



WINTER 2011

VOLUME 54

NO. 1

North Tenn. Winter Open .....	5
Tenn. Scholastic Individual Qualifiers .....	7
Individual Scholastic Finalists .....	8
50 <sup>th</sup> Mid-South Open .....	11
North TN Winter Open Crosstables .....	17

---

---

- February 19, 2011**      **Tenn. Individual Finals**  
Roaden Univ. Center, Tenn. Technological Univ., Cookeville, TN
- March 5, 2011**      **Tenn. Regional Team Qualifiers**  
Reg. 1: Oak Ridge High School, Oak Ridge  
Reg. 2: Univ. Ctr. of Univ. of Tenn.– Chattanooga, Chattanooga  
Reg. 3: Battle Ground Academy, Franklin  
Reg. 4: Lester School, Memphis  
See TCA website for contacts: [www.tnchess.org](http://www.tnchess.org) or last page of TCN
- March 19, 2011**      **Lakeway Spring Open**  
Lakeway Community Church, Morristown, TN  
Info: Victor Suich; Tel. 423-586-4351; E-mail [vesuich@bellsouth.net](mailto:vesuich@bellsouth.net)
- March 26, 2011**      **State Team Finals**  
Roaden Univ. Center, Tenn. Technological Univ., Cookeville, TN
- April 2, 2011**      **East Tenn. Scholastic Spring Open**  
Milligan College, Johnson City  
423-975-8031 or E-mail: [jcsimonsen@milligan.edu](mailto:jcsimonsen@milligan.edu)
- April 9, 2011**      **2011 Tennessee All Girls Scholastic Chess Championship**  
Montgomery County Civic Hall, Clarksville, TN.  
E-mail: [clarksvillechessclub@charter.net](mailto:clarksvillechessclub@charter.net)
- April 29–May 1**      **2011 National High School (K-12) Championship**  
Gaylord Opryland Resort , Nashville, TN

This magazine is being provided to current Tennessee Chess Association members as one of their benefits for supporting chess activity in Tennessee. It is the official publication of the *Tennessee Chess Association* and its legal property. We are trusting you to not abuse the privilege of online access to this information. Abuse would be considered copying over two pages for publication without crediting the source (Tennessee Chess News—TCN). However, you are permitted to download a copy of the online version of this publication to your personal computer. If you desire to use this content for other purposes than your own copy, contact the editor, Leonard Dickerson, for approval. Thank you for your support of chess in Tennessee and observation of these few requests!

## MEMBERSHIPS

TCA annual dues are \$10 for a *regular* membership or *student* membership. Additional members of a family may join for one dollar each, but only one copy of printed **TCN**'s will be available per family. Both regular and patron memberships are for a 12-month period, starting in the month of purchase and expiring after a 12-month period.

**Tax deductible Patron Memberships** are available beginning at \$100 per year for those who wish to help support the TCA and the FFTC. These memberships expire one year from the date of payment. The Patron membership categories are:

**PATRON — \$100; PATRON KING — \$300; PATRON MASTER — \$500; PATRON GRANDMASTER — \$1000+**

The benefits that pertain to the different level of patronage are currently being refined and will be detailed on our website soon.

## TOURNAMENT ANNOUNCEMENTS

**TCN** prints listings of upcoming tournaments that require TCA membership in each issue for free. Submit complete TLA information to Larry Grohn, Tournament Coordinator: E-MAIL: [LarryGrohn@comcast.net](mailto:LarryGrohn@comcast.net)

## TCN CHESS NEWS STAFF

### Editor

Leonard Dickerson

### Contributors

Corry Marsh      Roy Manners

Rhonda Weishaar

## TCN PUBLICATION SCHEDULE

**Spring 2010** — Scheduled for May 1st covering Feb, Mar, and Apr events

**Deadline for submission: Apr 18, 2010**

**Summer 2010** — Scheduled for Aug 1 covering May, Jun, and Jul events

**Deadline for submission: July 18, 2010**

**Fall 2010** — Scheduled for Nov 1 covering Aug, Sept, and Oct events

**Deadline for submission: Oct 18, 2010**


**Winter 2011** — Scheduled for Feb 1 covering Nov, Dec, and Jan events



**Deadline for submission: Jan 18, 2011**

Please submit material by e-mail to: [lsdick@tds.net](mailto:lsdick@tds.net)

# PATRON MEMBERS

**TENN. CHESS ASSOC. & FOUNDATION FOR TENN. CHESS**

 **Patron Grandmaster**   
**Dr. Martin Katahn**

 **Patron Member** 

**Malcolm Estrada**  
**Peter Lahde**  
**R. K. Shimabukuro**  
**Paul Semmes**  
**Brian Vogt**

# TN HALL OF FAME

The **Tennessee Chess Hall of Fame** was established to honor those members who have distinguished themselves through their outstanding achievements in chess, either in competition or in chess organization or promotion. Peter Lahde is chairman of the electing committee, and guidelines for nominations are posted onsite. Below is a listing of the current members and their year of induction.

Peter Lahde	1990	John Hurt	1992
Robert Coveyou	1990	James A. Sweets	1993
Jerry Sullivan	1990	Rea Hayes	1997
Martin Southern	1990	James A. Wright	1998
Tom Finucane	1990	Dr. Martin Katahn	2002
Robert Serivener	1990	David Burris	2003
L. Hunter Weeks	1990	Albert Hodges	2005

# PRESIDENT'S STATEMENT

*TCA Members and Friends,*

*2010 was an eventful year for TCA as the Board struggled with the problem of how to stem the losses we have suffered at our state championship and the Tennessee Winter Open without damaging player interest and attendance. I think that most of you are aware of the changes that were made, and unmade, so there is no reason to touch on that now. May it suffice to say that the losses have been declining which is a good sign but there is much work yet to be done.*

*All praise to Chris and Angela Prosser for the great effort they have put forth organizing and operating the NTWO this year and last. That tournament is living up to its seasonal name so having a playing hall with a fireplace has become a real plus. Does Lone Pine boast such an amenity?*

*Aside from what I believe is our primary service to the chess community, the funding, organization and operation of tournaments, the TCA has undertaken a program which is calculated to reach out and assist schools, clubs, and other organizations interested in promoting chess. We have styled this effort the Tennessee Chess Initiative (TCI) and the Board, with guidance from Roy Manners—the TCI brainchild—is working to determine how we can invest funds appropriately to support defined programs. You will hear more of this in the very near future.*

*Thanks to you all for your continuing interest and help.*

# FROM THE EDITOR

The NTWO was successful from a player-turnout standpoint, despite there being only 10 players competing in the Open Section (Kings). Still, the tournament came close to financially breaking even. Though many good games were played, they were not submitted. This was mainly because—unlike last year—no carbon-copy scoresheets were given to the participants. And asking for games is obviously futile. Whatever the case, all games submitted are included in this issue.

Most regions reported record-breaking attendance at the Individual Scholastic Qualifying tournaments. In Region 1 this increased participation did not mean an increase in problems, though. In fact, the over 130 participants were very quiet and few problems emerged. I can't remember when a tournament functioned so well during my tenure as tournament director! Hopefully this trend will carry forward into the upcoming Team Championships!

Through no fault of our Internet Coordinator, the game viewer is still not functional. In fact, it is not even accessible! The President is very upset about this and is discussing this concern with the developer of our website.

Roy Manners, Middle Tenn. Dir., developed the TCI to put the TCA's money to work for us developing programs that will promote, encourage, and enhance chess in our state. This development plan was approved by the Board on Jan. 23. Two plans of action were immediately approved to start accomplishing the goals of the TCI. First, it was decided that the TCA should develop Scholastic Chess Assistance Packages. This initiative would provide chess sets, books, and chess resources to schools that apply for assistance. The other major concern is bringing adults back to our tournaments. This proposal will involve some publicity campaign, possible book donation to libraries, and co-ordination with the chess clubs and tournament directors to stage tournaments that have adult participation. These two initiatives will certainly give Roy's ideas a test. And if successful, will greatly enhance chess development and publicize the TCA.

## North Tenn. Winter Open

The Tenn. Winter Open was held on Jan. 15-16th at Henry Horton State Park in Chapel Hill. Seventy-five players attended the event this year, which was 15 more players than those who braved the snow to compete last year. The increased attendance may have been due to the restructuring of the tournament. The most significant format change occurred in the top sections where the Kings and Queens Section were separated, with the Queens Section being limited to players with Under 1800 ratings. The Pawns Section was limited to those with ratings below a 1000. Unrated players were not limited to one section as in last year's format. Chris Prosser again assured that the tournament was smoothly ran, serving as tournament director.

**Ronald Burnett** and **Todd Andrews** again finished at top, this time besting a 10-player field. However, Burnett took sole first place with 4.5 points. Todd Andrews placed second with 4.0 points, a full point ahead of the remaining players.

**Ashraf Armanios**, last year's winner of the **Rooks Section**, again won the renamed Queens Section (which had a rating ceiling of 1800 last year) with 4.0 points, squeaking by second-place finishers **Scott Cantrell** and **Jennifer Ishee** who both had 3.5 points.

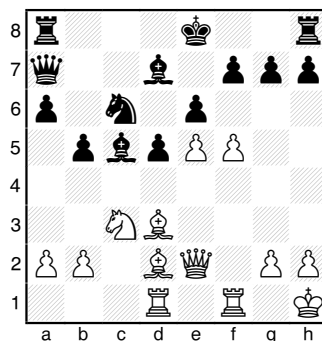
The 30-player **Rooks Section** was won by **Lillis Austin** who gave up only a draw to finish with 4.5 points. **Samuel Hunt** and **Angela Li** tied for second place with 4.0 points.

The **Pawns Section**, which had only 21 players, ended in an unusual three-way tie among 4-point scorers: **Puja Jagasia**, **William Pyle**, and **Ruben Atkins** shared the honors.

See the crosstables for the sections on pages 17-20. All games submitted for the event have been included in this issue.

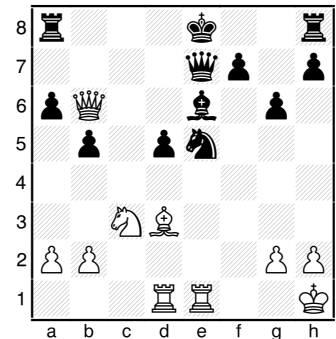
**NTWO - Kings (4)**  
**James Pollitt - 1950**  
**Corry Marsh - 1787**  
**Annotated by Marsh**

1. e4 e6 2. d4 d5 3. e5 c5 4. c3 Nc6 5. Nf3 Qb6 6. Bd3 cxd4 7. cxd4 Bd7 8. O-O Nxd4 9. Nxd4 Qxd4 10. Nc3 a6 Black wisely refrains from snatching the e-pawn because White gets serious compensation with Re1. -editor 11. Qe2 Ne7 12. Kh1 Nc6 13. f4 Qa7 Black's purpose behind Qa7 was to avoid having his Queen trapped and to still have the provided move of b5: 13... Nb4 14. Rd1 (14. Bb1 Qc4) 14... Nxd3 15. Rxd3 Qc4 16. b3 Qc7 17. Bb2 -/+ 14. **Bd2 b5 15. Rad1** Because of the possible activity along the c-file, 15. Racl is better. 15... Bc5 16. f5



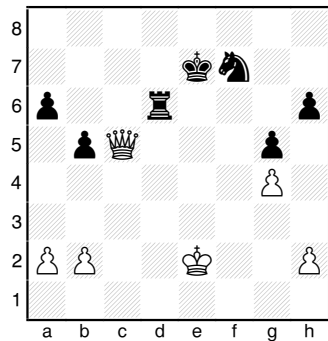
White tries to open the uncastled king and begin an attack. (16. Qg4 O-O 17. Rf3 f5 18. exf6 Rxf6 19. Rg3→ Black is being struck by an attack, but with correct play it can be held.) 16... **Nd4 17. Qg4 g6 18. fxe6** (18. fxc6 fxc6 19. Be3 Nf5 20. Bxf5 gxf5 =) 18... **Bxe6 19. Qh4 Be7** Black played here

in order to reposition his pieces and prevent any chances for an attack. Best here is 19... Nf5 20. Bxf5 gxf5 21. Bg5 d4 -/+ 20. **Bg5 Bxg5 21. Qxg5 Qe7** Black played here in order to try and trade into a winning endgame. There is no possible way for White to get solid penetration on the dark squares, so 21... O-O can be played. 22. **Qe3** White does not find the queen trade favorable, so he decides to try and redirect his play to the center and queenside. **Nc6 23. Qb6 Nxe5 24. Rfe1** Black has a strong position here, but he needs to worry about his d5-pawn.



**Nd7** (24... f6 25. Bc2 Rd8 26. Qxa6 b4 27. Nxd5 Rxd5 28. Rxd5 Bxd5 29. Qc8+ Qd8 30. Qxd8+ Kxd8 31. Rd1 =) 25. **Qc6 O-O 26. Nxd5 =/+** White has strong piece play and activity as compensation. **Bxd5** (26... Qd8 {26... Qc5 leaves Black with a big advantage.-ed.} 27. Be4 Ra7 28. Qd6 Re8 =/+ ) 27. **Qxd5 Nf6??** (27... Nb6 28. Qc6 Qa7 29. Bf1 =/+ ) 28. **Qf3 Qd6 29. Be4** (29. Rf1 is also strong.) 29... **Nxe4 30. Rxd6 Nxd6** White's idea here is to trade rooks and then win Black's pawns. This idea is very simple if it is executed correctly. Meanwhile, Black wants to build a fortress and try for a draw. 31. **Rd1 Nf5 32. g4 Ng7 33. Rd7 Ne6 34. Rxf7** White has gained his pawn and has Black in a position where he has to trade rooks. **Ng5 35. Rxf8+ Rxf8 36. Qd5+ Nf7 37. Qe6 Rd8 38. Qe2** White seemed to be worried about the loss of his pawns.

(38. Qxa6 Rd1+ 39. Kg2 b4 (39... Rd2+ 40. Kf3 Rxb2 41. Qc8+ Kg7 42. Qc3+) 40. Kf3 +-) 38... Kf8 39. Kg1 Nd6 40. Qf2+ Ke8 41. Qd4 Nf7 42. Qe3+ Kf8 Black is waiting for an opportunity where he will begin to build the impenetrable fortress. 43. Kf1 White plans to use his king and queen together in order to have a formal invasion. Rd6 Stage one of Black's plan is set up: he wants to keep his pawns defended. 44. Qc5 Kg7 (Better here is 44... h6 because it helps in the construction of the fortress. 45. Qe3 g5) 45. Qc3+ Kf8 46. Kf2 Ke7 Still 46... h6 is good. 47. Qc7+ Ke6 48. Ke2 White has no possible way to pick off one of Black's pawns. h6 49. Qc8+ Ke7 50. Qc5 g5

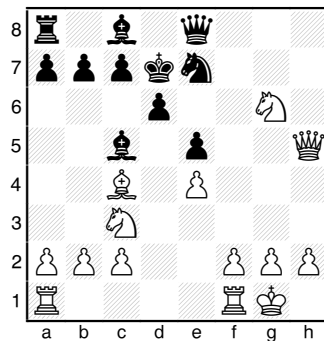


The king defends the knight, the knight defends the rook, the rook defends the backward pawns, and the backward pawns defend the forward pawns. 51. Kf3 Ke6 52. Qc8+ Ke7 53. Qb7+ Kf6 54. Ke3 Ne5 55. Qe4 White tries too hard to win. Nc4+ 56. Ke2?? (56. Kf2 Nxb2 57. Qh7 Ke5 58. h4 Nd1+ 59. Ke1 Ne3 =) 56... Re6 0-1

**NTWO – Pawns (2)**  
Colton Douthitt – 888  
Ruben Atkins – 773  
Result 1-0

1. e4 e5 2. d4 f6? 3. dxe5 fxe5 4. Bc4?! (4. Qh5+! Ke7 5. Qxe5+ Kf7 6. Bc4+ d5 7. Bxd5+ Kg6 8. Qg3+ and mate in four moves.) 4... Nf6 5. Nc3 Bc5 6. Nf3 Nc6 7. O-O d6

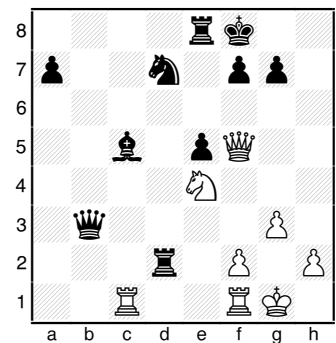
8. Bg5 (The immediate Ng5 is not as damaging as it first looks: 8. Ng5 Bg4!9. Qd3 Qe7) 8... h6 Definitely better is Na5, trying to get White's bishop off the a2-g8 diagonal. 9. Bxf6 gxf6?! Better was Qxf6 even though Nd5 would drive it back to d8. But Black would still be defending h4 and Black's kingside would not be so fractured. 10. Nh4 Rh7? Black had to play h5 to block the queen's entry into the game. 11. Qh5+ Kf8 12. Qg6! Rg7 13. Qxh6 Ne7 14. Qxf6+ Ke8 15. Qxg7 Kd7 16. Qg4+ Ke8 Better was Kc6, hoping to find some shelter on the queenside. 17. Qh5+ Kd7 18. Ng6 Qe8



19. Nxe5+ (19. Bf7! Qxf7 20. Nxe5+) 19... Kd8 Better was dxe, but Black did not want a rook entering the fray with a check along the d-file. 20. Nf7+ Kd7 21. Rad1 Nc6 22. Qf5+ (22. Qh3+! Ke7 23. Nd5+ Kxf7 24. Qh7+ Kf8 25. Qh8+ Kf7 26. Qf6+ Kg8 27. Ne7+) 22... Ke7 23. Nd5+ Kf8 24. Qf4 Qxf7 25. Qh4 Stronger was Qxf7. Be6 26. Qh6+ Qg7 (26... Ke8 27. Qh8+ Qf8 28. Nxc7+) 27. Qxe6 Re8 28. Qf5+ Qf7 29. Nf6 (29. Qxf7+ Kxf7 30. Nxc7+ Ke7 31. Nxe8 Kxe8 32. h4) 29... Qxc4 30. Nh7+ Ke7 31. Qf6+ Kd7 32. Qf5+ Kd8 33. Nf6 Re6 Better was Re7. 34. b3 Nd4 35. Rxd4 Rxf6? 36. Qxf6+ Kd7 37. Rxc4 b5 38. Rxc5 dxc5 39. Rd1+ Kc8 40. Rd8+ Kc7 41. e5 c4 42. e6 Kc6 43. e7+ Kc5 44. e8=Q cxb3 45. Qc3+ Kb6 46. Qec6# 1-0

**NTWO – Pawns (5)**  
Matt Olszewski  
Elena Roberts  
Result 1-0

1. e4 d5 2. exd5 Qxd5 3. Nc3 Qa5 4. d3 c6 5. Bd2 Qc7 Actually, there is no reason for the queen to retreat. Without a bishop on c4, White's knight has limited threats. 6. g3 Nf6 7. Bg2 Bf5 8. Nf3 +/- Nbd7 9. O-O e5 10. Nh4 Be6 11. Qe1 Much better was Qe2 to connect the rooks and pressure the e-pawn. Bd6 12. Nf3 O-O 13. Ng5 Bd5 14. Nxd5 cxd5 15. c4 Better was c3. Now Black has a tiny advantage. dxc4 Better was h6, forcing the knight to retreat while still maintaining control of e4. 16. dxc4 Qxc4 17. Bxb7 Rab8 18. Bg2?! White should first play b3, gaining a tempo off the queen and protecting the b-pawn. Rxb2 -/+ 19. Rc1! Choosing piece activity over material. Qxa2 20. Bc3 (20. Ra1! Qc4 21. Rxa7) 20... Rc2 21. Ra1 Qb3 22. Bd2 Bc5 23. Rc1 Stronger was Qe2, though White is still suffering. (23. Qe2 Bb4 24. Qe3) 23... Rb8 24. Be4 Rather than giving up the potentially-strong bishop, White should play Ne4. Nxe4 (24... Rxc1 25. Bxc1 h6 -+) 25. Qxe4 Rxd2 26. Qxh7+ Kf8 27. Qf5 Re8 (27... g6 28. Qe4 Rb4 29. Qc6 Qd5) 28. Ne4



Qd3 Better was Rd5. 29. Rc3 Qd4 30. Rf3 Rd1? (30... Nf6 31. Nxf6 gxf6 32. Qxf6 Qd5 -+) 31. Qxf7# 1-0

## Tenn. Regional Individual Qualifiers

The Regional Qualifying tournaments for Tenn. scholastic players took place on January 29th. The unrated 5-round events with mixed time controls of G/30 (Rounds 1 & 2) and G60 (Rounds 3-5) were held in the four regions of the state to qualify eight candidates per grade range and region for participation in the February 19<sup>th</sup> Individual Finals. Some very large sections (generally the Elementary) were expanded to 6 rounds with the latter rounds being conducted at G45. Consequently, some of the events lasted a complete 12 hours from registration through awards!

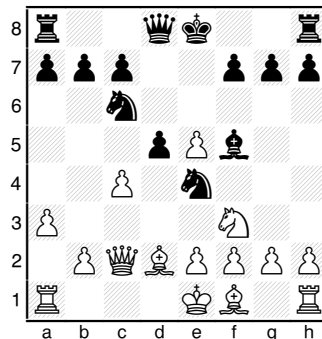
Trophies were awarded to the top ten players of each division, plus a trophy for the top unrated player and Top U800-rated player. Some regions even made additional trophies and awards available, especially for the large Elementary Section.

The top ten finishers in each section are shown on the following pages 8 and 9. They are listed alphabetically, not by rating or region. These may not necessarily be the eight regional finalists that actually participate in the Finals, but they are the players who have qualified and currently committed to participating in the tournament. You can find the complete and updated listing on the Tenn. Chess Association's website (tnchess.org).

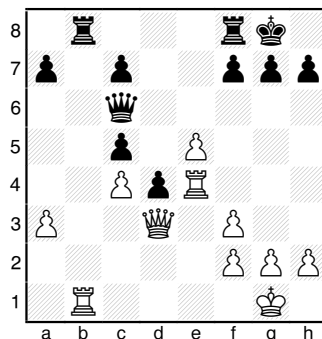
To see an example of the increased turnout for the scholastics this year, see the photos on page 10. (Don't overlook the clash of titans on page 22!)

**Reg. 1 Ind. Qualifier**  
**Corry Marsh - 1787**  
**Peter Suich - 2088**  
**Result 0-1**

1. d4 Nf6 2. c4 e5 3. dxe5 Ne4 4. Nf3 Nc6 5. Nbd2 Bb4 6. Qc2 Better is a3. d5 7. a3 Bxd2+ 8. Bxd2 (8. Nxd2 Bf5 9. Nxe4 dxe4 10. g4 Bxg4 11. Rg1 {11. Qxe4 Qd4 12. Bg2=} 11... Bf5 12. Qc3 +/-) 8... Bf5



9. Qc1 (Fritz recommends Rd1, ignoring Black's threat of Ng3: 9. Rd1 Ng3 10. Qb3 Nxh1 11. cxd5 Ne7 12. e4 Bg4 13. h3 Bxf3 14. Qxf3 +/- For the exchange, White has more than enough compensation with a pawn, a strong center, and the two bishops.) 9... Nc5 10. Bg5 Qd7 11. Qd1 d4 A little stronger is dxc. 12. b4 Ne4 13. b5 Nxg5 14. bxc6 Nxf3+ 15. exf3 bxc6 16. Bd3 Rd8 17. O-O O-O 18. Re1 c5 19. Qc2 Better was Rb1, fighting for control of the open file. Bxd3 20. Qxd3 Qc6 21. Re4 Rb8 22. Rb1

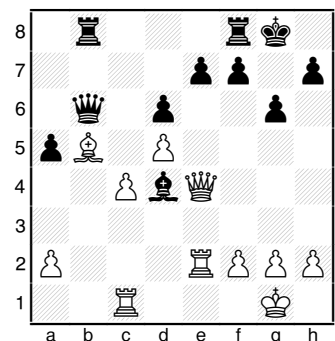


Recommended was R(e)-e1. Now Black can gain a significant edge. Rb6 (22... Rxb1+ 23. Qxb1 Qa4 24. Qc1 d3 25. Re1 h6 -+ Fritz gives

Black a 1.9 advantage.) 23. h3 Rfb8 24. Reel Qg6 25. Rxb6 Rxb6 26. Qd1 A little better was Re4. h6 27. Kh2 Rb2 28. Re4? Better was Re2. Corry is likely feeling the affects of tiredness from previous rounds and time pressure. Rxf2 29. Rg4 Qc2 30. Qe1 Qe2 31. Qb1 Qxe5+ 32. Kg1 Re2 33. Qb8+ Qe8 34. Qxc7 Re1+ 35. Kf2 d3 36. Re4 Rxe4 37. fxe4 Qxe4 38. Qxc5 d2 39. Qc8+ Kh7 40. Qd7 Qc2 41. Ke2 d1=Q+ 0-1

**Reg. 1 Ind. Qualifier**  
**Kevin Hong**  
**Sanchit Wadhawan**

1.e4 c5 2.Nf3 Nc6 3.d4 cxd4 4.Nxd4 g6 5.Nc3 Bg7 6.Be3 Nf6 7.Bb5 0-0 8.0-0 a6 9.Ba4 b5 10.Bb3 Bb7 11.Re1 b4 12.Nxc6 Bxc6 13.Nd5 Bxd5 This is a radical way of dealing with the threat of Bb6. A little better is offering a swap of pawns with e6: 13...e6! 14.Bb6 Qb8 15.Ne7+ Kh8 16.Nxc6 Qxb6 17.Ne5 a5=+ 14.exd5 d6 15.Qd2 White has the two bishops and pressure on the e-file. He should first continue with a3 to secure his queenside. 15...a5 16.Ba4 Ng4?! Much stronger is Ne4, heading for the strong c5 post. 17.Bd4 Ne5 18.Qe2? Nf3+ 19.Qxf3 Bxd4 20.c3 bxc3 A little stronger is Be5. 21.bxc3 Be5 22.Rac1 Rc8 23.c4 Rb8 24.Bb5 Qb6 25.Qe4 Bd4 Better was Qc5, sealing the position and maintaining a dark-square bind. 26.Re2 Though the position is drawish, Kevin played on because he had a 3:1 time advantage, and he achieved the win. 1-0



## High School Finalists

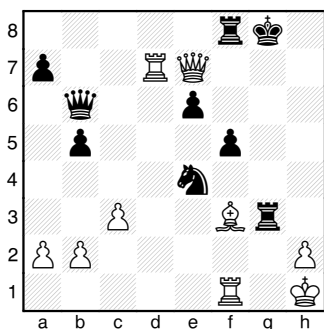
No.	Name	Reg	USCF#
1	Amarthaluru, Venka	R3	1233
2	Amarthaluru, Venka	R3	911
3	Berryhill, Jordan	R4	1539
4	Boonstra, Jackson	R3	1306
5	Brown, Leland	R3	1203
6	Bulington, Carter	R4	1600
7	Carrillo, Oscar As	R4	1637
8	Dasari, Teja	R4	1557
9	De Bruyn, Parker	R2	571
10	Donnan, Matthew Jo	R2	1146
11	Douglas, Donnie	R2	1069
12	Franklin, Shane Mi	R3	1309
13	Hodge, James Nicol	R3	1296
14	Horobetz, Graham	R4	2108
15	Knowles, Chase	R4	1854
16	Kumar, Vikas Shrey	R3	1815
17	Laclair, Adam J	R1	1009
18	Lillis, Austin	R2	1322
19	Marsh, Corry L	R1	1767
20	Marsh, Matthew L	R1	2135
21	Neglia, Salvatore	R3	1902
22	Pawel, Greg T	R1	745
23	Richardson, Zachar	R2	930
24	Roberts, Elena Eun	R1	716
25	Sharpe, Trevor All	R2	1334
26	Simonsen, Andrew	R1	1406
27	Suich, Peter	R1	2088
28	Vogt, Nathan	R4	1976
29	Warren, Jon	R2	1257
30	Weishaar, Kayla	R2	1483
31	Winchester, David	R1	1218
32	Woodbury, George	R4	1890

## Jr. High School Finalists

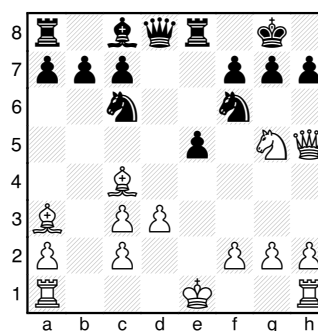
No.	Name	Reg	USCF#
1	Back, Alecia	R2	428
2	Berryhill, Jansen	R4	1305
3	Berryhill, Jenner	R4	1183
4	Blue, Charles	R1	1331
5	Boeger, Reed Allen	R3	1222
6	Burgess, Carter Br	R4	1505
7	Dai, Jing	R3	1115
8	Dasari, Vijaya R	R4	1235
9	Dupont, Randon	R4	1393
10	Friedman, Max Ashe	R4	1643
11	Fu, Jason	R1	1701
12	Gerloff, Samuel C	R1	
13	Harrelson, Samuel	R2	814
14	Hong, Kevin	R1	1594
15	Karri, Vivekanudee	R4	1290
16	Li, Angela	R3	1228
17	Linden, Jamison S	R2	494
18	Patri, Tanay	R2	850
19	Sathyam, Deepak	R4	1375
20	Sharpe, Kyle Andre	R2	1177
21	Shirer, William Al	R2	386
22	Simonsen, David	R1	983
23	Steed, Adam C	R3	1419
24	Suich, Victoria	R1	1185
25	Tomlin, Nicholas A	R3	1575
26	Velkovsky, Ivan	R3	1370
27	Wadhawan, Sanchit	R1	1494
28	Weishaar, Luke	R2	1558
29	Weishaar, Rachel	R2	1385
30	Welch, Christopher	R3	1389
31	Xue, Albert	R1	1149
32	Zhang, Alvin	R3	1367

Prepare for the Finals: hone your tactics daily. You can find these game collections of mating themes at chessgames.com: <http://www.chessgames.com/perl/chesscollection?user=patzr2&page=2>. See page 16.

## Tactical theme: Smothered Mate



Visser (2516) vs. Speelman (2541)  
4<sup>th</sup> Staunton Mem., 2006  
Black to make 27<sup>th</sup> move.



Hallman, H. vs. Schneider, W.  
corr. ARG., 1931  
White to make 11<sup>th</sup> move.

## Elementary Finalists

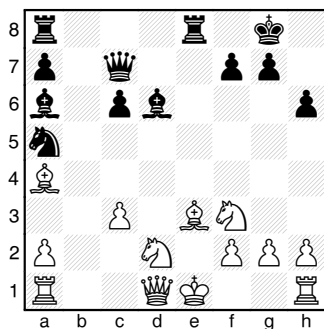
No.	Name	Reg	USCF#
1	Back, Brandon	R2	427
2	Beaty, Jack	R2	
3	Bell, Tolson	R1	
4	Bhagwat, Nagaraj R	R4	1550
5	Bowling, Michael R	R3	1101
6	Campbell, Joshua A	R3	1012
7	Chen, Kevin D	R1	644
8	Dominguez, Jason	R4	1301
9	Du, Justin	R4	1272
10	Duplooy, Jake Will	R2	513
11	Evered, Cole E	R1	868
12	Habermann, Julian	R3	1054
13	Hahamyán, Henrik A	R3	1379
14	Hamlin, Charlie	R2	666
15	Harman, Aubrie	R3	1212
16	Herring, Brock Mar	R2	624
17	Hodge, James M	R1	1054
18	Hoyos, Jordan	R1	1206
19	James, Cydney M	R4	703
20	Joo, Abraham	R1	645
21	Jurka, Mitchell Jo	R2	232
22	Kouch, Joshua	R4	1207
23	Leow, Joshua	R4	1152
24	Marsh, Hunter L	R1	1302
25	Moody, Jackson	R4	1296
26	Nodit, Paul Gabrie	R1	1037
27	Pao, Lucas	R3	1267
28	Qin, Alexander Cha	R3	1408
29	Salian, Nikhil K	R4	762
30	Sharpe, Weston	R3	1280
31	Simmons, Joshua Al	R2	845
32	Soni, Roshan	R2	

## Primary Finalists

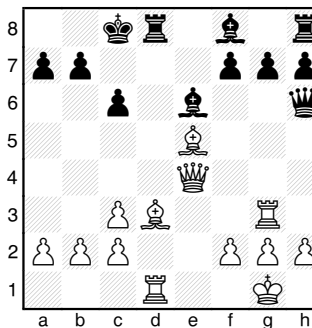
No.	Name	Reg	USCF#
1	Barton, Aden	R3	641
2	Brady, Andrew	R1	817
3	Burgess, Shaun Mon	R4	1358
4	Burns, Jeremy Elij	R1	462
5	Cao, Kevin	R4	1084
6	Dai, Wei	R3	964
7	Dasari, Krishna C	R4	1034
8	Du, Jake Wang	R4	427
9	Ellis, Seth A	R3	610
10	Esquivel, Joshua D	R3	904
11	Gummadi, Suhas	R2	
12	Hahamyán, Jacqueli	R3	734
13	Harring, Ian	R2	
14	Jakowski, Mikolaj	R1	342
15	Jurka, Mason Henry	R2	
16	Kesterson, Jacob L	R1	483
17	Kesterson, Joshua	R1	540
18	Koli, Tanuj	R3	1064
19	Kouch, Justin C	R4	995
20	Mullins, Brock Ala	R1	369
21	Nimon, Thomas	R2	
22	Ogle, Logan Kent	R1	608
23	Patri, Komal	R2	
24	Replogle, Jack Car	R1	718
25	Satheesh, Saharsh	R4	409
26	Schmidt, Kyle	R2	
27	Sernel, Kenner	R4	968
28	Smith, Colin	R3	1074
29	Soni, Rishi	R2	
30	Swartoot, Taylor	R2	
31	Taylor, Connor	R3	694
32	Wu, Allen	R4	1142

## Tactical theme: Boden's Mate

For answers, see games on page 16.



**Balk vs. Barnes**  
New Zealand, 1926  
Black to make 17<sup>th</sup> move.



**Lasker vs. Englund**  
Schveningen, 1913  
White to make 20<sup>th</sup> move.

# Tennessee Regional Qualifying Tournament



Region 1. Right: High School Sect.; Left: JrH Sect.; Rear: Elem. Sect.



Region 1 Primary Section. (Note spacious, well-lit facility.)

## 39<sup>th</sup> Annual CCCC Championship

Written by Rhonda Weishaar

The 39th Annual Cumberland County Chess Championship was held December 11th at the Community Complex in Crossville. The Cumberland County Bank and the Cumberland County Chess Club sponsored this championship tournament. Thirty-four of Cumberland County's finest chess players competed in five rounds of time-controlled chess. All players in the county-wide championship either work, reside or attend school in Cumberland County.

**Alan Kantor of Crossville** was awarded the first place plaque and earned the title of 2010 Cumberland County Chess Club Champion. Alan, who was the 2009 Champion, defended his title by finishing the tournament with a perfect score of 5.0 points. Alan will also have his name added to the champion's plaque that is displayed at Cumberland County Bank.

Coty Phillips earned the second place plaque with an impressive score of 4.0. Logan Blankenship and William Davis also finished with scores of 4.0 and were awarded 3rd and 4th place, as determined by tie-breakers. Old-timer in the chess world and past Cumberland County Chess Champion, Harry Sabine finished fifth with a score of 3.5. Rounding out the rest of the top ten plaque winners were Luke Weishaar, Kayla Weishaar, Rachel Weishaar, Bernie Lefrancois, and C. J. Houston who finished 6th thru 10th place, respectively.

Plaques were also awarded to the top finisher for each class. The champions by

class are as follows: Class E Champion, Matthew Donnan; Class F Champion, Leon Weishaar; Class G Champion, Robert Akin; Class H Champion, Brianna Gill; Class I Champion, Thomas Banik; and Top Unrated Player, Alex Donnan.

Congratulations to all of this year's Cumberland County participants and winners!

If you would like additional information about The Cumberland County Chess Club and their upcoming meetings and tournaments, then contact Harry Sabine at (931) 484-9593 or visit [cumberlandcountychess.org](http://cumberlandcountychess.org).

Weishaar also provided photographs of the event, some of which can be seen on the following page 12. Further, she had the event publicized in the local newspaper. This is the type of coverage for chess that deserves emulation.

## 50<sup>th</sup> Mid-South Open

The Mid-South Open featured three sections totaling 52 players and was held November 27<sup>th</sup>. The main section of this 4-round event had 20 competitors and was conducted with a time control of Game/60. **Graham Horobetz** (2124) won the Championship with 3.5 points out of 4.0 games. Edgar Davison (1956), Alexis Zamora (1935) and John Maddox, III (1597) shared third place honors with scores of 3.0. Horobetz earned her title by defeating second-place finishers Maddox in the second round and tying with Davison in the third round. And in the final round she

completed her dominance by defeating 6<sup>th</sup>-place finisher Kyle Salzgeber of Missouri.

The companion 7-round **Game/30 Section** was won by **Sourav Bhattacharjee** (1960), who finished with 6.5 points. The champion finished just a half point ahead of 1650-rated Kenneth Thompson.

The 4-round **U-1200 Section** had 24 participants, the vast majority of whom were unrated. **Justin Kouch** (852) and **Elliot Maneclang** (557) were co-champions of this very-competitive section, finishing with perfect scores.

The Mid-South Open also featured a **Blitz** tournament. **Gary Pylant** won this event with 4.5 points, finishing 1.5 points ahead of his nearest rivals.

**Horobetz** also finished a point ahead of the field in the 4-round, **Game/60 Mitchell Memorial**, which ran from December 3-December 17 and had 21 participants.

A few of the games that helped determine the order of the Mid-South winners are included here. Crosstables and many more games are available at the website of the Memphis Chess Club: <http://www.memphischessclub.homestead.com>.

**50th Mid-South Open (4)**  
**Graham Horobetz - 2108**  
**Kyle Salzgeber - 1565**  
**Result 1-0**

**1. e4 c5 2. Nc3 Nc6 3. f4 g6 4. Nf3 Bg7 5. Bc4 Nf6?! Certainly d6 or e6 was more appropriate. 6. f5** This is probably a pawn sacrifice; however, the simple e5 was better. Now Black can gain

(Continued on page 13)

# 39<sup>th</sup> Annual Cumberland Co. Chess Championship

(Photos contributed by Rhonda Weishaar)



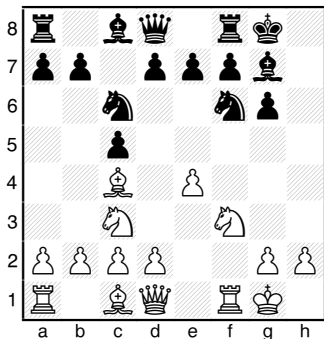
The Champion Alan Kantor (left) battling past-champion Harry Sabine.



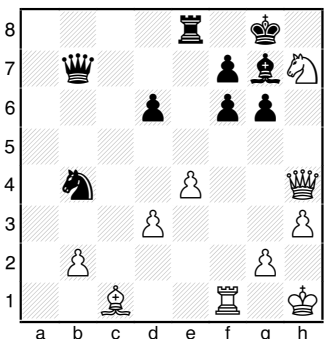
Participants of the CCCC Championship. Note that all are winners!

**Horobetz-Salzgeber, cont.**

an edge with gxf5 because if White recaptures the pawn Black can strike back with d5. O-O (6... gxf5 7. exf5 d5 -+) 7. fxc6 hxg6 8. O-O?!



d6 Black could have gained a slight advantage by trying the Fork Trick here: 8... Nxe4 9. Bxf7+ Rxf7 10. Nxe4 d5 11. Neg5 Rf5 12. d3 +/- Though Black's kingside is compromised and White is threatening Nh4, Black is still doing well. 9. d3 a6 10. a4 b5? 11. axb5 Nb4 Better was Na5. 12. h3 Bb7 13. bxa6 Bxa6 14. Bxa6 Rxa6 15. Rxa6 Nxa6 16. Qe1 Qb6 White is attack-minded here. So it is likely that if Black had played the better Nb4, White would have continued with Qh4, anyway. Fritz now recommends that White play e5 for a surer advantage. 17. Qh4 Re8 18. Ng5 Stronger is still e5. c4+ 19. Kh1 Fritz recommends Qf2, but White is trying to power his lower-rated opponent off the board. cxd3 20. Nd5 Qb7 21. cxd3 Nb4 22. Nxf6+ exf6 23. Nh7

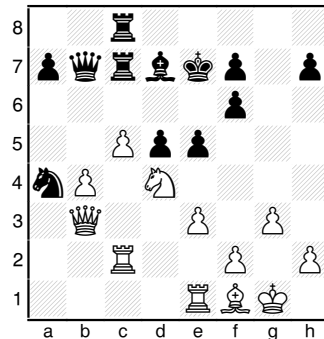


Qe7?! (23... Nxd3! 24. Nxf6+ Bxf6 25. Qxf6 Nxc1 26. Rxc1 Rxe4 =) 24. Nxf6+ Bxf6 25. Rxf6 Nxd3 26. Bg5 Qxe4 27. Qxe4 Rxe4 28. Rxd6 Nxb2?? 29. Bf6 Re1+ 30. Kh2 Rd1 31. Rb6 g5 32. Rxb2 Rd5 33. Re2 Threatening Re5; but stronger is Kg3, getting the king into the attack. Rf5 34. Bb2 Ra5 35. Re5 Ra2 36. Rxc5+ Kh7 37. Be5 Rf2 38. Kg3 Rf1 39. Kg4 f6 40. Rf5 Rxf5 41. Kxf5 fxe5 42. Kxe5 1-0

**50th Mid-South Open (3)  
Kyle Salzgeber - 1565  
Alexis Zamora - 1895**

1. d4 Nf6 2. Nf3 c5 3. c3 e6 4. Bg5 Nc6 5. e3 Be7 6. Bxf6 A better way to test the accuracy of Black's 5th move was dxc5. Bxf6 Preferable is gxf6. 7. dxc5 Qa5 Fritz suggests making a full sacrifice of the pawn with b6. This move is weak, as White proves. 8. Nbd2 (8. b4!? Nxb4 Recommended is Qd8, leaving White with problems of developing his queenside. 9. cxb4 Qxb4+ 10. Nbd2 Bxa1 11. Qxa1 O-O 12. Bd3 Better than Qd4. Qxc5 13. Qb1 +/-) 8... Qxc5 9. Ne4 Qb6 10. Nd6+ Ke7 11. Rb1 Better is Qd2, allowing the rook to play to d1. Na5 12. Ne4 d5 13. Nxf6 gxf6 +/- 14. g3 Another continuation is b4 with the idea of following up with c4 if Black retreats his knight to c6. Bd7 15. b3 Discouraging Bb5 but unnecessarily creating a weakness on the c-file. Rac8 = 16. Rc1 Qc7 Equality could have been obtained with Bb5. 17. Bg2 Bb5 18. a4 Bc6 Better was Bd7 followed by Qb6 and perhaps h5. 19. O-O b5 20. axb5 Bxb5 21. Re1 Nb7 Necessary was Qb8. Now White's activity capitalizes on Black's awkward development. 22. Nd4 Fritz gives White a 1.6 advantage. Bd7 23. Qd3 Much stronger was e4 to open the game. Nc5 24. Qb1 Qb6 25. b4 (Fritz likes c4, but it is

unlikely that a human is going to see this continuation in a 60-minute game: 25. c4 dxc4 26. Rxc4 Rhd8 27. Qc2 Nb7 28. Bc6) 25... Na4 26. Qb3 Rc4 27. Bf1 Rc7 28. c4 Rhc8? 29. c5 Qb7 30. Rc2 Strong is Qa3, eyeing the king and defending against a possible Nxc5. e5

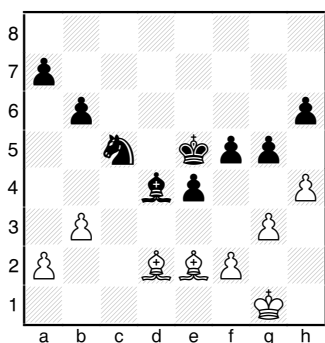


31. Nf3? (31. c6! Bxc6 32. Nf5+ Kd8 33. b5 Bxb5 34. Nd6) 31... Nxc5 32. Qa3 Ne4 33. Rxc7 Rxc7 34. Ba6 Qb6 35. b5+ Qc5 -+ 36. Qb3 Be6 (36... Qc2!) 37. Qb2 Bg4 38. Nh4 Nd6 (38... Qc3!) 39. Qb1 e4 This is weak, especially considering that Black had the automatic moves of Qc2, Qc3, or h6 available. 40. Qb3 Be6 41. Qb2 Bd7 42. Rb1 Qb6 43. Qb3 Rc5 44. Qa4 Bxb5 45. Bxb5 Rxb5 The score ends here. It is uncertain whether White won on time or by complications with Nf5+. 1-0

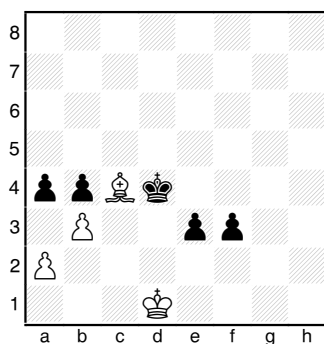
**50th Mid-South Open (3)  
Edgar Davison - 1932  
Graham Horobetz - 2108  
Result ½ - ½**

1. Nf3 c5 2. e4 g6 3. d3 Nc6 4. c3 d5 5. Nbd2 Bg7 6. Be2 e5 Black already has equality. 7. exd5 Qxd5 8. Qb3 Nge7 9. Qxd5 Nxd5 10. Ne4 b6 11. Nd6+ Ke7 12. Nxc8+ Raxc8 13. O-O h6 14. Re1 f5 15. Bf1 Kf7 16. Bd2 Rhe8 17. Rad1 Rcd8 18. Bc1 Slightly better was h4 to prevent g5, but neither White or Black seems

particularly combative. **Nc7 19. g3 Rd6 20. d4!?** The burst of activity onto an over-protected square comes almost as a shock. **cxd4 21. cxd4 Nxd4** Also good is Red8, setting a battery on the d-file: **21... Red8 22. Bc4+ Kf8 23. Bb3 Nxd4 24. Nxd4 Rxd4 25. Rxd4 Rxd4 26. Be3 =/+ 22. Nxd4 Rxd4 23. Be3 Rdd8** Simpler was **Rxd1** followed by **Ne6. 24. Bc4+ Ne6 =/+** White's activity does not compensate for being a pawn down. **25. Rd2 Rxd2 26. Bxd2 e4 27. b3 g5 28. Rd1 Rd8 29. Be2 Be5 30. Be1** White hopes that his bishops can bring equality; however, Black should win easily. **Rxd1 31. Bxd1 Kf6 +- 32. h3 Nc5 33. Bd2 Bd4 34. Be2 Ke5 35. h4**



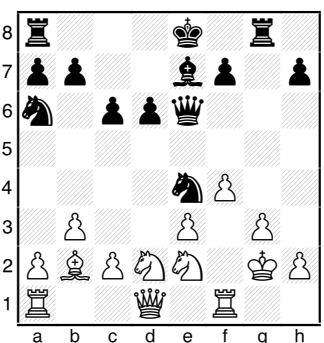
**f4 (35... Nd3! 36. hxg5 {36. Bxd3 exd3 37. hxg5 hxg5 38. Bxg5? Bc3} 36... hxg5 37. Bxg5 Bxf2+ 38. Kg2 Bc5) 36. hxg5 hxg5 37. gxf4+ gxf4 38. Kf1 f3 39. Bd1 Nd3 40. Be1 b5 41. Bc2 Nxe1?!** Though White is restricted, it is going to be hard making progress with opposite-colored bishops. Better was the patient **Kf5**, seeking opportunities to swap off the black-squared bishop: **41... Kf5 42. Bd1 (42. a4 Ne5 43. axb5 Ng4 44. Bd1 Kf4 45. Bd2+ e3 46. fxe3+ Bxe3) 42... b4 43. Bc2 Bc3. 42. Kxe1 b4 43. Bd1 a5 44. Bc2 Kf4 45. Kf1 Bxf2 46. Kxf2 e3+ 47. Ke1 Ke5 48. Bd3 Kd4 49. Bc4** Better was **Ba6. a4 50. Kd1**



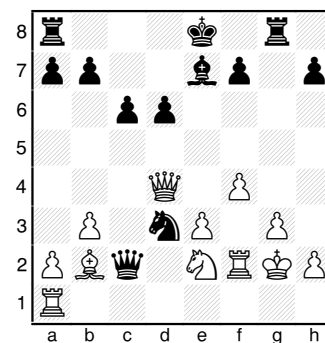
**a3? (50... Kc3! 51. Bd5 e2+ 52. Ke1 a3 53. Bxf3 Kb2 -+) 51. Kc2 Ke5 52. Kd1 Kf4 53. Ke1 Ke5 54. Kd1 Ke4 55. Kc1 f2 56. Be2 Kf4 57. Kc2 Ke4 58. Kd1 Ke5 59. Kc1 Kd5 1/2-1/2**

### 50th Mid-South Open (2) Ross Ray - 1557 Edgar Davison - 1932

**1. b3 e5 2. Bb2 d6 3. e3 Nf6 4. g3 Be7 5. Bg2 c6 6. Ne2 Bf5 7. O-O Qd7** Slightly better is **Nbd7**, continuing developing and over-protecting e5. **8. f4 e4** Possible is the immediate **Bh3**, since the e-pawn is protected by combinations: **(8... Bh3 9. fxe5 dxe5 10. Bxe5? {10. Bxh3 Qxh3 11. Bxe5?? Ng4} 10... Bxg2 11. Kxg2 Qd5+) 9. d3 Bh3?! 10. dxe4 Bxg2 11. Kxg2 Nxe4 12. Bxg7 Rg8 13. Bb2 Na6 14. Nd2 Qe6?**



**15. Nxe4 (15. Nd4! Qg6 16. f5 Qg4 17. Qxg4 Rxg4 18. Nxe4 Rxe4 19. f6 Bd8 20. Nf5) 15... Qxe4+ 16. Rf3 Nc5 17. Qd4?** White would have still been winning with the simple **Nc3. Qxc2 18. Rf2 Nd3**



**19. Rc1 (19. Raf1! Nxf2 {19... Nxb2? 20. Rc1} 20. Rxf2) 19... Nxc1 20. Nxc1 Qc5** White should attempt to retain the queens with **Qe4**. If then **Qd5** by Black, then **Qxd5** would give White some counterplay against the doubled pawns. **21. Qxc5 dxc5 22. Rd2** Much better was **Nd3**. Now Black can trade off another White piece, further reducing any chances of counterplay. **Rd8 23. Rxd8+ Kxd8 24. Nd3 Kc7 25. Kf3 Rd8 26. Ke2 b5 27. Be5+ Kb6 28. a3 a5** Stronger is **c4**, hitting the knight and the a-pawn. **29. Bb2 f5 30. h3 h5 31. Ne5 Ra8 32. Nd7+ Kc7 33. Ne5 c4** Stronger is **a4**, but the game ends here, anyway. **0-1**

## Tenn. All Girls Scholastic Chess Championship

April 9, 2011

Montgomery County Civic Hall  
350 Pageant Lane  
Clarksville, Tenn.

5 Round Swiss; Game/40 min.

Championship Section  
Open to all TN Girls U18 yrs  
\$15 if mailed by Apr. 5th

Competition Section (Unrated)  
Open to all Girls U18 yrs  
\$12 if mailed by Apr. 5th

Info: [www.clarksvillechessclub.org](http://www.clarksvillechessclub.org).

## Knoxville City Championship

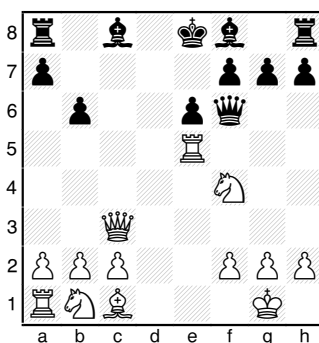
The Knoxville Championship (which is formally called the David E. Burris Memorial) was held from October 26 until December 2. Knoxville Chess Club President Anthony has an interesting way of selecting the six participants for the Championship. His formula consists of selecting: (1) the winners of the club's five rated Swiss tournaments (held in January, March, May, July, and September 2010); and (2) seeding the player who made the highest cumulative score of the mentioned five Rated Swisses played during 2010. **Pete Bereolos**-who descended to mere co-champion last year-went undefeated and reasserted his supremacy, extending his reign as City Champion of Knoxville. **Andrew Crigger** took clear second with 3.5 points.

## Nashville City Championship

The 2011 Nashville Chess Champions tournament was held on January 17 at the Nashville Chess Center. This year the candidates for the tournament were determined by a preliminary knock-out tournament. Under the new format, eight players were seeded into the championship, two more than last year. **Ronald Burnett** again topped the field, winning with 5.0 points while yielding two draws. Todd Andrews again came in second place, drawing his game with Burnett in the final round and accumulating 4.5 points.

**NTWO - Pawns (2)**  
**Matthew Olszewski**  
**Natalie De-La Torre**  
**Result 1-0**

1. e4 c5 2. d4 d5!? 3. dxc5 Nf6 4. e5 Nfd7 Better was Ne4. (4... Ne4) 5. Qxd5 Qc7? Required was e6. 6. Bb5 Much stronger was Nc3, threatening Nb5. The disruptive e6 would also have allowed White to obtain a larger advantage. e6 7. Qf3 Much better was Qe4, protecting the e4-pawn and reserving f3 for the knight. Qxc5 8. Bxd7+ Nxd7= 9. Ne2 Nxe5 10. Qc3 Qd5 Black could have maintained a small advantage with Bd7. 11. O-O b6 12. Nf4 Qe4?? The simple Qc5 would have maintained equality. 13. Re1 Qf5 14. Rxe5 Qf6

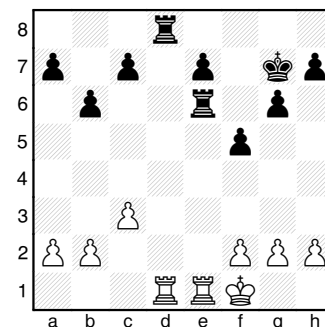


15. Nd5 (15. Qc6+ Bd7 {15... Ke7 16. Nd5+} 16. Qxa8+ Qd8 17. Qxa7) 15... Qd8 16. Nc7+ Kd7 17. Nxa8 Bb7 18. Qd3+ Bd6 19. Nxb6+ axb6 20. Bf4 f6 21. Rb5 Ba6?? 22. Qxd6+ Kc8 23. Qxe6+ (23. Qc6+! Qc7 24. Qxc7#) 23... Qd7 (23... Kb7 24. Rd5) 24. Qxd7+ Kxd7 25. Rxb6 Bc8 26. Nc3 h6 27. Rd1+ Ke7 28. Nd5+ The simple advance of the a-pawn is decisive. Kf7 29. Nc7 Bg4 30. Rd7?? Bxd7 31. h3 g5 32. Bd6 f5 33. Be5 Rg8 34. Rf6+ Ke7 35. Rxh6 Rf8 36. Rh7+ (36. Bd6+!) 36... Kd8 37. Rh8 Ke7 38. Nd5+ (38. Bd6+ Kxd6 39. Rxf8) 38... Ke6? 39. Rxf8 Kxd5 40. Bf6 g4 41. h4 f4 42. h5 Bf5 43. h6 Bxc2 44. Rd8+ Ke6 45. Bg7 Ke7 46. Rd4 Kf7 47. Rxf4+ Kg6 48. Rf6+ Kg5 49. b4 Bd3 50. a4 Kh5 51. g3 Kg5 52. b5

Bc2 53. a5 Bd3 54. b6 Ba6 55. h7 Bd3 56. h8=Q Be4 57. Qh6# 1-0

**NTWO - Pawns (3)**  
**Matt Olszewski - 799**  
**Colton Douthitt - 888**  
**Result 1/2 - 1/2**

1. e4 d6 2. Nc3 Nf6 3. d4 g6 4. e5? dxe5 5. dxe5 Qxd1+ 6. Nxd1 Ne4 Stronger is Ng4, putting White on the defensive. 7. Be3 Bg7 8. Nf3 O-O Better is b6. 9. Bd3 Nd6?? Necessary was f5. 10. O-O? Nf5 11. Bg5 Nc6 12. c3 Nxe5 13. Nxe5 Bxe5 14. Ne3 Correctly played as trying to restore the balance leads to worst consequences: 14. Bxf5? Bxf5 15. Bxe7 Rfe8 16. f4 (16. Bh4 Bd3) 16... Rxe7 + 14... Nxe3 15. Bxe3 b6 16. Be4 Rb8 17. Bh6 Bg7 18. Bxg7 Kxg7 19. Rad1 f5 Better is Be6, not creating any more weaknesses. 20. Bc6 Be6 21. Rfe1 Rf6 22. Bd7 Rd8 23. Bxe6 Rxe6 24. Kf1

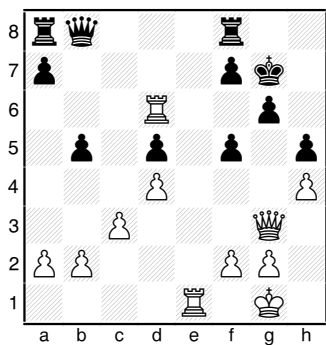


Red6? (24... Rxd1 25. Rxd1 Rd6) 25. Rxe7+ Kf8 26. Rde1 Rd2 27. Rxc7= 1/2-1/2

**NTWO - Pawns (4)**  
**Colton Douthitt - 888**  
**William Earl Pyle -863**  
**Result 1-0**

1. e4 d5 2. exd5 Qxd5 3. Nc3 Qd8 4. Bc4 e6 (4... Nf6 5. Nf3 Bf5 6. Ne5 e6 7. Qf3 Qd4 8. Bb5+ Ke7 9. Qxb7 Qxe5+ 10. Be2) 5. d4 Bb4 6. Nf3 c6 7. O-O b5 8. Bb3 Stronger is Bd3, targeting the kingside. Ne7 9. Qe2 (9. a4! O-O 10. axb5 Bxc3 11. bxc3 cxb5 12.

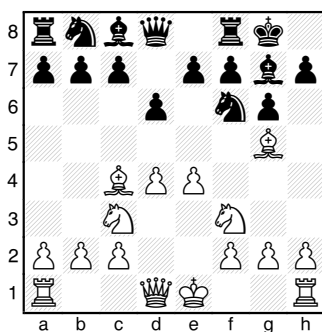
Qd3 and there is no adequate defense for the b-pawn.) 9... Ba6 10. Qe3?! Better was Ne4, planning Bg5 or c3. Nd5 11. Nxd5 cxd5 12. Qe5 O-O 13. Qg3 Be7 14. c3 Bf6 Since there are no immediate threats to the kingside, Black should take this opportunity to activate his queenside bishop with b4. 15. Re1 g6 This creates an unnecessary weakness on the kingside. Black still should play b4. (15... b4! 16. cxb4?! Nc6) 16. Bc2 (16. Bh6 Re8 {16... Bg7 17. Bxg7 Kxg7 18. h4} 17. h4 +/-) 16... Nc6 17. h4 Ne7 18. Qf4 Better was h5. Nf5 19. Bxf5 exf5 20. Qg3 h5 21. Bh6 Bg7 22. Bg5 Bf6 Much stronger was Qb6. 23. Re3 Bxg5 24. Nxg5 Bc8 (24... Re8 25. Rael Rxe3 26. Rxe3 Bc8 27. Qe5) 25. Rae1 Bd7 26. Ne6 (26. Re7! f4 {26... Rc8 27. Nxf7} 27. Qxf4) 26... Bxe6 27. Rxe6 Kg7 Better was Rc8. 28. Rd6 Qb8? (Better was Re7 but Black is still busted: 28... Re8 29. Rxe8 Qxe8 30. Rxd5)



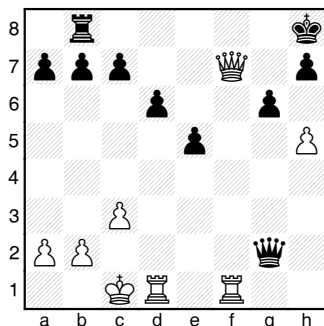
29. Re7 Threatening Rxg6+ as well as Qe5+ Qxd6 30. Qxd6 Rad8 31. Rd7 Rde8 1-0

NTWO - Pawns (5)  
Puja Jagasia - 921  
Colton Douthitt - 888  
Result 1-0

1. e4 d6 2. d4 Nf6 3. Nc3 g6  
4. Bg5 Bg7 5. Nf3 O-O 6. Bc4



Bg4 (Black could gain immediate equality with the Center Fork trick: 6... Nxe4 7. Nxe4 d5 8. Bd3 dxe4 9. Bxe4) 7. h3 Bxf3 8. Qxf3 Nc6 9. O-O-O Qe8 Better is h6. 10. Rhe1 e5?? 11. Bxf6 Nxd4 12. Qg3? (12. Rxd4! exd4 13. Nd5) 12... Bxf6 13. Nd5 Qd8 -/+ 14. c3 Ne6 15. Nxf6+ Qxf6 16. h4 Nc5 Instead of this weak move, Black should try to make inroads on the queenside by a5 or preparing b5. 17. Qg5 Qxf2 With a swap of the queens Black would have maintained his winning advantage. 18. Rf1 Nd3+? (18... Nxe4! 19. Rxf2 Nng5 20. hxg5 and Black at least has some pawns for the piece and can later free his kingside after Kg7.) 19. Bxd3 Qc5 20. Bc2 Rab8 Better was a5 to attempt to generate some queenside threats and keep the bishop from posting at b3. 21. Bb3 Kg7? 22. Qf6+ Kg8 23. Bxf7+ Rxf7 24. Qxf7+ Kh8 25. h5 Stronger was Rf3 to keep the Black queen from being able to come to the defense of his king. Qe3+ 26. Kb1 Qxe4+ 27. Kc1 Qxg2? Much better was Qg4.



28. hxg6 (28. Qf6+! Kg8 29. h6) 28... Rg8?? 29. Qxh7# 1-0

### Games Pertaining to Tactical Themes

(pp. 8 & 9)

Yge Visser - Jonathan Speelman  
Staunton Memorial 4th  
London/Crowthorne (10), 24.08.2006  
1.e4 c6 2.d4 d5 3.Nd2 dxe4 4.Nxe4 Nd7 5.Nf3 Ngf6 6.Ned2 e6 7.Nc4 Be7 8.g3 b5 9.Nce5 Bb7 10.Bg2 0-0 11.0-0 c5 12.Qe2 Qb6 13.Bg5 Rae8 14.Rad1 cxd4 15.Rxd4 Nxe5 16.Qxe5 Rc8 17.c3 Rc5 18.Qe3 h6 19.Bxh6 gxh6 20.Qxh6 Be4 21.Ng5 Ng4 22.Qh4 Rxg5 23.Bxe4 f5 24.Rd7 Nxf2 25.Bf3 Ne4+ 26.Kh1 Rxg3 27.Qxe7 27...Qg1+ 28.Rxg1 Nf2#

H. Hallmann - W. Schneider  
corr. ARG, 02.02.1931  
1.e4 e5 2.Nc3 Nf6 3.Bc4 Bb4 4.d3 d5 5.exd5 Bxc3+ 6.bxc3 Nxd5 7.Qh5 0-0 8.Nf3 Nc6 9.Ba3 Re8 10.Ng5 Nf6 11.Qxf7+ Kh8 12.Qg8+ Rxg8 13.Nf7#

Balk - Barnes  
New Zealand, 02.02.1926  
1.e4 e5 2.Nf3 Nc6 3.Bc4 Nf6 4.Ng5 d5 5.exd5 Na5 6.Bb5+ c6 7.dxc6 bxc6 8.Ba4 h6 9.Nf3 e4 10.Ng1 Bd6 11.d3 0-0 12.dxe4 Nxe4 13.Be3 Ba6 14.Nf3 Qc7 15.Nbd2 Rfe8 16.c3 Nxc3 17.bxc3 17...Rxe3+ 18.fxe3 Bg3+ 19.hxg3 Qxg3#

Edward Lasker - Fritz Englund  
Scheveningen (12), 06.08.1913  
1.e4 e5 2.Nf3 Nc6 3.Nc3 Nf6 4.Bb5 Nd4 5.Nxe5 Qe7 6.Nf3 Nxe4 7.0-0 Nxc3 8.dxc3 Nxf3+ 9.Qxf3 Qc5 10.Re1+ Be7 11.Bd3 d5 12.Be3 Qd6 13.Bf4 Qf6 14.Qxd5 c6 15.Qe4 Be6 16.Re3 Bc5 17.Be5 Qh6 18.Rg3 Bf8 19.Rd1 0-0 20.Qxc6+ bxc6 21.Ba6#

## 2011 TENNESSEE WINTER OPEN — KINGS

## Wall Chart

Name/State ID	Group/Team	Rate	Rnd 1	Rnd 2	Rnd 3	Rnd 4	Rnd 5
1. BURNETT, RON TN 12093120		2375	B 4 1.0	B 3 2.0	B 6 3.0	B 2 3.5	B 5 4.5
2. ANDREWS, TODD D TN 12583055		2314	B 10 1.0	B 5 2.0	HALF 2.5	B 1 3.0	B 7 4.0
3. SUICH, PETER TN 12779311	S	2088	B 7 1.0	B 1 1.0	B 10 2.0	B 5 2.0	B 9 3.0
4. NEGLIA, SALVATORE TN 12939260		1898	B 1 0.0	B 6 0.5	B 9 1.0	B 10 2.0	B 8 3.0
5. SUICH, JOSHUA TN 12707426	S	2162	B 8 1.0	B 2 1.0	B 7 1.5	B 3 2.5	B 1 2.5
6. POLLITT, JAMES TN 12548696		1950	B 9 1.0	B 4 1.5	B 1 1.5	B 7 1.5	B 10 2.5
7. MARSH, CORRY TN 12843522	T	1787	B 3 0.0	B 8 1.0	B 5 1.5	B 6 2.5	B 2 2.5
8. ALATAIWI, ALI TN 13746224		1833	B 5 0.0	B 7 0.0	BYE 1.0	B 9 2.0	B 4 2.0
9. LEVINE, BENJAMIN TN 13544181		1722	B 6 0.0	B 10 0.5	B 4 1.0	B 8 1.0	B 3 1.0
10. TANAS, ZAKI TN 13656491		1860	B 2 0.0	B 9 0.5	B 3 0.5	B 4 0.5	B 6 0.5

## 2011 TENNESSEE WINTER OPEN — QUEENS

## Wall Chart, Page 1

Name/State ID	Group/Team	Rate	Rnd 1	Rnd 2	Rnd 3	Rnd 4	Rnd 5
1. ARMANIOS, ASHRAF TN 14094777		1799	B 5 0.0	B 10 1.0	B 13 2.0	B 3 3.0	B 4 4.0
2. CANTRELL, SCOTT TN 12589123		1740	B 13 0.0	B 14 1.0	HALF 1.5	B 12 2.5	B 8 3.5
3. ISHEE, JENNIFER TN 12737086		1665	B 9 1.0	B 13 2.0	B 4 3.0	B 1 3.0	B 6 3.5
4. PHILLIPS, COTY 21016778		1717	B 14 1.0	B 6 2.0	B 3 2.0	B 7 3.0	B 1 3.0
5. WEISHAAR, LUKE TN 14191493	W	1558	B 1 1.0	B 8 1.5	B 7 1.5	B 11 2.0	B 12 3.0
6. WADHAWAN, SANCHIT TN 13399514		1507	B 11 1.0	B 4 1.0	B 10 2.0	B 8 2.5	B 3 3.0
7. JOBE, THOMAS TN 10197449		1670	B 8 0.0	B 9 1.0	B 5 2.0	B 4 2.0	B 11 2.5
8. SIMONSEN, ANDREW TN 12921005		1433	B 7 1.0	B 5 1.5	HALF 2.0	B 6 2.5	B 2 2.5

## 2011 TENNESSEE WINTER OPEN — QUEENS

## Wall Chart, Page 2

Name/State ID	Group/Team	Rate	Rnd 1	Rnd 2	Rnd 3	Rnd 4	Rnd 5
9. QIN, ALEXANDER TN 13298561		1399	B 3 0.0	B 7 0.0	HALF 0.5	B 14 1.5	B 13 2.5
10. GARCIA, MANUEL TN 12585143		1295	B 12 1.0	B 1 1.0	B 6 1.0	B 13 1.5	B 14 2.5
11. HINES, CRAIG TN 10285682		1786	B 6 0.0	B 12 0.5	HALF 1.0	B 5 1.5	B 7 2.0
12. SUICH, VICTOR TN 12732019	S	1624	B 10 0.0	B 11 0.5	B 14 1.5	B 2 1.5	B 5 1.5
13. VAN DER MEER, WEIB TN 12552192		1497	B 2 1.0	B 3 1.0	B 1 1.0	B 10 1.5	B 9 1.5
14. WEISHAAR, KAYLA TN 14232761	W	1483	B 4 0.0	B 2 0.0	B 12 0.0	B 9 0.0	B 10 0.0

## 2011 TENNESSEE WINTER OPEN — ROOKS

## Wall Chart, Page 1

Name/State ID	Group/Team	Rate	Rnd 1	Rnd 2	Rnd 3	Rnd 4	Rnd 5
1. LILLIS, AUSTIN TN 13747364		1321	B 19 1.0	B 5 1.5	B 16 2.5	B 4 3.5	B 3 4.5
2. HUNT, SAMUEL KY 12484526		1399	B 8 1.0	B 15 2.0	B 14 3.0	B 3 3.0	B 10 4.0
3. LI, ANGELA TN 13043990		1253	B 11 1.0	B 12 2.0	B 13 3.0	B 2 4.0	B 1 4.0
4. DEHORTY, JASON TN 14367566	D	1268	B 26 1.0	B 16 1.5	B 6 2.5	B 1 2.5	B 21 3.5
5. MARTINDALE, TIM TN 12768993	M	1198	B 27 1.0	B 1 1.5	B 9 2.5	B 14 3.0	B 7 3.5
6. DAI, JING TN 14191121		1175	B 24 1.0	B 9 1.5	B 4 1.5	B 25 2.5	B 14 3.5
7. DOUGLAS, DONNIE TN 14232672	T	1169	B 29 1.0	B 14 1.0	B 23 2.0	B 13 3.0	B 5 3.5
8. MARTINDALE, CHRIS TN 12709524	M	1152	B 2 0.0	B 30 1.0	B 12 2.0	B 15 3.0	B 9 3.5
9. HUTCHISON, EARL TN 14190620		1290	B 25 1.0	B 6 1.5	B 5 1.5	B 19 2.5	B 8 3.0
10. SUICH, VICTORIA TN 12902341	S	1185	B 28 1.0	B 13 1.0	B 20 2.0	B 18 3.0	B 2 3.0
11. DEHORTY JR, WILLIAM TN 14491831	D	504	B 3 0.0	B 19 0.0	B 30 1.0	B 26 2.0	B 22 3.0
12. WEISHAAR, RACHEL TN 14222716	W	1385	B 17 1.0	B 3 1.0	B 8 1.0	B 23 2.0	B 18 2.5

# 2011 TENNESSEE WINTER OPEN — ROOKS

Name/State ID	Group/Team	Rate	Rnd 1	Rnd 2	Rnd 3	Rnd 4	Rnd 5
13. DOUTHITT, AUTUMN TN 12840938		1341	B 18   1.0	B 10   2.0	B 3   2.0	B 7   2.0	B 17   2.5
14. DALAL, NAYSHIL TN 14282303		1313	B 20   1.0	B 7   2.0	B 2   2.0	B 5   2.5	B 6   2.5
15. SANDOVAL, ELIJAH TN 14232687	T	1212	B 30   1.0	B 2   1.0	B 17   2.0	B 8   2.0	B 20   2.5
16. MARSH, HUNTER TN 13473408	T	1157	B 23   1.0	B 4   1.5	B 1   1.5	B 21   1.5	B 25   2.5
17. HARMAN, AUBRIE IN 21026900		1125	B 12   0.0	B 21   1.0	B 15   1.0	B 28   2.0	B 13   2.5
18. STALEY, TIM GA 12625534		1093	B 13   0.0	B 28   1.0	B 22   2.0	B 10   2.0	B 12   2.5
19. COLLINS, MICHAEL TN 12455921		1092	B 1   0.0	B 11   1.0	HALF   1.5	B 9   1.5	B 27   2.5
20. PAO, LUCAS TN 14226107		1072	B 14   0.0	B 29   1.0	B 10   1.0	B 24   2.0	B 15   2.5
21. BLOOM, LEONARD TN 14141050		936	B 22   1.0	B 17   1.0	HALF   1.5	B 16   2.5	B 4   2.5
22. CHRISTOPHER, JOHNATHAN TN 14200963		1286	B 21   0.0	B 24   1.0	B 18   1.0	B 27   2.0	B 11   2.0
23. DEHORTY, JUSTIN TN 14565428	D	nnnn	B 16   0.0	B 26   1.0	B 7   1.0	B 12   1.0	B 28   2.0
24. PAXTON, EMMANUEL TN 14531164	T LESTER	nnnn	B 6   0.0	B 22   0.0	B 26   1.0	B 20   1.0	B 29   2.0
25. SIMONSEN, DAVID TN 12921006		1003	B 9   0.0	B 27   1.0	HALF   1.5	B 6   1.5	B 16   1.5
26. HARRIS, SHYHEIM TN 14531452	T LESTER	612	B 4   0.0	B 23   0.0	B 24   0.0	B 11   0.0	B 30   1.0
27. HUSSEIN, HAMZA TN 14531232	T LESTER	487	B 5   0.0	B 25   0.0	B 29   1.0	B 22   1.0	B 19   1.0
28. JAMES, CYDNEY TN 14531274	T LESTER	378	B 10   0.0	B 18   0.0	BYE   1.0	B 17   1.0	B 23   1.0
29. HAMBY, AARON 14566292		nnnn	B 7   0.0	B 20   0.0	B 27   0.0	B 30   1.0	B 24   1.0
30. MOHAMED, WALID TN 14531211	T LESTER	487	B 15   0.0	B 8   0.0	B 11   0.0	B 29   0.0	B 26   0.0

TN Scholastic Team Chess Qualifiers



March 5, 2011



## 2011 TENNESSEE WINTER OPEN — PAWNS

## Wall Chart

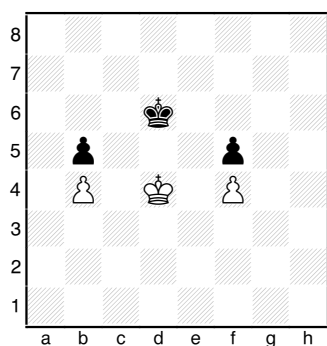
Name/State ID	Group/Team	Rate	Rnd 1	Rnd 2	Rnd 3	Rnd 4	Rnd 5
1. JAGASIA, PUJA TN 13367387		921	B 11 0.0	B 20 1.0	B 8 2.0	B 5 3.0	B 4 4.0
2. PYLE, WILLIAM EARL TN 12870745		863	B 15 1.0	B 9 2.0	B 7 3.0	B 4 3.0	B 12 4.0
3. ATKINS, RUBEN TN 14232666		773	B 20 1.0	B 4 1.0	B 16 2.0	B 18 3.0	B 7 4.0
4. DOUTHITT, COLTON TN 12877295		997	B 13 1.0	B 3 2.0	B 5 2.5	B 2 3.5	B 1 3.5
5. OLSZEWSKI, MATT TN 14197540		799	B 19 1.0	B 10 2.0	B 4 2.5	B 1 2.5	B 9 3.5
6. XIN, ARTHUR TN 14510743		903	B 14 1.0	B 8 1.0	B 11 1.0	B 20 2.0	B 15 3.0
7. SANDOVAL, JERRY TN 14232693		770	B 16 1.0	B 21 2.0	B 2 2.0	B 10 3.0	B 3 3.0
8. YUAN, LANGJIE TN 14262886		718	B 17 1.0	B 6 2.0	B 1 2.0	B 12 2.0	B 18 3.0
9. ROBERTS, ELENA TN 14172356		678	B 12 1.0	B 2 1.0	B 21 2.0	B 11 3.0	B 5 3.0
10. DE LA TORRE, NATALIE TN 14485822		633	B 18 1.0	B 5 1.0	B 17 2.0	B 7 2.0	B 16 3.0
11. LI, ANNA TN 13701153		572	B 1 1.0	B 13 1.0	B 6 2.0	B 9 2.0	B 17 3.0
12. GERLOFF, SAMUEL TN 14577657		nnnn	B 9 0.0	B 15 1.0	B 13 2.0	B 8 3.0	B 2 3.0
13. SABIMANA, SAMUEL TN 14531431	LESTER	592	B 4 0.0	B 11 1.0	B 12 1.0	B 16 1.0	B 20 2.0
14. WILLIAMS, JORDAN TN 14530223	LESTER	353	B 6 0.0	B 17 0.0	B 18 0.0	BYE 1.0	B 21 2.0
15. PAXTON, SHIMERA TN 14531300	LESTER	352	B 2 0.0	B 12 0.0	B 19 1.0	B 21 2.0	B 6 2.0
16. JONES, ALEXIS TN 14531268	LESTER	209	B 7 0.0	BYE 1.0	B 3 1.0	B 13 2.0	B 10 2.0
17. WILLIAMS, JALYNN TN 14530244	LESTER	121	B 8 0.0	B 14 1.0	B 10 1.0	B 19 2.0	B 11 2.0
18. MacDANIEL, IVY TN 14569066		nnnn	B 10 0.0	B 19 1.0	B 14 2.0	B 3 2.0	B 8 2.0
19. MOHAMED, FARAH TN 14531137	LESTER	295	B 5 0.0	B 18 0.0	B 15 0.0	B 17 0.0	BYE 1.0
20. BIGGS, TEIRANEY TN 14531295	LESTER	260	B 3 0.0	B 1 0.0	BYE 1.0	B 6 1.0	B 13 1.0
21. MOHAMED, SUMEYA TN 14531336	LESTER	105	BYE 1.0	B 7 1.0	B 9 1.0	B 15 1.0	B 14 1.0

## Scholastic Corner

### More than Theory

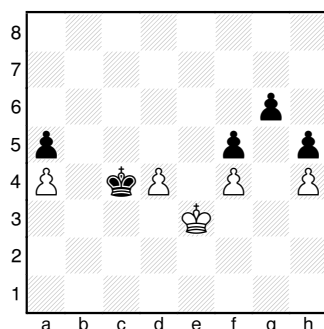
While reading chess endgame books or being tutored you often see articles and examples of the opposition, square of the pawn, and triangulation. You might even regard such discussions as interesting. But what you really need to do is to stop simply viewing these discussions as theoretical and start trying to apply the principles postulated to your own games. These concepts are not just good teaching: they are useful guides that you should be trying to inject into your everyday play.

For example, the diagram below is often used to illustrate the concept of the opposition.



With White to move, he simply sidesteps and is able to recover the opposition as needed to maintain the draw. Many students can readily grasp this concept when shown the operation. But, many scholastic players fail to apply their learning when confronted with similar situations over-the-board. This failure to appreciate opportunities could be attributed to them perhaps viewing the opposition as some esoteric topic that has little relation to live play. Or-more probable-they are moving too rapidly to realize that utilizing the opposition could make a difference in their situation.

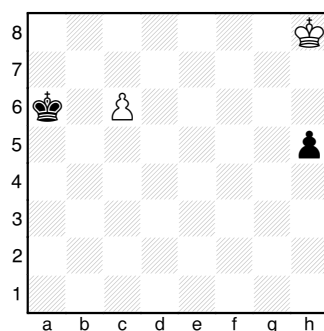
To illustrate the failure to transfer learning to actual play, I will use two positions from games that occurred recently in the Alcoa Crusaders tournament that was held on May 12.



Alcoa Crusaders, 4/12/2010  
White to make 43<sup>rd</sup> move

In the above position, White abandoned all hope and soon lost. However, if he had applied his teachings regarding the opposition, he could have easily drawn. White needs to play 43. d5 Kxd5, 44. Kd3, seizing the opposition and the draw.

Another case in point is the Reti maneuver. See the below diagram. White appears



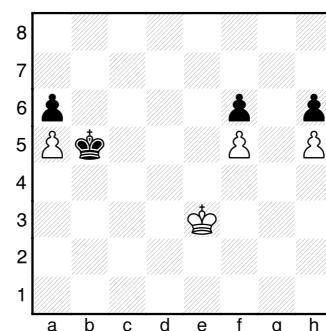
Reti, 1921  
White to move and draw.

to be two tempi behind to prevent Black's h-pawn from queening. However, by using the simultaneous threat of queening his own pawn, he will be able to maneuver into the position to obtain a draw. The analysis goes 1. Kg7 h4, 2. Kf6! Kb6 (2... h3, 3. Ke7 Kb6, 4. Kd6 and both pawns promote, yielding a draw.), 3. Ke5! Kxc6, 4. Kf4 and White has

entered the square of the pawn.

That the position is based on a study makes it seem even more alien and impractical. But this knowledge is useful for practical applications if you but take the time to properly assess your position. Suffice it to say that an elementary player missed the pertinence of this study when he obtained a similar position, except that-with king at g7 and on the move-there was a pawn on h7 and a Black rook at h8.

Well, if you don't know the study, it is understandable that one might resign. I won't criticize him harshly. But look at this next position that White lost!



Alcoa Crusaders, 4/12/2010  
White to make 44<sup>th</sup> move.

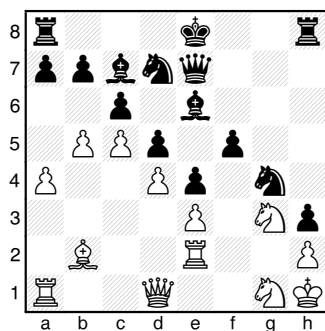
Play proceeded 44. Ke4 Kxa5, 45. Kd3?, trying to obtain a draw. However, White has much more than a draw in this position! Simple counting will show that 45. Kd5! wins!! Yes, Black can take the a-pawn and even queen first. But after White charges up the board, it is White who will win the game after he later queens and captures Black's h-pawn.

**Be alert!** Your own games can be instructive and form the examples that future generations look upon as theoretical concepts! Theory is practically useful if you attempt to integrate it and take the time to assess your position.

Clarksville Chess Club  
 October 26, 2010  
 Manoochehr Yousefi  
 Floyd Parton - 1470

NM Henry Robinson: "Floyd played the most incredible game (pawn chain-wise) that I have ever see!" Let's see why this game made such an impression!

1.g3 c6 2.Bg2 d5 3.e3 e5  
 4.Ne2 f5 5.0-0 Nf6 6.d4 e4  
 7.Nd2 Bd6 8.c4 Be6 9.c5 Bc7  
 10.b4 Nbd7 11.Bb2 g5= 12.a4  
 Qe7 13.b5 h5 14.Kh1?  
 (14.Qb3 Rb8 15.f4=+/)  
 14...h4 15.Ng1 hxg3 16.fxg3  
 Bxg3 17.Bh3 Bc7 (17...f4!  
 18.exf4 gxf4) 18.Rf2 g4  
 19.Nf1 gxh3 20.Ng3 Ng4  
 21.Re2



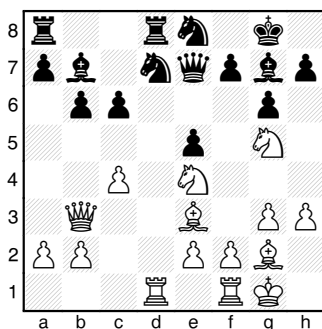
Nxe3 (21...Bxg3 22.hxg3 h2  
 23.Qf1 hxg1=Q+) 22.Qe1 f4  
 23.Nf1 Ng2 24.Qc3 f3 25.Rf2  
 (25.Nxf3 exf3 26.Qxf3)  
 25...Qg7 26.Bc1 Nf4 Stronger  
 is Ne1. 27.Bxf4? Qg2+  
 28.Rxg2 hxg2# 0-1

For sure, Floyd's pawns were busy-so busy, in fact, that he didn't even have time to castle!

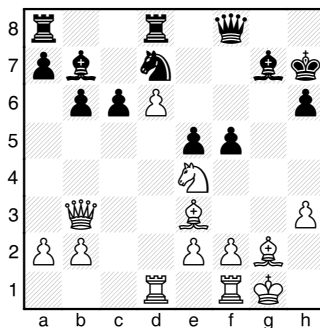
Reg. 1 Individual (4)  
 January 29, 2011  
 Peter Suich (2087)  
 Matthew Marsh (2135)

1.Nf3 d6 2.d4 Nf6 3.g3 g6  
 4.Bg2 Bg7 5.0-0 0-0 6.c4  
 Nbd7 7.Nc3 e5 8.dxe5 dxe5  
 9.Be3 c6 10.h3= Qe7 11.Qb3  
 b6 Since White's bishop  
 already commands the  
 diagonal, Black should  
 consider developing the

bishop to e6. 12.Rad1 Bb7  
 13.Ng5 Rfd8 14.Nce4 Ne8  
 [14...Nxe4 15.Nxe4 c5 16.Rd3  
 Nf6 17.Bg5 Bxe4=]

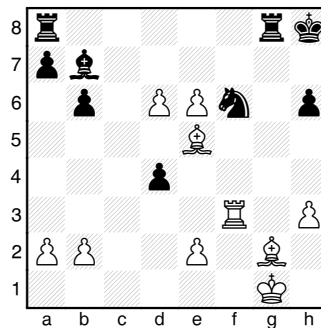


15.c5 Fritz prefers Nxf7:  
 15.Nxf7!? Kxf7 16.Ng5+ Kf8  
 17.c5 threatening Nxh7 mate  
 17...Nef6 18.cxb6! axb6  
 19.Rd6 White has an  
 initiative and could have  
 settled for a draw with  
 Ne6+. (19.Ne6+ Ke8 20.Nc7+  
 Kf8=) 15...h6 16.Nd6 Nxd6  
 17.cxd6 Qf8 18.Ne4 Kh7  
 Better was c5 or Rb8. 19.g4  
 An interesting way of  
 fighting for the advantage  
 is f4, exposing Black's  
 queen to the rook's  
 influence. 19...f5 20.gxf5  
 gxf5

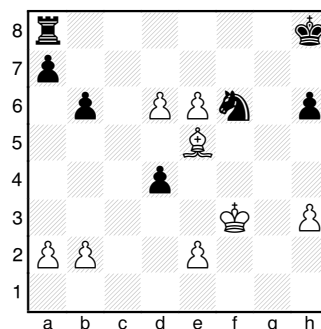


21.f4! The tamer Nc3 also  
 keeps a little advantage.  
 21...fxe4 22.Bxe4+ Kh8  
 23.fxe5 Qg8 24.e6! Be5+  
 25.Bg2 Better is Kh1. Now,  
 Black gets a strong  
 initiative with either c5 or  
 Qg3. 25...Qg3 26.Rf3 Better  
 was Rf2. 26...Qh2+ 27.Kf2  
 Rg8 28.Rg1 Nf6 -+ 29.Qc4 c5  
 Black missed Rg3, which  
 would have allowed him to

double rooks on the g-file.  
 But the easier-to-see text  
 move also contains some  
 venom! (29...Rg3 30.Kf1  
 Rxf3+ 31.exf3 Bxd6=+/)  
 30.Bf4 Bd4+?! (30...Bxf4  
 31.Qxf4 Ne4+ 32.Kf1 Qxf4  
 33.Rxf4 Nxd6-+) 31.Qxd4  
 Qxg1+ 32.Kxg1 cxd4 33.Be5



33...Rxg2+? (33...Bxf3!  
 34.Bxf6+ Kh7 35.exf3 d3)  
 34.Kxg2 Bxf3+ 35.Kxf3



And the pawn duo on the 6th  
 rank easily compensates for  
 Black's rook. White is  
 winning. 35...Kg7 36.d7 Kg6  
 37.Bc7 Kf5 38.d8Q Rxd8  
 39.Bxd8 Ne8 (39...Kxe6  
 40.Bxf6 Kxf6 41.Ke4 +-)  
 40.e7 b5 41.b4 a6 42.a3 Nf6  
 43.Bb6 Ke5 44.Bc5 Ne8 45.Kg4  
 Ke4?? Necessary is Nf6+,  
 keeping the king from  
 getting to the h-pawn.  
 46.Kh5 d3 47.exd3+ Kxd3  
 48.Kxh6 Kc4 49.Kg6 a5 50.h4  
 axb4 51.axb4 Kd5 52.h5 Ke6  
 1-0

## Clarksville to Host All-Girls Tournament

Submitted by Roy Manners

Clarksville has been chosen as the site of the 2011 All-Girls Scholastic Chess Championship. The All-Girls Chess tournament is held every year to determine the State Champion among girls eighteen years of age and younger. The winner is Tennessee's official representative to the National Championship for girls.

At their Board of Directors meeting in Crossville, Tennessee on Saturday August 14, 2011, the Tennessee Chess Association (TCA) made the decision to accept a proposal submitted by the Clarksville Chess Club to host the tournament.

The tournament will be held Saturday April 9, 2011 at the Montgomery County Civic Hall in Veteran's Plaza, 350 Pageant Lane, Clarksville, TN 37040. The tournament will be in two sections. The Championship Section will be open to all TN girls age 18 and Under and will be USCF rated. The Competition Section will be open to all girls age 18 and Under from any state and will not be rated. Each section will have three divisions according to age: 18 & Under, 14 & Under, 10 & Under. Trophies and prizes will be awarded in each division.

The Championship section will also offer a Grand Prize to the State Champion of a partial Scholarship to the college of her choice. Money is being raised for this purpose even now. The goal is to be able to offer the winner a \$1,000 scholarship. One thousand dollars doesn't sound like much if you are attending Harvard or Stanford, but any parent paying tuition will tell you that every little bit helps, and any student struggling to find financial aid will be glad to have an extra grand at their disposal. The Championship section is only open to TN girls, but unrated players may play in it, too. USCF and TCA membership is required to play in the Championship section.

The tournament format was designed in order to encourage more girls to participate. The winner in the 18 & Under division of the Championship Section will be crowned the TN All-Girls State Champion and be TN's official representative to the All-Girls National events. The Competition Section was included "just for fun" so more girls could participate without the pressure of competing for the title or risk losing rating points. The prizes and trophies in both sections are very comparable.

In each of the past four years only nineteen girls have participated in the TN All-Girls Tournament. The goal in 2011 is to get forty girls in each section, so the tournament was designed to give girls a choice about which way they'd like to compete.

The Competition Section-even though not rated-is not just consolation play. It is set up to be just as much fun and just as exciting as any other tournament. There is no risk to anyone's rating. No memberships of any kind are required. Just pay the entry fee and play. It is hoped that this will encourage first time girls to participate. A girl does not have to be unrated to play in the Competition section. It is open to all girls, rated or not, from anywhere.

The tournament will also offer some special activities during the day. There will be a chess vendor. There will be exhibitors from the groups and companies that sponsored the scholarship. Also, National Master Henry Robinson will be providing free game analysis on site, all day. Please obtain the flyer from: [tnchess.org](http://tnchess.org).

# BOARD OF DIRECTORS

## **PRESIDENT:**

Malcolm Estrada  
7123 Annview LN  
Harrison, TN 37341  
H: (423) 280-9526  
e-mail: straightleg111@aol.com

## **VICE-PRESIDENT:**

Paul Semmes  
1010 N. Maple Ave.  
Cookeville, TN 38501  
H: (931) 526 - 2883  
e-mail: PaulSemmes@charter.net

## **SECRETARY:**

Chris Prosser  
733 Long Hunter Court  
Nashville, TN 37217  
H: (615) 399 - 8432  
e-mail: regioniii@aol.com

## **TREASURER:**

Angela McElrath-Prosser  
733 Long Hunter Court  
Nashville, TN 37217  
H: (615) 399 - 8432  
e-mail: tcanews@aol.com

## **INTERNET CHESS COORDINATOR:**

Karoly Mirnics  
6604 Currywood Dr  
Nashville, TN 37205  
e-mail: karoly.mirnics@vanderbilt.edu

## **SCHOLASTIC COORDINATOR:**

Harry D. Sabine  
P. O. Box 381  
Crossville, TN 38557  
H: (931) 484 - 4878  
W: (931) 484 - 9593  
e-mail: hdsabine@citlink.net

## **TOURNAMENT COORDINATOR:**

Larry Grohn  
7032 Igoo Gap Road  
Chattanooga, TN 37421  
H: (423) 243 - 8235  
e-mail: LarryGrohn@comcast.net

## **TN CHESS NEWS EDITOR:**

Leonard Dickerson  
420 Oran Road  
Knoxville, TN 37934  
H: (865) 966 -1095  
e-mail: lsdick@tds.net

## **EAST TENNESSEE DIRECTOR:**

Victor Suich  
707 Pritchard  
Morristown, TN 37813  
(423) 586 - 4351  
e-mail: vesuich@bellsouth.net

## **MIDDLE TENNESSEE DIRECTOR:**

Roy Manners  
1215 Cumberland Heights Road  
Clarksville, TN 37040  
H:(931) 552 -1839  
e-mail: clarksvillechessclub@charter.net

## **WEST TENNESSEE DIRECTOR:**

Marla Stafford  
P. O. Box 770474  
Memphis, TN 38117  
e-mail: Westregion4@aol.com

## **Regional Scholastic Coordinators**

### **Region 1:**

David Marsh  
4411 Stillwood Road  
Louisville, TN 37777  
H: (865) 982 - 7216; NESGIV4DAVE@aol.com

### **Region 2:**

Michael Ake  
16 Pinecrest Dr.  
Wildwood, GA 30757  
Cell phone: (423) 505-8214  
O: (423) 493 - 5406; make@mccallie.org

### **Region 3:**

Chris Prosser  
733 Long Hunter Court  
Nashville, TN 37217  
H: (615) 399 - 8432; e-mail: regioniii@aol.com

### **Region 4:**

Brian Vogt  
2669 Sweet Maple Cove  
Germantown, TN 38139  
H: (901) 624 - 0020; b-vogt@comcast.net