



SUMMER 2011

VOLUME 54

NO. 3

2010 Tenn. Open Championship	5
Listing of Past TN Champions	8
Tenn. All Girls Scholastic Ch	9
Tenn. Scholastic Team Finals	14
Tenn. Senior Open	15
North Tenn. Winter Open	18
Tenn. Individual Qualifiers	20
John Hurt Memorial 8	31
2011 U.S. Cadet Championship	32

-
- Aug. 20, 2011 **19th Battle of Murfreesboro**
Grace Lutheran Church, Murfreesboro, TN
Five round Swiss
Rutherford Co. Chess Club; 615-895-7989
- Sept. 2–4, 2011 **Tennessee Open Championship**
Roaden University Center, Tenn. Tech Univ.
1000 N. Dixie Ave., Cookeville, TN
Baymont Inn & Suites (tournament hotel)
Two Sections: Open and Novice U1400
Chris Prosser (615) 426-7105; Regioniii@aol.com
- Sept. 3, 2011 **Tenn. Open Scholastic Chess Tournament**
Roaden University Center (played simultaneous with TN Championship)
Four round Swiss; USCF Rated; Game/30 Sudden Death
- October 8, 2011 **Cumberland Co. Fall Open**
Cumberland Co. Community Complex, Crossville
Harry Sabine (931) 484-9593; hdsabine@citlink.net

This magazine is being provided to current Tennessee Chess Association members as one of their benefits for supporting chess activity in Tennessee. It is the official publication of the *Tennessee Chess Association* and its legal property. We are trusting you to not abuse the privilege of online access to this information. Abuse would be considered copying over two pages for publication without crediting the source (Tennessee Chess News—TCN). However, you are permitted to download a copy of the online version of this publication to your personal computer. If you desire to use this content for other purposes than your own copy, contact the editor, Leonard Dickerson, for approval. Thank you for your support of chess in Tennessee and observation of these few requests!

MEMBERSHIPS

TCA annual dues are \$10 for a *regular* membership or *student* membership. Additional members of a family may join for one dollar each, but only one copy of printed **TCN**'s will be available per family. Both regular and patron memberships are for a 12-month period, starting in the month of purchase and expiring after a 12-month period.

Tax deductible Patron Memberships are available beginning at \$100 per year for those who wish to help support the TCA and the FFTC. These memberships expire one year from the date of payment. The Patron membership categories are:

PATRON — \$100; PATRON KING — \$300; PATRON MASTER — \$500; PATRON GRANDMASTER — \$1000+

The benefits that pertain to the different level of patronage are currently being refined and will be detailed on our website soon.

TOURNAMENT ANNOUNCEMENTS

TCN prints listings of upcoming tournaments that require TCA membership in each issue for free. Submit complete TLA information to Larry Grohn, Tournament Coordinator: E-MAIL: LGrohn47@gmail.com

TN CHESS NEWS STAFF

Editor

Leonard Dickerson

Contributors

Peter Lahde Roy Manners

Henry Robinson Paul Semmes

TCN PUBLICATION SCHEDULE

Spring 2010 — Scheduled for May 1st covering Feb, Mar, and Apr events

Deadline for submission: Apr 18, 2010

Summer 2010 — Scheduled for Aug 1 covering May, Jun, and Jul events

Deadline for submission: July 18, 2010

Fall 2010 — Scheduled for Nov 1 covering Aug, Sept, and Oct events

Deadline for submission: Oct 18, 2010

Winter 2011 — Scheduled for Feb 1 covering Nov, Dec, and Jan events

Deadline for submission: Jan 18, 2011

Please submit material by e-mail to: lsdick@tds.net

PATRON MEMBERS

TENN. CHESS ASSOC. & FOUNDATION FOR TENN. CHESS

 **Patron Grandmaster** 
Dr. Martin Katahn

 **Patron Member** 

Malcolm Estrada
Pat Knight Smith – LIFE
Peter Lahde
R. K. Shimabukuro
Brian Vogt

TN HALL OF FAME

The **Tennessee Chess Hall of Fame** was established to honor those members who have distinguished themselves through their outstanding achievements in chess, either in competition or in chess organization or promotion. Peter Lahde is chairman of the electing committee, and guidelines for nominations are posted onsite. Below is a listing of the current members and their year of induction.

Peter Lahde	1990	John Hurt	1992
Robert Coveyou	1990	James A. Sweets	1993
Jerry Sullivan	1990	Rea Hayes	1997
Martin Southern	1990	James A. Wright	1998
Tom Finucane	1990	Dr. Martin Katahn	2002
Robert Serivener	1990	David Burris	2003
L. Hunter Weak	1990	Albert Hodges	2005

FROM THE EDITOR

This is our second "yearbook" issue. There is still debate on the slant of the newsletter with some favoring an informational type issue containing historical articles and data, like a listing of all scholastic champions from all divisions. Admittedly, I'm foggy on how to fully develop such an issue. Hence, I am again making this yearbook issue a summary-type publication where the significant tournaments and articles from the first three online publications of the fiscal year are printed. And, of course, the significant tournaments of this quarter are also included, specifically an article about the highly-prestigious 2011 U.S. Cadet Championship that was again fought out in Crossville - highlighting Tennessee as a center of chess excellence.

For sure, I can't go wrong with this approach because this is the only hard copy of the **TCN** that is produced per year. However, the printed version is available only to those who have paid **TCA** dues. If there are specific topics that the readership would like to see in the yearbook issue, please detail these to me and I certainly will consider including them. I have given a nod to the data-formatted type yearbook by including a listing of all former Tennessee Champions (thanks to Lahde's records).

The articles and tournaments included in this issue from earlier during the year are those that were deemed the most significant. The majority of the material from the earlier issues has been placed up front in chronological order. In some cases the original articles have been modified slightly to accommodate the yearbook presentation. Too, the free online version of the Summer **TCN** will probably differ from the printed version because of the prohibitive cost of printing all the online-published pages. What is likely to be omitted in the printed copy is some photos because they don't add significantly to the articles.

Don't overlook that there is a Game/30 Sudden Death scholastic tournament being run along with the Tenn. Open Championship. Also, for those who are playing in the Tennessee Open this year, please reserve your rooms at the Baymont Inn & Suites by August 19th.

Tennessee Open State Championship

Sept. 2-4, 2011 **\$\$\$\$\$ 3,000 Guaranteed** **\$\$\$\$\$**

Tenn. Tech Univ., Roaden Univ. Ctr, 1000 N Dixie Ave, Cookeville, TN
5 Round Swiss Time: Game/2 hrs Open & Under 1400 Section

Entry: \$50 & \$60 (after 8/27) 1st Round: Fri. (7:00 p.m.) or Sat. (9:00 a.m.)

Scholastic Chess Tournament

Sept. 3, 2011 **10 Trophies for each of 4 Sections**

4 Round Swiss Time: Game/30 min. SD

for flyer and additional details, see <http://tncchess.org>

2010 Tenn. Open Championship

The Tennessee Open was held in Cookeville, TN on September 3-5. Seventy-eight players participated in the tournament with the majority of these players (31) playing in the Championship Section. The 5-round tournament had a time control of 30 moves in 80 minutes and then Game/60. Also, a one-day 4-round Swiss scholastic tournament was held in conjunction with it.

Todd Andrews won a full point ahead of the field. Ronald Burnett, Peter Bereolos, David Justice, Joshua Suich, Graham Horobetz, Peter Suich, and Ali Alataiwi shared 2-8th place with 3.5 points each. Ronald Burnett, last year's champion, was held to two draws in his last three rounds.

A listing of past Tenn. Championships is on page 8.

In the **Amateur U1600 Section** (which had 26 players) **Ryan Hunley** gave up a draw in the first round but went on to win the remainder of his games to emerge undefeated with 4.5 points. Luke Weishaar and Wardell Vance tied for second- and third-place honors with 4.0 points.

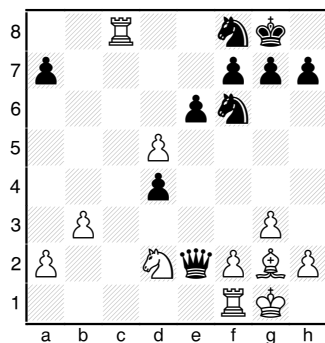
In the 22-player **Novice U1200 Section**, **Cary Carter** and **Victoria Suich** tied for first with 4.0 points. Victoria actually beat Cary in their individual game in Round 3 but she then lost to Angela Li in Round 4. Angela finished with 3.5 points, tying for third-place honors with Kayla Weishar, Jordan Hoyos, and Jason Dahorty.

See the crosstables for the sections on pages 26-30.

Games from the tournament are included throughout the issue. Additional games are included in a downloadable pgn file (TCNFall_10) or can be viewed using the game player on our website.

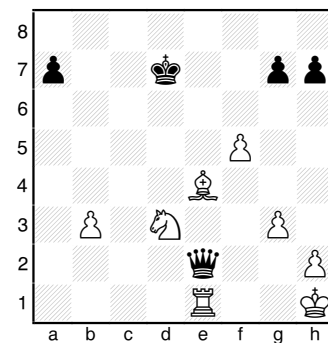
Tenn Open - Championship (1) Brian Smith (2028) Niglia Salvatore (1859)

1. g3 d5 2. Bg2 e6 3. Nf3 Nf6 4. O-O Bd6 5. c4 c6 6. b3 O-O 7. Bb2 Nbd7 8. d3 b5 Black is not content to settle for b6 followed by Bb7. This, however, serves to unleash the power of White's white-squared bishop. 9. Nbd2 Even stronger is e4, attacking the white squares and threatening e5: 9. e4! dxe4 10. dxe4 Qc7 (10... Nxe4? 11. cxb5 cxb5 12. Nh4) 11. cxb5 +/- 9... Ba6 10. cxb5 Bxb5 11. Nd4 Rc8 12. Rc1 Qb6 13. Qc2 c5 Fritz considers Ba6 a little better, but this move is certainly okay. 14. Nxb5 Qxb5 15. e4 Be5 16. d4!? Rfd1 is safer. Bxd4 17. Bxd4 cxd4 18. Qxc8 Rxc8 19. Rxc8+ Nf8 20. exd5 Qe2 Stronger is exd5.



21. dxe6 fxe6 22. Nf3 d3 23. Nd4 Qg4 24. Rd8 N6d7 25. f4 Qg6? (25... d2 26. Bf3 Qg6 27. Nc6 Qc2 28. Ne5 Qc5+ 29. Kg2 Qe7 White is still better but Black may be able to defend.) 26. f5 (26. Nc6 Qh6 27. h4 a5 28. Rd1) 26... Qg5 27. Nxe6 Qe3+ 28. Kh1 Qe2? 29. Nxf8 Kf7 (29... Nxf8 30. Bd5+) 30. Ne6 Ke7 31. Nf4 Even stronger is Nd4, planning Nc6+. Qxa2 32. Rxd7+ Kxd7 33. Nxd3 Qc2 34.

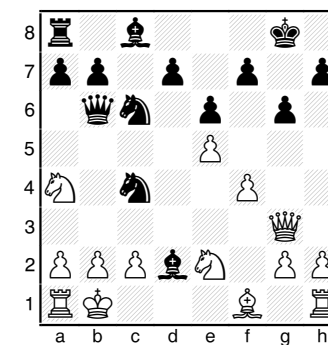
Be4 Qe2 35. Re1 Note how artistically the white pieces defend each other.



Qd2 36. b4 a5 37. bxa5 Qxa5 38. f6 gxf6 39. Bxh7 f5 40. Rf1 Qd5+ 41. Kg1 Qd4+ (41... Qxd3?? 42. Bxf5+) 42. Rf2 Qa1+ 43. Kg2 Qa8+ 44. Rf3 Qa2+ 45. Nf2 Black resigned.

Tenn Open - Championship (5) David Justice - 2141 Kumar Vikas - 1826

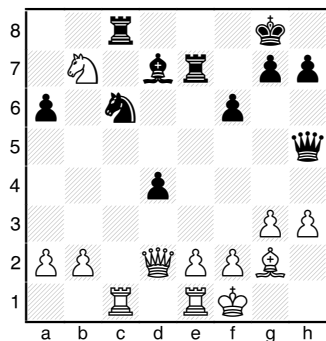
1. e4 c5 2. Nf3 e6 3. d4 cxd4 4. Nxd4 Nf6 5. Nc3 Bb4 6. e5 Nd5 (6... Qc7?! Black can temporarily win material but soon has to return it with disadvantage: 7. exf6 Bxc3+ 8. bxc3 Qxc3+ 9. Qd2 Qxa1 10. c3! threatening Nb3 Qb1 11. Bd3 Qb6 12. fxc7 Rg8 13. Qg5+-) 7. Qg4 O-O (7... Nxc3 8. a3 Bf8 9. bxc3 Nc6 10. Qg3+/=) 8. Bh6 g6 9. Bxf8 Qxf8 10. Qg3 Qc5 11. Nde2 Nc6 12. f4?! (12. a3 Ba5 13. O-O-O Nxc3 14. Nxc3 Qxe5+/= Black does not have full compensation for the exchange.) 12... Ne3 13. Kd2 Nc4+ 14. Kc1=/+ Qb6 15. Na4 (15. Rb1 Bc5 16. Nd1 d5 and Black has a dwindling initiative.) 15... Bd2+ 16. Kb1



Be3?? (16... Qa5 17. b3 {17. Nac3 Be3; or 17. Nec3 Nxb2} 17... b5-/+) 17. **Nxb6 Nd2+** 18. **Kc1 Nxf1+** 19. **Qxe3 Nxe3** 20. **Nxa8 1-0**

Tenn Open - Championship (4)
Peter Bereolos (2328)
David Justice (2141)
Result 1-0

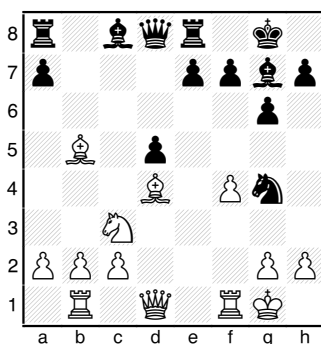
1. **d4 d5** 2. **c4 e6** 3. **Nc3 c5** 4. **cxd5 exd5** 5. **Nf3 Nc6** 6. **g3 Nf6** 7. **Bg2 Be7** 8. **O-O O-O** 9. **dxc5 Bxc5** 10. **Bg5 d4** This is a more active defense than the sturdy **Be6**. 11. **Bxf6 Qxf6** 12. **Nd5** Ne4 would likely lead to a surer advantage as Black would not have the two bishops and he would still have to nurse his isolated pawn. **Qd8** 13. **Nd2 Re8** (13... **Be6** 14. **Nf4 Rc8** 15. **Rc1 Qb6** 16. **Nxe6 fxe6** 17. **Nb3 Na5** and White only has a slight edge.) 14. **Re1 a6** 15. **Rc1 Ba7** 16. **Nf4 Bg4** 17. **Ne4** (17. **Rxc6 bxc6** 18. **Bxc6 Rc8** 19. **Bxe8 Qxe8 +/-**) 17... **Re5** Better was **Rc8**. 18. **Nd3 Re7** 19. **Nec5 Bxc5** 20. **Nxc5 Rc8** 21. **Qd2 Qe8** 22. **Kf1 f6** 23. **h3 Bd7?** Beside this blundering a pawn, better was **Bh5**, keeping the pressure on e2 and retaining the bishop. 24. **Nxb7 Qh5**



25. **g4** Even stronger was **Rc5**: 25. **Rc5 Re5** 26. **Rec1 Rxc5** 27. **Rxc5 Qe8 +-** 25... **Qe5** 26. **Nc5 Qd6** 27. **Nxd7 Rxd7** 28. **Rc4 Rdc7** 29. **Rec1 Ne5** 30. **Rxc7 Rxc7** 31. **Rxc7 Qxc7** 32. **Bd5+ Kf8** 33. **Qb4+ Ke8** 34. **Qxd4 g5** 35. **Qa4+ 1-0**

Tenn Open - Championship (5)
Ali Alatori (1850)
Alan McCormick (1818)
Result 1-0

1. **Nf3 c5** 2. **e4 d6** 3. **d4 cxd4** 4. **Nxd4 Nf6** 5. **Bd3 g6** 6. **O-O Bg7** 7. **Nc3 O-O** 8. **Rb1 Nc6** 9. **Nxc6 bxc6** 10. **Be3 d5** 11. **exd5 cxd5** Nxd5 is a little more enterprising. This move does give Black the half-opened b- and c-file for queenside pressure. 12. **Bd4 Re8** 13. **f4 Ng4** Better was **Be6** or even **Bg4**. 14. **Bb5**

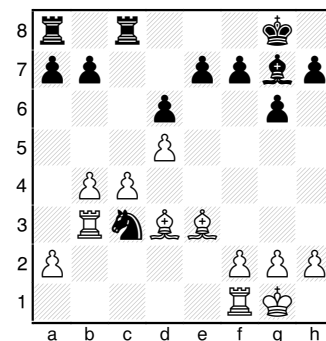


e5! 15. **fxe5 Rxe5** 16. **Be2** (16. **Bxe5 Bxe5** 17. **Qf3 Be6=**); (16. **Rf4** Fritz's preference, but not much better: **Qd6** 17. **g3 h5** 18. **Qd2** {18. **Bxe5 Bxe5** 19. **Rf3 Qb6+** 20. **Kg2 d4 -/+**} 18... **Rf5=**) 16... **Ne3** 17. **Bxe3 Rxe3** 18. **Bf3 Ba6** 19. **Re1 Qb6=/+** 20. **Kh1 Rxe1+** 21. **Qxe1 Bxc3** 22. **Qxc3 Rd8** 23. **Qd2 d4** 24. **b3 Bb7** 25. **Be2** (25. **Bxb7 Qxb7** 26. **Re1 Qb6** 27. **h3 Qd6=**) 25... **Qc6** 26. **Bc4 Bc8** Stronger was **Rd6**, protecting the rook and providing a defense for the f-pawn. 27. **Qa5 Qb6** 28. **Qg5 Kg7** 29. **Rf1 Rf8?** Stronger was **f6**, maintaining a slight edge. 30. **Qe5+ Kh6** (30... **Kg8** 31. **Bxf7+ Rxf7** 32. **Qe8+ Kg7** 33. **Rxf7+ Kh6** 34. **Qf8+ Kg5** 35. **h4+ Kg4** 36. **Qxc8+**) 31. **Rf4 Qd8** 32. **g3 f5** (32... **Re8** 33. **Qxd4 Qxd4** 34. **Rxd4 Re7+/-**) 33. **Rh4+ Kg5** 34. **Rxh7 Bb7+** 35. **Kg1 Rxb7** also maintains a winning initiative. **Qb8** 36. **h4+** (36. **Qe7+!** **Rf6** 37. **Rh5+ Kxh5** {37... **gxh5** 38. **Qg7+ Rg6** 39.

h4+ Kg4 40. **Qxg6+ Kf3** 41. **Qxf5+ Kxg3** 42. **Qf2+ Kg4** 43. **Be6#**) 38. **Qh7+ Kg5** 39. **Qh4#** 36... **Kg4** 37. **Qxd4+** (37. **Rc7 f4** 38. **Be2+ Kh3** 39. **Qg5** with mate in two.) 37... **Kxg3** 38. **Qf2+ Kh3** 39. **Bf1+ Kg4** 40. **Be2+ Kh3** 41. **Rxb7!** A 7-move mate is available with **Qf1+**. **Qg3+** (41... **Qxb7** 42. **Qh2#**) 42. **Qxg3+ Kxg3** 43. **h5 g5** 44. **h6 Re8** 45. **Kf1 f4** 46. **Bb5 Rd8** 47. **Rd7 Rc8** 48. **Bd3 f3** 49. **h7 f2** 50. **Rf7 a5** 51. **Rxf2 a4** 52. **Rf7 axb3** 53. **axb3 g4** 54. **Rg7 Rf8+** 55. **Ke2 1-0**

Tenn Open - Championship (5)
David Justice (2141)
Graham Horobetz (2101)
Result 1/2-1/2

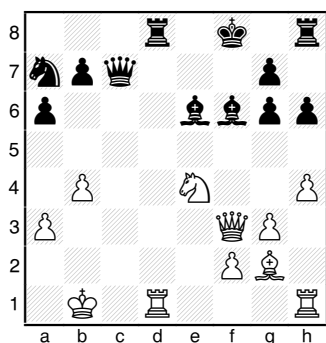
1. **e4 c5** 2. **Nf3 g6** 3. **d4 cxd4** 4. **Nxd4 Nc6** 5. **c4 Nf6** 6. **Nc3 Nxd4** 7. **Qxd4 d6** 8. **Bg5 Bg7** 9. **Be2 O-O** 10. **Qe3 Be6** 11. **O-O Qa5** 12. **Rab1 Rfc8** 13. **b4 Qb6** 14. **Nd5 Qxe3** 15. **Bxe3 Bxd5** 16. **exd5 Ne4** 17. **Bd3 Nc3** 18. **Rb3**



b5! 19. **cxb5 Nxd5** (19... **Nxa2** 20. **Re1 f5** 21. **Bf1 Rc3** 22. **Reb1=**) 20. **Be4 Nxe3** 21. **fxe3** (21. **Bxa8?? Nxf1 -+**) 21... **Rab8** 22. **Bc6 e6** 23. **Rd1 Be5** 24. **Ra3 Rc7** 25. **Rdd3 Re7** A little more vigorous is **f5-f4**. 26. **Ra6 Rc8** 27. **Rda3 Rcc7** 28. **b6 axb6** 29. **Rxb6 d5** 30. **Rd3 Ra7** 31. **a3** (31. **a4 Bc7** 32. **a5 Bxb6** 33. **axb6 Ra6** 34. **b7 Rb6 =/+**) 1/2-1/2

Tenn Open - Championship (4)
Bin Li (1744)
Ali Alataiwi (1850)
Result 0-1

1. e4 d5 2. exd5 Qxd5 3. Nc3 Qd8 4. d4 Nf6 5. Bg5 e6 6. Nf3 Bb4 7. Qd3 Nc6 8. a3 Be7 9. O-O-O h6 Better was castling. 10. Bxf6 Bxf6 11. Ne4 (11. d5! exd5 12. Nxd5 O-O 13. Qe4+/-) 11... Be7 12. h4 Qd5 13. Nc3 Qd6 14. g3 (14. Qe4 O-O 15. Nb5) 14... a6 15. Bg2 Rb8 16. Ne4 Qd5 17. c4 Qa5 18. d5 exd5 19. cxd5 Na7? 20. d6 Much stronger is Qd4 which appears to win the knight or give White a winning initiative. cxd6 21. Nxd6+ Kf8 22. b4 This is a little loosening. Nxc8 is okay as well as Rfe. (22. Nxc8 Rxc8+ 23. Kb1 Nc6 24. Bh3 Rd8 25. Qb3) 22... Qc7+ 23. Kb1 Be6 24. Ne5? Necessary was Ne4, not allowing a pin. Rd8 25. Ng6+ fxc6 26. Qf3+ Bf6 27. Ne4

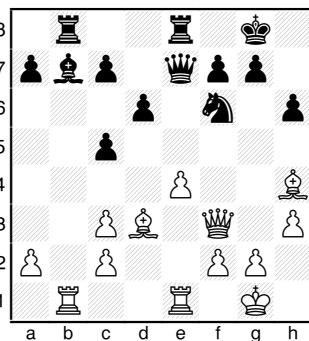


Bf5 (27... Ba2+ 28. Kxa2 Qc2#) 28. g4 Bxe4+ 29. Qxe4 Rxd1+ 30. Rxd1 Qc3 31. Qe2 Qa1+ 32. Kc2 Qb2+ 33. Kd3 Qxa3+ 34. Kc4 Qc3+ 35. Kd5 Qc6# 0-1

Tenn Open - Championship (1)
Ali Alataiwi (1850)
Joseph Stafford (1516)
Result 1-0

1. e4 e5 2. Nf3 Nc6 3. d4 exd4 4. Nxd4 Nf6 5. Nc3 Bb4 6. Nxc6 bxc6 7. Bd3 Bxc3+ (7... d5 8. exd5 Qe7+ 9. Qe2 Nxd5 =) 8. bxc3 Qe7 9. O-O O-O 10. Bg5 h6 Black should simply break the pin with

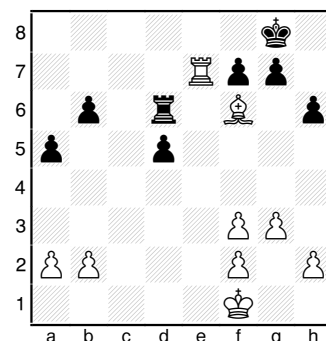
Qe5: 10... Qe5 11. Bxf6 Qxf6 12. Qd2 = 11. Bh4 d6 12. h3 Bb7 (12... Qe5 13. Re1 Re8 14. Qd2 Nh5 =) 13. Re1 c5 14. Qf3 Stronger is f4, preventing g5 and threatening e5. Rfe8 15. Rab1 Rab8?



Much better was Bc6, but then White had Bxf6. 16. Rxb7 Rxb7 17. e5 Rbb8? (17... g5 18. Qxb7 gxh4 19. f4 dxe5 20. Rxe5 Qd6 21. Rxe8+ Nxe8 22. Qxa7 +/-) 18. Bxf6! gxf6 19. Qf5 Qe6 20. Qh7+ Kf8 21. Qxh6+ Ke7 (21... Kg8 22. Bh7+ Kh8 23. Bf5+) 22. exf6+ Kd8 23. Rxe6 Rb1+ 24. Kh2 Rxe6 25. Qf8+ Re8 26. Qxf7 Rbe1 27. Bf5 R1e7 28. fxe7+ Rxe7 29. Qf6 Ke8 30. Bd3 1-0

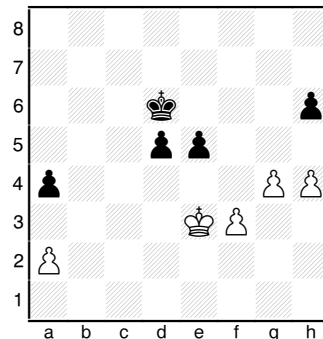
Tenn Open - Championship (2)
Ben Blair (1500)
William Bragg (1925)

1. d4 d5 2. c4 c6 3. Nf3 Nf6 4. g3 e6 5. Qc2 Nbd7 6. Bg2 Bd6 7. O-O O-O 8. Nbd2 e5 Black dissolves his own white-square barrier but gets immediate activity for all his pieces. 9. cxd5 cxd5 10. dxe5 Nxe5 11. Nxe5 Bxe5 12. Nf3 Qd6 Bd6 was better, preserving the bishop. 13. Nxe5 Qxe5 14. Bf4 Qh5 15. Bf3 Better was Racl. Bg4 16. Qb3 Bxf3 17. exf3 b6 18. Kg2 Rfd8 19. Rfe1 Qf5 20. Re5 Qd7 21. Rael Re8 (21... d4 22. Re7 Qd5) 22. Bg5 Rxe5 23. Rxe5 Rd8 24. Qa3 (24. Bxf6 gxf6 25. Rh5 f5 26. Qd3 d4 27. Rxf5 +-) 24... Qd6 25. Qxd6 Rxd6 26. Re7 a5 27. Kf1 h6 28. Bxf6



After 28. Bxf6.

gxf6? After Rxf6, it will be very difficult for White to break Black's defense because his kingside pawns are doubled. Now, however, Black's four pawn islands can't prevent later penetration by White. 29. Re8+ Kg7 30. Ke2? White could have maintained an advantage with Rc8. Now he even has losing chances. Re6+ 31. Rxe6 fxe6 32. Kd3 Kf7 33. Kd4 Ke7 34. f4 Kd6 35. g4 e5+ 36. fxe5+ fxe5+ 37. Kd3 Ke6 Black needs to hurry and play a4 to assure that White can't gain a tempo by playing a4 himself. Still, with an outside passed pawn, White has a small advantage. 38. f3 Kf6 39. h4 a4 40. b3 b5 41. bxa4 bxa4 42. Ke3 Ke6 43. Kd3 Kd6 44. Ke3



After 44. Ke3.

Kc5?? With Ke6 Black could have held his ground, now he is outside the square of the rook pawn. 45. g5 hxg5 46. h5 Kc4 47. h6 Kc3 48. h7 d4+ 49. Ke2 Kc2 50. h8=Q d3+ 51. Kf2 g4 52. fxc4 d2 53. Qc8+ Kd1 54. Qc4 e4 55. Qxe4 Kc1 56. Qxa4 1-0

TENNESSEE STATE CHESS CHAMPIONS

Year	Champion/co-Champion	Year	Champion/co-Champion
1947	Robert Coveyou	1979	Curt Jones & M.C. Wright
1948	J. B. Mullenix	1980	Leonard Dickerson & Thomas
1949	J. B. Mullenix	1981	Carey, Micheal & Jones
1950	Lawrence Noderer	1982	Joseph Sentef & Paul Harless
1951	Jerry Sullivan	1983	Carey & Sid Pickard
1952	Lawrence Noderer	1984	Johnson Moore & L. Dickerson
1953	Jerry Sullivan	1985	Charles Madigan
1954	Jerry Sullivan & Southern	1986	Ronald Burnett
1954	Robert Coveyou	1987	Ronald Burnett
1955	Robert Coveyou	1988	Charles Schulien
1956	Robert Coveyou	1989	Charles Schulien
1956	Jerry Sullivan	1990	Curt Jones
1957	Jerry Sullivan	1991	D Sirias, M Ishee, & J Wheeler
1958	Robert Coveyou	1992	Rea Hayes
1959	Robert Coveyou	1993	Ronald Burnett
1960	Jerry Sullivan	1994	Sam Palatnik
1961	Robert Coveyou	1995	Sam Palatnik
1962	Emanuel Tsitseklis	1996	Peter Bereolos
1963	Robert Coveyou	1997	Sam Palatnik
1964	James Wright	1998	Todd Andrews
1965	David Burris	1999	Sam Palatnik
1966	David Burris	2000	Sam Palatnik
1967	David Burris	2001	Sam Palatnik
1968	Robert Coveyou	2002	Peter Bereolos
1969	James Sweets	2003	Peter Bereolos
1970	James Wright	2004	Ronald Burnett
1971	Doug Ralston	2005	Todd Andrews
1972	Juan Aristorenas	2006	Todd Andrews
1973	John Hurt	2007	Todd Andrews & Peter Bereolos
1974	Kenny Thomas	2008	Ronald Burnett & Todd Andrews
1975	Kenny Thomas	2009	R. Burnett, P. Tae & D. Justice
1976	Emanuel Tsitseklis	2010	Todd Andrews
1977	Louis Torres & H. Robinson	2011	
1978	Tsitseklis (State Closed)	2012	

The years 1954-1956 overlap because the tournament was played from Dec. - Jan.

TN All Girls Scholastic Ch

The All-Girls Championship was held on April 9 at the Montgomery County Civic Hall in Clarksville, Tenn. The event had five sections. The two divisions of the Competition Section were not rated and were run separate from the Championship Section. Forty players attended the event which had the capacity to comfortably seat 80 players. Because the venue was so spacious, one board per table was possible. Promoter Roy Manners stated that the majority of the players commented that the facility was excellent and that the staff did a great job hosting the event.

Graham Gibson won the **Championship 18 and Under Section** with a score of 4.5 out of 5. She plans to use the \$1000 scholarship this year as she is attending University of Memphis in the fall. In addition to her trophy, Graham also won a Chronos Touch Sensor Clock. Joann Welch finished second with 4.0 points, her only lost coming in the third round to Gibson. The **14 and Under Section** was won by undefeated Rachel Weishaar who received a trophy and a copy of Chessimo Chess Training software as a prize for winning her section. Second- and third-place honors in this 7-player section was shared by Puja Jagasia and Ivy MacDaniel who both had 2.5 points. The **Championship 10 and Under Section** was won by undefeated Nina Bhat who won a trophy and the Chess Tactics Training DVD with book prize. Cydney James captured second place, dropping only a point to Nina in Round 3.

The **Competition 14 and Under Section** was won by Reina Lopetegui with 4.0 points

and her sister Teresa finished second with 3.0 points. The winner received the Chessimo Training Software. There challengers were drawn chiefly from the **Competition 10 and Under Section**. This section was won by Mary Grace Gower and Shimera Paxton who both finished with 4.0 points. The winners received the Staunton Marshal Series Chess Set.

Manners stated: "We now have a much better idea of what the people and players expect at an All-Girls event, and hopefully we can strive to fulfill those needs and wants next year. We certainly have a much better idea of what the expenses are and what sources of revenue are available to help us cover the cost."

In addition to the \$1,000 scholarship donations, many other prizes were donated. For instance, many received Jennifer Shahde's book as door prizes or a copy of Ray Robson's (the youngest chess master) book: "Chess Child: The Story of Ray Robson." Prior to the start of most rounds, another copy of Shahde's book or Robson's book was awarded to a lucky player: for Round 1 a book was awarded to Anna Mott for being the first one to enter the tournament (interested candidates for next year, remember this award and enter early); in Round 2 another was given to Andrinna Bridges for being the youngest girl to play; for Round 3 Victoria Suich received one for traveling the furthest; and in the fourth round Cheyenne Douthitt sparked as her name was pulled randomly from a hat to receive a book. All of the second-place winners of the divisions also received books.

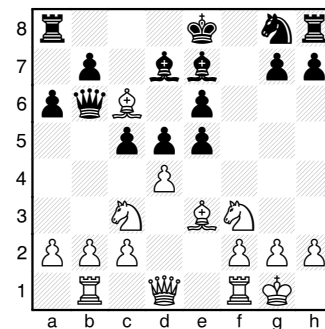
All the games from the event were received and converted into a pgn file by Master Henry Robinson who also

commented many of them. Most games of the grand champion are included here with Robinson's annotations. Additionally, Robinson took photos of just about everyone and everything. Several of those photos are also included in this issue starting on page 10, some of which have comments by Roy Manners.

In this Round 2 encounter, the 14U Ch winner deals the 14U Competitive Section winner her only loss.

Reina Lopetegui
Rachel Weishaar

1. e4 e6 2. d4 d5 3. e5 c5 4. Nf3 Nc6 5. Bb5 Qb6 6. Nc3 a6 Better was Bd7. 7. Ba4 Bd7 Better is cxd4 with equal chances. 8. O-O Be7 9. Rb1 f6 Again, cxd was better. 10. Be3 fxe5 11. Bxc6



Qxc6? 12. Nxe5 Fritz gives White a big 2. 6 advantage. **Qc7** 13. Qf3 (13. Qh5+! g6 14. Nxc6) 13... Nf6 14. Bf4 Better was Qh3 followed by f4 to anchor the knight. **Bd6** (14... cxd4 15. Ng6 Qd8 16. Nxc6 dxc3 17. bxc3 Kf8 +-) 15. dxc5? **Qxc5** The simple Bxe5 wins a piece. 16. Nd3 **Qc7** 17. Bg5 O-O \$15 18. Bf4 e5 19. Nxd5 **Qxc2** 20. Nxf6+ Better was Rbc1: 20. Rbc1 Qa4 21. Nxe5 20... Rxf6 21. Qd5+ Be6 22. Qxd6 exf4 (Bxa2!) 23. Nxf4? (23. Rbc1 Qa4 24. Rf1 Bxa2 25. Qc7 Rf7 26. Re7=+/) 23... Bxa2 24. Rfc1 **Qxc1+** 25. Rxc1 Rxd6 26. f3 Rad8 27. Kf2 Rd2+ 28. Ne2 Re8 29. Re1 Bc4 30. Kg3 Rdx2 31. Rxe2 Rxe2 32. b4 Rb2 0-1

Tenn. All Girls Scholastic Chess Championship

(Photos contributed by Henry Robinson and Roy Manners)



Graham Gibson the 2011 TN All Girls Champion collecting her prizes and honors from Promoter Roy Manners.



Champion Rachel Weishaar (left) facing off against Third-place finisher Teresa Lopetequi in Round 3. Rachel won the 14 and Under Championship Section and received a trophy and copy of Chessimo Chess Training software as a prize.



Winners in the 18 & Under Championship Section. From the left: Graham Gibson - 1st Place, JoAnn Welch - 2nd Place, Victoria Suich - 5th, Angela Lee - 3rd Place, and Kayla Weishaar - 4th Place



Winners in the 14 and Under Championship Section. From left: Rachel Weishaar - 1st Place, Ivy McDaniel - 3rd Place, Emily Nance - 4th Place, and Puja Jagasia - 2nd Place



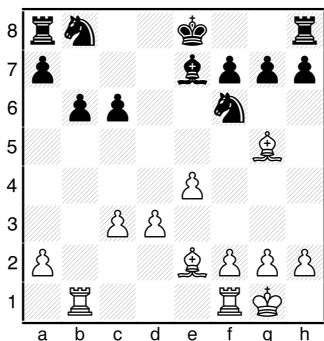
Winners in the 10 and Under Section. From Left: Alexis Jones - 4th Place, Teiraney Biggs - 3rd Place, Mikaela Brennan - 6th Place, Bliss Button-Hale - 7th Place, (in front) Andrina Bridges - 10th Place, Cydney James - 2nd Place, Cheyenne Douthitt - 8th Place, and Nina Bhat - 1st Place



Mary Grace Gower (right) vrs. Hailey Gilchrist in Round 5. Manners reports that "Mary Grace is nine years old and only lives a block from the Nashville Chess Center. She noticed their sign one day and started asking if she could go over there. She has been attending their Sunday afternoon lessons for kids. This was her second tournament." On the other hand, Hailey lives 154 miles away! Manners reports that her house had just been involved in a fire 10 days earlier and she lost all but one of her chess trophies! Well, she started rebuilding her collection by earning a third-place trophy.

All Girls Ch - 3
Joann Welch
Graham Gibson
Annotator Henry Robinson

1. e4 c6 2. Nc3 d5 3. d3 e5
4. Nf3 d4 5. Ne2 Bg4 Graham is setting a trap, which Joann falls right in to! When a strong player makes an obvious blunder early in the game, let's look twice before we leap!! **6. Nxe5 Qa5+ 7. c3 Qxe5 8. cxd4 Bxe2 9. Bxe2 Qxd4 10. O-O!** Two pawns for the piece and a lead in development. Joann must keep Graham on the retreat for as long as possible. **Be7 11. Qb3** Protecting the b-pawn and attacking b7. **Qb4** Graham is ready to offer queen exchanges since the ending will easily be won. **12. Qc3** When behind in material, it is rarely a good idea to exchange queens. It is easier to drum up counter play if you still have your queen. **Qxc3** Graham rightly removes queens. **13. bxc3 Nf6 14. Rb1 b6 15. Bg5** This is a blunder which both players overlook.

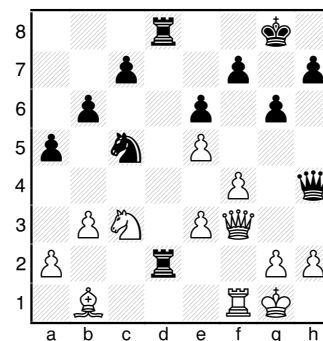


Nbd7 It is normal for mortals to get a mind set of "hunker down" once we gain material. The idea is to catch up in development, then win with ease. With this mind set, we often miss a shot that we would normally see. Best here is ...Nxe4!!: 15... Nxe4 16. Bxe7 Nxc3 17. Rfel Kxe7 and Black has an extra piece and pawn! **16. h3 O-O** Nxe4 is still there! **17. Bg4 Rfe8** Continuing the idea of seeking exchanges. This is a good move, defending the

Bishop, ready to make exchanges. **18. Bxf6 Nxf6 19. Bf3 Rad8** It's all over. Graham will simply chop wood till the game is over. No more comments needed. **20. Rfd1 c5 21. c4 Bd6 22. d4 cxd4 23. Rxd4 Bh2+ 24. Kxh2 Rxd4 25. Rc1 Nxe4 26. Bxe4 Rdx4 27. f3 R4e5 28. h4 g6 29. Kh3 Rc8 30. g4 Rec5 31. Kg3 Rxc4 32. Rb1 Rc2 33. a3 R8c3 34. Ra1 Rb2 35. Kf4 Rbb3 36. Ke4 Rxa3 37. Rxa3 Rxa3 38. f4 a5 39. f5 Rb3 40. Kd4 a4 41. Kc4 b5+ 0-1**

All Girls Ch - 1
Aubrie Harman
Graham Gibson
Annotator Henry Robinson

1. d4 d5 2. c4 e6 3. Nc3 Nf6
4. Bg5 Nbd7 5. Nf3 Be7 6. e3 O-O 7. Bd3 b6 8. O-O Bb7 9. Qe2 Re8 10. Ne5 Both players have complete their development adequately. Aubrie is the first to declare hostile intentions. This will test our champion's cool under fire. **Nxe5 11. dxe5 Nd7 12. Bxe7 Qxe7 13. f4 Nc5** Graham has emerged with several positives. First, several pieces were exchanged making a White Kingside attack less powerful. Second, the White pawn structure has been compromised, allowing Blacks pieces to infiltrate to the White squares. Aubrie has gained space on the Kingside and better light a fire very soon else she will find herself defending her structure. **14. Rad1 Rad8 15. Bc2 dxc4** Graham cleverly sets a trap, which Aubrie falls into. **16. Qxc4 Ba6 17. Qb4 Bxf1 18. Rxf1 a5** Graham immediately begins to consolidate, once she has won material. **19. Qb5 Rd2 20. Bb1 Red8** Seize the open file. The mark of a champion. **21. b3 Qh4 22. Qc6 g6** Very good play by Graham. She makes 'luft' for her King and closes the long diagonal b1-h7. Excellent! **23. Qf3**



Qe7 Not best. Graham has a keen sense of consolidation, but over does it here. She could continue her original plan of invasion with Rb2, planning R8d2. For example: 23... Rb2 24. Ne4 Nxe4 25. Qxe4 Rdd2 26. Qf3 Qh5 27. Be4 Qxf3 28. Bxf3 Rxa2 with an easy win or 23... Rb2 24. Be4 Rdd2 25. Kh1 Rf2 26. Rxf2 Qxf2 27. Qxf2 Rxf2 (White cannot last much longer.) 28. Kg1 Nxe4 29. Nxe4 Rxa2 **24. h3 Qd7** This is more comfortable to Graham. Less complications. **25. a3 Kg7 26. Kh2 Qe7 27. b4 axb4 28. axb4 Nb3 29. Qc6 R2d7** Of course, Graham is still winning, but "safety first" is her motto. She plans to win without risk. And as the champion, it works for her! More complicated is the line beginning with ...Qxb4: 29... Qxb4 30. Qxc7 Nc5 and the white Knight is lost or 29... Qxb4 30. Ne4 Rd1 31. Qxc7 R8d7 32. Qc8 Rf1 33. Nf6 Qf8 34. Qxd7 Rxb1. A rook ahead, but who wants to calculate all this when a simple method is available! **30. Qa4 Nd2 31. Rd1 Nxb1 32. Rxd7 Qxd7 33. Nxb1** Oops. I happened to be present when this oops-move was played. Aubrie showed great composure! She did not smack her head or sigh or anything. If this had been a boys tournament, something may have sailed across the room! **Qxa4 34. Nc3 Qxb4 35. Ne2 Rd1 36. Kg3 Qe1+ 37. Kf3 Qf1+ 38. Ke4 Qxg2# 0-1**

Tenn. State Team Finals

The Scholastic Team Finals were held on March 26 at the Roaden University Center of Tenn. Technological Univ. (TTU). The four-round Game 60 tournament was comprised of the top 4 teams from each championship section of the four regions of Tenn.

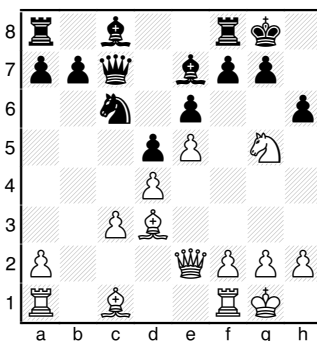
White Station HS took clear first in the **High School Section** with 3.5 points. Memphis University School finished in second place with 3.0 points. Therefore, four members of White Station HS received the four-year TTU Service Scholarships of \$4,000 per year. The second place scholarship awards of \$2,500 per year went to four members of Memphis University School.

In the **Jr. High School Section**, White Station HS again captured a clear first with 3.5 points. White Station Middle and Farragut Middle School tied for second place with 3.0 points. The **Elementary Section** was also won with 3.5 points. **Grahamwood Elementary** triumphed; the University School of Nashville and Campbell Home School tied for second with 3.0 points. Another Memphis school triumphed in the **Primary Section**. **Grahamwood Elementary** (winning school of the **Primary Section**) again won, this time going undefeated with a perfect 4.0 score. Three teams finished with 3.0 points to take second-place honors: University School of Nashville, St. George's School, and Woodland Elem. School.

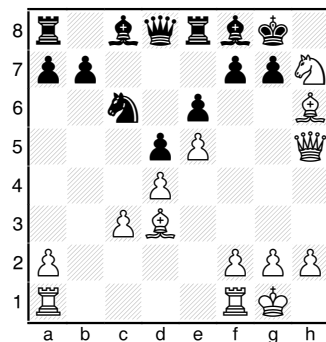
Here is a tense encounter from the event. Others are located throughout this issue.

Team State Finals 2011 Sanchit Wadhawan Jason Fu

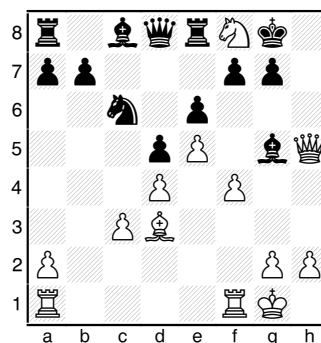
1. e4 c5 2. c3 Nf6 3. e5 Nd5 4. d4 cxd4 5. Nf3 Nc6 6. cxd4 e6 7. Bc4 d6 8. O-O Be7 9. Nc3 Nxc3 10. bxc3 O-O Black can equalize with dxe with the queens off or on: 10... dxe5 11. dxe5 Qc7= or 11... Qxd1 12. Rxd1 Bd7 13. Be3 O-O-O= 11. **Qe2 Qc7 12. Bd3 d5?!** This is a mistake, entombing his bishop. Besides, White quickly reveals that he has another route to the kingside! 13. **Ng5** Better was Bg5, dumping the potentially ineffective queenside bishop. **h6?!**



Better was g6. 14. **Qh5** (14. Nh7! Rd8 15. Qg4 Kh8 16. Qf3 Bf8 17. Bg5! Re8 (17... hxg5 18. Qh3 g4 19. Qh5 g6 20. Qh4 Kg7 21. Nf6 Ba3 22. Qh7+ Kf8 23. Bxg6) 18. Qh3 Nxe5 19. dxe5 Qxe5 20. Rael Qxc3 21. Nxf8 Rxf8 22. Bxh6 e5 23. g4) 14... **Qd8?** Fritz11 suggests: 14... Nxe5 15. dxe5 Qxc3 16. Bh7+ Kh8 17. Bf5 Bxg5 (17... Qxa1 18. Nxf7+ Rxf7 19. Qxf7 exf5 20. Qxe7) 18. Bxg5 exf5 19. Bxh6 gxh6 20. Qxh6 +/- 15. **Nh7 Re8 16. Bxh6! Bf8**



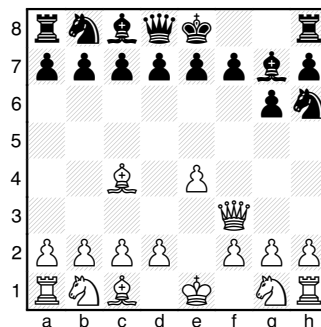
16... gxh6 17. Qxh6 f5 18. exf6 Bxf6 19. Nxf6+ -+) 17. **Bg5** The immediate Nf6+ was also decisive: 17. Nf6+ gxf6 (17... Qxf6 18. exf6) 18. Qg4+ Kh8 19. Bxf8 Rxf8 20. Qh5+ Kg8 21. Qh7# 17... **Be7 18. Nf8??** Always try to continue with check: 18. Nf6+! Bxf6 19. exf6 gxf6 20. Qh7+ Kf8 21. Qh6+ Ke7 22. Bxf6+ Kd7 23. Bxd8; also, 18. Bxe7 Nxe7 19. Ng5 (hitting both h7 and f7) Ng6 20. Bxg6 fxxg6 21. Qh7+ Kf8 22. Qh8+ Ke7 23. Qxxg7#) 18... **Bxg5 19. f4** (19. Nh7!? Bh6 20. Rael Qc7 21. g4 Ne7 22. g5 +-)



19... **Kxf8?? 20. fxg5 Qc7 21. g6 Nd8 22. gxf7 Nxf7 23. Bg6 1-0**

Team Finals Board 4, Rnd 4 Chase Martin Rachel Maddux

1. e4 Nh6 2. Bc4 g6 3. Qf3 Bg7



4. **Qxf7+??** Be alert at all times and don't assume that you lower-rated opponent has simply overlooked a tactic. **Nxf7 5. Nf3 O-O 6. O-O** And Black went on to win after many more moves. **0-1**

Tenn. Senior Open Chess Tournament

The 2011 Tenn. Senior Open Chess Championship was held May 13-15 at the Fair Park Senior Center of Crossville, TN. The 5-round Swiss had a time control of 2 hours Game and two formats to accommodate player's schedules, offering three games on Saturday rather than the option of playing one game on Friday. Attendance was relatively low this year even though a few players from three other states attended. The tournament had only 22 seniors (50 years plus).

Three players ended up in a tie for first place with 4.0 points: **Dr. John Patty, Alan Kantor, and Paul Semmes**. Last year champion, Leonard Dickerson, yielded one draw too many - though it could have been even worse for him as he played in the grueling Saturday 3-day schedule. But he did win a nice golf umbrella!

At the start of each round, prizes were again given to the participants. Donations (prizes) included umbrellas, vintage chess sets, coupons for complete meals and pizzas at local restaurants, coupons for bottles of wine, and tickets for shows at the Cumberland Co. Playhouse. Moreover, there were abundant snacks including sodas and water available all throughout the tournament.

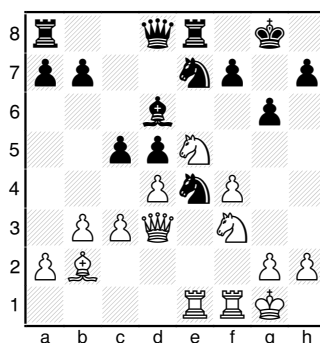
Again, the participants-who were welcomed by the mayor-thought that the site was excellent and the venue well suited for the event.

Many games from the event are included in this issue. First for showcasing is Kentucky's William Bragg sacrificial game against Champion John Patty.

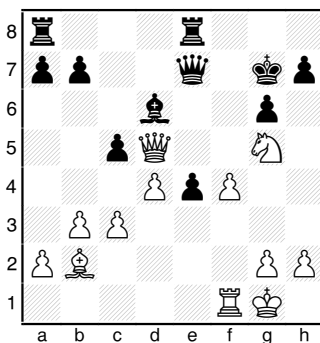
A few photos from the event are included on page 17.

Tenn. Senior Open Ch
William Bragg - 1903
John Patty - 2200

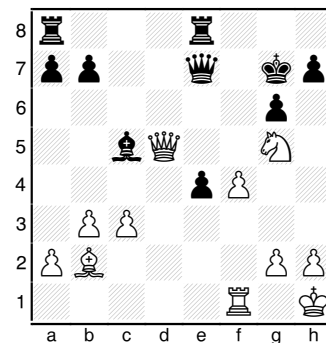
1. e4 e6 2. b3 d5 3. Bb2 Nf6
 4. exd5 exd5 5. Nf3 Be7 6.
 d4 O-O 7. Bd3 Bb4+ 8. c3
 Re8+ 9. Ne5 Bd6 10. O-O Nc6
 Black correctly assesses that his development lags too much to comfortably win a pawn: 10... Bxe5 11. dxe5 Rxe5 (11... Ng4 12. Be2 Nxe5 13. c4 Ng6 14. Qd4 f6 15. Bf3 Nc6 16. Qxd5+ =) 12. c4 Re8 13. cxd5 Nxd5 = **11. f4 Ne7 12. Qc2 g6 13. Nd2 Bf5** Fritz11 suggests the better Ng4: 13... Ng4 14. Rael f6 15. Ndf3 Nh6 16. Bc1 c6 =) **14. Rael c5 15. Ndf3 Bxd3 16. Qxd3 Ne4**



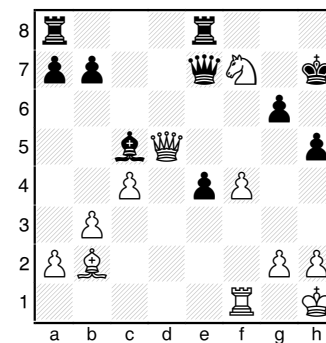
17. **Nxf7!?** **Kxf7 18. Rxe4!!**
dx4 (18... c4 19. Ng5+ Kf8 20. Qh3 Nf5 21. Rxe8+ Kxe8 22. Qxh7 +-) (18... Kg8 19. Re2 Nf5 20. Ne5 Rc8 21. g4) **19. Qc4+ Kg7** (19... Kf6 20. Ng5 Rf8 21. dxc5 Bxc5+ (21... Bxf4 22. h4 Qd5 23. Rxf4+ Kg7 24. Qxd5 Nxd5 25. c4+ Kg8 26. Rxf8+ Rxf8 27. cxd5) 22. Qxc5 Kg7 23. Ne6+) **20. Ng5 Nd5 21. Qxd5 Qe7**



22. **dx5?** 22. c4! Rad8 (22... Kh6 23. Nf7+ Kg7 24. dxc5+ Kf8 25. Nxd6 Qe6 26. Qd4) 23. dxc5+ Be5 24. Bxe5+ Kf8 25. Bd6 +- **22... Bxc5+ 23. Kh1**



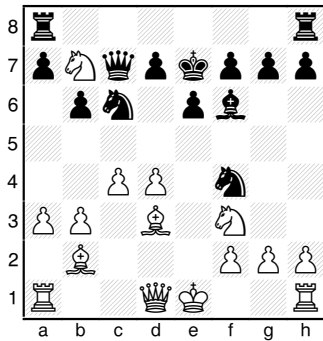
h5?! (23... Rad8! 24. c4+ Kf8 25. Nxf7+ Qxh7 26. Qxc5+ Kg8 27. Be5 Rd3 28. Qxa7 Red8 =) **24. c4+ Kh6** (24... Kf8 25. f5) **25. Nf7+ Kh7**
 And a draw was agreed.



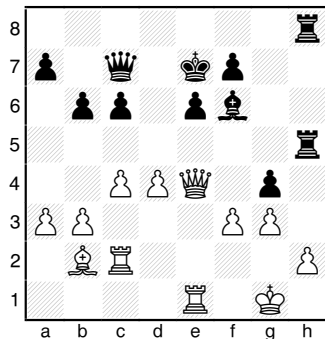
However, f5 is decisive: 26. f5 g5 (26... Rad8 27. fxc6+ Kxc6 28. Qf5#) 27. f6 **1/2-1/2**

Tenn. Senior Open Ch
William Davis - 1291
Robert Hydzyk - 1623

1. d4 e6 2. Nf3 b6 3. e3 Bb7
 4. Bd3 c5 5. b3 Be7 6. Bb2
 Nc6 7. a3 cxd4 8. exd4 Bf6
 9. Nbd2 Nge7 10. Ne4 Nd5?
 11. Nd6+ Ke7 12. Nxb7 Qc7
 13. c4 White wisely abandons the knight, settling to maintain his gains. (13. Ba6 Nb8 14. Qe2 Nxa6 15. Qxa6 Qxc2 -/+) **13... Nf4**



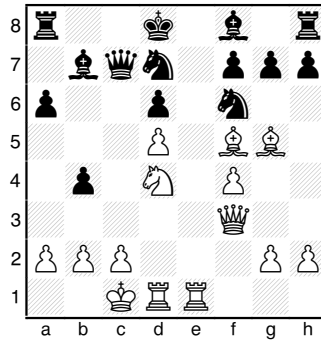
14. O-O (Fritz11 prefers going for more with d5, threatening d6+: 14. d5 exd5 15. Bxf6+ Kxf6 16. O-O) 14... Nxd3 15. Qxd3 Qxb7 16. Rfe1 Qc7 17. Rac1 Rhe8 18. Qxh7 g6 19. Qh6 Rh8 20. Qe3 g5 21. g3 Better was Ne5. g4 22. Ne5 Rag8 23. Nxc6+ dxc6 24. Rc2 Rg5 25. Qe4? Much better was d5, taking advantage of Black's poor king placement and simplifying the position. Rgh5 26. f3



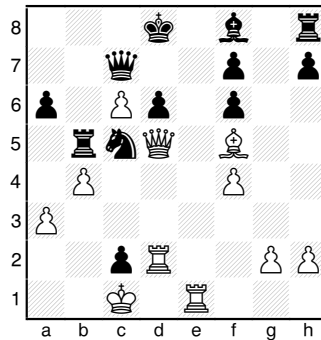
gxf3? (26... Rxh2! 27. f4 {27. Rxh2 Qxg3+ 28. Rg2 Qh3 29. Qxg4 Qh1+ 30. Kf2 Bh4+ 31. Rg3 Qh2+ 32. Ke3 Qxb2 -+} 27... R2h3) 27. Qxf3 Qd6 28. Rd2 Rf5?? 29. Qxf5 1-0

2011 TN Senior Open - 3
Paul Semmes - 1966
David Mueller - 1774

1. e4 c5 2. Nf3 d6 3. d4 cxd4 4. Nxd4 Nf6 5. Nc3 a6 6. Bg5 e6 7. f4 Nbd7 8. Qf3 Qc7 9. O-O-O b5 10. Bd3 b4 11. Nd5!? exd5 12. exd5 Bb7 13. Rhe1+ Kd8 14. Bf5 Better was the immediate Nc6+.

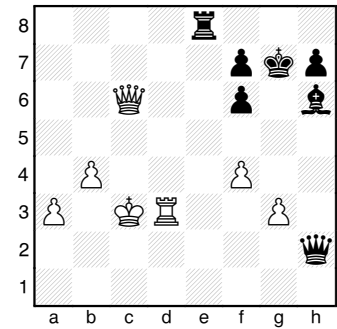


Nc5? Black could have escaped the coming bind with Qc5, vacating another square for his king: 14... Qc5 15. Qh5 Kc7 = 15. Bxf6+ gxf6 16. Nc6+ Bxc6 17. dxc6 Rb8 18. Qd5 Rb5 19. Rd2 Stronger was Re3. b3! 20. a3 (20. a4 Ra5 (20... Nxa4 21. Qe4) 21. Re3 Bg7 22. Rc3 Ke7 =) 20... bxc2 21. b4

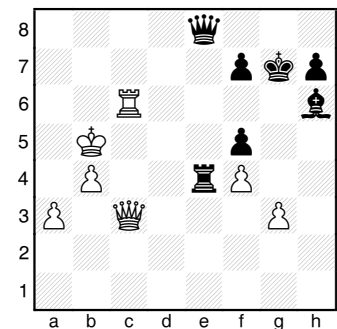


Nb3?! Black makes a bid to win but Ne6 was better: 21... Ne6 22. Qe4 Be7 23. Bxe6 fxe6 24. Qxe6 Re8 25. Rxc2 Rb6 26. Qc4 f5 +/- 22. Qxb3 Rxf5 Black has done well to survive to this point. But White still has a slight advantage due to Black's poorly placed pieces. 23. Rde2 Better was Qe3. Bh6 24. g3 Qxc6 Stronger was the immediate Re5, keeping the rooks at bay and reducing White's firepower. 25. Rxc2 (25. Qxf7 Rxf4 26. gxf4 Bxf4+ 27. Re3 d5 28. Qe7+ Kc8 29. Qg7 Bxe3+ 30. Rxe3 Rd8 31. Qxh7 =) 25... Qd5 =/+ 26. Qe3 Re5 Much better was Qb7. 27. Qb6+ Ke7 28. Rd1 Qe6 -/+ 29. Rc7+ Kf8 30. Rxd6 (30. Qxd6+

Kg7 31. Qxe6 Rxe6 -+ Black will activate his bishop and decide the game.) 30... Re1+ 31. Kb2 Re2+ 32. Rc2 Rxc2+ 33. Kxc2 Qc4+ 34. Kd2 Much better was Kb2, trying to find some shelter on the a-file.) Kg7 35. Qxa6 Qa2+ 36. Kc3 Qxh2 37. Rd3 Re8 White is in big trouble and must run to b3 with his king. 38. Qc6



Re2 Better is Qe2 with the threat Re3. White's queenside pawns won't advance too far before Black's bishop comes to play. 39. Qf3 f5 -+ 40. Kc4 Re4+ 41. Kb5 Qc2 42. Rc3 Qa2 43. Qd3 Qe6 44. Rc6 Qe8 45. Qc3+



f6?? (45... Kg8! 46. Qc5 {46. Ka5 Bg7 47. Qc1 Qa8+ 48. Kb5 Re8 and Black has a decisive 4-point advantage.} 46... Re6 47. Kb6 Qb8+ 48. Ka6 Bf8 -+) 46. Qxf6+ Kg8 47. Qxh6 Re7 48. Qg5+ Rg7 49. Qxf5 Qe2+ 50. Kc5 Qe3+ 51. Kc4 Qc1+ 52. Kb5 Qf1+ 53. Ka4 Qd1+ 54. Qc2 Ra7+ 55. Kb3 Qd5+ 56. Qc4 Rxa3+ 57. Kxa3 1-0

Tenn. Senior Open Championship



Harry Sabine opening the 4th Round. Table 2 William Bragg, Table 5 Michael Hale (pink shirt) vrs Brian Moore, Board 8 Hydzik vrs Michael Collins (cap), and Bonnie's hair!



William Bragg (Table 2, green suspenders), Paul Semmes (Table 1, blue Jacket) vrs John Patty, Michael Hale's back (Table 5, pink shirt), Mueller (light blue shirt)vrs. William Davis, Roy Manners (red shirt), Robert Hydzik (Tbl 8, dark blue shirt) vrs Michael Collins (white cap), and Bonnie Shapbell (foreground on Table 11).

North Tenn. Winter Open

The Tenn. Winter Open was held on Jan. 15-16th at Henry Horton State Park in Chapel Hill. Seventy-five players attended the event this year, which was 15 more players than those who braved the snow to compete last year. The increased attendance may have been due to the restructuring of the tournament. The most significant format change occurred in the top sections where the Kings and Queens Section were separated, with the Queens Section being limited to players with Under 1800 ratings. The Pawns Section was limited to those with ratings below a 1000. Unrated players were not limited to one section as in last year's format. Chris Prosser again assured that the tournament was smoothly ran, serving as tournament director.

Ronald Burnett and **Todd Andrews** again finished at top, this time besting a 10-player field. However, Burnett took sole first place with 4.5 points. Todd Andrews placed second with 4.0 points, a full point ahead of the remaining players.

Ashraf Armanios, last year's winner of the **Rooks Section**, again won the renamed Queens Section (which had a rating ceiling of 1800 last year) with 4.0 points, squeaking by second-place finishers **Scott Cantrell** and **Jennifer Ishee** who both had 3.5 points.

The 30-player **Rooks Section** was won by **Lillis Austin** who gave up only a draw to finish with 4.5 points. **Samuel Hunt** and **Angela Li** tied for second place with 4.0 points.

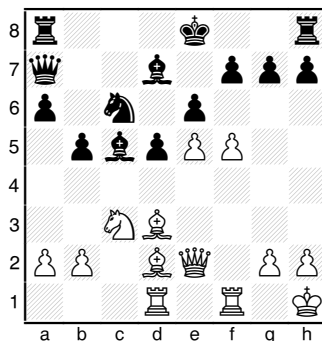
The **Pawns Section**, which had

only 21 players, ended in an unusual three-way tie among 4-point scorers: **Puja Jagasia**, **William Pyle**, and **Ruben Atkins** shared the honors.

See the crosstables for the sections on pages 23-25.

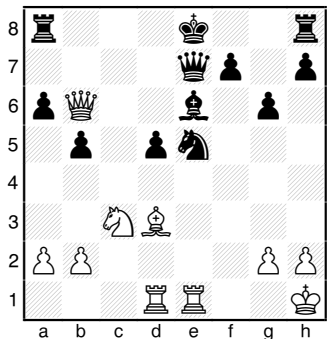
NTWO - Kings (4) James Pollitt - 1950 Corry Marsh - 1787 Annotated by Marsh

1. e4 e6 2. d4 d5 3. e5 c5 4. c3 Nc6 5. Nf3 Qb6 6. Bd3 cxd4 7. cxd4 Bd7 8. O-O Nxd4 9. Nxd4 Qxd4 10. Nc3 a6 Black wisely refrains from snatching the e-pawn because White gets serious compensation with Re1. -editor 11. Qe2 Ne7 12. Kh1 Nc6 13. f4 Qa7 Black's purpose behind Qa7 was to avoid having his Queen trapped and to still have the provided move of b5: 13... Nb4 14. Rd1 (14. Bb1 Qc4) 14... Nxd3 15. Rxd3 Qc4 16. b3 Qc7 17. Bb2 -/+ 14. **Bd2 b5 15. Rad1** Because of the possible activity along the c-file, 15. Racl is better. 15... Bc5 16. f5



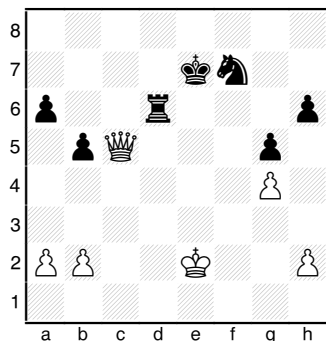
White tries to open the uncastled king and begin an attack. (16. Qg4 O-O 17. Rf3 f5 18. exf6 Rxf6 19. Rg3→ Black is being struck by an attack, but with correct play it can be held.) 16... **Nd4 17. Qg4 g6 18. fxe6** (18. fxc6 fxc6 19. Be3 Nf5 20. Bxf5 gxf5 =) 18... **Bxe6 19. Qh4 Be7** Black played here in order to reposition his pieces and prevent any chances for an attack. Best

here is 19... Nf5 20. Bxf5 gxf5 21. Bg5 d4 -/+ 20. **Bg5 Bxg5 21. Qxg5 Qe7** Black played here in order to try and trade into a winning endgame. There is no possible way for White to get solid penetration on the dark squares, so 21... O-O can be played. 22. **Qe3** White does not find the queen trade favorable, so he decides to try and redirect his play to the center and queenside. **Nc6 23. Qb6 Nxe5 24. Rfe1** Black has a strong position here, but he needs to worry about his d5-pawn.



Nd7 (24... f6 25. Bc2 Rd8 26. Qxa6 b4 27. Nxd5 Rxd5 28. Rxd5 Bxd5 29. Qc8+ Qd8 30. Qxd8+ Kxd8 31. Rd1 =) 25. **Qc6 O-O 26. Nxd5 =/+** White has strong piece play and activity as compensation. **Bxd5** (26... Qd8 {26... Qc5 leaves Black with a big advantage.-ed.} 27. Be4 Ra7 28. Qd6 Re8 =/+) 27. **Qxd5 Nf6??** (27... Nb6 28. Qc6 Qa7 29. Bf1 =/+) 28. **Qf3 Qd6 29. Be4** (29. Rf1 is also strong.) 29... **Nxe4 30. Rxd6 Nxd6** White's idea here is to trade rooks and then win Black's pawns. This idea is very simple if it is executed correctly. Meanwhile, Black wants to build a fortress and try for a draw. 31. **Rd1 Nf5 32. g4 Ng7 33. Rd7 Ne6 34. Rxf7** White has gained his pawn and has Black in a position where he has to trade rooks. **Ng5 35. Rxf8+ Rxf8 36. Qd5+ Nf7 37. Qe6 Rd8 38. Qe2** White seemed to be worried about the loss of his pawns. (38. Qxa6 Rd1+ 39. Kg2 b4 {39... Rd2+ 40. Kf3 Rxb2 41. Qc8+ Kg7 42. Qc3+} 40. Kf3

+-) 38... Kf8 39. Kg1 Nd6 40. Qf2+ Ke8 41. Qd4 Nf7 42. Qe3+ Kf8 Black is waiting for an opportunity where he will begin to build the impenetrable fortress. 43. Kf1 White plans to use his king and queen together in order to have a formal invasion. Rd6 Stage one of Black's plan is set up: he wants to keep his pawns defended. 44. Qc5 Kg7 (Better here is 44... h6 because it helps in the construction of the fortress. 45. Qe3 g5) 45. Qc3+ Kf8 46. Kf2 Ke7 Still 46... h6 is good. 47. Qc7+ Ke6 48. Ke2 White has no possible way to pick off one of Black's pawns. h6 49. Qc8+ Ke7 50. Qc5 g5

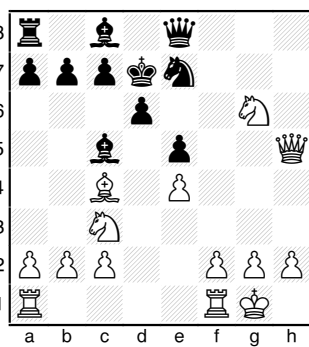


The king defends the knight, the knight defends the rook, the rook defends the backward pawns, and the backward pawns defend the forward pawns. 51. Kf3 Ke6 52. Qc8+ Ke7 53. Qb7+ Kf6 54. Ke3 Ne5 55. Qe4 White tries too hard to win. Nc4+ 56. Ke2?? (56. Kf2 Nxb2 57. Qh7 Ke5 58. h4 Nd1+ 59. Ke1 Ne3 =) 56... Re6 0-1

NTWO - Pawns (2)
Colton Douthitt - 888
Ruben Atkins - 773
Result 1-0

1. e4 e5 2. d4 f6? 3. dxe5 fxe5 4. Bc4?! (4. Qh5+! Ke7 5. Qxe5+ Kf7 6. Bc4+ d5 7. Bxd5+ Kg6 8. Qg3+ and mate in four moves.) 4... Nf6 5. Nc3 Bc5 6. Nf3 Nc6 7. O-O d6 8. Bg5 (The immediate Ng5 is not as damaging as it first

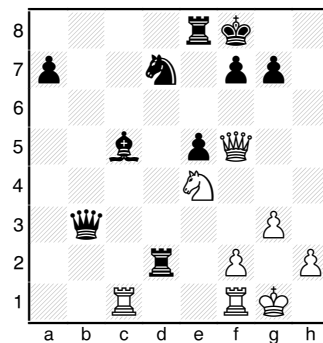
looks: 8. Ng5 Bg4!9. Qd3 Qe7) 8... h6 Definitely better is Na5, trying to get White's bishop off the a2-g8 diagonal. 9. Bxf6 gxf6?! Better was Qxf6 even though Nd5 would drive it back to d8. But Black would still be defending h4 and Black's kingside would not be so fractured. 10. Nh4 Rh7? Black had to play h5 to block the queen's entry into the game. 11. Qh5+ Kf8 12. Qg6! Rg7 13. Qxh6 Ne7 14. Qxf6+ Ke8 15. Qxg7 Kd7 16. Qg4+ Ke8 Better was Kc6, hoping to find some shelter on the queenside. 17. Qh5+ Kd7 18. Ng6 Qe8



19. Nxe5+ (19. Bf7! Qxf7 20. Nxe5+) 19... Kd8 Better was dxe, but Black did not want a rook entering the fray with a check along the d-file. 20. Nf7+ Kd7 21. Rad1 Nc6 22. Qf5+ (22. Qh3+! Ke7 23. Nd5+ Kxf7 24. Qh7+ Kf8 25. Qh8+ Kf7 26. Qf6+ Kg8 27. Ne7+) 22... Ke7 23. Nd5+ Kf8 24. Qf4 Qxf7 25. Qh4 Stronger was Qxf7. Be6 26. Qh6+ Qg7 (26... Ke8 27. Qh8+ Qf8 28. Nxc7+) 27. Qxe6 Re8 28. Qf5+ Qf7 29. Nf6 (29. Qxf7+ Kxf7 30. Nxc7+ Ke7 31. Nxe8 Kxe8 32. h4) 29... Qxc4 30. Nh7+ Ke7 31. Qf6+ Kd7 32. Qf5+ Kd8 33. Nf6 Re6 Better was Re7. 34. b3 Nd4 35. Rxd4 Rxf6? 36. Qxf6+ Kd7 37. Rxc4 b5 38. Rxc5 dxc5 39. Rd1+ Kc8 40. Rd8+ Kb7 41. e5 c4 42. e6 Kc6 43. e7+ Kc5 44. e8=Q cxb3 45. Qc3+ Kb6 46. Qec6# 1-0

NTWO - Pawns (5)
Matt Olszewski
Elena Roberts
Result 1-0

1. e4 d5 2. exd5 Qxd5 3. Nc3 Qa5 4. d3 c6 5. Bd2 Qc7 Actually, there is no reason for the queen to retreat. Without a bishop on c4, White's knight has limited threats. 6. g3 Nf6 7. Bg2 Bf5 8. Nf3 +/- Nbd7 9. O-O e5 10. Nh4 Be6 11. Qe1 Much better was Qe2 to connect the rooks and pressure the e-pawn. Bd6 12. Nf3 O-O 13. Ng5 Bd5 14. Nxd5 cxd5 15. c4 Better was c3. Now Black has a tiny advantage. dxc4 Better was h6, forcing the knight to retreat while still maintaining control of e4. 16. dxc4 Qxc4 17. Bxb7 Rab8 18. Bg2?! White should first play b3, gaining a tempo off the queen and protecting the b-pawn. Rxb2 -/+ 19. Rc1! Choosing piece activity over material. Qxa2 20. Bc3 (20. Ra1! Qc4 21. Rxa7) 20... Rc2 21. Ra1 Qb3 22. Bd2 Bc5 23. Rc1 Stronger was Qe2, though White is still suffering. (23. Qe2 Bb4 24. Qe3) 23... Rb8 24. Be4 Rather than giving up the potentially-strong bishop, White should play Ne4. Nxe4 (24... Rxc1 25. Bxc1 h6 -) 25. Qxe4 Rxd2 26. Qxh7+ Kf8 27. Qf5 Re8 (27... g6 28. Qe4 Rb4 29. Qc6 Qd5) 28. Ne4



Qd3 Better was Rd5. 29. Rc3 Qd4 30. Rf3 Rd1? (30... Nf6 31. Nxf6 gxf6 32. Qxf6 Qd5 -) 31. Qxf7# 1-0

Tenn. Regional Individual Qualifiers

The Regional Qualifying tournaments for Tenn. scholastic players took place on January 29th. The unrated 5-round events with mixed time controls of G/30 (Rounds 1 & 2) and G60 (Rounds 3-5) were held in the four regions of the state to qualify eight candidates per grade range and region for participation in the February 19th Individual Finals. Some very large sections (generally the Elementary) were expanded to 6 rounds with the latter rounds being conducted at G45. Consequently, some of the events lasted a complete 12 hours from registration through awards!

Trophies were awarded to the top ten players of each division, plus a trophy for the top unrated player and Top U800-rated player. Some regions even made additional trophies and awards available, especially for the large Elementary Section.

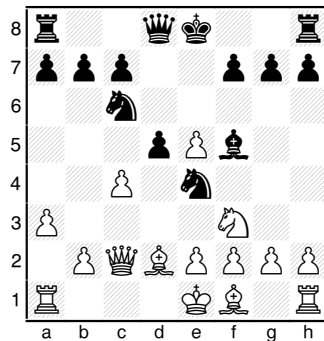
The top finishers and qualifiers for the finals of each section are shown on page 21. They are listed alphabetically, not by rating or region. These may not necessarily be the eight regional finalists that actually participate in the Finals, but they are the players who have qualified and currently committed to participating in the tournament.

The results are in. The 2011 Tenn. scholastic chess champions are:

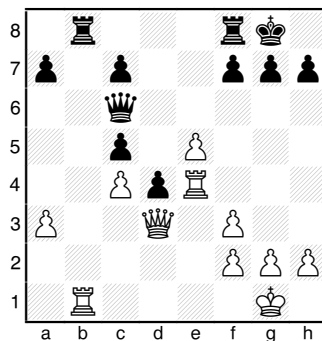
High School [Graham Horobetz](#)
Jr. High [Jansen Berryhill](#)
Elementary [Weston Sharpe](#)
Primary [Kevin Cao](#)

Reg. 1 Ind. Qualifier
Corry Marsh - 1787
Peter Suich - 2088
Result 0-1

1. d4 Nf6 2. c4 e5 3. dxe5 Ne4 4. Nf3 Nc6 5. Nbd2 Bb4 6. Qc2 Better is a3. d5 7. a3 Bxd2+ 8. Bxd2 (8. Nxd2 Bf5 9. Nxe4 dxe4 10. g4 Bxg4 11. Rg1 {11. Qxe4 Qd4 12. Bg2=} 11... Bf5 12. Qc3 +/-) 8... Bf5



9. Qc1 (Fritz recommends Rd1, ignoring Black's threat of Ng3: 9. Rd1 Ng3 10. Qb3 Nxh1 11. cxd5 Ne7 12. e4 Bg4 13. h3 Bxf3 14. Qxf3 +/- For the exchange, White has more than enough compensation with a pawn, a strong center, and the two bishops.) 9... Nc5 10. Bg5 Qd7 11. Qd1 d4 A little stronger is dxc. 12. b4 Ne4 13. b5 Nxg5 14. bxc6 Nxf3+ 15. exf3 bxc6 16. Bd3 Rd8 17. O-O O-O 18. Re1 c5 19. Qc2 Better was Rb1, fighting for control of the open file. Bxd3 20. Qxd3 Qc6 21. Re4 Rb8 22. Rb1

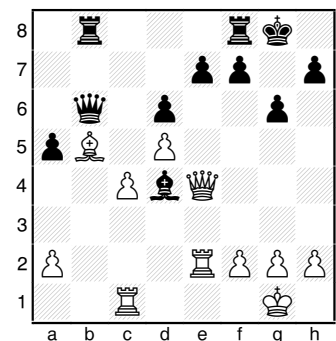


Recommended was R(e)-e1. Now Black can gain a significant edge. Rb6 (22... Rxb1+ 23. Qxb1 Qa4 24. Qc1 d3 25. Re1 h6 -+ Fritz gives

Black a 1.9 advantage.) 23. h3 Rfb8 24. Reel Qg6 25. Rxb6 Rxb6 26. Qd1 A little better was Re4. h6 27. Kh2 Rb2 28. Re4? Better was Re2. Corry is likely feeling the affects of tiredness from previous rounds and time pressure. Rxf2 29. Rg4 Qc2 30. Qe1 Qe2 31. Qb1 Qxe5+ 32. Kg1 Re2 33. Qb8+ Qe8 34. Qxc7 Re1+ 35. Kf2 d3 36. Re4 Rxe4 37. fxe4 Qxe4 38. Qxc5 d2 39. Qc8+ Kh7 40. Qd7 Qc2 41. Ke2 d1=Q+ 0-1

Reg. 1 Ind. Qualifier
Kevin Hong
Sanchit Wadhawan

1.e4 c5 2.Nf3 Nc6 3.d4 cxd4 4.Nxd4 g6 5.Nc3 Bg7 6.Be3 Nf6 7.Bb5 0-0 8.0-0 a6 9.Ba4 b5 10.Bb3 Bb7 11.Re1 b4 12.Nxc6 Bxc6 13.Nd5 Bxd5 This is a radical way of dealing with the threat of Bb6. A little better is offering a swap of pawns with e6: 13...e6! 14.Bb6 Qb8 15.Ne7+ Kh8 16.Nxc6 Qxb6 17.Ne5 a5=+ 14.exd5 d6 15.Qd2 White has the two bishops and pressure on the e-file. He should first continue with a3 to secure his queenside. 15...a5 16.Ba4 Ng4?! Much stronger is Ne4, heading for the strong c5 post. 17.Bd4 Ne5 18.Qe2? Nf3+ 19.Qxf3 Bxd4 20.c3 bxc3 A little stronger is Be5. 21.bxc3 Be5 22.Rac1 Rc8 23.c4 Rb8 24.Bb5 Qb6 25.Qe4 Bd4 Better was Qc5, sealing the position and maintaining a dark-square bind. 26.Re2 Though the position is drawish, Kevin played on because he had a 3:1 time advantage, and he achieved the win. 1-0



Qualifiers for the Tenn. Regional Individual Scholastic Finals

High School Finalists

No.	Name	Reg	USCF#
1	Amarthaluru, Venka	R3	1233
2	Amarthaluru, Venka	R3	911
3	Berryhill, Jordan	R4	1539
4	Boonstra, Jackson	R3	1306
5	Brown, Leland	R3	1203
6	Burlington, Carter	R4	1600
7	Carrillo, Oscar As	R4	1637
8	Dasari, Teja	R4	1557
9	De Bruyn, Parker	R2	571
10	Donnan, Matthew Jo	R2	1146
11	Douglas, Donnie	R2	1069
12	Franklin, Shane Mi	R3	1309
13	Hodge, James Nicol	R3	1296
14	Horobetz, Graham	R4	2108
15	Knowles, Chase	R4	1854
16	Kumar, Vikas Shrey	R3	1815
17	Laclair, Adam J	R1	1009
18	Lillis, Austin	R2	1322
19	Marsh, Corry L	R1	1767
20	Marsh, Matthew L	R1	2135
21	Neglia, Salvatore	R3	1902
22	Pawel, Greg T	R1	745
23	Richardson, Zachar	R2	930
24	Roberts, Elena Eun	R1	716
25	Sharpe, Trevor All	R2	1334
26	Simonsen, Andrew	R1	1406
27	Suich, Peter	R1	2088
28	Vogt, Nathan	R4	1976
29	Warren, Jon	R2	1257
30	Weishaar, Kayla	R2	1483
31	Winchester, David	R1	1218
32	Woodbury, George	R4	1890

Jr. High School Finalists

No.	Name	Reg	USCF#
1	Back, Alecia	R2	428
2	Berryhill, Jansen	R4	1305
3	Berryhill, Jenner	R4	1183
4	Blue, Charles	R1	1331
5	Boeger, Reed Allen	R3	1222
6	Burgess, Carter Br	R4	1505
7	Dai, Jing	R3	1115
8	Dasari, Vijaya R	R4	1235
9	Dupont, Randon	R4	1393
10	Friedman, Max Ashe	R4	1643
11	Fu, Jason	R1	1701
12	Gerloff, Samuel C	R1	
13	Harrelson, Samuel	R2	814
14	Hong, Kevin	R1	1594
15	Karri, Vivekanudee	R4	1290
16	Li, Angela	R3	1228
17	Linden, Jamison S	R2	494
18	Patri, Tanay	R2	850
19	Sathyan, Deepak	R4	1375
20	Sharpe, Kyle Andre	R2	1177
21	Shirer, William Al	R2	386
22	Simonsen, David	R1	983
23	Steed, Adam C	R3	1419
24	Suich, Victoria	R1	1185
25	Tomlin, Nicholas A	R3	1575
26	Velkovsky, Ivan	R3	1370
27	Wadhawan, Sanchit	R1	1494
28	Weishaar, Luke	R2	1558
29	Weishaar, Rachel	R2	1385
30	Welch, Christopher	R3	1389
31	Xue, Albert	R1	1149
32	Zhang, Alvin	R3	1367

Elementary Finalists

No.	Name	Reg	USCF#
1	Back, Brandon	R2	427
2	Beaty, Jack	R2	
3	Bell, Tolson	R1	
4	Bhagwat, Nagaraj R	R4	1550
5	Bowling, Michael R	R3	1101
6	Campbell, Joshua A	R3	1012
7	Chen, Kevin D	R1	644
8	Dominguez, Jason	R4	1301
9	Du, Justin	R4	1272
10	Duplooy, Jake Will	R2	513
11	Evered, Cole E	R1	868
12	Habermann, Julian	R3	1054
13	Hahamyan, Henrik A	R3	1379
14	Hamlin, Charlie	R2	666
15	Harman, Aubrie	R3	1212
16	Herring, Brock Mar	R2	624
17	Hodge, James M	R1	1054
18	Hoyos, Jordan	R1	1206
19	James, Cydney M	R4	703
20	Joo, Abraham	R1	645
21	Jurka, Mitchell Jo	R2	232
22	Kouch, Joshua	R4	1207
23	Leow, Joshua	R4	1152
24	Marsh, Hunter L	R1	1302
25	Moody, Jackson	R4	1296
26	Nodit, Paul Gabrie	R1	1037
27	Pao, Lucas	R3	1267
28	Qin, Alexander Cha	R3	1408
29	Salian, Nikhil K	R4	762
30	Sharpe, Weston	R3	1280
31	Simmons, Joshua Al	R2	845
32	Soni, Roshan	R2	

Primary Finalists

No.	Name	Reg	USCF#
1	Barton, Aden	R3	641
2	Brady, Andrew	R1	817
3	Burgess, Shaun Mon	R4	1358
4	Burns, Jeremy Elij	R1	462
5	Cao, Kevin	R4	1084
6	Dai, Wei	R3	964
7	Dasari, Krishna C	R4	1034
8	Du, Jake Wang	R4	427
9	Ellis, Seth A	R3	610
10	Esquivel, Joshua D	R3	904
11	Gummadi, Suhas	R2	
12	Hahamyan, Jacqueli	R3	734
13	Harring, Ian	R2	
14	Jakowski, Mikolaj	R1	342
15	Jurka, Mason Henry	R2	
16	Kesterson, Jacob L	R1	483
17	Kesterson, Joshua	R1	540
18	Koli, Tanuj	R3	1064
19	Kouch, Justin C	R4	995
20	Mullins, Brock Ala	R1	369
21	Nimon, Thomas	R2	
22	Ogle, Logan Kent	R1	608
23	Patri, Komal	R2	
24	Replogle, Jack Car	R1	718
25	Satheesh, Saharsh	R4	409
26	Schimidt, Kyle	R2	
27	Sernel, Kenner	R4	968
28	Smith, Colin	R3	1074
29	Soni, Rishi	R2	
30	Swartoot, Taylor	R2	
31	Taylor, Connor	R3	694
32	Wu, Allen	R4	1142

2011 TENNESSEE WINTER OPEN — KINGS

Wall Chart

Name/State ID	Group/Team	Rate	Rnd 1	Rnd 2	Rnd 3	Rnd 4	Rnd 5
1. BURNETT, RON TN 12093120		2375	B 4	B 3	B 6	B 2	B 5
			1.0	2.0	3.0	3.5	4.5
2. ANDREWS, TODD D TN 12583055		2314	B 10	B 5	HALF	B 1	B 7
			1.0	2.0	2.5	3.0	4.0
3. SUICH, PETER TN 12779311	S	2088	B 7	B 1	B 10	B 5	B 9
			1.0	1.0	2.0	2.0	3.0
4. NEGLIA, SALVATORE TN 12939260		1898	B 1	B 6	B 9	B 10	B 8
			0.0	0.5	1.0	2.0	3.0
5. SUICH, JOSHUA TN 12707426	S	2162	B 8	B 2	B 7	B 3	B 1
			1.0	1.0	1.5	2.5	2.5
6. POLLITT, JAMES TN 12548696		1950	B 9	B 4	B 1	B 7	B 10
			1.0	1.5	1.5	1.5	2.5
7. MARSH, CORRY TN 12843522	T	1787	B 3	B 8	B 5	B 6	B 2
			0.0	1.0	1.5	2.5	2.5
8. ALATAIWI, ALI TN 13746224		1833	B 5	B 7	BYE	B 9	B 4
			0.0	0.0	1.0	2.0	2.0
9. LEVINE, BENJAMIN TN 13544181		1722	B 6	B 10	B 4	B 8	B 3
			0.0	0.5	1.0	1.0	1.0
10. TANAS, ZAKI TN 13656491		1860	B 2	B 9	B 3	B 4	B 6
			0.0	0.5	0.5	0.5	0.5

2011 TENNESSEE WINTER OPEN — QUEENS

Wall Chart, Page 1

Name/State ID	Group/Team	Rate	Rnd 1	Rnd 2	Rnd 3	Rnd 4	Rnd 5
1. ARMANIOS, ASHRAF TN 14094777		1799	B 5	B 10	B 13	B 3	B 4
			0.0	1.0	2.0	3.0	4.0
2. CANTRELL, SCOTT TN 12589123		1740	B 13	B 14	HALF	B 12	B 8
			0.0	1.0	1.5	2.5	3.5
3. ISHEE, JENNIFER TN 12737086		1665	B 9	B 13	B 4	B 1	B 6
			1.0	2.0	3.0	3.0	3.5
4. PHILLIPS, COTY 21016778		1717	B 14	B 6	B 3	B 7	B 1
			1.0	2.0	2.0	3.0	3.0
5. WEISHAAR, LUKE TN 14191493	W	1558	B 1	B 8	B 7	B 11	B 12
			1.0	1.5	1.5	2.0	3.0
6. WADHAWAN, SANCHIT TN 13399514		1507	B 11	B 4	B 10	B 8	B 3
			1.0	1.0	2.0	2.5	3.0
7. JOBE, THOMAS TN 10197449		1670	B 8	B 9	B 5	B 4	B 11
			0.0	1.0	2.0	2.0	2.5
8. SIMONSEN, ANDREW TN 12921005		1433	B 7	B 5	HALF	B 6	B 2
			1.0	1.5	2.0	2.5	2.5

2011 TENNESSEE WINTER OPEN — QUEENS

Wall Chart, Page 2

Name/State ID	Group/Team	Rate	Rnd 1	Rnd 2	Rnd 3	Rnd 4	Rnd 5
9. QIN, ALEXANDER TN 13298561		1399	B 3	B 7	HALF	B 14	B 13
			0.0	0.0	0.5	1.5	2.5
10. GARCIA, MANUEL TN 12585143		1295	B 12	B 1	B 6	B 13	B 14
			1.0	1.0	1.0	1.5	2.5
11. HINES, CRAIG TN 10285682		1786	B 6	B 12	HALF	B 5	B 7
			0.0	0.5	1.0	1.5	2.0
12. SUICH, VICTOR TN 12732019	S	1624	B 10	B 11	B 14	B 2	B 5
			0.0	0.5	1.5	1.5	1.5
13. VAN DER MEER, WEIB TN 12552192		1497	B 2	B 3	B 1	B 10	B 9
			1.0	1.0	1.0	1.5	1.5
14. WEISHAAR, KAYLA TN 14232761	W	1483	B 4	B 2	B 12	B 9	B 10
			0.0	0.0	0.0	0.0	0.0

2011 TENNESSEE WINTER OPEN — ROOKS

Wall Chart, Page 1

Name/State ID	Group/Team	Rate	Rnd 1	Rnd 2	Rnd 3	Rnd 4	Rnd 5
1. LILLIS, AUSTIN TN 13747364		1321	B 19	B 5	B 16	B 4	B 3
			1.0	1.5	2.5	3.5	4.5
2. HUNT, SAMUEL KY 12484526		1399	B 8	B 15	B 14	B 3	B 10
			1.0	2.0	3.0	3.0	4.0
3. LI, ANGELA TN 13043990		1253	B 11	B 12	B 13	B 2	B 1
			1.0	2.0	3.0	4.0	4.0
4. DEHORTY, JASON TN 14367566	D	1268	B 26	B 16	B 6	B 1	B 21
			1.0	1.5	2.5	2.5	3.5
5. MARTINDALE, TIM TN 12768993	M	1198	B 27	B 1	B 9	B 14	B 7
			1.0	1.5	2.5	3.0	3.5
6. DAI, JING TN 14191121		1175	B 24	B 9	B 4	B 25	B 14
			1.0	1.5	1.5	2.5	3.5
7. DOUGLAS, DONNIE TN 14232672	T	1169	B 29	B 14	B 23	B 13	B 5
			1.0	1.0	2.0	3.0	3.5
8. MARTINDALE, CHRIS TN 12709524	M	1152	B 2	B 30	B 12	B 15	B 9
			0.0	1.0	2.0	3.0	3.5
9. HUTCHISON, EARL TN 14190620		1290	B 25	B 6	B 5	B 19	B 8
			1.0	1.5	1.5	2.5	3.0
10. SUICH, VICTORIA TN 12902341	S	1185	B 28	B 13	B 20	B 18	B 2
			1.0	1.0	2.0	3.0	3.0
11. DEHORTY JR, WILLIAM TN 14491831	D	504	B 3	B 19	B 30	B 26	B 22
			0.0	0.0	1.0	2.0	3.0
12. WEISHAAR, RACHEL TN 14222716	W	1385	B 17	B 3	B 8	B 23	B 18
			1.0	1.0	1.0	2.0	2.5

2011 TENNESSEE WINTER OPEN — ROOKS

Name/State ID	Group/Team	Rate	Rnd 1	Rnd 2	Rnd 3	Rnd 4	Rnd 5
13. DOUTHITT, AUTUMN TN 12840938		1341	B 18	B 10	B 3	B 7	B 17
			1.0	2.0	2.0	2.0	2.5
14. DALAL, NAYSHIL TN 14282303		1313	B 20	B 7	B 2	B 5	B 6
			1.0	2.0	2.0	2.5	2.5
15. SANDOVAL, ELIJAH TN 14232687	T	1212	B 30	B 2	B 17	B 8	B 20
			1.0	1.0	2.0	2.0	2.5
16. MARSH, HUNTER TN 13473408	T	1157	B 23	B 4	B 1	B 21	B 25
			1.0	1.5	1.5	1.5	2.5
17. HARMAN, AUBRIE IN 21026900		1125	B 12	B 21	B 15	B 28	B 13
			0.0	1.0	1.0	2.0	2.5
18. STALEY, TIM GA 12625534		1093	B 13	B 28	B 22	B 10	B 12
			0.0	1.0	2.0	2.0	2.5
19. COLLINS, MICHAEL TN 12455921		1092	B 1	B 11	HALF	B 9	B 27
			0.0	1.0	1.5	1.5	2.5
20. PAO, LUCAS TN 14226107		1072	B 14	B 29	B 10	B 24	B 15
			0.0	1.0	1.0	2.0	2.5
21. BLOOM, LEONARD TN 14141050		936	B 22	B 17	HALF	B 16	B 4
			1.0	1.0	1.5	2.5	2.5
22. CHRISTOPHER, JOHNATHAN TN 14200963		1286	B 21	B 24	B 18	B 27	B 11
			0.0	1.0	1.0	2.0	2.0
23. DEHORTY, JUSTIN TN 14565428	D	nnnn	B 16	B 26	B 7	B 12	B 28
			0.0	1.0	1.0	1.0	2.0
24. PAXTON, EMMANUEL TN 14531164	T LESTER	nnnn	B 6	B 22	B 26	B 20	B 29
			0.0	0.0	1.0	1.0	2.0
25. SIMONSEN, DAVID TN 12921006		1003	B 9	B 27	HALF	B 6	B 16
			0.0	1.0	1.5	1.5	1.5
26. HARRIS, SHYHEIM TN 14531452	T LESTER	612	B 4	B 23	B 24	B 11	B 30
			0.0	0.0	0.0	0.0	1.0
27. HUSSEIN, HAMZA TN 14531232	T LESTER	487	B 5	B 25	B 29	B 22	B 19
			0.0	0.0	1.0	1.0	1.0
28. JAMES, CYDNEY TN 14531274	T LESTER	378	B 10	B 18	BYE	B 17	B 23
			0.0	0.0	1.0	1.0	1.0
29. HAMBY, AARON 14566292		nnnn	B 7	B 20	B 27	B 30	B 24
			0.0	0.0	0.0	1.0	1.0
30. MOHAMED, WALID TN 14531211	T LESTER	487	B 15	B 8	B 11	B 29	B 26
			0.0	0.0	0.0	0.0	0.0

Tenn. Open Chess Championship

Sept. 2 – 4, 2011

2011 TENNESSEE WINTER OPEN — PAWNS

Wall Chart

Name/State ID	Group/Team	Rate	Rnd 1	Rnd 2	Rnd 3	Rnd 4	Rnd 5
1. JAGASIA, PUJA TN 13367387		921	B 11 0.0	B 20 1.0	B 8 2.0	B 5 3.0	B 4 4.0
2. PYLE, WILLIAM EARL TN 12870745		863	B 15 1.0	B 9 2.0	B 7 3.0	B 4 3.0	B 12 4.0
3. ATKINS, RUBEN TN 14232666		773	B 20 1.0	B 4 1.0	B 16 2.0	B 18 3.0	B 7 4.0
4. DOUTHITT, COLTON TN 12877295		997	B 13 1.0	B 3 2.0	B 5 2.5	B 2 3.5	B 1 3.5
5. OLSZEWSKI, MATT TN 14197540		799	B 19 1.0	B 10 2.0	B 4 2.5	B 1 2.5	B 9 3.5
6. XIN, ARTHUR TN 14510743		903	B 14 1.0	B 8 1.0	B 11 1.0	B 20 2.0	B 15 3.0
7. SANDOVAL, JERRY TN 14232693		770	B 16 1.0	B 21 2.0	B 2 2.0	B 10 3.0	B 3 3.0
8. YUAN, LANGJIE TN 14262886		718	B 17 1.0	B 6 2.0	B 1 2.0	B 12 2.0	B 18 3.0
9. ROBERTS, ELENA TN 14172356		678	B 12 1.0	B 2 1.0	B 21 2.0	B 11 3.0	B 5 3.0
10. DE LA TORRE, NATALIE TN 14485822		633	B 18 1.0	B 5 1.0	B 17 2.0	B 7 2.0	B 16 3.0
11. LI, ANNA TN 13701153		572	B 1 1.0	B 13 1.0	B 6 2.0	B 9 2.0	B 17 3.0
12. GERLOFF, SAMUEL TN 14577657		nnnn	B 9 0.0	B 15 1.0	B 13 2.0	B 8 3.0	B 2 3.0
13. SABIMANA, SAMUEL TN 14531431	LESTER	592	B 4 0.0	B 11 1.0	B 12 1.0	B 16 1.0	B 20 2.0
14. WILLIAMS, JORDAN TN 14530223	LESTER	353	B 6 0.0	B 17 0.0	B 18 0.0	BYE 1.0	B 21 2.0
15. PAXTON, SHIMERA TN 14531300	LESTER	352	B 2 0.0	B 12 0.0	B 19 1.0	B 21 2.0	B 6 2.0
16. JONES, ALEXIS TN 14531268	LESTER	209	B 7 0.0	BYE 1.0	B 3 1.0	B 13 2.0	B 10 2.0
17. WILLIAMS, JALYNN TN 14530244	LESTER	121	B 8 0.0	B 14 1.0	B 10 1.0	B 19 2.0	B 11 2.0
18. MacDANIEL, IVY TN 14569066		nnnn	B 10 0.0	B 19 1.0	B 14 2.0	B 3 2.0	B 8 2.0
19. MOHAMED, FARAH TN 14531137	LESTER	295	B 5 0.0	B 18 0.0	B 15 0.0	B 17 0.0	BYE 1.0
20. BIGGS, TEIRANEY TN 14531295	LESTER	260	B 3 0.0	B 1 0.0	BYE 1.0	B 6 1.0	B 13 1.0
21. MOHAMED, SUMEYA TN 14531336	LESTER	105	BYE 1.0	B 7 1.0	B 9 1.0	B 15 1.0	B 14 1.0

Name/State ID	Rating	Rnd 1	Rnd 2	Rnd 3	Rnd 4	Rnd 5
1. Andrews, Todd D TN 12583055	2297	W 24 1.0	B 14 2.0	W 3 3.0	B 10 4.0	W 2 4.5
2. IM Burnett, Ronald TN 12093120	2371	W 23 1.0	B 11 2.0	W 10 2.5	B 4 3.0	B 1 3.5
3. Bereolos, Peter TN 11414966	2328	B 13 1.0	W 7 2.0	B 1 2.0	W 5 3.0	B 6 3.5
4. Suich, Joshua TN 12707426	2170	B 26 0.5	W 18 1.5	B 16 2.5	W 2 3.0	B 7 3.5
5. Justice, David Ala TN 12814183	2141	W 25 1.0	B 29 2.0	W 6 2.5	B 3 2.5	W 15 3.5
6. Horobetz, Graham TN 12800231	2101	B 27 1.0	W 16 1.5	B 5 2.0	W 9 3.0	W 3 3.5
7. Suich, Peter TN 12779311	2022	W 21 1.0	B 3 1.0	W 22 2.0	B 14 3.0	W 4 3.5
8. Alataiwi, Ali Hamd TN 13746224	1850	W 30 1.0	B 10 1.0	W 29 1.5	B 17 2.5	W 16 3.5
9. Neglia, Salvatore TN 12939260	1859	B 11 0.0	W 27 1.0	B 25 2.0	B 6 2.0	W 20 3.0
10. Ardaman, Miles F TN 10226678	2324	B 17 1.0	W 8 2.0	B 2 2.5	W 1 2.5	--- 2.5
11. Smith, Brian TN 11517056	2028	W 9 1.0	W 2 1.0	B 17 1.5	B 15 2.0	W 14 2.5
12. Davison, Edgar TN 12659000	1956	B 16 0.0	W 24 0.5	B 18 1.0	W 22 1.5	W 26 2.5
13. Belitz, Marco TN 13821258	1899	W 3 0.0	B 25 0.0	W 21 1.0	B 26 1.5	B 22 2.5
14. Sloan, Kenneth AL 10163561	1858	B 28 1.0	W 1 1.0	B 26 2.0	W 7 2.0	B 11 2.5
15. Kumar, Vikas Shrey TN 12920966	1826	B 22 0.5	W 26 1.0	B 28 2.0	W 11 2.5	B 5 2.5
16. McCormick, Alan M TN 12778990	1818	W 12 1.0	B 6 1.5	W 4 1.5	B 29 2.5	B 8 2.5
17. Li, Bin TN 13511415	1744	W 10 0.0	B 30 1.0	W 11 1.5	W 8 1.5	B 28 2.5
18. Smith, Aaron TN 12851863	1724	B 19 0.5	B 4 0.5	W 12 1.0	W 28 1.5	B 29 2.5
19. Bragg, William N KY 10433011	1926	W 18 0.5	B 22 0.5	B 24 0.5	W 27 1.5	W 21 2.0
20. Hines, Craig L IN 10285682	1782	W 29 0.0	B 21 0.5	HALF 1.0	W 25 2.0	B 9 2.0

2010 TENNESSEE OPEN — OPEN

Wall Chart, cont.

Name/State ID	Rating	Rnd 1	Rnd 2	Rnd 3	Rnd 4	Rnd 5
21. Hydzik, Robert J TN 12468777	1644	B 7 0.0	W 20 0.5	B 13 0.5	W 32 1.5	B 19 2.0
22. Blair, Benjamin La TN 11071511	1500	W 15 0.5	W 19 1.5	B 7 1.5	B 12 2.0	W 13 2.0
23. Owens, Johnny KY 10248795	1746	B 2 0.0	W 28 0.0	B 27 0.5	W 30 1.0	B 25 1.5
24. Mueller, David TN 12461504	1713	B 1 0.0	B 12 0.5	W 19 1.5	--- 1.5	--- 1.5
25. Lee, Terrence A TN 12577812	1687	B 5 0.0	W 13 1.0	W 9 1.0	B 20 1.0	W 23 1.5
26. Fu, Jason TN 13103964	1687	W 4 0.5	B 15 1.0	W 14 1.0	W 13 1.5	B 12 1.5
27. Ishee, Jennifer TN 12737086	1661	W 6 0.0	B 9 0.0	W 23 0.5	B 19 0.5	B 30 1.5
28. Jobe, Thomas B TN 10197449	1632	W 14 0.0	B 23 1.0	W 15 1.0	B 18 1.5	W 17 1.5
29. Schafer, Jacob Ant TN 12913914	1494 PLAQUE	B 20 1.0	W 5 1.0	B 8 1.5	W 16 1.5	W 18 1.5
30. Stafford, Joseph C TN 12945706	1516	B 8 0.0	W 17 0.0	HALF 0.5	B 23 1.0	W 27 1.0
31. Human, Matthew H TN 12750900	1636 HOUSE	--- 0.0	--- 0.0	--- 0.0	--- 0.0	--- 0.0
32. Hughes, James D TN 12222390	1600 HOUSE	--- 0.0	--- 0.0	--- 0.0	B 21 0.0	--- 0.0

- ♔ - ♔ - ♔ - ♔ - ♔ - ♔ - ♔ -

2010 TENNESSEE OPEN — AMATEUR

Wall Chart, Page 1

Name/State ID	Rating	Rnd 1	Rnd 2	Rnd 3	Rnd 4	Rnd 5
1. Hunley, Ryan TN 21013192	1584	B 8 0.5	W 9 1.5	B 19 2.5	W 7 3.5	B 2 4.5
2. Bertram, David TN 12601971	1566	B 22 1.0	W 15 2.0	B 3 2.5	W 10 3.5	W 1 3.5
3. Hong, Kevin TN 13787313	1414	W 21 1.0	B 17 2.0	W 2 2.5	B 6 3.5	W 4 3.5
4. Weishaar, Luke Mic TN 14191493	1503	B 20 1.0	W 18 2.0	B 6 2.0	W 12 3.0	B 3 4.0
5. Vance, Wardell TN 12710969	1396	B 23 0.0	W 22 1.0	B 14 2.0	W 15 3.0	W 6 4.0
6. Qin, Alexander Cha TN 13298561	1334	B 10 1.0	B 11 2.0	W 4 3.0	W 3 3.0	B 5 3.0

2010 TENNESSEE OPEN — AMATEUR

Wall Chart, cont.

Name/State ID	Rating	Rnd 1	Rnd 2	Rnd 3	Rnd 4	Rnd 5
7. Thomas, Richard L NC 12642264	1385	W 26 1.0	B 19 1.5	W 8 2.5	B 1 2.5	HALF 3.0
8. Hutchison Sr, Earl TN 14190620	1313	W 1 0.5	B 13 1.5	B 7 1.5	W 19 2.5	B 9 3.0
9. Lillis, Austin TN 13747364	1302	HALF 0.5	B 1 0.5	W 24 1.5	B 16 2.5	W 8 3.0
10. Van Der Meer, B Wi TN 12552192	1542	W 6 0.0	B 21 1.0	W 17 2.0	B 2 2.0	W 12 3.0
11. Suich, Victor W TN 12732019	1529	B 16 1.0	W 6 1.0	B 12 1.0	W 22 2.0	W 13 3.0
12. Belitz, Nicole Jen TN 12772734	1509	W 19 0.0	B 25 1.0	W 11 2.0	B 4 2.0	B 10 2.0
13. Hodge, James Nicol TN 13731257	1225	HALF 0.5	W 8 0.5	B 18 1.5	W 14 2.0	B 11 2.0
14. Moore, Zachary A TN 12667690	1575	W 17 0.0	B 24 1.0	W 5 1.0	B 13 1.5	HALF 2.0
15. Gillespie, Gary F FL 12751542	1362	W 25 1.0	B 2 1.0	HALF 1.5	B 5 1.5	W 20 1.5
16. Davis, William S TN 12484473	1325	W 11 0.0	B 20 1.0	HALF 1.5	W 9 1.5	B 18 1.5
17. Dalal, Nayshil TN 14282303	1312	B 14 1.0	W 3 1.0	B 10 1.0	W 18 1.5	B 22 2.0
18. Steed, Adam C TN 13187735	1213	BYE 1.0	B 4 1.0	W 13 1.0	B 17 1.5	W 16 2.5
19. Christopher, Jonat TN 14200963	1196	B 12 1.0	W 7 1.5	W 1 1.5	B 8 1.5	W 21 2.5
20. Pond, Lawrence F TN 12580170	1169	W 4 0.0	W 16 0.0	HALF 0.5	B 24 1.5	B 15 2.5
21. Justice Jr, Paul A TN 12844683	1288	B 3 0.0	W 10 0.0	B 22 0.0	W 26 1.0	B 19 1.0
22. Weishaar, Rachel M TN 14222716	1284 PLAQUE	W 2 0.0	B 5 0.0	W 21 1.0	B 11 1.0	W 17 1.5
23. Boonstra, Jackson TN 13052045	1232	W 5 1.0	--- 1.0	--- 1.0	--- 1.0	--- 1.0
24. Hodge, James Thomas TN 12093150	1212	HALF 0.5	W 14 0.5	B 9 0.5	W 20 0.5	B 26 1.5
25. Martindale, Timothy TN 12768993	1224	B 15 0.0	W 12 0.0	--- 0.0	--- 0.0	--- 0.0
26. Weishaar, Leon TN 14258586	nnnn HOUSE	B 7 0.0	--- 0.0	--- 0.0	B 21 0.0	W 24 0.0

2010 TENNESSEE OPEN — NOVICE SECTION

Wall Chart, Page 1

Name/State ID	Rating	Rnd 1	Rnd 2	Rnd 3	Rnd 4	Rnd 5
1. Carter, Cary Frank TN 13120863	1167	W 6 1.0	B 7 2.0	W 2 2.0	W 8 3.0	B 3 4.0
2. Suich, Victoria TN 12902341	1129	W 18 1.0	B 20 2.0	B 1 3.0	W 3 3.0	B 5 4.0
3. Li, Angela TN 13043990	1161	B 13 1.0	W 9 2.0	B 5 2.5	B 2 3.5	W 1 3.5
4. Hoyos, Jordan TN 13770025	1121	B 21 0.0	W 22 1.0	B 6 1.5	W 14 2.5	B 9 3.5
5. Dehorty, Jason AL 14367566	1105	W 19 1.0	B 21 2.0	W 3 2.5	B 10 3.5	W 2 3.5
6. Weishaar, Kayla TN 14232761	934 PLAQUE	B 1 0.0	W 15 1.0	W 4 1.5	B 16 2.5	W 10 3.5
7. Harman, Aubrie TN 21026900	1058	B 22 1.0	W 1 1.0	B 13 2.0	W 9 2.0	W 16 3.0
8. Douglas, Donnie TN 14232672	1040 PLAQUE	B 14 0.5	W 16 1.0	W 20 2.0	B 1 2.0	W 12 3.0
9. Sandoval, Elijah TN 14232687	1002	W 15 1.0	B 3 1.0	W 12 2.0	B 7 3.0	W 4 3.0
10. Pao, Lucas TN 14226107	920	B 16 1.0	W 17 1.5	B 14 2.5	W 5 2.5	B 6 2.5
11. Lefrancois, Bernar TN 14029777	877	B 17 0.0	W 14 0.0	B 15 1.0	HALF 1.5	W 18 2.5
12. Richards Jr, James TN 12554716	1146	B 20 0.0	W 18 1.0	B 9 1.0	W 21 2.0	B 8 2.0
13. Pyle, William Earl TN 12870745	894	W 3 0.0	B 19 1.0	W 7 1.0	B 18 1.5	W 14 2.0
14. Olszewski, Matthew TN 14197540	735	W 8 0.5	B 11 1.5	W 10 1.5	B 4 1.5	B 13 2.0
15. Sandoval, Jerry TN 14232693	490 PLAQUE	B 9 0.0	B 6 0.0	W 11 0.0	W 20 1.0	B 21 2.0
16. Collins, Michael TN 12455921	1198	W 10 0.0	B 8 0.5	W 21 1.5	W 6 1.5	B 7 1.5
17. Martindale, Christ TN 12709524	1156	W 11 1.0	B 10 1.5	--- 1.5	--- 1.5	--- 1.5
18. Smith, Colin TN 14006711	797	B 2 0.0	B 12 0.0	W 19 1.0	W 13 1.5	B 11 1.5
19. Banik, Thomas Paul TN 14029364	232	B 5 0.0	W 13 0.0	B 18 0.0	HALF 0.5	W 20 1.5
20. Hoyos, Jacob TN 13770031	838	W 12 1.0	W 2 1.0	B 8 1.0	B 15 1.0	B 19 1.0

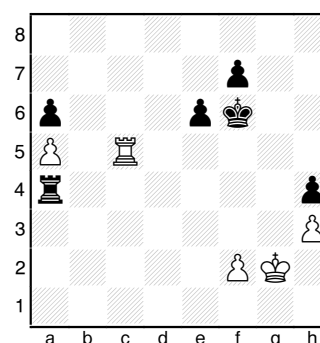
Name/State ID	Rating	Rnd 1	Rnd 2	Rnd 3	Rnd 4	Rnd 5
21. Yuan, Langjie, Rog TN 14262886	686	W 4	W 5	B 16	B 12	W 15
		1.0	1.0	1.0	1.0	1.0
22. Weishaar, Leon TN 14258586	nnnn	W 7	B 4	---	---	---
House		0.0	0.0	0.0	0.0	0.0

Tenn Open - Championship (3)

Bin Li (1744)

Brian Smith (2028)

1. e4 c5 2. Nf3 a6 3. c3 e6 4. d4 d5 5. Nbd2 cxd4 6. cxd4 dxe4 7. Nxe4 Be7 8. Bc4 b5 9. Bb3 Bb7 10. Qd3 (10. Nc5 Bxc5 11. dxc5 Nd7 12. Be3 Rc8 13. Rcl=) 10... Bd5 11. O-O Nf6 12. Nxf6+ Bxf6 Black should give White the opportunity to blunder by playing a4. But it still should not produce more than equality. 13. Bxd5 (13. a4 bxa4 14. Bxa4+ Nc6 15. Ne5 Bxe5 16. dxe5 O-O) 13... Qxd5 14. Re1 If White is not going to play a4, then Rd1 was better. Nc6 15. Be3 O-O 16. Rac1 Rfd8 17. Qc3 (17. Red1 Nb4! {17... e5 18. Rc5 Qxc5 19. dxc5 Rxd3 20. Rxd3 e4=} 18. Qa3 a5-/+) 17... Nxd4 18. Bxd4 Bxd4 19. Nxd4 Qxd4 20. Qxd4 Rxd4-/+ 21. Rc2 Rad8 22. g3 Kf8 23. Kg2 Ke7 24. b3 g5 25. Ree2 h5 26. Rc6 R8d6 27. Rc7+ Kf6 28. Rec2 Rd2 29. h3 h4 30. gxh4 gxh4 31. a4 Rxc2 32. Rxc2 bxa4 33. bxa4 Rd4 34. a5 Ra4 35. Rc5 (see diagram) e5? Black had to approach by Ke7-d6. 36. Rc6+ Kf5 37. Rxa6 f6 38. Ra8 Kf4 39. a6 e4 40. a7 f5 41. Rh8 Rxa7 42. Rxh4+= Kg5 43. Rh8 Rg7 44. Re8 Kf4+ 45. Kf1 Rh7 46. Kg2 Rg7+ 47. Kf1 Kf3 48. Rb8 Rd7 49. Rb3+ Rd3 50. Rxd3+ exd3 51. Ke1 f4 52. h4 Kg4 53. Kd2 Kxh4 54. Kxd3 Kh3 55. Ke4 Kg2 1/2-1/2



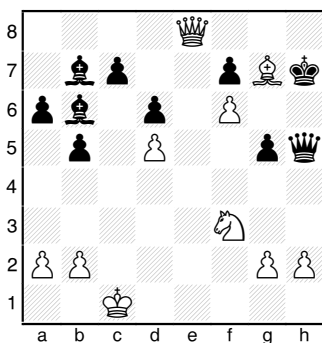
After 35. Rc5.

Tenn Open - Championship (3)

Ali Alataiwi (1850)

Jacob Schafer (1494)

1. e4 e5 2. Nf3 Nc6 3. d4 exd4 4. Bc4 Bc5 5. c3 dxc3? Much better was Nf6 with the threat of d5. 6. Qd5 Better was Bxf7, though Black might be able to find some hopes of a draw: 6. Bxf7+ Kxf7 7. Qd5+ Ke8 8. Qh5+ Kf8 9. Qxc5+ d6 10. Qxc3= 6... Qe7 7. Ng5? This is understandable, but White needs to cut his losses now with Nc3. Ne5 8. f4 Nxc4 Black has a winning advantage. 9. Qxc4 d6 (9... cxb2 10. Bxb2 Nf6 11. Nc3 c6 12. e5 d5+) 10. Nxc3 Nf6 11. Bd2 O-O Stronger was c6 followed by b5. 12. O-O-O h6 13. Nf3 (13. e5! hxg5 14. exf6 Qxf6 15. Nd5 Qd8 16. Rhe1 and Black's advantage has shrunk.) 13... a6 14. Nd5 Nxd5 15. exd5 b5 16. Qd3 Bb7 Better was Qf6. 17. Rhe1 Qd7 18. f5 Bb6 Much better was Rf8 to start reducing pieces and allow the rook more influence. 19. f6= g6? 20. Bxh6 Rfe8 21. Bg7 Qg4 After White's optimistic bishop move, Black regains an edge. 22. Qd2 Qh5? (22... Rxe1 23. Nxe1 {23. Rxe1 Qc4+ 24. Kb1 Bxd5 25. b3 Be4+ 26. Kb2 Qc6+} 23... Re8 -/+) 23. Rxe8+ Rxe8 24. Re1 White is attempting to get his queen to the other side of the enemy king. Rxe1+ (24... Rc8 25. Re4 g5 26. Qe2) 25. Qxe1 g5 26. Qe8+ Kh7 (see diagram) 27. g4? Now it is Black who is winning, but the win was there for White had he first provided some protection for his pawn: (27. Qe4+ Kg8 {27... Qg6 28. Nxcg5+ Kg8 29. Qe8#} 28. g4) 27... Qxg4 28. Qh8+ Kg6 29. Qh6+ Kf5 30. Qh7+ Kf4 31. Nd2 Qg1+ Black should win with Qe2 as he would be playing with an extra piece. (31... Qe2 32. Qc2 {32. Qh3 Be3 33. Qg3+ Kf5} 32... Bxd5) 32. Kc2 Black decides not to pursue his considerable advantage, perhaps because



After 26... Kh7.

of time? 1/2-1/2

John Hurt Memorial 8

The John Hurt Memorial 8 was held June 25 at the Memphis Chess Center. The Game/60 tournament had 18 players participating in the Open Section and 13 players in the Under 1600 Section. **Graham Horobetz**—last year's champion—again trumped the field with a perfect score, 4 points. Capturing second place with 3 points each was **David Sichel**, **Kenneth Turner** (who tied for second-place last year), and **David Justice** (the 2009 Champion). Below are a few of the games from the Open Section which highlights the leaders in action.

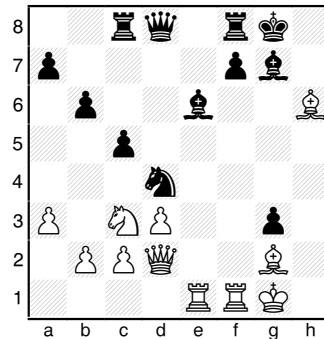
The **Under 1600 Section** was won by **Burgess Carter**, who also went undefeated. There was a two-way tie for second place between **Oleksandr Sytnytsky** and **Jordan Berryhill**, who finished with 3.0 points.

In the final round, **Graham** faced off against **Sichel** and the below exciting game resulted. (Additional games and crosstab of the event can be found at <http://www.memphischess.com/>.)

John Hurt Memorial - 4
David Sichel - 1962
Graham Horobetz - 2095

1. e4 c5 2. Nc3 g6 3. g3 Bg7 4. Bg2 d6 5. Nge2 e5 6. d3 Ne7 7. Bd2 Nbc6 Black has erected a Botvinnik structure most often seen after 1. c4 and has already equalized. 8. Qc1 h6 Castling is just fine, since Bh6 won't inconvenience Black much since his bishop does not have much of a role anyway. 9. f4 Be6 10. a3 Castling is probably best, and there certainly is nothing wrong with immediately plopping a knight on d5. d5 11. exd5 Nxd5 12. O-O Rc8 13. fxe5 Nxe5 14. Nf4 Nxf4 15. Bxf4

b6 16. h3 [16. Bb7 {Thanks Fritz--I thought Black was okay.} Rc7 17. Qe3 Qd4 18. Bg2 Qxe3+ 19. Bxe3 Ng4 = {Oops. I guess Black has equalized--easily.}; 16. Re1 Ng4 17. Bb7 Qd4+ 18. Kh1 O-O 19. Bxc8 Bd5+ 20. Ne4 (20. Nxd5 Qxd5+ 21. Kg1 {21. Re4 Rxc8 22. Kg1 Bd4+} 21... Bd4+) 20... f5 -+] 16... g5 17. Be3 O-O 18. Qd2 Nc6 =/+ 19. Rael Nd4 20. h4 gxh4 21. Bxh6 hxg3 (Fritz suggests the better 21... h3: 21... h3 22. Bh1 Rc7)



22. Bxg7? (22. Qf4! Nf5 23. Bxg7 Kxg7 {23... Nxg7 24. Qxg3} 24. Qg4+ Kh8 {24... Kh6 25. Rxf5} 25. Qh5+ Kg8 26. Be4 Qh4 27. Rxf5 +/-) 22... Kxg7 23. Re5? (23. Qf4 Re8 24. Qxg3+ +/-) 23... f5 24. Qf4 Rf6 25. Rfe1 Qh8 26. Rxe6 (26. Qxg3+ Rg6 27. Qf2 Rg8 -/+) 26... Nxe6 {More exact was the in-between check of Qh2+} 27. Qxg3+ Kf7 28. Nd5 Rg6 29. Qd6 Qe8? (29... Qd8 30. Qe5 Qg5) 30. Qe5 (30. Re5! Taking the draw--or more. Rg5 31. Nf4 Nxf4 32. Rxe8 Rxc2+ 33. Kf1 Rxe8 34. Qxf4 =) 30... Qa4?? Black blunders again. Perhaps he is in time trouble. The simple Nd4 or Ng7 keeps the advantage. 31. Re2 (31. Qxf5+ Kg7 32. Qe5+ Kg8 33. Ne7+ +/-) 31... Rcg8? {Qd4+, of course.} 32. Kf1?? Mutual time trouble? (32. Qxf5+ Kg7 33. Rxe6) 32... Rf8 Encouraging White to take the f-pawn. But Qg4 would be decisive. 33. Nc7 Qf4+ 34. Qxf4 Nxf4 35. Bd5+ Nxd5 36. Nxd5 Kg7 Better was Re8 or Re6. 37. Nf4 Actually this position is still an easy draw since

Black can't do anything about Ne6+, which regains the exchange. However, **Graham** pulls out the victory--perhaps aided by the clock. 0-1

John Hurt Memorial - 3
David Sichel - 1962
David Justice - 2182
 1-0

1. e4 d6 2. Nc3 Nf6 3. g3 e5 4. Bg2 c6 5. Nge2 b5 6. a3 Nbd7 7. d4 Bb7 8. O-O Be7 9. h3 O-O 10. d5 Better is g4 with the idea Ng3-f5. Now Black is the one emerging with the kingside chances. cxd5 11. Nxd5 Nxd5 12. exd5 Rc8 13. Be3 a6 A little better was Nb6, considering Nc4. 14. a4 b4 15. a5 Qc7 (15... Bg5 16. Bxg5 Qxg5 17. Ra4 b3 18. cxb3 f5 19. Rb4 Ba8 +/-) 16. c3 bxc3 17. bxc3 f5 Better was Rb8 or Ba8. 18. Qb3 Ba8 19. Rfb1 Nf6 This knight definitely belongs on c5. So better was Bf6 or Nc5. 20. Ra4 Rb8 21. Bb6 Qd7 22. Rb4 Kh8 23. Qc4 Rfc8 24. Qxa6 Better was Qa2. Now Black obtains real chances on the white squares. Nxd5 25. Bxd5 Bxd5 26. Ba7 Rxb4 27. Rxb4 f4 Stronger was Bf3. 28. gxf4 Rf8 29. Qd3 Be6? Abandoning the mating diagonal. 30. Be3 Better was Bb8, possibly planning to simply queen the a-pawn. Bxh3 31. fxe5 Bf5 (31... Qc6! 32. Qe4 d5 33. Qd4 Bxb4 34. cxb4 Qa6 and with the pawns balancing the exchange, a draw is likely.) 32. Qd5 Qe8 (32... dxe5 33. Qxd7 Bxd7 34. Rb7 Bg4 35. Rxe7 Bxe2 36. Rxe5 +/-) (32... Be6 33. Qd4 Qc6 34. exd6 Bh3 35. Qe4 Qxe4 36. Rxe4 Bxd6 +/-) 33. Ng3 Qg6 34. Rb7 Trying to promote the a-pawn is also strong. Be6 35. Qg2 Bd8 36. exd6 Bxa5 37. Bd4 Bf7 38. Qe4 Qxd6 39. Bxg7+ Kg8 (else Nf5+) 40. Bxf8 Qxf8 41. Nf5 Bxc3 42. Rc7 Bf6 43. Qc6 Bd8 44. Nh6+ Less complicated was Rc8 but Black's two bishops can't even start to hold against a queen in this position. 1-0

2011 U.S. Cadet Championship

The U.S. Cadet Championship was held for the third consecutive time in Crossville, TN from July 11-15. The 8-person (all masters) round robin tournament was sponsored by the confederation of the Cumberland County Chess Club, the U.S.C.F., and the Cumberland Co. Bank (the actual site of the tournament), TAP Publishing, House of Staunton, and Crossville Trophy & Gifts. The tournament was directed by International Arbiter Walter Brown.

The U.S. Cadet Championship is a national invitational championship chess tournament that is staged for the top eight players in the United States under the age of 16. The winner receives a four-year incoming tuition scholarship (current value \$69,760 for out-of state students, \$34,832 for in state) from the University of Maryland at Baltimore County. The second place finisher receives a four-year University Academic Service Scholarship (current value \$20,000) to Tennessee Tech University. In addition to the scholarship and national titles, the winning cadets also receive cash prizes of \$500, \$300, and \$200 for the respective top place prizes.

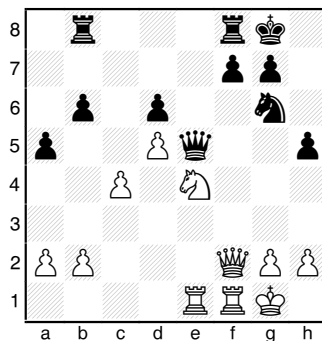
Michael Bodek (New York) and **Arthur Shen** (New Jersey) emerged with 5.5 points, sharing first-place honors. In Round 7, Bodek out-lasted his opponent in a tortuous queen-and-pawn versus queen endgame; and Shen added to his half-point lead by holding the draw against the World Open Under 2400 co-champ Aleksandr Ostrovskiy to capture his share of the crown. (Aleksandr Ostrovskiy again took clear third place with 4.0 points, just as in

2010.) Arthur Shen was granted the scholarship to the Univ. of Maryland due to his better tiebreaks (most likely because he beat Bodek in their matchup—see game).

USCF's Alan Kantor rightly describes the Cadets' games as "fighting chess." One wonders how in later years they lose their edge and even pursue the draw. It is either complacency, dementia, or the need to eat! Below are some critical games illustrating the competitiveness of the combatants. The other games of the event can be found at the tournament website, www.monroi.com.

2011 US Cadet Ch (5) Michael Bodek - 2279 Kevin Mo - 2240

1. e4 c5 2. Nf3 d6 3. d4 cxd4 4. Nxd4 Nf6 5. Nc3 a6 6. f3 e5 7. Nb3 Be6 8. Be3 Be7 9. Qd2 h5 10. Nd5 Nxd5 11. exd5 Bf5 12. Bd3 Bxd3 13. Qxd3 Bg5 14. O-O O-O 15. c4 Nd7 16. Rac1 b6 17. Nd2 Bxe3+ 18. Qxe3 a5 19. Ne4 Qe7 20. f4 exf4 (20... f5 21. Ng5 Nc5 =) 21. Qxf4 Ne5
The knight appears to have a nice outpost but the advanced pawn on h5 is a weakness. 22. Qf5 Ng6? (Black's position is already critical. Fritz11 suggests that he immediately abandon the pawn, trying to limit the damage. 22... Rad8 23. Qxh5 f5 24. Ng5 g6 25. Qh6 Rd7 26. Ne6 Rf7) 23. Rce1 Qe5 24. Qf2 Rab8??

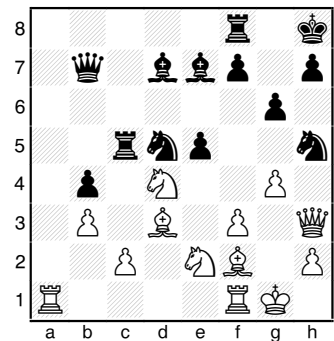


25. Qd2! Getting out of the way of the rooks' action.

f5 26. Ng5 Qf6 27. Re6 1-0

2011 US Cadet Ch (1) Kevin Cao - 2236 Arthur Shen - 2241

1. e4 c5 2. Nf3 d6 3. d4 cxd4 4. Nxd4 Nf6 5. Nc3 a6 6. Bc4 e6 7. Bb3 b5 8. Bg5 Be7 9. Qf3 Qb6 10. O-O Nbd7 (10... Qxd4? 11. e5 Nd5 12. Bxe7 Kxe7 13. Rad1 Qc5 14. Nxd5+ exd5 15. Rxd5 Bb7 16. exd6+ Kd8 17. Rxc5 Bxf3 18. gxf3 +-) 11. Rad1 O-O 12. Qg3 Nc5 13. Bh6 Ne8 14. Be3 Qb7 15. f3 Bd7 16. a3 a5 17. Ra1 Kh8 18. Ba2 Nf6 19. e5 dxe5 20. Qxe5 Rac8 21. Nce2 (21. Rfd1 Na4 22. Nxa4 bxa4 =) 21... b4 (21... Na4 22. b3 (22. b4 axb4 23. axb4 Bxb4) 22... Qd5 23. Bf4 Qxe5 24. Bxe5 Nb6 -/+) 22. axb4 axb4 23. Bc4 Na4 24. b3 Rc5 25. Qg3 Nb6
Fritz11 recommends Nb2, but hardly any human would venture there without doing a long think: 25... Nb2 26. Ba6 Qb6 27. Bc1 Bd6 28. f4 Ra8 29. Bxb2 Rxa6 -/+ 26. Bd3 Nbd5 27. Bf2 Nh5 28. Qh3? (28. Qe5 Ndf6 29. Qe3 =/+) 28... g6 29. g4 e5



30. Nf5 (30. f4! Nhx f4 31. Nxf4 Nxf4 32. Qf3 -+) 30... Ndf4 31. Nxf4 Nxf4 32. Qh6 gxf5 33. Bxc5 Bxc5+ 34. Kh1 -+ Bc6 35. Qf6+ Kg8 36. Qg5+ Ng6 37. Qxf5 Bd7 38. Qh5 Bc6 39. Qf5 Bd4 40. Rad1 f6 41. Be4 Bxe4 42. fxe4 Qc6 43. Rd2? Better was Qf3 but White is damaged beyond repair. Nh4 44. Rxd4 Nxf5 45. Rc4 Qxc4 0-1

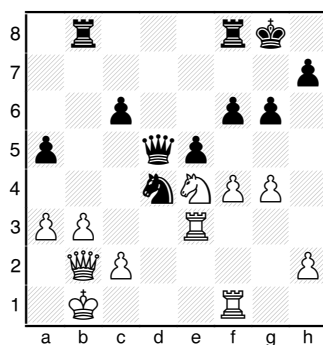
2011 US Cadet Ch (4)
 Aleksandr Ostrovskiy - 2332
 Arthur Shen - 2241

1. e4 c5 2. Nf3 d6 3. d4 cxd4 4. Nxd4 Nf6 5. Nc3 a6 6. Be2 e6 7. a4 Nc6 8. O-O e7 9. Be3 O-O 10. f4 Qc7 11. Kh1 Re8 12. Bf3 Rb8 13. g4 Nxd4 14. Bxd4 e5 15. fxe5 dxe5 16. Ba7 Ra8 17. g5 Nd7 Fritz claims that White gets the advantage even if Black swaps bishops: (17... Rd8 18. Qe2 Rxa7 19. gxf6 Bxf6 20. Nd5 Qc6 21. Nxf6+ Qxf6 22. Bh5 Qh4 23. Bxf7+) 18. Nd5 Qd6 19. Be3 Nf8 20. Qe2 (20. Nb6 Rb8 21. Qxd6 Bxd6 22. Rad1 Bh3 23. Rf2 Be7 24. Nd5 +/- Black is still viable but White has some pressure.) 20... Be6 21. Rfd1 The other rook seems preferable, but White wants to avoid surprises with Bh3. Bxd5 22. Rxd5 Qc7 = 23. Bg4 Rad8 24. c4 Ng6 25. Rad1 Nf4 26. Bxf4 exf4 27. b3 b6 28. Bd7 Rf8 29. Qg4 Bc5 30. Rf1 Bd6 31. Rfd1 Rxd7 32. e5 Qc6 33. exd6 Rxd6 34. Qxf4 Re6 35. Kg1 Re2 A little stronger was Qe8. 36. Rf1 b5 37. axb5 axb5 38. Qf3 bxc4 39. bxc4 Re7 40. c5 h6 41. gxh6 Qxh6 1/2-1/2

2011 US Cadet Ch (6)
 Arthur Shen - 2241
 Michael Bodek - 2279

1. e4 c5 2. Nf3 d6 3. d4 cxd4 4. Nxd4 Nf6 5. Nc3 g6 6. Be3 Bg7 7. f3 O-O 8. Qd2 Nc6 9. O-O-O d5!? Bodek's trademark. He used the tactical 9... d5 to win his last round game, too. 10. exd5 Nxd5 11. Nxc6 bxc6 12. Bd4 White does not want to risk any home-cooking by Black and so avoids the complications arising after Nxd5: 12. Nxd5 cxd5 13. Qxd5 Qc7 14. Qc5 Qb7 15. Qa3 (15. Bd4 Bf5 16. Bd3 Rfc8 +/-) 15... Bf5 16. Bd3 Rab8 17. b3 = 12... Bxd4 13. Qxd4 Qb6 14. Na4 (14. Nxd5 cxd5 15. Qxd5 Be6 =) 14... Qa5 = 15. b3 Qc7 16. Re1 Rb8 17. Qe5 Qa5 18. Bd3 Rb4 Better was Bd7 or Qb4. 19. g3 (Fritz suggests 19. Be4,

allowing the rook sacrifice that has certain equalizing potential: 19. Be4 Rxa4 20. bxa4 Qxa4 21. h4 Qxa2 22. Qb2 Qc4 23. h5 Qc5 =) 19... f6! 20. Qb2 e5 =/+ 21. a3 Rb8 22. g4 Nf4 23. Bc4+ Be6 24. Bxe6+ Nxe6 Black is better with his agile knight and pressure on the king. 25. Nc3 Rbd8 26. Ne4 Nd4 27. Rhf1 Qd5 (Fritz suggests the direct f5 to pressure White's f-pawn but Black stills keeps a 0.5 advantage with this more solid move: 27... f5 28. gxf5 Rxf5 29. Re3 Qb6 30. b4 Rd5) 28. Kb1 Rb8 threatening Nxb. (28... f5 29. gxf5 Rxf5 30. Rd1 Qf7 =/+ 31. Ka2 Rd5 {31... Rxf3? 32. Ng5 Rxf1 33. Nxf7 Rxd1 34. Nxd8 Rd2 35. Qb1 Rxc2+ 36. Ka1 c5 +/-}) 29. Re3 a5 30. f4

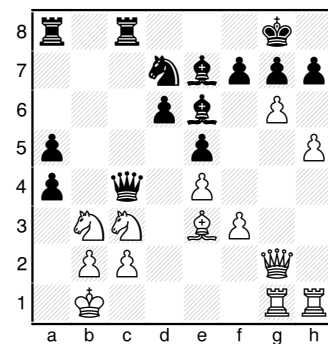


f5! 31. gxf5?! (31. Ng3 exf4 32. Rxf4 Ne6 33. Rd3 Qb5 34. Rf1 fxg4) 31... Rxf5 32. Rfe1 Rxf4 33. Nc3 Qf7 34. Ne2 (34. Rxe5 Rf2 35. Re7 Rxc2 36. Rxf7 Rxb2+ -) 34... Nxe2 (34... Rh4 35. Rxe5 {35. Qc3 a4 36. b4 Nb5} 35... Nf3) 35. R3xe2 = Re8 (35... a4 36. Qxe5 Qf8 37. Kb2 axb3 38. cxb3 c5 =) 36. Rxe5 Rxe5 37. Rxe5 Rf5 (37... a4 38. Rc5 Rf1+ 39. Ka2 Qe6 =) 38. Re4 Rf4 39. Re5 Rf5 40. a4 h5 41. Re4 Rf1+ 42. Ka2 Rf2 43. Rc4 Qe6? (43... Rf4 44. Rxc6 {44. Rd4 Kh7} 44... Rxa4+) 44. Qc3 Rxh2? (44... Qf6 45. Qxa5 Rxh2 46. Qa8+ Kh7 47. Rxc6 +/-) 45. Rxc6 Qf5 46. Rc7 Qf8 47. Rc8 Rf2 48. Rxf8+ Rxf8 49. Qxa5 Kg7 50. Qc7+ Kh6 51. a5 Ra8 52. b4 h4 53. Qf4+ g5 54. Qf6+ Kh5 55. Qf3+ g4 56. Qd5+ Kg6 57.

Qxa8 h3 58. Qb8 Kf5 59. Qg3 1-0

2011 US Cadet Ch (1)
 Michael Bodek - 2279
 Andrew Wang - 2248

1. e4 c5 2. Nf3 d6 3. d4 cxd4 4. Nxd4 Nf6 5. Nc3 a6 6. f3 e5 7. Nb3 Be7 8. Be3 Be6 9. Qd2 O-O 10. O-O-O a5?! This weakening move comes at an early stage and appears unnecessary. Obviously Nbd7 or even b5 is necessary. 11. Bb5 Na6 12. g4 Nc7 13. g5 Better appears to be a4. However Bb6 would be weak because of Nd7. Nd7 = 14. Kb1 Nxb5 15. Nxb5 Ra6 Better would be to first play a4 to drive the b3-knight away and deny the b5-knight an anchor. 16. a4 Qc8 17. Nc3 (17. Nxa5? b6 18. Nb3 Rxa4) 17... Qc4 18. h4 Rc8 19. h5 Raa8? (19... Nb6 20. Bxb6 {20. g6 Nxa4 21. gxh7+ Kxh7 22. Nd5 Bxd5 23. exd5 Nb6 24. Bxb6 Rxb6 25. Nxa5 Qc3 -/+} 20... Rxb6 =) 20. g6 b5 (20... hxg6 21. hxg6 fxg6 22. Rdg1 +/-) 21. Rdg1 (21. gxh7+ Kxh7 22. Nxb5 Qxa4 23. Nc3 Qc6 24. Nd5 Bxd5 25. exd5 Qb5 26. h6 g6 27. Nc1 a4 28. Na2 Rab8 29. c3 -/+) 21... bxa4 -+ Fritz11 gives Black a solid 1.4-point advantage. 22. Qg2

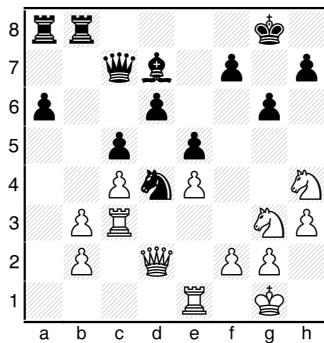


Bf8?! (22... fxg6! 23. hxg6 h6 24. Bxh6 axb3 25. Bxg7 bxc2+) 23. Bh6 (23. Nd2 Qc6 24. gxh7+ Kxh7 25. Rc1 a3 26. Nd1 axb2 -) 23... hxg6 (23... axb3 24. Bxg7 bxc2+ 25. Kc1 Nc5 26. gxh7+ Kxh7 27. Bxf8 Nd3+ 28. Kxc2 Nb4+ 29. Kc1 Na2+ 30. Kd2 Qd4+

31. Ke1 Qe3+ 32. Qe2 -/+)
24. hxg6 f6 25. Qh2 gxh6
 (25... Be7 26. Bxg7 Kxg7 27.
 Qh6+) **26. g7** (Instead of
 resigning, Fritz says that a
 draw can be had by axb3: ...
 axb3 27. Qxh6 Kf7 28. g8=Q+
 Ke8 29. Qgh8 bxc2+ 30. Kc1
 a4 =) **1-0**

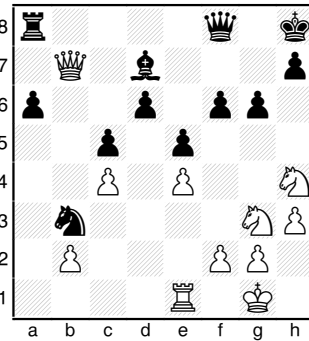
John Hurt Memorial -3
Graham Horobetz - 2095
Kenneth Turner - 1998
1-0

1. e4 e5 2. Nf3 Nc6 3. Bb5
a6 4. Ba4 b5 5. Bb3 d6 6. h3
Be7 7. O-O Nf6 8. Re1 Na5 9.
c3 Nxb3 10. axb3 The tempi
 that Black might gain after
 10. Qxb3 Be6 11. Qd1 c5
 could give him a slight
 advantage. **Bb7 11. d3 O-O**
12. Nbd2 Playing b4 looks
 to be a little more
 constrictive but certainly
 nothing to trouble Black. **c5**
13. c4 Seeking to cramp
 Black's bishops but allowing
 potential weaknesses along
 the b-file after exchanges.
Qc7 14. Nf1 Bc6 15. Ng3
 Stronger was Ne3, hitting
 both d5 and f5. **Bd7 16. Nh4**
 Better was the immediate
 Nf5. Now both knights are
 excluded from that square.
g6 =/+ 17. Bh6 Rfb8 18. Bg5
Nd5 Black can make
 immediate progress on the
 queenside with bxc: 18...
 bxc4 19. dxc4 a5 20. Re2 Rb6
 21. Nf3 Rab8 -/+ **19. Bxe7**
Nxe7 20. Rc1?! Better was
 Ra2 or Qd2. Now Black has a
 solid initiative. **bxc4 21.**
dxc4 Nc6 22. Rc3 Nd4 23. Qd2



Qd8! There is a real danger
 of White's kingside
 ambitions getting unwieldy

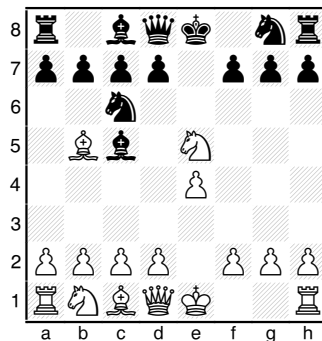
if Black immediately
 captures the pawn: 23...
 Rxb3 24. Rxb3 Nxb3 25. Qh6
 Nd4 26. Re3 Qc8 27. Nh5 gxh5
 28. Rg3+ Bg4 29. Kh2 +/-
24. Qh6 Qf8 25. Qg5 f6 26.
Qd2 Rxb3?! Much better was
 capturing with the knight.
27. Rxb3 Nxb3 28. Qd5+ Kh8
29. Qb7



Qc8? (29... Ba4 30. Nf3 a5
 and Black safely digests the
 pawn.) **30. Qxb3 Bxh3?! Justified**
 desperation. **31. gxh3 Qxh3 32. Ng2 f5 33.**
exf5 gxf5 34. Qb7 Rg8 35.
Qf7 f4 36. Qf6+ Rg7 37. Nxf4
 If 37... exf, then 38. Re8
 kills. **1-0**

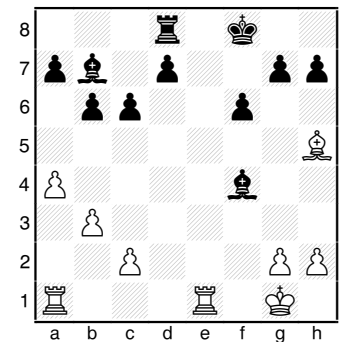
2011 US Cadet Ch (4)
Aleksandr Ostrovskiy - 2332
Kevin Cao - 2236

1.e4 e5 2.Nf3 Nc6 3.Bb5 Bc5
4.Nxe5



This is a surprising move
 not even mentioned in MCO-
 15. Recommended is 4. c3
 but this interesting
 variation of the Cordel
 Defense to the Ruy Lopez
 does have some merit and is
 certainly to be respected if
 a Senior Master plays it.
4...Nxe5 [4...Qg5 5.Ng4 Bd4

6.Be2 (6.Qe2 a6 {6...d6
7.Ne3 Bxe3 8.fxe3 Nf6 9.Nc3}
7.Bxc6 {7.Bc4 Nf6 8.Nxf6+
Bxf6 9.O-O Nd4 10.Qd3 b5=}
7...dxc6 8.Ne3 Bxe3 9.fxe3
Qh4+ +/=) 6...h5=] 5.d4 c6
6.Be2 Bd6 7.dxe5 Bxe5 8.f4
Bc7 9.Nc3 b6?! Fritz11
 suggests Ne7 or d6. Now
 White could get a real
 advantage with Qd4, but the
 game continuation is also
 effective. **10.Be3 Bb7 11.Qd2**
Qe7 12.O-O f6 13.a4± Nh6
14.Rfd1 Rd8 Giving up the
 option of queenside castling
 and leaving the a-pawn
 without defense. Hence,
 White can strongly play 15.
 a5 with a 1.5-point
 advantage. **15.Bh5+ Nf7**
16.Re1 O-O 17.Qf2 Nd6 18.b3
 Better was still a5. Now
 Black has the strong f5,
 equalizing. **18 ... Nxe4 19.**
Nxe4 Qxe4 20.Bc5 [20.Bxb6
Bxb6 21.Rxe4 Bxf2+ 22.Kxf2
c5 23.Re7 +/-] 20...Qxf4
21.Qxf4 Bxf4 22.Bxf8 Kxf8
=/+



Fritz11 rightly claims that
 Black is doing well with the
 two bishops and extra pawns,
 but Black's reluctance to
 play d5 and get his pawns
 working gets him into
 difficulty. **23.Rad1 Be5**
[23...d5 24.c4 g6 25.Bf3 d4
 and Black is strongly
 holding.] **24.Bf3 a5 25.Be4**
g6 26.g4 Kf7 [26...d5! 27.c4
d4 -/+] 27.Kg2 Bc7 28.Bf3
Ba6 29.h4 h6 30.c4 Bb7
31.Rd3 Bf4 32.Red1 d6 Trying
 to erect a black square
 blockade. **33.b4! axb4 34.Rb1**
f5 Ba6 or d5 was necessary.
35.gxf5 gxf5 36.Rxb4 Rg8+
37.Kf1 Kf6?! 38.Rxb6 Ba8
39.Bxc6 Bxc6 40.Rxc6 Ra8
41.c5 Ke5 42.cxd6 Ke4 43.Rd1
Be3 44.d7 Rg8 45.Re6+ 1-0

BOARD OF DIRECTORS

PRESIDENT:

Malcolm Estrada
7123 Annview LN
Harrison, TN 37341
H: (423) 280-9526
e-mail: straightleg111@aol.com

VICE-PRESIDENT:

Paul Semmes
1010 N. Maple Ave.
Cookeville, TN 38501
H: (931) 526 - 2883
e-mail: PaulSemmes@charter.net

SECRETARY:

Chris Prosser
733 Long Hunter Court
Nashville, TN 37217
H: (615) 399 - 8432
e-mail: regioniii@aol.com

TREASURER:

Angela McElrath-Prosser
733 Long Hunter Court
Nashville, TN 37217
H: (615) 399 - 8432
e-mail: tcanews@aol.com

INTERNET CHESS COORDINATOR:

Karoly Mirnics
6604 Currywood Dr
Nashville, TN 37205
e-mail: karoly.mirnics@vanderbilt.edu

SCHOLASTIC COORDINATOR:

Harry D. Sabine
P. O. Box 381
Crossville, TN 38557
H: (931) 484 - 4878
W: (931) 484 - 9593
e-mail: hdsabine@citlink.net

TOURNAMENT COORDINATOR:

Larry Grohn
7032 Igoo Gap Road
Chattanooga, TN 37421
H: (423) 243 - 8235
e-mail: LGrohn47@gmail.com

TN CHESS NEWS EDITOR:

Leonard Dickerson
420 Oran Road
Knoxville, TN 37934
H: (865) 966 -1095
e-mail: lsdick@tds.net

EAST TENNESSEE DIRECTOR:

Victor Suich
707 Pritchard
Morristown, TN 37813
(423) 586 - 4351
e-mail: vesuich@bellsouth.net

MIDDLE TENNESSEE DIRECTOR:

Roy Manners
1215 Cumberland Heights Road
Clarksville, TN 37040
H:(931) 552 -1839
e-mail: clarkvillechessclub@charter.net

WEST TENNESSEE DIRECTOR:

Marla Stafford
P. O. Box 770474
Memphis, TN 38117
e-mail: Westregion4@aol.com

Regional Scholastic Coordinators

Region 1:

David Marsh
4411 Stillwood Road
Louisville, TN 37777
H: (865) 982 - 7216; NESGIV4DAVE@aol.com

Region 2:

Michael Ake
16 Pinecrest Dr.
Wildwood, GA 30757
Cell phone: (423) 505-8214
O: (423) 493 - 5406; make@mccallie.org

Region 3:

Chris Prosser
733 Long Hunter Court
Nashville, TN 37217
H: (615) 399 - 8432; e-mail: regioniii@aol.com

Region 4:

Brian Vogt
2669 Sweet Maple Cove
Germantown, TN 38139
H: (901) 624 - 0020; b-vogt@comcast.net

Leonard Dickerson,
TCN Editor
420 Oran Road
Knoxville, TN 37934

MAIL TO:

Visit our website: www.tnchess.org