



SPRING 2011

VOLUME 54

NO. 2

Tenn. All Girls Scholastic Ch	5
Tenn. Scholastic Team Finals	13
National High School Ch	14
Tenn. Senior Open Championship	15
Quickest Helpmates with Pieces or Pawns	24
Tenn. Senior Open Crosstables	26

- May 28, 2011 **Rutherford Co. Open**
Grace Lutheran Church, Murfreesboro, TN
Rutherford Co. Chess Club: rccc@rccc.us
- June 4, 2011 **Rea Hayes Open Chess Tournament**
Bethel Bible Village
3001 Hamill Road, Chattanooga, TN
E-mail: entries@chattanooga.chess.org
- July 16, 2011 **Clinton Pearson, Jr. Memorial Summer**
Cumberland Co. Community Complex, Crossville
Harry Sabine (931) 484-9593; hdsabine@citlink.net
- July 23, 2011 **Lakeway Summer Open**
Lakeway Community Church, Morristown, TN
Info: Victor Suich; Tel. 423-586-4351; E-mail vesuich@bellsouth.net
- June 25, 2011 **John Hurt Memorial 8**
Greater Memphis Chess Center, Memphis, TN
Entries: Memphis Chess Club
- August 20, 2011 **19th Battle of Murfreesboro**
Grace Lutheran Church, Murfreesboro, TN
Rutherford Co. Chess Club: rccc@rccc.us

This magazine is being provided to current Tennessee Chess Association members as one of their benefits for supporting chess activity in Tennessee. It is the official publication of the *Tennessee Chess Association* and its legal property. We are trusting you to not abuse the privilege of online access to this information. Abuse would be considered copying over two pages for publication without crediting the source (Tennessee Chess News—TCN). However, you are permitted to download a copy of the online version of this publication to your personal computer. If you desire to use this content for other purposes than your own copy, contact the editor, Leonard Dickerson, for approval. Thank you for your support of chess in Tennessee and observation of these few requests!

MEMBERSHIPS

TCA annual dues are \$10 for a *regular* membership or *student* membership. Additional members of a family may join for one dollar each, but only one copy of printed **TCN**'s will be available per family. Both regular and patron memberships are for a 12-month period, starting in the month of purchase and expiring after a 12-month period.

Tax deductible Patron Memberships are available beginning at \$100 per year for those who wish to help support the TCA and the FFTC. These memberships expire one year from the date of payment. The Patron membership categories are:

PATRON — \$100; PATRON KING — \$300; PATRON MASTER — \$500; PATRON GRANDMASTER — \$1000+

The benefits that pertain to the different level of patronage are currently being refined and will be detailed on our website soon.

TOURNAMENT ANNOUNCEMENTS

TCN prints listings of upcoming tournaments that require TCA membership in each issue for free. Submit complete TLA information to Larry Grohn, Tournament Coordinator: E-MAIL: LarryGrohn@comcast.net

TCN CHESS NEWS STAFF

Editor

Leonard Dickerson

Contributors

Peter Lahde Roy Manners

Henry Robinson Paul Semmes

TCN PUBLICATION SCHEDULE

Spring 2010 — Scheduled for May 1st covering Feb, Mar, and Apr events

Deadline for submission: Apr 18, 2010

Summer 2010 — Scheduled for Aug 1 covering May, Jun, and Jul events

Deadline for submission: July 18, 2010

Fall 2010 — Scheduled for Nov 1 covering Aug, Sept, and Oct events

Deadline for submission: Oct 18, 2010

Winter 2011 — Scheduled for Feb 1 covering Nov, Dec, and Jan events

Deadline for submission: Jan 18, 2011

Please submit material by e-mail to: lsdick@tds.net

PATRON MEMBERS

TENN. CHESS ASSOC. & FOUNDATION FOR TENN. CHESS

 **Patron Grandmaster** 
Dr. Martin Katahn

 **Patron Member** 

Malcolm Estrada
Peter Lahde
R. K. Shimabukuro
Paul Semmes
Brian Vogt

TN HALL OF FAME

The **Tennessee Chess Hall of Fame** was established to honor those members who have distinguished themselves through their outstanding achievements in chess, either in competition or in chess organization or promotion. Peter Lahde is chairman of the electing committee, and guidelines for nominations are posted onsite. Below is a listing of the current members and their year of induction.

Peter Lahde	1990	John Hurt	1992
Robert Coveyou	1990	James A. Sweets	1993
Jerry Sullivan	1990	Rea Hayes	1997
Martin Southern	1990	James A. Wright	1998
Tom Finucane	1990	Dr. Martin Katahn	2002
Robert Serivener	1990	David Burris	2003
L. Hunter Weeks	1990	Albert Hodges	2005

FROM THE EDITOR

This has been one busy season for chess. The Team Qualifying Events and Team Finals have ended, the National High School Chess Championship was conducted on Tennessee soil, the TN All Girls Tournament has concluded, and the TN Senior Open just concluded last weekend. Even with all of this chess fervor, though, the Tennessee Chess Association continues to lose money because of lessened participation and, perhaps, tournament expenses such as site fees. Both the All Girls Tournament (37 participants) and the Senior Open (22 participants) lost about \$600. These are not significant losses but they could be threatening if they represent a trend.

Actually, the participation in the All Girls Tournament jumped from last year's total of only 19. This certainly signals that Roy Manners is doing something right in promoting the tournament. Though the tournament did offer a first prize monetary scholarship award of \$1,000, Manners was able to get local businesses to donate money to cover the award. In fact, businesses even donated a couple of hundred more than necessary for the scholarship, jump starting next year's contributions! The many awards and door prizes (autographed books and chess software) were also donated. Yet even with a free site a little money was lost. However, this minor tournament loss is not a concern because of the success of the tournament and the impact that it has on young girl's life. Just look at all of the happy faces on pages 6-9! Too, tons of other photographs from the tournament were submitted-as well as every game played in the tournament! I wish other tournaments would provide just a measure of support that this tournament did as for my publication needs.

On the other hand, the Senior Open has been showing an waning trend after the initial boost in participation that it received when it moved to the excellent Senior Center site in Crossville. It dropped from 35 players in 2009 to 29 players in 2010 and this year it hit a low of 22 players. And no one is sure why the participation has dropped, especially considering the excellent tournament site and royal treatment that the seniors received. Perhaps more effort will have to be put into promoting the tournament to seniors, emphasizing that a senior is considered to be a player over *only* 50 years of age. Otherwise this tournament may be eliminated. Okay, Donors, it is time to make an impact!

Because of space limitations, only a fourth of the games provided from the All Girls Tournament were included in this issue. All legible games submitted from the Tennessee scholastic events and other tournaments were included. Tennesseans placing honorably in the National High School Championship are mentioned on page 14.

Be sure to check out Peter Lahde's submission on the quickest helpmates possible with pieces or pawns (page 24). While many have shown a few quick mates as blunders, I have not seen any published source that shows the quickest mates for every piece. The mates are easy to construct but the concept is what was brilliant. It is just like the latest patent of a seemingly simple idea that sells millions-someone has to conceive and implement it. And - of course - Peter gives us a history lesson!

Though the ongoing FIDE candidate matches are raging - sporting the likes of Kramnik, Topalov, Aronian, Kamsky, and Grischuk - and can be viewed on a live broadcast at <http://kazan2011.fide.com/live-games.html>, they are just warmup to the upcoming 2011 U.S. Cadet Chess Tournament where the U.S. top players under age 16 will do battle during July 11-15 in Crossville, Tenn. This all-master event will also be available as a live-feed online.

One other major concern remains unresolved with the TCA's online presence. We are aware that the game viewer is not operational. Once enabled, the games published in this issue-as well as those submitted from the All Girls tournament that weren't used-will be available. Too, we are still working on providing the membership with speedy tournament announcements and results. We need your feedback and input to improve our services.

TN All Girls Scholastic Ch

The All-Girls Championship was held on April 9 at the Montgomery County Civic Hall in Clarksville, Tenn. The event had five sections. The two divisions of the Competition Section were not rated and were run separate from the Championship Section. Forty players attended the event which had the capacity to comfortably seat 80 players. Because the venue was so spacious, one board per table was possible. Promoter Roy Manners stated that the majority of the players commented that the facility was excellent and that the staff did a great job hosting the event.

Graham Gibson won the **Championship 18 and Under Section** with a score of 4.5 out of 5. She plans to use the \$1000 scholarship this year as she is attending University of Memphis in the fall. In addition to her trophy, Graham also won a Chronos Touch Sensor Clock. Joann Welch finished second with 4.0 points, her only lost coming in the third round to Gibson. The **14 and Under Section** was won by undefeated Rachel Weishaar who received a trophy and a copy of Chessimo Chess Training software as a prize for winning her section. Second- and third-place honors in this 7-player section was shared by Puja Jagasia and Ivy MacDaniel who both had 2.5 points. The **Championship 10 and Under Section** was won by undefeated Nina Bhat who won a trophy and the Chess Tactics Training DVD with book prize. Cydney James captured second place, dropping only a point to Nina in Round 3.

The **Competition 14 and Under Section** was won by Reina Lopetegui with 4.0 points

and her sister Teresa finished second with 3.0 points. The winner received the Chessimo Training Software. There challengers were drawn chiefly from the **Competition 10 and Under Section**. This section was won by Mary Grace Gower and Shimera Paxton who both finished with 4.0 points. The winners received the Staunton Marshal Series Chess Set.

Manners stated: "We now have a much better idea of what the people and players expect at an All-Girls event, and hopefully we can strive to fulfill those needs and wants next year. We certainly have a much better idea of what the expenses are and what sources of revenue are available to help us cover the cost."

In addition to the \$1,000 scholarship donations, many other prizes were donated. For instance, many received Jennifer Shahde's book as door prizes or a copy of Ray Robson's (the youngest chess master) book: "Chess Child: The Story of Ray Robson." Prior to the start of most rounds, another copy of Shahde's book or Robson's book was awarded to a lucky player: for Round 1 a book was awarded to Anna Mott for being the first one to enter the tournament (interested candidates for next year, remember this award and enter early); in Round 2 another was given to Andrinna Bridges for being the youngest girl to play; for Round 3 Victoria Suich received one for traveling the furthest; and in the fourth round Cheyenne Douthitt sparked as her name was pulled randomly from a hat to receive a book. All of the second-place winners of the divisions also received books.

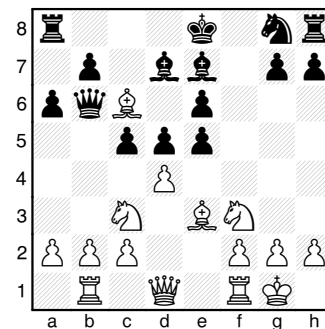
All the games from the event were received and converted into a pgn file by Master Henry Robinson who also

commented many of them. All games of the grand champion are included here with Robinson's annotations. Additionally, Robinson took photos of just about everyone and everything. Several of those photos are also included in this issue in the following pages, some of which have comments by Roy Manners.

In this Round 2 encounter, the 14U Ch winner deals the 14U Competitive Section winner her only loss.

Reina Lopetegui
Rachel Weishaar

1. e4 e6 2. d4 d5 3. e5 c5 4. Nf3 Nc6 5. Bb5 Qb6 6. Nc3 a6 Better was Bd7. 7. Ba4 Bd7 Better is cxd4 with equal chances. 8. O-O Be7 9. Rb1 f6 Again, cxd was better. 10. Be3 fxe5 11. Bxc6



Qxc6? 12. Nxe5 Fritz gives White a big 2. 6 advantage. **Qc7** 13. Qf3 (13. Qh5+! g6 14. Nxc6) 13... Nf6 14. Bf4 Better was Qh3 followed by f4 to anchor the knight. **Bd6** (14... cxd4 15. Ng6 Qd8 16. Nxc6 dxc3 17. bxc3 Kf8 +-) 15. dxc5? **Qxc5** The simple Bxe5 wins a piece. 16. Nd3 **Qc7** 17. Bg5 O-O \$15 18. Bf4 e5 19. Nxd5 **Qxc2** 20. Nxf6+ Better was Rbc1: 20. Rbc1 Qa4 21. Nxe5 20... Rxf6 21. Qd5+ Be6 22. Qxd6 exf4 (Bxa2!) 23. Nxf4? (23. Rbc1 Qa4 24. Rf1 Bxa2 25. Qc7 Rf7 26. Re7=+/) 23... Bxa2 24. Rfc1 **Qxc1+** 25. Rxc1 Rxd6 26. f3 Rad8 27. Kf2 Rd2+ 28. Ne2 Re8 29. Re1 Bc4 30. Kg3 Rdx2 31. Rxe2 Rxe2 32. b4 Rb2 0-1

Tenn. All Girls Scholastic Chess Championship

(Photos contributed by Henry Robinson and Roy Manners)



Graham Gibson the 2011 TN All Girls Champion collecting her prizes and honors from Promoter Roy Manners.



Champion Rachel Weishaar (left) facing off against Third-place finisher Teresa Lopetequi in Round 3. Rachel won the 14 and Under Championship Section and received a trophy and copy of Chessimo Chess Training software as a prize.



Winners in the 18 & Under Championship Section. From the left: Graham Gibson - 1st Place, JoAnn Welch - 2nd Place, Victoria Suich - 5th, Angela Lee - 3rd Place, and Kayla Weishaar - 4th Place



Winners in the 14 and Under Championship Section. From left: Rachel Weishaar - 1st Place, Ivy McDaniel - 3rd Place, Emily Nance - 4th Place, and Puja Jagasia - 2nd Place



Winners in the 10 and Under Section. From Left: Alexis Jones - 4th Place, Teiraney Biggs - 3rd Place, Mikaela Brennan - 6th Place, Bliss Button-Hale - 7th Place, (in front) Andrina Bridges - 10th Place, Cydney James - 2nd Place, Cheyenne Douthitt - 8th Place, and Nina Bhat - 1st Place



Mary Grace Gower (right hand side) vrs. Hailey Gilchrist in Round 5. Manners reports that "Mary Grace is nine years old and only lives a block from the Nashville Chess Center. She noticed their sign one day and started asking if she could go over there. She has been attending their Sunday afternoon lessons for kids. This was her second tournament." On the other hand, Hailey lives 154 miles away! Manners reports that her house had just been involved in a fire 10 days earlier and she lost all but one of her chess trophies! Well, she started rebuilding her collection by earning a third-place trophy.



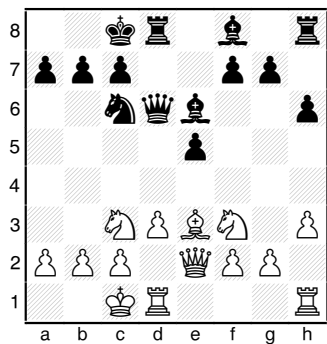
Ivy McDaniel (right side) versus Reina Lopetegue in Round 5. Ivy took 3rd Place in the xx and Under Championship Section and Reina took first Place in the 14 and Under Competition Section. Roy reports that "twelve year old Ivy McDaniel was born deaf. Her advantage is that she can't hear the doors opening and closing or people chattering in the background. Moreover, her eyes are sharper than you can imagine. She can read lips from an amazing distance, and she notices things like the changes in the light when someone walks behind her. She plays Chess with all her heart though, and this was only her third tournament."



Manners reports that "sixteen year old Elena Roberts showed up with a blanket and a pillow. She came to be comfortable. Some of the other girls were jealous that they didn't think of it. She played chess wrapped in her blanket and she looked right at home all day long."

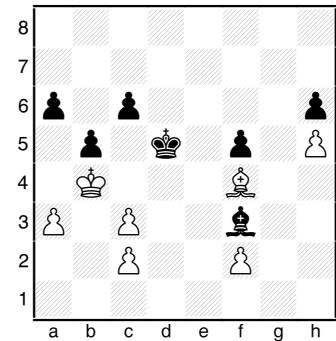
All Girls Ch - 2
 Graham Gibson
 Angela Li
 Annotator Henry Robinson

1. e4 e5 2. Nf3 Nc6 3. Bc4 Nf6 4. d3 Graham plays a very conservative line. Not forcing anything in the opening phase of the game. h6 Angela likewise starts the game conservatively, not allowing the pin resulting from Bg5. 5. Be3 This is a logical square for the Bishop, robbing the Black Bishop of its logical square on c5. d5 With this move Angela maintains a pretty easy equality. There is a sense of respect that felt as these moves are being played. 6. exd5 Nxd5 7. Bxd5 Exchanging what is normally an important Bishop in double King pawn openings, Graham is satisfied with gaining a tempo on the opposing Queen. Qxd5 8. Nc3 Qd6 Angela decides to keep her King Bishop rather than pinning the Knight on c3 with ...Bb4, so she moves her Queen to a square where she has influence on the center and perhaps a chance to swing to the Kingside later on. 9. h3 We might question this move just a little as it weakens the Kingside. Angela has the advantage in space, so it will be easier for her to begin to probe weaknesses created by the Graham. Graham on the other hand, is not so concerned about the perceived Kingside weakness since she plans to slide her King to the queenside! Be6 10. Qe2 O-O-O 11. O-O-O



It is rare to see both sides castled queenside in a double King Pawn opening! Right now Angela has the advantage due to space and the two Bishops. a6 Angela is still very weary of her illustrious opponent. Concern over her a-pawn, she creates a weakness in her King's home. It would have been better to begin to utilize her space advantage with 11... Nd4. For example: 11... Nd4 12. Bxd4 exd4 13. Ne4 Qa6 14. a3 Bxa3 15. bxa3 Qxa3+ 16. Kd2 Qb4+ 17. Kc1 f5 With a MIGHTY ATTACK! 12. d4 Graham senses that her position was critical and breaks in the center to neutralize the threats. exd4 13. Nxd4 Nxd4 14. Rxd4 Qc6 15. Rxd8+ Kxd8 16. Rd1+ Kc8 17. Qd3 Bb4 18. Qd4 Inviting simplification. Bishops of opposite color will make this a very difficult ending to win. But, with the poor pawn structure resulting from the exchanges on c3, Graham will have a long hard fight on her hands. Bxc3 19. bxc3 By recapturing with the pawn, Graham maintains some chance of endangering the enemy King's position as well as raiding the Kingside through the a7 square. f6 A very good move and a difficult one to find. This move shores up the Kingside, recognizing that her King's position is in no ACTUAL danger! Good job Angela. 20. Qa7 The logical and best continuation. Angela shows great calmness in a very dangerous looking position. But with this move she proves the danger to be an illusion. Her King is safe. b5 21. Kb2 Holding the c-pawn. Qb7 This move is safe. But ...Bc4 adding a bit of pressure on Graham's King would seem to be a tad better. 22. h4 It would have been better, if playing for to complicate, to keep winning possibilities alive, to play Qc5 since the White Queen would still be better placed than the Black one. Qxa7 23. Bxa7 Rd8 This should be completely safe.

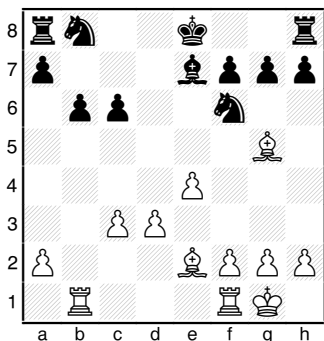
24. Rd4 Rd5 25. Rxd5 Bxd5 26. g3 g5 27. Bd4 gxh4 28. gxh4 f5 29. h5 Bf3 30. Be3 Kd7 31. Bf4 c6 32. a3 Ke6 33. Kb3 Kd5 34. Kb4



The position is completely drawn. The score for the balance of the game was stopped due to time trouble. I was able to watch the balance of the game and can summarize it for you. Graham was able to win due to her superior understanding of Bishop of opposite color endings. Angela had many chances to hold the game, but simply could not come up with the correct plan of blockading on the white squares. She mistakenly allowed Graham to get a passed a-pawn, which still could have been blockaded with her King. Instead, she chose to stop the pawn with her Bishop, while her King wandered to the Kingside. Graham marched the pawn down the board where Angela was forced to give up her Bishop for the pawn. Then Graham marched her King back over to the Kingside and captured the remaining black pawn and promoted her own. Stronger players have all the luck! - or maybe the rest of us should spend just a little more time looking at endings!! Ke4 35. Bxh6 Bxh5 36. Ka5 f4 37. Kxa6 f3 38. Kb6 Kd5 39. Ka5 Bg6 40. Kb4 Bxc2 1-0

All Girls Ch - 3
Joann Welch
Graham Gibson
Annotator Henry Robinson

1. e4 c6 2. Nc3 d5 3. d3 e5
4. Nf3 d4 5. Ne2 Bg4 Graham is setting a trap, which Joann falls right in to! When a strong player makes an obvious blunder early in the game, let's look twice before we leap!! **6. Nxe5 Qa5+ 7. c3 Qxe5 8. cxd4 Bxe2 9. Bxe2 Qxd4 10. O-O!** Two pawns for the piece and a lead in development. Joann must keep Graham on the retreat for as long as possible. **Be7 11. Qb3** Protecting the b-pawn and attacking b7. **Qb4** Graham is ready to offer queen exchanges since the ending will easily be won. **12. Qc3** When behind in material, it is rarely a good idea to exchange queens. It is easier to drum up counter play if you still have your queen. **Qxc3** Graham rightly removes queens. **13. bxc3 Nf6 14. Rb1 b6 15. Bg5** This is a blunder which both players overlook.

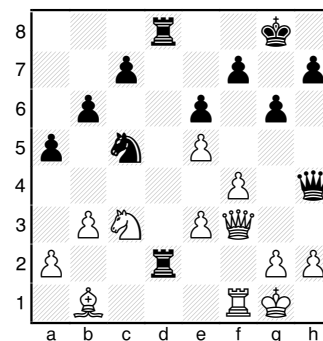


Nbd7 It is normal for mortals to get a mind set of "hunker down" once we gain material. The idea is to catch up in development, then win with ease. With this mind set, we often miss a shot that we would normally see. Best here is ...Nxe4!!: 15... Nxe4 16. Bxe7 Nxc3 17. Rfe1 Kxe7 and Black has an extra piece and pawn! **16. h3 O-O** Nxe4 is still there! **17. Bg4 Rfe8** Continuing the idea of seeking exchanges. This is a good move, defending the

Bishop, ready to make exchanges. **18. Bxf6 Nxf6 19. Bf3 Rad8** It's all over. Graham will simply chop wood till the game is over. No more comments needed. **20. Rfd1 c5 21. c4 Bd6 22. d4 cxd4 23. Rxd4 Bh2+ 24. Kxh2 Rxd4 25. Rc1 Nxe4 26. Bxe4 Rdx4 27. f3 R4e5 28. h4 g6 29. Kh3 Rc8 30. g4 Rec5 31. Kg3 Rxc4 32. Rb1 Rc2 33. a3 R8c3 34. Ra1 Rb2 35. Kf4 Rbb3 36. Ke4 Rxa3 37. Rxa3 Rxa3 38. f4 a5 39. f5 Rb3 40. Kd4 a4 41. Kc4 b5+ 0-1**

All Girls Ch - 1
Aubrie Harman
Graham Gibson
Annotator Henry Robinson

1. d4 d5 2. c4 e6 3. Nc3 Nf6
4. Bg5 Nbd7 5. Nf3 Be7 6. e3 O-O 7. Bd3 b6 8. O-O Bb7 9. Qe2 Re8 10. Ne5 Both players have complete their development adequately. Aubrie is the first to declare hostile intentions. This will test our champion's cool under fire. **Nxe5 11. dxe5 Nd7 12. Bxe7 Qxe7 13. f4 Nc5** Graham has emerged with several positives. First, several pieces were exchanged making a White Kingside attack less powerful. Second, the White pawn structure has been compromised, allowing Blacks pieces to infiltrate to the White squares. Aubrie has gained space on the Kingside and better light a fire very soon else she will find herself defending her structure. **14. Rad1 Rad8 15. Bc2 dxc4** Graham cleverly sets a trap, which Aubrie falls into. **16. Qxc4 Ba6 17. Qb4 Bxf1 18. Rxf1 a5** Graham immediately begins to consolidate, once she has won material. **19. Qb5 Rd2 20. Bb1 Red8** Seize the open file. The mark of a champion. **21. b3 Qh4 22. Qc6 g6** Very good play by Graham. She makes 'luft' for her King and closes the long diagonal b1-h7. Excellent! **23. Qf3**



Qe7 Not best. Graham has a keen sense of consolidation, but over does it here. She could continue her original plan of invasion with Rb2, planning R8d2. For example: 23... Rb2 24. Ne4 Nxe4 25. Qxe4 Rdd2 26. Qf3 Qh5 27. Be4 Qxf3 28. Bxf3 Rxa2 with an easy win or 23... Rb2 24. Be4 Rdd2 25. Kh1 Rf2 26. Rxf2 Qxf2 27. Qxf2 Rxf2 (White cannot last much longer.) 28. Kg1 Nxe4 29. Nxe4 Rxa2 **24. h3 Qd7** This is more comfortable to Graham. Less complications. **25. a3 Kg7 26. Kh2 Qe7 27. b4 axb4 28. axb4 Nb3 29. Qc6 R2d7** Of course, Graham is still winning, but "safety first" is her motto. She plans to win without risk. And as the champion, it works for her! More complicated is the line beginning with ...Qxb4: 29... Qxb4 30. Qxc7 Nc5 and the white Knight is lost or 29... Qxb4 30. Ne4 Rd1 31. Qxc7 R8d7 32. Qc8 Rxf1 33. Nf6 Qf8 34. Qxd7 Rxb1. A rook ahead, but who wants to calculate all this when a simple method is available! **30. Qa4 Nd2 31. Rd1 Nxb1 32. Rxd7 Qxd7 33. Nxb1** Oops. I happened to be present when this oops-move was played. Aubrie showed great composure! She did not smack her head or sigh or anything. If this had been a boys tournament, something may have sailed across the room! **Qxa4 34. Nc3 Qxb4 35. Ne2 Rd1 36. Kg3 Qe1+ 37. Kf3 Qf1+ 38. Ke4 Qxg2# 0-1**

All Girls Ch - 4

Kayla Weishar

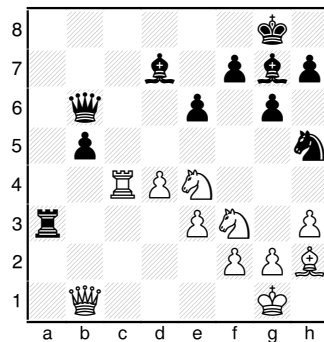
Graham Gibson

Annotator Henry Robinson

1. d4 d5 2. Nf3 Nc6 3. Bf4 Nf6 4. e3 Bg4 5. c4 g6 6. Bd3 Bg7 7. Nc3 O-O 8. O-O Re8 9. h3 Bd7 Graham often withdraw the Bishop to d7 after pinning on f3. Probably this is not a good idea. The purpose of the invasion to g4 is to make room for Black's pieces. So, exchanging on f3 is better than the retreat. 10. c5 After this, Kayla has a very comfortable position. Her pieces are well placed and she has a space advantage on the queenside. Graham will find it difficult to break in the center, so she immediately challenges the pawn chain. b6 11. cxb6 cxb6 Normally, we would recapture with the a-pawn, but Graham realizes that the pawn on c7 is an easy target for the f4 Bishop. 12. a3 a6 13. b4 b5 14. Qb3 e6 15. Rac1 Qb6 16. Rc2 The basics. Graham doubles Rooks on an open file. If things break, then she is prepared to break through. Nh5 The f4 Bishop is a thorn in Graham's side, so she hopes to remove it. Kayla simply repositions the Bishop to a post almost as favorable, while Graham leaves her Knight stuck on the rim for too long a time.

17. Bh2 Rec8 18. Rfc1 Ne7 19. Ne2 Rxc2 20. Rxc2 Nc6 21. Qb1 a5 Graham wants to get some active play. Kayla has held control over the position long enough. 22. bxa5 Nxa5 23. Nc3 Nc4 This is such a lovely Knight that Kayla must remove it from the board. 24. Bxc4 dxc4 25. Ne4 Kayla finally blinks. Graham's breakthrough nets an important pawn. Now White's empire falls like a house of cards. Kayla could have gone in to complications with a3-a4!: 25. a4 b4 26. Ne4 b3 27. Rxc4 Bxa4 28. Bc7 Qb7 with terrible complications. Black's Knight on h5 is out of play for now. It is

really hard to judge. But we know that the actual move played, simply loses the a-pawn for nothing. That cannot be good. 25... Rxa3 26. Rxc4



bxc4 This is what Kayla missed, a beautiful back rank mate!! Well played and disguise Graham! 27. Qc1 (27. Qxb6 Ra1+ 28. Qb1 Rxb1+ 29. Ne1 Rxe1#) 27... Qa6 The game is over. 28. Bd6 Ra1 29. Qxa1 Qxa1+ 30. Kh2 c3 31. Nxc3 Qxc3 32. Ne5 Bxe5+ 33. Bxe5 f6 34. Bg3 Nxg3 35. Kxg3 Bc6 36. f3 Qxe3 37. d5 Qe5+ 38. Kf2 Bxd5 39. g3 Qd4+ 40. Kg2 Qd2+ 41. Kg1 Bxf3 42. Kf1 Qe2+ 43. Kg1 Qg2# 0-1

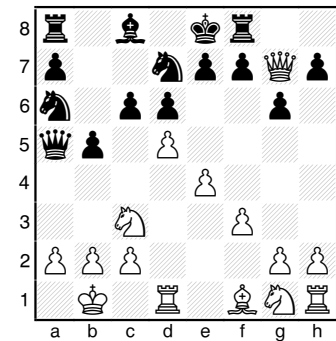
All Girls Ch - 5

Graham Gibson

Autumn Douthitt

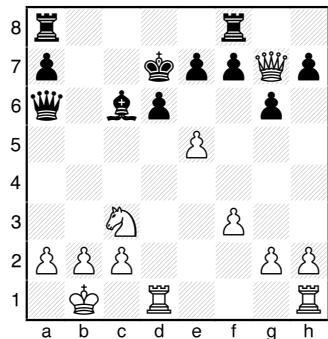
Annotator Henry Robinson

1. e4 d6 2. d4 Nf6 3. Nc3 g6 4. Be3 Bg7 5. Qd2 c6 6. O-O-O b5 7. f3 Nfd7 8. Bh6 Bxh6 9. Qxh6 Qa5 10. Qg7 Rf8 11. Kb1 Somewhat of a strange opening. Graham has infiltrated on the Kingside, but has no immediate threats. Autumn has begun a pawn storm on the queenside. This looks like anything but a quick draw. Na6 12. d5 Graham follows the principle that a wing attack is best met by a push in the center. (See diagram.) Bb7 A bit too slow on Autumn's part. Apparently she prepares for emergency castling long, but active play would have been better: 12... b4 13. dxc6 bxc3 14. cxd7+ Bxd7 15. Bxa6 Rb8 16. b3 Qxa6 17. Nh3 Rc8 (planning Qa3 and mate on



After 12. d5

b2) 18. Rd3 Bxh3 19. gxh3 Qa5. Maybe Graham would be a bit better; Autumn's position would definitely be better. 13. Nge2 b4 14. dxc6 bxc3 This is a disaster. Much better would have been ...Bxc6. 15. cxd7+ Kxd7 16. Nxc3 Bc6 17. Bxa6 Qxa6 18. e5



Graham is winning, but a draw gives her the championship and the \$1000 scholarship. She offers the draw and is crowned champion. 1/2-1/2

All Girls U10 Competition- 1

Keva Jackson

Mary Grace Gower

Co-Champion Gower outwits a Scholar's Mate attempt, showing how it should be done.

1.e4 e5 2.Bc4 Bc5 3.Bxf7+? Kxf7 4.d4 Bxd4 5.c3 Bc5 6.h4 Qf6 7.Bg5?? Qxf2# 0-1

Gower did a little better playing White in Round 3-she mated in 5 moves!

Tenn. Scholastic Team Finals

The Scholastic Team Finals were held on March 26 at the Roaden University Center of Tenn. Technological Univ. (TTU). The four-round Game 60 tournament was comprised of the top 4 teams from each championship section of the four regions of Tenn.

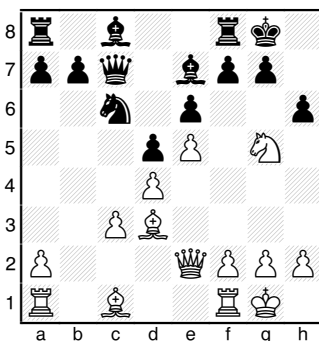
White Station HS took clear first in the **High School Section** with 3.5 points. Memphis University School finished in second place with 3.0 points. Therefore, four members of White Station HS received the four-year TTU Service Scholarships of \$4,000 per year. The second place scholarship awards of \$2,500 per year went to four members of Memphis University School.

In the **Jr. High School Section**, **White Station HS** again captured a clear first with 3.5 points. White Station Middle and Farragut Middle School tied for second place with 3.0 points. The **Elementary Section** was also won with 3.5 points. **Grahamwood Elementary** triumphed; the University School of Nashville and Campbell Home School tied for second with 3.0 points. Another Memphis school triumphed in the **Primary Section**. **Grahamwood Elementary** (winning school of the **Primary Section**) again won, this time going undefeated with a perfect 4.0 score. Three teams finished with 3.0 points to take second-place honors: University School of Nashville, St. George's School, and Woodland Elem. School.

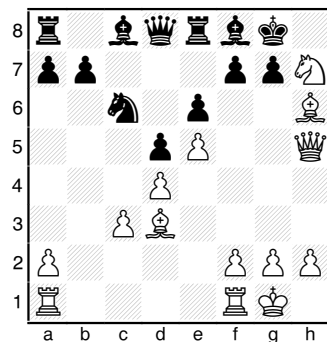
Here is a tense encounter from the event. Others are located throughout this issue.

Team State Finals 2011
Sanchit Wadhawan
Jason Fu

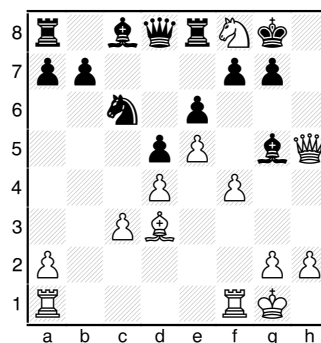
1. e4 c5 2. c3 Nf6 3. e5 Nd5 4. d4 cxd4 5. Nf3 Nc6 6. cxd4 e6 7. Bc4 d6 8. O-O Be7 9. Nc3 Nxc3 10. bxc3 O-O Black can equalize with dxe with the queens off or on: 10... dxe5 11. dxe5 Qc7= or 11... Qxd1 12. Rxd1 Bd7 13. Be3 O-O-O= 11. **Qe2 Qc7 12. Bd3 d5?!** This is a mistake, entombing his bishop. Besides, White quickly reveals that he has another route to the kingside! 13. **Ng5** Better was Bg5, dumping the potentially ineffective queenside bishop. **h6?!**



Better was g6. 14. **Qh5** (14. Nh7! Rd8 15. Qg4 Kh8 16. Qf3 Bf8 17. Bg5! Re8 (17... hxg5 18. Qh3 g4 19. Qh5 g6 20. Qh4 Kg7 21. Nf6 Ba3 22. Qh7+ Kf8 23. Bxg6) 18. Qh3 Nxe5 19. dxe5 Qxe5 20. Rael Qxc3 21. Nxf8 Rxf8 22. Bxh6 e5 23. g4) 14... **Qd8?** Fritz11 suggests: 14... Nxe5 15. dxe5 Qxc3 16. Bh7+ Kh8 17. Bf5 Bxg5 (17... Qxa1 18. Nxf7+ Rxf7 19. Qxf7 exf5 20. Qxe7) 18. Bxg5 exf5 19. Bxh6 gxh6 20. Qxh6 +/- 15. **Nh7 Re8 16. Bxh6! Bf8**



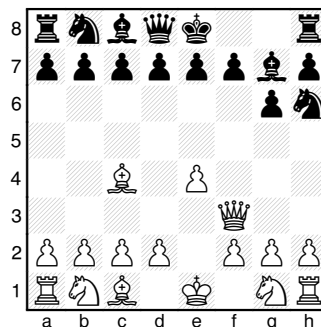
16... gxh6 17. Qxh6 f5 18. exf6 Bxf6 19. Nxf6+ -+) 17. **Bg5** The immediate Nf6+ was also decisive: 17. Nf6+ gxf6 (17... Qxf6 18. exf6) 18. Qg4+ Kh8 19. Bxf8 Rxf8 20. Qh5+ Kg8 21. Qh7# 17... **Be7 18. Nf8??** Always try to continue with check: 18. Nf6+! Bxf6 19. exf6 gxf6 20. Qh7+ Kf8 21. Qh6+ Ke7 22. Bxf6+ Kd7 23. Bxd8; also, 18. Bxe7 Nxe7 19. Ng5 (hitting both h7 and f7) Ng6 20. Bxg6 fxxg6 21. Qh7+ Kf8 22. Qh8+ Ke7 23. Qxxg7#) 18... **Bxg5 19. f4** (19. Nh7!? Bh6 20. Rael Qc7 21. g4 Ne7 22. g5 +-)



19... **Kxf8?? 20. fxg5 Qc7 21. g6 Nd8 22. gxf7 Nxf7 23. Bg6 1-0**

Team Finals Board 4, Rnd 4
Chase Martin
Rachel Maddux

1. e4 Nh6 2. Bc4 g6 3. Qf3 Bg7



4. **Qxf7+??** Be alert at all times and don't assume that you lower-rated opponent has simply overlooked a tactic. **Nxf7 5. Nf3 O-O 6. O-O** And Black went on to win after many more moves. **0-1**

National High School Championship

The 2011 National High School (K-12) Championship was held at Opryland in Nashville, TN from April 29 - May 1. This 5-sectioned tournament was a 7-round Swiss tournament with a time control of 120 minutes game. In the K-12 Championship Section, 2278-rated Eric Rosen of Illinois won the event with a perfect 7.0. Many Tennesseans played in the various sections of the tournament and distinguished themselves.

K-12 Championship Section: Peter Suich finished in 16th place, garnering 5.0 points, and Graham Horobetz also finished with 5.0 points. Vikas Kumar finished with 4.5 points tying for 47th place; and Neglia Salvatore finished with 4.0 points, tying for 77th place out of 295 players.

K-12 Under 1600 Section: Carter Burgess finished with 5.5 points, tying for 7th place; Jonathan Warren and Alexander Qin finished with 5.0 points, tying for 21st place; Joey Santoro finished with 4.5 points, tying for 38th place; Jordan Hoyos, Deepak Sathyan, and Kayla Weishaar finished with 4.0 points, tying for 66th place.

K-12 Under 1200 Section: the highest finishing Tennessean was Joshua Campbell who tied for 44th place (finishing 61st) with 4.5 points. Too, Anthony Bonvissuto and Puja Jagasia also earned 4.5 points for a very respectable finish. Colin Smith, David Williams, and David Yue tied for 77th with 4.0 points.

K-12 Under 800 Section: Kevin Wang tied for second place (officially listed as 7th) with 6.0 points;

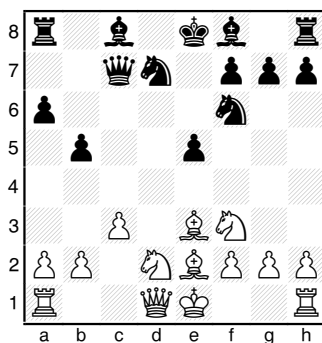
Emanuel Paxton tied for 19 place with 5.0 points; Dhruv Chandra, Hamza Hussein tied for 39th place with 4.5 points. Joshua Goco, Walid Mohamed, and Jacob Hoyos tied for 59th place with 4.0 points.

K-12 Unrated Section: Mary Grace Glower finished 88th place with 1.5 points.

Blitz Tournament: Matthew Marsh finished 32nd out of 263 participants with 8.5 points out of 12 games. Vikas Kumar finished 41st with 8.0 points; and Corry Marsh finished 66th with 7.5 points.

National HS Ch - 2
Sanchit Wadhawan - 1644
Charles Swan - 1932

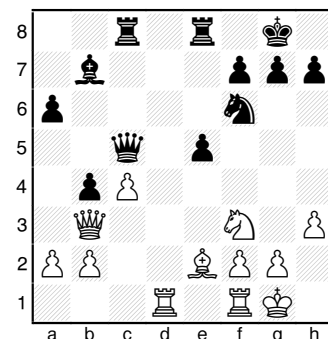
1. e4 c5 2. c3 d5 3. exd5 Qxd5 4. d4 Nf6 5. dxc5 Qxc5 6. Be3 Qc7 7. Na3 a6 8. Nc4 Nbd7 9. Be2 (9. Qf3 e5 10. O-O-O Be7 11. Be2 O-O 12. Nh3 =) 9... b5 10. Nd2 e5 11. Ngf3 Properly ignoring the possible attack on e3. (11. Bf3 Bb7 12. Bxb7 Qxb7 13. Ngf3 Be7 14. Qc2 h6 =/+)



11... Bd6 (11... Ng4 12. a4 Nxe3 13. fxe3 Bc5?! 14. Ne4 Bxe3 15. Nd6+ Kf8 16. axb5 or 11... Bc5 12. a4! (12. Bxc5 Nxc5 13. O-O O-O 14. Nb3 Rd8 15. Qc2 Ne6 16. Rad1 Bb7 Black is better but it really isn't obvious how he can hurt White.) 12... Bxe3 13. fxe3 Ng4 14. Nf1 O-O 15. axb5 Nc5 16. Qc2 =/+)

12. h3 Bb7 13. O-O O-O 14. c4 Stronger is a4 followed by Qc2. b4 15. Nb3 Correctly

anticipating Black's Nc5. (15. b3 Nc5 -/+) 15... Nc5 (15... Rfd8 16. Qc2 a5 17. Rad1 a4 18. Nbd2 Nc5 -/+) 16. Nxc5 Bxc5 17. Bxc5 Qxc5 18. Qb3 Rfe8 = 19. Rad1 Rac8



20. Ne1 Stronger is a3, pressuring the queenside: 20. a3 a5 (20... Bxf3 21. axb4) 21. axb4 axb4 22. Qe3= 20... e4 Stronger was Be4, rerouting (and protecting) the bishop to control more white squares. 21. Nc2 a5 22. a3 Better was Qe3 with certain equality. Ba6 23. axb4?! axb4? (23... Bxc4 24. bxc5 Bxb3 25. Rc1 Rxc5) 24. Nxb4 Bxc4 25. Bxc4 Qxc4 26. Qxc4 Rxc4 27. Nd5 Nxd5 28. Rxd5 Rb4 29. Rfd1 (29. Re1 f6 30. Re2 Reb8 31. Rd7 f5 32. g4 =) 29... Rxb2 30. Rd8 Rb8 31. Rxe8+ Rxe8 32. Re1 g5 33. Kh2 f5 34. Kg3 h5 35. f3 e3? (35... f4+! 36. Kf2 e3+) 36. f4 g4 37. hxg4 hxg4 38. Kh4 1/2-1/2

2011 Candidate Matches

The FIDE Candidates matches to determine who will qualify as the Challenger for the 2012 World Champion match are still underway and will conclude May 27. The fight is being waged with a time control of 120 minutes for the first 40 moves, 60 minutes for the next 20 moves and then 15 minutes for the rest of the game, plus an additional 30 seconds per move starting from move 61. You don't have to go to Kazan to view the games, currently they are online.

Tenn. Senior Open Chess Tournament

The 2011 Tenn. Senior Open Chess Championship was held May 13-15 at the Fair Park Senior Center of Crossville, TN. The 5-round Swiss had a time control of 2 hours Game and two formats to accommodate player's schedules, offering three games on Saturday rather than the option of playing one game on Friday. Attendance was relatively low this year even though a few players from three other states attended. The tournament had only 22 seniors (50 years plus).

Three players ended up in a tie for first place with 4.0 points: **Dr. John Patty, Alan Kantor, and Paul Semmes.** Last year champion, Leonard Dickerson, yielded one draw too many - though it could have been even worse for him as he played in the grueling Saturday 3-day schedule. But he did win a nice golf umbrella!

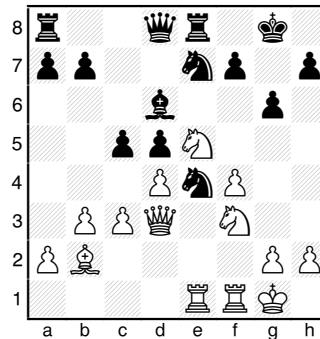
At the start of each round, prizes were again given to the participants. Donations (prizes) included umbrellas, vintage chess sets, coupons for complete meals and pizzas at local restaurants, coupons for bottles of wine, and tickets for shows at the Cumberland Co. Playhouse. Moreover, there were abundant snacks including sodas and water available all throughout the tournament.

Again, the participants-who were welcomed by the mayor-thought that the site was excellent and the venue well suited for the event.

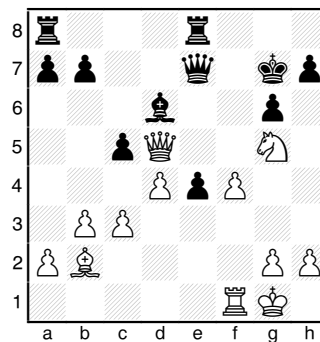
Many games from the event are included in this issue. First for showcasing is Kentucky's William Bragg sacrificial game against Champion John Patty.

Tenn. Senior Open Ch William Bragg - 1903 John Patty - 2200

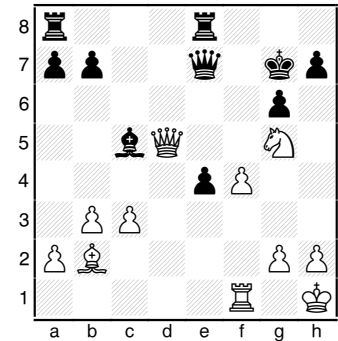
1. e4 e6 2. b3 d5 3. Bb2 Nf6 4. exd5 exd5 5. Nf3 Be7 6. d4 O-O 7. Bd3 Bb4+ 8. c3 Re8+ 9. Ne5 Bd6 10. O-O Nc6 Black correctly assesses that his development lags too much to comfortably win a pawn: 10... Bxe5 11. dxe5 Rxe5 (11... Ng4 12. Be2 Nxe5 13. c4 Ng6 14. Qd4 f6 15. Bf3 Nc6 16. Qxd5+ =) 12. c4 Re8 13. cxd5 Nxd5 = 11. f4 Ne7 12. Qc2 g6 13. Nd2 Bf5 Fritz11 suggests the better Ng4: 13... Ng4 14. Rael f6 15. Ndf3 Nh6 16. Bcl c6 =) 14. Rael c5 15. Ndf3 Bxd3 16. Qxd3 Ne4



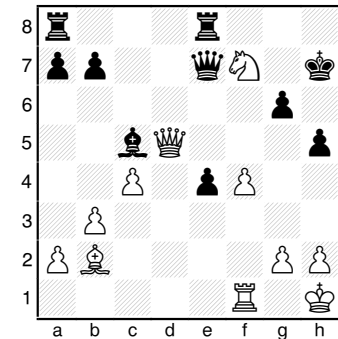
17. Nxf7!? Kxf7 18. Rxe4!! dx e4 (18... c4 19. Ng5+ Kf8 20. Qh3 Nf5 21. Rxe8+ Kxe8 22. Qxh7 +-) (18... Kg8 19. Re2 Nf5 20. Ne5 Rc8 21. g4) 19. Qc4+ Kg7 (19... Kf6 20. Ng5 Rf8 21. dxc5 Bxc5+ (21... Bxf4 22. h4 Qd5 23. Rxf4+ Kg7 24. Qxd5 Nxd5 25. c4+ Kg8 26. Rxf8+ Rxf8 27. cxd5) 22. Qxc5 Kg7 23. Ne6+) 20. Ng5 Nd5 21. Qxd5 Qe7



22. dxc5? 22. c4! Rad8 (22... Kh6 23. Nf7+ Kg7 24. dxc5+ Kf8 25. Nxd6 Qe6 26. Qd4) 23. dxc5+ Be5 24. Bxe5+ Kf8 25. Bd6 +- 22... Bxc5+ 23. Kh1



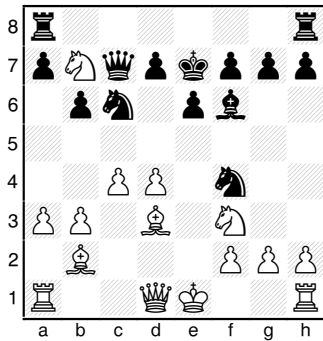
h5?! (23... Rad8! 24. c4+ Kf8 25. Nxf7+ Qxh7 26. Qxc5+ Kg8 27. Be5 Rd3 28. Qxa7 Red8 =) 24. c4+ Kh6 (24... Kf8 25. f5) 25. Nf7+ Kh7 And a draw was agreed.



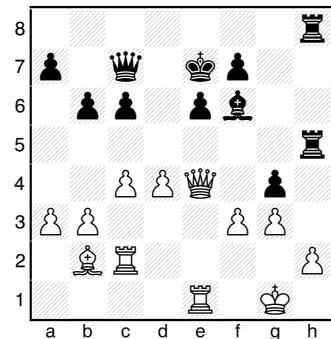
However, f5 is decisive: 26. f5 g5 (26... Rad8 27. fxc6+ Kxc6 28. Qf5#) 27. f6 1/2-1/2

Tenn. Senior Open Ch William Davis - 1291 Robert Hydzyk - 1623

1. d4 e6 2. Nf3 b6 3. e3 Bb7 4. Bd3 c5 5. b3 Be7 6. Bb2 Nc6 7. a3 cxd4 8. exd4 Bf6 9. Nbd2 Nge7 10. Ne4 Nd5? 11. Nd6+ Ke7 12. Nxb7 Qc7 13. c4 White wisely abandons the knight, settling to maintain his gains. (13. Ba6 Nb8 14. Qe2 Nxa6 15. Qxa6 Qxc2 -/+) 13... Nf4



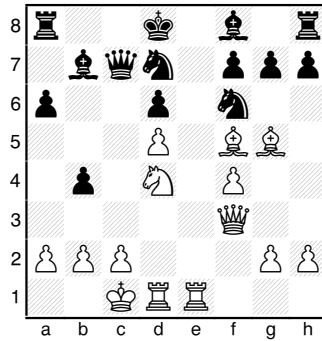
14. O-O (Fritz11 prefers going for more with d5, threatening d6+: 14. d5 exd5 15. Bxf6+ Kxf6 16. O-O) 14... Nxd3 15. Qxd3 Qxb7 16. Rfe1 Qc7 17. Rac1 Rhe8 18. Qxh7 g6 19. Qh6 Rh8 20. Qe3 g5 21. g3 Better was Ne5. g4 22. Ne5 Rag8 23. Nxc6+ dxc6 24. Rc2 Rg5 25. Qe4? Much better was d5, taking advantage of Black's poor king placement and simplifying the position. Rgh5 26. f3



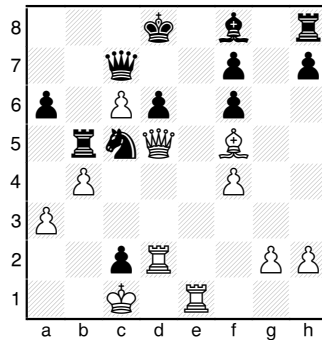
gxf3? (26... Rxh2! 27. f4 {27. Rxh2 Qxg3+ 28. Rg2 Qh3 29. Qxg4 Qh1+ 30. Kf2 Bh4+ 31. Rg3 Qh2+ 32. Ke3 Qxb2 -+} 27... R2h3) 27. Qxf3 Qd6 28. Rd2 Rf5?? 29. Qxf5 1-0

2011 TN Senior Open - 3
Paul Semmes - 1966
David Mueller - 1774

1. e4 c5 2. Nf3 d6 3. d4 cxd4 4. Nxd4 Nf6 5. Nc3 a6 6. Bg5 e6 7. f4 Nbd7 8. Qf3 Qc7 9. O-O-O b5 10. Bd3 b4 11. Nd5!? exd5 12. exd5 Bb7 13. Rhe1+ Kd8 14. Bf5 Better was the immediate Nc6+.

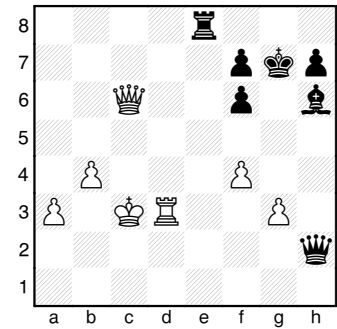


Nc5? Black could have escaped the coming bind with Qc5, vacating another square for his king: 14... Qc5 15. Qh5 Kc7 = 15. Bxf6+ gxf6 16. Nc6+ Bxc6 17. dxc6 Rb8 18. Qd5 Rb5 19. Rd2 Stronger was Re3. b3! 20. a3 (20. a4 Ra5 (20... Nxa4 21. Qe4) 21. Re3 Bg7 22. Rc3 Ke7 =) 20... bxc2 21. b4

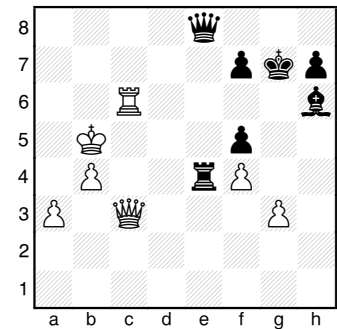


Nb3?! Black makes a bid to win but Ne6 was better: 21... Ne6 22. Qe4 Be7 23. Bxe6 fxe6 24. Qxe6 Re8 25. Rxc2 Rb6 26. Qc4 f5 +/- 22. Qxb3 Rxf5 Black has done well to survive to this point. But White still has a slight advantage due to Black's poorly placed pieces. 23. Rde2 Better was Qe3. Bh6 24. g3 Qxc6 Stronger was the immediate Re5, keeping the rooks at bay and reducing White's firepower. 25. Rxc2 (25. Qxf7 Rxf4 26. gxf4 Bxf4+ 27. Re3 d5 28. Qe7+ Kc8 29. Qg7 Bxe3+ 30. Rxe3 Rd8 31. Qxh7 =) 25... Qd5 =/+ 26. Qe3 Re5 Much better was Qb7. 27. Qb6+ Ke7 28. Rd1 Qe6 -/+ 29. Rc7+ Kf8 30. Rxd6 (30. Qxd6+

Kg7 31. Qxe6 Rxe6 -- Black will activate his bishop and decide the game.) 30... Re1+ 31. Kb2 Re2+ 32. Rc2 Rxc2+ 33. Kxc2 Qc4+ 34. Kd2 Much better was Kb2, trying to find some shelter on the a-file.) Kg7 35. Qxa6 Qa2+ 36. Kc3 Qxh2 37. Rd3 Re8 White is in big trouble and must run to b3 with his king. 38. Qc6



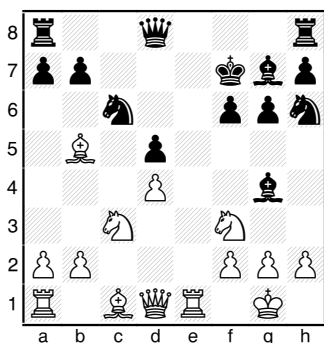
Re2 Better is Qe2 with the threat Re3. White's queenside pawns won't advance too far before Black's bishop comes to play. 39. Qf3 f5 --+ 40. Kc4 Re4+ 41. Kb5 Qc2 42. Rc3 Qa2 43. Qd3 Qe6 44. Rc6 Qe8 45. Qc3+



f6?? (45... Kg8! 46. Qc5 {46. Ka5 Bg7 47. Qc1 Qa8+ 48. Kb5 Re8 and Black has a decisive 4-point advantage.} 46... Re6 47. Kb6 Qb8+ 48. Ka6 Bf8 --+) 46. Qxf6+ Kg8 47. Qxh6 Re7 48. Qg5+ Rg7 49. Qxf5 Qe2+ 50. Kc5 Qe3+ 51. Kc4 Qc1+ 52. Kb5 Qf1+ 53. Ka4 Qd1+ 54. Qc2 Ra7+ 55. Kb3 Qd5+ 56. Qc4 Rxa3+ 57. Kxa3 1-0

Tenn. Senior Open Ch
 Benjamin Blair - 1591
 Leonard Dickerson - 2200

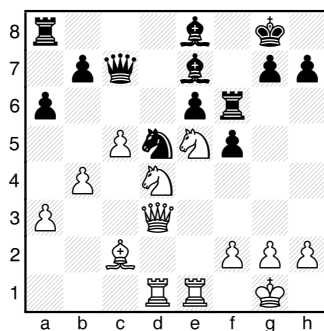
1. e4 c5 2. c3 g6 3. d4 cxd4
 4. cxd4 d5 5. e5 Bg7 6. Nf3
 More resistant may be f4,
 shoring up e5. Nc6 7. Bb5
 f6 This is premature if not
 just weak. I succeeded in
 taking myself out of book!
 8. O-O Nh6 9. exf6 exf6 10.
 Re1+ Kf7 11. Nc3 Bg4 Fritz
 gives White a healthy full
 point.



12. h3? I actually saw the
 following possibility during
 the game but it was too late
 to do anything about it.
 12. Ba4 Nf5 (12... Bxf3 13.
 gxf3 Re8 14. Rxe8 Kxe8 15.
 Qb3 Kf8 16. Qxb7 Ne7 17. Bf4
 Nhf5 18. Re1 +/-) 13. Nxd5
 Nfxd4 14. Bb3 Bxf3 15. gxf3
 Kf8 16. Be3 f5 and Black is
 embarrassed. 12... Bxf3 13.
 gxf3 Nf5 14. Bxc6 (14. Ba4
 Nfxd4 15. Be3 Re8 16. Nxd5
 Qd6 17. Nc3 Red8 =) 14...
 bxc6 +/- 15. Bf4 Qb6 16. Ne2
 Rhe8 17. Rc1 Re6 18. Rc5?
 Qxb2 19. Qd3 Rae8 I saw
 that I could win the
 exchange but I thought that
 I would be giving Black too
 much activity as
 compensation. With threats
 along the e-file and also
 Nf5-h4-f3, I thought that my
 position was worth at least
 4-points. 19... Nxd4 20.
 Nxd4 Rxe1+ 21. Kg2 Qa1 22.
 Bh2 -/+ 20. Rc2 Qb5 21. Qxb5
 cxb5 22. Kf1 (22. Rc7+ Kg8
 23. Be3 Nxe3 24. Nf4! I
 didn't see this! Now I'll
 be lucky to maintain any
 advantage! R6e7 25. Rxe7
 Rxe7 26. fxe3 f5 27. Kf2 Rd7
 +/- 22... Nxd4 0-1

Tenn. Senior Open Ch - 5
 Paul Semmes - 1966
 Brian Moore - 1765

1. e4 e6 2. d4 d5 3. Nc3 Nf6
 4. Bg5 dxe4 5. Bxf6 Qxf6 6.
 Nxe4 Qg6 7. Ng3 Nc6 8. Bd3
 Qf6 The weakening f5 was
 necessary, not wasting any
 more time shifting the queen
 about. 9. Nf3 Bd7 10. c3 Qd8
 A third tempo wasted with
 the queen. Moving the queen
 to f4 would have some
 purpose, controlling some
 important dark squares and
 targeting White's queenside.
 11. O-O Bd6 +/- 12. Ne4 Ne7
 13. Ne5 Nd5 (13... Bxe5 14.
 dxe5 Bc6 15. Qe2) 14. Bc2
 Be7 Better was Bxe5 with the
 idea of castling queenside.
 15. Qd3 Stronger was Qh5,
 forcing kingside weaknesses.
 a6 16. a3 f5 17. Nd2 Fritz
 suggests Nc5 with advantage.
 O-O 18. Rfel Rf6 19. Qf3 Be8
 20. c4 Nb6 21. Qd3 c5 22.
 Ndf3 cxd4 23. Nxd4 Bc5 24.
 Rad1 Qc7 25. b4 Be7 The
 poor-looking Bxd4 was
 necessary to remove the
 pressure from e6. 26. c5

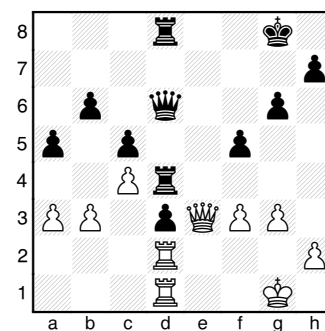


Nd5? 27. Nxe6 Nf4 28. Nxc7
 Nxd3 29. Rxd3 Rc8 30. Nxe8
 Rxe8 31. Bb3+ Kh8 (31... Kf8
 32. Nd7#) 32. Nf7+ Kg8 33.
 Nd6+ Kf8 34. Nxe8 1-0

Tenn. Senior Open Ch
 Donald Wade - 1348
 Robert Hydzyk - 1623

1. Nf3 e6 2. g3 b6 3. Bg2
 Bb7 4. c4 c5 5. O-O Ne7 6.
 b3 d5 7. d3 g6 8. Bb2 d4 9.
 Nbd2 (9. b4 Bg7 10. bxc5
 bxc5 11. Nbd2 Nd7 12. e3 Rb8
 13. Rb1 O-O 14. exd4 Nf5 15.
 Qc2 cxd4 +/-) 9... Bg7 10.
 Re1 A little more forcing

was e3 or b4. O-O 11. Nf1
 Nbc6 12. Bc1 Ne5? 13. Ng5
 (13. Nxe5! Bxg2 14. Nxc6
 fxg6 15. Kxg2 Nf5 +/-) 13...
 Bxg2 +/- 14. Kxg2 N5c6 15.
 Rb1 Nf5 16. Nf3 Re8 17. a3
 a5 18. N3d2 Better was
 Nf1-d2. Now Black even has
 the prospect of h5. e5 19.
 Ne4 Nd6 20. f3 f5 21. Nxd6
 Qxd6 22. e4 dxe3 Fritz
 suggests that f4 is stronger
 but this continuation is
 also strong. 23. Nxe3 Rad8
 24. Nd5 Ne7 25. Nxe7+ Rxe7
 26. Bg5 Bf6 27. Bxf6 Qxf6
 28. Qc2 Red7 29. Rbd1 Rd4
 30. Qe2 Re8 31. Kg1 Qd6 32.
 Qc2 White needs to
 temporize with king moves
 and keep constant pressure
 on e5. Rd8 33. Qe2 Re8
 Stronger is the immediate
 e4. 34. Rd2?! (34. Qc2 Kg7
 35. Qb2 Rxd3 {35... Rd8 36.
 Rd2 f4 37. g4} 36. Rxd3 Qxd3
 37. Rxe5 =) 34... e4 35.
 Red1 Rd8 (35... e3 36. f4
 Kf7 37. Rc2 -+) 36. Qe3 (36.
 fxe4 fxe4 37. Qe3 Kg7 -+)
 36... exd3



37. Kf2 Fritz suggests
 taking the pawn, given Black
 only a slight plus: 37.
 Rxd3! Rxd3 (Better is Rd7.)
 38. Rxd3 Qxd3 39. Qe6+ Kg7
 40. Qe7+! This is the move
 that would be difficult to
 foresee. Kh6 41. Qh4+ Kg7
 42. Qe7+ Kh8 43. Qe5+ Kg8
 44. Qe6+ Kf8 45. Qf6+ =
 37... Qd7 38. Re1 a4 39.
 bxa4 Rxc4 40. a5 bxa5 41.
 Red1 Rd4 42. Qe5 c4 43. Qxa5
 Qd5 44. Qxd5+ R4xd5 45. Ra2
 Better is Rc1 to retard the
 advance of the pawns, but it
 is still hopeless: 45. Rc1
 Rc8 46. Rc3 Kf7 47. a4 Ke6
 48. Ke1 Rdc5 -+ 45... c3 46.
 Raa1 c2 47. Rd2 Rb8 0-1

Tenn. Senior Open Championship



Harry Sabine opening the 4th Round. Table 2 William Bragg, Table 5 Michael Hale (pink shirt) vrs Brian Moore, Board 8 Hydzik vrs Michael Collins (cap), and Bonnie's hair!



William Bragg (Table 2, green suspenders), Paul Semmes (Table 1, blue Jacket) vrs John Patty, Michael Hale's back (Table 5, pink shirt), Mueller (light blue shirt)vrs. William Davis, Roy Manners (red shirt), Robert Hydzik (Tbl 8, dark blue shirt) vrs Michael Collins (white cap), and Bonnie Shapbell (foreground on Table 11).



Board 9: Jerry Jones vrs
Donald Wade
Board 6: Top Below 1000
Harold Winfield vrs. Jim
Hughes
Board 3: Co-Champion Alan
Kantor vrs Robert Mahan

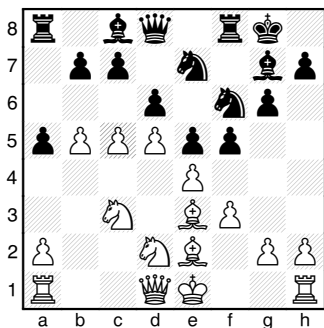
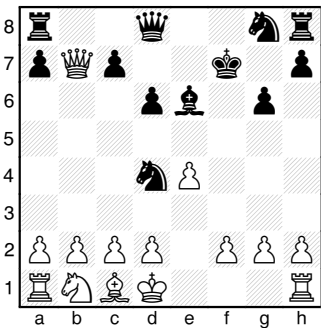
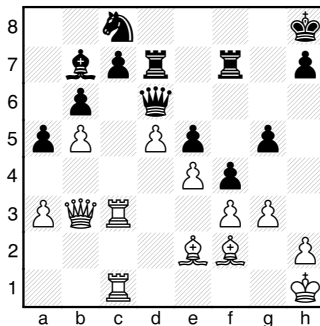
Co-Champions Dr. John Patty versus
ETSU Dean Paul Semmes in 4th Round



Top Class B/C co-Champion David
Mueller (white) versus Top
Below 1400 Class winner William
Davis

2011 TN Senior Open - 4
 John Patty - 2200
 Paul Semmes - 1966

1. d4 Nf6 2. c4 g6 3. Nc3 Bg7 4. e4 d6 5. Nf3 O-O 6. Be2 e5 7. Be3 Nc6 8. d5 Ne7 9. Nd2 Nd7 Black could have tried the radical c5 himself to hold off White's coming queenside assault. 10. b4 f5 11. f3 Nf6 12. c5 a5 13. b5



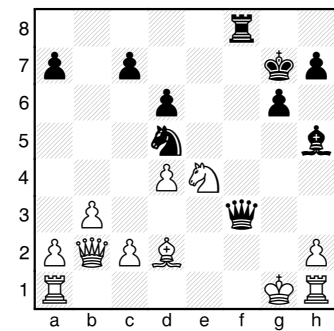
dxc5 (13... fxe4 14. fxe4 dxc5 15. Bxc5 b6 16. Ba3 Ne8 17. Nf3 Nd6 The difference in this sequence of moves is that White has to spend an additional tempo before castling and Black's pieces are freed from their cramped position.) 14. **Bxc5 b6** 15. **Be3 Ne8** Black could transpose into the analysis of the 13th move if he plays fxe. 16. O-O Nd6 17. Rc1 Rf7 18. Nc4 Kh8 19. Qb3 f4 Better was Bb7, keeping the pawn tension. Obviously Black still has kingside intentions. 20. **Bf2 g5** 21. **Qa3** (21. Na4 Rb8 22. Nxd6 Qxd6 23. Rfd1 White has a major 2-point advantage and will steadily increase his grip.) 21... **Nxc4** 22. **Bxc4 Rf6** 23. Rfd1 Rd6 24. Be2 Bf8 25. Na4 Ng6 26. Qc3 Rd7 27. Nb2 Bb4 28. Qc2 Bb7 29. Rd3 Qe7 30. Qb3 Rf8 31. a3 Bd6 32. Nc4 Rf7 33. Nxd6 Qxd6 Better was Rxd6. 34. **Rdc3** (34. Rc6 Bxc6 {34... Qf8 35. Re6 Rf6 36. d6} 35. dxc6) 34... **Ne7** 35. **Kh1** (35. Rc6! Bxc6 36. dxc6 Nxc6 37. bxc6 Rde7) 35... **Nc8** 36. **g3** A nice concept to make use of the white-squared bishop.

Qe7 (Better was Qf6 to thwart the bishop's intrusion into the fray: 36... Qf6 37. Bf1 Qh6 38. Kg1 Nd6 39. g4 Qg6) 37. **Bf1 Nd6** Fritz suggests the desperate g4 to temporarily block the bishop's diagonal as well as weaken e4: 37... g4 38. fxc4 Nd6 39. Bg2 f3 40. Bxf3 Rxf3 41. Rxf3 Nxe4 +- 38. **Bh3 Ne8** 39. **Bxd7** The defense has crumbled. **Qxd7** 40. **a4** (40. gxf4 gxf4 41. d6 cxd6 42. Bxb6) 40... **Qd8** 41. **Qc2 Rd7** 42. **Kg2 Qf6** 43. **g4 Rg7** 44. **Rh1 Kg8** 45. **h4 h6** 46. **hxc5 hxc5** 47. **Qa2 Qd6** 48. **Rcc1 Rh7** 49. **Rxh7 Kxh7** 50. **Rh1+ Kg7** 51. **Rh5 Qg6** 52. **Qb2 Qf6** 53. **Be1 Bc8** 54. **Bc3 Qg6** 55. **Bxe5+ Kf7** 56. **Qc2 Nf6** 57. **Qxc7+ Nd7** 58. **Bd4** 1-0

Reg. 1 Team Qualifier
 Kevin Hong
 Elo Wittig

1. **e4 e5** 2. **Nf3 Nc6** 3. **Bc4 Bc5** 4. **Nxe5??** White tries the Center Fork Trick, overlooking his misplaced bishop will come under attack. **Nxe5** 5. **Bb3 Nc6** Decisive was Qh5, striking h2 and e4. And even the better Ng6 negates the following pawn-winning combination. 6. **Bxf7+ Kxf7** 7. **Qh5+ g6** 8. **Qxc5 d6** 9. **Qb5 Be6** It is not necessary to give White yet another pawn. Black should play a6 and then consolidate his kingside for an easy win. 10. **Qxb7 Nd4** 11. **Kd1?** Better was the simple Na3.

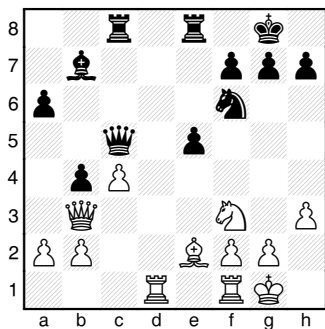
Bg4+ Decisive was Qg5: 11... Qg5! 12. c3 (12. Qxa8 Qxg2 13. Re1 Qf3+) (12. e5 Qg4+ 13. f3 Qxg2 14. Re1 Bg4 15. Qxc7+ Kf8 16. Qxd6+ Kg7 17. Qc7+ Ne7 18. Qxe7+ Kg8 19. fxc4 Qf3+ 20. Re2 Qxe2#) 12... Qxg2 13. cxd4 Qxh1+ 14. Kc2 Ne7) 12. **f3 Nxf3?** 13. **Qb3+ Kg7** 14. **gxf3 +/-** Now it is White who is winning. **Bh5** 15. **Qc3+ Kf8** 16. **d4 Qf6** 17. **Ke2 Re8** 18. **Nd2 Ne7** 19. **Kf2 Kg7** (19... Qh4+ 20. Kf1 Nf5 21. Kg2 Qg5+ 22. Kf2 Qh4+ 23. Kf1 d5 =) 20. **b3?!** The simple d5 breaks the attack because the threats imposed by the queen would be canceled. **Nd5!!** 21. **Qb2 Rxe4** Even stronger was Rhf8 where there is no answer to Black's threat of Bxf3. 22. **Nxe4 Qxf3+** 23. **Kg1 Rf8!** 24. **Bd2**



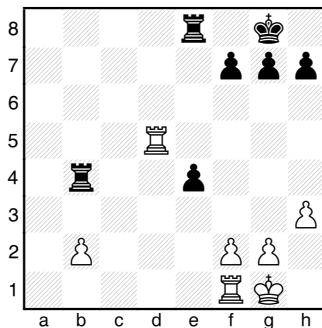
Nf4 (24... Ne3! 25. d5+ Kh6 26. Bxe3+ Qxe3+ 27. Kg2 Qxe4+ 28. Kg1 Qg4#) 25. **d5+ Kh6?** Much better was Kg8, avoiding the pin. 26. **Bxf4+ Rxf4** 27. **Re1 Rxe4** 28. **Rxe4 Qxe4** 29. **Qc1+ g5** 30. **h4 Qg4+** 31. **Kf1 Qf3+** 32. **Kg1** This obvious draw ended in a win for White. 1-0

2011 National HS Ch - 2
 Sanchit Wadhawan
 Charles Swan

1. e4 c5 2. c3 d5 3. exd5
 Qxd5 4. d4 Nf6 5. dxc5 Qxc5
 6. Be3 Qc7 7. Na3 a6 8. Nc4
 Nbd7 9. Be2 (9. Qf3 e5 10.
 O-O-O Be7 11. Be2 O-O 12.
 Nh3 =) 9... b5 10. Nd2 e5
 11. Ngf3 Bd6 (11... Ng4 12.
 a4 Nxe3 13. fxe3 Bc5?! 14.
 Ne4 Bxe3 15. Nd6+ Kf8 16.
 axb5 or 11... Bc5 12. a4!
 {12. Bxc5 Nxc5 13. O-O O-O
 14. Nb3 Rd8 15. Qc2 Ne6 16.
 Rad1 Bb7 Black is better but
 it really isn't obvious how
 he can hurt White.}) 12...
 Bxe3 13. fxe3 Ng4 14. Nf1
 O-O 15. axb5 Nc5 16. Qc2
 =/+ 12. h3 Bb7 13. O-O O-O
 14. c4 Stronger is a4
 followed by Qc2. b4 15. Nb3
 {Correctly anticipating
 Black's Nc5. (15. b3 Nc5 -
 /+) 15... Nc5 (15... Rfd8
 16. Qc2 a5 17. Rad1 a4 18.
 Nbd2 Nc5 -/+ 16. Nxc5 Bxc5
 17. Bxc5 Qxc5 18. Qb3 Rfe8 =
 19. Rad1 Rac8



20. Ne1 Stronger is a3,
 pressuring the queenside:
 20. a3 a5 (20... Bxf3 21.
 axb4) 21. axb4 axb4 22. Qe3.
 20... e4 Stronger was Be4,
 rerouting (and protecting)
 the bishop to control more
 white squares. 21. Nc2= a5
 22. a3 Better was Qe3 with
 drawish potential. Ba6 23.
 axb4?! axb4? (23... Bxc4 24.
 bxc5 Bxb3 25. Rc1 Rxc5) 24.
 Nxb4 Bxc4 25. Bxc4 Qxc4 26.
 Qxc4 Rxc4 27. Nd5 Nxd5 28.
 Rxd5 Rb4



29. Rfd1 (29. Re1 f6 30. Re2
 Reb8 31. Rd7 f5 32. g4 =)
 29... Rxb2 30. Rd8 Rb8 31.
 Rxe8+ Rxe8 32. Re1 g5 33.
 Kh2 f5 34. Kg3 h5 35. f3 e3?
 (35... f4+! 36. Kf2 e3+) 36.
 f4 g4 37. hxg4 hxg4 38. Kh4
 1/2-1/2

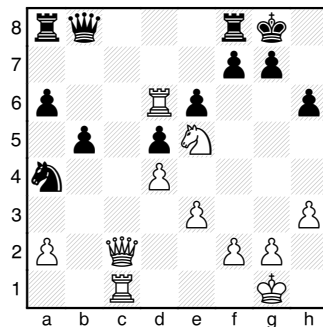
Team Finals
 Jordan Hoyos
 Jay Dharsadia

1. e4 c6 2. d4 d5 3. exd5
 cxd5 4. Nc3 Nf6 5. Nf3 Bf5
 6. Bf4 e6 7. Bb5+ Nc6 8. a3
 Bd6 9. Be5 a6 10. Bxc6+ bxc6
 11. O-O O-O 12. Re1 c5
 Immediately liquidating the
 backward pawn before Black
 can play Na4 or b4. 13.
 Bxd6 Qxd6 14. Na4 cxd4 =/+
 15. Nxd4 Rac8?! Black
 should, of course, save his
 bishop and keep his pawns
 intact. 16. Nxf5 exf5 17.
 Nc3 Rfe8 (17... Ng4 18. g3
 d4 {threatening Qh6 followed
 by dxc3 gives Black a
 continuing initiative.}) 18.
 Qd2 Ne4 Stronger was Ng4.
 19. Nxe4 (19. Qxd5 Qxd5 20.
 Nxd5 Rxc2 21. f3 Nd6 22.
 Rxe8+ Nxe8 23. Rb1 Rc5 =)
 19... fxe4 20. Red1 Re5 =/+
 This move was omitted from
 the notation but is evident
 from the game continuation.
 Perhaps Black is now
 considering Re5-h5 with some
 attack notions on the
 kingside? 21. Rac1 Rb8?!
 Black continues to ignore
 the dangerous pin along the
 d-file. 22. b4 Already c4 is
 possible. Rf5? 23. c4 Rd8
 24. cxd5 Rxd5?? 25. Qxd5
 Qxd5 26. Rxd5 Rf8 27. Rd7 g6
 28. Re7 Ra8 29. Rxe4 a5 30.

b5 Rb8 31. Rb1 Rb6 32. Re8+
 Kg7 33. Ra8 Rb7 34. Rxa5 Rb8
 35. Ra6 Rb7 36. b6 Rxb6 37.
 Rbxb6 1-0

Tenn. Senior Open Ch
 Roy Manners - 1268
 James Hughes - 1600

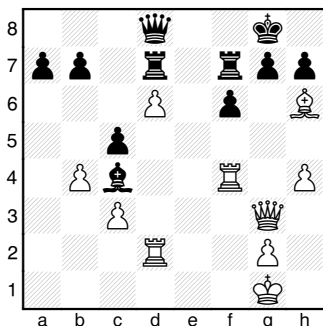
1. d4 Nf6 2. Nf3 d5 3. Bf4
 e6 4. e3 Be7 5. Bd3 O-O 6.
 h3 b6 7. Nbd2 Ba6 8. O-O
 Bxd3 9. cxd3 Na6 10. Rc1
 Stronger was Ne5,
 threatening Nc6. c5 11. dxc5
 Nxc5 12. d4 Nde5 followed
 by Ndf3 is better. Nd3 13.
 Bc7 Qe8 14. Rc3 Nxb2 15.
 Qc2? (15. Qb3 Na4 16. Rc2
 Rc8 17. Rfc1 Nc5 18. dxc5
 Rxc7 19. cxb6 Rb7 =/+ 15...
 Na4 16. Rc6 b5 16... Nc5!
 17. Ne5 Nce4 (17... Na6 18.
 Qb3 Nd7 19. Rc2 Nxc7 20.
 Rxc7 Bd6 -/+ 17. Rc1 a6 18.
 Ne5 Nd7 (18... Ba3 19. Rb1
 Qe7 20. Rb3 Ne8 =) 19. Ndf3
 h6 20. Nxd7 Qxd7 21. Ne5 Qe8
 22. Bd6 Bxd6 23. Rxd6 Qb8



24. Rc6 (24. Rd7! Nb6 25.
 Nc6 Qe8 26. Re7 Qc8 27. Qc5
 +/=) 24... Nb6 25. Qc5 Na4
 26. Qc2 Ra7 27. f4 Nb6 28.
 f5 exf5 29. Qxf5 Qd8 30. Qg4
 Better was Ng4 even though
 this move threatens Rxh6.
 Regardless of this, Black
 now has the disruptive Nc4.
 Kh7 (30... Nc4! 31. Nxc4
 (31. Rxh6 Nxe3 32. Qf4 gxh6
 33. Nc6 Qg5) 31... bxc4 32.
 Rxh6 Re8 33. Qg3 Rae7 34.
 Re1 Qa5 35. Rd6 c3 -/+ 31.
 Rf1 Nc4 32. Qf5+ Kg8 33. Ng4
 Qg5 34. Rc5 Qxf5 35. Rxf5
 White is much better but the
 game was drawn. 1/2-1/2

Tenn. Senior Open Ch - 4
Benjamin Blair - 1591
Roy Manners, Roy - 1268

1. e4 c5 2. c3 e5 A move popularized by Filipenko in the 80s. White can concentrate massive firepower on f7 but Black gets fighting positions. 3. Nf3 (3. d4 cxd4 4. cxd4 exd4 5. Nf3 Bc5! 6. Nxd4 Qb6 =) 3... d6 4. Bc4 Nf6 5. Ng5 d5 6. exd5 Nxd5 7. d4 After Qf3, the position looks like some positions of the Fried Liver Attack. But now it is similar to the Lolli Attack. Be7 8. Ne4? Proper was cxd4 or 0-0, since the knight on d5 would still need protection: 8. dxc5 Bxg5 9. Bxg5 Qxg5 10. Bxd5 +/- 8... Be6 (8... Nb6! 9. Bb5+ Bd7 10. Bxd7+ N8xd7 =/+ Black is better developed and exerts major pressure on the White center.) 9. dxe5 O-O 10. O-O Nc6 11. f4? White exposes himself to a comeback-tactic. Na5 (11... Nxf4! 12. Bxe6 Nxe6) 12. Na3 Better was capturing the knight. Nxc4 13. Nxc4 Nxf4 Nxc3 was also good, attacking both knights. 14. Bxf4 Bxc4 15. Rf2 Qb6 Better was swapping queens and playing Rad8. 16. Rd2 Rad8 17. Nd6 Be6 18. Qf3 Bxd6 19. exd6 Rd7 Rooks are the worst of all defenders because they lose their mobility. Perhaps Bd7, followed by massing rooks on the e-file was viable? Besides, there is little immediate danger from the pawn pushing. 20. Qg3 Qd8 21. Rf1 Bxa2 22. Bh6 f6 23. h4 Rff7 24. b4 Bc4 25. Rf4



Kf8? (25... Rxd6! Indirect defense of the bishop and a very difficult move to see OTB. 26. Rg4! {The only move but certainly good for a draw.} Rxd2 27. Rxc7+ Kh8 28. Rxf7 Rxc7 29. Qxg2 Qd1+ 30. Kh2 Qd6+ 31. Kg1 Qd1+ And draw by perpetual check.) 26. Rxc4 gxh6 27. bxc5 Rg7 28. Qe3 Kg8 Either Rg6 or f5 was better. 29. Re4 Kf7 30. Re2 Rg8 31. h5 (31. Qxh6 Qf8 32. Qxh7+ Rg7 33. Qh5+) 31... Rf8 32. Re7+ Kg8 1-0

2011 TN Senior Open - 1
Paul Semmes - 1966
Earl Hutchison - 1286

1. e4 c5 2. Nf3 Nc6 3. d4 cxd4 4. Nxd4 g6 5. Nc3 Bg7 6. Be3 Nf6 7. f3 a6 8. Qd2 O-O 9. Bc4 e6 10. O-O-O Qc7 (10... d5 11. exd5 exd5 12. Bb3 Be6 13. g4 Na5 14. h4 +/-) 11. Bb3 b5 12. Nde2 (12. Nxc6 dxc6 13. Qd6 Qb7 14. a3 a5 15. Bd4 b4 16. Na4 Nd7 17. h4 +/-) 12... Ne8 Fritz claims that Black has an equal position with Bb7. 13. Bh6 Ne5 (13... Bxh6 14. Qxh6 b4 15. Na4 Ne5 16. h4 Ng7 17. Nd4 +/-) 14. h4 Nc4 15. Bxc4 Qxc4 16. h5 White has achieved a position reminiscent of the Yugoslav Attack. b4 17. Bxg7 Kxg7 (17... Nxc7 18. hxg6 fxg6 19. Na4 Rb8 20. b3 Qb5 21. Nb2 Qc5 22. Kb1 +-) 18. hxg6 hxg6 19. Qh6+ Kf6 20. Qxf8 Nc7 21. e5+ (21. Qd8+ Ke5 22. f4#) 21... Kxe5 22. Qd6+ Kf5 23. Ng3+ Kf6 24. Nce4+ Kg7 25. Qe5+ Kf8 26. Rh8+ Ke7 27. Qf6# 1-0

Team Finals
Jordan Hoyos
Jay Dharsadia

1. e4 c6 2. d4 d5 3. exd5 cxd5 4. Nc3 Nf6 5. Nf3 Bf5 6. Bf4 e6 7. Bb5+ Nc6 8. a3 Bd6 9. Be5 a6 10. Bxc6+ bxc6 11. O-O O-O 12. Re1 c5 Immediately liquidating the backward pawn before Black can play Na4 or b4. 13. Bxd6 Qxd6 14. Na4 cxd4 =/+ 15. Nxd4 Rac8?! Black should, of course, save his bishop and keep his pawns

intact. 16. Nxf5 exf5 17. Nc3 Rfe8 (17... Ng4 18. g3 d4 {threatening Qh6 followed by dxc3 gives Black a continuing initiative.}) 18. Qd2 Ne4 Stronger was Ng4. 19. Nxe4 (19. Qxd5 Qxd5 20. Nxd5 Rxc2 21. f3 Nd6 22. Rxe8+ Nxe8 23. Rb1 Rc5 =) 19... fxe4 20. Red1 Re5 =/+ This move was omitted from the notation but is evident from the game continuation. Perhaps Black is now considering Re5-h5 with some attack notions on the kingside? 21. Rac1 Rb8?! Black continues to ignore the dangerous pin along the d-file. 22. b4 Already c4 is possible. Rf5? 23. c4 Rd8 24. cxd5 Rxd5?? 25. Qxd5 Qxd5 26. Rxd5 Rf8 27. Rd7 g6 28. Re7 Ra8 29. Rxe4 a5 30. b5 Rb8 31. Rb1 Rb6 32. Re8+ Kg7 33. Ra8 Rb7 34. Rxa5 Rb8 35. Ra6 Rb7 36. b6 Rxb6 37. Rbxb6 1-0

2011 U.S. Cadet Approaching

Come July 11-15, Crossville and Cumberland County Bank will again host the U.S. Cadet Chess Championship for a third year in a row! This national invitational chess championship is held for the top players of the United States under age 16. This all-masters tournament will be led by Ostrovskiy (2353) and Bodek (2269) of New York and Shetty (2296) from Michigan.

Do you want to be part of the action? You can view it live in Crossville or follow all the action by daily uploads to the Internet, thanks to all of the games being inputted with the MonRoi scorekeeping device. This prestigious tournament again highlights Tennessee's growing national recognition as a chess center.

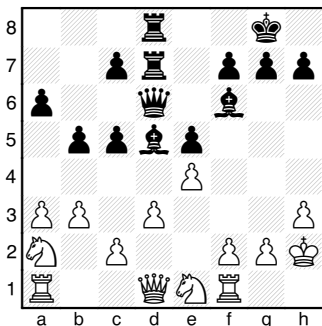
Tenn. Senior Open Ch - 4
 Robert Hydzik - 1623
 Michael Collins - 1080

1. c4 e6 2. g3 d5 3. cxd5 Qxd5 4. Nf3 Nf6 5. Nc3 Qd8 6. Bg2 White is strategically better, with pressure on b7 and good chances of assuming control of e5. g6 7. d3 Bg7 8. Bf4 (8. Qa4+ Bd7 {8... Qd7 9. Nb5 O-O 10. Ne5 Qd8} 9. Qb3 Bc6 10. O-O +/-) 8... a6 9. O-O O-O 10. Rc1 Nc6 11. Qa4 A little better was Qb3. Bd7 12. Qb3 Rb8 13. Ne5 Nh5 14. Nxd7 Fritz suggests the tricky Bg5: 14. Bg5 f6 15. Nxd7 Qxd7 16. Bd2 f5 17. e3 Rfd8 18. d4 +/- 14... Qxd7 15. Be3 b5 16. Ne4 Nd4 17. Bxd4 Bxd4 18. e3 Bg7 19. Rc2 (19. Rc6! Rb6 20. Nc5) 19... Nf6 20. Nxf6+ Bxf6 21. Rfc1 Rfc8 22. Rc6 Rb6 23. d4 Rxc6 24. Rxc6 Ra8 25. Rxc7 Qxc7 26. Bxa8 Qc1+ {Stronger was e5.} 27. Kg2 Qc8 28. Bf3 h5 29. Qa3 Bd8 30. Qc5 Qb8 31. Be2 Bb6 32. Qc6 Qa7 33. b3 Kg7 34. d5 exd5 35. Qxd5 Qc7 36. Qd2 (36. Qa8! Qa7 {36... Qc2 37. Qxa6 Bxe3 38. Qxb5} 37. Qc8) 36... Ba5 37. Qd4+ f6 38. Bd3 Bb6 39. Qe4 Qd6?? 40. Qxg6+ 1-0

Tenn. Senior Open Ch - 2
 John Sawyer - 943
 Roy Manners - 1268

1. e4 e5 2. Nf3 Nc6 3. Bb5 Nf6 4. d3 Bc5 5. Bg5 O-O 6. O-O Be7 This is a miserable and uncharacteristic retreat that should be rejected on general principles. Certainly better was h6 or even d6: 6... h6 7. Be3 Qe7 8. Nc3 Nd4 = or 6... d6 7. Nc3 h6 8. Bh4 Be6 = 7. Bxf6 Bxf6 But now Roy looks like a genius, having secured the two bishops! 8. Bxc6 dxc6 9. Nc3 Be6 =/+ Sooner or later the sweep of the bishops will tell. 10. h3 Qd7 11. Kh2 Rad8 12. Na4 b6 13. b3 You can wall out one bishop but rarely ever both. Qd6 14. Nc3 Rd7 15. Nb1 If the knight must retreat, Nc3-e2-g3 is better, perhaps even getting in Nf5. Rfd8

16. Ne1 b5 17. a3 c5 Qd4 followed by perhaps Qc3 is also powerful. Just about anything works against passivity. 18. Nc3 a6 19. Na2 Bd5?! Instead of attempting this tactic, the methodical c4 mops up.



20. Nc3 (20. exd5! e4+ 21. Kg1 Bxa1 22. Qxa1 Qxd5 23. dxe4 Qxe4 24. Nd3 Now it is White who would have the advantage, having netted both powerful bishops for a rook.) 20... Be6 21. f3 c6 22. g3 Bg5 23. Qe2? Qd4 24. Ng2 Qxc3 25. h4 Bf6 26. g4 c4 27. Qd1 cxd3 28. Rc1 c5 29. Kg3 Rd4 30. Kh3 c4 0-1

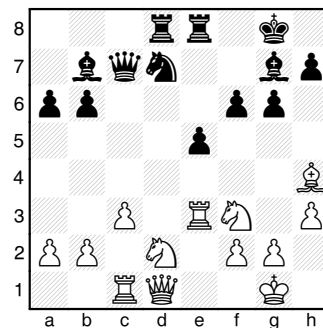
Team Finals
 Adam Johnson
 Nikhil Salian

1. Nf3 d5 2. d4 Nf6 3. Nc3 e6 4. Bf4 Nbd7 5. Be5 The knight belongs here, not the long-range bishop which may later want to go to g5. (Black's c7-square is not as weak as it might appear. For instance: 5. Nb5 Bb4+ 6. c3 Ba5) 5... Be7 6. e3 O-O 7. Bd3 Be2 or even Bg3 were better moves. c5 8. Na4 c4 9. Be2 Ne4 10. b3 Bb4+ (10... f6 11. Bg3 Qa5+ 12. Kf1 b5 13. Nc5 {13. Nb2 Ba3 14. Rb1 Nc3 15. Qe1 Bb4} 13... Ndxc5 14. dxc5 Bxc5 and Black has a huge advantage.) 11. Kf1 Nc3 (11... Nxe5 12. Nxe5 b5 13. c3 Qh4 14. Qe1 Bd6 -) 12. Nxc3 Bxc3 13. bxc4?! (13. Bd6 Re8 14. Rb1) 13... Bxa1 14. Qxa1 dxc4 15. Bxc4 a6 16. c3 b5 17. Bd3 Nxe5 -/+ 18. Nxe5 Bb7 19. Qd1 f6 20. c4?? fxe5 21. dxe5 bxc4

Also strong is Qg5, hitting e5 and g2 while making room for a rook to shift to d8. 22. Be2 Qxd1+ 23. Bxd1 Rf7 24. Be2 Raf8 25. Ke1 Bxg2 26. Rg1 Rxf2 27. Bxc4 Bd5 28. Bxa6 Rxa2 29. Bd3 Ra1+ 30. Kd2 Rxc1 31. Bb5 Rf2+ 32. Kd3 Rd1+ 33. Kc3 Rxh2 34. Ba4 Rdd2 35. e4 Bxe4 36. Bd7 Rxd7 37. Kc4 Rc2+ 38. Kb3 Rb7+ 39. Ka3 Bd5 40. Ka4 Ra2# 0-1

Tenn. Senior Open Ch - 1
 Roy Manners - 1268
 Bill Bragg - 1905

1. d4 Nf6 2. Nf3 g6 3. Bf4 c5 4. e3 Bg7 5. c3 cxd4 6. exd4 O-O 7. Be2 b6 8. O-O Bb7 9. Nbd2 d6 10. Rc1 Nbd7 11. h3 Re8 12. Re1 A little better is Qb3 with a possible continuation of: 12. Qb3 e5 13. Be3 e4 14. Nh2 Qe7 15. Ng4 Nd5 16. Bc4 Nxe3 17. fxe3 = 12... e5 13. dxe5 dxe5 14. Bg5 Qc7 (14... e4 Extending the range of the bishops and targeting d3. 15. Nd4 Nc5) 15. Bb5 a6 16. Bxd7 Nxd7 17. Re3 f6 (17... e4 18. Nd4 Nc5 19. Qe2 Qe5 -/+) 18. Bh4 Rad8



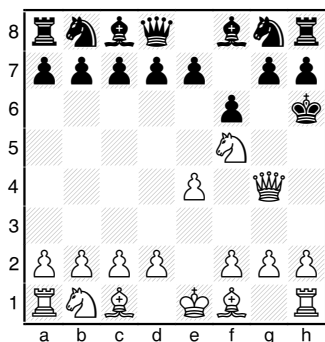
19. Qe2? (19. b4 Bh6 20. Re2 Bxf3 21. gxf3 Kg7 22. Rb1 It is probably best to immediately give up another pawn rather than try Rc2 for defense. But the game's outright blunder ends all debate. {22. Rc2 Nf8 23. Qe1 Rd3 24. Ne4 f5} 22... Qxc3 23. Kg2 -/+) 19... Bh6 20. Rd3 e4 21. Bg3 Necessary was Rxd7. exd3 22. Bxc7 dxe2 23. Bxd8 Bxf3 24. Nxf3 Bxc1 25. Bc7 Ne5 26. Bxb6 Nxf3+ 27. gxf3 e1=Q+ 0-1

Quickest Helpmates with Pieces or Pawns

Written by Peter Lahde

Did you know that Black can achieve a mate in three moves from the starting position by moving only the Knight? This construction is called helpmate because it requires the opponent's cooperation to setup. The same knight-mate idea will take four moves for White to execute. What is surprising to me is that it appears that no one ever has come up with the idea. The closest thing to it I saw in *Chess Life*, January issue for 1977. Here is this game:

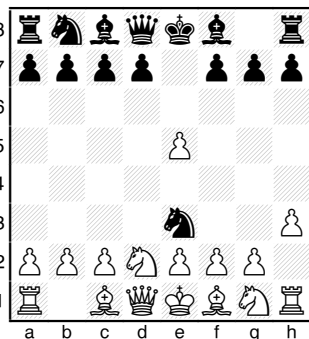
1. e4 f6 2. Nf3 Kf7 3. Nd4 Kg6 4. Qg4+ Kh6 5. Nf5 mate.



However, in this game there is also a Pawn move and a Queen move. But it can be done in four moves with moving a Knight only.

I actually got the idea from a game that went like this (according to Chernev & Reinfeld - see the following editor's note):

1. d4 Nf6 2. Nd2 e5 3. dxe5 Ng4 4. h3? Ne3! 5. Resigns (Gibaud - Lazard, Paris 1924). In the following diagram, White will have to give up the Queen or face mate in two. Actually the Knight move that makes it possible is Ne2 or Ne7 for Black.



Another game went like this:

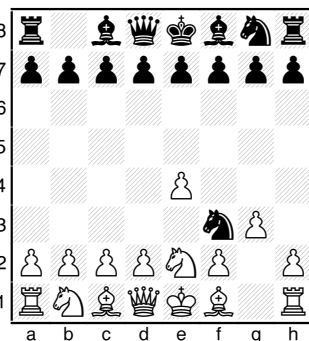
1. d4 Nf6 2. Nd2 e5 3. dxe5 Ng4 4. Ngf3! Bc5 5. Ne4 Bb6 6. h3 f5 7. hxg4 fxe4 8. Bg5! Resigns (Menchik - Winter, 1944) and the Black Queen is trapped. (Vera Menchik, the Woman's World Champion, was later killed that year in an air raid.)

The way to mate with the Knight in four moves for White goes like this:

1. Nf3 e6 2. Ne5 Ne7 3. Ng4 g6 4. Nf6 mate. White can also vary by 2. Ng5 Ne7 3. Ne4 g6 4. Nf6 mate.

Black can mate in three moves as follows:

1. e4 Nc6 2. Ne2 Ne5 3. g3 Nf3 mate.

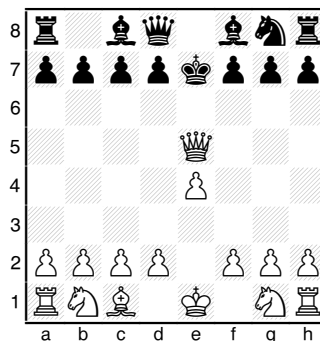


I am sure you are familiar with the Fool's Mate where White can mate in three moves and Black in only two moves. There is actually a game that was played where this happened. It went like this:

1. e4 g5 2. Nc3 f5? 3. Qh5 mate (Masefield - Trinka, US Open 1959)

But there is another way White can mate in three moves with the Queen. It goes like this:

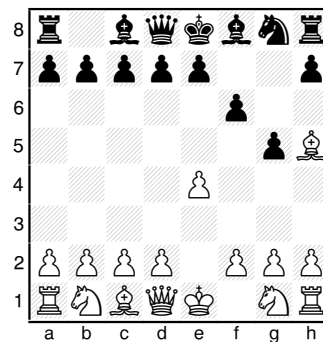
1. e4 e5 2. Qh5 Ke7 3. Qxe5 mate.



If White touched the King before moving it, the move Ke7 would actually be forced.

The Bishop can also mate in three moves as follows:

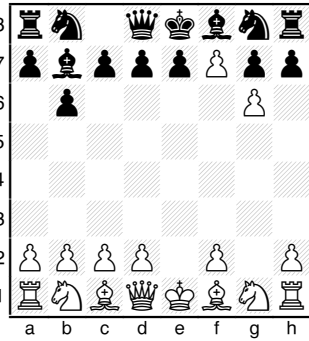
1. e4 f6 2. Be2 g5 3. Bh5 mate.



What is interesting is that you can mate with the Pawns by making only Pawn moves. I have to give credit to Leonard for figuring this out. It goes like this:

1.e4 b6 2.g4 Bb7 3.e5 Bc8 4.g5 Bb7 5.e6 Bc8 6.g6 Bb7 7.exf7 mate or 7. gxf7 mate.

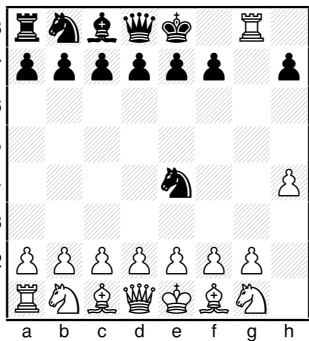
(See the diagram on the following page.)



Of course, Black can move differently as long as he does not disturb the center.

Perhaps the hardest thing to do is mating with the Rook. Here again Leonard came up with the initial moves for White as follows: 1. h4, 2. Rh3, and 3. Rg3. The game can be won in 6 moves like this:

1. h4 Nf6
2. Rh3 Nd5
3. Rg3 g5
4. Rxg5 Bg7
5. Rxg7 Rg8
6. Rxg8 mate.



Editor's note:

The Gibaud - Lazard reference was taken from page 69 of Chernev & Reinfeld's *The Fireside Book of Chess* which was published in 1949. However, historians have debunked the reference and claim that it is a fake game. Billwall in Fireside Chess of chess.com states:

"Amedee Gibaud, born in 1885, had been the champion of France four times. There are two Lazard chess players from Paris. There is Frederic Lazard (1883-1948) and Gustave Lazard (1876-

1924). Gibaud did not play this game. It was not played in 1924. The game lasted 5 moves, not 4 moves.

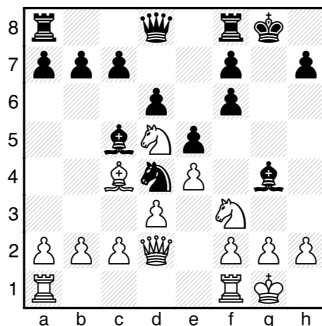
Frederic Lazard, better known as a composer of chess endgames studies and problems, wrote that this was a friendly game between an amateur and himself, played in 1922. He wrote that the game went, **1.d4 d5 2.b3 Nf6 3.Nd2 e5 4.dxe5 Ng4 5.h3 Ne3 and White resigned.** The game was first published in *Chess* in 1937 as the shortest tournament game ever played, from a Paris Championship. When Gibaud saw this, he wrote a letter to *Chess*, saying he never lost any tournament game in 4 moves."



Scholastic Team Finals - 2

Ria Jagasia - 602
Dan Primka - 332

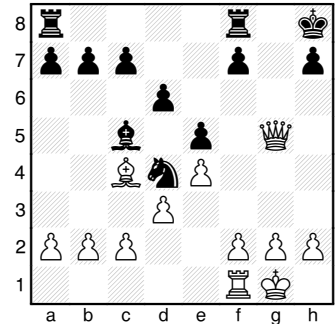
Dan displays the toughness that you want to see in your players, being able to play with composure after having suffered a major lose of material. Regardless of the rating of players and tactics missed, the game is an example of why you tell your scholastic players to fight on. **1. e4 e5 2. Nf3 Nc6 3. Bc4 Bc5 4. O-O Nf6 5. Nc3 O-O 6. d3 d6 7. Bg5 Bg4 8. Nd5 Nd4 9. Bxf6 gxf6 10. Qd2!?**



Is this some known book trap! For sure, others should watch out for this dangerous sequence. **Bxf3** The other piece should

capture: **10... Nxf3+!** This is the refutation, not hoping to win the queen with a later knight check. **11. gxf3 Bxf3 12. Qh6 Kh8 -+ 11. Qh6 Be2?** (11... Kh8 12. Nxf6 Ne2+ 13. Kh1 Bxg2+ 14. Kxg2 Rg8+ 15. Nxc8 Qxc8+ 16. Kh1 Qg6 +-)

12. Nxf6+ Qxf6 13. Qxf6 Bxf1 14. Qg5+ Kh8 15. Rxf1



f6? Black misses a shot to get back into the game: **15... Nf3+ 16. gxf3 Rg8 17. Qg3 Rxc3+ 18. hxc3 Kg7** with a likely draw due to the opposite-colored bishops. **16. Qh4 Nxc2** Black is well-compensated for the queen and could even be winning, especially if he could get his queen rook to g7 for both attack and defense. **17. Be6 Kg7 18. Bf5 Rh8 19. Qg4+ Kf8 20. Kh1 Be3 ?!** **21. Qh3** White gives Black's attempt at a combination respect; whereas the simple fxe gains two active pieces for a rook. (**21. Qh5! Bg5 22. Be6 Kg7 23. f4** and mate looms.) **21... Bd2 22. Be6 Nd4 23. Bd5 c6 24. Rd1 Bg5 25. Qe6?? cxd5** Capture the queen, of course. **26. Qxd6+ Ke8 27. exd5** Black is in extreme time pressure and hence is missing obvious moves. **Rd8 28. Qc5 b6 29. Qb4 Rxd5 30. Qa4+ Nb5 31. Qc4 Rc5 32. Qe6+ Kf8 33. Re1 Nd4 34. Qd7 Nb5 35. Qd8+ Kg7 36. Qe7+ Kg8** Black misses another opportunity to free his rook with Kg6. Now White simply made quick checks to erode Black's time. **37. Qe6+ Kf8 38. h4 Bd2 39. Qxf6+ Kg8 40. Rd1 Rc2** And Black soon lost of time. **1-0**

No.	Name	St	Rate	Rd 1	Rd 2	Rd 3	Rd 4	Rd 5	Score
1.	Patty, John (2)	TN	2200	W11	W15	D7	W3	D4	4.0
2.	Kantor, Alan (3)	TN	2000	-H-	W17	D8	W15	W7	4.0
3.	Semmes, Paul B (4)	TN	1966	W13	W9	W5	L1	W8	4.0
4.	Dickerson, Leonard (1)	TN	2200	W10	D8	W6	D7	D1	3.5
5.	Mueller, David (6)	TN	1774	W18	W12	L3	W11	D10	3.5
6.	Blair, Benjamin La (11)	TN	1591	-H-	W20	L4	W14	W15	3.5
7.	Bragg, William N (5)	KY	1905	W14	W16	D1	D4	L2	3.0
8.	Moore, Brian (7)	NC	1765	W20	D4	D2	W12	L3	3.0
9.	Hydzik, Robert J (8)	TN	1623	W19	L3	L11	W17	W16	3.0
10.	Hughes, James D (9)	TN	1600	L4	-B-	D14	W19	D5	3.0
11.	Davis, William S (14)	TN	1291	L1	W18	W9	L5	W19	3.0
12.	Hale, Michael K (12)	TN	1586	W22	L5	W17	L8	D13	2.5
13.	Hutchison Sr, Earl (15)	TN	1286	L3	W22	L15	W21	D12	2.5
14.	Manners, Roy B (16)	TN	1268	L7	W21	D10	L6	W20	2.5
15.	Mahan, J Robert (10)	VA	1599	W21	L1	W13	L2	L6	2.0
16.	Wade, Donald R (13)	TN	1348	W23	L7	L19	W18	L9	2.0
17.	Collins, Michael M (17)	TN	1080	-B-	L2	L12	L9	W23	2.0
18.	Jones Esq, Jerry (18)	TN	1032	L5	L11	W22	L16	W21	2.0
19.	Winfield, Harold M (20)	TN	962	L9	W23	W16	L10	L11	2.0
20.	LeFrancois, Bernard (19)	TN	990	L8	L6	-H-	W22	L14	1.5
21.	Sawyer, John B (21)	TN	943	L15	L14	W23	L13	L18	1.0
22.	Shapbell, Bonnie M (22)	TN	684	L12	L13	L18	L20	-B-	1.0
23.	Banik, Thomas Paul (23)	TN	347	L16	L19	L21	-H-	L17	0.5

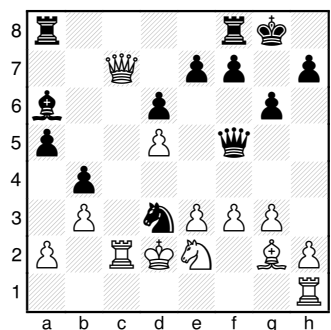
Bowling Green Chess Match

On Thursday March 24, ten members of the **Clarksville Chess Club** traveled to Bowling Green, KY for a friendly chess match with the **Western Kentucky Chess Club**. Clarksville triumphed overwhelmingly, winning the match with a 21 to 8 score.

2011 TN Senior Open - 2

Robert Hydzik (1623) - Paul Semmes (1966)

1. c4 Nf6 2. g3 c5 3. Bg2 g6 4. Nc3 Bg7 5. e3 d6 6. Nge2 a6 7. d4 Qc7 8. Nd5 Nxd5 9. cxd5 b5 10. Bd2 Nd7 11. Rc1 Qb6 12. dxc5 Nxc5 13. Bc3 Bxc3+ 14. Rxc3 b4 15. Qd4 O-O 16. Rc4 a5 17. b3 Much better was simply castling. (17. O-O Ba6 18. Rc2 b3 19. axb3 Qxb3 20. Qd2 =) 17... Ba6 18. Rc2 Nd3+ 19. Kd2 Qb5 20. Qc4? (20. Nc1 threatening Bf1 Nxc1 21. Kxc1 a4 22. Bf1) 20... Qd7 21. Qc7 Qf5 22. f3 Qxd5 (22... Rfc8! 23. Qxe7 Rxc2+ 24. Kxc2 Ne1+) 23. Qc6 Qh5 24. Nf4 Nxf4 25. exf4 Rfc8 26. Qe4 Rxc2+ 27. Kxc2 Qc5+ 28. Kb1 Rc8 29. Rd1 Qf2 30. Rc1 (30. Bh3 Rc3 31. Bg4? Bd3+ Yes, Fritz and I know that d5 is stronger but this interference sacrifice must be shown! 32. Rxd3 Qc2+ 33. Ka1 Qc1#) 30... Rxc1+ 31. Kxc1 Qg1+! The decisive in-between move which makes it possible to retain his own bishop. 0-1



Black to make 22nd move.

BOARD OF DIRECTORS

PRESIDENT:

Malcolm Estrada
7123 Annaview LN
Harrison, TN 37341
H: (423) 280-9526
e-mail: straightleg111@aol.com

VICE-PRESIDENT:

Paul Semmes
1010 N. Maple Ave.
Cookeville, TN 38501
H: (931) 526 - 2883
e-mail: PaulSemmes@charter.net

SECRETARY:

Chris Prosser
733 Long Hunter Court
Nashville, TN 37217
H: (615) 399 - 8432
e-mail: regioniii@aol.com

TREASURER:

Angela McElrath-Prosser
733 Long Hunter Court
Nashville, TN 37217
H: (615) 399 - 8432
e-mail: tcanews@aol.com

INTERNET CHESS COORDINATOR:

Karoly Mirnics
6604 Currywood Dr
Nashville, TN 37205
e-mail: karoly.mirnics@vanderbilt.edu

SCHOLASTIC COORDINATOR:

Harry D. Sabine
P. O. Box 381
Crossville, TN 38557
H: (931) 484 - 4878
W: (931) 484 - 9593
e-mail: hdsabine@citlink.net

TOURNAMENT COORDINATOR:

Larry Grohn
7032 Igoo Gap Road
Chattanooga, TN 37421
H: (423) 243 - 8235
e-mail: LarryGrohn@comcast.net

TN CHESS NEWS EDITOR:

Leonard Dickerson
420 Oran Road
Knoxville, TN 37934
H: (865) 966 -1095
e-mail: lsdick@tds.net

EAST TENNESSEE DIRECTOR:

Victor Suich
707 Pritchard
Morristown, TN 37813
(423) 586 - 4351
e-mail: vesuich@bellsouth.net

MIDDLE TENNESSEE DIRECTOR:

Roy Manners
1215 Cumberland Heights Road
Clarksville, TN 37040
H:(931) 552 -1839
e-mail: clarkvillechessclub@charter.net

WEST TENNESSEE DIRECTOR:

Marla Stafford
P. O. Box 770474
Memphis, TN 38117
e-mail: Westregion4@aol.com

Regional Scholastic Coordinators

Region 1:

David Marsh
4411 Stillwood Road
Louisville, TN 37777
H: (865) 982 - 7216; NESGIV4DAVE@aol.com

Region 2:

Michael Ake
16 Pinecrest Dr.
Wildwood, GA 30757
Cell phone: (423) 505-8214
O: (423) 493 - 5406; make@mccallie.org

Region 3:

Chris Prosser
733 Long Hunter Court
Nashville, TN 37217
H: (615) 399 - 8432; e-mail: regioniii@aol.com

Region 4:

Brian Vogt
2669 Sweet Maple Cove
Germantown, TN 38139
H: (901) 624 - 0020; b-vogt@comcast.net