



# TENNESSEE CHESS NEWS

## SUMMER 1998

CHESS SITES ON THE INTERNET.....	6
GAMES FROM JAMES A. WRIGHT.....	8
1998 RUTHERFORD COUNTY OPEN.....	11
5th HOPEWELL RATED SCHOLASTIC.....	12
THE TENNESSEE OPEN.....	14
1998 CUMBERLAND COUNTY SUMMER OPEN.....	17
GAMES FROM THE 1998 U.S. CADET CHAMPIONSHIP.....	19
TURKEY TOUR.....	26



**PROBLEM CORNER BY R. HUDGENS**  
**White wins Black's Queen in seven moves**  
**Solution on pg. 11**

## TENNESSEE CHESS NEWS

The *Tennessee Chess News* is the official publication of the Tennessee Chess Association. TCA annual dues are \$10 for a *regular* membership, \$6 for a *student* membership. Additional members of a family may join for one dollar each, but only one issue of TCN will be mailed per family. All memberships expire August 31.

**Tax-deductible Patron Memberships** are available beginning at \$25 per year for those who wish to help support the TCA. These memberships expire one year from the date of payment. Patron membership categories and benefits are as follows:

### **PATRON - \$25**

- receive TCN by First Class Mail with your name listed in each issue of TCN;

### **PATRON KNIGHT - \$50**

- all Patron benefits plus a commemorative plaque;

### **PATRON BISHOP - \$100**

- all Patron Knight benefits plus free entry to the Tennessee Open;

### **PATRON KING - \$500**

- all Patron Bishop benefits plus free lodging at the Tennessee Open;

### **PATRON FOUNDER - \$1000**

- all Patron King benefits plus free entry into all Turkey Tour events.

TCA memberships are required for participation in all rated chess events in Tennessee except scholastic-only events, and may be purchased at any chess tournament.

## TENNESSEE CHESS NEWS STAFF

### **Editor:**

Angela McElrath-Prosser

### **Contributors:**

Games Editor-Peter Lahde  
Tech Support-Chris Prosser  
Lee Edwards  
Ben Harris  
Wayne Hedger  
Raymond Hudgens  
N.J. Hughes  
Pat Knight  
Peter Lahde  
Roy B. Manners  
Kent Meadows  
Harry Sabine

## ADVERTISING RATES

Full Page	\$40.00
Half Page	\$20.00
One-third Page	\$14.00
One-quarter Page	\$10.00
One-eighth Page	\$ 7.00

**Pre-printed flyers** for insert must be 8 ½ x 11" in size, 60 pound Offset, and delivered flat. *Only one insert is available per issue.* \$15.00

## TOURNAMENT ANNOUNCEMENTS

TCN prints listings of upcoming tournaments in each issue for free, including those from other states. Submit all announcements to Wayne L. Hedger, Tournament Coordinator.

## TENNESSEE CHESS ASSOCIATION PATRON MEMBERS

### **PATRON FOUNDER**

DR. MARTIN "DICK" KATAHN

### **PATRON BISHOP**

DR. ROY CLARK  
CLINTON H. PEARSON  
HARRY D. SABINE  
R.K. SHIMABUKURO  
TODD SHIMABUKURO  
EMANUEL TSITSEKLIS

### **PATRON KNIGHT**

CLARKSVILLE CHESS CLUB  
THOMAS A. COOPER  
SHEILA CRAWFORD JOHNSTON  
JASON R. KNIGHT  
PAT KNIGHT  
BILL ORGAIN

### **PATRON**

LEE EDWARDS  
RAYMOND HUDGENS  
PETER P. LAHDE  
BRIAN LENTZ  
F. MORRIS LEWIS  
JEFF PENNIG



## EDITOR'S MARKS

This Summer 1998 issue of the *Tennessee Chess News* is packed full of games. A nice selection of games from the career of new Hall of Fame member, James A Wright, plus the Cadet tournament games. Thanks to everyone for the great material. The schedule for future issues:

Fall 1998 - Nov 1 - covering Aug, Sept, Oct - highlights: TN Open, TN Open Scholastics, etc.

**Deadline: October 9, 1998**

Winter 1999 - Feb 1 - covering Nov, Dec, Jan - highlights: Tennessee Open, Scholastic, and Quick Chess.

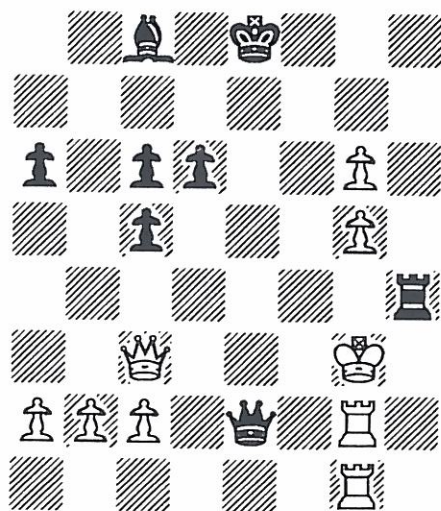
**Deadline: January 9, 1998**

Spring 1998 - May 1 - covering Feb, Mar, Apr - highlights: Regional and State Scholastic competitions

**Deadline: April 9, 1998**



Last issues puzzle was printed incorrectly. The position should have been:



1... Rh3+ 2. Kf4 Rf3+ 3. QxR Qe5 Mate!

## President's Column

**It's** hard to believe that a year has almost come and gone since last years Tennessee Open. I'd like to thank all the Board of Directors for all their hard work this past year. I truly appreciate the time, effort, and dedication they have given to promote chess in Tennessee.

I would also like to thank all TCA members and Patron Members for supporting the Tennessee Chess Association. Your support makes it possible for us to do more for Chess in Tennessee. If you are not a Patron member, I would like to encourage you to become one. A list of the different types, benefits, and cost of Patron Memberships are listed in the *TCN*.

**As** most of you know the TCA has a Web Site, [dickson.net/tca](http://dickson.net/tca). Our thanks to Bill Orgain, webmaster, and Support Engineering for their donation of the site, and for keeping it updated. If you haven't visited the site yet, I encourage you to check it out.

**If** you have an idea, suggestion, or complaint, please feel free to call, e-mail, or write me. I would like to hear from you.

Yours in Chess,

*Pat Knight*

## TN CHESS ASSOCIATION

### HALL OF FAME

PETER LAHDE	1990
ROBERT COVEYOU	1990
JERRY SULLIVAN	1990
MARTIN SOUTHERN	1990
TOM FINUCANE	1990
ROBERT SCRIVENER	1990
L. HUNTER WEAKS	1990
JOHN HURT	1992
JAMES A. SWEETS	1993
REA HAYES	1997
JAMES A. WRIGHT	1998



Suggestions for next years Tennessee Chess Association Hall of Fame should be submitted by March 31, 1999.





## Chess Sites on the Internet

by TCA Internet Chess Coordinator Lee Edwards

There are literally thousands of good chess related sites accessible throughout the world wide web. A good place to look for sites is [www.yahoo.com/Recreation/Games/Board\\_Games/Chess](http://www.yahoo.com/Recreation/Games/Board_Games/Chess). You can also find links and e-mail addresses at the USCF and TCA sites mentioned below. I will only try to mention some of the sites I think will be of the most interest to Tennessee players.

[www.rebel.nl](http://www.rebel.nl) - Download Rebel Decade 2, the mother of all shareware chess programs. Master strength with a database and many features. Must have a 386 or higher.

[www.gambitsoft.com/sharee.htm](http://www.gambitsoft.com/sharee.htm) - a VERY extensive collection of downloadable chess playing programs, including some antique commercial programs such as Chessmaster 2000 and RexChess are available at this German site.

[www.pitt.edu/~schach/Archives/index2.html](http://www.pitt.edu/~schach/Archives/index2.html) - the Pitt Chess Archives. Download \*.pgn game databases files, readable by Rebel Decade 2 and most commercially available playing engines.

[caissa.onenet.net](http://caissa.onenet.net) - the Internet Chess Library

[www.uschess.org](http://www.uschess.org) - United States Chess Federation official site.

[www.dickson.net/tca/](http://www.dickson.net/tca/) - Our own Tennessee Chess Association site.

[www.dickson.net/ncc/](http://www.dickson.net/ncc/) - The Nashville Chess Center site.

[www.people.memphis.edu/%7echessclub/index.htm](http://www.people.memphis.edu/%7echessclub/index.htm) - The University of Memphis site.

[www.chesscafe.com](http://www.chesscafe.com) - another good Chess site.

<http://ThomasStock.com/gambit.html> - a site devoted to gambits.

### Where to play

[www.chessclub.com](http://www.chessclub.com) - Internet Chess Club, the best chess playing site on the net, first week free, then \$50/year for unlimited access.

[www.zone.com](http://www.zone.com) - Microsoft Internet Gaming Zone, classic board games are free. Requires Microsoft Internet Explorer.

[www.playsite.com](http://www.playsite.com) - Java based free game site with clocks and ratings. May require Microsoft Internet Explorer browser, 28,800 baud modem or better preferred. I recommend downloading the Marimba Castnet Tuner (also free) for access to this site. You can download the tuner at [www.marimba.com](http://www.marimba.com). Another free Java channel, classic online games, is accessible through the Castanet Tuner.

[www.vinco.ru](http://www.vinco.ru) - Vinco Online Games, aka VOG, a Russian company with a server in Nebraska. Go figure. Good graphics, clocks, and ratings. Most players at this site seem to prefer Game/15 or slower time controls. First month free, then \$25 per year.

[www.onlinegames.net](http://www.onlinegames.net) - A new contender also known as TVML. Most games, including chess, free. Looks good. Don't confuse this one with [www.onlinegames.com](http://www.onlinegames.com), although you might want to check out that site also.

[www.burbs.com/chess](http://www.burbs.com/chess) - A chess ladder site. You don't actually play here. You post your challenges on the ladder here and make arrangements to play elsewhere.

Many of you know that I am interested in chess variants and other intellectual board games. If you want my complete list of board game sites, or if you know of any sites you think I should have listed, please feel free to contact me at [Lee\\_Edwards@prodigy.net](mailto:Lee_Edwards@prodigy.net).



## 1st Annual Jellico Scholastic Chess Tournament

**October 3, 1998**

**Rated Event**

**Jellico Elementary School, Jellico, Tennessee**

**Entry Fee \$10.00 if mailed by Sept. 12, 1998**

**High School--Jr. High--Elementary--Primary**

**Trophies 1st thru 10th all divisions**

**Contact: Eddie Archer at Jellico Elementary (423-784-6565)  
551 Sunset Trail, Jellico TN 37762**



## Games from Hall of Fame Inductee, James A. Wright

IGM William Lombardy - James A. Wright

Simultaneous Exhibition, Memphis, TN 11/18/77

1. e4 e6 2. d4 d5 3. Nc3 Bb4 4. e5 c5 5. a3 Bxc3 6. bxc3 Ne7 7. a4 Qa5 8. Qd2 Nc6 9. Nf3 Bd7 10. Bd3 c5 11. Bf1 b5 12. Ba3 bxa4 13. g3 Rb8 14. h4 h5 15. Bh3 Rb5 16. 0-0 a6 17. Ng5 Nf5 18. Rfe1 Nce7 19. Bb4 Qb6 20. Rxa4 a5 21. Bc5 Rxc5 22. dxc5 Qxc5 23. Ra1 Nxc3 24. Qd4 Qxd4 25. cxd4 Ngf5 26. Rxa5 Nxd4 27. Ra8+ Nc8 28. c3 Nb5 29. Rc1 Ke7 30. f4 Re8 31. Kf2 Nb6 32. Rxe8 Kxe8 33. Ke3 Na4 34. Kd2 Nc5 35. Rc2 f6 36. Nf3 Ne4 37. Ke3 Nexxc3 38. f5 exf5 39. Kf4 d4 40. exf6 gxf6 41. Bf1 d3 42. Rc1 Bc6 43. Nd2 Ne2+ 44. Bxe2 dxe2 45. Nxc4 Be4 46. Ke3 Ke7 47. Kxe2 Nd4+ 48. Kf2 Nf3 49. Kg3 Ne5 50. Rc3 Ng6 51. Nd2 f4+ 52. Kf2 f5 53. Nf3 Kf8 Drawn

Kent Meadows - James A. Wright TN Open, 1990

1. e4 e6 2. d4 d5 3. Nc3 Bb4 4. Ne2 de4 5. a3 Be7 6. Ne4 Nf6 7. N2g3 0-0 8. c3 Nc6 9. Nf6 Bf6 10. f4 Ne7 11. Bd3 Ng6 12. 0-0 c6 13. Be3 b6 14. Qh5 Qd5 15. Qe2 Re8 16. Be4 qd7 17. Rad1 Bb7 18. Qh5 Rad8 19. Bc1 Ba6 20. Rfe1 Qc7 21. Be3 Bc4 22. Bc2 Be7 23. f5 ef5 24. Nf5 Bf6 25. Bg5 Bg5 26. Qg5 Be6 27. g4 c5 28. Rf1 Qc6 29. Rf2 h6 30. Qh5 Bc8 31. h4 Bb7 32. Kh2 Qc7 33. Kh3 Nf3 34. Rf4 Qf4 0-1

James A. Wright - Joe Jones

Nashville-Memphis Match 1974

1. e4 c6 2. d4 d5 3. Nc3 de 4. Nxe4 Nd7 5. Nf3 Ngf6 6. Ng3 e6 7. Bc4 Qc7 8. 0-0 Be7 9. Qe2 0-0 10. Bxe6 fe 11. Qxe6 Kh8 12. Qxe7 Re8 13. Qb4 a5 14. Qc3 Nd5 15. Qd3 Nb4 16. Qd2 Nb6 17. c3 N4d5 18. b3 Be6 19. c4 Nb4 20. Bb2 Rad8 21. a3 Na6 22. Qxa5 Resigns

James A. Wright - John Hurt

1. d4 d5 2. c4 e6 3. Nc3 Nf6 4. Nf3 Nbd7 5. cd5 ed5 6. e3 b6 7. Bd3 Bb7 8. Qc2 c5 9. 0-0 Be7 10. dc5 bc5 11. b3 0-0 12. Bb2 Rc8 13. Rac1 Qa5 14. Rfd1 d4 15. Ne2 Bf3 16. gf3 Ne5 17. Kg7 Nd3 18. Rd3 Nd5 19. a3 Qa6 20. Qd1 Qg6+ 21. Ng3 f5 22. f4 Rfd8 23. Qf3 h5 24. Qh5 Qc6?(Qh5!) 25. Kg1 g6 26. Qf3 de3 27. fe3 Qe6 28. Be5 Nf6 29. Rd8+ Rd8 30. e4 Ng4 31. ef5 gf5 32. Re1 Qh6 33. Qe2 Rd3 34. Nf5 Qh3 35. Ne7+ Kf7 36. Nf5 Kg6 37. Bc7 Resigns 1-0

James A. Wright - Charles Ball TN Open, 1969

1. e4 c6 2. d4 d5 3. Nc3 dxe4 4. Nxe4 Bf5 5. Ng3 Bg6 6. Nf3 Nd7 7. Bc4 e6 8. 0-0 Ngf6 9. Qe2 Nd5 10. c3 h6 11. Bd2 Qc7 12. Ne5 Nxe5 13. dxe5 Be7 14. f4 Bc5+ 15. Kh1 Ne7 16. Rad1 0-0 17. Qg4 Nf5 18. Rde1 Nxc3+ 19. Qxc3 Rfd8 20. Bc1 Rd7 21. Bxe6 Rd3 22. Qxc6 fxe6 23. Qxd3 1-0

IM Elliott Winslow - James A. Wright

Mid-South Open, 1972

1. e4 Nf6 2. e5 Nd5 3. d4 d6 4. c4 Nb6 5. f4 dxe5 6. fxe5 Nc6 7. Be3 Bf5 8. Nc3 e6 9. Nf3 Qd7 10. Be2 0-0-0 11. 0-0 f6 12. exf6 gxf6 13. d5 exd5 14. cxd5 Nxd5 15. Nxd5 Qxd5 16. Qxd5 Rxd5 17. Nh4 Bd7 18. Rac1 Re5 19. Kf2 Rxe3 20. Kxe3 Bh6+ 21. Kf2 Bxc1 22. Rxc1 Re8 23. Bd3 Ne5 24. Rc3 Nxd3+ 25. Rxd3 Bb5 26. Re3 Rxe3 27. Kxe3 Kd7 28. Nf5 Bc6 29. g3 Bd5 30. a3 c5 31. Kd3 Ke6 32. Ne3 b5 33. b4 Kd6 34. Nf5+ Ke5 35. Ne7 c4+ 36. Ke3 a6 37. h4 Be4 38. Ng8 c3 39. Nh6 f5 40. Nf7+ Kd5 41. Ke2 Kc4 42. Kd1 Kb3 43. Kc1 Kxa3 44. h5 Kxb4 45. h6 Bd5 46. Nd6 Be6 47. Ne8 a5 48. Nc7 Bf7 49. Na6+ Kc4 50. Nb8 Be8 0-1

James A. Wright - Tony Estes

Middle Tennessee Open, 1966

1. e4 c5 2. Nf3 e6 3. d4 cxd4 4. Nxd4 a6 5. Nc3 Qc7 6. Be2 Bb4 7. Bd2 Nf6 8. f3 0-0 9. 0-0 Nc6 10. Nb3 Rd8 11. a3 Bxc3 12. Bxc3 d5 13. Bxf6 gxf6 14. exd5 Rxd5 15. Qe1 Rh5 16. Qg3+ Qxg3 17. hxg3 e5 18. g4 Rh6 19. Bd3 Be6 20. Nc5 Nd8 21. Kf2 Rc8 22. b4 f5 23. gxf5 Bd5 24. f6 Rxf6 25. Nd7 Rh6 26. Nxe5 Nc6 27. Ng4 Rd6 28. Rh1 Nd4 29. Bxh7+ Kg7 30. Ne3 Nxc2 31. Bxc2 1-0

IGM Petar Trifunovic - James A. Wright Simul, 1960

1. e4 c5 2. Nf3 d6 3. d4 cxd4 4. Nxd4 Nf6 5. Nc3 Nc6 6. g3 g6 7. Bg2 Bd7 8. 0-0 Bg7 9. Nb3 0-0 10. Bg5 a6 11. Re1 Rc8 12. Nd5 Nxd5 13. exd5 Ne5 14. c3 Re8 15. Nd4 Qb6 16. Qb3 Qxb3 17. Nxb3 h6 18. Be3 Nc4 19. Bc1 a5 20. Nd2 Ne5 21. f4 Nd3 22. Re3 Nxc1 23. Rxc1 Bd4 24. Rce1 Bxe3+ 25. Rxe3 b5 26. Nb3 Ra8 27. Nd4 Rac8 28. Nf2 b4 29. Nc6 bxc6 30. dxc6 bxc3 31. Rxc3 Rc7 32. Ra3 Rb8 33. b3 Rb5 34. Ke3 d5 35. Ra4 Rxc6 36. Bf1 Rbc5 37. Kd4 f6 38. Bd3 Kf7 39. b4 axb4 40. Rxb4 Rc7 41. a4 e6 42. Rb8 Rc1 43. a5 Rd1 44. Rb3 Ra7 45. Ra3 Ke7 46. Kc5 Rxd3 47. Rxd3 Rxa5+ 48. Kc6 Ra2 49. h4 Rc2+ 50. Kb5 Kd6 51. Kb4 e5 52. fxe5+ fxe5 53. Rf3 e4 54. Rf6+ Ke5 55. Rxc6 e3 56. Rg8 Kd4 57. Kb3 Rc7 58. g4 Kd3 59. g5 hxg5 60. hxg5 Rb7+ 61. Ka2 e2 62. Re8 Kd2 0-1

Duplantier - James A. Wright TN Open, 1961

1. d4 Nf6 2. e3 g6 3. c4 Bg7 4. Nc3 d6 5. f4 0-0 6. Bd3 Nbd7 7. Nf3 c5 8. d5 Ng4 9. h3 Nh6 10. 0-0 e5 11. fxe5 Nxe5 12. Nxe5 Bxe5 13. e4 Kg7 14. Rf3 Qh4 15. Qf1 Ng4 16. Bd2 Bd4+ 17. Kh1 Nf2+ 18. Kh2 Ng4+ 19. Kh1 Ne5 20. Be1 Qe7 21. Rg3 f5 22. exf5 Bxf5 23. Bxf5 Rxf5 24. Qxf5 Rf8 25. Qe4 Rf1+ 26. Kh2 Bg1+ 27. Kh1 Bf2+ 28. Kh2 Bxe1 29. Rxe1 Rxe1 30. Qxe1 Nf3+ 31. Rxf3 Qxe1 32. b3 Qe5+ 33. Kg1 g5 34. g4 a6 35. Kg2 Kg6 36. a4 h5 37. gxh5+ Kxh5 38. Nd1 Qe2+ 39. Nf2 b5 40. axb5 axb5 41. cxb5 Qxb5 42. Rd3 Qb4 43. Kg3 Draw



## ALL THAT...AND FREE DONUTS!!

by Chris Prosser

You heard me...fun, Chess, and free donuts. This combination has turned into a tradition at the Rutherford County Chess Club tournaments. I have had the pleasure to play in two of these events this summer, and I simply can't wait until the next one (August 22). With a modest \$30 entry fee and prize fund, 5 rounds of action, and a gracious host (Robert Guthrie), these tournaments are now drawing 30-60 participants. The first two rounds are generally at an accelerated time control (G\30 or G\45), with the last three rounds at a comfortable G\75. The playing field is always well rounded, with ratings from 600 to 2100. The real challenge comes from the young players, who seem to shine at these events. At the Murfreesboro Grand Prix these young stars included Evan Williams, Ben Tacker, and Danny Gholson, each gathering upsets of 400-500 rating points. One of the unique benefits from these battles is the ability to look through all of the games. The Rutherford County Chess Club pitches in to put every game on their internet chess site (<http://www.mindspring.com/~thought/chess/rccc.htm>). I will include one game (at the request of its' proud winner).

Ottie West (1600) - Walter Jordan (2021)

1. e4, c5 2. Nf3, d6 3. Nc3, Nf6 4. Bb5+, Bd7 5. Qe2, BxB 6. QxB+, Qd7 7. Qc4, Nc6 8. Nd5, NxN 9. exd, Nb4 10. a3, b5 11. Qb3, Na6 12. D4, c4 13. Qc3, Nc7 14. 0-0, Nxd5 15. Qa5, e6 16. Re1, Be7 17. Qd2, 0-0 18. Qe2, h6 19. c3, a5 20. Qe4, Nf6 21. Qh4, Nh7 22. Qh5, Bf6 23. Re4, Qc6 24. Rg4, Ng5 25. BxN, BxB 26. RxB, hxxg 27. Nxxg5, eRf8 28. Qxf7+, Kh8 29. Qh5+, Kg8 30. Qh7+, Kf8 31. Nxe6+, Kf7 32. Qxxg7+, KxN 33. Re1+, Kf5 34. Qh7+, Kg5 35. h4+, Kg4 36. f3+, Kf4 37. Qh6+, Resigns

## 1998 BATTLE OF MURFREESBORO

August 22, 1998

Grace Lutheran Church\*

811 E. Clark Blvd.

Murfreesboro, TN

\*Note new location

## 1998 Rutherford County Open

By Kent Meadows

On 5-30-98, the Rutherford County Chess Club hosted a tournament at Grace Lutheran Church in Murfreesboro. The event was well attended with 50 competitors. Todd Andrews and Carter Gibson drew a long endgame struggle in the last round to split first and second prize (\$160 each) with 4.5 points. Wally Jordan and Ben Bentrup split the Expert prize (\$60 each) with 4.0 points. Ben Harris scored 4.0 points as well and took home the \$130 A prize. The first B prize of \$120 was taken by Tom Trivers with 4.0 points also. The second B prize split 4 ways (\$15 each) by Terrence Lee, Haresh Mirani, John Proctor, and Jimmy Worley. The first and second C prizes were split 3 ways (\$60 each) by Leon Schwartz, Blake Gibson, and Wayne Hedger who all scored 3.0 points. Scott Cantrell took home the D prize of \$130 with 3.5 points. The E prize of \$60 went to Steve Patterson with 1.5 points. Jason Linville's 1.5 points clinched the Unrated prize of \$40.

There were many exciting upsets in this tourney as many of the players were competing at their best. The event was directed by yours truly. I was assisted by the organizer, Robert Guthrie, and by Brian Smith, who also played in the event. Robert ran the computer with the new (Windows95 compatible) SwissSystem tournament directing program. I have never seen this program before, but it is the state-of-the-art. It is a dream come true.

This event was yet another success for the Rutherford County Chess Club. They are hosting 3 tournaments every summer. Mark your calendar now for The Battle of Murfreesboro on 8-22-98 at the Grace Lutheran Church. You won't want to miss their events. Murfreesboro has quickly become one of the premier chess centers in the state, with plans for the future. Visit the web site for the Rutherford County Chess Club at <http://www.mindspring.com/~thought/chess/rccc.htm> for more information.

## SOLUTION TO PROBLEM CORNER

WHITE WINS BLACK'S QUEEN IN SEVEN MOVES

1. Nf3+ Kg6 2. Nh4+ Kg5 3. Bf7! KxN 4. g3+ Kg5  
5. f4+ Kg5 6. Be6+ QxB 7. KxQ (and then has an easy win.)



## 5th Hopewell Rated Scholastic

by N.J. Hughes

Hopewell's Raging Rooks once again hosted their annual rated scholastic chess tournament on May 30, 1998. This tournament has traditionally signaled the end of the school year scholastic tournaments in Region 2. Drawing players from all over TN and even Kentucky this years' tournament was a "raging" success! Our winners for this year are:

	<u>High School Section</u>	<u>Jr. High Section</u>
1st Place	Andrew Crigger Kingsport TN	Jeremy Carter Crossville TN
2nd Place	Kyle Phillips Clarkrange TN	Daniel Hammond Cleveland TN
3rd Place	Ricky Cravens Clarkrange TN	Westin Greene Alcoa TN
4th Place	Clark Bryant Cleveland TN	Dustin Mathe Alcoa TN
5th Place	Chris Jones Crossville TN	Ryan Flynn Crossville TN
6th Place	Franklin Hajny Crossville TN	Matthew Frye Cleveland TN
	<u>Elementary Section</u>	<u>Primary Section</u>
1st Place	Mirko Remec Oak Ridge TN	Michael Ballew Knoxville TN
2nd Place	Andy Moeller Oak Ridge TN	Kevin Torrico Knoxville TN
3rd Place	David Pendergrass Georgetown TN	Timothy Neuendorf Cleveland TN
4th Place	Walt Thompson Morristown TN	Ben Spires Cleveland TN
5th Place	Kevan Hogue Clinton TN	Danny Baggett Charleston TN
6th Place	Greg Tompkins Cleveland TN	Donnie Baggett Jr Charleston TN
	Elementary 1st Unrated	

## 1998 Music City Spring Open

By Kent Meadows

On 5-16-98, the Nashville Chess Center hosted a ChessPro event that attracted 37 players in two sections (22 in Open, 15 in Amateur). Master Bill Melvin and Daniel Thomas split the Open first place and the Expert prize with a 3.5 score (Congrats to Daniel who unofficially has now made Master!). Ben Harris and Rea Hayes split the A prize with 2.5 scores. DeWitt Pullen won the B prize with 2.0. The C and under was taken by the promising young Jake Kleiman with 2.5 points.

The Amateur first place and E prize were split by Steve Patterson and Jeremy Reed with 3.5 points each. Jacob Green's 2.5 score won the F and under prize. The unrated prize belonged to Robert Ashmead's 1.0.

The event was directed by yours truly. Be on the lookout for future ChessPro events!

□ Dewitt Pullen, Sr.  
■ Jeffrey Harris  
Music City Spring  
[Scotch Game]

1998

1.e4 e5 2.Nf3 Nc6 3.d4 exd4 4.Bc4 Bc5 5.Bg5 Nf6 6.e5 Qc7 7.Qc2 d3 8.cxd3 Nd4 9.Nxd4 Bxd4 10.0-0 Bxe5 11.Re1 d6 12.d4 Bg4 13.Qxg4 Bxh2+ 14.Kf1 Qxe1+ 15.Kxe1 Nxd4 16.Nc3 0-0 17.Kf1 d5 18.Bxd5 Bd6 19.Bxb7 Rab8 20.Bf3 Nh2+ 21.Kg1 Nxf3+ 22.gxf3 Rxb2 23.Be3 Re8 24.d5 Re5 25.Re1 a5 26.Bf4 Rf5 27.Bxd6 cxd6 28.Nb5 g6 29.Nxd6 Rxd5 30.Re8+ Kg7 31.Ne8+ Kh6 32.f4 Rxa2 33.Nf6 Rf5 34.Ng8+ Kg7 35.Ne7 Rxf4 36.Rg8+ Kh6 37.Re8 a4 38.Ng8+ Kh5 39.Re5+ Rf5 40.Nf6+ Kg5 41.Ne4+ Kf4 42.Re7 Re2 43.f3 Kxf3 44.Ng5+ Rxd5+ 45.Kf1 Rg1+ 46.Kxg1 Rxe7  
0-1

□ James Ch'ng  
■ Wardell Vance  
Music City Spring  
[Sicilian Defence]

1998

1.e4 c5 2.Nf3 Nc6 3.Bc4 g6 4.Nc3 Bg7 5.0-0 d6 6.h3 Nf6 7.d3 0-0 8.Re1 a6 9.a3 b5 10.Bb3 Bb7 11.Nd5 Nxd5 12.Bxd5 e6 13.Ba2 Rc8 14.e3 Na5 15.Bg5 Qb6 16.Be3 Qc7 17.Re1 c4 18.d4 Bxe4 19.Bf4 Bd5 20.Rc2 Qc6 21.Re3 Rfd8 22.Rce2 Nb3 23.Bb1 Bxf3 24.Rxf3 d5 25.Bc2 Na5 26.Qd2 Nb7 27.Bh6 Nd6 28.Bxg7 Kxg7 29.Rg3 Ne4 30.Bxe4 dxe4 31.Rg4 f5 32.Rg3 e5 33.h4 exd4 34.h5 dxc3 35.h6+ Kf7 36.Qxc3 Rd1+ 37.Kh2 Qf6 38.Qc2 Rcd8 39.f3 Qh4+ 40.Rh3 Qf4+ 41.g3 Qxf3 42.Rf2 Qh1#  
0-1

□ Jeremy Reed  
■ Steven Patterson  
Music City Spring  
[Guico Piano]

1998

1.e4 e5 2.Nf3 Nc6 3.Bc4 d6 4.h3 f5 5.d3 fxe4 6.dxe4 h6 7.Nc3 Nf6 8.0-0 Qc7 9.Bb5 Bd7 10.Nd5 Nxd5 11.exd5 Nb8 12.c4 Bxb5 13.cxb5 Nd7 14.Re1 Nb6 15.b3 g5 16.Ba3 Qf7 17.Qc2 Nxd5 18.Nd4 Bg7 19.Nf5 0-0 20.Nxg7 Qxg7 21.Ra1 Qf7 22.Re2 Rac8 23.Qd2 Nf4 24.Re4 a6 25.bxa6 bxa6 26.Rc4 Rcd8 27.Rc6 a5 28.Rdc1 Rd7 29.Qc2 Ra8 30.Kh1 Ra7 31.Bb2 Qd5 32.f3  
½-½

□ Andrew Mongin  
■ Michael White  
Music City Spring  
[Caro Kann Defence]

1998

1.e4 c6 2.Nc3 d5 3.Nf3 Bg4 4.h3 Bxf3 5.Qxf3 dxe4 6.Nxe4 e5 7.Bc4 Nf6 8.Ng5 Qc7 9.Bxf7+ Kd8 10.Bb3 Kc7 11.0-0 Nd5 12.d4 Qf6 13.Bxd5 exd4 14.Qxd5 exd4 15.Ne6+ Kc8 16.Bg5  
1-0

Summer 1998 /13



## THE TENNESSEE OPEN

### A New Perspective

The Tennessee Open should be the premier event in Tennessee Chess each year. The chess players of Tennessee should be the reason for holding this tournament. The Clarksville Chess Club hopes to establish this tradition at the 52nd Annual Tennessee Open.

This year, the open was designed with the player foremost in mind. The growing prize fund, awarding door prizes each round, the souvenir program (which will be given to each player contains coupons from local restaurants to help defray eating expenses), the sale of Tennessee Open and TCA T-shirts and other souvenirs, are all ideas that sprung from putting the player first. Each player should go home from the Tennessee Open knowing this annual tournament was held for his or her benefit, and not just as a reason to try to generate a large profit.

Unfortunately, if the Tennessee Open is to continue for another 52 years, it must at least pay for itself, and not lose money year after year. The Clarksville Chess Club has put together a sound financial package based on a realistic, even conservative number of entries. With 110 entries the 52nd Annual Tennessee Open will pay for itself. For all entries above 110, the entire entry fee of each additional player will be put into the prize fund, with the exception of the .32c per game required for the USCF ratings fee.

Neither the TCA nor the Clarksville Chess Club will make so much as a single cent of profit on the State Championship this year. Hopefully this will encourage many more players to attend. There will certainly be additional place prizes added to increase attendance. Even though the Tennessee Open is the State Championship, it is also an open tournament. Since Clarksville is on the border of Tennessee and Kentucky, the Clarksville Chess Club is inviting chess players from all over Kentucky and is actively marketing the 52nd Annual Tennessee Open in all surrounding states. This should provide plenty of new adversaries and enhance the level of competition for everyone.

The tournament directors for this year's Open are all being hired from out of state, so that the people who usually run the tournaments in Tennessee will have a chance to play. The tournament directors will be:

NTD Walter Schaetzle	Northport, AL
ATD Stephen Dilliard	Louisville, KY
STD Terry Winchester	Evansville, IN

The TCA and Chess Moves Association will also be holding the first ever Tennessee Quick-Chess Championship on Monday, September 7, 1998 (Labor Day) at the same site as the Tennessee Open. With this added attraction and the Scholastics Tournament on Saturday, September 5, 1998, this Tennessee Open has all the makings of one very spectacular tournament. With a large turnout and the growing prize fund it could become the largest tournament ever held in Tennessee (besides the Supnationals of 1997). Anyone who does not participate could very well be missing a chance to make history. The Clarksville Chess Club hopes to set a new standard for Tennessee tournaments that will carry well into the new millennium.

For a tournament this extraordinary, the Clarksville Chess Club had to pick a site that was just as awesome. The Ramada Inn Riverview sits seven stories tall atop a hill just above the Cumberland River. Half its rooms offer a breathtaking view of the Cumberland and the Tennessee countryside. The seventh floor is a security floor. There are even suites with hot tubs, as well as cable TV in each room with in room movies. The total space available to us for the chess tournament itself is over 7000 square feet of carpeted, air conditioned, well lit luxury. After seeing the facilities, Harry Sabine said, "It may be to big!" After viewing the suites and the main tournament room, Pat Knight said, "I think it's great!" The Ramada even offers a business center with access to computers, printer, fax and E-mail for guests. Each guest also receives a free full breakfast in the Hotel Restaurant and a complimentary 3-day pass to Gold's Gym.

The only thing better than this fantastic site is the excellent room rates the Ramada has offered the players in the 52nd Annual Tennessee Open. The rates are \$57.00/night plus tax for single/double and \$84.00/night plus tax for triple/quad. That's just one more benefit derived from putting the players first.

If this year's Tennessee Open sounds "terrific", then come join us. Everyone is invited and just wait until you get here and see the trophies!

Sincerely,

Roy B. Manners  
President Clarksville Chess Club



## CAMP-O-RAMMA

Chris Prosser

Oh, What a beautiful mornin' (at 5:30 that is), Oh, What a beautiful day (lessons, food, simuls, games, basketball, tournament, blitz, bughouse), I've got a wonderful feelin' (comfortable classrooms, huge recreation area, game room, a dorm hall all to ourselves, great food, and midnight pizza), everthins goin' my way (1998 Nashville Chess Camp). Twenty-one students from four states participated in this years' Nashville Chess Camp. The Camp is sponsored by the Nashville Chess Center. Our stompin grounds became the Middle Tennessee State University Campus (MTSU). GM Sam Palatnik and NM Mark Ishee proved to be the perfect (and best) instructors that we could have found. Sam and Mark divided their time between both groups to ensure that each student received the highest quality and variety of instruction. The classrooms, dorm rooms, recreational complex, cafeteria, game room, and parking facilities at MTSU proved to top notch (making a repeat performance next year a sure thing). A typical day included breakfast, 2 lessons, lunch, a G\30 tournament, tournament game analysis, recreation, another lesson, supper, and a night activity (blitz and bughouse tournaments, movie, and GM simul), a return to the dorm (for more blitz and bughouse), and a shuffle off to bed to prepare for a 5:30 a.m. wake up call. The G\30 Tournament w\analysis proved to be very beneficial to all the students. The blitz and bughouse tournaments proved to be fun and exciting, and very hotly contested. I can tell you that the 2nd place Bughouse team consisted of Cameron Jones, and Chris Prosser (your local camp director), and we fought till the very end, losing 1st via a playoff match. The biggest rivalry proved to be Lee gardner and Jake Kleiman, who tied for 1st in both the G\30 and Blitz tournaments. The week proved to be over much too soon. I wonderful time was had by all (including myself). The dates for next year's camp will be finalized soon, so be ready to come and join us at MTSU for the 1999 Nashville Chess Camp.

### 1998 BELLEVUE CHESS CAMP

The 3rd annual Bellevue Chess Camp (for K-6 grade Under 600 rated) was again a huge success. This year the teaching duties fell to Todd Andrews and Ben Bentrup. Each day was crammed full of instruction, games, tournaments, lunch, simuls, basketball, movies, and fun. This year's participants included two absolute beginners. By the end of the week, all of the students were playing higher quality chess. I have Todd and Ben to thank for that. The 1999 Bellevue Chess Camp will be held a week or two after school is out (metro), and again will be for K-6 students (with U600 ratings). Be watching for the flyers.

## 1998 INTERCONTINENTAL YOUTH TEAM TOURNAMENT

At the invitation of the British Chess Federation, the USA Youth Team travelled to England competing on July 14-16, 1998 at the King Edward's School. The results are as follows:

In the 14 and under division:	1st Place	USA	59.5
	2nd Place	England	32.5
	3rd Place	Yugoslavia	28
	4th Place	South Africa	24
In the 17 and under division:	1st Place	England	51.5
	2nd Place	USA*	46
	3rd Place	Yugoslavia	31
	4th Place	South Africa	15.5

\*Todd Andrews from Nashville TN competed in this division.



### Submitted Game

The following was submitted and annotated by the winner of the game, Ben Harris.  
(Nashville 1998 City Championship Finals, Nashville Chess Center, 01-17-98)

WHITE: Ben Harris BLACK: Leon Schwartz

1. e4	c5	(a) The Yugoslav Attack. This aggressive formation
2. Nf3	d6	all but purged the Dragon Variation from top level
3. d4	cx d	play in the 60's. (b) After this capture, White's dark
4. Nxd4	Nf6	squared bishop opposes Black's on the long
5. Nc3	g6	diagonal, relieving pressure on White's queenside.
6. Be3	Bg7	More usual is Qc7 (or Qa5) after Bd7, followed by
7. f3 (a)	O-O	Rc8, Ne5, & Nc4. This is a sharp game with
8. Bc4	Nc6	chances for both sides. However, White's
9. Qd2	Nxd4 (b)	advantage in the center can often leave him with
10. Bxd4	Qc7 ?!	an extra trump. (c) Not 12. Bxe6 fxe6
11. Bb3	Be6	strengthening Black's center. (d) Too slow.
12. O-O-O (c)	a6 (d)	If 12. Bc4, then 13. Nd5!. Perhaps 12. Qa5 to
13. h4	Bb3	try for an attack with ...b5, etc. (e) Threatening
14. axb	Qa5	Nd5. (f) This guards the threat, but White's
15. Kb1 (e)	Rfc8 (f)	attack now launches. White is close to having
16. h5	Nxh5	a strategically won game. (g) This move recurs
17. Bxg7	Kxg7	as being decisive in the Yugoslav. This theme
18. g4	Nf6	underlines White's central trumps. (h) White
19. Qh6+	Kg8	wins with decisive material gain. In sharp
20. Nd5 (g)	Qd8	positions even minor inaccuracies can lose
21. e5	Nh5	quickly. One must make every tempo count!
22. gxf...	(h)	



# 1998 CUMBERLAND CO SUMMER OPEN CHESS TOURNAMENT

51 PLAYERS	July 11, 1998	FIVE STATES REPRESENTED
		FAIRFIELD GLADE TN
<b>OPEN: (23)</b>	<b>PRIZE WINNERS</b>	
CHAMPION	PETER BERELOS	KNOXVILLE TN 4.0 \$50.00
EXPERT - 1ST	NEAL HARRIS	OLD FORT NC 3.0 \$18.33
EXPERT - 1ST	EMANUEL TSITSEKLIS	KNOXVILLE TN 3.0 \$18.33
EXPERT - 1ST	BILL HALL	CROSSVILLE TN 3.0 \$18.33
CLASS A - 1ST	REA HAYES	CHATTANOOGA TN 3.0 \$25.00
CLASS B - 1ST	RICHARD WESTBROOK	KNOXVILLE TN 2.0 \$25.00
CLASS C - 1ST	SCOTT CANTRELL	RICEVILLE TN 2.5 \$25.00

<b>AMATEUR: (28)</b>	<b>PRIZE WINNERS</b>	
CHAMPION	CHARLES MCGINNIS	MADISONVILLE TN 4.0 \$50.00
2ND	STEVE ROBERTS	CROSSVILLE TN 3.0 \$13.75
2ND	DAVID DEMEO	HERMITAGE TN 3.0 \$13.75
CLASS E - 1ST	BARTON CAMARATA	ATHENS TN 3.0 \$25.00
CLASS F - 1ST	FRANKLIN HAJNY	CROSSVILLE TN 3.0 \$13.75
CLASS F - 1ST	JOSHUA SUICH	MORRISTOWN TN 3.0 \$13.75
CLASS G - 1ST	DARRELL WYATT	CROSSVILLE TN 2.5 \$12.50
CLASS G - 1ST	JEREMY CARTER	CROSSVILLE TN 2.5 \$12.50
UNRATED - 1ST	TONI ROBERTS	CROSSVILLE TN 2.0 \$25.00

## 1998 U.S. CADET CHAMPIONSHIP NASHVILLE CHESS CENTER JULY 9-12, 1998

An eight-player Round Robin invitational for the top scholastic players under age 16. This year's player list:

Vinay Bhat 15 San Jose CA	Noah Siegel 15 New York NY
Andrei Zaremba 15 Dearborn Heights MI	Stanislav Ritvin 15 Philadelphia PA
Dmitry Schneider 13 Hastings on Hudson NY	Philip Xiao Wang 14 Reno NV
Jordy Mont-Reynaud 14 Palo Alto CA	David John 15 Houston TX

The games from each round start on page 18.

☐ **Zaremba**  
US Cadet Championship, Rd.1 1998

1.d4 Nf6 2.e4 c5 3.e3 g6 4.Nf3 Bg7 5.Nc3 0-0 6.Be2 cxd4 7.Nxd4 Nc6 8.0-0 Nxd4 9.Qxd4 d6 10.Bf3 Qc7 11.Qd3 Bd7 12.e4 Bc6 13.Bg5 Rf8 14.Bxf6 Bxf6 15.Rac1 Bxc3 16.Rxc3 Qb6 17.h4 Qe5 18.Rd1 a6 19.Rcc1 Qb4 20.Qd4 h5 21.Rd3 Qc5 22.Qxc5 dxc5 23.e5 Bxf3 24.gxf3 Rxd8 25.Rcd1 Rxd3 26.Rxd3 b5 27.Rd5 bxc4 28.Rxc5 Rb8 29.Rxc4 Rxb2 30.Ra4 Rb6 31.Kg2 ½-½

☐ **Ritvin**  
☒ **Schneider**  
US Cadet Championship, Rd.1 1998

1.e4 c6 2.d3 d5 3.Nd2 Nf6 4.Ngf3 Nc6 5.c3 a5 6.Be2 dxe4 7.dxe4 e5 8.0-0 Bc5 9.Qc2 0-0 10.Nc4 Qe7 11.Be3 Bg4 12.Bxc5 Qxc5 13.Ne3 Bxf3 14.Bxf3 Rad8 15.Rad1 g6 16.Rfcl Kg7 17.Qe2 Rxd1 18.Rxd1 Nd8 19.Nd5 Ne6 ½-½

☐ **Mont Renaud**  
☒ **Wang**  
US Cadet Championship, Rd.1 1998

1.d4 f5 2.Nf3 Nf6 3.g3 g6 4.Bg2 Bg7 5.0-0 0-0 6.c4 d6 7.Nc3 Qe8 8.d5 Na6 9.Nd4 Bd7 10.Rb1 c6 11.b3 Ne7 12.Bb2 c5 13.Nf3 Rb8 14.Nd2 b5 15.e3 h6 16.Qc2 a5 17.cxb5 Nxb5 18.a4 Ne7 19.Nc4 Ra8 20.Qd2 Qb8 21.Ne2 Qa7 22.Nf4 g5 23.Ne6 Bxe6 24.dxe6 d5 25.Ne5 Qb6 26.Ng6 Rfe8 27.Qc2 Ne4 28.f3 Nd6 29.f4 c4 30.bxc4 Qxc3+ 31.Kh1 Bxb2 32.Qxb2 Kh7 33.Qe5 gxf4 34.gxf4 Qd3 35.Nxe7 Rxe7 36.Qxd6 Rg7 37.Rb7 Qxc4 38.Qe5 Rag8 39.Qxf5+ Kh8 40.Qf6 Kh7 41.Qf5+ Kh8 42.Qe5 Kh7 43.Rxc7 Rxc7 44.e7 Rxe2 45.Kxe2 Qc2+ 46.Rf2 Qg6+ 47.Kh3 Qd3+ 48.Kh4 Rc3 49.Qxc3 Qxc3 50.e8Q Qf6+ 51.Kg3 Qc3+ 52.Kg2 Qg7+ 53.Kf3 Qd4 54.Qe7+ Kh8 55.Qe5+ 1-0

☐ **John**  
☒ **Bhat**  
US Cadet Championship, Rd.1 1998

1.d4 d5 2.Nf3 Nf6 3.e4 e6 4.Nc3 c6 5.Bg5 h6 6.Bxf6 Qxf6 7.e3 Nd7 8.Bd3 dxc4 9.Bxc4 g6 10.0-0 Bg7 11.b4 0-0 12.Qb3 e5 13.d5 Nb6 14.e4 Bg4 15.Be2 cxd5 16.Nxd5 Nxd5 17.Qxd5 Qb6 18.Qb3 Qc6 19.Qe3 Qb6 20.Qb3 Rac8 21.Rac1 Rc6 22.Rxc6 Qxc6 23.Nxe5 Qxe4 24.Bxg4 Qxe5 25.Rd1 Re8 26.g3 Re7 27.b5 h5 28.Bh3 h4 29.Qa4 Bf6 30.Qxa7 hxe3 31.hxe3 Qh5 32.Rd8+ Kh7 33.Kg2 Qxb5 34.Rd1 Qc6+ 35.Kg1 Qc2 36.Rf1 Qd3 37.Qe5 Kg7 38.Bg2 Re2 39.Qd5 Qa3 40.Qxb7 Bd4 41.Qf3 Qxa2 42.Bh3 Qb2 43.Bg2 Re5 44.Bh3 Re2 45.Bg2 Re6 46.Bh3 Rf6 47.Qg2 Qe2 48.Bc8 Rxf2 49.Rxf2 Qe1+ 50.Kh2 If 50 Qf1 Bxf2+ 51 Kg2 Bxg3 winning another pawn. Bxf2 51.Bh7 Bd4 52.Bf3 Qe3 53.Qf1 Qh6+ 54.Kg2 Qe3 55.Kh2 f5 56.Bg2 Qh6+ 57.Bh3 Qd2+ 58.Bg2 Qe3 59.Qf4 Qg1+ 60.Kh3 Qd1 61.Bf3 Qd3 62.Qc7+ Kf6 63.Qd6+ Kg7 64.Bg2 Qe3 65.Qf4 Qc3 66.Qf3 Qe5 67.Qd5 Qc3 68.Qf3 Qc1 ½-½



[ ] Bhat

■ Mont Renaud

US Cadet Championship, Rd.2

1998

1.e4 c5 2.Nf3 Nc6 3.Bb5 g6 4.Bxc6 dxc6 5.h3 e5 6.d3 Bg7 7.Be3 Qe7 8.Qd2 Nf6 9.Nc3 Nd7 10.Bh6 f6 11.Ne2 Nf8 12.Bxg7 Qxg7 13.Nh2 Ne6 14.f4 exf4 15.Nxf4 0-0 16.0-0 f5 17.exf5 Rxf5 18.Nxe6 Bxe6 19.Qe3 Re5 20.Qg3 Rd8 21.b3 Bd5 22.Ng4 Re6? 23.c4

1-0

[ ] Wang

■ Ritvin

US Cadet Championship, Rd.2

1998

1.d4 Nf6 2.Nf3 g6 3.c4 Bg7 4.g3 0-0 5.Bg2 d6 6.0-0 Nbd7 7.Nc3 e5 8.e4 exd4 9.Nxd4 Nc5 10.h3 Re8 11.Re1 a5 12.b3 c6 13.Bb2 Qb6 14.Qc2 a4 15.Rad1 Nfd7 16.Nxa4 Nxa4 17.bxa4 Qb4 18.Re3 Rxa4 19.a3 Qxc4 20.Re3 Qa6 21.Bf1 Qa8 22.Re3 Nc5 23.Kh2 Bd7 24.f4 Qa7 25.Ree1 b5 26.e5 dxe5 27.fxe5 Ne6 28.Nxc6 Bxc6 29.Qxc6 Rb8 30.Kg2 Qb7 31.Qxb7 Rxb7 32.Rd5 b4 33.Rb5 Rxb5 34.Bxb5 Ra8

1/2-1/2

[ ] Schneider

■ Siegel

US Cadet Championship, Rd.2

1998

1.e4 Nf6 2.e5 Nd5 3.d4 d6 4.Bc4 c6 5.Qc2 dxe5 6.dxe5 Bf5 7.Nf3 e6 8.0-0 Bg4 9.Bb3 Nd7 10.c4 Ne7 11.Bf4 Ng6 12.Bg3 Bxf3 13.Qxf3 Ndx5 14.Qh5 Nd7 15.Nc3 Nf6 16.Qe2 Be7 17.Rad1 Qc8 18.h4 Nf8 19.h5 N8d7 20.Bd6 Bxd6 21.Rxd6 Qc7 22.Rfd1 0-0-0 23.h6 gxh6 24.Qf3 Rhg8 25.Bc2 Rg7 26.Ne4 Ne8 27.R6d2 f5 28.Nc5 Qe5 29.Qa3 Nef6 30.Qxa7 Rxg2+ 31.Kxg2 Rg8+ 32.Kf1 Nxc5 33.Qa8+ Kc7 34.Rd8 Qxb2 35.Qb8+ Kb6 36.Rb1

1-0

[ ] Zaremba

■ John

US Cadet Championship, Rd.2

1998

1.d4 d5 2.Nf3 Nf6 3.g3 c6 4.Bg2 Bf5 5.0-0 e6 6.c4 Bd6 7.Nc3 Nbd7 8.b3 h6 9.Bb2 0-0 10.Nd2 Qe7 11.e4 dxe4 12.Ndx4 Nxe4 13.Nxe4 Bxe4 14.Bxe4 Nf6 15.Bg2 Ba3 16.Qc2 Bxb2 17.Qxb2 Rfd8 18.Rfd1 Rd7 19.Rd2 Rad8 20.Rad1 Qd6 21.Bf3 Qc7 22.Qc3 Ne8 23.Qe3 Qa5 24.Kg2 Nf6 25.h4 Qf5 26.d5 exd5 27.Qxa7 dxc4 28.Rxd7 Rxd7 29.Rxd7 Qxd7 30.bxc4 Qc8 31.a4 Ne8 32.a5 Nc7 33.Qb6 Na6 34.Be4 h5 35.c5 Nb8 36.Qa7 g6 37.Bd3 Kg7 38.Be4 Kg8 39.Qb6 Qd7 40.Qb1 Kh7 41.Qb3 Kg8 42.Qc3 Na6 43.Bxa6 bxa6 44.Qb3 Qc8 45.Qb6 Kg7 46.Qa7 Kg8 47.Qc7 Kg7 48.Qe5+ Kh7 49.Qf6 Kg8 50.f3 Qd7

1/2-1/2

[ ] John

■ Schneider

US Cadet Championship, Rd.3

1998

1.Nf3 d5 2.d4 c6 3.c4 e6 4.Nc3 dxc4 5.e3 b5 6.a4 Bb4 7.Bd2 a5 8.axb5 Bxc3 9.Bxc3 cxb5 10.b3 Bb7 11.d5 Nf6 12.bxc4 b4 13.Bxf6 Qxf6 14.Qa4+ Nd7 15.Nd4 e5 16.Nb3 Ke7 17.Qb5 Rhb8 18.Rxa5 Rxa5 19.Qxa5 Qg6 20.Qxb4+ Ke8 21.Qc3 Ba6 22.Nd2 f6 23.g3 Nc5 24.f3 Na4 25.Qa3 Rb1+ 26.Nxb1 Qxb1+ 27.Kd2 Nb2 28.Qxa6 Qd1+ 29.Kc3 Qc1+ 30.Kb4 Qd2+ 31.Kc5 Qxc3+ 32.Kd6 Qxf3 33.Qa7

1-0

[ ] Siegel

■ Wang

US Cadet Championship, Rd.3

1998

1.d4 f5 2.Nc3 d5 3.Bg5 g6 4.h4 Bg7 5.e3 Be6 6.Bd3 c6 7.Bf4 Nf6 8.h5 Nbd7 9.hxg6 hxg6 10.Rxh8+ Bxh8 11.f3 Qa5 12.Rb1 c5 13.Qd2 Nh5 14.Nb5 Qxa2 15.Nc7+ Kf7 16.Rd1 Nxf4 17.Nxa8 Nxd3+ 18.Qxd3 Qa5+ 19.Kf2 Qd8 20.Nh3 Bf6 21.Nf4 Qxa8 22.Nxe6 c4 23.Qe2 Kxe6 24.e4 fxe4 25.fxe4 Qf8 26.Kg1 dxe4 27.Qxe4+ Kd6 28.Qxb7 Qb8 29.Qa6+ Nb6 30.c3 Bg5 31.Re1 Kc6 32.d5+! Kd7 But not 32....Kxd5 33.Qb5+ wins a piece. 33.Qb5+ Kd8 34.d6 Bf6 35.dxe7+ Bxe7 36.Rd1+ Bd6 37.Qg5+ Kd7 38.Qxg6 Qf8 39.Qh7+ Kc6 40.Qe4+ Kb5 41.Qh4 Bc5+ 42.Kh1 Qf5 43.Qh8 a5 44.Qh6 a4 45.Kh2 Qc2 46.Qd2 Qh7+ 47.Kg3 Qg6+ 48.Kf3 Qc6+ 49.Kg4 Qe4+ 50.Kh3 Be3 51.Qe2 Kc5 52.Qg4 Qh7+ 53.Kg3 Kb5

1/2-1/2

[ ] Zaremba

■ Bhat

US Cadet Championship, Rd.3

1998

White lost on time (overslept)

0-1

[ ] Ritvin

■ Mont Renaud

US Cadet Championship, Rd.3

1998

1.e4 c5 2.Nf3 Nc6 3.g3 g6 4.Bg2 Bg7 5.0-0 d6 6.c3 e5 7.d3 Nge7 8.a3 0-0 9.b4 b5 10.a4 bxa4 11.b5 Nb8 12.Rxa4 Bb7 13.c4 f5 14.Nc3 Nc8 15.Qb3 Nb6 16.Ra2 N8d7 17.Nd5 Nf6 18.Bg5 Bxd5 19.cxd5 Qc7 20.Bxf6 Bxf6 21.Nd2 fxe4 22.Bxe4 c4 23.Nxc4 Nd7 24.Qb4 Nc5 25.Rfa1 a6 26.b6 Qd7 27.Rb1 Rab8 28.Rab2 Rfc8 29.Na5 Bd8 30.Qd2 Na4 31.Rb4 Rxb6 32.Nc6 Rxb4 33.Qxb4 Nc5 34.Rc1 a5 35.Qc4 a4 36.Bf3 Qf7 37.Bg4 Ra8 38.Nxe5 Qb7 39.d4 Nb3 40.Be6+ Kg7 41.Nf7 Be7 42.Rc3 Nd2 43.Qe2 Qb1+ 44.Kg2 Qe4+ 45.Qxe4 Nxe4 46.Ra3 Nd2 47.f4 Nc4 48.Ra2 h6 49.Ne5 dxe5 50.dxe5 Bb4 51.d6 Nc3+ 52.Kf3 Nd1 53.Ra1 Nc3 54.Kc3 a3 55.Kd3 Na4 56.Kc4 Nc5 57.Kxb4 Nxe6 58.Rxa3 Rxa3 59.Kxa3 Kf7 60.Kb4 g5 61.f5 Nd4 62.e6+ Kf6 63.g4 h5 64.d7 hxg4 65.d8Q+ Kc5 66.e7 Nxf5 67.e8Q+ Kf4 68.Qd2+ Kf3 69.Qee2#

1-0



[ ] Wang

■ John

US Cadet Championship, Rd.4

1998

1.d4 d5 2.c4 c6 3.Nf3 Nf6 4.g3 Bg4 5.Bg2 e6 6.0-0 Nbd7 7.b3 Bd6 8.Bb2 0-0 9.Ne5 Bf5  
10.f4 Be4 11.h3 Bxg2 12.Kxg2 Ne4 13.Nd2 Nxd2 14.Qxd2 Nf6 15.Nd3 Ne4 16.Qc2 f5 17.e3  
Kh8 18.Nf2 Nxf2 19.Rxf2 Qd7  
½-½

[ ] Bhat

■ Ritvin

US Cadet Championship, Rd.4

1998

1.e4 e6 2.d3 d5 3.Nd2 Nf6 4.Ng3 b6 5.g3 Ba6 6.e5 Nfd7 7.Bg2 g5 8.h3 Bg7 9.d4 c5 10.c3  
Nc6 11.Qa4 Qc8 12.Bf1 Bxf1 13.Kxf1 h6 14.Kg2 0-0 15.b4 f6 16.exf6 Nxf6 17.bxc5 Ne4  
18.Qc2 Nxd2 19.Qxd2 bxc5 20.Ba3 Rxf3 21.Kxf3 cxd4 22.cxd4 Nxd4+ 23.Kg2 Qc2 24.Qc3  
Qf5 25.Ra1 Nb5  
½-½

[ ] Mont Reynaud

■ Siegel

US Cadet Championship, Rd.4

1998

1.d4 d5 2.c4 c6 3.Nf3 Nf6 4.Nc3 dxc4 5.a4 Bf5 6.e3 e6 7.Bxc4 Bb4 8.0-0 0-0 9.Qe2 Bg4  
10.h3 Bxf3 11.Qxf3 Nbd7 12.Rd1 a5 13.e4 e5 14.Be3 Qc7 15.Ra1 exd4 16.Bxd4 Ne5 17.Qe2  
Qc7 18.Ba2 Rfe8 19.Qc3 Ng6 20.Bxf6 Qxf6 21.Qb6 Qe7 22.Bb1 Be5 23.Qb3 Nf4 24.Kh2  
Qg5 25.g3 Bxf2 26.Na2 Ne2 27.Rc2 Bxg3+ 28.Kh1 Qh4 29.Kg2 Nf4+  
0-1

[ ] Schneider

■ Zaremba

US Cadet Championship, Rd.4

1998

1.e4 c5 2.Nf3 d6 3.d4 cxd4 4.Nxd4 Nf6 5.Nc3 g6 6.Be3 Bg7 7.f3 0-0 8.Qd2 Nc6 9.Be4 Bd7  
10.h4 Rc8 11.Bb3 Ne5 12.0-0-0 h5 13.Bg5 a5 14.a4 Qb6 15.Bxf6 exf6 16.Ndb5 Bxb5  
17.Nxb5 Rfd8 18.Kb1 Rc5 19.Rhe1 Rxb5 20.axb5 a4 21.Bxa4 Ra8 22.Bb3 f5 23.c3 f4  
24.Qxf4 Qxb5 25.Kc2 Ra6 26.Rd5 Qb6 27.Red1 Qc7 28.Qd2 Ne4 29.Bxc4 Qxc4 30.Qd3 Qa2  
31.Qb5 Rc6 32.R1d3 Be5 33.Qa5 Qc4 34.b3 Qa6 35.Qxa6 Rxa6 36.Rb5 Ra2+ 37.Kb1 Rxc2  
38.Rxb7 g5 39.hxg5 h4 40.f4 Rg3 41.Kc2 Bxf4 42.Ra7 Rg2+ 43.Kb1 Bg3 44.Rf3 h3 45.Rxf7  
h2 46.Rg7+ Kf8 47.Rh7 Kg8 48.g6 h1Q+ 49.Rxh1 Be5 50.Ra8+ Kg7 51.Rh7+ Kf6 52.g7  
Rg1+ 53.Kc2 Rg2+ 54.Kd3 Rg3+ 55.Kc4 Rxc3+ 56.Kb4 Rc1 57.Rf8+ Ke7 58.g8Q+  
1-0

[ ] Schneider

■ Bhat

US Cadet Championship, Rd.5

1998

1.e4 d5 2.exd5 Qxd5 3.Nc3 Qa5 4.d4 Nf6 5.Be4 c6 6.h3 Bf5 7.Nf3 Nbd7 8.Bd2 Qc7 9.Qe2  
c6 10.Ne5 Nxe5 11.dxe5 Nd7 12.Bf4 Nb6 13.0-0 Bb4 14.Ne4 Bxe4 15.Qxe4 Nxc4 16.Qxc4

Be7 17.Rad1

½-½

[ ] Zaremba

■ Wang

US Cadet Championship, Rd.5

1998

1.d4 f5 2.Nf3 Nf6 3.g3 g6 4.Bg2 Bg7 5.0-0 0-0 6.c4 d6 7.Nc3 Qe8 8.Nd5 Nxd5 9.cxd5 Qb5  
10.Ng5 Qb6 11.e3 h6 12.Ne6 Bxe6 13.dxe6 c6 14.d5 Na6 15.e4 Nc5 16.exf5 Rxf5 17.Qg4  
Kh7 18.Be3 Qxb2 19.dxc6 bxc6 20.Bxc6 Raf8 21.a4 Qb3 22.Ra1 h5 23.Qh4 Bf6 24.Qh3  
Nxe6 25.f4 Kg7 26.Bd7 Rd8 27.Bxe6 Qxe6 28.Bb6 Qc8 29.Bxd8 Qxd8 30.Qg2 Qa5 31.Qe4  
Rc5 32.Rc1 Rf5 33.Rc8 Rd5 34.Rfc1 Rd4 35.Rg8+  
1-0

[ ] Siegel

■ Ritvin

US Cadet Championship, Rd.5

1998

1.d4 Nf6 2.c4 g6 3.Nc3 Bg7 4.e4 d6 5.Bf4 c5 6.d5 0-0 7.Nf3 b5 8.cxb5 a6 9.a4 Nbd7 10.b6  
a5 11.Bb5 Nxb6 12.0-0 Ne8 13.Qe2 Ne7 14.Bd3 Na6 15.Be3 Nb4 16.Bb5 Bd7  
½-½

[ ] John

■ Mont Renaud

US Cadet Championship, Rd.5

1998

1.c4 e5 2.g3 d6 3.Nc3 f5 4.Bg2 Nf6 5.e3 g6 6.Nge2 Bg7 7.d4 e4 8.Nf4 0-0 9.h4 c6 10.Rb1  
Na6 11.b4 Ne7 12.a4 b6 13.Bf1 a5 14.b5 c5 15.Be2 Qe8 16.d5 Ng4 17.Bb2 Ne5 18.Kd2 h5  
½-½

[ ] Bhat

■ Siegel

US Cadet Championship, Rd.6

1998

1.e4 Nf6 2.e5 Nd5 3.d4 d6 4.c4 Nb6 5.exd6 cxd6 6.Nc3 g6 7.Be3 Bg7 8.Rc1 0-0 9.b3 Nc6  
10.d5 Ne5 11.Be2 Qe8 12.f4 Ned7 13.Nb5 Qd8 14.Nf3 Nf6 15.0-0 a6 16.Nc3 Nbd7 17.Nd4  
Nc5 18.Bf3 Qa5 19.h3 Bd7 20.a4 Ne8 21.Qc2 Qb6 22.Nce2 e5 23.dxe6 fxe6 24.Rb1 Qc7  
25.Nc3 a5 26.Rbd1 Bxd4 27.Bxd4 Rxf4 28.Nd5 exd5 29.Bxd5+ Be6 30.Rxf4 Bxd5 31.cxd5  
Ng7 32.Bxc5 dxc5 33.d6 Qc6 34.Qc4+ Kh8 35.d7 Ne6 36.d8Q+  
1-0

[ ] Ritvin

■ John

US Cadet Championship, Rd.6

1998

1.e4 c5 2.Nf3 c6 3.d3 Nc6 4.g3 g6 5.d4 cxd4 6.Nxd4 Nf6 7.Bg2 Bg7 8.Nxc6 bxc6 9.c4 0-0  
10.0-0 d5 11.exd5 exd5 12.cxd5 Nxd5 13.Nc3 Nxc3 14.bxc3 Ba6 15.Bxa8 Bxf1 16.Qxd8



Rxd8 17.Kxf1 Bxc3 18.Rb1 Rxa8 19.Be3 a5 20.Ke2 Kg7  
 ½-½

□ Mont Renaud

■ Zaremba

US Cadet Championship, Rd.6

1998

1.d4 d5 2.c4 c6 3.Nf3 Nf6 4.Nc3 dxc4 5.a4 Bf5 6.e3 c6 7.Bxc4 Bb4 8.0-0 0-0 9.h3 Nbd7  
 10.Qe2 Bg6 11.Nh4 e5 12.Nxg6 hxg6 13.Rd1 exd4 14.exd4 Nb6 15.Ba2 Nbd5 16.Bd2 Ba5  
 17.Qf3 Nb4 18.Bb3 Qxd4 19.Be3 Qe5 20.Bd4 Qg5 21.Bxf6 Qxf6 22.Qxf6 gxf6 23.Rd7 Na6  
 24.Ne4 f5 25.Ng5 Nc5 26.Bxf7+ Kh8 27.Rd4 Ne4 28.Nxe4 Rxf7 29.Ng5 Re7 30.Rad1 Rac8  
 31.Rd7 Kg7 32.h4 Bb4 33.R1d4 Rxd7 34.Rxd7+ Re7 35.Rxe7+ Bxe7 36.Nf3 Kf6 37.Kf1 Ke6  
 38.Ke2 Kd5 39.g3 Bf6 40.b3 Kc5 41.Kd3 Kb4 42.Kc2 Bc3 43.Ng5 b5 44.axb5 cxb5 45.Ne6  
 a5 46.Nf4 Bd4 47.Nxg6 a4 48.bxa4 bxa4 49.Ne7 Bxf2 50.Nxf5 a3 51.h5 Be1 52.Ne3 Bxg3  
 53.Nd5+ Kc4 54.Nb6+ Kb5 55.Kb3  
 ½-½

□ Wang

■ Schneider

US Cadet Championship, Rd.6

1998

1.d4 d5 2.Nf3 c6 3.c4 e6 4.g3 dxc4 5.Bg2 b5 6.0-0 Nd7 7.Qc2 Bb7 8.Rd1 Qc8 9.Bf4 Ngf6  
 10.Nbd2 c5 11.a4 a6 12.axb5 axb5 13.b3 cxb3 14.Qxb3 Bc6 15.dxc5 Bxc5 16.Ne5 Bxg2  
 17.Nxd7 Nxd7 18.Kxg2 Rxa1 19.Rxa1 Qb7+ 20.Nf3 0-0 21.Rb1 b4 22.Qc4 Rc8 23.Bd2 Bf8  
 24.Qa2 Qe4 25.Qa6 Ra8 26.Qd3 Qxd3 27.exd3 Rb8 28.Rb3 Nf6 29.Kf1 Nd5 30.Ke2 f6  
 31.Nd4 Kf7 32.Ne2 e5 33.Ne3 Ke6 34.Nc4 Ra8 35.Kd1 Ra1+ 36.Ke2 Ra8 37.Kd1 Bc5  
 38.Ke2 h5 39.Kf3 g5 40.h3 Rg8 41.Ke2 f5 42.Ne3 Ne7 43.Rb1 f4 44.Nd1 Nf5 45.Be1 Nd4+  
 46.Kf1 Ra8 47.Kg2 Nc6 48.Nb2 Kd5 49.Kf3 Ra3 50.Ke2 Nd4+ 51.Kd1 Nf3 52.Rc1 Ra2  
 53.Rb1 Bd4 54.Nc4 Nxe1 55.Kxe1 Bxf2+  
 0-1

□ Zaremba

■ Ritvin

US Cadet Championship, Rd.7

1998

1.e4 e6 2.Nf3 d5 3.Nc3 Nf6 4.e5 Nfd7 5.d4 c5 6.dxc5 Nc6 7.Bf4 Be7 8.a3 g5 9.Bg3 g4  
 10.Nd4 Nxe5 11.Bb5 Bf6 12.c6 bxc6 13.Nxc6 Qc7 14.0-0 Bb7 15.Nxe5 Bxe5 16.Bxd7+ Kxd7  
 17.Nb5 Qb8 18.Qxg4 Ba6 19.Qh5 Bxg3 20.Qxf7+ Kd8 21.Qf6+ Kd7 22.Qg7+ Kc6 23.Nd4+  
 Kb6 24.fxg3 Bxf1 25.Rxf1 Qd6 26.Nxe6 Qxe6 27.Rf6 Qxf6 28.Qxf6+ Kc5 29.h4 Rhg8 30.Kh2  
 Rg6 31.Qe7+ Kb6 32.Qxh7 Rg8 33.Qe7  
 1-0

□ John

■ Siegel

US Cadet Championship, Rd.7

1998

1.Nf3 d5 2.d4 Nf6 3.c4 c6 4.Nc3 dxc4 5.a4 Bf5 6.Ne5 e6 7.f3 c5 8.e4 cxd4 9.exf5 Nc6  
 But not 9....dxc3 10.Qxd8+ followed by Nxf7+. 10.Nxc6 bxc6 11.fxe6 fxe6 12.Bxc4 dxc3  
 13.Qxd8+ Rxd8 14.bxc3 Nd5 15.Bxd5 cxd5 16.Be3 Rd7 17.Kd2 Bd6 18.f4 Kf7 19.Rhb1

Rc8 20.g3 h5 21.Rb5 Rc4 22.a5 Rdc7 23.Bd4 h4 24.Rab1 g5 25.fxg5 e5 26.Rf1+ Kg7  
 27.Rxd5 exd4 28.Rxd6 dxc3+ 29.Ke3 c2 30.Rc1 h3 31.Kd2 R4c5 32.a6 Rf5 33.Re6 Rf2+  
 34.Re2 Rg2 35.Ke1 Rg1+ White resigns as after 36 Kd2 Rd7+ 37 Kxc2 Rc7+ winning the Rook.  
 0-1

□ Schneider

■ Mont Renaud

US Cadet Championship, Rd.7

1998

1.e4 c5 2.Nf3 Nc6 3.d4 cxd4 4.Nxd4 g6 5.Nc3 Bg7 6.Be3 Nf6 7.Be2 0-0 8.f4 d5 9.e5 Ne8  
 10.Bf3 e6 11.0-0 f6 12.exf6 Bxf6 13.Nxc6 bxc6 14.Bd4 Nd6 15.Na4 Nf5 16.Bxf6 Qxf6  
 17.Qd2 Qd4+ 18.Qxd4 Nxd4 19.c3 Nc2 20.Rac1 Rxf4 21.Nc5 Rc4 22.Nd3 Nc3 23.Rfe1 Nf5  
 24.b3 Rh4 25.Ne5 g5 26.g3 Rh6 27.Nxc6 Rf6 28.Bg2 a5 29.c4 Bb7 30.cxd5 exd5 31.Ne7+  
 Kf8 32.Nxd5 Rf7 33.Nc7 Rc8 34.Bxb7 Rxc7 35.Rxc7 Rxc7 36.Rf1 Rxb7 37.Rxf5+ Ke7  
 38.Rxg5  
 1-0

□ Wang

■ Bhat

US Cadet Championship, Rd.7

1998

1.d4 d5 2.Nf3 Nf6 3.e3 c6 4.Bd3 Bg4 5.b3 e6 6.0-0 Nbd7 7.Bb2 Ne4 8.Qe1 f5 9.Ne5 Nxe5  
 10.dxe5 Bh5 11.Be2 Bg6 12.Nc3 Bc5 13.Nxe4 fxe4 14.Bd4 Qb6 15.Qd2 0-0 16.c3 a5 17.Qb2  
 Qa7 18.a3 b6 19.c4 Be7 20.Bc3 Bf5 21.a4 Rfd8 22.Rfd1 Bf8 23.Bd4 Rab8 24.Qc2 Rbc8  
 25.Rac1 Ba3 26.Bb2 Bc5 27.Bd4 Ba3 28.Bb2 Bc5 29.Bd4 Bxd4 30.exd4 e3 31.Bd3 exf2+  
 32.Qxf2 Rf8 33.Bxf5 Rxf5 34.Qe3 Qd7 35.c5 b5 36.axb5 cxb5 37.Ra1 Ra8 38.Ra2  
 ½-½

# U.S. CADET CHAMPIONSHIP JULY 9-12, 1998 NASHVILLE CHESS CENTER

	PLAYER	1	2	3	4	5	6	7	8	TOTAL
1	DMITRY SCHNEIDER	X	0.5	0	0.5	1	1	1	1	5
2	VINAY BHAT	0.5	X	0.5	0.5	1	1f	0.5	1	5
3	DAVID JOHN	1	0.5	X	0.5	0	0.5	0.5	0.5	3.5
4	STANISLAV RITVIN	0.5	0.5	0.5	X	0.5	0	0.5	1	3.5
5	NOAH SIEGEL	0	0	1	0.5	X	0.5	0.5	1	3.5
6	ANDREI ZAREMBA	0	0f	0.5	1	0.5	X	1	0.5	3.5
7	PHILIP WANG	0	0.5	0.5	0.5	0.5	0	X	0	2
8	JORDY MONT-REYNAUD	0	0	0.5	0	0	0.5	1	X	2



## UPCOMING WEEKEND TOURNAMENTS

(Turkey Tour Events are shown bold with ★)

DATE(S)	EVENT	LOCATION	FORMAT	CONTACT NAME	PHONE NUMBER
< 1998 >					
Aug 1-9	99th US Open	Kona HI	9SS,40/2,SD/1	Larry Reifurth	(808)262-5475
Aug 8	(QC) Quick! Chess Moves 2	Cleveland TN	7SS,G/15	Wayne Hedger	(423)559-0396
Aug 22	6th Battle of Murfreesboro	Murfreesboro TN	5SS,G/30,G/75(4)	Robert Guthrie	(615)895-7989
Aug 29	2nd Chattanooga Open	Chattanooga TN	4SS,G/60	Joe Dumas	(423)755-4084
Sep 4-6	★52nd Tennessee Open	Clarksville TN	5SS,40/100,SD/45	Roy Manners	(931)552-1839
Sep 5	Tennessee Open Scholastic	Clarksville TN	4SS,G/40	Roy Manners	(931)552-1839
Sep 7	(QC) Tennessee Quick Championship	Clarksville TN	7SS,G/15	Wayne Hedger	(423)559-0396
Sep 26	Chess Moves Slowly 2	Cleveland TN	4SS,G/60	Wayne Hedger	(423)559-0396
Oct 10	Cumberland County Fall Open	Crossville TN	4SS,G/60	Harry Sabine	(615)484-9593

## TURKEY TOUR STANDINGS

The latter half of the 1997-1998 Turkey Tour is now underway. The Turkey Point standings below include the first five of eight projected Turkey Tour events.

### MASTER/EXPERT

Bradley S Watson (87); Nicholas Barber (48); David C Sprengle (35); Ben Bentrup, Peter Bereolos (32); Semion Palatnik (30). [Watson moved into the Expert category]

### CLASS A

Bradley S Watson (73); Ed Newkirk (44); Rea B Hayes (34); James N Hughes (32); Joe Mooney (28); Benjamin Harris (24).

### CLASS B

Haresh Mirani (50); Bill Harvill (49); Michael T Abron (40); Mark E Cobb, Jay D Sabine, Jerome Sheridan, Ottie L West (35).

### CLASS C

Andrew Crigger (67); Wayne L Hedger (54); David B Bertram (49); Jimmy D Worley (48); Michael W White (40); Jason Knight (30). [Crigger moved into Class C]

### CLASS D

Shannon Shaw (66); John Helwick (65); Andrew Crigger (57); Chris Prosser (54); Scott Cantrell (48); Jonathan Alexander, M C Deck, Benjamin Tacker (45).

### CLASS E

Harold Miles (60); Brett Farris (50); Franklin Hajny (48); Curtis Wyatt (43); Clinton Pearson, Wardell Vance (40); Dustin Smith (35). [Miles was previously unrated]

## TENNESSEE CHESS ASSOCIATION 1997-1998 BOARD OF DIRECTORS

### PRESIDENT:

PATRICIA KNIGHT  
103 ALBION RD  
OAK RIDGE TN 37830  
H: 423-481-3516  
MODEM FAX: 423-483-2599  
E-MAIL: pknight@usit.net

### VICE-PRESIDENT:

PETER P. LAHDE  
2609 SAILBOAT COURT  
NASHVILLE TN 37217  
H: 615-361-4588

### TREASURER:

LEONARD S. DICKERSON  
420 ORAN ROAD  
KNOXVILLE TN 37922  
H: 423-966-1095  
O: 423-574-4676  
FAX: 423-574-3431

### SECRETARY:

JIM BARINGER  
513 LAUREL PARK DRIVE  
NASHVILLE TN 37205  
H: 615-353-0714

### TN CHESS NEWS EDITOR:

ANGELA McELRATH-PROSSER  
733 LONG HUNTER COURT  
NASHVILLE TN 37217  
H: 615-399-8432

### INTERNET CHESS COORDINATOR:

LEE EDWARDS  
21 VAUGHNS GAP RD APT D-50  
NASHVILLE TN 37205  
H: 615-353-5932  
O: 615-726-3395  
E-MAIL: Lee\_Edwards@prodigy.net

### STATE SCHOLASTIC COORDINATOR:

HARRY D. SABINE  
P.O. BOX 381  
CROSSVILLE TN 38557  
H: 931-484-4878  
O: 931-484-9593  
FAX: 931-456-7624

### EAST TENNESSEE DIRECTOR:

RICHARD WESTBROOK  
1227 VENIDO DRIVE  
KNOXVILLE TN 37932-2599  
H: 423-671-4124

### TOURNAMENT COORDINATOR:

WAYNE L. HEDGER  
1221 HARDWICK ST SE  
CLEVELAND TN 37311  
H: 423-559-0396  
O: 423-559-1856  
E-MAIL: hedger@usit.net

### WEST TENNESSEE DIRECTOR:

JOE MOONEY  
361 BOLIVAR HIGHWAY  
JACKSON TN 38301  
H: 901-427-0481  
O: 901-424-9009

### MIDDLE TENNESSEE DIRECTOR:

ROBERT KENT MEADOWS  
206 30TH AVENUE NORTH  
NASHVILLE TN 37203  
H: 615-320-0394  
O: 615-313-5503

## REGIONAL SCHOLASTIC COORDINATORS

### REGION 1

BARBARA CRIGGER  
260 RIDDLE STREET  
KINGSPORT TN 37660  
H: 423-247-6240

### REGION 2

N. J. HUGHES  
348 GLENSARA DR NW  
CHARLESTON TN 37310  
H: 423-476-8059

### REGION 3

CHRIS PROSSER  
733 LONG HUNTER COURT  
NASHVILLE TN 37217  
H: 615-399-8432

### REGION 4

BILL CUMMINGS  
3532 DAVIESHIRE DR  
MEMPHIS TN 38133  
H: 901-372-6584  
O: 901-348-1610