



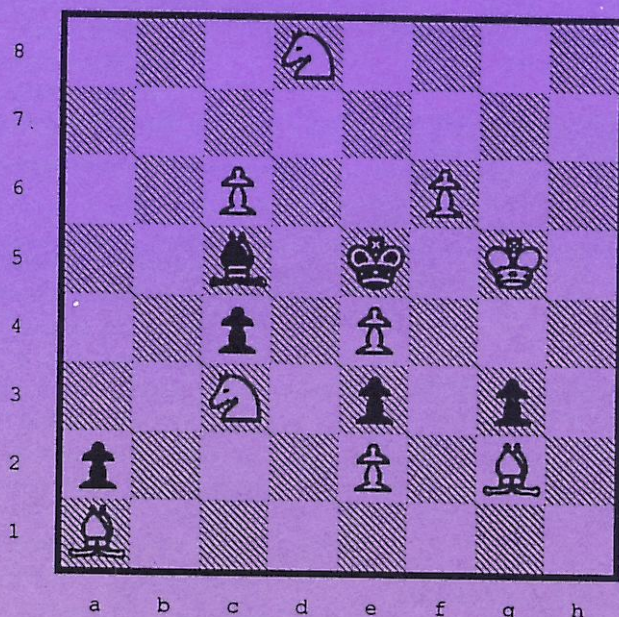
# TENNESSEE CHESS NEWS

## SUMMER 2002

VOLUME 44

NO. 4

|  |    |
|--|----|
| 2002 NCC MASTER/EXPERT INVITATIONAL.....       | 6  |
| GAMES FROM 2002 NCC MASTER/EXPERT.....         | 7  |
| 2002 CUMBERLAND CO SUMMER OPEN.....            | 12 |
| TODD ANDREWS' GAMES FROM PAUL MORPHY OPEN..... | 14 |
| 2002 BATTLE OF THE CLOUDS.....                 | 18 |
| GAMES FROM RECENT EVENTS.....                  | 24 |



**Problem Corner by Ray Hudgens**  
**White Mates in 2 Moves - Use a timer (Sol. Pg. 12)**



## TENNESSEE CHESS NEWS

The *Tennessee Chess News* is the official publication of the Tennessee Chess Association. TCA annual dues are \$10 for a *regular* membership, \$10 for a *student* membership. Additional members of a family may join for one dollar each, but only one issue of TCN will be mailed per family. All memberships expire August 31.

**Tax-deductible Patron Memberships** are available beginning at \$100 per year for those who wish to help support the TCA and the FFTC. These memberships expire one year from the date of payment. Patron membership categories and benefits are as follows:

### PATRON \$100

- One year TCA Membership and FFTC membership plus a key ring.

### PATRON KING \$300

- All Patron benefits plus one year free TCA and FFTC membership for all members of the Patron King's immediate family & free entry into the TN State Scholastic Individual Regional Tournament for the member and all members of the Patron King's immediate family.

### PATRON MASTER \$500

- All Patron King benefits plus one free entry to any TCA or FFTC sponsored Open Chess Tournament. The Patron Master or any member of his/her immediate family could use such free entry.

### PATRON GRANDMASTER

#### \$1000 (or more)

- All Patron Master benefits plus a chess clock and their name on a permanent plaque to be placed on the wall at the home of the TCA and FFTC.

### TOURNAMENT ANNOUNCEMENTS

TCN prints listings of upcoming tournaments requiring TCA membership in each issue for free. Submit complete TLA information to Joseph Crump, Tournament Coordinator.

---

### TN CHESS NEWS STAFF

#### Editor:

Angela McElrath-Prosser

#### Contributors:

Games Editor-Peter Lahde  
Tech Support-Chris Prosser

Todd Andrews  
Joe Crump  
Raymond Hudgens  
Mark Ishee  
Patricia Knight  
Peter Lahde  
Kent Meadows

#### TCN publishing schedule:

Fall 2002 - Nov 1 covering  
Aug, Sept, Oct events

**Deadline: Oct 9, 2002**

Winter 2003 - Feb 1 covering  
Nov, Dec, Jan events

**Deadline: Jan 9, 2003**

Spring 2003 - May 1 covering  
Feb, Mar, Apr events

**Deadline: Apr 9, 2003**

Summer 2003 - Aug 1 covering  
May, Jun, Jul events

**Deadline: July 9, 2003**

To submit material by e-mail,  
please send text non-zipped  
files to: [tcanews@aol.com](mailto:tcanews@aol.com)

## Tennessee Chess Association and Foundation for Tennessee Chess Patron Members

### Patron Grandmaster

Dr. Martin "Dick" Katahn  
George A. Dean  
Patricia Knight  
Kent Meadows  
Clinton H. Pearson, Jr.  
Harry D. Sabine

### Patron Master

None

### Patron King

None

### Patron Member

Juan T. Aristorenas, M.D.  
Edward Belbusti  
J. Scott Eddins  
Gary Gillespie  
Raymond Hudgens  
Mark Ishee  
Peter Lahde  
Mike McGinnis  
Harold Miles  
Bill Orgain  
Albert & Debra Partee  
Jeff Pennig  
Todd Shimabukuro  
Brad Watson

Spring 2002 /3



## **From the President**

**by Kent Meadows**

The site for the 2002 Tennessee Open in Knoxville is the **Marriott Hotel** (formerly the Hyatt Regency Hotel). The toll free booking number is: **1-800-228-9290**. *Be sure to ask for the Chess rate. If the operator says that there is not one, correct him. Read the pertinent part of the flyer to him. Hotel rooms will not be held for the Chess Tournament after **August 16**.* Be smart, and make your reservations now. I already have. Check out:

<http://www.homestead.com/tncchessorgn/TNOpen2002fly.html> ,

<http://www.homestead.com/tncchessorgn/TNOpen2002schfly.html>,

and also be sure to check out the link for directions. This is a very nice hotel, and we will be having a very fine tournament. Don't miss it.

It is with great sadness that I must tell you that we have all lost a fellow Chess player and a friend. Mack Knight of Oak Ridge, father of Jason Knight and Ashley Knight, and husband of TCA Internet Coordinator Patricia Knight, passed away suddenly from a brain tumor. Mack was a great supporter of Chess. We should all be supportive of Mack's family. Thank you.

Tennessee Chess Hall of Fame Charter Member Tom Finucane of Kingsport has passed away. He lived a very long life, and devoted much of it to Chess. We will all mourn his loss.

The Nashville Chess Center's new e-mail address is now [nashvillechess@comcast.net](mailto:nashvillechess@comcast.net). There were some temporary problems with the Nashville Chess Center website, but Mark Ishee and George Dean have straightened out the problems. Check out [www.nashvillechess.org](http://www.nashvillechess.org).

The veteran Master Klaus Pohl of South Carolina added another tournament win to his long list of successes by winning the 22-man Open Section of the Cumberland County Summer Open in Crossville with a perfect score of 4.0. David Justice and Daniel Rose won the 38-man Amateur Section with perfect 4.0 scores. The total attendance was 60 players. Check out <http://www.homestead.com/tncchessorg/CCCCSUMOP.html>. The Tournament Director was Paul Semmes.

Master Bill Melvin of Huntsville, Alabama won the 34-man Open Section of the Battle Above the Clouds in Chattanooga. Sarah Stanhope won the 9-man Scholastic 10-12 Section. Mark Young won the 12-man Scholastic K-9 Section. All three winners had perfect 4.0 scores. Total attendance was 55 players. Check out <http://www.homestead.com/tncchessorg/BATC.html>. The TD's were Jason Knight and Harry Sabine.

Master Esad Elezaj has moved back to Nashville from Chicago and won the Expert--Master Invitational at the Nashville Chess Center with a score of 5-1. Second was FIDE Master Peter Bereolos of Knoxville with a 4.5-1.5 score. Tied for third were Brian Smith of Murfreesboro and Chuck Lovingood of Crossville with 3.5-2.5 scores. Check out:

<http://bereolos.tripod.com/chess.html> and

<http://www.nashvillechess.org> and see some nice games. The TD was Mark Ishee.

Expert Jerry Spinrad and his daughter, Thalia, won the Youth—Adult Team Doubles Tournament at the Nashville Chess Center with a perfect 4.0 score. There were 24 teams and 48 players. The TD's were Mark Ishee and yours truly.

Phillip Rose and Matthew Fox won the round-robin Bughouse Tournament at the NCC with a score of 12.0-1.0. There were 14 teams and 28 players. Check out: <http://www.nashvillechess.org/>. The TD's were Mark Ishee and myself.

Master Esad Elezaj, Rick Telleri, and Bob Waterman won the 3-man Quick Chess Tournament at the NCC with a score of 5.0-1.0. There were 11 teams and 33 players. Six teams won trophies. The TD's were Mark Ishee and *moi*.

USChess has signed a contract with Opryland Hotel in Nashville for the 2003 National Elementary Championships next May. Scholastic players, coaches, parents, TD's, and volunteers, mark your calendars *now* for **May 8-11, 2003!** They have also signed a contract with Opryland for the 2005 Scholastic Supnationals (Elementary, Junior High, and High School). These tournaments will be wonderful for Chess in Tennessee.



**2002 NCC Master/Expert  
June 8-16, 2002**

**Pairing Numbers**

1. Brian Smith (2078)
2. Jeff Pennig (2015)
3. FM Todd Andrews (2327)
4. Esad Elezaj (2200)
5. Walter Jordan (2032)
6. FM Peter Bereolos (2329)
7. Chuck Lovingood (2098)
8. bye

Saturday, June 8, 10:00 AM

Elezaj - bye  
Jordan - Andrews 0-1  
Bereolos - Pennig 1-0  
Lovingood - Smith ½-½

Saturday, June 8, 4:00 PM

Lovingood - bye  
Smith - Bereolos 1-0  
Pennig - Jordan ½-½  
Andrews - Elezaj 0-1

Sunday, June 9, 10:00 AM

Andrews - bye  
Elezaj - Pennig 1-0  
Jordan - Smith 0-1  
Bereolos - Lovingood 1-0

Sunday, June 9, 4:00 PM

Bereolos - bye  
Smith - Elezaj ½-½  
Pennig - Andrews 0-1

Saturday, June 15, 10:00 AM

Pennig - bye  
Andrews - Smith 1-0  
Elezaj - Lovingood 1-0  
Jordan - Bereolos 0-1

**Invitational Round-Robin  
Results by Mark Ishee**

Saturday, June 15, 4:00 PM

Jordan - bye  
Bereolos - Elezaj ½-½  
Lovingood - Andrews 1-0  
Smith - Pennig ½-½

Sunday, June 16, 10:00 AM

Smith - bye  
Pennig - Lovingood 0-1  
Andrews - Bereolos 0F-1F  
Elezaj - Jordan 1-0

Sunday, June 16, 4:00 PM

Lovingood - Jordan 1F-0F

**Final Standings**

1st Place:

Esad Elezaj 5-1

2nd Place:

Peter Bereolos 4½-1½

3rd Place (tie):

Brian Smith 3½-2½

3rd Place (tie):

Chuck Lovingood 3½-2½

Todd Andrews 3-3

Jeff Pennig 1-5

Walter Jordan ½-5½

**Games from the NCC Invitational**

(1) Jordan, W - Andrews, T [C01] NCC Invitational (1), 08.06.2002

1.e4 e6 2.d4 d5 3.exd5 exd5 4.c4 Bb4+ 5.Nc3 Ne7 6.Bd3 Nbc6 7.Nge2 Be6  
8.c5 Bf5 9.0-0 Bxc3 10.bxc3 0-0 11.Ng3 Bxd3 12.Qxd3 Qd7 13.f4 f5 14.Re1  
Rae8 15.Rb1 Na5 16.Qb5 Qxb5 17.Rxb5 Nec6 18.Rxe8 Rxe8 19.Kf2 g6 20.Rb2  
Kf7 21.Nf1 Rb8 22.Ne3 Ne7 23.Rb5 Nac6 24.h3 Ke6 25.Rb2 Ng8 26.c4 Nf6  
27.cxd5+ Nxd5 28.Rd2 Nxe3 29.Kxe3 Kd5 30.Bb2 Re8+ 31.Kf3 Re4 32.g4  
Nd8 33.gxf5 gxf5 34.Rg2 Ne6 35.Rg8 Rxf4+ 36.Kg3 Re4 37.Rh8 f4+ 38.Kf2  
Kc4 39.Rxh7 Kd3 40.Bc1 Re2+ 41.Kf1 Rc2 42.Bxf4 Nxf4 43.Rxc7 Ke3  
44.Re7+ Kxd4 45.Rxb7 a5 46.h4 Rxc5 47.a3 Ke3 48.Rb3+ Nd3 49.Kg2 Rc7  
50.Kh3 a4 51.Rb8 Kf3 52.h5 Nf4+ 53.Kh4 Rg7 0-1

(2) Bereolos, P - Pennig, J [A40] NCC Invitational (1), 08.06.2002

1.d4 e6 2.c4 b6 3.e4 Bb7 4.Bd3 Nc6 5.Ne2 Nb4 6.0-0 Nxd3 7.Qxd3 Ne7  
8.Nbc3 f5 9.f3 g6 10.Bg5 Bg7 11.exf5 gxf5 12.Rfe1 0-0 13.Ng3 Bf6 14.Bxf6  
Rxf6 15.d5 f4 16.Nge4 Rg6 17.dxe6 dxe6 18.Qxd8+ Rxd8 19.Rad1 Rc8 20.g4  
fxg3 21.hxg3 Nf5 22.Kf2 Rf8 23.Rd7 Rf7 24.Rxf7 Kxf7 25.Rd1 Ke7 26.g4 Nd6  
27.Nxd6 cxd6 28.Ke3 Rg5 29.Rh1 Rg7 30.Rh6 Bc6 31.Ne2 e5 32.Ng3 Bd7  
33.Ne4 Be6 34.b3 a6 35.a4 b5 36.axb5 axb5 37.cxb5 Bxb3 38.Nxd6 Rg6  
39.Nf5+ Kd8 40.b6 Rxb6 41.Nxb6 Bd5 42.g5 1-0

(3) Lovingood, C - Smith, B [B22] NCC Invitational (1), 08.06.2002

1.e4 c5 2.Nf3 Nc6 3.c3 d5 4.exd5 Qxd5 5.d4 cxd4 6.cxd4 e5 7.Nc3 Bb4 8.Be2  
Nxd4 9.Bd2 Bxc3 10.Bxc3 Nxf3+ 11.Bxf3 Qxd1+ 12.Rxd1 f6 At this point  
White had used 4 minutes, Black 46 minutes. 13.Ba5 Be6 14.Rc1 Rc8 15.0-0  
Ne7 16.Bxb7 Rxc1 17.Rxc1 0-0 18.b3 Nd5 19.Rc6 Rb8 20.Ba6 Bd7 21.Rd6  
Bb5 22.Bxb5 Rxb5 23.Rd8+ Kf7 24.Rd7+ Kg6 25.Rxa7 Nf4 26.g3 Nd3 27.Bd2  
e4 28.Ra5 Rb6 29.Ra4 f5 30.Rc4 Ne5 31.Rc2 Nf3+ 32.Kf1 Rd6 33.Bb4 Rd4  
34.Bc3 Rd3 35.h4 Kh5 36.a4 Kg4 37.a5 f4 38.gxf4 Kxh4 39.a6 Rd6 40.Ra2  
Rd8 41.Ke2 Kg4 42.a7 Ra8 43.Ke3 h5 44.Kxe4 h4 45.Ra6 g5 46.fxg5 h3  
47.Be5 Nxe5 48.Kxe5 Kxg5 49.Ra1 Kh4 50.Kd6 h2 51.Kc5 Kg4 52.Kb6 Rf8  
½-½

(4) Pennig, J - Jordan, W [A39] NCC Invitational (2), 08.06.2002

1.d4 Nf6 2.c4 g6 3.g3 c5 4.Nf3 Bg7 5.Nc3 0-0 6.Bg2 cxd4 7.Nxd4 Nc6 8.0-0  
Qb6 9.Nc2 d6 10.Rb1 Be6 11.Nd5 Bxd5 12.cxd5 Ne5 13.Be3 Qa5 14.Na3 b5  
15.Qb3 a6 16.Rbc1 Rac8 17.Rc2 Rc7 18.Rxc7 Qxc7 19.Rc1 Qb8 20.f4 Ned7  
21.Rc6 Nc5 22.Bxc5 dxc5 23.Rxa6 b4 24.Nc4 Nd7 25.Qa4 Rd8 26.d6 exd6  
27.Ra8 Qc7 28.Ra7 Qc8 29.Nxd6 Nb6 30.Nxc8 ½-½



# Games from the NCC Invitational (con't)

(5) Smith, B - Bereolos, P [A26] NCC Invitational (2), 08.06.2002

[notes by Crafty] 1.g3 g6 2.Bg2 Bg7 3.Nf3 Nf6 4.0-0 0-0 5.c4 d6 6.Nc3 e5 7.d3 Nc6 8.Rb1 a5 9.a3 h6 10.b4 axb4 11.axb4 Be6 12.b5 Ne7 13.Qb3 Qd7 14.b6 c6 15.Ba3 Nh5 16.Ra1 f5 17.Bb2 Rad8 18.Ra7 Nc8 19.Ra8? Nxb6! 20.Rxd8 Qxd8 21.Ba3 Rf7 22.Rb1 Nc8 23.Qb4 Qc7 24.e4 Bf8 [24...f4] 25.Qa4 Nf6 26.Nh4 Kh7 27.Bh3 Nd7 28.Qa8 b6? [28...Nc5] 29.Nd5! Bxd5 30.cxd5 c5 31.Bc1 Nf6 32.Nxg6! fxe4 [32...Kxg6 33.Bxf5+ Kg7 34.Bxc8] 33.Bf5 Kg7 34.dxe4 Ne7? [34...h5] 35.Nxf8 Rxf8 36.Bxh6+ 1-0

(6) Andrews, T - Elezaj, E [C42] NCC Invitational (2), 08.06.2002

1.e4 e5 2.Nf3 Nf6 3.Nxe5 d6 4.Nf3 Nxe4 5.d4 d5 6.Bd3 Nd7 7.0-0 Be7 8.c4 0-0 9.cxd5 Nef6 10.Nc3 Nb6 11.Qc2 h6 12.a3 Nbx5 13.Bd2 Re8 14.Rfe1 c6 15.Ne2 Bd6 16.Ng3 Bf4 17.Rxe8+ Nxe8 18.Re1 Bxd2 19.Qxd2 Be6 20.Bb1 Qd6 21.Ne5 Nef6 22.Qc2 Rd8 23.h3 Kf8 24.Ba2 Kg8 25.Nf5 Qc7 26.Bb1 26...Qa5 27.Rd1 Nf4 28.Ne3 Qb5 29.N3g4 Nxg4 30.hxg4 Kf8 31.Qe4 Qe2 32.Re1 Qxe4 33.Rxe4 33...Rxd4 34.Re1 Ke7 35.g3 Nd5 36.f4 Kf6 37.Nf3 Ra4 38.Bc2 Ra5 39.f5 Bd7 40.Ne5 Nb6 41.g5+ Kxg5 42.Nxf7+ Kf6 43.Nd6 Re5 44.Rc1 Ke7 45.Rd1 Bc8 46.Kf2 Rd5 47.Nxc8+ Nxc8 48.Re1+ Kd7 49.Re2 Nd6 50.g4 Rd4 51.Kg3 Nc4 52.Re6 Rd6 53.Re2 Rd2 54.Rxd2+ Nxd2 55.Bd3 Ke7 56.Kf4 Kf6 57.b4 b5 58.Bc2 Ke7 59.a4 a6 60.axb5 axb5 61.Bd1 Nc4 62.Bf3 Kd6 63.Be4 Nb6 64.g5 Nd5+ 65.Kg4 hxg5 66.Kxg5 Ke5 67.Bb1 Nxb4 68.Kg6 c5 69.Kxg7 Nd5 70.Ba2 c4 71.Bb1 b4 0-1

(7) Elezaj, E - Pennig, J [A14] NCC Invitational (3), 09.06.2002

1.Nf3 Nf6 2.c4 b6 3.g3 Bb7 4.Bg2 e6 5.0-0 Be7 6.b3 0-0 7.Bb2 c5 8.Nc3 d5 9.cxd5 Nxd5 10.Re1 Nxc3 11.dxc3 Qxd1 12.Raxd1 Rd8 13.Ne5 Bxg2 14.Kxg2 f6 15.Rxd8+ Bxd8 16.Rd1 Bc7 17.Nc4 Na6 18.f4 Rd8 19.Rxd8+ Bxd8 20.Nd6 Nc7 21.Nc8 f5 22.c4 g5 23.Nxa7 gxf4 24.Nc6 Bg5 25.Be5 Ne8 26.gxf4 Bh6 27.Ne7+ 1-0

(8) Bereolos, P - Lovingood, C [D07] NCC Invitational (3), 09.06.2002

[notes by Crafty] 1.d4 d5 2.c4 Nc6 3.cxd5 Qxd5 4.e3 e5 5.Nc3 Bb4 6.Bd2 Bxc3 7.bxc3 Qd6 8.Bd3 Nge7 9.Ne2 Be6 10.0-0 b6 11.Qc2 f5 12.f3 Rd8 13.Be1 0-0 14.Bf2 Ng6 15.Rad1 Qa3 16.e4 fxe4 17.Bxe4 Na5 18.d5 Bd7 19.c4 Ba4 20.Rd3 Bxc2 [20...Qb4 21.Qc3 Qxc4 22.Qa3 c5 23.Rc1 Qb4 24.Qxb4 cxb4 25.Rc7 Bb5 26.Rd2 Nc4 27.Rc2 Na3 28.Rd2 Nc4=] 21.Rxa3 Bxe4 22.fxe4 Nxc4 23.Rxa7 Nd2 24.Rc1 Nxe4 25.Rxc7 Rxf2 26.Rxg7+ Kf8 27.Nc3 27...Rf4 [27...Rxg2+ 28.Kxg2 Nxc3 29.Rxh7 Nxd5μ] 28.g3 Rg4? [28...Nxc3! 29.gxf4 Ne2+ 30.Kf2 Nxf4 31.Rxh7 Nxd5μ] 29.Raf7+ Ke8 30.Nb5 Rc8 31.Nc7+ Rxc7 32.Rxc7 Kf8 33.Rcf7+ Ke8 34.Ra7 Kf8 35.Rxh7 1-0

# Games from the NCC Invitational (con't)

(9) Jordan, W - Smith, B [B22] NCC Invitational (3), 09.06.2002

1.e4 c5 2.c3 d5 3.exd5 Qxd5 4.d4 g6 5.Qf3 Nf6 6.Qxd5 Nxd5 7.dxc5 Bg7 8.Bc4 Nc7 9.Nf3 Be6 10.Bb3 Nc6 11.Bxe6 Nxe6 12.Be3 Nb4 13.Na3 Nd3+ 14.Ke2 Nxb2 15.Nd4 Nxc5 16.Ndb5 Ne6 17.Bxa7 0-0 18.Rab1 Na4 19.Rhc1 Nxc3+ 20.Nxc3 Rxa7 21.Nab5 Nd4+ 22.Nxd4 Bxd4 23.a4 Rc8 24.Nb5 Rxc1 25.Rxc1 Rxa4 26.Nxd4 Rxd4 27.Rc7 e6 28.Rxb7 28...g5 29.Rb5 h6 30.Rb7 Kg7 31.Ke3 Ra4 32.Rc7 h5 33.Rb7 h4 34.Rc7 h3 35.Rc1 hxg2 36.Kf3 Kg6 37.Kxg2 Re4 38.Rc8 Ra4 39.Rg8+ Kf5 40.Rb8 f6 41.Rb3 Rg4+ 42.Kf3 Rf4+ 43.Kg3 e5 44.h3 Rd4 45.Rf3+ Kg6 46.Ra3 e4 47.Ra6 Rd3+ 48.Kg2 Kf5 49.Rb6 Ke5 50.Rb8 Kf4 51.Rb4 Kf5 52.Rb6 Kg6 53.Rb4 e3 54.fxe3 Rxe3 55.h4 f5 56.hxg5 Kxg5 57.Rb8 Kg4 58.Rg8+ Kf4 59.Kf2 Ra3 60.Rf8 Ra2+ 61.Kf1 Kg5 62.Kg1 Ra3 63.Kf2 Rb3 64.Kf1 Kg4 65.Kf2 Rb2+ 66.Kf1 f4 67.Kg1 Kf3 68.Rf7 Rb1+ 69.Kh2 Re1 70.Rf8 Re3 71.Kg1 Re1+ 72.Kh2 Ke3 73.Kg2 Re2+ 74.Kf1 Rf2+ 75.Kg1 Rd2 76.Rf7 Kf3 77.Rf8 Rg2+ 78.Kh1 Rg4 79.Rh8 Kg3 80.Kg1 Rg7 81.Kf1 Rg6 82.Kg1 Rg4 83.Ra8 Rh4 84.Rg8+ Rg4 85.Rxg4+ Kxg4 86.Kg2 f3+ 87.Kf2 Kf4 88.Kf1 Kg5 89.Kg1 Kh4 90.Kf2 Kg4 91.Kg1? [91.Kf1=] 91...Kg3 92.Kf1 f2 0-1

(10) Smith, B - Elezaj, E [A39] NCC Invitational (4), 09.06.2002

1.g3 c5 2.Bg2 Nc6 3.Nf3 g6 4.0-0 Bg7 5.c4 Nf6 6.Nc3 0-0 7.d4 cxd4 8.Nxd4 Nxd4 9.Qxd4 d6 10.Qd3 Nd7 11.b3 Rb8 12.Be3 b6 13.Bd4 Bxd4 14.Qxd4 a6 15.Rfd1 Bb7 16.Rac1 Bxg2 17.Kxg2 Qc7 18.Nd5 Qb7 19.Kg1 Rfe8 20.h4 Ne5 21.h5 Qc8 22.Qh4 Rb7 23.Kg2 Qg4 24.Qxg4 Nxg4 25.hxg6 hxg6 26.Rd4 Nh6 27.e4 1/2-1/2

(11) Pennig, J - Andrews, T [A45] NCC Invitational (4), 09.06.2002

1.d4 Nf6 2.g3 c5 3.d5 d6 4.c4 b5 5.cxb5 a6 6.bxa6 g6 7.Bg2 Bg7 8.Nc3 Nxa6 9.Nf3 Bb7 10.0-0 Nb4 11.Nh4 0-0 12.a4 Ra5 13.Qb3 Qa8 14.Rd1 Rb8 15.e4 Ba6 16.Rd2 Bh6 17.Qd1 Qb7 18.f4 c4 19.Bf1 Bg7 20.Ra3 Nd7 21.Nb5 Bxb5 22.axb5 Qxb5 23.Rxa5 Qxa5 24.Nf3 Nc5 25.Bxc4 Nxe4 26.b3 Nxd2 27.Qxd2 Qc5+ 28.Kg2 Ra8 29.Qe3 Ra2+ 30.Kf1 Ra1 31.Ke2 Nxd5 0-1

(12) Elezaj, E - Lovingood, C [A29] NCC Invitational (5), 15.06.2002

[notes by Crafty] 1.c4 Nc6 2.Nc3 e5 3.g3 Nf6 4.Bg2 Be5 5.Nf3 d6 6.Na4? e4 7.Ng1 Bf5 8.b3 Bd4 9.Bb2 Qd7 10.Qc1 0-0 11.Bxd4 Nxd4 12.Qb2 c5 13.Rd1 Rfe8 14.h4 Bg4 15.Nc3 Qf5 16.Nh3 Nh5 17.Ng5 Nf3+ 18.Bxf3 exf3 19.Qb1 fxe2 20.Rc1 h6 21.Qxf5 Bxf5 22.Nh3 Re6 23.Rh2 Rae8 24.Nd5 Rg6 25.Nhf4 Nxf4 26.Nxf4 Rg4 27.Rc3 g5? 28.Nd5 gxh4? [28...Re6 29.Ne3 Rf6 30.Nxg4 Bxg4 31.hxg5 hxg5 32.Re3?] 29.Nf6+ Kf8 30.Nxg4 Bxg4 31.Rxh4 Bf5 32.Rxh6 1-0



# Games from the NCC Invitational (con't)

(13) Jordan, W - Bereolos, P [C67] NCC Invitational (5), 15.06.2002

1.e4 e5 2.Nf3 Nc6 3.Bb5 Nf6 4.0-0 Nxe4 5.Re1 Nd6 6.Bxc6 dxc6 7.Nxe5 Be7 8.d3 0-0 9.Nc3 Re8 10.Bf4 Bf8 11.Ne4 f6 12.Nf3 Bg4 13.h3 Bh5 14.g4 Bf7 15.Nxd6 cxd6 16.Qd2 Qd7 17.Nd4 h5 18.f3 Bg6 19.Rxe8 Rxe8 20.Re1 c5 21.Rxe8 Qxe8 22.Ne2 d5 23.Qe3 Qc6 24.Kg2 hxg4 25.hxg4 Qa4 26.Qc1 d4 27.a3 c4 28.dxc4 Qxc4 29.Qd2 Bc5 30.c3 d3 31.Nc1 Bb6 32.Bg3 Qc5 33.Bf2 Qxf2+ 34.Qxf2 Bxf2 35.Nxd3 Bxd3 0-1

(14) Andrews, T - Smith, B [A77] NCC Invitational (5), 15.06.2002

1.d4 Nf6 2.c4 c5 3.d5 e6 4.Nc3 exd5 5.cxd5 d6 6.Nf3 g6 7.Nd2 Bg7 8.e4 0-0 9.Be2 Re8 10.0-0 a6 11.a4 Nbd7 12.Qc2 Nh5 13.Bxh5 gxh5 14.Ra3 Ne5 15.Ne2 h4 16.h3 Kh8 17.f4 Ng6 18.Nc4 f5 19.exf5 Bxf5 20.Qxf5 Rxe2 21.Qh5 Qe7 22.Ne3 Nxf4 23.Rxf4 Re1+ 24.Rf1 Rxc1 25.Rxc1 Bxb2 26.Nf5 Qe8 27.Qxh4 Qe5 28.Nh6 Kg7 29.Rg3+ 1-0

(15) Lovingood, C - Andrews, T [C01] NCC Invitational (6), 15.06.2002  
[notes by Crafty] 1.e4 e6 2.d4 d5 3.exd5 exd5 4.Nf3 Nc6 5.Bb5 Bd6 6.c4 6...Qe7+? [6...dxc4 7.d5 a6 8.Ba4 b5 9.dxc6 bxa4 10.0-0±] 7.Be3 Bb4+ 8.Nc3 Nf6 9.0-0 Bxc3 10.bxc3 a6 [10...0-0] 11.Bg5! [11.Bxc6+ bxc6 12.Ne5 Qe6 13.Qa4 Bd7 14.Qb4 Qd6 15.c5 Qe6 16.Qb7 0-0 17.Qxc7±] 11...axb5 12.Re1 Be6 13.cxd5 h6? [13...0-0] 14.dxe6 0-0 [14...fxe6 15.Qb3 0-0 16.Rxe6 Qa3 (16...Qf7 17.Bxf6 gxf6 18.Rae1+-) 17.Qxa3 Rxa3 18.Bxf6 Rxf6 19.Rxf6 gxf6²] 15.exf7+ Qxf7 16.Bxf6 Qxf6 17.Qb3+ Kh8 18.Qxb5 Qg6 19.Qb1! Qf6 20.Qxb7 Qd6 21.Qb1 Ra3 22.Re3 Ra5 23.Qe4 Rf6 24.Ne5 Ra4 25.Qc2 Ra8 26.Rae1 Rf8 27.Qe4 Nd8 28.Rg3 g5 29.Rh3 Ne6? 30.Ng6+ Kg7 31.Nxf8 Qxf8 32.Rf3 1-0

(16) Bereolos, P - Elezaj, E [D39] NCC Invitational (6), 15.06.2002

1.d4 d5 2.c4 dxc4 3.Nf3 Nf6 4.Nc3 e6 5.e4 Bb4 6.Bg5 c5 7.Bxc4 Bxc3+ 8.bxc3 Qa5 9.Bxf6 Qxc3+ 10.Nd2 gxf6 11.dxc5 Ke7 12.Rc1 Qd4 13.0-0 Rd8 14.Rc2 Bd7 15.Qe2 Bc6 16.Re1 Qxc5 17.Nb3 Qg5 18.g3 h5 19.f4 Qh6 20.Qd3 Nd7 21.Nd4 Ke8 22.Rd2 Rdc8 23.Nb5 Kf8 24.Nxa7 Rd8 25.Nxc6 bxc6 26.Red1 Ke8 27.Qb3 Qf8 28.Kg2 Qc5 29.Rxd7 Rxd7 30.Rxd7 Kxd7 31.Qb7+ Kd6 32.Qxa8 Qxc4 33.Qf8+ Kc7 34.Qxf7+ Kb6 35.Qxh5 Qxa2+ 36.Kh3 Qc2 37.Qg6 c5 38.Qxf6 Qxe4 39.f5 Qxf5+ 40.Qxf5 exf5 41.Kg2 Kc6 42.Kf3 Kd6 43.Ke2 Ke5 44.Ke3 Kf6 45.Kd3 Ke5 46.Ke3 ½-½

# Games from the NCC Invitational (con't)

(17) Smith, B - Pennig, J [D05] NCC Invitational (6), 15.06.2002

1.Nf3 d5 2.d4 Nf6 3.e3 e6 4.Bd3 c5 5.c3 Nc6 6.0-0 Qc7 7.Nbd2 b6 8.Re1 cxd4 9.exd4 Bd6 10.Qe2 0-0 11.Ne5 Ne7 12.Ndf3 Kh8 13.Bg5 Neg8 14.Nh4 Bb7 15.Qf3 Ne4 16.Bf4 Qd8 17.Qh3 Bxe5 18.Bxe5 Qg5 19.f3 Nef6 20.Re2 Qh6 21.Bxf6 Nxf6 22.f4 Qxf4 23.g3 Qg4 24.Qg2 Ne4 25.Rf1 f5 26.Nf3 a5 27.Ne5 Qh5 28.a3 Ba6 29.Bxa6 Rxa6 30.Rf4 Kg8 31.a4 Ra7 32.Rc2 Rc7 33.Rf1 Qe8 34.Nd3 Qxa4 35.Nf4 Qe8 36.Ra1 Rc4 37.Qe2 Qc6 38.Nd3 Qc8 39.Ne5 Rc7 40.Qb5 Qb7 41.Qe2 g5 42.Kh1 Rg7 43.b4 axb4 44.cxb4 Rc8 45.b5 Rxc2 46.Qxc2 Rc7 47.Nc6 Nd6 48.Qe2 Qc8 49.Qh5 Ne4 50.Rc1 Kg7 51.Qe2 Qe8 52.Ra1 h6 ½-½

(18) Andrews, T - Bereolos, P [A00] NCC Invitational (7), 16.06.2002 time forfeit 0-1

(19) Elezaj, E - Jordan, W [E65] NCC Invitational (7), 16.06.2002

1.Nf3 d6 2.d4 Nf6 3.c4 c5 4.g3 g6 5.Bg2 Bg7 6.0-0 0-0 7.Nc3 Be6 8.b3 Qc8 9.Re1 Bh3 10.Bh1 h5 11.Bg5 Re8 12.Rc1 Nbd7 13.d5 Nh7 14.Qd2 Bg4 15.Bh6 Bf6 16.Ng5 Nxg5 17.Bxg5 Bg7 18.e4 Ne5 19.Qe3 Kh7 20.Ne2 f6 21.Bf4 Nf7 22.f3 Bh3 23.Qd2 g5 24.Be3 Rg8 25.Kf2 f5 26.f4 Nh6 27.Ng1 gxf4 28.Bxf4 Bd4+ 29.Ke2 Bg4+ 30.Kf1 Nf7 31.h3 Bxg1 32.hxg4 Bd4 33.exf5 Ne5 34.g5 Kg7 35.Be4 Ng4 36.Kg2 Rh8 37.Bb1 Qf8 38.Qe2 Re8 39.Qd3 Qf7 40.Re6 Ne5 41.Qe2 Ng4 42.Re1 Be5 43.Rh1 Reg8 44.Rh4 Kf8 45.Bxe5 Nxe5 46.g6 Qg7 47.Rf4 1-0

(20) Pennig, J - Lovingood, C [D00] NCC Invitational (7), 16.06.2002

1.d4 d5 2.Bf4 Nc6 3.e3 Nf6 4.h3 Bf5 5.Bd3 Bxd3 6.Qxd3 e6 7.Nf3 Bd6 8.Ne5 Bxe5 9.dxe5 Nd7 10.Qc3 0-0 11.Nd2 Qe7 12.0-0 f6 13.exf6 Nxf6 14.Nf3 Ne4 15.Qb3 Rab8 16.Rad1 b5 17.Ne5 Nxe5 18.Bxe5 Rb6 19.f3 Ng5 20.a4 Nxf3+ 21.gxf3 Qg5+ 22.Kh2 Qxe5+ 23.f4 Qh5 24.Rd2 Qf5 25.axb5 Rfb8 26.Qa3 Rxb5 27.Qxa7 Qf7 28.b3 g6 29.Qd4 Rb4 30.Qc3 Qg7 31.Qxg7+ Kxg7 32.Ra1 R8b7 33.Kg2 Kf6 34.Kf3 c5 35.Ke2 c4 36.bxc4 Rxc4 37.Kd3 Rbc7 38.Ra2 Rc3+ 39.Ke2 R7c4 40.Kf3 d4 41.Rd3 dxe3 42.Kxe3 Rxc2 43.Ra7 h5 44.Rdd7 R2c3+ 45.Kd2 Kf5 46.Rf7+ Ke4 47.Rae7 Rd3+ 48.Ke2 Rc2+ 49.Ke1 Rxh3 50.Rxe6+ Kf3 51.Kd1 Ra2 52.Rc7 Rh1+ 0-1



**PUZZLE SOLUTION:**      White Mates in 2

1. N b5+ c3 2. Bxc3 Mate      or      1...Bd4 2.Bxd4 Mate

**2002 Cumberland Co Summer Open Results Amateur Section**

| Place | Name      |                  | Rate | Score |
|-------|-----------|------------------|------|-------|
| 1     | JUSTICE   | DAVID (1)        | 1360 | 4.0   |
| 2     | ROSE      | DANIEL (2)       | 1301 | 4.0   |
| 3     | BUSH      | TONY W. (4)      | 1135 | 3.0   |
| 4     | LEE       | JUSTIN A. (5)    | 1110 | 3.0   |
| 5     | YARNELL   | MICHAEL (6)      | 1096 | 3.0   |
| 6     | WINFIELD  | HAROLD (7)       | 1052 | 3.0   |
| 7     | HOWARD    | ADAM (11)        | 1009 | 3.0   |
| 8     | SNOW      | CHRIS (13)       | 1001 | 3.0   |
| 9     | MARSH     | MATTHEW (15)     | 979  | 3.0   |
| 10    | RAWL      | RYAN (17)        | 935  | 3.0   |
| 11    | ESTRADA   | MALCOLM R. (36)  | nnnn | 3.0   |
| 12    | PARTON    | DONNIE (3)       | 1175 | 2.5   |
| 13    | STANTON   | JACOB (8)        | 1046 | 2.5   |
| 14    | MCKAY     | MELISSA (9)      | 1040 | 2.5   |
| 15    | SUICH     | PETER D. (12)    | 1004 | 2.0   |
| 16    | JONES     | JESSE G. (14)    | 995  | 2.0   |
| 17    | CORNETT   | SHANE H. (16)    | 942  | 2.0   |
| 18    | JUSTICE   | PAUL A. (19)     | 887  | 2.0   |
| 19    | PHILLIPS  | COTY (21)        | 865  | 2.0   |
| 20    | ROSE      | JOHN (22)        | 857  | 2.0   |
| 21    | STEVENSON | KATIE L. (23)    | 857  | 2.0   |
| 22    | McFERRIN  | CLAYTON (24)     | 811  | 2.0   |
| 23    | HERRMANN  | NOEL A. (34)     | 187  | 2.0   |
| 24    | LONG      | DANIEL S. (37)   | nnnn | 2.0   |
| 25    | MARSH     | DAVID C. (38)    | nnnn | 2.0   |
| 26    | McDANIEL  | PETER W. (18)    | 889  | 1.5   |
| 27    | HORWITZ   | JOSH (25)        | 782  | 1.5   |
| 28    | NELSON    | JOHN (27)        | 660  | 1.5   |
| 29    | CLEMENT   | WILLIAM A. (10)  | 1026 | 1.0   |
| 30    | SIMPSON   | JONATHAN T. (20) | 866  | 1.0   |
| 31    | SUICH     | JOANNA (26)      | 749  | 1.0   |
| 32    | MARSH     | CORRY (32)       | 463  | 1.0   |
| 33    | HOUSTON   | C. J. (33)       | 425  | 1.0   |
| 34    | PYLE      | WILLIAM (39)     | nnnn | 1.0   |
| 35    | JOLLEY    | JOHN (28)        | 653  | 0.5   |
| 36    | BURGESS   | DEREK (31)       | 467  | 0.5   |
| 37    | LYON      | PAULA (29)       | 494  | 0.0   |
| 38    | HOUSTON   | CHARLIE R. (30)  | 492  | 0.0   |



# 2002 Cumberland Co Summer Open Results Open Section

| Place | Name                   | Rate | Score |
|-------|------------------------|------|-------|
| 1     | POHL KLAUS A. (1)      | 2224 | 4.0   |
| 2     | HARRIS NEAL (2)        | 2200 | 3.0   |
| 3     | DICKERSON LEONARD (3)  | 2087 | 3.0   |
| 4     | PRESSWOOD ROBERT (7)   | 1683 | 3.0   |
| 5     | JONES ELLIS E. (4)     | 1867 | 2.5   |
| 6     | SUICH JOSHUA (5)       | 1734 | 2.5   |
| 7     | MILLER LEE (8)         | 1629 | 2.5   |
| 8     | BRADY STEPHEN (14)     | 1349 | 2.5   |
| 9     | NELSON BRANDON (17)    | 1297 | 2.5   |
| 10    | WRIGHT JOE (10)        | 1558 | 2.0   |
| 11    | BERTRAM DAVID R. (11)  | 1543 | 2.0   |
| 12    | ROSE PHILIP (13)       | 1350 | 2.0   |
| 13    | KNIGHT JASON R. (9)    | 1623 | 1.5   |
| 14    | McDANIEL BRAD W. (12)  | 1373 | 1.5   |
| 15    | HORWITZ DAN (15)       | 1322 | 1.5   |
| 16    | McDANIEL BRITT (20)    | 1026 | 1.5   |
| 17    | LAFAVER JUSTIN S. (22) | nnnn | 1.5   |
| 18    | MCKAY BILL (6, HOUSE)  | 1700 | 1.0   |
| 19    | SUICH VICTOR W. (16)   | 1321 | 1.0   |
| 20    | HORWITZ MATT (19)      | 1093 | 1.0   |
| 21    | BURKS LEE (21)         | 860  | 0.5   |
| 22    | BRAIMAN CHANAN (18)    | 1200 | 0.0   |

## 2002 Cumberland Co Summer Open Chess Tournament

61 Players

July 13, 2002

Three States Represented  
Crossville TN

### Open: (22)

### Prize Winners

|               |                   |                |     |         |
|---------------|-------------------|----------------|-----|---------|
| Champion      | Klaus Pohl        | Greenville SC  | 4.0 | \$50.00 |
| Expert - 1st  | Leonard Dickerson | Knoxville TN   | 3.0 | \$25.00 |
| Class A - 1st | Ellis E. Jones    | Summertown TN  | 2.5 | \$25.00 |
| Class B - 1st | Robert Presswood  | Cleveland TN   | 3.0 | \$25.00 |
| Class C - 1st | Stephen Brady     | Chattanooga TN | 2.5 | \$12.50 |
| Class C - 1st | Brandon Nelson    | Jamestown TN   | 2.5 | \$12.50 |

### Amateur: (39)

### Prize Winners

|               |                    |                    |     |         |
|---------------|--------------------|--------------------|-----|---------|
| Co-Champion   | David Alan Justice | Franklin TN        | 4.0 | \$50.00 |
| Co-Champion   | Daniel Rose        | College Grove TN   | 4.0 | \$50.00 |
| Class E - 1st | Tony Bush          | Buffalo Valley TN  | 3.0 | \$12.50 |
| Class E - 1st | Justin Lee         | Crossville TN      | 3.0 | \$12.50 |
| Class E - 1st | Michael Yarnell    | Thorn Hill TN      | 3.0 | \$12.50 |
| Class E - 1st | Harold Winfield    | Fairfield Glade TN | 3.0 | \$12.50 |
| Class E - 1st | Adam Howard        | Deerlodge TN       | 3.0 | \$12.50 |
| Class E - 1st | Chris Snow         | Monterey TN        | 3.0 | \$12.50 |
| Class F - 1st | Matthew Marsh      | Louisville TN      | 3.0 | \$12.50 |
| Class F - 1st | Ryan Rawl          | Oak Ridge TN       | 3.0 | \$12.50 |
| Class G - 1st | Noel Herrman       | Knoxville TN       | 2.0 | \$25.00 |
| Unrated - 1st | Malcolm Estrada    | Chattanooga TN     | 3.0 | \$25.00 |



□ Bond,T  
 ■ Andrews,T  
 Paul Morphy Open (2)

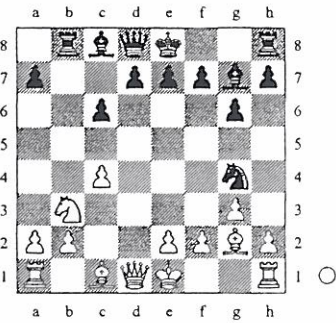
A04

2002

If not for this completely bogus round two pairing, this instructive game would have never been. The director just blamed the poor pairing on the computer and said that the start of the round was late, so he wasn't going to change anything. This director had his priorities wrong from the beginning. 1.Nf3 c5 2.g3 Nc6 3.d4 cxd4 4.Nxd4 g6 5.Bg2 Bg7 6.Nxc6?! Although this move has been played before, for fundamental reasons I feel it can't be the strongest. White is moving the d4 knight for a third time, it brings the b7 pawn to c6 where it controls the central square of d5 and it gives my rook the half open b-file which works well together with my g7 bishop. I see all of these as pluses which makes one want to reconsider 6.Nxc6 bxc6 7.c4 Rb8 [7...Qa5+! says the Junior 7 chess program's opening database. 8.Nd2 (8.Bd2 Qc5 9.Qc2 Ba6 10.Na3 Nf6; 8.Qd2 Qxd2+) 8...Rb8] 8.Nd2N Apparently a new move. Before 1993 you would have mainly seen 8.Nc3 here. After 1993, you would find 8.Qc2 to be the norm. Of course, black can't capture the b2 pawn, but how can one not be happy with the coordination of the black pieces. I see it in terms of geometry. The vertical path of the b8 rook creates a line of control that intersects with the diagonal path of the g7 bishop. Usually I find that if my pieces' lines of attack intersect, then they are working in good harmony. [8.Qc2 Qb6 9.Nd2 c5 10.0-0 h5 11.h4 d6 12.Rb1 Nf6 13.b3 Bf5 14.e4 Bd7 15.Bb2 0-0 16.Rbd1 Ng4 17.Bxg7 Kxg7 18.Qc3+ Kg8 19.f3 Ne5 20.f4 Nc6 with equality, but black went on to win in Stefanova-Sergeev 1993] 8...Nf6 [8...h5!? launching an interesting flank attack. I would say this move is natural and makes sense, due to the absence of the king side knight now. Pressure on the white king's flank comes with greater ease when there are less defenders around. 9.h4 Probably a necessary reply by white, which keeps the game symmetrically and really does not change the assessment of the position dramatically.] 9.Nb3 White's knight attempts to disrupt the lines of communication between the b8 rook and the g7 bishop by blocking the b-file and access to the vulnerable b2 pawn. Ng4

(Diagram)

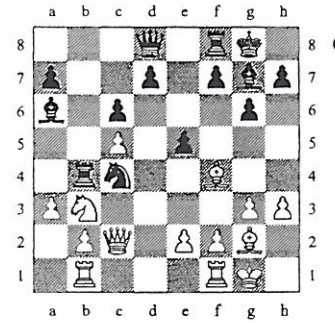
The first move that I had to use a little bit of time on and I think it is an interesting choice. This game makes for an excellent illustration of how to go about coordinating your forces effectively. I came about this move when trying to figure out what



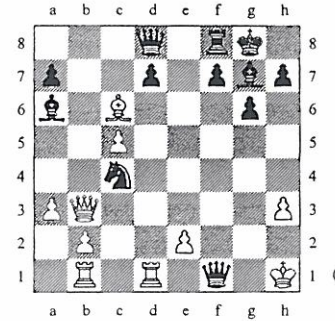
exactly I was going to do with my c8 bishop. It might be difficult to play d6 to let the bishop escape this way, because of the c6 pawn. I will probably have to spend an extra move to protect this point. Then, I considered ...Ba6 hitting the c4 soft spot. I also say that this would work well with ...Rb4, again hitting the c4 soft spot. I felt that by transferring the knight to e5 via g4 that the pressure against white would prove too much. 10.h3?! kicking the knight to where he wants to be. White is in need of some more useful moves such as Qc2 or perhaps even Bf4 to help solidify his position and complete his development. Now the onslaught of the black pieces on the white side of the board becomes overwhelming real fast. [10.0-0 Ba6 11.Qc2 Rb4 12.c5 h5] 10...Ne5 11.Bf4 White's only choice is to try to take the sting out of the well posted e5 knight by pinning him down. 0-0? 12.Qc2 Perhaps a few moves too late. Ba6 Now I've accomplished the majority of then plan I considered when playing 9...Ng4 and the black pieces work well together. 13.0-0 [13.Bxe5 Bxe5 14.Rd1 Rb4 15.c5 Bc4 16.0-0 Qc7 and still the black forces are better coordinated than white's. Black has a long term advantage in the two bishops as well.] 13...Rb4 Now the rook joins in as well. 14.c5□ Nc4 Now the knight dances with another partner. Thanks to the total control of the c4 square, the black knight now teams up with the g7 bishop to pressure b2. The black pieces are in perfect harmony. 15.Rab1 e5 gaining some time and now the e7 pawn embarks on a long journey. 16.a3? [16.Bc1 Qe7 and I felt that I would have an advantage here and that my plan would involved trying to round up the c5 pawn now.]

(Diagram)

and white cracks, this is one instance when fire can't be met with fire. White had to retreat the f4 bishop. 16...Rxb3! 17.Qxb3 exf4 18.Rfd1 White had to



prevent the fork on d2. fxxg3 19.Bxc6? gxf2+ 20.Kh1 f1Q+ and he scores. The d1 rook will be deflected by the new queen and the bishop on c6 will be gone. Hopefully this will help you to better understand the importance and value of always having a plan and that how your pieces will work together in that plan should be one of your main considerations.



0-1

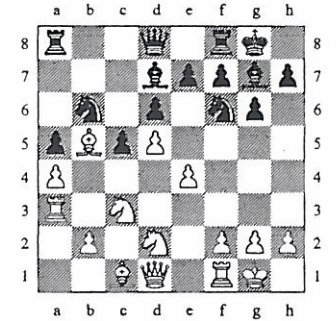
□ Andrews,T  
 ■ Wojtkiewicz,A  
 Paul Morphy Open (3)

A40

2002

The second time I have faced Alex this year. Luckily both times I have had white for it is known to be quite difficult to crack Alex with black. 1.d4 g6 2.c4 Bg7 3.Nf3 Although this might make it impossible to play certain variations, because it blocks in the f-pawn, I like it much better than Nc3 which could lead into systems like the Dzindzi-Indian that I do not know much about. c5 4.d5 b5 5.cxb5 a6 6.b6 This is not my usual system

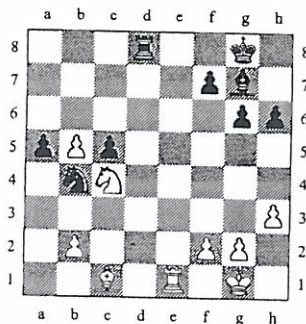
against the Benko, but I did have experience on the black side so I thought I would just think along the same lines, but with roles reversed. Nf6 7.Nc3 d6 8.a4 forcing the issue, black can't allow white to protect the b6 pawn with a5. a5 better than ...Qxb6 I believe because of the maneuver Nf3-d2-c4. 9.e4 0-0 10.Nd2 [10.Qb3!?] 10...Nbd7 11.Bb5 Nxb6 12.0-0 Bd7 The Benko player may be tempted by ...Ba6, but from here the bishop will do nothing and if I decide to exchange the black rook will look silly as well on a6. 13.Ra3 I recalled this idea from a game I had played in Greece against IM Gershon. He played this idea against my benko, but I had not placed my pieces as well and he easily rolled me.



e6 Black finds counterplay in the center. Here I begin to feel as though my knight on d2 was a little misplaced. I no longer plan to go to c4 because exchanges favor black in this position, as in most Benko gambit positions. White is forced to take on e6, otherwise I will just be leaving a big target on d5 for black to pile up on. 14.dxe6 Bxe6 Alex played this immediately and he is known to be a strong, solid, technical player. I guess this does put the bishop on a far more active post, but now my bishop on b5 does a good job of disrupting the lines of communication between the black pieces merely by controlling a few key squares such as e8 and d7. However, I do not completely understand why he did not even consider ...fxe6. Perhaps it weakens the kingside slightly or maybe the d6 pawn will become a weak target. I think even if you visualize to the future, black can probably just hope for the infamous "hanging pawns" on c5 and d5 and I feel white's pieces are well placed to take on this structure. But there might be some way to utilize the fact that the d-pawn is passed. The position is unclear. 15.Nf3 [15.Re1 is another good idea preparing the rook to take the soon open e-file. Black will not really be able to oppose white on the e-file because of the b5 Bishop's control of e8.] 15...d5 16.exd5 Again, white's central structure is not sturdy

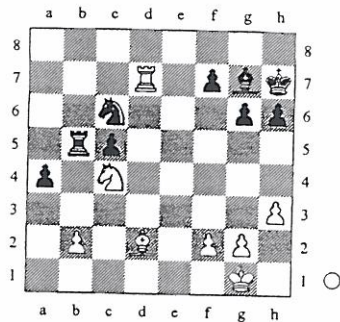


enough not to exchange. Nfd5 17.Nxd5 [17.Ne4 c4 18.Re1 is another interesting continuation, but now I felt that exchanges would favor white, thanks to the better pawn structure.] 17...Qxd5 [17...Nxd5 18.Rd3 Qd6 19.Qd2+; 17...Bxd5 18.Re1] 18.Ng5 [18.Rd3! Qb5 (18...Qf5) 19.Re1 and for some reason when assessing this position I did not like the look of the black queen on my kingside. However, I feel white will have a plus after playing b3 and developing the c1 bishop. I have long term advantages again thanks to my pawn structure.] 18...Qxd1 19.Rxd1 Bf5 20.h3 Seems useful in this position. Rfd8 21.Re1 Of course I do not want to exchange. It would greatly weaken my back rank and besides now he can't oppose me on the e-file. h6 22.Nf3 Be6?! [22...c4 was better.] 23.Rae3 Bc4?! [23...Nd5 24.R3e2 Nb4 25.Be3 c4 26.Bb6 and Wojtkiewicz was saying he was clearly better after Nd5, however, I think white has plenty of counterplay in the form of my two bishops and control down the e-file.] 24.Ne5!± Now the knight jumps into black's territory with tempo! Giving up the g7 bishop for the knight is not in black's interest either. Bxb5 25.axb5 Nd5 Black transfers the knight to a better post. Here I could not help but think I was almost winning, because I thought my knight would be able to help the b-pawn down the board so that it would at least sidetrack some of the black pieces. But black defends well. 26.Rd3 Nb4 27.Rxd8+ Rxd8 28.Nc4! A very useful backwoods knight move. It attacks a5, defends b2, blockades the c-pawn and helps support the advance of the b5 pawn.



Rb8 29.Rd1 Stopping the fork on d3 and making black have to choose between the pawn and keeping my rook out. [29.b6 Nd5] 29...Rxb5 30.Rd8+ Kh7 31.Rd7 a4 32.Bd2 Nc6 And I accepted his draw offer. After Rx7 and Kg8, white stands a little better thanks to his well posted rook on the seventh, but I did not see any clear path to victory at the board.

1/2-1/2

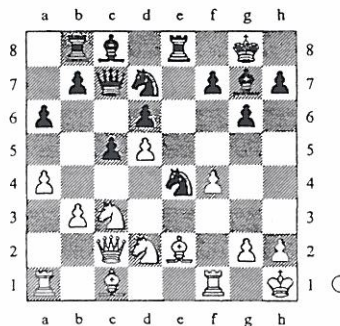


□ Andrews,T  
■ Langer,M  
Paul Morphy Open (5)

A77

2002

This was the final round battle for first. The advantage switches from side to side, but white is able to capture the final initiative. 1.d4 Nf6 2.c4 c5 3.d5 e6 The Benoni 4.Nc3 exd5 5.cxd5 d6 6.Nf3 g6 7.Nd2 I employed this idea often in this tournament. a6 8.a4 The automatic reflex. Nbd7 9.e4 Bg7 10.Be2 0-0 11.0-0 Re8 12.f3 [12.f4! says the Jr. 7 book A) 12...c4 13.Kh1 Nc5 14.e5 dxe5 15.fxe5 Rxe5 16.Nxc4 Re8 17.Bg5 h6 18.Bh4 Nce4 19.Nxe4 (19.d6 g5 20.Be1 Be6 21.Nxe4 Nxe4 22.Ba5 Bxc4 23.Bxd8 Bxe2 24.d7); B) 12...Qc7 13.Kh1 c4 (13...Rb8 14.Qc2 c4 15.e5 dxe5 16.Nxc4 b5 17.axb5 axb5 18.fxe5 Nxe5 19.d6 Qd7 20.Nxe5 Rxe5 21.Bf4 Rf5 22.Bg3 b4 23.Rxf5 Qxf5 24.Bd3) 14.e5 dxe5 15.Nxc4 e4 16.f5 Nc5 17.Bf4 Qd8 18.fg6 hfg6 19.a5 Bf5 20.Bg5 Nd3 21.Ne3 Nxd5 22.Nxd5 Qxg5 23.Nxf5 gxf5 24.Bxd3 exd3 25.Qxd3; 12.Qc2 Ne5 13.Ra3 g5 14.f3 Nh5 15.g3] 12...Rb8 13.Kh1 Its never a bad idea to get your king off the open diagonal. Qc7 14.Qc2 Ne5 15.f4 Ned7 [15...Neg4 16.Qd3±] 16.b3?! [16.Nc4 b5 17.axb5 axb5 A) 18.Na5 is probably a better choice. b4 (18...c4 19.Nc6 Rb7 20.Ra5±) 19.Nb5 Qb6 20.Nc6±; B) 18.Nxb5 Rxb5 19.Nxd6 Qxd6 20.e5 Qb6 and the tactics don't quite work, black is winning.] 16...Nxe4!? a very interesting exchange sacrifice that I too quickly dismissed in my analysis. Now black takes the initiative. 17.Ndx4 Rxe4 18.Qxe4 Bxc3 19.Ra2 Nf6 20.Qc4 Bd4 21.Bf3 Bf5 22.a5?! [22.h3 b5 23.axb5 axb5 24.Qe2=; 22.Bb2] 22...Re8 23.b4 Bd7! 24.Rd1 Ng4



25.h3!?

I decided to give the exchange back for counterplay down the a1-h8 diagonal. My opponent was low on time, so I felt pushing him into the corner was the right idea even at the cost of a little material. Bb5 26.Qb3 c4? Now the return of the bishop to d4 to help fight the battle down the long diagonal is impossible. 27.Qa3 Nf2+ 28.Rxf2 Bxf2 29.Qc3 Qe7 30.Bb2 f6 31.Bg4 Be1 [31...Qe1+ 32.Rxe1 Rxe1+ 33.Kh2 Bg1+ 34.Kh1 Bf2+ 35.Kh2 Bg1+ is a draw. 36.Kg3 Re3+ 37.Qd4 Bxb4 33.Be6+ Kg7 34.f5 g5 35.Qg4 c3 it would probably be more correct to capture on b4 and regain a little bit of material, but my opponent was extremely low on time here and it was sudden death, so keeping pieces on the board was priority. 36.Bc1 e2 37.Rg1 even at the cost of having to play this ugly move. Be3 38.h4 h6 39.Ba3! Setting up tactics. Be5 d6 must be protected. 40.Rc1 Bd7 41.Rxc2 Bxe6 42.dxe6 Qd8 43.Qh5 Re7 44.Bb4 [44.Qg6+ Kh8 45.Qxh6+ Rh7 (45...Kg8 46.Qg6+ Kh8 47.Bb4) 46.e7] 44...Kh7 45.hxg5 fxg5 46.Qg6+ Kh8 47.f6 Re7 48.e7

(Diagram)

1-0

## TN CHESS HALL OF FAME

|                          |      |
|--------------------------|------|
| PETER LAHDE              | 1990 |
| ROBERT COVEYOU           | 1990 |
| JERRY SULLIVAN           | 1990 |
| MARTIN SOUTHERN          | 1990 |
| TOM FINUCANE             | 1990 |
| ROBERT SCRIVENER         | 1990 |
| L. HUNTER WEAKS          | 1990 |
| JOHN HURT                | 1992 |
| JAMES A. SWEETS          | 1993 |
| REA HAYES                | 1997 |
| JAMES A. WRIGHT          | 1998 |
| DR. MARTIN "DICK" KATAHN | 2002 |

## 2002 Battle Above the Clouds Scholastics 6-9 Crosstables

| No. | Name                 | St Rate | Rd 1 | Rd 2 | Rd 3 | Rd 4 | Score |
|-----|----------------------|---------|------|------|------|------|-------|
| 1.  | YOUNG MARK D. (1)    | TN 784  | W5   | W6   | W2   | W4   | 4.0   |
| 2.  | HOUSTON CHARLIE (3)  | TN 492  | W9   | W3   | L1   | W5   | 3.0   |
| 3.  | GIANARO LAUREN (10)  | TN nnnn | X12  | L2   | W6   | D7   | 2.5   |
| 4.  | HOUSTON C. J. (4)    | TN 425  | -B-  | W7   | L5   | L1   | 2.0   |
| 5.  | ALTER PAUL (5)       | TN nnnn | L1   | W9   | W4   | L2   | 2.0   |
| 6.  | DETWILER CHARITY (7) | TN nnnn | W7   | L1   | L3   | W9   | 2.0   |
| 7.  | HARVEY SEAN (11)     | TN nnnn | L6   | L4   | W9   | D3   | 1.5   |
| 8.  | JONES OWEN KIRK (2)  | TN 676  | -U-  | -U-  | -U-  | -U-  | 0.0   |
| 9.  | BERRY ANTHONY (6)    | TN nnnn | L2   | L5   | L7   | L6   | 0.0   |
| 10. | DIAZ FRANCISCO (8)   | TN nnnn | -U-  | -U-  | -U-  | -U-  | 0.0   |
| 11. | FREEMAN MICHAEL (9)  | TN nnnn | -U-  | -U-  | -U-  | -U-  | 0.0   |
| 12. | SHERRELL ANDREW (12) | TN nnnn | F3   | -U-  | -U-  | -U-  | 0.0   |



## 2002 Battle of the Clouds Open Crosstables

| No. | Name                      | St | Rate | Rd1 | Rd2 | Rd3 | Rd4 | Score |
|-----|---------------------------|----|------|-----|-----|-----|-----|-------|
| 1.  | MELVIN, BILL (1).....     | AL | 2200 | W15 | W6  | W5  | W3  | 4.0   |
| 2.  | DICKERSON, LEONARD(2)...  | TN | 2038 | W16 | D23 | W19 | W7  | 3.5   |
| 3.  | PRESSWOOD, ROBERT(5)...   | TN | 1683 | W18 | W8  | W11 | L1  | 3.0   |
| 4.  | FABREO, FREDDIE (7)...    | TN | 1663 | W26 | L19 | W22 | W15 | 3.0   |
| 5.  | RUPPERT, HORST K.(8)...   | TN | 1606 | W27 | W20 | L1  | W14 | 3.0   |
| 6.  | WRIGHT, JOE (10).....     | TN | 1558 | W33 | L1  | W20 | W19 | 3.0   |
| 7.  | HUMAN, MATTHEW (13)...    | TN | 1421 | W30 | W10 | W13 | L2  | 3.0   |
| 8.  | AMATO, BRUCE (14).....    | TN | 1354 | W32 | L3  | W21 | W13 | 3.0   |
| 9.  | BURTON, JOEY (3).....     | TN | 1836 | W24 | L11 | W23 | D12 | 2.5   |
| 10. | WHEELER, GERALD(4)....    | AL | 1732 | W17 | L7  | W16 | D11 | 2.5   |
| 11. | MELVIN, MILES (11)....    | AL | 1541 | W34 | W9  | L3  | D10 | 2.5   |
| 12. | SABINE, JAY (12).....     | TN | 1537 | L20 | W27 | W18 | D9  | 2.5   |
| 13. | DUMAS, JOSEPH D.(6)...    | TN | 1674 | W25 | W14 | L7  | L8  | 2.0   |
| 14. | ALTER, STEPHEN (15)...    | TN | 1301 | W22 | L13 | W30 | L5  | 2.0   |
| 15. | PARTON, DONNIE (16)...    | TN | 1175 | L1  | W33 | W24 | L4  | 2.0   |
| 16. | HATCHETT, ROBBY(17)...    | TN | 1161 | L2  | W28 | L10 | W30 | 2.0   |
| 17. | LEE, JUSTIN A. (19)...    | TN | 1110 | L10 | L30 | W31 | W32 | 2.0   |
| 18. | SNOW, CHRIS (20).....     | TN | 1001 | L3  | W32 | L12 | W31 | 2.0   |
| 19. | HOWARD, ADAM (21).....    | TN | 994  | W31 | W4  | L2  | L6  | 2.0   |
| 20. | ALLISON III, HOMER(29)... | TN | 753  | W12 | L5  | L6  | W24 | 2.0   |
| 21. | LA FEVER, JUSTIN(33)...   | TN | nnnn | -U- | W26 | L8  | W25 | 2.0   |
| 22. | LEWIS, MARK (34).....     | TN | nnnn | L14 | W25 | L4  | W27 | 2.0   |
| 23. | HEDGER, WAYNE L.(9)...    | TN | 1601 | W28 | D2  | L9  | -U- | 1.5   |
| 24. | BALLOU, ANTHONY(18)...    | TN | 1115 | L9  | W34 | L15 | L20 | 1.0   |
| 25. | BRINDISI, FRANK(22)...    | TN | 868  | L13 | L22 | W28 | L21 | 1.0   |
| 26. | SIMPSON, JONATHAN(23)...  | TN | 866  | L4  | L21 | L32 | W33 | 1.0   |
| 27. | PHILLIPS, COTY (24)...    | TN | 865  | L5  | L12 | W34 | L22 | 1.0   |
| 28. | BURKS, LEE (25).....      | TN | 860  | L23 | L16 | L25 | W34 | 1.0   |
| 29. | BRINDISI, LAURA(26)...    | TN | 810  | -U- | -U- | W33 | -U- | 1.0   |
| 30. | NELSON, JOHN (30).....    | TN | 660  | L7  | W17 | L14 | L16 | 1.0   |
| 31. | BURGESS, DEREK (31)...    | TN | 467  | L19 | -B- | L17 | L18 | 1.0   |
| 32. | ESTRADA, MALCOLM (32)...  | TN | nnnn | L8  | L18 | W26 | L17 | 1.0   |
| 33. | GUNTER, DANIEL (27)...    | TN | 797  | L6  | L15 | L29 | L26 | 0.0   |
| 34. | McCANN, DILLON (28)...    | TN | 767  | L11 | L24 | L27 | L28 | 0.0   |

## 2002 Battle Above the Clouds Scholastics 10-12 Crosstables

| No. | Name                    | St | Rate | Rd 1 | Rd 2 | Rd 3 | Rd 4 | Score |
|-----|-------------------------|----|------|------|------|------|------|-------|
| 1.  | STANHOPE SARA H. E. (6) | TN | 537  | -B-  | W3   | W2   | W5   | 4.0   |
| 2.  | BRINDISI LAURA M. (2)   | TN | 810  | X9   | W7   | L1   | W3   | 3.0   |
| 3.  | BRINDISI STEVEN (1)     | TN | 863  | W8   | L1   | W7   | L2   | 2.0   |
| 4.  | MEJIA JUAN (3)          | TN | 783  | -U-  | L6   | W8   | W7   | 2.0   |
| 5.  | BRINDISI JENNIFER (4)   | TN | 773  | L7   | W8   | W6   | L1   | 2.0   |
| 6.  | HOLLOWAY LORENZO (5)    | TN | 610  | -U-  | W4   | L5   | W8   | 2.0   |
| 7.  | CHISHOLM DANIEL (7)     | TN | nnnn | W5   | L2   | L3   | L4   | 1.0   |
| 8.  | CONNER NICK (8)         | TN | nnnn | L3   | L5   | L4   | L6   | 0.0   |
| 9.  | SUMMERS EDWARD (9)      | TN | nnnn | F2   | -U-  | -U-  | -U-  | 0.0   |

## Do You Want the TCN Online?

By Kent Meadows

Would you like the choice of receiving the TCN in electronic form as opposed to receiving the printed version?

We will *still* be mailing out the printed version to TCA members that prefer it in that manner. Personally, I will continue to receive the printed version. However, if you would prefer receiving the TCN via cyberspace, please e-mail in your e-mail address to our TCA Internet Coordinator, Patricia Knight, at: [webmaster@tncchess.org](mailto:webmaster@tncchess.org) as soon as possible.

Please understand -- you cannot receive the TCN *both* ways. We will be voting on this issue at the next TCA Board Meeting. If we get enough requests to make it worth these ladies' time, then we will offer it as an option to TCA Members. If we don't get enough requests, then we won't offer the TCN by e-mail. The choice is in *your* hands!

Pat Knight has an excellent firewall. She also has the best anti-virus protection. We will not be selling or giving out your e-mail addresses to anyone. She will verify your TCA Membership. Your privacy will be protected. Angela McElrath-Prosser will still be the Newsletter Editor. We are only offering this option as a *service to the TCA*! We are also considering this as a way to *cut postage expenses for the TCN as a way to better serve the TCA*.

## Donations

The Foundation for Tennessee Chess and The Tennessee Chess Association encourage all chess players and their family members to consider donating chess items to us when a member either loses interest or passes on. We have a growing donated reference library which is being used extensively by our membership. Contributions are tax-deductible.

A sample form for a bequest would be:

I, \_\_\_\_\_, hereby give, devise, and bequeath to the Foundation for Tennessee Chess, (or Tennessee Chess Association) \_\_\_\_\_ (All of my chess books and equipment), (the following chess books and/or items of equipment), (the sum of \_\_\_\_\_) to be used at the discretion of the Directors of the Foundation for Tennessee Chess (or Tennessee Chess Association).



## Tennessee Tournament Calendar

provided by Joseph Crump

August 30,-September 1, 2002--56th Annual Tennessee Open 5SS, Primary 30/80, then SD/1, Marriott Hotel (formerly the Hyatt Regency), Knoxville TN \$4000 guaranteed Prize Fund. EF: \$55 if mailed by 8/26/02. \$65.00 at site. Entries to: Pat Knight, 103 Albion Rd, Oak Ridge TN 37830, (865) 481-3516

August 31, 2002--56th Annual Tennessee Open Scholastic Tournament 4SS, Game/30, Rd. 1- 9:00 AM (EDT) all others ASAP Marriott Hotel (formerly the Hyatt Regency), Knoxville TN Trophies 1st - 10th Place for all Sections. EF: \$15 if mailed by 8/26/02. \$20.00 later and at site. Entries to: Pat Knight, 103 Albion Rd, Oak Ridge TN 37830, (865) 481-3516

September 28, 2002--Music City Fall Open 4-SS, G/60. Nashville Chess Center, 2911 Belmont Blvd, Nashville TN 37212. \$275 Guaranteed Prizes in 2 sections. Open: \$50 1st, class X, A, B, C& below each \$25. U1400 section: \$50 1st, class E, F& below, Unrated, each \$25 (unrated eligible for unrated prize only). Both sections EF \$15 if received by 9/23, \$20 later and at site (\$5 discount to current NCC members). Register 9:00-9:45 a.m. Rds: 10-12-2:30-4:30. TCA & USCF membership required. Top eligible player in Open section qualifies for 2003 Nashville Championship Finals (ties broken by tie-breaks). For info & questions, contact Mark Ishee at (615) 292-7341.

October 12, 2002--Cumberland County Fall Open. 4-SS, G/60, Multi-Purpose Bldg., Fairfield Glade Resort, Crossville TN 38558. \$G 300. Open-\$175: 50-1st, 25-X, A, B, C&Below. Amateur-U1400 \$125: 50-1st, 25-E, F&Below, UNR (UNR eligible for UNR prize only). Both, EF: \$10 if mailed by 10/7/02, \$15 at site. TCA req'd., Reg. 7:30-8:30 AM (CDT) Rds. 9-11-2-4:30. Ent: Harry D. Sabine, PO Box 381, Crossville TN 38557, (931) 484-9593 or 484-4878. NS. NC. W.

October 26, 2002--Mid-State Open 4-SS, Rds. 1 and 2, G/60; Rds. 3 and 4, G/90. Nashville Chess Center, 2911 Belmont Blvd, Nashville TN 37212. \$275 Guaranteed Prizes in 2 sections. Open: \$50 1st, class X, A, B, C& below each \$25. U1400 section: \$50 1st, class E, F& below, Unrated, each \$25 (unrated eligible for unrated prize only). Both sections EF \$15 if received by 10/21, \$20 later and at site (\$5 discount to current NCC members). Register 8:00-8:45 a.m. Rds: 9-12-2:45-6:30. TCA & USCF membership required. Top two eligible players in Open section (who have not previously qualified) qualify for 2003 Nashville Championship Finals (ties broken by tie-breaks). For info & questions, contact Mark Ishee at (615) 292-7341.

November 8-10, 2002--\$10,000 World Amateur Championship, Biloxi MS.

November 16-17, 2002--National Youth Action Championship, Rockford IL.

November 23-24, 2002--NCC Fall Classic 4-SS, 35/90, SD/30. Nashville Chess Center, 2911 Belmont Blvd, Nashville TN 37212. \$275 Guaranteed Prizes in 2 sections. Open: \$50 1st, class X, A, B, C & below each \$25. U1600 section: \$50 1st, class E, F& below, Unrated, each \$25 (unrated eligible for unrated prize only). Both sections EF \$15 if received by 11/18, \$20 later and at site (\$5 discount to current NCC members). Register 9:00-9:45 a.m. Rds: 10-2:30-7, 9-1:30. TCA & USCF membership required. Top three eligible players in Open section (who have not previously qualified) qualify for 2003 Nashville Championship Finals (ties broken by tie-breaks). For info & questions, contact Mark Ishee at (615) 292-7341.

December 13-15, 2002--National Scholastic K-12 Championship, Atlanta GA.

### Tournament Entry Form

For your convenience, we have included this copy and mail Tournament Entry Form. Please fill out completely, and mail with payment to the Tournament organizer.

Name of Tournament: \_\_\_\_\_

USCF#: \_\_\_\_\_ Rating: \_\_\_\_\_ Exp. Date: \_\_\_\_\_

Last Name: \_\_\_\_\_ First Name: \_\_\_\_\_

Address: \_\_\_\_\_

City: \_\_\_\_\_ ST: \_\_\_\_\_ ZIP: \_\_\_\_\_

E-Mail Address: \_\_\_\_\_

DOB: \_\_\_\_\_ Phone Number: \_\_\_\_\_

Section: \_\_\_\_\_ Byes: \_\_\_\_\_

Entry Fee: \_\_\_\_\_ USCF Dues: \_\_\_\_\_ TCA Dues: \_\_\_\_\_

Total Amount Paid: \$ \_\_\_\_\_

Notes: \_\_\_\_\_

USCF Dues required for all USCF Rated Tournaments.

TCA Dues required for all TN residents playing in adult tournaments.

If you have any questions, contact the tournament organizer.



## Nashville Chess Center Calendar of Events, Fall/Winter 2002

provided by Mark Ishee

August 10, 2002 Tournament Director Seminar. 10 am-4 pm. National Tournament Director Mark Ishee will discuss tournament rules & procedures, pairings and prize allocation, as well as TD certification. Free of charge, but pre-registration is required: e-mail [nashvillechess@comcast.net](mailto:nashvillechess@comcast.net)

August 24-25, 2002 Open 10 am- 4 pm

August 30-Sept. 1, 2002 Tennessee Open Championship, Knoxville TN

August 31, 2002 Tennessee Open Scholastics, Knoxville TN

September 7-8, 2002 Open 10 am- 4 pm

September 14, 2002 Patriot's Day Scholastic 4-SS, G/10. Prizes: Trophies to 1st-2nd-3rd overall, 1st-2nd-3rd Under 1000, 1st-2nd-3rd Unrated. Open to players in grades K-12. One section only, no team awards. Entry fee: \$10 if received before 9/9/02, \$15 after and at site. USCF membership required.

September 21-22, 2002 Open 10 am- 4 pm

September 28-29-Music City Fall Open 4-SS, G/60. \$275 Guaranteed Prizes in 2 sections: Open section: \$50 1st, class X, A, B, C&below each \$25. Top eligible player in Open section qualifies for 2003 Nashville Championship Finals. U1400 section: \$50 1st, class E, F&below, Unrated each \$25 (Unrated eligible for unrated prize only). Both sections: EF \$15 if received by 9/23, \$20 later and at site (\$5 discount to current NCC members). Register 9:00-9:45 am. Rds: 10-12-2:30-4:30. TCA & USCF membership required. For info & questions, contact Mark Ishee at (615) 292-7341 or e-mail [nashvillechess@comcast.net](mailto:nashvillechess@comcast.net)

October 5-6, 2002 Open 10 am- 4 pm

October 12, 2002 Mid-State Scholastics 5-SS, G/60. Christ the King School, 3105 Belmont Blvd, Nashville TN (next door to Nashville Chess Center). 4 Sections: (High school, Junior High, Elementary, and Primary). Trophies to Top 10 individuals, Top 5 teams and Top 3 Unrated in each section. Top 2 local players in each section qualify for Nashville Scholastic Championship Finals. Entry fee: \$10 if received before 10/7, \$15 later and at site. Register: 8:00-8:30 am. Round 1 at 9:00 am, other rounds ASAP. USCF membership required. Mail entries to Nashville Chess Center or contact Mark Ishee (615) 292-7341 ([nashvillechess@comcast.net](mailto:nashvillechess@comcast.net))

October 26, 2002 Mid-State Open 4-SS. Rds 1 & 2 G/60; Rds 3 & 4 G/90. \$275 Guaranteed Prizes in 2 sections: Open section: \$50 1st, class X, A, B, C&below each \$25. Top two eligible players in Open section qualify for 2003 Nashville Championship Finals. U1400 section: \$50 1st, class E, F&below, Unrated each \$25 (Unrated eligible for unrated prize only). Both sections: EF \$15 if received by 10/21, \$20 later and at site (\$5 discount to current NCC members). Register 8:00-8:45 am. Rounds: 9-12-2:45-6:30. TCA & USCF membership required. For info and questions, contact Mark Ishee at (615) 292-7341 or e-mail [nashvillechess@comcast.net](mailto:nashvillechess@comcast.net)

November 9, 2002 Page Scholastics 5-SS, G/30. Page High School, Arno Road, Franklin TN 4 Sections: (High school, Junior High, Elementary, and Primary). Trophies to Top 10 individuals, Top 5 teams and Top 3 Unrated in each section. Top 2 local players in each section qualify for Nashville Scholastic Championship Finals. Entry fee: \$10 if received before 11/4, \$15 later and at site. Register: 8:00-8:30 am. Round 1 at 9:00 am, other rounds ASAP. USCF membership required. Contact: Mark Ishee (615) 292-7341 ([nashvillechess@comcast.net](mailto:nashvillechess@comcast.net))

November 16-17, 2002 Open 10 am- 4 pm

November 23 & 24, 2002 NCC Fall Classic 5-SS. 35/90, SD/30. \$275 Guaranteed Prizes in 2 sections: Open section: \$50 1st, class X, A, B, C&below each \$25. Top three eligible players in Open section qualify for 2003 Nashville Championship Finals. U1600 section: \$50 1st, class E, F&below, Unrated each \$25 (Unrated eligible for unrated prize only). Both sections: EF \$15 if received by 11/18, \$20 later and at site (\$5 discount to current NCC members). Register 9:00-9:45 am. Rounds: 10-2:30-7, 9-1:30. TCA & USCF membership required. For info & questions, contact Mark Ishee at (615) 292-7341 or e-mail [nashvillechess@comcast.net](mailto:nashvillechess@comcast.net)

November 27, 2002 (Wednesday) Closed for Thanksgiving holiday

November 30-Dec. 1, 2002 Open 10 am- 4 pm

December 7, 2002 Meigs Scholastics 5-SS, G/30. Meigs Magnet School, Nashville TN 4 Sections: (High school, Junior High, Elementary, and Primary). Trophies to Top 10 individuals, Top 5 teams and Top 3 Unrated in each section. Top 2 local players in each section qualify for Nashville Scholastic Championship Finals. Entry fee: \$10 if received before 12/2, \$15 later and at site. Register: 8:00-8:30 am. Round 1 at 9:00 am, other rounds ASAP. USCF membership required. Contact: Mark Ishee (615) 292-7341 ([nashvillechess@comcast.net](mailto:nashvillechess@comcast.net))

For up-to-date tournament announcements, news, and information, please visit our website: [www.nashvillechess.org](http://www.nashvillechess.org)

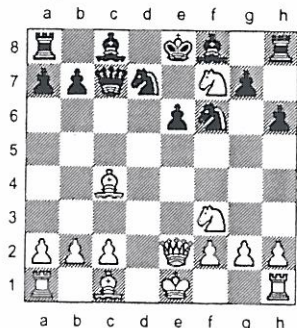


□ Ciarleglio, Peter  
 ■ Crump, Joe  
 Nashville-Columbia Match  
 [Annotated by Peter Lahde]

B17

2002

1.e4 c6 2.d4 d5 3.Nc3 dxe4 4.Nxe4 Nd7 5.Bc4 Ngf6 6.Ng5 e6 7.Qe2!? ECO only gives 7 Ne2 h6 8 Nf3 Bd6 9 0-0 Qc7 10 Re1 0-0 11 Nc3 b5 12 Bd3 Bb7 13 Ne4 Nxe4 14 Bxe4 c5= h6 A game of mine continued here 7...Nb6 8 Bb3 Qxd4? 9 Nf3 Qd8 10 Ne5! Nbd5 11 Nxf7 Bb4+ 12 Kf1 Qb6 13 Nxf8 1:0 (Lahde-Trafimow, Nashville 1962) Judging from this game it does not appear that capturing the pawn (Qxd4) is advisable. Although in my game he could have done better in place of 9...Qd8. 8.Nf3 It may already be sound to play 8 Nxf7 here. But I let the reader figure this out. c5 9.dxc5 Nxc5 10.Ne5 Ncd7 11.Ng3 Qc7? 12.Nxf7!



Kxf7 13.Qxe6+ Kg6 14.Nh4+ Kh5 15.Qf5+ g5 16.Bf7+ After 16...Kxh4 either 17 Qh3 mate or 17 g3 Qxg3 18 hxg3 mate! (The game was played on February 2, 2002)

1-0

□ Carlos Sims  
 ■ Gary Pylant  
 A Little More Time II  
 [May 31, 2002]

E32

2002

1.d4 Nf6 2.c4 e6 3.Nc3 Bb4 4.Qc2 0-0 5.e4 Bxc3+ 6.bxc3 d6 7.Bg5 e5 8.Nf3 Nc6 9.Rd1 Qe7 10.d5 Nb8 It seems that Na5 might be a better choice here, followed by b6 and Bb7. 11.Be2 Nbd7 12.0-0 b6 13.Nh4 Nc5 14.f4 h6 15.fxe5 hxg5 16.exf6 gxh6 17.Nf5 Qxe4 18.Qxe4 Nxe4 19.Ne7+ Kg7 20.Bd3 Nxc3 21.Rde1 Na4 22.Re2 Nc5 23.Bc2 Bg4 24.Re2 Rae8 25.Nf5+ Bxf5 26.Rxf5 Ne4 27.Re1 Nd2 28.Rc1 Re5 0-1

□ Kenneth Turner  
 ■ Phillip McMillion  
 Summer Knight Open (Memphis)  
 [June 8, 2002]

C50

2002

1.e4 e5 2.Nf3 Nc6 3.Bc4 Bc5 4.0-0 Nf6 5.c3 0-0 6.d4 exd4 7.cxd4 Bb6 8.Bg5 d6 9.Nc3 Bg4 10.d5 Ne5 11.Be2 Bxf3 12.Bxf3 c5 13.dxc6 bxc6 14.Qd2 Bc7 15.Be2 d5 16.exd5 Qd6 17.f4 Ned7 18.Bf3 Bb6+ 19.Kh1 c5 20.Nb5 Qb8 21.d6 a6 22.Bxa8 Qxa8 23.Bxf6 Nxf6 24.Nc3 c4 25.h3 Qc6 26.Rad1 Nh5 27.Kh2 f6 28.Qd5+ Qxd5 29.Rxd5 a5?? 30.Rxh5 1-0

□ Nate Partee  
 ■ Hiroshi Manabe  
 Tennessee Quick Chess Champ.  
 [April 6, 2002]

C01

2002

1.e4 e6 2.d4 d5 3.exd5 exd5 4.Qe2+ Be7 5.Bg5 Be6 6.Qb5+ Bd7 7.Qxb7 Bc6 8.Bxe7 Qxe7+ 9.Be2 Bxb7 10.Nc3 Nf6 11.Nf3 Ba6 12.0-0 0-0 13.Rfe1 Qb4 14.Bxa6 Nxa6 15.a3 Qxb2 16.Na4 Qxc2 17.Nc5 Nxc5 18.dxc5 Rfe8 19.Rab1 Rxe1+ 20.Nxe1 Qxb1 21.Kf1 Re8 22.g3 Rxe1+ 23.Kg2 Rg1+ 24.Kh3 Qf5+ 25.Kh4 Qg4# 0-1

A18

□ Rick Telleri  
 ■ Hiroshi Manabe  
 Tennessee Quick Chess Champ.  
 [April 6, 2002]

1.c4 e6 2.Nc3 Nf6 3.e4 d5 4.e5 Nfd7 5.d4 dxc4 6.Bxc4 Nb6 7.Bd3 c5 8.Nf3 Nc6 9.Bb5 Bd7 10.0-0 Nxd4 11.Nxd4 cxd4 12.Qxd4 Bxb5 13.Nxb5 Qxd4 14.Nxd4 Be7 15.Be3 Nc4 16.Bc1? Better 16 Bf4 and if Nxb7 17 Rab1. Nxe5 17.Nb5 0-0 18.Bf4 Nd3 19.Bg3 a6 20.Nc7 Rac8 21.Rfd1 Rfd8 22.Rab1 Nxb2 23.Rxd8+ Rxd8 24.Kf1 Rd1+ 25.Rxd1 Nxd1 26.Ke2 Nc3+ 27.Kd3 Nxa2 28.Kc4 Nb4 29.Na8 Nd5 30.f3 Kf8 31.Be5 g6 32.g4 Ke8 33.h3 Kd7 34.Bd4 b5+ 35.Kb3 Bd8 36.Be5 Kc8 37.Kc2 Kb7 38.Kd3 Kxa8 39.Kd4 Bb6+ 40.Kd3 Kb7 41.f4 Kc6 42.h4 Bc7 43.Bxc7 Kxc7 44.Ke4 b4 45.Kd4 Nxf4 46.Kc4 a5 Shortly after winning the State title here he returned to Japan after graduating from Vanderbilt. He also won the Nashville title. 0-1

January 18 &amp; 19, 2003

The 4th Annual

## North Tennessee Winter Open

Chess Tournament

At the beautiful Riverview Inn, Clarksville, TN

\$4,000 Prize Fund

Unconditionally Guaranteed

## Section 1 "Kings" Open to all

|                                      |     |
|--------------------------------------|-----|
| 1 <sup>st</sup> Place Trophy + \$500 |     |
| 2 <sup>nd</sup> Place                | 300 |
| 3 <sup>rd</sup> Place                | 200 |

|                            |     |
|----------------------------|-----|
| 1 <sup>st</sup> Below 2200 | 150 |
| 2 <sup>nd</sup> Below 2200 | 100 |

## Section 4 "Bishops" U1500

|                                      |     |
|--------------------------------------|-----|
| 1 <sup>st</sup> Place Trophy + \$225 |     |
| 2 <sup>nd</sup> Place                | 125 |
| 3 <sup>rd</sup> Place                | 100 |

|                  |     |
|------------------|-----|
| Top 1300-1399    | 100 |
| Top 1299 & Below | 50  |

|                                      |    |
|--------------------------------------|----|
| *Unrated:                            |    |
| 1 <sup>st</sup> Place Trophy + \$125 |    |
| 2 <sup>nd</sup> Place                | 50 |

## Section 2 "Queens" U2000

|                                      |     |
|--------------------------------------|-----|
| 1 <sup>st</sup> Place Trophy + \$300 |     |
| 2 <sup>nd</sup> Place                | 200 |
| 3 <sup>rd</sup> Place                | 100 |

|                  |     |
|------------------|-----|
| Top 1800-1899    | 100 |
| Top 1799 & Below | 50  |

## Section 5 "Knights" U1250

|                                      |     |
|--------------------------------------|-----|
| 1 <sup>st</sup> Place Trophy + \$225 |     |
| 2 <sup>nd</sup> Place                | 125 |
| 3 <sup>rd</sup> Place                | 100 |

|                  |     |
|------------------|-----|
| Top 1050-1149    | 100 |
| Top 1049 & Below | 50  |

\*Unrateds must play in Section 4 "Bishops". Unrateds eligible for unrated prizes only.

## Section 3 "Rooks" U1750

|                                      |     |
|--------------------------------------|-----|
| 1 <sup>st</sup> Place Trophy + \$250 |     |
| 2 <sup>nd</sup> Place                | 125 |
| 3 <sup>rd</sup> Place                | 100 |

|                  |     |
|------------------|-----|
| Top 1550-1649    | 100 |
| Top 1549 & Below | 50  |

## Section 6 "Pawns" U1000

|                              |  |
|------------------------------|--|
| 1 <sup>st</sup> Place Trophy |  |
| 2 <sup>nd</sup> Place Trophy |  |
| 3 <sup>rd</sup> Place Trophy |  |
| 4 <sup>th</sup> Place Trophy |  |
| 5 <sup>th</sup> Place Trophy |  |

|                 |        |
|-----------------|--------|
| Top 800-899     | Trophy |
| Top 799 & below | Trophy |

5 round Swiss.

Supplement will be used.

REGISTRATION: Sat. 18<sup>th</sup>, 8:30-10:00 am CST.

ENTRY FEE: Sections 1-5 \$55.00 advance or \$65.00 at Site  
 Section 6 \$22.00 advance or \$30.00 at Site  
 Unrateds \$30.00 in advance or \$40.00 at Site  
 Section 6 is trophy only, No Cash Prizes.

Advance entries must be postmarked on or before January 13, 2003.

½ point bye available for any one round if requested at or before registration.

USCF membership required for all, and TCA membership required for all TN residents. Available at site. OSA

No Smoking, No Alcohol, No Drugs, No Computers, Wheelchair accessible.

Saturday, January 18<sup>th</sup>

Round 1 - 11:00 a.m.  
 Round 2 - 3:30 p.m.  
 Round 3 - 8:00 p.m.

Sunday, January 19<sup>th</sup>

Round 4 - 9:00 a.m.  
 Round 5 - 1:30 p.m.  
 \* Have a safe trip home\*



Hotel Rates: \$ 67.00 /night + tax for 1-4 people includes free breakfast. Reservations must be booked individually, and you must reserve your room prior to January 1, 2002 to insure availability. You must say you are with the Chess Tournament to get the discounted rate. Riverview Inn, 50 College St., Clarksville, TN 37040. Phone: (931) 552-3331

Contact: Kent Meadows, 615-313-5503 / nashvillechess@comcast.net or E-mail Roy Manners, roybinat@msn.com





## TENNESSEE CHESS CLUBS

Athens Chess Club  
Mike McGinnis  
423-507-8454

Chattanooga CC  
Joe Dumas  
H (423) 886-7628  
O (423) 755-4084

Chattanooga UTC CC  
Joe Dumas  
H (423) 886-7628  
O (423) 755-4084

Columbia CC  
Joe Crump  
(931) 381-2758

Cumberland Co CC  
Harry Sabine  
(931) 484-9593

Dayton CC  
Bruce Barnett  
(423) 775-7000

ETSU Chess Assoc  
Chun Ng  
(423) 917-2219

Goodlettsville, Knights CC  
Wieb van der Meer

Greater Knoxville CC  
Leonard Dickerson  
(865) 966-1095

Kingsport, Indian Springs CC  
Steve Poff  
(423) 279-0697

Memphis Chess Club  
Michael Sansom, pres.  
Gary Pylant (tourney info)  
(901) 358-1731

Nashville Chess Center  
Bill Orgain, pres.  
Mark Ishee, exec dir  
e-mail:  
mark.ishee@nashville.com  
(615) 292-7341

Oak Ridge CC  
Charles Maddigan  
(865) 482-5962

Rutherford Co CC  
Robert Guthrie  
(615) 895-7989

Tipton County CC  
Thomas Stark  
(901) 837-5874



### TN CHESS ASSOCIATION AFFILIATE MEMBERS

Cumberland Co Chess Club  
Nashville Chess Center

MORE DETAILS ABOUT EACH  
CLUB ARE AVAILABLE ON  
THE TCA WEBSITE:

<http://www.tnchess.org>

## TENNESSEE CHESS ASSOCIATION 2001-2002 BOARD OF DIRECTORS

**PRESIDENT:**  
ROBERT KENT MEADOWS  
206 30TH AVENUE NORTH  
NASHVILLE TN 37203  
H: 615-320-0394 O: 615-313-5503  
E-MAIL: kent.meadows@nashville.com

**VICE-PRESIDENT:**  
JEFF PENNIG  
PO BOX 90578  
NASHVILLE TN 37209  
H: 615-733-1880  
E-MAIL: jcpennig@comcast.net

**TREASURER:**  
LEONARD S. DICKERSON  
420 ORAN ROAD  
KNOXVILLE TN 37922  
H: 865-966-1095 O: 865-946-1268  
F: 865-574-3431  
E-MAIL: lxchess@email.msn.com

**SECRETARY:**  
BRADLEY WATSON  
123 COOPER CIRCLE  
OAK RIDGE TN 37830  
H: 865-482-2983  
E-MAIL: bjwatson@esper.com

**TN CHESS NEWS EDITOR:**  
ANGELA McELRATH-PROSSER  
733 LONG HUNTER COURT  
NASHVILLE TN 37217  
H: 615-399-8432  
E-MAIL: tcanews@aol.com

**INTERNET CHESS COORDINATOR:**  
PATRICIA KNIGHT  
103 ALBION RD  
OAK RIDGE TN 37830  
H: 865-481-3516  
E-MAIL: mspatknight@mindspring.com

**STATE SCHOLASTIC COORDINATOR:**  
HARRY D. SABINE  
P.O. BOX 381  
CROSSVILLE TN 38557  
H: 931-484-4878 O: 931-484-9593  
F: 931-456-7624  
E-MAIL: hdsabine@cittlink.net

**EAST TENNESSEE DIRECTOR:**  
MIKE MCGINNIS  
151 COUNTY RD 451  
ATHENS TN 37303  
H: 423-507-8454  
E-MAIL: magennis@usit.net

**TOURNAMENT COORDINATOR:**  
JOE CRUMP  
111 TOMMY DR  
COLUMBIA TN 38401  
H: 931-381-2758 O: 615-770-8406  
E-MAIL: joseph\_crump@c-chess.com

**WEST TENNESSEE DIRECTOR:**  
MIKE SANSOM  
PO BOX 17864  
MEMPHIS TN 38187-0864  
H: 901-683-0513 O: 901-685-7471  
E-MAIL: Frenchdefense1@juno.com

**MIDDLE TENNESSEE DIRECTOR:**  
ROY MANNERS  
1215 CUMBERLAND HEIGHTS RD  
CLARKSVILLE TN 37040  
H: 931-552-1839  
E-MAIL: roybintn@msn.com

### REGIONAL SCHOLASTIC COORDINATORS

#### REGION 1

S. THOMAS PURUCKER  
112 ORCHARD CIRCLE  
OAK RIDGE TN 37830  
H: 865-482-7397 O: 865-482-6679  
E-MAIL: purucker@utk.edu

#### REGION 2

GARY F. GILLESPIE  
31 BRAMBLETON COURT  
CROSSVILLE TN 38558-7151  
H: 931-456-6146  
E-MAIL: gfgillespie@aol.com

#### REGION 3

CHRIS PROSSER  
733 LONG HUNTER COURT  
NASHVILLE TN 37217  
H: 615-399-8432  
E-MAIL: region3@aol.com

#### REGION 4

BILL CUMMINGS  
3532 DAVIESHIRE DR  
MEMPHIS TN 38133  
H: 901-372-6584 O: 901-348-1610  
E-MAIL: wacummin@bellsouth.net