



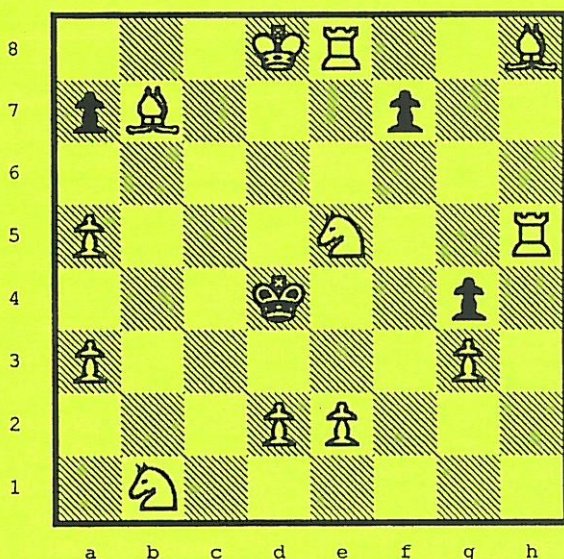
TENNESSEE CHESS NEWS

SPRING 2002

VOLUME 44

NO. 3

2002 TN STATE INDIVIDUAL CHAMPIONSHIP.....	7
2002 TN REGIONAL & STATE INDIVIDUAL.....	10
MEMPHIS HAS NEW CITY CHAMPION.....	18
NCC VS COLUMBIA CHESS CLUB.....	20
2002 TN REGIONAL & STATE TEAM RESULTS.....	21
MUSIC CITY WINTER RESULTS.....	30
MANABE CLAIMS TN QUICK CHESS CHAMPIONSHIP.....	32



Problem Corner by Ray Hudgens
White Mates in 2 Moves (Sol. Pg. 37)

TENNESSEE CHESS NEWS

The **Tennessee Chess News** is the official publication of the Tennessee Chess Association. TCA annual dues are \$10 for a *regular* membership, \$10 for a *student* membership. Additional members of a family may join for one dollar each, but only one issue of TCN will be mailed per family. All memberships expire August 31.

Tax-deductible Patron Memberships are available beginning at \$100 per year for those who wish to help support the TCA and the FFTC. These memberships expire one year from the date of payment. Patron membership categories and benefits are as follows:

PATRON \$100

- One year TCA Membership and FFTC membership plus a key ring.

PATRON KING \$300

- All Patron benefits plus one year free TCA and FFTC membership for all members of the Patron King's immediate family & free entry into the TN State Scholastic Individual Regional Tournament for the member and all members of the Patron King's immediate family.

PATRON MASTER \$500

- All Patron King benefits plus one free entry to any TCA or FFTC sponsored Open Chess Tournament. The Patron Master or any member of his/her immediate family could use such free entry.

PATRON GRANDMASTER \$1000 (or more)

- All Patron Master benefits plus a chess clock and their name on a permanent plaque to be placed on the wall at the home of the TCA and FFTC.

TOURNAMENT ANNOUNCEMENTS

TCN prints listings of upcoming tournaments requiring TCA membership in each issue for free. Submit complete TLA information to Joseph Crump, Tournament Coordinator.

TN CHESS NEWS STAFF

Editor:

Angela McElrath-Prosser

Contributors:

Games Editor-Peter Lahde
Tech Support-Chris Prosser

Alvin Harris
Joe Crump
Gary Gillespie
Raymond Hudgens
Mark Ishee
Peter Lahde
Kent Meadows

Pre-printed flyers for insert must be 8 1/2 x 11" in size, 60 pound Offset, and delivered flat. *Only one insert is available per issue.* \$15.00

TCN publishing schedule:
Summer 2002 - Aug 1 covering
May, Jun, Jul events

Deadline: July 9, 2002

Fall 2002 - Nov 1 covering
Aug, Sept, Oct events

Deadline: Oct 9, 2002

Winter 2003 - Feb 1 covering
Nov, Dec, Jan events

Deadline: Jan 9, 2003

Spring 2002 - May 1 covering
Feb, Mar, Apr events

Deadline: Apr 9, 2003

To submit material by e-mail,
please send text non-zipped
files to: tcanews@aol.com

Tennessee Chess Association and Foundation for Tennessee Chess Patron Members

Patron Grandmaster

Dr. Martin Katahn
George A. Dean
Patricia Knight
Clinton H. Pearson Jr.
Harry D. Sabine

Patron Master

Kent Meadows

Patron King

None

Patron Member

Juan T. Aristorenas MD.
Edward Belbusti
Gary Gillespie
Raymond Hudgens
Mark Ishee
Peter P. Lahde
Mike McGinnis
Bill Orgain
Albert & Debra Partee
Jeff Pennig
Brad Watson

From the President

by Kent Meadows

The site for the 2002 Tennessee Open in Knoxville is the **Marriott Hotel** (formerly the Hyatt Regency Hotel). The toll free booking number is: **1-800-228-9290**. Check out:

<http://www.homestead.com/tncchessorgn/TNOpen2002fly.html>,
<http://www.homestead.com/tncchessorgn/TNOpen2002schfly.html>, and
also be sure to check out the link for directions.

Dr. Martin Katahn has been inducted into the Tennessee Chess Association Hall of Fame by a unanimous vote. I certainly cannot think of a more deserving recipient for this honor. The official ceremony shall occur this Labor Day weekend at the 2002 Tennessee Open in Knoxville. There is little that I can add to the excellent article that Mark Ishee wrote for the Fall 2001 TCN praising "Dick" Katahn. For those of you wanting more information, please see that issue.

Roland Piekorz is the 2002 Memphis City Champion! Please check out details at:

<http://www.homestead.com/memphischessclub/city2002.html>,
<http://www.homestead.com/MEMPHISCHESSCLUB/games2002.html>,
and <http://www.homestead.com/MEMPHISCHESSCLUB/champs.html>.
Gary Pylant has one of the very best Chess Club websites in the country. Congratulations, Roland!

We have crowned this year's Scholastic Individual and Team Champions! Please check out:

<http://tncchessorg.homestead.com/INDresults2002.html>,
<http://tncchessorgn.homestead.com/INDcross2002.html>,
<http://www.homestead.com/tncchessorg/2002teamresults.html>, and
<http://tncchessorgn.homestead.com/2002teamXtable.html>.

Congratulations to all of our winners! Thanks to Harry Sabine, Bill Cummings, Chris Prosser, Gary Gillespie, and Tom Purucker for all of their hard work. Special Congratulations go to High School winner Blake Gibson, who will represent Tennessee in the 2002 Denker Tournament.

Hiroshi Manabe, the 2002 Nashville City Champion, is now also

the 2002 Tennessee Quick Chess Champion. Alvin Harris directed. Please check out:

<http://www.homestead.com/tncchessorg/Xtable2002QC.html> and
<http://www.homestead.com/tncchessorg/quickchess.html>. We must sadly say goodbye to the very likeable Hiroshi, who is moving back to Japan with his very nice family this May. Hiroshi graduates from Vanderbilt's Owen School of Business with his Master's Degree. We surprised Hiroshi (with his wife's assistance) with a farewell party for him at the Nashville Chess Center earlier this month.

Ben Harris and Hiroshi Manabe won the Open Section of the Music City Winter Open with 3.5-0.5 scores. Mick West won the Under1400 Section with a perfect 4.0 score. The total for both Sections was 56 players. Mark Ishee directed.

Ben Harris, Romel Batistil, and Rick Telleri won the Music City Spring Open with 3.0-1.0 scores. David Justice won the Under1400 with 3.5-0.5. The total attendance was 27 players. Yours truly directed.

Jim Lech and Bill Orgain report that twelve scholastic players from the Foundation for Tennessee Chess took on all challenges at a booth at the KidzFair in Smyrna. They scored an incredible 168-2! Wow!

The Nashville Chess Center's new e-mail address is now nashvillechess@comcast.net. There have been some temporary problems with the Nashville Chess Center website, but Mark Ishee and George Dean are getting it straightened out.

Leonard Dickerson, Robert Presswood, Scott Eddins, and Trey B. Smith won the Cumberland County Spring Open in Crossville with a score of 3.0-1.0. David Justice, Matt Fox, and Ryan Fitch won the Amateur Section with perfect 4.0 scores. The total attendance was 63 players. The TD was Harry Sabine.

I think it is time to acknowledge two of the hardest workers that the TCA has. I don't know what we would do without Angela McElrath-Prosser, the TCN Editor, and Patricia Knight, the TCA

Internet Coordinator. Pat is also the organizer for this year's 2002 Tennessee Open in Knoxville.

USChess has signed a contract with Opryland Hotel for the 2003 National Elementary Championships next May. This came as a great surprise for all of us. The tournament *will be* in Nashville, and USChess has now begun negotiating with the TCA and FFTC for our assistance. Their first contract proposal was unacceptable. Harry Sabine has been authorized by both Boards to represent both organizations and deal with USChess. More details next issue. Let's all keep our fingers crossed!

Tournament Entry Form

For your convenience we have included this copy and mail Tournament Entry Form. Please fill out completely, and mail with payment to the Tournament organizer.

Name of Tournament : _____

USCF#: _____ Rating: _____ Exp. Date: _____

Last Name: _____ First Name: _____

Address: _____

City: _____ ST: _____ ZIP: _____

E-Mail Address: _____

DOB: _____ Phone Number: _____

Section: _____ Byes: _____

Entry Fee: _____ USCF Dues: _____ TCA Dues: _____

Total Amount Paid: \$ _____

Notes: _____

USCF Dues required for all USCF Rated Tournaments.
TCA Dues required for all TN residents playing in adult tournaments.
If you have any questions, contact the tournament organizer.

2002 Tennessee State Individual Chess Championship

by Gary F. Gillespie

As usual, the annual Tennessee State Individual Chess Championship was a highly competitive tournament. In fact, a number of tournament directors noted that this year's tournament was the most competitive tournament yet.

Tennessee Technological University (Tennessee Tech) in Cookeville hosted the tournament, which was held on February 16. Making the tournament even more exciting than usual was a four-year tuition scholarship Tennessee Tech was offering to the winner of the High School Section. The scholarship is valued at \$12,000--well worth winning.

Blake Gibson, a home school student from the Memphis area, was the prohibitive favorite in the High School Section as he was rated over 300 points above his nearest competitor. Blake won the High School Section with a perfect score of five wins--but only after several close games in which his opponents appeared to have chances to draw the games. As High School Section Champion, Blake was eligible for the four year tuition scholarship offered by Tennessee Tech--but already had a full four-year scholarship to play chess at the University of Texas at Dallas.

Alexander King, of Meigs Magnet School in Nashville, won the Junior High Section with four and one-half points. Griffin Gibson (Blake's younger brother) was the highest rated player in the section. Griffin appeared to be on his way to the section championship but was derailed by Abdoulaye Diallo of Oakhaven in the third round.

The Elementary Section offered few surprises as top-rated Evan Mah defeated Joshua Gao, the next highest rated player, in a sudden death play-off game. Evan and Joshua fought to a draw in the final round of the tournament--but Evan then won the G/10 sudden death playoff game.

Forrest Baty, last year's Primary Section Champion, won the Primary Section again with a perfect score of five wins. It wasn't an easy win, though, as Forrest had to survive several long hard games to claim the Primary Section Championship.

All in all, it was another very successful tournament made possible by our gracious hosts, Tennessee Technological University.



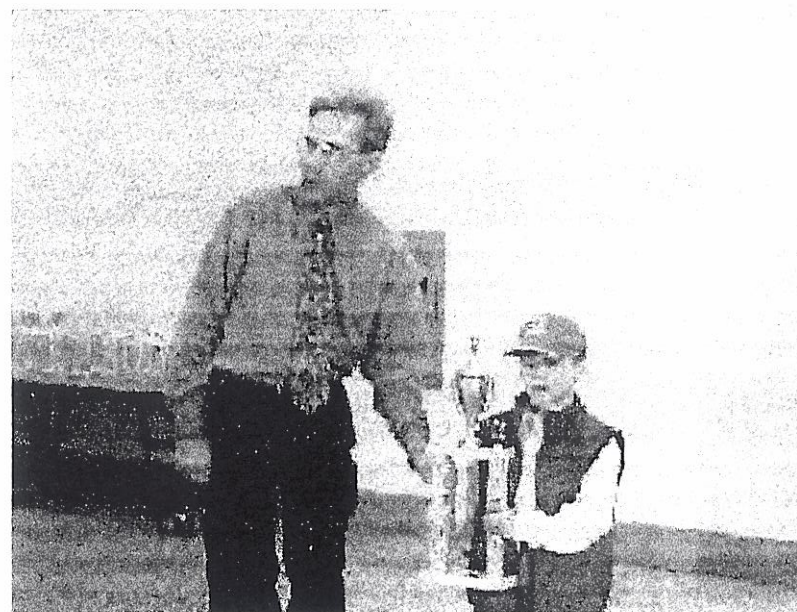
High School Champion 2002 - Blake Gibson
 Pictured with TCA President - Kent Meadows
 TCA State Scholastic Coordinator - Harry D. Sabine
 in the background



Elementary Champion 2002 - Evan Mah



Junior High Champion 2002 - Alexander King
 Pictured with TCA President - Kent Meadows
 TCA State Scholastic Coordinator - Harry D. Sabine
 in the background



Primary Champion 2002 - Forrest Baty
 Pictured with Gary Gillespie - Region 2
 Scholastic Coordinator, TCA

Region 1 Individual Results 2002

Place	Primary	Score
1st	Peter Suich	4.5
2nd	Brain Glatt	4.5
3rd	Matthew Marsh	4.5
4th	Jack Mellgard	4.0
5th	Scotty Chung	4.0
6th	Zach Butler	4.0
7th	Conner Moore	4.0
8th	Alex Goldberger	4.0
9th	Sam Worley	3.5
10th	Trey Sexton	3.5
Top U1000	Collyn Fike	3.0
Top UNR	Jacob Adams	3.5

Place	Elementary	Score
1st	David Drown	5.5
2nd	Mark Remec	5.0
3rd	Will Davis	5.0
4th	Chris Barber	5.0
5th	Sam Thompson	5.0
6th	Rushil Dave	5.0
7th	Jesse Jones	5.0
8th	Whitteny Stinnett	4.5
9th	David Hecht	4.5
10th	Alex Shor	4.5
Top U1000	JaRon Tony	4.0
Top UNR	Tyler Crowe	4.0

Place	Junior High	Score
1st	Mirko Remec	5.0
2nd	William Cook	4.0
3rd	Nathan Leiby	4.0
4th	Joshua Dunn	4.0
5th	David Cook	4.0
6th	Sam Wicker	3.5
7th	Travis Bonar	3.5
8th	Ryan Pearce	3.0
9th	Mark Carden	3.0
10th	Adam Riggs	3.0
Top U1000	Benjamin Klinkhammer	3.0
Top UNR	Allan Cameron	3.0

Region 1 Individual Results 2002 (Con't)

Place	High School	Score
1st	Patrick Tae	4.0
2nd	Josh Suich	4.0
3rd	Chris Martindale	3.5
4th	Westin Greene	3.0
5th	Adrain van der Velde	2.5
6th	Aaron McClain	2.5
7th	Nathan Kennard	2.0
8th	Forrest Ferguson	2.0
9th	Robert Schlenker	2.0
10th	Bobby Grizzard	1.5

Region 2 Individual Results 2002

PLACE	PRIMARY	SCORE
1st	Jared Herman	5.0
2nd	Ethan Hassler	4.0
3rd	C.J. Houston	4.0
4th	Quinton DeBruyn	3.5
5th	Alex Ricketson	3.5
6th	Matthew Donnan	3.5
7th	Bryce Nunley	3.0
8th	Parker DeBruyn	3.0
9th	Kristen Turner	3.0
10th	Charlie Houston	3.0
1st U1000	Jerrod Christmas	3.0
Top UNR	Roy Lee Harvey Jr.	3.0

PLACE	JUNIOR HIGH	SCORE
1st	Chris Snow	4.5
2nd	Melissa McKay	4.0
3rd	Jonathan T. Simpson	4.0
4th	Dillon McCann	4.0
5th	Adam Howard	4.0
6th	Donnie Parton	4.0
7th	William Howard	3.0
8th	Jason Keeton	3.0
9th	Michael Hammer	3.0
10th	John Nelson	3.0
Top U1000	Mark Alberson	3.0
Top UNR	Tae-Jin Kyong	3.0

Region 2 Individual Results 2002 (Con't)

PLACE	ELEMENTARY	SCORE
1st	Justin Lee	5.0
2nd	Richard Lee	4.5
3rd	Bryant Davis	4.5
4th	Clayton McFerrin	4.0
5th	Addie Roberts	4.0
6th	Wendell P. Bryant III	4.0
7th	Tyler Browning	4.0
8th	Cody Pelfrey	4.0
9th	Kirk Jones	4.0
10th	Derek Burgess	3.5
11th	Beck Spurlock	3.5
12th	Michael Howard	3.5
13th	Justin Horn	3.5
14th	Dustin Brown	3.5
15th	Timothy Neuendorf	3.0
Top U1000	Mark Young	3.0
Top UNR	Matthew Young	3.0
2nd UNR	Tyler Clark	3.0
3rd UNR	Jeremy Green	3.0
4th UNR	Cory Williamson	3.0
5th UNR	Bubba Sirhan	3.0
6th UNR	Trey Wilson	3.0
7th UNR	Michael Haynes	3.0
8th UNR	Brandon Parker	2.5
9th UNR	Alex Green	2.5
10th UNR	Ava Gunter	2.5

PLACE	HIGH SCHOOL	SCORE
1st	Brett Farris	4.5
2nd	Mark Dixon	4.0
3rd	Matthew Human	4.0
4th	Brandon Nelson	4.0
5th	Wilson McCrory	4.0
6th	Glenis Swallows	3.5
7th	Joe Wright	3.5
8th	Ryan West	3.5
9th	Ryan Leathan	3.5
10th	Timmy Smith	3.5
Top U1000	Laura Brindisi	3.0
Top UNR	Dylan Young	3.0

Region 3 Individual Results 2002

PLACE	PRIMARY	SCORE
1st	Alex Hamilton	5.0
2nd	Harrison Hilt	5.0
3rd	Patrick Williamson	4.0
4th	Samuel Randels	4.0
5th	Thalia Spinrad	4.0
6th	Jesse Scott	4.0
7th	Leland Brown	4.0
8th	Joel McGee	4.0
9th	David Frost	3.5
10th	Jake Hale	3.5
1st U1000	Manu Nair	3.0
Top UNR	Taylor White	3.5

PLACE	ELEMENTARY	SCORE
1st	Josh Gao	5.0
2nd	Gainer Phay	4.0
3rd	Jonathan McGee	4.0
4th	Madhu Nair	4.0
5th	Daniel Smith	4.0
6th	Collin Ball	4.0
7th	Max Breyer	4.0
8th	Jamie McGee	3.5
9th	Trey Weatherspoon	3.5
10th	Matthew Cyr	3.0
1st U1000	Andrew Riggle	3.0
1st U800	Clayton Weber	3.0
Top UNR	Howie Fox	3.0

PLACE	HIGH SCHOOL	SCORE
1st	Trey Smith	4.5
2nd	Kirill Annikov	4.0
3rd	Philip Rose	4.0
4th	Alan M. McCormick	3.5
5th	William Garnette	3.5
6th	Mario Pantoja	3.0
7th	Daniel Kut	3.0
8th	Matthew Fox	3.0
9th	Rob Mabry	3.0
10th	Mikelle Field	3.0
1st U1200	Ron Glass	2.5
1st U1000	Jace Allison	2.0
Top UNR	Matt Thomas	1.0

Region 3 Individual Results 2002 (Con't)

PLACE	JUNIOR HIGH	SCORE
1st	Alex King	5.0
2nd	Ryan Fitch	4.0
3rd	Brandon Ladage	4.0
4th	DeWitt Pullen Jr.	4.0
5th	Daniel Rose	3.5
6th	Zachary Moore	3.5
7th	David Justice	3.0
8th	Tony Nichols	3.0
9th	DeCarlos Baker	3.0
10th	Ira Kaplan	3.0
1st U1000	Randall Sanders	3.0
Top UNR	Samer Sahoury	3.0

Region 4 Individual Results 2002

PLACE	PRIMARY	SCORE
1st	Forrest Baty	5.0
2nd	Graham Gibson	5.0
3rd	Carter Bulington	4.5
4th	Nishit Mummareddy	4.0
5th	Joseph Levy	4.0
6th	Sam Law	4.0
7th	Cabell Brown	4.0
8th	Matthew Murphy	4.0
9th	Charles Stewart	4.0
10th	Jordan Berryhill	4.0
Top U1000	Jordan Beatty	3.5
Top UNR	Nathan Vogt	3.0

PLACE	ELEMENTARY	SCORE
1st	Evan Mah	5.0
2nd	Jonathan Beatty	4.0
3rd	Brandt Norcross	4.0
4th	Alexander Kritchevsky	4.0
5th	Samuel Kritchevsky	4.0
6th	Latreze Townsend	4.0
7th	Arkadiy Lenchik	4.0
8th	Adam Diallo	4.0
9th	William Martin	3.5
10th	Chris Harbert	3.5
Top U1000	Jacob Wiley	3.0
Top UNR	Derek Sanders	3.5

Region 4 Individual Results 2002 (Con't)

PLACE	HIGH SCHOOL	SCORE
1st	Blake Gibson	5.0
2nd	Lee Hoyle	4.0
3rd	Jonathan Wade	3.0
4th	Kevin Bell	3.0
5th	Jose Rodriguez	3.0
6th	Matthew Markham	3.0
7th	John Turner	3.0
8th	Jason Brown	3.0
9th	Landon Johnson	2.5
10th	Jason Federick	2.5
Top U1000	Daniel Coon	2.0
Top UNR	James Stallworth	2.0

PLACE	JUNIOR HIGH	SCORE
1st	Griffin Gibson	5.0
2nd	Abdoulaye Dialo	4.0
3rd	Carlos Harbert	4.0
4th	Hunter Phillips	4.0
5th	Michael Schoumacher	3.5
6th	Michael Ross	3.5
7th	Christopher Jenious	3.5
8th	Cedric Prier	3.5
9th	Matt Nahmias	3.0
10th	Andrew Overall	3.0
Top U1000	Conrad Gibson	3.0
Top UNR	Eric Spangler	3.0

Tennessee State Scholastic Individual Results 2002

PLACE	PRIMARY	SCORE
1st	Forrest Baty	5.0
2nd	Graham Gibson	4.0
3rd	Jesse R. Scott	4.0
4th	Alex J. Hamilton	4.0
5th	Brian Glatt	3.5
6th	Matthew Marsh	3.5
7th	Nishit Reddy	3.5
8th	Samuel Randels	3.0
9th	Scotty A. Chung	3.0
10th	Zach H. J. Butler	3.0
Top U1000	Samuel D. Law	3.0
2nd U1000	Charles Stewart	2.0

Tennessee State Scholastic Individual Results 2002 (Con't)

PLACE	ELEMENTARY	SCORE
1st	Evan Mah	4.5
2nd	Joshua Gao	4.5
3rd	Brandt Norcross	4.0
4th	Latreze Townsend	4.0
5th	Gainer Phay	3.5
6th	Madhu Nair	3.5
7th	Jonathan Beatty	3.5
8th	Collin Ball	3.5
9th	Jonathan McGee	3.0
10th	Justin A. Lee	3.0
Top U1000	David E. Hecht	3.0
Top UNR	Owen Kirk Jones	2.0

PLACE	HIGH SCHOOL	SCORE
1st	Blake Gibson	5.0
2nd	Lee Hoyle	4.0
3rd	Alan McCormick	4.0
4th	Joshua Suich	3.5
5th	Mark Dixon	3.5
6th	Joe Wright	3.5
7th	Matthew Human	3.5
8th	Glenis Swallows	3.5
9th	Kevin R. Bell	3.5
10th	Daniel Kut	3.0
Top U1000	Aaron McClain	2.0
Top UNR	Nathan Kennard	1.0

PLACE	JUNIOR HIGH	SCORE
1st	Alexander King	4.5
2nd	Mirko Remec	4.0
3rd	Griffin Gibson	4.0
4th	Daniel Rose	4.0
5th	Matt Nahmias	4.0
6th	Abdoulaye Diallo	3.5
7th	Michael Ross	3.5
8th	Dewitt Pullen Jr.	3.5
9th	Carlos Harbert	3.0
10th	Melissa McKay	3.0
Top U1000	Zachary Moore	3.0
Top UNR	Travis Bonar	2.0

Congratulations to Next Year's Champions

by Mark Ishee

On Saturday, February 16, 2002, the Nashville Chess Center hosted the third annual "Next Year's Champions" scholastic chess tournament. Open only to players not participating in the state individual finals, the focus of this event is on improving chess skill in an enjoyable tournament format. This year 34 players in grades K-12 participated. The winners were:

Next Year's Champions 2002 Prize Winners

High School (grades 10-12)

- 1st -- Allison, Jace
- 2nd -- Constantine, Mike
- 3rd -- Paulauskas, Tim

Junior High (grades 7-9)

- 1st -- McGuffey, Alex
- 2nd -- Bullington, Craig
- 3rd -- Baker, Decarlos

Elementary (grades 4-6)

- 1st -- McCay, Matthew
- 2nd -- Partee, Nate
- 3rd -- Novick, Aaron

Primary (grades 3-below)

- 1st -- Nair, Manu
- 2nd -- Smith, Tre
- 3rd -- Yang, Eric

For crosstables and more chess information and news, visit our website at www.nashvillechess.org.

EDITOR'S NOTE:

PUBLICATION OF THE SPRING 2002 ISSUE WAS DELAYED TO ALLOW FOR REPRINTING OF THE TENNESSEE OPEN FLYERS DUE TO HOTEL MANAGEMENT CHANGE.

THE CORRECT FLYERS ARE THE GREEN ONES INCLUDED IN THIS ISSUE. PLEASE DISREGARD THE EARLIER ORANGE VERSION.

MEMPHIS HAS NEW CITY CHAMPION

by Peter Lahde

With the former city champion, Doug Eckert, no longer competing after having won the title the last two years, a new winner was crowned with Roland Piekorz. Doug left Memphis to return to his former city of St. Louis, Missouri. This year's championship was hard fought with some good games but also some games won by forfeit. Second place was taken by Bradley Denton with only half a point behind the winner. Third place was taken by Randall Senn, the highest rated player. He forfeited one game to Denton. Had he won that game, he would have been in second place.

The Reserve section consisted of a fifteen player Swiss. The winners here were Gary Pylant and Michael Sansom with five points each.

A selection of games may be found on the following page. These were obtained from the Memphis club website.

MEMPHIS CITY CHAMPIONSHIP 2002

January 11 - February 22

Name	Rating	1	2	3	4	5	6	7	8	Total
1. Roland Piekorz	1859	X	½	½	1	1	1	wf	1	6.0
2. Bradley Denton	1760	½	X	wf	½	1	½	wf	1	5.5
3. Randall Senn	1971	½	1f	X	1	½	1	½	wf	4.5
4. Divakaran Marella	1851	0	½	0	X	1	u	½	½	2.5
5. Kenneth Howell	1569	0	0	½	u	X	1	1	wf	2.5
6. Saturo Inoue	1425	0	½	0	u	0	X	½	wf	2.0
7. Evan Mah	1685	1f	1f	½	½	1f	½	X	½	2.0
8. Danny Gholson	1519	0	0	1f	½	1f	1f	½	X	1.0

u = unplayed game wf = win by forfeit 1f = loss by forfeit



□ Marella (1851)
■ Piekorz (1859)
Memphis Championship

B54

2002

1.e4 c5 2.Nf3 Nc6 3.d4 cxd4 4.Nxd4 d6 5.c4 Nf6 6.f3 e6 7.Na3 Be7 8.Be2 0-0 9.Nac2 Qb6 10.Rb1 Nxd4 11.Qxd4 Qa5+ 12.Qc3 Qxc3+ 13.bxc3 b6 14.Ba3 Nd7 15.Nd4 Nc5 16.h4 Bf6 17.g4 Bb7 18.g5 Be5 19.Rg1 Rfd8 20.Kf2 Na4 21.Rbc1 Nxc3! 22.Nb5 Nxb5 23.cxb5 Bd4+ Nicely played by the champion. First he wins a pawn and now follows this up with a win of the exchange. 24.Kg2 Bxg1 25.Kxg1 Rd7 26.Bd3 Perhaps he should more pressure on the weak d-pawn by playing 26.Rd1. Rc8 27.Rxc8+ Bxc8 28.Kf2 Bb7 29.Bb2 d5 30.e5 Rc7 31.Ke3 Rc8! 32.Kd4 Ra8 33.a3 a6 34.f4 axb5 35.Kc3 Ra4 Now Black has found a way to activate his Rook. 36.Bc1 Bc6 37.h5 d4+ 38.Kb2 b4 39.Kb3 bxa3 40.Bxa3 h6 41.Bc1 b5 42.gxh6 gxh6 43.f5 Bd5+ 44.Kc2 Ra2+ 45.Kd1 Bc4 46.Be4 Re2 47.Bf3 Rxe5 A well conducted game by the winner. 0-1

□ Piekorz (1859)
■ Senn (1971)
Memphis Championship

B01

2002

1.e4 d5 2.exd5 Nf6 3.d4 Nxd5 4.Nf3 Or 4 c4 right away as he plays later anyway. e6 5.Be2 Be7 6.0-0 0-0 7.c4 Nf6 8.Nc3 b6 9.Ne5 Bb7 10.Bf3 Qc8 11.Be3 Nfd7 12.Nxd7 Nxd7 13.Qe2 Rd8 14.Rad1 c5 15.d5 Ne5 16.Be4 f5 17.f4 Nxc4 18.Qxc4 Ba6 White may have overlooked this move, but it turns out OK. 19.Nb5 Bxb5 20.Qxb5 fxe4 21.Qc4 exd5 22.Rxd5 The players agreed to a draw, since White will regain his pawn (e4). ½-½

□ Senn (1971)
■ Marella (1851)
Memphis Championship

2002

1.e4 c5 2.Nf3 Nc6 3.c3 e6 4.d4 d5 5.e5 Qb6 By transposition we have reached a position of the French Defence. 6.Be2 Be7 7.0-0 Bd7 8.dxc5 Bxc5 9.b4 Bf8 10.Bf4 Nge7 11.Bd3 Ng6 12.Bg3 Be7 13.Nbd2 0-0 Perhaps he also considered 13...h5 with an attack on the King-side, followed up by Queenside castling. But 14 h4 may have discouraged that idea. 14.h4 f6 15.exf6 Bxf6 16.Rc1 Nge5 17.Nxe5 Nxe5 18.Bxe5 Bxe5 19.Qh5! Rf5! Probably best under the circumstances giving up the exchange. 20.Bxf5 exf5 21.Nb3 g6 22.Qd1 Bc6 22...Bg3!? picking up a pawn seems interesting, although White has a good reply in 23 h5. 23.Nd4 Qd8 24.Nf3 Bf6 25.Re1 a5 26.a3 axb4 27.axb4 Qd6 It is difficult to say if he should have tried 27...Bxh4. But because of White's material advantage of the exchange he may have thought it better to preserve the Bishops. Whether this was better than the text is a mute question. 28.Qd3 Ra3 29.b5 Bd7 30.Red1 Be6 31.Qe3 f4 32.Qd3 Kg7 33.Ng5 Bf5 34.Qxd5 Qxd5 35.Rxd5 Rxc3 36.Rxc3 Bxc3 37.Rc5 Ba5 38.b6 Bxb6 39.Rb5 h6 40.Nf3 Bd8 41.Rxb7+ Kf6 42.Rh7 h5 43.Rh8 Be7 44.Ng5 Bc5 45.Ra8 Ke7 46.Ra5 Kd6 47.Nf7+ Kc6 48.Ra6+ Bb6 49.Ne5+ Kb7 50.Ra4 Bc7 51.Rb4+ Kc8 52.Rc4 Kd8 53.Rd4+ Ke7 54.Nf3 Ke6 55.Rc4 Kd6 56.Rxf4 1-0

□ Rankin, T
■ Field, R
South Carolina Scholastic Champ. 2002

1.d4 d5 2.c4 dxc4 3.Nf3 Nc6 4.e4 Nf6 5.Nc3 e6 6.Bxc4 Bb4 7.Bg5 0-0? 8.e5 h6 9.Bh4 g5 10.Nxg5! hxg5 11.Bxg5 Nxd4 12.Bxf6 Qd7 13.Qg4+ Kh7 14.Qg7# 1-0



Nashville Chess Center – Columbia Match

Feb. 02, 2002

by Kent Meadows

<u>Board</u>	<u>Round</u>		<u>Columbia</u>	<u>Round</u>	
	<u>Nashville</u>	<u>1 2</u>		<u>1 2</u>	
1) Kent Meadows (1898)	½	½	Ellis Eugene Jones (1874)	½	½
2) Peter Ciarleglio (1876)	0F	1	Joe Crump (1775)	1F	0
3) Hiroshi Manabe (1799)	0	1	Tim McHenry (1723)	1	0
4) Alex King (1509)	1	1	Jim Kettle (1532)	0	0
5) Edward Belbusti (1371)	1	½	Jim Beardslee (1432)	0	½
6) James Lech (1330)	1	1	Alan Garner (1373)	0	0
7) George Dean (1067)	0	½	Steve McClellan (1323)	1	½
8) Nathaniel Partee (938)	0	1	Jennifer Kettle (858)	1	0
	3½	6½		4½	1½
<u>Total</u>		10		6	

The Nashville Chess Center traveled to Columbia to play the second match of a series with the Columbia Chess Club. This time we made the trip. We had a warm, hospitable welcome with refreshments from the Columbia Club, which has a very nice, clean location at Trinity Lutheran Church in Mule Town, USA. However, we had a rocky reception waiting for us on the chessboards. Peter Ciarleglio forgot about the match and lost his first game on time forfeit to Joe Crump. I failed to convert a pawn up game into a win against Ellis Jones. Tim McHenry beat Nashville City Champion Hiroshi Manabe. We found ourselves down by a full point after the first round. Although out rated by Columbia, could we recover?

We got our answer almost immediately. Peter scored an impressive win by checkmating Joe in a pretty miniature. Nate returned my clock to me after winning almost before the round started. George Dean held a difficult position for half a point, and Hiroshi bested Tim in their second game with a very pretty finish. We went on to win the second round by five points (without losing a game), and the match by four. The strength of the NCC team was its middle boards, as Alex King, Edward Belbusti, and Jim Lech scored 5½ of Nashville's 10 points.

I heartily recommend match play for clubs across the State. The teams enjoy camaraderie within their own team, and with their opponents as well.

2002 Team Regional Results Region 1

Place	High School	Score
1st	Morrisown Home Education Light &Power	2.5
2nd	Alcoa High School	2.5
3rd	Webb Upper School - Knoxville	1.0
4th	Jacksboro Middle School	0.0

Place	Junior High	Score
1st	Jefferson Middle School	4.0
2nd	Concord Christian School	3.0
3rd	St. Mary's	2.5
4th	Holston Middle School	2.0
5th	Knoxville Homeschool	1.5
6th	Robertsville Middle School	1.5
7th	Farragut Middle School	1.5
8th	Jacksboro Middle School	0.0

Place	Elementary	Score
1st	Alcoa Middle School	3.5
2nd	Webb Middle School - Knoxville	3.0
3rd	Robertsville Middle School	3.0
4th	Farragut Middle School	3.0
5th	Jefferson Middle School	2.5
6th	Morrisown Home Education Light &Power	2.5
7th	Woodland Elementary School	2.5
8th	Alcoa Elementary School	2.0
9th	A.L. Lotts Elementary School	2.0
10th	Linden Elementary School	2.0
11th	Willow Brook Elementary School	2.0
12th	Webb Lower School - Knoxville	2.0
13th	Knoxville Homeschool	2.0
14th	Lake City Elementary School	1.0
15th	Brickey Elementary	1.0
16th	West Valley	1.0
17th	St. Mary's	1.0

Place	Primary B-Team	Score
1st	Webb Lower School B1 - Knoxville	4.0
2nd	Webb Lower School B2 - Knoxville	2.5
3rd	Willow Brook Elementary School	2.0
4th	Linden Elementary School	1.5
5th	A. L. Lotts Elementary School B1	1.0
6th	A. L. Lotts Elementary School B2	1.0

2002 Team Regional Results Region 1 (Con't)

Place	Primary	Score
1st	Webb Lower School - Knoxville	3.5
2nd	Willow Brook Elementary School	3.5
3rd	Woodland Elementary School	2.5
4th	A. L. Lotts Elementary School	2.0
5th	Linden Elementary School	2.0
6th	Brickey Elementary School	2.0
7th	Glenwood Elementary School	2.0
8th	Lake City Elementary School	1.5
9th	Knoxville Homeschool	1.0
10th	St. Mary's	0.0

Place	Junior High B-Team	Score
1st	Farragut Middle School	3.0
2nd	Morrisown Home Education Light & Power	2.0
3rd	Jacksboro Middle School	1.0
4th	Holston Middle School	0.0

Place	Elementary B-Team	Score
1st	A. L. Lotts Elementary School B1	3.0
2nd	Webb Lower School - Knoxville	2.0
3rd	Alcoa Elementary	0.5
4th	A. L. Lotts Elementary School B2	0.5

2002 Team Regional Results Region 2

Place	High School	Score
1st	Clarkrange High School	4.0
2nd	McCallie School	3.0
3rd	Home School of Cumberland County	2.5
4th	Celina High School	2.0
5th	East Ridge High School	2.0
6th	Brainerd High School	1.5
7th	Chattanooga School for the Arts & Sciences	0.5
8th	Girls Preparatory School	0.5

Place	Junior High	Score
1st	Clarkrange High School	3.5
2nd	Pine View Elementary School	3.5
3rd	Meigs County Middle School	2.5
4th	Crab Orchard Elementary School	2.5
5th	Cleveland Middle School	2.0
6th	Chattanooga School for the Arts & Sciences	1.5
7th	Hunter Middle School	1.5
8th	Algood School	1.5
9th	Stone Elementary School	1.0
10th	Home School of Cumberland County	0.5

2002 Team Regional Results Region 2 (Con't)

Place	Elementary	Score
1st	Cleveland Middle School	3.5
2nd	North Cumberland Elementary School	3.0
3rd	Hunter Middle School	3.0
4th	South Cumberland Elementary School	3.0
5th	Crab Orchard Elementary School	2.5
6th	Algood School	2.5
7th	Clarkrange Elementary School	2.0
8th	Stone Elementary School	2.0
9th	Home School of Cumberland County	2.0
10th	Snow Hill Elementary School	1.5
11th	Chattanooga School for the Arts & Sciences	1.5
12th	Pine View Elementary School	1.5
13th	Prescott Central Middle School	1.5
14th	Rhea Central Middle School	1.5
15th	Northeast Elementary School	1.0
16th	Capshaw Elementary School	0.0

Place	Primary	Score
1st	Capshaw Elementary School	4.0
2nd	North Cumberland Elementary School	3.0
3rd	Crab Orchard Elementary School	2.0
4th	Snow Hill Elementary School	2.0
5th	Chattanooga School for the Arts & Sciences	1.0

Place	B-Team High School / Junior High	Score
1st	Clarkrange High School	4.0
2nd	Hunter Middle School	3.0
3rd	Chattanooga School for the Arts & Sciences	2.5
4th	McCallie School	1.5
5th	Celina High School	0.5
6th	Hunter Middle School	0.0

Place	B-Team Elementary	Score
1st	Clarkrange Elementary School	3.5
2nd	CSAS Elementary B Team	3.0
3rd	North Cumberland C Team	2.5
4th	CSAS Elementary C Team	2.5
5th	Snow Hill Elementary School	2.0
6th	Rhea Central Elementary School	2.0
7th	North Cumberland B Team	2.0
8th	Stone Elementary School	1.0
9th	South Cumberland Elementary School	0.5
10th	Snow Hill Elementary School	0.0

2002 Team Regional Results Region 2 (Con't)

Place	B-Team Primary	Score
1st	CSAS Primary B Team	3.0
2nd	Snow Hill Primary	1.0

2002 Team Regional Results Region 3

Place	High School	Score
1st	Page High School	3.5
2nd	Franklin High School	3.0
3rd	Montgomery Central High School	2.5
4th	Dickson County High School	2.0
5th	Meigs Magnet School	0.5
6th	Kenwood High School	0.5

Place	Junior High	Score
1st	Meigs Magnet School	4.0
2nd	Page High School	3.0
3rd	Montessori Academy	2.5
4th	Rutherford Tutorial Academy	2.5
5th	Page Middle School	2.5
6th	Charlotte Middle School	2.5
7th	Montgomery Central High School	2.0
8th	Antioch High School'	2.0
9th	Ensworth Junior High	1.5
10th	Battle Ground Academy	1.0
11th	Christ the King School	0.5
12th	Ewing Park	0.0

Place	Elementary	Score
1st	Meigs Magnet School	4.0
2nd	Charlotte Elementary	3.0
3rd	Julia Green Elementary	3.0
4th	Percy Priest Elementary	1.0
5th	Ross Elementary	1.0
6th	Ensworth Elementary	0.0

Place	Primary	Score
1st	Montessori Academy	4.0
2nd	Julia Green Elementary	2.5
3rd	Christ the King School	2.5
4th	Granberry Elementary	2.0
5th	Charlotte Elementary	2.0
6th	Percy Priest Elementary	1.5
7th	Eakin Elementary	1.5
8th	Ross Elementary	0.0

2002 Team Regional Results Region 3 (Con't)

Place	B-Teams	Score
1st	Page B-Team 1	4.0
2nd	Montessori 1 B-Team	3.5
3rd	Meigs Magnet 2 B-Team	3.0
4th	Page B-Team 2	3.0
5th	Meigs Magnet 1 B-Team	2.5
6th	Page Middle B-Team	2.0
7th	Page B-Team 3	2.0
8th	Charlotte Elementary 2 B-Team	2.0
9th	Montessori 2 B-Team	1.5
10th	Julia Green Elementary	1.5
11th	Christ the King School	1.0
12th	Meigs Magnet 3 B-Team	1.0
13th	Charlotte Elementary 1 B-Team	1.0
14th	Meigs Magnet 4 B-Team	0.0

2002 Team Regional Results Region 4

Place	High School	Score
1st	Harding Academy	3.5
2nd	Dyersburg High School	3.0
3rd	Brighton High School	2.5
4th	Halls High School	1.5
5th	Saint Benedict High School	1.5

Place	Junior High	Score
1st	White Station Middle School	3.5
2nd	Oakhaven Jr. High	3.5
3rd	John P. Freeman	3.0
4th	Saint Benedict Jr. High	2.0
5th	Ridgeway Middle School	2.0
6th	Westminster Academy	1.0
7th	South Fulton Middle School	1.0

Place	Elementary	Score
1st	Oakhaven Elementary	3.5
2nd	Grahamwood Good Knight Graci	3.0
3rd	St. George's Day School	2.5
4th	Richland Elementary Champ	2.5
5th	Saint Benedict Elementary	2.5
6th	John P. Freeman Optional	2.0
7th	Brighton Elementary School	2.0
8th	Our Lady of Perpetual Help	1.0
9th	Hawkins Mill Elementary	0.5
10th	South Fulton Middle School	0.5

2002 Team Regional Results Region 4 (Con't)

Place	Primary	Score
1st	St George's Day School	4.0
2nd	Grahamwood Dueling Dragons	3.0
3rd	John P. Freeman Optional	3.0
4th	Oakhaven Primary Team	2.5
5th	Our Lady of Perpetual Help	2.5
6th	Richland Primary Champ	2.0
7th	Saint Benedict Primary	1.0
8th	Dogwood Primary	1.0
9th	Hawkins Mill Primary	1.0

Place	High School & Jr. High B-Teams	Score
1st	Brighton High B-Team	3.0
2nd	Halls High School B-Team	2.0
3rd	John P. Freeman 2	2.0
4th	South Fulton Beta Team	1.0
5th	South Fulton Alpha Team	0.0
6th	South Fulton Gamma Team	

Place	Elementary B-Teams	Score
1st	Oakhaven Elem B-Team	3.5
2nd	#1 John Freeman B-Team	3.5
3rd	Oakhaven Elem C-Team	3.0
4th	Grahamwood Knight Moves	2.5
5th	Grahamwood R2D2 to D4	2.5
6th	Knights of the Round Table	2.5
7th	#2 John Freeman B-Team	2.0
8th	Grahamwood Mad Sicilians	2.0
9th	Oakhaven Elem E-Team	2.0
10th	Richland's "Grey Host"	1.5
11th	Oakhaven Elem D-Team	1.0
12th	Hawkins Mill Elem B-Team	1.0
13th	Hawkins Mill Elem B2-Team	0.5
14th	St. Benedicts Elem B-Team	0.5

Place	Primary B-Teams	Score
1st	John P Freeman B-Team	3.5
2nd	Our Lady of Perpetual Help	3.0
3rd	Richland "The Rohirrim"	3.0
4th	Richland's "Hobbits"	1.5
5th	Oakhaven Primary B-Team	1.0

Tennessee State Team Finals Results 2002

Place	Primary	Score
1st	ST. GEORGE'S DAY SCHOOL (1)	4.0
2nd	WEBB LOWER SCHOOL (4)	3.0
3rd	JULIA GREEN ELEMENTARY (2)	3.0
4th	GRANBERY ELEMENTARY (7)	3.0
5th	MONTESSORI ACADEMY (8)	2.5
6th	GRAHAMWOOD ELEMENTARY (3)	2.5
7th	OAKHAVEN ELEMENTARY (12)	2.5
8th	A.L. LOTTS ELEMENTARY (10)	2.5
9th	WOODLAND ELEMENTARY (14)	2.0
10th	CHRIST-THE-KING SCHOOL (16)	2.0
11th	WILLOW BROOK ELEMENTARY (6)	2.0
12th	JOHN P. FREEMAN (17)	2.0
13th	LINDEN ELEMENTARY (5)	1.5
14th	NORTH CUMBERLAND ELEM. (15)	1.0
15th	SNOW HILL ELEMENTARY (13)	1.0
16th	CRAB ORCHARD ELEM. (11)	1.0
17th	CAPSHAW ELEMENTARY (9)	0.5

Place	Elementary	Score
1st	GRAHAMWOOD ELEMENTARY (3)	3.5
2nd	OAKHAVEN ELEMENTARY (4)	3.0
3rd	ST. GEORGE'S DAY SCHOOL (1)	3.0
4th	RICHLAND ELEMENTARY (2)	3.0
5th	PERCY PRIEST ELEMENTARY (16)	2.5
6th	MEIGS MAGNET SCHOOL (6)	2.5
7th	CHARLOTTE ELEMENTARY (15)	2.0
8th	ROBERTSVILLE M.S. (11)	2.0
9th	WEBB M.S. (5)	2.0
10th	CLEVELAND M.S. (13)	1.5
11th	SOUTH CUMBERLAND ELEM. (10)	1.5
12th	ALCOA M.S. (9)	1.5
13th	JULIA GREEN ELEMENTARY (8)	1.5
14th	HUNTER M.S. (12)	1.0
15th	NORTH CUMBERLAND ELEM. (7)	1.0
16th	FARRAGUT M.S. (14)	0.5

Tennessee State Team Finals Results 2002

Place	Junior High	Score
1st	OAKHAVEN JHS (3)	3.5
2nd	MEIGS MAGNET SCHOOL (2)	3.0
3rd	WHITE STATION M.S. (1)	3.0
4th	JEFFERSON M.S. (7)	3.0
5th	RUTHERFORD TUTORIAL (10)	3.0
6th	PAGE H.S. (5)	2.5
7th	SAINT BENEDICT JHS (4)	2.0
8th	MONTESSORI ACADEMY (9)	2.0
9th	PINEVIEW ELEMENTARY (11)	2.0
10th	CLARKRANGE H.S. (8)	2.0
11th	CONCORD CHRISTIAN SCHOOL (12)	1.5
12th	JOHN P. FREEMAN (6)	1.5
13th	MEIGS COUNTY M.S. (13)	1.0
14th	CRAB ORCHARD ELEM. (14)	1.0
15th	HOLSTON M.S. (16)	1.0
16th	ST. MARY'S SCHOOL (15)	0.0

Place	High School	Score
1st	CLARKRANGE H.S. (1)	3.5
2nd	MORRISTOWN HOME SCHOOL (2)	3.0
3rd	ALCOA H.S. (7)	2.5
4th	PAGE H.S. (3)	2.5
5th	FRANKLIN H.S. (5)	2.5
6th	CELINA H.S. (14)	2.5
7th	HARDING ACADEMY (12)	2.0
8th	BRIGHTON H.S. (8)	2.0
9th	HALLS H.S. (15)	2.0
10th	DYERSBURG H.S. (4)	2.0
11th	DICKSON COUNTY H.S. (6)	1.0
12th	MONTGOMERY CENTRAL H.S. (10)	1.0
13th	HOME SCHOOL - CROSSVILLE (11)	1.0
14th	EAST RIDGE H.S. (9)	0.0
15th	WEBB SCHOOL (13)	0.0
16th	JACKSBORO M.S. (16)	0.0



Oakhaven Junior High School



Meigs Magnet School

Donations

The Foundation for Tennessee Chess and The Tennessee Chess Association encourage all chess players and their family members to consider donating chess items to us when a member either loses interest or passes on. We have a growing donated reference library which is being used extensively by our membership. Contributions are tax-deductible.

A sample form for a bequest would be:

I, _____, hereby give, devise, and bequeath to the Foundation for Tennessee Chess, (or Tennessee Chess Association) _____ (All of my chess books and equipment), (the following chess books and/or items of equipment), (the sum of _____) to be used at the discretion of the Directors of the Foundation for Tennessee Chess (or Tennessee Chess Association).

Music City Winter -- Open Performance Ratings

Name/Pairing#	Pre	Post	TOT	Rounds			
1 Harris, Ben(1)	1958	1958	3.5	W-10	W--6	D--2	W--9
2 Manabe, Hiroshi(2)	1799	1828	3.5	W-11	W--5	D--1	W--3
3 Forsythe, James(9)	1494	1545	3.0	W-18	W--3	W--4	L--1
4 Eddins, Scott(7)	1573	1577	3.0	D-16	D-13	W-12	W-11
5 King, Alex(6)	1576	1580	2.5	W-15	L--1	D-16	W-13
6 Miller, Lee(4)	1620	1601	2.5	D-13	W-17	L--9	W-16
7 West, Ryan(13)	1408	1440	2.0	D--4	D--7	W--5	L--6
8 Gao, Joshua(11)	1458	1475	2.0	L--2	W-14	W--8	L--7
9 Seaney, Ron(3)	1671	1651	2.0	W-12	L--9	W-10	L--2
10 Cutshaw, Tim(5)	1617	1596	2.0	W-14	L--2	L-13	W-17
11 Harris, Alvin(8)	1531	1507	2.0	D-17	D-16	L-11	W-12
12 Wright, Joe(16)	1346	1367	1.5	D--7	D--8	D--6	L--4
13 Swallows, Glenis(17)	1341	1356	1.5	D--8	L--4	W-14	L--5
14 Human, Matt(10)	1483	1476	1.5	L--1	W-15	L--3	D-18
15 Arnold, Justin(18)	1303	1292	1.5	L--9	L-12	B---	D-10
16 Dixon, Mark(12)	1424	1408	1.0	L--3	W-18	L--7	L--8
17 McCuiston, Blake(14)	1372	1336	1.0	L--5	L-11	L-17	B---
18 Belbusti, Edward(15)	1371	1352	0.0	L--6	L-10	U---	U---

Open Section Prize winners:

Tie 1st Place & Top Class B - \$37.50 each
Ben Harris & Hiroshi Manabe (3.5 points)

Tie Top Class C/below - \$12.50 each
Scott Eddins & James Forsythe (3 points)

Music City Winter -- U1400 Performance Ratings

Name/Pairing#	Pre	Post	TOT	Rounds			
1 West, Nick(30)	UNR	1545	4.0	W-11	W--5	W--6	W--1
2 McCormick, Alan(4)	1241	1262	3.5	W-23	W-17	W-37	D--2
3 Rose, Daniel(2)	1282	1296	3.5	W-21	W-13	W-16	D--4
4 Justice, David(7)	1078	1126	3.5	W-26	W-34	D--1	W-10
5 McCormick, Scott(37)	UNR	1277	3.0	W-18	W--8	L--4	W-12
6 Garnette, William(6)	1079	1097	3.0	W-25	W-31	L-30	W-23
7 Glass, Ron(5)	1165	1169	3.0	W-24	L-30	W-20	W-16
8 Fitch, Ryan(8)	1067	1087	3.0	W-27	L-37	W-19	W-31
9 Lech, Jim(1)	1330	1301	2.5	W-20	W-14	D--7	L-30
10 Smith, Timmy(13)	0954	997	2.5	W-32	L--2	W-22	D--3
11 Snow, Chris(17)	0879	924	2.5	W-36	L--4	D-34	W-38
12 Sanders, Randall(10)	1013	1033	2.5	D-29	W-28	W--9	L--7
13 Nelson, Brandon(3)	1254	1230	2.5	W-22	L-16	W-18	D-13
14 Paulauskas, Tim(16)	0896	936	2.0	W-35	W--3	L--2	L--5
15 Randels, Dale(31)	UNR	1038	2.0	W-12	L--6	W-11	L--8
16 Phillips, Coty(23)	0793	835	2.0	L--4	W-36	W-14	L--6
17 Clark, Aaron(34)	UNR	1020	2.0	W-15	L--7	D-17	D-24
18 Ashman, Frank(38)	UNR	1014	2.0	W-19	L--9	W-15	L-17
19 Tate, Jo Le(12)	0958	966	2.0	L-31	W-29	W-21	L-37
20 Brown, Loren(18)	0871	901	2.0	L-37	W-25	L--3	W-27
20 Howard, Adam(22)	0822	858	2.0	L--3	W-35	L-13	W-15
22 Burks, Lee(20)	0865	902	2.0	L--1	W-33	L--5	W-35
23 Partee, Nate(14)	0938	959	2.0	W-33	L--1	L-23	W-21
24 Nichols, Tony(19)	0868	894	2.0	L-38	W-27	L--8	W-26
25 Constantine, Mike(24)	0739	783	2.0	L--5	D-11	W-28	D-34
26 Justice, Paul A(36)	UNR	1002	2.0	L-17	L-23	W-25	W-11
27 Habor, Scott(29)	0504	545	1.5	D-10	L-12	L-26	W-28
28 Williams, Hunter(9)	1057	1050	1.5	D-28	W-38	L-10	U---
29 Randels, Samuel(21)	0859	859	1.0	L--2	W-32	L-12	L-14
30 McCann, Dillon(15)	0896	883	1.0	L-34	W-26	L-38	L-22
31 Fender, Nick(35)	UNR	800	1.0	L-16	L-22	W-32	L-20
32 Brown, Leland(26)	0651	669	1.0	L--7	L-15	W-29	L-19
33 Field, Mikelle(27)	0582	604	1.0	L--8	L-19	W-33	L-18
34 Nelson, John(25)	0696	683	1.0	L--6	L-18	L-36	B---
35 Sahoury, Samer(32)	UNR	800	1.0	L-13	L-21	L-35	W-33
36 Henry, Jarrod(11)	1006	957	0.5	L-30	D-24	L-31	L-36
37 Bader, Will(28)	0578	584	0.5	D--9	L-10	L-24	L-29
38 Seaney, Brian(33)	UNR	600	0.0	L-14	L-20	L-27	L-32

U1400 Section Prize Winners:

Tie 1st Place & Top Class E - \$25 each
Daniel Rose, Alan McCormick & David Justice (3.5 points)

Tie Top Class F/below - \$12.50 each
Timmy Smith & Chris Snow (2.5 points)

Top Unrated - Nick West (4 points) \$25

TENNESSEE CHESS HALL OF FAME

PETER LAHDE	1990	ROBERT COVEYOU	1990
JERRY SULLIVAN	1990	MARTIN SOUTHERN	1990
TOM FINUCANE	1990	ROBERT SCRIVENER	1990
L. HUNTER WEAKS	1990	JOHN HURT	1992
JAMES A. SWEETS	1993	REA HAYES	1997
JAMES A. WRIGHT	1998	DR MARTIN KATAHN	2002

MANABE CLAIMS TENNESSEE QUICK CHESS CHAMPIONSHIP by Alvin Harris

NASHVILLE, Tenn., April 7, 2002 -- Nashville chess champion Hiroshi Manabe added another title to his chess resume winning the 2002 Tennessee Quick Chess Championship. A graduate student at Vanderbilt's Owen School of Management, Manabe took the first place trophy and prize money by scoring an impressive 5½ points in the 6-round tournament. Scott McCormick of Hendersonville and Tim Cutshaw of Goodlettsville tied for 2nd and 3rd places with 5 points apiece. The tournament was played on April 6, 2002, at the Nashville Chess Center and was directed by Alvin Harris.

Manabe entered the tournament as the 8th seed in the 33-player field with a pre-tournament quick chess rating of 1445. His run through the field included wins over top-seed William Bragg (2118) and third-seeded Rick Telleri (1835). Only Page High School chess coach, Scott Eddins was able to score against Manabe, holding a draw in a bishop and pawn endgame.

Saturday's tournament also determined the 2002 Scholastic State Quick Chess Champions. Trey Smith of Franklin, TN won the high school title with 4 points, including a win over former Tennessee Quick Chess Champion Jerry Spinrad (2061). The Junior High champion is Daniel Rose of College Grove, TN who also finished with 4 points. Meigs Magnet Middle 6th grader Joshua Gao was the highest scorer among Elementary section players with 3½ points, including a second round upset of the 2118-rated Bragg. The Primary champion is Eakin Elementary second-grader Tomoki "Tommy" Manabe, son of the overall winner.

Tennessee Quick Chess Championship 2002

State Quick Chess Champion: Hiroshi Manabe

High School Champ: Trey Smith Junior High Champ: Daniel Rose

Elementary Champ: Joshua Gao Primary Champ: Tomoki Manabe

	Name/Pairing#	Pre	Post	TOT	Rounds							
1	Manabe, Hiroshi (8)	1445	1520	5.5	W-24	W-22	W--3	D--7	W-10	W--1		
2	Cutshaw, Timothy (6)	1694	1693	5.0	L-22	W-33	W-20	W-14	W--3	W--9		
2	McCormick, Scott (17)	UNR	1687	5.0	L--1	W-26	W-33	W-11	W--5	W--7		
4	Bragg, William (1)	2118	2074	4.0	W-17	L-10	W-15	W-12	W--4	L--8		
5	Eddins, Scott (7)	1448	1453	4.0	W-23	W-16	W--2	D--8	D--9	L-17		
6	Telleri, Rick (3)	1835	1786	4.0	W-19	W-12	L--8	W-13	L--6	W-14		
7	Smith, Trey (9)	1438	1481	4.0	W-25	W-30	D--4	W--2	D--7	L--6		
8	Spinrad, Jerry (2)	2061	2000	4.0	W-18	W-11	L--7	L--9	W-15	W-10		
9	Meadows, Kent (4)	1809	1779	4.0	W-20	W-13	D--9	D-10	L--1	W-12		
10	Rose, Daniel (11)	1201	1207	4.0	W-27	L--2	W-19	L-17	W-18	W-21		
11	Gao, Joshua (10)	1303	1373	3.5	W-26	W--1	W--5	D--4	L--8	L--2		
12	Bertram, David (22)	UNR	1372	3.5	W--6	L--8	L-12	W-29	W-13	H---		
13	Newkirk, Ed (5)	1755	1679	3.5	W-21	D-15	L-10	W-30	L-17	W-32		
14	Allison, Jace (15)	1026	1086	3.5	W-31	D--5	L--1	W-32	L--2	W-30		
15	Pullen Jr, DeWit (12)	1171	1195	3.0	W-28	L--3	W-22	L--1	W-20	L--4		
16	Fitch, Ryan (13)	1152	1156	3.0	W-29	L--4	W-21	L--3	L-22	W-26		
17	Payne, Samuel (14)	1045	1068	3.0	L-30	W-24	W-23	L--6	W-19	L--3		
18	Waterman, Bob (19)	UNR	1180	3.0	L--3	W-28	L-11	W-24	L-14	W-23		
19	Constantine, Mike (21)	UNR	1185	3.0	L--5	W-29	L-13	W-31	W-16	L-11		
20	Cheney, Christoph (20)	UNR	1279	3.0	L--4	W-27	L--6	W-25	L-12	W-16		
21	Layne, Sean (28)	UNR	954	3.0	L-12	L-19	L-25	B---	W-33	W-27		
22	Stockhem, Francois (30)	762	817	2.5	W-14	L--9	D-16	L--5	W-23	L-15		
23	Justice, David (18)	UNR	1144	2.5	L--2	W-25	D-32	D-16	L-11	D-29		
24	Drone, Stevie (29)	UNR	959	2.5	L-13	L-21	W-26	L-22	W-25	D-18		
25	Mabry, Rob (32)	546	586	2.5	L-16	B---	D-18	L-15	W-24	L--5		
26	Tate, Joe Le (16)	938	935	2.0	W-32	L--7	D-30	D-18	L-21	L-20		
27	Bader, Will (26)	UNR	942	2.0	L-10	L-17	L-29	W-27	W-31	L-13		
28	Fender, Nick (23)	UNR	949	2.0	L--7	W-31	L-14	W-33	L-30	L-19		
29	Lopez, Anthony (31)	604	622	2.0	L-15	L-23	B---	L-21	L-26	W-24		
30	Cheney, Bryan (25)	UNR	873	1.5	L--9	L-18	W-28	L-20	L-29	D-33		
31	Manabe, Tomoki (33)	520	528	1.5	B---	L--6	L-17	L-23	L-28	D-25		
32	Partee, Nate (24)	UNR	815	1.0	L--8	L-14	W-27	L-19	L-32	L-31		
33	Williams, Hunter (27)	UNR	640	1.0	L-11	L-20	L-24	L-26	B---	L-28		

W-Win, L-Loss, D-Draw, X-Forfeit Win, B-Bye, U-Unplayed

NCC Schedule

Provided by Mark Ishee

April 27, 2002

July 27-28, 2002 - Music City Grand Prix 40/2, SD/60. Nashville Chess Center, 2911 Belmont Blvd, Nashville TN 37212. \$\$Guaranteed prizes in 2 sections. Open: \$200-100, A, B each \$50. U1600: \$125-75, D, E/below/UNR each \$35. Entry fee: \$25 Open, \$20 U1600 if received by 7/22, \$10 more later and at site. Current members of Nashville Chess Center receive \$5 discount. Rounds: 10-4 Sat., 9-3 Sun. USCF & TCA membership required. Entries to: Nashville Chess Center, 2911 Belmont Blvd., Nashville, TN 37212. nashvillechess@comcast.net

September 28, 2002 - Music City Fall 4-SS, G/60. Nashville Chess Center, 2911 Belmont Blvd, Nashville TN 37212. \$275 Guaranteed Prizes in 2 sections. Open: \$50 1st, class X, A, B, C& below each \$25. U1400 section: \$50 1st, class E, F& below, Unrated, each \$25 (unrated eligible for unrated prize only). Both sections EF \$15 if received by 9/23, \$20 later and at site (\$5 discount to current NCC members). Register 9:00-9:45 a.m. Rounds: 10-12-2:30-4:30. TCA & USCF membership required. Top eligible player in Open section qualifies for 2003 Nashville Championship Finals (ties broken by tie-breaks). For info and questions, contact Mark Ishee at (615) 292-7341.

October 26, 2002 - Mid-State Open 4-SS, Rds. 1 and 2, G/60; Rds. 3 and 4, G/90. Nashville Chess Center, 2911 Belmont Blvd, Nashville TN 37212. \$275 Guaranteed Prizes in 2 sections. Open: \$50 1st, class X, A, B, C& below each \$25. U1400 section: \$50 1st, class E, F& below, Unrated, each \$25 (unrated eligible for unrated prize only). Both sections EF \$15 if received by 10/21, \$20 later and at site (\$5 discount to current NCC members). Register 8:00-8:45 a.m. Rounds: 9-12-2:45-6:30. TCA & USCF membership required. Top two eligible players in Open section (who have not previously qualified) qualify for 2003 Nashville Championship Finals (ties broken by tie-breaks). For info and questions, contact Mark Ishee at (615) 292-7341.

November 23-24, 2002 - NCC Fall Classic 4-SS, 35/90, SD/30. Nashville Chess Center, 2911 Belmont Blvd, Nashville TN 37212. \$275 Guaranteed Prizes in 2 sections. Open: \$50 1st, class X, A, B, C& below each \$25. U1600 section: \$50 1st, class E, F& below, Unrated, each \$25 (unrated eligible for unrated prize only). Both sections EF \$15 if received by 11/18, \$20 later and at site (\$5 discount to current NCC members). Register 9:00-9:45 a.m. Rounds: 10-2:30-7, 9-1:30. TCA & USCF membership required. Top three eligible players in Open section (who have not previously qualified) qualify for 2003 Nashville Championship Finals (ties broken by tie-breaks). For info and questions, contact Mark Ishee at (615) 292-7341.

Martin Katahn, Ph.D.
Nashville, TN 37215

Dick,

On behalf of the Board of Directors of the Tennessee Chess Association, it is my privilege and delight to inform you that you have been inducted into the Tennessee Chess Hall of Fame. This is the highest honor that the Tennessee Chess Association can bestow upon one of its members. Your name will now join that same roster along side the names of those who have contributed the most to Chess in Tennessee.

The benevolence of your good heart has been especially intended to benefit our young scholastic players with the gift of Chess. However, your kindness has permeated to Chess players of *all* ages. All of us have benefited from the opportunities presented by the Nashville Chess Center and the Foundation for Tennessee Chess. Your gifts shall teach the advantages of our favorite game to the young people of today -- the Chess players of tomorrow. Your vision of a non-profit organization for the education of Chess has come to fruition, and it shall impact our community for generations to come. It is rare to ever know an individual so giving and unselfish.

It is our fondest hope that you will join us at the 2002 Tennessee Open in Knoxville this coming Labor Day weekend. We shall have a brief induction ceremony for you at that time. Thank you so much for all that you do, and all that you have done.

Kent Meadows, President
Tennessee Chess Association

Tennessee Tournament Calendar

Provided by Joseph Crump, Tournament Coordinator

July 13, 2002--Cumberland County Summer Open. 4-SS, G/60, Multi-Purpose Bldg., Fairfield Glade Resort, Crossville, TN 38558. \$\$G 300. Open--\$175: 50-1st, 25-X, A, B, C& Below. Amateur-U1400 \$125: 50-1st, 25-E, F& Below, UNR (UNR eligible for UNR prize only). Both, EF: \$10 if mailed by 7/8/02, \$15 at site. TCA req'd., Reg. 7:30-8:30 AM (CDT) Rds. 9-11-2-4:30. Ent: Harry D. Sabine, PO Box 381, Crossville TN 38557, (931)484-9593 or 484-4878. NS. NC. W.

July 27-28, 2002--Music City Grand Prix. 40/2, SD/60. Nashville Chess Center, 2911 Belmont Blvd, Nashville TN 37212. \$\$Guaranteed prizes in 2 sections. Open: \$200-100, A, B each \$50. U1600: \$125-75, D, E/below/UNR each \$35. Entry fee: \$25 Open, \$20 U1600 if received by 7/22, \$10 more later and at site. Current members of Nashville Chess Center receive \$5 discount. Rounds: 10-4 Sat., 9-3 Sun. USCF & TCA membership required. Entries to: Nashville Chess Center, 2911 Belmont Blvd., Nashville TN 37212. nashvillechess@comcast.net

July 27-August 4, 2002--US Open, Cherry Hill, NJ.

August 30,-September 1, 2002--56th Annual Tennessee Open 5SS, Primary 30/80, then SD/1, Marriott Hotel (formerly the Hyatt Regency), Knoxville TN \$4000 guaranteed Prize Fund. EF: \$55 if mailed by 8/26/02. \$65.00 at site. Entries to: Pat Knight, 103 Albion Road, Oak Ridge TN 37830, (865) 481-3516

August 31, 2002--56th Annual Tennessee Open Scholastic Tournament 4SS, Game/30, Rd. 1- 9:00 AM (EDT) all others ASAP Marriott Hotel (formerly the Hyatt Regency), Knoxville TN Trophies 1st - 10th Place for all Sections. EF: \$15 if mailed by 8/26/02. \$20.00 later and at site. Entries to: Pat Knight, 103 Albion Road, Oak Ridge TN 37830, (865) 481-3516

September 28, 2002--Music City Fall Open 4-SS, G/60. Nashville Chess Center, 2911 Belmont Blvd, Nashville TN 37212. \$275 Guaranteed Prizes in 2 sections. Open: \$50 1st, class X, A, B, C& below each \$25. U1400 section: \$50 1st, class E, F& below, Unrated, each \$25 (unrated eligible for unrated prize only). Both sections EF \$15 if received by 9/23, \$20 later and at site (\$5 discount to current NCC members). Register 9:00-9:45 a.m. Rounds: 10-12-2:30-4:30. TCA & USCF membership required. Top eligible player in Open section qualifies for 2003 Nashville Championship Finals (ties broken by tie-breaks). For info and questions, contact Mark Ishee at (615) 292-7341.

October 12, 2002--Cumberland County Fall Open. 4-SS, G/60, Multi-Purpose Bldg., Fairfield Glade Resort, Crossville, TN 38558. \$\$G 300. Open--\$175: 50-1st, 25-X, A, B, C& Below. Amateur-U1400 \$125: 50-1st, 25-E, F& Below, UNR (UNR eligible for UNR prize only). Both, EF: \$10 if mailed by 10/7/02, \$15 at site. TCA req'd., Reg. 7:30-8:30 AM (CDT) Rds. 9-11-2-4:30. Ent: Harry D. Sabine, PO Box 381, Crossville TN 38557, (931)484-9593 or 484-4878. NS. NC. W.

October 26, 2002--Mid-State Open 4-SS, Rds. 1 and 2, G/60; Rds. 3 and 4, G/90. Nashville Chess Center, 2911 Belmont Blvd, Nashville TN 37212. \$275 Guaranteed Prizes in 2 sections. Open: \$50 1st, class X, A, B, C& below each \$25. U1400 section: \$50 1st, class E, F& below, Unrated, each \$25 (unrated eligible for unrated prize only). Both sections EF \$15 if received by 10/21, \$20 later and at site (\$5 discount to current NCC members). Register 8:00-8:45 a.m. Rounds: 9-12-2:45-6:30. TCA & USCF membership required. Top two eligible players in Open section (who have not previously qualified) qualify for 2003 Nashville Championship Finals (ties broken by tie-breaks). For info and questions, contact Mark Ishee at (615) 292-7341.

November 16-17, 2002--National Youth Action Championship, Rockford, IL.

November 23-24, 2002--NCC Fall Classic 4-SS, 35/90, SD/30. Nashville Chess Center, 2911 Belmont Blvd, Nashville TN 37212. \$275 Guaranteed Prizes in 2 sections. Open: \$50 1st, class X, A, B, C & below each \$25. U1600 section: \$50 1st, class E, F& below, Unrated, each \$25 (unrated eligible for unrated prize only). Both sections EF \$15 if received by 11/18, \$20 later and at site (\$5 discount to current NCC members). Register 9:00-9:45 a.m. Rounds: 10-2:30-7, 9-1:30. TCA & USCF membership required. Top three eligible players in Open section (who have not previously qualified) qualify for 2003 Nashville Championship Finals (ties broken by tie-breaks). For info and questions, contact Mark Ishee at (615) 292-7341.

December 13-15, 2002--National Scholastic K-12 Championship, Atlanta, GA.

PUZZLE SOLUTION: White Mates in 2 Moves

1. d3 f5 2. Nd7 Mate 1...Kc5 2. Nxf7 Mate

1...Ke3 2. Nxe4 Mate 1...a6 2. Nf3 Mate

Athens Chess Club
Mike McGinnis
423-507-8454

Chattanooga CC
Joe Dumas
H (423) 886-7628
O (423) 755-4084

Chattanooga UTC CC
Joe Dumas
H (423) 886-7628
O (423) 755-4084

Columbia CC
Joe Crump
(931) 381-2758

Cumberland Co CC
Harry Sabine
(931) 484-9593

Dayton CC
Bruce Barnett
(423) 775-7000

ETSU Chess Assoc
Chun Ng
(423) 917-2219

Goodlettsville, Knights CC
Wieb van der Meer

Greater Knoxville CC
Leonard Dickerson
(865) 966-1095

MORE DETAILS ABOUT EACH
CLUB ARE AVAILABLE ON
THE TCA WEBSITE:

<http://www.tnchess.org>

Kingsport, Indian Springs CC
Steve Poff
(423) 279-0697

Memphis Chess Club
Michael Sansom, pres.
Gary Pylant (tourney info)
(901) 358-1731

Nashville Chess Center
Bill Orgain, pres.
Mark Ishee, exec dir
e-mail:
mark.ishee@nashville.com
(615) 292-7341

Oak Ridge CC
Charles Maddigan
(865) 482-5962

Rutherford Co CC
Robert Guthrie
(615) 895-7989

Tipton County CC
Thomas Stark
(901) 837-5874



TN CHESS ASSOCIATION AFFILIATE MEMBERS

Cumberland Co Chess Club
Nashville Chess Center

TENNESSEE CHESS ASSOCIATION 2000-2001 BOARD OF DIRECTORS

PRESIDENT:
ROBERT KENT MEADOWS
206 30TH AVENUE NORTH
NASHVILLE TN 37203
H: 615-320-0394 O: 615-313-5503
E-MAIL: kent.meadows@nashville.com

VICE-PRESIDENT:
JEFF PENNIG
PO BOX 90578
NASHVILLE TN 37209
H: 615-733-1880
E-MAIL: jcpennig@comcast.net

TREASURER:
LEONARD S. DICKERSON
420 ORAN ROAD
KNOXVILLE TN 37922
H: 865-966-1095 O: 865-946-1268
F: 865-574-3431
E-MAIL: lxchess@email.msn.com

SECRETARY:
BRADLEY WATSON
123 COOPER CIRCLE
OAK RIDGE TN 37830
H: 865-482-2983
E-MAIL: bjwatson@esper.com

TN CHESS NEWS EDITOR:
ANGELA McELRATH-PROSSER
733 LONG HUNTER COURT
NASHVILLE TN 37217
H: 615-399-8432
E-MAIL: tcanews@aol.com

INTERNET CHESS COORDINATOR:
PATRICIA KNIGHT
103 ALBION RD
OAK RIDGE TN 37830
H: 865-481-3516
E-MAIL: mspatknigh@mindspring.com

STATE SCHOLASTIC COORDINATOR:
HARRY D. SABINE
P.O. BOX 381
CROSSVILLE TN 38557
H: 931-484-4878 O: 931-484-9593
F: 931-456-7624
E-MAIL: hdsabine@citlink.net

EAST TENNESSEE DIRECTOR:
MIKE MCGINNIS
151 COUNTY RD 451
ATHENS TN 37303
H: 423-507-8454
E-MAIL: magennis@usit.net

TOURNAMENT COORDINATOR:
JOE CRUMP
111 TOMMY DR
COLUMBIA TN 38401
H: 931-381-2758 O: 615-770-8406
E-MAIL: joseph_crump@c-chess.com

WEST TENNESSEE DIRECTOR:
MIKE SANSOM
PO BOX 17864
MEMPHIS TN 38187-0864
H: 901-683-0513 O: 901-685-7471
E-MAIL: Frenchdefense1@juno.com

MIDDLE TENNESSEE DIRECTOR:
ROY MANNERS
1215 CUMBERLAND HEIGHTS RD
CLARKSVILLE TN 37040
H: 931-552-1839
E-MAIL: roybintn@msn.com

REGIONAL SCHOLASTIC COORDINATORS

REGION 1

S. THOMAS PURUCKER
112 ORCHARD CIRCLE
OAK RIDGE TN 37830
H: 865-482-7397 O: 865-974-9553
E-MAIL: purucker@utk.edu

REGION 2

GARY F. GILLESPIE
31 BRAMBLETON COURT
CROSSVILLE TN 38558-7151
H: 931-456-6146
E-MAIL: gfgillespi@aol.com

REGION 3

CHRIS PROSSER
733 LONG HUNTER COURT
NASHVILLE TN 37217
H: 615-399-8432
E-MAIL: regionIII@aol.com

REGION 4

BILL CUMMINGS
3532 DAVIESHIRE DR
MEMPHIS TN 38133
H: 901-372-6584 O: 901-348-1610
E-MAIL: wacummin@bellsouth.net

56th Annual Tennessee Open

A Heritage Event

August 30 – September 1, 2002

Chess Tournament

Knoxville Marriott Hotel, 500 Hill Avenue, S.E. Knoxville, TN

\$4,000 Prize Fund

Unconditionally Guaranteed

OPEN	Open to All	Amateur	U1800	Novice	U1400
1 st Place	Trophy+\$500	1 st Place	Trophy+\$250	1 st Place	Trophy+225
2 nd Place	300	2 nd Place	150	2 nd Place	125
3 rd Place	200	3 rd Place	100	3 rd Place	75
Expert		Class C & Below		Class E	
1 st Place	Trophy + 250	1 st Place	Trophy + 225	1 st Place	Trophy + 150
2 nd Place	150	2 nd Place	125	2 nd Place	100
3 rd Place	100	3 rd Place	75	3 rd Place	50
Class A & Below		Best Game		Class F & Below	
1 st Place	Trophy + 250		50	1 st Place	Trophy + 100
2 nd Place	150			Unrated	
3 rd Place	100			1 st Place	Trophy + 100
Best Game				Best Game	50

*Only Tennessee residents are Eligible for Trophies

*Unrateds are only eligible for top 3 prizes in Open Section or Unrated Prize in Novice Section

5 round Swiss.

Time Control: Primary 30/80, then SD/1

The Last Official USCF Rating will be used.

REGISTRATION: 3:00 – 6:00 PM (EDT) Friday night, August 30 and 7:30 – 8:30 AM (EDT) Saturday Aug. 31, 2002

ENTRY FEE: \$55.00 for all sections if mailed by Monday, August 26, 2002

\$65.00 later and at Site.

USCF Youth and Scholastic Players may enter any Section to compete for Trophy only (no prize money) for only:

\$25.00 if mailed by Monday, August 26, 2002

\$35.00 later and at Site.

½ point bye available for any one (and only one) round if requested at or before Registration

USCF membership required for all, and TCA membership required for all TN residents. Available at site. OSA

Entry Form must include Declaration of 1st round option.

No Smoking, No Computers, Wheelchair accessible.

TCA Annual Membership Meeting at 2:00 PM, Saturday, August 31, 2002. All TCA Members Welcome.

Friday, August 30th & Saturday August 31st

Friday Round 1 -7:00 PM or
Sat. 9:30 AM

Round 2 -3:00 PM

Round 3 -8:00 PM



Sunday September 1st

Round 4 - 9:00 AM

Round 5 - 2:00 PM

Hotel Rates: \$ 85.00 /night + tax for 1 – 4 people. You must reserve your room prior to August 16, 2002 to insure availability. You must ask for the Chess Rate to get the discounted rate. Knoxville Marriott, Knoxville, 500 Hill Ave., SE, Knoxville, TN 1-800-228-9290.

*****ROOMS WILL NOT BE HELD FOR CHESS TOURNAMENT AFTER AUGUST 16, 2002*****

56th Annual Tennessee Open Entry Form

USCF#: _____ Rating: _____ Exp. Date: _____
Last Name: _____ First Name: _____ DOB: _____
Section: _____ 1st Round (Please Circle One) FRIDAY SATURDAY
Address: _____
City: _____ State: _____ Zip: _____
Phone: _____ Email: _____ 1/2 point Bye Round #: _____
Entry Fee:\$ _____ TCA Dues:\$ _____ USCF Dues:\$ _____ Amount Paid:\$ _____
Mail Entries to: Pat Knight, 103 Albion Road, Oak Ridge, TN, 37830. Phone:(865) 481-3516 Email: tcachess@mindspring.com



The 56th Annual Tennessee Open 2002

Scholastic Chess Tournament

Sponsored by the Tennessee Chess Association

Saturday, August 31, 2002

Site: Knoxville Marriott Hotel

500 Hill Avenue, S.E.

Knoxville, TN 37915

For reservations call: 1-800-228-9290

Hotel Rate: \$85.00 plus Tax, but you must ask for **Chess Rate**

IMPORTANT: No Rooms held for Chess Tournament after August 16, 2002

Make your reservations now (before August 16)!

4 Sections

High School
(Grades 12 & Below)

Junior High
(Grades 9 & Below)

Elementary
(Grades 6 & Below)

Primary
(Grades 3 & Below)

Trophies 1st through 10th Place for all Sections

Ribbons to participants not winning a Trophy

Entry Fee: \$15 if mailed by August 26, 2002, \$20 later and at Site

Registration and Check-in: 7:30 – 8:30 AM (EDT) Saturday, August 31, 2002

Four (4) Round Swiss System

Round 1: 9:00 AM (EDT), all other rounds ASAP (no break)

Time Control: Game/30

USCF Rated; USCF Membership required, available at site

TCA Membership required, Other States Accepted, available

56th Annual Tennessee Open Scholastic Entry Form

Name: _____ USCF ID# _____ Section _____

Address: _____ City: _____ State _____ Zip: _____

Phone: _____ Rating: _____ Last official Rating will be used Grade: _____

Email: _____ Date of Birth: _____

Mail Entries to: Pat Knight, 103 Albion Road, Oak Ridge, TN 37830 Phone: (865) 481-3516

Email: tcachess@mindspring.com