

---

# *TENNESSEE*

---

# Chess News

---

## IN THIS ISSUE:

- Tennessee Open Prize Winners
- 1983-84 Turkey Tour Begins
- Crosstables From Recent Events



Beginning with this issue, TCN will print crosstables of rated events only after the official report returns from the USCF so that post-event ratings can be included.

## TURKEY TOUR!

The Turkey Tour is a year long contest to help promote the current high standards of Tennessee chess participation and competition. The first Turkey Tour will span from September 6, 1983, thru the 1984 Tennessee Open.

For a tournament to qualify as a Turkey Tour event, the tournament must meet these requirements:

- (1) Be U.S.C.F. rated
- (2) Require T.C.A. dues for Tennessee residents
- (3) Cannot require any other dues, except T.C.A. and U.S.C.F.
- (4) Be an open week end tournament in Tennessee
- (5) Be cleared thru the clearinghouse
- (6) Be advertised in the TCN Tournament Calendar
- (7) Must be at least 3 rounds in length
- (8) A copy of the rating report (or final wall chart) and appropriate round fees must be submitted within two weeks by the TD or organizer to the P.O. Box 2587, Crossville, TN 38555.

(Exceptions may be granted by the tournament coordinator with written notice to the T.C.A. Board.)

### PRIZE FUND:

The Prize Fund will be formed from Turkey Tournament round fees (U.S. C.F. Grand Prix events-\$5 per round; all other tournaments-\$3 per round) and other donations. The T.C.A. has made an initial donation of \$100 to start the Prize Fund.

Prizes will be awarded to the top players of each category by the following percentages of the Prize Fund:

Master & Expert	20%
Class A	20%
Class B	15%
Class C	15%
Class D	15%
Class E	15%

### Conditions of Awarding Prizes:

- (1) The final class standing of a player will be determined by the September 1984 rating supplement.
- (2) Tour points accumulate for a player whose rating moves up to a higher class, and the player remains eligible for prizes in the lower class based upon points earned prior to moving into the higher class (based on current rating supplements during the year).
- (3) Players may win only one prize.
- (4) Players whose U.S.C.F. class designation symbol shows a former rating 101 or more points over a prize group will not be eligible for that prize, but will be eligible for the next category which they are not 101 points over.
- (5) Players must be T.C.A. members to accumulate and collect Turkey points.
- (6) The T.C.A. tournament coordinator will be responsible for compiling the class standings and awarding prizes.

### Earning Turkey Points:

T.C.A. members players may earn Turkey Points for tournament participation and performance. Each player participating in a Tennessee-U.S.C.F. Grand Prix Turkey Even will earn 20 Turkey Points; and in all other Turkey-Tour Events will earn 10 Turkey Points. (Players must complete at least half of the scheduled rounds).

Plus, for a positive performance result (meaning wins minus losses) players will be awarded additional Turkey Points by the formula:

(W-L) times number of rounds equals number of Turkey Points

## TURKEY TOUR LEADERS

Master/Expert	POINTS
Leonard Dickerson	26
Scott Godfrey	26

Class A	
Dusan Tutush	22
Mark King	22

Class B	
Mark Oshman	22

Class C	
Paul Kapke	18
Charles McGinnis	18
Jeremy Hassler	18

Class D	
Eighteen players have 10 points:	
Larry Pankey, Fred Baier, Clint Pearson, Roy Barger, Joel Paschall, Susan Smathers, Ronnie McGill, Shawn Teague, John D'Armond, Nancy Weaver, Ralph Panther, Kitty Burdick, Matthew May, Mark Burdick, Denton Brock, Chris Wilson, Jason White, Wayne May	

Class E	
Nine players have 10 points:	
Stephen Graves, Lynn McHenry, Tom Boydston, Richard Hess, Matthew Folks, Tommy Wagner, Kent Smith, Wayne Crisp, Matthew Burdick	

## PROVISIONAL RATINGS DROPPED FROM LIST

Beginning with the next issue of TCN, provisionally-rated players will not be listed on the state's Top 10 lists. This policy was adopted by the Board of Directors in order to conform to the USCF's policy on this matter.

## BOOK REVIEW

### Petroff's Defense

by Fortinos and Haig  
Published May 1983; 248 pages, index of variations. Batsford paperback, \$21.00. Figurine Algebraic.  
by Jack Smith

Using the criteria of timelines, comprehensiveness, and research, **Petroff's Defense** gets a firm recommendation. It contains research dating back to 1497, yet mentions new games by Karpov and Chekov, among others GM Fortinos and IM Haig cover virtually every line of the Petroff. Even more pleasing than the book's technical merits is its discussion of the history of the opening (often anecdotal), and the adventures of the masters who have employed it.

The last great English language treatise on the Petroff was **A Complete Defense to 1. P-K4** by Hooper. It is a definitive work, containing analysis of other lines besides Petroff's Defense; it is also a reference to this work.

Material is divided into three sections: Chapters 1-7 (51 pages) cover 3. d4 ed, Chapters 8-13 (45 pages) discuss 3. d4 Nxe4, and Chapters 15-35 (119 pages) examine 3. Nxe5. Chapter 14 covers 3. d4 d5, while White's other third move possibilities are Chapters 36-38.

According to the authors, the Petroff can be used to complicate (Marshall) or equalize (Karpov). It has a certain "surprise value" in local tournaments, and avoids the Ruy Lopez and Giuoco Piano.

It is often difficult to recommend an expensive book of this sort. No problem here, however. This is a well-written, exhaustively researched, definitive exposition of the Petroff, and is larger than most openings texts. Since it is well-made and well-proofed, it is not overpriced at \$21.00. When was the last time you both learned from and enjoyed reading an opening manual?

Besides, Pillsbury played it.  
Available from David and Charles, North Pomfret, VT 05053.

PLAYER	PRE RTNG	POST RTNG	1	2	3	4	5	TOT
1. JONES, CURT	2295	2310	W34	W26	W-9	W-8	W-7	5.0
2. TSITSEKLIS, EMANUE	2178	2189	W42	W16	W10	W25	D-3	4.5
3. HARDY, JAMES K	2051	2100	W49	W30	W19	W-4	D-2	4.5
4. POHL, KLAUS A	2357	2342	W33	W37	W13	L-3	W20	4.0
5. POTTER, JOHN RUSSE	2280	2281	W41	W15	W17	L-7	W12	4.0
6. HARRIS, NEAL D	2172	2166	W65	L25	W34	W18	W21	4.0
7. MOORE, JOHNSON S	2080	2108	W62	W38	W20	W-5	L-1	4.0
8. RUEHMANN, ALBERT C	2042	2061	W48	W32	W21	L-1	W22	4.0
9. LOVINGOOD, CHUCK H	1975	1990	W51	W31	L-1	W38	W27	4.0
10. HAYAMI, MARVIN Y	1937	1960	W67	W72	L-2	W30	W25	4.0
11. MCKINNEY, BILLY	1983	1891	L68	W64	W45	W28	W32	4.0
12. MADDIGAN, CHARLES	2299	2281	W47	W22	D18	W24	L-5	3.5
13. MEADOWS, ROBERT KE	1958	1958	W52	W54	L-4	W39	D16	3.5
14. TUTUSH, DUSAN SP/4	1946	1948	W35	W29	L25	W26	D15	3.5
15. BENNETT, MIKE	1816	1834	W70	L-5	W48	W61	D14	3.5
16. REED, BROOKS	1797	1836	W71	L-2	W54	W17	D13	3.5
17. EASTER, RON	2000	1980	W66	W44	L-5	L16	W40	3.0
18. BENNETT, RICHARD	1966	1968	W50	W45	D12	L-6	D24	3.0
19. LESTER, RONNIE	1960	1936	W43	W68	L-3	L32	L48	3.0
20. CHAMBERS, CHRIS L	1883	1886	W77	W60	L-7	W29	L-4	3.0
21. JEFFERY, JACK A	1851	1853	W53	W57	L-8	W46	L-6	3.0
22. CALLIS, TRACY	1829	1845	W69	L12	W35	W36	L-8	3.0
23. WATSON, BRADLEY S	1803	1769	L57	D43	W73	D42	W49	3.0
24. PETROVIC, CEDOMIR	1775	1793	D63	W36	W40	L12	D18	3.0
25. PRESSWOOD, ROBERT	1760	1827	W61	W-6	W14	L-2	L10	3.0
26. SCHNEITMAN, PATRIC	1750	1755	W74	L-1	W66	L14	W50	3.0
27. MCGILL, TONY RHEA	1735	1722	L54	W67	W69	W55	L-9	3.0
28. BEASLEY, RONALD E	1734	1714	L60	W77	W72	L11	W51	3.0
29. DAILEY, DONALD R	1670	1677	W78	L14	W57	L20	W52	3.0
30. ABRON, MICHAEL T	1667	1676	W75	L-3	W70	L10	W61	3.0
31. SCZEKAN, STEVE R	1641	1667	W59	L-9	L36	W54	W46	3.0
32. EGULF, FRANK T	1622	1659	W56	L-8	W59	W19	L11	3.0
33. COOPER, TOM	1565	1582	L-4	W76	L55	W57	W59	3.0
34. PARKER, BOB	1559	1590	L-1	W74	L-6	W58	W55	3.0
35. NUCKOLS, DR DAVID	1513/13	1561	L14	W75	L22	W56	W44	3.0
36. GARNES, ELWIN	0	1767	W39	L24	W31	L22	W47	3.0
37. JOHNSON, III JAMES	1835	1801	W76	L-4	D42	L40	W63	2.5
38. LONG, CARY D	1766	1762	W46	L-7	W60	L-9	D42	2.5
39. PRINCE, BENNY D	1683/5	1654	L36	W53	W68	L13	D43	2.5
40. NEELY, RICHARD	1629	1637	D64	W63	L24	W37	L17	2.5
41. THOMAS, DAVID M	1601/12	1581	L-5	L70	W53	D63	W62	2.5
42. ANTHONY, JOHN	1540	1573	L-2	W71	D37	D23	D38	2.5
43. GOINS, MIKE	1447	1484	L19	D23	D63	W45	D39	2.5
44. IRWIN, BILL	1693	1661	W58	L17	L46	W69	L35	2.0
45. CHAFFIN, JAMES E	1642	1618	W55	L18	L61	L43	W70	2.0
46. SKEEN, LARRY	1597/8	1608	L38	W62	W44	L21	L31	2.0
47. SILVERS, H.R.	1579/5	1574	L12	L69	W64	W68	L36	2.0
48. KAPKE, PAUL A	1563	1577	L-8	W56	L15	W60	L19	2.0
49. SABINE, JAY D	1524	1525	L-3	W78	L11	W74	L23	2.0
50. CHAMBERS, ANDY	1454	1439	L18	L55	W75	X--	L26	2.0
51. CRAWFORD, III ROY	1453/9	1434	L-9	L59	W71	X--	L28	2.0
52. CHAMBERS, STEVE	1427	1407	L13	L73	W78	W70	L29	2.0
53. MCGILL, RONNIE R	1300	1305	L21	L39	L41	W79	W71	2.0
54. WILSON, CHRIS	1246	1315	W27	L13	L16	L31	W65	2.0
55. MENZEL, OTTO J	0	1511	L45	W50	W33	L27	L34	2.0
56. KOONTZ, JASON I	0	1477	L32	L48	W77	L35	W67	2.0
57. HIGDON, JAMES T	0	1593	W23	L21	L29	L33	W66	2.0
58. ARWOOD, JERRY	0	1429	L44	L66	W67	L34	W68	2.0
59. MARTIN, LEWIS A	0	1510	L31	W51	L32	W66	L33	2.0
60. CARL, RICK	0	1570	W28	L20	L38	L48	W69	2.0
61. KOUNS, WILLIAM C	0	1661	L25	W65	W45	L15	L30	2.0
62. COUNTS, ROGER L	1561	1533	L-7	L46	D76	W64	L41	1.5
63. TEAGUE, R SHANN	1300	1332	D24	L40	D43	D41	L37	1.5
64. SISK, JR GERALD D	0	1438	D40	L11	L47	L62	W76	1.5
65. COOK, ANDREW L	1534	1495	L-6	L61	L74	W76	L54	1.0
66. GROENIGER, LOUIS M	1475	1454	L17	W58	L26	L59	L57	1.0
67. HAYDEN, ALAN T	1396	1366	L10	L27	L58	W75	L56	1.0
68. LENTZ, BRIAN D	1340/6	1391	W11	L19	L39	L47	L58	1.0
69. LYONS, CURTIS	1302	1316	L22	W47	L27	L44	L60	1.0
70. MORGAN, GORDON R	1230	1244	L15	W41	L30	L52	L45	1.0
71. JUMONVILLE, TIMOTH	0	1174	L16	W42	L51	W78	L53	1.0
72. ROBINSON, DAVE	0	1516	W73	L10	L28	F--	U--	1.0
73. KALSHOVEN, J.E.	0	1418	L72	W52	L23	F--	U--	1.0
74. JOHNSON, TERRY A	0	1392	L26	L34	W65	L49	U--	1.0
75. COOK, RONALD	0	1200	L30	L35	L50	L67	W78	1.0
76. HORTON, HERBERT T	1339	1320	L37	L33	D62	L65	L64	.5
77. GENTLE, JR JACK M	1316/16	1309	L20	L28	L56	U--	U--	.0
78. HUSKEY, MICHAEL G	0	993	L29	L49	L52	L71	L75	.0
79. KOONTZ, JOHN	0	900	U--	U--	U--	L53	U--	.0

The Knoxville Summer Swiss, played July 16/17, was a remarkable tournament in many ways. The field totaled 79 players including entries from as far away as Arizona and Michigan. The tournament was a strong one with four masters rated near 2300 on the top boards (Charles Maddigan, Rusty Potter, Klaus Pohl and our own Curt Jones). On the bottom side of the field, a very encouraging fifteen new players were drawn to chess competition primarily by advertisements in the local papers and the offer to waive entry fees for players participating in their first tournament.

Upsets punctuated the pace of the tournament and they started early. Round one found Brian Lentz (1371), Chris Wilson (1315) and James Higdon (new) defeating opponents rated 1891, 1792 and 1769 respectively. Robert Presswood of Chattanooga gained a quick 67 rating points by defeating Candidate Masters in rounds two and

three. Charles Maddigan fell off the pace in round three when Richard Bennett held out for a draw. In round four, Johnson Moore and James Hardy acquired perfect scores the hard way by defeating Rusty Potter and Klaus Pohl!

In the final round, Curt Jones won the tournament outright by demonstrating incredible patience in a superior but very difficult endgame against Johnson Moore. Emanuel Tsitseklis and James Hardy shared second and third places by drawing which gave them each 4½ points. Winners in other categories include—

Candidate master: Al Ruehmman, Neal Harris and Johnson Moore

Category 1: Chuck Lovingood, Bill McKinney and Marvin Hayami

Category 2: Brooks Reed

Category 3: Top Cooper, Bob Parker and David Nuckols

Category 4: Ronnie McGill, Chris Wilson and James Higdon

Unr: Elwin Barnes

## TENNESSEE'S TOP TEN PLAYERS

1. Curt Jones	Nashville	2295
2. Paul Harless	Nashville	2228
3. Michael Carey	Nashville	2226
4. Brian McCarthy	Hermitage	2212
5. Joseph Sentef Jr.	Jackson	2193
6. Emanuel Tsitseklis	Knoxville	2178
7. Albert Wright	Memphis	2163
8. Ronald Burnett	Nashville	2155
9. Mahlon Smith	Memphis	2134
10. Leonard Dickerson	Knoxville	2131

## TENNESSEE'S TOP TEN WOMEN PLAYERS

1. Sofi Zhislin	Nashville	1725
2. Joy Wellman	Memphis	1456
3. Vicki Berry	Memphis	1368/6
4. Debbie Pollen	Memphis	1327/10
5. Janet Schwartz	Memphis	1323
6. Susan Smathers	Crossville	1303
7. April Bean	Knoxville	1299/11
8. Nancy Weaver	Crossville	1283
9. Camilla West	Nashville	1283/17
10. Kitty Burdick	Cookeville	1265

# TENNESSEE OPEN PRIZE WINNERS

## OPEN SECTION

Co-Champion	Michael P. Carey	Nashville	5-1
Co-Champion	Sid B. Pickard	Memphis	5-1
3rd/1st & 2nd CM	Daniel L. Boyd	Memphis	4½-1½
	Joseph Sentef, Jr.	Jackson	4½-1½
	Mahlon A. Smith	Memphis	4½-1½
3rd CM	Ronald Burnett	Nashville	4-2
	Richard Carpenter	Knoxville	4-2
	Gregory Hood	Memphis	4-2
	Johnson Moore	Nashville	4-2
	Randy Cope	Memphis	4-2
1st-Category I	Barry Goode	Memphis	3½-2½
2nd/3rd category I	Tony Estes	Hermitage	3-3
	Dale Flickinger	Memphis	3-3
	John Marberry	Nashville	3-3
	Chris Chambers	Concord	3-3
	Brett Thompson	Huntington, WV	3-3
	Robert G. Etter	Signal Mt.	3-3
Tennessee Jr Champ.	Ronald Burnett	Nashville	4-2
Open Team Champ.	Pillsbury Chess Club	Memphis	17½

## AMATEUR SECTION

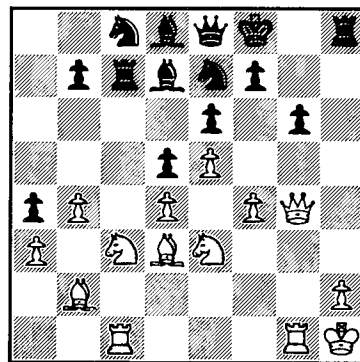
Champion	Robert A. Yokley	Knoxville	5½-1½
2nd	Tim J. Hill	Cincinnati, OH	5-1
3rd	Ron Seaney	Smyrna	4½-1½
	Sofi Zhislin	Nashville	4½-1½
	Matthew Dolloff	Nashville	4½-1½
	Dewitt Pullen	Nashville	4½-1½
1st/2nd/3rd Cat. III	John Anthony	Sevierville	3½-2½
	Ben Fischer	Signal Mt.	3½-2½
	Eric S. Martin	Clarksville	3½-2½
Amateur Team Champ.		Murfreesboro	17

## NOVICE SECTION

Co-Champion	Jas. E. Bryant	Clarksville	4-2
Co-Champion	Jas. M. Rohr	Huntsville, AL	4-2
3rd	Dennis W. Bryant	Nashville	3½-2½
	Ralph Panther	Antioch	3½-2½
1st-Category V	Robert F. Newkirk	Nashville	2½-3½
1st-Unrated	Ricky Gann	Nashville	5-1
	L. Jay Turbeyville	Nashville	5-1
Novice Team Champ.		Nashville	12

### Mike Carey-Sid Pickard French Defense

1. e4 e6; 2. d4 d5; 3. Nd2 Nf6; 4. e5 Nfd7; 5. f4 c5; 6. c3 Nc6; 7. Ndf3 cd; 8. cd h5 To avoid the variation 8... Nb6; 9. g4 h5; 10. gh Rh5; 11. Ne2 g6; 12. h4 and 13. h5 with a clear advantage for White 9. Bd3 Nb6; 10. Ne2 g6; 11. 0-0 Bd7; 12. a3 a5; 13. b3 a4; 14. b4 Na7 Planning ...Bh5. Play on the Queenside White squares is Black's motif in this variation. 15. Nc3 Be7; 15. Bb2? This Bishop would have come in handy on the Kingside after an eventual f4-f5 break. Kf8; 17. Rc1 Qe8; 18. Qe2 Rc8; 19. Nd2 I was happy to see Mike resist my plans rather than stir up anything of his own. Kg7; 20. Kh1 Spoken too soon! This move can only mean 21. Rg1 and 22. g4, when Black will need a knight on e7 to cover the "sac points" d5, f5, and g6. Bd8; 21. Rg1 Rc7; 22. g3 Nbc8; 23. Nf1 Ne7; 24. Ne3 Kf8; 25. g4 hg; 26. Qg4 Nac8 Rounding up the strays! Nimzovich would have been proud of Black's setup.



27. Rg3 Nb6; 28. Rh3 Rh3; 29. Qh3 Kg7; 30. Ng4 Qh8; 31. Qh8+ Kh8; 32. Nf6 White must be forced to occupy b5 with a pawn, else the Bishop will get there with too much effect. Bc6; 33. b5 Bd7; 34. Nd7 Rd7; 35. Bc2 Rc7! Check for yourself what happens if White now grabs the a-pawn. 36. Rd1 Nc4; 37. Bc1 Na3; 38. Ba3 Rc3; 39. Be7 Be7; 40. Ba4 ½-½ In time pressure, the game was agreed drawn, though as I've been shown the simple 40... Rc4 probably wins. A fun game nevertheless. (Pickard)

### Sid Pickard-Tony Estes Reversed Dutch

1. f4 d5; 2. Nf3 c5; 3. g3 Nc6; 4. d3 g6; 5. Bg2 Bg7; 6. 0-0 Bg4; 7. c3 Bf3?; 8. Bf3 e6 If 8...e5; 9. Qb3 9. Qc2 Nge7; 10. e4 0-0; 11. Be3 b6; 12. Bf2 Rc8; 13. Nd2 Qc7; 14. Rac1 I spin my wheels for a while trying to organize the "so what?" advance b4 Qb8; 15. Qb1 Rfd8; 16. e5 h5 Doubtful. 17. Rfe1 Nf5; 18. Bg2 Qc7; 19. Nf3 Qe7; 20. a3 Bh6 Not good unless he plans...g5. 21. b4 Rh8; 22. Qc2 Rdc8; 23. Qd2 Rc7; 24. h3 Bg7; 25. Rb1 Rbc7; 26. Kh2 Bf8 White has found a plan at last, but Black continues with excessive prophylaxis. 27. g4 hg; 28. hg Nh6; 29. Bh4 Qd7; 30. Kg3 Be7; 31. Bg5 The party's over Kg7; 32. Bh6+ Kh6; 33. f5+ Kg7; 34. Rh1 Rh8; 35. f6+ Bf6; 36. ef6+ Kg8; 37. Rh8+ Kh8; 38. Qh6+ 1-0 (Pickard)

### Ron Easter-Mike Carey Staunton Gambit

1. d4 f5; 2. e4 fe; 3. Nc3 Nf6; 4. Bg5 b6; 5. f3 e3; 6. Bd3 e6; 7. Qe2 Be7; 8. Qxe3 0-0; 9. h4 c5?; 10. Bxf6 Bxf6; 11. Qe4 d5; 12. Qxh 7+ kf7; 13. Qg6+ Ke7; 14. 0-0-0 cd; 15. Nce2 Nc6; 16. f4 Nb4; 17. g4 Nxd3+; 18. cd Qe8; 19. Qxe8+ Kxe8; 20. Nf3 Be7; 21. h5 Bd6 ½-½

### Sid Pickard-Joseph Sentef Reversed Dutch

1. f4 g6; 2. Nf3 Bg7; 3. d3 c5; 4. g3 Nc6; 5. Bg2 d5; 6. 0-0 Nf6; 7. c3 d4; 8. Qa4 0-0; 9. Qa3 Qb6; 10. Nbd2 a6; 11. e4?! de; 12. Nc4 Qd8!; 13. Ne3 Qd3; 14. Qc5 Rd8!; 15. Ne5 Ne5; 15. fe Ne4; 17. Qe7 Be6; 18. Qb7 Nd2!; 19. Bd2 Qd2; 20. Qe4 Qb2; 21. c4 Be5; 22. Rab1 Qd4; 23. Kh1 Rac8; 24. Rfc1 Qc5; 25. Rd1 Bd4; 26. Nd5 Bf5?; 27. Ne7+ Kg7; 28. Nf5+ gf; 29. Qd3! Bf6; 30. Bd5 h6; 31. Qf5 Rd6; 32. Rh7 Rc7; 33. Qg4+ Bg5; 34. Rc7 Qc7; 35. h4 Rg6; 36. hg5 Rg5; 37. Qd4+ Kg8; 39. Bf7+? Qf7; 39. Qd8+ Qf8; 40. Qf8; 41. Rd6? Rg3; 42. Ra6 Rc3; 43. Rh6 Rc4 ½-½

# COOKEVILLE SUMMER OPEN

PLAYER	PRE RTNG	POST RTNG	1	2	3	4	TOT
1. JONES, CURT	2355	2359	W22	W10	W11	W-7	4.0
2. ESTES, TONY C	1971	2001	W59	W13	W-9	W14	4.0
3. MCCARTHY, BRIAN	2218	2211	D39	W40	W21	W16	3.5
4. GODFREY, SCOTT	2050	2055	W31	W47	W23	D-5	3.5
5. GANEY, ARTHUR C	1898	1925	W34	W15	W12	D-4	3.5
6. EASTER, RON	1960	1943	W30	L12	W42	W46	3.0
7. LOYLESS, CHRIS P	1887	1904	W42	W24	W18	L-1	3.0
8. ROBBINS, GREGORY K	1851	1865	W32	L14	W19	W17	3.0
9. REED, BROOKS	1830	1835	W48	W28	L-2	W25	3.0
10. PRESSWOOD, ROBERT	1827	1835	W51	L-1	W30	W28	3.0
11. MCGILL, TONY RHEA	1730	1756	W41	W27	L-1	W24	3.0
12. POTTS, MICHAEL	1702	1736	W50	W-6	L-5	W34	3.0
13. WHITE, JOHN L	1702	1712	W43	L-2	W31	W29	3.0
14. EGULF, FRANK T	1668	1728	W55	W-8	W38	L-2	3.0
15. BURGESS, DONALD R	1664	1685	W44	L-5	W43	W23	3.0
16. KING, MARK T	1855	1857	W33	W26	D17	L-3	2.5
17. SCHNEITMAN, PATRIC	1791	1791	W52	W20	D16	L-8	2.5
18. SEANEY, RON K	1757	1745	W49	W53	L-7	D20	2.5
19. LAWS, CHARLES G	1741	1730	W58	D21	L-8	W37	2.5
20. HALL, BILL	1639	1644	W45	L17	W57	D18	2.5
21. KAPKE, PAUL A	1605	1626	W37	D19	L-3	W45	2.5
22. HOOD, DAVID	1504	1518	L-1	W58	D45	W39	2.5
23. MOORE, JOHN W	1815	1797	W36	W25	L-4	L15	2.0
24. BURKE, ROBERT J	1683	1668	W61	L-7	W41	L11	2.0
25. MCHENRY, TIM	1661	1652	W35	L23	W53	L-9	2.0
26. SEXTON, JAMES R	1630/8	1614	W62	L16	W55	U--	2.0
27. FRAZIER, RICKY	1568	1552	W57	L11	L29	W49	2.0
28. SABINE, JAY D	1502	1524	W29	L-9	W35	L10	2.0
29. WILLIAMS, DAVID C	1489/4	1505	L28	W49	W27	L13	2.0
30. DAY, SHANE M	1464	1470	L-6	W50	L10	W55	2.0
31. ALLEN, CHARLIE	1445	1453	L-4	W51	L13	W58	2.0
32. HESS, WILLIAM W	1413	1409	L-8	L55	W59	W50	2.0
33. CORDING, JR ROBERT	1401	1406	L16	W54	L46	W53	2.0
34. PEARSON, JR CLINTO	1368	1404	L-5	W44	W47	L12	2.0
35. WORLEY, JIMMY D	1316/4	1382	L25	W36	L28	W48	2.0
36. DEKMAR, ERIC	1303	1314	L23	L35	W61	W57	2.0
37. ALLEN, PATRICIA F	1224/5	1314	L21	B--	W40	L19	2.0
38. FARR, ROY T	1904	1877	D40	W39	L14	U--	1.5
39. STANCLIFF, LEON D	1475	1480	D-3	L38	W60	L22	1.5
40. CROUCH, SAM J	1445	1450	D38	L-3	L37	W60	1.5
41. ORGAIN, WILLIAM H	1396	1384	L11	W62	L24	D44	1.5
42. GREEN, GRAYSON	1366	1362	L-7	W61	L-6	D43	1.5
43. MCHENRY, LYNN	1181	1211	L13	W59	L15	D42	1.5
44. FUQUA, MARK	1109/8	1198	L15	L34	W52	D41	1.5
45. BAILEY, KENNETH	0	1387	L20	W52	D22	L21	1.5
46. BURDICK, PATRICK T	1719	1717	U--	U--	W33	L-6	1.0
47. PENUEL, BRYANT D	1701	1680	W54	L-4	L34	U--	1.0
48. MCGILL, RONNIE R	1323	1305	L-9	L57	W51	L35	1.0
49. WILSON, CHRIS	1315	1307	L18	L29	W54	L27	1.0
50. MORGAN, GORDON R	1244	1232	L12	L30	W62	L32	1.0
51. CASSILL, CRIS	1234/15	1249	L10	L31	L48	W59	1.0
52. ALLEN, WYATT	1199	1185	L17	L45	L44	W62	1.0
53. BOYDSTON, TODD B	1142	1134	B--	L18	L25	L33	1.0
54. BOYDSTON, TOM J	1131	1131	L47	L33	L49	W61	1.0
55. HESS, RICHARD W	1119	1140	L14	W32	L26	L30	1.0
56. BURDICK, MATTHEW	745/8	754	U--	U--	L58	B--	1.0
57. NEAL, BRETT T	0	1258	L27	W48	L20	L36	1.0
58. WITHERSPOON, WILLI	0	1223	L19	L22	W56	L31	1.0
59. WRIGHT, IAN	1423	1356	L-2	L43	L32	L51	0
60. BURDICK, MARK	1255	1240	U--	U--	L39	L40	0
61. DIERINGER, NICK	1111	1081	L24	L42	L36	L54	0
62. DIERINGER, MIKE	910	898	L26	L41	L50	L52	0

# MUSIC CITY GRAND PRIX

PLAYER	PRE RTNG	POST RTNG	1	2	3	4	5	TOT
1. JONES, CURT	2310	2320	W22	W12	W14	D-2	D-4	4.0
2. MADDIGAN, CHARLES	2281	2294	W17	W15	D-5	D-1	W-8	4.0
3. KOZEL, WOLF	0	2081	L20	W23	W24	W12	W14	4.0
4. UNGER, TOM	2317	2315	W18	W-9	D-8	D-5	D-1	3.5
5. CAREY, MICHAEL P	2226	2237	W-7	W11	D-2	D-4	D-6	3.5
6. MOORE, JOHNSON S	2108	2102	L24	W26	W17	W13	D-5	3.5
7. MCELHANEY, KENNET	1733	1808	L-5	D19	W27	W16	W15	3.5
8. MCCARTHY, BRIAN	2209	2204	W23	W20	D-4	D14	L-2	3.0
9. WHEELER, JERRY T	2048	2043	W16	L-4	L12	W18	W17	3.0
10. HAYAMI, MARVIN Y	1960	1949	D26	W27	D13	D15	D11	3.0
11. MEADOWS, ROBERT KE	1958	1959	W19	L-5	D16	W21	D10	3.0
12. HOFFMAN, GREGORY W	1950	1967	W21	L-1	W-9	L-3	W20	3.0
13. FARR, ROY T	1909	1904	D27	W28	D10	L-6	W21	3.0
14. BURNETT, RONALD WA	2158	2142	W26	W24	L-1	D-8	L-3	2.5
15. TUTUSH, DUSAN SP/4	1948	1944	W25	L-2	W20	D10	L-7	2.5
16. SCROFANI, ROSS	1702/5	1807	L-9	W18	D11	L-7	W23	2.5
17. MOORE, JOHN W	1808	1815	L-2	W25	L-6	W24	L-9	2.0
18. BURNETT, JOHN T	1805	1809	L-4	L16	W19	L-9	W26	2.0
19. BEASLEY, RONALD E	1714	1721	L11	D-7	L18	W27	D22	2.0
20. PULLEN, DEWITT T	1694	1728	W-3	L-8	L15	W22	L12	2.0
21. BOLSTAD, JEFF L	1647	1667	L12	W22	W28	L11	L13	2.0
22. SEANEY, RON K	1744	1719	L-1	L21	W26	L20	D19	1.5
23. WEEMS, RICHARD T	1714	1708	L-8	L-3	D25	W28	L16	1.5
24. CHAPUIS, BOBBY R	1689	1700	W-6	L14	L-3	L17	D27	1.5
25. EDWARDS, LEE	1666	1654	L15	L17	D23	L26	W28	1.5
26. MELVIN, BILL	1748	1724	L14	L-6	L22	W25	L18	1.0
27. SMITH, BRIAN D	1631	1625	D13	L10	L-7	L19	D24	1.0
28. TAYLOR, JEFF B	1614	1582	D10	L13	L21	L23	L25	5

# MUSIC CITY GRAND PRIX SECTION II

PLAYER	PRE RTNG	POST RTNG	1	2	3	4	5	TOT
1. PULLEY, ALVIN J	1543	1614	W15	W-4	W14	X--	W-5	5.0
2. MARTIN, ERIC S	1495	1556	W16	W21	L10	W-6	W-8	4.0
3. CHARNS, STUART N	1568	1583	W13	D12	L-5	W18	W11	3.5
4. WELDON, G L	1390	1462	W-5	L-1	W17	D11	W12	3.5
5. JACKSON, JAMES L	1639	1641	L-4	W15	W-3	W12	L-1	3.0
6. HALL, BILL	1577	1577	W-7	L14	W-9	L-2	W15	3.0
7. COLVIN, MARK S	1525	1516	L-6	L11	W19	W22	W14	3.0
8. SAMPSON, TOMMY E	1484	1499	L10	W16	W22	W14	L-2	3.0
9. WUESCHER, LES	1281	1336	L22	W20	L-6	W16	W18	3.0
10. MULTEKDEA, MONKENP	0	1924	W-8	W19	W-2	F--	U--	3.0
11. FISCHER, BEN	1535/4	1508	L14	W-7	W21	D-4	L-3	2.5
12. LANGLEY, PATRICK D	1432	1452	W17	D-3	W18	L-5	L-4	2.5
13. GREEN, GRAYSON	1403	1366	L-3	L17	L16	B--	W19	2.0
14. ORGAIN, WILLIAM H	1369	1392	W11	W-6	L-1	L-8	L-7	2.0
15. BRYANT, DENNIS W	1358	1356	L-1	L-5	B--	W17	L-6	2.0
16. BUCKNER, JOHN S	1324/8	1360	L-2	L-8	W13	L-9	W21	2.0
17. SCHWARTZ, LEON	0	1331	L12	W13	L-4	L15	W22	2.0
18. WHITE, MICHAEL W	1502	1453	D19	W22	L12	L-3	L-9	1.5
19. KOZEL, MICHAEL	1187/8	1264	D18	L10	L-7	W20	L13	1.5
20. LYNN, BOBBY J	1509	1447	L21	L-9	U--	L19	B--	1.0
21. PASCHALL, JOEL K	1335	1329	W20	L-2	L11	U--	L16	1.0
22. CAREY, KATE B	1229	1226	W-9	L18	L-8	L-7	L17	1.0

# TENNESSEE POSTAL CHESS with KENT MEADOWS

Bruce Stearns and Jack Smith have each won their last remaining game with Bryant Penuel to tie for 2nd-3rd place in the now-completed 1980 Finals. Each of them wins \$12.00. Your friend and humble narrator won \$24.00

TC-5-83 lacks one entry from completion. The prize fund for the '83 championship is now \$114.00, and one more entry will bring it to \$120.00. If you want to win money, or even if you just like to slaughter your opponents (you sadist, you!), send \$6.00 (\$4.00 more if not a TCA member) to: Kent Meadows, 206 30th Ave. N., Nashville, TN 37203. You play six games with three other players—two games versus each (one white, one black). All entries are returned as prizes in the finals. You qualify for the finals by scoring four points or more in six games, and entry in more than one section is permitted. Enter today! You'll be glad ya did!

## 1980 FINALS

1. Kent Meadows	XXX	1½	1½	½½	11	6
2-3. Jack Smith	½0	XXX	10	11	11	5½
2-3. Bruce Stearns	½0	10	XXX	11	11	5½
4. Bryant Penuel	½½	00	00	XXX	10	2
5. Larry Ousley	00	00	00	01	XXX	1

**Results:** TC-F-80; Stearns, Smith 1 Penuel; TC-3-82; Inman, Irwin 1 Green, Inman 1 Irwin. TC-2-83: E.E. Jones 1½, Edwards ½; E.E. Jones 2 G'Fellers; Edwards 1 G' Fellers. TC-3-83: Irwin 1 Lewis.

**Entries:** Otto Menzel, Bill Irwin, Grayson Green.

## RATINGS

Bowman	400	Lewis	645
Burnett	1084	McElhaney	400
Edwards	599	Meadows	716
G'Fellers	557	Menzel	595
Green	385	Ousley	576
Inman	758	Penuel	493
Irwin	614	Smith	813
Ishee	662	Stearns	806
Jones, E.	742	Teague	400
Jones, J.	937	Weldon	400

## POSTAL GAMES OF THE MONTH

This month we have a game submitted by Lewis Inman, who has just qualified for TC-F-82. We also have a non-Tennessee postal game by Rick Herbers that is typical of Rick's "quiet" style.

**Lewis Inman-Grayson Green TC-3-82**  
1. e4 e5; 2. Nf3 Nc6; 3. Bb5 a6; 4. Ba4 Nf6; 5. 0-0 Be7; 6. Re1 b5; 7. Bb3 d6; 8. c3 h6; 9. h3 0-0; 10. d4 ed?; 11. cd Bb7; 12. Nbd2! Nh7; 13. Nf1 Na5; 14. Bc2 Ng5; 15. Ng3 d5; 16. Nxe5 Bxe5; 17. e5! Bc8; 18. Qd3 g6; 19. f4 Bh4; 20. f5 Bxf5; 21. Nxf5 Bxe1; 22. Nxe6 Kg7; 23. Nxf7! Rxf7; 24. Qxg6+ Kf8; 25. Bh6+ Kg7; 26. Qg8+ 1-0 (26....Ke7; 27. Bg5+)

### Rocco Marco-Rick Herbers Latvian Gambit

1. e4 e5; 2. Nf3 f5; 3. Nxe5 Qf6; 4. d4 d6; 5. Nc4 fe; 6. Be2 d5; 7. Ne3 c6; 8. 0-0 Bd6; 9. f3 Qh4; 10. g3 Bxg3; 11. hg Qxg 3+; 12. Ng2 Bh3; 13. Rf2 Nf6; 14. Bf4 Qg6; 15. fe 0-0; 16. Nc3 Nxe4; 17. Nxe4 Rxf4!; 18. Bh5 Rxf2!; 19. Bxg6 Rxe2+ 20. Kh1 Rxe6; 21. Ne5 b6; 22. Qe2! Rf6; 23. Qe7 Nd7; 24. Nxd7 Rf7; 25. Nf6+ Rxf6; 26. Qb7 Raf8; 27. Rg1 g6; 28. Qxa7 b5; 29. Re1 Bf5; 30. Re2 Be4+; 31. Kh2 Rf1; 32. Qc7? Rh1+; 33. Kg3 Rf3+ 0-1

## Scholastic Chess with Patrick Burdick

With the Tennessee Open now history, congratulations are in order for Ron Burnett of Nashville, the State's Junior Champion. Ron won the title with his sixth-round victory over Chris Chambers of Knoxville. Both players had entered the last game 3 and 2. Chris' performance was also very commendable in that all six of his opponents were rated above 2100.

At the Director's meeting held at the open, several items of interest to scholastic organizers were decided:

First, the site for the Tennessee Scholastics will be rotated among the three regions of the state from year to year. This February, the site will be Crossville. Second, the scholastics will be held in eight sections: a championship and novice section for each age group. (Primary, Elementary, Junior High, Senior High). In addition, for first time tournament players, USCF and TCA dues will be optional for the novice entrants. Third, the top ten lists will no longer list provisionally rated players. This decision is consistent with U.S.C.F. policy as regards its "Top 50" scholastic lists, and will become effective with the next issue of the TCN.

This issue's ideas come from a game played in the Crossville summer open. Chris Lax, who is in fifth grade this fall and among the state's strongest elementary players, had just defeated a Category I player in the third round, and came gunning for me.

June, 1983  
Lax (1500) P. Burdick (1689)  
English

1. e4 Nf6 2. Nc3 e6 3. g3 Bb4 4. Bg2 c5 5. d3 Bxc3 6. bxc3 e5 7. e4 d6 8. Ne2 Nbd7 9. 0-0 Nf8 10. Bg5 h6 11. Bxf6 Qxf6 12. f4 Bg4 I wanted to trade the white (BAD) bishop because the white

Among the nation's best young players are the following Tennessee students as listed in the September, 1983 rating supplement. Congratulations!

<b>Age 15-16</b>		
Ron Burnett	2155	7th
Chuck Lovingood	1975	32nd

<b>Age 14-15</b>		
Chris Loyless	1833	14th
Travis Parham	1686	39th

<b>Age 11-12</b>		
Gus Lipman	1553	29th
Shane Day	1474	46th

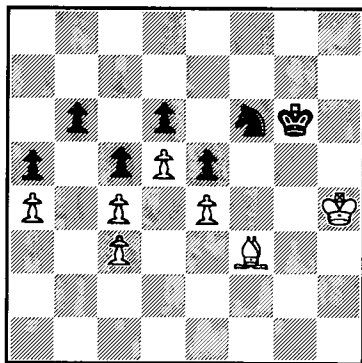
<b>Age 9-10</b>		
Chris Lax	1537	3rd
Ian Wright	1423	11th
Chuck Hamlett	1335	19th
Jason Wilkerson	1294	27th
Mark Burdick	1255	26th
Jason Balough	1241	42nd

<b>Age 8 and under</b>		
Charles Smith	1354	4th
Oliver Tai	1320	5th
Jason White	1223	10th
Jimmy Day	1040	24th
Mike Dieringer	910	30th

*pawns are blocked on white squares: I felt that a knight would be better in an end game than a white-squared bishop*  
13. f5 Bxe2 14. Qxe2 Nd7 15. Rfbl b6 16. a4 a5 17. Rb5 Kd8 18. Qg4 Kc7 19. Qh4 Qg5 20. Oxe5 hxe5 21. h3 Nf6 22. g4 Rab8 23. Kf2 Nd7 24. Ke3 Rh6 25. d4 Kc6 26. Rabl Kc7 27. d5 Rf8 28. Kf3 Rb8 29. Kg3 g6?? I thought I would open it up: grossly miscalculated. 30. fxg6 Rxe6 31. h4 Nf6 32. h5 Rh6 33. Rf1 Rf8 34. Rf5 Rg8 35. Rbl Rg7 36. Rbfl Nd7 37. Rxf7 Rxf7 Black is crushed 38. Rxf7 Kd8 39. Rg7 Ke8 40. Rxe5 Kf8 41. Rg6?? Look how this allows black to double the pawns on the g-file. The pawns were very strong as connected passed pawns. White should have played moves like 41. Rf5+... 42. Kh4... 43.

Bh3... 44. ...g5. but as played, the Black King blockades and White's bishop cannot make progress. 41. ... Rxg6 42. hxxg6 Kg7 43. Kh4 Kxg6 44. g5. Nf8 45. Bf3 Nh7 46. Bh5+ Kg7 47. g6 Nf6! White is trying to force a win out of a drawn position. Always unwise. If White had play on the Queen side, his strategy might have value. But note that all Black's pawns are on squares safe from the Bishop. 48. Bf3 Kxg6 Now it is White who is cramped for space and on the defensive. He must now play to draw by exchanging his bishop for the Knight and then gaining opposition. For example: 49. Kg3 Nh5 50. Bxh5 Kh5 51. Kh3 draw 49. Kh3 Kg5 50. Kg3 Nh7 51. Bh1 Nf8 52. Kf3 Ng6 53. Ke3 Kg4 54. Ke2 Nf4+ 55. Ke3 Kg3 56. Kd2 Kf2 57. Kc2 Nh5 58. Kd2 Ng3 59. Kd3 Nxxh1 and White went on to win.

Lets go back again to the position after 48. ... Kxg6:



My analysis after the game convinced me that only Black has winning chances now.

See if you can find the correct defense for White from this position, and mail it to me for publication in our next issue. Send your name, age, rating and address. All correct solutions from those under 20 years will be entered in a drawing for a prize.

## JOHN HURT REPLIES. . .

John Hurt calls our attention to Kenny Thomas' review of *The Sicilian Wing Gambit* which appeared on pp. 6-7 of TCN, August-September 1983.



Thanks for the review of "The Sicilian Wing Gambit" in your last issue. Kenny did a good job.

Regarding the suggestion in (2) line 27, 8..Nd4 was not my "Pawn Grabbing" move. It is from Santasiere's analysis.

After 8...Ne4 9 Be4 Bd6 10 Qc2 prevents castling, gives better development, opens lines with center control that is worth the pawn which black may not be able to hold.

In (3) Thomas says 3 a3 is "main line." I do not say so. Santasiere considers 3 c4 the main line. Koltanowski, Bronstein & others play 3 d4. Still others prefer the delayed wing gambit.

In line 58, note 1, Thomas says I give 8 Na3 as better than 8 Ra3. I did not.

He is right about line 78 that 21 Nb7 is a mistake. 21 Re1 is at least equal for white.

Line 79, note 7 is a game Hurt-Middleton, 1-0.

I agree that in note 3, the suggested 14 Rh4 is not good.

I have a few copies for sale.

Thanks again.

John Hurt

## COMING ATTRACTIONS

DEC. 3-4 1983 Crossville Scholastics. 6-SS, 40 1. Martin JHS. Stanley St., Crossville, TN 38555. Open to all school students. 4 sections: HS, open to grades 12 below. EF: \$6, if mailed by 11/28. Trophies to top 10, top 11, 111, IV, V, VI, Unr., top 5 teams. \$575-50-25 to top 3 TN teams for expenses to TN Scholastics. JHS, open to grades 9 below. EF: \$5, if mailed by 11/28. Trophies to top 10, top 11, 111, IV, V, VI, Unr., top 5 teams. \$575-50-25 to top 3 TN teams for expenses to TN Scholastics. Elementary, open to grades 6 below. EF: \$4, if mailed by 11/28. Trophies to top 10, top 11, 111, IV, V, VI, Unr., top 5 teams. \$575-50-25 to top 3 TN teams for expenses to TN Scholastics. Reg. Friday only: players meeting, 8 a.m. Sat., Rds. 8:30-12:30-7, 8-12 (CST). Primary, 5-SS, 30/30, Saturday only, open to grades 3/below. EF: \$3, if mailed by 11/28. Trophies to top 10, top 11, 111, IV, V, VI, Unr., top 5 teams. \$5 50 to top TN team for expenses to TN Scholastics. Rd. 1 at 8:30 a.m. All, EF \$5 more at site. ST \$4 req. of TN students. Teams must have at least 4 from same school. No school may win more than one team trophy per section, top 4 scores added for team score. Team members will not be paired against each other. HR: Heritage Inn, P.O. Box 581, Crossville, TN 38555; (615) 484-9505, \$27.50, any number in room. Ent: Harry Sabine, P.O. Box 381, Crossville, TN 38555, (615) 484-9593 or 484-4878. Free sleeping bag accommodations if requested in advance. NS, NC.

### NOV 26-27

24th Annual Mid-South Open. 5-SS, 40/100, Rodeway Inn-Medical Center, 889 Union, Memphis, TN 38104. \$5 4,000G. 2 sections: Open \$5G: 800-400-300, CM, Cat. 1 each 200-100. Reserve, open to under 1800 or Unr. \$5G: 600-300-200, Cat. 111, IV below each 200-100, Unr. 125-75 (Unr. eligible only for Unr. prizes or top prizes in Open section). Both, EF: \$40, in advance: \$35 at site. ST \$4. No checks accepted at site! Masters' entry deducted from winnings. Reg. 7:30-9:30 a.m., Rds. 10-3-8, 10-3. HR: \$20-25, special rtes (901) 526-8481. Ent: Jim Gallagher, 4611 Boeingshire, Memphis, TN 38116, (901) 398-6370, I.S. NC. Grand Prix Points Available: 30

### DEC 31-JAN 1

7th Fairfield Glade Open. 5-SS, 50 2, Fairfield Glade resort, Peavine Rd., Crossville, TN \$5G: 2,500, 3 sections: Open, EF: \$25 if rec'd by 12/26. \$5G: 500-200-100, CM, 1 below 200-100-50; trophies to 1st, top CM, 1 below. Amateur, open to below 1800. EF: \$20, if rec'd by 12/26. \$5G: 200-75-50, 111 below 150-75-50; trophies to 1st, top 111 below. Novice open to below 1400. EF: \$15, if rec'd by 12/26. \$5 100-75-50, V 75, VI 50, Unr. 50; trophies to 1st, V, VI, unr. (Unr. eligible for Unr. prize only). All, special \$5 EF for all juniors, (current youth or participating youth member of USCF), may win trophies only. EF \$5 more at site. ST \$4. Optional trophies available. Reg. 7-9 p.m. 12/30 or 7-8 a.m. 12/31, Rds. 9-2-7, 9-2 CST. HR: Fairfield Glade Lodge; \$28; Villa Parlor (kitchen 2 dbl. beds) \$40, VP & one bedroom \$60, VP & 2 bedrooms \$80. Ent: Harry Sabine, P.O. Box 381, Crossville, TN 38555, (615) 484-9593 or (615) 484-4878, I.S. C. Grand Prix Points Available: 15

NOV 5-6 Music City Fall Open 1983. 5-SS, 50 2, Hilton Airport Inn, One International Plaza, Nashville, TN 37217. EF: \$20, if rec'd by 11/1; \$25 at site. ST \$4. \$5 (360 b 35): 100-60-40, Cat. 1, 11, 111, IV below Unr. each 40 Reg. 8-9 a.m., Rds. 9-30-2-7, 9-2. Ent: Music City Chess Assn., c/o Peter Lahde, 2609 Sailboat Ct., Nashville, TN 37217. NS, NC.

24th ANNUAL  
THE MID-SOUTH  
OPEN

\$4000  
GUARANTEED  
30 GRAND PRIX POINTS

november  
26-27

RODEWAY INN  
889 UNION  
MEMPHIS, TN.  
38104

ENTRIES: JAMES GALLAGHER  
4611 BOEINGSHIRE, MEMPHIS,  
TENNESSEE, 38116. 901 398-6370