

October - November 1988

TENNESSEE Chess News

1988 Music City Grand Prix



TENNESSEE CHESS NEWS

Tennessee Chess News is the official bi-monthly publication of the Tennessee Chess Assn. TCA annual dues are \$6.00 for regular membership and \$4.00 for student membership. Additional members of a family may join for 50¢, but only one issue of TCN will be mailed. All memberships expire August 31. Patron memberships are available for \$25.00 per year, with said year beginning with date of payment of dues. These memberships are tax-deductible and help support TCA. These memberships also receive TCN via 1st class mail and their names are printed in each issue. If anyone has already paid their regular fee, but wishes to switch to patron, they may do so by paying an additional \$19.00 (or \$21.00 for students). After April 1, 1989 you may join the TCA for \$6.00 or pay \$9.00 to join until 8/31/90.

TCA Board of Directors 1988-89

PRESIDENT: **Bill Orgain**

710 West College, #8
P.O. Box 366
Dickson, TN 37055

H: (615) 446-0521 O: (615) 446-2814

VICE-PRESIDENT: **Mark Ishee**

720 Shenandoah Drive
P.O. Box 1911
Brentwood, TN 37027
(615) 373-4814

SECRETARY-TREASURER: **Harry D. Sabine**

311 South Main Street
P.O. Box 381
Crossville, TN 38557

H: (615) 484-4878 O: (615) 484-9593

TCN EDITOR: **Mark J. Schindler**

2110 Pea Ridge Road
Clarksville, TN 37040
P.O. Box 725

St. Bethlehem, TN 37155
H: (615) 552-2608 O: (615) 648-2608

POSTAL CHESS COORDINATOR: **Lee Edwards**

406 Stahlman Bldg.
211 Union Street
Nashville, TN 37201
3214 McGavock Pike
Nashville, TN 37214

H: (615) 883-7522 O: (615) 726-3395

TOURNAMENT COORDINATOR: **Richard Igou**

400 Rhodora Court, Apt. F
Knoxville, TN 37923

H: (615) 690-6810 O: (615) 574-1839

SCHOLASTIC COORDINATOR: **Curt Jones**

8182 Creekside Circle South
Cordova, TN 38018

H: (901) 757-8955 O: (901) 756-2000

DIRECTOR-EAST TN: **Chester C. Crowley**

109 Iroquois Lane
Clinton, TN 37716

H: (615) 457-7965 O: (615) 457-3100

DIRECTOR-MID TN: **F. Morris Lewis**

P.O. Box 121886
Nashville, TN 37212

H: (615) 297-2524 O: (615) 329-0031

DIRECTOR-WEST TN: **Paul A. Linxwiler**

5980 Southampton
Memphis, TN 38119

(901) 683-5860

Editorial Staff

Mark J. Schindler Editor

Roger E. Viles Asst. Editor, E-TN.

6109 Foot Mineral Lane
Lot #58
Knoxville, TN 37923
(615) 693-3434

Joey Burton Asst. Editor, Plateau

205 Long Street
Sunny Acres
Crossville, TN 38555
(615) 484-6408

Mark Ishee Asst. Editor, Mid-TN.

P.O. Box 1911
Brentwood, TN 37027
(615) 373-4814

Paul Linxwiler Asst. Editor, W-TN.

5980 Southampton
Memphis, TN 38119
(901) 683-5860

Affiliates

This section contains clubs that are affiliated with the TCA across the state. Since this magazine is contained in many libraries, we hope this section will serve as a guide to new people in our state or area as to the location of the nearest chess club to their area. If you wish your club listed, please send the club name, address, point of contact, and phone number to the editor.

East Tennessee Chess Club

Tom Cooper
513 Merman Road
Kingsport, TN 37663

Contact: Roger Counts (615) 323-2590
Tom Cooper (615) 239-4800

Blount County Chess Club

Larry G. Thomas
P.O. Box 688
Alcoa, TN 37701
(615) 983-1977

Cumberland County Chess Club

Meets Wednesdays - 7:00 p.m.

Harry D. Sabine
P.O. Box 381
Crossville, TN 38557
(615) 484-9593

Greater Knoxville Chess Club

Richard Igou
400 Rhodora Court, Apt. F
Knoxville, TN 37923

The Fugitive Chess Club

"Home of Mark Ishee"
720 Shenandoah Drive
P.O. Box 1911
Brentwood, TN 37027
(615) 373-4814 or 373-0326

Clinton Chess Club

Chester Crowley
109 Iroquois Lane
Clinton, TN 37716
(615) 457-7965

Nashville Chess Club

Meets Thursdays - 7:30 p.m.
Peter P. Lahde
Arlington Methodist Church
1360 Murfreesboro Road
Nashville, TN 37217
(615) 361-4588

Dickson County Scholastic Chess Club

P.O. Box 366
Dickson, TN 37055
(615) 446-0521

Dickson County Chess Club

Bill Orgain
710 W. College, #8
P.O. Box 366
Dickson, TN 37055

Patron Members

Harry D. Sabine
Todd T. Shimabukuro
Clinton H. Pearson, Jr.
Richard Igou
Thomas A. Cooper
Bill Orgain
Louis M. Groeniger
Peter P. Lahde
Joseph Sentef, Jr.
Joseph G. Sullivan, Jr.
Mark Ishee
Clifford Anderson
Brian D. Lentz
Chester Crowley
Lee Edwards
Frank W. Larimer
Oliver Tai
Larry G. Thomas
Dr. D. Bennett Nuckols
Bill Harvill
Tony C. Estes
Wayne W. Tolbert
Jerry Wheeler

Tournament Announcements

We print any tournaments in our "Coming Attractions" section for free. All ads for this section must be in Richard Igou's hands no later than December 3, 1988 for insertion in the January issue of TCN. We will gladly print tournament announcements from other states provided that they meet this deadline. Richard Igou's address is: 400 Rhodora Ct., Apt. F, Knoxville, TN 37923

Address Changes & Dues

Send ALL address changes and dues to:

Harry D. Sabine
P.O. Box 381
Crossville, TN 38557

Advertising Rates

Full Page	\$40
½ Page	\$20
⅓ Page	\$14
¼ Page	\$10
⅙ Page	\$7
Pre-printed flyers for insert (must be 8½ x 11, 60# Offset, delivered flat)	\$15

EDITORIAL

Autumn seems to have arrived early here in Middle Tennessee and with it, thoughts of coming fall events begin to surface. I personally am looking forward to Fairfield Glade this December - - - possibly to avenge my own poor showing at the 42nd Tennessee Open. Nevertheless, all of us need to remember that the only way to progress is through innovative thought and the willingness on one's part to risk their precious USCF rating in the process.

I have just passed the first milestone in my tenure as your editor of Tennessee Chess News. The experience has been challenging and my reception at the General Membership meeting on September 4th was heartwarming. I sincerely appreciate your support and although we publish the TCN in Clarksville, it would not be possible without the continual input of my assistant editors who do a great job covering chess from their respective regions of the state. All of us at TCN continue to stress that we are no better than the input we receive from the general membership. Keep sending in those noteworthy games!

I have on hand many back issues of Tennessee Chess News going back to 1984. I will be happy to supply current members of the Tennessee Chess Association with any back issue, while supplies last, for a donation

of \$1.00 to the Tennessee Scholastic Chess Trust for each back issue. Issues available are:

- February, March 1984
- December 1984, January 1985
- February, March 1985
- April, May 1985
- June, July 1985
- November, December 1985
- February, March 1986
- May, June, July 1986
- August, September, October 1986
- November, December 1986, January 1987
- February, March, April 1987
- May, June, July 1987
- August, September, October 1987

Please make your checks payable to the Tennessee Chess Assn. and send them to my address which appears on page 2. We really need to get behind this effort to fund the two trusts that the Board of Directors have voted to set-up. Scholastic chess is our Association's future - - - show you really care about chess, donate TODAY!

Mark J. Schindler
TCN Editor

Congratulations to our new member and newest state champion, Mr. Charles Schulien of Cleveland, Tennessee. This competitor showed remarkable form in this year's state championship, demolishing a very strong field. We look forward to his active participation in future state events!

As I begin my final year as your state association President, I feel that it is important to point out that the Tennessee Chess Association has come a long way during my tenure. We are no longer operating in the red financially; we have implemented not one, but two trust funds assuring the Association's future existence. We have had, and continue to have a DEDICATED Board of Directors who have worked diligently to improve chess in the state. Our state has hosted several NATIONAL tournaments and are now one of the LEADING associations in the United States. Attempts are being made, on every level, to put chess in every school in the state; this being especially important because we must recognize that scholastic chess is our future. Without it, our Association will wither like a flower starving for water. Our state magazine, Tennessee Chess News, has reached a level of quality heretofore unknown and is being managed in such a way that it no longer sucks the financial lifeblood out of the Association treasury, and still goes out on time! Most importantly, all this change has been accomplished through the open exchange of ideas between various members who will agree to disagree. Certainly, the goals have been the same for all of us, and while the means have not, we have behaved with dignity and understanding towards suggestions and opinions contrary to our own. All this, while many other state organizations are becoming impotent by the political turmoil which is wrecking what they have taken years to put into place. Looking back over the last three years, I feel that our cooperation is the FINEST of all our accomplishments.

Nevertheless, we still have not attained all of our goals. We will not be satisfied until Tennessee hosts \$100,000 Open Tournaments the likes of which seem to only be held in New York, California, and Pennsylvania. We shall not be satisfied until Tennessee Chess News rivals *Chess Life* and *Chess Horizons*. We will not be satisfied until major international events are brought, not only to the U.S.A., but to Tennessee as well. We will not be satisfied until we have Grandmasters-in-Residence. We will not be satisfied until our glorious game takes its rightful place alongside football, tennis, and golf. We will not be satisfied until our players are given the respect that their devotion, study, time, and sweat commands. All this will be nothing but a "pipedream" until we wake up and realize that it's not going to happen magically. We must devote our energies into the game, and this means more than showing up at tournaments and plunking down an entry fee! If you're the type of person that thinks, "Hey, that's not for me; I don't want to get involved. I just want to play. I don't want to waste my time teaching, directing, organizing or fundraising.", then you are purely and simply being a parasite. You will take and take and take, and you will give nothing back to the game. It's time to get up off our best intentions and use our God-given talents to a constructive end. No matter how dedicated our small group of workers and Directors is, they will not be able to do the job alone. Take it upon yourself to begin a chess project TODAY. Chess can use your time, talent, and money. If you have ANY suggestions, please pass them along to your nearest Board member. We must work together, or we shall surely hang like isolani.

AMEN! And now - - - back to our regularly scheduled programming.

Yours in Chess,
Bill Orgain
TCA President

1988-89 TENNESSEE TURKEY TOUR

The Tennessee Turkey Tour, (hereafter referred to as TTT), is a year-long contest to help promote the current high standards of Tennessee chess participation and competition. The 5th Annual TTT will span the period 9/6/88 through the 1989 Tennessee Open.

For a tournament to qualify as a TTT event, it must meet the following requirements:

- 1) Be USCF rated
- 2) Require TCA dues for TN residents (no other dues may be required except USCF dues).
- 3) Be an open weekend tournament in Tennessee of at least three rounds in length.
- 4) Be cleared through the TN Tournament Coordinator and advertised in the TCN tournament calendar.
- 5) A copy of the final wall chart and appropriate TTT fees must be submitted to the Tournament Coordinator within 2 weeks of the date of the tournament.

A. PRIZE FUND:

The prize fund will be formed from tournament round fees (USCF Grand Prix events - \$5/rd.; all other tournaments - \$3/rd.) and other donations. Prizes will be awarded to the top players of each class by the following percentages of the prize fund:

MASTER/EXPERT, Class A	1st - 10%
	2nd - 5%
	3rd - 3%
Class B,C,D,E	1st - 8%
	2nd - 5%
	3rd - 3%

B. CONDITIONS OF AWARDING PRIZES:

- 1) The final class standing of a player will be determined by the September 1989 USCF rating supplement.
- 2) TTT points accumulate for a player who moves up to a higher rating class, but the player remains eligible for prizes in the lower class based upon the points earned while in that class. If a player moves to a lower class, points earned in the higher class are not counted for the lower class standing, and points earned in the lower class will not be carried forward if the player moves again into a higher class.

- 3) A player may win only one prize and will be awarded the greater prize for which he or she is eligible.
- 4) Players whose USCF class designation shows a former rating 101 or more points over a prize class will not be eligible for that class prize but will be eligible for the prizes in the next higher class. Only players with permanent ratings are eligible for prizes. However, players will accumulate points during the time that their rating is provisional and those points will be credited to them in their first permanent rating class.
- 5) Players must be TCA members to accumulate and collect TTT points.
- 6) The Tournament Coordinator is responsible for compiling the class standings and awarding prizes.

C. EARNING TTT POINTS:

TCA members may earn TTT points for tournament participation and performance as follows:

- 1) Each player participating in a Tennessee-USCF Grand Prix TTT event will earn 20 TTT points; players participating in the Tennessee Open will earn 30 TTT points; and players participating in all other TTT events will earn 10 TTT points. Players must complete at least ½ of the scheduled rounds in a tournament to earn these points.
- 2) Players will be awarded additional TTT points for a positive performance result in any TTT event by the following formula: Wins minus losses times number of rounds equals performance points. Players must complete the tournament to earn any performance points. Unplayed games except for Byes or forfeit wins will be counted as losses for this calculation.

TENNESSEE TURKEY TOUR FINAL RESULTS 1987-88

by Richard Igou

MASTER / EXPERT

1st Brian D. Smith	172
2nd Len Dickerson	157
3rd Charles Schulien	152

CLASS A

1st Brian D. Lentz	150
2nd Jerry Spinrad	134
3rd Mike Spencer	130

CLASS B

1st Mike Abron	103
2nd Jay Sabine	101
3rd Kelles Tate	100

CLASS C

1st Joe Drake	126
2nd Jim Kade	105
3rd Wayne Tolbert	97

CLASS D

1st Clint Pearson	130
2nd Bill Harvill	80
3rd B.W. Guerrant	70

CLASS E and UNRATED

1st Paul Tate	80
2nd Chris Steele	60
3rd Gray Mills	40

Congratulations to ALL !!

TWO MASTERS TOP MUSIC CITY GRAND PRIX

by Peter P. Lahde

Two Masters, Charles Schulien of Cleveland, Tennessee and Stephen Tarin from North Carolina shared top honors in the Open Section of the 1988 Music City Grand Prix. They both scored 4½ points in five rounds. The draw was their individual encounter in Round 4. Third place was secured by Rich Jackson with a 4-1 score. Jackson, another North Carolinian, was undefeated as well.

This tournament was most likely the STRONGEST Music City Grand Prix with six Masters and eight Experts competing. The event attracted a total of 41 players.

The top Class A players were R.O. Mitchell of Nashville and Peter Ciarleglio of Franklin with 3½ points. The best scoring Class B player was James Manley from Alabama who had 3 points and picked up a whopping 74 rating points in the process!

The Amateur event attracted only 16 players, but an improvement of 33% over the 12 players competing in the 1987 event. The Amateur section was limited to players with a USCF rating of under 1600. Three players tied for 1st place with identical 4-1 scores. They were Wendell Morgan from Alabama, and Bill McCreery and Eric Funkhouser, both of Nashville.

Brilliance prizes were awarded in both the Open section and the Amateur section this year. The prizes were awarded to Charles Schulien in the Open and Bill McCreery in the Amateur. The judge for these awards was Master Mark Ishee, of the Fugitive Chess Club, headquartered in Brentwood, Tennessee.



Tennessee Crosstables Section



Auburndale School Championship

PLAYER	ST	RTNG	PRE					TOT	
			RTNG	1	2	3	4		5
1 HOOK, TED	TN	1353	1372	W29	W18	D-8	W-8	W20	4.5
2 KINI, VIKRAM	TN	1078	1119	W23	W46	B--	W48	U--	4.0
3 FAN, WILL	TN	1608	1620	X--	W17	W14	U--	U--	3.0
4 DAVIS, THOMAS	TN	1543	1574	W36	W15	W12	U--	U--	3.0
5 LEVATINO, ELIAN	TN	1317	1335	W49	W16	X--	U--	U--	3.0
6 ROSEN, JAY	TN	1225	1243	W21	W44	B--	U--	U--	3.0
7 DE SHAZO, TIFFANY	TN	1093/9	1170	W45	W43	W54	U--	U--	3.0
8 JENKINS, BEN	TN	1186	1212	W41	W28	D-1	L-1	U--	2.5
9 BOZOF, BRAIN A	TN	961/6	1063	W53	W24	D30	U--	U--	2.5
10 O' DANIELS, SEAN	TN	1843	1851	W58	W33	U--	U--	U--	2.0
11 COHEN, JASON	TN	1520	1530	W35	W39	U--	U--	U--	2.0
12 ALBONETTI, CHRIS	TN	1518	1510	W40	W36	L-4	U--	U--	2.0
13 KINI, VINAY	TN	1472	1489	W64	W34	U--	U--	U--	2.0
14 BALOGH, JASON	TN	1468	1471	W38	W19	L-3	U--	U--	2.0
15 BONGARD, DAN J	TN	1439	1434	W62	L-4	W40	U--	U--	2.0
16 SEAL, BRETT	TN	1245	1240	B--	L-5	W49	U--	U--	2.0
17 FOARD, JOHN	TN	1186	1206	W55	L-3	W38	U--	U--	2.0
18 THOMPSON, RYAN	TN	1151	1164	W57	L-1	W41	U--	U--	2.0
19 O' DANIELS, BRIAN	TN	1029/7	1107	W42	L14	W55	U--	U--	2.0
20 CHRISTIAN, JENNIFE	TN	1000	1028	W50	W51	U--	U--	L-1	2.0
21 REDFEARN, JOSH	TN	925/15	947	L-6	B--	W44	U--	U--	2.0
22 WUCHINA, ZEKE	TN	830/13	902	D47	W37	D27	U--	U--	2.0
23 RAO, ROHIT	TN	0	1039	L-2	B--	W46	U--	U--	2.0
24 RICE, CRAIG	TN	0	1134	W30	L-9	B--	U--	U--	2.0
25 FERRANTE, ERIC	TN	0	1000	B--	L30	W53	U--	U--	2.0
26 WELMAN, WESLEY	TN	0	1027	W52	L49	B--	U--	U--	2.0
27 ADCOCK, BUBBA	TN	0	1235	W37	D47	D22	U--	U--	2.0
28 GROSMANN, BRETT	TN	1224	1208	W56	L-8	D29	U--	U--	1.5
29 ALPERT, SEAN A	TN	1113	1122	L-1	W57	D28	U--	U--	1.5
30 GRIFFIN, HUNTER	TN	904/5	973	L24	W25	D-9	U--	U--	1.5
31 TAI, OLIVER	TN	2107	2108	W59	U--	U--	U--	U--	1.0
32 KLEIN, CRAIG	TN	1638	1640	W61	U--	U--	U--	U--	1.0
33 LLOYD, MICHAEL D	TN	1599	1597	W60	L10	U--	U--	U--	1.0
34 HORGAN, ALEC WILLI	TN	1440	1428	W65	L13	U--	U--	U--	1.0
35 ENGELBERG, PAUL	TN	1330	1322	L11	B--	U--	U--	U--	1.0
36 LEWIS, JEFF	TN	1223	1231	L-4	L12	W62	U--	U--	1.0
37 PROCTOR, RYAN	TN	1200/2	1093	L27	L22	W47	U--	U--	1.0
38 CROFT, JUSTIN	TN	1157	1147	L14	W42	L17	U--	U--	1.0
39 RAO, RATHI A	TN	1106	1103	B--	L11	U--	U--	U--	1.0
40 JUMPER, CHRIS	TN	1073	1080	L12	W62	L15	U--	U--	1.0
41 BRONSTEIN, STUART	TN	1058	1050	L-8	W56	L18	U--	U--	1.0
42 MC CORMICK, ERIC	TN	1040/7	992	L19	L38	B--	U--	U--	1.0
43 BURCH, TRACY	TN	939/3	969	W54	L-7	L45	U--	U--	1.0
44 SCOTT, KENNY T	TN	906/16	891	B--	L-6	L21	U--	U--	1.0
45 GOODWIN, MELISSA	TN	902/2	961	L-7	L54	W43	U--	U--	1.0
46 VANDY, JUSTIN	TN	900/5	831	B--	L-2	L23	U--	U--	1.0
47 LEE, DANIEL E	TN	842/6	907	D22	D27	L37	U--	U--	1.0
48 ASKEW, LILLIAN	TN	771/6	838	W66	U--	U--	L-2	U--	1.0
49 PARKER, CHRISTOPHE	TN	0	1054	L-5	W26	L16	U--	U--	1.0
50 SAMUELS, AMY	TN	0	1000	L20	W63	U--	U--	U--	1.0
51 MILES, DESIREE	TN	0	1000	W63	L20	U--	U--	U--	1.0
52 DAVIS, JON	TN	0	600	L26	B--	U--	U--	U--	1.0
53 WATSON, BRETT	TN	0	734	L-9	B--	L25	U--	U--	1.0
54 LE MAR, KAREN	TN	0	1000	L43	W45	L-7	U--	U--	1.0
55 HOOVER, WINSTON	TN	0	838	L17	B--	L19	U--	U--	1.0
56 BOMAR, KRIS	TN	908	899	L28	L41	D57	U--	U--	.5
57 SANDMEL, TOMMY	TN	0	821	L18	L29	D56	U--	U--	.5
58 LOSKOVITZ, NEAL	TN	1327	1325	L10	U--	U--	U--	U--	.0
59 CSEKO, PAUL	TN	1316	1316	L31	U--	U--	U--	U--	.0
60 BRADLEY, BRAD	TN	1288	1283	L33	U--	U--	U--	U--	.0

Auburndale School Championship (con't)

61 LEE, SAM	TN	1205	1203	L32	U--	U--	U--	U--	.0
62 GARNER, JAMES	TN	1126/4	1006	L15	L40	L36	U--	U--	.0
63 HAYES, MARY	TN	0	600	L51	L50	U--	U--	U--	.0
64 PARHAM, RODNEY	TN	0	1072	L13	U--	U--	U--	U--	.0
65 COOK, CHRIS	TN	0	1040	L34	U--	U--	U--	U--	.0
66 SANDERS, LAUREN	TN	0	639	L48	U--	U--	U--	U--	.0

Greater Memphis Open

PLAYER	ST	RTNG	PRE				TOT	
			RTNG	1	2	3		4
1 HERBERS, CHARLES R	TN	2073	2070	W-4	W-6	D-3	D-2	3.0
2 GARTH, KEITH	TN	1892	1918	W-8	D-3	W-6	D-1	3.0
3 PYLANT, GARY M	TN	2009	2004	W-5	D-2	D-1	D-4	2.5
4 STENGEL, R ANTHONY	TN	1776	1806	L-1	W-7	W-5	D-3	2.5
5 MILLS, CALVIN	TN	1792	1783	L-3	W-8	L-4	W-7	2.0
6 ILFELD, DAVID N	TN	1720	1728	W-7	L-1	L-2	W-8	2.0
7 THRASH, JAMES L	TN	1655/10	1587	L-6	L-4	D-8	L-5	.5
8 MITCHELL, JAMES H	TN	1585	1563	L-2	L-5	D-7	L-6	.5

Greater Memphis Novice

PLAYER	ST	RTNG	PRE				TOT	
			RTNG	1	2	3		4
1 MAYBERRY, JOHN H	TN	1490	1523	W11	D-6	W-8	W-5	3.5
2 PRIZINA, JAMES E	TN	1527	1549	W10	W-4	L-5	W-8	3.0
3 HAMILTON, DAVID	AR	1515	1521	L-6	W16	W-9	W-7	3.0
4 JIMERSON, WILLIE L	TN	1421/11	1458	W14	L-2	W-6	W11	3.0
5 BOLDT, ED D	TN	0	1659	W-9	W-7	W-2	L-1	3.0
6 ROBBINS, RUSSELL	TN	1342	1387	W-3	D-1	L-4	W13	2.5
7 DANGEAU, CHEYENNE	TN	1488	1484	W12	L-5	W15	L-3	2.0
8 WEEKS, W. ROBERT	TN	1439/5	1402	W18	W15	L-1	L-2	2.0
9 PREST, CHARLES	TN	1330	1340	L-5	W17	L-3	W16	2.0
10 SINIS, BILL	TN	1188	1211	L-2	W12	L11	W15	2.0
11 MILLS, GRAY	TN	1137	1161	L-1	W18	W10	L-4	2.0
12 BYNUM, BRUCE E	AR	0	1323	L-7	L10	W14	W17	2.0
13 SINIS, HARRY	TN	1475	1437	L15	D14	W16	L-6	1.5
14 ILFELD, ETAN J.	TN	1438	1411	L-4	D13	L12	W18	1.5
15 WILLIAMS, JEREMY J	TN	1352	1327	W13	L-8	L-7	L10	1.0
16 REAMES, TORRE	TN	1321/12	1265	B--	L-3	L13	L-9	1.0
17 SHIELDS, JEFFERY J	TN	1179	1170	U--	L-9	W18	L12	1.0
18 SAMS, JON PAUL	TN	1057	1027	L-8	L11	L17	L14	.0

Knoxville May Club Swiss

PLAYER	ST	RTNG	PRE				TOT	
			RTNG	1	2	3		4
1 MADDIGAN, CHARLES	TN	2385	2384	W10	W-5	D-2	W-4	3.5
2 DICKERSON, LEONARD	TN	2165	2186	W-8	W-4	D-1	W-5	3.5
3 VILES, ROGER E	TN	1773	1768	L-6	W-7	W-9	W10	3.0
4 ANTHONY, JOHN	TN	2031	2021	W-7	L-2	W10	L-1	2.0
5 WATSON, JIMMY T	TN	1979	1972	W-9	L-1	W-6	L-2	2.0
6 FINUCANE, MICHAEL	TN	0	1717	W-3	L10	L-5	W-8	2.0
7 DRAKE, JOE	TN	1524	1513	L-4	L-3	L-8	W-9	1.0
8 GROENIGER, LOUIS M	TN	1518	1501	L-2	L-9	W-7	L-6	1.0
9 STENSAKER, LEE A.	TN	1423/9	1446	L-5	W-8	L-3	L-7	1.0
10 FINUCANE, DANIEL	TN	0	1739	L-1	W-6	L-4	L-3	1.0

Blount County Spring Open

PLAYER	PRE		POST				TOT	
	ST	RTNG	RTNG	1	2	3		4
1 MAYHEW, MATT G	TN	1859	1902	W11	W-6	W-4	U--	3.0
2 DICKERSON, LEONARD	TN	2179	2175	W-5	D-3	W-8	U--	2.5
3 THOMAS, LARRY G	TN	1893	1921	W13	D-2	W-7	U--	2.5
4 SPENCER, MICHAEL E	TN	2018	2009	W-9	W-7	L-1	U--	2.0
5 SWANN, RODGER M	TN	1680	1684	L-2	W14	W13	U--	2.0
6 WARD, JIMMY L	TN	0	1944	W-8	L-1	W12	U--	2.0
7 ISBILL, WALTER H	TN	1892	1867	W14	L-4	L-3	U--	1.0
8 PRESSWOOD, ROBERT	TN	1808	1797	L-6	W11	L-2	U--	1.0
9 TATE, KELLES	TN	1675	1664	L-4	L12	W14	U--	1.0
10 HYDZIK, ROBERT J	TN	1565	1580	U--	U--	U--	W11	1.0
11 GROENIGER, LOUIS M	TN	1543	1518	L-1	L-8	B--	L10	1.0
12 DELEANU, MICHAEL J	TN	1505/4	1592	U--	W-9	L-6	U--	1.0
13 TATE, PAUL R	TN	1176	1174	L-3	B--	L-5	U--	1.0
14 MEEHAN, KAYVON	TN	0	1349	L-7	L-5	L-9	U--	.0

Memphis Solid Gold Tourney

PLAYER	PRE		POST				TOT
	ST	RTNG	RTNG	1	2	3	
1 PYLANT, GARY M	TN	1996	2009	W14	W11	W-4	3.0
2 WRIGHT, JAMES A	TN	1921	1910	D13	W-7	X--	2.5
3 JONES, JAMES E	TN	2111	2089	W-9	L-4	W12	2.0
4 O' DANIELS, SEAN	TN	1822	1843	W-8	W-3	L-1	2.0
5 CROCKETT, MICHAEL	TN	1566	1580	L10	W13	W11	2.0
6 BARTON, MIKE D	TN	1932	1925	D-7	W10	F--	1.5
7 KAY, TODD M	TN	1561	1591	D-6	L-2	W10	1.5
8 ILFELD, ETAN J.	TN	1428	1438	L-4	D-9	W14	1.5
9 WEIS, LOUIS T	TN	1400	1417	L-3	D-8	W13	1.5
10 THRASH, JAMES L	TN	1698/7	1655	W-5	L-6	L-7	1.0
11 MITCHELL, JAMES H	TN	1596	1585	W12	L-1	L-5	1.0
12 PEETE, BARRY C.	TN	1355/8	1412	L11	W14	L-3	1.0
13 DAVIE, WILLIAMS S	TN	1428/3	1396	D-2	L-5	L-9	.5
14 WILLIAMS, JEREMY J	TN	1380	1352	L-1	L12	L-8	.0

B.B. Jefferson Memorial Tourney

PLAYER	PRE		POST				TOT	
	ST	RTNG	RTNG	1	2	3		4
1 JONES, JAMES E	TN	2089	2111	W-6	W-5	W-2	W-4	4.0
2 PYLANT, GARY M	TN	2004	2005	W-8	X--	L-1	W-5	3.0
3 HERBERS, CHARLES R	TN	2070	2038	W10	D-4	L-5	W-8	2.5
4 THRASH, JAMES L	TN	1587/14	1632	W11	D-3	W10	L-1	2.5
5 WRIGHT, JAMES A	TN	1910	1914	W-9	L-1	W-3	L-2	2.0
6 CROCKETT, MICHAEL	TN	1580	1562	L-1	L-9	W12	W10	2.0
7 MITCHELL, JAMES H	TN	1563	1525	L12	L-8	W11	W-9	2.0
8 PEETE, BARRY C.	TN	1412/11	1473	L-2	W-7	D-9	L-3	1.5
9 WILLIAMS, JEREMY J	TN	1327	1354	L-5	W-6	D-8	L-7	1.5
10 WEIS, LOUIS T	TN	1417	1410	L-3	W11	L-4	L-6	1.0
11 ADAMS, BRIAN	TN	1190	1179	L-4	L10	L-7	F--	.0

Knox County Action Quad I

PLAYER	PRE		POST				TOT	
	ST	RTNG	RTNG	1	2	3		4
1 TRUESDEL, L DAVE	TN	2150	2168	*	W	W	W	3.0
2 LENTZ, BRIAN D	TN	1945	1971	L	*	W	W	2.0
3 WATSON, BRADLEY S	TN	1943	1937	L	L	*	W	1.0
4 WATSON, JIMMY T	TN	1972	1929	L	L	L	*	.0

Knox County Action Quad II

PLAYER	PRE		POST				TOT	
	ST	RTNG	RTNG	1	2	3		4
1 VELAZQUEZ, JOSE	TN	1713	1762	*	W	W	W	3.0
2 JORDAN, PAUL J	TN	1882	1857	L	*	D	W	1.5
3 VILES, ROGER E	TN	1768	1761	L	D	*	W	1.5
4 DRAKE, JOE	TN	1513	1496	L	L	L	*	.0

Knox County Action Quad III

PLAYER	PRE		POST				TOT	
	ST	RTNG	RTNG	1	2	3		4
1 STENSAKER, LEE A.	TN	1446/13	1475	*	W	W	W	3.0
2 TOLBERT, WAYNE	TN	1435	1435	L	*	W	W	2.0
3 WILLIAMS, SR LARRY	TN	1257/5	1146	L	L	*	L	.0
4		925/0		L	L	W	*	.

Linda's Quad

PLAYER	PRE		POST				TOT	
	ST	RTNG	RTNG	1	2	3		4
1 MILLS, CALVIN	TN	1783	1792	*	W	W	W	3.0
2 PRIZINA, JAMES E	TN	1549	1549	L	*	W	W	2.0
3 MILLS, GRAY	TN	1161	1174	L	L	*	W	1.0
4 FIEDLER, BRIAN	TN	1214/10	1187	L	L	L	*	.0

Covington Quad II

PLAYER	PRE		POST				TOT	
	ST	RTNG	RTNG	1	2	3		4
1 MILLS, CALVIN	TN	1792	1805	*	W	W	W	3.0
2 PRIZINA, JAMES E	TN	1549	1564	L	*	W	W	2.0
3 CAMPBELL, SR FRED	TN	0	1451	L	L	*	W	1.0
4 GATLIN, SHANNON	TN	1410	1383	L	L	L	*	.0

Cumberland County Summer Open I

PLAYER	ST	PRE		POST		1	2	3	4	TOT
		RTNG	RTNG	RTNG	RTNG					
1 SCHULIEN, CHARLES	OH	2454	2456	W12	W21	W14	W-4			4.0
2 SMITH, BRIAN D	TN	2117	2108	W18	W-6	L-4	W10			3.0
3 CARPENTER, RICHARD	KY	2092	2087	W-7	L10	W-5	W-8			3.0
4 OSHMAN, MARK A	TN	1914	1950	W13	W16	W-2	L-1			3.0
5 HODGES, WYMON	GA	1843	1863	W26	W22	L-3	W15			3.0
6 OUSLEY, LARRY J	TN	1825	1849	W24	L-2	W17	W16			3.0
7 CRAWLEY, DON	KY	1673	1718	L-3	W26	W22	W14			3.0
8 SPENCER, MICHAEL E	TN	2009	2002	W17	W11	D10	L-3			2.5
9 LENTZ, BRIAN D	TN	1970	1945	L16	W19	W18	D11			2.5
10 PEDDIESON, JOHN	TN	1849	1880	W19	W-3	D-8	L-2			2.5
11 PRESSWOOD, ROBERT	TN	1797	1803	W20	L-8	W25	D-9			2.5
12 MC HENRY, TIM	TN	1782	1794	L-1	D13	W23	W22			2.5
13 HYDZIK, ROBERT J	TN	1580	1625	L-4	D12	W28	W21			2.5
14 MAYHEW, MATT G	TN	1902	1892	W28	W15	L-1	L-7			2.0
15 ORGAIN, WILLIAM H	TN	1826	1805	W25	L14	W24	L-5			2.0
16 TURNER, KENNETH GR	MS	1750	1774	W-9	L-4	W21	L-6			2.0
17 OWENS, JOHNNY	KY	1709	1703	L-0	W20	L-6	W25			2.0
18 SWANN, RODGER M	TN	1684	1691	L-2	W27	L-9	W24			2.0
19 LONG, STEPHEN	MS	1512	1517	L10	L-9	D26	W27			1.5
20 KADE, JIM	TN	1420	1431	L11	L17	D27	W26			1.5
21 HEADRICK, MIKE	TN	1850	1805	W27	L-1	L16	L13			1.0
22 NICHOLS, LARRY S	TN	1681/10	1641	W23	L-5	L-7	L12			1.0
23 BOSTON, RALPH A	TN	1666	1626	L22	L24	L12	W28			1.0
24 DRAKE, JOE	TN	1520	1524	L-6	W23	L15	L18			1.0
25 TOLBERT, WAYNE	TN	1404	1416	L15	W28	L11	L17			1.0
26 GRAHAM, JR JOSEPH	GA	1485	1456	L-5	L-7	D19	L20			.5
27 GORE, WILLIAM DOUG	VA	1432	1410	L21	L18	D20	L19			.5
28 WINFIELD, HAROLD	TN	1544	1493	L14	L25	L13	L23			.0

Cumberland County Summer Open II

PLAYER	ST	PRE		POST		1	2	3	4	TOT
		RTNG	RTNG	RTNG	RTNG					
1 HALL, BILL	TN	2096	2102	W22	W10	W-8	D-2			3.5
2 CARPENTER, RICHARD	KY	2087	2100	W18	W-6	W-7	D-1			3.5
3 FUNKHOUSER, BYRON	TN	1875	1855	W23	L13	W18	W11			3.0
4 HODGES, WYMON	GA	1863	1862	D11	W15	W13	D-5			3.0
5 WATSON, BRADLEY S	TN	1972	1943	W20	L-8	W22	D-4			2.5
6 OUSLEY, LARRY J	TN	1849	1834	W14	L-2	D20	W19			2.5
7 TURNER, KENNETH GR	MS	1774	1780	W24	W-9	L-2	D-8			2.5
8 OWENS, JOHNNY	KY	1703	1733	W26	W-5	L-1	D-7			2.5
9 NICHOLS, LARRY S	TN	1641/14	1654	W19	L-7	D10	W13			2.5
10 BOSTON, RALPH A	TN	1626	1635	W25	L-1	D-9	W20			2.5
11 LONG, MICHAEL	MS	1441	1512	D-4	W12	W17	L-3			2.5
12 WINFIELD, HAROLD	TN	1493	1466	D16	L11	D19	W25			2.0
13 NOYES, STEVE M	TN	1583	1626	W21	W-3	L-4	L-9			2.0
14 EVERHART, MICHAEL	TN	1479/12	1478	L-6	L18	W27	W22			2.0
15 NICHOLS, JOSHUA B	TN	1419	1466	D17	L-4	W16	D18			2.0
16 HARVILL, BILL	-TN	1222	1243	D12	L17	L15	W24			1.5
17 ORGAIN, WILLIAM H	TN	1805	1795	D15	W16	L11	U--			1.5
18 LONG, STEPHEN	MS	1517	1521	L-2	W14	L-3	D15			1.5
19 TOLBERT, WAYNE	TN	1416	1435	L-9	W26	D12	L-6			1.5
20 FUNKHOUSER, ERIC	TN	1318	1340	L-5	W24	D-6	L10			1.5
21 STEELE, CHRIS	-TN	1065	1065	L13	L23	L24	W26			1.0
22 GRAHAM, JR JOSEPH	GA	1456	1445	L-1	W25	L-5	L14			1.0
23 TEAGUE, R SHANN	TN	1396	1426	L-3	W21	U--	U--			1.0
24 HARVILL, RONALD D.	TN	1238	1256	L-7	L20	W21	L16			1.0
25 PEARSON, JR CLINTO	TN	1217	1228	L10	L22	W26	L12			1.0
26 WILLIAMS, JR LARRY	TN	918/14	925	L-8	L19	L25	L21			.0
27 WILLIAMS, BETTY	TN	0	1078	U--	U--	L14	U--			.0

Chattanooga-Red Bank June Tourney

Cumberland County Summer Amateur I

PLAYER	ST	PRE		POST		1	2	3	4	TOT
		RTNG	RTNG	RTNG	RTNG					
1 BAILEY, MIKE	TN	1447/4	1595	W14	W-3	W-9	W-4			4.0
2 LONG, MICHAEL	MS	1434	1441	W16	W-5	L-4	W11			3.0
3 NICHOLS, JOSHUA B	TN	1393	1419	W11	L-1	W-6	W-8			3.0
4 HICKS, GEORGE	TN	0	1628	W13	W-8	W-2	L-1			3.0
5 HARVILL, BILL	TN	1195	1222	W-7	L-2	D12	W-9			2.5
6 WILLIAMS, SR LARRY	TN	1366/1	1257	W10	L-9	L-3	W13			2.0
7 UNDERWOOD, MARK J	TN	1320/15	1286	L-5	L10	W14	W12			2.0
8 HARVILL, RONALD D.	TN	1232	1238	W12	L-4	W15	L-3			2.0
9 WHITE, EDWIN CATO	TN	1187	1197	W15	W-6	L-1	L-5			2.0
10 STEELE, CHRIS	TN	1038	1065	L-6	W-7	L11	W15			2.0
11 GREENING, DAN	TN	0	1277	L-3	W14	W10	L-2			2.0
12 MOSS, BILL B	TN	0	1154	L-8	W13	D-5	L-7			1.5
13 PEDDIESON, JANICE	TN	1301	1260	L-4	L12	W16	L-6			1.0
14 PEARSON, JR CLINTO	TN	1241	1217	L-1	L11	L-7	W16			1.0
15 WALTON, JR WILLIAM	TN	0	914	L-9	W16	L-8	L10			1.0
16 WILLIAMS, JR LARRY	TN	947/10	918	L-2	L15	L13	L14			.0

PLAYER	ST	PRE		POST		1	2	3	4	TOT
		RTNG	RTNG	RTNG	RTNG					
1 SCHULIEN, CHARLES	TN	2461	2466	W11	W17	W-4	W-3			4.0
2 MEIDINGER, CHARLES	AL	2238	2231	W18	L-5	W12	W-7			3.0
3 CHAMBERS, CHRIS L	TN	2169	2174	W13	W-9	W-6	L-1			3.0
4 SMITH, BRIAN D	TN	2110	2111	W19	W10	L-1	W-9			3.0
5 SPENCER, MICHAEL E	TN	2019	2037	W21	W-2	L-7	W13			3.0
6 GEE, MICHAEL S	TN	1987	1987	W14	W16	L-3	W10			3.0
7 MELVIN, BILL	AL	2174	2160	D12	W11	W-5	L-2			2.5
8 DOUGLAS, MIKE	AL	1473/6	1541	L10	W21	W16	D12			2.5
9 HUDDLESTON, DAVE	TN	1677	1680	W20	L-3	W14	L-4			2.0
10 PASCHALL, JOEL K	TN	1650	1662	W-8	L-4	W15	L-6			2.0
11 HARWELL, JEFF	NC	1542	1563	L-1	L-7	W21	W19			2.0
12 DERRICK, MARK T	TN	1523	1560	D-7	W18	L-2	D-8			2.0
13 KADE, JIM	TN	1455	1489	L-3	W20	W17	L-5			2.0
14 ASHLEY, GARY L	GA	1406	1424	L-6	W22	L-9	W18			2.0
15 TURNMIRE, DANA L	GA	1221	1250	L17	W19	L10	W22			2.0
16 MC ALISTER, E.K	TN	0	1625	W22	L-6	L-8	W17			2.0
17 GARDNER, PHILIP	GA	1869	1813	W15	L-1	L13	L16			1.0
18 WHITAKER, JAMES AL	AL	1545	1510	L-2	L12	W20	L14			1.0
19 GREESON, CHARLES L	NC	1459	1423	L-4	L15	W22	L11			1.0
20 VEST, NAOMI	TN	1225	1236	L-9	L13	L18	W21			1.0
21 FERGUSON, JACK M	AL	1412	1370	L-5	L-8	L11	L20			.0
22 VEST, DANIEL J	TN	0	1017	L16	L14	L19	L15			.0

Diagonal Knights Invitational

PLAYER	ST	PRE	POST					TOT	
		RTNG	RTNG	1	2	3	4		5
1 SHAFER, SETH A	TN	1624	1631	U--	W-2	W-3	W-5	W-4	4.0
2 WALL, JOHN BRANDON	TN	1119	1164	W-4	L-1	U--	W-3	W-5	3.0
3 DANIEL, BENJAMIN W	TN	1215	1209	W-5	W-4	L-1	L-2	U--	2.0
4 DANIEL, MARY ALICE	TN	1088	1074	L-2	L-3	W-5	U--	L-1	1.0
5 LAWS, BERNARD D.	TN	0	862	L-3	U--	L-4	L-1	L-2	.0

1988 Region VIII Action Open

PLAYER	ST	PRE	POST					TOT	
		RTNG	RTNG	1	2	3	4		5
1 RACHELS, STUART	AL	2473	2473	W13	W-9	W-4	D-2	W-8	4.5
2 WHEELER, JERRY T	TN	2229	2247	W-3	W-8	W-5	D-1	D-4	4.0
3 SPINRAD, JERRY	TN	1860	1921	L-2	W17	W18	W-6	W-9	4.0
4 WRIGHT, MILTON C	TN	2108	2116	W10	W16	L-1	W11	D-2	3.5
5 SMITH, BRIAN D	TN	2119	2102	W14	W15	L-2	L-9	W12	3.0
6 HALL, BILL	TN	2102	2065	W17	L11	W12	L-3	W13	3.0
7 ROBBINS, GREGORY K	TN	1966	1942	L15	W14	W11	L-8	W16	3.0
8 GEORGE, HERBERT A	KY	1955	1977	W19	L-2	W15	W-7	L-1	3.0
9 LEWIS, F MORRIS	TN	1902	1923	W18	L-1	W19	W-5	L-3	3.0
10 MOORE, JOHN W	TN	1782	1786	L-4	L12	D14	W20	W17	2.5
11 SHAFER, SETH A	TN	1631	1662	B--	W-6	L-7	L-4	D14	2.5
12 SABINE, HARRY D	TN	1885	1866	L16	W10	L-6	W18	L-5	2.0
13 BUCKLEW, LESLIE WA	KY	1874	1859	L-1	L18	W16	W19	L-6	2.0
14 MC KINLEY, MICHAEL	TN	1792	1785	L-5	L-7	D10	W15	D11	2.0
15 PETTY, ERIC H	TN	1720	1738	W-7	L-5	L-8	L14	W18	2.0
16 EDWARDS, LEE	TN	1683	1713	W12	L-4	L13	W17	L-7	2.0
17 SABINE, JAY D	TN	1775	1722	L-6	L-3	B--	L16	L10	1.0
18 MC MILLAN, DANNY	TN	1696	1680	L-9	W13	L-3	L12	L15	1.0
19 CROWLEY, CHESTER C	TN	1694	1672	L-8	B--	L-9	L13	U--	1.0
20 SHAFER, STEVE J	TN	1436	1432	U--	U--	U--	L10	U--	.0

1988 Region VIII Action Amateur

PLAYER	ST	PRE	POST					TOT	
		RTNG	RTNG	1	2	3	4		5
1 DRAKE, JOE	TN	1496	1520	W13	L-3	W-2	W-6	W-4	4.0
2 HARVILL, BILL	TN	1243	1314	W-6	D-9	L-1	W11	W-5	3.5
3 WHITE, JOE H	TN	1150	1218	B--	W-1	D-5	L-4	W-9	3.5
4 CALVO, MICHAEL T.	TN	0	1621	W-7	D-5	W-9	W-3	L-1	3.5
5 BAILEY, MIKE	TN	1595/8	1538	W12	D-4	D-3	W-7	L-2	3.0
6 MORGAN, WENDELL	AL	1561	1547	L-2	W10	W-8	L-1	W14	3.0
7 COLLINS, STEVEN P	KY	1498/9	1512	L-4	W-8	W13	L-5	W10	3.0
8 WILLIAMS, JEREMY J	TN	1354	1359	D10	L-7	L-6	B--	W12	2.5
9 BELLIFORD, WILLIAM	TN	1576	1521	W11	D-2	L-4	D10	L-3	2.0
10 BARRETT, ERIC	KY	1534	1504	D-8	L-6	W12	D-9	L-7	2.0
11 SAYLES, RONALD J	AZ	1056/6	1086	L-9	L12	B--	L-2	W13	2.0
12 TOMLIN, JASON RUSS	TN	0	1270	L-5	W11	L10	W13	L-8	2.0
13 PEARSON, JR CLINTO	TN	1228	1182	L-1	B--	L-7	L12	L11	1.0
14 SHAFER, STEVE J	TN	1432	1422	U--	U--	U--	U--	L-6	.0

King Cotton Open

PLAYER	ST	PRE	POST				TOT	
		RTNG	RTNG	1	2	3		4
1 LINXWILER, PAUL A	TN	2247	2254	W12	W-7	W-3	D-2	3.5
2 JONES, JAMES E	TN	2092	2119	W11	W-6	W-4	D-1	3.5
3 SENN, RANDALL C	TN	2052	2084	W10	W-5	L-1	W-7	3.0
4 PYLANT, GARY M	TN	2005	2011	W14	W12	L-2	W15	3.0
5 SMITH, III MAHLON	TN	2140	2125	W-9	L-3	W11	D-6	2.5
6 SNOW, GLENN W	AR	1996	1998	W16	L-2	W13	D-5	2.5
7 HERBERS, CHARLES R	TN	2038	2023	W13	L-1	W10	L-3	2.0
8 WEAVER, DWIGHT K	MS	1890	1898	U--	U--	D15	W13	1.5
9 STENGEL, R ANTHONY	TN	1756	1733	L-5	L10	D14	W16	1.5
10 MEISEL, JAY R	TN	1726	1727	L-3	W-9	L-7	D14	1.5
11 BARNES, RONNIE C	TN	1718	1719	L-2	W16	L-5	D12	1.5
12 JACKSON, JOHN M	MO	1701	1704	L-1	L-4	W16	D11	1.5
13 DAVIS, JERRY P	TN	1679	1674	L-7	W14	L-6	L-8	1.0
14 CARNES, RICK	TN	1559	1562	L-4	L13	D-9	D10	1.0
15 MILLS, CALVIN	TN	1905	1893	U--	U--	D-8	L-4	.5
16 MITCHELL, JAMES H	TN	1525	1515	L-6	L11	L12	L-9	.0

King Cotton Amateur

PLAYER	ST	PRE	POST				TOT	
		RTNG	RTNG	1	2	3		4
1 JIMERSON, WILLIE L	TN	1458/15	1488	W-6	W10	W-3	D-4	3.5
2 DANGEAU, CHEYENNE	TN	1484	1506	W-8	L-3	W-9	W-5	3.0
3 DANGEAU, CHEYENNE	TN	1484	1511	W11	W-2	L-1	W-9	3.0
4 WILLIAMS, JEREMY J	TN	1359	1405	W-5	D-9	W-8	D-1	3.0
5 STOVER, ERIC	IL	1559/4	1444	L-4	W-6	W10	L-2	2.0
6 BYNUM, BRUCE E	AR	1323/4	1315	L-1	L-5	W-7	W10	2.0
7 ADAMS, BRIAN	TN	1179	1174	L-9	B--	L-6	W11	2.0
8 SHIELDS, JEFFERY J	TN	1170	1166	L-2	W11	L-4	B--	2.0
9 PRIZINA, JAMES E	TN	1564	1519	W-7	D-4	L-2	L-3	1.5
10 JIMERSON, MONTSO	TN	960/16	975	B--	L-1	L-5	L-6	1.0
11 MOODY, EDDIE W	TN	0	878	L-3	L-8	B--	L-7	1.0

Music City Grand Prix

PLAYER	ST	PRE	POST						TOT
		RTNG	RTNG	1	2	3	4	5	
1 SCHULIEN, CHARLES	TN	2466	2473	W20	W-7	W-6	D-2	W-4	4.5
2 TARIN, STEPHEN A	NC	2297	2323	W33	W-9	W13	D-1	W11	4.5
3 JACKSON, RICH	NC	2229	2228	W28	D19	W24	D11	W15	4.0
4 BURNETT, RONALD WA	NY	2412	2407	W25	W14	D12	W-5	L-1	3.5
5 GINSBURG, JEFFREY	OH	2249	2244	W26	W10	D17	L-4	W21	3.5
6 BROOKSHEAR, TIMOTH	GA	2118	2133	W18	W37	L-1	W12	D-7	3.5
7 SPENCER, MICHAEL E	TN	2037	2054	W32	L-1	W26	W16	D-6	3.5
8 BEDELL, LESTER B	GA	2035	2049	H--	W39	L11	W20	W18	3.5
9 MITCHELL, R O	TN	1974	1986	W30	L-2	D18	W25	W22	3.5
10 CIARLEGLIO, PETER	TN	1903	1944	W38	L-5	W37	W14	D12	3.5
11 WHEELER, JERRY T	TN	2241	2229	W21	D24	W-8	D-3	L-2	3.0
12 CHAMBERS, CHRIS L	TN	2174	2163	W34	W31	D-4	L-6	D10	3.0
13 JONES, JAMES E	TN	2111	2092	W27	W16	L-2	L15	W32	3.0
14 MC MURRAY, GARY	GA	2037	2028	W29	L-4	W19	L10	W30	3.0
15 BUFFIE, EDWARD F	TN	1904	1914	L16	W27	W31	W13	L-3	3.0
16 MANLEY, JAMES TODD	AL	1601	1675	W15	L13	W33	L-7	W26	3.0
17 SMITH, BRIAN D	TN	2111	2119	W36	W35	D-5	U--	U--	2.5
18 MILLS, CALVIN	TN	1860	1889	L-6	W41	D-9	W19	L-8	2.5
19 FUNKHOUSER, BYRON	TN	1855	1863	W22	D-3	L14	L18	W36	2.5
20 SPINRAD, JERRY	TN	1851	1860	L-1	D22	W29	L-8	W33	2.5
21 PULLEN, DEWITT T	TN	1825	1846	L11	D29	W39	W24	L-5	2.5
22 CRUMP, JOSEPH	TN	1690	1711	L19	D20	W34	W35	L-9	2.5
23 TAYLOR, TOM	IL	1990	1925	L31	D34	D35	D27	D25	2.0
24 LEWIS, F MORRIS	TN	1919	1902	W40	D11	L-3	L21	D29	2.0
25 HODGES, WYMON	GA	1874	1867	L-4	W36	D30	L-9	D23	2.0
26 MC KINLEY, MICHAEL	TN	1819	1792	L-5	W38	L-7	X--	L16	2.0
27 WASSON, DENNIS L	IA	1781	1784	L13	L15	W38	D23	H--	2.0
28 POWERS, FRANCIS X	PA	1772	1753	L-3	L30	L32	W39	W35	2.0
29 BARNES, RONNIE C	TN	1704	1724	L14	D21	L20	W34	D24	2.0
30 PASCHALL, JOEL K	TN	1662	1684	L-9	W28	D25	H--	L14	2.0
31 EDWARDS, LEE	TN	1659	1683	W23	L12	L15	L32	W38	2.0
32 MOONEY, JOE	TN	1658/13	1699	L-7	L33	W28	W31	L13	2.0
33 COOPER, TOM	TN	1837	1803	L-2	W32	L16	D36	L20	1.5
34 GLOVER, HASKELL L	TN	1776	1756	L12	D23	L22	L29	W39	1.5
35 KULIK, BRIAN W	TN	1509	1508	B--	L17	D23	L22	L28	1.5
36 BRADLEY, BUD	TN	1472/9	1581	L17	L25	W41	D33	L19	1.5
37 MEISEL, JAY R	TN	1679	1697	W41	L-6	L10	F--	U--	1.0
38 LYNN, BOBBY J	TN	1621	1585	L10	L26	L27	B--	L31	1.0
39 ANDERSON, CLIFFORD	TN	1718	1675	H--	L-8	L21	L28	L34	.5
40 MUHL, ROBERT	NC	1649	1643	L24	H--	U--	U--	U--	.5
41 BOYKIN, JIMMIE C	TN	2004	1950	L37	L18	L36	U--	U--	.0

Music City Grand Prix - Amateur Section

PLAYER	ST	PRE	POST						TOT
		RTNG	RTNG	1	2	3	4	5	
1 MORGAN, WENDELL	AL	1555	1561	W16	W15	W-3	W-7	L-2	4.0
2 MC CREERY, BILL	TN	1421	1482	L-8	W-5	W16	W10	W-1	4.0
3 FUNKHOUSER, ERIC	TN	1340	1421	W-4	W10	L-1	W-6	W-7	4.0
4 BOLDT, ED D	TN	1659/4	1501	L-3	L12	B--	W16	W13	3.0
5 CARNES, RICK	TN	1578	1559	L-7	L-2	W14	W-8	W12	3.0
6 WHITE, MICHAEL W	TN	1464	1455	W14	W13	L-7	L-3	W10	3.0
7 ROBBINS, RUSSELL	TN	1387	1425	W-5	W-8	W-6	L-1	L-3	3.0
8 HICKS, GEORGE	TN	1628/4	1515	W-2	L-7	D12	L-5	W16	2.5
9 ABARNO, FRANK	FL	1462	1441	L15	D14	W13	D12	D11	2.5
10 NOYES, STEVE M	TN	1626	1570	W12	L-3	W15	L-2	L-6	2.0
11 STEWART, SR RONALD	TN	1511	1513	H--	U--	U--	W14	D-9	2.0
12 MANLEY, JASON R	AL	1354/11	1384	L10	W-4	D-8	D-9	L-5	2.0
13 STEELE, CHRIS	TN	1065	1056	B--	L-6	L-9	X--	L-4	2.0
14 HARRIS, DONNY	TN	0	1204	L-6	D-9	L-5	L11	B--	1.5
15 FLOWERS, CLEON A	TN	1295/14	1316	W-9	L-1	L10	F--	U--	1.0
16 MILLS, GRAY	TN	1121	1116	L-1	B--	L-2	L-4	L-8	1.0

Knoxville July Club Swiss

PLAYER	ST	PRE	POST						TOT
		RTNG	RTNG	1	2	3	4	5	
1 DICKERSON, LEONARD	TN	2187	2204	W11	W-8	W-2	W-6	U--	4.0
2 ANTHONY, JOHN	TN	2000	1997	W-4	D-6	L-1	W-5	U--	2.5
3 LENTZ, BRIAN D	TN	1971	1955	D10	W11	D-6	D-4	U--	2.5
4 VILES, ROGER E	TN	1761	1791	L-2	W10	W-8	D-3	U--	2.5
5 DRAKE, JOE	TN	1497	1525	L-8	W-7	D10	L-2	W12	2.5
6 WATSON, JIMMY T	TN	1929	1937	W-7	D-2	D-3	L-1	U--	2.0
7 VELAZQUEZ, JOSE	TN	1762	1767	L-6	L-5	W11	W-8	U--	2.0
8 WATSON, BRADLEY S	IN	1924	1875	W-5	L-1	L-4	L-7	U--	1.0
9 CROWLEY, CHESTER C	TN	1672	1679	U--	U--	U--	W10	U--	1.0
10 STENSAKER, LEE A.	TN	1475	1478	D-3	L-4	D-5	L-9	U--	1.0
11 ABRON, MICHAEL T	TN	1797	1768	L-1	L-3	L-7	U--	U--	.0
12 PARRIS, CHRIS P	TN	1290/8	1269	U--	U--	U--	U--	L-5	.0

RACHELS WINS REGION VIII CHAMPIONSHIP

by Mark Ishee

FIDE Master Stuart Rachels of Birmingham, Alabama took clear first place in the Region VIII Action Chess Championship held July 16, 1988 in Dickson, Tennessee. Rachels thereby took home the title of Region VIII Action Chess Champion as well as the Aetna Cup. Sponsored by the Aetna Insurance Company, the Region VIII Championship was the first action chess (30 min. sudden death) tournament ever held in Tennessee.

Thirty-two enthusiastic participants in two sections helped to make Tennessee's first action event a BIG success. Playing conditions were excellent, and many players remarked how well they liked to new format. Interestingly, some players commented that they found active chess to be less fatiguing than slow chess due to the shorter time between rounds!

TCA President Bill Orgain not only organized and directed the event, but also secured Aetna sponsorship! His efforts were rewarded by the larger-than-expected number of players, making possible not only an increase in the prize fund, but also a donation to the TCA Scholastic Fund from the excess profits. Surely this speaks well for the future of action chess events, and it seems reasonable to expect that soon we will see more tournaments in this format.

Rachels was held to a draw in Round 4 by Master Jerry Wheeler, but nonetheless took clear first place when Wheeler was unable to convert a promising position into a win in the final round against M.C. Wright. Rachels had also played Wright in a previous round, and selected that game as his best game from the event. This game can be found in the pages of "Selected Games from around the State" in this issue of *Tennessee Chess News*.

THE CORRESPONDENCE GAME

with Lee Edwards

Will speed chess ruin your game? Not if you counterbalance all of those speed games with some postal chess. Speed chess is fun. It gives you variety, experience against many opponents, and knowledge of tactical traps. You can get together with a friend and play hundreds of speed games with your favorite openings, but you'll never experience truly DEEP analysis until you try some postal games.

If you get in time trouble, you'll be glad you play speed chess. If you have an adjourned game, you'll be glad you play postal!

Chris Steele, Larry Ousley, and Jim Rylander are looking for one opponent in TC-1-88/89. We should have a second section opening up soon. Send those entries in TODAY! For a three player preliminary section, the entry fee is a mere \$6.00, plus TCA membership, if you need it. All money is returned in prizes in the Finals. Make your check or money order made payable to Tennessee Chess Assn., and send it to:

Lee Edwards
Postal Coordinator
Tennessee Chess Association
3214 McGavock Pike
Nashville, Tennessee 37214

Congratulations to Brian D. Smith who has advanced to the USCF Golden Knights Finals after scoring 6-0 in the preliminaries and 5½-½ in the semi-finals. Brian sends this game from the semi-finals and, "yes, Brian, I had already sent the previous column with my game to be published before you gave me this one."

W: G. Walker

B: Brian D. Smith

1986 Golden Knights semi-finals (Meran Gambit)

1. d4 Nf6 2. c4 e6 3. Nc3 d5 4. Nf3 c6 5. e3 Nbd7 6. Bd3 dxc4 7. Bxc4 b5 8. Bd3 a6 9. e4 c5 10. e5 cxd4 11. Nxb5 Nxe5 12. Nxe5 axb5 13. O-O Qd5 14. Qe2 Ba6 15. Bg5 Be7 16. f4 O-O 17. Rf3 Bb7 18. Rg3 g6 19. h4 Bd8 20. Bh6 Re8 21. Bxb5 Bb6 22. Kh2 Rec8 23. h5 Nxh5 24. Qxh5 Qxb5 25. Bg5 Rc2 26. Qh6 Bxg2 27. Bf6 Be4+ 28. Kh3 Bf5+ 29. Rg4 Bxg4+ 30. Nxg4 Qd3+ 31. Kh4 g5+ 32. Qxg5+ Qg6 White resigns 0-1.

U-1600

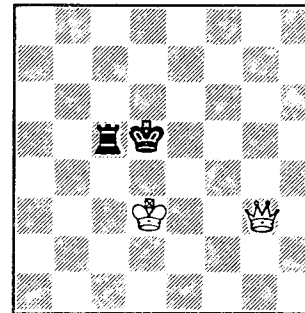
by Roger E. Viles

In this issue, we are going to look at the the Queen versus Rook ending. While this ending isn't extremely difficult, it can be tricky to play if you are not familiar with it.

In the diagram, Black's Rook and King are in the center of the board where they enjoy maximum mobility. The Black Rook must stay near its King so that the chance of being skewered or forked is held to a minimum. Black's only chance for a draw hinges on the ability to stay in the center of the board and hope that White makes an error.

For White to win, he must drive the Black King to the edge of the board so that he can restrict the movement of the Rook and King and be able to take full advantage of his Queen's superior mobility.

Let's go to the Diagram and see how this works:



1. Qf3+ Ke5 2. Qe4+ Kd6 3. Kd4 Rc6 (Remember that the Rook should stay near the King. But even if he strays and tries to keep the White King out of the game it may not work. One variation is ... 3... Ra5 4. Qg6+ Kd7 5. Qf6!! Rb5 6. Qf7+ Kd6 7. Qf8+ Kd7 8. Qf6 Ra5 9. Kc4 Kc7 10. Qe7+ Kc6 11. Qe6+ Kc7 12. Kb4 This forces the Rook to retreat and although Black isn't mated yet he is still in a lot of trouble) 4. Qe5+ Kd7 5. Kd5 Rc7 (If Black tries to get his Rook active by 5... Rc1, then White has 6. Qf5+ Ke8 7. Qh5+ Kd7 8. Qg4+ Ke8 9. Kd6 From this position you can see that not only did Black fail to get his Rook active, but that it is out of play and may be lost if he isn't careful.)

6. Qe6+ Kd8 (Here White must be careful of a little trap by Black. If White plays the obvious 7. Kd6 then Black gets a stalemate with the reply 7... Rc6+. So White must be careful or all his struggles will be for naught) 7. Qg8+ Ke7 8. Qg7+ Kd8 9. Qf8+ Kd7 10. Qf4 Kc8 11. Kd6 Kb8 12. Qe5 Rb7 13. Kc6+ Ka8 14. Qa1+ Kb8 15. Qa5! (Black is now out of moves and must lose his Rook no matter HOW he moves. A couple of variations are: 15... Rh7 16. Qe5+ Ka8 17. Qa1+ Kb8 18. Qb1+ or another 15... Rb3 16. Qd8+ Ka7 17. Qd4+ Kb8 18. Qf4+ Ka7 19. Qa4+)

Selected Games from Around the State

W: Peter Ciarleglio (1903)

B: Gary McMurray (2037)

Round 4, 1988 Music City Grand Prix

1. e4 c5 2. Nf3 d6 3. d4 cd 4. Nxd4 Nf6 5. Nc3 a6 6. Be2 e5 7. Nb3 Be6 8. O-O Be7 9. f4 Qc7 10. a4 O-O 11. Be3 Nbd7 12. a5 ef 13. Bxf4!? Ne5 14. Nd4 Nc4 15. Nxe6 fe 16. Bxc4 Qxc4 17. Bxd6 Rad8 18. Ra4 Qc6 19. e5 Bxd6 20. ed Rxd6 21. Qe2 Rfd8 22. Rc4 Qd7 23. Qe5 Qe8 24. h3 Rd2 25. Rxf6 gf 26. Rg4+ Kf8 27. Qxf6+ Qf7 28. Qh6+ Ke8 29. Rg7 Qf2+ 30. Kh2 Qf5 31. Rg8+ Ke7 32. Rg7+ Ke8 33. Rg8+ Ke7 34. Qh4+ Kf7 35. Rxd8 Qe4+ 36. Kh1 Rxd8 37. Qxd8 Qe1+ 38. Kh2 Qe5+ 39. g3 Qe3 40. Qc7+ Kf6 41. Qf4+ Qxf4 42. gf Black forfeits on time 1-0.

W: Oliver Tai (2114)

B: Jake Harris (1714)

Round 1, 1988 National Junior High Championship (notes by M. Ishee)

1. Nf3 Nf6 2. g3 g6 3. Bg2 Bg7 4. O-O O-O 5. d3 d6 6. e4 e5 7. Nc3 Nc6 8. h3 Bd7 9. Be3 Re8 10. Qe2 h6 11. Rae1 Qe7 12. Nd2 Nh7 13. Nd5 Qd8 14. Nb3 Be6 15. c4 Bxd5 16. cd Ne7 17. Rc1 Rf8 18. Na5?! (Too soon! 18. Qd2! relocates the Queen with gain of tempo due to the attack on h6. White would then have a large positional advantage due to pressure down the c-file, and could play Na5 with advantage.) 18... b6? (18... c5! hits the knight and shuts down the c-file. Black then has the advantage of having two knights in a closed position, and stands better.) 19. Nc6 Qd7 20. d4 Nxc6 21. dc Qe7 22. de Qxe5 23. Rc2 Nf6 24. Rd1 (The game is about even, and now with 24... Rae8 Black can put real pressure on e4.) 24... Nxe4? (Overlooking White's reply) 25. Bf4! (Winning a piece.) 25... Nxc3! (Making the best of it by getting two pawns for the lost piece.) 26. Bxc3 Qf6 27. Qf3 Qxf3 28. Bxc3 Rfe8 29. Kf1 Be5 30. Bxe5 Rxe5 31. Re1 R5e8 32. Rce2 Kf8 33. Rxe8+ Rxe8 34. Rxe8+ Kxe8 35. Ke2 Ke7 36. Kd3 Ke6 37. Kd4 Kf5 38. Bd5 f6 39. Kc4 Ke5 40. Bg2 f5 (White has played planlessly, and is in danger of not being able to win. Meanwhile Black's pawns rush forward on the kingside.) 41. a3 g5 42. b4 h5 43. Kb5 d5 44. a4 d4? (Losing the d-pawn and with it the game. Much better was 44... g4. If Black could create two passed pawns, he could win due to White misplaced King, but after the move played, the White King rejoins the battle and the game becomes one-sided.) 45. Kc4 a6 46. Kd3 g4 47. hg fg 48. f3 gf 49. Bxf3 h4 50. Bg2 (Now the win is routine. Oliver shows good technique from here.) 50... b5 51. ab ab 52. Bh1 h3 53. Bf3 h2 54. Bh1 Kf4 55. Kxd4 Kg3 56. Ke5 Kf2 57. Ke6 Kg1 58. Be4 h1=Q 59. Bxh1 Kxh1 60. Kd7 Kg2 61. Kxc7 Kf3 62. Kd7 Ke4 63. c7 Kd4 64. c8=Q Ke4 65. Qc5 Kf4 66. Qe7 Kf5 67. Kd6 Kf4 68. Qe5+ Kf3 69. Kd5 Kg4 70. Qf6 Kg3 71. Ke4 Kg2 72. Qf4 Kh3 73. Qg5 Kh2 74. Kf3 Kh1 75. Qg2++ 1-0.

W: Eric Petty (1720)

B: Mike MicKinley (1792)

Round 4, 1988 Region VIII Action Open (notes by M. Ishee)

1. Nf3 d5 2. c4 Nf6 3. e3 c6 4. Nc3 e6 5. a3 Bd6 6. d4 dc 7. Bxc4 Nbd7 8. O-O O-O 9. b4 e5 10. Bb2 e4 11. Nd2 Nb6 12. Bb3? (Oh no! This allows the classic bishop sacrifice on h2! 12. Be2 was required.) 12... Bxh2+ 13. Kxh2 Ng4+ 14. Kg1 Qh4 15. Re1 Qxf2+ 16. Kh1 Qh5+ 17. Kg1 Qh2+ 18. Kf1 Qh1+ White resigns 0-1.

W: M.C. Wright (2108)

B: Stuart Rachels (2473)

Round 3, 1988 Region VIII Action Open

1. e4 c5 2. Nf3 d6 3. b3!? Nf6 4. d3 g6 5. Bb2 Bg7 6. Nbd2 O-O 7. Be2 Nc6 8. h3 e5 9. c4 Nh5 10. g3 f5 11. efgf 12. Nh2 Nf6 13. g4 d5 14. Rg1 Kh8 15. g5 Ne8 16. Bh5 Nb4 17. Qe2 Nc2+ 18. Kd1 Nxa1 19. Bxa1 e4 20. Bxe8 Qxe8 21. Bxg7+ Kxg7 22. cd Qe5 23. Nhf1 Qa1+ 24. Kc2 Qxa2+ 25. Kc3 b5 26. de b4+ 27. Kd3 Ba6+ 28. Ke3 Bxe2 29. Kxe2 fe 30. Ng3 Rxf2+ 31. Kxf2 Qxd2+ 32. Ne2 Rf8+ White resigns 0-1.

W: Stuart Rachels (2473)

B: Jerry Wheeler (2229)

Round 4, 1988 Region VIII Action Open

1. e4 c5 2. Nf3 d6 3. d4 cd 4. Nxd4 Nf6 5. Nc3 Nc6 6. Bg5 e6 7. Qd2 h6 8. Bxf6 gf 9. O-O O-O 10. f4 h5 11. Kb1 Bd7 12. Be2 Qb6 13. f5 Bh6 14. Qd3 Nxd4 15. Qxd4 Qxd4 16. Rxd4 Bf4 17. Bf3 Be5 18. Rd3 Rc8 19. Ne2 Bb5 20. Rd2 Bxe2 21. Rxe2 Ke7 22. h3 h4 23. Rd1 Rc5 24. c3 Rhc8 25. a3 b5 26. Ka2 a5 27. Kb3 Rc4 28. Red2 Rc7 29. Re2 Draw agreed 1/2-1/2.

W: Jerry Spinrad (1863)

B: Andrew Mongin (1804)

Round 4, Music City Spring Open

1. e4 e6 2. d4 d5 3. Nd2 Nf6 4. e5 Nfd7 5. Bd3 c5 6. c3 Nc6 7. Ne2 cd 8. cd f6 9. Nf4 Nxd4 10. Qh5+ Ke7 11. Ng6+ hg 12. Qxh8 Nxe5 13. Bb1 Qc7 14. Kd1 Bd7 15. Qh3 Rc8 16. Qc3 Qxc3 17. bc Ba4+ 18. Ke1 Nc2+ 19. Bxc2 20. Ba3+ Kf7 21. Bxf8 Kxf8 22. Kf3 Nxf3+ 23. gf Rxc3 24. Kd2 Rc6 25. Rhc1 Ba4 26. f4 Rxc1 27. Rxc1 Bc6 28. Kd3 Kf7 29. Kd4 g5 30. fg e5+ 31. Kc5 fg 32. Kd6 Kf6 33. Rc3 e4 34. Kc5 Kf5 35. Kd4 g4 36. Re3 Kf4 37. Rg3 Kf5 38. Re3 a6 39. Rc3 Ke6 40. Rg3 Kf5 41. Rc3 Kf4 42. Re3 g5 43. Rc3 Bb5 44. Re3 Bc4 45. a3 b5 46. Rg3 a5 47. Kc3 Ke5 48. Rxc4 d4+ 49. Kd2 Kf5 50. Rg3 b4 51. ab ab 52. Rg1 Bd3 53. Rc1 b3 54. Rc5+ Kf4 55. Kc1 e3 56. fe+ de 57. Rc8 e2 58. Re8 Be4 White resigns 0-1.

W: Michael Deleanu (1954)

B: Louis Groeniger (1576)

Round 4, 1987 Blount County Summer Open

1. d4 Nf6 2. c4 c5 3. d5 b5 4. Nd2 d6 5. e4 Nd7 6. cb a6 7. ba Bxa6 8. Bxa6 Rxa6 9. Qe2 Qa8 10. a3 g6 11. f4 Bg7 12. Ngf3 O-O 13. O-O Qb7 14. e5 de 15. fe Nxd5 16. Nc4 h6 17. Bd2 Re6 18. Qe4 f5 19. Qh4 f4 20. Ne1 g5 21. Qh3 Qb6 22. Nd6 Rxe5 23. Nd3 Qxd6 24. Nxe5 Nxe5 25. Rad1 Ng6 26. Qb3 Rb8 27. Qc4 e6 28. Rfe1 Ne5 29. Qe4 Rf8 30. Bc3 f3 31. Bxe5 f2+ 32. Kh1 fxe1=Q+ 33. Rxe1 Qxe5 34. Qxe5 Bxe5 35. g3 Bd4 36. Rxe6 Kg7 37. Rd6 Rf1+ 38. Kg2 Rf2+ 39. Kh3 Nf6 40. b4 Be5 41. Re6 g5+ White resigns 0-1.

W: Jerry Wheeler (2239)

B: William Murray (1903)

Round 1, 1988 National Open

1. c4 Nf6 2. Nf3 g6 3. d4 c5 4. Nc3 Bg7 5. e4 cd 6. Nxd4 d6 7. Be2 O-O 8. O-O Nc6 9. Be3 Nxd4 10. Bxd4 b6 11. Qd2 Bb7 12. f3 Ba6 13. Rfd1 Rc8 14. b3 Re8 15. Bf1 Qd7 16. a4 Nh5 17. a5 Bxd4 18. Qxd4 Ra8 19. ab ab 20. Nd5 Qb7 21. Nxb6 Ra7 22. b4 Rb8 23. Nd5 e6 24. b5 ed 25. cd Rba8 26. Rxa1 Rxa6 28. ba Qe7 29. g3 Qg5 30. a7 h5 31. Rb1 Black resigns 1-0.

COMING ATTRACTIONS

TURKEY TOUR EVENT

11/18 A Piece of the Action Chess. 4-SS, G/30, Holy Trinity Episcopal Church, 3749 Kimball, Memphis, TN 38111. EF: \$10. Memphis CC membership req. \$\$ (150 b/20): 70 X,A,B,C/blo ea 20. Reg: 7:30-8 p.m., RDS: 8-9-10-11, earlier if possible. ENT: Dwight Weaver, 8168 Cedarbrook Dr., Southaven, MS 38671

TURKEY TOUR EVENT

11/26-27 29th Mid-South Open 5-SS, 40/100, 25/1, Hickory Ridge Mall, 6075 Winchester, Memphis, TN 38111. EF: \$25 if rec'd by 11/18, \$30 @ site. \$\$ (640 b/30, 4/class, 1st G): 160-81, X,A,B,C,D/blo ea 80. REG: 8:15-9:15 a.m. RDS: 9:30-2-6:30/9-2 ENT: Dwight Weaver, info as above.

TURKEY TOUR EVENT

12/10 John Nichols Memorial Open. 4-SS, 40/1, SD/15, University Ctr, Hwy 11W, S. of town, Kingsport, TN \$\$ (205 b/40) 2 sect: **OPEN:** \$\$40 X,A,B,C/blo ea 25 **AMAT:** open to blo 1400. \$\$ 30, E20, UNR 15 **BOTH:** EF: \$6 if rec'd by 12/1, \$10 @ site. REG: 8-9 a.m. RDS: 9:30-12-3-6 ENT: Larry Ousley, 607 Crowell Ln., Johnson Cty, TN 37601

TURKEY TOUR EVENT

12/7 Blount County Winter Open. 4-SS, 50/90, Mountain View Methodist Church, Hwy 33 & John Sevier Hwy., Maryville, TN. EF: \$6 \$\$ (b/20) 25 to 1st, A,B,C,D/blo ea 15, UNR 10. REG: 8:15-8:55 a.m. RDS: 9-12:30-4:30-7. ENT: Larry Thomas, P.O. Box 688, Alcoa, TN 37701

TURKEY TOUR EVENT

12/30-1/1/89 12th Annual Fairfield Glade Open, 5-SS, TL 40/100, Fairfield Glade Resort, Peavine Rd., Crossville, TN. **\$\$\$ \$5000.** 3 Sect.: **OPEN,** EF: \$35, if rec'd by 12/26, **\$\$\$** 600-300-200, EXP, A, blo, 350-150-100; 2200-2299, 2000-2099, & blo 1900 - \$100; trophies to 1st, top EXP, A & blo. **AMAT,** open to blo 1800, EF: \$35, if rec'd by 12/26, **\$\$\$** 350-125-100, C & blo, 350-125-100; 1600-1699 & blo 1500 - \$100; trophies to 1st, top C & blo. **NOVICE,** open to blo 1400, EF: \$35, if rec'd by 12/26, **\$\$\$** 350-125-100; 1200-1299 - \$100, E - \$225, UNR - \$150; trophies to 1st, E, UNR (UNR elig for UNR prize only). **ALL:** special \$10 EF for all juniors, (current youth or scholastic member of USCF), may win trophies only. EF: \$5 more at site. TCA memb. req., other states OK, USCF rating list taking effect 1/1/89 will be used for all players. Optional trophies avail. **RG:** 3-7 p.m. 12/30 or 7-8 a.m. 12/31. **RD:** 1st rd. choice of Friday at 8 p.m. or Saturday at 9 a.m., other rds. 2-7; 9-2 CST, **HR:** Fairfield Glade Resort, P.O. Box 1849, Fairfield Glade, TN 38555 (TN 1-800-262-6702, other states 1-800-251-6778) - Lodge \$37, 37, 37, 37, Villa Parlor \$55, Villa Bedroom \$44. Reservations should be made by 12/12. **ENT:** Harry D. Sabine, P.O. Box 381, Crossville, TN 38557 (615) 484-9593 or 484-4878. **LS.**