

May/June/July, 1987

TENNESSEE

Chess News

IN THIS ISSUE: *Congratulations to
Oliver Tai*

Crosstable in back of book



Tennessee Chess News

Tennessee Chess News is the official quarterly publication of the Tennessee Chess Association. TCA annual dues are \$6.00 for regular membership and \$4.00 for student memberships. Additional members of a family may join for 50 cents, but only one issue of TCN will be mailed. All memberships expire August 31. Patron memberships are available for \$25.00 per year, with said year beginning with date of payment of dues. These memberships are TAX-deductible and help support TCA. These members also receive TCN via first class mail and their names are printed in each issue. If anyone has already paid their regular fee, but wish to switch to patron, they may do so by paying an additional \$19.00 (or \$21.00 for students). As of April 1 you may join the TCA for \$6.00 or pay \$9.00 to join until August 31, 1988.

Board of Directors

PRESIDENT.....Bill Orgain
P. O. Box 366 Dickson, TN 37055
Home (615) 446-0521.....Office (615) 446-2814

VICE PRESIDENT.....Peter P. Lahde
2609 Sailboat Court, Nashville, TN 37217
Home (615) 361-4588.....Office (615) 794-8000

SECRETARY/TREASURER...Harry D. Sabine
P. O. Box 381, Crossville, TN 38555
Home (615) 484-4878.....Office (615) 484-9593

NEWSLETTER EDITOR.....Larry G. Thomas
P. O. Box 688, Alcoa, TN 37701
Home (615) 983-1977.....Office (615) 982-4472

POSTAL CHESS COORDINATOR..Lee Edwards
P. O. Box 424, Goodlettsville, TN 37072

TOURNAMENT COORDINATOR..Richard Igou
400 Rhodora Court, Apt. F, Knoxville, TN 37923
Home (615) 690-6810.....Office (615) 574-1839

SCHOLASTIC COORDINATOR....Curt Jones
6638 Bent Birch Cove, Memphis, TN 38115
Home (901) 795-2026.....Office (800) 238-5088

EAST TENNESSEE DIRECTOR.....Al Lipkin
Rt. 1, Box 404, New Tazewell, TN 37825
Home (615) 626-4071.....Office (615) 869-3611

MIDDLE TN DIRECTOR.....Ronald W. Burnett
4517 Xavier Drive, Antioch, TN 37013
1/2 Home (615) 832-7132

WEST TN DIRECTOR.....Dale Flickinger
5247 Heselbourne Circle, No. 14
Home (901) 382-3829.....Office (901) 388-7321

Affiliates

This section contains clubs that are affiliated with the TCA across the state. Since this magazine is contained in many libraries, we hope this section will serve as a guide to new people in our state or area as to the location of the nearest chess club to their area. If you wish your club listed, please send the club name, address, name of person to contact, and phone number to the editor.

East Tennessee Chess Club

Tom Cooper
513 Merman Rd.
Kingsport, TN 37663
Contact:.....Roger Counts (615) 323-2590
Tom Cooper (615) 239-4800

Blount County Chess Club

Larry G. Thomas
P. O. Box 688
Alcoa, TN 37701
Phone (615) 983-1977

Cumberland County Chess Club

Harry Sabine
P. O. Box 381
Crossville, TN 38555
Phone (615) 484-9593

Greater Knoxville Chess Club

Rick Igou
400 Rhodora Court, Apt. F
Knoxville, TN 37923

Chattanooga Chess Club

Larry Ousley
Trinity Woodmore United Methodist Church
1321 N. Moore Rd.
Chattanooga, TN

The Fugitive Chess Club

Home of Mark Ishee
720 Shenandoah Dr.
Brentwood, TN 37027
Phone (615) 373-4814 or 373-0326
Dues \$5 per year.

Clinton Chess Club

Chester Crowley
109 Iroquois Lane
Clinton, TN 37716
Phone (615) 457-7965

Nashville Chess Club

Peter Lahde
Arlington Methodist Church
1360 Murfreesboro Rd.
Phone (615) 361-4588

Dickson County Scholastic Chess Club

P. O. Box 366
Dickson, TN 37055
Phone (615) 446-0521

Dickson County Chess Club

Bill Orgain
710 W. College No. 8
P. O. Box 366
Dickson, TN 37055

Editor's Note

Believe it or not, it is time to begin considering the election of your officers in the TCA again. The elections are not until September 1st, but these will determine how your state organization is run.

One of the positions coming open will be that of editor of the TCN. This may seem to be a small matter, but not when you consider that this publication is your main means of keeping in contact with **everything** that is happening in this state that concerns chess—coming events, past events, operations of the board, how your money is spent, where and when the state championship is... everything concerning tournaments in Tennessee.

If you would be interested in any office in TCA, let at least one friend know so you can be nominated. Letting someone know you are interested in an office is not bragging but simply expressing your desire to help TCA be one of the best state organizations around. How many times have we used the words **apathy** lately? Don't be apathetic, get involved.

***5' 5'5' && 5'&... That is just to see if you are paying attention. There will be a quiz on this next Monday!!

Seriously, get involved. Let **someone** know that you would be interested in a position on the board.

Editorial Staff

Larry G. Thomas..... Editor
John White..... Asst. Editor
P. O. Box, Alcoa, TN 37701

Jim Watson..... Asst. Editor East Tennessee
Rt. 4, Box 182-A, Corryton, TN 37721

Gregory K. Robbins Asst. Editor Plateau

Gregory K. Robbins.....Asst. Editor Plateau
P. O. Box 2761, Crossville, TN 38555

Joey Burton..... Asst. Editor, Plateau
205 Long St., Crossville, TN 38555

Phone (615) 484-6408
Mark Ishoe Asst. Editor, Middle Tennessee

Mark Ishee..... Asst. Editor, Middle Tennessee
P. O. Box 1911, Brentwood, TN 37027

Phone (615) 373-4814
Paul Linxwiler..... Asst. Editor, West Tennessee

TCN News Flash

The National Elementary and Primary held in Terre Haute on April 11 and 12 produced some good news for Tennesseans. In the national Elementary section, Auburndale brought home the honors of 14th place and in the Primary section produced the 4th place team. Hey!! We are talking national here. Congratulations Auburndale. We are proud of you...

Individually, Auburndale came through again with two of its players in the top twenty. Elian Levatina and Cole Bass came in 6th and 17th respectively. Not to be left out in the cold, Harold Simmons proceeded to place Crossville in the spotlight by placing 7th.

I really think we owe these kids a vote of thanks for keeping the name of Tennessee in the national limelight... So, again, thanks kids and congratulations.

Patron Members

Harry D. Sabine
Todd T. Shimabukuro
Clinton H. Pearson
Richard Igou
Thomas A. Cooper
Bill Orgain
Louis M. Groeniger
Peter P. Lahde
Joseph Sentef, Jr.
Joseph G. Sullivan, Jr.
Ellis Eugene Jones
Mark Ishee
Al Lipkin
Clifford Anderson
Brian D. Lentz
Chester Crowley
Lee Edwards
Frank W. Larimer

Tournament Announcements

We print any tournaments in our Coming Attractions for free. All ads for this section must be in Rick Igou's hands by 10th of the month preceding issue date of TCN. We will gladly print tournaments from other states as long as they meet this deadline. The address is: Richard Igou, 400 Rhodora Court, Apt. F, Knoxville, TN 37923.

Advertising Rates

Full Page.....	\$40
One-Half Page.....	\$20
One-Third Page.....	\$14
One-Eighth Page.....	\$7
(Camera Ready only), Pre-printed fliers.....	\$15

Address Change or Dues

Send ALL address changes and dues to: Harry D. Sabine, P. O. Box 381, Crossville, TN 38555.

President's Column

Greetings from your policy board! We hope you have kept your best secret moves in good repair because your state association, in conjunction with the Knoxville Chess Club, have arranged a special event for you and coming players to showcase their talents. I refer to the U. S. Amateur Championships to be held in Knoxville on Memorial Day weekend (see tournament calendar in back for details). This will be the closest non-scholastic national tournament this year and promises to be an awesome event. You won't have to contend with the likes of Curt Jones, Ronald Burnett or Charles Maddigan either, because masters need not apply. This is a national title that anyone can win, so don't

Last issue, I promised that the State Association Committees would be formed and that has been done. The purpose of these committees is to brainstorm and suggest ways that their particular area of interest can be enhanced on a statewide level.

Serving on the publicity committee will be Dewittus Pullen, Bill Hall, Jack McNeese, Larry Gossnell, and Jim Watson. The Publicity Committee answers to the Regional Directors. The Membership Committee is answerable to the President and is comprised of John White and David Gibson. We need more members involved in this group. The Fund Raising Committee needs more staffing as well. It is Answerable to the Secretary-Treasurer and is comprised of Bill Melvin and Jack Sprague.

Our largest staff works for the future of Tennessee Chess—the Scholastic Committee. The Board liaison is the scholastic co-ordinator of course. The committee is comprised of Mark Ishee, Steve Poff, Emanuel Tsitsekis, Stone Steele, Ellis Jones, Joey Burton, Thomas Noonan and Chris Chambers. Our last committee works to get big bucks for our

organization, The Corporate Liason Committee. The Vice-President is in charge of this group. Members are Joel Grossman, John Hurt, James Jones, Morris Lewis and Peter Lahde.

Hopefully having so many links to the Board of Directors will improve communication. That is why it is important to have all three regions of the State represented in these committees. Some are short of this goal and we need your help. If your area is not represented and you are ready to help, please contact my office.

contact my office. I think that together we can take Tennessee Chess to new heights! Without a joint effort, we are doomed to mediocrity. The choice is yours to make. If you can't contribute your time, we can use your money. We have a scholastic and a general endowment fund yearning for your dollars. We'll need to get about \$20,000 in each before one will become useful. If one reaches \$100,000, the interest alone will equal our annual budget. The possibilities are staggering. We don't expect you to reach in your wallet and lay a few grand on us (although we certainly wouldn't turn it away). All we want are the nickel and dime contributions. They are the backbone of operations such as these and really add up over time. The next time your wallet gets divided up, I suggest you use it in a few different ways and considering where you are going to spend your 57 cents, endorse your check to be payable only to the Tennessee Chess Association's Scholastic Fund and give it to a board member. You won't be missing it anyway and it will do a lot of good.

Thanks for your time and attention. I hope to see each of you on the tournament circuit very soon.

Yours in Chess,
Bill Orgain, TCA President

Letter to The Editor

Sir:

I have noticed the list of top 100 players in your last issue. I have no problem with the list. I think it is a good idea to publish it, and all that. But the results! Good Lord!! Don't laugh, but I have always wanted to make it to the top 10. I was rather proud of myself, as I had picked up 90 rating points since the last list came out. But what happened? I'll tell you.... I dropped, yes, dropped, from number 75 to number 78. I ask you, Mr. Editor, is this fair?

What can a poor chess player do? Not long ago, a lowly expert could be in the top 10, but no longer. Now, you must be a master, and by the way, where are all of them coming from?

Back to the main issue! What can we do about this? I have been working just as hard as I can, and I'm losing ground. I must admit, I haven't been confining all my efforts to chess play itself. Joe and Curt Jones keep getting offers to take over a Peruvian father-son ant farm. I hope they never notice the Corryton, Tennessee postmark. I know for a fact Ron Burnett gets California travel brochures—that is if I have his correct address.

Someone has taken it upon themselves to call Charles Maddigan every night and sing "New York, New York". It may even work! If not, I'll take voice lessons.

Could we start a "put an Expert on a bus" program? Maybe a series of tournaments with a one-way plane ticket as 1st prize. Could you print an article about the excellent chance of becoming a state champion in, say, South Dakota or New Mexico?

If any of those players get their nose out of an informant long enough to see this letter, let me remind them of the wonderful opportunities for chess players in Iceland. Also, Go is a much more challenging game than chess—and the Japanese make a lot of money at it.

But lastly, and this is the reason I wrote you, could you insert my name in the 9th position when you next print the list? You can always claim it was a typo. They will never see the list anyway, as they are off somewhere studying the double-delayed symmetrical hyper-modern defense. Sincerely,

1987 Nashville Championship Finals

Player	Rating	1	2	3	4	5	6	7	8	Total	Place
1. SM Ronald Burnett	2392	XXX	1	0	.5	1	1	(u)	1	5.5 - 1.5	1-2
2. NM Jerry Wheeler	2238	0	XXX	0	1	1	1	.5	1	4.5 - 2.5	3-4
3. Joe C. Jones, Jr.	2164	1	1	XXX	1	.5	0	1	(u)	5.5 - 1.5	1-2
4. Alexander Zhislin	2125	.5	0	0	XXX	1	1	(u)	1	4.5 - 2.5	3-4
5. Brian D. Smith	1998	0	0	.5	0	XXX	.5	(u)	0	2 - 5	7
6. Tony C. Estes	1941	0	0	1	0	.5	XXX	(u)	0	2.5 - 4.5	6
7. Jerry Spinrad	1806	(f)	0	0	(f)	(f)	(f)	XXX	(f)	0 - 7	8
8. F. Morris Lewis	1665	0	.5	(f)	0	1	1	(u)	XXX	3.5 - 3.5	5

(f) = unplayed loss; (u) = unplayed win

A dramatic last-round victory over NM Jerry Wheeler propelled Expert Joe Jones into first place in the Finals of the Nashville Championship held February 21-22. Defending champion SM Ron Burnett equalled Jones' score but had to settle for second overall on tiebreaks. Joe Jones thus took the championship trophy and the title of 1987 Nashville Champion, thanks largely to his victories over both masters in the event.

The tournament was fiercely contested, with the outcome uncertain until the very end. Jones led throughout the event and seemed on the way to an easy victory after defeating Burnett, but jeopardized his chances for first place when he was outplayed in the penultimate round by a hard-charging Tony Estes. Jones, Wheeler, and Burnett were all tied for first with one game remaining.

Especially noteworthy was the excellent showing made by Morris Lewis. Lowest rated and playing in his first Championship Finals, he scored upsets over Estes and Smith, while holding Wheeler to a draw. Jerry Spinrad withdrew after two games due to family matters.

Joe Jones - Jerry Wheeler
Sicilian Defense

Nashville Championship Finals 1-0 54

1.e4 c5; 2.Nf3 e6; 3.d4 cd; 4.Nxd4 a6; 5.Bd3 d6; 6.c4 Nf6; 7.Nc3 Be7; 8.O-O; 9.Be3 Nbd7; 10.f3 Qc7; 11.Rcl b6; 12.b3 Bb7; 13.Qel Rfe8; 14.Qf2 Rac8; 15.Rfd1 Qb8; 16.Bf1 Bd8; 17.Khl Bc7; 18.Qgl Bb8; 19.Nc2 Rc8; 20.a4 Qa8; 21.Qf2 Qb8; 22.Qb4 Bd8; 23.Qf2 Bc7; 24.Qgl Qa8; 25.Rd2 d5; 26.ed ed; 27.Nxd5 Nxd5; 28.cd Bxd5; 29.Nb4 Nf6; 30.Bxa6 Bb7; 31.Bb5 Rxe3; 32.Qxe3 Bf4; 33.Rd8+ Rxd8; 34.Qxf4 Bd5; 35.Nxd5 Qxd5; 36.Qc4 Qd2; 37.Qf1 g6; 38.Qel Qb2; 39.Rd1 Rc8; 40.Bc4 Re8; 41.Qf1 Kg7; 42.g3 Qc3; 43.Qd3 Qb4; 44.Kg2 Qa3; 45.Rd2 Qc5; 46.Qd4 Qc7; 47.Qd6 Qb7; 48.Re2 Rxe2; 49.Bxe2 h5; 50.Bc4 Ng4; 51.Qd4+ Kg8; 52.h3 Nh6; 53.Qf6 Kh7; 54.g4 Qd7 Black Resigns

Jerry Wheeler - Jerry Spinrad
Queen's Gambit, Slav

Nashville Championship Finals 03/12/87 1-0 42

1.d4 d5; 2.Nf3 Nf6; 3.c4 c6; 4.Nc3 dc4; 5.Ne5 Nbd7; 6.Nc4 Qc7; 7.g3 Nb6; 8.Bf4 Qd8; 9.Ne5 Nxd5; 10.Qb3 Qb6; 11.Bg2 Qb3; 12.ab3 Nf4; 13.gf4 Nd7; 14.O-O Ne5; 15.fe e6; 16.Rfcl Be7; 17.Na4 a6; 18.Rc6 Bb8; 19.Rc7 Bd8; 20.Rc2 O-O; 21.Racl Bg5; 22.e3 b5; 23.Nc5 Bc5; 24.Ne4 Bb7; 25.Rc7 Bd8; 26.R7c2 Bd5; 27.Nc5 Bg2; 28.Kg2 Ra8; 29.f4 Be7; 30.Kf3 Rfc8; 31.Ke4 Rc7; 32.f5 Rac8; 33.fe6 fe6; 34.b4 Rc6; 35.Rc3 Rf8; 36.Rc2 Ra8; 37.Kd3 Rf8; 38.Ra3 Ra8; 39.e4 Rd8; 40.Ra6 Ra6; 41.Na6 Kf7; 42.Rc6 Black Resigns

Tony Estes - Jerry Wheeler

Sicilian Defense, c3 variation

Nashville Championship Finals 03/21/87 0-1 43

1.e4 c5; 2.c3 d6; 3.d4 Nf6; 4.dc5 Nc6; 5.f3 dc5; 6.Qd8 Nd8; 7.Be3 e5; 8.Nd2 Be7; 9.Bb5+ Bd7; 10.Bd7+ Nd7; 11.Rdl b5; 12.c4 a6; 13.Ne2 Nc6; 14.Nc3 O-O; 15.Nd5 Bd6; 16.O-O Nd4; 17.b3 Rab8; 18.Rfel Rfc8; 19.Bg5 f6; 20.Bh4 Nb6; 21.Rcl Nd5; 22.cd5 c4; 23.Bf2 c3; 24.Nbl c2; 25.Nd2 Ba3; 26.Kf1 Rc3; 27.f4 Rd3; 28.Bd4 Bcl; 29.Rcl Rd2; 30.Be3 Rd1+; 31.Ke2 Rcl; 32.Bcl ef4; 33.Bf4 Rc8; 34.Bcl Kf7; 35.Kd3 b4; 36.Kd2 Ke7; 37.a3 a5; 38.ab4 ab4; 39.g3 Kd3; 40.Bb2 h5; 41.Kcl Re8; 42.Kc2 Re4; 43.Kd3 Kd5 White Resigns

Joe Jones - Ronald Burnett

Sicilian Defense, Richter-Rauzer Variation

Nashville Championship Finals 1-0 43

1.e4 c5; 2.Nf3 Nc6; 3.d4 cd; 4.Nxd4 Nf6; 5.Nc3 d6; 6.Bg5 e6; 7.Qd2 Be7; 8.O-O O-O; 9.Nb3 a5; 10.a4 d5; 11.Bb5 Bb4; 12.ed ed; 13.Qf4 Bd6; 14.Qd2 Bb4; 15.Qf4 Bd6; 16.Qd2 Be7; 17.Kbl Bb4; 18.Qf4 Be7; 19.Nd4 h6; 20.Nxe6 fe; 21.Bxb6 gh; 22.Be2 Rf7; 23.Rd3 Qf8; 24.Rh3 e5; 25.Qf5 Ne4; 26.Qe6 Nxc3; 27.bc Bg5; 28.Bh5 Nd8; 29.Qxd5 Kg7; 30.Qxe5 Rf6; 31.Rdl Kg8; 32.Rd7 Rf5; 33.Qe4 Ra6; 34.Rd3 Ne6; 35.g4 Rb6+; 36.Ka2 Bcl; 37.c4 Qb4; 38.Rd8+ Ncd8; 39.Rxd8 Rf8; 40.Qd5+ Kg7; 41.Qd7+ Kh8; 42.Qd4+ Rf6; 43.Qxf6+ Kg8 Black Resigns

Joe Jones - Alexander Zhislin

Sicilian Defense, Najdorf Variation

Nashville Championship Finals 1-0 33

1.e4 c5; 2.Nf3 d6; 3.d4 cd; 4.Nxd4 Nf6; 5.Nc3 a6; 6.Be2 e5; 7.Nb3 Be7; 8.Be3 Nbd7; 9.O-O O-O; 10.Qd2 Qc7; 11.Rfd1 b5; 12.f3 Bb7; 13.a3 Rac8; 14.Racl Rfd8; 15.Bf1 Nc5; 16.Qf2 d5; 17.Nxc5 Bxc5; 18.Bxc5 Qxc5; 19.Qxc5 Rxc5; 20. ed Bxd5; 21.Rd2 Rde8; 22.Nxd5 Nxd5; 23.b4 Rc3; 24.Rxd5 Rxa3; 25.Rel f6; 26.c4 bc; 27.Bxc4 Kf8; 28.Rd7 Rec8; 29.Be6 Rc6; 30.Bd5 Rb6; 31.Recl Ke8; 32.Rag7 Kd8; 33.Bb7 Black Resigns

Ronald Burnett - Jerry Wheeler

King's Indian Defense, Samisch Variation

Nashville Championship Finals 1-0 33

1.d4 g6; 2.c4 Nf6; 3.Nc3 Bg7; 4.e4 d6; 5.f3 O-O; 6.Be3 Nbd7; 7.Qd2 e5; 8.d5 Nh5; 9.O-O O-O; 10.Nge2 b6; 11.Kbl Ndf6; 12.h3 f4; 13.Bf2 Nfd7; 14.b4 a5; 15.a3 Ba6; 16.Ncl Rf7; 17.Bd3 Bf6; 18.Nb3 ab; 19.ab Bh4; 20.Bxd4 Qxd4; 21.Kb2 Ng3; 22.Rhgl Qe7; 23.Ral Rff8; 24.Ra3 Bb7; 25.Rgal Rxa3; 26.Rxa3 Rb8; 27.Ra7 Qd8; 28.Nb5 Nf6; 29.c5 bc; 30.bc dc; 31.Qa5 Bxd5; 32.ed Qxd5; 33.Qxc7 Black Resigns

Jerry Wheeler - Alexander Zhislin

Queen's Gambit Accepted

Nashville Championship Finals 1-0 39

1.d4 d5; 2.Nf3 Nf6; 3.c4 e6; 4.Nc3 dc; 5.e3 c5; 6.Bc4 Be7; 7.O-O O-O; 8.Qe2 Nbd7; 9.Rdl Qc7; 10.Bd2 Nb6; 11.Bb3 Rd8; 12.Racl Qb8; 13.dc Bc5; 14.Nb5 Nbd7; 15.Bc3 Be7; 16.Bf6 Nf6; 17.Nc7 Bd7; 18.Na8 Qa8; 19.Ne5 Be8; 20.Rd8 Qd8; 21.Qc2 Qd6; 22.Nf3 h6; 23.Rdl Qb8; 24.Qd3 Bc6; 25.Qd4 Nd7; 26.Rcl Bf6; 27.Qdl Nb6; 28.Nd4 Bd7; 29.Qf3 Be5; 30.g3 Bf6; 31.Bc2 Qd6; 32.Rdl Qc7; 33.Be4 Qc4; 34.b3 Qb4; 35.Bb7 e5; 36.Nf5 Bf5; 37.Qf5 Qa3; 38.Be4 Qa2; 39.Qh7+ Black Resigns

Tony Estes - Joe Jones

English Opening

Nashville Championship Finals 1-0 48

1.Nf3 Nf6; 2.c4 c5; 3.d4 cd; 4.Nxd4 Nc6; 5.Nc3 e6; 6.a3 d5; 7.cd ed; 8.Bg5 Be7; 9.Rcl O-O; 10.e3 Ne5; 11.Be2 a6; 12.Qb3 Be6; 13.Nxe6 fe; 14.Qxb7 Qd6; 15.Qb3 h6; 16.Bh4 g5; 17.45.Rhd5 Bc7; 18.h3 h4; 19.Bh2 Nfd7; 20.O-O Rab8;

May/June/July, 1987

Tennessee Chess News

21.Qc2 Qb6; 22.Nd1 Bd6; 23.b4 Rf7; 24.Qa4 Rbf8; 25.Qxa6 Qb8; 26.Kh1 Rf6;
27.Bb5 Nb6; 28.Bxe5 Bxe5; 29.Rc6 Nc4; 30.Bxc4 bc; 31.Qxc4 Qe8; 32.Rc5 Qb8;
33.Qb5 Bd6; 34.Rox5+ Kf7; 35.Qxb8 Rxb8; 36.Rh5 Rc8; 37.Nb2 Rc2; 38.Nd3 Rd2;
39.Ne5+ Ke8; 40.Nf3 Ra2; 41.Kg1 Kd7; 42.Rd1 e5; 43.Nxe5 Kc7; 44.Nf3 Kb6;
45.Rhd5 Bc7; 46.R5d3 Kb4; 47.Nd4 Ka4; 48.Nf3 Black Resigns

Morris Lewis - Brian Smith

Trampovsky Attack

Nashville Championship Finals 1-0 60

1.d4 Nf6; 2.Bg5 Ne4; 3.Bf4 c5; 4.Nd2 Qa5; 5.c3 Nxd2; 6.Qxd2 cd; 7.cd Qxd2+;
8.Bxd2 d5; 9.e3 Bf5; 10.Nf3 a6; 11.Rcl Nc6; 12.Bc3 e6; 13.a3 Bd6; 14.Kd2
b5; 15.Bd3 Bg6; 16.Nel Ke7; 17.f3 Rac8; 18.g3 Kd7; 19.e4 f6; 20.Nc2 Bh5;
21.Rhf1 Bg6; 22.Ne3 de; 23.fe Ne7; 24.Ng2 e5; 25.Nh4 Bh5; 26.de Bxe5;
27.Bxe5 Rcl; 28.Kocl fe; 29.Nf5 g6; 30.Ne3 g5; 31.Kd2 Bg6; 32.Rf6 Ra8;
33.Roa6? Rxa6; 34.Bxb5+ Ke6?; 35.Bxa6 Bxe4; 36.b4 h5; 37.a4 Bb1; 38.Be2 h4;
39.b5 hg; 40.hg Be4; 41.Bd3 Bf3; 42.Be2 Be4; 43.a5 Nc8; 44.Bg4+ Kd6;
45.Bxc8 Kc7; 46.Bf5 Bh1; 47.Nc4 e4; 48.Ka3 Bg2; 49.Bxe4 Bf1; 50.Bd3 Bg2;
51.Ba4 Bf1; 52.Kd4 g4; 53.Kc5 Kb8; 54.b6 Kc8; 55.a6 Be2; 56.a7 Kd7; 57.a8=Q
Ke6; 58.Qe8+ Kf6; 59.Kd6 Kg7; 60.Ne5 Black Resigns

Brian Smith - Ronald Burnett

Torre Attack

Nashville Championship Finals 0-1 29

1.d4 Nf6; 2.Bg5 e6; 3.Nf3 d5; 4.e3 Be7; 5.Nbd2 b6; 6.Ne5 O-O; 7.Bd3 Ba6;
8.Bxa6 Nxa6; 9.Nc6 Qe8; 10.Nxe7+ Qxe7; 11.O-O h6; 12.Bxf6 Qxf6; 13.Qe2 Nb8;
14.c4 a5; 15.cd ed; 16.Nf3 Na6; 17.Rfd1 Rfd8; 18.Racl c5; 19.dc bc; 20.b3
a4; 21.ba c4; 22.Rd2 Nc5; 23.h3 Rxa4; 24.Nd4 Rda8; 25.Nb5 Nd3; 26.Rocl
R8a5; 27.Nd4 Nb4; 28.Nc2 Nxa2; 29.Rxd5? White Resigns

Tony Estes - Morris Lewis

English Opening

Nashville Championship Finals 0-1 43

1.Nf3 Nf6; 2.c4 g6; 3.g3 Bg7; 4.Bg2 O-O; 5.Nc3 c5; 6.d4 cd; 7.Nxd4 Nc6;
8.Nc2 d6; 9.O-O Be6; 10.Nd5 Qd7; 11.Rel Rac8; 12.Rbl Na5; 13.b3 b5; 14.Bd2
bc; 15.Nxf6+ Bxf6; 16.Bxa5 cb; 17.ab Qb5; 18.b4 Ba2; 19.Rcl Bb3; 20.Ba4
Qa4; 21.e3 Bb2; 22.Qe2 Bxcl; 23.Rxcl Rc3; 24.Ral Rxc2; 25.Rxa5 Rxc2; 26.Ra3
Be6; 27.Bd3 Ra2; 28.Rxa2 Bxa2; 29.Ba6 Be6; 30.Kf1 Bc8; 31.Be2 Bb7; 32.Bg4
f5; 33.Bd1 Ba6+; 34.Kel Rc8; 35.Ba4 Kf7; 36.b5 Bxb5; 37.Bxb5 Rc5; 38.Bb4
Rb5; 39.Bc3 a5; 40.Kd2 Ke6; 41.Kc2 a4; 42.Bb2 Kd5; 43.Kc3 Rb3+ White
Resigns

Al Malek - Alexander Zhislin

English Opening

Nashville Championship Preliminaries 0-1 41

1.c4 c5; 2.Nc3 Nf6; 3.Nf3 d5; 4.cd Nxd5; 5.e4 Nb4; 6.d4 cd; 7.Qa4+ N8c6;
8.Bb5 Bd7; 9.Ne2 a6; 10.Bxc6 Nd3+; 11.Kd2 Bxc6; 12.Qxd4 Qa5+; 13.Kc2 Rd8;
14.Qe3 Qa4+; 15.b3 Qxe4; 16.Qxe4 Bxe4; 17.Kc3 e5; 18.a3 Rc8+; 19.Kd2 Nxf2;
20.Rf1 Rd8+; 21.Ke3 Bc5+; 22.Ned4 Bxf3; 23.Kc3 Bxd4; 24.Ra2 Nd3; 25.Bd2 O-
O; 26.Ke4 Nc5+; 27.Kf3 Nxb3; 28.Bb4 Rfe8; 29.Rbl Nc5; 30.Bxc5 Bxc5; 31.Rxb7
Rd3+; 32.Ke4 Rd4+; 33.Kf3 e4+; 34.Ke2 e3; 35.Rc7 Bb6; 36.Rc6 Ba5; 37.Rxa6
Rd2+; 38.Rxd2 ed+; 39.Kd1 Rel+; 40.Kc2 dl=Q+; 41.Kb2 Re2 mate

Morris Lewis - Jerry Wheeler

Trampovsky Attack

Nashville Championship Finals 1/2 - 1/2 38

1.d4 Nf6; 2.Bg5 d5; 3.Bxf6 ed; 4.e3 Bd6; 5.Bd3 O-O; 6.c3 Re8; 7.Qc2 The e-
file is getting hot, and my King is looking for some shade. This move also
induces weaknesses on my primary target, the kingside ...g6; 8.Nd2 f5; 9.O-
O b6; 10.h4 Ba6; 11.h5 An open h-file will be worth more than my white-
squared Bishop if Black exchanges ...c5; 12.hg fg? [In view of what
follows, better is 13...hg to preserve some pawn shelter for the King
toward the center -- Ishee]; 13.Bxf5! Black considered his move for several
minutes here. If 13...gf there follows 14.Qxf5 Qd7; 15.Qxd5+ Kh8 (or
15...Kf8; 16.Ne4 Bc7; 17.Qxa8 and I haven't found a line where the Queen is
trapped); 16.Ne4 Bc7; 17.Qxa8 Nc6; 18.Rdh7+! ...Qf6; 14.dc Here I goofed.
Better is 14.Nc4 -- if 14...Qxf5; (or 14...de; 15.Bxe4 followed by Bxa8
when White has at least a Rook & pawn for 2 pieces) 15.Nxd6 Qxc2+; 16.Kxc2
Rd8; 17.dc bc; 18.Rxd5 and White has 2 pawns. ...Bxc5; 15.Bd3 Bb7; 16.Nf3
Nc6; 17.Rh4 Rac8; 18.Rdhl Re7; 19.Rf4 Qd6; 20.Ng5 Ne5; 21.Rfh4 Rcc7; 22.Nb3
[22.Nf3!] ... a5; 23.Nd4 Bxd4; 24.ed Nxd3; 25.Qxd3 Bc8; 26.Rh6 Bf5?;
27.Qxf5 ...Rxc3+; 28.Kd2? Not 28.bc?? Qa3+; 29.Kbl gf, but best is 28.Kbl!
when Black has no counterplay. ...Rcc7? [28...Rc4!]; 29.a3 Stopping the
last check ...Rc4; 30.Rlh4 Qc6; 31.Qd3 Qf6; 32.Ne4? Here I faltered,
considering only 33.Rdx7 Rdx7; 34.Rdx7 Kdx7?; 35.Ng5+, but of course Black
need not take the second Rook. Fortunately the line played was sufficient
for the half point. ...Qe6; 33.Rdx7 Rdx7; 34.Rdx7 de; 35.Re7 ed; 36.Rxe6
Rc2+; 37.Rxd3 Rb2; 38.Rox6+ Kf7 Draw Agreed (notes by Morris Lewis)

Chess Trivia Quiz No. 5

by Mark Ishee

- How long did history's first correspondence match, between London and Edinburgh, last?
- What do the 1870 Baden-Baden and the 1914 Mannheim tournaments have in common?
- Which famous university once lost a correspondence game to an insane asylum?
- What was odd about the 1878 Paris-Marseilles correspondence game besides the fact that Paris gave Marseilles Queen odds?
- In what year did the tournament to determine the "Absolute" Champion of the USSR occur?
- Who was the first player to compete in an international tournament via teletype?
- Which American tied for first in the 1938 AVRO Tournament?
- Who won the 1966 Petrosian-Spassky match for the title?
- Who became World Champion in 1969?
- Where did Fischer finish in the 1958 World Championship Interzonal?
- In what year did the famous Fischer-Reshevsky match occur?
- How many of the 24 games in the 1974 Karpov-Korchnoi match were draws?

Answers - bottom of page 10

Mitchell Wins Scholastic Championship

R.O. Mitchell of Nashville, a newcomer to scholastic tournament chess, scored a hard-fought 4-1 to take a well deserved first place in the top section of the 1987 Tennessee Scholastics. He solidly defeated Joey Burton and Oliver Tai, as well as tournament veteran Jay Sabine, losing only to defending champion Bill Hall in a see-saw battle that ended in a time forfeit.

Mitchell's future in chess looks bright indeed, as he is only a sophomore. By capturing the scholastic championship on his first attempt, he follows in the footsteps of such notables as Curt Jones and Ronald Burnett (now both Senior Masters). Both Jones and Burnett dominated Tennessee scholastic chess in their respective eras, and, considering his excellent showing, it seems possible that Mitchell could now do the same. He is unquestionably stronger than his current class B rating indicates, as shown by his games below. He will represent Tennessee in the Arnold Denker Tournament of High School Champions later this year.

Oliver Tai (1982) - R.O. Mitchell (1649)

Sicilian Dragon

Tennessee Scholastics 0-1 28

1.e4 c5; 2.Nf3 d6; 3.d4 cd; 4.Nxd4 Nf6; 5.Nc3 g6; 6.Be3 Bg7; 7.f3 O-O; 8.Qd2 Nc6; 9.Bc4 Bd7; 10.b4 Sharpest, but most masters (notably Karpov) play 10.O-O-O, removing the King to safety while preserving options for central and/or kingside attack....Rc8 Another idea is Qa5 followed by Rfc8 (which eliminates any Nd5-Nxe7+ tricks by White after Kd1). The text is a highly playable alternative.; 11.Bb3 Na5 Nonstandard (normal is Ne5), but there seems nothing wrong with it. Black gives himself the option of Nxb3 in addition to the more normal Nc4; 12.O-O-O b5 A typical situation in the Dragon: both sides attack as rapidly as possible, usually sacrificially. White cannot safely win this pawn, as its absence opens lines for Black's attack.; 13.h5 Nxb3+; 14.Nxb3 b4; 15.Nd5 Nxd5; 16.ed? This is suicide because of the weakness on c2. 16.Qxd5 was necessary. ...Bf5 White could probably safely resign here, but he plays on grimly.; 17.Nal Ugly, but forced. ...Qa5; 18.a3 18.Kb1 is no better. ...Qa4 Black's attack is decisive; 19.Bd4? Bxd4; 20.hg Be3; 21.Qxe3 Rxc2; 22.Kb1 Rc3+; 23.Qe4 Bxe4; 24.fe Rg3; 25.gh Kh8; 26.Rd4 Rb8; 27.Nc2 Rxc2; 28.Rc4 Qb3 White Resigns

Joey Burton (1804) - R.O. Mitchell (1649)

King's Indian Attack

Tennessee Scholastics 0-1 37

1.Nf3 c5; 2.g3 Nc6; 3.Bg2 g6; 4.d3 Bg7; 5.c3 e5; 6.e4 Nge7; 7.O-O O-O; 8.Nb4 d6; 9.Qe1 Be6; 10.f4 Qd7; 11.Nd2 ef; 12.gf f5; 13.Qg3 fe; 14.de d5; 15.Nb3 b6; 16.Be3 de; 17.Rad1 Qc7; 18.Bxe4 Nf5; 19.Nxf5 Bxf5; 20.Bd5+ Kh8; 21.Nd2 Rae8; 22.Rf3 Ne7; 23.Bc4 Bd7; 24.Qc2 Bg4; 25.Ne4 Nf5; 26.Ng5 Bxf3; 27.Qxf3 Nxe3; 28.Ne6 Rxe6; 29.Bxe6 Nxd1; 30.Qxd1 Qxf4; 31.Qe2 Be5; 32.b4 Re8; 33.Qa6 Qd2+; 34.Kf1 Rf8+; 35.Bf2 Rxf7+; 36.Kel Rxc3+; 37.Kd1 Qd2 mate

Michael Lloyd (1299) - R.O. Mitchell (1649)

Sicilian Defense

Tennessee Scholastics 0-1 48

1.e4 c5; 2.Bc4 Nc6; 3.Nf3 d6; 4.h3 Nf6; 5.Nc3 g6; 6.O-O Bg7; 7.d3 O-O; 8.a3 a6; 9.Nd5 b5; 10.Nxf6+ Bxf6; 11.Bd3 Bd7; 12.c3 e6; 13.Bxc6 Bxc6; 14.Bh6 Re8; 15.Rel e5; 16.d4? ed; 17.cd Rxe4; 18.Rxe4 Bxe4; 19.b4 c5; 20.Rcl Bxf3; 21.gf Bg5; 22.Bxe5 Qxe5+; 23.Kf2 Re8; 24.Rc2 Qd5; 25.Re2 Rxe2; 26.Rxe2 Qe6+; 27.Kd2 Qd3; 28.f4 Qd3+; 29.Kel Qxd1+; 30.Kxd1 d5; 31.Kd2 f5; 32.Kc3 g5; 33.fg Kg7; 34.f4 Kg6; 35.Kd2 Kh5; 36.Ke2 Kg4; 37.Ke3 Kg3; 38.Ke2 Kxf4; 39.Kc2 Ke4; 40.Kc3 Ke3; 41.Kc2 Kxd4; 42.Kd2 c3+; 43.Kc2 Kc4; 44.Kcl d4; 45.Kc2 d3+; 46.Kcl Kb3; 47.Kd1 c2+; 48.Kd2 c3+ Black Won on Time

R.O. Mitchell (1649) - Bill Hall (1990)

Queen's Gambit Declined

Tennessee Scholastics 0-1

1.d4 d5; 2.c4 e6; 3.Nc3 Nf6; 4.Bg5 Nbd7; 5.cd ed; 6.e3 c6; 7.Rd3 Be7; 8.Qc2 O-O; 9.Nge2 h6; 10.Bxf6 Nxf6; 11.h3 Ne8; 12.O-O-O b5; 13.g4 Nd6; 14.f4 f5; 15.Rdgl Bd7; 16.Rg2 b5; 17.Na4 Ne4; 18.Bxe4 fe; 19.Kb1 Rb8; 20.b3 Rb5; 21.Rcl Qa5; 22.Nc5 Bc8; 23.Na4 Bb7; 24.Ng3 Rc8; 25.Nf5 Bf8; 26.Nc5 Kf7; 27.h4 Bxc5; 28.dc Ba6; 29.NH6+ Kf8; 30.Nxb5 Bxb5; 31.Qb2 Bd3+; 32.Kal Qc7; 33.f5 a5; 34.f6 g6; 35.f7 Kxf7; 36.Rf2+ Kg8; 37.Qf6 Qg7; 38.Qxg7 Kxg7; 39.Kb2 Ra8; 40.Rhl Rd8; 41.a3 d4; 42.ed Rxd4; 43.Rel Rd5; 44.ab ab; 45.Ral Rd7; 46.Rel Rd5; 47.Ral Rd7; 48.Kcl e3; 49.Rh2 e2; The rest of the game was not recorded in the mutual time scramble that followed. Black eventually won on time.

Rick Herbers - Dwight Weaver

Sicilian Defense

Memphis Triad 1-0 35

1.e4 c5; 2.c3 Nc6; 3.d4 cd; 4.cd d5; 5.Nc3 de; 6.d5 Nb8; 7.Ne4 Nd7; 8.Qa4 b6; 9.Qc6 Rb8; 10.Bf4 Bb7; 11.Bb5 Bc6; 12.dc5 e5; 13.cd7 Ke7; 14.Be5 Rb7; 15.Rd1 Nf6; 16.Bd6+ Ke6; 17.Ng5+ Kf5; 18.Nf7 Bd6; 19.Nd6+ Ke6; 20.Nb7 Qc7; 21.d8=Q Rd8; 22.Nd8+ Kf5; 23.Bd3+ Kg4; 24.h3+ Kh5; 25.g4+ Ng4; 26.hg4 Kg4; 27.Be2+ Kf5; 28.Rh5+ Kg6; 29.Rg5+ Kf6; 30.Nf3 Qf4; 31.Rd7 Qb4+; 32.Kf1 Qf8; 33.Rf7+ Qxf7; 34.Nf7 Kf7; 35.Rd5 Black Resigns

The Correspondence Game

with Lee Edwards

Congratulations to Dr. Juan Aristorenas, who qualified for the 85-86 finals by winning his section with a perfect 6-0 score.

Over the board players often ignore the many advantages of correspondence play. They tend to think of postal players as being bodes, like problemists and checker players. Scientific studies conducted by my predecessor, Kent Meadows, indicate that correspondence specialists are justified in thinking that over the board "speed freaks" are a bit slow mentally. Meadows also notes that he could get no satisfaction at all before taking up chess by mail, whereas now, he is surrounded by postal groupies and is reputed to be a veritable Rasputin.

On a less serious note, many players find that they can improve their knowledge of their favorite openings by using them in postal chess. Some players avoid the books, while others try to expose the mistakes in their opponents' books.

Many players use new openings in postal chess for a year or two before venturing them over the board.

Of course, one can analyse middlegame positions in much greater depth in postal chess than is possible

in those weekend swiss tournaments. Correspondence players often deliberately attempt to reach razor sharp middlegame positions. Your opponent is less likely to make mistakes, however, and you are therefore more likely to reach the endgame. Postal chess is a good way to get experience in practical endgame positions and study those endings which frequently arise from your favorite openings.

There is something to be said for playing postal chess at the state, national and international levels.

So you players out there who are competing in ICCF and USCF events, why not get your entry in today? And you people who haven't given postal chess a chance yet; why not improve your over the board play, raise your IQ 50 points, and be a heavy dude like Albert Einstein, Leonardo da Vinci, John Stuart Mill, or Kent Meadows?

It only costs \$6.00, plus TCA dues if you're not a member, and all entry fees are returned as prize money. So send those entries in today to: Lee Edwards, P. O. Box 424, Goodlettsville, TN 37072.

Answers to Trivia Quiz

1. Four years
2. They were halted because of the marching troops nearby.
3. Cambridge
4. Marseilles had to force Paris to give mate.
5. 1941
6. Bobby Fischer
7. Reuben Fine
8. Petrosian
9. Boris Spassky
10. Fifth
11. 1961
12. 19

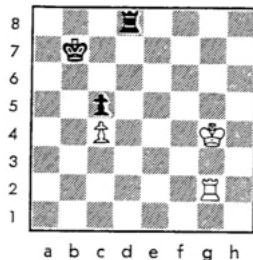
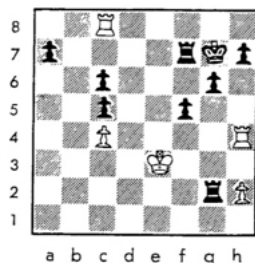
May/June/July, 1987

Doctor Dull

by Jim Watson

This column might be subtitled, "How not to play rook and pawn end games." My opponent did not take advantage of my middle-game mistakes (open King position) and I cruised into the ending 3 pawns up. How do you win this kind of ending? I thought you "just make moves." Play along and discover my errors.

1. e4 e5 2. f4 ef 3. Be4 d5 4. Bd5 Nf6 5. Nc3 Bb4 6. Nf3 Bc3 7. bc Nd5 8. ed Qd5 9. 0-0 0-0 10. d4 Bg4 11. Bf4 c5 12. Qd3 Bf3 13. Rf3 Nc6 14. Rh3 g6 15. Rh6 f5 16. Be3?? Rae8 17. e4 Qe4 18. d5 Qe3 + 19. Qe3 Re3 20. dc bc 21. Rb1 Rf7 22. Rb8 + Kg7 23. Kf2 Rc3 24. Rh4 Re2 + 25. Ke3 Ra2 26. Re8 Rg2



I had been playing for this position since move 40. Only now do I see that ...Rg8 + 49. Kf3 Rg2 50. Kg2 Kb6 51. Kf3 Ka5 52. Ke3 Kb4 53. Kd3 Kb3 54. Kd2! Kc4 55. Kc2 white gives up the pawn but draws with the opposition ...49. Rb2 + Ka6 50. Kf5 Rd4 51. Ke5 Rc4 Draw agreed.

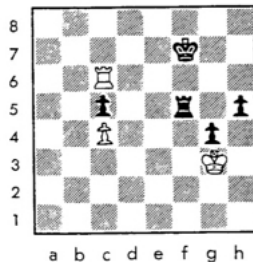
Blount County Spring Open

by Jim Watson

Blount County hosted another tournament April 11. Recent events here have been packed with both talent and competition. That was not the case this time. A very disappointing attendance of only 16 players showed up.

At the risk of editorializing, I would like to scold many of the Middle and East Tennessee players that did not play. I understand prior commitments often strike a large number of players, and can cause bizarre fluctuations in attendance. But the same thing occurred in Crossville the week-end before. Where was the faithful Nashville group? More disappointing, where were the members of the host club? Can we expect more events if pitiful attendance continues?

Back to the event—Roger Viles rushed to the front, continuing the upset trail he has been carving lately. The top board, Richard Carpenter, stopped the Vile's Express in the last round. This allowed Carpo to win with a perfect 4 points, continuing his habitual domination of this event. Other information is unavailable as to class prizes. The crosstable from this event will be printed in the next TCN.



Tennessee Chess News

Fearless Fish

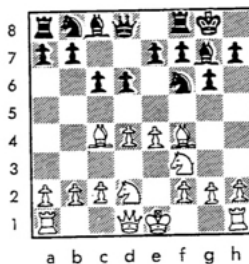
by Jim Watson

I stated in print I would only play the ultra-dull in the future. I even had a secret dream of becoming the most boring player in Tennessee Chess. Alas, such dreams are made to be broken. It should have been obvious some opponents might resist my dull intentions. In addition, many positions require spirited play to hold equality.

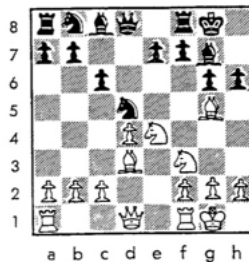
In the following game, my opponent responded to my odd opening by refusing to develop his Q-side. I tried not to notice, but soon reached a point that required fireworks to avoid a disadvantage.

White: Jim Watson. (1926)
Black: Leonard Dickerson. (2149)

1. d4 Nf6 2. Nf3 g6 3. Bf4 Bg7 4. Nbd2 d6 5. e4 0-0 6. Be4? O'Kelly-Geller continued Bd3 Nbd7 7. 0-0 Nh5 with a position so dull the spectators slept until the draw was agreed ...e6



Black doesn't equalise with ...Ne4 7. Ne4 d5 8. Qe2 dc 9. 0-0 0-0 10. 0-0 d5 8. Bd3 de 9. Ne4 Nd5 10. Bg5 I didn't want black to play ...e5 and gain equality ...h6

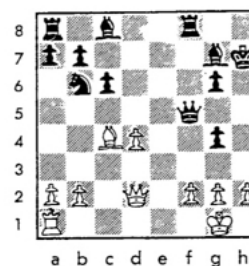


It is becoming noticeable that Black is making no attempt to develop his Q-side. By ...Bg4 ...Nd7 ...e5, he should get a reasonable game with no risk. 11. e4 hg 12. cd g4 13. Ne5 Qd5



I have difficulty deciding what is going on in this position. In general terms, Black is undeveloped and his Queen is exposed. I can't find a quiet way to continue without Black gaining a large advantage. This forces the conclusion—White must play sharply and trust he has enough threats to keep his opponent busy.

We must be aware, Black did not have to go into this. Before proceeding, let's look at some other ideas: A) ...Be5 14. de cd 15. Ng3 Nc6 16. Re1 and white wins back the pawn with advantage. B) ...cd 14. Ng3 Nc6 15. Nc6 bc 16. Qe2 Bd4 with a complicated position that black is probably winning. 14. Be4 Qe4 15. Re1 Qf5 16. Nf7 Kh7 Black's best seems to be ...Rf7 17. Re7 Qf2 + 18. Kh1 Qd4 19. Qb3 and white has a bind. 17. Re7 Nd7 18. Qd2 Nb6



Black's crippled K-side allows a quick combination. He should try ...Nf6 19. Rael Bd7 and slowly try to unwind his pieces. 19. Qh6 + Kg8 if ...Bh7 20. Ng5 + Kh8 21. Rh7 mate 20. Ng5 + Nc4 21. Qb7 mate.

May/June/July, 1987

MINUTES OF A REGULAR MEETING OF THE BOARD OF DIRECTORS

OF THE TENNESSEE CHESS ASSOCIATION

A regular meeting of the Board of Directors of the Tennessee Chess Association was held at the Tennis Center, Fairfield Glade Resort, Crossville, Tennessee, on Sunday, March 1, 1987, at 10:00 A.M., in conjunction with the 1987 Tennessee Scholastics.

Directors present were Bill Orgain, Peter Lahde, Harry Sabine, Larry Thomas, Rick Igou, Curt Jones and Ron Burnett. Directors absent were Al Lipkin, Dale Flickinger and Lee Edwards.

President Orgain presided. The minutes of the Board of Directors meeting held on August 31, 1986, were approved.

Officers reports were given by Bill Orgain, Harry Sabine, Larry Thomas, Rick Igou and Curt Jones.

It was noted that Chester Crowley had had to cancel the Oak Ridge Tournament scheduled for March 7-8 because of problems with the Holiday Inn and that he was taking all reasonable steps to let players know about the situation.

The 1986-1987 Turkey Tour was discussed. A motion was made to permit up to two turkey tour events per weekend at the discretion of the Tournament Coordinator. The motion was duly seconded and approved. Peter Lahde made a motion to waive the turkey tour fee if the TCN was not mailed on schedule. The motion failed by a vote of 1-4.

The 1987 Tennessee Open was discussed. Only one bid had been received from the Shelby County Chess Club. However, many details were not included in the bid. Accordingly, all matters pertaining to the 1987 Tennessee Open including the budget, format and approval of a bid were referred to a committee composed of Bill Orgain, Curt Jones, Rick Igou and Mark Ishee for appropriate action.

A motion was made to reserve the SASP funds for 1986 for the next fiscal year. The motion was duly seconded and approved.

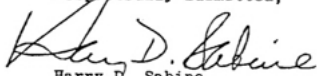
A motion was made to allow home school students residing in the same county in Tennessee to form a team and participate as a team in future Tennessee Scholastics. The motion was approved by a vote of 5-0.

The bidding deadline for the 1987 Southeastern Amateur Team Tournament was extended until the next Board meeting.

All other matters were deferred until the next Board meeting which will probably be held in June or July in Dickson, Tennessee.

Respectfully submitted,

ATTEST:


Harry D. Sabine,
Secretary-Treasurer

Bill Orgain, President

May/June/July, 1987

The 1987 Tennessee Scholastics was Held

by Joey Burton

February 28-March 1 at Fairfield Glade Resort in Crossville. Despite the bad weather, it was an exceptional tournament.

An incredible surprise was in store for the 26-player High School Championship Section. R. O. Mitchell from Hume Fog out-scored last year's champion, Bill Hall, to take a clear first place with a 5-1 score. Hall from Cumberland Co. and Vibeke Jansen from Auburndale tied for second with 4½-1½ scores. The High School Team competition was won for the third consecutive time by Cumberland County with 16 points. Auburndale placed a close second with 16 points and Red Bank placed third with 6 points.

The High School Junior Varsity was the largest section with 40 participants. This section was also left bewildered after yet another player from Hume Fog, Greg Sinkovich, took off with first place with a perfect 6-0 score. Red Bank's Lynn Lee and Kevin Spann placed second and third with 5-1 scores. The team competition was won by Red Bank with a total of 18 points. Second place, with 15 points, went to Memphis University; and Craigmont also from Memphis, took third with 14 points.

Auburndale completely dominated the Junior High Championship Section with the top four players coming from Auburndale. Oliver Tai and Craig Klein were co-champions with 6-0 scores, and teammates Will Fan and Clayton Scott placed third and fourth place respectively. To no one's surprise, Auburndale won the team competition with 21½ points; 12½ points ahead of the second place team, Martin Junior High of Crossville.

The Junior High Booster section also produced a perfect score. Chris Walker of Memphis University won first with an impressive 6-0 score. John Opfer of Homestead took second place with a 4-1½ score, and Sanjeev Memula of Memphis University placed third with a 4-2 score. The team champion was Memphis University, who amassed a total of 17½ points. Athens Junior and Auburndale placed second and third respectively.

The Elementary Championship Section was also dominated by Auburndale. The Auburndale team collected 8 of the top 10 individual awards. The

champion, although was not from Auburndale. Daniel Branham from Clinton Elementary won first place over the Auburndale players with a 5½-½ score. Jason Cohen placed second for the Auburndale team, and Jake Harris from (Home School) scored 5-1 to take third. Auburndale won the team competition with 18 points, with Martin Junior High taking second and Homestead Elementary placing third.

The 11-player Primary Section was won by Harold Simmons of Homestead with a 5½-½ score. Elian Levatino and Cole Bass, both from Auburndale placed second and third respectively. Auburndale also won the team competition for the fourth straight year with a score of 15½.

The National High School Championship took place April 24-26 in Pulaski, Virginia. GM Arthur Bisguier gave a simultaneous exhibition Friday and was at the tournament site Saturday and Sunday for game analysis. The tournament was played with the top board being shown on closed-circuit TV throughout the tournament site. The tournament was well organized, and Tennessean Kenneth Keck did a great job as chief TD.

Vivek Rao came to the tournament with the No. 1 pairing; he left under the same conditions. Rao dominated the Varsity Section with a perfect 7-0 score. Bellarmine High School from San Jose, California, commanded the team competition by scoring 21 points, 1½ points above the rest of the field.

Bill Hall from Cumberland County represented Tennessee well by placing tenth individually. Cumberland County also excelled as a team, placing 7th in the tough Varsity Section. Auburndale High School also did well by placing 20th in the Varsity Section.

The Junior Varsity Section produced three co-champions. Doug Underhill from Eastside, Richard Ha from Evansville Day School, and Brian White from Twin Lakes all scored 6½ points for first place honors. Hal Phillips of Red Bank, Tennessee, won top D player with 5½ points. The Red Bank High School also enjoyed an excellent tournament to tie for 6th as a team in the Junior Varsity Section.

FEBRUARY 28-MARCH 1, 1987

Fairfield Glade Resort - Crossville, Tennessee

1. High School Championship Section: (26 players)

Individual Winners:

Champion	- R. O. Mitchell	- Hume Fogg	5-1
2nd Place	- Bill Hall	- Cumberland Co.	4½-1½
3rd place	- Vibeke Jansen	- Auburndale	4½-1½
4th place	- Oliver Tai	- Auburndale	4-2
5th place	- Fred Baier	- Cumberland Co.	4-2

May/June/July, 1987

1987 U. S. AMATEUR CHAMPIONSHIPS



A six round Swiss on May 23, 24, 25, 1987
At the Downtown Hilton in Knoxville, Tennessee

In 2 Sections—Open: Under 2200/Unr.
and Reserve: Under 1800/Unr.

Prove Bragging Rights to
Best in the U. S.

Pre-Entry \$25
If Postmarked 5/10, \$30 at site

For details contact USCF or:
Chester Crowley (615) 457-7965

**PLAN
TO
PLAY**

Tennessee Chess News

**Oliver Tai
is the
NEW
Junior High
NATIONAL
CHAMPION**

**More in the next
issue of TCN**

Tennessee Chess News

1st-Class B	- Jay Sabine	- Cumberland Co.	4-2
2nd-Class B	- Sean O'Daniels	- Auburndale	4-2
1st-Class C	- Jeff Smathers	- Cumberland Co.	3½-2½
2nd-Class C	- Hoa Pham	- Red Bank	3-3
1st-Class D	- Michael Lloyd	- Auburndale	1½-4½
1st-Unrated	- Joe Drake	- Karns	2-4
2nd-Unrated	- Shane Wilson	- Dobyns-Bennett	1½-4½

Team Winners: (5 teams)

Team Champion	- Cumberland Co.	- Crossville	16
2nd place Team	- Auburndale	- Cordova	15
3rd Place Team	- Red Bank	- Red Bank	6

2. High School Junior Varsity: (40 players)

Individual Winners:

Champion	- Greg Sinkovich	- Hume Fogg	6-0
2nd Place	- Lynn Lee	- Red Bank	5-1
3rd Place	- Kevin Spann	- Red Bank	5-1
4th place	- Phillip Vanness	- Craigmont	4½-1½
5th place	- Jonathan Weinberg	- Memphis University	4½-1½
6th place	- Mark McNabb	- Lenoir City	4-2
7th place	- Chris Varner	- Red Bank	4-2
8th place	- Douglas Brumley	- Memphis University	4-2
9th place	- Wayne McMeen	- Red Bank	4-2
10th place	- David Smith	- Red Bank	4-2
1st-1000-1199	- Brian Jordan	- Craigmont	3½-2½
1st-Unrated	- Bennie Benson	- Memphis Central	3-3

Team Winners: (8 teams)

Team Champion	- Red Bank	- Red Bank	18
2nd place Team	- Memphis University	- Memphis	15
3rd place Team	- Craigmont	- Memphis	14

3. Junior High Championship Section: (14 players)

Individual Winners:

Co-Champion	- Oliver Tai	- Auburndale	6-0
Co-Champion	- Craig Klein	- Auburndale	6-0

May/June/July, 1987

3rd place	- Will Fan	- Auburndale	5-1
4th place	- Clayton Scott	- Auburndale	4½-1½
5th place	- Seth Shafer	- Charlotte JHS	3½-2½
1st-Class C	- Chuck Hamlett	- Memphis University	3-3
1st-Class E	- Freda Weaver	- Martin JHS	3-3
2nd-Class E	- Micol Guigou	- Martin JHS	2-4
1st-Unrated	- Dean Weidner	- Martin JHS	2-4
2nd-Unrated	- Mike Owens	- Martin JHS	½-5½

Team Winners: (2 teams)

Team Champion	- Auburndale	- Cordova	21½
2nd place Team	- Martin Junior	- Crossville	9

4. Junior High Booster Section: (21 players)

Individual Winners:

Champion	- Chris Walker	- Memphis University	6-0
2nd place	- John Opfer	- Homestead	4½-1½
3rd place	- Sanjeev Memula	- Memphis University	4-2
4th place	- Rodney Blevins	- Athens JHS	4-2
5th place	- Dan Bongard	- Auburndale	4-2
1st-Below 1000	- Chris Jumper	- Auburndale	3-3
1st-Unrated	- Amish Purohit	- Memphis University	4-2

Team Winners: (4 teams)

Team Champion	- Memphis University	- Memphis	17½
2nd place Team	- Athens Junior	- Athens	14
3rd place Team	- Auburndale	- Cordova	12½

5. Elementary Championship Section: (19 players)

Individual Winners:

Champion	- Daniel Branham	- Clinton Ele.	5½-½
2nd place	- Jason Cohen	- Auburndale	5-1
3rd place	- Jake Harris	- (Home School)	5-1
4th place	- Robin Rogers	- Auburndale	4½-1½
5th place	- Alec Horgan	- Auburndale	4½-1½
6th place	- Nicolas Saeger	- Auburndale	4-2

Tennessee Chess News

7th place	- Vinay Kini	- Auburndale	4-2
8th place	- Jay Rosen	- Auburndale	4-2
9th place	- Kelly Horgan	- Auburndale	4-2
10th place	- Matthew Winstead	- Auburndale	4-2
1st-Class E	- Rathi Rao	- Auburndale	3-3
2nd-Class E	- Jody Neely	- Homestead	2½-3½
1st-Unrated	- Kevin Dean	- Martin JHS	2-4

Team Winners: (3 teams)

Team Champion	- Auburndale	- Cordova	18
2nd place Team	- Martin Junior	- Crossville	5
3rd place Team	- Homestead	- Crossville	4½

6. Primary Section: (11 players)

Individual Winners:

Champion	- Harold Simmons	- Homestead	5½-½
2nd place	- Elian Levatino	- Auburndale	4½-1½
3rd place	- Cole Bass	- Auburndale	4-2
4th place	- Nick Laurinas	- Auburndale	3½-2½
5th place	- Ted Hook	- Auburndale	3½-2½
1st-Below 1000	- Zeke Wuchina	- Auburndale	2-4
1st-Unrated	- Virgil Thompson	- South Cumberland	1-5

Team Winners: (1 team)

Team Champion	- Auburndale	- Cordova	15½
---------------	--------------	-----------	-----

1987 Tennessee Scholastics

HIGH SCHOOL CHAMPIONSHIP TEAMS

No.	School	City	RD1	RD2	RD3	RD4	RD5	RD6	Tot
1.	Cumberland County	Crossville	4	6	9½	11	13½	16	16
2.	Auburndale	Cordova	3½	6	9½	12½	12½	15	15
3.	Red Bank	Red Bank	0	1	3	3	4	6	6
4.	Karns	Knoxville	½	1½	2½	3½	5	5½	5½
5.	Memphis University	Memphis	0	2	2½	3½	4½	4½	4½

HIGH SCHOOL JUNIOR VARSITY TEAMS

No.	School	City	RD1	RD2	RD3	RD4	RD5	RD6	Tot
1.	Red Bank	Red Bank	4	8	8	12	15	18	18
2.	Memphis University	Memphis	4	4½	7½	10½	13½	15	15
3.	Craigmont	Memphis	2	5	7½	10	12½	14	14
4.	Auburndale	Cordova	2	5	8	8½	9	11	11
5.	Central	Memphis	0	3½	3½	5½	8	10	10
6.	Cumberland County	Crossville	2	2½	4½	4½	5½	7½	7½
7.	Hume Fogg	Nashville	2	4	5	7	7	7	7
8.	Lenoir City	Lenoir City	1	3	5	6	6	6	6

May/June/July, 1987

JUNIOR HIGH CHAMPIONSHIP TEAMS

No.	School	City	RD1	RD2	RD3	RD4	RD5	RD6	Tot
1.	Auburndale	Cordova	4	8	12	14	18	21½	21½
2.	Martin JHS	Crossville	1	4	5	8	8	9	9

JUNIOR HIGH BOOSTER TEAMS

No.	School	City	RD1	RD2	RD3	RD4	RD5	RD6	Tot
1.	Memphis University	Memphis	4	8	10	12	15	17½	17½
2.	Athens Jr. High	Athens	2	4	7	9	12	14	14
3.	Auburndale	Cordova	3	4½	6½	9½	10½	12½	12½
4.	Homestead	Crossville	1	2½	3½	5½	5½	7½	7½

ELEMENTARY TEAMS

No.	School	City	RD1	RD2	RD3	RD4	RD5	RD6	Tot
1.	Auburndale	Cordova	4	8	10	12	16	18	18
2.	Martin JHS	Crossville	0	2	2	3	4	5	5
3.	Homestead	Crossville	1	2	3	3	4½	4½	4½

PRIMARY TEAMS

No.	School	City	RD1	RD2	RD3	RD4	RD5	RD6	Tot
1.	Auburndale	Cordova	4	6	9	11	13½	15½	15½

Turkey Tour Standings

MASTER/EXPERT

1. Ron Burnett	224
2. Mark Ishee	160
3. Richard Carpenter	145
4. Curt Jones	104
5. Bill Melvin	94
Doug Raulston	94

CATEGORY A

1. Joey Burton	137
2. Brian Lentz	121
3. Brian D. Smith	105
4. Greg Robbins	75
5. John Peddleson	72

CATEGORY B

1. Joey Burton	117
2. Jay Sabine	103
3. Mike Spencer	67
4. Karl Kneile	61
5. F. Morris Lewis	60
Benny Prince	60

CATEGORY C

1. Jason Johns	119
2. Joe Crum	74
3. Harold Simmons	68
4. Rick Carnes	45
5. Kelle Tate	44

CATEGORY D

1. Clint Pearson	105
2. Jason Johns	99
3. Eddie Graham	90
4. Tony Sherrill	82
5. Buford Guerant	58

CATEGORY E

1. Neil Lentz	38
2. Ed White	38
3. Paul Tate	30
4. Stone Steele	20

Chattanooga Hosts Quads

by Jim Watson

In February, Chattanooga changed its successful Swiss format to experiment with Quads. A rather small 32 player field showed up. Attendance for recent Swiss events here has been closer to 50 players.

Gary Bagwus ruled the top Quad with two wins. Kark Kneile produced the days only perfect score in the 'B' Quad.

Cumberland County Winter I & II

by Jim Watson

Ron Burnett dominated a large field of 30 in the open class, and emerged with 4 points. This writer drew with Neal Harris in the last round (see Dr. Dull this issue) for clear 2nd. Harris and Richard Carpenter tied for 1st Expert prize. Consult the crosstable in this issue for the log-jam for 1st place B-class. Rick Carnes took sole 1st C-class.

Jason Johns and Tony Sherrill powered to a tie for 1st in the Amateur section.

On Sunday, Burnett fell off the pace, allowing Harris to sweep the field with 4 points for 1st place. This was an evenly matched field of 31 players, producing a 3-way tie for A-class and a 6 way tie for B-class.

How Good is the Par Excellence?

by Mark Ishee

No doubt many TCN readers are interested in acquiring a dedicated chess-playing computer to assist them in their study. Since so many "chess-playing boxes" are available in such a wide variety of price ranges, and since they offer so many different features, it becomes essential to have some hands-on experience with the machine of your choice before purchasing it. This column will consider the relative merits of one of the strongest and yet most affordable chess computers: the Fidelity Par Excellence, which sells through USCF for \$168 and boasts a 2100 rating. I acquired one of these machines about 5 months ago, and have played hundreds of games with it. I hope TCN readers will benefit from my experience in selecting a chess computer.

The Par Excellence (hereafter called simply Par) has many features which tournament players are likely to find useful. The best thing about the Par's hardware is its auto-sensory board, which enables you to play a "normal" game simply by moving the pieces (instead of typing in your move each time). The Par has lights around the side which display its response to you. Thus, no knowledge of notation is necessary to play against Par, a valuable feature when teaching beginners.

The Par also has several special features which can make it a more, or less, challenging opponent, depending on your preference. There are 12 selectable levels of play (see chart below); however, I have found that only six of them (levels 6 through 11) are really "playable" in the way that you might sit down with a human opponent for a game, but this does not detract from the Par's usefulness as a training tool. Levels 1 and 2 respond quickly but are too easy for a good game, while levels 3-5 play well but are unusually slow. The computer's 2100 rating was generated at level 11, and this is the setting I personally prefer to play against. However, Par plays a reasonable to good game even at the lowest levels.

Level	Time Controls	Response Time
Level 1	fixed search depth	1 ply*
Level 2	fixed search depth	2 ply*
Level 3	fixed search depth	3 ply*
Level 4	fixed search depth	4 ply*
Level 5	fixed search depth	5 ply*
Level 6	60 moves/5 minutes	5 seconds
Level 7	60 moves/15 minutes	15 seconds
Level 8	60 moves/30 minutes	30 seconds
Level 9	60 moves/1 hour	1 minute
Level 10	30 moves/1 hour	2 minutes
Level 11	40 moves/2 hours	3 minutes
Level 12	Infinite Mode	No limit

* -- response time varies based on complexity of position

There are also some useful game options besides playing level. Easy Mode disables the computer's thinking on your time, which makes it very much easier to defeat. Sound Off turns off the annoying beep that Par makes to alert you to its move. Monitor Mode is a special feature that allows two beginners to play against each other, using the Par as a "referee" against illegal moves. Black From The Bottom enables you to play the Black pieces. Change Color With Move is for solving problem positions -- the computer, with your assistance, plays itself. Cancel Book disengages Par's book opening knowledge, causing it to play weaker openings. Clear Board empties the board of pieces, allowing you to set up any position you want Par to analyse. Mate Finder Mode is a special setting for solving mate problems -- Par will analyse until it sees a mate or can analyse no further.

Par also has an optional "Selectable Openings" feature. Left on its

May/June/July, 1987

own, Par has a good built-in opening repertoire, but you can play any one of 64 different opening variations (one for each square of the board) if you choose. Not all openings are represented, but most of the common ones are included in one form or another.

One of the Par's most impressive features is its automatic mate announcement. When it has a forced mate, Par does not make its move -- it simply informs you that you are about to be mated. You can make it show you the mate, if you can't figure it out yourself. Par will also announce draws by stalemate, by threefold repetition, and by the 50-move rule.

Unlike many commercial chess programs, Par permits underpromotion, and knows that it is legal to have more than the normal complement of pieces. This feature sounds basic, but if you have ever played against a computer which will not permit you to make a second Queen you can appreciate this small but important detail.

Par has a Verify key which permits you to confirm that the board position is correct -- useful if you want to set up a position for study or if your board is accidentally upset during the game. Since Par does not record the game moves, this is the only way to reconstruct the game position in case of accident. Par also has a Take-back key which allows you to reconsider a blunder after Par's reply. This is especially useful if you want to continue a game where you have overlooked mate and Par has announced mate against you. Obviously, taking back moves regularly is very bad practice, but at least the option is there. Par also has a Hint key, but it is mostly unreliable since it only shows the best move Par has found so far; frequently, Par will "hint" one move but will play another after using more time. In other words, Par would defeat you every time if you relied solely on the Hint key for your moves.

So far, so good. There's no doubt that Par is a tremendous value, far outstripping any similarly-priced machine. But does it have flaws, and if so, what are they?

It is not my intention here to introduce damning evidence against the Par's quality of play, but I do feel that the various claims about its strength have been overdone. There are some situations and evaluations in chess that are extremely difficult to write effective programs for, and Par shares these "classic computer flaws."

Although Par is an excellent sparring partner for any player under Master level, its evaluation of the position is often suspect. For example, Par loves to win material, and will do almost anything to win and keep extra wood. Par overvalues material to the point that it will often allow decisive piece sacrifices against its castled position -- King safety does not seem to be extremely high on its list of priorities. Also, Par absolutely hates closed positions, and will do almost anything to open the position if it sees that lines are about to become closed. This is no doubt a function of the machine's evaluation routine which calls for maximizing the total mobility of the pieces, but it prevents Par from playing good closed games.

Par suffers from another classic computer flaw in the endgame, especially at level 9 and below: it sometimes fails to "see the idea" of pawn promotion in time to catch the pawn. This means that it loses equal (or even favorable!) positions that humans of its strength would almost never lose. Additionally, Par's overestimation of the value of material can cause it to play very strangely at times in the endgame. Rook endgames, notoriously difficult to begin with, are the Par's weakest point. Par does not realize that activity is often more important in a Rook ending than a pawn or two, and will play passively to retain the material.

Par knows about threefold repetition, and thus will strive to avoid repeating the position if it is ahead in material. This "draw avoidance" quirk in its makeup can actually cause it to lose. For example, I once reached a single Rook ending against Par in which I was positionally superior but a pawn down. Par's best play to avoid loss was to continue checking my King so as to repeat the position, or else my King would invade its position decisively. Par would only be able to draw the position because

Tennessee Chess News

of its extra pawn. Any 2100 player would have simply repeated the position or agreed to a draw, but Par thought that its extra pawn should be decisive; thus, it avoided the draw by sacrificing the extra pawn (!), after which it could no longer restrain my King, and I won easily. This is an odd situation, but it shows how poor even the best computers are when it comes to evaluating positions accurately in terms of both tangible and intangible elements. I have also won even endgames against Par when it makes the elementary BdRP error (as Fischer did in Game 1 vs. Spassky) because it does not "see" that its Bishop will be trapped in a few moves. A true 2100 player almost never even considers playing such a move. In short, Par sometimes "plays to lose."

Because the Par has a distinct preference for open or semi-open positions in which it can maximize its total mobility score, it plays far better in its pre-selected opening book than it does in the 64 selectable openings. Further, some of the selectable opening variations are far too limited in scope. Those wishing to practice as White in the Sicilian Defense will be disappointed to discover that the Par knows almost nothing about most of the variations, and that once its book is exhausted it often plays weak, unthematic moves. In a sharp variation like the Sicilian Dragon, this is nearly always fatal to Par. If you force Par to defend the Two Knights Defense, it will allow the Fried Liver Attack, and will get its liver fried. Thus, despite its claims about a large opening book, Par really understands very few openings, and has a small number of lines that it plays well.

There is only one other notable quirk in Par which deserves mention; namely, that there are a few elementary drawn positions which effectively end the game due to elimination of material. Par does not know, for example, that a lone King vs. lone King position is a draw until the 50-move rule comes up! Happily, this "bug" in the program is not a practical difficulty since the game can safely be abandoned as a draw at that point.

So, after all this, what conclusions can be drawn? First, I would guess that Par plays in the 1600-2000 range most of the time unless it is set on Level 11, where I think it plays 2100 strength chess if it is allowed to play its favorite openings. Most of the game options weaken Par noticeably. However, as a practice partner for non-Masters, I believe Par is a superb tool, well worth the low cost and providing invaluable lessons in tactics.

As a footnote, there is a deluxe edition of Par which sells for several hundred dollars and which has many more features, including clocks, a printer, and opening book cartridges for each edition of the Encyclopedia of Chess Openings. These features seem utterly optional to me, although I have sometimes wished for a printout of the game score.

Cumberland County Spring I & II

by Jim Watson

Nearly a foot of snow slowed attendance to the doubtfully named Spring Open. On Saturday, only 16 players showed up in the open class, and 11 in the amateur. By round 2, all of the top 5 players had suffered at least one loss, resulting in a wide open shot at 1st place. First was finally claimed by Brian Lentz and R. O. Mitchell with a quick draw in the last round. When was this tournament last won by a 1600 player??

The Amateur was equally unpredictable. David Booth, an unrated player from Kentucky, took clear 1st. Janice Peddieson took 1st E-class and Paul Muskin took 1st unrated.

Another small turn-out of Sunday gave only a field of 17, which was easily dominated by Charles Maddigan. Charles produced a perfect 4 points by crushing me in 10 moves in the last round.

May/June/July, 1987

Tennessee Scholastic/HSC

PLAYER	PRE RTNG	RTNG	1	2	3	4	5	6	TOT
1 MITCHELL, R O	1648	1760	w23	w10	L-2	w15	w-4	w-8	5.0
2 HALL, BILL	1992	1998	w22	w-7	w-1	L-4	w-3	D-5	4.5
3 JANSEN, VIBEKE	1892	1905	w20	D17	w-9	w-6	L-2	w12	4.5
4 TAI, OLIVER	1967	1964	w11	w-8	D-6	w-2	L-1	D-9	4.0
5 MAYHEW, MATT G	1719	1749	w14	L-6	D11	w22	w10	D-2	4.0
6 BAIER, FRED	1699	1736	w16	w-5	D-4	L-3	D-9	w14	4.0
7 O'DANIELS, SEAN	1680	1686	w25	L-2	w14	w20	L-8	w13	4.0
8 SABINE, JAY D	1668	1700	w15	L-4	w13	w19	w-7	L-1	4.0
9 LENTZ, BRIAN D	1869	1856	D19	w12	L-3	w11	D-6	D-4	3.5
10 BURTON, JOEY G	1805	1790	w13	L-1	D22	w17	L-5	w19	3.5
11 SMATHERS, JEFF	1520	1570	L-4	w16	D-5	L-9	w23	w17	3.5
12 ODOM, STEPHEN E	1615	1606	w21	L-9	L20	w16	w19	L-3	3.0
13 WILSON, DANNY R	1448	1469	L10	w25	L-8	w24	w15	L-7	3.0
14 WILBERT, DAINIL F	1446	1462	L-5	w23	L-7	w21	w20	L-6	3.0
15 PHAM, HOA	1444	1470	L-8	w21	w18	L-1	L13	w20	3.0
16 THOMPSON, MARK E	1389	1410	L-6	L11	w26	L12	w24	w21	3.0
17 MC MILLAN, DANNY	1730	1698	w24	D-3	L19	L10	w22	L11	2.5
18 HASSLER, JEREMY	1694	1619	D26	L19	L15	L23	x--	w22	2.5
19 COHEN, SHANNON	1570	1593	D-9	w18	w17	L-8	L12	L10	2.5
20 JOHNS, JASON	1499	1478	L-3	w24	w12	L-7	L14	L15	2.0
21 DRAKE, JOE	0	1198	L12	L15	w23	L14	x--	L16	2.0
22 HAMLETT, IV JAMES	1596	1578	L-2	w26	D10	L-5	L17	L18	1.5
23 LLOYD, MICHAEL D	1295	1290	L-1	L14	L21	w18	L11	D24	1.5
24 WILSON, SHANE	0	1264	L17	L20	w25	L13	L16	D23	1.5
25 LARSEN, PAUL	1421	1378	L-7	L13	L24	B--	F--	U--	1.0
26 TAI, STEPHANIE	1433	1416	D18	L22	L16	U--	U--	U--	.5

Tennessee St. Scholastic/HSJV

PLAYER	PRE RTNG	POST RTNG	1	2	3	4	5	6	TOT
1 SINKOVICH, GREG	1329	1496	w14	w-8	w-2	w11	w-5	w-7	6.0
2 SPANN, KEVIN M	1308	1348	w37	w20	L-1	w13	x--	w-9	5.0
3 LEE, LYNN F	1231	1375	w27	w29	L15	w16	w12	w13	5.0
4 WEINBERG, JONATHAN	1331/11	1396	w23	L10	w26	w33	w-8	D-5	4.5
5 VANNESS, PHILIP	1253	1348	w39	w-6	w-7	w15	L-1	D-4	4.5
6 SHERRILL, TONY T	1403	1411	w34	L-5	w30	L-3	w20	w26	4.0
7 VARNER, CHRIS	1337	1361	w22	w17	L-5	w12	x--	L-1	4.0
8 SMITH, DAVID M	1277/11	1340	w26	L-1	w20	w19	L-4	w28	4.0
9 HRUMLEY, DOUGLAS	1271	1307	w38	L11	w28	w10	w15	L-2	4.0
10 MC MEEN, WAYNE	1194	1252	w28	w-4	L12	L-9	w19	w24	4.0
11 MC NABB, MARK	950/3	1362	w33	w-9	w16	L-1	F--	w15	4.0
12 BROCK, DENTON A	1321	1335	w19	D13	w10	L-7	L-3	w30	3.5
13 CLARK, ALEXANDER	1255	1272	w40	D12	w29	L-2	w31	L-3	3.5
14 JORDAN, BRIAN	1057/5	1188	L-1	w39	D32	D23	D34	w35	3.5

Tennessee Chess News

15	ALBONETTI, CHRIS	1303	1318	W21	W18	W-3	L-5	L-9	L11	3.0
16	JOHNSON, DAVID	1285/1	1334	W24	W30	L11	W22	U--	U--	3.0
17	DAVIS, THOMAS	1247	1236	W31	L-7	L27	D32	D38	W37	3.0
18	PHILLIPS, HAL	1220	1213	W36	L15	W23	L27	D30	D22	3.0
19	BRADLEY, BRAD	1158	1168	L12	W38	W34	L-8	L10	W36	3.0
20	PUROHIT, MANISH	1158	1179	W32	L-2	L-8	W37	L-6	W38	3.0
21	BEAN, NASH	1113/8	1095	L15	L36	W38	L34	W40	W39	3.0
22	UTLEY, JEFF	1109/5	1137	L-7	W37	W35	L16	D23	D18	3.0
23	WILSON, MIKE	1078/1	1117	L-4	W25	L18	D14	D22	W31	3.0
24	SCHRUPP, THOMAS	1000/5	1121	L16	L26	W37	W40	W32	L10	3.0
25	KEAHEY, MATT	0	1048	L30	L23	W39	W38	L35	W40	3.0
26	RENSON, BENNIE	0	1326	L-8	W24	L-4	W29	W33	L-6	3.0
27	PERKEY, JAMES R	0	1497	L-3	W34	W17	W18	F--	U--	3.0
28	MIDHA, YATESH	0	1239	L10	W32	L-9	W39	W36	L-8	3.0
29	WHITTENBERG, PHILL	1316	1274	W35	L-3	L13	L26	W39	D34	2.5
30	PRICE, BRENNAN T	1159	1156	W25	L16	L-6	W35	D18	L12	2.5
31	VANGILDER, MICHAEL	978/4	1014	L17	D35	W40	W36	L13	L23	2.5
32	GALVAN, RICHARD	1399	1320	L20	L28	D14	D17	L24	W33	2.0
33	CSEKO, PAUL	1255	1227	L11	W40	W36	L-4	L26	L32	2.0
34	STILES, ROBERT	1119	1122	L-6	L27	L19	W21	D14	D29	2.0
35	PAULK, DERREK	1017/5	983	L29	D31	L22	L30	W25	L14	1.5
36	SUN, LILLIAN	0	893	L18	W21	L33	L31	L28	L19	1.0
37	SHEPHERD, GINGER	0	812	L-2	L22	L24	L20	B--	L17	1.0
38	VIVERETTE, CURTIS	0	829	L-9	L19	L21	L25	D17	L20	.5
39	LOW, ELIZABETH	0	828	L-5	L14	L25	L28	L29	L21	.0
40	RATLIFF, STACIE LY	0	745	L13	L33	L31	L24	L21	L25	.0

Tennessee St. Schol/JR HS C

PLAYER	RTNG	RTNG	1	2	3	4	5	6	TOT
1 TAI, OLIVER	1964	1972	W-9	W-5	W-6	W11	W-7	W-8	6.0
2 KLEIN, CRAIG	1666	1688	W-7	W-8	W-5	W-6	W-9	W11	6.0
3 FAN, WILL	1518	1528	W11	W-6	W-8	L-5	W12	W-9	5.0
4 SCOTT, CLAYTON	1378	1372	W14	W-9	W10	L12	W11	D-5	4.5
5 SHAFER, SETH A	1346	1374	W13	L-1	L-2	W-3	W10	D-4	3.5
6 HAMLETT, CHUCK	1539	1515	W10	L-3	L-1	L-2	W14	W12	3.0
7 WEAVER, FREDDA	1082	1106	L-2	W13	L-9	W10	L-1	W14	3.0
8 CAPPS, SHAWN J	1247	1235	W12	L-2	L-3	L-9	W13	L-1	2.0
9 NEELY, J.R.	1140	1163	L-1	L-4	W-7	W-8	L-2	L-3	2.0
10 PEDDE, RALPH A	1038	1042	L-6	W14	L-4	L-7	L-5	W13	2.0
11 GUIGOU, MICCOL	1023/11	1125	L-3	W12	W13	L-1	L-4	L-2	2.0
12 WEIDNER, DEAN	0	1175	L-8	L11	W14	W-4	L-3	L-6	2.0
13 ROBERTS, JAMES	972	932	L-5	L-7	L11	D14	L-8	L10	.5
14 OWENS, MIKE	800/4	839	L-4	L10	L12	D13	L-6	L-7	.5

Tennessee ST Schol/JR HS B

PLAYER	PRE RTNG	POST RTNG	1	2	3	4	5	6	TOT
1 WALKER, CHRIS S	1162	1315	W19	W-7	W15	W-4	W-2	W-5	6.0
2 OPFER, JOHN	1073	1169	W18	D10	W-3	W-8	L-1	W14	4.5
3 MEMULA, SANJEEV	1176	1204	W16	W-5	L-2	W-7	W12	L-4	4.0
4 BONGARD, DAN J	1137	1177	W-9	L-8	W13	L-1	W16	W-3	4.0
5 BLEVINS, RODNEY	1108/9	1192	W20	L-3	W-6	W16	W-8	L-1	4.0
6 PUROHIT, AMISHR	0	1239	B--	W15	L-5	L10	W11	W12	4.0

May/June/July, 1987

7	PRITCHETT, EDDIE	1251/4	1244	W12	L-1	W17	L-3	W13	D10	3.5
8	VINING, RICHARD	1178	1201	W11	W-4	W10	L-2	L-5	D-9	3.5
9	HICKMAN, BRETT	1129/4	1146	L-4	W17	W14	L12	W15	D-8	3.5
10	ENGELBERG, PAUL	1227	1211	W13	D-2	L-8	W-6	L14	D-7	3.0
11	BROOKS, JEFF	1145/8	1115	L-8	W21	L12	W18	L-6	W17	3.0
12	JUMPER, CHRIS	1038	1067	L-7	W14	W11	W-9	L-3	L-6	3.0
13	CARTER, SARAH E	1038	1038	L10	W20	L-4	B--	L-7	W19	3.0
14	WANDERMAN, GREG	1015	1041	W21	L12	L-9	W20	W10	L-2	3.0
15	ALEXANDER, CHRIS	1155	1136	W17	L-6	L-1	W21	L-9	D16	2.5
16	CUNNAR, SHANE	972/8	977	L-3	B--	W19	L-5	L-4	D15	2.5
17	CLAYTON, KEITH A	1083/4	1019	L15	L-9	L-7	W19	W20	L11	2.0
18	SHEPHERD, MITCHEL	715/3	799	L-2	L19	L20	L11	B--	W21	2.0
19	ROBINSON, JOE	0	967	L-1	W18	L16	L17	W21	L13	2.0
20	RAGSDALE, BRIAN	0	826	L-5	L13	W18	L14	L17	H--	2.0
21	KEASLER, JOSH	939/4	783	L14	L11	B--	L15	L19	L18	1.0

Tennessee ST Schol/Elem.

PLAYER	RTNG	RTNG	1	2	3	4	5	6	TOT
1 BRANHAM, DANIEL	0	1637	W13	W-9	W-6	W-2	D-4	W-7	5.5
2 COMEN, JASON	1419	1458	W16	W-3	W13	L-1	W11	W14	5.0
3 HARRIS, JAKE P	1141	1309	W-4	L-2	W-7	W-5	W-8	W-6	5.0
4 HORGAN, ALEC WILL	1421	1440	L-3	W17	W11	W16	D-1	W18	4.5
5 RUGERS, ROBIN L	1141	1174	W15	W14	W16	L-3	D12	W17	4.5
6 KINI, VINAY	1300	1317	W14	W19	L-1	W13	W16	L-3	4.0
7 SAEGER, NICOLAS	1268	1301	W12	W11	L-3	W17	W13	L-1	4.0
8 HORGAN, KELLY E	1258	1265	L11	W12	W18	W19	L-3	W16	4.0
9 WINSTEAD, MATTHEW	1228	1240	W17	L-1	W19	L11	W18	W15	4.0
10 ROSEN, JAY	1212	1212	W18	L13	W14	W12	W17	L11	4.0
11 RAO, RATHI A	856	980	W-8	L-7	L-4	W-9	L-2	W10	3.0
12 NEELY, JUDY	995/5	1005	L-7	L-8	W15	L10	D-5	B--	2.5
13 BROCK, BARRY C	1185	1178	L-1	W10	L-2	L-6	L-7	W19	2.0
14 WINSTEAD, JASON	1000	1000	L-6	L-5	L10	W18	B--	L-2	2.0
15 DEAN, KEVIN	0	847	L-5	L16	L12	B--	W19	L-9	2.0
16 WHITE, SEAN M	1052	1033	L-2	W15	L-5	L-4	L-6	L-8	1.0
17 DILLIE, R.ERIC	933	909	L-9	L-4	B--	L-7	L10	L-5	1.0
18 GOUZA, VIRGINIA L	830/11	828	L10	B--	L-8	L14	L-9	L-4	1.0
19 OPFER, FRANCES	787/10	790	B--	L-6	L-9	L-8	L15	L13	1.0

Tennessee ST Schol/Prim.

PLAYER	PRE RTNG	POST RTNG	1	2	3	4	5	6	TOT
1 SIMMONS, HAROLD	1571	1580	W-8	W-6	W-4	W-3	D-2	W-5	5.5
2 LEVATINO, ELIAN	361	1373	L-6	W-8	W-9	W-7	D-1	W-3	4.5
3 BASS, COLE C.	304	1322	W-5	W10	W-6	L-1	W-4	L-2	4.0
4 LAURINAS, NICK	1173	1188	W10	W-9	L-1	D-8	L-3	W-7	3.5
5 HOOK, TED	1046	1104	L-3	W-7	W-8	D-9	W-6	L-1	3.5
6 SEAL, BRETT	1101	1132	W-2	L-1	L-3	W10	L-5	W-9	3.0
7 THOMPSON, RYAN	1162/10	1126	W11	L-5	W10	L-2	D-9	L-4	2.5
8 ALPERT, SEAN A	1115	1122	L-1	L-2	L-5	D-4	W11	W10	2.5
9 WUCHINA, ZEKE	760/7	846	B--	L-4	L-2	D-5	D-7	L-6	2.0
10 ROSEN, RALPH	825	804	L-4	L-3	L-7	L-6	B--	L-8	1.0
11 THOMPSON, VIRGIL	1180/1	874	L-7	F--	F--	F--	L-8	U--	.0

Tennessee Chess News

Cumberland County Winter Open

PLAYER	ST	PRE RTNG	POST RTNG	1	2	3	4	TOT
1 BURNETT, RONALD WA	TN	2403	2409	w-7	w-9	w-5	w-3	4.0
2 WATSON, JIMMY T	TN	1894	1950	w16	w28	w-8	D-4	3.5
3 CARPENTER, RICHARD	TN	2176	2179	w22	w10	w13	L-1	3.0
4 HARRIS, NEAL D	NC	2174	2170	D21	w26	w25	D-2	3.0
5 JOHNSON, III JAMES	NC	1978	1993	w18	w17	L-1	w13	3.0
6 ROBERDEAU, JOE C	OH	1929	1936	L17	w19	w21	w10	3.0
7 OSHMAN, MARK A	TN	1818	1846	L-1	w23	w28	w20	3.0
8 RALSTON, DOUGLES F	TN	2124	2110	w15	w11	L-2	D-9	2.5
9 WARNICKE, ROBERT	AZ	1865	1886	w24	L-1	w17	D-8	2.5
10 LENTZ, BRIAN D	TN	1882	1869	w27	L-3	w26	L-6	2.0
11 PEDDIESON, JOHN	TN	1872	1861	w23	L-8	D14	D18	2.0
12 TAYLOR, JEFF B	TN	1865	1847	D19	D21	D18	D14	2.0
13 OUSLEY, LARRY J	TN	1845	1858	w29	w25	L-3	L-5	2.0
14 BURTON, JOEY G	TN	1819	1819	L25	w27	D11	D12	2.0
15 POFF, STEVE MARION	TN	1651	1674	L-8	w29	D20	D19	2.0
16 HOOD, DAVID	TN	1650	1664	L-2	L20	w24	w26	2.0
17 HORTILLOSA, ANDRES	TN	1632	1654	w-6	L-5	L-9	w28	2.0
18 SHOEMAKER, ANDREW	TN	1625	1643	L-5	w30	D12	D11	2.0
19 CARNES, RICK	TN	1534	1578	D12	L-6	w22	D15	2.0
20 BANGUS, GARY W	TN	1863	1815	L26	w16	D15	L-7	1.5
21 ORGAIN, WILLIAM H	TN	1802	1800	D-4	D12	L-6	D23	1.5
22 MANNON, MICHAEL T.	TN	1725	1711	L-3	D24	L19	w29	1.5
23 TAYLOR, JEFF B	TN	1647	1648	L11	L-7	w29	D21	1.5
24 SIMMONS, HAROLD LL	TN	1583	1571	L-9	D22	L16	B-=-	1.5
25 SMITH, BRIAN D	TN	2019	1994	w14	L13	L-4	U-=-	1.0
26 WORLEY, JIMMY D	TN	1519	1533	w20	L-4	L10	L16	1.0
27 STANCLIFF, LEON D	TN	1420	1415	L10	L14	B-=-	U-=-	1.0
28 KADE, JIM	TN	1335/16	1353	B-=-	L-2	L-7	L17	1.0
29 DAVIS, MARK T	TN	1579/12	1514	L13	L15	L23	L22	.0
30 LENTZ, NEIL D	TN	1193	1191	U-=-	L18	U-=-	U-=-	.0

Cumberland County Winter OP/RES

PLAYER	ST	PRE RTNG	POST RTNG	1	2	3	4	TOT
1 JOHNS, JASON	TN	1465	1491	w10	w15	w11	D-2	3.5
2 SHERRILL, TONY T	TN	1377	1419	w18	w12	w-8	D-1	3.5
3 LENTZ, NEIL D	TN	1191	1239	w14	U-=-	w15	w-8	3.0
4 PEDDIESON, JANICE	TN	1185/14	1227	L15	w18	w13	w-7	3.0
5 WHITE, EDWIN CATO	TN	1122	1218	L-7	w17	w-6	w11	3.0
6 SIMMONS, JOHN	TN	1382	1381	L11	w-9	L-5	w12	2.0
7 GRAHAM, JR JOSEPH	TN	1358	1359	w-5	L11	w10	L-4	2.0
8 GUERRANT, B W	KY	1315	1332	w16	w13	L-2	L-3	2.0
9 JOHNSON, DAVID	TN	1312/6	1285	D12	L-6	w14	D13	2.0
10 TURNMIRE, DANA L	GA	1192/12	1201	L-1	w14	L-7	w15	2.0
11 LOVE, MICHAEL S	TN	0	1431	w-6	w-7	L-1	L-5	2.0
12 SHAFER, SETH A	TN	1362	1346	D-9	L-2	w17	L-6	1.5
13 SHAFER, STEVE J	TN	1261/5	1234	w17	L-8	L-4	D-9	1.5
14 BAILEY, BARRY	TN	0	1112	L-3	L10	L-9	w17	1.0
15 MC CREERY, BILL	TN	0	1203	w-4	L-1	L-3	L10	1.0
16 KADE, JIM	TN	1353	1335	L-8	U-=-	U-=-	U-=-	.0
17 PEARSON, JR CLINTO	TN	1200	1200	L13	L-5	L12	L14	.0
18 OPPER, JOHN	TN	1079	1073	L-2	L-4	U-=-	U-=-	.0

May/June/July, 1987

Cumberland County Winter Open II

PLAYER	ST	PRE RTNG	POST RTNG	1	2	3	4	TOT
1 HARRIS, NEAL D	NC	2170	2186	w17	w13	w-4	w-5	4.0
2 HESS, PETER D	IN	2174	2172	L-7	w21	w17	w-9	3.0
3 MELVIN, BILL	TN	2141	2146	w18	w16	L-5	w-8	3.0
4 SMITH, BRIAN D	TN	1994	1997	w19	w15	L-1	w16	3.0
5 JOHNSON, III JAMES	NC	1993	2029	w24	w-7	w-3	L-1	3.0
6 TAYLOR, JEFF B	TN	1847	1867	w28	w26	w20	U-=-	3.0
7 MC MILLAN, DANNY	TN	1618	1730	w-2	L-5	w13	w15	3.0
8 BURNETT, RONALD WA	TN	2409	2388	w12	w10	D-9	L-3	2.5
9 JONES, JR JOE C	TN	2150	2149	w30	w14	D-8	L-2	2.5
10 YEOMANS, ALAN	KY	1868	1870	w22	L-8	w18	D11	2.5
11 OAKS, VERLON R	KY	1317/3	1589	L15	w24	w12	D10	2.5
12 BURTON, JOEY G	TN	1819	1805	L-8	w22	L11	w25	2.0
13 ORGAIN, WILLIAM H	TN	1800	1812	w25	L-1	L-7	w20	2.0
14 PRESLEY, WILLIAM D	GA	1742	1749	w23	L-9	w19	U-=-	2.0
15 LIPKIN, ALAN H	TN	1724	1738	w11	L-4	w23	L-7	2.0
16 SABINE, JAY D	TN	1670	1668	w29	L-3	w27	L-4	2.0
17 SHOEMAKER, ANDREW	TN	1643	1651	L-1	w28	L-2	w24	2.0
18 CARNES, RICK	TN	1578	1581	L-3	w25	L10	w27	2.0
19 JOHNS, JASON	TN	1491	1499	L-4	w29	L14	w23	2.0
20 PEDDIESON, JOHN	TN	1861	1812	D21	w27	L-6	L13	1.5
21 GRAHAM, JR JOSEPH	TN	1359	1366	D20	L-2	L24	w29	1.5
22 SHERRILL, TONY T	TN	1419	1403	L10	L12	D29	D28	1.0
23 SCHUTZ, STEPHEN	OH	1394/11	1389	L14	w30	L15	L19	1.0
24 LIPKIN, MICHAEL A	NC	1359	1366	L-5	L11	w21	L17	1.0
25 VASKO, MARTIN J	TN	1329	1338	L13	L18	w28	L12	1.0
26 MC CREERY, BILL	TN	1203/4	1252	X-=-	L-6	U-=-	U-=-	1.0
27 PEARSON, JR CLINTO	TN	1200	1200	B-=-	L20	L16	L18	1.0
28 WHITE, WAYNE	TN	1390	1364	L-6	L17	L25	D22	.5
29 FITTS, JAMES M	TN	1182/9	1183	L16	L19	D22	L21	.5
30 GUERRANT, B W	KY	1332	1318	L-9	L23	U-=-	U-=-	.0

Feb. Club Tour.

PLAYER	ST	PRE RTNG	POST RTNG	1	2	3	4	TOT
1 GRAHAM, JR JOSEPH	TN	1366	1373	w-7	D-3	w-6	L-4	2.5
2 SABINE, HARRY D	TN	1858	1867	U-=-	U-=-	w-5	w-3	2.0
3 SIMMONS, HAROLD LL	TN	1580	1562	w-6	D-1	D-4	L-2	2.0
4 SHERRILL, TONY T	TN	1411	1424	U-=-	D-6	D-3	w-1	2.0
5 JOHNS, JASON	TN	1478	1480	U-=-	U-=-	L-2	w-6	1.0
6 PEARSON, JR CLINTO	TN	1200	1200	L-3	D-4	L-1	L-5	.5
7 BLYLER, JAMES A	TN	0	966	L-1	F-=-	F-=-	F-=-	.0

Oliver Tai is the New National Champion!!
More in the next issue!!

COMING ATTRACTIONS

MAY 16 Chattanooga Choo Choo Spring Tone ups. 4-ss. SD/90. Trinity Woodmere United Methodist Church. N. Moore Rd. Chatt. TN. 2 sections. Open. E.F. \$15. TCA req. \$6 (4). \$5350 (b/30) 1st 100, 2nd \$50, A,B,C, \$40, D,E \$30, Unr. \$25. m. E.F. \$6. TCA req. \$5(65 b/20). 1st \$20, 2nd \$15 E. unr. \$10. Both Sections. Special Upset prize \$25 in Open & \$10 Am. For upset purposes, unr. Players assigned 100 points above highest rated player in that section. Optional trophies available for purchase. Reg. 9-9:30 EST. Rds. 10-1:10-4-4:20-7:30. Ent. and Info. Mark Oshman 1606 Anderson Ave., Chatt., TN 37404 Phone (615) 698-2781. NS. WA. NCTT-May 16. Chattanooga Choo Choo.

MAY 23, 24, 25. U. S. Amateur. (That's right!! Read it again to be sure) U. S. Amateur Championship. 6-ss. 50/2. Knoxville Hilton, 501 W. Church St., Knoxville, TN 37902-2591. (615) 523-2300. EF if rec'd by 5/9. \$30 at site. 2 sections: Open and Reserve. (May rating supplement used). Open. (Open to under 2200), trophies to top 5, top senior over 54, top junior under 16, top junior under 13, top 2 class A,B,C. Reserve: (Open to under 1800), trophies to top 5, top senior over 54, top junior under 16, top junior under 13, top 2 class C,D,E. unr. Reg. Sat. 9-12 noon. Rds 1-6, 9-4, 9-4. Ent: USCF 186 Rt. 9W, New Windsor, NY 12550. Info. Rick Igou (615) 690-6810 or Chester Crowley (615) 457-7965 1-75/40 E, exit 388. Follow the signs to Hwy. 441, turn south. 1-75/40 W, exit 388A, follow signs to Hwy. 4412, turn North. Hilton across street from Holiday Inn and Sun Sphere.

MAY 30-31. Memphis Open. "The Meeting in the Hickory Ridge Mall, 6075 Winchester, Memphis, TN 2 Sections: Open. 4-ss, 40/100. EF: \$25 \$5(750 b/10 per class, 1st Gtd.): 250-125, Exp., A,B/below each 125. Rds. 10-3, 9-2. Novice, 30th only. 3-ss, 40/60. Open to under 1600. EF: \$5. Trophy to 1st, top D, Top E/Unr. Rds. 10-1-4. Both TCA req. TN res. \$6 and \$4 Jrs. Reg. 8:30-9:30 am. Info. Dwight Weaver, (601) 393-3540. LS. NC.

JUNE 6. Cumberland County Spring Open I. 4-ss. 40/1 30/SD. Martin JHS, Stanley St., Crossville, TN 38555. 2 Sections. Open. \$5 (150 b/30, 1st G). 50. Exp. A,B,C each 25 Amateur: Open to below 1400 or Unr. \$5 (75 b/20) 30. E 25. Unr. 20. Both EF \$6. TCA req. TN res. \$6, \$4. Reg. 7:30-8:30 am CST. Rds. 9-11:30-2:30-5:30 CST. HR: 27. 50+ tax-1-4. Heritage Inn, Ent. Harry Sabine, P. O. Box 381, Crossville, TN 38555. LS.

JUNE 6. Crossville Non-rated Spring. 4-ss 40/1. Martin Jr. HS., Stanley St., Crossville, TN 38555. Reg. 7:30-8:30 am CST. Rds 9-11:30-2:30-5:30. EF \$5. Trophy to 1st.

JUNE 7. Cumberland County Spring Open II. 4-ss. 40/1, 30/SD. Martin Jr. HS., Stanley St., Crossville, TN 38555. EF \$6. TCA req. TN res. \$6 \$4, \$5 (150 b/35, 1st G). 50. Exp. A,B,C,D,E each \$15. Unr. \$10. Reg. 7:30-8:30 am CST. Rds. 9-11:30-2:30-5:30. CST. HR \$27. 50. Heritage Inn Ent. Harry Sabine, P. O. Box 381, Crossville, TN 38555. LS.

JUNE 20. Blount County Spring Open. 4-ss. 30/1, 30/SD. United Steelworkers of America Union Hall, S. Hall Rd., Alcoa, TN. (1st left off By-Pass past airport-across street from Krogers) EF \$6. TCA req. TN res. \$6, \$4. \$5(95 b/20) 30. Exp. A,B,C,D/below 12. Unr. 8. Reg. 8:10-8:55 am EST. Rds. 9-11:30-2:30-5:30. Contact L. G. Thomas (615) 983-1977. LS. W. NC.

JULY 11, 12. Music City Grand Prix. 5-ss. 50/2. Hilton Airport Inn. One International Plaza. Nashville, TN 37217. 2 sections. Open. Adv. Entry \$25 if rec'd by 7/6. \$30 at site. TCA req. \$5(\$00 b/40) 250-125-50. Exp. A,B, each 125. Amateur Adv. EF: \$20 if rec'd by 7/6. at site \$25. TCA req. \$5(300) 100-50. D 50-25. E/under/unr. 50-25. Both Reg. 8-9 Rds. 9:30-2-7, 9-2. Ent. Music City Chess. 2609 Sailboat Court, Nashville, TN 37217. (615) 361-4588. NS. NC. WA.

JULY 18, 19. Oak Ridge Summer Open. 5-ss. 50/2. Holiday Inn, 420 S. Illinois Ave., Oak Ridge, TN 37830. EF: \$20 if rec'd by 7/15. \$25 at site. \$5G 1000: 200-125, Exp. A each 120. B,C each 100, D, E/below each 80. Unr. 75. Unr. eligible unrated prize only. Reg. 8-9:30 am EST. Rds 10-2-7, 9-2. HR \$40 up to 4. Ent: Richard Igou, 400 Rhodora Ct., Apt. F, Knoxville, TN 37923. (615) 690-6810, 457-7965. Grand Prix points available: 5

AUGUST 1-2. King Cotton Open. Mall of Memphis Community Room, 4451 American Way, Memphis, TN 2 Sections. Open 4-ss. 40/100. EF: \$25. \$5 (550 b/30 top 2 G): 150-100. X,A,B/below each 100. Rds 10-3, 9-2. Novice 8/1 only. 4-ss. SD/60. Open to under 1600. EF:\$5. Trophy to 1st, 2nd, D,E/ unr. Rds 10-1-3-5. Both. TCA req. \$6 and \$4 Jr. Reg. 8-30-9:30 am. Info: Dwight Weaver, (601) 393-3540. LS. NC.

AUGUST 15. Blount County Summer Open. 4-ss. 30/1, 30/SD. United Steelworkers of America Union Hall, S. Hall Rd., Alcoa, TN (1st left off By-Pass past airport-across street from Krogers) EF \$6. TCA req. TN res. \$6, \$4. \$5(95 b/20) 30. Exp. A,B,C,D/below 12. Unr. 8. Reg. 8:10-8:55 am EST. Rds. 9-11:30-2:30-5:30. Contact L. G. Thomas (615) 983-1977. LS. W. NC.

AUGUST 29. Chattanooga

SEPTEMBER 5, 6, 7. The 41st Tennessee Open. Auburndale School. 2100 N. Germantown Rd., Cordova, TN 38018. 2 sections. Open. 6-ss. 50/2. EF: \$20 rec'd by 9/2. \$25 at site. TCA req. JR. Entry \$10 by 9/2 or \$15 at site. (Jr's paying Jr fee and winning prize will have \$10 deducted from prize) \$5(700 Grntd) \$150+T, 100. Exp. A,B, each 100-50. Trophy to state champ, Jr. state champ, Scrivener Plaque to Top Team. Titles and trophies restricted to TCA members. State Champ and Jr. State Champ restricted to TN res. Reg. 10-11:30 am. Rds. 1-6, 1-6, 8-1. Amateur. 6-ss. 50/2. under 1600. EF: \$20 if rec'd by 9/2. \$25 at site. Jrs. \$10 if rec'd by 9/2. \$15 at site. Jrs. who pay Jr. fee will have \$10 deducted from winnings. TCA TN Res. \$6 and \$4 Jrs. \$5(620 grtd) 140+T, 90. D.E.unr. 90-40. Unr. eligible unr. only. Reg. 10-11:30 Sept. 5 only. Rds. 1-6, 1-6, 8-1. Both HR: Hampton Inn, 1585 Sycamore \$41 for 2-4; Also if reserved by Aug. 10, Red Roof Inn, 1-28. 95, 2-33. 95, 3-35. 95; under 18 free if with adult. Pre-Ent. and info: Dale Flickinger, in care of Auburndale School, 2100 N. Germantown Rd., Cordova, TN. 38018. NS. NC.

SEPTEMBER 19-20. Cumberland County Fall

OCTOBER 10-11. Bluff City Open. Memphis

OCTOBER 24-25. Blount County Fall Open.

NOVEMBER 28-29. Mid-South Open. Memphis

DECEMBER 5-6. Crossville Scholastics

JANUARY 8-10. Fairfield Glade Open.