



TENNESSEE CHESS NEWS

June - July 1994

IN THIS ISSUE:

EDITOR'S ETCETERA.....	4
PRESIDENT'S COLUMN	4
GAMES FROM RECENT EVENTS	6
1994 CUMBERLAND CO. SUMMER OPEN	8
PROBLEM CORNER.....	9
ANNOTATED GAME	10
NEWS RELEASE	12
MORE ON YOUNGEST U.S. MASTER.....	14
THE GAMBIT PLAYER.....	16
TOURNAMENTS! TOURNAMENTS!	17

TENNESSEE CHESS NEWS

The **Tennessee Chess News** is the official publication of the Tennessee Chess Association. TCA annual dues are \$10 for a *regular* membership, \$4 for a *student* membership. Additional members of a family may join for one dollar each, but only one issue of **TCN** will be mailed per family. All memberships expire August 31.

Tax-deductible Patron Memberships are available beginning at \$25 per year for those who wish to help support the TCA. These memberships expire one year from date of payment. Patron memberships categories and benefits are as follows:

PATRON - \$25

- receive **TCN** by First Class Mail with your name listed in each issue of **TCN**;

PATRON KNIGHT - \$50

- all Patron benefits plus a commemorative plaque;

PATRON BISHOP - \$100

- all Patron Knight benefits plus free entry to the Tennessee Open;

PATRON KING - \$500

- all Patron Bishop benefits plus free lodging at the Tennessee Open;

PATRON FOUNDER - \$1000

- all Patron King benefits plus free entry into all Turkey Tour events.

TCA memberships are required for participation in all rated chess events in Tennessee except scholastic-only events, and may be purchased at any chess tournament.

TENNESSEE CHESS NEWS EDITORIAL STAFF

Voting Editor:

Ed Boldt

Managing Editor:

Richard Westbrook

Contributing Editors:

Leonard Dickerson;

Raymond Hudgens;

Rick Igou;

Nancy Hughes;

Ed Porter;

Harry Sabine.

ADVERTISING RATES

Full Page \$40.00

Half Page \$20.00

One-third Page \$14.00

One-Quarter Page \$10.00

One-Eighth Page \$ 7.00

Pre-printed flyers for insert must be 8½ x 11" in size, 60 pound Offset, and delivered flat. *Only one insert is available per issue.* \$15.00

TOURNAMENT ANNOUNCEMENTS

TCN prints listings of upcoming tournaments in each issue for free, including those from other states. Submit all announcements to **Rick Igou**, Tournament Coordinator.

Current T.C.A. Patron Members

Patron King

Dr. Martin "Dick" Katahn

Patron Bishops

Clinton H. Pearson, Jr.
Harry Sabine

Patron Knights

Thomas Cooper
Ellis E. Jones
Frank W. Larimer
Bill Orgain

Patrons

Frank B. Couch, III
Chester C. Crowley
Walter R. Green
Louis M. Groeniger
Raymond Hudgens
Peter P. Lahde
Brian D. Lentz
Edward Newkirk
Mark Oshman
Jeffrey Pennig

Thomas R. Pierce
Edward C. Porter
Jim Rylander, Jr.
Todd Shimabukuro
Jack C. Sprague
Joseph Sullivan, Jr.
Wayne W. Tolbert
Edwin Cato White
James A. Wright

EDITOR'S ETCETERA

The *Tennessee Chess News* is on the move! Literally! Actually, the move has already occurred. I have relocated across town and have a new address and phone fax/modem number. The information is listed at the back of the issue.

In part, the delay in producing the April/May and June/July issues is directly attributable to time and attention I had to devote to finding a new residence, packing, moving, unpacking, and so forth. With this adventure behind me, future issues of the *TCN* should appear as scheduled.

I have received games from many TCA members from all over the state. I will happily include any and all games and news that you send, but *please* check your score sheets for accuracy. If you were expecting to see your game in an issue but it is not included, it is most likely that there is an error in recording the moves which I can't work around....

As usual, I want to thank all the people who contributed items for the *TCN*. It is they who ultimately make it interesting and informative.

Please note that the State Open has been changed to a two-day format. See you there!!

PRESIDENT'S COLUMN

"Why do we need standards, anyway? Our (club, group, etc.) doesn't want to it that way?" All of us have heard this from our fellow chess players at tournaments, club meetings, or just informal meetings over coffee.

It sounds reasonable on the surface, but is it really? How many of us would sit down for a game only to find out that Black moves first at this club and only one bishop will be used per side. Oh, by the way, they must be opposite colored bishops.

I've been at tournaments where there has been disagreements over everything from the published rules for the particular tournament to the cost of the entry fee. I've resisted the temptation to ask the protagonists how they read about the tournament but missed those details. Or if they hadn't missed them, why did they show up if they disagreed so vigorously with them?

All of us resist rules from time to time; that's good. It keeps up growing and thinking. But there have to be some established rules for the game. Each game of chess you play, anywhere in the world, starts with the same number of pieces, the same board, and the same rules. We wouldn't want it any other way. This way we know what to expect. We plan our games according to established rules. It's just like life.

(Continued on page 15)

Your Club's News Could Be Here!

Your Tournament's Crosstables Could Be Here!

Your Latest Brilliancy Could Be Here!

Contribute to the *TCN*!

GAMES FROM RECENT EVENTS

Isbill, Paul (1030) - Linnemann, Russell (1207)

James Albert Sweets Memorial II, Chattanooga, 1994

1.e4 e5 2.Nf3 Nf6 3.Nc3 Bc5 4.Bc4 Nc6 5.Nd5 Ne4 6.Qe2 Nf6
7.Ne5 O-O! 8.O-O! Re8 9.Nf6 Kf8 10.Nh7 Kg8 11.Qh5 Re5
12.Bf7 Kh8 13.Ng5 1-0.

(Ed NewKirk submitted the following games which were played in the
Regional 2 Individual and Team championship competitions.)

Whelan, Shaun - Subhaway, Ty

2-26-94

1.e4 e5 2.Nf3 Nc6 3.Bb5 Nf6 4.O-O Ne4 5.Re1 Nf6 6.Ne5 Ne5 7.Re5 Be7
8.d4 O-O 9.Bf4 Bd6 10.Rf5 g6 11.Bd6 gf5 12.Bf8 Qf8 13.Nd2 Qb4 14.Bc4
Qb2 15.Nf3 b5 16.Bb3 Ne4 17.Ne5 Nc3 18.Qh5?? Qa1 0-1.

Hudspeth, Adrianne - Keel, Allen

2-26-94

1.e4 e5 2.c3 Nc6 3.Nh3 d6 4.a4 Bh3 5.gh3 Nf6 6.f3 Be7 7.Bd3 O-O 8.O-O
Qd7 9.h4 d5 10.ed5 Nd5 11.h3 Qh3 12.Rf2 Qh4 13.Rh2 Qg3 14.Kf1?? Qh2
15.Be2 Nf4 16.Bd3?? Nd3 17.Ra3?? Qf2 0-1.

Willis, Caleb - Hewlett, David

2-26-94

1.Nf3 e5 2.Nc3 Qf6 3.e4 Bd6 4.Bb5 c6 5.Ba4 b5 6.Nb5 cb5 7.Bb5 a6 8.Ba4
Bb7 9.d4 Be4 10.Bg5 Qf3 11.gf3 Bc6 12.Bc6 Nc6 13.Bd2 Nd4 14.Be3 Nf3
15.Qf3 Nf6 16.Rd1 e4 17.Qe2 Ng4 18.Qg4 Bb4 19.Ke2 O-O 20.Rd7 Rad8
21.Rd8 Rd8 22.Qf5 Re8 23.Rd1 g6 24.Qg5 Be7 25.Qf4 g5 26.Qe4 h5 27.Qc6
Rd8 28.Rd7 Rd7 29.Qd7 Kf8 30.Qc8 Kg7 31.Qa6 h4 32.Bd4 f6 33.b4 g4
34.b5 h3 35.b6 g3 36.fg3 Kh6 37.b7 Kh5 38.b8Q Kg6 39.Qg8 Kf5 40.Qh7
Kg4 41.Qg7 Kf5 42.Qe7 Kg4 43.Qee6 Kg5 44.Qa5 Kh6 45.Be3 Kg7 46.Bg5
fg5 47.Qa7 Kh8 48.Qe8 1-0.

Peete, Nathenia - Subhaway, Ty

2-26-94

1.e4 e5 2.Nf3 Nc6 3.Bb5 Nd4 4.Nd4 ed4 5.d3 Bb4 6.Bd2 Bd2 7.Qd2 c6 8.Bc4
Nf6 9.O-O d5 10.ed5 cd5 11.Bb5 Bd7 12.Re1 Kf8 13.Qb4 Kg8 14.Bd7 Qd7
15.Qd4 h5 16.Nc3 Rh6 17.Re5 Rg6 18.h3 Qh3 19.g3 h4 20.Ne2 Ng4 21.Qd5
Qh2 22.Kf1 Qf2 0-1.

Subhaway, Ty - Perrish, Jim

2-26-94

1.e4 e5 2.Nf3 Bb4 3.Ne5 Qh4 4.Bd3 Qg5 5.Nf3 Qg2 6.Rg1 Qh3 7.Nc3 d5
8.Nd5 Bg4 9.Ng5 Bd1 10.Nh3 Bg4 11.Nc7 Kd7 12.Na8 Nf6 13.Ng5 Re8
14.c3 h6 15.cb4 hg5 16.Bb5 Ke7 17.Be8 Ke8 18.e5 Ne4 19.Rg4 f6 20.ef6 Nf6
21.Rg5 Nc6 22.Rg7 Nb4 23.Nc7 Kf8 24.Ne6 Ke8 25.Rc7 Nc2 26.Rc2 b5
27.d4 Ke7 28.Nc7 a6 29.Na6 Nd5 30.Bg5 Ke6 31.Nc7 Kf5 32.Nd5 Kg5
33.Rd1 Kg4 34.Nf6 Kf4 35.d5 Kf5 36.d6 Kf6 37.d7 Ke7 38.d8Q Kf7 39.Rc6
Kg7 40.Rd7 1-0.

Moon, Bobby - Subhaway, Ty

2-26-94

1.e4 e5 2.Nf3 Nc6 3.Bb5 Nf6 4.Nc3 Bb4 5.Bc6 dc6 6.Ne5 Bc3 7.bc3 O-O 8.d3
Qd6 9.Nc4 Qc5 10.O-O Ne4 11.de4 Qc4 12.Re1 Qc3 13.Bd2 Qf6 14.Re3 Bg4
15.Qe1 Rad8 16.Rg3 Rd2 17.Qd2 Qa1 18.Qe1 Qe1 0-1.

White, Christopher - Bentrup, Ben

3-26-94

1.e4 g6 2.Nf3 Bg7 3.d4 c6 4.Nc3 d5 5.ed5 cd5 6.Bb5 Nc6 7.O-O Bg4 8.Qd2
e6 9.Ne5 Be5 10.de5 h5 11.Qf4 a6 12.Bc6 bc6 13.Qd4 Ne7 14.Bg5 Nf5 5.Bd8
Nd4 16.Bf6 O-O 17.f3 Bf5 18.h3 Rab8 19.b3 Bc2 20.g4 Kh7 21.Kf2 c5
22.Be7 Rfc8 23.Bd6 Rb6 24.Na4 Rbc6 25.Ke3 Nb5 26.Rac1 d4 27.Kd2 d3
28.Rf2 Nd6 29.ed6 Rd6 30.Nb2 hg4 31.hg4 Kg7 32.f4 Rd4 33.Nc4 f6 34.Ke3
Rcd8 35.Rd2 e5 36.fe5 fe5 37.Ne5 Re8 38.Kf3 Re5 39.Rg1 g5 40.Rgg2 Rf4
41.Kg3 Re3 0-1.

Dunn, Dustin - White, Christopher

3-26--94

1.d4 g6 2.Nc3 Bg7 3.Nf3 d6 4.h3 Nf6 5.e4 Nc6 6.Bc4 O-O 7.Bf4 Nd7 8.Ne2
e5 9.Be3 Nb6 10.Qd3 Nb4 11.Qc3 d5 12.Qb4 Nc4 13.ed5 Qd5 14.de5 Ne5
15.Bd4 Nf3 16.gf3 Qf3 17.Ng3 Re8 18.Be3 b6 19.Qb5 Re6 (*The scoresheet
indicates that White castled queenside, which is illegal. Nevertheless, Black
went on to win. -ed.*) 0-1.

(Editors note: Several players from across the state have sent me games to
publish. Unfortunately, it is not possible to include them because they contain
transcription errors which I can not overcome. *Please* check your games for
accuracy so that your games can appear in the TCN, too.)

♠ ♠ ♠ ♠ ♠ ♠ ♠ ♠

1994 CUMBERLAND COUNTY SUMMER OPEN CHESS TOURNAMENT

(Submitted by Harry Sabine)

Leonard Dickerson of Knoxville won clear first place and \$50 for his efforts in the Open section of the 1994 Cumberland County Summer Open Tournament held on July 9th at Fairfield Glade Resort. Leonard knocked off Master Neal Harris of North Carolina on his way to the title. The only blemish on his record was a draw with Walter Isbill of Whitwell who took Class A honors with 2.5 points. The Class B prize money was split between Robert Presswood of Cleveland and Ralph Boston of Chattanooga.

The Amateur Section was won by Billy Ware of Maryville who defeated Harold Winfield of Fairfield Glade in the last round to take top honors with 3.5 points. Class D money was split between James N. Hughes of Charleston and David Bertram of Allardt with 3.0 points each. Former Cocke County High School player, David Sands, took the Class E money with 2.5 points, and Guy Thompson of Crossville and James M. Hughes of Charleston tied for the unrated prize with 3 points each.

The computer doing the pairing made sure all family members had to face each other by pairing brother and sister in Round 2 and father and son in Round 3. Sisir Botta won over his sister, Vandana, and James N. Hughes (son) beat James M. Hughes (father) knocking him out of winning the unrated prize outright.

In spite of the fact that the Music City Club scheduled their summer tournament on the same date, 30 players opted to come to Fairfield Glade instead, including three from Nashville. The tournament was directed by Ron Harvill and Nancy Hughes for the Cumberland County Chess Club.

Open Section: 12 Players

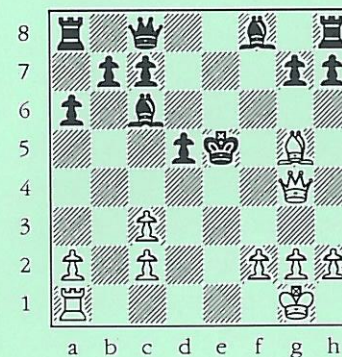
Champion:	Leonard Dickerson,	3.5	\$50.00
Class A - 1st:	Walter Isbill,	2.5	\$25.00
Class B - 1st:	Robert Presswood,	2.5	\$12.50
Class B - 1st:	Ralph Boston,	2.5	\$12.50

Amateur Section: 18 Players

Co-Champion:	Billy Ware,	3.5	\$50.00
Class D - 1st:	James N. Hughes,	3.0	\$12.50
Class D - 1st:	David Bertram,	3.0	\$12.50
Class E - 1st:	David Sands	2.5	\$25.00
Unrated - 1st:	Guy Thompson	3.0	\$12.50
Unrated - 1st:	James M. Hughes	3.0	\$12.50

PROBLEM CORNER

(Submitted by Raymond Hudgens)



What is White's quickest way to mate?
Answer page 11 .

ANNOTATED GAME

(By Leonard Dickerson)

This game is a pure example of black-square domination. It demonstrates the dangers of falling behind in development to win insignificant material. It also represents the quickest mate (not win) that I have executed against a master.

White: Neil Harris 2216

Black: Leonard Dickerson 2160

1994 Cumberland County Summer Open
Round 3; Game in 60

Two Knights Variation of Caro-Kann

1.e4 c6 2.Nc3 d5 3.Nf3 de4 (In the Two Knights variation, Black normally proceeds with Bg4. However, I wanted a different type of game. With the knight on f3, I figure that a Bronstein-Larsen variation would be ideal.) **4.Ne4 Nf6 5.Qe2 Bg4** (If 5...Nxe; 6.Qxe Nd; 7.Bc4 Nf6; 8.Qe2 Bf5, Black has only a slight inferiority. But I felt that this was probably one of the main lines, and, since I was not familiar with the line, wanted to avoid it.) **6.h3 Bh5** (Now I could swap two pieces if I wanted to diffuse a White attack. However I believe that White would keep a nagging edge late into the middle game because of possessing the two bishops. Too, in the previous round, Harris warned me of his endgame skill by outplaying Ellis Jones with opposite-colored bishops. Hence I did not want to prematurely enter the endgame.) **7.Ng3 Bg6** (This bishop maneuver was not bad. It took three moves to arrive at g6; however, the White knight also took three moves to get to g3--and it has less scope.) **8.Ne5 Nbd7** (8... e6 might be stronger since it would force White to make a decision about his piece placement. But 8...Bxc? now would be awful, as 9. Nxf would devastate me. My move keeps the knight from getting cozy at e5.) **9.Ng6 hg6**

10.d4 Qc7 11.Bd2 O-O-O 12.Qc4 e6 13.Qa4 (White would have maintained a slight plus had he castled on move 12 or 13. Now, safe for Black is 13...Kb8. But I saw that I could possibly strand the White king in the center and possibly trap the Queen. Anyway, the d-pawn has to be worth more than my a-pawn.) **13...Nb6!? 14.Qa7 Rd4 15.Be3 Bc5!** [diagram]



(This is the key move of the sequence. It is possible because I am better developed, and the White queen is out of play.) **16.Bd4 Bd4 17.Ne2** (If 17.c3 Bxf+; 18.Kxf Qf4+; 19.Ke2 Nfd5! And now if (a) 20.Rd1 Qe3 mate; (b) 20.Qa3 Nc4 wins; (c) 20.c4 Qe3+; 21.Kd1 Rd8 wins. If instead, 17. Rd1 Qf4 threatens f2 and gets at least the exchange back. The move made was best.) **17...Bb2** (And here I cowardly offered a draw. I knew I was doing well, but I kept seeing final positions of my queen versus his two rooks. Objectively, though, probably the worst that can occur from such an event would be a draw. Whatever, not seeing the danger, he declined anyway.) **18.Rb1 Qe5 19.f3** (White does not respond with his best. He should try Qxb6, preparing to give up his queen for the rook when it checks at d8: 19.Qxb6 Bc3+; 20.Kd1 Rd8+; 21.Qxd8 Kxd8; 22.Nxc3 Qxc3; 23.Bd3 and Black has a plus because the rooks are uncoordinated -- for now!) **19...Bc3+** (All variations lead to mate now.) **20.Kf2 Qc5+ 21.Kg3 Be5+ 22.f4** (If 22.Nf4 Nh5+ also mates. This is a textbook example of Black square domination.) **22...Qe3+ 23.Kh2 Ng4 mate.**

♠ ♠ ♠ ♠ ♠ ♠ ♠ ♠

SOLUTION TO THE PROBLEM CORNER (See page 9.):

1.Re1+ Kd6 2.Be7+ 3.Qb4+ Kd7 4.Qxe7 mate. (This was developed from an idea presented in *ChessTactician's Handbook* by IM John Grefe.

NEWS RELEASE

(Submitted by Nancy Hughes)

June 4th was quite a busy day at Hopewell Elementary School in Cleveland, TN. Sixty-three scholastic players and their parents converged on the school early Saturday morning to participate in the 5 round swiss tournament and play in the simul with the new TN GM Sam Palatnik. After introductions of GM Palatnik, his daughter, Olga, and Dr. Dick Katahn, the tournament began. During the first three rounds, Sam observed the games in progress and was able to offer comments later in the day to the players. At the lunch break GM Palatnik gave a demonstration for the group, highlighting moves from some of the morning games. He also presented the Grand Masters Best Game Trophy to Jim Hughes. Parents and coaches had a chance to meet and talk with Sam at a welcoming reception during the last round of play. After the presentation of trophies and certificates most of the players participated in the Grand Master Simul. Many on the areas of TN from Nashville, Oak Ridge, Maryville, Athens, and Cleveland were represented as well as AL and MS.

PLACE WINNERS

	<u>Junior High</u>	<u>High School</u>
1st	Matthew Strobel	Olga Palatnik
2nd	Matt Bumbalough	Billy Ware
3rd	Jason Copas	Bill Ryan
4th	Chris Love	Ryan Newhouse
5th	Trey Grant	David Hewitt
6th	Jacob Detring	Bill Bacon
7th	John Gibson	Jim Hughes
8th	—	Rob Dake
9th	—	Corey Pass

HOPEWELL 1ST RATED SCHOLASTICS

JUNE 4, 1944

(Submitted by Nancy Hughes)

PLACE WINNERS

	<u>Primary</u>	<u>Elementary</u>
1st	Jay Quigley	Manuel Garcia
2nd	Jeffery Harris	Sisir Botta
3rd	David Norton	Jason Knight
4th	Evans Williams	Ted Blakeman
5th	Leah Guffy	Shaun Gilliam
6th	Amanda Lowry	Rick Castle
7th	Lu Sun	David Redwine
8th	Jami Couch	Vandana Botta
9th	Kyle Hodges	Todd Andrews
10th	Nathan Love	David Berry

UNDER 1000

1st	Kyle Jones	Trevor Brown
2nd	Greg Tompkins	Andrew Carson
3rd	Sandy Tompkins	Arron Lowry

UNRATED

1st	Michael Griffith	David Ehrsam
2nd	Beth Presswood	Adam Hetzler
3rd	Jason Thompson	Adam Smith

MORE ON YOUNGEST U.S. MASTER

(By R. Hudgens)

It was with great interest his writer had as he read the item in the April/May issue of the TCN about Jordy Mont-Reynaud. Jordy was the National Primary Champion in Knoxville in 1992. It has been my privilege for the past two years to do some coaching for elementary students in Nashville. So, as I see the tremendous achievement of an eight year old (Jordy's age at the time in Knoxville) I am again reminded of the awesome potential of elementary school players. Here is the final round game in Knoxville between Jordy and a young lady from Arizona. (From the *California Chess Journal*, June/July 1992.)

White: Jordy Mont-Reynaud (1762)
Black: Andrea Peterson (1500)
Caro-Kann [B12]
(Annotated by Jordy Mont-Reynaud)

1.e4 c6 2.d4 d5 3.e5 Bf5 4.Bd3

The way White played in days of yore, sixty years ago or so, Capablanca maybe.

4...Bg6?

4...Bxd3!

5.Bxg6

5.e6 is equally strong.

5...hxg6 6.e6!

Crashing through and breaking us Black's kingside. Everything is messy now — lots of weaknesses. All of this game revolves around this pawn move.

6...f6

Black's kingside is strangled.

7.Qg4 g5

14/ *Tennessee Chess News*

Forced.

8.Qf5

Threatening mate in one.

8...Qd6!

Black is threatening Rxh2, Qxh2 with advantage.

9..Nf3 Nh6 10.Qg6+ Kd8 11.Kf1

I didn't want to play 11.O-O, castling into an open rook file, because then Black might get a wild attack. 11.Kf1 is better than 11.Kd1 Qxe6 12.Nxg4 Qg4+ threatening the pawn at d4.

11...c5 12.dxc5 Qxc5 13.Qd3 Nc6 14.Be3 Qd6 15.Nc3

White's King position is somewhat better and White at least can develop all his minor pieces.

15...Nb4 16.Qd2 Qxe6 17.a3 Nc6 18.Nxd5 Qd6 19.Rd1 Ke8 20.Qe2 Qb8 21.Qb3 Kf7 22.Bxg5?! fxg5 23.Nxg5+ Kg8 1-0.

And Black forfeits on time.

Amazingly, there is no forced mate, even though the position looked like it demanded one! But, winning is 24.Nb6 and if ...axb6, Qd5 leads to mate; otherwise, White wins the exchange after Nxa8.

(Continued from page 4)

We at the TCA and those at the USCF, your local clubs and TDs are all here just for one thing, ... to promote Chess — for fun, education, art, etc. Let's all pull together. Look what has happened in Tennessee to the Scholastic program! This growth only occurred due to cooperation and hard work on the part of the chess players and chess lovers in Tennessee.

Keep up the good work, fellow TCA members! Without you and your cooperation, there would be no regular chess in Tennessee.

Thanks!!!

THE GAMBIT PLAYER

(By Richard Westbrook)

Just when you thought it was safe to pick up a *Tennessee Chess News* and not be subjected to more "Diemerism," you're hit with another dose! This game was obtained from the "information superhighway" late last year. I'm passing it along to the membership for several reasons. First, it is an interesting game, in many ways typical of the devastating attacks which occur in almost all lines of the opening. Second, the winners chest-pounding is also typical of Diemer proponents. Third, if any of you are tempted, the winner provides the electronic address for a Diemer "newsgroup." Without further ado (notes by Yeates):

"Why play the Blackmar-Diemer? Because 1) most good players don't wimp out with a Kings Indian set up since they 'know' the BDG is unsound. 2) Unless Black knows what they're doing, they easily can go astray.

"This victory capped of a 5-0 win of my club's tournament and puts me over the 2000 mark.

"When I started the newsgroup alt.chess.bdg a year or so ago, somebody asked me if the newsgroup was for chess bondage! Maybe they weren't far off. You can almost hear black screaming 'Hurt me, Hurt me' during this game.

Mathew Yeates - McNoughton (2065)

1.d4 Nf6 2.f3 d5 3.e4 dxe4 4.Nc3 exf3 5.Nxf3 c5 6.Bf4 cxd4 Shiller only gives 6.d5 but the *gambit keybook* gives a few games with Bf4. 7.Nb5 Qa5 Nope 7...Na6 8.Nd5. 8.b4 Qxb4 9.c3 Qc5 10.Nc7 Kd8 11.Rc1 Nd5 12.cxd4 Qa5 13.Bd2 Qxc5 14.Rxc7 Kxc7 While material is approx equal white has a huge lead in development 15.Bc4 e6 16.Ne5 Be7 17.Nxf7 Rf8 18.O-O Nc6 19.Qe1 Nxd4 aiming for a cheapo skewer of the queen and king but it fails 20.Qe5 Kc6 21.Bxd5 exd5 22.Qxe7 1-0."

Once again, when the BDG works, it works well and quickly! While you might not wish to venture the BDG in a rated tournament game, it is loads of fun to spring on opponents while playing blitz or skittles. Remember, **think f3!**

TOURNAMENTS! TOURNAMENTS!

(Submitted by Rick Igou)

08/06/94

TURKEY TOUR EVENT

2nd Annual Chattanooga State Warmup,
Chattanooga, TN

09/2-3/94

TWO DAY EVENT!!

TURKEY TOUR EVENT

48th Tennessee Open, Nashville, TN
Contact Peter Lahde for details:

2609 Sailboat Court
Nashville, Tn 37217
(615) 361-4588

10/08/94

TURKEY TOUR EVENT

Cumberland Co. Fall Open

10/29/94

2nd Oak Ridge Scholastic Chess Camp,
Oak Ridge, TN

11/19/94

8th Annual Oak Ridge Fall Scholastics,
Oak Ridge, TN

12/10/94

Cumberland Co Scholastics (closed)

TCA Regional Scholastic Coordinators

(1994-1995)

STATE SCHOLASTIC COORDINATOR

Harry D. Sabine
205 South Thurman Avenue
P.O. Box 381
Crossville, TN 38557
H: (615) 484 - 4878
O: (615) 484 - 9593
Fax: (615) 484 - 7624 (+ modem)

REGION 1 SCHOLASTIC COORDINATOR

Ellis E. Jones
500 North B Street
Lenoir City, TN 37771
H: (615) 986 - 2344
O: (615) 947 - 8409
Fax: (615) 947 - 8591

REGION 2 SCHOLASTIC COORDINATOR

Ron Harvill
Route 6, Box 146
Crossville, TN 38555
H: (615) 788 - 2767
O: (615) 484 - 5959

REGION 3 SCHOLASTIC COORDINATOR

Alvin L. Harris
(Office)
Greene + Greene
323 Union Street
P.O. Box 198768
Nashville, TN 37219
H: (615) 297 - 8185
O: (615) 256 - 5607
Fax: (615) 256 - 3229

REGION 4 SCHOLASTIC COORDINATOR

Bill Cummings
3532 Davieshire Drive
Memphis, TN 38133
H: (901) 372 - 6584
O: (901) 348 - 1600
Fax: (901) 348 - 1610

TCA Board Of Directors

(1993-94)

PRESIDENT

Ed Porter
904 Wilson Pike
Brentwood, TN 37027
Home: (615) 371-9784
Work: (615) 251-2449
FAX: (615) 251-3866

VICE - PRESIDENT

Douglas Nichols
900 Mountain Creek Road, P-239
Chattanooga, TN 37405
Work: (615) 265-2271, ext., 413
Home: (615) 870-1101

SECRETARY - TREASURER

Leonard S. Dickerson
420 Oran Road
Knoxville, TN 37922
Home: (615) 966-1095
Work: (615) 574-4676

POSTAL CHESS COORDINATOR

Lee Edwards
406 Stahlman Building
211 Union Street
Nashville, TN 37201
Home: (615) 883-7522
Work: (615) 726-3395

TOURNAMENT DIRECTOR

Rick Igou
400 Rhodora Court, Apt., F
Knoxville, TN 37923
Home: (615) 690-6810
Work: (615) 574-1839

SCHOLASTIC COORDINATOR

Harry D. Sabine
P.O. Box 381
Crossville, TN 38557
Home: (615) 484-4878
Work: (615) 484-9593
FAX: (615) 456-7624

TCN EDITOR (EAST)

Richard R. Westbrook
1227 Venido Drive
Knoxville, TN 37932-2599
Home: (615) 671-4124
Work: (615) 974-1250
FAX: (615) 671-4124

TCN EDITOR (WEST)

Ed Boldt
31 Holly St, PO Box 3039
Jackson, TN 38301

DIRECTOR, EAST TENNESSEE

Chester Crowley
114 Iroquois Lane
Clinton, TN 37716
Home: (615) 457-7965
Work: (615) 457-3100
FAX: (615) 531-2958

DIRECTOR, MIDDLE TENNESSEE

Peter P. Lahde
2609 Sailboat Court
Nashville, TN 37217
Home: (615) 361-4588

DIRECTOR, WEST TENNESSEE

Joseph Mooney
361 Hwy 18
Jackson, TN 38301
Home: (901) 427-0481
Work: (901) 423-1339