



TENNESSEE CHESS NEWS

FALL 1999

PALATNIK AND ANDREWS CO-CHAMPIONS.....	4
GAMES FROM 1999 TN OPEN.....	11
AMATEUR CHAMPION ANNOTATIONS.....	20
CLASS C WINNER'S VIEW OF FAIRFIELD GLADE.....	22
ANNUAL TREASURER'S REPORT SUMMARY.....	25
GIRL'S WORLD CHAMPIONSHIP.....	28



NEW TCA PRESIDENT KENT MEADOWS
1999 TN OPEN CLASS A CHAMPION

TENNESSEE CHESS NEWS

The *Tennessee Chess News* is the official publication of the Tennessee Chess Association. TCA annual dues are \$10 for a *regular* membership, \$6 for a *student* membership. Additional members of a family may join for one dollar each, but only one issue of TCN will be mailed per family. All memberships expire August 31.

Tax-deductible Patron Memberships are available beginning at \$25 per year for those who wish to help support the TCA. These memberships expire one year from the date of payment. Patron membership categories and benefits are as follows:

PATRON - \$25

- receive TCN by First Class Mail with your name listed in each issue of TCN;

PATRON KNIGHT - \$50

- all Patron benefits plus a commemorative plaque;

PATRON BISHOP - \$100

- all Patron Knight benefits plus free entry to the Tennessee Open;

PATRON KING - \$500

- all Patron Bishop benefits plus free lodging at the Tennessee Open;

PATRON FOUNDER - \$1000

- all Patron King benefits.

TOURNAMENT ANNOUNCEMENTS

TCN prints listings of upcoming tournaments requiring TCA membership in each issue for free. Submit complete TLA information to Wayne L. Hedger, Tournament Coordinator.

TN CHESS NEWS STAFF

Editor:

Angela McElrath-Prosser

Contributors:

Games Editor-Peter Lahde
Tech Support-Chris Prosser
Scott Cantrell
Joe Crump
Leonard Dickerson
Raymond Hudgens
Mark Ishee
Peter Lahde
Roy Manners
Harry Sabine

ADVERTISING RATES

Full Page	\$40.00
Half Page	\$20.00
One-third Page	\$14.00
One-quarter Page	\$10.00
One-eighth Page	\$ 7.00

Pre-printed flyers for insert must be 8 1/2 x 11" in size, 60 pound Offset, and delivered flat. *Only one insert is available per issue.* \$15.00

TCN publishing schedule:
Winter 2000 - Feb 1 covering
Nov, Dec, Jan events
Deadline: Jan 9, 2000
Spring 2000 - May 1 covering
Feb, Mar, Apr events
Deadline: Apr 9, 1999
Summer 2000 - Aug 1 covering
May, Jun, Jul events
Deadline: July 9, 1999
Fall 2000 - Nov 1 covering
Aug, Sept, Oct events
Deadline: Oct 9, 1999
To submit material by e-mail:
tcanews@aol.com

TENNESSEE CHESS ASSOCIATION PATRON MEMBERS

PATRON FOUNDER

DR. MARTIN "DICK" KATAHN

PATRON BISHOP

PETER BEREOLOS
DR. ROY CLARK
GEORGE DEAN
RHEA HAYES
RAYMOND HUDGENS
ROY MANNERS
HAROLD MILES
DR. HARESH MIRANI
CLINTON H. PEARSON
JEFF PENNIG
HARRY D. SABINE
R.K. SHIMABUKURO
TODD SHIMABUKURO (HONORARY)

PATRON KNIGHT

JASON R. KNIGHT
BILL ORGAIN

PATRON

THOMAS A. COOPER
JOE C. JONES
F. MORRIS LEWIS
JAMES A. WRIGHT

GM SAM PALATNIK AND TODD ANDREWS CO-CHAMPIONS by Peter Lahde

GM Sam Palatnik and Master Todd Andrews, both of Nashville, are the new state champions. They achieved this by scoring four wins and only one draw. (Todd also was in a tie-break for first in last year's Open but with only 3.5 points rather than 4.5.) Palatnik had the best tie-break to be awarded the trophy. Curiously they did not play each other and reached the same results by drawing Pedro Tidoy, a newcomer to the Middle Tennessee area. Esad Elezaj, another Nashvillian also scored four points along with Tidoy to divide the third place prize.

The Expert prize was won by Brian Smith of Murfreesboro, a frequent winner of the Nashville Championship. He was forced to forfeit his first game because of car trouble but then proceeded to win the other four games. Whether or not he deserved to win, two of those games may be questionable, as both Leonard Dickerson and Jake Kleiman missed the winning continuations. See both games in the games section. But the winning prize almost paid for the repair bill. Three other experts divided the second and third place money. They were Adam Caveney from Georgia, David Kapley from Kentucky and M.C. Wright from Hermitage TN.

Dan Liu was the winner of the Class A prize with a score of three points. He hails from North Carolina. With his score, he again is in the Expert class. Second place was won by Kent Meadows from Nashville with 2.5 points. With eight Masters (including one GM and one IM) and nine Experts, this was by far the strongest Open ever. The Open was attached by 29 players

The Amateur was won by Donald Jackson from Georgia with four wins and a draw. Since he is not from Tennessee, the state title and trophy went to James B. Lewis from Madison. He had not played for about three years but came back with a vengeance despite the fact that he was only rated as a Class C player. He took the state trophy but had to divide the money with two other players that also scored four points. They were Ottie West from Nashville and Scott Cantrell from Riceville TN. The second place for the Class C Prize was won by Wayne Jenkins from LaVergne TN with 3.5 points. There were 34 players in the Amateur.

The Novice Section was all bunched up with no less than seven players scoring four points. The best tie-break was obtained by Wardell Vance from Nashville to receive the trophy. The other players were: Danny Gholson from Memphis, Jerry Seay from Madison, Brian

McCormick from Huntsville AL, Jeffrey Burrows from Nashville and Shannon Shaw from Crossville. But Patrick Clark of Allardt TN won the Class E prize and trophy with the same score of four points. Second in Class E was David Dawson from Germantown TN. The Unrated prize and trophy went to Tim Martindale from Knoxville. Second place was won by Scott Agee from Spencer TN. There were 40 players in this section.

Thanks to the 21 players from other states who attended the 53rd Tennessee Open this year, this was a very successful event. Both Kentucky and Georgia were leading the pack with seven players each. Then came North Carolina with three players, two from Alabama, and one each from South Carolina and Indiana. There were a total of 103 players in attendance.

The tournament was directed by National TD Harry Sabine, assisted by Chris Prosser, Jim Baringer, Jeremy Carter, and at the computer, Angela McElrath-Prosser.

The game prizes have now been awarded. Two prizes were awarded in the Open. The top prize going to Walter Jordan from Nashville for his game with Gerald Larsen, second went to Doug Eckert from Memphis for his win over Frankie Newton. The Amateur game prize went to David Bertram of Jamestown TN and the Novice game prize was won by John Burrows of Nashville. Master Mark Ishee annotated the games for the *TCN* and made the selections.

TENNESSEE OPEN SCHOLASTICS A GREAT SUCCESS by Chris Prosser

The 1999 Tennessee Open Scholastics had 57 participants in four sections. The *Primary* section was won by Evan Mah, with Jonathan Beatty and Beck Spurlock coming in 2nd and 3rd. Mirko Remec had a perfect 4.0 score to take the *Elementary* section, followed by Brandon Ladage and Joshua Dunn. The *Junior High* section was the largest with 20 players. Michael Ross won all four of his games to capture 1st place. Hal Nichols and Chris Martindale topped a 6 way tie-break to take 2nd and 3rd. The *High School* section was won by Shannon Shaw, beating 2nd place Brett Farris on tie-breaks. Jennifer Laupp took 3rd. The Scholastics were directed by Chris Prosser and Jeremy Carter. Tennessee should be proud of these students' results.

1999 TENNESSEE OPEN

OPEN

AMATEUR

1 GM SAM PALATNIK	4.5	1 DONALD E. JACKSON	4.5
2 TODD D. ANDREWS	4.5	2 JAMES B. LEWIS	4.0
3 PEDRO P. TIDOY JR	4.0	3 OTTIE WEST JR	4.0
4 ESAD ELEZAJ	4.0	4 SCOTT N. CANTRELL	4.0
5 BRIAN D. SMITH	4.0	5 CHAD ELLER	3.5
6 ADAM S. CAVENEY	3.0	6 WAYNE L. JENKINS	3.5
7 DOUG D. ECKERT	3.0	7 DEWITT PULLEN SR	3.5
8 IM TIM TAYLOR	3.0	8 HUSEIN AUDIC	3.0
9 DAVID KAPLEY	3.0	9 JACQUELINE GUGLIELMI	3.0
10 DAN LIU	3.0	10 DALLAS LOVEN	3.0
11 MILTON C. WRIGHT	3.0	11 JOSHUA WOLFE	3.0
12 GERALD A. LARSON	2.5	12 MARK E. COBB	3.0
13 WALTER W. JORDAN	2.5	13 BRET WILKISON	3.0
14 LEONARD DICKERSON	2.5	14 DAVID B. BERTRAM	3.0
15 MARTIN NILSSON	2.5	15 JASON R. KNIGHT	2.5
16 ROBERT KENT MEADOWS	2.5	16 JON L. MURRAY	2.5
17 MARK A. MANGONE	2.0	17 HARESH K. MIRANI	2.5
18 FRANKIE NEWTON	2.0	18 PATRICK CUNNINGHAM	2.0
19 GREGORY HOFFMAN	2.0	19 WAYNE L. HEDGER	2.0
20 BRADLEY S. WATSON	2.0	20 ANDREW J. CRIGGER	2.0
21 CARLOS S. SIMS	2.0	21 KEITH RICE	2.0
22 JAKE KLEIMAN	2.0	22 BILLY R. PATILLO	2.0
23 REA B. HAYES	1.5	23 ROY W. CLARK	2.0
24 PETER BEREOLOS	1.5	24 STEVEN PATTERSON	2.0
25 JEFF PENNIG	1.5	25 JIMMY D. WORLEY	2.0
26 JOHN W. LEATHER	1.0	26 FRED GARLINGHOUSE	2.0
27 CHRIS FUCHS	1.0	27 BRETT FARRIS	1.5
28 JEREMY R. CARTER	1.0	28 WILLIAM H. ORGAIN	1.5
29 JERRY T. WHEELER	1.0	29 STEPHEN K. MORALES	1.5
		30 JEREMY REED	1.0
		31 ADAM STIEN	0.5
		32 WILLIAM BELLIFORD	0.0
		33 ALVIN L. HARRIS	0.0

ELEMENTARY

1 MIRKO REMEC	4.0
2 BRANDON LADAGE	3.5
3 JOSHUA DUNN	3.0
4 LAHARI SUBRAVETI	3.0
5 JOSHUA GAO	2.5
6 STEPHEN TESAURO	2.0
7 CHRISTOPHER CLAYTON	2.0
8 LOREN BROWN	2.0
9 ALEXANDER MCGUFFEY	2.0
10 KATHLEEN CUNNINGHAM	2.0
11 SURAJ MENON	2.0
12 JORDAN HUNSBERGER	2.0
13 ERIC BROOKS	1.0
14 GRANT CHALMERS	1.0
15 HUGH ARCHIBALD	1.0

PRIMARY

1 EVAN MAH	3.5
2 JONATHAN BEATTY	3.0
3 BECK SPURLOCK	3.0
4 EVAN DUVALL	2.5
5 JORDAN BEATTY	2.0
6 CONNOR CUNNINGHAM	1.0
7 NICHOLAS CLAYTON	1.0

1999 TENNESSEE OPEN

NOVICE

1 WARDELL VANCE	4.0
2 PATRICK CLARK	4.0
3 JERRY E. SEAY	4.0
4 DANNY B. GHOLSON	4.0
5 SHANNON SHAW	4.0
6 JEFFREY BURROWS	4.0
7 BRIAN MCCORMICK	3.5
8 DAVID DAWSON	3.5
9 DAVID H. JAFARI	3.0
10 ADAM STIEN	3.0
11 CURTIS LENZ	3.0
12 BARTON CAMARATA	3.0
13 MICHAEL W. WHITE	3.0
14 TREY SMITH	3.0
15 TIM MARTINDALE	3.0
16 EVAN B. MAH	3.0
17 DEWITT PULLEN JR	3.0
18 GARY F. GILLESPIE	3.0
19 SCOTT A. AGEE	2.5
20 TIMOTHY STALEY	2.5
21 JOSHUA M. GAO	2.5
22 PATRICK CARNER	2.5
23 ROY B. MANNERS	2.5
24 JONATHAN C. WADE	2.0
25 STEVE FOUNTAIN	2.0
26 DENNIS HIGDON	2.0
27 DUSTIN SMITH	2.0
28 WAYNE CARPENTER	2.0
29 CHARLES MCGINNIS	2.0
30 JOHN M. SMITH	2.0
31 LEWIS T. PEARSON	2.0
32 MICHAEL ROSS	1.5
33 JONATHAN BEATTY	1.5
34 JAMES FISHER	1.5
35 NOAH KAPLEY	1.5
36 ROBERT WEAVER JR	1.0
37 MATT STALEY	1.0
38 WILLIAM LEWTER	1.0
39 RAYMOND HUDGENS	0.5
40 GEORGE A. DEAN	0.0

HIGH SCHOOL

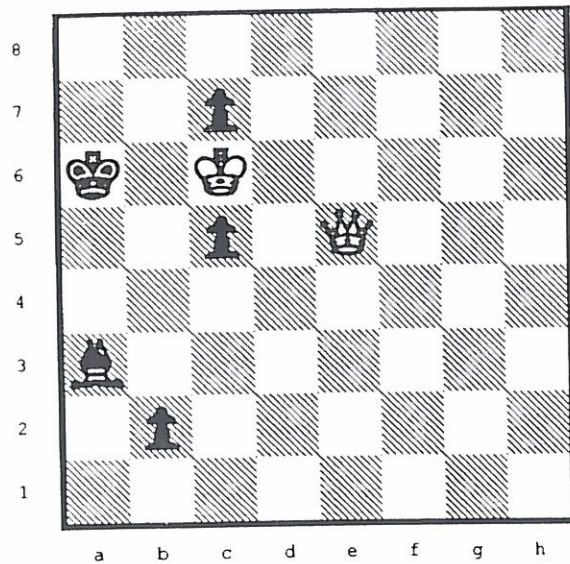
1 SHANNON SHAW	3.5
2 BRETT FARRIS	3.5
3 JENNIFER LAUPP	3.0
4 GLENIS SWALLOWS	3.0
5 JASON SMITH	2.5
6 MARK DIXON	2.5
7 RYAN WEST	2.0
8 WAYNE CARPENTER	2.0
9 MATT HUMAN	2.0
10 RYAN MULHOLLEN	2.0
11 LENNY VAN METER	2.0
12 RONNIE GLASS	1.0
13 KIRK CLARK	1.0
14 GREG WRIGHT	1.0
15 DARYL DUFFY	1.0

JR HIGH SCHOOL

1 MICHAEL ROSS	4.0
2 CHRIS MARTINDALE	3.0
3 JOE WRIGHT	3.0
4 DREW LOCKHART	3.0
5 TIMOTHY HUANG	3.0
6 HAL NICHOLAS	3.0
7 MATT STALEY	2.0
8 JACOB GREEN	2.0
9 BRANDON NELSON	2.0
10 DAVID BOYD	2.0
11 MICHAEL E. NORMAN	2.0
12 SAM TRUSLOW	2.0
13 TIMMY SMITH	2.0
14 KENNY GUNTER	2.0
15 ALAN MCCORMICK	2.0
16 ANDY TIDWELL	1.5
17 JEDIDIAH R. SIRK	1.0
18 BRYAN BOUTELL	0.5
19 JOSH YATES	0.0
20 KYLE LOCKHART	0.0



PROBLEM CORNER BY R. D. HUDGENS

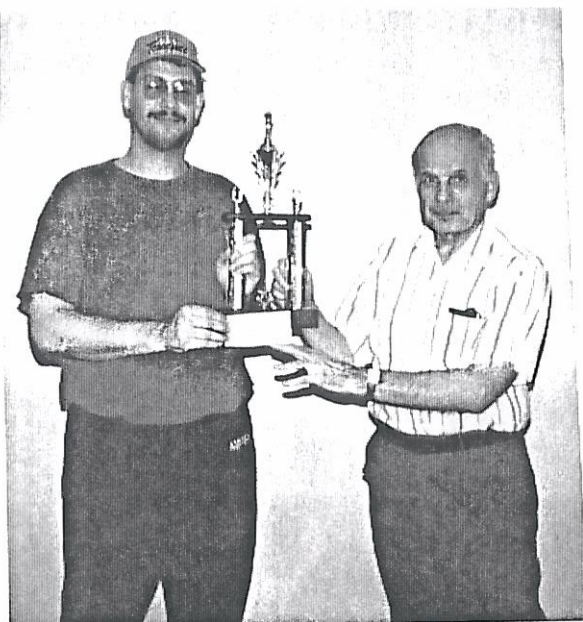


WHITE MATES IN THREE MOVES
SOLUTION ON PAGE 31



1999 53RD TENNESSEE OPEN WINNERS





□ Larson, G
 ■ Jordan, W
 Tennessee Open
 [notes by Mark Ishee]

B94

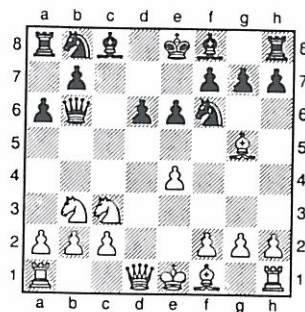
1999

1.e4 c5 2.Nf3 d6 3.d4 cxd4 4.Nxd4 Nf6
 5.Nc3 a6 6.Bg5 Qb6 7.Nb3

A tame reaction that gives Black a favorable form of the "Poisoned Pawn" Najdorf Variation.

[7.Bxf6 gxf6 8.Nd5 is a logical way to try to exploit black's omission of ...e7-e6. For example, Qa5+ 9.b4 Qd8 10.Qh5 e6 11.Ne3 produces an interesting and tense position where white's attacking chances outweigh his split queenside pawns.]

7...e6



8.Bxf6? The doubled f-pawns created by this trade are not weak, and without his dark-squared bishop white soon loses control of key dark squares.

[8.f4?! Qe3+ 9.Qe2 Qxe2+ 10.Bxe2 is good for Black because the queen trade reduces white's attacking chances in the middlegame, and brings black a giant step closer to exploiting his "Sicilian endgame" advantage.]

[8.Qe2 followed by 0-0-0 and f2-f4 creates attacking chances for white.]

8...gxf6 9.Qf3 Nd7 10.0-0-0 Qc7

The queen has done its work on b6. Now white's king offers a convenient target, so black prepares ...b7-b5. 11.Qh5 b5 12.Nd4?! If this is white's best, then 7.Nb3 was certainly a mistake!

[12.Bd3 Bb7 13.Rhe1 is a more logical continuation.]

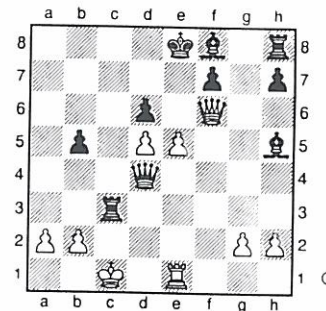
12...Qc5 Black wants to trade queens to reach an ending where his bishop pair will give him good winning chances. 13.Nd5? White has been outplayed strategically, and makes a desperate attempt to complicate. exd5

14.exd5 Ne5 After this simple reply Black's king is perfectly safe. 15.f4 Bg4++ 16.Qh4 Bxd1 17.Qxf6 Qxd4! 18.Bxb5+

Another desperate sacrifice.

[18.Qxh8? Is a mistake. Black can win white's queen with 18...Nd3+, or play for more with Bxc2! because if white takes the bishop he gets mated: 19.Kxc2 Rc8+ 20.Bc4 (20.Kb1 Qd1#; 20.Kb3 Qa4#) 20...Qd3+ 21.Kc1 Rxc4#]

18...axb5 19.Re1 Rc8 20.c3 Bh5 21.fxe5 Rxc3+!



22.Kb1

[22.bxc3 Qxc3+ 23.Kb1 Bg6+ forces white to give up his queen with 24.Qxg6]

22...Re3 23.Rc1 Qe4+ 24.Ka1 Re1

White has no satisfactory way to continue the struggle; for example, 25.Qg5 runs into 25...Qxg2! (1st Best Game Prize, Open Section)

0-1



Eckert,D
 ■ Newton,F
 Tennessee Open
 [notes by Mark Ishee]

A57

1999

1.d4 Nf6 2.c4 c5 3.d5 b5 4.Nf3 g6
 5.cxb5 a6 6.Nc3 axb5 7.e4 b4 8.e5 bxc3
 9.exf6 Qa5 10.bxc3 Qxc3+ 11.Bd2 Qxf6
 12.Rc1 Bg7 13.Bc4 To this point the game
 has followed the 1999 consultation game
 Memphis vs. Nashville. FM Eckert's Memphis
 squad achieved a very strong position in this
 variation against the Nashville team led by GM
 Palatnik.

[13.Bc3? Qxc3+ 14.Rxc3 Bxc3+ 15.Nd2
 Rxa2 16.Qb3 (only move) Ra1+ 17.Ke2
 Ba6+ 18.Kf3 Be5 with advantage to black.]

13...Ba6

[13...0-0 was played in the Memphis-
 Nashville match game, which continued:
 14.Bg5 Qd6 15.0-0 Ba6 16.Nd2 Qe5
 17.h4 Bf6 18.Re1 Qd4 19.Re4 Qb2
 20.Bb3 Bd3 21.Re3 c4 22.Nxc4 Bxc4
 23.Rxc4 d6 24.Rxe7 Bxe7 25.Bxe7 Re8
 26.Bxd6 Nd7 27.Rc7?! (27.Bb4!) Rac8!
 28.Ba4? Rxc7 29.Bxc7 Qc3 30.Qc2 Re1+
 31.Kh2 Qxc2 32.Bxc2 Rc1 0-1.]

14.0-0 0-0 15.Bg5 Qd6 16.Nd2 Qe5

17.h4 By transposition we now have the same
 position as in the Memphis-Nashville game.
 e6?

[17...Bf6 was Nashville's choice here, which
 looks stronger. After 17...e6 the dark
 squares on black's kingside become very
 weak.]

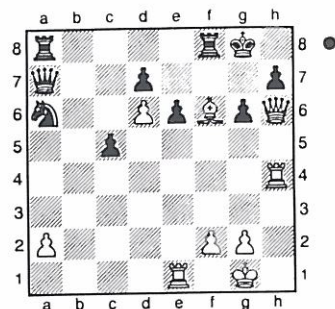
18.Re1 Qc7 19.Be7 Rc8 20.Ne4 Bxc4
 21.Rxc4 Na6 22.d6 Qa7 23.Nf6+

Now it's clear why 17...e6? was wrong. Kh8
 After this black gets squashed.

[23...Bxf6 looks bad at first, but may be
 black's best chance to survive. For example,
 24.Bxf6 Nb4 25.Qc1 Nd5 26.Ba1 Qxa2
 27.Qh6 Qxa1! 28.Rxa1 Rxa1+ looks OK
 for the second player.]

24.h5 Re8 25.hxg6 fxg6 26.Rh4 Bxf6
 27.Bxf6+ Kg8 28.Qd2 Rf8 29.Qh6

Black is getting mated-- for example, 29...Rf7



30.Qxg6+ Kf8 31.Be7+ Ke8 (31...Rxe7 32.
 Rf4+) 32.Qg8+ Rf8 33.Qxf8#. (2nd Best Game
 Prize, Open Section)
 1-0

Tennessee Open/Scholastics

■ Ryan Mulhollen

■ Jennifer Laupp

TN Scholastics/High School

1999

1.e4 c5 2.Nc3 Nf6 3.Nf3 Nc6 4.Bc4 Bc5
 5.0-0 0-0 6.Ne2 d5 7.exd5 Nxd5 8.d3 Bg4
 9.Nc3 Nf4 10.Bxf4 exf4 11.d4? Bxd4
 12.Qc1 Be5 13.Bd5 Bxc3 14.Bxc6 Bxf3
 15.Bxf3 Bd2 16.Qd1 Qd6 17.Bxb7 Rad8
 18.c3 Qb6 19.Be4 Rfe8 20.Qc2 g6 21.Rfd1
 Qd6 22.a3 Re5 23.Ra2 Rh5 24.Bf3 Re5
 25.b4 Bxc3! 26.Qxc3? Qxd1+

0-1

■ Micheal Norman

■ Micheal Ross

TN Scholastic/Jr. Hi

1999

1.d4 d6 2.g3 Nf6 3.Bg2 g6 4.Nf3 Bg7
 5.Bc3 0-0 6.Nc3 Nc6 7.a3 Ng4 8.Qd2
 Nxe3 9.Qxe3 Bg4 10.Qe4 Bxf3 11.Qxf3
 Nxd4 12.Qxb7? Nxc2+ 13.Kd2 Nxa1
 14.Rxa1 Rb8 15.Qa6 Rxb2+ 16.Kc1? Bxc3+
 17.Kf1 Qb8 18.Qa4 Rb1+ 19.Rxb1 Qxb1+
 20.Qd1 Qxd1#

0-1

■ Smith,B

■ Kleiman,J

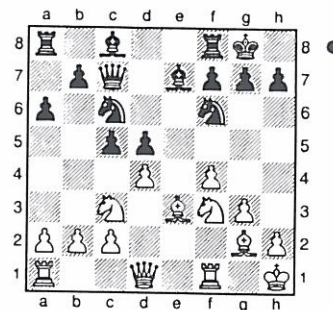
Tennessee Open

[notes by Mark Ishee]

B23

1999

1.e4 c5 2.Nc3 e6 3.f4 Qc7 4.g3 a6 5.Bg2
 Nc6 6.Nf3 d6 7.0-0 Nf6 8.d3 Be7 9.Kh1
 0-0 10.Be3 d5 11.exd5 exd5 12.d4



Rd8 A prelude to a very dangerous pawn
 sacrifice. 13.dxc5 d4! 14.Nxd4 Bxc5

[14...Ng4 is the alternative. However,
 15.Bg1 Nxd4 16.Bxd4 Ne3?! 17.Bxe3!
 Rxd1 18.Raxd1 favors white. By exchanging
 his queen for R+B+P, white activates all his
 pieces and seizes the initiative with the
 threat of Nd5.]

15.Nce2 Nxd4

[15...Ng4 also looks playable. For example,
 if white replies 16.Rf3 (similar to the actual
 game continuation), then Nxe3 17.Rxe3
 Bg4! 18.c3 Bxd4 19.cxd4 Nxd4
 is possible because trading white's queen for
 R+N is not as good here as it was earlier:
 20.Qxd4 Rxd4 21.Nxd4 Rd8 22.Rae1 h6
 23.Nf3 Be6 and black has a small
 advantage.]

16.Nxd4 Ng4 17.Rf3 Bf5!?

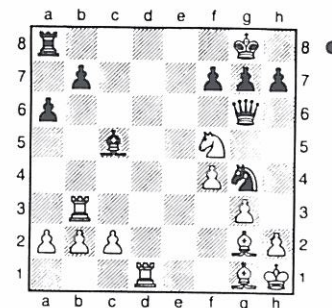
[17...Qb6 immediately forces the reply 18.c3
 after which black gains the upper hand with
 Nxe3 19.Rxe3 Qxb2]

18.Bg1 Qb6 19.Rb3! Qg6 20.Nxf5?!

[20.Bxb7]

20...Rxd1 21.Rxd1

Qh5? Serendipity. Black overestimates his



chances and walks into a powerful
 counterpunch.

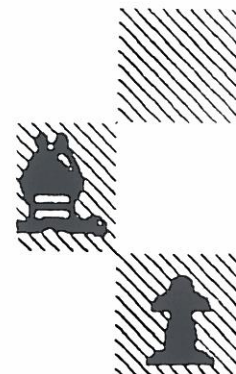
[21...Qxf5 22.Rd5 Qxc2 23.Rxc5 Nf2+
 24.Bxf2 Qxf2 25.Rc1 Re8
 is fine for black.]

22.Rd5! Suddenly White is winning! g6

[22...Qg6 is no better -- after 23.Rxc5 Qe6
 24.Rxb7 White has a winning advantage,
 with R+2B+2P vs. black's queen.]

23.Ne7+ Bxe7 24.Rxh5 gxh5 25.Rxb7
 Re8 26.Bc6 Rc8 27.Bd7

1-0



Wright, M

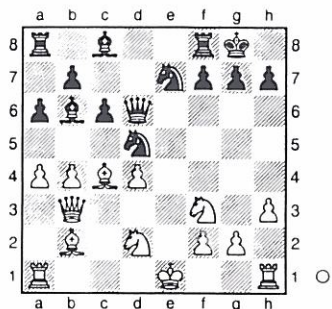
Bereolos, P

Tennessee Open

1999

[notes by Mark Ishee]

1.e4 e5 2.Nf3 Nc6 3.Bc4 Bc5 4.c3 Nf6
5.b4 An inferior side-line.
[5.d4 exd4 6.cxd4 Bb4+ is the main
variation of the Italian Game. 7.Bd2 Bxd2+
8.Nbxd2 d5! 9.exd5 Nxd5=]
5...Bb6 6.d3 d6 7.a4 a6 8.Qb3 0-0 9.h3
Ne7! Black intends central expansion with ...
c6 + ...d5. 10.Nbd2 c6 11.d4 exd4 12.cxd4
d5 13.exd5 Nfxd5 Black has the advantage
thanks to his better pawn structure. 14.Bb2?
[14.0-0]
14...Qd6



15.Ba3

[15.b5 Qe6+ 16.Kf1 axb5 17.axb5 Rxa1+
18.Bxa1 Rd8 is somewhat better than the
game continuation, but still favors black.]
15...Bxd4! 16.Nxd4 Qe5+ 17.Kf1 Qxd4
Black has a winning position. 18.Rd1 b5
19.axb5 axb5 20.Bxd5 Nxd5 21.Nb1 Qf4
22.g3 Qe4 23.Kg1 Be6 24.Qb2 Qf3
25.Rc1 Rfd8 26.Kh2
[26.Rxc6? Nf4 threatens mate with both ...
Qg2 and ...Rd1.]
26...Bxh3 27.Rhg1 Rd6
0-1

Smith, B

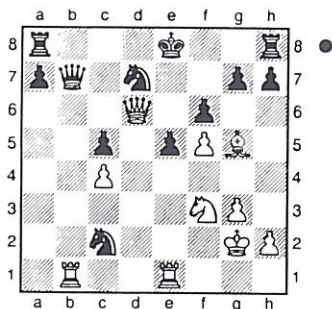
Dickerson, L

Tennessee Open

1999

[notes by Mark Ishee]

1.e4 d6 2.Nc3 c6 3.g3 e5 4.Bg2 Nf6 5.d3
Be7 6.Nge2 Be6 7.0-0 Qc8 8.f4 Bh3
9.f5?! Bxg2 10.Kxg2 Nbd7 11.a4 d5
Black has the upper hand. 12.Ng1 Qc7
13.a5 dxe4 14.dxe4 Bb4 15.a6 Bxc3
16.axb7 Qxb7 17.bxc3 c5 Black has a clear
advantage. White cannot defend his e4-pawn.
18.Re1 Nxe4 19.Nf3 Nxc3 20.Qd3 Nd5
21.c4 Nb4 22.Qd6 Nc2 23.Bg5 f6
24.Rab1



Nb4?

[24...Nxe1+ 25.Rxe1 fxe5 should win for
black.]
25.Qe6+ Kf8 26.Rbd1 Rd8
[26...Nc2!? 27.Rxd7 Nxe1+ 28.Kf2 Qxd7
29.Qxd7 Nxf3 offers some chances for black
to save the game, although white is better
after 30.Qd6+ Kf7 31.Qd5+ Ke7 32.Qxc5+
Kd7 33.Qd5+ Kc7 34.Kxf3 fxe5 35.Qxe5+
Kc6 36.Qxg7]
27.Rxe5! Nc6 28.Red5 Nd4 29.Nxd4 cxd4
30.Bf4 Nb6 31.Bd6+ Rxd6 32.Qxd6+ Kf7
33.Qe6+ Kf8 34.Re1 Nxd5 35.Qe8#
1-0



Weaver, R

Burrows, J

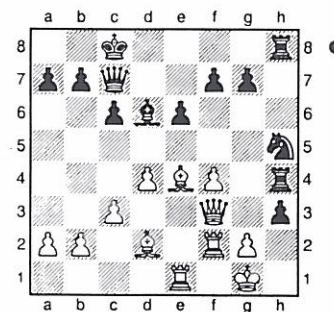
Tennessee Novice (3)

1999

[notes by Mark Ishee]

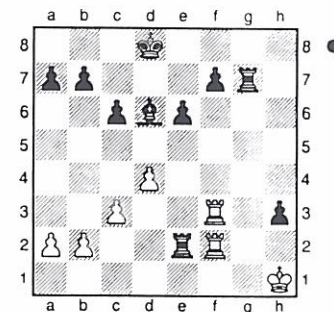
1.e4 c6 2.d4 d5 3.Nc3 dxe4 4.Nxe4 Bf5
5.Ng3 Bg6 6.c3 Nf6 7.N1e2 e6 8.Nf4 Bd6
9.Nxg6 hxg6 White has the two bishops, but
black has good pawn structure and an open h-
file. 10.Bd3 Nbd7 11.0-0?
White underestimates the danger of kingside
castling. Preparing to castle long was better to
avoid black's play down the h-file. Qc7
12.Qe2 0-0-0 Black correctly realizes that his
king belong on the queenside. 13.Bd2 Rh7
Logical. Black takes the initiative by doubling
rooks on the open h-file. 14.f4 Rdh8 15.h3
Rh4 16.Qf3 g5 After this move black is firmly
in control. 17.Ne4?

[17.fxg5 Bxg3 18.gxf6 gxf6 offers white
better chances to defend.]
17...Nxe4 18.Bxe4 Nf6 19.Rae1 g4 20.Qe2
Nh5 21.Rf2
[21.Qf2 g5! 22.fxg5? (22.c4 gxh3 23.g3
Rg4 24.Bf3 Rxxg3+ 25.Kh1 gxf4
is hopeless for white.) 22...Bh2+ 23.Kh1
Ng3+ 24.Kxh2 Nxf1+ 25.Kg1 Nxd2
26.Qxd2 gxh3 is crushing.]
21...gxh3 22.Qf3



g5 Black keeps the advantage with this move,
but there is a more precise move available.
[22...h2+ leads to a huge advantage after
23.Kh1 Bxf4 (threatens ...Ng3+) 24.Bxf4
Rxf4 and the threat of ...Ng3+ is decisive --

for example, white gets mated after 25.Qd3
(25.Re3 Rxf3 is hardly appealing) 25...Rxf2
26.Re3 Qg3!! 27.d5 (what else?) (27.Rxxg3
Nxxg3+ 28.Qxxg3 Rf1#) 27...Qxe3 28.Qxe3
Ng3+ 29.Qxxg3 Rf1#]
23.g3 Nxg3 An effective and sound sacrifice.
24.Qxxg3 gxf4 With 3 pawns for a piece and
open lines for attack against white's king,
black is clearly winning. 25.Qg5 f3
[25...f5 is also good, with the threat of ...
Rg4+.]
26.Ref1? Losing a whole piece for nothing,
after which black's win is easy.
[26.Bxf3 is the best chance. After the
continuation Bg3 27.Ref1 Bxf2+ 28.Rxf2
white is worse but is not clearly lost.]
26...Rxe4 27.Qg7 Qd8 28.Bg5?
Another mistake in a bad position. Rg8
29.Bxd8 Rxxg7+ 30.Kh1 Kxd8 31.Rxf3 Re2
32.R1f2



Re1+

[32...h2! forces mate. After 33.Rf1 Reg2
white can only prolong the inevitable: 34.Rf4
Rg1+ 35.Kxh2 Rxf1 36.any Bxf4+ 37.Kh3
Rh1#]
33.Rf1 Rxf1+ 34.Rxf1 h2 35.b4 f5 36.a3
Ke7 37.c4 Rg1+ 38.Rxxg1 hxg1Q+
39.Kxxg1 Bf4 40.Kg2 Be3 41.Kf3 Bxd4
42.Ke2 Kf6 43.Kd3 e5 44.a4 Kg5 45.Kc2
f4 46.b5 f3 47.a5 f2 (Best Game Prize,
Novice Section)
0-1

E73

□ Bectrum,D
 ■ Reed,K
 Tennessee Amateur (4)
[notes by Mark Ishee]

1999

1.d4 Nf6 2.c4 g6 3.Nc3 Bg7 4.e4 d6
 5.Be2 0-0 6.Be3 e5 7.d5 Nbd7 8.h4
 Now that the center is closed, white begins a flank attack. Nc5

[8...h5]

9.Bg5

[9.f3 as in the Saemisch Variation would be more flexible.]

9...h6 10.Bxf6 Bxf6 11.h5 This is white's idea. The reply 11...g5 allows white to gain control of the light squares, especially f5. But any other reply allows white to open the h-file. g5 12.b4

[12.Bg4 immediately runs into Bxg4

13.Qxg4 Nd3+ , so white first drives away the knight.]

12...Nd7 13.Bg4! Bg7 14.Bf5 Qe7?!

Black needs to take steps to break white's grip on the kingside light squares.

[14...Nf6 would be more active. For example, 15.Qf3 g4 16.Qd3 Bxf5 17.exf5 e4! is one way black might cross up white's plans.]

15.Nce2?! Heading for f5 via g3, but it would be better to develop the other knight to e2 with the same idea in mind. The main problem with white's position is his lack of development.

[15.Nge2 is preferable.]

15...c6 16.Ng3 a5 Black is looking for counterplay on the queenside. 17.dxc6 bxc6 18.b5! cxb5 19.Qd5

[19.cxb5 Bb7 20.a4 Nb6 leads to an interesting struggle where white has better pawn structure but is behind in development.]

19...Nb6 20.Qxb5 Bxf5 21.Nxf5

The culmination of white's plan: an "eternal knight" on f5. Qb7? The losing move, dropping the d6-pawn.

[21...Qc7 is best for black here, but after 22.Rc1 Rfc8 23.Rh3! white keeps the advantage. Black can't play Nxc4?]

because of the reply 24.Rhc3]

22.Nxd6 Qc7 23.Rd1 Rfd8 24.c5 Nd7

25.Nb7! Rab8 26.c6 Bf8 27.Ne2!

With a winning position in hand, white is careful not to allow black any counterchances.

[27.Rxd7? is tempting at first glance because of Rxd7 28.cxd7 Rxb7 29.Qxb7 but after Qxb7 30.d8Q black gets undeserved counterplay against white's uncastled king with Qxe4+]

27...Bb4+ 28.Kf1 Nc5 29.Rxd8+ Qxd8

30.Nxd8 Rxb5 31.c7 Nxe4 32.c8Q Rc5

33.Nc6+ (Best Game Prize, Amateur Section) 1-0



C01

□ Carter,Jeremy
 ■ Andrews,Todd
 Tennessee Open

1999

1.e4 e6 2.d4 d5 3.exd5 exd5 4.Nf3 Bd6 5.Nc3 c6 6.Bd3 Bg4 7.h3 Bh5 8.Be3 Nf6 9.g4 Bg6 10.Bxg6 hxc6 11.Bg5 Qe7+ 12.Qe2 Qxe2+ 13.Kxe2 Nbd7 14.Rae1 0-0-0 15.Kd3 Rde8 16.Rxe8+ Rxe8 17.Re1 Rh8 18.Ng1 Nf8 19.Bxf6 gxf6 20.Re3 Ne6 21.Rf3 Be7 22.Nce2 Kd7 23.Nf4 Ng5 24.Re3 Bd6 25.Nfe2 b5 26.f4 Ne4 27.Rf3 a5 28.Nc3 Re8 29.Rf1 Nxc3 30.Kxc3 Re3+ 31.Kd2 Rg3 32.Ke2 Rg2+ 33.Kd3 b4 34.f5 g5 35.Ne2 Rh2 36.Rf3 Rh1 37.c3 Ral 38.cxb4 axb4 39.a3 bxa3 40.bxa3 Rxa3+ 41.Nc3 Bb4 42.Kc2 Rxc3+ 43.Rxc3 Bxc3 44.Kxc3 Kd6 45.Kd3 c5 46.dxc5+ Kxc5 47.Kc3 d4+ 48.Kd3 Kd5 49.Kd2 Ke4 50.Ke2 d3+ 51.Kd2 Kd4 52.Kd1 Ke3 53.Ke1 d2+ 54.Kd1 Kd3 55.h4 gxh4 56.g5 fxg5 57.f6 Ke3 0-1

B33

□ Larson,Gerald
 ■ Smith,Brian
 Tennessee Open

1999

1.e4 c5 2.Nf3 Nc6 3.d4 exd4 4.Nxd4 Nf6 5.Nc3 e5 6.Ndb5 d6 7.Bg5 a6 8.Na3 b5 9.Bxf6 gxf6 10.Nd5 Bg7 11.c3 f5 12.exf5 Bxf5 13.Nc2 0-0 14.Be2 Be6 15.Nce3 f5 16.f4 Ne7 17.0-0 Kh8 18.Kh1 Rb8 19.Qd2 Ng6 20.g3 Qd7 21.Rad1 a5 22.b3 Qb7 23.Bf3 e4 24.Bg2 Rbd8 25.c4 b4 26.Qe1 Ne7 27.h3 Nxd5 28.Nxd5 Qf7 29.Qe3 Qb7 30.Kh2 Kg8 31.Rf2 Kh8 32.Bf1 Rc8 @E 33.Be2? Rc5 34.g4 Bxd5 35.cxd5 Rxd5 36.Rxd5

Qxd5 37.Rg2 fxg4 38.hxg4 Rxf4 0-1

A13

□ Hoffman,Greg
 ■ Wright,M.C.
 Tennessee Open

1999

1.c4 e6 2.Nc3 d5 3.e3 Nf6 4.Nf3 c6 5.b3 Nbd7 6.Bb2 Bd6 7.d4 Ne4 8.Nxe4 dxe4 9.Nd2 f5 10.g3 Nf6 11.Bg2 0-0 12.f3 exf3 13.Bxf3 Qe7 14.e4 e5 15.d5 cxd5 16.cxd5 fxe4 17.Bxe4 Bb4 18.Bg2 e4 19.0-0 e3 20.Bxf6 Rxf6 21.Ne4 Rxf1+ 22.Qxf1 Bh3 23.Bxh3 Qxe4 24.Be6+ Kh8 25.Qe2 Rf8 26.Rf1 Rxf1+ 0-1

E62

□ Pennig,Jeff
 ■ Wright,M.C.
 Tennessee Open

1999

1.d4 Nf6 2.Nf3 g6 3.g3 Bg7 4.Bg2 c6 5.c4 d6 6.Nc3 Qc7!? 7.e4 0-0 8.0-0 e5 9.h3 h6?! 10.Be3 Kh7 11.Qe2 Re8 12.d5 c5? 13.a3 a5 14.Kh2 Bd7 15.Nd2 Ng8 16.Nb5 Bxb5 17.cxb5 Nd7 18.Nc4 Nb6 19.Nxb6 Qxb6 20.b4 Qc7 21.bxc5 dxc5 22.Qc4 b6 23.Rad1 Bf8 24.f4 Bd6 25.Rf2 f6 26.a4 Re7 27.h4 Rae8 @E 28.f5 gxf5? 29.Rxf5 Rf7 30.Bh3 Bf8 31.d6 Qb7 32.d7 Rxd7 33.Rxd7+ Qxd7 34.Rxf6 Qd8 35.Qf7+ Bg7 36.Rg6 Qf6 37.Rxf6 Nxf6 38.Bf5+ Kh8 39.Bxh6 1-0

C44

Jenkins, Wayne
Wilkison, Bret
 Tennessee Amateur

1999

1.e4 Nf6 2.d3 e5 3.Nf3 Nc6 4.c3 d5
 5.exd5 Nxd5 6.Be2 Be7 7.0-0 0-0
 8.Re1 b6 9.Qc2 Bb7 10.Nbd2 Nf4
 11.Bf1 Ba6 12.Nc4 Bxc4 13.dxc4
 Ng6 14.Bd3 Bd6 15.Be4 Qd7 16.Qa4
 Nge7 17.Rd1 Rad8 18.Be3 f5
 19.Bd5+ Kh8 20.Bg5 h6 21.Bxc6
 Nxc6 22.Bxd8 Rxd8 23.b4 Qf7
 24.Qxc6 e4 25.Ne5 Qh5 26.c5 Bxe5
 27.Rxd8+ Kh7 28.h4 Qxh4 29.Re8
 Bxc3 30.Rd1 Bxb4 31.cxb6 cxb6
 32.Rdd8 Qf6 33.Qxf6 gxf6 34.Rd7+
 Kg6
 1-0

A37

Pattillo, Bill
Orgain, William
 Tennessee Amateur

1999

1.Nf3 e5 2.c4 Nc6 3.Nc3 d6 4.g3 g6
 5.Bg2 Bg7 6.0-0 e5 7.d3 Nge7
 8.Ng5 f6 9.Nge4 f5 10.Ng5 h6
 11.Nf3 0-0 12.e3 Be6 13.Qc2 Qd7
 14.a3 g5 15.Ne2 Ng6 16.Bd2 f4
 17.exf4 exf4 18.Rae1 g4 19.Bxf4
 gxf3 20.Bxf3 Bh3 21.Bg2 Nxf4
 22.Nxf4 Nd4 23.Qd1 Bxg2 24.Kxg2
 Be5 25.Nd5 Nf3 26.Re3 Ng5 27.Qh5
 Kh7 28.f4 Qf5 29.g4 Qf7 30.Qxf7+
 Rxf7 31.fxe5 Rxf1 32.Kxf1 Rf8+
 33.Kg2 dxe5 34.h4 Nf7 35.Nf6+ Kg6
 36.Nd7
 1-0

B27

Wolff, Joshua
Pullen, Dewitt Sr.
 Tennessee Amateur (2)

1999

1.e4 c5 2.Nf3 g6 3.d4 cxd4 4.Qxd4
 Nf6 5.Nc3 Nc6 6.Qd1 Bg7 7.Bc4 0-0
 8.0-0 a6 9.a4 Qc7 10.Re1 d6 11.Bg5
 Bg4 12.Bb3 e6 13.h3 Bxf3 14.Qxf3
 Nd4 15.Qe3 Nd7 16.Rad1 Qb6 17.a5
 Qxa5 18.Be7 Rfe8 19.Bxd6 Nxb3
 20.cxb3 Ne5 21.f4 Nc6 22.e5 b5
 23.Ne4 Qd8 24.Bf8 Qh4 25.Bxg7
 Kxg7 26.Nf6 Red8 27.Qc5 Nd4
 28.Ne8+ Rxe8 29.Qxd4 Red8 30.Qf2
 Qxf2+ 31.Kxf2 Rac8 32.Rd6 Rc2+
 33.Re2 Rdc8 34.Rxa6 Rxe2+ 35.Kxe2
 Rc2+ 36.Kd3 Rxb2 37.Kc3 Rxc2
 38.Rd6 Rf2 39.Kb4 Rxf4+ 40.Kxb5
 Rf5 41.Kc6 Rxe5 42.b4 Re3 43.b5 f5
 44.b6 Rc3+ 45.Kb5 Kf6 46.Kb4 Re1
 47.Rd7 Rb1+ 48.Kc5 f4 49.b7 e5
 50.Rd6+ Kf5 51.Rb6 Rc1+ 52.Kd6
 Rd1+ 53.Ke7 f3 54.Rf6+ Ke4 55.b8Q
 Rd4 56.Ke6
 1-0

C02

Clark, Roy
Reed, Jeremy
 Tennessee Amateur (4)

1999

1.e4 e6 2.d4 d5 3.e5 c5 4.c3 Nc6
 5.Nf3 f6 6.Be2 Qc7 7.0-0 fxe5 8.Re1
 e4 9.Ng5 h6 10.Bh5+ Kd7 11.Nh3
 cxd4 12.Bf4 Bd6 13.Qg4 g5 14.Bxd6
 Qxd6 15.Qd1 d3 16.Nd2 b5 17.Nb3
 b4 18.f3 Nf6 19.fxe4 dxe4 20.Nf2
 bxc3 21.bxc3 Bb7 22.Nxe4 Nxe4
 23.Rxe4 Qd5 24.Bf3 Ke7 25.Rb4 Qd7
 26.Nc5 Qd6 27.Rxb7+ Kf8 28.Nd7+
 Kg8 29.Nf6+ Kf8 30.Bxc6 Qxc6
 31.Rab1 Qxc3 32.Qf3 Qd4+ 33.Kh1
 Qf4 34.Qxd3 Qxf6 35.Rf1
 1-0

A00

Manners, Roy
Higdon, Dennis
 Tennessee Novice (2)

1999

1.g4 d5 2.h3 e5 3.Bg2 Nc6 4.c4 Bc5
 5.cxd5 Nce7 6.Nc3 Nf6 7.e3 0-0
 8.Qb3 b6 9.d6 cxd6 10.Bxa8 Be6
 11.Bd5 Nexd5 12.Qc2 Nb4 13.Qa4
 Qa8 14.Rh2 Nd3+ 15.Ke2 Nb4 16.d4
 Bc4+ 17.Kd1 exd4 18.exd4 b5
 19.Nxb5 Qe4 20.f4 Qd3+ 21.Bd2
 Qf1+ 22.Be1 Re8 23.Ne2 Bxe2+
 24.Kd2 Qxf4+
 0-1

B00

Burrows, Jeff
Smith, Trey
 Tennessee Novice (4)

1999

1.d4 d5 2.e4 Nc6 3.e5 Bf5 4.c3 e6
 5.Nf3 a6 6.Be3 f6 7.Bd3 fxe5 8.Bxf5
 exf5 9.dxe5 Be7 10.Qe2 g5 11.Nxg5
 Nxe5 12.Bd4 Bxg5 13.Bxe5 Qe7
 14.Bxh8 Bc1 15.Nd2 Bxb2 16.Rc1
 0-0-0 17.Qxe7
 1-0

B22

Gao, Josh
Gholson, Danny
 Tennessee Novice

1999

1.e4 c5 2.c3 e6 3.d4 cxd4 4.cxd4
 Nc6 5.Nf3 d5 6.Nc3 Bb4 7.exd5 exd5
 8.Bd2 Nge7 9.Bb5 Bg4 10.0-0 Qc7
 11.Re1 0-0 12.Bxc6 Qxc6 13.Rxe7
 Bxe7 14.Ne5 Bxd1 15.Nxc6 bxc6
 16.Rxd1 Rab8 17.b3 Rfe8 18.Bf4
 Rbc8 19.h3 Bb4 20.Na4 Re2 21.Rd3
 Rxa2 22.Rg3 Be1 23.Kh2 Bxf2
 24.Rd3 Ra1 25.Be3 Bh4 26.g3 Ra2+
 27.Rd2 Rxd2+ 28.Bxd2 Bf6 29.Bc3

Rb8 30.Nc5 Be7 31.b4 h5 32.Nd7
 Re8 33.Kg2 Bd6 34.Kf2 Bxg3+
 35.Kxg3 Re3+ 36.Kg2 Rxc3 37.Nc5
 Rc4 38.Kf3 Rxd4 39.Ke3 Rxb4
 0-1

C01

Dean, George
Smith, John M.
 Tennessee Novice

1999

1.e4 e6 2.d4 d5 3.exd5 exd5 4.Nc3
 Bb4 5.Bd3 Nf6 6.Bd2 0-0 7.Nf3 c5
 8.a3 Bxc3 9.Bxc3 c4 10.Be2 Ne4
 11.b3 Nxc3 12.Qd2 Nxe2 13.Qxe2
 Re8 14.Ne5 Nc6 15.0-0 Nxe5
 16.dxe5 cxb3 17.cxb3 f6 18.f4 fxe5
 19.fxe5 Qb6+ 20.Kh1 Qxb3 21.Qa2
 Qxa2 22.Rxa2 Rxe5 23.Raf2 Bd7
 0-1

C47

Kapley, Noah
Mah, Evan
 Tennessee Novice (4)

1999

1.e4 Nc6 2.d4 e5 3.Nf3 exd4 4.Nxd4
 Nf6 5.Nc3 Bb4 6.Nxc6 bxc6 7.Bd3
 d5 8.exd5 cxd5 9.0-0 0-0 10.Bd2
 Ng4 11.h3 Ne5 12.Bf4 Ng6 13.Bg3
 Bb7 14.Qf3 Be7 15.Rad1 c6 16.Bc4
 Bh4 17.Rd2 Bxg3 18.fxg3 Ne5
 19.Qh5 Nxc4 20.Rd4 Qd6 21.Ne4
 Qg6 22.Nf6+ Kh8 23.Rf5 gxf6
 24.Rh4 Ne5 25.Rxf6 Qxh5 26.Rxh5
 Ng6
 0-1

AMATEUR CHAMPION ANNOTATES HIS ONLY DRAW

by Peter Lahde

Donald Jackson from Georgia was the clear winner in the Amateur section of the Tennessee Open allowing only on draw while winning the other four games. But it was his draw that he considered worthy to be considered a game to be entered as a "Best Game". He also mentioned to me that he decided to play in the event only on the very day he came. He now is glad that he did. We present the game with his own notes.

1999 Tennessee Amateur W - Donald Jackson B - Chad Eller

1. d4 Nf6 2. c4 e6 3. g3 d5 4. Bg2 Be7 5. Nc3 0-0 6. Nf3 Re8? In the post-mortem both players agreed that this was a weak move. 7. 0-0 c6 8. Qd3 Nbd7 9. Bg5 h6 10. Bxf6 Nxf6 11. Rfd1 b6 12. cxd5 Opening things up. cxd5 13. Rac1 Bd7 14. Ne5 a6 15. e4 dxe4 16. Nxe4 Bb5 17. Qb3 Rc8 18. Nc3 Bd7 19. d5 exd5 20. Nxd5 Rxc1 21. Rxc1 Bc5! A strong move! 22. Nxd7 Nxd7 23. Qd3 Nf6 24. Kf1? Missing the double attack on f2 and h2 with the next move. Therefore Nxf6+ should have been played. Ng4! 25. Rc2 Nxh2+ 26. Kg1 Ng4 27. Kf1 Nf6 28. Rd2 Nxd5 29. Bxd5 Qe7 30. Rd1 Qf6 31. Rd2 Qe5 32. Kg2 a5 33. Qf3 Qf6 34. Qxf6 gxf6 The only dent that was put into the score for Jackson. Although the game ended in a draw it was submitted for a best game. The analysis was submitted by Mr. Jackson. .5-.5

The Montgomery County Scholastic Chess League

by Roy Manners

The Montgomery County Scholastic Chess League (MCSCCL) is a subsidiary program of the Clarksville Chess Club which works with the chess club sponsors in our local schools. The league was formed to provide an administrative body responsible for organizing and sponsoring scholastic chess tournaments in cooperation with participating Clarksville - Montgomery County schools. The Montgomery County Scholastic Chess League is a not for profit organization established to promote scholastic chess in Montgomery County and the surrounding area. All proceeds from tournaments are donated to the chess clubs of the host schools.

MCSCCL is assisted in it's efforts with outstanding support from the Tennessee Chess Association (TCA), a 501 (c) (3) non-profit corporation dedicated to promoting chess in Tennessee. The TCA's Region 3 scholastic coordinator has served as the official licensed Tournament Director at league tournaments.

Since the Clarksville Chess Club is an affiliate of the United States Chess Federation (USCF), all league tournaments are USCF rated and

require USCF membership from each player, consequently league tournaments are open to all chess players up to 19 years of age, whether public, private, or home schooled. Players participating in league tournament come not just from Montgomery County but all surrounding counties, as well as southern Kentucky, some as far away as McMinnville. One foreign exchange student from Berlin, Germany even played in league tournaments during the year she spent at Clarksville High School, and won several trophies to take back home with her.

The main goal of MCSCCL is to provide a forum in which kids can exercise their chess skills and have fun competing. Another goal of the league is to establish a chess club in every school in Clarksville - Montgomery County. So far, the league has contributed to the formation of two new chess clubs in schools each year. The league sponsors a scholastic chess tournament approximately every eight weeks during the school year and one during the summer.

The league donates an average of \$400 to local school chess clubs annually. The chess club sponsor at Richview Middle School, Mr. Glen Davis, uses part of the money raised to pay half of the annual USCF dues, and half of the MCSCCL membership fees for his students who participate in league tournaments. Mr. Jose Luna, chess club sponsor at Kenwood Middle School, uses the money raised to buy chess boards and sets, which he gives away to students, not only his school, but to other schools who start chess clubs, and as prizes for non-trophy winners at tournaments. The New Providence Middle School chess club sponsor, Mr. Terrill Hester, uses league donated monies to pay his clubs annual USCF affiliation dues.

MCSCCL also tracks the scores of it's members, as part of a year long competition called the Grand Champion series. At the end of the league's last tournament each year, the player with the most points is crowned Grand Champion. Grand Champions receive a trophy and a prize. The league also recognizes the second and third place players in the Grand Champion Series with trophies, plaques, and prizes. The prizes are generally donated by local companies, organizations, and individuals, or purchased with monies generated by donated items and services.

The Montgomery County Scholastic Chess League would not be the success it is, if not for the generous donations of time, money, food, services, and other items from these contributors. Their participation and efforts on the league's behalf demonstrate the spirit of community support necessary to make a program like this excel.

Class C Winner's View of the 1999 Fairfield Glade Summer Open
by Scott Cantrell

Going into the tournament ranked 10th, I was merely hoping for part of the Class C prize. I won the first round. Then, I was paired with the #1 seed, Neal Harris from NC, rated at 2200. After 29 moves, he resigned, and I achieved my first master win. Round 3 I drew to Donald Burgess (1930). The fourth round I was playing Bradley Watson (1986) on Board 2 for part of the championship. After being up two pawns, I had to settle for a draw due to Bradley's outstanding endgame play under tremendous time pressure. I came out of the tournament in a tie for second with 3 points. Instead of only tying for the C prize, I won it outright. I truly had a great tournament, and I hope I have more like it in the future. The following is my second round win over Neal Harris.

White: Neal Harris (2200) Black: Scott Cantrell (1581) Sicilian Defense

1. e4 c5 2. Nf3 d6 3. Nc3?! Normally, of course, white continues with 3. d4. However, I have found that this move is becoming more popular. Black, though, continues with solid development. 3...Nc6 4. d4 Now comes the transposition back to main lines. 4...cxd4 5. Nxd4 Nf6 6. Bg5 e6 The game has now transposed into the Richter-Rauzer Attack. 7. Qd3?! Even though this move is probably playable, better is main line 7. Qd2. The text blocks the f1-bishop and puts the queen on a vulnerable square. 7...a6 Black proceeds classically. 8. 0-0-0 With this move, white plans to play for a kingside attack. 8...Bd7 Still unsure of where the king needs to be, black continues to develop. 9. f4 Be7 10. Qg3 Qc7 Black may now castle on either side. 11. Be2 White adds more pressure to the kingside. 11...0-0-0! Castling queenside in an open Sicilian? Why not? Black's queenside is solid, and with the king on the queenside, Black doesn't have to fear the kingside attack. 12. Qf2 h6 13. Bh4 Kb8 Black plays this move for both defensive and offensive reasons. First, it protects the king by moving to a less open square. Secondly, it clears the c8-square so a battery can be created on the c-file. 14. Bg3 Now the bishop eyes the queen pin to the king. 14...e5! This move helps to relieve pressure given by the g3-bishop. 15. Nf5? White's first tactical error costs him a pawn. 15...Nxe4 16. Nxe4 Bxf5 17. Nc3 Nb4! Better than 17...Nd4. 18. Rd2 This is the only move that holds white's position. 18...Be6 19. a3 Na2 20. Nxa2 Bxa2 21. h4 White prevents Black's threat of pushing the g5 pawn. 21...Bf6 22. Rhd1 Rhe8 23. Bf3? White's second error loses completely. 23...e4 Black threatens the bishop as well as playing the pawn to e3 with a fork between the queen and rook. 24. f5 White's bishop is now opened to the d6-square. 24...Be5? Intimidated by white's last move and the idea of his queen being pinned, Black falters. This move doesn't lose, but completely winning is the simple 24...e3! followed by perhaps something

like 25. Rxd6 exf2 26. Rxd8 Bxd8 and Black will win. 25. Bxe4 Bxg3 26. Qxg3 Rxe4 27. Rxd6? This move allows Black to win much quicker than need be. Offering White a chance is 27. b3 d5 28. Qxc7 Kxc7 29. Kb2 Bxb3 30. cxb3 d4 and even though Black should still win, he does have some work left to do. 27...Rxd6 28. Rxd6? Better is 28. Qxd6 but white is still lost. 28...Rd4! Picking up the rook, a nice way to finish. 29. Rd8+ Rxd8 White resigns.







**BIDS FOR 2000 TN OPEN NOW BEING
ACCEPTED BY THE TCA**

HEAR YE! HEAR YE! HEAR YE!

Any one interested in hosting the 2000 Tennessee Open needs to submit their bids by December 31, 1999. All sealed bid for the 2000 Tennessee Open should be sent to:

KENT MEADOWS
206 30TH AVE NORTH
NASHVILLE TN 37203

The bid should include information regarding:

-  Playing space at the site, lodging accommodations (discounts?)
-  Budget (entry fee, prize fund, bookstore fee, trophies, rent, table & chair rental if separate, reduced fee for children playing in both Open & Scholastics?, tournament director fees, misc. etc.)
-  Guarantee against loss (if any)  Scholastics
-  Seminars or lectures  Food Accommodations

The more details you can provide, the better chance your bid has of being accepted.

BIDS WILL BE AWARDED 1/31/99

TN CHESS HALL OF FAME NOMINATIONS

The deadline for nominating an outstanding Tennessee chess player for the Hall of Fame is March 31, 2000. Nominations should be forwarded to the TN Hall of Fame Selection Committee c/o Peter Lahde, 2609 Sailboat Court, Nashville TN 37217.

Inductees into the Tennessee Chess Hall of Fame are current or former Tennessee residents who have either distinguished themselves for outstanding achievements in the competitive chess arena or who have made significant contributions to the game of chess in Tennessee.

The following guidelines should be used in selecting a nominee:

1. The nominees must be Tennessee residents for a significant portion of their careers, or must have had significant and substantial periods of residency in Tennessee.
2. Inductees may be selected from qualified candidates either living or deceased.
3. Achievements must be significant and can be in any one or more of the following chess-related areas: competition (over-the-board or correspondence play), composition, promotion, journalism, organization, or leadership. This list is not all-inclusive and should be used for guidance only.

Please think about who you would like to see join this special group of dedicated chess players and why.

TN CHESS HALL OF FAME

PETER LAHDE	1990
ROBERT COVEYOU	1990
JERRY SULLIVAN	1990
MARTIN SOUTHERN	1990
TOM FINUCANE	1990
ROBERT SCRIVENER	1990
L. HUNTER WEAKS	1990
JOHN HURT	1992
JAMES A. SWEETS	1993
REA HAYES	1997
JAMES A. WRIGHT	1998

TENNESSEE CHESS ASSOCIATION ANNUAL TREASURER'S REPORT SUMMARY SEPTEMBER 1, 1998 TO AUG. 31, 1999

BALANCE ON HAND	Sept. 1, 1998		\$29,361.96
<u>INCOME</u>			
1. TCA Membership Dues			
Patron Memberships (17 members)		\$975.00	
Regular Memberships (250 mem (123 youth))		\$1,922.00	
			\$2,897.00
2. Investment Income:			
(1) Interest from First National Bank of Loudon Co.		\$257.78	
(2) Dividends from T. Rowe Price Equity Income Fund		\$1,333.30	
			\$1,591.08
3. Turkey Tour Prize Fund			\$61.00
4. SASP Funds USCF			\$420.00
5. Miscellaneous Income			\$142.62
6. 1999 TN OPEN CHAMPIONSHIP EXPENSES			
Flyers and Tournament Announcement			\$-343.00
7. 1998 TENNESSEE OPEN CHAMPIONSHIP			
Income		\$8,562.00	
Expenses		\$8,448.21	
Profit to TCA		\$113.79	\$113.79
8. 1999 REGION 1 INDIVIDUAL SCHOLASTICS			
INCOME: Entry Fees		\$1,690.00	
EXPENSES		\$1,225.68	
TCA Profit		\$464.32	\$464.32
9. 1999 REGION 2 INDIVIDUAL SCHOLASTICS			
INCOME		\$1,000.00	
EXPENSES		\$977.00	
TCA Profit		\$23.00	\$23.00
10. 1999 REGION 3 INDIVIDUAL SCHOLASTICS			
INCOME		\$1,530.00	
EXPENSES		\$1,170.16	
TCA Profit		\$359.84	\$359.84
11. 1999 REGION 4 INDIVIDUAL SCHOLASTICS			
INCOME		\$1,250.00	
EXPENSES		\$1,250.00	
TCA Profit		None	\$0.00
12. 1999 INDIVIDUAL SCHOLASTIC FINALS			
INCOME		\$1,200.00	
EXPENSES		\$1,201.50	
Loss - TCA		\$-1.05	\$-1.05



13. 1999 REGION 1 TEAM SCHOLASTICS			
INCOME	\$1,300.00		
EXPENSES	\$1,163.58		
Profit - TCA	\$136.42	\$136.42	
14. 1999 REGION 2 TEAM SCHOLASTICS			
INCOME	\$830.00		
EXPENSES	\$994.83		
Loss - TCA	\$-164.83	\$-164.83	
15. 1999 REGION 3 TEAM SCHOLASTICS			
INCOME	\$1,450.00		
EXPENSES	\$1,330.93		
Profit - TCA	\$119.07	\$119.07	
16. 1999 REGION 4 TEAM SCHOLASTICS			
INCOME	\$1,240.00		
EXPENSES	\$1,240.00		
TCA Profit	None	\$0.00	
17. 1999 SCHOLASTIC TEAM FINALS			
INCOME Entries and Book Concession Fees	\$1,420.00		
EXPENSES	\$1,137.20		
Profit to TCA	\$282.80	\$282.80	
TOTAL INCOME		\$6,041.06	

EXPENSES

1. Tennessee Chess News			
Printing Expense	\$1,381.32		
Mailing Expense	\$495.00	\$1,876.32	
2. TCA Operating Expenses			
Officer's Expenses	\$155.32		
TCA Charitable Organization Application	\$100.00		
Corporate Annual Report	\$40.00		
TCA Liability Insurance	\$274.00		
Bank Charge for Corporate Checks	\$47.95		
USCF Affiliation Fee	\$40.00		
TCA Membership Cards	\$103.76	\$761.03	
3. Scholastic Program Expenses		\$704.25	
4. Other Program Expenses			
Plaques & Engraving	\$131.39		
Patron Reception	\$81.08		
TCA Ribbons	\$637.50		
Turkey Tour Pay-out	\$167.01	\$1,016.98	
5. Miscellaneous Expenses			
Minolta copier service contract	\$300.00		
TCA Survey Questionnaire	\$89.27		
Internet Services setup and name registration	\$530.00		
TCA Internet Site Maintenance	\$210.00	\$1,129.27	
TOTAL ITEMIZED EXPENSES		\$-5,487.85	

BALANCE ON HAND		\$29,915.17
LESS - ALLOCATED FUNDS		
T. Rowe Price Equity Income Fund	\$17,765.71	
NET OPERATING BALANCE 09/1/99		\$12,149.46

ASSETS

1. First National Bank of Loudon County		
General Endowment Account (#35923)	\$3,176.45	
Checking Account (#35931)	\$8,973.01	\$12,149.46
2. T. Rowe Price Equity: General Account		
(Purchased 551.901 sh @ \$27.36 on 12/24/97; value shown is for shares' cost plus the earned dividends.)	\$17,765.71	\$17,765.71
TOTAL ASSETS		\$29,915.17

SCHOLASTIC ENDOWMENT FUND (Account #34181)

BALANCE ON HAND 9/1/98		\$9,290.00
------------------------	--	------------

1. Interest Earned	\$98.96	
2. Contributions	\$240.00	
3. Scholarship Award (B. Ware)	\$-500.00	
4. T. ROWE PRICE EQUITY INVESTMENT		
Dividend Distribution	\$485.63	

BALANCE ON HAND		\$9,614.59
-----------------	--	------------

LESS ALLOCATED FUNDS		
1. Chessplayer/Scholarship Award	\$-1,500.00	
2. Funds Tied Up in Money Market Fund	\$-6,470.93	

OPERATING BALANCE OF SCHOLASTIC ENDOWMENT FUND		\$1,643.66
--	--	------------

ASSETS

1. First National Bank of Loudon County	\$3,143.66	
2. T. Rowe Price Equity Income Scholastic End. Fund	\$6,470.93	
(Purchased 201.023 sh @ \$27.36; value shown is purchase price plus dividends. There are presently 238.219 shares.)		

TOTAL ASSETS		\$9,614.59
---------------------	--	-------------------

The complete financial report is available by contacting:
Leonard Dickerson, 420 Oran Rd, Knoxville TN 37922

1999 CUMBERLAND CO FALL OPEN CHESS TOURNAMENT

31 PLAYERS	October 09, 1999	THREE STATES REPRESENTED
		FAIRFIELD GLADE TN
OPEN: (15)	PRIZE WINNERS	
CHAMPION	THOMAS TRIVERS	CHATTANOOGA TN 3.5 \$50.00
EXPERT - 1ST	WALTER W. JORDAN	ANTIOCH TN 3.0 \$25.00
CLASS B - 1ST	MICHAEL FILIPPONE	HIXSON TN 1.5 \$8.33
CLASS B - 1ST	SCOTT CANTRELL	RICEVILLE TN 1.5 \$8.33
CLASS B - 1ST	SCOTT EDDINS	NASHVILLE TN 1.5 \$8.33
CLASS C - 1ST	BRETT FARRIS	CROSSVILLE TN 3.0 \$25.00

AMATEUR: (16)	PRIZE WINNERS	
CHAMPION	MIRKO REMEC	OAK RIDGE TN 4.0 \$50.00
CLASS E - 1ST	SAM HOOD	THOMPSON STATION TN 3.0 \$12.50
CLASS E - 1ST	TONY BUSH	SILVER POINT TN 3.0 \$12.50
CLASS F - 1ST	NATHAN COOPER	HAZEL KY 3.5 \$25.00
UNRATED - 1ST	SAMUEL RAY	BELVEDERE TN 1.5 \$25.00



IRINA KRUSH TIES IN GIRLS WORLD CHAMPIONSHIP

by Peter Lahde

The 32 Junior and Girls Championships took place from September 18-30 in Yerevan, Armenia. The World Girls Championship had two representatives from the USA competing, Irina Krush and Jennifer Shahade. They were accompanied by their coach, Sam Palatnik, resident of the Nashville Chess Center. Unfortunately their arrival was quite late as they were still tired from the long trip and also because of jet lag. Both players had a slow start but then began to move closer to the top. The early lead was taken by the Greek player Kouvatsou in this 13-round round robin. But then Irina made a tremendous run winning 5.5 points from the last six rounds to end up in a tie for first with 8.5 points out of 13. The Greek player still won the title after tie break. It was interesting though as it fell on the other American Jennifer Shahade to defeat Kouvatsou in the last round to allow Irina to be in a tie for first place with these two other players: Jackova from the Czech Republic and Vajda from Romania. Jennifer ended up with eight points to be in a tie for fifth place. A total of 35 girls competed. Thanks to Sam Palatnik for sharing the scores from the event.

The Junior section had only one player from the U.S. He was Perelshteyn who scored a respectable eight points. With this score, he achieved the International Master title. The winner here was Galkin from Russia with 10.5 points. This section had 67 entries.

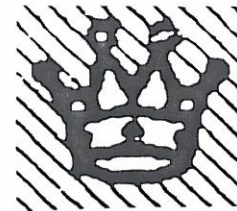
World Girls Championship (Yerevan, Armenia)

Krush, Irina		
■ Vo Hong (Vietnam)		
World Girls Championship	1999	

1.d4 d5 2.c4 e6 3.Nc3 dxc4 4.e4 c5 5.Nf3 Nc6 6.Be3 Nf6 7.Bxc4 cxd4 8.Nxd4 Bb4 9.0-0 0-0 10.Nxc6 Qxd1 11.Rfxd1 bxc6 12.f3 Bb7 13.Na4 Be7 14.b3 Rfd8 15.Rxd8+ Bxd8 16.Rd1 Be7 17.g4 h6 18.h4 Bc8 19.Bc5 Bxc5+ 20.Nxc5 Kf8 21.Rd6 Ke7 22.Rxc6 Bd7 23.Ra6 Bc8 24.Ra5 Ne8 25.e5 Kd8 26.Bd3 Kc7 27.Be4 Kb6 28.b4 Rb8 29.Na4+ Kc7 30.Rxa7+ Kd8 31.a3 Nc7 32.Nc5 Bd7 33.Nxd7 Kxd7 34.Kf2 f6 35.f4 fxe5 36.fxe5 Rf8+ 37.Ke3 Kc8 38.a4 1-0

Krush, Irina		
■ Matras (Poland)		
World Girls Championship	1999	

1.d4 d5 2.c4 c6 3.Nc3 Nf6 4.e3 e6 5.Nf3 Nbd7 6.Qc2 Bd6 7.b3 0-0 8.Be2 e5 9.cxd5 cxd5 10.Nb5 Bb4+ 11.Bd2 Bxd2+ 12.Nxd2 a6 13.dxe5 Nxe5 14.Nd4 Bg4 15.Bxg4 Nexg4 16.0-0 Rc8 17.Qb2 Ne4 18.N2f3 Qf6 19.Rac1 Rxc1 20.Qxc1 Re8 21.Qc7 Qe7 22.Qf4 Ne5 23.Nxe5 Qxe5 24.Qxe5 Rxe5 25.Rc1 Kf8 26.f3 Nd6 27.Kf2 Ke7 28.Rc7+ Ke8 29.g4 Re7 30.Rc5 Re5 31.e4 Kd7 32.Ke3 Ne8 33.Nf5 g6 34.Ng3 Nf6 35.Kd4 Kd6 36.f4 Rxe4+ 37.Nxe4+ dxe4 38.h3 Nd7 39.Rc8 Nb6 40.Rf8 e3 41.Kxe3 Nd5+ 42.Kf3 Ke6 43.Rh8 Nf6 44.Rb8 1-0



Shahade, Jennifer		
■ Hersvik (Norway)		
World Girls Championship	1999	

1.e4 c5 2.Nf3 d6 3.d4 cxd4 4.Nxd4 Nf6 5.Nc3 a6 6.f4 e6 7.Qf3 Qc7 8.g4 e5 9.Nf5 Nc6 10.g5 Bxf5 11.gxf6 Nd4 12.Qg2 Bg6 13.Be3 gxf6 14.Bxd4 exd4 15.Nd5 Qd8 16.f5 Rc8 17.fxg6 hxg6 18.0-0-0 Bh6+ 19.Kb1 Be3 20.Qf3 1-0

Zaksaitė (Lithuania)		
■ Aydin (Turkey)		
World Girls Championship	1999	

1.e4 c5 2.Nf3 Nc6 3.Bb5 a6 4.Bxc6 bxc6 5.0-0 d5 6.exd5 cxd5 7.d4 e6 8.Bg5 Qb6 9.c4 h6 10.Bh4 Bb7 11.Ne5 dxc4 12.dxc5 Qc7 13.Qa4+ Bc6 14.Nxc6 Bxc5 15.Ne5+ 1-0

Shahade, Jennifer		
■ Kouvatsou (Greece)		
World Girls Championship	1999	

1.e4 c5 2.Nf3 e6 3.d4 cxd4 4.Nxd4 Nf6 5.Nc3 d6 6.Be2 a6 7.a4 Nc6 8.Be3 Be7 9.0-0 0-0 10.f4 Qc7 11.Kh1 Re8 12.Bf3 Bf8 13.Qd3 Nb4 14.Qd2 e5 15.Nb3 exf4 16.Bxf4 Nd7 17.a5 Ne5 18.Ra4 Nbc6 19.Nd5 Qd8 20.Bg5 f6 21.Be3 Nd7 22.Qf2 Rb8 23.Bh5 Re5 24.Bg4 Nc5 25.Nxc5 Bxg4 26.Nd3 Re8 27.Qg3 f5 28.exf5 Be2 29.Bb6 Qc8 30.Rff4 Kh8 31.Nc7 Re7 32.Ne6 Ne5 33.Nxe5 dxe5 34.Rh4 Qxc2 35.Qg6 Qc1+ 36.Bg1 h6 37.Ng5! 1-0

Upcoming Events at the Nashville Chess Center

by Mark Ishee

November 6 & 7 – Nashville Candidates (Qualifying tournament for 2000 Nashville City Championship). 5-SS, 35/90, then SD/30. \$20 entry fee if received before Nov. 1, \$25 thereafter (\$5 discount for Nashville Chess Center members). Registration: Nov. 6, 1999, 8:45 – 9:30 a.m. Limited to first 40 entries due to space limitations. USCF membership required. Rounds: 10-3-8 on 11/6, 10-3 on 11/7. Top 5 finishers join 1999 Nashville City Champion in Round Robin Finals to be played January 8 and 9, 2000 (no additional entry fee.) Ties broken by tie-breaks. All City Championship finalists who finish the tournament will receive prize money based on order of finish in finals. Trophy to 2000 Nashville City Champion. Entries to: Nashville Chess Center, 2911 Belmont Boulevard, Nashville, TN 37211, or call Alvin Harris at 251-5448 (aharris@whbdlaw.com).

Nov. 7 – No Sunday children's class because of Nashville Candidates tournament.

November 13 – Quick Chess Tournament. 4-SS, G/15. \$10 entry fee (\$5 less if NCC member). Prizes based on entries. Entries to: Nashville Chess Center, 2911 Belmont Boulevard, Nashville, TN 37211, or call Kent Meadows at 320-0394 (kent.meadows@nashville.com).

November 20 – Seminar: "Learn to Play Chess." How the pieces move and capture, how to checkmate, and all other rules necessary to play a game of chess, as well as beginning chess strategy. Also covers historical information about chess, chess etiquette, suggested reading and web sites, tournament play, information about scholastic chess in Middle Tennessee, and how to start and run a school chess club (teachers, ask your principal about in-service credit). Registration Fee: \$40 per person or \$70 for 2 people enrolling together. Schedule: 10:00 a.m.-3:30 p.m. Participants receive certificate of course completion, a tournament standard set of chess pieces & roll-up vinyl board (\$15 value). For more information, call 251-5448 (day) or 297-8185 (evening) or e-mail aharris@whbdlaw.com. Please pass this information along to your non-chess playing friends!

November 25, 26, 27 & 28 – closed for Thanksgiving holidays

December 4 – Primary & Elementary Scholastic at Nashville Chess Center. 4-SS, G/30. \$7 entry if recd. before 11/30, \$10 thereafter (\$2 discount for NCC members). Register: 9-9:30 a.m., round 1 at 9:45, all others rounds ASAP. Due to limited space, registration will be limited to the first 40 players. Prizes: Elementary (grades 4-6) – trophies to top 3 &

top unrated; Primary (grades 3 & below) – trophies to top 3 & top unrated. All players not receiving trophies will receive a medal, ribbon, or certificate. Entries to: Nashville Chess Center, 2911 Belmont Boulevard, Nashville, TN 37211, or call Alvin Harris at 251-5448 (aharris@whbdlaw.com).

December 11 – "End of the Century" Blitz Tournament (G/5 minutes). \$10 entry fee (\$5 less if NCC member). Prizes based on entries. Register 10:00-10:30 a.m., round 1 10:30 a.m., other rounds ASAP. Limited to first 40 entries due to space limitations. Entries to: Nashville Chess Center, 2911 Belmont Boulevard, Nashville, TN 37211, or call Kent Meadows at 320-0394 (kent.meadows@nashville.com).

December 18 – "Non-Tournament" (Open only to players who have never played in a U.S. Chess Federation tournament). 4 rounds, G/30. \$2 entry fee. Prizes include memberships in U.S. Chess Federation and Tennessee Chess Association, chess sets and boards, etc. Registration: 10:00-10:30 a.m. Limited to first 40 entries due to space limitations. Register in advance by sending name, address, phone number, e-mail address and entry fee to Nashville Chess Center, 2911 Belmont Boulevard, Nashville, TN 37211 or call Alvin Harris at 251-5448 (aharris@whbdlaw.com).

December 25 & 26 – closed for Christmas. Open Monday, Dec 27.

January 1 & 2, 2000 – closed for New Year's. Open Monday, January 3.

January 9 -- No Sunday children's class because of Nashville Championship Finals.



PROBLEM CORNER SOLUTION:

1. Qg3 (threat 2. Qxa3 Mate) Bb4 2. Qxc7 Ba5 3. Qb7 Mate

If 1...b1=N 2. Qxc7 and 3. Qb6++

If 1...Qa7 2. Qxc7+ 3. Q Mates



Tennessee Tournament Calendar

November 13, 1999--Ragin' Regional Scholastic; Lake City, TN; David Williams (423)426-2108.

November 13, 1999--TLC Fall Open. 4SS, G/60. Trinity Lutheran Church, 5001 Trotwood Ave., Columbia, TN 38401. Open to all. EF: \$10 if received by Nov. 8, \$15 at site. TCA req'd. \$\$G 250: \$50-1st, \$25-X, A, B, C, D, E, F/below, UNR. (UNR. eligible for UNR. prize only). Reg. 7:30-8:30 am. Rds. 9:00-11:30-2:00-4:30. Send advanced entries to: Joseph Crump, 111 Tommy Drive, Columbia, TN 38401. (931) 381-2758. www.public.usit.net/crump. NS,NC,W.

November 20, 1999--Richview Middle School; Montgomery County Scholastic Chess League; Clarksville, TN; Roy Manners (931)552-1839.

November 20, 1999--U. S. Open Team Championship; St. Louis MO.

December 4, 1999--Primary & Elementary Scholastic; Nashville TN; Alvin Harris (615) 297-8185.

December 10, 11, & 12, 1999--K-12 Grade Championship; Louisville KY.

December 18, 1999--Montgomery Central High School; Montgomery County Scholastic Chess League; Cunningham, TN; Roy Manners (931)552-1839.

January 15 & 16, 2000--The North Tennessee Regional Open; Riverview Inn, Clarksville, TN; Roy Manners (931)552-1839.

January 22, 2000--Region 3 Individual Qualifying Tournament; Kenwood Middle School, Clarksville, TN; Chris Prosser (615)399-8432.

February 12, 1999--TLC Winter Open. 4SS, G/60. Trinity Lutheran Church, 5001 Trotwood Ave., Columbia, TN 38401. Open to all. EF: \$10 if received by Feb. 7, \$15 at site. TCA req'd. \$\$G 250: \$50-1st, \$25-X, A, B, C, D, E, F/below, UNR. (UNR. eligible for UNR. prize only). Reg. 7:30-8:30 am. Rds. 9:00-11:30-2:00-4:30. Send advanced entries to: Joseph Crump, 111 Tommy Drive, Columbia, TN 38401. (931) 381-2758. www.public.usit.net/crump. NS,NC,W.

February 19, 2000--Kenwood Middle School; Montgomery County Scholastic Chess League; Clarksville, TN; Roy Manners (931)552-1839.

March 25, 2000--Tennessee Scholastic Team State Finals; Richview Middle School, Chris Prosser (615)399-8432. Clarksville, TN;

April 8, 2000--New Providence Middle School; Montgomery County Scholastic Chess League; Clarksville, TN; Roy Manners (931)552-1839.

April 15, 2000--TN Quick Chess Championship; Nashville, TN; Mark Ishee (615)331-2129.

April 22, 2000--Cumberland County Spring Open; Crossville, TN; Harry Sabine (931)484-9593.

April 28, 29, & 30, 2000--National High School Championship; Charlotte, NC.

May 11, 2000--TLC Spring Open; Columbia, TN; Joseph Crump, (931)381-2758.

May 20, 2000--Richview Middle School; Montgomery County Scholastic Chess League; Clarksville, TN; Roy Manners (931)552-1839.

July 8, 2000--Cumberland County Summer Open; Crossville, TN; Harry Sabine (931)484-9593.

August 12, 2000--TLC Summer Open; Columbia, TN; Joseph Crump (931)381-2758.

October 14, 2000--Cumberland County Spring Open; Crossville, TN; Harry Sabine (931)484-9593.

November 11, 2000--TLC Winter Open; Columbia, TN; Joseph Crump (931)381-2758.

April 26, 27, 28 & 29, 2001--USCF Super Nationals; Kansas City, MO.

Please send TLA and Calendar information to:
Joseph Crump, 111 Tommy Drive, Columbia, TN 38401. (931) 381-2758
Or E-mail: crump.usit.net



TENNESSEE CHESS CLUBS

Athens Chess Club
Mike McGinnis
423-745-6120

Greater Knoxville CC
Leonard Dickerson
(423) 966-1095

Chattanooga CC
Joe Dumas
H (423) 886-7628
O (423) 755-4084

Kingsport, Indian Springs CC
Steve Poff
(423) 279-0697

Chattanooga UTC CC
Joe Dumas
H (423) 886-7628
O (423) 755-4084

Memphis Chess Club
Greg Krog, Jr (club info)
H (901) 366-7642
O (901) 495-1261
Gary Pylant (tourney info)
(901) 358-1737

Clarksville CC
Roy Manners
(931) 552-1839

Nashville Chess Center
Alvin Harris, pres.
(615) 251-5448

Columbia CC
Joe Crump

Nashville Chess Club
Peter Lahde
(615) 361-4588

Cumberland Co CC
Harry Sabine
(931) 484-9593

Oak Ridge CC
Charles Maddigan
(423) 482-5962

Dayton CC
Bruce Barnett
(423) 775-7000

Rutherford Co CC
Robert Guthrie
(615) 895-7989

ETSU Chess Assoc
Chun Ng
(423) 917-2219

Tipton County CC
Thomas Stark
(901) 837-5874

Goodlettsville, Knights CC
Wieb van der Meer

MORE DETAILS ABOUT EACH
CLUB ARE AVAILABLE ON
THE TCA WEBSITE:

<http://www.tnchess.org/>



TENNESSEE CHESS ASSOCIATION 1998-1999 BOARD OF DIRECTORS

PRESIDENT:
ROBERT KENT MEADOWS
206 30TH AVENUE NORTH
NASHVILLE TN 37203
H: 615-320-0394 O: 615-313-5503
E-MAIL: kentmeadows@nashville.com

TOURNAMENT COORDINATOR:
JOE CRUMP
111 TOMMY DR
COLUMBIA TN 38401
H: 931-381-2758 O: 615-770-8406
E-MAIL: crump@usit.net

VICE-PRESIDENT:
PETER P. LAHDE
2609 SAILBOAT COURT
NASHVILLE TN 37217
H: 615-361-4588

WEST TENNESSEE DIRECTOR:
GREG KROG JR
5390 DERON AVE
MEMPHIS TN 38115
H: 901-366-7642 O: 901-495-1261
E-MAIL: gkrogjr@netzero.net

TREASURER:
LEONARD S. DICKERSON
420 ORAN ROAD
KNOXVILLE TN 37922
H: 423-966-1095
O: 423-574-4676
F: 423-574-3431

MIDDLE TENNESSEE DIRECTOR:
ROY MANNERS
C/O CLARKSVILLE CHESS CLUB
PO BOX 1146
CLARKSVILLE TN 37041-1146
H: 931-552-1839

SECRETARY:
BRADLEY WATSON
123 COOPER CIRCLE
OAK RIDGE TN 37830
H: 423-482-2983

REGIONAL SCHOLASTIC COORDINATORS

REGION 1

TN CHESS NEWS EDITOR:
ANGELA McELRATH-PROSSER
733 LONG HUNTER COURT
NASHVILLE TN 37217
H: 615-399-8432
E-MAIL: tcanews@aol.com

PAT KNIGHT (ACTING)
103 ALBION RD
OAK RIDGE TN 37830
H: 423-481-3516
MODEM FAX: 423-483-2599
E-MAIL: pmknight@bellsouth.net

REGION 2

VACANT

REGION 3

STATE SCHOLASTIC COORDINATOR:
HARRY D. SABINE
P.O. BOX 381
CROSSVILLE TN 38557
H: 931-484-4878
O: 931-484-9593 F: 931-456-7624

CHRIS PROSSER
733 LONG HUNTER COURT
NASHVILLE TN 37217
H: 615-399-8432
E-MAIL: regionIII@aol.com

REGION 4

EAST TENNESSEE DIRECTOR:
MIKE MCGINNIS
151 COUNTY RD 451
ATHENS TN 37303
H: 423-745-6120
E-MAIL: magennis@usit.net

BILL CUMMINGS
3532 DAVIESHIRE DR
MEMPHIS TN 38133
H: 901-372-6584
O: 901-348-1610