



Tennessee Chess News

November 1994 - April 1995

| | |
|---|----|
| Patron Membership List | 3 |
| Editor's Etcetera | 4 |
| Palatnik Wins The 1994 Tennessee Open | 5 |
| Brilliant Games From The 1994 Open | 6 |
| Games From the 1994 Novice Championship | 8 |
| 1994 Cumberland County Fall Open | 11 |
| 1994 Cumberland County Scholastics | 12 |
| 1994 Cumberland County Scholastic Chess Championship | 13 |
| Knoxville Fights Back To Defeat Chattanooga | 14 |
| 1994 Tennessee Open Prize Winners | 17 |
| The Gambit Player | 18 |
| Annotated Game | 20 |
| The Problem Corner | 22 |
| Tournaments! Tournaments! Tournaments! | 25 |
| TCA Regional Scholastic Coordinators | 26 |
| TCA Board of Directors | 27 |

TENNESSEE CHESS NEWS

The *Tennessee Chess News* is the official publication of the Tennessee Chess Association. TCA annual dues are \$10 for a *regular* membership, \$4 for a *student* membership. Additional members of a family may join for one dollar each, but only one issue of TCN will be mailed per family. All memberships expire August 31.

Tax-deductible Patron Memberships are available beginning at \$25 per year for those who wish to help support the TCA. These memberships expire one year from date of payment. Patron membership categories and benefits are as follows:

PATRON - \$25

- receive TCN by First Class Mail with your name listed in each issue of TCN.

PATRON KNIGHT - \$50

- all Patron benefits plus a commemorative plaque;

PATRON BISHOP - \$100

- all Patron Knight benefits plus free entry to the Tennessee Open.

PATRON KING - \$500

- all Patron Bishop benefits plus free lodging at the Tennessee Open.

PATRON FOUNDER - \$1000

- all Patron King benefits plus free entry into all Turkey Tour events.

TCA memberships are required for participation in all rated chess events in Tennessee except scholastic-only events, and may be purchased at any chess tournament.

ADVERTISING RATES

| | |
|------------------|---------|
| Full Page | \$40.00 |
| Half Page | \$20.00 |
| One-third Page | \$14.00 |
| One-Quarter Page | \$10.00 |
| One-Eighth Page | \$ 7.00 |

Pre-printed flyers for ads must be 8½ x 11" in size, 60 pound bond, and delivered flat. Only one insert is available per issue. \$15.00.

TOURNAMENT ANNOUNCEMENTS

TCN prints listings of upcoming tournaments in each issue for free, including those from other states. Submit all announcements to Rick Igou, Tournament Coordinator.

Current T.C.A. Patron Members

PATRON KING

Dr. Martin "Dick" Katahn

PATRON BISHOPS

Clinton H. Pearson, Jr.
Harry Sabine

PATRON KNIGHTS

Thomas Cooper
Edward C. Dallas
Ellis E. Jones
Frank W. Larimer
Bill Orgain
Ed Porter
Jim Rylander, Jr.
Joseph Sullivan, Jr.

PATRONS

Frank B. Couch, III
Chester C. Crowley
Leonard S. Dickerson
Walter R. Green
Raymond Hudgens
Rick Igou
Peter P. Lahde
Brian D. Lentz

Ed Newkirk
Jeffrey Pennig
Thomas R. Pierce
Edward C. Porter
Todd Shimabukuro
Jack C. Sprague
Edwin Cato White
James A. Wright

Editor's Etcetera

By Richard Westbrook

With the onset of colder weather, Fall has fallen into winter, which means shorter days and less time to spend outside doing the many and varied things the great outdoors has to offer. There is the joy of yard-work, for example.... Can't say as I really miss it all that much....

The good news, of course, is that it becomes easier to find the time to brush up on one's endgames, or admire the artistry of you favorite GM; or even get caught up on such things as publishing the next issue of the TCN....

Speaking of which — herein you will find a continuation of the coverage of the 1994 Tennessee Open: Lahde's article about it, brilliant games from each section, games from the Novice Section, and a listing of the Prize winners.

Tom Rowan concludes his two-part series on learning from one's losses by annotating a couple games from the Lone Pine Open. The Gambit Player returns with Lee Edwards providing us with some games involving queen sacrifices in the King's Indian and Pirc Defenses. I don't mind

throwing pawns around in the Blackmar-Diemer, but a queen...? They are interesting lines, though!

With the State Scholastic Championships fast approaching, it is very timely to have the results of the Cumberland County Scholastics to get us thinking about these events. If you're in school, PLAY! If you're a parent or member of a local club, HELP the organizers. It's fun and you're needed!

A tribute to the late Doug Nichols will appear in the February - March issue.

One of many New Year's Resolutions is to become active on the Internet. I will be able to provide my address in the February - March issue so you can send me games, etc., via that medium as well. See you at Fairfield Glade!

HAPPY HOLIDAYS!!

~Richard Westbrook

GM Sam Palatnik wins Tennessee Open

By Peter Lahde

(Editor's note: due to space constraints, this article did not appear in the October-November issue, but is included here, along with the Brilliancy games and other information on the '94 Open. -rw.)

Perhaps not unexpectedly, newly arrived GM Sam Palatnik from the Ukraine, won the 48th Annual Tennessee Open this year. He won four games and accepted a draw in the last round when he had cinched the title. Second place was shared with four points by Vijay Raghavan of Nashville, Vernon Vix from Indiana, and Leonard Dickerson of Knoxville. Expert Champion was the former State Champion Emanuel Tsitseklis of Knoxville. Second Expert was Brian Smith of Murfreesboro. Class A Champion was Juan Aristorenas who is also a former State Champion. Tying for second place were Jerry Spinrad, Igor Zhislin, and William Slifer, all of Nashville.

The newly crowned Amateur Champion became Gary Jamison of Nashville, scoring 4 1/2 points on tie break. Second and third places went to Russell Robbins of Jackson and Ben Bentrup of Nashville. The Class C Champion was Olga Palatnik. Second and third places went to Gary Green of Nashville and Kermit Widener of Bristol.

In the Novice Section, Vanderbilt student Nazly Imram was the winner with a perfect 5-0 score. Second and third places were hared by Kevin Lowry of Memphis and William Witherspoon of Murfreesboro. John Gerges became Unrated Champion. The Class E title was shared between Betty Williams of Knoxville, and Jeffrey Harris of Nashville.

The winners in the Scholastic Section were: Caleb Johnson from KY in the High School, James Hughes of Charleston in the Junior High, Andrew Campbell of Brentwood in the Elementary and Benjamin Tacker of Germantown in the Primary.

(Continued on page 16)

**For the list of 1994 Tennessee Open prize winners,
see page 17.**

Brilliant Games from the 1994 Open

(Editor's note: The games below were collected by Mr. Peter Lahde at the end of the tournament and judged by Chad Hill. Lahde forwarded the games to me with the following note: ".... The person that did the evaluation could not decide on a clear winner in the Open, so this prize is divided. He felt that analyzing those games was so complicated that he did not analyze these two games. He also liked one other game in the Open which we will give honorable mention. He annotated this game. He also annotated the winners of the Amateur and Novice sections." -rw)

The brilliancy prize games for the Tennessee Open have been determined. The evaluation was done by a regular member of the Nashville Chess Club. He is Chad Hill who, when he last played in tournaments in 1986, had a rating of 2219. His efforts in deciding on these games is appreciated. For the Open section he could not decide on a clear winner so the prize is divided. He also felt that another game was worth mentioning which will receive honorable mention. Here are the winners:

| | |
|---------------------------|---|
| Open Division Tie: | Vijay Ragahavan of Nashville and Brian Smith of Murfreesboro |
| Honorable Mention: | Juan Aristorenas of Adamsville |
| Amateur Division: | Russell Robbins of Jackson |
| Novice Division: | John Gerdes of Nashville |

OPEN SECTION WINNERS (TIE)

Raghavan - Zhislin

94 TN Open

1.e4 e6 2.d4 d5 3.Nd2 Nf6 4.e5 Nfd7 5.Bd3 c5 6.c3 Nc6 7.Ne2 cd4 8.cd4 f6 9.ef6 Nf6 10.O-O Bd6 11.Nf3 Qc7 12.Nc3 a6 13.Re1 O-O 14.Bg5 Nh5 15.Ne5 g6 16.Bh6 Be5 17.Bf8 Nd4 18.Bh6 Bh2 19.Kh1 Bf4 20.Nd5 ed5 21.Re8 Kf7 22.Rf8 Ke7 23.Qe1 Ne6 24.Rh8 Bh6 25.Rh7 Bg7 26.Bg6 Bd7 27.Bh5 Rh8 28.Rg7 Kf8 29.Rf7 Kg8 30.Qd1 Nf4 31.Rf4 Qf4 32.Qd5 Kf8 33.Kg1 Qh4 34.Qf7 1-0

Smith - Hyatt

94 TN Open

1.g3 c5 2.Bg2 d5 3.Nf3 Nc6 4.c4 d4 5.d3 e5 6.e3 Be6 7.ed4 cd4 8.O-O f6 9.Re1 Bd6 10.Na3 Qd7 11.Nc2 h5 12.Rb1 O-O-O 13.b4 g5 14.c5 Bb8 15.b5 Nce7 16.Bg5 fg5 17.Ng5 Nd5 18.c6 bc6 19.bc6 Qd6 20.Ne6 Qe6 21.Nd4 Qd6 22.Bh3 Rd7 23.cd7 1-0

HONORABLE MENTION

Aristorenas - Moody

94 TN Open

1.e4 g6 2.d4 Bg7 3.c4 Nc6 4.Nf3 (If 4.d5!? Nd4, 5.Be3 c5. Flexible is 4.Be3, delaying the KN's development until Black shows his hand.) 4...d6 5.Be3 Bg4 6.Be2 e5 7.d5 Bf3 8.Bf3 Nd4 9.Nc3 c5?! (Better 9...c6.) 10.Qa4! Qd7 11.Bd1! Bh6? (This doesn't really threaten to exchange B's and now the KN also can't move.) 12.O-O a6 (Not ...Be3?? 13.fe wins.) 13.b4! Rb8 (If ...b5 14.cb Be3 15.fe Nb5 16.Nb5 Qb5 17.bc dc 18.Rb1! But instead of playing for b7-b5, Black should now trade Q's into an inferior ending.) 14.bc5 dc5 15.Rb1 Bf8? (Better ...Qa4 16.Na4! Bf8 17.Nb6 and 18.Ba4, or 17.f4. The game move lets White start a roll.) 16.Qa5! (Threatens 17.Ba4) 16...Qd6 (If ...Qd8 17.Ba4+ b5 18.Qa6 ba 19.Qa4+ Ke7 20.Qa7+. Or 16...b5 17.Qa6.) 17.Rb6 (If 17.Ba4 b5 holds out a few moves longer than the game.) 17...Qc7 18.Ba4 Kd8 19.d6! Bd6 (If ...Qc8 20.Rb7+) 20.Rd6 Kc8 21.Bd7 Qd7 (Or ...Kd8 22.Bg4+) 22.Rd7 Kd7 23.Qc5 (Interesting game. Initiative well played by White.) 1-0

AMATEUR SECTION WINNER

Robbins - Presswood

94 TN Amateur

After inaccurate opening play Black is reduced to a passive position. 18.e5! begins the final assault. White opens up direct paths to the enemy king with the line-clearing 21.f5! and 23.g7! 29.Ne6! removes the final cover.

1.e4 g6 2.d4 Bg7 3.c4 d6 4.Nc3 Nf6 5.f3 O-O 6.Be3 Nbd7 7.Qd2 c6 8.Nge2 e5 9.g4 ed4 10.Nd4 Ne5 11.Be2 Be6? (11...Ne8 and 11...Nfd7 have been played here.) 12.Ne6 fe6 13.O-O-O Ne8 14.f4 Nf7 15.h4 Rc8 (With no counterplay and White advancing on the k-side, Black desperately hopes for combinations on the c-file based on ...d5.) 16.h5 d5 17.hg6 hg6 18.e5! (Blocks the long diagonal and also prevents a future Nf6.) 18...a6 (Black's position appears hopeless. He will be unable to defend his k-side, especially g6 and h7.) 19.Qc2 Nh8 20.Bd3 Kf7 21.f5! Be5 22.fg6 Kg8 23.g7! Bg7 24.Bh7 Kf7 25.Rdf1 Ke7 26.Bg5 Nf6 27.Na4 b5 (If 27...b6 28.c5! keeps the heat on.) 28.Nc5 Qd6 29.Ne6! Ke6 30.Bf5 Kf7 (If 30...Ke7 31.Rh7! Kf7 32.Bc8 Rc8 33.Bf6) 31.Bc8 Rc8 32.Bf6! Kg8 33.Bg7 Kg7 34.Qh7 1-0

(continued on page 10.)

Games from the 1994 Novice Championship

Leners, Mark - Ragland, Jim

94 TN Novice (2)

1.e4 e5 2.Nf3 Nc6 3.Bb5 d6 4.O-O Nf6 5.Nc3 a6 6.Bc6 bc6 7.d4 d5 8.Re1 Bb4 9.Ne5 Bd7 10.ed5 Nd5 11.Nc6 Kf8 12.Nd8 Rd8 13.Bd2 Bf5 14.Nd5 Bd2 15.Qd2 Rd5 16.Qb4 Rd6 17.Qb8 Rd8 18.Qd8 1-0

Ragland, Bill - Baringer, James

94 TN Novice (2)

1.e4 e5 2.Nf3 Nc6 3.Bc4 Bc5 4.d3 d6 5.Nc3 Bg4 6.h3 Bf3 7.Qf3 Nf6 8.O-O Nd4 9.Qg3 Rg8 10.Nd5 Ne2 11.Kh2 Ng3 12.fg3 h6 13.Nf6 gf6 14.Rf6 Qf6 15.Bb5 c6 16.Bc4 h5 17.h4 Qf2 18.Bg5 Be3 19.d4 Rf8 20.Rf1 Qc2 21.Bb3 Qe2 22.Bd1 Qf1 0-1

Roslie, S - Bath, Cheney

94 TN Novice (2)

1.e4 e5 2.Nf3 Nc6 3.Bb5 a6 4.Ba4 Bc5 5.O-O Nf6 6.Re1 Ng4 7.Qe2 Bf2 8.Kh1 Be1 9.Qe1 h6 10.Qg3 d6 11.h3 h5 12.Bc6 bc6 13.d4 ed4 14.hg4 hg4 15.Nh2 Qh4 16.Qh4 Rh4 17.g3 Rh3 18.Kg2 Be6 19.b3 O-O-O 20.Nd2 d5 21.e5 Bf5 22.Bb2 Be4 23.Ne4 de4 24.Ng4 Rdh8 25.Bd4 R3h5 26.Rf1 Rd8 27.c3 c5 28.Be3 f6 29.ef6 gf6 30.Rf6 Rd1 31.Re6 Re1 32.Kf2 Rhh1 33.Re4 Rhf1 34.Kg2 Ra1 35.Bc5 Rfb1 36.Re2 Kb7 37.Ne5 Re1 38.Re1 Re1 39.Bd4 Re2 40.Kf3 Ra2 41.g4 a5 42.Kf4 Bb2 43.Nd3 Bb3 44.Nc5 1-0

Van der Meer, Weib - Imran, Nailly

94 TN Novice (2)

1.e4 c5 2.Nf3 d6 3.d4 cd4 4.Nd4 Nf6 5.Nc3 g6 6.Be2 Bg7 7.Be3 O-O 8.f4 Nc6 9.O-O Bd7 10.Qd2 Ng4 11.Bg4 Bg4 12.h3 Bd7 13.Rab1 a6 14.Nd5 e6 15.Nc6 Bc6 16.Bb6 Qd7 17.Nc7 Rac8 18.e5 de5 19.Qd7 Bd7 20.Bc5 Rc7 21.Bf8 Kf8 22.fe5 Be5 23.c3 h5 24.Rbd1 b5 25.Rf3 f6 26.g4 h4 27.g5 f5 28.Rfd3 Ke7 29.Kf2 Bg3 30.Kf3 Bc6 31.Ke2 f4 32.Kf1 e5 33.Rd6 Rd7 and Black won. 0-1

Stalcup, Michael - Botta, Sisir

94 TN Novice (3)

1.e4 e5 2.Nf3 Nc6 3.Bb5 d6 4.h3 Nf6 5.d3 Bd7 6.O-O Be7 7.c3 O-O 8.Bg5 d5 9.ed5 Nd5 10.Be7 Nde7 11.Re1 a6 12.Bc4 Ng6 13.Nbd2 Bf5 14.d4 ed4 15.cd4 Nd4 16.Kh2 Nf3 17.Nf3 Qd1 18.Rad1 Rfe8 19.Bd3 Bd3 20.Rd3 Re1 21.Ne1 h6 22.Nc2 Re8 23.Ne3 c6 24.Rd7 b5 25.Rb7 Re6 26.Rb6 c5 27.Re6 fe6 28.g4 1/2

Imran, Nailly - Lowry, Kevin

94 TN Novice (4)

1.e4 Nc6 2.Nf3 Nf6 3.Nc3 e5 4.Bc4 h6 5.d4 Bb4 6.Qd3 Bc3 7.bc3 Qe7 8.Nd2 O-O 9.O-O Re8 10.Re1 d6 11.f3 Be6 12.d5 Bd7 13.de6 Bc6 14.Bb3 Qd7 15.c4 a6 16.Bb2 b5 17.Rad1 bc4 18.Nc4 Bb5 19.Qd2 Rab8 20.Bc3 Rbd8 21.f4 d5 22.Ne5 Qe6 23.ed5 Qb6 24.Bd4 Qb7 25.d6 Rf8 26.Ng6 Rfe8 27.Bf6 Re1 28.Qe1 gf6 29.Qe7 Qb6 30.Kh1 Rd7 31.Qf6 Kh7 32.Nf8 Kg8 33.Nd7 Bd7 34.Bf7 1-0

Leners, Mark - Stalcup, Michael

94 TN Novice (4)

1.e4 c5 2.Nc3 d6 3.Bb5 Bd7 4.Bd7 Qd7 5.Nf3 Nf6 6.O-O e6 7.d3 Nc6 8.Re1 g6 9.e5 de5 10.Ne5 Ne5 11.Re5 Bg7 12.Re1 O-O 13.Ne4 Rac8 14.Bg5 Qe7 15.Qf3 1-0

Miller, Lee - Botta, Sisir

94 TN Novice (4)

1.e4 e5 2.Nf3 Nc6 3.Bb5 d6 4.d3 Bg4 5.Bc6 bc6 6.Nc3 Nf6 7.h3 Bh5 8.g4 Bg6 9.Nh4 Be7 10.Ng6 hg6 11.h4 d5 12.g5 Nh5 13.ed5 cd5 14.Bd2 O-O 15.Qf3 d4 16.Ne4 Rb8 17.O-O-O Qc8 18.a3 Qb7

19.Bb4 Bb4 20.ab4 Qb4 21.b3 Qa3 22.Kd2 Qb4 23.Ke2 Nf4 24.Kf1 Nh5 25.Ng3 Ng3 26.Qg3 Qd6 27.h5 e4 28.Qh4 ed3 29.h6 de2 30.Rc1 Qe5 31.Rc2 Rb3 32.Re1 Qb5 33.Kg1 Qe5 34.hg7 Qg7 35.Rc7 a5 36.Rd7 Rb4 37.Kg2 d3 38.Qh3 Rb5 39.f4 Rb2 40.Kg3 Rb3 41.Kg2 Re8 42.Rd3 Re2 43.Kf1 Rd3 44.Qc8 Qf8 45.Rh8 Kh8 46.Qf8 Kh7 47.Qf7 Kh8 1-0

Spencer, Alan - Gerges, John

94 TN Novice (4)

1.e4 e5 2.Nf3 Nc6 3.Bb5 Bc5 4.O-O Nd4 5.Ba4 Qf6 6.c3 Nf3 7.Qf3 Qf3 8.gf3 a5 9.f4 Nf6 10.fe5 Ne4 11.d4 Be7 12.Re1 Ng5 13.f4 Nf3 14.Kf2 Ne1 15.Ke1 c6 16.Nd2 d6 17.Ne4 d5 18.Ng3 g6 19.Bc2 h5 20.Be3 h4 21.Nf1 h3 22.Bf2 Bh4 23.Ng3 a4 24.Ke2 Kf8 25.Rg1 Ra6 26.Rb1 Kg7 27.Rg1 Kf8 28.Rb1 Ke7 29.f5 gf5 30.Bf5 Bg3 31.Bc8 Bf2 32.Rf1 Bd4 33.Rf3 Rc8 34.cd4 Bb6 0-1

Terrell, Jim - Harris, A L

94 TN Novice (4)

1.e4 e6 2.Nf3 Nf6 3.Nc3 Bc5 4.d4 Be7 5.Bd3 d5 6.e5 Nfd7 7.O-O Nc6 8.a3 O-O 9.Ne2 b6 10.c3 Bb7 11.Bc2 Bh4 12.Qd3 f5 13.g3 Be7 14.Nf4 g5 15.Ne6 Qe8 16.Nc7 Qh5 17.Na8 Ra8 18.Qf5 Rd8 19.Bd1 g4 20.Qh5 1-0

Miller, Lee - Terrell, Jim

94 TN Novice (5)

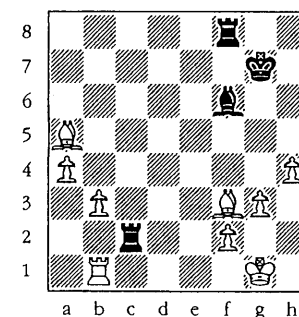
1.e4 d6 2.d3 g6 3.Nf3 Nf6 4.d4 Bg7 5.Nc3 O-O 6.e5 de5 7.de5 Qd1 8.Nd1 Ng4 9.Bf4 Nc6 10.e6 Be6 11.Bc7 Rac8 12.Bf4 Nb4 13.Bd3 Nc2 14.Bc2 Rc2 15.Ng5 Bc4 16.h3 Ne5 17.Ne3 Re2 18.Kf1 Re3 19.Kg1 Rd3 20.Re1 Nc6 21.b3 Ba6 22.Kh2 Bh6 23.g3 Bg7 24.Kg2 e6 25.h4 h6 26.Ne4 b6 27.h5 g5 28.Ng5 Bb7 29.f3 Nb4 30.Re3 Re8 31.Rd3 Nd3 32.Ne4 Nf4 33.gf4 Rd8 34.Ng5 Rd2 35.Kg3 Bf6 36.Ne4 Be4 37.fe4 Ra2 38.f5 e5 39.Rg1 Bb2 40.Kf3 Kh7 41.Rg7 Kg7 42.Kg3 Bb3 43.Kg4 a5 1/2

(Editor's note: While the next game didn't win recognition for brilliance, it must be among the best come-backs in the tournament! After 48...Rc2, Black is down five (5!) pawns for the exchange. One inattentive move by her opponent lets her counter-attack cause his complete collapse. When you have no pawns, you have plenty of open lines! -rw)

Ragland, Bill - Williams, Betty

94 TN Novice (5)

1.e4 c5 2.Nc3 d6 3.b3 Nf6 4.Bc4 e6 5.Nf3 Nc6 6.d3 a6 7.O-O Be7 8.a4 Na5 9.e5 de5 10.Ne5 O-O 11.Rb1 Bd6 12.Re1 Nc6 13.Nc6 bc6 14.Qf3 Qc7 15.g3 Re8 16.Ne4 Ne4 17.de4 Be5 18.Qh5 g6 19.Qf3 a5 20.Be3 Qd6 21.Red1 Qe7 22.Qg4 h5 23.Qg5 Bf6 24.Qf4 g5 25.Qd6 Qd6 26.Rd6 Bb7 27.Bc5 Be5 28.Rd3 Rad8 29.Bb6 Ra8 30.Rdd1 c5 31.Bc5 Be4 32.Bd3 Bf3 33.Re1 Bc3 34.Re3 g4 35.h4 Bd2 36.Re5 Bc3 37.Rh5 f5 38.Rg5 Bg7 39.Bd4 e5 40.Bc4 Kh7 41.Bc5 Rac8 42.Bb6 Bf6 43.Rf5 Rf8 44.Ba5 Kg6 45.Bd3 e4 46.Rf3!? *(No doubt envisioning at least five passed pawns! -rw.)* gf3 47.Be4 Kg7 48.Bf3 Rc2 [DIAGRAM]



49.b4? *(Immediate attention to the defense of f2 is needed. This only cuts off the Ba5 and makes matters worse. 49.Be4 looks good. -rw)* 49...Bd4 50.Rf1 Rf3 51.Kg2 Ra3 52.Rd1 Bf2 53.Rd7 Kf8 54.b5 Bg3 55.Kh3 Bh2 56.Kg4 Ra4 57.Kh5 Rc5 58.Kg6 Ra5 59.h5 Ke8 60.Rg7 Bf4 0-1



Stalcup, Michael - Van der Meer, Weib

94 TN Novice (5)

1.e4 e5 2.Nf3 Nc6 3.Bb5 a6 4.Ba4 Nf6 5.O-O b5 6.Bb3 Bc5 7.c3 d6 8.h3 O-O 9.Re1 Bb7 10.d3 a5
 11.Bg5 Qe7 12.Bd5 Nd8 13.Bb7 Nb7 14.d4 Bb6 15.Nbd2 Nd8 16.Qc2 Ne6 17.de5 de5 18.Ne5 Ng5
 19.Nc6 Qc5 20.Nd4 b4 21.Rad1 Qe5 22.N4f3 Nf3 23.Nf3 Qf4 24.Re2 Rfe8 25.e5 Nh5 26.Red2 Ng3
 27.Qa4 Ne4 28.Qe8 Re8 29.Rd8 Kf8 0-1

Surkov, Alexey - Ragland, Jim

94 TN Novice (5)

1.e4 c5 2.e5 d5 3.Nf3 Nc6 4.Bb5 a6 5.Ba4 b5 6.Bb3 c4 7.c3 cb3 8.Qb3 Be6 9.d4 Na5 10.Qc2 c6
 11.Ng5 g6 12.O-O Bf5 13.Qe2 b4 14.c4 b3 15.ab3 Nb4 16.Bd2 Bd3 17.Qf3 f6 18.Ne6 Qb6 19.Nc5
 Bf1 20.Bb4 Qb4 21.Na6 Qe1 22.Nc7 Kd7 23.Qd5 Kc8 24.Ra8 Kc7 25.Ra7 Kc8 26.Qa8 1-0

*continued from page 7.***NOVICE SECTION WINNER****Richard - Gerdes**

94 TN Novice

White builds up a strong position but begins to go astray with 15.Nh4. With 18...Qd2 Black penetrates the White lines. Possibly in time trouble, White blunders, but his position was lost anyhow. Tenacious defense by Black.

1.d4 d5 2.c4 dc4 3.e4 e6 (...e5!) 4.Bc4 Nf6 5.Bg5 Be7 6.Nc3 c6 (6...Ne4! 7.Be7 Nc3 8.Qg4 (If 8.Bd8 Nd1 9.Bc7 Nb2 10.Bb3 Nd3+ and Nb4) 8...Qe7 9.Qg7 Qf8 =.) 7.a4 Qa5 8.Bf6 (Or 8.e5 Nd5 9.Be7 and if ...Nc3 10.Qc2 +/-.) 8...Bf6 9.Nf3 Nd7 10.O-O Nb6 11.Bb3 O-O 12.e5 Be7 13.Qd3 f6 14.Bc2 g6? (...f5) 15.Nh4? (15.ef Bf6 16.Rfe1.) 15...f5 16.Qg3 Bh4 17.Qh4 Nd5 18.Ne2? (Better is 18.Ra3.) 18...Qd2! 19.Bd1 f4 (19...Qb2 prevents Ra3 and after 20.Rc1 White must prove he has something for the pawn.) 20.Nc3? (20.Ra3!?) 20...Qd4 21.Nd5 ed5 22.Re1 Be6 23.Bg4 Rfe8 24.Be6 Re6 25.b4 Re5! 26.Re5?? Qa1 0-1



1994 Cumberland County Fall Open Chess Tournament

*Submitted by Harry Sabine***PRIZE WINNERS***October 8, 1994**Fairfield Glade, Tennessee*

Total Players: 36

States Represented: Tennessee, Kentucky, North Carolina, Virginia, Georgia

Open Section: (16 Players)

| | | | | |
|-------------|----------------|------------------|-----|---------|
| Champion | Karl Ehram | Ashville, NC | 4.0 | \$50.00 |
| Expert-1st | Chris Chambers | Marietta, GA | 3.0 | 12.50 |
| Expert-1st | Brian Smith | Murfreesboro, TN | 3.0 | 12.50 |
| Class A-1st | Doug Hyatt | Knoxville, TN | 2.0 | 12.50 |
| Class A-1st | Ellis E. Jones | Lenoir City, TN | 2.0 | 12.50 |
| Class B-1st | Tim McHenry | Scottsville, KY | 3.0 | 25.00 |

Amateur Section: (20 Players)

| | | | | |
|-------------|------------------|------------------|-----|---------|
| Champion | Billy Ware | Maryville, TN | 4.0 | \$50.00 |
| Class D-1st | James Hughes | Charleston, TN | 3.0 | 6.25 |
| Class D-1st | David Bertram | Allardt, TN | 3.0 | 6.25 |
| Class D-1st | Charles McGinnis | Madisonville, TN | 3.0 | 6.25 |
| Class D-1st | Alvin L. Harris | Nashville, TN | 3.0 | 6.25 |
| Class E-1st | Jason Knight | Oak Ridge, TN | 3.0 | 25.00 |
| Unrated-1st | Lee Gilmer | Crab Orchard, TN | 1.0 | 25.00 |

1994 Cumberland County Scholastics

By Harry Sabine

The 22nd annual Cumberland County Scholastic chess tournament drew the largest turnout in ten years as 41 students from Cumberland county fought it out over the chessboard at Martin Elementary Saturday, November 5, to earn the title of Cumberland County scholastic champion.

In the High School division, M.C. Deck, III, achieved the only perfect score in the entire tournament to claim the title of 1994 Cumberland County High School Champion. As a 9th grader, M.C. has obviously established himself as the player to beat for the next three years.

Danny Winningham, an 8th grader from Homestead, won the Junior High crown with a five minute playoff win over Cosby Stone, Jr., and Brian Wyatt. All three players scored 4-0 to tie for first, necessitating the playoff matches to determine the champion.

The titles in the Elementary and Primary divisions stayed in the same family as Steven Butler in the Elementary and Christopher in the Primary each earned the title of Champion. Both Butlers are students at Homestead Elementary giving that school a sweep of the Junior High, Elementary and Primary championships.

All four champions will have their names added to the plaques containing the names of all previous winners which are on display in the lobby of the Highland Federal Savings & Loan Association, the sponsor of the tournament.



Cumberland County Scholastic Chess Championships

Submitted by Harry Sabine

PRIZE WINNERS

November 5, 1994

Total Players: 41

Schools Represented: Cumberland County High School, Martin Junior High, Crossville Elementary, Homestead Elementary, North Cumberland, Crab Orchard

High School Section: (5 Players)

| | | | | |
|-------------|--------------------|------|-----|------------|
| Champion | M.C. Deck, III | CCHS | 5.0 | 9th grade |
| 2nd | Richard Gilmer | CCHS | 4.0 | 10th grade |
| 1st-Unrated | Michael E. Stammen | CCHS | 1.0 | 9th grade |

Junior High Section: (15 players)

| | | | | |
|-------------|------------------|-----------|-----|-----------|
| Champion | Danny Winningham | Homestead | 4.0 | 8th grade |
| 2nd | Cosby Stone, Jr. | Homestead | 4.0 | 7th grade |
| 3rd | Brian Wyatt | Martin | 4.0 | 8th grade |
| 1st-Unrated | Lee Gilmer | Martin | 3.0 | 7th grade |

Elementary Section: (16 Players)

| | | | | |
|-------------|--------------------|-------------|-----|-----------|
| Champion | Steven E. Butler | Homestead | 4.5 | 4th grade |
| 2nd | James White | Homestead | 4.0 | 5th grade |
| 3rd | R. Scot Winningham | Homestead | 3.5 | 4th grade |
| 1st-Unrated | Ryan Rector | Crab Orch'd | 3.5 | 4th grade |

Primary Section: (5 Players)

| | | | | |
|-------------|--------------------|-------------|-----|-----------|
| Champion | Christopher Butler | Homestead | 4.0 | 2nd grade |
| 2nd | John H. Hall | Cross. Ele. | 3.0 | 3rd grade |
| 3rd | Daniel Powers | Cross Ele. | 3.0 | 3rd grade |
| 1st-Unrated | Sabrina Altizer | Homestead | 3.0 | 3rd grade |

Knoxville Chess Club Fights Back to Victory

By Leonard Dickerson

The Greater Knoxville Chess (GKCC) emerged victorious over the Chattanooga Chess Club by a score of 20.5 to 19.5 points. The chess team match consisted of two games against the same opponent conducted over two Saturdays. The first half of the match was conducted in Chattanooga on June 18, 1994, and saw Knoxville limp away from the 8-board competition down 6.5 to 9.5. On December 3, the second half of the match was hosted by the GKCC at the Candy Factory. This 12-board affair saw Knoxville storm back to win 14 of the 24 games played, giving them a narrow one-point total victory of the very competitive Chattanooga Chess Club.

The score table from the first encounter shows that Knoxville team (average rating 1800) got walloped by the Chattanooga team who was rated almost an average 100 points less. The Knoxville top boards mustered only 3.5 points while the lower boards fared no better with a scant 3 points. After this unexpectedly dismal show, Knoxville seem primed for the kill in the second part of the match. Chattanooga's first-part victory did spur much greater interest for the return match and caused more players to register, raising the boards to 12 instead of 8.

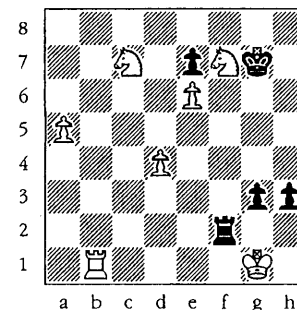
Chattanooga vs Knoxville, Part I

| Knoxville | Score | Chattanooga | Score |
|--------------------------|-------|--------------------|-------|
| Leonard Dickerson 2129 | 1 1 | Walter Isbill 1951 | 0 0 |
| Emanuel Tsiksekliis 2000 | 1 0 | Mark Oshman 1843 | 0 1 |
| Eric Vaughan 1871 | 0 ½ | Joe Dumas 1839 | 1 ½ |
| Richard Westbrook 1746 | 0 0 | Doug Nichols 1817 | 1 1 |
| Doug Hyatt 1736 | 1 1 | Joe Hardy 1682 | 0 0 |
| Jon Murray 1711 | 0 1 | Ralph Boston 1648 | 1 0 |
| Mike Abron 1703 | 0 0 | Jim Kade 1557 | 1 1 |
| Lee Stensaker 1500 | 0 0 | R. Linnemann 1322 | 1 1 |
| | 6.5 | | 9.5 |

It was not sure which team the additional boards would favor, though it was thought that perhaps Chattanooga should have the better chances there since they would be grossly outrated on the top boards. However, the second score table reveals that no one received a real advantage from the additional board--just more excitement! Both the top and bottom boards of the teams contributed equally to the victory at home: Knoxville's top and bottom boards produced seven points each; Chattanooga's top and bottom boards produced five points each.

The second match-up shows that Knoxville's top six board have almost the average of an expert rating, outranking Chattanooga by an average of 132 points. However, the overall rating was close to the first match-up since Knoxville outranked the Chattanooga team by only 100 points (1746 to 1644). But ratings were not the chief factor in this match. As in all great rivalries, it was home-field advantage!

However, a shaky 6.5 to 5.5 point start reveals that Chattanooga nullified this advantage in the first round of the second match-up. Knoxville could find no cause to be optimistic. In fact, the outcome looked bleak for Knoxville based on the last two games to be completed: Stensaker and Rowan's individual games. Lee Stensaker, after outplaying Hughes much of the opening, got overconfident and needlessly sacrificed a Bishop. Hughes ate the Bishop and later was able to inject another freebie. He was two Knights up in the endgame and ever increasing his material. Lee was seemingly staggering on like a punch-drunk fighter, chiding himself for his recklessness. With the overall match points at 19-19, Knoxville paartisans had conceded the Stensaker point and put their faint hopes on Rowan. Faint hopes indeed because Rowan had fallen into time trouble on the 35th move, and Rea Hayes was playing the caliber of chess that allowed him to become the 1994 Senior Champion of the U.S. Things looked desperate with the hope of a tied match fading fast.



But Lo! look what Lady Caissa granted Stensaker's persistence! See diagram. It is a forced draw by repetition--or Black wins! With this draw, things looked slightly brighter. However, Rea Hayes had started to take advantage of Rowan's white-square weaknesses.

The fate of the championship rested on Rowan. If he drew, the cities drew; if he won, Knoxville won (or the unthinkable--now after the Stensaker draw!). Hayes cracked a little under the pressure of the congregation of questioning eyes crowding his board. He blundered and was forced to accept a Knight and Rook for his Queen--plus a pawn! With Rowan having only his Queen to battle Haye's passer, no Knoxvilleian other than Doug Hyatt had great faith in him (innocence of youth)! While Hayes' pawn rushed to the crowning it was hijacked by a fork of both pieces by the Queen. Knoxville had scrapped back to victory! No dominance was shown, but next year we vow not to fall behind in the first part of the match!

(Continued on page 16)

Chattanooga vs Knoxville, Part II

| Knoxville | Score | Chattanooga | Score |
|--------------------|-------|-----------------|-------|
| Tom Rowan | 1 1 | Rea Hayes | 0 0 |
| Leonard Dickerson | ½ 1 | Walter Isbill | ½ 0 |
| Emanuel Tsikseklis | 1 0 | Mark Oshman | 0 1 |
| Ellis Jones | 0 1 | Joe Dumas | 1 0 |
| Doug Hyatt | 0 ½ | Bob Presswood | 1 ½ |
| Richard Westbrook | 0 1 | Ralph Boston | 1 0 |
| Jon Murray | 1 0 | Phil Pennington | 0 1 |
| Jim Fitzgerald | 0 * | Rus Linnemann | 1 * |
| Justin Daniels | * 1 | Rus Linnemann | * 0 |
| Mike Abron | 1 1 | Jim Kade | 0 0 |
| Lee Stensaker | 1 ½ | James Hughes | 0 ½ |
| Brian McDaniel | 1 0 | Matthew Yates | 0 1 |
| Peter Sajonz | 0 ½ | Holmer Shaik | 1 ½ |
| 14 | | 10 | |

(Continued from page 5)

The team competition for the John Hurt Memorial Plaque was a close race between Nashville and Knoxville. Nashville was the winner with 15 points and Knoxville scored 14 points. At the TCA meeting a vote was taken whether to continue the team competition or not. It was decided that the team competition would not be continued. It was suggested that instead informal match play between the major cities of Tennessee would be considered as an alternative. Please contact Peter Lahde if you are interested.

A new attendance record was achieved with a total of 155 players when combining both the adult and scholastic sections. There were 34 in the Open, 53 in the Amateur, and 25 in the Novice for a total of 112 players. The last time we had over 100 players was in 1986 when it was held at Montgomery Bell State Park. The scholastic section was attended by 43 players. There were many players from other states with Kentucky leading the list with 12 players. Other states represented were: Georgia, Alabama, Mississippi, Arkansas, Missouri, Indiana, and Pennsylvania.

1994 Tennessee Open Prize Winners

Submitted by Peter Lahde

OPEN

| | | | |
|-------------------|---------------------|--------------|------------------|
| State Champion | Palatnik, Sam | Nashville | \$500 + trophy |
| 2nd - 4th | Raghavan, Vijay | Nashville | \$175 |
| 2nd - 4th | Vix, Vernon | Newburgh, IN | \$175 |
| 2nd - 4th | Dickerson, Leonard | Knoxville | \$175 |
| Expert Champion | Tsitseklis, Emanuel | Knoxville | \$175 + trophy |
| 2nd Expert | Smith, Brian | Murfreesboro | \$125 |
| Class A Champion | Aristorenas, Juan | Adamsville | \$93.75 + trophy |
| Class A 2nd - 4th | Spinrad, Jerry | Nashville | \$93.75 |
| Class A 2nd - 4th | Zhislin, Igor | Nashville | \$93.75 |
| Class A 2nd - 4th | Slifer, William | Nashville | \$93.75 |

J. Hurt Team Plaque NASHVILLE 14 points Plaque

AMATEUR

| | | | |
|-----------------------|------------------|-----------|----------------|
| Amateur Champion | Jamison, Gary | Nashville | \$150 + trophy |
| 2nd - 3rd | Robbins, Russell | Jackson | \$150 |
| 2nd - 3rd | Bentrup, Ben | Nashville | \$150 |
| Class C Champion | Palatnik, Olga | Nashville | \$250 + trophy |
| Class C 2nd place (t) | Green, Gary | Nashville | \$50 |
| Class C 2nd place (t) | Widener, Kermit | Bristol | \$50 |

NOVICE

| | | | |
|------------------|-----------------|--------------|----------------|
| Novice Champion | Imran, Nazlly | Nashville | \$200 + trophy |
| 2nd - 3rd | Lowry, Kevin | Memphis | \$62.50 |
| 2nd - 3rd | Witherspoon, W | Murfreesboro | \$62.50 |
| Unrated Champion | Gerdes, John | Nashville | \$75.00 |
| Class E (t) | Williams, Betty | Knoxville | \$62.50 |
| Class E (t) | Harris, Jeffrey | Nashville | \$62.50 |

The Gambit Player

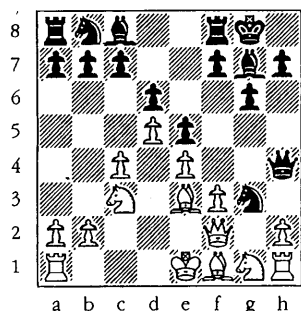
By Lee Edwards

When is a sacrifice truly a sacrifice? When is a gambit a true gambit? Sometimes it is not so clear. There are many sharp positions, in the Sicilian Dragon or Najdorf Poisoned pawn variations for example, which could be considered true gambits. In this issue, I give you examples of two lines, one in the King's Indian Saemisch and the other in the Pirc Defense, where the material is approximately equal, but wildly unbalanced. Often middlegame and endgame positions where there is assymetry of forces are the most difficult to handle. Are these positions equal? White should probably win in both lines, but the fact that Black has been played by some of the best players in the world would seem to indicate that those of us who are not masters should be able to give them a try once in a while. If you have a computer, I would recommend that you try playing a few games from both positions with both colors.

Karpov, Anatoly - Velimirovic, Dragoljub

Skopje, 1976 E 87 / KI 40.1

1.c4 Nf6 2.Nc3 g6 3.e4 d6 4.d4 Bg7 5.f3 O-O 6.Be3 e5 7.d5 Nh5 8.Qd2 Qh4 9.Bf2 Qf4 10.Be3 Qh4 11.g3 Ng3 12.Qf2 [DIAGRAM]



12...Nf1 13.Qh4 Ne3 14.Ke2 Nc4 15.Rc1 Na6 16.Nd1 Nb6 17.Nh3 Bd7 18.Ne3 f6 19.Rhg1 Rad8 20.b3 c6 21.dc6 bc6 22.Nf5 gf5 23.Rg7 Kg7 24.Rg1 Kf7 25.Qh5 Ke6 26.Qf5 Kf7 27.Qh5 Ke6 28.Qf5 Kf7 29.Ng5 Ke8 30.Ne6 Rf7 31.Rg7 Rc8 32.Rf7 Kf7 33.Ng5 Ke7 34.Qh7 Kd8 35.Qh8 Kc7 36.Qf6 Re8 37.h4 Nc5 38.h5 Ne6 39.h6 Nf8 40.b4 Nc8 41.Kd2 Ne7 42.h7 Nh7 43.Nh7 Nc8 44.Nf8 Re7 45.a3 Be8 46.Ne6 Kd7 47.Ng7 Kc7 48.Nf5 Rd7 49.a4 Bf7 50.Kc3 Ba2 51.a5 Rf7 52.Qh6 Rd7 53.f4 ef4 54.Qf4 Rf7 55.Qh6 Rd7 56.Qh2 Be6 57.Qh6 Bf5 58.ef5 d5 59.Kd4 Nd6 60.Qf4 Kb7 61.Qe5 Nf7 62.Qe8 Kc7 63.Qa8 Kd6 64.Qf8 Kc7 65.Qc5 Nd6 66.Qa7 Kc8 67.Qa6 1-0

Kasparov, Gary - Seirawan, Yasser

Barcelona, 1989 E 87 / KI 40.1

1.d4 d6 2.e4 Nf6 3.f3 g6 4.Be3 Bg7 5.Qd2 O-O 6.c4 e5 7.d5 Nh5 8.Nc3 Qh4 9.Bf2 Qf4 10.Be3 Qh4 11.g3 Ng3 12.Qf2 Nf1 13.Qh4 Ne3 14.Ke2 Nc4 15.Rc1 Na6 16.Nd1 Nb6 17.Ne3 Bd7 18.Nh3 f6 19.Nf2 Nc8 20.Rc3 Ne7 21.Rhc1

Rac8 22.Rb3 Rb8 23.Nd3 Rf7 24.Qe1 Nc8 25.Qa5 Nb6 26.Rc7 f5 27.Rc2 fe4 28.fe4 Rbf8 29.Rb6 1/2

Levitt, Jonathan - Martin, Andrew

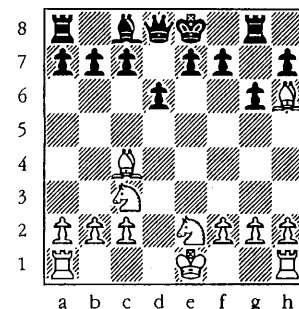
Glasgow, 1989 E 87 / KI 40.1

1.d4 Nf6 2.c4 g6 3.Nc3 Bg7 4.e4 O-O 5.f3 d6 6.Be3 e5 7.d5 Nh5 8.Qd2 Qh4 9.g3 Ng3 10.Qf2 Nf1 11.Qh4 Ne3 12.Ke2 Nc4 13.Rc1 Na6 14.Nd1 Nb6 15.Ne3 Bd7 16.Nh3 f6 17.Nf2 Nc8 18.Nd3 c5 19.Qg3 Bh6 20.h4 Bb5 21.a4 Bd3 22.Kd3 Nb4 23.Ke2 f5 24.h5 Be3 25.hg6 h6 26.Rh6 Bh6 27.Qh3 Kg7 28.Rh1 Bg5 29.Qh7 Kf6 30.Qd7 Bh6 31.Rh6 1-0

Kindermann - Balinas

London, Lloyds Bank, 1978 B 07 / PU 7.2.6

1.e4 g6 2.d4 Bg7 3.Nc3 d6 4.Bc4 Nf6 5.Qe2 Nc6 6.e5 Nd4 7.ef6 Ne2 8.fg7 Rg8 9.Nge2 Rg7 10.Bh6 Rg8 [DIAGRAM]



11.O-O-O Be6! 12.Be6 fe6 13.Rhe1?! (f4!) 13...g5 14.Nd4 e5 15.Nf3 Qc8 16.Bg5 h6 (Perhaps ...Qg4!?) 17.Bh4 c6 18.Nd2 Rg2 19.Bg3 Qf5 20.Nc4 Rf2 21.Ne4 Rc2 22.Kc2 d5 23.Nd2 O-O-O 24.Kc1 de4 25.Ne4 Rd4 26.Nc3 Rc4 27.Re2 b5 28.a3 a5 29.Rde1 Qd3 30.Re5 Rc3 31.bc3 Qc3 1/2 (Notes by Edwards)

Troutman - Edwards

Music City Grand Prix, 1987 B 07 / PU 7.2.6

1.e4 d6 2.d4 Nf6 3.Nc3 g6 4.Bc4 Bg7 5.Qe2 Nc6 6.e5 Nd4 7.ef6 Ne2 8.fg7 Rg8 9.Nge2 Rg7 10.Bh6 Rg8 11.O-O-O Be6 12.Be6 fe6 13.Ne4 c6 14.Nd4 e5 15.Ne6 Qa5 16.Kb1 Rc8 17.N4g5 Qb4 18.h4 Qg4 19.Rdg1 Kd7 20.f3 Qc4 21.Bg7 a5 22.h5 h6 23.Bh6 gh5 24.Rh5 a4 25.a3 b5 26.Rgh1 Qe2 27.f4 e4 28.f5 e3 29.Nf4 Qd2 30.Nf3 Qa5 31.Re1 c5 32.Re3 b4 33.Ng6 Rb8 34.Re7 Kc6 35.Re3 ba3 36.Ra3 Rb2! 37.Kb2 Qb4 38.Ka2 Rb8 39.Ne7 Kc7?? 40.Nd5 Kd7 41.Ne5 Kd8 42.Nb4 cb4 43.Ra4 de5 44.Bg5 Kd7 45.Ra6 Rc8 46.Rh7 Ke8 47.Rh8 Kf7 48.Rc8 b3 49.cb3 1-0



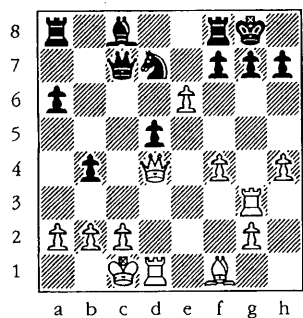
Annotated Game

By NM Tom Rowan

Tom Rowan (NM) - Lael Kaplan (NM)

Winston-Salem, NC 1994 A65/BI 37.4

1.d4 Nf6 2.c4 g6 3.Nc3 Bg7 4.e4 d6 5.f3 O-O 6.Bg5 c5 (The standard reply and probably best. A couple of my opponents have tried 6...h6 7.Be3 e5, reaching a "normal" Saemisch position, but at the cost of a slightly weaker than normal kingside.) 7.d5 e6 8.Qd2 ed5 9.cd5 a6 (Here or on the next move Black should consider h6, forcing the Bg5 back to e3. 10.Bxh6 can be answered by Nxe4 and Qh4+, a standard trick in Saemisch positions.) 10.a4 Nbd7 11.Nge2 (In the Saemisch variation, White's king knight is his problem piece, at least in the opening phase of the game. Where is it supposed to live? In the Bg5 c5 line White has tried Ng1-e2-c1 and Ng1-e2-g3 and Ng1-h3-f2. White's basic strategy is to put a clamp on Black's central counterplay, break with b4, and pressure Black's weak queenside pawns. A knight on g3 is best for this strategy because it controls the key e4 and f5 squares. Since Black neglected to chase my Bg5 back to e3 earlier, g3 cannot be easily attacked by Black's h-pawn.) 11...Re8 12.Ng3 Qa5?! (This threatens b5 but it isn't part of an appropriate plan. Black should try Qc7 with the idea of c4 and Nc5.) 13.Ra3 Qb4 14.Be2 Ne5? (Leads to a difficult ending. After the game my opponent suggested Rb8 as a possible improvement. 15.a5 b5 gives Black counterplay but 15.Na2 Qxd2+ 16.Kxd2 b5 (the idea behind Rb8) 17.axb5 axb5 18.b4 keeps some pressure.) 15.Na2 Qd2 16.Kd2 Rb8 17.b4 Ned7 18.bc5 Nc5 19.Bf4 Bf8 20.Rb1 Nfd7 21.Nb4 [DIAGRAM]



(This is exactly the kind of ending White hopes to get in this line. Black's knights are holding his position together so I start trying to trade them off.) 21...Ra8 22.Nd3 Nd3 23.Bd3 Nc5 24.Be2 (To avoid Bd7 25.a5 Nxd3 followed by Bb5.) 24...Bd7 25.a5 Rac8 26.Rb6 Rcd8 27.Bg5 (Bxd6 can be answered by Na4. It's not hard to see that White will need his knight to break through on the queenside, so more promising is Ng3-f1-e3-c4. With my next few moves I try to make progress without making any committal

decisions.) 27...Rc8 28.Be3 Rc7 29.Bf4 Rcc8 30.Ra2 Red8 31.Nf1 Be8 32.Ne3 Ba4 33.Ra3 (If Nc4 then Bb3.) 33...Rc7 34.Rb4? (Obviously a pretty lame-looking move when Nc4 is just screaming to be played. 34.Nc4 Rd7? loses to 35.Rb4 Bb5 36.Nd6 so Black should probably answer 34.Nc4 with Bb5.

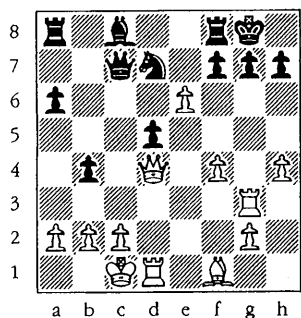
In this position I saw several tactical ideas for Black: 1) the Rb6 is trapped, 2) when the d6 pawn falls the Bf8 and the Ra3 will be on an open diagonal, and 3) if the Bf4 moves off the c1-h6 diagonal, then Bh6+ could give Black potentially dangerous counterplay on the c-file. However, these tricks only work if White gets careless. 34.Nc4 Bb5 35.Nxd6 looks good. If 34...Na4 36.Rax4 Bxa4 37.Nxb7. Afraid of missing something in the complications I instead decided to play safe moves to reach time control.) 34...Be8 35.Ra2 h5 36.Rc2 Kh7 37.Rb6 Rcd7 38.Nc4 Na4 39.Rb4 Rc7 40.Nb6 Nc5 41.Be3 Bh6 42.Bh6 Kh6 43.Nc4 Bb5 44.Na3 Be2 45.Ke2 Re7 46.Nc4!? (Playing safe has cost White all his advantage but I keep pressing for a win. Kd1 is safer.) 46...f5 47.Nd6 (I was rejecting everything that looked drawish so I didn't seriously consider the more cautious Nd2.) 47...Ne4 48.fe4 (Also possible is the messy 48.Rxb7 Nc3+. All the lines look equal: 1) 49.Kd2 (or d3) Nxd5 50.Nf7+ Rxf7 51.Rxf7 Nb4+; 2) 49.Kf2 Nd1+ 50.Kg3 Rxb7 51.Nxb7 Rxd5; 3) 49.Kf1 Rxb7 50.Nxb7 Nxd5.) 48...Rd6 49.Rd2? (Defends the center, but now White can't activate his King. Rc5 is better.) 49...fe4 50.Rb6? (Ludicrous. After the rook exchange any pawn ending is lost for White, which leaves me no way to exchange off Black's e-pawn. White could still put up tough resistance with 50.Ke3 Re5 51.Rxe4 Rxd5 52.Rxd5 Rxd5 53.Rb4 Rxa5 54. Rxb7.) 50...Rb6 51.ab6 Kg5 52.Ke3 Kf5 53.Kd4 e3 (It took me this long to realize that 50.Rb6? had pitched my last hope. Playing d6 wouldn't have helped. Black simply uses his king and rook to munch on d6 then on b6.) 54.Re2 Re4 55.Kc5 Ke5 56.d6 Ke6 57.h3 h4 58.d7 Kd7 59.Kd5 Re6 60.Kd4 Kc6 0-1

Tom Rowan (NM) - Emory Tate (NM)

Winston-Salem, NC 1994 A57/BI 45.4

1.d4 Nf6 2.c4 c5 3.d5 b5 4.cb5 a6 5.f3 (This is currently regarded as one of the best anti-Benko weapons. In New In Chess # 5, 1993, Benko specialist Michael Adams said of this move: "The thing the most surprising about it is that such a stupid-looking move can be so strong.") 5...e6 (The sharpest reply. It had been decreasing in popularity recently because the resulting complications supposedly favored White.) 6.e4 c4 (A new move, at least to me. Black has played all his moves instantly so we're obviously still in his preparation at this point.) 7.Bc4 (Declining the the second pawn doesn't look reasonable because Black still gets tons of play at half the cost.) 7...ab5 8.Bb5 Bc5 (If 8...Qa5+ 9.Nc3 Bb4 then 10.a4 gives White a good position. With Bc5 Black highlights the "stupid-looking" aspects of 5.f3. In particular, where is White going to put his king? Black now threatens to win a piece with Qb6 or Bxg1, or to get dangerous pressure down the e-file with exd5 and O-O.) 9.de6 fe6 10.Nc3 Qb6 11.Nh3 Nc6 12.Bg5 O-O (12...Nd5 13.Bc4 Qxb2 14.Rc1 just lets White catch up in development.) 13.Bh4? (Getting the bishop to f2 and castling kingside sounds nice but such time-consuming maneuvers are begging

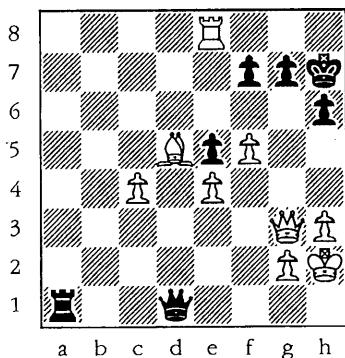
for trouble against a better developed opponent. I avoided 13.Bxc6 because I feared the pressure of the Black bishop on a6. Still, castling makes sense because the Nc6 is a stronger piece than the Bb5. White can follow Bxc6 with Qc2 and O-O-O. Black gets some pressure but it doesn't look like it is worth two pawns.) **13...Bd4?** (Nd4! looks much stronger. White's dark-squared bishop no longer controls c1 so after 14.Bc4 Qxb2 Black can answer 15.Rc1 or Qc1 with Ba3. On the other hand, if 14.a4 then Ba6! looks strong because 15.Bxa6 can be answered with Qxb2.) **14.a4??** [DIAGRAM]



(In a sharp position I foolishly base my choice on general considerations instead of calculation. I figured that I would play a4 eventually anyway and keeping my queen on d1 keeps d4, b3, and my Ra1 all covered. All this is true but it overlooks an obvious threat. Qe2 followed by Bf2 and O-O looks good.) **14...Bc3 15.bc3 Qe3 16.Qe2 Qc3 17.Kf2 Qd4 18.Kg3 Qe5 19.f4 Ne4 20.Kf3 Nd4** (It's mate or huge material loss after 21.Ke3 Nf5+ 22.Kf3 Qc3+.) **0-1**

The Problem Corner

By Ray Hudgens



In this diagram, we have the great Russian GM Botvinnik playing White for the 1939 Soviet Championship. Fortunately, it is White's move. Otherwise Black (played by I.A. Kan) would have moved ...Qh1 mate!. How did Botvinnik win? Solution page 24.

This Page is Dedicated
to the Memory
of

Douglas Lee Nichols,
1957 - 1994.

Tennessee's biggest open chess tournament ever!
1st annual MIDDLE TENNESSEE OPEN
February 24-26 or 25-26
Nashville, TN

\$10,000 PROJECTED PRIZES, 40 Total Grand Prix Points!
(all profit donated to trust fund for son of the late Doug Nichols of Chattanooga)

5-rd Swiss, 40/100, 30/SD Days Inn - Airport, #1 International Plaza, Briley Parkway, Nashville, TN (beside old airport terminal). Free airport shuttle, free parking. Beautiful facility with restaurant, room service, courtyard/pool, and lounge. **\$10,000 In prizes** based on 200 paid entries (juniors and unr. count as 1/2 entry), else proportional, except 60% of prizes guaranteed. **In 4 sections** (unrateds must play in Unrated or Open Sections): **OPEN SECTION:** Prizes \$800-500-300-200; **U2300/Unr.** 175-75; **Expert** 500-300-200-100; **U2100** 175-75; **Class A** 500-300-200-100; **U1900** 175-75; **UNDER 1800:** Prizes \$500-300-200-100; **U1700** 175-75; **Class C** 500-300-200-100; **U1500** 175-75; **UNDER 1400:** Prizes \$500-300-200-100; **U1300** 175-75; **Class E** 300-200-100-50; **U1100** 150-50; **UNRATED SECTION:** Prizes \$200-100-50; All will obtain ratings. Provisional players are not unrated. **Entry Fee:** 3-day \$59, 2-day \$58 if mailed by 2/17. All \$69 at tournament. \$30 less for juniors and unrateds. 2500+ free (\$60 deducted from prize). **3-day Schedule:** Registration ends Fri. 7pm, Rds Fri 8, Sat 2-7, Sun 9-2. **Re-entry \$30.** **2-day Schedule:** Registration ends Sat. 8am, Rds Sat 9-2-7, Sun 9-2. **All:** 1/2 pt. bye allowed, must commit before rd. 1. **Hotel Rate:** \$45 (1-4) 800-851-1962; 615-361-7666. Reserve by 2/3, ask for chess rate. **Entries:** Ed Newkirk 1202 Twin Springs Dr., Brentwood, TN 37027. (615) 370-3653.

Turkey Tour Prize Fund Doubled!!

For the tournament year 1994-95, the Turkey Tour Prize Fund will be matched by monies from the TCA. The same criteria apply for earning points on the Turkey Tour: participating in a USCF/TCA Grand Prix event is worth 20 points; playing in the Tennessee Open is worth 30 points; and all other Turkey Tour Tournaments are worth 10 points. Additional points are awarded based on your performance. The top three finishers in each of the following categories will receive cash awards: Master/Expert; Class A; Class B; Class C; Class D; and Class E. Your published rating as of 8/1995 will determine your class for the year. The TCN will periodically update the standings.

Solution to the Problem Corner

1.Qg6+! fxc6 2.Bg8+ Kh8 3.Bxc6 mate. (Also possible was 4.fxc6 mate.)

Tournaments! Tournaments! Tournaments!

By Rick Igou

DECEMBER 1994

- 10: Cumberland Co Scholastics (closed)
- 17: December Action Open, Louisville, KY

JANUARY 1995

- 06-08: Fairfield Glade, Crossville TN
- 28: Scholastic Individual Champion Qualifying Tournaments
Region 1: Blountville MS, Blountville, TN
Region 2: Bradley Central HS, Cleveland, TN
Region 3: Lakeview Elem School, Nashville, TN
Region 4: Evangelical Christian School, Cordova TN
****Contact your Regional Coordinator for more information!*

FEBRUARY 1995

- 11: Scholastic Individual Finals, Smyrna, TN
- 18: Head Middle School Scholastic, Nashville, TN.
****Contact: Jim Baringer (615) 646 - 7032*
- 18: Quad C Championships, Lexington KY
- 24-26: 1995 1st Annual Middle Tennessee Open

MARCH 1995

- 11: Scholastic Team Championship Qualifying Tournaments
Region 1: Blountville MS, Blountville, TN
Region 2: Warren Co MS, McMinnville, TN
Region 3: Hume Fogg HS, Nashville, TN
Region 4: White Station MS, Memphis, TN
****Contact your Regional Coordinator for more information!*
- 25: Scholastic Team Finals, James Union Bld, MTSU, Murfreesboro, TN

TCA Regional Scholastic Coordinators (1994-1995)

STATE SCHOLASTIC COORDINATOR

Harry D. Sabine
205 South Thurman Avenue
P.O. Box 381
Crossville, TN 38557
H: (615) 484 - 4878
O: (615) 484 - 9593
Fax: (615) 484 - 7624 (& modem)

REGION 1 SCHOLASTIC COORDINATOR

Ellis E. Jones
500 North B Street
Lenoir City, TN 37771
H: (615) 986 - 2344
O: (615) 947 - 8409
Fax: (615) 947 - 8591

REGION 2 SCHOLASTIC COORDINATOR

Ron Harvill
Route 6, Box 146
Crossville, TN 38555
H: (615) 788 - 2767
O: (615) 484 - 5959

REGION 3 SCHOLASTIC COORDINATOR

Alvin L. Harris
(Office)
Greene & Greene
323 Union Street
P.O. Box 198768
Nashville, TN 37219
H: (615) 297 - 8185
O: (615) 256 - 5607
Fax: (615) 256 - 3229

REGION 4 SCHOLASTIC COORDINATOR

Bill Cummings
3532 Davieshire Drive
Memphis, TN 38133
H: (901) 372 - 6584
O: (901) 348 - 1600
Fax: (901) 348 - 1610

PRESIDENT

Ed Kohnke
1237 Hickory Street
Nashville, TN 37203
Home: (615) 256 - 1000
Work: (615) 256 - 1000
FAX: (615) 256 - 1000

VICE - PRESIDENT

Bill Orgain
PO Box 366
Dickson, TN 37056
Home: (615) 446 - 0521
Work: (615) 446 - 2814
FAX: (615) 446 - 9913

SECRETARY - TREASURER

Leonard S. Dickerson
420 Oram Road
Knoxville, TN 37923
Home: (615) 966 - 1095
Work: (615) 574 - 4676

POSTAL CHESS COORDINATOR

Lee Edwards
406 Stehman Building
211 Union Street
Nashville, TN 37201
Home: (615) 883 - 7322
Work: (615) 726 - 3393

TOURNAMENT DIRECTOR

Rick Igon
400 Rhodora Court, Apt. F
Knoxville, TN 37923
Home: (615) 690 - 6810
Work: (615) 574 - 1839

SCHOLASTIC COORDINATOR

Harry D. Sabine
P.O. Box 381
Crossville, TN 38557
Home: (615) 484 - 4878
Work: (615) 484 - 9593
FAX: (615) 484 - 7624

TECHNICAL STAFF

Michael S. Montemore
1237 Hickory Street
Nashville, TN 37203
Home: (615) 256 - 1000
Work: (615) 256 - 1000
FAX: (615) 256 - 1000

TECHNICAL STAFF

Ed Kohnke
31 Holly St., P.O. Box 3838
Jackson, TN 38301

DIRECTOR EAST TENNESSEE

Clutter Crowley
114 Iroquois Lane
Clinton, TN 37716
Home: (615) 457 - 7965
Work: (615) 457 - 9160
FAX: (615) 551 - 2938

DIRECTOR MIDDLE TENNESSEE

Ed Kohnke
1202 Twin Springs Drive
Brentwood, TN 37027
Home: (615) 570 - 3655
Work: (615) 458 - 4483

DIRECTOR WEST TENNESSEE

Joseph Manning
961 Hwy 12
Jackson, TN 38301
Home: (901) 427 - 0441
Work: (901) 423 - 1339