



TENNESSEE CHESS NEWS

WINTER 2008

VOLUME 51

NO. 1

North Tenn. Winter Open	4
Mid-South Open	8
Fischer Memorial	12
Various Tournaments	27

Tennessee Chess Association Tournament Calendar from the TCA Website

Feb. 09, 2008	2008 Regional Team Warm-Up North Cumberland Elementary School Crossville, TN 38571 Alan Kantor; 931-200-9038
Feb. 16, 2008	TN State Individual Finals University Ctr., Tenn. Tech. University Cookeville, TN
Mar. 1, 2008	TN State Scholastic Team Qualifier Contact your Regional Chess Coordinator
Mar. 29, 2008	TN State Scholastic Team Finals University Ctr., Tenn. Tech. University Cookeville, TN
Mar. 29, 2008	East Tenn. Scholastic Spring Open Milligan College, Johnson City John Simonsen; 423-975-8031
Apr. 19, 2008	Cumberland Co. Spring Open Cumberland Co. Community Complex, Crossville Harry Sabine; 931-484-9593
Apr. 26, 2008	Jack Smith Memorial 4 Hampton Inn; contact Memphis Chess Club

TENNESSEE CHESS NEWS is the official publication of the
Tennessee Chess Association.

MEMBERSHIPS

TCA annual dues are \$10 for a *regular* membership or *student* membership. Additional members of a family may join for one dollar each, but only one issue of **TCN** will be mailed per family. For those wishing to join after April 1 of any year, a \$15.00 membership is available for the remainder of that year and includes the following year. All non-patron memberships expire August 31.

Tax-deductible Patron Memberships are available beginning at \$100 per year for those who wish to help support the TCA and the FFTC. These memberships expire one year from the date of payment. Patron membership categories and benefits are as follows:

PATRON \$100

- One year TCA Membership and FFTC membership plus a key ring.

PATRON KING \$300

- All Patron benefits plus one year free TCA and FFTC membership for all members of the Patron King's immediate family & free entry into the TN State Scholastic Individual Regional Tournament for the member and all members of the Patron King's immediate family.

PATRON MASTER \$500

- All Patron King benefits plus one free entry to any TCA or FFTC sponsored Open Chess Tournament. The Patron Master or any member of his/her immediate family can use such free entry.

PATRON GRANDMASTER \$1000 **(or more)**

- All Patron Master benefits plus a chess clock and their name on a permanent plaque to be placed on the wall at the home of the TCA and FFTC.

TOURNAMENT ANNOUNCEMENTS

TCN prints listings of upcoming tournaments that require TCA membership in each issue for free. Submit complete TLA information to Malcolm Estrada, Tournament Coordinator.

E-MAIL: straightleg@aol.com

TN CHESS NEWS STAFF

Editor:

Leonard Dickerson

Contributors:

Peter Bereolos

Peter Lahde

Roy Manners

TCN publishing schedule and
deadline for submissions:

Spring 2007 - May 1 covering

Feb, Mar, and Apr events

Deadline: Apr 11, 2007

Summer 2007 - Aug 1 covering

May, Jun, and Jul events

Deadline: July 11, 2007

Fall 2007 - Nov 1 covering

Aug, Sept, and Oct events

Deadline: Oct 11, 2007

Winter 2008 - Feb 1 covering

Nov, Dec, and Jan events

Deadline: Jan 11, 2008

Please submit material by e-mail
to: lsdick@tds.net



TENNESSEE CHESS ASSOCIATION & FOUNDATION FOR TENNESSEE CHESS

PATRON MEMBERS

Patron Grandmaster

Dr. Martin Katahn

Patron Member

Dr. Juan T. Aristorenas

R. K. Shimabukuro

Brian Vogt



The **Tennessee Chess Hall of Fame** was established to honor those members who have distinguished themselves through their outstanding achievements in chess, either in competition or in chess organization or promotion. Peter Lahde is chairman of the electing committee, and guidelines for nominations are posted onsite.

TCA HALL OF FAME

Peter Lahde	1990
Robert Coveyou	1990
Jerry Sullivan	1990
Martin Southern	1990
Tom Finucane	1990
Robert Scrivener	1990
L. Hunter Weaks	1990
John Hurt	1992
James A. Sweets	1993
Rea Hayes	1997
James A. Wright	1998
Dr. Martin Katahn	2002
David Burris	2003
Albert Hodges	2005

A NOTE FROM THE EDITOR

In this Issue

Robert "Bobby" Fischer died on January 17. Several articles throughout this issue recognize his exploits. See pp. 12,19, and 37. The NTWO and Mid-South Open are the main tournaments of concern in this issue, and many games are showcased. Because the Tenn. scholastic qualifying tournaments were held late in the month, those regionals and games will be reported next time. However, because of the state-wide interest in who qualified for the Finals, a partial, unofficial, listing of top-5 finalists is given on page 18. These finishers may not be the representatives for the Finals. (The qualifiers as well as the crosstables should soon be on the TCA website, too.) More games from the Second Tenn. Senior Open have been included here. Note that I say "Second." In the last issue I erroneously stated that this was the first Senior Open.

TCA Board Renewal

The TCA Board is in flux. Because of time constraints and health concerns, **President** Michael Cross has been forced to step down. We thank him for his year's of dedicated service and his willingness to assume the post. Our present Secretary, Chris Prosser, has generously volunteered to fill this vacancy until September (at which time we'll badger him to continue!). The **Region I Scholastic Chess Coordinator**, Judd Jones, is turning over his responsibilities to Victor Suich of Morristown. And there is yet another change to the Board: the **Middle Tenn. Director** Scott Cantrell has bowed out, and Roy Manners of Clarksville will be filling that gap. Demands of a new job assignment have pressured Paul Semmes to give up his post, also! Stepping forward to fill the position of **Tournament Coordinator** is Malcolm Estrada of Harrison. The other stalwarts on the Board continue to serve. A special meeting will be held on Feb. 23 in Crossville to brief the new Board members and make sure that none of them have come to their senses! Be sure to check out the extensively revised listing of current TCA Officers listed at the back of this issue.

Bereaving A Chess Hero

Robert James "Bobby" Fischer died on January 17, 2008 (aged 64) in Iceland of renal failure, an ailment which he had been suffering for some time. In 1972 he became the first and only born-American to win the official World Chess Championship, defeating Spassky in Reykjavik, Iceland. (He forfeited his title in 1974 when FIDE refused his match conditions.) Additionally, Fischer won the U.S. Championship all eight times that he competed and achieved a peak ELO rating of 2785.

TCN/Win 2008_03

9th North Tenn. Winter Open

The 6-section NTWO was held in Clarksville, TN from January 19-20. Perhaps because of snowy weather, the 5-round Swiss had far fewer participants this year than last, totaling only 89 players versus last year's total of 130. The Open Section itself had only 10 players, which meant that over half these players received a cut of the prize fund!

In the Open Section, the **Kings Section**, Ronald Burnett and Peter Bereolos took top honors with 4.0 points after having both given up two draws. So the co-champions repeated from last year. Joshua Suich took clear third place.

In the **Queens Section** (U2000) the champion from last year also repeated. William Bragg of Kentucky dominated with 4.0 points, and last year's co-winner-Frank Ashmun-placed 2nd-4th along with Will Stevenson and Jason Knight. The **Rooks Section** (U1750) was taken by Bin Li with an undefeated 4.5 points; lone 2nd was Timothy Cutshaw with 4.0 points. Victor Suich swept the **Bishops Section** (U1500) with 4.5 points and was trailed by Logan Blankenship who had 4.0 points. The **Knights Section**

(U1250) was dominated by out-of-state participants. Steven Arnold (KY) and Timothy Staley (GA) won the section with 4.0 points each. And two Kentuckians took 3rd-4th with 3.5 points each. The only player to amass a perfect score did so in the **Pawns Section** (U1000) where C. J. Houston triumphed with 5 points! Angela Li took clear second with 4.0 points.

Very few games were submitted by those in the top two sections, but all legible games turned in are published throughout this issue. Crosstables from the event can be found on pages 29-33.

NTWO Pawns
Aaron Wallace
Jon Hammett

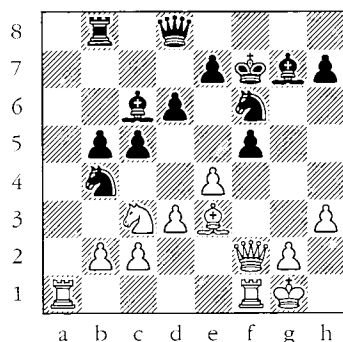
1. c4 d6 2. Nc3 Nf6 3. Nf3 Nc6 4. e3 e5 5. d4 Bf5 6. c5 Nb4? 7. cxd6?? White could have won a piece with 7. Qa4+ Nc6 8. d5. Nc2+ 8. Ke2 Nxa1 9. Nb5 cxd6 10. Qa4 Bd7 11. dxe5 dxe5 12. Nxe5 a6 13. Qc4?? This threatens mate but overlooks Black's decisive fork. Bxb5 14. Ke1 Bxc4 15. Bxc4 Qa5+ 16. Bd2 Qxe5 17. f4 Nc2+ 18. Kf2 Qxb2 19. a4 Bc5 20. Rc1 Nxe3 21. Re1 O-O 22. Kf3 Nxc4 23. Rc1 Qxd2 24. Rxc4 Qd3# 0-1

TCN/Win 2008_04

NTWO Open

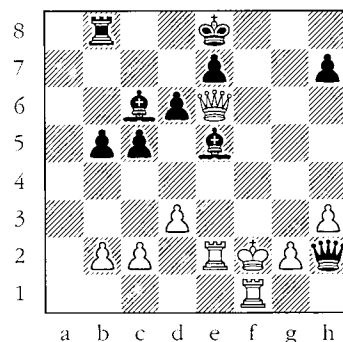
Beatty, Jonathan
Knight, Jason

1. e4 c5 2. Nc3 Nc6 3. f4 g6
4. Nf3 Bg7 5. Bc4 d6 6. h3
Nf6 7. O-O O-O 8. d3 a6 9.
a4 Bd7 10. Qe1 Nb4 11. Qf2
Bc6 12. Be3 Rb8 13. Ng5 b5
14. axb5 axb5 15. Nxf7 This
seems overly-ambitious as
the simple Bb3 would be
drawish, but White might be
dreading Black's
counterplay that would come
with the undermining c4
advance. Rxf7 16. Bxf7+ Kxf7
17. f5 gxf5



18. exf5? Yikes! White
closes the open f-file and
stops his attack dead. He
should have played e5! which
would have kept his attack
rolling as well as giving
his bishop more scope: 18.
e5! dxe5 (18... Nfd5 19.
Nxd5 Nxd5 20. Qxf5+ Kg8 21.
Bh6! {Credit Fritz9.} Bxh6
22. Qe6+ Kg7 23. Rf7+) 19.
Bxc5 Nbd5 20. Qxf5=+/+ 18...
Nbd5 19. Nxd5 Nxd5 20. Rab1
Of course c3 was necessary.

Nxe3 21. f6 Bxf6 (Also good
was Nxf because White has
nothing left with which to
attack: 21... Nxf1 22. fxg7+
Kxg7 23. Rxf1 Kh8) 22. Qxe3
Qh8 23. Rbe1 Ke8 24. Qe6
Bd4+ 25. Kh1 Qg7 26. Re2 Be5
27. c3 Bd7 Sufficient, of
course, but Qg3 would be
more decisive and even
contains a brilliant spark:
27... Qg3! 28. Kg1 Qh2+ 29.
Kf2



A possibility in Beatty-Knight.

Bf3!!) 28. Qd5 e6 29. Qf3
Ke7 30. Ref2 Rg8 31. Qf7+
Kd8 32. g4 h6 33. Qxg8+ Qxg8
34. Rf8+ Qxf8 35. Rxf8+ Ke7
36. Rf2 b4 37. Rc2 Bb5 0-1

Fischer's "Pet" Sozen
Havana Team Tournament, 1966
Robert Fischer
Jacek Bednarski

1. e4 c5 2. Nf3 d6 3. d4 cxd4
4. Nxd4 Nf6 5. Nc3 a6 6. Bc4 e6
7. Bb3 Nbd7 8. f4! Nc5 9. f5!
Nfxe4!? 10. fxe6! Qh4+? 11. g3
Nxxg3 12. Nf3! Qh5 13. exf7+ Kd8
14. Rg1 Nf5 15. Nd5! Qxf7 16.
Bg5+ Ke8 17. Qe2+ Be6 18. Nf4
Kd7 19. O-O-O Qe8 20. Bxe6+
Nxe6 21. Qe4 g6 22. Nxe6 1-0

TCN/Win 2008_05

NTWO Open

Jerry Wheeler
Joshua Suich

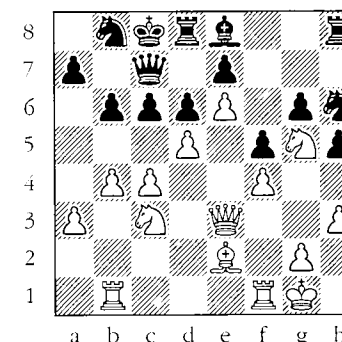
1. e4 d5 2. exd5 Nf6 3. d4
Bg4 4. Qd3?! This line can
be most safely met by Be2,
which generally gives White
a nice pawn center. But
White also does well with
Bb5+ but probably needs to
be aware of the
complications involved
before he plays this. Qxd5
5. Nc3 Qd7 6. Bf4 Nc6=+/+ 7.
Be5 Its hard to label this
a mistake because I wouldn't
want to play the ugly - but
perhaps necessary - Nf3,
either! O-O-O 8. Nb5!?
Rather than get pecked to
death, Wheeler goes all out
for complications. a6 9. a4
Qe6 Simply avoiding the
complications of taking the
knight as Black's advantage
still persists. (9... axb5
10. axb5 Nb8 11. b6 Nd5 12.
bxc7 Nxc7 13. Qc3 Nc6 14.
Bb5 e6=+) 10. Qc3 Nd5 11.
Bc4 (11. Nxc7 Qxe5+ 12. dxe5
Nxc3) 11... axb5 12. axb5
Nxe5 13. Bxd5 Rxd5 14. dxe5
Qxe5+ 15. Qxe5 Rxe5+ 16. Kf1
Rxb5 17. h3 Bf5 18. Nf3 Bxc2
19. Ke2 b6 20. Ra8+ Kb7 21.
Rha1 Ra5 22. R8xa5 bxa5 23.
Ne5 Bb3 24. Rxa5 c6 25. Ra3
Bd5 26. Nd7 e6 27. Rg3 g6
0-1

NTWO U1500

Joe Le Tate (1422)
Jose Luna (1406)

1. c4 g6 2. d4 Bg7 3. e4 c6
4. Nf3 d6 5. Nc3 Bg4 6. Be2

Qc7 7. h3 Bd7? The start of
Black's problems. He should
have simply taken the knight
and followed up with Nd7 and
e5. 8. Rb1 Na6 9. a3 O-O-O
10. Be3 Bh6 11. Qd2 Bxe3 12.
Qxe3 f5 13. e5 h5 14. e6 Be8
15. Ng5 Nh6 16. O-O Rf8 17.
f4 Rh8 18. b4 Nb8 19. d5 b6



The definition of a
space advantage!

20. dxc6 Continuing with c5
to demolish Black's
queenside shelter is also
winning. Also to be
considered is the simple
permanent restriction of the
knight with a4-b5, but this
is even weaker than the text
because White's advantage is
worth more than a piece.
Nxc6 21. Nd5 Qb7 22. Bf3 Kb8
23. c5 Ng4 24. Qc3 Nf6 25.
Nxf6 exf6 26. Qxf6 Bd7 27.
e7 Rde8 28. cxd6 Qa6 29. Qc3
b5 30. Nf7 Rc8 31. Nxxh8 Nxe7
32. Qf6 Qb6+ 33. Kh2 Qe3 34.
dxe7 Qxf4+ 35. Kh1 Rc2 36.
Nxxg6 Qg3 37. Ne5 1-0

TCN/Win 2008_06

NTWO Bishops

Victor Suich

Logan Blankenship

1. Nf3 c5 2. g3 g6 3. Bg2 Bg7 4. O-O Nf6 5. d3 d5 6. Nbd2 Nc6 7. Re1 e5 8. e4 d4 9. Nc4 Bg4 10. h3 Bxf3 11. Qxf3 O-O 12. Bg5 h6 13. Bxf6 Bxf6 14. a3 Re8 15. Rab1 a5 16. Nd2 a4 Logan logically goes about developing a queenside initiative. 17. Nf1 Bg7 18. Nh2 b5 19. h4 h5 20. Bh3 Ra6 21. Qe2 b4 22. Nf3 Qe7 23. Nd2 Rb8 24. Red1 Na7 25. Nc4 Qc7 26. Kh2 White should consider trying to generate his own counter play with Rf1 and f4, but this might also create some black-square weaknesses. Nb5 27. Ra1 bxa3 28. Nxa3 Nxa3 29. bxa3 Rb2 30. Rdb1 Rab6 31. Rxb2 Rxb2 32. Qd1 Qa5 With c4 Black could have continued attacking, but now Bd7 would secure a draw. 1/2-1/2

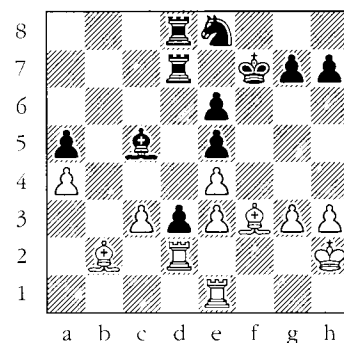
NTWO Knights

Blake Winstead (1006)

Roy Manners (1167)

1. e4 c5 2. Nf3 d6 3. Nc3 Nf6 4. d4 cxd4 5. Nxd4 e5 6. Nf3 a6 7. b3 Very unusual, but perhaps White is planning on attacking d6 from a3? Be6 8. Bb2 Nbd7 9. h3 Be7 10. Be2 b5 11. Ng5 O-O= 12. Nd5 Now it is almost certain that White's black-square bishop is badly placed. Nxd5 13. Nxe6 Qa5+! A nice in-between move. 14. Kf1 Ne3+ 15. fxe3 fxe6+ Black has a big advantage. 16. Bf3 Nf6 17. Kg1 Rad8 18.

Qe1 Qxe1+ 19. Rxe1 Ne8 20. Kh2 Bf6 21. Bg4 Nc7 22. Ba3 a5 23. c3 Rf7 Black has dissipated his advantage. 24. Rd1 Rfd7 25. Rd2 Kf7 26. Bf3 Ne8 (26... b4 27. cxb4 Nb5 28. Bb2 axb4) 27. Rf1 d5 Black self-destructs. 28. Rfd1 d4 29. Bb2? Better was Rd3. Now 29... Bg5 should equalize. d3 30. a4 White makes a weakening move when Kg3-f2 followed by further attacking the d3-pawn with the bishop would have painlessly secured an advantage. bxa4 31. bxa4 Be7 32. g3 Bc5 33. Re1



Nd6! Seeing that the d-pawn may eventually fall, Black envisions a bold concept--though Rb8 or Nf6 would have also been strong. 34. Rxd3 Nc4 35. Rxd7+ Rxd7 36. Bc1 Rd3 37. Be2 Rxc3 38. Bxc4 Rxc4+ 39. Kg2 Rxe4 40. Rf1+ Ke7 41. Kf3 Rxa4 42. e4 Ra1?? 43. Bg5+ Kf7 44. Rxa1 Bb4 45. Bd8 Bc3 46. Ra4 g5 47. Bxa5 Bd4 48. Bc7 Kf6 49. Bd8+ Kg6 50. Ra6 Kf7 51. Bxg5 1-0

47th Mid-South Open

The Mid-South Open expanded to a second section this year, adding an Under 1600 Section. But even this addition did not succeed in increasing its participation. This 5-round event, played from November 17-18th, had a 2-h Game format and was held at Hampton Inn in Memphis. No masters dominated the event like last year, so Kenneth Turner, a 1900-player from Mississippi, emerged clear champion with 4 points. (Kenneth managed 11th place last year.) The big point-gainer was from TN: Willanthian Williams; the 1400-player picked up 135 points competing in the Open Section with his 3 points. And his gain was no fluke: see his game against Baudendistel.

The Under 1600 Section was a family affair, with all of the participants being related! See the attached crosstables, pp. 35-36. Many games from the event are included in this issue and additional ones can be found on the informative Memphis Chess Club's website, located at URL: <http://memphischessclub.com/estead.com/index.html>.

47th Mid-South Open

William Polk (1400)

Albert Burgess (1518)

1. d4 d5 2. c4 e6 3. e3 Nf6 4. Nc3 Be7 5. Nf3 O-O 6. Qc2 h6 7. Bd3 dxc4 8. Bxc4 Nc6 Playing c5 would be best. Not only would this attack White's center but it would also ensure that the c-pawn does not later become a target. 9. a3 Na5 Better was Bd6, keeping the move e5 in mind. This move simply decentralizes a piece. 10. Ba2 b6 11. b4 Nb7 This is ugly but it does allow c5 to be played. 12. Bb1 Nd6 13. Ne5? Stronger was the simply e5, threatening to fork and win a piece as well as chase the defender from f6. Bb7 14. O-O Nfe4 15. f3 Nxc3?? 16. Qh7# 1-0

NTWO

Steven Arnold

Chris Martindale

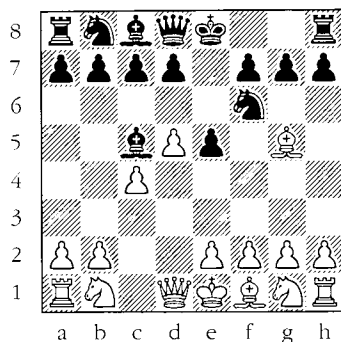
1. e4 c5 2. d3 Nc6 3. Nf3 g6 4. Be3 d6 5. Nc3 Bg7 6. Qd2 Qb6 Much better was queen side castling or the simple Rb1. 7. b3 Qb4 8. Nd5 Qxd2+ 9. Bxd2 Bxa1 10. Nc7+ Kd8 11. Nxa8 Bg7 12. Ng5 Nh6 13. Be2 Nd4 Black gets distracted. The simple b6 followed by Bb7 assures a solid advantage. 14. Bd1 Nb5 15. a4 Nd4 16. c3 Ne6 17. Nf3 Bd7 18. O-O Kc8 19. b4 f5 20. Ng5 Kb8 21. Bf3 Kxa8 22. Rb1 Kb8 23. exf5 Nxf5 24. Nxe6 Bxe6 25. bxc5? 1/2-1/2

NTWO U1500

Joe Le Tate (1422)

Victor Suich (1433)

1. c4 Nf6 2. d4 e5 3. d5 Bc5
4. Bg5



Ne4! It pays to know your book traps! 5. Nh3 (5. Be3 Bxe3 6. fxe3 Qh4+ 7. g3 Nxg3 8. Nf3 Qh6 9. Rg1 Nxf1) 5... Nxg5 6. Nxg5 Qxg5 7. e3 d6 8. a3 a6 9. Nd2 Nd7 10. Ne4 Qe7 11. Bd3 Ba7 12. Qc2 Nc5 13. Nxc5 Bxc5 14. O-O-O Bd7 15. g3 g6 16. b4 Ba7 17. Kb2 Qf6 18. Kb3 O-O 19. h4 Bf5 20. h5 Bxd3 21. Rxd3 c6 22. Qe2 cxd5 23. Rxd5 Rfd8 24. f4 exf4 25. gxf4 Re8 26. c5 dxc5 27. bxc5 Qxf4 (27... Bxc5 28. Rxc5 Qb6+) 28. exf4 Rxe2 29. hxg6 hxg6 30. f5 Rae8 31. f6 R2e6 32. Rf1 Re5 33. Kc4 Rxd5 34. Kxd5 Rc8 35. Rc1 0-1

NTWO Knights

Elo Wittig

Tim Staley

1. e4 c5 2. Nf3 Nc6 3. Bc4 e6 4. d4 cxd4 5. Nxd4 g6 6.

Nxc6 bxc6 7. Bf4 Obviously d5 was preferable. Bg7 8. e5 Ne7 Because of b2 being exposed, d5 was still possible and f6 would have also been good. 9. Nc3 Qa5 10. Qe2 O-O 11. O-O f6 12. exf6 Bxf6 13. Qe3? Better was Bd6 to hold the pawns up. And the move played is actually a blunder that can also be punished by Qb4, which actually threatens both bishops. d5 14. Be2 d4 15. Qd3 dxc3 16. b3 Nd5 17. Bh6 Bg7 18. Bg5 Nf4 19. Bxf4 Rxf4 20. g3 Rd4 21. Qf3 Bb7 22. Bc4 Qf5?! This should lose a couple of pawns but it is doubtful that Black really cares, since he is still a piece up. 23. Qe3 Re4 24. Qd3 c5 25. Qd7 Bd5 26. Bb5 Qf3 27. Rad1 Rd4 28. Qxd5 exd5 29. Rfe1 Rxd1 30. Rf1 Rxf1+ 31. Kxf1 Bd4 32. Ke1 Qxf2+ 33. Kd1 Qd2# 0-1

NTWO

Ryan Winstead 1040

Roy Manners 1169

1. e4 e5 2. Nf3 Nc6 3. Bb5 a6 4. Ba4 Nf6 5. O-O Bc5 6. d3 b5 7. Bb3 d6 8. a3 O-O 9. Nc3 Be6 10. Bxe6 Nd5 was much better. Black now has control of the center as well as the half-open f-file. fxe6 11. Be3 Nd4 12. Ng5 Qe8 13. Ne2 Rd8 Anticipating the opening of the d-file. However, Black would do better to pursue a kingside attack with moves like Qh4 and Ng4. 14. c3 Nc6

TCN/Win 2008_09

15. b4 Bb6 16. Qb3 d5 17. Bxb6 cxb6 18. f4 Rd7?! More challenging would be h6 followed by exf. 19. d4 Better was the simple fxe followed by Nf4. Nxe4 20. Nxe4 dxe4 21. fxe5 Nd8 22. Ng3 Qg6 23. Rxf8+ Kxf8 24. Re1 Rf7 25. Nxe4 Qf5 26. Qa2 g5? 27. Nd6 Qd3 28. Nxf7 Kxf7 29. Qb1 Qxc3 30. Qxh7+ Ke8 31. Qg6+ Kd7 32. Qe4 Qxa3 33. d5 Qc3 34. dxe6+ Nxe6 35. Qd5+ Ke7 36. Qd6+ Kf7 37. Rf1+ Nf4 38. Rd1 Qe3+ 39. Kh1 Qe2 40. Qf6+ Ke8 41. Rd8# 1-0

NTWO

Roy Manners (1167)

Lucas Edmonds (1089)

1. d4 d5 2. Nf3 Nf6 3. Bf4 Nc6 4. c3 Bg4 5. Nbd2 e6 6. e3 Bd6 7. Bg3 Bxg3 8. hxg3 O-O 9. Bd3 h6 10. Rc1 e5 11. dxe5 Nxe5 12. Bb1 Re8 13. Qc2 Re6 14. Nd4 Rd6 15. N2f3 Qe8 16. O-O a6 17. Rfe1 c5 18. Nxe5 Qxe5 19. Nf5 Bxf5 20. Qxf5 Qxf5 21. Bxf5 Rb6 22. Re2 Re8 23. Bc2 Rxb2? 24. f3 (24. Bh7+) 24... Rb6 25. Rd1 Rd6 26. Kf2 c4 27. Red2 b5 28. a4 g6 29. Re2 Re5 30. Rd4 Rh5 31. e4 bxa4? 32. e5 Ne4+ 33. Rxe4 dxe4? 34. Rxd6 exf3 35. Bxa4 fxg2 36. Kxg2 Rxe5 37. Rxa6 Black needs to hang onto at least one more pawn. So Rc6 is much better. He can gang-attack the a-pawn later and win it. Re3 38. Ra8+ Kg7 39. Ra7 Kf6 40. Bc6 Rxc3 41. Bd5 Kg5 42. Rxf7 Rc2+ 43. Kf3 Rc3+ 44. Ke2 Kg4 45.

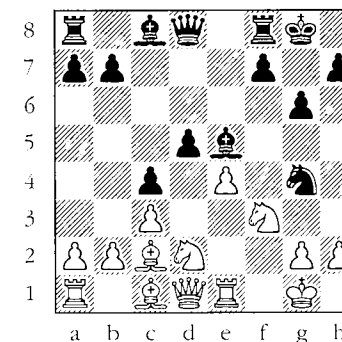
Rf4+ Kxg3 46. Rxc4 Rxc4 47. Bxc4 g5 48. Bd5 Kg4 49. Kf1 Kg3 50. Kg1 g4 51. Bg2 h5 52. Bf1 Kf3 53. Kh2 Kf2 54. Bg2 h4 55. Bh1 Kf1 56. Bg2+ Kf2 57. Bh1 Ke3 58. Bb7 Kf4 1/2-1/2

NTWO Knights

Blake Douthitt

Roy Manners

1. f4 d5 2. Nf3 c5 3. e3 e6 4. d4 Nc6 5. c3 Nf6 6. Bd3 c4 7. Bc2 g6 8. Nbd2 Bg7 9. O-O O-O 10. e4 Ng4 11. Re1 e5!? Here Roy states: "I saw the smothered mate [possibility] before I pushed the pawn." Nice vision but the combination is actually flawed. 12. fxe5 Ncxe5? 13. dxe5 Bxe5 14. Nxe5??



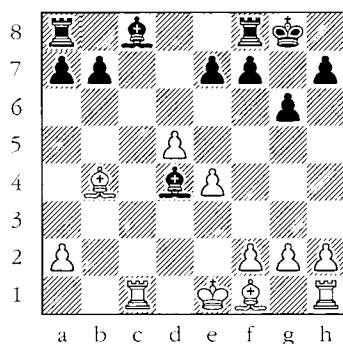
Roy expected his opponent to make this unwise move to help protect h2, but the simple Nf1 or even Re2 leaves White winning. Qb6+ Kudos for daring!! White resigned in face of the well-known 4-move smothered mate. 0-1 TCN/Win 2008_10

NTWO Rooks

Richard DeCredico (1667)

Corry Marsh (1641)

1. d4 Nf6 2. c4 g6 3. Nc3 d5
4. cxd5 Nxd5 5. e4 Nxc3 6.
bxc3 Bg7 7. Nf3 c5 8. Rb1
Qa5 9. Rb5 Qxc3+ 10. Bd2 Qa3
11. Rxc5 O-O 12. Qc1 Qxc1+
13. Rxc1 Nc6 14. d5 Nd4 15.
Nxd4 Bxd4 16. Bb4



Bf6? Black misses his chance for f5, which would undermine the White center and give his rook more operating room as well as some threats on the f2-square. 17. f4 The e-pawn could be easily won with Rc7 but the text nicely holds the advantage, too. Rd8 18. Rc7 e5 19. g3 exf4 20. gxf4 Rd7 21. Rc1 Be7 22. Bd2 Rd8 Again f5 would be better, undermining White's intimidating center. 23. Bc4 Bg4 24. Kf2 Rac8 25. Bb3 Ba3 26. Rxc8 Rxc8 27. Ke3 Bc5+ 28. Kd3 Ba3 29. Rg1 Bd7 30. Re1 Bb5+ 31. Ke3 Bc4 32. Bxc4 Rxc4 33. Kd3 b5 34. Rb1 a6 35. Rb3 Bc5 36. Bc3= Ra4 37. Bf6 Bd6? Black should

snap the a-pawn because he still has time to stop the d-pawn. 38. Rc3 Rc4 39. Rxc4 bxc4+ 40. Ke3 Better was Kxc4 as Black doesn't have time to take the f-pawn. Kf8 41. e5 Bc5+ 42. Kd2 Ke8 43. Kc3 h6 44. Bg7 h5 45. Kxc4 Be3 46. Bh6 Kd7 47. Bg5 Bf2 48. Kd3 Bg1 49. h3 Bf2 50. Ke4 Bc5 51. f5 Ba3 52. fxf6 fxf6 53. e6+ Ke8 54. Ke5 Bb2+ 55. Kd6 Ba3+ 56. Kc6 a5 57. d6 Bxd6 58. Kxd6 a4 59. a3 h4 60. Kc7 1-0

NTWO Knights

Martindale, Chris (1169)

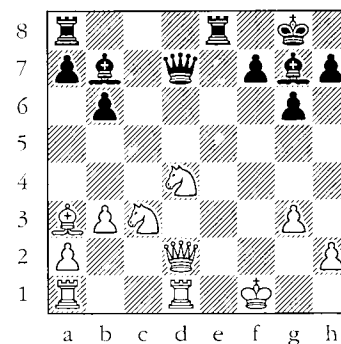
Winstead, Blake (961)

1. e4 c5 2. c3 d6 3. Nf3 Nc6
4. d4 b6 5. Bb5 Better would be the simple d5. Bd7 6. Be3 a6 7. Bd3 e6 8. O-O d5? 9. exd5 exd5 10. Re1 Nf6? Black must interject c4 first. 11. dxc5 bxc5 12. Bxc5+ Be7 13. Bxe7 Nxe7 Stronger is the immediate Qe2, halting castling. 14. Nbd2 O-O 15. Qe2 Re8 16. c4 Qb6 17. Nb3 Ba4 18. Qc2 Rac8 19. Rac1 h6 20. h3 Nc6 21. cxd5 Nb4? 22. Qxc8 Nxd3 23. Rxe8+ Nxe8 24. Rf1 Kf8 25. Qf5 Bb5 26. Nbd4 Nd6 27. Qh5 Nf4 28. Qg4 Bxf1 29. Kxf1 Nd3 30. Qg3 Better was Qd7. Ne4 31. Qh4 Qc7 32. Qxe4?? Qc1+ 33. Ne1 Nxe1 34. Qxe1 Qc4+ 35. Ne2 Qxd5 36. Nc3 Qb7 37. Qe2 Qc7 38. g3 Qb7 39. Kg1 Qc8 40. Kh2 Qb7 41. a4 Qb8 42. Qxa6 g6 43. Qf6 Qxb2 44. Qh8+ Ke7 45. Nd5+ Kd6 46. Qxb2 1-0

TCN/Win 2008_11

Fischer's Genius

Only one game needs to be referred to crown Fischer's play with the stamp of genius. Fischer swept the 1964 U.S. Championship, winning 11-0 — a still unprecedented feat. This game position arose from his Round 3 encounter with Robert Byrne, a GM who at that time had not lost a game in more than two years! Byrne's comment on the final combination represented by the diagram is: "The culminating combination is of such depth that even the very moment at which I resigned, both grandmasters who were commenting on the play for the spectators in a separate room believed that I had a won game!"



After 21...Qd7, White resigned!

If 22. Qf2 Qh3+ 23. Kg1 Re8+! 24. Rxe Bxd4+. If 22. N(d)-b5 Qh3+ 23. Kg8 Bh6! followed by Be3. See this edition's Scholastic Corner.

Solutions to Scholastic Quiz

To honor Fischer and help perpetuate his memory, additional quizzes have been constructed and provided on pp. 19-20. The solution to those quizzes are provided below.

Byrne vs. Fischer. Analysis.

1. Re1+ Rxe 2. Bxd4

Fischer vs. Benko.

1. Rf6 with the idea of e4-e5.

Fischer-Myagmarsuren

31. Qxh7 Kxh7

Fischer vs. Filip

1. f5! preventing Rg6

Fischer vs. Portisch

1. e5! creating a space for the knight.

Fischer vs. Jimenez

Na4-b6-d5.

Doda vs. Fischer

1... Nf3 2. Rh5 Nd2

Doda vs. Fischer, 2nd Puzzle

1... Rg6, eyeing Qa1 +

Fischer vs. Schweber

23. Rxe4 Qxg3 24. Rxd4! Qg4 25. Rxc4

Nikolic vs. Fischer

19... Bg4!? 20. hxg hg 21. Rh1 Nf3+ 22. Bxf gxf 23. Kg1 Bxf 24. exf Kg7 with play down the h-file.

Byrne vs. Fischer; Analysis.

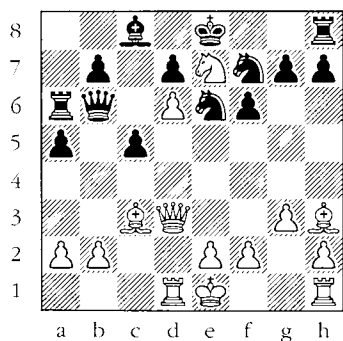
2nd Puzzle

Bg7-h6-e3!

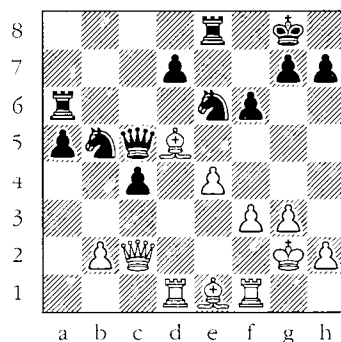
TCN/Win 2008_12

Knoxville City Championship
 Peter Bereolos
 Alborz Bejnood
 Annotator: Peter Bereolos

I had White in Round 4 against Alborz Bejnood. He was the big surprise in this year's Championship. He was the first player to qualify this year, by winning the January tournament, and started the Championship with 3 wins including an upset of Matthew Marsh. He achieved difficult positions in all of his games, but as the present game demonstrates, he showed a considerable amount of resilience under fire. 1. d4 e6 2. c4 c5 3. d5 exd5 4. cxd5 Nf6 5. Nc3 Bd6 6. g3 Qe7 A very unusual move, I decided to grab the 2 bishops and gain a lot of time developing 7. Nb5 Na6 8. Bg2 Nc7 9. Nxd6+ Qxd6 10. Bf4 Qb6 11. d6 Ne6 12. Be5 Ng4 13. Bc3 f6 14. Nf3 Nh6 15. Qd2 Nf7 16. Rd1 a5 17. Bh3 Ned8 18. Qe3+ Ne6 19. Qd3 Nf8 20. Nh4 Ra6 21. Nf5 Ne6 22. Ne7?!



I thought this was a clincher, but there is a tactical hole. Better was either 22. Qf3 or 22. O-O leaving Black struggling to unwind 22... Qxd6 guarding the bishop loses 22... Qd8 23. Nxc8 Qxc8 24. Bxe6; 22... Ra8 23. Nxc8 Rxc8 24. Bxe6; or 22... Kd8 23. Bxe6 dxe6 24. d7 Kxe7 25. dxc8=N+ Rxc8 26. Qd7+ 23. Nxc8 Qc6 Even if White was castled here, the knight still can't get out from c8 24. Bg2 Qxc8 25. Qb5?! A silly move that drops a couple of tempi 25. O-O and the 2 bishops give compensation for the pawn. 25... Nd6 26. Qd3 O-O I thought 26... b5 mobilizing the queenside was better. 27. a4 Re8 28. O-O Ng5 29. Bd5+ Kh8 30. f3 c4 31. Qc2 Qc5+ 32. Kg2 Ne6 33. e4 b5 34. axb5 Nxb5 35. Be1



35...Nbd4? The knight on d6 had been holding Black's position together, and it should have returned there. 36. Qxc4 Qxc4 37. Bxc4 Rc6 38. Bxe6 Rc2+ 39. Rf2 Rxf2+ TCN/Win 2008_13

40. Bxf2 Nxe6 41. Rxd7 Ra8 42. Re7 Nf8 43. Ra7 Rxa7 44. Bxa7 Nd7 45. f4 Kg8 46. Kf3 Kf7 47. Ke3 Ke6 48. Kd4 Kd6 49. Kc4 Kc6 50. Bd4 Nb6+ 51. Bxb6 Kxb6 52. Kd5 Kc7 53. Ke6 Kc6 54. e5 Kc5 55. Kf7 fxe5 56. fxe5 [1:0]

CLARKSVILLE CHESS CLUB AWARD

The Clarksville Chess Club gave out its annual Awards to distinguished club members at the NTWO this year. Among its honored was Autumn Douthitt. This report by Roy Manners details her exploits and worthiness.

"Autumn Douthitt won 'Chess Player of the Year' for 2007. Autumn played in 10 tournaments, including both Scholastic and Open events. She won 33 tournament games. Moreover, she had the highest winning percentage of any adult or scholastic player in the Clarksville Chess Club, winning 68.367% of her tournament games last year. Her average tournament score was 3.35 points. She was our most improved player overall as she added 410 points to her rating in 2007.

According to the USCF top 100 lists, Autumn is the number one rated 12-year old in the state of Tennessee! Also, she is the number three rated girl under 21 in

the state. She is rated 17th overall under 21 in Tennessee, and she is 65th in the Nation for girls under 13. She flat out blew us all away!"

NTWO Knights

Tim Staley (1030)

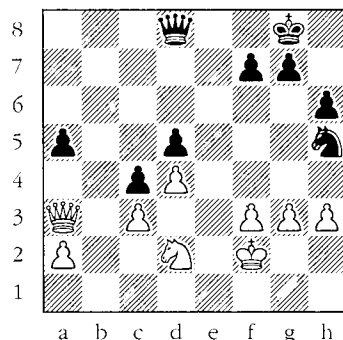
Blake Douthitt (1239)

1. c4 f5 2. Nc3 Nf6 3. g3 e6 4. Bg2 d5 5. cxd5 exd5 6. e3 c6 7. Nge2 Bd6 8. O-O O-O 9. b3 Nbd7 10. Nd4 Ne5 11. d3 Bd7 12. f4 Neg4 13. h3 Nh6 14. Re1 Bc5 15. Nde2 Re8 16. d4 Bb4 17. a3 Bxc3 18. Nxc3 Nf7 19. a4 Nd6 20. Ba3 Nde4 21. Nxe4 Nxe4 22. Bxe4 Rxe4 23. Bd6 Qf6 Better was Re6, not allowing the rook to be cut off from play. 24. Be5 Qh6 25. Kh2 Re8 26. Ra2 Re6 27. Rg2? Be8? (Qxh3+ was the move.) 28. g4 fxg4 29. Rxc4 Rg6 (29... Bh5 30. Rxc4 Rg6 31. Qxh5 Qf7) 30. Rxc4 Rg6 Better was taking with the pawn. 31. Qg4 Qh5 32. Qc8+ Be8 33. Rg1 Rxe5 34. dxe5 Kf8 35. Qxb7 g6 36. Qxa7 Bf7 37. Qc5+ Kg7 38. Qxc6 Qe2+ 39. Rg2 Qxe3 40. Qf6+ Kg8 41. e6?! Bxe6 42. Qe5 Qxh3+ 43. Kg1 Kf7 44. f5! Bxf5 45. Qxd5+ Be6 46. Qb7+ Kf6 47. Rf2+ Ke5 48. Qc7+ Ke4 49. Qf4+ Kd5 50. Qf3+ Qxf3 51. Rxf3 Kc5 52. a5 Kb5 53. a6 Bd5 54. Rd3 Bc6 55. Rc3 Be4 56. a7 Kb6 57. Rc4 Ba8 58. Ra4 Kb7 59. b4 Kb6 60. Ra5 Kb7 61. Kf2 Kb6 62. Kg3 h6 63. Kg4 Kc6 64. Ra6+ Kb7 65. b5 Kc7 66. Rxc6 1-0

47th Mid-South Open
Date "2007.11.18"
Aaron Smith (1665)
Greg Turner (1943)

1. d4 d5 2. Bf4 e6 3. e3 Nf6 4. Bd3 Nbd7 5. Nf3 b6 6. Nbd2 Bb7 7. c3 Be7 8. Qc2 O-O 9. O-O c5 10. Rac1 Better is b3 or Bg3. White should not have wasted time moving the rook here because Black can close the file at will. h6 11. h3 c4 12. Be2 b5 13. b3 a5 14. bxc4 bxc4 White still has the preferable position because Black's white-square bishop may never re-enter the battle. 15. Ne5 Nxe5 16. Bxe5 Bd6 17. Rb1 Bc6 18. Bxd6 Not the best. White should simply play f4. This would effectively shut out the white-square bishop. Qxd6 19. Nf3 Nd7 Excellent! Controlling both e5 and b6. Black is now threatening to assume the initiative with Qa3. 20. Rfd1 Rab8 21. Nd2 Qa3 22. e4? This move is conceptually bad and would be effective only if Black took the pawn. This revives Black's bishop. Ba4 23. Qc1 Qd6 24. Re1 Rxb1 25. Nxb1 Rb8 26. exd5 exd5 27. Bd1 Wrong square. Bf3 was best. Now Black simply trades off his problem bishop. Bxd1 28. Qxd1 Qb6 Better was Rb2. 29. Qa4 Qb5 30. Qa3?! White should have jumped at the chance to swap queens: (30. Re8+ Nf8 31. Qxb5 Rxb5 32. Na3 Rb2 33. Ra8= 30... Nf6 31. f3 Re8 Qb2 was

better, but Black still has a little advantage. 32. Rxe8+ Qxe8 33. Kf2 Qd8 34. g3 Safer would have been Qb2 or even Kgl. If White is worried about the Black knight, then g4 was much better. Nh5 35. Nd2



Nxg3! 36. Nxc4? White must take the knight. Qh4 37. Nxa5 Ne4+ 38. Ke3 Qf2+ 39. Kf4 Qd2+ 0-1

NTWO Bishop
Charlie Houston
Joe Luna

1. e4 g6 2. Nc3 Bg7 3. Bc4 e6 4. d4 c6 5. Nf3 b5 6. Bb3 Nf6 7. e5 Nd5 8. Nxd5 cxd5 9. Bg5 f6 10. exf6 Bxf6 11. Qd2 O-O 12. h4 Nc6 13. c3 Ba6 14. Nh2 Qb6? (Bxf6) 15. O-O-O b4 16. Ng4 bxc3 17. bxc3 Bg7 18. Nh6+ Bxh6 19. Bxh6 Rf7 20. h5 Ne7 21. Bg5 Qd6 22. Bxe7 Qxe7 23. Qh6?! Better was hxg. Qf6?! (g5, keeping the kingside closed) 24. Bc2 Qf4+ 25. Qxf4 Rxf4 26. f3 Kg7 27. Rh3 and the game was drawn in a few more moves. 1/2-1/2

TCN/Win 2008_15

Tennessee Senior Open (3)
Gary Tamkin
Peter Ciarleglio

1.d4 Nf6 2.Nc3 d5 3.e4 dxe4 4.f3 exf3 5.Nxf3 e6 6.Bd3 Be7 7.O-O O-O 8.Qe1 c5 9.Qh4 Nc6 10.Bg5 h6 11.Bxh6 Ne4? 12.Qxe4 f5 13.Qf4 gxh6 14.Qxh6 Rf7 15.Bc4 Nxd4 16.Rfd1 Qf8 17.Qxf8+ Bxf8 18.Nxd4 cxd4 19.Nb5 Bc5 20.Kh1 a6 21.Nxd4 Rf6 22.Nxf5 Kh7 23.Ng3 b5 24.Bd3+ Kg7? 25.Nh5+ 1-0

47th Mid-South Open
Greg Turner (1943)
Edgar Davison (1841)

1. e4 d5 2. exd5 Nf6 3. Nf3 Qxd5 4. Nc3 Qa5 5. b3 Very unusual for this variation - and probably inferior to Bc4 or d4. Bg4 6. Bb2 Nc6 With nothing to chase the Black queen with, it stands well on a5 and can easily transfer to the kingside. Hence, c7-c6 is useless here. Black is equal, for sure. 7. Be2 O-O-O 8. O-O e6 9. a3 Qf5 10. b4 Bxf3 If Black was intent on winning, he could play moves like Bd6 and h5. 11. Bxf3 Nd4 12. d3 Nxf3+ 13. Qxf3 Qxf3 14. gxf3 Nd5 15. Ne4 Be7 16. Kh1 Bf6 17. Nxf6 Nxf6 18. Rg1 Rhg8 19. Rg2 Nh5 20. Rag1 g6 The position is drawish and likely to remain so. 21. Rg4 Rd5 22. Bc1 Rf5 23. f4 Rd8 24. Rg5 Rdd5 25. Rxf5 Rxf5 26. Rg5 Kd7?! Better was Ng7 but even a superior minor piece shouldn't grant

too much in this position. However, here is no reason that Black should suffer his pawn structure to get fractured. 27. Rxf5 exf5 28. Kg2 Kc6 29. Kf3 Nf6 30. Bb2 Ne8 31. c4 a6 32. Ke3 Nd6 33. Kd4 b5 34. c5 Ne8 35. Ke5 Kd7 White could inflict upon himself a self mate here if he played d4, as f6 followed by c6 mates. 36. f3 c6 37. Bc3 f6+ 38. Kd4 Nc7 39. Be1 Nd5 White's king is effectively stalemated. 40. Bh4 Ke6 41. Bg3 Kd7 42. h4 h5 43. Bh2 Kc7 44. Bg1 Kb7 45. Be3 Kc7 46. Bc1 Kd7 47. Bd2 Ke6 48. Bc1 1/2-1/2

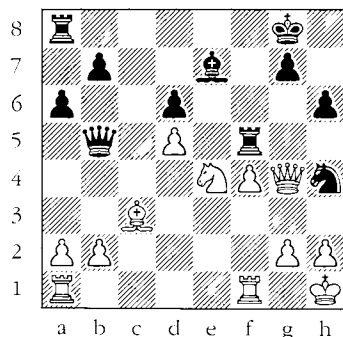
47th Mid-South Open
Jeff Baudendistel (1555)
Aaron Smith (1555)

1. Nf3 Nf6 2. c4 e6 3. d4 d5 4. e3 Be7 5. Be2 O-O 6. O-O c5 7. Nbd2 Nc6 8. Nb3 b6 9. a3 Ba6 10. cxd5 Bxe2 11. Qxe2 Qxd5 Black is doing well. 12. Qd1 Rad8 13. Bd2 Ne4 (13... c4 14. Nc1 e5 15. Bc3 b5-/+) 14. dxc5 Black seems too worried about getting isolated or hanging pawns from this variation, revealing that he does not yet understand their dynamic potential. Nxc5 15. Nxc5 Bxc5 16. Qc2 Ne5 17. Nxe5 Qxe5 18. Bc3 Qg5 19. Rad1 h6 20. Qa4 Bd6 The simple a5 was better. 21. Rd4 Rxd6 is also possible and perhaps better. Bb8? 22. Rg4 Bxh2+ 23. Kh1 Qe7 24. Rxg7+ 1-0

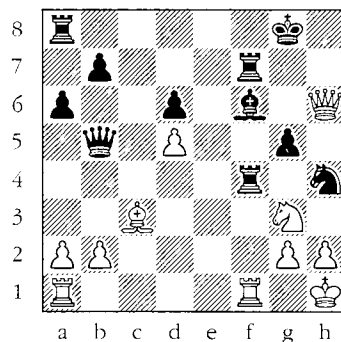
TCN/Win 2008_16

Tenn. Senior Open 2007 (3)
Jerry Spinrad
Edward Labate

1. e4 c5 2. Nf3 d6 3. c3 Nf6
4. Be2 Nc6 5. d4 cxd4 6.
cxd4 e6 Now the pawn can be
snatched because the queen
check is blocked. So 6...
Nxe 7. d5 Qa5+ would net a
pawn but Black's development
would sorely lack. Still,
this is preferable to
allowing White to maintain a
threatening center. 7. Nc3
Be7 8. O-O a6 9. d5 exd5 10.
exd5 Ne5 11. Re1 h6 12. Nd4
O-O 13. Kh1 So that f4 can
be comfortably played. Nfg4
14. Rf1 f5? This weakens
the White squares as well as
loses a pawn. The cramping
d-pawn is retarding Black's
development. 15. f4 Ng6 16.
Nxf5 Bxf5 17. Bxg4 Qd7 18.
Bxf5 Qxf5 19. Ne2 To be
considered was g4. It
allows easy defense of the
f-pawn and could establish
an attacking duo. But the
White king would be a mite
exposed. Bf6 20. Ng3 Qd7
21. Ne4 Be7 22. Qh5 Qb5 23.
Bd2 Nh4 24. Bc3 Rf5 25. Qg4



g5? Necessary was Rf7. 26.
Rfd1 Instant death would
have come with an immediate
Ng3. Raf8 27. Ng3 Rxf4 28.
Qe6+ R8f7 29. Qxh6 Bf6



30. Nh5! Bg7 31. Qe6 Bxc3
32. Nxf4 Qxb2 33. Rab1 Qf2
Better was Qc2. 34. Rf1 Qd4
35. Ne2 Qg7 36. Qxf7+ Qxf7
37. Rxf7 Kxf7 38. Rxb7+ Kg6
39. Nxc3 Nf5 40. Rb6 a5 41.
Nb5 Kh5 42. Nxd6 Ne3 43. Rb5
a4 44. Ne4 a3 45. d6 Kh4 46.
d7 Nd1 47. d8=Q Nf2+ 48.
Nxf2 1-0

The Fischer Variation

Havana Olympic 1966

Robert Fischer
Svetozar Gligoric

1. e4 e5 2. Nf3 Nc6 3. Bb5
a6 4. Bxc6 dxc6 5. O-O f6!
6. d4 Bg4! 7. c3! exd4 8.
cxd4 Qd7 9. h3! Be6 10. Nc3
O-O-O 11. Bf4! Ne7? 12. Rc1
Ng6 13. Bg3 Bd6 14. Na4!
Bxg3? 15. fxg3 Kb8 16. Nc5
Qd6 17. Qa4! Ka7?? 18. Nxa6!
Bxh3 19. e5! Nxe5 20. dxe5
fxe5 21. Nc5+ Kb8 22. gxh3
e4 23. Nxe4 Qe7 24. Rc3 b5
25. Qc2 1-0

Top-5 Regional Qualifiers

REGION 1 QUALIFIER RESULTS

High School

Jesse Jones	1789	4.0
Clayton Gotwals	1416	4.0
Matthew Marsh	2046	4.0
Shreyas Dahotre	1388	3.5
Noel Herrmann	1025	3.5

Junior High

Corry Marsh	1709	4.5
Peter Suich	1926	4.0
Nathan Smith	1128	2.5
Demet Bovopoulos	1329	2.5
Matthew Klawonn	879	2.5

Elementary

Jason Fu	1177	5.5
Elliot Baerman	1107	5.5
Samir Martin	817	5.0
Albert Xue	855	5.0
Sanchit Wadhawan	1222	4.5

Primary

Hunter Marsh	432	5.0
Sean Read	466	4.0
Paul Nodit	542	4.0
James Hodge	341	4.0
Shijie Zhao	nnnn	4.0

REGION 2 QUALIFIER RESULTS

High School

Ryan Hunley	1623	5.0
Philip Hinchman	1950	4.0
Michael Davis	1270	4.0
Kaleb Rice	1092	3.0
Joshua Giddings	1145	3.0

Junior High

Erick Lorinc	1222	4.5
Charlie Houston	1314	4.0
Lucas Edmonds	1070	4.0
Brandon Brewer	454	4.0
Cody Challener	nnnn	4.0

Elementary

Noah McClung	1054	5.0
Cary Carter	891	4.0
Ethan Jones	648	4.0
Luke Almonrode	nnnn	4.0
David Thompson	nnnn	4.0

Primary

Matthew Jones	438	5.0
Zachary Webber	100	4.0
Gunnar Moss	100	3.5
Charles Hamlin	nnnn	3.5
Brock Herring	233	3.0

REGION 3 QUALIFIER RESULTS

High School

Josh Salter	1691	4.5
Jacob Schafer	1324	4.0
Hudson Todd	1193	3.5
Koty Berrett	1331	3.0
Michael Agostino	1459	3.0

Junior High

James Wu	1991	5.0
Andrew Yang	1026	3.5
Ravi Konjeti	1098	3.5
Salvatore Neglia	1600	3.0
Manu Nair	1540	3.0

Elementary (See p.21)

Gene Xijie Li	1222	5.0
Christopher Welch	1006	4.0
Neil Zheng	1010	4.0
Marco Mirnics	992	3.5
Ivan Velkovsky	741	3.5

Primary (See p. 21)

Alexander Qin	882	5.0
Joachim Kennedy	355	4.0
Sam Strang	733	3.5
Anna Li	401	3.5
Nathan Baulch	538	3.5

REGION 4 QUALIFIER RESULTS

High School

George Woodbury III	1608	4.0
Chase Knowles	1423	4.0
Nishit Reddy	1618	3.0
Garrett Houston	1403	3.0
Aaron Vancil	1458	2.5

Junior High

Graham Gibson	1565	4.5
Graham Horobetz	1531	4.0
Nathan Vogt	1790	3.5
Jordan Berryhill	1452	3.5
Uday Cherukuri	1251	3.5

Elementary

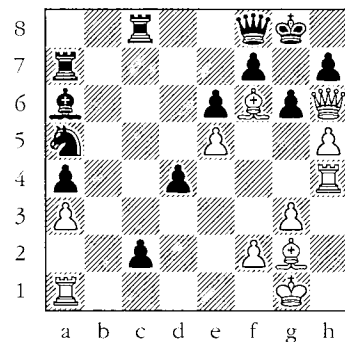
Jasen Berryhill	1304	4.5
Deepak Sathyan	1222	4.5
Arun Jambulapati	1035	4.0
Kasyap Cherukuri	1084	4.0
Max Law	999	3.5

Primary

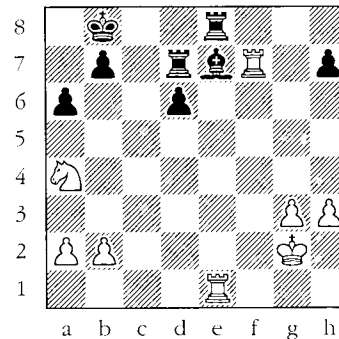
Joseph Stafford	1198	5.0
Ragan Sernel	907	4.0
Bays Webb	670	4.0
Nagaraj Bhagwat	546	4.0
Pranay Lingareddy	651	3.5

SCHOLASTIC CORNER: FISCHER'S LEGACY

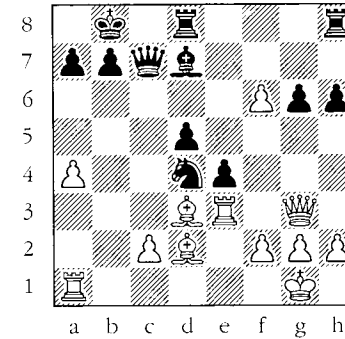
Most of these combinations were so deep that I shortened their solutions to nearer their "obvious" end so that they could be more easily solved by any student. I, myself, actually have an easier time solving the tactical wiz Tal's combos than I do grasping Fischer's quieter style!



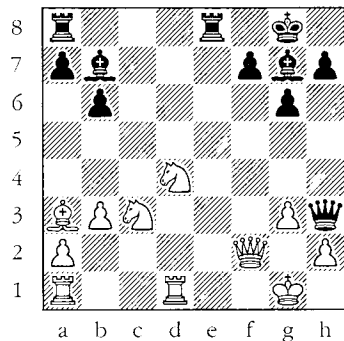
3 Fischer-Myagmarsuren,
1967. White to move.



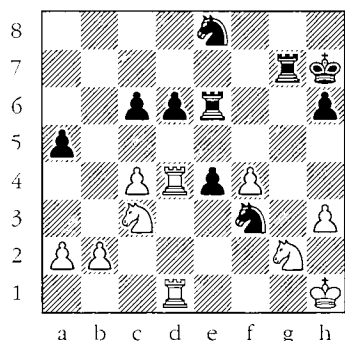
Diag. 6 Fischer vs. Jimenez,
1966. White to move.



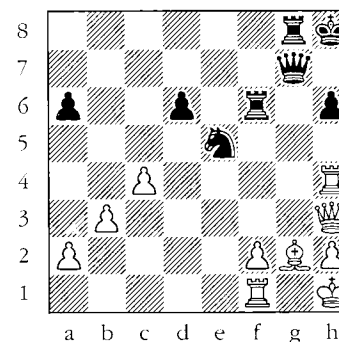
Diag. 9 Fischer vs. Schweber,
1970. White to move.



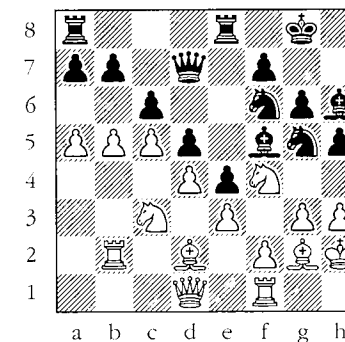
Diag. 1 Bryne vs. Fischer, 1963.
Black to move. Hint: The other
bishop should be used, too.



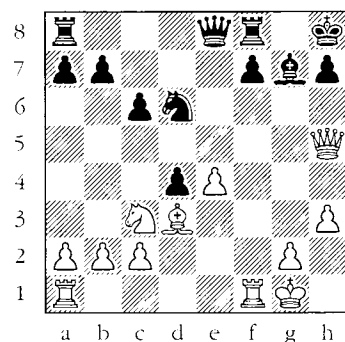
Diag. 4 Fischer vs. Filip, 1962.
White to move. Hint: Winning a
pawn is not enough.



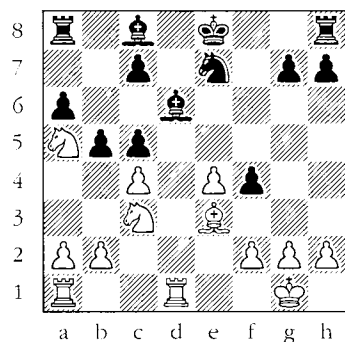
Diag. 7 Doda vs. Fischer, 1965.
Black to move.



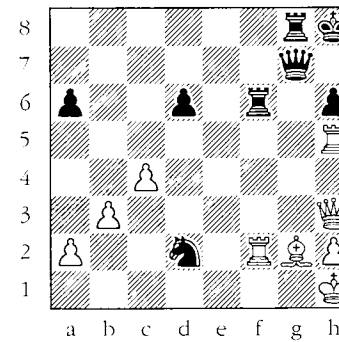
Diag. 10 Nikolic-Fischer, 1968.
Black to move.



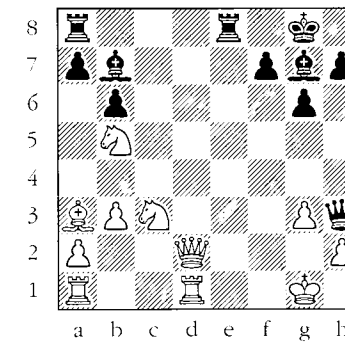
Diag. 2 Fischer v. Benko, 1963.
White to move. Hint: White's
focus is h7 and mate.



Diag. 5 Fischer vs. Portisch,
1966. White to move.



Diag. 8 Doda vs. Fischer, 1965.
Black to move.



Diag. 11 Bryne vs. Fischer,
1963. Black to move.

NTWO Knights

Roy Manners Roy (1167)

Alexander Qin (1005)

1. d4 d5 2. Nf3 Nf6 3. Bf4 e6 4. e3 Bd6 5. Bg3 Nbd7 6. Nbd2 b6 7. c3 Bb7 8. Bd3 O-O 9. Rc1 Qe7 10. Bb1 Ne4 11. Qc2 e5 12. Bh4 Either Nxe4 or dxe5 are preferable. Qe6 13. dxe5 Nxe5 14. Ng5? White is trying to force a mate on h7 but is creating many weaknesses. Now either Qh6 or Qg4 would give Black an easy advantage. Qg6 Assuring that no surprise mate will materialize. 15. f3 Nxcg5 16. Qxcg6 fxcg6 (Ngxf6+ grabs another pawn and leaves the bishop sitting awkwardly.) 17. Bxcg5 Ba6-/+ 18. Rd1 Better is the simple Kf2. Nd3+ 19. Bxd3 Bxd3 20. Nb3 Bc2 21. Rd2 Grabbing the d-pawn gives White a plus and allows him to later expand with e4. Bf5?! 22. Rxd5 h6 23. Bh4 g5 24. Bf2+/- Rad8 Hoping White will castle and lose his rook to an in-between check. 25. Nd4 g6 26. Nc6 Be6 27. Rd1 Rd7 28. O-O Bc4 29. Rfe1 a5? White should have taken the a-pawn. 30. Ne5 Bxe5 31. Rxd7 Bxa2 32. Bg3 Bxc3 33. hxg3 c5 34. Rb7 Rf6 35. Rd1 Bb3 36. Rd8+ Rf8 37. Rxf8+ Kxf8 38. Rxb6 Kf7 39. Rxb3 1-0

**** Regional Qualifier Adjustment ****

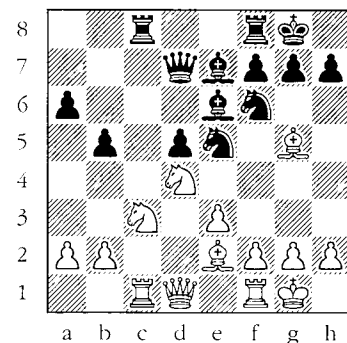
The listing of Region III Individual Qualifiers on page 18 does not reflect actual finish order, but rather those most likely going to play in the Finals. The Bonvissuto's are not shown.

NTWO - Open Section (4)

Peter Bereolos (2316)

Joshua Suich (2121)

1. d4 d5 2. c4 e6 3. Nc3 c5 4. cxd5 cxd4 5. Qa4+ Bd7 6. Qxd4 exd5 7. Nf3 According to ECO-2003, White can safely poach this pawn: 7. Qxd5 Nf6 8. Qb3+/-=. While this may be so, certainly White's development will lag and Black will enjoy the initiative for several moves. 7... Nc6 8. Qd1 Nf6 9. Bg5 Be6 10. e3 Be7 11. Be2 O-O 12. O-O Qd7 13. Qa4 a6 14. Rac1 b5 15. Qd1 Rac8 16. Nd4 Ne5? Black could equalize by playing b4 or either h6 first and then b4.



17. f4! Alert play, targetting the bishop at e6! Nfg4 (17... Nc6 {17... Neg4 18. f5} 18. Ncxb5 Ng4 19. Nxe6 fxe6 20. Bxc4 Bxc5 {if 20... axb5 21. e4} 21. Nd4) 18. Nxe6 Qxe6 (18... fxe6 19. Bxe7 {19. Bxc4 Bxc5 20. fxc5 Rxf1+ 21. Kxf1 b4} 19... Nxe3 20. Qd4 Nxf1 21. Bxf8) 19. Bxc4 Nxc4 20. f5 Bxc5 21. fxe6 Bxe3+ 22. Kh1

TCN/Win 2008_21

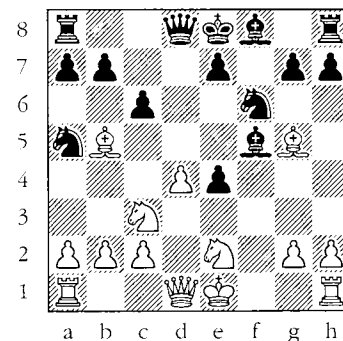
Bxc1 23. exf7+ Rxf7 24. Rxf7 Kxf7 25. Qxc4 Technically better was Qxd5+. 25... Rd8 26. Qf5+ Kg8 27. Nxd5 Bxb2 28. Qe6+ Kh8 29. Qxa6 b4 30. g3 h6 31. Nxb4 Rd1+ 32. Kg2 Rd2+ 33. Kh3 1-0

NTWO - Open Section (5)

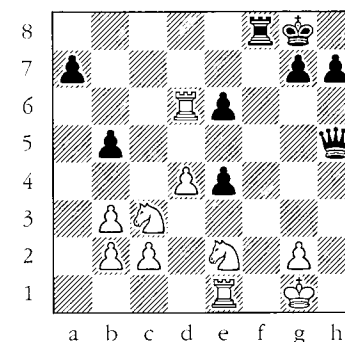
Peter Bereolos (2316)

Gerald Larson (2097)

1. d4 f5 2. e4 fxe4 3. Nc3 Nf6 4. f3 d5 5. fxe4 dxe4 6. Bg5 Bf5 7. Bc4 Nc6 8. Nge2 Na5 9. Bb5+ c6



10. Ba4?! Better is Ng3 followed by Be2. Now Black gets an initiative. e6 11. O-O b5 12. Bb3 Nxb3 13. axb3 Bd6 14. h3 O-O-/+ 15. Qd2 Qe8 16. Bxf6 Rxf6 17. Qe3 Qg6 18. Ra6 Raf8 Accurately played. 19. Re1 Bxh3?! With b4 or e5 Black could have maintained the advantage. 20. Qxh3 Rf5 21. Rxc6 (On 21. Nxe4 Rh5 22. Qxh5 Qxh5 23. Nxd6 Qd5, Fritz9 gives Black a 2.5 advantage.) 21... Rh5 22. Qxh5 Qxh5 23. Rxd6



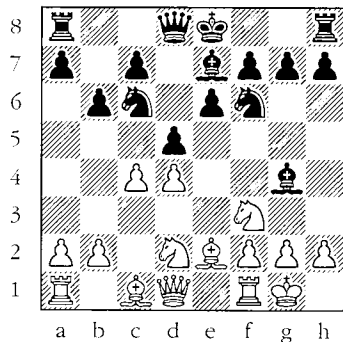
Qf5 (Black is winning on 23... Qh4! 24. Rf1 {even less helpful is 24. g3} 24... Rxf1+ 25. Kxf1 e3 26. g3 Qh2 27. Nd1 Qh1+ 28. Ng1 Qxg1+ 29. Kxg1 e2.) 24. Nd1 e3? Black slips up. Qg5 would strongly continue the assault. 25. c4 (25. Rc6! with the idea Rc3xe3 b4 26. Rc5) 25... Qd3 26. Nec3 b4 27. Rxe6 bxc3 28. bxc3 Qc2 29. R6xe3 The e-pawn is not going anywhere, so b4 is better since it would deny Black a passed a-pawn. Qxb3 30. c5 a5 31. c6 Rc8 (31... Qc4 32. Re5) (31... a4) 32. Re8+ Rxe8 33. Rxe8+ Kf7 34. c7 Qxd1+ 35. Kh2 Qh5+ 36. Kg1 Qd1+ 1/2-1/2

Most of the analysis in this game and Bereolos-Suich was provided by Pete himself. He will later provide more rigid analysis and comments on these games and others on his chess site on the web at URL: <http://www.knology.net/~bereolos/>.

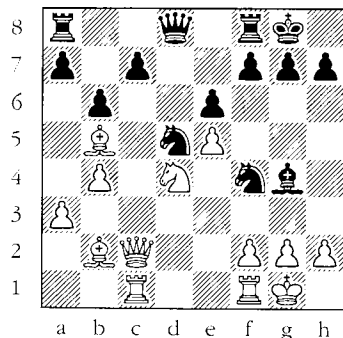
TCN/Win 2008_22

47th Mid-South Open
 Jeff Baudendistel (1555)
 Willianthian Williams (1545)

1. Nf3 d5 2. d4 Nf6 3. Nbd2
 Nc6 4. e3 Bg4 5. Be2 e6 6.
 O-O Be7 7. c4= b6?



8. a3 (8. Qa4! Qd7 {8... Qd6
 9. c5 bxc5 10. Bb5} 9. cxd5
 Nb4 10. Bb5 c6 11. dxc6 Qc7)
 8... O-O 9. b4 dxc4 10. Nxc4
 Bd6 11. Bb2 Ne7 12. e4? Nxe4
 13. Qc2 Nf6 14. Rac1 Ned5
 15. Nce5 Nf4 16. Bb5 Bxe5
 Stronger was giving up the
 other bishop and then
 attacking the queenside:
 16... Bxf3 17. Nxf3 a5. 17.
 dxe5 N6d5 18. Nd4 Removing
 a key defender, but Black's
 reply was unexpected.



Bh3! 19. Bc6 Bxg2 0-1

Tennessee Senior Open (3)
 Richard Higgins
 Ronnie Barnes

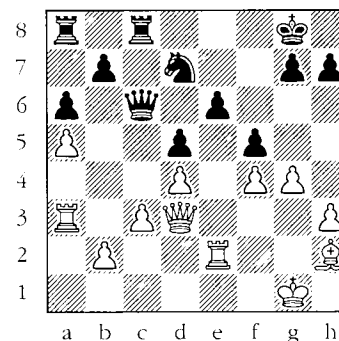
1. d4 f5 2. c4 g6 3. Nc3 Nf6
 4. Nf3 Bg7 5. e3 O-O 6. Be2
 d6 7. O-O e6 8. b4 b6 9. Rb1
 Bb7 10. Bb2 Nbd7 11. Qb3 Kh8
 12. c5 d5? (Better is Qe7 or
 Nd5.) 13. Ne5? Right piece;
 wrong square! (13. Ng5! Qe8
 [13... Qe7 14. c6 Bxc6 15.
 b5 Bb7 16. Ba3] 14. Nb5)
 13... Nxe5 14. dxe5 Ng4 15.
 f4 d4 16. Nd1 (16. Bxg4 dxc3
 17. c6! Bxc6 18. Qxc3) 16...
 Bd5 17. Bc4?? Qh4 18. h3 Qg3
 19. Bxd5 Qh2# 0-1

Tennessee Senior Open (4)
 James Hodge
 Gus Winter

1. e4 e5 2. Nc3 Nf6 3. Bc4
 Bc5 4. Nf3 d6 5. d4 exd4 6.
 Nxd4 O-O 7. O-O Re8 8. b4?
 Bb6? 9. Nd5 Nxd5 10. Bxd5 c6
 11. Bc4 Rxe4 12. Bxf7+? Kxf7
 13. Qf3+ Qf6 14. Qxe4 Bxd4
 15. Be3 Bxa1 16. Re1 d5 17.
 Qd3 Bf5 18. Qe2 Bc3 19.
 Bd4!? A sly, desperate try!
 Qe6 Better was the simple
 Qxd4, but Bxd4? would lead
 to Qe8 mate. 20. Qh5+ Qg6
 21. Qxg6+ Bxg6 22. Bxc3 Bxc2
 23. Re3 Nd7 24. Rf3+ Nf6 25.
 g3 Rd8 26. Bd4 Re8 27. Bc3
 Kg8 28. h4 b6 29. Bd2 Re2
 30. Rc3? Rxd2 31. Rxc6 Be4
 32. Rc1 Rxa2 33. g4 Rc2 34.
 Re1 Rb2 35. h5 Kf7 36. g5
 Nxh5 37. b5 Rb1 38. Rf1
 Rxf1+ 39. Kxf1 Kxg6 0-1

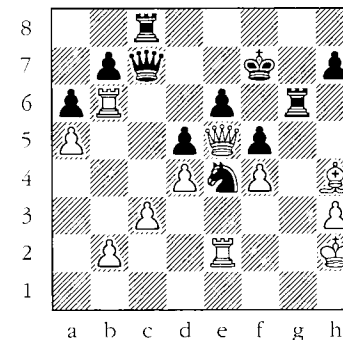
47th Mid-South Open
 Date "2007.11.18"
 Greg Turner (1943)
 David Kernell (1898)

1. e4 c6 2. d4 d5 3. exd5
 cxd5 4. Nf3 Nf6 5. Bd3 Nc6
 6. O-O Bg4 7. c3 e6 8. h3
 Bh5 9. Bf4 Bg6 10. Re1 Be7
 11. a4 Qb6 12. Re2 O-O 13.
 Na3 Rfc8 14. Ne5 Bxd3
 15. Qxd3 Nxe5 16. Bxe5 Nd7
 17. Bh2 a6 18. f4 Bxa3 19.
 Rxa3 f5 Black is
 constructing an unassailable
 post on e5, but the simple
 Nf6-e5 would have been
 better. Now White has the
 f5 pawn as a target as well
 as more unchallengeable
 squares for his bishop. 20.
 a5 Qc6 21. g4



g6 This gives White an
 advantage, especially if he
 continues with g5. Based
 on White's uncoordinated
 rooks and weakened king
 position, Fritz9 suggests:
 21... Nf6! 22. gxf5 exf5 23.
 Qxf5 Re8 24. Re5 Ne4 25. Ral
 (25. Rxd5? Re6 26. c4 Rg6+)
 25... Qb5 26. Rf1 Rad8. 22.
 gxf5 gxf5 23. Qe3 Kf7 24.

Bg3 Rg8 25. Kh2 Nf6 26. Qe5
 Ne4 27. Bh4 Rg6 28. Rb3 Rc8
 29. Rb6 Qc7? (29... Qc4=)



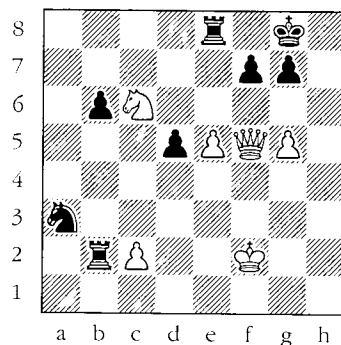
30. Rxe6! Rxe6 31. Qxf5+ Rf6
 32. Qxd5+ Stronger was
 Bxf6!, for instance: 32.
 Bxf6 Nxf6 33. Qe6+ Kg7 34.
 Rg2+ Kf8 35. Qxf6+. 32...
 Kf8 33. Rxe4 Rxf4? Better
 was Qf7. 34. Be7+ Ke8 35.
 Bd6+ Rxe4 36. Qxe4+ Kd7 37.
 Bxc7 Rxc7 38. Qxh7+ Kc6 39.
 Qe4+ Kd6 40. h4 Re7 41. Qf4+
 Kc6 42. Qf6+ Kd7 43. Qxe7+
 Kxe7 44. h5 Kf6 45. d5 Kg5
 46. d6 Kxh5 47. d7 b5 48.
 axb6 a5 49. d8=Q a4 50. Qg8
 a3 51. bxa3 Kh6 52. Kg3 Kh5
 53. Kf4 Kh6 54. Kf5 1-0

Tenn. Senior Open 2007 (2)
 Edward Labate (2100)
 Gus Winter (1238)

1.e4 e5 2.f4 exf4 3.Bc4?!
 Be7 4.d4 Bh4+ 5.Kf1 Qe7
 6.Nc3 d6 7.Nf3 Bg4 8.Bxf4
 Nc6 9.Bb5 Qd7? 10.d5 Nge7
 11.dxc6 Nxc6 12.Be2 Bxf3
 13.Bxf3 0-0 14.Bg4 Qe7
 15.Bf5 f6? 16.Nd5 Qf7??
 17.Qg4 1-0

On May 1, 2007, Todd Andrews conducted a simultaneous at the Nashville Chess Center, playing about 15 players at 30 minutes per game. On his way to excelling in the event, Todd did give up a draw to Peter Lahde. And because of an unusual twist in the game that could have allowed a check to be answered by a winning check, Peter wished to share his effort with us and has submitted this annotated game.

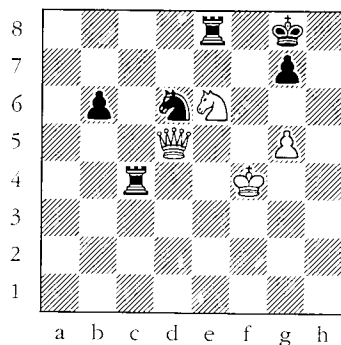
With a little more time, Pete might have seen the winning shot g6.-ed



30-min Simul at NCC
Date: May 7, 2007
Peter Lahde
Todd Andrews

1. e4 e6 2. d4 d5 3. Nc3 Bb4 4. e5 Qd7 5. f4 b6 6. Nf3 Ba6 7. Bxa6 Nxa6 8. 0-0 Ne7
Another game went here 8....Bxc3 9. bxc3 Ne7 10. Qd3 Qa4 11. g4 h5 12. h3 hxg4 13. hxg4 g6 14. Be3 c5 15. Kg2 Rc8 16. Rh1 Rf8 17. Rhc1 cxd4 18. cxd4 Nb4 19. Qb3 Qxb3 20. cxb3 Nc2 0-1, Vainionpaa - Linquist, Finish Champ., 2001. 9. a3 Bxc3 10. bxc3 c5 11. a4 Nc6 12. Ba3 Na5 13. Qd3 Nb8 14. Rfb1 Qxa4 15. dxc5 Better is Bb4! 15....Nc4 16. cxb6 Threatening b7. 16....axb6 17. Bb4 Qxa1 18. Rxa1 Rxa1 19. Kf2 Nc6 20. h4 Ra2 21. g3 Nxb4 22. cxb4 h6 23. f5 exf5 24. Qxf5 0-0 25. g4 Rb2 26. b5 Rxb5 27. Nd4 Rb2 28. g5 hxg5 29. hxg5 Re8 30. Nc6 Na3

31. Nd4 Nc4 (And here, Nxc2 is correct for White.-ed)
32. e6 fxe6 33. Nxe6 Nd6 34. Qxd5 Rxc2+ 35. Kf3 Rc3+ 36. Kf4 Rc4+ 37. Kf3 and we agreed to a draw here.



After 36... Rc4+

I had better with 37. Nd4! which would have won. I had not noticed this possibility, but Fritz pointed it out. I only saw 37. Ke5? which would have lost to Rc5!.

KNOXVILLE CITY AMATEUR CHAMPIONSHIP

CROSSTABLE

Pair Num	Player Name USCF ID /Rating	Total Pts	Round 1	Round 2	Round 3	Round 4
1.	DAVID MUELLER TN 12461504/1659	3.5	W 5	H	W 3	W 4
2.	ISAAC FINE TN 13037713/1015	2.5	H	W 7	L	4 W 3
3.	ROBERT J HYDZIK TN 12468777/1581	2.0	W 6	W	4 L	1 L 2
4.	SANCHIT WADHAWAN TN 13399514/1222	2.0	B	L	3 W	2 L 1
5.	ELO F WITTIG TN 13135040/ 928	2.0	L	1 W	6 F	B
6.	ARAM BEJNOOD TN 13167705/933	2.0	L	3 L	5 B	W 7
7.	ISABEL R GELLERT TN 13399520/626	1.5	H	L	2 X	L 6

An example of the "Fischer Endgame: rook & bishop vs. rook & knight.

Candidates Match (2), May 18, 1971

Robert Fischer (2740)

Mark Taimanov (2620)

1. e4 c5 2. Nf3 Nc6 3. d4 cxd4 4. Nxd4 e6 5. Nb5 d6 6. Bf4 e5 7. Be3 Nf6 8. Bg5 Qa5+ 9. Qd2 Nxe4 10. Qxa5 Nxa5 11. Be3 Kd7 12. N1c3 Nxc3 13. Nxc3 Kd8 14. Nb5 Be6 15. 0-0-0 b6 16. f4 exf4 17. Bxf4 Nb7 18. Be2 Bd7 19. Rd2 Be7 20. Rhd1 Bxb5 21. Bxb5 Kc7 22. Re2 Bf6 23. Rde1 Rac8 24. Bc4 Rhf8 25. b4 a5 26. Bd5 Kb8 27. a3 Rfd8 28. Bxf7 Bc3 29. Bd2 d5 30. Rd1 d4 31. Bxc3 Rxc3 32. Kb2 d3 33. Kxc3 dxe2 34. Re1 Nd6 35. Bh5 Nb5+ 36. Kb2 axb4 37. axb4 Rd4 38. c3 Rh4 39. Bxe2 Nd6 40. Rd1 Kc7 41. h3 Rf4 42. Rf1 Re4 43. Bd3 Re5 44. Rf2 h5 45. c4 Rg5 46. Kc3 Kd7 47. Ra2 Kc8 48. Kd4 Kc7 49. Ra7+ Kd8 50. c5 bxc5+ 51. bxc5 Ne8 52. Ra2 Nc7 53. Bc4 Kd7 54. Rb2 Kc6 55. Bb3 Nb5+ 56. Ke3 Kxc5 57. Kf4 Rg6 58. Bd1 h4 59. Kf5 Rh6 60. Kg5 Nd6 61. Bc2 Nf7+ 62. Kg4 Ne5+ 63. Kf4 Kd4 64. Rb4+ Kc3 65. Rb5 Nf7 66. Rc5+ Kd4 67. Rf5 g5+ 68. Kg4 Ne5+ 69. Kxg5 Rg6+ 70. Kxh4 Rxg2 71. Bd1 Rg8 72. Bg4 Ke4 73. Kg3 Rg7 74. Rf4+ Kd5 75. Ra4 Ng6 76. Ra6 Ne5 77. Kf4 Rf7+ 78. Kg5 Rg7+ 79. Kf5 Rf7+ 80. Rf6 Rxf6+ 81. Kxf6 Ke4 82. Bc8 Kf4 83. h4 Nf3 84. h5 Ng5 85. Bf5 Nf3 86. h6 Ng5 87. Kg6 Nf3 88. h7 Ne5+ 89. Kf6 1-0

NASHVILLE CHAMPIONSHIP

Ronald Burnett and Jerry Wheeler emerged as co-champions of Nashville from the 5-player Round-Robin City Championship that ran from January 12-13. Both finished with 4.5 points and gave up a draw only to each other.

2008 NASHVILLE CHAMPIONSHIP				CROSSTABLE			
Pairing # & Player	Rnd1	Rnd2	Rnd3	Rnd4	Rnd5	Rnd6	Tot
Ronald Burnett - 2412	X	W 5	D 2	W 6	W 3	W 4	4.5
Jerry Wheeler - 2200	D 1	W 5	X	W 6	W 3	W 4	4.5
Todd Andrews - 2376	L 1	D 5	L 2	W 6	X	W 4	2.5
Gainer Phay - 1997	L 1	D 5	L 2	W 6	L 3	X	1.5
James Wu - 1991	L 1	X	L 2	L 6	D 3	D 4	1.0
Zaki Tanas - 1587	L 1	W 5	L 2	X	L 3	L 4	1.0

TENNESSEANS IN TOURNAMENTS ABROAD

Todd Andrews and Peter Bereolos won (along with Bradley Denton of MS) the 5-round **2007 Space City Open** that was held in Huntsville, Alabama on October 20-21st. John Beck, another member of the *Tennessee Tempo*, tied for 4th--5th with 3.5 points along with Gainer Phay. Gerald Larson completed the Tenn. *Tempo* members' domination by winning 3.0 points in the event to also place well.

Peter Bereolos hung with the GMs and tied for 4th place with 3.5 of 5 points in the **16th Kings Island Open** that was held in Mason, OH November 9--11. Jerry Wheeler and Patrick Tae both obtained respectable scores in the event by garnering 2.5 points after both took half- point byes in the first round.

Several Tennesseans played in the very competitive Open Section of the **Land of the Sky Tournament**, which was held in Asheville, NC from Jan. 25-27. They were: Peter Bereolos (3 points), Todd Andrews (2.5 points), Patrick Tae (2.0 pts; 4 draws!), and Jerry Wheeler (1.5 points).

TCN/Win 2008_27

KNOXVILLE CHAMPIONSHIP

The Knoxville Championship was held on successive Thursdays from October 18-November 19, 2007. Peter Bereolos again emerged as the Champion for the tenth time. (Matthew Marsh took clear second with 3.5 points.) One of Peter's more competitive games from the event is included on page 13. Highest-rated David Mueller (1659) dominated the Amateur Championship that was held concurrently. He won the amateur title with 3.5 points, a full point ahead of his nearest challenger, Isaac Fine (who took clear second), despite having a second-round half-point bye. The crosstable for the Amateur is located on page 26.

2008 KNOXVILLE CITY CHAMPIONSHIP				CROSSTABLE		
Pairing # & Player	Rnd1	Rnd2	Rnd3	Rnd4	Rnd5	Tot
Peter Bereolos - 2318	W3	D2	W6	W5	W4	4.5
Matthew Marsh - 2046	L3	W6	W5	D1	W4	3.5
Alborz Bejnood - 1562	W2	W6	W5	L1	L4	3.0
Robert Hydzyk - 1512	W3	L2	W6	W5	L1	3.0
Corry Marsh - 1709	L3	L2	W6	L1	L4	1.0
Kipp Bynum - 1266	L3	L2	L5	L1	L4	0.0

WEBB SCHOOL CHESS TOURNAMENT

TD Michael Anders developed and staged another chess event at Webb School of Knoxville. The **Yuletide with the Bear** tournament was held December 15 and had 43 participants in its three sections (Open, Under 1250, and Under 750). **Peter Bereolos** redeemed himself from a poor showing at the last tournament and swept the event with 4.0 points. This victory could be in part due to Anders increasing the time limit from 60 min. to 75 min. **C.J. Houston** and **Christopher Schultz** both obtained 4.5 points to win the Under 1250 Section. **Jordan Hoyos**, a 301 rated player (based on 12 games) won the Under 750 Section with 4.0 out of 5.

TCN/Win 2008_28

NORTH TENNESSEE WINTER OPEN -- KINGS

Wall Chart

Name/State ID	Rate	Rnd 1	Rnd 2	Rnd 3	Rnd 4	Rnd 5
1. IM BURNETT, RONALD W TN 12093120	2410	B 4 1.0	B 3 1.5	B 2 2.0	B 6 3.0	B 7 4.0
2. BERELOS, PETER TN 11414966	2316	B 9 1.0	B 6 2.0	B 1 2.5	B 3 3.5	B 4 4.0
3. SUICH, JOSHUA TN 12707426	2121	B 5 1.0	B 1 1.5	B 10 2.5	B 2 2.5	B 9 3.5
4. LARSON, GERALD A AL 10422159	2097	B 1 0.0	B 5 1.0	HALF 1.5	B 10 2.5	B 2 3.0
5. ARNOLD, JUSTIN N KY 12667835	1910	B 3 0.0	B 4 0.0	B 8 1.0	B 9 1.5	B 6 2.5
6. MARSH, MATTHEW L TN 12843523	1980	B 10 1.0	B 2 1.0	B 7 2.0	B 1 2.0	B 5 2.0
7. HORTILLOSA, ANDRES TN 12455466	1900	BYE 1.0	B 10 1.0	B 6 1.0	B 8 2.0	B 1 2.0
8. MC CORMICK, ALAN M TN 12778990 PLAQ	1593	--- 0.0	B 9 1.0	B 5 1.0	B 7 1.0	BYE 2.0
9. WU, JAMES F TN 12913034	1982	B 2 0.0	B 8 0.0	BYE 1.0	B 5 1.5	B 3 1.5
10. WHEELER, JERRY T TN 10242126	2200	B 6 0.0	B 7 1.0	B 3 1.0	B 4 1.0	--- 1.0
11. BRIDGES, ROBERT TN 13867460 HOUSE	nnnn	--- 0.0	--- 0.0	--- 0.0	--- 0.0	--- 0.0
12. GRIGORIAN, ARSENI TN 13867454 HOUSE	nnnn	--- 0.0	--- 0.0	--- 0.0	--- 0.0	--- 0.0

NORTH TENN. WINTER OPEN -- QUEENS

Wall Chart, Page 1

Name/State ID	Rate	Rnd 1	Rnd 2	Rnd 3	Rnd 4	Rnd 5
1. BRAGG, WILLIAM N KY 10433011	1878	B 14 1.0	B 13 1.5	B 9 2.0	B 7 3.0	B 2 4.0
2. STEVENSON, WILL T AL 12857774	1957	B 12 1.0	B 4 2.0	B 5 3.0	B 3 3.5	B 1 3.5
3. ASHMUN, FRANK TN 12845540	1896	B 6 0.0	B 14 1.0	B 13 2.0	B 2 2.5	B 5 3.5
4. KNIGHT, JASON TN 20114130	1773	B 11 1.0	B 2 1.0	B 8 1.5	B 13 2.5	B 9 3.5

NORTH TENN. WINTER OPEN -- QUEENS

Continued

Name/State ID	Rate	Rnd 1	Rnd 2	Rnd 3	Rnd 4	Rnd 5
5. SUICH, PETER D TN 12779311	1930	B 10 1.0	B 7 2.0	B 2 2.0	B 9 3.0	B 3 3.0
6. SALTER, JOSHUA TN 12890290 PLAQ	1676	B 3 1.0	B 9 1.0	B 7 1.5	B 8 2.0	B 10 3.0
7. TUCKER, TOM C KY 10435552	1857	B 8 1.0	B 5 1.0	B 6 1.5	B 1 1.5	B 14 2.5
8. PARVATHAREDDY, ROHITH TN 12843629 PLAQ	1569	B 7 0.0	B 10 1.0	B 4 1.5	B 6 2.0	B 11 2.5
9. KOVALIC, JEFFREY J TN 12467445	1825	HALF 0.5	B 6 1.5	B 1 2.0	B 5 2.0	B 4 2.0
10. WEINER, ALEX AL 12894487	1693	B 5 0.0	B 8 0.0	B 11 1.0	B 12 2.0	B 6 2.0
11. MOGHADDAMI, KASHMI TN 13490025	1557	B 4 0.0	B 12 1.0	B 10 1.0	B 14 1.5	B 8 2.0
12. SMITH, AARON TN 12851863	1712	B 2 0.0	B 11 0.0	B 14 0.5	B 10 0.5	B 13 1.5
13. BEATTY, JONATHAN TN 12748652 PLAQ	1543	BYE 1.0	B 1 1.5	B 3 1.5	B 4 1.5	B 12 1.5
14. REDDY, NISHIT TN 12805997 PLAQ	1627	B 1 0.0	B 3 0.0	B 12 0.5	B 11 1.0	B 7 1.0
15. BRIDGES, ROBERT TN 13867460 HOUSE	nnnn	--- 0.0	--- 0.0	--- 0.0	--- 0.0	--- 0.0
16. GRIGORIAN, ARSENI TN 13867454 HOUSE	nnnn	--- 0.0	--- 0.0	--- 0.0	--- 0.0	--- 0.0

NORTH TENN. WINTER OPEN -- ROOKS

Wall Chart, Page 1

Name/State ID	Rate	Rnd 1	Rnd 2	Rnd 3	Rnd 4	Rnd 5
1. LI, BIN TN 13511415	1715	B 9 0.5	B 6 1.5	B 14 2.5	B 8 3.5	B 3 4.5
2. CUTSHAW, TIMOTHY TN 12522883	1624	B 7 1.0	B 8 1.0	B 18 2.0	B 13 3.0	B 9 4.0
3. DE CREDICO, RICHARD TN 12557415	1643	B 16 1.0	B 18 2.0	B 8 2.5	B 9 3.5	B 1 3.5
4. LAUPP, JENNIFER MO 12737086	1695	B 19 1.0	B 14 1.5	B 9 1.5	B 6 2.0	B 12 3.0

NORTH TENNESSEE WINTER OPEN -- ROOKS

Continued

Name/State ID	Rate	Rnd 1	Rnd 2	Rnd 3	Rnd 4	Rnd 5
5. BARKLEY, CURTIS T AL 12744815	1653	B 15	B 10	HALF	B 11	B 8
		0.5	1.0	1.5	2.5	3.0
6. SWANN, RODGER M TN 12441421	1624	B 11	B 1	B 15	B 4	B 14
		0.5	0.5	1.5	2.0	3.0
7. DASARI, TEJA TN 12878872 PLAQ	1355	B 2	B 13	BYE	B 18	B 17
		0.0	0.0	1.0	2.0	3.0
8. KNOWLES, CHASE TN 13441952 PLAQ	1330	B 22	B 2	B 3	B 1	B 5
		1.0	2.0	2.5	2.5	3.0
9. MARSH, CORY L TN 12843522	1614	B 1	B 11	B 4	B 3	B 2
		0.5	1.5	2.5	2.5	2.5
10. HUGHES, JAMES D TN 12222390	1610	B 12	B 5	B 13	B 15	HALF
		0.5	1.0	1.0	2.0	2.5
11. VANCIL, AARON W TN 12780062 PLAQ	1469	B 6	B 9	B 17	B 5	B 16
		0.5	0.5	1.5	1.5	2.5
12. PRATT, DONALD NY 12432777	1700	B 10	B 15	HALF	B 14	B 4
		0.5	1.0	1.5	2.0	2.0
13. LOVEN, DALLAS TN 10360641	1656	B 18	B 7	B 10	B 2	---
		0.0	1.0	2.0	2.0	2.0
14. HUNLEY, RYAN TN 21013192	1621	B 17	B 4	B 1	B 12	B 6
		1.0	1.5	1.5	2.0	2.0
15. AGOSTINO, MICHAEL TN 12884766	1510	B 5	B 12	B 6	B 10	BYE
		0.5	1.0	1.0	1.0	2.0
16. BARKLEY, ELEANOR H AL 12792270	1531	B 3	B 17	HALF	B 20	B 11
		0.0	0.0	0.5	1.5	1.5
17. SCHAFER, JACOB A TN 12913914 PLAQ	1338	B 14	B 16	B 11	HALF	B 7
		0.0	1.0	1.0	1.5	1.5
18. BERTRAM, DAVID TN 12601971	1578	B 13	B 3	B 2	B 7	---
		1.0	1.0	1.0	1.0	1.0
19. MC CORMICK, ALAN M TN 12778990	1593	B 4	---	---	---	---
		0.0	0.0	0.0	0.0	0.0
20. CARTER, CARY TN 13120863	706	---	---	---	W 16	---
		0.0	0.0	0.0	0.0	0.0
21. GRIGORIAN, ARSENI TN 13867454 HOUSE	nnnn	---	---	---	---	---
		0.0	0.0	0.0	0.0	0.0
22. BRIDGES, ROBERT TN 13867460 HOUSE	nnnn	B 8	---	---	---	---
		0.0	0.0	0.0	0.0	0.0

TCN/Win 2008_31

NORTH TENN. WINTER OPEN -- BISHOPS

Wall Chart

Name/State ID	Rate	Rnd 1	Rnd 2	Rnd 3	Rnd 4	Rnd 5
1. SUICH, VICTOR W TN 12732019	1433	B 15	B 13	B 5	B 2	B 4
		1.0	2.0	3.0	3.5	4.5
2. BLANKENSHIP, LOGAN TN 12914168	1372	B 3	B 12	B 6	B 1	B 7
		1.0	1.5	2.5	3.0	4.0
3. PROCTOR, SHANE M TN 20013698	1476	B 2	B 9	B 8	B 14	B 11
		0.0	0.5	1.5	2.5	3.5
4. HIGGINS, RICHARD A KY 12921471	1400	B 8	B 6	HALF	B 12	B 1
		1.0	2.0	2.5	3.5	3.5
5. TATE, JOE L TN 12750247	1422	B 7	B 14	B 1	B 13	B 12
		0.5	1.5	1.5	2.0	3.0
6. RILING, KYLE TN 12915882	1393	B 9	B 4	B 2	B 8	B 13
		1.0	1.0	1.0	1.5	2.5
7. HOUSTON, CHARLIE R TN 12841434	1314	B 5	B 11	B 12	HALF	B 2
		0.5	1.5	2.0	2.5	2.5
8. DAVIS, MICHAEL TN 12877174 PLAQ	1270	B 4	B 15	B 3	B 6	B 16
		0.0	1.0	1.0	1.5	2.5
9. WADHAWAN, SANCHIT TN 13399514 PLAQ	1222	B 6	B 3	B 16	B 11	B 14
		0.0	0.5	1.5	1.5	2.5
10. MARTINDALE, TIMOTHY TN 12768993	1208	B 13	B 16	B 11	BYE	B 15
		0.0	0.5	0.5	1.5	2.5
11. KAN, DANIEL TN 11307221	1473	B 14	B 7	B 10	B 9	B 3
		0.0	0.0	1.0	2.0	2.0
12. LUNA, JOSE TN 13334936	1406	B 16	B 2	B 7	B 4	B 5
		1.0	1.5	2.0	2.0	2.0
13. FENDER, MYRL KY 12520564	1375	B 10	B 1	B 14	B 5	B 6
		1.0	1.0	1.5	2.0	2.0
14. BERRETT, KOTY L TN 12845539	1353	B 11	B 5	B 13	B 3	B 9
		1.0	1.0	1.5	1.5	1.5
15. MILLER, DAVID FL 12432770	1329	B 1	B 8	HALF	B 16	B 10
		0.0	0.0	0.5	1.0	1.0
16. LORINC, ERICK L TN 12865002	1275	B 12	B 10	B 9	B 15	B 8
		0.0	0.5	0.5	1.0	1.0
17. BRIDGES, ROBERT N 13867460 HOUSE	nnnn	---	---	---	---	---
		0.0	0.0	0.0	0.0	0.0
18. GRIGORIAN, ARSENI TN 13867454 HOUSE	nnnn	---	---	---	---	---
		0.0	0.0	0.0	0.0	0.0

TCN/Win 2008_32

NORTH TENN. WINTER OPEN -- KNIGHTS Wall Chart, Page 1

Name/State ID	Rate	Rnd 1	Rnd 2	Rnd 3	Rnd 4	Rnd 5
1. STALEY, TIMOTHY P GA 12625534	1125	B 7 1.0	B 14 2.0	B 2 2.0	B 4 3.0	B 6 4.0
2. ARNOLD, STEVEN T KY 12789873	1080	B 8 1.0	B 16 2.0	B 1 3.0	B 6 3.5	B 5 4.0
3. WINSTEAD, RYAN KY 13606057	1055	B 16 0.0	B 10 0.5	B 13 1.5	B 9 2.5	B 12 3.5
4. TUCKER, JESSE E KY 13334957	970	B 17 1.0	B 6 1.5	B 14 2.5	B 1 2.5	B 10 3.5
5. WINSTEAD, BLAKE KY 13606042	961	B 10 1.0	B 9 2.0	B 6 2.0	B 12 3.0	B 2 3.5
6. MARTINDALE, CHRIS TN 12709524	1169	B 12 1.0	B 4 1.5	B 5 2.5	B 2 3.0	B 1 3.0
7. WITTIG, ELO F TN 13135040	928	B 1 0.0	B 11 0.0	BYE 1.0	B 15 2.0	B 13 3.0
8. DOUTHITT, AUTUMN N TN 12840938	1218	B 2 0.0	B 13 1.0	B 12 1.0	HALF 1.5	B 15 2.5
9. MANNERS, ROY B TN 12649484	1167	B 15 1.0	B 5 1.0	B 11 1.5	B 3 1.5	B 14 2.5
10. SMITH, JORDAN M KY 12896270	1133	B 5 0.0	B 3 0.5	B 17 1.5	B 11 2.5	B 4 2.5
11. EDMONDS, LUCAS TN 12921798	1089	B 14 0.0	B 7 1.0	B 9 1.5	B 10 1.5	BYE 2.5
12. ROSS, HENRY TN 12793256	1022	B 6 0.0	B 17 1.0	B 8 2.0	B 5 2.0	B 3 2.0
13. CARTER, CARY TN 13120863	706	W 19 1.0	B 8 1.0	B 3 1.0	BYE 2.0	B 7 2.0
14. DOUTHITT, BLAKE TN 12807059	1239	B 11 1.0	B 1 1.0	B 4 1.0	HALF 1.5	B 9 1.5
15. QIN, ALEXANDER C TN 13298561	1005	B 9 0.0	BYE 1.0	HALF 1.5	B 7 1.5	B 8 1.5
16. TODD, HUDSON O TN 13314996	1193	B 3 1.0	B 2 1.0	---	---	---
17. CLEMENT, WILLIAM A TN 12727877	1135	B 4 0.0	B 12 0.0	B 10 0.0	---	---

NORTH TENNESSEE WINTER OPEN -- KNIGHTS Continued

18. BRIDGES, ROBERT TN 13867460 HOUSE	nnnn	---	---	---	---	---
19. GRIGORIAN, ARSENI TN 13867454 HOUSE	nnnn	B 13 0.0	---	---	---	---

NORTH TENNESSEE WINTER OPEN -- PAWNS Wall Chart

Name/State ID	Rate	Rnd 1	Rnd 2	Rnd 3	Rnd 4	Rnd 5
1. HOUSTON, C J TN 12836144	743	B 12 1.0	B 8 2.0	B 2 3.0	B 5 4.0	B 7 5.0
2. LI, ANGELA TN 13043990	857	B 4 1.0	B 3 2.0	B 1 2.0	B 7 3.0	B 5 4.0
3. GELLERT, ISABEL R TN 13399520	626	B 9 1.0	B 2 1.0	B 7 1.0	B 11 2.0	B 10 3.0
4. WALLACE, RYAN A TN 13121034	427	B 2 0.0	B 9 1.0	B 10 1.0	B 12 2.0	B 8 3.0
5. HAMMETT, JON H TN 12931306	945	B 7 0.5	B 10 1.5	B 8 2.5	B 1 2.5	B 2 2.5
6. DOUTHITT, COLTON TN 12877295	645	B 10 0.0	B 7 0.0	B 12 1.0	HALF 1.5	B 11 2.5
7. GRAWCOCK, SETH TN 13550617	582	B 5 0.5	B 6 1.5	B 3 2.5	B 2 2.5	B 1 2.5
8. WALLACE, AARON TN 12982112	871	B 11 1.0	B 1 1.0	B 5 1.0	B 10 2.0	B 4 2.0
9. CONATSER, JESS TN 13746925	100	B 3 0.0	B 4 0.0	B 11 0.0	BYE 1.0	B 12 2.0
10. DILLIS, AUSTIN TN 13747364	100	B 6 1.0	B 5 1.0	B 4 2.0	B 8 2.0	B 3 2.0
11. KLINGBERG, JOHN E TN 13037488	445	B 8 0.0	B 12 0.0	B 9 1.0	B 3 1.0	B 6 1.0
12. LI, ANNA TN 13701153	225	B 1 0.0	B 11 1.0	B 6 1.0	B 4 1.0	B 9 1.0
13. BRIDGES, ROBERT TN 13867460 HOUSE	nnnn	---	---	---	---	---
14. GRIGORIAN, ARSENI TN 13867454 HOUSE	nnnn	---	---	---	---	---

47th Mid-South Open
Edgar Davison (1841)
Nathan Vogt (1832)

1. d4 Nf6 2. e3 e6 3. Bd3 b6 4. Nd2 Bb7 5. e4 c5 6. c3 Nc6
7. Ngf3 Be7 8. a3 O-O 9. h4 This is very ambitious,
especially from an equal position. Black should start
working on destroying White's center and making White chose
a home for his king. Qc7 Better was cxd4 when Black would
have had a slight advantage. 10. e5 Nd5? (Nh5 or g4 would
have contained some of White's energy. Apparently Black
does not recognize the Classic Bishop Sacrifice setup.) 11.
Bxh7+ Kh8 12. Ng5 g6 13. Nde4 Kg7 (13... cxd4 14. cxd4 Nxe5
15. dxe5 Qxe5 and the Queen arrives in time to bolster
Black's kingside defense.) 14. h5 Another way of
continuing was Qd2. Rh8 15. hxg6 fxxg6 16. Qf3 Bxxg5 17. Nxxg5
Nd8 18. Qh3 Nf7 19. Nxf7 Kxf7 20. Qh6 Even stronger was
Qf3+. Ne7 21. Rh4 Raf8 22. Bg5 d5 23. Rf4+ Ke8 24. Bxxg6+
Nxxg6 25. Qxxg6+ Rf7 26. Qxe6+ Kf8 27. Bh6+ 1-0

MID-SOUTH OPEN - OPEN SECTION

Num	USCF ID	Rtg	Pts	1	2	3	4	5
1. KENNETH G TURNER	1932	4.0	H	0 W	12 D	3 W	11 W	2
MS 1247029 0								
2. DAVID C KERNELL	1897	3.5	W	9 W	11 W	7 D	6 L	1
TN 12830368 8								
3. EDGAR DAVISON	1833	3.5	D	12 W	15 D	1 W	5 H	0
TN 12659000								
4. RON W HARVEY	1932	3.0	D	17 L	8 W	15 W	12 D	6
TN 13816044								
5. NATHAN VOGT	1847	3.0	D	8 W	17 H	0	L	3 W
TN 12847448								
6. JEFFREY J KOVALIC	1825	3.0	W	14 L	7 W	8 D	2 D	4
TN 12467445								
7. BRADLEY ALLAN BOGLE	1712	3.0	W	13 W	6 L	2 H	0 D	8
TN 12641161								
8. WILLANTHIAN WILLIAMS	1410	3.0	D	5	W	4	L	6 W
TN 13242196								
9. JEFF BAUDENDISTEL	1553	2.5	L	2 W	10 D	13 L	8 W	11
MS 12466039								

MID-SOUTH OPEN - OPEN SECTION

Continued

Name/State ID	Rate	Score	Rnd 1	Rnd 2	Rnd 3	Rnd 4	Rnd 5
10 DANIEL B. MCKEE JR	1295P	2.5	L	11 L	9 D	19 W	17 W
TN 13730206							
11 AARON SMITH	1686	2.0	W	10 L	2 W	14 L	1 L
TN 12851863							
12 PATRICK COLEMAN	1426	2.0	D	3 L	1 W	17 L	4 H
TN 13482266							
13 JONATHAN VAN DOREN	1369	2.0	L	7 W	19 D	9 H	0 U
TN 12908498							
14 WILLIAM C POLK	1403	2.0	L	6 W	16 L	11 L	15 W
TN 12774191							
15 BARRY NEAL BRAZELL	1279	2.0	W	19 L	3 L	4 W	14 L
TN 12500510							
16 JESSICA LEIGH POPE	933P8	2.0	L	18 L	14 B	0 W	19 L
GA 13772503							
17 KEITH RICE	1565	1.5	D	4 L	5 L	12 L	10 B
TN 12625351							
18 MICHAEL P. SANSOM	1477	1.0	W	16 U	0 U	0 U	0 U
TN 12543537							
19 ALBERT W BURGESS	1619	0.5	L	15 L	13 D	10 L	16 L
TN 10324335							

MID-SOUTH UNDER 1600 SECTION

Pair	Player	Total	Round	Round	Round
Num	Name USCF ID / Rtg	Pts	1	2	3
1.	DR ALVIN MILLER JR	3.0	W	3 W	2 W
	TN 13745325 / R: 803P2 -> 803P5				
2.	JUNIOR WILLIAM MILLER	2.0	W	4 L	1 W
	TN 13745352 / R: 311P6 -> 386P9				
3.	TINA MARIE MILLER	1.0	L	1 W	4 L
	TN 13745367 / R: 265P5 -> 268P8				
4.	CHRISTOPHER THOMAS MILLER	0.0	L	2 L	3 L
	TN 13745346 / R: 238P6 -> 161P9				

Personal Reflections on a Chess Genius

I became a staunch believer in Fischer's dominance when he demolished the Candidates for Spassky's thrown during 1971. Firstly, he took down Taimanov 6-0! That was impressive. But I was shocked when he did the same thing to the Danish Grandmaster Larsen (my endgame guru)!! Now he was primed to face the defensive power upon whom I modeled my play: the Immovable "Iron" Petrosian. Because Petrosian was rightly touted as the drawing master, I knew that it would be almost impossible for Fischer to get a perfect score against him. So when Petrosian ended one of the longest winning streaks (20 games) in the history of chess by defeating Fischer in game two of their Candidates Match I wasn't surprised. Suddenly Fischer looked beatable. However, Fischer easily rebounded and handed Petrosian his worse match-play loss ever, scoring 6.5-2.5! Absolute dominance over elite world-class grandmasters.

Then, we did not have instant access to the news as we do today. Unless you were a grandmaster or news correspondent, you had to patiently wait for a weekly article to appear in the New York Times or sweat out a month of anticipation until you got your *Chess Life & Review*. So we anxiously awaited tidbits. And Fischer's exploits during that period seemed grandly heroic, sweetened by the wait! He inspired us to be better chess players because of his undaunted winning spirit.

Then there was the Spassky match, itself. Even had Fischer lost the match, I would have been faithful to my glorification of him. I would have ascribed his lost to manipulation by the Soviets or a fix. In fact, when Fischer lost the first game and then gave Spassky a forfeit win in the second game (0-2), I was fully expecting him to just quit in face of the Russian's cold-war tactics. But he stormed back and equalized the match in the next three games! Every chess player that I knew was bragging and boasting as if they had played the games themselves!

He inspired us. He also disappointed us when he retired from chess, having tired of fighting against the system. Even worse, he later appalled us with his ranting and anti-Semantic tirades. But regardless his eccentricities, he will forever be ascribed a chess genius in my esteem.

TCN/Win 2008_37

PRESIDENT (INTERIM):

Chris Prosser
733 Long Hunter Court
Nashville, TN 37217
H: (615) 399-8432
e-mail: regioniii@aol.com

VICE-PRESIDENT:

Allen Snow
P. O. Box 2127
Clarkrange, TN 38553
W: (931) 863-4082
Fax: (931) 863-4081
e-mail: asnow@twlakes.net

SECRETARY:

Chris Prosser
733 Long Hunter Court
Nashville, TN 37217
H: (615) 399-8432
e-mail: regioniii@aol.com

TREASURER:

Angela McElrath-Prosser
733 Long Hunter Court
Nashville, TN 37217
H: (615) 399-8432
e-mail: tcaneews@aol.com

INTERNET CHESS COORDINATOR:

Alan Kantor
577 Livingston Road, Apt. 23
Crossville, TN 38555
H: (931) 200-9038
W: (931) 787-1234 ext. 128
e-mail: kantor@charter.net

SCHOLASTIC COORDINATOR:

Harry D. Sabine
P. O. Box 381
Crossville, TN 38557
H: (931) 484-4878
W: (931) 484-9593
e-mail: hdsabine@citlink.net

TOURNAMENT COORDINATOR:

Malcolm Estrada
123 Annview LN
Harrison, TN 37341
H: (423) 326-1446
e-mail: straightleg@aol.com

TN CHESS NEWS EDITOR:

Leonard Dickerson
420 Oran Road
Knoxville, TN 37932
H: (865) 966-1095
e-mail: lsdict@tds.net

EAST TENNESSEE DIRECTOR:

Victor Suich
707 Pritchard
Morristown, TN 37813
(423) 586-4351
e-mail: vesuich@juno.com

MIDDLE TENNESSEE DIRECTOR:

Roy Manners
1215 Cumberland Heights Road
Clarksville, TN 37040
H: (931) 552-1839
e-mail: roybintn@msn.com

WEST TENNESSEE DIRECTOR:

Robert Schoumacher
4266 Long Leaf Drive
Memphis, TN 38117
H: (901) 767-3060
W: (901) 572-5222
e-mail: rschoumacher@utmcm.edu

Regional Scholastic Coordinators

Region 1:

Judd Jones
10904 Lookout Point
Knoxville, TN 37922

Region 2:

Michael Ake
16 Pinecrest Dr.
Wildwood, GA 30757
H: (706) 820-0693
O: (423) 493-5406

Region 3:

Chris Prosser
733 Long Hunter Court
Nashville, TN 37217
H: (615) 399-8432
regioniii@aol.com

Region 4:

Brian Vogt
2669 Sweet Maple Cove
Germantown, TN 38139
H: (901) 624-0020

TCN/Win 2008_38