



TENNESSEE CHESS NEWS

WINTER 2007

VOLUME 50

NO. 1

NORTH TN WINTER OPEN	4
MID-SOUTH OPEN	16
TENNESSEANS ABROAD: KI, KOGAN, etc.	27
CITY CHAMPIONSHIPS	22

Tennessee Chess Association Tournament Calendar from the TCA Website

February 17, 2007	TN State Individual Scholastic Finals Univ. Center, TN. Technological Ctr. Cookeville, TN Harry Sabine 931-484-9593
March 3, 2007	TN State Scholastics Team Regionals Contact your Regional Coordinator
March 24, 2007	TN State Scholastics Team Final Univ. Center, TN. Technological Ctr. Cookeville, TN Harry Sabine 931-484-9593
March 31, 2007	East TN Scholastic Spring Open Milligan College Johnson City, TN 423-975-8031
April 14, 2007	TN Girls Chess Championship Nashville Chess Center Nashville, TN 615-292-7341

TENNESSEE CHESS NEWS is the official publication of the
Tennessee Chess Association.

MEMBERSHIPS

TCA annual dues are \$10 for a *regular* membership or *student* membership. Additional members of a family may join for one dollar each, but only one issue of **TCN** will be mailed per family. For those wishing to join after April 1 of any year, a \$15.00 membership is available for the remainder of that year and includes the following year. All non-patron memberships expire August 31.

Tax-deductible Patron Memberships are available beginning at \$100 per year for those who wish to help support the TCA and the FFTC. These memberships expire one year from the date of payment. Patron membership categories and benefits are as follows:

PATRON \$100

- One year TCA Membership and FFTC membership plus a key ring.

PATRON KING \$300

- All Patron benefits plus one year free TCA and FFTC membership for all members of the Patron King's immediate family & free entry into the TN State Scholastic Individual Regional Tournament for the member and all members of the Patron King's immediate family.

PATRON MASTER \$500

- All Patron King benefits plus one free entry to any TCA or FFTC sponsored Open Chess Tournament. The Patron Master or any member of his/her immediate family can use such free entry.

PATRON GRANDMASTER \$1000 **(or more)**

- All Patron Master benefits plus a chess clock and their name on a permanent plaque to be placed on the wall at the home of the TCA and FFTC.

TOURNAMENT ANNOUNCEMENTS

TCN prints listings of upcoming tournaments that require TCA membership in each issue for free. Submit complete TLA information to Paul Semmes, Tournament Coordinator.

E-MAIL: paulsemmes@charter.net

TN CHESS NEWS STAFF

Editor:

Leonard Dickerson

Contributors:

Peter Lahde
Peter Bereolos
Todd Andrews

**TCN publishing schedule and
deadline for submissions:**

Spring 2006 - May 1 covering
Feb, Mar, and Apr events

Deadline: Apr 9, 2006

Summer 2006 - Aug 1 covering
May, Jun, and Jul events

Deadline: July 9, 2006

Fall 2006 - Nov 1 covering
Aug, Sept, and Oct events

Deadline: Oct 9, 2006

Winter 2007 - Feb 1 covering
Nov, Dec, and Jan events

Deadline: Jan 9, 2007

Please submit material by e-mail
to: lsdick@tds.net



TENNESSEE CHESS ASSOCIATION & FOUNDATION FOR TENNESSEE CHESS

PATRON MEMBERS

♔ Patron Grandmaster ♔

George A. Dean

Dr. Martin Katahn

♘ Patron Member ♘

Dr. Juan T. Aristorenas

Scott Eddins

Gary Gillespie

Peter P. Lahde

Bill Orgain

Clinton H. Pearson, Jr.

Jeff Pennig

Harry D. Sabine

Paul B. Semmes

R. K. Shimabukuro

Joe Le Tate

Brian Vogt



A NOTE FROM THE EDITOR

We had many outstanding tournaments during November, December, and January. Chief among these was the North Tennessee Winter Open. We were again lucky that scoresheets were made available because of the largesse of Lahde and Chris Prosser. And special thanks goes out especially to Todd Andrews and the NCC for translating the scoresheets and even providing brief comments on some of the games.

Two major city championships are also included in this issue (Knoxville and Nashville); the Memphis City Championship is still ongoing. If there are other cities who want their club championships or games highlighted, just e-mail them to me before the due date for publication.

The next issue will focus mainly on the Tennessee scholastic championships: Individuals and Team. So you scholastic players be sure to record those games and send them to me. You can even request that I do an detailed analysis for publication, similar to this TCN's *Scholastic Chess Corner*.

Tennessee Tempo Update

The Tennessee Tempo emphatically entered the winner's bracket with their 2.5-1.5 victory over the strong Miami Sharks Team. The Tempo closed out their season on November 1 and are already booking up for next season. In an upcoming issue I will feature the team's win over Miami and a tactical quiz from some of their earlier matches.

Boris Kogan Memorial

Nine players played in the Open Section of the 2006 Boris Kogan Memorial, which was held in Scottdale, GA from 10/6/2006-10/8/2006. Ronald Burnett won the tournament with 4.5 points, a full-point ahead of his nearest competitor (David Vest). Ron's draw came in the last round where it seems he split the point with an 1800-rated player to simply ensure victory. Peter Lahde says that the event was headlined *Tennessee Thunder*, which would have to describe how Burnett rolled through the event since he was the only Tennessean playing in the Open Section. In the Under 2000 Section, Matthew Marsh of Knoxville had a decent showing, beating the eventual winner of the section but dropping a few games to the other top finishers. In fact, he played all the top finishers: 1st-5th!! And his younger brother, Corry, dominated the Under 1400 Section by tying for first with 4 points.

7th North Tenn. Winter Open

The NTWO was again held at the Riverview Inn in Clarksville, TN and ran from January 13-14. And for a welcome change, it did not snow! The 5-round Swiss had six different sections and 130 total players. Players from other states really impacted the winner's column.

The **Queens** Section (U2000) was won by Frank Ashmun of Texas and William Bragg of Kentucky, who both had 4 points. The **Rooks** Section (U1750) was also won by a Kentuckian, Blake McCuiston; he had 4.5 points. He was trailed by Elion King and Marc Servi with 4.0 points. The **Bishops** Section (U1500) also saw a tie for first with Mark Leamon and Victor Suich both garnering 4.0 points. The **Knights** Section (U1250) was won by Koty Berrett with 4.5 points; 2nd-5th was shared by Nate Musin (OH), Richard Higgins (KY), and Christopher Dobbs (OH), each managing 4.0 points. The **Pawns** Section (U1000) saw a 4-way tie for first with 3.5 points: Chandler Coffman (KY), Jon Hammett, Arpam Dutta, and Bjay Moore (KY). Crosstables for the event are included on pages 29-37.

Todd Andrews was principally responsible for deciphering the scoresheets and providing us with some quality games. Too, his excellent comments on the tournament have been included below and detail events in the **Kings** Section.

" The 2007 version of the North Tennessee Winter Open was a wet one with rain falling nearly all weekend. The Open section was essentially a training session for Tennessee's professional chess team (The Tennessee Tempo) with the top six seeds being the team members that will return to the squad next year. Board Four player and Huntsville, AL resident Gerald Larson was looking to draw blood early, and after a wild battle in the second round, he had taken down FM Todd Andrews for the first time in their many battles. He then continued his tear by carefully defending a rook and pawn ending down three pawns against FM Bereolos to a draw in time trouble and finished up with a draw against IM Ronald Burnett. This was a fortunate result though for Tennessee's only International Master as Gerald was better throughout the entire game."

"A short draw while still in the opening book between Andrews and Bereolos in the last round meant a four-way tie for first between all the aforementioned players. There was also a very interesting duel between Burnett and Bereolos with Ron trading his Queen right out of the opening for a Rook, knight and pawn. Burnett took the plaque on the second tie-breaker."

Below and throughout the issue are various games from the competitive sections.

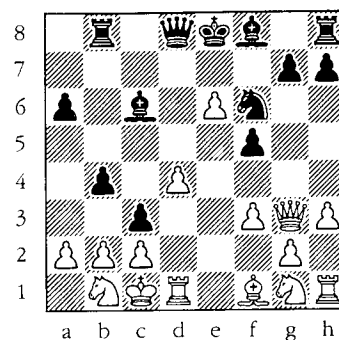
NTWO Kings (1)
Jerry Spinrad
(FM) Todd Andrews

1. e4 e6 2. d4 d5 3. exd5 exd5 4. c4 Bb4+ 5. Bd2 Bxd2+ 6. Qxd2 Nf6 7. Nc3 O-O 8. Nf3 Queenside castling should be strongly considered. Re8+ 9. Be2 Bg4 10. O-O 10. cxd5 Bxf3 11. gxf3 Nxd5 (This is sort of drawish but it is highly unlikely that White will survive the difficult defense.) 10... dxc4 11. h3 Bh5 Not getting distracted by greed. After all, the d-pawn is weak, too. 12. g4 Bg6 13. Bxc4 h5?! This is rushed; Qd6 or Ndd7 is preferable. 14. g5 Ne4 15. Qf4 Nxc3 16. bxc3 Now White is okay. Nc6 17. Nh4 Rfe

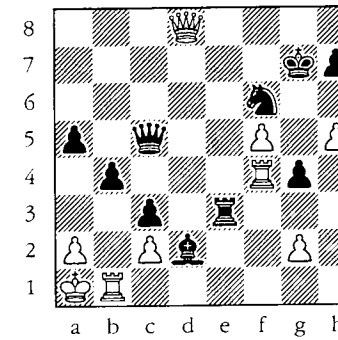
would have allowed White to keep a small edge. Na5! 18. Nxc6 Nxc4 19. Nh4 Qd5 20. Nf3 Nd6 21. Rfel Rxe1+ 22. Rxe1 Re8 Snatching the pawn is also okay: 22... Qxa2 23. Ne5 a5. 23. Rxe8+ Nxe8 24. Qe5 Qxf3 25. Qxe8+ Kh7 26. Qe3?? Qxe3 27. fxe3 h4 28. Kg2 Kg6 29. Kf3 Kxg5 30. e4 b5! 31. Ke3 Kf6 32. Kf4 g5+ 33. Kg4 Kg6 34. Kf3 Kh5 35. e5 c6 36. Kg2 g4 37. hxg4+ Kxg4 38. Kh2 h3 39. Kg1 Kg3 40. Kh1 h2 41. a4 bxa4 0-1

NTWO Kings (2)
Todd Andrews
Gerald Larson

1. d4 f5 2. h3 d5 3. Qd3 Nf6 4. Bf4 c5 5. Nc3 a6 6. Bxb8 Rxb8 7. O-O-O c4 Black should consider playing the simple e6, preparing to castle as well as leaving the c-file open for an upcoming attack lane. 8. Qg3 Bd7 9. f3 b5 10. e4!? e6 If Black takes the pawn, White gets an active initiative for the pawn: 10... dxe4 11. fxe4 b4 12. Nd5 Nxd5 13. exd5 Rc8=. 11. exd5 b4 Playable and maybe even preferable is Kf7, which protects g7, removes the king from the center, and promotes smooth development. 12. dxe6 Bc6 13. Nbl? c3 (See following Diagram.)



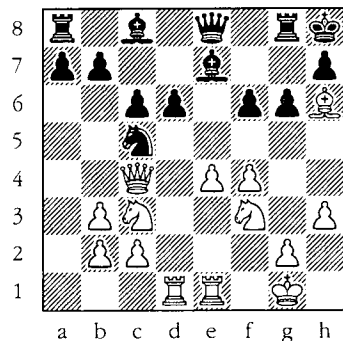
14. Bc4 On a quick glance, Todd suggested that e5 would be stronger, but Fritz9 shows that this is also unappetizing: 14. Qe5 Bd6 15. Qxf5 O-O 16. Bc4 (16. Qg5 Be7 17. Qe5 Nd5 18. h4 Bd6) 16... Nd5 17. Qd3 Bf4+. 14... Nh5 15. Qe5 Bd6 16. Qxf5 Bf4+ 17. Nd2 Bxd2+ 18. Kb1 Nf6=/+ 19. Qc5 Qb6 (19... Bd5 20. Qa7 Rb7 21. Qxa6 Qb6+\=) 20. Qe5 Rd8 21. e7 Rxd4 22. Qe6 Rxc4 23. Qxc4 Kxe7 24. f4 Bd5 25. Qe2+ Kf7 26. Nf3 Qa5 27. Ne5+ Kf8 28. b3 g6 (28... Qa3! 29. Nd3 Kf7 30. Ne5+ Kg8 31. Nd3 a5) 29. Ka1 Kg7 30. Nc4 Bxc4 31. bxc4 Re8 32. Qd3 Qc5 33. Rhf1 Re3 34. Qd8 Qxc4 35. Rb1 Qc5 36. f5 g5 37. h4 g4 38. Rf4 a5 39. h5 [DIAGRAM]



Qe5 (39... b3! 40. cxb3 c2) 40. h6+ Kxh6 41. Rff1 Kg7 42. Rh1 Re2 43. Qa8 Qc5 44. Qa6 Re7 45. Rbf1 Ra7 46. Qe6 a4 47. Rh4 b3 48. Rfh1 Qe7 49. Qb6 bxc2 50. Qd4 c1=Q+ 51. Rxc1 Bxc1 52. Rxg4+ Kf8 53. Rg3 Bd2 54. Kb1 Qe4+ 55. Qxe4 Nxe4 56. Rd3 Rb7+ 57. Kc2 Rb2+ 58. Kd1 Nf2+ 59. Ke2 Nxd3 60. Kxd3 Be1 0-1

NTWO Kings (2)
Joshua Suich
(IM) Ronald Burnett

1. Nf3 g6 2. e4 Bg7 3. d4 d6 4. Bc4 Nf6 5. Nc3 O-O 6. Qe2 Nc6 7. h3 Nd7 8. Be3 e5 9. Rd1 exd4 10. Nxd4 Nce5 11. Bb3 Nc5 12. O-O Nxb3 13. axb3 Nd7 14. Rfel Re8 15. Qd2 c6?! Unnecessarily creating a weakness. 16. Nde2 Bf8 17. Bh6 Be7 18. Qd4 f6 19. Qc4+ Kh8 20. f4 Rg8 21. Nd4 Qe8 22. Nf3?! Nc5? (See Diagram on next page.)



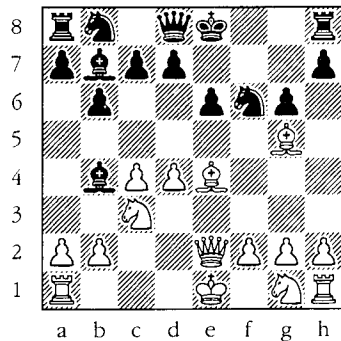
White to move.
Suich vs. Burnett, Move 23.

Threatening to trap the bishop with 22... g5 is better: 23. fxg5 fxg5 24. Qd4+ Bf6 25. Qe3 Qh5 26. Rxd6 Qxh6 27. e5 Qf8+/-.

But the game continuation is a mistake and Andrews comments: "Here Burnett offered a draw and Suich accepted. It could have meant that the top two seeds would go down in the same round if white had only played ... Ng5!" 1/2-1/2 After 23. Ng5! (winning on the spot.) ... Rf8 24. Bxf8 Qxf8 25. Nf3.

NTWO Kings (3)
(FM) Peter Bereolos
(IM) Ronald Burnett

1. d4 b6 2. c4 e6 3. e4 Bb7
4. Bd3 Bb4+ 5. Nc3 f5 6.
Qh5+ g6 7. Qe2 Nf6 8. Bg5
fxe4 9. Bxe4



Black to move.

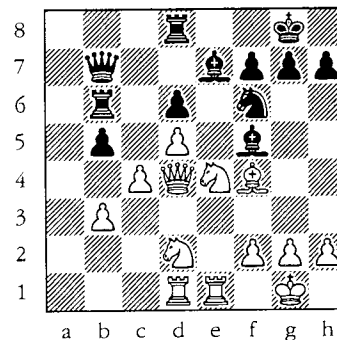
Nxe4!? Taking with the bishop leads to a drawish game with few pieces to cause Black--or White--any problems: 9... Bxc3+ 10. bxc3 Bxe4 11. Bxf6 Qxf6 12. Qxe4 Nc6 13. Nf3 Qf5. 10. **Bxd8 Nxc3** 11. **bxc3 Bxc3+** 12. **Kf1 Bxa1** 13. **Bxc7 Bxd4** 14. **Be5** Perhaps White would do better to try and keep Black in the center with Bd6: 14. Bd6 Nc6 15. Nf3 Bc5 (15... Bg7 16. Qe4 Bf8 17. Be5 Rg8 18. Nd4) 16. Bxc5 bxc5 17. Qb2 O-O-O 18. Ne5 Rhf8 19. Nxc6 Bxc6 20. Qa3 d6. **Bxe5** 15. **Qxe5** O-O 16. Nf3 **Bxf3** 17. **gxf3** Na6 18. h4 Nc5 19. h5 Rf5 20. Qd4 Raf8 21. hxg6 hxg6 22. Rh8+ Kf7 23. Rh7+ Ke8 24. Qd6 R5f7 25. Qb8+ Ke7 26. Rxf7+ Rxf7 27. Kg2

Immediately taking on a7 at least allows the a-pawn to be preserve but is also probably insufficient to

win against stout defense:
27. Qxa7 Rf4 28. Qxb6 Rxc4
29. Qc7 Rcl+. d6 28. Qxa7+
Nd7 29. Kg3 Rf5 30. f4 Ra5
31. Qb7 Rxa2 32. Qe4 Ra4 33.
Qxg6 Ra5 (33... Rxc4? 34.
Qg7+ Kd8 35. f5!) 1/2-1/2

NTWO Kings (3)
Jerry Spinrad
Charles McMillan

1. e4 c5 2. Nf3 d6 3. c3 Nf6
4. Be2 Bd7 5. e5 Nd5 (5...
dxe5 6. Nxe5 Nc6 7. Nxd7
Qxd7=) 6. **exd6 exd6** 7. d4
Nf6 8. O-O Be7 9. d5 O-O 10.
c4 Re8 11. Nc3 Na6 12. h3
Nc7 13. Bf4 a6 14. a4 b6
(14... b5! 15. axb5 axb5 16.
Rxa8 Qxa8 17. b3=) 15. **Bd3**
Rb8 16. Nd2 b5 17. axb5 axb5
18. b3 Rb6 19. Qf3 Qb8 20.
Nce4 Na6? 21. Rad1 (21.
cxb5! Nb4 22. Nxc5 Nxd3 23.
Qxd3) 21... Nb4 Better was
Qd8. 22. **Nxc5** Qc8 23. **Nce4**
Nxd3 24. **Qxd3** Bf5 25. **Qd4**
Qb7 26. Rfe1 Rd8?



White to move.

27. Ng3 Black resigns 1-0

NTWO Kings (4)
Gerald Larson
(FM) Peter Bereolos

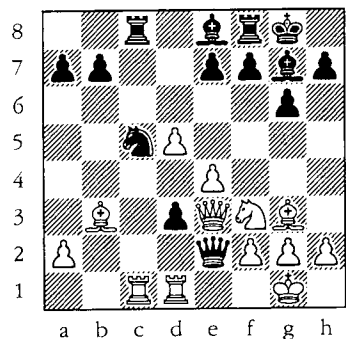
1. e4 e5 2. Nf3 Nc6 3. Bb5
d6 4. d4 Bd7 5. O-O exd4 6.
Nxd4 g6 7. Nc3 Bg7 8. Nxc6
bxc6 9. Bc4 Qe7 10. Be3 Nf6
11. Bd4 O-O 12. f3 Be6 13.
Qd3 Nd7 14. f4 Nb6 15. Bxg7
Kxg7 16. Ba6 Bc8 17. Rael
Bxa6 18. Qxa6 d5 19. Qd3
Qc5+ 20. Kh1 Rae8 21. f5 h6
22. e5!?

This looks to be much stronger than it actually is. In reality, it just loses a pawn with minimum compensation. d4 23. f6+ Kh7 24. Ne4 (24. Ne2 Qxe5 25. Qxd4 Nd5 26. h3 Qd6 27. Rf2 Re6 28. c4 Nb4 29. Ref1=) 24... Qxe5 25. h4 (25. c4 dxc3 26. bxc3 Re6-/+) 25... Qd5 26. b3 Re5 27. Ng3 Nd7 28. Rxe5 Qxe5 29. h5 Nxf6 30. Qf3 Nxe5 31. Nxe5 Qxh5+ 32. Qxh5 gxh5 33. Rf6-/+ and in the time scramble, the players went on to draw. 1/2-1/2

NTWO Kings (4)
(IM) Ronald Burnett
Jerry Wheeler

1. d4 d5 2. c4 c6 3. Nf3 Nf6
4. Qc2 g6 5. Bf4 Bg7 6. e3
O-O 7. Nc3 c5 8. Nxd5 Nxd5
9. cxd5 cxd4 10. e4 Na6 11.
Bc4= Bd7 Possibly better are
b5 or Bg4. 12. O-O Rc8 13.
Qe2 Qb6 14. Ne5 Be8 15. Rac1
Nc5 16. Rfd1 Qf6 17. Bg3

h5 18. Nf3 d3 19. Qe3 Qxb2
20. Bb3 Qe2



White to move.

21. d6 This is a creative move that shows Ron's focus and understanding of the position. It does not forcefully win anything but is a nice continuation to extract the most from the position. exd6?! (21... Nxb3 22. axb3 Qxe3 23. fxe3 Rxc1 24. Rxc1 Bc6 25. dxe7 Re8 and black is much better thanks to the two bishops, passed d-pawn and poor white pawn structure. 22. Bxd6 Nxb3 23. axb3 Bb5 24. Bxf8 Bxf8 25. h4 Rc2 26. Nd4 Bh6 27. Qxe2 dxe2 28. Nxc2 (Flag) 1-0

NTWO Kings (5)

(IM) Ronald Burnett

Gerald Larson

Annotated by T. Andrews

1. e4 c5 2. Nf3 Nc6 3. Bb5 d6 4. O-O Bd7 5. c3 a6 6. Ba4 Nf6 7. Bc2 e5 8. h3 Ne7

9. d4 Ng6 10. dxc5 dxc5 11. Nbd2 Be7 12. Nc4 Qc7 13. a4 Rd8 14. Qe2 b5 15. Na3 c4 16. Be3 O-O 17. Rfd1 Bc6 18. Rxd8 Rxd8 19. Nd2 Qb7 20. axb5 axb5 21. Nab1 Ra8 22. Rxa8+ Qxa8 23. Bg5 Qa2 24. g3 Qxb2 25. Qd1 Nf8 26. Nf1 h6 27. Bxf6 Bxf6 28. h4 Be7 29. Ne3 Ne6 30. Nd5 Bc5 31. Nd2 Now black should seek to play ...b5-b4 at the right moment. The computer comes up with the interesting plan of ...Nf8-d7-c4 to protect the c-pawn, necessary to accomplish this plan. 31... Nd4?! 32. cxd4 exd4 33. Qg4 d3! (33... Bxd5 34. Qc8+ Bf8 35. exd5 d3 36. Bxd3 cxd3 37. d6) 34. Qc8+ Kh7 35. Qf5+ g6 36. Qxf7+ Qg7 37. Qxg7+ Kxg7 38. Bb1 Bxd5 39. exd5 c3 40. Bxd3 cxd2 41. Bc2 g5 1/2-1/2

NTWO Queens (4)

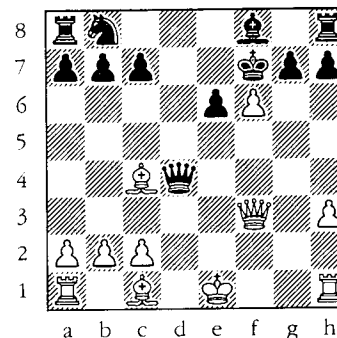
William Bragg (1811)

Peter Suich (1795)

1. e4 d5 2. d4 dxe4 3. Nc3 Nf6 4. f3 exf3 5. Nxf3 Bg4 6. h3 Bh5 7. g4 Bg6 8. Ne5 Be4?! Black needed to protect d5 with c6 or e6. This is a definite opening blunder. 9. Nxe4 Nxe4 10. Nxf7 Even stronger is 10. Bg2: ... Nd6 11. Bxb7 Nxb7 12. Qf3 Qxd4 13. Nxf7 c6 14. Nxb8. 10... Kxf7 11. Qf3+ Nf6 12. Bc4+?! White should simply take the

TCN/Winter 2007_9

b-pawn. He errs slightly by endangering his bishop. e6 13. g5 Qxd4 14. gxf6



Black to move.

Qxf6 (14... Qh4+! 15. Kd1 Qd4+ 16. Bd2 gxf6) 15. O-O Bc5+?? (15... Qxf3 16. Rxf3+ Ke8 17. Bxe6 Nc6=) 16. Be3 Qxf3 17. Rxf3+ Ke8 18. Bxc5Nd7 19. Bd4 e5 20. Re1 Rf8 21. Rxf8+ Kxf8 22. Bxe5 Nxe5 23. Rxe5 Rd8 24. Kf2 Rd2+ 25. Re2 Rd4 26. Bb3 c5 27. c3 Rd3 28. Kg2 b5 29. Bc2 Rd5 1-0

NTWO Queens (3)

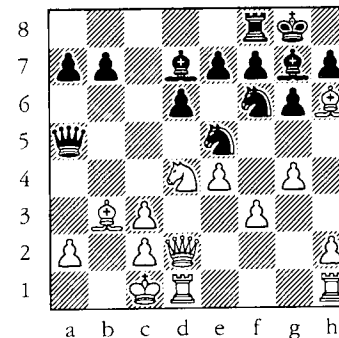
Joshua Salter

Tom Tucker

This game showcases one of the most violent (if not best) combinations executed during the tournament.

1. e4 c5 2. Nf3 d6 3. d4 cxd4 4. Nxd4 Nf6 5. Nc3 g6 6. Be3 Bg7 7. f3 Nc6 8. Bc4 O-O 9. Qd2 Bd7 10. O-O-O Rc8 11. Bb3 Ne5 12. g4 Qa5

13. Bh6 Rxc3 14. bxc3? (14. Bxg7 Rxc2+ 15. Bxc2 Qxd2+ 16. Kxd2 Kxg7+/-)



Black to move.

14... Nxf3 15. Nxf3 (15. Qf4 Bxh6 16. Qxh6 Qxc3-+) 15... Nxe4 16. Qd5 Qa3+ 17. Kb1 Nxc3+ 18. Ka1 Nxd1+ 19. Bxg7 Qc1# 0-1

NTWO Rooks (2)

Elion King

Alan McCormick

1. e4 c5 2. Nf3 e6 3. c3 d6 4. d4 cxd4 5. cxd4 Nf6 6. Bd3 Nc6 7. O-O Be7 8. Bg5 O-O 9. Nbd2 h6 10. Bh4 Kh8 11. h3 Ng8 Better was Nh5 as White can now play Bg3. 12. Bxe7 Ngxe7 13. Nc4 b5?! (13... d5 14. Nce5 Qb6 15. exd5 exd5) 14. Ne3+/= Qb6 15. Bc2 Bb7 16. a3 e5 17. d5 Nb8?! Better was Nd4. 18. Nh4 Bc8 19. Qh5 Nd7 20. Ng4 Ng8 21. Nf3 Ndf6 22. Qh4 Qd8 23. Nxf6 Qxf6 24. Qg3 Bd7

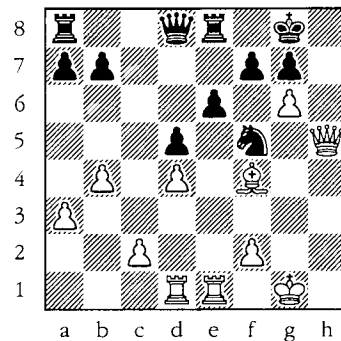
TCN/Winter 2007_10

25. Nh2 g5 There is no need to weaken the kingside. Rac8 would serve Black well. 26. Bd1 Qg6= 27. Qe3 h5 28. f3 Ne7 Stronger was f5. 29. g4 Rfc8 30. Bb3 h4 31. Rfc1 f6 32. Rc3 Qe8 33. Nf1 Ng6 34. Qd2 Nf4 35. Kh2 Rxc3 36. bxc3?! White is worried about the Black knight getting to d4, but the White pieces can simply redeploy (Bd1-Qd2-Ne3) and neutralize his post. Taking with the pawn unnecessarily creates a weakness on the half-open c-file. (36. Qxc3 Ne2 37. Qc7=) 36... Qc8 37. Ne3 Qc5! 38. c4 bxc4 (38... Rc8! 39. cxb5?? (39. Ra2 Qd4) 39... Qc3) 39. Bxc4 Rc8 40. Ra2 Rb8 41. Ra1 Qb6 42. Nd1?! This knight should stay where it is so that it will be in position to challenge Black's well-placed knight. Ba4 43. Ra2 Qc5 (43... Nxb3 44. Kxb3 Qg1 45. Qg2 Qxd1) 44. Bf1?? (44. Ne3) 44... Rb1 45. Ne3 Bb3 46. Rb2 Rxb2 47. Qxb2 Qxe3 48. Bc4 Bxc4 49. Qb8+ Kg7 50. Qc7+ Kg6 51. Qxa7 Qe2+ 0-1

NTWO Rooks (4)
Elion King
Coty Phillips

1. e4 d5 2. exd5 Qxd5 3. Nc3 Qa5 4. Nf3 c6 5. d4 Nf6 6. Bd3 Bg4 7. h3 Bh5 8. O-O Nbd7 9. a3 e6 10. Bf4 Be7 11. Re1 O-O 12. Qe2 Rfe8

13. g4 Bg6 14. Bxg6 hxg6 15. b4 Qd8 16. Rad1 Attacking White's weakened queenside with a5 would give Black good counterplay. Nd5 17. Nxd5 cxd5 18. g5 White should have rushed to get in c4. The kingside play looks innocuous. Nb6 Well, Rc8 was best, holding the knight just in case it might be needed for kingside defense or to help control e5. Still, Black is okay. 19. h4 Bd6 20. Ne5 Bxe5 21. Bxe5 Nc4 22. Bf4 White blunders for surely he does not believe that his kingside attack is strong enough to sacrifice the a-pawn?! Nd6?! (22... Nxa3 23. Rd3 Nb5 24. h5 Rc8 25. hxg6 fxg6 26. Qg4 Qe7 27. Re2 Rf8++) 23. h5 gxh5 24. Qxh5 Nf5 25. g6 Rd3 is even better.



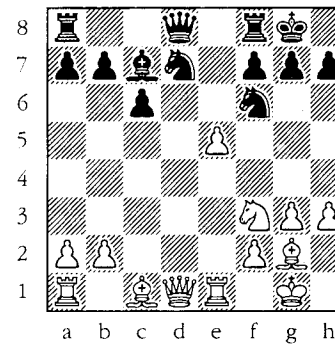
Black to move.

f6? (25... fxg6 26. Qxg6 Qf6++) 26. Rd3 Kf8 27. Rh3 Ne7 28. Rxe6! (28. Qh8+ Ng8 29. Rh7 Re7 30. Rxe6)

28... Nxb6 29. Qxg6 Rxe6 30. Rh8+ Ke7 31. Qxg7# 1-0

NTWO Bishops (3)
Victor Suich
Corry Marsh

1. Nf3 d5 2. g3 Nf6 3. Bg2 Bf5 4. O-O e6 5. d3 Nbd7 6. Nbd2 Bd6 7. c4 c6 8. cxd5 exd5 9. Re1 O-O 10. e4 dxe4 11. dxe4 Bg4 12. h3 Bxf3 13. Nxf3 Bc7 14. e5



Black to move.

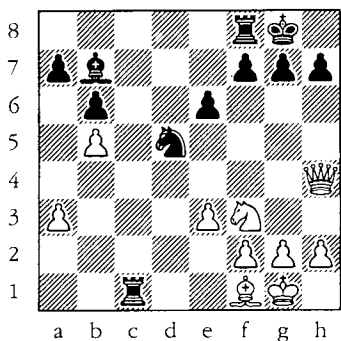
Nd5? Possible is Nxe5 because the White's rook is overworked. 15. Qb3 Bb6 16. Nd2 Nc5 17. Qc4 Re8 18. Nb3 Nxb3 19. Qxb3 Nc7 (19... Qd7) 20. Kf1 (20. Be3 Rxe5 21. Bxb6 Rxe1+ 22. Rxe1 axb6 23. Qxb6=/+) 20... Qd4? 21. Be3 Qd7 22. Bxb6 axb6 23. Qxb6 Nd5 24. Qb3 Rad8 25. Rad1 Qe6 26. f4 g5 27. Qf3 gxf4 28. gxf4 Qf5 29. Re4 Nxf4?? 30. Rxd8 Rxd8 31. Rxf4 1-0

NTWO Bishops (2)
Korey Kormick
Michael Agostino
Annotated by T. Andrews

1. e4 c5 2. Nf3 d6 3. c3 Nf6 4. e5 dxe5 5. Nxe5 Qc7 6. d4 cxd4 7. cxd4 g6 8. Bf4 Qb6 9. Nc4 Qe6+ 10. Ne5 Qb6 11. Nc4 Qe6+ 12. Be5 Bg7 13. d5 Qd7 (13... Nxd5!) 14. Nc3 O-O 15. Ne3 Ng4 16. Nxb4 Qxg4 17. Bxg7 Kxg7 18. Qxg4 Bxg4 19. f3 Bf5 20. O-O-O a6 21. Bd3 Bxd3 22. Rxd3 Nd7 23. Re1 Rfe8 24. Rde3 Kf8 25. a4 Rac8 26. Kd2 a5 27. Rb1 Nb6 28. Kd3 Red8 29. Re4 Nxd5 30. Nxd5 Rxd5+ 31. Rd4 Rxd4+ 32. Kxd4 Rc2 33. b4 Ra2? 34. bxa5 Rxa4+ 35. Kc3 Rxa5 36. Rxb7 Ra2 37. Rb2 Rxb2 38. Kxb2 f5 39. f4 Kf7 40. Kc3 Ke6 41. Kc4 Kd6 42. Kd4 h6 43. Ke3 Kd5 44. Kd3 e5 45. fxe5 Kxe5 46. Ke3 g5 Rxb2 38. Kxb2 f5 39. f4 Kf7 40. Kc3 Ke6 41. Kc4 Kd6 42. Kd4 h6 43. Ke3 Kd5 44. Kd3 e5 45. fxe5 Kxe5 46. Ke3 g5 47. h3 g4 48. hxg4 fxg4 49. Kf2 Kf4 50. Kg1 g3 (50... Kg3 51. Kh1 h5 52. Kg1 h4 53. Kh1 Kf2 54. Kh2 g3+ 55. Kh1 h3 wins) 51. Kh1 h5 52. Kg1 Ke3 53. Kf1 Kd2 54. Kg1 Ke1 55. Kh1 h4 56. Kg1 Ke2 57. Kh1 h3 58. gxh3 Kf2 1/2-1/2 (But it looks like a 3-move mate to me.-ed. Perhaps a few moves were added during data entry?)

NTWO Bishops (3)
Michael Agostino
Mark Leamon

1. d4 Nf6 2. c4 e6 3. Nc3 Bb4 4. Qc2 O-O 5. Bg5 d6 6. Nf3 b6 7. e3 Ba6 8. a3 Bxc3+ 9. Qxc3 Nbd7 10. Bd3 c5 11. O-O cxd4 12. Qxd4 Qc7 13. Bxf6 This is highly unnecessary. It even helps Black with the defense of the d-pawn. Nxf6 14. Rfc1 The wrong rook. Ask what potential files both rooks can be deployed on before posting your rooks. Now the rook at a1 has little work--unless doubling on the c-file is intended. Qc5 15. Qf4 Rac8 16. b4 Qc7 17. Qh4 d5! 18. b5 Bb7 19. cxd5 (Rc2 is better.) Qxc1+ 20. Rxc1 Rxc1+ 21. Bf1 Nxd5



White to move.

22. Qg3? White could prolong resistance with Nd4 (which allows the king to create an escape square and the knight to perhaps temporarily block

the c-file): 22. Nd4 Nc3 23. f3 Bd5 24. Kf2 Nd1+ 25. Ke2 Rfc8 26. e4. At the least, h3 followed by Nh2 would slow the execution. 22... Nc3 23. Nd4 Ne4 24. Qf3 Nd2 25. Qe2 Rxf1+ 0-1

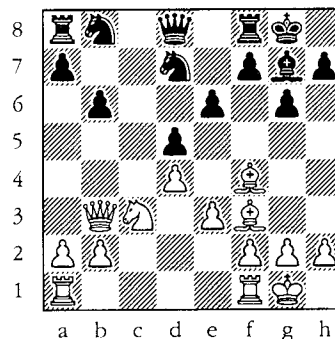
NTWO Bishops (5)
Victor Suich
Bin Li

1. Nf3 Nf6 2. d4 e6 3. c4 d5 4. Nc3 Nc6 5. Bg5 Be7 6. e3 h6 7. Bh4 g5 8. Bg3 Bb4 9. a3 Bxc3+ 10. bxc3 Ne4 11. Qc2 f5 12. cxd5 Qxd5? 13. c4 (13. Bxc7) 13... Qa5+ 14. Nd2 Bd7 15. Bd3? O-O-O? (15... Nb4!) 16. Bxe4 fxe4 17. O-O Qf5 18. Qxe4 Qxe4 19. Nxe4 Rdf8 20. Nc5 h5 21. Nxd7 Kxd7 22. h3 h4 23. Bh2 Rfg8 24. d5 exd5 25. cxd5 Ne7 26. Rad1 g4 27. hxg4 Rxc7?! This looks attractive but keeping a strong center with f3-e4 was much better. Kxc7 29. d6+ Kd7 30. dxe7+ Kxe7 31. Rd4 Rhg8 32. Rxc7 Rxc7 33. f3 Ra4 34. Rb1 b6 35. Rb3 Kd6 36. e4 Ke5 37. Kf2 Kd4? 38. Rb4+ Rxb4 39. axb4 a5 40. bxa5 bxa5 41. Ke2 Kc3?? Simple counting would reveal that this approach is futile, and after queening White will play Qe5+ and capture Black's newly promoted queen. But Black can get a draw by using the a-pawn as a decoy: 41... a4

42. Kd2 Ke5 43. Kc3 Kf4 44. Kb4 Kg3 45. e5 Kxg2 46. e6 h3 47. e7 h2 48. e8=Q h1=Q 49. Qe2+ Kg3= 42. e5 a4 43. e6 1-0

NTWO Knights (3)
Nate Musin
Christopher Dobbs

After an excellent exchange sacrifice, White overlooks two consecutive attacks and drops a won game. 1. d4 Nf6 2. c4 g6 3. Nf3 Bg7 4. Bf4 O-O 5. Nc3 d5 6. e3 Bg4 7. Be2 e6 8. Qb3 b6 9. h3 Bxf3 10. Bxf3 c6 11. O-O Nfd7? 12. cxd5 cxd5



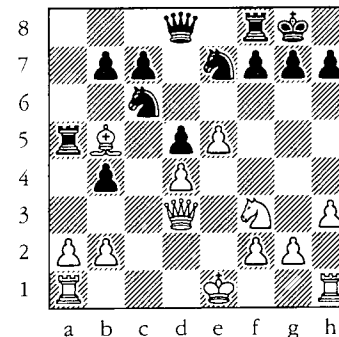
White to move.

13. Nxd5! exd5 14. Bxd5 Na6 15. Bxa8 Qxa8 16. Qb5 Qb7 17. Rac1 Nf6 18. Rc7?? Nxc7 19. Rc1?? Nxb5 0-1

NTWO Knights (5)
Roy Manners
Timothy Staley

1. e4 e6 2. c4 d5 3. cxd5 exd5 4. e5 Nc6 5. d4 Bb4+ 6.

6. Bd2 a5 7. Nf3 Bg4 8. Bb5 Nge7 9. Bxb4 axb4 10. Nbd2 O-O 11. h3 Bxf3 (11... Nxd4!) 12. Nxf3 Ra5 13. Qd3??



Black to move.

Qa8 (13... Na7! would win the bishop) 14. Bxc6 Nxc6 15. O-O Rxa2 16. Rxa2 Qxa2 17. Ng5 g6 18. Qb5? White holds equality with Qd2, protecting his pawns and eyeing the weakened black squares of the kingside. Nxd4 19. Qxb7 Ne2+ 20. Kh2 Qxb2 21. Qxc7 h6 22. Nf3 Nf4 A little better is Nd4 because it would decrease the protection of e5 and bring the game closer to a technical win while limiting White counter play. 23. Qd6 Qe2 24. Kg1 b3 (24... Nxf3+!) 25. Nd4 Qe4 26. Nf3 Ne2+ 27. Kh1 Qd3 28. Re1 b2 29. Qb4 Qc2 30. Rxe2 Qxe2 31. Nd2 Qe1+ 32. Kh2 Qxe5+ 33. g3 Rb8 0-1

NTWO Knights (2)
 Bryan Parkhurst
 Nate Musin

1. e4 c6 2. Nf3 d5 3. e5 Bf5
 4. d4 e6 5. h3 a6 6. a4 c5
 7. c4 dxc4 8. Bxc4 cxd4 9.
 Nxd4 Bxb1 10. Rxb1 Bc5?!
 (10... Bb4+! 11. Ke2) 11.
 Be3 Bxd4 (11... Qa5+ 12. Bd2
 Bb4 13. O-O=) 12. Bxd4 Nc6
 13. Bc5? Nxe5 14. Be2 Nd7
 15. Bd4 Ngf6 16. Bf3 Rb8 17.
 b4 O-O 18. Ba7 Ra8 19. Bd4
 Rb8 20. Ba7 Ra8 21. Bd4 Nd5
 22. Qb3 N7f6 23. Bxf6 Qxf6
 24. Bxd5 Qe5+ 25. Qe3 Qxd5
 26. O-O b5 27. a5 Rfc8 28.
 Rfc1 h6 29. Rxc8+ Rxc8 30.
 Qb6 Qc6 31. Qe3 Qc2 32. Rb3
 Qc1+ 33. Kh2 Qxe3 34. Rxe3
 Rc4 35. Rb3 Kf8 36. g4 f5
 37. gxf5 exf5 38. Kg3 g6 39.
 Re3 Kf7 0-1

The Memphis Chess Classic
 Open was a 5-round Swiss
 that was held Oct. 14-15.
 Burnett dominated the event
 with a perfect 5.0, and
 Gerald Larson also went
 undefeated with 4.5 points.

Ronald Burnett (2435)
 R.O. Mitchell (2161)
 Commented by Peter Lahde

1. d4 Nf6 2. c4 e6 3. Nf3 d5
 4. g3 Be7 5. Bg2 O-O 6. O-O
 c6 7. Nbd2 b6 8. Qc2 Bb7 9.
 e4 dxe4 10 Nxe4 c5 11. Nxf6
 Resigns 1-0 Fritz gives this
 possible continuation:
 11...Bxf6 12. Ng5! Bxg5 13.
 Bxb7 Bxc1 14. Bxa8 etc.

NTWO Knights (3)
 Roy Manners
 Chris Martindale

1. e4 c5 2. Nf3 Nc6 3. Bc4
 g6 4. O-O d6 5. Re1 Bg7 6.
 h3 Nf6 7. c3 O-O 8. d3Bd7 9.
 Be3 a6 10. Bb3 b5 11. Nbd2
 Qc7 12. Bf4 Better is d4. b4
 13. Nc4 bxc3 14. bxc3 Nh5
 15. Bd2 Na5 16. Nxa5 Qxa5
 17. Rc1 (17. e5!) 17... Nf6
 18. e5 Ne8 19. e6 (Bg5!)
 wins two pawns or the
 exchange. Bxe6 20. Bxe6
 fxe6 21. Rxe6 Bf6 22. Qb3
 Kg7 23. c4?! If White wanted
 to exchange the black
 bishop, then he should have
 chosen the strong Bg5. Also
 good is Rce. But the move
 played simply cuts off one
 of Whites attack angles as
 well as limits his queen's
 options. Qc7 24. Rce1 Kg8
 25. Bc3 Rb8 26. Qc2 Rb7?
 Black could boot the rook
 and gain the advantage with:
 26... Ng7 27. R6e4 Bxc3 28.
 Qxc3 e5=/+ 27. Bxf6 Nxf6
 28. Qe2 Seeking to swap the
 rooks for the queen is also
 strong but Roy figures that
 he can get even more out of
 the position since he has a
 nice attack position and can
 get even more risk-free.
 28... Qd8 29. Ng5 Ne8?? 30.
 Qe4 Threatening Rxc6+. Ng7
 31. Qxb7 Nxe6 32. Nxe6 Qa5
 33. Qe4 Rf6 34. Qa8+ 1-0

TCN/Winter 2007_15

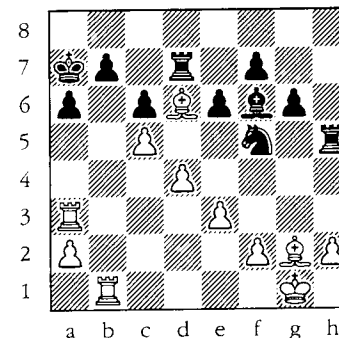
46th Mid-South Open

The 46th Mid-South Open was
 held in Memphis, TN from
 November 25-26. This 5SS
 had a time control of 2-
 h/Game. Twenty-five players
 participated in the event.
 Sam Palatnik won the event
 with an undefeated 4.5
 points and Ronald Burnett
 and David Kernell tied for
 second with 4.0 points.
 Games from the event are
 included below and
 crosstables are at
<http://www.memphischess.com/midsouth46.html>.

46th Mid-South Open (5)
 David Kernell (1923)
 Carlos Harbert(1934)

1. Nf3 d5 2. c4 c6 3. g3
 dxc4 4. Na3 Be6 5. Qc2 g6 6.
 Ng5 Qd5?! 6... Bd5 7.e4
 Nf6 8. Bg2 h6= 7. Nxe6
 Qxe6 8. Qxc4 Qxc4 9. Nxc4
 Nd7 10. Bg2 Nb6 11. Na5
 O-O-O= 12. b4 Bg7 13. Rb1 a6
 14. O-O Nf6 15. d3 Nfd5 16.
 Bd2 The immediate Na4 would
 have slowed White's progress
 on the queenside. Kb8 17.
 Rfc1 e6 18. Nb3 Na4 19. d4
 Nc7 20. Bf4 Rd7 21. e3 Ka7
 22. Nc5 Nxc5 23. bxc5 Nd5
 Growing uneasy with the
 pressure of the black-square
 bishop, Black loses time
 trying to swap it off. Best
 would be to play Re8, aiming
 for a quick e5. 24. Bd6 Ne7
 25. g4 Bf6 26. Rc3 h5

27. gxh5 Rxh5 28. Ra3!?
 Nf5?? The rook had to
 hustle back to h8 to protect
 the backrank.



White to move.

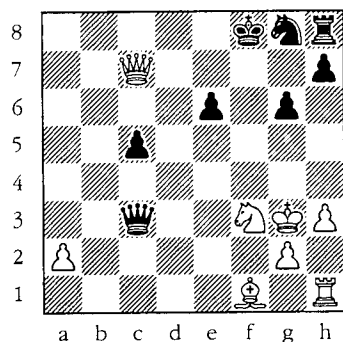
29. Bxc6! Rg5+ 30. Kf1 Nxd6
 31. Bxd7 Nc4 32. Rd3 Rd5 33.
 c6 Bd8 34. Rxb7+ Ka8 35. c7
 1-0

46th Mid-South Open (5)
 Ron Burnett (2443)
 Carlos Sims (1911)

1. e4 d6 2. d4 c6 3. f4 g6
 4. Nc3 Bg7 5. h3?! White is
 trying to immediate blow
 Black away. However, first
 playing Nf3 is advisable.
 e5! Targetting h4. 6. dxe5
 Qh4+ 7. Ke2 dxe5 8. Nf3 Qe7
 Bg4 or Qg3 are possible.
 Nonetheless, White actually
 is not in bad shape because
 Black has so few pieces
 developed: 8... Bg4 9. g3
 Bxf3+ 10. Kxf3 Qe7 11. Kg2
 Nd7= 9. Kf2 9. Nxe5 Bxe5

TCN/Winter 2007_16

10. fxe5 Qxe5 11. Kf2 Nf6
 12. Bd3 +/- 9... exf4?!
 Nd7 would have granted Black
 a comfortable position. 10.
Bxf4 Bxc3? The pawn can be
 won but the cost of lagging
 development and black-square
 weakness is too much.
 Besides, there are also
 tactical problems with this
 continuation. 11. **bxc3**
Qxe4? 12. **Bxb8 Rxb8** 13. **Qd6**
Qxc2+ 14. **Kg3 Qxc3** 15. **Re1+**
Be6 16. **Qxb8+ Ke7** 17. **Qxb7+**
Kf6 18. **Qxa7 c5** 19. **Qb8 Ke7**
 20. **Qc7+ Kf8** 21. **Rxe6 fxe6**



White to move.

22. **Bc4!!** An excellent
 example of attraction and
 line clearance! **Qxc4** 23.
Rd1 The attraction motif is
 seen after 23. **Ne5**, gaining
 a tempo while threatening
 mate: 23. **Ne5 Qc3+** 24. **Kh2**
Ne7 25. **Rf1+ Kg8** 26. **Qd8+**
Kg7 27. **Qxe7+ Nf6** 24. **Rd8+**
Ne8 25. **Qd7** 1-0

46th Mid-South Open (4) Sam Palatnik (2518) Ron Burnett (2443)

1. **Nf3 Nf6** 2. **c4 e6** 3. **g3 b6**
 4. **Bg2 Bb7** 5. **d4 Be7** 6. **O-O**
O-O 7. **Nc3 Ne4** 8. **Qc2 Nxc3**
 9. **Qxc3 Bf6** 10. **Qc2 d5** **Nc6**
 is more tenacious but
 Burnett knows how to nurture
 hanging pawns. 11. **cxd5**
exd5 12. **Bf4 Na6** 13. **Rac1**
Qe7 14. **Be5 Bxe5** 15. **Nxe5 c5**
 16. **b3 Rac8** 17. **Qb2 Nc7** 18.
dxn5 bxc5= 19. **Rfd1 Ne6?**
 Oops. The simple **Rfd8** would
 have maintained the balance.
 20. **Bxd5 Bxd5** 21. **Rxd5 Nd4**
 22. **e3 Qe6** 23. **Rdxc5 Rxc5**
 24. **Rxc5 Nf5** 25. **Qd2 h5** 26.
Qd5 Qf6 27. **Nd7 Qa1+** 28. **Kg2**
Nxe3+ 29. **fxe3 Qxa2+** 30. **Kf3**
Re8 31. **Ne5 Rf8** 32. **h4** (32.
Ng6! **Re8** 33. **Rc7**) **Qh2** 33.
Kf4 The Steinzian King--a
 fighting piece! **Qf2+** 34.
Qf3 Qb2 35. **Qxh5 Qxb3** 36.
Nf3 Re8 37. **Re5 Qb8** 38. **Kg4**
g6 39. **Rxe8+ Qxe8** 40. **Qe5**
Qc8+ 41. **Kg5 Qd8+** 42. **Qf6**
Qe8 43. **Ne5 a5** 44. **g4!** **a4**
 45. **h5 gxh5** 46. **gxh5 Kh7** 47.
h6 Qf8 48. **Kh5** 1-0

Cheating by Grandmasters?

Possibly. Topalov accused
 Kramnik of cheating in their
 championship match. Now it
 is Topalov who is being
 accused of cheating by GM
 Short, Corus officials, and
 Wijk ann Zee tournament
 officials. His manager is
 suspected of passing non-
 verbal clues.

46th Mid-South Open (2) Sam Palatnik (2518) Greg Turner (1847)

White gets a tremendous
 advantage according to Fritz
 but can't seem to make much
 of it. The game reminds me
 of how the computers are
 quick to condemn Kramnik's
 Berlin Defense but yet can't
 show one the clear line to
 crack it. 1. **c4 Nf6** 2. **Nc3**
c5 3. **Nf3 Nc6** 4. **d4 cxd4** 5.
Nxd4 d6 6. **e4 g6** 7. **Be2 Bg7**
 8. **Be3 a6** 9. **O-O O-O** 10. **f3**
Bd7 11. **Qd2 Rc8** 12. **Rfc1**
Nxd4 13. **Bxd4 Bc6** 14. **b4 b6**
 15. **Rab1 Bb7** 16. **Nd5 Nd7** 17.
Be3?!= Generally White
 would jump at the chance to
 swap off Black's bishop--and
 should have in this case,
 too, according to Fritz9.
 Sam trusts that his greater
 knowledge and positional
 play will win if he just
 gives his opponent the
 opportunity to create a few
 more weaknesses. **e6** 18. **Nc3**
Qc7 19. **Na4 Rfd8** 20. **Bf1 Ba8**
 21. **Rd1 Bf8** 22. **Qf2 Rb8** 23.
Rbc1 Qb7 24. **a3 Rdc8** 25. **Bf4**
e5?! Black should have
 stuck with passive defense
 and played **Rc6**. Now White
 does have something
 tangible. 26. **Be3 Qc6** 27.
Nc3 a5 28. **Qh4 Re8** 29. **Nb5**
Re6 Fritz9 claims a
 whopping 2.4-point advantage
 for White here. But this
 assessment is based mainly
 on piece activity and square
 control. No killing tactics

are evident. 30. **Qe1 axb4**
 31. **axb4 Bb7** 32. **Bd3 Ba6** 33.
Ra1 Bxb5 34. **cxn5 Qc7** Still
 Fritz9 claims a big 2.4
 advantage for White but
 offers no killing shot.
 Certainly White can now gang
 attack the b-pawn, though,
 with moves like **Ra6**, **Rc6**,
 and **Qf2**. 35. **Rdc1 Qd8** 36.
Bc4 Re8 37. **Bd5 Kg7** 38. **Bc6**
Re7 39. **Rd1 Nf6** 40. **Ra6 Re6**
 41. **Qf2 Nd7** 42. **Ra7 Nf6** 43.
Qa2 Re7 44. **Ra6 Re6** 45. **Qf2**
Nd7 46. **Rda1 Re7** 47. **Ra7 Nf6**
 48. **Qh4** White allows part of
 his advantage to dissipate.
 He could have more strongly
 played **Ra8**, but Black does
 seem vulnerable on the
 kingside, too. **Rxa7** 49.
Rxa7 Be7 50. **Bh6+ Kg8** 51.
Bg5 Kg7 52. **Qh6+ Kg8** 53.
Bxf6 Fritz9 suggests **Bh4** or
f4. **Bxf6** 54. **Bd5 Be7**
 Because of the
 opposite-colored bishops
 ending, Black can even
 afford to play the more
 aggressive **Bg5**: 54... **Bg5**
 55. **Bxf7+ Kh8** 56. **Qh3 Qc8**
 57. **Qxc8+ Rxc8** 58. **g3 Be3+**
 59. **Kg2 Rc2+** 60. **Kh3 Rb2**.
 55. **Bxf7+** This looks
 aggressive but leads
 straight to a draw. Perhaps
 Sam was running low on time
 or simply conceding the
 draw? **Kxf7** 56. **Qxh7+ Kf6**
 57. **g4 Qe8** 58. **g5+ Ke6** 59.
Qh3+ Kf7 60. **Qh7+ Ke6**
 1/2-1/2

Scholastic Corner: Excessive Movement of Developed Pieces

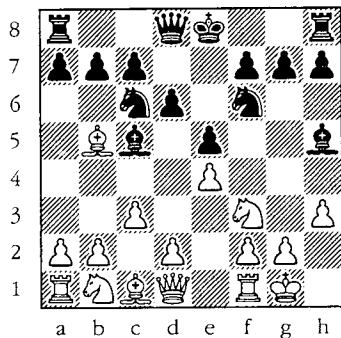
This game is a lesson on the evils of moving the same piece when another more inactive unit could be placed into service. White commits this sin four times and gets away with it mainly because he is attacking. But as soon as Black does it his game collapses.

NTWO Knights (4)

Koty Berret (1204)

Christopher Dobbs (1146)

1. e4 e5 2. Nf3 Nc6 3. Bc4 Bc5 4. O-O d6 5. c3 Bg4 6. h3 Bh5 7. Bb5 Moving a nicely developed piece twice. White should consider grabbing space on the queenside and forget trying to get in d4: 7. b4 Bb6 8. a4 a6 9. d3 Nge7=+. 7... Nf6? Uhoh. Black should have played a6 to break the pin on his knight.



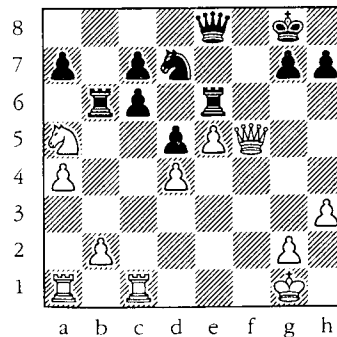
White to move.

8. Re1 This move is not

consistent with White's 7th move. Now logically following through with d4 would allow White to win the pinned knight: 8. d4 Bxf3 9. gxf3 Qd7 10. Kg2 Bb6 11. d5 a6 12. dxc6. 8... O-O=+/+ 9. Bxc6 Note that this capture-though it involves a 3rd move of the bishop-is not considered as neglect of development to the detriment of unmoved pieces because it accomplishes something that the unmoved pieces can't (removing a protector of d4) and actually promotes White development by allowing White to later regain a move if he gets d4 in. Bxf3 10. Qxf3 bxc6 11. Qd1 The queen was well-placed to initiate kingside action with d3 followed by Bg5, but White still thinks that playing d4 is important. It is good to have a plan but one should not neglect development. Of course, it is ideal when your development helps promote your plan; but if realization of your plan is not going to achieve some decisive goal, then it is better to get the pieces off the back rank and then redeploy them when your path becomes clearer. Re8 12. d4 exd4 13. cxd4 Bb4 14. Bd2 Bxd2 Better is Rb8 (developing an unmoved piece to a useful square) rather than helping White develop his pieces. 15. Nxd2 d5? Black was doing well and

TCN/Winter 2007_19

could have kept his advantage by playing Nd7 followed by c5. Now the e-file is temporarily closed and he has lost significant ground on the kingside. 16. e5 Nd7 17. Qc2 Better was Nb3 to prevent c5. Rb8 (17... c5 18. Qc3 cxd4 19. Qxd4 c6=) 18. Nb3 Rb6 19. Na5 Qa8 20. Rec1 Again moving a well-developed piece for the third time. If White thinks that c6 can be gang-attacked then he should use the inactive rook at a1 for this purpose. Better is f4, especially since c5 is still possible because e5 is under-protected. Re6 (20... c5 21. dxc5 Ra6 22. b4 Nxe5) 21. a4 Perhaps considering Ra3-c3? f6 22. Qf5 Another instance of moving a piece and unprotecting a unit but since it accomplishes a specific goal that no other piece can, it cannot be termed neglect of development. Here f4 or exf was necessary. Qe8=+/+ 23. f4 fxe5 24. fxe5



Black to move.

Qf7?! With c5 Black keeps the advantage. 25. Qd3? Rxb2 26. Rf1 Qg6 27. Qf3 Re8? Now it is Black's turn to move a well-placed piece! The White Queen has no entry, so h6 would have kept the advantage. And here is the main evil of wasting moves: unless the attacker has sacrificed material his shifting pieces might just result in him losing the advantage; but if the defender loses a move then it often results in the loss of the game. 28. Nxc6 Nf6?? Better was Qe6 or h6. 29. exf6 gxf6 30. Rael Rxe1 31. Qxd5+ Kg7 32. Rxe1 Qg3 33. Re7+ Kh6 34. Qe4 Qf2+ 35. Kh2 Rb3 36. Rxh7+ Kg5 37. Qg4# 1-0

TCA HALL OF FAME

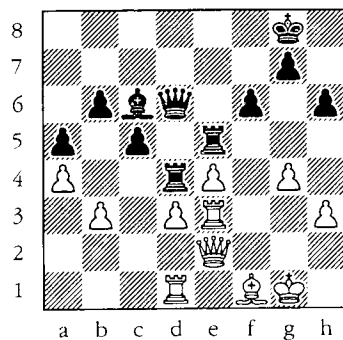
Peter Lahde	1990
Robert Coveyou	1990
Jerry Sullivan	1990
Martin Southern	1990
Tom Finucane	1990
Robert Scrivener	1990
L. Hunter Weaks	1990
John Hurt	1992
James A. Sweets	1993
Rea Hayes	1997
James A. Wright	1998
Dr. Martin Katahn	2002
David Burris	2003
Albert Hodges	2005

TCN/Winter 2007_20

46th Mid-South Open (5)
Lawrence Cohen (2000)
Sam Palatnik (2518)

1. c4 Nf6 2. g3 c5 3. Nc3 d5
4. cxd5 Nxd5 5. Bg2 Nc7 6.
Nf3 Nc6 7. O-O e5 8. d3 Be7
9. Be3 O-O 10. Qd2 f6 11.
Ne1 Bd7 12. f4 exf4 13. Bxf4
Ne6 14. Be3 If 14. Bd5,
then the simple Kh8 keeps
the game balanced. Black is
okay. Rc8 15. Nf3 Ncd4 16.
Nd5 Bc6 17. Nxe7+ Qxe7=/
18. Rael Rfe8 Easier would
be to simply trade pieces
now, which would allow Black
to maintain a 0.6 edge
according to Fritz9: 18...
Nxf3+ 19. Bxf3 Bxf3 20. Rxf3
Rfe8 but Sam has to be
mindful of the rating
difference and so does not
want to simplify too soon
and risk a draw. 19. Kh1 b6
20. Bf2 Rcd8 would give
Black even more pressure.
Qb7 21. e4 Nxf3 22. Bxf3
Rcd8 23. Qc2 Nd4 Even
better might be pressuring
the backward pawn with Bb5
or Qa6. 24. Bxd4 Rxd4 25.
Kg1 Red8-/+ 26. Re3 Re8?!

Black minutely reduces his
advantage by moving an
already well-placed piece.
Qe7 would have been better.
27. g4 Re5 28. b3 Qd7 29.
Qe2 Bb5 30. Rd1 a5 31. a4
Bc6 32. h3 Now transferring
the Queen to d4 with Rb4-Qd4
would be ideal for Black.
Qd6 33. Bg2 h6 34. Bf1??
Rc1 was necessary.



Black to move.

Bd7? (34... Bxe4! 35. Qh2
Bd5) 35. Qg2 Be6 36. Rb1 Rb4
37. Qc2 Qd4 38. Kf2 h5!
Opening up another field of
attack. 39. Be2 h4 (39...
hxg4 40. hxg4 Rg5 and there
are just too many weak
points for White to defend.
40. Bd1 Bd7 41. Ke2 f5 42.
gxf5 Bxf5 43. Rf3 Bg6 44.
Kf1 Rg5 (44... Bh5 45. Rf2
Qe3) 45. Qf2 Qxf2+ 46. Kxf2
c4 47. Bc2 cxd3 48. Bxd3
Bxe4 49. Bxe4 Rxe4 50. Rg1
Rxc1 51. Kxc1 Kh7 52. Kf2
Kh6 53. Rd3 Kh5 54. Rd5+ g5
55. Rb5 Rb4 56. Rxb4 axb4
57. Kf3 g4+ Nice. 58.
hxg4+ Kg5 59. Kg2 Kxc4 60.
Kf2 Kf4 0-1

The 2007 TN GIRLS
CHAMPIONSHIP is coming
April 14, 2007. Open
to all female
Tennesseans <19 years
old and enrolled in
Grades 12 and below.
See the TCA website.

Knoxville Championship

Peter Bereolos won the
Knoxville City Championship
for the 10th time, and
Robert Hydzyk scored back-
to-back championships in the
Knoxville Amateur
Championship while
simultaneously playing in
the City Championship. The
quality of the tournament
suffered a little because
the Greater Knoxville Chess
Club lost their playing site
at the World's Fair Park
about a year ago. (They now
meet at the Tennessee Valley
Unitarian Universalist
Church located at 2931
Kingston Pike on Thursday.)
The tournament ran from Oct.
19-Dec. 7 Peter provides
good coverage of the City
championship on his website:
[http://www.knology.net/~ber
eolos/](http://www.knology.net/~ber
eolos/).

Boris Fine

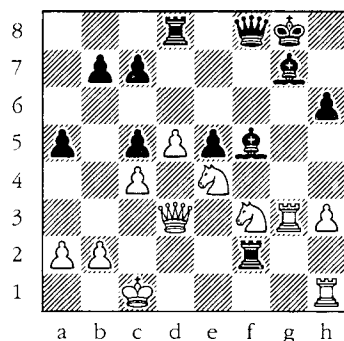
Peter Bereolos

Annotated by Peter Bereolos

Boris Fine was the only
participant besides myself
who played in last year's
Championship. I expected him
to be my main competition
this year since he was the
second highest rated player
by a wide margin. That
turned out to be the case as
he won all his other games
to take second and gave me a
big fight in this game.

1. d4 Nf6 2. c4 g6 3. Nc3
Bg7 4. e4 d6 5. Nf3 O-O 6.
Be2 e5 7. d5 a5 8. h3 Na6 9.
Bg5 h6 10. Be3 Nc5 11. Qc2
11. Nd2 is much more common
11... Ne8 12. g4 f5!? The
macho move. It is probably
saner to go for play on the
queenside with 12... c6 The
result of this game was a
contributing factor in my
loss a few weeks later to
Andrew Boekhoff in the Kings
Island Open. In that game, I
went for a similar break in
the opening, but his pieces
were positioned much better
to deal with it. 13. gxf5
gxf5 14. Bxc5 He should
probably delay this until he
Black plays ...f4 14. O-O-O
has been successfully played
here a couple of times.
14... dxc5 15. Bd3 15. O-O-O
is an improvement, now the
bishop ends up on the
awkward e4 square where a
knight would rather be.
15... fxe4 I also considered
the blockading 15... f4, but
I think the text is better
as I get the f-file to work
with. 16. Bxe4 Nd6 17. Qd3
Rf4 Piling up the big pieces
on the f-file is the right
idea, but I should have done
so directly with 17... Qf6
forcing his king to stay in
the middle 18. Ke2 18. O-O-O
Qf8 19. Nd2 Rxf2 20. Rdx1
Nxe4 Black should be fine
with 20... Qf4 but it was
difficult to calculate the
consequence of the long

dangerous-looking variation
 21. Bh7+ (21. Ne2 Qh4) 21...
 Kh8 22. Rxc7 Kxc7 23. Qg6+
 Kf8 24. Qg8+ Ke7 25. Qg7+
 Kd8 26. Qh8+ Qf8 and Black
 should win since 27. Qxe5
 can be met by 27... Rxd2 21.
Ncxe4 Bf5 22. Rg3 22. d6!?
 Rxd2 (22... cxd6 23. Qd5+
 breaks the pin and leaves
 Rf2 hanging) 23. Kxd2 Qxd6
 24. Nxd6 Bxd3 25. Kxd3 and
 White should have some
 winning chances. 22... Rd8
 23. Nf3??



Black to move.

The fight ends after this
 bad blunder. I was expecting
 23. Rhg1 Rd7 24. Qe3 Bxe4
 25. Nxe4 Rf1+ after the game
 we looked at 26. Kc2 (26.
 Rxf1 Qxf1+ 27. Kd2 Rf7)
 26... Rxc7 27. Rxc7 Qf5 28.
 Rg4 White has full
 compensation for his pawn
 (28. Kd3 c6). 23... Bxe4
 24. Qxe4 Qf4+ 25. Qxf4 exf4
 26. Rxc7+ Kxc7 27. Rg1+ Kf6
 28. Ne1 b6 29. Nd3 Rf3 30.
 Kd2 Re8 31. Rg4 Re4 32. Kc2
 Rxc4+ 33. Kb3 Rd4 [0:1]

Robert Hydzyk
Peter Bereolos
 Annotated by Peter Bereolos

In the final round I had
 Black against Robert Hydzyk,
 the Knoxville Amateur
 (U2000) Champion. Robert
 successfully defended the
 Amateur title this year
 while simultaneously playing
 in the championship.
 However, his play in the
 main event suffered from
 some terrible blunders of
 the magnitude seen in this
 game. From the positions he
 reached, he likely should
 have won his other 4 games,
 but because of those
 mistakes, he only managed 1
 point. 1. c4 g6 2. g3 Bg7 3.
Bg2 e5 4. Nc3 d6 5. Nf3 Nc6
6. d3 Nf6 6... f5 has scored
 very well here in high level
 games. White can avoid that
 possibility with the move
 order 1. Nf3 Nf6 2. g3 g6 3.
 Bg2 Bg7 4. O-O O-O 5. d3 d6
 6. c4 e5 7. O-O O-O 8. Bd2
h6 9. Rb1 a5 10. a3 Be6 11.
b4 axb4 12. axb4 Qd7 13. Qc1
 More typical is 13. b5 for
 example 13...Ne7 14. Qb3 Bh3
 15. c5 Bxc2 1/2-1/2
 Andersson-Gelfand 1996
 Yerevan Olympiad. 13... Kh7
14. Ne1 Bh3 15. f4 Rae8 16.
e4 exf4 17. Rxf4 Bxc2 18.
Kxc2 Ng8 Better was 18...
 Nh5 meeting 19. Rh4 (19. Rf1
 keeps Black's edge to a
 minimum) with 19... f5

TCN/Winter 2007_23

19. Rh4 Nd4 20. Ne2?? 20.
 Nc2 is still roughly even. I
 sat there in a bit of
 disbelief for a few seconds,
 then he realized what he had
 done and resigned without
 waiting for 20... Nxe2. 0-1

Nashville Championship: Andrews Triumphs

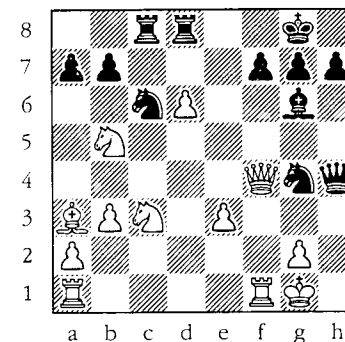
The Nashville Championship
 was held at the Nashville
 Chess Center on January 6-7.
 It was a 6-player Round
 Robin event. Todd Andrews
 won the competitive
 tournament with a 4-1 score,
 giving up draws to the two
 players who trailed him by
 only a half point: Hornick
 (4th round draw) and King (5th
 round draw). Four of the
 games from the event were
 submitted by Lahde. A
 crosstable of the event
 appears on page 30.

Nashville Championship 2007 Round 3

G. Phay (1988)
 T. Andrews (2359)

1. d4 Nf6 2. c4 c5 3. Nf3
 cxd4 4. Nxd4 e5 5. Nb5 d5 6.
 cxd5 Bc5 Of course not 6...
 Nxd because of 7. Qxd Qxd 8.
 Nc7+. 7. e3 O-O 8. N5c3 Qe7
9. Bc4 e4 10. O-O White's
 development is so backward
 that Black has the advantage
 even though he is a pawn
 down! **Rd8** This does not do

much. Bd6 was better: ...
 Bd6 11. Nb5? (Playing this
 move would allow the stock
 sacrifice starting with Bxh7
 hence 11. f4 is almost
 forced: 11. f4 exf3 12. gxf3
 Nbd7 =/+) 11... Bxh2+ 12.
 Kxh2 Ng4+ 13. Kg3 h5 14. Rh1
 h4+ 15. Rxh4 Qe5+ 16. f4
 exf3+ 17. Kxf3 Qf6+) 11. Nd2
Bf5 12. Nb3 Bd6 13. Nd4 Bg6
14. f3 Bxh2+ 15. Kxh2 Qc7+
16. d6 White should just
 back his king off to g1.
 Now Black has the attack and
 more than a pawn. **Qxc4 17.**
Ndb5 exf3 18. Qxf3 Nc6 19.
b3 Qh4+ 20. Kg1 Rac8 21. Ba3
Ng4 22. Qf4?!



Black to move.

Nce5! with the threat of
 Nd3; and if 23. Ne2, then
 Nd3 wins everything anyway
23. Nd4 Rxc3 24. Nf3 Qh5 25.
Bb2 Rc5 26. Nxe5 Nxe5 27.
Qd4 f6 0-1

*It is better to learn how to
 win a game than it is to
 win. -LSD*

TCN/Winter 2007_24

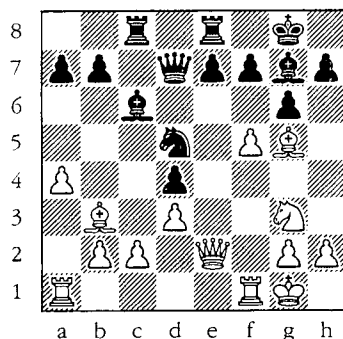
Nashville Championship 2007

Todd Andrews

S. Yoon

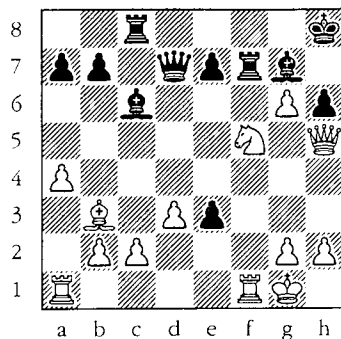
[Annotator "Peter Lahde"]

1. e4 c5 2. Nc3 Nc6 3. f4 d6
4. Nf3 g6 5. Bb5 Bd7 6. a4
Bg7 7. O-O Nd4 8. Bc4 Bc6 9.
d3 Nf6 10. Nxd4 cxd4 11. Ne2
d5 12. exd5 Nxd5 13. f5 O-O
14. Ng3 Qd7 15. Qe2 Rac8 16.
Bb3 Rfe8?! The rook needs to
remain on f8 to keep an eye
on f7. 17. Bg5



Black to move.

Ne3? 17... e6! Forcing White
to decide the future of his
f-pawn now and taking some
steam out of the attack.
This move would offer Black
chances to defend
horizontally along the 7th
rank: 18. fxc6 hxc6
(18...fxg6 is playable with
the idea of contending with
White down the f-file after
19.... Rf8) 19. Ne4 and
White is only slightly
better. 18. Bxe3 dxe3 19.
fxg6 Rf8 20. Bxf7+ Kh8 21.
Qh5 h6 22. Nf5 Rxf7



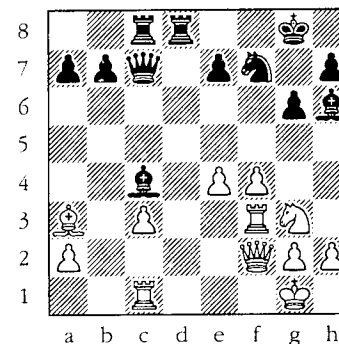
White to move.

23. Nxh6 Rf6 24. Nf5+ Kg8
25. Qh7+ Kf8 26. Qxg7+ Ke8
27. Qg8+ Rf8 28. Nd6+ 28.
Ng7+ is another route to
mopping up--as is resigning:
Kd8 29. Rxf8+ Kc7 30. Rxc8+
Qxc8 31. Ne6+ Kb8 32. Qxc8+
Kxc8 33. g7--ed. 28... Qxd6
29. Rxf8+ Kd7 30. Rxc8 Qf6
31. Rf1 Qxb2 32. g7 Qxc2
33. Qd8+ Ke6 34. g8=Q+ Ke5
35. Qg5+ Ke6 36. Qf5# 1-0

Nashville Championship 2007
A. King
G. Phay

1. c4 Nf6 2. d4 g6 3. Nf3
Bg7 4. Nc3 d5 5. cxd5 Nxd5
6. e4 Nxc3 7. bxc3 c5 8.
Ba3? cxd4 9. Nxd4 O-O 10.
Bc4 Nc6 11. Ne2 Qa5 Oc7 is
much stronger if played on
this move. 12. Qb3 Qc7 13.
Qc2 Rd8 14. Rc1? Castling
was imperative. Ne5 15.
Bxf7+?! 15. Bb5 a6 16. Ba4

Nc4! is even worst for White
than the game continuation.
Nxf7 16. O-O Be6 17. f4 Bc4
18. Rf3 Better is e5 here
or on the next move. Rac8
19. Ng3 Bh6 20. Qf2



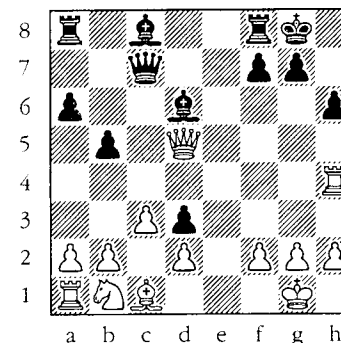
Black to move.

Ne5! 21. Nf5 Nxf3+ 22. gxf3
gxf5 0-1

Nashville Championship 2007
A. King
M. Hornick

1. e4 e5 2. Nf3 Nc6 3. Bb5
a6 4. Ba4 Nf6 5. O-O Be7 6.
Re1 b5 7. Bb3 O-O 8. c3 d5
9. exd5 Nxd5 10. Nxe5 Nxe5
11. Rxe5 c6 12. Bxd5 cxd5
13. Qf3 Bd6 14. Re1 Qc7
Lahde writes: "Both
players followed the book
[for the Marshall Gambit
in the Ruy Lopez] until
this move. But instead of
Qc7, better here is either
Qh4 or even Be6." 15. Qh5
d4 16. Re4? Better was d3.
Now both White's queen and

rook are out of play while
his development remains
backward. d3 Black simply
decides to keep White's
pieces out of the game, but
he has a host of better
moves (such as Bb7 or g6:
16... Bb7 17. Rh4 h6 18.
Rxd4 Rfe8). 17. Rh4 h6 18.
Qd5??



Black to move (King vs.
Hornick).

Now Black reveals why
White's 16th move was so
bad: Re8 19. Re4 Bb7 0-1

--+ + ♔ --+ + -

The Quick-play USCF
Headquarters Invitational,
an 8-player Round Robin, was
held on Jan. 6. The time
limit was 15 min./3 sec. SD.
Dir. Bill Hall dominated the
event. Though I had a plus
over the winner, dropping
won games due to neglecting
the clock--except for an
opening lesson from
Semmes!--kept me humble.

Tennesseans Spark at the 15th Kings Island Open

The 15th Annual Kings Island Open was held in Mason, OH on November 10-12. The Open Section of this five-round Swiss had three Tennesseans among its 29 players: Todd Andrews, Peter Bereolos, and Jerry Wheeler.

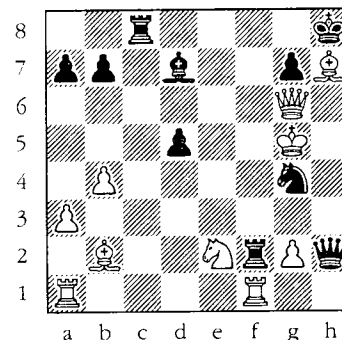
IM Justin Sarkar won the event on tiebreak but Todd Andrews came in a shared 3rd with 3.5 points. Todd reported the event in an article posted on the USCF website: *Sarkar Takes Kings Island*. Below is one of his games that he commented on at http://beta.uschess.org/frontend/news_7_178.php.

"The French was a prevalent opening in the top boards of Kings Island. I have defended the black side of the French for about ten years now because I remember hearing over and over as a young player how it was feared or annoying to play against. It has a reputation for being a solid defense with sometimes little or no space to work with. Often black must grab a pawn or a weakness and then hold on for dear life, but I am here to say the French defense is an attacking opening!"

Kings Island Open 2006 Christopher Nienart (2218) Todd Andrews (2359)

1.e4 e6 2.d4 d5 3.Nd2 Nf6
4.e5 Nfd7 5.Bd3 c5 6.c3 Nc6
7.Ne2 Qb6 8.Nf3 cxd4 9.cxd4
f6 10.exf6 Nxf6 11. 0-0 Bd6
12.a3 [12.Nc3 Bd7 13.Bg5
(13.a3 Nxd4 14.Nxd4 Qxd4
15.Bg6+ hxg6 16.Qxd4 Bxh2+
17.Kh1 Be5+ is a similar
trap that occurred in Chow-
Andrews World Open 1998)
13...Nxd4!? 14.Nxd4 Qxd4
15.Nb5 (15.Bg6+ hxg6 16.Qxd4
Bxh2+ 17.Kh1 Be5+ 18.Qh4
Rxh4+ 19.Bxh4 were I have
always liked Black.)
15...Qe5 16.f4 Qe3+ 17.Kh1
Qb6 18.a4 a5 19.Re1 0-0
20.Nd4 Bc5 21.Nf3 Ng4 22.Bh4
Rxf4 23.h3 Ne3 24.Qe2 Nf5
25.g3 Rxh4 26.Bxf5 Rh6
27.Bg4 Rf8 28.Ne5 Bc8 29.Nd3
Bd4 30.Ra1 Bd7 31.Ra1 Qd6
32.Nf4 e5 was from the
second round game with
Garret Smith.] 12...0-0
13.Qc2?! I believe the Queen
will be vulnerable on the c-
file and she does indeed end
up losing valuable time.
13...Bd7 14.b4 Rac8 15.Qb1
e5 16.dxe5 Nxe5 17.Nxe5 Bxe5
18.Bb2 Bxh2+! The Greek
Gift! 19.Kxh2 Ng4+ 20.Kg3
[20.Kg1 Qh6 21.Bxh7+ Kh8
22.Be5 Nxe5 and then the
knight just returns to g4.]
20...Rxf2 21.Bxh7+ Kh8
22.Qg6 Qc7+ 23.Kh4 Qh2+
24.Kg5 and now the moment of

truth. I must stop mate on g7 and I want my knight off the g-file because it is shielding the white king. I found an idea with Nh6 to defend down the h-file as well. But it did not cross my mind that f6 was the square!



Black to make 24th move.

24...Qxh7? [24...Nf6!
25.Bxf6 Rxg2+ 26.Ng3 Qxg3+
27.Kh5 Rh2+ 28.Bh4 Rxh4#]
25.Rh1 Nh6 26.Bxg7+
[26.Rxh6 Rxg2+; 26.Qxh6 Rf5+
27.Kg4 Rh5+] 26...Qxg7
27.Rxh6+ Kg8 28.Nf4 Rc4 and
it should be a draw after
the queens are traded ...
heck, White may even be
better, but my opponent
missed my final cheapo
attempt. 29.Rah1 Rxg2+!
30.Nxg2 Rg4+ 31.Kh5 Rxg6
32.Rxg6 Be8 33.Nf4 Bxg6+
34.Nxg6 Qh7+ 0-1

Peter Lahde thought that Wheeler's game played at Kings Island was also interesting and provided the

notes to the short game that saw Wheeler committing a quick opening blunder.

Kings Island Open 2006 Jerry Wheeler (2163) Bennett (2245)

1 Nf3 d5 2. c4 c6 3. b3 Bg4
4. Ne5 dxc4! 5. Nxg4? Not
recommended. Better are
either 5. Nc4 or 5. Bb2.
Qd4 With this move Black
regains the piece. 6. bxc4?
The losing move. 6. Nc3 was
called for. Perhaps he had
visions of trapping the
queen. Qxa1 7. Nc3 Na6! 8.
e4 If White tried a3 then
e6 was allow the bishop to
enter the game (Bxa3). Nb4
9. a3 Na2 10 Nxa2 Qxa2 11.
Bd3 Rd8 12. Bc2 Qxc4 13. d3
Qc3+ 14. Bd2 Qxa3 15. 0-0
Nf6 16. Ne5 Qc5 17. Nc4?
Nxe4 18. Be3 Qxc4 Regains
the exchange, but he is
still three pawns down. The
rest needs no comment. 19.
dxc4 Rxd1 20. Rxd1 Nd6 21.
Bxa7 Nxc4 22. Bb3 Nd6 23.
Bc5 Nc8 24. Ra1 e6 25. Ra8
Kd7 26. Be3 Bd6 27. f4 Re8
28. Kf1 Ne7 29. Ra1 Nd5 30
Bd4 e5 31. Bb2 Nxf4 32. Bxf7
Rf8 33. Bc4 Nd3+ 0-1

--+--▲▲▲▲▲▲▲--+--

Cheating and self-improvement are contrary. You fail to grow when you diminish your efforts by cheating or giving less than you are capable. Chess is about self-improvement and personal growth. (See p. 17.)

NORTH TN WINTER OPEN -- KINGS

Wall Chart

Name/State ID	Rate	Rnd 1	Rnd 2	Rnd 3	Rnd 4	Rnd 5
1. BURNETT, RONALD TN 12093120	2435	B 6 1.0	B 5 1.5	B 3 2.0	B 9 3.0	B 4 3.5
2. ANDREWS, TODD D TN 12583055	2359	B 7 1.0	B 4 1.0	B 11 2.0	B 5 3.0	B 3 3.5
3. BERELOS, PETER TN 11414966	2308	B 13 1.0	B 10 2.0	B 1 2.5	B 4 3.0	B 2 3.5
4. LARSON, GERALD A AL 10422159	2089	B 12 1.0	B 2 2.0	HALF 2.5	B 3 3.0	B 1 3.5
5. SUICH, JOSHUA TN 12707426	2086	B 8 1.0	B 1 1.5	B 9 2.0	B 2 2.0	B 7 3.0
6. PHAY, GAINER TN 12828988	1988	B 1 0.0	B 9 0.0	BYE 1.0	B 11 2.0	B 10 3.0
7. SPINRAD, JERRY TN 12409131	1973	B 2 0.0	B 14 1.0	B 8 2.0	B 10 2.5	B 5 2.5
8. MCMILLAN, CHARLES TN 13197753	1718	B 5 0.0	B 13 0.5	B 7 0.5	B 12 1.5	B 11 2.5
9. WHEELER, JERRY T TN 10242126	2200	B 11 0.5	B 6 1.5	B 5 2.0	B 1 2.0	---
10. KANTOR, ALAN TN 10118506	2000	B 14 1.0	B 3 1.0	HALF 1.5	B 7 2.0	B 6 2.0
11. WU, JAMES TN 12913034	1909	B 9 0.5	B 12 1.5	B 2 1.5	B 6 1.5	B 8 1.5
12. MARKOV, STEFAN TN 13067802	1791	B 4 0.0	B 11 0.0	HALF 0.5	B 8 0.5	BYE 1.5
13. SIMS, CARLOS S TN 20005559	1928	B 3 0.0	B 8 0.5	---	---	---
14. SKAGGS, RYAN KY 12925214	1085	B 10 HOUSE	B 7 0.0	---	---	---
15. MILLER, ANDY KY 13067797	1004	---	---	---	---	---

NASHVILLE CHAMPIONSHIP - 2007

Name	Rating	Rnd1	Rnd2	Rnd3	Rnd4	Rnd5	Score
1. Andrews, T.	2359	W6	W5	W3	D2	D4	4-1
2. Hornick, M.	1947	W3	D6	W4	D1	D5	3½-1½
3. Phay, G.	1988	L2	W4	L1	W5	W6	3-2
4. King, A.	2104	W5	L3	L2	W6	D1	3½-1½
5. Meese, B.	1812	L4	L1	D6	L3	D2	1-4
6. Yoon, S.	1585	L1	D2	D5	L4	L3	1-4

NORTH TN WINTER OPEN -- QUEENS

Wall Chart, Page 1

Name/State ID	Rate	Rnd 1	Rnd 2	Rnd 3	Rnd 4	Rnd 5
1. ASHMUN, FRANK TN 12845540	1880	B 11 1.0	B 9 1.5	B 7 2.0	B 8 3.0	B 10 4.0
2. BRAGG, WILLIAM N KY 10433011	1811	B 18 1.0	B 21 2.0	B 8 3.0	B 9 3.5	B 4 4.0
3. WAGNER, MARK DANIEL KY 20093646	1931	B 14 1.0	B 8 1.0	B 17 1.5	B 16 2.5	B 9 3.5
4. ARNOLD, JUSTIN N KY 12667835	1922	B 15 1.0	B 7 1.5	B 6 2.0	B 11 3.0	B 2 3.5
5. MARSH, MATTHEW L TN 12843523	1846	B 17 1.0	B 13 1.5	B 9 1.5	B 21 2.5	B 6 3.0
6. POLLITT, JAMES D IN 12548696	1837	B 16 0.5	B 10 1.5	B 4 2.0	B 13 2.5	B 5 3.0
7. JETTER, ANDREW W OH 12768807	1805	B 19 1.0	B 4 1.5	B 1 2.0	B 10 2.0	B 13 3.0
8. SUICH, PETER D TN 12779311	1795	B 20 1.0	B 3 2.0	B 2 2.0	B 1 2.0	B 17 3.0
9. WRIGHT, JOE TN 12755318	1787	B 24 1.0	B 1 1.5	B 5 2.5	B 2 3.0	B 3 3.0

NORTH TN WINTER OPEN -- QUEENS

Wall Chart, Cont.

Name/State ID	Rate	Rnd 1	Rnd 2	Rnd 3	Rnd 4	Rnd 5
10. CHAVEZ, CHRISTIAN TN 12894852	1735	B 12 1.0	B 6 1.0	B 20 2.0	B 7 3.0	B 1 3.0
11. KOVALIC, JEFFREY J TN 12467445	1723	B 1 0.0	B 24 1.0	B 22 2.0	B 4 2.0	B 18 3.0
12. TUCKER, TOM C KY 10435552	1911	B 10 0.0	B 16 0.0	B 19 1.0	B 14 1.5	B 20 2.5
13. VOGT, NATHAN TN 12847448	1763 PLAQUE	B 23 1.0	B 5 1.5	HALF 2.0	B 6 2.5	B 7 2.5
14. HUMAN, MATTHEW H TN 12750900	1744	B 3 0.0	B 20 0.0	B 23 1.0	B 12 1.5	B 21 2.5
15. DE CREDICO, RICH- NV 12557415	1742	B 4 0.0	B 19 1.0	B 21 1.5	B 17 2.0	B 16 2.5
16. LOVEN, DALLAS IN 10360641	1668	B 6 0.5	B 12 1.5	HALF 2.0	B 3 2.0	B 15 2.5
17. WEINER, ALEX AL 12894487	1718	B 5 0.0	B 23 1.0	B 3 1.5	B 15 2.0	B 8 2.0
18. SMITH, TRE TN 12790065	1605 PLAQUE	B 2 0.0	B 22 0.0	B 25 1.0	B 24 2.0	B 11 2.0
19. SALTER, JOSHUA TN 12890290	1549 PLAQUE	B 7 0.0	B 15 0.0	B 12 0.0	B 23 1.0	B 22 2.0
20. KUMAR, VIKAS S TN 12920966	1537 PLAQUE	B 8 0.0	B 14 1.0	B 10 1.0	B 22 2.0	B 12 2.0
21. MACDONALD, MYLES TN 12785727	1711	B 22 1.0	B 2 1.0	B 15 1.5	B 5 1.5	B 14 1.5
22. VENKATESAN, SUBRA- OH 13204614	1842	B 21 0.0	B 18 1.0	B 11 1.0	B 20 1.0	B 19 1.0
23. MOGHADDAMI, KASHMI TN 13490025	1366	B 13 0.0	B 17 0.0	B 14 0.0	B 19 0.0	B 24 1.0
24. BARTLETT, RILEY MS 12911822	1503	B 9 0.0	B 11 0.0	HALF 0.5	B 18 0.5	B 23 0.5
25. SKAGGS, RYAN KY 12925214	1085 HOUSE	--- 0.0	--- 0.0	B 18 0.0	--- 0.0	--- 0.0
26. MILLER, ANDY KY 13067797	1004 HOUSE	--- 0.0	--- 0.0	--- 0.0	--- 0.0	--- 0.0

NORTH TN WINTER OPEN -- ROOKS

Wall Chart, Page 1

Name/State ID	Rate	Rnd 1	Rnd 2	Rnd 3	Rnd 4	Rnd 5
1. MCCUISTON, BLAKE KY 12613717	1740	B 15 1.0	B 12 2.0	B 6 3.0	B 3 4.0	B 2 4.5
2. KING, ELION B TN 13193901	1722	B 16 1.0	B 9 2.0	HALF 2.5	B 5 3.5	B 1 4.0
3. SERVE, MARC OH 12887065	1675	B 13 1.0	B 4 2.0	B 8 3.0	B 1 3.0	B 6 4.0
4. CHILDRESS, JASON A OH 12758186	1511	B 14 1.0	B 3 1.0	B 9 2.0	B 11 3.0	B 7 3.5
5. PHILLIPS, COTY TN 21016778	1656	B 7 0.5	B 11 1.0	B 17 2.0	B 2 2.0	B 13 3.0
6. NEGLIA, SALVATORE TN 12939260	1639	B 17 1.0	B 18 2.0	B 1 2.0	B 12 3.0	B 3 3.0
7. BURNETT, NICOLAS KY 12896266	1546	B 5 0.5	B 8 0.5	B 14 1.5	B 18 2.5	B 4 3.0
8. HUNLEY, RYAN TN 21013192	1544 PLAQUE	B 11 0.5	B 7 1.5	B 3 1.5	B 9 2.0	B 12 3.0
9. MC CORMICK, ALAN M TN 12778990	1599	B 10 1.0	B 2 1.0	B 4 1.0	B 8 1.5	B 17 2.5
10. SCHAFER, JACOB A TN 12913914	1356 PLAQUE	B 9 0.0	B 15 0.0	B 19 1.0	B 17 1.5	B 18 2.5
11. LOWERY, CHRIS T. TN 12876037	1650	B 8 0.5	B 5 1.0	B 13 2.0	B 4 2.0	--- 2.0
12. SMITH, AARON TN 12851863	1585	- 22 X1.0	B 1 1.0	B 15 2.0	B 6 2.0	B 8 2.0
13. BERTRAM, DAVID TN 12601971	1560	B 3 0.0	B 14 1.0	B 11 1.0	B 15 2.0	B 5 2.0
14. SEANEY, RON K TN 12102620	1626	B 4 0.0	B 13 0.0	B 7 0.0	B 16 1.0	B 15 1.5
15. YOON, SU'AD TN 12910458	1585	B 1 0.0	B 10 1.0	B 12 1.0	B 13 1.0	B 14 1.5
16. SNOW, CHRIS TN 21013103	1571 PLAQUE	B 2 0.0	HALF 0.5	ZERO 0.5	B 14 0.5	B 20 1.5

NORTH TN WINTER OPEN -- ROOKS

Wall Chart, Cont.

Name/State ID	Rate	Rnd 1	Rnd 2	Rnd 3	Rnd 4	Rnd 5
17. FARR, BRIAN T TN 20062623	1527	B 6 0.0	B 19 1.0	B 5 1.0	B 10 1.5	B 9 1.5
18. MAHAN, J ROBERT VA 10199204	1400	B 19 1.0	B 6 1.0	HALF 1.5	B 7 1.5	B 10 1.5
19. KAN, DANIEL FL 11307221	1625	B 18 0.0	B 17 0.0	B 10 0.0	B 20 0.0	BYE 1.0
20. MILLER, ANDY KY 13067797	1004 HOUSE	---	---	---	B 19 1.0	B 16 1.0
21. SKAGGS, RYAN KY 12925214	1085 HOUSE	---	---	---	---	---
22. HAMMETT, JON H TN 12931306	975 F0.0	- 12 0.0	---	---	---	---

NORTH TN WINTER OPEN -- BISHOPS

Wall Chart, Page 1

Name/State ID	Rate	Rnd 1	Rnd 2	Rnd 3	Rnd 4	Rnd 5
1. LEAMON, MARK TN 12869699	1443	B 21 1.0	B 11 1.5	B 6 2.5	B 2 3.5	B 3 4.0
2. SUICH, VICTOR W TN 12732019	1410	B 18 1.0	B 7 2.0	B 5 3.0	B 1 3.0	B 9 4.0
3. KORMICK, KOREY J TN 12755802	1487	B 8 1.0	B 6 1.5	B 11 2.0	B 4 3.0	B 1 3.5
4. BARKLEY, CURTIS T AL 12744815	1451	B 13 1.0	B 10 2.0	HALF 2.5	B 3 2.5	B 11 3.5
5. MARSH, CORRY L TN 12843522	1382	B 17 1.0	B 14 2.0	B 2 2.0	B 11 2.5	B 6 3.0
6. AGOSTINO, MICHAEL TN 12884766	1381	B 16 1.0	B 3 1.5	B 1 1.5	B 10 2.5	B 5 3.0
7. VAN DER MEER, B W TN 12552192	1327	B 19 1.0	B 2 1.0	B 12 1.0	B 14 2.0	B 15 3.0
8. DAVIS, WILLIAM S. TN 12484473	1111	B 3 0.0	B 18 1.0	HALF 1.5	B 17 2.5	B 10 3.0
9. LI, BIN TN 13511415	nnnn	B 11 0.0	B 21 1.0	B 14 2.0	B 12 3.0	B 2 3.0

NORTH TN WINTER OPEN -- BISHOPS

Wall Chart, Cont.

Name/State ID	Rate	Rnd 1	Rnd 2	Rnd 3	Rnd 4	Rnd 5
10. BLANKENSHIP, LOGAN TN 12914168	1365	B 15 1.0	B 4 1.0	B 13 2.0	B 6 2.0	B 8 2.5
11. MC CANN, DILLON TN 12844681	1337	B 9 1.0	B 1 1.5	B 3 2.0	B 5 2.5	B 4 2.5
12. DAVIS, MICHAEL TN 12877174	1194 PLAQUE	B 14 0.0	B 15 1.0	B 7 2.0	B 9 2.0	B 13 2.5
13. HUGHES, PATRICK G KY 12753010	1064	B 4 0.0	B 19 1.0	B 10 1.0	B 18 2.0	B 12 2.5
14. CROUCH, JERRY W IN 12556037	1489	B 12 1.0	B 5 1.0	B 9 1.0	B 7 1.0	B 17 2.0
15. DAVIS, GEORGE TN 13487153	nnnn	B 10 0.0	B 12 0.0	B 16 1.0	B 19 2.0	B 7 2.0
16. WINSTEAD, RYAN KY	nnnn	B 6 0.0	B 17 0.0	B 15 0.0	BYE 1.0	B 19 2.0
17. BARKLEY, ELEANOR H AL 12792270	1301	B 5 0.0	B 16 1.0	HALF 1.5	B 8 1.5	B 14 1.5
18. GRAWCOCK, SETH TN 13550617	nnnn	B 2 0.0	B 8 0.0	B 19 0.5	B 13 0.5	BYE 1.5
19. WINSTEAD, BLAKE KY	nnnn	B 7 0.0	B 13 0.0	B 18 0.5	B 15 0.5	B 16 0.5
20. SKAGGS, RYAN KY 12925214	1085 HOUSE	---	---	---	---	---
21. MILLER, ANDY KY 13067797	1004 HOUSE	B 1 0.0	B 9 0.0	---	---	---

NTWO Bishops (4)

Corey Kormick
Curtis Barkley

1. e4 c5 2. Nf3 d6 3. c3 Nc6 4. d4 cxd4 5. cxd4 e6 6. d5
exd5 7. exd5 Qe7+ 8. Be3 Ne5 9. Bb5+ Bd7 10. Bxd7+ Qxd7 11.
O-O Nf6 12. Re1 Be7 13. Nxe5 dxe5 14. Bf4 (14. Nc3+/=) 14...
exf4 (14... Qxd5!)=) 15. d6 Rd8? 16. dxe7 Rc8 17. Qxd7+ Kxd7
18. Nc3 Rhe8 (18... Rc6=) 19. Nb5 Rc5 20. Rad1+ Rd5 21.
Rxd5+ Nxd5 22. Rd1 Rxe7? 23. Nc3 Kc6 24. Nxd5 Re2 25. Nb4+
Kc7 26. Nd3 f3 27. gxf3 Re6 28. Nf4 and white won. 1-0

NORTH TN WINTER OPEN -- KNIGHTS

Wall Chart, Page 1

Name/State ID	Rate	Rnd 1	Rnd 2	Rnd 3	Rnd 4	Rnd 5
1. BERRETT, KOTY L TN 12845539	1204	B 6 1.0	B 10 2.0	B 11 3.0	B 4 4.0	B 3 4.5
2. MUSIN, NATE L OH 12737769	1209	B 20 1.0	B 5 2.0	B 4 2.0	B 11 3.0	B 10 4.0
3. HIGGINS JR, RICHARD KY 12921471	1197	B 12 1.0	B 18 2.0	HALF 2.5	B 15 3.5	B 1 4.0
4. DOBBS, CHRISTOPHER OH 13355892	1146	B 17 1.0	B 7 2.0	B 2 3.0	B 1 3.0	B 13 4.0
5. PARKHURST, BRYAN C OH 12833723	1139	B 29 1.0	B 2 1.0	B 24 2.0	B 6 2.5	B 16 3.5
6. STALEY, TIMOTHY P GA 12625534	1002	B 1 0.0	B 29 1.0	B 18 2.0	B 5 2.5	B 14 3.5
7. ROESNER, MIKE OH 12887069	970	B 9 1.0	B 4 1.0	B 20 2.0	B 8 2.5	B 15 3.5
8. MARTINDALE, CHRIS TN 12709524	1187	B 21 1.0	B 24 1.5	B 14 1.5	B 7 2.0	B 20 3.0
9. RILING, KYLE TN 12915882	1163	B 7 0.0	B 13 1.0	B 12 1.0	B 24 2.0	B 21 3.0
10. SMITH, JORDAN M KY 12896270	1097	B 23 1.0	B 1 1.0	B 25 2.0	B 12 3.0	B 2 3.0
11. PAGE, CHRIS I KY 12919510	1072	B 26 1.0	B 14 2.0	B 1 2.0	B 2 2.0	B 23 3.0
12. HOUSTON, CHARLIE R TN 12841434	982	B 3 0.0	B 22 1.0	B 9 2.0	B 10 2.0	B 18 3.0
13. MARTINDALE, TIM- TN 12768993	1249	B 19 0.5	B 9 0.5	B 28 1.5	B 17 2.5	B 4 2.5
14. MANNERS, ROY B TN 12649484	1167	B 25 1.0	B 11 1.0	B 8 2.0	B 16 2.5	B 6 2.5
15. VAUGHN, RANDALL R TN 12915612	1159	B 28 1.0	B 16 2.0	HALF 2.5	B 3 2.5	B 7 2.5
16. BARINGER, JIM TN 12582162	1025	B 30 1.0	B 15 1.0	B 21 2.0	B 14 2.5	B 5 2.5

NORTH TN WINTER OPEN -- KNIGHTS

Wall Chart, Cont.

Name/State ID	Rate	Rnd 1	Rnd 2	Rnd 3	Rnd 4	Rnd 5
17. BARTLETT, BRYNNA MS 12955291	957 PLAQUE	B 4 0.0	B 27 1.0	HALF 1.5	B 13 1.5	B 24 2.5
18. ARNOLD, STEVEN T. KY 12789873	1120	B 22 1.0	B 3 1.0	B 6 1.0	B 28 2.0	B 12 2.0
19. HUGHES, DANIEL G KY 12753011	1015	B 13 0.5	B 20 0.5	B 29 0.5	B 27 1.5	B 25 2.0
20. ERD, ANDY OH 13426762	1006	B 2 0.0	B 19 1.0	B 7 1.0	B 22 2.0	B 8 2.0
21. WITTIG, ELO F TN 13135040	978	B 8 0.0	B 23 1.0	B 16 1.0	B 29 2.0	B 9 2.0
22. WILLIAMS, FRANKLIN TN 12978356	857	B 18 0.0	B 12 0.0	B 26 1.0	B 20 1.0	B 28 2.0
23. TUCKER, JESSE E KY 13334957	852	B 10 0.0	B 21 0.0	B 30 1.0	B 25 2.0	B 11 2.0
24. WRIGHT, BRIAN KY 13126946	1062	B 27 1.0	B 8 1.5	B 5 1.5	B 9 1.5	B 17 1.5
25. FINE, ISAAC TN 13037713	975	B 14 0.0	B 26 1.0	B 10 1.0	B 23 1.0	B 19 1.5
26. HOUSTON, C J TN 12836144	790	B 11 0.0	B 25 0.0	B 22 0.0	B 30 0.5	B 29 1.5
27. QIN, ALEXANDER C TN 13298561	760	B 24 0.0	B 17 0.0	HALF 0.5	B 19 0.5	B 30 1.5
28. PATEL, DEVANSH TN 13430340	963	B 15 0.0	B 30 1.0	B 13 1.0	B 18 1.0	B 22 1.0
29. WRIGHT, JAMES KY 13210760	863	B 5 0.0	B 6 0.0	B 19 1.0	B 21 1.0	B 26 1.0
30. KLINGBERG, JOHN E TN 13037488	465	B 16 0.0	B 28 0.0	B 23 0.0	B 26 0.5	B 27 0.5
31. SKAGGS, RYAN KY 12925214	1085 HOUSE	---	---	---	---	---
32. MILLER, ANDY KY 13067797	1004 HOUSE	---	---	---	---	---

NORTH TN WINTER OPEN -- PAWNS

Wall Chart

Name/State ID	Rate	Rnd 1	Rnd 2	Rnd 3	Rnd 4	Rnd 5
1. COFFMAN, CHANDLER KY 12919508	997	B 8 1.0	B 6 2.0	B 5 3.0	ZERO 3.0	B 4 3.5
2. HAMMETT, JON H TN 12931306	975	B 3 0.5	B 10 1.5	B 4 2.5	B 5 2.5	W 7 3.5
3. DUTTA, ARPAM TN 13406685	777	B 2 0.5	B 8 1.5	B 7 1.5	B 9 2.5	W 5 3.5
4. MOORE, BJAY KY 13185503	679	- 14 X1.0	B 7 2.0	B 2 2.0	B 11 3.0	W 1 3.5
5. MILLER, CHESTON A KY 12918177	932	B 11 1.0	B 12 2.0	B 1 2.0	B 2 3.0	B 3 3.0
6. WADHAWAN, SANCHIT TN 13399514	879	B 13 1.0	B 1 1.0	B 9 1.0	B 12 2.0	B 11 3.0
7. MILLER, CALEB JOHN TN 12937152	931	B 9 1.0	B 4 1.0	B 3 2.0	HALF 2.5	B 2 2.5
8. WALLACE, AARON TN 12982112	792	B 1 0.0	B 3 0.0	B 10 1.0	B 13 2.0	B 9 2.5
9. LI, ANGELA TN 13043990	608	B 7 0.0	BYE 1.0	B 6 2.0	B 3 2.0	B 8 2.5
10. AGOSTINO, MATTHEW TN 12915888	889	B 12 0.0	B 2 0.0	B 8 0.0	BYE 1.0	B 13 2.0
11. OOI, HARRISON TN 13529047	609	B 5 0.0	B 13 1.0	B 12 2.0	B 4 2.0	B 6 2.0
12. WALLACE, RYAN A TN 13121034	563	B 10 1.0	B 5 1.0	B 11 1.0	B 6 1.0	BYE 2.0
13. AGOSTINO, JOSEPH TN 12915872	490	B 6 0.0	B 11 0.0	BYE 1.0	B 8 1.0	B 10 1.0
14. MILLER, JEFF TN 12880104	974	- 4 FO.0	---	---	---	---

TCN/Winter 2007_37

PRESIDENT:
J. Michael Cross
2961 Martha Washington Rd.
Clarkrange, TN 38553
H: (931)863-3188
e-mail: jmcross@twlakes.net

VICE-PRESIDENT:
Allen Snow
P. O. Box 2127
Clarkrange, TN 38553
W: (931)863-4082
Fax: (931) 863-4081
e-mail: asnow@twlakes.net

SECRETARY:
Chris Prosser
733 Long Hunter Court
Nashville, TN 37217
H: (615) 399-8432
e-mail: regioniii@aol.com

TREASURER:
Angela McElrath-Prosser
733 Long Hunter Court
Nashville, TN 37217
H: (615) 399-8432
e-mail: tcanews@aol.com

INTERNET CHESS COORDINATOR:
Patricia Knight
103 Albion Road
Oak Ridge, TN 37830
H: (865) 481-3516
W: (931) 787-1234 ext. 133
e-mail: tcachess@bellsouth.net

SCHOLASTIC COORDINATOR:
Harry D. Sabine
P. O. Box 381
Crossville, TN 38557
H: (931) 484-4878
W: (931) 484-9593
e-mail: hdsabine@citlink.net

TOURNAMENT COORDINATOR:
Paul Semmes
1010 N. Maple Ave.
Cookeville, TN 38501
H: (931) 526-2883
e-mail: PaulSemmes@charter.net

TN CHESS NEWS EDITOR:
Leonard Dickerson
420 Oran Road
Knoxville, TN 37932
H: (865) 966-1095
e-mail: lsdkc@tds.net

EAST TENNESSEE DIRECTOR:
Malcolm Robert Estrada
7123 Annview Lane
Harrison, TN 37341
W: (423) 751-8984
e-mail: mrestrada@tva.gov

MIDDLE TENNESSEE DIRECTOR:
Scott Cantrell
2325 Willowbrook Dr., Apt. C6
Murfreesboro, TN 37130
H:(615) 217-9084
e-mail: greatscottmagic@yahoo.com

WEST TENNESSEE DIRECTOR:
Robert Schoumacher
4266 Long Leaf Drive
Memphis, TN 38117
H: (901) 767-3060
W: (901) 572-5222
e-mail: rschoumacher@utmem.edu

Regional Scholastic Coordinators

Region 1:
Judd Jones
10904 Lookout Point
Knoxville, TN 37922

Region 2:
Michael Ake
16 Pinecrest Dr.
Wildwood, GA 30757
H: (706) 820-0693
O: (4230) 493-5406

Region 3:
Chris Prosser
733 Long Hunter Court
Nashville, TN 37217
H: (615) 399-8432

Region 4:
Brian Vogt
2669 Sweet Maple Cove
Germantown, TN 38139
H: (901) 624-0020