



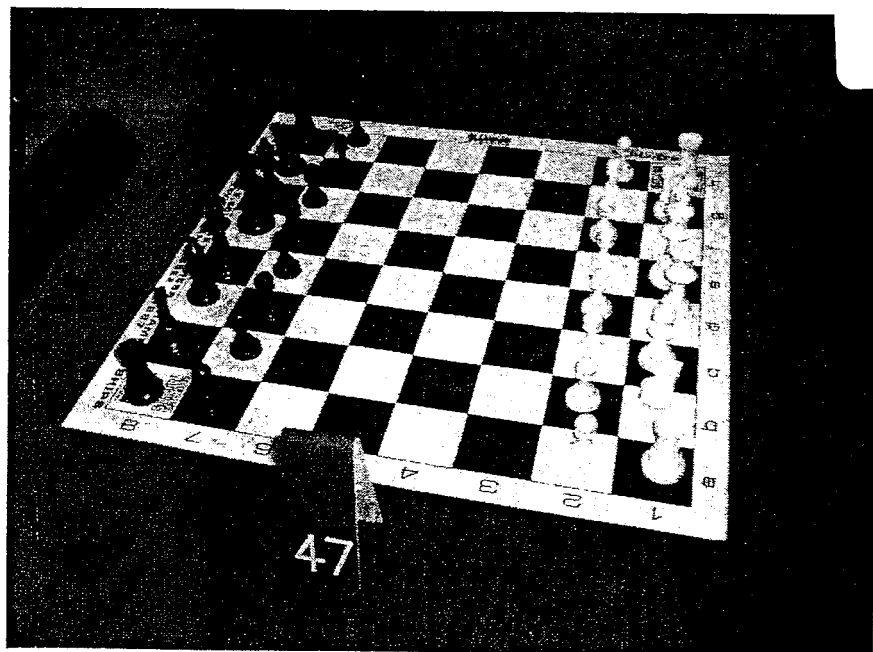
TENNESSEE CHESS NEWS

WINTER 2005

VOLUME 48

NO. 2

33 RD CUMBERLAND CO CLOSED CHAMPIONSHIP.....	4
NASHVILLE CROWNS 2005 CITY CHAMPS.....	8
ARNOLD DENKER REMEMBERED.....	12
TN QUICK CHESS CHAMPIONSHIP 2004.....	15
6 TH NORTH TN WINTER OPEN RESULTS.....	16
KRAMNIK VS LEKO 10/18/04 GAME ANNOTATED.....	25



TENNESSEE CHESS NEWS

The **Tennessee Chess News** is the official publication of the Tennessee Chess Association. TCA annual dues are \$10 for a *regular* membership, \$10 for a *student* membership. Additional members of a family may join for one dollar each, but only one issue of TCN will be mailed per family. All memberships expire August 31.

Tax-deductible Patron Memberships are available beginning at \$100 per year for those who wish to help support the TCA and the FFTC. These memberships expire one year from the date of payment. Patron membership categories and benefits are as follows:

PATRON \$100

- One year TCA Membership and FFTC membership plus a key ring.

PATRON KING \$300

- All Patron benefits plus one year free TCA and FFTC membership for all members of the Patron King's immediate family & free entry into the TN State Scholastic Individual Regional Tournament for the member and all members of the Patron King's immediate family.

PATRON MASTER \$500

- All Patron King benefits plus one free entry to any TCA or FFTC sponsored Open Chess Tournament. The Patron Master or any member of his/her immediate family could use such free entry.

PATRON GRANDMASTER **\$1000 (or more)**

- All Patron Master benefits plus a chess clock and their name on a permanent plaque to be placed on the wall at the home of the TCA and FFTC.

TOURNAMENT ANNOUNCEMENTS

TCN prints listings of upcoming tournaments requiring TCA membership in each issue for free. Submit complete TLA information to Ellis Jones, Tournament Coordinator.
E-MAIL: mudbugger5@earthlink.net

TN CHESS NEWS STAFF

Editor:

Angela McElrath-Prosser

Contributors:

Alvin Harris
Mark Ishee
Patricia Knight
Peter Lahde
Harry Sabine
USCF

TCN publishing schedule:

Spring 2005 - May 1 covering
Feb, Mar, Apr events

Deadline: Apr 9, 2005

Summer 2005 - Aug 1 covering
May, Jun, Jul events

Deadline: July 9, 2005

Fall 2005 - Nov 1 covering
Aug, Sept, Oct events

Deadline: Oct 9, 2005

Winter 2006 - Feb 1 covering
Nov, Dec, Jan events

Deadline: Jan 9, 2006

Please submit material by e-mail
to: tcanews@aol.com

Tennessee Chess Association and Foundation for Tennessee Chess

Patron Members

Patron Grandmaster

Dr. Martin Katahn

George A. Dean

Patron Member

Dr. Juan T. Aristorenas

Scott Eddins

Gary Gillespie

Peter P. Lahde

Ed Newkirk

Bill Orgain

Jeff Pennig

Clinton H. Pearson, Jr.

Harry D. Sabine

Paul B. Semmes

R. K. Shimabukuro

Joe Le Tate

From TCA Website February 2005

Winter 2005 /3

2004 Cumberland County 33rd Closed Championship
DECEMBER 11, 2004 Sponsored by CUMBERLAND COUNTY BANK

PRIZE WINNERS

Champion	- Bill Hall	- 5.0
2nd	- Logan Blankenship	- 4.5
3rd	- Jay Sabine	- 4.0
4th	- Michael Howard	- 4.0
5th	- William Abel Howard	- 4.0
6th	- Harry D. Sabine	- 4.0
7th	- Marty Robbins	- 4.0
8th	- Charlie R. Houston	- 4.0
9th	- Eric Buechel	- 4.0
10th	- Eric M. Donnan	- 4.0
1st-Class E	- William S. Davis	- 3.0
1st-Class F	- Adam Mullinax	- 3.0
1st-Class G	- Cody Pelfrey	- 3.5
1st-Unrated	- Frank McClung	- 3.0
2nd-Unrated	- Alex Donnan	- 3.0

2004 Cumberland County 33rd Closed Championship
Crosstables

No.	Name	St	Rate	Rd1	Rd2	Rd3	Rd4	Rd5	Score
1.	HALL, BILL (1)....TN	2098	W58	W19	W8	W5	W4	5.0	
2.	BLANKENSHIP, LOGAN(8) TN	1085	W60	W25	W26	W3	D6	4.5	
3.	SABINE, HARRY (2).TN	1685	W55	W20	W17	L2	W12	4.0	
4.	SABINE, JAY (3)...TN	1606	W51	W21	W9	W7	L1	4.0	
5.	HOWARD, MICHAEL(4)TN	1285	W34	W22	W10	L1	W19	4.0	
6.	HOWARD, WILLIAM 9)TN	1084	W69	W24	D13	W14	D2	4.0	
7.	DONNAN, ERIC M(11)TN	979	W45	W56	W29	L4	W20	4.0	
8.	ROBBINS, MARTY(12)TN	975	W61	W41	L1	W13	W22	4.0	
9.	BUECHEL, ERIC (15)TN	813	W46	W54	L4	W24	W30	4.0	
10.	HOUSTON, CHARLIE(18)TN	701	W44	W30	L5	W25	W21	4.0	
11.	GILLESPIE, GARY (5)TN	1255	W68	D14	W28	L12	W23	3.5	
12.	CRABTREE, STEPHEN(16)TN	790	W63	D28	W57	W11	L3	3.5	
13.	PELFREY, CODY (24)TN	549	W66	W16	D6	L8	W38	3.5	
14.	MCCLUNG, NOAH (25)TN	541	W65	D11	W40	L6	W36	3.5	
15.	BURGESS, DEREK (6)TN	1194	-U-	-H-	W41	W26	D28	3.0	
16.	DAVIS, WILLIAM (7)TN	1145	W52	L13	W64	L20	W49	3.0	
17.	MULLINAX, ADAM(14)TN	876	W43	W35	L3	L23	W48	3.0	
18.	HAMMETT, JON H(17)TN	714	W37	L29	W34	L30	W50	3.0	
19.	DE BRUYN, ANDREW(19)TN	679	W53	L1	W55	W29	L5	3.0	
20.	MC CLUNG, JAVAN(20)TN	668	W47	L3	W48	W16	L7	3.0	
21.	BRINDISI, FRANK(21)TN	639	W49	L4	W54	W31	L10	3.0	
22.	HOUSTON, C J (22).TN	635	W48	L5	W47	W32	L8	3.0	
23.	BROWN, DUSTIN (23)TN	564	L54	W69	W52	W17	L11	3.0	
24.	HENRY, CLAY M (26)TN	533	W59	L6	W51	L9	W55	3.0	

2004 Cumberland County 33rd Closed Championship
Crosstables (Continued)

No.	Name	St	Rate	Rd1	Rd2	Rd3	Rd4	Rd5	Score
25.	DE BRUYN, QUINTON(28)TN	505	W42	L2	W65	L10	W52	3.0	
26.	DONNAN, MATTHEW(30)TN	287	W38	W31	L2	L15	W45	3.0	
27.	BENNETT, DUNE (32)TN	100	L30	L51	-B-	W54	W56	3.0	
28.	DONNAN, ALEX (45).TN	nnnn	W39	D12	L11	W40	D15	3.0	
29.	LYON, KATHERINE(56)TN	nnnn	W32	W18	L7	L19	W43	3.0	
30.	MCCLUNG, FRANK(57)TN	nnnn	W27	L10	W39	W18	L9	3.0	
31.	SAPP, BILLY (10)..TN	1037	W67	L26	W59	L21	D35	2.5	
32.	SWAFFORD, RUSSELL(13)TN	965	L29	W42	W50	L22	D34	2.5	
33.	ADAMS, WILLIAM (36)TN	nnnn	L56	L34	W66	D51	W58	2.5	
34.	GILBERT, STUART(50)TN	nnnn	L5	W33	L18	W47	D32	2.5	
35.	INGRAM, ANDREW (51)TN	nnnn	W64	L17	D56	D45	D31	2.5	
36.	JACKSON, MARK (52)TN	nnnn	-H-	L40	W53	W56	L14	2.5	
37.	RICHARDSON, ZACHAR(60)TN	nn	L18	L48	W44	D41	W57	2.5	
38.	WALLACE, AARON(66)TN	nnnn	L26	D68	W58	W57	L13	2.5	
39.	EDMONDS, LUCAS(27)TN	526	L28	W67	L30	-U-	W65	2.0	
40.	MCPARTLAND, TYLER(31)TN	157	D57	W36	L14	L28	D51	2.0	
41.	BUECHEL, GEORGE(33)TN	100	W50	L8	L15	D37	D53	2.0	
42.	ADAMS, RACHAEL (35)TN	nnnn	L25	L32	L43	W66	W63	2.0	
43.	BRIGHAM, JIMMY (37)TN	nnnn	L17	L52	W42	W46	L29	2.0	
44.	BURNETT, BRIAN (39)TN	nnnn	L10	L55	L37	W69	W64	2.0	
45.	CAMPBELL, DUSTIN(41)TN	nnn	L7	D63	W68	D35	L26	2.0	
46.	CARTER, CARY (42) TN	nnnn	L9	L47	W61	L43	W62	2.0	
47.	DONNAN, SARAH (46) TN	nnnn	L20	W46	L22	L34	W60	2.0	
48.	EDDINGTON, STEVEN(47)TN	nnn	L22	W37	L20	W65	L17	2.0	
49.	GILBERT, HENRY (48)TN	nnnn	L21	L59	W60	W67	L16	2.0	
50.	MIFFLIN, MATTHEW(58)TN	nnn	L41	W66	L32	W63	L18	2.0	
51.	SMITH, BRANDON (61)TN	nnnn	L4	W27	L24	D33	D40	2.0	
52.	SWEITZER, IANN (64)TN	nnnn	L16	W43	L23	W62	L25	2.0	
53.	TREADWAY, AMOS (65)TN	nnnn	L19	D58	L36	W68	D41	2.0	
54.	WALLACE, RYAN (67).TN	nnnn	W23	L9	L21	L27	W67	2.0	
55.	WELCH, SPENCER (68)TN	nnnn	L3	W44	L19	W64	L24	2.0	
56.	DEBRUYN, PARKER(29)TN	462	W33	L7	D35	L36	L27	1.5	
57.	JENKINS, CHRIS (54)TN	nnnn	D40	W62	L12	L38	L37	1.5	
58.	STEWART, JEAN (63).TN	nnnn	L1	D53	L38	W61	L33	1.5	
59.	SUTTON, JOHN C (34)TN	100	L24	W49	L31	-U-	-U-	1.0	
60.	BURNETT, BRANDON(38)TN	nnn	L2	L64	L49	-B-	L47	1.0	
61.	CAMPBELL, AMANDA(40)TN	nnn	L8	L65	L46	L58	W68	1.0	
62.	CARTER, REBECCA (43)TN	nnn	-H-	L57	D63	L52	L46	1.0	
63.	DAVIS, AMY (44)....TN	nnnn	L12	D45	D62	L50	L42	1.0	
64.	JACKSON, TIMOTHY(53)TN	nnnn	L35	W60	L16	L55	L44	1.0	
65.	KLINGBERG, JOHN (55)TN	nnn	L14	W61	L25	L48	L39	1.0	
66.	SMITH, T J (62)....TN	nnnn	L13	L50	L33	L42	W69	1.0	
67.	ZICHKO, CHRIS (69) TN	nnnn	L31	L39	W69	L49	L54	1.0	
68.	RAY, DUSTIN (59)...TN	nnnn	L11	D38	L45	L53	L61	0.5	
69.	GILBERT, ISAAC (49)TN	nnnn	L6	L23	L67	L44	L66	0.0	

2004 Cumberland County Closed Scholastic Championship

High School Crosstables

No.	Name	St	Rate	Rd1	Rd2	Rd3	Rd4	Rd5	Score
1.	DONNAN, ERIC M (3)TN	975	W8	W2	W3	W5	W7		5.0
2.	HOWARD, WILLIAM(1)TN	1086	W5	L1	W4	W6	D3		3.5
3.	BLANKENSHIP, LOGAN(2)TN	1028	W6	W4	L1	W7	D2		3.5
4.	GIDDINGS, JOSHUA(5)TN	896	W7	L3	L2	L8	W5		2.0
5.	SURLES, WILLIAM (6)TN	888	L2	W8	W6	L1	L4		2.0
6.	BRINDISI, STEVEN(7)TN	763	L3	W7	L5	L2	W8		2.0
7.	HACKETT, PRESTON(4)TN	911	L4	L6	W8	L3	L1		1.0
8.	CRABTREE, STEPHEN(8)TN	742	L1	L5	L7	W4	L6		1.0

Junior High Crosstables

No.	Name	St	Rate	Rd1	Rd2	Rd3	Rd4	Rd5	Score
1.	BURGESS, DEREK (2)TN	1138	W6	W3	W2	W4	W5		5.0
2.	HOWARD, MICHAEL(1)TN	1200	W7	W4	L1	W3	W6		4.0
3.	HAMMETT, JON H (3)TN	741	W5	L1	W6	L2	-B-		3.0
4.	DE BRUYN, ANDREW(4)TN	679	-B-	L2	W5	L1	W7		3.0
5.	PARKER, NATHAN (6)TN	nnnn	L3	-B-	L4	W7	L1		2.0
6.	WELCH, SPENCER (7)TN	nnnn	L1	W7	L3	-B-	L2		2.0
7.	JENKINS, CHRIS (5)TN	nnnn	L2	L6	-B-	L5	L4		1.0

Elementary Crosstables

No.	Name	St	Rate	Rd1	Rd2	Rd3	Rd4	Rd5	Score
1.	HOUSTON, C J (3) TN	618	W11	W14	W6	W12	W3		5.0
2.	HOUSTON, CHARLIE(1)TN	785	W19	W13	W12	L3	W9		4.0
3.	MC CLUNG, JAVAN (2)TN	650	W15	W8	W9	W2	L1		4.0
4.	GILBERT, STUART(15)TN	nnn	W24	L12	W10	W7	W6		4.0
5.	DEBRUYN, PARKER (5)TN	462	D10	D7	W21	D11	W17		3.5
6.	DONNAN, MATTHEW (6)TN	287	W21	W22	L1	W15	L4		3.0
7.	EDDINGTON, STEVEN(13)TN	nnn	D17	D5	W22	L4	W19		3.0
8.	LANCIANESE, FRANK(18)TN	nnn	W23	L3	L13	W26	W21		3.0
9.	LYON, KATHERINE (19)TN	nnn	W27	W18	L3	W14	L2		3.0
10.	MCPARTLAND, TYLER(20)TN	nnn	D5	W17	L4	W22	D11		3.0
11.	WALLACE, AARON (26)TN	nnnn	L1	W16	W24	D5	D10		3.0
12.	DE BRUYN, QUINTON(4)TN	505	W26	W4	L2	L1	D16		2.5
13.	BUECHEL, GEORGE(7)TN	145	-B-	L2	W8	L17	D18		2.5
14.	BLACKWOOD, JETT(8)TN	nnnn	W16	L1	W20	L9	D15		2.5
15.	CAUSBY, BRETT (11)TN	nnnn	L3	W23	W26	L6	D14		2.5
16.	HACKERMAN, ADAM(16)TN	nnn	L14	L11	W23	X24	D12		2.5
17.	RICHARDSON, ZACHARY(22)TN	nnn	D7	L10	W27	W13	L5		2.5
18.	DAVIS, DWAYNE (12)TN	nnnn	D20	L9	L19	W27	D13		2.0
19.	PHIPPS, FRANK (21)TN	nnnn	L2	L21	W18	W25	L7		2.0
20.	TODD, MICKEY (23) TN	nnnn	D18	D27	L14	L21	W25		2.0

Elementary Crosstables (Continued)

No.	Name	St	Rate	Rd1	Rd2	Rd3	Rd4	Rd5	Score
21.	TREADWAY, AMOS(24)TN	nnnn	L6	W19	L5	W20	L8		2.0
22.	WALALCE, RYAN (25)TN	nnnn	W25	L6	L7	L10	W26		2.0
23.	WENDIG, JESSE (27)TN	nnnn	L8	L15	L16	-B-	D27		1.5
24.	BLEVENS, MATTHEW(9)TN	nnn	L4	-B-	L11	F16	-U-		1.0
25.	CARTER, REBECCA(10)TN	nnn	L22	L26	-B-	L19	L20		1.0
26.	ELLIOTT, ZACHARY(14)TN	nnn	L12	W25	L15	L8	L22		1.0
27.	HUBBARD, CALEB(17)TN	nnnn	L9	D20	L17	L18	D23		1.0

Primary Crosstables

No.	Name	St	Rate	Rd1	Rd2	Rd3	Rd4	Rd5	Score
1.	MC CLUNG, NOAH (1)TN	525	W5	W2	W4	W3	W7		5.0
2.	GILBERT, HENRY (11)TN	nnn	W12	L1	W6	W4	W5		4.0
3.	COLE, ZACK (9)....TN	nnnn	W15	D7	W9	L1	W11		3.5
4.	BENNETT, DUNE (2).TN	100	-B-	W6	L1	L2	W9		3.0
5.	CARTER, CARY (6)..TN	nnnn	L1	W14	W13	W10	L2		3.0
6.	HACKERMAN, AUSTIN(12)TN	nnn	W14	L4	L2	W13	W10		3.0
7.	BURNETT, BRIAN (5)TN	nnnn	D11	D3	D14	W8	L1		2.5
8.	RAY, DUSTIN (13)..TN	nnnn	D13	D11	D12	L7	W14		2.5
9.	SMITH, T J (14)..TN	nnnn	D10	W15	L3	W12	L4		2.5
10.	CARVER, KATLIN (7)TN	nnnn	D9	D13	W11	L5	L6		2.0
11.	COLE, AUSTIN (8)..TN	nnnn	D7	D8	L10	X15	L3		2.0
12.	DAVIS, AMY (10)...TN	nnnn	L2	-B-	D8	L9	D13		2.0
13.	BURNETT, BRANDON(4)TN	nnn	D8	D10	L5	L6	D12		1.5
14.	TODD, LOGAN (15)..TN	nnnn	L6	L5	D7	-B-	L8		1.5
15.	BARGER, DAVID (3).TN	nnnn	L3	L9	-B-	F11	-U-		1.0

Coming Attractions

In the next issue of the *Tennessee Chess News*, look for following:

2005 Regional Individual Scholastic Results

2005 State Individual Scholastic Results

2005 Regional Team Scholastic Results

2005 State Team Scholastic Results

NASHVILLE CROWNS 2005 CITY CHAMPS

By Alvin Harris

FM Todd Andrews went undefeated to win the 2005 Nashville Championship played at the Nashville Chess Center January 8-9, 2005. Andrews scored 4.5 points in the 6-player round robin event, winning \$200, an engraved glass trophy and the title of 2005 Nashville Chess Champion. High school sophomore Alexander King and Ben Harris tied for second with 3.5 points apiece. Below is the final cross-table.

Pairing Number and Player	1	2	3	4	5	6	TOTAL
1 FM Todd Andrews (USCF 2398)	X	1	1	1	1	.5	4.5
2 Gainer Phay (USCF 1543)	0	X	1	0	1	0	2.0
3 Frank Ashmun (USCF 1624)	0	0	X	.5	1	0	1.5
4 Alexander King (USCF 2013)	0	1	.5	X	1	1	3.5
5 Robert Geil (USCF 1014)	0	0	0	0	X	0	0.0
6 Ben Harris (USCF 1910)	.5	1	1	0	1	X	3.5

Twenty-four mid-State scholastic players competed in the 2005 Nashville Scholastic Chess Championships sections at the Nashville Chess Center January 8, 2005. The round-robin tournament was played in four six-player sections (High School, Junior High, Elementary and Primary). The coveted qualification slots were awarded to high finishers in three mid-State scholastic events held in October, November and December of 2004. Profiles and photographs of the players were featured in tournament programs distributed the day of the event.

When the dust cleared, the 2005 Nashville Scholastic Chess Champions emerged:

High School Section	Myles MacDonald, Hume-Fogg High School
Junior High Section	Madhu Nair, Hume-Fogg High School
Elementary Section	Manu Nair, Meigs Magnet & Sal Neglia, Harding Academy
Primary Section	Michael Fang, Kenrose Elementary

All players received trophies with the champs receiving a beautifully engraved glass award.

HIGH SCHOOL SECTION

Pairing Number and Player	1	2	3	4	5	6	TOTAL
1 Josh Turnbow (USCF 861) Creek Wood High School	X	1	0	0	0	0	1.0
2 Jesse Hotchkin (USCF 913) Creek Wood High School	0	X	.5	0	1	0	1.5
3 Zachary Moore (USCF 1384) Rutherford Tutorial Academy	1	.5	X	0	1	0	2.5
4 Brandon Ladage (USCF 1233) Creek Wood High School	1	1	1	X	.5	.5	4.0
5 Christopher Cheney (USCF 1341) Rutherford Tutorial Academy	1	0	0	.5	X	0	1.5
6 Myles MacDonald (USCF 1626) Hume Fogg High School	1	1	1	.5	1	X	4.5

JUNIOR HIGH SECTION

Pairing Number and Player	1	2	3	4	5	6	TOTAL
1 Michael Schoenfield (USCF 1257) Meigs Magnet	X	1	.5	0	1	0	2.5
2 Tre Smith (USCF 1163) Nazarene Christian Academy	0	X	0	1	.5	0	1.5
3 Madhu Nair (USCF 1526) Hume-Fogg High School	.5	1	X	1	.5	1	4.0
4 Max Breyer (USCF 1135) Meigs Magnet	1	0	0	X	0	0	1.0
5 Suad Yoon (USCF 1261) Bass Middle School	0	.5	.5	1	X	1	3.0
6 Austin Conner (USCF 1051) Meigs Magnet	1	1	0	1	0	X	3.0

VOLUNTEERS NEEDED FOR 2005 SUPERNATIONALS

BE A PART OF SCHOLASTIC CHESS HISTORY

ELEMENTARY SECTION

Pairing Number and Player	1	2	3	4	5	6	TOTAL
1 Isaac Weintraub (USCF 799) J.T. Moore Middle	X	0	0	0	0	0	0.0
2 Sal Neglia (USCF 1226) Harding Academy	1	X	1	.5	.5	1	4.0
3 Eric Yang (USCF 918) Westmeade Elementary	1	0	X	0	.5	1	2.5
4 Manu Nair (USCF 1458) Meigs Magnet	1	.5	1	X	.5	1	4.0
5 Jacob Schafer (USCF 852) Meigs Magnet	1	.5	.5	.5	X	1	3.5
6 Ravikanth Konjeti (USCF 886) Rose Park Magnet	1	0	0	0	0	1	1.0

PRIMARY SECTION

Pairing Number and Player	1	2	3	4	5	6	TOTAL
1 Tommy Metke (USCF 552) Donelson Christian Academy	X	0	1	1	1	1	4.0
2 Michael Fang (USCF 272) Keurose Elementary	1	X	1	1	.5	1	4.5
3 Allen Davis (USCF 201) Heritage Covenant Home School	0	0	X	1	1	0	2.0
4 Noah Coffee (USCF 313) Percy Priest Elementary	0	0	0	X	0	0	0.0
5 Dylan Cheatham (USCF 436) Lakeview Elementary	0	.5	0	1	X	1	2.5
6 Weslev Gibson (USCF 556)	0	0	1	1	0	X	2.0

HUGE VARIETY OF JOBS E-MAIL ME FOR DETAILS CHRIS PROSSER REGIONiii@AOL.COM

SEND NAME, ADDRESS, PHONE, AND T-SHIRT SIZE

Arnold Denker, 90, Dean of American Chess and Former US Chess Champion, Dies Fort Lauderdale - January 2, 2005

(New Windsor) Arnold Sheldon Denker, the "Dean of American Chess" and United States chess champion from 1944 to 1946, died on Jan. 2, 2005 at his home after a brief struggle with brain cancer. He was 90 years old.

Grandmaster (GM) Denker, whose playing career spanned nearly three quarters of a century from 1929 to 2002, was renowned not only for tournament successes but also for a tempestuous attacking style filled with risky sacrifices and slashing assaults on the opponent's king. Al Horowitz, a former New York Times chess columnist, wrote of GM Denker's play, "The attack is both his strength and his weakness. He can handle an attack with a fertility of ideas and a richness of imagination that are rare. Yet frequently he tries to attack where defense is necessary or where the position does not warrant aggressive tactics." To which GM Denker responded with his famed feistiness, "I still like to attack. If this be treason, then make the most of it!"

He first attracted attention by winning the New York City individual interscholastic championship in 1929 at age 15; he considered those games some of his finest. In 1940 he won the first of six championships of the Manhattan Chess Club, which was then regarded as the strongest aggregation of chess players in the world. Denker set a world record by playing 100 opponents in 7.33 hours, beating Capablanca's record by one hour. During WW II, Denker gave simultaneous exhibitions at military bases and even aboard aircraft carriers. He was also invited by the US government to help crack enemy codes because of his chess prowess.

In 1944 GM Denker won the U. S. Championship with the score of 15 ½ - 1 ½, a result of 91%, that is surpassed in U.S. title history only by Bobby Fischer's clean slate of 11-0 in the 1963-64 championship tournament. In 1946 GM Denker successfully defended his title in a 10-game match against International Master Herman Steiner, scoring 6-4.

Business commitments prevented GM Denker from participating often in international tournaments, and he never mounted a challenge for the world championship. However, his tie for 10th - 12th at Groningen 1946, the first great tournament following WW II, placed him in the elite two dozen of world chess. In tournament and exhibition play, he drew with at least five world champions, including Bobby Fischer.

Grandmaster Arnold Denker represented the United States in numerous international competitions. He was a mentor of the World Chess Champion, Bobby Fischer. He served as President of the North American Zone of the World Chess Federation Internationale des Echecs (FIDE). Denker was on the Board of the American Chess Foundation, the United States Chess Federation and the US Chess Trust. In 1992, GM Denker was inducted into the U.S. Chess Hall of Fame. Denker received virtually every honorary award the chess world had to offer. He was designated a charter lifetime honorary member of the Board of Directors of the Florida Chess Association. In 1999, he was only one of two Americans whose names were entered into the World Chess Federation's Gold Book at their 75th Anniversary celebrations in Paris, France. At a special awards banquet held in Boca Raton, Florida on June 11, 2004, Denker received America's highest chess honor when he became only the third person to ever be proclaimed "Dean of American Chess" of the United States Chess Federation.

After retiring to Florida, Denker gave unstintingly of his time to teach chess to young children. He helped create programs to bring chess into the school curriculum. The children who played chess were found to perform better in all academic areas. Teaching chess and passing the game to the next generation was his great passion. Grandmaster Denker took special pride in first starting (1984) and then sponsoring the national championship of high school state champions, known affectionately as "The Denker". Each year college scholarships are awarded to the top participants. Among his many other accomplishments are his books, "If You Must Play Chess" and "The Bobby Fischer I Knew and Other Stories".

Born February 21, 1914 in New York City, GM Denker graduated from New York University. He married the former Nina Simmons in 1936 and was married for 57 years until her death in 1993. Survivors include his daughter, Randie, of Tallahassee, Florida; and two sons Mitchell of Belleview, Florida, and Richard of New York City, as well as his grandchildren Jana, Gaea and Dylan.

The above note was provided by Richard Denker.

Those of you who would like to share your tributes to Arnie can email them to Joan DuBois, Media Director at USCF and Chess Life Editor Kalev Pehme: joandubois@uschess.org and editor@uschess.org

Tribute from Larry Parr, former editor of Chess Life:
Gentlemen and Genteladies,

Harold Winston puts his finger on the two things that made Arnold,
Arnold. Vibrance and empathy.

Some people appear at times to be barely alive; Arnold usually was barely able to contain himself. He loved everything he was doing, right down to crossing a street by running through traffic with a saint's faith that he would make it to the other side. Most of us think it is one of life's little chores to get across a wide street with flowing traffic. He turned it into an adventure.

Arnold's empathy was of an unusual type. Most people who have the quality of empathy demonstrate it at an immediate moment. Arnold's was a reflective empathy. He often gave thought before helping a person, perhaps to find the best way, and he spent decades thinking about the great men of chess he once knew before putting his thoughts on paper.

One subject that came up often, when he and I had hot pastrami sandwiches at the old Applebaum's just down from Macy's, was the condemnation of Alekhine at a tournament in England following the war. On one occasion tears came to his eyes when thinking about the feeling of abandonment that Alekhine must have experienced. It was a subject that he never dropped from his mind, mentioned to me in a serious way at least a dozen times, though the events were a half century old.

Arnold felt he had done something wrong, and he could not help feeling what Alekhine might have felt. Vibrance and empathy. Harold Winston hit it just right. Yours, Larry Parr

FOR IMMEDIATE RELEASE Contact: Joan DuBois January 3, 2005
(845) 562-8350, ext. 123 Press Release #1 of 2005

TENNESSEE QUICK CHESS CHAMPIONSHIP 2004

By Peter Lahde

The seventh annual Tennessee Quick Chess Championship took place at the Nashville Chess Center on October 30, 2004. This was most likely the weakest of all the quick chess tournaments we have had. In my opinion the low prize fund had something to do with it. (The very first tourney was held in 1998 and played the day after the Tennessee Open. That one attracted just about all the top players of the state.) But this allowed me to get into contention as I had scored 4-1 after 5 rounds. Had I won the last game I would have tied for first.

2004 TN Quick Chess Championship

Place	Pairing#/Name	Rating		Rounds															
		Pre	TOT	W-19	W-14	W--2	W--7	W--1	L--4	W-10	W--3	W-15	W-20	W--5	W--2	D--1	W-15	W-20	L--6
1	5 Remec, Mirko	1561	5.0	W-19	W-14	W--2	W--7	W--1	L--4	W-10	W--3	W-15	W-20	W--5	W--2	D--1	W-15	W-20	L--6
2	6 Phay, Gainer	1437	5.0	L-20	W-25	W-16	W-12	W-10	W--3	W-15	W-20	W--5	W--2	D--1	W-15	W-20	L--6	W-20	L--6
3	4 Wright, Joe	1663	5.0	W-18	W-11	L-10	W-15	W-20	W--5	W--2	D--1	W-15	W-20	W--5	W--2	D--1	W-15	W-20	L--6
4	7 Human, Matthew	1371	4.5	W-21	W-13	W--3	L--5	W--2	D--1	W-15	W-20	W--5	W--2	D--1	W-15	W-20	L--6	W-20	L--6
5	2 Justice, David	1711	4.0	W-16	W--9	L--5	W-10	L--7	W-15	W-20	W--5	W--2	D--1	W-15	W-20	L--6	W-20	L--6	L--6
6	10 Snow, Chris	1200	4.0	W-24	W--1	W--4	L--2	L--6	W-20	W--5	W--2	D--1	W-15	W-20	L--6	W-20	L--6	W-20	L--6
7	3 Lahde, Peter	1676	4.0	W-17	W-12	L--7	W-14	W--9	L--6	W-20	W--5	W--2	D--1	W-15	W-20	L--6	W-20	L--6	L--6
8	1 Taylor, Jeff	1797	3.5	W-15	L-10	W-20	W-13	L--5	D--7	W-15	W-20	W--5	W--2	D--1	W-15	W-20	L--6	W-20	L--6
9	12 Breyer, Max	1141	3.5	W-27	L--3	W-21	L--6	W-17	D--9	W-15	W-20	W--5	W--2	D--1	W-15	W-20	L--6	W-20	L--6
10	16 Mc Cann, Dillon	1038	3.5	L--2	W-23	L--6	W-26	D--8	W-13	W-15	W-20	W--5	W--2	D--1	W-15	W-20	L--6	W-20	L--6
11	9 Wiebe, Peter	1207	3.5	W-23	L--2	W-19	W-24	D-14	L--8	W-15	W-20	W--5	W--2	D--1	W-15	W-20	L--6	W-20	L--6
12	8 Phillips, Coty	1274	3.5	W-22	L-20	L-15	W-23	D-16	W-19	W-15	W-20	W--5	W--2	D--1	W-15	W-20	L--6	W-20	L--6
13	14 Hunley, Ryan	1086	3.5	W-29	L--5	W-25	L--3	D-19	W-18	W-15	W-20	W--5	W--2	D--1	W-15	W-20	L--6	W-20	L--6
14	20 Berrett, Koty	0872	3.0	W--6	W--8	L--1	W-11	L--4	L-10	W-15	W-20	W--5	W--2	D--1	W-15	W-20	L--6	W-20	L--6
15	15 England, Justin	1074	3.0	L--1	W-22	W--8	L--4	W-21	L--2	W-15	W-20	W--5	W--2	D--1	W-15	W-20	L--6	W-20	L--6
16	22 Riling, Kyle	0753	3.0	L--8	L-15	W-29	L-17	W-25	W-24	W-15	W-20	W--5	W--2	D--1	W-15	W-20	L--6	W-20	L--6
17	27 Chavez, Genesis	UNR	3.0	L-12	W-17	L-26	W-28	L-11	W-25	W-15	W-20	W--5	W--2	D--1	W-15	W-20	L--6	W-20	L--6
18	18 Yoon, Suad	0927	2.5	L--4	W-26	W-11	L--9	D-13	L-14	W-15	W-20	W--5	W--2	D--1	W-15	W-20	L--6	W-20	L--6
19	19 Kumar, Vikas	0893	2.5	L--5	W-29	L--9	W-24	D-14	L--8	W-15	W-20	W--5	W--2	D--1	W-15	W-20	L--6	W-20	L--6
20	11 Agostino, Michael	1151	2.5	W-26	L--4	L-18	L-20	W-27	D-21	W-15	W-20	W--5	W--2	D--1	W-15	W-20	L--6	W-20	L--6
21	17 Simonton, Andrew	1002	2.5	L--3	L-27	W-28	W-22	L-12	D-23	W-15	W-20	W--5	W--2	D--1	W-15	W-20	L--6	W-20	L--6
22	13 Herman, Jared	1087	2.5	W-28	L--7	W-24	L--1	D-18	L-16	W-15	W-20	W--5	W--2	D--1	W-15	W-20	L--6	W-20	L--6
23	23 Davis, Michael	0709	2.5	L--9	L-16	B---	L--8	W-26	D-17	W-15	W-20	W--5	W--2	D--1	W-15	W-20	L--6	W-20	L--6
24	21 Chavez, Christian	0754	2.5	L--7	W-28	L-12	W-25	L-15	D-11	W-15	W-20	W--5	W--2	D--1	W-15	W-20	L--6	W-20	L--6
25	26 Fang, Michael	UNR	2.0	L-11	L-18	W-27	L-16	L-23	B---	W-15	W-20	W--5	W--2	D--1	W-15	W-20	L--6	W-20	L--6
26	24 Jenkins, Simmy	0571	2.0	L-10	B---	L-13	L-19	W-29	L-22	W-15	W-20	W--5	W--2	D--1	W-15	W-20	L--6	W-20	L--6
27	28 Griffith, Brent	UNR	1.5	L-13	L-21	L-17	L-27	B---	D-29	W-15	W-20	W--5	W--2	D--1	W-15	W-20	L--6	W-20	L--6
28	29 Agostino, Matthew	UNR	1.5	L-14	L-19	L-22	B---	L-24	D-28	W-15	W-20	W--5	W--2	D--1	W-15	W-20	L--6	W-20	L--6
29	25 Agostino, Joseph	0403	1.0	B---	L--6	L-14	L-21	L-22	L-27	W-15	W-20	W--5	W--2	D--1	W-15	W-20	L--6	W-20	L--6

THE WINNERS

State Champion	Mirko Remec	5 points	\$33.33 +Trophy
2 nd place	Gainer Phay	5 points	\$33.33
3 rd place	Joe Wright	5 points	\$33.33
High School Champion	David Justice	4 points	Trophy
Junior High Champion	Gainer Phay	5 points	Trophy
Elementary Champion	Vikas Kumar	2.5 points	Trophy
Primary Champion	Michael Fang	2 points	Trophy

6TH NORTH TENNESSEE WINTER OPEN
RIVERVIEW INN - CLARKSVILLE, TN
JANUARY 15-16, 2005
PRIZE WINNERS

Total Players - 140

States Represented - Tennessee, Kentucky, Mississippi,
Georgia, Alabama, Louisiana, Illinois

Kings Section: (19 Players)

Co-Champion IM Ronald Burnett Antioch TN 4.0 \$400.00
Co-Champion Bradley J Denton Hernando MS 4.0 \$400.00+T
3rd Place Xiao Cheng Atlanta, GA 3.5 \$150.00
3rd Place Peter Bereolos Knoxville, TN 3.5 \$150.00
3rd Place David Justice Franklin, TN 3.5 \$150.00

Queens Section: (17 Players)

Co-Champion Jerry Spinrad Murfreesboro TN 4.0 \$250.00+T
Co-Champion Carlos Harbert Memphis TN 4.0 \$250.00
3rd Place Mark Cobb Nashville, TN 3.5 \$ 62.50
3rd Place Abou Anne Memphis, TN 3.5 \$ 62.50
3rd Place Joe Wright Monterey, TN 3.5 \$ 62.50
3rd Place Matthew Human Jamestown TN 3.5 \$ 62.50

Rooks Section: (23 Players)

Champion Frank Ashman Nashville, TN 4.5 \$250.00+T
2nd Place Chris T. Lowery McKenzie, TN 4.0 \$112.50
2nd Place Garin Allison Spring Hill, TN 4.0 \$112.50
1st 1550-1649-Latrese Townsend Memphis TN 3.0 \$100.00
1st B1550 Coty Phillips Monterey, TN 3.0 \$ 25.00
1st B1550 Christopher Harbert Memphis TN 3.0 \$ 25.00

Bishops Section: (34 Players)

Champion Mark L. Bloss Nashville, TN 5.0 \$225.00+T
2nd Place Nathaniel Hutchinson Huntsville AL 4.0 \$125.00
3rd Place Victor Suich Morristown, TN 3.5 \$ 75.00
3rd Place Salvatore Neglia Brentwood TN 3.5 \$ 75.00
3rd Place Tre Smith Madison, TN 3.5 (T)
1st 1300-1399 Chess Volp Murray, KY 3.0 \$ 33.33
1st 1300-1399 Malcolm Estrada Chattanooga TN 3.0 \$33.33
1st 1300-1399 Justin England Clarkrange TN 3.0 \$ 33.33
1st Unrated Stefan Markov Murfreesboro TN 4.5 \$125.00+T
2nd Unrated Anthony Neglia Brentwood TN 3.0 \$ 50.00

6TH NORTH TENNESSEE WINTER OPEN
RIVERVIEW INN - CLARKSVILLE, TN
JANUARY 15-16, 2005
PRIZE WINNERS (CONTINUED)

Knights Section: (30 Players)

Co-Champion Sean Layne Franklin, TN 4.5 \$175.00+T
Co-Champion Richard Patterson Laverne, TN 4.5 \$175.00
3rd Place Alex Weiner Huntsville, AL 4.0 \$ 50.00
3rd Place Derek Burgess Crossville, TN 4.0 \$ 50.00
1st 1050-1149 William Davis Crossville, TN 3.0 \$ 50.00
1st 1050-1149 Dale Randels Nashville, TN 3.0 \$ 50.00
1st B1050 Nicholas Burnett Murray, KY 2.5 (T)
1st B1050 Jordan Smith Murray, KY 2.0 \$ 50.00

Pawns Section: (17 Players)

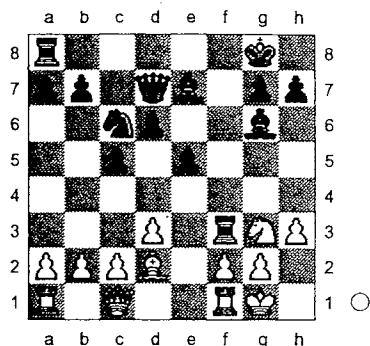
Champion Richard Higgins, Jr. Cadiz, KY 4.5 - T
2nd Place Jim Baringer Nashville, TN 3.5 - T
3rd Place Koty L. Barrett Arrington, TN 3.5 - T
4th Place Kyle Riling College Grove, TN 3.0 - T
5th Place Simmy Jenkins Monterey, TN 3.0 - T
1st 800-899 Michael Davis Clarkrange, TN 3.0 - T
1st B800 Matthew Agostino Franklin, TN 3.0 - T

2005 Tennessee Open Location Decided!

The 2005 Tennessee Open
will be held at the
Fairgrounds in
Crossville, TN.

B29
☐ **Jordana Williams**
☒ **Jerry Spinrad**
 North Tennessee Winter Queens 2005
[Notes by Lahde]

1.e4 c5 2.Nf3 Nf6 3.Nc3 Nc6 4.Bc4 d6
 5.h3 Nxe4 6.Bxf7+ Kxf7 7.Nxe4 Bf5
 8.Ng3 Bg6 9.0-0 e5 10.d3 Be7 11.Bd2
 Rf8 12.Qc1 Kg8 13.Ng5 Qd7 14.Nf3
 Rxf3!!



15.gxf3 Qxh3 16.Bc3 If 16 Bg5 then Nd4!
 is decisive. Rf8 17.Qe3 Rf4 18.Rfd1 Bh4
 19.Qe1 Rxf3 20.Qf1 Qg4 21.Qg2 Bxg3
 22.Be1 If 22 fxc3 then Rxc3 pinning the
 queen. Nd4 23.c3 Ne2+ 24.Kf1 Nf4
 25.Qh1 Bxd3+ 26.Rxd3 Nxd3 27.Ke2
 Rxf2+! 28.Kxd3 Qe2#
 0-1

E97
☐ **Todd Andrews**
☒ **Gainer Phay**
 Nashville Championship 2005

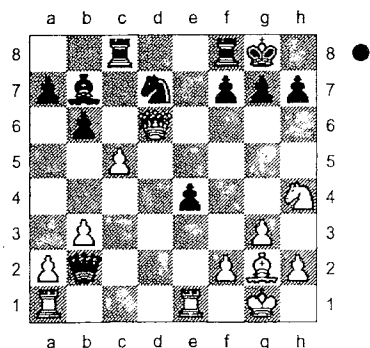
1.d4 Nf6 2.c4 g6 3.Nf3 Bg7 4.Nc3 0-0
 5.e4 d6 6.Be2 e5 7.0-0 Nc6 8.d5 Ne7
 9.b4 Nh5 10.Re1 Nf4 11.Bf1 h6 12.Bxf4
 exf4 13.Rc1 g5 14.e5 g4 15.exd6 Qxd6
 16.c5 Qd8 17.Ne5 Bxe5 18.Rxe5 Ng6
 19.Re1 Qh4 20.Qd4 Rd8 21.Ne4 Kf8
 22.g3 fxg3 23.hxg3 Qh5 24.Nf6 Qf5
 25.Bd3
 1-0

D92
☐ **Gainer Phay**
☒ **Robert Geil**
 Nashville Championship 2005

1.d4 Nf6 2.c4 g6 3.Nc3 d5 4.Nf3 Bg7
 5.Bf4 c6 6.e3 Qa5 7.Bd3 dxc4 8.Bxc4
 Nbd7 9.0-0 b5 10.Bxf7+ Kxf7 11.Ng5+
 Ke8 12.Qb3 Rf8 13.Ne6 Rf7 14.Nc7+
 Kf8 15.Nxa8 b4 16.Ne2 Ba6 17.Rfe1
 Nh5 18.Nc7 Bc8 19.Ne6+ Ke8 20.Rac1
 1-0

A15
☐ **Ben Harris**
☒ **Alexander King**
 Nashville Championship 2005

1.c4 Nf6 2.g3 e6 3.Bg2 d5 4.b3 b6
 5.Bb2 Bb7 6.Nf3 Nbd7 7.0-0 Bd6 8.d4
 c5 9.Nbd2 0-0 10.cxd5 exd5 11.e3 Qe7
 12.Re1 Rac8 13.e4 Nxe4 14.Nh4 Qf6
 15.Nxe4 dxe4 16.dxc5 Qxb2 17.Qxd6?



Preferable according to Fritz 5 is 17 cxd6.
 Nxc5 18.Nf5 Rcd8 19.Qe7 Rd7 20.Qg5
 Nd3 21.Rf1 f6 22.Qg4 Ne5 23.Qh3
 Rfd8 24.Rab1 Qxa2 25.Ra1 Qxa1
 26.Rxa1 Rd1+ 27.Rxd1 Rxd1+ 28.Bf1
 Nf3+ 29.Kg2 Ng5 30.Ne7+ Kf8 31.Qf5
 e3+ 32.f3 Bxf3+ 33.Kg1 e2 34.Qc8+
 Kxe7 35.Qc7+ Rd7
 0-1

B18
☐ **Carlos Sims (1707)**
☒ **Philip Maclin (1400)**
 Jim Mitchell Memorial (Memphis) 2004

1.e4 c6 2.d4 d5 3.Nc3 dxe4 4.Nxe4
 Bf5 5.Ng3 Bg6 6.Nf3 h6 7.Bc4 e6
 8.Ne5 Bh7 9.Qe2 Qe7 10.0-0 Nd7
 11.Rd1 Ngf6 12.Bd2 Bxc2 13.Rdc1 Bh7
 14.Bb4 c5 If 14...Qxb4 then 15 Nxf7 Qxc4
 16 Rxc4 Kxf7 17 Re1 Re8 is even according
 to Fritz 5. 15.dxc5 Nxc5 16.Bxc5 Qxc5
 17.Bb5+
 1-0

B05
☐ **Tony Cao (2000)**
☒ **Sam Palatnik (2534)**
 44th Mid South 2004

1.e4 Nf6 2.e5 Nd5 3.d4 d6 4.Nf3 Bg4
 5.Be2 e6 6.0-0 Be7 7.b3 0-0 8.c4 Nb6
 9.exd6 cxd6 10.Bb2 Nc6 11.Nbd2 d5
 12.Ne5 Bxe2 13.Qxe2 Nxe5 14.dxe5
 dxc4 15.Nxc4 Nxc4 16.Qxc4 Rc8
 17.Qe2 Qa5 18.Qe4 Qb4 19.Qxb4 Bxb4
 20.a3 Bc3 21.Bxc3 Rxc3 22.Rab1 Rd8
 23.Rfc1 Rdd3 24.Rxc3 Rxc3 25.Kf1 g5
 26.a4 Kg7 27.b4 Rc4 28.f3 h5 29.h3
 h4 30.g4 hxg3 31.Kg2 b6 32.a5 bxa5
 33.bxa5 Rc5 34.a6 Ra5 35.Kxg3 Rxa6
 36.Rb5 Ra4 37.Rc5 a5 38.Rc8 Rb4
 39.Ra8 Rb5 40.f4 gxf4+ 41.Kxf4 Rb4+
 42.Kg5 a4 43.h4 Re4 44.Ra5 Rxe5+!!
 A pretty conclusion. 45 Rxe5 f6+ etc.
 0-1

C77
☐ **Paul Smith (1781)**
☒ **Kenneth Turner (1706)**
 44th Mid South 2004

1.e4 e5 2.Nf3 Nc6 3.Bb5 a6 4.Ba4 Nf6
 5.Qe2 d6 6.c3 Be7 7.d3 0-0 8.Bg5 h6
 9.Bh4 Nh7 10.Bxe7 Nxe7 11.Nbd2 Ng6
 12.0-0-0 Nf4 13.Qf1 Ng5 14.h4 Nxf3
 15.Nxf3 Bg4 16.Rd2 Bxf3 17.gxf3 c5

18.d4 Qa5 19.Bc2 cxd4 20.cxd4 Qxa2
 21.Bb1 Rac8+ 22.Rc2 Rxc2+ 23.Bxc2
 Rc8 24.Qd1 Qa1+ 25.Kd2 Qxb2 26.d5
 Qc3+ 27.Kc1 Nd3+
 1-0

C54
☐ **Jason Knight (1772)**
☒ **Peter Bereolos (2333)**
 Knoxville Championship 2004
[November 11, 2004]

1.e4 e5 2.Nf3 Nc6 3.Bc4 Bc5 4.c3 Nf6
 5.d3 d6 6.b4 Bb6 7.a4 a6 8.0-0 0-0
 9.Be3 Ba7 10.Nbd2 Ne7 11.Bxa7 Rxa7
 12.d4 Ng6 13.Re1 Qe7 14.Qb3 Nf4
 15.b5 axb5 16.axb5 Rxa1 17.Rxa1 exd4
 18.cxd4 Nxe4 19.Re1 Nxd2 20.Rxe7
 Nxb3 21.Bxb3 c6 22.bxc6 bxc6 23.Rc7
 Bg4 24.Ng5 Ne2+ 25.Kf1 Nxd4
 26.Bxf7+ Kh8 27.f3 Bf5 28.Ba2 Bd3+
 29.Kf2 Bg6 30.Ne6 Nxe6 31.Bxe6 Be4
 32.Ke3 Bb1 33.Rxc6 Re8 34.Rc8 Rxc8
 35.Bxc8 Kg8 36.Kd4 Kf7 37.Bb7 h6
 38.h4 White offered a draw here. Bc2
 39.g3 Bd1 40.Bc6 Ke6 41.Bd5+ Kf6
 42.Be4 Bb3 43.Bd5 Bd1
 1/2-1/2

D12
☐ **Dickerson (2034)**
☒ **Patterson (1793)**
 Knoxville Championship 2004
[November 18, 2004]

1.d4 d5 2.Nf3 Nf6 3.e3 Bf5 4.c4 c6
 5.Qb3 Qc7 6.cxd5 cxd5 7.Nc3 e6
 8.Bd2 Nc6 9.Rc1 a6 10.Ne5 Bd6 11.f4
 Bxe5 12.fxe5 Nd7 13.Be2 0-0 14.0-0
 f6 15.Nxd5! Qd8 15...exd5 16 Qxd5 Kh8
 17 Rxf5 exd5 17 Qxd5 is actually better than
 the text, but White still has the advantage.
 16.Rxf5 exf5 17.Nc7+ Kh8 18.Nxa8
 Qxa8 19.e6 Ndb8 20.d5 Ne5 21.Qb6
 1-0

Donations

The Foundation for Tennessee Chess and The Tennessee Chess Association encourage all chess players and their family members to consider donating chess items to us when a member either loses interest or passes on. We have a growing donated reference library which is being used extensively by our membership. Contributions are tax-deductible.

A sample form for a bequest would be:

I, _____, hereby give, devise, and bequeath to the Foundation for Tennessee Chess, (or Tennessee Chess Association) _____ (All of my chess books and equipment), (the following chess books and/or items of equipment), (the sum of _____) to be used at the discretion of the Directors of the Foundation for Tennessee Chess (or Tennessee Chess Association).

Tournament Entry Form

For your convenience, we have included this copy and mail Tournament Entry Form. Please fill out completely, and mail with payment to the Tournament organizer.

Name of Tournament : _____

USCF#: _____ Rating: _____ Exp. Date: _____

Last Name: _____ First Name: _____

Address: _____

City: _____ ST: _____ ZIP: _____

E-Mail Address: _____

DOB: _____ Phone Number: _____

Section: _____ Byes: _____

Entry Fee: _____ USCF Dues: _____ TCA Dues: _____

Notes: _____ Total Amount Paid: \$ _____

USCF Dues required for all USCF Rated Tournaments.

TCA Dues required for all TN residents playing in adult tournaments.

If you have any questions, contact the tournament organizer.

2005 Elementary, Junior High and High School in one great event! 7SS, G/120 (K-1 G/90), Gaylord Opryland Resort and Convention Center, 2802 Opryland Dr., Nashville, TN 37214. (615) 883-2211 HR: \$129 single-quad. All under one roof! 14 sections (one section must be selected): High School, K-12 Championship; K-12 U1500; K-12 U 1200; K-12 U900; K-12 Unrated. Junior High, K-9 Championship; K-8 Championship; K-8 U1250; K-8 U1000; K-8 U 750; K-9 Unrated. Elementary, Burt Lerner K-6 Championship; K-5 Championship; K-6 U 1000; K-5 U 900; K-3 Championship; K-3 U800; K-1 Championship; K-6 Unrated. EF: \$32 postmarked, faxed or online by 3/7, \$52 postmarked, faxed or online by 3/21, \$75 after 3/21 online, via fax or on site. DO NOT MAIL entries after March 21, they may not be received in time. \$20 change fee for roster or section changes after March 21 or any on site changes. USCF membership is required and must be current. You may pay USCF membership with your entry. Trophies to (minimum) top 25 individuals & top 25 teams in ea. section. Many other class prizes. Team score=total of top four (min. 2) finishers from ea. section. February 2005 rating supplement used. One 1/2-pt. bye available any round if requested in advance (except round 7). Rounds 1-2: Friday (4/8) 1:00pm & 7:00pm, Rounds 3-5: Saturday (4/9) 9:00am, 2:00pm, 7:00pm, Rounds 6-7 (4/10): 9:00am & 2:00pm. Sunday (4/10): Main Event Awards Ceremonies; K-1 at 5pm, all others 7pm. Thursday, 4/7: Bughouse Championships, 1:00pm ON SITE ONLY by noon. EF: \$20 per team/2. Thursday, 4/7 Blitz Championship, 6:00pm ON SITE ONLY by 5:00pm. EF: \$15. Blitz and Bughouse Awards Ceremony, Saturday (4/9) AT 8AM. Refer to the website for updated schedule details, Simuls, lectures, field trips, and other activities. Advance entries must include player's name and all fees to be accepted. Roster changes are considered new entries and will be charged according to date received. List name, address, phone, section, grade, school (even if no team), coach's name, e-mail, birthdate, USCF ID number, USCF expiration (enclose USCF dues if necessary) and rating. Players must be eligible to play in accordance with USCF Scholastic Regulations.

Print this for mail or fax entries. Fax #: (845) 561-2437. Checks payable to USCF. Mail Entries To: 2005 SuperNationals III, U.S. Chess Federation, 3068 U.S. Route 9W, Suite #100, New Windsor, NY 12553.

Enter online: <http://www.uschess.org/tournaments/2005/supernationalsIII/>

Please allow approximately 10 days to see your registration confirmed on the USCF website.

□ **Burnett (2431)**

■ **Bereolos (2332)**

TN Open (Open) (4)

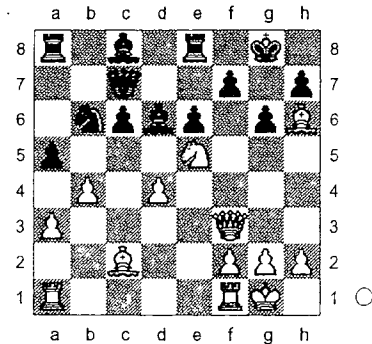
[Notes by Burnett & Bereolos]

1.d4 Ron's usual opening is 1. e4, which he had played in our 3 previous meetings (P). **Nf6 2.Bg5 e6** Here Black could have played Ne4 inviting the Trompovsky Opening, sometimes also called Opocensky Opening, as both players popularized it in the 1930s and 1940s (Editor). But neither players would mention this. Both players annotated it, for Burnett I identify it with R and for Bereolos with P). **3.Nf3 d5!?** What to say about this move? It probably wasn't that smart of me to leave me repertoire on move 3 of the most important game I have played this year. It's been over 20 years since I played the Black side of any form of Queen's Gambit in a tournament game. Of course, I had an idea of what variation I wanted to play on this day (P). **4.c4 c6 5.Nbd2** This flexible move avoids the Cambridge Springs Variation (R). **Nbd7 6.e3 Bd6** It's probably better to play 6...Be7 since with the configuration Bd6 vs Nd2 an attempt to free the position with dxc4 would be met by Nxc4 hitting the bishop (P). **7.Bd3 0-0 8.0-0 Qc7?! Here's the problem with playing an opening you are unfamiliar with. You spend a lot of time trying to figure out the nuances over the board and just overlook something obvious. Much better is 8...b6 (P). 9.c5 Be7 10.Bf4 Qd8 11.e4** I borrowed this idea from the game Karpov - Kosteniuk, Manises 2002. That game went: 1 d4 d5 2 c4 e6 3 Nc3 Nf6 4 Nf3 c6 5 e3 Nbd7 6 Qc2 Bd6 7 Bd3 0-0 8 0-0 Qe7 9 c5 Bc7 10 e4 e6 11 exd5 cxd5 12 Bg5 Qe6 13 Nb5 Bb8 14 Bxf6 e4 15 Bh4 exf3 16 Bxh7+ Kh8 17 Bf5 Qc6 18 Nc3 fxg2 19 Kxg2 Nxc5 20 dxc5 d4+ 21 Be4 Qh6 22 Bg3 Bh3+ 23 Kg1 Bxf1 24 Rxf1 dxc3 25 Qxc3 Bf4 26 Bxb7 Rae8 27 c6 Bd2 28 Qc5 f5 29 c7 f4 30 c8Q Rxc8 31 Bxc8 fxg3 32 Qxf8+ 1-0 (R). **dxe4 12.Nxe4 Nxe4 13.Bxe4 Nf6 14.Bc2 Nd5 15.Qd3 g6**

D30

2004

16.Bh6 Re8 16...Nb4 17 Qc3 Nxc2 18 Bxf8 Nxa1 19 Bxe7 Qxe7 20 Rxa1 simplifies things, but Black remains stuck with a horrible bishop (P). **17.a3 b6 18.Ne5 Qc7 19.b4 a5 20.cxb6 Nxb6 21.Qf3 Bd6**



The critical position. He went for a forcing variation (P). **22.Qf6** I wanted to play 22. Ng4, when 22...Nd5 23 Qxd5 would win the exchange, but there are two problems, Black has excellent compensation after 23... Bxh2+ 24 Kh1 cxd5 25 Nf6+ Kh8 26 Bg7+ Kxg7 27 Nxe8+ Kf8 28 Nxe7 Bxc7 or he can avoid this by playing 22...Nd7 instead. (R) 22 Qxc6 seems to lead to an advantage for White with the main variation being 22... Qxc6 23 Nxc6 axb4 24 axb4 Ba6 25 Rfc1 Bb5 when the move 26 Na7! might be hard to find from the diagrammed position, especially since Black has quite a few other options that must be considered. Not as good is 22 Nxc6 Nd5 23 b5 Bd7 (23...Bb7!?, 23...Bxh2+!? 24 Kh1 Bd6) (P). **Bf8 23.Bxf8 Rxf8 24.Ng4 h5 25.Qe5** A tough decision. I really wanted to play the continuation 25 Nh6+ Kh7 26 Bxg6+ (or 26 Nxf7 Qxf7 27 Bxg6+ Qxg6 28 Qxf8) 26...fxg6 27 Qxf8 Qg7 when White may have a slight edge. However, I could not find a variation in which White was clearly better after 25 Nh6. Also, the players on board two were starting to repeat the position, therefore tournament tactics dictated that I pullback and play to draw. The reason is that there would be four or five players with 3.5 going into the last round (Burnett, Andrews, Bereolos, Vest

and Brookshear if he won (he later drew). That would make the last round pairings Vest-Burnett and Bereolos-Andrews. White those pairings would not guarantee me the state title it would give me the best odds of the players still in the hunt (R). With his time running down, he couldn't bring himself to pull the trigger on the somewhat unclear 25 Nh6+ Kh7 26 Bxg6+ fxg6 27 Qxf8 Bd7 28 Qf7+ Kxh6 29 bxa5 although the somewhat exposed nature of Black's king guarantees White should have at least perpetual check. The other way to sacrifice only leads to a draw 25 Bxg6 hxg4 26 Bxg6 hxg4 26 Bh7+ Kxh7 27 Qh4+ Kg6 28 Qxg4+ Kf6 29 Qh4+ with perpetual check (P). **Qxe5 26.Nxe5 axb4 27.axb4 Ba6 28.Rfc1 Bb5 29.Be4 Nd5 30.Rab1 Ra4 31.Nxc6 31 Bxd5 exd5** doesn't really offer White much either since capturing the pawn backfires 32 Nxc6? Bxc6 33 Rxc6 Rb8 because of White's back rank, Black will emerge with an extra pawn, for example the somewhat humorous variation 34 b5 Rxb5 35 Rd1 Rxd4 (P). **Bxc6 32.Rxc6 Rxb4 33.Rxb4** Probably my best position of the game, but I decided to save some energy for the final round and accepted his draw offer. The knight is going to be a bit awkward on b4 (P). ½-½

□ **David Vest (2150)**

■ **Ron Burnett (2430)**

Tennessee Open (5)

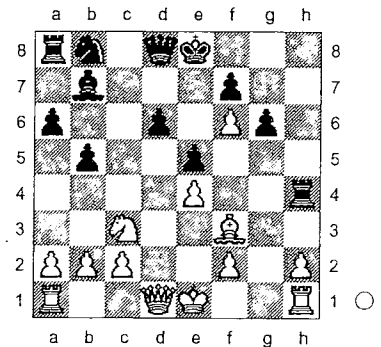
[Notes by Burnett]

B84

2004

1.Nf3 e6 2.e4 c5 A bit of explanation for the move order. The last game Dave and I played went: 1 c4 b6 2 Nf3 Bb7 3 g3 Bxf3!? 4 gxf3 c5 5 d4 cxd4 6 Qxd4 Nc6 7 Qd2 e6 8 Nc3 Qf6 9 f4 Bb4 and Black had a slight edge with the sounder pawn structure. Dave commented after the game about how I "always have the more compact (sounder) pawn structure". So, when you face someone that reaches more solid pawn

structures than you do, one possible antidote is to play aggressively in the hope that the individual is not able in an attacking game. **3.d4 cxd4 4.Nxd4 Nf6 5.Nc3 d6 6.Be2 a6** So for the first time in many years Dave is White in the Sicilian and I am Black in the Scheveningen (I liked the soundness of the system, however it is not as active as other Sicilian systems. **7.g4 h6 8.Be3 b5 9.Bf3 e5** Forced to avoid e4-e5. However, the resulting pawn formation is a good one for Black similar to the Boleslavsky i.e. 1 e4 c5 2 Nf3 d6 3 d4 cxd4 4 Nxd4 Nf6 5 Nc3 Nc6 6 Be2 e5. **10.Nf5 g6 11.Nxh6?! White's best is here 11. Ng3 Bxh6 12.Bxh6 Rxh6 13.g5 Rh4 14.gxf6 Bb7!**

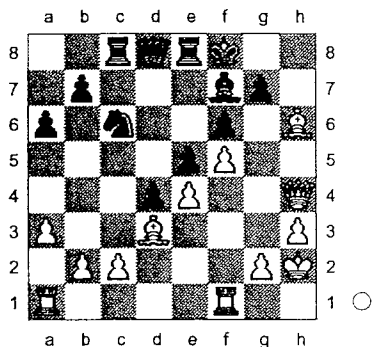


Much better than 14...Qxf6, when 15 Nd5 forces the queen back. Black does not need to hurry to capture on f6 since the pawn is too far advanced to be permanently protected. **15.Nd5?** Now Black can complete his most effective development (... Nd7xf6 to recapture the pawn and pressure e4) and not lose time or his d-pawn. **Nd7 16.Ne3 Nxf6 17.h3 Nxe4** Black is now comfortably better and with proper technique should win. **18.Ng2 Rh8 19.Qe2 Qa5+ 20.Kd1 Qb4 21.Kc1 Qc4 22.Qxc4 bxc4 23.Ne3 Rc8 24.Rg1 Rc7 25.Be2 c3 26.f3 Rxh3 27.Nc4 Ng3 28.Bd3 Ke7 29.bxc3 Bxf3 30.Ne3 Bb7 31.Kb2 Ne2 32.Bxe2 Rxe3 33.Bd3 e4 34.Rae1 Rxe1 35.Rxe1 f5**

0-1

B45
 □ **Evan Mah (1887)**
 ■ **Luke Hellwig (1617)**
 TN Open (Open) (3)
 [Best Game Prize]

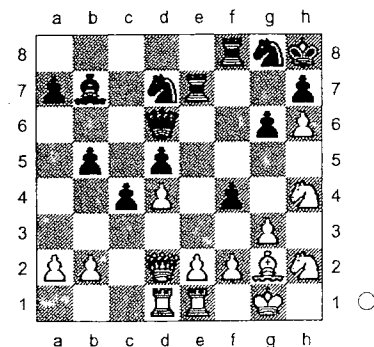
1.e4 c5 2.Nf3 Nc6 3.d4 cxd4 4.Nxd4 Nf6 5.Nc3 e6 6.Ndb5 This is supposed to give White the best chances according to ECO. Bb4 7.a3 Another line is 7 Bf4 Ne4 8 Qf3 d5 9 Nc7 Kf8! 10 0-0-0 Bxc3 11 bxc3 g5! with an unclear position. Bxc3+ 8.Nxc3 d5 9.Bd3 0-0 According to Fritz 5 the position is still equal. 10.Bg5 d4 11.Ne2 e5 12.0-0 h6 13.Bd2 Bg4 14.f3 Be6 15.h3 Re8 16.Ng3 Qd7 17.Kh2 Rac8 18.f4 Qd8 19.Nh5 Nxe5 20.Qxe5 f6 21.f5 Bf7 22.Qh4 Fritz considers the position still equal. a6? Kh7 is probably best here. 23.Bxe6! This sac gives White now the edge. Kf8



If Black takes the bishop the continuation might be 24. Qxe6 Ne7 25 Rf3 Nxf5 26 Rxf5 Rc6 27 Raf1 etc. 24.Bd2 Ke7 25.b4 Rh8 26.Qg3 Qb6 27.Rab1 Na7 28.c4 dxc3 29.Be3 Qc7 30.Bc5+ Ke8 31.Qxg7 31 Bxa7 is also good here. Rg8 32.Qxf6 Nc6 33.b5 Nd4 34.Bd6 Qd7 35.Qxe5+ Ne6 If 35...Kd8 the continuation might be 36 bxa6 b5 37 Qxd4. 36.bxa6 Rc5 37.Bxc5 Qxd3 38.a7 Qg3+ 39.Qxg3 1-0

D02
 □ **Suich, V (1409)**
 ■ **Allison, H (1322)**
 TN Open (Amateur) (4)
 [Best Game Prize]

1.Nf3 Nf6 2.g3 Nc6 3.d4 d5 4.Bg2 b6 5.0-0 Bb7 6.Bf4 e6 7.Nbd2 Bd6 8.Bxd6 Qxd6 9.c4 Ne7 10.Rc1 c5 11.cxd5 exd5 12.Qb3 c4 13.Qc2 b5 14.Rfe1 0-0 15.Ne5 Nd7 16.Ndf3 f6 17.Ng4 Ng6 18.Rcd1 Rae8 19.h4 Ne7 Fritz 5 considers the position still equal at this point. 20.h5 g6 21.Nh6+ Better here is 21.hxg6. Kg7 22.Qd2 Ng8 23.Ng4 Re7 24.h6+ Kh8 25.Nh4 f5! Now Black has the advantage. 26.Nh2 Here 26 Ne5 was the lesser evil, although it loses a pawn. f4!



27.g4 Nxe6 28.f3 Better was 28 g5 here. g5 Now White must give up a pawn. 29.Nf5 Nxf5 30.gxf5 Nf6 But Black has other ideas. 31.Bh3 h5 32.Qc2 Rg8 33.Kh1 g4 34.fxg4 hxg4 35.Bg2 Rh7 36.Kg1 f3 37.Nf1 fxg2 38.Kxg2 g3 39.e3 Ne4 40.Qe2 Qh6 41.Qf3 Qh1# A well conducted attack by Black. 0-1

Kramnik(GM) (2760) - Leko(GM) (2743) [B12]

Brissago, Switzerland,
 18.10.2004
 [notes by Mark Ishee]

1.e4 c6

A draw makes Leko the new World Champion, so the solid Caro-Kann seems like a good choice.

2.d4 d5 3.e5 Bf5 4.h4

Kramnik needs an unbalanced position in order to create winning chances, so he selects an offbeat variation. More usual are 4.Nc3 and 4.Nf3.

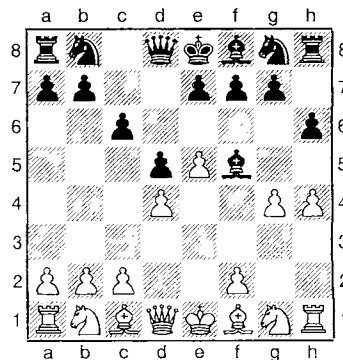
4...h6

The obvious move, securing h7 as a retreat square for the bishop. Now Black only needs to play ...e7-e6 to establish a rock-solid formation.

4...e6? 5.g4 Bg6 6.h5 Be4 7.f3 trapping the bishop is the point of White's setup.;

4...h5 has been suggested as a better way to meet the threatened kingside pawn advance.

5.g4



5...Bd7

This is safe but also very passive. From this and subsequent moves it becomes clear that Leko is unwilling to take any risks at all, and Kramnik starts to use this to his advantage.

[Apparently Black avoided the obvious move 5...Bh7 because he did not want to face the reply 6.e6]

6.Nd2

A novelty. [6.h5 has been tried before.]

6...c5

This is the thematic freeing move in this "French Defense" pawn formation, but it also allows White to show the point of his 6th move.

[6...Qb6 is also a safe choice and is a typical move in such positions.]

7.dxc5!

Vacating d4 for use as an outpost square, a typical White plan against the French Defense pawn structure.

7...e6 8.Nb3

Now in order to regain the pawn Black will have to exchange his dark-squared bishop for a knight, leaving White with the bishop pair. It is already becoming clear that Black has failed to equalize, and White is accumulating significant advantages.

8...Bxc5

[8...Qc7 is a reasonable alternative. 9.f4 Bxc5 (9...h5! Black should seize the chance for active play to inflict weaknesses on White's structure. 10.gxh5 Bxc5 (Ron Burnett)) 10.Nxc5 Qxc5 is better for Black than the variation in the actual game.]

9.Nxc5 Qa5+ 10.c3 Qxc5 11.Nf3 Ne7

Another safe, solid developing move.

[11...h5! as suggested by IM Ron Burnett would still be very strong. After 12.gxh5 Nh6 followed by ...Nf5 Black's knight would be active on the f5-outpost and White's doubled pawns would make nice targets for attack on the h-file.]

12.Bd3

White delays Be3 until Black's other knight comes to c6, so that the Queen cannot retreat to c7.

12...Nbc6

[12...Qc7 Of course Black could play this move without being provoked since White is clearly going to play Be3 anyway.]

13.Be3 Qa5

Now Black is threatening to play 14...d4.

14.Qd2 Ng6

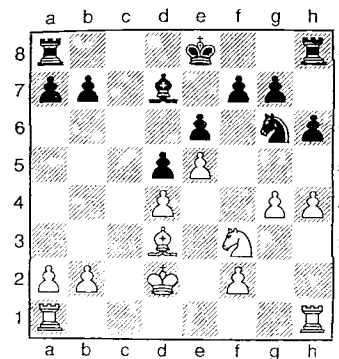
A clumsy move that does not improve Black's position. Leko's safety-first tactics are about to backfire.

[Many annotators have suggested that Black should play 14...d4 anyway, sacrificing a pawn for active play. For example, 15.cxd4 Nb4 16.0-0 Qd5 17.Be2 Bb5 looks fine for Black. His active pieces, together with White's vulnerable kingside formation, compensate for the pawn sacrifice.]

15.Bd4!

Perhaps this simple reply caught Black off guard. White transposes into a very favorable endgame.

15...Nxd4 16.cxd4 Qxd2+ 17.Kxd2



White has many advantages here: more space, active pieces, centralized king, and connected rooks. Meanwhile Black has a bad bishop, weak dark squares, and passive, undeveloped pieces. The ease with which White converts his advantage from this point is impressive.

17...Nf4 18.Rac1 h5

Finally he gets around to this, but now it only helps White open a file for attack on the kingside. White's "weak" h-pawn turns out to be not very important.

19.Rhg1

Threatens gxh5 attacking g7.

19...Bc6

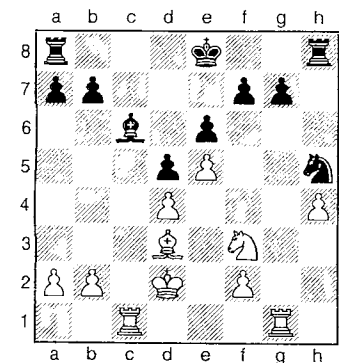
Preventing Rc7, at least for the moment.

[19...hxg4 20.Rxg4 Nxd3 21.Kxd3 g6 is unappealing because of 22.Rc7 White reaches a "good knight vs. bad bishop" position where he also has very active rooks.]

20.gxh5

The attack on g7 forces Black to de-activate his knight.

20...Nxb5



21.b4!

The idea is simply b4-b5 followed by Rc7.

21...a6 22.a4! Kd8

Defending c7, and preparing to move the bishop.

[22...Bxa4 Lots of casual observers wondered why Leko did not play this. The answer is that he gets gutted after 23.Rc7 Bc6 24.Ng5 Rf8 25.Nxf7! Shazam!]

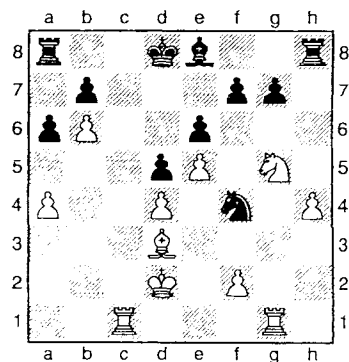
23.Ng5 Be8 24.b5

Now after b5-b6 White will be able to play Rc7 after all.

24...Nf4 Trying to re-activate the wayward knight.

[24...axb5 25.Bxb5 Rf8 26.Rc2 followed by Rgc1 leaves Black curiously helpless.]

25.b6



25...Nxd3

[25...Rc8 is the main alternative. The nature of Black's troubles becomes clear after 26.Rxc8+ Kxc8 27.Rc1+ Bc6 White can now sacrifice the exchange to reach a winning position: 28.Rxc6+! bxc6 29.Bxa6+ Kd7 30.Nxf7 Rxh4 31.Nd6 and the two connected queenside passed pawns will score the point for White. Notice in this line that Black's knight remains far removed from the main action.]

26.Kxd3 Rc8 27.Rxc8+ Kxc8 28.Rc1+ Bc6

[28...Kb8 29.Rc7 Rf8 30.a5]

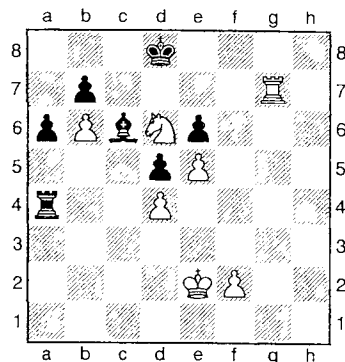
29.Nxf7 Rxh4 30.Nd6+

Remember the exchange of Black's dark-squared bishop on move 8? It's not an accident that the main points of White's attack have been dark squares (c7, g7, and now d6)

30...Kd8 31.Rg1 Rh3+

[31...Rh7? is horribly passive.]

32.Ke2 Ra3 33.Rxg7 Rxa4



In spite of everything Black has managed some degree of activity, and if White plays routinely he could still fail to win.

34.f4!!

A profound move. The point is not just that White can create a passed pawn with f4-f5; he is also playing for mate.

[34.Nxb7+? allows Black to trade his awful bishop for the dominating knight, after which he has good chances to draw the rook ending. For example, 34...Bxb7 35.Rxb7 Rxd4 36.Ra7 Kc8 37.b7+ Kb8 38.Rxa6 Re4+ 39.Kd3 Rxe5=]

34...Ra2+

[34...Rxd4 fails after 35.f5 exf5 36.e6 Re4+ (or else e6-e7+ is immediately decisive) 37.Nxe4 fxe4 38.Rc7! with the threat to

create a second unstoppable passed pawn with Rxc6!.]

35.Kf3 Ra3+ 36.Kg4 Rd3 37.f5 Rxd4+

[37...exf5+ 38.Kxf5 Rxd4 39.e6 Be8 40.Rc7! forces mate! Black can only delay it with give-away moves like ...Bg6+ and ...Rf4+.]

38.Kg5 exf5 39.Kf6

[39.Kxf5 wins too.]

39...Rg4 40.Rc7 Rh4

Now it's mate in three.

41.Nf7+ 1-0

Black resigned. The finish would be 41...Ke8 42.Rc8+ Kd7 43.Rd8#

Tennessee Chess Association Tournament Calendar From TCA Website

March 19, 2005

East Tennessee Scholastic
Chess Championship
Johnson City TN
John Simonsen (423) 975-8031

March 26, 2005

TN State Scholastic Team
Finals Cookeville TN
Contact Harry Sabine
931.484.9593 or Tennessee
Chess Association web site
calendar

April 8-10, 2005

SuperNationals III Nashville TN

Gaylord Opryland Resort and
Convention Center
2802 Opryland Drive
Nashville, TN 37214
(615) 883-2211

May 21, 2005

Cumberland County Chess Club
Spring Open Crossville TN
4 ss, G/1 Entry Fee \$15 at site:
registration 8a-9:30a, Rds. 10a,
12:30p, 2:30p, 4:30p Contact:
Harry D. Sabine (931) 484-9593

July 9, 2005

Cumberland County Chess Club
Summer Open Crossville, TN
Harry D. Sabine (931) 484-9593

August 6-14, 2005

2005 U.S. Open Phoenix AZ

Arizona Biltmore Resort & Spa
24th Street and Missouri
Phoenix, AZ 85016
(602) 954-2571

October 8, 2005

Cumberland County Chess Club
Fall Open Crossville, TN
Harry D. Sabine (931) 484-9593

TENNESSEE CHESS CLUBS

Athens Chess Club
Mike McGinnis
(423) 507-8454

Chattanooga Chess Club
Malcolm Robert Estrada
H (423) 697-4938
O (423) 751-8984

Chattanooga UTC CC
Joe Dumas
H (423) 886-7628
O (423) 755-4084

Clarksville Chess Club
Roy Manners
(931) 552-1839

Columbia Chess Club
Joe Crump
(931) 381-2758

Cumberland Co Chess Club
Harry Sabine
(931) 484-9593

Dayton Chess Club
Bruce Barnett
(423) 775-7000

ETSU Chess Assoc
Chun Ng
(423) 917-2219

Greater Knoxville Chess Club
John Anthony, pres.
Leonard Dickerson
(865) 966-1095

VISIT TCA WEBSITE:
<http://www.tnchess.org>

Memphis Chess Club
Anthony Maneclang, pres.
Gary Pylant (tourney info)
(901) 358-1731 or 384-8012

Nashville Chess Center
Bill Orgain, pres.
Mark Ishee, exec dir
(615) 292-7341

Oak Ridge Chess Club
Charles Maddigan
(865) 482-5962

Rutherford Co Chess Club
Robert Guthrie
(615) 895-7989

Tipton County Chess Club
Thomas Stark
(901) 837-5874

Tennessee Tech Chess Club
Brian Stansberry
(931) 252-3493

TN CHESS ASSOCIATION HALL OF FAME

PETER LAHDE	1990
ROBERT COVEYOU	1990
JERRY SULLIVAN	1990
MARTIN SOUTHERN	1990
TOM FINUCANE	1990
ROBERT SCRIVENER	1990
L. HUNTER WEAKS	1990
JOHN HURT	1992
JAMES A. SWEETS	1993
REA HAYES	1997
JAMES A. WRIGHT	1998
DR. MARTIN KATAHN	2002
DAVID BURRIS	2003

TENNESSEE CHESS ASSOCIATION 2004-2005 BOARD OF DIRECTORS

PRESIDENT:
ALLEN SNOW
PO BOX 2127
CLARKRANGE TN 38553
O: 931-863-4082 F: 931-863-4081
E-MAIL: asnow@twlakes.net

VICE-PRESIDENT:
ED NEWKIRK
93 WEAKLEY LN APT C-30
SMYRNA TN 37167
W: 615-459-8483 E-MAIL:
ed.newkirk@us.schneider-electric.com

TREASURER:
LEONARD S. DICKERSON
420 ORAN ROAD
KNOXVILLE TN 37922
H: 865-966-1095 O: 865-946-1268
F: 865-574-3431
E-MAIL: lsdick@tds.net

SECRETARY:
BRIAN VOGT
2669 SWEET MAPLE COVE
GERMANTOWN TN 38139
H: 901-624-0020
E-MAIL: bvogt@midsouth.rr.com

TN CHESS NEWS EDITOR:
ANGELA McELRATH-PROSSER
733 LONG HUNTER COURT
NASHVILLE TN 37217
H: 615-399-8432
E-MAIL: tcanews@aol.com

INTERNET CHESS COORDINATOR:
PATRICIA KNIGHT
103 ALBION RD
OAK RIDGE TN 37830
H: 865-481-3516
E-MAIL: tcachess@bellsouth.net

STATE SCHOLASTIC COORDINATOR:
HARRY D. SABINE
P.O. BOX 381
CROSSVILLE TN 38557
H: 931-484-4878 O: 931-484-9593
F: 931-456-7624
E-MAIL: hdsabine@citlink.net

EAST TENNESSEE DIRECTOR:
MALCOLM ROBERT ESTRADA
3623 FOUNTAIN AVE #71
CHATTANOOGA TN 37412
H: 423-697-4938 O: 423-751-8984
E-MAIL: straightleglll@aol.com

TOURNAMENT COORDINATOR:
ELLIS JONES
5 KELLEYS FERRY AVE
CHATTANOOGA TN 37419
H: 423-825-1544
E-MAIL: mudbugger5@earthlink.net

WEST TENNESSEE DIRECTOR:
ROBERT SCHOUMACHER
4266 LONG LEAF DR
MEMPHIS TN 38117
H: 901-767-3060 O: 901-572-5222
E-MAIL: rschoumacher@utmem.edu

MIDDLE TENNESSEE DIRECTOR:
ROY MANNERS
1215 CUMBERLAND HEIGHTS RD
CLARKSVILLE TN 37040-6909
H: 931-552-1839
E-MAIL: queencitychess@charter.net

REGIONAL SCHOLASTIC COORDINATORS

REGION 1

PATRICIA KNIGHT
103 ALBION RD
OAK RIDGE TN 37830
H: 865-481-3516
E-MAIL: tcachess@bellsouth.net

REGION 2

VACANT
CONTACT: HARRY SABINE

H:
E-MAIL:

REGION 3

CHRIS PROSSER
733 LONG HUNTER COURT
NASHVILLE TN 37217
H: 615-399-8432
E-MAIL: regionIII@aol.com

REGION 4

BILL CUMMINGS
3532 DAVESHIRE DR
MEMPHIS TN 38133
H: 901-372-6584
E-MAIL: wacummin@bellsouth.net