

# TENNESSEE CHESS NEWS

## WINTER 2000

NASHVILLE CHAMPIONSHIP FINALS.....	7
THE NORTH TENNESSEE REGIONAL OPEN.....	10
THE FIRST MEMPHIS NASHVILLE MATCH.....	14
TENNESSEE TOURNAMENT CALENDAR.....	18
53RD TENNESSEE OPEN CROSSTABLES.....	25
REGION III CHESS SCORESHEET.....	33



Problem Corner by Ray Hudgens  
White mates in 3 (sol. pg 19)



# TENNESSEE CHESS NEWS

The Tennessee Chess News is the official publication of the Tennessee Chess Association. TCA annual dues are \$10 for a *regular* membership, \$6 for a *student* membership. Additional members of a family may join for one dollar each, but only one issue of TCN will be mailed per family. All memberships expire August 31.

**Tax-deductible Patron Memberships** are available beginning at \$25 per year for those who wish to help support the TCA. These memberships expire one year from the date of payment. Patron membership categories and benefits are as follows:

## **PATRON - \$25**

- receive TCN by First Class Mail with your name listed in each issue of TCN;

## **PATRON KNIGHT - \$50**

- all Patron benefits plus a commemorative plaque;

## **PATRON BISHOP - \$100**

- all Patron Knight benefits plus free entry to the Tennessee Open;

## **PATRON KING - \$500**

- all Patron Bishop benefits plus free lodging at the Tennessee Open;

## **PATRON FOUNDER - \$1000**

- all Patron King benefits.

## **TOURNAMENT ANNOUNCEMENTS**

TCN prints listings of upcoming tournaments requiring TCA membership in each issue for free. Submit complete TLA information to Joseph Crump, Tournament Coordinator.

2/ Tennessee Chess News

# TN CHESS NEWS STAFF

## **Editor:**

Angela McElrath-Prosser

## **Contributors:**

Games Editor-Peter Lahde  
Tech Support-Chris Prosser

Joe Crump  
Raymond Hudgens  
Mark Ishee  
Peter Lahde  
Roy Manners  
Harry Sabine

## **ADVERTISING RATES**

Full Page	\$40.00
Half Page	\$20.00
One-third Page	\$14.00
One-quarter Page	\$10.00
One-eighth Page	\$ 7.00

Pre-printed flyers for insert must be 8 1/2 x 11" in size, 60 pound Offset, and delivered flat. *Only one insert is available per issue.* \$15.00

## **TCN publishing schedule:**

Spring 2000 - May 1 covering  
Feb, Mar, Apr events

**Deadline: Apr 9, 2000**

Summer 2000 - Aug 1 covering  
May, Jun, Jul events

**Deadline: July 9, 2000**

Fall 2000 - Nov 1 covering  
Aug, Sept, Oct events

**Deadline: Oct 9, 2000**

Winter 2001 - Feb 1 covering  
Nov, Dec, Jan events

**Deadline: Jan 9, 2001**

To submit material by e-mail:  
tcanews@aol.com

**TENNESSEE CHESS ASSOCIATION  
PATRON MEMBERS**

**PATRON FOUNDER**

**DR. MARTIN "DICK" KATAHN**

**PATRON BISHOP**

**PETER BERELOS  
DR. ROY CLARK  
GEORGE DEAN  
RHEA HAYES  
RAYMOND HUDGENS  
ROY MANNERS  
HAROLD MILES  
DR. HARESH MIRANI  
CLINTON H. PEARSON  
JEFF PENNIG  
HARRY D. SABINE  
R.K. SHIMABUKURO  
TODD SHIMABUKURO**

**PATRON KNIGHT**

**BILL ORGAIN**

**PATRON**

**THOMAS A. COOPER  
JOE C. JONES  
PETER LAHDE  
JAMES A. WRIGHT**

## From the President

by Kent Meadows

I hope that all of you had a happy holiday season. As we move from one century to the next, we need to understand that we must change as our tools change. Computer technology becomes more of a daily routine for all of us. Improvements never stop. I think that we are all grateful for the outstanding job that Richard Westbrook is doing for us with our improved TCA website. We need to remember to go to it at

<http://www.tnchess.org/>

on a regular basis for the most up-to-date information available for both state and community. There are many tournaments listed on the website Tournament Calendar. When we get that chess fever, when we want to know when and where our next tourney will take place, all we need to do is go there to find it. The rest is up to us ...

Congratulations to IM Tim Taylor of Hendersonville TN and Gerald Larson (a TCA member) of Huntsville, Ala for winning the Kings' Section of the North Tennessee Regional Open in Clarksville TN. The Clarksville Chess Club did an outstanding job of hosting another splendid event!

There have been some rumors circulating that The Nashville Chess Center is about to fold. I have spoken with Dr. Dick Katahn, and he assures me that this is simply not so. There are plans for greater media exposure and more fund-raising. Purity Dairies just made a generous donation to The NCC. There will be more emphasis on scholastic chess and teaching children. There are some people spending a lot of time and effort for the NCC. If you would like to help or find out more, let me know. More on this later ...

Congratulations to Doug Eckert of Memphis! He made International Correspondence Chess Master with the ICCF. What a tremendous accomplishment. I know how much hard work postal chess is. I have played a time or two myself ...

Does your school (or your children's school) have a chess team? No? Do you wish that it did? Have your Mom or Dad contact your local Regional Scholastic Coordinator (listed in this issue) for more information. You'll be glad ya did.

The Tennessee Quick Chess Championship is coming up April 15. See the ad for it in this issue and on the website. Make your plans today to be the next state quick chess champ!



**Glenn Cornwell Dies**  
by Peter Lahde

It is with great sorrow for me to report that my dear friend, Glenn, last year after a short illness, passed away on November 11, 1999 at the age of 74. He was a great supporter of chess, many activities in Tennessee, and especially Nashville. He organized many chess tournaments in Middle Tennessee and also the Tennessee Open as well as the Southern Open in 1974. He also was one of the original organizers for scholastic chess in Tennessee. After having heard of this news, Mark Ishee, a Nashville Master said if it had not been for people like Glenn, he probably would never have taken up the game. He also was for a time the Editor for *Music City Chess*. Later in life he was the coach for the school of his church that he attended. As a player he excelled especially in postal chess with a rating that would be considered expert. He also had good results in tournaments. In 1974, when he also was TD for the Southern, he came in third in the city championship.

Glenn was a devout Catholic, so when he was scheduled to play on Sunday mornings he would take a half point bye so he could attend Mass. He worked for most of his life at the Ford Glass Plant and was active in Union activities. He was born on October 4, 1925. He was a loving husband and father to six children, two boys and four girls. His wife preceded him in death the year before. To conclude I am giving two of his games.

Golden Knights Semifinal (Postal) 1969  
White: Glenn Cornwell Black: Herbert Starks [Ruy Lopez]

1.e4 e5 2.Nf3 Ne6 3.Bb5 Bc5 4.c3 Nf6 5.d4 Bb6 6.Nxe5 Nxe5 7.dxe5  
Nxe4 8.Qg4 Bxf2+ 9.Kd1 Qh4 10.Qxg7 Rf8 11.b4 Qh5+ 12.Kc2 Qg6  
13.Qxg6 fxe6 14.Nd2 Nxd2 15.Bxd2 b6 16.e6 c6 17.exd7+ Bxd7  
18.Be2 Bf5+ 19.Bd3 0-0-0 20.Bxf5+ Rxf5 21.Rhf1 Re8 22.g3 Re2  
23.Kd3 Rfe5 24.a3 Kd7 25.Rad1 Ke6? 26.Bf4 If 26...R5e4 then 27.Rxf2  
Rxf2 28. Kxe4 loses a piece. 1-0

Nashville Chess Club Match 1999  
White: Glenn Cornwell Black: Peter Lahde [April 29, 1999]

1.d4 Nf6 2.Nf3 d5 3.c4 g6 4.Nc3 Bg7 5.e3 0-0 6.Be2 c6 7.0-0 a5 8.h3  
dxc4 9.Bxc4 b5 10.Bd3 Ba6 11.Re1 Nd5 12.a3 Nxc3 13.bxc3 c5!?  
14.Be4 Ra7 15.a4 Qd7 16.axb5 Bxb5 17.Rb1 f5 18.Bc2 exd4 19.cxd4  
Re8 20.Rxb5 Qxb5 21.Ba4 Qd5 22.Bxe8 Nd7 23.Ng5 Kf8? 24.Bxd7  
Rxd7 25.Nxh7+ Kg8 26.Ng5 Rb7 27.Qa4 Bf6 28.e4! fxe4 29.Nxe4 Kf7  
30.Nxf6 Kxf6 31.Ba3 e6 32.Qe8 Qxd4 33.Qf8+ Rf7? 34.Be7+! Now this  
loses also the Rook. So Black resigns. This game shows that Glenn  
was still sharp even in his last year.

# TENNESSEE QUICK CHESS CHAMPIONSHIP

**APRIL 15, 2000**

NASHVILLE CHESS CENTER

1ST PLACE: \$50 + TROPHY & TITLE OF

**TENNESSEE QUICK CHESS CHAMPION**

2ND PLACE: \$30 3RD PLACE: \$20

SPECIAL ADDITIONAL PRIZES FOR SCHOLASTIC PLAYERS:  
**SCHOLASTIC QUICK CHESS STATE CHAMPIONSHIPS**

TROPHY & TITLE TO TOP PLAYER IN

GRADE 10-12 \* GRADE 7-9 \* GRADE 4-6 \* GRADE 3/BELOW

6 ROUNDS \* SWISS SYSTEM PAIRINGS \* GAME/15 MINUTES

Registration: 8:00-8:45 AM \* Round 1: 9:00 AM, Other Rounds ASAP

\* ONE SECTION ONLY \*

**Registration limited to the first 40 entries.**

ENTRY FEE: \$15 if received before 4/8/00 (\$10 for Nashville Chess  
Center Members) \$5 more after 4/8/00 and at playing site

THIS EVENT WILL BE USCF "QUICK CHESS" RATED.

USCF AND TCA MEMBERSHIP REQUIRED.

CASH PRIZES BASED ON 40 ENTRIES AND MAY BE REDUCED PROPORTIONATELY  
TO 50% OF ADVERTISED AMOUNTS

---

## NASHVILLE CANDIDATES NOVEMBER 6-7, 1999

PLAYER	1	2	3	4	5	TOTAL
BRIAN D SMITH	W8	D6	L5	W10	L2	2.5
DAVID KAPLEY	W9	D5	D8	L7	W1	3.0
MARTIN NILSSON	W10	W7	L4	D6	W5	3.5
ANDREW MONGIN	W11	W14	W3	D5	D7	4.0
JEFF PENNIG	W12	D2	W1	D4	L3	3.0
ROBERT K MEADOWS	X15	D1	D2	D3	L8	2.5
DEWITT T PULLEN	W13	L3	W12	W2	D4	3.5
LEE MILLER	L1	W11	W13	L9	W6	3.0
CHRIS FUCHS	L2	L12	W14	W8	W10	3.0
NOAH W KAPLEY	L3	L13	W11	L1	L9	1.0
DEWITT PULLEN JR	L4	L8	L10	D14	L12	0.5
STEVEN PATTERSON	L5	W9	L7	W13	W11	3.0
TREY SMITH	L7	W10	L8	L12	W14	2.0
JOSHUA GAO	BYE	L4	L9	D11	L13	1.5
JEREMY T REED	F6	0	0	0	0	0.0

WIN L=LOSS D=DRAW X=FORFEIT WIN F=FORFEIT LOSS



# Nashville Championship Finals January 8-9, 2000

## Final Standings

1. Todd Andrews – 4.0
2. Martin Nilsson – 3.5
- 3.-4. Jeff Pennig – 3.0
- 3.-4. David Kapley – 3.0
5. Andrew Mongin – 1.5
6. DeWitt Pullen – 0.0\*

\*NOTE: DeWitt Pullen withdrew after one round due to ill health.

Sponsor: the Nashville Chess Center Tournament Director: Mark Ishee

## Round 1

Andrews,T - Pullen,D [D35] Nashville Champ. Finals (1), 01-08-2000  
1.d4 Nf6 2.c4 e6 3.Nc3 d5 4.cxd5 exd5 5.Bg5 Be7 6.Qc2 Nc6 7.e3 Nb4  
8.Qd2 h6 9.Bf4 Bd6 10.Bxd6 Qxd6 11.Nb5 Qe7 12.Nxc7+ Qxc7 13.Qxb4  
Bg4 14.f3 Bf5 15.Ne2 Qe7 16.Qxe7+ Kxe7 17.Nc3 a6 18.Kd2 Rac8  
19.Be2 Rhd8 20.Rhc1 Bd7 21.b4 Bc6 22.a4 Ra8 23.b5 Be8 24.bxa6  
bxa6 25.Rab1 Kf8 26.a5 Ra7 27.Rb6 Rda8 28.Rcb1 Bb5 29.Bd1 Ke7  
30.Bb3 Be8 31.Nxd5+ Nxd5 32.Bxd5 Rc8 33.Bb7 Rc4 34.Rxa6 Rxa6  
35.Bxa6 Ra4 36.Rb7+ Kd6 37.Bb5 Bxb5 38.Rxb5 Kc6 39.Rc5+ Kd6  
40.Kd3 g6 41.g4 Ra3+ 42.Ke4 Ra4 43.h4 Rb4 44.h5 g5 45.f4 f6 46.fxg5  
fxg5 47.Kf5 Ra4 48.Kg6 Ra3 49.Kxh6 Rxe3 50.Kxg5 Re4 51.h6 Rxd4  
52.h7 Kxc5 53.h8Q 1-0

Pennig,J - Kapley,D [A87] Nashville Champ. Finals (1), 01-08-2000  
1.d4 f5 2.Nf3 Nf6 3.c4 g6 4.g3 Bg7 5.Bg2 0-0 6.b3 d6 7.Bb2 Qe8 8.0-0  
Na6 9.Nbd2 e5 10.dxe5 Ng4 11.Rb1 dxe5 12.h3 Nh6 13.e4 f4 14.Ba3 c5  
15.g4 Nf7 16.Qe2 h5 17.gxh5 gxh5 18.Rbd1 Kh7 19.Kh2 Bf6 20.Nb1  
Rg8 21.Nc3 Qe6 22.Ng1 Kh6 23.Nd5 Bh4 24.Rd3 Bd7 25.Rfd1 Qg6  
26.Qf1 Be6 27.Nf3 Bf6 28.Ng1 Rg7 29.Nf3 Rag8 30.Ne1 Bd8 31.Bb2  
Qg5 32.Rf3 Qh4 33.Nxf4 exf4 34.Bxg7+ Rxb7 35.Qe2 Bg4 36.Rd5 Nc7  
37.Rxc5 Ne6 38.Rd5 Nfg5 39.e5 Nxf3+ 40.Nxf3 Bxf3 41.Bxf3 Ng5  
42.Rd6+ Rg6 43.Rxg6+ Kxg6 44.Qd3+ Kg7 45.Qd7+ draw

Nilsson,M - Mongin,A [A87] Nashville Champ. Finals (1), 01-08-2000  
1.d4 f5 2.g3 Nf6 3.Bg2 g6 4.Nf3 Bg7 5.0-0 0-0 6.c4 d6 7.Nc3 Qe8 8.Qc2  
e5 9.e3 e4 10.Nd2 g5 11.f3 exf3 12.Nxf3 Qg6 13.Bd2 Na6 14.Rae1 c6  
15.b3 Nc7 16.e4 Nxe4 17.Nxe4 fxe4 18.Qxe4 Qxe4 19.Rxe4 g4 20.Nh4  
Rxf1+ 21.Bxf1 Bf6 22.d5 Bd7 23.Be2 Bxh4 24.gxh4 Re8 25.Rxe8+ Nxe8  
26.dxc6 bxc6 27.Be3 c5 28.Bf4 Kf7 29.Kg2 Kf6 30.Kg3 h5 31.h3 gxh3  
32.Bxh5 Ng7 33.Bg4 h2 34.Bg5+ Kg6 35.Bf3 Ne6 36.Be4+ Kh5 37.Be7  
Nd4 38.Kxh2 Bf5 39.Bd5 Bb1 40.Bxd6 Bxa2 41.Bxc5 Nxb3 42.Bf2 a5

43.c5 Nxc5 44.Bxa2 Ne4 45.Be1 a4 46.Kh3 Nd6 47.Bd5 Nf5 48.Be6 Nd4  
49.Bd7 a3 50.Bd2 a2 51.Be8# 1-0

### Round 2

Pennig,J - Nilsson,M [E18] Nashville Champ. Finals (2), 01-08-2000  
1.d4 Nf6 2.Nf3 b6 3.g3 Bb7 4.Bg2 e6 5.0-0 Be7 6.c4 0-0 7.Nc3 d5  
8.cxd5 Nxd5 9.Nxd5 exd5 10.Bf4 c5 11.dxc5 bxc5 12.Ne5 f6 13.Qb3  
fxe5 14.Qxb7 Nd7 15.Qxd5+ Kh8 16.Qxa8 Qxa8 17.Bxa8 exf4 18.Bg2  
Nb6 19.b3 a5 20.Rac1 g6 21.Rc3 Kg7 22.Rd1 fxe3 23.hxe3 Rf6 24.Re 3  
Bf8 25.Rd8 Bd6 26.Rf3 Bc7 27.Rxf6 Kxf6 28.Rd3 Ke7 29.e4 Be5 30.f4  
Bd4+ 31.Kf1 Nc8 32.e5 Na7 33.Ke2 Nb5 34.Kd2 Ke6 35.a4 Nc7 36.Rxd4  
cxd4 37.Kd3 Nd5 38.Bh3+ Ke7 39.Kxd4 Nb4 40.Kc5 Nd3+ 41.Kb5 g5  
42.Bf5 Nc1 43.Bxh7 Nxb3 44.Bg8 Nd4+ 45.Kxa5 gxf4 46.gxf4 Ne 2 47.f5  
Nd4 48.f6+ Kf8 49.Bd5 Ke8 50.Kb6 Nc2 51.e6 Nb4 52.Bc6+ Nxc6  
53.Kxc6 Kd8 54.a5 Kc8 55.e7 Kb8 56.e8Q+ Ka7 57.Qd7+ Kb8 58.Qb7#  
1-0

Mongin,A - Andrews,T [C00] Nashville Champ. Finals (2), 01-08-2000  
1.e4 e6 2.Nf3 d5 3.e5 c5 4.b4 b6 5.a3 Ne7 6.Bb2 Nf5 7.Bd3 Nc6 8.0-0  
cxb4 9.Re1 Nh4 10.axb4 Nxf3+ 11.Qxf3 Nxb4 12.Bb5+ Bd7 13.Na3 Rc8  
14.Bxd7+ Qxd7 15.c3 Nc6 16.Qg3 Na5 17.d3 Nb3 18.Rad1 Qa4 19.Nb1  
g6 20.Qe3 b5 21.Nd2 Bc5 22.d4 Be7 23.Qd3 Nxd2 24.Qxd2 b4 2 5.Ra1  
Qb3 26.Rxa7 bxc3 27.Rxe7+ Kxe7 28.Qg5+ Kd7 29.Qf6 cxb2 30.Qxf7+  
Kc6 31.Qxe6+ Kb7 0-1

### Round 3

Andrews,T - Pennig,J [E32] Nashville Champ. Finals (3), 01-08-2000  
1.d4 Nf6 2.c4 e6 3.Nc3 Bb4 4.Qc2 0-0 5.a3 Bxc3+ 6.Qxc3 b6 7.Bg5 Bb7  
8.Nf3 d6 9.Nd2 c5 10.dxc5 bxc5 11.f3 Nbd7 12.e3 Qc7 13.Bd3 a5  
14.Rc1 Rfe8 15.0-0 Ne5 16.Bb1 Rab8 17.Bxf6 gxf6 18.f4 Nd7 19.e4 Kf8  
20.Nf3 Ke7 21.Rfd1 Rg8 22.Rd2 Rg4 23.Rcd1 Rxf4 24.Rxd6 Bc 6 25.h3  
Rxf3 26.gxf3 Qxd6 27.Rxd6 Kxd6 28.b3 Ne5 29.Bc2 Ra8 30.Kf2 h5  
31.Bd1 h4 32.Be2 a4 33.b4 cxb4 34.Qxb4+ Kd7 35.c5 Rg8 36.f4 Ng6  
37.Qd4+ Ke8 38.Qd6 Bxe4 39.Bb5+ 1-0

Kapley,D - Nilsson,M [B07] Nashville Champ. Finals (3), 01-08-2000  
1.e4 Nf6 2.Nc3 d6 3.d4 Nbd7 4.f4 e5 5.Nf3 exd4 6.Qxd4 c6 7.Be3 d5  
8.e5 Ng4 9.Bg1 Bc5 10.Qd2 Bxg1 11.Rxg1 Qb6 12.0-0-0 Nxh2 13.Bd3  
Ng4 14.Rde1 Nc5 15.f5 Nxd3+ 16.Qxd3 Nf2 17.Qd2 Bxf5 18.Na4 Qa6  
19.Nc5 Qxa2 20.Qxf2 Qa1+ 21.Kd2 Qxb2 22.Nd3 Bxd3 23.Kxd3 0-0 2  
4.Rb1 Qa2 25.Ra1 Qc4+ 26.Kd2 d4 27.Rgc1 b5 28.Qe2 Qc3+ 29.Kd1 h6  
30.Qd3 Qc5 31.Ra6 Rfd8 32.Rca1 Rd7 33.Qa3 Qd5 34.Rxa7 Rdx7  
35.Qxa7 0-1



#### Round 4

Nilsson,M - Andrews,T [A46] Nashville Champ. Finals, 01-09-2000  
1.d4 Nf6 2.Nf3 c5 3.c3 e6 4.g3 b6 5.Bg2 Bb7 6.0-0 d6 7.Nbd2 Be7 8.Re1  
Nbd7 9.e4 Qc7 10.b3 Rc8 draw

Kapley,D - Mongin,A [B01] Nashville Champ. Finals (4), 01-09-2000  
1.e4 d5 2.exd5 Nf6 3.Nf3 Qxd5 4.Nc3 Qa5 5.d4 Bf5 6.Ne5 c6 7.g4 Bg6  
8.h4 Nbd7 9.Nc4 Qc7 10.h5 Be4 11.Nxe4 Nxe4 12.Qf3 Nd6 13.Bf4 0-0-0  
14.0-0-0 b5 15.Ne5 Nxe5 16.dxe5 Nb7 17.Bg2 Rxd1+ 18.Rxd1 Nd8  
19.e6 Qa5 20.Rxd8+ Kxd8 21.Qd3+ 1-0

#### Round 5

Andrews,T - Kapley,D [A81] Nashville Champ. Finals (5), 01-09-2000  
1.d4 f5 2.g3 Nf6 3.Bg2 g6 4.Nh3 draw

Pennig,J - Mongin,A [A80] Nashville Champ. Finals (5), 01-09-2000  
1.d4 f5 2.Nf3 draw

Results provided by Mark Ishee (mark.ishee@nashville.com)

---

#### NASHVILLE CHAMPIONSHIP FINALS JANUARY 8-9, 2000

PLAYER	1	2	3	4	5	6	TOTAL
1 TODD ANDREWS	//	W2	W3	W4	D5	D6	4.0
2 DEWITT PULLEN	L1	//	F3	F4	F5	F6	0.0
3 JEFF PENNIG	L1	X2	//	D4	W5	D6	3.0
4 ANDREW MONGIN	L1	X2	D3	//	L5	L6	1.5
5 MARTIN NILSSON	D1	X2	L3	W4	//	W6	3.5
6 DAVID KAPLEY	D1	X2	D3	W4	L5	//	3.0

W=WIN L=LOSS D=DRAW X=FORFEIT WIN F=FORFEIT LOSS

NOTE: DeWitt Pullen withdrew after one round due ill health.

## THE NORTH TENNESSEE REGIONAL OPEN

by Roy Manners

The North Tennessee Regional Open was held in Clarksville at the Riverview Inn on January 15th & 16th 2000. One hundred five players from seven states participated including IM Tim Taylor. Over \$3,000 was given away as prize money. The Tennessee Chess Association gained twenty-one new members. Nine unrated players took part in the tournament.

The Clarksville Chess Club thanks everyone who came and played chess with us. The tournament was in six sections, as follows: KINGS (Open), QUEENS (U2000), ROOKS (U1750), BISHOPS (U1500 & unrateds), KNIGHTS (U1250), and PAWNS (U1000). The winners were:

KINGS:	Co-Champions - IM Tim Taylor & Gerald Larson
QUEENS:	Champion - Gregory Hoffman
ROOKS:	Champion - Jason Knight
BISHOPS:	Champion - David Bertram
UNRATED:	Champion - Daniel Balbas
KNIGHTS:	Co-Champions - Brad Tinsley, Sam Hood, James Ray, Joshua Goa, and Dennis Higdon
PAWNS:	Champion: - Ryan West

Now, here are a few of the games that stood out at the NTRO. The first one was won by a 7th grader in convincing style and aptly demonstrates the old adage: "Don't get greedy".

Jed Sirk (776) v. Jason Smith (965)

1.e4 e5 2.Nf3 d6 3.Bc4 Bg4 4.Nc3 a6 5.Nxe5!! Bxd1 6.Bxf7+ Ke7 7.Nd5++

Jason Knight (1536) v. Roger McIntyre (1738)

1.e4 c5 2.Nf3 d6 3.Bc4 Nf6 4.d3 e6 5.c3 Be7 6.0-0 0-0 7.Bg5 d5 8.exd5 exd5 9.Bb3 h6 10.Bh4 Nc6 11.d4 c4 12.Bc2 Ne4 13.Bxe7 Nxe7 14.Re1 Bf5 15.Nbd2 Nxd2 16.Qxd2 Bxc2 17.Qxc2 Re8 18.Re2 Ng6 19.Rae1 Rxe2 20.Rxe2 Nf4 21.Re3 Qd7 22.Ne5 Qc7 23.Qf5 Ne6 24.Nxf7 Qxf7 25.Qxe6 R-d8 26.Qe7 Rd7 27.Qxf7+ Kxf7 28.f3 a5 29.Re5 Rd6 30.Kf2 Rb8 31.Re2 a4 32.a3 g5 33.g4 Kg6 34.Kg3 h5 35.gxh5+ Kxh5 36.f4 gxf4 37.Kxf4 Kh4 38.Ke5 Rb5 39.Kd6 Kh3 40.Ke6 Kh4 41.Rf2 Kh3 42.Kd6 Kh4 43.Ke6 Kh3 44.Re2 Kh4 45.Re5 Rxb2 46.Kxd5 b5 47.Kc5 Rb3 48.Re3 Rxa3 49.Kxb5 Ra1 50.Kxc4 Rb1 51.Re2 a3 52.Ra2 Rb2 53.Rxa3 Rxh2 54.Kc5 Kg5 55.Ra1 Kf6 56.Re1 Rh5+ 57.d5 Rh8 58.c4 Rc8+ 59.Kd4 Kf7 60.c5 Kf8 61.d6 Rd8 62.Kd5 Rxd6 63.Kxd6 Resigns



Matt Human (882) v. Ryan West (936)

1.e4 e5 2.Bc4 d6 3.Nf3 Bg5 4.d3 Be7 5.h3 Bh5 6.Qe2 a6 7.Qe3  
Bxf3 8.Qxf3 Bf6 9.Bg5 h6 10.Bh4 c6 11.Nc3 b5 12.Bb3 Qe7 13.Bxf6  
Qxf6 14.Qxf6 Nxf6 15.Ne2 Nfd7 16.f4 0-0 17.Rf1 a5 18.a4 b4 19.f5  
Kh8 20.g4 g5 21.Rf3 d5 22.exd5 cxd5 23.0-0-0 Nc5 24.Ba2 Nxa4  
25.Ng3 Nb6 26.Re3 N8d7 27.Rdh1 Kh7 28.Nh5 f6 29.Rd1 a4 30.b3  
d4 31.Re2 Nd5 32.Rh1 Nf4 33.Nxf4 gxf4 34.Kd2 Nc5 35.Rb1 a3  
36.Rg1 Re8 37.Re1 Re7 38.Rg2 Rae8 39.h4 f3 40.Rg3 e4 41.g5 e3+  
42.Kc1 f2 43.Rh1 e2 44.g6+ Kg7 45.Rg1 fxg1=Q+ 46.hxg1 e1=Q  
47.Rxe1 Rxe1+ 48.Kd2 Re2++

Patrick Carner (1398) v. Daniel Balbas (UNR)

1.e4 c5 2.Nf3 Nc6 3.d4 exd4 4.Nxd4 Nf6 5.Nc3 d6 6.Bg5 e6 7.Be2  
Be7 8.0-0 a6 9.a3 0-0 10.b4 h6 11.Bh4 Qc7 12.b5 Nxd4 13.Qxd4 e5  
14.Qc4 Qxc4 15.Bxc4 axb5 16.Bxb5 g5 17.Bg3 Be6 18.a4 Rfc8  
19.Ra3? d5 20.Bxe5 Ng4 21.Rb3 Nxe5 22.Exd5 Bf5 23.Ne4 Bxe4  
24.Re3 f5 25.f3 Bc5 26.Rfe1 Bxe3 27.Rxe3 Nc4 28.Rc3 bxd5 29.Kf2  
Nd6 30.Rxc8+ Rxc8 31.Bd3 Bc4 32.Ke3 f4 33.Kd4 Nf5 34.Bxf5 Rc7  
35.c3 b5 36.a5 Ra7 37.Be4 Rxa5 38.g3 fxg3 39.Hxg3 Ra2 40.f4 gxf4  
41.gxf4 Kf7 42.Bc6 Kf6 43.Bd7 Rd2+ Resigns

Gerald Larson (2076) v. Doug Eckert (2288)

1.e4 c5 2.Nf3 d6 3.d4 cxd4 4.Nxd4 Nf6 5.Nc3 e6 6.Be3 a6 7.Bc4 Be7  
8.Bb3 0-0 9.Qe2 Nc6 10.0-0-0 Qe8 11.f3 Nxd4 12.Bxd4 Nd7 13.f4  
Nc5 14.Kb1 Nxb3 15.axb3 b5 16.Rhe1 Bd7 17.Rd3 b4 18.Na4 Bxa4  
19.Bxa4 Qxa4 20.Rg3 g6 21.Qh5 Qb5?? 22.Qh6 f6 23.Rxg6+ hxg6  
24.Qxg6+ Kh8 25.Re3 Qf1+ 26.Ka2 Qc4+ 27.b3 Resigns

David Bertram (1481) v. Jeremy Carter (1434)

1.d4 Nf6 2.c4 g6 3.Nc3 Bg7 4.e4 d6 5.f3 0-0 6.Be3 e5 7.dxe5 dxe5  
8.Qxd8 Rxd8 9.Nd5 Na6 10.Nge2 c6 11.Ne7+ Kf8 12.Nxc8 Raxc8  
13.Bxa7 c5 14.a3 Rd6 15.Nc3 Bh6 16.Rd1 Rdc6 17.Kf2 Ne8 18.Nb5  
Nac7 19.Be2 (draw offered) Ke7 20.Rd3 b6 21.Rhd1 Bg5 22.g3 Nxb5  
23.Rd7+ Kf8 24.Cxb5 Rf6 25.Bc4 Nc7 26.Rd8+ Rxd8 27.Rxd8+ Ke7  
28.Rb8 Rd6 29.Bxb6 Rd2+ 30.Ke1 Ne6 31.f4 exf4 32.Bxe6 Kxe6  
33.Bxc5 f3 34.h4 Bh6 35.Re8+ Kd7 36.Re7+ Kc8 37.Rxf7 Rxb2  
38.Rxf3 Rxb5 39.Rc3 Kb7 40.Ke2 Bg7 41.Rc4 Rb2+ 42.Kf3 Rb3+  
43.Kg2 Rb2+ 44.Kh3 Re2 45.Bd4 Rxe4 46.Rb4+ Resigns

Dennis Higdon (1073) v. Dwight Dodd (1186)

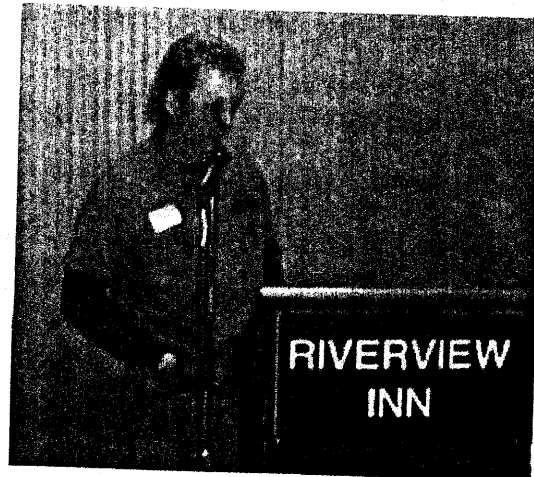
1.e4 e5 2.Nf3 Nc6 3.d4 Bd6 4.Bc4 f6 5.dxe5 Nxe5 6.Nxe5 Bxe5  
7.0-0 Ne7 8.f4 Bd6 9.Rf3 Nc6 10.Rg3 g6 11.Nc3 Bc5 12.Be3 Bxe3+  
13.Rxe3 d6 14.f5 Qe7 15.Nd5 Qf7 16.b3 Ne5 17.Qd4 c5 18.Bb5+  
Kf8 19.Qd2 g5 20.Nc3 a6 21.Qxd6+ Qe7 22.Qxe7+ Kxe7 23.Nd5+  
Kf7 24.Nc7 Ra7 25.Be2 h5 26.Rd1 b5 27.Nd5 Rd7 28.Rc3 c4  
29.bxc4 b4 30.Nxb4 Rxd1+ 31.Bxd1 g4 32.Be2 Bb7 33.c5 Bxe4

34.Bxa6 Bxf5 35.c6 Rb8 36.a3 Bc8 37.c7 Ra8 38.Bxc8 Rxc8 39.Nd5  
Nd7 40.a4 Ke6 41.Nf4+ Ke5 42.Nxh5 Kd4 43.Rd3+ Kc5 44.Rxd7 Kc6  
45.Nxf6 Rxc7 46.Rxc7 Kxc7 47.Nxg4 White won.

And last but not least, a good solid performance by an unrated player in  
a rated house game:

Roy Manners (1105) v. Elanor Harrison

1.d4 d5 2.Bf4 Nf6 3.Nf3 Nc6 4.c3 Bg4 5.h3 Bh5 6.Nbd2 e6 7.e3 Be7  
8.Bd3 Qd7 9.Rc1 0-0-0 10.Qc2 Bd6 11.Ne5 Bxe5 12.dxe5 Ne8  
13.Qb3 f6 14.Bb5 a6 15.Bxc6 Qxc6 16.0-0 Bg6 17.c4 d4 18.Rfe1 d3  
19.e4 Qc5 20.Be3 Qxe5 21.c5 d4 22.Nc4 Qd5 23.Qb4 Bxg2 24.Nb6+  
cxb6 25.cxb6+ Kb8 26.Qe7 Bxh3 27.f3 d2 28.Rcd1 dxe1=Q+  
29.Rxe1 Rc8 30.Rc1 Rxc1 31.Bxc1 e5 32.Kh2 Bf5 33.Kg3 Qd4  
34.Be3 Qxe3 35.Qd8+ Bc8 36.b4 e4 37.a4 Qd3 38.Qxd3 exd3  
39.Kf2 Nd6 40.b5 Nc4 41.a5 Nxa5 42.f4 Re8 43.f5 d2 44. Resigns



## TN CHESS HALL OF FAME NOMINATIONS

The deadline for nominating an outstanding Tennessee chess player for the Hall of Fame is March 31, 2000. Nominations should be forwarded to the TN Hall of Fame Selection Committee c/o Peter Lahde, 2609 Sailboat Court, Nashville TN 37217.

Inductees into the Tennessee Chess Hall of Fame are current or former Tennessee residents who have either distinguished themselves for outstanding achievements in the competitive chess arena or who have made significant contributions to the game of chess in Tennessee.

The following guidelines should be used in selecting a nominee:

1. The nominees must be Tennessee residents for a significant portion of their careers, or must have had significant and substantial periods of residency in Tennessee.
2. Inductees may be selected from qualified candidates either living or deceased.
3. Achievements must be significant and can be in any one or more of the following chess-related areas: competition (over-the-board or correspondence play), composition, promotion, journalism, organization, or leadership. This list is not all-inclusive and should be used for guidance only.

Please think about who you would like to see join this special group of dedicated chess players and why.

## TN CHESS HALL OF FAME

PETER LAHDE	1990
ROBERT COVEYOU	1990
JERRY SULLIVAN	1990
MARTIN SOUTHERN	1990
TOM FINUCANE	1990
ROBERT SCRIVENER	1990
L. HUNTER WEAKS	1990
JOHN HURT	1992
JAMES A. SWEETS	1993
REA HAYES	1997
JAMES A. WRIGHT	1998





# THE FIRST MEMPHIS NASHVILLE MATCH

by Peter Lahde

*When I reported on the Internet Match between Memphis and Nashville last year I also quoted a telegraph game that was played in 1911 between these two cities. The game given was a consultation game. At the same time a match by telegraph was played on twelve boards between these two cities. The American Chess Bulletin (ACB) gave an excellent account of that match. I am quite certain that Miss Rosa Jefferson who wrote the chess column for the Memphis paper, "The Commercial Appeal", is the source of the information to ACB. In her column she gives eight of the games that were played in the match. I will now give you the article as it appeared in ACB and on another page the eight historic games. In conclusion, I will close the article with the results of all the matches that have taken place between these two cities. Below is the article as it appeared in the American Chess Bulletin for the month of August on page 176.*

On June 15, Memphis triumphed over Nashville in a twelve-board telegraph match by the score of 8 games to 2. Should Nashville be credited with wins in the two games left for adjudication the score would still be in Memphis' favor. Simultaneously with this match there was also contested a consultation game between these two cities. After 4 1/2 hours of play the game was left unfinished. The following gentlemen played for Memphis: B. B. Jefferson, R. A. McDonald, Ed Hill, Robert Scrivener, David Cummins, J. Ryan, A. B. Pitman, Robert Horton, F. C. Looney, Hays Flowers, T. Jones and M. Rainwater. For Nashville these players fought: James McClure, Dr. M. S. Hawkins, N. D. Malone, J. Wittenberg, O. E. Wiggers, Dr. J. H. Kirkland, Ab Landis, F. H. McDaugh, H. Chester, P. Wright, J. Akin and T. Smith.

It is now proposed that these two towns meet in a return match over the board at historic Pittsburg Landing, on the Tennessee River. As this place is also a Summer resort in addition to being a historic battleground of the Civil War its selection for the encounter is a good one and ought to afford both clubs a pleasant trip. *(It is not known if this return match took place as there was no mention of it in the Memphis chess column. Also the outcome of the unfinished games was not reported.)*

Here are the results of all the matches between Memphis and Nashville beginning in 1959:

1.	1959	Memphis - Nashville	6 - 4
2.	1960	Memphis - Nashville	9 - 1
3.	1960	Nashville - Memphis	8.5 - 7.5
4.	1961	Nashville - Memphis	16.5 - 3.5

5.	1962	Memphis - Nashville	6.5 - 5.5
6.	1963	Nashville - Memphis	6 - 0
	(Team competition with Oak Ridge and Knoxville)		
7.	1963	Memphis - Nashville	10.5 - 1.5
8.	1964	Memphis - Nashville	11 - 5
9.	1965	Memphis - Nashville	11.5 - 8.5
10.	1968	Memphis - Nashville	11 - 5
11.	1969	Memphis - Nashville	16 - 8
12.	1970	Nashville - Memphis	15 - 15 (Tie)
13.	1972	Memphis - Nashville	12 - 12 (Tie)
14.	1973	Nashville - Memphis	21 - 19
15.	1974	Nashville - Memphis	21 - 11
16.	1975	Memphis - Nashville	15.5 - 10.5
17.	1976	Memphis - Nashville	15.5 - 8.5
18.	1978	Nashville - Memphis	10.5 - 9.5
19.	1981	Nashville - Memphis	16.5 - 11.5
20.	1982	Memphis - Nashville	13 - 11
21.	1993	Memphis - Nashville	8.5 7.5
22.	1999	Nashville - Memphis	1.5 - 5

The final tally then makes Memphis the winner with 11 wins, 8 losses, and 2 draws.



### 2000 TN OPEN BID AWARDED!

Congratulations to the Parent Project for Muscular Dystrophy Research, the Shelby County Scholastic Chess Association, and the Memphis Chess Club on their fine bid.

The 54th Annual Tennessee Open will be held September 1-3, 2000 at the Memphis Marriott along with the 3rd Annual Parent Project Chess Classic.



☐ Hawkins (Nashville)  
☒ McDonald (Memphis)  
 Match: Nashville vs. Memphis

1911

1.e4 e5 2.e3 Nf6 3.d4 Nc6 4.Nc3 Bb4 5.a3  
 Bxc3+ 6.bxc3 d6 7.Nf3 Bg4 8.Be2 0-0  
 9.0-0 Ne4 10.Bb2 Rb8 11.h3 Bh5 12.Nd2  
 Nxd2 13.Qxd2 Bxe2 14.Qxe2 Re8 15.f4  
 exf4 16.Rxf4 Ne7 17.Raf1 f6 18.e4 Ng6  
 19.Rf5 Qe7 20.Re1 Qd7 21.Qg4 Qc6 22.h4  
 Qb6 23.Re2 Ne5 24.Qg3 Nxc4 25.Bc1 Qb1  
 26.Rf1 Qb5 27.Rxf6 Nxa3 28.Re2 Nc4  
 29.Rf7 g6 30.Rxc7 Re6 31.Rff7 Qb1  
 32.Rg7+  
 1-0

☐ Hill (Memphis)  
☒ Malone (Nashville)  
 Memphis vs. Nashville Match

1911

1.e4 e5 2.Nf3 Nc6 3.d4 exd4 4.Nxd4 Bc5  
 5.Nf5 Qf6 6.Nc3 Nge7 7.Be3 Bxe3 8.Nxe3  
 0-0 9.Bd3 a6 10.0-0 d6 11.Kh1 Kh8 12.f4  
 Nb4 13.Be2 b5 14.a3 Nbc6 15.Bd3 Ng6  
 16.Ncd5 Qd8 17.Qh5 Nce7 18.f5 Ne5  
 19.Nxe7 Qxe7 20.f6 Qe6 21.Rf4 Ng6  
 22.Rf5 c6 23.Ng4 Rg8? 24.Qxh7+  
 1-0

☐ Wright (Nashville)  
☒ Flowers (Memphis)  
 Nashville vs. Memphis Match

1911

1.e4 e5 2.Nf3 Nc6 3.c3 Nf6 4.d3 d6 5.h3  
 Be7 6.g4 Be6 7.Ng5 Qd7 8.d4 d5 9.f3 exd4  
 10.exd5 Qxd5 11.Bc4 Qxc4 12.b3 Qd5  
 13.c4 Qe5+ 14.Kf2 Nxg4+ 15.hxg4 Bxg5  
 16.Rh5 Be3+ 17.Kg2 Qf4 18.Bxc3 Qxc3  
 19.Nd2 0-0-0 20.Nf1 Qf4 21.Qd3 g6  
 22.Rc5 h5 23.gxh5 Rxh5 24.Rxh5 gxh5  
 0-1

☐ Smyth (Nashville)  
☒ Rainwater (Memphis)  
 Nashville vs Memphis Match

1911

1.e4 e6 2.Bc4 d5 3.exd5 exd5 4.Bb3 Nf6  
 5.d3 Bc5 6.d4 Be7 7.c3 c6 8.Bg5 Be6  
 9.Nf3 Nbd7 10.c4 dxc4 11.Bxc4 Bxc4  
 12.Nc3 0-0 13.Qa4 b5 14.Qc2 Re8 15.Bc3  
 Bb4 16.0-0-0 Qa5 17.Kb1 Bxc3 18.bxc3  
 Nd5 19.Kb2 Qxa2+ 20.Kc1 Qxc2+ 21.Kxc2  
 Nxe3+ 22.fxc3 Rxc3 23.Rd2 Nf6 24.Re1  
 Ng4  
 0-1

☐ Looney (Memphis)  
☒ Chester (Nashville)  
 Memphis vs Nashville Match

1911

1.e4 e5 2.Nf3 Nc6 3.Bc4 Bc5 4.d3 Nf6  
 5.Nc3 d6 6.Bg5 h6 7.Bh4 g5 8.Bg3 Bg4  
 9.h3 Bh5 10.Bb5 a6 11.Bxc6+ bxc6 12.Na4  
 Ba7 13.Qd2 Rb8 14.0-0-0 Qd7 15.Rde1 c5  
 16.b3 Bxf3 17.gxf3 Ke7 18.Nc3 Rb7 19.h4  
 g4 20.f4 Nh5 21.fxe5 Nxg3 22.exd6+ exd6  
 23.fxg3 Qe6 24.Nd5+ Kd7 25.Rhfl Rh7?  
 26.Nf6+ Kc6 27.Nxh7 Qe5 28.Kb1 c4  
 29.dxc4 Bd4 30.Rd1 Kc5? 31.Rf5  
 1-0

☐ Pittman (Memphis)  
☒ Landis (Nashville)  
 Memphis vs Nashville Match

1911

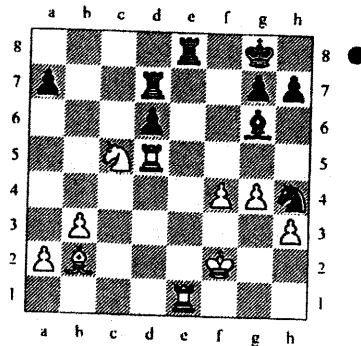
1.e4 e5 2.f4 exf4 3.Bc4 Qh4+ 4.Kf1 d5  
 5.Bxd5 Bg4 6.Nf3 a6 7.Bxf7+ Kxf7 8.Ne5+  
 Ke8 9.Nxg4 Nd7 10.e5 Nh6 11.Nxh6 Qxh6  
 12.d4 Rd8 13.Qf3 g5 14.Nd2 Qg6 15.Ne4  
 h5 16.h4 g4 17.Qxf4 Bc5 18.Qe3 Nxe5  
 19.Nxc5 Rf8+ 20.Kel Rf7 21.Nd3 Re7  
 22.dxe5 Rxd3 23.cxd3 Qg7 24.Qg3 Rxc5+  
 25.Be3 Re7 26.Rbl Qd4 27.Kd2 Qb4+  
 28.Kcl Qb6?? 29.Bxb6  
 1-0



□ Kirkland (Nashville)  
 ■ Ryan (Memphis)  
 Nashville vs Memphis Match

1911

1.e4 e5 2.Nf3 Ne6 3.Bb5 Nf6 4.0-0 d6  
 5.Re1 Bg4 6.c3 Be7 7.d4 exd4 8.cxd4 0-0  
 9.Bxc6 bxc6 10.h3 Bh5 11.Nbd2 Nd7  
 12.Qc2 c5 13.b3 cxd4 14.Nxd4 Bf6 15.Bb2  
 Bxd4 16.Bxd4 Bg6 17.Qc3 f6 18.Qg3 Ne5  
 19.Rac1 Qd7 20.f4 Nc6 21.Bb2 f5 22.exf5  
 Rx15 23.Nf3 Ne7 24.Ng5 c5 25.Ne6 Rf7  
 26.Rcd1 Nf5 27.Qf3 Re8 28.Qd5 Qb7  
 29.g4 Qxd5 30.Rxd5 Nh4 31.Kf2 Rd7  
 32.Nxc5



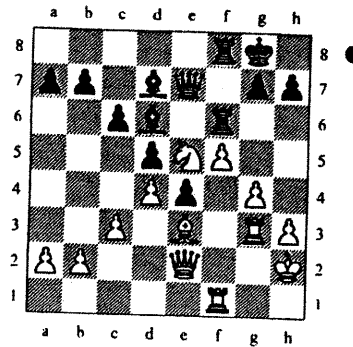
Rc7 33.Rxe8+ Bxe8 34.Nd3 Rd7 35.Ba3  
 Ng6 36.Rxd6 Rxd6 37.Bxd6 Kf7 38.f5  
 Ne7 39.Bxe7 Kxe7 40.a4 Kd6 41.Ke3 a5  
 42.Kd4 Bc6 43.h4 Bf3 44.g5 Bg4 45.Ne5  
 Bxf5 46.Nc4+ Kc6 47.Nxa5+ Kd6 48.Nc4+  
 Kc6  
 1-0

□ Jefferson (Memphis)  
 ■ McClure (Nashville)  
 Memphis vs Nashville Match(Bd.1)

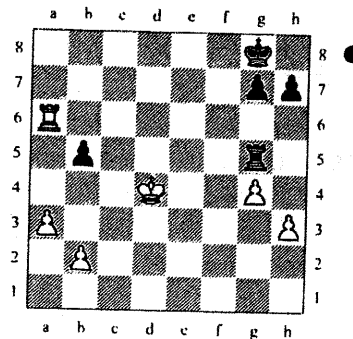
1911

1.e4 e6 2.d4 d5 3.exd5 exd5 4.Nf3 Nf6  
 5.Bd3 Be7 6.h3 Nbd7 7.0-0 0-0 8.Nc3 c6  
 9.Bf4 Nh5 10.Be3 f5 11.Ne5 Qe8 12.f4  
 Ng3 13.Re1 Nf6 14.Kh2 Nfe4 15.Nxe4  
 Nxe4 16.Bxe4 fxe4 17.g4 Bd6 18.c3 Qe6  
 19.Qe2 Bd7 20.Rg1 Rf6 21.Raf1 Raf8  
 22.Rg3 Qe7 23.f5?

White threatens 24 Bg5, but it appears that



Black can play 23...Bxe5 anyway, so if now 24  
 Bg5 then Bxg3+. Black missed a good winning  
 chance. R6f7 24.Bf4 Bxe5 25.dxe5 Qd8  
 26.Qe3 Qb6 27.e6 Bxe6 28.fxe6 Rf6  
 29.Qxb6 axb6 30.e7 Re8 31.Kg2 Re6  
 32.Bc7 R6xe7 33.Bxb6 Ra8 34.a3 Ra6  
 35.Bd4 b6 36.Rf5 Rd7 37.Kf2 c5 38.Be5  
 d4 39.cxd4 cxd4 40.Ke2 Ra8 41.Rf4 Re8  
 42.Rxe4 Rde7 43.Kd3 Rxe5 44.Rxe5 Rxe5  
 45.Kxd4 Rc5 46.Rc3 Rg5 47.Rc6 b5  
 48.Ra6



1-0





# Tennessee Tournament Calendar

provided by Joe Crump

February 19, 2000--Kenwood Middle School; Montgomery County Scholastic Chess League; Clarksville TN; Roy Manners (931) 552-1839.

February 26, 2000--Meigs Magnet School; Nashville TN; Chris Prosser (615) 399-8432

March 11, 2000--Regional Team Qualifying Tournaments; Contact: Region I - Pat Knight, Region II - Gary Gillespie, Region III - Chris Prosser, Region IV - Bill Cummings.

March 25, 2000--Tennessee Scholastic Team State Finals; Richview Middle School, Montgomery County Scholastic Chess League; Clarksville TN; Roy Manners (931) 552-1839.

April 8, 2000--New Providence Middle School; Montgomery County Scholastic Chess League; Clarksville TN; Roy Manners (931) 552-1839.

April 15, 2000--TN Quick Chess Championship; Nashville, TN; Mark Ishee (615) 331-2129.

April 22, 2000--Cumberland County Spring Open. 4-SS, G/60, Multi-Purpose Bldg., Fairfield Glade Resort, Crossville TN 38558. \$\$G 275. Open--\$\$150: 50-1st, 25-X, A, B, C/below. Amateur-U1400 \$\$125: 50-1st, 25-E, F/below, UNR (UNR eligible for UNR prize only). Both, EF: \$10 if mailed by 4/17, \$15 at site. TCA req'd., Reg. 7:30-8:30 AM (CDT). Rds. 9-11-2-4:30. Ent: Harry D. Sabine, PO Box 381, Crossville TN 38557 (931) 484-9593 or 484-4878. NS. NC. W.

April 28, 29, & 30, 2000--National High School Championship; Charlotte NC.

May 11, 2000--TLC Spring Open. 4SS, G/60. Trinity Lutheran Church, 5001 Trotwood Ave., Columbia TN 38401. Open to all. EF: \$10 if received by May 6, \$15 at site. TCA req'd. \$\$G 250: \$50 1st, \$25 X, A, B, C, D, E, F/below, UNR. (UNR. eligible for UNR. prize only). Reg. 7:30 8:30 am. Rds. 9:00 11:30 2:00 4:30. Send advanced entries to: Joseph Crump, 111 Tommy Drive, Columbia TN 38401 (931) 381-2758. [www.public.usit.net/crump](http://www.public.usit.net/crump). NS,NC,W.

May 20, 2000--Richview Middle School; Montgomery County Scholastic Chess League; Clarksville TN; Roy Manners (931) 552-1839.

July 8, 2000--Cumberland County Summer Open. 4-SS, G/60, Multi-Purpose Bldg., Fairfield Glade Resort, Crossville TN 38558. \$\$G 275. Open--\$\$150: 50-1st, 25-X, A, B, C/below. Amateur-U1400 \$\$125: 50-1st, 25-E, F/below, UNR (UNR eligible for UNR prize only). Both, EF: \$10 if mailed by 7/3, \$15 at site. TCA req'd., Reg. 7:30-8:30 AM (CDT). Rds. 9-11-2-4:30. Ent: Harry D. Sabine, PO Box 381, Crossville TN 38557 (931) 484-9593 or 484-4878. NS. NC. W.

August 12, 2000--TLC Summer Open. 4SS, G/60. Trinity Lutheran Church, 5001 Trotwood Ave., Columbia TN 38401. Open to all. EF: \$10 if received by Aug. 7, \$15 at site. TCA req'd. \$\$G 250: \$50 1st, \$25 X, A, B, C, D, E, F/below, UNR. (UNR. eligible for UNR. prize only). Reg. 7:30 8:30 am. Rds. 9:00 11:30 2:00 4:30. Send advanced entries to: Joseph Crump, 111 Tommy Drive, Columbia TN 38401 (931) 381-2758. [www.public.usit.net/crump](http://www.public.usit.net/crump). NS,NC,W.

October 14, 2000--Cumberland County Fall Open. 4-SS, G/60, Multi-Purpose Bldg., Fairfield Glade Resort, Crossville TN 38558. \$\$G 275. Open--\$\$150: 50-1st, 25-X, A, B, C/below. Amateur-U1400 \$\$125: 50-1st, 25-E, F/below, UNR (UNR eligible for UNR prize only). Both, EF: \$10 if mailed by 10/9, \$15 at site. TCA req'd., Reg. 7:30-8:30 AM (CDT). Rds. 9-11-2-4:30. Ent: Harry D. Sabine, PO Box 381, Crossville TN 38557 (931) 484-9593 or 484-4878. NS. NC. W.

November 11, 2000--TLC Fall Open. 4SS, G/60. Trinity Lutheran Church, 5001 Trotwood Ave., Columbia TN 38401. Open to all. EF: \$10 if received by Nov. 6, \$15 at site. TCA req'd. \$\$G 250: \$50 1st, \$25 X, A, B, C, D, E, F/below, UNR. (UNR. eligible for UNR. prize only). Reg. 7:30 8:30 am. Rds. 9:00 11:30 2:00 4:30. Send advanced entries to: Joseph Crump, 111 Tommy Drive, Columbia TN 38401 (931) 381-2758. [www.public.usit.net/crump](http://www.public.usit.net/crump). NS,NC,W.

April 26, 27, 28 & 29, 2001--USCF Super Nationals; Kansas City MO.

---

Please send TLA and Calendar Information to:  
Joseph Crump, 111 Tommy Drive, Columbia TN 38401. (931) 381-2758.  
Or E-mail: [crump@usit.net](mailto:crump@usit.net)

---

#### **SOLUTION TO THE PROBLEM CORNER:**

1. Bg5 (Of course, if black plays 1...e5 2. Qa3 Mate or 1...Bg4 or 1...Bg2 2.Bh6 Mate)

However black can last 3 moves if he proceeds as follows:

1. Bg5 Qf6+ 2. BxQ Be6 3. Bg7 Mate

**Nashville Chess Center Events, February-April 2000**  
by Mark Ishee

February 12: No event scheduled because of the TLC Winter Open this weekend in Columbia TN. The chess center will be open on Saturday from 10-4 for skittles, blitz, etc.

February 19: No event scheduled because of the Kenwood Scholastic this weekend in Clarksville TN. The chess center will be open on Saturday from 10-4 for skittles, blitz, etc.

February 26: No event scheduled because of the Meigs Magnet Scholastic this weekend in Nashville TN. The chess center will be open on Saturday from 10-4 for skittles, blitz, etc.

March 4: Music City Spring Open. 4-SS, G/60. \$15 entry fee if received before 2/28, \$20 after and at site (\$5 discount for current NCC members). Registration: 8-8:45, rounds 9:00 AM, 11:00 AM, 2:00 PM, & 4:30 PM (CDT). Due to limited space, registration will be limited to the first 40 players. Guaranteed Prizes: 1st place \$50, 2nd place \$30, Class A, Class B, Class C, Class D, Class E/below/Unrated – each \$25. USCF and TCA membership required. Entries to: Nashville Chess Center, 2911 Belmont Blvd, Nashville TN 37212, or contact Mark Ishee (mark.ishee@nashville.com) 615-371-5229.

March 11: No event scheduled because of the Tennessee Scholastic Team Regionals. Players in Region III go to Charlotte Elementary School, 4000 Highway 48 North, Charlotte TN. Contact: Chris Prosser (regioniii@aol.com) 615-399-8432. The chess center will be open on Saturday from 10-4 for skittles, blitz, etc.

March 18: NCC March Swiss. 3-SS, G/60. \$15 entry fee (\$10 for current NCC members). Cash prizes based on entries; all entry fees returned in prizes. Register: 9:30 AM, round 1 at 10:00, all other rounds ASAP. Due to limited space, registration will be limited to the first 40 players. Entries to: Nashville Chess Center, 2911 Belmont Blvd, Nashville TN 37212, or contact Kent Meadows (kent.meadows@nashville.com) 615-320-0394.

March 25: Tennessee Scholastic Team Finals (Richview Middle School, Clarksville TN).

March 25: Next Year's Champions II. Open only to scholastic players not qualifying for state team finals. 4-SS, G/30. \$15 entry fee in advance (\$10 for current NCC members), \$20 after 3/20 and at site. Register: 9-9:30 AM, round 1 at 9:45, all other rounds ASAP. Due to limited space, registration will be limited to the first 40 players. All players compete in one

section. Trophies to top 3 in High School (grades 10-12), Junior High (grades 7-9), Elementary (grades 4-6), and Primary (grades 1-3). All players not receiving trophies will receive a medal, ribbon, or certificate. Entries to: Nashville Chess Center, 2911 Belmont Blvd, Nashville TN 37212, or contact Mark Ishee (mark.ishee@nashville.com) 615-371-5229.

April 1: NCC April Swiss. 3-SS, G/60. \$15 entry fee (\$10 for current NCC members). Trophy to 1st place. Cash prizes based on entries; all entry fees returned in prizes. Register: 9:30 AM, round 1 at 10:00, all other rounds ASAP. Due to limited space, registration will be limited to the first 40 players. Entries to: Nashville Chess Center, 2911 Belmont Blvd, Nashville TN 37212, or contact Kent Meadows (kent.meadows@nashville.com) 615-320-0394.

April 8: No event scheduled because of the New Providence Scholastics this weekend in Clarksville TN. The chess center will be open on Saturday from 10-4 for skittles, blitz, etc.

April 15: Tennessee Quick Chess Championship. 6-SS, G/15. \$15 entry fee if received before 4/8 (\$10 for current NCC members), \$5 more later and at site. Prizes: 1st place—\$50 + trophy & title of Tennessee Quick Chess Champion. 2nd place—\$30, 3rd place—\$20. Special prizes for scholastic players: Trophy & Scholastic Quick Chess State Champion title to top finisher in each of Grade 10-12, Grade 7-9, Grade 4-6, and Grade 3 & below. Due to limited space, registration will be limited to the first 40 players. Cash awards based on 40 entries, and may be reduced proportionately. USCF "Quick Chess" rated. USCF and TCA membership required. Entries to: Nashville Chess Center, 2911 Belmont Blvd, Nashville TN 37212, or contact Mark Ishee (mark.ishee@nashville.com) 615-371-5229.

April 22: No event scheduled because of the Cumberland County Spring this weekend in Crossville TN. The chess center will be open on Saturday from 10-4 for skittles, blitz, etc.

April 29: Blitz Tournament. Double round-robin. \$7 entry fee (\$5 for current NCC members). Cash prizes based on entries; all entry fees returned in prizes. Register: 9:30 AM, round 1 at 10:00, all other rounds ASAP. Due to limited space, registration will be limited to the first 40 players. Entries to: Nashville Chess Center, 2911 Belmont Blvd, Nashville TN 37212, or contact Kent Meadows (kent.meadows@nashville.com) 615-320-0394.



**1999 Tennessee Chess Association Annual Membership Meeting**  
Days Inn - Nashville, TN September 4, 1999  
President Peter Lahde called the meeting to order at 2:00 PM.

**President's Report**

Mr. Lahde announced that this was the strongest Tennessee Open ever, with turnout comparable to last year's Tennessee Open. The president also announced that the TCA was accepting bids for the 2000 Tennessee Open, individual regional finals, and Quick Chess championships. Bids for the Quick Chess Championship were due by Labor Day (September 6, 1999), while bids for the Tennessee Open must be received by December 31, 1999. Bids were to be submitted to the new president. Mr. Lahde also encouraged all Tennessee players to complete one of the surveys that had been passed out at the beginning of round 2, and that Roy Manners would collect the surveys and issue a final report.

**Treasurer's Report**

Treasurer Leonard Dickerson announced that the financial report was posted in the skittles room, and that extra copies were available upon request. The T. Rowe Price Fixed Income Fund that the TCA had invested in was doing quite well, increasing from our initial investment of \$10,000 to \$18,500.

**Scholastic Coordinator's Report**

Scholastic Coordinator Harry Sabine announced that the scholastic programs in Tennessee had a good year, although participation was down from the peak two years ago when 500 to 700 participated in individual and team events. Mr. Sabine further noted that the scholastic programs can succeed only if the regional coordinators make it work. Two regional coordinator positions (Regions 1 and 2) are currently open. Chris Prosser and Bill Cummings stated that Pat Knight (Region 1) and Harry Sabine (Region 2) have been doing a fine job filling in as interim coordinators until the positions can be permanently filled.

**Secretary's Report**

Secretary Jim Baringer announced that TCA membership was up to 308, with approximately half of these scholastic members, and urged all members to complete the TCA survey. The minutes from the 1998 annual meeting were distributed. In item 2, "Hodgkins" was corrected to "Hodges," and a clarification was added to explain that the Fairfield Glade Opens would no longer be held because the conference center was being converted to office space. With these modifications, the minutes were unanimously accepted.

#### **Tournament Coordinator's Report**

Wayne Hedger reported that the Turkey Tour for 1999-2000 would be cancelled due to a lack of enthusiasm with the program. Mr. Hedger then announced his resignation as tournament coordinator.

#### **Internet Coordinator's Report**

Kent Meadows report for Lee Edwards, stating that Mr. Edwards was responsible for all TCA internet activities, including the web page. Changes to the web page are to be authorized by the internet coordinator (Lee Edwards) and implemented by the webmaster (Richard Westbrook). Roy Manners inquired if the upcoming Clarksville tournament had been posted on the web page yet. Mr. Meadows responded that it had not yet been posted.

#### **Newsletter Editor's Report**

Angela McElrath-Prosser reported that the TCN was doing well, and that she would be willing to serve as editor for another term. Peter Lahde noted that Doug Eckhart had volunteered to annotate games.

#### **USCF Delegates' Report**

Bill Orgain and Harry Sabine reported that they went to the USCF Delegates Meeting. The meeting was contentious, and nearly every member of the old policy board is now gone. "One Man-One Vote" did not pass, although the vote was close. The TN delegation was split on this issue. The USCF finances are stressed, and that we would be facing an austere year for services. No dues increases were foreseen in the immediate future, and there was no mention on the yearly SAS funds given by the USCF to state organizations. Last year Tennessee received \$500. New officers elected included Bob Smith (Florida), John McCreary (South Carolina), Dorris Berry (South Carolina), Jim Peachack (OH, Vice President of Finance). Officers at large include Tim Redman, Helen Warren, Garrett Scott, and Joey Piledo.

#### **Patron Memberships**

Eight patron bishop memberships and two renewals were collected at the Tennessee Open. These included George Dean, Harold Miles, Peter Bereolos, Roy Manners, Raymond Hudgens, Haresh Mirani, Rhea Hayes, Jeff Pennig, Clint Pearson, and Harry Sabine.

#### **Election of Officers**

Kent Meadows nominated Greg Krog for West Tennessee Director. Harry Sabine seconded the nomination and moved that nominations be closed. Bill Orgain inquired if the TCA board had a slate of recommended candidates, and suggested that if this were so, the entire slate could be voted on at once to save time. President Lahde announced that the slate recommended by the board was as follows:

West Tennessee Director – Greg Krog, President – Kent Meadows, Vice President – Peter Lahde, Secretary – Bradley Watson, Treasurer – Leonard Dickerson, TCN Editor – Angela McElrath-Prosser, Middle Tennessee Director – Roy Manners, and Tournament Coordinator – Joe Crump. Bill Orgain motioned that the board's slate be elected by acclamation. This was done and the candidates were elected unanimously. Since there were no nominees for the position of East Tennessee Director, it was announced that the board would fill this position at the next board meeting. A motion was made to adjourn, which passed unanimously.

---

### 53RD TENNESSEE OPEN SCHOLASTICS CROSSTABLES

JUNIOR HIGH		PRE	POST	1	2	3	4	TOTAL
1	MICHAEL ROSS	1155	1168	W11	W12	W10	W6	4.0
2	CHRIS MARTINDALE	943	955	W4	W15	L6	W10	3.0
3	JOE WRIGHT	858	880	W14	L6	W15	W7	3.0
4	DREW LOCKHART	834	869	L2	W18	W14	W8	3.0
5	TIMOTHY HUANG	789	830	W7	W16	L8	W9	3.0
6	HAL NICHOLS	724	791	W8	W3	W2	L1	3.0
7	MATT STALEY	927	903	L5	W17	W13	L3	2.0
8	JACOB GREEN	906	885	L6	W11	W5	L4	2.0
9	BRANDON NELSON	868/14	824/18	L13	W20	W12	L5	2.0
10	DAVID BOYD	856	850	W20	W13	L1	L2	2.0
11	MICHAEL E NORMAN	780	797	L1	L8	W19	W16	2.0
12	SAM TRUSLOW	700/14	732/18	W18	L1	L9	W20	2.0
13	TIMMY SMITH	643	677	W9	L10	L7	W19	2.0
14	KENNY GUNTER	547/5	675/9	L3	W19	L4	W17	2.0
15	ALAN MCCORMICK	0	878/4	W19	L2	L3	W18	2.0
16	ANDY TIDWELL	0	720/4	W17	L5	D18	L11	1.5
17	JEDIDIAH R SIRK	826	776	L16	L7	W20	L14	1.0
18	BRYAN BOUTELL	886	822	L12	L4	D16	L15	0.5
19	JOSH YATES	826	748	L15	L14	L11	L13	0.0
20	KYLE LOCKHART	513	492	L10	L9	L17	L12	0.0

W=WIN L=LOSS D=DRAW X=FORFEIT WIN F=FORFEIT LOSS



# 53RD TENNESSEE OPEN SCHOLASTICS

PRIMARY		PRE	POST	1	2	3	4	TOTAL
1	EVAN B MAH	1176	1172	W4	W3	D2	W5	3.5
2	JONATHAN BEATTY	794	817	W6	L1	W7	W2	3.0
3	BECK SPURLOCK	704	721	L1	W5	W6	B	3.0
4	EVAN M DUVAL	862/6	861/10	W5	W7	D1	L3	2.5
5	JORDON BEATTY	368	385	B	L2	L3	W6	2.0
6	CONNOR CUNNINGHAM	665/4	601/7	L2	L4	B	L1	1.0
7	NICHOLAS CLAYTON	508	473	L3	B	L4	L7	1.0

ELEMENTARY		PRE	POST	1	2	3	4	TOTAL
1	MIRKO REMEC	1251	1269	W8	W4	W6	W5	4.0
2	BRANDON LADAGE	986	1022	W14	W7	D5	W6	3.5
3	JOSHUA DUNN	925	942	W10	L5	W9	W8	3.0
4	LAHARI SUBRAVETI	841	853	X	L1	W15	W10	3.0
5	JOSHUA GAO	1060	1063	W13	W3	D2	L1	2.5
6	STEPHEN TESAURO	930	924	W9	W15	L1	L2	2.0
7	CHRISTOPHER CLAYTON	872	848	W11	L2	L10	W15	2.0
8	LOREN BROWN	832	826	L1	W12	W11	L3	2.0
9	ALEXANDER MCGUFFEY	763	762	L6	W14	L3	B	2.0
10	KATHLEEN CUNNINGHAM	704	727	L3	W13	W7	L4	2.0
11	SURAJ MENON	542/4	603/7	L7	B	L8	W13	2.0
12	JORDAN HUNSBERGER	371	394	B	L8	L13	W14	2.0
13	ERIC BROOKS	829/13	752/17	L5	L10	W12	L11	1.0
14	GRANT CHALMERS	795	741	L2	L9	B	L12	1.0
15	HUGH ARCHIBALD	547	534	X	L6	L4	L7	1.0

HIGH SCHOOL		PRE	POST	1	2	3	4	TOTAL
1	SHANNON SHAW	1404	1409	W6	W4	W3	D2	3.5
2	BRETT FARRIS	1384	1390	W9	W10	W7	D1	3.5
3	JENNIFER LAUPP	991	1013	W8	W14	L1	W10	3.0
4	GLENIS SWALLOWS	899	939	W12	L1	W8	W7	3.0
5	JASON SMITH	978	965	L14	W12	W9	D6	2.5
6	MARK DIXON	888	901	L1	W13	W15	D5	2.5
7	RYAN WEST	949	937	W13	W15	L2	L4	2.0
8	WAYNE CARPENTER	908	885	L3	B	L4	W15	2.0
9	MATT HUMAN	880	882	L2	W11	L5	W14	2.0
10	RYAN MULHOLLEN	777	793	W11	L2	W14	L3	2.0
11	LENNY VAN METER	0	658/3	L10	L9	B	W12	2.0
12	RONNIE GLASS	815/4	703/8	L4	L5	W13	L11	1.0
13	KIRK CLARK	711/3	581/6	L7	L6	L12	B	1.0
14	GREG WRIGHT	709	708	W5	L3	L10	L9	1.0
15	DARYL DUFFY	626	610	B	L7	L6	L8	1.0

W=WIN L=LOSS D=DRAW X=FORFEIT WIN F=FORFEIT LOSS



### 53RD TENNESSEE OPEN CROSSTABLES

OPEN	PRE	POST	1	2	3	4	5	TOTAL
1 SEMION PALATNIK	2544	2546	W15	W26	W7	W8	D3	4.5
2 TODD D ANDREWS	2301	2331	W29	W28	D3	W6	W7	4.5
3 PEDRO TIDOY	2260	2289	W9	W4	D2	W14	D1	4.0
4 ESAO ELEZAJ	2200	2214	W25	L4	W19	W9	W8	4.0
5 BRIAN D SMITH	2067	2115	F	W21	W20	W12	W13	4.0
6 TIMOTHY W TAYLOR	2470	2448	W30	L8	W15	L2	W14	3.0
7 DOUG D ECKERT	2292	2288	W19	W22	L1	W17	L2	3.0
8 ADAM CAVENEY	2088	2128	W24	W6	W23	L1	L4	3.0
9 DAVIDS J KAPLEY	2051	2056	L3	W18	W28	L4	W20	3.0
10 MILTON C WRIGHT	2000	2009	L23	L24	W29	W22	W18	3.0
11 DANIEL LIU	1991	2037	H	D12	W26	L13	W17	3.0
12 LEONARD DICKERSON	2197	2162	D20	D11	W22	L5	D15	2.5
13 GERALD A LARSON	2091	2076	W27	D23	L14	W11	L5	2.5
14 WALTER W JORDAN	2011	2032	H	W16	W13	L3	L6	2.5
15 MARTIN NILSSON	2004	2032	L1	W25	L6	W24	D12	2.5
16 ROBERT K MEADOWS	1884	1902	D17	L14	D21	D19	W29	2.5
17 FRANKIE NEWTON	2168	2127	D16	D20	W27	L7	L11	2.0
18 GREGORY HOFFMAN	1978	1967	L26	L9	W25	W21	L10	2.0
19 BRADLEY S WATSON	1977	1971	L7	W29	L4	D16	D25	2.0
20 MARK A MANGONE	1898	1902	D12	D17	L5	W27	L9	2.0
21 JAKE KLEIMAN	1816	1806	H	L5	D16	L18	W27	2.0
22 CARLOS S SIMS	1732	1727	X	L7	L12	L10	W28	2.0
23 PETER BERELOS	2326	2303	W10	D13	L8	U	U	1.5
24 JEFF PENNIG	1922	1920	L8	W10	H	L15	U	1.5
25 REA B HAYES	1900	1900	L4	L15	L18	B	D19	1.5
26 JERRY T WHEELER	2277	2256	W18	L1	L11	U	U	1.0
27 CHRIS FUCHS	1413	1407	L13	B	L17	L20	L21	1.0
28 JEREMY R CARTER	1407	1384	X	L2	L9	L29	L22	1.0
29 JOHN W LEATHER	1902	1859	L2	L19	L10	W28	L16	1.0
30 MILTON C WRIGHT	1998	1996	L6	U	U	U	U	0.0

W=WIN L=LOSS D=DRAW X=FORFEIT WIN F=FORFEIT LOSS H=1/2 PT BYE U=UNPLAYED

### TENNESSEE CHESS ASSOC DUES CHANGE

EFFECTIVE AUGUST 31, 2000 THE STUDENT TCA MEMBERSHIP WILL BE DISCONTINUED. ADULT AND STUDENT MEMBERSHIPS WILL BE AT THE \$10.00 RATE.

# 53RD TENNESSEE OPEN CROSSTABLES

AMATEUR	PRE	POST	1	2	3	4	5	TOTAL
1 DONALD E JACKSON	1726	1753	W35	W20	D6	W7	W4	4.5
2 OTTIE L WEST	1667	1686	L17	W21	W25	W13	W11	4.0
3 SCOTT CANTRELL	1619	1647	L6	W29	W24	W23	W9	4.0
4 JAMES B LEWIS	1594	1656	W23	W8	W9	W11	L1	4.0
5 DEWITT T PULLEN	1765	1757	W33	L13	D20	W19	W12	3.5
6 CHAD ELLER	1645	1665	W3	W24	D1	L12	W16	3.5
7 WAYNE L JENKINS	1547	1584	H	W26	W10	L1	W15	3.5
8 MARK E COBB	1787	1751	W34	L4	D16	D21	W20	3.0
9 JACQUE GUGLIELMI	1675	1673	W12	W17	L4	W18	L3	3.0
10 BRET WILKISON	1672	1652	W22	D16	L7	D20	W21	3.0
11 HUSEIN AUDIC	1670	1666	W19	W14	W13	L4	L2	3.0
12 DALLAS LOVEN	1630	1638	L9	W34	W14	W6	L5	3.0
13 JOSHUA WOLFF	1541	1574	W29	W5	L11	L2	W24	3.0
14 DAVID B BETRAM	1437	1484	W27	L11	L12	W25	W18	3.0
15 HARESH MIRANI	1638	1618	H	W25	D18	D16	L7	2.5
16 JASON KNIGHT	1520	1536	W26	D10	D8	D15	L6	2.5
17 JON L MURRAY	1520	1513	W2	L9	L23	D29	W26	2.5
18 WAYNE L HEDGER	1591	1565	D31	W28	D15	L9	L14	2.0
19 JIMMY D WORLEY	1589	1581	L11	W22	H	L5	D27	2.0
20 PATRICK CUNNINGHAM	1525	1530	W30	L1	D5	D10	L8	2.0
21 ANDREW CRIGGER	1453	1482	D28	L2	W27	D8	L10	2.0
22 FRED GARLINGHOUSE	1452	1442	L10	L19	W33	L26	W29	2.0
23 BILLY R PATTILLO	1452	1476	L4	W27	W17	L3	U	2.0
24 ROY W CLARK	1443	1421	B	L8	L3	W30	L13	2.0
25 KEITH RICE	1401	1401	W32	L15	L2	L14	W30	2.0
26 STEVEN PATTERSON	1238	1247	L16	L7	B	W22	L17	2.0
27 WILLIAM H ORGAIN	1664	1600	L14	L23	L21	W33	D19	1.5
28 STEPHEN MORALES	1633	1610	D21	L18	W30	U	U	1.5
29 BRETT FARRIS	1390	1386	L13	L3	W34	D17	L22	1.5
30 JEREMY T REED	1144	1155	L20	W33	L28	L24	L25	1.0
31 ADAM STEIN	1303	1313	D18	U	U	U	U	0.5
32 JON L MURRAY	1513	1500	L25	U	U	U	U	0.0
33 WILLIAM BELLIFORD	1507	1445	L5	L30	L22	L27	U	0.0
34 ALVIN L HARRIS	1460	1428	L8	L12	L29	U	U	0.0
35 JEREMY R CARTER	1384	1380	L1	U	U	U	U	0.0

W=WIN L=LOSS D=DRAW X=FORFEIT WIN F=FORFEIT LOSS H=1/2 PT BYE U=UNPLAYED

# 53RD TENNESSEE OPEN CROSSTABLES

NOVICE	PRE	POST	1	2	3	4	5	TOTAL
1 SHANNON SHAW	1409	1414	W20	W25	L5	W24	W8	4.0
2 JEFFREY BURROWS	1350	1350	L22	W37	W38	W15	W11	4.0
3 BRIAN MCCORMICK	1308	1321	L8	W41	W34	W28	W10	4.0
4 JERRY SEAY	1290	1308	D16	W35	W14	W9	D5	4.0
5 WARDELL VANCE	1252	1284	38	W17	W1	D7	D4	4.0
6 DANNY GHOLSON	1216	1239	W26	W21	D8	W16	D7	4.0
7 PATRICK CLARK	1191	1233	W28	W18	W10	D5	D6	4.0
8 DAVID DAWSON	1124	1196	W3	W11	D6	W19	L1	3.5
9 CURTIS W LENZ	1337	1309	W37	W23	D19	L4	D16	3.0
10 ADAM STEIN	1313	1289	B	W15	L7	W17	L3	3.0
11 MICHAEL W WHITE	1307	1294	W41	L8	W21	W23	L2	3.0
12 DEWITT PULLEN	1227	1205	D31	L16	W35	W22	D14	3.0
13 GARY F GILLESPIE	1195	1174	L23	W30	L17	W38	W29	3.0
14 EVAN MAH	1172	1193	H	W31	L4	W33	D12	3.0
15 TREY SMITH	1129	1158	W32	L10	W18	L2	W30	3.0
16 NAVID JAFARI	1027	1088	D4	W12	W33	L6	D9	3.0
17 BARTON CAMARATA	1017	1071	W24	L5	W13	L10	W31	3.0
18 TIMOTHY MARTINDALE	911	1044	W27	L7	L15	W39	W28	3.0
19 PATRICK S CARNER	1417	1398	W34	W36	D9	L8	U	2.5
20 ROY B MANNERS	1135	1127	L1	L29	W26	D34	W35	2.5
21 JOSHUA GAO	1047	1060	W40	L6	L11	X	D23	2.5
22 TIMOTHY STALEY	1037	1084	W2	D33	L24	L12	W32	2.5
23 SCOTT A AGE	0	1213	W13	L9	W25	L11	D21	2.5
24 CHARLES MCGINNIS	1243	1221	L17	W39	W22	L1	U	2.0
25 DUSTIN SMITH	1206	1176	W30	L1	L23	L29	W34	2.0
26 JOHN M SMITH	1143	1098	L6	L34	L20	W41	W39	2.0
27 LEWIS T PEARSON	1140	1093	L18	L28	W41	L30	W38	2.0
28 JONATHAN WADE	999	1016	L7	W27	W36	L3	L18	2.0
29 DENNIS L HIGDON	0	1073	L36	W20	L31	W25	L13	2.0
30 WAYNE CARPENTER	885	894	L25	L13	B	W27	L15	2.0
31 STEVE FOUNTAIN	0	1074	D12	L14	W29	D32	L17	2.0
32 JAMES J FISHER	1383	1291	L15	L38	W37	D31	L22	1.5
33 NOAH W KAPLEY	1229	1183	W39	D22	L16	L14	U	1.5
34 MICHAEL ROSS	1168	1149	L19	W26	L3	D20	L25	1.5
35 JONATHAN BEATTY	817	826	H	L4	L12	W37	L20	1.5
36 WILLIAM LEWTER	1147	1128	W29	L19	L28	F	U	1.0
37 MATT STALEY	903	899	L9	L2	L32	L35	W41	1.0
38 ROBERT WEAVER	838	942	L5	W32	L2	L13	L27	1.0
39 RAYMOND HUDGENS	901	875	L33	L24	H	L18	L26	0.5
40 GARY F GILLESPIE	1174	1153	L21	U	U	U	U	0.0
41 GEORGE A DEAN	1072	1007	L11	L3	L27	L27	L37	0.0

W=WIN L=LOSS D=DRAW X=FORFEIT WIN F=FORFEIT LOSS H=1/2 PT BYE U=UNPLAYED

□ Walter Jordan  
 ■ Kent Meadows  
 53rd Tennessee Open

C89

1999

1.e4 e5 2.Nf3 Nc6 3.Bb5 a6 4.Ba4 Nf6  
 5.0-0 Be7 6.Re1 b5 7.Bb3 0-0 8.c3 d5  
 9.exd5 Nxd5 10.a4 I have not seen this try  
 against the Marshall Gambit. It has some merit  
 in that it forces Black to commit on the  
 queenside. b4 11.d4 White should probably  
 accept the gambit and see what happens. After  
 the game move, Black has easy equality. exd4  
 12.Nxd4 Nxd4 13.Qxd4 Bb7 14.c4  
 White makes a committal decision by locking in  
 his White squared Bishop. This allows Black to  
 obtain a slight advantage because the Black  
 Bishops have more scope. 14. Bd2 to clarify the  
 queenside seems more logical. Bf6 15.Qg4  
 Ne7 16.Nd2 Ng6 17.Nf3 Re8 18.Rxe8+  
 Qxe8 19.Bd2 c5 20.Re1 Qe6 21.Bc1 Re8  
 22.Be2 22. Rxe8 leading to a position similar to  
 the game, although still favoring Black, is more  
 accurate. Rxe1+ 23.Nxe1 Ne5 24.Qf4 Qe6  
 25.b3 White misses 25 Nd3 Nxd3 26 Bxd3  
 Qe1+ 27 Bf1 when it is not obvious how Black  
 can strengthen his position. Equality results after  
 27...Qe5. Nc6 Black logically guards b8 and  
 angles for d4 with his knight. However, 25...  
 Nxc4 26 Bc8 27 Nd3 Nd6 gives Black an extra  
 pawn. The pin is awkward, but White has no  
 clear path to take advantage of it. With the text  
 White equalizes. 26.Qe4 Nd4? Black commits  
 an oversight. 26...Qxe4 27 Bxe4 Nd4 28 Bxb7  
 Ne2+ 29 Kf1 Nxc1 30 Bxa6 Nxb3 is probably  
 equal but no means drawn. Both sides have  
 pawns that could be dangerous. 27.Qxh7+ Kf8  
 28.Be3 Bg5?? Black falls apart making a  
 desperate shot. 28...g6 29 Bd1 Qe4 or 29 Bxg6  
 fxc6 30 Qxb7 Nxb3 should favor White, but  
 Black has counterplay. One of the keys to  
 maximizing your rating is to set the most  
 difficult problems for your opponent when you  
 are losing. 29.Qh8+ Ke7 30.Bxg5+  
 Annotations by Doug Eckert.  
 1-0

□ Nilsson  
 ■ Hayes  
 53rd Tennessee Open  
 [Scotch Game]

C45

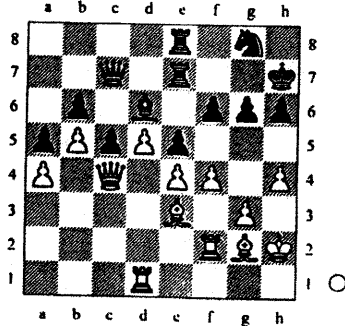
1999

1.e4 e5 2.Nf3 Nc6 3.d4 exd4 4.Nxd4 Qf6  
 5.Be3 Be5 6.c3 Nge7 7.Bc4 Nxd4  
 ECO 3rd Edition gives this idea as dubious and  
 cites 7...Nxd4 8 cxd Bb4 9 Nc3 Bxc3 10 bxc3  
 0-0 11 0-0 Qc6 12 Bd3 d5 13 Qc2 Qg6  
 (Schittidiel - Romanishin, Groningen 1991) as  
 better for White. The current game is similar.  
 8.cxd4 Bb4+ 9.Nc3 c6 10.0-0 0-0 11.Qb3  
 Bxc3 12.bxc3 b5 13.Bd3 d5 14.f3 dxe4  
 Strategically bad. Black voluntarily gives up  
 his remaining central outpost. 14...Be6 15 Qc2  
 h6 is more solid. However, in any case, White  
 maintains an edge with 16 Rael when Black's  
 Queen is short of squares. 15.fxe4 Qe6 16.Qe2  
 g6 This fatally weakens the Black squares.  
 White should focus on the dark squares as a  
 basis for a direct attack. Without a Black  
 Bishop, Black has no way to cover the weakness.  
 16...h6 is better but Black is strategically lost b  
 ecause of White's more active pieces and  
 dominating central control. 17.Rael a5  
 17..f6 to restrain White's center is a final try to  
 hang on for Black. 18.Bh6 Rd8 19.Bg5 Ba6  
 20.Qe2 White prevents Black's b4, but this  
 move is not consistent with a dark square attack.  
 20 Qf2 leaves Black without a good defence to  
 the plan of 21 Qh4 22 Bf6 23 Rf4 24 Qxh7+.  
 Black will be forced to make Material  
 concessions to prevent this. Black next move  
 loses immediately. With 20...Nc8 Black could  
 have prolonged the game and White would have  
 needed to resort to the dark square attacking  
 strategy to further strengthen his position.  
 Rd7?? 21.Rf6 The Queen has no escape.  
 Annotations by Doug Eckert.  
 1-0



□ Pennig, Jeff  
 ■ Wright, M.C.  
 Tennessee Open  
 [notes by Mark ishee]

1.d4 Nf6 2.Nf3 g6 3.g3 Bg7 4.Bg2 c6 5.c4 d6  
 6.Nc3 Qc7!? 7.e4 0-0 8.0-0 e5 9.h3 h6?!  
 10.Be3 Kh7 11.Qe2 Re8 12.d5 c5? 13.a3 a5  
 14.Kh2 Bd7 15.Nd2 Ng8 16.Nb5 Bxb5 17.exb5  
 Nd7 18.Nc4 Nb6 19.Nxb6 Qxb6 20.b4 Qc7  
 21.bxc5 dxc5 22.Qc4 b6 23.Rad1 Bf8 24.f4  
 Bd6 25.Rf2 f6 26.a4 Re7 27.h4 Rae8 @E



28.f5 gxf5? 29.Rxf5 Rf7 30.Bh3 Bf8 31.d6  
 Qb7 32.d7 Rxd7 33.Rxd7+ Qxd7 34.Rxf6 Qd8  
 35.Qf7+ Bg7 36.Rg6 Qf6 37.Rxf6 Nxf6  
 38.Bf5+ Kh8 39.Bxh6  
 1-0

□ Carter, Jeremy  
 ■ Andrews, Todd  
 Tennessee Open

C01

1999

1.e4 c6 2.d4 d5 3.cxd5 cxd5 4.Nf3 Bd6 5.Nc3  
 c6 6.Bd3 Bg4 7.h3 Bh5 8.Be3 Nf6 9.g4 Bg6  
 10.Bxg6 hxg6 11.Bg5 Qc7+ 12.Qe2 Qxc2+  
 13.Kxe2 Nbd7 14.Rac1 0-0-0 15.Kd3 Rdc8  
 16.Rxe8+ Rxe8 17.Rc1 Rh8 18.Ng1 Nf8  
 19.Bxf6 gxf6 20.Re3 Ne6 21.Rf3 Be7 22.Nce2  
 Kd7 23.Nf4 Ng5 24.Re3 Bd6 25.Nfe2 b5 26.f4  
 Ne4 27.Rf3 a5 28.Nc3 Re8 29.Rf1 Nxe3  
 30.Kxc3 Re3+ 31.Kd2 Rg3 32.Ke2 Rg2+  
 33.Kd3 b4 34.f5 g5 35.Nc2 Rh2 36.Rf3 Rh1  
 37.c3 Ra1 38.exb4 axb4 39.a3 bxa3 40.bxa3  
 Rxa3+ 41.Nc3 Bb4 42.Kc2 Rxc3+ 43.Rxc3  
 Bxc3 44.Kxc3 Kd6 45.Kd3 c5 46.dxc5+ Kxc5

E62  
 1999  
 47.Kc3 d4+ 48.Kd3 Kd5 49.Kd2 Ke4 50.Ke2  
 d3+ 51.Kd2 Kd4 52.Kd1 Ke3 53.Ke1 d2+  
 54.Kd1 Kd3 55.h4 gxf4 56.g5 fxf5 57.f6 Ke3  
 0-1

□ Leather, John  
 ■ Wright, M.C.  
 Tennessee Open

C03

1999

1.e4 c6 2.d4 d5 3.Nd2 Nc6 4.c3 e5 5.exd5  
 Qxd5 6.dxe5 Nxe5 7.Ndf3 Qxd1+ 8.Kxd1 Ng4  
 9.Ke1 Be5 10.Nh3 N8f6 11.Bd3 0-0 12.Bf4 c6  
 13.Nd2 Re8+ 14.Kf1 Be6 15.f3 Rad8 16.Bxh7+  
 Nxh7 17.fxf4 Rxd2  
 0-1

□ Loven  
 ■ Pullen, Dewitt  
 Tennessee Amateur (5)

B22

1999

1.e4 c5 2.c3 b6 3.d4 Bb7 4.Bd3 Nf6 5.Qe2 g6  
 6.Nf3 Bg7 7.0-0 0-0 8.Be3 Nxe4 9.Bxe4 Bxe4  
 10.dxc5 Bb7 11.cxb6 axb6 12.Nbd2 d5 13.Nb3  
 Ba6 14.Qd2 Bxf1 15.Kxf1 Nc6 16.Bh6 e6  
 17.Bxg7 Kxg7 18.a3 Qd6 19.Nbd4 e5 20.Nxc6  
 Qxc6 21.Nxe5 Qc5 22.Nd7 Qb5+  
 0-1

□ Burrows, Jeff  
 ■ Smith, Trey  
 Tennessee Novice (4)

B00

1999

1.d4 d5 2.e4 Nc6 3.e5 Bf5 4.c3 e6 5.Nf3 a6  
 6.Be3 f6 7.Bd3 fxe5 8.Bxf5 exf5 9.dxe5 Be7  
 10.Qe2 g5 11.Nxg5 Nxe5 12.Bd4 Bxg5 13.Bxe5  
 Qc7 14.Bxh8 Bc1 15.Nd2 Bxb2 16.Re1 0-0-0  
 17.Qxe7  
 1-0



**2000**  
**TENNESSEE STATE SCHOLASTIC**  
**TEAM CHESS TOURNAMENT**  
*(Open to Tennessee Students Only)*

**REGIONAL QUALIFYING TOURNAMENTS**

**\*\*\*MARCH 11, 2000\*\*\***

**REGION 1**

Glenwood Elem. School  
125 Audubon Road  
Oak Ridge, TN

**REGION 2**

Homestead Elem. School  
U.S. 127 & State Highway 68  
Crossville, TN

**REGION 3**

Charlotte Elem. School  
4000 Highway 48 North  
Charlotte, TN

**REGION 4**

St. Paul United  
Methodist Church  
2949 Davies Plantation  
U.S. Highway 64  
Memphis, TN

*Sponsored by the Tennessee Chess Association*

**CHAMPIONSHIP SECTIONS**

High School (open to grades 12 and below), Junior High (open to grades 9 and below), Elementary (open to grades 6 and below), Primary (open to grades 3 and below)

**ENTRY FEE:** In Advance - \$40.00 per team if mailed by 3-3-00  
Late Entry - \$50.00 per team

*All Teams must register by Wednesday, March 8th at 5:00 pm.  
No changes in team lineup will be permitted after that time.*

**COACHES MEETING:** Saturday 8:15 am

(All teams should have a representative present)

**CHECK-IN SITE:** 7:45 am to 8:15 am Saturday

(All teams must check in at this time

or they will not be paired for the 1st round.)

**ROUNDS:** 4 Round Team Swiss. 1st round at 9:00 am. Other rounds as announced at tournament. (May be less than 4 rounds if less than 5 teams in a section).

**TIME CONTROL:** 60min/Sudden Death

**TROPHIES:** Top 5 teams in each section.

Plaques to top team in each section.

Ribbons to all players except top team.

**B - TEAM DIVISIONS**

**SECTIONS:** Based on the number of teams.

**ENTRY FEE:** In Advance - \$20.00 per team if mailed by 3-3-00  
Late Entry - \$30.00 per team

*All Teams must register by Wednesday, March 8th at 5:00 pm.*

*No changes in team lineup will be permitted after that time.*

**COACHES MEETING:** Saturday 8:15 am

(All teams should have a representative present)

**CHECK-IN SITE:** 7:45 am to 8:15 am Saturday

(All teams must check in at this time

or they will not be paired for the 1st round.)

**ROUNDS:** 4 Round Team Swiss. 1st round at 9:00 am. Other rounds as announced at tournament.

**TIME CONTROL:** 60min/Sudden Death

**TROPHIES:** Based on number of teams. Ribbons to all players.

(Minimum of 2 trophies awarded.)

**STATE TEAM FINALS**

Date: March 25, 2000

Location: Richview Middle School, Clarksville, TN

**Qualification:** Top 4 teams from each championship section in each region may play.

**Rounds/Sections/Time Control:** Same as Regionals

**Entry Fee:** None

**Trophies:** Top 6 Teams in each section. Plaques to top 4 players & coach on top teams.

**Hotel:** Travelodge Hotel

Exit 4 - I-24

(800)531-1900

Mention Tennessee Chess Association

Rate - \$42.00 + tax per night

**Registration:** All teams must be registered with their Regional Scholastic Coordinator by 5 pm on Thursday, March 16th. *NO CHANGES* in a team line-up will be permitted after that time.

**Coaches Meeting:** Saturday 8:30 am

(All teams should have a representative present)

**Check-In Site:** 8:00 am to 8:30 am Saturday.

(All teams must check in at this time

or they will not be paired for the 1st round.)

*Ribbons To All Players Except Top Teams*



## RULES AND REGULATIONS

1. **General Rules.** Each team will play a 4-board match against a different team each round. Two players on each team will play the white pieces and two will play the black pieces. Color will alternate, with boards 1 and 3 having one color while boards 2 and 4 have the other color. Each team will score 1 point, 1/2 point, or 0 points each round. A game score of 2 points for each team is a draw and each team will receive 1/2 point. More than 2 game points per round wins the match for the team, while less than 2 points loses. All teams will play 4 rounds unless the number of rounds in a section is changed because there are less than five teams.
2. **Schools.** A school may enter only one team in each Championship Section. Schools **MUST** play in their geographic region. Team members **MUST** all attend the same school.
3. **Teams.** A team consists of 4 players from the same school. Up to 2 substitutes are allowed for a maximum of 6 players per team. A team must have at least 2 players to participate.
4. **B-Team Division.** A school may not enter a team in the B-Team Division unless it has a team in the corresponding section of the Championship Division. Otherwise, schools may enter as many teams as they wish in the B-Team Division.
5. **Rating.** The latest USCF Rating Supplement will be used. The team rating is the average of the four highest rated players (including substitutes) on the team.
6. **Unrated Players.** Unrated players will be assigned a rating of 600. A team of all unrated players will be assigned a team rating of 600.
7. **Substitutes.** Up to 2 substitutes are allowed per team. All substitutes must be registered (in board order) with their team by the end of registration.
8. **Board Order.** Players may play in any board order regardless of rating, with the order determined by the coach when registering. Board order cannot be changed after registration ends. The team must play in the same board order each round. A team with only 3 players must forfeit Board 4 each round. If a board is to forfeit any round, all remaining players must close ranks to Board 1 for that round.
9. **The Breaks.** If two or more teams tie for 1st place, a 10 minute playoff match will be held to determine the champion. Otherwise, tie-break systems used to break ties for teams tying for trophies or to qualify for the State Finals will be (1) US Team; (2) Median; (3) Solkoff; (4) Cumulative; (5) Total game points for the team; and (6) coin toss.
10. **Dues.** No dues shall be required for any students to play in the regional tournaments. USCF dues will be required for all students at the State Finals.
11. **Equipment.** All participants should bring chess sets, boards, and clocks if they have them.
12. **Miscellaneous.** Unusual situations not covered by these rules will be dealt with by the Tournament Director at the site.

## COUNTIES IN EACH REGION

**Region 1:** Anderson, Blount, Campbell, Carter, Claiborne, Cocke, Grainger, Greene, Hamblen, Hancock, Hawkins, Jefferson, Johnson, Knox, Loudon, Monroe, Scott, Sevier, Sullivan, Unicoi, Union, Washington

**Region 2:** Bledsoe, Bradley, Clay, Coffee, Cumberland, DeKalb, Fentress, Franklin, Grundy, Hamilton, Jackson, Marion, McMinn, Meigs, Morgan, Overton, Pickett, Polk, Putnam, Rhea, Roane, Sequatchie, Van Buren, Warren, White

**Region 3:** Bedford, Cannon, Cheatham, Davidson, Dickson, Giles, Hickman, Houston, Humphreys, Lawrence, Lewis, Lincoln, Macon, Marshall, Maury, Montgomery, Moore, Perry, Robertson, Rutherford, Smith, Stewart, Sumner, Trousdale, Wayne, Williamson, Wilson

**Region 4:** Benton, Carroll, Chester, Crockett, Decatur, Dyer, Fayette, Gibson, Hardeman, Hardin, Haywood, Henderson, Henry, Lake Lauderdale, Madison, McNairy, Obion, Shelby, Tipton, Weakley

**To Enter:** Send the following information for each player: Name, Address, Telephone Number, Date of Birth, Sex, Grade, USCF Identification Number, and email address.

**For Each Team** provide the following information: School Name, School Nick Name, Section Entered, Correct Fee, and coach information.

**Make checks payable and send entry to person listed below for your region:**

**REGION 1**  
Pat Knight  
103 Albion Road  
Oak Ridge, TN 37830  
(865)481-3516  
email:  
pmknight@bellsouth.net

**REGION 2**  
Harry D. Sabine  
P.O. Box 381  
Crossville, TN 38557  
Office (931)484-9593  
Fax (931)456-7624  
Home (931)484-4878

**REGION 3**  
Chris Prosser  
733 Long Hunter Court  
Nashville, TN 37217  
Home (615)399-8432  
email:  
regionIII@aol.com

**REGION 4**  
Bill Cummings  
3532 Davieshire Dr.  
Memphis, TN 38133  
Home (901)372-6584  
email:  
wacummin@bellsouth.net





# REGION III CHESS SCORESHEET

## SCHOLASTIC TOURNAMENTS (call me for info at 615-399-8432)

February 19 - Kenwood M.S. in Clarksville  
February 26 - Meigs Magnet Scholastic in Nashville  
March 11 - Region III Team Tournament in Charlotte  
March 25 - State Team Tournament in Clarksville  
April 9 - New Providence M.S. in Clarksville  
May 6 - Stokes M.S. in Nashville (tentative)

## REGION III HERO

**TODD ANDREWS** - Todd played on the Head Middle School Chess Team that won the State Elementary Team Championship some 7 or 8 years ago (with the coaching of Jim Baringer). When Todd came to Bellevue Middle School, he played guitar in my string class, and played on the Bellevue Chess Team. In the next two years, Todd helped the Bellevue team win the Regional Championship. As an 8th grader, Todd won the State High School Individual Championship. At the beginning of his 7th grade year, Todd was rated about 1000. By the end of his 8th grade year, he was rated over 2000. In the next three years, Todd would lead himself, and his Hume Fogg team mates to several Regional, and State Championships. In the meantime, Todd traveled all over the United States and Europe with some very successful chess results. Locally, Todd coached several school teams, and taught at the Bellevue Chess Camp. Todd is now a Senior, and has won his final State High School Championship (a full listing of winners will be in the next TCN issue). Todd has been among the most successful Chess Players, Coaches, and Students that Tennessee has seen. I wish Todd much luck in his Chess future. He has made Region III very proud.

The TN Regional Scholastic Coordinators meeting will be May 20th. If you have any questions, suggestions, concerns, etc., get them to me.  
Phone - 615-399-8432      E-mail - RegionIII@aol.com

# TENNESSEE CHESS CLUBS

Athens Chess Club  
Mike McGinnis  
423-745-8755

Chattanooga CC  
Joe Dumas  
H (423) 886-7628  
O (423) 755-4084

Chattanooga UTC CC  
Joe Dumas  
H (423) 886-7628  
O (423) 755-4084

Clarksville CC  
Roy Manners  
(931) 552-1839

Columbia CC  
Joe Crump  
(931) 381-2758

Cumberland Co CC  
Harry Sabine  
(931) 484-9593

Dayton CC  
Bruce Barnett  
(423) 775-7000

ETSU Chess Assoc  
Chun Ng  
(423) 917-2219

Goodlettsville, Knights CC  
Wieb van der Meer

Greater Knoxville CC  
Leonard Dickerson  
(423) 966-1095

Kingsport, Indian Springs CC  
Steve Poff  
(423) 279-0697

Memphis Chess Club  
Greg Krog, Jr (club info)  
H (901) 366-7642  
O (901) 495-1261  
Gary Pylant (tourney info)  
(901) 358-1737

Nashville Chess Center  
Alvin Harris, pres.  
(615) 251-5448

Nashville Chess Club  
Peter Lahde  
(615) 361-4588

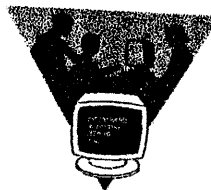
Oak Ridge CC  
Charles Maddigan  
(423) 482-5962

Rutherford Co CC  
Robert Guthrie  
(615) 895-7989

Tipton County CC  
Thomas Stark  
(901) 837-5874

MORE DETAILS ABOUT EACH  
CLUB ARE AVAILABLE ON  
THE TCA WEBSITE:

<http://www.tnchess.org/>



# TENNESSEE CHESS ASSOCIATION 1999-2000 BOARD OF DIRECTORS

## **PRESIDENT:**

ROBERT KENT MEADOWS  
206 30TH AVENUE NORTH  
NASHVILLE TN 37203  
H: 615-320-0394 O: 615-313-5503  
E-MAIL: kent.meadows@nashville.com

## **VICE-PRESIDENT:**

PETER P. LAHDE  
2609 SAILBOAT COURT  
NASHVILLE TN 37217  
H: 615-381-4588

## **TREASURER:**

LEONARD S. DICKERSON  
420 ORAN ROAD  
KNOXVILLE TN 37922  
H: 423-966-1095  
O: 423-574-4676  
F: 423-574-3431

## **SECRETARY:**

BRADLEY WATSON  
123 COOPER CIRCLE  
OAK RIDGE TN 37830  
H: 423-482-2983

## **TN CHESS NEWS EDITOR:**

ANGELA McELRATH-PROSSER  
733 LONG HUNTER COURT  
NASHVILLE TN 37217  
H: 615-399-8432  
E-MAIL: tcanews@aol.com

## **INTERNET CHESS COORDINATOR:**

LEE EDWARDS  
21 VAUGHNS GAP RD APT D-50  
NASHVILLE TN 37205  
H: 615-353-5832  
O: 615-726-3395 F: 800-878-4950  
E-MAIL: Lee\_Edwards@prodigy.net

## **STATE SCHOLASTIC COORDINATOR:**

HARRY D. SABINE  
P.O. BOX 381  
CROSSVILLE TN 38557  
H: 931-484-4878  
O: 931-484-9593 F: 931-456-7624

## **EAST TENNESSEE DIRECTOR:**

MIKE MCGINNIS  
151 COUNTY RD 451  
ATHENS TN 37303  
H: 423-745-6755  
E-MAIL: magennis@usit.net

## **TOURNAMENT COORDINATOR:**

JOE CRUMP  
111 TOMMY DR  
COLUMBIA TN 38401  
H: 931-381-2758 O: 615-770-8406  
E-MAIL: crump@usit.net

## **WEST TENNESSEE DIRECTOR:**

GREG KROG JR  
5390 DERON AVE  
MEMPHIS TN 38115  
H: 901-366-7642 O: 901-495-1261  
E-MAIL: gkrogjr@netzero.net

## **MIDDLE TENNESSEE DIRECTOR:**

ROY MANNERS  
C/O CLARKSVILLE CHESS CLUB  
PO BOX 1146  
CLARKSVILLE TN 37041-1146  
H: 931-552-1839  
E-MAIL: roybintn@juno.com

## **REGIONAL SCHOLASTIC COORDINATORS**

### **REGION 1**

PAT KNIGHT (ACTING)  
103 ALBION RD  
OAK RIDGE TN 37830  
H: 423-481-3516 FAX: 423-483-2599  
E-MAIL: pmknight@bellsouth.net

### **REGION 2**

GARY F. GILLESPIE  
31 BRAMBLETON COURT  
FAIRFIELD GLADE TN 38558  
H: 931-456-6146  
E-MAIL: gfgillespi@aol.com

### **REGION 3**

CHRIS PROSSER  
733 LONG HUNTER COURT  
NASHVILLE TN 37217  
H: 615-399-8432  
E-MAIL: regionIII@aol.com

### **REGION 4**

BILL CUMMINGS  
3532 DAVIESHIRE DR  
MEMPHIS TN 38133  
H: 901-372-6584 O: 901-348-1610