



TENNESSEE CHESS NEWS



Vol. 20, No. 3

Jun-Jul 1978

Tennessee Chess News is the official publication of Tennessee Chess Association, Inc. The publication is bi-monthly. TCA membership, including subscription, is \$3 a year.

TCN EDITOR: John D. Nichols, 825 W. Maple St., Johnson City, TN 37601

TCN POSTAL EDITOR: Stan Bimson, Rt. 2, Box 293, Hendersonville, TN 37075

TCA PRESIDENT: Peter P. Lahde, 2609 Sailboat Court, Nashville, TN 37217

TCA VICE PRESIDENT: James Cobb, 3217 Ozark Circle, Chattanooga, TN 37415

TCA SECRETARY-TREASURER: Harry Sabine, PO Box 381, Crossville, TN 38555

TCA TMT CO-ORDINATOR: Glenn Cornwell, 303 Belinda Dr., Hermitage, TN 37076

TENNESSEE: NO. 2 IN NATION!

by Peter P. Lahde

Many members and affiliates have responded well to the USCF and TCA membership drives, putting us in second place in the contest between the states. USCF membership in Tenn. has increased by 32.4% since USCF began the contest in July 1977. Vermont, which has a much smaller total membership (143) is first with a 44.4% gain. As of 9 March 1978 there were 695 USCF members in Tennessee, exceeding by 70 the previous peak of 625 of the "Bobby Fischer Era." Besides Vermont, we are probably the only state which can make that claim.

There are two additional goals that I challenge every TCA member to help us attain, especially those of you who have not already participated:

1. To become Number 1 among the states in recruiting USCF members. This is a very worthy goal and should not be too difficult to achieve. Besides having the honor of being first, special recognition by USCF, I am sure, would be forthcoming.

2. To reach our own goal of having 1000 or more USCF members in the state. While certainly more difficult to attain, this should not be an impossible task. I dare say that to date only about 10% of TCA members have actively participated in the "Tennessee 1000+ Members" contest. If only half of our members could sign up two new members each, our goal would be surpassed. Remember, the contest ends on 31 August 1978, which is less than three months away.

Let me again explain what you have to do to receive credit for USCF membership by TCA as well as USCF. For any new member you sign up between now and 31 August, you must mail the required dues, as well as the name and address of the member, to the TCA Secretary-Treasurer: Harry Sabine, PO Box 381, Crossville, TN 38555. For Junior and Participating Junior members the date of birth must also be included. [Con't on next page]

(Continued from page 35)

The following dues should be included for the three different types of USCF memberships acceptable by TCA. This includes the Participating Junior Membership, for which USCF does not give credit but TCA gives half credit. As a special bonus, without any additional cost, the TCA membership for a new member signed up from 1 Jun through 31 Aug 1978 will be extended through 31 August 1979.

USCF Adult Membership	\$15.00	(includes TCA membership through Aug 1979)
USCF Junior Membership	\$ 9.00	(includes TCA membership through Aug 1979)
USCF Participating Junior	\$ 4.00	(includes TCA membership through Aug 1979)

PRIZES IN THE "TENNESSEE 1000+ MEMBERS" CONTEST

The Tennessee Chess Association offers the following prizes for bringing in new members to USCF and TCA. (Contest ends 31 August 1978)

Individuals

1st \$100 to person signing up at least 10 new USCF members through TCA

2nd \$ 50 to person signing up at least 6 new USCF members through TCA

(Remember: for TCA credit, a person whose membership in USCF for at least three months still qualifies as a new member.)

Affiliates

1st \$100 (minimum of 25 members gained in cities with population over 100,000)

2nd \$ 50 (minimum of 12 members gained in areas with population under 50,000)

+ + + + + **Advertisement** + + + + +

For several years the CHESS HOUSE has been my only business, and a profitable one, at that. I have recently become involved in real estate and cattle buying. Since my Land & Cattle transactions are expanding, I am no longer able to devote full time to the Chess House. Hence,

For Sale

an interest in one of America's foremost chess businesses

the chess house

The Chess House is the winning combination of a retail store, a mail order discount house, and a chess club.

If you have \$10,000.00 to invest in an established and ongoing business concern, then I can promise you a present return in Excess of 20% per year.

You must be willing to work (play chess with customers, etc.) at least three days per week at additional salary.

For further information:

Jack Winters
% The Chess House
7445 Broadway
Kansas City, MO 64114



Serious inquiries only.

Tel: 816-361-9008

fun with chess

by peter lahde

MAN vs. COMPUTER

What makes the game of chess so fascinating is the fact that the number of possible moves is almost endless. With as many games as have been played, new moves are still being discovered today, even in the opening. On the first move White has 20 possibilities, which then increases to 28, 30 and 33 ways of playing the 2nd, 3rd, and 4th moves respectively. For Black the corresponding numbers are 20, 29, 31 and 33 moves. This adds up to 318, 979, 548,000 ways in which only the first four moves can be played on both sides. No doubt the ratio of plausible moves at every stage is small, but after every allowance has been made for that fact, the varieties of play still remain enormous. The number of ways of playing the first 10 moves on each side is $169,518,829,544 \times 10^{16}$. On this basis, and considering the population of the world to be 4 billion, more than 80 billion years would be needed to go through them all, even if every man, woman, and child on the face of the globe played without cessation for that vast period at the rate of one set per minute, and no set was repeated. [R.N.Coles, The Chess Player's Weekend Book]

In the light of this, isn't it simply fantastic that man has devised computers that can play a decent game of chess that nearly everyone can afford? The best ones actually play at master level. The store manager of the Games Store in Nashville recently asked me to evaluate the Chess Challenger at level 3. So I proceeded to play the computer a game, as follows:

SCOTCH OPENING: Peter Lahde-Chess Challenger: 1 e4 e5 2 Nf3 Nc6 3 d4 d6 4 Bc4 Nf6 5 Ng5 Bg4 6 Bxf7+ Ke7 7 f3 Bh5 8 Bxh5 Nxh5 9 d5 Na5 10 Nc3 Qd7 11 Ne6 g6 12 Bg5+ Ke8 13 Qe2 h6 14 Bd2 Be7 15 Nb5 Bh4+ 16 Kd1 c6 17 Nb5-c7+ Kf7 18 Nxa8 Rxa8 19 Bxa5 Nf4 20 Nxf4. At this point the computer made the impossible move 14 b6xa5. I thought maybe I had made a mistake, so I played the game again, with the computer replying the same way, including the illegal move. But the store manager told me that none of the 14 people who had bought one had returned one.

My advice would be to check the computer out before you purchase it. The quality of the moves made by the computer may be of about Class E level. I certainly think that anyone can get enjoyment from it, particularly lower rated players. The response time by the computer is about 45 seconds per move, which I consider very good. Another computer, though less costly, would take up to several hours before replying.

As for myself, I prefer to wait before I buy one. I feel that in about two years the level of the computer will either reach or be just below Class C. Also the price tag should be between \$50-100. But if you don't want to wait two years or longer, my advice to you is to go and buy one. I am sure you will have lots of fun with it.



DAVID FREITAG WINS NASHVILLE AMATEUR



David Freitag of Murfreesboro won his first tournament by winning four games and drawing only one to runner-up Ronnie Yoder. Yoder, from Elkhart, Indiana, was second with 4-1, ahead on tie-break over Don Sibrel of Franklin and Joe Roberdeau of Nashville.

Bryant Peneul of Waverly had 3.5-1.5 to place 5th and with it obtain the best score for a Class D player. Two other Class D players, Bobby Chapuis and Ronald Edge, scored 3-2 to tie for 2nd in the prize fund for Class D players.

Six players shared in the special prize fund for Class E players and below. (This was awarded because of the good attendance of 17 players in this group.) The six were: Leonard Dickerson, Terry Moffett, Gary Jamison, Gary McMurray, Michael Abron, and Paul Zepelinsky.

The event was well attended with 35 players. Peter Lahde directed for the Music City Chess Association.

Player	Rtng	Rd1	Rd2	Rd3	Rd4	Rd5	Tot
1 David Freitag	1639	W16	W27	W13	D2	W12	4.5
2 Ronnie Yoder (KY)	1660	W28	W5	W3	D1	D4	4.0
3 Don Sibrel	1484	W34	W18	L2	W23	W14	4.0
4 Joe Roberdeau	1696	W30	D17	W6	W14	D2	4.0
5 Bryant Peneul	1389	W24	L2	W25	D10	W13	3.5
6 Bryan McCarthy	1456	W31	W29	L4	D7	W17	3.5
7 Ronald Raith (IL)	1466	L13	W24	W29	D6	W16	3.5
8 Steven Shumate	1451	W32	L13	W27	D9	W15	3.5
9 Bobby Chapuis	1301	W25	D10	D23	D8	D20	3.0
10 Frank Rives	1521	W21	D9	L15	D5	W24	3.0
11 Ronald Edge	1392	D15	W35	L14	D19	W23	3.0
12 David Thistlethwaite	1546	---	W31	W28	W15	L1	3.0
13 Leonard Dickerson	0	W7	W8	L1	D17	L5	2.5
14 D.Scott Smith	1501	W33	D23	W11	L4	L3	2.5
15 Terry Moffett	0	D11	W30	W10	L12	L8	2.5
16 Gary Jamison	1182	L1	---	W20	W18	L7	2.5
17 Ronald Roe	1359	W35	D4	D19	D13	L6	2.5
18 Gary McMurray	1170	W19	L3	D22	L16	W27	2.5
19 Gordon Smead	1585	L18	W34	D17	D11	D21	2.5
20 Steven Choatie	1574	L23	W32	L16	W22	D9	2.5
21 Michael Abron	0	L10	L25	W32	W29	D19	2.5
22 Paul Zepelinsky	0	L27	W33	D18	L20	W31	2.5
23 Wallace Taylor	1032	W20	D14	D9	L3	L11	2.0
24 David Patterson (AL)	0	L5	L7	W34	W28	L10	2.0
25 Barry Wheeler (NC)	0	L9	W21	L5	W30	---	2.0
26 Louis Sampson	0	L29	L28	---	W34	W32	2.0
27 Donald Wing	1264	W22	L1	L8	D31	L18	1.5
28 Bill Conte	1193	L2	W26	L12	L24	D30	1.5
29 Rick Cumby	994	W26	L6	L7	L21	D35	1.5
30 John Bandy (KY)	1236	L4	L15	W35	L25	D28	1.5
31 Barry Kington (KY)	0	L6	L12	W33	D27	L22	1.5
George McGraw (NC)	0	L8	L20	L21	W35	L26	1.0
George Arfken	0	L14	L22	L31	---	D34	1.0
34 Anna Bilyeu	0	L3	L19	L24	L26	D33	0.5
35 Robert Utlev (KY)	0	L17	L11	L30	L32	D29	0.5

-39-
MUSIC CITY SPRING OPEN
(29-30 April 1978)

Player	Rtng	Rd1	Rd2	Rd3	Rd4	Rd5	Total
1 George Holton (AL)	1942	W22	W6	W11	W10	D2	4.5
2 Henry Robinson	2031	W26	W5	W3	WF9	D1	4.5
3 Joe Pharo (AL)	1714	W34	W14	L2	W12	W15	4.0
4 David Freitag	1646	W40	W13	L9	W18	W10	4.0
5 George C. Jamison, Jr.	1547	W46	L2	W45	W25	W11	4.0
6 Steven Choatie	1574	W23	L1	W26	D14	W24	3.5
7 Rick Newman (VA)	1641	W33	W25	L10	W13	D9	3.5
8 Gary McMurray	1162	L10	W35	W44	W16	D12	3.5
9 Michael J. A. Rice (OH)	1851	W38	W27	W4	LF2	D7	3.5
10 David Kushner	1750	W8	W17	W7	L1	L4	3.0
11 Peter Lahde	1680	W29	W28	L1	W17	L5	3.0
12 Jerry Wheeler	1850	W37	D16	W15	L3	D8	3.0
13 Stan Bimson	1358	W20	L4	W43	L7	W30	3.0
14 Ronald Roe	1380	W43	L3	W30	D15	D19	3.0
15 Jimmy Lawson	1600	W32	W30	L12	W28	L3	3.0
16 David Thistlethwaite	1546	W42	D12	D19	L8	W26	3.0
17 Bryant Penue	1389	W35	L10	W29	L11	W25	3.0
18 Everett Blaylock	1370	L41	W32	W31	L4	W29	3.0
19 Robert K. Meadows	1638	LF	W39	D16	W22	D14	3.0
20 Robert Utley (KY)	0	L13	W40	L22	W33	W28	3.0
21 Todd Kinnane	1249	LF	L31	W40	W42	W27	3.0

22-24 (2.5): Morris Lewis, James Burden, Andrew Cagle

25-36 (2.0): William Martin, Bobby Chapuis, Frank B. Rives, John W. Moore, Kirk Barton, George Arfken, Barry Kington, Michael Abron, Mark Holbrook, Rick Cumby, Terry Moffett, Ken Whittaker

37-39 (1.5): Bill Conte, Eric Martin, Paul Zepelinsky

40-45 (1.0): Harry Sands, Tommy Sampson, Joey Hardman, Louis Sampson, Don Si-brel, Donald Wing

46 (0.0): Peter Gregory

Tournament Director: Joe Roberdeau

DYERSBURG SPRING FLING (11-12 MARCH 1978)

The Dyersburg Spring Fling was won by Harold E. Moody. Second in the ten-man race was Gary D. Newsom.

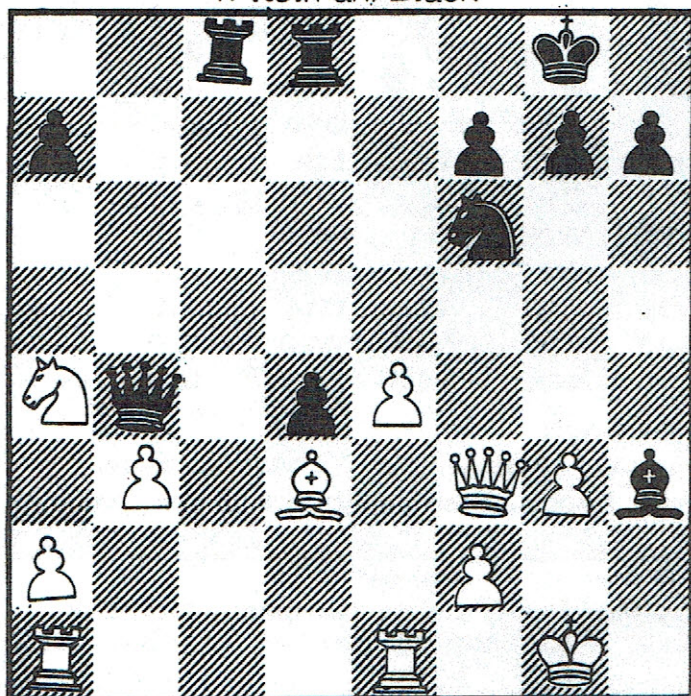
Player	Rtng	Rd1	Rd2	Rd3	Rd4	Rd5	Tot.
1 James R Rackley	1773	W6	W4	L3	W7	L8	3.0
2 James A Wright	1709	W7	L3	L6	W9	W10	3.0
3 Harold E Moody	1706	W8	W2	W1	W6	L4	4.0
4 William M Sulcer	1571	W9	L1	L7	W5	W3	3.0
5 Phillip MacLin, Sr	1563	W10	L6	D8	L4	D9	2.0
6 Robert E Garner	1561	L1	W5	W2	L3	W7	3.0
7 Eulis J Moody	1548	L2	W10	W4	L1	L6	2.0
8 Gary D Newsom	1548	L3	W9	D5	W10	W1	3.5
9 David R Hawkes	1396	L4	L8	L10	L2	D5	0.5
10 Richard E Garner	1260	L5	L7	W9	L8	L2	1.0

GAMES FROM NASHVILLE CHAMPIONSHIP

ENGLISH: Tom Farr-Michael Mitelman

1 c4 e5 2 Nc3 Nf6 3 g3 c6 4 Nf3 e4
5 Nd4 d5 6 cd cd 7 Bg2 Nc6 8 Nc6 bc
9 d3 ed 10 Qd2 Bd6 11 0-0 0-0 12 e4
Qa5 13 Re1 Ba6 14 Qd1 d4 15 Qd4 Be5
16 Qe3 Efd8 17 Bf1 Bd4 18 Qf3 Bc8
19 h3 Be6 20 Bd2 Qb6 21 Be3 c5 22 Na4
Qb4 23 Bd4 cd 24 b3 Rac8 25 Bd3 Bh3?
[diagram]

Mitelman/Black



Farr/White

26 e5! Ng4 27 Bf5! Ne5 28 Re5 Bf5
29 Rf5 d3 30 Rd1 d2 31 Rd5 Rd5 32 Qd5
Rc1 33 Qd8+ Qf8 34 Qd2 Rc8 35 Qd6 Qe8
36 Qd7 Qf8 37 Qa7 Qa3 38 Qd7 Rf8 39 Nc3
Qb2 40 Qc7 h5 41 Rd8 Qc1+ 42 Kg2 Rd8
43 Qd8+ Kh7 44 Qd3+ Kg8 45 Qd8+ Kh7
46 Qd3+ Kg8 47 Ne4 Qc6 48 Qf3 Qe8
49 Nd6 (1-0)

SICILIAN: Tom Farr-Curt Jones

1 e4 c5 2 Nf3 d6 3 d4 cd 4 Nd4 Nf6 5 Nc3 a6
6 Bg5 Nbd7 7 Be2 Qa5 8 Qd2 e6 9 0-0 Be7
10 a3 h6 11 Be3 Qc7 12 f4 b5 13 Bf3 Bb7
14 Rad1 Rc8 15 g4 Nb6 16 g5 Nc4 17 Qf2 Ne3
18 Qe3 hg 19 fg d5 20 e5 Ne4 21 Ne4 Qe5
22 Qf2 de 23 Bg4 0-0 24 g6 f5 25 Bh3 Rf6
26 Qg2 Bd6 27 Nf5 ef 28 Rd6 Qd6 29 Bf5 Qc5+
30 Kh1 Rf5 31 Rd1 Rg5 32 Qh3 (0-1)

SICILIAN: Richard Parsons-J. Jones

1e4 c5 2 c3 Nf6 3 d3 Nc6 4 g3 g6 5 Bg2 Bg7
6 Nf3 d6 7 0-0 0-0 8 Qe2 Qc7 9 Nbd2 b6
10 d4 cd 11 Nd4 Bb7 12 N2b3 Rac8 13 Nc6
Bc6 14 Nd4 Ba8 15 Re1 Qb7 16 Bg5 Rc5
17 Bf6 Bf6 18 Rad1 a6 19 Nc2 b5 20 a3 Rfc8
21 Ne3 Qb6 22 Rd2 a5 23 Nc2 Bc6 24 Bh3
Rc7 25 Qe3 Qb7 26 Bg2 Qb8 27 Bh3 Rc4
28 Qd3 Bb7 29 Rdd1 Qa8 30 Bg2 Qc8 31 Qe3
Bc3 32 bc Rc3 33 Qb6 Rc2 34 Qa5 Ra2
35 Bh3 Qb8 36 e5 Rcc2 37 ed ed 38 Qb5 Qa7
39 Qe8+ Kg7 40 Re3 Rf2 41 Rd6 Qc5 42 Qe5
Qe5 43 Re5 Rh2 44 Bf1 Rh1 mate (0-1)



TORRES TAKES ALABAMA TOURNEY

Luis Torres of Knoxville won the 1st place trophy and split first and second place prize money with runner-up Bob Durrett (4 1/2-1/2) in the Space City Open, held in Huntsville, Alabama, on 11-12 March.

Another Tennessean, Alejandro Barrero of Knoxville, won the Class D/E/Unrated trophy and prize money.

The 20-player event was directed by Wally F. Helgeson.

* CURT JONES AGAIN NASHVILLE CHAMP *

The Nashville Closed Championship, composed of the seven qualifiers from three preliminary sections and the defending champion, was won for the second consecutive year by Curt Jones with a score of 6 1/2-1/2. Curt's father, Joe Jones, tied with Richard Parsons (5-2) to share the 2nd and 3rd place slots.

GAMES FROM NASHVILLE CHAMPIONSHIP

ENGLISH: Finley (1680)-Parsons (1985)

1 Nf3 Nf6 2 c4 c5 3 Nc3 Nc6 4 e3 e6 5 Be2 d5 6 cd Nd5 7 O-O Be7 8 b3 O-O 9 Bb2 b6 10 Bb5 Bb7 11 a3 Bf6 12 Qe2 Na5 13 Bc4 Nc4 14 bc Nc3 15 Bc3 Bc3 16 dc Qf6 17 Rfd1 Qc3 18 Rac1 Bf3 19 Qf3 Qa3 20 Qb7 Rad8 21 Qc7 Rd1+ 22 Rd1 Qa4 23 Rc1 h6 24 e4 Ra8 25 h3 Qa6 26 g3 Qc8 27 Qe7 a5 28 Rb1 Qb8 29 Qd7 a4 30 Qc6 a3 31 f4 g2 32 Ra1 Qd8 33 Kh1 Ra3 34 e5 Qd4 35 resigns.



OLD INDIAN DEF: Joe Jones (1871)-Schofield (1704): 1 e4 d6 2 d4 e5 3 Nf3 Bg4 4 de Bxf3 5 Qxf3 de 6 Bc4 Nf6? 7 Qb3! Bc5 8 Bxf7+ Kf8 9 O-O Nc6 10 Be3 Nd4 11 Bxd4 Bxd4 12 Nc3 Qe7 13 Bc4 c6 14 g4 g6 15 Rad1 Kg7 16 Ne2 Bb6 17 Qh3 Rad1 18 Nc3 Rxd1 19 Rxd1 Qc5? [a] 20 Qe6! Qxf2+ 21 Kh1 Rd8? 22 Rf1 Qh4 23 Qf7+ Kh3 24 Qxf6 Rd2?? 25 Qxh4+ resigns [a] Correct is 19...Bxf2+ 20 Kxf2 Qc5+ 21 K moves Qxc4=.

KING'S FIANCHETTO: Stinson (1683)-Mitelman (2069): Rd 5: 1 g3 e5 2 Bg2 Nf6 3 d3 Bc5 4 Nf3 d6 5 c4 c6 6 O-O h6 7 Nc3 Be6 8 Rb1 Nbd7 9 b4 Bb6 10 a4 O-O 11 Ba3 Bc7 12 Nfd2 Re8 13 e4 Rb8 14 h3 Nf8 15 b5 Qd7 16 Kh2 g5 17 Rh1 Ng6 18 Kg1 Kg7 19 Nf1 Bb6 20 Bc1 d5 21 bc bc 22 ed cd 23 cd Nxd5 24 Bb2 Bd4 25 Nxd5 Bxd5 26 Bxd4 Bxg2 27 Bxe5+ Nxe5 28 Kg2 Rxb1 29 Qxb1 Qd5+ 30 f3 Nxf3 31 Kf2 Nd4 32 Ne3 Qf3+ 33 resigns.



DUTCH DEFENSE: Parsons (1985)-C. Jones

1 Nf3 f5 2 g3 Nf6 3 Bg2 g6 4 O-O Bg7 5 d4 O-O 6 c4 d6 7 Nc3 c6 8 d5 Bd7 9 Re1 Na6 10 e4 fe 11 Ng5 Bg4 12 Qd2 cd 13 cd Qa5 14 Ngxe4 Nxe4 15 Nxe4 Qxd2 16 Bxd2 Bxb2 17 Rb1 Bd4 18 Rxb7 Nc5 19 Rxe7 Nxe4 20 R/1xe4 Bxf2+ 21 Kh1 Rb8 22 Rxc4 Rb1+ 23 Bf1 Rxf1+ 24 Kg2 Bg1 25 Rf4 R/1xf4 26 Bxf4 Bc5 27 Bh6 R/8f2+ 28 Kh3 Rxa2 29 Rg7+ Kh8 30 Rb7 Kg8 31 draw.

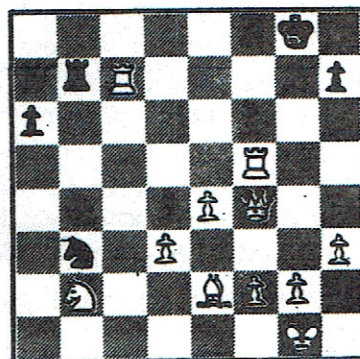
WALTER BROWNE SIMULTANEOUS

US Champion Walter Browne gave a simultaneous exhibition and lecture in Nashville on April 19, while on an abbreviated nationwide tour. The event was sponsored by the Music City Chess Association and the Rivergate Mall. Excellent coverage was received through newspaper and television.

Grandmaster Browne faced 38 "local" players, some of whom came from as far away as Sparta, Tullahoma, and Fort Campbell, KY. He allowed each player to choose the color, so that about three-fourths chose White. After about 3 1/2 hours he had won 37 games and lost only one. This game is given below:

LARSEN'S OPENING: David Thistlethwaite (1568)-Walter Browne (2579):

1 P-QN3 P-Q4 2 B-N2 N-KB3 3 P-K3 P-QB4 4 N-KB3 N-QB3 5 P-Q3 B-N5 6 B-K2 P-K3 7 O-O B-K2 8 P-KR3 BxN 9 BxB O-O 10 N-Q2 N-Q2 11 P-QB4 B-B3 12 PxP PxP 13 BxB NxP 14 B-K2 P-Q5 15 P-K4 R-QB1 16 N-QB4 P-QN4 17 N-N2 R-K1 18 R-QB1 N-N5 19 R-R1 Q-R4 20 P-QR4 P-QR3 21 PxP QxP 22 N-B4 QR-Q1 23 R-R5 Q-Q2 24 RxBP Q-R2 25 R-R5 N-Q2 26 Q-Q2 R-QN1 27 N-Q6 Q-N3 28 Q-B4 R-KB1 29 R-KB5 P-B3 30 N-B4 Q-R2 31 R-QB1 N-B4 32 N-N2 NxNP 33 R-QB7 R-N2 [diagram] 34 RxBP!! RxR 35 R-B8+ K-B2 36 B-R5+ P-N3 37 Q-R6 K-K3 38 B-N4+ K-Q3 39 N-B4+ K-K2 40 Q-N7+ resigns [if 40...R-B2 then 41 Q-K5 mate].



CUMBERLAND COUNTY NEWS

The 6th Annual Cumberland County Junior High and Elementary Tournament, held in Crossville on February 11, had a record turnout of 24 young chess players.

The Junior High division was won by Larry Berney with 4 wins and a draw with second place finisher Tony Gustin, who also did not lose a game, scoring 2 wins and 3 draws. Pamela Campbell was 3rd, also with a score of 3.5. James Hancock took home the 4th place trophy and Keith Lowe, fifth.

The Elementary division was won by State elementary champion Scott Turner with a 4.5 score. Second place went to 3rd grader Mike Mitchell, who was playing in his first tournament. The third place trophy was won by Mike Reagan, with Lee Potter taking 4th and Steve Sabine, 5th place.

Reported by Harry D. Sabine, who directed the event.

Elementary Division	Pre Rtng	Post Rtng	Rd1	Rd2	Rd3	Rd4	Rd5	Tot
1 Scott Turner	1082	1082	W8	W6	W2	D4	W5	4.5
2 Michael Mitchell	0	829	W5	W12	L1	W8	W4	4.0
3 Grover L Potter	453	485	D6	L5	W9	W12	W10	3.5
4 Michael W Reagan	345	406	W9	W11	W12	D1	L2	3.5
5 Steven D Sabine	836	828	L2	W3	W11	W6	L1	3.0
6 Johnny Camilleri	729	689	D3	L1	W7	L5	W12	2.5
7 Barry Lewis	0	203	L11	D10	L6	W9	D8	2.0
8 Trey Meadows	0	388	L1	D9	W10	L2	D7	2.0
9 Jimmy E Holiman	1	66	L4	D8	L3	L7	W11	1.5
10 Kerry L Houston	0	137	L12	D7	L8	W11	L3	1.5
11 Brian Tankersley	265	147	W7	L4	L5	L10	L9	1.0
12 Gary Stockslager	0	260	W10	L2	L4	L3	L6	1.0

Junior High Division	Pre	Post	Rd1	Rd2	Rd3	Rd4	Rd5	Tot
1 Larry L Berney	900	938	W9	W5	W6	W3	D2	4.5
2 Tony J Gustin	1000	1006	D3	D7	W8	W4	D1	3.5
3 Pamela C Campbell	585	806	D2	W10	W7	L1	W6	3.5
4 William Gwin	806	810	L6	W12	W10	L2	W9	3.0
5 Keith Lowe	751	744	W11	L1	L9	W12	W7	3.0
6 James Hancock	685	733	W4	W8	L1	W9	L3	3.0
7 James M Jones	910	871	W10	D2	L3	W8	L5	2.5
8 Terry Burdett	538	545	W12	L6	L2	L7	W11	2.0
9 Steven M Dalton	420	514	L1	W11	W5	L6	L4	2.0
10 Doug Tabor	1031	832	L7	L3	L4	L11	W12	1.0
11 Robert B Jolley	0	369	L5	L9	L12	W10	L8	1.0
12 James G Lack	0	422	L8	L4	W11	L5	L10	1.0

3rd CHATTANOOGA QUADRANGULAR

Section winners of the tourney, held on March 18 and directed by Gary Bawgus, were: A--Brian Worley (3-0), B--Frank Rives (2 1/2-1/2), C--Carlos Hargis (3-0).

CUMBERLAND COUNTY NEWS

Defending state champion Emanuel Tsitsekis won the Cumberland County Spring Open, held in Crossville on April 1, with a perfect score of 4-0.

Tied for 1st in Class C were George Jamison of McEwen, Frank Larimer of Oak Ridge, and William Valentino of Bowling Green, KY, with scores of 3-1. Gary Kendrick of Crossville, Mark Derrick of Lenoir City, Thomas White of Russell Springs, KY, and Edward Gustin of Crossville all tied for the Class D prize. Top 1000-1199 went to Jeffery Wicker of Russell Springs, while the Top Below 1000 was shared by Rick Cumby of Cookeville and Mike Wilson of Russell Springs. Best Unrated was won by Edward Oblow of Oak Ridge.

The tournament was attended by 26 players and directed by Harry D. Sabine.

ID	PLAYER	SI	RING	PRE	POST	1	2	3	4	TDI
10772788	1 TSITSEKLIS, EMANUE	TN	2008		2021	W14	W-8	W-3	W-4	4.0
10220696	2 LAYTON, WILLIAM J	TN	2061		2042	W19	L-7	W13	W-5	3.0
11158692	3 FREITAG, DAVID	TN	1743		1745	W15	W12	L-1	W11	3.0
10244587	4 CARPENTER, RICHARD	TN	1732		1740	W20	W10	W-6	L-1	3.0
10241472	5 COOK, TREVOR L	TN	1659		1679	W21	W11	W-7	L-2	3.0
10241375	6 JAMISON, GEORGE C	TN	1547		1555	W16	W18	L-4	W10	3.0
10910161	7 VALENTINO, WILLIAM	KY	1478		1516	W17	W-2	L-5	W12	3.0
10224217	8 LARIMER, FRANK W	TN	1401		1418	W24	L-1	W20	W14	3.0
11365060	9 OBLow, EDWARD	TN	0		1301	D13	L14	W25	W20	2.5
10774128	10 KENDRICK, GARY WAY	TN	1398		1396	W23	L-4	W18	L-6	2.0
11118453	11 WHITE, THOMAS P	KY	1395		1389	W25	L-5	W17	L-3	2.0
10244145	12 DERRICK, MARK T	TN	1371		1370	W22	L-3	W15	L-7	2.0
11100392	13 ROE, RONALD	TN	1370		1389	D-9	W26	L-2	D18	2.0
10774101	14 GUSTIN, EDWARD L	TN	1235		1248	L-1	W-9	W23	L-8	2.0
10780519	15 WICKER, JEFFREY	KY	1038		1059	L-3	W22	L12	W25	2.0
11249931	16 CUMBY, RICK D	TN	1007		1019	L-6	L25	W19	W24	2.0
11344551	17 WILSON, MICHAEL R	KY	657/4		836	L-7	W19	L11	W23	2.0
11330703	18 PRESSMAN, BRADFORD	TN	1199/7		1258	W26	L-6	L10	D13	1.5
10246679	19 SPOONER, GEORGE W	TN	1244		1194	L-2	L17	L16	W22	1.0
11064353	20 VARNER, ERNIE R	TN	1220		1199	L-4	W24	L-8	L-9	1.0
10774136	21 PEARSON, JR CLINTO	TN	1135		1084	L-5	L23	L22	B--	1.0
11389091	22 ALDERMAN, JONATHAN	TN	945/4		960	L12	L15	W21	L19	1.0
11341802	23 JONES, JAMES MICHA	TN	872/18		868	L10	W21	L14	L17	1.0
11254977	24 MARSEE, DARRYL	TN	746/4		716	L-8	L20	B--	L16	1.0
11368964	25 CRUCE, TOM C	TN	0		985	L11	W16	L-9	L15	1.0
10244447	26 NOONAN, THOMAS R	TN	1680		1623	L18	L13	---	---	0.0

National Jr. High Tournament

Harry Sabine took 9 players from Martin Junior High in Crossville to play in the National Junior High School Tournament in Minneapolis, MN, April 29-30.

The tournament, attended by 196 players, was won by Joel Benjamin with a perfect score of 8-0. Sweet Home of Oregon captured the 1st Team prize with 21 points. Martin scored a total of 15 points, placing 24th out of 35 teams, indicating how well balanced the field was. Martin's top scorer was Keith Lowe (744), who defeated players rated 1440 and 1366, to finish 5-3. All in all, a very creditable performance for a maiden effort in a national tournament, especially when one considers the fact that the team had to spend 20 hours on the road.

Moreover, the Martin Jr. High team was the only one from the South and the first ever to represent TN in this event.

ETSU SPRING OPEN

Player	Rtng	Rd1	Rd2	Rd3	Tot
1 Wm Bickham	1922	W9	W4	W2	3
2 Jeff Mullins	1568	W8	W3	L1	2
3 Robt Goff	1656	W6	L2	W5	2
4 Steve Poff	1394	W7	L1	W6	2
5 Mike Finucane	1150	Bye	W8	L3	2
6 Mike Goins	1272	L3	Bye	L4	1
7 Leon Dickerson	0	L4	W9	L8	1
8 David Quint	1278	L2	L5	W7	1
9 Barry Pope	1284	L1	L7	Bye	1

A small but enthusiastic group showed up for the ETSU Spring Open on Apr 14. Winner was Bill Bickham from Asheville, NC. In addition to being an excellent OTB player, Bill is a First Class Postalite with a 1616 postal rating. He has about 30 postals going now! [My profound thanks to Jim Sims, who unhesitatingly substituted for me as TD when I was called out of town by a family emergency.--John Nichols]



1st FENTRESS COUNTY OPEN

PLAYER	SI	PRE RING	POST RING	1	2	3	4	TDI
1 GUSTIN, EDWARD L	TN	1227	1235	W-8	W10	W-4	W-5	4.0
2 BUCHHEIT, JOHN Q I	TN	896/4	851	W11	L-4	W-8	W-7	3.0
3 CAMPBELL, PAMELA C	TN	815/14	814	W12	W11	L-5	W-9	3.0
4 ROGERS, TALROT W	TN	383/2	583	W14	W-2	L-1	W10	3.0
5 ALDERMAN, JONATHAN	TN	0	945	W15	W-7	W-3	L-1	3.0
6 BUCHHEIT, III JOHN	TN	762/2	797	---	---	W12	W11	2.0
7 CAMILLERI, JOHNNY	TN	658/18	655	W-9	L-5	W13	L-2	2.0
8 BROWN, CORWIN A	TN	0	602	L-1	W14	L-2	W13	2.0
9 BUCHHEIT, JACK T	TN	0	526	L-7	W15	W10	L-3	2.0
10 BOW, SCOTT E	TN	0	450	W13	L-1	L-9	L-4	1.0
11 BUCK, RICKY	TN	0	432	L-2	L-3	W14	L-6	1.0
12 HARVEY, FRED J	TN	0	285	L-3	L13	L-6	W14	1.0
13 TIPTON, MARK D	TN	0	265	L10	W12	L-7	L-8	1.0
14 REAGAN, RONALD G	TN	0	64	L-4	L-8	L11	L12	0.0
15 THREEE, NICK E	TN	0	285	L-5	L-9	---	---	0.0

The first ever chess tournament in Fentress County was held on Mar 11. The event, sponsored by the Cumberland County Chess Club and directed by Harry Sabine, was won by Edward Gustin of Crossville, who scored a perfect 4-0.

1978 CUMBERLAND COUNTY CHAMPIONSHIP

Player	Rtng	Rd1	Rd2	Rd3	Rd4	Tot
1 Harry Sabine	1461	W8	W9	W5	D2	3.5
2 Ron T Wiley	1531	W12	W7	D3	D1	3.0
3 George Spooner	1247	W15	W10	D2	D5	3.0
4 Edward Gustin	1227	W13	L5	W8	W9	3.0
5 Lloyd Story	1518	W6	W4	L1	D3	2.5
6 Pamela Campbell	806	L5	W13	W11	D7	2.5
7 C. H. Pearson	1123	W11	L2	W10	D6	2.5
8 Keith Lowe	744	L1	W14	L4	W12	2.0
9 Talbot Rogers	0	W14	L1	W15	L4	2.0
10 G. Stockslager	260	Bye	L3	L7	W15	2.0
11 Grover Potter	485	L7	Bye	L6	W13	2.0
12 William Gwin	810	L2	D15	W14	L8	1.5
13 Mike Fortenberry	682	L4	L6	Bye	L11	1.0
14 Scott Turner	1082	L9	L8	L12	Bye	1.0
15 John Camilleri	689	L3	D12	L9	L10	0.5

The Cumberland County Championship, held in Crossville on May 6, was won by Harry Sabine. There was a three-way tie between Ron Wiley, George Spooner and Edward Gustin for 2nd place. Thomas P. Collard directed.



HIPPOPHOBIA

A term derived from the Greek words hippos (horse) & phobos (an inordinate fear). Chessplayers afflicted with hippophobia have been known to take great risks to eliminate their opponent's Knight.

Memphis

Memphis Chess Club

★ In the 27-player Bluff City Open, Marty Appleberry edged John F. Hurt after a tiebreak had resolved their 4.5 standoff. Third place was gained by Robert B. Ilderton. Arthur L. Hager directed. [Crosstable and games in this issue.]

★ The 75th Memphis City Closed Championship went to Mahlon Smith when his 4.5 tie with Thomas W. Olsen and Gary M. Pylant was resolved by a tiebreak. The 8-player event was directed by James C. Little. [Crosstable and games in this issue.]

★ The Memphis City Amateur Championship, attended by 24 players, was won by Gregory W. Hood with a 5-0 sweep. Four players, each 4-1, placed second through fifth on tiebreaks in the following order: Bruce M. Ching, Scott Pletcher, Stephen Mathews, and Dwight K. Weaver. Carolyn C. Little directed.

★ In the 4-man 3rd Memphis City Reserve Championship the participants finished in the following order: Randall C. Senn (4-2), Michael S. Bock (4-2), Kenneth Ferguson (3.5-2.5), James Mitchell (0.5-5.5). James C. Little directed.

Pillsbury Chess Club

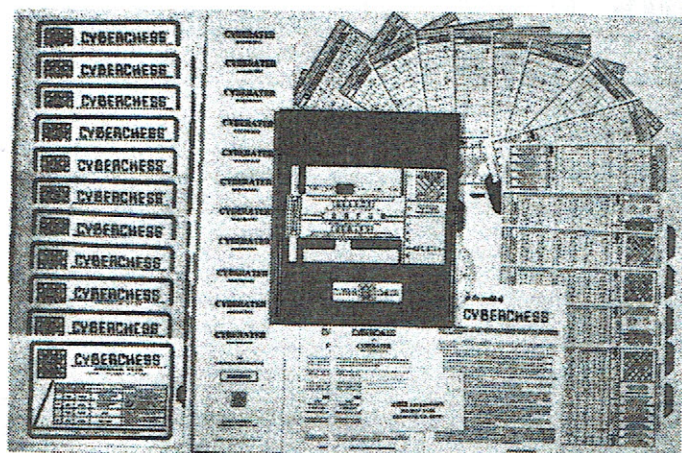
★ In the N. MS - PCC Incentive II, co-sponsored by Ole Miss and the Pillsbury CC, Marty Appleberry posted a clear first of 4.5-0.5, half a point better than Joseph Sentef, Jr., with whom he drew his fifth round game. Gary Pylant, recent MCC co-champion for 1978, took third place after tiebreaks with Robert Williams and John E. Gray (3.5 each). Most Improved, with a performance rating of 449 points over his last-published rating, was Mabry Fowler, who finished with 3 points. Second most improved was John Gray: John, with a performance rating of +161, was gracious enough to split the \$22.50 prize with Gary Pylant, who scored "only" 160 points over his last published rating of 1650. Top D/E/Unr went to Davrish Veiseh, who received \$35 and a book donated by Assistant TD Ed Issa. Second D/E/Unr was split by Mike Denzin and Firooz Keshavarzi. [Crosstable in this issue.]

I [Jack Smith] would like to thank Joe Sentef, who arranged the playing site, which was lovely, with Ole Miss; Ed Issa, who handled publicity and coordination and also acted as assistant TD; Jim Little, who came to sell books at the request of many MS players; and all of the 20 participants who made the tournament a success.

Best Games Awards (1 yr dues to MCA for top game by a MS player, 1 yr dues to TCA for top game by a TN player) will be chosen by non-participants from the respective states.

★ Jack Smith won the 8-man, 3-SS Procrastinated Foolish Tournament, with a perfect score. Ron Minor and Mike Denzin tied for second place with 2-0 scores. The tournament was held at Memphis State on April 2.

★ Mitchell Robinson (4-0) and David Lenz (3-1) won memberships in the USCF in the 5-player Unrated Beginners' "Can You Beat Bobby Fischer?" held on April 1. The remaining three entrants received 1 year's TCA dues as consolation prizes.



PRESENTS

CYBERCHESS

THE MOST
• POWERFUL
• EFFECTIVE
• COMPLETE
SYSTEM FOR THE IMPROVEMENT OF CHESS.

&

THE ONLY
• USER PROGRAMMABLE
• VARIABLE PLAYING STRENGTH
• LOW COST
CHESS PLAYING MACHINE.

Would you like to greatly improve your game? ... Become No. 1 in your club? ... Be known as a powerful and decisive player? ... And boast a rating to match? ... Now you can with CYBERCHESS! ... CYBERCHESS users report the most drastic and fast, almost miraculous increase in their chess prowess.

Did you ever feel the urge to play a game of chess and the frustration of not having a readily available partner? ... Ever want to play somebody much better than you without feeling that certain discomfort of losing to another player? ... Now you can! ... All of the above and much more is yours with CYBERCHESS. A self-contained machine which can substitute for an opponent in a game of chess. A programmable chess partner, always ready, always eager, to challenge you to a game.

CYBERCHESS is a tested, very effective system for the improvement of the individual's chess. It includes the only user programmable, 8 level chess playing machine which uses USCF master pre-programmed game cards to offer an exciting and challenging game to anyone with a 900 to 2200 rating. It features a unique, precise numerical move rating system and exclusive CYBERATER analysis texts for an effortless but extremely powerful way of improving your game.

YOU PROGRAM IT. CYBERCHESS is user programmable. You program it and it's as easy as ABC. You merely insert the CYBERCHESS game cards and that's all there is to it. You are now ready to play against the machine and to learn great chess.

YOU SELECT THE LEVEL OF PLAY AND LEARNING. CYBERCHESS will play against you and you may win or lose depending on how good you are and how good you set the machine to play. CYBERCHESS plays easy or it may be tough, very tough, and you decide. You select the level of play ranging from beginner amateur to top rated pro. 8 levels of play altogether at your fingertips.

A COMPLETE SYSTEM. CYBERCHESS is more than a chess partner or a chess teacher; it is a complete system consisting of:

- The CYBERCHESS machine. A precision made instrument, scientifically designed to develop and maximize your playing abilities and to provide hours of fun playing chess.
- CYBERCHESS program cards. Prepared by USCF rated masters and fine-tuned under carefully controlled conditions to insure a high quality of play and learning for weak and strong players alike.
- The CYBERATER analysis texts. Painstakingly designed by chess masters to provide you with the foundation and knowledge required for great chess; by analyzing and dissecting every one of your moves.
- Continuous support through a constant stream of new CYBERCHESS programs, CYBERATERS, self-gauging and self-improvement tools. A steady supply of everything you need to become a better player.
- The CYBERCLUB. Membership in a CYBERCHESS user group designed to fill all of your chess needs at rock-bottom member prices.

THE MOST AMAZING CHESS IMPROVEMENT PROGRAM EVER DEvised. The CYBERCHESS system is inherently designed to continuously strengthen your game through several effectively proven and hard-hitting ways. It is custom adjusted by you to your own abilities and your own rate of progress. It is highly educational and easy to use by everyone.

- It teaches you naturally and effortlessly, while you are playing, to instinctively recognize the best moves in a given position; by channeling your thoughts towards those moves, and only towards those moves. You learn to be a forceful and decisive opponent with a well-defined goal and a precise and direct way to reach it.
- The unique mathematical move rating system builds your ability to recognize and weigh the merits of good and bad choices by giving you in precise numerical terms the relative strength or weakness of your moves. You no longer wander across the chess board making random, uneducated moves; you become a finely tuned machine who knows that a +1 move is much better than a -5 one, and your opponents will know it too, you will see to that.
- The secret of powerful play is knowledge; precise, accurate and well organized knowledge of sound principles of play. The CYBERATER makes this knowledge a part of your arsenal not by asking you to memorize this opening or that variation; rote memorization is tedious and does not work; but by constantly exposing you to the major tenets of sound strategic and tactical analysis. This know-how is acquired by you effortlessly, in a step-by-step way, while you are playing the machine; by forcing and challenging you to analyze and digest a steady stream of simple but priceless bits of information.
- Want to heighten your combinatorial skills? ... Or improve your attacking ability? ... Or bone up on your defensive strategies? ... CYBERCHESS lets you do just that by allowing you to select the programs with the desired game features and characteristics.
- Would you like to sharpen your opening play? ... Or the midgame? ... Or perhaps the ending? ... Want to improve your ability to play white? Or are the black pieces your weakness? ... Perhaps you would like to learn certain lines of play? ... Combinations? ... Sacrifices? ... Pitfalls? ... Traps? ... Gambits, Variations, Mates? ... Or maybe you just want to play an easy game of chess ... Wallop ... Defeat and humiliate CYBERCHESS just for the fun of it ... You can do all of the above. CYBERCHESS allows you to select your color ... opening lines ... level of play ... desired game features ... serious learning or just fun play ... It's all at your fingertips wherever and whenever you choose.

TESTED AND PROVEN. Just how effective is CYBERCHESS? How well does it work? Here are some comments from CYBERCHESS users.

"It is the best device I have ever seen to improve your chess. I have recommended it to all my friends and allowed them to play it. Now they have ordered it too."

R.O.V. New York, NY.

"I was greatly surprised. CYBERCHESS was 100% better and more challenging than I imagined."

J.M. Warrensburg, MD.

"You are to be congratulated for CYBERCHESS. I am greatly pleased by your remarkable machine. To me it is the chess player's dream come true ... CYBERCHESS is all you promised, I get a good tough game of chess anytime I want it and have already noticed great improvement in the sharpness of my play and my confidence."

M.P.O. Lititz, PA.

"It is the best chess improvement tool ever made."

D.D.N. Portland, OR.

"I am a chess advisor to scholastic teams and find your program an excellent teaching tool."

W.T.N. Wilbraham, MA.

"I may never have to buy another chess book. I have learned more playing it for 2 months than in years of reading books."

R.F. Atwater, MN.

"Since using CYBERCHESS I have beaten a 1688 and a 1464 rated individual in my first two rounds of a tournament. Keep up the good work."

S.B. Aloha, OR. Rating 1296

"Congratulations on a fine product! I just received my machine and am so impressed that I have to write to you immediately. My friends have also ordered your machine. Naturally we were skeptical at first but no more. The machine's ingenious design and the system of number ratings for each move make it an excellent device for spurring on a player to greater efficiency in his move choices. I am a USCF rated expert and have tried the machine at several levels; the games were programmed with inner logic and consistency which is very instructive indeed."

J.P.A. Tallahassee, FL. Rating 2034

"Extremely useful for teaching chess to junior high students. We thank you."

R.H. Yardley, PA.

"CYBERCHESS impressed me a great deal, it more than met expectations."

A.C.S. Burlington, VT. Rating 1670

"Just what I needed! Forces analysis, teaches tactics, punishes needless moves. Approved by a 2000 player. A great tool."

R.H.P. Seattle, WA.

"I like the wide selection of play levels, it can keep me busy for hours."

D.R. Warwick, RI.

"I love it. It is the best new development in chess teaching and chess fun since I have been playing. I can't tell you how much satisfaction I have gotten from it. I use it daily."

C.T.G. Montoursville, PA. Rating 958

"It is teaching me slowly but surely to see more deeply into positions."

J.P.O. Portland, OR.

"CYBERCHESS should do to chess what the transistor has done to electronics; unlimited potential for all."

L.A.B. Chicago, IL.

"It is the best way to improve a person's chess that has been developed."

K.K.B. Bloomsburg, PA.

"An excellent item. I plan to use it as an aid in the chess class I conduct."

P.M.S. Mill Valley, CA.

"It is a great idea. It forces me to analyze positions more carefully."

E.N. Los Angeles, CA. Rating 836

"The program cards offer extremely good study material. I was not expecting it to be this good."

M.F. New Alexandria, PA. Rating 2030

"It is the best thing on the market. It's great."

B.B. Holtsville, NY.

"I have used this magnificent concept in chess and found it to be everything you say and more."

R.H.Z. Chicago, IL.

"CYBERCHESS has helped my chess. I can now concentrate better and since I know what I am looking for I make fewer poor moves."

C.H. Cincinnati, OH.

10 DAYS FREE TRIAL. CYBERCHESS comes to you with an unconditional iron clad guarantee. Try the system for 10 days, use it, test it, show it to your friends, and if it is not everything we say and you are not 100% satisfied just return it within the 10 days and get a complete and immediate refund of all monies sent ... You can't lose.

OTHER FEATURES. CYBERCHESS is the most complete and versatile educational chess program ever devised anywhere. It allows you to use your own chess set, any set at all.

If you are an exceptionally good player, capable of playing a complete game without a chess board; it refreshes your memory by displaying an updated position diagram on every tenth move, which allows you to correct any mistakes and/or verify your position.

It is not a computer and it uses no electricity nor does it require any source of energy at all.

LOW PRICE. You would expect to pay way in excess of \$100.00 for a system of this quality and with an array of features comparable to those listed here. However, CYBERCHESS comes to you complete for the low price of \$29.95. Here's what you get:

- The CYBERCHESS unit. Fully assembled and ready to use.
- A clearly written user manual.
- 3 program packs with 12 complete games.
- 3 CYBERCLUBS with total analysis of every move in all 12 games.
- CYBERCLUB News explaining the club's advantages and your invitation to join free.
- The latest index of additional programs and CYBERCLUBS available. CYBERCLUB members can have the desired new programs and CYBERCLUBS shipped to them automatically at the low member's price of \$2.00 per pack of 4 games and \$1.50 per 4 game CYBERCLUB.

HOW TO ORDER. To order your CYBERCHESS send \$29.95 plus \$1.50 shipping and handling (total of \$31.45). California residents please add 6% sales tax (total of \$33.25).

Make check or money order payable to CYBER ENTERPRISES

Mastercharge and VISA (BankAmericard) O.K. Sorry no C.O.D. credit card customers please give card number and expiration date.

SEND YOUR ORDER TO CYBER. DEPT. 14 P.O. BOX 2066, CERRITOS, CALIFORNIA 90701

We use United Parcel Service for faster delivery; however, since UPS cannot deliver to a P.O. BOX, it is necessary that you always use a street address when ordering. Shipments to a P.O. BOX will be made by U.S. Mail.

CYBER ENTERPRISES is a member of the Cerritos Chamber of Commerce

National and International

SICILIAN: Spassky-L. Ljubojevic

1 P-K4	P-OB4	21 NxR	B-N2
2 N-QB3	N-QB3	22 R-B7	R-N1
3 P-KN3	R-N1	23 N-B5	B-B3
4 P-B4	P-KN3	24 P-R3	P-QR4
5 N-B3	B-N2	25 P-N4	N-K1
6 B-N2	P-QN4	26 R-R7	P-Q3
7 P-QR3	Q-R4!?	27 N-Q7	R-N2!
8 O-O	P-N5	28 R x R	B x R
9 N-K2	P-B5!	29 N-N6	B-R3
10 P-Q4	P x P e.p.	30 P-Q4	N-B2
11 P x QP	Q-N3+	31 P-Q5	B-N4
12 K-R1	P x P	32 B-B3	P-R5
13 R x P	B x P	33 B-Q1	P-R6
14 B x B	Q x B	34 B-N3	N-R3
15 Q-R1	N-B3	35 P-K5	N-N5
16 N/2-Q4	N x N	36 N-B8	B-R5!
17 N x N	P-QR3	37 B-B4	P x P
18 R-B1	O-O	38 P x P	K-B1
19 Q x Q	R x Q	39 N-N6	B-N4
20 R-N3	R x R	40 Resigns (0-1)	

[Bugojna International Tmt, Yugo.]



SICILIAN: Westerinen-Sigurjonsson

1 P-K4	P-QB4	17 Q-KR4	P-N5
2 N-KB3	P-Q3	18 Q x P	B x P
3 P-Q4	P x P	19 R-N1	B-K5
4 N x P	N-KB3	20 N x B	P x N
5 N-QB3	P-QR3	21 R/3-KN3	N-QB3
6 B-KN5	P-K3	22 Q-N7	QR-N1
7 P-B4	P-N4	23 Q x N/7	Q x P+
8 P-K5	P x P	24 K-Q1	N-Q5
9 P x P	Q-B2	25 Q x NP+!	K x Q
10 Q-K2	KN-Q2	26 B-Q8+!	K-R1
11 O-O-O	B-N2	27 R-N8+	R x R
12 Q-N4	Q x P	28 B-B6+	R-N2
13 B-K2	B-B4	29 B x R+	K-N1
14 KR-B1	B x N	30 B x N+	K-B2
15 R x B	O-O	31 R-B1+	K-K2
16 R-Q3	P-B4	32 B x Q	(1-0)

[GHI International Tournament, NY]

Please check all games submitted for publication for accuracy and legibility.

BENONI: Kristensen-Holm

1 P-Q4	N-KB3	22 Q-N3	K-N2
2 P-QB4	P-B4	23 B-QB4	Q-K1
3 P-Q5	P-K3	24 R-KB1	P-R3
4 N-QB3	P x P	25 R x N	N x R
5 P x P	P-Q3	26 B-K5	P x N
6 P-K4	P-KN3	27 Q-N3	K-R2
7 P-B4	B-N2	28 Q x P	N-R4
8 P-K5	KN-Q2	29 N-B5	Q x B
9 N-B3	O-O	30 Q-R6+	K-N1
10 B-K2	P x P	31 N-K7+	Q x N
11 O-O	P-QR3	32 P x Q	N-N2
12 P-QR4	P x P	33 Q x P	P-N4
13 B x P	N-KB3	34 P x R(Q+)	R x Q
14 P-KR3	N-R4	35 Q-N6	B x P+
15 B-R2	N-Q2	36 K x B	P x B
16 P-Q6	P-N3	37 Q x R P	R-N1
17 N-Q5	B-N2	38 Q x P	R x P+
18 N-K7+	K-R1	39 K-B1	N-K3
19 N-N5	B-Q5+	40 P-QR5	R-N5
20 K-R1	B-KB3	41 Q-R2	R-N2
21 R x B	N/4 x R	42 Q-N2+	(1-0)

This game, played in the Copenhagen Championship, was awarded the 1977 game of the year in Denmark by the Danish chess journalists. White is Bjarke Kristensen, not to be confused with Jens Kristiansen, who was chosen Denmark's player of the year.



1978 U.S. JUNIOR INVITATIONAL

Martin Morrison, Executive Director of USCF, has announced that Memphis has been selected as the site for the 1978 U.S. Junior Invitational Championship. Co-sponsors of the event will be the Memphis Chess Club and the Northeast Memphis Optimist Club. The top 8 US players who have not reached their twentieth birthday by Sep 1, 1978, will play in the Faulkner Lounge of Memphis State University Center nightly from 6 to 11 PM, June 18-25.

NATIONAL AND INTERNATIONAL

1978 MEN'S WORLD CHAMPIONSHIP MATCH

On 1 March the President of FIDE received the preferences of the World Champion, Anatoly Karpov, and the Challenger, Victor Korchnoi, for the site of the match. Karpov's list read: 1 Hamburg, 2 Baguio City. Korchnoi's list read: 1 Graz, 2 Baguio City, 3 Tilburg. Both players rejected the cities they had not mentioned. Taking into account the players' wishes and considering the other stipulations of the match regulations, the President selected Baguio City, Philippines, as the site for the match. After consultation with the organizers, the beginning of the match was for Sunday, 16 July. On that day the first game will be played.

BISGUIER WINS NATIONAL OPEN

Grandmaster Arthur B. Bisguier, of Rock Hill, NY, locked first place by defeating International Master Peter Biyiasas, of Canada, in the sixth round of the 12th Annual National Open Chess Championship (19-23 Mar 1978, Charleston, SC). Going into the last round, Bisguier was a full point ahead of the field, then drew with Vitaly Zaltsman.

The score of the critical Bisguier (White)-Biyiasas (Black) game follows: 1 d4 Nf6 2 c4 g6 3 Nc3 Bg7 4 Nf3 0-0 5 Bg5 d6 6 e3 Nbd7 7 Be2 e5 8 0-0 Re8 9 Qc2 c6 10 Rfd1 Qe7 11 Ne4 Qf8 12 Nxd6 e4 13 Bxf6 exf3 14 Bxg7 Qxd6 15 Be5 Nxe5 16 dxe5 Qxe5 17 Bxf3 Bf5 18 Qb3 Re7 19 Rd4 Qc5 20 Rad1 Be6 21 Bg4 f5 22 Be2 b5 23 Qc3 Kf7 24 Rd6 b4 25 Qd4 Qxd4 26 R1xd4 Rc7 27 c5 Rb8 28 b3 a5 29 g4 Re8 30 Bf3 fxg4 31 Rc4+ Kg7 32 Bxc6 R1e7 33 Re4 Bf5 34 Rxe7+ Rxe7 35 Bd5 Rc7 36 e4 Bc8 37 c6 Kf8 38 Kg2 Ke7 39 e5 Ba6 40 Kg6 Be2 41 Kf4 resigns.



GAMES FROM RECENT EVENTS



ENGLISH: Marty Appleberry (2238)-James Wright (1660): 1 c4 e5 2 Nc3 Nf6 3 Nf3 Nc6 4 d3 d6 5 g3 b6 6 Bg2 Bb7 7 0-0 Be7 8 e4 h6 9 Nd5 Qd7 10 Rb1 Nd4 11 Nd4 ed4 12 Ne7 Qe7 13 e5 Bg2 14 ef6 Qf6 15 Re1+ (1-0) [Mid-South]

ENGLISH: Appleberry (2238)-James Rackley (1626): 1 c4 Nf6 2 Nc3 e5 3 Nf3 Nc6 4 d3 d5 5 cd5 Nd5 6 g3 Be7 7 Bg2 Nc3 8 bc3 0-0 9 0-0 Bd7 10 Rb1 Rb8 11 Qc2 Qc8 12 d4 ed4 13 Nd4 Nd8 14 Bf4 Ne6 15 Nf5 Bf6 16 Be3 b6 17 Nd4 Nd8 18 Be4 g6 19 Nb5 Re8 20 a4 a5 21 Rfd1 Nc6 22 Rd7 Qd7 23 Rd1 Qe6 24 Bd5 Qd7 25 Bf3 Qe6 26 Nc7 Qc8 27 Ne8 Qe8 28 Rd6 (1-0) [Bluff City Open]

SICILIAN: Eulis Moody (1681)-Appleberry (2238): 1 e4 c5 2 Nf3 Nc6 3 d4 cd4 4 Nd4 g6 5 c4 Bg7 6 Be3 Nf6 7 Nc3 Ng4 8 Be2 Ne3 9 fe3 0-0 10 0-0 d6 11 Rb1 Bd7 12 Kh1 Ne5 13 Nd5 e6 14 Nc3 a6 15 Qd2 Rc8 16 b3 Qa5 17 Rbd1 b5 18 Nb1 Qd2 19 Nd2 Rb8 20 Rc1 Bh6 21 cb5 Be5 22 Nc6 Bc6 23 bc6 Bd2 (0-1) [Bluff City Open]

MODERN: John Hurt (1892)-Appleberry (2238): 1 e4 c6 2 d4 g6 3 Nf3 Bg7 4 Bd3 d6 5 0-0 Nf6 7 Be3 Nbd7 8 Nbd2 e5 9 c3 Qc7 10 Qc2 h6 11 Rae1 Re8 12 de5 de5 13 Nh4 (1/2-1/2) [Bluff City Open]

NIMZO-INDIAN: Moshe Khatena (1800)-Appleberry (2238): 1 Nf3 Nf6 2 c4 e6 3 Nc3 Bb4 4 Qc2 0-0 5 d4 c5 6 e3 d5 7 a3 Bc3+ 8 bc3 Nc6 9 Bd3 b6 10 0-0 Qc7 11 Bb2 dc4 12 Bc4 e5 (1/2-1/2) [MS-Memphis Match]

BLUFF CITY OPEN

Player	Rtng	Rd1	Rd2	Rd3	Rd4	Rd5	Tot
1 Marty Appleberry	2194	W19	W8	D2	W7	W3	4.5
2 John F Hurt	1750	W15	W16	W6	W10	W8	4.5
3 Robert B Ilderton	2031	W12	W9	W6	W4	L1	4.0
4 Robert E Garner	1561	W22	W13	W17	L3	D7	3.5
5 Harold E Moody	1683	L17	D14	W25	W15	W13	3.5
6 Kenneth Ferguson	1706	W18	W10	L3	D13	D9	3.0
7 James A Wright	1752	W23	D17	W14	L1	D4	3.0
8 James R Rackley	1741	W25	L1	W20	W11	L2	3.0
9 Philip S Maclin, Sr	1562	W26	L3	W16	D17	D6	3.0
10 Ronald L Minor	1835	W20	L6	W19	L2	W18	3.0
11 Frank C Day	1563	L16	W22	W18	L8	W17	3.0
12 Gary D Newsom	1548	L3	W26	L13	W14	W16	3.0
13 Michael S Bock	1755	W21	L4	W12	D6	L5	2.5
14 Owen T Thornberry	1194	W27	D5	L7	L12	W21	2.5
15 Randy W Cope	0	L2	Bye	W21	L5	W22	2.5
16 Louis T Weis	1361	W11	L2	L9	W20	L12	2.0
17 Dwight K Weaver	1418	W5	D7	L4	D9	L11	2.0
18 Robert A Garner	(1450)	L6	W23	L11	W19	L10	2.0
19 Eulis J Moody	1548	L1	W24	L10	L18	W23	2.0
20 Bill Irwin	1528	L10	W27	L8	L16	W24	2.0
21 Gordon E Scott	1479	L13	D25	L15	W24	L14	1.5
22 B.G. Rice	1282	L4	L11	D26	W25	L15	1.5
23 Robert F Stewart	0	L7	L18	Bye	W26	L19	1.5
24 James H Mitchell	1276	---	L19	W27	L21	L20	1.0
25 Warren G Minor	0	L8	D21	L5	L22	Bye	1.0
26 Richard E Garner	1260	L9	L12	D22	L23	D27	1.0
27 Morris L Busby, Jr	1041	L14	L20	L24	Bye	D26	1.0

75th MEMPHIS CITY CLOSED CHAMPIONSHIP

Player	Rtng	Rd1	Rd2	Rd3	Rd4	Rd5	Rd6	Rd7	Rd8	Tot
1 Mahlon Smith	1821	---	1/2	1	1	0	0	1	1	4.5
2 Thomas W Olsen	1571	1/2	---	1	0	1	0	1	1	4.5
3 Gary M Pylant	1632	0	0	---	1	1/2	1	1	1	4.5
4 John Hurt	1892	0	1	0	---	1	1/2	1/2	1	4.0
5 James Wright	1660	1	0	1/2	0	---	1	1/2	1/2	3.5
6 Eddie Middleton	1970	1	1	0	1/2	0	---	0	1	3.5
7 James Rackley	1626	0	0	0	1/2	1/2	1	---	1/2	2.5
8 Frank Day	1576	0	0	0	0	1/2	0	1/2	---	1.0

CORRECTION

In Vol. 20, No. 2 (Apr-May 1978) the following line was inadvertently omitted at the bottom of page 22: [i] 43...RxP 44 B-B7+ is a forced draw. [j] Overlooking White's 47th move. Annotated by Ronnie Yoder.

N. MS - PCC INCENTIVE II

Player	Rtng	Rd1	Rd2	Rd3	Rd4	Rd5	Tot
1 Marty Appleberry (TN)	2199	W5	W16	W4	W3	D2	4.5
2 Joseph Sentef, Jr	2184	W14	W18	W13	D4	D1	4.0
3 Gary M Pylant (TN)	1650	W9	W6	W7	L1	D5	3.5
4 Robert Williams	1803	W17	W8	L1	D2	W6	3.5
5 John E Gray	1553	L1	W20	W11	W10	D3	3.5
6 Mabry Fowler, Jr	1302	W7	L3	W9	W16	L4	3.0
7 Edward G Boeren	1689	L6	W9	L3	W14	W10	3.0
8 Ed Issa	1555	W19	L4	L10	W12	W11	3.0
9 Darivsh M Veiseh	0	L3	L7	W19	W15	W14	3.0
10 John S Dribben	1486	L13	W19	W8	L5	L7	2.0
11 Firooz Keshavarzi	0	L15	W17	L5	W20	L8	2.0
12 Michael C Denzin (TN)	0	L16	L14	W20	L8	W19	2.0
13 Dale C Jones	1824	W10	W15	L2	---	---	2.0
14 M.A. Farrell	1491	L2	W12	D16	L7	L9	1.5
15 Philip S Maclin, Sr (TN)	1563	W11	L13	L6	L9	D17	1.5
16 Jackson Taylor, Jr	(1650)	W12	L1	D14	L6	---	1.5
17 Gordon E Scott	1479	L4	L11	Bye	D19	D15	1.5
18 Frank C Day (TN)	1590	W20	L2	---	---	---	1.0
19 Ronald L Meek (TN)	0	L8	L10	L9	D17	L12	0.5
20 David K Drew (TN)	0	L18	L5	L12	L11	Bye	0.5

PROCRASTINATED FOOLISH TOURNAMENT

Player	Rtng	Rd1	Rd2	Rd3	Tot
1 Ron Minor	1832	W5	L2	W4	2.0
2 Jack Smith	1650	W6	W1	W3	3.0
3 Phil Maclin	1563	W7	D4	L2	1.5
4 Cecil Duke	1300	W8	D3	L1	1.5
5 Mike Denzin	0	L1	W8	W7	2.0
6 David Drew	0	L2	L7	---	0.0
7 Craig Harrison	0	L3	W6	L5	1.0
8 Harry Nelson	0	L4	L5	Bye	0.5

SICILIAN: SMITH-MORRA GAMBIT:

Ronald Roe (1359)-Thomas Noonan (1680)

1 P-K4 P-QB4 2 P-Q4 PxP 3 P-QB3
 PxP 4 NxP P-Q3 5 B-B4 N-KB3 6 P-K5
 PxP? 7 BxP+! (1-0)

[Cumberland County Spring Open]



ENGLISH: Marty Appleberry (2199)-Robert Williams (1803): 1 c4 c5 2 b3 Nf6 3 Bb2 e6
 4 Nf3 d5 5 e3 Be7 6 Be2 0-0 7 0-0 Nbd7 8 Nc3 dxc4 9 bxc4 b6 10 Qc2 Bb7 11 Ng5
 h6 12 Bf3 Bxf3 13 Nxf3 Qc7 14 Ne1 Rfd8 15 f4 Nf8 16 Nf3 Ng6 17 Rad1 a6 18 Ne2
 Rac8 19 Ng3 Ne8 20 f5 exf5 21 Nxf5 Bf6 22 Bxf6 Nxf6 23 Qc3 Qc6 24 Ne5 Nxe5
 25 Ne7+ Resigns (1-0)

This game was awarded the Brilliancy Prize in the N.M.S.-PCC Incentive II tournament.

★ When submitting games for publication, please check and double check score sheets for accuracy and legibility.

GAMES FROM SPACE CITY OPEN

Annotated by Luis Torres

BISHOP'S OPENING: Torres-Holton: 1 e4 e5 2 Bc4 Nf6 3 d3 c6 4 Nf3 d5 5 Bb3 Bd6 [a] 6 Nc3 Be6 7 Bg5 Qa5 8 0-0 Nbd7 9 ed5 cd5 10 Re1 0-0-0 11 Qd2! h6?! 12 Bf6 gf6 [b] 13 Nd5 Qd2 14 Nd2 f5 15 Nc4 ?! [c] Bc5 16 Nc3 e4! 17 de4 f4! [d] 18 Nd5 f3 19 g3 h5!? [e] 20 Ba4! [f] h4 21 Bd7+ Rd7 22 Ne5 hg3 23 hg3 Rdd8 24 Nf3 Rdg8 25 Ne3 Bd7 26 Ne5 Be6 27 Nd3 Bb6 28 Nf4 Bd7 29 Kg2 Bc6 30 Ned5 Bc5 31 Rh1! Rh1 32 Rh1 f5! 33 f3 Bd6 34 Rh6 Bf8 [g] 35 Rf6 fe4 36 fe4 Kb8 37 Kf3 Bd7 38 e5 Bc5 39 e6 Bc6 40 e7 Be7? 41 Rc6! bc6 42 Ne7 Re8 43 Nc6+ Kc7 44 Nd4 Rb8 45 b3 Kd7 46 a4 Rc8 47 c4 Ke7 48 Ke4 Rg8 49 c5 Kd7 50 Nfe2 Rg5 51 b4 a5 52 c6+ Kc8 53 b5 Kb8 54 b6 Kc8 55 b7+ Kb8 56 c7+? [h] Kb7 57 Kf4 Rc5 58 Ne6 Rc4+ 59 Ned4 Kc8 60 Ke5 Rc3 61 g4 Rc4 62 g5 Rc8 63 g6 Resigns.

[a] If 6...de 7 Ng5 Be6 8 Be6 fe6 9 de. 6...Bb4+ is interesting.

[b] If 12...Nf6 13 Ne5 e4 14 Be6+ fe6 15 Nb1 Qc7 16 Qe2 maintaining the pawn.

[c] Better is 15 Nf3 Bc5 16 Nc3! White exchanges a bishop while keeping the pressure. In the game Black sacs a second pawn and obtains full compensation because White's pieces are on the Q-side.

[d] Also strong is 17...Bc4 18 Bc4 Ne5 with compensation.

[e] Stronger is 19...b5! 20 Nce3.

[f] White exchanges an important piece and is able to bring the Knights to the K-side.

[g] If 34...Bf4 35 Ne7+ Kd8 36 Ng8 Bh6 37 Nh6 fe 38 f4! which wins easily.

[h] A gross oversight: White was under the impression that Kc7 was forced.

BOGO-INDIAN DEFENCE: Phero-Torres: 1 P-Q4 N-KB3 2 P-QB4 P-K3 3 N-KB3 B-N5+ 4 B-Q2 Q-K2 5 P-QR3!? BxB+ 6 QNxP P-Q3 7 P-K4 P-K4 8 P-Q5 P-QR4! 9 P-QN4 PxP 10 PxP RxR 11 QxR N-R3!? [a] 12 Q-B3 0-0 13 P-N3 B-N5 14 B-N2 P-B3! 15 0-0 PxP 16 BPxP [b] R-B1 17 Q-N2 Q-B2 18 P-N5 N-B4 19 R-B1 Q-Q1 20 P-KR3 B-Q2 21 N-K1 R-R1! 22 P-B4?! PxP 23 PxP [c] N-R4 24 P-B5 [d] N-B5 25 R-B4 Q-N4 26 N/2-B3 Q-N6 27 P-N6 NxP+ 28 K-R1 N-B7+ 29 K-N1 N/4xKP 30 K-B1 N-Q8! 31 Q-K2 B-N4 32 K-N1 N/5-B7 33 K-B1 BxR 34 QxB N-K6+ 35 Res.

[a] More exact is 11...0-0, forcing White to commit the bishop; now 12 P-B5, even though after PxP Black is slightly better.

[b] Better is 16 KPxP R-B1.

[c] If 23 P-K5 N-R4 24 P-KN4 N-KN6 25 R-B4 N-R5! wins. P-K6 should be answered sometime with B-K1.

[d] If 24 P-K5 NxP 25 R-B4 Q-N4 wins.

TO THE EDITOR

I just received the April-May copy of the Tennessee Chess News, and I must say I am verydelighted with the fine way your publication of chess news in Tennessee is carried out....On a week's vacation last month I traveled to see Nashville and played in one of your USCF tournaments [Nashville Amateur]. I did all right, scoring 3.5 out of 5, but more important to me was meeting so many nice people; they really made me feel welcome! I've played in about a dozen states and Tennessee is by far one of the best. I have told many members in the Lincoln Park Chess Club, Chicago Chess Center, and Chicago Chess Club about the marvelous time I had and how well the tournament functioned. -- Ronald Raith, 1342 W. Wrightwood, Chicago, IL 60614.

Games

SOKOLSKII: Frank Rives (1521)-Bob Shearer (1496): 1 P-QN4 P-Q3 2 B-N2 P-K4 3 P-K3 N-KB3 4 N-KB3 B-K2 5 P-B4 P-QN3 6 N-B3 P-B4 7 P-N5 P-QR3 8 P-QR4 0-0 9 B-K2 B-N2 10 0-0 P-K5 11 N-R4 QN-Q2 12 N-B5 N-K4 13 Q-B2 B-B1 14 NxB+ QxN 15 NxP B-B4 16 NxN+ QxN 17 Q-Q1 Q-N3 18 P-B4 N-N5 19 B-B3 R-R2 20 P-K4 BxP 21 BxN P-B4 22 B-B3 B-Q6 23 B-K2 B-K5 24 R-B2 PxP 25 RPxP R-K2 26 P-Q3 B-N2 27 B-KB3 R/1-K1 28 BxB R-K8+ 29 QxR RxQ+ 30 RxR p-R4 31 R-K7 K-B1 32 R/2-K2 P-R5 33 B-Q5 P-R6 34 R-B7+ QxR 35 BxQ KxB 36 PxP P-N3 37 K-N2 P-N4 38 PxP K-N3 39 P-R4 K-R4 40 R-K5 P-Q4 41 PxP P-KB5 42 K-B3 KxP 43 KxP K-R6 44 P-N6 P-B5 45 P-N7 K-N7 46 P-N8=Q+ K-B8 47 K-B3 P-B6 48 Q-N2 mate (1-0) [3rd Chatt. Quad]

RUY LOPEZ: Frank Rives(1521)-Brian Baxter (1090): 1 P-K4 P-K4 2 N-KB3 N-QB3 3 B-N5 N-KB3 4 0-0 NxP 5 R-K1 N-Q3 6 BxN QPxP 7 NxP B-K3 8 N-QB3 Q-N4 9 P-Q3 Q-B3 10 B-Q2 0-0-0 11 P-QR4 N-B4 12 N-B3 B-Q3 13 B-N5 Q-N3 14 BxR RxB 15 P-R5 P-QR3 16 Q-Q2 P-R3 17 R-R4 B-Q4 18 NxB PxN 19 P-R3 Q-B3 20 P-B3 B-B4 21 P-Q4 B-Q3 22 P-QN4 P-KN4 23 Q-N2 P-B3 24 R-R2 N-R5 25 NxN PxN 26 Q-K2 Q-B5 27 Q-N4+ P-B4 28 QxQ BxQ 29 R2/K2 K-Q2 30 R-K7+ K-B1 31 R-R8 B-Q7 32 RxR+ KxR 33 R-K6 K-Q2 ...and White won on move 43. (1-0) [3rd Chattanooga Quadrangular]

LARSEN'S OPENING: Jack Smith (1650)-Gary Pylant (1650): 1 b3 d5 2 Bb2 Bg4 3 h3 Bh5 4 d3 Nd7 5 g4 Bg6 6 Bg2 e6 7 Nf3 Ngf6 8 Nbd2 h6 9 c4 c6 10 a3 a5 11 Bc3 Bd6 12 b4 ab 13 ab e5 14 c5 Bc7 15 Nh4 Bh7 16 e4 0-0 17 0-0 de 18 de Ra1 19 Ba1 Re8 20 Nf5 Bf5 21 gf5 Nf8 22 Nc4 Qe7 23 Qe2 Rd8 24 Rd1 Rd1+ 25 Qd1 Ne8 26 Qb3 Nh7 27 b5 Qc5 28 bc bc 29 Qc3 f6 30 Qb3 Qb5 31 Qa2 Kh8 32 h4 Nd6 33 Nd6 Bd6 34 Bf1 Qb8 35 Bc3 Nf8 36 Qa6 c5 37 Bb5 g5 38 f5 Qc7 39 Ba5 Qe7 40 Qc8 Kg7 41 Bb6 Qf7 42 Be8 Qe7 43 Bb5 Qf7 (1/2-1/2) [Clocks A Luck -- Pillsbury CC]

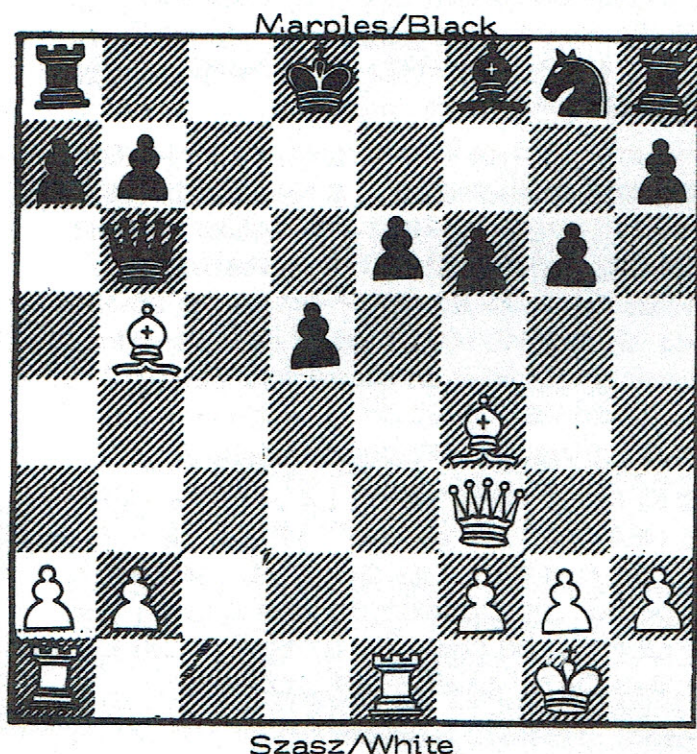
LATVIAN GAMBIT: James Sims-Louis Groeniger: 1 P-K4 P-K4 2 N-KB3 P-KB4 3 B-B4 [a] PxP 4 NxP P-Q4 5 Q-R5+ [b] B-K2 6 B-N5+ [c] P-B3 7 NxNP N-KB3 [d] 8 Q-K5+ B-K2 9 NxB QxN 10 QxQ KxQ [e] 11 B-K2 R-N1 12 P-KN3 B-R6 13 B-B1 [f] BxB 14 RxB N-N5 15 P-KR4 N-QR3 16 P-N3 N-R7 17 R-R1 N-B6+ [g] 18 K-B1 N-N5 19 B-R3 P-B4 20 BxN? PxP 21 P-B3 PxP 22 NxP K-K3 23 R-Q1 QR-QB1 24 K-K2 K-K4 25 R-QB1 P-Q5 26 N-N1 [h] P-Q6+ 27 K-Q1 [i] RxR+ 28 KxR R-B1+ 29 N-B3 P-N4 30 P-QN4 K-Q5 31 K-N2 P-QR3 32 R-Q1 N-K4 33 P-R4 PxP 34 NxP R-B7+ 35 K-N3 N-B5 [j] 36 N-B5 R-N7+ 37 K-R4 R-R7+ 38 K-N3 R-R6 mate (0-1) [MLE/01]
[a] G: conventional development. [b] G: also traditional, as is ...P-N3. [c] G: not useful, as it helps Black later. [d] S: preparatory analysis just overlooked this move. [e] G: Black's gambit has opened his game and brought the King into action. [f] S: plain and simple error. [g] G: very strong post for the Knight. [h] S: my analysis hampered by incorrect notation; i.e., had Black's QR on f8 instead of g8! [i] G: White is tougher if 27 K-K3 [j] G: White is now helpless. --Annotated by Sims (S) and Groeniger (G).

ENGLISH: Rd 5: Joseph Sentef, Jr (2184)-Marty Appleberry (2199): 1 P-QB4 N-KB3 2 N-QB3 P-K3 3 P-KN3 P-Q4 4 PxP PxP 5 P-Q4 P-QB4 6 N-KB3 N-QB3 7 B-N2 B-K2 8 0-0 0-0 9 B-B4 PxP 10 NxP Q-N3 11 NxN PxN 12 P-QN3 B-KB4 13 B-K5 R-K1 14 B-Q4 Q-R4 15 N-R4 QR-B1 16 QR-B1 B-R6 17 BxN PxP 18 QR-B3 B-N5 19 R-B1 B-R6 20 R-B3 (1/2-1/2). [N.MS-PCC Incentive II]

GAMES FROM RECENT EVENTS

FRENCH: C. Szasz (1782)-D. Marples (1792)

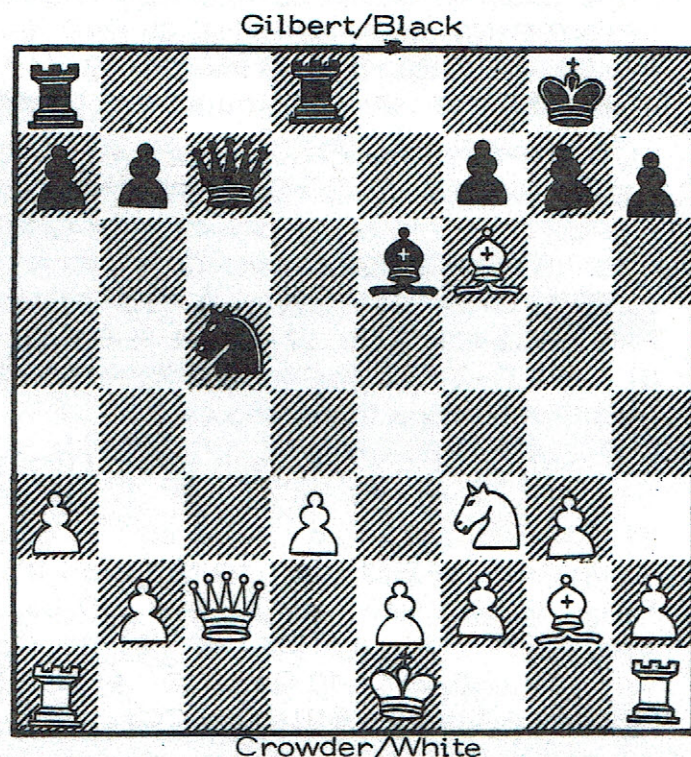
1 e4 e6 2 d4 d5 3 e5 c5 4 c3 Nc6 5 Nf3
Qb6 6 Bd3 Bd7 7 0-0 cd4 8 cd4 Nd4 9 Nd4
Qd4 10 Nc3 Qe5 11 Re1 Qd6 12 Nb5 Bb5
13 Bb5+ Kd8 14 Qh5 g6 15 Qf3 f6 16 Bf4
Qb6 [diagram]



[16...e5? 17 Re5 fe5 18 Be5! Qe5 19 Qf8+
Kc7 20 Rc1+]
17 Qd5+ (1-0) [Charleston]

QGD: P. Crowder (1695)-Gilbert (1468):

1 Nf3 Nf6 2 d4 d5 3 c4 c5 4 dc5 Qa5+
5 Nc3 Qc5 6 cd5 e6 7 de6 Be6 8 Be3 Qc7
9 g3 Bb4 10 Bd2 0-0 11 a3 Bc3+ 12 Bc3
Rd8 13 Qc2 Nbd7 14 Bg2 Nc5 15 Bf6
[diagram]



15...Nd3+ 16 Qd3 Rd3 18 ed3 Qc2+
(0-1) [Twin Tornado #1]

PIRC: David Freitag (1688)-Gerald Larson (1766): 1 P-K4 P-Q3 2 P-Q4 N-KB3
3 N-QB3 P-KN3 4 P-B4 B-N2 5 N-B3 0-0 6 P-K5 KN-Q2 7 P-K6 N-N3 8 PxP+
RxP 9 B-Q3 B-N5 10 P-KR4 P-K4 11 QPxP PxP 12 P-R5 KPxP 13 PxP R-K2+
14 N-K2 PxP 15 B-QB4+ resigns [Music City Winter Open]

SMITH-MORRA GAMBIT ACCEPTED: David Freitag (1688)-Jerry Wheeler (1758):
1 P-K4 P-QB4 2 P-Q4 PxP 3 P-QB3 PxP 4 NxP N-QB3 5 N-B3 P-Q3 6 B-QB4 P-K3
7 0-0 P-QR3 8 Q-K2 N-B3 9 R-Q1 Q-B2 10 B-KN5 B-K2 11 QR-B1 P-QN4 12 BxNP
PxP 13 NxP Q-N3 14 NxP+ BxN 15 RxB B-N2 16 Q-B4 QR-B1 17 RxP+ PxR 18 QxP+
K-B1 19 Q-Q6+ K-N1 20 Q-K6+ K-B1 21 N-K5 R-B2 22 BxN NxN 23 BxP+ KxB
24 QxN+ K-R3 25 RxR R-KB1 26 Q-N7 K-R4 27 QxP+ K-N4 28 R-N7+ res. [MCWO]

SICILIAN: David Freitag-MTSU Computer: 1 P-K4 P-QB4 2 N-KB3 P-Q3 3 P-Q4
PxP 4 NxP N-KB3 5 N-QB3 P-QR3 6 B-KN5 P-K3 7 P-B4 B-K2 8 Q-B3 Q-B2
9 0-0-0 0-0 10 B-Q3 N-B3 11 NxN QxN 12 Q-N3 Q-B2 13 B-R6 N-K1 14 P-K5
K-R1 15 BxP+ NxB 16 BxP KxB 17 R-Q3 PxP 18 Q-R3+ K-N1 19 PxP B-N4+
20 K-N1 R-Q1 21 KR-Q1 RxR 22 RxR B-Q2 23 Q-N4 B-K2 24 R-N3 B-KB1 25 N-K4
R-B1 26 N-B6+ resigns.

Games

Music City Spring Open

LARSEN'S OPENING: D. Thistlethwaite (1546)-G. McMurray (1162): 1 b3 e5 2 Bb2 Nc6 3 e3 d5 4 Nf3 Bd6 5 Bb5 Qe7 6 0-0 Nf6 7 Re1 Bg4 8 Be2 e4 9 Nd4 Qe5 10 g3 h5 11 Qc1 h4 12 Nb5 Qh5 13 Nd6+ cd 14 Bg4 Ng4 15 Kg2hg 16 Rh1 Qh3+ 17 Resigns

ALEKHINE'S DEFENCE: H. Robinson (2031)-Joe Pharo (1714): 1 e4 Nf6 2 e5 Nd5 3 d4 d6 4 c4 Nb6 5 f4 de 6 fe Nc6 7 Be3 Bf5 8 Nc3 e6 9 Nf3 Be7 10 d5 Nb4 11 Nd4 Bg6 12 a3 c5 13 Ne6! fe 14 ab cb 15 Na4 Na4 16 Qa4+ Kf7 17 Be2 ed 18 0-0+ kg8 19 cd Qd5 20 Rac1 Qe4 21 Qb3+ Resigns

GRUENFELD DEFENCE: P. Lahde (1680)-G. Holton (1942): 1 P-Q4 N-KB3 2 P-QB4 P-KN3 3 N-QB3 P-Q4 4 B-B4 B-N2 5 P-K3 0-0 6 PxP NxP 7 NxN QxN 8 BxP N-R3 9 B-N3 B-B4 10 P-QR3 QR-B1 11 N-K2 [a] R-B7 12 N-B3 Q-R4 13 R-R2 KR-B1 14 P-N4? [b] NxP!! 15 PxN QxP 16 RxR BxR 17 QxB RxN 18 Q-Q2 Q-N8+ 19 Q-Q1? R-B8 20 B-K2 Q-N5+ 21 K-B1 RxQ+ 22 BxR Q-Q7 23 Resigns. [a] Book is 11 N-B3 R-B7 12 P-N4 Q-N6 13 BxN Q-B6+ 13 K-B1 PxB which equalizes. [b] 14 BxN! PxB 15 P-N4 R/7xN 16 PxQ R-B8 17 0-0 RxQ 18 RxR wins for White. Notes by Lahde.

King Cotton Open

BENONI: D. Marcott (1782)-M. Appleberry (2198): 1 d4 Nf6 2 c4 c5 3 e3 g6 4 Nc3 Bg7 5 Nf3 0-0 6 Be2 cd4 7 ed4 d5 8 0-0 Nc6 9 h3 dc4 10 Bc4 Na5 11 Be2 Be6 12 Be3 Nd5 13 Ne4 Nc4 14 Neg5 Nce3 15 Ne6 fe6 16 fe6 Ne3 17 Qb3 Nf1 18 Qe6+ Kh8 19 Bf1 Bd4+ 20 Kh1 Bf6 21 h4 Qb6 22 Qe4 Qc6 23 Qe2 Rac8 24 h5 Qc5 25 Resigns

NIMZO-INDIAN: F. Day (1593)-G. Newsom (1505): 1 d4 Nf6 2 c4 e6 3 Nc3 Bb4 4 a3 Bc3+ 5 bc3 d6 6 Nf3 Nbd7 7 e3 0-0 8 Bd3 e5 9 e4 Re8 10 Qc2 ed4 11 cd4 Ne4 12 Be4 f5 13 Ne2 fe4 14 0-0 Nf6 15 Re1 Bf5 16 Nf1 Qe7 17 Ne3 Re7 18 Rb1 b6 19 Rb5 Bg6 20 Bd2 Rf8 21 h3 R7f7 22 Bc3 Nh5 23 Rf1 Nf4 24 Qb2 Bh5 25 Resigns

MODERN: R. Minor (1796)-J. Smith (1653): 1 e4 d6 2 d4 Nf6 3 Nc3 g6 4 f4 Bg7 5 Nf3 c5? 6 d5 e6 7 de6 fe6 8 e5 Nfd7 9 Qd6 Qe7 10 Nb5 Qd6 11 Nd6+ Ke7 12 Be3 b6 13 0-0-0 Resigns

ENGLISH: D. Weaver (1418)-J. Smith (1653): 1 c4 e5 2 Nc3 f5 3 g3 Nf6 4 Bg2 d6 5 e3 Be7 6 Nge2 c6 7 0-0 Be6 8 b3 Nbd7 9 Bb2 0-0 10 d4 e4 11 d5 Bf7 12 dc6 bc6 13 Nd4 Ne5 14 Nf5 Bh5 15 Qc2 Nf3+ 16 Kh1 d5 17 Ne7+ Qe7 18 cd5 cd5 19 h3 Qd7 20 Ne2 Ng4 21 hg4 Bg4 22 Ng1 Qf5 23 Nf3 ef3 24 Qf5 Rf5 25 Kg1 fg2 26 Rfc1 Bf3 27 g4 Rg5 28 Bd4 Rg4 29 Kh2 h5 30 Kh3 Raf8 31 Be5 Be4 32 f4 g5 33 Rc7 Rf7 34 Rf7 Kf7 35 Rg1 Rh5+ 36 Kg3 Rh1 37 Resigns

ENGLISH: D. Weaver (1418)-R. Waldrip (1200): 1 c4 e5 2 Nc3 Nf6 3 g3 Bb4 4 Bg2 Nc6 5 Nf3 0-0 6 0-0 d6 7 a3 Bc3 8 dc3 Be6 9 b3 Ne4 10 Bb2 f5 11 Ne1 Ng5 12 e3 f5 13 ef4 ef4 14 Nd3 f3 15 Resigns

Emerald Knight

QGD: J. Wright (1709)-J. Hurt (1811): 1 d4 d5 2 c4 e6 3 Nc3 Nf6 4 Nf3 Nbd7 5 cd5 ed5 6 e3 b6 7 Bd3 Bb7 8 Qc2 c5 9 0-0 Be7 10 dc5 bc5 11 b3 0-0 12 Bb2 Rc8 13 Rac1 Qa5 14 Rfd1 d4 15 Ne2 Bf3 16 gf3 Ne5 17 Kg7 Nd3 18 Rd3 Nd5 19 a3 Qa6 20 Qd1 Qg6+ 21 Ng3 f5 22 f4 Rfd8 23 Qf3 h5 24 Qh5 Qc6? (Qh5!) 25 Kg1 g6 26 Qf3 de3 27 fe3 Qe6 28 Be5 Nf6 29 Rd8+ Rd8 30 e4 Ng4 31 ef5 gf5 32 Re1 Qh6 33 Qe2 Rd3 34 Nf5 Qh3 35 Ne7+ Kf7 36 Nf5 Kg6 37 Bc7 Resigns

POSTAL CHESS by Stan Bimson

MLE/GPO
\$400 PRIZE FUND

MLE/GPO: Prize fund of \$400, based on 50 entries; assignments are in 7-man sections with mixed classes; each plays White with three and Black with three. Play will be for three rounds.

Entry fee is \$3 per section and you may enter more than one section. TCA membership is required. For more details and an entry form, see January issue of TCN.

Ratings (only those which have changed since last report are listed):

Bennett	589	Jordan	491	Ramondt	500
Bimson	512	Logue	834	Sawyer	753
Greer	474	Noonan	696	Searles	877
Groeniger	524	Nuckols	582	Sims	404
Irwin	656	Oats	400	Stampler	417
Ishee	578	Ousley	543	Towery	359
Jones	984	Pylant	399		

Game results:

TF/74: Logue 1 Bennett; Logue, Searles, Bennett, Ishee 1F Jordan

MLE/01: Groeniger, Sims, Pylant, Ousley, Irwin 1F Towery

MLE/02: Bimson 1 Irwin; Stampler 1 Bennett; Nuckols 1 Stampler

MLE/03: Jones 1 Sawyer, ousley; Ramondt 1 Greer; Noonan 1 Sawyer; Sawyer 1 Ousley

Challenge Matches: See last issue for details. A full report will be given in the August-September issue of TCN.

CLUB DIRECTORY

Additions to the club directory published in previous issues:

HENDERSONVILLE Hendersonville Chess Club
St Joseph's Episcopal Church, Gallatin Road
Tuesday nights, 7 PM
Stan Bimson, Rt 2, Box 293, Hendersonville, TN 37075

KNOXVILLE Greater Knoxville Chess Club
YMCA (West Branch), N. Winston Road
Tuesday nights, 6-11 PM
Emmanuel Tsitsekliis, 1733 McClung Ave, Knoxville 37920

All chess clubs in the state, whether affiliated with USCF or not, are requested to send TCN the following information for publication: name of club; time and place of regular meetings; name and address of an officer. In particular, we would like to hear from high school, prison, industrial, and fraternal clubs.

TCN Deadlines

The following are the deadline dates for tournament announcements for each issue of Tennessee Chess News. Dates refer to date of receipt by the Editor.

<u>Rec'd by Editor</u>	<u>For tnmts starting</u>	<u>Publ. in</u>
Nov 16 thru Jan 15	Feb 15 thru Apr 14	Feb issue
Jan 16 thru Mar 15	Apr 15 thru Jun 14	Apr issue
Mar 16 thru May 15	Jun 15 thru Aug 14	Jun issue
May 16 thru Jul 15	Aug 15 thru Oct 14	Aug issue
Jul 16 thru Sep 15	Oct 15 thru Dec 14	Oct issue
Sep 16 thru Nov 15	Dec 15 thru Feb 14	Dec issue

Note that these are the same deadlines as those for CL&R, adjusted to reflect the fact that TCN is a bi-monthly publication. Other materials submitted for publication must reach the Editor by the last date in Column I to be published in the issue shown in Column III. These dates are absolutely firm and apply to everyone.

Please do not wait until the last minute. It is never too soon to send stories, games, crosstables, announcements, etc., for publication.

Subscribers are reminded that TCA memberships and TCN subscriptions expire as of 31 August 1978. All current members will receive the August-September issue of TCN. If the mailing label on this issue does not read "EXP 79" please renew your membership immediately through your local chess club or by mailing your dues to the Secretary-Treasurer by 9 September to ensure uninterrupted delivery of the magazine. Make all checks payable to Tennessee Chess Association.

TCA/TCN rates are scaled as follows:

Jan -Aug 78	\$2.00	Expires 31 August 1978
May-Aug 78	\$4.00	Expires 31 August 1979
Sep-Dec 78	\$3.00	Expires 31 August 1979
Jan-Aug 79	\$2.00	Expires 31 August 1979

We mail TCN early enough for you to get your copy by the 15th of the issue month. If your magazine is constantly late, we suggest that you fill out a Consumer Service Card at your local post office. If you are moving, please inform the Editor as soon as possible of your new address, as the post office will not forward the magazine to you unless you guarantee to pay the postage.

Name _____ Date _____

Address _____ Amount enclosed: \$ _____

City _____ State _____ ZIP _____

Mail to: Harry Sabine, PO Box 381, Crossville, TN 38555.
Checks payable to: Tennessee Chess Association.

Tournament Calendar

TENNESSEE REGIONAL CHAMPIONSHIPS

ALL: 5-SS, 50/2. **EF:** \$15. TCA membership required (\$2). **\$\$** top 2 each 25 toward expenses to State Closed Championship, B, C, D, E/Unr. each 33-22 (based on 50 entries); trophies to 1st, top B, C, D, E/Unr. **LS.**

- JUN 10-11 * **WEST TN:** Open to residents of West Tennessee only. Howard Johnson's Motor Inn, 3280 Elvis Presley Blvd., Memphis 38116. **Reg.** 8:30-9 AM. **Rds.** 9:30-2-7, 9-2. **ENT:** James Little, 1147 Brower Rd., Memphis, TN 38111.
- JUN 17-18 * **MIDDLE TN:** Open to residents of Middle Tennessee only. Admiral Benbow Inn, 823 Murfreesboro Rd., Nashville 37217. **Reg.** 8-9 AM. **Rds.** 9:30-2-7, 9-2. **ENT:** Music City Chess Association, 303 Belinda Drive, Hermitage, TN 37076.
- JUN 17-18 * **EAST TN:** Open to residents of East Tennessee only. Fairfield Glade Resort, Peavine Rd., Crossville 38555. **Reg.** 6-9 PM 6/16, 7-8:30 AM 6/17. **Rds.** 9-2-7, 9-2. **ENT:** Harry D. Sabine, PO Box 381, Crossville, TN 38555.



- JUL 22-23 **MUSIC CITY SPRING OPEN** (Nashville). 5-SS, 50/2, Admiral Benbow Inn, 823 Murfreesboro Rd., Nashville 37217. **EF:** \$15. TCA mem. req. (\$2) of state residents, other states OK. **\$\$:** 100-50-25, B, C, D, E/Unr each 25-15; trophy to 1st. **Reg.** 8-9 AM. **Rds.** 9:30-2-7, 9-2. **ENT:** Music City Chess Association, 303 Belinda Dr., Hermitage, TN 37076.
- JUL 22-23 **TENNESSEE STATE CLOSED CHAMPIONSHIP.** Admiral Benbow Inn, 823 Murfreesboro Rd., Nashville 37217.
- AUG 5 **ETSU SUMMER OPEN** (Johnson City). 3-SS, 45/90. D.P. Culp University Center, Johnson City 37601. **EF:** \$8. TCA mem. req. (\$2) of state residents, other states OK. **\$\$:** (based on 30 entries) 100-50-25-15, upset 10. **Reg.** 9:30-10 AM EDT. **Rds.** 10:30-2-5:30. **ENT:** John Nichols, 825 W. Maple St., Johnson City, TN 37601.

TENNESSEE CHESS ASSOCIATION, INC.

John D. Nichols, Editor

Tennessee Chess News

825 W. Maple St.

Johnson City, TN 37601

NONPROFIT ORGANIZATION

U. S. POSTAGE

PAID

KINGSPORT, TENNESSEE

PERMIT NO. 321

Robert Kent Meadows

3000 S. ...

Franklin, TN 37064