



# TENNESSEE CHESS NEWS

## SPRING/SUMMER 2006

VOLUME 49

NO. 3

REA HAYES OPEN .....	4
SCHOLASTIC DEVELOPMENT .....	12
TENNESSEE SENIOR OPEN .....	15
MEMPHIS CHESS ACTIVITY .....	16

---

---

### Tennessee Chess Association Tournament Calender from the TCA Website

Aug. 27– Sept 1, 2006	United States Senior Open Opryland Hotel, Nashville, TN Harry Sabine                      931-484-9593
September 1–3, 2006	60 <sup>th</sup> Tenn. Open Championship & Scholastic Opryland Hotel, Nashville, TN Harry Sabine                      931-484-9593
October 14, 2006	Cumberland Co. Fall Open Crossville, TN Harry Sabine                      931-484-9593
October 14–15, 2006	Memphis Chess Classic Memphis, TN Memphis Chess Club <a href="mailto:gplyant@gmail.com">gplyant@gmail.com</a>
October 14, 2006	Memphis Scholastic Chess Classic Memphis, TN Memphis Chess Club <a href="mailto:gplyant@gmail.com">gplyant@gmail.com</a>

TENNESSEE CHESS NEWS is the official publication of the Tennessee Chess Association.

**MEMBERSHIIPS**

TCA annual dues are \$10 for a *regular* membership or *student* membership. Additional members of a family my join for one dollar each, but only one issue of TCN will be mailed per family. For those wishing to join after April 1 of any year, a \$15.00 membership is available for the remainder of that year and includes the following year. All non-patron memberships expire August 31.

**Tax-deductible Patron Memberships** are available beginning at \$100 per year for those who wish to help support the TCA and the FFTC. These memberships expire one year from the date of payment. Patron membership categories and benefits are as follows:

**PATRON \$100**

- One year TCA Membership and FFTC membership plus a key ring.

**PATRON KING \$300**

- All Patron benefits plus one year free TCA and FFTC membership for all members of the Patron King's immediate family & free entry into the TN State Scholastic Individual Regional Tournament for the member and all members of the Patron King's immediate family.

**PATRON MASTER \$500**

- All Patron King benefits plus one free entry to any TCA or FFTC sponsored Open Chess Tournament. The Patron Master or any member of his/her immediate family can use such free entry.

**PATRON GRANDMASTER \$1000 (or more)**

- All Patron Master benefits plus a chess clock and their name on a permanent plaque to be placed on the wall at the home of the TCA and FFTC.

**TOURNAMENT ANNOUNCEMENTS**

TCN prints listings of upcoming tournaments that require TCA membership in each issue for free. Submit complete TLA information to Paul Semmes, Tournament Coordinator.  
E-MAIL: [paulsemmes@charter.net](mailto:paulsemmes@charter.net)

**TN CHESS NEWS STAFF**

**Editor:**

Leonard Dickerson

**Contributors:**

Peter Lahde  
Patricia Knight  
Alvin Harris  
Memphis Website

TCN publishing schedule and deadline for submissions:

Spring 2006 - May 1 covering Feb, Mar, and Apr events

**Deadline: Apr 9, 2006**

Summer 2006 - Aug 1 covering May, Jun, and Jul events

**Deadline: July 9, 2006**

Fall 2006 - Nov 1 covering Aug, Sept, and Oct events

**Deadline: Oct 9, 2006**

Winter 2007 - Feb 1 covering Nov, Dec, and Jan events

**Deadline: Jan 9, 2007**

Please submit material by e-mail to: [lsdick@tds.net](mailto:lsdick@tds.net)



**TENNESSEE CHESS ASSOCIATION & FOUNDATION FOR TENNESSEE CHESS**

**PATRON MEMBERS**

**Patron Grandmaster**

George A. Dean

Dr. Martin Katahn

**Patron Member**

Dr. Juan T. Aristorenas

Scott Eddins

Gary Gillespie

Peter P. Lahde

Ed Newkirk

Bill Orgain

Clinton H. Pearson, Jr.

Jeff Pennig

Harry D. Sabine

Paul B. Semmes

R. K. Shimabukuro

Joe Le Tate



### A NOTE FROM THE EDITOR

The delay in getting this issue of the Tenn. Chess News out was caused by the transition of officers to different posts. I, Leonard Dickerson, was selected to be the editor at an early 2006 business meeting (of which I was absent). The Treasurer's position that I held was transferred to Angela McElrath-Prosser. (See the revised Board of Directors on back page.) We gradually if not reluctantly swapped our duties and are now both satisfied with the switch. But due to the delay, this issue is double the size of the regular issue so that both Spring and Summer events can be addressed. A special section dedicated to the development of scholastic players will be in each issue to assure that younger players get their space. Now that I have my templates developed and printing connections established, future issues will be issued timely in accord with the schedule of page 1.

A special thank you goes to Peter Lahde for providing many of the games and annotations. Also, the Memphis Chess Club's website deserves special recognition as a rich source of games and post-event info.

### The Tennessee Tempo: the New Power in the U.S. Chess League

The U.S. chess team competition has been active since early 2005. The league presently consists of 8-player teams from Baltimore, New York, Miami, Seattle, Dallas, Philadelphia, and other prominent chess centers. Tennessee became the first midwestern team in the USCL when it joined the league in March 2005 and has as its three stronger team members FM Todd Andrews (who also manages the team), FM Peter Bereolos, and IM Ron Burnett. Each match will consist of four players from the 8-player team roster, with the overall rating of those players being under 2401 USCF.

The Seattle Sluggers and Tennessee Tempo will kick off the season on Monday August 28th, while the rest of the league will start play on Wednesday. There is a 10 week regular season, followed by playoffs, with an extra WildCard Round this season. Stay tuned all season for four great matches every Wednesday evening and new special feature matches every Monday. All of the games are presented live on the Internet Chess Club. To find out more about the league and games visit <http://www.uschessleague.com/index.html>.

### TCA and CCCC Supports Purchase of Sign for U.S.C.F.

The TCA and Cumberland Co. Chess Club each donated \$2,000 to assist the USCF to purchase a sign for the USCF's new home off O'Brien Dr. in Crossville. The sign was on proud display at their July 22nd Grand Opening, which mayors, other officials, and the general public attended.

For the past few years, the Rea Hayes Open has been a one-day event. But the March 18-19 two-day event marked the first time in over 10 years that Chattanooga has developed a long-time control, Grand Prix event. This five-round Swiss drew 25 players in the Open and 33 players in the reserve Section (Under 1600). This was an excellent turn-out for an established tournament transitioning to a two-day event.

International Master Kriventsov from Louisiana dominated the field, accumulating an undefeated 5 points. Expert Joshua Suich won clear second with 4.0 points, dropping a game only to the IM. In the Reserve Section Joshua McClellan garnered 4.5 points for an undefeated first. Then the father of Joshua proved that he could equal his son by tying for second with 4.0 points, along with Alan Rice and Demetrios Bovopoulos. Incidentally, Alan Rice is unrated but he defeated two respectable 1300's to secure his share of second. All games played by the champion are presented below as well as crosstables from the event.

Unfortunately it appears that this annual event won't be able to be hosted by the Clarion next year because the hotel is undergoing renovation during February and March and no other venue in Chattanooga is cost-effective for hosting a large tournament. The 2007 Rea Hayes Open will be held (probably in late February), but it will have to return to the one-day format. This will only be temporary change as it is expected to return as a long-time control event the following year. If this unfortunate scenario materializes, the organizer has stated that he will send a letter to all participants of the 2006 event to alert them to the temporary change.

**Kriventsov, S. (2495)**

**Suich, J. (2041)**

**Rea Hayes Open (2)**

1. e4 d5 2. exd5 Nf6 3. Nf3 Qxd5 4. Nc3 Qh5 5. Be2 Bg4 6. O-O e6 7. d4 Nc6 8. h3 Bd6? This sacrifice does not work. He needs to play 8... Bxf3. 9. hxg4 Nxf3 10. g3 e5 11. Nh4 f5 12. f3 Nf6 13. f4 Ng4 14. fxe5 Nxd4 15. Qxd4 O-O-O 16. Rxf5 Qe8 17. exd6 Nf6 18. Rxf6 gxf6 19. Bg4+ 1-0

**White "Kriventsov, S. (2495)**

**Black "Larson, G. (2352)**

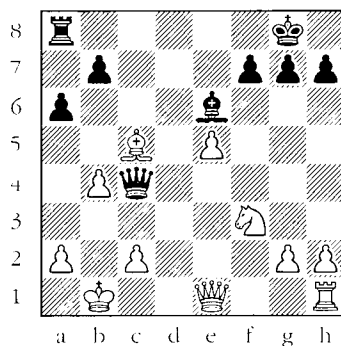
**Rea Hayes Open (5)**

1. e4 e5 2. Nf3 Nc6 3. d4 cxd4 4. Nxd4 Qc7 5. Nc3 e6 6. Be2 a6 7. O-O b5 8. Nxc6 dxc6 9. f4 Bb7 10. e5 Rd8 11. Qe1 Ne7 12. Ne4 Nf5 13. Bg4 Nd4 14. Rf2 h5

15. Bh3 c5 16. c3 Bxe4 17. Qxe4 Nc6 The attractive 17...Qc6 is not best because the knight lacks a good retreat after 18. Qb1. 18. f5 Rd1+ 19. Rf1 Rxf1+ 20. Kxf1 exf5 21. Bxf5 Be7 22. e6 f6 23. Bg6+ Kd8? Much better is Kf8. 24. Bf4 Ne5 25. Rd1+ Kc8 26. Rd7 Nxd7 27. exd7+ 0-1

Kriventsov, S. (2495)  
 Andrews, T. (2352)  
 Rea Hayes Open (4)  
 [Notes by Peter Lahde]

1. e4 c5 2. Nf3 d6 3. d4 cxd4 4. Nxd4 Nf6 5. Nc3 Nc6 6. Bg5 e6 7. Qd2 a6 8. O-O-O Bd7 9. f4 Qc7 10. Kb1 Be7 11. Qe1 O-O 12. Nf3 Rfe8 13. Bd3 Nb4? According to Fritz, this move is inferior. The move 13... h6 is better. 14. e5! Now White has the advantage. Nxd3 15. Rxd3 dxe5 16. fxe5 Nd5! This is best, according to Fritz. 17. Rxd5! But with this temporary sacrifice White gains material. exd5 18. Nxd5 Qc5 (Qd8 is worse-ed.) 19. Nxe7+ Rxe7 20. b4! Only in this way does White gains material. The queen can no longer protect the rook. Qc4 21. Bxe7 Be6 22. Bc5



Black to move.

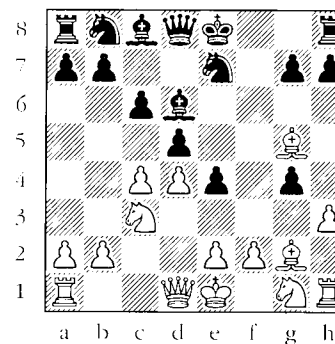
b6! (To enable the rook to participate, either down the b- or c-file.) 23. Bxb6 Rb8 24. Bd4 This is best according to Fritz. My idea would have been 24. Ba5 but Fritz did not consider this. (Probably because the holey queenside and pressure on e2 would have resulted only in a draw while the bishop on a5 would serve only as a bystander ed.) Rxb4+ 25. Kc1 The only saving move—and it wins. Bf5 26. Qc3 Qxa2 27. Kd2 Rc4 28. Ra1 Qxc2+ 29. Qxc2 Rxc2+ 30. Ke3 Rxc2 31. Nh4 Rg5 32. Rxa6 h6 Black continues even though the game is lost. Perhaps White was under time pressure? 33. Nxf5 Rxf5 34. Ra8+ Kh7 35. Ra7 Kg8 36. e6 fxe6 37. Rxc7+ Kf8 38. Ke4 h5 39. h4 Rb5 40. Rg5 Rxc5 41. hxc5 Kf7 42. Kf4 Kg6 43. Be3 Kf7 44. Kg3 Kg6 45. Kh4 0-1

Collins, Russell (1760)  
 Larson, Gerald (2124)  
 Rea Hayes Open (1)  
 (Annotator L. Dickerson)

1. e4 c5 2. Nf3 Nc6 3. d4 cxd4 4. Nxd4 Qc7 5. Nc3 e6 6. Be3 a6 7. a4 Nf6 Better might be Bd3 followed by Nd-c2 to keep the queenside intact but White has already misplayed the opening. 8. f3 Bb4 9. Nb3 d5! 10. Bd3 e5 11. Bd2 d4 12. Nd5 Nxd5 13. exd5 Bxd2+ 14. Qxd2 Ne7 15. Qe2 O-O The immediate Nxd5 is better and winning. If, then, 16. Nxd4? Nf4 routs White. 16. O-O-O Nxd5 17. Bxh7+ Kxh7 18. Qe4+ Kg8 19. Qxd5 Be6 20. Qc5 Qb8 Rac is better. 21. Qb6 Bxb3 22. Qxb3 b5 23. Rhe1 Qd6 24. Qd3? Better is 24. f4 bxa4 25. Qxa4 Qh6 26. g3 exf4 27. Kb1. bxa4 25. c3?? Aiding the enemy in the destruction of his home: 25. f4 Qh6 26. g3 exf4 27. gxf4 Qxf4+ 28. Kb1. a3 26. Kb1 Rab8 27. Re2 axb2 28. cxd4 Rfc8 29. Rxe5 Qb4 30. Rc5 Qa4 31. Rxc8+ Rxc8 32. Kxb2 Rb8+ 33. Kc1 Qa1+ 34. Kd2 Qa2+ 35. Ke3 If 35. Ke1 Qxc2 36. Rd2 Qg1+ 37. Ke2 Re8+ 38. Qe4 Rxe4+ 39. fxe4 Qxh2+. 35... Rb3 36. d5 Rxd3+ 37. Rxd3 Kf8 38. d6 Ke8 39. Kf4 Qc4+ 40. Ke3 Kd7 0-1

Hayes, David  
 Kriventsov, Stanislav  
 Rea Hayes Open (1)

1. g4 d5 2. Bg2 c6 3. h3 e5 4. d4 e4 5. c4 Bd6 6. Nc3 Ne7 7. Bg5 f6 8. Bd2 f5 9. Bg5 fxg4

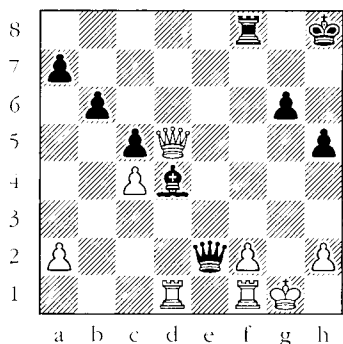


White to move.

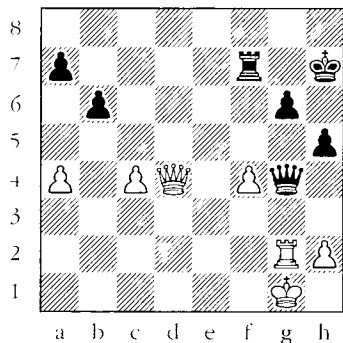
10. e3? After this move Black is better. He should have played hxg5 instead. g3! 11. Qh5+? This move does not accomplish anything. Instead 11. f3 or f4 should have been played. g6 12. Qh4 gxf2+ 13. Qxf2 h6 14. Qh4-Qc7 Threatening 14...Bg3+. 15. Nge2 The only way to protect g3 again. Nf5! 0-1

Meidinger, Charles L  
 Kriventsov, Stanislav G  
 Rea Hayes Open (3)

1. d4 Nf6 2. c4 g6 3. Nc3 d5 4. Nf3 Bg7 5. Bg5 Ne4 6. Bh4 Nxc3 7. bxc3 dxc4 8. Qa4+ Nd7 9. e3 O-O 10. Bxc4 This is a mite unusual, showing no regard for the two bishops. Qxc seems better. Now the game is drawish with Black having a slight preference. Nb6 11. Qb4 Nxc4 12. Qxc4 b6 13. O-O Bb7 14. Ne5 Bd5 14..c5! would have given Black even more of an advantage. But the text is nice, too. 15. Qb4 f6 Again, c5 was stronger and comes with attack on the queen. 16. c4!? Bxg2 17. Kxg2 fxe5 18. Bxe7 Qd7 19. Bxf8 Qg4+ 20. Kh1 Qf3+ Here the draw by perpetual check is spurned, because Black feels that he has more. 21. Kg1 Rxf8 22. Qe7 exd4 23. Qe6+ Rf7 S6 24. Rad1 c5 25. Qe8+ Rf8 26. Qe6+ Kh8 27. Qd5 Qg4+ 28. Qg2 Qe2 29. Qd5 h5 30. exd4 Bxd4 White still has chances of survival, though he has weaknesses galore. On the other hand, Black's king is a mite exposed, too. ( See diagram):



White to move.



Black to make 36<sup>th</sup> move.

31. Rxd4?! 31. Rde1 Bxf2+ ?? (31...Qxa2 32. Re7 Qd2 =) 32. Kh1 Qg4 33. Re7 Qf4 34. Re2 wins the bishop) 31... cxd4 32. Qxd4+ Kh7 33. a4 Rf5! +/- Fritz claims a 1.00 advantage for Black who now threatens a two-move mate. 34. f4 Rf7 35. Rf2 Better was c5. Qg4+ 36. Rg2 Though Qxf4 should win, Black finds an even better move based on White's weakened backrank. (See below diagram.)

Rd7! 37. Rxg4 Rxd4 38. Rg5 Rxc4 39. a5 Rc5. 40. Rxc5 bxc5 41. Kf2 Kg7 42. Kf3 Kf6 43. Ke4 Ke6 44. h3 a6 45. h4 Kd6 46. f5 gxf5+ 47. Kxf5 c4 48. Ke4 Kc5 49. Ke3 Kb4 0-1

Remember, those who participated in this year's Rea Hayes Open will get a letter from the organizer alerting them to whether the next event will be a one-day affair or another Grand Prix event. Sharpen those tactics!!

2006 REA HAYES -- OPEN

Wall Chart

Name/ID	Rate	Rnd 1	Rnd 2	Rnd 3	Rnd 4	Rnd 5
1. KRIVENTSOV, STANISLAV G 12739627	2495	B 13	W 6	B 5	W 2	W 3
2. ANDREWS, TODD D 12583055	2352	W 14	B 7	W 11	B 1	W 12
3. LARSON, GERALD A 10422159	2124	B 15	W 9	HALF	W 8	B 1
4. THOMPSON, WAYNE 12128510	2115	W 16	B 11	W 12	B 15	W 9
5. MEIDINGER, CHARLES L 10237114	2046	B 17	W 12	W 1	B 7	B 6
6. SUICH, JOSHUA 12707426	2041	W 18	B 1	W 13	B 11	W 5
7. BENT, SCOTT W 12523631	2017	B 19	W 2	B 8	W 5	B 10
8. KANTOR, ALAN 10118506	2000	W 20	B 22	W 7	B 3	---
9. SPINRAD, JERRY 12409131	1961	B 21	B 3	W 19	W 17	B 4
10. FINE, BORIS V 13037707	1939	W 22	B 20	HALF	B 19	W 7
11. PHAY, GAINER 12828988	1921	B 23	W 4	B 2	W 6	B 19
12. MARSH, MATTHEW L 12843523	1847	W 24	B 5	B 4	W 22	B 2
13. HAYES, DAVID 12538096	1798	W 1	B 18	B 6	W 21	W 23
14. HINCHMAN, PHILIP 12905116	1765	B 2	W 19	W 24	B 23	B 17
15. COLLINS, RUSSELL 13201807	1760	W 3	B 21	B 23	W 4	W 24
16. THRASH, WILLARD 12580129	1724	B 4	W 23	B 18	B 24	W 20

Continued

17. HUGHES, JAMES D 12222390	1679	W 5	B 24	W 20	B 9	W 14	1.0	0.5	1.5	1.5	1.5
18. WHEELER, GERALD A 10238633	1675	B 6	W 13	W 16	B 20	---	0.0	0.0	1.0	1.0	1.0
19. SUICH, PETER D 12779311	1640	W 7	B 14	B 9	W 10	W 11	0.0	1.0	1.5	2.5	2.5
20. DUMAS, JOSEPH D 12056910	1630	B 8	W 10	B 17	W 18	B 16	0.5	0.5	0.5	1.5	1.5
21. WORLEY, WILLIAM D 10238986	1614	W 9	W 15	HALF	B 13	---	0.0	0.5	1.0	1.5	1.5
22. TRIVERS, THOMAS D 12471383	1607	B 10	W 8	HALF	B 12	---	1.0	1.0	1.5	1.5	1.5
23. EGULF, FRANK T 12025700	1600	W 11	B 16	W 15	W 14	B 13	0.0	1.0	1.0	1.5	1.5
24. NEGLIA, SALVATORE 12939260	1504	B 12	W 17	B 14	W 16	B 15	0.0	0.5	0.5	1.5	1.5
25. ESTRADA, MALCOLM 12811126	1421	---	---	---	---	---	0.0	0.0	0.0	0.0	0.0
26. HOUSTON, CHARLIE R 12841434	1078	---	---	---	---	---	0.0	0.0	0.0	0.0	0.0

2006 REA HAYES -- RESERVE

Wall Chart

Name/ID	Rate	Rnd 1	Rnd 2	Rnd 3	Rnd 4	Rnd 5					
1. CHAVEZ, CHRISTIAN 12894852	1588	W 17	B 9	B 8	W 16	B 10	1.0	1.5	2.0	3.0	3.0
2. TEDDER JR, JERRY 12749954	1572	B 18	W 12	HALF	B 9	---	1.0	1.5	2.0	3.0	3.0
3. HYDZIK, ROBERT J 12468777	1549	W 20	B 11	W 5	B 28	B 4	1.0	2.0	2.5	3.5	3.5
4. MC CLELLAN, JOSHUA 12857773	1491	B 21	W 14	B 29	B 5	W 3	1.0	2.0	3.0	3.5	4.5
5. SUICH, VICTOR W 12732019	1460	W 22	B 16	B 3	W 4	W 29	1.0	2.0	2.5	3.0	4.0

Continued

2006 REA HAYES -- RESERVE, Continued

Name/ID	Rate	Rnd 1	Rnd 2	Rnd 3	Rnd 4	Rnd 5					
6. AMATO, BRUCE S 11422900	1448	B 23	W 29	B 22	W 12	B 27	1.0	1.0	1.5	1.5	1.5
7. ESTRADA, MALCOLM R 12811126	1421	---	W 25	---	---	---	0.0	1.0	1.0	1.0	1.0
8. WADE, DONALD R 12728736	1361	W 24	B 26	W 1	HALF	B 30	1.0	2.0	2.5	3.0	3.0
9. LEAMON, MARK 12869699	1347	B 25	W 1	B 12	W 2	B 13	1.0	1.5	2.5	2.5	3.5
10. BOVOPOULOS, DEMETR 12901610	1346	W 31	B 13	HALF	B 20	W 1	0.5	1.5	2.0	3.0	4.0
11. SCHAFER, JACOB A 12913914	1333	B 27	W 3	B 24	W 30	B 16	1.0	1.0	2.0	2.0	2.0
12. SMITH, TRE 12790065	1331	W 30	B 2	W 9	B 6	W 28	1.0	1.5	1.5	2.5	3.5
13. MARSH, CORRY L 12843522	1304	B 28	W 10	B 27	W 22	W 9	0.5	0.5	1.5	2.5	2.5
14. RIEVES, ROBERT M 12526224	1295	W 32	B 4	W 26	B 29	---	1.0	1.0	2.0	2.0	2.0
15. MCLEMORE, BILL 13102055	1207	B 29	W 23	B 30	W 26	B 17	0.0	1.0	1.0	2.0	2.0
16. MASINGTON, DAN 12716601	1181	W 33	W 5	B 32	B 1	W 11	1.0	1.0	2.0	2.0	3.0
17. MCGUFFEY, DREW 12911754	1177	B 1	W 24	B 21	W 32	W 15	0.0	0.0	1.0	2.0	3.0
18. WARREN, JONATHAN R 12911327	1146	W 2	B 30	W 19	B 24	W 31	0.0	0.0	1.0	1.5	2.5
19. HOUSTON, CHARLIE R 12841434	1078	---	---	B 18	---	---	0.0	0.0	0.0	0.0	0.0
20. MANNERS, ROY B 12649484	1042	B 3	W 27	B 31	W 10	B 22	0.0	0.5	1.5	1.5	2.5
21. STALEY, TIMOTHY P 12625534	1042	W 4	B 32	W 17	B 25	W 24	0.0	0.0	0.0	1.0	2.0

Continued

2006 REA HAYES -- RESERVE, Continued

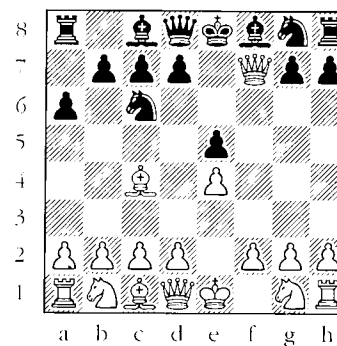
Name/ID	Rate	Rnd 1	Rnd 2	Rnd 3	Rnd 4	Rnd 5
22. LORINC, ERICK L 12865002	1039	B 5	W 33	W 6	B 13	W 20
		0.0	1.0	1.5	1.5	1.5
23. FINE, ISAAC 13037713	888	W 6	B 15	HALF	W 27	B 26
		0.0	0.0	0.5	0.5	0.5
24. MC GUFFEY, LES C 13046303	733	B 8	B 17	W 11	W 19	B 21
		0.0	1.0	1.0	1.5	1.5
25. WITTIG, ELO F 13135040	385	W 9	B 7	HALF	W 21	B 33
		0.0	0.0	0.5	0.5	0.5
26. GOODLETT, JOSHUA M 13212986	274	BYE	W 8	B 14	B 15	W 23
		1.0	1.0	1.0	1.0	2.0
27. FREIBERG, CHRIS 13209234	nnnn	W 11	B 20	W 13	B 23	W 6
		0.0	0.5	0.5	1.5	2.5
28. HALE, DAVID nnnn	nnnn	W 13	B 31	BYE	W 3	B 12
		0.5	1.5	2.5	2.5	2.5
29. MCMAHAN, MICHAEL 13398725	nnnn	W 15	B 6	W 4	W 14	B 5
		1.0	2.0	2.0	3.0	3.0
30. RICE, ALAN J 12925490	nnnn	B 12	W 18	W 15	B 11	W 8
		0.0	1.0	2.0	3.0	4.0
31. SMITH, ROBERT 13355452	nnnn	B 10	W 28	W 20	B 33	B 18
		0.5	0.5	0.5	1.5	1.5
32. STALEY, SUSAN 13395808	nnnn	B 14	W 21	W 16	B 17	---
		0.0	1.0	1.0	1.0	1.0
33. WADHAWAN, SANCHIT 13399514	nnnn	B 16	B 22	HALF	W 31	W 25
		0.0	0.0	0.5	0.5	1.5

Leamon, M.  
Smith, Tre  
North Tennessee Winter Open

1. g4 d5 2. Bg2 c6 3. h3 e5 4. d4 e4 5. c4 Bd6 6. Nc3 Ne7 7. Bg5 f6 8. Bd2 f5 9. Bg5 fxg4 10. e3? After this move Black is better. He should have played hxg5 instead. g3! 11. Qh5+? This move accomplishes nothing. Instead 11. f3 or f4 should have been played. g6 12. Qh4 gxf2+ 13. Qxf2 h6 14. Qh4 Qc7 Threatening 14... Bg3+. 15. Nge2 The only way to protect g3 again. Nf5! 0-1

### Scholastic Development: Avoiding the Scholar's Mate

The Scholars' Mate is a 4-move mate that scholastic players and beginners delight in executing. The attack is conducted on the weakest square of the board: the f7-or corresponding f2-square. See the below diagram.



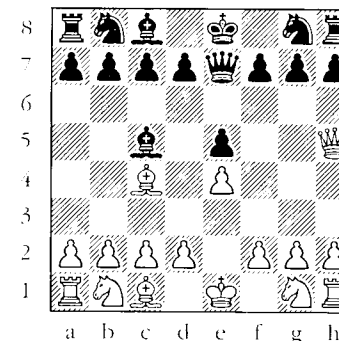
Example of Scholars' Mate

This is one of the first opening traps that I teach students how to avoid. However, this simple mate caused Webb Primary School to lose two games in the same round of 2006 Team Final's Championship. And it was trained players who fell for the mate! Hence it behooves me to consider another method of presenting a defense to this often-occurring setup.

I once instructed my students to simply develop pieces while White wastes time bringing out his queen (pp. 22-25 of *Basics for Scholastic Chess Players*). But now I have devised an easier system of dealing with the problem. This new method will be shared with the public so that those budding geniuses will be forced

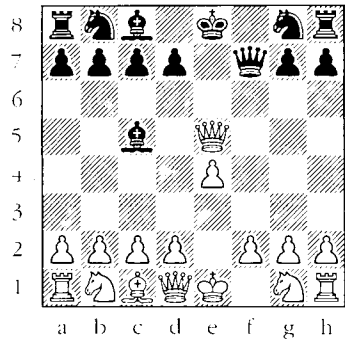
to do their own thinking rather than rely on a canned mate.

If after 1. e4 e5, White plays 2. Bc4, then Black should proceed with 2... Bc5. Then if White follows up with 3. Qh5—attacking both f7 and e5—Black should bring his queen out as in *Diag. 2*, below. White violated the opening principles of attacking too soon and bringing his queen out early. Hence your response can be just as radical. What makes Black's early queen move acceptable, though, is that he will be forcing White to lose a move when he next plays Nf6. When White's queen retreats, Black simply moves his queen to its original square and the queen moves offset but Black is ahead in development!



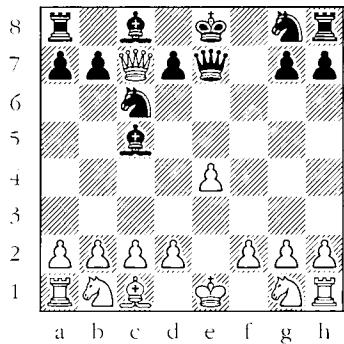
Diag. 2 White's Scholar's Mate setup is countered by 3...Qe7!

If White tries to vigorously pursue the attack before Black brings out his king-side knight, play could proceed as 3. Bxf7-?! Qxf7 4. Qxe5+. See *Diag. 3*, next page:



**Diag. 3 White continues aggressively, winning pawns for the piece.**

Black counters with Qe7, protecting his bishop and attacking the e-pawn. Now after 5. Qxc7 (attacking the undefended queen bishop), Black plays Nc6, threatening Bd6 which would win the queen. Diagram 4.

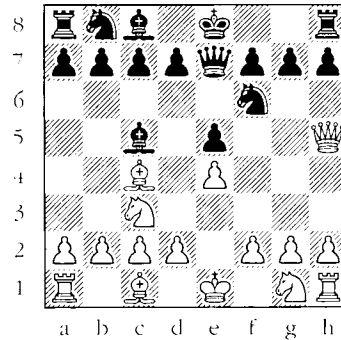


**Diag. 4 Black threatens Bd6.**

Then after the forced 6. Qf4, Black play either Qf6 or Nf6!, planning an attack down the f-file.

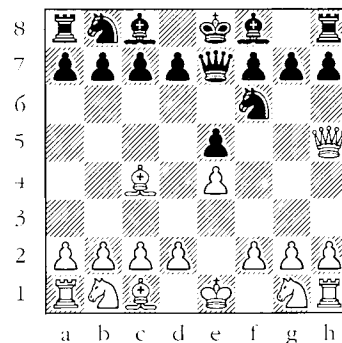
From Diag. 2, if White plays sanely with Nc3, then 4... Nf6 drives the queen back

as in Diag. 5. After the White queen retreats, Black can continue with development or simply castle.



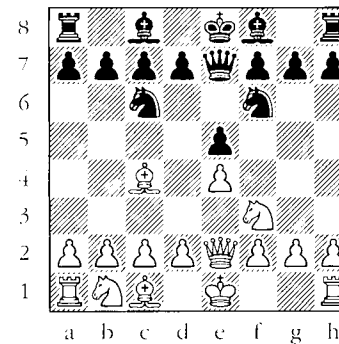
**Diag. 5 Black is ahead in development.**

Therefore Black's system works ideally against 2. Bc4. But what of 2. Qh5? Well, 2... Qe7! again defends everything and prepares to beat the White queen back with Nf6, attacking queen and e-pawn. Play could then proceed 3. Bc4 Nf6, as in Diag. 6.



**Diag. 6 Black gains time by beating White back.**

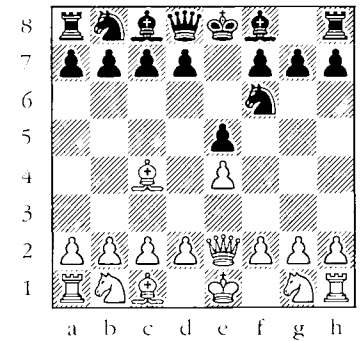
Nf3 can create the Fried Liver Attack threat of Ng5. See Diag. 7. But this is easily diffused by 5... Na5! If 4. Qf3 Nc6! threatens both Nd4 and in some instances Na5, chasing the bishop of the critical diagonal. So after the better 4. Qe2-leaving f3 available to the knight-Black can play Nc6 or immediately Qd8. If 4... Qd8, development of the Black bishop to c5 can be problematic because of Bxf7! and Qc4+, in some lines.



**Diag. 7 Black could face a Fried Liver Attack if he continues with Nc6 instead of Qd8. But Na5! is more than sufficient.**

So I prefer 4.. Nc6, though If you play instead 4...Qd8, then Diag. 8 arises (next column). Just be aware of the dangers of playing Bc5 too soon and Black should have no problems development. He can even try Nc6 followed by Bb4 if he really wants to develop his Bishop outside the pawn chain.

But it doesn't matter much which method Black chooses for his fourth move.. He will have avoided the routine Scholars' Mate and forced his opponent to do some actual thought. Hence Black



**Diag. 8 After Black retreats with Qd8, White's queen simply looks misplaced.**

can gain an easy equality with his early queen move to counter White's brash attack. Learn this method of dealing with Scholars' Mate and watch the incidences of this insidious attack drop!

#### TCA HALL OF FAME

Peter Lahde	1990
Robert Coveyou	1990
Jerry Sullivan	1990
Martin Southern	1990
Tom Finucane	1990
Robert Scrivener	1990
L. Hunter Weaks	1990
John Hurt	1992
James A. Sweets	1993
Rea Hayes	1997
James A. Wright	1998
Dr. Martin Katahn	2002
David Burris	2003

## Tennessee Senior Open

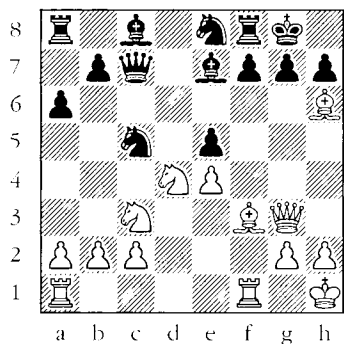
The inaugural Tenn. Senior Open was held at the Nashville Chess Center on June 3. Seven players participated in the event, including Malmborg of Alabama. The veteran of chess, Tom Doyle, emerged triumphant with a perfect 4.0. (A cross table of the event is included on page 23.) With the interest likely sparked by the National Senior Open being held at Opryland in late August, next year's attendance will surely double.

**Ciarleglio, Peter (1805)**

**Tampkin, Gary (1197)**

**Tennessee Senior Open**

1. e4 c5 2. Nf3 d6 3. d4 cxd4 4. Nxd4 Nf6 5. Nc3 a6 6. Be2 e6 7. O-O Be7 8. f4 O-O 9. Qe1 Nbd7 10. Kh1 Qc7 11. Qg3 Nc5 12. Bf3 e5 13. fxe5 dxe5 14. Bh6 Ne8



White to move (Ciarleglio vs. Tampkin).

15. Rad1? (15. Nd5 or Nf5 was indicated. After the text Black wins material.) 15... exd4 16. Nd5 Qxg3

17. Nxe7+ Kh8 18. hxg3 gxh6 19. Rxd4 Ng7 20. e5 Be6 21. Rh4 Rae8 22. Nd5 Bxd5 23. Bxd5 Nce6 24. Rxh6 Ng5 25. Rhf6 Nh5 26. Rb6 Nxg3+ 27. Kg1 Nxf1 28. Kxf1 Rxe5 0-1

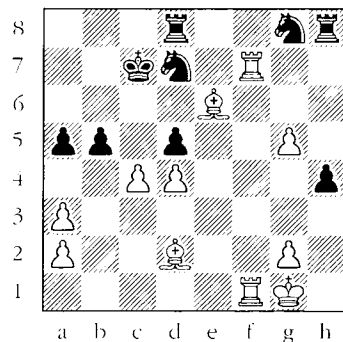
**Lahde, Peter**

**Baringer, Jim**

**Tennessee Senior Open**

[Notes by Peter Lahde]

1. e4 e5 2. f4 g6 3. Nf3 exf4 4. d4 g5 5. Bc4 d6 6. O-O Bg4 7. h3 Bxf3 8. Qxf3 Qf6 9. c3 White could have played 9. e5 dxc5 (Best is Qd8 saving the rook.) 10. Qxb7 Qc6? 11. Bb5! Nd7 10. Na3 c6 11. Bd2 O-O-O 12. h4 h6 13. Qg4 Hoping for 13. h5 and getting it. h5? Losing not only the g-pawn but also the f-pawn. 14. Qxg5 Qxg5 15. hxg5 b5 16. Bxf7 h4 17. Rxf4 Be7 18. Rf3 a6 19. Be6 d5 20. exd5 Bxa3 21. bxa3 cxd5 22. Rf7 a5 23. Raf1 Kc7 24. c4!



Black to move (Lahde vs. Baringer).

dx4 25. Bxa5+ Kc8 26. Bxd8 Kxd8 27. Rxd7+ Ke8 28. Rff7 h3 29. Ra7 h2+ 30. Kh1 0-1

## Memphis Chess Scene

Chess is alive and well in Memphis, TN. During this reporting period they held 25 chess tournaments. Three of their major, long-time control tournaments are recounted in this issue.

### John Hurt Memorial 3

Another 5-round game/60 event classic was held in Memphis on June 24: the John Hurt Memorial 3. This event had four sections: Open, U1600, U1200 and U900. David Kernell (1885) won the event a clear point ahead of his closest rival. Keith Rice (1444) scored an even more convincing victory by dominating the U1600 section by 1.5 points, winning with 4.5 points. David Marsh won the U1200 Section and Clay Smith racked up a perfect 5.0 to win the U900 section by a full 2 points. Below is a game showing how Kernell stayed a game ahead of his nearest competition, Harbert. Crosstables of the event available on the Memphis Chess Club website and a ample selection of games can be accessed by this URL: <http://www.memphischess.com/games2006b.html>.

**John Hurt Memorial 3**

**David Kernell(1919)**

**Carlos Harbert(1906)**

1. d4 d6 2. e4 Nf6 3. Bd3 g6 4. Nf3 Bg7 5. O-O O-O 6. c4 Nbd7 7. b4 This is a very challenging move. Since the diagonal has been completed opened by White, Black should seek to exploit it with c5 to try and transform his bishop into a dominator. Nc3 was more circumspect. e5 8. d5 Now White has a secure center and space on the queenside but no measurable advantage. a6 ( 8... a5! 1 9. b5) 9. Nbd2 h6 10. Qc2 Nh7 Nh5 was better, threatening Nf4 followed perhaps by f5. Now White just sweeps the board with little resistance from Black. 11. c5 dxc5 12. bxc5 Ng5 13. c6 Nb6 14. Ba3 Re8 15. Rae1 bxc6 16. Qxc6 Ra7 17. Nxg5 Qxg5? 18. Qxe8+ 1-0

### Jack Smith Memorial 2

The Jack Smith Memorial, named after the chess expert who was very active in Memphis and Memphis Chess Club President during the 70s and 80s, was held on March 25. It was a 5-round Swiss with a 60/Game format held in Memphis. Evan Mah won the event with a 1.5-point lead over the other seven players who participated in the Open Section. The Under 1600 Section was far more competitive

with the top-rated players getting mauled. In fact, the eight-ranked of the 10-player section- Kyle Richter, rated 1143 emerged as the clear winner with 4.5 points. But his road was a tough one: he had to take on five of the top six ranked opponents to come away with the crown. The Under 1200 Section was won by 891-rated Darryl Tomlinson with 4.0 points. Darryl achieved his victory by defeating both the numbers one- and two-ranked players. Below is a game from the event that show how Mah's tactics secured him a well-deserved first-place.

A crosstable of the event can be found on the Memphis Chess Club's excellent website at URL <http://www.memphischess.com/JackMemorial2.html>.

## Memphis Championship

In the 8-player 2006 Memphis City Championship held February 17 - April 14, Carlos Sims was aided by having white in all(!) 7 rounds to emerge the undefeated champ with 5.5 points. Last year's champ, Carlos Harbert, managed only 4.0 points out of the tough field dominated by 1800-level players. The scoring of the round-robin tournament reflects the equality of the ratings. (See attached wall chart.) David Kernell also emerged undefeated and took clear second with 5 points.

Wade, J. (1691)

Pylant, G. (1856)

Memphis Championship

1. d4 Nf6 2. c4 e5 3. dxe5 Ng4 4. Bf4 Bc5 5. e3 Nc6? Losing a piece. Necessary was 5... d6. 6. Qxg4 d5 7. Qd1 After 7. Qxg7 White wins. Bb4+ 8. Nc3 d4 9. exd4 Nxd4 10. a3 Bf5 11. Rc1 Be7 12. Nf3 Nxf3+ 13. Qxf3 c6 14. Be2 a5 15. O-O h5 16. Rcd1 Qc8 17. Ne4 Bxe4 18. Qxe4 g5 19. Be3 a4 20. e6 Qxe6 21. Qxe6 fxe6 22. Bd4 Rh6 23. Bg7 Rh7 24. Be5 Bf8 25. f4 g4 26. g3 Bc5+ 27. Bd4 Bf8 28. Bd3 Rh6 29. f5 h4 30. gxh4 Rxh4 31. fxe6 Rh6 32. Rf6 Ke7 33. Rxh6 Bxh6 34. Bf5 Rg8 35. Be5 Be3+ 36. Kg2 Rg5 37. Rd7+ Ke8 38. Bf6 Threatens mate! 38... Bb6 39. Bxg5 0-1

Sims, Carlos (1780)

O'Bar, Sam (1810)

Memphis Championship

1. Nf3 Nf6 2. g3 g6 3. Bg2 Bg7 4. d4 d5 5. O-O O-O 6. Bf4 Ne4 7. h4 c6 8. Qc1 Re8 9. Bh6 Bh8 10. h5 e5? This is a mistake from a practical standpoint. First Black properly avoided the swap of bishops with Bh8 but is now willing to part with

it for a knight. Black is probably trying to open the center to counter White's premature flank attack but more circumspect moves like Bg4 or even the bold gxh should be played. 11. hxg6 hxg6 12. dxe5 Bxe5 13. Nxe5 Rxe5 14. Be3? Better is c4 or Rd1. Qe7 15. Bd4 Rh5 16. Qf4 c5 17. Bxe4 dxe4 18. Bc3 Nd7 19. Nd2 f5 20. Kg2 b5 21. b3 g5?? 22. Qc7? Qxf4 is better. e3? 23. Qc6! Nb6? A neat trap is 23... Nf8 and if 24. Qxa8 then Bb7+. 24. Qg6+ Loses the rook for a knight and with it the game. Kf8 25. Qxh5 exd2 26. Qh8+ 1-0

O'Bar, Sam (1810)

Palatnik, Sam (2516)

Memphis Candidates

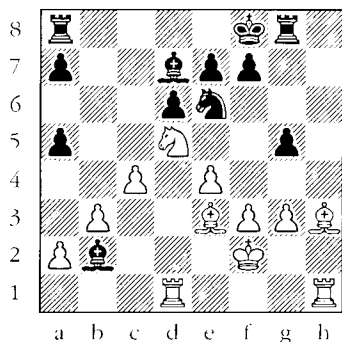
1. e4 c5 2. Nf3 d6 3. d4 cxd4 4. Nxd4 Nf6 5. Nc3 a6 6. Be2 e6 7. Be3 Nbd7 8. O-O b5 9. a3 Bb7 10. Bg5 Be7 11. Bd3 O-O 12. Re1 h6 13. Bd2 Nc5 14. Re3 Qb6 15. Nb3 Nxd3 16. exd3 Rfc8 17. Rh3 Kf8 18. Qf3 d5 19. e5 d4 20. Qg3 Better is Ne4 although Black has the advantage. dxc3 21. exf6 Bxf6 22. Be3? Necessary was 22. Bxc3. cxb2 23. Rb1 23. Bxb6 loses to bxa1(Q) 24. Nxa1 Rc1+, mating! Qc6 24. Na5 Qc1+ 0-1

Wall Chart of Memphis City Championship 2006

Name/ID	Rate	Rnd 1	Rnd 2	Rnd 3	Rnd 4	Rnd 5	Rnd 6	Rnd 7
Sims, Carlos S 20005559	1780	W8	W6	W2	W3	W5	W7	W4
Kernell, David C 12830368	1867	B7	W4	B1	B6	W8	B3	W5
Harbert, Carlos 12833879	1833	B5	W7	B4	B1	B6	W2	W8
Wade, Jonathan 12662511	1691	W6	B2	W3	B5	W7	B8	B1
O'Bar, Sam R 2694772	1810	W3	B8	B7	W4	B1	W6	B2
Pylant, Gary M 10245451	1856	B4	B1	W8	W2	W3	B5	W7
Bunch, John E 10206201	1831	W2	B3	W5	B8	B4	B1	B6
Maneclang, Anthony 12486714	1615	B1	W5	B6	W7	B2	W4	B3

Kleiman (2279)  
 Nakamura (2644)  
 U.S. Championship  
 March 3, 2006

1. e4 c5 2. Nf3 g6 3. d4 cxd4 4. Nxd4 Bg7 5. c4 Nc6 6. Be3 Nf6 7. Nc3 Ng4 8. Qxg4 Nxd4 9. Qd1 Ne6 Anchoring the knight with e5 does not improve Black's chances in this line, which according to ChessBase 9 are subpar (around 40% versus the usual 45% scoring for Black). 10. Qd2 Qa5 11. Rc1 g5 12. Be2 b6 13. Qd5 Rb8 14. Qxa5 bxa5 15. b3 Bb7 16. f3 Ra8 17. h4 h6 18. Nd5 Rg8 19. hxg5 hxg5 20. Kf2 d6 21. g3 Kf8 22. Rcd1 Bb2 Possibly considering swapping bishops with Ba3-c5. 23. Bf1! Bc6 24. Bh3 Bd7



White to move.

25. Nc7! White secures the two bishops and initiates dangerous queenside activity. Nxc7 26. Bxd7 Na6 27. Bc6 Rd8 28. Bb5 The immediate Bxa7 gives White better play than in the game since Black's a5-pawn is weak and White can coordinate his rooks, unlike Black. For instance, 28. Bxa Nb4 29. Ba4 Nxa2 30. Bb6 Ra8 30. Rd5 (if Rd2 then Nb4 sets up an equalizing check) Bc3 31. Rh7 Bb4 32. Rf5 and White maintains a dangerous initiative. Nc7 29. Bc6 Ba3 30. Bxa7 Ne6 31. Rd5 Nc5 32. Bb6 Rc8 33. Bb5 Bb4 34. Ke3 Rb8 35. Bxc5 Bxc5+ Draw agreed. 1/2-1/2

### Wojo Dies at 43

GMAleksander "Wojo" Wojtkiewicz. Maryland's highest-rated player and one of the most active and successful players on the U.S. chess scene for nearly a decade, succumbed to a perforated intestine and liver disease July 14 at the age of 43.

An ethnic Pole born in Latvia in 1963, the popular Wojtkiewicz can be described as an adventurer. According to press profiles, he was Tal's favorite student and a candidate master by the age of 15 but had a promising chess career cut short when refused induction into the Soviet Army. He moved to Brooklyn, New York, about 10 years ago and to Maryland in 2002 after being recruited by University of Maryland for its chess team. He left UMBC in 2003.

His enterprising chess and willingness to mix it up and play any caliber player at local events will be missed.

### 2006 CUMBERLAND COUNTY SUMMER OPEN -- OPEN

Name/ID	Rate	Rnd 1	Rnd 2	Rnd 3	Rnd 4
1. BARBER, NICHOLAS M 12655813	2128	B 15	W 8	B 6	W 5
2. LARSON, GERALD A 10422159	2123	W 16	B 9	W 3	B 11
3. HALL, BILL 12397673	2106	B 17	W 28	B 2	---
4. SUICH, JOSHUA 12707426	2064	W 19	B 11	W 9	B 14
5. KANTOR, ALAN 10118506	2000	B 20	W 10	B 14	B 1
6. MARSH, MATTHEW L 12843523	1848	W 21	B 12	W 1	B 13
7. SUICH, PETER D. 12779311	1758	B 22	W 14	B 16	W 12
8. NASH, JERRY D 12406202	1750	W 23	B 1	W 19	B 22
9. CRIGGER, ANDREW J 12578723	1722	B 24	W 2	B 4	---
10. BAIER, FRED 12263020	1711	W 25	B 5	W 21	B 19
11. JONES, JESSE GRAY 12824925	1694	B 26	W 4	B 20	W 2
12. NEGLIA, SALVATORE 12939260	1591	W 27	W 6	B 22	B 7
13. BERTRAM, DAVID 12601971	1565	B 28	W 17	B 25	W 6
14. CHAVEZ, CHRISTIAN 12894852	1520	W 32	B 7	W 5	W 4
15. HYDZIK, ROBERT J 12468777	1500	W 1	B 23	W 28	B 17
16. SUICH, VICTOR W 12732019	1487	B 2	W 24	W 7	B 32

Continued

2006 Cumberland County Summer Open-Open Section, continued

17. WEINER, ALEX 12894487	1483	W 3	B 13	B 18	W 15
		0.5	0.5	1.5	1.5
18. POND, LAWRENCE F 12580170	1388	---	B 25	W 17	W 24
		0.0	0.0	0.0	0.0
19. BEJNOOD, ALBORZ 12911448	1361	B 4	W 26	B 8	W 10
		0.0	1.0	2.0	3.0
20. BLANKENSHIP, LOGAN 12914168	1323	W 5	B 27	W 11	B 28
		0.0	1.0	1.0	1.0
21. MARSH, CORRY L 12843522	1308	B 6	W 31	B 10	W 25
		0.0	1.0	1.0	2.0
22. MC GUFFEY, DREW 12911754	1251	W 7	B 32	W 12	W 8
		0.0	1.0	1.0	1.0
23. PAUL, CORY M 12863912	1244	B 8	W 15	---	---
		0.0	0.0	0.0	0.0
24. DAVIS, WILLIAM S 12484473	1131	W 9	B 16	W 27	B 18
		0.0	0.0	1.0	2.0
25. DAHOTRE, SHREYAS 12929518	1129	B 10	W 18	W 13	B 21
		0.0	1.0	1.0	1.0
26. DAHOTRE, SANKET 12929519	1113	W 11	B 19	W 32	B 27
		0.0	0.0	0.0	0.5
27. ZHANG, XIAOHAN 12904551	1087	B 12	W 20	B 24	W 26
		0.0	0.0	0.0	0.5
28. BARBER, CHRISTOPHER 12844873	965	W 13	B 3	B 15	W 20
		1.0	1.0	1.0	2.0
29. DING, JUN	nnnn	---	---	---	---
		0.0	0.0	0.0	0.0
30. EDMONDS, ROBERT	nnnn	---	---	---	---
		0.0	0.0	0.0	0.0
31. HESS, KARL	nnnn	---	B 21	---	---
		0.0	0.0	0.0	0.0
32. RYLAND, JOHN A 13287184	nnnn	B 14	W 22	B 26	W 16
		0.0	0.0	1.0	1.0

2006 CUMBERLAND COUNTY SUMMER OPEN -- AMATEUR

Name/ID	Rate	Rnd 1	Rnd 2	Rnd 3	Rnd 4
1. SHIELDS, TANNER R 12919132	993	B 10	W 6	B 14	W 8
		1.0	1.0	2.0	3.0
2. PAUL, COLTON J 12909580	984	W 11	B 7	W 9	B 5
		1.0	1.0	2.0	3.0
3. WILLIAMS, FRANKLIN 12978356	960	B 12	W 8	B 10	W 4
		0.0	1.0	2.0	2.0
4. LYNN, JOSHUA ADAM 12937075	895	W 13	B 9	W 7	B 3
		1.0	2.0	2.0	3.0
5. HAMMETT, JON H 12931306	880	B 17	W 12	B 6	W 2
		1.0	2.0	2.5	2.5
6. FU, JASON 13103964	857	W 15	B 1	W 5	B 7
		1.0	2.0	2.5	3.5
7. EDMONDS, LUCAS 12921798	728	---	W 2	B 4	W 6
		X1.0	2.0	3.0	3.0
8. WALLACE, AARON 12982112	724	W 20	B 3	W 11	B 1
		1.0	1.0	2.0	2.0
9. WADHAWAN, SANCHIT 13399514	669	B 14	W 4	B 2	W 12
		1.0	1.0	1.0	2.0
10. BEJNOOD, ARAM 13167705	501	W 1	B 15	W 3	B 11
		0.0	1.0	1.0	2.0
11. WALLACE, RYAN A 13121034	495	B 2	W 20	B 8	W 10
		0.0	1.0	1.0	1.0
12. DING, CHUNYANG 13398966	439	W 3	B 5	W 13	B 9
		1.0	1.0	2.0	2.0
13. MOSS, GUNNAR 13328776	100	B 4	W 14	B 12	W 20
		0.0	0.0	0.0	0.0
14. BAIER, DALTON 13364455	nnnn	W 9	B 13	W 1	B 15
		0.0	1.0	1.0	1.5

Continued

2006 CUMBERLAND COUNTY SUMMER OPEN -- AMATEUR, continued

15. BAIER, RYAN 13364461	nnnn	B 6	W 10	B 20	W 14	
		0.0	0.0	1.0	1.5	
-----						
16. DING, JUN	nnnn	---	---	---	---	
		0.0	0.0	0.0	0.0	
-----						
17. EDMONDS, ROBERT	nnnn	W 5	---	---	---	
		0.0	0.0	0.0	0.0	
-----						
18. HESS, KARL	nnnn	---	---	---	---	
		0.0	0.0	0.0	0.0	
-----						
19. MA, MICHALE 13474465	nnnn	---	---	---	---	
		F0.0	0.0	0.0	0.0	
-----						
20. SCHULT, CHRISTOPHER 13401468	nnnn	B 8	B 11	W 15	B 13	
		0.0	0.0	0.0	1.0	

1<sup>ST</sup> TENNESSEE SENIOR OPEN

Name	Rate	Rnd1	Rnd2	Rnd3	Rnd4	TOT
Tom Doyle	1915	W3	W6	W2	W4	4.0
James Beardslee	1482	W4	W7	L1	D3	2.5
Peter Lahde	1658	L1	BYE	W7	D2	2.5
Walter Malmborg (AL)	1855	L2	W5	W6	L1	2.0
Peter Ciarleglio	1805	L6	L4	BYE	W7	2.0
Gary Tampkin	1197	W5	L1	L4	BYE	2.0
Jim Baringer	1002	BYE	L2	L3	L5	1.0

VISIT TCA WEBSITE: <http://www.tnchess.org>

2006 CUMBERLAND COUNTY SPRING OPEN CHESS TOURNAMENT

Open Section

Place	Name/Team	Rate	Score
1	HINCHMAN, PHILIP (2)	1862	4.0
2	KANTOR, ALAN (1)	2000	3.5
3	SUICH, PETER D. (8)	1657	3.0
&4	WESTBROOK, RICHARD (9)	1630	3.0
&5	MC CANN, DILLON (21)	1305	3.0
6	WRIGHT, JOE (3)	1811	2.5
&7	JONES, JESSE GRAY (6)	1707	2.5
&8	HUGHES, JAMES D (7)	1679	2.5
&9	NEGLIA, SALVATORE (11)	1585	2.5
&10	HYDZIK, ROBERT J (13)	1535	2.5
&11	SNOW, CHRIS (14)	1515	2.5
&12	SUICH, VICTOR W. (15)	1423	2.5
&13	BLANKENSHIP, LOGAN (20)	1316	2.5
&14	ROARK, SCOTT (22)	1271	2.5
15	HUMAN, MATTHEW H (4)	1742	2.0
&16	PRESSWOOD, ROBERT (5)	1711	2.0
&17	PHILLIPS, COTY (10)	1599	2.0
&18	HUNLEY, RYAN (12)	1566	2.0
&19	GILBREATH, THOMAS (16)	1404	2.0
&20	HOWARD, MICHAEL (18)	1343	2.0
&21	BURGESS, DEREK (25)	1129	2.0
&22	ZHANG, XIAOHAN (27)	1100	2.0
&23	DAHOTRE, SHREYAS (28)	1088	2.0
24	DAVIS, MICHAEL (26)	1116	1.5
&25	HOUSTON, CHARLIE R (29)	1040	1.5
26	BOVOPOULOS, DEMETRIOS (17)	1346	1.0
&27	SIMONTON, ANDREW (23)	1167	1.0
&28	DAVIS, WILLIAM S (24)	1131	1.0
&29	KOSACKI, JULIAN (30)	1007	1.0
&30	FINE, ISAAC (31)	982	1.0
&31	WITTIG, ELO F (32)	385	1.0
32	MC GINNIS, CHARLES (19)	1331	0.0
&33	DUTTA, ARPAM (33)	nnnn	0.0
&34	EDMONDS, ROBERT (34)	nnnn	0.0
&35	HACKERMAN, JACK (35)	nnnn	0.0
&36	SMITH, ROBBIE (36)	nnnn	0.0

**2006 CUMBERLAND COUNTY SPRING OPEN CHESS TOURNAMENT**

**Amateur Section**

Place	Name/Team	Rate	Score
1	BLUE, CHARLES T (3)	958	4.0
2	JENKINS, SIMMY (7)	844	3.5
&3	EDMONDS, LUCAS (11)	724	3.5
4	HAMMETT, JON H (4)	883	3.0
&5	DAHOTRE, SANKET N (9)	776	3.0
&6	HINCHMAN, RUTH (14)	706	3.0
7	MILLER, JEFF (5)	871	2.5
&8	SMITH, NATHAN J (8)	828	2.5
9	PAUL, COLTON J (1)	996	2.0
&10	SUICH, JOANNA R (2)	978	2.0
&11	WALLACE, AARON (6)	846	2.0
&12	LEE, NIKKI (12)	715	2.0
&13	SMITH, KAI ALAN (16)	514	2.0
&14	HACKERMAN, AUSTIN (17)	431	2.0
&15	WALLACE, RYAN A (18)	274	2.0
&16	RICE, KALEB (24)	nnnn	2.0
&17	WADHAWAN, SANCHIT (26)	nnnn	2.0
18	SUICH, VICTORIA E (10)	759	1.0
&19	PYLE, WILLIAM EARL (15)	584	1.0
&20	GELLERT, ISABEL (21)	nnnn	1.0
&21	HACKERMAN, JACK (22)	nnnn	1.0
&22	JOHNSON, KYLE (23)	nnnn	1.0
23	BRINDISI, FRANK (13)	713	0.0
&24	MOSS, GUNNAR (19)	100	0.0
&25	EDMONDS, ROBERT (20)	nnnn	0.0
&26	SMITH, ROBBIE (25)	nnnn	0.0
&27	WEST, RAYMOND O (27)	nnnn	0.0

**Cheng, X (2290)**

**Burnett, R (2414)**

**Southern Congress (Open)**

1. e4 g6 2. d4 c6 3. Nc3 Bg7 4. h3 d5 5. Nf3 Nf6 6. e5 Ne4 7. Nxe4 dxe4 8. Ng5 c5 9. dxc5 Qa5+ 10 Bd2 Qxc5 11. Nxe4? Fritz likes 11. e6 or 11. Qe2 and White can survive. Another move is 11. Bc3 and if 11...Bxe5?! 12. Bxe5 Qxe5 13. Qd8+! Kxd8 14. Nxf7+ etc. After the text Black should win easily as he can capture more material. 11...Qxe5 And the players agreed to a draw. This allowed Cheng to share first and second prize money. One line suggested by Fritz runs as follows: 12. Qe2 Qxb2 13. Qb5+ Nc6 14. Qxb2 Bxb2. 1/2 - 1/2.

TCN/Summer 2006\_25

**PRESIDENT:**

J. Michael Cross  
2961 Martha Washington Rd.  
Clarkrange, TN 38553  
H: (931)863-3188  
e-mail: jmcross@twlakes.net

**VICE-PRESIDENT:**

Allen Snow  
P. O. Box 2127  
Clarkrange, TN 38553  
W: (931)863-4082  
Fax: (931) 863-4081  
e-mail: asnow@twlakes.net

**SECRETARY:**

Brian Vogt  
2669 Sweet Maple Cv.  
Germantown, TN 38139  
H: (901) 624-0020  
e-mail: bvogt@midsouth.rr.com

**TREASURER:**

Angela McElrath-Prosser  
733 Long Hunter Court  
Nashville, TN 37217  
H: (615) 399-8432  
e-mail: tcnews@aol.com

**INTERNET CHESS COORDINATOR:**

Patricia Knight  
103 Albion Road  
Oak Ridge, TN 37830  
H: (865) 481-3516  
W: (931) 787-1234 ext. 133  
e-mail: teachess@bellsouth.net

**SCHOLASTIC COORDINATOR:**

Harry D. Sabine  
P. O. Box 381  
Crossville, TN 38557  
H: (931) 484-4878  
W: (931) 484-9593  
e-mail: hdsabinc@citlink.net

**TOURNAMENT COORDINATOR:**

Paul Semmes  
1010 N. Maple Ave.  
Cookeville, TN 38501  
H: (931) 526-2883  
e-mail: PaulSemmes@charter.net

**TN CHESS NEWS EDITOR:**

Leonard Dickerson  
420 Oran Road  
Knoxville, TN 37932  
H: (865) 966-1095  
e-mail: lsdick@tds.net

**EAST TENNESSEE DIRECTOR:**

Malcolm Robert Estrada  
7123 Annview Lane  
Harrison, TN 37341  
W: (423) 751-8984  
e-mail: mrestrada@tva.gov

**MIDDLE TENNESSEE DIRECTOR:**

Scott Cantrell  
2325 Willowbrook Dr., Apt. C6  
Murfreesboro, TN 37130  
H: (615) 217-9084  
e-mail: greatscottmagic@yahoo.com

**WEST TENNESSEE DIRECTOR:**

Robert Schoumacher  
4266 Long Leaf Drive  
Memphis, TN 38117  
H: (901) 767-3060  
W: (901) 572-5222  
e-mail: rschoumacher@utmcm.edu

**Regional Scholastic Coordinators**

**Region 1:**

Judd Jones  
10904 Lookout Point  
Knoxville, TN 37922

**Region 2:**

Michael Akc  
16 Pincercrest Dr.  
Wildwood, GA 30757  
H: (706) 820-0693  
O: (423) 493-5406

**Region 3:**

Chris Prosser  
733 Long Hunter Court  
Nashville, TN 37217  
H: (615) 399-8432

**Region 4:**

Bill Cummings  
3532 Davieshire Dr.  
Memphis, TN 38133  
H: (901) 372-6584 O: (901) 348-1610