



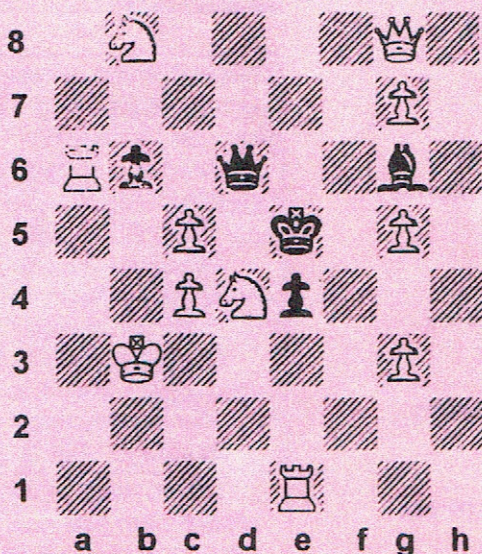
TENNESSEE CHESS NEWS

SPRING 2001

VOLUME 43

NO. 3

ELEZAJ WINS 2001 TN QUICK CHESS CHAMPIONSHIP.....	5
TRIBUTE TO RHEA B HAYES.....	7
ANNOTATED GAME BY CARTER GIBSON.....	10
2001 TN SCHOLASTIC INDIVIDUAL RESULTS.....	12
2001 TN SCHOLASTIC TEAM RESULTS.....	16
ROAD WARRIORS.....	22



Problem Corner by Ray Hudgens
White Mates in 2 Moves (Sol. Pg. 6)

TENNESSEE CHESS NEWS

The *Tennessee Chess News* is the official publication of the Tennessee Chess Association. TCA annual dues are \$10 for a *regular* membership, \$10 for a *student* membership. Additional members of a family may join for one dollar each, but only one issue of TCN will be mailed per family. All memberships expire August 31.

Tax-deductible Patron Memberships are available beginning at \$25 per year for those who wish to help support the TCA. These memberships expire one year from the date of payment. Patron membership categories and benefits are as follows:

PATRON - \$25

- receive TCN by First Class Mail with your name listed in each issue of TCN;

PATRON KNIGHT - \$50

- all Patron benefits plus a commemorative plaque;

PATRON BISHOP - \$100

- all Patron Knight benefits plus free entry to the Tennessee Open;

PATRON KING - \$500

- all Patron Bishop benefits plus free lodging at the Tennessee Open;

PATRON FOUNDER - \$1000

- all Patron King benefits.

TOURNAMENT ANNOUNCEMENTS

TCN prints listings of upcoming tournaments requiring TCA membership in each issue for free. Submit complete TLA information to Joseph Crump, Tournament Coordinator.

TN CHESS NEWS STAFF

Editor:

Angela McElrath-Prosser

Contributors:

Games Editor-Peter Lahde
Tech Support-Chris Prosser

Todd Andrews
John Anthony
Joe Crump
Carter Gibson
Raymond Hudgens
Mark Ishee
Peter Lahde
Kent Meadows
Harry Sabine

Pre-printed flyers for insert must be 8 1/2 x 11" in size, 60 pound Offset, and delivered flat. *Only one insert is available per issue.* \$15.00

TCN publishing schedule:
Summer 2001 - Aug 1 covering
May, Jun, Jul events
Deadline: July 9, 2001
Fall 2001 - Nov 1 covering
Aug, Sept, Oct events
Deadline: Oct 9, 2001
Winter 2002 - Feb 1 covering
Nov, Dec, Jan events
Deadline: Jan 9, 2002
Spring 2002 - May 1 covering
Feb, Mar, Apr events
Deadline: Apr 9, 2002

To submit material by e-mail,
please send text non-zipped
files to: tcanews@aol.com



TENNESSEE CHESS ASSOCIATION PATRON MEMBERS

Patron Founder

Dr. Martin Katahn

Patron Bishops

Roy Clark

George A. Dean

Raymond Hudgens

Mark Ishee

Harold Miles

Clint Pearson

Jeff Pennig

Harry Sabine

Patron Knights

Tom Cooper

Patricia Knight

Mike McGinnis

Bill Orgain

Brad Watson

Patron Members

David Burris

Lee Edwards

Rea Hayes

Joe Jones

James Wright

For those of you who got the first version of the 2001 Tennessee Open flyer in Huntsville or Nashville, please make sure that the zip code for "Mail Entries:" says 37212. If it doesn't, please correct it right now before you forget. You'll be glad you did ... think about it. The Scholastic flyer is correct as is. In this issue, you will find flyers for both the 55th Annual Tennessee Open 2001 and the 2001 Tennessee Open Scholastic. You can also check out:

<http://www.tnchessorgn.homestead.com/TNOpen2001fly.html>
and <http://www.tnchessorgn.homestead.com/TNOpen2001schfly.html>

The directions (same for both) are on the back of the flyers, but you can get them from:

<http://www.tnchessorgn.homestead.com/TNOPENDir.html>.

The Riverview Inn will not save rooms for these tournaments after August 15, 2001, so make your plans now. I have already saved my room. We have a nice prize fund of \$4,625 for the Tennessee Open, and it is unconditionally guaranteed. Please make your plans right now to come play this Labor Day. Wouldn't you like to go home with rating points, glory, prize money, and maybe even a trophy! Of course you do! Some of you Scholastic players can even play in both tournaments if you choose the Friday night option for the First Round of the Open. Who will be the TN State Champion for 2001? Will it be you? See you there!

Congratulations to our State Scholastic Champions. Please check out:

<http://www.homestead.com/tnchessorg/INDresults2001.html> and

<http://www.homestead.com/tnchessorg/2001teamresults.html>

for our winners. We literally had hundreds of young people playing in the Regionals and Finals. Hats off to our Regional winners, Champions, and Scholastic Coordinators who did the work to make it possible. Carter Gibson of Memphis, our State High School Champion, will be representing Tennessee in the Denker Tournament this year. Thank you Harry Sabine, Tom Purucker, Gary Gillespie, Chris Prosser, and Bill Cummings.

Congratulations to Esad Elazaj. He is a Master from Sarajevo, Bosnia. He came to Nashville as a refugee a few years ago. He is now our 2001 State Quick Chess Champion. He won with 5.5 out of 6. Check out:

<http://tnchessorgn.homestead.com/TNquickchess.html>.

Alvin Harris directed.

Congratulations to the Cumberland County Chess Club. They had 60 players at their Spring Open. Check out:

<http://www.tnchessorgn.homestead.com/ccso2001PW.html>.

Brian Smith of Murfreesboro won the Open with 3.5 out of 4.

Tim McHenry of Columbia won the Music City Spring Open with 4 out of 4. Check out: <http://tchessorgn.homestead.com/MCSOXtables.html>. Mark Ishee directed.

The same weekend as the Music City Spring Open was the Space City Open in Huntsville. While there I was told that it was the strongest tournament ever held in the State of Alabama. GM Pavel Blotny, GM Alex Wojtkiewicz, GM Sam Palatnik of Memphis, and FM Todd Andrews of Nashville all tied for first with 4 out of 5. Jake Kleiman of Memphis took home the Expert Prize with 3.5. Walter Smith of Cosby, TN took home the U2000 Prize also with 3.5. Many of the 60 players came from Tennessee. Frank Camaratta directed.



ELEZAJ WINS 2001 TENNESSEE QUICK CHESS CHAMPIONSHIP

by Alvin Harris

Sarajevo native Esad Elezaj outplayed a talented field to win the 2001 Tennessee Quick Chess Championship held at the Nashville Chess Center on April 6, 2001. A master level chess player currently residing in Nashville, Elezaj finished with 5½ out of a possible 6 points to claim first place prize money and the trophy for this year's championship. The Quick Chess Championship is distinguished from so-called "slow" chess by a rapid time control that requires the players to complete the entire game in 15 minutes or else suffer a time-forfeit. "We had a lot of strong players today but Esad's exceptional ability to play good moves in time-pressure was the difference," said chief tournament director Alvin Harris.

Taking second place was Nashville newcomer Omar Salazar of Mexico who finished with 5 wins in the six-round tournament. Walter Smith of Sevierville, Tennessee, Brian Smith of Murfreesboro and Kent Meadows of Nashville tied for third place with 4½ points.

In the scholastic sections, Jennifer Laupp of Franklin won the High School championship trophy for grades 10-12. DeWitt Pullen, Jr. of Nashville topped the Junior High section for grades 7-9. Alex King, a student at Meigs Magnet Middle School in Nashville took the Elementary section title for grades 4-6. First grader Jared Herman traveled from Cookeville, Tennessee to win the Primary section championship for grades 3 and under.

The event was held at the Nashville Chess Center located at 2911 Belmont Blvd. The Nashville Chess Center is a 501(c)(3) charitable organization dedicated to educating the public about the educational benefits of chess and currently sponsors more than 25 programs in local schools. For more information about the Nashville Chess Center and its activities, visit its web site at <http://www.nashvillechess.org> or call its Executive Director, Mark Ishee, at 292-7341.

2001 TENNESSEE QUICK CHESS CROSSTABLES

	RATING	1	2	3	4	5	6	TOTAL
1 Esad Elezaj (27)	UNR	W14	W11	W5	W2	W4	D1	5.5
2 Omar Salazar (17)	UNR	X	L1	W11	W6	W10	W19	5.0
3 Brian D. Smith (1)	2088	W15	W17	W8	L4	W23	D27	4.5
4 Kent Meadows (4)	1803	W18	W20	W19	W1	L27	D2	4.5
5 Walter Smith (2)	1943	W16	W12	W23	L27	W8	D4	4.5
6 Lee Edwards (5)	1710	L19	W28	L27	W24	W20	W26	4.0
7 DeWitt Pullen (6)	1669	L20	W18	W26	L17	W21	W11	4.0
8 Lee Miller (19)	UNR	W5	W7	L4	D10	W9	L17	3.5
9 Hiroshi Manabe (23)	UNR	W9	W10	L2	W7	L1	D8	3.5
10 Alexander King (8)	1137	W22	W26	L1	W21	L2	D23	3.5
11 DeWitt Pullen Jr (10)	1087	W24	L23	W15	D19	L17	W20	3.5
12 Jennifer Laupp (9)	1123	L23	B	D20	W25	L19	W28	3.5
13 Chris Blankenship (26)	UNR	W13	L8	L6	W12	W7	L5	3.0
14 Ira Kaplan (11)	981	B	L27	L17	W15	W13	L6	3.0
15 Leon Schwartz (7)	1506	W21	L19	W13	L23	L26	W24	3.0
16 Sandeep Chavan (18)	UNR	L4	L6	W22	L13	B	W25	3.0
17 Jonathan Mikkelsen (13)	UNR	L26	W22	L7	W18	L11	W21	3.0
18 Jonathan McGee (20)	UNR	W6	L4	D9	W28	L5	L10	2.5
19 Andrew Eisenberg (28)	UNR	H	L5	W16	L20	W12	L9	2.5
20 Tony Shadler (16)	UNR	L2	D25	L28	W14	L24	W15	2.5
21 Jared Herman (22)	UNR	L8	L13	L18	B	D14	W12	2.5
22 Jamie McGee (21)	UNR	L7	W14	W12	L8	L6	L13	2.0
23 Christopher Charles (24)	UNR	L10	L15	B	L5	W16	L7	2.0
24 Tre Smith (25)	UNR	L12	D16	W14	L9	D15	L18	2.0
25 Benjamin Mikkelsen (15)	UNR	L1	W24	L10	L11	D25	L16	1.5
26 Daniel Mikkelsen (14)	UNR	L27	L21	L25	L16	D22	B	1.5
27 James Charles (12)	UNR	W25	L2	L21	L26	L28	L22	1.0
28 Todd Andrews (3)	1873	F	U	U	U	U	U	0.0

PROBLEM CORNER SOLUTION:

PUZZLE # 1

WHITE MATES IN TWO

1. ... Kc5 2. Qb6 Mate

OR

1. Qf8 Qxd4 2. Qf6 Mate

OR

1. Nc1 Rxd5 2. Nb4-d3 Mate

1. ... QxQ 2. Nb8-c6 Mate

WHITE MATES IN TWO

PUZZLE # 2

R. B. HAYES HAS DIED

by Peter Lahde

It is with great sorrow that I have to report another of our great players has gone. Mr. R. B. Hayes passed away on February 16 at the age of 86. He was born in Canada on October 13 in 1914. Just four years ago, he became a member of the Tennessee Chess Hall of Fame. At that time, he was kind enough to give us a good account of his career including his many accomplishments. Allow me to highlight some of his great successes from this article he called *Musings from Rhea Hayes*. It all started when he learned the moves at the age of 11. He began playing in tournaments in Canada in 1934. He has remained active playing in tournaments all of his life so that would make it 66 years.

He qualified for the finals of the Toronto Championships in 1934 by winning in his last game in a Bishop and Knight vs King ending. He played in his first Canadian Championship in 1936. He even produced a book of this tournament, his first venture into chess publishing. The high point of his career while in Canada was when he placed 3rd in the Canadian Championship in 1947. Only Yanofsky and Rauch placed ahead of him. He played in his last Canadian Championship in 1951. While he did not score that well (4-8) he had the distinction of beating D. A. Yanofsky. Yanofsky had defeated Botvinnik in 1946 at the tournament in Groningen who became World Champion two years later. So he liked to tell people "if they beat me they are only three steps removed from the World Championship".

In 1955, he moved to Chattanooga and while there that same year he won the Southern Championship which took place in that city. The next year he also had a good result at the Tennessee Open where he placed third behind Jerry Sullivan and Bob Coveyou.

In 1957, he moved to Cincinnati where he stayed for thirty years. He won several Ohio state Championships including a clear first in 1963 and several when he tied for first. They honored him in the 70's when they called him Mr. Chess of Cincinnati.

During this period and shortly after his retirement from Union Central Life where he worked as an actuary, he traveled to Sun City West in Michigan to take part in the First Senior Open in 1988. He had the distinction of winning this national tournament.

Since 1990, he had been a resident of Tennessee living in Chattanooga. At the Tennessee Open in 1992 at the age of 77 became the Tennessee State Champion on tiebreak. Now let Rhea tell it how he saw it. "I became state champion in spite of the presence of Ron Burnett, who was having poor result (for him). Again, I was ranked about #16 going in

and played nobody below #9, so my terrific tiebreaks put me ahead of three other players. It only took three wins and three draws that year".

On three separate occasions, 1962, 1981, and 1992, his rating went into the area of 2175+. Unofficially, he probably reached master level in those years including 1947. He also recalled that in his honor they created a tournament in Chattanooga calling him a "Living Legend".

See the following page for some of his games.

CUMBERLAND COUNTY SPRING OPEN APRIL 14, 2001

OPEN	TOTAL	AMATEUR (CON'T)	TOTAL
Brian D. Smith	3.5	8 Brandon Anderson	3.0
Nicholas Barber	3.0	9 Tim Paulauskas	3.0
Walter Smith	3.0	10 Donnie Parton	3.0
J. Scott Eddins	3.0	11 James White	3.0
Trey Smith	3.0	12 Brandon Nelson	2.5
Bradley S. Watson	2.5	13 William Garnette	2.5
Glenis Swallows	2.5	14 Michael Howard	2.5
Matt Human	2.5	15 Michael J. Yamell	2.0
Brian Stidham	2.0	16 Dwaine Allison	2.0
Lee Miller	2.0	17 David Drown	2.0
Andrew Crigger	2.0	18 Anthony Robinson	2.0
Mirko Remec	2.0	19 Jennifer Brindisi	2.0
Joe Wright	2.0	20 Justin Lee	2.0
Jace Allison	2.0	21 Mike Constantine	2.0
Mark Dixon	1.5	22 Lee Burks	2.0
Chuck H. Lovingood	1.0	23 Jimmie Evans III	2.0
Nathan Cooper	1.0	24 Abel W. Howard	2.0
Victor W. Suich	1.0	25 Patrick J. Tae	1.5
Tanai Tae	0.5	26 Joanna R. Suich	1.5
Joshua Dunn	0.0	27 Joe Drown	1.5
Tim Paulauskas	0.0	28 Collyn T. Fike	1.0
Homer M. Allison III	0.0	29 Timmy Smith	1.0
		30 Clinton H. Pearson Jr	1.0
AMATEUR	TOTAL	31 Jason Kaufman	1.0
Phillip Rose	4.0	32 Frank Brindisi	1.0
Robert Schlenker	4.0	33 Ryan Fitch	1.0
Timothy Martindale	3.5	34 Steven F. Brindisi	1.0
Ryan Flynn	3.0	35 Danell W. Holt	1.0
Charles M. McGinnis	3.0	36 Cody Fike	0.5
Daniel Rose	3.0	37 C. J. Houston	0.0
Christopher Martindale	3.0	38 Jonathan T. Simpson	0.0

B22	C11
[] Hayes, R. ■ Jones, J. Tennessee Open 1992	[] GM Yanofsky ■ Hayes, R Canadian Championship 1951
1.e4 c5 2.c3 d5 3.exd5 Qxd5 4.d4 e6 5.Nf3 Nf6 6.Be3 cxd4 7.cxd4 Be7 8.Nc3 Qd8 9.Bc4 0-0 10.0-0 Nbd7 11.d5 exd5 12.Nxd5 Nxd5 13.Bxd5 Bf6 14.Qe2 Nb6 15.Bb3 Qe7 16.Rfd1 Bg4 17.Rd2 Rfd8 18.Rad1 Rxd2 19.Rxd2 Rc8 20.h3 Bh5 21.Qb5 Bg6 22.a4 Rc1+ 23.Rd1 Rxd1+ 24.Bxd1 Qd7 25.Be2 Qxb5 26.Bxb5 Bxb2 27.a5 Nd5 28.Bxa7 Nc7 29.Bc4 Bc3 30.Bb6 Na8 31.Bd8 Kf8 32.Bb5 h6 33.Kf1 Be4 34.Ke2 Bc6 35.Bxc6 bxc6 36.Kd3 Bb2 37.Kc4 Ke8 38.Bh4 Kd7 39.Bg3 f6 40.Nd4 g6 41.f4 Nc7 42.f5 g5 43.Bxc7 Kxc7 44.Ne6+ Kb7 45.Nd8+ Kc7 46.Ne6+ Kb7 47.g4 Be5 48.Kc5 Bg3 49.Nd8+ Kc7 50.Nxc6 1-0	1.e4 e6 2.d4 d5 3.Nc3 Nf6 4.Bg5 dxe4 5.Nxe4 Be7 6.Bxf6 Bxf6 7.Nf3 0-0 8.Qd2 b6 9.c3 Bb7 10.Bd3 Nd7 11.Qc2 Be7 12.0-0-0 f5 13.Ned2 c5 14.Rhe1 Rf6 15.g4 fxg4 16.Bxh7+ Kh8 17.Ng5 Nf8 18.Be4 Bd5 19.Bxd5 exd5 20.dxc5 Rxf2 21.Ne6 Nxe6 22.Rxe6 bxc5 23.Qg6 Bg5 24.Re5 Bh6 25.Kb1 Qf6 26.Qxf6 gxf6 27.Rxd5 Re8 28.Rh5 Kh7 29.Nc4 f5 30.h3 g3 31.a4 Kg6 32.Rxh6+ Kxh6 33.a5 g2 34.Ka2 Rf1 35.Rd6+ Kg5 36.h4+ Kxh4 0-1
B03	B07
[] Hayes, R ■ Drummond, R Ontario Championship 1948	[] Hayes, R ■ Key, G Cincinnati 1972
1.e4 Nf6 2.e5 Nd5 3.d4 d6 4.c4 Nb6 5.exd6 cxd6 6.Bd3 g6 7.Nc3 Bg7 8.Be3 0-0 9.Nge2 e5 10.dxe5 dxe5 11.0-0 Nc6 12.c5 Nd5 13.Nxd5 Qxd5 14.Nc3 Qd8 15.Ne4 Be6 16.Nd6 Qh4 17.f3 f5 18.Bf2 Qb4 19.a3 Qxb2 20.Rb1 Qxa3 21.Rxb7 Rfd8 22.Qe2 Qc3 23.Rfb1 Nd4 24.Rxg7+! Kh8!7 Or 24....Kxg7 25.Qxe5+ Kg8 26.Bxd4 etc. 25.Qe3 But not now 25.Qxe5?? as Nxf3+ wins the Queen. Nxf3+ 26.gxf3 Kxg7 27.Be1 Qd4 28.Qxd4 exd4 29.Bf2 Bd5 30.Bxd4+ Kh6 31.Bf6 Rdb8 32.Rxb8 Rxb8 33.Kf2 Rb3 34.Be2 g5 35.Nxf5+ Kg6 36.Ne7+ Kxf6 37.Nxd5+ Ke5 38.c6 Rb2 39.Ne3 Ke6 40.Nc4 Rc2 41.Ke3 a5 42.Nxa5 Rc5 43.Bc4+ Ke5 44.Ba6 Rc3+ 45.Kd2 Rc5 46.Kd3 Rc1 47.Nc4+ 1-0	1.e4 d6 2.d4 Nf6 3.Bd3 g6 4.f4 Bg7 5.Nf3 0-0 6.0-0 Nfd7 7.Be3 c5 8.c3 Qc7 9.Nbd2 b6 10.Qb3 Bb7 11.Bc4 Nc6 12.Ng5 e6 13.Bxe6 Nf6 14.e5 Na5 15.Bxf7+ Kh8 16.Qe6 dxe5 17.fxe5 Bc8 18.exf6 Bxe6 19.fxg7+ Kxg7 20.Nxe6+ 1-0
	B06
	[] Hayes, R ■ Gutzwiller Cincinnati 1974
	1.e4 g6 2.d4 Bg7 3.f4 d5 4.e5 h5 5.Bd3 Nh6 6.Nd2 c5 7.dxc5 Qa5 8.Ngf3 Bg4 9.c3 Qxc5 10.Qe2 Nf5 11.Nb3 Qc7 12.e6! fxe6 13.Qxe6 Qc6 14.Bb5! Qxb5 15.Qc8+ 15...Kf7 16.Ng5+ Kf6 17.Qe6 #. 1-0



Sp

Thank you to the Tennessee Chess Association
by Carter Gibson

I would like to express my gratitude for being allowed to play in the Denker Tournament of High School Champions. I really appreciate the extra work Mr. Sabine put in to get me entered in both the Denker Tournament and the US Open. I would also like to thank the TN Chess Association for the generous gift of \$100 and for paying my entry fee into the US Open! I learned a lot from both of the tournaments. In the 13 total games, I played nine people rated higher. Four of those were in the five-round Denker Tournament! Playing so many higher-rated opponents gave me many chances to discover some of my weaknesses and gave me plenty to work on before the next tournament. I also had the opportunity to develop endurance, by playing in the Denker Tournament in the morning and then in the US Open in the evening. One day I played for 12 hours! Although it was a very tiring experience, I thoroughly enjoyed it. Finally, I learned about proper clothing—those tournament rooms were freezing cold! I was very pleased with my score of 3.5 out of 5 in the Denker Tournament, which was good enough to tie for 6th. The winning score for the tournament was 4 out of 5, so I am very happy to place so well! Again, I would like to express my genuine appreciation for being allowed to represent Tennessee in the Denker Tournament. This meant a great deal to me. It has been one of my goals since about the 7th grade to play in the Denker Tournament, so it was a dream come true! Now if I can only win the TN State Championship next year....Thanks for everything!

I have enclosed one of my games at the request of Mr. Sabine. I consider it my best achievement of both tournaments. It was against FM Sean Nagle in the US Open. Sean also played in the Denker Tournament, where he was seeded 2nd, being only three rating points lower than the 1st seed.

(8) Gibson,C (1979) - FM Nagle,S (2329) [B15]US Open (2), 08/06/00
Caro-Kahn Defense, Two Knights Variation 1.e4 c6 Before the round I had looked at all of Sean's games that I could find in my databases. From the games I found, I expect him to play the Sicilian Dragon. I am not sorry to see him play the Caro-Kahn as I had been working on these lines earlier in the week. 2.Nc3 d5 3.Nf3 Some of my openings are fixed in my repertoire, and I always play them when given the chance. The Caro-Kahn is NOT one of them! This is the latest way I battle the Caro-Kahn. 3...g6 I am very familiar with the g6 plan in the main lines of the Caro-Kahn, but I have never seen it played against the Two Knights. I decide to battle for the center as is the usual plan. 4.d4 Bg7 5.exd5 My d-pawn would be weak if I allow dxe4 and the continual build-up against my center. 5...cxd5 6.h3 I play this to prevent the pin and to keep my

strong knight from being traded away. 6...Nc6 7.Be3 Nf6 8.Bd3 I intend to meet 8...Nb4 with Bb5-a4, then later to play c3 and Bc2. 8...a6 9.a3 I have to prevent Nb4 since I no longer have Bb5. 9...0-0 10.0-0 We have entered a middlegame with the e-pawn swapped for a c-pawn. This is a Karlsbad structure. It's one of my favorite middlegames! 10...b5 11.b4+= Sean tries a classic Minority Attack (2 pawns vs. 3 pawns). The goal is to further weaken my d-pawn by preventing me from playing c3. If I allow b4, my pawn structure will be very cramped. [11.Qd2? b4!+= And I believe Black is slightly better.] 11...Be6 12.Ne2 c5 would be a wonderfully strong outpost for one of my knights! 12...Qc8 13.Nc1 Nd2-b3-c5 would be better, as this would give me the option of playing f3. [13.Nd2 Ne4 14.f3 Nf6 15.Nb3+= I maintain the advantage.] 13...Bf5 14.Nb3 Ne4 By allowing Ne4 I trade my advantage for an unclear position. 15.Nc5 Nxc5 [15...e5 This move causes me to think for about 20 minutes. The resulting position is very unclear and requires many accurate moves from both of us. (After all that thinking Sean plays 15...Nxc5 instantly.) 16.dxe5 Nxe5 17.Nxe5 Bxe5 18.Bxe4 dxe4 (18...Bxa1? 19.Bxf5! Qxf5 20.Qxa1±) 19.Rb1 The position is extremely unclear.] 16.bxc5 My passed c-pawn will remain a menacing threat for the rest of the game. 16...Be4! The battle for the center begins to rage furiously. 17.c3 Rd8 18.Ne1 e5 19.Nc2 exd4 20.cxd4 Qf5 21.Bxe4 dxe4= I miss the threat of 16...Be4 which eventually forces me to capture the Bishop and allows the d-file to be opened, causing my pawns to be weak again. 22.Qd2 Rd5? 23.Nb4!± Sean underestimates the play I get with an open a-file. 23...Nxb4 24.axb4 Qd7 25.Rfd1 I am not too worried about the d-pawn because Black will lose his a-pawn (and probably more) if he moves the rook on a8. 25...f5 I believe this move was played too early. White is definitely better now. 26.Ra3 Queen a2 is now a powerful move, strengthening my attack down the a-file and pinning the rook on d5. 26...Qf7 27.Qa2 The a-pawn is dead were it stands! I have also prepared a rather large tactic after Rd8 and f4 which is his obvious plan after Qf7. Perhaps 26...Kh8 would have been better although White still has a pounding attack and great connected passed-pawns. 27...Rad8 28.Rxa6 f4 29.Ra7! Qf5 30.Ra8!! Pins everywhere! This is the tactic I planned with 27.Qa2. Black is in serious trouble. 30...Kh8 This is the best try in my opinion. The other moves will lose quickly. [30...Rxa8 31.Qxa8+ Kf7 32.Bxf4+-; 30...fxe3 31.Rxd8+ Bf8 32.Qxd5+ Qxd5 33.Rxd5+-; 30...Qf6 31.Qxd5+-; 30...Qg5 31.Bxf4 Qf5 32.g4!+-] 31.Bxf4 Qh5? Maybe 31...h6 will let him live a little longer but White's advantage is decisive. [31...Qd7 32.Bc7!] 32.g4!! I can now win forcibly by checkmate or by a decisive material advantage. 32...Qxh3 33.Qxd5 Qxg4+ 34.Bg3 Qxd1+ 35.Kh2 Rf8 [35...Qh5+ 36.Qxh5 Rxa8 37.Qd5 Re8 38.Qc6+- And the win comes shortly.; 35...Rxa8 36.Qxa8+ Bf8 37.Qxf8#; 35...Bf6 36.Rxd8+ Kg7 (36...Bxd8 37.Be5+ Bf6 38.Bxf6#) 37.Rg8+ And mate in 4.] 36.Rxf8+ Bxf8 37.Be5+ And Black resigns [37.Be5+ Bg7 38.Qd8#] 1-0

2001 TN REGION 1 INDIVIDUAL SCHOLASTICS**HIGH SCHOOL**

1 JOSHUA SUICH	4.5
2 ADRIAN VAN DER VELDE	4.0
3 JONATHAN FIELDS	3.5
4 ANDREW CAMPBELL	3.0
5 JASON KNIGHT	3.0
6 BAHBAK HAGHIGHI	3.0
7 KATYA CASPER	3.0
8 AARON MCCLAIN	2.5
9 CHRIS GREEN	2.5
10 DUSTIN MATHE	2.5

TOP U1000

BOBBY GRIZZARD	1.0
----------------	-----

TOP UNR

JOHN ZWIER	2.5
------------	-----

PRIMARY

1 PATRICK TAE	5.0
2 BRIAN GLATT	4.5
3 DAVID DROWN	4.5
4 PETER SUICH	4.0
5 COLLYN FIKE	4.0
6 ELLEN BLAST	4.0
7 CODY FIKE	4.0
8 ZACH BUTLER	3.5
9 EVAN NOON	3.5
10 LINUS LIANG	3.5

TOP U1000

JESSICA PALMER	3.5
----------------	-----

TOP UNR

KYRION WARE	3.0
-------------	-----

JR HIGH

1 SKYLAR STEPHENS	5.0
2 DAVID COOK	4.0
3 ROBERT SCHLENKER	4.0
4 JORDAN GREENLEE	3.5
5 CHRIS MARTINDALE	3.5
6 MARK CARDEN	3.5
7 PHILIP LEACH	3.0
8 MARTIN VAN MOURIK	3.0
9 LAWRENCE LA PLUE	2.5
10 JONATHAN CHUNG	2.5

TOP U1000

FREDERICK L CONRAD	2.5
--------------------	-----

TOP UNR

TRAVIS BONAR	2.0
--------------	-----

ELEMENTARY

1 MIRKO REMEC	6.0
2 SAM THOMPSON	5.5
3 JOSHUA DUNN	5.0
4 HEATHER SKAGGS	5.0
5 JESSE JONES	5.0
6 NATHANIEL JOHNSON	5.0
7 HARRISON COOK	4.5
8 MATTHEW MITCHELL	4.5
9 ROB TATGENHORST	4.0
10 WILL DAVIS	4.0

TOP U1000

GREER MACKEBEE	4.0
----------------	-----

TOP UNR

WESLEY MONTGOMERY	3.0
-------------------	-----

2001 TN REGION 2 INDIVIDUAL SCHOLASTICS**HIGH SCHOOL**

1 SCOTT CANTRELL	4.5
2 MATTHEW HUMAN	4.0
3 RYANN FLYNN	4.0
4 JOE WRIGHT	3.5
5 GLENIS SWALLOWS	3.5
6 RYAN WEST	3.5
7 MARK DIXON	3.0
8 TIMMY SMITH	3.0

PRIMARY

1 JARED HERMAN	4.5
2 CHRISTIAN STUTHEIT	4.5
3 ANDREW DEBRUYN	3.5
4 JERROD CHRISTMAS	3.0
5 JACOB CHRISTMAS	3.0
6 DUSTIN HORN	3.0
7 ETHAN HASSLER	3.0
8 QUINTON DEBRUYN	3.0

2001 TN REGION 2 INDIVIDUAL SCHOLASTICS (CON'T)

9 DANIEL HAMMOND	3.0	9 MICHAEL REAVES	2.0
10 ERIC CHNN	3.0	10 JUSTIN HORN	2.0
TOP U1000		TOP U1000	
HELEN REAVES	3.0	GRANT LEGGETT	2.0
TOP UNR		TOP UNR	
STEPHEN BRADY	2.0	C. J. HOUSTON	2.0
JR HIGH		ELEMENTARY	
1 BRANDON NELSON	4.5	1 MARK YOUNG	5.0
2 DONNIE PARTON	4.0	2 ABEL HOWARD	4.0
3 SARAH E STANHOPE	4.0	3 MICHAEL HOWARD	4.0
4 SNEHA KEMKAR	3.5	4 RYAN BANKS	4.0
5 PAUL BURKS	3.5	5 ALEX VOTAVA	4.0
6 SAM TRUSLOW	3.5	6 GRANT STUTHEIT	4.0
7 STEVEN BRINDISI	3.0	7 VALDIS RICHELSON	4.0
8 MELISSA MCKAY	3.0	8 ELI HARRISON	3.0
9 WILSON YANG	3.0	9 TIMOTHY NEUENDORF	3.0
10 STEVE PAI	3.0	10 JUSTIN LEE	3.0
TOP U1000		TOP U1000	
BRANDISE GRIMES	2.0	BECK SPURLOCK	3.0
TOP UNR		TOP UNR	
BARRY STUTHEIT	2.0	NICHOLAS PEPPERS	3.0

2001 TN REGION 3 INDIVIDUAL SCHOLASTICS

HIGH SCHOOL		PRIMARY	
1 ALAN MCCORMICK	4.5	1 HUNTER WILLIAMS	5.0
2 JENNIFER LAUPP	4.5	2 MICHAEL DUPUIS	4.0
3 MICHAEL HOOVER	3.0	3 JOEL MCGEE	4.0
4 GRANT T. OSBORN	3.0	4 RYAN WRIGHT	4.0
5 KIRILL ANNIKOV	3.0	5 LELAND C. BROWN	4.0
6 ROBERT KIDWELL	3.0	6 NOAH SMITH	4.0
7 PHILLIP ROSE	2.5	7 TRE SMITH	4.0
8 ANTHONY C. LOPEZ	2.0	8 BLAKE EDWARDS	4.0
9 REBECCA COX	2.0	9 NIYI ADEWOLE	4.0
10 DANIEL HUMBERD	2.0	10 CODY SUTHERLAND	3.5
TOP U1000		1ST U1000	
RONNIE GLASS	2.0	O. MISSIRIAN-DILL	3.0
TOP UNR		2ND U1000	
SHAWN HARTSELL	2.0	AUSTIN WEATHERELL	3.5

2001 TN REGION 3 INDIVIDUAL SCHOLASTICS (CON'T)

JR HIGH

1 TREY SMITH	5.0
2 FRANCOIS STOCKHAM	4.0
3 STEPHEN OSBORN	4.0
4 DANIEL ROSE	3.5
5 JACOB GREEN	3.5
6 DARREN FIZER	3.5
7 JACE ALLISON	3.5
8 WILLIAM GARNETTE	3.5
9 DAVID BOYD	3.0
10 JOSH TURNBOW	3.0

TOP U1000

WESLEY MARCUM-MULLINE	3.0
-----------------------	-----

TOP UNR

BEN ASH	2.0
---------	-----

ELEMENTARY

1 JOSHUA M. GAO	4.5
2 ALEXANDER KING	4.5
3 MYLES MCDONALD	4.0
4 ERIC BROOKS	4.0
5 JONATHAN MCGEE	4.0
6 BRANDON LADAGE	4.0
7 CHRISTOPHER CHENEY	4.0
8 CASSANDRA OSBORN	3.5
9 CHRISTOPHER CLAYTON	3.0
10 MATTHEW PITZ	3.0

TOP U1000

BLAKE ROSS	3.0
------------	-----

TOP UNR

GAINER PHAY	3.0
-------------	-----

2001 TN REGION 4 INDIVIDUAL SCHOLASTICS

HIGH SCHOOL

1 CARTER GIBSON	5.0
2 BLAKE GIBSON	4.0
3 JAVIER CEPEDA	3.0
4 VINEET SATHYAN	3.0
5 AARON SMITH	3.0
6 MATTHEW MARKHAM	3.0
7 ALIX DUNN	3.0
8 JASON FREDERICK	3.0
9 JOSE RODRIGUEZ	2.5
10 ERIK MALTOS	2.5

TOP U1000

MATT MILLER	2.0
-------------	-----

TOP UNR

CLINT SMITH	2.0
-------------	-----

PRIMARY

1 MINGDA XU	5.0
2 GRAHAM GIBSON	4.5
3 JONATHAN BEATTY	4.0
4 FORREST BATY	4.0
5 BRANDT NORCROSS	3.5
6 JACOB WILEY	3.5
7 CABELL BROWN	3.0
8 MITCHELL ALLEN	3.0
9 NISHIT REDDY	3.0
10 MICHAEL COX	3.0

TOP U1000

ADAM MARCHAND	3.0
---------------	-----

TOP UNR

DEREK SANDERS	3.0
---------------	-----

JR HIGH

1 MICHAEL ROSS	4.0
2 LEE HOYLE	4.0
3 GRIFFIN GIBSON	3.5
4 DAVID DAWSON	3.5
5 SUNNY MAJUMDAR	3.5
6 SEAN CURRAN	2.5
7 LANDON JOHNSON	2.0
8 AMANDA LAW	2.0

ELEMENTARY

1 EVAN MAH	5.0
2 YURIY BRODSKIY	4.5
3 ADELINE BROWN	4.0
4 BRAD DILLON	4.0
5 JEFF DREIFUS	4.0
6 CONRAD GIBSON	4.0
7 CHRISTOPHER JENIQU	4.0
8 PIERCE RUFFIN	3.5

2001 TN REGION 4 INDIVIDUAL SCHOLASTICS (CON'T)

9 MATTHEW HERST	2.0	9 DAVID YOUNG	3.0
10 ADAM MALTOS	2.0	10 DOUGLAS CARLOCK	3.0
TOP U1000		TOP U1000	
HUNTER PHILLIPS	1.5	REX HAMMONDS	3.0
TOP UNR		TOP UNR	
RANDY BROWN	0.0	ABDOULOYE DIALLO	3.0

2001 TENNESSEE STATE INDIVIDUAL FINALS

HIGH SCHOOL

1	Carter B. Gibson	4.5
2	Javier A. Cepeda	4.0
3	Blake Gibson	3.5
4	Jason R. Knight	3.5
5	Joshua Suich	3.5
6	Alix Dunn	3.5
7	Katya Casper	3.5
8	Adrian van der Velde	3.0
9	Jennifer Laupp	3.0
10	Grant Osborn	3.0

TOP U1000

Bahbak Haghighi	2.0
-----------------	-----

2ND U1000

Jason Frederick	2.0
-----------------	-----

JUNIOR HIGH

1	Griffin Gibson	5.0
2	Jacob Green	4.0
3	Michael Ross	4.0
4	David Dawson	3.5
5	Sneha Kemkar	3.5
6	Trey Smith	3.5
7	Brandon Nelson	3.5
8	Jace Allison	3.0
9	Daniel Rose	3.0
10	Melissa McKay	3.0

1ST U1000

Hunter Phillips	3.0
-----------------	-----

TOP UNR

Donnie Parton	2.0
---------------	-----

ELEMENTARY

1	Mirko Remec	5.0
2	Adeline Brown	4.0
3	Joshua C. Dunn	4.0
4	Justin Lee	4.0
5	Joshua Gao	3.5
6	Evan Mah	3.5
7	Alexander King	3.5
8	Yuriy Brodskiy	3.5
9	Jeff Dreifus	3.0
10	Christopher Jenious	3.0

TOP U1000

Myles McDonald	3.0
----------------	-----

TOP UNR

Jesse Jones	3.0
-------------	-----

PRIMARY

1	Forrest Baty	5.0
2	Patrick J. Tae	4.0
3	David Drown	4.0
4	Graham Gibson	4.0
5	Brandt Norcross	4.0
6	Peter Suich	3.5
7	Mingda Xu	3.5
8	Joel McGee	3.0
9	Jonathan Beatty	3.0
10	Brian Glatt	3.0

TOP U1000

Mitchell Allen	3.0
----------------	-----

TOP UNR

Christian Stutheit	3.0
--------------------	-----

2001 TENNESSEE STATE SCHOLASTIC REGION 1 TEAM RESULTS

High School

1 Morristown Home Educ L&P	3.0
2 Alcoa High School	2.0
3 West High School	0.5
4 Tri-Cities Christian School	0.5

B-Team Primary

1 Linden Elem. School B1	3.5
2 Willow Brook Elem. School	3.0
3 A. L. Lotts Elem. School	2.5
4 Webb School of Knoxville	2.0
5 Linden Elem. School B2	1.0

Elementary

1 Alcoa Elementary School	3.5
2 Lake City Middle School	3.0
3 A.L. Lotts Elementary School	3.0
4 Willow Brook Elem. School	3.0
5 Webb School of Knoxville	2.5
6 Lake City Elem. School	2.0
7 Tate's School of Discovery	2.0
8 Tri-Cities Christian School	2.0
9 Linden Elementary School	2.0
10 Jefferson Middle School	1.5
11 Morristown Home Educ L&P	1.5
12 Brickey Elementary School	1.0
13 Holston Middle School	1.0
14 Five Rivers Homeschool	0.0

B-Team Elementary

1 Alcoa Elementary	4.0
2 A. L. Lotts Elem. School B2	2.5
3 A. L. Lotts Elem. School B1	2.0
4 Lake City Elementary	2.0
5 Tri-Cities Christian School	2.0
6 Alcoa Elementary B1	2.0
7 Alcoa Elementary B2	1.5
8 Brickey Elementary School	0.0

Junior High

1 Jefferson Middle School	4.0
2 Morristown Home Educ L&P	3.0
3 Webb School of Knoxville	2.5
4 Lake City Middle School	1.5
5 Five Rivers Homeschool	1.0
6 Holston Middle School	0.0

Primary

1 Linden Elem. School	4.0
2 Webb School of Knoxville	3.0
3 Willow Brook Elementary	3.0
4 Woodland Elem. School	2.0
5 Brickey Elementary School	2.0
6 Alcoa Elementary School	2.0
7 A. L. Lotts Elem. School	1.5
8 Five Rivers Homeschool	1.5
9 Lake City Elem. School	1.0

2001 TENNESSEE STATE SCHOLASTIC REGION 2 TEAM RESULTS

High School

1 Clarkrange High School	4.0
2 Cumberland Co High School	3.0
3 McCallie School	2.5
4 East Ridge High School	2.5
5 Brainerd High School	1.5
6 Home School Cumberland Co	1.5
7 Cleveland High School	1.0

Primary

1 North Cumberland Elem.	3.5
2 Capshaw Elem. School	3.5
3 Homestead Elementary	2.5
4 Crab Orchard Elementary	2.5
5 D. P. Yates Primary School	2.0
6 E. L. Ross Elem. School	2.0
7 Graysville Elem. School	0.0

B-Team H. S./Jr High

1 Clarkrange High School	4.0
2 East Ridge High School	3.0

B-Team H. S./Jr High (Con't)

3 Brainerd High School	3.0
4 Meigs Middle School	1.0

2001 TN STATE SCHOLASTIC REGION 2 TEAM RESULTS (CON'T)

Elementary		B-Team Elem/Primary	
1 E. L. Ross Elementary	3.0	1 E. L. Ross Elem. School	4.0
2 Chatt. School of Arts& Scienc	3.0	2 Chatt. Sch. of Arts & Scienc	3.0
3 Clarkrange Elem. School	3.0	3 Snow Hill Elem. School	3.0
4 North Cumberland Elem.	3.0	4 Clarkrange Elem. School	2.0
5 Pineview Elementary School	3.0	5 Crab Orchard Elem. School	2.0
6 Snow Hill Elem. School	2.5	6 Homestead Elem. School	2.0
7 Crab Orchard Elem. School	2.0	7 North Cumberland Prim T2	1.5
8 Homestead Elementary	2.0	8 North Cumberland Prim T1	1.5
9 Home School Cumberland Cr	2.0	9 Grimsley Elem. School	1.0
10 Grimsley Elem. School	1.5	10 Stone Elementary School	0.0
11 Stone Elementary School	1.5		
12 Pleasant Hill Elem. School	1.5	Junior High	
13 South Cumberland Elem.	1.5	1 Clarkrange High School	3.5
14 Graysville Elementary Schoo	1.5	2 Cleveland Middle School	3.0
15 Hunter Middle School	1.0	3 Pleasant Hill Elementary	3.0
		4 Meigs Middle School	2.0
		5 Homestead Elementary	2.0
		6 Hixon Middle School	1.5
		7 Hunter Middle School	1.0
		8 South Cumberland Elem.	0.0



2001 TENNESSEE STATE SCHOLASTIC REGION 3 TEAM RESULTS

High School		B-Teams	
1 Page High School	3.5	1 Page High School B1	4.0
2 Franklin High School	3.0	2 Meigs Magnet Elem. B1	3.5
3 Hillsboro High School	2.0	3 Page High School B2	3.5
4 Montgomery Central H. S.	2.0	4 Meigs Magnet Elem. B2	3.0
5 Mt. Juliet High School	1.5	5 Granbery Elem. B2	3.0
		6 Scales Elem. B1	2.5
		7 Meigs Magnet Elem. B3	2.5
		8 Charlotte Elem. B2	2.0
		9 Charlotte Elem. B1	2.0
		10 Meigs Magnet Jr. High B1	2.0
		11 Scales Elem. B2	2.0
		12 Ross Elem. B1	2.0
		13 Granbery Elem. B1	2.0
		14 Meigs Magnet Elem. B4	2.0
		15 Christ The King School B1	1.5
		16 East Montgomery Elem.	1.0
		17 Ross Elem. B2	1.0
		18 Hattie Cotton Elementary	1.0
Junior High			
1 Meigs Magnet School	3.5		
2 Page Middle School	3.0		
3 Charlotte Middle School	3.0		
4 Battle Ground Academy	3.0		
5 Brentwood Academy	2.0		
6 Richview Middle School	2.0		
7 Page High School	1.5		
8 H. G. Middle School	1.0		
9 Christ The King School	1.0		
10 Antioch Middle School	0.0		

2001 TN STATE SCHOLASTIC REGION 3 TEAM RESULTS (CON'T)

Elementary

1 Meigs Magnet School	4.0
2 Scales Elementary School	3.0
3 Charlotte Elementary School	3.0
4 Julia Green Elem. School	3.0
5 Hattie Cotton Elem. School	2.5
6 Stokes Elementary School	2.0
7 Christ The King School	2.0
8 Discovery School	1.5
9 East Montgomery Elem.	1.0
10 Lakeview Elementary School	1.0
11 Ross Elementary School	1.0
12 H. G. Hill Middle School	0.0

19 Stokes Elementary	0.5
20 Meigs Magnet Elem. B5	0.0
21 Christ The King School B2	0.0

Primary

1 Scales Elementary School	4.0
2 Granbery Elem. School	3.0
3 Julia Green Elem. School	2.0
4 Charlotte Elem. School	2.0
5 Christ The King School	0.5
6 East Montgomery Elem.	0.5

2001 TENNESSEE STATE SCHOLASTIC REGION 4 TEAM RESULTS

High School

1 White Station High School	3.0
2 Dyersburg High School	2.0
3 Memphis University School	1.0
4 St. Benedict at Auburndale	0.0

Junior High

1 White Station Middle School	2.0
2 St. Benedict at Auburndale	1.5
3 Memphis University School	1.0
4 Lausanne Collegiate School	0.5

Elementary

1 Grahamwood Elementary	3.5
2 Richland Elementary School	3.0
3 St. George's Day School	2.5
4 Oakhaven Elementary School	2.0
5 Christ Methodist Day School	2.0
6 John P. Freeman Elem.	2.0
7 Riverdale Elementary School	1.0
8 Sea Isle Elementary School	0.0

Primary

1 Grahamwood Primary	3.5
2 St. George's Day School	2.5
3 John P. Freeman Primary	2.0
4 Riverdale Primary	2.0
5 Richland Primary	2.0
6 St. Benedict at Auburndale	2.0
7 Our Lady of Perpetual Help	1.0
8 Christ Methodist Day School	0.0

Primary B-Teams

1 Our Lady of Perpetual Help	4.0
2 Richland Knights B1	2.5
3 Richland Bishops B2	2.5
4 J. P. Freeman Castles B	2.0
5 J. P. Freeman Kings B	1.0

Elementary B-Teams

1 Oakhaven Elementary B	4.0
2 Grahamwood Bishops B	3.0
3 Richland Royals	2.5
4 Grahamwood Dragons B	2.5
5 J. P. Freeman Bishops B II	2.5
6 J. P. Freeman Rooks B I	2.0
7 Grahamwood Knights B	1.5
8 Richland Red Castles	1.0
9 J. P. Freeman Knights B III	1.0



2001 TENNESSEE SCHOLASTIC TEAM FINALS

HIGH SCHOOL

1	Clarkrange High School	3.5
	Clarkrange TN	
2	Cumberland County H. S.	3.5
	Crossville TN	
3	White Station High School	3.0
	Memphis TN	
4	East Ridge High School	2.5
	Chattanooga TN	
5	Morristown Home School	2.0
	Morristown TN	
6	Montgomery Central H. S.	2.0
	Clarksville TN	
7	Alcoa High School	2.0
	Alcoa TN	
8	Page High School	1.5
	Franklin TN	
9	Franklin High School	1.5
	Franklin TN	
10	Dyersburg High School	1.5
	Dyersburg TN	
11	Memphis University School	1.0
	Memphis TN	
12	West High School	0.0
	Knoxville TN	
13	St. Benedict at Auburndale	0.0
	Cordova TN	
14	McCallie School	0.0
	Chattanooga TN	
15	Hillsboro High School	0.0
	Nashville TN	
16	Tri-Cities Christian School	0.0
	Blountville TN	

JUNIOR HIGH

1	White Station Middle School	3.5
	Memphis TN	
2	Lausanne Collegiate School	3.5
	Memphis TN	
3	Jefferson Middle School	3.0
	Oak Ridge TN	
4	Meigs Magnet School	2.5
	Nashville TN	
5	Charlotte Middle School	2.5
	Charlotte TN	

ELEMENTARY

1	Grahamwood Elem. School	3.5
	Memphis TN	
2	Meigs Magnet School	3.5
	Nashville TN	
3	Richland Elem. School	3.0
	Memphis TN	
4	Julia Green Elem. School	3.0
	Nashville TN	
5	Scales Elementary School	3.0
	Brentwood TN	
6	Alcoa Elementary School	2.0
	Alcoa TN	
7	A.L. Lotts Elementary School	2.0
	Knoxville TN	
8	St. George's Day School	2.0
	Germantown TN	
9	Lake City Middle School	2.0
	Lake City TN	
10	Pine View Elem. School	2.0
	Rockwood TN	
11	E. L. Ross Elem. School	1.5
	Cleveland TN	
12	Charlotte Elem. School	1.5
	Charlotte TN	
13	Oakhaven Elem. School	1.0
	Memphis TN	
14	Chattanooga Arts & Science	1.0
	Chattanooga TN	
15	Clarkrange Elem. School	1.0
	Clarkrange TN	
16	Willow Brook Elementary	0.0
	Oak Ridge TN	

PRIMARY

1	Woodland Elem. School	3.5
	Oak Ridge TN	
2	St. George's Day School	3.0
	Germantown TN	
3	Grahamwood Elem. School	3.0
	Memphis TN	
4	Linden Elem. School	2.5
	Oak Ridge TN	
5	Webb School of Knoxville	2.5
	Knoxville TN	

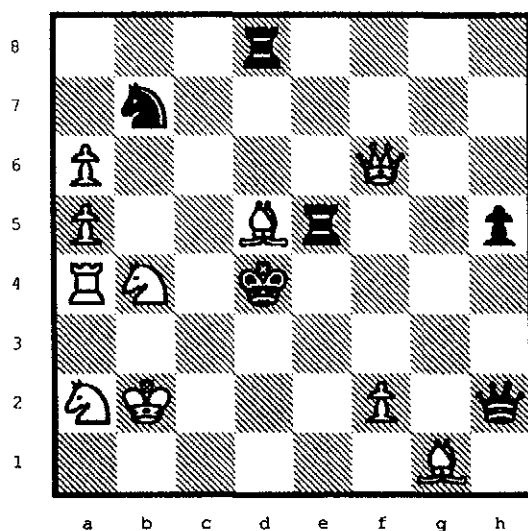
2001 TENNESSEE SCHOLASTIC TEAM FINALS (CON'T)

6 Page Middle School Franklin TN	2.5	6 J. P. Freeman Primary Memphis TN	2.0
7 Clarkrange High School Clarkrange TN	2.5	7 Willow Brook Elementary Oak Ridge TN	2.0
8 Morristown Home School Morristown TN	2.0	8 Granbery Elementary School Brentwood TN	2.0
9 St. Benedict at Auburndale Cordova TN	2.0	9 Julia Green Elementary Nashville TN	2.0
10 Meigs Middle School Decatur TN	2.0	10 North Cumberland Elem. Crossville TN	2.0
11 Five Rivers Home School Morristown TN	1.5	11 Scales Elem. School Brentwood TN	1.5
12 Battle Ground Academy Franklin TN	1.5	12 Crab Orchard Elem. School Crab Orchard TN	1.0
13 Cleveland Middle School Cleveland TN	1.0	13 Donald P. Yates Primary Cleveland TN	0.5
14 Lake City Middle School Lake City TN	1.0	14 Charlotte Elementary School Charlotte TN	0.5
15 Pleasant Hill Elementary Pleasant Hill Tn	1.0	15 Homestead Elem. School Crossville TN	0.0
16 Memphis University School Memphis TN	0.0	16 Riverdale Elem. School Memphis TN	0.0

Problem Corner by Ray Hudgens

Puzzle # 2

White Mates in 2 Moves (Sol. Pg6)



KNOXVILLE BEATS CUMBERLAND 7-3

Knoxville and Cumberland County faced-off on Wednesday, April 18, in a 10-board, USCF Rated match at the GKCC. Cumberland County augmented their team with a squad of players from Clarkrange High School.

Clarkrange are the new Tennessee High School Champions, and the reigning National High School Champions in the under "1000" section. They're going back to the SuperNationals at the end of April, and wanted to get in some practice.

We outranked Cumberland on every board. According to the ratings, we should have swept the event; instead, we won by 7-3. Cumberland fielded a tough team; more than one Knoxville player complained afterwards that all the Cumberland players are underrated!

Thanks go to Cumberland County Chess Club President, Gary F. Gillespie, who helped direct. The cross table is on page 11 of our PDF Cross Tables Document: <http://members.aol.com/revjanth/Tables.pdf>

Thanks go to Bobby Clark for submitting this game, which surely qualifies as being one of the most tactical ever played!

Brindisi, Frank (762) - Clark, Bobby (1062) [D20]
GKCC-Cumberland Match Knoxville (1), 4/18/01

1.d4 d5 2.c4 dxc4 3.Nc3 f5 4.Nf3 Nc6 5.Qa4 Bd7 6.Qxc4 e6 7.d5 exd5 8.Nxd5 Nf6 9.Bg5 Be6 10.e4 fxe4 11.Qxe4 Nxe4 12.Bxd8 Rxd8 13.Nxc7+ Kf7 14.Nxe6 Bb4+ 15.Ke2 Kxe6 16.Ke3 Nd2 17.Ng5+ Ke7 18.Be2 Bc5+ 19.Kf4 Rhf8+ 20.Kg4 Ne5+ 21.Kh3 Bxf2 22.Nxh7 Rf4 23.g3 Re4 24.Bh5 Rh8 25.Kg2 Bxg3 26.Ng5 Re3 27.hxg3 Rd3 28.Rae1 Kf6 29.Ne4+ Nxe4 30.Rxe4 Rd2+ 31.Be2 Rxh1 32.Kxh1 Rxb2 33.Rf4+ Ke6 34.Bg4+ Nxc4 35.Rxc4 Kf5 36.Ra4 b5 37.Rxa7 b4 38.Rf7+ Kg6 39.Rf3 Rxa2 40.Rb3 Ra1+ 41.Kh2 Ra2+ 42.Kh3 Ra4 43.Kh4 Kh6 44.Kg4 Kg6 45.Kh4 Ra5 46.g4 Ra4 47.Rd3 Ra6 48.Rb3 ½-½

GKCC APRIL 5-MINUTE TOURNAMENT

NM Peter Bereolos swept the tournament with a perfect 7-0. Expert Nick Barber finished second with 6-1. 8-year-old Patrick Tae won the Under "1500" prize with 2.5-4.5. This was Patrick's first appearance in a GKCC 5-Minute Tournament. (Patrick, currently rated 1197, is the 11th highest rated player his age in the USA.) The tournament was an 8-player Round-Robin, and was unrated. GKCC Events Director, Kipp Bynum, directed. The cross table is on page 10 of our PDF Cross Tables Document: <http://members.aol.com/revjanth/Tables.pdf>

2001 CUMBERLAND CO SPRING OPEN CHESS TOURNAMENT

59 PLAYERS

April 14, 2001

TWO STATES REPRESENTED

CROSSVILLE TN

OPEN: (21)

PRIZE WINNERS

CHAMPION	BRIAN SMITH	MURFREESBORO TN	3.5	\$50.00
EXPERT - 1ST	NICHOLAS BARBER	LOUDON TN	3.0	\$25.00
CLASS A - 1ST	WALTER SMITH	SEVIERVILLE TN	3.0	\$25.00
CLASS B - 1ST	BRIAN STIDHAM	GRAY TN	2.0	\$12.50
CLASS B - 1ST	LEE MILLER	MANCHESTER TN	2.0	\$12.50
CLASS C - 1ST	SCOTT EDDINS	NASHVILLE TN	3.0	\$12.50
CLASS C - 1ST	TREY SMITH	FRANKLIN TN	3.0	\$12.50
CLASS D - 1ST	GLENIS SWALLOWS	MONTEREY TN	2.5	\$12.50
CLASS D - 1ST	MATT HUMAN	JAMESTOWN TN	2.5	\$12.50

AMATEUR: (38) PRIZE WINNERS

CO-CHAMPION	PHILIP ROSE	COLLEGE GROVE TN	4.0	\$45.00
CO-CHAMPION	ROBERT SCHLENKER	ROGERSVILLE TN	4.0	\$45.00
CLASS E - 1ST	TIMOTHY MARTINDALE	KNOXVILLE TN	3.5	\$25.00
CLASS F - 1ST	CHRIS MARTINDALE	KNOXVILLE TN	3.0	\$12.50
CLASS F - 1ST	BRANDON ANDERSON	JAMESTOWN TN	3.0	\$12.50
CLASS G - 1ST	TIM PAULAUSKAS	THOMPSON STATION TN	3.0	\$25.00
UNRATED - 1ST	DONNIE PARTON	DECATUR TN	3.0	\$12.50
UNRATED - 1ST	JAMES WHITE	CHATTANOOGA TN	3.0	\$12.50

Road Warriors

by FM Todd D. Andrews

There are numerous types of chess people in this world. There are your teachers, coffee shop players, scholastics, writers and those that just enjoy watching. Then there is a select group of us who hit the road each and every weekend we can to make our mark on the scene. We travel from town to town, land to land trying to prove that we are the best and rake up some cash for the next tournament at the same time. The Tennessee roadies had a superb weekend in Huntsville, Alabama April 21-22 for the 2001 Space City Open, bringing many of the top prizes back to the Volunteer State.

Day Two of the tournament proved to be very generous for the Tennesseans in prize contention. Jake Kleiman, the current Tennessee junior hope, received a gift Sunday morning when his opponent overslept, but then put out fellow Tennessean Peter Bereolos in the final round to bring the top expert prize home with 3.5/5. GM Palatnik of Memphis had an uneventful second day drawing both games quickly, but it was enough to tie for first with 4.0/5. Before going to bed on the

conclusion of the first day, I knew I had to go 2-0 if I was going to defend my Space City Open title. It became even tougher when I had to do with black both rounds. I out-theoried Charles Meidinger in round four and then played aggressively against FM Stephen Mohammed to accomplish the 2-0 and join the three Grandmasters at 4.0/5 for first place. GM Pavel Blatny took the trophy on tie breaks. Enjoy these games with my notes from the strongest tournament ever held in Alabama and if you have any comments or arguments with my analysis, email me at toddjr@nashville.net.

A57

☐ **Meidinger,C**

☒ **Andrews,T**

Space City Open (4)

2001

1.d4 Nf6 2.c4 c5 3.d5 b5 4.cxb5 a6 5.e3
 axb5 6.Bxb5 Qa5+ 7.Nc3 Bb7 8.Bc4 e6
 9.Bd2 Qb6 10.Qb3 Qxb3 11.Bxb3 exd5
 12.Nf3 Be7 13.0-0 d6 14.Rfd1 Nbd7 15.Be1
 Nb6 16.Nd2?! 0-0 17.a4 Rfb8 18.a5 Nbd7
 19.Nb5? Bc6 20.Nc3 c4 21.Ba4 Bxa4
 22.Nxa4 Bd8 23.Nb6 Nxb6 24.axb6 Bxb6
 25.Nf3 Bc5 26.Bc3 Ne4 27.Kf1 h6 28.Ke1
 Rxa1 29.Rxa1 Bb4 30.Bxb4 Rxb4 31.Ra2
 Kh7 32.Nd4 g6 33.Ne2 Kg7 34.Nc3 Nxc3
 35.bxc3 Rb1+ 36.Ke2 Kf6 37.h4 Kf5 38.g3
 Ke4 39.Rd2 Rc1 40.f4 Rxc3 41.Rd4+ Kf5
 42.Rxd5+ Ke6 43.Ra5 Rb3 44.h5 Rb2+
 45.Kf3 c3 46.hxg6 c2 47.f5+ Kd7 48.Ra7+
 Kc6 49.Ra8 Kb7 50.gxf7 c1Q 51.Rb8+ Kxb8
 52.f8Q+ Ka7 53.Qg7+ Ka6 54.Qxh6 Qd1+
 55.Kf4 Rb4+ 56.Kg5 Qg4+ 57.Kf6 Qxg3
 58.Qg5 Qe5+ 59.Kf7 Rb7+
 0-1



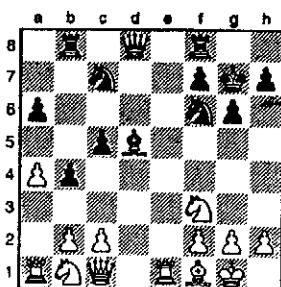
□ Mohammed,S

■ Andrews,T

Space City Open (5)

2001

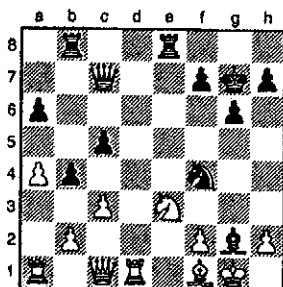
This was definitely the high point of my tournament in Huntsville. I upped my record on FIDE Master Stephen Mohammed of Atlanta to 2.5 from three games. I had only winning on my mind when I sat down to play. 1.d4 Nf6 2.Nf3 c5 3.d5 d6 4.Nc3 g6 5.e4 Bg7 6.Be2 0-0 7.0-0 Na6 8.Bf4 GM Fedorowicz chose Re1 against me in our draw at the 2000 US Masters in Chicago. It is the only other time I have played the black side of this. Nc7 9.a4 b6 10.Re1 a6 Black's whole plan is clear: get in the b5 pawn thrust. White should do all he can to prevent this thrust as it will cause white some discomfort and some backing up of his pieces. White chooses a weak plan now to nullify the g7 bishop. 11.Qc1 Rb8 12.Bh6 b5 My first goal has been accomplished in this position. 13.Bxg7 Kxg7 14.Bf1 to protect the e-pawn against ...b4. White accomplished the under 1600 plan of trading off my flachettoed bishop, but now all his pieces will end up on the back rank. Bg4 15.Nd2 e5 Thematic. If white does not capture the pawn en passant, then Black will play Nh5, B retreat and f5 and it will be black who controls play on both flanks while the center is completely locked. An easy game to play. 16.dxe6 Bxe6 I think taking with the bishop is forced, otherwise he could get trapped with f3-g4 and there is no need to even analyse sacking a knight for the king side pawns. My advantage is clear. 17.Nf3 b4 18.Nb1 d5! Fundamentals. When you have a lead in development, break the position open and the superior activity will be your advantage. 19.exd5 Bxd5! How does one choose with which piece should he or she recapture? Here is my logic: I put the Bishop on its most powerful diagonal aiming at the king side. The knights will dominate on the dark squares on the king side with Ne6, Nh5, Nf4, Qc7. Add these two elements together and there are good king side attack possibilities associated with the g2 square. More than enough to make you stop your analysis.



20.Nbd2 Re8 First, I take the time to nullify white's strongest piece, the e1 rook. 21.Ne5 No trades for whites. Now I wanted to play Ne6, but I was worried about my a6 pawn so... Bb7 22.Ndc4 Ne6 23.Rd1? He played this move immediately thinking he was going to get in Nd6. However, he missed my next move. Nd5! Why would I want to self-pin myself? Because there is no way for white to exploit the pin itself. 24.c3

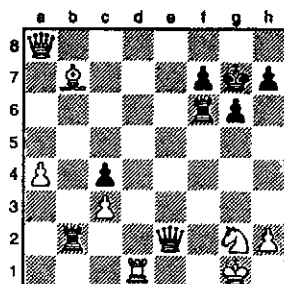
[24.Ne3 Qg5 25.Nxd5 Qxe5+]
24...Qc7 25.Ng4? Going to h6 is a threat that is easily dealt with. Nef4 26.Nce3?

[26.g3 h5!]
26...Nxe3 27.Nxe3 Bxg2! "What a one-mover!" -B. McCarthy



28.Nxg2 Forced because of the knight fork on e2. Nh3+ 29.Kh1 Nxf2+ 30.Kg1 Nh3+ 31.Kh1 Nf2+ The psychologically right thing to do. The reasoning behind checking him again: Because I can. 32.Kg1 Nxd1 33.Qxd1 bxc3 34.bxc3 Rb2 Rook and two pawns for two crippled minor pieces. I'll do it anyway,

especially if you let me put my rook on the 7th right away! 35.Qf3 Re6! Protecting a6 and threatening a Rf6-f2 invasion. 36.Rd1 Rf6 37.Qa8 Qe5 38.Bxa6 c4! 39.Bb7 Qe2 Mate in nine.



0-1

□ Barber,N

■ Andrews,T

Space City Open (2)

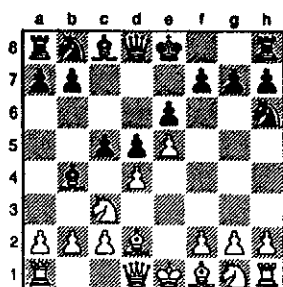
C17

2001

I had three very interesting victories with black in this tournament. This was unusual for me as I have always played much stronger on the white side. I never take Nick lightly, he hurt me a few times during our highschool rivalry days. So I knew I had to make the best moves or Nick would take his chances. 1.e4 e6 2.d4 d5 3.Nc3 Bb4 4.e5 c5 5.Bd2 This move has been made popular by the infamous Roman Opening Forum video tapes from GM Roman Dz(can't spell his last name)ashvili. White's idea is to play Nc3-b5 and try to jump on the d6 square. Black must clear the way for castling immediately. Nh6! This was the first time I had ever played ...Nh6. I have only tried to usual ...Ne7. My only knowledge of this ...Nh6 move comes from some articles I read by GM Pshaskis, who is a pioneer in the French Defense.

(Diagram)

There is no need to worry about the doubling of

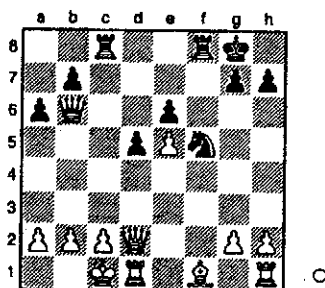


your h-pawn. It would require white to move the dark squared bishop again and the hole on g7 could be repaired with a later Bf8-g7. 6.Nb5 Bxd2+ 7.Qxd2 0-0 8.f4! There are a few ways to approach this position as white. I think the more solid 8. c3 is the best way to play from here, although Nick's idea of getting in f4 before going Nf3 and delay recapturing of the d4-pawn is also a popular idea. a6 Drive the knight away, so that it can't recapture on the d4 square. 9.Nd6 cxd4 10.Nf3 Nc6 11.0-0-0 White does not have to worry with taking the d4 pawn immediately, it is not going anywhere. Playing Nxd4 first would probably do nothing more than transpose. f6 The natural move loosening up the d6 Knight's foundation. 12.Nxc8? This definitely gives black the better of it. It is weak for white to use a tempo to trade his well placed knight for my bad bishop. It also brings my rook on the c-file directly across from the white king.

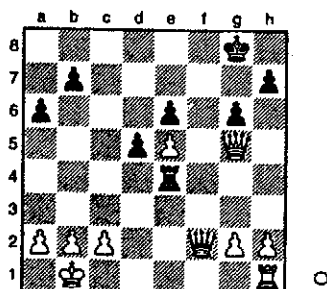
[12.Nxd4 fxe5 13.Nxc6 bxc6 14.fxe5 Ng4 15.Re1 Qb6 and play on the dark squares give black the initiative, but it was the better line for white to take I believe.]

12...Rxc8 13.Nxd4 Nxd4! All my pieces will be active and white will face danger against his king and his dark squares after a few forced moves by white. 14.Qxd4 Nf5 15.Qd2 fxe5 16.fxe5 The silicon beast wants to play d4 in this position but I did not want to loosen my pawn structure. There is no future support for the d4 pawn if I move it, I thought it was better to just head straight for the dark squares. Qb6 I seriously considered only this move and ...Qc7. I chose Qb6 over Qc7, because I live by the

saying "the threat is stronger than the execution."
 "It is clear what the targets are when I play ...
 Qc7: checkmate on c2 and the e5 pawn. When
 I play Qb6, its much more unclear as to what
 my goals are with this move. It has a more
 threatening feeling to it. I had the e3 and f2
 squares in mind as well as a line I had worked
 out where I would have superior rook
 placements in a major piece endgame.



17.Bd3 Ne3 18.Rde1 Nc4 19.Bxc4 Rxc4
 20.Kb1 Rf2 The ultimate goal of any rook:
 make it to the 7th rank. Although I had foreseen
 it would not be there long, there is another idea
 behind my moves. 21.Re2 Rxe2 22.Qxe2
 My other idea is revealed, the weak e5 pawn
 will be easy pickins. Re4 23.Qh5 Mate on e8
 is white's only defense g6 24.Qg5 Qf2
 This is the position I had seen when I played
 Qb6 on move 16. The rook on h1 is so weak I
 was sure a win was not far away.

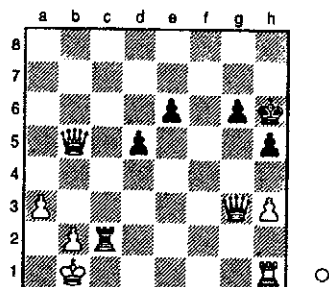


25.a3 Re2 26.Qd8+ Kg7 27.g3?!
 27. h4! and the Fritz says = (0.00) White
 missed a draw by controlling g5, the antidote to

my Kh6 escape. Qf7 28.Qd6 h5 29.Qb8 b5
 Simply take away the targets. 30.h3 Qf5
 31.Qc7+ Kh6 32.Qc8

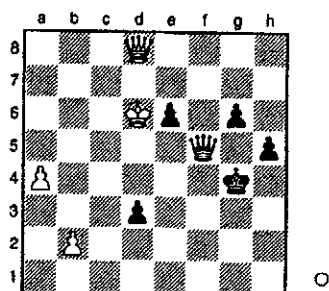
[32.g4! trying to open lines on my king was
 white's best chance.]

32...Qxe5 33.Qxa6? This was the move that
 tossed it all away. 33. Rf1 was the best try
 where black must force a rook trade on the
 back rank or his king might be in trouble after
 Rf8 by white. Qxg3 34.Qxb5 Rxc2!



35.Kxc2 Qg2+ 36.Kc3 Qxh1 37.a4??
 [37.Qd3 Only move.]

37...Qxh3+ 38.Kd4 Qg4+ 39.Ke5 Qf5+
 40.Kd6 d4 41.Qe8 d3 42.Qh8+ Kg5
 43.Qd8+ Kg4



0-1



Jace City Open 2001 – Open Section

No.	Name	St	Rate	Rd 1	Rd 2	Rd 3	Rd 4	Rd 5	Score
1.	GM Wojtkiewicz, Alek (1).....	NY	2680	D14	W18	W23	W8	D3	4.0
2.	GM Blatny, Pavel (2).....	FR	2623	W6	W9	L8	W17	W5	4.0
3.	GM Palatnik, Semion (3).....	TN	2564	W15	W23	W11	D5	D1	4.0
4.	Andrews, Todd D (7).....	TN	2339	W20	W13	L5	W10	W8	4.0
5.	Tcherepanov, Andre (4).....	GA	2550	W24	W17	W4	D3	L2	3.5
6.	Kleiman, Jake (16).....	TN	2092	L2	W14	D12	X23	W11	3.5
7.	Smith, Walter (21).....	TN	1886	L11	W28	W13	D12	W14	3.5
8.	Muhammad, Stephen (5).....	GA	2390	W16	W12	W2	L1	L4	3.0
9.	Wheeler, Jerry T (9).....	TN	2219	W19	L2	W18	D11	-H-	3.0
10.	Meidinger, Charles (13).....	AL	2154	W22	L11	W19	L4	W17	3.0
11.	Bereolos, Peter (6).....	TN	2368	W7	W10	L3	D9	L6	2.5
12.	Melvin, Bill (10).....	AL	2214	W21	L8	D6	D7	D13	2.5
13.	Barber, Nicholas M (12).....	TN	2168	W25	L4	L7	W20	D12	2.5
14.	Dickerson, Leonard (15).....	TN	2097	D1	L6	W22	W16	L7	2.5
15.	Smith, Brian D (17).....	TN	2088	L3	W21	L17	W19	D18	2.5
16.	Pruitt, Robert F (19).....	AL	1949	L8	W25	-H-	L14	W21	2.5
17.	Puckett, Matthew (11).....	AL	2172	W28	L5	W15	L2	L10	2.0
18.	Larson, Gerald (14).....	AL	2100	W26	L1	L9	D21	D15	2.0
19.	Schweinsberg, John (24).....	AL	1815	L9	W26	L10	L15	W25	2.0
20.	Meadows, Robert Kent (22).....	TN	1870	L4	L24	W25	L13	D22	1.5
21.	Peele, Rhodes (25).....	AL	1810	L12	L15	X28	D18	L16	1.5
22.	Begala, Mike (28).....	AL	1599	L10	-B-	L14	L25	D20	1.5
23.	Elezej, Esad (8).....	TN	2240	X27	L3	L1	F6	-U-	1.0
24.	Aeria, Ulric E (18).....	AL	2013	L5	W20	-U-	-U-	-U-	1.0
25.	Stribling, Mark P (27).....	AL	1611	L13	L16	L20	W22	L19	1.0
26.	Petty, Kirk D (20).....	LA	1908	L18	L19	-U-	-U-	-U-	0.0
27.	Lawrence, Caesar W (23).....	AL	1833	F23	-U-	-U-	-U-	-U-	0.0
28.	Khalegi, Bijan (26).....	AL	1807	L17	L7	F21	-U-	-U-	0.0



YOUR SCHOOL COULD WIN!!

Chessmaster is challenging schools across the country to help kids with Muscular Dystrophy by raising funds for Duchenne MD Research. Josh will make a personal visit to the winning school.

Lots of other great prizes too, including Chessmaster software, autographed celebrity memorabilia and more.

COMPLETE CONTEST INFORMATION

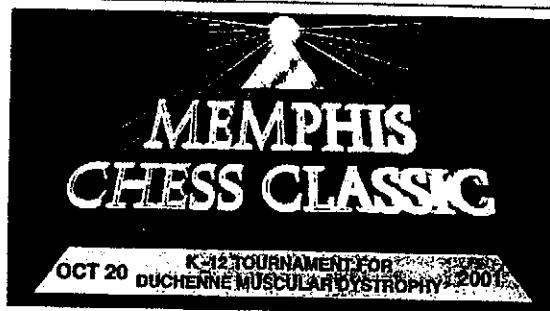
WWW.CHESSMASTER.COM



"I have faced plenty of tough opponents over the years, but none as tough as one faced each day by my friend Jonathan and all children with Duchenne Muscular Dystrophy.

The Parent Project is a national organization formed and managed by families and friends of these kids. Their goal is to provide funding to expedite a treatment and cure for this devastating childhood disease. Your participation in the Chessmaster Challenge Fundraising Contest and the Memphis Chess Classic will support the efforts of Parent Project and the other Duchenne research.

Chessmaster and I teamed up with Parent Project and the Memphis Chess Classic, after I met Jonathan at another Supnationals a few years ago. Now I am inviting you to join us in the battle to defeat Duchenne Muscular Dystrophy. Take part in the Chessmaster Challenge contest, and make plans to play in the Memphis Chess Classic. Visit us at the Chessmaster booth for information on these two cool ways to "move" toward a cure. See you There!



www.memphischessclassic.com

CHESSMASTER

is a proud sponsor of

THE MEMPHIS CHESS CLASSIC

Space City Open 2001 – Reserve Section

No.	Name	St	Rate	Rd 1	Rd 2	Rd 3	Rd 4	Rd 5	Score
1.	Savoie, William R (3)	AL	1746	W22	W10	W15	W8	D2	4.5
2.	Funaro, Gregory V (2)	AL	1746	W17	W4	D3	W6	D1	4.0
3.	Mc Intyre, Roger K (5)	AL	1646	W32	W25	D2	W19	D5	4.0
4.	Bashinsky, Robert (12)	AL	1539	W23	L2	W24	W13	W10	4.0
5.	West, Otfie L (1)	TN	1792	L8	W31	W11	W21	D3	3.5
6.	Miller, Lee (7)	TN	1607	W27	W29	W19	L2	D8	3.5
7.	Salenas, Daniel (11)	AL	1549	-H-	F14	W31	W29	W15	3.5
8.	Causey, Lamar (16)	AL	1490	W5	W16	W14	L1	D6	3.5
9.	Chaffee, Joseph R (26)	AL	1248	L10	W22	W25	D15	W19	3.5
10.	Morrison, William (10)	AL	1562	W9	L1	W26	W12	L4	3.0
11.	Melvin, Miles (18)	AL	1420	-H-	D26	L5	W23	W21	3.0
12.	Baker, Josh (30)	AL	907	L20	W18	W16	L10	W25	3.0
13.	Kennerly, Joel L. (32)	TN	nnnn	W21	L15	W17	L4	W20	3.0
14.	Lasky, Chris (6)	AL	1640	D26	X7	L8	D20	D17	2.5
15.	Bowen, James R (8)	AL	1596	W30	W13	L1	D9	L7	2.5
16.	Jenkins, Wayne L (9)	TN	1583	D31	L8	L12	W27	W26	2.5
17.	Abdel-Ghany, Moham (17)	AL	1460	L2	W23	L13	W22	D14	2.5
18.	Parks, Quinn (20)	AL	1394	L19	L12	D27	W24	W29	2.5
19.	Wolff, Joshua (4)	TN	1648	W18	W20	L6	L3	L9	2.0
20.	Bankston, Charles (14)	AL	1500	W12	L19	D29	D14	L13	2.0
21.	Daskar, Jafar (15)	AL	1495	L13	W30	W28	L5	L11	2.0
22.	O'Connor, John T (19)	AL	1400	L1	L9	W30	L17	W28	2.0
23.	Mc Meen, Bryan (27)	AL	1162	L4	L17	W32	L11	W30	2.0
24.	Esslinger, William (28)	AL	1098	L25	W32	L4	L18	W31	2.0
25.	Hedger, Wayne L (13)	TN	1520	W24	L3	L9	D26	L12	1.5
26.	Ljubas, Robert (22)	AL	1365	D14	D11	L10	D25	L16	1.5
27.	Griffin, Jim O'nea (23)	AL	1342	L6	L28	D18	L16	W32	1.5
28.	Webb, Stephen G (29)	AL	995	L29	W27	L21	-H-	L22	1.5
29.	Griffin, Christopher (31)	AL	nnnn	W28	L6	D20	L7	L18	1.5
30.	Mc Cormick, Brian (24)	AL	1304	L15	L21	L22	W32	L23	1.0
31.	Wilder, Gregory M (25)	AL	1276	D16	L5	L7	-H-	L24	1.0
32.	Brown, James F (21)	AL	1372	L3	L24	L23	L30	L27	0.0



DAVID BURRIS SCHOLARSHIP

Memorial gifts may be sent to:

University of Tennessee
David E. Burris Memorial Scholarship
600 Andy Holt Tower
Knoxville, Tennessee 37996
Attention: Mike Hitchcox



Only USCF rated chess players are eligible for the scholarship; players from East Tennessee will be given preference.

David received his Bachelor's and his first Master's degree (mathematics) from UT. He continued his education at Rutgers after moving to New Jersey.



2001 BELLEVUE CHESS CAMP JULY 16 - 20

9:00 - 1:00 EACH DAY
BELLEVUE MIDDLE SCHOOL
655 COLLICE-JEANNE RD

Beginning and **Advanced** level instruction
students will be grouped by ability level

\$60.00 CAMP FEE

Includes instruction and T-shirt

Call (615) 399-8432 FOR A CAMP FLIER
OR E-MAIL REGIONIII@AOL.COM

Chris Prosser

Blitz Champion of the USA Patrick Tae

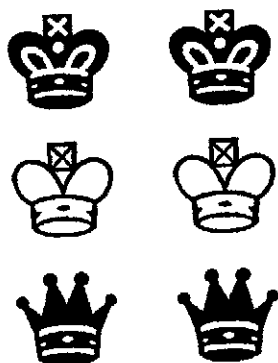
by Leonard Dickerson

Patrick Tae of Oak Ridge is the new Grade K-3 Blitz Chess Champion of the United States. He competed in the Super Nationals II scholastic chess championships held in Kansas City, Missouri from April 26—29. In the chess blitz tournament, games are played at 5 minutes per side. Using his quickness and exceptional tactical ability, Patrick won 22 of 24 games and convincingly won the blitz tournament a full 2 points ahead of his nearest opponent! For his exceptional accomplishments, he was crowned Grades K-3 Blitz Champion of the United States and received a trophy that is over four feet tall.

In the main K-3 Championship, Patrick tangled with a much higher-rated opponent in game five and drew a tough match. This drawn game effectively knock him and his highly-touted opponent out of competition for the national title. Still, Patrick emerged with 5.5 points out of 7 points to tie for 11th—21st, receiving honors as the 15th place winner out of the 268 players that competed in the event. For this additional glory that he added to his already-confirmed championship title, he received another hefty trophy and about 20 points to tack onto his rapidly-growing chess rating. (Robert Hess of NY won the event with a perfect 7-0.)

Patrick Tae attends Linden Elementary School in Oak Ridge and just recently led Linden to a team victory in the primary section of 2001 Region 1 Team scholastic chess championship of Tennessee. Leonard Dickerson, Patrick's coach, states that Patrick presently has the tactical ability of a Class A player (capable of rapidly seeing 4-move chess combinations) and will probably become a chess expert within three years.

For additional information, go to the Super Nationals chess site at <http://www.kcchess.org/supernationals>.



Tennessee Tournament Calendar provided by Joseph Crump

July 14, 2001-Cumberland County Summer Open.

4-SS, G/60, Multi-Purpose Bldg., Fairfield Glade Resort, Crossville TN 38558. \$\$G 275. Open-\$\$150: 50-1st, 25-X, A, B, C & Below. Amateur-U1400 \$\$125: 50-1st, 25-E, F & Below, UNR (UNR eligible for UNR prize only). Both, EF: \$10 if mailed by 7/9/01, \$15 at site. TCA req'd., Reg. 7:30-8:30 AM (CDT) Rds. 9-11-2-4:30. Ent: Harry D. Sabine, PO Box 381, Crossville TN 38557, (931) 484-9593 or 484-4878. NS. NC. W.

August 5-17, 2001-US Open; Framingham, MA.

August 31-September 2, 2001 - The 55th Annual Tennessee Open; Clarksville TN. See enclosed flyer or go to

<http://www.tnchessorgn.homestead.com/TNOpen2001fly.html> and
<http://www.tnchessorgn.homestead.com/TNOPENdir.html>. Contact person: Mark Ishee c/o Nashville Chess Center, 2911 Belmont Blvd., Nashville TN 37212; (615) 292-7341; nashvillechess@home.com

September 1, 2001 - The Tennessee Open Scholastic Tournament; Clarksville TN. See enclosed flyer or go to

<http://www.tnchessorgn.homestead.com/TNOpen2001schfly.html> and
<http://www.tnchessorgn.homestead.com/TNOPENdir.html>. Contact person: Mark Ishee c/o Nashville Chess Center, 2911 Belmont Blvd., Nashville TN 37212; (615) 292-7341; nashvillechess@home.com

October 13, 2001-Cumberland County Fall Open.

4-SS, G/60, Multi-Purpose Bldg., Fairfield Glade Resort, Crossville, TN 38558. \$\$G 275. Open-\$\$150: 50-1st, 25-X, A, B, C&Below. Amateur-U1400 \$\$125: 50-1st, 25-E, F&Below, UNR (UNR eligible for UNR prize only). Both, EF: \$10 if mailed by 10/8/01, \$15 at site. TCA req'd., Reg. 7:30-8:30 AM (CDT) Rds. 9-11-2-4:30. Ent: Harry D. Sabine, PO Box 381, Crossville TN 38557, (931) 484-9593 or 484-4878. NS. NC. W.



Nashville Chess Center Calendar of Events May-August 2001

provided by Mark Ishee

May 19: Saturday Class for Advanced Players. Instructor: FIDE Master Todd Andrews. Schedule: 12:00 noon - 6:00 pm; includes classroom-style lessons, clock simul game vs. instructor, and game analysis. Restricted to first 10 players rated over 1200. Tuition: \$50/student.

May 26: Open 10-4. No event scheduled.

June 2: Open 10-4.

June 9: NCC Invitational

June 16: NCC Invitational

June 23: Open 10-4.

June 30-July 1: Weekend Chess Camp FM Todd Andrews and NM Mark Ishee offer ten hours of classroom-style instruction. Limited to 20 students. \$99 registration fee. For complete details, contact Mark Ishee (mark.ishee@nashville.com) at 615-371-5229.

July 7: Open 10-4.

July 14: Tournament Director Seminar A day of essential information for coaches, parents of scholastic players, and anyone who wants to learn about organizing and directing a chess tournament. Includes tournament rules & procedures, how to make pairings and calculate tie-breaks. Free of charge. Starts 10:00 am. For details, contact Mark Ishee (mark.ishee@nashville.com) at 615-371-5229.

July 21: Queen's Gambit Thematic Tournament. 4-SS, G/60. All games begin 1.d4 d5 2.c4. Register: 9:00-9:45. Round 1: 10 am, other rounds ASAP. Entry fee: \$10 (\$5 discount to current NCC members). Prizes based on entries. Not USCF rated. Contact: Mark Ishee (mark.ishee@nashville.com) (615) 371-5229.

July 28-29: Music City Grand Prix. 4-SS, 40/2 then SD/60. Guaranteed prizes in 2 Sections. Open: 1st \$200, 2nd \$100, class A & B each \$50. Under 1600: 1st \$125, 2nd \$75, class D & E/below/UNR each \$35. Register: 9:00-9:45. Rounds: 10 & 4 Saturday, 9 & 3 Sunday. Entry Fee: Open \$25, U1600 \$20 if received before 7/23, both \$10 later and at site. (\$5 discount for current NCC members). TCA membership required. Contact: Mark Ishee (mark.ishee@nashville.com) (615) 371-5229.

August 4: Open 10-4.

August 11: Open 10-4.

August 18: Quick Chess Tournament. 8-SS. G/15. Guaranteed prizes: 1st \$50, 2nd \$30, 3rd \$20, Class A, B, C, D, E/below/UNR each \$15. Registration 9:00-9:45 am, round 1 at 10:00 am, all others ASAP. EF \$15 (\$5 discount for NCC members). USCF & TCA membership required. USCF quick rated.

August 25: Open 10-4.

Sept. 1-2: Tennessee Open (Clarksville)
Make your hotel reservations early!

Send entries for these events to: nashvillechess@home.com
Nashville Chess Center, 2911 Belmont Boulevard, Nashville, TN 37212

TENNESSEE CHESS CLUBS

Athens Chess Club
Mike McGinnis
423-745-6755

Chattanooga CC
Joe Dumas
H (423) 886-7628
O (423) 755-4084

Chattanooga UTC CC
Joe Dumas
H (423) 886-7628
O (423) 755-4084

Columbia CC
Joe Crump
(931) 381-2758

Cumberland Co CC
Harry Sabine
(931) 484-9593

Dayton CC
Bruce Barnett
(423) 775-7000

ETSU Chess Assoc
Chun Ng
(865) 917-2219

Goodlettsville, Knights CC
Wieb van der Meer

Greater Knoxville CC
Leonard Dickerson
(865) 966-1095

MORE DETAILS ABOUT EACH
CLUB ARE AVAILABLE ON
THE TCA WEBSITE:

<http://www.tnchess.org>

Kingsport, Indian Springs CC
Steve Poff
(865) 279-0697

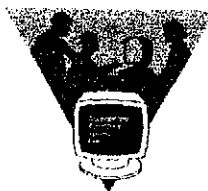
Memphis Chess Club
Michael Sansom, pres.
Gary Pylant (tourney info)
(901) 358-1737

Nashville Chess Center
Alvin Harris, pres.
Mark Ishee, mgr
e-mail:
mark.ishee@nashville.com
(615) 292-7341

Oak Ridge CC
Charles Maddigan
(865) 482-5962

Rutherford Co CC
Robert Guthrie
(615) 895-7989

Tipton County CC
Thomas Stark
(901) 837-5874



Tennessee Chess Association Affiliate Members

Cumberland County Chess Club
Nashville Chess Center

TENNESSEE CHESS ASSOCIATION 2000-2001 BOARD OF DIRECTORS

PRESIDENT

ROBERT KENT MEADOWS
206 30TH AVENUE NORTH
NASHVILLE TN 37203
H: 615-329-0394 D: 615-913-5503
E-MAIL: kent.meadows@postwills.com

VICE-PRESIDENT

JEFF PENNING
187 50TH AVENUE NORTH
NASHVILLE TN 37203
H: 615-297-7429
E-MAIL: penningj@earthlink.net

TREASURER

LEONARD B. BLOKERSON
420 ORAN ROAD
KNOXVILLE TN 37922
H: 865-966-1885 D: 865-574-4676
F: 865-574-3431
E-MAIL: lbchess@hotmail.msn.com

SECRETARY

BRADLEY WATSON
423 COOPER CIRCLE
OAK RIDGE TN 37830
H: 865-492-2983
E-MAIL: bwatson@gateway.net

TN CHESS NEWS EDITOR

ANGELA McELRATH PROSSER
733 LONG HUNTER COURT
NASHVILLE TN 37217
H: 615-396-8432
E-MAIL: teahaw@earth.com

INTERNET CHESS COORDINATOR

PATRICIA KNIGHT
108 ALBION RD
OAK RIDGE TN 37830
H: 865-481-3516
E-MAIL: pat.knight@home.com

STATE SCHOLASTIC COORDINATOR

HARRY D. SABINE
P.O. BOX 381
CROSSVILLE TN 38557
H: 931-484-4575 D: 931-484-9595
F: 931-485-2624
E-MAIL: hdsabine@juno.com

EAST TENNESSEE DIRECTOR

MIKE MCGINNIS
151 COUNTY RD 461
ATHENS TN 37303
H: 423-745-8755
E-MAIL: magerinnis@aol.net

TOURNAMENT COORDINATOR

JOE CRUMP
111 TOMMY DR
COLUMBIA TN 38401
H: 931-381-2758 D: 615-770-8406
E-MAIL: joseph.crump@c-chess.com

WEST TENNESSEE DIRECTOR

GREG KROG JR
5300 DERON AVE
MEMPHIS TN 38115
H: 901-566-7642 D: 901-465-1261
E-MAIL: gkrog@uol.com

MIDDLE TENNESSEE DIRECTOR

ROY MANNERS
1215 CUMBERLAND HEIGHTS RD
CLARKSVILLE TN 37040
H: 931-552-1898
E-MAIL: roy.manners@juno.com

REGIONAL SCHOLASTIC COORDINATORS

REGION 1

S. THOMAS PURUCKER
412 ORCHARD CIRCLE
OAK RIDGE TN 37830
H: 865-482-7397 D: 865-974-0553
E-MAIL: tpurucker@vps.edu

REGION 2

GARY R. GILLESPIE
31 BRAMBLETON COURT
CROSSVILLE TN 38558-7151
H: 931-456-6146
E-MAIL: g.r.gillespie@aol.com

REGION 3

CHRIS PROSSER
733 LONG HUNTER COURT
NASHVILLE TN 37217
H: 615-396-8432
E-MAIL: redmills@aol.com

REGION 4

BILL CHAMMISE
3532 DAVESHIRE DR
MEMPHIS TN 38133
H: 901-372-6684 D: 404-392-1810
E-MAIL: wacammise@aol.com



The 55th Annual Tennessee Open 2001

Scholastic Tournament

Sponsored by the Tennessee Chess Association

September 1, 2001

Site: Riverview Inn; 50 College St.

Clarksville, TN 37040

Phone: (901) 522-3331

Hotel Rate: \$65.00 plus Tax, but you must ask for **Chess Rate**, includes breakfast

IMPORTANT: No Rooms held for Chess Tournament after August 15, 2001

Make your reservations now (before August 15)!

4 Sections

High School
(Grades 12 & Below)

Junior High
(Grades 9 & Below)

Elementary
(Grades 6 & Below)

Primary
(Grades 3 & Below)

Trophies 1st through 5th Place for all Sections

Ribbons to all participants

Entry Fee: \$15 if received by August 27, 2001, \$20 later and at Site

Registration and Check-in: 7:00 – 8:30 AM Saturday, September 1, 2001

Four (4) Round Swiss System

Round 1: 9:00 AM, all other rounds ASAP (no break)

Time Control: Game/30

USCF Rated; USCF Membership required, available at site

TCA Membership required, Other States Okay, available at site.

55th Annual Tennessee Open Scholastic Entry Form

Name: _____ USCF ID# _____ Section _____

Address: _____ City: _____ State _____ Zip: _____

Phone: _____ Rating: _____ Last official Rating will be used Grade: _____

Email: _____ Date of Birth: _____

Mail Entries to: Mark Ishee; c/o Nashville Chess Center; 2911 Belmont Blvd.; Nashville, TN 37212.

Phone: (615) 292-7341 email: nashvillechess@home.com

55th Annual Tennessee Open

A Heritage Event

August 31 – September 2, 2001

Chess Tournament

At the beautiful Riverview Inn, Clarksville, TN, The Gateway to the New South

\$4,625 Prize Fund

Unconditionally Guaranteed

OPEN Open to all

1st Place Trophy + \$500

2nd Place 300

3rd Place 200

Expert

1st Place Trophy + 300

2nd Place 200

3rd Place 125

Class A

1st Place Trophy + 300

2nd Place 200

3rd Place 125

Best Game 50

Amateur U1800

1st Place Trophy + \$300

2nd Place 200

3rd Place 125

Class C

1st Place Trophy + 250

2nd Place 150

3rd Place 100

Best Game 50

Novice U1400

1st Place Trophy + \$250

2nd Place 150

3rd Place 100

Class E

1st Place Trophy + 200

2nd Place 125

3rd Place 75

Class F

1st Place Trophy + 100

Unrated

1st Place Trophy + 100

Best Game 50

*Only Tennessee residents are Eligible for Trophies

*Unrateds are only eligible for top 3 prizes in Open Section or Unrated Prize in Novice Section

5 round Swiss.

Time Control: Primary 35/90, then SD/30

The Last Official USCF Rating will be used.

REGISTRATION: 5:00 – 6:30 PM Friday night, August 31 and 7:30 – 8:30 AM Saturday Sept. 1, 2001.

ENTRY FEE: \$5.00 for all sections if received by Monday, August 27, 2001

\$65.00 later and at Site.

USCF Youth and Scholastic Players may enter any Section to compete for Trophy only (no prize money) for only \$15.00

½ point bye available for any one (and only one) round if requested at or before Registration

USCF membership required for all, and TCA membership required for all TN residents. Available at site. OSA

No Smoking, No Alcohol, No Drugs, No Computers, Wheelchair accessible.

Entry Form must include Declaration of 1st round option.

TCA Business Meeting at 2:00 PM, Saturday, September 1, 2001. All TCA Members Welcome.

Friday, August 31st & Saturday September 1st

Friday Round 1 - 7:00 PM or

Sat. 9:00 AM

Round 2 - 3:00 PM

Round 3 - 8:00 PM



Sunday September 2nd

Round 4 - 9:00 AM

Round 5 - 2:00 PM

Hotel Rates: \$ 65.00 /night + tax for 1-4 people includes free breakfast. You must reserve your room prior to August 15, 2001 to insure availability. You must ask for the **Chess Rate** get the discounted rate. Riverview Inn, 50 College St., Clarksville, TN 37040. Phone: (931) 552-3331

*****ROOMS WILL NOT BE HELD FOR CHESS TOURNAMENT AFTER AUGUST 15, 2001*****

55th Annual Tennessee Open Entry Form

USCF#: _____ Rating: _____ Exp. Date: _____

Last Name: _____ First Name: _____ DOB: _____

Section: _____

Address: _____

City: _____ State: _____ Zip: _____

Phone: _____ Email: _____ 1/2 point Bye Round #: _____

Entry Fee: \$ _____ TCA Dues: \$ _____ USCF Dues: \$ _____ Amount Paid: \$ _____

Mail Entries to: Mark Ishee, c/o Nashville Chess Center, 2911 Belmont Blvd., Nashville, TN 37214 Phone: (615) 292-7341

email: nashvillechess@home.com

DIRECTIONS TO TENNESSEE OPEN SITE

When coming to Clarksville from **Nashville Tennessee**, take I-24/W to Clarksville. Get off at exit 11, which is the Clarksville/Adams exit. (it will be the first Clarksville exit you come to) At the end of the exit ramp, turn left, (or west on Hwy 76) travel approximately 3 miles to the first traffic light, (K-Mart will be on your left and Captain D's on your right) go straight through this light. You will then be on the Hwy 41-A bypass, travel approximately 7 miles to the second traffic light, (hint: count lights from the Interstate) there will be a huge car dealership on your left. Go straight through this light also, you will then be on Riverside Drive. Travel about 1 mile to the third traffic light, go straight through this light as well. Approximately ¼ mile further will be the fourth traffic light, which you will go straight through, also. At the next light (which will be the fifth) you will turn right. This will be College Street, after turning right onto College Street proceed to the 4-way stop sign and turn right. The Riverview Inn will be on your immediate right.

When coming to Clarksville from **Memphis Tennessee**, you can take the long way, by going to Nashville and then following the directions above. You may also take the scenic route (which will shave about 80 miles off your trip, but may not save very much time) this route is as follows: Take I-40/E toward Nashville, after crossing the Tennessee River get off at the exit for TN Hwy 13 (this exit is approximately 17 miles from the river) go north on Hwy 13. You will travel approximately 19 miles to the town of Waverly Tennessee. Stay on Hwy 13/N straight through Waverly, and about 19 miles more will bring you to the small town of Erin Tennessee. Continue on Hwy 13/N straight through Erin, another 18 miles will bring you to a T intersection with Tennessee Hwy 48. Turn left at this intersection and follow Hwy's 48/13 north into Clarksville (a trip of about 6-8 miles). You will enter the Clarksville City limits right after you cross the Cumberland River, continue straight on, to the second traffic light, then turn left. Travel straight through two more lights and turn right at the third light. Go to the 4-way stop sign and turn right, The Riverview Inn will be on your immediate right.

When coming to Clarksville from **West Tennessee**, you may also connect with U.S. Hwy 79 going north, and take it all the way into Clarksville. As you approach Clarksville on Hwy 79 you will be forced to turn right at the third traffic light you come to. After making this right turn, go through two more lights and at the third traffic light turn right again. Turn left at the very next light, and proceed to the 4-way stop sign, then turn right and The Riverview Inn will be on your immediate right.

When coming to Clarksville via **I-65/S from (or through) Kentucky**, travel on I-65/S until you come to the Green River Parkway just south of Bowling Green Kentucky. Take the Green River Pkwy north or toward Owensboro for about 5 miles, then get off on U.S. Hwy 68 going west to Russellville Kentucky. Once in Russellville get on U.S. Hwy 79/S to Guthrie. Continue straight through Guthrie on Hwy 79, shortly after going through Guthrie you will enter Tennessee. Approximately 8 miles into Tennessee you will come to the I-24 overpass, there is a traffic light by the exit ramp prior to the overpass. Counting this light as the first one, you will travel straight through approximately 17 lights until you come to the first 4-way stop sign. (approximately 7 miles from I-24) Once at the 4-way stop, you will see The Riverview Inn in front of you to your left. Turn left at the stop sign and the parking lot entrance will be on your right.

When coming to Clarksville, **from (or through) Kentucky**, others may choose to follow the Pennyriple Parkway south to Hopkinsville Kentucky, then get on U.S. Alt. 41 (41-A) going south to Clarksville. Approximately 12 miles south of Hopkinsville, 41-A/S will connect with I-24. Get on I-24/E toward Nashville, once you cross over into Tennessee get off at exit 4. Turn right at the end of the exit ramp. Then travel straight through approximately 16 traffic lights until you come to the first 4-way stop, you will see The Riverview Inn in front of you to your left. Turn left at the stop sign and the entrance to the parking lot will be on your right.