

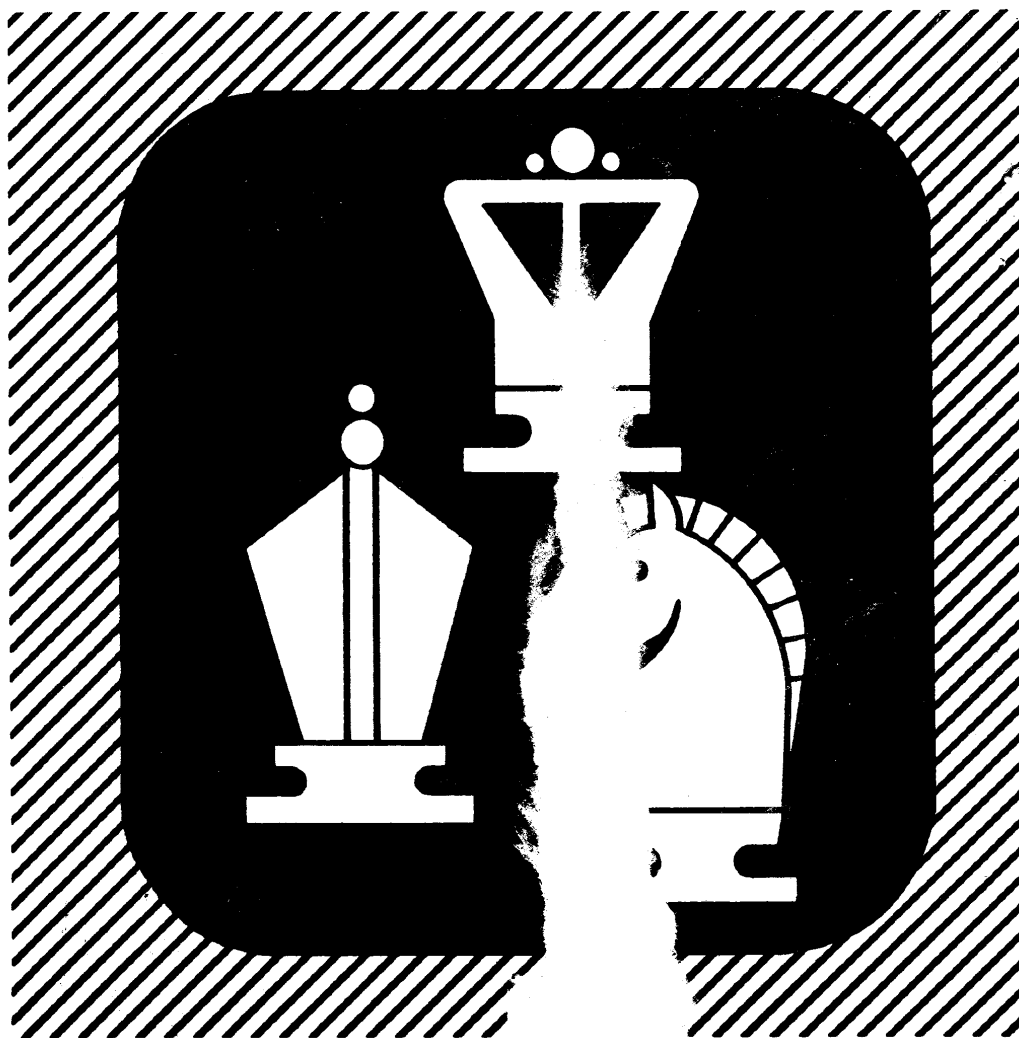
November/December 1985

TENNESSEE

Chess News

IN THIS ISSUE:

Madigan-TN Champ
Turkey Tour Explained
New TCN Schedule



Editor's Note

Another year, here and gone, and the winds of change blow amongst us again. Some board members withstood the gale, some did not, our editor was one of those listed as missing. Leonard's abilities with words and the quality of the TCN have led some to applaud it as one of the top five in the nation. Well done Dickerson and we too applaud you.

Another change is no less serious in nature. Because of finances, the TCN will no longer be published six times a year; we will now be mailing on a quarterly basis. The Board's choice was, as simple

as this may seem, to either go to a quarterly basis or give up the quality of the printing in this magazine. There was really no choice—GO QUARTERLY.

The major disadvantage is that tournament announcements will have to be planned a little more in advance. We hope this will not prove to be too great of a hardship.

If anyone has suggestions on improving or adding to this journal, WRITE. I will read what you have to say, whether you consider your idea brilliant or silly!!

Board of Directors 1985 - 1986

PRESIDENT

Bill Orgain
P. O. Box 366
Dickson, TN 37055
H. (615) 446-0521
O. (615) 446-2814

VICE PRESIDENT

Peter P. Lahde
2609 Sailboat Court
Nashville, TN 37217
H. (615) 361-4588
O. (615) 794-8000

SECRETARY-TREASURER

Harry D. Sabine
P. O. Box 381
Crossville, TN 38555
H. (615) 484-4878
O. (615) 484-9593

NEWSLETTER EDITOR

Larry G. Thomas
P. O. Box 688
Alcoa, TN 37701
H. (615) 983-1977
O. (615) 982-4472

POSTAL CHESS COORDINATOR

Lee Edwards
3214 McGavock Pike
Nashville, TN 37214
H. (615) 833-7522
O. (615) 242-5020

TOURNAMENT COORDINATOR

Richard Igou
400 Rhodora Court, Apt. F
Knoxville, TN 37923
H. (615) 690-6810
O. (615) 574-1839

SCHOLASTIC COORDINATOR

James W. Corbitt
1492 Vera Cruz
Memphis, TN 38117
H. (901) 761-5978
O. (901) 529-3038

DIRECTOR-EAST TENNESSEE

Al Lipkin
Route 1, Box 404
New Tazewell, TN 37825
H. (615) 626-4071
O. (615) 869-3611

DIRECTOR-MIDDLE TENNESSEE

Ronald W. Burnett
2213 8th Avenue South
Nashville, TN 37204
H. (615) 385-9155
O. None

DIRECTOR-WEST TENNESSEE

Dale Flickinger
5247 Shelbourne Circle, No. 14
Memphis, TN 38134
H. (901) 382-3829
O. (901) 388-7321

November/December 1985

Regular Meeting of Board of Directors

A regular meeting was held at the site of the Tennessee Open. Lee Edwards was elected to fill the unexpired term of Kent Meadows and the Cookeville Chess Club's bid to host the Tennessee Scholastics in '86 was accepted. Also, the USCF SASP funds were assigned to help make the Amateur Team Championship a success.

For those of you who are unfamiliar with

SASP, this is a special rebate made by USCF to state organizations to help further promote chess in that state. This fund is determined by that state's current membership in USCF.

One of the other items voted into existence was that the tournament coordinator would prepare the tournament announcement section of the TCN to help avoid conflicts of tournaments in the Turkey Tour.

TENNESSEE CHESS ASSOCIATION

ANNUAL BUDGET COMPARISON

	<u>1984-1985</u>		
	<u>Budget</u>	<u>Actual</u>	
<u>INCOME:</u>	<u>1984-1985</u>	<u>1984-1985</u>	<u>Difference</u>
1. Dues	\$2,570.00	\$2,246.50	\$ (323.50)
2. Interest	250.00	207.97	(42.03)
3. Miscellaneous	500.00	411.50	(88.50)
4. Tennessee Open	(770.00)	(770.14)	(0.14)
5. Tennessee Scholastics	None	122.64	122.64
TOTAL INCOME	\$2,550.00	\$2,218.47	\$ (331.53)
 <u>EXPENSES:</u>			
1. Tennessee Chess News	\$1,850.00	\$1,994.30	\$ (144.30)
2. TCN Editor's Fee	None	None	None
3. TCA Operating Expense	600.00	733.77	(133.77)
4. USCF Delegate Expense	100.00	100.00	None
5. TCA Turkey Tour	None	None	None
6. Miscellaneous	None	100.00	(100.00)
TOTAL EXPENSES	\$2,550.00	\$2,928.07	\$ (378.07)

NOTE: All ads must be in my hands by January 10 to make next issue.

—RICK

Turkey Tour

(or Do What??)

The Tennessee Turkey Tour (hereafter referred to as TTT) is a year-long contest to help promote chess participation and competition in Tennessee. The main idea is to give points to people participating in TTT events, have these points accumulate through the year, then award cash prizes to the people with the most points at the time of the Tennessee Open each year. There is no carry-over from year to year, i.e. you start from scratch each year at the conclusion of the Tennessee Open. How an event qualifies and how you earn points is broken down in the next section.

For a tournament to qualify, it must meet the following requirements:

1. Be USCF rated, 2. Require TCA membership for Tennessee residents, USCF membership for all participants but no other memberships. 3. Be an OPEN WEEKEND Tournament in Tennessee of at least 3 rounds in length. 4. Be cleared through the Tennessee Tournament Coordinator and advertised in the TCN tournament calendar. Only one tournament will be approved per weekend. 5. A copy of the final wall chart and appropriate TTT fees must be submitted to the tournament coordinator within two (2) weeks of the date of the tournament.

How do you earn points? Read on fellow TTT possible and see: 1. All players, upon completion of at least one-half the scheduled rounds in a Tennessee-USCF Grand Prix Turkey Tour event will earn 20 points. Completion of the same in the Tennessee Open earns 30 points and all others earn 10 points. 2. To earn more points in a said tournament, you must complete all rounds and have more wins than losses (Byes and Forfeits count as losses). The formula for tallying your score is wins minus losses times number of rounds.

Ah!! The prize fund!! This is formed from tournament round fees (USCF Grand Prix-\$5.00/round; all others-\$3.00/round) and other donations. These prizes are then awarded by Class as follows:

Master/Expert, Class A-	1st—10 %/o
	2nd— 5 %/o
	3rd— 3 %/o
Class B, C, D, & E	1st— 8 %/o
	2nd— 5 %/o
	3rd— 3 %/o

Finally, the conditions of awarding the prizes or The Rules of Fair Play:

1. The final class standing of a player will be determined by the September, 1986 USCF rating supplement.

2. TTT points accumulate for a player who moves up to a higher rating class, but the player remains eligible for prizes in the lower class based upon points earned while in that class. If a player moves to a lower class, points earned in higher class are not counted for the lower class and points earned in the lower class will not be carried forward if the player moves back to a higher class.

3. A player may earn only one prize—the greater for which he is eligible.

4. Players whose USCF class designation shows a former rating of 101 points, or more, over a prize class will not be eligible for that class prize but will be eligible for the prizes in the next higher class. Only players with permanent ratings are eligible for prizes. However, players will accumulate points during the time that their rating is provisional and those points will be credited to them in their first permanent rating class.

5. Players must be TCA members to accumulate and collect Turkey points.

6. The Tournament Coordinator is responsible for compiling class standings and awarding prizes.

Any questions Good!! Rick Igou will be glad to answer them. His address is at the front of this newsletter.

NOTE:
ALL Tournament
Announcements
must be sent
through
Rick Igou.

November/December 1985

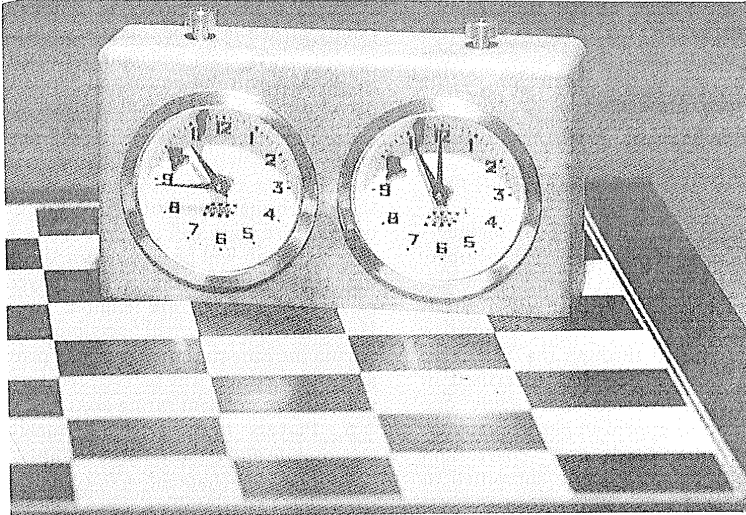
Cumberland County Bank:

Checking Account #563-208-0 (Super NOW Account) \$2,291.57

Respectfully submitted,

Harry D. Sabine
Harry D. Sabine
Secretary-Treasurer

SPECIAL!!!



**ROLLAND No. 4040
CHESS CLOCK**

\$23.95 plus 10% handling charge.

This is a high quality, German made, with 12 months warranty, chess clock. These precision clockworks are mounted in a low-price plastic clock case. Seven quality controls guarantee a precise operation before clocks area ready for export.

Send check or money order to:
Black & White Chess
P. O. Box 237
Alcoa, TN 37701

Allow up to six weeks for delivery.
Offer ends December 1, 1985.

TCA Members only and through
this ad only!

Turkey Tour

(or Do What??)

The Tennessee Turkey Tour (hereafter referred to as TTT) is a year-long contest to help promote chess participation and competition in Tennessee. The main idea is to give points to people participating in TTT events, have these points accumulate through the year, then award cash prizes to the people with the most points at the time of the Tennessee Open each year. There is no carry-over from year to year, i.e. you start from scratch each year at the conclusion of the Tennessee Open. How an event qualifies and how you earn points is broken down in the next section.

For a tournament to qualify, it must meet the following requirements:

1. Be USCF rated,
2. Require TCA membership for Tennessee residents, USCF membership for all participants but no other memberships.
3. Be an OPEN WEEKEND Tournament in Tennessee of at least 3 rounds in length.
4. Be cleared through the Tennessee Tournament Coordinator and advertised in the TCN tournament calendar. Only one tournament will be approved per weekend.
5. A copy of the final wall chart and appropriate TTT fees must be submitted to the tournament coordinator within two (2) weeks of the date of the tournament.

How do you earn points? Read on fellow TTT possible and see: 1. All players, upon completion of at least one-half the scheduled rounds in a Tennessee-USCF Grand Prix Turkey Tour event will earn 20 points. Completion of the same in the Tennessee Open earns 30 points and all others earn 10 points. 2. To earn more points in a said tournament, you must complete all rounds and have more wins than loses (Byes and Forfeits count as losses). The formula for tallying your score is wins minus losses times number of rounds.

Ah!! The prize fund!! This is formed from tournament round fees (USCF Grand Prix-\$5.00/round; all others-\$3.00/round) and other donations. These prizes are then awarded by Class as follows:

Master/Expert, Class A-	1st—10 %/o
	2nd— 5 %/o
	3rd— 3 %/o
Class B, C, D, & E	1st— 8 %/o
	2nd— 5 %/o
	3rd— 3 %/o

Finally, the conditions of awarding the prizes or The Rules of Fair Play:

1. The final class standing of a player will be determined by the September, 1986 USCF rating supplement.

2. TTT points accumulate for a player who moves up to a higher rating class, but the player remains eligible for prizes in the lower class based upon points earned while in that class. If a player moves to a lower class, points earned in higher class are not counted for the lower class and points earned in the lower class will not be carried forward if the player moves back to a higher class.

3. A player may earn only one prize—the greater for which he is eligible.

4. Players whose USCF class designation shows a former rating of 101 points, or more, over a prize class will not be eligible for that class prize but will be eligible for the prizes in the next higher class. Only players with permanent ratings are eligible for prizes. However, players will accumulate points during the time that their rating is provisional and those points will be credited to them in their first permanent rating class.

5. Players must be TCA members to accumulate and collect Turkey points.

6. The Tournament Coordinator is responsible for compiling class standings and awarding prizes.

Any questions Good!! Rick Igou will be glad to answer them. His address is at the front of this newsletter.

NOTE:
ALL Tournament
Announcements
must be sent
through
Rick Igou.

TENNESSEE OPEN

Madigan: TN CHAMPION

by L. Dickerson

The 39th TN Open Championship convened in Oak Ridge, TN and saw 99 combatants assemble in one of the strongest Opens ever, boasting six masters and thirteen experts. Requiring Class B players to play in the Open Section instead of the Amateur as previous permitted allowed a few more impressive scores to be tallied. But, the good score of the many-times-sufficient five was not good enough to win this tourney! With the last round remaining to be played, Charles Madigan of Oak Ridge already had his five and was assured of at least a co-championship—with a possible three others. But, he had to surmount the challenge of Brian McCarthy, fresh from New York with a solid master rating. Madigan played for the win. He succeeded in drawing and becoming the first person to win the TN Open outright since the co-championship format became recognized in 1980! A masterful performance by a master!

Burnett was denied his place at the top by the unanticipated participation of the Champion, Madigan. Leonard Dickerson, the defending champion of 1984, found master flesh to be a delicacy too fine for his palate. In rounds three and four he faced masters Fischer and Wheeler and found them undigestible; managing draws. But, after netting the exchange from McCarthy in the fifth round, he relaxed too much relishing the upcoming feast and choked on the kingly fare!

When Burnett first walked into the tournament hall, a number of the younger players moaned that there goes their shot at the Jr. Championship. Sure enough, Burnett cinched the honor for the fourth consecutive time with 4.5 points. Others to emerge honorably were Thomas Ousley and Mark King with five points—a half point shy this year. Douglas Ralston's versatile opening repertoire (he sported a different opening each round!—drawing three masters and going undefeated) and Bill Melvin's tactical wizardry earned them a respectable 4.5 points for Expert honors. A four way tie in the Class A Section saw Kent Meadows tote off the trophy with 4 points. Class B honors were also shared: Bill Orgain and a persistent Brian Lentz did themselves proud with 3.5 points. The Amateur Section was also a hard

fought affair, ending in a three-way tie among the five-pointers Robert Mahan (Va.), Jeff Smathers, and Lloyd Collier. Class D ended in a two-way tie between Alan Howe (Ky.) and our champion Jonathan Eck with 4 points. Class E was swept by Paul Tate of Kingsport with 2.5 points, and Frank Couch and Monty Collier shared the Unrated's glory with 3 points each.

The Schriver Team Award was in doubt until the sixth round, with Nashville edging Knoxville out with a half point to take the coveted plaque.

Rick Igou's gamble with a relatively low entry for a championship tourney and aggressive advertisement brought the Open closer to break-even than has been experienced by any of Tennessee's major tournaments lately. He just missed the black because he had to refund the masters' participation money. Nevertheless, one must congratulate him for his fine hosting of the event and dedication in making the Open's return to East Tennessee a triumphant affair—if not a monetary success (relatively speaking). West Tennessee had few representatives. Perhaps Middle Tennessee hosting the event next year and experiencing a real profit will encourage a return of the old format and disband the roving championship? It's your participation and will that gives the Board its direction.

...

Here is one of Bill Melvin's sparkling efforts from the TN Open Championship. He maintained this same level of creativity and tactical awareness throughout the event, accumulating 4.5 points. Notes are provided by Bill.

b. Melvin (2066) vs. Robert Fischer (2219)
1985 TN Open Championship

1. e4 e5 2. d4 ed4 3. Nf3 Bc5 4. c3... (At this point I knowingly left ECO, thus initiating the most tactical game that I have ever played. (This is really saying something, considering how Bill shocked his last round opponent and delighted spectators with a really wild, tactical blast!) Indeed, there are no strictly positional moves in the entire game.) **4... dc3 5. Nc3 Nc6 6. Bc4 d6 7. Qb3 Na5 8. Bf7 + Ke7 9. Qa4 Kf7 10. Qa5 Nf6 11. Ng5 + Kg6** (I admire Fischer's courage.) **12. f4 Qe8 13. Kd1 Ng4** (Safer was b6, but Fischer wants to try for a win.) **14. f5 + Kh5 15. Nd5 Nf2 + 16.**

Continued

Madigan: TN CHAMPION from Page 7

Kc2 Bf5 (Fischer is playing very well, but fortunately White still has tactical resources.) **17. g4+! Bg4 18. Qc3 Rg8** (18...Qe5 is met with 19. Nf4+ and 18... Qa4, 19. b3 Qd4 is also answered with 20. Nf4+) **19. h3! Nh1 20. hg4+ Kg6 21. Qh3 Ng3 22. Qh7 mate**

B. Melvin (2079) vs. Jerry Wheeler (2240)
LMU Open

1. e4 c5 2. b4?! (I was feeling crazy on this day. Although I had been studying this line for about three weeks, I had never intended to try this move in a tournament. Wheeler is a positional player and I had hoped that this move would eventually lead to tactics.) 2...cb 4 3. d4 d5 4. e5 Bf5 (Out of my book) 5. Bd3 Bd3 6. Qd3 e6 7. Ne2 Ne7 8. a3 Nc6 9. 0-0 Nf5 10. Be3 Be7 11. Ng3 Ng3 12. fg3 0-0 13. ab4 Nb4 14. Qe2 Qc7 15. c3 Nc6 16. Qg4

Rfc8 17. Na3... (My knight now tires of the whole concept of playing chess and decides to single-handedly checkmate Black. Well, maybe he does have a little help.) **17... a6 18. Nc2 Bf8?! (18...Na5 is stronger.) 19. Ne1 Na5 20. Nf3 Nb3 (20...Qc3 would have been met with 21. Bd3) 21. Rae1 Qc3 22. Ng5 Rc7 23. Nf7! Re8? (23...Rf7, 24. Qe6 Qc7, 25. Qd5 Nd4!, 26. Bd4 is probably Black's best line, although White still has tactical chances. For instance, 26...Rd8 would be met by 27. Rf7. 23... Re7 is an interesting though passive attempt to hold the position.) 24. Nh6 Kh8 25. Qe6!...** (This move instantly and beautifully refutes Black's 23rd move.) **25... Be7 26. Qg8+ Resigns** (My knight now completes his quest by delivering mate on f7 after Rg8. I naturally saw all of this when I played 17. Na3.)

First Annual Ft. Henry Mall

Here is a game from the Ft. Henry Mall Tournament that was held in Kingsport on August 10 and saw Douglas Ralston beat the field of 20 players with 4 points. This topsyturvy affair can be explained partly by the tournament site (in the open Mall area) and Philip Hart getting into time trouble. It is a good fighting game, showing exploitation of an isolated pawn from a semi-open file. Black goes for another Queen; White goes for the King.

L. Groeniger vs. Philip Hart Round 2 Board 8
1. d4 Nf6 2. Nf3 g6 3. g3 Bg7 4. Bg2 0-0 5. c4 d6 6. 0-0 Nc6 7. Nc3 a6 8. b3 Rb8 9. Bb2 b5 10. cb? (Qd2 so as to recapture with the b-pawn is safer. Now Black gets some

initiative.) 10... ab 11. a3?! (d5 is much stronger.) 11... b4 12. ab Nxb4 (Black has a decided plus.) 13. Ba3 Be6 14. Rb1 Nd7? (14...Nf-d4 or c6 and the threat of Qa5 are suggested. Black toys with the idea of c5.) 15. Ng5 c6 16. Nxe6 fxe6 17. Bxb4 Rxb4 18. e3 Qb6 19. Ne2 (19. Bh3! is very strong.) 19... Rb8 20. Nc1 e5 21. d5 e5 22. Bh3 Nf6 23. Qc2 c4 24. Rd1 cxb 25. Qb2 Ne4 26. Rd3 Nc5 27. Rd1 Ra8 28. Qe2 e4! 29. Qe1 b2 30. Ne2 Ral 31. Nc3 Bxc3? (Black is in time trouble.) 32. Qxc3 Rxb1 33. Rxb1 Nd3? (Suicidal.) 34. Be6+ Kf8 35. Qc8+ (Qh8 mate.) 35... Kg7 36. Qg8+ Kh6 37. Qf7 (Qf8+) 37... Rc4 38. Qf8+ Kh5 39. g4+ Kg5 40. h4+ Kxh4 41. Qh6 mate.

PLAYER	ST	PRE		POST				TOT	
		RTNG		RTNG	1	2	3		4
1 RALSTON, DOUGLES F	TN	2114		2136	w16	w-7	w-2	w-6	4.0
2 CHAMBERS, CHRIS L	NJ	2062		2057	w11	w10	L-1	w14	3.0
3 PRINCE, BENNY D	TN	1666		1692	D13	D17	w18	w-7	3.0
4 GOINS, MIKE	TN	1552		1630	L-7	w16	w11	w10	3.0
5 DICKERSON, LEONARD	TN	2084		2057	w15	D-8	L-6	w13	2.5
6 HILL, JOHN M	TN	1797		1809	D17	w18	w-5	L-1	2.5
7 IGOU, RICHARD E	TN	1961		1952	w-4	L-1	w-8	L-3	2.0
8 WATSON, BRADLEY S	TN	1909		1895	w12	D-5	L-7	D15	2.0
9 LETTERMAN, JOHN A	TN	1862		1864	U--	w20	w19	U--	2.0
10 BABB, CURTIS LEE	TN	1670/12		1672	w19	L-2	w12	L-4	2.0
11 COLLIER, LLOYD KEN	TN	1596		1605	L-2	w19	L-4	w17	2.0
12 GROENIGER, LOUIS M	TN	1441		1465	L-8	w15	L10	w18	2.0
13 MILLEN, TOBY	TN	0		1775	D-3	D14	w16	L-5	2.0
14 BOWMAN, MICKEY D.	TN	1711		1716	U--	D13	w17	L-2	1.5
15 HART, PHILIP A	TN	1655		1640	L-5	L12	w20	D-8	1.5
16 VILES, ROGER E	TN	1638		1625	L-1	L-4	L13	w19	1.0
17 TATE, KELLES	TN	1461		1465	D-6	D-3	L14	L11	1.0
18 PHILLIPS, ALAN W	TN	1261		1261	w20	L-6	L-3	L12	1.0
19 GALLICO, WILLIAM T	TN	1305		1291	L10	L11	L-9	L16	.0
20 PAULIK, TONY	TN	0		1193	L18	L-9	L15	U--	.0

November/December 1985

The Correspondence Game

with Lee Edwards

From out of the godless secular humanoid regions north of Mammoth Cave, Kentucky, comes your new Correspondence Czar; the erstwhile Postal God, having been banished from Olympus, is now a mere Titan playing the Yugoslav attack against inferior lizards. The formerly omnipotent McMeadows is also rumoured to be the Presidential (and Vice-Presidential) candidate of the subversive Solipsist Party U. S. A.

DeWitt Pullen requests the honor of the presence of three opponents to join him for the months of carnage and regicide to commence in TC-2-85-86. If you feel up to facing the awesome forces which will oppose your efforts, send \$6.00 (and \$4.00 more if not a TCA member) to: Lee Edwards, 3214 McGavock Pike, Nashville, TN 37214.

Lead on adventurer, your quest awaits.

You play six games with the other three players—two games versus each, one with each color. All entry fees are returned to the top three finalists. You qualify for the finals by scoring four points out of six games (sometimes three and one-half will get it if you are needed to fill out the final section). Entry into more than one section is permitted. The 1985 and 1986 finals will be combined.

If you've been trying to play Anderson's Opening (1.a3), Alapin's Opening (1.e4 e5 2. Ne2), or the Queen's Fianchetto Defense (1. any move b6) since 1910, the last time Halley's Comet came around, maybe you should try entering TC-GT-1, the new gambit-thematic section I am offering. In addition to the above, white gets to force his opponent to choose from a list of openings including the King's Gambit, the Evans' Gambit, the Goring Gambit, the Smith-Morra Gambit, the Sicilian Wing Gambit, the Dragon Variation-Yugoslav Attack, The Poison Pawn variation of the Sicilian Najdorf, and the Staunton Gambit. Otherwise, the rules will be the same as in regular sections, with the winners advancing to the finals, where, of course, they will not get to impose their pet gambits on their opponents by fiat. Entrants should elect to have their games rated or non-rated.

RESULTS:

TC-F-83: Inman 1 E. Jones; Burnett 1/2 Edwards. Nashville's Joe Jones appears to be leading the 1983 finals.

Tennessee postalites are strictly admonished to submit their games for publication, under penalty of reading month after month of the worst and most boring games of Lee Edwards. This month, 1982 Tennessee Postal Champion Lews Inman sends a fine example of his play. Our second feature, Elberfeldu SchaaKclub vs. SchaaKclub Labourdonnals, correspondence 1861, is a blast from the past. Let's hear it from clubs, particularly junior teams, who are interested in organized postal consultation games.

TC-F-83 ENGLISH OPENING

White: E. E. Jones

Black: Lewis Inman

1. c4 e5 2. Nc3 Nf6 3. Nf3 Nc6 4. g3 Bb4 5. Bg2 0-0 6. 0-0 e4 7. Ne1 Bxc3 8. dxc3 Re8 9. Bg5 h6 10. Bxf6 Qxf6 11. Nc2 d6 12. Ne3 Bf5 13. f4 h5 keeps white cramped by preventing 14. g4 —Inman 14. Qd5 g6 15. h3 Be6 16. Qb5 Rab8 17. f5 gxf5 18. Nd5 Qd8 19. Bxe4 a6 20. Qa4 fxe4 21. Nf6 + Kf8 22. Nxe8 Kxe8 23. Rf4 Bxh3 24. Rxe4 + Be6 25. Rf1 Qg5 26. Kh2 Kd7 27. br? Rg8 28. Rg1 Qf5! 29. Rh4 Rxc3! 30. 0-1 If 30. Rxc3 then Qf2 + 31. Kh1 Qxc3 32. Rxh5 Qe1 + 33. Kh2 Qxe2 + wins. Or after 30. Rxc3 Qf2 + if 31. Rg2 then... Qxh4 + 32. Kg1 Qxc4 wins —Inman

CORRESPONDENCE 1861

Ruy Lopez

White: Elberfeldu SchaaKclub

Black: SchaaKclub LaBourdonnais

1. e4 e5 2. Nf3 Nc6 3. Bb5 a6 4. Ba4 Nf6 5. d4 exd4 6. 0-0 Be7 7. e5 Ne4 8. Nxd4 0-0 9. c3 f6 10. Bc2 d5 11. Nxc6 bxc6 12. Bxe4 dxe4 13. exf6 Bd6! 14. fxc7 Rf7 15. g3 Bh3 16. Re1 Bc5 17. Bf4 Rxf4! 18. gxf4 Qh4 19. Kh1 Qxf2 20. Rg1 Qxg1 + 21. Qxg1 Bxg1 22. Kxg1 Rd8 23. Na3 Rd2 24. b4 e3 25. Nc4 Rg2 + 26. Kh1 e2 27. Ne3 Rf2 28. Kg1 Rf3 29. Ng2 Rd3 30. Re1 Rd1 31. Kf2 Bxg2 32. Rxe2 Bd5 33. Re8 + Kxc7 34. Re7 + Kh6 25. Rxc7 Rcl 36. Ra7 Rc2 + 37. Ke1 Rxa2 38. Kd1 Kg6 39. 0-1

Blount County Summer Open

(or Leonard's Nemesis)

Another B. C. Summer Open has gone without the usual number of upsets this time. One year ago, the top 4 players bit the dust and upsets were rolling like golf balls on a driving range. This year, the only one to have major upset was Leonard Dickerson. This has to have been a frustrating tournament for him, especially since one of his losses was on time and he had a won position. Come on Leonard, we are counting on you to shake this Nemesis and blow the field away next year.

There were no perfect scores in this one. The winners: (there were three) all had 3½. They were Richard Carpenter, Chris Cham-

bers, and Rick Igou (who also took Class A prize). Class B was split between Mike Headrick, Jimmy Watson, and Larry Ousley. Class C was monopolized by Philip Hart. David Jordan (first tournament in many years) and Roger Swann (first major tournament) took Class D. Unrated was cleaned up by David Woody and Curtis Babb.

Evidently no one liked their games in this tournament because no one wanted any published. Maybe this thing really is a Nemesis. Next year will give more information on this.

	PLAYER	ST	RTNG	PRE	POST				TOT
				RTNG	1	2	3	4	
1	CARPENTER, RICHARD	TN	2134	2137	w17	w10	w-9	0-3	3.5
2	CHAMBERS, CHRIS L	NJ	2062	2085	w21	w13	D-4	w11	3.5
3	IGOU, RICHARD F	TN	1937	1961	w27	w-6	w-5	D-1	3.5
4	WATSON, JIMMY T	TN	1787	1849	w20	w11	D-2	D-9	3.0
5	HEADRICK, MIKE	TN	1758	1761	w19	w24	L-3	w15	3.0
6	OUSLEY, LARRY J	TN	1684	1705	w12	L-3	w24	w20	3.0
7	HART, PHILIP A	TN	1607	1659	w26	D-8	D10	w14	3.0
8	PATTERSON, FHEOPAT	TN	1920	1916	w18	D-7	L11	w12	2.5
9	TSBILL, WALTER H	TN	1865	1877	w23	w14	L-1	D-4	2.5
10	GULLETTE, ALAN	TN	1856	1857	w16	L-1	D-7	w22	2.5
11	DICKERSON, LEONARD	TN	2090	2067	w15	L-4	w-8	L-2	2.0
12	BABB, CURTIS LEE	TN	1713/8	1670	L-6	w27	w19	L-8	2.0
13	PRINCE, BENNY D	TN	1681	1666	w22	L-2	L20	w24	2.0
14	GOSNELL, LARRY	TN	1640	1638	w25	L-9	w16	L-7	2.0
15	POFF, STEVE MARION	TN	1566	1566	L11	w25	w26	L-5	2.0
16	WOODY, DAVID W	TN	1443	1460	L10	w17	L14	w18	2.0
17	AMATO, BRUCE S	TN	1425	1436	L-1	L16	w21	w25	2.0
18	WHITE, JASON C	TN	1359	1357	L-8	L26	B--	w16	2.0
19	JORDAN, DAVE J	TN	1267	1299	L-5	w23	L12	w26	2.0
20	SWANN, RODGER M	TN	1244/11	1339	L-4	B--	w13	L-6	2.0
21	GRUENTIGER, LOUIS M	TN	1432	1433	L-2	D22	L17	w27	1.5
22	HOLDWAY, TIM	TN	0	1498	L13	D21	w27	L10	1.5
23	WAGNER, TOMMY H	TN	1385	1341	L-9	L19	L25	B--	1.0
24	VARNER, CHRIS	TN	1269/13	1276	B--	L-5	L-6	L13	1.0
25	GAMBILL, GARY C	TN	1169/5	1230	L14	L15	w23	L17	1.0
26	SWANN, BRIAN K	TN	0	1315	L-7	w18	L15	L19	1.0
27	THOMPSON, MARK E	TN	1422	1386	L-3	L12	L22	L21	.0

12th Annual Lawrence Pfefferkorn Open

Amidst a tournament of this size, you would expect much hard thinking and many battles taking place across the chess board. For Al Lipkin's tournament, this is not enough though. In addition to the chess battles, a real honest-to-goodness fist-fight broke out. In spite of this distraction, four

Tennessee players came out with purses so pretty. They were Chris Nickle, Fred Stanbrook, Charles Allen Webb, and Michael A. Lipkin. Thanks for putting us on the scoreboard fellows and, eh, Al, not so much realism. OK?

Music City Grand Prix

After upsetting Ronald Burnett in Round 4 of the Music City Grand Prix, Charles Meidinger tied with Jerry Wheeler to win the event with 4.5 points. First Expert also saw a tie with 4 points among Paul Linxwiler and Bill Melvin. In Round 5 Master James Gallagher bowed to John Daugherty, after having already been upset in Round 1. This upset gave Daugherty of Alabama the Class A prize, and kept five other Class A players from sharing the Class prize.

A remarkable outcome of this 38 player tournament was that 14 of the combatants shared in the prize fund—37% of the players got a return on their money! This result compares favorably with international events in this respect. Another favorable comparison would be that there were no big rating changes among over 95 percent of the

players. This is unusual for a local tournament.

Here is one of the two upsets being delivered to Gallagher in the tournament.

MUSIC CITY GRAND PRIX Round 1 Gallagher 2212 vs. Boykin Opening: Pirc

1. e4 d6 2. d4 Nf6 3. Nc3 g6 4. f4 Bg7 5. Be2 0-0 6. Nf3 e5 7. Be3 Qa5 8. Qd2 cxd4 9. Nxd4 Nc6 10. Nb3 Qd8 11. h3 Nd7 12. g4 b6 13. 0-0 Nc5 14. Bf3 Nxb3ch 15. cxb3 Bb7 16. Kb1 Rc8 17. h4 Qd7 18. h5 g5 19. h6 Bxc3 20. bxc3 gxf4 21. Bxf4 Qe6 22. Rh5 f6 23. e5 Na5 24. Bxb7 Nxb7 25. exd Qe4ch 26. Kb2 e5! 27. Be3 Nxd6! 28. Qd5ch Qxd5 29. Rxd5 Ne4 30. c4 Rcd8 31. g5 Rxd5 32. cxd5 f5 33. Rh1 f4 34. Be1 Nxe5 35. Rg1 Rf5 36. Kc2 Kf7 37. Ba3 e4 38. Rd1 f3 39. Bc1 f2 40. Rf1 Nh3 41. d6 Ke6 42. Ba3 e3 43. Kd3 Rf3 44. Ke2 Ng1ch 45. Resigns.

PLAYER	PRE ST RTNG	POST RTNG	1	2	3	4	5	TOT
1 WHEELER, JERRY T	TN 2204	2224	w14	w11	w10	w-4	0-2	4.5
2 MEIDINGER, CHARLES	AL 2177	2205	w24	w13	w-6	w-3	0-1	4.5
3 BURNETT, RONALD WA	TN 2294	2290	w19	w-8	w-9	L-2	w10	4.0
4 LINXWILFR, PAUL A	TN 2124	2128	w24	w29	w15	L-1	w11	4.0
5 MELVIN, BILL	TN 2097	2098	L30	w36	w14	w-8	w13	4.0
6 DAUGHERTY, JOHN	AL 2036	2071	w36	w30	L-2	w15	w-7	4.0
7 GALLAGHER, JR JAME	TN 2245	2211	L22	w32	w19	w17	L-6	3.0
8 SMITH, BRIAN D	TN 2007	2004	w25	L-3	w24	L-5	w18	3.0
9 KOZEL, CRAIG L	AR 2002	1997	w35	w16	L-3	L13	w17	3.0
10 HOFFMAN, GREGORY W	KY 1996	2000	w31	w22	L-1	w12	L-3	3.0
11 JEFFERY, JACK A	MS 1940	1940	w26	L-1	w22	w27	L-4	3.0
12 BURNETT, JOHN T	TN 1869	1852	L27	w35	w20	L10	w22	3.0
13 CHARLEGLTD, PETER	TN 1798	1828	w34	L-2	w23	w-9	L-5	3.0
14 TAI, OLIVER	TN 1780	1794	L-1	w26	L-5	w35	w27	3.0
15 TURBEVILLE, L. JAY	TN 1773	1801	w37	w21	L-4	L-6	w24	3.0
16 ALLEN, GREG L	KY 1741	1754	w33	L-9	L21	w32	w23	3.0
17 FLICKINGER, DALE B	TN 2034	2005	D32	w38	w18	L-7	L-9	2.5
18 WARNICKE, ROBERT	AZ 1867	1844	D38	w27	L17	X--	L-8	2.5
19 ORGAIN, WILLIAM H	TN 1726	1731	L-3	w25	L-7	D20	w32	2.5
20 SHOEMAKER, ANDREW	TN 1608	1615	L21	w37	L12	D19	w33	2.5
21 KING, MARK T	TN 2092	2070	w20	L15	w16	U--	U--	2.0
22 BOYKIN, JIMMIE C	TN 1652	1674	w-7	L10	L11	w25	L12	2.0
23 WOODWARD, JR JAMES	TN 1619	1609	L-4	w28	L13	w26	L16	2.0
24 BROOKS, RICHARD WA	AL 1602	1611	L-2	w34	L-8	w36	L15	2.0
25 KOZEL, MICHAEL	TN 1447	1456	L-8	L19	w37	L22	w34	2.0
26 PETTY, ERIC H	TN 1405	1422	L11	L14	w28	L23	w35	2.0
27 HOWE, SP4 ALAN F	KY 1392	1451	w12	L18	w31	L11	L14	2.0
28 ECK, JUNATHAN	TN 1263	1282	L29	L23	L26	w37	w36	2.0
29 PATTERSON, RODNEY	TN 1783	1789	w28	L-4	D30	F--	U--	1.5
30 SIBREL, DONALO W	TN 1569	1611	w-5	L-6	D29	U--	U--	1.5
31 WOLSKE, GARY D	AL 1561	1532	L10	D33	L27	L34	w38	1.5
32 PASCHALL, JOEL K	TN 1535	1542	D17	L-7	w38	L16	L19	1.5
33 HOGAN, SCOTT	TN 1428/4	1406	L16	D31	L36	w38	L20	1.5
34 MC TAGGART, MICHAEL	TN 1585/11	1508	L13	L24	L35	w31	L25	1.0
35 BRYANT, DENNIS W	TN 1477	1466	L-9	L12	w34	L14	L26	1.0
36 WHITE, MICHAEL W	TN 1458	1436	L-6	L-5	w33	L24	L28	1.0
37 COLLINS, MICHAEL M	TN 0	1123	L15	L20	L25	L28	B--	1.0
38 DUNCAN, TIMOTHY L	KY 0	1361	D18	L17	L32	L33	L31	.5

The Cumberland County Fall Open I & II

by Bill Hall

Hot-handed Ronald Burnett cleaned up the open section of this 3 section event. Ronald's success is offset, though, by the excellent performance of Tim McHenry. What a day he had. He scored 3½ points by drawing Bill Melvin in the third round and upsetting Brian Smith in a final round clash. Watch Out Ronald!!!

The expert prize was won by Mark Ishes, 3 points, when Melvin and Brian Smith suffered upsets and Doug Raulston fell to Ron Burnett.

Class B was a tie between Jim Watson and Karl Kneile (3 points each). Joel Paschell pulled 2½ points against higher rated opponents to take the Class C money.

The Amateur section was won by Ralph Panther and Chris Sides (3½ points each). Class E was tied between Jason Johns and Stone Steele with 1½ points each while the Unrated section went to Marshall Prince with 3 points. The Non-rated Beginners Section was a wipe-out with Janice Peddleson pulling 5 out of 5. WOW!!

The Cumberland County Fall Open II was held the following day. Again the heavy favorite, Ronald Burnett, took top honors with a perfect score. This was the first time he had scored 8-0 for the two events.

The expert category was taken by Doug Ralston with 3½ points while Category A was split between Greg Robbins and yours truly with both scoring 3 points. 3 points, and Class B honors, were also scored by Brian Lentz. Scott Hogan won Class C. William Gallico took Class D. Jason Johns and John Opfer tied for Class E and Frank Couch was top unrated.

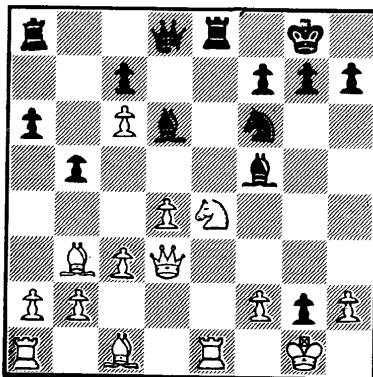
Any games anyone would like published from Crossville Tournaments, please send them to: **Bill Hall**, P. O. Box 346, Crossville, TN 38555, Phone (615) 484-8050.

The following game is from the C. C. Fall Open II.

The Ruy Lopez/Bill Hall (1948) vs.

Bill Melvin (2066)

1. e4 e5 2. Nf3 Nc6 3. Bb5 a6 4. Ba4 Nf6 5. 0-0 Be7 6. Re1 b5 7. Bb3 0-0 8. c3 d5 9. e x d5 (Melvin smiled when I played this) 9. ...e4 10. dxc6 exf3 11. d4 (if 11. Qxf3? then Bg4!) 11. ...fxg2 12. Bg5 Bg4 13. Qd3 Re8 14. Nd2 Bd6? (this move may be Avant Garde) 15. Ne4! Bf5? (If 15. ...Rxe4 then 16 Qxe4 Nxe4



17. Bxd8 Rxd8 (If 17. ...Nxf2 then Re8 + !!)
18. Rxe4 and white is up the exchange) 16. Nxf6 +! gxf6?? (Melvin must have fallen asleep. He loses quickly now. Better was 16. ...Qxf6 17. Bxf6 Bxd3 18. Bh4 with better game for white) 17. Qxf5! Rxe1 18. Rxe1 fxe5 (This allows me mate but it's over anyway)

King

COTTON

Continued

PLAYER	ST	RTNG	PRE				TOT	
			1	2	3	4		
1 GALLAGHER, JR JAME	TN	2211	2239	W-8	W-3	W-5	W-4	4.0
2 COPE, RANDY W	TN	2114	2118	W16	L-4	W11	W10	3.0
3 BOYD, DANIEL LEROY	TN	1952	1990	W12	L-1	W16	W-9	3.0
4 PYLANT, GARY M	TN	1944	2002	W15	W-2	W-9	L-1	3.0
5 HOLYFIELD, ROBERT	TN	2114	2109	W19	W11	L-1	D-8	2.5
6 MINOR, RONALD L	TN	2105	2083	L11	W14	D10	W15	2.5
7 BROWN, LEROY	TN	1962	1949	W17	L-9	D15	W14	2.5
8 WEAVER, DWIGHT K	MS	1867	1886	L-1	W12	X--	D-5	2.5
9 LINXWILER, PAUL A	TN	2128	2111	W13	W-7	L-4	L-3	2.0
10 WRIGHT, JAMES A	TN	1902	1897	D14	W18	D-6	L-2	2.0
11 YU, GEORGE	MA	1718	1766	W-6	L-5	L-2	W16	2.0
12 SMITH, HOWARD W	TN	0	1851	L-3	L-8	W13	W19	2.0
13 BAYER, WALTER	TN	1754	1744	L-9	D19	L12	W17	1.5
14 HARRISON, CRAIG	TN	1656	1676	D10	L-6	W19	L-7	1.5
15 MITCHELL, JAMES H	TN	1583	1593	L-4	B--	D-7	L-6	1.5
16 POTTS, MICHAEL	TN	1734	1733	L-2	W17	L-3	L11	1.0
17 LOE, JR ROBERT	TN	1623	1598	L-7	L16	B--	L13	1.0
18 AVANT, TIMOTHY A	TN	1541	1537	B--	L10	F--	U--	1.0
19 SPRAGUE, JACK C	TN	1684	1657	L-5	D13	L14	L12	.5

19. Qxf7 + Kh8 20. Re8 +!! Resigns (after 20. ...Bf8 21. Qg8 mate or 20. ...Qxe8 21. Qf6 mate)

FROM C. C. FALL OPEN II

Round 4 — Board 1

SICILIAN, White: Bill Hall

Black: Ronald Burnett

1. e4 c5 2. Nf3 Nc6 3. d4 cxd4 4. Nxd4 Nf6 5. Nc3 d6 6. Be2 e5 7. Nb3 Be7 8. Be3 a5 9. Be6 10. g5 Nd7 11. Nd5 a4 12. Nd2 Rc8 13. Nxe7 Qxe7 14. c3 a3 15. b3 0-0 16. Bg4 b5 17. c4 Bxg4 18. Qxg4 bxc5 19. Nxc5 Nd4 20. Nxa3 d5 21. Bxd4 exd4 22. 0-0 Ne5 23. Qg3 Rc3 24. Qf4 Rf3 25. Qh4 Qxa3 26. exd5 Ng6 27. Qxd4 Qe7 28. Qg4 Rf4 29. Qg3 Qd7 30. h3 f6 31. gxf6 R (8)xf6 32. R(a)e1 Qxe5 33. Re8 + Nf8 34. FLAG!!

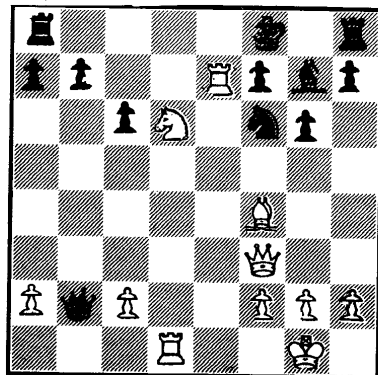
Cave-Man Chess by Jim Watson

We all want to be great chess players. Alas, for many of us, this will never happen. We are confined to week-end tournaments and ratings on the low side of 2200. Don't despair, we may never play great chess, but it is within our power to play exciting chess.

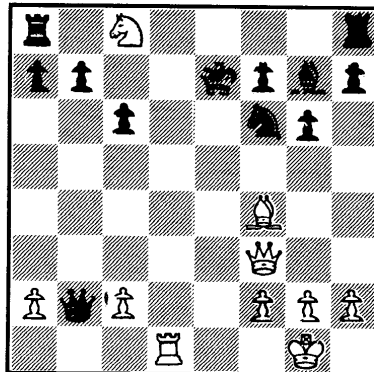
The simple plan is to know our true selves. What is it called when we prefer a wild 30 move loss to a dull 70 move draw? When we always play unclear exchange sack's? When we constantly calculate moves on the odd side of baroque? I call it Cave-Man Chess! I give you an example of a game that quickly reaches a suitable position.

Richard Carpenter vs. Doug Ralston 3-10-85

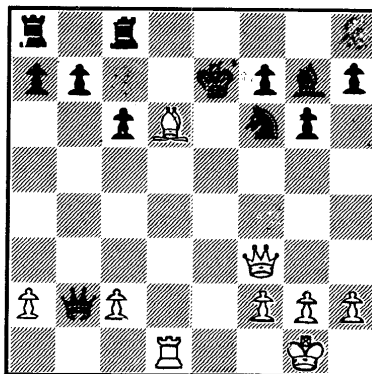
1. e4 c6 2. d4 d5 3. Nc3 de 4. Ne4 Nd7 5. Nf3 Ngf6 6. Nf6 + Nf6 7. Bc4 Nd5 8. 0-0 Bg4 9. Be2 Qc7 10. Ne5 Be2 11. Qe2 g6 12. Qf3 Nf6 13. Bf4 Qb6 14. Rfe1 Bg7 15. Nc4! Qd4 16. Nd6 Kf8 17. Rad1 Qb2 (Black has taken some liberties and white has played quite well. Now, unhappily, white does not pursue the proper Cave-Man policy, and the game ended in a draw. I would like to suggest the proper move, with attendant analysis...) 18. Re7! Black has 3 replies: A...Kg8, B...Qc2, C...Ke7



A) 18...Kg8 19. Rb7 Qc2 20. Nf7 and white is winning B) 18...Qc2 19. Rf7 + Kg7 20. Rg7 + Kg7 21. Be5 Rhf8 22. Ne4 Rae8 23. Rd7 + Kg8 24. Nf6 + Rf6 25. Rg7 +! Kh8 26. Rd7 wins for white C) 18...Ke7 19. Nc8 +! and now Black has 1)...Kf8 (1)Ke8 III)...Ke6 IV)...Rhc8



1) 19...Kf8 20. Bd6 + Kg8 21. Ne7 + Kf8 22. Ng6 + Kg8 23. Ne7 + Kf8 24. Nf5 + Kg8 25. Qg3 Nh5 26. Nh6 mate II) 19...Ke8 20. Qe3 + Kf8 21. Rd8 + Ne8 22. Qxe8 mate III) 19...Ke6 20. Qe3 + Kf5 21. Ne7 + Kg4 22. Qg3 + Kh5 23. Qh3 mate IV) 19...Rhc8 20 Bd6 + and Black has a)...Ke8? b)...Kd7 c)...Ke6



a)...Ke8? 21. Qe2 + and white wins b)...Kd7 or Kd8 21. Ba3 + Nd5 22. Bb2 Bb2 23. c4 wins c)...Ke6 (CHARGE!! A move in the counter Cave-Man tradition!! 21. Qh3 + Ng4 22. Qg4 + f5 23. Qc4 + Kf6 24. Bb4 (traps the Queen) 24...Rd8 25. Bc3 + and now 1)...Kg5 and 2)...Qc3! 1)...Kg5 26. h4 + Kh5 27. Qf4 Rd1 + 28. Kh2 Bf6 29. Bb2 Bh4 30. Qf3 + Kh6 31. Qd1 and white wins 2)...Qc3! 26. Qc3 + Kf7 27. Qb3 + Kf6

We have reached a position the Knoxville

Continued

Chess Club Experts feel is drawn. Long-time Texas Expert Bill Trim says it is an obvious win for white. Now that the position is more technical than Cave-Man, I leave it to the reader. Can anyone demonstrate a win or draw here?

So, in conclusion, the games that I will be out there playing will not resemble Karpov, but will be wild, complicated, and, hopefully, interesting.

Anyone having games of interest, please contact me at the following address: **Jim Watson**, Rt. 11, Johnson Cemetery Road, Knoxville, TN 37918, phone (615) 922-7030.

Gallagher is King at the King Cotton

The annual King Cotton, in Memphis, was swept by James Gallagher, Jr. In a field of nineteen competitors, Gallagher came through with a perfect 4-0. His nearest competitors were Randy Cope, Daniel Boyd, and Gary Pylant—all with 3 points. Class B was picked clean by George Yu with 2 points. Another big piece of news in the open, though, was an unrated player, Howard W. Smith, came out of the field with 2 big wins.

The novice section was cleaned up by H. Richmond, Jr. with a perfect 3-0. His closest competitors were a full point behind him.

PLAYER	PRE ST	PRE RTNG	POST RTNG	POST			TOT
				1	2	3	
1 RICHMOND, JR HARVE	TN	1590	1617	W-4	W-3	W-2	3.0
2 SHIFFLETT, STEVEN	MS	1499	1503	W10	W-5	L-1	2.0
3 WEIS, LOUIS T	TN	1406	1421	W13	L-1	W-8	2.0
4 KAY, TODD M	TN	1361	1375	L-1	W-7	W13	2.0
5 FORE, JOHN MICHAEL	MS	1360	1359	W14	L-2	W11	2.0
6 MYERS, DAVID R	TN	0	1387	L-7	W13	W-9	2.0
7 REYES, ALEX	TN	0	1434	W-6	L-4	W10	2.0
8 GALLAGHER, SR JAME	TN	1465	1444	W11	D-9	L-3	1.5
9 BRUCE, ANDY D	TN	1354/13	1337	W12	D-8	L-6	1.5
10 CONARD, CARL W	TN	1297/5	1242	L-2	W14	L-7	1.0
11 DINGLER, JOE K	MS	1064	1071	L-8	W12	L-5	1.0
12 PULLIAM, CLIFF	TN	0	1001	L-9	L11	W14	1.0
13 CRAYTON, DAVID	TN	1114/9	1074	L-3	L-6	L-4	.0
14 JONES, ANTHEN	TN	1077/3	946	L-5	L10	L12	.0

TCA Board Meeting in Dickson

A regular meeting of the Board of Directors of TCA was held on Sept. 28, 1985, at Bill Orgain's home in Dickson. The topics discussed were election of a new editor, how many issues of TCA to produce each year, the 1985 and 1986 TN Open Tournament, the TN Amateur Team Tournament, and the dues structure of TCA.

The new editor elected was Larry Thomas. The number of issues, as previously discussed, will be 4 per year. The Amateur Team Tournament was granted SASP funds from USCF. Now, for the important parts. The 1985 TN Open lost money! The options discussed for next year included: recentralizing the tournament in Nashville, dropping the prize fund again, or increasing dues in order to prevent the 1986 tournament from losing funds. The final solution seemed fairly obvious to most of the ones present—raise dues.

Tennessee presently has one of the lowest state association dues in the U.S. Our publication, at the risk of repeating myself, under Dickerson, was one of the top in the nation. We hold annual state championship matches, scholastic and open, the new team open tournament, and are considering the possibilities of more, and help to coordinate tournaments across the state. All in all, we are getting our monies worth. With us losing money at the rate we are, we will soon be in trouble. Therefore, the conclusion—raise the rates. The new rates will be in effect as of September, 1986. The rates will still be \$4.00 per year for juniors. All others will go to \$6.00 per year. After all this discussion—we still have one of the lowest rates in the nation.

Believe it or not, this took all day. Boy!! Are we slow.

COMING ATTRACTIONS

NOVEMBER 8-10 AMATEUR TEAM TOURNAMENT 5-SS-team event. 5012, SO. Springbrook Recreation Park, Alcoa, TN. Chess Clock to first place on Boards 1,2,3, & 4. Set & Board to 1st place Scholastic Players on Boards 1,2,3, & 4. Four plaques each to best team, best scholastic team, best team under 1700, best team name, best team outfits. 1 plaque each to 2nd place team, 2nd place under 1700, 2nd place scholastic E. F. pre-entry reg. team \$24 (\$6/person). Pre-entry Scholastic \$16 (\$4/person). Scholastic \$28 (\$7/person). Reg. Team \$36 (\$9/person). USCF & TCA required (TCA for TN res. only). Pre-entry before Nov. 5. Reg. at site 8-10 Sat a.m. Rounds: 10-3-8; 9-2 (EST). Hotel-\$23.77/night up to 5 people/room if reserved by Nov. 4. Family Inns of America, 2450 Airport Hwy., Alcoa, TN 37701, Phone (615) 970-2006. Free sleeping bag accommodations available at site. Pre-entries & Info. **Larry G. Thomas**, P. O. Box 688, Alcoa, TN 37701, phone (615) 983-1977. NS.



NOVEMBER 31-DECEMBER 1. Mid-South Open. Mall of Memphis Community Room, 4451 American Way. 2 Sections: Open 4-SS, 45/100. EF \$25. TCA Req. \$4. \$(525 b/35) 200-125, A 100.B/ below 100. Rds 9:30-2, 9&30-2. Novice 3-SS 45/100, Open to below 1600. EF-\$5. Trophies to top 3. Rds. 9:30-1-3:30. Reg. 8:15-9:15. Info. **Walter Bayer**, 4695 Cottonlane No. 6, Memphis, TN 38118, phone (901) 363-3168.



DECEMBER 7-8, 1985. Crossville Scholastics, 5-SS. Time control-Champ Sections SD-120 Novice Sections-SD/60. Martin Jr. High School, Crossville, TN. Prizes-High School Champ. trophies top 10 players, trophies top 2 Class B,C,D: below, unr. trophies top 5 teams, expenses to TN St. Scholastics top 3 teams \$75-\$50-\$25. Top out-of-state-\$75. High School Novice. Trophies top 10 players. Trophies top 2 Class E, unr. trophies top 5 teams. Junior High Champ-trophies top 10 players. Trophies to 2 Class C,D,E, Unr. Trophies top 5 teams. Expenses to TN St. Scholastics top 3 teams \$75-\$50-\$25, top out-of-state team \$75. Junior High Novice trophies top 10 players. Trophies top 2 Unr. Trophies top 5 teams. Elementary Championship-trophies top 10 players, trophies top 2 Class D,E, Unr. Trophies top 5 teams. Expenses TN St. Scholastics top 3 teams \$75-\$50-\$25, top out-of-state team \$75. Elementary Novice trophies top 10 players. Trophies top 2 Unr. Trophies top 5 teams. Primary trophies top 10 players trophies top 2 below 1000, Unr. Trophies top 5 teams. Expenses to TN St. Scholastics top team \$50. Pre-entries in by Nov. 27. H.S. Champ \$8/\$10 HS Nov. \$5/\$10 JH Champ \$7/\$10 JH Nov. \$5/\$10 Ele. Champ \$6/\$10 Ele. Nov. \$5/\$10 Primary \$5/\$10 Registration at site. FRIDAY ONLY. 3 pm-7 pm at MJHS. Round times HS-JHS-ELE Champ Sections 9 am-2 pm-7 pm/8 am-12:30 pm (CST) HS-JHS-ELE Nov. 9 am-11:30 am-2 pm/4:30 pm-7 pm (CST). Primary-SAT. ONLY 1st round at 9 am (CST). Free sleeping bag accommodations if req. in advance. Heritage Inn \$27.50 plus tax-any number. P. O. Box 581, Crossville, TN 38555, phone (615) 484-9505. Pre-entry and info. **Harry Sabine**, P. O. Box 381, Crossville, TN 38555, phone (615) 484-9593 or (615) 484-4878

DECEMBER 27-29. 9th Fairfield Glade Open. 5-SS. 40/100. Fairfield Glade Resort, Conf. Center-Peavine Road, Fairfield Glade, TN 38555. In 3 sections. Open E.F. \$35 if rec'd by 12/23 \$\$G 600-300-200, Exp., A & below 350-150-100; 2000-2099 & below 1300-\$100: Trophies 1st, top exp., A & below. Amateur open to below 1800. E. F. \$35 if rec'd by 12/23. \$\$G 350-125-100, C & below 350-125-100. 1600-1699 & below 1500-\$1100; trophies to 1st, top C & below. Novice. Open to below 1400 E. F. \$35 if rec'd by 12/23. \$\$\$350-125-100; 1200-1299-\$100. E \$225, Unr. \$150; trophies to 1st, E, Unr. (Unr. eligible for unr. prize only). All-Special \$10 E. F. for all juniors-may win trophy only. E. F. \$5 more at site. ST. \$4. Jan rating supplement will be used. Optional trophies available. R.G. 3-7 pm 12/27 or 7-8 am 12/28. RD: 1st round choice of Friday at 8 pm or Saturday at 9 am, other rounds 2-7, 9-2 CST. HR: Fairfield Glade Lodge \$30-30-30-30. Villa Parlor (Kitchen/2 double beds) \$50. Ent. **Harry Sabine**, P. O. Box 381, Crossville, TN 38555, phone (615) 484-9593 or 484-4878.



JANUARY 11-12. Shelby County Open 5-SS. 50/2 Auburndale School, 2100 N. Germantown Rd., Cordova, TN 38018. \$\$5(b/40). 200-100, top cat. exp. A,B,C,D,E,Unr.-\$40. Advance Entry \$16. \$20 at site. Juniors-\$6 (\$10 deducted from winnings) Reg. 7:30-8:30 am Sat. RDS 9-2-7, 8-1. Pre-entry & more info. **Dale Flickinger**, in care of Auburndale School, 2100 N. Germantown Rd., Cordova, TN 38018, phone (901) 382-3829 N.S., W.A., N.C.



JANUARY 25, Scotsboro Winter Tornado, Scotsboro, Ala.

FEBRUARY 15. Cumberland County Winter Open I. 4-SS 40/1, SD/30. Martin Jr. H.S. Stanley St., Crossville, TN 38555. Open \$\$5(150 b/30) \$50, Exp. A,B,C-\$25 (1st \$50 gtd) Amateur \$\$5(75 b/30) \$30, E-\$25, Unr. \$20. All Ent.-\$6 Reg. 7:30-8:30 CST. RD. times 9-11:30-2:30-5:30 CST. Heritage Inn \$27.50 plus tax, 1-4 persons. Info. **Harry Sabine**, P. O. Box 381, Crossville, TN 38555, phone (615) 484-9593 or 484-4878 LS WA.



FEBRUARY 15. Crossville Non-Rated Winter 40/1. Martin J.H.S., Stanley St., Crossville, TN EF \$5 Reg. 7:30-8:30 am CST RDS 9-11:30-2:30-5:30 CST Info. **Harry Sabine**, P. O. Box 381, Crossville, TN 38555, phone (615) 484-9593 or 484-4878.

FEBRUARY 16. Cumberland County Winter Open II 4-SS 40/1 DS/30 Martin J.H.S. Stanley St., Crossville, TN \$(150 b/35) \$50, Ex-A-B-C-D-E \$15 Unr. \$10. 1st \$50 gtd. EF \$6. Reg. 7:30-8:30 CST RDS 9-11:30-2:30-5:30 CST. Heritage Inn \$27.50 plus tax, 1-4 persons. Info. **Harry Sabine**, P. O. Box 381, Crossville, TN 38555, phone (615) 484-9593 or 484-4878 LS WA

All Articles and Tournament Announcements must be in by January 10 to make next issue

TENNESSEE CHESS NEWS
Larry G. Thomas, Editor
P. O. Box 688
Alcoa, TN 37701

CURT JONES
MEMPHIS, TN.

