



Tennessee Chess News

SPECIAL SPRING DOUBLE ISSUE

February - March 1995 and April - May 1995

Patron Membership List.....	3
Editor's Etcetera	4
Tennessee and Chattanooga have lost...Doug Nichols.....	5
Tennessee Scholastic Team Championships.....	6-7
1st Middle Tennessee Open.....	8
Annotated Game.....	9
1st Middle Tennessee Open Results.....	10-14
The Problem Corner	14
Region 2 Scholastic Championships	15
A Visit With Our GM	16
Chattanooga Scholastic Championships	18
Scholastic Success at 1995 Jr. Chess Congress	18
1995 Cumberland Summer County Open.....	20-21
The Gambit Player.....	24
Tournaments! Tournaments! Tournaments!	29
TCA Regional Scholastic Coordinators	30
TCA Board of Directors.....	31

TENNESSEE CHESS NEWS

The **Tennessee Chess News** is the official publication of the Tennessee Chess Association. TCA annual dues are \$10 for a *regular* membership, \$4 for a *student* membership. Additional members of a family may join for one dollar each, but only one issue of TCN will be mailed per family. All memberships expire August 31.

Tax-deductible Patron Memberships are available beginning at \$25 per year for those who wish to help support the TCA. These memberships expire one year from date of payment. Patron memberships categories and benefits are as follows:

PATRON - \$25

- receive TCN by First Class Mail with your name listed in each issue of TCN;

PATRON KNIGHT - \$50

- all Patron benefits plus a commemorative plaque;

PATRON BISHOP - \$100

- all Patron Knight benefits plus free entry to the Tennessee Open;

PATRON KING - \$500

- all Patron Bishop benefits plus free lodging at the Tennessee Open;

PATRON FOUNDER - \$1000

- all Patron King benefits plus free entry into all Turkey Tour events.

TCA memberships are required for participation in all rated chess events in Tennessee except scholastic-only events, and may be purchased at any chess tournament.

2/ *Tennessee Chess News*

TENNESSEE CHESS NEWS EDITORIAL STAFF

Editor:

Richard Westbrook

Contributing Editors:

Lee Edwards;

Rea Hayes;

Raymond Hudgens;

Nancy Hughes;

Rick Igou;

Ed Newark;

Tom Rowan;

Harry Sabine.

ADVERTISING RATES

Full Page	\$40.00
Half Page	\$20.00
One-third Page	\$14.00
One-Quarter Page	\$10.00
One-Eighth Page	\$ 7.00

Pre-printed flyers for insert must be 8½ x 11" in size, 60 pound Offset, and delivered flat. *Only one insert is available per issue.* \$15.00 .

TOURNAMENT ANNOUNCEMENTS

TCN prints listings of upcoming tournaments in each issue for free, including those from other states. Submit all announcements to **Rick Igou**, Tournament Coordinator.

CURRENT T.C.A. PATRON MEMBERS

PATRON KING

Dr. Martin "Dick" Katahn

PATRON BISHOPS

Clinton H. Pearson, Jr.
Harry Sabine

PATRON KNIGHTS

Thomas Cooper
Edward C. Dallas
Ellis E. Jones
Frank W. Larimer
Bill Orgain
Ed Porter
Jim Rylander, Jr.
Joseph Sullivan, Jr.

PATRONS

Frank B. Couch, III
Chester C. Crowley
Leonard S. Dickerson
Walter R. Green
Raymond Hudgens
Rick Igou
Peter P. Lahde
Brian D. Lentz

Ed Newkirk
Jeffrey Pennig
Thomas R. Pierce
Edward C. Porter
Todd Shimabukuro
Jack C. Sprague
Edwin Cato White
James A. Wright

Editor's Etcetera

By Richard Westbrook

I would like to extend a sincere apology to the Tennessee Chess Association membership for the lengthy delay in the production and mailing of the February-March and April-May issues of the *Tennessee Chess News*. The lag is entirely my fault. It has been very difficult to make the time necessary to create the quality publication which you expect and deserve. However, the personal and professional distractions which caused the delay have passed and I will be able to continue to serve as Editor of the TCN.

In this issue are many items of interest. Rea Hayes wrote an excellent tribute to the late Doug Nichols. There are many articles, contributed by Harry Sabine and Nancy Hughes, pertaining to scholastic chess in Tennessee -- which continues to grow and be a source of pride for all of us. The ongoing success of scholastic chess is a direct result of the efforts of many individuals who devoted long, and often thankless, hours attending to the details of ensuring the tournaments run smoothly. If you are not already involved, I urge you to find a way to become so. Your regional scholastic coordinator can give you ideas on how you can help. Remember, scholastic players represent the future of Tennessee chess.

Also in this issue, you will find an excellent Annotated Game by Tom Rowan. Lee Edwards has some interesting insights into the Gibbins-Weidenhagen Gambit, 1.d4 Nf6 2.g4?! (How many times have you encountered THAT?) Of course, there are other features as well, such as Raymond Hudgens' "The Problem Corner."

In the next issue, there will be the usual columns as well as more material on the scholastic championships which I could not fit into this issue. There will also be more cross tables and games.

PLEASE NOTE:

On September 11, 1995, telephone numbers in the eastern part of the state from Johnson County in the northeast to Scott and Marion Counties, will have their area codes changed from 615 to 423. The central and western parts of the state will not be changed. This will effect calls made to some of the Board, Regional Scholastic Coordinators, tournament organizers, and others....

PLEASE NOTE:

There have been changes in the starting times of rounds for this year's TENNESSEE OPEN! See page 20 for details. See you at the tournament!

Richard Westbrook

Tennessee and Chattanooga have lost the services of Doug Nichols

By Rea Hayes

Doug Nichols has departed by God's other door, leaving a vacancy in the hearts of chessplayers, family, church and co-workers. He leaves a wife and son who were very dear to him and he was loved by the folks at Moccasin Bend where he was an administrator.

I cannot begin to speak for all the other folks who are missing him, but I would like to speak for the chess community in Chattanooga and Tennessee. Chattanooga had become a humdrum chess club after a previous leader left town. It had settled into a dull routine where players only played chess with their buddies and gave little thought to expanding our role.

Doug Nichols became President of the Club and got us involved in tournament play, in scholastic chess and in taking our place among the other communities in Tennessee. He not only coached chess at a school himself, but he got others in the club interested in this vital source of new players. He looked beyond local matters and became Vice-President of the Tennessee Chess Association. I only realized what a commitment that was when I inherited his files with a view of turning them over to the other officers of the Association. For the first time in many years, we held tournaments in which there was an out of town presence. We did not have to go out of town to play in "real" tournaments.



Douglas Lee Nichols

1957 - 1994

While strength alone does not make a person cherished by other players, he finished with a rating of 1794, having earned the A title and 7 points toward "x". This indicates an ability to play far above his rating on occasion and, on at least two occasions, he demolished experts and masters.

Above all, a chessplayer is proud of and likes to be remembered for his games and I have selected some of Doug's best for your enjoyment. I planned to feature one of my own losses, but my scorebook broke down in the critical position and I do not find the game in the 3 scorebooks available to me.

(Continued on page 22)

Spring 1995 / 5

TENNESSEE SCHOLASTIC TEAM FINALS

MIDDLE TENNESSEE STATE UNIVERSITY
MURFREESBORO, TN MARCH 25, 1995

High School Section:

No.	School	City	Rd1	Rd2	Rd3	Rd4
1	White Station H.S.	Memphis	1.0	2.0	3.0	4.0
2	Univ. School-Jackson	Jackson	0.5	1.0	2.0	3.0
3	Hume-Fogg H.S.	Nashville	1.0	2.0	2.0	3.0
4	Cumberland Co. HS	Crossville	0.5	1.5	1.5	2.5
5	Cocke County H.S.	Newport	0.5	1.5	2.5	2.5
6	Cleveland Mid. Sch.	Cleveland	0.5	1.0	2.0	2.0
7	Athens Junior High	Athens	0.5	0.5	1.5	2.0
8	Columbia Central HS	Columbia	0.5	0.5	1.5	1.5
9	Dyersburg H.S.	Dyersburg	1.0	1.0	1.0	1.5
10	Sullivan Central HS	Blountville	0.0	0.5	1.5	1.5
11	Bradley Junior High	Cleveland	0.0	1.0	1.0	1.5
12	Sullivan North H.S.	Kingsport	0.0	0.5	0.5	1.5
13	Stewart County H.S.	Dover	1.0	1.0	1.0	1.5
14	Germantown H.S.	Germantown	----	----	----	----

Junior High Section:

No.	School	City	Rd1	Rd2	Rd3	Rd4
1	White Station Middle	Memphis	1.0	2.0	3.0	4.0
2	Tipton-Rosemark Acad.	Millington	1.0	2.0	2.0	3.0
3	First Assembly C.S.	Memphis	0.0	1.0	2.0	3.0
4	David Lipscomb middle	Nashville	0.0	1.0	1.5	2.5
5	Warren County Middle	McMinnville	0.5	1.0	1.5	2.5
6	Meigs Magnet School	Nashville	1.0	1.0	1.0	2.0
7	Mary Blount Elem.	Maryville	0.5	1.5	2.0	2.0
8	Bellevue Middle Sch.	Nashville	0.5	1.5	2.0	2.0
9	Athens Junior High	Athens	1.0	1.0	2.0	2.0
10	Robertsville JHS	Oak Ridge	0.5	0.5	1.5	1.5
11	Jefferson Junior High	Oak Ridge	0.0	0.5	0.5	1.5
12	Bradley Junior High	Cleveland	1.0	1.0	1.0	1.0
13	Homestead Ele	Crossville	0.0	0.0	1.0	1.0
14	Wright Mid. School	Nashville	0.0	0.0	0.0	0.0
15	Webb School	Knoxville	----	----	----	----

TENNESSEE SCHOLASTIC TEAM FINALS

**MIDDLE TENNESSEE STATE UNIVERSITY
MURFREESBORO, TN MARCH 25, 1995**

Elementary Section:

No.	School		Rd1	Rd2	Rd3	Rd4
(1)	Scales Elementary	Brentwood	1.0	2.0	3.0	4.0
(2)	Glenwood Elementary	Oak Ridge	1.0	2.0	2.5	3.0
(3)	Snowden School	Memphis	1.0	1.0	2.0	3.0
(4)	Jefferson Junior High	Oak Ridge	1.0	1.0	2.0	3.0
(5)	St. George's Day Sch.	Germantown	1.0	2.0	2.0	2.5
(6)	Woodland Elementary	Oak Ridge	1.0	2.0	2.5	2.5
(7)	Grahamwood Elementary	Memphis	1.0	1.0	2.0	2.0
(8)	Charlotte Elementary	Charlotte	1.0	1.0	2.0	2.0
(9)	Warren County Middle	McMinnville	0.0	1.0	1.0	2.0
(10)	Julia Green Elem.	Nashville	0.0	1.0	1.0	1.5
(11)	North City Elementary	Athens	0.0	0.0	1.0	1.5
(12)	Head Middle School	Nashville	0.0	1.0	1.0	1.5
(13)	Alcoa Elementary	Alcoa	0.0	1.0	1.0	1.0
(14)	Homestead Elementary	Crossville	0.0	0.0	0.5	1.0
(15)	First Assembly C.S.	Memphis	0.0	0.0	0.5	1.0
(16)	Hopewell Elementary	Cleveland	0.0	0.0	0.0	0.5

Primary Section:

No.	School	City	Rd1	Rd2	Rd3	Rd4
1	St. George's Day Sch.	Germantown	1.0	2.0	3.0	4.0
2	Montessori Academy	Brentwood	1.0	2.0	2.0	3.0
3	Charlotte Elementary	Charlotte	1.0	1.0	2.0	3.0
4	Woodland Elementary	Oak Ridge	0.5	1.5	2.5	2.5
5	Snowden School	Memphis	0.5	1.5	2.5	2.5
6	Eakin Elementary	Nashville	0.5	1.5	1.5	2.5
7	Glenwood Elementary	Oak Ridge	1.0	1.0	1.0	2.0
8	Chimneyrock Elem.	Memphis	0.5	0.5	1.0	2.0
9	Clinton Elementary	Clinton	0.5	0.5	1.0	2.0
10	Richland Elementary	Memphis	0.5	0.5	1.5	1.5
11	Lakeview Elementary	Nashville	0.0	0.5	1.0	1.0
12	Homestead Elementary	Crossville	0.0	0.5	1.0	1.0
13	Hopewell Elementary	Cleveland	0.0	1.0	1.0	1.0
14	Indian Springs Ele.	Kingsport	----	----	----	----
15	Crab Orchard Elem.	Crab Orchard	----	----	----	----

Spring 1995 / 7

1st Middle Tennessee Open

By Ed Newkirk

The Middle Tennessee Open (MTO) was a great success for its first year. We believe our goal which was to offer a top quality tournament and leave a favorable, lasting impression with the players. We had an excellent turnout, broke even financially, donated money to a worthy cause, and awarded 59 checks totaling almost \$7,000 in prize money.

As most of you know, Doug Nichols, age 36, was our TCA Vice President until his untimely death last October. Thanks to the support of all the participants and many donations, we were able to present a check of \$500 to the J.D. Nichols Trust Fund for his 2 year-old son prior to round 2.



153 participants competed in four sections. We saw many of the best players in Tennessee and three of the best in the U.S. - Gregory Kaidanov (KY), Sam Palatnik (TN), and Ron Burnett (NY). Competition

Ed Newkirk, J.D., and Karen Nichols

was tough in all sections, especially going into round 4 on Sunday morning. On Board 1, we saw a tremendous battle between Burnett and Kaidanov. Gregory's knight was *en prise* for several moves, followed by some exchanges, and finally Ron was left with a lost endgame.

The Expert section ended in a 5-way tie, all with 3.5 points. The Class A section was won by two giant-killers, Joe Mooney (TN) and John Price (AL). In the U1800 section, two of the nation's top Class B players, Bill Savoie (AL) and Olga Palatnik (TN) tied for first with 4.5 points. Josh Niesse, a junior player from KY, also had an excellent tournament until he finally lost to Bill in the final round. Class C was won by Larry Williams (TN), a junior player from Knoxville.

(Continued on page 29)

Annotated Game

Submitted by Tom Rowan

In the inter-city match with Chattanooga last fall, I found myself paired against Rea Hayes, a very tough Expert and former State Champion. Players with as much experience as Rea are usually very resourceful, so I knew this would be an interesting game. As it turned out, it was the last game to conclude -- with the outcome of the match riding on the decision.

E02/6

Tom Rowan - Rea Hayes

Knoxville, TN 1994

Knoxville - Chattanooga Match

1. d4 Nf6 2. Nf3 d5 3. c4 e6 4. g3 dxc4 5. Qa4+

The gambit line Nc3 is more aggressive but it also requires more preparation time than I had available.

5... Bd7 6. Qxc4 Bc6 7. Bg2 Nbd7 8. O-O Bd6?!

With the c pawn blocked playing for the e5 break looks natural, but the bishop is too exposed here. Bd5 followed by an eventual c5 is better.

9. Nc3 O-O 10. Qd3 (Intending e4.) 10... e5 11. d5 e4

If Nc5 then 12. Qc4 threatens dxc6 and Nxe5.

12. Nxe4 Bxd5 13. Nxd6 cxd6 14. Bf4

White's two bishops and better pawn structure give him the edge, but Black's control of key central squares makes progress difficult.

With the text White prevents Ne5.

14... Nb6

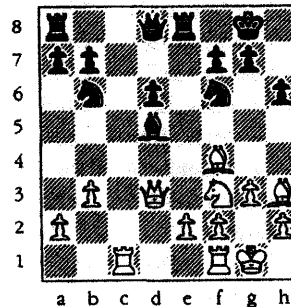
Nc5 looks obvious but after Qa3 White faces fewer problems.

15. b3 Re8 16. Rac1 h6 17. Bh3? [diagram]

Against an isolated pawn I should be exchanging minor pieces, not engaging in clumsy finesses to avoid them. Bh3 also overlooks a fairly obvious tactic. Nd4 is simple and good.

17... Nh5?

I get a reprieve. Immediately after playing Bh3 I noticed 17... g5!, safely winning a piece for two pawns. Nh5 displaces the knight and forces my bishop to a better square.



(Continued on page 26)

Middle Tennessee Open -- Open Section

Submitted by Ed Newkirk

Pl	Pr#	Name	Rating	TOT	Rounds				
1	2	Palatnik, S	2547	4.5	X---	W-18	W--8	W--4	D--1
2	1	Kaidanov, G	2666	4.5	W-32	W-17	W-10	W--3	D--2
3	3	Burnett, R	2513	4.0	W-21	W-19	W-13	L--1	W-30
4	4	Filatov, L	2400	4.0	W-22	W-25	W-16	L--2	W-10
5	5	Mooney, J	1937	3.5	W-52	W--9	W--7	D-12	L--3
6	39	Price, John	1881	3.5	W-15	D-12	D--5	D-13	W-18
7	8	Rowan, Tom	2208	3.5	W-36	W-28	L--2	W-16	D-12
8	9	Leite, George	2148	3.5	W-33	L-30	W-28	W-17	D-15
8	13	Puckett, M	2101	3.5	W-42	W-53	L--3	D-39	W-33
10	7	Meidinger, C	2232	3.5	W-31	W-34	L-30	W-24	D-14
11	12	Chambers, C	2131	3.5	W-38	D-39	W-23	D-30	D--8
12	15	Kaganovska, P	2065	3.5	L-39	W-41	W-34	W--5	D--9
13	14	Smith, Brian D	2089	3.5	L-44	W-38	W-47	W-53	D--7
14	10	Hall, Bill	2147	3.0	W-37	W-49	L--1	W-22	L--4
15	16	Bond, Tim	2038	3.0	W-40	W-44	L--4	L--8	W-48
16	53	Sloan, Kenneth	1773	3.0	B---	L-13	W-25	L-14	W-26
17	22	Yavari, Paul	2020	3.0	L--4	W-40	W-48	L-10	W-44
18	24	Hayes, Rea B	2000	3.0	H---	D-29	W-49	L--7	W-52
19	28	Watson, Brad	1974	2.5	W--6	L--8	L--9	D-46	W-45
20	17	Maring, Lee C	2036	2.5	W-48	L--1	W-42	L--9	D-51
21	25	Daugherty, J	1994	2.5	W-46	L--4	L-53	W-42	D--6
22	6	Melvin, Bill	2242	2.5	L-28	W-51	L-29	W-50	D-25
22	18	Ash, Robert B	2035	2.5	W-41	L--2	D-50	W-44	L-39
24	47	Hyatt, Doug	1838	2.5	W-26	L--5	L-14	W-31	D-19
25	19	Roland, Jere E	2029	2.5	W-50	L--3	L-44	W-40	D-47
26	51	Hardeman, B	1806	2.5	D-29	L--6	D-37	W-32	D-17
27	46	Crump, Joseph	1840	2.5	L-25	D-31	D-21	D-28	W-23
28	33	Pennig, Jeff	1910	2.5	L--9	W-52	H---	W-23	L-13
29	44	Thomas, D	1846	2.0	W-14	L-16	W-19	L-18	L-22
30	5	Wheeler, Jerry	2254	2.0	D-23	W-47	D-39	L-15	U---
31	48	De Koekkoek, T	1833	2.0	L-17	W-32	L-22	W-34	L-16
32	52	Pullen, Dewitt	1800	2.0	L-30	L-33	B---	W-37	L-24
33	31	Stinson, M	1929	2.0	L--7	D-46	D-45	L-47	W-49
34	50	Bradley, Bud	1813	2.0	L-19	W-26	D-18	L--6	H---
35	42	Aguirre, Tony	1850	2.0	L-13	W-27	L-17	L-25	W-38
36	29	Barber, Ed	1962	2.0	D-51	D-24	W--6	U---	U---
37	23	Bedell, Lester B	2001	1.5	D--5	W-45	L-12	L-33	L-46
38	40	Gossett, Jeff	1875	1.5	L-16	L-22	W-27	L-19	D-32

39 49 Rushing, David	1816	1.5	W-27 L-10 L-24 D-26 L-31
40 32 Reeder, Andy	1912	1.5	L--1 L-48 W-41 L-51 D-40
41 26 Spinrad, Jerry	1983	1.5	L-47 L-50 W-38 D-49 L-53
42 21 Jordan, Walter	2022	1.5	L--3 D-37 D-46 D-45 U---
43 45 Lahde, Peter	1840	1.5	H--- L-23 D-31 D-21 L-28
44 27 Slifer, William	1975	1.5	L-49 L-42 L-40 D-38 B---
45 34 Meadows, R	1900	1.0	W-11 L--7 L-15 L-48 U---
46 37 Estes, Tony C	1899	1.0	L-10 D-21 D-51 L-52 U---
47 43 Aguirre, Tony	1850	1.0	W-20 U--- U--- U--- U---
48 38 Schaetzle, W	1881	0.5	L-12 L-14 L-26 D-27 L-42
49 41 Wright, James	1860	0.0	L-18 L-15 L-32 U--- U---
50 36 Meadows, R	1900	0.0	L--8 U--- U--- U--- U---
51 20 Roland, Jere E	2029	0.0	L-43 U--- U--- U--- U---
52 11 Jones, Joe C	2144	0.0	L-34 U--- U--- U--- U---
53 35 Aristorenas J	1900	0.0	F--- U--- U--- U--- U---

Middle Tennessee Open -- U1800 Section

Submitted by Ed Newkirk

Pl	Pr#	Name	Rating	TOT	Rounds
1	1	Savoie, Bill	1795	4.5	W-29 W-19 D-12 W-16 W-11
2	3	Palatnik, Olga	1784	4.5	W-31 W-20 D-25 W-22 W-12
3	15	Burgess, D	1706	4.0	W-27 W-52 W-10 L-11 W-14
4	10	Seaney, Ron	1728	4.0	W-21 W-28 L-15 W-26 W-18
5	11	Niesse, Josh	1720	4.0	W-40 W-34 W-26 W-15 L--1
6	4	Robbins, R	1776	4.0	W-30 L-26 W-53 W-19 W-25
7	25	Hayes, David	1647	3.5	W-55 W--9 D--3 W--6 L--4
8	6	Boston, Ralph	1764	3.5	D-17 W-23 W-32 L-25 W-21
9	12	Cutshaw, T	1719	3.5	W-41 W-50 D--1 W-54 L--3
10	16	Sangco, B	1700	3.5	D--2 W-42 W--5 L--1 W-22
11	5	Street, C	1766	3.5	W-33 D-22 L-16 W-39 W-28
12	17	Westbrook, R	1700	3.5	D--6 L--8 W-40 W-45 W-55
13	21	Jamison, Gary	1691	3.0	L-10 W-45 W-52 W--7 L--6
14	18	Edwards, Lee	1700	3.0	D--8 D-14 W-49 W--9 L-10
14	19	Cornwell, G	1700	3.0	W-47 L--1 W-50 L--4 W-49
16	8	Edwards, R	1735	3.0	D-18 W-17 L-22 W-41 D-32
17	32	Lee, Terrence A	1614	3.0	W-48 W--7 L--6 D-13 D--8
18	14	Murray, Jon L	1716	3.0	D-45 D-18 W-46 W-33 L-15

(Continued on page 12)

Spring 1995 / 11

19	52	Williams, L	1437	3.0	W-35	L-15	L-21	W-46	W-27
20	33	Eddins, J. S	1611	3.0	L--5	W-44	W--2	L-14	W-13
21	7	McCreery, Bill	1744	3.0	W-36	L-32	W-34	L-21	W-54
22	20	Patterson, Rod	1700	3.0	W-46	L--3	D-51	D-47	W-50
23	26	Hawkes, David	1646	2.5	W-56	W--4	L-11	L-10	D-47
24	22	Lewis, James B	1662	2.5	W-49	D--5	W--8	L--3	L-16
25	47	Harvill, Ron	1489	2.5	L-19	D-30	W-31	D-20	D-26
26	9	Turner, Ken	1731	2.5	W-37	L-25	W-35	L-18	D-30
26	28	Cobb, Mark	1625	2.5	W-44	L-10	D-55	W-51	L--5
26	54	Moore, Jerry D	1412	2.5	W-39	D--2	W-13	L-12	L--7
29	30	Maclin, Philip	1617	2.5	L--4	D-47	X---	D-53	D--9
30	55	White, Michael	1407	2.5	L-25	B---	D-28	W-36	L-17
31	31	Lynn, Bobby J	1617	2.5	L--3	D-40	L-47	W-56	W-53
32	39	Porter, Ed	1537	2.5	L-54	W-27	H---	L--5	W-45
33	37	Martin, Michael	1578	2.5	L--9	L-49	D-44	W-23	W-41
34	49	Standbrook, F	1457	2.0	L-22	W-37	L-18	W-34	L-19
35	50	Belbusti, E	1454	2.0	W-24	L-12	L-19	X---	L-20
36	13	Orgain, Bill	1718	2.0	W-43	D-53	L-54	D-32	L-33
37	27	Shockley, R	1643	2.0	L-15	L-39	W-56	W-48	L-52
38	53	Witherspoon, W	1420	2.0	W-38	D-13	L--4	D-30	L-31
39	51	Avila, Glenn	1449	2.0	L-34	W-38	D-20	L-28	D-29
40	29	Barnes, Ronnie	1620	2.0	L--1	D-41	L-45	W-40	D-51
41	48	Belcher, Tony	1485	2.0	L-32	L-35	B---	L-27	W-36
42	38	Clark, Roy W	1571	2.0	L-53	L-51	L-36	B---	W-34
43	45	Story, Orville	1500	1.5	D-14	L-21	W-29	L-17	L-39
44	40	Green, Gary	1537	1.5	L-11	D-31	L-17	L-29	W-56
45	41	Fender, Myrl	1529	1.5	L-12	D-29	W-23	L--8	L-37
46	46	Yussman, Eric	1494	1.5	L-20	W-36	L-14	L-52	D-23
47	34	Williams, Rory	1607	1.0	W-51	L-11	L--7	L-49	L-38
48	2	Loven, Dallas E	1793	1.0	D-16	D-54	L-33	U---	U---
49	23	Schwartz, Leon	1656	1.0	H---	L--6	L-41	L-37	D-46
50	36	Schaetzle, M	1588	1.0	L--7	L-46	W-38	L-55	L-48
51	35	Proctor, John W	1603	1.0	L-52	W-48	L--9	F---	U---
52	56	Campbell, A	1371	0.5	L-26	H---	L-27	L-31	L-40
53	44	Belliford, W	1500	0.5	L-28	L-33	D-37	U---	U---
54	42	Cook, Michael	1505	0.5	H---	L-16	F---	U---	U---
55	43	Cook, Michael	1505	0.0	L-13	U---	U---	U---	U---
56	24	Schwartz, L	1656	0.0	L-50	U---	U---	U---	U---



Middle Tennessee Open -- U1400 Section

Submitted by Ed Newkirk

Pl	Pr#	Name	Rating	TOT	Rounds
1	16	Kristoff, Justin	1297	5.0	W-36 W--5 W-10 W--4 W-18
2	27	Allain, Francois	1177	4.5	W--7 D-11 W--9 W-20 W--4
3	18	West Jr, Ottie L	1260	4.0	W-40 W--6 W-13 W-12 L-16
4	29	Thomas, Emily	1147	4.0	D--9 W--8 W-11 D--6 W-12
5	13	Vandermeer, B	1320	4.0	W-33 W-41 L-18 W-31 W-10
6	17	Prosser, Chris	1264	4.0	W-38 W--2 L-12 W-22 W--6
7	11	Graham, Tony	1337	3.5	W-32 D-27 L-29 W-41 W-20
8	9	Stigall, Michael	1353	3.5	D-29 W-21 L-27 W-28 W-23
9	32	Giles, Eric	1131	3.5	L-11 W--7 W-15 D-14 W--5
10	35	Salsman, Scott	1079	3.5	L-15 W-30 W-19 H--- W-14
11	12	Whorton, B C	1330	3.0	W-30 W-39 W-17 L-18 L-29
12	4	Wright, Charles	1380	3.0	W-24 W-15 W-14 L-16 L-27
13	10	Bertram, David	1345	3.0	W-31 W-22 L-16 W-26 L-13
14	22	Kristoff, Ryan	1211	3.0	W--3 L-10 W-39 L-17 W-31
15	1	Terrell, James R	1398	3.0	D-21 W-28 L-20 D-25 W-26
16	25	Morcos, John	1188	3.0	L--6 W-37 D-41 D--1 W-38
17	6	Miller, Charles L	1372	2.5	W-25 L-18 W-33 D-29 L-17
18	7	Shafer, Steve	1370	2.5	L-27 L-32 W-34 D-33 W-39
19	14	Botta, Sisir	1320	2.5	W-34 W-42 L--4 D-32 L-35
20	20	Campbell, Ian	1237	2.5	W-37 H--- W--1 L-27 L-11
21	33	Andrews, Todd	1103	2.5	L-13 W-24 L--6 D--7 W-21
22	28	Williams, Evan	1171	2.5	D--8 L--1 W-21 L--9 W-41
23	23	Harris, Alvin L	1204	2.5	L--5 H--- W--8 W-42 L--9
24	5	Davis, Mark	1380	2.0	W-23 L-16 L-26 W-24 L-32
25	31	Baringer, James	1133	2.0	L-10 W-40 W--2 L-13 L-22
26	39	Pearson, Clint	0992	2.0	W-43 L-12 L-22 W-19 L--7
27	15	Daniel, James	1312	2.0	W-35 L--4 L-32 F--- W-42
28	26	Stalcup, R. M	1182	2.0	L--2 W-38 W--5 L-10 L--1
29	38	Williams, Betty	1051	2.0	L-17 L-26 W-30 X--- L-25
30	24	Hunt, Phillip D	1199	2.0	L--4 L-33 W-37 L--5 W-19
31	30	Ragland, Bill	1138	2.0	L-12 L-35 L-38 W-40 W-37
32	41	Botta, V	0934	1.5	W-19 L-13 D-25 L-11 L-28
33	21	Osborn, T. J.	1216	1.5	D--1 L--9 L-28 X--- L-33
34	42	Wernerfelt, N	0759	1.5	B--- L-14 H--- L-23 L-15
35	37	Xu, Lynn	1067	1.0	L-20 L-25 L-24 W-34 L-30
36	19	Sloan, David	1259	1.0	L-41 W-34 L-35 L-39 L-24
37	40	Couch, Jami	0945	1.0	L-18 L-31 B--- L-30 L-34

(Continued on page 14)

Spring 1995 / 13

38 34	Leners, Mark V	1090	1.0	L-14	L-19	L--7	L-37	W-40
39 2	Leiss, James D	1381	1.0	W-26	L-17	L-31	U---	U---
40 8	Hall, Kevin L	1365	0.5	D-28	L-29	L-23	F---	U---
41 36	Salsman, Scott	1079	0.0	L-16	U---	U---	U---	U---
42 3	Leiss, James D	1381	0.0	L-22	U---	U---	U---	U---
43 43	Davis, Gail	UNR	0.0	L-39	U---	U---	U---	U---

Middle Tennessee Open -- Unrated Section

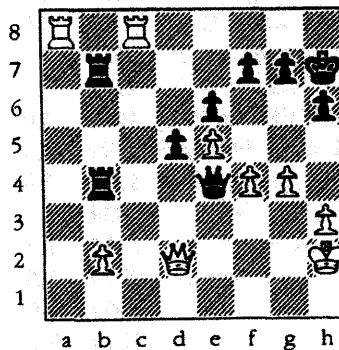
Submitted by Ed Newkirk

Pl	Pr#	Name	Rating	TOT	Rounds				
1	3	Jenkins, W	UNR	4.0	W-6	L-8	W-7	W-5	W-9
2	8	Nelson, A	UNR	4.0	W-10	W-3	W-1	D-9	D-7
3	9	Campbell, Pr	UNR	3.0	W-7	H---	W-5	D-8	L-3
4	5	Allain, Jean F	UNR	3.0	W-2	W-1	L-9	L-3	W-10
5	10	Fuhrer, M	UNR	3.0	L-8	B---	W-4	X---	L-5
6	4	Woods, Travis	UNR	3.0	L-1	W-6	L-10	W-7	W-2
7	7	Davie, Patrick	UNR	1.5	L-9	W-2	L-3	L-4	D-8
8	2	Wyatt, Richard	UNR	1.0	L-5	L-7	L-6	B---	L-4
9	1	Heath, Mark A	UNR	1.0	W-4	L-5	L-8	U---	U---
10	6	Proctor, C	UNR	1.0	L-3	L-4	W-2	F---	U---

The Problem Corner

By Ray Hudgens

In the diagram, Black threatens both ...Rxb2, and ...Qxf4. However, it is White's move; a pretty mate-in-four follows. The position arose during Bernstein-Kotov, 1946. The solution is on page 17.



Region 2 Scholastic Championships

By Nancy Hughes

A cold drizzle and locked gates greeted the staff of the Region 2 Scholastics at Bradley Central High. After several tense minutes and a couple of visits with the local constabulary, a resourceful woodworking instructor opened the gates. And so it went ... round 1 at 9:00 a.m.

Despite the hectic start, 55 dedicated scholastic chess players showed up to play and have fun. Welcoming the players were Region 2 Scholastic Coordinator Ron Harvill, Harry Sabine, State Scholastic Coordinator and Steve Miller, USCF Scholastic Coordinator. Assisting with directing were new Senior TD Mike McGinnis, Robert Presswood and Nancy Hughes.

An added feature to this tournament, that the players enjoyed, was the chess bookstore of Dorothy and Walter Schaetzle. The Schaetzle's of Northport, AL, organizers of the 1994 and 1995 National Jr. Chess Congress, offer a wide assortment of books and equipment for the chess player and, as always, that much needed replacement piece!

Due to his recent move to the Atlanta area, local tournament organizers shouldn't be surprised to see Steve Miller on occasion visiting their tournaments. He has high praise for the Tennessee Scholastic program and hopes to learn some of our secrets of success to incorporate into the Georgia programs. One thing he'll find hard to duplicate is dedicated veteran coaches like Nancy Weaver, Mike McGinnis, Ron Harvill, Harry Sabine and the late C:hattanooga, Doug Nichols. These folks from Region 2 have given countless hours, (probably years!) helping young chess players learn and improve their games. So if Steve shows up, have a good visit and put him to work, he's a great help on the computer and handing out awards!

In all sections except Junior High, games moved along at a fast clip. The high school players from Cumberland County High competed round robin style for the region championship, with Richard T. Gilmer claiming the win with a perfect score. Perfect scores also decided the Jr. High and Elementary sections with Jim Hughes and Barton Camarata winning those titles respectively. Daniel Powers' tie with top-rated Christopher Butler gave him the Championship with a 4.5 score. Along with their trophies, champions received a special Region 2 Champion Scorebook and their choice of a book from a selection of chess books recently donated to each region by Dick Katahn.

A Visit With Our Grandmaster

By Nancy Hughes

Our state scholastic chess program has many resources and supporters to its credit. Not in the least of these is Dr. Dick Katahn. A recent convert to the game, Dick sees the unlimited benefits chess offers to all players, children in particular. To this end, he asked why can't we have a Grandmaster-in-residence for Tennessee to encourage us all and help our scholastic program directly. Working tirelessly with the members of the TCA, they did what was necessary to pave the way for GM Sam Palatnik and his family to make Nashville their new home. What a tremendous resource this is for our program!

Following a successful visit in June to Hopewell Elementary's first Rated Scholastics, coaches from Athens, Cleveland and Chattanooga worked together over the summer to plan a several day visit with Sam to area schools and clubs for the fall.

Jim Hughes, Hopewell Raging Rook Coach, was Sam's guide to the area. The tour began with a simul Wednesday afternoon at Bradley Junior High School. Tim Sams, the coach and sponsor of their club, prepared the simul site in the library, with plenty of space for viewing by parents, teachers and students. He included name cards for each player. This was a nice extra, not only for Sam to know the name of whom he was playing, but also for spectators not familiar with all the players. After the simul, Sam signed boards and magazines (provided free from the USCF) while he talked with the players and gave an interview to a local paper.

Wednesday evening, a short Coaches Workshop was held for area coaches and parents. This was a wonderful time for exchanging ideas and understanding different approaches. Sam highly recommended the use of Lev Alburt's *Comprehensive Course*, Volumes 1 & 2. Its step-by-step approach makes it easy even for the most inexperienced chess coach to teach.

Excitement filled the air Thursday morning as Fairview Elementary School in Decatur held its' first simul. complete with a short television coverage, 24 players match skills against the GM. Susan Helton, School Sponsor, and Joanne Ewing, Meigs Coutny Schools Instructional Coordinator, were impressed with the players enthusiasm for the event. They hope this excitement continues through the school year.

A quick stop was made at Cleveland Middle School where members of their newly formed club were treated to a short lesson from the Grandmaster. A little

later, Sam played another simul while in our area, this time at Bradley Central High School.

Chattanooga's chess club hosted a scholastic simul Thursday evening, where many of Jack Money's Tennessee Temple students came to play as well as some from Cleveland. Dob Dolan, 83, a new member of the Club, became Sam's oldest "scholastic" player when he sat down and played, not realizing it was a scholastic simul. Real tears filled the eyes of little Ester Williams when she realized she was losing her game. She had walked in "just knowing she was going to win!" That's the determination that makes her a winner in life. Club members enjoyed meeting and talking with Sam about his life in the Ukraine.

Hopewell hosted their second simul with Sam on Friday morning. Several Raging Rooks as well as students new to chess played, with two young ladies accepting the draw offered them by GM Palatnik.

McMinn County High School alumnus Mathew Yates met Sam for lunch and took him to the high school in Athens where he played another simul late in the afternoon. That evening, the McMinn County High King's Indians hosted a "meet and greet" for area players. A highlight for all was Sam demonstrating his style from one of his early games against a defending Soviet Champion.

Before ending his visit Saturday morning, Sam viewed games at the Fall Chestnut Gathering at McMinn High, annotating a few of them. He presented the Primary Section Trophies and the Grandmaster's Best Game Award.

All in all, it was a very successful visit. We estimate 300 people met Sam and about 102 students played in simuls. This is one resource you don't want to miss out on. Talk to your Regional Scholastic Coordinator and see what ideas you can develop for a successful visit for your students with our Grandmaster!

Solution to The Problem Corner

1.Rh8+ Kg6 2.f5+ exf5 3.Qxh6+ gxh6 4.Rag8 mate.

Chattanooga Scholastic Championships

By Nancy Hughes

Downtown Chattanooga's Waterhouse Pavilion played host to 45 scholastic players for the 3rd Annual Doug L. Nichols Memorial Chattanooga/Hamilton County Scholastic Championships. The Waterhouse Pavilion is an unusual facility for a tournament in that it is completely glass enclosed. Players and parents seemed to enjoy this different site, as did the many sightseers who stopped in as they were walking past. The tournament was renamed this year to honor the Chattanooga Chess Club's late president, Doug Nichols. Doug was instrumental in development of this tournament 3 years ago. A strong supporter of scholastic chess, Doug often said, "An adult taught me to play this game the least I can do is share my love of the game with kids wanting to play." Doug firmly believed that scholastic chess is an important benefit for a child. He also felt it is important for all chess players to do their share to encourage, develop and touch the life of our scholastic players.

The primary section was an excellent example of the rise in numbers of female chess players. Four of the seven players were girls! Primary results were:

1st place	Billy Shiraef	5-0
2nd place	Joby Williams	4-1
3rd place	Sandy Tompkins	3-2
4th place	Ashley Knight	2-3
5th place	Esther Williams	1.5-3.5
6th place	Greg Tompkins	1.5-3.5

Elementary results are:

1st place	Jason Knight	5-0
2nd place	Michael Shiraef	4-1
3rd place	Vandana Botta	3-2
4th place	Jonathan Villmow	3-2
5th place	Jay Quigley	2.5-2.5
6th place	Scott Tompkins	2.5-2.5

Also playing in this section were John Williams, Bryan Walters, Kyle Jones and Allen Jones.

The Jr. and Sr. High sections were combined for a total of 28 players. Trophies were awarded in each section. The top three Jr. High and Sr. High winners were:

1st place	Jim Hughes	5-0
2nd place	Olga Palatnik	4-1
3rd place	Quyen Tran	4-1

The Senior High winners were:

1st place	Fred Shiraef	4-1
2nd place	Clark Warner	3-2
3rd place	Tim Schauer	1-4

Also playing in this section were: Todd Andrews, John Gerdes, David Thomas, Sisir Botta, David Gerdes, Dutch Ehrsam, Arron McCarter, Jordan Johnson, Steven Eckert, Trey Grant, Roland Howell, Benjamin Shirley, Matthew Goodson, Cisco Aponte, Jamey Pritchard, Mike Booth, Chris Mironescu, Kevin Fann, Adam McMurray, Padma Chundra, Chris Bullington, and Jeremy Stout.

Scholastic Success at 1995 Jr. Chess Congress

By Nancy Hughes

With 24 players spanning the sections, Tennessee was well represented in Huntsville, AL at the 1995 U.S. Jr. Chess Congress. This tournament premiered during the Martin Luther King Day weekend in 1994, in Birmingham, AL, with the support of USCF President Denis Barry. His vision for future of this tournament included expansion from one tournament site to six divisional tournaments sites. To this end the U.S. Jr. Chess Congress played at two sites this Martin Luther King Day weekend. The site in Huntsville was in the shadow of the NASA Space Center.

The Jr. Chess Congress is the only national scholastic tournament designed to be an individual as opposed to a team event. In this 7 round swiss there are 6 sections divided by age: 8 and under, 9 & 10, 11 & 12, 13 & 14, 15 & 16 and 17 & 18 year olds. Included during the weekend are a Blitz tournament, a Bughouse tournament, and a Master Simultaneous to add fun and excitement for all.

In the 8 and under section were Ashley Knight of Oak Ridge and Benjamin Tacker of Germantown. Ashley went 2-5, while Benjamin claimed 3rd place with a 5-2 score.

(Continued on page 28)

Spring 1995 / 19

1995 CUMBERLAND COUNTY SUMMER OPEN CHESS TOURNAMENT

Submitted by Harry Sabine

Does not playing chess for several years affect your game? Chuck Lovingood's opponents might claim that his game only gets better. The Crossville Expert scored 3.5 to capture first place and \$50.00 in the Cumberland Co. Summer Open held on July 22nd at Fairfield Glade Resort. Other prize winners in the 17 player open Section were Brian Smith of Murfreesboro who took the Expert prize, George Rusyniak of Rome, GA, Paul Semmes of Cookeville, and Frederick Trayers of Knoxville who shared Class A honors, Russell Linnemann of Hixson who won Class B, and Michael Shelton of Burns, TN who took the Below 1600 prize.

Jim Kade of Chattanooga won the 31 player Amateur Section with a perfect 4.0 score. Todd Andrews of Nashville was second with 3.5 points. Class D money was divided between Chun Ng of Johnson City and David Berry of Oak Ridge. M. C. Deck of Crossville and Edwin Cato White of Nashville won the Class E prize with scores of 2.0. The Below 1000 prize was won by Jay Quigley of Maryville while Chip Turner and Joseph Kucan of Johnson City and Ashok Mishra of Cookeville shared the Unrated money.

Another record turnout of 48 players allowed the sponsoring Cumberland County Chess Club to add an additional \$160 to the \$250 prize fund. The tournament drew players from as far away as Springfield, IL, and was directed by Harry Sabine and Ron Harvill for the Cumberland County Chess Club.

1995 TENNESSEE OPEN ROUND-TIME CHANGES!!

The following round times will be in effect at the 1995 Tennessee Open. Please make a note of them and plan accordingly. On Saturday, Round 2 will begin at 2:00 pm (instead of 3:00); Round 3 will start at 7:00 pm (instead of 8:00). On Sunday, Round 4 will begin 8:00 am (instead of 9:00); and the TCA Annual Meeting will be held at 1:00 pm.

1995 CUMBERLAND COUNTY SUMMER OPEN CHESS TOURNAMENT

Fairfield Glade, Tennessee
July 22, 1995

Total Players - 48

States Represented - Tennessee, Kentucky, Illinois, Alabama, Georgia

Open Section: (17 Players)

Champion	Chuck Lovingood	Crossville, TN	3.5	\$50.00
Expert-1st	Brian D. Smith	Murfreesboro, TN	2.5	\$25.00
Class A-1st	George Rusyniak	Rome, GA	3.0	\$ 8.33
Class A-1st	Paul B. Senunes	Cookeville, TN	3.0	\$ 8.33
Class A-1st	Frederick Trayers	Knoxville, TN	3.0	\$ 8.33
Class B-1st	Russell Linnemann	Hixson, TN	2.5	\$25.00
1st - B1600	Michael C. Shelton	Burns, TN	2.0	\$25.00

Amateur Section: (31 Players)

Champion	Jim Kade	Chattanooga, TN	4.0	\$50.00
2nd Place	Todd D. Andrews	Nashville, TN	3.5	\$30.00
Class D-1st	Chun Ng	Johnson City, TN	3.0	\$22.50
Class D-1st	David Berry	Oak Ridge, TN	3.0	\$22.50
Class E-1st	M. C. Deck, III	Crossville, TN	2.0	\$22.50
Class E-1st	Edwin Cato White	Nashville, TN	2.0	\$22.50
1st-B1000	Jay Quigley	Maryville, TN	2.0	\$25.00
2nd-B1000	Nancy J. Hughes	Charleston, TN	1.0	\$ 5.00
2nd-B1000	Joseph W. Bedford	Sweetwater, TN	1.0	\$ 5.00
2nd-B1000	Kyle E. Jones	Auburn, AL	1.0	\$ 5.00
2nd-B1000	Allen B. Jones	Auburn, AL	1.0	\$ 5.00
Unrated-1st	Chip Turner	Johnson City, TN	3.0	\$15.00
Unrated-1st	Ashok K. Mishra	Cookeville, TN	3.0	\$15.00
Unrated-1st	Joseph J. Kucan	Johnson City, TN	3.0	\$15.00

(Continued from page 5)

First case in point was Oak Ridge Spring Open, 1990, where he finished second over all, bagging a master and an expert. Incidentally, Doug kept score in descriptive, but I translate.

Doug Nichols (1614) - Jon Nyquist (2238)

Oak Ridge Spring Open, 1990

1.Nf3 d5 2.d4 Nf6 3.Bf4 Bg4 4.Ne5 Bh5 5.Nc3 e6 6.f3 c5 7.g4 Bg6 8.Ng6 hg6
9.Bg5 cd4 10.Qd4 Nc6 11.Qd3 Be7 12.O-O-O Qa5 13.Qb5 Qb5 14.Nb5 Rc8
15.Bf4? e5 16.Bg5 a6 17.Bf6 gf6 18.Nc3 d4 19.Nd5 Nb4 20.Nb4! Bb4 21.a3
Ba5 22.h4 Ke7 23.h5 g5 24.Bg2 Kf8 25.h6 Kg8 26.Rh5 Kh7 27.f4 gf4 28.Be4
Kg8 29.Bb7 Rb8 30.Ba6 Kf8 31.Bd3 Ke7 32.h7 Bd8 33.Rg1 Kf8 34.Bf5 Kg7
35.Rgh1 Be7 36.b4 Rhd8 37.h8Q Rh8 38.Rh8 Rh8 39.Rh8 Kh8 40.Kb2 Kg8
41.Kb3 Kf8 42.Kc4 Ke8 43.Kd5 Kd8 44.Kc6 e4 45.Be4 Kc8 46.Bd5 Kb8
47.Bf7 Bf8 48.Kd5 Kc7 49.Kd4 Bd6 50.c4 Be5 51.Kd5 Bc3 52.b5 Kb6 53.Be8
Bb2 54.c5 Kb7 55.a4 Bc3 56.Bc6 Kc7 57.b6 Kb8 58.Kd6 Bb4 59.a5? Ba5
60.Kd5 Bd2 61.Kc4 Be3 62.Kb5 Bd4 63.Bd5 Be5 64.Ka6 Bd4 65.c6 Be5
66.Kb5 Bd6 67.Kc4 Kc8 68.Be6 Kb8 69.Kd5 Be5 70.Bf5 f3 71.ef3 Bf4 72.Ke6
Be3 73.c7 Kb7 74.Kf6 Bd4 75.Kf7 1-0

Chris Chambers (2167) - Doug Nichols (1614)

Oak Ridge Spring Open, 1990

1.e4 e6 2.d4 d5 3.Nc3 Nf6 4.e5 Nfd7 5.f4 c5 6.Nf3 a6 7.Be3 Nc6 8.Be2 b5
9.dc5 Bc5 10.Bc5 Nc5 11.Nd4 Nd4 12.Qd4 Qe7 13.O-O O-O 14.Rae1 Bb7
15.Bg4 g6 16.a3 Rac8 17.Re3 f6? 18.ef6 Qf6 19.Qf6 Rf6 20.b4 Ne4 21.Ne4
de4 22.Rf2 Bd5 23.g3 Rc6 24.Bh3 Rf7 25.Bg2 Rfc7 26.Be4 Be4 27.Re4 Kf7
28.Rfe2 Rd6 29.Kf2 Rc3 30.R4e3 Rdc6 31.Rd3 Rd3 32.cd3 Rc3 33.Ra2 Rd3
34.a4 Rb3 35.ab5 ab5 36.Ra7 Kg8 37.Ra8 Kg7 38.Ra7 Kh6 39.g4 Rb4 40.Kf3
g5 41.fg5 Kg5 42.Rh7 Rf4 43.Ke2 Rg4 44.h3 Rh4 45.Rg7 Kf6 46.Rg3 Ra4
47.Rf3 Kg5 48.Kd2 e5 49.Rb3 b4 50.Kc2 Ra2 51.Kb1 Ra4 52.Kb2 e4 53.h4
Kh4 54.Re3 b3 55.Kb3 Rd4 56.Kc3 Ra4 57.Kd2 Kg4 58.Re1 Kf4 59.Rf1 Ke5
60.Rf8 Rd4 61.Ke3 Rd3 62.Ke2 Ke6 (Score ends because of sudden death.
White lost on time in a theoretically drawn position.) 0-1

Doug Nichols (1614) - Dan Turnmire (394)

Armed Forces Day -- Provident-Chattanooga, 1990

1.d4 d5 2.c4 e6 3.Nf3 Nf6 4.Bg5 Be7 5.Bf6 Bf6 6.e3 dc4 7.Bc4 O-O 8.Nc3 b6
9.O-O Bb7 10.e4 Nd7 11.e5 Be7 12.d5 Nc5 13.b4 ed5 14.Nd5 Ne6 15.Qb3 c5
16.Rad1 Qe8 17.b5?? Rd8 18.Rd3?! Bd5 19.Bd5 Nf4 20.Rd2 Nd5 21.Rd5 Rd5
22.Qd5 Qd8 23.Rd1 Qd5 24.Rd5 Rd8 25.Rd8 Bd8 26.Nd2 Kf8 27.f4 f6 28.e6!
Ke7 29.f5 g6 30.g4 Kd6 31.Kf2 Kd5 32.Ke3 g5 33.Kd3 Be7 34.Nc4 Bf8 35.a4
Be7 36.a5 ba5 37.b6! Kc6 38.ba7 Kb7 39.Na5 Ka7 40.Nc6 Kb6 41.Ne7 Kb5
42.Kc3 c4 43.Ng8 (Doug's delightful comment, "Revenge is sweet when served

COLD," was to become a sort of battle cry whenever he put away an opponent who had beaten him previously.) 1-0

R. Seaney (1711) - Doug Nichols
Tennessee Open, 1990

("One of my best games ever"-- Doug Nichols.)

1.d4 d5 2.c4 c6 3.Nc3 Nf6 4.Nf3 Bf5 5.e3 e6 6.Be2 Bb4 7.Bd2 Bc3 8.Bc3 O-O
9.Nh4 Ne4! 10.Nf5 Nc3 11.Nh6 gh6 12.bc3 Qg5 13.O-O Kh8 14.Qb3 Rg8
15.g3 b6 16.f4 Qh4 17.Rf3 Nd7 18.Raf1 f5 19.cd5 cd5 20.c4 Nf6 21.R3f2 Ne4
22.Rg2 Ng3! 23.hg3 Rg3 24.Bf3 Rh3 0-1

Jerry Spinrad (1973) - Doug Nichols (1669)
Music City Open, 1993

1.e4 e6 2.d4 d5 3.Nc3 Nf6 4.Bg5 Be7 5.e5 Nfd7 (Doug's favorite defense.) 6.h4
a6 (Not high on the list of suggested defenses suggested by ECO. On the other
hand, White's reply is not given at all.) 7.Bd3 c5 8.Nf3 Nc6 9.dc5 Nde5 10.Qe2
Nf3 11.gf3 (Relying on the open file.) 11...h6 12.Be7 Qe7 13.Na4 Rb8 14.OOO
O-O 15.Rhg1 e5 16.Rg3 f5 17.Qd2 (Rdg1 looks more natural.) 17...Qh4
18.Rdg1 g5 19.Nc3 Be6 20.Bf1 f4 21.R3g2 Nd4 22.Qd1 Qh5 23.Be2 Qg6
24.Bd3 Qf6 25.Rh1 Kg7 26.Rh5 Rbd8 27.Qh1 Nf3 (Calm and good.) 28.Ne4
de4 29.Be4 Bf7 (If ...Nd4; 30.R2xg5+ is conclusive.) 30.Bf3 Bh5 31.Qh5 Qe7
32.Be4 Qf6 33.Bb7 f3 34.Rg4 Rd4 35.c6 Rg4 36.Qg4 Qf4 37.Qf4 ef4! 38.c7
g4! 39.c8Q Rc8 40.Bc8 g3!! (Doug's note simply, "Revenge.") 0-1

Doug Nichols (1669) - Ralvis Negulescu (1896)
Music City Open, 1993

(Black was th 1993 Scholastic Champion.) 1.d4 Nf6 2.e3 g6 3.Nf3 Bg7 4.c4 d6
5.Nc3 O-O 6.Bd3 Nbd7 7.O-O e5 8.d5 Nc5 9.e4 a5 10.Be3 Ng4 11.Bc5 (With
full compensation for the minor exchange.) 11...dc5 12.h3 Nh6 13.Qd2 f6
14.Qe3 b6 15.Bc2 Nf7 16.Ba4 f5 17.Bc6 Rb8 18.Rfe1 f4 19.Qd3 Nd6 20.Nb5
g5 21.Qc3 g4 22.hg4 Bg4 23.b3 h5 24.Nh2 f3 25.gf3 Bh3 26.Kh1 Rf4 27.Rg1
Qh4 28.Qe5 (Did Black overlook his Bishop was pinned or just over-estimate
the strength of the combination?) 28...Rg4 29.Qe6! Kh7 30.fg4 Ba1 31.Qd7
Kh8 32.Nd6 cd6 33.Qd6 Qf2 (Time pressure or desperation.) 34.Qb8 Kh7
35.Qg3 Bd4 36.Qf2 Bf2 37.gh5 1-0

(Notes by Rea Hayes, except for move punctuation.)



The Gambit Player

By Lee Edwards

Blackmar-Diemar Gambit players are a strange lot. Ever heard of the Lemberger Countergambit, the Langeheineke, the Rasa-Studier Gambit, or the Von Popiel Attack? How about the Huebsch Gambit, the Paleface Attack, or the Hillbilly Attack? Are these guys playing Chess or some other game?

Believe it or not, these guys -- like I said they are a strange lot -- are actually playing Chess. You have to be a little weird to play gambits after opening with the Queen's Pawn. For some reason, the BDG Gemeinde (as they style themselves [*"Gemeinde" is a German word for community- ed.*]) also seem to like the Soller Gambit (1.d4 e5?! and even the Elephant (1 e4 e5 2.Nf3 d5?! with ideas similar to the Latvian Gambit). The BDG player's principal dilemma, however, is what to do when Black insists on playing an Indian Defense. One solution is to play 1.d4 Nf6 2.f3!? and hope that Black will transpose by way of . . . d5 3.e4 dxe4 4.Nc3 exf3, but Black may still be uncooperative and choose not to transpose. A more direct, certainly more risky, and probably crazier solution is simply to play a spike attack by way of 1 d4 Nf6 2.g4?!, the Gibbins-Weidenhagen Gambit. There is even a book on this opening by Rasmus Pape and Niels Jorgen Jensen. America's leading exponent of this system is Hawaii's Clyde Nakamura. Here are some of his games:

Clyde Nakamura - Marc Leski
Hawaii International, 1994

1 d4 Nf6 2.g4 Nxg4 3.e4 d6 4.Be2 Nf6 5.Nc3 g6 6.Bg5 c6 7.Qd2 b5 8.Bd3 Nbd7 9.0-0-0 Bb7 10.f4 b4 11.Nce2 c5 12.d5 Qa5 13.Kbl Nxd5 14.Nf3 N5f6 15.Ng3 Bg7 16.Rdel 0-0-0 17.Rhfl Nb6 18.Qe2 Kb8 19.Bxf6 Bxf6 20.e5 Bg7 21.Ng5 Bd5 22.b3 h6 23.Nf3 Rc8 24.Nd2 Rhd8 25.Nc4 Bxc4 26.bxc4 d5 27.f5 Na4 28.Qg4 Nc3+ 29.Kcl h5 30.Nxh5 Bh6+ 31.Nf4 dxc4 32.Rf3 cxd3 33.cxd3 c4 34.fxg6 cxd3 35.Kd2 Qxa2+ 36.Ke3 Ndl+ (0-1)

Nakamura - Tsoy
1984

1 d4 Nf6 2.g4 Nxg4 3.e4 d6 4.Be2 Nf6 5.Nc3 c5 6.Nf3 cxd4 7.Nxd4 g6 8. Be3 Bg7 9. Qd2 Nc 6 1 0. 0-0-0 Nxd4 11 . Bxd4 a6 12. f 3 Be6 13. Nd5 Bxd5 14.exd5 Rc8 15.Kbl Qc7 16.c4 h5 17.Qe3 h4 18.Rhel Nh5 19.Bfl Bxd4 20.Qxd4 0-0 21 Bd3 Nf6 22.Rgl b5 23.Qxh4 bxc4 24.Bxg6 fxg6 25.Qh6 e5 26.Rxg6+ Kf7 27.Rxf6+ Ke7 28.Qg7+ (1-0)

Nakamura - Vasquez

1984

1.d4 Nf6 2.g4 Nxg4 3.e4 d6 4.Be2 Nf6 5.Nc3 Nbd7 6.Be3 e6 7.Qd2 a6 8.0-0-0 b5 9.a3 Bb7 10.d5 Nxe4 11.Nxe4 exd5 12.Bg5 f6 13.Nxf6+ Nxf6 14.Bh5+ g6 15.Rel+ Kd7 16.Bg4+ Nxg4 17.Bxd8 Rxd8 18.Qd4 Bh6+ 19.Kbl Ne5 20.Qh4 d4 21.f3 Be3 22.c3 c5 23.cxd4 Bxd4 24.Ne2 Nxf3 25.Qh3+ Kc7 26.Nxd4 Nxd4 27.Re7+ Kb6 28.Rhel Bc8 29.Qe3 Bf5+ 30.Ka2 d5 31.Qg3 Rc8 32.Qe5 Nc6 33.Qf6 Rhf8 34.Rf7 Rxf7 35.Qxf7 d4 36.Qxh7 d3 37.Qh6 Rd8 38.Qe3 Nd4 39.b4 c4 40.a4 c3 41.Qe7 Be6+ 42.Rxe6+ Nxe6 43.a5+ Kc6 44.Qxe6+ Rd6 45.Qc8+ Kd5 46.Qxc3 Ke4 47.Qd2 Rd4 48.Qg2+ Ke3 49.Qg3+ Kd2 50.Qf2+ (1-0)

Nakamura - McQuitty

1985

1 d4 Nf6 2.g4 Nxg4 3.e4 d6 4.Be2 Nf6 5.Nc3 b6 6.Be3 Bb7 7.f3 e6 8.Qd2 Nbd7 9.0-0-0 c5 10.d5 e5 11.Nh3 h6 12.f4 a6 13.fxe5 Nxe5 14.Bf4 Qe7 15.Rhfl g5 16.Bxe5 Qxe5 17.Rf5 Qe7 18.e5 Nd7 19.e6 fxe6 20.Bh5+ Kd8 21.Rf7 Qe8 22.Qe2 e5 23.Rh7 Rxh7 24.Bxe8 Kxe8 25.Qh5+ Kd8 26.Nxg5 Re7 27.Nf7+ Kc7 28.Nxd6 Nf6 29.Qg6 Kxd6 30.Ne4+ Kd7 31.Nxf6+ Kd8 32.Qg8 Re8 33.Qf7 Bc8 34.Qxe8+ Kc7 35.Qc6+ Kb8 36.Qxb6+ Bb7 37.Nd7+ Kc8 38.Nxf8 (1-0)

Nakamura - Oshima

1985

1.d4 Nf6 2.g4 e5 3.dxe5 Nxg4 4.Nf3 Bc5 5.e3 Nc6 6.Nc3 Ngxe5 7.Nxe5 Nxe5 8.Qh5 d6 9.Be2 g6 10.Qh6 Qf6 11.f4 Ng4 12.Bxg4 Bxg4 13.Nd5 Qd8 14.b4 Bb6 15.Bb2 Bh5 16.Nf6+ Ke7 17.Nxh5 Ke6 18.0-0-0 Qf8 19.Bg7 Qe8 20.f5+ Kxf5 21.Qf4+ (1-0)

Nakamura - Chun

1985

1 d4 Nf6 2.g4 e6 3.g5 Nd5 4.e4 Nb6 5.Nc3 d5 6.Be3 Nc6 7.Qd2 Bd7 8.0-0-0 Nc4 9.Bxc4 dxc4 10.f4 b5 11.d5 Na5 12.Nxb5 Bxb5 13.Qxa5 c6 14.Qel Qc7 15.Nf3 Be7 16.dxe6 fxe6 17.Nd4 Kf7 18.f5 e5 19.Ne6 Qb7 20.Qg3 Qa6 21.Qxe5 Rag8 22.g6+ hxg6 23.fxg6+ (1-0)

Nakamura - Robinson

1983

1 d4 Nf6 2.g4 h6 3.Nc3 d6 4.h3 c6 5.Nf3 Nbd7 6.e4 e6 7.Be3 Be7 8. Qd2 Nh7 9. 0-0-0 Bg5 10. Nxg5 Nxg5 11. f 4 Nh7 12. f 5 Ndf 8 13. Bd3 b5 14.fxe6 Bxe6 15.d5 Bd7 16.Rhfl b4 17.dxc6 Bxc6 18.Nd5 Bxd5 19.exd5 Qa5 20.Qel Qxd5 21.Rf5 Qxa2 22.Bb5+ Nd7 23.Bxd7+ Kxd7 24.Rxd6+ Kxd6 25.Qxb4+ Ke6 26.Qe4+ Kd6 27.Bf4+ Kd7 28.Qb7+ Ke6 29.Qxf7+ (1-0)

(Continued from page 9)

18. Be3 Be4 19. Qb5?!

Awkward. Qd2 is simpler.

19... Nf6 20. Rfd1 Nfd5 21. Bxb6

Black's minor pieces were beginning to make my queen feel claustrophobic.

21... Nxb6 22. Nd4 Re5 23. Qb4 a5 24. Qd2 a4 25. Nf3 Rd5 26. Qb4 Rxd1+ 27. Rxd1 d5 28. Nd4 axb3 29. Qxb3

axb3 keeps the knight out but allows Ra2.

29... Nc4 30. Nb5

Preventing Ra3 and planning an eventual Nc3.

30... Qb6! 31. Bg2

31. Nc3 can be answered by 31... Qxb3 32. axb3 Bc2 because 33. bxc4 loses to Bxd1 34. Nxd1 Ra1.

31... Ra5

A reasonable but very committal move. The rook will be out of play as long as White can keep his pawn on a4 securely defended.

32. a4 Nd6! [diagram]

Very alert. The attack against the Nb5 forces my reply.

33. Bxe4 Nxe4 34. e3

If Rd4 then 34 ... Qf6, threatening both Qxf2+ and Rxb5, is awkward to meet.

34... Qa6

During the game I thought this just put the queen offside and I worried more about two other ways to go after my a4 pawn. 34 ...

Nc5 35. Qxd5 would probably lead to a R+N ending where Black has an outside passed pawn and the better practical chances. I was most concerned about 34 ... Qf6, hitting the weak f2 square. Now 35. Rf1 drops the exchange and on any queen move Black can virtually force a perpetual with Rxa4. I had intended to answer 34... Qf6 with 35. f4. The weakened second rank and e3 square makes White's position look a little precarious but I see no clear way for Black to take advantage.

35. Rd4

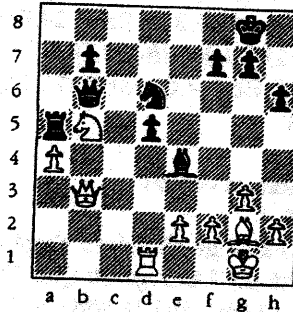
35. Nc7 fails to Qe2! and 35. Rxd5 Rxa4 36. Rd8+ Kh7 leaves White vulnerable to Ra1 or Ra2.

35... Nc5 36. Qxd5 Nxa4 37. Qd8+

Here either Qf5 or Qe4 looks strong. If Black covers the mate threat with Qa8 then White plays Qd3 threatening Rd8+.

37... Kh7 38. Nc7 Qb6 39. h3?

Dangerously slow. Qd6 is a safer way to avoid trouble on the long



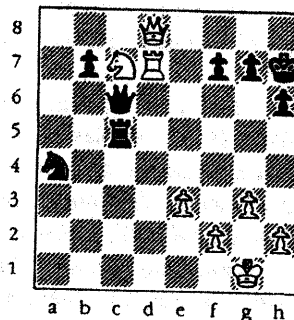
diagonal.

39... Rc5

Nc3, clearing the a file for the rook and threatening Ne2+, looks strong.

40. Rd7 Qc6?! [diagram]

The last move before time control and on first glance it looks crushing. To stop the mate threats White has to self-pin his knight. However, the more I looked at the position the more I liked White. If I can ever move the knight without allowing an immediate mate then I can play the crushing Ne7. Black should probably have tried Qb1+.



41. Nd5 Rc1+ 42. Kh2

Now White threatens e4 and Ne7.

42... Nb6?

A strong-looking move that turns out to be the decisive mistake. Having so many strong threats of your own to sort through can make it easy to miss one of your opponent's.

43. Rc7 Nxd5 44. Rxc6 bxc6 45. e4

White is winning but it could take a while unless I can win the f pawn or disrupt the mutual protection of Black's pieces.

45... Nb4

On Nf6 I was going to try Qd3.

46. Qe7 c5 47. Qxf7 c4 48. e5 c3 49. Qf4 Rd1

Black can't save the piece. If ...Na2 White plays Qf5+, winning the knight after a few more checks.

50. Qxb4 1:0.

A hard-fought game which enabled the Knoxville club to win it's home-and-home match with Chattanooga.

Turkey Tour Prize Fund Doubled!!

For the tournament year 1994-95, the Turkey Tour Prize Fund will be matched by monies from the TCA. The same criteria apply for earning points on the Turkey Tour: participating in a USCF/TCA Grand Prix event is worth 20 points; playing in the Tennessee Open is worth 30 points; and all other Turkey Tour Tournaments are worth 10 points. Additional points are awarded based on your performance. The top three finishers in each of the following categories will receive cash awards: Master/Expert; Class A; Class B; Class C; Class D; and Class E. Your published rating as of 8/1995 will determine your class for the year. The TCN will periodically update the standings.

(Continued from page 19)

Daniel Powers of Fairfield Glade was the only Tennessean in the 9 - 10 year old section. He had a 3-4 score.

The 11 - 12 year old section included Emilie Udell of Crossville, Vandana Botta of Nashville, Michelle Koo of Memphis, Sisir Botta of Nashville, Jason Knight of Oak Ridge, and Jim Hughes of Charleston. Emilie had a 2-5 score, Vandana claimed the U1400 2nd place trophy while Michelle placed 1st U1200. Sisir placed 3rd overall and 5th on tiebreak with a 4.5 - 2.5 score. Jason Knight placed 2nd overall and 4th on tiebreak with a 5-2 score. Jim Hughes was Co-Champion with a 6-0 score, with Daniel Thomas of Huntsville, AL and Andy Reeder of Tuscaloosa, AL.

The 13-14 year old section had seven Tennesseans. Gavin Koo of Memphis placed 4th overall and 6th by tiebreak. Larry Williams of Knoxville and Todd Andrews of Nashville, earned 5th overall and placed 7th and 9th by tiebreak. Lee Gilmer of Crab Orchard claimed 1st place U1600, while Brian Wyatt was 2nd U1600. Also from Crossville were Jason Sonneberg and Michael Stammen.

In a field of 8 in the 15 - 16 year old section six were from Tennessee. With a perfect score or 7-0 (only one of two in the whole tournament) Billy Ware of Maryville claimed the Championship. M.C. Deck of Crossville placed 3rd, Richard Gilmer of Crab Orchard placed 5th, Jason Hale of Crossville was 6th, and 7th place was claimed by Louis Keen, of Fairfield Glade.

Russell Linnemann was Co-Champion of the 17-18 year Old section with a 6-0 score. Samuel Taylor of Whitesburg placed 5th with a 4-3 score, and Benjamin Clayton with a 3-4 score placed 7th.

Plans for the 1996 Jr. Chess Congress in Huntsville are ongoing. Look for more information later this year and plan to join us for all the fun and winning!!.

Advertisement

1st Annual Tennessee Fall Classic \$6000 Prize Fund!

Nashville, Tennessee

November 24-26, or 25-26, 1995

For details see *Chess Life* or call Ed Newkirk, (615) 370-3653.

28/ *Tennessee Chess News*

Tournaments! Tournaments! Tournaments!

By Rick Igou

**** TURKEY TOUR EVENT ****

09/02/95 Tenn Open

09/16/95 Cumberland Co Champ (closed)

**** TURKEY TOUR EVENT ****

10/14/95 Cumberland Co Fall Open, Fairfield Glade, TN

10/21/95 US Class Championships, Syracuse, NY

10/21/95 Games 29 tourney, Jackson, TN

11/04/95 Cumberland Co Scholastic (closed)

11/24-26/95 Tennessee Fall Classic, Nashville, TN

12/02/95 U.S. Grade School Championships, Syracuse, NY

**** TURKEY TOUR EVENT ****

01/5-7/96 1996 Fairfield Glade Open, Fairfield Glade, TN

01/27/96 TN Individual Regional (Scholastics)

02/10/96 TN Individual Finals (Scholastics)

**** TURKEY TOUR EVENT ****

02/16-18/96 Middle Tennessee Open, Nashville, TN

(Continued from page 8)

The U1400 section saw most of the upsets. Justin Kristoff (KY) won all 5 games to capture clear first, while Francios Allain (LA, 1177 rating) took 2nd with 4.5 points. One young lady, Emily Thomas (AL), survived without any losses to win Class E with 4 points.

The Unrated section was a pleasant surprise with 10 entries. All of these relatively unknowns battled their hearts out with Wayne Jenkins (TN) and Andrew Nelson (TN) tying for 1st with 4 points each. Four other players finished in a huge tie for 3rd.

In addition, our staff of TD's donated their weekend for the cause. Andrew Mongin, Mark, Ben Couch, and Ben Bentrup worked numerous hours coordinating this new event.

We are already making preparations for next year's MTO. Please let us know how we can make the '96 MTO even better! Thanks again for supporting one of the biggest chess events ever held in Tennessee.

Spring 1995 / 29

TCA Regional Scholastic Coordinators (1994-1995)

STATE SCHOLASTIC COORDINATOR

Harry D. Sabine
205 South Thurman Avenue
P.O. Box 381
Crossville, TN 38557
H: (615) 484 - 4878
O: (615) 484 - 9593
Fax: (615) 456 - 7624 (& modem)

REGION 1 SCHOLASTIC COORDINATOR

Ellis E. Jones
500 North B Street
Lenoir City, TN 37771
H: (615) 986 - 2344
O: (615) 947 - 8409
Fax: (615) 947 - 8591

REGION 2 SCHOLASTIC COORDINATOR

Ron Harvill
Route 6, Box 146
Crossville, TN 38555
H: (615) 788 - 2767
O: (615) 484 - 5959

REGION 3 SCHOLASTIC COORDINATOR

Alvin L. Harris
(Office)
Greene & Greene
323 Union Street
P.O. Box 198768
Nashville, TN 37219
H: (615) 297 - 8185
O: (615) 256 - 5607
Fax: (615) 256 - 3229

REGION 4 SCHOLASTIC COORDINATOR

Bill Cummings
3532 Davieshire Drive
Memphis, TN 38133
H: (901) 372 - 6584
O: (901) 348 - 1600
Fax: (901) 348 - 1610

TCA Board Of Directors (1994-95)

PRESIDENT

Ed Porter
1227 Buckingham Cr.
Franklin, TN 37064
Home: (615) 791 - 4303
Work: (615) 377 - 0054
FAX: (615) 377 - 4915

VICE - PRESIDENT

Bill Orgain
PO Box 366
Dickson, TN 37056
Home: (615) 446 - 0521
Work: (615) 446 - 2814
FAX: (615) 446 - 9913

SECRETARY - TREASURER

Leonard S. Dickerson
420 Oran Road
Knoxville, TN 37922
Home: (615) 966 - 1095
Work: (615) 574 - 4676

POSTAL CHESS COORDINATOR

Lee Edwards
406 Stahlman Building
211 Union Street
Nashville, TN 37201
Home: (615) 883 - 7522
Work: (615) 726 - 3395

TOURNAMENT DIRECTOR

Rick Igou
400 Rhodora Court, Apt. F
Knoxville, TN 37923
Home: (615) 690 - 6810
Work: (615) 574 - 1839

SCHOLASTIC COORDINATOR

Harry D. Sabine
P.O. Box 381
Crossville, TN 38557
Home: (615) 484 - 4878
Work: (615) 484 - 9593
FAX: (615) 456 - 7624

TCN EDITOR (EAST)

Richard R. Westbrook
1227 Venido Drive
Knoxville, TN 37932-2599
Home: (615) 671 - 4124
Work: (615) 974 - 1250
FAX: (615) 671 - 4124

TCN EDITOR (WEST)

Ed Boldt
31 Holly St, PO Box 3039
Jackson, TN 38301

DIRECTOR, EAST TENNESSEE

Chester Crowley
114 Iroquois Lane
Clinton, TN 37716
Home: (615) 457 - 7965
Work: (615) 457 - 3100
FAX: (615) 531 - 2958

DIRECTOR, MIDDLE TENNESSEE

Ed Newdrk
1202 Twin Springs Drive
Brentwood, TN 37027
Home: (615) 370 - 3653
Work: (615) 459 - 8483

DIRECTOR, WEST TENNESSEE

Joseph Mooney
361 Hwy 18
Jackson, TN 38301
Home: (901) 427 - 0481
Work: (901) 423 - 1339