

TENNESSEE CHESS NEWS



VOLUME 25, NO. 1

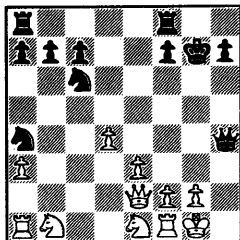
FEB - MAR 1983

GAMES

WINTER KNIGHTS CLASSIC

Polish Opening

Mahlon Smith (2128) - Kamaran Shirazi (2552) 1. b4 e5 2. Bb2 Bb4 3. Be5 Nf6 4. c4 Nc6 5. Bb2 0-0 6. Nf3 d5 7. cd5 Nd5 8. e3 Bf5 9. Be2 Nb6 10. 0-0 Bd3 11. Ne1 Be2 12. Qe2 Na4 13. a3 Bd6 14. Bg7 Bh2+ 15. Kh2 Qh4+ 16. Kgl Kg7 17. d4



Rae8 18. Qc2 Nb6 19. Nd2 Re6 20. Nef3 Qh5 21. Nh2 Kh8 22. Ndf3 Rg8 23. Rfbl Nd5 24. Rb5 b6 25. Qc4 Nce7 26. Re1 c6 27. Rb3 Nf5 28. Qf1 Reg6 29. e4 Nf4 30. ef5 Rg2+ 31. Kh1 Qf5 32. Rbe3 Qd5 33. Re4 Rh2+ 34. Nh2 f5 35. f3 fe4 36. fe4 Qg5 37. Re3 Nh5 38. Rh3 Qg6? 39. Rh5! Qe4+ 40. Nf3 Rf8 41. Rh3 Qd4?? 42. Rh7+ Kh7 43. Qh3? (43. Qbl+) Kg7 44. Nd4 Rh8 45. Nf5+ Kg8 46. Ne7+ Kg7 47. Nf5+ Kg8 48. Nh6+ Kg7 49. Qd7+ Kh6 50. Qa7 b5 51. Qe7 Kg6+ 52. Kg2 Rh6 53. Kg3 Kf5 54. Qc5+ Ke4 55. Qc2+ Ke5 56. Qc3+ Kf5 57. Qf3+ Kg5 58. Qf4+ Kg6 59. Kg4 Kg7 60. Qc7+ Kg8 61. Kg5 Re6 62. Qc8+ Kf7 63. Qd7+ Re7 64. Qc6 Re5+ 65. Kf4 Rh5 66. Kg4 Re5 67. Qd6 Re4+ 68. Kf5 Rh4 69. Qf6+ 1 - 0

Queens Gambit Declined

Kamran Shirazi (2552) - Boris Kogan (2549) 1. d4 d5 2. c4 e6 3. Nc3 c6 4. e3 Nf6 5. Nf3 a6 6. Qc2 c5 7. cd ed 8. Be2 Nc6 9. 0-0 Be7 10. Rd1 cd 11. Nd4 Nd4 12. ed Be6 13. Qb3 b5 14. Bg5 Qd6 15. Bf3 Rd8 16. Ne2 0-0 17. Nf4 h6 18. Ne6 fe 19. Bh4 Rc8 20. Bg3 Qd7 21. a4 b4 22. a5 Rc4 23. Be2 Rc6 24. Rac1 Rfc8 25. Rc6 Rc6 26. f3 Nh7 27. Be5 Ng5 28. Qa4 Qc8 29. Qal Nf7 30. Bf4 (30. Bg3) Bf6 31. Kh1 Nd6 32. Qbl Nf5 33. Be5 Be5 34. de Qc7 35. f4 Qa5 36. Qd3 Qc5 37. g4 Nh4 38. f5 Qf2 39. Rgl Rcl! White lost on time. 0 - 1

Sicilian Dragon

Joe Jurjevich (2122) - Stuart Rachels (2232) 1. e4 c5 2. Nf3 d6 3. d4 cd 4. Nd4 Nf6 5. Nc3 g6 6. Be3 Bg7 7.

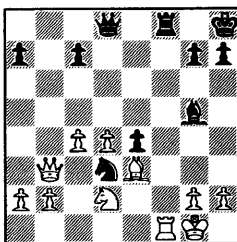
f3 Nc6 8. Qd2 0-0 9. 0-0-0 Nd4 10. Bd4 Be6 11. Nd5 Bd5 12. ed Qc7 13. Kbl Rac8 14. g4 Nd5 15. Bg7 Kg7 16. h4 Nf6 17. h5 e5 18. Bd3 Kg8 19. Qh6 e4 20. fe Ng4 21. Qg5 Ne5 22. hg fg 23. c3 Qd8 24. Qh6 Qe7 25. Bc2 Rcd8 26. Bb3+ Kh8 27. Qcl Rd7 28. Rh7+ Qh7 29. Rh1 Rf2 30. Rh7+ Rh7 31. a4 Rhh2 32. Ka2 Rb2+ 33. Ka3 Rhd2 34. Qgl b6 35. Qg5 Kg7 36. Qe7+ Kh6 37. Qh4+ ½ - ½

English Opening

Peyton Crowder (1928) - Joe Sentef (2150) 1. Nf3 c5 2. c4 Nc6 3. g3 g6 4. Bg2 Bg7 5. Nc3 Nf6 6. 0-0 0-0 7. d3 a6 8. Bd2 Rb8 9. Qcl b5 10. cb ab 11. Bh6 b4 12. Bg7 Kg7 13. Nd1 d6 14. b3 Bd7 15. Ne3 Rb5 16. Qb2 Kg8 17. d4 cd 18. Nd4 Nd4 19. Qd4 Qb8 20. Rfcl Rc8 21. Qd2 Rbc5 22. Rc5 Rc5 23. Rcl Qc7 24. Rc5 Qc5 25. Nc2 Qe5 26. Nd4 Nd5 27. e3 Nc3 28. Nc6 Bc6 29. Bc6 Qa5 30. Ba4 Na4 31. ba Qa4 32. Qb2 Qdl+ 33. Kg2 Qd5+ 34. Kgl Qc4 35. a3 b3 36. f3 Qc2 0 - 1

Ruy Lopez - Schliemann

Luismar Brito (2403) - Brent Inman (2123) 1. e4 e5 2. Nf3 Nc6 3. Bb5 f5 4. d4 fe 5. Ne5 Nf6 6. 0-0 Be7 7. c3 0-0 8. Qb3+ d5 9. Nc6 bc 10. Bc6 Ba6 11. Ba8 Bf1 12. Bd5+ Nd5 13. Kf1 Kh8 14. c4 Nb4 15. Be3 Nd3 16. Nd2 Nf2! 17. Kgl Bg5! 18. Rf1?? (18. Bf2 Bd2 19. Be3 Qf6 20. Rd1) 18... Nd3!!



19. Bg5 Qd4+ 20. Kh1 Rf1+ 21. Nf1 Nf2+ 0 - 1

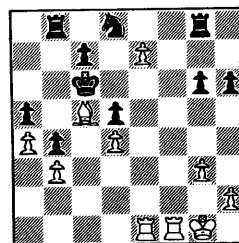
Polish Opening

Mahlon Smith (2128) - Paul Kuroda (2437) 1. b4 Nf6 2. Bb2 g6 3. c4 Bg7 4. Nf3 d6 5. e3 0-0 6. Be2 e5 7. d4 Nbd7 8. Qb3 ed 9. Nd4 a5 10. a3 Ne4 11. Nc3 Ndf6 12. Nf3 ab 13. ab Ral+ 14. Bal Bg4 15. Ne4 Ne4 16. Bg7 Kg7 17. 0-0 Qf6 18. Rcl Ra8 19. Qd3

Ral 20. Ral Qal+ 21. Bf1 Bf3 22. gf Ng5 23. Qd5 Nh3+ 24. Kg2 Qe1 25. Qd4+ f6 26. Qh4 Ng5 27. f4 Nf7 28. b5 Nh6 29. Qh3 f5 30. Qh5 Ng4 31. Qe7+ Kh6 32. Qg5+ Kg7 ½ - ½

French Defence

Daniel Eccles (1395) - Mike Barton (1795) 1. e4 e6 2. d4 d5 3. Nc3 Nf6 4. Bg5 Bb4 5. e5 h6 6. Bd2 Bc3 7. Bc3? Ne4 8. Bb4 Nc6 9. Ba3 Qh4 10. g3 Qg5 11. Nf3 Qd8 12. Bb5 Bd7 13. Bd3 Ng5 14. Be2 Nf3 15. Bf3 Ne7 16. Qd3 b5 17. Bh5 a5 18. Bc5 Rb8 19. Qf3 g6 20. Qf6 Rg8 21. Be2 Nf5 22. Qd8+ Kd8 23. 0-0 b4 24. b3 Bb5 25. Bb5 Bb5 26. a4 Rb7 27. Racl Ne7 28. c4 Nc6 29. cd5 ed5 30. f4 Kd7 31. f5 Nd8 32. Rce1 Rb8 33. e6 fe6 34. fe6+ Kc6 35. e7



Nb7 36. Rf8 Nc5 37. Rb8 Rb8 38. e8Q? (38. dc5) Re8 39. Re8 Nb3 40. Re6+ Kd7 41. Ra6 Nd4 42. Ra5 c6 43. Rc5 Kd6 44. Ra5 b3 45. Rad b2 46. Rb8 Nb5 47. a6 blQ+ 48. Kg2 cb5??? (illegal move?) 49. Rb6+ Kc5 0 - 1

Reti Opening

Brian McCarthy (2158) - Larry Shamburger (1886) 1. Nf3 d5 2. c4 d4 3. g3 c5 4. Bg2 Nc6 5. 0-0 Nf6 6. e3 g6 7. ed4 cd4 8. d3 Bg7 9. Na3 0-0 10. Nc2 Qb6 11. Rbl Bg4 12. h3 Bf5 13. g4 Bc8 14. b4 Nd7 15. b5 Nd8 16. Re1 Ne6 17. Ba3 Re8 18. Nb4 Ndc5 19. Nd5 Qd8 20. Bcl Nc7 21. Ne5 Be6 22. Nc7 Qc7 23. Bf4 Qa5 24. Bd2 Qc7 25. Bf4 Qa5 26. Nf3 Rad8 27. Be5 Be5 28. Re5 Qc7 29. a4 b6 30. Rb2 Bc8 31. Re1 Bb7 32. Rbe2 Rd6 33. Nh4 Bg2 34. Ng2 Re6 35. f4 Re2 36. Re2 e5 37. f5 g5 38. h4 h6 39. hg5 hg5 40. Ne1 f6 41. Rh2 Kg7 42. Nc2 Rh8 43. Rh8 Kh8 44. Nb4 Qh7 45. Qf3 Qb7 46. Nc6 Na4 47. Qd5! Nc5 48. Qd8+ Kh7 49. Ne7 1 - 0

TENNESSEE CHESS ASSOC

The annual dues for each member are \$4.00. All memberships expire in August 31 of each year. However any person who joins the TCA between Apr. 1 and Aug. 31 shall pay \$2, which expires Aug. 31 or pay \$5 which expires Aug. 31 of the following year. Each additional person in the same family may become a member by paying \$.50 but will not receive the newsletter. Any USCF affiliate that needs a supply of membership cards for issue should contact Harry D. Sabine, the Secretary-Treasurer.

TCA DEADLINES

ISSUE	DEADLINE
DEC-JAN	NOV 15
FEB-MAR	JAN 15
APR-MAY	MAR 15
JUN-JUL	MAY 15
AUG-SEP	JUL 15
OCT-NOV	SEP 15

ADDRESS CHANGES ????

PLEASE SEND ALL ADDRESS CHANGES AND DUES TO:

HARRY D. SABINE
p.o. box 381
Crossville, TN 38555

The Tennessee Chess Association is a non-profit corporation recognized by the Internal Revenue Service as being 501-(c)-(3) tax exempt; we welcome your deductible contributions.

The 11th Annual Cumberland Thrift Scholastics is in progress on this issue's front cover. Shane Day ponders his next move against Chris Lax. More on this story will be in the next issue.

THE TENN. CHESS NEWS IS THE OFFICIAL PUBLICATION OF THE TCA. THE PUBLICATION IS BI-MONTHLY. INDIVIDUAL COPY PRICE IS \$1.00.

Report on Tennessee Chess

1982 CROSSVILLE SCHOLASTICS

Once again records fell as 315 enthusiastic young chess players gathered in Crossville, Tennessee, for the 1982 Crossville Scholastics. The tournament was the largest ever held in Tennessee and one of the largest ever held in the South.

Thirty-seven teams and individuals representing 46 different schools competed for the 88 trophies and \$500 in cash prizes awarded.

The 82-man high school section was won by Ron Burnett of Eagleville, Tennessee, with a $5\frac{1}{2}$ - $\frac{1}{2}$ score. Matt Dolloff and Ted Carver of MBA, and Chuck Daugherty and Chris Byrd of Pulaski County, Virginia, tied for 2nd thru 5th place with scores of 5-1. Pulaski County won the team competition with 18 points followed by Montgomery Bell Academy of Nashville, Tennessee, with 17.

Chuck Lovingood of Martin Junior High School took top honors in the 109 player junior high section with a perfect 6-0 record. Close on his heels was Stewart Knight of Woodrow Wilson Junior High School in Terre Haute, Indiana with $5\frac{1}{2}$ points. Tony McGill of Maryville, Tennessee, George Wallace of Martin Junior High School and Gerald Naliborski, Billy Kassis, Rob Harmon, David Wilson, Srinivas Raju, and Richard Brink of Woodrow Wilson took 3rd thru 10th places with 5-1 scores. Woodrow Wilson took top team honors with 20 $\frac{1}{2}$ points followed closely by Martin Junior High School with 19.

The 111 player elementary section was won by Kevin Harlow of Pulaski Middle School with a 6-0 score. Coming in second was his teammate, Randy Quesenberry, with $5\frac{1}{2}$ points. Ian Wright of Capshaw Elementary, Ray Tuck of Pulaski Middle, Jeff Shelton of Critzer, and Chris Arfken of Thrasher all scored 5-1 for 3rd thru 6th places. The top elementary team was Pulaski Middle School with 19 $\frac{1}{2}$ points. Second and third in the team competition went to Critzer Elementary of Pulaski, Virginia, and Thrasher Elementary of Signal Mountain, Tennessee, each with 17 points.

Mark Burdick of Parkview Elementary in Cookeville, Tennessee, took home top honors in the 36 man primary section with a perfect 5-0 score. Second thru fifth went to Angela Chang of Cherry River, Siscompathana Phrommala of Bradley, Roger Breeding of Homestead and Will Litchford of Crossville with scores of 4-1. Cherry River Elementary of Richwood, West Virginia, and Homestead Elementary of Crossville shared championship honors in the team competition with 13 $\frac{1}{2}$ points.

Grandmaster Arthur Bisguier was again the hit of the tournament playing over 100 participants in a Friday night simultaneous and analyzing games for the budding young masters throughout the tournament.

The tournament was sponsored by the Cumberland County Chess Club and the American Chess Foundation and directed by Harry Sabine, Chief TD and his staff of top notch directors.

TENNESSEE'S TOP TEN PLAYERS

1.	Curt Jones	Nashville	2292
2.	Michael Carey	Nashville	2198
3.	Albert Wright	Memphis	2193
4.	Brian McCarthy	Hermitage	2190
5.	Paul Harless	Nashville	2181
6.	Leonard Dickerson	Knoxville	2159
7.	Emanuel Tsitsekli	Knoxville	2140
8.	Mahlon Smith	Memphis	2134
9.	Kenny Thomas	Memphis	2131
10.	Randy Cope	Memphis	2126

TENNESSEE'S TOP TEN WOMEN PLAYERS

1.	Sofi Zhislin	Nashville	1755
2.	Joy Wellman	Memphis	1475
3.	Susan Smathers	Crossville	1356
4.	Nancy Weaver	Crossville	1343
5.	Janet Schwartz	Memphis	1323
6.	April Bean	Knoxville	1299/11
7.	Camilla West	Nashville	1299/11
8.	Amy Knightly	Knoxville	1222/17
9.	Penny McGill	Maryville	1184/13
10.	Cathy Smith	Memphis	1178

TENNESSEE'S TOP TEN HIGH SCHOOL PLAYERS (Grades 10-12)

1.	Ronald Burnett	(10)	Eagleville	1994
2.	Barry D. Goode	(12)	ECS	1873
3.	Nils Gentner	(12)	Central	1851
4.	Robert G. Etter	(11)	Baylor	1840
5.	Chris Chambers	(11)	Webb	1823
6.	Bradley Watson	(11)	Webb	1820
7.	Terry Brudett	(12)	Cumberland Co.	1794
8.	Richard Weems	(10)	Baylor	1758
9.	Cary Long	(11)	Farragut	1733
10.	Matt Dolloff	(11)	MBA	1728

TENNESSEE'S TOP TEN JUNIOR HIGH PLAYERS (Grades 7-9)

1.	Chuck Lovingood	(9)	Martin	1921
2.	Tony McGill	(9)	Maryville	1681
3.	Chris Loyless	(8)	Martin	1649
4.	George Wallace	(9)	Martin	1615
5.	Mike Mitchell	(9)	Martin	1600
6.	Todd Etter	(9)	Baylor	1600/12
7.	Jeremy Hassler	(7)	Martin	1575
8.	Jay Sabine	(7)	Martin	1509
9.	Johnny Camilleri	(9)	Martin	1502
10.	Brian Jones	(7)	Sacred Heart	1497/6

TENNESSEE'S TOP TEN ELEMENTARY PLAYERS (Grades 4-6)

1.	Ted Mason	(5)	Auburndale	1540
2.	Sisomvang Phrommala	(6)	Bradley Model	1519/9
3.	Gus Lipman	(6)	Lusanne	1497
4.	Shane Day	(5)	Homestead	1432
5.	Robert Virden	(6)	Auburndale	1424/9
6.	Ian Wright	(4)	Capshaw	1418
7.	Ronnie Baylosis	(6)	Martin	1416
8.	Jim Grossl	(6)	So. Cumberland	1382
9.	Brian White	(6)	FACS	1376
10.	Chris Arfken	(5)	Thrasher	1365

TENNESSEE'S TOP TEN PRIMARY PLAYERS (Grades 3 & Below)

1.	Lee Hendricks	(3)	Reeves-Rogers	1519/10
2.	Sisompathana Phrommala	(3)	Bradley Model	1463/9
3.	Charles Smith	(3)	Franklin Rd. Christian	1399
4.	Shuho Fujii	(3)	Bradley Model	1383/14
5.	Thilavanh Phrommala	(2)	Bradley Model	1252/10
6.	Oliver Tai	(2)	Auburndale	1236/7
7.	Mark Burdick	(3)	Parkview	1233
8.	Randall Breeding	(3)	Homestead	1228
9.	Roger Breeding	(3)	Homestead	1226
10.	Todd Shimabukuro	(2)	Willowbrook	1211/5

TCA Board Members

PRESIDENT

Peter P. Lahde
2609 Sailboat Court
Nashville, TN 37217
H: 351-4588

VICE-PRESIDENT

Jack E. Smith
3436 Carnes, #6
Memphis, TN 38111
H: (901) 452-8779

SECRETARY-TREASURER

Harry D. Sabine
P.O. Box 381
Crossville, TN 38555
H: 484-4878
O: 484-9593

NEWSLETTER EDITOR

Gary Pylant
3397 Buchanan Ave.
Memphis, TN 38122
H: (901) 452-7028
O: (901) 454-2277

POSTAL EDITOR

Kent Meadows
206 - 30th Avenue, N.
Nashville, TN 37203
H: 320-0394

TOURNAMENT COORDINATOR

John L. White
P.O. Box 2587
Crossville, TN 38555
H: (615) 484-8377

DIRECTOR, EAST TENNESSEE

Richard Igou
400 Rhodora, Apt. F
Knoxville, TN 37923
H: 690-6810

DIRECTOR, MIDDLE TENNESSEE

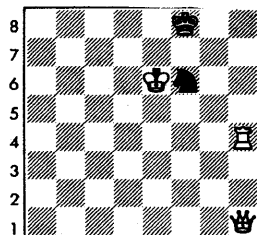
Johnson Moore
3424 - 33rd Avenue South
Nashville, TN 37212
H: (615) 383-8823

DIRECTOR, WEST TENNESSEE

Dale Flickinger
5247 Shelbourne Circle, #14
Memphis, TN 38134
H: (901) 382-3829

Evans on Chess

by GM Larry Evans



a b c d e f g h
White mates in 2 moves
BAD PREPARATION

Failure is our best teacher. It is always instructive to hear greats in any field confessing their greatest gaffes.

Mikhail Tal tells about the time he forgot to turn the page in preparing for a game against Aivar Gipslis during the 1958 Latvian Championship, two years before Tal became the youngest world champion in history at the age of 23.

Before this game I was preparing for my University Exam in old Church Slavonic, Old Russian, Dialectology,

surrounded by some ten kilos of specialist literature. Suddenly the door bell rang and the postman arrived with the latest issue of SHAKHMATNY BULLETIN.

I decided that fate itself was calling on me to relax, so I lay down in a hot bath and began reading the magazine. Straightaway I came across an article on a topical variation of the Sicilian Defense which I readily played as both White and Black. I read: "Recently Black has adopted the new continuation 15... e5. In two games Black won one and drew the other."

That's excellent, I thought, I'll have a quick draw with Gipslis and then return to philology. As if it had been prearranged, inside five minutes we played the moves given in the article.

The following morning I passed my exam but resigned the adjourned game. The first question Gipslis asked was: "Didn't you get the bulletin?" He took it out of his briefcase, pointed to 15... e5 and turned the page, whereupon I read the very

first line: "However *by answering with 16 Bc4! White sets his opponent problems."

White: GIPSLIS Black: TAL
Sicilian Defense 1958

1 e4	c5	28 Rxf4	Kc7?
2 Nf3	d6	29 Rxf6	Rxf6
3 d4	cxd4	30 Nd5 +	Kd6
4 Nxd4	Nf6	31 Nxf6	Ke5
5 Nc3	Nc6	32 Ng4 +	Kf4
6 Bg5	e6	33 Nxb6	Kg3
7 Qd2	e6	34 Ng8	Kxb4
8 0-0-0	Bd7	35 Nf6	Bf7
9 f4	h6	36 Ne4	Bd5
10 Bh4	Nxe4	37 g3 +	Kb3
11 Qe1	Nf6	38 Nc3	Bf3
12 Nf5	Qe5	39 Kd2	Kxg3
13 Nxd6 +	Bxd6	40 Kc3	Kg4
14 Rxd6	0-0-0	41 Kd4	Kf5
15 Rd2	e5?	42 e4	Bc6
16 Bc4!	exf4	43 e5	Bf3
17 Bxf6	gxf6	44 Ne2	Ke6
18 Bxf7	Bf5	45 Kc5	Ke5
19 Rf1	Ne5	46 Nb4	Ke4
20 Bd5	Ng6	47 Nd5	Ke5
21 Qf2	Kb8	48 c4	Bc2
22 Bf7	Rxd2	49 Ne7	Bd3
23 Qxd2	Rd8	50 b4	Bf1
24 Qf2	Rd6	51 Kb6	Kd4
25 Bxg6	Bxg6	52 c5	Bg2
26 Qxf4	Qg5	53 b5	Resigns
27 b4	Qxf4		

SOLUTION: 1 Rg4! Waiting. Pat
Benko, USA.

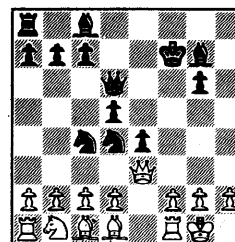
RATINGS:

Edwards	600
G'Fellers	564
Green	400
Inman	759
Irwin	605
Ishee	647
Jones, E	725
Lewis	652
Meadows	716
Ousley	582
Penuel	499
Smith	789
Stearns	816
Weldon	400

postal game of the month

TC -1-82: Larry Ousley -
Morris Lewis

1. P-K4 P-K4
2. N-KB3 P-KB4
3. B-QB4 PXP
4. NxP P-Q4
5. Q-KR5ch P-KN3
6. NxKNP PxN
7. QxR K-B2
8. B-K2 B-KN2
9. Q-KR7 N-Q2
10. Q-KR3 N-QN3
11. Q-KN3 N-KR3
12. 0-0 N-KB4
13. Q-QN3 N-Q5
14. O-K3 Q-Q3
15. B-Q1 N-B5



16. Q-N5 B-KB4
 17. P-KB3 N-K3
 18. Q-KN3 B-K4
 19. Q-K1 BxPch
 20. K-R1 R-R1
 21. R-B2 B-K4ch
 22. K-N1 B-Q5
 23. PXP Q-R7ch
 24. K-B1 N-KB5
 25. resigns
- 0:1

Good games, Morris. An excellent example of the consequences of time-wasting.

tennessee postal chess

with Kent Meadows

Addendum to last month's game of the month (by Lewis Inman): other possibilities are (A.) 19. N-R2? P-B6 20. NxP R-K3! and (B.) 19. N-K1 R-K3 20. P-B3 R-N3ch 21. N-N2 (21. K-B2? Q-R7ch) R-N6 22. R-KB1 R-K1 23. R-B2 R-K4 followed by 24...R-R4. Sorry that that was left out last issue, Lewis. Nice game.

The 1980 and 1981 championships are drawing to a close. In the 1980 finals, I have finished with a 6-2 score, but Bruce Stearns has a 3½-1½ score with one game remaining with Jack Smith and two games remaining with Bryant Penuel. If he wins two and draws the other, he ties me. If he wins all three he wins.

Mark Ishee is in the driver's seat in the '81 finals. Lewis Inman and Bill Irwin have finished with 3½-1½ scores. Mark has a 3-0 score with two games remaining, one with Inman, and one with Gary G'Fellers. All Mark needs is a draw to tie, and a win or two draws to win.

TC-1-83 has been completed, and we only need three more entries to join Gary G'Fellers to complete TC-2-83. Enter by sending \$6 (and \$4 more if not a TCA member) to:

Kent Meadows
206 30th Ave. N.
Nashville TN 37203

You play 6 games with 3 opponents - 2 games vs. each (one as white, one as black). You qualify for the finals by scoring 4 or better out of the possible 6 points.

All entry fees are returned as prizes to the top three places in the finals. You may enter more than one section. Enter today!

ENTRIES: TC-1-83: Gary Weldon, Bill Irwin, Jack Smith, and Gary G'Fellers
TC-2-83: Gary G'Fellers

RESULTS:
TC-F-80: Smith 1½ Ousley; Meadows 1½ Stearns ½.
TC-F-81: Irwin 1 G'Fellers; Irwin ½ Inman ½.
TC-1-82: Irwin ½ Lewis ½; G'Fellers ½ Ousley ½.
TC-2-82: Irwin 1 G'Fellers; E. Jones 2 G'Fellers; E. Jones 1 Edwards.

LETTERS TO THE EDITOR

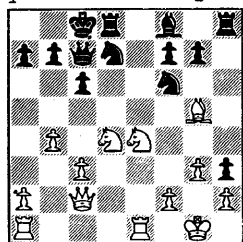
Dear Dr. Pylant:
Here is a game that you may be interested in. It is from the Southern Open 1974. One of the players, Tom Farr, is a long time friend of yours, a person whom you have known and admired for many years. In fact it has been said that the key factor in your rise to the very pinnacle of world chess that of International Grandmaster status has been a careful study of his games and playing technique.

Caro Kann Defence

James Mitchell - Tom Farr

- | | |
|----------|-------|
| 1. P-K4 | P-QB3 |
| 2. P-Q4 | P-Q4 |
| 3. N-QB3 | PxP |
| 4. NxP | B-B4 |
| 5. N-N3 | B-N3 |
| 6. P-QB3 | Q-B2 |
| 7. N-B3 | N-Q2 |
| 8. B-Q3 | BxB |
| 9. QxB | P-K3 |
| 10. O-O | KN-B3 |
| 11. R-K1 | O-O-O |
| 12. P-N4 | P-K4 |
| 13. Q-B2 | PxP |
| 14. NxP | P-KR4 |
| 15. B-N5 | P-R5 |
| 16. N-K4 | P-R6 |
| 17. P-N3 | ... |

Pause a minute and look at the threat of B-B4 after which his queen has only one square.



- | | |
|--------------|------|
| 17. ... | N-K4 |
| 18. NxN | PxN |
| 19. BxP | Q-Q3 |
| 20. Q-B5+ | N-Q2 |
| 21. BxP (R1) | Q-R3 |
| 22. NxP | QxN |
| 23. Q-K4 | Q-N4 |
| 24. Q-N4 | P-B3 |

Cheapo. I was, at this time however, affected with a condition that Kotov describes in his book, Think Like a Grandmaster, as dizziness due to success. In fact I was so dizzy thinking about the 30 USCF points that I had won my mind was on everything except the game. After 25. QxP he doesn't have anything.

- | | |
|---------|-----|
| 25. BxP | ... |
|---------|-----|

Being affected with the aforementioned condition I grab the pawn like a idiot. After all his knight is pinned.

- | | |
|---------|------|
| 25. ... | Q-B3 |
|---------|------|

Threatening mate and picking up the bishop. Even at this point I still have a relatively easy win but I managed to throw it away.

- | | |
|-----------|------|
| 26. QxP | QxB |
| 27. QR-B1 | B-R3 |
| 28. R-B2 | K-N1 |
| 29. Q-R4 | B-N4 |
| 30. Q-K4 | K-R1 |
| 31. P-QR4 | N-N3 |
| 32. P-R4 | B-R3 |
| 33. P-QR5 | N-R5 |
| 34. Q-K5 | ... |

Still another opportunity thrown away. After 34. Q-K8 he is up a creek without a paddle again. The queen hits the black knight. The knight has no place to go. His best try 34...Qb1 35. QxQ RxQ (or BxQ) 36. R-R1 and the knight falls. At this point, however, I was so disgusted that my mental processes were malfunctioning so badly that I was lucky I was able to remember how the pieces moved. Needless to say it's a lesson I'll never forget.

- | | |
|--------------|--------|
| 34. ... | Q-B1 |
| 35. R-R2 | B-N2 |
| 36. Q-K7 | NxP |
| 37. QxQ | BxQ |
| 38. R-B2 | BxP |
| 39. R(1)-QB1 | BxP |
| 40. RxN | BxR |
| 41. RxB | P-N4 |
| 42. P-R5 | P-N5 |
| 43. R-N3 | P-R4 |
| 44. P-N4 | R-QN1 |
| 45. P-R6 | P-R5 |
| 46. R-N1 | P-R6 |
| 47. P-R7 | P-R7 |
| 48. R-Q1 | P-N6 |
| 49. R-R1 | R-R1 |
| 50. K-N2 | RxP |
| 51. P-B4 | K-N2 |
| 52. P-N5 | P-N7 |
| 53. RxP | P-N8 Q |
| 54. R-KB2 | Q-R8+ |
| 55. Resigns, | |

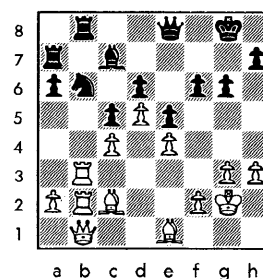
Sincerely,
James H. Mitchell
International Grandmaster

Queen Pawn Game

Patrick Schneitman (1755) -
Brian McCarthy (2190)

I have since been shown where I missed the win, even so, I still believe that the game makes for interesting reading. Event: ACUI Regional (held in Knoxville at UT); Date: Feb. 10, 11, & 12. (notes by Schneitman)

- | | | | | | | | |
|----------|-----------|----------------------------|-------------------------------|------------------------------|----------------------------|-----------------------------|---------|
| 1. d4 g6 | 2. g3 Bg7 | 3. Bg2 | Nf6 | 4. Nf3 | O-O | 5. O-O | c5 |
| 6. d5 | d6 | 7. c4 | Na6 | 8. Nc3 | Nc7 | 9. Re1 | a6 |
| 10. e4 | b5 | 11. Rb1 | bc | (11...b4?! 12. Na4 | followed by b3 is good for | White.) | 12. Nd2 |
| Bg4 | 13. Qc2 | Nb5 | 14. Nc4 | Nd4 | 15. Qd3 | Rb8 | 16. h3 |
| Bd7 | 17. Ne2 | Ne2+ | 18. Qe2 | Bb5 | 19. Bd2?! (19. Qc2 | followed by Bd2 is better.) | Nd7 |
| 20. b3 | Nb6 | 21. Qd3 | e5 | 22. Qc2 | Bc4 | 23. bc4 | Qe8 |
| 24. Rb3 | Qa4 | 25. Bf1 | Rb7 | 26. Rebl | Rfb8 | 27. Rblb2 | Bf6 |
| 28. Qbl | Bd8 | 29. Bd3 | f6 | 30. Kg2 | Bc7 | 31. Bel | Ra7 |
| 32. Bc2 | Qe8 | (At this point Black has 4 | minutes left for time control | , while White has 12 minutes | remaining.) | | |



- | | | | | | | |
|-----------|---|------------------------|----------|---------|---------------|---------|
| 33. Ba5 | (Editor's note: Why not try 33. Rb6, getting two pieces for a rook!) | 33... Nd7 | 34. Rb8 | Bb8 | 35. Ba4 | Bc7 |
| 36. Bc7 | Rc7 | 37. Rb8 | Rc8 | 38. Rb7 | Rd8 | 39. Qb3 |
| Kf8 | 40. Bc6 | Qe7 | 41. Qa4 | Ke8 | 42. Qa6 | f5 |
| 43. Qa7? | (43. ef5 is the better move by far.) | 43... fe4 | 44. a4 | Qf7 | 45. a5?! Qf3+ | 46. Kg1 |
| Qd1+ | 47. Kh2 | Qf3?! (47...Qe2 best.) | 48. Rb2 | Qc3 | 49. Rb8 | Rb8 |
| 50. Qd7+? | (50. Qb8+ Ke7 51. Qc7 does not give Black the chance to walk his king.) | 50...Kf8 | 51. Qd6+ | Kg7 | 52. Qb8 | e3 |
| 53. Qe8?? | (53. Qc7!) ef2 | 54. Qe7+ | Kg8 | ½ - ½ | | |

HELP !

Due to the increase in mail costs and printing, TCA is offering a proposed change in memberships. We will still have the regular low fee (\$4) for annual dues. Tennessee is one of few states left that have such a low membership fee (most states charge 5 to 8 dollars).

Article I - Membership

Section 5 - Patron Membership

Any person may become a patron member of the Association by paying annual dues of twenty-five dollars (\$25). Patron dues shall be payable annually and shall be good for one year from the first day of the month payment is received. All patron members shall enjoy full privileges in the Association, including the right to vote and hold office. Patron members shall receive the newsletter published by the Association by first class mail, shall receive a special membership card, and shall have their names published in each issue of the newsletter of the Association.

PROPOSED BY LAWS CHANGE TO CREATE THE OFFICE OF SCHOLASTIC COORDINATOR

Section 5 - Duties of Officers.

(h) The scholastic coordinator

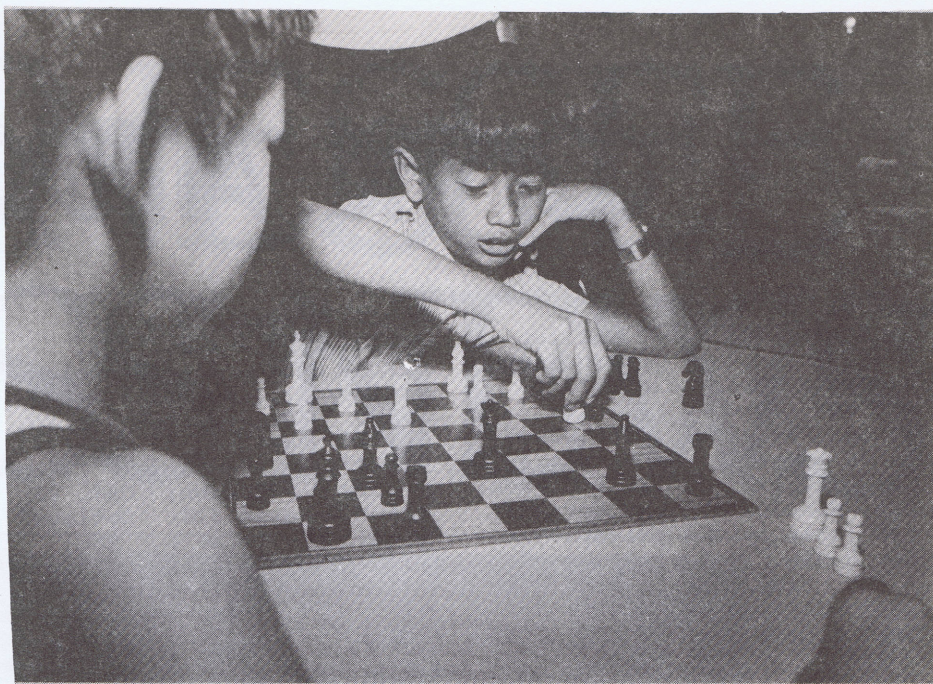
(1) shall be responsible for coordinating all scholastic programs by the Association.

(2) shall maintain a list of all schools in Tennessee which have scholastic programs.

(3) shall make a report at the annual membership meeting.

MURFREESBORO FALL SCHOLASTICS

On Nov. 6, 40 young chess players competed in the 1982 Murfreesboro Fall Scholastics. The tournament was divided into three sections of grades 1-3, 4-6, and 7-9, and was held at the Franklin Road Christian School.



Sisompathama on the move against Shulo Fujii
Photo by Charlie Hunt.

In the Primary section Lee Hendricks took first with a perfect 4-0 score. This was Lee's first tournament, and on his way to first place he defeated top rateds Charles Smith, and Sisompathana Phrommala all with 3-1 scores. Thilavanh Phrommala placed 5th and 6th place went to Gary Shirey.

In the Elementary section Sisomvang Phrommala, another Unr. player, won 1st with 3½ points. Second through sixth place went to Sourisouk Sombounsith, Jason Wilkerson, Al Wilkerson, Robert Smith, and Paul Jones all with 3-0. Twenty players competed in this section.

In the Junior High section Andrew Rawlins placed 1st with a perfect 4-0. Eric Black, Scott Turner, Mike Jacobs, Hideaki Yoshida, and Wally Hinton placed 2nd - 6th respectively.

reported by Donald Burgess, TD

A team of bilingual students representing Bradley Model School in Murfreesboro placed third in the Primary Division of the 1982 Crossville Scholastics Chess Tournament. The tournament was held at Martin Junior High in Crossville on December 4th and 5th 1982. Over 300 players representing schools in several states entered the tournament.

In the Primary Division (3rd grade and below) there was a tie for first place between Cherry River Elementary (Richwood, WV) and Homestead Elementary of Crossville. Both teams had a total of 13½ points. They were closely followed by Bradley Model with 12½ points. Ten schools were represented in the Primary Division.

This was the first time Bradley Model School had ever entered team competition in chess. The two first place teams in the Primary Division, Cherry River and Homestead, are the 1982 state champions for their respective states.

Sisompathana Phrommala, who had never played chess until this summer, received the third place individual trophy at the Crossville tournament. His teammate Shuho Fujii, the only team member who knew how to play chess before July 1982 won the 6th place trophy. The other team members at Crossville were Thilavanh Phrommala, Sengamphone Phrommala, and Phoungoun Sombounsith. Shuho Fujii is a citizen of Japan; the other four team members are refugee children from Laos.

The coach of the team is Sisomvang Phrommala, a 6th grade student at Bradley Model School. Harry Sabine of Crossville was the tournament director.

Source:
Rutherford County Rank and File, Murfreesboro. TN 37130

COMING ATTRACTIONS

MAR 19-20 MUSIC CITY

WINTER: 5ss, 50/2, Hilton Airport Inn, One International Plaza, Nashville 37217.
EF: \$20 if rec'd by 3-14.
\$5 more at site. \$360 based on 30 players: \$100, 60, 40. Cat. II, III, and IV \$40 each. Cat. V&below (VI and Unrated) \$40 (this is one prize).
RG: 8-9AM. RDS: 9:30, 2, 7; 9, 2. Send entries to: Music City Chess, 2609 Sailboat Court, Nashville, TN 37217.

MAR 26-27 BLUFF CITY OPEN:

5ss, 40/100, Quality Inn - Airport, 1400 Springbrook Rd., Memphis, TN, 38106.
EF: \$20 in advance; \$5 more at site. Masters free entry deducted from winnings. Unrateds: \$5 entry (eligible for UNR prize only). Based on 55 players: 600 at \$20. \$200-100, CM, Cat. I, II, III, IV/below each \$60, UNR trophy. (5 per class minimum).
RG: 8-9:30AM. RDS: 10-3-8; 10-3. ENT: Paul Linxwiler, 5980 Southampton, Memphis, TN, 38119 (901-683-5860) LS.

APR 9 CUMBERLAND COUNTY

SPRING OPEN: 4ss, 40/1, Martin Junior High School, Stanley St., Crossville, TN 38555. EF: \$6. TCA \$4. \$\$ (250 based on 45 players) 1st \$75 (guaranteed); Cat. I thru V \$30 each; Cat. VI \$15; Unrated \$10. Optional trophies available. REG: 7:30-8:30. RDS: 9-11:30-2:30-5:30. ENT: Harry Sabine, P.O. Box 381, Crossville, TN 38555.

APR 16 CHOO CHOO TOWN TORN-

ADO I: (date tentative) Chattanooga.

APR 31 - May 1 NATIONAL

ELEMENTARY: Memphis

MAY 7-8 TENN. VALLEY OPEN:

(date tentative) Murfreesboro.

MAY 14 COOKEVILLE SPRING OPEN

MAY 21-22 MUSIC CITY SPRING OPEN: Nashville

MAY 28-29 MEMPHIS IN MAY OPEN

JUN 4 CUMBERLAND COUNTY SUM-

MER: Crossville.

JUN 9 CHOO CHOO TOWN TORNADO

II: (date tentative) Chattanooga.

JUL 23-24 MUSIC CITY GRAND

PRIX: Nashville.

AUG 13 COOKEVILLE SUMMER OPEN

AUG 13-14 KING COTTON OPEN:

Memphis.

SEP 3-5 TENN. OPEN: Nashville

SEP 17 CHOO CHOO TOWN TORNADO

III: (date tentative) Chattanooga.

SEP 24 CUMBERLAND COUNTY FALL

Crossville.

OCT 15 COOKEVILLE FALL OPEN.

NOV 5-6 FAIRFIELD GLADE OPEN

Crossville.

NOV 25-26 MID-SOUTH OPEN:

Memphis

DEC 3-4 CROSSVILLE SCHOLAS-

TICS: Crossville.

TENNESSEE CHESS ASSOCIATION

Gary M. Pylant
3397 Buchanan Avenue
Memphis, TN 38122

Nonprofit Organ.
U.S. Postage
PAID
Memphis, TN
Permit No. 1677

GARY PYLANT

AVE

22