



## TENNESSEE CHESS NEWS

### FALL 2008

VOLUME 51

NO. 4

Tenn. Open Championship .....	5
Tenn. Senior Open .....	6
Alcoa Tornado Tournament .....	7
Cumberland Co. Fall .....	8
Tennessee Tempo Team .....	9

---

---

#### Tennessee Chess Association Tournament Calender from the TCA Website

Nov. 29, 2008

#### **48<sup>th</sup> Mid-South Open**

Hampton Inn, Memphis, TN  
Entries: Memphis Chess Club  
e-mail: [gpylant@gmail.com](mailto:gpylant@gmail.com)

January 17-18, 2009

#### **Tennessee Class Championships**

Measurement Inc., 1-24 West and Haywood LN  
3800 Ezell Rd., Nashville, TN 37211  
Hotel: Country Inn & Suites; tel: 615-731-8540  
Entries: Chris Prosser (615) 399-8432  
e-mail: [regioniii@aol.com](mailto:regioniii@aol.com)

January 24, 2009

#### **TN State Individual Scholastic Qualifiers**

Region 1: University of Tennessee, Knoxville  
Region 2: Cleveland Middle School, Cleveland  
Region 3: Wright Middle School, Nashville  
Region 4: St. George's Independent, Germantown  
See TCA website for contacts: [www.tnchess.org](http://www.tnchess.org)

February 14, 2009

#### **TN State Individual Scholastic Finals**

Univ. Center, TN. Technological Ctr.  
Cookeville, TN  
Harry Sabine (931) 484-9593

TENNESSEE CHESS NEWS is the official publication of the  
Tennessee Chess Association.

## MEMBERSHIPS

TCA annual dues are \$15 for a *regular* membership or *student* membership. Additional members of a family may join for one dollar each, but only one issue of **TCN** will be mailed per family. For those wishing to join after March 1st of any year, a \$20.00 membership is available for the remainder of that year and includes the following year. All non-patron memberships expire August 31.

**Tax-deductible Patron Memberships** are available beginning at \$100 per year for those who wish to help support the TCA and the FFTC. These memberships expire one year from the date of payment. Patron membership categories and benefits are as follows:

### PATRON \$100

- One year TCA Membership and FFTC membership plus a key ring.

### PATRON KING \$300

- All Patron benefits plus one year free TCA and FFTC membership for all members of the Patron King's immediate family & free entry into the TN State Scholastic Individual Regional Tournament for the member and all members of the Patron King's immediate family.

### PATRON MASTER \$500

- All Patron King benefits plus one free entry to any TCA or FFTC sponsored Open Chess Tournament. The Patron Master or any member of his/her immediate family can use such free entry.

### PATRON GRANDMASTER \$1000 (or more)

- All Patron Master benefits plus a chess clock and their name on a permanent plaque to be placed on the wall at the home of the TCA and FFTC.

## TOURNAMENT ANNOUNCEMENTS

**TCN** prints listings of upcoming tournaments that require TCA membership in each issue for free. Submit complete TLA information to Larry Grohn, Tournament Coordinator.

E-MAIL: LarryGrohn@comcast.net

## TN CHESS NEWS STAFF

**Editor:**  
Leonard Dickerson

**Contributors:**  
Bill Davis  
Roy Manners  
Corry Marsh  
Chris Prosser

TCN publishing schedule and  
deadline for submissions:

Spring 2008 - May 1 covering

Feb, Mar, and Apr events

**Deadline: Apr 11, 2008**

Summer 2008 - Aug 1 covering

May, Jun, and Jul events

**Deadline: July 11, 2008**

Fall 2008 - Nov 1 covering

Aug, Sept, and Oct events

**Deadline: Oct 11, 2008**

Winter 2009 - Feb 1 covering

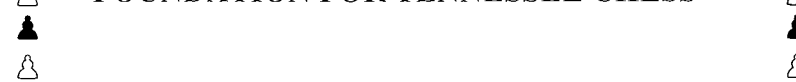
Nov, Dec, and Jan events

**Deadline: Jan 11, 2009**

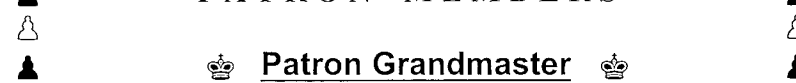
Please submit material by e-mail  
to: [lsdick@tds.net](mailto:lsdick@tds.net)



## TENNESSEE CHESS ASSOCIATION & FOUNDATION FOR TENNESSEE CHESS



## PATRON MEMBERS



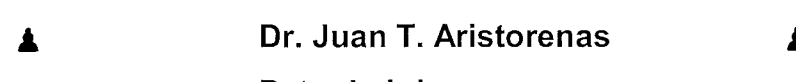
♔ Patron Grandmaster ♔



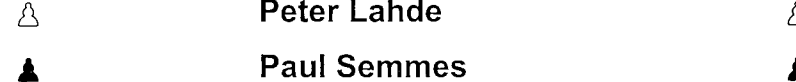
Dr. Martin Katahn



♘ Patron Member ♘



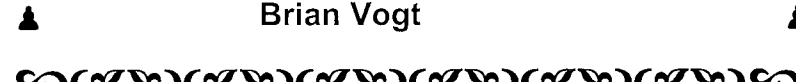
Dr. Juan T. Aristorenas



Peter Lahde



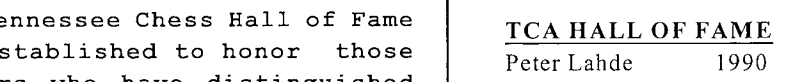
Paul Semmes



R. K. Shimabukuro



Brian Vogt



The Tennessee Chess Hall of Fame was established to honor those members who have distinguished themselves through their outstanding achievements in chess, either in competition or in chess organization or promotion. Peter Lahde is chairman of the electing committee, and guidelines for nominations are posted onsite.

### TCA HALL OF FAME

Peter Lahde	1990
Robert Coveyou	1990
Jerry Sullivan	1990
Martin Southern	1990
Tom Finucane	1990
Robert Scrivener	1990
L. Hunter Weeks	1990
John Hurt	1992
James A. Sweets	1993
Rea Hayes	1997
James A. Wright	1998
Dr. Martin Katahn	2002
David Burris	2003
Albert Hodges	2005

## NOTATIONS FROM THE PRESIDENT

I was quite honored to be elected president of the Tennessee Chess Association at the August 29<sup>th</sup> Membership Meeting. At that time, I made a few remarks about what I thought that the TCA could and should be doing for our chess community across the state. The board has already begun to implement some of the initiatives such as a retooling of our state championship, the creation of the new state class championship, and the design and construction of a new web site.

I also pointed out what I believe that the *members could be doing to assist the TCA* and, in doing so, help themselves. To be blunt, that assistance has to do with the sponsorship of TCA tournaments. I encourage those of you out there who know of corporations or individuals who might be interested in sponsoring a TCA tournament—scholastic and/or adult—to get in touch with me so that I may act on the information. The TCA members are the eyes and ears of the organization and, given our numbers, there seems to be no reason why we cannot identify prospects. Sponsorship could mean better playing conditions and, possibly, healthier prize funds to name a few benefits.

Finally—and we have been remiss in this action—the TCA will ask that the members fill out surveys that we will make available to you at future tournaments. We may also include surveys on our new web site. We need to know what you are thinking and what you suggest that the TCA could be doing differently at tournaments, on the new web site, etc. But do not wait on all that: E-mail me at [straightleg111@aol.com](mailto:straightleg111@aol.com) with your thoughts. All for now.

Malcolm Estrada

## FROM THE EDITOR

I hope that I represent all Tennessee chess players when I **thank Chris Prosser** for his able administration of the presidency while also maintaining his position as Secretary. He did an excellent job. Even while filling in for only a short time, he made a significant impact. He introduced new initiatives, started a membership drive that has already resulted in a few more patrons signing up, chaired regular board meetings, and—most importantly—assured that a suitable replacement had been identified for president before he turned over the office. We appreciate his service and hard work.

Todd Andrews is again the **Tennessee Open's** co-champion, this year tieing with Ronald Burnett instead of Peter Bereolos. Ben Blair captured the Tenn. Amateur Champion title. And Erick Lorinc won the Tenn. Novice Championship with an undefeated 4.5 points.

Crosstables for the TN Open would have been included if I could have obtained the files soon enough to reformat the crosstables. Nonetheless, all the submitted games from the Open Section and many others from the Amateur and Novice sections of the Tenn. Championship have been included.

Dr. John Patty of Crossville captured the **2008 Tenn. Senior Championship**. He won the 4-round Swiss with 3.5 of 4.0 points. In an effort to attract more players and allow for better quality games, Bill Davis of Crossville (Fairfield Glade) is preparing to host next year's Senior Open in Crossville and increase the time limit to at least 90 minutes a game if not 120 minutes. Depending upon the time limit chosen, the event may be held over two days instead of just one. These changes will likely be more attractive to seasoned players more leisurely pace. If you are a senior (over 50 years) and these proposed conditions sound appealing, please let Bill know now so that he can include your ideas into restructuring the tournament and get an idea of the number of participants that he can perhaps expect. You can e-mail him at [wsdmttd@hotmail.com](mailto:wsdmtd@hotmail.com).

The **North Tenn. Winter Open** will not be held this year because the hotel site is no longer available. It will be replaced by the **Tenn. Class Championship** which will be held on January 12-18. See page 37.

### *Tennessee Class Championship*

*January 17-18, 2009*

*\$3,000 Guaranteed Prize Fund*

*Site: Measurement, Inc; Nashville, TN*

See Ad

on page

37.

## The 62<sup>nd</sup> Tennessee Open

The Tennessee Open Championship was held August 30-31 in Crossville, with \$4,000 guaranteed money. In the Open Section, 47 players—including a 419-rated with high ambitions—participated; in the Amateur Section 19 players played; and 32 players competed in the Novice Section. The Chief TD was Darrell Watt, assisted by Harry Sabine.

**Ronald Burnett and Todd Andrews** tied with 4.5 points to become Tennessee co-champions on August 31<sup>st</sup>. Ron suffered an early third round draw with Joshua Suich, and Todd gave up a second round draw to William Bragg of Kentucky. (Burnett's game with Joshua Suich is presented on page 28 and Todd's draw is presented on page 32.) With an undefeated 4.0 points, Jerry Wheeler took sole 3<sup>rd</sup> place.

Even with giving up two draws, **Ben Blair dominated the Amateur Section** and captured the Amateur title with 4.0 points. (Blair's critical game with Bertram immediately follows and his game with Fu is on page 34.) Bertram and Dewitt went undefeated but had one too many draws to join Ben at the top. Instead, they tied

for 2nd-6th along with Victor Suich, Richard Thomas, and Nicole Belitz who all totaled 3.5 points. Moreover, Brittney Dewitt gained a massive 83 points from the event, jumping from 1373 to 1456.

In the **Novice Section (under 1400)**, **Erick Lorinc** gained the title with 4.5 points. Trailing a half-point behind were Sanchit Wadhawan, Jesse Norton, Cary Carter, and Christopher Welch. Key games that contributed to Lorinc's dominance were his game with Sanchit (page 34) and Ragan (page 15).

All games that were submitted by those in the Open Section are analyzed and included. The key games submitted from the Amateur and Novice section are also analyzed with others presented without comment.

**TN Open — AMATEUR (5)**  
**David Bertram (1553)**  
**Ben Blair (1503)**

1. d4 d5 2. c4 e6 3. Nf3 Nf6 4. e3 Nbd7 5. Nc3 Bb4 6. Bd2 c6 7. a3 Bxc3 8. Bxc3 Ne4 9. Rcl O-O 10. c5 b6 11. b4 b5 12. Bd3 f5 13. h4 Qf6 14. Ng5 Black actually has an advantage here: 14... Nxc3 15. Rxc3 e5 16. Qc2 a5. But all Blair needed was a draw to secure the Amateur Championship. **1/2-1/2**

## 2008 SENIOR OPEN

The 4-round Senior Open was held at the Nashville Chess Center on September 27. Ten seniors (50 years old and above) competed in the G-60 event, and Dr. John Patty of Crossville emerged the undefeated champion. A short biography of this new face in Tennessee is provided on page 7. Moreover, because Chris Prosser transcribed all of the scoresheets, most of the games are included in this issue. Last year's top finishers--Jerry Spinrad and Edward Lebate--did not participate in the event this year.

Player Name	Total	Round	Round	Round	Round
USCF ID/Rtg (Pre->Post)	Pts	1	2	3	4
1.   JOHN PATTY	3.5	W 7	W 8	W 4	D 2
TN   12397977 / R: 2200 ->2200					
2.   PETER CIARLEGLIO	3.0	W 5	D 3	W6	D 1
TN   10241804 / R: 1700 ->1735					
3.   BIN LI	3.0	W 6	D 2	D 8	W 4
TN   13511415 / R: 1723 ->1733					
4.   JAMES D HUGHES	2.0	W 10	W 7	L 1	L 3
TN  12222390 / R: 1629 ->1627					
5.   WIEB VAN DER MEER	2.0	L 2	W 9	L 7	W 8
TN   12552192 / R: 1472 ->1491					
6.   FRANK HOTZ	2.0	L 3	W 10	L 2	W 9
KY   12484392 /R: 1402P25->1415					
7.   VICTOR W SUICH	2.0	L 1	L 4	W 5	W 10
TN   12732019 / R: 1491 ->1499					
8.   PETER P LAHDE	1.5	W 9	L 1	D 3	L 5
TN   10242452 / R: 1635->1623					
9.   FRED C STANDBROOK	1.0	L 8	L 5	W 10	L 6
TN   12075300 / R: 1439 ->1400					
10.  JAMES TRENER	0.0	L 4	L 6	L 9	L 7
TN   13977182 / R: 1033P7 ->1027P11					

## Alcoa Tornado Tournament

Submitted by Corry Marsh

"On September 27, 2008, the Tornado Tournament had solid success hosting scholastic players from the areas of Chattanooga, Cookeville, Knoxville, and Maryville/Alcoa. It was held at Alcoa Middle School. Sections for Open, U1200, U750, and Unrated were advertised, but the top 2 groupings were combined to make more competitive pairings. At the end of the tournament, the Open and U1200 were separated again to award the prizes. Trophies were awarded to the top five players of each section.

Our winners for the **Unrated Section** were: 1st Conner Davidson, 2nd Zack Garrett, 3rd Cole Lonker, 4<sup>th</sup> William Carter, and 5th Daulton Potenza. Winners for the **U750 Section** were: 1st Jacob Hoyos, 2nd Hunter Marsh, 3rd Rajat Agarwal, 4th Anna Blue, and 5th Adrian Gellert. Our champions for the **U1200** were: 1st Matthew Klawonn, 2nd Neel Madhukar, 3rd Kai Smith, 4th Albert Xue, 5th Isabel Gellert. **Open Section** winners were: Jason Fu in 1st place, 2nd Sanchit Wadhawan, 3rd Charles Blue, and Erick Lorinc finished out the section in fourth place. Feedback from participants of this tournament indicates a desire to have another such event at this venue this winter. Please continue to check back to the TCA website for its information to be posted soon. A special thanks to all the volunteers who helped make this Tornado Tournament fun and successful!"

The Chief TD Corry Marsh was assisted by his brother Matthew. Crosstables from the event are on pages 29 and 30. Two games by the champion are provided on pages 17 and 22. The games show the top three finishers of the Open Section in action and the competitiveness of the tournament.

**Dr. John Patty—the 2008 Tenn. Senior Open Champion**—is a Life Chess Master who moved to Fairfield Glade from Texas this year. He is in his early 70s and is a clinical psychologist. He won the Texas State championship, Texas Sr. Championship (5 times), California Sr. Championship (3 times), Toronto City Championship (6 times), the National championships of Namibia and Costa Rica, as well as many other city, state, and provincial championships in U.S. and Canada.

## Cumberland Co. Fall Open

The Cumberland Co. Fall chess tournament was held on October 11. It provided two sections, with the Amateur Section being limited to those with ratings under 1000. Jay Sabine directed and Susan Houston worked the computer.

Twenty-five players competed in the Open Section. Joshua Suich won with a perfect 4.0 after outplaying his brother Peter in a tense rook and pawn ending in the final round. With 3.0 points, Peter and I tied for second by rule because Alan Kantor (who drew over my corpse by perpetual check after sacrificing a rook) was a house player. Also trailing with 3.0 points was Scott Cantrell, Terrence Burdett, and James Hughes.

The Amateur Section had 32 players. Joshua Lynn won the section with 4.0 points, and Victoria Suich took clear second with an undefeated 3.5 points. It is for certain that high-schooler Jake Knanishu should have also finished with 4 points, but he lost in Round 3 to another 3-point finisher (Ricky Cravens) while being in essence a queen up but visibly nervous because of mutual time pressure. Kevin Hong also finished with 3 points and netted about 170 points! While talking about gains, Joshua Lynn aggrandized his rating by tacking on another 99 points-making himself ineligible for entry into the Amateur Section of the upcoming Cumberland Co. Winter Open (unless, of course, he dumps some points).

## Anand Remains World Champion

The 12-game **World Chess Championship** match between Viswanathan Anand (India) and Vladimir Kramnik (Russia) in Boon, Germany concluded on October 29 after the World Unified Champion cinched the match with a 6.5-4.5 score by winning the first 3 of 6 games and then conceding only one loss. The prize fund of approximately 2.35 million dollars will be equally split among the contestants.

On **August 4 Vishy Anand won the Rapid World Championship Chess Classic**. He is the Rapid World champion of chess for the 9th straight year, having won the title eleven times total. He finished  $\frac{1}{2}$  ahead of Magnus Carlsen, whom he beat with the Black pieces in their 4-game match.

TCN/Fall 2008\_08

## Stepping Up the Tempo

On October 29, the Tempo—who were already eliminated from the playoffs—finished their season 16.5 points of 40 (10 rounds). GM Jaan Ehlevest has been playing for the Team since Week 4 (9/17/2008) and the Tempo's results reflect the lessening of the rating differential. Review of our record-below-promises a winning season next year! The below article by Peter Bereolos illuminates the frustrations of playing USCL games.

### Tenn. Tempo Record

Carolina vs T:	1-3
T vs Seattle:	2-2
Chicago vs T:	0-4
T vs. Arizona:	1.5-2.5
Miami vs T:	2-2
T vs Dallas:	2.5-1.5
T vs. Chicago:	1.5-2.5
San Francisco:	1-3
Seattle vs T:	2.5-1.5
T vs Baltimore:	2.5-1.5

### Bereolos: Game of the Week!

On Sept. 5th the Tempo took on the Seattle Sluggers in a USCL match on the ICC via the Internet. We were able to tie the match because of Pete Bereolos' spectacular win. Pete was irritated that the game didn't receive the recognition that he felt it deserved. Moreover, GM Joel Benjamin, in his 9-19-08 Game of the Week feature on ICC, largely agrees with Pete's comments of being

robbed of Game of the Week honors. Hence I am going to let the readers be the judge of the merits of this nice game by presenting the game with all of Pete's commentary from his website:

"Wednesday it was pure joy winning to give the Tempo an upset draw against the Seattle Sluggers, who had dominated our previous meetings. Today, it was a bit back down to earth as I got totally jobbed out of 2nd place in the Game of Week voting.

I don't really have a problem with the decision to make Bhat-Tate the first-place game, but the Becerra-Charbonneau game was totally overrated in my opinion. Both Greg Shahade and Jonathan Hilton had my game second and that one 3rd, but Arun Sharma placed it second while relegating mine all the way to 5th!! While Julio played a fine game, which could be a textbook example of exploiting a weak square, it was mostly due to the fact that Pascal put up no resistance whatsoever. Becerra didn't have to find any difficult moves the whole game and as the judges pointed out even Black's resignation was too early, especially in a team event. Arun's assessment of my game

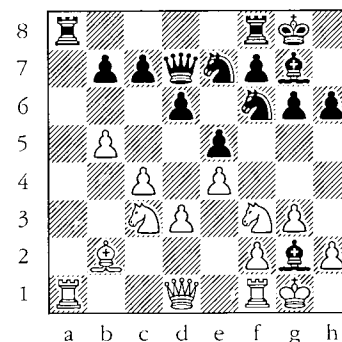
was basically that I was worse the whole way and got lucky when he blundered in time pressure. I hope my notes will show that to be a very superficial assessment.

I wasn't expecting to play this week, but was pressed into emergency service on Board 2 as neither Ehlevest or Burnett was available to play.

FM Slava Mikhailuk (SEA)

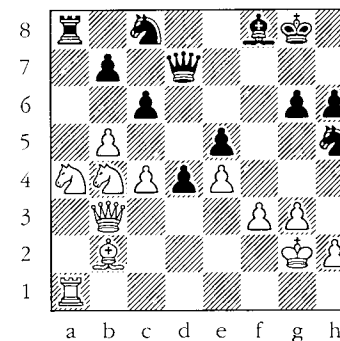
FM Peter Bereolos (TEN)

1. c4 g6 2. Nc3 Bg7 3. g3 e5 4. Bg2 d6 5. d3 Nc6 6. Rb1 a5 7. a3 Nf6 8. b4 axb4 9. axb4 O-O 10. b5 Ne7 11. Nf3 h6 12. O-O Be6 13. Bb2 Qd7 14. Ral Bh3 15. e4 Bxg2

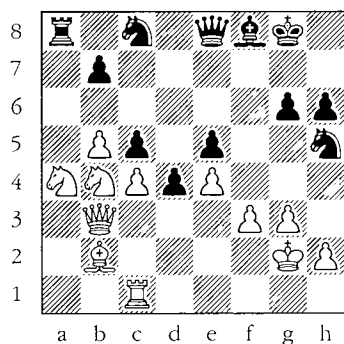


The first move outside of book, but he had played very slowly and I already had a huge time advantage. Vaganian-Volke continued along similar lines, but Black first surrendered the a-file with 15... Rxa1 16. Qxa1. I think if Black is going to cede the a-file a better method is 15... Rab8

hoping that the rook can later participate in kingside operations. 16. Kxg2 Nh5 17. Rxa8 I got a bit frustrated here. The official score will show that my opponent spent 2:20 here, but it was more like 10 minutes, as he disconnected twice. I was awarded 1 minute for each disconnection, but it is still a very sore spot with the Tempo that in our very first match in the USCL we were forced to go to the phones after our connection was lost twice. There was at least one other time when his clock wasn't running. It makes it very distracting to play when those sorts of things are happening. Also, I would have preferred to have time deducted from his clock as he got to study the position the entire time while I still had more than the starting time on my clock. 17... Rxa8 18. Ne1 f5 19. f3 c6 20. Nc2 d5 21. Nb4 d4 22. Na4 Nc8 23. Qb3 Bf8 24. Ral fxe4 25. dxe4



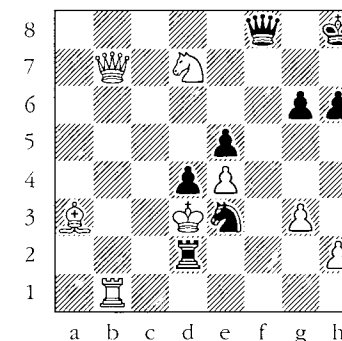
This [25. dxe4] seems a bit double-edged since Black gets a protected passer. However, White gets a great blockading square on d3 for a knight. The alternative capture 25. fxe4 allows Black to probably draw at once with 25... Nf4+ since 26. gxf4 Qg4+ 27. Kf2 Qxf4+ 28. Ke1 Qe3+ 29. Kd1 Bxb4 30. Qxb4 Qxd3+ 31. Kc1 Qxe4 looks quite dangerous for White. Or Black could try for more with the immediate 25... Qg4 25... Qe8. Not 25... c5?? 26. Nxc5 +/- 25... Qe8 26. Rc1 Since White will probably need more than one open line on the queenside, he probably should have taken his last chance to play 26. c5+ followed by 27. bxc6 26... c5.



It looks a bit anti-positional to allow the knight into d5 (and this probably helped hypnotize the judges as Becerra won effortlessly with his Nd5) but Black easily plays around this knight which

hits on air. The other White pieces are now extremely limited in scope so Black has plenty of time to reorganize his pieces. 27. Nd5 Qd8 28. b6 otherwise Black will play b6 himself, but now the b6-pawn becomes a target itself 28... Nf6 29. Ba3 Nd7 The attempt to free the position tactically fails 29... Nxd5 30. cxd5 (30. exd5 Qg5 31. Rc2 Qe3) 30... c4 31. Rxc4 Bxa3 32. d6! Kh8 33. Qxa3 Nxb6 34. Nxb6 Rxa3 35. Rc8 and White wins. 30. Qb5 Kh8 sidestepping the threatened Qxd7. I was trying to win the b-pawn without giving up the c-pawn, but perhaps I could have grabbed the b-pawn here since 30... Ncxb6 31. Naxb6 Nxb6 32. Bxc5 (32. Ra1 is better) runs into 32... Ra2+ 33. Kg1 Nxd5 34. cxd5 Qg5 with a winning attack. 31. Rb1 Nd6 32. Qb3 Rc8 33. Nb2 Rc6 34. Nd3 Nc8 35. Qb5 Ncxb6. Around here it was obvious that the score in the match was going to be 2-1 in Seattle's favor, so I knew it was all up to me. 36. Qa5 Be7 37. Nxe7 The first step in the wrong direction 37. Rb5 Nxc4 38. Qxd8+ Bxd8 39. Rxb7 Rd6 40. Bxc5 Nxc5 41. Nxc5 Ne3+ 42. Nxe3 dxe3 looks about equal. 37... Qxe7 38. Nxc5? Another equal ending arises after 38. Bxc5 Nxc5 39. Nxc5 Qxc5 40. Qxc5 Rxc5 41. Rxb6 Rxc4

but he was probably lured by the opposition of Ba3 on the diagonal with the black queen. 38... Nxc4 39. Qa8+ Qf8 40. Qxb7 This loses, but in pretty bad time pressure he obviously didn't want to play 40. Qxf8+ Nxf8 and Black should prevail with his extra pawn. I took some time here as Black has a lot of choices and pieces are hanging all over the place. Finally I found the idea with ...Rd2+ at the end and played 40... Ne3+ My original intention when playing Nxc4 had been 40... Nxa3 hitting Rb1 and Nc5, but he has a couple of ways to escape 41. Qxc6 Nxc5 (41... Qxc5?? 42. Rb8+) 42. Rb8 (42. Ra1 or 42. Rc1 is met by 42...Nb3) 42...Qxb8 43. Qf6+ with perpetual check or 41. Nxd7 Rc2+ 42. Kh3 Qxf3 43. Qb8+ and again White gives perpetual check. 41. Kf2 Rf6 White seems to escape again after 41... Rxc5 42. Qxd7 (42. Bxc5 Qxc5 is a much better version of the previous Q+2N vs. Q+R ending for Black since White has no perpetual) 42... Rc2+ 43. Ke1 Qg8 threatening Re2+ 44. Qb5 and now it looks like Black has nothing better than a repetition with 44...Ng2+ 45. Kd1 (45. Kf1 Qc4+) 45...Ne3+. 42. Nxd7 Allowing a beautiful finish, but there is no defense 42... Rxf3+ 43. Ke2 Rf2+ 44. Kd3 Rd2+!



White resigns as 45. Kxd2 Qf2+ and 46...Qc2#."

▲ - ▲ - ▲ - ▲ - ▲ - ▲

2008 TN Senior Open (1)  
Wieb Van Der Meer (1424)  
Peter Ciarleglio (1700)

1. e3 Nf6 2. d4 c5 3. dxc5 Qa5+ 4. c3 Qxc5 5. Nf3 d6 6. Nbd2 g6 7. Bd3 Bg7 8. Nb3 Qc7 9. O-O O-O 10. Bd2 There is no need for this passivity. He should take a small stake in the center with e4, opening the diagonal for his black-squared bishop. Bg4 11. Rc1 Nc6 12. Nbd4 Ne5 13. Be2 Nxf3+ 14. Bxf3 Bxf3 15. Nxf3 Ne4 16. Rc2 (16. b3 Rac8 17. c4) 16... Rac8 17. Qb1 a6 18. Rd1 b5 19. a3 The seeds of defeat are nurtured in passivity. d5 20. Nd4 e5 21. Ne2 d4 22. Rcc1 Nxd2 23. Rxd2 dxe3 24. fxe3 Bh6 25. Qe4 Qc5 Much stronger was Qc6 for then Bxe3+ can't be avoided. 26. Rd3 f5 27. Qd5+ Qxd5 28. Rxd5 Bxe3+ 29. Kh1 Bxcl 30. Nxc1 Rcd8 0-1

## Public Library: a Good Place to Promote Chess

by Roy Manners

The Clarksville Chess Club and the Clarksville-Montgomery County Public Library cooperated during the entire month of July 2008 to promote chess in our community. The goal was to raise awareness of Chess in all its aspects without specifically promoting our chess club or any upcoming tournaments. The library agreed to let us utilize one of their display cases during the month of July.

On July 12<sup>th</sup> 2008, we held a Chess Exhibition in the main Lobby of the Public Library from 1:00 PM -5:00 PM. We made available to the public, back issues of several chess magazines, brochures from the USCF and World Chess Hall of Fame, catalogs from chess suppliers, as well as miscellaneous chess paraphernalia. All was free for the taking and we had volunteers to answer questions and talk to people about chess as a hobby, a sport, an art and a way of life. Because of the generosity of several individuals and chess organizations around our great Nation, we had chess books and instructional DVD's and other gifts to give away. We held drawings

every 15 minutes and gave away everything we could. The afternoon's main attraction was a Simul by National Master Henry Robinson (2264). When Henry graciously volunteered to do the Simul he said he would take on all comers up to sixty players. He ended up playing 16 games that afternoon. He won fourteen and drew two. Everyone who participated in the Simul went home with a DVD and a chess book. The Chess Exhibition and Simul were open to the public of all ages and totally free.

The Clarksville Chess Club does not charge membership dues nor fees of any kind. However, once a year, in the winter, we ask anyone who wishes to do so, to make a voluntary donation, in any amount. With the money we collect in this manner, we buy chess books to donate to the Clarksville-Montgomery County Public Library.

We have been doing this for four years. It has become tradition for each of our members to donate twenty dollars each year. Some of our members also donate chess books directly to the library as individuals. Because of these efforts and the library's willingness to acquire chess books on its

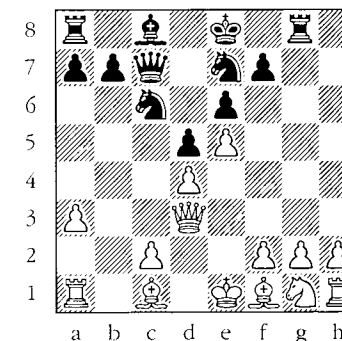
own, the library's collection of chess books as of 5/4/2008 totaled 292! Clarksville's library has one of the most extensive chess libraries in the state. The 63 books our club has donated over the past four years have a face value of \$1,244.14.

The Chess Club will accept donations of books or money for this purpose at any time during the year. We only make a formal request once annually. All donations for the book drive are strictly voluntary, and the club is still free and open to the public whether you participate in the book drive or not.

This is just a small way we have found to share our passion with the community. We have also worked the idea of offering free chess lessons to kids at the Children's Library. Initially, over 76 children signed up to take advantage of the opportunity. However, various unforeseen problems curtailed the idea, but it may be reconsidered for future deployment. The message is: promote chess by any means that you and/or your club can.

2008 TN Senior Open (4)  
Dr. John Patty (2200)  
Peter Ciarlegio (1700)

1. e4 e6 2. d4 d5 3. Nc3 Bb4 4. e5 Ne7 5. a3 Bxc3+ 6. bxc3 c5 7. Qg4 Qc7 8. Qxg7 Rg8 9. Qxh7 Nbc6 This seems to be inaccurate to me, because in the book line of the Winawer Black promptly restores equality with cxd threatening Qxc3+. (9... cxd4 10. Ne2 Nbc6 11. f4 dxc3 12. Qd3 Bd7) 10. Qd3 cxd4 11. cxd4



Bd7?? Now the pawn lost is permanent, with minimal compensation. Necessary was 11... Nxe5! 12. Qb3 N5c6. 12. Nf3 Na5 13. Bd2 Since all White needed was a draw to clinch the championship, he accepted the uncomplicated route to become the 2008 Tenn. Senior Champion. 1/2-1/2

*Tennessee Class Championship  
Nashville, TN*

*Jan. 17-18, 2009  
\$3,000 Guar. Prize*



TN Open Championship (1)  
 Todd Andrews  
 Alex Weiner (1887)

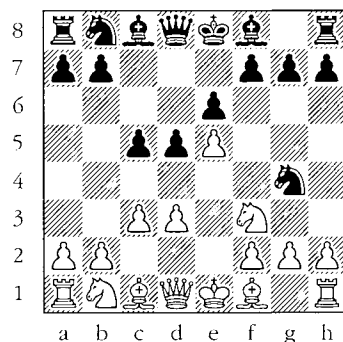
Todd not only has good tactical vision, but can also grind. 1. e4 c6 2. d4 d5 3. exd5 cxd5 4. c4 Nf6 5. Nc3 Nc6 6. Bg5 Nf3 was proper, transposing into normal lines of the Panov-Botvinnik Attack. Now Black equalizes easily. dxc4 7. Bxc4 Qxd4 8. Qxd4 Nxd4 9. O-O-O=+/+ e5 10. f4 Bg4 11. Re1 Nc6 (Fritz9 suggests: 11... Rc8 12. Rxe5+ Be7 13. Be2 Be6= as well as Nfd7--even giving Black the advantage based on piece activity: 11... Nd7 12. fxe5 Rc8 13. Bd5 Nc5 14. Rf1 Be6) 12. fxe5 Nd7 13. Nf3 Bb4 (13... Bxf3 14. gxf3 Ndx5 15. f4 Be7 16. Bxe7 Nxc4 17. Bc5+ Kd7) 14. h3 Be6 15. Bxe6 fxe6 16. Rd1 Bxc3 17. bxc3 h6 18. Bh4 g5 19. Bg3 O-O-O= 20. Rd6 Nc5 21. Rhd1 Ne4 22. Rxd8+ Rxd8 23. Rxd8+ Kxd8 24. Be1 b5 25. Kc2 Nc5 26. g4 Kc7 27. h4 Nd7 28. hxg5 hxg5 29. Bg3 Kd8 This is inferior because it allows the e-pawn to be captured with check. 30. Nxc5 Ndx5 31. Nxe6+ Ke7 32. Nc7 Nxc4 33. Nxb5 Kd7 34. Kb3 Ne3 35. Bf2 a6 36. Na3 Nd5 37. Kc4 Nf6 38. Bd4 Nxd4? Before it was doubtful whether White could make much progress because the action would be in a small sector, but now with the defense stretched White has better chances of

winning. 39. cxd4 Kc6 40. Nc2 a5 41. Ne3 Ne4 42. d5+ Kc7 43. Kd4 Nd6 44. a4 Nb7 45. Nc4 Kd7 46. Nb2 Kc7 47. Nd3 White now demonstrates excellent technique, earning the extra 1/2 point. Kd6 48. Kc4 Nd8 49. Nc5 Ke5 50. Nd7+ Kd6 51. Nb6 Nb7 52. Kb5 Kc7 53. Nc4 Kd7 54. Kb6 Kc8 55. Nxa5 1-0

#### TN Open--NOVICE (4)

Lorinc, Erick  
 Sernel, Ragan

1. e4 c5 2. c3 e6 3. Nf3 Nf6 4. d3 d5 5. e5 Ng4?

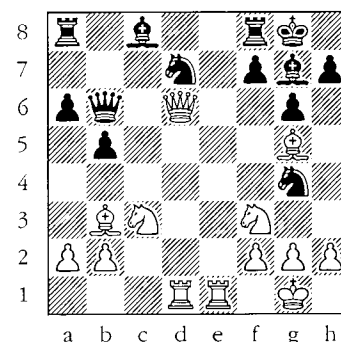


6. h3? (6. Qa4+ Nc6 7. Qxc4) 6... Nh6 7. Bg5 Qc7 8. Bxh6 gxh6 9. d4 cxd4 10. cxd4 Bb4+ 11. Nfd2 Nc6 12. Bb5 Qb6 13. Bxc6+ bxc6 14. a3 Qa5 15. O-O Ba6? 16. Nb3! Qb6 17. axb4 Bxf1 18. Kxf1 Qxb4 19. Qc2 Qb5+ 20. Kg1 Rb8 21. Ra3 (21. Rxa7 Qxb3 22. Qxc6+ Kf8 23. Qc7 Qd1+ 24. Kh2 Qh5 25. Qxb8+) 21... Qb4 22. Qxc6+ Ke7 23. Rxa7+ Kf8 24. Qc7 Mate is unavoidable without giving up the queen. Ke8 25. Qd7+ Kf8 26. Qxf7# 1-0

TCN/Fall 2008\_15

2008 TN Senior Open (4)  
 Bin Li (1702)  
 James Hughes (1628)

1. e4 c5 2. Nf3 Nc6 3. c3 g6 Black is mixing his opening ideas. The Dragon formation does not work against the Alapin. He needs to play either Nf6 or d5. 4. d4 cxd4 5. cxd4 d5 6. exd5 Qxd5 7. Nc3 Qd8 8. d5 Nb8 9. Bc4 Instead of relying on defense, White should continue with attacking ideas like Bb5+ followed by O-O. Bg7 10. Bd2 Nf6 11. O-O O-O 12. Re1 a6 White has squandered his advantage. Black could transpose into the Steiner variation of the Caro-Kann (ECO B14) with Nb-d7-b6, achieving a good game. 13. Bb3 Nbd7 14. Bg5 b5 15. d6 Also strong was Nd4, targeting c6. exd6 16. Qxd6 Qb6 17. Rad1 Ng4!?



18. Re2? (18. Qg3! Ngf6 19. Nd5 Nxd5 {19... Qa7 20. Ne7+ Kh8 21. Be3 Qb8 22. Qxb8 Rxb8 23. Ng5} 20. Bxd5 Bb7 21. Be3) 18... Qxd6 19. Rxd6 Nc5 20. Bd5 Bb7 21. h3 Nh6

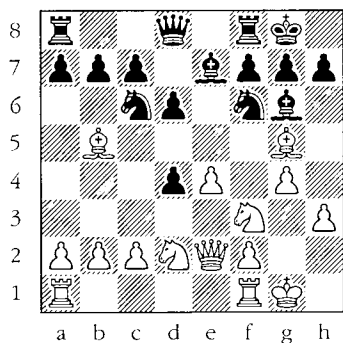
22. Bxb7 Nxb7 23. Rb6 Nc5 24. Nd5 Nf5 Ne6 would have been simpler. 25. g4 Nd4 Very good! Black uses tactics to stay in the game. 26. Nxd4 Bxd4 27. Rc6 Stronger was Rd6 which threatens a discovered check, though the game continuation weakly threatens Be7. Ne6 28. Be7 Rfc8 29. Rcc2 Rxc2 30. Rxc2 Kg7 31. b3 a5 32. h4 h6 33. Kg2 a4 34. b4 Ra7 35. Bc5 Rb7 36. Bxd4+ Nxd4 37. Rd2 Ne6 38. f3 g5 39. h5 Kf8 40. Re2 Nd8 41. Re5 Obviously, Blacks loss must have been time related since the position is so drawish. 1-0

2008 TN Senior Open (1)  
 James Trenery (1033)  
 James Hughes (1628)

1. e4 c5 2. Nf3 Nc6 3. Bc4 g6 4. d3 Bg7 5. Be3? Bxb2 6. Nbd2 Bxa1 7. Qxa1 e5 8. Nxe5 Qf6 9. Bxc5? (Bxf7!) Qxe5 10. d4 Qf6 11. O-O d6 12. Ba3 Nge7 13. Bb2 Qf4 14. d5 Ne5 15. Bb5+ Kf8 16. Nc4 Rg8 17. Nxe5 (Better than Bc1.) dxe5 18. Bxe5 Qxe4 19. Bf6? (d6!) Nxd5 20. Bd3 Qg4 21. Qe5 Nxf6 22. Qxf6 Qe6 23. Qf3 Kg7 24. g4 Qxc4+ 25. Qg2 Qxc4+ 26. Kxc4 Be6 27. a4 a5 28. c4 b6 29. Rb1 Rab8 30. h4 Rgc8 31. Rc1 Rc5 32. Kg3 Rbc8 33. Rb1 Bxc4 34. Bxc4 Rxc4 35. Rxb6 Rxa4 36. f4 Rcc4 37. f5 Rc3+ 38. Kf2 Ra2+ 39. Ke1 Rc1# 0-1

TCN/Fall 2008\_16

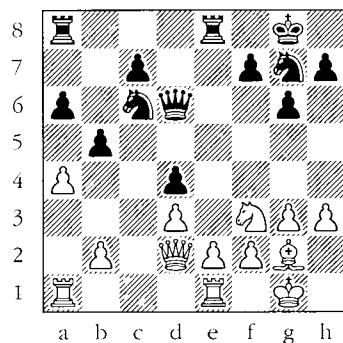
1. e4 e5 2. Nf3 Nc6 3. d4 exd4 4. Bc4 Nf6 5. Bg5 More standard but drawish is castling or playing e5. **Be7** This gives Black a small plus, but he could have gone for more with h6: 5... h6 6. Bf4 Nxe4 7. O-O d5 8. Bb5 Bd6 \$17 6. Qe2 d6 7. O-O O-O 8. Nbd2 Bg4 A little better was Nh5, relieving a lot of tension from the position and allowing Black more freedom of movement. **9. h3 Bh5** Black can also try the more enterprising Bxf3 and temporarily win another pawn: 9... Bxf3 10. Nxf3 Nxe4 11. Bxe7 Qxe7 12. Rfel Rfe8 13. Qd3 Nb4 14. Qb3 d5 -/+. 10. **g4 Bg4** 11. Bb5



hxg4 cxb5 15. f5 h6 16. Bxh6  
gxh6 17. fxg6 fxg6 18. Ne6  
Qb6+ and a draw was agreed  
1/2-1/2

2008 TN Senior Open (4)  
Victor Suich (1490)  
James Trenery (1033)

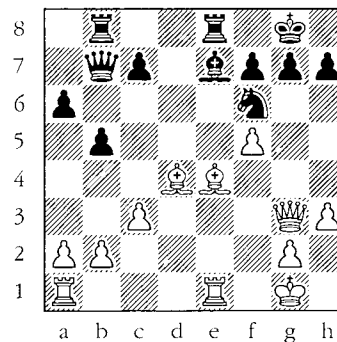
1. Nf3 d5 2. g3 Nc6 3. Bg2  
Bg4 4. d3 e5 5. O-O Nf6 6.  
Nbd2 g6 7. h3 Bxf3 8. Nxf3  
Bg7 9. Re1 O-O 10. c3 Re8  
11. Bd2 Qd6 12. Qc1 b5 13.  
Bh6 Nh5 14. Bxg7 Nxd7 15. a4  
a6 16. Qd2 d4? Better was  
either b4, keeping the  
diagonal closed, or Na5,  
gaining time to play c6 or  
continuing with b4. 17. cxd4  
exd4



18. Rec1 (18. axb5 axb5 19. Rxa8 Rxa8 20. Nxd4) 18... Na5?? 19. Qxa5 Rxe2 20. axb5 Rxb2 21. bxa6 Rxa6?? 22. Qxa6 Rb6 23. Qc8+ Qf8 24. Ra8 Ne6 25. Qxf8+ Nxf8 26. Rxc7 Kg7 27. Nxd4 h5 28. Be4 Ne6 29. Nxe6+ Rxe6 30. Raa7 Rf6 31. Rc6 Rxc6 32. Bxc6 g5 33. Bd5 Kg6 34. Bxf7+ Kh6 35. Ra6+ Kg7 36. Bxh5 Kh7 37. d4 Kg7 38. d5 Kf8 39. Ra7 1-0 *TCN/Fall 2008* 17

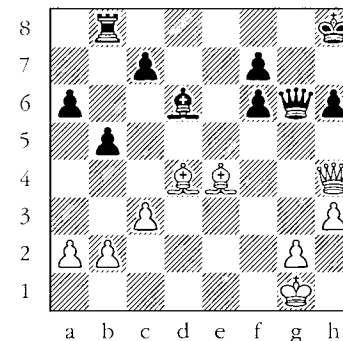
2008 TN Senior Open (2)  
Peter Ciarleglio (1700)  
Bin Li (1702)

1. e4 e5 2. Nf3 Nc6 3. Bb5  
a6 4. Ba4 Nf6 5. O-O b5 6.  
Bb3 Be7 7. Qe2 d6 8. c3 O-O  
9. h3 Bb7 10. d4 h6 11. Rd1  
Qc8 12. Nbd2 Re8 13. dxe5  
Nxe5 14. Nxe5 dxe5 15. Nf3  
Bd6= 16. Bc2 Bc6 17. Nh4 Qb7  
18. f3 Bd7 19. Be3 Qc8 20.  
Nf5 Bxf5 21. exf5 Black  
simply needs to get his  
other rook into the game.  
Moves like Qd7 or Qb7 come  
to mind, followed by Rad8.  
The game continuation helps  
activate White's bishops. e4  
22. fxe4 Nxe4 23. Qf3 Nf6  
24. Bd4 Be5 25. Bc5 Rb8 26.  
Re1 Nd7 27. Bf2 Bd6 28. Qg4  
Nf6 29. Qh4 Qb7 30. Bd4 Be7  
31. Qg3 Kh8 32. Be4!?! Qc8?



(Fritz9 reveals that better is Bd6 (but not 32... c6 because of 33. Bxc Qxc 34. Rxe7): 32... Bd6 33. Bxb7 Bxg3 34. Rxe8+ Nxe8 35. Bd5 {35. Bxa6 c5 36. Bxc5 Nc7=} 35... Nd6) **33. Bc6 Bd6 34. Qh4** (34. Rxe8+ Qxe8 35. Bxe8 Bxq3 36. Bxf7) **34... Rxe1+**

35. Rxe1 Qxf5 36. Rf1 Qg6  
37. Rxf6 White does not  
really have enough pieces  
for this exchange sacrifice.  
gxh6 38. Be4



**Qg3??** (38... **Bg3!** This should win, but not **Qg5** when **Bxf6+** wins the queen, anyway.) 39. **Qxh6+** **Kg8** 40. **Bh7+** **Kh8** 41. **Bxf6+** 1-0

2008 TN Senior Open (3)  
James Trenery (1033)  
Fred Standbrook (1393)

1. e4 e6 2. Nc3 d5 3. exd5  
exd5 4. d4 Bb4 5. Nf3 Nf6 6.  
Qe2+ Ne4 7. a3 Bxc3+ 8. bxc3  
O-O 9. c4 Re8 10. Be3 Bg4  
11. cxd5 Qxd5 12. c4? (Qc4  
or Qb5) Qa5+ 13. Bd2 Qa4 14.  
h3?? Nc3 (Nxd2!) 15. Bxc3  
Rxe2+ 16. Bxe2 Be6 17. O-O  
Qc2 18. d5 Bf5 19. Nd4 Qxc3  
20. Nxf5 Nd7 21. Rfc1 Qd2  
22. Ng3 Re8 23. Kf1 g6 24.  
Rd1 Qc3 25. Rdc1 Qd4 26. Rd1  
Qc5 27. f3 h5 28. Ne4 Qe7  
29. a4 Qe5 30. g4? f5 31.  
gxf5 gxf5 32. Bd3 fxe4 33.  
Re1 Qf4 34. Bxe4 Nc5 (Rxe4!)  
35. Kg2 Kh8 36. Rf1 Rg8+ 37.  
Kh1 Qg3 38. Rg1 Qxh3# 0-1

## Scholastic Corner:

### Transforming a Space Advantage

Whereas an advantage of time cannot be increased indefinitely, an advantage in space can be used to choke your opponent's forces into submission. There are four general rules which apply to trying to hold and increase a spatial advantage:

1. Take your time. Space is a long-term advantage that won't disappear like a time advantage can.

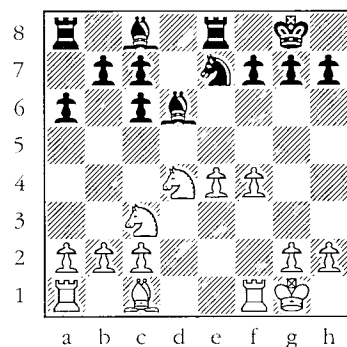
2. Defend your flanks. Don't let your opponent break free; try to cramp and squeeze him more.

3. Avoid trading pieces. You want your opponent's pieces to suffocate in their cramped quarters, getting in the way of one another.

4. Be on the alert to try to gain some other concessions from your opponent as they wiggle free, such as misplaced pieces, weakened squares, or an absence of defenders in a sector of the board.

Capablanca and Lasker were world champions who knew how to exploit a space advantage. The below game shows how Lasker defeated Capablanca in 1914 by utilizing a space advantage.

In the diagram, a count of pieces will show that the material is even, and a count of tempi will reveal that time is even. The real problem for Black is that his forces are confined to the first three ranks and his white-squared bishop is undeveloped. Note that White's pawns on the 4th rank control significant central space. Since White's advantage is not overwhelming, he must proceed slowly and hope to restrict Black more in his movements until some definite concessions are made:



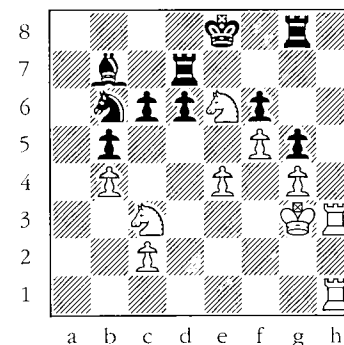
1. Nb3! "Losing" time but not allowing Black to relieve his cramp by trading a piece with Bc5. ... f6 (making a place for the queen bishop at f7 and stopping White's ideas of f5-f6) 2. f5 Preventing the queen bishop from getting a good diagonal; however, it yields e5 to Black's pieces. Too, note that White is too

skilled a player to rely solely on the hope that increasing his spatial advantage will win the game. He already has visions of parking a knight at e6! ... b6 (alternative development for the bishop so that the rooks can be connected and an attack perhaps launched on the backward king pawn) 3. Bf4! Note that Lasker knows when to break the "rules!" He wants to trade Black's best piece, especially because it can become more active with Be5 or remove White's knight at c3, which is needed to defend the backward e-pawn. ... Bb2 4. Bxd cxd 5. Nd4 R(a)d8 6. Ne6 Rd7 (Black has gained time but lost more ground. White has converted a portion of his spatial advantage into a point of attack on d6. 7. R(a)-d1 Nc8 It was too early for Black to attempt d5 because the pawn could be fatally isolated. And if 7... c5 8. Ne2 Rde7 9. Ne2f4 and the knight is eternal (if 9... g5? 10. Nh5). 8. Rf2 b5 9. R(f)-d (guarding against tactics) R(d)-e 10. b4 (restraining c5) ... Kf7 11. a3 Ba8 Black can sacrifice his rook for the knight and a pawn. This would relieve the space cramp and give him reasonable counter chances. 12. Kf2 Ra7 13. g4 h6 14. Rd3 a5 This move is more damaging to Black than White since open lines favor the more mobile attacker. 15. h4

3. Bf4! Note that Lasker knows when to break the "rules!" He wants to trade Black's best piece, especially because it can become more active with Be5 or remove White's knight at c3, which is needed to defend the backward e-pawn. ... Bb2 4. Bxd cxd 5. Nd4 R(a)d8 6. Ne6 Rd7 (Black has gained time but lost more ground. White has converted a portion of his spatial advantage into a point of attack on d6. 7. R(a)-d1 Nc8 It was too early for Black to attempt d5 because the pawn could be fatally isolated. And if 7... c5 8. Ne2 Rde7 9. Ne2f4 and the knight is eternal (if 9... g5? 10. Nh5). 8. Rf2 b5 9. R(f)-d (guarding against tactics) R(d)-e 10. b4 (restraining c5) ... Kf7 11. a3 Ba8 Black can sacrifice his rook for the knight and a pawn. This would relieve the space cramp and give him reasonable counter chances. 12. Kf2 Ra7 13. g4 h6 14. Rd3 a5 This move is more damaging to Black than White since open lines favor the more mobile attacker. 15. h4

15. h4

axb 16. axb R(a)-e7 17. Kf3 The king is a fighting piece in the endgame. ... Rg8 18. Kf4 g6 19. Rg3 g4+ 20. Kf3 Nb6 21. hxg hxg 22. Rh3! Stronger than capturing the queen pawn, which could allow Black the tempi to swing his knight to e5 with check. ... Rd7 23. Kg3 Ke8 24. R(d)-h1 Bb7

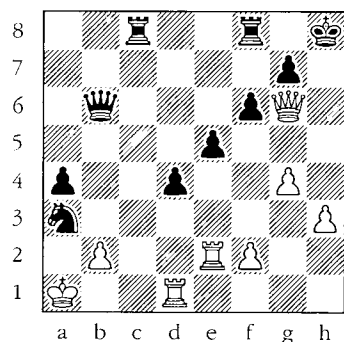


25. e5! (clearing e4 for his knight, whereupon White obtains multiple threats) ... dxe 26. Ne4 Nd5 (if Ke7?, 27. Rh7+ or even N(4)-c5) 27. N(e6)-c5 Bc8 This was forced, since moving the rook would allow capture of the bishop or Nd6+. 28. Nxd7 Bxd7 29. Rh7 (This defends the b-pawn tactically with the threat of Rxd7 followed by Nxf6+) ... Rf8 30. Ra1 Kd8 31. Ra8+ Bc8 32. Nc5 and facing Rd7+ and Ne6+, Black resigned.

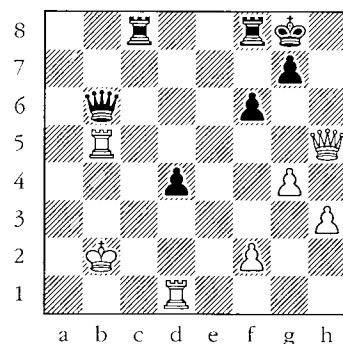
The space advantage resulted in White first obtaining an outpost, then an open file for domination, and finally control of both rook files.

2008 TN Senior Open (3)  
Bin Li (1702)  
Peter Lahde (1635)

1. e4 e6 2. d4 d5 3. Nc3 Bb4  
4. Bd3 c5 5. Bd2 (5. exd5  
Qxd5 6. Bd2 Qxg2?? {6...  
Bxc3 7. Bxc3 cxd4 8. Bxd4  
e5=} 7. Be4) 5... cxd4 6.  
Nb5 Bxd2+ 7. Qxd2 Nc6 8. Nf3  
e5? 9. O-O-O (9. exd5 a6 10.  
dxc6 axb5 11. Bxb5 Kf8 12.  
Nxe5) 9... a6 10. Na3 Nf6  
11. exd5 Nxd5 12. Rhe1 f6  
13. Bc4 b5 14. Bb3 (Fritz9  
suggested this variation:  
14. Nxd4 Nxd4 15. Qxd4 Be6  
16. Qc5 Rc8 17. Rxd5 Bxd5  
18. Qxd5 bxc4 19. Qe6+ Kf8  
20. Nxc4=) 14... O-O Black  
has established a winning  
advantage. 15. c4 bxc4 16.  
Nxc4 Kh8 17. Qc2 a5 18. a3  
Bg4 19. h3 Bh5 20. g4 Bg6  
21. Qd2 a4 22. Ba2 Rc8 23.  
Nh4 Na5 Lahde and Fritz  
agree that Black has a  
6-point advantage. 24.  
Nxg6+ hxg6 25. Qc2 Nb6 26.  
Kb1 Naxc4 27. Bxc4 Nxc4 28.  
Qxg6 Qb6 As Pete muses:  
"How can this end in a  
draw?" 29. Re2 Nxa3+ 30.  
Kd1



Nb5?? Decisive was Qb3. 31.  
Rxe5! Pete admittedly  
overlook the pin on the  
queen. a3 Forced-and seen  
both by Pete and recommended  
by Fritz. 32. Qh5+ Kg8 33.  
Rxb5 axb2+ 34. Kxb2



Qc6? (34... Qc7! maintains  
the queen, keeps a rook off  
7th rank, and threatens  
several checks. Black has a  
strong initiative: 35. Qd5+  
Rf7 36. Qb3 Ra8 37. Rxd4 Qa7  
38. Rd1 Qxf2+ 39. Kb1 Qa7)  
35. Qd5+ Qxd5 36. Rxd5 Rc4  
37. R1xd4 Rb8+ 38. Ka3 Rc3+  
1/2-1/2

## Women's World Championship

On September 9<sup>th</sup>, Alexandra  
Kosteniuk of Russia won the  
Women's World Chess  
Championship title. After  
surviving five qualifying  
matches, in the 6th round  
she scored 2.5 points over  
the 14-year-old Chinese  
wondergirl Hou Yifan (2557)  
by winning the first game  
and making three draws.

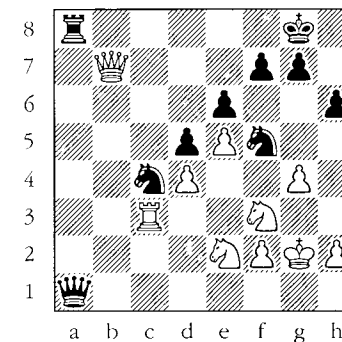
2008 TN Senior Open (2)  
James Hughes (1628)  
Victor Suich (1490)

1. c4 Nf6 2. Nc3 g6 3. g3  
Bg7 4. Bg2 O-O 5. Nf3 d6 6.  
O-O Nbd7 7. d3 e5 8. Bg5 h6  
9. Bxf6 Nxf6 10. Qc2 c6 11.  
Rab1 Bf5 12. e4 Be6 13. b4  
Nd7 14. a4 f5 15. exf5 Bxf5  
16. b5 d5 17. Nh4 dxc4 18.  
Nxf5 Rxf5? Much better was  
gxf5. 19. dxc4 cxb5 20. cxb5  
Rb8 21. Be4 Rf6 22. Bxg6 Rc8  
23. Be4 Nc5 24. Rbc1 Nxe4  
25. Qxe4 Qd4 26. Qxd4 exd4  
27. Ne4 Rff8 28. Rfd1 Rfd8  
29. Kf1 b6 30. f3 Rf8 31.  
Kf2 Rce8 32. Nd2 Re7 33. Re1  
Ref7 34. Re6 Rd8 35. Rec6  
Rfd7 36. Rc7 Kf7 37. Ne4 Ke7  
38. Ke2 Be5 39. Rxd7+ Rxd7  
40. Kd3 Bg7 41. Rc6 Be5? 42.  
Rxh6 Bg7 43. Rc6 Be5 44. f4  
Bg7 45. h4 Bf8 46. h5 Kd8  
47. g4 Bg7 48. g5 Re7 49. h6  
Bf8 50. Kxd4 1-0

Alcoa Tornado (3)  
Jason Fu (1319)  
Sanchit Wadhawan (1291)

1. e4 c5 2. c3 Nc6 3. d4  
cxd4 4. cxd4 d5 5. e5 Bf5 6.  
Nc3 e6 Black has transposed  
into a favorable variation  
of the French and is  
certainly doing okay. 7.  
Nf3 Bb4 8. Bd3 Bxd3 9. Qxd3  
Nge7 10. O-O O-O 11. a3 Ba5  
\$6 12. Bg5 (12. Ng5 Ng6  
(12... Nf5 13. g4 h6 14.  
gxf5 hxg5 15. fxe6 fxe6 16.  
Qd1 =) 13. h4 Re8 14. h5 Nf8  
15. h6 \$14) 12... h6 13. Bd2  
Nf5 14. Ne2 Bxd2 15. Qxd2

Qb6 Evidently Black has  
achieved a good form of the  
French. 16. Rac1 Rac8 17.  
Rfd1 Na5! 18. Rxc8 Rxc8 19.  
b4 Nc4 20. Qa2 a5 Much  
better was Rb1. 21. bxa5  
Qxa5 22. Rc1 Ra8 23. Qb3  
Qxa3 This is hasty. Black  
probably could have  
maintained his pawn with b6:  
23... b6 24. Ra1 Nd2 25. Qd3  
Nxf3+ 26. Qxf3 Qd2. 24.  
Qxb7 Qa1? Qa7 was necessary  
to hold onto his knight. 25.  
g4 Qa3 26. Rc3? Unnecessary.  
Just gxf since the Black rook  
is under attack. Qa1+ 27. Kg2



Ra7 (27... Nfe3+ 28. fxe3  
(28. Rxe3 Nxe3+ 29. fxe3 Ra2  
30. Qb5 +/-) 28... Ra2! -+)  
28. Qc8+ Kh7 29. gxf5 Qb2?  
30. Nfg1 (30. Ng5+ hxg5 31.  
Rh3#) 30... Nb6 31. Qc6 Na4  
32. Rc2 Qb4 33. fxe6 fxe6  
34. Nf3 Qb3 35. Nc1 Qb4 36.  
Qxe6 Qb1 37. Qc6 Ra8 38. Ra2  
Ra7 39. Rxa4 Rxa4 40. Qxa4  
Qxc1 41. e6 Qc7 42. Qd7 Qf4  
43. e7 Qf6 44. e8=Q Qf4 45.  
Qee7 Qc7 46. Qxg7# 1-0

# TN Open – NOVICE (4)

Jesse Morton

Chris Martindale

1. e4 c5 2. Nf3 Nc6 3. d4 cxd4 4. Nxd4 Nf6 5. Nc3 g6 6. Nxc6 bxc6 7. Bd3 Bg7 8. O-O O-O 9. Bd2 d5 10. exd5 cxd5 11. Rb1 Re8 12. Re1 Bb7 13. Bb5 Rf8 14. Be3 Qd6 15. Bd4 h5 16. h3 Bc6 17. Bxc6 Qxc6 18. Bxf6 Bxf6 19. Nxd5 Rad8 20. Nxf6+ Qxf6 21. Qe2 e6 22. c3 Rd7 23. Rbd1 Rfd8 24. Rxd7 Rxd7 25. Rd1 Qd8 26. Rxd7 Qxd7 27. c4 Qc6 28. Qc2 f5 29. b4 a6 30. Qd3 e5 31. Qd5+ Qxd5 32. cxd5 Kf8 33. Kf1 White could logically follow up the swap of queens with an easily won pawn advance: 33. a4 Ke7 34. b5 axb5 35. axb5 Kd6 36. b6. 33... Ke7 34. Ke2 Kd6 35. Kd3 Kxd5 36. Kc3 f4?! Advance your passed pawn first. Now White can win by playing f3, stalling out Black's kingside pawns and then luring the Black king to the queenside. (36... g5 37. f3 e4 38. fxe4+ Kxe4 {38... fxe4? Black will now lose because White will divert him with the outside passed pawn and then wipe out his kingside pawns. 39. a4 Ke5 40. b5 axb5 41. axb5 Kd5 42. b6 Kc6 43. g4 hxg4 44. hxg4 Kxb6 45. Kd4 Kc6 46. Kxe4 Kd6 47. Kf5 and the non-rook pawn wins easily.} 39. a4 h4 40. b5 axb5 41. axb5 Kd5 42. b6 Kc6 43. Kd4 Kxb6 44. Ke5 g4 45. Kxf5 gxh3 46. gxh3 Kc6 47. Kg4 Kd6 48. Kxh4 Ke6 49. Kg5

Kf7 50. Kh6 Kg8=) 37. a4 (37. f3! e4 (37... g5 38. Kd3 g4 39. hxg4 hxg4 40. a4+-) 38. fxe4+ Kxe4 39. h4) 37... Kc6 38. f3 1/2-1/2

## 2008 TN Senior Open (2)

Frank Hotz (1444)

James Trenery (1033)

1. e4 e5 2. Nf3 Nc6 3. Bc4 Nf6 4. d3 d5 5. Bb5 Bd7 (5... dxe4! 6. Nxe5 Qd5 7. Bxc6+ bxc6 8. Bf4 Bd6 9. Nc3 Qe6-/+ ) 6. O-O Bd6 7. Bg5 a6 8. Ba4 b5 9. Bb3 (9. exd5 bxa4 10. dxc6 Bxc6 11. Re1 O-O=+/+ ) 9... Be6?? 10. exd5 Bg4 11. dxc6 O-O 12. Nc3 h6 13. Bxf6 Qxf6 14. Ne4 Qg6 15. Bd5 Bh3 16. g3 Kh7? 17. Nxd6 cxd6 18. Nh4 Qf6 19. Qf3 Qxf3 20. Nxf3 Bxf1 21. Kxf1 Rac8 22. c3 f5 23. a4 g5 24. axb5 axb5 25. Ra7+ Kg6 26. Rd7 Rf6 27. c7 Rff8 28. Rxd6+ Rf6 29. Nxe5+ Kg7 30. Rd7+ Kf8 31. Rd8+ Rxd8 32. cxd8=Q+ Kg7 33. Qg8# 1-0

## 2008 TN Senior Open (1)

Victor Suich (1490)

Dr John Patty (2200)

1. Nf3 c5 2. g3 Nc6 3. Bg2 g6 4. O-O Bg7 5. d3 e5 6. Nbd2 Nge7 7. e4 O-O 8. Nc4 d6 9. a4 f5 10. exf5?! Better is c3 or even Ne3. Bxf5 11. Rb1 Now, Ne3 was definitely better. Qd7 12. Nh4 Bg4 13. Bf3?? Necessary was f3 followed by perhaps f4. Rxf3 14. Nxf3 Rf8 15. Ncxe5 Nxe5 16. Nxe5 Bxe5 17. Qd2 Bf3 18. Qh6 Nf5 19. Qh3 Nd4! 0-1 TCN/Fall 2008\_23

# TN Open – AMATEUR

Ian Gilcrist

Victor Suich

1. d4 Nf6 2. Nf3 g6 3. Bf4 Bg7 4. e3 O-O 5. Nc3 d6 6. Be2 Nbd7 7. Nd2 e5 8. dxe5 dxe5 9. Bg5 Qe8 10. h4 h6 11. Bxf6 Nxf6 12. h5 g5 13. Nde4 Bf5 14. Nxf6+ Bxf6 15. Nd5 Bd8 16. Qd2 c6 17. Nc3 Ba5 18. O-O-O (Qd6) Rd8 19. Qe1 b5 20. Rxd8 Qxd8 21. g4 Be6 22. b3 Qe7 23. Kb2 Rd8 24. Bf3 c5 25. Qe2 Bxc3!+ 26. Kxc3 Qf6? (e4!) 27. Be4 c4 28. Kb2 cxb3 29. axb3 Bd5 30. f3 Bxe4 31. fxe4 Qc6 32. Qf3 Rd2 33. Rcl b4 34. Kbl a5 35. Qf5 Qe6 (Qc3!) 36. Qxe6 fxe6 37. c3 bxc3 38. Rxc3 Kf7= Better was Rg2. 39. Rc5 Rg2 40. Rxa5 Rxg4 41. Rxe5 Rg3 42. b4 Rxe3 43. b5?! (Kc2) g4 44. b6?? g3 45. Kc2 g2 46. b7 g1=Q 47. b8=Q Qf2+ 48. Kcl Re1# 0-1

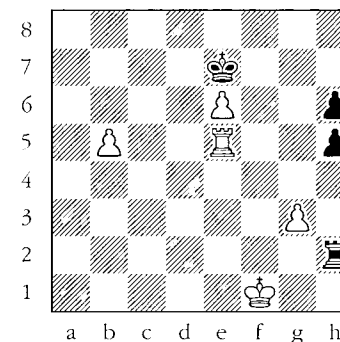
## TN Open Championship (4)

Peter Bereolos

Patrick Tae

1. d4 d6 2. e4 Nf6 3. Nc3 c6 4. g3 Qc7 5. a4 e5 6. Nge2 Bg4 7. Bg2 Nbd7 8. O-O Bxe2 9. Nxe2 g6 With this configuration where the d-file is likely to be opened and there will be a pawn on e5 (blocking the bishop) or d6 (needing defense), the bishop is better placed at e7. 10. h3 Bg7 11. Be3 O-O 12. Qd2 Rfe8 13. Nc3 exd4 14. Bxd4 Ne5 15. b3 a6 16. Rad1 Rad8 17. Be3 d5 18. exd5 cxd5 Better

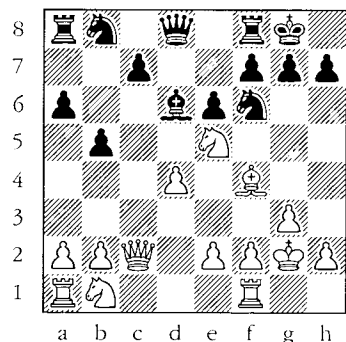
was Nxd5, not allowing the knight to be pinned: 18... Nxd5 19. Nxd5 cxd5 20. Bd4 Qc8 21. Rfel Qf5 22. f4 Nc6 23. Rxe8+/- 19. Bg5 Rc8 20. Bxf6 Qxc3 21. Qxc3 Rxc3 22. Bxg7 Kxg7 23. Bxd5 Re7 24. Rd2 Rec7 25. f4 Nd7 26. Rf3 Rxc2 (Better is b5: 26... b5 27. Be4 Nf6 28. Rxc3 Rxc3 29. Bd3 bxa4 30. bxa4 a5 31. Kf2 Ra3) 27. Rxc2 Rxc2 28. Bxb7 Nc5 29. Bd5 Rd2 30. Bc4 Rc2 31. Re3 Kf6 32. Re5 Nxa4 33. Bxa6 Nc5 34. Bc4 Ne6 35. Bxe6 fxe6 36. b4 h6 37. h4 Rb2 38. b5 Ke7 39. h5 gxh5 40. f5 Kf6 41. fxe6 Ke7 42. Kf1 Rh2



43. Kg1? (43. Re2! would allow White to win because he can now work his king up the board, attacking and defending. ... Rh1+ 44. Kg2 Rb1 45. Re5 Rb2+ 46. Kh3 Rb1 47. Rxh5 Re1+-) 43... Rb2 44. Rxh5 Kxe6 45. b6 Kf6 46. Rxh6+ Kg5 47. Rc6 Kg4= 48. Kf1 Kxg3 49. Rf6 Kg4 50. Ke1 Kg5 51. Rc6 Kf5 52. Kd1 Ke5 53. Kc1 Rb5 54. Kc2 Kd5 55. Rh6 Rb4 56. Kd2 Kc5 57. Kc3 Rxb6 58. Rxb6 Kxb6 1/2-1/2

TN Open Championship  
Peter Bereolos  
Alex Hamilton

1. Nf3 Nf6 2. c4 e6 3. g3 d5  
4. d4 Be7 5. Bg2 O-O 6. O-O  
dxc4 7. Qc2 a6 8. Qxc4 b5 9.  
Qc2 Bb7 10. Bf4 Bd6 11. Ne5  
Bxg2 12. Kxg2+/-



Nh5?! Black could have maintained his slight advantage with c5: 12... c5 13. dxc5? {13. Rd1 cxd4 14. Rxd4 Qb6 15. e3} 13... Bxe5 14. Bxe5 Qd5+. 13. Rd1 Nxf4+ 14. gxf4 Qh4 15. Qe4 f6 16. Nd3 (16. Qxa8?! fxe5 17. Nd2 {17. dxe5 Bxe5!-/+} 17... c6=+/) 16... Qg4+ 17. Kh1 Nd7 18. Rg1 Qf5 19. Qxf5 exf5 20. Rc1 Rfc8 21. Rc6 Nb8 22. Rc2 Nd7 23. Nd2 Nb6 24. Nb3 Nd5 25. e3 g5 26. fxg5 fxg5 27. Nbc5 Kf7+/- 28. a3 h5 Small imprecisions are allowing White to minutely increase his advantage. Black should probably play a5 to maintain his centralized knight. Still, Fritz considers White's advantage at this stage to be minimal. 29.

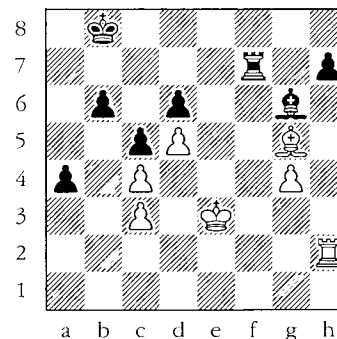
Nb4 Bxc5? Black should capture the knight, relying on the fact that White's extra pawn will be doubled. (29... Nxb4 30. axb4 g4 31. Rxa6= {31. Ra5 Ra7 32. Nxa6 Rca8+/-}) 30. Rxc5 Ne7 31. Rac1 Ra7 32. Nd5 c6 33. Nxe7 Rxe7 34. Rxf5+ 1-0

TN Open - NOVICE (4)  
Sanchit Wadhawan  
James Thomas Hodge

1. e4 d6 2. d4 Nf6 3. Nc3 g6  
4. h3 Bg7 5. Be3 O-O 6. Bc4  
Generally not advisable in the Pirc because of a later d5 or b5. c6 7. a4 d5 8. exd5 cxd5 9. Bf1? Now that the bishop is out, don't return it to f1 and restrict development. Bb3, Bd3, or Be2 was much better. Ne4 10. Nxe4 dxe4 11. g4 Qa5+ 12. c3 f5?! 13. gxf5 Qxf5 14. Bg2 Bh6 15. Qd2 Bxe3 16. Qxe3 Qf7 17. Bxe4 Bf5?? 18. Bxb7 Nd7 19. Bxa8 Rxa8 20. Ne2 Rf8 21. O-O Nf6 22. Nf4 Nd5 23. Nxd5 Qxd5 24. Qe5 Qf3 25. Qg3 Qh5 (25... Bxh3 26. Qxf3 Rxf3 27. Rfe1 +-) 26. h4 Be4 27. Rae1 Rf3 28. Qb8+ Rf8 29. Qe5 Qg4+ 30. Qg3 Qf5 31. Re3 Bc6 32. Rxe7 Qh5 33. Re5 Qh6 34. Qg5 Qg7 35. Re7 Rf7 36. Rxf7 Stronger was Rf-e1, ruling out all counter play and taking over the 7th rank. Qxf7 37. Qe5 h6 38. Re1 Bxa4 39. Qe6 Qxe6 40. Rxe6 Bd7 41. Re7 Bc6 42. Rxa7 1-0

TN Open Championship  
Matthew Marsh (2069)  
Peter Bereolos

1. d4 g6 2. c4 Bg7 3. Nc3 c5  
4. d5 Bxc3+ 5. bxc3 f5 6. Qc2 Nf6 7. Bh6 d6 8. Nf3 Qa5 9. Nd2 Nbd7 10. e3 Nb6 11. Bd3 Bd7 12. O-O O-O-O 13. f3 Qa4 14. Rfe1 Qxc2 15. Bxc2 Na4 16. Bxa4 Bxa4 17. e4 fxe4 18. Nxe4 Bc2 19. Nxf6 exf6 20. Re3 The obvious Bg7 is better: 20. Bg7 Rhg8 21. Bxf6 Rde8. 20... Rhe8 21. Rae1 Underestimating the danger to his pawns. Better was Kf2. Rxe3 22. Rxe3 Bb1 23. a3 Ba2 24. Re4 f5 25. Rh4 a6 26. Bg5 Rd7 27. a4 a5 28. g4 Bb1?! (28... f4 29. Bf6 Bxc4 30. g5 Bxd5 31. Rxf4 Bc6 As long as the rooks would remain on the board, Black would retain some winning chances.) 29. Kf2 Rf7 30. Ke3 Bc2 31. Rh6? Better and drawish was 31. gxf Bxf 32. Rf4. fxg4 32. fxg4 Bxa4 33. h4 Bc2 34. h5 a4 35. hxg6 Bxg6 36. Rh2 b6

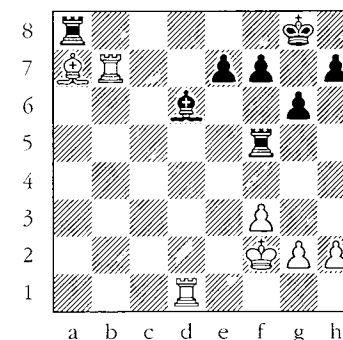


37. Bf4?? An immediate blockade was required with Ra2-a3. a3 38. Ra2 Ra7 39. Bxd6 Bb1 40. Ra1 a2 41. Kf4

Ra4 42. Kg5 Rxc4 43. Be5 Re4 44. Kf6 Kd7 45. g5 b5 46. Bg3 b4 47. cxb4 cxb4 48. Be5 b3 (48... Rxe5 49. Kxe5 b3 50. Kd4 b2) 49. Bb2 Re2 50. Be5 Rxe5 51. Kxe5 b2 52. Rxb1 axb1=Q 0-1

TN Open - AMATEUR (4)  
David Bertram (1553)  
Brittney Dewitt (1373)

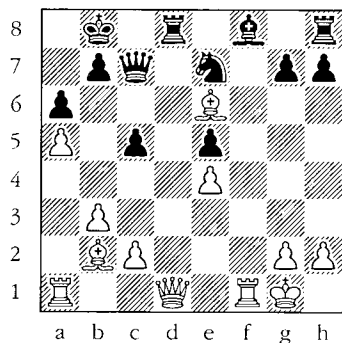
1. d4 Nf6 2. c4 g6 3. Nc3 d5  
4. Nf3 Bg7 5. e3 O-O 6. Qc2 c5 7. Bd3 Nc6 8. a3? cxd4 9. exd4 dxc4 10. Bxc4 Nxd4 11. Qd3 Nxf3+ 12. Qxf3 Qd4 13. Qd3 White would do better to retain the queen for the middle game as his prospects in the endgame are bleak. Qxd3 14. Bxd3 Rd8 15. Ke2 Nd5 16. Nxd5 Rxd5 17. Rd1 Bg4+ 18. f3 Re5+ Better was Bf5. 19. Kf2 Bf5 20. Bxf5 Rxf5 21. Be3 Bxb2 22. Rab1 White offered a draw. Bxa3 23. Rxb7 Bd6? Simply a5, holding the pawn. 24. Bxa7??



Rc8? (24... Rxa7 25. Rxa7 Bc5+) 25. Rd2 and Black offered a draw which was accepted. 1/2-1/2

2008 TN Senior Open (2)  
Dr John Patty (2200)  
Peter Lahde (1635)

1. e4 e6 2. b3 c5 3. Bb2 Nc6  
4. Bb5 Qb6 5. Nc3 Nd4 Simply  
continuing with development  
was better (Nf6 or Be7).  
Black is being distracted  
too much by White's bishop.  
6. Bc4 a6 7. a4 Ne7 Better  
was normal development with  
7... Nf6: 7... Nf6 8. e5 d5!  
= 8. Nge2 Ng6 9. f4 Nxe2  
10. Nxe2 d6 11. O-O Bd7 12.  
d4 O-O-O 13. a5 Qc7 14. f5  
Ne7?! Black should counter  
with d5. 15. fxe6 fxe6 16.  
Nf4 e5 17. Ne6 (Fritz9 shows  
that dxe5 is best: 17. dxe5  
dxe5 18. Ne6 Bxe6 19. Bxe6+  
Kb8 20. Bxe5. 17... Bxe6  
18. Bxe6+ Kb8 19. dxe5 dxe5?



Better is Nc6 or Ng6. 20.  
Bxe5 Qxe5 21. Qxd8+ Ka7 22.  
Bd5 Qd4+ 23. Kh1 Nc6 24.  
Qb6+ Ka8 25. Bxc6 bxc6 26.  
Rad1 1-0

2008 TN Senior Open (3)  
Frank Hotz (1444)  
Peter Ciarlegio (1700)

1. d4 Nf6 2. Nc3 d6 3. Nf3

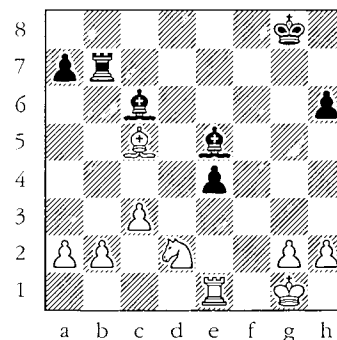
c5 4. dxc5 dxc5 5. Qxd8+  
Kxd8 6. e4 Bg4 7. Be2 e6 8.  
Bg5? (Ne5) Be7 9. O-O h6 10.  
Bh4 Nc6 11. h3 Bh5 12. g4  
Bg6 13. Rad1+ Ke8 14. Bb5?  
(e5) Nxe4 15. Bxc6+ bxc6 16.  
Nxe4 Bxe4 17. Bxe7 Kxe7  
Better was Bxf3. 18. Ne5  
Rhd8 19. f3 Rxd1 20. Rxd1  
Bd5 21. c4 f6 22. cxd5 fxe5  
23. dxc6 Rd8 24. Rxd8 Kxd8  
25. Kf2 Kc7 26. Ke3 Kxc6 27.  
Ke4 Kd6 =/+ 28. b3 (Better  
was g4.) g5 29. a3 a6 30.  
a4 a5 31. Kd3? (Ke3 =) Kd5  
32. Kc3 e4 33. fxe4+ Kxe4  
34. Kc4 e5 35. Kxc5 Kd3 36.  
b4 axb4 37. Kxb4? Better  
was a4. e4 38. a5 e3 39. a6  
e2 40. Kb5 e1=Q 41. Kb6 Qe4  
42. Ka7 Ke3 43. Kb8 Kf3 44.  
a7 Kg3 0-1

2008 TN Senior Open (3)  
Wieb Van Der Meer (1424)  
Victor Suich (1490)

1. e3 Nf6 2. d4 g6 3. Bd3  
Bg7 4. Ne2 O-O 5. c4 d6 6.  
Nbc3 Nbd7 7. b3 c5 8. Bb2  
Re8 9. O-O e5 10. d5 Nh5 11.  
Ne4 Qe7 12. g4 Nh6 13. N2g3  
Nxe4 14. Nxe4 Nf6 15. h3  
Nxe4 16. Bxe4 Qh4 17. Bg2 f5  
18. f3 Bd7 19. Bc3 fxg4 20.  
fxg4 Rf8 21. Be1 Rxf1+ 22.  
Bxf1 Qe7 23. Rc1 Rf8 24. Rc2  
Bh6 25. Re2 Rf7 26. Bd2 Qf8  
27. Qe1 Bg5 28. Rg2?! (Rf2  
=) Rf3 29. h4? Bxh4! 30.  
Qxh4 Rxf1+ 31. Kh2 Qf6 32.  
Be1?? g5! 33. Qg3 Rf3 34.  
Rf2 Qh6+ 0-1

TN Open Championship  
Joshua Suich  
Ronald Burnett

1. Nf3 g6 2. e4 Bg7 3. d4 d6  
4. Nc3 Nf6 5. Bc4 Nxe4  
There is a reason that most  
players don't try posting  
the bishop on c4. Another  
is the popularity of the  
c6-d5 or c6-b5 variations.  
6. Nxe4 d5 7. Bd3 dxe4 8.  
Bxe4 Nd7 9. c3 c5 10. dxc5  
Qc7 11. c6 bxc6 12. Qa4 Bb7  
13. Be3 O-O 14. O-O e5 15.  
Rad1 h6 16. Bb1 f5?! This  
might be a little too  
aggressive. Nf6 eyeing d5  
was a safer reply. 17. Qh4  
f4 18. Qg4 Nf6 19. Qe6+ Qf7?  
20. Qxf7+ Rxf7 21. Bc1 Re7  
22. Bxg6 e4 Better was c5.  
23. Nd4 Nd5 24. Rfe1 (24.  
c4! Nb6 25. Nf5 Re6 26. Rd6)  
24... e3 25. fxe3 fxe3 26.  
Bh5 Rf8 27. Bf3 Rf6 28.  
Bxd5+ cxd5 29. Rxe3  
According to Fritz, White  
has a 2.25 advantage--a  
probable win. Re4 30. Rxe4  
dxe4 31. Nb3 Bc6 32. Be3 Rf7  
33. Bd4 Bf8 34. Re1 Bd6 35.  
Bc5 Be5 36. Nd2 Rb7



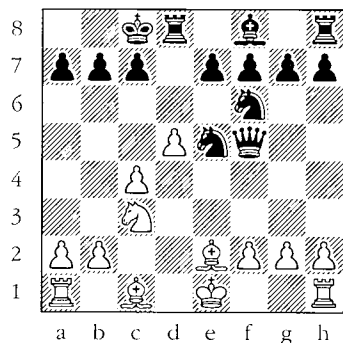
37. Ba3?! White should jump  
at the chance to eliminate  
one of the bishops: 37. Nc4  
Bf6 (37... Bc7 38. b3 Kg7)  
38. Na5 Rb5 39. Nxc6 Rxc5  
40. Nxa7. 37... Bc7 38. Nxe4  
Bb6+ 39. Kh1 Rf7 40. h3 Rf4  
41. Nc5 Either Ng3 (to  
oppose rooks) or Nd2 (to  
oppose the white-squared  
bishop) was better. Rf2 42.  
Ne4 Rc2 1/2-1/2

TN Open - AMATEUR  
Anthony Ballou  
Benjamin Blair

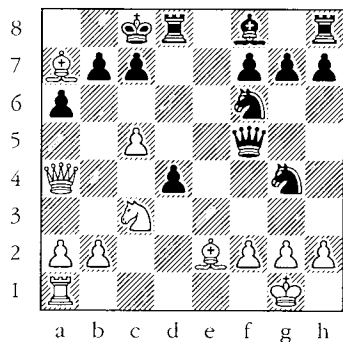
1. e4 Nc6 2. Nf3 Nf6 3. Nc3  
d5 4. e5 Nd7 5. d4 Nb6 6. b3  
Bg4 7. Bb5 e6 8. h3 Bh5 9.  
O-O Bb4 10. Bb2 g5!? 11. a3  
Bxc3 12. Bxc3 g4? 13. Nh2  
Rg8 14. hxg4 Bg6 15. f4?  
(g5! with plans of Ng4-f6.  
Be4 16. f5 exf5 17. Bd2 Qe7  
18. Bb4 Qe6 (Qh4) 19. Bd3  
O-O-O -/+ 20. Bxe4 dxe4 21.  
Bc3? (gxf5) Nd5 22. Qe1  
fxg4 23. Bb2 g3 24. c4 gxh2+  
(Qh6!) 25. Kh1 Qg4 26. Qf2  
Ne3 27. d5 Nxf1 28. Rxf1 e3  
29. Qf5+ Qxf5 30. Rxf5 e2  
31. Bc3 Nd4 32. Rf4 Nc2 33.  
Re4 e1=Q+ 34. Bxe1 Nxe1 35.  
Rxe1 Kd7 36. Kxh2 Rg5 37.  
e6+ fxe6 38. dxe6+ Ke7 39.  
b4 Rdg8 40. Rg1 Kxe6 41. g3  
Ke5 42. c5 Ke4 43. Re1+ Kf3  
44. Rf1+ Ke2 45. Rg1 Kf2 46.  
Rg2+ Kf3 47. Rg1 Rxg3 48.  
Rf1+ Kg4 49. Rg1 Rxg1 50.  
Kxg1 Kf3+ 51. Kh1 h5 52. b5  
Rg3 53. a4 h4 54. a5 b6 55.  
axb6 axb6 56. c6 Rg5 57. Kh2  
Rxb5 0-1

TN Open Championship  
John Patty (2200)  
Peter Suich (1913)

1. e4 d5 2. exd5 Nf6 3. Nf3 Qxd5 4. d4 Nc6 5. c4 Qe4+ 6. Be2 Bg4 7. Nc3 Qf5 8. d5 Bxf3 9. Bxf3 Ne5 10. Be2 O-O-O?



11. O-O (11. f4! Ned7 {11... Nc6 12. O-O Nb4 13. a3 Na6 14. b4}); {11... Neg4 12. h3 Nh6 13. g4 Qd7 14. g5 Nf5 15. gxf6} 12. g4 Nxg4 13. Bxg4 11... e6 12. Be3 a6 13. Qa4 (13. f4 Neg4 14. Bd4 exd5 15. cxd5 Qd7 16. Rc1+/-) 13... Neg4 14. Ba7 exd5 15. c5 d4?!



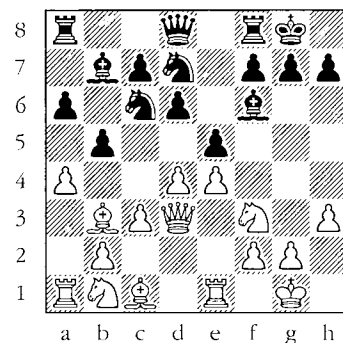
(15... Bxc5 16. Bxc5 d4 17. Bxd4 Qf4 18. g3 Qxd4-/+ ) 16. Nbl?? (16. c6 Rd6 {16... dxc3?? 17. cxb7+ Kxb7 18. Qxa6+ Ka8 19. Bb6+ Kb8 20. Qa7+ Kc8 21. Qxc7#} 17. Bf3 Rxc6 18. Bxc6 dxc3 19. bxc3+/-) 16... c6?! (16... Qe5 17. Bxg4+ Nxg4 18. g3 Qh5 19. h4 Ne5-+) 17. Rc1?? (17. Bxa6!) 17... d3 Surely Black would have seen Qxf2+? Maybe a piece is misplaced? 18. Bf3 Rd5 and White went on to win. 1-0

TN Open - AMATEUR (5)  
Nicole Belitz  
Anthony Ballou

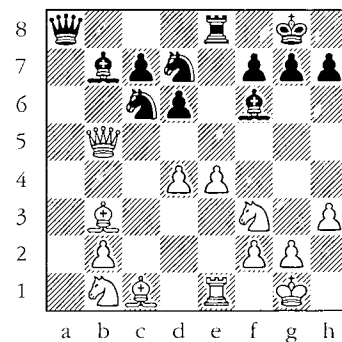
1. e4 d5 2. exd5 Nf6 3. c4 c6 4. Nc3 cxd5 5. cxd5 Nxd5 6. Qa4+ Nc6 7. Bc4? Nb6 8. Qb3 e6?! (Nxc4) 9. Bb5 Bd7 10. Bxc6? Bxc6 -/+ 11. Nf3 Bc5 12. Ne2 Qf6 13. d4 Bd6 14. Bg5 Qg6 15. Nf4?? Bxf4 16. Bxf4 Qxg2 17. Rg1 Qxf3 18. Qxf3 Bxf3 19. Rxg7 Rc8 20. b3 Ke7 21. Bg5+ Kf8 22. Bh6 Ke8 23. Rg3 Bh5 24. Rg5 Bg6 25. h4 Rc2 26. h5 Bd3 27. Kd1 Rxf2 28. Rg1 Rf1+ 29. Rxf1 Bxf1 30. Kd2 Bb5 31. Bg7 Rg8 32. h6 Nc8 33. Rc1 Kd7 34. a4 Bc6 35. Kc3 Ne7 36. Rf1 Ke8 37. b4 Nf5 38. b5 Bd5 39. Be5 Nxb6 40. Bb8 a6 41. bxa6 bxa6 42. Kb4 Kd7 43. Ba7 f5 44. Ka5 Ng4 45. Rc1 Rc8 46. Bc5 Rc6 47. Rb1 Kc8 48. Bb6 Rc4 49. Bc5 Bc6 50. Bb4 Rxd4 51. Rc1 Kd7 52. Rc5 Rd5 53. Rxd5+ exd5 54. Bc5 h5 55. Kxa6 Bxa4 0-1

TN Open Championship  
Todd Andrews  
Peter Bereolos

1. e4 e5 2. Nf3 Nc6 3. Bb5 a6 4. Ba4 Nf6 5. O-O Be7 6. Re1 b5 7. Bb3 d6 8. c3 O-O 9. h3 Nd7 10. d4 Bf6 11. a4 Bb7 12. Qd3



Re8? Instead of being in a winning position, Black is now losing. (12... exd4 13. cxd4 {13. axb5 Nc5 14. Qd1 axb5 15. Rxa8 Qxa8 16. cxd4 Nxd4} 13... Nxd4! 14. Nxd4 Nc5 15. Qc2 Bxd4-+) 13. axb5 axb5 14. Rxa8 Qxa8 15. Qxb5 exd4 16. cxd4



... Nb6? (Obvious is Bxd4, but Fritz9 proves that Nxd4 also appears to work: 16... Nxd4 17. Nxd4 Nc5 18. Nf3 Ba6 19. Qb4 Nd3 20. Qd2 Nxe1 21. Qxe1 Qxe4= and if 16... Bxd4 17. Nxd4 Nxd4 18. Bxf7+ Kxf7 19. Qxd7+ Re7 20. Qg4 Nc2 21. Rd1 Bxe4+/-) 17. Qh5 g6? 18. Bxf7+! Kxf7 19. Qxh7+ Bg7 20. Bh6 Rg8 21. Ng5+ Kf6 22. f4 Qf8 23. e5+ Ke7 24. exd6+ Kxd6 25. Qxg6+ Kd5 26. Qe6+ Kxd4 27. Qe4+ Kc5 28. Ne6+ 1-0

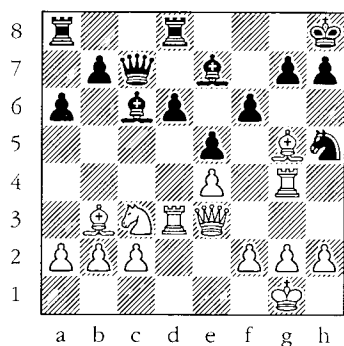
TN Open Championship  
Louise Belitz  
Jerry Wheeler (2200)

1. e4 c5 2. Nf3 e6 3. d4 cxd4 4. Nxd4 Nc6 5. Nc3 Nf6 6. Ndb5 Bb4 7. Nd6+ Ke7 8. Nxc8+ Rxc8= 9. Bd2 a6 (9... Bxc3 10. Bxc3 Nxe4 11. Bxg7 Qb6 12. Qe2 Rhg8 13. Qxe4 Rxg7=+/+) 10. Bd3 Qc7 11. O-O h5 12. f4 d6 13. Kh1 Rcf8? It appears that Black is planning on moving his king to the queenside. Better is the simple h4. 14. f5 (14. a3 Bc5 15. Qe1 h4 16. b4 Bd4 17. b5 Bxc3 18. Bxc3 axb5 19. Bxb5+/-) 14... Bc5 15. Bg5 Bd4 16. Bc4 (Fritz9 suggests: 16. Ne2 Bxb2 17. Rb1 Be5 18. Nf4 Bxf4 19. Rxf4 Kd7 20. Bc4+/-) 16... Bxc3 17. bxc3 Ne5 Though White still has an edge, the strong knight on e5 gives Black enough for equality. 1/2-1/2



**TN Open Championship**  
**Andrews, Todd**  
**Belitz, Marco (1907)**

1. e4 c5 2. Nf3 d6 3. d4 cxd4 4. Nxd4 Nf6 5. Nc3 a6 6. Bc4 e6 7. Bb3 Be7 8. Bg5 Nc6 9. O-O Bd7 10. Re1 O-O 11. Qd3 Nxd4 12. Qxd4 Bc6 13. Rad1 Qa5 looks okay, ensuring that a pawn will not be lost after 14. Bxf6 Bxf6. Qc7 14. Re3 (14. Bxf6 Possession of the two bishops, control of the dark squares, the ability to double White's queenside pawns, and a white-square bishop with more range would compensate for loss of the d-pawn: Bxf6 15. Qxd6 Qxd6 16. Rxd6 Be5 17. Rd3) 14... Rfd8 15. Rg3 Kh8 16. Rdd3 e5? Black panics in face of White's build up, creating a terrible pawn weaknesses. 17. Qe3 Nh5 18. Rg4 f6



19. Qh3!? Rh4 or Bh6 are more obvious. Bd7 20. Qxh5 Bxg4 21. Qxg4 f6 22. Rh3 g6 (22... h6 Allowing a stronger stand would be: 23. Qe6 threatening Rxh6+ Bf6 24. Nd5 Qd7 25. Qxd7 Rxd7

26. Nb6 Rad8 27. Nxd7 Rxd7 28. Rc3+/-) 23. Qe6 Threatening Qxg6 as well as Qf7. Qd7 24. Qf7 1-0

**TN Open - NOVICE (2)**  
**Welch, JoAnn**  
**Martindale, Christopher**

1. e4 c5 2. Bc4 d6 3. Nf3 Nf6 4. Nc3 g6 5. O-O Bg7 6. d3 O-O 7. Bf4 Nc6 8. Re1 Qb6 9. Rb1 Qa5 10. e5?! dxe5 (Nh5! would have emphasized that the pawn advance was premature.) 11. Nxe5 Nxe5 12. Bxe5 e6 Better was Bd7. 13. Qf3 Qd8 14. Rbd1 Qe7 15. d4 cxd4 16. Rxd4 Rd8 17. Rf4 Nd7? (Nh5! =) 18. Bxg7 Kxg7 19. Ne4 (Nd5!) Ne5 20. Qc3 Qc7 21. Ng5 (Rxf7+) Rf8 22. Rxe5 f6 23. Nxe6+ (Rxe6!) Bxe6 24. Rxe6 Qxf4 25. Re7+ Kh8 26. Qh3 h5 1/2-1/2

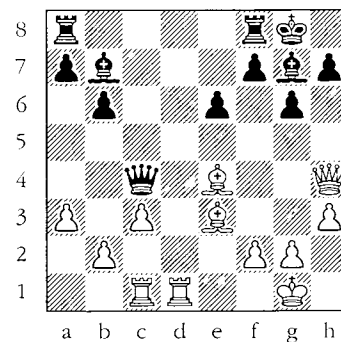
**TN Open--NOVICE (5)**  
**Ragain Sernel (1042)**  
**Jesse Morton (1179)**

1. e4 c5 2. Nf3 g6 3. d4 cxd4 4. Nxd4 Bg7 5. Nc3 d6 6. Be3 Nf6 7. Qd2 O-O 8. O-O-O Nbd7 9. f4?! Going into a Yugoslav attack with h4 or f3 was better. Nc5 10. e5 dxe5 11. fxe5 Ng4 12. Nf3? The pawn is already lost, so h3 is better. Qxd2+ 13. Rxd2?? Nxe3 14. h3 Nxf1 15. Rxf1 Bf5 16. Nd5 e6 17. Ne7+ Kh8 18. Ng5 Bxe5 19. b4 Na4 20. g4 Bf6 21. Nxf5 Bxg5 22. Nd6 Bxd2+ 23. Kxd2 Rad8 24. Kc1 Rxd6 25. g5 Kg7 26. h4 Rfd8 27. c4 0-1

TCN/Fall 2008\_31

**TN Open Championship**  
**William Bragg (1892)**  
**Todd Andrews (2372)**

1. e4 c5 2. d4 cxd4 3. c3 d3 This is one way of ensuring that you can get a Dragon-type setup without allowing White to have his center as in the Alapin. But the gain of tempi actually gives White even more of an advantage and certainly getting in c3 for free was a big benefit to White. 4. Nf3 Nc6 5. Bxd3 g6 6. O-O Bg7 7. Qe2 d6 8. h3 Perhaps Rd1 was stronger. Nf6 9. Bf4 O-O 10. Rd1 Nd7 11. Nbd2 a6 12. Rac1 b5= White's lead in development has been neutralized. Black can even play Nce5. 13. a3 Bb7 14. Nf1 Nde5 15. Nxe5 Nxe5 16. Bb1 This bishop doesn't appear worth retaining. Qb6 17. Ne3 e6 18. Ng4 Nxg4 19. Qxg4 d5 20. Be3 Qc7 21. Qh4 dxe4 22. Bxe4 Qc4

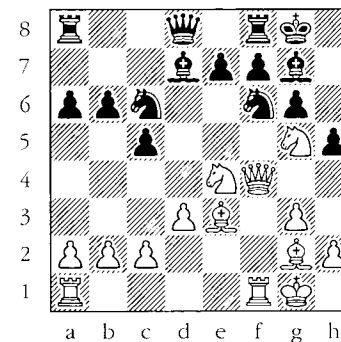


23. Rd4! Qc7 (23... Bxd4? 24. cxd4) 24. Bh6 Bxh6 25. Qxh6 Rad8 26. Bxb7 Rxd4 27.

cxd4 Qxb7 28. Qf4 Rc8 29. Rxc8+ Qxc8 30. Qd6 Qc1+ 31. Kh2 Qxb2 32. Qb8+ Kg7 33. Qe5+ 1/2-1/2

**TN Open Championship**  
**John Patty (2200)**  
**Todd Andrews (2372)**

1. e4 c5 2. Nc3 a6 3. g3 Nc6 4. Bg2 d6 5. d3 g6 6. f4 Bg7 7. Nh3 Nf6 8. O-O Bg4 9. Qd2 h5 10. Ng5 Bd7 11. e5 dxe5 12. fxe5 Nxe5 13. Qf4 Nc6 14. Be3 b6 15. Nce4 O-O

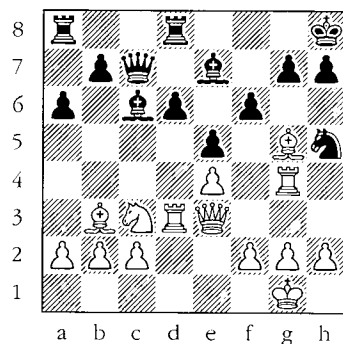


16. Nxf7!? Very sharp and dangerous over-the-board but objectively not really sound (as were many of Tal's sacs). Rxf7 17. Ng5 Rf8 18. Qc4+ Kh8 19. Nf7+ Rxf7 20. Qxf7 Ne5+ 21. Qb3 Bc6 22. Bxc6 Nxc6 23. Rae1 Ng4 24. Bg5 Qd4+ 25. Kg2 Rf8 26. Rxf8+ Bxf8 27. Qf7 Bg7 28. Qe8+ Kh7 After this move, White resigned. Perhaps because he noticed Black's upcoming check on f2? Besides, he had only one minute remaining to Black's 18 minutes. 0-1

TCN/Fall 2008\_32

**TN Open Championship**  
**Andrews, Todd**  
**Belitz, Marco (1907)**

1. e4 c5 2. Nf3 d6 3. d4 cxd4 4. Nxd4 Nf6 5. Nc3 a6 6. Bc4 e6 7. Bb3 Be7 8. Bg5 Nc6 9. O-O Bd7 10. Re1 O-O 11. Qd3 Nxd4 12. Qxd4 Bc6 13. Rad1 Qa5 looks okay, ensuring that a pawn will not be lost after 14. Bxf6 Bxf6. Qc7 14. Re3 (14. Bxf6 Possession of the two bishops, control of the dark squares, the ability to double White's queenside pawns, and a white-square bishop with more range would compensate for loss of the d-pawn: Bxf6 15. Qxd6 Qxd6 16. Rxd6 Be5 17. Rd3) 14... Rfd8 15. Rg3 Kh8 16. Rdd3 e5? Black panics in face of White's build up, creating a terrible pawn weaknesses. 17. Qe3 Nh5 18. Rg4 f6



19. Qh3!? Rh4 or Bh6 are more obvious. Bd7 20. Qxh5 Bxg4 21. Qxg4 fxg5 22. Rh3 g6 (22... h6 Allowing a stronger stand would be: 23. Qe6 threatening Rxh6+ Bf6 24. Nd5 Qd7 25. Qxd7 Rxd7

26. Nb6 Rad8 27. Nxd7 Rxd7 28. Rc3+/-) 23. Qe6 Threatening Qxg6 as well as Qf7. Qd7 24. Qf7 1-0

**TN Open - NOVICE (2)**  
**Welch, JoAnn**  
**Martindale, Christopher**

1. e4 c5 2. Bc4 d6 3. Nf3 Nf6 4. Nc3 g6 5. O-O Bg7 6. d3 O-O 7. Bf4 Nc6 8. Re1 Qb6 9. Rb1 Qa5 10. e5?! dxe5 (Nh5! would have emphasized that the pawn advance was premature.) 11. Nxe5 Nxe5 12. Bxe5 e6 Better was Bd7. 13. Qf3 Qd8 14. Rbd1 Qe7 15. d4 cxd4 16. Rxd4 Rd8 17. Rf4 Nd7? (Nh5! =) 18. Bxg7 Kxg7 19. Ne4 (Nd5!) Ne5 20. Qc3 Qc7 21. Ng5 (Rxf7+) Rf8 22. Rxe5 f6 23. Nxe6+ (Rxe6!) Bxe6 24. Rxe6 Qxf4 25. Re7+ Kh8 26. Qh3 h5 1/2-1/2

**TN Open - NOVICE (5)**  
**Ragain Sernel (1042)**  
**Jesse Morton (1179)**

1. e4 c5 2. Nf3 g6 3. d4 cxd4 4. Nxd4 Bg7 5. Nc3 d6 6. Be3 Nf6 7. Qd2 O-O 8. O-O-O Nbd7 9. f4?! Going into a Yugoslav attack with h4 or f3 was better. Nc5 10. e5 dxe5 11. fxe5 Ng4 12. Nf3? The pawn is already lost, so h3 is better. Qxd2+ 13. Rxd2?? Nxe3 14. h3 Nxf1 15. Rxf1 Bf5 16. Nd5 e6 17. Ne7+ Kh8 18. Ng5 Bxe5 19. b4 Na4 20. g4 Bf6 21. Nxf5 Bxg5 22. Nd6 Bxd2+ 23. Kxd2 Rad8 24. Kc1 Rxd6 25. g5 Kg7 26. h4 Rfd8 27. c4 0-1

**TN Open Championship**  
**Joshua Wolff (1811)**  
**Peter Bereolos (2336)**

1. e4 e5 2. Nf3 Nc6 3. Bb5 a6 4. Ba4 Nf6 5. O-O Be7 6. Re1 b5 7. Bb3 d6 8. c3 O-O 9. h3 Na5 10. Bc2 c5 11. d4 Nd7 12. Nbd2 exd4 13. cxd4 Nc6 14. Nf1 cxd4 15. Nxd4 Nxd4 16. Qxd4 Ne5 17. Rd1 Qc7 18. Bb3 Bxh3 19. f4 Developing a piece with Bf4 was not much better: (19. Bf4 Bg4 20. Rdcl (20. f3? Bxf3) 20... Qd7=+/+) 19... Nc6 20. Qc3 Be6 21. Bxe6 fxe6 22. Qh3 Nd8 23. Be3 Qb7 Stronger was Qc2. 24. Ng3 Rc8 25. f5 e5 26. Kf2?! Nf7 The flashy-looking Ne6 gets Black into a little trouble: 26... Ne6 27. Rh1 h6 28. Bxh6=. 27. Rh1 Rc2+ 28. Kf3 h6 29. f6 Bxf6 30. Qe6 Qc8 31. Qd5 Kh7 32. Nf5 Bg5 0-1

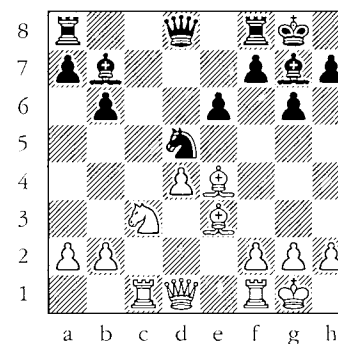
**TN Open - AMATEUR**  
**Jason Fu**  
**Ben Blair**

1. e4 Nc6 2. d4 d5 3. e5 f6 4. Nf3 Bg4 5. exf6 (Bb5) Nxf6 6. c3 e5 7. dxe5 Nxe5 8. Be2 Nxf3+ 9. Bxf3 Qd7 10. Bxg4 Nxg4 11. O-O O-O-O =/+ 12. Re1? Bd6 13. h3? Nf6 (Bh2!+ 14. Kf1 Nxf2) 14. Bg5 Rdf8 15. Bxf6 Rxf6 16. Qg4?! Qxg4 17. hxg4 Rhf8 (Bc5) 18. f3 Bc5+ 19. Kf1 Rh6 20. Re5 Rh1+ 21. Ke2 c6 22. Rf5 Re8+ 23. Kd3 Rd1+ 24. Kc2 Reel 25. b4 Rc1+ 26. Kb2 Be3 27. Rf8+ Kd7 28. Rf7+ Kd6 29. Rxg7 b5 30. Rxh7 Re2+ The moves of the scoresheet are

confusing after this. Black went on to win. 0-1

**TN Open - NOVICE (5)**  
**Wadhawan, Sanchit**  
**Erick, Lorinc**

1. e4 c5 2. c3 g6 3. d4 cxd4 4. cxd4 Bg7 5. Be3 e6 6. Nc3 Ne7 7. Nf3 b6 8. Bd3 (8. Nb5 d5 9. Rc1 Nbc6 10. e5 O-O 11. Nd6) 8... Bb7 9. O-O O-O 10. Rc1 d5 11. exd5?! Nxd5 12. Be4??



Nxe3?? (Nxc3) 13. fxe3 Bxe4 14. Nxe4 Nd7 15. Nc3?! The knight was well-placed, as it was. Better was Qa4, pressuring the a-pawn and planning doubling of the rooks with Rc3. Rc8 16. e4 This is bad. Now the bishop has a target and White's pawns need protecting. Nf6 17. Re1 Bh6 18. Rc2 Rc7 19. Nb5 Rxc2 20. Qxc2 a5?! Another unwise move that weakens the pawns. Anchoring the knight with a5 was strong. 21. e5 Nd5 22. Nc3?! Nxc3 23. bxc3 1/2-1/2

# ALCOA TORNADO

## OPEN SECTION CROSSTABLE

Player's Name USCF ID/Rtg (Pre->Post)	Total Pts	Round 1	Round 2	Round 3	Round 4
1.   JASON FU 13103964 / R: 1319 ->1353	3.5	W 9	W 8	W 3	D 4
2.   ERICK L LORINC 2865002 / R: 1337 ->1313	3.0	L 16	W 10	W 11	W 6
3.   SANCHIT WADHAWAN 13399514 / R: 1291 ->1285	3.0	W 17	W 15	L 1	W 9
4.   CHARLES BLUE 12934167 / R: 1239 ->1246	3.0	W 14	W 16	D 6	D 1
5.   MATTHEW KLAOWNN 13773114 / R: 1002 ->1032	3.0	L 8	W 14	W 10	W 12
6.   KAI ALAN SMITH 13352357 / R: 1008 ->1058	2.5	W 11	W 12	D 4	L 2
7.   NEEL MADHUKAR 13773108 / R: 1063P25->1045	2.5	L 15	W 17	D 8	W 14
8.   ALBERT S. XUE 13500641 / R: 790 ->948	2.5	W 5	L 1	D 7	W 17
9.   ISABEL R GELLERT 13399520 / R: 897 -> 985	2.0	L 1	W 13	W 15	L 3
10.   JORDAN A. HOYOS 13770025 / R: 810 -> 912	2.0	W 13	L 2	L 5	W 15
11.   STEVEN L DUNBAR 12919659 / R: 879 -> 886	2.0	L 6	B 0	L 2	W 16
12.   CHIOKE FULLER 13773088 / R: 689P17->735P20	2.0	B 0	L 6	W 16	L 5
13.   JON H HAMMETT 12931306 / R: 1175 ->1069	1.0	L 10	L 9	L 14	B 0

# ALCOA TORNADO, cont.

14.   JOSHUA ADAM LYNN 12937075 / R: 948 ->934	1.0	L 4	L 5	W 13	L 7
15.   JAKE KNANISHU 13773067 / R: 869P11->863	1.0	W 7	L 3	L 9	L 10
16.   AARON WALLACE 12982112 / R: 880 -> 860	1.0	W 2	L 4	L 12	L 11
17.   MEKHI D. CARTER 13852947 / R: 958P4 -> 840P7	1.0	L 3	L 7	B 0	L 8

## UNDER 750 SECTION CROSSTABLE

Player's Name USCF ID/Rtg (Pre->Post)	Total Pts	Round 1	Round 2	Round 3	Round 4
1.   JACOB AARON HOYOS 13770031 / R: 537P20->834P24	4.0	W 2	W 5	W 3	W 4
2.   HUNTER L MARSH 13473408 / R: 533 -> 696	3.0	L 1	W 7	W 6	W 5
3.   RAJAT AGARWAL 12911321 / R: 495P13->619P17	3.0	W 7	W 6	L 1	W 8
4.   PAUL GABRIEL NODIT 13513977 / R: 738 -> 678	2.0	L 6	W 9	W 8	L 1
5.   ADRIAN H GELLERT 13692672 / R: 688 -> 646	2.0	W 8	L 1	W 9	L 2
6.   ANNA BLUE 13448928 / R: 568 -> 557	2.0	W 4	L 3	L 2	B 0
7.   RYAN A WALLACE 13121034 / R: 601 -> 550	2.0	L 3	L 2	B 0	W 9
8.   SAMANTHA A. LORINC 12893825 / R: 188 -> 171	1.0	L 5	B 0	L 4	L 3
9.   GEORGE C. CARTER V 13919764 / R: 178P4 ->167P7	1.0	B 0	L 4	L 5	L 7



## TENN. CLASS CHAMPIONSHIP



January 17-18, 2009

Measurement Inc.

3800 Ezell Road, Nashville, TN 37211

\$3,000 GUARANTEED PRIZE FUND

### ENTRY FEE:

Master — Class E: \$45 (BY 1/10, \$55 at SITE)

Class F, G, and UNR: \$20 (\$30 at SITE)

USCF and TCA membership required (\$15)

Registration 8:00-8:30 a.m.

### ROUNDS:

Sat. 9:00, 1:30, and 6:00; Sun. 9:00 and 1:30

5 Round rated Swiss, G/2 hours

### PRIZES:

See TCA Website Tournament Announcement

### HOTEL:

Country INN & Suites: \$85; 615-731-8540

### ENTRIES:

Chris Prosser

733 Long Hunter Ct

Nashville, TN 37217

Info: [RegionIII@aol.com](mailto:RegionIII@aol.com) or 615-426-7105

## Tenn. Chess Association 2008-2010 Board of Directors

### **PRESIDENT:**

Malcolm Estrada  
123 Annaview LN  
Harrison, TN 37341  
H: (423) - 326-1446  
e-mail: [straightleg@aol.com](mailto:straightleg@aol.com)

### **VICE-PRESIDENT:**

Paul Semmes  
1010 N. Maple Ave.  
Cookeville, TN 38501  
H: (931) 863-4082  
e-mail: [PaulSemmes@charter.net](mailto:PaulSemmes@charter.net)

### **SECRETARY:**

Chris Prosser  
733 Long Hunter Court  
Nashville, TN 37217  
H: (615) 399-8432  
e-mail: [regioniii@aol.com](mailto:regioniii@aol.com)

### **TREASURER:**

Angela McElrath-Prosser  
733 Long Hunter Court  
Nashville, TN 37217  
H: (615) 399-8432  
e-mail: [tcanews@aol.com](mailto:tcanews@aol.com)

### **INTERNET CHESS COORDINATOR:**

Alan Kantor  
577 Livingston Road, Apt. 23  
Crossville, TN 38555  
H: (931) 200-9038  
W: (931) 787-1234 ext. 128  
e-mail: [kantor@charter.net](mailto:kantor@charter.net)

### **SCHOLASTIC COORDINATOR:**

Harry D. Sabine  
P. O. Box 381  
Crossville, TN 38557  
H: (931) 484-4878  
W: (931) 484-9593  
e-mail: [hdsabine@citlink.net](mailto:hdsabine@citlink.net)

### **TOURNAMENT COORDINATOR:**

Larry Grohn  
7032 Igoo Gap Road  
Chattanooga, TN 37421  
H: (423)-243-8235  
e-mail: [LarryGrohn@comcast.net](mailto:LarryGrohn@comcast.net)

### **TN CHESS NEWS EDITOR:**

Leonard Dickerson  
420 Oran Road  
Knoxville, TN 37932  
H: (865) 966-1095  
e-mail: [lsdick@tds.net](mailto:lsdick@tds.net)

### **EAST TENNESSEE DIRECTOR:**

Victor Suich  
707 Pritchard  
Morristown, TN 37813  
(423) 586-4351  
e-mail: [vesuich@juno.com](mailto:vesuich@juno.com)

### **MIDDLE TENNESSEE DIRECTOR:**

Roy Manners  
1215 Cumberland Heights Road  
Clarksville, TN 37040  
H: (931) 552-1839  
e-mail: [roybintn@msn.com](mailto:roybintn@msn.com)

### **WEST TENNESSEE DIRECTOR:**

Korey Kormick  
3550 S. Galloway Rd.  
Memphis, TN 38111  
H: (502) - 396 - 8858  
e-mail: [kjkormick@hotmail.com](mailto:kjkormick@hotmail.com)

### Regional Scholastic Coordinators

#### **Region 1:**

David Marsh  
4411 Stillwood Road  
Louisville, TN 37777  
H: (865) 982-7216; [NESGIV4DAVE@aol.com](mailto:NESGIV4DAVE@aol.com)

#### **Region 2:**

Michael Ake  
16 Pinecrest Dr.  
Wildwood, GA 30757  
Cell phone: (423) 505-8214  
O: (423) 493-5406; [revmake@bellsouth.net](mailto:revmake@bellsouth.net)

#### **Region 3:**

Chris Prosser  
733 Long Hunter Court  
Nashville, TN 37217  
H: (615) 399-8432; e-mail: [regioniii@aol.com](mailto:regioniii@aol.com)

#### **Region 4:**

Brian Vogt  
2669 Sweet Maple Cove  
Germantown, TN 38139  
H: (901) 624-0020; [b-vogt@comcast.net](mailto:b-vogt@comcast.net)