



TENNESSEE CHESS NEWS

FALL 2006

VOLUME 49

NO. 4

TN OPEN CHAMPIONSHIP	06
TN OPEN SCHOLASTIC	12
TENNESSEE TEMPO UPDATE	15
TN OPEN CROSSTABLES	19

Tennessee Chess Association Tournament Calender from the TCA Website

November 25–26, 2006	46 th Mid-South Open Memphis, TN Memphis Chess Club	910-210-4033
January 13–14, 2006	North Tennessee Winter Open Riverview Inn, Clarksville, TN Harry Sabine	931-484-9593
January 27, 2007	Tenn. Individual State Scholastics Region 1 Region 2 Region 3 Region 4	Judd Jones Harry Sabine 931-484-9593 Chris Prosser 615-399-8432 Brian Vogt 901-624-0020
February 17, 2007	TN State Scholastics Final Cookeville, TN Harry Sabine	931-484-9593

MEMBERSHIIPS

TCA annual dues are \$10 for a *regular* membership or *student* membership. Additional members of a family may join for one dollar each, but only one issue of **TCN** will be mailed per family. For those wishing to join after April 1 of any year, a \$15.00 membership is available for the remainder of that year and includes the following year. All non-patron memberships expire August 31.

Tax-deductible Patron Memberships are available beginning at \$100 per year for those who wish to help support the TCA and the FFTC. These memberships expire one year from the date of payment. Patron membership categories and benefits are as follows:

PATRON \$100

- One year TCA Membership and FFTC membership plus a key ring.

PATRON KING \$300

- All Patron benefits plus one year free TCA and FFTC membership for all members of the Patron King's immediate family & free entry into the TN State Scholastic Individual Regional Tournament for the member and all members of the Patron King's immediate family.

PATRON MASTER \$500

- All Patron King benefits plus one free entry to any TCA or FFTC sponsored Open Chess Tournament. The Patron Master or any member of his/her immediate family can use such free entry.

PATRON GRANDMASTER \$1000 (or more)

- All Patron Master benefits plus a chess clock and their name on a permanent plaque to be placed on the wall at the home of the TCA and FFTC.

TOURNAMENT ANNOUNCEMENTS

TCN prints listings of upcoming tournaments that require TCA membership in each issue for free. Submit complete TLA information to Paul Semmes, Tournament Coordinator.

E-MAIL: paulsemmes@charter.net

TN CHESS NEWS STAFF

Editor:

Leonard Dickerson

Contributors:

Peter Lahde
Patricia Knight
Paul Semmes

**TCN publishing schedule and
deadline for submissions:**

Spring 2006 - May 1 covering
Feb, Mar, and Apr events

Deadline: Apr 9, 2006

Summer 2006 - Aug 1 covering
May, Jun, and Jul events

Deadline: July 9, 2006

Fall 2006 - Nov 1 covering
Aug, Sept, and Oct events

Deadline: Oct 9, 2006

Winter 2007 - Feb 1 covering
Nov, Dec, and Jan events

Deadline: Jan 9, 2007

Please submit material by e-mail
to: lsdick@tds.net



TENNESSEE CHESS ASSOCIATION

&

FOUNDATION FOR TENNESSEE CHESS

PATRON MEMBERS

♔ Patron Grandmaster ♔

George A. Dean

Dr. Martin Katahn

♘ Patron Member ♘

Dr. Juan T. Aristorenas

Scott Eddins

Gary Gillespie

Peter P. Lahde

Ed Newkirk

Bill Orgain

Clinton H. Pearson, Jr.

Jeff Pennig

Harry D. Sabine

Paul B. Semmes

R. K. Shimabukuro

Joe Le Tate

Brian Vogt

A NOTE FROM THE EDITOR

This has been a particularly rich season for chess. Not only did we have the Tenn. Open with its associated Scholastic tournament but we also had *Tennessee Tempo* USCL activity, the Fall Classic in Memphis, numerous other scholastic events, and two Senior Championships: the USCF National Senior Championship and the first Tenn. Senior Championship. Because Paul Semmes took the time to decipher and reformat all legible score sheets submitted at the Tenn. Open, we had an unusually high number of games from the event. So many, in fact, that size consideration for the magazine necessitates that this issue focus mainly on the Tenn. Open.

Special thanks goes to Semmes for his work in translating the games as well as to Pete Lahde who funded the purchase of score sheets for the games and additionally provided at-large reporting of Tenn. players' activities abroad. They make my job easy!

Starting with the last issue of the *TCN*, the state magazine will be freely posted on the *TCA* website two or three months after its original publication date. They will be posted in pdf-format, so you'll need to use Adobe Acrobat Reader or similar to view them.

ERRATA: The NTWO game given as Leamon vs. Smith (page 12 of the last *TCN*) was not played by these players but those names were submitted with the game. The players were actually D. Hayes vs. Krievenstov. I'm not sure certain how the original players were wrongly credited with the game, but I am sure it was not Leamon, who states: "I've never started a game with 1. g4 in my life!" A game displaying Mark Leamon's true ability and technique is presented on page 13.

New World Chess Champion: Topalov Toppled

Russian GM Vladimir Kramnik defeated GM Veselin Topalov 2.5-1.5 in the four-game tiebreak after a tough twelve-game match, which ended 6-6. Kramnik demonstrated his excellent technique by grinding down his opponent in two very well-played endings (despite being 25-min game/10-s increment per move) in game two and four of the tie breaker.

Because Kramnik won the tie-breaker, there will likely be no more discussions of the rancor that erupted after Topalov suffered his second defeat in the fourth regulation game, after which Topalov's camp accused Kramnik of visiting the bathroom excessively to somehow cheat, resulting in Kramnik not appearing at the fifth game and being forfeited. Since Kramnik won in spite of losing a forfeit point, it is likely that this infamous incident will fade and the new champion can enjoy his unified title.

Update on the *Tennessee Tempo*

The *Tennessee Tempo*'s introduction to the U.S. Chess League has been brutal. We've only drawn a single match out of seven (the other matches were losses). Peter Bereolos (on his website <http://www.knology.net/~bereolos/>) describes what is happening to our team with his presentation of our September 29th rematch with the Seattle Sluggers:

"It was another frustrating night for the *Tennessee Tempo*. Wednesday in the US Chess league we had a rematch with our opening night opponents, the Seattle Sluggers. Since they swept us on opening night, Seattle had amassed the best record in the league, while we have headed in the other direction. Our team spirit has remained high and we were ready to reverse the trend. We knew that we had missed a lot of opportunities in that first match as well as having to deal with technical difficulties with our internet connection. We started the same 4 we had in the first match: Burnett, Andrews, myself, and Wheeler while they substituted FM Mikhailuk on Board 2."

"It seemed that karma was on our side early when Seattle's internet connection dropped almost as soon as play began. After they finally got back up and running they were all penalized 5 minutes and we ran up a significant time advantage on every board (unknown to us, they were having to relay all their moves through a single computer, much like we had to do with the telephone on opening night). ... Todd's game looked like a total mess with an extra piece versus a slew of pawns. Once again the pawns ended up being stronger. Still, down 0.5-1.5 things didn't look too bad for us. Jerry had an extra pawn and Ron's position looked tenable although slightly worse. Both of their opponents were short on time. Things began to go off the track a bit when Jerry allowed a dangerous piece sacrifice instead of taking a clean two pieces for a rook. He used up his time edge, but his opponent misplayed the attack and it looked like Jerry just needed to unwind his position. Meanwhile, GM Serper gave up all of his advantage versus Ron, nearly losing on time and swapping into a drawn rook ending, which he then proceeded to misplay and actually give Black some winning chances. Then, in the span of a few seconds, disaster struck. Jerry locked up and couldn't produce a move and lost on time! Ron offered an exchange of rooks that gave Serper a winning king and pawn ending. From winning or at worst drawing the match, suddenly we had lost by 3 points for the second straight week."

That, in a nutshell, is what is happening to the *Tempo*. We are not being outplayed by higher-rated opponents but we are making simple, correctable mistakes. Hence it is likely that the *Tempo* will start churning out the wins in the near future. In the meanwhile, following are two worthy wins that demonstrate our potential. If you

wish to see (or play online) all the other games that the Tempo has played, visit <http://www.uschessleague.com/>. View the games live on Wednesday at the Internet Chess Club (ICC).

[Event "USCL San Francisco vs Tennessee"]

[White "Larson,G (2130)"]

[Black "Naroditsky,D (2055)"]

1.e4 c5 2.Nf3 d6 3.d4 cxd4 4.Nxd4 Nf6 5.Nc3 a6 6.Bc4 e6 7.Bb3 b5 8.0-0 Be7 9.Qf3 Qc7 10.Re1 0-0 11.a3 Nbd7 12.Qg3 Nc5 13.Bh6 Ne8 14.Ba2 Bf6 15.Be3 Bb7 16.f3 Rd8 17.Rad1 Ba8 18.Bf2 g6 Slightly loosening. Playing to queen to b8 is better, avoiding potential sacrifices on e6. 19.f4 Bg7? Ng7 was certainly better. 20.f5! Kh8 e5 was better, by far. 21.b4 fxe wins a pawn. e5 22.Ndxb5 axb5 23.bxc5 Be6 24.Rd3 Nf6 25.fxg6 cxd6 wins a pawn without complications. fxg6 26.Red1?! Nxe4 27.Nxe4 Bxe4 28.cxd6 Qxc2 29.R3d2 Qc6 30.Bd5 Bxd5 31.Rxd5 Rf7?! Wrong rook: Rd7! gives clearer drawing chances. 32.Qb3 Rb7 33.Rc5 Qd7 34.Qd5 Rf8 35.Be3 h6 36.Rc6 Kh7 37.Rdc1 Rd8 38.Bc5 Bb6 followed by Rc7 was the quickest route to take the 7th rank. Re8 39.Qe4 Rd8 40.Bb4 Rbb8 41.Rc7 Qe6 42.Re7 Qf5 43.Qxf5 gxf5 44.Rcc7 Rg8 45.Ba5! And there is nothing to be done about the upcoming promotion. Kg6 46.Rxg7+! Rxg7 47.Rxg7+ Kxg7 48.d7 Kf7 49.d8Q Rxd8 50.Bxd8 Ke6 51.Kf2 Kd5 52.Ke3 Kc4 53.Be7 Kd5 54.Bb4 h5 55.Kd3 f4 56.Bd2 h4 57.h3 e4+ 58.Ke2 e3 59.Be1 Kc4 60.Bxh4 Kb3 61.Be7 b4 62.axb4 Black resigns 1-0

[Event "USCL Dallas vs Tennessee"]

[White "GM Panchanathan,M (2530)"]

[Black "Burnett,R (2449)"]

1.Nf3 Nf6 2.g3 b5 3.a4 b4 4.Bg2 Bb7 5.0-0 e6 6.d4 c5 7.c3 Na6 8.a5 bxc3 9.Nxc3 cxd4 10.Nxd4 Bxg2 11.Kxg2 Bb4 12.Qd3 Nc5 13.Qc4 Bxc3 14.bxc3 Rc8 15.Nb5 d5 16.Qb4 Qe7? (a6 may give Black a tiny advantage.) 17.Bf4! But now White rules. e5 18.Bxe5! Qxe5 19.Nxa7 0-0 20.Nxc8 Rxc8 21.a6 Nfd7 22.a7 Ra8 23.Rfb1 h5 24.Ra5 Qxe2 25.Qd4 Of course, 25. Rxc Nxc 26. Qxc? Leaves the rook at b1 undefended. Qe4+ 26.Qxe4 Nxe4 27.Rb7 Nef6 28.Rc5 Nxc5 Black could have postponed his demise with Kh7 or Kf8, but White's advantage would have remained imposing. 29.Rb8+ Rxb8 30.axb8Q+ Kh7 31.Qf8 Nce4 32.Qxf7 Nxc3 33.h3 Ne2 34.Qe6 Nd4 35.Qe5 Nc6 36.Qf5+ Kh6 Forced. 37.g4 hxg4 38.hxg4 Ne7 39.g5+ Kh5 40.gxf6+? White gets over-confident and thinks that he sees a queening combination. The simple Qe5 or Qh3 would have still won a knight. And we get to see the type of combination that White intended after 40. Qe5 Nc6 41. gxf- Nxe 42. fxg and queens. Nxf5 41.f7 Nh4+ The in-between move that forces resignation! 0-1

Tennessee Open Championship

The 60th Annual Tennessee Open was held from September 1-3 at the Gaylord Opryland Hotel in Nashville and featured a \$5,000 guaranteed prize fund. The event had four sections: Open, Amateur (Under 1600), Novice (Under 1200), and a one-day Game/60 Scholastic event. The event drew players from eight states, including the distant states of Iowa and Arizona. Forty-two players competed for the championship. 33 players were in the Amateur, and 13 players battled it out in the Novice. Probably the main reason that the Novice was relatively small was that the Scholastic Tournament (divided into four grade levels) had over 110 players. So either the parents or the scholastic players favored the one-day, 60-min. format.

The **Tennessee Champion for 2006 is Todd Andrews** who took the title with four wins and one draw. (Ron Burnett and Peter Bereolos came in second place with 4.0 points.) **Tre Smith of Gallatin, TN took the Amateur title** with an undefeated 4.5 score. (Vikas Kumar of Nashville took clear second with 4.0 points.) The **Novice was won by Randall Vaughn** of Nashville with 4.5 points, a clear point ahead of the field that saw four others bunched in second-fifth place with 3.5 points.

Whereas the main sections of the Tenn. Open were won by 4.5 points, all winners of the Scholastic Event had an undefeated 4.0 score. The High School Section of the Scholastic event was won by Chris Snow of Clarkrange; the Jr. High Section was won by David Fan of Nashville; the Elementary Section was won by Charles Blue of Knoxville; and the Primary Section was won by Kasyap Cherukuri of Cordova.

Peter Lahde graciously donated money to the event to purchase score sheets so that we could obtain copies of the games. Hence we have more games to present in this issue than ever before, some of which are annotated. There is even a quiz based on some of the tactical positions that developed during the course of play. To give you the flavor of the event, I'll share thoughts of the Champion during his first round battle with Evan Mah. (Todd published this game on the USCF's website.)

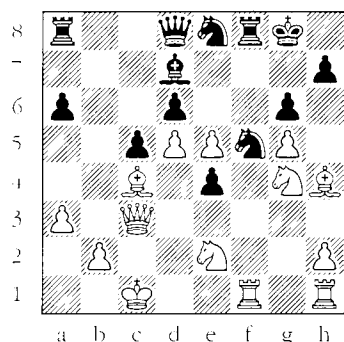
[White "Andrews, Todd"]

[Black "Mah, Evan"]

[Annotator "Todd Andrews"]

1. d4 Nf6 2. c4 e6 3. Nc3 Bb4 4. Qc2 0-0 5. a3 Bxc3+ 6. Qxc3 d6 Not as popular as b7-b6, but I figured it could transpose. 7. Bg5 Nc6 8. f3 e5 9. d5 Ne7 9...Nd5 (These tactical ideas never seem to work for Black.) 10. e4 I saw no advantage in doubling the f-pawn and giving up my bishop pair. Ne8 11. g4!? g6 12. 0-0-0 f6 13. Bh4?! 13. Be3 makes a lot more sense and my bishop does not end up getting in the way of operations on the king-side. I was hooked on tactical ideas where I play f3-f4

and for some reason I felt my bishop wanted to remain on the h4-d8 diagonal with the Black queen. **c5 14. Bd3 Bd7 15. Ne2 a6 16. Rdf1** Announcing my plan of f2-f4. The only way for Black to prevent this is to play ...g6-g5 and I felt like the kingside breakthrough was only a matter of time with plans such as h2-h4, Rf2-h2 and Ng3-f5 or h5. **b5 17 g5 f5 18. f4!?** Whether or not this is the best way for White to play in the search for truth in chess is questionable, but is definitely the best way to play to mix it up on and confuse the up-and-coming teenager. **bxc4?!** 18...fxe4 19. Bxe4 Bg4 20. Qe3 Ng7 puts up tougher resistance. **19. Bxc4 fxe4 20. fxe5 Nf5**



White to move.

21. e6 Bb5 22. Bxb5 The idea 22. Ng3! is even stronger here than on the next move. **Bxc4 22. Nxb4?? 23. Rxf8+ Kxf8 24. Qh8+ Ke7 25. Qxh7+ or 23. Nxf5 gxf5 24. Qxc4 axb5 23. Ng3! Ra4 23....b4!** is of course the best move creating complications for me to deal with 24. Nxf5 Rxf5 (24...bxc3 25. Nh6+ Kg7 26. Rxf8 and White does not escape the mating net without losing material.) 25. Qe3 is unclear. **24. Nxf5 Rxf5 24...gxf5 25. Qg3 or h3** is very dangerous for Black. **25. Rxf5 Rc4 26. Qxc4 bxc4 27. Rf7 c3 28. Rhf1 1-0**

After "passing" through Burnett with a strong draw, Todd faced Expert Bill Hall in the final game to determine the champion:

[Event "Open Section"]

[White "Andrews, Todd (2350)"]

[Black "Hall, Bill (2103)"]

1. d4 b6 2. e4 Bb7 3. Bd3 e6 4. Nf3 Nf6 5. Qe2 d5 6. e5 Nfd7 7. h4 Be7 8. Nbd2 c5 9. c3 Nc6 In this hybrid of a French Defense, White has a stronger kingside attack than he would usually be able to achieve in most French Defense setups. Still, Black has good chances and the game is now even. **10. a3 Qc7 11. h5 h6 12. b4 c4** Black should have maintained his ground on the queenside and simply castled kingside. But perhaps he is considering queenside castling? **13. Bb1 Nf8?!** It is uncertain what this accomplishes, but b5 would have been better or even a5 as later played. **14. Nf1 a5 15. b5 Nd8?** Na7 followed by castling to a safe queenside would have been better. The knights would be able to coordinate later. Now White has a huge space advantage and can start working on Black's kingside weaknesses. **16. a4 f6 Ah!** Now we see what the knight was doing on the 13th move. However, Bg6- is strong. **17. Bf4 f5** Black should have followed up with the consistent Nf7.

18. Rg1 g5 A good move, allowing Black to rid himself of some of his kingside weaknesses--though his h-pawn now receives all the attention. **19. hxc6 Nxc6 20. Bd2 h5 21. Rh1 Nf7 22. g3 O-O-O 23. Ne3 Rdg8 24. Ng2 Qd8** The rook on g8 makes possible the immediate h4: **24... h4!?** 25. gxh4 Bxh4 26. Ngxh4 Nxh4 27. Nxh4 Rxh4 28. Rxh4 Rg1+ (Black has no weaknesses other than being cramped but may have to deal with the rooks later.) **25. Bc2 Ng5? 26. Nxc5 Bxc5 27. Rxh5 Be7 28. O-O-O Qe8 29. Rdh1 Rxh5 30. Rxh5 Qf7 31. Kb1 Kd8 32. Rh3 Bc8 33. Qd1 Bd7 34. Qh1 Be8 35. Ne3 Bg5** This is a blunder but it is difficult to come up with suggestions even now. Maybe Bf8 could help stave off the inevitable but Black is simply without counterplay. **36. Rh7 Rg7 37. Rxc7 Qxc7 38. Nxf5 1-0**

[Event "Open Section (4)"]

[White "Hall, Bill (2106)"]

[Black "Arnold, Justin (1933)"]

1. Nf3 c5 2. c4 Nc6 3. Nc3 g6 4. g3 Bg7 5. Bg2 d6 6. O-O e5 7. d3 Nge7 Black employs a very flexible setup against the English, a reverse Botvinnik. **8. Nd5 O-O 9. a3 Nxd5** This blunts the g2-bishop's range. **10. cxd5 Ne7 11. e4 a5 12. Rb1 Bd7 b5** is interesting, setting up a possible outside passer or preparing b4 to kill queenside activity. **13. Be3 a4 14. Nd2 Bb5 15. Qe2 f5** Finally! **16. Bg5?!** Better was f4. **h6 17. Bxe7 Qxe7+/- 18. Nc4 f4 19. b4! axb3 20. Rxb3 Bxc4 21. dxc4 Qf7 Qd7! 22. Rfb1+/- Ra7 23. Bh3 Kh7 24. Be6 Qe7 25. f3 Rfa8 26. Qb2 fxg3 27. hxg3 Qg5 28. Kg2 b6?** Better was Ra4. **29. Ra1 h5 30. Rxb6 h4 31. Bg4 hxg3??** (Rxa3! may lead to stalemate.) **32. Rh1+ Kg8 33. Be6+ Kf8 34. Rb8+ Ke7 35. Rxa8 Rxa8 36. Qb7+ 1-0**

[Event Open Section (5)"]

[White "Suich, Joshua (2064)"]

[Black "Burnett, Ronald (2423)"]

1. Nf3 e6 2. c4 b6 3. g3 Bb7 4. Bg2 f5 5. Nc3 Bb4 6. Qb3 a5 7. a3 Be7 8. d4 Nf6 9. O-O O-O 10. Bg5 Better is Rd1 or Bf4. **Ne4 11. Bxe7 Qxe7 12. d5 Na6** Black has more than equalized. **13. Nxe4 fxe4 14. Nd2 Nc5 15. Qe3 exd5 16. cxd5 Bxd5** Black has a full point advantage. **17. f3 Qe5 18. fxe4 a4 19. Rf3 Be6 20. Raf1 Qxb2 21. Rxf8+ Rxf8 22. Rxf8+ Kxf8 23. Qf4+ Qf6 24. Qe3** Better is e5 but White rightly fears the endgame. **d6 25. Nf3 Qa1+ 26. Kf2 Qc3 27. Qf4+ Qf6 28. e5 dxe5 29. Nxe5 Qxf4+ 30. gxf4 Ke7 31. Nc6+ Kd6 32. Nd4 Nb3 33. Nb5+ Kc5** Better was Kd7, holding onto the pawn but Ron trusts that he will be able to later win White's a-pawn. **34. Nxc7 Bc4 35. e4** Better was Ke3. Now Black rolls. **Nd4 36. e5 Nc2 37. f5 Nxa3 38. f6 gxf6 39. exf6 Nc2 40. Bd5 Bxd5 41. Nxd5 Nd4 42. Nc7 Kd6 43. f7 Ke7 44. Nd5+ Kxf7 45. Ke3 a3 46. Nb4 Nc6 47. Nc2 a2 48. Kd2 Nd4 49. Na1 Nf3+ 50. Kc2 Nxh2 51. Kb3 h5 52. Kxa2 h4 0-1**

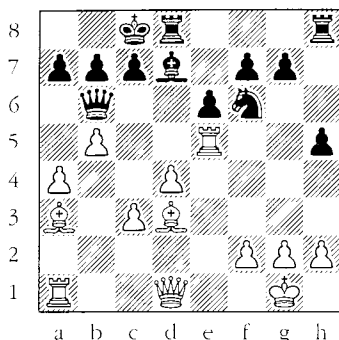
[Event "TN Open, Open Section"]

[White "Wu, James (1772)"]

[Black "Hunley, Ryan (1563)"]

1. e4 e6 2. d4 d5 3. Nc3 dxe4 4. Nxe4 Bd7 Black should have continued with the simple Nf6. And if he is going to spend two moves to develop his bishop, then it is better placed on b7 where it won't be harassed by pawns or knights. 5. Nf3 Bc6 6. Bd3 Nd7 7. c3 Ngf6 8. Nxf6+ Nxf6 9. O-O Bd6 10. Re1 Qd7 11. Ne5 Bxe5 12.

Rxe5 O-O-O 13. a4 Qd6 The immediate h5 is better. 14. b4 h5?! Black does not sense the danger. 15. b5 Bd7?? A suggestion of Fritz9 is Bd5 (I would probably have settled for the simple Be8--if I saw what was coming myself!) 15... Bd5!? 16. Ba3 Qd7 17. c4? Bxg2 18. Kxg2 Qxd4 19. Re3 Ng4 20. Rf3 Ne5 16. Ba3 Qb6 17. Bc5! The in-between move--not just settling to win the exchange with Be7! Qa5 18. Bb4 Qb6 19. a5 1-0



Wu-Hunley. White's 17th move.

[Event "Novice Section (3)"]

[White "Shields, Tanner (993)"]

[Black "Suich, Joanna (1099)"]

1. e4 e5 2. Nf3 Nc6 3. Bc4 Bc5 4. d3 Nf6 5. Bg5 O-O 6. Nc3 Bb4 If Black is so worried of the pinning attack on her knight at f6 that she is going to violate the opening principle of not moving the same piece twice while other pieces are undeveloped, then the bishop should be returned to e7. Better, though, is the simple h6 followed by d6. 7. Qd2 Instead of simply castling and being up an extra tempo, White unnecessarily defends against getting doubled pawns. h6 8. Bh4 Nd4? 9. a3 Nxf3+ 10. gxf3 Bxc3 11. Qxc3 d6 12. Rg1 Re8 13. O-O-O Be6 14. f4 Bxc4 15. dxc4 Nxe4?! 16. Bxd8? Winning is 16. Qh3! f6 17. Qg2 Ng5 18. fxg5 hxg5-/- 16... Nxc3 17. bxc3 Raxd8 18. fxe5 dxe5 Four pawn islands are terminal even at the scholastic level. 19. Rde1 g5 20. Rg4? f5 21. Rg3 Kg7 22. h4 f4 23. Rg4 Kf6 24. hxg5+ hxg5 25. Rgg1 e4 26. Rgf1 Kg6 27. Rg1 e3 28. fxe3 Rxe3 29. Rxe3 fxe3 30. Re1 Re8 31. c5 c6 32. c4 Kf5 33. Kd1 Kf4 34. Ke2 g4 35. Rg1 g3 36. c3 Kg4 37. a4 Kh3 38. Rh1+ Kg2 39. Rf1 Kh2 40. Rf3 g2 41. Rxe3 Rxe3+ 42. Kd2 g1=Q 43. Kc2 Qf2+ 44. Kb3 Re2 45. Ka3 Re1 46. Kb3 Rb1+ 47. Ka3 Qb2# 0-1

[Event "Open Section (1)"]

[White "Suich, Peter (1722)"]

[Black "Wheeler, Jerry (2206)"]

1. Nf3 c5 2. b3 d5 3. e4 dxe4 4. Ne5 Nd7 5. Bb5 Ngf6 6. Bb2 e6 7. f3 a6 8. Bxd7+ Bxd7 9. O-O Qc7 10. Nxd7 Qxd7 11. fxe4 Nxe4 12. Qf3 Nf6 13. Na3 Be7 14. Nc4 Rd8 15. Rad1 O-O 16. Qg3 b5 17. Rxf6! bxc4 18. Rdf1 g6 19. Qe5 Bxf6 20. Qxf6 Qd4+ 21. Bxd4 Rxd4 22. Qg5 Rd5 23. Qf4 cxb3 24. axb3 a5 25. c3 e5 26. Qe3 Rfd8 27. Rf2 f6 28. Kf1 Kg7 29. Ke2 Rb8 30. Qf3 Rd6 31. c4 Rbd8 32. d3 f5 33. Qe3 Kf6 34. Rf3 Rd4 35. h4 R8d7 36. Qg5+ Kg7 37. Rxf5 1-0

[Event "Open Section (3)"]

[White "Remec, Mirko (1836)"]

[Black "Slifer, William (1832)"]

1. e4 c5 2. Nf3 d6 3. d4 cxd4 4. Nxd4 Nf6 5. Nc3 a6 6. Be3 e5 7. Nf3 Be6 8. Be2 Be7 9. O-O Qc7 10. Ng5 Bc4 11. f4 h6 12. Nf3 Ng4 13. Qd2 exf4 14. Bxf4 Qc5+ 15. Qd4 Bxe2 16. Nxe2 Nc6 17. Qxc5 dxc5 18. e5 h5 19. Ng3 g6 20. Ne4 O-O-O 21. h3 Nh6 22. Bxh6 Rxh6 23. Nfg5 Bxg5 24. Nxxg5 Nxe5 25. Rae1 Rd5 26. Rxe5! Rxe5 27. Nxf7 1-0

[Event "Open Section (1)"]

[White "Andrews, Todd (2350)"]

[Black "Slifer, William (1832)"]

1. d4 Nf6 2. e4 d6 3. Nf3 g6 4. Nc3 Bg7 5. e4 O-O 6. Be2 e5 7. O-O Nc6 8. d5 Ne7 9. b4 a5 10. bxa5? Rxa5 11. Nd2 Nd7 12. Nb3 Ra8 13. a4 b6 14. a5 bxa5 15. Nxa5 Nc5? 16. Nc6 Nxc6 17. Rxa8 Nd4 18. Be3 Qh4 19. f3 f5 20. exf5 gxf5 21. f4 Bh6 22. g3 Qh3 23. Bxd4 exd4 24. Qxd4 Bg7 25. Qe3 Nb3 26. Nb5 Nc5 27. Bf3 1-0

[Event "Amateur Section (2)"]

[White "Mah, Galvin (1391)"]

[Black "Hydzik, Robert (1546)"]

[Result "0-1"]

1. d4 e6 2. e4 d5 3. e5 c5 4. Nf3 Nc6 5. c3 Qb6 6. Be2 Nge7 7. O-O cxd4 8. cxd4 Nf5 9. Nc3 Nxd4 10. Nxd4 Qxd4 11. Bb5+ Bd7 12. Bxd7+ Kxd7 13. Qe2 a6 14. Be3 Qxe5 15. Na4 Bd6 16. Nb6+ Ke7 17. g3 Always examine your available checks: 17. Bg5-! f6 18. Qxe Bxe 19. Nxa could have resulted in White winning. Rad8 18. Qd2 Nxe3 19. Rae1 Nxf1 20. Kxf1 Qxe1+ 21. Qxe1 Bc7 22. Qb4+ Rd6

[Event "Open Section (3)"]
 [White "Suich, Joshua (2064)"]
 [Black "Bereolos, Peter (2309)"]

1. Nf3 Nf6 2. c4 g6 3. d4 Bg7 4. Nc3 O-O 5. e4 d6 6. Be2 e5 7. dxe5 dxe5 8. Qxd8 Rxd8 9. Bg5 Na6 10. Nd5 Rd6 11. Bxf6 Bxf6 12. Nxf6+ Rxf6 13. Nxe5 Re6 14. Ng4 h5 15. Ne3 Rxe4 16. O-O-O Re8 17. Bf3 c6 18. Rd6 Nc5 19. Rhd1 a5 20. h3 Kg7 21. b3 Ne6 22. h4 Nc5 23. Kb2 Be6 24. a3 Na6 25. Nc2 Nc5 26. Nd4 Bg4 27. Bxg4 hxg4 28. b4 axb4 29. axb4 Ne4 Peter comments on his website: "This looks natural, but I could have gained a clear advantage with the paradoxical 29... Na4+! going to the edge of the board and blocking the a-file 30. Kb3 (30. Kc2 Nb6) 30... g3 31. fxg3 Re3+." 30. Rd7 Nxf2 31. Rf1 g3 32. Rxb7 Rad8 33. Nxc6 Rd3 34. Re7 Ra8 35. Ra7 Re8 36. Re7 Ra8 37. Ra7 1/2-1/2

[Event "Amateur Section (5)"]
 [White "Mark Leamon (1455)"]
 [Black "Joe Tate (1259)"]

Instead of trying to win more material, Black satisfies himself with what he has and steers the game toward an ending. Then he plays to restrict his opponent's opportunities while increasing his own scope.

1. Nf3 d5 2. d4 c6 3. Bf4 g6 4. e3 Nf6 5. h3 Bg7 6. c4 O-O 7. Nc3 Re8? This wastes a valuable tempo. It is unlikely that Black will be able to engineer e5 so he should simply continue with his development. 8. Bd3 Bd7 Another inaccuracy. Since the only other decent square for this bishop is f5, it is better placed on c8 because it defends the b-pawn. So Nbd7 would be better or even Be6 or the challenging Bf5. For instance, 8... Be6 9. Ng5 Bf5 10. Bxf5 gxf5 11. Qb3 dxc4 12. Qxb7 (12. Qxc4 e6) 12... Qb6 13. Qxa8 Na6 14. Qxe8- Nxe8. 9. O-O Qc8? 10. cxd5 cxd5 11. Rc1 Qb3 is also strong. Nc6 12. Nb5 Nh5 There would be less pain if he moved the misplaced rook: 12... Rf8 13. Nc7 Rb8 14. b4 ! Nxb4!? (14... a6 15. Re5 e6 16. b5 axb5 17. Nxb5 Ra8 18. Nd6 Qd8 19. Nxb7) 15. Nxd5 Nfxd5 16. Rxc8 Rbxc8. 13. Bh2 e5 14. dxe5 Now Nd6 and well as g4 are threatened. a6 15. Nd6 Qd8 16. Nxe8 Qxe8 Better is g4 but White prefers to keep a tight position and settle for the riches he has already netted. 17. Rc5 Nxe5 18. Nxe5 Bxe5 19. Bxe5 Qxe5 20. Be2 Nf6 21. Bf3 Qxb2 22. Bxd5 Nxd5 23. Rxd5 Bc6 24. Rd8+ Rxd8 25. Qxd8+ Kg7 26. Qd4+ Qxd4 27. exd4 White enters an endgame where he has all the winning chances and Black has minimal counterplay. Kf6 28. Re1 Bd5 29. a4 a5 Black tries to create a target for counterplay but ... 30. Re5 Bc6 31. Rxa5 Ke6 32. Re5+ Kd6 33. a5 f6 34. Rc5 h6 35. f4 h5 36. g4 hxg4 37. hxg4 Ke6 38. a6 Rxc6- also works since the king is outside the square of the a-pawn. Anyway, Black saw the futility of continuing and resigned. 0-1

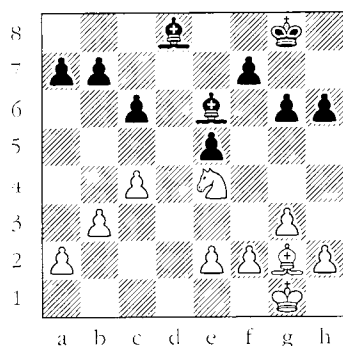
[Event "Fall Classics 5 (3)"]
 [Date "2006.09.29"]
 [White "Pylant, Gary-1855"]
 [Black "Torchia, Robert-1919"]
 [Annotator "Leonard Dickerson"]

The Fall Classic, a 4-round 2-h game Swiss, was held in Memphis from Sept. 8-29. Contending for first place, Pylant played this Torre Attack in the fourth and final game of the Memphis Fall Classic. At the start of this game, he had 2.5 points and his opponent had 2.0 points.

1. d4 Nf6 2. Nf3 g6 3. Bg5 Ne4 4. Bf4 Bg7 5. Nbd2 d5 6. e3 Nd7 7. Be2 Better is either c4 or Bd3. Ndf6 8. h3 This unnecessary move was probably played to preserve the bishop from attack by Nh5. If so, it was not justified because either Be5 or Nxe would have accomplished the same thing. ... c6 9. c3 Qb6 10. Qc1 Qb3 was a little better. Now the game is even. ... Bd7 11. Ne5 g5?! 12. Bh2 Nxd2 13. Nxd7 Nxd7 14. Qxd2 Nf6 15. Bd3 h6 16. Be5 White has got a plus but it is hard to make progress. Black could now play Nh5 but decides to just wait and see what White does. ... e6 17. Qe2 Playing a4 could gain queenside space but would probably give up queenside castling rights. ... Ke7?! Fritz9 screams that White now has a 2.0 advantage but does not offer a convincing kill. This is similar to the 9th game of the Topalov-Kramnik match where Topalov had a huge computer-advantage but struggled to make progress against Kramnik's defense (which did eventually fail--though not because of White's brilliance). 18. O-O-O Ne8 Now White can continue strongly with h4 to take advantage of the disconnected rooks and weak pawns or e4 to exploit the Black king's position and increase his white-square bishop's range. 19. Bg3?! Nd6 20. Bxd6? Well, there goes part of White's advantage. Better was f3. Black can now castle by hand but still has weak kingside pawns. ... Kxd6 21. e4 Rae8 This rook would have been better placed on f8 to help defend the kingside weaknesses. 22. Rhe1 Kd7? 23. exd5 cxd5 Capturing with the e-pawn could offer Black some defensive chances for a draw because of the resulting opposite colored bishop endgame: 23... exd5 24. Qg4+ Kd8 25. Rxe8- Rxe8 26. h4 Qc7 27. hxg5 Qe7 28. g6 fxg6 29. Bxg6 Rf8 30. f3 Qg5- 31. Qxg5- hxg5. 24. Bb5+ Kc8 25. Bxe8 Rxe8 26. Qf3 Re7 27. Re2 The rooks need entry points, so Rh1 followed by h4 is a way to penetrate Black's position. ... a5 28. Qd3 Qd8 29. Kb1 Kb8 Qb5 or Qh7 are more forcing. 30. Rde1 Rc7 31. Qg3 Ka7 32. h4 Bf6 33. hxg5 Bxg5 34. Qf3 a4 35. Rc2 b5 36. Qd3 Kb6 37. g3 Be7 38. f4 Qc8 39. Rec1 Bf6 40. Qh7 Qh8 41. Qxh8 Bxh8 42. a3 Kc6 43. Rh1 Bg7 44. Re2 Kd6 45. Rh4 f6 46. Rh1 Re7 47. Rhe1 e5 48. dxe5+ fxe5 49. fxe5+ Rxe5 50. Rxe5 Bxe5 51. g4 d4 52. cxd4 Bxd4 53. Kc2 Kc5 54. Re6 Kc4 55. Rxb6 1-0

[Black "Harbart, Carlos-1840"]

1. c4 d6 2. Nf3 Nf6 3. Nc3 g6 4. g3 Bg7 5. Bg2 Nbd7 6. d4 O-O 7. O-O e5 8. dxe5 Nxe5 9. Nxe5 dxe5 10. Bg5 Qxd1 11. Rfxd1 c6 12. Rd6 c5 has also been played. **Be6 13. Rad1 h6 14. Bxf6 Bxf6 15. b3** Also possible is Ne4, which could give White some play against the Black pawns and, indeed, may be the way to go if one was playing for a win: 15. Ne4!? Be7 16. Rxe6 fxe6 17. Rd7 Rfe8 18. Rxb7 Rab8! (Activating the rook and not waiting around for moves such as Bh3 to show that White actually has something tangible.) 19. Rxa7 Rxb2 20. Bh3 Rxe2 21. Bxe6-Kf8 22. Nf6 Rd8 23. Nd7+ Ke8 24. Kf1 Rd2 25. Nxe5 Bc5-/+ White's attack eventually fritters out and Black remains with a nice advantage (0.84 according to Fritz9). **15... Rfd8?! (Be7 was stronger.) 16. Ne4 Be7 17. Rxd8+ Rxd8 18. Rxd8+ Bxd8**



White to move.

The USCF held its' 26th annual U.S. Senior Chess Championship at the Gaylord Opryland hotel in Nashville, Tenn. Aug. 27-Sept. 1. Forty-three older warriors (50 and beyond) battled through six rounds (one game per day). **Texas' Joseph Mark Bradford** emerged as the **2006 U.S. Senior Open Champion** by scoring 5.5 points. Participants from Tenn. included Henry Robinson, James Beardsley, Jerry Nash, Gary Gillespie, Roy Manners, Michael White, and William Clement. **James Beardsley won the Under 1600 Section** with 3.5 points.

[Date "June 16, 2006"]

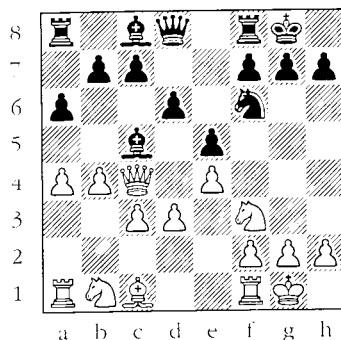
1. e4 c5 2. Nf3 e6 3. d4 cxd4 4. Nxd4 Nc6 5. Nc3 a6 6. Be3 Nf6 7. Qd2 Bb4 8.f3 d5
9. 0-0-0 White has been doing well in this variation - but by playing 9.a3 here. My
choice was brave, but also extremely dangerous, but fortune favors the brave.
9....Qa5 10. Kb1 But fortune also favors the strong - Neiditsch - Bruzon, 37th
Olympiad 2006 continued 10. Nxc6 bxc6 11. Bd4 0-0 12. Qg5 and it was White's
attack that dominated. 10....Bxc3 11. bxc3 dxe4 12. Nxc6 OK, OK - Now White
opens up the b-file. This bravery thing may be over-rated. 12....bxc6 13. Qd6 This
was the position I played for when I castled, but does White have enough for the
Pawn? After 13...Bb7 I just could not find a way to break Black's back. After
Black's next move flame covers the board. 13....Nd5?! Black is tempted by the
Rook sacrifice, wanting to attack, too. But there is a serious flaw. 14. Qxc6+ Bd7
15. Qxa8+ Ke7 16. Rxd5! White destroys the most dangerous Black piece and
establishes a winning game. 16....exd5 17. Qa7 Bravery has to be earned, too. I
settled on 17. Qa7 as I could calculate that I could reposition my Queen getting it
into play and keeping my King safe, but the brave was 17. Qxh8! Qxc3 18. Bg5+
Ke6 19. Qf8! and White wins. 17....Rc8 18. Bd4 Rxc3! And my opponent is no
slouch in the valor game either. Only by this exchange sacrifice can Black hope to
attack the White king, but I was ready for it. 19. Bxc3 Qxc3 20. Qb6 This works
well enough, but 20. Qb7 was more accurate. 20....Ba4 21. Qf2 Qb4+ 22. Kc1
Qa3+ 23. Kd1 Qxa2 Black's attack has played itself out and now White once again
begins a hunt for the Black king. 24. Qc5+ Kd7 25. fxe4 After 25...dxe4 26. Qd4+
Kc7 27. Qxe4 the dominant White queen promises immunity for the White king.
25.... Qb1+ 26. Kd2 dxe4 There is nothing better, but now White leaves Black with
just a Queen to fight with. 27. Qd4+ Kc7 28. Qxa4 e3+ 29. Kxe3 Qe1+ 30. Kd3
Qd1+ 31. Kc3 Qe1+ 32 Kb2 1-0

Peter Lahde also submitted the following two 15-min. games which were played by Palatnik against world-class opponents on a ferry ship from Odessa to Istanbul. That Gaprindashvili is Nona, the legendary Georgian who started the revolution in women's chess and reigned as World Champion from 1962–1978. Palatnik bested over half the field, but Ivanchuk won the event with 10 of 12 points.

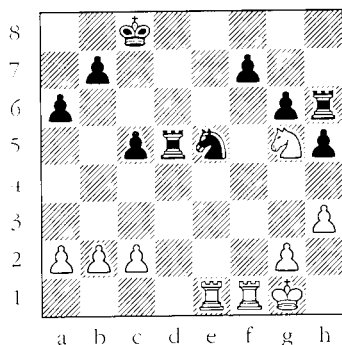
Scholastic Corner: Tactics from the TN Open

These tactics appeared in games from the 2006 Tennessee Open. The solutions are included in the games themselves, either as moves played or editorial notes. So you'll have to actually check the games to obtain the suggested solution! Study daily to improve your tactics:

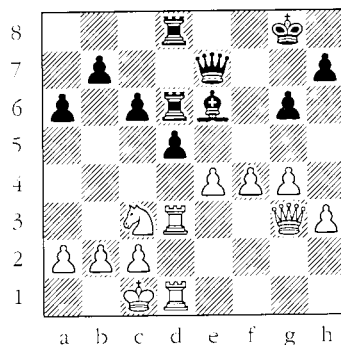
<http://www.entertainmentjourney.com/in dex1.htm> has a decent offering.



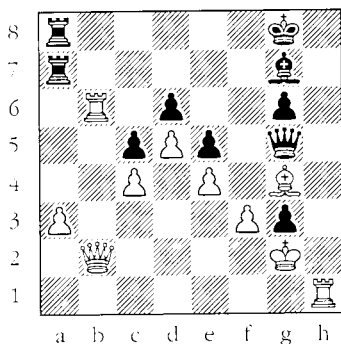
Black to move. Vaughn-Smith,
Move 11



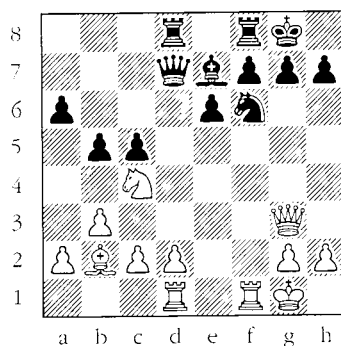
White to move. Mirko-Williams,
Move 25.



White to move. Sabine-Estrada,
Move 22.



White to move. Hall-Justin,
Move 33.



White to move. Suich-Wheeler,
Move 17

The Tennessee Chess Association & The Foundation For Tennessee Chess

Invite you to play Chess

January 13 & 14, 2007

The 7th Annual

North Tennessee Winter Open

Chess Tournament

At the beautiful Riverview Inn, Clarksville, TN, The Gateway to the New South

\$4,000 Prize Fund

Unconditionally Guaranteed

Section 1 "Kings" Open to all

1st Place Trophy + \$500

2nd Place 300

3rd Place 200

1st Below 2200 150

2nd Below 2200 100

Section 2 "Queens" U2000

1st Place Trophy + \$300

2nd Place 200

3rd Place 100

Top 1800-1899 100

Top 1799 & Below 50

Section 3 "Rooks" U1750

1st Place Trophy + \$250

2nd Place 125

3rd Place 100

Top 1550-1649 100

Top 1549 & Below 50

Section 4 "Bishops" U1500

1st Place Trophy + \$225

2nd Place 125

3rd Place 100

Top 1300-1399 100

Top 1299 & Below 50

1st Unrated Trophy + \$125

2nd Unrated 50

Section 5 "Knights" U1250

1st Place Trophy + \$225

2nd Place 125

3rd Place 100

Top 1050-1149 100

Top 1049 & Below 50

Section 6 "Pawns" U1000

1st Place Trophy

2nd Place Trophy

3rd Place Trophy

4th Place Trophy

5th Place Trophy

Top 800-899 Trophy

Top 799 & below Trophy

*Unrateds must play in Section 4 "Bishops". (Unrateds eligible for unrated prizes only.)

5 round Swiss. Time Control: **G / 2 Hours** The December 2006 Annual Supplement will be used.

REGISTRATION: Sat. Jan. 13th, 8:30-10:00 am CST.

ENTRY FEE: Sections 1-5 \$55.00 advance or \$65.00 at Site

Section 6 \$22.00 advance or \$30.00 at Site

Unrateds \$30.00 in advance or \$40.00 at Site

Section 6 is trophy only, No Cash Prizes.

For Info: Harry Sabine: (931) 484-9593 hdsabine@citlink.net

USCF Youth and Scholastic members may enter any section and play for "trophy only" for \$22.00 advance, \$30.00 at site.

Advance entries must be postmarked on or before January 6, 2007.

½ point bye available for any one round if requested at or before registration.

USCF membership required for all, and TCA membership required for all TN residents. Available at site. OSA

No Smoking, No Alcohol, No Drugs, No Computers, Wheelchair accessible.

Saturday, January 13th

Round 1 - 11:00 a.m.

Round 2 - 3:30 p.m.

Round 3 - 8:00 p.m.



Sunday, January 14th

Round 4 - 9:00 a.m.

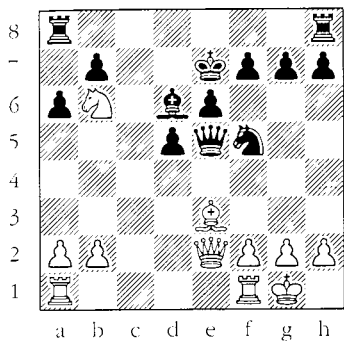
Round 5 - 1:30 p.m.

* Have a safe trip home*

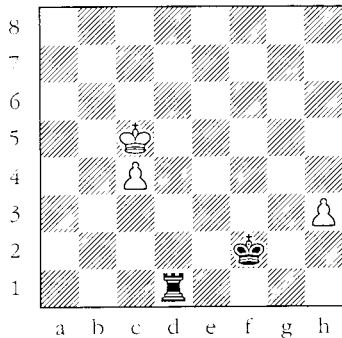
Hotel Rates: \$ 69.00 /night + tax for 1-4 people, includes free breakfast. Riverview Inn, 50 College St., Clarksville, TN 37040. Phone: (931) 552-3331. Reservations must be booked individually, and you must reserve your room prior to January 1, 2007 to ensure availability. You must say you are with the Chess Tournament to get the discounted rate.

Entries to: Harry D. Sabine, P.O. Box 381, Crossville, TN 38557

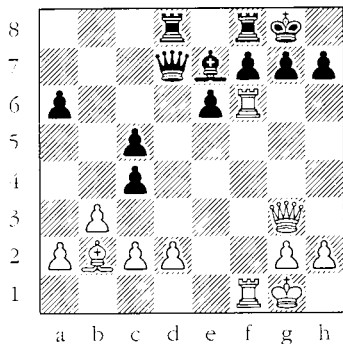
Entry Form on Web Site: www.tnchess.org



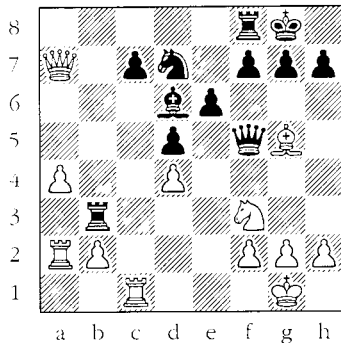
White to move. Mah-Hydzik,
Move 17.



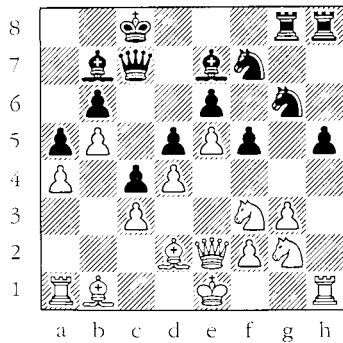
Black to move. Miller-Shields,
Move 49.



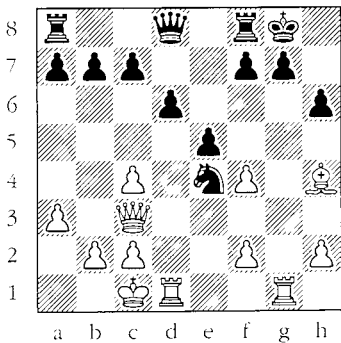
Black to move. Suich-Wheeler,
Move 18.



Black to move. Li-Sapir,
Move 18.



Black to move. Andrews-Hall,
24th move.



White to move. Shields-Suich,
Move 16.

[Event "Chess Cruise"]
 [White "Tukmakov (2560)"]
 [Black "Palatnik (2478)"]
 [Date "2006.08.31"]

1. Nf3 d5 2. c4 e6 3. d4 c5 4. exd5 exd5 5. Nc3 Nc6 6. g3 Nf6 7. Bg2 Be7 8. 0-0 0-0 9. dxc5 Bxc5 10. Bg5 d4 11. Bxf6 Qxf6 12. Nd5 Qd8 13. Ne1 Re8 14. Rc1 Bf8 15. Nd3 Bg4 16. Rc2 Qd7 17. Re1 Rad8 18. Qd2 Bf5 19. Rec1 Be4 20. N5f4 Bxg2 21. Kxg2 Qf5 22. Nc5 Ne5 23. Kg1 d3 24. Ncxd3 g5 25. Qc3 gxf4 26. Nxf4 Bh6 7. Qb4 Bxf4 28. Qxf4 Qxf4 29. gxf4 Nc6 0-1

[Event "Chess Cruise"]
 [White "Gaprindashvili (2375)"]
 [Black "Palatnik (2478)"]

1. d4 d5 2. c4 e6 3. Nc3 c5 4. cxd5 exd5 5. Nf3 Nc6 6. Bg5 Be7 7. Bxe7 Ngxe7 8. e3 cxd4 9. Nxd4 0-0 10. Nb3 Qb6 11. Qd2 Rd8 12. Nb5 Bg4 13. h3 Bh5 14. Bd3 Ne5 15. 0-0 Nc4 16. Bxc4 dxc4 17. N3d4 Qxb5 0-1

[Amateur Section (3)]
 [White "Bertram, David-1565"]
 [Black "McCann, Dillon-1388"]

Here is a short game from the TN Open where Bertram feasts on Fried Liver.

1. e4 e5 2. Nf3 d6 3. Bc4 Nf6 4. Ng5 d5 5. exd5 Nxd5? (5... h6) 6. Nxf7 Kxf7 (Qh5 is clearer.) 7. Qf3+ Ke6 8. Nc3 c6 9. O-O Qd6?? 10. d4 (10. Qh3+ Ke7 11. Qxc8) 10... Nd7 11. Ne4 Qc7 12. Ng5+ Kd6 13. Nf7+ Ke7 14. Nxe8 N5f6 15. Re1 1-0

TCA HALL OF FAME

Peter Lahde	1990
Robert Coveyou	1990
Jerry Sullivan	1990
Martin Southern	1990
Tom Finucane	1990
Robert Scrivener	1990
L. Hunter Weeks	1990
John Hurt	1992
James A. Sweets	1993
Rea Hayes	1997
James A. Wright	1998
Dr. Martin Katahn	2002
David Burris	2003

2006 TENNESSEE OPEN -- OPEN

Wall Chart, Page 1

Name/State ID	Rate	Rnd 1	Rnd 2	Rnd 3	Rnd 4	Rnd 5
1. Andrews, Todd D TN 12583055	2350	B 39 1.0	B 11 2.0	B 24 3.0	B 2 3.5	B 7 4.5
2. IN Burnett, Ronald TN 12093120	2423	B 28 1.0	B 19 2.0	B 6 2.5	B 1 3.0	B 8 4.0
3. Bereolos, Peter J TN 11414966	2309	B 25 0.5	B 31 1.5	B 8 2.0	B 14 3.0	B 11 4.0
4. Schoonmaker, Nichol TX 11270972	2212	W 27 1.0	B 12 2.0	B 7 2.5	B 5 3.0	B 13 4.0
5. Tae, Patrick John TN 12780648	2102	B 23 1.0	B 18 1.5	B 30 2.5	B 4 3.0	B 12 4.0
6. Cao, Tony IL 12327934	2144	B 33 1.0	B 13 2.0	B 2 2.5	B 8 2.5	B 20 3.5
7. Hall, Bill TN 12397673	2106	B 26 1.0	B 15 2.0	B 4 2.5	B 20 3.5	B 1 3.5
8. Suich, Joshua TN 12707426	2064	B 29 1.0	B 32 2.0	B 3 2.5	B 6 3.5	B 2 3.5
9. Kantor, Alan TN 10118506	2000	B 34 0.5	B 25 1.0	B 27 1.5	B 23 2.5	B 22 3.5
10. Jordan, Walter W TN 10242207	2000	B 18 0.0	B 33 1.0	HALF 1.5	B 32 2.5	B 16 3.0
11. Hornick, R Michael TN 10124816	1938	B 36 1.0	B 1 1.0	B 28 2.0	B 15 3.0	B 3 3.0
12. Hinchman, Philip TN 12905116	1897	B 38 1.0	B 4 1.0	B 31 2.0	B 24 3.0	B 5 3.0
13. Ashmun, Frank TN 12845540	1877	B 40 1.0	B 6 1.0	B 38 2.0	B 18 3.0	B 4 3.0
14. Marsh, Matthew L TN 12843523	1835	B 37 1.0	B 24 1.0	B 35 2.0	B 3 2.0	B 30 3.0
15. Suich, Peter D TN 12779311	1722	B 41 1.0	B 7 1.0	B 21 2.0	B 11 2.0	B 24 3.0
16. Human, Matthew H TN 12750900	1716	HALF 0.5	B 20 0.5	B 29 1.5	B 19 2.5	B 10 3.0

OPEN SECTION, page 3

Name/State ID	Rate	Rnd 1	Rnd 2	Rnd 3	Rnd 4	Rnd 5
17. Cantrell, Scott TN 12589123	1710	B 24 0.0	B 21 0.0	B 40 1.0	B 38 2.0	B 26 3.0
18. Vogt, Nathan 12847448 TROPHY	1678	B 10 1.0	B 5 1.5	HALF 2.0	B 13 2.0	B 27 3.0
19. Phay, Gainer TN 12828988	1983	B 35 1.0	B 2 1.0	B 23 1.5	B 16 1.5	B 32 2.5
20. Arnold, Justin N KY 12667835	1933	B 30 0.5	B 16 1.5	B 34 2.5	B 7 2.5	B 6 2.5
21. Harbert, Carlos TN 12833879	1906	B 31 0.0	B 17 1.0	B 15 1.0	B 28 1.5	B 33 2.5
22. Remec, Mirko TN 12662179	1836	HALF 0.5	B 30 0.5	B 39 1.5	B 34 2.5	B 9 2.5
23. Wu, James PA 12913034	1772	B 5 0.0	B 36 1.0	B 19 1.5	B 9 1.5	B 35 2.5
24. Mah, Evan B TN 12728664	2120	B 17 1.0	B 14 2.0	B 1 2.0	B 12 2.0	B 15 2.0
25. Smith, Paul Jason TN 12561474	1832	B 3 0.5	B 9 1.0	B 32 1.0	B 33 1.5	B 28 2.0
26. O'Neill, Julie Ann TX 10457262	1821	W 7 0.0	B 35 0.0	B 37 1.0	B 31 2.0	B 17 2.0
27. Wright, Joe TN 12755318	1791	B 4 0.0	B 37 1.0	B 9 1.5	B 30 2.0	B 18 2.0
28. Whelan, Shaun M TN 12573057	1727	B 2 0.0	B 40 1.0	B 11 1.0	B 21 1.5	B 25 2.0
29. Jones, Jesse Gray TN 12824925	1682	B 8 0.0	B 39 0.5	B 16 0.5	B 36 1.0	B 34 2.0
30. Chavez, Christian TN 12894852	1634	B 20 0.5	B 22 1.5	B 5 1.5	B 27 2.0	B 14 2.0
31. Seaney, Ron K TN 12102620	1613	B 21 1.0	B 3 1.0	B 12 1.0	B 26 1.0	B 38 2.0
32. Weiner, Alex AL 12894487	1588	BYE 1.0	B 8 1.0	B 25 2.0	B 10 2.0	B 19 2.0

OPEN SECTION, cont.

Name/State ID	Rate	Rnd 1	Rnd 2	Rnd 3	Rnd 4	Rnd 5
33. MacDonald, Myles A TN 12785727	1713	B 6 0.0	B 10 0.0	B 36 1.0	B 25 1.5	B 21 1.5
34. Phillips, Coty TN 21016778	1653	B 9 0.5	B 41 1.5	B 20 1.5	B 22 1.5	B 29 1.5
35. Brady, Stephen TN 12833875	1614	B 19 0.0	B 26 1.0	B 14 1.0	HALF 1.5	B 23 1.5
36. Hunley, Ryan 21013192 TROPHY	1563	B 11 0.0	B 23 0.0	B 33 0.0	B 29 0.5	B 40 1.5
37. Neglia, Salvatore TN 12939260	1592	B 14 0.0	B 27 0.0	B 26 0.0	B 40 0.5	HALF 1.0
38. Stubblefield, Matt 12977724 TROPHY	736	B 12 0.0	BYE 1.0	B 13 1.0	B 17 1.0	B 31 1.0
39. Slifer, William E TN 10150604	1832	B 1 0.0	B 29 0.5	B 22 0.5	---	---
40. Moghaddami, Kashmi TN	nnnn	B 13 0.0	B 28 0.0	B 17 0.0	B 37 0.5	B 36 0.5
41. Wheeler, Jerry T TN 10242126	12206	B 15 0.0	B 34 0.0	---	---	---
42. Nair, Madhu 12814193 TROPHY	1690	---	---	---	---	---

[Event "Open Section (1)"]

[White "Hunley, Ryan – 1563"]

[Black "Hornick, Michael – 1938"]

1. d4 d5 2. Nf3 Nf6 3. Bg5 Bf5 4. e3 e6 5. Bd3 Bxd3 6. Qxd3 Nbd7 7. Nbd2 h6 8. Bh4 Be7 9. e3 O-O 10. Bxf6 Nxf6 11. e4? Premature. At least castle first. dxe4 12. Nxe4 c5 13. Rd1? Better is castling or playing Qe2. exd4 14. Qxd4 Qa5 15. a3? The damage is already done so even castling now is preferable. Rfd8 16. Nxf6+ Bxf6 17. Qb4 Rxd1+ 18. Kxd1 Qd5+ 19. Kc2 Rd8 20. Re1 Qd3+ 21. Kb3 Rd6 22. Re3? Playing Ka2 offered better resistance but White still needs to extremely vigilant. For instance, 22. Ka2 Rb6 23. Qe4? Rxb2+ leads to mate. Now White can win with two different queen moves. Qd5+ 23. c4 Qd1+ 24. Ka2 Rb6 25. Re1 Qc2 White lost on time. 0-1

2006 TENNESSEE OPEN -- AMATEUR

Wall Chart, Page 1

Name/State ID	Rate	Rnd 1	Rnd 2	Rnd 3	Rnd 4	Rnd 5
1. Smith, Tre TN 12790065	1460	B 9 0.5	B 23 1.5	B 8 2.5	B 3 3.5	B 5 4.5
2. Kumar, Vikas S 12920966 TROPHY	1508	B 27 1.0	B 25 2.0	B 15 3.0	B 5 3.5	B 4 4.0
3. Lee, Terrence A TN 12577812	1399	B 33 1.0	B 24 1.5	B 19 2.5	B 1 2.5	B 17 3.5
4. Bankston, Charles AL 10239331	1386	B 12 1.0	B 8 1.5	HALF 2.0	B 15 3.0	B 2 3.5
5. Hydzik, Robert J TN 12468777	1548	B 30 1.0	B 17 2.0	B 7 3.0	B 2 3.5	B 1 3.5
6. Nair, Manu TN 12843521	1546	B 16 1.0	B 19 1.0	B 28 2.0	B 17 2.5	B 9 3.5
7. Bonvissuto, Vincen TN 12598473	1494	B 31 1.0	B 26 2.0	B 5 2.0	B 19 2.5	B 21 3.5
8. Hall, Kenneth TN 12850713	1405	B 32 1.0	B 4 1.5	B 1 1.5	B 16 2.5	B 19 3.5
9. Sabine, Jay D TN 11501737	1568	B 1 0.5	B 22 1.0	B 18 2.0	B 24 3.0	B 6 3.0
10. Salter, Joshua TN 12890290	1485	B 19 0.0	B 12 1.0	B 21 1.5	HALF 2.0	B 24 3.0
11. Martin, Rodger TN 12944154	1413	B 21 0.0	B 20 1.0	B 32 2.0	B 22 2.5	HALF 3.0
12. Agostino, Michael TN 12884766	1386	B 4 0.0	B 10 0.0	BYE 1.0	B 32 2.0	B 22 3.0
13. Bertram, David TN 12601971	1565	---	B 30 0.5	B 27 1.5	B 25 2.5	---
14. Chapuis, Bobby R TN 10242533	1500	B 25 0.0	B 18 0.5	HALF 1.0	B 28 1.5	B 29 2.5
15. Sulch, Victor W TN 12732019	1473	B 20 1.0	B 21 2.0	B 2 2.0	B 4 2.0	B 18 2.5
16. Leamon, Mark TN 12869699	1455	B 6 0.0	B 31 0.5	B 30 1.5	B 8 1.5	B 28 2.5

Name/State ID	Rate	Rnd 1	Rnd 2	Rnd 3	Rnd 4	Rnd 5
17. Mah, Galvin S TN 12772618	1391	B 29 1.0	B 5 1.0	B 26 2.0	B 6 2.5	B 3 2.5
18. Remed, Mark TN 21020021	1387	HALF 0.5	B 14 1.0	B 9 1.0	B 26 2.0	B 15 2.5
19. Howard, Michael TN 12826439	1367	B 10 1.0	B 6 2.0	B 3 2.0	B 7 2.5	B 8 2.5
20. Schafer, Jacob A 12913914 TROPHY	1266	B 15 0.0	B 11 0.0	B 29 1.0	HALF 1.5	B 27 2.5
21. Barber, Christophe TN 12844873	1223	B 11 1.0	B 15 1.0	B 10 1.5	B 23 2.5	B 7 2.5
22. Snow, Chris 21013103 TROPHY	1557	B 23 0.5	B 9 1.0	B 25 1.5	B 11 2.0	B 12 2.0
23. Bartlett, Riley MS 12911322 TROPHY	1455	B 22 0.5	B 1 0.5	B 31 1.5	B 21 1.5	B 25 2.0
24. Estrada, Malcolm R TN 12811126	1422	B 28 1.0	B 3 1.5	HALF 2.0	B 9 2.0	B 10 2.0
25. Marsh, Corry L TN 12843522	1338	B 14 1.0	B 2 1.0	B 22 1.5	B 13 1.5	B 23 2.0
26. Lorino, Erick L TN 12865002	1043	BYE 1.0	B 7 1.0	B 17 1.0	B 18 1.0	B 32 2.0
27. Mc Cann, Dillon TN 12844681	1388	B 2 0.0	B 29 0.5	B 13 0.5	B 31 1.5	B 20 1.5
28. Tate, Joe L TN 12750247	1259	B 24 0.0	B 33 1.0	B 6 1.0	B 14 1.5	B 16 1.5
29. Fisher, James J TN 20019240	1205	B 17 0.0	B 27 0.5	B 20 0.5	B 30 1.5	B 14 1.5
30. Van Der Meer, B W TN 12552192	1366	B 5 0.0	B 13 0.5	B 16 0.5	B 29 0.5	B 31 1.0
31. Benson, Roy AZ 12731382	1290	B 7 0.0	B 16 0.5	B 23 0.5	B 27 0.5	B 30 1.0
32. Riling, Kyle TN 12913882	1221	B 8 0.0	BYE 1.0	B 11 1.0	B 12 1.0	B 26 1.0
33. Van Doren, Jonatha TN 12908498	1388	B 3 0.0	B 28 0.0	---	---	---

2006 TENNESSEE OPEN -- NOVICE

Wall Chart, Page 1

Name/State ID	Rate	Rnd 1	Rnd 2	Rnd 3	Rnd 4	Rnd 5
1. Vaughn, Randall R TN 12915612	1006	B 16 1.0	B 20 2.0	HALF 2.5	B 2 3.5	B 5 4.5
2. Manners, Roy B TN 12649484	1107	B 3 0.5	B 18 1.5	B 11 2.5	B 1 2.5	B 14 3.5
3. Bandy, Greg MS 20122831	881	B 2 0.5	B 6 0.5	B 21 1.5	B 8 2.5	B 10 3.5
4. Miller, Jeff TN 12880104	866	BYE 1.0	B 12 1.5	B 8 2.0	B 15 3.0	B 6 3.5
5. Smith, Kai Alan TN 13352357	688	BYE 1.0	B 7 2.0	B 15 2.5	B 6 3.5	B 1 3.5
6. Suich, Joanna R. 12779310 TROPHY	1099	HALF 0.5	B 3 1.5	B 12 2.5	B 5 2.5	B 4 3.0
7. Newcomb, Maria Con MS 12923254	1167	B 17 0.5	B 5 0.5	B 18 1.5	B 11 2.0	B 13 2.5
8. Simonton, Andrew 12877172 TROPHY	1150	B 12 0.0	B 13 1.0	B 4 1.5	B 3 1.5	B 19 2.5
9. Davis, Michael 12877174 TROPHY	1127	B 20 0.0	B 19 1.0	B 14 1.0	B 12 2.0	B 11 2.5
10. Newcomb, Danielle MS 12921925 TROPHY	1098	--- 0.0	B 16 1.0	B 20 2.0	B 14 2.5	B 3 2.5
11. Baringer, Jim TN 12582162	997	B 14 1.0	B 15 1.5	B 2 1.5	B 7 2.0	B 9 2.5
12. Shields, Tanner Ry TN 12919132	993	B 8 1.0	B 4 1.5	B 6 1.5	B 9 1.5	B 20 2.5
13. Bartlett, Brynna MS 12955291 TROPHY	957	--- 0.0	B 8 0.0	B 16 1.0	B 20 2.0	B 7 2.5
14. Agostino, Matthew TN 12915888	801	B 11 0.0	BYE 1.0	B 9 2.0	B 10 2.5	B 2 2.5
15. Clement, William A TN 12727877	1170	B 19 1.0	B 11 1.5	B 5 2.0	B 4 2.0	--- 2.0
16. Williams, Franklin TN 12978356	935	B 1 0.0	B 10 0.0	B 13 0.0	B 18 1.0	B 21 2.0

NOVICE, cont.

Name/State ID	Rate	Rnd 1	Rnd 2	Rnd 3	Rnd 4	Rnd 5
17. Lebew, Nathaniel J TN 12810932	950	B 7 0.5	B 21 1.5	--- 1.5	--- 1.5	--- 1.5
18. Suich, Victoria E. 12902341 TROPHY	631	HALF 0.5	B 2 0.5	B 7 0.5	B 16 0.5	BYE 1.5
19. Houston, Charlie R TN 12841434	1088	B 15 0.0	B 9 0.0	HALF 0.5	B 21 1.0	B 8 1.0
20. Lynn, Joshua Adam TN 12937075	895	B 9 1.0	B 1 1.0	B 10 1.0	B 13 1.0	B 12 1.0
21. Qin, Alexander TN 13298561	579	HALF 0.5	B 17 0.5	B 3 0.5	B 19 1.0	B 16 1.0

[Event "Novice Section (2)"]

[White "Miller, Jeff (866)"]

[Black "Shields, Tanner (993)"]

1. c4 e5 2. Nc3 Nc6 3. Nf3 Nf6 4. d3 d6 5. Bg5 Be7 6. Bxf6 Bxf6 7. Nd5 Nd4 8. Nxf6+ Qxf6 9. Nxd4 exd4 10. Qa4+ Bd7 11. Qb4 b6 12. g3 c5 13. Qd2 Bc6 14. Rg1 O-O 15. Qf4 Qxf4 16. gxf4 Rae8 17. O-O-O Re6 18. Bg2 Bxg2 19. Rxd2 Rxe2 20. Rd2 Rxd2 21. Kxd2 g6 22. f5 Re8 23. fxd6 hxd6 24. Rg5 Re7 25. Rd5 Kh7 26. a3 Kh6 27. b4 Rc7 28. Kc2 g5 29. Kb3 Kh5 30. Ka4 a6 31. Rxd6 Rb7 32. bxc5 bxc5 33. Rf6 Ra7 34. Ka5 Rb7 35. Rb6 Re7 36. Kxa6 Re2 37. Rf6 Ra2 38. Kb5 Rxa3 39. Kxc5 Rxd3 40. Rxf7 Rd1 41. Rd7 d3 42. Rd5 Kg4 43. h3+ Kf3 44. Rxd5 d2 45. Kd4 Rc1 46. Rg3+ Kxf2 47. Rd3 d1=Q 48. Rxd1 Rxd1+ 49. Kc5 Rd3 Winning is 49... Ke3! The h-pawn is not going anywhere so Black should first contain the c-pawn by double attack, 50. h4 Ke4 (Bringing the king ever closer and assuring that he can easily gang-attack the c-pawn when it moves.) 51. Kb6 Rc1 52. c5 Kd5 53. h5 Rxc5 And only now should Black give attention to the h-pawn. 50. Kb6 Rxd3 51. c5 Rh7 52. c6 1/2-1/2

[Event "Novice Section (5)"]

[White "Houston, Charlie-1088"]

[Black "Simonton, Andrew-1150"]

1. e4 e5 2. Nf3 Nf6 3. Nc3 Bb4 4. a3?! Bxc3 5. dxc3 d6 6. Bg5 h6 7. Bh4? g5 8. Bg3 Nxe4 9. Bd3 Nc5 10. Bc4 Be6 11. Bd5 c6 12. Ba2 Bxa2 13. Rxa2 f5 14. h3 Qe7 15. b4 Ne4 16. Qd3? Nxd3 17. fxd3 e4 18. Qd4? Better is Qe3. exf3+ 19. Kf2 Qe2+ 20. Kg1 Qxd3# 0-1

2006 TENNESSEE OPEN SCHOLASTICS -- HIGH SCHOOL
Wall Chart

Name/State ID	Rate	Rnd 1	Rnd 2	Rnd 3	Rnd 4
1. Snow, Chris TN 21013103	1557	B 5 1.0	- 13 X2.0	B 3 3.0	B 2 4.0
2. Salter, Joshua TN 12890290	1485	B 10 1.0	B 7 2.0	B 6 3.0	B 1 3.0
3. Phillips, Coty TN 21016778	1653	B 8 1.0	B 4 2.0	B 1 2.0	B 6 2.5
4. Howard, Michael TN 12826439	1367	B 12 1.0	B 3 1.0	B 5 1.5	B 8 2.5
5. Davis, Michael TN 12877174	1127	B 1 0.0	B 12 1.0	B 4 1.5	B 9 2.5
6. Hunley, Ryan TN 21013192	1563	B 9 0.5	B 10 1.5	B 2 1.5	B 3 2.0
7. Mc Cann, Dillon TN 12844681	1388	B 11 1.0	B 2 1.0	B 8 1.0	B 10 2.0
8. Bejhood, Alborz TN 12911448	1361	B 3 0.0	B 9 1.0	B 7 2.0	B 4 2.0
9. Simonton, Andrew TN 12877172	1150	B 6 0.5	B 8 0.5	B 11 1.5	B 5 1.5
10. Suich, Joanna R. TN 12779310	1099	B 2 0.0	B 6 0.0	B 12 1.0	B 7 1.0
11. Miller, Jeff TN 12880104	866	B 7 0.0	BYE 1.0	B 9 1.0	B 12 1.0
12. Patel, Devansh TN 13430340	731	B 4 0.0	B 5 0.0	B 10 0.0	B 11 1.0
13. Jefferson, Jordan AL 12910399	673	BYE 1.0	- 1 F1.0	---	---

VISIT TCA WEBSITE: <http://www.tnchess.org>

2006 TENNESSEE OPEN SCHOLASTICS -- JUNIOR HIGH
Wall Chart, Page 1

Name/State ID	Rate	Rnd 1	Rnd 2	Rnd 3	Rnd 4
1. Fan, David TN 12931783	986	B 8 1.0	B 12 2.0	B 7 3.0	B 2 4.0
2. Dasari, Teja TN 12878872	1357	B 19 1.0	B 6 2.0	B 11 3.0	B 1 3.0
3. Franklin, Shane Mi TN 12849501	1227	B 14 1.0	B 7 1.0	B 16 2.0	B 5 3.0
4. Zhang, Xiaohan TN 12904551	1168	B 15 1.0	B 11 1.0	B 17 2.0	B 13 3.0
5. Cunningham, Adam T TN 12898615	973	B 18 1.0	B 16 2.0	B 13 3.0	B 3 3.0
6. Hammett, Jon H TN 12931306	962	B 20 1.0	B 2 1.0	B 21 2.0	B 12 3.0
7. Metke, Tony J TN 12919635	958	B 21 1.0	B 3 2.0	B 1 2.0	B 18 3.0
8. Rice, Kaleb J TN 13402697	726	B 1 0.0	B 25 1.0	B 9 2.0	B 11 3.0
9. Martin, Neel R TN 12867899	1049	B 16 0.0	B 23 1.0	B 8 1.0	B 24 2.0
10. Shields, Tanner Ry TN 12919132	993	B 17 1.0	B 13 1.0	B 18 1.0	B 15 2.0
11. Miller, Caleb J TN 12937152	913	B 22 1.0	B 4 2.0	B 2 2.0	B 8 2.0
12. Lynn, Joshua Adam TN 12937075	895	B 25 1.0	B 1 1.0	B 20 2.0	B 6 2.0
13. Cherukuri, Uday K TN 12955950	850	B 24 1.0	B 10 2.0	B 5 2.0	B 4 2.0
14. Bonvissuto, Maria TN 12876696	825	B 3 0.0	B 18 0.0	B 25 1.0	B 20 2.0

JR. HIGH CROSSTABLE, cont.

Name/State ID	Rate	Rnd 1	Rnd 2	Rnd 3	Rnd 4
15. Welch, Joann P TN 12919632	760	B 4 0.0	B 22 1.0	B 23 2.0	B 10 2.0
16. Wallace, Aaron TN 12982112	743	B 9 1.0	B 5 1.0	B 3 1.0	B 22 2.0
17. Schichler, Kyle TN 13030690	733	B 10 0.0	B 24 1.0	B 4 1.0	B 21 2.0
18. Houston, C J TN 12836144	666	B 5 0.0	B 14 1.0	B 10 2.0	B 7 2.0
19. Gernt, Ben TN 13080081	837	B 2 0.0	B 20 0.0	B 24 0.0	BYE 1.0
20. Wallace, Ryan A TN 13121034	579	B 6 0.0	B 19 1.0	B 12 1.0	B 14 1.0
21. Pyle, William Earl TN 12870745	572	B 7 0.0	BYE 1.0	B 6 1.0	B 17 1.0
22. Klingberg, John E TN 13037488	492	B 11 0.0	B 15 0.0	BYE 1.0	B 16 1.0
23. Schichler, Casey TN 13174304	323	BYE 1.0	B 9 1.0	B 15 1.0	B 25 1.0
24. Wood, Alex TN	nnnn	B 13 0.0	B 17 0.0	B 19 1.0	B 9 1.0
25. Scherner, Joseph TN	nnnn	B 12 0.0	B 8 0.0	B 14 0.0	B 23 1.0

[Event "High School (Scholastic)"]

[White "Phillips, Coty – 1653"]

[Black "Bejnood, Alborz – 1361"]

1. d4 d5 2. Nf3 Nf6 3. Bf4 Bf5 4. e3 e6 5. Bd3 Bxd3 6. cxd3 Bb4+ 7. Nbd2 O-O 8. O-O Ne6 9. Rc1 Re8 10. Re1 Rc8 11. e4? dxe4 12. dxe4 Nxd4 13. Rc4 Better was e5 or Ne5. Nxf3+ 14. gxf3 Ba5 15. b4 Bb6 16. Qc2 Nh5 17. e5 Nxf4 18. Rxf4 h5? 19. Ne4 Qe7 20. Kh1 Bd4? 21. Nf6+! gxf6 22. Rg1+ Kf8 23. Qh7 Qd8 24. Rg7 Qd7 25. Rxf6 1-0

2006 TENNESSEE OPEN SCHOLASTICS -- ELEMENTARY

WallChart

Page 1

Name/State ID	Rate	Rnd 1	Rnd 2	Rnd 3	Rnd 4
1. Blue, Charles T. TN 12934167	1085	B 30 1.0	B 15 2.0	B 10 3.0	B 8 4.0
2. Hess, David B KY 12835287	1224	B 17 1.0	B 13 2.0	B 7 3.0	B 3 3.5
3. Bonvissuto, Gregor TN 12875110	1046	B 20 1.0	B 22 2.0	B 4 3.0	B 2 3.5
4. Baerman, Elliot A TN 12873865	1200	B 18 1.0	B 9 2.0	B 3 2.0	B 15 3.0
5. Newcomb, Danielle MS 12921925	1098	B 25 1.0	B 10 1.0	B 11 2.0	B 18 3.0
6. Houston, Charlie R TN 12841434	1088	B 29 1.0	B 14 2.0	B 8 2.0	B 19 3.0
7. Lorinc, Erick L TN 12865002	1043	B 26 1.0	B 16 2.0	B 2 2.0	B 21 3.0
8. Stafford, Joseph C TN 12945706	1008	B 21 1.0	B 31 2.0	B 6 3.0	B 1 3.0
9. Metke, Tommy J TN 12922021	991	B 32 1.0	B 4 1.0	B 27 2.0	B 20 3.0
10. Sapir, Yasha TN 13282317	886	B 36 1.0	B 5 2.0	B 1 2.0	B 23 3.0
11. Bozeman, Scott Cha AL 12935676	1035	B 27 0.5	B 28 1.5	B 5 1.5	B 22 2.5
12. Gilchrist, Ian P IL 13010957	1064	B 31 0.0	B 26 0.5	B 24 1.0	B 29 2.0
13. Wright, Brian KY 13126946	969	B 33 1.0	B 2 1.0	B 21 1.0	B 31 2.0
14. Welch, Christopher TN 12919633	877	B 23 1.0	B 6 1.0	B 20 1.0	B 27 2.0

ELEMENTARY, page 2

Name/State ID	Rate	Rnd 1	Rnd 2	Rnd 3	Rnd 4
15. Fang, Michael Y. TN 12997816	869	B 34	B 1	B 33	B 4
		1.0	1.0	2.0	2.0
16. Newcomb, Evangelin MS 12935569	835	B 35	B 7	B 22	B 30
		1.0	1.0	1.0	2.0
17. Gill, Haile M AL 12910398	822	B 2	B 21	B 26	B 33
		0.0	0.0	1.0	2.0
18. Santoro, Joey TN 13409560	776	B 4	B 32	B 28	B 5
		0.0	1.0	2.0	2.0
19. Jambulapati, Arun TN 12919608	742	---	B 35	B 30	B 6
		0.0	1.0	2.0	2.0
20. Martin, Samir TN 12935114	559	B 3	B 36	B 14	B 9
		0.0	1.0	2.0	2.0
21. Gernt, Nicholas TN 13080075	490	B 8	B 17	B 13	B 7
		0.0	1.0	2.0	2.0
22. Ding, Chunyang TN 13398966	439	B 24	B 3	B 16	B 11
		1.0	1.0	2.0	2.0
23. Li, Gene Xijie TN 13483453	nnnn	B 14	B 29	B 31	B 10
		0.0	1.0	2.0	2.0
24. Bartlett, Brynna MS 12955291	957	B 22	B 27	B 12	B 32
		0.0	0.0	0.5	1.5
25. Steed, Adam C TN 13187735	686	B 5	B 33	B 36	B 28
		0.0	0.0	1.0	1.5
26. Bonvissuto, Angela TN 12876695	521	B 7	B 12	B 17	B 36
		0.0	0.5	0.5	1.5
27. Bejnood, Aram TN 13167705	501	B 11	B 24	B 9	B 14
		0.5	1.5	1.5	1.5
28. Lorinc, Samantha A TN 12893825	378	BYE	B 11	B 18	B 25
		1.0	1.0	1.0	1.5
29. Li, Angela TN 13043990	662	B 6	B 23	B 35	B 12
		0.0	0.0	1.0	1.0

ELEMENTARY CROSSTABLE, cont.

Name/State ID	Rate	Rnd 1	Rnd 2	Rnd 3	Rnd 4
30. Cunningham, Anna C TN 12916693	662	B 1	B 34	B 19	B 16
		0.0	1.0	1.0	1.0
31. Suich, Victoria E. TN 12902341	631	B 12	B 8	B 23	B 13
		1.0	1.0	1.0	1.0
32. Smith, Emma C TN 12904126	480	B 9	B 18	B 34	B 24
		0.0	0.0	1.0	1.0
33. English, Jacob A TN 13282323	463	B 13	B 25	B 15	B 17
		0.0	1.0	1.0	1.0
34. Ross, Michael TN	nnnn	B 15	B 30	B 32	B 35
		0.0	0.0	0.0	1.0
35. Scherner, Lucy TN	nnnn	B 16	B 19	B 29	B 34
		0.0	0.0	0.0	0.0
36. Nadar, Arushi TN 13422925	nnnn	B 10	B 20	B 25	B 26
		0.0	0.0	0.0	0.0

[Event "Elementary (Scholastic)-4"]

[White "Li, Gene"]

[Black "Sapir, Yasha (886)"]

1. d4 d5 2. Nc3 Nf6 3. Nf3 Nc6 4. e3 Bf5 5. Bd3 Bxd3 6. Qxd3 e6 7. O-O Nb4 8. Qb5+ Nd7 9. a3 Nxc2 10. Ra2 Bd6 11. Qb3 Nxd4 12. exd4 Qf6 13. Qxb7 O-O 14. Nb5 Rab8 15. Qxa7 Rxb5 16. Bg5 Qf5 17. a4 Rb3 18. Rc1 Rxf3! 19. gxf3 Qxg5+ 20. Kf1 Qxc1+ 21. Ke2 Qc4+ 0-1

[Event "Novice Section (5)"]

[White "Vaughn, Randall (1006)"]

[Black "Smith, Kai (688)"]

1. e4 e5 2. Nf3 Nc6 3. Bc4 Bc5 4. c3 Nf6 5. Qb3 O-O 6. d3 h6 7. O-O a6 8. a4 Na5 9. Qa2 Nxc4 10. Qxc4 d6 11. b4 Bb6 Black could win the queen with Be6! 12. Qb3 Be6 13. Qd1 Bg4 14. Re1 Qd7 15. Be3 a5 16. Bxb6 cxb6 17. b5 Rac8 18. Ra3 Rc7 19. Qe2 Rfc8 20. Rc1 d5 21. Nbd2 Qd6 22. Qd1 Nh5 23. g3 d4 24. c4 Bh3 25. Ng5 hxg5 26. Qxh5 Be6 27. Qxg5 Qd7 28. Qxe5 Rc5 29. Qf4 Qc7 30. Qxc7 R8xc7 31. f4 Bg4 32. Kf2 Kf8 33. Nf3 Bxf3 34. Kxf3 Rh5 35. h4 f6 36. Rh1 Re7 37. g4 and White eventually won (scoresheet is unclear at this point) 1-0

2006 TENNESSEE OPEN SCHOLASTICS -- PRIMARY
Wall Chart, Complete

Name/State ID	Rate	Rnd 1	Rnd 2	Rnd 3	Rnd 4
1. Cherukuri, Kasyap TN 12963620	624	B 6 1.0	B 3 2.0	B 2 3.0	B 4 4.0
2. Newcomb, Justin I MS 12939889	929	B 13 1.0	B 5 2.0	B 1 2.0	B 6 3.0
3. Wright, Garrett KY 13210781	nnnn	B 11 1.0	B 1 1.0	B 8 2.0	B 5 3.0
4. Dasari, Vijaya R TN 12917005	650	B 7 1.0	B 12 2.0	B 5 2.0	B 1 2.0
5. Gilchrist, Joshua IL 13010942	601	B 9 1.0	B 2 1.0	B 4 2.0	B 3 2.0
6. Bonvissuto, Anthon TN 13247344	nnnn	B 1 0.0	B 9 1.0	B 7 2.0	B 2 2.0
7. Shelton, Kyle TN	nnnn	B 4 0.0	B 13 1.0	B 6 1.0	B 11 2.0
8. Bonvissuto, Dominic TN 13483824	nnnn	B 10 0.0	B 11 1.0	B 3 1.0	B 13 2.0
9. Kennedy, Joachim TN 13484655	nnnn	B 5 0.0	B 6 0.0	B 13 0.5	B 12 1.5
10. Jambulapati, Arun TN 12919608	742	B 8 1.0	--- 1.0	--- 1.0	--- 1.0
11. Li, Max TN 13282392	326	B 3 0.0	B 8 0.0	B 12 1.0	B 7 1.0
12. Steed, Andrew TN 13447004	100	BYE 1.0	B 4 1.0	B 11 1.0	B 9 1.0
13. Scherner, Richard TN	nnnn	B 2 0.0	B 7 0.0	B 9 0.5	B 8 0.5

© BREAKING NEWS!! The Tennessee Tempo won its first match. On Oct. 25th it defeated the Miami Sharks 2.5-1.5!

PRESIDENT:

J. Michael Cross
2961 Martha Washington Rd.
Clarkrange, TN 38553
H: (931)863-3188
e-mail: jmcross@twlakes.net

VICE-PRESIDENT:

Allen Snow
P. O. Box 2127
Clarkrange, TN 38553
W: (931)863-4082
Fax: (931) 863-4081
e-mail: asnow@twlakes.net

SECRETARY:

Chris Prosser
733 Long Hunter Court
Nashville, TN 37217
H: (615) 399-8432
e-mail: Regioniii@aol.com

TREASURER:

Angela McElrath-Prosser
733 Long Hunter Court
Nashville, TN 37217
H: (615) 399-8432
e-mail: tcnews@aol.com

INTERNET CHESS COORDINATOR:

Patricia Knight
103 Albion Road
Oak Ridge, TN 37830
H: (865) 481-3516
W: (931) 787-1234 ext. 133
e-mail: tcchess@bellsouth.net

SCHOLASTIC COORDINATOR:

Harry D. Sabine
P. O. Box 381
Crossville, TN 38557
H: (931) 484-4878
W: (931) 484-9593
e-mail: hdsabine@citlink.net

TOURNAMENT COORDINATOR:

Paul Semmes
1010 N. Maple Ave.
Cookeville, TN 38501
H: (931) 526-2883
e-mail: PaulSemmes@charter.net

TN CHESS NEWS EDITOR:

Leonard Dickerson
420 Oran Road
Knoxville, TN 37932
H: (865) 966-1095
e-mail: lsdict@tds.net

EAST TENNESSEE DIRECTOR:

Malcolm Robert Estrada
7123 Annaview Lane
Harrison, TN 37341
W: (423) 751-8984
e-mail: mrestrada@tva.gov

MIDDLE TENNESSEE DIRECTOR:

Scott Cantrell
2325 Willowbrook Dr., Apt. C6
Murfreesboro, TN 37130
H: (615) 217-9084
e-mail: greatscottmagic@yahoo.com

WEST TENNESSEE DIRECTOR:

Robert Schoumacher
4266 Long Leaf Drive
Memphis, TN 38117
H: (901) 767-3060
W: (901) 572-5222
e-mail: rschoumacher@utmem.edu

Regional Scholastic Coordinators

Region 1:

Judd Jones
10904 Lookout Point
Knoxville, TN 37922

Region 2:

Michael Ake
16 Pinecrest Dr.
Wildwood, GA 30757
H: (706) 820-0693
O: (423) 493-5406

Region 3:

Chris Prosser
733 Long Hunter Court
Nashville, TN 37217
H: (615) 399-8432

Region 4:

Brian Vogt
2669 Sweet Maple Cove
Germantown, TN 38139
H: (901) 624-0020