

August - September 1988

# TENNESSEE Chess News

*1988 National JHS Championship*



## TENNESSEE CHESS NEWS

Tennessee Chess News is the official quarterly publication of the Tennessee Chess Assn. TCA annual dues are \$6.00 for regular membership and \$4.00 for student membership. Additional members of a family may join for 50¢, but only one issue of TCN will be mailed. All memberships expire August 31. Patron memberships are available for \$25.00 per year, with said year beginning with date of payment of dues. These memberships are tax-deductible and help support TCA. These memberships also receive TCN via 1st class mail and their names are printed in each issue. If anyone has already paid their regular fee, but wishes to switch to patron, they may do so by paying an additional \$19.00 (or \$21.00 for students). After April 1, 1988 you may join the TCA for \$6.00 or pay \$9.00 to join until 8/31/89.

### TCA Board of Directors 1987-88

**PRESIDENT:** **Bill Orgain**

710 West College, #8  
P.O. Box 366  
Dickson, TN 37055  
H: (615) 446-0521 O: (615) 446-2814

**VICE-PRESIDENT:** **Peter P. Lahde**

2609 Sailboat Court  
Nashville, TN 37217  
H: (615) 361-4588 O: (615) 794-8000

**SECRETARY-TREASURER:** **Harry D. Sabine**

311 South Main Street  
P.O. Box 381  
Crossville, TN 38557  
H: (615) 484-4878 O: (615) 484-9593

**TCN EDITOR:** **Mark J. Schindler**

2110 Pea Ridge Road  
Clarksville, TN 37040  
P.O. Box 725  
St. Bethlehem, TN 37155  
H: (615) 552-2608 O: (615) 648-2608

**POSTAL CHESS COORDINATOR:** **Lee Edwards**

406 Stahlman Bldg.  
211 Union Street  
Nashville, TN 37201  
3214 McGavock Pike  
Nashville, TN 37214  
H: (615) 883-7522 O: (615) 726-3395

**TOURNAMENT COORDINATOR:** **Richard Igou**

400 Rhodora Court, Apt. F  
Knoxville, TN 37923  
H: (615) 690-6810 O: (615) 574-1839

**SCHOLASTIC COORDINATOR:** **Curt Jones**

8182 Creekside Circle South  
Cordova, TN 38018  
H: (901) 757-8955 O: (901) 682-9800

**DIRECTOR-EAST TN:** **Chester C. Crowley**

109 Iroquois Lane  
Clinton, TN 37716  
H: (615) 457-7965 O: (615) 457-3100

**DIRECTOR-MID TN:** **F. Morris Lewis**

P.O. Box 121886  
Nashville, TN 37212  
H: (615) 297-2524 O: (615) 329-0031

**DIRECTOR-WEST TN:** **Dale Flickinger**

5247 Shelbourne Circle, #14  
Memphis, TN 38134  
H: (901) 382-3829 O: (901) 388-7321

### Editorial Staff

**Mark J. Schindler** Editor

**Roger E. Viles** Asst. Editor, E-TN.

6109 Foot Mineral Lane  
Lot #58  
Knoxville, TN 37923  
(615) 693-3434

**Joey Burton** Asst. Editor, Plateau

205 Long Street  
Sunny Acres  
Crossville, TN 38555  
(615) 484-6408

**Mark Ishee** Asst. Editor, Mid-TN.

P.O. Box 1911  
Brentwood, TN 37027  
(615) 373-4814

**Paul Linxwiler** Asst. Editor, W-TN.

5980 Southampton  
Memphis, TN 38119  
(901) 683-5860

## Affiliates

This section contains clubs that are affiliated with the TCA across the state. Since this magazine is contained in many libraries, we hope this section will serve as a guide to new people in our state or area as to the location of the nearest chess club to their area. If you wish your club listed, please send the club name, address, point of contact, and phone number to the editor.

### East Tennessee Chess Club

Tom Cooper  
513 Merman Road  
Kingsport, TN 37663

Contact: Roger Counts (615) 323-2590  
Tom Cooper (615) 239-4800

### Blount County Chess Club

Larry G. Thomas  
P.O. Box 688  
Alcoa, TN 37701  
(615) 983-1977

### Cumberland County Chess Club

Meets Wednesdays - 7:00 p.m.

Harry D. Sabine  
P.O. Box 381  
Crossville, TN 38557  
(615) 484-9593

### Greater Knoxville Chess Club

Richard Igou  
400 Rhodora Court, Apt. F  
Knoxville, TN 37923

### The Fugitive Chess Club

"Home of Mark Ishee"

720 Shenandoah Drive  
P.O. Box 1911  
Brentwood, TN 37027  
(615) 373-4814 or 373-0326

### Clinton Chess Club

Chester Crowley  
109 Iroquois Lane  
Clinton, TN 37716  
(615) 457-7965

### Nashville Chess Club

Meets Thursdays - 7:30 p.m.

Peter P. Lahde  
Arlington Methodist Church  
1360 Murfreesboro Road  
Nashville, TN 37217  
(615) 361-4588

### Dickson County Scholastic Chess Club

P.O. Box 366  
Dickson, TN 37055  
(615) 446-0521

### Dickson County Chess Club

Bill Orgain  
710 W. College, #8  
P.O. Box 366  
Dickson, TN 37055

## Patron Members

Harry D. Sabine  
Todd T. Shimabukuro  
Clinton H. Pearson, Jr.  
Richard Igou  
Thomas A. Cooper  
Bill Orgain  
Louis M. Groeniger  
Peter P. Lahde  
Joseph Sentef, Jr.  
Joseph G. Sullivan, Jr.  
Mark Ishee  
Clifford Anderson  
Brian D. Lentz  
Chester Crowley  
Lee Edwards  
Frank W. Larimer  
Oliver Tai  
Larry G. Thomas  
Dr. D. Bennett Nuckols

## Tournament Announcements

We print any tournaments in our "Coming Attractions" section for free. All ads for this section must be in Richard Igou's hands no later than October 3, 1988 for insertion in the November issue of TCN. We will gladly print tournament announcements from other states provided that they meet this deadline. Richard Igou's address is: 400 Rhodora Ct., Apt. F, Knoxville, TN 37923

## Address Changes & Dues

Send ALL address changes and dues to:  
Harry D. Sabine  
P.O. Box 381  
Crossville, TN 38557

## Advertising Rates

Full Page	\$40
½ Page	\$20
⅓ Page	\$14
¼ Page	\$10
⅛ Page	\$7
Pre-printed flyers for insert (must be 8½ x 11, 60# Offset, delivered flat)	\$15

## EDITORIAL

We are fast approaching the end of the summer, and with the approach of Labor Day our thoughts become focused, and rightly so, on the most important event on our associational calendar, the 42nd Tennessee Open. All preliminary arrangements to attend should have been taken care of by now, for hotel space might be a scarce commodity in Crossville this holiday weekend.

I would encourage all TCA members to attend the general membership meeting, to be held on Sunday at 2:00 p.m. I, along with other TCA officers will be giving reports on the condition of our association. One of the most important functions that the general membership has to attend to is the election of several persons to serve in positions on your Board of Directors for two year terms. The positions coming up for election this year are: Vice-President, Postal Chess Coordinator, Scholastic Coordinator, and the three Grand Division Directors (East, Middle, and West). We must also not forget the election of our USCF Delegate and Voting Members. Please don't hesitate to step forward and allow yourself to be nominated for a position that would interest you.

As TCN Editor, I have been very pleased with the response I've received in having members send in some of their memorable

games. I would particularly like to thank Calvin Mills (last year's TN Amateur Champion) for his game submissions - - - I have used a few in past issues. I'd like to continue this in saying that these submissions needn't be strictly from statewide events. If you played in a tournament in say, Ohio, with good results - - - SEND IT IN! All we ask is that you submit it in algebraic notation. If you feel a diagram would be helpful in understanding a position, let it be known where you want it inserted.

One last point - - - I have had several member's issues of TCN returned due to a lack of a correct address. If you look on page 3 of TCN, you will note what should be done should an address correction become necessary. If you keep Harry Sabine informed of your whereabouts, you'll never miss an issue. Don't rely on the postal service forwarding your mail!

*Mark J. Schindler*  
TCN Editor

## THE PRESIDENT'S COLUMN

I certainly hope that everyone has had a successful summer and is looking forward to finishing out the year in grand style. Hopefully, you've gotten a little of the wet stuff along the way. I'm sure you've needed it, no matter where in the state you live.

Your state association has certainly been busy since I last wrote to you. Formalization of the state scholastic tournaments for next season has been completed, and flyers should be going out soon. We hope many will find the new one-day formats attractive. We're doing all we can to make chess for youth as inexpensive as possible.

Plans are also being made to have a Tennessee Chess Association booth at the Tennessee School Board Convention scheduled for this fall. Hopefully, this will result in several new teams competing in next year's competition.

Another project your board has been working on is the inclusion of chess in the Tennessee State Games. At the present, Tennessee is one of only a half-dozen states that do not have state games (olympic-style competition). However, strong interest has been established for beginning such an event, and we are determined to see that chess is included right alongside of basketball, track & field, equestrian sports, and the like. This has been established in many states, such as Nebraska, with GREAT success, and we at TCA have no doubt that it would do well in the state of Tennessee.

Yours truly will be departing for Boston to attend the United States Open and convention. For the first time in several years, I will not be attending as a delegate. Instead, I will be there in my capacity as Region VIII Vice-President, so Tennessee will get a little extra representation this year. As always, I will be happy to take anything you feel is crucial to improving or maintaining the USCF to the floor of the convention. All I ask (for the sake of my sanity) is that you submit your proposal in writing and collect signatures of members of similar persuasion to show the degree of grass roots support. I realize that this requires a little effort, but if it is important, it will be worth it!

Remember to keep sending in your "brilliant" games to your regional editors, and if you're really ambitious, full-blown articles would be appreciated (especially from you recalcitrant Masters). Also, DON'T miss the Tennessee Open in Crossville - - - this year featuring the LARGEST PRIZE FUND in recent memory. If you're having a problem with the association, give us a call. Our numbers are in the front of the magazine, and solving problems are what we are here for.

That's about it for now. Remember to control the center, develop quickly, and don't forget to hit that clock!

Yours in Chess,  
*Bill Orgain*  
TCA President

**TENNESSEE CHESS ASSOCIATION  
4th QTR. BUDGET COMPARISON 1987-88**

<b>INCOME</b>	<b>BUDGET 1987-88</b>	<b>ACTUAL 1987-88</b>	<b>BUDGET DIFFER.</b>
1) DUES	\$2200.00	\$1943.50	\$(256.50)
2) INTEREST	250.00	291.35	41.35
3) MISCELLANEOUS	100.00	151.33	51.33
4) TENNESSEE OPEN	None	24.00	24.00
5) SOUTHEASTERN AMATEUR TM.	None	63.10	63.10
6) TENNESSEE SCHOLASTICS	None	42.81	42.81
<b>TOTAL INCOME</b>	<b>\$2550.00</b>	<b>\$2516.09</b>	<b>\$(33.91)</b>
<b>EXPENSES</b>			
1) TENNESSEE CHESS NEWS	\$2000.00	\$1301.51	\$698.49
2) TCN EDITOR'S FEE	None	None	None
3) TCA OPERATING EXPENSES	500.00	491.05	8.95
4) USCF DELEGATE EXPENSES	50.00	50.00	None
5) TCA TURKEY TOUR	None	None	None
6) MISCELLANEOUS	None	None	None
<b>TOTAL EXPENSES</b>	<b>\$2550.00</b>	<b>\$1842.56</b>	<b>\$707.44</b>
<b>NET PROFIT (Loss):</b>			<b>\$673.53</b>

## TENNESSEE TURKEY TOUR UPDATE

*by Richard Igou*

### MASTER / EXPERT

1st Brian D. Smith  
2nd Len Dickerson  
3rd Bill Hall  
4th Bill Melvin  
5th Ron Burnett

136  
109  
83  
79  
66

### CLASS C

1st Wayne Tolbert  
2nd Louis Groeniger  
3rd Jim Kade  
4th Joe Drake  
5th William Belliford

97  
78  
75  
65  
48

### CLASS A

1st Brian D. Lentz  
2nd Matt Mayhew  
3rd Mike Spencer  
4th Mark Oshman  
5th Bill Orgain

120  
107  
100  
77  
74

### CLASS D

1st Clint Pearson  
2nd Wayne Tolbert  
3rd Jim Kade  
4th Neal D. Lentz  
5th Janice Peddieson

90  
77  
55  
53  
42

### CLASS B

1st Jerry Spinrad  
2nd Kelles Tate  
3rd Dan J. Lewis  
4th (tie) Mike Abron  
4th (tie) Jay Sabine

79  
70  
69  
55  
55

### CLASS E and UNRATED

1st Paul Tate  
2nd Wayne Tolbert  
3rd Gray Mills  
4th John Opfer

50  
22  
20  
15

*Congratulations to ALL !!*

# THE CORRESPONDENCE GAME

with Lee Edwards

Congratulations to Ronald Wayne Burnett, who has won the 1987 Tennessee Postal Chess Championship. Lewis Inman was second. In the 1985-86 Finals, Joe Jones and Bill Orgain are still slugging it out. If Orgain wins, the players are Co-Champions. If Jones wins or draws, he becomes sole Champion.

Chris Steele awaits three opponents in TC-1-88/89. Send those entries in TODAY! For a three player preliminary section, the entry fee is a mere \$6.00, plus TCA membership, if you need it. All money is returned in prizes in the Finals. Make your check or money order made payable to Tennessee Chess Assn., and send it to:

Lee Edwards  
Postal Coordinator  
Tennessee Chess Association  
3214 McGavock Pike  
Nashville, Tennessee 37214

I can't even mention the ineffable name of my predecessor, the "Postal God". Meanwhile, I note with displeasure that I have been demoted to a mere "Correspondence Guru", worthy of no more respect than the "Holy Bagworm", and people are even APPEALING my decisions! Since I asked for your games, I.C.C.F. games or any games, and you didn't send them, the only way I know to exact revenge is to dare the editor of TCN to print my own games. You've seen my victory over the Soviet player, Sotskov; now you get to see me checkmate a Slovak.

I am sometimes asked about the international rule which requires repeat moves to be sent by registered mail, which costs three or four dollars. I have only had to do this once. I would be much more concerned about playing my games to completion, however, since the I.C.C.F. - U.S. Secretary has made it plain that American players who drop out will be banned from further international play.

The best advice I ever received about international correspondence play was to use sharp openings, since the games go into adjudication after two years. This will probably not be a major problem in your games with players from Northern Europe or Australia, but could cause the adjudication of games with opponents in the Communist bloc.

I.C.C.F. play is a good way to keep up with German and Russian analysis of your favorite lines. Most of your opponents will speak English, however. The game below is the first time I ever played the ultra-tactical Marshall gambit in the Ruy Lopez and the analysis comes straight from the pages of the September 1985 issue of the much maligned Chess Life. It's better when your opponent isn't a subscriber.

**W: Krylov** (Czech.)

**B: Edwards** (USA)

*ICCF Cup VI/VII, Group 321*

**1. e4 e5 2. Nf3 Nc6 3. Bb5 a6 4. Ba4 Nf6 5. O-O Be7 6. Re1 b5 7. Bb3 O-O 8. c3 d5 9. exd5 Nxd5 10. Nxe5 Nxe5 11. Rxe5 Nf6** (Shamkovich's suggestion) **12. d4 Bd6 13. Re1 Ng4 14. h3 Nxf2** (14... Bh2!? 15. Kf1 Nxf2 16. Qf3 Nh1; I am currently playing a game in this line against the Soviet Master A.A. Nikolichev of Bor) **15. Qf3 Qh4 16. Bd2** (Re8! or perhaps 16. Re2 Bxh3 17. g3!) **16... Bb7 17. Qxb7 Nd3 18. Re2 Rae8 19. Qf3 Rxe2 20. Qxe2 Qg3 21. Qf3 Qh2+ 22. Kf1 Nf4 23. Kf2?** (better is 23. Be3) **23... Re8 24. Bd1 g6 25. Na3 Nh5 26. Qg4??** (Black threatened 26... Bg3+ 27. Kf1 Qh1++). Instead of the text, White should play 26. Be3) **26... Nf6 27. Qe2 Rxe2+ 28. Bxe2 Ne4+ 29. Ke3 Qf4+ 30. White resigns. 0-1** (it's mate after 30. Kd3 Qxd2+ 31. Kxe4 Qxe2+ 32. Kd5 Qxg2)



## TAI

by Paul Linxwiler

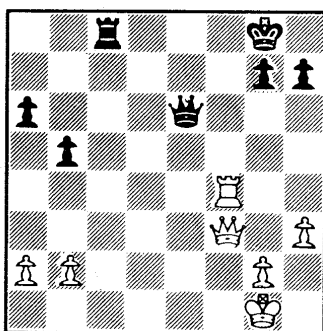
Much has been written about the young Oliver Tai in recent chess publications, and with good reason. His talent for the game is genuinely extraordinary. His resume' of tournaments and titles won is as long as it is impressive. Oliver has been the "defacto king" of scholastic chess in Memphis for years, and he has at least tied for first (if not outright *WON*) all of the different sections at the rigorous Crossville Scholastics. Only the Tennessee High School State Championship has eluded his conquering of regional scholastic events.

Oliver won the 1983 National Primary Championship in Albany, N.Y., the 1987 National Junior High School Championship in Los Angeles, CA, and in a massive nine-way tie for first, took home a piece of the 1988 National High School Championship in Albuquerque, NM.

Tai, having just celebrated his twelfth birthday (!), enjoys a 2114 USCF rating. Many have questioned if this rating realistically reflects his playing strength since many of his rating points have been earned against scholastic players, a group whose ratings are notoriously over-inflated. Tai himself has put many of these doubts to rest by successfully qualifying for the Memphis City Championship (usually an all-adult field) for two years in a row. More astonishingly, Oliver has defeated the last three Masters he has encountered in O-T-B play.

Although Oliver recently failed in his bid to win consecutive National Junior High School titles (he fell a ½ point short of the winners in Memphis), he is someone who will undoubtedly continue to add to his already unbelievable list of titles. We in the chess community will doubtless hear much about him in the future.

Now, an opportunity to see for yourself:

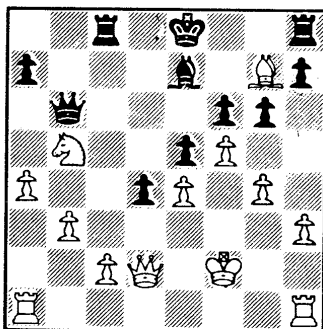


**W: Paul Harless (2297)**

**B: Oliver Tai (2093)**

*'88 Memphis City Championship (Sicilian: Smith-Morra)*

1. e4 c5 2. d4 cxd4 3. c3 dxc3 4. Nxc3 e6 5. Nf3 Nc6 6. Bc4 Bc5 7. O-O a6 8. Qe2 Nge7 9. Bf4 b5 10. Bb3 Ng6 11. Bg3 Qe7 12. Rfd1 d6 13. Rac1 O-O 14. e5 d5 15. Bxd5 Bb7 16. Ne4 Bxf2+ 17. Kxf2 exd5 18. Rxd5 Nd8 19. Rd2 Bxe4 20. Qxe4 Ne6 21. h3 Rfe8 22. Kg1 Ng5 23. Qg4 Nxf3+ 24. Qxf3 Nxe5 25. Bxe5 Qxe5 26. Rd7 Rf8 27. Rcc7 Qe6 28. Rxf7 Rxf7 29. Rxf7 Rc8 30. Rf4 (diagram A) 30. . . Qxa2 31. b3 Qa1+ 32. Kh2 Qe5 33. Qg3 Re8 34. h4 a5 35. Kh3 Qe1 36. Qf3 Qe6+ 37. Kh2 h6 38. Kg3 Qe1+ 39. Kh3 Re3 White resigns 0-1.



**W: Curt Jones (2431)**

**B: Oliver Tai (1996)**

*'87 Bluff City Open (Closed Sicilian)*

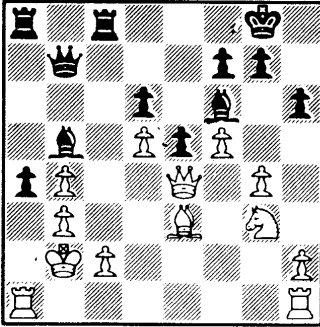
1. e4 c5 2. Nc3 Nc6 3. g3 d6 4. Bg2 Nf6 5. d3 Nd4 6. h3 e5 7. Be3 b5 8. f4 Qa5 9. Qd2 Be7 10. Nf3 Nh5 11. Kf2! f6 12. f5 g6 13. g4 Ng7 14. a4! Bb7 15. Nxb5 Qb6 16. b3?! d5! 17. Nfxd4 cxd4 18. Bh6 dxe4 19. Bxe4 Bxe4 20. dxe4 Rc8! 21. Bxg7 (diagram B) Rxc2!! 22. Qxc2 d3+ 23. Kf3 dxc2 24. Bxh8 a6! 25. Rhc1 axb5 26. Rxc2 bxa4 27. Rb1 Qd4 28. Rbb2 axb3 29. Rd2 Qc3+ 30. Kg2 Ba3 White resigns 0-1.

## TAI (con't)

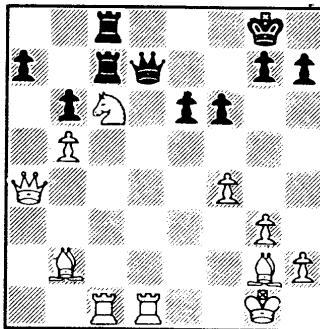
**W: Paul Linxwiler (2259)**

**B: Oliver Tai (1998)**

*'88 Memphis Candidates Tourney (Sicilian: Najdorf)*



1. e4 c5 2. Nf3 d6 3. d4 cxd4 4. Nxd4 Nf6 5. Nc3 a6  
6. Bg5 e6 7. f4 Be7 8. Qf3 Qc7 9. O-O-O Nbd7  
10. Bd3 h6 (So far, so book. The Browne Variation is  
one of Tai's favorites) 11. Qh3 Nb6 12. f5 e5  
13. Nde2 Bd7 14. Be3?! Nc4 15. Bxc4 Qxc4  
16. Qf3 b5! (Black is already better, threatening to  
undermine the White e-pawn with b4) 17. a3 a5 18. b3  
Qc7 19. Nd5 Nxd5 20. exd5 a4 21. Kb2 b4!  
22. axb4 O-O (on 22... a3 and 23. Kc1 a2 24. Kd2,  
White actually survives) 23. Qe4 Rfc8 24. Rc1 Bf6  
25. g4 Qb7 26. Ra1 Bb5 27. Ng3 (diagram C) Bc4!!  
(the Bishop can't be captured due to Qxb4+ with a  
horrible attack. However, it cuts off the defense of the  
pawn on b4) 28. Rhd1 Qxb4 29. Nh5 axb3  
30. Nxf6+ gxf6 31. c3 Qb5 32. Bxh6 Ra2+  
33. Rxa2 bxa2+ 34. Ka1 Rb8 35. Qc2 Bb3 White  
resigns 0-1.



**W: Oliver Tai (2093)**

**B: Fred Baier (1745)**

*'88 Tennessee Scholastics, HS Section*

1. Nf3 d5 2. g3 c5 3. Bg2 Nc6 4. d4 e6 5. O-O Nf6  
6. b3 Be7 7. Bb2 O-O 8. dxc5 Bxc5 9. Nbd2 b6  
10. Rc1 Ba6 11. a3 Rc8 12. b4 Bd6 13. c4 dxc4  
14. Nxc4 Be7 15. Qa4 Nxb4 16. Nce5 Bxe2  
17. axb4 Bxf1 18. Rxf1 Rc7 19. Nc6 Qd7 20. Nfe5  
Qe8 21. Nxe7+ Qxe7 22. b5 Rfc8 23. Nc6 Qd7  
24. Rd1 Nd5 25. Be5 Rb7 26. f4 f6 27. Bb2 Rbc7  
(diagram D) 28. f5 Kf7 29. fxe6+ Kxe6 30. Bxd5+  
Qxd5 31. Rxd5 Kxd5 32. Qd4+ Ke6 33. Qc4+ Kf5  
34. Qd5+ Kg6 35. h4 h5 36. Bd4 Black resigns  
1-0.



*Tennessee  
Crosstables  
Section*



1988 National Jr. High Championship / Open Section

	PLAYER	ST	RTNG	PRE	POST							TOT
				RTNG	1	2	3	4	5	6	7	
1	PHILLIPS, RICHARD	CA	2141	2154	W-75	W-50	W-14	W-13	W--7	D--2	D--6	6.0
2	WAITZKIN, JOSHUA	NY	2043	2068	W-76	W-36	W-84	W-48	W--5	D--1	D--7	6.0
3	GRAHAM, NATHANIEL	MN	1974	1965	W-61	W-86	L-48	W-54	W-32	W-15	W-19	6.0
4	CHANG, ALEX F	WV	1964	1986	W-95	W-42	D-47	W-37	W-18	D--6	W-13	6.0
5	POLK, ALAN	MN	1904	1942	W-63	W-39	W-16	W-10	L--2	W-48	W-11	6.0
6	TAI, OLIVER	TN	2114	2107	W-56	D-32	W-57	W-71	W--9	D--4	D--1	5.5
7	AMBATS, JESSICA	NY	2077	2083	W-25	W-20	W-19	W-31	L--1	W--8	D--2	5.5
8	SKAGGS, BRAD	KY	2017	2007	W117	W-51	D-30	W-33	W-46	L--7	W-29	5.5
9	CHANG, ANGELA	WV	1868	1867	W118	D116	W-93	W-29	L--6	W-34	W-31	5.5
10	CARLIN, JOHN P	NY	1743	1760	W-73	W-88	W-24	L--5	D-22	W-71	W-39	5.5
11	GRABOWSKI, ERIC	NY	2012	1980	W102	W-60	D-33	W-30	D-47	W-14	L--5	5.0
12	GRANNE, MICHAEL	NY	1912	1865	L-57	W100	W-63	W-41	D-50	W-32	D-21	5.0
13	PARKER, NICKOLAI	NY	1881	1885	W-77	W-40	W-17	L--1	W-20	W-49	L--4	5.0
14	ELLIS, STEVE	IN	1747	1755	W-98	W-94	L--1	W-55	W-24	L-11	W-56	5.0
15	SHARER, GILLIAN	NC	1719	1706	W119	L-24	W130	W-91	W-40	L--3	W-50	5.0
16	SIMMONS, HAROLD LL	TN	1709	1700	W-97	W-59	L--5	W-58	D-39	W-42	D-22	5.0
17	KAPLAN, PAUL	NY	1703	1693	W-68	W-74	L-13	D-75	W-90	D-51	W-57	5.0
18	SMITH, MIKE A	MI	1701	1706	W128	W-87	D-21	W-72	L--4	D-50	W-51	5.0
19	PEHME, MORGAN L	NY	1685	1724	W-64	W-89	L--7	W-74	W-36	W-47	L--3	5.0
20	MILLER, RANDY	IN	1549	1599	W123	L--7	W-96	W-57	L-13	W-62	W-46	5.0
21	MEHTA, SUJEET	IN	1549	1615	W133	W-62	D-18	L-46	W-38	W-70	D-12	5.0
22	JAKUBOWSKY, BRIAN	MN	1512	1564	W112	L-26	W-45	W-64	D-10	W-33	D-16	5.0
23	BORBELY, MARC	NY	1456	1496	W138	L-46	W119	L-43	W-80	W-66	W-48	5.0
24	HSU, EDWARD	NY	1405	1491	W149	W-15	L-10	W-28	L-14	W-99	W-47	5.0
25	DEBNAM, DARRAND	PA	1364	1452	L--7	W123	D-34	D-35	W-69	W-87	W-49	5.0
26	ARNETT, DAVID A	NY	1864	1805	W127	W-22	L-31	L-40	W-95	W-55	D-37	4.5
27	JOHNSON, PETER	KY	1715	1660	L-45	W125	W128	L-62	W-63	W-53	D-41	4.5
28	SPOO, ERIC	IN	1646	1617	W131	W-91	L-71	L-24	W-61	W-59	D-40	4.5
29	KAUFMANN, SCOTT HO	NC	1644	1649	W141	D-38	W116	L--9	W-78	W-73	L--8	4.5
30	BOWIE, JEROME	MI	1630	1643	W-80	W-44	D--8	L-11	W-54	L-39	W-75	4.5
31	HUGHES, BOBBY	IN	1597	1634	W129	W-90	W-26	L--7	D-73	W-43	L--9	4.5
32	MYERS, DAN	MN	1594	1637	W109	D--6	W-78	W-70	L--3	L-12	W-77	4.5
33	JACKSON, BRYAN	IN	1581	1599	W-99	W-58	D-11	L--8	W-44	L-22	W-76	4.5
34	HALSEY, SHAWN	IL	1556	1555	W120	L-57	D-25	W118	W-75	L--9	W-73	4.5
35	MC MANUS, TONY	KY	1551	1529	W148	D-54	L-38	D-25	W102	W-58	D-45	4.5
36	HOOVER, TOM E	IN	1544	1551	W108	L--2	W-61	W-56	L-19	D-76	W-79	4.5
37	MARTINO, CARLO	NY	1525	1573	W147	W-45	D-70	L--4	W-79	D-46	D-26	4.5
38	JOHNSON, ROBERT	PA	1524	1551	W154	D-29	W-35	L-47	L-21	W111	W-71	4.5
39	CHU, DAVID	KY	1504	1553	W137	L--5	W-77	W-66	D-16	W-30	L-10	4.5
40	DOAN, TU M	MN	1428	1485	W134	L-13	W-67	W-26	L-15	W-64	D-28	4.5
41	ZINDEL, DAVID J	NY	1408	1458	W101	L-47	W-98	L-12	W-65	W-96	D-27	4.5
42	STAPP, DEREK	NC	1390	1421	W124	L--4	D-79	W105	W100	L-16	W-78	4.5
43	RIVERS, MONTREZ	PA	1377	1440	L-84	W153	W-89	W-23	D-71	L-31	W-86	4.5
44	BARRASSO, ALEXANDE	NY	1370	1405	W-69	L-30	D111	W107	L-33	W125	W-70	4.5
45	STEIN, JASON Z	CA	1358	1422	W-27	L-37	L-22	W150	W-91	W-88	D-35	4.5
46	KELLY, MATT	MN	1834	1785	W-65	W-23	D-72	W-21	L--8	D-37	L-20	4.0
47	LAI, BRUCE	MN	1799	1775	W-96	W-41	D--4	W-38	D-11	L-19	L-24	4.0
48	PARSONS, PAUL J	MA	1669	1681	W-79	W-52	W--3	L--2	W-88	L--5	L-23	4.0
49	FAN, WILL	TN	1646	1608	W152	L-72	W-65	W-53	W-62	L-13	L-25	4.0
50	CRANE, ADAM A	WA	1526	1559	W111	L--1	W-95	W-59	D-12	D-18	L-15	4.0
51	STICKLER, TIM	IN	1497	1498	W145	L--8	D118	W130	W111	D-17	L-18	4.0
52	SCOTT, CLAYTON W	TN	1484	1447	W151	L-48	D-97	D-99	L-96	W108	W-98	4.0
53	CRISP, PAUL	IN	1426	1429	W115	L-71	W134	L-49	W108	L-27	W104	4.0
54	ROGERS, ERIC	PA	1423	1439	W140	D-35	W-85	L--3	L-30	D100	W114	4.0
55	DELANEY, SHAWN	IN	1419	1434	W132	L-84	W103	L-14	W-68	L-26	W-99	4.0
56	HARRIS, JAKE P	TN	1414	1437	L--6	W109	W-69	L-36	W124	W-60	L-14	4.0
57	LANGE, BRIAN M	MN	1393	1464	W-12	W-34	L--6	L-20	W126	W-86	L-17	4.0
58	SANCHEZ, JUAN	NY	1388	1400	W-82	L-33	W142	L-16	W105	L-35	W110	4.0
59	CHANDRAN, RAJESH	WV	1384	1396	W142	L-16	W137	L-50	W-67	L-28	W100	4.0
60	HEETER, ADAM	IN	1383	1392	W106	L-11	L-66	W122	W119	L-56	W102	4.0
61	SWAMY, GIRI P	TN	1378	1405	L--3	W112	L-36	W137	L-28	W124	W-85	4.0
62	RUDISILL, MICAH D	GA	1366	1393	X---	L-21	W148	W-27	L-49	L-20	W-96	4.0
63	MC CARTY, RYAN E	MI	1357	1381	L--5	W108	L-12	W106	L-27	W103	W115	4.0
64	ROUDEBUSH, MIKE	IN	1315	1354	L-19	W139	W126	L-22	W-92	L-40	W-91	4.0
65	VOGEL, BRETT	IL	1312	1340	L-46	W138	L-49	W135	L-41	W134	W-89	4.0
66	SPERRY, JOSHUA	NY	1291/6	1419	L-70	W106	W-60	L-39	W-85	L-23	W-87	4.0
67	CHU, JAMES	KY	1255	1298	F---	W154	L-40	W142	L-59	W-93	W-88	4.0
68	WHITE, SHANN	WV	1227	1280	L-17	W143	L-86	W110	L-55	W126	W-92	4.0
69	NGUYEN, TOAN	GA	0	1325	L-44	W133	L-56	W145	L-25	W130	W-95	4.0
70	CORDELL, BRANDON	NC	1787	1711	W-66	W-92	D-37	L-32	W-72	L-21	L-44	3.5

1988 National Jr. High Championship / Open Section (con't)

71	LANGE, MARK D	MN	1629	1612	W107	W-53	W-28	L--6	D-43	L-10	L-38	3.5
72	DANGEAU, CHEYENNE	TN	1467	1488	W-83	W-49	D-46	L-18	L-70	L-77	W121	3.5
73	DEY, JUSTIN	TN	1458/8	1499	L-10	W101	W-87	W-86	D-31	L-29	L-34	3.5
74	VANDEGRIFT, DAVID	KY	1422	1403	W104	L-17	W-80	L-19	L-99	D120	W125	3.5
75	MEYER, RUSSELL D	NC	1410	1448	L--1	W122	W104	D-17	L-34	W-84	L-30	3.5
76	ROCHELLE, MICHAEL	TN	1357/13	1363	L--2	L111	W101	W109	X---	D-36	L-33	3.5
77	ROSSI, JOE S	IL	1312	1349	L-13	W113	L-39	W148	D-84	W-72	L-32	3.5
78	HILTZ, WILLIAM S	MI	1302	1336	W144	D-85	L-32	W-81	L-29	W-82	L-42	3.5
79	HINZMAN, ED	WV	1244	1305	L-48	W-83	D-42	W116	L-37	W-90	L-36	3.5
80	POWELL, GREG	MS	1237/10	1259	L-30	W146	L-74	W151	L-23	D116	W122	3.5
81	HUNT, SAM	IN	1181/9	1243	H---	L126	W131	L-78	W118	L-85	W116	3.5
82	CRAWFORD, MICHAEL	KY	1153	1176	L-58	L107	W114	W129	D116	L-78	W120	3.5
83	NOP, VANY TENG	VA	1707/3	1371	L-72	L-79	L109	W144	D123	W118	D-94	3.0
84	BRANHAM, DANIEL G	TN	1637	1574	W-43	W-55	L--2	L-88	D-77	L-75	D111	3.0
85	SAMUELS, JASON F	NY	1540	1473	W103	D-78	L-54	D102	L-66	W-81	L-61	3.0
86	BALOGH, JASON	TN	1512	1468	W113	L--3	W-68	L-73	W128	L-57	L-43	3.0
87	KAUFMANN, CRAIG	NC	1499	1460	W136	L-18	L-73	W120	W-98	L-25	L-66	3.0
88	HODGES, JIMMY	IN	1496	1460	W153	L-10	W147	W-84	L-48	L-45	L-67	3.0
89	VANDEGRIFT, MARK	KY	1476	1406	W139	L-19	L-43	L108	W122	W141	L-65	3.0
90	MEYER, ROBERT G	NC	1439	1396	W143	L-31	D-99	W-97	L-17	L-79	D101	3.0
91	KUSNIER, LOUIS P	MI	1436	1409	W110	L-28	W129	L-15	L-45	W105	L-64	3.0
92	JOHNSON, CALEB	KY	1420	1362	W150	L-70	L105	W147	L-64	W107	L-68	3.0
93	BOLTON, BRIAN	IL	1409	1365	D121	W105	L--9	L100	D-97	L-67	W137	3.0
94	YOUNG, CHRIS	KY	1363	1314	W146	L-14	D107	L111	L125	W123	D-83	3.0
95	ZIZZI, SAMUEL J	WV	1342	1343	L--4	W124	L-50	W123	L-26	W137	L-69	3.0
96	POOLE, BRENT A	IN	1339	1337	L-47	W151	L-20	W115	W-52	L-41	L-62	3.0
97	DAVIS, JOEY	WV	1270	1267	L-16	W149	D-52	L-90	D-93	L104	W138	3.0
98	PARSONS, MELISSA K	MA	1257	1265	L-14	W110	L-41	W134	L-87	W142	L-52	3.0
99	NAFZIGER, BRETT P	IL	1245	1278	L-33	W132	D-90	D-52	W-74	L-24	L-55	3.0
100	WILLIAMS, ROB E	IN	1241	1259	H---	L-12	W145	W-93	L-42	D-54	L-59	3.0
101	SHAH, MANAN R	NC	1228/9	1250	L-41	L-73	L-76	W140	D129	W117	D-90	3.0
102	SWOPE, MATT	NC	1192/10	1254	L-11	D145	W115	D-85	L-35	W106	L-60	3.0
103	MOORE, BRETT C	NY	1179	1182	L-85	W140	L-55	L126	W150	L-63	W132	3.0
104	VAUGHN, STEVE	IN	1176/5	1184	L-74	X---	L-75	L128	W109	W-97	L-53	3.0
105	WHISENHUNT, JESSE	MS	1175/8	1231	W126	L-93	W-92	L-42	L-58	L-91	W134	3.0
106	GOORHA, SALIL	TN	1125	1152	L-60	L-66	W144	L-63	W151	L102	W130	3.0
107	HENDRICKS, TOM	IL	1122	1151	L-71	W-82	D-94	L-44	D130	L-92	W139	3.0
108	SUMNER, CHARLES T	NC	1121	1166	L-36	L-63	W149	W-89	L-53	L-52	W128	3.0
109	FERGUSON, HOY	WV	1119	1154	L-32	L-56	W-83	L-76	L104	W151	W126	3.0
110	SELLERS, WALTER	TN	1112/5	1163	L-91	L-98	W133	L-68	W147	W119	L-58	3.0
111	NESTOR, KEVIN	WV	1109	1177	L-50	W-76	D-44	W-94	L-51	L-38	D-84	3.0
112	HIGGINS, ERIC T	IN	1077	1092	L-22	L-61	L135	W143	L142	W140	W127	3.0
113	TSAI, TONY	NC	1026/5	1094	L-86	L-77	D146	D121	L127	W135	W141	3.0
114	REMUS, GINGER S	IL	997	1047	L116	L118	L-82	W154	W131	W127	L-54	3.0
115	NGUYEN, TAO H.	GA	0	1185	L-53	W120	L102	L-96	X---	W128	L-63	3.0
116	KARKOWSKI, DAVID	NY	1466/5	1352	W114	D--9	L-29	L-79	D-82	D-80	L-81	2.5
117	WRIGHT, DAVID J	MS	1329	1276	L--8	L137	W139	L136	D121	L101	W142	2.5
118	OCHSENDORF, JOHN	WV	1303	1292	L--9	W114	D-51	L-34	L-81	L-83	W145	2.5
119	THURMAN, RICHARD	MI	1227	1206	L-15	W150	L-23	W138	L-60	L110	D124	2.5
120	FOARD, JOHN	TN	1205	1186	L-34	L115	W153	L-87	W139	D-74	L-82	2.5
121	TRUSTY, JOSEPH	TN	1193/11	1185	D-93	L130	L122	D113	D117	W131	L-72	2.5
122	FORSTER, CAM	IN	1180/10	1190	H---	L-75	W121	L-60	L-89	W129	L-80	2.5
123	SHIELDS, JEFFERY J	TN	1178	1179	L-20	L-25	W143	L-95	D-83	L-94	W146	2.5
124	MASON, CHAKA	MS	1070/5	1135	L-42	L-95	W154	W127	L-56	L-61	D119	2.5
125	RODECAP, DAVID A	IN	1066/11	1125	H---	L-27	L127	W146	W-94	L-44	L-74	2.5
126	POWELL, CHRIS	MS	1583/5	1308	L105	W-81	L-64	W103	L-57	L-68	L109	2.0
127	LONGMIRE, BUBBA	TN	1325	1241	L-26	L148	W125	L124	W113	L114	L112	2.0
128	BROWNFIELD, TROY F	IN	1293	1265	L-18	W136	L-27	W104	L-86	L115	L108	2.0
129	WOODS, CHRIS	KY	1272	1217	L-31	W135	L-91	L-82	D101	L122	D143	2.0
130	CHILDERS, JON	IN	1268/4	1186	H---	W121	L-15	L-51	D107	L-69	L106	2.0
131	PAYNE, MILES N	MS	1263	1195	L-28	L134	L-81	W153	L114	L121	W151	2.0
132	LOWE, PATRICK NEAL	VA	1250/8	1163	L-55	L-99	L136	L133	W146	W144	L103	2.0
133	ROSSI, PETER	IL	1173	1131	L-21	L-69	L110	W132	L134	L139	W150	2.0
134	WHITINGER, ANDY J	MI	1147	1147	L-40	W131	L-53	L-98	W133	L-65	L105	2.0
135	WALLACE, PATRICK	TN	1141/5	1081	F---	L129	W112	L-65	L137	L113	W154	2.0
136	CROFT, JUSTIN	TN	1110/14	1157	L-87	L128	W132	W117	F---	U---	U---	2.0
137	DRAUGHN, JIM	MS	1071/5	1130	L-39	W117	L-59	L-61	W135	L-95	L-93	2.0
138	POOLE, ERIC R	IN	1067	1052	L-23	L-65	W140	L119	L141	W147	L-97	2.0
139	LEVANWAY, JEREL	MS	1034/9	1021	L-89	L-64	L117	B---	L120	W133	L107	2.0
140	ROTH, LYNN M.	IL	962/5	975	L-54	L103	L138	L101	W154	L112	W147	2.0
141	O' DANIELS, BRIAN	TN	0	1029	L-29	L142	L150	W149	W138	L-89	L113	2.0
142	JONES, PHILIP D.	TN	0	1071	L-59	W141	L-58	L-67	W112	L-98	L117	2.0

1988 National Jr. High Championship / Open Section (con't)

143	MC CORMICK, ERIC	TN	0	1040	L-90	L-68	L123	L112	D144	W154	D129	2.0
144	NELSON, WILLARD D	MI	1634/5	1249	L-78	L147	L106	L-83	D143	L132	W149	1.5
145	HOLMES, RICK L	MS	1066/5	1034	L-51	D102	L100	L-69	L149	W150	L118	1.5
146	RICE, KENNETH ALBE	IL	0	964	L-94	L-80	D113	L125	L132	W149	L123	1.5
147	ALGOOD, MINDY	MS	1115/10	1067	L-37	W144	L-88	L-92	L110	L138	L140	1.0
148	WANDERMAN, GREG	TN	1102	1112	L-35	W127	L-62	L-77	F---	U---	U---	1.0
149	DEAN, DARREN	IN	919	898	L-24	L-97	L108	L141	W145	L146	L144	1.0
150	MAHON, SUSAN	MS	840/5	882	L-92	L119	W141	L-45	L103	L145	L133	1.0
151	STEWART, JR WILLIA	MS	827/5	852	L-52	L-96	B---	L-80	L106	L109	L131	1.0
152	WALKER, CHRIS S	TN	1208	1206	L-49	F---	U---	U---	U---	U---	U---	.0
153	JAMES, RACHEL	TN	1024/5	984	L-88	L-43	L120	L131	U---	U---	U---	.0
154	VIVERETTE, KEITH	TN	0	759	L-38	L-67	L124	L114	L140	L143	L135	.0

1988 National Jr. High Championship / Premier Section

PLAYER	ST	PRE		POST									TOT
		RTNG		RTNG		1	2	3	4	5	6	7	
1	TREPP, RICHARD	NY	1738	1817	W-87	W108	W-45	W-71	W-12	W-10	D--2	6.5	
2	FIGELMAN, ILYA	MA	1910	1907	W203	W-33	W-99	D-43	W-42	W-24	D--1	6.0	
3	JIMENEZ, MARC A	AZ	1885	1890	W111	W-88	W-69	W-25	D-14	W-43	D--4	6.0	
4	SPIRO, ARI	NY	1810	1844	W-59	W-76	W-39	W-20	W-16	D--5	D--3	6.0	
5	ROKOP, TERENCE M	PA	1748	1802	W132	W-57	W--7	W-64	W-11	D--4	D-14	6.0	
6	YANDLE, JOSEPH W	NC	1654	1668	W-34	W143	L-32	W141	W-76	W-31	W-30	6.0	
7	WARNER, TASS	FL	1598	1657	W-89	W113	L--5	W-85	W-84	W-18	W-22	6.0	
8	DEAN, AARON	IN	1455	1542	L-46	W208	W-27	W136	W101	W-68	W-23	6.0	
9	MC NICHOLS, MATT J	IN	1398	1533	W-98	D-46	W-40	D-44	W-66	W-28	W-20	6.0	
10	SELTZER, ROBERT R	MA	2064	2028	W-49	W-74	D-42	W-91	W-31	L--1	W-46	5.5	
11	BERMAN, MARC	NY	2063	2031	W-58	W-80	W-66	W-38	L--5	D-14	W-43	5.5	
12	TOM, MATTHEW A	MO	1829	1822	W167	W-30	W-53	W-52	L--1	D-25	W-38	5.5	
13	RUNAS, ROY A	CA	1778	1770	W182	L-32	W-59	W125	D-64	W-67	W-40	5.5	
14	TRICKER, TROY	IN	1697	1749	W138	W-37	W-72	W-32	D--3	D-11	D--5	5.5	
15	MC CARTNEY, RYAN	IN	1612/11	1646	W168	W130	L-64	D-55	W-49	W103	W-53	5.5	
16	VICARY, ELIZABETH	NC	1602	1637	W179	W125	W-77	W126	L--4	D-53	W-47	5.5	
17	CALTON, BILL J	MI	1901	1855	W165	L-31	W-97	W-81	W-75	L-20	W-58	5.0	
18	CRAWFORD, BRAD	IL	1756	1727	W192	W-83	L-52	W-26	W129	L--7	W-88	5.0	
19	COOPER, JR JOHN E	IN	1701	1694	W-79	W-26	W100	L-31	W-71	L-23	W-74	5.0	
20	HENDERSON, ROBIN K	IN	1684	1692	W172	W-84	W-95	L--4	W108	W-17	L--9	5.0	
21	BHUSHAN, SAMEER	CA	1655	1645	W183	W-81	D114	W103	L-43	W107	D-25	5.0	
22	YOUNG, JOSH	IN	1642	1638	W181	W128	L-31	W102	W-33	W-72	L--7	5.0	
23	CAIN, GRANT	IL	1639	1634	W-67	L-91	W192	W110	W-86	W-19	L--8	5.0	
24	ROTH, RICKY J	IN	1626	1636	W-85	W-56	D103	W114	W107	L--2	D-29	5.0	
25	SULLIVAN, TOMMY	AZ	1589	1628	W148	W-86	W121	L--3	W-37	D-12	D-21	5.0	
26	SINGER, ARI	OH	1517	1550	W175	L-19	W113	L-18	W171	W156	W-68	5.0	
27	DINIUS, WILLIAM B	IN	1515	1513	W171	L121	L--8	W193	W181	W-86	W-67	5.0	
28	PENGELLY, MATTHEW	AZ	1498	1510	W140	W141	L-91	W-79	W-57	L--9	W-76	5.0	
29	LINDER, MARK	AZ	1487	1552	W118	W-68	L-43	W122	W-44	D-38	D-24	5.0	
30	ABALO, AGUSTIN	FL	1468	1512	W195	L-12	W193	W-96	W-70	W-41	L--6	5.0	
31	LAM, CUONG PHUONG	CA	1467	1560	W-92	W-17	W-22	W-19	L-10	L--6	W-70	5.0	
32	SPIRO, NAOMI	NY	1457	1521	W212	W-13	W--6	L-14	L-68	W161	W-66	5.0	
33	YANDLE, JOHNNY	NC	1425	1464	W152	L--2	W178	W-36	L-22	W-89	W-96	5.0	
34	VOLKERS, KYLE R	IN	1417	1469	L--6	W175	W-51	L-75	W136	W129	W-72	5.0	
35	ANDREWS, WARD	AZ	1390	1446	L-40	D118	W176	W137	W100	D-64	W-75	5.0	
36	VINCELLI, TONY	MN	1335	1420	W127	L100	W130	L-33	W135	W108	W-64	5.0	
37	SCHINCKLE, JEFF	MN	1250/12	1384	W217	L-14	W199	W123	L-25	W101	W-69	5.0	
38	QUICKSALL, ANDY N	MO	1673	1679	W207	W102	W135	L-11	W-88	D-29	L-12	4.5	
39	SHAFER, SETH A	TN	1653	1624	W149	W142	L--4	D112	L-58	W143	W111	4.5	
40	TAYLOR, MARC	IN	1652	1627	W-35	D107	L--9	W166	W117	W-80	L-13	4.5	
41	NELSON, BRAD	KY	1639	1617	W166	W134	L-71	W-56	W-52	L-30	D-54	4.5	
42	SNYDER, RICHARD	IN	1583	1606	W204	W117	D-10	W-63	L--2	L-58	W102	4.5	
43	LEMMON, ROBERT J	CA	1565	1617	W211	W-78	W-29	D--2	W-21	L--3	L-11	4.5	
44	CRAWFORD, IV ROY R	KY	1565	1555	W189	W193	D-63	D--9	L-29	D102	W107	4.5	
45	WOODWORTH, RICHARD	IN	1563	1548	W190	W199	L--1	D165	L112	W166	W109	4.5	
46	MAY, JOHN	IN	1559	1560	W--8	D--9	W160	L107	W165	W112	L-10	4.5	
47	SKIDMORE, JENNIFER	MI	1531	1522	L154	D171	W209	W117	W-61	W-63	L-16	4.5	
48	STANSBERRY, MATT	IN	1515	1475	L121	W147	D117	L-97	W119	W116	W106	4.5	
49	WALKER, DUSTY	KY	1509	1517	L-10	W155	D116	W119	L-15	W174	W105	4.5	
50	CAUDILL, RORY K	KY	1499	1481	L193	W188	L104	W149	W179	W-84	D-56	4.5	
51	WEINTRAUB, KEITH	MI	1499	1488	L142	W115	L-34	W185	W164	D-59	W112	4.5	
52	MC FEETERS, JOSHUA	NC	1498	1560	W-61	W-94	W-18	L-12	L-41	W126	D-60	4.5	
53	BARTOW, KYLE A	IN	1497	1512	W147	W-96	L-12	W181	W-91	D-16	L-15	4.5	
54	BASS, COLE C.	TN	1484	1487	L-94	L185	W206	W187	W152	W122	D-41	4.5	
55	REESE, JASON	IN	1468	1476	L160	W210	W195	D-15	L-63	W169	W-98	4.5	
56	MC NEELY, GREG D	IN	1446	1469	W198	L-24	W153	L-41	W154	W-99	D-50	4.5	

1988 National Jr. High Championship / Premier Section (con't)

57	KINI, VINAY	TN	1438	1472	W120	L--5	W142	W-95	L-28	D106	W104	4.5
58	TITUS, JERRALD LYN	IN	1425	1479	L-11	D169	W204	W118	W-39	W-42	L-17	4.5
59	SPENCE, ROBBIE	AZ	1392	1458	L--4	W-93	L-13	W213	W123	D-51	W100	4.5
60	GARCIA, ALAN	FL	1376/11	1445	L122	W218	W-73	L-72	W-77	W-71	D-52	4.5
61	SALE, CHRIS	IN	1278/11	1384	L-52	W109	W131	D-80	L-47	W114	W103	4.5
62	YOUNG, ERIK	IN	1626	1573	W188	L126	W164	L-84	L138	W189	W128	4.0
63	FOX, JEFF J	OH	1586/8	1564	W180	W124	D-44	L-42	W-55	L-47	D-80	4.0
64	CAMPBELL, CHARLES	KY	1561	1560	W206	W116	W-15	L--5	D-13	D-35	L-36	4.0
65	STEPHENS, JOHN RIC	IN	1558	1516	W104	L135	L-85	W189	L111	W148	W138	4.0
66	PAIGE, RUSSELL	IN	1546/11	1537	W184	W-90	L-11	W180	L--9	W104	L-32	4.0
67	WARNER, BOBBY	FL	1526/12	1559	L-23	W162	W124	W-77	W-69	L-13	L-27	4.0
68	BETTS, JASON N	IL	1522	1510	W202	L-29	W182	W-78	W-32	L--8	L-26	4.0
69	GRACE, BRIAN	KY	1522	1522	W194	W154	L--3	W143	L-67	W-79	L-37	4.0
70	PETERSON, DAVID	TX	1521	1497	L126	W172	W-87	W135	L-30	W139	L-31	4.0
71	MANNOR, ERIC H	MI	1521	1541	W187	W156	W-41	L--1	L-19	L-60	W126	4.0
72	O'NEILL, DAVID P	NC	1506	1508	W150	W213	L-14	W-60	W126	L-22	L-34	4.0
73	SINIS, HARRY	TN	1506	1475	L117	W189	L-60	W190	W-85	D111	D-87	4.0
74	MERRILL, SCOTTY	AZ	1479	1476	W170	L-10	L-89	W146	W148	W-91	L-19	4.0
75	ROUDEBUSH, RYAN	IN	1473/11	1459	W209	L160	W140	W-34	L-17	W138	L-35	4.0
76	BARTOW, KEVIN L	IN	1455	1464	W197	L--4	W190	W-92	L--6	W-95	L-28	4.0
77	SESSA, DANIELLE	NY	1450	1451	W155	W158	L-16	L-67	L-60	W188	W142	4.0
78	BROWN, MICHAEL P	KY	1425	1418	W174	L-43	W159	L-68	L106	W154	W161	4.0
79	CONTRUCCI, JOE	OH	1413	1422	L-19	W146	W-94	L-28	W121	L-69	W159	4.0
80	TREPP, WILLIAM	NY	1405	1434	W191	L-11	W-90	D-61	W-97	L-40	D-63	4.0
81	YANDELL, ERIC	KY	1400	1402	W157	L-21	W154	L-17	L-89	W185	W152	4.0
82	NOEL, TONY	KY	1399	1370	L116	L190	W-93	L152	W170	W150	W160	4.0
83	KNAPP, CHARLES	AZ	1391	1405	W208	L-18	L-92	W113	L-95	W178	W153	4.0
84	POLLAK, MARC D	NY	1381	1416	W218	L-20	W106	W-62	L--7	L-50	W158	4.0
85	RAMSEY, JASON	OH	1380	1419	L-24	W205	W-65	L--7	L-73	W196	W122	4.0
86	WARNICKE, MARGARET	AZ	1378	1415	W144	L-25	W158	W-99	L-23	L-27	W156	4.0
87	AGUEL, FELIPE	FL	1328	1350	L--1	W200	L-70	D175	W173	W137	D-73	4.0
88	EVANS, ANDY	IN	1325/9	1406	W169	L--3	W185	W121	L-38	W153	L-18	4.0
89	BHARGAVA, RAVI N	OH	1305	1360	L--7	W139	W-74	L129	W-81	L-33	W133	4.0
90	WIDOLFF, ROBERT	IN	1291	1351	W162	L-66	L-80	L105	W127	W131	W136	4.0
91	DOYLE, MICHAEL	AZ	1273	1358	W101	W-23	W-28	L-10	L-53	L-74	W129	4.0
92	ZIMMERMAN, MATT	MN	1193	1273	L-31	W138	W-83	L-76	L102	W132	W139	4.0
93	WAN, DARREN	NY	1172/11	1274	L103	L-59	L-82	W186	W203	W180	W125	4.0
94	TUNNELL, JOHN	IN	1137/10	1262	W-54	L-52	L-79	L132	W190	W179	W135	4.0
95	PLANAS, RAUL	FL	1117/8	1295	W133	W137	L-20	L-57	W-83	L-76	W130	4.0
96	REA, CHRIS M	NC	1056	1162	W131	L-53	W134	L-30	W177	W125	L-33	4.0
97	HYUN, ELLIOTT M	NY	1035	1151	D163	W-98	L-17	W-48	L-80	W123	D-99	4.0
98	ABBOTT, DAVID M	IN	1634	1551	L--9	L-97	W194	W115	D143	W160	L-55	3.5
99	COHEN, JASON	TN	1558	1520	W115	W178	L--2	L-86	W132	L-56	D-97	3.5
100	KELLY, MARIA A	MI	1533	1501	W146	W-36	L-19	D104	L-35	W165	L-59	3.5
101	JACKSON, MICHAEL R	IN	1521	1481	L-91	W148	W168	W128	L--8	L-37	D115	3.5
102	RAPTIS, NICK	OR	1511	1502	W106	L-38	W157	L-22	W-92	D-44	L-42	3.5
103	ANDERSON, ASHLEY	VA	1510	1510	W-93	W161	D-24	L-21	W116	L-15	L-61	3.5
104	MUMUN, SAWAB	KY	1464	1459	L-65	W174	W-50	D100	W114	L-66	L-57	3.5
105	DAMRON, JOHN	MI	1450	1414	L178	W184	L181	W-90	W175	D109	L-49	3.5
106	ILFELD, ETAN J.	TN	1443	1428	L102	W179	L-84	W188	W-78	D-57	L-48	3.5
107	PARKER, MATT	OH	1436	1454	W205	D-40	W119	W-46	L-24	L-21	L-44	3.5
108	BETTS, RYAN	IL	1425	1413	W153	L--1	W150	W160	L-20	L-36	D113	3.5
109	SOWELL, DE WAYNE	KY	1385	1380	L156	L-61	W170	W199	W144	D105	L-45	3.5
110	BAKER, DAUNE A	IN	1381	1355	W216	L122	W198	L-23	L160	D151	W173	3.5
111	OCHOA, OMAR	AZ	1381	1390	L--3	L153	W210	W157	W-65	D-73	L-39	3.5
112	HORGAN, ALEC WILLI	TN	1379	1384	W176	L152	W214	D-39	W-45	L-46	L-51	3.5
113	COUNCIL, ROB	IN	1358/9	1394	W136	L--7	L-26	L-83	W134	W177	D108	3.5
114	BANDY, RYAN	KY	1322	1341	W151	W214	D-21	L-24	L104	L-61	W169	3.5
115	BARGINERE, DERRICK	MI	1315	1334	L-99	L-51	W215	L-98	W200	W127	D101	3.5
116	WADE, BRIAN P	TN	1259	1315	W-82	L-64	D-49	W133	L103	L-48	W168	3.5
117	GREINER, TED M	FL	1244	1310	W-73	L-42	D-48	L-47	L-40	W162	W174	3.5
118	WILKINSON, BRYAN	MN	1228	1267	L-29	D-35	W163	L-58	L166	W194	W172	3.5
119	PECK, MIKE	OH	1218	1282	D129	W163	L107	L-49	L-48	W202	W164	3.5
120	KLEEMAN, BOBBY	AZ	1168	1213	L-57	L168	W211	L139	W192	D164	W165	3.5
121	GONDAR, JULIO	FL	1131	1212	W-48	W-27	L-25	L-88	L-79	D168	W166	3.5
122	CRICK, WESLEY	KY	1592	1532	W-60	W110	L126	L-29	W167	L-54	L-85	3.0
123	GRAMMER, ED	TN	1546	1475	D164	D176	W132	L-37	L-59	L-97	W175	3.0
124	STINSON, DARLENE	MI	1490	1438	W210	L-63	L-67	L178	L147	W191	W184	3.0
125	BARRIOS, JENNIFER	MI	1482	1440	W200	L-16	W152	L-13	W178	L-96	L-93	3.0
126	MYNES, JASON	MI	1475	1483	W-70	W-62	W122	L-16	L-72	L-52	L-71	3.0
127	OAKLEY, KEVIN	KY	1424	1364	L-36	D209	D171	W142	L-90	L115	W185	3.0
128	PARKER, BRIAN	TN	1421	1398	W215	L-22	W161	L101	L156	W187	L-62	3.0

1988 National Jr. High Championship / Premier Section (con't)

129	KIM, SUNG	IN	1420/6	1364	D119	D164	W149	W-89	L-18	L-34	L-91	3.0
130	CHAMBERS, JONATHAN	MI	1418	1376	W201	L-15	L-36	L154	W155	W171	L-95	3.0
131	YAMAN, JASON	MI	1414	1354	L-96	W151	L-61	L171	W191	L-90	W193	3.0
132	MYERS, BRAD A	IN	1405	1394	L--5	W187	L123	W-94	L-99	L-92	W190	3.0
133	YANDELL, NATHAN	KY	1396	1346	L-95	D204	W169	L116	D172	W149	L-89	3.0
134	WELK, SCOTT	MI	1391	1340	W159	L-41	L-96	L150	L113	W197	W188	3.0
135	BURCHAM, AARON	IN	1381	1378	W196	W-65	L-38	L-70	L-36	W147	L-94	3.0
136	TAHA, IBRAHIM A	IN	1379/9	1342	L113	W194	W202	L--8	L-34	W184	L-90	3.0
137	COGSWELL, BRYAN	IN	1371/9	1318	W185	L-95	D166	L-35	W159	L-87	D151	3.0
138	BENEKER, RAY	IN	1364	1358	L-14	L-92	W197	W201	W-62	L-75	L-65	3.0
139	LARKINS, ADAM	KY	1349	1300	L213	L-89	W155	W120	W150	L-70	L-92	3.0
140	WINKELSPECHT, A J	MI	1343	1308	L-28	W201	L-75	L144	W199	L158	W196	3.0
141	LEVATINO, ELIAN	TN	1342	1317	W173	L-28	W213	L--6	L153	L142	W189	3.0
142	CONTRUCCI, JOSH	OH	1324	1337	W-51	L-39	L-57	L127	W201	W141	L-77	3.0
143	ENGELBERG, PAUL	TN	1319	1330	X---	L--6	W156	L-69	D-98	L-39	D144	3.0
144	ANDERSON, ANDREW	IN	1314/3	1275	L-86	W211	L165	W140	L109	D172	D143	3.0
145	AQUINO, PAOLO	MI	1307	1269	L161	L150	L187	L170	W212	W199	W178	3.0
146	ASTORGA, LUIS	AZ	1307/8	1284	L100	L-79	W186	L-74	L158	W201	W192	3.0
147	DUKES, JOHN	KY	1282	1301	L-53	L-48	L177	W205	W124	L135	W180	3.0
148	WARD, BILL	VA	1280	1288	L-25	L101	W212	W196	L-74	L-65	W187	3.0
149	DORREL, CHUCK A	IN	1230	1250	L-39	W186	L129	L-50	W198	L133	W177	3.0
150	BROWN, SHANNON	VA	1227	1256	L-72	W145	L108	W134	L139	L-82	W182	3.0
151	EDENS, SAMUEL J	MI	1214	1226	L114	L131	L203	W215	W207	D110	D137	3.0
152	KENNEDY, WALTER J	CA	1212	1254	L-33	W112	L125	W-82	L-54	W167	L-81	3.0
153	BROOKS, GRANT ELLI	KY	1210	1250	L108	W111	L-56	W203	W141	L-88	L-83	3.0
154	HADLEY, CEDRIC	MI	1192	1241	W-47	L-69	L-81	W130	L-56	L-78	W183	3.0
155	MONTIEL, ARNOLD	AZ	1186	1195	L-77	L-49	L139	W218	L130	W215	W181	3.0
156	GRAEVE, PAUL	MN	1170/7	1261	W109	L-71	L143	W168	W128	L-26	L-86	3.0
157	SAAM, CHRIS	IN	1122	1169	L-81	W167	L102	L111	L189	W203	W179	3.0
158	HARTMAN, PAT	IN	1102/9	1160	B---	L-77	L-86	L163	W146	W140	L-84	3.0
159	WALL, JOHN BRANDON	TN	1094	1119	L134	B---	L-78	W182	L137	W181	L-79	3.0
160	WEIR, HENRY	NC	1064	1139	W-55	W-75	L-46	L108	W110	L-98	L-82	3.0
161	ASHE, THOMAS KEITH	VA	1028/10	1147	W145	L103	L128	W192	W180	L-32	L-78	3.0
162	HAMLETT, CHUCK	TN	1512	1450	L-90	L-67	F---	D206	W208	L117	W204	2.5
163	CAIN, MATTHEW J	IL	1448	1345	D-97	L119	L118	W158	L169	L175	W198	2.5
164	CALTON, DAVID	MI	1410	1363	D123	D129	L-62	W214	L-51	D120	L119	2.5
165	FISHER, TROY	IN	1409	1387	L-17	W206	W144	D-45	L-46	L100	L120	2.5
166	HOOK, TED	TN	1384	1353	L-41	W173	D137	L-40	W118	L-45	L121	2.5
167	STREET, BRANDY R	TN	1335	1292	L-12	L157	W191	W200	L122	L152	D171	2.5
168	TURNER, KAMIESHA A	CA	1329	1292	L-15	W120	L101	L156	W197	D121	L116	2.5
169	TATE, DARYL	MI	1251	1263	L-88	D-58	L133	W204	W163	L-55	L114	2.5
170	HAGER, TODD	MI	1240	1229	L-74	L182	L109	W145	L-82	D186	W211	2.5
171	HELFERICH, JASON	IN	1235	1264	L-27	D-47	D127	W131	L-26	L130	D167	2.5
172	RAO, NAVEEN G	KY	1213	1218	L-20	L-70	D174	W176	D133	D144	L118	2.5
173	SENSING, ROBERT F.	TN	1182/9	1206	L141	L166	W207	D202	L-87	W204	L110	2.5
174	HAMDEN, JOSEPH ADI	VA	1014/5	1141	L-78	L104	D172	W209	W202	L-49	L117	2.5
175	JACKSON, MICHELLE	IN	1005/6	1128	L-26	L-34	B---	D-87	L105	W163	L123	2.5
176	QUINOGA, MIGUEL E.	TX	0	1221	L112	D123	L-35	L172	L194	W206	W202	2.5
177	PAGIDIPATI, SIDDHA	TN	1426	1374	F---	F---	W147	W195	L-96	L113	L149	2.0
178	SAVELLS, AMBER	KY	1406	1369	W105	L-99	L-33	W124	L125	L-83	L145	2.0
179	LINDA, KAREN MARIE	AZ	1332/10	1262	L-16	L106	W205	W198	L-50	L-94	L157	2.0
180	WOODS, BRAD	IN	1330	1291	L-63	W191	W196	L-66	L161	L-93	L147	2.0
181	CHILDERS, CURTIS C	TX	1319/5	1232	L-22	W212	W105	L-53	L-27	L159	L155	2.0
182	SIKTBERG, PAUL	IN	1309/9	1269	L-13	W170	L-68	L159	F---	W195	L150	2.0
183	MILLER, AARON	VA	1275	1200	L-21	L198	L200	L191	W218	W205	L154	2.0
184	MC DONALD, DANIEL	CA	1269	1226	L-66	L105	L201	W212	W213	L136	L124	2.0
185	CRAWFORD, WILLIAM	CA	1259	1243	L137	W-54	L-88	L-51	W214	L-81	L127	2.0
186	MOWRER, JAMIE A	OH	1258/12	1193	L199	L149	L146	L-93	W206	D170	D194	2.0
187	GROVES, JODY	KY	1253	1226	L-71	L132	W145	L-54	X---	L128	L148	2.0
188	BONE, KENNETH G	TN	1250	1235	L-62	L-50	W218	L106	W195	L-77	L134	2.0
189	YAMAMOTO, FRANKLIN	AZ	1247/10	1249	L-44	L-73	W208	L-65	W157	L-62	L141	2.0
190	HINSON, SHAWN E	MI	1242	1237	L-45	W-82	L-76	L-73	L-94	W214	L132	2.0
191	FORTUNE, CORNELIUS	MI	1237	1226	L-80	L180	L167	W183	L131	L124	W208	2.0
192	GAUNT, JOE	IN	1233/9	1199	L-18	W197	L-23	L161	L120	W200	L146	2.0
193	SELM, DAVID J	IN	1216	1211	W-50	L-44	L-30	L-27	L196	W213	L131	2.0
194	KHOSLA, VIKAS	NC	1196	1184	L-69	L136	L-98	D208	W176	L118	D186	2.0
195	BARKER, KYLE R	MI	1193	1180	L-30	W203	L-55	L177	L188	L182	W214	2.0
196	PROCTOR, SHANE M.	TN	1193/10	1178	L135	W207	L180	L148	W193	L-85	L140	2.0
197	BERRY, BRIAN	VA	1122/10	1112	L-76	L192	L138	W211	L168	L134	W215	2.0
198	DANIEL, MARY ALICE	TN	1064	1088	L-56	W183	L110	L179	L149	W207	L163	2.0
199	REAVIS, JAMIE	VA	1052/6	1128	W186	L-45	L-37	L109	L140	L145	W209	2.0
200	BOLSER, KENNY	IN	1020	1040	L125	L-87	W183	L167	L115	L192	W210	2.0



1988 National Jr. High Championship / Premier Section (con't)

201	WILLIAMS, IV CHARL	OH	0	1167	L130	L140	W184	L138	L142	L146	W207	2.0
202	SATTERFIELD, PHILL	KY	1390	1288	L-68	W215	L136	D173	L174	L119	L176	1.5
203	LAMBERT, VICKIE L	VA	1350	1269	L--2	L195	W151	L153	L-93	L157	D205	1.5
204	SPRAKER, KAREN R	VA	1257	1223	L-42	D133	L-58	L169	W209	L173	L162	1.5
205	WAGERS, ANTHONY	IN	1243/5	1146	L107	L-85	L179	L147	W211	L183	D203	1.5
206	GINGERICH, PETER G	KY	1231	1196	L-64	L165	L-54	D162	L186	L176	W213	1.5
207	GOODIN, MENDY	KY	1368	1247	L-38	L196	L173	W210	L151	L198	L201	1.0
208	SINIS, BILL	TN	1249	1188	L-83	L--8	L189	D194	L162	D209	L191	1.0
209	ATKINS, PETER	MI	1180	1139	L-75	D127	L-47	L174	L204	D208	L199	1.0
210	CRAIG, LYNN	VA	1171/7	1066	L124	L-55	L111	L207	L215	W218	L200	1.0
211	HUGHES, JEFF	IN	1163	1095	L-43	L144	L120	L197	L205	W212	L170	1.0
212	WHITTAKER, JASON L	CA	1003	1000	L-32	L181	L148	L184	L145	L211	W218	1.0
213	PELTIER, DAVID	CA	987/11	1009	W139	L-72	L141	L-59	L184	L193	L206	1.0
214	HARMON, MIST L.	TN	0	901	X---	L114	L112	L164	L185	L190	L195	1.0
215	DENTURELLI, DANIEL	FL	0	958	L128	L202	L115	L151	W210	L155	L197	1.0
216	FINLEY, BECKY	AZ	1219/7	1189	L110	U---	U---	U---	U---	U---	U---	.0
217	ZUMOFF, JACOB	AZ	1109/8	1119	L-37	U---	U---	U---	U---	U---	U---	.0
218	BOBROWICZ, CHRIS	OH	800/5	827	L-84	L-60	L188	L155	L183	L210	L212	.0

1988 National Jr. High Championship / Jr. Varsity Section

PLAYER	ST	PRE RTNG	POST RTNG								TOT	
				1	2	3	4	5	6	7		
1	SCHANES, CORY	IL	1479/11	1558	W104	W-80	W-51	W-77	W-38	W-22	W--3	7.0
2	GORHAM, WILLIAM L	OH	1433	1451	W106	W-30	W-57	W-23	L--7	W-38	W-27	6.0
3	VO, XUAN	CA	1416/5	1528	W135	W-18	W-20	W-28	W-21	W--7	L--1	6.0
4	WATSON, JOEL D	IN	1388	1411	W110	W154	W-63	L-22	W-30	W-66	W-32	6.0
5	GOSSETT, STEPHEN G	IN	1378	1427	W112	D-52	W-50	W-14	W-10	W-13	D-11	6.0
6	CHAU, KHOUNG	CA	1245/5	1420	W125	W-25	W-48	W-19	L-22	W-23	W-28	6.0
7	CALLIS, JONAS A.	VA	1198	1300	W139	W133	W-76	W--9	W--2	L--3	W-16	6.0
8	ERLICHMAN, DAVID	TN	0	1527	W134	W-46	L-28	W-25	W-68	W-21	W-22	6.0
9	WILLIAMS, JEREMY J	TN	1338	1380	W137	W-37	W108	L--7	W-33	D-41	W-34	5.5
10	IRVIN, PHILLIP S	OH	1303	1343	D-60	W153	W-79	W-75	L--5	W-45	W-41	5.5
11	MANCA, PETER	CA	1293/9	1346	W157	L-42	W-97	W108	W-91	W-57	D--5	5.5
12	BROCK, BARRY C	TN	1290	1324	W-16	W111	D-13	D-41	D-42	W-43	W-36	5.5
13	HILL, BEAU B	OH	1147	1241	W123	W-24	D-12	W-36	W-49	L--5	W-39	5.5
14	PARK, DAVID SUNG K	TN	1454/6	1410	W138	W136	W-31	L--5	L-20	W-99	W-60	5.0
15	NICHOLS, JOSHUA B	TN	1422	1393	W129	W-43	L-42	W103	L-66	W-52	W-64	5.0
16	CARR, JOHN R	MI	1422/11	1399	L-12	W143	W101	W134	W-55	W-20	L--7	5.0
17	DINH, HAO	CA	1418/5	1401	W132	W-62	L-23	W-63	L-51	W-91	W-57	5.0
18	MANNOR, KEITH	MI	1385	1409	W-81	L--3	W-44	L-35	W140	W-67	W-50	5.0
19	FIELDS, JASON	IN	1324	1350	W144	W-71	W-35	L--6	L-32	W-73	W-69	5.0
20	HICKS, SHANNON L	IN	1303	1348	W131	W-61	L--3	W-74	W-14	L-16	W-58	5.0
21	WILLIAMS, KEITH L	MI	1302	1347	W113	W-65	W-33	W-42	L--3	L--8	W-66	5.0
22	LINGAR, RYAN J	MI	1298	1361	W147	W-54	W117	W--4	W--6	L--1	L--8	5.0
23	WOOLUM, STEVE D	IN	1292	1340	W146	W102	W-17	L--2	W-67	L--6	W-65	5.0
24	HICKS, CHRIS	IN	1285	1279	W-72	L-13	W-64	L-66	W126	W100	W-61	5.0
25	SCOTT, CHARLES A	IN	1277	1325	W-98	L--6	W116	L--8	W-50	W105	W-44	5.0
26	HARRIS, JOHN	WA	1272/5	1365	F---	W110	L-60	W137	W-79	W-94	W-77	5.0
27	SALISBURY, BRYAN G	MI	1272	1305	W-73	L-68	W-71	W-69	W-37	W-35	L--2	5.0
28	BROWN, REBECCA LYN	KY	1266	1324	W116	W105	W--8	L--3	W-89	W-58	L--6	5.0
29	RADEE, SHOOCHAN	IL	1253	1276	W115	L-36	W138	W-73	L-58	W109	W-71	5.0
30	BARNES, JAMIE J	IN	1203	1278	W-90	L--2	W-81	W-54	L--4	W-75	W-45	5.0
31	SCHROLL, BRIAN	IN	1180	1231	W162	W-82	L-14	L-58	W112	W-89	W-76	5.0
32	GRIESENBRICK, THEO	VA	994/8	1170	L136	W-83	W144	W-85	W-19	W-51	L--4	5.0
33	MILLER, JOHN A	MS	0	1446	W-55	W-53	L-21	W-48	L--9	W-46	W-51	5.0
34	SMITH, JONATHAN	IN	1696/7	1540	W-64	L-99	W135	W-61	D-39	W-84	L--9	4.5
35	HEDGEPEETH, PAUL	TN	1341/6	1368	W-59	W-93	L-19	W-18	W-77	L-27	D-38	4.5
36	COOMBS, MATTHEW W	OH	1297	1304	W-70	W-29	D-75	L-13	W-94	W-82	L-12	4.5
37	SPENCER, ZACH	NC	1250	1286	W-45	L--9	W-80	W-53	L-27	D-77	W-87	4.5
38	GIBSON, JASON	IN	1224	1277	W165	W121	W-67	W-49	L--1	L--2	D-35	4.5
39	HORGAN, KELLY E	TN	1203	1222	L102	W148	W112	W115	D-34	W-42	L-13	4.5
40	WIEGAND, CHRIS J	IL	1200	1204	L-41	W140	L-65	W148	W-72	D-87	W-84	4.5
41	LOBO, COLIN A	IN	1185	1230	W-40	D-97	W-86	D-12	W-47	D--9	L-10	4.5
42	O'NEAL, JAY B	IN	1152	1224	W-58	W-11	W-15	L-21	D-12	L-39	W-78	4.5
43	SCHROLL, CHAD R	IN	1125	1171	W-78	L-15	D-95	W126	W156	L-12	W-80	4.5
44	REAMES, TORRE	TN	1355/5	1321	W-56	L-57	L-18	W-88	W135	W-62	L-25	4.0
45	DOYLE, RUSSELL GRA	VA	1321/8	1293	L-37	W109	W137	W-79	W-62	L-10	L-30	4.0
46	VANDERHEIJDE, ROLA	IN	1289	1278	W127	L--8	W-72	L-76	W110	L-33	W116	4.0
47	LEMMON, DAVID C	CA	1285	1244	W140	L108	W107	W-68	L-41	L-64	W111	4.0
48	CROWE, JEFFREY	MI	1277	1267	W119	W149	L--6	L-33	L109	W130	W110	4.0
49	AKSIM, DAVID E	OH	1276	1260	W109	W-94	W-99	L-38	L-13	L-61	W-82	4.0
50	GARCIA, ELI	CA	1255/5	1272	W-69	W100	L--5	W-52	L-25	W-63	L-18	4.0

1988 National Jr. High Championship / Jr. Varsity Section (con't)

51	SCOTT, ABIGAIL	IL	1249	1291	W128	W-74	L--1	W-65	W-17	L-32	L-33	4.0
52	SANDERS, JASON	IL	1243	1246	W160	D--5	D103	L-50	W118	L-15	W105	4.0
53	BRISCOE, JASON	IL	1242	1231	W143	L-33	W154	L-37	W111	L-69	W109	4.0
54	WOODRUFF, BRANDON	KY	1233	1232	W-84	L-22	W136	L-30	W108	L-60	W-99	4.0
55	WINSTEAD, MATTHEW	TN	1228	1235	L-33	W128	W111	W118	L-16	L-65	W112	4.0
56	GROSMANN, BRETT	TN	1226	1224	L-44	W147	L-74	W116	L-73	W115	W119	4.0
57	FEIPEL, JON A	IL	1216	1255	W-87	W-44	L--2	W102	W-76	L-11	L-17	4.0
58	FERGUSON, BRADFORD	IN	1208/12	1219	L-42	W129	W100	W-31	W-29	L-28	L-20	4.0
59	LEE, SAM	TN	1205	1205	L-35	W-87	L102	L121	W-98	W113	W117	4.0
60	PAGIDIPATI, RAHUL	TN	1196	1229	D-10	L-86	W-26	W-78	D-75	W-54	L-14	4.0
61	RHODES, JENNIFER	IL	1153	1187	W-89	L-20	W152	L-34	W139	W-49	L-24	4.0
62	WARDEN, DAVID	TN	1146	1178	W126	L-17	W121	W-98	L-45	L-44	W102	4.0
63	MEMULA, SANJEEV	TN	1135	1175	W151	W-95	L--4	L-17	W121	L-50	W-90	4.0
64	ADAMS, BRIAN	TN	1134	1190	L-34	W122	L-24	W-70	W-74	W-47	L-15	4.0
65	ZUMOFF, JACOB	AZ	1119/9	1168	B---	L-21	W-40	L-51	W-96	W-55	L-23	4.0
66	SMITH, MATTHEW R	VA	1108	1159	L-75	W145	W133	W-24	W-15	L--4	L-21	4.0
67	LOO, GEORGE	CA	1096/5	1203	W101	W-91	L-38	W-99	L-23	L-18	W100	4.0
68	WEBB, JASON J	VA	1095	1149	W159	W-27	L-77	L-47	L--8	W118	W-89	4.0
69	BARRERA, JASON	MI	1054	1115	L-50	W150	W-92	L-27	W-93	W-53	L-19	4.0
70	SMITH, LESTER	MI	1050/4	1161	L-36	L116	W-83	L-64	W-88	W107	W-96	4.0
71	REMUS, ROBBIE	IL	1030	1080	W152	L-19	L-27	W147	W-95	W-92	L-29	4.0
72	COLES, ANDRE	MI	939	1013	L-24	W151	L-46	W114	L-40	W-95	W-93	4.0
73	CRANE, THEODORE S	WA	926/8	1083	L-27	W160	W-93	L-29	W-56	L-19	W-92	4.0
74	AMUSS, CHAD	MI	741/4	1085	W163	L-51	W-56	L-20	L-64	W137	W-91	4.0
75	FIELDER, STEVE	TN	0	1246	W-66	W-85	D-36	L-10	D-60	L-30	W106	4.0
76	LANGDON, DAVID W.	WA	0	1231	W164	W-96	L--7	W-46	L-57	W-85	L-31	4.0
77	CREMEENS, MATTHEW	IL	1293	1288	W142	W117	W-68	L--1	L-35	D-37	L-26	3.5
78	MUSSERY, BRENT	OH	1265/5	1173	L-43	W142	D-94	L-60	W-86	W128	L-42	3.5
79	ROSEN, JAY	TN	1248	1225	D-86	W120	L-10	L-45	L-26	W153	W128	3.5
80	HANING, PHIL E	IL	1243	1226	W118	L--1	L-37	D-95	W157	W-97	L-43	3.5
81	ALBRITTON, MICHAEL	MS	1216/5	1203	L-18	W101	L-30	L-91	W136	W103	D-85	3.5
82	PHILLIPS, GARY SCO	AL	1209/12	1183	W107	L-31	D106	W157	W104	L-36	L-49	3.5
83	REBAC, BRETT A	IN	1152	1143	L-97	L-32	L-70	W155	W141	D121	W130	3.5
84	THOMPSON, RYAN	TN	1150	1151	L-54	D126	W156	W113	W-97	L-34	L-40	3.5
85	HAYWOOD, MATT	KY	1140	1149	W161	L-75	W139	L-32	W115	L-76	D-81	3.5
86	WARREN, SCOTT A	MI	979	1034	D-79	W-60	L-41	L-94	L-78	W157	W124	3.5
87	NZMIER, JASON W.	TN	0	1161	L-57	L-59	W125	W154	W107	D-40	L-37	3.5
88	DANIEL, BENJAMIN W	TN	1284	1215	L121	X---	L115	L-44	L-70	W145	W146	3.0
89	STARK, LANCIL	TN	1280/4	1165	L-61	W131	W132	W-96	L-28	L-31	L-68	3.0
90	LEWIS, III J. B.	TN	1272	1205	L-30	L135	L110	W142	W101	W138	L-63	3.0
91	SEAL, BRETT	TN	1268	1245	W155	L-67	W-98	W-81	L-11	L-17	L-74	3.0
92	ZABAWA, LARA	IN	1249/7	1139	L117	W146	L-69	W143	W103	L-71	L-73	3.0
93	JENKINS, BEN	TN	1232	1186	W148	L-35	L-73	W117	L-69	W140	L-72	3.0
94	BORHANI, CHRIS J	MI	1200	1182	W141	L-49	D-78	W-86	L-36	L-26	D-97	3.0
95	FINLEY, BECKY	AZ	1189/8	1089	B---	L-63	D-43	D-80	L-71	L-72	W143	3.0
96	WILLIAMS, RANDY M	TN	1183	1152	W156	L-76	W105	L-89	L-65	W143	L-70	3.0
97	IRWIN, WILLIAM	IN	1175/12	1164	W-83	D-41	L-11	W106	L-84	L-80	D-94	3.0
98	O'NEAL, KATIE	IN	1162/6	1130	L-25	W125	L-91	L-62	L-59	W133	W135	3.0
99	MURDOCK, ANGALA	MI	1155	1168	W145	W-34	L-49	L-67	W102	L-14	L-54	3.0
100	SCHMITZ, ANN	IL	1134/9	1125	W158	L-50	L-58	W119	W147	L-24	L-67	3.0
101	SESHAGIRI, CHANDRA	IL	1125	1120	L-67	L-81	L-16	W120	L-90	W141	W148	3.0
102	GILMORE, CHRISTIAN	TN	1123/5	1130	W-39	L-23	W-59	L-57	L-99	W108	L-62	3.0
103	WINSTEAD, JASON	TN	1093	1090	D120	W130	D-52	L-15	L-92	L-81	W152	3.0
104	SOWELL, CRYSTAL	KY	1085	1081	L--1	L118	D114	W156	L-82	W129	D121	3.0
105	NISHITANI, KOICHI	TN	1079	1100	W124	L-28	L-96	W138	W132	L-25	L-52	3.0
106	KINI, VIKRAM	TN	1076	1078	L--2	W161	D-82	L-97	D113	W148	L-75	3.0
107	BRILEY, DANNY L	TX	1061/5	1063	L-82	W162	L-47	W131	L-87	L-70	W151	3.0
108	CAHILL, BRIAN P.	IN	1053/9	1092	W114	W-47	L--9	L-11	L-54	L102	W139	3.0
109	TAHA, KHALED A	IN	1034/12	1071	L-49	L-45	W155	W158	W-48	L-29	L-53	3.0
110	HOWELL, A JACK	TN	1023	1061	L--4	L-26	W-90	W149	L-46	W114	L-48	3.0
111	PETER, JEAN G	NJ	995	1022	W150	L-12	L-55	W151	L-53	W139	L-47	3.0
112	TIN, CRAIG	IL	994/8	1036	L--5	W158	L-39	W160	L-31	W152	L-55	3.0
113	PAGIDIPATI, SRUJAN	TN	916	953	L-21	D114	W120	L-84	D106	L-59	W150	3.0
114	REDFEARN, JOSH	TN	869/8	925	L108	D113	D104	L-72	W131	L110	W137	3.0
115	CARLILE, CHRIS E	TX	842/4	1020	L-29	W159	W-88	L-39	L-85	L-56	W136	3.0
116	HAFFLEY, CHRIS	OH	740/5	978	L-28	W-70	L-25	L-56	W158	W134	L-46	3.0
117	ABREGO, MARIO M.	TX	0	1128	W-92	L-77	L-22	L-93	W123	W135	L-59	3.0
118	RODRIGUEZ, JUAN	TX	0	1122	L-80	W104	W124	L-55	L-52	L-68	W134	3.0
119	BERCH, BUBBA	TN	0	1094	L-48	L124	W159	L100	W134	W125	L-56	3.0
120	VAN MIDDLESWORTH,	TN	0	1031	D103	L-79	L113	L101	D144	W154	W138	3.0
121	MOORE, COY G.	TX	0	1119	W-88	L-38	L-62	W-59	L-63	D-83	D104	3.0
122	FORE, II JOHN M.	TN	0	980	L154	L-64	L131	W127	L143	W147	W140	3.0

1988 National Jr. High Championship / Jr. Varsity Section (con't)

123	ROMMEL, ABE P.	WA	0	1008	L-13	L138	W127	L135	L117	W155	W142	3.0
124	SAVELLS, BETH	KY	1198	1123	L105	W119	L118	D128	L130	W126	L-86	2.5
125	BRONSTEIN, STUART	TN	1079	1058	L--6	L-98	L-87	W159	W160	L119	D131	2.5
126	KIDNEY, CHRIS	IN	1010/10	1012	L-62	D-84	W153	L-43	L-24	L124	W157	2.5
127	BAKER, CHRIS	TN	1003/5	972	L-46	L134	L123	L122	D155	W162	W153	2.5
128	GUNTHER, BILLY	MI	999/4	1026	L-51	L-55	W141	D124	W153	L-78	L-79	2.5
129	AKSIM, STEVEN B	OH	966	970	L-15	L-58	D161	L130	W150	L104	W156	2.5
130	GRAY, DARREN	OH	850/5	931	D153	L103	L157	W129	W124	L-48	L-83	2.5
131	ANDERSON, BRIAN D.	IN	0	971	L-20	L-89	W122	L107	L114	W159	D125	2.5
132	DRUMWRIGHT, DENNIS	TN	1217	1183	L-17	W155	L-89	W133	L105	U---	U---	2.0
133	CASHER, JASON	TN	1203/5	1008	X---	L--7	L-66	L132	L148	L-98	W162	2.0
134	ALPERT, SEAN A	TN	1163	1113	L--8	W127	W149	L-16	L119	L116	L118	2.0
135	JACKSON, JIMMY	TN	1142	1128	L--3	W-90	L-34	W123	L-44	L117	L-98	2.0
136	RAO, RATHI A	TN	1139	1106	W-32	L-14	L-54	L139	L-81	W149	L115	2.0
137	DEAN, KEVIN	TN	1096	1069	L--9	W141	L-45	L-26	W151	L-74	L114	2.0
138	LEWIS, TODD	VA	1021	1007	L-14	W123	L-29	L105	W149	L-90	L120	2.0
139	PAYNE, BILL	KY	1006	1000	L--7	W164	L-85	W136	L-61	L111	L108	2.0
140	MENARD, VAN	TN	967/6	978	L-47	L-40	W162	W152	L-18	L-93	L122	2.0
141	LOVELACE, TIM	TN	936/5	927	L-94	L137	L128	W165	L-83	L101	W161	2.0
142	LAMBERT, GEOFF	IN	908/9	887	L-77	L-78	L151	L-90	B---	W160	L123	2.0
143	SCOTT, KENNY T	TN	852/9	906	L-53	L-16	W145	L-92	W122	L-96	L-95	2.0
144	BAKER, AYANA L	TX	754/8	837	L-19	L152	L-32	D145	D120	L151	W160	2.0
145	WADE, KELLY	TN	644/4	823	L-99	L-66	L143	D144	W162	L-88	D154	2.0
146	GORHAM, ROBERT	OH	0	928	L-23	L-92	L160	D162	D161	W158	L-88	2.0
147	WELCH, BEN	TN	0	927	L-22	L-56	W164	L-71	L100	L122	W158	2.0
148	ST LAWRENCE, ZACK	MS	0	950	L-93	L-39	W150	L-40	W133	L106	L101	2.0
149	NEAKREASE, LYNN	IL	0	837	X---	L-48	L134	L110	L138	L136	W159	2.0
150	LEE, STEVEN	TN	0	839	L111	L-69	L148	W164	L129	W161	L113	2.0
151	HUCKE, JON-PAUL	IL	0	869	L-63	L-72	W142	L111	L137	W144	L107	2.0
152	IBRAHIM, ALI	IN	0	901	L-71	W144	L-61	L140	W154	L112	L103	2.0
153	WILLIAMS, JR LARRY	TN	1135/3	947	D130	L-10	L126	W161	L128	L-79	L127	1.5
154	SAMS, JON PAUL	TN	1126	1057	W122	L--4	L-53	L-87	L152	L120	D145	1.5
155	HARMON, WILLIAM L.	TN	1123/7	1007	L-91	L132	L109	L-83	D127	L123	W164	1.5
156	PEJAVER, SCOTT	TN	1051/5	935	L-96	D157	L-84	L104	L-43	W164	L129	1.5
157	COOMBS, WENDY J	OH	987	959	L-11	D156	W130	L-82	L-80	L-86	L126	1.5
158	JOHNSON, CY	TN	1112/5	874	L100	L112	X---	L109	L116	L146	L147	1.0
159	MC NEIL, MERICA	TN	1016/9	910	L-68	L115	L119	L125	W164	L131	L149	1.0
160	FAULK, KATIE	TN	925/5	860	L-52	L-73	W146	L112	L125	L142	L144	1.0
161	SMITH, KATRINA	TN	893/5	806	L-85	L106	D129	L153	D146	L150	L141	1.0
162	LEE, DANIEL A.	TN	0	691	L-31	L107	L140	D146	L145	L127	L133	.5
163	CHU, JAMES	KY	1298	1280	L-74	U---	U---	U---	U---	U---	U---	.0
164	CHRISTIAN, JENNIFE	TN	1015	1000	L-76	L139	L147	L150	L159	L156	L155	.0
165	ASKEW, LILLIAN	TN	800/4	771	L-38	F---	F---	L141	U---	U---	U---	.0

Knoxville March Quads

		PRE	POST				TOT		
PLAYER	ST	RTNG	RTNG	1	2	3	4		
1	MADDIGAN, CHARLES	TN	2375	2386	*	W	W	W	3.0
2	DICKERSON, LEONARD	TN	2173	2181	L	*	W	W	2.0
3	ANTHONY, JOHN	TN	2030	2031	L	L	*	W	1.0
4	BENNETT, RICHARD	TN	1989	1963	L	L	L	*	.0

		PRE	POST				TOT		
PLAYER	ST	RTNG	RTNG	1	2	3	4		
1	WATSON, JIMMY T	TN	1942	1979	*	W	W	W	3.0
2	VILES, ROGER E	TN	1765	1784	L	*	W	X	2.0
3	SWORD, JEFFREY DWA	TN	1923	1906	L	L	*	W	1.0
4	PRINCE, BENNY D	TN	1877	1856	L	F	L	*	.0

		PRE	POST				TOT		
PLAYER	ST	RTNG	RTNG	1	2	3	4		
1	ABRON, MICHAEL T	TN	1781	1791	*	W	W	X	3.0
2	DRAKE, JOE	TN	1463	1490	L	*	W	W	2.0
3	GROENIGER, LOUIS M	TN	1521	1497	L	L	*	X	1.0
4	TOLBERT, WAYNE	TN	1403	1390	F	L	F	*	.0

Music City Spring Open

	PLAYER	PRE		POST				TOT	
		ST	RTNG	RTNG	1	2	3		4
1	SMITH, BRIAN D	TN	2090	2117	W25	W10	W-7	W-4	4.0
2	WRIGHT, MILTON C	TN	2071	2108	W24	W12	W15	W-3	4.0
3	JONES, CURT	TN	2385	2367	W13	W-6	W-5	L-2	3.0
4	BOYKIN, JIMMIE C	TN	2041	2039	W20	W11	W16	L-1	3.0
5	FUNKHOUSER, BYRON	TN	1860	1875	W26	W14	L-3	W16	3.0
6	ORGAIN, WILLIAM H	TN	1807	1829	W18	L-3	W20	W15	3.0
7	MONGIN, ANDREW	IN	1804	1840	W23	W-8	L-1	W12	3.0
8	TAYLOR, JEFF B	TN	1888	1883	W21	L-7	W14	D11	2.5
9	PEDDIESON, JOHN	TN	1871	1849	W27	L15	W24	D10	2.5
10	MAURER, JR CALVIN	TN	1821/4	1811	W17	L-1	W27	D-9	2.5
11	PULLEN, DEWITT T	TN	1819	1825	W30	L-4	W18	D-8	2.5
12	SPINRAD, JERRY	TN	1863	1849	W22	L-2	W26	L-7	2.0
13	PARSONS, GREGORY S	TN	1690	1680	L-3	L16	W23	W26	2.0
14	PFLEGER, BRUCE	TN	1683/4	1652	W28	L-5	L-8	W21	2.0
15	CRUMP, JOSEPH	TN	1678	1690	W29	W-9	L-2	L-6	2.0
16	HUDDLESTON, DAVE	TN	1667	1677	W19	W13	L-4	L-5	2.0
17	GRAHAM, J. A.	TN	1354	1375	L10	W19	L21	W25	2.0
18	PEDDIESON, JANICE	TN	1254	1301	L-6	W25	L11	W24	2.0
19	HARRIS, CHARLES C	TN	0	1345	L16	L17	W30	W27	2.0
20	WHITE, MICHAEL W	TN	1476	1464	L-4	W30	L-6	D22	1.5
21	DEVENPECK, EDWARD	TN	1450	1448	L-8	D23	W17	L14	1.5
22	AYLWARD, EDWARD	KY	1279	1291	L12	L24	W28	D20	1.5
23	BAILEY, MIKE	TN	0	1447	L-7	D21	L13	W30	1.5
24	COLEMAN, ROBERT	TN	1526	1516	L-2	W22	L-9	L18	1.0
25	STOKES, MICHAEL L	TN	1516/6	1450	L-1	L18	W29	L17	1.0
26	SCHINDLER, MARK J	TN	1348	1349	L-5	W28	L12	L13	1.0
27	OLSON, ERIK J	TN	1321	1309	L-9	W29	L10	L19	1.0
28	THOMPSON, RUSSELL	TN	0	1138	L14	L26	L22	W29	1.0
29	RENNER, ROBERT SCO	TN	1146/3	1059	L15	L27	L25	L28	.0
30	STEELE, CHRIS	TN	1018/14	1038	L11	L20	L19	L23	.0

Lauderdale County Championship

	PLAYER	PRE		POST				TOT	
		ST	RTNG	RTNG	1	2	3		4
1	SINIS, HARRY	TN	1470	1506	W13	W-9	W-8	W-4	4.0
2	GATLIN, SHANNON	TN	1335/14	1410	X--	W-3	W-6	W-8	4.0
3	GRAMMER, ED	TN	1536	1546	W-7	L-2	W11	W-9	3.0
4	PARKER, BRIAN	TN	1401	1421	W17	W10	W-5	L-1	3.0
5	SINIS, BILL	TN	1204/12	1249	W16	W11	L-4	W15	3.0
6	DRUMWRIGHT, DENNIS	TN	1176/14	1217	W21	D-7	L-2	W16	2.5
7	JACKSON, JIMMY	TN	1078/11	1142	L-3	D-6	W21	W12	2.5
8	STREET, BRANDY R	TN	1330	1335	W18	W12	L-1	L-2	2.0
9	WADE, BRIAN P	TN	1215/12	1259	W15	L-1	W13	L-3	2.0
10	JENNINGS, MARCHALL	TN	1193/4	1176	W14	L-4	L15	W18	2.0
11	WILLIAMS, RANDY M	TN	1177	1183	W22	L-5	L-3	W19	2.0
12	WARDEN, DAVID	TN	1137/14	1146	W19	L-8	W14	L-7	2.0
13	WHITE, BILLY	TN	1093/14	1129	L-1	W19	L-9	W17	2.0
14	BROWN, JEREMY	TN	0	1078	L10	W17	L12	W21	2.0
15	BROWN, BRIAN	TN	0	1218	L-9	W20	W10	L-5	2.0
16	KIESTLER, EMILY	ZY	759/7	864	L-5	W22	D18	L-6	1.5
17	GARRISON, FRANCO	KY	974/10	971	L-4	L14	W22	L13	1.0
18	JOHNSON, ANDREA V	ZY	906/14	911	L-8	D21	D16	L10	1.0
19	CLEM, SHAWN	TN	0	921	L12	L13	W20	L11	1.0
20	BRANTLEY, KEITH	TN	0	918	U--	L15	L19	W22	1.0
21	WEBB, CORAM	TN	0	846	L-6	D18	L-7	L14	.5
22	WADE, KELLY	TN	0	644	L11	L16	L17	L20	.0

Memphis Spring Swiss

PLAYER	PRE		POST			TOT	
	ST	RTNG	RTNG	1	2		3
1 LINXWILER, PAUL A	TN	2219	2231	W-6	W12	W-5	3.0
2 PYLANT, GARY M	TN	1978	1990	W15	W13	W12	3.0
3 NEWSOM, GARY D	TN	2083	2090	W18	W-7	D-4	2.5
4 SENN, RANDALL C	TN	2057	2064	W-8	W11	D-3	2.5
5 JONES, JAMES E	TN	2137	2131	W14	W10	L-1	2.0
6 HUFFORD, BRIAN	TN	1567	1576	L-1	X--	W15	2.0
7 MITCHELL, JAMES H	TN	1559	1592	W-9	L-3	W13	2.0
8 KAY, TODD M	TN	1539	1559	L-4	W17	W18	2.0
9 THRASH, JAMES L	TN	0	1747	L-7	W18	W14	2.0
10 ILFELD, DAVID N	TN	1767	1764	W16	L-5	D11	1.5
11 LOVELACE, JOHN M	TN	1727	1730	W17	L-4	D10	1.5
12 WEAVER, DWIGHT K	MS	1811	1801	W19	L-1	L-2	1.0
13 CROCKETT, MICHAEL	TN	1559/12	1555	W20	L-2	L-7	1.0
14 DANGEAU, CHARLES M	TN	1552	1544	L-5	W16	L-9	1.0
15 WEIS, LOUIS T	TN	1413	1407	L-2	W20	L-6	1.0
16 PEETE, BARRY C.	TN	1284/2	1272	L10	L14	X--	1.0
17 ILFELD, ETAN J.	TN	1487/10	1444	L11	L-8	U--	.0
18 DANGEAU, CHEYENNE	TN	1406	1389	L-3	L-9	L-8	.0
19 WILLIAMS, JEREMY J	TN	1327	1325	L12	F--	F--	.0
20 MC NEIL, TORBET	TN	0	1073	L13	L15	U--	.0

Covington Triumph

PLAYER	PRE		POST			TOT	
	ST	RTNG	RTNG	1	2		3
1 JONES, ELLIS EUGEN	TN	2017	2009	W-6	W-5	D-2	2.5
2 MILLS, CALVIN	TN	1745	1771	W-8	W-4	D-1	2.5
3 PRIZINA, JAMES E	TN	1526	1527	L-4	W-6	W-7	2.0
4 CAMPBELL, SR FRED	TN	0	1715	W-3	L-2	W-5	2.0
5 SINIS, HARRY	TN	1459/16	1470	W-7	L-1	L-4	1.0
6 MILLS, GRAY	TN	1181	1190	L-1	L-3	W-8	1.0
7 MARLOW, ROBERT J.	TN	0	1237	L-5	W-8	L-3	1.0
8 MOORE, DAVIE	TN	1180/5	1110	L-2	L-7	L-6	.0

Auburndale Grand Prix #7

PLAYER	PRE		POST			TOT	
	ST	RTNG	RTNG	1	2		3
1 O' DANIELS, SEAN	TN	1805	1821	W12	W11	W-7	3.0
2 ALBONETTI, CHRIS	TN	1459	1510	W13	W-3	W-4	3.0
3 FAN, WILL	TN	1644	1646	W10	L-2	W12	2.0
4 DAVIS, THOMAS	TN	1554	1565	W14	W-5	L-2	2.0
5 BONGARD, DAN J	TN	1441	1439	W15	L-4	W13	2.0
6 BASS, COLE C.	TN	1428	1461	W-8	L-7	W10	2.0
7 BALLIN, JEFF	TN	1355	1397	W-9	W-6	L-1	2.0
8 BRADLEY, BRAD	TN	1197	1242	L-6	W-9	W11	2.0
9 COHEN, JASON	TN	1566	1542	L-7	L-8	X--	1.0
10 HORGAN, ALEC WILLI	TN	1392	1379	L-3	W16	L-6	1.0
11 LEVATINO, ELIAN	TN	1371	1370	W16	L-1	L-8	1.0
12 HORGAN, KELLY E	TN	1199	1203	L-1	W15	L-3	1.0
13 NISHITANI, KOICHI	TN	1005/12	1079	L-2	W14	L-5	1.0
14 SEAL, BRETT	TN	1218	1189	L-4	L13	D15	.5
15 REDFEARN, JOSH	TN	778/5	869	L-5	L12	D14	.5
16 LEE, TRACEE U	TN	1194	1178	L11	L10	F--	.0

Dickson County National Warmup II

PLAYER	ST	PRE		POST				TOT
		RTNG	RTNG	1	2	3	4	
1 SHAFER, SETH A.	TN	1648	1653	*	W	W	W	3.0
2 WALL, JOHN BRANDON	TN	1050	1094	L	*	W	W	2.0
3 SENSING, ROBERT F.	TN	1191/6	1182	L	L	*	W	1.0
4 PROCTOR, SHANE M.	TN	1319/7	1193	L	L	L	*	.0

Louis T. Weis Dedication

PLAYER	ST	PRE		POST				TOT
		RTNG	RTNG	1	2	3	4	
1 LINXWILER, PAUL A	TN	2231	2247	W14	W11	W10	W-2	4.0
2 GILLEY, MARK	TN	2120	2118	W21	W-6	W-5	L-1	3.0
3 JONES, JAMES E	TN	2118	2111	W16	L-5	W18	W-9	3.0
4 PYLANT, GARY M	TN	1990	1996	W24	W12	D-9	D10	3.0
5 WEAVER, DWIGHT K	MS	1801	1840	W26	W-3	L-2	W18	3.0
6 STENGEL, R ANTHONY	TN	1751	1776	W22	L-2	W21	W11	3.0
7 LOVELACE, JOHN M	TN	1730	1762	W25	L-9	W20	W12	3.0
8 EATMAN, JOHN R	TN	0	1837	L11	W16	W13	W15	3.0
9 SENN, RANDALL C	TN	2064	2052	W20	W-7	D-4	L-3	2.5
10 BARTON, MIKE D	TN	1929	1932	W23	W13	L-1	D-4	2.5
11 WRIGHT, JAMES A	TN	1934	1921	W-8	L-1	W14	L-6	2.0
12 THRASH, JAMES L	TN	1747/3	1698	W15	L-4	W24	L-7	2.0
13 MITCHELL, JAMES H	TN	1592	1596	W17	L10	L-8	W21	2.0
14 KAY, TODD M	TN	1559	1561	L-1	W24	L11	W23	2.0
15 CROCKETT, MICHAEL	TN	1555/15	1566	L12	W19	W17	L-8	2.0
16 DANGEAU, CHEYENNE	TN	1447	1467	L-3	L-8	W22	W19	2.0
17 PEETE, BARRY C.	TN	1272/4	1355	L13	W23	L15	W20	2.0
18 TOMES, WALTER K	TN	1873/4	1779	D19	W25	L-3	L-5	1.5
19 ILFELD, ETAN J.	TN	1444/12	1443	D18	L15	D25	L16	1.0
20 WEIS, LOUIS T	TN	1407	1400	L-9	W26	L-7	L17	1.0
21 PREST, CHARLES	TN	1326	1330	L-2	W22	L-6	L13	1.0
22 MC NEIL, TORBET	TN	1290/7	1252	L-6	L21	L16	W26	1.0
23 SHIELDS, JEFFERY J	TN	1178	1178	L10	L17	W26	L14	1.0
24 ADAMS, BRIAN	TN	1058/12	1134	L-4	L14	L12	W27	1.0
25 ILFELD, DAVID N	TN	1764	1720	L-7	L18	D19	U--	.5
26 MC NEIL, MERICA	TN	1022/5	1016	L-5	L20	L23	L22	.0
27 JENNINGS, GAIL M	TN	0	744	U--	U--	U--	L24	.0

Memphis City Schools Tourney / High School Section

PLAYER	ST	PRE	POST	1	2	3	4	5	TOT
		RTNG	RTNG						
1 EVANS, DAVID	TN	0	1526	W-7	W-9	W19	W10	W-5	5.0
2 UTLEY, JEFF	TN	1137/11	1196	L-6	W14	W12	W22	W-8	4.0
3 PARKER, FRANK	TN	0	1352	W25	W-6	W23	L-5	W10	4.0
4 HEKKING, JEFF	TN	1099/5	1172	L17	W18	W-9	W11	D-6	3.5
5 CAIN, GRAG	TN	0	1298	D12	W16	W21	W-3	L-1	3.5
6 MC GLASSON, CHUCK	TN	0	1325	W-2	L-3	W18	W17	D-4	3.5
7 SIMS, CARLOS	TN	0	1273	L-1	W15	W11	D13	W12	3.5
8 STILES, ROBERT	TN	1153	1150	W23	L17	W25	W16	L-2	3.0
9 WILSON, MICHAEL	TN	1117	1134	W26	L-1	L-4	W24	W17	3.0
10 BLALACK, JOHN	TN	922/8	1035	W19	W21	W13	L-1	L-3	3.0
11 BALDWIN, ROBERT	TN	0	1161	W24	W20	L-7	L-4	W16	3.0
12 SCHREIBER, SAM	TN	0	1135	D-5	W13	L-2	W20	L-7	2.5
13 SHAYNE, GARY	TN	0	1079	W22	L12	L10	D-7	W21	2.5
14 JACKSON, ALFRED	TN	0	1085	L16	L-2	W15	W25	U--	2.0
15 KIRKWOOD, ARTHUR	TN	0	959	L21	L-7	L14	W26	W25	2.0
16 OCOTT, TIM J	TN	0	1009	W14	L-5	W17	L-8	L11	2.0
17 TATE, LENOR	TN	0	1064	W-4	W-8	L16	L-6	L-9	2.0
18 HOLLADAY, MATTHEW	TN	0	930	L20	L-4	L-6	W23	D20	1.5
19 SCHMIDT, CLIFF	TN	0	1058	L10	W22	L-1	D21	U--	1.5
20 TEMPLE, KENNETH	TN	0	868	W18	L11	L22	L12	D18	1.5
21 URESHY, PATEL	TN	0	914	W15	L10	L-5	D19	L13	1.5
22 CRAYTON, DAVID	TN	1074/12	1028	L13	L19	W20	L-2	U--	1.0
23 MORTON, THEDRIC	TN	0	898	L-8	W24	L-3	L18	U--	1.0
24 RIVERS, JOHN	TN	0	854	L11	L23	W26	L-9	U--	1.0
25 WRAY, ROBERT	TN	0	845	L-3	W26	L-8	L14	L15	1.0
26 NASH, BRYAN	TN	790/6	726	L-9	L25	L24	L15	U--	.0

Memphis City Schools Tourney / Jr. High School Section

PLAYER	ST	PRE	POST	1	2	3	4	5	TOT
		RTNG	RTNG						
1 DANGEAU, CHEYENNE	TN	1389	1447	W22	W-7	W-6	W-4	W-3	5.0
2 JONES, JAMES	TN	0	1377	D25	W15	W12	W-9	W-8	4.5
3 WILLIAMS, JEREMY J	TN	1325	1338	W20	W13	W19	W14	L-1	4.0
4 SHIELDS, JEFFERY J	TN	1084/12	1178	W24	W21	W-5	L-1	W14	4.0
5 TAYLOR, STEPHEN	TN	0	1320	W16	W-9	L-4	W21	W20	4.0
6 PITTMAN, DURBAN	TN	0	1363	W27	W12	L-1	W19	W13	4.0
7 JOHNSON, CHARLES	TN	0	1318	W18	L-1	W22	W25	W23	4.0
8 STARK, LANCIL	TN	0	1280	H--	W18	W25	W23	L-2	3.5
9 HOWELL, A JACK	TN	978	1023	W26	L-5	W11	L-2	W24	3.0
10 WALLACE, PATRICK	TN	0	1141	W29	W17	L14	L13	W21	3.0
11 SELLERS, WALTER	TN	0	1112	W28	L14	L-9	W22	W17	3.0
12 FARMER, ERIC	TN	0	1208	W23	L-6	L-2	W29	W19	3.0
13 MC DONALD, CHE	TN	0	1226	W15	L-3	W24	W10	L-6	3.0
14 HOSTETLER, JASON	TN	0	1257	W30	W11	W10	L-3	L-4	3.0
15 LEWIS, TERRY	TN	890/9	934	L13	L-2	L16	W27	W26	2.0
16 TOWNSEND, EDDIE	TN	0	973	L-5	L23	W15	L24	W28	2.0
17 IVEY, JAMES	TN	0	952	L19	L10	W27	W26	L11	2.0
18 JAMES, RACHEL	TN	0	1024	L-7	L-8	L28	W31	W25	2.0
19 HUNTLEY, GEOFFREY	TN	0	1065	W17	W30	L-3	L-6	L12	2.0
20 BAMPFIELD, RANDY	TN	0	1036	L-3	W27	L21	W28	L-5	2.0
21 MARTIN, JOHNNY	TN	0	1068	W31	L-4	W20	L-5	L10	2.0
22 ARMSTRONG, GEORGE	TN	0	1077	L-1	W31	L-7	L11	W29	2.0
23 CROSSLIN, ROBERT	TN	0	1040	L12	W16	W29	L-8	L-7	2.0
24 BENSLEY, JEFF	TN	0	1029	L-4	W28	L13	W16	L-9	2.0
25 JACKSON, EDDIE	TN	0	1008	D-2	W26	L-8	L-7	L18	1.5

Memphis City Schools Tourney / Jr. High School Section (con't)

26	HOSTETLER, JOEL	TN	0	761	L-9	L25	W31	L17	L15	1.0
27	NUGENT, MARCEL	TN	0	825	L-6	L20	L17	L15	W31	1.0
28	SHIELDS, KAREN	TN	0	776	L11	L24	W18	L20	L16	1.0
29	SHIELDS, KEVIN	TN	0	640	L10	H--	L23	L12	L22	.5
30	HENSON, DENNIS	TN	0	681	L14	L19	U--	U--	U--	.0
31	MC KINNON, FREDERI	TN	0	600	L21	L22	L26	L18	L27	.0

Memphis City Schools Tourney / Elementary Section

	PLAYER	ST	PRE		POST					TOT
			RTNG	RTNG	1	2	3	4	5	
1	LEWIS, III J. B.	TN	1129/9	1272	W29	W24	W-2	W-5	W-3	5.0
2	MC NEIL, TORBET	TN	1073/2	1290	W26	W10	L-1	W19	W-8	4.0
3	SAMS, JON PAUL	TN	1067	1126	W23	W-9	W-8	W13	L-1	4.0
4	RAISBECK, EVAN	TN	0	1243	L24	W17	W15	W21	W13	4.0
5	REAMES, TORRE	TN	0	1355	W22	W15	W19	L-1	W10	4.0
6	MIDDLESWORTH, MICH	TN	0	1182	L-8	D28	W22	W12	W11	3.5
7	PATIL, AVINASH	TN	0	1121	W21	L-8	L10	W24	W20	3.0
8	CASHER, JASON	TN	0	1203	W-6	W-7	L-3	W16	L-2	3.0
9	JOHNSON, CY	TN	0	1112	W17	L-3	W24	L10	W21	3.0
10	COOK, MICHAEL	TN	0	1229	W11	L-2	W-7	W-9	L-5	3.0
11	PEJAVER, SCOTT	TN	0	1051	L10	D22	W29	W23	L-6	2.5
12	JOHNSON, KACEY	TN	0	1035	L13	D29	W28	L-6	W25	2.5
13	SLOAN, ELIZABETH	TN	0	1115	W12	D14	W27	L-3	L-4	2.5
14	JOSHI, ANJALI	TN	0	1271	W25	D13	W26	U--	U--	2.5
15	LEWIS, BECKY	TN	0	1101	W18	L-5	L-4	D17	W23	2.5
16	MC NEIL, MERICA	TN	0	1022	D27	L21	W25	L-8	W19	2.5
17	SCHAFFER, GARRETT	TN	0	987	L-9	L-4	W18	D15	D24	2.0
18	WEATHERINGTON, HOL	TN	0	920	L15	L26	L17	W29	W30	2.0
19	PEJAVER, MEERA	TN	0	1034	W28	W30	L-5	L-2	L16	2.0
20	LOVELACE, TIM	TN	0	936	D30	D27	L21	W22	L-7	2.0
21	BAKER, CHRIS	TN	0	1003	L-7	W16	W20	L-4	L-9	2.0
22	FAULK, KATIE	TN	0	925	L-5	D11	L-6	L20	W29	1.5
23	HARDIN, JUSTIN	TN	0	853	L-3	D25	W30	L11	L15	1.5
24	DEDMAN, BERT	TN	0	1019	W-4	L-1	L-9	L-7	D17	1.5
25	SMITH, KATRINA	TN	0	893	L14	D23	L16	W30	L12	1.5
26	YOW, LIBBY	TN	0	1058	L-2	W18	L14	U--	U--	1.0
27	BYRNNE, YOW	TN	0	871	D16	D20	L13	U--	U--	1.0
28	CAYGLE, PAMELA	TN	0	786	L19	D-6	L12	U--	U--	.5
29	WOOFER, DANIEL	TN	0	776	L-1	D12	L11	L18	L22	.5
30	WOOFER, HARRIETTE	TN	0	680	D20	L19	L23	L25	L18	.5

Knoxville Swiss Spring Fling

	PLAYER	ST	PRE		POST					TOT
			RTNG	RTNG	1	2	3	4	5	
1	MADDIGAN, CHARLES	TN	2386	2385	W18	W19	D15	W-5	W-3	4.5
2	SPENCER, MICHAEL E	TN	1953	1980	W32	L-3	W13	W20	W-8	4.0
3	DICKERSON, LEONARD	TN	2181	2178	W20	W-2	D-6	W-7	L-1	3.5
4	CALE, RICHARD T	TN	2001	1992	L17	W21	W14	W12	D-6	3.5
5	DILLARD, STEPHEN P	KY	1978	1994	W13	W12	D-7	L-1	W10	3.5
6	SKAGGS, BRAD	KY	1950	1975	W29	W10	D-3	D-8	D-4	3.5
7	BENNETT, MIKE	TN	1851	1882	W23	W17	D-5	L-3	W15	3.5
8	LENTZ, BRIAN D	TN	1992	1970	D21	W31	W16	D-6	L-2	3.0
9	OSHMANN, MARK A	TN	1948	1914	L22	W24	D17	D14	W21	3.0
10	ABRON, MICHAEL T	TN	1791	1791	X--	L-6	W26	W11	L-5	3.0
11	VILES, ROGER E	TN	1784	1773	L14	W25	W22	L10	W24	3.0
12	LIPKIN, ALAN H	TN	1772	1775	W30	L-5	W23	L-4	W22	3.0
13	GROENIGER, LOUIS M	TN	1497	1543	L-5	W30	L-2	W25	W19	3.0



Knoxville Swiss Spring Fling (con't)

14	DAVIS, REID M	TN	1340/14	1494	W11	D16	L-4	D-9	W20	3.0
15	PRINCE, BENNY D	TN	1856	1864	W24	W22	D-1	U--	L-7	2.5
16	PRESSWOOD, ROBERT	TN	1825	1808	W25	D14	L-8	D21	D17	2.5
17	POFF, STEVE MARION	TN	1704	1736	W-4	L-7	D-9	D18	D16	2.5
18	TATE, KELLES	TN	1679	1675	L-1	L23	W27	D17	W28	2.5
19	MAYHEW, MATT G	TN	1907	1859	W26	L-1	L28	W23	L13	2.0
20	BOSTON, RALPH A	TN	1676	1666	L-3	W32	W31	L-2	L14	2.0
21	SEXTON, JAMES R	TN	1656	1675	D-8	L-4	W29	D16	L-9	2.0
22	LIPKIN, MICHAEL A	TN	1614	1622	W-9	L15	L11	W26	L12	2.0
23	DRAKE, JOE	TN	1490	1520	L-7	W18	L12	L19	W27	2.0
24	WARD, DANIEL J	WV	1472	1475	L15	L-9	W32	W31	L11	2.0
25	TOLBERT, WAYNE	TN	1390	1404	L16	L11	W30	L13	W31	2.0
26	GUERRANT, B W	KY	1314	1329	L19	B--	L10	L22	W29	2.0
27	WINFIELD, HAROLD	TN	1559/15	1526	F--	D29	L18	W30	L23	1.5
28	HYDZIK, ROBERT J	TN	1547	1565	U--	U--	W19	U--	L18	1.0
29	GORE, WILLIAM DOUG	VA	1472	1432	L-6	D27	L21	D32	L26	1.0
30	PIERCE, ALLAN	KY	1363	1345	L12	L13	L25	L27	W32	1.0
31	TATE, PAUL R	TN	1191	1176	B--	L-8	L20	L24	L25	1.0
32	MORGAN, SAMUEL L	NY	1154/1	1248	L-2	L20	L24	D29	L30	.5

Knoxville Swiss Spring Fling / High School Section

PLAYER	ST	PRE		POST			TOT
		RTNG	RTNG	1	2	3	
1 LEGER, DERRICK	TN	0	1631	X--	W-7	W-4	3.0
2 GOODIN, CLINT R	KY	1343/14	1366	X--	D-3	W-7	2.5
3 MC GEORGE, JOHN A	KY	1336/13	1355	X--	D-2	W-5	2.5
4 KNUCKLES, MILLARD	KY	1188	1214	W-7	W-5	L-1	2.0
5 BUFFALO, ROBBIE	TN	0	880	B--	L-4	L-3	1.0
6 WALTERS, D MIKE	KY	1401	1401	F--	U--	U--	.0
7 LASSATER, MARK E	TN	1364/9	1291	L-4	L-1	L-2	.0

Knoxville Swiss Spring Fling / Jr. High Section

PLAYER	ST	PRE		POST			TOT
		RTNG	RTNG	1	2	3	
1 OWNBY, MATTHEW	TN	1213/3	1341	W-4	W-3	W-2	3.0
2 MOHAMMADI, KAYVON	TN	0	1289	W-3	W-4	L-1	2.0
3 CHHABRA, PUINT	TN	0	1091	L-2	L-1	W-4	1.0
4 TSAI, HARRY	TN	0	824	L-1	L-2	L-3	.0

Knoxville Swiss Spring Fling / Elementary Section

PLAYER	ST	PRE		POST				TOT
		RTNG	RTNG	1	2	3	4	
1 MC DONALD, DAVID	TN	1604/4	1672	W-2	W-4	W-3	W-6	4.0
2 BEATTY, CHRIS M	TN	1297/8	1322	L-1	W-7	W-6	B--	3.0
3 HARMON, TONY	TN	1454/4	1444	W-5	W-6	L-1	U--	2.0
4 NELSON, KEVIN	TN	1312/12	1333	W-7	L-1	W-5	U--	2.0
5 WILLIAMS, JR LARRY	TN	0	1135	L-3	B--	L-4	W-7	2.0
6 TSAI, PETER	TN	0	1099	X--	L-3	L-2	L-1	1.0
7 HILL, CRYSTAL	TN	0	883	L-4	L-2	B--	L-5	1.0

Knoxville Swiss Spring Fling / Extra Section

PLAYER	ST	PRE		POST		TOT
		RTNG	RTNG	1	TOT	
1 ABRON, MICHAEL T	TN	1791	1797	W-5	1.0	
2 POLING, ROBERT S	TN	1540	1547	W-6	1.0	
3 GOODIN, CLINT R	KY	1366/16	1366	D-4	.5	
4 WILLIAMS, SR LARRY	TN	0	1366	D-3	.5	
5 LEGER, DERRICK	TN	1631/2	1551	L-1	.0	
6 MC GEORGE, JOHN A	KY	1355/15	1342	L-2	.0	

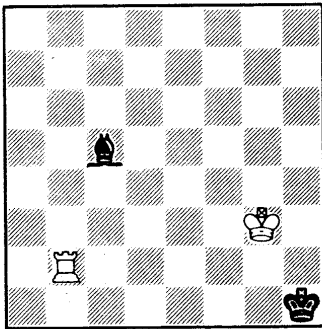
**U-1600**  
by Roger E. Viles

In the last issue, we looked at how to draw with a Knight against a Rook. In this issue, we are going to look at the draw with a Bishop against a Rook.

One of the most important things to learn about this draw is to take your King to the proper corner so that the Rook can only attack from two directions. Leaving your King in the center of the board leaves open four directions of attack and the possibility that you can lose your Bishop.

Just taking your King to any old corner is not good enough! You must go to one of the corners that is the *OPPOSITE COLOR* of your Bishop. This is what I mean when I say one of the *PROPER* corners. The reason for this is that the Bishop must be able to block the Rook, or give check to the opposing King when required. If you go to a corner of the same color as your Bishop, you will have a square of the wrong color next to your King and your Bishop will become worthless, i.e., when the Rook gives check, the Bishop won't be able to block the check.

Let's go to the Diagram and see how to play against a Rook with a Bishop:



**1. Rb5 Ba7 2. Rh5+ Kg1 3. Ra5!** (This threatens both the Bishop and to give mate on the a1 square.) Black has two ways of stopping the mate threat. The first, and preferred way, is with 3... Bd4 protecting the a1 square. After 4. Rd5, once again threatening both the Bishop and mate, the Bishop must now go the second way and check the White King with 4... Bf2+ anyway. Why is the first way the preferred way? Remember your fifty-move rule. You don't have any chance of winning from this position. Even if your opponent plays badly and gives up his Rook, you would *STILL* only get a draw. So, in the unlikely event he makes you a gift of his Rook, we need to get every move out of the position we can get.

**3... Bd4 4. Rd5 Bf2+ 5. Kf3 Bb6 6. Kg3 Kh1 7. Rd1+ Bg1 8. Rd5 Bb6 9. Rb5 Ba7 10. Rb1+ Bg1 11. Kf3 Kh2.** White has no way of forcing the Black King out of the corner and, if he isn't careful of his moves, a stalemate could be the result.

## Selected Games from Around the State

**W: Curt Jones (2385)**

**B: M.C. Wright (2071)**

*Round 5, Music City Spring Open (notes by M. Ishee)*

1. c4 c5 2. g3 g6 3. Bg2 Bg7 4. e3 Nc6 5. Nc3 d6 6. Nge2 e5 7. Rb1 Nge7 8. a3 a5?! (an unusual choice... normally Black also tries to advance his b-pawn [by means of... a6/... b5], or else leaves his Queenside pawns unmoved so as to create fewer weaknesses for White to exploit on the Queenside) 9. d3 O-O 10. O-O h6 11. Nb5 Be6 12. Nec3 f5 13. Nd5 Bxd5 14. cd Na7 15. Nxa7 Rxa7 16. b4 ab 17. ab b6 18. f4 Kh7 19. Bb2 Qd7 20. fe Bxe5 21. Bxe5 de 22. bc bc 23. Qb3 Rd8 24. e4 Rc8 25. Qb6 Ra2 26. Qf6 c4 27. d6 Ng8 28. Qxe5 cd 29. ef g5 30. f6? (by thematic means, White has achieved a winning game, but this inaccuracy allows counterplay. After the game Jones pointed out that much better is 30. Be4!) 30... Rxb2+! (the best try... Black eliminates the dangerous Bishop and reminds White that he has a King too) 31. Kxb2 Rc2+ 32. Rf2? (better is 32. Kf3 when 32... Qc6+ fails to 33. Qe4+ Qxe4+ 34. Kxe4 and wins) 32... Qc6+! (now this is a strong in-between move) 33. Kg1 Rxf2 34. Kxf2 Qc2+ 35. Kf3 Qxc1 (suddenly things have changed... Black is a piece ahead, but this seems to matter little in view of White's passed pawns. But Black also has a dangerous passed pawn) 36. Qf5+ Kh8 37. f7 Qf1+ 38. Ke4 Qxf5+ 39. Kxf5 d2 40. f8=Q d1=Q (now Black's extra piece is decisive since White cannot mate with just a Queen. In fact, White doesn't even have a check, much less a mate) 41. Kg6 (what else? But now the White King is caught in a mating net amidst the Black pawns) 41... Qd3+ 42. Kh5 Qe2+ 43. Kg6 Qe6+ 44. Kh5 Kh7! (there's no stopping 45... Nf6+ except by giving up the Queen. This was an inspired counterattacking effort by M.C.!) **White resigns 0-1.**

**W: Bill Hall (2096)**

**B: Seth Shafer (1648)**

*Round 2, 1988 Region VIII Action Chess Tourney*

1. Nf3 d5 2. b3 Nc6 3. Bb2 Nf6 4. e3 Bf5 5. d4 e6 6. Nbd2 Nb4 7. Bd3 Bxd3 8. cxd3 Nxd3+ 9. Ke2 Nxb2 10. Qc2 Na4 11. bxa4 Rc8 12. Rhc1 Bd6 13. Nb3 b6 14. a5 Ba3 15. Rg1 c5 16. Nbd2 Bb4 17. ab ab 18. Ne5 O-O 19. dc Rxc5 20. Qb3 Bc3 21. Nd3 Bxa1 22. Nxc5 bxc5 23. Rxa1 Qc7 24. Qc3 c4 25. f4 Re8 26. g4 e5 **White forfeits on time 0-1.**

**W: Ellis Jones (2017)**

**B: Calvin Mills (1675)**

*Round 4, 1988 Tipton County Championship*

1. Nf3 Nf6 2. d4 e6 3. c4 b6 4. a3 Bb7 5. Nc3 d5 6. Bg5 Be7 7. e3 Nbd7 8. Ne5 Nxe5 9. dxe5 Ne4 10. Bxe7 Qxe7 11. Nxe4 dxe4 12. Qa4+ Qd7 13. Qxd7+ Kxd7 14. O-O-O+ Ke2 15. Be2 c5 16. Rd2 Rhd8 17. Rhd1 Rxd2 18. Rxd2 Rd8 19. Rc2 a5 20. b5 ab 21. ab cb 22. Rb2 Kd7 23. Rxb4 Kc7 24. Kc2 Ra8 25. g3 Ra5 26. Rb5 Rxb5 27. cxb5 f6 28. ef gf 29. Kc3 Kd6 30. Kd4 e5+ 31. Kc4 f5 32. h3 Ke6 33. g4 Bd5+ 34. Kb4 h6 35. h4 f4? 36. Bc4 Kd6 37. Bxd5 Kxd5 38. g5 hg 39. hg Ke6 40. Kc4 Kf5 41. Kd5 Kg4 42. Kxe4 fxe3 43. fxe3 Kxg5 44. Kxe5 Kg6 45. Kd6 Kf7 46. Kc6 **Black resigns 1-0.**

**W: Jimmie Boykin (2041)**

**B: David Huddleston (1667)**

*Round 3, Music City Spring Open*

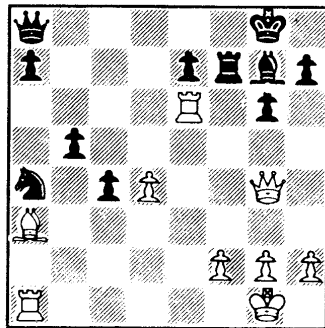
1. d4 f5 2. e4 fe 3. Nc3 Nf6 4. Bg5 g6 5. Bc4 c6 6. Bxf6 ef 7. d5 Bb4 8. Ne2 d6 9. Qd4 Qe7 10. O-O-O Bc5 11. Qxe4 Qxe4 12. Nxe4 Rf8 13. dc Nxc6 14. Nxd6+ Ke7 15. Ne4 Bb6 16. Nf4 Bc7 17. Nd5+ Kd8 18. Ndx6+ Ke7 19. Nd5+ Ke8 20. Nf6+ **Black resigns 1-0.**

**W: Chuck Schulien (2464)**

**B: Jerry Spinrad (1898)**

*Round 2, 1988 Music City Grand Prix (notes by C. Schulien)*

**1. d4 d5 2. c4 c6 3. Nf3 Nf6 4. Nc3 dc5 5. e4 b5 6. e5 Nd5 7. Ng5!?** (7. a4 is standard) **7... Bf5!?** (Alternatives are 7... e6?; 8. Qh5! or 7... h6; 8. Ne4 e6 which is safer but not terribly promising for Black) **8. e6** (the only move ... if 8. g4?! Bg6 9. e6 f6! with advantage to Black) **8... Bxe6** (8... fxe6; 9. g4 h6 [or 9... Nxc3; 10. bxc3 Qd5; 11. Rg1 or maybe even 11. gxf5!?, with compensation for the material in either case] 10. gxf5 hxg5 11. fxe6 Nxc3 12. bxc3 Qd5 13. Rg1 Qxe6+ 14. Be3 Rxh2 15. Rxc5 Nd7 16. a4 with compensation) **9. Nxe6 fxe6 10. Be2** (10. g3! is a possible alternative, but 10. Qh5+? meets **g6 11. Qe5 Nf6 12. Qxe6 Qxd4 10... Nxc3!** (eliminating the future Ne4-Ng5 by White) **11. bxc3 e5!?** (if 11... g6 12. O-O Bg7 13. Bg4 Qd6 14. Re1 with compensation) **12. O-O** (12. dxe5? Qxd1 13. Rxd1 Nd7 with advantage to Black) **12... exd4 13. cxd4 g6** (not won 13... e5?! because of 14. Bb2! with compensation. Note that 14. dxe5 Qxd1 15. Rxd1 instead is unclear) **14. a4** (the only move worth playing) **14... Bg7 15. Bb2** (15. Be3? e5! with advantage to Black) **15... O-O!** (best... if 15... Qc7 or 15... Qb6 then 16. axb5 cxb5 17. Bf3 Nc6 18. Bxc6 Qxc6 19. d5 wins, or 15... Nd7 16. axb5 cxb5 17. Bf3 Rc8 18. Rxa7 with compensation. In this last line, White might even try 18. Bd5!?) **16. axb5 cxb5 17. Bf3 Nd7 18. Bxa8 Qxa8** (now the position is unclear) **19. Re1 Rf7** (19... Bf6 20. Qg4 Nb6 [perhaps 20... Qb7!]) **21. Re6 Na4 22. Rea6** is good for White) **20. Qg4 Nb6** (20... Qb7 21. Qe6 or 21. Ba3 is unclear) **21. Re6** (threatening 22. Rxb6) **21... Na4** (if 21... Nd5 22. Rea6! and White is better) **22. Ba3**



*After 22. Ba3*

**22... Bf6** (an important juncture. Here 22... Qd5 is a more testing reply by Black. Now 23. Rd1? is an error - 23... Nc3 24. Rd2 Nb1. Best is 23. Rxe7 Rxe7 [not 23... Bxd4? (also bad is 23... Qxd4? 24. Re8+) when White should not play 24. Rxf7 Kxf7 25. Rd1 Nc3!! but instead should choose 24. Rd1! when 24... Bxf2+ 25. Kh1 gives him a winning attack] 24. Bxe7 and now both 24... Qxd4? 25. Qe6+ and 24... Bxd4 25. Qc8+ lose for Black) **23. Rae1 Qd8 24. Bd6! Qd7!?** (a move of doubtful value. If instead 24... Kf8? 25. Rxf6+ wins for White, but Black could try 24... Kg7 25. Be5 which is unclear. Also deserving consideration are 24... Nb6, 24... Nc3, and 24... c3!?) **25. Be5 a5?** (Black should instead consider 25... Nb6 or 25... c3, but not 25... Bxe5? 26. Rxc6+ and wins) **26. h4 Kf8 27. Bxf6 exf6 28. h5** (White now has a clear advantage) **28... Re7 29. hxg6 Rxe6 30. Rxe6 hxg6 31. Rxf6+ Black resigns 1-0.**

**W: Joseph Crump (1678)**

**B: Bill Orgain (1807)**

*Round 4, 1988 Music City Spring Open*

**1. d4 Nf6 2. c4 e6 3. Nc3 c5 4. d5 ed 5. cd d6 6. e4 g6 7. Be3 Bg7 8. Bd3 O-O 9. f3 Na6 10. Rc1 Nc7 11. Nge2 Rb8 12. a4 a6 13. a5 Re8 14. O-O b5 15. Qd2 b4 16. Nd1 Nb5 17. Ra1 Nd7 18. Bg5 Qc7 19. Ra2 Ne5 20. b3 Nxd3 21. Qxd3 Nc3 22. Ndx3 bc 23. Nxc3 Rxb3 24. Rfc1 Qa7 25. Qc2 c4+ 26. Qf2 Qxf2+ 27. Kxf2 Rxc3 28. Rxc3 Rxc3 29. Rc2 Bd4+ White resigns 0-1.**

## COMING ATTRACTIONS

**9/17** 9th Anl. MSU Open (KY), 4 Sections, **OPEN**, **AMATEUR** (blo 1800), **NOVICE** (blo 1400), **SCHOLASTIC NOVICE** (blo 1200) EF: \$8 if rec'd by 9/14 - \$10 afterward **REG:** 8:30 - 9:15 a.m., players mtg. 9:20 a.m. **ENT:** Wayne Bell, Box 2468, Murray State Univ., Murray, KY 42071 (502) 753-8831

**9/24** Capitol Hill Warm-Up, Frankfort (KY)

**9/24** 100% Tournament, Lexington (KY)

### TURKEY TOUR EVENT

**10/8** Bluff City Open, Memphis

**10/15-16** Kentucky Open, Louisville (KY)

**11/5-6** Lexington (KY) Grand Prix

**11/19** Paducah Action Open, Paducah (KY)

### TURKEY TOUR EVENT

**11/26-27** Mid-South Open, Memphis

**12/3-4** 5th MSU Scholastics (KY)

**12/10** Louisville Scholastics, Louisville (KY)

### TURKEY TOUR EVENT

**12/30-1/1/89** 12th Annual Fairfield Glade Open, 5-SS, TL 40/100, Fairfield Glade Resort, Peavine Rd., Crossville, TN. **\$\$\$ \$5000.** 3 Sect.: **OPEN**, EF: \$35, if rec'd by 12/26, **\$\$\$ 600-300-200**, EXP, A, blo, 350-150-100; 2200-2299, 2000-2099, & blo 1900 - \$100; trophies to 1st, top EXP, A & blo. **AMAT**, open to blo 1800, EF: \$35, if rec'd by 12/26, **\$\$\$ 350-125-100**, C & blo, 350-125-100; 1600-1699 & blo 1500 - \$100; trophies to 1st, top C & blo. **NOVICE**, open to blo 1400, EF: \$35, if rec'd by 12/26, **\$\$\$ 350-125-100**; 1200-1299 - \$100, E - \$225, UNR - \$150; trophies to 1st, E, UNR (UNR elig for UNR prize only). **ALL:** special \$10 EF for all juniors, (current youth or scholastic member of USCF), may win trophies only. EF: \$5 more at site. TCA memb. req., other states OK, USCF rating list taking effect 1/1/89 will be used for all players. Optional trophies avail. **RG:** 3-7 p.m. 12/30 or 7-8 a.m. 12/31. **RD:** 1st rd. choice of Friday at 8 p.m. or Saturday at 9 a.m., other rds. 2-7; 9-2 CST, **HR:** Fairfield Glade Resort, P.O. Box 1849, Fairfield Glade, TN 38555 (TN 1-800-262-6702, other states 1-800-251-6778) - Lodge \$37, 37, 37, 37, Villa Parlor \$55, Villa Bedroom \$44. Reservations should be made by 12/12. **ENT:** Harry D. Sabine, P.O. Box 381, Crossville, TN 38557 (615) 484-9593 or 484-4878. **LS.**

**TENNESSEE CHESS NEWS**  
Mark J. Schindler, Editor  
P.O. Box 725  
St. Bethlehem, TN 37155-0725

---

NON-PROFIT ORGANIZATION  
**U.S. POSTAGE PAID**  
ST. BETHLEHEM, TN.  
PERMIT NO. 5

---

  
Memphis, TN