



tennessee chess
association

TENNESSEE CHESS NEWS

August 1992 – February 1993

President's Column	
by Ed Porter	1
Mid-State Chess League	
by Ben Couch	2
John Hurt Dies at 78	
by Dwight Weaver	3
Annotated Games	
by Tim McGrew	12
Three New Fischer Games	
by Peter Lahde	20
Ishee Wins Silverman Memorial	
by Mark Ishee	21
The Gambit Player	
by Lee Edwards	27
King's Gambit Thematic	
by Murlin Varner	30
Postal Games	31
Selected Games	32
Wolff is New U.S. Champion	34
Championship Event Bids Awarded	39
Chess In The Classroom	40
1992 Fun Fest Winners	41
1992 Turkey Tour Winners	42
Tournament Calendar	43

TENNESSEE CHESS NEWS

The *Tennessee Chess News* is the official publication of the Tennessee Chess Association. TCA annual dues are \$10.00 for regular membership, \$4.00 for student membership. Additional members of a family may join for \$1.00 each, but only one issue of TCN will be mailed per family. All memberships expire August 31.

Tax-deductible Patron Memberships are available beginning at \$25.00 per year for those who wish to help support the TCA. These memberships expire one year from date of payment. Patron membership categories and benefits are as follows:

Patron – \$25

receive TCN by First Class mail, name listed in each issue of TCN

Patron Knight – \$50

all Patron benefits plus a commemorative plaque

Patron Bishop – \$100

all Patron Knight benefits plus free entry to Tennessee Open

Patron King – \$500

all Patron Bishop benefits plus free lodging at Tennessee Open

Patron Founder – \$1000

all Patron King benefits plus free entry into all Turkey Tour events.

TCA memberships are required for participation in all rated chess events in Tennessee except scholastic-only events, and may be purchased at any chess tournament.

Tennessee Chess News Editorial Staff

Editor: Vacant

Interim Editors:

Mark Ishee & Ed Porter

Contributing Editors:

Harry Sabine, Peter Lahde,

Rick Igou, Lee Edwards,

Tim McGrew, Dwight

Weaver, Andrew Mongin.

ADVERTISING RATES

Full Page	\$40.00
Half Page	\$20.00
One-Third Page	\$14.00
One-Quarter Page	\$10.00
One-Eighth Page	\$7.00

Pre-printed flyers for insert must be 8 1/2 x 11 inches in size, 60 pound Offset, and delivered flat. *Only one insert is available per issue*

\$15.00

TOURNAMENT ANNOUNCEMENTS

Tennessee Chess News prints listings of upcoming tournaments in the "Coming Attractions" section for free, including announcements from other states. Submit all announcements in advance to Tournament Coordinator Rick Igou.

President's Column

by TCA President Ed Porter

As we begin the new year there are a number of things for which the TCA needs to be thankful.

The TCA has had some meaningful growth. We are now the fifteenth largest USCF affiliated association and have picked up one additional voting member. This possibly will give us a larger voice in the national scheme of things. Our state membership is now over 1000 strong. This is due in part to the strong, active scholastic program for which our state is nationally famous.

Your new directors elected at the Tennessee Open are listed in the newsletter. We have reorganized somewhat and feel that the slate of directors will serve your interests well during the remainder of their term. There is a spirit of unity among the directors which assures us that the TCA will strengthen during the coming months.

The TCN Editor, John Price, has decided to move back to his native Alabama. We will miss him. This also means that we will be looking for an editor to take his place. This is an elected position which holds a place on the TCA board of directors. We will appoint someone to fulfil these duties until the elections at the Tennessee Open in September. In the meantime, please send any info for the TCN to:

Tennessee Chess News
P.O. Box 2431
Brentwood, TN 37027

Another thing that every member, club, and organizer will find encouraging is that the TCA has a new contact for you. Ben Couch has agreed to help the association with publicity and promotion. please feel free to contact Ben for help with ideas for promoting Chess in your area. Also let him know of any contacts which you have in your area of the state. It would be helpful to know names and addresses of contacts at newspapers or radio/TV stations in your area. You may reach Ben at the following address: Frank B. Couch 2150 Newcastle Rd Arrington, TN 37014 615-395-7635

One of the new activities that Ben has come up with is a

chess league in Middle Tennessee. If you are interested in more information on doing the same thing in your area call Ben.

I was pleased to hear that the Memphis Chess Club is moving along with their activities. They recently held the Mid-South Open on the campus of UT Memphis. Also their city championship began January 9, 1993. Those in the Memphis area are encouraged to attend all of the activities.

Please contact your area director for any help promoting chess or for any information you might need. Let's make this year the best for Tennessee chess.

Mid-State Chess League Starts!

by Ben Couch

Finally! League play has come to town for local chess players. On January 23rd the opening round of the Mid Tennessee Chess League took place. A total of six 4 man teams entered this year long event to vie for the honor of "top chess team" in the Greater Nashville area. Entrees for the league came from towns like Lewisburg, Murfreesboro and Franklin, along with teams from the Fugitive Chess Club, Franklin Chess Club and MTSU!

The league was organized by Ben Couch and Brad Boyd and is sponsored by the Tennessee Chess Association. Teams are scheduled to play one match per month (usually the third Saturday of each month) with matches scheduled each month throughout the year.

Each teams has four "starting players" and one or more alternates to be used as substitutes in the event a starting player is unable to attend a specific match. Individual teams arrange their players by U.S.C.F. rating strength. The highest rated player on the team is assigned first board, second highest on second board, etc. The average team rating was restricted to 1800 or less.

In the actual competition each player plays two games against his/her assigned opponent. One game playing the white pieces and one playing black. This makes a total of eight board points per match. In order for a team to score a match win they must tally a total of 4 1/2 board points in individual competition. A team is awarded two points for a winning their match and one point for a tie.

The inaugural week demonstrated how evenly matched these teams are, witnessed by the 4-4 tie between Lewisburg and MTSU. The Fugitive Chess Club won their match by a 6-2 score as did the Franklin Chess Club #1 by a 5 1/2-2 1/2 margin. Beverly Hedden, playing as an alternate on board four for the Lewisburg club, scored a perfect 2-0 to rally her team into a tie match. Other perfect scores were recorded by Mark Ishee, Andrew Mongin, Peter Ciarleglio, Mark Cobb, James Howard and Jim Scowden.

Individuals interested in forming teams or being placed on a team should contact either Ben Couch (395-7635) or Brad Boyd (790-9318).

Mid-State Chess League 1993 Participants

1. Fugitive Chess Club
2. Franklin Chess Club #3
3. Franklin Chess Club #1
4. Lewisburg Chess Club
5. Middle Tennessee State University
6. Franklin Chess Club #2

John Hurt Dies at 78

by Dwight K. Weaver

[Editor's note: Legendary teacher, author, chess champion and Tennessee Chess Hall of Fame inductee John Hurt of Memphis recently passed away. Born February 21, 1914, he died at age 78 on February 6, 1993.]

John Hurt liked achievements. The last time I talked to John, back in 1990, gave me a list of the titles that he had accomplished. Let me just give you a few of the big ones. John Hurt won the Memphis City Championship 11 times since 1961. Before moving to Memphis he had won the Charleston, West Virginia City Championship 10 times starting in 1934 and the West Virginia State Championship 5 times. In 1973 John won the Tennessee State Championship. He wrote two books, *The Center Gambits* and *The Sicilian Wing Gambit*.

John's move to Memphis, sometime in 1960, was a shot in

the arm for Mid-South chess. Teaching chess and running tournaments in the city schools was one of the biggest jobs he had ever laid upon himself. He continued tirelessly even into his 60s.

Mr. Hurt loved tennis, his other hobby, and he seemed to love it more than chess. He played tennis till about 1991, when a mild stroke sent him to a Nursing Home for over a year.

I liked John Hurt because he got involved with the average players as well as the master chess players. It was 1973 when I first came to the Memphis Chess Club, while it was at the Episcopal School for Girls 60 N. Perkins, and John was one of the first people with whom I played a game. After our game John said, "You played an interesting game, but you just need to learn the value of the pieces." I was 17 years old and had just learned the movements of the pieces only 5 months earlier. His comment made me feel good even though I was a patzer.

Through the years players would call or visit John and ask him about certain games or adjourned positions. He was well respected and we will miss him.

GM Robert Fischer – John Hurt
Simultaneous Display, Little Rock, AR 5/29/1964

1.e4 e6 2.d4 d5 3.♖c3 ♘b4 4.a3 ♙xc3+ 5.bxc3 ♜e7 6.♙d3
0-0 7.♜f3 ♜d7 8.e5 f5 9.exf6 gxf6 10.0-0 ♜f7 11.♞e1 ♜f8
12.♜h4 ♜fg6 13.♞h5 ♜xh4 14.♞xh4 ♞h8 15.♞e3 ♜f5 16.♙xf5
exf5 17.♞g3 ♞e7 18.♙f4 ♙d7 19.♙xc7 ♙a4 20.♙f4 ♙xc2
21.♞e3 ♞d7 22.♞ae1 ♞g8 23.h3 ♙a4 24.♞e6 ♞d8 25.g3 ♞e8
26.♞h6 ♞xe6 27.♞xe6 ♞f8

Hurt: "But not 27....Bd7 then 28.Rf6:!"

28.♞h5 ♙d7 29.♞d6 ♞e8

Hurt: "Better is 29....Re7."

30.♞h2 ♙e6 31.a4 ♞e7 32.a5 ♞g7 33.a6 b6

Hurt: "Better is 33....ba6:."

34.♞e2 ♙d7 35.♞a2 ♞e8

Hurt: "A hasty move, better were 35....Be6 or 35....Rg6."

36. ♖xf6 ♖e7 37. ♗e5 ♖xe5 38. dxe5 ♜xe5 39. ♖f8+ ♜g7 40. ♖a8 f4 41. ♖xa7 fxg3+ 42. fxg3 ♜e6 43. ♖xd7+ 1-0

A quote from Mr. Hurt on 4/20/67 in the *Memphis Press-Scimitar*:
"I still don't know what happened in that one, or how he overcame me. Our games look the same on paper but he came out on top. He has that extra something."

Hunter Weaks — John Hurt
Memphis City Championship, 5/2/1961

1.d4 d5 2.c4 c5

John Hurt; "Knowing that Weaks prepared intensively for this game and expected a standard defence such as Lasker's, I attempt to surprise him with this move for which only a couple of examples from grandmaster play exist."

3.e3

Hurt; "Weaks plays it conservative, not wanting a game that his opponent may know."

3... ♗f6 4. ♗f3 ♗g4

Hurt; "Risky but against 5.Qb3 I would have answered Nc6; 6.Qb7 Na4 with a draw as the Queen will be unable to stop continual attack."

5. ♗e2 dxc4 6. ♗a3 cxd4 7. exd4 e6 8. ♗xc4 ♗c6 9. 0-0 ♗e7 10. ♗e3 ♜d5 11. ♗ce5 ♗d6

Hurt; "A great deal of time has been consumed thus far and time pressure is mounting."

12. ♗xf7

Hurt; "Again there was a possibility of a draw here with 12.Bc4 Qe4; 13.Bd3 Qd5 etc."

12... ♗xh2+

Hurt; "Not Kf2: because of 13.Ng5 + regaining the piece with advantage."

13.♖xh2

Hurt; "The other choice of Kxh2 may have been better although Black plays 13....Qh5 + ."

13...♕xe2 14.♖xe2 ♜xf7 15.♖f3 ♜hf8 16.♜fc1 h6 17.♜c5 ♖e4
18.♗e5+ ♗xe5 19.dxe5

Hurt; "If White plays 19.Re5 here, Black answers with Qh4."

19...♗d5

Hurt; "Now this Knight is a very strong piece, unassailable and strongly posted in the center."

20.♖f3+ ♖xf3

Hurt; "This leaves White with the inferior game but he was in danger of being left with doubled and isolated King Pawns as well as a isolated Knight Pawn."

21.gxf3 b6 22.♜c4

Hurt; "I think 22.Rc6 would have been better for White here."

22...♜ac8 23.♜ac1 ♜xc4 24.♜xc4 g5 25.♜a4 a5 26.♜c4

Hurt; "White does better to play 26.Kg2, I think."

26...♜g6 27.♜c6 ♜f5 28.♕xb6 ♜xe5 29.♕xa5 ♜xf3 30.b4

Hurt; "This is bad but Black has strong potential attack against White's King. White should have tried 30.Bc3+ and if Black trades it may be a draw. However, I had no intention of giving up my attack against the King."

30...♜a3

Hurt; "It should be noted that during the last few moves, White was in time trouble."

31.♠c2 ♖f4 32.♠b2 h5 33.♙d8 ♠a8 34.♙a5 h4 35.♠c2 ♖f3
36.♖h2 g4 37.♠b2 ♠c8 38.b5 0-1

GM Larry Evans – John Hurt
Simultaneous Display, Memphis 10/14/1969

1.e4 e6 2.d3 d5 3.♗d2 ♗f6 4.f4 ♙e7 5.♗gf3 0-0 6.g3 dxe4
7.dxe4 b6 8.c3 ♙a6 9.♙xa6 ♗xa6 10.e5 ♗d7 11.♖e2 ♖c8
12.0-0 ♖b7 13.b4 ♠ad8 14.♗e4 c5 15.b5 ♗c7 16.c4 a6 17.a4
axb5 18.axb5 ♠a8 19.♙b2 ♠xa1 20.♙xa1 ♠a8 21.♠d1 ♗e8
22.♖g2 ♗f8 23.♙c3 ♠a3 24.♙b2 ♠a2 25.♠d2 h6 26.♖f2 f5
27.exf6 ♗xf6 28.♙xf6 ♠xd2 29.♗fxd2 gxf6 30.♖g4+ ♖h7 31.f5
♖d7 32.fxe6 ♖xe6 33.♖xe6 ♗xe6 34.♗c3 ♖g6 35.♗d5 ♙d8
36.♖e3 ♖f5 37.♗e4 ♖e5 38.♗ec3 ♗d4 39.♖d3 f5 40.♗f4 ♗e6
41.♗xe6 ♖xe6 42.♗d5 ♖e5 draw

GM Walter Browne – John Hurt
Simultaneous Display, Memphis, 5/5/73

1.e4 e6 2.d4 d5 3.♗d2 dxe4 4.♗xe4 ♗f6 5.♗xf6+ gxf6 6.♗f3
b6 7.♙b5+ c6 8.♙d3 ♙b7 9.♖e2 ♖c7 10.c4 ♙b4+ 11.♙d2
♙xd2+ 12.♗xd2 ♗d7 13.0-0-0 0-0-0 14.♖h5 ♗f8 15.♖h4 f5
16.♗f3 ♗g6 17.♖f6 ♖e7 18.♖xe7 ♗xe7 19.♠he1 ♗g6 20.g3
♠d7 21.h4 ♠hd8 22.h5 ♗f8 23.♙c2 ♠e7 Hurt; -∞ 24.♙xf5
♗d7 25.g4 ♗f6 26.♗g5 ♠c7 27.♗xh7 ♗xh7 28.♙xh7 c5 29.dxc5
♠xd1+ 30.♠xd1 ♙f3 31.♠d4 e5 32.♙f5+ ♖b7 33.♠d7 ♠xd7
34.♙xd7 bxc5 35.h6 ♙e4 36.♙f5 1-0

GM Arthur Bisguier – John Hurt
Simultaneous Display, Memphis 10/25/74

1.e4 e6 2.d4 d5 3.♗d2 c5 4.exd5 exd5 5.♗gf3 ♗c6 6.♙b5 ♙g4
7.0-0 ♙d6 8.♖e1+ ♗ge7 9.dxc5 ♙xc5 10.♗e5 ♙d7 11.♗xd7
♖xd7 12.♗b3 ♙d6 13.♙g5 0-0 14.♙xe7 ♠fe8 15.♠d1 ♠xe7
16.♖d2 a6 17.♙xc6 bxc6 18.c4 ♠d8 19.cxd5 cxd5 20.g3 ♙c7
21.♖d4 ♙e5 22.♖d2 ♖a4 23.♗d4 ♙xd4 24.♖xd4 ♖xa2 25.♠a1
♖c4 26.♖xc4 dxc4 27.♠xa6 ♠e2 draw

John Hurt – Paul Linxwiller
1982 Memphis City Championship

1.e4 c5 2.♗f3 ♗c6 3.♗c3 d6 4.d3 g6 5.g3 ♙g7 6.♙g2 e6 7.0-0
♗ge7 8.♙e3 0-0 9.♖d2 ♗d4 10.♗h4 f5 11.exf5 ♗exf5 12.♗xf5

♖xf5 13. ♖g5 ♜b6 14. ♖ab1 d5 15. ♖e2 h6 16. g4 hxg5 17. gxf5
 exf5 18. ♖xd5+ ♖e6 19. ♖xe6+ ♜xe6 20. ♖fe1 ♜f6 21. ♖c3
 ♖ad8 22. ♖e2 ♖d4 23. ♜e3 ♖g4+ 24. ♜f1 ♜h7 25. ♜xc5 b6
 26. ♜d5 ♖d8 27. ♜e6 ♜d4 28. ♖e3 ♖h4 29. ♜g1 ♜f4 30. ♖g3
 ♖d4 31. ♖f1 ♖c5 32. ♖d5 ♜d6 33. ♜f7+ ♜h8 34. c4 ♖d4 35. ♖e7
 ♖h6 36. ♖h3 1-0

John Hurt; "This was the first loss by Mr. Momic since coming to the U.S.A."

Milan Momic – John Hurt
Southern Championships, New Orleans, 7/4/1963

1. e4 e6 2. d3 d5 3. ♖d2 ♖f6 4. g3 dxe4 5. dxe4 e5 6. c3 c6 7. ♖g2
 ♜d3 8. ♜e2 ♜xe2+ 9. ♖xe2 ♖e6 10. ♖b3 ♖bd7 11. f4 ♖xb3
 12. axb3 ♖c5 13. ♖e3 ♖d3+ 14. ♜d2 0-0-0 15. ♜c2 ♖g4 16. ♖h3
 h5 17. ♖xa7 ♜c7 18. ♖xg4 hxg4 19. ♖e3 ♖c5 20. ♖ad1 ♖b4+
 21. cxb4 ♖xe3 22. ♖d3 exf4 23. ♖xf4 ♖xf4 24. ♖xd8 ♜xd8
 25. gxf4 ♜e7 26. ♖g1 ♖xh2+ 27. ♜c3 ♖e2 28. ♜d3 ♖xb2
 29. ♖xg4 ♖xb3+ 30. ♜c4 ♖e3 31. ♜d4 ♖b3 32. ♜c4 ♖f3 33. ♜c5
 g6 34. ♖h4 ♜d7 35. ♜b6 ♖b3 36. ♜c5 b6+ 37. ♜c4 ♖f3 38. ♜d4
 ♜e6 39. ♜c4 b5+ 40. ♜d4 ♖g3 41. ♜c5 ♖c3+ 42. ♜b6 ♖c4
 43. f5+ gxf5 44. exf5+ ♜xf5 0-1

1/68 TN Chess News: In Memphis a match took place between J. Wright & J. Hurt. It was concluded 10/20/67. James Wright went out to a 2-0 lead in this 4-game match, so John had to come from behind by winning the last two. Final result: 2-2.

James Wright – John Hurt
Match, 1967

1. e4 e6 2. d4 d5 3. ♖d2 c5 4. exd5 exd5 5. ♖gf3 ♖f6 6. ♖d3 c4
 7. ♖e2 ♖d6 8. 0-0 0-0 9. ♖e5 ♖c6 10. ♖df3 ♖e8 11. ♖xc6 bxc6
 12. ♖g5 h6 13. ♖h4 ♖e6 14. ♖e1 ♜c7 15. ♖xf6 ♖xf6 16. ♖e5 c5
 17. c3 cxd4 18. cxd4 ♖b8 19. ♜c1 ♜b6 20. ♜e3 ♜xb2 21. ♖c6
 ♖e6 22. ♜f3 ♖b6 23. ♖d8 ♖e7 24. ♜xd5 ♖xe2 25. ♜xf7+ ♜h7
 26. ♜xc4 ♖xf2 27. ♜d5 ♖f5 28. ♜e4 ♜f2+ 29. ♜h1 ♜f4 30. g3
 ♜xe4+ 31. ♖xe4 ♖f2 32. ♖c1 ♖bb2 0-1

**John Hurt – Gordon Scott
Mid-South Open 1978**

1.e4 c5 2.b4 ♖b6 3.bxc5 ♜xc5 4.d4 ♜c7 5.♟f3 ♟f6 6.♞d3 d6
7.0-0 ♞g4 8.♞e3 g6 9.♟bd2 ♞g7 10.c4 0-0 11.♞b1 ♟c6 12.h3
♞d7 13.♟b3 ♟b4 14.e5 dxe5 15.dxe5 ♟xd3 16.exf6 exf6
17.♜xd3 ♞f5 18.♜e2 ♞xb1 19.♞xb1 ♞fe8 20.c5 ♜c6 21.♟a5
♞xe3 22.♜xe3 ♜a4 23.♟xb7 ♜xa2 24.♜b3 ♜e2 25.♞e1 ♜a6
26.♞e7 ♞f8 27.♟d6 h5 28.♟xf7 ♜h7 29.♜b7 ♜a1+ 30.♜h2
♞g8 31.♜xa7 ♜c1 32.♜c7 1-0

**John Hurt – James Rackley
Summer Rating Tourney, 1975**

1.e4 c5 2.b4 cxb4 3.a3 d5 4.exd5 ♜xd5 5.♟f3 ♟c6 6.axb4 ♟f6
7.♟c3 ♜d8 8.b5 ♟b4 9.♞c4 e6 10.0-0 ♞e7 11.♞a3 0-0 12.♞e1
♞e8 13.d4 ♜c7 14.♟e5 ♞d6 15.b6 ♜xb6 16.♟b5 ♞xe5 17.dxe5
♞d8 18.♜e2 ♟fd5 19.♞ab1 a6 20.♟d6 ♜a5 21.♜f3 ♟c7
22.♜xf7+ ♜h8 23.♟e8 1-0

**John Hurt – Marty Appleberry
Birmingham Open, 1967**

1.e4 e5 2.d4 exd4 3.♟f3 ♟c6 4.c3 dxc3 5.♞c4 cxb2 6.♞xb2
d5 7.♞xd5 ♞b4+ 8.♟c3 ♟ge7 9.♜b3 ♟xd5 10.exd5 ♜e7+
11.♜f1 ♟a5 12.♜c2 0-0 13.a3 ♞d6 14.♞e1 ♜d8 15.♟e4 1-0

**John Hurt – Gary Pylant
Memphis City Championship, 1980**

1.e4 ♟f6 2.e5 ♟d5 3.d4 d6 4.c4 ♟b6 5.exd6 cxd6 6.♟c3 g6
7.♞e3 ♞g7 8.♞d3 0-0 9.♟ge2 ♟c6 10.b3 d5 11.c5 ♟d7 12.♞c1
♟xc5 13.dxc5 d4 14.♞d2 dxc3 15.♞xc3 ♟e5 16.♞e4 ♜xd1+
17.♞xd1 ♞b8 18.f4 ♟g4 19.♞xg7 ♜xg7 20.h3 ♟f6 21.♞f3 ♞f5
22.♞d4 ♞fc8 23.b4 a5 24.g4 ♞e6 25.a3 axb4 26.axb4 ♞c7
27.♜f2 ♞b3 28.g5 ♟e8 29.♟c3 b6 30.c6 ♟d6 31.b5 ♞a8 32.♞e1
♞a5 33.♞e5 ♞e6 34.♞g4 ♞c4 35.♞e2 ♞xe2 36.♜xe2 ♞a3
37.♟d5 ♟f5 38.♞xf5 gxf5 39.♟xc7 1-0

**Randy Cope – John Hurt
Mid-South Open, 1979**

1.♟f3 d5 2.c4 dxc4 3.♟a3 g6 4.♟xc4 ♞g7 5.d4 ♟f6 6.e3 0-0

7.♔d3 c5 8.0-0 cxd4 9.♗xd4 ♖e8 10.♝c2 e5 11.♜b3 ♘c6
12.♞d1 ♜b4 13.♞e2 ♝c7 14.e4 ♕e6 15.♜a3 ♞ed8 16.♕e3 a6
17.♜c2 ♜xd3 18.♞xd3 ♞xd3 19.♝xd3 ♞d8 0-1

John Hurt – Ron Minor
Region VII Championship 5/27/1979

1.e4 e5 2.d4 exd4 3.♗f3 ♘c6 4.c3 dxc3 5.♕c4 cxb2 6.♕xb2
♕b4+ 7.♜c3 d6 8.♝b3 ♞e7 9.0-0-0 ♕xc3 10.♕xc3 ♗f6
11.♞he1 0-0 12.e5 dxe5 13.♜xe5 ♜xe5 14.♞xe5 ♕e6 15.♕xe6
fxe6 16.♕b4

16.Re6! wins, according to the *Mid-South Chess Advocate*, July 1979.

16...c5 17.♞xe6 ♝f7 18.♕a3 b6 19.♕b2 ♞ae8 20.♞de1 ♞xe6
21.♞xe6 ♞e8 22.♞xe8+ ♜xe8 23.♕e5 23.♝c2! 1-0 (23...♝xb3
24.axb3 ♗f6)

Randall Senn – John Hurt
Region VII Championship, 1979

1.e4 e6 2.d4 d5 3.♜d2 ♗f6 4.e5 ♗fd7 5.♕d3 c5 6.c3 ♘c6
7.♜e2 cxd4 8.cxd4 ♜b4 9.♕b1 b5 10.a3 ♘c6 11.0-0 ♝b6 12.♗f3
a5 13.♕d2 ♕b7 14.b3 ♕e7 15.♕d3 ♞c8 16.♝b1 g6 17.♕h6
♞g8 18.♕e3 h5 19.h4 b4 20.a4 ♕a6 21.♞e1 ♜db8 22.♗f4
♕xd3 23.♝xd3 ♝d7 24.♞ac1 ♜a7 25.♝b1 ♞xc1 26.♞xc1 ♞c8
27.♜d3 ♞xc1+ 28.♝xc1 ♝c6 29.♜c5+ ♝e8 30.g3 ♜d7 31.♜xd7
♝xd7 32.♝xc6+ ♜xc6 33.♜e1 ♕d8 34.f3 ♕b6 35.♜c2 ♝e7
36.g4 f6 37.exf6+ ♝xf6 38.♕g5+ ♝f7 39.♕e3 e5 40.dxe5 d4
41.♕f2 hxg4 42.♝g2 d3 43.♕xb6 dxc2 44.♕e3 ♜d4 45.fxg4
♜xb3 46.h5 gxh5 47.gxh5 ♘c5 48.h6 ♝g6 49.♝f3 b3 50.♕c1
♜xa4 51.e6 b2 52.♕xb2 ♜xb2 53.e7 ♝f7 54.e8♝+ ♝xe8 55.h7
c1♝ 56.h8♝+ ♝d7 57.♝d4+ ♝c6 58.♝f6+ ♝b5 59.♝e5+
♝b4 60.♝b8+ ♝a3 0-1

John Hurt – Eddie Middleton
Memphis City Championship. 1978

1.e4 c5 2.♗f3 ♘c6 3.d3 e6 4.g3 d5 5.♜bd2 ♗f6 6.♕g2 ♕e7
7.0-0 0-0 8.♜h4 ♜e8 9.♜hf3 ♗f6 10.♞e1 dxe4 11.dxe4 e5 12.c3
♝c7 13.♞e2 a6 14.♜h4 g6 15.♜df3 b5 16.♕h6 ♞d8 17.h3 c4
18.♞ad1 ♕d7 19.♞d2 ♕e8 20.♞ed1 ♜d7 draw

**John Hurt – Morris Middleton
1976 Mid-South Open**

1.e4 e5 2.d4 exd4 3.c3 dxc3 4.♗xc3 ♖b4 5.♙c4 ♙xc3+ 6.bxc3
♗e7 7.♗b3 ♗c6 8.♙a3 d6 9.♗f3 ♗h6 10.0-0-0 0-0 11.e5 ♗a5
12.♗b4 ♗xc4 13.♗xc4 ♙e6 14.♗e2 ♙g4 15.♙he1 ♙xf3
16.♗xf3 ♗g5+ 17.♗e3 ♗xe3+ 18.fxe3 ♙fe8 19.exd6 cxd6
20.♙xd6 ♙ad8 21.♙xd8 ♙xd8 22.♗c2 f6 23.♙c5 a6 24.a4 ♗f7
25.♙b1 ♙d7 26.♙b6 ♗g4 27.h3 ♗f2 28.♙d4 ♗e4 29.c4 g6
30.♗b3 f5 31.♗b4 ♗d6 32.c5 ♗c8 33.♙f6+ ♗e7 34.c6 ♙c7
35.cxb7 ♙xb7+ 36.♗a5 1-0

**Jack Sprague – John Hurt
1976 Memphis City Championship**

1.e4 e6 2.d4 d5 3.exd5 exd5 4.♙d3 ♙d6 5.♗f3 ♗e7 6.0-0 ♗bc6
7.♙e1 ♙g4 8.c3 ♗d7 9.♗bd2 0-0-0 10.b4 ♙de8 11.♗b3 f6
12.♗c5 ♙xc5 13.bxc5 ♗d8 14.♙b1 g5 15.♗b3 ♙xf3 16.♙a6
♗g4 17.♙xb7+ ♗xb7 18.♗xb7+ ♗d7 19.♗b5+ ♗c6 20.g3
♙xe1+ 0-1

**John Hurt – Peter Thayer
Memphis Candidates, 1975**

1.e4 c5 2.b4 cxb4 3.a3 d5 4.exd5 ♗xd5 5.♗f3 e5 6.axb4 ♙xb4
7.c3 ♙d6 8.♗a3 ♙xa3 9.♙xa3 ♙g4 10.♗a4+ ♙d7 11.♗b4 1-0

**John Hurt – Robert Holyfield
1975 Memphis City Championship**

1.e4 c6 2.♗c3 d5 3.♗f3 ♙g4 4.h3 ♙xf3 5.♗xf3 ♗f6 6.d3 dxe4
7.dxe4 ♗bd7 8.g4 h6 9.♙g2 e6 10.♗e2 ♗c7 11.0-0 0-0-0
12.♙e3 ♙c5 13.♙xc5 ♗xc5 14.b4 ♗e5 15.♗e3 ♗d3 16.cxd3
♗xc3 17.♗xa7 ♗xd3 18.b5 ♗xb5 19.♙fc1 ♗c7 20.♙ab1 ♗a6
21.♗e3 ♙hf8 22.♙f1 ♗a8 23.♗b6+ ♗c8 24.♙a6 ♗xa6
25.♙xc6+ ♗d7 26.♗c7+ ♗e8 27.♙xa6 bxa6 28.f3 ♙d7
29.♙b8+ ♗e7 30.♗c5+ 1-0

The Tennessee Chess Association is in need of Publicity /
Promotions Coordinators for both the east and west state
regions. Interested individuals should contact Ben Couch
at (615)395-7635.

Annotated Games

By Tim McGrew

I thought I'd try my hand at annotating a few games for the TCN. The games are of moderate quality, chosen for their interest and instructiveness rather than objective artistry.

I have a theory that a major gap between lower and higher rated players is the capacity of the latter to focus on the relevant rather than the irrelevant aspects of a position. As an annotator, I've tried to pitch my notes at players in that 1400-1700 range who are still struggling to figure out why strong A players and experts consistently beat them, players who make their non-forced moves according to vague rules of thumb rather than a concrete assessment of the position on the board. I hope these games and notes will help such players to get a glimpse of chess strategy which might otherwise have eluded them.

Wayne Bell (2022)-Tim McGrew (2068)

Region VIII Action Chess Championship, August 4, 1990:

1 e4 e5 2 ♖c3 ♗f6 3 ♗c4 ♗c6 4 f4!?

It is an unsettling experience to encounter an unfamiliar line which your opponent has obviously prepared. On this occasion, I was not wholly surprised: Dr. Bell had played this variation in an earlier round on the board next to mine! Between rounds I had time for a quick cram, but this is always dangerous and I was proceeding with extreme caution at this point—a hard thing to do in action chess!

4 ..♗xe4 5 ♗f3 ♗d6 6 ♗d5 e4 7 ♗e5 ♖h4+

All of these moves are likely to seem mysterious and even a bit arcane to the uninitiated. Did Black really mean to put his Knight in jeopardy on move four? Why is Black blocking in his Queen-pawn? Why doesn't White capture on e4 at move seven? Isn't the Queen check just the kind of move Reinfeld would condemn, with most of Black's pieces still boxed in on the back row and his Knights awkwardly blocking in his pawns?

Questions like this can only be answered by a combination of tactical and strategic considerations. On 5 Nxe4, Black gets

back the piece by the well-known fork trick d5! (6 Bxd5? Qxd5 leaves White's Knight unable to move). White can't avoid this by 5 Bxf7 + Kxf7, since after 6 Nxe4 d5 7 Ng5 + Kg8 the center has slipped out of White's control.

Black plays 5...Nd6 to gain a tempo on White's loose Bishop, thus preventing White from playing the crippling fxe5. On move seven, White doesn't capture the e-pawn because it would free Black's d-pawn to do so, e.g. 7 Nxe4 Nxe4 8 Bxe4 d5! 9 Bd3 Bc5 and Black exploits the early move of the f-pawn: or 7 Bxe4 Nxe4 8 Nxe4 d5! 9 Nc3 Be7 and Black has a fine game with adequate development and a pair of Bishops, while White finds his own Bishop limited in scope by the awkward pawn on f4.

The net result is that Black gets to push ...e4 with (momentary) impunity, driving White's Knight from the defense of h4. His Queen sortie is a double-edged idea, designed to take advantage of White's early f4 by keeping the King in the center. Of course, Black is conceding time and space to do this if his strategy is faulty, he could easily get crushed.

8 g3 ♖h3 9 ♗xe4 ♗xe4 10 ♕xe4 ♕e7

Here I depart from the book line, which gives 10...Bc5. I was afraid of a quick c3 and d4, blocking my Bishop out of the game, but these fears may have been exaggerated.

11 d4 0-0 12 ♕e3 d6?!

This is Black's one real risk in the game, and White should have taken the bait. After 13 Nxc6 bxc6 14 Bxc6 Rb8 15 Qcl Bf6 16 c3 Black is in serious difficulties looking for a way to meet the threatened 17.d5. White's extra space really does count in this line Black's open b-file turns out to be a dead end road. But whether he misevaluated the relative importance of these positional features or was simply unnerved by the speed with which I had played my first ten moves, Dr. Bell decided to decline the offer.

13 ♗f3?! ♕f6 14 ♖d3 ♗b4!

The outlines of Black's strategy are beginning to emerge, and

again it takes the form of punishing White for his fourth move. White had to move his d-pawn to develop his queenside, since he could not castle kingside. But with both the d- and f- pawns moved forward, he can only control the advanced squares e3 and e4 with pieces. Since he is prevented from castling for some time this causes serious problems: his King is on the other end of that file!

In strict fairness I have to point out that right about here events off the board put White in an even more desperate position. White had just made his fourteenth move when he looked up with a shocked expression on his face, rose, and ran out into the torrential rain which had just started coming down! I hesitated to make my move until he returned, but in action chess one can only be humane to a limited degree. A few minutes later Dr. Bell returned, thoroughly drenched, and went into the restroom to dry his face and glasses with a wad of paper towels. I can only conjecture that he had left his car windows open – a tactical error of the worst kind!

15 ♖c4 ♜e8!

Timed to occur just when the Queen had left the Bishop unattended. The order of Black's moves hereabouts is important: inverting two could give away all of his advantage or even fumble a piece.

White now tries to link his disconnected forces, but Black's pieces have become dangerously active and White cannot hold his multiple weaknesses on e4, e3, and c2. In the event, e3 falls.

16 d5 ♗f5! 17 ♗xf5 ♜xf5 18 ♜xb4 ♜xe3+ 19 ♚f2 ♜ae8(!)

The exclamation point is for restraint, not for brilliance. I spent some time here (probably too much) analyzing 19... Qxc2 +!?, which works in every line but one. Readers might try their analytical powers to see whether they could have resisted the sacrifice! But 19... Rae8 is obvious and strong. Now White has to contend with the threat of Qxc2 + .

20 ♜d2 ♜e4

Triumph of the e-file strategy! The threats of 21... Qxf3+ and 21... Re2+ cannot both be met (21 Ngl Qxhl). Now White is simply slaughtered.

21 ♖hel ♜xf3+ 22 ♜gl ♖xel+ 23 ♖xel ♖xel+ 24 ♜xel ♗d4+
0-1

Tim McGrew (2089)-Mark Schoenfield (1542 ?!)
Vanderbilt Spring Open, February 23, 1991:

Before a move was made, things went screwy in this game. Mark Schoenfield, who teaches English at Vanderbilt, must have acquired his rating in the dim past since he is clearly at least class A strength. Unfortunately I didn't find this out until we sat down to play ...

1 e4 c5 2 ♖f3 d6 3 ♗b5+

It is a mystery to me why non-masters regularly use the main lines of the Sicilian. There are so many reasonable avoidance lines (2 f4, 2 d4, 2 c3, 2 Nc3, 3 8b5(+), 3 b4!?, etc.) which lead to playable middlegames – who needs 3 d4 ?

White's idea here is to set up a kind of reversed Nimzoindian, where his extra time should enable him to grip the kingside and Black will be reticent to advance d6-d5 because of the resulting weakness of the c-pawns. The plan takes time and is not particularly dangerous if properly countered, but most Sicilian players are not familiar with it and do not find the resulting positions to their liking. At class C and B levels, it scores quite well.

3... ♗d7 4 ♗xd7 ♖xd7 5 0-0 ♖gf6 6 d3 g6 7 ♖c3 ♗g7 8 ♖h4
e6 9 ♜el

White and Black are trading tactical jokes here. White plans f2-f4, but this requires moving the Knight offside for a moment. Black's eighth move opens the dB-h4 diagonal, threatening 9... Nxe4 and 10... Qxh4: White's ninth is designed to meet this by 10 Qxe4, and also places the queen on a useful square for defending c3 (if White decides to play b3 and Bb2) and for exploiting the e1-h4 diagonal.

9... ♖e7 10 f4 a6 11 a4 ♗g4 12 ♗f3 f5!?

Where did this guy come from? 11... Ng4 is dangerously aggressive, e.g. 12 h3?! Bd4+ 13 Kh1 Nf2+! 14 Rxf2 Qxh4! Now Black elects not to castle (which could be dangerous for him after f4-f5) and to block White's expansion all across the front. This makes it difficult for White to formulate a concrete plan: if he can't advance his f-pawn, what should he be doing? After prolonged thinking, I decided to open a file.

13 exf5 gxf5 14 ♗g5 ♗d4+ 15 ♖hl ♗f♗ 16 ♖e2 h6 17 ♗f3 ♗f6 18 ♗el

White is making what use he can of the e-file, and the resulting pressure on e6 prevents Black from developing a menacing attack on the kingside (... Rg8, ...Qg7, ... Ng6-h4). Black should probably have put the Rook on g8 anyway to keep White's pieces tied to their preventative threat! Instead, Mark gets spooked by the possibility of Nd5 and plays a rather strange move to control e7. But White has a more dangerous idea.

18... ♗h7?! 19 ♗e3 h5 20 d4 0-0-0

Suddenly the center is looking like an unsafe place to rent, and Black shifts over to avoid being on the wrong end Of the coming clearance. But even with the King gone control of the center is more important than control of the wing, as the coming tactics demonstrate.

21 ♗ad1 ♗d7 22 dxc5 dxc5 23 ♗gl

Hey! Suddenly e6 and c5 are hard to hold onto. Mark stakes everything on the g-file and lets his e-pawn go.

23... ♗g8 24 ♖xe6 ♖g7

An uncomfortable position for the higher-rated player. Black is threatening ... Nf2+ followed by mate on g2, and blocking this with 25 g3 creates a new and permanent weakness for exploitation by ... h4. It's true that Black's Queen is overloaded defending d7 and g5, but it seems White doesn't have time to exploit this.

If only I had another move before the g-file comes open! If only I could force him to put another block there . . .

Thus the tactical idea is born. But it must be calculated out, too: we can all spot a nice combination when prompted, but it's much harder to pull one off in a real game.

25 ♖g5! ♗xg5 26 ♜xd7!

The good guys come crashing through, and Black's attack falls apart.

26 .. ♜xd7 27 ♜xg8+ ♗d8 28 ♜d1

Oops! Now the point of the combination becomes clear: to avoid losing a piece Black drops more pawns, and his King becomes exposed. For this reason White decides to keep Queens on, and the decision (though a calculated risk when Mark is on the other side of the board!) turns out to be correct.

28... ♜g7 29 ♜f8 ♜f7 30 ♜xc5+ ♜c7 31 ♜a7 ♗h4 32 ♖d5 ♜xc2?

Overlooking White's thirty-fourth, but it's far too late to save the game in any event.

33 ♜a8+ ♜d7 34 ♖e3+

"Oh, that way!" Mark exclaimed. In time pressure he continues, probably from momentum as well as from an M. C. Wright-like hope of pulling a swindle.

34... ♜xd1 35 ♖xd1 ♜c7 36 g3

No back-rank madness! Mark seemed visibly deflated by this dashed hope. Things wrap up neatly now.

36... ♗e7 37 ♜e8 ♖h6 38 ♖c3 ♜d6 39 ♜b8+ ♜c6 40 ♜c8+ ♜d6 41 ♗c5++

John Burnett (1894)-Tim McGrew (2084)
Region VIII Action Chess Open, Aug. 17, 1991:

1 c4 c5 2 ♖c3 ♖c6 3 g3 g6 4 ♔g2 ♔g7 5 e4

I'm beginning to hate this! John specializes in this "reversed Botvinnik" English setup, and I couldn't think of anything else to do but copy his moves!

5... d6 6 d3 e5 7 ♗e2 ♗e7 8 O-O ♕e6

Just to break the symmetry. This is the final round, and since Mark Ishee is chewing up Brian Smith, a draw will give me nothing.

9 ♗d5 O-O 10 ♗xe7+ ♜xe7 11 ♖c3 ♜d7

White has lost a little time with his N-maneuver, but the position is still essentially symmetrical. I probably should have struck first here with 11... f5, but I harbored dreams of... Bh3 and messing up the Kingside a little bit.

12 f4!

Now Bh3 is out because of 13 f5!, so I have to step back into symmetry.

12... ♗d4 13 ♕e3 f5 14 ♕xd4 exd4

I was unhappy playing this, wondering whether cxd4 is better. My chief worry was that I would find myself with an even worse King Bishop.

15 ♗d5 fxe4?

But here I really did know better — the text is positionally asinine. White now gets great minor pieces, while both of my Bishops look like autistic pawns.

16 ♕xe4!

Sensing that I'm in deep trouble, I begin looking for a positional swindle...

16.. ♖ae8 17 ♗d2 ♕f5

Any trades will ease my cramp, so John correctly declines.

18 ♕f3 ♖e3!?

Here it is! Black offers a clear exchange in return for real, live, breathing minor pieces, a passed pawn and the removal of the monster Knight on ds. White should now batten down with 19 Be2 RaeB 20 Rfe1, but Black undeniably gets play down the e-file and material gain is sooo hard to resist . . .

19 ♗xe3 dxe3 20 ♗e2

Another element of Black's compensation: the Queen is a poor blockader, as we shall soon see.

20.. ♕d4 21 ♖ab1 ♖e8 22 b3 ♕xd3! 23 ♕d5+ ♔g7 24 ♗xd3

John agonized over this forced move for several minutes and was now in some time pressure. This gave me the idea of presenting him with as many small calculation problems as I could in order to exacerbate his Zeitnot.

24... e2+ 25 ♔g2

Again, John took precious time over a forced move. 25 Rf2 fails because the Rook is pinned and can be removed after exchanges on e1.

25... ♖e3!?

All in line with my policy of not clarifying the situation until I have to. And now it pays dividends as John plays

26 ♗xe3?? exf8 (♗)+! 27 ♖xf1 ♕xe3 28 ♖e1 ♕d4

and after a little tacking I found the correct plan of opening a line on the Queenside for infiltration:

29 ♗f3 a6 30 g4 h5 31 h3 b5! 32 ♖e6 bxc4 33 bxc4 ♗a4 34 ♖e7+ ♗f8 35 ♖f7+ ♖e8 36 gxh5 ♗dl+ 37 ♗e4

Shortening the agony.

37... ♖e2++.

Despite the opening fiasco, a satisfying game.

Three New Fischer Games

By Peter Lahde

In 1964 Bobby Fischer gave several simultaneous exhibitions throughout the United States. One of those was held on March 29 in Little Rock, Arkansas. In this display he was invincible by winning all 30 games. Three games by Tennessee players that made the trip to Little Rock are given herewith. These games have not had any exposure except locally until recent publication in *Inside Chess* and *Chess Life*.

GM Robert Fischer — Hunter Weaks Caro Kann Defence

1 e4 c6 2 ♘c3 d5 3 ♘f3 ♗g4 4 h3 ♗xf3 5 axf3 e6 6 d4 ♘f6
7 ♗d3 dxe4 8 ♘xe4 ♘xe4 9 ♗xe4 ♘d7 10 O-O ♗e7 11 ♗d1
O-O 12 c4 ♘f6 13 ♗c2 ♖c7 (Better was Qb6. The text leads
to difficulties on the c-file). 14 ♗f4 ♗d6 15 ♗g5 ♗e7 16 ♗ac1
♗fd8 17 ♗b3 ♗d7 18 d5 exd5 19 cxd5 ♗ad8 20 dxc6 ♗xd1+
21 ♗xd1 bxc6 22 ♗b3 c5 23 ♗e3 h6 24 ♖f5 ♖f8 25 ♗xc5
♗xc5 26 ♗xc5 ♖d7 27 ♖f4 ♖d6 28 ♖c4 ♗d7 29 ♗c8+ ♘e1
30 g3 ♗c7 31 ♗a4! ♗xc8 32 ♖xc8 ♖e5 33 ♖xe8+ ♖xe8 34
♗xe8 ♖xe8 35 ♖g2 ♖d7 36 ♖f3 ♖d6 37 ♖e4 1-0

GM Robert Fischer — John Hurt French Defence

1 e4 e6 2 d4 d5 3 ♘c3 ♗b4 4 a3 ♗xc3+ 5 bxc3 ♘e7 6 ♗d3
O-O 7 ♘f3 ♘d7 8 e5 f5 9 exf6 ep gxf6 10 O-O ♗f7 11 ♗e1
♘f8 12 ♘h4 ♘fg6 13 ♖h5 ♘xh4 14 ♖xh4 ♖h8 15 ♗e3 ♘f5
16 ♗xf5 exf5 17 ♗g3 ♖e7 18 ♗f4 ♗d7 19 ♗c7 ♗a4 20 ♗f4
♗xc2 21 ♗e3 ♖d7 22 ♗ae1 ♗g8 23 h3 ♗a4 24 ♗e6 ♖d8 25
g3 ♗e8 26 ♖h6 ♗xe6 27 ♗xe6 ♖f8 28 ♖h5 ♗d7 29 ♗d6 ♖e8
30 ♖h2 ♗e6 31 a4 ♖e7 32 a5 ♗g7 33 a6 b6 34 ♖e2 ♗d7
35 ♖a2 ♖e8 (Better is Be6) 36 ♗xf6 ♗e7 37 ♗e5 ♗xe6 38

dxe5 axe5 39 ♖f8+ ♜g7 40 ♖a8 f5 41 ♖xa7 fxg3 42 fxg3
♜e6 43 ♖xd7+ 1-0

(Mr. Hurt's annotations to this game appear elsewhere in this issue.)

GM Robert Fischer – Richard Long
Sicilian Defence

1.e4 c5 2.♟f3 ♟c6 3.d4 cxd4 4.♟xd4 a6 5.♟c3 e6 6.♟c4 ♜c7
7.♟b3 b5 8.O-O ♟b7 9.♖e1 ♖c8 10.♟d5 ♜e5 11.♟f3 ♜h5
12.♟e3 ♟f6 13.♟f4 ♜h6 14.♟xe6 g5 15.♟xg5 ♜g6 16.♟h4
♜h5 17.♟xf6 ♜xd1 18.♖axd1 dxe6 19.♟xh8 1-0

Ishee Wins Silverman Memorial

by Mark Ishee

Recently I scored an undefeated 8.5 - 1.5 to take clear first place in Q-150, the APCT "Silverman Memorial" Tournament. Since this was only my second APCT event (the first was 90-T-E-I, an Evans Gambit thematic – what else would you expect from the author of *Evans Gambit Games* ?), I'm. virtually unknown to most APCT players.

I never would have considered entering this tournament at all if my good friend Sam Conner had not talked me into doing so, mainly as a way for us to keep in touch. Thanks Sammy!

Below are two games from Q-150, both in the same variation of the French Tarrasch. This tournament was the first time I had ever played 3.Nd2 against the French, so I was especially pleased to win both games in what I hope is an instructive and entertaining manner.

Ishee, Mark - Vance, Rudy
Q-150 APCT Silverman Memorial, 1992

1.e4 e6 2.d4 d5 3.♟d2 ♟f6

I think this is inferior to 3...c5

4.e5 ♟fd7 5.♟d3 c5 6.c3 ♟c6 7.♟e2 ...

Now Black has to make a decision about how to attack white's center.

7...♖b6

For 7...cxd4 B.cxd4 f6 see Ishee-Nash below.

8.♗f3 cxd4 9.cxd4 f6 10.exf6 ♗xf6 11.O-O ♗d6 12.b3

So far this is all standard book stuff. With 12.b3 White adopts a direct solution to the problem of how to develop the Bc1. Also possible are 12.Re1, 12.Nc3 and 12.Bf4. For example, 12.Bxf4 Bxf4 13.Nxf4 O-O (13...Qxb2!) 14.Rb1 Qc7 15.g3 e5 16.dxe5 Nxe5 17.Nxe5 Qxe5 18.Re1 with a clear advantage for White. Compare this variation with the text game.

Notice that Black's weak central pawn formation becomes exploitable after the exchange of black-squared bishops, and that achieving this exchange is characteristic of a White advantage.

12...O-O 13.♗b2 ♗d7 14.♗g3 ♗f4 15.♗e5 ♗e8 16.♗xc6 ♗xc6 17.♗a3 ♖fe8

Previously played was 17...Rf7 18.Ne2 Bh6 19.Bc1 Bxc1 20.Rxc1 Bb5 21.Bxb5 Qxb5 22.Nc3 Qb4 23.Re1 Rc7 24.Ne4 Rxc1 25.Nxf6 + gxf6 26.Qg4 + Kh8 27.Rxc1 d6 28.Qh5 Rf8 29.Qh6 Kg8 30.h4 Qe7 31.Qf4 e5 32.Qf5 Qd6 33.h5 exd4 34.Og4 + Kf7 35.h6 Rg8 36.Qf5 Rg6 37.Qc8 Rg8 38.Rc7 + Kg6 39.Qxg8 + Kh5 40.Qxh7 d3 41.Qf7 + Kg4 42.Rc3 1-0 (Wessman - Brynell, Malmo 1988). Obviously Black has to deviate somewhere, and I assumed that 17...Rfe8 was preparation for a subsequent ...e6-e5.

18.♗e2 ♖c7

Interesting. Black offers to trade his black-squared bishop for a knight in order to obtain kingside attacking chances. But White's proper plan, as shown in the above examples, is to exchange black-squared bishops and then to apply pressure against the central black squares.

19.g3! ♗d6 20.♗xd6 ♖xd6 21.♖c1 ♖ac8 22.♖e1 ♗d7

Black plans to exchange rooks and then play ...e6-e5 with the idea that this will free his game. But the resulting isolated d-pawn will be a burden to Black even though it is passed.

23. ♖f4 ♜xc1 24. ♝xc1 e5 25. dxe5 ♜xe5 26. ♜xe5 ♝xe5

White has been steadily making progress, but care is required. Black envisions combining d5-d4 with play along the a8-h1 diagonal.

27. ♛f1! ...

A multi-purpose move which (a) guards the white squares around the king, (b) repositions the bishop so as to attack the d-pawn, and (c) guards against back-row checks.

27... ♞c6

Here Black offered a draw, but I declined since White has the better pawn formation and more active piece play.

28. ♝c5 ♝e1

Black sacrifices the a-pawn in order to obtain tactical chances. No better was 28... a6 29. Bxa6 Qa1 + 30. Bf1 Qxa2 31. Qe7! with the idea of Nf4-e6 and a mating attack.

29. ♝xa7 ...

This looks impossible in view of Black's reply, but White has a saving resource.

29... ♞b5 30. ♝b8+ ♗e8 31. ♗e2! ...

Two moves ago it looked as if Black had strong back-row threats, but now it's obvious that White's invasion on the 8th rank is more potent.

I had to see 31. Ne2 when playing 28. Qc5.

31. .. ♝a1

Now 31...d4 32.Qe5 d3? 33.Qxb5 dxe2? 34.Qxe8 mate; or instead 32...Nc7 33.Qxc7 Bxe2 34.Qc8 + Kf7 35.qf5 + Kg8 36.Qe6 + Kf8 37.Qxe2 wins.

32.a4 ♖c6 33.♗d8 ...

Keeping Black tied up as long as possible, and preparing Qb6 to defend b3.

33...♗b2 34.♗b6 ♖f6 35.a5

Threatening a5-a6.

35...♗d7 36.♗e3 ♗e5

The best try, hoping for 37.Nd4? Qxd4 38.QXd4 Nf3 + winning a piece.

37.f4 ♗d7

Slightly better is 37...Nf7, although White should still win.

38.a6 1-0

Black loses material: 38...bxa6 (Black can't permit a6-a7) 39.Qe8 + Nf8 40.Qxc6.

Ishee, Mark - Nash, Will

Q-150 APCT Silverman Memorial, 1992

1.e4 e6 2.d4 d5 3.♗d2 ♖f6 4.e5 ♗fd7 5.♗d3 c5 6.c3 ♗c6 7.♗e2 cxd4 8.cxd4 f6 9.exf6 ♗xf6 10.♗f3 ♗d6 11.O-O O-O

Black could transpose to the variation played in Ishee-Vance (above) with 11...Qb6. Also often played is 11...Qc7 to prevent 12.Bf4 and the exchange of black-squared bishops. But after 11...O-O White gets to exchange black-squared bishops right away.

12.♗f4 ♗xf4 13.♗xf4 ♗b6?!

A dubious novelty. Before entering this variation I spent many hours plowing through the complications of 13...Ne4 14.Ne2 Rxf3!

15.gxf3 Ng5 when Black seems to have more than enough compensation for the exchange. For example, 16.Kh1 e5 17.dxe5 Nxf3 18.Bxh7 + Kh8 19.Ng1 Ncd4 = (48/379). In this line 19.Nf4 at first looks like a better try, but 19...Bg4! (Not 19...Ncxe5? 20.Ng6 +! Nxf6 21.Qxf3 with advantage for White) 20.Rg1 Qg5 favors Black.

But White need not go into this exchange-sac variation since 13...Ne4 14.Qc1! side-steps the sacrifice on f3 and keeps a solid position.

14.♖d2 ♘e4?

Black is playing an ill-timed mixture of thematic ideas. If now 15.Bxe4? dxe4 16.Ng5 Qxd4 17.Qxd4 Nxd4 is clearly good for Black.

15.♗e3 ♘f6

A poor retreat, but what else is there? Black can't maintain the knight on e4.

16.h3 ♗d7

When making this move Nash pointed out an interesting variation: 16.b3 Ng4 17.Ng5 Rf5 18.Bxf5 Nxe3 19.Bxh7 + Kf8 20.fxe3 Ke7 and White has the initiative.

Since Black can't take the b-pawn (16...Qxb2 17.Rab1 Qxa2 18.Ra1 Qb2 19.Rfb1 Qc3 20.Bxh7 + wins the queen), I saw no need to defend b2, and in view of White's long-term advantage in pawn structure I decided to avoid unclear tactics, even if they might ultimately favor me.

17.♠ad1 ♠ac8

Another possibility is 17...Rae8 18.Ne5 Nxe5 19.de Qxe3 20.fe g5 (forced) 21.exf6 gxf4 22.Rxf4 with a clear advantage for White.

18.♠d2 ...

White begins to regroup so as to exploit the weakened black

squares, especially the inviting e5 outpost. Black's weak central pawn formation will be a constant burden to him.

18...♖b4?! 19.♗b1 ♘d6 20.♗e5 ♗b5 21.♞e1 ♗d7

Black's last few moves have actually driven the white pieces to better squares!

22.a3! ♗a6 23.♗xd7 ♗xd7 24.♗d3 ♘b6 25.♗e5

White is now firmly in control. He has achieved his "ultimate" positional set-up, and is now ready for the final kingside attack. Meanwhile, Black's army is on vacation on the queenside, and can't return for defense.

25...♗a4 26.♘d3 ♞f5

Of course 26...g6 meets 27.Nxg6.

27.♘g3 ♞f6 28.♘h4 h6 29.♗g4 ♞f7 30.♞d3

Black can only watch as White throws everything into the attack. Lifting the rook to g3 will be decisive.

30...♗c2

Nothing helps.

31.♞g3 ♗h7 32.♗xc2+ ♞xc2 33.♗xh6 gxh6 34.♘g4 1-0

Black is mated after 34...Rc8 35.Qg6+ Kh8 36.Qxh6+ Rh7 37.Qf6+, or 34...Qd8 35.Rxe6! (intending Rxh6+).

WANTED

Volunteers to exhibit their chess skills at the following scheduled simultaneous exhibitions in the mid-state area:

April 24 — Hickory Hollow Mall, Center Court, 10 am - 9 pm

May 15, 16, 22, 23, 29, 30, 31 — Renaissance Festival, Triune, 11:00 am - 6:00 pm

Any interested Class C or higher rated player should contact Ben Couch at 395-7635.

The Gambit Player

by Lee Edwards

Against Petroff's Defense, the Urusov Gambit: 1.e4, e5; 2.Nf3, Nf6; 3.d4, exd4; 4. Bc4, Nxe4; 5.Qxd4 is quite playable. This gambit may also arise from the Bishop's Opening. Another interesting attempt in the Petroff is Cochrane's Gambit: 1.e4 e5 2.Nf3 Nf6 3.Nxe5 d6 4.Nxf7!?

Your opponent may stare at you in disbelief before taking your Knight with his King. Everybody knows that the GMs usually move the Knight back to f3 or once in a blue moon to c4, but they never try the rash attack on f7. Even if you are playing by mail, your opponent may not be able to find this move or, better yet, he may find a few lines of misleading analysis. Schiller and Benjamin say that the Cochrane "has recently been seen hovering on the fringes of respectable tournaments." The gambit may not be quite sound, but it is very dangerous for the unprepared Black player.

The Cochrane is named for the 19th century Scottish player John Cochrane. Cochrane spent much of his chess career in India, where he edited a chess magazine. Devotees of the Indian and Pirc Defenses may be familiar with his games against "the Brahmin" Moheshunder Bonnerjee. Cochrane's conception in the Petroff was originally rejected because after 4.Nxf7 Kxf7 5. Bc4 + ?! d5! 6. exd5 Bd6 Black has three pawns for the piece but gets nowhere because of the blockade. Then Bronstein resurrected the move 5.d4 and Black had better not even think of playing Nxe4?, which at least results in the immediate return of the piece, or even worse something like 6.Qh5 + Ke7 7.Qe2 d5? 8.Bg5 +!

So what is Black's best plan after 1.e4 e5 2.Nf3 Nf6 3.Nxe5 d6 4.Nxf7 Kxf7 5.d4? You may see such amazing moves as 5. . . , Qe8 Qe7 Be6 c6 d5 Bg4 Nbd7 and even b5!?, but basically Black has four defenses. First, most books give the defense 5. . . Be7 6.Nc3 Re8 7.Bc4 + Kf8 but I don't think this is particularly good for Black. White should castle Queenside, keep the enemy King bottled up on f8, place the Queen or a Rook on the f file, and try to impale the Black Knight with g5. In a Russian postal tournament, White won slightly more than half the games in this line, with Black winning only a third. Second, Black can fianchetto the Bishop with 5. . . g6 6.Nc3 Bg7 7.Bc4 + Be6 8.Bxe6 Ke6 9.f4 Kf7

as in Vitolins-Anikayev, 1979 and Makropoulos-Toth, 1981. This is better than the first plan, but what does Black do with his King? The answer seems to be that his best defense is to fianchetto the King with something along the lines of 5... g6 6.Nc3 Kg7 7.f4 d5 8.e5 Ng4 9.Qf3 Bb4 and White continues with a pawn storm. In the Russian tournament, Black won 51% and White won 37% from this line. The fourth defense is 5... .c5 6.dxc5 Nc6 7.Bc4 + Be6 8.Bxe6 + Kxe6 9.O-O d5 10.e5 Ne4 11.Qg4 + Kf7 with an unclear position. Domsgen, writing in *Gambit Review*, seems to consider this the modern main line.

**Cochrane, J – Moheshunder
Bonnerjee Calcutta, 1848.**

1.e4 e5 2.♖f3 ♘f6 3.♗xe5 d6 4.♗xf7 ♜xf7 5.♙c4+ ♜e8 6.O-O c5 7.h3 ♜c7 8.f4 ♗c6 9.♗c3 a6 10.a4 ♜e7 11.♗d5 ♜d8 12.d4 cxd4 13.e5 ♗xd5 14.♙xd5 dxe5 15.♙xc6+ bxc6 16.♜h5+ ♜d7 17.fxe5 ♜c7 18.♞f7+ ♜b8 19.e6 ♙d6 20.♙g5 ♜b6 21.a5 ♜c5 22.b4 ♜e5 23.♙f4 ♜xe6 24.♜c5 ♜xf7 25.♙xd6+ 1-0

**Hoffer – Evans
TCC Silver Horse, 1987**

1.e4 e5 2.♗f3 ♘f6 3.♗xe5 d6 4.♗xf7 ♜xf7 5.d4 ♙e7 6.♗c3 c6 7.♙c4+ ♙e6 8.♙xe6+ ♜xe6 9.f4 ♗bd7 10.O-O ♞e8 11.e5 dxe5 12.fxe5 ♗d5 13.♜g4+ (1-0)

**Pergeron – Aiken
APCT, 1983**

1.e4 e5 2.♗f3 ♘f6 3.♗xe5 d6 4.♗xf7 ♜xf7 5.d4 ♙e7 6.♗c3 ♞e8 7.♙c4+ ♜f8 8.f4 ♙g4 9.♜d3 ♗xe4 10.♗xe4 d5 11.O-O dxc4 12.♜xc4 ♙f6 13.♗xf6 ♜xf6 14.b3 ♜d6 15.♜c3 ♗c6 16.♙b2 ♜f6 17.d5 ♜xc3 18.♙xc3 ♗e7 19.♙b4 a5 20.♙c5 b6 21.♙a3 ♜f7 22.d6 ♗c6 23.h3 ♙d7 24.♞ad1 ♞ac8 25.♞f2 ♗a7 26.dxc7 ♞xc7 27.♙d6 ♞b7 28.♞fd2 ♙c6 29.♙e5 ♞ee7 30.♜f2 ♞ed7 31.♞xd7+ ♞xd7 32.♞xd7+ ♙xd7 33.♙c7 ♗c8 34.c4 ♙f5 35.c5 bxc5 36.♙xa5 ♗d6 37.♜e3 ♙b1 38.♙b6 ♗e4 39.a4 ♜e6 40.a5 ♜d6 41.a6 ♗f6 42.♙a5 ♗d5+ 43.♜d2 ♙e4 44.a7 ♗c7 45.g4 ♗b5 46.♙b6 ♙a8 47.♜d3 ♜c6 48.♙d8 ♗xa7 49.♙e7 ♜b5 (0-1)

Brull – Colson
APCT, 1984

1.e4 e5 2.♖f3 ♗f6 3.♗xe5 d6 4.♗xf7 ♜xf7 5.d4 ♚e7 6.♛c4+
d5 7.exd5 ♛d6 8.O-O ♚e8 9.♛g5 ♛f5 10.♗c3 ♗bd7 11.h3 ♜f8
12.♝d2 a6 13.♚fe1 ♚c8 14.♛d3 ♛xd3 15.♝xd3 h6 16.♛e3
♗b6 17.a3 ♗bxd5 18.♗xd5 ♗xd5 19.♝f5+ ♗f6 20.c4 ♝d7
21.♝d3 c5 22.♚ad1 cxd4 23.♝xd4 ♚cd8 24.♜f1 ♚e5 25.♝c5+
♝e7 26.♚xd8 ♚xd8 27.♝xe7+ ♜xe7 28.♛c5+ ♝e6 29.f4 ♗d7
30.♛d4 ♚f8 31.♛xe5 ♗xe5 32.♚xe5+ ♝d6 33.g3 g5 34.♚e4
♚f5 35.♝e2 h5 36.♜f3 a5 37.b4 gxf4 38.gxf4 b6 39.♚d4+
♝c6 40.b5+ ♝c5 41.♚d5+ ♚xd5 42.cxd5 ♜xd5 43.♝e3 a4
44.h4 (1-0)

Roman – Moulain
Paris, 1989

1.e4 e5 2.♖f3 ♗f6 3.♗xe5 d6 4.♗xf7 ♜xf7 5.d4 g6 6.♗c3 ♛g7
7.♛c4+ ♚e6 8.♛xe6+ ♜xe6 9.O-O ♚e8 10.f4 ♜f7 11.e5 ♗fd7
12.f5 gxf5 13.♝h5+ ♜g8 14.♛g5 ♝c8 15.♗d5 dxe5 16.♚xf5
♗c6 17.♛h6 ♛xh6 18.♝xh6 ♗f8 19.♗f6+ ♜h8 20.♚g5 (1-0)

Cabejsek – Stmad
Correspondence, 1991

1.e4 e5 2.♖f3 ♗f6 3.♗xe5 d6 4.♗xf7 ♜xf7 5.d4 ♝e7 6.♗c3
♛e6 7.♛g5 h6 8.♛h4 g5 9.♛g3 ♛g4 10.♛e2 ♛xe2 11.♝xe2
♗c6 12.O-O-O h5 13.h4 g4 14.♚he1 ♛h6+ 15.♝b1 ♚ad8 16.e5
dxe5 17.dxe5 ♚xd1+ 18.♚xd1 ♗d7 19.♗d5 ♝c5 20.e6+ (1-0)

Edwards – Flowers
Music City Fall, 1989

1.e4 e5 2.♖f3 ♗f6 3.♗xe5 d6 4.♗xf7 ♜xf7 5.d4 ♚e7 6.♗c3 h6
7.♛c4+ ♚e6 8.d5 ♛d7 9.O-O a6 10.e5 ♗e8 11.♝f3+ ♜g8
12.e6 ♛xe6 13.dxe6 ♗f6 14.♝xb7 ♗c6 15.♝xc6 ♝c8 16.♗e4
♗h7 17.♚e1 ♗f8 18.♗g3 ♜h7 19.♗f5 ♗g6 20.♝e4 ♚e8 21.♛d3
♛f6 22.♗xg7 ♚h8 23.♝xg6+ ♜g8 24.♝f7+ (1-0)

Edwards – McAllister
Music City Fall, 1991

1.e4 e5 2.♖f3 ♗f6 3.♗xe5 d6 4.♗xf7 ♜xf7 5.d4 ♗xe4 6.♝h5+

g6 7. ♖d5+ ♗e6 8. ♜xe4 c6 9. ♘c3 ♗g7 10. ♗e3 ♗e8 11. ♜f3+ ♜g8 12. O-O-O ♜a5 13. h4 h5 14. ♗d3 ♗g4 15. ♜g3 ♗f5 16. ♜xd6 ♗xd3 17. ♗xd3 ♜f5 18. ♘e2 ♘d7 19. ♘g3 ♜f7 20. d5 ♗ad8 21. dxc6 ♘e5 22. ♜xd8 ♗xd8 23. ♗xd8+ ♜h7 24. cxb7 ♜xb7 25. ♗hd1 ♘c4 26. b3 ♘xe3 27. fxe3 ♜xg2 28. ♘f1 ♜e4 29. ♗8d7 a5 30. ♗a7 ♜e5 31. ♗dd7 ♜b2+ 32. ♜d1 ♜b1+ 33. ♜e2 ♜xc2+ 34. ♘d2 ♜b2 35. ♗xg7+ ♜xg7 36. ♗xg7+ ♜xg7 37. ♘c4 ♜f6 38. ♜f3 g5 39. hxg5+ ♜xg5 40. ♘xa5 h4 41. ♜g2 ♜g4 42. b4 h3+ 43. ♜h2 ♜f3 44. b5 ♜xe3 45. b6 ♜d4 46. b7 ♜c5 47. b8 ♜ (1-0)

World Correspondence Chess Federation Kings Gambit Thematic

by Murlin Varner

Heinz Fiesell (2384), Germany
Murlin Varner (1738), Franklin, TN

1. e4 e5 2. f4 ef4 3. ♗c4 ♘c6 4. d4 ♘f6 5. ♗:f4 ♘:e4 6. ♜e2 d5 7. ♗b5 ♗e7 8. ♘d2 ♘:d2 9. ♜:d2 O-O 10. ♗:c6 bc6 11. ♗el ♗g5 12. ♜e3 ♗:f4 13. ♜:f4 ♗a6 14. ♘f3 ♜d6 15. ♜h4 ♗ab8 16. b3 g6 17. ♜e7 ♜f4+ 18. ♜c3 ♗c8 19. ♘e5 ♗e6 20. g3 ♜h6 21. ♘d7 ♗:d7 22. ♜:d7 ♜h5 23. ♗e3 c5 24. ♗f1 cd4+ 25. ♜:d4 c5+ 26. ♜d3 c4+ 27. ♜d2 ♜:h2+ 28. ♜cl cb3 29. ♗:b3 ♗c8 0-1

Heinz lost one other game, to the eventual winner of the section, Bernard Hanison of England. Bernard scored 5 1/2 out of six, his only draw to yours truly. That game is given below. I finished with two wins and four draws, to tie for second in the section. If a person wishes to try same international postal chess, the WCCF is a good way to go. Just be aware that your postage costs will be higher. An international post card is forty cents.

Murlin Varner (1738), Franklin, TN
Bernard Hanison (2024), England

1. e4 e5 2. f4 ef4 3. ♘f3 g5 4. ♗c4 ♗g7 5. O-O h6 6. d4 d6 7. c3 ♘c6 8. g3 ♗h3 9. ♗f2 ♘f6 10. gf4 ♘:e4 11. ♗e2 d5 12. ♗d3 ♜d7 13. ♗:e4 ng4+ 14. ♜f2 de4 15. ♗:e4+ ♜f8 16. ♜g1 ♜f5 17. ♘bd2 gf4 18. b3 ♜g8 19. ♗a3 ♗h7 20. ♗ael ff

21. ♖h4 ♗h5 22. ♖:f4 ♗a5 23. ♖b1 ♗g5 24. ♚c1 ♗:g1 25. ♖:g1 ♗f7 26. ♖d2 ♖d8 draw agreed

I also had two opponents from the U.S.A. and one each from Iceland and Australia.

Selected Postal Games

by Tennessee players

Inman, Lewis – McHenry, Tim

1992 Tennessee Postal Tournament of Champions

1.e4 e6 2.d4 d5 3.♖c3 ♚b4 4.e5 ♗d7 5.a3 ♚f8 6.♗g4 f5
7.♗g3 b6 8.♚b5 c6 9.♚e2 ♚a6 10.♚d2 c5 11.♖f3 ♖e7 12.O-O
♖ec6 13.♚e3 cxd4 14.♖xd4 ♚xe2 15.♖cxe2 ♖xd4 16.♖xd4
♚c5 17.♖xe6 ♗xe6 18.♗xg7 ♖f8 19.♚xc5 bxc5 20.♗b7 ♗c6
21.♗xh7 ♖d7 22.e6 ♖b6 23.♖fe1 ♗d6 24.e7 ♖f6 25.♗g8+
♗d7 26.e8♗+ ♖xe8 27.♗xe8+ ♗c7 28.♖e7+ ♖d7 29.♖ae1
♖h6 30.g3 f4 31.♖xd7+ ♗xd7 32.♖e7 1-0

Brandenburg, Mark – Lewis, Morris

1991 Golden Knights

1.e4 e5 2.♖f3 ♖c6 3.♚b5 a6 4.♚a4 ♖f6 5.O-O ♚e7 6.♖e1 b5
7.♚b3 O-O 8.c3 d5 9.exd5 ♖xd5 10.a4 b4 11.♖xe5 ♖xe5
12.♖xe5 ♖f6 13.d4 ♚d6 14.♖e2 ♖b8 15.♚g5 ♚xh2+ 16.♗xh2
♖g4+ 17.♗g1 ♗xg5 18.♖d2 bxc3 19.bxc3 ♖b6 20.♖e4 ♖h6
21.♖f1 ♗h5 0-1

Rylander, Jim Jr. – Thompson, Paul

1989 Golden Knights

1.e4 c5 2.♖f3 d6 3.d3 ♖c6 4.g3 ♖f6 5.♚g2 e5 6.O-O ♚e7 7.a4
O-O 8.♖c3 ♚g4 9.h3 ♚d7 10.♖e1 ♖d4 11.f4 ♗b6 12.♗h1 ♖fe8
13.g4 ♚c6 14.g5 ♖d7 15.f5 ♗d8 16.♗g4 f6 17.h4 ♗a5 18.♖a3
♖f8 19.g6 hxg6 20.♗xg6 ♖b6 21.♖g1 ♚e8 22.♗g4 ♖f7 23.h5
c4 24.dxc4 d5 25.♖a1 dxc4 26.♚f3 ♚b4 27.♚h6 ♚f8 28.♚d2
♗b4 29.♖b1 ♗d6 30.a5 ♖a4 31.♖a2 ♚c6 32.♚g2 ♗h8 33.♖a3
♖xb2 34.♖h3 ♗d7 35.♗h4 ♗e7 36.♚f3 b6 37.♖g6 ♖xf3
38.♖xf3 ♖d1 39.h6 ♗g8 40.hxg7 ♖xg7 41.♗h8+ ♗f7 42.♖hg3
♖xg6 43.fxg6+ ♗e6 44.♗h3+ ♗d6 45.♚b4+ ♗c7 46.♚xe7
♖f2+ 47.♗h2 ♖xh3 48.♚xf6 1-0

Reynolds, Scott – Lewis, Morris
1991 Golden Knights

1.e4 e5 2.♟f3 ♘c6 3.d4 exd4 4.♟xd4 ♖c5 5.♟xc6 ♜f6 6.♜e2
♟xc6 7.♟c3 a5 8.f4 ♘e7 9.♞d2 O-O 10.e5 ♜g6 11.h3 ♜xc2
12.♞c1 ♜g6 13.g4 d6 14.f5 ♟xf5 15.gxf5 ♞xf5 16.♞f4 dxe5
17.♞h2 ♜g5 18.♞g2 ♜h4+ 19.♜d1 ♞ad8+ 0-1

Selected Games

from recent over-the-board events

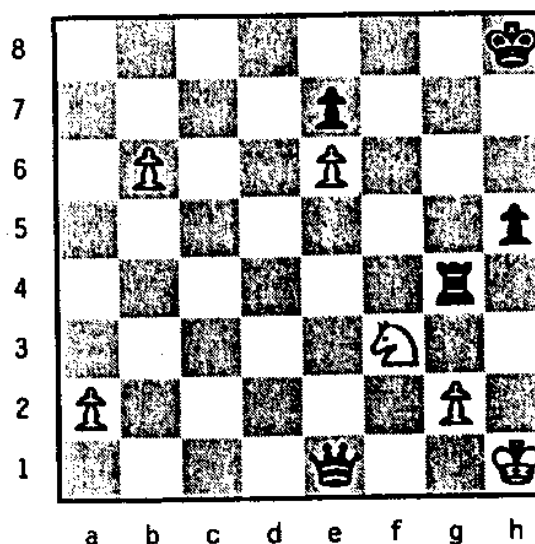
You Know It's a Bad Day...

..when you're one of the top players in the world and this happens!

Kaidanov, Gregory GM (2654) – Tate, Kelles (1621)

1992 Fun fest Simul, Kingsport

1.d4 ♟f6 2.c4 c5 3.d5 b5 4.cb5 a6 5.b6 ♜b6 6.♟c3 d6 7.e4
♟bd7 8.f4 g6 9.♟f3 ♞g7 10.♞c4 ♟g4 11.♜e2 O-O 12.h3 ♟h6
13.O-O ♟f6 14.♞e3 ♞b8 15.♞ab1 ♟h5 16.♜f2 ♜h8 17.f5 gf5
18.♜h4 f4 19.♞d2 ♟f6 20.♞f4 ♟fg8 21.♜h1 f5 22.e5 ♜d8
23.♞fe1 ♞b4 24.b3 ♞b6 25.♟a4 de5 26.♞e5 ♞g6 27.♞g7 ♜g7
28.♟c5 ♞ff6 29.♟d4 ♜d6 30.♟ce6 ♜h8 31.♟f3 ♟f7 32.♜d4
♞e6 33.de6 ♜d4 34.♟d4 ♟d6 35.♞a6 ♟e4 36.♞b2 h5 37.b4
♟h6 38.♞d3 ♟g4 39.♞e4 fe4 40.hg4 ♞g4 41.b5 e3 42.b6 ♞f2
43.♞f2 ef2 44.♟f3 fe1♜ (♞h4 is best.)



45.♗e1 ♖b4 46.♗f3 ♖b6 47.♜h2 ♖e6 48.♜h3 ♖a6 49.♗e5
♜g7 50.♜h4 ♖a2 51.g3 ♖h2 52.♜g5 ♖h3 53.♜f4 ♜f6 54.♗f3
e6 55.♗g5 e5 56.♜f3 ♜g5 57.♜g2 ♜g4 0-1

Albert, Lev – Rushing, Dave
Nashville Chess Club Simul

1.e4 g6 2.d4 ♗g7 3.♗c3 d6 4.f4 ♗c6 5.♗e3 ♗h6 6.♗f3 ♗g4
7.♗g1 e6 8.h3 ♗f6 9.g4 h5 10.g5 ♗d7 11.f5 exf5 12.exf5 gxf5
13.♗d3 ♗b6 14.♜d2 ♜e7+ 15.♜f1 ♗e6 16.♖e1 O-O-O 17.♜f4
♜d7 18.♗h4 ♗e7 19.♜f2 f4 20.♜g2 ♗bd5 21.♗xd5 ♗xd5
22.♜h2 ♖de8 23.a3 ♗xh3 24.♗e4 ♗e3 25.♜xf4 ♖xe4 26.♜xe4
♗f1+ 27.♖xf1 ♗xf1 28.♗f5 ♖e8 29.♜f3 ♗e2 30.♜f4 ♗h8
31.♗f2 ♗g4 32.♗e3 ♗g7 33.♖e1 1/2

McCreery, Bill (1647) – Lipkin, Alan (1718)
1992 Land of the Sky

1.e4 e5 2.f4 ♗c5 3.♗f3 d6 4.♗c4 ♗f6 5.d3 ♗c6 6.♗c3 a6 7.a3
O-O 8.h3 ♗h5 9.♗e2 ♗d4 10.♗exd4 ♗xd4 11.g4 ♗g3 12.♖h2
♜f6 13.f5 g6 14.♗g5 ♜g7 15.f6 ♜h8 16.♗xd4 exd4 17.♜d2
h6 18.♗h4 ♗xe4 19.dxe4 g5 20.♗xg5 hxg5 21.♜xg5+ ♜h7
22.♗d3 ♗f5 23.♜xf5+ 1-0

Alburt, Lev GM – Bolt, Ed
Nashville Chess Club Simul

1.d4 ♗f6 2.c4 c5 3.d5 b5 4.cxb5 a6 5.b6 ♜xb6 6.♗c3 g6 7.♗f3
♗g7 8.e4 d6 9.♗d2 ♗fd7 10.♗e2 O-O 11.O-O e5 12.♗c4 ♜c7
13.♗g5 f6 14.♗e3 ♗b6 15.♗a5 ♗d7 16.♖c1 ♗c8 17.♗c4 ♗e7
18.a3 a5 19.♗a4 ♗c8 20.♜b3 ♜h8 21.♗xd6 ♗xa4 22.♜xa4
♗xd6 23.♖xc5 ♜d7 24.♜c2 ♖c8 25.♖c1 ♖xc5 26.♜xc5 ♗f8
27.f3 ♜b7 28.b4 axb4 29.axb4 ♗a6 30.♗xa6 ♜xa6 31.♜c6
♜e2 32.♗f2 ♖c8 0-

Alburt, Lev GM – Boyd, Brad
Nashville Chess Club Simul

1.d4 d5 2.c4 e6 3.♗f3 ♗e7 4.g3 ♗f6 5.♗g2 O-O 6.O-O ♗bd7
7.♗c3 c6 8.♜d3 ♜c7 9.e4 ♗xe4 10.♗xe4 dxe4 11.♜xe4 ♗f6
12.♜c2 b6 13.♗f4 ♗d6 14.♗xd6 ♜xd6 15.♗e5 ♗b7 16.♖ad1
♜c7 17.c5 b5 18.a4 a6 19.b3 ♖fd8 20.♖fe1 ♖ac8 21.♖e3 ♗d7
22.♗f3 ♗f6 23.♗h3 ♖d5 24.♖e5 h6 25.♜e2 ♖cd8 26.♜e3 ♜f8

27. ♖f4 ♗d7 28. ♛xe6 ♗xe5 29. ♛xd5 ♗xf3+ 30. ♛xf3 ♖xf4
31. gxf4 ♜e7 32. ♜f1 ♜f6 33. ♛e4 g6 34. ♜e2 ♜d7 35. ♜d3 ♜c7
36. axb5 axb5 37. ♜a1 ♛c8 38. ♜a6 ♛xa6 0-1

Alburt, Lev GM – Pennig, Jeff
Nashville Chess Club Simul

1. d4 ♗f6 2. c4 e6 3. g3 b6 + 4. ♗c3 O-O 5. ♛g2 d5 6. ♗f3 b6
7. O-O ♛b7 8. ♗e5 c6 9. ♛g5 ♛e7 10. ♖c2 ♗bd7 11. ♜fd1 ♗xe5
12. dxe5 ♗d7 13. ♛xe7 ♖xe7 14. cxd5 cxd5 15. f4 ♜ac8 16. ♖a4
a6 17. e4 ♜c4 18. ♖b3 ♜b4 19. ♖a3 ♖c5+ 20. ♖h1 d4 21. ♗e2
♜c8 22. ♜ac1 ♜c4 23. b4 ♖xb4 24. ♖xb4 ♜xb4 25. ♜xc8+ ♛xc8
26. ♗xd4 ♜f8 27. h4 ♜c4 28. ♛f1 ♜c3 29. ♗e2 ♜c2 30. ♜c1 ♜xc1
31. ♗xc1 ♛b7 32. ♜g1 ♗c5 33. ♗b3 ♗xe4 34. ♛g2 ♛d5 35. ♛xe4
♛xe4 36. ♗d4 ♜e7 37. ♜f2 ♗d7 38. ♜e3 ♛d5 39. a3 b5 40. ♜d3
♜c7 41. ♜c3 ♖b6 42. ♗c2 ♖c5 43. ♗b4 a5 44. ♗d3+ ♖c6 45. ♜d4
♛c4 46. ♗c5 1/2

Patrick Wolff Is New U.S. Chess Champion

Young Gm Wins First U.s. Title

Grandmaster (GM) Patrick Wolff of Somerville, Mass., is the 1992 U.S. Chess Champion following his 10 1/2 - 4 1/2 triumph in the United States Chess Federation's U.S. Chess Championship. The 16-player, \$30,000 round-robin, sponsored by The Software Toolworks, was held December 2-20 in Durango, Colorado.

For his achievement, Wolff wins \$11,500. International Master (IM) Alex Sherzer (College Park, Md.) and GM Boris Gulko (Fair Lawn, N.J.) shared 2nd-3rd. Each scored 10-5 and took home \$3,500. Sherzer, who was leading throughout most of the tourney, stumbled in the last round against GM John Fedorowicz (New York, N.Y.). Nevertheless, Sherzer's impressive result gives him a GM norm.

GMs Dmitry Gurevich (Chicago, Ill.) and Yassaer Seirawan (Seattle, Wash.), both scored 9-6 to take 4th-5th and \$2,500 each. Fedorowicz captured 6th with 8 1/2-6 1/2 for \$1,500. Tying for 7th-9th with 8-7 were GM Alex Yermolinsky (Highland Park N.J.), GM Joel Benjamin (New York, N.Y.), and IM Ilya Gurevich (Worcester, Mass.). Each won \$1,017. Ilya qualifies for the Interzonal because of his 1990 World Junior victory. He joins Wolff, Sherzer, Gulko, Seirawan, Dmitry Gurevich, and GM Gat

Kamsky (who did not play, but qualifies by virtue of his rating) as America's Interzonalists.

Rounding out the field were: 10th, GI Roman Dzindzichashvili (New York, N.Y.) 7 1/2-7 1/2 \$700; 11th-12th, GM Alexander Ivanov (Brookline, Mass.) and GM Walter Browne (Berkeley, Calif.) 7-8, \$573 each; 13th, IM Stuart Rachels (Birmingham, Ala.) 6 1/2-8 1/2, \$545; 14th-15th IM Igor Ivanov (Dominguez Hills, Calif.) and Senior Master (SM) Boris Men (Cleveland, Ohio) 5-10 \$525 each; and IM Kamran Shirazi (New York, N.Y.), 1-14 \$510.

Wolff began with draws against Fedorowicz, Sherzer, and Dzindzichashvili in rounds 1, 2, and 4, plus wins against Shirazi, I. Ivanov, and Rachels in rounds 3, 5, and 6 to take an early lead. A 7th-round defeat at the hands of I. Gurevich slowed Wolff and allowed Sherzer to make his move. After defeating A. Ivanov and Shirazi in rounds 1 and 4, Sherzer then jumped to the lead—which he held until the very last round—defeating consecutively Browne, I. Ivanov, Yermolinsky, and Rachels in rounds 7-10. His incredible streak was halted by a loss to D. Gurevich in round 11. Gulko, who drew Seirawan, A. Ivanov, Sherzer, and Yermolinky in rounds 1, 2, 3, and 6 and defeated Benjamin and Browne in rounds 4 and 5, was similarly beaten by D. Gurevich in round 7. Nevertheless, the race for the title was just heating up.

After drawing Men in round 8, Gulko closed in on the lead with wins against Fedorowicz, Wolff, Shirazi, and I. Ivanov in rounds 9, 10, 11, and 13. Draws with Dzindzichashvili, Rachels, and I. Gurevich in rounds 12, 14, and 15 kept him in striking distance of the title. Sherzer, meanwhile, coasted through with a win against Men in round 13 and draws against I. Gurevich and Seirawan in rounds 12 and 14. A last-round defeat against Fedorowicz kept Sherzer from a share of the title.

After a draw with Seirawan in round 8, Wolff immediately moved back into contention with a win against A. Ivanov in round 9 and (after the Gulko defeat) back-to-back victories over Benjamin, Browne, and Yermolinsky in rounds 11-13. After his 14th-round draw with D. Gurevich, Wolff was one half-point behind Sherzer, and the New Englander pulled through with a win over Men in the final outing.

The American Chess Foundation provided special prizes for the event. Wolff added the \$1,500 Albaugh Prize to his \$10,000 prize check by virtue of his undisputed victory. Two Albert Prizes of \$500 and \$200 recognizing brilliancy will be determined short-

ly. Additionally, The Crenshaw Prizes recognized individual performance in the event in the following categories:

Most interesting combination: Benjamin (against A. Ivanov);
\$100 Most interesting endgame: Seirawan (against Fedorowicz);
\$100 Most interesting draw: I. Gurevich against Sherzer; \$75
each Most interesting swindle: D. Gurevich (against I. Gurevich);
\$50 Best second-half comeback: Benjamin; \$100.

Games from the U.S. Championship

Benjamin-Gulko

Round 4

1.e4 e6 2.d4 d5 3.e5 c5 4.c3 ♖c6 5.♗f3 ♘d7 5.♙e2 ♗ge7
7.♗a3 cxd4 8.cxd4 ♗f5 9.♗c2 ♜b6 10.O-O a5 11.g4 ♗fe7
12.♗h4 ♗g6 13.♗g2 ♙e7 14.f4 O-O 15.♙e3 f5 16.exf6 ♖xf6
17.♙d3 ♙d6 18.h4 ♖af8 19.g5 ♖6f7 20.♙xg6 hxg6 21.h5 gxh5
22.qxh5 g6 23.♜xg6+ ♖g7 24.♜d3 ♗e7 25.♜b3 ♜xb3 26.axb3
b6 27.♙d2 ♗f5 28.♖f3 ♖h7 29.♖af1 ♙b5 30.♖e1 ♜f7 31.♜f2
♖h2 32.♙c3 ♗h4 33.♖g3 ♙xf4 34.♖g4 ♜e7 35.♖xh4 ♙xg5+
36.♜g3 ♖xg2+ 37.♜xg2 ♙xh4 38.♖h1 ♖f4 39.♗e1 ♙e2
40.♙d2 ♖g4+ 41.♜h3 ♖xd4 42.♙e3 ♖e4 43.♗g2 ♙f6 44.♙xb6
♙g4+ 45.♜h2 ♖e2 46.♜g3 ♙f5 0-1

Gulko-Browne

Round 5

1.d4 ♗f6 2.♙g5 ♗e4 3.♙f4 c5 4.f3 ♜a5+ 5.o3 ♗f6 6.d5 e6
7.e4 exd5 8.exd5 d6 9.♗e2 ♗bd7 10.♗d2 ♗b6 11.b4 cxb4 12.c4
♙e7 13.♗d4 ♙d7 14.♗2b3 ♜a4 15.♙d3 ♖c8 16.O-O O-O
17.♖c1 ♗h5 18.♙d2 ♙f6 19.g4 ♙xd4+ 20.♗xd4 ♗f6 21.♜xa4
♗xa4 22.♙xb4 ♗c5 23.♙e2 ♖c7 24.♗b3 h5 25.h3 hxg4 26.hxg4
♙a4 27.♗xc5 dxc5 28.♙c3 ♗e8 29.♜f2 ♖e7 30.♙d3 ♗d6
31.♖b1 f5 32.gxf5 ♗xf5 33.♖fe1 ♖xe1 34.♖xe1 b6 35.♖c1 ♖f7
36.♙e5 ♗h4 37.♙e4 ♙d7 38.♜e2 ♗f5 39.♜d3 ♜f8 40.♖h1
♜g8 41.♖g1 ♜f8 42.d6 ♙e6 43.♖g6 ♙c8 40.♙d5 ♗h4 45.♖g3
♙f5+ 46.♜e3 ♖d7 47.♜f4 g6 48.♙f6 ♖h7 49.♖g1 ♖h5 50.♜g3
♙d7 51.♙xh4 g5 52. ♜f2 ♖xh4 53.♖xg5 ♖h8 54.♜e3 ♜e8
55.♜e4 b5 56.cxb5 ♙xb5 57.♜e5 c4 58.♖g7 a6 59.f4 c3 60.♖c7
♖h5+ 1-0

I. Ivanov-Wolff
Round 5

1.d4 d5 2.♟f3 c6 3.c4 e6 4.♞bd2 ♟f6 5.g3 ♞bd7 6.♞g2 ♞e7
7.O-O O-O 8.♝c2 b6 9.e4 ♞b7 10.e5 ♟e8 11.a3 a5 12.♞b1
♟c7 13.b4 axb4 14.axb4 ♞a6 15.♞e1 dxc4 16.♟xc4 ♟d5
17.♞d2 ♞b5 18.h4 ♞a4 19.♟g5 g6 20.♟e3 ♟xb4 21.♞xb4
♞xb4 22.♞xc6 ♞xe1 23.♞xb5 ♞xd4 24.♞xd7 ♞d1 25.♞xe1
♟xc2 26.♟xc2 ♝xd7 27.♟e4 ♟g7 28.♟d6 ♞a8 29.♟e3 ♝c6
30.♞b1 ♞a2 0-1

Wolff-Rachels
Round 6

1.d4 d5 2.c4 dxc4 3.e3 ♟f6 4.♞xc4 e6 5.♟f3 c5 6.♝e2 e6
7.dxc5 ♞xc5 8.O-O ♟c6 9.e4 ♝c7 10.e5 ♟d7 11.♞f4 ♟d4
12.♟xd4 ♞xd4 13.♞d1 ♞xb2 14.♝xb2 ♝xc4 15.♞d4 ♝b5
16.♝d2 O-O 17.♟a3 ♝c5 18.♟c4 f6 19.♞c1 ♝e7 20.exf6 ♝xf6
21.♞g5 ♝g6 22.♞xd7 ♞xd7 23.♟e5 ♝f5 24.♟xd7 ♞fc8 25.♟b6
♞xc1+ 26.♝xc1 ♞f8 27.♞e3 e5 28.h3 ♝a6 29.a4 h6 30.♝c5
♞e8 31.♟d5 ♞d8 32.♟c7 ♝d6 33.♝c4+ ♟h8 34.♟e6 ♞e8
35.♟c5 ♝c8 36.a5 ♞c7 37.♟h2 ♝c6 38.♝d3 ♞c8 39.♝f5 ♞e8
40.♝f7 ♞b8 41.♟d7 ♞c8 42.♟xe5 ♝c7 43.♝e6 ♞f8 44.g3 ♞f6
45.♝e8+ ♟h7 46.♟d7 1-0

Browne-Sherzer
Round 7

1.d4 ♟f6 2.c4 g6 3.♟c3 ♞g7 4.e4 d6 5.♟1f3 O-O 6.♞e2 e5
7.O-O ♟c6 8.d5 ♟e7 9.♟d2 a5 10.a3 ♟d7 11.♞b1 f5 12.b4
♟h8 13.f3 ♟g8 14.♝c2 ♟df6 15.c5 axb4 16.axb4 ♟h5 17.♟c4
♟f4 18.♞e3 ♟f6 19.b5 fxe4 20.fxe4 ♞g4 21.♞xf4 exf4 22.♞xf4
♞xe1 23.♟xe2 dxc5 24.b6 ♟d7 25.♞xf8+ ♟xf8 26.e5 cxb6
27.♟xb6 ♞a6 28.♝xc5 ♞xe5 29.♟c4 ♞g7 30.♞f1 ♞a2 31.♟e5
ee8 32.♟c1 ♞a1 33.♟cd3 ♟d7 34.♟xd7 ♞xf1+ 35.♟xf1 ♝xd7
36.d6 ♟g8 37.♝c7 ♝f5+ 38.♟f2 ♝b5+ 39.♟e1 ♞f8 40.d7
♞b4+ 41.♟d1 ♝f1+ 42.♟c2 ♝xf2+ 43.♟b3 ♞e7 44.d8=♝+
♞xd8 45.♝xd8+ ♟g7 46.g3 h5 47.♟a4 ♝c2+ 48.♟b4 ♝e4+
49.♟a5 ♟f7 50.♝d7+ ♟f6 51.♝d8+ ♟f5 52.♝d7+ ♝e6
53.♝d1 ♟a6+ 54.♟b4 ♝b6+ 55.♟a4 ♝c6+ 56.♟b4 ♝e4+
57.♟c5 ♝c6+ 58.♟b4 b6 59.♝e2 ♝e4+ 0-1

Yermolineky-Sherzer
Round 9

1.d4 ♖f6 2.c4 g6 3.♗c3 ♕g7 4.e4 d6 5.h3 O-O 5.♖g5 c5 7.d5
e6 8.♗d3 exd5 g.cxd5 h6 10.♗e3 ♖e8 11.♗ge2 ♗bd7 12.♗g3
a6 13.a4 ♗e5 14.♗e2 ♗h7 15.O-O ♖h4 16.♗h1 ♗g5 17.f4
♗xh3+ 18.gxh3 ♖xh3 19.♖d2 ♗g4 20.♗xg4 ♖xg4+ 21.♖92
♖xg2+ 22.♖xg2 ♗xc3 23.bxc3 ♖xe4 24.♖f2 b6 25.♗g3 ♖c4
26.♖h1 h5 27.♗xh5 gxh5 28.♖xh5 [28.♖b1!] ♖g7 29.f5 ♖f6
30.♖e2 ♗b7 31.♖d3 ♖g4 32.c4 b5 33.♖e1 bxc4+ 34.♖c3
♗xd5 35.♖h6+ ♖xf5 36.♖xd6 ♗e6 37.♗xc5 ♖b8 38.♗b6
♖g3+ 39.♖c2 ♖h8 40.♖e2 ♖hh3 41.a5 ♖c3+ 42.♖b2 ♖b3+
43.♖c2 c3 44.♖f2+ ♖g5 ♖5.♖d1 ♖a3 46.♖g1+ ♖h5 47.♖gf1
♗b3+ 48.♖b1 c2+ 4g.♖c1 ♖a1+ 50.♖b2 ♖d1 0-1

A. Ivanov-Wolff
Round 9

1.e4 c6 2.d4 d5 3.e5 ♗f5 ♖.h4 h5 5.c4 e6 6.♗c3 ♗d7 7.♗g5
♖b6 8.♖d2 ♗e7 9.♗f3 ♗g6 10.cxd5 cxd5 11.♖c1 ♗b4 12.a3
♗xc3 13.♖xc3 O-O 14.♗e2 ♗g4 15.♗g1 ♖fc8 16.♗xg4 hxg4
17.h5 ♖xc3 18.♖xc3 ♗gxe5 19.dxe5 d4 20.♖d2 ♖c6 21.♖f1
♗xe5 22.♗e2 d3 23.♗c3 ♗c4 24.♖xd3 ♗xb2 25.♖c2 ♗c4 26.hf
f5 27.hxg7 ♖xg7 28.♗c1 ♖d8 29.♖g1 ♖d6 30.♖e2 ♖c8 31.♗d1
e5 32.f3 g3 33.♗e3 ♗xe3 34.♗xe3 f4 35.♗xf4 0-1 (time)

Benjamin-Wolff
Round 11

1.e4 c5 2.♗f3 d6 3.d4 cxd4 4.♗xd4 ♗f6 5.♗c3 a5 6.a4 ♗c4
7.♗e2 g6 8.♗e3 ♗g7 9.O-O O-O 10.f4 ♖b8 11.♖d2 ♗g4
12.♖h1 ♗xe2 13.♗dxe2 b5 14.axb5 axb5 15.♗g3 ♗d7 16.f4
b4 17.♗d5 ♗xb2 18.♖a6 ♖c8 1g.♗h6 ♖ee 20.♗h5 ♗f4
21.♗hxf6+ exf6 22.♗b6 ♗c3 23.♖d1 ♖b8 24.♗c4 ♖c8 25.♖a1
♖c7 26.♗f4 ♗e5 27.♗e3 ♗c4 28.♗d5 ♖c5 29.♖d3 ♗d4 30.h4
♖xe4 31.♗xc1 bxc3 32.♖xc3 ♗e5 33.♗g3 ♖bc8 34.♖d2 ♗c4
35.♖f2 ♗e3 36.♖e1 ♗c4 37.fxg6 hxg6 38.♖aa1 ♗f5 39.♖xe8-
♖xe8 40.♗h2 ♖e2 41.♖f3 ♖xc2 42.♖d1 ♖c1 43.♖xc1 axc1-
44.♗g1 ♖c4 45.♗f2 d5 46.g4 ♗d6 47.♖xf6 ♗e4 48.♖d8+ ♖g
49.♗b6 ♖f1+ 50.♖h2 ♖f4+ 51.♖g2 ♖g3+ 52.♖f1 ♖d3+ 0-

**Men-Sherzer
Round 13**

1.e4 e5 2.♖f3 ♘c6 3.♙c4 ♙c5 4.d3 ♗f6 5.O-O d6 6.c3 ♗g4
7.♙b3 ♜d7 8.♗bd2 O-O-O 9.♙c2 d5 10.b4 ♙b6 11.♜e2 ♜he8
12.♜e1 ♗h5 13.exd5 ♗f4 14.♜e4 ♗d4 15.cxd4 f5 16.♗xe5 fxe♗
17.♗xd7 ♙xd4 18.♗xe4 ♗e2+ 19.♜f1 ♙xa1 20.♙g5 ♗d4
21.♙xd8 ♗xc2 22.♜c1 ♙xd7 23.♙h4 ♙a4 24.d6 ♙b2 25.♜b1
♙d4 26.b5 c6 27.bxc6 ♙xc6 28.♜c1 ♗b4 29.♜c4 ♗xd3 30.d7+
♜xd7 31.♜xd4+ ♜c7 32.f3 ♙xe4 33.fxe4 ♗e5 34.♜e2 ♜c6
35.♙g3 b5 36.♜d5 ♗c4 37.♜d3 ♜f8 38.a4 a6 39.axb5+ axb5
40.♜d4 ♜f1 41.♜c5+ ♜b6 42.♙c7+ ♜a6 43.♜c6+ ♜b7 44.♜c5
♜d1+ 45.♜c3 ♜a6 46.♜c6c ♜b7 47.♜c5 ♗d2 48.♜c2 ♗xe4
49.♜xd1 ♗xc5 50.♙e5 g6 51.♙c3 ♜c6 52.♜e2 ♜d5 53.♜e3
♗e6 54.♜f3 ♜c4 55.♙a5 ♜d3 56.♙e1 ♗c7 57.♜f4 ♗d5+
58.♜g5 ♗c3 0-1

**Yermolinsky-Wolff
Round 13**

1.d4 d5 2.c4 c6 3.♗f3 e6 4.e3 ♗f6 5.♙d3 dxc4 6.♙xc4 c5
7.O-O a6 8.♙b3 ♗c6 9.♜e2 ♜c7 10.♜d1 ♙e7 11.♗c3 O-O
12.♙d2 b5 13.♜ac1 c4 14.♙c2 ♜d8 15.a4 ♜b8 16.♗e4 e5
17.dxe5 ♗xe4 18.♙xe4 ♗xe5 19.axb5 axb5 20.b3 ♗xf3+
21.♜xf3 ♙e6 22.bxc4 bxc4 23.♙c3 ♜xd1+ 2r1.♜xd1 ♙b4
25.♙d4 h6 26.♜c2 ♙a3 27.♜a1 ♙c5 28.♙c3 ♙b4 29.♙d4 ♙c5
30.♙b2 ♜b6 31.♙c3 ♙e7 32.h3 ♜b3 33.♜c1 ♜d8 34.♙d4 ♜c8
35.♜b1 ♜a3 36.♜c2 c3 37.♙h7+ ♜h8 38.♙f5 ♙xf5 39.Pxf5
♜f8 40.♜b7 ♙d6 41.f4 ♜g8 42.♜g4 g6 43.♜h4 ♙c5 44.♙e5
c2 45.♜xh6 ♜xe3+ 46.♜h2 ♜91+ 47.♜g3 ♜e1+ 0-1

Championship Event Bids Awarded

Upcoming National Events Scheduled

The United States Chess Federation has awarded bids to organizers for the 1993 Pan-American Intercollegiate Team championship and the 1994 National Scholastic Chess Championships.

1993 Pan-Am Intercollegiate and High School Team Championships:

This six-round competition will be held December 27-30, 1993, at Stetson University in DeLand, Florida. There are two sections,

one for college teams, another for high school squads. A total of \$2700 in cash prizes for the college division, plus trophies in the high school section, will be offered. For more information, contact John Rasp, (904) 822-7444.

1994 National Elementary School Championship:

This popular contest will be held May 6-8, 1994, in San Jose, Calif. The event is open to children in grades K-6, and features many side attractions for kids. For more information, contact Chester Crowley, (615) 457-7965.

1994 National Junior High School Championship:

The 1994 National Junior High will be held April 15-17, 1994, in Rye, N.Y. The event is open to children in grades K-9. The Rye Town Hilton, site of the popular 1991 Elementary, will host the tourney. For more information, contact Steve Immitt, (212) 645-7856.

1994 National High School Championship: This prestigious tournament will be held April 29-May 1, 1994, in Dearborn, Mich. The event is open to children in grades K-12, and shares the site that held the successful 1992 U.S. Open. For more information, contact Pete Nixon, (313) 676-2985.

December 15, 1992 was the bid deadline for organizers interested in hosting any of the following events in 1993: U.S. Closed, U.S. Women's, U.S. Junior Invitational, U.S. Cadet, U.S. G/60, and the National School Grade Championship. Proposals for the 1993 U.S. Masters are overdue and will be considered immediately.

Chess In The Classroom

New Jersey Legislature Makes Historic Vote

For the first time, a state legislative body has approved the concept of chess instruction in public schools and has taken active steps towards implementing this goal.

By a vote of 63-6, the New Jersey State General Assembly passed a bill on December 17 to establish chess in the classroom. Earlier, on October 15, the bill had passed through the State Senate, 23-1. Governor Jim Florio is expected to sign the bill into law in early January. A ceremonial signing may also be

conducted by the Governor at the U.S. Amateur Team East Championship in Somerset, N.J., over Presidents' weekend in February.

The bill (S-452 and A-1122) was sponsored by State Senator Leanna Brown and Assemblyman Tom Dunn, Sr. The legislation has been the initiative of Roz Katz of Mendham, N.J., who, along with a team of volunteers from the New Jersey State Chess Federation (N.J.S.C.F.) managed to get chess supporters from virtually every chess club in New Jersey to help push the bill through. Local Boards of Education are given the option, but are not required to offer chess in their schools.

FUN FEST WINNERS

Kingsport, TN. 08/02/92

Open

1ST: Len Dickerson — 3.5

Class A: Joel Harrison, Frank Lamb, Haskell Glover — 2.5

Class B: Lloyd Collier, Tom Cooper, Benjamin Blair, Steve Poff — 2.5

Amateur

1ST: Hieu Phan — 4.0

TIE : Lee Stensaker, Brian Stidham, Ming Chan, Michael Renfro, Ian Galbraith — 3.0

Class D: Michael Collier — 2.5

Novice

1ST: Ron Sage — 4.0

2ND: Rick Dunham — 3.0

3RD: Gabriel Dungan — 3.0

High School

1ST : Jonathan P. Fisher — 4.0

Junior HS

1ST : David Renfro — 3.5

2ND : Tim Crigger — 1.5

Elementary

1ST : Justin Humphreys — 4.0

2ND : Adrian Dungan – 3.0
3RD : Jamie Crigger – 3.0

Primary

1ST : Brett Baker – 0.0

1992 Turkey Tour Prize Winners

by Rick Igou

Expert & Up

1st 10% = \$19.71 to Ronald Burnett
2nd 5% \$ 9.85 to Len Dickerson
3rd 3% = \$ 5.91 to Brian D. Smith

Class A

1st 10% = \$19.70 to Bill Orgain
2nd 5% = \$ 9.85 to Frank Lamb
3rd 3% = \$ 5.91 to Andrew Mongin

Class B

1st 8% = \$15.76 to Bobby Lynn
2nd 5% = \$ 9.85 to John Price
3rd 3% \$ 5.91 to Lee Edwards

Class C

1st 8% \$15.76 to Tim Cutshaw
2nd 5% = \$ 9.85 to Steve Wilson
3rd 3% = \$ 5.91 to Henry Lynn

Class D

1st 8% = \$15.76 to James Richards, Jr
2nd 5% = \$ 9.85 to Larry Williams, Jr
3rd 3% = \$ 5.91 to Gary Green

Class E & under

1st 8% = \$15.76 to Raymond Hudgens
2nd 5% \$ 9.85 to Ke Qin
3rd \$ 2.95 to Timothy Hydzik
3rd \$ 2.95 to Ted Capaul

Tournament Calendar

A schedule of upcoming events

TURKEY TOUR EVENT

03/20-21/93 Bluff City Open, Memphis Tn

03/27/93 State final scholastic team championship

03/27-28/93 KY State Scholastic Championship (individual),
Owensboro, Ky

04/02-03-04/93 1993 National High School, Dallas, Tx

04/10/93 KY State Scholastic Team Championship, Bardstown,
Ky

04/17/93 KY Team Championship, Owensboro, Ky

TURKEY TOUR EVENT

05/08/93 Kingsport Grand Prix, Kingsport Tn

TURKEY TOUR EVENT

05/22/93 Cumberland Co. Spring Open

TURKEY TOUR EVENT

Tennessee Class Championship. Open to all. 6-SS, G/90, Montgomery Bell Inn, Montgomery Bell State Park, Burns, TN. 8 sections: EF \$25 if rec'd by 5/24, \$5 more late entry or at site. Master: \$\$G 150-100-50, X, A, B, C, D, E/below: \$\$G 120-60-30 each. Unr: \$\$G 50. Prizes may be increased based on attendance. TCA membership required for TN residents, OSA. Trophy to winner each section. Only TN residents eligible for titles and trophies. Hotel info & reservations: (615) 797-3101, mention chess tourney. Reg. 10-11 am, rds. 12-3:30-7, 9-1:30-6. Enter: Bill Orgain, P.O. Box 366, Dickson, TN 37056. (615) 446-2814/0521. NS. NC. W.

TURKEY TOUR EVENT

06/12-13/93 Oak Ridge Grand Prix, Oak Ridge TN

TURKEY TOUR EVENT

06/26/93 KINGSPORT GRAND PRIX, KINGSPORT Tn

TURKEY TOUR EVENT

07/10-11/93 Music City Grand Prix, Nashville TN

07/17-18/93 36th Cincinnati Open, Cincinnati OH

TURKEY TOUR EVENT

07/24/93 Cumberland Co Summer Open

TURKEY TOUR EVENT

08/01/93 Vulcan Materials Co. Fun Fest Chess Tournament
Civic Auditorium, Kingsport, Tennessee. Sponsored by: *Kingsport Chess Club, Vulcan Materials Company, Collier's Printing Company, AmeriGas, Kingsport Mall, Wholesale Furniture, WKIN Radio, Holiday Inn, Commercial Plastic & Supply Corp., Stone World.* **4 Sections:** *Open* (open to all) \$\$G 200-100-100-100, Class A, B each 50. *Amateur:* (rated 1699-below) \$\$G 100-75-50. *Non-rated:* (rated 1200-below) trophy each to 1st, 2nd, 3rd; USCF membership to all scoring 3 pts. or more; free entry to UNR only. *Scholastic:* High school section (grades 12 & below), Junior High section (grades 9 & below), Elementary (grades 6 & below), Primary (grades 3 & below). **All:** EF \$2.00/person if received by July 29; \$4.00 per person at site. Register: 8:00-9:15 EST. Rds. 10-1:30-3:30-5:30 EST. TL: G/60 minutes per player. All sections USCF rated except non-rated section. Tie breaks: 1. cumulative 2. Solkoff. Small sections may be combined at tournament director's discretion. TCA membership required for Tennessee residents in Open & Amateur section, OSA. HR: Holiday Inn Kingsport, \$41/night, (615) 247-3133. Enter: Kingsport Chess Association, 409 Cherokee Street, Kingsport, TN 37660. Contact Lloyd Collier at (615) 247-5557 or (615) 247-8219.

08/21/93 Ky Class Championship, Bowling Green, Ky

08/21/93 Ky State Junior Championship, Bowling Green, Ky

TURKEY TOUR EVENT

10/09/93 Cumberland Co Fall Open

TURKEY TOUR EVENT

11/06/93 Kingsport Grand Prix, Kingsport, Tn

11/20/93 Oak Ridge Fall Scholastic

Abbreviations and Terms

A guide to reading tournament announcements

\$\$G – Guaranteed prizes.

\$\$b/ – Based-on prizes (number of entries needed to pay full prize fund follows). At least 50% of announced prizes must be awarded.

EF – Entry fee.

Ent – Where to mail entries.

G/ – Game in. For example, G/75 means each side has 75 minutes to complete the game.

GPP – Grand Prix Points available.

HR – Hotel rates.

NS – No smoking.

NC – No computers are allowed to participate.

Rds – Scheduled round times.

Reg – Site registration time.

SS – Swiss system.

SD/ – Sudden death time control. For example, 30/90, SD/1 means the first time control is 30 moves in 90 minutes, and the second time control is 1 hour sudden death.

Unr – Unrated.

W – Wheelchair access available.

Tennessee Open

#	NAME	ST	PreRate	PstRate	1	2	3	4	5	6	TOTL
1	BURNETT, RONALD W	TN	2471*s5	2458*s5	D--13	W--24	D--5	W--25	W--8	D--3	4.
2	LASTER, ANTHONY G	NC	2189*m4	2212*m4	W--26	W--20	W--15	L--8	W--7	D--5	4.
3	CALE, ROBERT F	VA	2148*x0	2180*x2	W--22	L--5	W--17	W--10	W--15	D--1	4.
4	CALE, RICHARD T	TN	2080*a4	2090*a6	D--14	W--33	L--6	W--27	W--9	B----	4.
5	HAYES, REA B	TN	2012*a7	2106*x5	W--16	W--3	D--1	D--7	W--6	D--2	4.
6	JONES, JOE C	TN	2195*x4	2186*x4	L--17	W--22	W--4	W--13	L--5	W--12	4.
7	DICKERSON, LEONAR	TN	2156*x9	2157*x9	W--27	W--17	D--8	D--5	L--2	W--14	4.
8	HARRIS, NEAL D	NC	2270*x4	2279*x6	W--23	W--25	D--7	W--2	L--1	U----	3.
9	BROOKSHEAR, TIMOT	GA	2157*x4	2132*x4	D--34	D--18	D--26	W--21	L--4	W--23	3.
0	ISHEE, MARK	TN	2142*x0	2135*x0	W--31	L--15	W--18	L--3	W--17	D--13	3.
1	HARDY, JAMES K	TN	2116*x0	2100*x0	D--33	W--21	D--13	L--15	D--18	W--24	3.
2	TSITSEKLIS, EMANU	TN	2054*x0	2048*x0	W--19	L--31	D--14	W--26	W--16	L--6	3.
3	HERBERS, CHARLES	TN	2033*x0	2060*x0	D--1	W--34	D--11	L--6	W--19	D--10	3.
4	PRICE, JOHN M	TN	1811*b7	1889*a7	D--4	D--16	D--12	W--29	W--25	L--7	3.
5	POHL, KLAUS A	SC	2274*m9	2262*m9	W--29	W--10	L--2	W--11	L--3	U----	3.
6	ROWAN, THOMAS H	TN	2217*x6	2172*x6	L--5	D--14	W--24	W--20	L--12	D--18	3.
7	EHR SAM, KARL	NC	1973*a7	1991*a7	W--6	L--7	L--3	W--32	L--10	W--28	3.
8	PRUITT, ROBERT F	AL	1946*a0	1974*a0	H----	D--9	L--10	W--33	D--11	D--16	3.
9	MOONEY, JOE	TN	1741*b0	1775*b5	L--12	B----	L--20	W--22	L--13	W--21	3.
0	WRIGHT, MILTON C	TN	2066*x0	2042*x0	W--32	L--2	W--19	L--16	D--24	U----	2.
1	DOWNS, CHARLES R	AL	1941*a2	1928*a2	H----	L--11	W--34	L--9	W--27	L--19	2.
2	JONES, ELLIS EUGE	TN	1935*a0	1920*a0	L--3	L--6	W--28	L--19	W--32	D--26	2.
3	BACON, W MICHAEL	GA	1915*a0	1916*a0	L--8	D--28	L--27	W--34	W--26	L--9	2.
4	FITZGERALD, JAMES	TN	1640*c7	1674*c7	B----	L--1	L--16	W--31	D--20	L--11	2.
5	FLICKINGER, DALE	TN	2110*x0	2085*x0	W--28	L--8	W--31	L--1	L--14	U----	2.
6	MEADOWS, ROBERT K	TN	1936*a0	1921*a0	L--2	W--32	D--9	L--12	L--23	D--22	2.
7	SWORD, JEFFREY DW	TN	1872*a0	1868*a0	L--7	D--29	W--23	L--4	L--21	U----	1.
8	TALLMADGE, WILLIA	KY	1855*b2	1828*b2	L--25	D--23	L--22	L--30	W--33	L--17	1.
9	LAMB, FRANK B	TN	1984*a4	1943*a4	L--18	D--27	D--33	L--14	U----	U----	1.
0	LEWIS, F MORRIS	TN	1905*a0	1918*a0	F----	F----	F----	W--28	U----	U----	1.
1	EDWARDS, ROBERT N	TN	1830*b0	1821*b0	L--10	W--12	L--25	L--24	U----	U----	1.
2	HILL, JOHN M	VA	1804*b0	1768*b0	L--20	L--26	B----	L--17	L--22	U----	1.
3	MARTIN, ULYSSES	GA	1800*a0	1800*a0	D--11	L--4	D--29	L--18	L--28	U----	1.
4	JORDAN, PAUL J	TN	1888*a0	1859*a0	D--9	L--13	L--21	L--23	U----	U----	0.

Tennessee Open, Amateur Section

R#	NAME	ST	PreRate	PstRate	1	2	3	4	5	6	TO
1	RYLANDER, JIM	TN	1720*b0	1792*x5	W--45	D--6	W--7	W--13	W--10	W--9	5
2	BLANNING, JAMES B	NC	1705*a5	1739*a5	W--25	W--4	W--22	L--10	W--5	W--6	5
3	NICHOLS, DOUGLAS	TN	1600*b0	1662*b5	W--31	W--8	L--16	W--17	W--12	W--10	5
4	CUTSHAW, TIMOTHY	TN	1586*c2	1635*c5	W--47	L--2	W--44	W--14	W--22	W--16	5
5	ROBBINS, RUSSELL	TN	1639*c0	1689*c5	W--43	W--9	W--14	D--16	L--2	W--15	4
6	JASPER, ALEXANDER	NC	1599*b0	1652*b2	W--40	D--1	W--28	W--8	W--16	L--2	4
7	GALBRAITH, IAN T	TN	2796/04	2499/10	W--33	W--18	L--1	L--15	W--32	W--22	4
8	COLLIER, LLOYD KE	TN	1769*b4	1745*b4	W--19	L--3	W--30	L--6	W--34	W--24	4
9	BOYD, BRADLEY V	TN	1766*b7	1759*b7	W--23	L--5	W--33	W--35	W--11	L--1	4
10	BABB, CURTIS LEE	TN	1621*c5	1628*c7	W--27	W--26	W--37	W--2	L--1	L--3	4
11	BOSTON, RALPH A	TN	1620*b2	1619*b2	L--37	W--42	W--26	W--41	L--9	W--21	4
12	TATE, KELLES	TN	1561*c0	1569*c0	W--42	L--37	W--34	W--24	L--3	W--19	4
13	LYNN, BOBBY J	TN	1732*b5	1701*b5	W--24	D--28	W--20	L--1	L--19	W--29	3
14	HYDZIK, ROBERT J	TN	1719*b0	1701*b0	W--34	W--32	L--5	L--4	D--23	W--28	3
15	ORGIN, WILLIAM H	TN	1700*b0	1700*b0	D--46	L--20	W--18	W--7	W--28	L--5	3
16	STREET, CHESTER M	TN	1689*b5	1668*b5	W--36	W--29	W--3	D--5	L--6	L--4	3
17	MC CREERY, BILL	TN	1643*c8	1619*c8	L--26	W--39	W--23	L--3	W--37	H----	3
18	DELEANU, MICHAEL	TN	1643*c0	1627*c0	D--20	L--7	L--15	W--47	W--36	W--30	3
19	LYNN, HENRY S	TN	1566*c2	1574*c2	L--8	W--40	H----	W--29	W--13	L--12	3
20	HERNDON, CHARLES	NC	1345*d4	1399*d9	D--18	W--15	L--13	L--28	W--44	W--34	3
21	ABRON, MICHAEL T	TN	1693*b2	1636*b2	L--29	W--36	L--24	W--30	W--25	L--11	3
22	LEWIS, JAMES B	TN	1600*b4	1600*b4	W--39	W--41	L--2	W--37	L--4	L--7	3
23	HARGIS, BUDDY	OH	1566*c4	1560*c4	L--9	W--47	L--17	W--27	D--14	H----	3
24	CHALLAN, ROBERT W	OH	1517*c0	1528*c0	L--13	W--31	W--21	L--12	W--26	L--8	3
25	HARVILL, RONALD D	TN	1483*d2	1463*d2	L--2	L--27	W--31	W--38	L--21	W--37	3
26	WILLIAMS, LARRY	TN	1422*c4	1433*c4	W--17	L--10	L--11	W--44	L--24	W--41	3
27	EDDINS, J SCOTT	TN	1247/07	1323/13	L--10	W--25	L--35	L--23	W--47	W--39	3
28	WIDENER, KERMIT B	TN	1574*c9	1556*c9	W--38	D--13	L--6	W--20	L--15	L--14	2
29	MONEY, JACK D	TN	1367*d2	1388*d4	W--21	L--16	H----	L--19	W--38	L--13	2
30	RICHARDS, JAMES E	TN	1230*e7	1270*d4	H----	W--46	L--8	L--21	W--41	L--18	2

31	CAPPAUL, THEODORE	TN	1153# 0	1170#e2	L--3	L--24	L--25	W--45	D--42	W--43	2
32	SCHWARTZ, LEON	TN	1627#b6	1595#b6	W--44	L--14	L--41	W--36	L--7	U--	2
33	PENNINGTON, PHILI	TN	1569#c0	1566#c0	L--7	W--45	L--9	W--42	U--	U--	2
34	GODDARD, JOSEPH S	TN	1539#c7	1491#c7	L--14	W--38	L--12	W--40	L--8	L--20	2
35	SHORT, JACK	TN	1533#c9	1514#c9	L--41	W--43	W--27	L--9	U--	U--	2
36	PRICE, JOHN H	AL	1343#d2	1344#d2	L--16	L--21	W--43	L--32	L--18	W--42	2
37	WARE, BILLY	TN	1260#E0	1296#E7	W--11	W--12	L--10	L--22	L--17	L--25	2
38	HUNT, PHILLIP D	TN	1221/05	1231/11	L--28	L--34	W--39	L--25	L--29	W--47	2
39	TATE, PAUL R	TN	1218#E2	1205#E2	L--22	L--17	L--38	W--43	W--40	L--27	2
40	HUDGENS, RAYMOND	TN	999# 0	997# 0	L--6	L--19	B--	L--34	L--39	W--44	2
41	HOGAN, JEFF	TN	0	1372/06	W--35	L--22	W--32	L--11	L--30	L--26	2
42	SCHINDLER, MARK J	TN	1254#E4	1229#E4	L--12	L--11	W--45	L--33	D--31	L--36	1
43	PEARSON, CLINTON	TN	1139#e0	1107#e0	L--5	L--35	L--36	L--39	W--45	L--31	1
44	HYDZIK, TIMOTHY	TN	831# 0	818# 0	L--32	B--	L--4	L--26	L--20	L--40	1
45	CRISPIN, JOSHUA A	TN	0	967/05	L--1	L--33	L--42	L--31	L--43	B--	1
46	MEI, MATTHEW GENY	TN	1454#d7	1439#d7	D--15	L--30	U--	U--	U--	U--	(
47	MONEY, JOEL	TN	0	1070/05	L--4	L--23	H--	L--18	L--27	L--38	(

Mid-South Open

PLR#	NAME	ST	PreRate	PstRate	1	2	3	4	5	TOTAL
1	JONES, CURT	TN	2406#M7	2405#M7	W--18	W--22	W--6	W--9	D--3	4.5
2	HERBERS, CHARLES	TN	2103#x4	2118#x4	W--13	W--4	H--	W--10	W--9	4.5
3	LINXWILER, PAUL A	TN	2239#m0	2239#m0	W--8	D--11	W--26	W--15	D--1	4.0
4	LONG, JOEL T	TN	1684#C2	1711#C7	W--35	L--2	W--19	W--20	W--14	4.0
5	PYLANT, GARY M	TN	1967#A4	1940#A4	L--23	D--19	W--27	W--18	W--16	3.5
6	DURHAM, CHARLIE	TN	1902#A5	1914#A5	W--21	W--12	L--1	W--11	D--7	3.5
7	STEWART, DOUGLAS	MS	1701#b9	1719#B2	W--33	L--9	W--24	W--23	D--6	3.5
8	NELSON, FRANK LJU	AR	1557#c2	1606#C5	L--3	W--28	W--30	D--16	W--22	3.5
9	BOLDT, ED D	TN	1917#A0	1931#A0	W--24	W--7	W--16	L--1	L--2	3.0
10	BARTON, MIKE D	TN	1900#a7	1898#a7	W--30	W--17	D--15	L--2	D--11	3.0
11	AGUIRRE, TONY	TN	1814#B2	1832#B4	W--28	D--3	W--22	L--6	D--10	3.0
12	HAWKES, DAVID R	TN	1672#C2	1667#C2	W--25	L--6	L--20	W--30	W--23	3.0
13	HAMILTON, DAVID	AR	1518#c0	1530#c0	L--2	W--35	L--14	W--25	W--24	3.0
14	FIELDS, W THOMAS	TN	1438/13	1492/17	L--16	B--	W--13	W--17	L--4	3.0
15	ARISTORENAS, JUAN	TN	1948#a0	1949#a0	W--20	W--29	D--10	L--3	U--	2.5
16	WRIGHT, JAMES A	TN	1872#a7	1842#a7	W--14	W--23	L--9	D--8	L--5	2.5
17	DILLON, WILLIAM	MS	1628/14	1604/19	W--32	L--10	W--21	L--14	D--20	2.5
18	WOLSKA, GARY D	TN	1602#b0	1606#b0	L--1	W--27	H--	L--5	W--26	2.5
19	THOMPSON, KEN E	AR	1555#c0	1571#c2	D--34	D--5	L--4	W--33	D--21	2.5
20	SIMS, CARLOS	TN	1553#c7	1565#c9	L--15	W--31	W--12	L--4	D--17	2.5
21	MITCHELL, JAMES H	TN	1500#C0	1500#C0	L--6	W--25	L--17	X--	D--19	2.5
22	BARNES, RONNIE C	TN	1734#A5	1702#A5	W--27	L--1	L--11	W--26	L--8	2.0
23	MACLIN, PHILIP S	TN	1515#c0	1545#c2	W--5	L--16	W--29	L--7	L--12	2.0
24	WRANOVIX, MATTHEW	TN	1500#C0	1500#C0	L--9	W--33	L--7	W--32	L--13	2.0
25	SHORT, PETER J	MS	1425/08	1407/13	L--12	L--21	W--35	L--13	W--30	2.0
26	BOWEN, JOHN	MS	1258#E2	1282#E2	B--	W--34	L--3	L--22	L--18	2.0
27	WRIGHT, JEFF	MS	1149/09	1253/14	L--22	L--18	L--5	W--31	W--33	2.0
28	HELLUMS, HERB L	MS	0	1225/04	L--11	L--8	L--33	X--	W--32	2.0
29	FORNOF, BILL W	MS	1664#c7	1639#c7	W--31	L--15	L--23	F--	U--	1.0
30	KINNEY, THOMAS E	TN	1448#d5	1415#d5	L--10	W--32	L--8	L--12	L--25	1.0
31	CABANEDA, LETICI	MS	1287/05	1167/09	L--29	L--20	L--32	L--27	B--	1.0
32	WRIGHT, BRENT	TN	1211/03	1167/08	L--17	L--30	W--31	L--24	L--28	1.0
33	BOYD, JERRY W	MS	0	1203/05	L--7	L--24	W--28	L--19	L--27	1.0
34	ROSE, JOHN A	TN	1977#A0	1932#A0	D--19	L--26	U--	U--	U--	0.5
35	DODDS, THOMAS R	MS	1159/05	1151/08	L--4	L--13	L--25	F--	U--	0.0

Tennessee Class Championship

#	NAME	ST	PreRate	PstRate	1	2	3	4	TOTAL
1	MELVIN, BILL	AL	2168*x2	2209*x5	W---2	W---5	W---3	D---4	3.5
2	BURNETT, RONALD W	TN	2459*M4	2452*M4	L---1	W---4	W---5	W---6	3.0
3	RUSS, EDWARD	GA	2085*x2	2107*x2	D---4	W---6	L---1	W---5	2.5
4	MEIDINGER, CHARLE	AL	2177*m7	2177*m7	D---3	L---2	W---6	D---1	2.0
5	DICKERSON, LEONAR	TN	2169*x9	2146*x9	W---6	L---1	L---2	L---3	1.0
6	GRAHAM, CURTIB AD	NC	2016*A0	1982*A0	L---5	L---3	L---4	L---2	0.0

#	NAME	ST	PreRate	PstRate	1	2	3	4	TOTAL
1	GLOVER, HASKELL L	TN	1809*B0	1886*A5	W---3	W---6	W---2	W---5	4.0
2	BEDELL, LESTER B	GA	1940*a4	1958*a8	W---6	W---4	L---1	W---3	3.0
3	JONES, ELLIS EUGE	TN	1927*A0	1923*A0	L---1	W---5	W---4	L---2	2.0
4	SHAFER, GETH A	TN	1953*a2	1935*a2	W---5	L---2	L---3	U---	1.0
5	BOLDT, ED D	TN	1924*a0	1900*a0	L---4	L---3	W---6	L---1	1.0
6	AGUIRRE, TONY	TN	1828/11	1756/14	L---2	L---1	L---5	B---	1.0

#	NAME	ST	PreRate	PstRate	1	2	3	4	TOTAL
1	CRUMP, JOSEPH	TN	1782*b0	1829*B5	W---8	W---2	W---9	W---4	4.0
2	BARNES, RONNIE C	TN	1750*A5	1773*A5	W---10	L---1	W---7	W---9	3.0
3	NEWKIRK, ED	TN	1639*C2	1666*C4	D---4	D---10	D---6	W---7	2.5
4	RYLANDER, JIM	TN	1725*b0	1720*b0	D---3	D---6	W---5	L---1	2.0
5	LEWIS, JAMES B	TN	1628*B4	1620*B4	L---7	W---8	L---4	B---	2.0
6	PRICE, JOHN M	TN	1740*b6	1711*b6	L---9	D---4	D---3	D---8	1.5
7	LYNN, BOBBY J	TN	1711*B5	1686*B5	W---5	D---9	L---2	L---3	1.5
8	MC CREERY, BILL	TN	1641*C6	1635*C6	L---1	L---5	W---10	D---6	1.5
9	STREET, CHESTER M	TN	1631*C0	1634*C0	W---6	D---7	L---1	L---2	1.5
10	PORTER, ED	TN	1656*C5	1627*C5	L---2	D---3	L---8	U---	0.5

#	NAME	ST	PreRate	PstRate	1	2	3	4	TOTAL
1	WILSON, STEVEN W	TN	1497*D5	1545*D5	W---9	W---4	W---6	U---	3.0
2	TACKETT, STANTON	KY	1476*C5	1509*C5	W---3	L---7	W---4	W---5	3.0
3	BELBUSTI, EDWARD	TN	1263/09	1386/13	L---2	W---9	W---8	W---6	3.0
4	COBB, MARK E	TN	1574*c7	1556*c7	W---7	L---1	L---2	W---10	2.0
5	SCHWARTZ, LEON	TN	1508*C5	1503*C5	W---8	L---6	W---7	L---2	2.0
6	BENTRUP, BEN	TN	1489*c7	1482*c7	W---10	W---5	L---1	L---3	2.0
7	HERNANDEZ, JAMIE	TN	1471*D0	1476*D0	L---4	W---2	L---5	W---8	2.0
8	WHITE, MICHAEL W	TN	1462*D0	1427*D0	L---5	W---10	L---3	L---7	1.0
9	SHAFER, STEVE J	TN	1421*d7	1375*d7	L---1	L---3	L---10	B---	1.0
0	HEATH, ROY L	AL	1419*D0	1398*D0	L---6	L---8	W---9	L---4	1.0

#	NAME	ST	PreRate	PstRate	1	2	3	4	TOTAL
1	DROUGHTON, JEFFRE	KY	1286*E4	1354*D5	W---7	W---6	W---2	W---3	4.0
2	WILLIAMS, LARRY	TN	1347*c5	1369*c5	W---3	W---5	L---1	W---4	3.0
3	PURUCKER, STEVEN	TN	1334/13	1328/17	L---2	W---7	W---5	L---1	2.0
4	WEST, KEN P	TN	1295*E0	1276*E0	L---5	B---	W---6	L---2	2.0
5	WARE, BILLY	TN	1242*E0	1236*E0	W---4	L---2	L---3	B---	2.0
6	RICHARDS, JAMES E	TN	1219*E2	1215*E2	B---	L---1	L---4	W---7	2.0
7	GREEN, GARY	TN	1358* 0	1300* 0	L---1	L---3	B---	L---6	1.0

#	NAME	ST	PreRate	PstRate	1	2	3	4	TOTAL
1	PURUCKER, KEVIN	TN	1018/05	1203/09	W---5	W---6	W---2	D---3	3.5
2	GIN, KE	TN	1191*E5	1212*E5	W---6	W---4	L---1	W---5	3.0
3	OSBORN, T J	TN	1081*d5	1089*d5	L---4	D---5	W---6	D---1	2.0
4	SCHLEGEL, ERIK JO	TN	1036*e2	1052*e2	W---3	L---2	L---5	W---6	2.0
5	TOWLE, TERRY W	TN	1292/09	1211/13	L---1	D---3	W---4	L---2	1.5
6	HUDGENS, RAYMOND	TN	1071* 0	1017* 0	L---2	L---1	L---3	L---4	0.0

The Problem Corner

by Raymond Hudgens

While I was looking at chess books in a local bookstore recently, Mark Dvoretsky's *Secrets of Chess Training* fell into my hands. In one of the later chapters he recommends using endgame studies and problems as a means of sharpening one's tactical skills. So chess problems can be more than brain teasers!

Diagram 1: 1.b7xa8 = N Kxg2 2.Nb6 any 3.a8 = Q mate

Diagram 2: 1.Rc8 + Rd8 2.Qc4 Kf8 3.Qxd5 Ke7 4.Qe5 + Kd7 5.Rc7 mate

TCA Board of Directors

President: Ed Porter
904 Wilson Pike
Brentwood, TN 37027
Home: (615) 371-9784
Work: (615) 251-2449
FAX: (615) 251-3866

Scholastic Coordinator:
Harry D. Sabine
P.O. Box 381
Crossville, TN 38557
Home: (615) 484-4878
Work: (615) 484-9593
FAX: (615) 456-7624

Vice-President: Douglas Nichols
900 Mountain Creek Road
Chattanooga, TN 37405
Work: (615) 265-2271, ext. 413
Home: (615) 870-1101

TCN Editor: VACANT

Secretary-Treasurer:
Leonard S. Dickerson
420 Oran Road
Knoxville, TN 37922
Home: (615) 966-1095
Work: (615) 574-4676

Director — East Tennessee:
Chester Crowley
109 Iroquois Lane
Clinton, TN 37716
Home: (615) 457-7965
Work: (615) 457-3100
FAX: (615) 531-2958

Postal Chess Coordinator:
Lee Edwards
406 Stahlman Building
211 Union Street
Nashville, TN 37201
Home: (615) 883-7522
Work: (615) 726-3395

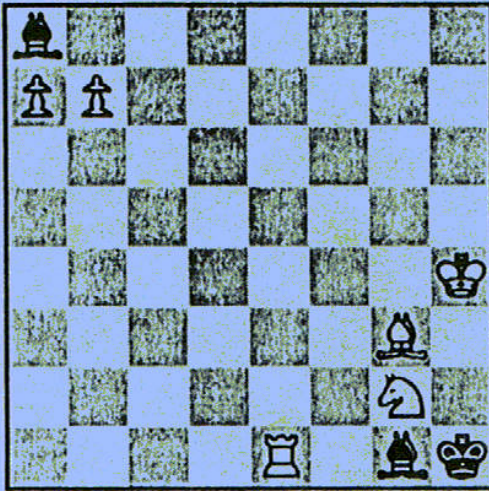
Director — Middle Tennessee:
Peter P. Lahde
2609 Sailboat Court
Nashville, TN 37217
Home: (615) 361-4588
Work: (615) 794-8000

Tournament Coordinator:
Richard Igou
400 Rhodora Court, Apt. F
Knoxville, TN 37923
Home: (615) 690-6810
Work: (615) 574-1839

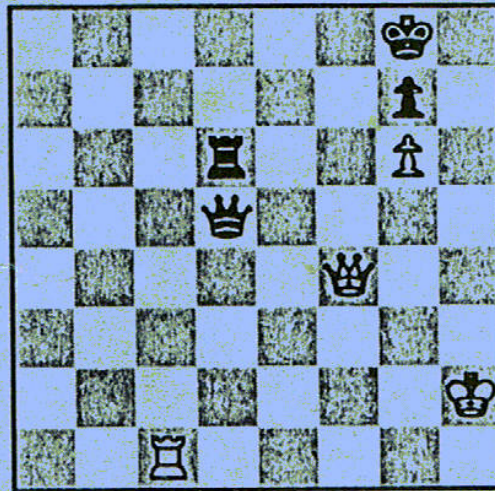
Director — West Tennessee:
Joseph Mooney
361 Hwy 18
Jackson, TN 38301
Home: (901) 427-0481
Work: (901) 423-1339

Problem Corner

by Raymond Hudgens



White mates in 3



White mates in 5

Tennessee Chess News
P.O. Box 2431
Brentwood, TN 37024-2431

NON-PROFIT ORGANIZATION
U.S. POSTAGE PAID
BRENTWOOD, TN
PERMIT NO. 91