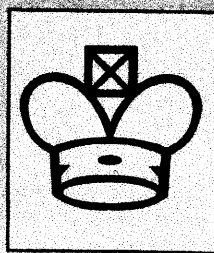


tennessee chess
association

Tennessee Chess News

APRIL - MAY 1994

1994 TENNESSEE SCHOLASTIC TEAM RESULTS!



TENNESSEE CHESS NEWS

The **Tennessee Chess News** is the official publication of the Tennessee Chess Association. TCA annual dues are \$10 for a *regular* membership, \$4 for a *student* membership. Additional members of a family may join for one dollar each, but only one issue of TCN will be mailed per family. All memberships expire August 31.

Tax-deductible Patron Memberships are available beginning at \$25 per year for those who wish to help support the TCA. These memberships expire one year from date of payment. Patron memberships categories and benefits are as follows:

PATRON - \$25

- receive **TCN** by First Class Mail with your name listed in each issue of **TCN**;

PATRON KNIGHT - \$50

- all Patron benefits plus a commemorative plaque;

PATRON BISHOP - \$100

- all Patron Knight benefits plus free entry to the Tennessee Open;

PATRON KING - \$500

- all Patron Bishop benefits plus free lodging at the Tennessee Open;

PATRON FOUNDER - \$1000

- all Patron King benefits plus free entry into all Turkey Tour events.

TCA memberships are required for participation in all rated chess events in Tennessee except scholastic-only events, and may be purchased at any chess tournament.

2 *Tennessee Chess News*

TENNESSEE CHESS NEWS EDITORIAL STAFF

Voting Editor:
Ed Boldt

Managing Editor:
Richard Westbrook

Contributing Editors:
John Anthony;
W. A. Cummings;
Raymond Hudgens;
Rick Igou;
Ed Porter;
Dave Rushing;
Harry Sabine.

ADVERTISING RATES

Full Page	\$40.00
Half Page	\$20.00
One-third Page	\$14.00
One-Quarter Page	\$10.00
One-Eighth Page	\$ 7.00

Pre-printed flyers for insert must be 8½ x 11" in size, 60 pound Offset, and delivered flat. *Only one insert is available per issue.* \$15.00

TOURNAMENT ANNOUNCEMENTS

TCN prints listings of upcoming tournaments in each issue for free, including those from other states. Submit all announcements to **Rick Igou**, Tournament Coordinator.



TABLE OF CONTENTS



President's Column by Ed Porter.....	4
Editor's Etcetera by Richard Westbrook.....	4
1994 TN Individual and Team Scholastic Championship Report by Harry Sabine.....	5
1994 TN Team Championship Results by Harry Sabine.....	6
Tennessee Chess Growth by Dave Rushing.....	14
Annotated Game by John Anthony.....	16
Scholastic Chess in Memphis by W. A. Cummings.....	19
The Gambit Player by Richard Westbrook.....	20
From the USCF.....	24
Turkey Tour Leaders by Rick Igou.....	26
Tournaments! Tournaments! by Rick Igou.....	29

PRESIDENT'S COLUMN

(By Ed Porter)

Saturday, April 16, 1994 will go down in Tennessee Chess History. Sam Palatnik, former coach of the Ukrainian Team, moved to Nashville. Sam, his charming wife Paulina and lovely daughter Olga, and his French Poodle arrived via Helsinki and New York.

Sam and his family were greeted by TCA Patron Martin (Dick) Katahn, yours truly and my wife Gay, Ed Newkirk and his family, Lee Edwards, TCA Postal Coordinator. TWA delivered all safely. Since their arrival, Sam and his family have been oriented to the USA by the Zhislin family and other members of the TCA.

Sam and his family will reside in Nashville for the next two to three

(Continued on page 25)

EDITOR'S ETCETERA

(By Richard Westbrook)

As I put the finishing touches on this issue of the TCN, a somewhat fractured version of a famous, rhythmic exhortation has been running through my mind: "Done at last! Done at last! Thank God Almighty, done at last!" My apologies to the late Dr. M. L. King, Jr., for fracturing his phrase, and to the membership for trying your patience with the belatedness of this issue! Some of the lateness resulted because of a desire to include scholastic news; some of it resulted from my being busier than the proverbial one-armed paper hanger. (I'm moving!!)

I thank **everyone** who submitted material. Due to time and space constraints, information sent in by **Doug Nichols**, **Lee Edwards**, and **Ed Newkirk** will appear in the June-July issue which I plan to complete around 7/1. Additional material on Tennessee Scholastics will be in that issue. The August-September issue is slated for completion in early August so that it will be out prior to the Open.

**1994 TENNESSEE
INDIVIDUAL AND TEAM
SCHOLASTIC
CHAMPIONSHIP REPORT**
(By Harry Sabine)

Enclosed are ... reports on the 1994 State Scholastic. Enjoy your reading!

We have had a fantastic year. The individual regionals were a great success with a record 386 players. The team regionals also set a record with 572 players and 123 teams participating. Financially, all scholastic tournaments were in the black by \$575.

Tennessee is currently 5th in the nation in scholastic members, 2nd in scholastic affiliates, and 3rd in scholastic members per population. Not too shabby!

The dates have been set for the 1995 State Scholastic Tournaments. The individual regionals will be held on January 28th with the finals on February 11th. The team regionals will be on March 11th with the finals on March 25th. Please mark your calendars accordingly.

Our Grandmaster-in-Residence, Sam Palatnik, is here and already hard at work. If you would like to arrange for him to do a simul for your club or for any other function, please contact Dick Katahn at 4607 Belmont Park Terrace, Nashville, TN 37215. For adult functions his fee is open to negotiation. For Tennessee scholastic events he is available free but room, board, and a mileage fee will be charged. For all scholastic functions, you must go through your regional scholastic coordinator and not contact Dick directly.

(More information on the team scholastics will appear in the next issue of TCN - rw.)

**TENNESSEE SCHOLASTIC TEAM FINALS
MIDDLE TENNESSEE STATE UNIVERSITY,
MURFREESBORO, TN
APRIL 9, 1994**

1. High School Section:

<u>#</u>	<u>School</u>	<u>City</u>	<u>Rd1</u>	<u>Rd2</u>	<u>Rd3</u>	<u>Rd4</u>
1)	Hume Fogg HS	Nashville	1.0	1.0	2.0	3.0
2)	Germantown HS	Germantown	0.5	1.5	2.5	3.0
3)	Cocke County HS	Newport	1.0	1.5	2.5	3.0
4)	McMinn Co HS	Athens	1.0	2.0	2.0	2.5
5)	Athens JH	Athens	0.0	1.0	2.0	2.5
6)	Tipton Rosemark	Millington	1.0	1.5	1.5	2.0
7)	Hermitage Springs	Red Boil. Sp.	0.5	1.5	1.5	2.0
8)	Univ. Sch-Jackson,	Jackson	1.0	1.0	2.0	2.0
9)	Hillsboro HS	Nashville	0.0	1.0	1.0	1.0
10)	Cumberland Co HS,	Crossville	0.0	0.0	0.0	1.0
11)	Maryville HS	Maryville	0.0	0.0	1.0	1.0
12)	Maplewood HS	Nashville	0.0	0.0	0.0	0.0
13)	White Station HS	Memphis	---	---	---	---
14)	Tri-Cities Chris.	Kingsport	---	---	---	---
15)	Hillwood HS	Nashville	---	---	---	---

**SUPPORT SCHOLASTIC
CHESS IN TENNESSEE:
BECOME A
VOLUNTEER OFFICIAL!**

**TENNESSEE SCHOLASTIC TEAM FINALS
MIDDLE TENNESSEE STATE UNIVERSITY,
MURFREESBORO, TN
APRIL 9, 1994**

2. Junior High Section:

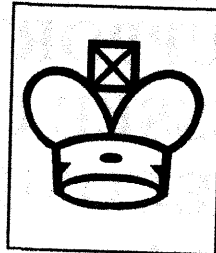
<u>#</u>	<u>School</u>	<u>City</u>	<u>Rd1</u>	<u>Rd2</u>	<u>Rd3</u>	<u>Rd4</u>
1)	White Station Mid	Memphis	1.0	2.0	3.0	4.0
2)	N. Cumberland E.	Crossville	0.0	1.0	2.0	3.0
3)	Athens JH	Athens	1.0	2.0	2.0	3.0
4)	Mary Blount Ele.	Maryville	0.5	1.0	1.5	2.5
5)	Hume Fogg HS	Nashville	0.5	1.5	2.5	2.5
6)	Tipton Rosemark	Millington	1.0	1.0	1.0	2.0
7)	Lynn View Middle	Kingsport	0.5	1.0	1.0	2.0
8)	Homestead Ele.	Crossville	1.0	1.0	1.5	2.0
9)	Blountville Middle	Blountville	0.5	0.5	1.5	2.0
10)	First Assembly C.	Memphis	1.0	1.0	2.0	2.0
11)	Richview Mid S.	Clarksville	1.0	2.0	2.0	2.0
12)	Brentwood M. S.	Brentwood	0.0	0.5	0.5	1.5
13)	Frayser HS	Memphis	0.0	0.5	1.5	1.5
14)	Red Bank Middle	Chattanooga	0.0	0.0	1.0	1.0
15)	Jefferson JH	Oak Ridge	0.0	0.5	0.5	0.5
16)	Bellevue Mid. S.	Nashville	0.0	0.5	0.5	0.5

**SUPPORT
TENNESSEE CHESS:
BECOME
A PATRON MEMBER!**

TENNESSEE SCHOLASTIC TEAM FINALS
MIDDLE TENNESSEE STATE UNIVERSITY,
MURFREESBORO, TN
APRIL 9, 1994

3. Elementary Section:

<u>#</u>	<u>School</u>	<u>City</u>	<u>Rd1</u>	<u>Rd2</u>	<u>Rd3</u>	<u>Rd4</u>
1)	Head Mid School	Nashville	1.0	2.0	3.0	3.5
2)	Scales Elementary	Brentwood	1.0	1.5	2.0	3.0
3)	Glenwood Ele.	Oak Ridge	0.5	1.5	2.0	3.0
4)	St. George's D. S.	Germantown	1.0	1.0	2.0	2.5
5)	Goodland Ele.	Oak Ridge	1.0	1.5	1.5	2.5
6)	Snowden School	Memphis	0.0	0.5	1.0	2.0
7)	Hopewell Ele.	Cleveland	0.5	1.0	1.5	2.0
8)	Tipton Rosemark	Millington	1.0	1.0	1.5	2.0
9)	Andrew Jackson	Old Hickory	0.0	0.5	1.0	2.0
10)	Alcoa Elementary	Alcoa	1.0	2.0	2.0	2.0
11)	Tenn. Temple A.	Chattanooga	0.0	1.0	2.0	2.0
12)	Charlotte Ele.	Charlotte	0.0	1.0	1.5	1.5
13)	Richland Ele.	Memphis	0.5	0.5	1.0	1.5
14)	Homestead Ele.	Crossville	0.5	1.0	1.0	1.0
15)	Linden Ele.	Oak Ridge	0.0	0.0	1.0	1.0
16)	Central Interm.	Harriman	0.0	0.0	0.0	0.5



**TENNESSEE SCHOLASTIC TEAM FINALS
MIDDLE TENNESSEE STATE UNIVERSITY,
MURFREESBORO, TN
APRIL 9, 1994**

4. Primary Section:

<u>#</u>	<u>School</u>	<u>City</u>	<u>Rd1</u>	<u>Rd2</u>	<u>Rd3</u>	<u>Rd4</u>
1)	St. George's Day	Germantown	1.0	2.0	3.0	3.5
2)	Richland Ele.	Memphis	1.0	2.0	2.0	3.0
3)	Alcoa Ele. Sch.	Alcoa	1.0	2.0	2.5	3.0
4)	Snowden School	Memphis	0.0	1.0	2.0	3.0
5)	Julia Green Ele	Nashville	1.0	1.0	1.5	2.5
6)	Montessori Acad.	Brentwood	0.0	1.0	2.0	2.0
7)	Woodland Ele.	Oak Ridge	0.0	0.0	1.0	2.0
8)	Lausanne Col.	Memphis	0.0	0.0	1.0	2.0
9)	Granbery Ele.	Nashville	0.0	1.0	1.0	2.0
10)	Eakin Ele. Sch.	Nashville	1.0	1.0	1.5	1.5
11)	Glenwood Ele.	Oak Ridge	0.0	1.0	1.5	1.5
12)	Homestead Ele.	Crossville	1.0	1.0	1.0	1.0
13)	Hopewell Ele.	Cleveland	1.0	1.0	1.0	1.0



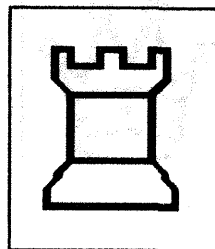
APRIL - MAY, 1994 9

HIGH SCHOOL TEAM CHAMPIONS (Lists Provided by Harry Sabine)

<u>Year</u>	<u>School</u>	<u>City</u>
1971	Father Ryan H.S.	Nashville
1972	Montgomery Bell Academy	Nashville
1973	Montgomery Bell Academy	Nashville
1974	Montgomery Bell Academy	Nashville
1976	Montgomery Bell Academy	Nashville
1977	Montgomery Bell Academy	Nashville
1978	Germantown High School	Germantown
1979	Christian Bro. H.S. - CoChampion	Memphis
	Baylor School - Co-Champion	Chattanooga
1980	Christian Bro. H.S.-CoChampion	Memphis
	Baylor School - Co-Champion	Chattanooga
1981	Cumberland Co. H.S.	Crossville
1982	Cumberland Co. H.S.	Crossville
1983	Christian Bro. H.S.	Memphis
1984	Webb School	Knoxville
1985	Cumberland Co. H.S.	Crossville
1986	Cumberland Co. H.S.	Crossville
1987	Cumberland Co. H.S.	Crossville
1988	Auburndale School	Cordova
1989	St. Benedict(Auburndale)	Cordova
1990	Memphis Univ. Sch.	Memphis
1991	Memphis Univ. Sch. - Co-Champion	Memphis
	Cocke County H.S. - Co-Champion	Newport
	Fairview H.S. - Co-Champion	Fairview
1992	Cocke Co. H.S.	Newport
1993	Evangelical Christian Sch.	Cordova
1994	HUME FOGG H.S.	NASHVILLE

JUNIOR HIGH TEAM CHAMPIONS

<u>Year</u>	<u>School</u>	<u>City</u>
1978	Baylor School	Chattanooga
1979	Baylor School	Chattanooga
1980	Baylor School	Chattanooga
1981	Martin Junior H.S.	Crossville
1982	Martin Junior H.S.	Crossville
1983	Martin Junior H.S.	Crossville
1984	Martin Junior H.S.	Crossville
1985	Martin Junior H.S.	Crossville
1986	Auburndale School	Cordova
1987	Auburndale School	Cordova
1988	Auburndale School	Cordova
1989	Lauderdale Mid School	Ripley
1990	Memphis Univ. School	Memphis
1991	Memphis Univ. School	Memphis
1992	Evangelical Chris. Sch.	Cordova
1993	Hume Fogg High School	Nashville
1994	WHITE STATION M.S.	MEMPHIS



ELEMENTARY TEAM CHAMPIONS

<u>Year</u>	<u>School</u>	<u>City</u>
1978	Cumberland Elem. Sch.	Crossville
1979	Cumberland Elem. Sch.	Crossville
1980	Cumberland Elem. Sch.	Crossville
1981	Tabor-Cumberland E.	Crossville
1982	Martin Junior H.S.	Crossville
1983	Auburndale School	Cordova
1984	Auburndale School	Cordova
1985	Auburndale School	Cordova
1986	Auburndale School	Cordova
1987	Auburndale School	Cordova
1988	Auburndale School	Cordova
1989	St. George's Day School	Germantown
1990	St. George's Day School	Germantown
1991	Clinton Elem. School	Clinton
1992	Richland Elem. School	Memphis
1993	St. George's Day Sch.	Germantown
1994	HEAD MIDDLE SCHOOL NASHVILLE	



PRIMARY TEAM CHAMPIONS

<u>Year</u>	<u>School</u>	<u>City</u>
1980	Crossville E. Sch.	Crossville
1981	Homestead E. S. - Co-Champion	Crossville
	Franklin Rd. Bapt. - Co-Champion	Murfreesboro
1982	Homestead E. S.	Crossville
1983	Homestead E. S.	Crossville
1984	Auburndale School	Cordova
1985	Auburndale School	Cordova
1986	Auburndale School	Cordova
1987	Auburndale School	Cordova
1988	Auburndale School	Cordova
1989	Lausanne School	Memphis
1990	Christ Meth. Day	Memphis
1991	Clinton E. S. - Co-Champion	Clinton
	Ripley E. S. - Co-Champion	Ripley
1992	Charlotte E. S.	Charlotte
1993	Glenwood E. S.	Oak Ridge
1994	ST. GEORGE'S DAY	GERMANTOWN



TENNESSEE CHESS GROWTH HIGHEST IN U.S.

(By Dave Rushing)

According to some statistics that Harry Sabine has provided, the percentage change that Tennessee's USCF membership has seen since January, 1991, is the highest by far (172%) of any state in the USA. While the actual ranking of Tennessee's number has only risen from 24th in 1991 to 14th in 1994, this rate of change has been phenomenal. Kentucky's rise from 25th to 20th in the 3-year period in terms of actual membership, is second in rank of percentage change with 86%, and third place Arizona has a growth rate of 82%, rising from 21st to 16th in actual membership ranking.

The big states for actual membership are New York (7,688), Southern California (4,0805). Northern California (4,238) and Illinois (4,010). Tennessee's 1,927 membership breaks down:

Adult		Youth	
Regular Members	410	Youth Members	161
Life Members	92	Scholastic Members	1199
Sustaining Members	15	Other	8
Other	42	(Family & Participating Youth)	
(Senior, Blind, Trial)			
Total:	559	Total:	1368

The spectacular growth during this three-year span has come almost exclusively in the Scholastic Member group. While the entire Adult category grew from 479 members in January, 1991, to 559 in January 1994, (17% growth rate), the Scholastic sector grew from 74 to 1199 (1520%!!). The Junior (Youth) category was 127 in January, 1991, so its 27% growth rate is more in line with the adult section.

(Continued on page 15)

As evidence of this Scholastic boom, Tennessee's total for this category (74) was 21st in the USA in 1991, behind New York's #1 ranking with 466. While New York has maintained top ranking with 2,524 Scholastics at the latest count, Tennessee has risen to **THIRD** in the country, with Illinois second at 1,435 in January, 1994.

The emphasis that Tennessee's organizers have placed on the development of programs in schools across the state has resulted in the growth of affiliate clubs from a 10th-ranked 25 in January, 1991 to a 3rd-ranked 69 today. Only Illinois (77) and New York (76) have more USCF Scholastic affiliates than Tennessee. By contrast, the number of Regular affiliates in Tennessee has remained constant (17 in 1991 - - 15 today).

We should all be proud of this effort and help to do what it will take to make Tennessee Number One in ALL categories!

Problem Corner Solutions:

(By Raymond Hudgens)

Number 1: 1) Qa6 exf 2. e3 mate; or 1. Qa6 Kxf2 2. Qf6 mate.

Number 2: I have included this endgame study which occurred in a recent game of mine. I played black and had exchanged both his rooks for mine to give me a chance to queen one of my pawns. This occurred just before the position in the diagram. 1...Kb6 2.Kf3 Ka5 3.Ke2 Kb4 4.Kf3 Kc3 5.Kg3 Qe4 6.Kf2 Kd2 7.Kg3 Be5+ 8.Kf2 Qf5+ 9.Kg2 Qg4+ 10.Kf2 Bd4+ 11.Kf1 Qh3 mate. *(This results in a pretty "criss-cross" mate. Of course, also possible is 11...Qg1 mate - rw.)*

ANNOTATED GAME

(by John Anthony)

Anthony, John (2094) - Rowan, Tom (2210)
Greater Knoxville CC - Oak Ridge CC Match, 1994

1.e4 e6 2.d4 d5 3.♟d2

The Tarrasch variation.

3...♟f6

Black's most aggressive line. His main idea is to put great pressure on White's d + e pawns. The resulting play can become quite tricky. Here's an example from master play: 4.e5 ♟fd7 5.f4 c5 6.c3 ♟c6 7.♟df3 cd4 8.cd4 ♟b6 9.g3 ♟e7 10.♟h3 f6 11.♟e2 0-0 12.♟e6+ ♟h8 13.♟d5 fe5 14.fe5 ♟de5 15.de5 ♟e5 16.♟f4 ♟f3+ 17.♟f3 ♟b4+ 18.♟f1 ♟h3+ 19.♟g2 ♟c6 20.♟h3 ♟h1+ 21.♟f2 ♟c5+ 22.♟d4 ♟h2+ 23.♟g2 ♟ad8 24.♟g4 ♟d4 0-1. Lukyanov-Gleizerov. USSR Central Chess Club, 1986.

4.e5 ♟fd7 5.f4

More ambitious than the more common 5.♟d3.

5...c5 6.c3 ♟c6 7.♟df3

An odd move that's necessary to counter Black's pressure against the d + e pawns. White will follow up with ♟ge2, further shoring up his pawns.

7...cd4

The Leningrad System.

8.cd4 ♟b6 9.a3

To stop 9...♟b4+. The main line is 9.g3, but then things can get tricky after 9...♟b4+ 10.♟f2 g5; or 9...f6 10.♟h3

♙b4+ 11.♖f1 fxe5 12.fxe5 O-O 13.♗g2 ♟dxe5 14.dxe5
♟xe5. Not being prepared for these lines, I try to get a
side variation.

9...a5

If White can get in b4 and Be3 it would be easier for
him to guard his center pawns.

10.h4

The main idea of this variation. White prepares a
kingside attack.

10...f6?!

This makes it too easy for white to develop his kingside
pieces. Maybe Black should try 10...♙e7 with the idea
of ...a4 and ...♗b3, trying to enter an endgame.

11.♙d3 ♙e7

11...♟xd4?? 12.♟xd4 ♗xd4 13.♙g6+ 1-0.

12.♟e2 O-O 13.♗c2 f5 14.♙e3

Since ...fxe4 is no longer possible, White can develop
on the black diagonal - - because there is no pin on his
QP.

14...♗d8

Maybe Black should undertake to untangle his
queenside: ...♟db8, ...♙d7, ...♞ac8, etc.

15.♖f2?!

15.h5 is better.

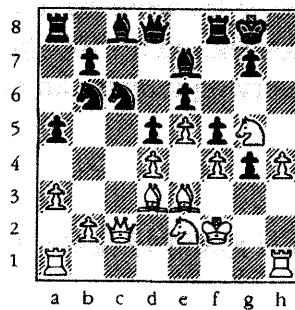
15...h5 16.g4

Now White must sacrifice a pawn to continue his attack.

16...hg4 17.♘g5

White's attacking possibilities give him compensation for the pawn.

17...♘b6 [diagram]



After 17...♘b6

18.♖ag1!

The key to White's attack. The threat is ♖xg4.

18...g6

So that if 19.♖xg4 fxg4 (...♙xg5? 20.♖xg5) 20.♙xg6, the g-pawn isn't taken with check. Now Black can defend with 20...♖f5!, blocking out the White queen.

19.♙e1

White steps out of the pin on his f-pawn that would

arise after ♖xg4 and ...fxg4.

19...♜g7 20.h5 ♜h8 21.h6+ ♜f8

21...♜xh6?? 22. ♜xh6 ♜xh6 23.♟f7+ 1-0.

22.♜g4 fg4 23.♜g6 ♟c4

If 23...♜xg5 24.fxg5 ♜e7 25.♜d3 and White will advance his g + h pawns.

24.♜c1 ♜b6

Black has only 3 minutes left to reach move 40.

25.♟h7+ ♜g8 26.♜h5 ♜h7 27.♜g6+ ♜f8 28.♜h7

I was moving too fast to notice 28.Qe8 mate.

28...♜b4+ 29.ab4 1-0.

Mate is forced in three moves.

Scholastic Chess in Memphis

(By W. A. Cummings)

In an effort to progress scholastic chess in Memphis, Shelby County Scholastic Chess has contacted many schools in our area. As a result, many schools have come on board. One of the most noted is Snowden with approximately 150 students led by Mr. Frank Wranovix. Other schools less than three years into the process have a "TAKE CHARGE" attitude now, hosting tournaments independently. Even home schoolers have a club. Home schoolers boast of approximately 65 students taking chess lessons this year. Some meet at Berclair Church of the Nazarene and some at Central Church Family Life Center.

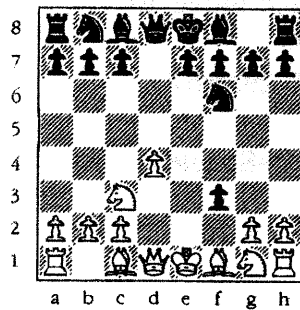
If schools need support from this organization, contact West Tennessee Regional Director, Bill Cummings at either 3532 Davieshire Dr., Bartlett, Tn., 38133, or telephone (901) 348-1600.

APRIL - MAY, 1994 / 19

THE GAMBIT PLAYER

(By Richard Westbrook)

In the December-January issue, I presented some information on the Blackmar-Diemer Gambit -- a bit of background and three games. One of the beauties of the BDG is that it can be reached in a variety of ways and from either d-pawn or e-pawn openings! Tim Sawyer, in his *Blackmar-Diemer gambit keybook* (Thinkers' Press, 1992), states that there are 20 "separate and reasonable" move orders to get to the main position after Black's fourth move. [diagram]



The three most common are

I) 1.d4 d5 2.e4 dxe4 3.♘c3 ♘f6 4.f3 exf3;

II) 1.d4 ♘f6 2.♘c3 d5 3.e4 dxe4 4.f3 exf3; and,

III) 1.d4 ♘f6 2.f3 d5 3.e4 dxe4 4.♘c3 exf3.

There are other interesting transpositions. It is easy enough to arrive at a thematic BDG position from the Caro-Kann Defense: 1.e4 c6 2.d4 d5 3.♘c3 dxe4 4.f3 which is called the Fantasy Variation. ("A rose by any other name....") Black has advanced his c-pawn in lieu of developing his g-knight. In all likelihood, that will be nothing more than a transposition into the Ziegler Defense to the BDG in which Black plays ...c6 at move 5. (See Owen-Sammes, 1989, below.) Obviously, similar lines can arise from Slav Defense move orders.

Transposing from the French is quite possible as well. 1.e4 e6 2.d4 d5 3.♘c3 dxe4 4.f3! Of course, Black may not be so

obliging as to play the Rubenstein variation, so you should be prepared to play against the Classical (3...♟f6 -- see Diemer-N.N.) or the Winawer (3...♞b4). Thematically related in the Dutch Defense is the respected Staunton Gambit. (See Reti-Euwe, below.) The Center Counter is capable of changing into a BDG: 1.e4 d5 2.d4 3.exd4 4.f3. So, too, can the Nimzovitch Defense be steered into BDG lines: 1.e4 ♟c6 2.d4 d5 3.♟c3 dxe4 4.f3.

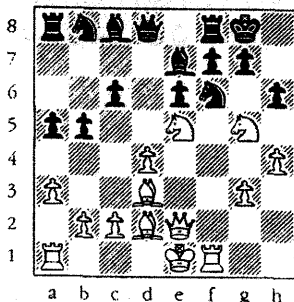
It is true that Black can run and hide in a Pirc/Modern setup if he wants. In this case there is little one can do except have a prepared line for that defense and be on the lookout for advantageous opportunities to jettison the f-pawn. Nevertheless, in most openings, White can find ways to wander into BDG territory. Below are some sample games.

The great Smyslov ventures into a Fantasy Variation Ziegler Defense!

Smyslov - Gereben

Match, Moscow-Budapest, 1949

1.e4 c6 2.d4 d5 3.f3 e6 4.♞e3 dxe4 5.♟d2 exf3 6.♟gf3 ♟f6
7.♟c4 ♟d5 8.♞d2 ♞e7 9.♞d3 ♞h4+ 10.g3 ♞f6 11.♞e2 a5
12.a3 0-0 13.h4! ♞e7 14.♟g5 ♟f6 15.♟e5 b5 16.♞f1 h6
[diagram]



17.♞xf6! gxf6

*If 17...hxcg5 18.♞h5 g6 19.♞xcg6+-;
or if 17...♞xf6 18.♞e4 g6
19.♟xcg6+-.*

18.♞h5 fg5 19.♞h6 f5 20.♞g6+
♞h8 21.hg5 ♞a3 22.♞e2 ♞d5
23.♟f3 1-0.

(Continued on page 22)

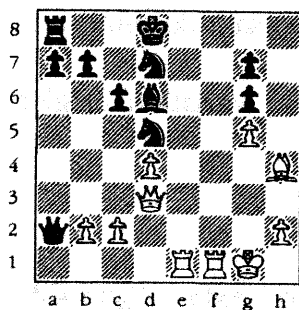
APRIL - MAY, 1994 / 21

Next, an interesting correspondence game demonstrates the exploitation of typical weaknesses.

Owen - Sammes

Corres '87-88 (cited in Sawyer, page 15.)

1.d4 d5 2.e4 dxe4 3.♖c3 c6 4.♙c4! (Sawyer) 4...♙f5 5.f3 exf3
6.♗f3 e6 7.0-0 ♗e7 8.♗e5 ♗g6 (8...♗f6? 9.♗xf7! ♗xf7 10.♞xf5
+-) 9.♗e4! ♗f6 10.♗xg6 hxg6 11.♗g5 ♞f8 12.♙xe6 fxe6
13.♗xe6 ♗d7 14.♗xf8 ♙xf8 15.♗d3 ♗d8 16.♗g5 ♗f7
17.♞ae1 ♗bd7 18.♗h4 ♙d6 19.g4 ♗xa2 ("Gone fishing."
-Sawyer) 20.g5 ♗d5 [diagram]



21.♞e8+! ("Great move!" -Sawyer)
21...♗xe8 22.♗xg6+ ♗d8 23.♗xd6
♗c8 24.♞e1 ♗c7 25.♗g3 ♗a5
26.♞e7 1-0.

The following is a game between two outstanding players in their youth. It is one of my favorites examples of high-level gambit play.

Reti - Euwe

Rotterdam, 1920

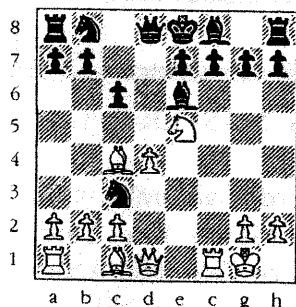
1.d4 f5 2.e4 fxe4 3.♖c3 ♗f6 4.f3 exf3 5.♗f3 g6 6.♗g5 ♗g7
7.♙d3 c5 8.d5 ♗b6 9.♗d2 ♗xb2 10.♞b1 ♗d5 11.♗xd5 ♗xb1+
12.♗f2 ♗xh1 13.♙e7 d6 14.♙xd6 ♗c6 15.♙b5 ♙d7 16.♙xc6
♙xc6 17.Qe2+ 1-0.

A recent Alapin-Diemer is next.

Barbaut-Freel

France, 1993

1.e4 c6 2.d4 d5 3.♖c3 dxe4 4.♙c4 ♗f6 5.f3 exf3 6.♗xf3 ♗d5
7.0-0 ♙e6 8.♗e5 ♗xc3 [see diagram next page]



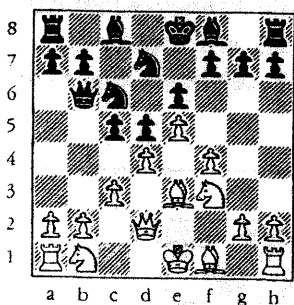
9. ♖xe6! ♜xd4+ 10. ♜xd4 ♜e2+ 11. ♜h1
 ♜xd4 12. ♖xf7+ ♜d8 13. ♖d1 1-0.

Sometimes, you just can't sac the f-pawn. Diemer knew exactly what to do -- and got an amusing finish to boot!

Diemer - N.N.

1953

1.d4 d5 2.e4 e6 3.♖e3 (Diemer's favorite against the French -- sometimes referred to as the Alapin-Diemer Gambit." -rw)
 3...♜f6 4.e5 ♜fd7 5.f4 c5 6.c3 ♜c6 7.♜f3 ♜b6 8.♜d2 ("Diemer has commented on many occasions that this is the ideal setup for White against the French." - Charles Szasz. *BDG WORLD*, VI N4, 1983) [diagram]



8...f6 9.h4 h5 10.♖d3 f5 11.♜g5 ♜e7
 12.♜a3 c4 13.♖xc4! dxc4 14.♜xc4 ♜c6
 15.♜d6+ ♜d8 16.♜xe6++ 1-0.

Moral: Don't let move order deter you! You can probably find a way to transpose into a "Diemer-esque" position. If you can't, you may very well end up with a spatial advantage as in the last game. Remember, to get these type positions, THINK f3!

FROM THE USCF

CALIFORNIAN IS THE YOUNGEST U.S. MASTER EVER

Ten-year-old Jordy Mont-Reynaud of Stanford, California, is the youngest player ever to attain the USCF Master title. Jordy achieved a rating of 2212 at the 1994 Southern California Action Chess Tournament held in Buena Park. The previous record-holder was IM Stuart Rachels, who achieved the Master title at the age of 11. A rating of at least 2200 is required.

Jordy starting (*sic*) playing chess at the age of 5 with his father, Bernard. At that time, the Mont-Reynaud family lived in the home of Bobby Fishcer's sister, Mrs. Joan Targ.

At age 6, Jordy played in his first tournament and quickly improved while playing at the Palo Alto Club under the tutelage of National Master Lee Corbin and Major Bill Wall. He was the Silver Medal Winner at the World Youth Championships in 1993 where his coach was Grandmaster Pal Benko.

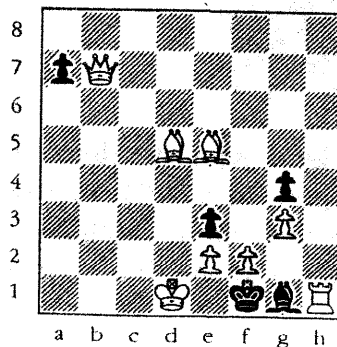
Jordy attends the fifth grade at the Peninsula French-American School in Palo Alto. Among his other interests are soccer, piano and his cats, Wolfgang and Joplin. He will celebrate his 11th birthday in August.

Problem Corner #1

(By Raymond Hudgens)

Solution, page 15.

24 Tennessee Chess News



White wins in two.

(Continued from page 4)

years thanks to the generosity and love of chess of Dr. Katahn.

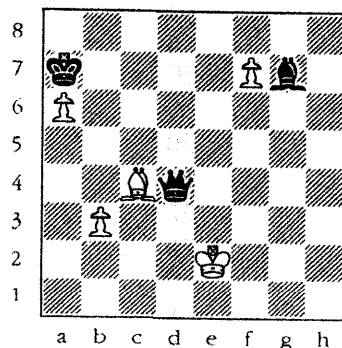
Sam's "job" is to help the state's scholastic program. He will be available for your schools. To request Sam's help, contact your regional director. Sam's services are free. Your school/club will be responsible only for his lodging, transportation and meals. Where else could you get a 2600+ player who loves students for such a price!? Our gratitude for Dr. K's generosity is unending.

Sam isn't here just for scholastic assistance, however. He and his Master-level wife Olga are available for private or group lessons. Again, contact your regional director. Tell them what you want, and they will arrange it, if possible.

Sam is here for the State of Tennessee. Your requests for Sam's assistance are requested. Your reward will be improved play and the knowledge that you have helped Sam and his family learn how pleasant Southern Hospitality is!

Contact your Regional Director now!

(For a related story, see page 5. -rw.)



Black moves and wins in 11.

Problem Corner #2

(By Raymond Hudgens)

Solution, page 15.

APRIL - MAY, 1994 / 25

Tennessee Turkey Tour Leaders: 1993 - 94

As of 04/09/94

(By Rick Igou)

Master/Expert

HAYES, REA B	62
SMITH, BRIAN D	49
DICKERSON, LEONARD	48
MONGIN, ANDREW J	47
ROWAN, TOM	43
BURNETT, RON	40
SIRIAS, DANILO	30
JORDAN, WALTER W	25
TSITSEKLIS, EMANUEL	20
CALE, RICHARD	20
ARISTORENAS, JUAN	20
WHEELER, JERRY	20
ISBILL, WALTER H	10
ISHEE, MARK	8

Category A

JONES, ELLIS E	56
ISBILL, WALTER H	52
NICHOLS, DOUGLAS	40
LENTZ, BRIAN D	38
WESTBROOK, RICHARD	30
GLOVER, HASKELL	25
KAIBNI, WILLIAM I	25
PUCKETT, MATTHEW	20
RYLANDER, JIM	20
SLOAN, KENNETH R	20
PENNIG, JEFF	20
MORGAN, STEPHEN G	20
PULLEN, DEWITT T	20
GARDNER, PHIL	20
PRESSWOOD, ROBERT	18
OSHMANN, MARK	10

Category B

ABRON, MICHAEL T	65
HARDY, JOSEPH D	58
BOSTON, RALPH	50
GOODMAN, MARK A	45
INMAN, LEWIS	40
COOPER, TOM	35
FITZGERALD, JAMES	30
LEWIS, JAMES B	30
ROBBINS, RUSSELL	30
NICHOLS, DOUGLAS	30
PATTERSON, ROD	30
AGUIRRE, TONY	25
BENTLEY, CHARLES	25
MURRAY, JON	25
STREET, CHESTER M	25
PHAN, HIEU	25
BARNES, RONNIE C	20
HAWKES, DAVID R	20
LIPKIN, MICHAEL	20
BABB, CURTIS L	20
LIPKIN, ALAN	20
ORGAIN, WILLIAM	20
NEWKIRK, ED	20
MCMAHAN, KEITH	20
PUCKETT, MATTHEW	14
PRESSWOOD, ROBERT	14
BURGESS, DONALD R	10
PRESLEY, W DAVID	10

Category C

KADE, JIM	68
EDDINS, J SCOTT	62
MCCREERY, BILL G	35
WIDENER, KERMIT	30
REEDER, ANDY	25

(Continued on page 28)

PORTER, EDWARD C	25
SHORT, JACK	20
NICHOLSON, EDWARD	20
BELLIFORD, WILLIAM	20
TATE, KELLES	20
PROCTOR, JOHN W	20
SCHWARTZ, LEON	20
FUNKHOUSER, ERIC	20
HARVILL, BILL	18
WARE, BILLY	10
PENNINGTON, PHILIP	10

Category D

GREEN, JR, GARY	50
BARINGER, JIM	35
RICHARDS, JR, JAMES E	35
SMITH, MICHAEL E	30
WILLIAMS, JR, LARRY	25
BLUM, ARTHUR F	25
SCHINDLER, MARK J	20
THOMTE, JOHN	10

Category E

KNIGHT, JASON R	40
YATES, MATTHEW	35
SLOAN, DAVID	30
ROBERTS, ALAN	30
PEARSON, JR, CLINTON	30
ROBERTS, CHRISTOPHER	30
HUNT, PHILLIP D	25
DECK, M C	25
BARNES, RANDY	22
TALLENT, ROB	20
MARKHAM, KYLE	20
SMITH, CHAD G	20
HUGHES, JAMES N	20

TOURNAMENTS! TOURNAMENTS!

06/25/94

TURKEY TOUR EVENT

Tennessee Sportsfest

07/09/94

TURKEY TOUR EVENT

Cumberland Co. Summer

08/06/94

TURKEY TOUR EVENT

2nd Annual Chattanooga State Warmup,
Chattanooga, TN

09/2-3-4/94

TURKEY TOUR EVENT

48th Tennessee Open, Nashville, TN

10/08/94

TURKEY TOUR EVENT

Cumberland Co. Fall Open

10/29/94

2nd Oak Ridge Scholastic Chess Camp,
Oak Ridge, TN

11/19/94

8th Annual Oak Ridge Fall Scholastics,
Oak Ridge, TN

12/10/94

Cumberland Co Scholastics (closed)

Current T.C.A. Patron Members

Patron King

Dr. Martin "Dick" Katahn

Patron Bishops

Lee Edwards
Clinton H. Pearson, Jr.
Harry Sabine

Patron Knights

Ellis E. Jones
Frank W. Larimer
Bill Orgain

Patrons

Frank B. Couch, III
Chester C. Crowley
Walter R. Green
Louis M. Groeniger
Raymond Hudgens
Peter P. Lahde
Brian D. Lentz
Edward Newkirk
Mark Oshman
Jeffrey Pennig

Thomas R. Pierce
Edward C. Porter
Jim Rylander, Jr.
Todd Shimabukuro
Jack C. Sprague
Joseph Sullivan, Jr.
Wayne W. Tolbert
Edwin C. White
James A. Wright

TCA Board Of Directors

(1993-94)

PRESIDENT

Ed Porter
904 Wilson Pike
Brentwood, TN 37027
Home: (615) 371-9784
Work: (615) 251-2449
FAX: (615) 251-3866

VICE - PRESIDENT

Douglas Nichols
900 Mountain Creek Road, P-239
Chattanooga, TN 37405
Work: (615) 265-2271, ext., 413
Home: (615) 870-1101

SECRETARY - TREASURER

Leonard S. Dickerson
420 Oran Road
Knoxville, TN 37922
Home: (615) 966-1095
Work: (615) 574-4676

POSTAL CHESS COORDINATOR

Lee Edwards
406 Stahlman Building
211 Union Street
Nashville, TN 37201
Home: (615) 883-7522
Work: (615) 726-3395

TOURNAMENT DIRECTOR

Rick Igou
400 Rhodora Court, Apt., F
Knoxville, TN 37923
Home: (615) 690-6810
Work: (615) 574-1839

SCHOLASTIC COORDINATOR

Harry D. Sabine
P.O. Box 381
Crossville, TN 38557
Home: (615) 484-4878
Work: (615) 484-9593
FAX: (615) 456-7624

TCN EDITOR (EAST)

Richard R. Westbrook
3636 Taliluna Ave., Apt 237
Knoxville, TN 37919
Home: (615) 974-9076
Work: (615) 974-1250
FAX: (615) 974-9076

TCN EDITOR (WEST)

Ed Boldt
31 Holly St., PO Box 3039
Jackson, TN 38301

DIRECTOR, EAST TENNESSEE

Chester Crowley
114 Iroquois Lane
Clinton, TN 37716
Home: (615) 457-7965
Work: (615) 457-3100
FAX: (615) 531-2958

DIRECTOR, MIDDLE TENNESSEE

Peter P. Lahde
2609 Sailboat Court
Nashville, TN 37217
Home: (615) 361-4588

DIRECTOR, WEST TENNESSEE

Joseph Mooney
361 Hwy. 18
Jackson, TN 38301
Home: (901) 427-0481
Work: (901) 423-1339