

# TENNESSEE CHESS NEWS

Vol. 21 NO. 6

DEC. 79- JAN. 80



## IN MEMORIAM

Dr. JOHN D. NICHOLS

1927-1979

"A LABOR OF LOVE"

By Harry Sabine

The Tennessee Chess News has had but two editors since its birth in 1959. For the last two years John D. Nichols wore the editor's hat ably and well earning honorable mention by the Association of Chess Journalists for having the most improved chess publication.

The glue that holds any chess organization together is often its newsletter which is the only effective means of communication among its members, particularly in a state such as Tennessee with some members over 500 miles apart. John's concern was always to cover chess activities from Kingsport to Memphis so that every city and club would be represented among the pages of the TCN.

John died on October 1st of leukemia and cancer. Those of us who were at the Tennessee Open and had the chance to visit with John still find the suddenness of his death hard to take. Except for a bad cough he was his normal self, and neither he nor anyone else had any inkling of what was to come.

Upon learning of John's condition arrangements were made by several of us to go to Johnson City to help put together the October-November issue of the TCN. Upon arriving on Saturday, September 29th, we went straight to the hospital to visit John only to find that he had convinced his doctor to let him go home for a few hours to help us get the material together for publication. We arrived at his home to find John, except for his obviously weakened condition, in good spirits and ready to do anything he could to get the TCN ready for press.

Before leaving Johnson City the following day, John made us promise him that we would get a copy of the TCN to him as soon as it was printed. The next day he was gone.



# **TENNESSEE CHESS ASSOCIATION**

## **BOARD OF DIRECTORS**

1979 - 1980

## **PRESIDENT**

Peter P. Lehde  
2609 Sailboat Court  
Nashville, TN 37217  
Phone: Home (615) 361-4588  
Office (615) 256-8899

## **VICE PRESIDENT**

Jack E. Smith  
3436 Carnes, #6  
Memphis, TN 38111  
Phone: (901) 452-8779  
**SECRETARY-TREASURER**  
Harry D. Sabine  
P. O. Box 381  
Crossville, TN 38555.  
Phone: (615) 484-9593 or  
484-4878

## **NEWSLETTER EDITOR**

John L. White  
Route 8, Box 247  
Crossville, TN 38555  
Phone: (615) 484-8377

## **POSTAL CHESS COORDINATOR**

Ston Binson  
Route 2, Box 293  
Hendersonville, TN 37075  
Phone: (615) 824-4938

## **TOURNAMENT COORDINATOR**

John P. Hurt  
1063 S. Perkins Road  
Memphis, TN 38117  
Phone: (901) 482-5342.

## **EAST TENNESSEE DIRECTOR**

Leonard S. Dickerson  
2514 Croyden Drive  
Knoxville, TN 37921  
Phone: (615) 525-0868

## **MIDDLE TENNESSEE DIRECTOR**

Tom Furr  
229 Jacksonian Drive  
Hartsville, TN 37076  
Phone: (615) 889-4165

## **WEST TENNESSEE DIRECTOR**

Marlon A. Smith  
3116 Waynoka, #2  
Memphis, TN 38111  
Phone: (901) 454-1228

# **WHERE TO PLAY CHESS IN TENNESSEE**

## **CHATTANOOGA: ?**

**COKEVILLE:** ?  
**CROSSVILLE:** Cumberland Co. CC, Community  
Complex, Wed.-7PM, Contact Harry  
Sabine 484-9593 or 484-4878

## **DYERSBURG: ?**

**HENDERSONVILLE:** Hendersonville CC, St.  
Joseph's Episcopal Church, Contact  
Ston Binson 824-4938

## **JACKSON: ?**

**KINGSPORT:** Contact Jim Sims 245-4796  
**KNOXVILLE:** (1)Greeter Knoxville CC,  
Arntstein Jewish Community Center,  
6800 Deane-Hill Dr., Wed.-6:30PM,  
Contact Rick Igoe 690-6810  
(2)JUT CC, Student Center, Room 202,  
Fri.-6:30PM

**MEMPHIS:** (1)Memphis CC, Grace-St. Luke's  
Episcopal Church, Fri.-7:30PM, Contact  
Lee Branch 761-0483  
(2)Pillsbury CC, McFarland Community  
Center, 4903 Cottonwood Rd., Tue.-  
7:30PM, Contact Jack Smith 452-8779  
(3)Memphis St. CC, University Center,  
Room 303A, Thur.-7:30PM, Contact  
Randy Cope 452-6573  
(4)Christian Bros. CC, Contact Greg  
Krog 683-1527  
**NASHVILLE:** Nashville CC, Arlington United  
Methodist Church, 1360 Murfreesboro Rd.  
Thur.-7:30PM, Contact Peter Lehde  
361-4588

## **OAK RIDGE: ?**

**SPARTA:** White Co. CC, White Co. H.S.,  
Tue.-6:30PM, Contact James Burden  
738-8672

THE TENNESSEE CHESS NEWS IS THE OFFICIAL  
PUBLICATION OF THE TENNESSEE CHESS  
ASSOCIATION. THE PUBLICATION IS BI-  
MONTHLY. TCA MEMBERSHIP, INCLUDING  
SUBSCRIPTION, IS \$4.00 PER YEAR. INDIVIDUAL  
COPY PRICE IS \$1.00. TCN IS PRINTED BY  
COLLIER'S PRINTING COMPANY, 718 RIVERSIDE  
AVENUE, KINGSPORT, TENNESSEE 37660.

## **ADDRESS CHANGES**

SEND ALL CHANGES OF ADDRESS AND DUES TO  
HARRY D. SABINE, P. O. BOX 381,  
CROSSVILLE, TENNESSEE 38555

# **TCA MEMBERSHIP DUES**

The annual dues for each member are \$4.00. All memberships  
expire on August 31 of each year. However, any person who  
joins the Association between April 1 and August 31 of each  
year shall have the option of paying \$2.00 which shall entitle  
him to him to a membership which expires on August 31 of the  
same year in which he pays the dues, or may pay \$5.00 which  
shall entitle him to a membership which expires on August 31  
of the following year. Each additional person in the same  
family may become a member by paying \$.50 but will not re-  
ceive the TCN. Any affiliate that needs a supply of member-  
ship cards for issue should contact the Secretary-Treasurer.

# **TCN DEADLINES**

The following are the deadline dates for material to be sub-  
mitted for each issue of the Tennessee Chess News. Dates  
refer to the date of receipt by the Editor.

Issue	Deadline
October-November	September 15
December-January	November 15
February-March	January 15
April-May	March 15
June-July	May 15
August-September	July 15

Tournament announcements will be published four months in advance  
if the information is received by the appropriate deadline. This  
will permit publication in two successive issues of the TCN.

Please do not wait until the last minute. It is never too soon  
to send stories, games, crossables, announcements, ect., for  
publication.

We attempt to mail the Tennessee Chess News around the first of  
the month. You should receive your copy by the 15th of the issue  
month. If your magazine is constantly late, we suggest that you  
fill out a Consumer Service card at your local post office. If  
you are moving, please inform the Editor as soon as possible of  
your new address, as our postal service will not forward the  
magazine to you unless we have guaranteed postage.

ADVERTISING RATES: FULL PAGE \$20, 1/2 PAGE \$10, 1/4 PAGE \$5, ONE INCH \$7.  
SEND, PLEASE-ALWAYS CUT AND GLUE.

(continued from p. 72)

It is easy for all of us to sit back and enjoy reading the TCN with-  
out giving any thought to the many long hours of effort and dedication  
that the editor spends putting it together. John Nichols often  
referred to it as "a labor of love", and it could not be more succinctly  
put. Most of us I fear spent far more time complaining about what we  
didn't like in the TCN than in thanking John for devoting his time to  
do a job none of us would attempt.

John literally spent the last hours of his life seeing that his final  
labor of love was completed. May we all learn from his display of  
courage and dedication in the face of death.

## **NICHOLS MEMORIAL I**

by Jim Sims

What was originally called Chess War IV was changed  
to the John D. Nichols Memorial I. The Fall tournament  
in Kingsport will be named the Nichols Memorial and the  
Spring tournament will continue to be Chess War.

Scholastic chess got a big boost in Kingsport in  
the Non-rated section. First place in a thirteen entry  
field was David McCray of Tri-Cities Christian School.  
Second place was a tie between James Moore of Christian  
School and Dennis Sexton of Sullivan West. The Tri-Cities  
Christian School provided eight enthusiastic entries in  
this, their first tournament, and we look for more from  
them in the future.



## FROM THE PRESIDENT'S DESK

by Peter Lahde

This issue of the Tennessee Chess News is dedicated to John Nichols, who with great love devoted a considerable amount of his time to writing and editing to our state publication, without receiving any financial compensation. He did it simply because he loved the game of chess so much that he wanted to share it with others. John passed away after a short illness after having served as editor for TCN for nearly two years.

Harry Sabine, our TCA treasurer, who had worked closely with John, went to see him just a few days before his passing, picked up all the material for the October issue and put together our last issue almost singlehandedly. Except for a slight delay in the mailing and the announcement about John's illness there was almost no indication that anything had happened. Thanks, Harry, for a job well done.

Now, I think, we are fortunate that we have found or rather that someone has come forward to offer his services to edit the TENNESSEE CHESS NEWS. That someone is John White who hails from Crossville and teaches in the public school system there. I had the opportunity to talk with John at the recent Fairfield Glade Open, and I was impressed with his ideas for TCN and particularly his interest for scholastic chess. I think you will agree with me that the officers of TCA acted wisely when they agreed to allow John White to take over for the unexpired term of our former editor John Nichols.

Since the 1980 Tennessee Scholastic Championships will be coming up shortly, our new editor asked me to devote some space to this important activity of TCA. The future of chess is dependent to a large degree to the efforts we give to promote the game among our young people. We already have high school chess programs in several areas of Tennessee, such as Chattanooga, Crossville, Kingsport, Knoxville, Memphis and Nashville. (Two events that have just taken place in Kingsport and Nashville are described in this issue.) But we need more dedicated players and teachers who are willing to promote the game among our young people not just in areas of Tennessee where we don't have any chess programs yet but we also need more support in the cities where we already have chess activity for young people. If you are interested to help us in this task please write to our new Editor John White, who will act as the co-ordinator for our scholastic chess activities. John plans to devote some space to scholastic chess each issue of the TCN.

As you receive this issue an important scholastic event will have just taken place, which is the Crossville Scholastic Championships. Probably many of our students in elementary, junior high, and high school used it as a preparation for the state tournament. The event I am referring to will be the tenth annual TENNESSEE SCHOLASTIC CHAMPIONSHIPS sponsored by the Tennessee Chess Association. It will be held for the first time outside of Nashville, but only about 30 miles away on the beautiful campus of Middle Tennessee State University in Murfreesboro. The date is January 19-20, 1980. If you are attending school in Tennessee I hope you have or will make plans to attend. Better yet get a team of four players from your school together so that your school can compete for the team prizes. The top team prize will be \$100 toward expenses for competing in the Southern High School tournament. For further information about the Tennessee Scholastics please refer to the ad and tournament calendar in this issue.

Next issue I will examine the progress we have made and also the setbacks we have had in chess activity throughout the state during 1979, and my views for a successful season in 1980.

## Curt Jones Takes Fairfield

Former Tennessee State Champion Curt Jones of Knoxville clearly locked up the top spot in the Open Section as the only player with five straight wins in the Third Fairfield Glade Open held November 3-4. Curt went home a trophy and \$300 richer, in a contest with a purse of \$1700, the largest amount given away in a Tennessee tournament this year.

Steven Shumate of Nashville grabbed the Amateur Section first place trophy and \$150, with a score of  $4\frac{1}{2}-\frac{1}{2}$ . William Gwin of Crossville made a clean getaway in the Novice Section,, winning five in a row, taking away a trophy and \$150.

Altogether 119 chessplayers turned up at this luxury resort for a week-end of playing chess for fun and for blood. For the first time the Fairfield tournament was split into three sections. 27 entered the Open Section, 31 entered the Amateur Section, and a whopping 61 swelled into a bulging Novice Section.

**OTHER WINNERS** - In the Open Section William Ruiz of Decatur, Georgia and Marty Appleberry of Memphis tied for 2nd and 3rd place. Jerry Wheeler of Nashville took the Class A trophy, but was clinched in a three-way tie for the prize money with David Freitag of Murfreesboro and Leonard Dickerson of Knoxville (all 3-2).

John Smith, Jr., of Atlanta (4-1), took first place in Class B, followed by Brian McCarthy of Hermitage ( $3\frac{1}{2}-\frac{1}{2}$ ). Upset prizes for each round were awarded to Ron Easter of Knoxville, John Smith Jr. of Atlanta, Jerry Wheeler of Nashville, and by the very upsetting Danny Silverstein, from Baylor School of Chattanooga, who won the prize twice.

In the Amateur Section, close on the heels of champion Shumate were Steve Choate of Nashville and William Talmadge of Berea, Kentucky, who tied for second place with 4-1 each.. Clark Brown of Chattanooga took the Class D trophy but found himself in a triple  
(con't on p 77)



Harry Sabine, TD, and Curt Jones  
Fairfield Glade Open Champion.



Steven Shumate, Fairfield Glade  
Amateur Champion and Harry Sabine.



William Gwin, Fairfield Glade  
Novice Champion.



(continued from p.76)

tie for the prize money with John W. Moore of Nashville and Morris Lewis of Lebanon (all  $3\frac{1}{2}-1\frac{1}{2}$ ).

Upset prizes went to Thomas Idwell of Ringgold, Georgia, Donald Brattin of Berea, Kentucky, and to that merciless boat-rocker John W. Moore, who tipped the tables on his superiors three times.

In the packed Novice Section, Theodore Lipinski of Fairmont, West Virginia hewed out second place with  $4\frac{1}{2}-\frac{1}{2}$ . Third place had to be sliced four ways for James Burden of Sparta, Tony Magee of Raleigh, North Carolina, Pete Austin of Chattanooga, and Terry Burdett of Crossville (all 4-1). Pam Campbell of Crossville took the Below 1000 prize with  $4\frac{1}{2}-\frac{1}{2}$ . Edward Murphy of Nashville plucked the Unrated Prize with 4-1.

In this section, the upset prizes all went to students from Crossville: Jay Sabine, William Gwin, Keith Threet, Mike Whisnant, and Pam Campbell.

The tournament was directed with the usual efficiency of Harry Sabine, assisted by John White, both of Crossville.



Curt at Work



Cindy Shultz and Bob Bow



Round 1 ?/ Fairfield Glade



Pam Campbell and John Storrs



David Freitage, Harry Sabine, Jerry Wheeler and Leonard Dickerson



NO.	NAME	CITY	OLD	NEW
1.	ABELL, RICHARD	NASHVILLE	1515/18	-----
2.	ABRAM, HARRY	NASHVILLE	1235	-----
3.	ABRON, MICHAEL	NASHVILLE	1491	1520
4.	ABSHER, KARL	CROSSVILLE	238/15	965
5.	ADAMS, A. PAT	MEMPHIS	1064/9	-----
6.	ADAMS, BRADFORD	-----	1180/12	-----
7.	ADAMS, STUART	-----	1266/11	-----
8.	ADAMS, JR. TOMMY	MEMPHIS	1301/6	1218/10
9.	ADAMSON, MICHAEL	-----	1457/4	-----
10.	ADKISON, ROSS	NASHVILLE	UNR	1011
11.	ADLER, JOAN E.	MEMPHIS	1133/7	-----
12.	AGEE, H. LINDSEY	CROSSVILLE	593/5	-----
13.	ALBRIGHT, D.G.	MEMPHIS	964/4	-----
14.	ALAVI-TABRI, H.	MURFREES	1627/10	1584/15
15.	AL-CHOUGHACHY, E.	KNOXVILLE	1292/5	1324/12
16.	ALDERMAN, J.	JAMESTOWN	921	-----
17.	ALISAGO, JIMMY	CHATT	UNR	1027/8
18.	ALLEN, WM. A.	-----	UNR	1349
19.	ALLEN, WM. D.	-----	1042/4	-----
20.	ANDERSON, A.	-----	1040/6	-----
21.	ANDERSON, BILL	NASHVILLE	1536	-----
22.	ANDERSON, BYRON	MEMPHIS	847/7	-----
23.	ANDERSON, DAVID	-----	1229/8	1217/12
24.	ANDERSON, MIKE	NASHVILLE	1463	1466
25.	ANDRE, FRANK J.	LOUISVILLE	1276/11	-----
26.	ANTRIM, DONNIE	-----	1427	-----
27.	APPLEBERRY, H.	MEMPHIS	2234	2207
28.	ARFKEN, CHRIS	SIGNAL MTN	UNR	857/4
29.	ARFKEN, GEO. H.	SIGNAL MTN	538	809
30.	ARMANTROUT, J.	HENDERSON	UNR	877/9
31.	AUSTIN, PETE	CHATT	UNR	835/5
32.	BAILEY, TOM	-----	997/4	-----
33.	BAKER, DAVID	JACKSON	1914	1914
34.	BAKER, HARRY	GERMANTOWN	1352	-----
35.	BAKER, RUSS A.	-----	827/4	-----
36.	BAKER, RUSS T.	KNOXVILLE	1410/6	-----
37.	BALL, JENNIFER	-----	UNR	1107/10
38.	BARBER, JAS. D.	-----	UNR	1469/5
39.	BARKER, BOBBY	CROSSVILLE	1/6	-----
40.	BARKER, JIM A.	CROSSVILLE	UNR	727/6
41.	BARNES, J. R.	-----	UNR	936/4
42.	BARNBY, STUART	MURFREES	1116	-----
43.	BARNES, DAN J.	CHATT	1310	-----
44.	BARNES, J. R.	-----	1241	-----
45.	BARRERO, A.	KNOXVILLE	1556	1603
46.	BARTON, DAVID	NASHVILLE	1165/15	1170
47.	BARTON, MIKE D.	JACKSON	1044/8	1326
48.	BASS, BILLY M.	-----	1223/12	-----
49.	BANGUS, GARY	CHATT	1833	-----
50.	BATTER, BRYAN	CHATT	UNR	1156/19
51.	BAYER, WALTER	-----	UNR	675/17
52.	BEATY, PAUL E.	CROSSVILLE	1015/15	-----
53.	BECK, WARREN F.	KNOXVILLE	UNR	1117/14
54.	BENNETT, J. S.	ANTIOCH	UNR	1733
55.	BENNETT, MIKE	KNOXVILLE	1774	1858
56.	BENNETT, R.	KNOXVILLE	883	983
57.	BERNEY, LARRY	CROSSVILLE	UNR	738/16
58.	BERTRAM, JIM	CROSSVILLE	UNR	721/15
59.	BERTRAM, RICK	CROSSVILLE	UNR	867/5
60.	BILYEU, ANNA I.	SPARTA	867/5	-----
61.	BIMSON, STANLEY	HENDERSON	1470	1467
62.	BINGHAM, C.D.	MEMPHIS	1183/24	-----
63.	BLACK, CHRIS F.	-----	1067/8	-----
64.	BLACKLEY, M.	MEMPHIS	917/8	-----
65.	BLACKWELL, JR.	MEMPHIS	1278	-----
66.	BLAYLOCK, E.	HARRITMAN	1375	-----
67.	BLUM, LARRY W.	MEMPHIS	1062/20	-----
68.	BOCK, MICHAEL	MEMPHIS	1709	-----
69.	BOCO, VICKY T.	MEMPHIS	1043/9	-----
70.	BOLDT, EDW. D.	JACKSON	1212/24	1274
71.	BOLIN, WADE B.	CROSSVILLE	185/6	619/14
72.	BORUM, SCOTT K.	ATHENS	481/9	-----
73.	BOW, BOB D.	JAMESTOWN	855/4	1126/17
74.	BOW, SCOTT E.	WESTON	450/4	-----
75.	BOW, TONY E.	CROSSVILLE	185/10	942
76.	BOWEN, ALBERT	NASHVILLE	1555	-----
77.	BOYER, LARRY F.	-----	UNR	1407/7
78.	BOWMAN, RAYMOND	COKEVILLE	592/4	918/9
79.	BOYD, LEROY	MEMPHIS	UNR	1795/8
80.	BRADBERY, GLENN	MEMPHIS	1005/5	1021/9
81.	BRADLEY, LARRY	CROSSVILLE	771	897
82.	BRADSHAW, CHARLIE	-----	UNR	1116/7
83.	BRANCH, LESLIE	MEMPHIS	1211	1200
84.	BRANDENBURG, WENDY	CHATT	738/9	-----
85.	BRIDGEMAN, H.	MEMPHIS	UNR	900/9
86.	BRILL, LARRY D.	-----	UNR	777/9
87.	BRODERICK, G.	-----	UNR	1139/5
88.	BROWN, CLARK	SIGNAL MTN	1286/22	1266
89.	BROWN, CORIN	JAMESTOWN	602/4	-----
90.	BROWN, LEROY	MEMPHIS	1573/19	1570
91.	BROWN, LINDA H.	CROSSVILLE	238/4	-----
92.	BRUNWILER, P.A.	MEMPHIS	1314	1371
93.	BRYANT, JAS. E.	CLARKSVILLE	1292	-----
94.	BUCHHEIT, J. T.	JAMESTOWN	561/16	659
95.	BUCHHEIT, J. G. III	JAMESTOWN	852/8	-----
96.	BUCHHEIT, J. G. IV	JAMESTOWN	887/16	929
97.	BUCK, RICKY	JAMESTOWN	432/4	-----
98.	BUCKER, DOUGLAS	MEMPHIS	1499/16	-----
99.	BURDEN, JAS. E.	SPARTA	1109	1161
100.	BURDET, TERRY	CROSSVILLE	766	1160
101.	BURDICK, PAT T.	COKEVILLE	-----	1565
102.	BURGESS, DIANE	COLUMBIA	870/11	920
103.	BURGESS, DON R.	MURFREES	787/4	835/9
104.	BURKE, RICHARD	-----	836/14	-----
105.	BURNETT, JOHN T.	EAGLEVILLE	-----	1561
106.	BURNETT, RON W.	EAGLEVILLE	UNR	1227/10
107.	BURNS, BRUCE R.	MURFREES	-----	1280
108.	BURNS, JAMES R.	MEMPHIS	1137	1212
109.	MORRIS, BUSBY, JR.	MEMPHIS	1137	1212
110.	BUSH, GARY	-----	UNR	576/6
111.	CAGLE, ANDREW D.	NASHVILLE	1320	-----
112.	CAIN, BYRD G.	-----	UNR	1237
113.	CALDWELL, DOUG	MEMPHIS	1154/4	-----
114.	CALKINS, LANCE	MEMPHIS	1103/13	-----
115.	CAMILLERI, JOHN	CROSSVILLE	546	1107
116.	CAMPBELL, PAMELA	CROSSVILLE	974	1274
117.	CARANAY, TERRY	-----	UNR	618/4
118.	CARPENTER, RICH	KNOXVILLE	1683	1722
119.	CARTER, ALTON O.	WATERLOO	1203	1226
120.	CARTER, CAROL L.	WATERLOO	825	-----
121.	CARVER, TED E.	NASHVILLE	831/8	1053/19
122.	CHAMBERLAIN, J.	MURFREES	UNR	996/5
123.	CHAMBERS, MARC	NASHVILLE	UNR	1141/13
124.	CHANEY, KENNETH	-----	-----	1653
125.	CHAPUIS, BOBBY	NASHVILLE	1285	1329
126.	CHEESEMAN, MITCH	MEMPHIS	1254/8	1187/16
127.	CHESTNUT, JERRY	HENDERSON	UNR	1094/17
128.	CHILDRESS, JOHN	BELFAST	-----	1298
129.	CHILES, DICK	MEMPHIS	1062	-----
130.	CHING, BRUCE H.	MEMPHIS	1625	-----
131.	CHOATE, STEVEN	NASHVILLE	1565	1598
132.	CHURCHILL, ROBT	CHATT	1670	-----
133.	CHARLESTON, PETE	NASHVILLE	1554	1590
134.	CLARK, CHRIS	CROSSVILLE	424/4	-----
135.	CLARK, JAMES H.	-----	1436	1459
136.	CLARK, MIKE	MEMPHIS	1135/17	1269
137.	CLARK, ROY H.	MEMPHIS	1372	1403
138.	CLARK, STEVE	MEMPHIS	1094/12	1114/17
139.	CLIFFORD, CHAS.	HARRITMAN	1732	1745
140.	COB, FREDY W.	LENOIR CITY	1330	-----
141.	COLE, THOMAS M.	KNOXVILLE	1247/6	1226/10
142.	COLEMAN, TERRY	NASHVILLE	855/14	-----
143.	COLLARD, MICHELLE	CROSSVILLE	UNR	609/5
144.	COLLARD, THOMAS	CROSSVILLE	1312	1360
145.	COLLIER, LLOYD	KINGSPORT	1871	-----
146.	COLLINS, STEPHEN	FRANKLIN	675/8	680/12
147.	COLLUM, DOUGLAS	-----	1317/4	-----
148.	COLVIN, ANTHONY	MEMPHIS	1249/7	1196/13
149.	CONTE, BILL T.	NASHVILLE	1210	1403
150.	COOK, TREVOR L.	KNOXVILLE	1700	-----
151.	COOPERIDER, DAVID	NASHVILLE	1282	-----
152.	COPE, RANDY W.	MEMPHIS	1406	1649
153.	CORBETT, BRIAN	JOHNSON CTY	1480/14	-----
154.	CORDER, LARRY M.	MEMPHIS	1522	-----
155.	CORDERY, JOHN D.	GREENBRIER	1152/5	-----
156.	CORNEY, ROBT B.	NASHVILLE	281/4	-----
157.	CORNWELL, GLENN	HERMITAGE	1546	1553
158.	CORWIN, MICHAEL	FRANKLIN	UNR	913/12
159.	COX, D. BARRY	NASHVILLE	911/4	-----
160.	CRABBS, JOHN D.	MEMPHIS	961/6	1027
161.	CRAIG, DAVID B.	ARLINGTON	1221/9	-----
162.	CRAWFORD, LARRY	KNOXVILLE	1665	16
163.	CRIGGER, TERRY	HIXSON	UNR	802/2
164.	CROWLEY, CHESTER	-----	UNR	1020/6
165.	CRUCE, TOM C.	CROSSVILLE	841/3	-----
166.	CRUMP, JR. JOSEPH	CROSSVILLE	662/12	-----
167.	CUMBY, RICK D.	COKEVILLE	1015	1306
168.	CURVIN, CHRIS E.	SOD-DAILY	1229/23	-----
169.	DALE, KEVIN	CROSSVILLE	206/5	-----
170.	DALTON, STEVEN	CROSSVILLE	606	800
171.	DANGEAU, CHAS.	MEMPHIS	1329	1418
172.	DAY, FRANK C.	MEMPHIS	1535	-----
173.	DAY, WILLIAM A.	-----	UNR	1294/7
174.	DEIERHOI, SHERRA	SIGNAL MTN	807	-----
175.	DEMPSEY, EDMOND	MEMPHIS	1191/18	-----
176.	DENNIS, FLOYD B.	SHYRNA	UNR	803/12
177.	DEN UYL, DENNY	ATHENS	711/18	761
178.	DENZIN, MICHAEL	MEMPHIS	1186	-----
179.	DE ROSETT, TIM	CROSSVILLE	243/4	320/5
180.	DERRICK, MARK T.	LENOIR CITY	1372	1375
181.	DERRINGTON, K.	MEMPHIS	1322	-----
182.	DETRICK, MARK	SIGNAL MTN	1549	1691
183.	DESAI, ATIT D.	NASHVILLE	691/4	933/15
184.	DESAUSSURE, III, R.	MEMPHIS	1387/6	-----
185.	DEVENPECK, EDW.	SHYRNA	681/5	808
186.	DICKERSON, ANDY	SIGNAL MTN	UNR	857/4
187.	DICKERSON, L.	KNOXVILLE	1820	1873
188.	DICKERSON, JAMES D.	MEMPHIS	1179/11	-----
189.	DODSON, TOMMY	CROSSVILLE	389/8	-----
190.	DOLE, DAVID W.	MEMPHIS	1035/6	999/11
191.	DOLLOFF, M.H.	NASHVILLE	UNR	699/6
192.	DRAFFIN, JR. ROBT	MEMPHIS	1940/4	-----
193.	DREN, DAVID K.	GALLATIN	995/6	-----
194.	DUNBAR, AMBER B.	CROSSVILLE	77/4	-----
195.	DUNCAN, DEREK	-----	UNR	1389/7
196.	DYER, PAUL	KNOXVILLE	-----	1615
197.	EAGLE, RUSS F.	JACKSON	1353	1354
198.	EARTHART, MESLEY	CROSSVILLE	283/5	-----
199.	EAST, BRAD	HIXSON	964/4	-----
200.	EASTER, RON	KNOXVILLE	1486	1643
201.	ECK, JONATHAN	NASHVILLE	1052/5	-----
202.	EDDLETON, STEVE	MEMPHIS	987/9	-----
203.	EDGE, RONALD D.	HENDERSON	1402	-----
204.	EDWARDS, JR. ROBT	FAYETTEV	1791	1775
205.	EGULF, FRANK T.	-----	UNR	632/6
206.	EICHE, LOREN S.	-----	UNR	482/9
207.	ELLENBERGER, F.	FAYETTEV	1499	-----
208.	ENGLAND, BRUCE	CROSSVILLE	837/18	1013
209.	ERICKSON, JEFF	FRANKLIN	UNR	694/10
210.	EVANS, ANNE C.	CHATT	795	-----
211.	FAGG, ROBERT J.	-----	UNR	1149/5
212.	FAIDLEY, RICHARD	GERMANTOWN	1114/5	-----
213.	FAJARDO, JOSE D.	-----	UNR	1149/5
214.	FARR, ROY T.	HERMITAGE	1808	1-
215.	FARRIS, KELLY	ATHENS	222/8	-----
216.	FAULK, RITCHY	MEMPHIS	UNR	1262/10
217.	FELDMAN, SCOTT	GERMANTOWN	1684	-----
218.	FELT, ROBERT S.	MEMPHIS	1951	-----
219.	FERGUSON, KEN	MEMPHIS	1743	-----
220.	FERGUSON, MESLEY	MANCHESTER	-----	1696
221.	FERRER, MIKE	-----	1161/6	-----
222.	FINLEY, WAYNE	NASHVILLE	1662	-----
223.	FINNEANE, MIKE	KINGSPORT	1258	-----
224.	FISHER, JAS. B.	-----	UNR	1561
225.	FLICKINGER, DALE	MEMPHIS	1720	1808
226.	FLYNN, TODD	CROSSVILLE	507/9	-----
227.	FORTENBERRY, M.	CROSSVILLE	567/22	-----

## DUES INCREASE\*\*USCF - signup now!!!

Effective January 1, 1980 USCF dues increase. Renew your current membership before the New Year and save a few dollars. The new rates are:

	1 yr	2 yr	3 yr
Adult	\$20	\$38	\$55
Junior	\$10	\$19	\$27
Part. Junior	\$3	\$6	\$9
Senior	\$10	\$20	\$30
Spouse	\$10	\$20	\$30

Tournament Membership \$1  
(for each game played)

Part. Junior and spouse does not include the magazine.

Renew Now! Save Adult \$5, Junior\$2.



228. FRANK, ALLEN L. 1472/6 -----  
229. FRAZIER, RICKY BENTON UNR 1202/9  
230. FREEMAN, JOHN L. NASHVILLE 1505 1599  
231. FREITAG, DAVID MEMPHIS 1817 1854  
232. FULLERTON, RICK HILSON UNR 1066/5  
233. GALLAGHER, SR. J. MEMPHIS 1198 1238  
234. GAMBRELL, ALAN ----- 1380  
235. GARLAND, PAUL G. MEMPHIS 787/5 -----  
236. GARMAN, WM. J. COBBEVILLE UNR 1360/5  
237. GARNER, MACK HARTSVILLE 2008 2034  
238. GARNER, RICH E. DYERSBURG 1236 -----  
239. GARNER, ROBT A. DYERSBURG 1532 -----  
240. GARNER, ROBT E. DYERSBURG 1597 -----  
241. GARY, JAMES E. SIGNAL MTN 1261/19 -----  
242. GEE, MIKE CLEVELAND UNR 1715/9 -----  
243. GIBSON, MARK S. NASHVILLE 1162/6 1158/11  
244. GIBSON, STEVE N. CROSSVILLE 452/9 -----  
245. GILL, HARRISON CHATT 1620 -----  
246. GILLIAM, MICHELLE UNR 756/5 -----  
247. GIVENS, TROY J. CROSSVILLE 1/7 327/16  
248. GODFREY, SCOTT SIGNAL MTN 1398 1574  
249. GODWIN, BARRY UNR 1306/9 -----  
250. GOODWIN, JERRY MILLINGTON 1634/8 -----  
251. GRAHAM, GEO. M. CROSSVILLE UNR 449/4 -----  
252. GRAHAM, JERRAL MEMPHIS 1239/10 1247/11  
253. GRAVES, DAVID P. 1379 -----  
254. GREEN, GRAYSON UNR 1098/15  
255. GREEN, III, J.W. 1623 1624  
256. GREGORY, PETER NASHVILLE 743/19 864  
257. GREGORY, TOMMY CROSSVILLE 763/4 -----  
258. GREMS, CHARLOTTE CHATT 984/20 -----  
259. GRODEMAN, THOMAS KNOXVILLE 987/7 -----  
260. GROENIGER, LOUIS KNOXVILLE 1211 1329  
261. GROSS, JR, WM. UNR 1048/4 -----  
262. GUNTER, PHILLIP CROSSVILLE 1167/5 -----  
263. GUSTIN, EDW. L. CROSSVILLE 1102 1124  
264. GUSTIN, TONY J. CROSSVILLE 1006 -----  
265. GUTHRIE, NEWTON CLEVELAND UNR 1251/10  
266. GUTTMAN, GARY NASHVILLE 1133/11 1232/16  
267. GWIN, WILLIAM CROSSVILLE 837 1117  
268. HAGER, ARTHUR MEMPHIS 1404 1408  
269. HAGLIN, HOWARD MEMPHIS 1000 1044  
270. HALEY, MAX L. NASHVILLE 1281/14 -----  
271. HALE, DORIS A. CROSSVILLE 545/4 -----  
272. HALL, JIMMIE H. NASHVILLE 758/4 -----  
273. HANCOCK, JAMES CROSSVILLE 795 1082  
274. HARDMAN, JOE NASHVILLE 973/5 1091/10  
275. HARGIS, JR., C. CHATT 1336 1280  
276. HARLEY, THOMAS NASVILLE 1652 1670  
277. HARPELL, THOMAS MURFREES 1515 -----  
278. HARRIS, DAVID CHATT 1450 1662  
279. HARRIS, JAS. R. MADISON 598/6 -----  
280. HARRISON, CRAIG MEMPHIS 1284/7 1448/17  
281. HARTZELL, DAVID 1413/4 -----  
282. HARVEY, FRED J. JAMESTOWN 425 -----  
283. HATTON, ERNEST 934/5 -----  
284. HAWKES, DAVID R. DYERSBURG 1397 1475  
285. HAYNES, DANNY NASHVILLE 574/4 -----  
286. HEADRICK, MIKE HARTSVILLE 1286 1321  
287. HEER, JOHN A. NASHVILLE 1366/5 -----  
288. HEER, DALTON SIGNAL MTN 1292 -----  
289. SHOT, DAVE MURFREES 1292 -----  
290. JERSON, DAN ALCOA 905/8 -----  
291. JERSON, LISA ENGLEWOOD 472/8 -----  
292. JENNORICKSON, C. MEMPHIS 1409/12 -----  
293. JENKINS, CHAS. MEMPHIS 1605 1838  
294. HICKMAN, LOEL MEMPHIS 1317/6 -----  
295. HICKOK, TRACEY MEMPHIS UNR 643/12  
296. HICKS, WILLIAM 1344/22 -----  
297. HIGDON, G. SCOTTY MURFREES 1041/4 1039/9  
298. HILL, RONALD T. MEMPHIS 1318/5 1432/15  
299. HINDS, ZENESH JAMESTOWN 705/4 -----  
300. HINSON, LARRY D. UNR 1193/10  
301. HINTON, JOSEPH 816/4 904/10  
302. HIRSON, THOMAS UNR 1369/14  
303. HIRT, ANDREW L. NASHVILLE UNR 853/4  
304. HIX, HARVEY MURFREES 1360 -----

305. HODGE, ANN N. CHATT 706/14 -----  
306. HOEHL, DAVID R. KNOXVILLE 1172/8 -----  
307. HOLBROOK, MARK NASHVILLE 696/12 -----  
308. HOLMAN, JIMMY CROSSVILLE 11/8 -----  
309. HOOD, W. GREGORY MEMPHIS 1884 1898  
310. HOOKINGS, MARK MEMPHIS 1054/4 -----  
311. HORTON, EVERD JOHNSON CTY 1039 1478  
312. HOUSTON, KERRY CROSSVILLE 168/8 -----  
313. HOWLAND, HENRY CHATT 1192/18 1232  
314. HUFFORD, BRIAN MEMPHIS UNR 1428/13  
315. HUGHES, JR. NAT CHATT 1283 -----  
316. HUGHES, SAN B. CHATT 1160 -----  
317. HURMAN, STEVE CHATT 1290/5 -----  
318. HUNTER, CHRIS MEMPHIS 1120/4 946/13  
319. HURT, JOHN F. MEMPHIS 1948 1843  
320. ICE, JEFF MEMPHIS UNR 1268  
321. IGOU, RICHARD OAK RIDGE 1696 1782  
322. ILDERTON, ROBT GERMAN TOWN 2046 -----  
323. IMMAN, JR. W.L. COLUMBIA 1623 1621  
324. IRWIN, BILL KNOXVILLE 1541 -----  
325. ISBELL, DEANNE CHATT 1017 -----  
326. ISHEE, MARK BRENTWOOD 1670 1742  
327. IVY, JAMES E. 192/4 -----  
328. JACKSON, JACK MC EWN 1345 -----  
329. JAMISON, GARY MC EWN 1458 -----  
330. JAMISON, GEO. MC EWN 1681 1784  
331. JANDON, LESLIE CROSSVILLE 418/8 468/11  
332. JEAN, MICHAEL COLUMBIA 696/5 -----  
333. JEFFERY, JACK HENDERSON UNR 1018/17  
334. JEPPEY, CHRIS CHATT 1225/15  
335. JETER, LEIGH MEMPHIS 897/6 -----  
336. JEWELL, TED JOHNSON CTY 1863 -----  
337. JOLLY, ROBT B. CROSSVILLE 403/13  
338. JONES, CLIFFORD JACKSON 1161 -----  
339. JONES, CURT NASHVILLE 2147 2171  
340. JONES, JAMES E. MEMPHIS 1789 1786  
341. JONES, JAMES M. CROSSVILLE 1071/5 1197  
342. JONES, JR. JOE C. NASHVILLE 1912 -----  
343. JONES, LESTER CROSSVILLE UNR 979/4  
344. JONES, PHILLIP CROSSVILLE UNR 685/7  
345. JONES, RICHARD CROSSVILLE 237/7 858  
346. JORDAN, FRED C. MEMPHIS 942/6 -----  
347. KAPKE, PAUL A. UNR 1347/10  
348. KASTEN, STEPHEN KINGSPORT 1381/5 -----  
349. KAHAKAT, NOBY CONCORD 1189/4 -----  
350. KEAGLE, JEFF CROSSVILLE 840/9 -----  
351. KEATON, CHRIS FRANKLIN 1272 1258  
352. KEITH, MITCHELL UNR 568/5  
353. KELLEY, ELLEN CHATT 540/5 -----  
354. KELLY, BILL K. KINGSPORT UNR 1192/7  
355. KENASON, MONTE UNR 1015/5  
356. KENDRICK, GARY CROSSVILLE 1384 1394  
357. KENDRICK, WADE CROSSVILLE 843 1025  
358. KERLEY, MICHAEL CROSSVILLE 969/18 1067  
359. KERLIN, THOMAS KNOXVILLE 1071/5 1325/10  
360. KHAN, BOBBY NASHVILLE UNR 1000/7  
361. KIDLER, RICK MEMPHIS 917/9 917/10  
362. KINCAD, R. NASHVILLE 656/11 -----  
363. KING, CHAS. B. DECATUR 533/8 -----  
364. KING, MARK T. MURFREES 1444/8 1381/13  
365. KINGSBURY, ROBT MEMPHIS UNR 930/5  
366. KINNANE, TODD NASHVILLE 1274 1356  
367. KIRK, MIKE R. MEMPHIS 1100/18 -----  
368. KNAPP, RICHARD MADISON 1251 -----  
369. KNUATSON, K.L. MEMPHIS 1292/11 -----  
370. KOOL, JOY V. NASHVILLE 1665 -----  
371. KROG, CHAS. J. MEMPHIS 1091/6 -----  
372. KROG, JR. GREGORY MEMPHIS 1543 -----  
373. KROG, JAMES M. MEMPHIS 1216/5 -----  
374. KUMARAN, A. R. UNR 1649/12  
375. KUTLER, MARTIN CROSSVILLE 1049/8 -----  
376. LACK, JAMES G. NASHVILLE 1589 1623  
377. LAHDE, PETER P. NASHVILLE 1589 1623  
378. LAIN, JOHN NORRIS 535/4 -----  
379. LANDRUM, JOE MURFREES 1537 1570  
380. LANGFORD, DON CROSSVILLE UNR 1201  
381. LARIMER, FRANK KNOXVILLE 1390 1448  
382. LARSON, ARTHUR GERMAN TOWN 813/3 -----

383. LARSON, GERALD NASHVILLE 1831 1823  
384. LASLEY, D. MARTY SOD-DAISY 1821 -----  
385. LAVERNE, DOUG NASHVILLE 1635 -----  
386. LAWRENCE, BOBBY NASHVILLE 1918/10  
387. LAWRENCE, DAVID CROSSVILLE UNR 779/12  
388. LAWRENCE, KAZI MEMPHIS 1430 -----  
389. LAWS, CHARLES CLEVELAND 1651 1647  
390. LAYTON, WM. J. KNOXVILLE 2066 2083  
391. LEE, CHESTER MEMPHIS UNR 1134/5  
392. LEE, ROBT. E. NASHVILLE 1331/8  
393. LEECH, SHELLEY CROSSVILLE 442/4  
394. LEHMASTERS, TOM CROSSVILLE 691/23 976  
395. LEHUEU, BRUCE CROSSVILLE 667 950  
396. LENZ, DAVID W. MEMPHIS 1072/5  
397. LEU, ROBERT P. KNOXVILLE 1128/9  
398. LEWIS, BARRY CROSSVILLE 209/13  
399. LEWIS, MORRIS LESANN 1325 1323  
400. LIGHT, JACKIE MEMPHIS 376/4  
401. LINWELER, PAUL KNOXVILLE 1531 1846  
402. LIPITAI, T. J. KNOXVILLE 1494/15 1548/17  
403. LITTLE, JAMES MEMPHIS 1616  
404. LOEBLEIN, H.F. MILLINGTON 1501  
405. LOGAN, MARY T. CHATT 674/15  
406. LONG, A. KEN MEMPHIS 1186/8  
407. LONG, BILL E. MEMPHIS 1110/6  
408. LONG, CARY D. KNOXVILLE UNR 1042/6  
409. LONG, MARK W. MEMPHIS 1381/7  
410. LOSCALZO, J.M. SEYMOUR 1026/20  
411. LOVELACE, J.M. MEMPHIS 1102/9  
412. LOVINGOOD, C.H. CROSSVILLE 579 1109  
413. LOWE, FRED R. MEMPHIS 1275 1284  
414. LOWE, KEITH CROSSVILLE 931 1227  
415. LONE, SHANE S. CROSSVILLE UNR 606  
416. LONG, STEVEN A. HILSON 999 1047  
417. LYNN, DAVID ANTIOCH 1061/5 1361  
418. LYONS, KYLE S. ATHENS 674/16  
419. MACLIN, SR. P. MEMPHIS 1529 1502  
420. MADERO, ROGER ----- 1863  
421. MALLETT, J. M. 1122/10  
422. MARIOLIS, PETER TREADWAY ----- 1506  
423. MARSEE, DARRYL COOKEVILLE 972/22 1430  
424. MARTIN, ERIC S. CLARKSVILLE 1035/21 1116  
425. MARTIN, WIL OZONE 794/4  
426. MARTIN, WM. J. NASHVILLE 1297 1327  
427. MATTHEWS, C. JAMESTOWN 378/4  
428. MATTHEWS, S. MEMPHIS 1297 1342  
429. MAYFIELD, BOBBY CROSSVILLE 665/21 816  
430. MAYO, ANDY MEMPHIS 1099/11  
431. MAZE, GERALD D. DANDRIDGE 1305  
432. MCALISTER, E.D. CHARLESTON 1491 1492  
433. MCCARTHY, BRIAN HERMITAGE 1661 1753  
434. MCCARTHY, MARK MEMPHIS 1172/9  
435. MCCORMACK, KENT KNOXVILLE 1705  
436. McDEVITT, EV CHATT 963/15  
437. McDONOUGH, MIKE CROSSVILLE UNR 446/4  
438. McELHANEY, KEN LEVTSBURG UNR 1360/14  
439. McGINNIS, CHAS. MADISONVILLE 1217 1243  
440. McGUIRE, KELLY MEMPHIS 1168/12  
441. McKENNA, GREG 1028/8  
442. McLAUGHLIN, M. ----- 1656  
443. McLEAN, JR. J.L. NORRIS 1392  
444. McMAHON, JOHN MEMPHIS UNR 850/5  
445. McMURRAY, GARY HENDERSON 1353 1408  
446. McNEELY, BROOKS KNOXVILLE 1771 1784  
447. McRIMMON, M. P. MEMPHIS 856/5  
448. MADDIGAN, CHAS. OAK RIDGE ----- 2274  
449. MADDONS, ROBT. FRANKLIN 1732 1825  
450. MADDONS, TREY CROSSVILLE 263 988  
451. MEER, RONALD MEMPHIS 1371 1415  
452. MENARD, LARRY MEMPHIS UNR 799/5  
453. MENJET, R. A. KNOXVILLE 1807  
454. MERZ, JIM W. MEMPHIS 731/4  
455. MIDDLETON, ED MEMPHIS 1942  
456. MILES, JEFF CROSSVILLE 706/8  
457. MILLINER, JAMES NASHVILLE 1154 1232  
458. MILLER, DON D. HILLINGTON 1848 1911  
459. MINOR, RONALD HILLINGTON 1143/12  
460. MINOR, WARREN HILLINGTON 1365 1444  
461. MITCHELL, JAS. MEMPHIS 1365 1444



462. MITCHELL, MIKE	CROSSVILLE	551	852
463. MITCHELL, MIKE	CROSSVILLE	2003	2002
464. MOFFETT, TERRY	CHATT	1395/13	-----
465. MONAHAN, COBY A.	MEMPHIS	1463/10	-----
466. MOODY, EULIS J.	BYERSBURG	1541	-----
467. MOODY, HAROLD	NEWBURN	1753	-----
468. MOORE, ALLEN M.	MEMPHIS	1437/13	-----
469. MOORE, CAROL	JAMESTOWN	373/4	-----
470. MOORE, JAMES E.	-----	1245/11	-----
471. MOORE, JOHN B.	MEMPHIS	1367/13	-----
472. MOORE, JOHN W.	NASHVILLE	1231	1345
473. MOORE, JOHNSON	NASHVILLE	-----	1789
474. MOORE, LEE R.	GREENSBRIER	1138/5	-----
475. MOORE, PAM J.	JAMESTOWN	499/4	-----
476. MORGAN, PHILIP	-----	1865	-----
477. MORRISON, MADE W.	NASHVILLE	1123/10	-----
478. MOSSER, TOM W.	KNOXVILLE	878/12	-----
479. MURPHY, EDW. A.	NASHVILLE	1409	-----
480. MURRY, JIM H.	MEMPHIS	1113/5	-----
481. MYERS, DAVID R.	MEMPHIS	1584/6	-----
482. NAKAGHIAN, K.	MEMPHIS	1104/10	1458
483. NEELY, ANDY	MEMPHIS	1151/15	-----
484. NETTLE, WM.	MEMPHIS	1397	1383
485. NELSON, ANDY S.	NASHVILLE	1261/13	-----
486. NELSON, HARRY	NASHVILLE	734/6	949/10
487. NELSON, GARY D.	NEWBURN	1806	-----
488. NELSON, MARK S.	NEWBURN	1307	-----
489. NEWMAN, ROBT D.	MEMPHIS	1345/18	1430
490. NICHOLS, JOHN	JOHNSON CTY	1605	1620
491. NICHOLS, STEVE	NASHVILLE	574/4	-----
492. NOONAN, THOMAS	OAK RIDGE	1381/15	-----
493. NORDQUIST, PER	FRANKLIN	1271/5	-----
494. NORMAN, JOHN	-----	511/4	-----
495. OBLON, EDWARD	OAK RIDGE	1381/15	-----
496. OENATH IV, THEO.	CHATT	1419/17	1481
497. OLSEN, ROBT. J.	NASHVILLE	1798	1847
498. OLSEN, THOS. V.	MEMPHIS	1757	-----
499. OLSON, ERIC J.	NASHVILLE	1234/22	1267
500. ORALEY, KAHAI O.	CHATT	1293/4	-----
501. ORALEY, LARRY	CHATT	1520	-----
502. OVERSTREET, SAN	MEMPHIS	1172/9	-----
503. OWEN, DEREK	NASHVILLE	949/4	-----
504. OWEN, JOSEPH	MEMPHIS	589/4	-----
505. PAFORD, WM. F.	JOHNSON CTY	-----	1604
506. PALGE, TERRY S.	CHATT	1145/5	1278
507. PANG, ALEX S.	NASHVILLE	568/4	-----
508. PARDUE, JOHNNY	MEMPHIS	1160/6	1106/14
509. PARKER, BOB	MEMPHIS	1104/6	-----
510. PARKER, JES. W.	NASHVILLE	1082/4	-----
511. PARKER, LARRY	NASHVILLE	1135	-----
512. PARKSON, RICH	NASHVILLE	2010	-----
513. PASCHALL, ROEL	-----	1207/19	-----
514. PAX, STEVE A.	KNOXVILLE	1576/21	-----
515. PEARSON, CLINT	CROSSVILLE	1035	1022
516. PEDRO, VINCENT	MEMPHIS	1309/9	-----
517. PENDERGAST, D.	SHARPS CHP	2048	-----
518. PENDEL, BRYANT	WAVELEY	1457	1463
519. PHILLIPS, ALAN	KINGSPOINT	1026/6	-----
520. PICKARD, SID B.	-----	1839	-----
521. PICKEL, PAUL	CROSSVILLE	473/1	367
522. PLETCHER, SCOTT	MEMPHIS	1873	1870
523. PLUDRA, ROLF	GERMANTOWN	1452	1474
524. POFF, STEVE M.	JOHNSBORO	1431	-----
525. POPE, BARRY H.	BLOUNTVILLE	1342	1384
526. POTTER, GROVER	CROSSVILLE	537	609
527. POTTS, MICHAEL	MURFREES	1369/4	1242/13
528. PRATT, DAVID C.	SIGNAL MTN	1015/10	1158
529. PRESSON, KEITH	MEMPHIS	906/8	-----
530. PRESSWOOD, ROBT	BEHTON	-----	1298/8
531. PRICE, DANNY L.	CROSSVILLE	132/4	-----
532. PROFFITT, SAN	CROSSVILLE	329/4	-----
533. RUCKETT, ARNOLD	DEER LODGE	1375	-----
534. RUGH, STACY N.	CROSSVILLE	UNR	959
535. PURVIS III, J.	MEMPHIS	1414	1441
536. PYLANT, GARY H.	MEMPHIS	1735	1710
537. PYLANT, LARRY	MEMPHIS	1038	1064/9
538. QUINTON, SUSAN	JAMESTOWN	1/4	-----
539. RACKLEY, JAS.	MEMPHIS	1725	1752
540. RALSTON, DOUG	KNOXVILLE	1847	1843
541. RAHSBURG, SCOTT	CROSSVILLE	160/4	-----
542. RAY, TERRY	-----	UNR	625/6
543. REAGAN, M. W.	CROSSVILLE	524	659
544. REAGAN, R. EARL	CROSSVILLE	590/9	-----
545. REAGAN, RONALD	JAMESTOWN	85/12	-----
546. REAGAN, T. LEON	CROSSVILLE	221/4	-----
547. REED, BENJIE	CLARKSVILLE	1072/17	1192
548. REED, BROOKS	CLARKSVILLE	172/17	1192
549. REED, JR., HERMAN	CROSSVILLE	1/4	-----
550. REEVES, JOHNNY	CROSSVILLE	UNR	618/7
551. REW, TERRY L.	MEMPHIS	1406/5	-----
552. RENFRO, STAN	MEMPHIS	845/4	-----
553. REYNOLDS, JAS.	SIGNAL MTN	1283	-----
554. REYNOLDS, STEVE	ATHENS	910/14	963
555. RICE, B. G.	MEMPHIS	1107	1153
556. RICE, MARTIN P.	SPARTA	UNR	1387/9
557. RICH, ROY D.	-----	UNR	1058/5
558. RICHARDSON, M.	NASHVILLE	1223	1236
559. RICKARD, DUSTIN	MEMPHIS	1459/7	1438
560. RICKMAN, JAS. T.	MEMPHIS	1021/10	-----
561. RICKMAN, JOE T.	NASHVILLE	1840	1839
562. RIVES, FRANK B.	CHATT	1561	-----
563. ROACH, STEVE G.	ATHENS	717/13	-----
564. ROBBINS, GREG	CROSSVILLE	524/5	767/19
565. ROBBINS, MIKE	COOKEVILLE	505/4	696/8
566. ROBBINS, MIKE	MEMPHIS	1092/13	1131
567. ROBERDEAU, JOE	NASHVILLE	1734	1685
568. ROBERTSON, JOHN	CROSSVILLE	93/10	779
569. ROBERTS, RONALD	UNR	1336/7	-----
570. ROBERTSON, ALVIN	MEMPHIS	1031/10	-----
571. ROBINSON, H. J.	CLARKSVILLE	2037	2163
572. ROBINSON, KEN	MEMPHIS	1317/14	1426
573. ROBINSON, STEVE	CROSSVILLE	858/11	1030
574. RODGERS, JUD	GREENSBRIER	1056/5	-----
575. ROE, RONALD	HENDERSON	1685	1829
576. ROGERS, TALBOT	OZONE	756	832
577. ROLAND, BOBBY	CROSSVILLE	557/4	-----
578. ROSS, TONY	KINGSPOINT	UNR	1085/7
579. RUEHMANN, A.C.	KNOXVILLE	1806	1901
580. SABINE, HARRY	CROSSVILLE	1576	1557
581. SABINE, HARRY	CROSSVILLE	1576	1557
582. SABINE, STEVEN	CROSSVILLE	700	782
583. SAMPSON, LOUIS	NASHVILLE	922/18	-----
584. SAMPSON, TOMMY	HENDERSON	1200/10	1144/15
585. SANDERS, DAVID	NASHVILLE	953/11	-----
586. SANDS, HARRY E.	NASHVILLE	868	898
587. SARANTOPOULOS, R	CROSSVILLE	37/9	787
588. SARRA, ROGELLO	HILLINTON	1517/4	-----
589. SAUNDERS, MARK	UNR	1059/4	-----
590. SANCER, J. P.	-----	1554	-----
591. SCARBROUGH, J.	KNOXVILLE	910/5	-----
592. SCHEUEMAN, MADE	MEMPHIS	915/9	-----
593. SCHOFIELD, MIKE	NASHVILLE	1495	-----
594. SEAGLE, PAUL F.	CHATT	1273	1267
595. SELBY, JOSEPH	KINGSPOINT	1421/12	-----
596. SELBY, RANDY D.	CROSSVILLE	277/4	-----
597. SELBY, VIVIAN	KINGSPOINT	958/9	-----
598. SELLERS, D.E.	MURFREES	659/4	1000/9
599. SEIN, RANDALL	MEMPHIS	1682	1680
600. SEVERSON, W.L.	CHATT	1348	1359
601. SEXTON, TIM W.	CROSSVILLE	238/17	840
602. SETMOUS, JIM	-----	UNR	1207
603. SHEARER, JEANETTE	CHATT	801	845
604. SHEARER, ROBERT	CHATT	1487	1548
605. SHELTON, MIKE	MEMPHIS	1111/15	1156
606. SHIPLEY, STEVE	CHATT	1138	-----
607. SHIPLEY, STEVE	CHATT	1002	-----
608. SHIPLEY, WM.	UNR	1118/9	-----
609. SHOR, NYUTIA	NASHVILLE	UNR	1992/5
610. SHORT, EUGENE	MEMPHIS	1297/5	1271/10
611. SHOULERS, SCOTT	UNR	748/6	-----
612. SHUBEL, DON W.	NASHVILLE	1415	1459
613. SIDES, DEN	CHATT	-----	1940
615. SILLYMAN, RANDY	MEMPHIS	1153/9	-----
616. SILVERSTEIN, DAN	HIXSON	1359	1419
617. SIMONE, PAUL S.	MEMPHIS	1124/11	-----
618. SIMPSON, KENNY	LENOIR CTY	1497	-----
619. SIMPSON, LOUIE	ARLINGTON	1256	-----
620. SIMS, JAMES O.	KINGSPOINT	875	-----
621. SIMS, JAMES W.	KINGSPOINT	1166	1131
622. SIMS, KELLY L.	DAISY	881/10	-----
623. SINGLETON, C.H.	CHATT	268/4	-----
624. SKINNER, BRIAN	LAYRONE	1224/4	-----
625. SMATHERS, JEFF	CROSSVILLE	162/19	-----
626. SMATHERS, SUSIE	CROSSVILLE	117/16	-----
627. SNEAD II, GORDON	MURFREES	1508	1512
628. SMITH, DAVID S.	NASHVILLE	1472	-----
629. SMITH, FRANK	SPRINGFIELD	1154/5	-----
630. SMITH, HOWARD	MEMPHIS	1549	-----
631. SMITH, JR. JACK	MEMPHIS	1678	1781
632. SMITH III, MAHLON	MEMPHIS	1954	-----
633. SMITH, ONVA	CROSSVILLE	154/4	-----
634. SPENCE, JIMMY	CHATT	537/5	-----
635. SPOONER, GEO.	CROSSVILLE	1301	1324
636. SPRAGUE, JACK	MEMPHIS	1524	1580
637. STAFFORD, TIM	UNR	1194/8	-----
638. STAMPER, JAS.	KINGSPOINT	1122/9	1252/15
639. STANCLIFF, LEON	MURFREES	1200	1197
640. STANFILL, RAY D.	NASHVILLE	UNR	862/9
641. STANLEY, RICH	NASHVILLE	UNR	942/8
642. STEARNS, BRUCE	NASHVILLE	1791	1798
643. STEWART, ROBT	MEMPHIS	1157/14	1254/19
644. STINSON, MARCUS	SHYRA	1730	1694
645. STOCKSLAGER, G.	CROSSVILLE	670	1013
646. STOLLERMAN, J.	MEMPHIS	1605	1614
647. STORRS, JOHN	NASHVILLE	1163	1173
648. STORY, LLOYD	CROSSVILLE	1534	-----
649. STOTY, JR., EDW.	-----	-----	1445/13
650. STREPEL, JOHN	EAST RIDGE	1918	-----
651. STROUD, ROBT W.	CHATT	-----	1525
652. SULLIVAN, A.	UNR	834/6	-----
653. SULLIVAN, CINDY	CROSSVILLE	99/14	980
654. SULLIVAN, MIKE	CROSSVILLE	UNR	670/7
655. SULLIVAN, TIM	CROSSVILLE	832/13	-----
656. SEDELT, L.	CROSSVILLE	1085/4	-----
657. TABOR, DOUG	CROSSVILLE	1085/4	-----
658. TALLEY, RAMON	CROSSVILLE	140/11	-----
659. TANKERSLEY, AMYE	CROSSVILLE	1474	1461
660. TANKERSLEY, B.	KINGSPOINT	1021/12	1021/14
661. TATE, KELLES	KINGSPOINT	1474	1461
662. TATE, PAUL E.	KINGSPOINT	1021/12	1021/14
663. TAYLOR, WALLACE	NASHVILLE	1177/20	-----
664. THATCHER, JON	NASHVILLE	1481	-----
665. THIEBE, RICHARD	NASHVILLE	1027/5	-----
666. THISTLEHAITE, D.	NASHVILLE	1776	1826
667. THOMAS, KEN P.	MEMPHIS	1959	-----
668. THOMAS, LARRY	MEMPHIS	1365/15	1377
669. THOMAS, MIKE J.	SIGNAL MTN	1354	1389
670. THOMAS, W. V.	-----	1160/18	-----
671. THOMAS, KEVIN P.	-----	1290/10	-----
672. THORNBERY, O.T.	MEMPHIS	1311	-----
673. THRETT, KEITH	CROSSVILLE	23/15	852
674. TIDWELL, EDDIE	MEMPHIS	1386/5	1440/9
675. TIPTON, MARK D.	ALLARD	253/12	-----
676. TORRES, EVELYN	KNOXVILLE	918/6	-----
677. TORRES, LUIS J.	KNOXVILLE	2082	-----
678. TRAM, PERRY D.	CROSSVILLE	503/9	-----
679. TRIMBLE, DOUG	JAMESTOWN	685/4	-----
680. TITTELIS, E.	KNOXVILLE	910	-----
681. TUCKER, DANIEL	CROSSVILLE	234/5	-----
682. TURBYFILL, MIKE	UNR	663/10	-----
683. TURNER, ERIC D.	CROSSVILLE	UNR	500/14
684. TURNER, GREG C.	CROSSVILLE	363	-----
685. TURNER, JOHN D.	MEMPHIS	1220/11	-----
686. TURNER, ROBT E.	JAMESTOWN	850/4	-----
687. TURNER, SCOTT	CROSSVILLE	889	962
688. TURNER, TRACY F.	UNR	1241/5	-----
689. TURNER, WM. H.	JAMESTOWN	193/4	-----
690. TUTTLE, DANIEL	CROSSVILLE	108/16	606
691. VAN DORN, CLIFF	CROSSVILLE	512/10	-----

# NICHOLS MEMORIAL I - OPEN - KINGSPOINT

No.	Name	Rating	City	RD1	RD2	RD3	tot
1.	Bickham, Bill	1885	Asheville, N.C.	W3	W2	W4	3.0
2.	Harris, Neal	1611	Asheville, N.C.	W4	L1	W6	2.0
3.	Corpenster, Richard	1683	Knoxville	L1	W6	05	1.5
4.	Igo, Rick	1696	Oak Ridge	L2	W5	L1	2.0
5.	Harrison, Joel	1750	Virginia	D6	L4	D3	1.0
6.	Adicks, William	1620	Asheville, N.C.	D5	L3	L2	0.5

# NICHOLS MEMORIAL I - BOOSTER - KINGSPOINT

No.	Name	Rating	City	RD1	RD2	RD3	Tot
1.	Jones, Mike	1032	Crossville	W14	W9	W4	3.0
2.	Langford, Scott	UNR	Crossville	D3	W8	W10	2.5
3.	Phillips, Alan	1026	Kingsport	D2	W12	W11	2.5
4.	Conilleri, Johnny	546	Crossville	W15	W10	L1	2.0
5.	Love, Keith	931	Crossville	L9	W14	W13	2.0
6.	Lovingood, Chuck	579	Crossville	L7	W16	W9	2.0
7.	Vaughan, Al	UNR	Kingsport	W6	W11	---	2.0
8.	Buchanan, Robert	UNR	Blountville	D12	L2	W15	1.5
9.	Ross, Tony	UNR	Kingsport	W5	L1	L6	1.0
10.	Stonper, Jones	1122	Kingsport	W13	L4	L2	1.0
11.	Hendons, Trey	263	Crossville	W16	L7	L3	1.0
12.	Sullivan, Cindy	99	Crossville	D8	L3	D14	1.0
13.	Threest, Keith	23	Crossville	L10	W15	L5	1.0
14.	O'Fellers, Gary	UNR	Johnson City	L1	L5	D12	0.5
15.	Blevins, William	782	-----	L4	L13	L8	0.0
16.	Brown, James	UNR	-----	L11	L6	---	0.0

# NON-RATED SECTION - NICHOLS MEMORIAL I - OCTOBER 6, 1979

No.	Name	School	RD1	RD2	RD3	RD4	Tot
1.	McCray, David	Tri Cities Christian	W4	W8	W5	W7	4.0
2.	Moore, James	Tri Cities Christian	W3	W6	L4	W10	3.0
3.	Sexton, Dennis	Sullivan West	L2	W11	W8		3.0
4.	Fine, Steve		L1	W10	W2		2.5
5.	Hammend, Mike	Tri Cities Christian	L1	W10	W2		2.5
6.	Spokane, Jay	Cumberland	W11	L2	L10	W12	2.0
7.	Al-Lindsay, Farrah	Do Dyns Bennett	W12	L3	L1		2.0
8.	Beil, David	Do Dyns Bennett	W12	L1	L3	W13	2.0
9.	Overstay, Von	Tri Cities Christian	L3	W5	W11	L3	2.0
10.	Hubbard, John	Tri Cities Christian	L3	W5	W11	L3	2.0
11.	Hubbard, Jeff	Tri Cities Christian	L6	L3	L9	Bye	1.0
12.	Hubbard, Jeff	Tri Cities Christian	L6	L3	Bye	L8	1.0
13.	Hammend, Bobby	Tri Cities Christian	L9	Bye			0.5



692.	VAN DORN, CLINT	CROSSVILLE	741/22	-----
693.	VANDERGRIFT, J.	MARYVILLE	606/4	-----
694.	VARNER, ERNIE	LENOIR CTY	1214	-----
695.	VAUGHN, JR. AL	KINGSPORT	UNR	1556/6
696.	VAUGHN, TOMMY	CROSSVILLE	UNR	755/5
697.	VERMILLION, M.		583/4	-----
698.	WADDELL, CHAS.	MEMPHIS	1142/14	-----
699.	WAH, RAYMOND	MEMPHIS	1222/14	-----
700.	WAHL, DANIEL		1521	-----
701.	WALDRIP, RANDY	GERMANTOWN	1214	-----
702.	WALKER, CAMERON	MEMPHIS	1175/7	-----
703.	WALKER, ROBT H.	LEWISBURG	1427	-----
704.	WALL, J. FRENCH	CHATT	1330	1347
705.	WALLACE, GEO.	CROSSVILLE	UNR	934
706.	WARDEN, RICHARD	MEMPHIS	1119/6	-----
707.	WARE, STEVE	CHATT	674/5	-----
708.	WEATHERS, CATHY	CHATT	971/21	-----
709.	WEAVER, FREDDA	CROSSVILLE	1/4	275/8
710.	WEAVER, HAROLD		UNR	1195/4
711.	WEAVER, NANCY	CROSSVILLE	1000	1022
712.	WEBB, JR. FLUENT	HARTSVILLE	1176/15	-----
713.	WEINGARTNER, S.	NASHVILLE	1096/5	-----
714.	WEIS, LOUIS T.	MEMPHIS	1355	1409
715.	WEST, ANNE	CHATT.	UNR	858/4
716.	WHALLEY, DAVID	COOKEVILLE	1484	-----
717.	WHEELER, DAVID	KNOXVILLE	1430	1459
718.	WHEELER, JERRY	NASHVILLE	1938	1948
719.	WHISNANT, MIKE	CROSSVILLE	113/24	760
720.	WHITE, CHRIS	SIGNAL MTN	UNR	1061/4
721.	WHITE, JOHN L.	CROSSVILLE	1047/17	1144
722.	WHITE, MICHAEL	NASHVILLE	893/11	947
723.	WHITTEHEAD, R.D.	MARYVILLE	1524	-----
724.	WHITTAKER, KEN	NASHVILLE	950	1029
725.	WILDER, JOE P.	CROSSVILLE	UNR	419/6
726.	WILLIAMS, BENJ	MEMPHIS	1192	1338
727.	WILLIAMS, GRADY	SIGNAL MTN	1080/11	-----
728.	WILLIAMS, R. A.	NASHVILLE	848/5	-----
729.	WILLS, GREG A.	MEMPHIS	1260/10	-----
730.	WILLS, JOHN W.	KNOXVILLE	1146/8	-----
731.	WILSON, BOBBY	CROSSVILLE	350/4	839/19
732.	WILSON, LARRY	NASHVILLE	1299/5	-----
733.	WOLINSKY, GLEN	CHATT	UNR	892/10
734.	WOOD, RANDALL		1157/4	-----
735.	WOOD, JR. W. H.	MEMPHIS	1246	-----
736.	WOKLEY, BRIAN	KNOXVILLE	1869	1879
737.	WRIGHT, JAS. A.	MILLINGTON	1853	1832
738.	WRIGHT, MILTON	HERMITAGE	1909	1926
739.	WUESCHER, LES	NASHVILLE	1056/10	1121/15
740.	WYATT, D. TRAVIS	CROSSVILLE	UNR	1048
741.	YOKLEY, ROBT A.	NASHVILLE	1589	1580
742.	YORK, AVERY C.	CROSSVILLE	UNR	697/15
743.	YOUNG, DANNY W.	CROSSVILLE	825/4	896/10
744.	YOUNG, ROBT L.	CROSSVILLE	1353	1365
745.	ZEPELINSKY, P.	NASHVILLE	1038/19	1219
746.	ZHISLIN, ALEX	NASHVILLE	UNR	1833/15
747.	ZHISLIN, MARK	NASHVILLE	UNR	1371/5
748.	ZHISLIN, SOPHI	NASHVILLE	UNR	1497/15

Address Change? Please  
notify us immediately.  
The TCN is mailed Third  
Class -- Not forwarded.

Editor's Comment: the top ten  
scholastic lists are inaccurate.  
If your name should be listed  
please send name & grade.

#### TENNESSEE'S TOP TEN PLAYERS

No.	Name	City	Rating
1.	Charles Maddigan	Oak Ridge	2274
2.	Marty Appleberry	Memphis	2207
3.	Curt Jones	Nashville	2171
4.	Henry J. Robinson	Clarksville	2163
5.	Luis Torres	Knoxville	2090
6.	William J. Leyton	Knoxville	2053
7.	David Pendergast	Sharps Chapel	2048
8.	Robt. B. Ilderton	Germantown	2046
9.	Mack Garner	Maryville	2034
10.	Richard W. Parsons	Nashville	2010

#### TENNESSEE'S TOP TEN WOMEN PLAYERS

No.	Name	City	Rating
1.	Sophi Zhislin	Nashville	1497/15
2.	Pamela Campbell	Crossville	1274
3.	Mary Shepherd	Chattanooga	1138
4.	Joan E. Adler	Memphis	1133/7
5.	Jennifer D. Ball		1107/10
6.	Vicky T. Boco	Memphis	1043/9
7.	Nancy Weaver	Crossville	1022
8.	Deanne W. Isbell	Chattanooga	1017
9.	Charlotte Grem	Chattanooga	984/2
10.	Cindy L. Sullivan	Crossville	980

#### TOP TEN HIGH SCHOOL PLAYERS (Grades 10-11)

No.	Name	School	City	Rating
1.	Gary Gorton	Baylor	Chattanooga	1617
2.	Scott Godfrey	Baylor	Chattanooga	1574
3.	Mike Anderson	MBA	Nashville	1466
4.	Danny Silverstein	Baylor	Chattanooga	1419
5.	Gary McMurray	Hendersonville	Hendersonville	1408
6.	Bill Conte	University School	Nashville	1403
7.	Mark King	Oakland	Murfreesboro	1381/13
8.	Todd Kinnane	David Lipscomb	Nashville	1356
9.	Morris Lewis	MBA	Nashville	1323
10.	Pamela Campbell	Cumberland Co.	Crossville	1274

#### TOP TEN JUNIOR-HIGH PLAYERS (Grades 7-9)

No.	Name	School	City	Rating
1.	Ronald Burnett		Eagleville	1227/10
2.	Terry Burdett	Martin	Crossville	1160
3.	Ted Carver	MBA	Nashville	1053/19
4.	Jimmy Alisago	Baylor	Chattanooga	1027/8
5.	Wade Kendrick	Martin	Crossville	1025
6.	Gary Stockslager	Martin	Crossville	1013
7.	Karl Absher	Homestead	Crossville	965
8.	Scott Turner	Martin	Crossville	962
9.	Bruce Lemieux	Martin	Crossville	950
10.	Atit Desai	MBA	Nashville	933/15

#### TENNESSEE'S TOP TEN ELEMENTARY PLAYERS (6th Grade & Below)

No.	Name	School	City	Rating
1.	Chuck Lovingood	Cumberland	Crossville	1109
2.	Johnny Camilleri	Cumberland	Crossville	1107
3.	Chris White	Thrasher	Signal Mtn	1061/4
4.	Travis Wyatt	Homestead	Crossville	1048
5.	Trey Meadows	Cumberland	Crossville	988
6.	Cindy Sullivan	Homestead	Crossville	980
7.	Stacy Pugh	Homestead	Crossville	959
8.	John Barker	Thrasher	Signal Mtn	936/4
9.	George Wallace	Cumberland	Crossville	934
10.	Richard Jones	Cumberland	Crossville	858
10.	Ann West	Thrasher	Signal Mtn	858/4



Dear Mr. Editor:

It's time for TN chess players to wake up to a very subtle, but in my opinion, very real problem. Recently a number of foreign players have been entering our TN tournaments under the ranking of UR classification. These players, although they don't have a USCF rating, are nevertheless very strong players and not UR by any means. Their UR status allows them to play in the lower sections whereby they usually win easily. Taking your money!

While at times these players do play in the open sections, their UR status deceives their opponents into thinking they are only novice players.

I can think of only one group to blame, and that is the tournament directors. According to the "Rules of Chess" the director has the right to use the foreign player's national rating or give him an estimated rating based on whatever information the director wishes to use.

While I could cite examples of actual occurrence, it is not necessary in order to recognize and do something about this problem. It is not a new problem, only recently has it become increasingly more evident and we should not accept it blindly.

Sincerely yours,

Bobby Edwards  
Fayetteville, TN 37334  
Box 528, #4

Dear Editor:

I am in Nashville at the main prison, and we have started a chess organization. We also have held a chess tournament which I won.

We are expected to become affiliated with the TCA & USCF soon, and there may be a possibility that someone from the prison might get the chance to participate in the Music City Fall Open, that would be great.

Mr. Peter Lahde is expected to come out to the prison sometime in the very near future. The last time I was here he came out and we are looking forward to that.

What are the possibilities of our teams getting together for a match? Four or five person teams would be ideal for us.

I believe that there is a greater interest in chess here among the administrators than at Brushy, hopefully with the prisoners also!

We organized our Association under the guidelines that you drew up and was in the last edition on the Tennessee Chess News.

The Association also has sent letters to many other chess players everywhere letting them know about us. From my experience in prison, chess is very big and can get bigger. In the future we will let all the chess players we can contact know that they can get a game with us.

If this letter is somewhat confusing, let me put it in a nutshell, we like chess and want to play anybody.

Yours truly,

Daniel Gray 77175  
Station A. West  
Nashville, TN 37203



# Chess With Curt

Round 4, Fairfield Glade Open '79

White: Jerry Wheeler (1948)  
Black: Curt Jones (2171)

1.	e4	c5
2.	Nf3	e6
3.	d4	cx d4
4.	Nxd4	Nf6
5.	Nc3	d6 Schevingen
6.	g4	...

This is known as the Keres' Attack, after the late GM Paul Keres, and is one of White's sharpest continuations against the Schevingen Proper.

6. ... a6

Also considered are 6 ... h6, 6 ... Nc6 and 6 ... Be7. Note that an immediate "retaliation" in the center to White's flank attack is bad: 6 ... d5?

7.	g5	Nf3?
8.	f4	...

A recent development which I had not seen before.

8. .... b5

Consistent, but suspect in principle. Maybe 8 ... Re5 is better, but I wasn't looking forward to 9 Bb3 ....

9. f5 b4

9 ... Re5 to give added protection to e6, 10 b4 is just to strong.

10. fxe6 bxc3

I had played 8 ... B4 with this move in mind. Of course I had looked at 10 e2? --- exposing my king. A line would run 10 exf7+ xf7 11 Bc4 Re8 12 f1 f3. Bc5 and Black survives.

11.	exd7+	Bxd7
12.	bxc3	...

I was hoping that White's king would become exposed as my compensation for the pawn.

12.	...	Re7
13.	Re4!	O-O

Not 10 ... Bg5? 11 Bf7+ Kf7 12 Rh5+

14.	Re5	Re7
15.	Re1	Re6

Preventing 15 g6 by White, but weakening the long a1-h8 diagonal.

16.	h4	Re7
17.	Bb1	Nc6

17 ... Nxc3 is met with 18 Bb2 and immediate pressure on the long diagonal.

18. Bb6 Re3

# by Curt Jones

I took a long time to find this one. Black doesn't need to worry about exchanges on c6-- the more the better.

19. h5 Ne5

Closes the long diagonal with a piece, but also a good central square for the Knight. Black threatens 20 ... Bg4.

20.	hxc6	hxc6
21.	Qe2	Rxc3

If White were allowed to build up on the h-file with Rh1, Qh2 Black would definitely be in trouble. Now the resource ... Rh3 is a savior.

22. Bb2 Qc5!

Black's Rook is protected after all, 21 Bc3? Nxc3+ 22 Qd2 Qd4 23 Qd4 Nf3+, so difficult to find.

23. Qd2! ...

If 23 ... Re2, I felt that after 24 Qc2 Qb6 25 Rh1 and 26 Qh2 was again just to strong.

23.	...	GxRb6
24.	GxKc3	Re8
25.	Bb3	Rb8

Has a threat: 26 ... Qc7 27 Qa3 Bb2 28 Qb2 Qd4! (again) 29 Qd4 Nf3+

26.	GxRb6	RxRb6
27.	Bc3?	...

Probably the losing move. Better, we agreed, was 27 Bb3, although I still like Black because of White's isolated g-pawn and Black's active pieces. Note that Sicilian end games often reward Black for patient defense in the early going -- if he lives through it!!

27.	...	Re1
28.	Re2	Re4
29.	Re2	Re3
30.	Re2	Re1
31.	KxRe1	GxRe5
32.	exd5	Gxg5

The rest should be easy -- two Bishops, unbalanced pawns, plus a pawn up for Black.

23.	Nf3	Re3
24.	Nf1	Bb5+
25.	Re1	Re4
26.	Re4	Gxa2
27.	Re3	GxRe3
28.	axBb3	f5

Black won on move 48.

**Solutions to Chess Problems:**  
A. 1 d5+ Kc5 2 Bc3+ Kxc4 3 Qe4+ Kc3  
4 Bb4+ Kb2 5 Qb1  
B. 1 Qh6 Re8 2 Rd8+ RxRd8 3 RxRd8+  
KxRd8 4 Qf8+ Resigns



# EDITOR'S COLUMN: by John White

Tennessee Chess Players, I welcome the opportunity to serve you as your editor of the Tennessee Chess News. I, like most of you, was shocked at the sudden illness and death of John Nichols. His shoes will be hard to fill.

I will attempt to print as much material as I possibly can about Tennessee Chess Activities. But I do not receive material, it will be hard to fill the pages. This month's issue has more than enough. I apologize for not printing all.

Memphis- You folk are left out of this issue because I have not received any material from the Western Region. Chess players of Tennessee wish to hear about your accomplishments. So please let us hear tournament results and what's happening.

We will publish tournament adds free of charge for tournaments of interest to Tennessee players. (Within easy traveling distance)

TD's please send a crosstable (copy of rating report will do) of all tournaments directed. Include Name, City, Rd results, Total Score.

Also, we can use short write-ups about prize winners.

Pictures--Black & White will be considered for publication. Sharp-Clear

I like more games in an issue, myself. Next month we will have more games! If you have a game you'd like to see published, sent it in.

Scholastic Players--Please drop me a post card with your name, grade and school.

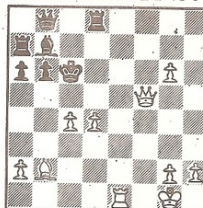
Chess Coaches--Please let us hear from your school's chess activities.

Every Scholastic Chess Player and Team should make an effort to play in the State Tournament JAN 19-20.

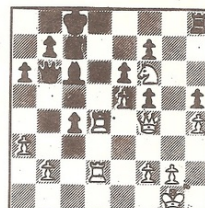
My special thanks goes out to those who have helped put this issue together: Pete Lohde, Harry Sabine, Lloyd Collier, Marilyn Loomis and the other contributors.

May all of your pawns - Queen.

## CHESS PROBLEMS:



A Botvinnik-  
Chekov  
Moscow 1935



B Keres-  
Hasenfuss  
Kemer 1937

## Games: TENNESSEE OPEN

Tom Farr (1808) - Mahlon Smith (1954)  
English 1 c4 Nf6 2 Nc3 e5 3 Nf3 Nc6  
4 a3 d5 5 cxd Nxd5 6 d3 Be7 7 e3 Be6  
8 Bd2 a5 9 Be2 0-0 10 0-0 f5 11 NxNd5  
BxNd5 12 Bc3 Bd6 13 Qa4 Kh8 14 Qb5 e4  
15 Nd2 exd 16 Qxd3 Be5 17 Bf3 BxBf3  
18 QxQd8 RaxQd8 19 NxBf3 BxBc3 20  
BxBc3 Rd3 21 Rfc1 g6 22 Kf1 Rfd8 23  
Ke2 b6? 24 Nd4! NxNd4 25 exNd4  
Black Resigns

3Rd Fairfield Glade Open-Novice Secti  
Jack Jeffery (1018) - Diane Burgess  
(920) (rd 2) 1 e4 e5 2 Nf3 Nc6 3 Bb5  
a6 4 Ba4 Bc5 5 0-0 d6 6 c3 Bg4 7 h3 Bh5  
8 d3 Ne7 9 Re1 0-0 10 Be3 BxBc3 11 RxBe3  
Ng6?! 12 g4 Nf4 13 gxh5 Nxh3+ 14 Kf1 f5  
15 Qb3+ Kh8 16 Nd2 h6 17 Qxb7 Ne7 18 Qb3  
Rb8 19 Qe6 Rxb2 20 Qd7 QxQd7 21 BxQd7  
Ng5 22 Nc4 Rb7 23 NxNg5 hxNg5 24 Rg3 g4  
25 exf5 d5 26 Nxe5 c6 27 Be6 Nxf5? 28  
Ng6+ Kh7 29 NxRf8+ Kh6 30 Rxg4 Nd6 31  
Kg2! Rb8 32 Rg6+!! Kxh5 33 Rhmate (1-0)

Tennessee Open-1979 -Open Section  
Richard Carpenter (1683) - John Hurt  
(1948) (rd 1) French Defense 1 e4 e6  
2 d4 d5 3 Nc3 Bb4 4 e5 c5 5 a3 BxNc3+  
6 BxBc3 Ne7 7 a4 Nbc6 8 Nf3 Bd7 9 Bd3  
Qa5 10 Qd2 c5 11 Be2 f6 12 0-0 0-0-0  
13 Ba3 Be8 14 Rfb1 fxe5 15 Nxe5 NxNe5?  
16 BxNe7 Nc6 17 BxRd8 QxBd8 18 Bg4 Qf6  
19 Qe3 Bd7 20 Qf3 Qe7 21 Re1 Re8 22 Re3  
g6 23 Qd1 h5 24 Bh3 Nd8 25 a5 Nf7 26 f4  
Qf6 27 Qf3 Nd6 28 a6 b6 29 Rb1 Ne4 30  
RxNe4 dxRe4 31 Qxe4 Kd8 32 Qa8+ Ke7 33  
Qxa7 Qxf4 34 Bxe6 Qd2 35 QxBd7+ Kf3 36  
Rf1+ resign (1-0)

## Scholastic Chess

SMYRNA HIGH MID\*STATE HIGH SCHOOL CHAMPION

reported by Peter Lahde

Smyrna High School's A Team captured the Championship Trophy by defeating in the third round the favorite Montgomery Bell Academy A Team by a narrow margin of  $2\frac{1}{2}:1\frac{1}{2}$ . Smyrna also had a close call when they could only win by  $2\frac{1}{2}:1\frac{1}{2}$  over Oakland. MBA had an easier time with Oakland by winning 3:1.

Smyrna-A won all their 5 matches and won  $15\frac{1}{2}$  out of 20 games. Second place was won by MBA-A with a 4-1 match record and  $14\frac{1}{2}$  out of 20 games. The third place trophy was won by Oakland with a 3-2 match score and  $11\frac{1}{2}$  point game score. MBA's B Team had the best game score to take the Class-B Trophy, beating out the Smyrna B Team by  $3\frac{1}{2}$  game points. Two Rivers as the only Junior High Team captured the Junior High Trophy and also managed a tie with 7th place Bellview.

There were eight schools represented from the Middle Tennessee area and eleven teams. Forty-eight players competed and about half played in their first rated event. Tom Farr was instrumental in getting the cafeteria of East High School. The event was sponsored by the Music City Chess Association and directed by Peter Lahde.

	TEAM GAME POINTS					Game Points	Match Score
	Rd 1	Rd 2	Rd 3	Rd 4	Rd 5		
1. Smyrna-A	4 (11)	$2\frac{1}{2}$ (3)	$2\frac{1}{2}$ (2)	$3\frac{1}{2}$ (6)	3 (5)	$15\frac{1}{2}$	5
2. MBA -A	3 (5)	3 (6)	$1\frac{1}{2}$ (1)	3 (3)	4 (8)	$14\frac{1}{2}$	4
3. Oakland (Murfreesbor)	4 (9)	$1\frac{1}{2}$ (1)	$2\frac{1}{2}$ (4)	1 (2)	$2\frac{1}{2}$ (6)	$11\frac{1}{2}$	3
4. MBA -B	3	1 (7)	$1\frac{1}{2}$ (3)	1 (5)	4 (11)	$10\frac{1}{2}$	2
5. Clarksville -A	1 (2)	4 (9)	-	3 (4)	1 (1)	9	2
6. Antioch	3 (7)	1 (2)	$2\frac{1}{2}$ (8)	$\frac{1}{2}$ (1)	$1\frac{1}{2}$ (3)	$8\frac{1}{2}$	2
7. Belleview	1 (6)	3 (4)	2 (11)	0 (8)	2 (9)	8	2
8. Smyrna -B	0	$2\frac{1}{2}$ (11)	$1\frac{1}{2}$ (6)	3 (7)	0 (2)	7	2
9. Northwest(Clarksville)	0 (3)	0 (5)	-	4 (10)	2 (7)	6	$1\frac{1}{2}$
10. Clarksville -B	3	-	-	0 (9)	2 Bye	5	$1\frac{1}{2}$
11. Two Rivers	0 (1)	$1\frac{1}{2}$ (8)	2 (7)	2 Bye	0 (4)	$5\frac{1}{2}$	1

Best Results On Each Board: Board 1: Morris Lewis(MBA-A)  $4\frac{1}{2}$   
Mark King(Oakland)  $4\frac{1}{2}$   
Board 2: Danny Haynes(Smyrna-A)  $4\frac{1}{2}$   
Board 3: George Cheij(MBA-B) 5  
Board 4: Ron Seaney(Smyrna-A) 5

### KNOX COUNTY MIDDLE SCHOOLS MATCH

reported by Louis Groeniger &  
Noby Kanakami

On November 17, the "first ever" match between Knox County middle school chess teams took place - Cedar Bluff hosted Farragut. The Village Green Optimists Club is primarily responsible for inaugurating chess programs in both schools. Members of the Greater Knoxville Chess Club have provided leadership and instruction. Two games were played at 8 boards each, with the following results: Cedar Bluff 6 Farragut 10

Board 1. B. Watson $\frac{1}{2}$	C. Chambers $1\frac{1}{2}$	5. R. Iuppa 1	B. Sonnenthal 1
2. C. Long 2	B. Fricks 0	6. K. Jones 1	J. Priode 1
3. D. Moore 1	M. Phelps 1	7. L. Karter $\frac{1}{2}$	M. Perry $1\frac{1}{2}$
4. D. Hubbs 0	G. Fok 2	8. T. Coats 0	A. Dixon 2



# POSTAL CHESS by Stan Bimson

1980 Tennessee Postal Championship: A cash prize fund (based on the number of entries) will be awarded to the top 3 finishers with 50% of prize fund for 1st, 30% for 2nd and 20% for 3rd. Initial assignments are 4 players to a section. You play two games simultaneously with each opponent, six games in all. A score of 4 points or more will qualify a player for the finals. All games are postal rated. The entry fee is only \$3.00 per section. You may enter more than one section. Tennessee residency is not required but, as in all TCA sanctioned events, TCA membership is required. If you are not already a TCA member for 1980, you may send \$4.00 TCA dues with your entry fee and you will receive your TCA membership card and this bi-monthly publication.

New entrants to Tn. Postal Chess are requested to furnish their latest USCF rating, either OTB or postal or any established postal rating. Send all entries to Stan Bimson, Rt. 2 Box 293, Hendersonville, Tn. 37075, please make checks payable to: Tn. Chess Association.

Game Results: (7/15 to 11/15) C3/2/79 Sims 1 Groeniger. TC-1-79 Jones 2 Stamper. MLE/F Jones 1 Ousley, Noonan; Nuckols 1 Searles; Noonan 1 Nuckols, Groeniger; Ousley 1 Noonan; Groeniger 1 Nuckols.

Ratings: (all active postal players are listed, \* notes new player, ! notes those rating that have changed.)

Barton	*	400.34	Jeffery	*	400.32	Ramondt		445.19
Bennett		575.01	Jones	!!!	1004.08	Sawyer		760.20
Bimson		496.02	Meadows		511.14	Searles	!	792.21
Chesnut	*	400.33	Noonan	!	681.15	Shirley		400.31
G'Fellers	*	400.35	Nuckols	!	603.16	Sims	!	410.22
Greer		533.04	Oats		400.27	Stamper	!	435.23
Groeniger	!	510.05	Ousley	!	594.17	White		400.30
Irwin		719.06	Parsons		985.29			

!! Postal Master !!: With this issue of Tn. Postal Chess I wish to acknowledge and congratulate our first postal chess Master, none other than Tennessee's own, Curt Jones. When I started as postal editor we had some out-of-state players that were in reach of the lustrous 1000 mark and was afraid that someday I would have to bestow this honor on one of them. After what I thought was a major set back in Sept. of '78 because of a lost in rating due to 3 drawn games Curt began a winning streak that now has put him over the mark. Again congratulations to Curt and here's looking for our second Master.

Postal Chess Ratings:      Master 1000 & Up,    Class A 800 - 999  
                                  Class B 600 - 799    Class C 400 - 599  
                                  Class D 200 - 399    Class E 0 - 199

Challenge Matches: Challenge matches are rated postal games between a pre-arranged or challenged opponent. Any number of games may be agreed on, usually in groups of two, where you play one game as White and the other as Black. The opening and even the variation may be designated.

## POSTAL CHESS CON'T

The fee for this type of match will be 25¢ per game per player. Play will comply with normal postal chess rules, except that more replying time may be added when more than two games are being played. All you need to do is (1) to set up your match and notify the postal director of the arrangements, enclosing the required fee; or (2) if it's a challenge, just send your match format with its requirements and I will offer it in this section. Send all entries and/or challenges to: Stan Bimson, Rt. 2 Box 293, Hendersonville, Tn, 37075.

Challenge Matches!! : Kirk Barton (400.34) would like an opponent for 2 little quiet games (1 as white, 1 as Black) of the Giuoco Piano, 1 P-K4 P-K4 2 N-KB3 N-QB3 3 B-B4 B-B4. To accept, write Kirk direct (6554 Jocelyn Hollow Rd., Nashville, Tn 37205) to make arrangements.

"For the fun of it" my Challenger '71 computer would like to have 4 postal games with any other size/make of "over-the-counter" chess playing machine. Play 2 games at slow speed of 24 hours/move and 2 fast speed games at 6 minutes/move. Not postal rated and no humans need apply, write to Stan Bimson, address above.

### MUSIC CITY FALL OPEN PRIZE WINNERS:

1st & 2nd : D. Timberlake & S. Choatie  
3rd Tie : J. Wheeler & Nyuma Shor  
Class B Tie : S. Zhislin, K. Meadows, &  
B. McCarthy  
Class C Tie : S. Shumate & Glen Cornwell  
Class E/UR : Ross Adkison  
Class E/UR : Bobby Simms  
TD: Peter Lahde

COOKEVILLE: On July 7, 1979 the FIRST TENNESSEE TECH NON-RATED BEGINNERS TOURNEY was held in Cookeville. Mike Panicali, Mike Robbins, and Mike Stamps tied for 1st (all 3-1). Other players were Ray Bowman, Vance Tate, and Ken Klingler. The winner of a free USCF Membership was Mike Stamps.  
TD: Darryl Marsee

HENDERSONVILLE, NC: Fall Classic Chess Tournament. Terry Burdett, a 9th grader at Martin Junior High, Crossville, TN tied for first place in Category 5 of the reserve section. Other TN players from Crossville were Scott Turner, Michael Reagan, John Roberson and Coach Nancy Weaver.

Pulaski, VA: The Winter Wars Tournament Elementary Section: Chuck Lovingood and Johnny Camilleri of Crossville, TN were co-champions with perfect 4-0 scores. They both Cumberland Elementary 6th graders.

Editors Note: We can print Black & White pictures. Please send, clear pictures.

### USCF RATINGS

Rating	Label
2400+	Senior Master
2200-2399	Master
2000-2199	Expert
1800-1999	Category I
1600-1799	Category II
1400-1599	Category III
1200-1399	Category IV
1000-1199	Category V
Under 1000	Category VI



## Brilliance Prize Winning Games

from the Tennessee Open  
OPEN SECTION WINNER

Gary Pylant (1735) - Emanuel Tsitsekis (1910) (rd 6) 1 e4 g6 2 d4 c5 3 Nf3 Bg7 4 Nc3 cxd4 5 Nxd4 Nc6 6 Be3 d6 7 Bc4 Nf6 8 f3 Ne5 9 Bb3 a6 10 Qd2 Qc7 11 h4 Nc4 12 BxNc4 QxBc4 13 0-0-0 b5 14 Kb1 Bd7 15 Bh6 BxBh6 16 QxBh6 b4 17 Nd5 NxNd5 18 exNd5 Qxd5 19 Rhe1 e5 20 Nf5 Qa5 21 Nxd6+ Ke7 22 Nc4 Qc7 23 Re5+ Be6 24 RxBe6+ KxRe6 25 Qe3+ Kf6 26 Qd4+ Ke7 27 Re1+ Kf8 28 QxRh8mate (1-0)

OPEN SECTION 2ND PLACE

Curtis J. Jones (2147) - Gary W. Bawgus (1833) (rd 2) 1 e4 Nc6 2 Nf3 d6 3 d4 Bg4 4 d5(a) Ne5 5 Bb5+ c6 6 dxc6 Qa5+ (b) 7 Nc3 bxc6 8 NxNe5! BxQd1 9 Bxc6+ Kd8 10 Nxf7+ Kc7 11 BxRa8 Bxc2 12 0-0 Nf6 13 NxRh8 Bb3(c) 14 Bd2(d) Qe5 15 axBb3 Ng4 16 Bf4 Qh5 17 h3 Ne5 18 BxNe5 dxBe5 19 Bd5 e6 20 Bxe6 Bc5 21 b4 (1-0)

- a. 4 Bb5, Nc3, or Be3
- b. better is Nc6
- c. a mistake but Black is already lost.
- d. White has the double threat of axb and Nd5+ followed by Ba5.

AMATEUR SECTION WINNER

Edward A. Murphy (UNR) - John W. Moore (1231) (rd 6) 1 e4 e6 2 d4 d5 3 Nc3 Nf6 4 Bg5 Bb4 5 e5 h6 6 exNf6 hxBg5 7 fxg7 Rg1 8 Qh5 Qf6 9 Nge2 Qxg7 10 0-0-0 Nc6 11 Qf3 Bd7 12 a3 BxNc3 13 QxBc3 0-0-0 14 Kb1 e5 15 dxe5 Nxe5 16 h3 Be6 17 Nc1 Rd6 18 Nb3 Rc6 19 Qe3 Nc4 20 BxNc4 dxBc4 21 Nd4 Rb6 22 Rhe1 c5 23 Nb3 cxNb3 24 cxb3 Rxb3 25 Qxc5+ Kb8 26 Qd6+ Ka8 27 Qd8+ Bc1 28 Qd2 Rd8 29 Qc2 RxRd1+ 30 RxRd1 Qg6 31 Rd8 Rxb2 32 KxRb2 Qf6+ 33 Qb3 QxRd8 34 Qxf7 Qb6+ 35 Kc3 a6 36 Qg8 Qc5+ 37 Kb2 Ka7 38 Ka1 Qc3+ 39 Ka2 Qc2+ 40 Ka1 Bf5 41 Qa2 Qc1+ 42 (0-1) resign

NOVICE SECTION WINNER

Jerry E. Chesnut (UNR) - Eric S. Martin (1035) (rd 5) 1 c4 c5 2 Nc3 Nc6 3 g3 e6 4 Bg2 Nf6 5 Nf3 d5 6 cxd5 exd5 7 d4 cxd4 8 Nxd4 Bc5 9 e3 Be6 10 0-0-0 11 Re1 Bg4 12 Qd2 Ne4 13 NXNc6 bxNc6 14 NxNe4 dxNe4 15 QxQc8 RaxQc8 16 Bxe4 Bb4 17 Kf1 Be2 18 Bxc6 BxRf1 19 KxBf1 Rd1+ 20 Ke2 Re3+ 21 Kd3 Rc8 22 resign (0-1)

Other Games of interest

HERALDICA CLASS E TOURNAMENT  
(New York-Hunter College)

Jovanovic (1174) - Dimalanta (1080)  
Two Knights Defense (rd 1) 1 e4 e5 2 Nf3 Nc6 3 Bc4 Nf6 4 Ng5 d5 5 exd5 Nxd5 6 d4 h6 7 Nxf7 KxNf7 8 Qf3+ Ke7 9 BxNd5 Be6 10 BxNc6+ bxBc6 11 dxe5 Bd5 12 Qg3 Qd7 13 0-0 Re8 14 Qh4+ Kf7 15 Qf4+ Kg8 16 b3 Be6 17 Bb2 Be7 18 Qd4 Qc8 19 Qxa7 Kh7 20 Nc3 Rhf8 21 Qe3 Rf5 22 Qe4 Kh8 23 Qxc6 Rxe5 24 Rfe1 Bd7 25 Qg6 Rg5 26 Qf7 Bc5 27 Ne4 Rf8 28 Qc4 Rxg2+ 29 KxRg2 Bh3+ 30 Kh1 Qg4 31 Bxg7+! Kh7 32 Nf6+!! RxNf6 33 QxQg4 BxQg4 34 BxRf6 Bxf2 35 Kg2 BxRe1 36 RxBe1 c6 37 a4 Bf5 38 Re2 Kg6 39 Rf2 Be4+ 40 Kg1 c5 41 a5 Bb7 42 Be7 h5 43 Bxc5 Kg5 44 c4 Ba6 45 Rc2 Kf5 46 b4 Ke6 47 b5 Bb7 48 Rd2 Ba8 49 a6 Bf3 50 b6 Ke5 51 b7 Bxb7 52 axBb7 Black Resigns (1-0)

Jovanovic (1174) - Dowie (1135)  
Sicilian (rd 3) 1 e4 e5 2 Nf3 d6 3 Bc4 Nc6 4 d3 a6 5 Nc3 Na5 6 Bb3 NxNb3 7 axNb3 Nf6 8 Bg5 e6 9 0-0 Be7 10 Re1 Qc7 11 Qd2 b6 12 Nb5 Qc6 13 Nc3 Bb7 14 Qe3 0-0 15 Qf4 Qc7 16 Qg3 Rac8 17 Bh6 Nh5 18 Qg4 Bf6 19 QxNh5 gxh6 20 Qxh6 Bg7 21 Qg5 Kh8 22 Nh4 Rg8 23 Qe7 24 Re3 Qf6 25 Rh3 Qh6 26 Qxf7 Bc7 27 Ng6+ QxNg6 28 QxQg6 h6 29 Rxh6+ Black Resigns (1-0)

CUMBERLAND COUNTY CHAMPIONSHIP "79"

Keith Lowe (931) - Harry Sabine (1576) (rd 4) 1 d4 d5 2 c4 e6 3 Nc3 Nf6 4 Bg5 Nbd7 5 c5 c6 6 Nf3 b6 7 b4 bxc5 8 bxc5 Qa5 9 Qc2 Ne4 10 Bd2 NxBd2 11 QxNd2 Ba6 12 g3 Be7 13 Bh3 0-0 14 0-0 Rab8 15 Rab1 Bc4 16 a4 h6 17 Rfe1 Rfd8 18 Qc2 f5 19 e6 Bf6 20 Nd2 Ba6 21 f4 Qc7 22 Nf3 g6 23 Ne5 NxNe5 24 fxe5 Bg7 25 RxRb8 RxRb8 26 Rb1 Bc4 27 Bf1 BxBf1 28 KxBf1 a5 29 RxRb8+ QxRb8 30 Ne2 g5 31 Qc3 Qb1+ 32 Kf2 Qh1 33 Qxa5 Qxh2+ 34 Ke1 Qh1+ 35 Kd2 h5 36 Qd8+ Kh7 37 Qxg5 Qf3 38 Qf4 Qh1 39 Qh4 Qf3 40 g4 Bh6 41 g5 Bg7 42 g6+ Kh6 43 Qf4+ QxQf4 44 exQf4 h4 45 Ng1 Kxg6 46 a5 Bh6 47 Ke3 Kh5 48 a6 Kg4 49 a7 Bxf4+ 50 Kf2 Bg3+ 51 Kf1 f4 52 a8(Q) Kf5 53 Qxc6 Ke4 54 Qxe6 f3 55 Qg4+ resign (1-0)

# FAIRFIELD GLADE OPEN - CROSSVILLE - NOVEMBER 3, 1979

No.	Name	Rating	City	R01	R02	R03	R04	R05	Tot
1.	Gwin, William H.	837	Crossville	W55	W7	W10	W14	W4	5.0
2.	Campbell, Pamela C.	974	Crossville	W38	W54	W11	D9	W14	4.5
3.	Lipinski, Theodore Jr.	1095	Fairmont, WV	D30	L24	W3	W12	W9	4.5
4.	Burdett, Terry	766	Crossville	W52	W21	W17	W5	L1	4.0
5.	Hagge, Tony D.	976	Raleigh, N.C.	W19	W35	W34	L4	W18	4.0
6.	McCarthy, Edward A.	950	Nashville	W20	W13	L9	W21	W16	4.0
7.	James, E.	1109	Sparto	W46	L1	W35	W23	W19	4.0
8.	Pete	835	Chattanooga	W60	L9	W55	W17	W20	4.0
9.	Blum, Khosrow	1104	Memphis	W40	W3	W15	D2	L3	3.5
10.	Phillips, Alan W.	1026	Kingsport	W56	W28	L1	D29	W30	3.5
11.	Jeffery, Jack A.	UNR	Hendersonville	W51	W44	L2	D13	W28	3.5
12.	Whittaker, Kenneth	UNR	Nashville	W32	W36	L15	D28	W29	3.5
13.	James, James Michael	1032	Crossville	W43	L6	W54	D11	W15	3.5
14.	Storrs, John W.	1163	Nashville	W42	W23	W16	L1	L2	3.0
15.	Goodard, James C.	UNR	Hendersonville	W27	W24	W12	L3	L13	3.0
16.	Ethridge, Glenn L.	897	Elberton, GA	W45	W53	L14	W36	L6	3.0
17.	Gollogher, Jas. J. Sr.	1198	Memphis	W29	W18	L4	L8	W34	3.0
18.	Boo, Bob D.	855	Jamestown	W58	L17	W26	W25	L5	3.0
19.	Horton, Carl F.	UNR	Black Mtn, N.C.	L5	W40	W31	W24	L7	3.0
20.	Davenport, Edward	881	Smyrna	L6	W48	W43	W22	L8	3.0
21.	Bell, Jack T.	941	Elberton, GA	W26	L4	W53	L6	W36	3.0
22.	Stanbrook, Fred	UNR	Nashville	W37	L3	W51	L20	W35	3.0
23.	Kay, Joseph A.	869	Elberton, GA	W59	L14	W38	L7	W39	3.0
24.	Turner, Scott	889	Crossville	W57	L15	W41	L19	W42	3.0
25.	Gibson, Mark S.	1162	Nashville	W53	W49	W37	L18	W40	3.0
26.	Corpenier, Frederic	UNR	Oak Grove, KY	L21	W42	L18	W44	W37	3.0
27.	Hayfield, Bobby	665	Crossville	L15	L41	W56	W55	W38	3.0
28.	Sanders, Greg H.	817	Elberton, GA	W43	L10	W39	D12	L11	2.5
29.	Whitlow, Jeff M.	466	Elberton, GA	L17	W60	W50	D10	L12	2.5
30.	Sullivan, Cindy L.	99	Crossville	D3	L33	W45	W49	L10	2.5
31.	Low, Keith	931	Crossville	W41	L34	L19	D32	W49	2.5
32.	Mason, Bradley	UNR	Knoxville	L12	L37	W59	D31	W51	2.5
33.	Cumby, Rick	1045	Cookeville	D49	W30	L3	W50	---	2.5
34.	Higginbotham, Danny	UNR	Cookeville	W50	W31	L5	---	---	2.5
35.	Levinwood, Chuck	579	Crossville	W39	L5	L7	W43	L22	2.0
36.	Threest, Keith D.	23	Crossville	W56	L12	W44	L16	L21	2.0
37.	Camilleri, Johnny S.	548	Crossville	L22	W32	L25	W41	L26	2.0
38.	Lomb, Lucy	UNR	Knoxville	L2	W46	L23	W53	L27	2.0
39.	Whitworth, Gene	UNR	Nashville	L35	W56	L28	W46	L23	2.0
40.	Whitman, Michael	113	Crossville	L9	L19	W60	W47	L25	2.0
41.	Dye, Anthony H.	UNR	Elberton, GA	L31	W27	L24	L37	W52	2.0
42.	James, Richard	237	Crossville	L14	L26	W58	W54	L24	2.0
43.	McDaniel, Jory J.	UNR	Smyrna	L13	W58	L20	L35	W55	2.0
44.	Bureess, Diane	870	Columbia	W1	L11	L36	L26	W54	2.0
45.	Hester, Jeff	UNR	Nashville	L16	D51	L30	W59	D50	2.0
46.	Smathers, Susie	117	Crossville	L7	L38	W48	L39	W57	2.0
47.	Weaver, Henry W.	UNR	Crossville	W57	L54	W57	L40	W56	2.0
48.	Plyler, Ted H.	UNR	Crossville	L28	L20	L46	W56	W59	2.0
49.	Meens, Richard T.	UNR	Chattanooga	D33	L25	W52	L30	L31	1.5
50.	Pearson, Clinton H.	1035	Crossville	L54	W57	L29	L32	W54	1.5
51.	Stocksinger, Gary	692	Crossville	L11	D45	L22	W52	L32	1.5
52.	Tyler, Mike K.	UNR	Elberton, GA	L4	D59	L49	L51	W60	1.5
53.	Sabine, Jay D.	152	Crossville	W25	L16	L21	L38	L41	1.0
54.	Horton, Herbert T.	UNR	Black Mtn, N.C.	W47	L2	L13	L42	L44	1.0
55.	Hend, Mark S.	UNR	Elberton, GA	L1	W47	L8	L27	L43	1.0
56.	Sandage, Shane	UNR	Crossville	L10	L39	L27	W55	L47	1.0
57.	Robert, E. E.	UNR	Elberton, GA	L24	L50	L47	W60	L46	1.0
58.	Cindy L.	UNR	Crossville	L18	L43	L42	L56	W56	1.0
59.	George	UNR	Crossville	L23	D52	L32	L45	L48	0.5
60.	Shawn C.	UNR	Crossville	L8	L29	L40	L57	L52	0
61.	Harber, Robert S.	UNR	Kingston	W1	---	---	---	---	0

# FAIRFIELD GLADE OPEN - CROSSVILLE - NOVEMBER 3, 1979

No.	Name	Rating	City	R01	R02	R03	R04	R05	Tot
1.	James, Curt	2147	Knoxville	W21	W14	W3	W6	W2	5.0
2.	Smith, John W. Jr.	1727	Atlanta, GA	W20	W10	W19	W7	L1	4.0
3.	Rutz, William	2033	Decatur, GA	W12	W13	L1	W10	W6	4.0
4.	Appleberry, Marty	2234	Memphis	W27	W9	L6	W13	W8	4.0
5.	McCarthy, Brian	1661	Hermitage	W7	D8	D9	W14	W3	3.5
6.	Wheeler, Jerry T.	1933	Nashville	W10	W16	W4	L1	L3	3.5
7.	Dickerson, Leonard	1820	Knoxville	W26	L3	W16	L4	W17	3.0
8.	Edwards, Robert Jr.	1791	Fayetteville	D22	D5	W25	W17	L4	3.0
9.	Cobb, James K. Jr.	1693	Chattanooga	W15	L4	D5	W23	D7	3.0
10.	Jamison, George C.	1681	McEwen	L6	W27	L1	L3	---	3.0
11.	Silverstein, Danny	1359	Chattanooga	W19	L19	L10	W24	W22	3.0
12.	Cobb, James K. Jr.	1693	Chattanooga	L3	L25	W20	W16	---	3.0
13.	Bennett, Richard	1774	Knoxville	W26	L3	W16	L4	---	2.5
14.	Farr, Roy T.	1808	Hermitage	W25	L1	D15	W22	---	2.5
15.	Morris, David	1650	Chattanooga	L9	W21	D14	D18	D13	2.5
16.	Easter, Ron	1436	Knoxville	W17	L6	L13	W25	L12	2.0
17.	Nullis, Don	1716	Atlanta, GA	L16	W22	W20	L8	L10	2.0
18.	Bell, Arthur H.	UNR	Crossville	W24	L2	L7	D15	D19	2.0
19.	Sides, Ben L.	2000	Chattanooga	D23	W11	L2	W1	---	2.0
20.	Burrell, Martin D.	1542	Hixson, GA	L2	---	---	L17	L12	2.0
21.	Becht, Barry E.	1708	Goodlet	L1	L15	L12	W25	---	2.0
22.	Harris, Neal D.	1611	Old Fort, N.C.	D8	---	---	L74	L14	1.5
23.	Corpenier, Richard	1683	Knoxville	D19	L7	W26	L9	L21	1.5
24.	Peterson, Deane	1689	Chattanooga	L18	D26	L22	L11	---	1.5
25.	Adickes, William	1620	Nashville, N.C.	L14	W12	L8	L16	L20	1.0
26.	Bowen, Albert	1555	Nashville	L13	D24	L23	---	---	0.5
27.	Hardy, James K.	1713	Marion, N.C.	L4	L10	---	---	---	0

# FAIRFIELD GLADE AMATEUR - CROSSVILLE - NOVEMBER 3, 1979

No.	Name	Rating	City	R01	R02	R03	R04	R05	Tot
1.	Chumate, Steven P.	1469	Nashville	W26	W16	W14	W9	D2	4.5
2.	Glenn, Wm. H.	1558	Berea, KY	D19	W27	W10	W13	D1	4.0
3.	Chootie, Steven H.	1565	Nashville	W30	L15	W21	W10	---	4.0
4.	Edge, Donald D.	1402	Hendersonville	W21	W25	D13	W24	---	3.5
5.	Wheeler, Gerald A.	1505	Huntsville, AL	W11	L10	D7	W22	W9	3.5
6.	Brown, Clark	1286	Chattanooga	L13	W23	W31	D14	W15	3.5
7.	Noore, John M.	1331	Nashville	L14	W30	D5	W17	W13	3.5
8.	Lewis, Morris F.	1325	Lebanon	L24	W26	D20	W19	W14	3.5
9.	Valentino, William	1494	Lexington, KY	W18	W31	W15	L1	L5	3.0
10.	Lipinski, Jeff L.	1332	Fairmont, WV	W22	W5	L2	L3	W16	3.0
11.	McGraw, George	1287	Hovesville, N.C.	L5	W28	L16	W31	W22	3.0
12.	Salisbury, Franklin	1378	Martin, KY	L16	L18	W30	W20	W21	3.0
13.	Jimison, Kenny E.	1497	Lenoir City	W6	W20	D4	L2	L7	2.5
14.	Lanford, Donald S.	UNR	Crossville	D7	W24	L1	---	---	2.5
15.	Brattin, Donald D.	1334	Berea, KY	W28	W3	L9	D16	L6	2.5
16.	Varner, Ernie R.	1214	Lenoir City	W12	L1	W11	D15	---	2.5
17.	Hunt, David	1401	Fairmont, WV	D22	L19	W25	L7	---	2.5
18.	Chapman, Bobby R.	1285	Nashville	D27	W27	---	---	---	2.5
19.	Martin, William J.	1297	Nashville	D2	W17	L24	L8	D20	2.0
20.	Leamon, Edward D.	1225	Kennesaw, GA	W23	L13	D8	L12	---	2.0
21.	Hailey, Max L.	1381	Nashville	L4	W29	L3	---	---	2.0
22.	Stancil, Leon D.	1209	Memphis	---	---	---	---	---	2.0
23.	Leamon, Edward D.	1225	Kennesaw, GA	L20	L6	W27	L21	W25	2.0
24.	Collier, Lloyd K.	1571	Kingsport	L8	L14	W19	L4	---	2.0
25.	Chandler, Charlie	370	Elberton, GA	W14	---	---	---	---	2.0
26.	Blitzer, John P.	1284	Prestonsburg, KY	L1	L8	---	---	---	1.5
27.	Burns, Bruce D.	1251	Hixson, GA	W17	L2	L23	---	---	1.5
28.	Richardson, Mark D.	1253	Nashville	L15	L11	W26	W27	---	1.5
29.	Thames, Larry G.	1261	Crossville	L31	L21	L26	W27	---	1.5
30.	Wheeler, Harry	1297	Brownstown, N.C.	L3	L7	L12	W25	---	1.5
31.	Wheeler, Louis M.	1311	Knoxville	W9	L9	L6	L11	L27	1.0

# INDIAN SUMMER OPEN - CROSSVILLE - OCTOBER 13, 1979

No.	Name	Rating	R01	R02	R03	R04	Tot
1.	Camilleri, Johnny S.	546	W29	W7	W10	W9	4.0
2.	Gwin, William H.	837	W19	W14	W11	W3	4.0
3.	Kesley, Michael	569	W28	W5	W4	L2	3.0
4.	Turner, Scott	1000	W21	W13	L3	W14	3.0
5.	Haisley, Jr., Roy H.	1012	W18	L3	W19	W11	3.0
6.	Kendrick, Wade	843	W22	L11	W24	W13	3.0
7.	Burdett, Terry	766	W24	L1	W26	W12	3.0
8.	Longford, Scott	UNR	L11	W22	W23	W10	3.0
9.	Sullivan, Cindy L.	99	W20	D15	W12	L1	2.5
10.	Stocksinger, Gary	692	W26	W17	L1	L8	2.0
11.	Levinwood, Chuck	579	W8	W6	W47	L2	2.0
12.	Sabine, Jay D.	152	W32	W16	L9	L7	2.0
13.	Seagon, Mike	524	W27	L4	W25	L6	2.0
14.	Smathers, Jeff	142	W30	L2	W27	L4	2.0
15.	Bundy, Barry A.	UNR	D23	D9	W17	L20	2.0
16.	Sabine, Steven D.	700	W25	L12	W18	---	2.0
17.	Smathers, Susan	117	W33	L10	L15	W29	0
18.	Whitman, Mike D.	113	L5	W28	L16	W24	2.0
19.	Costerly, James	UNR	L2	W30	L5	W28	2.0
20.	Conner, Nancy	1000	L9	W23	---	W15	2.0
21.	Threest, Keith D.	23	L4	L27	W30	W25	2.0
22.	Garrison, Steve S.	UNR	L6	L8	W33	W26	2.0
23.	Turner, Grey C.	363	D15	L20	L8	W27	1.5
24.	Brooks, Mike A.	UNR	L7	W29	L6	L18	1.0
25.	Shultz, Cindy L.	UNR	L16	W32	L13	L21	1.0
26.	Counts, Shawn	UNR	L10	W33	L7	L22	1.0
27.	Low, Shane S.	UNR	L13	W21	L14	L23	1.0
28.	Parham, W. Travis	UNR	L3	L18	W32	L19	1.0
29.	Krahn, George H.	UNR	L1	L24	W32	L17	1.0
30.	Sanders, Shane	UNR	L14	L19	L21	W33	0
31.	Powers, Talbot W.	756	---	---	---	W32	1.0
32.	Whitman, Lexie	UNR	L12	L25	L28	L31	0
33.	Young, Brian L.	UNR	L17	L36	L22	L30	0



# 1980 Tennessee Scholastics

(Open to Tennessee Students Only)

January 19-20, 1980

Five-Round Swiss - Four Sections

At Student Center  
Middle Tennessee State University  
Murfreesboro, TN

## High School Championship Section

Open to Grades 12 and below

Entry Fee: \$8 if received by 1/15; \$10 at site

1st - Trophy + \$100 expenses to Southern High School	1st Team - Trophy + \$100 expenses to Southern H.S.
2nd - Trophy	2nd Team - Trophy
3rd - Trophy	3rd Team - Trophy
4th - Trophy	
5th - Trophy	

## High School Novice Section

Open to Grades 12 and below rated below 12

Entry Fee: \$7 if received by 1/15; \$9 at site

1st - Trophy	1st Team - Trophy
2nd - Trophy	2nd Team - Trophy
3rd - Trophy	3rd Team - Trophy
4th - Trophy	
5th - Trophy	

## Junior High Section

Open to Grades 9 and below

Entry Fee: \$6 if received by 1/15; \$8 at site

1st - Trophy	1st Team - Trophy
2nd - Trophy	2nd Team - Trophy
3rd - Trophy	3rd Team - Trophy
4th - Trophy	
5th - Trophy	

## Elementary Section

Open to Grades 6 and below

Entry Fee: \$5 if received by 1/15; \$7 at site

1st - Trophy	1st Team - Trophy
2nd - Trophy	2nd Team - Trophy
3rd - Trophy	3rd Team - Trophy
4th - Trophy	
5th - Trophy	

REGISTRATION: 7:30-9:30 a.m., January 19

ROUNDS: Saturday - 10 a.m., 2 p.m., 7 p.m.  
Sunday - 9 a.m., 2 p.m.

TIME CONTROL: 50 moves in 2 hours

DUES: USCF and TCA for all

TEAMS: Teams must have at least 4 from the same school.  
The top 4 scores will be added for the team score.

No school may win more than one team trophy per section.

ACCOMMODATIONS: The Jackson Motel  
831 N.W. Broad Street  
Murfreesboro, TN, 37130  
615-893-5290

Rates: \$14-one person      \$18-three persons  
\$16-two person      \$20-four persons

ENTER: Harry D. Sabine P.O. Box 381  
Crossville, TN, 38555  
615-484-9593 or 484-4878

# TOURNAMENT CALENDER CON'T

FEB 2-3 MUSIC CITY WINTER, 5-SS, TL 50/2 Gentry Inn, I-24 & Bell Rd. Exit, Nashville 37211. EF: \$15. ST \$4. \$\$ (335 b/30): 100-50-25, B, C, D, E/UR each 25-15; Trophy to 1st. RG: 8-9 AM, RD: 30-2-7, 9-2. Ent: Music City Chess Assn., 303 Belinda Dr., Hermitage, TN 37076. NS.

FEB 16-17 1980 GEORGIA CONGRESS/H.S. CHAMPIONSHIPS. Save Inn-Midtown, 1152 Spring Street (Exit 1-75 & 14th Street) Atlanta 30309. In 4 sections: Congress, 4-SS, TL 30/90. EF: \$15 if rec'd by 2/8; \$17 at site. \$\$ UNCONDITIONALLY GUARANTEED!! TO: 120-70-60, Category I, II, III, IV, V, VI/UR each 60. RG: ends 11:30 AM. RD: 12-6, 10-4. Quads, (2/16 & 2/17!) 3-RR, TL 40/80, EF: \$7, Trophy to 1st each section. RG: ends 9:45 AM. RD: 10-1:30-5. HS CHAMP., 5-SS, 40/1, open to all HS students and pre-HS students, but must be a Georgia resident to claim title & trophy. EF: \$6.50 if rec'd by 2/8; \$7.50 at site. Trophies (on 50 entries) to top 4, 1500, 1400, 1300, 1200, 1100, 1000, below 1000, 2 JHS & ELEM students, top UR, top 2 schools of 3, top school under 1200, top school unrated (must be 6 schools) RG: ends at 10:30 AM. RD: 11-2-5, 10-1. GCA mem. req., other states OK. HR: \$19-23. Make reservations early. Ent: Thad Rogers, NTD, 3055 General Lee Road, Macon, GA 31204. NS.

MAR-APR ??? JUNIOR HIGH/ ELEMENTRY REGIONALS ????

MAR 1-2 11th SOUTHERN CONGRESS/H.S. CHAMPIONSHIPS. Dunfey Hotel, Howell Mill Road exit and I-75, Atlanta 30318. Site of 1980 U.S. Open. In 3 sections, Congress, 5-SS, 45/2. EF: \$18 if rec'd by 2/24 \$\$ 1000 UNCONDITIONALLY GUARANTEED. 200 - 150; Category I, II each \$120; Category III, \$110; Category IV, V, VI/Unr. each \$100; Trophy to 1st. Reg ends at 9:30 AM. Rds. 10-3-8, 10-3. H.S. Championship, 6-SS, 40/80. EF: \$12 if rec'd by 2/24. Trophies to top 5, top 4 4-man teams; \$150 - 100 - 50 toward National H.S. Expenses to top 3 players and top 3 teams (must play in National H.S. to get expenses). Reg. ends 11:15 AM. Rds: 12-4:30-8:30, 9-1-5. H.S. Novice, 6-SS, 40/1, open to under 1400 or Unr. EF: \$12 if rec'd by 2/24. Trophies to top 8, top Category V, VI, Unr., 4 4-man teams. Reg. ends 10:15 AM Rds 11:30-7, 9-12:30-4. Both H.S. sections open to all High School and Pre-H.S. students in AL, AR, FL, GA, KY, LA, MS, NC, SC, TN, VA, OR WV. All, EF: \$2 more at site. HR: \$35 single or double; \$40 triple or quad. GCA mem. req., other states OK. Ent: L. Thad Rogers, NTD, 3055 General Lee Road, Macon, Georgia 31204. NS.

APR 12 CUMBERLAND COUNTY SPRING OPEN. 4-SS, TL 40/1, Martin JHS, Stanley St. Crossville 38555. EF: \$6. ST \$2 for TN res. \$\$ (165 b/30): 50, C, D, 1000-1199, below 1000 each 25, UR 15, optional Trophies. RG: 7:30-8:45 AM CST, RD: 9-11:30-2:30-5:30 CST. Ent: Harry Sabine, P.O. Box 381, Crossville, TN 38555. (484-9593 or 484-4878), LS.

May 3-4° NATIONAL ELEMENTRY CHAMPIONSHIPS -- MINNEAPOLIS, MN

May 9-10-11 NATIONAL HIGH SCHOOL/ JUNIOR HIGH -- PHILADELPHIA, PA

Aug 3-15 U. S. OPEN -- ATLANTA, GA

Note: The Editor will publicize all tournament announcements received (in or out of State) which might be of interest to Tennessee Chess Players. NO CHARGE.



# Tournament Calendar

DEC \*8-9 KNOXVILLE OPEN, Farragut Middle School, Kingston Pike at Concord Road (I-40 Campbell Station Road exit or Cedar Bluff exit), Knoxville, TN. 5-SS, 50/2, EF: \$16., juniors \$9. \$\$ (b/30 -3/class) 120-70, B,C,D,E/UNR, Below 1000 40, Reg: 8-9:30 AM 12/8, Rds: 10-3-8, 9-2 Ent: Frank Larimer, Route 7, 1508 Hidden Hills Dr., Clinton, TN 37716 (615) 457-3932

DEC 15-16 ST. LOUIS JUNIOR OPEN, 6-SS, TL 40/1, Davis-Shaughnessy Hall, Room 120, St. Louis Univ., 3674 Lindell Blvd., St. Louis, MO 63108. Open to under 19, EF: \$4, USCF: \$10, part. jr. \$6, if rec'd by 12/13; all \$1 more at site. \$\$ (70 b/35): 50-20; trophies to champion, top categories 4, 5, 6, top UR, top HS team of 4. RG: 9-9:30 AM, RD: 10-1-4, 10-1-4. Ent: Ed Willis, 872 Morningside Lane, Arnold, MO 63010. NS (314) 296-4156

DEC 29 END OF YEAR, 3-SS in 8-man sections, TL 40/90, Starr Hall, Univ. of SC at Lancaster, Hubbard Dr., Lancaster. EF: \$5. \$\$25. RG: 9-9:30 AM, RD: 10-1:30-5. ENT: Marion E. Mahaffey, 1207 Memorial Park Rd., Lancaster, SC 29720

JAN 19-20 1980 TENNESSEE SCHOLASTIC CHAMPIONSHIPS - Murfreesboro (see add page 90)

JAN 26-27 1980 ATLANTA/JHS/ELEM CHAMPIONSHIPS. Marriott Hotel, 246 Perimeter Center Pkwy. N.E. (I-285 at Ashford-Dunwoody Exit) Atlanta 30346. In 5 sections: Atlanta Champ., 4-SS, TL 30/90. OPEN TO ANYONE, but trophy & title to top Atlanta player. EF: \$15. \$\$UNCONDITIONALLY GUARANTEED!! 610: 120-70-60, Category I, II, III, IV, V, VI/UR each 60. RG: ends at 11:30 AM. RD: 12-6, 10-4. Quads, (Saturday & Sunday) 3-RR, TL 40/80. EF: \$7. Trophy to 1st each section. RG: ends 9:45 AM. RD: 10-1:30-5. JHS CHAMP., (1/26 only!) Open to any student in grade 9 & below. EF: \$4.95. ELEM. CHAMP., (1/27 only!) Open to any student in an elementary school. 50% discount if played in JHS! EF: \$4.50, Both Scholastic Sections, 4-SS, TL 40/1. Prizes based on 30 entries/4 per class. Trophies to 1st, 2nd, 3rd, top Category V, UR, Girl, 2 New Players, team of 4 from same school, ribbons to top player each grade, RG: ends 9:30 AM. RD: 1st starts at 10 AM. All, EF: \$2 more at site. 1-pt. Bye for rd. 1 if requested in advance. ST: \$5 HR: \$30 up to 4 in room. ENT: Thad Rogers, NTD, 3055 General Lee Rd., Macon, GA. 31204. NS.

p. 92

TENNESSEE CHESS ASSOCIATION, INC.

John L. White Editor

Tennessee Chess News

Route 8 Box 247

Crossville, TN. 38555

John T. Burnett  
P. O. Box 115, Route 1  
Eagleville, TN 37060

NONPROFIT ORGANIZATION  
U. S. POSTAGE  
**PAID**  
KINGSPORT, TENNESSEE  
PERMIT NO. 321

