

November-December 1986/January 1987

---

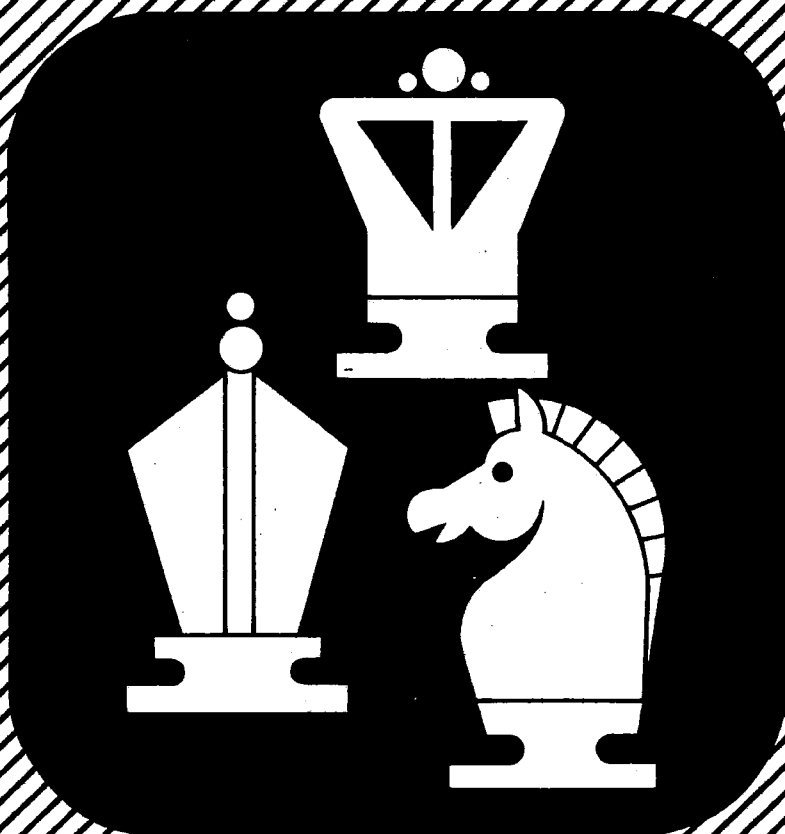
# TENNESSEE

---

# Chess News

---

IN THIS ISSUE:      London Exclusive  
                                 Tennessee Open



## Tennessee Chess News

Tennessee Chess News is the official quarterly publication of the Tennessee Chess Association. TCA annual dues are \$4.00. Those joining after April 1 each year pay \$2.00. All memberships expire August 31 each year. Additional members of one family may join TCA for 50 cents but only one issue of TCN will be mailed out. Patron memberships are available for \$25.00 per year, with said year beginning from date of payment of dues. These memberships are Tax-Deductable!! and do help support TCA. Patron members also receive TCN via first class mail and their names are printed in each issue of TCN. If anyone has already paid their \$4.00 regular membership, they pay \$21.00 and join the patron membership.

Send all address changes and dues to:

Harry D. Sabine  
P. O. Box 381  
Crossville, TN 38555

## Board of Directors 1985 - 1986

### PRESIDENT

Bill Orgain  
P. O. Box 366  
Dickson, TN 37055  
H. (615) 446-0521  
O. (615) 446-2814

### VICE PRESIDENT

Peter P. Lahde  
2609 Sailboat Court  
Nashville, TN 37217  
H. (615) 361-4588  
O. (615) 794-8000

### SECRETARY-TREASURER

Harry D. Sabine  
P. O. Box 381  
Crossville, TN 38555  
H. (615) 484-4878  
O. (615) 484-9593

### NEWSLETTER EDITOR

Larry G. Thomas  
P. O. Box 688  
Alcoa, TN 37701  
H. (615) 983-1977  
O. (615) 982-4472

### POSTAL CHESS COORD.

Lee Edwards  
3214 McGavock Pike  
Nashville, TN 37214  
H. (615) 833-7522  
O. (615) 242-5020

### TOURNAMENT COORDINATOR

Richard Igou  
400 Rhodora Court, Apt. F  
Knoxville, TN 37923  
H. (615) 690-6810  
O. (615) 574-1839

### SCHOLASTIC COORDINATOR

James W. Corbett  
1492 Vera Cruz  
Memphis, TN 38117  
H. (901) 761-5978  
O. (901) 529-3038

### DIRECTOR-EAST TENNESSEE

Al Lipkin  
Route 1, Box 404  
New Tazewell, TN 37825  
H. (615) 626-4071  
O. (615) 869-3611

### DIRECTOR-MIDDLE TENNESSEE

Ronald W. Burnett  
2213 8th Avenue South  
Nashville, TN 37204  
H. (615) 385-9155  
O. None

### DIRECTOR-WEST TENNESSEE

Dale Fleckinger  
5247 Shelbourne Circle, No. 14  
Memphis, TN 38134  
H. (901) 382-3829  
O. (901) 388-7321

## Editorial Staff

Larry G. Thomas, Editor

John White, Asst. Editor

P. O. Box 844  
Alcoa, TN 37701

Jim Watson, Asst. Editor-East TN

Route 11, Johnson Cemetery Road  
Knoxville, TN 37938  
(615) 922-7030

Gregory K. Robbins, Asst. Editor-Plateau

P. O. Box 2761  
Crossville, TN 38555

Mark Ishee, Asst. Editor-Middle TN

P. O. Box 1911  
Brentwood, TN 37027  
(615) 373-4814

Paul Linxwiler, Asst. Editor-West TN

226 Hawthorne Rt. 3  
Memphis, TN 38112  
(901) 725-0637

## Patron Members

Harry D. Sabine  
Todd T. Shimabukuro  
Clinton H. Pearson  
Richard Igou  
Thomas A. Cooper  
Bill Orgain  
Louis M. Groeniger  
Peter P. Lahde  
Joseph Sentef, Jr.  
Joseph G. Sullivan, Jr.  
Ellis Eugene Jones  
Mark Ishee  
Al Lipkin  
Clifford Anderson  
Brian D. Lentz  
Chester Crowley  
Lee Edwards

## Tournament Announcements

We print any tournaments in our Coming Attractions for free. All ads for this section must be in Rick Igou's hands by January 10 to be used in the February issue of TCN. We will gladly print tournaments from other states as long as they meet this deadline. The address is: **Richard Igou, 400 Rhodora Court, Apt. F, Knoxville, TN 37923.**

## Affiliates

EAST TENNESSEE CHESS CLUB

Tom Cooper  
513 Merman Road  
Kingsport, TN 37663  
Contact: Roger Counts (615) 323-2590  
Tom Cooper (615) 239-4480

BLOUNT COUNTY CHESS CLUB

Larry G. Thomas  
P. O. Box 688  
Alcoa, TN 37701  
Phone (615) 983-1977 Dues \$5 year

CUMBERLAND COUNTY CHESS CLUB

Harry Sabine  
P. O. Box 381  
Crossville, TN 38555

GREATER KNOXVILLE CHESS CLUB

Rick Igou  
400 Rhodora Court, Apt. F  
Knoxville, TN 37923

CHATTANOOGA Chess Club

Larry Ousley  
Trinity-Woodmore United Methodist Church  
1321 N. Moore Road  
Chattanooga, TN

THE FUGITIVE CHESS CLUB

Home of Mark Ishee  
720 Shenandoah Drive  
Brentwood, TN 37027  
Phone (615) 373-4814 or 373-0326 Dues \$5 yr.

CLINTON CHESS CLUB

Chester Crowley  
109 Iroquois Lane  
Clinton, TN 37716  
(615) 457-7965

NASHVILLE CHESS CLUB

Peter Lahde  
Arlington Methodist Church  
1360 Murfreesboro Road  
(615) 361-4588

## Editor's Note

With this issue, we begin a slightly different format for the TCN. Articles on tournaments, events, and meetings will be published in the first part of the magazine and all cross-tables will be published in the last part. We have had a great deal of difficulty coordinating these in the past. This seems the easiest solution. If an article's crosstable is not in that issue, it will follow in the next issue. This way, we hope to slight no one. Also, this will allow us to put in crosstables for which we have received no articles.

At the end of the magazine will be the Coming Attractions as has always been the format. We are hopeful that other states, surrounding us at least, will also take advantage of this feature to advertise their tournaments—helping their attendance and our possible tournaments.

I definitely wish to welcome Greg Robbins, of Crossville, and Curt Jones to the TCN. Greg will be serving as the assistant editor on the Crossville mountain and Curt, as Scholastic Coordinator, has offered to write some for the TCN.

At the risk of sounding redundant, allow me to again invite all of you to take advantage of the Letters to The Editor column. No subject is too small nor insignificant to voice your opinion on or ask a question about. Write it. We'll print it.

Speaking of taking advantage of—take advantage of our affiliates section also. A lot of people are constantly moving into or around Tennessee. Many of these people would take advantage of a nearby club if they knew it existed. This is one good way of letting them know.



On September 25th, Governor Lamar Alexander signed into being a proclamation stating that October 4, 1986 would be *Tennessee Chess Day!* This year is also the fortieth anniversary of the Tennessee Chess Assn.



The Dickson County High School Chess team competed in the Western Kentucky Regional Scholastic Tournament on October 11 where they captured first place from a hard-charging Houston County (TN) Team and a host of Kentucky schools. Final Team scores were: DCHS 9½, Houston County 8½, Paducah-Tilghman 6½. Wayne White of Dickson County scored 3½ and had a last round upset draw with John Coghill of North Hopkins-Madisonville to tie for first in the event. Danny McMillan and David Struble, both of Dickson County scored 3 points to tie for third. Also participating on the DCHS team was Brian Stewart who managed a respectable 2 points. Unfortunately, crosstables are unavailable for this event at press time.

HAPPY  
THANKSGIVING

## Advertising Rates

Full page \$40, 1/2 page \$20, 1/3 page \$14, 1/8 page \$7 (Camera Ready only), pre-printed fliers \$15.00.

## NOTE!

All ads must be in my hands by October 10, 1986 to appear in the November issue of TCN. —Rick Igou

November-December 1986/January 1987

## The President's Column

This month I am pleased to report that the 40th Tennessee Open was a rousing success. Over 110 combatants found their way to Montgomery Bell State Park for a weekend of cerebral karate. Our congratulations go to Ronald Burnett, of Antioch, who managed to fight his way through the field to first place, despite an early round loss to formidable adversary Paul Linxwiler of Memphis. I also feel that it is significant to note that this tournament succeeded in making a little money for the state association. This is the first time in three years the State Championship has done this and was accomplished despite a \$250 increase in the prize fund. I would like to take this opportunity to thank all the people who assisted in its preparation and organization. Without you, I should no doubt be residing in a rubber room by now.

The business meeting ended with our state board of Directors intact with the exception of the office of Scholastic Co-Ordinator. Curt Jones, Chess Master par excellence, now holds this post. It was formerly occupied by Jim Corbitt who served with distinction for many years. On behalf of the state membership, I would like to take this moment to thank Jim one last time for the countless hours he devoted to pulling Tennessee Scholastic Chess from the grave where it had almost found itself.

I found the election of officers to be both gratifying and disquieting. I am pleased to see such apparent harmony in the membership; so much harmony and satisfaction in the job the board has done in the first year of my administration that you found it justified to leave the board intact. However, the "Rubber-Stamping" ease with which I moderated the election of officers made me wonder if it was truly harmony or apathy that ruled the day. Are we doing such a good job that no one out there feels that they should aspire to do better? Surely one office would be contested I thought. I found myself traveling down a dubious line as acclamation was the buzz-word of the day.

## Burnett Wins State Title

Senior Master Ronald Burnett of Antioch emerged from the 1986 Tennessee Open as the new State Champion. He also acquired the title of Tennessee Speed Chess Champion and cemented his customary first-place position in the Tennessee Turkey Tour, thereby acquiring the title of Tennessee Turkey Tour Champion as well. He also led the Nashville Chess Club to victory in the team competition for the Scrivener Plaque. Not a bad weekend's work! He annotates his games from the Tennessee Open below.

Gary Pylant (1892) vs. Ron Burnett (2338)  
Sicilian Defense

0 - 1 16 08/30/86 Tennessee Open Round 1  
1.e4 c5; 2.Nf3 Nc6; 3.d4 cd; 4.Nxd4 Nf6; 5.Nc3 d6; 6.Bg5 e6; 7.Qc2 Be7; 8.O-O-O O-O; 9.Nb3 (The Podesbrad Variation, one of Alekhine's favorite's) 9...a5 (The sharpest reply, currently favored by theory); 10.f4?1 (Best is 10.a4!, and also playable is 10.Nd4 -- see Informant 40) 10...a4; 11.Nd4 h6; 12.Bh4 a3; 13.b3 Qa5 (Pressuring c3 and preventing e5); 14.Nf3 Bd7; 15.Bd3 Rfc8 (Setting him up for the kill with ...Nb4); 16.Rhe1 Nb4 White Resigns (notes by Burnett)

Continued

Ron Burnett (2338) vs. Wally Jordan (2030)

Queen's Gambit Declined

1 - 0 50 08/30/86 Tennessee Open Round 2

I was 0-2 vs Wally before this game, even though I was winning one of them but got mated in the endgame! Previously I had played 1.e4 and got a bad game. Wally is a tactical player, so I decided to play 1.Nf3 leading to a quiet game.

1.Nf3 Nf6; 2.d4 e6; 3.c4 d5; 4.Nc3 Nbd7; 5.Bg5 Be7; 6.e3 O-O; 7.Rc1 c6; 8.Be2 h6; 9.Bh4 Re8; 10.cd Nxd5; 11.Bg3! N7f6 (Black already has a difficult game due to his lack of space); 12.Qc2 Bf8; 13.Ne5 Nd7 (Intending to relieve his cramp by exchanges); 14.O-O Nxe5; 15.Bxe5 (Not 15.de because Black retains control of d6 with his bishop. White wants to exchange black-squared bishops also before recapturing with the pawn -- see note to Black's 21st move) 15...Bd6; 16.Ne4 Bc7; 17.Bc4 (With the idea of Bxd5 and Bxc7 leaving Black with a bad bishop) 17...Qe7 (Preventing my idea -- if 18.Bxd5 ed; 19.Bxc7 Qxe4 or 19...de); 18.Ng3 (Setting it up again) 18...Nf6; 19.Qe2 Bd6; 20.Rfd1 Bd7; 21.e4 (Threatening Bxd6 and e5) 21...Bxe5 (Finally Black has to make this exchange, which concedes the d6 square to White); 22.de Nh7; 23.Rd6 (Threatening to triple) 23...Nf8; 24.Rcd1 Red8; 25.Qd2 b5? (Concedes more dark squares to White); 26.Be2 Rdc8? (Losing material); 27.Rxd7 Nxd7; 28.Qxd7 Qxd7 (I expected 28...Qg5 or 28...Qc5 since all endgames are lost for Black); 29.Rxd7 Rd8; 30.Rd6! Rac8; 31.f4 Kf8; 32.Kf2 Ke7; 33.Rxd8 (This exchange was inevitable, but now White can hold his second rank with the King) 33...Rxd8; 34.Ke3 a5; 35.f5 g6; 36.Bd3 (Clearing e2 for the Knight) 36...Rd7; 37.Ne2 gf; 38.ef Rd5; 39.f6+ (The only move to hold material) 39...Kd8; 40.Ke4 Kc7; 41.g4 Kb6; 42.Nf4 Rd8; 43.h4 Rg8; 44.Be2 c5; 45.g5! (Preparing Bh5-Bxf7) 45...hg; 46.hg Rxxg5; 47.Bh5 Rgl; 48.Bxf7 Rel; 49.Kf3 Rxe5; 50.Bxe6 Black Resigns (He can't stop the pawn) (notes by Burnett)

Chris Chambers (2123) vs. Ron Burnett (2338)

Sicilian Defense

0 - 1 31 08/31/86 Tennessee Open Round 3

1.e4 c5; 2.Nf3 Nc6; 3.d4 cd; 4.Nxd4 Nf6; 5.Nc3 d6; 6.Be2 e5; 7.Nb3 Be7; 8.O-O O-O; 9.Be3 a5; 10.a4 Nb4; 11.f4 Bd7; 12.Nd5 Nfxd5 (Better than Nbxd5 so as to keep pressure on c2 and to advance the kingside pawns if the opportunity arises); 13.ed Bf5; 14.Rcl Be4; 15.Bf3 Bxf3; 16.Rxf3 e4; 17.Rh3 g6 (The only move); 18.f5 Bf6; 19.c3 (Best) Nd3; 20.Rc2 Qd7; 21.fg fg; 22.Bh6 Rf7? (Better is 22...Re8!); 23.Re2? (Dubious -- 23.Nd2! maintains the balance) 23...Qxa4; 24.Rhe3 Nc5; 25.c4 Qxc4; 26.Nxc5 Qxc5; 27.Rc2 Qb6; 28.Khl Bg7!; 29.Bxxg7 Qxe3; 30.Bc3 Raf8; 31.Rcl Qxcl! White Resigns (notes by Burnett)

Ron Burnett (2338) vs. Paul Linxwiler (2158)

Larsen's Opening

0 - 1 58 08/31/86 Tennessee Open Round 4

(For complete moves of this game, see "The Opening Phase" by Paul Linxwiler elsewhere in this issue.) After about 30 moves of this game, I realized that I was going to lose, and I began wondering how I might still finish in first place and win the State Champion title despite the loss. I hit upon the idea that it was still possible if: (1) Linxwiler and Gallagher, who would play the next morning, were to draw their game; (2) I were to defeat Carpenter the next morning and Wiseman were to beat Herbers; and (3) I managed to defeat Gallagher in the final round AND Wiseman did the same to Linxwiler. This seemed about 5% likely to occur, but incredibly, this scenario actually came to pass!

Continued

James Gallagher (2213) vs. Paul Linxwiler (2158)

Modern Benoni

1/2 - 1/2 55 09/01/86 Tennessee Open Round 5

This is the game that could have decided the state championship. From the outset, it was obvious that both players were playing to win since a victory for either side would have assured the title. I was hoping for a draw in order to fulfill the above scenario. When I left for lunch (about 3 hours into the round), Gallagher looked absolutely busted. I returned near the end of the round to discover that Gallagher had miraculously saved the draw through a stalemate resource. I include the game as a testament to Linxwiler's bad luck in this event despite his excellent play:

1.Nf3 Nf6; 2.d4 g6; 3.c4 c5; 4.d5 Bg7; 5.Nc3 d6; 6.e4 O-O; 7.Be2 a6; 8.a4 e6; 9.O-O ed; 10.cd Re8; 11.Nd2 Nbd7; 12.f4 Rb8; 13.Ra3 Nf8; 14.Qc2 Ng4; 15.Nf3 f5; 16.h3 fe; 17.Nxe4 Bf5; 18.Bd3 c4; 19.Qxc4 Bxe4; 20.hg Rc8; 21.Qb4 Bxd5; 22.Qd2 Qb6+; 23.Kh1 Qc6; 24.Qf2 Qc5; 25.Qh4 Qxc1; 26.Rxc1 Rxc1+; 27.Kh2 Bxb2; 28.Qg5 Bf7; 29.f5 Bxa3; 30.f6 Nd7; 31.Bf5 Rc5; 32.Qd2 Rxf5; 33.gf Bc5; 34.fg hg; 35.Qb2 b6; 36.g4 Ne5; 37.Ng5 Nxxg4+; 38.Kg3 Ne3; 39.a5 b5; 40.Qb1 Nf5+; 41.Kf4 Be3+; 42.Kg4 Nh6+; 43.Kh4 Bxxg5+; 44.Kg5 Re5+; 45.Kf4 Rf5+; 46.Ke3 Rxf6; 47.Qh1 Kg7; 48.Qb7 d5; 49.Kd4 Nf5+; 50.Ke5 Re6+; 51.Kf4 d4; 52.Kg5 Rd6; 53.Qc7 d3?; 54.Qc3+! Nd4; 55.Qxd4+! 1/2-1/2

As you can see, the presence of Wiseman, a Master from Indiana ranked #2 before the event who reminded many participants of former Tennessee resident Brian McCarthy, was the key to my winning the trophy and title. An interesting irony is that in the State Speed Championship, my final game with Wiseman ended in an accidental stalemate draw despite my being a Queen ahead, which gave him first place in the speed tourney and me the title of State Speed Champion (because he is not a Tennessee resident). I was glad he played in the Tennessee Open since he saved the state title for me by defeating Linxwiler in round six.

Richard Carpenter (2107) vs. Ron Burnett (2338)

Sicilian Defense

0 - 1 38 09/01/86 Tennessee Open Round 5

1.e4 c5; 2.Nf3 Nc6; 3.d4 cd; 4.Nxd4 Nf6; 5.Nc3 d6; 6.Bc4 e6; 7.Be3 Bd7; 8.Bb3 Rc8; 9.O-O a6; 10.f4 Be7; 11.f5 e5; 12.Nde2 (Intending Ng3-Nh5 as played by Bobby Fischer in similar positions. 12.Ne6! is possible also) 12...Na5 (Trying to eliminate the light-squared Bishop which hits d5 and f7); 13.Ng3 Nxb3 (A necessary preparation for my next move); 14.ab h5! (Similar to Byrne-Fischer, Sousse Interzonal 1967, which went 1.e4 c5; 2.Nf3 d6; 3.d4 cd; 4.Nxd4 Nf6; 5.Nc3 a6; 6.Bc4 e6; 7.Bb3 b5; 8.f4 Bb7; 9.f5 e5; 10.Nde2 Nbd7; 11.Bg5 Be7; 12.Ng3 Rc8!; 13.O-O h5!. It's interesting that the theory for both White and Black in such positions was created by Bobby Fischer.); 15.Nd5 Bc6; 16.Ncf6 gf1; 17.h4 d5; 18.Qel d4 (When Black can play this move in the Sicilian, something has gone wrong for White); 19.Bd2 Bb5; 20.Ba5 b6; 21.c4 dc e.p.; 22.Bxc3 Bxf1; 23.Qxf1 Qd7 (Planning Rd8-Qd3 or Qb5-Rd3 as well as Rg8); 24.Qf3 Rd8; 25.Nhx5 Rg8; 26.Rxa6 (White is lost) 26...Qb5; 27.Ra3 Rd3; 28.Ra8+ Kd7; 29.Ra7+ (If 29.Rxxg8 Rxf3; 30.gf Qe2; 31.Rg3 Bc5+; 32.Kh1 Ke7 Zugzwang! But the game continuation loses also) 29...Kc6; 30.Qf1 (30.Qe2 Bc5+; 31.Kf1 Rf3+!) 30...Bc5+; 31.Kh2 Rh3+!; 32.Kxh3 Qxf1; 33.Ng3 Rxxg3 (The quickest way to mate); 34.Kxxg3 Qf4+; 35.Kh3 Bf2; 36.Rc7+ Kxc7; 37.Bxe5+ fe; White Resigns (notes by Burnett)

Ron Burnett (2338) vs. James Gallagher (2213)

English/Dresden Blockade

1 - 0 91 09/01/86 Tennessee Open Round 6

1.e4 c5; 2.c4 d6; 3.Nc3 Nf6; 4.g3 Nc6; 5.Bg2 g6; 6.f4 e5; 7.Nf3 Bg7; 8.d3 O-O; 9.O-O ef; 10.Bxf4 Nh5; 11.Bg5 Qb6; 12.Qd2 Nd4; 13.Bh6 Nxf3+; 14.Bxf3 Bd4+; 15.Kg2 Ng7; 16.Nd5 Qd8; 17.Rab1 Rb8; 18.b4 b6; 19.bc dc; 20.Bf4 Rb7; 21.e5 Ne8; 22.Bg5 f6; 23.Nxf6+ Nxf6; 24.Bxf6 Rxf6; 25.ef Bxf6; 26.Bd5+ Kg7; 27.Qf4 Rd7; 28.Rbel Rxd5; 29.Re8 Bh3+; 30.Kxh3 Qd7+; 31.Kg2 Rf5; 32.Qe4

Rxf1; 33.Kxf1 Qh3+; 34.Qg2 Qf5+; 35.Ke2 Qd7; 36.Re4 Qa4; 37.Re3 h5; 38.Qb7+ Kh6; 39.Qe4 Qxa2+; 40.Kf1 Qxh2; 41.Qf4+ Kg7; 42.Rf3 Qh3+; 43.Ke2 Qe6+; 44.Re3 Qc6; 45.Rf3 a5; 46.Qe4 Qd7; 47.Rf1 a4; 48.Qa8 Kf7; 49.Qh8 Qg4+; 50.Kd2 Qg5+; 51.Kc2 Qe5; 52.Qh7+ Kf8; 53.Kd2 Qg5+; 54.Kd1 a3; 55.Qa7 Qg4+; 56.Kc1 Qe6; 57.Qxa3 Kg7; 58.Kb1 Bd4; 59.Qa8 Kh6; 60.Qf3 Qe3; 61.Qxe3+ Bxe3; 62.Rf6 Kg5; 63.Rxb6 Bf2; 64.Kc2 Bxxg3; 65.Kd2 Bf2; 66.Ke2 Bd4; 67.Kf3 Kf5; 68.Rd6 Bg1; 69.Rd5+ Kf6; 70.Rd8 Kf5; 71.Rf8+ Ke5; 72.Re8+ Kf5; 73.Kg3 Be3; 74.Rf8+ Ke5; 75.Re8+ Kd4; 76.Kf3 Bg1; 77.Rel Bh2; 78.Ke2 Bg3; 79.Rf1 Kc3; 80.Rf6 g5; 81.Rf5 Bf4; 82.Rxc5 h4; 83.Rd5 h3; 84.Kf3 Kb4; 85.Rb5+ Kc3; 86.c5 Bc7; 87.c6 g4+; 88.Kxxg4 h2; 89.Rh5 Kxd3; 90.Kf3 Kd4; 91.Kg2 Black Resigns

TENNESSEE CHESS ASSOCIATION

Financial Report

1986 TENNESSEE OPEN

INCOME:

1. Advance Entry Fees:

(1) Open	(24)	\$ 494.00	
(2) Amateur	(31)	503.00	\$ 997.00
	(55)		

2. Site Entry Fees:

(1) Open	(31)	\$ 786.00	
(2) Amateur	(25)	514.00	1,300.00
	(56)		

Total Entry Fees \$2,297.00

3. Book Concession Fee

27.25

TOTAL INCOME

\$2,324.25

EXPENSES:

1. Guaranteed Cash Prizes	\$1,250.00
2. Trophies	197.50
3. TD Fees	150.00
4. Playing Room Rent	None
5. Rating Fee	78.75
6. Supplies	25.00
7. Flyers & Mailing	286.58
8. TD Motel Room	None
9. Refund - Entry Fees - Masters	22.00
10. Turkey Tour Fee	<u>30.00</u>

TOTAL EXPENSES

2,039.83

NET PROFIT (LOSS)

\$ 284.42

Continued

## Minutes of the Annual Membership Meeting of the Tennessee Chess Association

The annual membership meeting of the Tennessee Chess Association was held at the Montgomery Bell State Park Inn, Burns, Tennessee, on Sunday, August 31, 1986. President Bill Orgain called the meeting to order at 2:00 P.M.

The minutes of the membership meeting of September 1, 1985, were read and approved.

Reports were presented by President Bill Orgain, Secretary-Treasurer Harry Sabine, Newsletter Editor Larry Thomas, Tournament Coordinator Rick Igou, and Scholastic Coordinator Jim Corbitt.

Larry Thomas noted that Paul Linxwiler had received Honorable Mention by the Chess Journalists of America in the Best Analysis category for his article, "The Opening Phase", as printed in the Tennessee Chess News.

A report was given by Bill Orgain as USCF Delegate on the meetings held at the U. S. Open in Somerset, New Jersey.

President Orgain announced that the election of officers was in order and the following were elected to their respective offices by acclamation:

- |                               |                   |
|-------------------------------|-------------------|
| (1) Vice President            | - Peter Lahde     |
| (2) Postal Chess Coordinator  | - Lee Edwards     |
| (3) Tournament Coordinator    | - Rick Igou       |
| (4) Scholastic Coordinator    | - Curt Jones      |
| (5) East Tennessee Director   | - Al Lipkin       |
| (6) Middle Tennessee Director | - Ron Burnett     |
| (7) West Tennessee Director   | - Dale Flickinger |

The following were elected as USCF Delegate, Voting Members and Alternate Voting Members:

- |                   |                     |
|-------------------|---------------------|
| (1) Delegate      | - Bill Orgain       |
| (2) Voting Member | - Rick Igou         |
| (3) Voting Member | - Larry Thomas      |
| (4) Voting Member | - Ron Burnett       |
| (5) Voting Member | - Curt Jones        |
| (6) Alternate VM  | - Clifford Anderson |
| (7) Alternate VM  | - Dale Flickinger   |
| (8) Alternate VM  | - Al Lipkin         |
| (9) Alternate VM  | - Lee Edwards       |
| (10) Alternate VM | - Peter Lahde       |

Harry Sabine announced that the USCF Policy Board would be meeting at Fairfield Glade Resort on November 8-9, and that all USCF members were welcome to attend.

Rick Igou announced that the Tennessee Chess Association and the Greater Knoxville Chess Club were bidding for the 1987 U. S. Amateur Tournament to be held in Knoxville on May 23-25, 1987.

A discussion was held concerning the rotation of the Tennessee Open. Proposals were made to continue the present

*Continued*

system of rotation, to always hold the tournament in Middle Tennessee, and to put the tournament open for bidding by any area of the state each year. A straw vote was taken which indicated that the members present and voting preferred to have the tournament awarded to the best bid each year regardless of the location of the bidder.

### TENNESSEE CHESS ASSOCIATION

## Budget

1986-1987

	Budget <u>1985-1986</u>	Actual <u>1985-1986</u>	Budget <u>1986-1987</u>
<u>INCOME:</u>			
1. Dues	\$2,250.00	\$2,118.50	\$2,000.00
2. Interest	182.35	176.60	175.00
3. Miscellaneous	100.00	142.99	100.00
4. Tennessee Open	(132.35)	(168.77)	None
5. Tennessee Amateur Team	None	(6.60)	None
6. Tennessee Scholastics	None	(147.20)	None
TOTAL INCOME	<u>\$2,400.00</u>	<u>\$2,115.52</u>	<u>\$2,275.00</u>
<u>EXPENSES:</u>			
1. Tennessee Chess News	\$1,600.00	\$1,518.36	\$1,750.00
2. TCN Editor's Fee	None	None	None
3. TCA Operating Expense	700.00	321.87	475.00
4. USCF Delegate Expense	100.00	100.00	50.00
5. TCA Turkey Tour	None	None	None
6. Miscellaneous	None	None	None
TOTAL EXPENSES	<u>\$2,400.00</u>	<u>\$1,940.23</u>	<u>\$2,275.00</u>

## Turkey Tour (or Do What???)

The Tennessee Turkey Tour (hereafter referred to as TTT) is a year long contest to help promote chess participation and competition in Tennessee. The main idea is to give points to people participating in TTT events, have these points accumulate through the year, then award cash prizes to the people with the most points at the time of the Tennessee Open each year. There is no carry-over from year to year, i.e. you start from scratch each year at the conclusion of the Tennessee Open. How an event qualifies and how you earn points is broken down in the next section.

For a tournament to qualify, it must meet the following requirements:

1. Be USCF rated.
2. Require TCA membership for Tennessee residents. USCF membership for all participants but no other memberships.
3. Be an OPEN WEEKEND tournament in Tennessee of at least 3 rounds in length.
4. Be cleared through the Tennessee Tournament Coordinator and advertised in the TCN tournament calendar. Only one tournament will be approved per weekend.
5. A copy of the final wall chart and appropriate TTT fees must be submitted to the tournament coordinator within 2 (two) weeks of the date of the tournament.

How do you earn points? Read on fellow TTT possible and see:

1. All players, upon completion of at least one-half the scheduled rounds in a Tennessee-USCF Grand Prix Turkey Tour event will earn 20 points. Completion of the same in the Tennessee Open earns 30 points and all others earn 10 points.
2. To earn more points in a said tournament, you must complete all rounds and have more wins than losses (Byes and Forfeits count as losses). The formula for tallying your score is wins minus losses times number of rounds.

Ah!! The prize fund!! This is formed from tournament round fees (USCF Grand Prix—\$5.00/round; all others \$3.00/round) and other donations. These prizes are then awarded by Master/Expert

Class A	1st — 10 percent
	2nd — 5 percent
	3rd — 3 percent

Class B, C, D, & E

	1st — 8 percent
	2nd — 5 percent
	3rd — 3 percent

Finally, the conditions of awarding the prizes or THE RULES OF FAIR PLAY:

1. The final class standing of a player will be determined by the September 1986 USCF rating supplement.

2. TTT points accumulate for a player who moves up to a higher rating class, but the player remains eligible for prizes in the lower class based upon points earned while in that class. If a player moves to a lower class, points earned in higher class are not

counted for the lower class and pinst earned in the lower class will not be carried forward if the player moves back to a higher class.

3. A player may earn only one prize—the greater for which he is eligible.

4. Players whose USCF class designation shows a former rating of 101 points, or more, over a prize class will not be eligible for that class prize but will be eligible for the prizes in the next higher class. Only players with permanent ratings are eligible for prizes. However, players will accumulate points during the time that their rating is provisional and those points will be credited to them in their first permanent rating class.

5. Players must be TCA members to accumulate and collect Turkey points.

6. The Tournament Coordinator is responsible for compiling class standings and awarding prizes.

Any questions?? Good!! Rick Igou will be glad to answer them. His address is at the front of this newsletter.

## Scholastic Chess

TO YOUNG CHESS ENTHUSIASTS:

Take the opportunity to play in this year's 1987 Tennessee State Scholastic Chess tournament to be held from February 28 to March 1 at Crossville, Tennessee.

This will be an opportunity for all of you to compete for prizes and titles as individuals and as teams.

You will qualify to play in one of three sections: High School, Junior High, or Primary. This will assure you of competing against your peers for the glory of State High School Chess Champion, State Junior High Chess Champion, and State Primary Champion.

Parents: The accommodations include a weekend at beautiful Fairfield Glade resort located on the Cumberland Plateau. This is a great chance for your children to compete and for you to get away for some fresh air.

Hope to see you there!

Curt Jones  
TN Scholastic Coordinator



### USCF PRESS RELEASE

Ed Albaugh, chess columnist for the "Washington Post" and "Baltimore Sun", and "Chess Horizons", the official publication of the Massachusetts Chess Assn., took top chess journalist awards along with Chess Horizons. Although Albaugh ate everyone alive in most areas, we Tennesseans can stand tall because of Paul Linxwiler's series, "The Opening Phase", which placed second in the nation as best analysis.

## Turkey Tour Prize Winners

	Points	Amount
1. <u>Master/Expert:</u>		
1st - Ron Burnett	443	\$29.30
2nd - Bill Melvin	373	14.65
3rd - Mark Ishee	334	8.79
2. <u>Class A:</u>		
1st - Bill Orgain	265	\$29.30
2nd - Brian Smith	248	14.65
3rd - Brian Lentz	215	8.79
3. <u>Class B:</u>		
1st - Morris Lewis	173	\$23.44
2nd - Joey Burton	133	14.65
3rd - Charles Martin	118	8.79
4. <u>Class C:</u>		
1st - Dave Jordan	207	\$23.44
2nd - Mike McTaggart	155	14.65
3rd - Marshall Prince	106	8.79
5. <u>Class D:</u>		
1st - Clinton Pearson	150	\$23.44
2nd - Jason Johns	129	14.65
3rd - Robert Hydzik	122	8.79
6. <u>Class E:</u>		
1st - Edwin Cato White	103	\$23.44
2nd - Neil Lentz	90	14.65
3rd - Brennan Price	60	8.79
Total Prizes		\$293.00

## Turkey Tour Tournaments

1. Cumberland Co. Fall Open I	\$ 12.00
2. Cumberland Co. Fall Open II	12.00
3. Music City Fall	12.00
4. Tennessee Amateur Team	15.00
5. Fairfield Glade Open	25.00
6. Shelby Co. Open	15.00
7. Cumberland co. Winter Open I	12.00
8. Cumberland Co. Winter Open II	12.00
9. Cougar III	12.00
10. Nashville Amateur	15.00
11. Cumberland Co. Spring Open I	12.00
12. Cumberland Co. Spring Open II	12.00
13. Blount Co. Summer Open	12.00
14. Chattanooga Choo Choo Open	12.00
15. Music City Spring	12.00
16. Cumberland Co. Summer Open I	12.00
17. Cumberland Co. Summer Open II	12.00
18. Music City Summer	25.00
19. Blount Co. Fall Open	12.00
20. 1986 Tennessee Open	30.00

Total Prize Fund

\$293.00

## Carpenter Defends Alcoa Title

by Jim Watson

A crowd of 37 players played at the Blount County Fall Open on August 16th. The Blount County Chess Club organized the event and Larry Thomas directed.

This tournament, occurring two weeks before the Tennessee Open, brought together a tremendously strong field of players. Charles Maddigan, the current State Champion, played board 1. Ron Burnett, fated to win the Tennessee Open later that month, sat at board 2. Also in evidence was two-time state champ Leonard Dickerson.

Mike Goins started the tournament by defeating expert Chris Chambers. Goins stayed on the winning track, raising his rating an incredible 112 points! Robert Hydzik also posted a big upset in the 1st round and rolled on to a gain of 104 rating points.

Brian Lentz bravely defended against Maddigan in round 2 to claim a draw. That game is included at the end of this article.

The decisive last round paired Carpenter and Burnett in a battle of the undefeated. Burnett made an unusual slip in the ending, and Carpenter produced the full point. Dickerson and Mark Ishee, also undefeated, played to a draw, leaving clear first place to Carpenter.

By winning this tournament twice running, both with perfect 4-0 scores, Carpenter has established himself as a favorite each time it is played. Richard has kindly allowed his games from this tournament to be published here.

Round 1  
White: Steve Poff  
Black: R. Carpenter  
1. e4 e5 2. Nf3 Nc6 3. Bc4 Nf6 4. d4 ed 5. 0-0 Bc5 6. Re1 0-0 7. e5 d5 8. ef dc 9. fg Kg7 10. Ng5 Bf5 11. Ne4 Bb6 12. Qh5 Bg6 13. Qh3 Re8 14. Bg5 Qxg5 15. N(hd)2 Qf5 16. Qg3 c3 17. bc dc 18. Nc3 Qc2 19. N(d)e4 f5 20. Re2 Qe2 21. Ne2 Re4 22. Nf4 Bd4 23. Rd1 R(a)e8 24. h3 Be5 25. Rd7+ Re7 26. Re7+ Ne7 27. Nh5+ Kf8 28. Qg5 Re5 mate.

Round 2  
White: Carpenter  
Black: Jordan  
1. e4 e5 2. Nf3 Nc6 3. d4 cd 4. Nd4 e5 5. Nb5 a6 6. Nd6+ Bd6 7. Qd6 Qf6 8. Qc7 N(g) e7 9. Nc3 Qg6 10. Be3 0-0 11. 0-0 d5 12. Nd5 Nd5 13. ed Nb4 14. a3 Bf5 15. ab R(a)c8 16. d6 Re7 17. dc Qe6 18. Bd3 Be6 19. Rd2 Qc7 20. R(hd)1 h6 21. Bc5 Re8 22. Bd6 Qc6 23. Be5 Bc4 24. Bf5 Be6 25. Rd8+ Black resigns.

Round 3  
White: Jim Watson  
Black: Carpenter  
1. e4 e5 2. d4 ed 3. c3 dc 4. Bc4 cb 5. Bb2 d5 6. Bd5 Bb4+ 7. Nc3 Bc3+ 8. Bc3 Nf6 9. Nf3 Nd5 10. ed Qe7+ 11. Kd2 0-0 12. Qa4 Na6 13. Qd4 f6 14. R(h)e1 Qd6 15. Ng5 e5 16. Qh4 Qd5+ 17. Kc1 Qg5+ White resigns.

Round 4  
White: Carpenter  
Black: R. Burnett  
1. e4 e5 2. Nf3 Nc6 3. d4 ed 4. Nd4 Nf6 5. Nc3 g6 6. Nc6 dc 7. Qd8+ Kd8 8. Bc4 Ke8 9. e5 Ng4 10. f4 b5 11. Bd3 Bf5 12. Bf5 gf 13. h3 Nh6 14. Be3 e6 15. 0-0 Ng8 16. R(a)d1 Ne7 17. a3 Nd5 18. Nd5 cd 19. a4 b4 20. c4 dc 21. Rc1 Re8 22. Ba7 Bc5+ 23. Bc5 Re5 24. R(hd)1 Ke7 25. Rd4 R(h)c8 26. a5 b3 27. a6 R(f)5c6 28. a7 R(6)c7 29. Re4 Rc4 30. Rc4 Ra8 31. Re7+ Kf8 32. Rb7 Kg7 33. Kf2 Kg6 34. Ke3 h5 35. Kd4 f6 36. Kc5 fe 37. fe f4 38. Kb6 Kf5 39. Rb8 Ra7 40. Ka7 Ke5 41. Rb3 Kd4 42. Rf3 e5 43. Ka6 Kc4 44. Ka5 Black resigns.

White: Maddigan  
Black: Brian Lentz  
1. c4 Nf6 2. Nc3 d5 3. cd Nd5 4. g3 c6 5. Bg2 g6 6. h4 h5 7. Nh3 Bg7 8. 0-0 Nc3 9. bc Bh3 10. Bh3 Nd7 11. Rb1 Nb6 12. a4 Qc7 13. Qb3 Rb8 14. Ba3 Nd5 15. d4 Nf6 16. Qb4 Nd5 17. Qc4 0-0 18. e4 Nb6 19. Qb3 R(f)e8 20. e5 Bf8 21. Bc5 e6 22. Bb6 Qb6 23. Qb6 ab 24. Rb6 Re7 25. R(hb)1 Ra8 26. Rb7 Rb7 27. Rb7 Ra4 28. Bf1 c5 29. Rd7 cd 30. cd Ra2 31. Bh3 Rd2 32. g4 Bc5 Drawn.



### USCF PRESS RELEASE

Fidelity retains U.S. Open Computer Chess Championship, Fidelity international, makers of the best-selling Chess Challenger line of chess computers, swept the second U. S. Computer Chess Championship, held July 18-20 in Mobile, Alabama. Fidelity also won the inaugural event last year in Mobile.

Two Fidelity programs—"Fidelity Challenger N" and "Fidelity Private Line"—scored five points each in the six-round Swiss-system tournament, to tie for first. Placing third was "Mephisto Janus" with 4½.

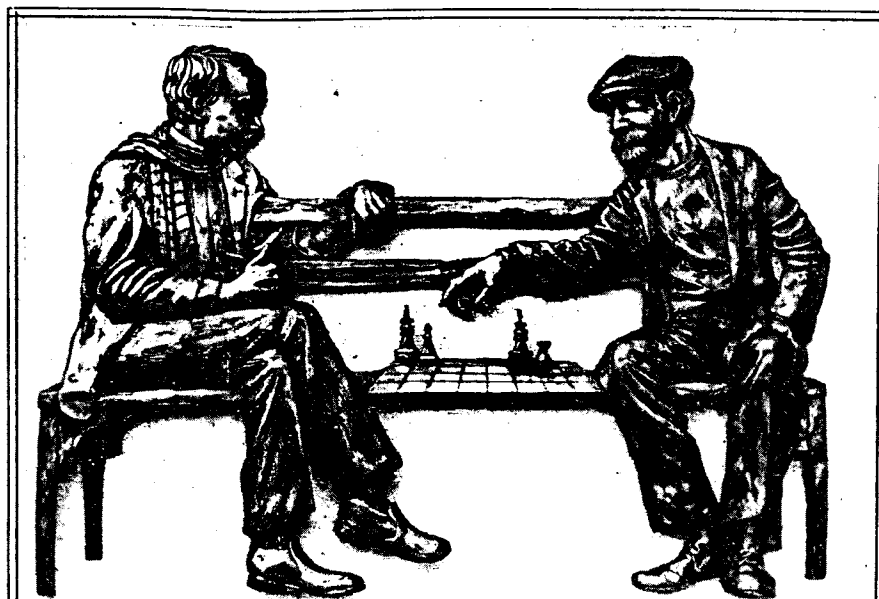
### USCF PRESS RELEASE

#### Charlotte Hosts Unique Chess Exhibition

On October 15, young chess players in Charlotte, NC, got a chance to match wits against an all-star team for the U. S. Armed Forces. Two of the best players for Army, Air Force, and Sea Services took on players from the nation's most innovative school chess program.

Some 250 youngsters were expected to take part in the activity.

The exhibition is the first of its kind ever held in the U. S. It was sponsored by the Charlotte-Mecklenberg Scholastics Chess Assn., founded by Larry Goldberg and under the guidance of Vincent McCambridge. Its purpose is to provide chess instruction to several hundred children in more than a dozen Charlotte schools and train Charlotte school teachers so they can conduct chess classes themselves.



## ENDGAME

Limited edition of 100

\$150.00

16" x 22"

Weighs approximately 7 pounds

Your chess sculpture will be made of cold cast bronze hand finished to a rich dark patina. Each piece will be signed, dated, and numbered for authenticity. The mold will be destroyed after 100 are cast guaranteeing the value of the edition. Each work is mounted on a fabric covered wood plaque and ready for display in home or office. Call or write early so that you may have your sculpture by Christmas.

All orders will be insured and shipped C.O.D.

ENDGAME  
506 6th Avenue  
Columbia, TN 38401  
(615) 381-1870

## Cave-Man Chess

by Jim Watson

I had a very specific goal in mind when I started playing in the "Cave-Man" style. I had come to realize I had a serious weakness as a player. My play was acceptable as long as the game was quiet; in wild and unbalanced positions, I was ill at ease, and easily confused. In an effort to correct this, I vowed to intentionally play for positions that baffled me.

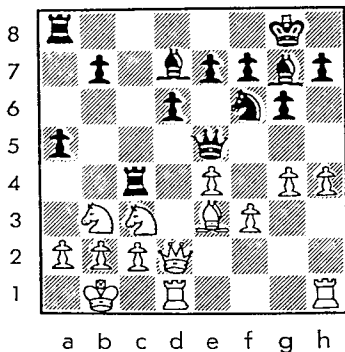
I have been happy with the progress I have made over the last year with this style. Although I have routinely played such odd and unsound openings as the Danish Gambit, the Wing Gambit, and the King's Bishop Gambit, I have maintained and even enhanced my rating.

My strategy has been successful to a point that other weaknesses in my play have come to prominence. I decided work on other and more mundane aspects should be my next priority. I intend now to plumb the depths of quiet positional play and endgame technique. In a word, I now have begun the journey into the land of "Doctor Dull". Thus, I plan no more "Cave-Man" articles.

I chose to change my style at the Tennessee Open. This produced a surprising result. I found the Dragon Sicilian does not fit into my new stodgy style!

White: Gary McMurray (2077)  
Black: J. Watson 1864

1. e4 c5 2. Nf3 d6 3. d4 cd 4. Nd4 Nf6 5. Nc3 g6 6. Be3 Bg7 7. f3 Nc6 8. Bc4 0-0 9. Qd2 Bd7 10. 0-0 0 Qa5 11. Kb1 Ne5 12. Bb3 Rf6c8 13. h4 Nc4 14. Bc4 Rc4 15. Nb3 Qe5 16. g4 a5? I must admit, the idea of dull positional play had left me. I was in the Cave-Man's element, and I wanted to start the carnage. I grasped my trusty A-pawn and sent it up the board. A more sober assessment proves that the b6 square was weakened. In the very next round, in the same position, Dale Flickinger nearly handed me my head by 17. Bd4 Qe6 18. g5 Nh5 19. Bg7 Kg7 20. Nd5 Ra6 21. Nd4 Qe5 22. R(h)e1 and I had reason to regret the weakening that a5 produced. The correct move was 16... R(a)c8 with a difficult position.



17. f4? It seems far from obvious that this is a grievous weakening of e4, the pillar of white's position. I had read about a single weak square changing the course of a game, but I remained skeptical; after all, it's just a pawn, right? the reply proves the fallacy of this view. 17... Qc3! 18. bc Ne4 19. Qh2? White should have tried to demonstrate the short fall of black's 16th move by 19. Qd3 Nc3+ 20. kc1 Na2+ 21. Kd2 and now if black had played the superior 16... R(a)c8, black could play 21... Nb4 with a horrible threat of... Rc2+; however, due to black's poor 16th move the rook on c4 would be unguarded—forcing the loss of an important tempo by... R(a)c8. Due to the passive square chosen, the white Queen doesn't move another step in this game! 19... Nc3+ 20. Kc1 Now if black continues forcefully, white escapes with a huge material advantage.

For example: A...Na2+ 21. Kd2 Bc3+ 22. Ke2 Bg4+ and white's king escapes. B...Na2+ 21. Kd2 Bb5 22. h5! and black has no good discovered checks. Black is forced to choose a quiet move eliminating the King's avenue of escape! ...Bg4 21. h5 Bh5 22. Rd3 Na2+ 23. Kd2 Nb4 Now the misplaced Queen becomes the subject of recurring threats. 24. Na1 Ba1 25. c3 Nd3 26. Ra1 r(a)c8 Due to tactical threats, the knight does not have to retreat; if 27. Rd3 Rc3+ 28. Kd4 Rc4+ 29. Kd5 Bf3 mate. 27. Ra3 Ne5 28. Bd4 Ne6 29. Be3 b5 Black is still trying to get to the c2 square. 30. f5 Nc5 31. Bd4 b4 32. cb Nb3+ 33. Ke3 Nd4 34. ba Nc2+ and White resigns.

## Lou's Latvian Returns

by Jim Watson

We are fortunate enough to have a very popular man in the Knoxville Chess Club. Lou Groeniger has a reputation as a fine gentleman, a chess teacher that produced several talented players, and a devotee of the outrageous Latvian Gambit. Lou has happily cracked a few heads with the Latvian over the years, Richard Carpenter's being the most notable. That game was published here about 5 years ago, and it seems time for an encore of his favorite gambit.

White: Roger Viles  
Black: Lou Groeniger

1. e4 e5 2. Nf3 f5 3. Ne5 Nf6 4. ef d6 5. Nf3 Bf5 6. Bc4 Nc6 7. a3 d5 8. Bb5 Bc5 9. d4 Bb6 10. 0-0 Qd6 11. Ne5 0-0 12. Re1 Nd4 13. Bd3 Ne4 14. Bf4 Ne6 15. Be4 Be4 16. Bg3 R(a)e8 17. Ng6 Bf2+ 18. Bf2 Bg6 19. Nc3 e6 20. Ba7 b5 21. Bf2 Rf5 22. Bg3 Qc5+ 23. Kh1 Bh5 24. Qd2 d4 25. Ne4 Qd5 26. Nd6 R(e)f8 27. Nf5 Qf5 28. Kg1 Qg6 29. Re5 Bg4 30. R(a)e1 e5 31. c3 d3 32. Bf2 Be2 33. Re2 de2 34. Qe2 Nf4 35. Qe4 Nh3+ 36. Kf1 Qe4 37. Re4 Nf2 38. Re2 Ng4+ 39. Kg1 Rf5 40. h3 Nf6 41. Re7 h5 42. b3 Nd5 43. Ra7 Nc3 44. a4 ba 45. ba c4 46. a5 Rf7 47. Ra8+ Rf8 48. Ra7 Rf8 49. Rb7 ne2+ 50. Kf2 c3 51. a6 c2 52. a7 c1=Q A probable follow-up would be 53. Rb8 Qf4+ 54. Ke2 Rb8... so White resigns.

## Fifty-Seventy-One Hundred Move Rule?

WHERE DOES IT END? by John White

Article 12, The Drawn Game, section 4 states: *When a player having the move demonstrates that at least fifty consecutive moves have been made by each side without the capture of any piece or the movement of any pawn.*

*This number of fifty moves can be increased for certain positions, provided that this increase in number and these positions have been clearly established before the commencement of the game.*

First, we have the fifty move rule and then we have exceptions. How many exceptions will be discovered before the fifty move rule is used in all cases—no exceptions.

James Gleick of the New York Times reports that Kenneth Thompson of AT&T Bell Laboratories in Murray Hill, NJ, has unearthed many basic positions, long thought to be a draw with best possible play by both sides, actually can be won by one side. The results have not been published as yet. These analysis were developed by the computer completely solving all possible endgame positions with five or fewer pieces. Thompson says that each endgame is exhaustively solved in two or three weeks of computer time.

Many truths have crumbled. Some are:

1. A king and queen are usually helpless to win against a king and two bishops, or king and two knights, or a king and bishop and knight. Two minor pieces can work together to force a draw.

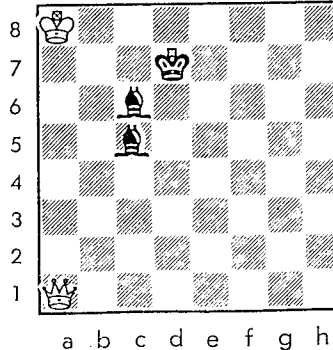
2. A king and a single knight can generally holdout and force a draw against a king and two bishops.

3. A king and queen can almost always draw against a king, queen and pawn, unless the pawn has already reached the seventh rank in one of the four center files.

A queen actually defeats two knights in 89.7 percent of the possible positions and defeats two bishops in 92.1 percent of the time.

These are only a few of Thompson's findings. He is in contact with the U.S.C.F. and F.I.D.E. It is reported that the federation may abolish exceptions altogether and return to the fifty move rule. Many positions may become drawn by the fifty move rule which are actually a won position.

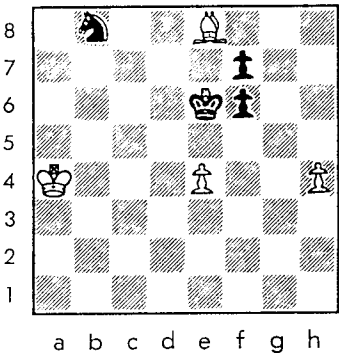
Chess needs the fifty move rule to end games and place stability in the game. There are too many exceptions and more are being developed by the computer working weeks at a time. The following is an example:



Kb8 Bd6+ 2. Ka7 Bc6+ 3. Ka6 Bc4+ 4. Ka5 Kd6 5. Qe1 Kd5 6. Qc3 Bd4 7. Qf6+ Ke5 8. Qg6+ Ke4 9. Qh4 Ke3 10. Qe7+ Kd3 11. Kb4 Bd5 12. Qe1 Bf3 13. Qh4 Ke3 14. Kc4 Be2+ 15. Ke5 Bf3+ 16. Ke6 Be4 17. Qg3+ Kd2 18. Qf4+ Kd3 19. Kd6 Bc3 20. Qg3+ Kd2 21. Qg1 Bd6 22. Ke5 Kc2 23. Qe3 Bb2 24. Kb4 Bc3+ 25. Ka3 Bb2+ 26. Ka4 Bc3 27. Qc5 Be4 28. Qe4 Bf3 29. Kb5 Bd1 30. Qa2+ Kd6 31. Qg2 Bb2 32. Ke5 Bd8 33. Qh3+ Kd2 34. Kd5 Bb3+ 35. Ke4 Bc7+ 36. Kf4 Bd4 37. Qa3 Bd3 38. Qb4+ Bc3 39. Qa4 Bb2 40. Kf3 Bc3 41. Qa7 Bb2 42. Qe5 Be2+ 43. Kf2 Bd3 44. Qg5+ Kc7 45. Zd5 Kd7 46. Qa2 Kcc3 47. Ke1 Bc4 48. Qa5+ Kb3 49. Qb6+ Kc3 50. Qb7 Kc2 51. Qh7+ Kb3 52. Qb1 Kc3 53. Qe4 Bh3 54. Qe3+ Kb2 55. Kd1 Bb3+ Kb3 56. Kd2 Bb4+ 57. Kd3 Ba2 58. Qe2+ Kb3 59. Qc2+ Ka3 60. Kd4 Bb3 61. Qc1+ Ka2 62. Kd3 Ba3 63. Qc7 Bb2 64. Qa7+ Kb1 65. Kd2 Bd5 66. Qb6 Be4 67. Qb5 Bg2 68. Qe2 Bb7 69. Qf1+ Ka2 70. Qf7 Ka3 71. Qxb etc. Leave the Fifty Move Rule.

## Doctor Dull

by Jim Watson



I chose the "Doctor Dull" title to remind myself to avoid wild, unbalanced, and complicated positions. By design, I now place more emphasis on simple positions and end-games. This is not to imply that these are the dull parts of chess. In contrast, the so-called "simple positions" often contain unexpected beauty.

The diagram is the starting position of a problem by A. Kuznetsov, published in Yuri Averbakh's book "Bishop vs. Knight Endings." How would you like to have this position versus Walter Browne in the next U. S. Open? If you knew it was a win? How would you play it? Try to solve it before you consult the solution.

SOLUTION 1. h5 Ke7? does not work because of 2. h6 Kf8 3. Kb5 and the N is trapped. Thus black plays the superior 1...f5 2. h6 Kf6 and 3. e5+ is tempting, but bad because of 3... Kg6 4. e6 Kh6 5. e7 Na6 6. Bc6 Nc7 and black draws. White is forced to find 3. e! Na6 4. Kb5!! Nc7+ 5. Kc5! Ne8 6. Kc6 and now black, in zugzwang, must allow the pawn to queen ...Ng7 7. h7 and wins.

## The Opening Phase

by Paul Linxwiler

### "FAILED EXPERIMENTS"

Every now and then, we witness strong players essaying a bizarre opening line, often in an attempt to force the opponent into unfamiliar territory. When successful, these imaginative attempts (although some would insist that "insane attempts" is more accurate!) frequently produce unique game positions with impressive results. When they don't work, however, they even more frequently lead to some of the most embarrassing routes imaginable.

The victim in this article is the formidable Mr. Ronald Burnett, who, despite dropping this game, went on to tie for first in the State Championship. It is a characteristic of good players to finish well, despite the occasional accident along the way.

allows White to meet the threatened ...d5 effectively. 18... d5 19. c5 Bf5 With a "subtle" threat. 20. e3... After this, Black has a won ending. But it is difficult to suggest anything better. 20... Qd3+ 21. Qxd3 exd3 22. Nb6... 22. Nc3 runs into 22... Bxc3 23. dxc3 Ra2 followed by Rc2. 22... Ra2 23. Ke1 Rb2 24. Rxb2 Bxb2 This position taxes even Burnett's ability. The bishops are running amok, ...Ba3 is an unstoppable threat, and the K-knight cannot be developed (25. Nf3 Be4). 25. f3 Ba3 26. g4 Be6 27. Nh3 Bxb4 28. Nf4 Bxc5 29. Na4 Ra8 30. Nb2 Ra1+ 31. Nd1 Be7 32. Nxd3 b5 33. Ke2 Kf8 34. h4 b4 35. h5 g5 36. Re1 e5 37. N(1) b2 Rxe1+ 38. Nxe1 Ke8 And Black, with the two bishops and an extra, outside protected passed pawn, eventually won.

### TENNESSEE OPEN

8/31/86

Round 4 Board 1

White: R. Burnett (2320)  
Black: P. Linxwiler (2158)

1. b3... I was not exactly thrilled with the prospect of having the black pieces against Burnett, and I was even less amused after seeing his first move. However... 1... Nf6 2. Bb2 g6 3. Bxf6?!... Taking the time to fianchetto the bishop, and then giving it up unprovoked must be questionable. White's plan practically concedes all the dark squares to Black. 3... exf6 4. c4 f5 5. Nc3 Bg7 6. Rc1 0-0 7. g3... White has developed all of his Q-side pieces and apparently attempts to compensate for the loss of his dark-square bishop by playing on the white squares (the Q-side pawn chain, the N on c3, the fianchettoed K-bishop). This is, however, extremely slow and is hardly enough to deal with the hellacious monster living on g7. 7... c6 8. Bg2 Qa5! Threatening to win the a-pawn and establishing firm control of the dark-squares. 9. Qc2 ?!... This turns out badly because of Black's next move, and 9. Rc2 looks equally unappetizing. 9... Na6! 10. Qb2... Trying to get in a3 followed by b4, as well as getting out of the way of the threatened Nb4. It does, however, have the drawback of stepping into the path of the bishop. 10... Re8 11. a3?... This looks like a logical follow up to White's tenth move, but it is actually a terrible underestimation of the strength of Black's position. Absolutely mandatory is 11. Nf3. 11... Nc5! The threat of Nd3+ is difficult to cope with. 12. Qc2 or 12. Qb1 concedes the a-pawn, and 12. b4 loses to 12... Nd3+ 13. Kf1 Nxb2 14. bxa5 Nxc4. So... 12. Kf1 Qb6 13. b4 a5 Now the Q-rook gets in on the act. 14. Rb1?... Any further waste of time is suicidal. Perhaps White's best try in this mess is 14. Nh3 (with the idea of Nf4) and if Black plays axb4 15. axb4 Na4 then 16. Qb3. 14... axb4 15. axb4 Ne4 Threatening mate. 16. Bxe4 fxe4 17. Qc2... Now 17. Nh3 gets crushed after 17... d5 18. Kg3 dxc4 or even 18... d4. However, 17. c5 may be best since it prevents the text. 17... Qd4! A powerful centralization that makes it a problem to defend the hanging Q-side pawns. 18. Na4?... Why not 18. c5? Putting the knight on the edge can't be good. At least 18. c5

## Best Games of the Tennessee Open

### OPEN SECTION

White: Gary McMurray (2077)  
Black: Jim Watson (1867)

This game is fully annotated in Jim Watson's article (this issue) "Cave Man Chess". I, personally, am very proud of the choice of this game as best. Having worked with Jim, as one of my assistants and friend, my only surprise is that it took this long for one of his games to be chosen best. Considering the number of times he has blown me off the board in speed chess, and now seeing this same brilliancy show in his tournament games, I think his name is about to become prominent in Tennessee Chess circles.

Congratulations Jim—you certainly deserve them.  
—The Editor

### AMATEUR SECTION

White: Mitchell (unrated)  
Black: Bob Hydzik 1376

1. d4 Nf6 2. c4 g6 3. Nc3 Bg7 4. e4 d6 5. f3 0-0 6. Be3 Re8 7. Qd2 Nf8 8. 0-0-0 c6 9. Bh6 Qa5 10. h4 e4 11. d5 Nf6 12. h5 Bxb3 13. Qxb Nxb 14. RxN gXR 15. Bd3 Qd8 16. Ne2 Kh8 17. Rh1 Rg8 18. Rxb Rg7 19. g4 Nd7 20. Qxd Rg6 21. Qa3 Nf6 22. Rh1 Bd7 23. Rd1 Ng8 24. b4 Qg5+ 25. Kb2 Qe3 26. b5 cb 27. Nxc Rb6 28. c5 RxN+ 29. BxR QxQ+ 30. KxQ BxB 31. Nc3 Bd7 32. Rb1 Rc8 33. Rxb Rxc 34. Na4 BxN 35. KxB Kg7 36. d6 Re8 37. d7 Rd8 38. g5 Kf8 39. Kb5 Ke7 40. Rxa f6 41. g6 hg 42. Kc6 f5 43. ef gf 44. Kd5 e4 45. fe Nf6+ 46. Kd4 Nxe 47. Ke5 Nd6 48. a4 Rxd 49. RxR KxR 50. a5 Kc7 51. Kd5 Kb7 52. Kc5 Ka6 53. KxN f4 54. Resigns.

Congratulations to Bob also, I have no doubt we will be seeing more of him; although, I doubt seriously if it will be in the Amateur Section... Well played Bob!

—The Editor

## The Atomic City II

by Leonard Dickerson

The Atomic City II held in Oak Ridge October 4-5 saw 32 players show up for this fiery tournament held at the Holiday Inn. This annual event was sponsored by the Clinton Chess Club and directed by Chester Crowley. West Tennessee surprised everyone with their absence, and Knoxville unrateds surprised many with their strength by claiming 1700 and 1800 scalps. This was a fighting tournament by all accounts.

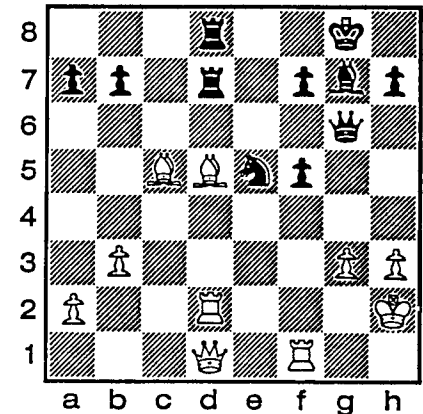
Carpenter, playing Black, managed to get Maddigan out of his positional style into a tactical melee in the fourth round that ended with Carpenter bombing the senior master. This set the stage for a tense money-round between Carpenter and Dickerson that ended in a fighting draw and sharing of first. Maddigan and the Category I winners, Joe Roberdeau (Ohio) and Gregory Robbins, shared second with 4 points each. Category II also ended in a tie, with three points. Page Tuminello, Charles Martin, and Benny Prince emerged with this honor. Category III and the Unrated section were the only divisions to have clear winners in this tournament of balanced scoring. Virtually every other player got a share of the pot and glory.

Richard Carpenter, in particular, could receive high honor from his performance. He has gotten within one point of masterhood—if, indeed, he has not already arrived! His string of wine extending a tournament or so beyond the Tennessee Open certainly puts him in a favored position. Whatever his status may be, he will definitely reach this exalted ground during 1986. Below are two games from the Atomic II giving testimony to his strength and masterful moves.

### THE BOMB FALLS

Maddigan (2401) vs. Carpenter  
Round 4, Board 1 (Kings Indian)

1. c4 Nf6 2. Nc3 g6 3. g3 Bg7 4. Bg2 0-0 5. d4 d6 6. Nf3 Nbd7 7. 0-0 c6 8. e4 e5 9. h3 ...Book—though Carpenter wasn't aware of this. I played a variation of this opening against David Timberlake in the 1984 Tennessee Open and also obtained good chances. 9... ed 10. Nxd4 Nb6 11. b3 d5! 12. cd... The obvious pawn win of 12. Ba3 Re8 13. c5 N(b)d7 14. exd Nxd 15. Nxd exd 16. Bxd? is highly dangerous, due to such counter as 16... Nxc or 16... Ne5! But 16... Bxd? 17. Qxd Nf6 fails to 18. Bb2. 12... cd 13. e5 Ne4 14. Nxe4 dxe4 15. Ba3 Re8 16. f4 ef 17. Nxf3 Bf5 Avoiding the trap 17... Qxd and 18... Bxe, which loses immediately. Black depose his pieces maximally for action. 18. Bd6 Nd7 19. Nd4... If 19. Re, then Qa5 followed by R(a)d is convincing. 19... Nxe5 20. Nxf5 gxf5 21. Rc1 Qb6+ 22. Be5 Qg6 Black's initiative and White's uncoordination gives Black a definite advantage. Now 23. Bf2 R(a)d8 24. Qc2 Nd3 is almost as favorable to Black as is the game continuation. 23. Kh2 R(a)d8 24. Bd5?! ... 25. Qc2 is called for, though White can then abandon any hope of winning—a mil possibility anyway. 24... Rd7 25. Rc2 R(e)d8 26. Rd2...



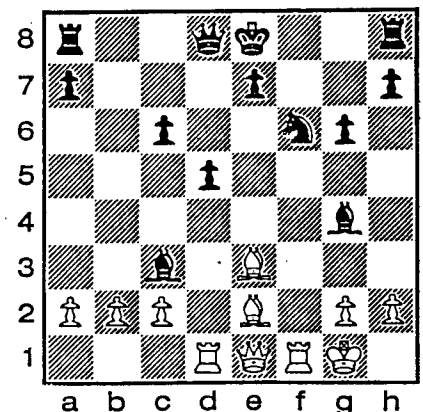
26... Bh6! 27. Rd4 Be3 28. g4 Bxd4 29. gxf Qf6 30. Resigns.

### CARPENTER VS. DICKERSON

White: Richard Carpenter (2170)  
Black: Leonard Dickerson (2090)

#### Opening: Accelerated Sicilian

1. e4 c5 2. Nf3 Nc6 3. d4 cxd4 4. Nxd4 g6 5. Nc3 Bg7 6. Be3 Nf6 7. Nxc bxc 8. e5 Ng8 8... Nd5 is a promising pawn offer for the initiative. 9. f4 f6 9... Nh6 is also quite acceptable. 10. Bc4?! ... BC0 neglects mention of this strong move. Other replies tend to favor Black. 10... fxe 11. fxe Bxe 12. 0-0 Nf6 13. Qe1 d5 14. Rad Bg4! 15. Be2 Bxc?!



16. Qxc!! ... Had this shocking reply been anticipated, Black would have avoided this line for 15... Bxe. Then 16. Nxe? Ng4 gives a strong initiative. So, 16. Qxe Bxc 17. bxc 0-0. Now 18. Bd4 Qd6. So, 18. Bh6 Rf7 19. Qe6 Qd6 20. Rde Qxe 21. Rxe Ng4! gives Black a plus, for 22. Bg5 Rxf+ 23. Kxf Rf!+ 24. Kg Rf5! If 19. c4 Ne4. If 19. Qf3 Qe8. This was

Continued

my aim. I figured my moves would simply transpose. But 18 minutes of thought by White produced this shocker! Now if Black plays 16... Bxe, then not 17. Qxc+? Nd7, but 17. Rxf!! Now 17... exf 18. Qxc+ Kf7 19. Rxd and mate follows soon (unless Black gives up his Queen with a move like 19... Bg4!— which will nonetheless prove insufficient because of Black's uncoordination.) This brings up a point. An oft heard question in regards to a player's depth of vision and playing strength! "How many moves did he see?" Well, for sure he saw four moves in all pertinent variations. But this question is irrelevant here—as it generally is with most deep sacrifices which are based partly on positional or tactical possibilities and the rest on intuition. This question is moot in this position because what one needs to appreciate is the quality of Carpenter's depth of search. He had to envision this difficult reply; then he had to see through the superficially strong and attractive weak follow-ups to find the truth. In this regard, his contemplated Bishop-and-exchange sacrifice deserves quality points that far exceed the totaling of moves. In short, such sacrifices should be judged on their difficulty—not their length. 16... 0-0 17. Bxg Nxb 18. Qxc Rxf+ 19. Rxf Nxe 20. Qe6+ Kh8 21. Qe5+ ... DRAW White can't afford the swap of Queens; the perpetual is forced.

1. Dickerson (2140) vs. D. Ralston (2169)

The other co-champion of the Atomic II, Leonard Dickerson, also had to play spirited to maintain his position at the top. Here Doug Ralston goes for an early knock-out against him by introducing some unorthodox aggression of the Kingside—before castling.

English—Ret1 1. e4 e6 2. b3 f5 3. Bb2 Nf6 4. Nf3 b6 5. g3 Bb7 6. Bg2 g5?! This aggressive move is positionally unfounded—even though it can bring about the exchange of White's King Bishop. A subsequent g4 and the exchange of Bishops will cede some weakened Black squares on the kingside. 7. d3 Rg8?

8. e4! ... This temporary pawn sack is based on Black's unprotected Queen Bishop. Black would have been better served with following through with g4 on the previous move. 8... fxe If 8... d6 to prevent 9. e5 and provide a retreat for the Knight, then 9. exf exf 10. Qe2+ wins material. 9. N(d)2 d5 10. dxe ... 10. cxd is also strong. 10... dxe If 10... dxc 11. 0-0! 11. 0-0 N(b)d7 12. Nc3 Nc5 13. Nb5! Be7 14... Bd6 immediately simply transposes. 14. Be5 Bd6 15. Nxd+ cxd 16. Bxf Qxf 17. b4 Nd7 17... Na6 is worse. 18. Nxe Bxe 19. Bxe Rc8 20. Qxd Rxc 21. Be6 Qe7 22. Rad Resigns If 22... Rg7. Then 23. Bxd+ Qxd 24. Qb8+ wins easily.

### Games of Interest

by Jim Watson

White: John Anthony (1206 Postal)  
Black: Walter Alberts (1042 Postal)

1. e4 e5 2. Nf3 Nc6 3. Bb5 a6 4. Ba4 Nf6 5. 0-0 b5 6. Bb3 Be7 7. Re1 0-0 8. a4 Bb7 9. d3 d6 10. Nc3 Na5 11. Ba2 b4 12. Ne2 c5 13. Ng3 b3 14. Bb3 Nb3 15. cb Qb6 16. Bd2 Ne8 17. Bc3 g6 18. Nd2 f5 19. Ne4 Qe7 20. f3 Bh4 21. Re2 Bg3 22. hg Rd8 23. b4 fe 24. fe cb 25. Bb4 a5 26. Ba5 Qc5+ 27. d4 Qe4 28. Re1 Qa6 29. Bd8 Qa8 30. Qb3+ Kh8 31. Be7 Rg8 32. Qf7 Be4 33. Rc7 Ng7 34. Bf6 Qf8 35. Qf8 Rf8 36. Bg7+ Kg8 37. Bf8 Black resigns.

White: Smith (1765) LPO 13  
Black: Anthony (1894)

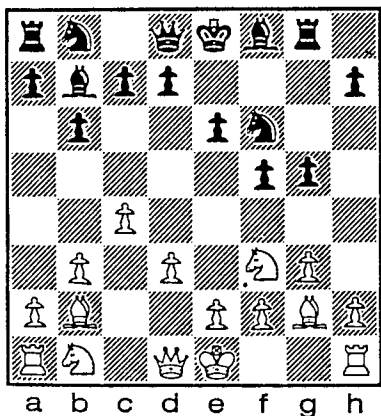
1. e4 c5 2. Nf3 e6 3. d4 cd 4. Nd4 a6 5. c4 Nf6 6. Nc3 Qc7 7. a3 b6 8. f4 Bb7 9. Bd3 Nc6 10. Nf3 d6 11. 0-0 Na5 12. b3 b5 13. Rb1 Rb8 14. cb Qc3 15. ba Be4 16. Be4 Ne4 17. b4 Qc6 18. Qd4 Be7 19. Be3 Bf6 20. Qd3 Qc4 21. a7 Rc8 22. R(a)c1 Nc3 23. Rc3 Bc3 24. Qd6 Nb7 25. Qb6 Qd5 26. Be5 Nc5 27. bc Bd4+ 28. Nd4 Qd4+ 29. Kh1 0-0 30. Rb1 Qc5 31. Qc5 Rc5 32. g3 Ra5 33. Rb7 Ra3 34. Kg2 g6 35. Kh3 Kg7 36. Kg4 Ra8 White resigns.

### USCF PRESS RELEASE

The 1986 U. S. Open was held in Somerset, NJ., from August 8-15. The USCF produced a philatelic souvenir of the event that will be of interest to all chess stamp and special event cover collectors. A cachet was prepared for the event and, in addition, the U. S. Post Office provided a special pictorial cancellation for the tournament. A postal sub station was in operation at the Somerset Hilton on August 3, 10, and 15.

The items are available. The cacheted envelop (no cancel) is on sale for 25 cents. Cancelled envelopes are \$1.25. A limited edition of 50 covers was produced bearing the signatures of 12 chess GM's, including tournament winner Larry Christiansen. These are being sold for 50 cents each while they last.

To order, send check for requested items and a large self addressed envelope to: USCF Covers, Woodrow Harris, 1105 West End Drive, Emporia, VA 23847. For information: same—or call (804) 634-2725.



## Chess Trivia Quiz 3

by Mark Ishee

1. How many times did Lasker defend his title against Tarrasch?
2. How many times did Lasker defend his title against Janowski?
3. Who was nicknamed "Paul the Second"?
4. Four of John W. Collins' chess prodigies were Bobby Fischer, Donald Byrne, Robert Byrne, and William Lombardy. Who were the other three?
5. What English GM could not read or write?
6. What was GM Larry Evans referring to when he said he "felt entrusted with the keys to the kingdom"?
7. Can chess games be copyrighted?
8. Where is Cambridge Springs?
9. What was the final score of Alekhine's 1927 Match vs. Capablanca?
10. What does FIDE stand for?
11. What is the Persian term meaning "the king is dead" from which the word "checkmate" derives?
12. Who said "Style? I have no style"?

Answers on Page 19

## Pizza and Speed Chess

The Fugitive Chess Club has recently begin holding monthly speed chess tournaments at the Red Geranium Pizza Parlor in Brentwood. All chess players are welcome, and prizes are usually awarded despite the fact that there is no entry fee! Final standings of the first two of these events appear below.

Red Geranium Speed Chess #1 (August)	
1. Ron Burnett	11 - 0
2. Mark Ishee	9.5 - 1.5
3. Morris Lewis	8 - 3
4. Bill Orgain	7 - 4
5. Peter Ciarleglio	7 - 4
6. Kent Meadows	6.5 - 4.5
7. Al Malek	5 - 6
8. Joe Crump	4 - 7
9. Rick Carnes	3.5 - 7.5
10. Mike McKinley	3.5 - 7.5
11. Joshua Baumgartner	0.5 - 10.5
12. Mike Vincent	0.5 - 10.5

Red Geranium Speed Chess #2 (September)	
1. Ron Burnett	7.5 - 0.5
2. Mark Ishee	7.5 - 0.5
3. Kent Meadows	5.5 - 2.5
4. Joe Crump	5.0 - 3.0
5. Morris Lewis	4.5 - 3.5
6. Haskell Glover	3.0 - 5.0
7. Bill Orgain	2.0 - 6.0
8. Jim Frith	1.0 - 7.0
9. Jake Harris	0.0 - 8.0

Red Geranium Speed Chess #3 (October)	
1. Ron Burnett	7.0 - 0.0
2. Mark Ishee	6.0 - 1.0
3. Morris Lewis	5.0 - 2.0
4. Mike McKinley	3.0 - 4.0
5. Bill Orgain	3.0 - 4.0
6. Rick Carnes	2.0 - 5.0
7. Jake Harris	1.0 - 6.0
8. Gene Pilcher	1.0 - 6.0

## Nashville Championship Prelims Underway

The annual preliminary playoffs for the Nashville Chess Club Championship have begun, with 22 players in three sections competing for spots in the finals. Qualifiers will square off against the defending champion, Senior Master Ronald Burnett, in a round-robin playoff. This year's preliminaries are the largest ever in the history of the event. Competition is fierce, as shown by the following first-round upset.

Clifford Anderson (1935) vs. Rick Carnes (1461)  
Center Counter

0 - 1 17 10/09/86 Nashville Championship Prelims  
1.e4 d5; 2.ed Nf6; 3.d4 Nxd5; 4.c4 Nb6; 5.b3 e5!; 6.de Qxd1+; 7.Kxd1 Nc6;  
8.Bb2 Be6; 9.Bd3 O-O; 10.Ke2 Bc5; 11.f4 Nd4+; 12.Kd2 Rd7; 13.Kc3 Rhd8;  
14.Be4 Bf5; 15.Bxf5 Nxf5; 16.Nf3 Rd3+; 17.Kc2 Ne3+ White Resigns

### ALBURT TO GIVE SIMUL

Two-time U.S. Champion Lev Alburt will give a simultaneous exhibition on November 6 at the Arlington Methodist Church on Murfreesboro Road in Nashville. Entry fee is \$20. This event is co-sponsored by the Fugitive Chess Club and the Nashville Chess Club.

### FUGITIVES SCORE IN TURKEY TOUR

The recently-released list of prize winners in the 1985-86 Tennessee Turkey Tour, comprised of three prize winners in each of six classes, was a major success for the Fugitive Chess Club of Brentwood. Fugitive Club members won first-place awards in four of the six sections, and five of the eighteen Turkey Tour prizes were won by Fugitives. Fugitive winners were: Ron Burnett (Master/Expert), Bill Orgain (Class A), Morris Lewis (Class B), and Edwin Cato White (Class E). Mark Ishee rounded out the list of Fugitive winners with third place in Master/Expert.

Bill Irwin (1740) vs. Morris Lewis (1600)d  
Caro-Kann Defense

0 - 1 18 08/31/86 Tennessee Open  
1.e4 c6; 2.d4 d5; 3.e5 c5; 4.Nf3 Nc6; 5.Bb5 Qb6; 6.Bxc6+ bc; 7.b3 Ba6;  
8.Be3 e6; 9.Nbd2 Rd8; 10.Rb1 Qa5; 11.Ng1? cd; 12.Bxd4 Bb4; 13.f4 Ne7;  
14.Ngf3 Nf5; 15.g4? Nxd4; 16.Nxd4 Qc5; 17.Ne2 Qe3; 18.Rg1 Bxe2 White Resigns

## Answers to Trivia Quiz 3

- 1
- 2
- Paul Keres, because of so many second-place finishes.
- Raymond Weinstein, Salvatore Matera, and Lewis Cohen
- Sultan Khan
- His revision of Modern Chess Openings.
- No
- Pennsylvania
- Alekhine won by 6 wins to 3, with 25 draws
- Federation Internationale des Echecs
- Shah Mat
- Anatoly Karpov

## World Chess Championship London 1986

by Kenny Thomas

London's posh Park Lane Hotel, adjacent to Green Park and just down the street from Piccadilly Circus, was the site of the first twelve games of this year's Kasparov-Karpov rematch. Although Kasparov had originally said he would not grant Karpov a rematch, he finally agreed to do so rather than engage in a prolonged political battle with Karpov and FIDE President Florencio Campomanes.

Indeed, lurking in the background of the rematch is the struggle for control of FIDE. Campomanes is widely known as a friend of Karpov's while Kasparov has endorsed the candidacy of Brazil's Lincoln Lucena for the FIDE presidency. And the outcome of the match will affect the presidential election, because whoever wins the match will be able to take over the organization of the USSR Chess Federation, controlling its vote on Campomanes-Lucena, and in essence controlling the votes of the Eastern European chess federations as well.

Thus the stage was set for a battle royal in every sense of the term. And the stage was set lavishly indeed, with many of the most prestigious names in British and international business numbered among the sponsors. The Greater London Council (later abolished by the Conservative national government) provided the main funding, but major support was also given by Save & Prosper (a financial services company), Pergamon Press, The London Times, British Airways and too many others to name, intelligent Chess Software provided the computer software that translated the moves on the board onto television monitors throughout the hotel. Another nice touch was provided by an art gallery on one floor with works on chessic themes. Naturally, there was also a big room full of books and the newest in chess computers.

Adding to the pageantry was the presence of most of the top names in British chess, and many of the best of the rest of the world as well. Many of them were among the 600-plus journalists working the match, plus top grandmasters in the commentary room such as John Nunn, Tony Miles, and Jan Timman.

The prize fund for the London half of the match was 900,000 pounds sterling (about \$1,350,000) plus a 10,000 pound brilliancy prize. But both players decided that they would donate their prize money to the Soviet government's fund for the victims of the Chernobyl nuclear accident.

One of the big stories of the rematch was Kasparov's reliance on the Grunfeld as his main defense to 1. d4. And as White, the champion immediately began putting the pressure on Karpov as early as game two. But quite possibly the most interesting game of the match was the eleventh, which many observers predicted would take the brilliancy prize. A wild Grunfeld, the game was full of sacs and countersacs, with both sides spurning a draw until there was no way to avoid it.

1. d4 Nf6 2. c4 g6 3. Nc3 d5 4. Bf4 Bg7 5. e3 e5 6. dc Qa5 7. Rc1 dc (Gulko and Stohl both play Ne4

here. After 6. cd Nc3 9. Qd2 Qa2 10. bc Qa5 11. Bc4 Nd7 12. Nf3 Nc5 13. Be5 Be5 14. Ne5 f6 15. Nf3 b5 Black went on to equalize in Bekarek-Stohl, Czech Championship 1986). 8. Be4 0-0 9. Nf3 Qc5 10. Bb3 Nc6 11. 0-0 Qa5 12. h3 (BCO gives only 12. Qe2 Ne4 13. Bg5 Bg4'. This gives the White QB an escape square and prevents Bg4 at the same time). 12... Bf5 13. Qe2 Ne4 14. Nd5 e5 15. Rc6 TN (Smejkel played 15. Bh2 against Saidu at Tallinn 1971. According to Botvinnik and Estrin's book on the Grunfeld, Black could have gotten a good game by 15... R(f)d8 16. R(f)d1 Rd7! and R(a)d8.) 15... ef (Obviously White has tons of compensation if... bc 16. Ne7+ Kh8 after either 17. Nc6 or Ne5) 16. Rc7 Be6 (Awarded a "!!!" in the match bulletin. 1f... fe 17. Qe3 Bb2 18. Nd4 White has a big advantage) 17. Qe1 Qb5 18. Ne7+ Kh8 19. Be6 (Not 19. ef Ng3! 20. fg Qb6+ snaring an exchange) ... fe 20. Qb1 Ng5 21. Nh4 (A sacrifice on g6 is obviously coming up, but how strong it would be no one in the commentary room or in the press room knew for sure. Tony Miles, chief commentator for this game, seemed to think Karpov had an edge, but as the crucial period of the game progressed, it was clear that nobody really knew what was going on except the players themselves.) 21... Nh3+ (Highly aggressive and seemingly very risky as well. Of course White can't take at once because of Qg5+, but the N will be sitting on h3 for a long time) 22. Kh2 Qh5 23. N(e) g6+ hg 24. Qg6 Qe5 25. Rf7 Totally unexpected in the commentary room. Frantic analysis of 25. Qc2 led to no conclusions, though the word from the press room, for which I saw on supporting analysis, was that Black was better in that case. Eric Schiller, "Overlord" of the press room, told me—I was standing just inside the analysis room but only a few feet from the press room—that consensus was that 25. Rg7 was the only way White could draw. As it turned out, all roads led to Rome 25... Rf7 (Not Kg8 26. Nf3 Qb2 27. Rb1 wins) 26. Qf7 Ng5 (Bailing out into an ending) 27. Ng6+ Kh7 28. Ne5 Nf7 29. Nf7 Kg6 (The sting at the end of the combination. Black gets his pawn back by forcing the N onto the same diagonal as the K and ends up with a tiny edge.) 30. Nd6 fe 31. Nc4 ef 32. Rf2 b5 33. Ne3 a5 34. Kg3 a4 35. Rc2 Rf8 36. Kg4 Bd4 37. Re2 Be3 38. Re3 Rf2 39. b3 Rg2+ 40. Kf3 Ra2 41. ba Draw.



London is a great place to visit even when the world championship isn't going on. My favorite hangout is the King's Head Pub and chess club on Moscow Road, in the Bayswater section of town. There you can play five-minute games with the members and get information on other chess activities in London and the rest of England.

### 40th Tennessee Open

PLAYER	ST	PRE RTNG	POST RTNG	1	2	3	4	TOT
BURNETT, RONALD WA	WA	2335	2344	W	26	W	26	52
WISEMAN, MICHAEL D	IN	2233	2344	W	26	W	26	52
LINXWILER, PAUL A	IN	2222	2344	W	26	W	26	52
GALLAGHER, JR JAME	IN	2207	2344	W	26	W	26	52
FISCHER, ROBERT J	TN	2156	2344	W	26	W	26	52
CARPENTER, RICHARD	TN	2135	2344	W	26	W	26	52
STINSON, MARCUS E	IL	1925	2344	W	26	W	26	52
MELVIN, BILL	CA	2157	2344	W	26	W	26	52
ISHEE, MARK	TN	2121	2344	W	26	W	26	52
HERBERS, CHARLES R	CA	2033	2344	W	26	W	26	52
JONES, ELLIS EUGEN	TN	1960	2344	W	26	W	26	52
SENTEF, JR JOSEPH	TN	2207	2344	W	26	W	26	52
CHAMBERS, CHRIS L	TN	2115	2344	W	26	W	26	52
GUODE, BARRY D	IN	2068	2344	W	26	W	26	52
JORDAN, WALTER H	IN	2042	2344	W	26	W	26	52
FICKLINGER, DALE	IN	1985	2344	W	26	W	26	52
MEADOWS, ROBERT KE	IN	1959	2344	W	26	W	26	52
ROBBINS, GREGORY K	TN	1945	2344	W	26	W	26	52
BARTON, MIKE D	TN	1923	2344	W	26	W	26	52
BURNETT, JOHN T	TN	1819	2344	W	26	W	26	52
COOPER, TOM	TN	1709	2344	W	26	W	26	52
DICKERSON, LEONARD	TN	2144	2344	W	26	W	26	52
MC MURRAY, GARY	TN	2114	2344	W	26	W	26	52
SMITH, BRIAN D	IN	1973	2344	W	26	W	26	52
HALL, BILL	TN	1973	2344	W	26	W	26	52
PYLANT, GARY M	IN	1938	2344	W	26	W	26	52
WATSON, JIMMY T	IN	1864	2344	W	26	W	26	52
TURBEVILLE, L JAY	TN	1855	2344	W	26	W	26	52
TAYLOR, JEFF B	IN	1849	2344	W	26	W	26	52
JACKSON, JOHN M	AR	1727	2344	W	26	W	26	52
PALLEN, DEWITT T	TN	1715	2344	W	26	W	26	52
CORNWELL, GLENN E	TN	1639	2344	W	26	W	26	52
WRIGHT, JAMES A	TN	1970	2344	W	26	W	26	52
TAI, OLIVER	TN	1969	2344	W	26	W	26	52
WEBB, JR WILLIAM B	TN	1939	2344	W	26	W	26	52
NIGGEL, CHARLES M	AR	1920	2344	W	26	W	26	52
LENTZ, BRIAN D	TN	1848	2344	W	26	W	26	52
NIGGEL, CHRISTOPHE	AK	1834	2344	W	26	W	26	52
LIPKIN, ALAN H	TN	1694	2344	W	26	W	26	52
LEWIS, F MORRIS	TN	1652	2344	W	26	W	26	52
MARTIN, WILLIAM J	TN	1613	2344	W	26	W	26	52
PENNIG, JEFF	TN	2031	2344	W	26	W	26	52
MALEK, AL	TN	2017/5	2344	W	26	W	26	52
GUZMAN, BENJAMIN	KY	1854	2344	W	26	W	26	52
ORGAIN, WILLIAM H	TN	1831	2344	W	26	W	26	52
PASCHALL, JOEL K	TN	1708	2344	W	26	W	26	52
BURTON, JOEY G	TN	1634	2344	W	26	W	26	52
SABINE, JAY D	TN	1624	2344	W	26	W	26	52
BAIER, FRED	TN	1674	2344	W	26	W	26	52
ANDERSON, CLIFFORD	TN	1840	2344	W	26	W	26	52
THOMAS, LARRY G	TN	1811	2344	W	26	W	26	52
IRWIN, BILL	TN	1753	2344	W	26	W	26	52
MITCHELL, JAMES H	TN	1620	2344	W	26	W	26	52
ODUM, STEPHEN E	TN	1502	2344	W	26	W	26	52
SABINE, HARRY D	TN	1868	2344	W	26	W	26	52
PETTY, ERIC H	TN	1655	2344	W	26	W	26	52

### 40th Tennessee Amateur

PLAYER	ST	PRE RTNG	POST RTNG	1	2	3	4	TOT
WILLIAMS, ALFRED H	TN	1723/5	1849	W	27	W	28	55
JANSEN, VIBEKE	TN	1734/5	1770	W	12	W	19	31
HYOZIK, ROBERT J	TN	1504	1623	W	9	W	25	34
JORDAN, DAVE J	IN	1740	1748	W	18	W	17	35
RYLANDER, JR JIM	IN	1581	1600	W	31	W	22	53
STRUBLE, DAVID	TN	1475	1501	L	16	W	46	62
PRINCE, MARSHALL B	TN	1474	1547	W	39	W	46	85
DUNCAN, TIMOTHY L	KY	1474	1542	W	47	W	30	77
MITCHELL, R O	TN	1660/5	1612	L	3	W	12	15
MC MILLAN, DANNY	TN	1499	1526	W	40	W	14	54
VAUGHN, REGINALD	KY	1497	1523	W	54	W	22	76
HUNT, MICKY G	AL	1414/15	1429	L	2	W	14	16
SKIDGEL, RON	IN	1356	1446	L	1	W	17	18
GUERRANT, B W	KY	1201	1349	L	24	W	10	34
WEBB, STEPHEN J	TN	1836	1773	W	49	W	34	83
MC KINLEY, MICHAEL	TN	1596/9	1570	L	3	W	29	32
WAGNER, MARK	TN	1498	1574	W	33	W	10	43
WHITE, MICHAEL R	TN	1498	1574	W	33	W	10	43
SIMMONS, HAROLD L	TN	1490	1502	W	2	W	33	35
CARNES, RICK	TN	1475	1496	W	2	W	33	35
CHAMBERS, STEVE	TN	1466	1483	W	4	W	33	37
SWANN, ROUGER F	TN	1453	1482	W	5	W	33	38
STEWART, SR RONALD	TN	0	1574	W	1	W	33	34
CHAPMAN, JR ERNEST	TN	1528	1521	W	14	W	33	47
MC TAGGART, MICHAEL	TN	1517	1504	W	5	W	33	38
TATE, KELLES	TN	1479	1484	W	3	W	33	36
COUCH, FRANK B	TN	1468/10	1453	W	4	W	33	37

PLAYER	ST	PRE RTNG	POST RTNG	1	2	3	4	TOT
SCHWARTZ, LEON	IN	1468	1479	W	37	W	15	52
PANTHER, RALPH	TN	1442	1414	L	41	W	50	91
WALLACE, CARL	TN	1441	1450	W	33	W	16	49
GRAHAM, JR JOSEPH	TN	1331	1341	W	5	W	16	21
COOK, JAMES S	TN	1266	1265	W	5	W	16	21
LENTZ, NEIL D	TN	2000	2021	W	26	W	26	52
PROCTOR, JR CLINTO	TN	2000	2117	W	37	W	15	52
BROWN, MICHAEL W	TN	0	0	W	38	W	14	52
BECKER, SETH A	TN	0	0	W	34	W	18	52
HORRIGAN, ALEC WILLI	TN	1419	1333	W	35	W	17	52
PRINCE, BRENNAN T	TN	1320/10	1144	W	0	W	49	49
STRUBLE, JOHN	TN	1273	1244	W	4	W	39	43
KEEKS, RANDY J	TN	1055/5	1115	W	0	W	48	48
HARRIS, JAKE P	TN	999/10	1004	W	1	W	48	49
THUAN, JULIEN P	TN	0	999	W	6	W	54	60
EDGEY, DAVID L	TN	0	0	W	3	W	57	60
ULREY, DAVID L	TN	0	0	W	3	W	57	60
MATHIS, RANDY	AR	140	1370	W	0	W	50	50
JOHNS, JASON	TN	1000	1000	W	0	W	50	50
HORGAN, KELLY E	TN	1000	1000	W	0	W	50	50
CHEN, IRWIN	TN	1000	1000	W	0	W	50	50
COLLINS, MICHAEL M	TN	1000	1000	W	0	W	50	50
WHITE, EDWIN CATO	TN	1157	1157	W	0	W	50	50
STEWART, BRIAN	TN	1152/10	1075	W	1	W	45	46
SAMPSON, FRANK M	TN	0	0	W	0	W	45	45

### SCCC Grand Prix No. 1

PLAYER	ST	PRE RTNG	POST RTNG	1	2	3	4	TOT
BURNETT, RONALD WA	WA	2344	2352	W	12	W	1	13
ROSE, JOHN A	TN	1944	1986	W	10	W	9	19
ISHEE, MARK	TN	2129	2132	W	16	W	0	16
MINOR, RONALD L	TN	2107	2106	W	13	W	0	13
HERBERS, CHARLES R	CA	2053	2060	W	8	W	8	16
PYLANT, GARY M	IN	1947	1960	W	2	W	0	2
TAI, OLIVER	TN	1942	1937	W	2	W	0	2
WRIGHT, JAMES A	TN	1932	1932	W	19	W	0	19
GALLAGHER, WILLIAM H	TN	1811	1817	W	1	W	0	1
GALLAGHER, JR JAME	TN	2220	2210	W	14	W	0	14
NEWSOM, GARY D	TN	2050	2041	W	18	W	0	18
TURNBOW, CHRIS	TN	1691	1706	W	0	W	0	0
JACKSON, JOHN M	AR	1795	1782	W	0	W	0	0
O'DANIELS, SEAN	TN	1666	1661	W	0	W	0	0
KAY, TODD H	TN	1438	1444	W	0	W	0	0
FAN, WILL	TN	1386	1391	W	0	W	0	0
TAYLOR, CORKY	TN	1321	1333	W	0	W	0	0
SAEGER, WAIN	TN	1314	1311	W	0	W	0	0
CSEKO, PAUL	TN	1285	1211	W	0	W	0	0
SAEGER, NICOLAS	TN	1198	1184	W	0	W	0	0

### Blount County Fall Open

PLAYER	ST	PRE RTNG	POST RTNG	1	2	3	4	TOT
CARPENTER, RICHARD	TN	2107	2135	W	4	W	5	9
MADDIGAN, CHARLES	TN	2401	2397	W	0	W	4	4
DICKERSON, LEONARD	TN	2136	2144	W	3	W	4	7
ISHEE, MARK	TN	2105	2121	W	8	W	3	11
BURNETT, RONALD WA	WA	2350	2335	W	16	W	1	17
ISBILL, WALTER H	TN	1884	1908	W	2	W	3	5
LENTZ, BRIAN D	TN	1817	1848	W	2	W	0	2
BOWMAN, MICKEY D.	TN	1691	1729	W	7	W	1	8
GUINS, MIKE	TN	1630	1742	W	3	W	4	7
WATSON, BRADLEY S	TN	1949	1936	W	12	W	7	19
HART, PHILIP A	TN	1688	1700	L	2	W	2	4
HYOZIK, ROBERT J	TN	1400	1504	W	1	W	1	2
CHAMBERS, CHRIS L	TN	2131	2115	W	9	W	1	10
SMITH, BRIAN D	TN	1984	1983	W	3	W	1	4
WATSON, JIMMY T	TN	1882	1864	W	2	W	1	3
HEADRICK, MIKE	TN	1805	1794	W	2	W	1	3
JORDAN, PAUL J	TN	1750	1748	W	3	W	1	4
MAYHEW, MATT G	TN	1685/5	1670	W	2	W	1	3
TURNBOW, CHRIS	TN	1662	1681	W	3	W	1	4
COUNTS, ROGER L	TN	1654	1671	W	2	W	1	3
THOMAS, DAVID M	TN	1645	1643	W	1	W	2	3
MC KINLEY, MICHAEL	TN	1443/5	1596	W	1	W	1	2
JORDAN, DAVE J	TN	1769	1740	W	3	W	1	4

November-December 1986/January 1987

24	POFF, STEVE MARION	TN	1575	1575	L-1	W37	D34	L11	1.5
25	HANNA, GEORGE	GA	1557	1553	L-4	W33	L17	D26	1.5
26	CARNES, RICK	TN	1473	1475	L18	W30	L21	D25	1.5
27	GAMBILL, GARY C	TN	1324	1364	L16	W21	L-8	D23	1.5
28	SCHNEITMAN, PATRIC	TN	1905	1900	W31	L-9	U--	U--	1.0
29	LIM, BYONG SUL	TN	1480	1464	L-6	L10	L33	W37	1.0
30	CHAMBERS, STEVE	TN	1475	1466	L14	L26	W35	L13	1.0
31	GROENIGER, LOUIS M	TN	1468	1470	L28	L13	W37	L16	1.0
32	ALBERT, JEFFREY L	TN	1381	1378	L15	L11	W36	L18	1.0
33	DAVIS, MARK T	TN	0	1408	L17	L25	W29	L21	1.0
34	WHITE, JOHN L	TN	1731	1716	U--	U--	D24	L12	.5
35	BOLING, GARY A	TN	1350/10	1321	L-7	L20	L30	D36	.5
36	LENTZ, NEIL D	TN	1240	1230	L19	L23	L32	D35	.5
37	MORGAN, GORDON R	TN	1302	1276	L-8	L24	L31	L29	.0

Music City Grand Prix

	PLAYER	ST	RTNG	PRE					TOT	
				RTNG	1	2	3	4		5
1	BURNETT, RONALD WA	TN	2326	2352	W30	W-6	W-8	W-9	W-7	5.0
2	JONES, CURT	TN	2400	2393	W-4	W33	L-9	W14	W11	4.0
3	WHEELER, JERRY T	TN	2192	2203	W22	W14	D10	D11	W12	4.0
4	SCHWALM, JERRY L	IL	1871	1988	L-2	W19	W32	W-8	W-9	4.0
5	ROBINSON, HENRY J	TN	2281	2264	W21	L12	W13	W15	D-6	3.5
6	CARPENTER, RICHARD	TN	2092	2106	W24	L-1	W34	W23	D-5	3.5
7	GUTHRIE, ROBERT CA	TN	1966/8	2065	D20	W35	W17	W10	L-1	3.5
8	MELVIN, BILL	TN	2160	2159	W19	W16	L-1	L-4	W20	3.0
9	FISCHER, ROBERT J	TN	2149	2156	W34	W15	W-2	L-1	L-4	3.0
10	MEIDINGER, CHARLES	AL	2144	2136	W23	W18	D-3	L-7	D13	3.0
11	CHAMBERS, CHRIS L	TN	2101	2113	D35	W20	W12	D-3	L-2	3.0
12	ZHISLIN, ALEXANDER	TN	2100	2103	W25	W-5	L11	W24	L-3	3.0
13	TAI, OLIVER	TN	1945	1950	D32	W37	L-5	W28	D10	3.0
14	PYLANT, GARY M	TN	1915	1933	W27	L-3	W25	L-2	W24	3.0
15	RICHBURG, JEFF E	MI	1875	1909	W28	L-9	W16	L-5	W23	3.0
16	MALEK, AL	TN	0	2017	W36	L-8	L15	W34	W21	3.0
17	SMITH, BRIAN D	TN	2032	2002	D37	W26	L-7	L20	W27	2.5
18	FARR, ROY T	TN	1930	1912	W29	L10	L24	W25	D19	2.5
19	GUZMAN, BENJAMIN	KY	1818/12	1854	L-8	L-4	W30	W32	D18	2.5
20	SPINRAD, JERRY	TN	1722	1789	D-7	L11	W37	W17	L-8	2.5
21	TAYLOR, JEFF B	TN	1868	1849	L-5	W31	D28	D27	L16	2.0
22	LENTZ, BRIAN D	TN	1852	1821	L-3	L25	W31	D29	D28	2.0
23	ZHISLIN, SOFI	TN	1806	1832	L10	W36	W33	L-6	L15	2.0
24	BOYKIN, JIMMIE C	TN	1772	1797	L-6	W30	W18	L12	L14	2.0
25	COHRON, DAVID L	IN	1742	1764	L12	W22	L14	L18	W34	2.0
26	JORDAN, DAVE J	TN	1715	1730	B--	L17	W35	U--	U--	2.0
27	CHAPUIS, BOBBY R	AL	1674	1697	L14	D32	W36	D21	L17	2.0
28	LEWIS, F MORRIS	TN	1646	1652	L15	B--	D21	L13	D22	2.0
29	MITCHELL, JAMES H	TN	1643	1648	L18	L34	B--	D22	D30	2.0
30	FUNKHOUSEK, BYRON	TN	1863	1836	L-1	L24	L19	W36	D29	1.5
31	LEWIS, DAN J	TN	1742	1731	L33	L21	L22	W35	D32	1.5
32	EDWARDS, LEE	TN	1649	1657	D13	D27	L-4	L19	D31	1.5
33	HAUBRICH, SCOTT A	WI	2098	2070	W31	L-2	L23	U--	U--	1.0
34	ORGAIN, WILLIAM H	TN	1856	1822	L-9	W29	L-6	L16	L25	1.0
35	CHOATIE, STEVEN R	TN	1784	1761	D11	L-7	L26	L31	D36	1.0
36	ANDERSON, CLIFFORD	TN	1924	1840	L16	L23	L27	L30	D35	.5
37	PULLEN, DEWITT T	TN	1714	1715	D17	L13	L20	U--	U--	.5

Music City Grand Amateur

1	HORTILLOSA, ANDRES	TN	1561/4	1616	W17	W23	W12	D-5	D-6	4.0
2	FULKERSON, BRIAN	KY	1500	1527	L10	W16	W19	W-7	W11	4.0
3	MITCHELL, R O	TN	0	1660	W25	W13	W-8	L-4	W-9	4.0
4	WILLIAMS, ALFRED H	TN	0	1723	W22	L-9	W20	W-3	W-5	4.0
5	SIBREL, DONALD W	TN	1593	1607	W16	W10	W-9	D-1	L-4	3.5
6	CHAPMAN, JR ERNEST	TN	1520	1528	L23	W14	W18	W10	D-1	3.5
7	MC TAGGART, MICHAEL	TN	1515	1517	W18	L12	W22	L-2	W13	3.0
8	SCHWARTZ, LEON	IN	1477	1468	W24	W25	L-3	L11	W15	3.0
9	WHITE, MICHAEL W	TN	1464	1498	W15	W-4	L-5	W12	L-3	3.0
10	CARNES, RICK	TN	1461	1473	W-2	L-5	W23	L-6	W18	3.0
11	QUINN, PHIL E.	TN	0	1526	W26	L20	W14	W-8	L-2	3.0

Tennessee Chess News

12	BROWN, PHILLIP C.	IN	0	1555	W21	W-7	L-1	L-9	W17	3.0
13	GIBSON, DAVID	TN	1541	1506	W19	L-3	D15	X--	L-7	2.5
14	MC DOWELL, JEFF A	AL	1290	1318	D20	L-6	L11	W19	W21	2.5
15	MC KINLEY, MICHAEL	TN	0	1443	L-9	W17	D13	W21	L-8	2.5
16	NEWMAN, JACLYN J	IL	1313	1302	L-5	L-2	W25	L18	W23	2.0
17	STEVENSON, CLARK K	KY	1278/12	1273	L-1	L15	B--	W23	L12	2.0
18	VANNESS, PHILIP	TN	1149/12	1216	L-7	W21	L-6	W16	L10	2.0
19	PRICE, BRENNAN T	TN	1120	1144	L13	W26	L-2	L14	W24	2.0
20	CHANDLER, TED	KY	1526	1521	D14	W11	L-4	F--	U--	1.5
21	OLSON, ERIK J	TN	1464	1393	L12	L18	W24	L15	L14	1.0
22	FLOWERS, CLEON A	TN	1308/11	1295	L-4	W24	L-7	U--	U--	1.0
23	WHITTENBERG, PHILL	TN	1196/5	1201	W-6	L-1	L10	L17	L16	1.0
24	HARRIS, JAKE P	TN	967/5	999	L-8	L22	L21	W25	L19	1.0
25	QUINN, JONATHAN R.	TN	0	932	L-3	L-8	L16	L24	B--	1.0
26	CORDING, JR ROBERT	TN	1439	1399	L11	L19	U--	U--	U--	.0

Emerald Knights

	PLAYER	ST	RTNG	PRE					TOT	
				RTNG	1	2	3	4		
1	HOLYFIELD, ROBERT	TN	2046	2067	W12	W-1	W-2	D-3	W-3	5.0
2	COPE, RANDY W	CA	2014	2031	W11	D-1	W-2	D-1	W-1	4.0
3	PYLANT, GARY M	TN	1933	1943	W11	D-1	W-2	D-1	W-1	4.0
4	NEWMAN, GARY D	NC	2058	2050	W14	L-1	W-2	W-1	W-1	4.0
5	JONES, JOHN A	TN	1976	1977	W10	L-1	W-2	W-1	W-1	4.0
6	ROSE, JAMES E	TN	1958	1956	W16	L-1	W-2	W-1	W-1	4.0
7	SENN, RANDALL C	TN	1946	1948	W17	L-1	W-2	W-1	W-1	4.0
8	BARTON, MIKE D	TN	1901	1909	W15	D-1	W-2	W-1	W-1	4.0
9	THOMPSON, GUY	MS	1875	1867	W15	D-1	W-2	W-1	W-1	4.0
10	BAYER, WALTER	TN	1755	1757	L-3	W15	W-1	W-1	W-1	4.0
11	MITCHELL, JAMES H	TN	1648	1637	L-3	W15	W-1	W-1	W-1	4.0
12	TUMINELLO, PAGE	TN	1776	1776	L-1	W15	W-1	W-1	W-1	4.0
13	MATTHEWS, MICHAEL	VA	1678/16	1681	L-1	W15	W-1	W-1	W-1	4.0
14	ILFELD, DAVID N	TN	1665/11	1662	L-1	W15	W-1	W-1	W-1	4.0
15	LOVELACE, JOHN M	TN	1661	1640	L-1	W15	W-1	W-1	W-1	4.0
16	TURNBOW, CHRIS	TN	1691	1674	L-1	W15	W-1	W-1	W-1	4.0
17	WEIS, LOUIS T	TN	1400	1406	L-1	W15	W-1	W-1	W-1	4.0
18	SAKS, DAVID	TN	0	1509	L-2	D11	L14	W14	W14	5.0

Horgan Invitational Open

	PLAYER	ST	RTNG	PRE					TOT	
				RTNG	1	2	3	4		
1	JONES, CURT	TN	2393	2378	L-4	W-5	W-3	W-3	W-3	5.0
2	GALLAGHER, JR JAME	TN	2214	2207	L-5	W-4	W-5	W-7	W-7	5.0
3	MINOR, RONALD L	TN	2088	2107	W-8	W-4	W-5	L-1	W-1	5.0
4	JONES, JAMES E	TN	2009	2071	W-1	L-2	W-6	W-6	W-6	5.0
5	WRIGHT, JAMES A	TN	1956	1970	W-2	L-3	D-8	D-8	D-8	5.0
6	LINXWILER, PAUL A	TN	2247	2217	W-2	L-3	L-4	L-4	L-4	5.0
7	PYLANT, GARY M	TN	1953	1949	L-6	W-8	L-2	W-2	W-2	5.0
8	JACKSON, JOHN M	AR	1719	1718	L-3	L-7	D-5	D-5	D-5	5.0

Horgan Invitational Scholastic

	PLAYER	ST	RTNG	PRE					TOT	
				RTNG	1	2	3	4		
1	O'DANIELS, SEAN	TN	1616	1656	W11	W-1	W-2	W-3	W-4	4.0
2	COHEN, SHANNON	TN	1341	1419	W11	D-1	W-2	W-3	W-4	4.0
3	DORSETT, NEIL A	TN	1386	1412	W14	W-1	W-2	W-3	W-4	4.0
4	COHEN, JASON	TN	1331	1348	W16	D-2	W-3	W-4	W-5	4.0
5	KLEIN, CRAIG	TN	1651	1652	W12	D-1	W-2	W-3	L-1	4.0
6	HORGAN, ALEC WILLI	TN	1449	1455	W10	L-4	L-3	L-2	W-1	4.0
7	FAN, WILL	TN	1369	1386	W10	L-1	L-2	W-3	W-4	4.0
8	LEVATINO, ELIAN	TN	1298	1283	L11	L10	W15	W14	W14	4.0
9	ENGELBERG, PAUL	TN	1162	1177	L-6	W16	W14	W14	W14	4.0
10	WEDDLE, ALEX M	TN	1101	1134	W-7	W13	W13	W13	W13	4.0
11	BRADLEY, BRAD	TN	1055	1103	W-7	W13	W13	W13	W13	4.0
12	CBEKO, PAUL	TN	1250	1225	L-1	W13	W13	W13	W13	4.0
13	HORGAN, KELLY E	TN	1222	1200	L-1	W13	W13	W13	W13	4.0
14	LAURINAS, NICK	TN	1139	1139	L-1	W13	W13	W13	W13	4.0
15	LAURINAS, HEATHER	TN	1058	1058	L-1	W13	W13	W13	W13	4.0
16	HOOK, TED	TN	888/12	859	L-2	W13	L14	L15	L15	4.0

### Audubon Breeze Invitational

PLAYER	ST	RTNG	PRE			POST			TOT
			RTNG	1	2	3	RTNG	1	
1 LINXWILER, PAUL A	TN	2204	2223	w=8	w=7	w=3	3.0		
2 NEWSOM, GARY D	NC	2054	2058	w=10	d=5	w=7	2.5		
3 GALLAGHER, JR JAME	TN	2231	2226	w=5	w=6	L=1	2.0		
4 JACKSON, JOHN M	AK	1710	1737	L=7	w=9	w=8	2.0		
5 THOMPSON, GUY	MS	1870	1875	L=3	D=2	w=10	1.5		
6 COPE, RANDY W	CA	2017	2014	w=9	L=3	U=	1.0		
7 BARTON, MIKE D	TN	1932	1923	w=4	L=1	L=2	1.0		
8 BAYER, WALTER	TN	1774	1755	L=1	w=10	L=4	1.0		
9 LOVELACE, JOHN M	TN	1680	1661	L=6	L=4	U=	.0		
10 PREST, CHARLES	TN	1264/14	1306	L=2	L=8	L=5	.0		

### Winston-Salem—LPO-13

PLAYER	ST	RTNG	PRE					POST					TOT
			RTNG	1	2	3	4	5	RTNG	1	2	3	
1 FRIEDEL, TOM	GA	2369	2402	w=39	w=11	w=65	w=26	w=9	5.0				
2 TATE, EMORY A	MD	2330	2373	w=40	w=34	w=20	w=4	w=8	5.0				
3 MC CAMBRIDGE, VIN	NC	2530	2530	D=19	w=89	w=12	w=32	w=14	4.5				
4 KOGAN, BORIS	GA	2574	2567	w=61	w=15	w=29	L=2	w=37	4.0				
5 ARDAMAN, MILES F	FL	2411	2411	w=79	w=88	w=46	L=8	w=29	4.0				
6 RUIZ, GUILLERMO	GA	2313	2312	w=60	L=47	w=68	w=52	w=35	4.0				
7 POHL, KLAUS A	SC	2301	2311	w=51	D=45	w=18	D=16	w=36	4.0				
8 GRANT, STEVEN	NY	2274	2300	w=21	w=90	w=38	w=5	L=2	4.0				
9 TARIN, STEPHEN A	NC	2263	2297	w=68	w=67	w=23	w=13	L=1	4.0				
10 BENJAMIN, RICHARD	MD	2163	2192	w=102	L=25	w=91	w=39	w=26	4.0				
11 ALSBERRY, MELVIN	NC	2150	2184	w=72	L=1	w=56	w=53	w=27	4.0				
12 NECCI, FRANK U	NC	2080	2144	w=43	w=86	L=37	w=34	w=28	4.0				
13 KOLVICK, RANDY S	NC	2354	2349	w=89	w=19	w=47	L=9	D=15	3.5				
14 KRAUSE, THOMAS W	SC	2254	2269	w=50	w=49	D=57	w=17	L=3	3.5				
15 LINXWILER, PAUL A	TN	2223	2247	w=93	L=4	w=50	w=31	D=13	3.5				
16 HARRIS, NEAL D	NC	2188	2208	w=53	w=41	D=25	D=7	D=20	3.5				
17 CALE, ROBERT F	VA	2179	2187	w=69	D=76	w=62	L=14	w=47	3.5				
18 KIDD, JEFFREY A	GA	2133	2144	w=82	D=74	L=7	w=56	w=59	3.5				
19 CUNNINGHAM, ROBIN	NC	2113	2148	D=33	L=13	w=102	w=64	w=48	3.5				
20 LEITE, GEORGE S	GA	2095	2127	w=106	w=28	L=2	w=30	D=16	3.5				
21 EVANS, GLENN	NC	2040	2080	L=28	w=70	D=77	w=44	X=	3.5				
22 RYMUZA, JEFFREY	NC	2022	2109	w=30	w=44	L=36	w=77	D=24	3.5				
23 FORMANEK, EDWARD W	PA	2438	2433	w=80	w=87	L=9	w=57	U=	3.0				
24 BUNNETT, RONALD WA	TN	2378	2350	w=35	L=46	w=40	D=47	D=22	3.0				
25 BURGER, KARL	GA	2323	2323	w=55	w=10	D=16	D=36	U=	3.0				
26 HASSAN, TAREK AHME	NY	2280	2274	w=54	w=66	w=48	L=1	L=10	3.0				
27 HAESSLER, CARL A	OR	2262	2246	w=59	L=38	w=76	w=49	L=11	3.0				
28 SVENONIUS, BENGT	MO	2204	2190	w=91	L=20	w=60	w=54	L=12	3.0				
29 WILLIAMS, WAYNE GO	SC	2186	2194	w=42	w=99	L=4	w=38	L=5	3.0				
30 BENNETT, ALLAN D	MA	2178	2166	L=22	w=42	w=73	L=20	w=69	3.0				
31 BROOKSHEAR, TIMOTH	GA	2161	2155	L=76	w=63	w=41	L=15	w=71	3.0				
32 MAYNARD, DEWEY G	GA	2151	2158	D=71	w=83	w=66	L=3	D=33	3.0				
33 DICKERSON, LEONARD	TN	2140	2136	D=64	L=82	w=58	w=62	D=32	3.0				
34 CHAMBERS, CHRIS L	TN	2113	2114	w=85	L=2	w=92	L=12	w=73	3.0				
35 SCHMIDT, BERNARD	NC	2111	2125	L=24	w=93	w=99	w=65	L=6	3.0				
36 FELBER, JOSEPH J	NY	2098	2113	D=83	w=71	w=22	D=25	L=7	3.0				
37 SPURRIER, JR ROBER	NC	2095	2106	D=74	D=64	w=82	w=69	L=4	3.0				
38 NEWMAN, TERRY W	NC	2092	2111	w=95	w=27	L=8	L=29	w=68	3.0				
39 PATRICK, V ALAN	NC	2078	2090	L=1	w=72	w=74	L=10	w=75	3.0				
40 CORBETT, III CLAUD	SC	2036	2069	L=2	w=101	L=24	w=92	w=76	3.0				
41 TOBIN, JAMES F	NC	2031	2061	w=78	L=16	L=31	w=94	w=67	3.0				
42 MAGEE, TONY D	NC	1979	1996	L=29	L=30	w=105	w=99	w=66	3.0				
43 GINBBURG, JEFFREY	OH	2201	2179	L=12	w=81	D=51	D=55	D=50	2.5				
44 MOORE, VINCENT A	DC	2180	2163	D=56	L=22	w=45	L=21	w=81	2.5				
45 LIU, DANIEL	NC	2155	2144	w=70	D=7	L=44	D=71	D=60	2.5				
46 BARKER, JR MARVIN	WV	2126	2144	w=92	w=24	L=5	D=59	F=	2.5				
47 KOUSH, JOHN EVERET	WV	2110	2126	w=103	w=6	L=13	D=24	L=17	2.5				
48 NANCE, DANA W	NC	2109	2106	D=62	w=58	L=26	w=51	L=19	2.5				
49 CARPENTER, RICHARD	TN	2106	2107	w=75	L=14	w=61	L=27	D=54	2.5				
50 ISHEE, MARK	TN	2106	2105	L=14	w=105	L=15	w=82	D=43	2.5				

51 KIRBY, JOHN	NC	2100	2096	L=7	w=95	D=43	L=48	w=83	2.5
52 WATSON, JAMES A	NC	2078	2072	w=97	L=65	w=75	L=66	D=53	2.5
53 MUSUMECI, JIM	GA	2072	2087	L=16	w=78	w=90	L=11	D=52	2.5
54 DEMERS, REX	VA	2062	2073	L=26	w=104	w=87	L=28	D=49	2.5
55 COOLEY, ALLEN M	NC	2059	2066	L=25	D=102	w=83	D=43	D=61	2.5
56 WADE, SCOTT	FL	2038	2047	D=44	w=96	L=11	L=18	w=76	2.5
57 GRATZ, GLEN E	IL	2036	2074	w=105	w=77	D=14	L=23	U=	2.5
58 SUGGS, JACK G	VA	2020	2025	D=100	L=48	L=33	w=84	w=85	2.5
59 KIRBY, KEVIN	NC	1996	2021	L=27	w=84	w=86	D=46	L=18	2.5
60 CANO, MD ORLANDO	GA	1991	2012	L=6	w=85	L=28	w=74	D=45	2.5
61 SCHMIDT, DAVID	NC	1967	2006	L=4	w=80	L=49	w=90	D=55	2.5
62 KELLY, PATRICK	WV	1961	1982	D=48	w=100	L=17	L=33	w=106	2.5
63 THOMPSON, JR JOHN	NC	1954	1979	L=87	L=31	w=104	D=78	w=79	2.5
64 MOSCOSO, MICHAEL D	GA	1872	1929	D=33	D=37	D=67	L=19	w=89	2.5
65 GALLAGHER, JR JAME	TN	2226	2214	w=94	w=52	L=1	L=35	U=	2.0
66 PUMAREJO, CHRISTOP	GA	2111	2083	w=104	L=26	L=32	w=93	L=42	2.0
67 BUKOVAC, ROBERT F	WV	2046	2028	w=98	L=9	D=64	D=76	L=41	2.0
68 NOBLE, MATTHEW E	NC	2017	2015	L=9	w=103	L=66	w=72	L=38	2.0
69 WITKOWSKI, JIM B	VA	2000	1997	L=17	w=98	w=88	L=37	L=30	2.0
70 KUBACH, GARY L	GA	1978	1963	L=45	L=21	L=78	w=104	w=97	2.0
71 SMITH, JR JOHN W	GA	1973	1995	D=32	L=36	w=100	D=45	L=31	2.0
72 HAIMES, DAVID M	NC	1969	1945	L=11	L=39	w=97	L=68	w=98	2.0
73 EDMONDS, NATHANIEL	VA	1967	1960	L=77	w=106	L=30	w=95	L=34	2.0
74 WALSH, JEFFRY G	NC	1947	1953	D=37	D=18	L=39	L=60	w=93	2.0
75 GRAY, RONALD E	VA	1884	1898	L=49	w=94	L=52	w=91	L=39	2.0
76 TILGHMAN, JEFFREY	VA	1748	1807	w=31	D=17	L=27	D=67	L=40	2.0
77 DORMAN, PETER J	CA	2212	2181	w=73	L=57	D=21	L=22	U=	1.5
78 ERB, E DAVID	NC	2165	2117	L=1	L=53	w=70	D=63	L=56	1.5
79 CALE, RICHARD T	VA	2103	2056	L=95	L=92	w=101	D=85	L=63	1.5
80 BAXTER, KEN J	NC	2083	2039	L=23	L=61	L=95	w=105	D=82	1.5
81 PAGONYI, LAJOS	NC	1990	1977	L=86	L=43	D=84	w=102	L=44	1.5
82 CHANG, ALEX F	WV	1978	1975	L=18	w=33	L=37	L=50	D=80	1.5
83 MEHLER, DAVID E	MD	1913	1902	D=36	L=32	L=55	w=98	L=51	1.5
84 BACON, W MICHAEL	GA	1892	1886	L=90	L=59	D=81	L=58	w=102	1.5
85 HELLMANN, JEFF R	KY	1884	1890	L=34	L=60	w=89	D=79	L=58	1.5
86 BLALOCK, REX E	GA	2189	2161	w=81	L=12	L=59	U=	U=	1.0
87 RALSTON, DOUGLES F	TN	2169	2155	w=63	L=23	L=54	U=	U=	1.0
88 FUERSTMAN, LELAND	NC	2141	2127	w=101	L=5	L=69	U=	U=	1.0
89 KAPLAN, LAEL L	DC	2123	2084	L=13	L=3	L=85	w=103	L=64	1.0
90 JONES, ROBERT C	GA	2108	2075	w=84	L=8	L=53	L=61	U=	1.0
91 HALL, BILL	TN	1955	1928	L=28	w=97	L=10	L=75	U=	1.0
92 DA CUNHA, CARL MAC	TN	1954	1946	L=46	w=79	L=34	L=40	U=	1.0
93 KING, PAUL L	NC	1954	1919	L=15	L=35	w=106	L=66	L=74	1.0
94 BARTON, MIKE D	TN	1923	1901	L=65	L=75	w=103	L=41	U=	1.0
95 COYINGTON, JR WILL	NC	1878	1876	L=38	L=51	w=80	L=73	U=	1.0
96 LIPKIN, ALAN H	TN	1691	1702	U=	L=56	U=	w=106	U=	1.0
97 BRIDGES, TERRY LEE	NC	1683	1691	L=52	L=91	L=72	w=101	L=70	1.0
98 ASHWELL, III RICH	GA	1645	1636	L=67	L=69	w=107	L=83	L=72	1.0
99 TIMLIC, WILLIAM	NC	1604	1599	w=108	L=29	L=35	L=42	U=	1.0
100 JOHNSON, JOEL F	MA	2196	2153	D=58	L=62	L=71	U=	U=	.5
101 GRAY, JERRY C	GA	1963	1897	L=88	L=40	L=79	L=97	D=104	.5
102 SLOAN, THOMAS R	NC	1950	1906	L=10	D=55	L=19	L=81	L=84	.5
103 DABNEY, JOHN J	VA	1825	1792	L=47	L=68	L=94	L=89	D=105	.5
104 SCHMIDT, JOAN K	NC	1777	1759	L=66	L=54	L=63	L=70	D=101	.5
105 TURNER, JERRY N	SC	1760	1744	L=57	L=50	L=42	L=80	D=103	.5
106 MC NEESE, JACK D	TN	1742/8	1663	L=20					

7	BUAIZ, MICHAEL A	NC	1819	1842	W100	L=80	W=61	W=74	W=36	4.0
8	ZINZON, LEE	NC	1818	1875	W=43	W101	W=47	W=66	L=3	4.0
9	POWELL, THOMAS J	NC	1790	1823	D=74	W=91	D=12	W=41	W=37	4.0
10	CHANG, ANGELA	NV	1770	1808	D=59	W=23	D=74	W=79	W=27	4.0
11	ADICKES, WILLIAM C	NC	1764	1820	D=46	W=82	W=28	D=27	W=34	4.0
12	RISHAVY, MARK A	NC	1679	1788	W=53	D=20	D=99	W=35	W=33	4.0
13	CAMPBELL, JOHN T	VA	1954	1968	W=61	D=38	W=42	W=54	L=2	3.5
14	JOHNSON, III JAMES	NC	1916	1920	L=38	D=88	W=78	W=71	W=47	3.5
15	JACOBS, AMBROUS	NC	1885	1899	W102	W=81	W=62	D=1	L=66	3.5
16	LOVELACE, RANDY C	NC	1867	1869	W=71	W=67	L=36	W=68	D=22	3.5
17	FENTRESS, JR ROBER	NC	1835	1886	W=30	W=24	W=22	D=4	L=5	3.5
18	WILLIAMS, MICHAEL	NC	1829	1864	W=72	D=55	W=38	L=4	L=3.5	3.5
19	ORGAIN, WILLIAM H	TN	1822	1840	D=86	L=42	W=91	W=85	W=60	3.5
20	ADAMS, MATT T	GA	1815	1845	W=75	D=12	L=38	W=56	W=54	3.5
21	HARGROVE, WILLIAM	NC	1794	1803	X=	L=79	W=76	W=80	D=24	3.5
22	WADFORD, JR A WILD	NC	1738	1763	W=78	W103	L=17	W=73	D=16	3.5
23	JORDAN, DAVE J	TN	1730	1769	D=66	L=10	W=72	W=86	W=52	3.5
24	CLIFTON, ROBERT C	VA	1685	1772	W=97	L=17	W=29	W=53	D=21	3.5
25	CARVER, JOHN E	AL	1627	1698	W114	L=36	D=58	W=87	W=50	3.5
26	STENART, WILLIAM J	NC	1548/10	1704	W=65	D=49	W=66	W=63	L=1	3.5
27	ROBERDEAU, JOE C	OH	1881	1876	W=44	D=50	W=55	D=11	L=10	3.0
28	TROY, JAMES G	NC	1873	1878	W=39	D=52	L=11	W=89	D=38	3.0
29	JOHNSON, LARRY D	GA	1847	1849	L=60	W=43	L=24	W101	W=74	3.0
30	FRADY, GREGORY A	SC	1817	1817	L=17	L=97	W=99	W106	W=66	3.0
31	SKEEN, JERRY W	WV	1788	1782	D=91	L=74	W=90	W=58	D=46	3.0
32	SCOTT, MARQX A	NC	1784	1772	L=80	L=98	W107	W102	X=	3.0
33	VINCENT, JR ARLEE	VA	1773	1793	W107	L=47	W102	W=40	L=12	3.0
34	LINGARD, JAMES A	NC	1770	1794	W=73	W=45	L=6	W=39	L=11	3.0
35	RICHARDS, DAVID T	NC	1764	1776	L=45	W108	W101	L=12	W=83	3.0
36	AUSTIN, BILL	VA	1764	1795	W108	W=25	W=16	L=3	L=7	3.0
37	HARD, DONALD W	VA	1706	1729	W104	L=2	W=81	W=62	L=9	3.0
38	HARVEY, JONATHAN C	VA	1704	1773	W=14	D=13	W=20	L=18	D=28	3.0
39	BUSBY, JR PHILIP F	NC	1684	1691	L=28	W=84	W103	L=34	W=79	3.0
40	JONES, EUGENE	GA	1676	1720	W=70	L=5	W=65	L=33	W=69	3.0
41	LOWDER, RANDY J	SC	1635	1661	L=62	W=96	W106	L=9	W=63	3.0
42	BELLIA, ROBERT	PA	1630	1693	D=51	W=19	L=13	D=66	W=75	3.0
43	STYERS, STEPHEN	NC	1629	1686	L=8	L=29	W114	W=97	W=64	3.0
44	WRIGHT, LARRY	NC	1602	1622	L=27	L=83	W108	W103	W=84	3.0
45	PETRANICK, DAVID A	NC	1563	1632	W=35	L=34	L=68	W100	W=70	3.0
46	STEWART, DAVID A	NC	1551	1632	D=11	D=68	D=56	W=55	D=31	3.0
47	CORBIN, JR CHARLE	NC	1526	1625	W110	W=33	L=8	W=70	L=14	3.0
48	PAYNE, CHARLES	DC	1907	1911	W112	D=54	W=52	L=5	U=	2.5
49	GUTIERREZ, MICHAEL	NY	1889	1876	W=83	D=26	W=59	L=2	L=56	2.5
50	BOSSNEIER, KARL D	VA	1831	1814	W=94	D=27	L=18	W=93	L=25	2.5
51	STRICKLAND, ROBERT	SC	1824	1829	D=42	W=85	L=54	W=57	U=	2.5
52	CHANDLER, ALLEN L	SC	1795	1789	W=93	D=28	L=48	W=94	L=23	2.5
53	RYAN, JACKIE	NC	1784	1783	L=12	W107	W=83	L=24	D=59	2.5
54	DAVIS, DOLF M	VA	1748	1758	W=84	D=48	W=51	L=13	L=20	2.5
55	OIETZ, CLEVELAND	VA	1726	1723	W=96	D=18	L=27	L=46	W=93	2.5
56	PASCHALL, JOEL K	TN	1687	1708	L=6	W105	D=46	L=20	W=49	2.5
57	ANTHONY, JOHN C	SC	1682	1689	D=3	L=66	W=95	L=51	W=94	2.5
58	HARWELL, GEORGE	VA	1679	1703	W=63	L=1	D=25	L=31	W=95	2.5
59	POWLER, BRADLEY	NC	1629	1663	D=10	W=86	L=49	D=64	D=33	2.5
60	KATRONIS, JOHN	FL	1622	1661	W=29	L=62	D=64	W=67	L=19	2.5
61	NALLEY, RON W	NC	1617	1645	L=13	W111	L=7	D=81	W=86	2.5
62	WATSON, CHARLES R	NC	1874	1854	W=41	W=60	L=15	L=37	U=	2.0
63	RISK, JOHN L	NC	1873	1833	L=58	W100	W=98	L=26	L=41	2.0
64	SMITH, JOHN H	NC	1780	1763	W=90	L=6	D=60	D=59	L=43	2.0
65	BRENNEMAN, TIMOTHY	NC	1777	1752	L=26	W=75	L=40	L=83	W103	2.0
66	HARRIS, WOODROW	VA	1766	1770	D=23	W=57	L=26	D=42	L=30	2.0
67	HOLMES, DOUGLAS R	SC	1748/12	1700	W105	L=16	D=93	L=60	D=78	2.0
68	CHANDLER, CHARLEY	GA	1746	1748	D109	D=46	W=45	L=16	U=	2.0
69	CARR, DAVID E	SC	1741	1700	L=79	L102	W104	W=92	L=40	2.0
70	NEAL, CHESTER W	NC	1722	1711	L=40	W=77	W=92	L=47	L=45	2.0
71	BOWMAN, MICKY D.	TN	1710	1691	L=16	D=90	W109	L=14	D=82	2.0
72	HAIGLER, WILLARD I	NC	1702	1688	L=18	D=78	L=23	W=90	D=81	2.0
73	MARTIN, TIMOTHY LE	NC	1677	1694	L=34	W=99	W=97	L=22	F=	2.0
74	FLEMING, ANGELO V	NC	1618	1641	D=9	W=31	D=10	L=7	L=29	2.0

Continued

Tennessee Chess News

75	FUNDERBURK, AMON L	NC	1614	1623	L=20	L=65	W110	W=96	L=42	2.0
76	MINCHACA, HENRY	NC	1608	1607	L=4	W110	L=21	L=84	W105	2.0
77	MORRIS, D.B.	NC	1599	1603	L=81	L=70	W111	U=	W104	2.0
78	EVANS, GERALD LEW	NC	1598	1610	L=22	D=72	L=14	W=91	D=67	2.0
79	JOHNSON, CHAD E	NC	1579	1605	W=69	W=21	L=4	L=10	L=39	2.0
80	COBB, JR LOUIS E	NC	1572	1622	W=32	W=7	L=1	L=21	U=	2.0
81	STANDBROOK, FRED C	MS	1937	1554	W=77	L=15	L=37	D=61	D=72	2.0
82	COWLES, RICHARD	NC	1515	1548	D=87	L=11	L=85	W=88	D=71	2.0
83	SWAIM, SAMUEL M	NC	1468	1507	L=49	W=44	L=53	W=65	L=35	2.0
84	WILLS, SANDY	VA	1428	1433	L=54	L=39	B=	W=76	L=44	2.0
85	BLANNING, JAMES S	NC	1749	1720	D=95	L=51	W=82	L=19	U=	1.5
86	GREENLEE, LEROY S.	NC	1738	1707	D=19	L=59	W=88	L=23	L=61	1.5
87	JACKSON, JOHN M	AR	1737	1719	D=82	W109	L=3	L=25	U=	1.5
88	CATO, TONY L	NC	1727	1702	L=5	D=14	L=86	L=82	W108	1.5
89	LEMASTER, DON	SC	1701	1669	L103	W104	D=94	L=28	U=	1.5
90	KRICKEL, EDWARD	GA	1686	1663	L=64	D=71	L=31	L=72	W113	1.5
91	STANTON, III ROY F	AL	1631	1611	D=31	L=9	L=19	L=78	W106	1.5
92	BALDWIN, DAVID W	NC	1588	1583	W111	L=4	L=70	L=69	D=96	1.5
93	CARLSON, ALBERT PA	NC	1547	1552	L=52	W114	D=67	L=50	L=55	1.5
94	ZOFCHAK, DAVID MIC	VA	1528	1537	L=50	W113	D=89	L=52	L=57	1.5
95	MARTINAT, HENRY	NC	1475	1498	D=85	U=	L=57	W=99	L=58	1.5
96	COLEMAN, KIM	DC	1450	1458	L=55	L=41	W113	L=75	D=92	1.5
97	KING, ANDREW J	NC	1818	1788	L=24	W=30	L=73	L=43	U=	1.0
98	GUSTAFSON, KENNETH	AL	1786	1782	L=1	W=32	L=63	U=	U=	1.0
99	CORBETT, JOSEPH S	SC	1772	1688	L101	L=73	L=30	L=95	B=	1.0
100	MAHAN, J ROBERT	VA	1661	1644	L=7	L=63	W105	L=45	U=	1.0
101	ALPISER, FRANCIS M	NC	1630	1627	W=99	L=8	L=35	L=29	U=	1.0
102	ABDELGHANY, MOHAM	AL	1604	1604	L=15	W=69	L=33	L=32	U=	1.0
103	GRANT, JOHN	NC	1533	1520	W=89	L=22	L=39	L=44	L=65	1.0
104	KING, LINDA	NC	1508/5	1473	L=37	L=89	L=69	W113	L=77	1.0
105	TATE, KELLES	TN	1493	1479	L=67	L=56	L100	W114	L=76	1.0
106	YUN, STAN	NC	1448	1427	X=	L=3	L=41	L=30	L=91	1.0
107	HOLLAND, BRUCE T	NC	1618	1590	L=33	L=53	L=32	D108	U=	.5
108	HEIM, DAVID R	PA	1598	1555	L=36	L=35	L=44	D107	L=88	.5
109	QUICK, FREDERIC P	NC	1491	1488	D=68	L=87	L=71	U=	U=	.5
110	FREEMAN, JOHN	NC	1763	1707	L=47	L=76	L=75	U=	U=	.0
111	LUCAS, PAUL	NC	1761	1692	L=92	L=61	L=77	U=	U=	.0
112	LIPKIN, ALAN H	TN	1702	1694	L=48	U=	U=	U=	U=	.0
113	DAVES, DANA D	NC	1646	1561	L=2	L=94	L=96	L104	L=90	.0
114	GENTRY, F BILLY	NC	1606	1555	L=25	L=93	L=43	L105	U=	.0

LPO-13 Novice

PLAYER	ST	RTNG	PRE					POST					TOT
			1	2	3	4	5	1	2	3	4	5	
1	RHINESMITH, JEFFRE	SC	1672/8	1738	W54	W22	W24	W17	D=2	4.5			
2	AZHAR, SALMAN	NC	1505	1598	W52	W40	W20	W11	D=1	4.5			
3	ELLISON, OWEN D	NC	1270	1453	W53	W12	W=7	D21	W=9	4.5			
4	MC CAIN, FELIX	VA	1560	1589	W60	L37	W61	W16	W24	4.0			
5	DUNCAN, JOE	NC	1458/13	1524	W32	W58	W19	L=9	W20	4.0			
6	RAU, BRUCE W	NC	1445	1478	L30	W55	W64	W32	W17	4.0			
7	SEAL, ROBERT G	VA	1442	1500	W49	W39	L=3	W28	W19	4.0			
8	SHARER, GILLIAN	NC	1386	1473	W33	L17	W59	W41	W21	4.0			
9	SILVERSIDES, IAN	NC	0	1791	W51	W23	W45	W=5	L=3	4.0			
10	KOVAC, TIM	NC	1539	1539	D57	W56	D42	W37	D14	3.5			
11	BRANTON, JR GARY L	NC	1509	1536	W62	W64	W37	L=2	D15	3.5			
12	GOOD, TODD A	NC	1481	1520	W28	L=3	W36	W47	D13	3.5			
13	SPARROW, MARVIN	NC	1425	1443	L50	W49	W39	W31	D12	3.5			
14	SILLS, TOM	NC	0	1489	W65	L24	W44	X=	D10	3.5			
15	GREEN, KEVIN	NC	0	1616	L26	W27	W23	W42	D11	3.5			
16	PUSEY, JIM	VA	1586	1573	W34	L19	W40	L=4	W50	3			

24	BELL, THOMAS L	NC	1397/12	1432	W67	W14	L-1	W50	L-4	3.0
25	ABUL-FADL, ALI	NC	1375	1403	L20	L32	W67	W40	W42	3.0
26	PASCASIO, CHRIS	VA	1362	1413	W15	W41	L17	L20	W46	3.0
27	BEAN, JOHN I	VA	1342	1365	L59	L15	W65	W39	W41	3.0
28	YANDLE, JOHNNY	NC	1289	1358	L12	W53	W33	L-7	W44	3.0
29	WILLIAMS, COLLINS	NC	1161/6	1334	W35	D21	W18	L19	D22	3.0
30	PEERY, ROBERT A	NC	1144/6	1294	W-6	L20	L22	W54	W49	3.0
31	OLIVER, ROLAND	NC	1015/5	1231	L45	W60	W35	L13	W56	3.0
32	PEREIRA-CARLISS, L	NC	0	1540	L-5	W25	W54	L-6	W47	3.0
33	JACKSON, JESSE A	NC	1478	1476	L-8	W63	L28	W51	D37	2.5
34	ECKERT, TOM C	OH	1429	1415	L16	L61	W57	W63	D36	2.5
35	PINNIX, CLAUDE B	NC	1404	1395	L29	D62	L31	W57	W59	2.5
36	VERGA, JOSEPH T	NC	1339/8	1350	L39	W52	L12	W58	D34	2.5
37	LIPKIN, MICHAEL A	NC	1308	1359	W18	W-4	L11	L10	D33	2.5
38	HOLMAN, DAVID	NC	0	1430	W44	L45	W43	D22	L18	2.5
39	EPINETTE, CHUCK	NC	1523/5	1425	W36	L-7	L13	L27	W61	2.0
40	WELCH, JOHN C	NC	1503	1485	W61	L-2	L16	L25	W62	2.0
41	YANDLE, JOSEPH W	NC	1486	1460	W63	L26	W46	L-8	L27	2.0
42	BRIGGS, EDWARD O	GA	1450	1421	D56	W57	D10	L15	L25	2.0
43	MASK, HEATHER J	NC	1417	1372	L58	W68	L38	L48	W63	2.0
44	GOODMAN, DWIGHT C	NC	1397	1389	L38	W48	L14	W61	L28	2.0
45	SAVAGE, KENNETH W	NC	1390	1418	W31	W38	L-9	F--	U--	2.0
46	VOSS, CHARLES P	GA	1384	1362	L17	W66	L41	W64	L26	2.0
47	SEAL, ROBERT E	VA	1381	1366	L19	W67	W58	L12	L32	2.0
48	CLARK, ROGER D	NC	1355	1353	L21	L44	W60	W43	L23	2.0
49	HORTON, HERBERT T	NC	1258	1267	L-7	L13	W52	W59	L30	2.0
50	BRIDGERS, HUGH F	NC	1181	1214	W13	W59	L21	L24	L16	2.0
51	HOLDER, JIMMY	NC	1156/3	1251	L-9	L18	W68	L33	W58	2.0
52	PIEDAD, ROBERT STE	NC	0	1348	L-2	L36	L49	W67	W60	2.0
53	RIGDON, JOE B	NC	1507	1458	L-3	L28	L55	D62	W64	1.5
54	HIATT, BRYAN A	NC	1385/14	1353	L-1	W65	L32	D30	W55	1.5
55	MAYES, TOM	NC	1242	1248	L22	L-6	W53	L23	D54	1.5
56	WHITEHEART, JOHN	NC	1229	1242	D42	L10	W62	L18	L31	1.5
57	SCHMIDT, JULIE C	NC	1172	1184	D10	L42	L34	L35	W67	1.5
58	SHAKER, PAUL	NC	1596/2	1342	W43	L-5	L47	L36	L51	1.0
59	WELBORN, STEVE	NC	1463/5	1298	W37	L50	L-8	L49	L35	1.0
60	DAVENPORT, BENJAMI	NC	1388	1332	L-4	L31	L48	W65	L52	1.0
61	HENDERSON, LEROY M	AL	1372	1343	L40	W34	L-4	L44	L39	1.0
62	GRAHAM, JR JOSEPH	TN	1364	1331	L11	D35	L56	D53	L40	1.0
63	PEARSON, JR CLINTO	TN	1203	1200	L41	L33	W66	L34	L43	1.0
64	CARLISLE, JAMES H	SC	1050	1039	B--	L11	L-6	L46	L53	1.0
65	MORRISON, MELVIN B	NC	1120	1093	L14	L54	L27	L60	D66	.5
66	YANDLE, JAMES D	NC	1063/16	1048	U--	L46	L63	U--	D65	.5
67	WHITE, EDWIN CATO	TN	1212	1157	L24	L47	L25	L52	L57	.0
68	STABKO, IRENE	VA	1140	1122	L23	L43	L51	U--	U--	.0

### Robert Scrivener Memorial

PLAYER	ST	HTNG	PRE	POST	1	2	3	TOT
1 JONES, JAMES E	TN	2071	2079	W-3	W-5	D-2		2.5
2 BAYER, WALTER	TN	1757	1779	W-7	X--	D-1		2.5
3 JACKSON, JOHN M	AR	1718	1727	L-1	W10	X--		2.0
4 PYLANT, GARY M	TN	1949	1938	D10	X--	U--		1.5
5 HOLYFIELD, ROBERT	TN	2067	2056	W-6	L-1	F--		1.0
6 LUMINELLO, PAGE	TN	1771	1754	L-5	L-7	W10		1.0
7 LOVELAKE, JOHN M	TN	1640	1651	L-2	W-6	U--		1.0
8 ROSE, JOHN A	TN	1954	1944	D-9	U--	U--		.5
9 TURNBOW, CHRIS	TN	1681	1691	D-8	U--	U--		.5
10 MITCHELL, JAMES H	TN	1637	1626	D-4	L-3	L-6		.5

# COMING ATTRACTIONS

**NOVEMBER 29-30.** SCCC Grand Prix Thanksgiving Final (County Grand Prix—not USCF Grand Prix). 3-ss, 50/2 then 25/1. Auburndale School, 2100 N. Germantown Rd., Cordova, TN 38018. \$5-t. b. a. E.F. \$10 to non-Shelby County residents. Free to Shelby County residents but must join SCCC-Adults \$15, Juniors \$7.50. ST-\$6. reg. 8-9. Rds. 9-2-7. Info Dale Flickinger (901) 382-3629.

**DECEMBER 6-7.** Crossville Scholastics. 5-SS. Martin JHS, Stanley St., Crossville, TN 38555. Open to all school students. 7 sections: *HS Championship*, open to grades 12/below. EF. \$8 if mailed by 11/26. \$10 at site. Trophies to top 10, top 2 B,C, D/below, unr., top 5 team: \$100-50-25 to top 3 TN teams for expenses to TN scholastics: \$100 to top out-of-state team. *HS Novice*, open to grades 12/below rated under 1400 or unr. EF \$5 if mailed by 11/26, \$10 at site. Trophies to top 10, top 2 E, unr., top five teams. *JHS Championship*, open to grades 9/below. EF \$7 if mailed by 11/26. \$10 at site. Trophies to top 10, top 2 C, D, E, Unr. top 5 teams. \$100-50-25 to top 3 TN teams for expenses to TN Scholastics. \$100 to top out-of-state team. *JHS Novice*, open to grades 9/below rated under 1250 or unr. EF. \$5 if mailed by 11/26. \$10 at site. Trophies to top 10, top 2 Unr. top 5 teams. *Elementary Championship*. Open to grades 6/below. EF \$6 if mailed by 11/26. \$10 at site. Trophies top 10, top 2 D, E, Unr. top 5 teams. \$100-50-25 to top 3 TN teams for expenses to TN Scholastics: \$100 to top out-of-state team. *Elementary Novice*, open to grades 6/below rated below 1150 or unr. EF \$5 if mailed by 11/26. \$10 at site. Trophies top 10, top 2 Unr. top 5 teams. *Primary*, (Sat. only) 5-ss, SD/1, open grades 3/below. EF \$5 if mailed by 11/26. \$10 at site. Trophies top 10, top 2 below 1000, Unr. top 5 teams: \$50 top TN Team for expenses to TN scholastics. Rd. 1 9 am. All, Reg. 3-7 pm (12/5 only). Players meeting Sat. 8:15 am. Rds. HS, JHS, Elem. 9-2-7, 8-12:30 CST: TL: Championship sections SD/2. Novice SD/90. TCA req. of TN residents \$4. Teams must have at least 2 from same school. No school may win more than one team trophy per section. Top 4 scores added for team score. Team members will not be paired against each other. HR. Heritage Inn, PO Box 381, Crossville, TN 38555. (615) 484-9505. \$30 plus tax—any number persons. ENT: Harry D. Sabine, PO Box 381, Crossville, TN 38555 (615) 484-9593 or 484-4878. Free sleeping bag accommodations if requested in advance. NS. NC.

**DECEMBER 13.** Choo Choo Open II. 4-ss, 40/1. Trinity-Woodmore United Methodist Church. 1321 N. Moore Rd., Chattanooga, TN 37411. EF \$8. Free 1Ms, GMs, and Masters. TCA mem. req. for TN res. \$6, \$4. \$5 (300 b/50, 1st G); 50-35-25. Exp. A,B,C,D,E each 25. Unr. 20. top under 18, \$10. top woman 10. Reg. 8-9 am Rds. 9:30-12-3-5:30. Ent. Larry Ousley, 1321 N. Moore Rd., Chattanooga, TN 37411. (615) 698-1319. NS. W.

**JANUARY 2-3-4.** Fairfield Glade. 5ss. 40/100, 15/30 Fairfield Glade Resort, Peavine Rd., Crossville, TN 38555. \$3 5,000. 3 sections. Open. EF. \$35 if received by 12/29. \$5G. 600-300-200. 2200-2299 1st-\$100. Exp \$300-150-100. 2000-2099 1st \$100. A and below \$350-150-100. Below 1900 1st \$100. Trophies to 1st, top expert, to class A. Amateur-open to below 1800. EF. \$35 if received by 12/29. \$5G, 350-125-100. 1600-1699 \$100. Trophies to 1st, top C. Novice section, open to below 1400. EF. \$35 if received by 12/29. \$5G. 350-125-100. 1200-1299 \$100. Class E \$225. Unr. \$150. Trophies to 1st, top E, Top unr. (unr. eligible unr. prize only). All. EF \$5 more at

site. ST \$6. Special \$10 EF for juniors (youth or participating youth) competing for trophies only. Reg. Fri. 3 pm-7 pm CST. Sat. 7am-8am CST. Rds 1st choice of Fri. 8 pm or Sat. 9 am. Other rounds Sat. 2-7. Sun. 9-2. HR Fairfield Glade Lodge \$34. Villa Parlor (kitchen 2 dbl. beds) \$50. Villa Bedroom \$40 res. by 12/12. Ent. Harry D. Sabine, P.O. Box 381, Crossville, TN 38555. (615) 484-9593 or (615) 484-4878. L.S.C.

**JANUARY 17-18.** 2nd Annual Shelby County Open. 5-ss. 50/2. accell. pairings 1st, 2nd rds. Auburndale School. 2100 North Germantown Rd., Cordova, TN 38018. \$5(\$580 b/40 adult players). \$200-100. Exp. A,B,C,D,E, Unr. each \$40. Prizes increased if over 40 players. (82 players last year): EF. \$16 if received by 1/10/87. \$20 at site. Juniors \$6 (\$10 deducted from winnings) ST \$6. Reg. 7:30-8:30. Rds. Sat. 9-2-7. Sun. 8-1. Adv. Ent. and info. Dale Flickinger, Auburndale School, 2100 N. Germantown Rd., Cordova, TN 38018. (901) 382-3829. Special Notice-Joe Jones is defending Champion. NS. NC. WA.

**JANUARY 24-25.** Cumberland County Closed Scholastics.

**FEBRUARY 14.** Cumberland County Winter Open I. 4-ss. 40/1 30/SD. Martin JHS, Stanley St., Crossville, TN 38555. 2 sections. Open. \$5 (150 b/30, 1st G). 50. Exp., A,B,C each 25 Amateur: Open to below 1400 or Unr. \$5 (75 b/20) 30. E 25. Unr. 20. Both EF \$6. TCA req. TN res. \$6, \$4. Reg. 7:30-8:30 am CST. Rds. 9-11:30, 2:30-5:30 CST. HR: 27. 50 plus tax—1-4. Heritage Inn. Ent. Harry Sabine, PO Box 381, Crossville, TN 38555. LS.

**FEBRUARY 14.** Crossville Non-rated Winter. 4-ss. 40/1 Martin Jr. HS., Stanley St., Crossville, TN 38555. Reg. 7:30-8:30 am CST. Rds. j9-11:30, 2:30-5:30. EF \$5. Trophy to 1st.

**FEBRUARY 15.** Cumberland County Winter Open II. 4-ss. 40/1, 30/SD. Martin Jr. HS., Stanley St., Crossville, TN 38555. EF \$6. TCA req. TN res. \$6, \$4. \$5 (150 b/35, 1st G). 50. Exp., A,B,C,D,E each \$15. Unr. \$10. Reg. 7:30-8:30 am CST. Rds. 9-11:30, 2:30-5:30. CST. HR \$27. 50. Heritage Inn. Ent. Harry Sabine, PO Box 381, Crossville, TN 38555. LS

**FEBRUARY 14-16.** U. S. Amateur Team Championship-Midwest. Chicago's Hyatt Regency O'Hare (just off Kennedy Expressway at river rd) 50/2. Reg. 9-11 am. Feb. 14. Rds. 12-6, 11-5, 9-3:30. Team consists of 4 plus alternate average rating under 2200. EF. \$60/team if mailed by Feb. 6. \$75 at site. Top team-4 chess clocks plus qualifies national telephone play-offs. Trophy plus clock to: top 3 teams, top team under 2000, top team under 1800, under 1600, under 1400 or unr., top HS team. Other team prizes to: top college team, top industrial team, 2nd HS team. Individual prizes: Chess clocks top player each board and any 6-0 scores. HR. Hyatt Regency O'Hare (Chicago). \$55 single, double. \$60 Triple, Quad. Info and preregistration-Harold Winston, 1567 Ridge 601, Evanston, ILL 60201 (312) 475-7022.

**FEBRUARY 21.** Chattanooga

**MARCH 28.** Nashville Open

**APRIL 4-5.** Cumberland County Spring I & II

**MAY 16.** Chattanooga

**JUNE 6-7.** Cumberland County Summer I & II