



Tennessee Chess Association

JUNE/JULY ISSUE 1984

TENNESSEE Chess News

IN THIS ISSUE:

- Oliver Tai Wins National Primary Title
- Games from Brian McCarthy and Richard Carpenter
- Theoretical Queen's Indian Defense



TENNESSEE CHESS NEWS
Mark Ishee, Editor
1511 Linbar Ct.
Nashville, Tennessee 37211

Ms. Ronald W. Barnett
2113 8th Ave., S.
Nashville, TN 37204

Nonprofit Organ.
U.S. Postage
PAID
Nashville, TN
Permit No. 1388

Tennessee Chess News

**TENNESSEE CHESS NEWS
JUNE/JULY ISSUE 1984
TABLE OF CONTENTS**

TCA Headlines.....page 3
Top 10 Lists.....page 4
Cumberland County Spring Open crosstable.....page 5
Cumberland County Spring Open II crosstable.....page 6
TCA Board of Directors.....page 6
The Games of Oliver Tai.....page 7
TCA Patron Members.....page 8
Rank and File by Jack Smith.....page 8
Richard Carpenter's Games.....page 9
Off the Cuff by Brian McCarthy.....page 10
Tennessee Postal Chess with Kent Meadows.....page 11
Theory in Review by Mark Ishee.....page 11
Coming Attractions.....page 14

**TENNESSEE CHESS NEWS
Mark Ishee, Editor**

Tennessee Chess News is the official bi-monthly publication of the Tennessee Chess Association. TCA annual dues are \$4.00. Those joining after April 1 each year pay \$2.00 for membership expiring August 31 or \$5.00 for membership expiring August 31 of the following year. Additional members of one family may join TCA for 50 cents each but will not receive TCA tax-deductible Patron Memberships are available for those who wish to support Tennessee Chess. These memberships are good for one year from the first day of the month payment is received, and all Patrons enjoy full TCA membership privileges. In addition, Patrons receive TCM by first-class mail and are recognized in each issue. Regular members who wish to become Patrons can do so for \$21.00 if they have already paid the regular \$4.00 fee.

SCHOLASTIC PLAYERS EXCEL

Several scholastic players from Tennessee have done us proud once again, this time in their respective National Championships. Most notable was Oliver Tai of Memphis, a student at Aburndale, who scored 6 1/2-1/2 to take clear first in the Primary section of the Elementary Championship. Oliver's games appear elsewhere in this issue. The Aburndale team made a fine showing with 18 points overall. Jennifer Doll, also of Aburndale, was the top-scoring girl in the same event.

The National Junior High Championship saw Crossville's Martin Junior High team in a close race for first with three other teams until the last round, finishing in third place. Chris Loyless, Bill Hall, and Jay Sabine, all of Martin, tied for eighth place. Fred Baker of Martin tied for first in class C.

The National High School Team Championship in Philadelphia attracted over 450 players, but the only one to score a perfect 7-0 was Charles Lee of Webb School in Knoxville. Playing third board, Lee's performance garnered him the third board trophy.

BIDDING OPEN

Sooner than you think it will be time for the 1985 Tennessee Scholastics. In accordance with a proposal adopted by the TCA Board of Directors last Labor Day, the tournament will be rotated between the three grand divisions of the state. In 1985 Middle Tennessee will host the event, and any Middle Tennessee schools or scholastic groups interested in holding and promoting the tournament should place bids with TCA Secretary-Treasurer Harry Sabine as soon as possible.

LABOR DAY IN MEMPHIS

Be sure not to miss this year's Tennessee Open in Memphis. Not only will State Championship titles be on the line, there will also be a bigger-than-ever prize fund (\$1105 guaranteed in the Open Section), and juniors may enter any section for \$5 and compete for trophies only. All Masters' entry fees will be refunded if they complete all rounds. Team titles and individual honors are at stake, so bring the whole club to Memphis this year for your Tennessee Open.

JOHN WHITE RESIGNS

TCA Tournament Coordinator John White has resigned from the Board of Directors effective immediately. TCA commends John for his fine work in organizing and promoting Tennessee chess, especially his work in scholastic events and in the Turkey Tour. Harry Sabine has taken over the duties of Tournament Coordinator until a replacement is selected, and all information regarding the scheduling of tournaments should be sent to him for the time.

CONTEST STILL OPEN

It's still not too late to send in your entry for TCA's first-ever contest for the best article, annotated game, review, or otherwise chess-related items of interest. There is one prize for class A and up, and another for class B and below. Address all entries to Mark Ishee, TCM Editor, 5101 Linbar Ct-107, Nashville, TN 37211.

WATCH FOR THE EXCITING CONCLUSION TO THE 1984 TENNESSEE TURKEY TOUR AT THE TENNESSEE OPEN IN MEMPHIS

TENNESSEE'S TOP TEN PLAYERS			
1. Curt Jones	Nashville	2390	
2. Michael Carey	Hermitage	2237	
3. Brian McCarthy	Jackson	2219	
4. Joseph Senter, Jr.	Nashville	2177	
5. Ronald Burnett	Nashville	2154	
6. Paul Harless	Memphis	2129	
7. Sid Pichan	Memphis	2129	
8. James J. Gallagher	Memphis	2126	
9. Johnson Moore	Nashville	2165	
10. Emanuel Tsitsekis	Knoxville	2163	
TENNESSEE'S TOP TEN WOMEN			
1. Sofi Zhailin	Nashville	1806	
2. Joy Wellman	Memphis	1463	
3. Susan Smathers	Crossville	1432	
4. Kitty Burdick	Cookeville	1366	
5. Camilla West	Nashville	1295	
6. Nancy Weaver	Crossville	1247	
7. Faye Carey	Nashville	1217	
8. Penny McGill	Maryville	1209	
9. Joan-Joy Cherin		1173	
10. Cathy Smith	Memphis	1159	
TENNESSEE'S TOP TEN HIGH SCHOOL PLAYERS (GRADES 10-12)			
1. Ronald Burnett	Overton	2194	
2. Chuck Lovingsood	CCIS	2032	
3. Chris Chambers	Webb	2003	
4. Robert Ertter	Baylor	1902	
5. Bradley Watson	Webb	1861	
6. Charles Lette	Webb	1798	
7. Matt Doffoff	MBA	1794	
8. Cary Long	Farragut	1773	
9. William Mariencheck	Christian Brothers	1750	
10. Tony McGill	Maryville	1747	
TENNESSEE'S TOP TEN JUNIOR HIGH PLAYERS (GRADES 7-9)			
1. Chris Loyless	Martin	1797	
2. Bill Hall	Martin	1754	
3. Jay Sabine	Martin	1703	
4. Travis Farham	Martin	1692	
5. Gene Woodie	Martin	1679	
6. Gus Lipman	MUS	1598	
7. Jeremy Hasser	Martin	1578	
8. Fred Baizer	Martin	1578	
9. David Williams	Oak Ridge	1556	
10. Sam Crouch	Cookeville	1553	
TENNESSEE'S TOP TEN ELEMENTARY PLAYERS (GRADES 4-6)			
1. Chris Lax	Homesead	1591	
2. Shane Day	Homesead	1539	
3. David Williams	Auburndale	1473	
4. Ian Wright	Capshaw	1410	
5. Jason Balogh	Auburndale	1400	
6. Richard Hesse	South Cumberland	1377	
7. Kitty Burdick	Parkview	1366	
8. Chuck Hamlett	Auburndale	1364	
9. Charles Smith	Franklin Road	1364	
10. Stuart Wood	David Lipscomb	1339	
TENNESSEE'S TOP TEN PRIMARY PLAYERS (GRADES 1-3)			
1. Oliver Tai	Auburndale	1466	
2. Todd Shimbukuro	Wilkinson	1395	
3. Jason White	Homesead	1364	
4. Jeremy Chasen	Capshaw	1333	
5. Sengaphone Phrommala	Bready Model	1257	
6. Harold Simmons	South Cumberland	1244	
7. Jimmy Day	Homesead	1188	
8. Thilavanh Phrommala	Bready Model	1188	
9. Matthew Burdick	Parkview	1147	
10. Mike Dieringer	Parkview	1088	

CUMBERLAND COUNTY SPRING OPEN												
PLAYER	PRE	POST	R01	R02	R03	R04	TOT					
1. MCCARTHY, BRIAN	2256	2267	W32	W14	W4	W5	4.0					
2. MELVIN, BILL	1913	1983	W20	W21	W9	W8	4.0					
3. CAMPBELL, RICHARD	2151	2144	W33	W16	L5	W10	3.0					
4. WATSON, BRADLEY	1851	1875	W19	W8	W2	L1	3.0					
5. FRESHWOOD, ROBERT	1809	1870	W18	W7	W3	L1	3.0					
6. TURKLETT, JAV	1716	1730	W14	W2	W14	L3	3.0					
7. ADISON, DONALD	1574	1661	W11	L5	W16	W13	3.0					
8. GODFREY, SCOTT	2088	2070	W17	W13	D10	L2	2.5					
9. KING, RAY	1940	1931	D23	W2	L2	W1	2.5					
10. ROBBINS, GREGORY	1889	1876	W34	W31	D8	L3	2.5					
11. MCNEIL, GARY	1716	1716	W16	W15	D12	L5	2.5					
12. ALLEY, MARK	1406	1490	L14	W32	W17	D1	2.5					
13. MCGILL, TONY	1747	1746	W30	L8	W31	L7	2.0					
14. HEARDICK, MIKE	1688	1704	W17	L3	W8	L4	2.0					
15. BURDEN, JAMES	1650	1655	L21	W20	W28	L4	2.0					
16. LARSON, DAVID	1628	1648	W29	L3	L7	W23	2.0					
17. HASSLER, JEREMY	1627	1637	L8	W30	L12	W28	2.0					
18. SMATHERS, JEFF	1592	1612	L5	W26	L14	W30	2.0					
19. PARKER, BOB	1558	1569	L4	W29	L11	W31	2.0					
20. HOOD, DAVID	1519	1542	L2	L15	W29	W27	2.0					
21. PASCHALL, JOEL	1416	1483	W15	L2	W22	L9	2.0					
22. FARHAM, TRAVIS	1708	1687	D27	L23	L21	W32	1.5					
23. WOODS, GENE	1628	1632	D9	W22	L6	L16	1.5					
24. GRAHAM, GEORGE	1499	1505	L25	L11	W34	D16	1.5					
25. BURDICK, PATRICK	1738	1744	W24	U-	U-	U-	1.0					
26. OWENS, JOHNNY	1727	1667	L28	L18	D27	D24	1.0					
27. BAUER, FRED	1298	1545	L22	L19	D26	L20	1.0					
28. WILLIAMS, DAVID	1547	1542	W26	L4	L15	L17	1.0					
29. ORGAIN, WILLIAM	1501	1473	L16	L19	D26	W34	1.0					
30. GROENIGER, LOUIS	1480	1478	L13	L17	W32	L18	1.0					
31. STANCLIFF, LEON	1466	1472	W6	L10	L13	L19	1.0					
32. BOWMAN, MICKEY	1639	1627	L1	L10	L10	D22	0.0					
33. SABINE, JAY	1671	1669	L3	U-	U-	U-	0.0					
34. MITCHELL, GARY	1506	1380	L10	L6	L24	L29	0.0					

CUMBERLAND COUNTY SPRING OPEN AMATEUR SECTION												
PLAYER	PRE	POST	R01	R02	R03	R04	TOT					
1. LENTZ, BRIAN	1364	1430	W24	W18	W8	W4	4.0					
2. KING, RAY	1241	1414	W20	W17	W3	W3	4.0					
3. MCKENSON, GARY	1814	1762	W17	W13	W10	L2	3.0					
4. MCKENSON, GARY	1447	1470	W28	W12	W6	L1	3.0					
5. MCGILL, TONY	1428	1441	W19	L2	W14	W14	3.0					
6. KECK, KENNETH	1424	1421	W26	W16	L4	W20	3.0					
7. FARRELL, RALPH	1383	1392	W29	L4	L7	W11	3.0					
8. WEAVER, NANCY	1249	1293	W29	W5	L1	W14	3.0					
9. PARKER, GORDON	1203	1472	L14	W15	W22	W12	3.0					
10. FERRISS, JR CLINTON	1288	1323	W2	L4	W19	W24	2.5					
11. CRISP, WAYNE	1203	1241	W10	D10	W21	L7	2.5					
12. MCNEIL, GARY	1400	1366	W25	L4	W18	L5	2.0					
13. KNUFF, STEVEN	1383	1382	L16	L3	W29	W25	2.0					
14. HANNAH, GABE	1220	1242	W9	L7	W16	L8	2.0					
15. MCELLEN, JOHN	1163	1191	W1	L12	W26	L2	2.0					
16. GOTTLEID, JOHN	1362	1386	W13	L6	L14	W22	2.0					
17. RICHMOND, BOB RYAN	1147	1165	L3	W29	W25	L5	2.0					
18. LARSEN, PAUL	1141	1153	W27	L1	L12	W26	2.0					
19. DAVIDSON, EDDIE	986	1017	L7	L70	W30	W23	2.0					
20. CAMPBELL, TONY	1140	1259	L1	W30	W23	W1	2.0					
21. D'ARMOND, JONH	1391	1358	W25	L2	L11	L10	1.0					
22. WAGNER, TOMMY	1211	1188	L12	W28	L9	L16	1.0					
23. BREIDING, ROGER	1203	1158	L10	W27	L5	L15	1.0					
24. BREIDING, RANDALL	1134	1127	L1	W27	L5	L15	1.0					
25. MATTHEWS, THOMAS	1102	1089	L11	W30	L17	W27	1.0					
26. DEAN, LORIE	1000	1000	L6	L23	W27	L18	1.0					
27. GOTTLEID, EDWARD	918	903	L18	L24	L26	W30	1.0					
28. THOMPSON, DANIEL	867	912	L4	L15	W28	L1	1.0					
29. DEAN, JOHN	1019	1000	L8	L17	L13	L28	0.0					
30. WILLIAMSON, WENDY	883	883	L2	L25	L19	L27	0.0					

June/July 1984

CUMBERLAND COUNTY SPRING OPEN II

PLAYER	PRE	POST	R01	R02	R03	R04	TOT
1. MC CARTHY, BRIAN	2267	2284	W13	W5	W4	W2	4.0
2. CAMPBELL, RICHARD	2144	2147	W18	W10	W6	L1	3.0
3. GODFREY, SCOTT	2070	2063	W20	W11	W16	L4	3.0
4. CHAMBERS, CHRIS	1994	2017	W14	W8	L1	W3	3.0
5. MELVIN, BILL	1983	1986	W2	L1	W17	W12	2.0
6. KING, MARK	1951	1960	W9	W7	L2	W11	3.0
7. SABINE, JAY	1669	1691	W27	L6	W24	W10	3.0
8. KAPPE, PAUL	1765	1763	W15	L4	D9	W19	2.5
9. ORGAIN, WILLIAM	1473	1513	L6	W27	D8	W17	2.5
10. FURKHOUSSER, BYRON	1860	1836	W19	L2	W20	L7	2.0
11. LARSON, DAVID	1648	1656	W23	L3	W21	L6	2.0
12. BOWMAN, MICKEY	1627	1626	W24	D16	D19	L5	2.0
13. SMATHERS, JEFF	1612	1616	L1	D17	W18	D15	2.0
14. WOLLEY, JIMMY	1545	1549	L4	U-	W27	W24	2.0
15. MONAGHAN, MIKE	1429	1447	L8	D18	W22	D13	2.0
16. ROBBINS, GREGORY	1896	1878	W22	D12	L3	U-	1.5
17. HASSLER, JEREMY	1637	1621	W25	D13	L5	L9	1.5
18. GRAHAM, GEORGE	1505	1492	L2	D15	L13	W25	1.5
19. FIFE, JOEL	1360	1350	L10	W25	D12	L8	1.5
20. CHAMBERS, STEVE	1493	1482	L3	W23	L10	L21	1.0
21. KECK, KENNETH	1399	1424	U-	U-	L11	W20	1.0
22. FERRISS, JR CLINTON	1307	1288	L16	L24	L15	W26	1.0
23. HANNAH, GABE	1242	1220	L11	L20	L25	W27	1.0
24. BUFFINGTON, TONY	1186	1200	L12	W22	L7	L14	1.0
25. MATTHEWS, THOMAS	1088	1102	L17	L19	W23	L18	1.0
26. WEAVER, NANCY	1263	1249	L5	U-	U-	L22	0.0
27. SMITH, ERIC	1103	1089	L7	L9	L14	L23	0.0

TCA Board of Directors

President: Jack E. Smith, 5660 Alrose, Memphis, TN 38117, 685-8029

Vice-President: Peter P. Lohde, 2609 Sailboat Ct., Nashville, TN 37217, 361-4588

Secretary-Treasurer: Harry D. Sabine, P.O. Box 381, Crossville, TN 38555, 484-4878 or 484-9593

Newsletter Editor: Mark Tabee, 5101 Linbar Dr., Apt. C-107, Nashville, TN 37211, 833-6111

Scholarship Coordinator: Jim Corbett, 1492 Vera Cruz, Memphis, TN 38117, (901) 761-5978

Postal Chess Coordinator: Kent Meadows, 206 30th Ave. N., Nashville, TN 37203, 320-0394

Tournament Coordinator: VACANT

East Tennessee Director: Richard Igou, 400 Rhodora, Apt. F, Knoxville, TN 37923, 690-6810

West Tennessee Director: Dale Flickinger, 5247 Sherbourne Circle #14, Memphis, TN 38134, 382-3829 or 388-7321

Tennessee Chess News

The games of Oliver Tai

United States Primary Champion

Round 1
Pirc Defense
White: Jeremy Waller (unt)

Black: Oliver Tai (1466)
1. Nf3 d5; 2.Nc3 Nf6; 3.e4 e6;
4.Nb5 b7; 5.Bc4 Bg7; 6.0-0-0;
7.Bd4 c5; 8.h3 Bb7; 9.Bd3 c5; 10.Bxc5
dxc5; 11.Ba3 B4; 12.Bb2 bxc3;
13.d4 Nc6; 14.Nb5 Nf5; 15.Bxc5
Rc8; 16.Ba1 Rxc3; 17.Rc1 Rxa3;
18.Ra1 Nb5; 19.c4 Rxa1; 20.Qxa1
Rcd3; 21.Nb2 Nc4; 22.Nc3 Bxb1;
23.Ne1 d6; 24.Qc1 Nd2; 25.a4 Nc1;
26.Rxf4 Rfd1; 27.Nc4 Bc2; 28.a4
Bxc4; 29.Rxg4 Rxe1; 30.e5 Qd5;
31.Kh1 Qf3; 32.Kh1 Rhl; 33.Rg5
Qf5; 34.Kh6 Nc4 mate

Round 2
Giucoco Piano
White: Oliver Tai (1466)
Black: William B. Dinius (1116)

4.Nc3 Bc5; 5.0-0-0 Qc7; 6.d3 d6; 7.h3
d5; 8.exd5 Nxd5; 9.Bxd5 Ne7; 10.Bc4
Bd5; 11.Rg5 h6; 12.Bh4 c6; 13.Qa2
Bc7; 14.Rad1 Qd6; 15.Ne4 Qd7;
16.Rf1 Bb5; 17.Rg3 Qc7; 18.Qc3
Nc5; 19.Ne5 Nc6; 20.Ne6 B8;
21.Nxh8 Nxe8; 22.Re1 c5; 23.Rxe8*
Kh7; 24.Ne5* Kg8; 25.Ne6* Kh7;
26.Rxc7 Bd7; 27.Nxh8 Bxe8; 28.d4
cxd4; 29.Qxd4 f6; 30.Qe4 Bg6;
31.Rg8 Rxe8; 32.Qxh6 h5; 33.Nf5
Rf8; 34.Qxg7 Rxe8; 35.Qe7 mate

Round 3
Pirc Defense
White: Alek Friedman (1156/6)

Black: Oliver Tai (1466)
1.e4 e5; 2.Nf3 Nc6; 3.Bc4 Nf6;
4.Nc3 Bc5; 5.0-0 Qc7; 6.d3 d6; 7.h3
h6; 8.Bd2 Bc8; 9.Bxe6 fxe6; 10.Qc2
Rc8; 11.a3 d5; 12.a4 Bb6; 13.b5
Nd4; 14.Nxd4 Exd4; 15.exd5 exd5;
16.Rf1 e4; 17.dxe4 Nxe4; 18.Nxe4
Rc4; 19.Nxd1 dxe4; 20.Qc4* Kh8;
21.Nc3 Qd7; 22.Qe2 a6; 23.Rd1 Qxb5;
24.Qxd4 Qd5; 25.Qd4 Qd5; 26.Qc1
Qd5; 27.Qd4 Qd5; 28.Qe2 Qe5; 29.Nb4
Qc6; 30.e4 b5; 31.e5 Qd5; 32.Qxd4
Qd1; 33.Rc1 e3; 34.Bc3 e4; 35.Rc1
35.Kh2 Rg8; 36.Qf4 Kh7; 37.Qx12

Round 4
Giucoco Piano
White: Oliver Tai (1466)
Black: Matthew Tom (1227)

1.e4 e5; 2.Nf3 Nc6; 3.Bc4 Nf6;
4.Nc3 Bc5; 5.0-0 Qc7; 6.d3 d6; 7.h3
h6; 8.Bd2 Bc8; 9.Bxe6 fxe6; 10.Qc2
Rc8; 11.a3 d5; 12.a4 Bb6; 13.b5
Nd4; 14.Nxd4 Exd4; 15.exd5 exd5;
16.Rf1 e4; 17.dxe4 Nxe4; 18.Nxe4
Rc4; 19.Nxd1 dxe4; 20.Qc4* Kh8;
21.Nc3 Qd7; 22.Qe2 a6; 23.Rd1 Qxb5;
24.Qxd4 Qd5; 25.Qd4 Qd5; 26.Qc1
Qd5; 27.Qd4 Qd5; 28.Qe2 Qe5; 29.Nb4
Qc6; 30.e4 b5; 31.e5 Qd5; 32.Qxd4
Qd1; 33.Rc1 e3; 34.Bc3 e4; 35.Rc1
35.Kh2 Rg8; 36.Qf4 Kh7; 37.Qx12

Round 5
Pirc Defense
White: Vaughn R. Sandman (1127)

Black: Oliver Tai (1466)
1.e4 e5; 2.Nf3 Nc6; 3.Bc4 Nf6;
4.0-0 Nf6; 5.Nc3 Qc7; 6.d3 d6;
7.Rg5 h6; 8.Bh4 Bc6; 9.Bb3 a6;
10.Nd5 Bxd5; 11.Bxd5 Re8; 12.Qd2
Qe7; 13.Rf1 Bnd7; 14.c3 Bb6; 15.d4
exd4; 16.cxd4 Bc5; 17.Qe2 Bxe1;
18.Rxe1 g5; 19.e5 Nxd5; 20.Rg3 a5;
21.Qe2 dxe5; 22.dxe5 Nf4; 23.Qc3
Nc5; 24.Nxe5 Rd5; 25.Ng4 Nf6;
26.Nf

TCA PATRON MEMBERS
J. Robert McEliff, Chattanooga
Harry D. Sabine, Crossville
Todd T. Shimabukuro, Oak Ridge
Nancy M. Weaver, Fairfield Glade
George Graham, Crossville
Clinton H. Patterson, Crossville
Patrick D. Burdick, Cookeville
Johnson S. Moore, Nashville
Richard Igo, Knoxville
Jack E. Smith, Jr., Memphis
Thomas A. Cooper, Kingsport
William H. Ogden, Dickson
Louis Greeninger, Knoxville



RAIN AND FILE
By Jack Smith

In the last article, we discussed why a pawn ahead wins and how to do it. This time let's back up and look at the board and pieces: the scene of the battle and some of the officers involved, like any good general.

First, set your board down. Is there a white square on the right corner nearest you? There should be.

Now place a bishop on d4, a black square. How many squares could it move to? ... There? It could go to a1, b2, c3, e5, f6, g7, h8 on one diagonal, and g1, f2, e3, c5, b6, a7 on the other. That's 13, all dark squares. Now put the bishop on h1. It can now go to only 7 squares, all white just as h1 is. Now put the bishop on h4. From here on the edge of the board the Bishop can reach only 7 squares again. Now put the bishop on g4; it can reach 9 squares from there, and on f4 it can reach 11 squares. From d4 the Bishop can reach 13 squares again, its maximum number.

So, we have seen that a Bishop's range and mobility increase as it nears the center of the board.

Place a Knight on a1. It only has two possible moves, to b3 or c2. On a3 it has 4 moves. But if placed on c3 or d4, the knight has 8 possible moves, its maximum number.

Like the bishop, the knight can do more if it starts near the center of the board. Note that although the Bishop can reach more squares (13), they are all of the same color. The knight reaches fewer squares (8), but moves from one color to the other on each move, and so can potentially attack any square on the board, something the Bishop cannot do. Remember also

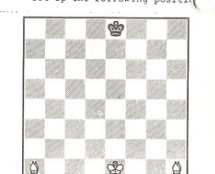
that a Bishop may be blocked off by pieces in its way. A Bishop on c3 cannot get to c3 or beyond if c4 of its own pieces or pawns is b2. A Knight on a1 would just leap over the pawn.

Thinking a little further, we can begin to see why:

- 1) Bishops and Knights are valued about the same
2) Having two Bishops is better than having two Knights or a Bishop and a Knight if there are lots of open diagonals (pawns have been exchanged). With two Bishops, every square on the board can be reached more rapidly than with any other combination of minor pieces as long as there is nothing in the way.
3) The center of the board is very important. It is like the "high ground" in a game of "King of the Hill." If you have the center for your pieces, your pieces can move to more squares in fewer moves on either side of the board. You can imagine that they can "see" better.
4) Knights are better than Bishops if there are a lot of pawns on the board (leaping ability).
5) The old saying "A Knight on the Rim is Din" holds true most of the time.

Now put a Black Knight on h4 and a White Bishop on e4. The Knight cannot move without being taken. World Champion Karpov, if he has nothing else to do during a game, will place a Bishop like this to set up the following position:

Set up the following position:



We're going to mate the Black King.

- 1. Be5 Ke7
2. Bd5 Kd7

If you draw an imaginary line with your finger to the Bishops to the 8th rank on the diagonals, you'll

see that the Black King is already limited to only six squares. Now Black can only move back and forth, while the White King comes up for the rescue.

- 3. Ke7 Ke7
4. Ke7 Kd7
5. Ke4 Ke7
6. Ke7 Kd7
7. Kf6 ...

Now the White King denies Black the square e7.

- 7. ... Kd8
8. Ke6 Ke8
9. Ke7 Ke8 (forced)
10. Kf6 Ke8
11. Ke5 Ke8 (forced)
12. Bd6+ Kg8 (forced)
13. Bd5+ Kh7
14. Bf8 Kh8
15. Kf7 Kh7
16. Be4+ Rh8
17. Bg7 mate

Note how the Bishops moved easily around the board while limiting the Black King's mobility. Practice this mate with friends or alone until you can do it without thought. Now is a good time to consult Chess Endings: Essential Knowledge by Averbakh, Basic Chess Endings by Fine, or Practical Chess Endings by Keres. Learn the mate with Bishop and Knight as well, and find out why two knights won't force mate.

Remember, if you don't know how to use 2 pieces, how are you going to know how to use all 16?

CARPENTER'S GAMES

This month TCM readers have a special treat: Knoxville CM Richard Carpenter submits several interesting short games from 1983-84. Those of you who have met Richard can't help but be impressed by the sheer force he has frequently been seen of (late) know of his enterprising, tactical style of play. He is often at his best in very brief encounters, such as the ones below.

Scottsboro Tornado

White: Kent McCormack (1955)
Black: Richard Carpenter
1.d4 e5; 2.h3 Nf6; 3.g4 fxg4; 4.h3 Nf6; 5.e4 d5; 6.f3 Bg7; 7.Bxh6 gxh6; 8.f4 Bc6; 9.f5 Bf7; 10.e5 e6; 11.f6 c5; 12.Bc2 cxd4; 13.Bh5 Qc7; 14.Bxf7 Qxf7; 15.Qx2

Dutch Defense

White: Bill Onobly (1979)
Black: Richard Carpenter
1.e4 e5; 2.Nc3 Nc6; 3.a7 Bc5; 4.Bc4 d6; 5.Ng2 Ng4; 6.O-O Qh4; 7.h3 Nxf2; 8.Rxf2 Bxf2; 9.Rh2 g5; 10.Ne5 g4; 11.Qf1 g4; 12.h4 Naf6; 13.Nxe6 Bxe6; 14.Nc7 R8; 15.Nxe8 Bxh3; 16.g4 Qx4; 17.Qg2 Qx2 1-0

Confederate Open 1983

White: Bill Onobly (1979)
Black: Richard Carpenter
1.e4 e5; 2.Nc3 Nc6; 3.a7 Bc5; 4.Bc4 d6; 5.Ng2 Ng4; 6.O-O Qh4; 7.h3 Nxf2; 8.Rxf2 Bxf2; 9.Rh2 g5; 10.Ne5 g4; 11.Qf1 g4; 12.h4 Naf6; 13.Nxe6 Bxe6; 14.Nc7 R8; 15.Nxe8 Bxh3; 16.g4 Qx4; 17.Qg2 Qx2 1-0

Sicilian Defense

White: Richard Carpenter
Black: Randy Coe (2038)
1.e4 e5; 2.Nf3 Nc6; 3.Nc3 Qc7; 4.Nf3 Qxe4; 5.Be2 Be7; 6.Nc3 Qg6; 7.Nd5 Qd6; 8.c4 Bb8; 9.d4 Ne7; 10.Bc4 Bc6; 11.Qc2 Qc7; 12.Qd2 Re8; 13.Bd3 Ng6; 14.Re1 Rxe1+; 15.Qxe1 Qd6; 16.Ng5 Bxg5; 17.Bg6 Nf6; 18.Qc3 Qh4; 19.f4 Qxg3; 20.Rh1 Qh3; 21.Rg1 Rg8; 22.g5 hxg5; 23.Qd4+; 24.Qc3 Qg4 0-1

Tennessee Chess News

You play six games with three other players - two games versus each, one with each colour. All entry fees are returned to the top three finalists. You qualify for the finals by scoring four or more points out of six games, and entry in more than one section is permitted. Also send me your over-the-board or other postal rating. Enter today! You'll be glad you did!

Since no one sent in a game, I have no postal game of the month (with my brilliant annotations). You postal players had better send in some of your games so I can show the world how brilliant you are, or else I'll simply talk about how brilliant I am.

RESULTS:
TC-F-82: G'Fellers, Edwards, E. Jones, Irwin, Inman I, Lewis
TC-1-81: Smith I, G'Fellers; Weldon I, Irwin; Irwin I, Weldon
TC-4-81: J. Jones I, G'Fellers; Irwin I, J. Jones
TC-5-81: Menzel I, Irwin; Inman I, Green

ENTRIES:
TC-2-84: Bryant Penuel, John Bowman
TC-3-84: Naceli Glover

THEORY IN REVIEW: QUEEN'S INDIAN DEFENSE

By Mark Isher

The Nimzo-Indian Defense has long been considered one of Black's most effective replies to 1.d4. For that reason, the Queen's Indian Defense (1.d4 Nf6; 2.c4 e6; 3.Ne3 b6) is a popular alternative that is critical to White's chances of securing an opening advantage. White's third move postpones the fight for the e4 square, and is usually considered to lead to an evenly-matched struggle after Black's most logical reply, 3...b6, which guarantees him an adequate share of the center after the fianchetto of his queen's bishop.

Most of the theory of the Queen's Indian centers on the neutralizing counter-g9. Recent games in Grandmaster competition have shown that White need not be quite so direct in his fight for the square e4; the dynamic counter 4...f3 (favored by Kasparov) is perhaps the most popular alternative to 4...g3, but White has been reasonably successful with it. This article will analyze a little-known and very sharp idea of GM Tony Leis: the variation 1.d4 Nf6; 2.c4 e6; 3.Nf3 b6; 4.Bf4!f7 (Diagram).

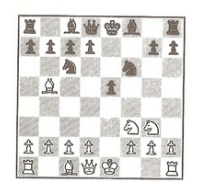
OFF THE CUFF

By Brian McCarthy

In the course of tournament play, book knowledge is often a major factor in determining who gets the point. Many games have been won by superior preparation, and many have been lost due to the slightest slip or even just from entering a prepared specialty. However, all of this becomes irrelevant when one is sitting at the board with no idea of the next book move! It is then that wits and imagination and resourcefulness must take over with an overriding desire to keep or get most of the water out of the boat. While this strategy is not always successful, and I do not advocate taking an opponent out of book to employ this strategy (the tried and true is usually best), coming "off the cuff" is indeed a joy.

2nd Anderson County Open

Roy Lopez
Brian McCarthy-Richard Carpenter
1. e4 e5; 2.Nf3 Nc6; 3.Bd5! I have a dog named Lopez. 3...f5!f7 Although I don't have much respect for this weakening of the Kingside, the Schlemann is probably playable, and as Richard says, "nobody knows it." 4.Nc3 fex4; 5.Nxe4 Nf6!f7 A mere footnote in my ECO. I was fully prepared for 3...d5!f7; 6. Nxe5! d5; 7.Nxc6 x Nw I am forced to come off the cuff. 6.Ng3 (diagram)



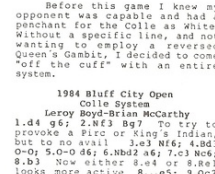
Nowhere to be found in the books, and not the best to say the least. I considered 6.d3!f7. Book is 6.Nxf6+ with the idea of winning the e-pawn after 6...Qxf6; 7.Qc2 and Bxc6 or 6...xf6!f7; 7.d4!f7. However, 6.Ng3 still fights for e4, keeps pieces on the board, and now my opponent was also off the cuff! 6...Qd4; 7.Qe2 Qe7; 8.Bxc6 1-0

1984 Bluff City Open

Colle System
Leroy Boyd-Brian McCarthy
1.d4 g6; 2.Nf3 Bg7 To try to

0-0; 5.O-O d6; 6.Bxb2 a6; 7.Qc2 Nc6; 8.B3 Now either 8...e5; 9.Qc2 Nbd5 (diagram)

Everything has been powerful so far, but now I storm White's king and don't stop 10.Bb2 Fiddling with the board, White is blown or rd, with the idea of 10...f5; 11...e4 12.Bb1 18...f5; 11.d4 de1; 12.Bc4 Rb8; 13.Bxd4 Qf6; 14.Be2 g5! This is not merely a



Scottsboro Tornado

White: Kent McCormack (1955)
Black: Richard Carpenter
1.d4 e5; 2.h3 Nf6; 3.g4 fxg4; 4.h3 Nf6; 5.e4 d5; 6.f3 Bg7; 7.Bxh6 gxh6; 8.f4 Bc6; 9.f5 Bf7; 10.e5 e6; 11.f6 c5; 12.Bc2 cxd4; 13.Bh5 Qc7; 14.Bxf7 Qxf7; 15.Qx2

Dutch Defense

White: Bill Onobly (1979)
Black: Richard Carpenter
1.e4 e5; 2.Nc3 Nc6; 3.a7 Bc5; 4.Bc4 d6; 5.Ng2 Ng4; 6.O-O Qh4; 7.h3 Nxf2; 8.Rxf2 Bxf2; 9.Rh2 g5; 10.Ne5 g4; 11.Qf1 g4; 12.h4 Naf6; 13.Nxe6 Bxe6; 14.Nc7 R8; 15.Nxe8 Bxh3; 16.g4 Qx4; 17.Qg2 Qx2 1-0

Confederate Open 1983

White: Bill Onobly (1979)
Black: Richard Carpenter
1.e4 e5; 2.Nc3 Nc6; 3.a7 Bc5; 4.Bc4 d6; 5.Ng2 Ng4; 6.O-O Qh4; 7.h3 Nxf2; 8.Rxf2 Bxf2; 9.Rh2 g5; 10.Ne5 g4; 11.Qf1 g4; 12.h4 Naf6; 13.Nxe6 Bxe6; 14.Nc7 R8; 15.Nxe8 Bxh3; 16.g4 Qx4; 17.Qg2 Qx2 1-0

Sicilian Defense

White: Richard Carpenter
Black: Randy Coe (2038)
1.e4 e5; 2.Nf3 Nc6; 3.Nc3 Qc7; 4.Nf3 Qxe4; 5.Be2 Be7; 6.Nc3 Qg6; 7.Nd5 Qd6; 8.c4 Bb8; 9.d4 Ne7; 10.Bc4 Bc6; 11.Qc2 Qc7; 12.Qd2 Re8; 13.Bd3 Ng6; 14.Re1 Rxe1+; 15.Qxe1 Qd6; 16.Ng5 Bxg5; 17.Bg6 Nf6; 18.Qc3 Qh4; 19.f4 Qxg3; 20.Rh1 Qh3; 21.Rg1 Rg8; 22.g5 hxg5; 23.Qd4+; 24.Qc3 Qg4 0-1

Tennessee Chess News

You play six games with three other players - two games versus each, one with each colour. All entry fees are returned to the top three finalists. You qualify for the finals by scoring four or more points out of six games, and entry in more than one section is permitted. Also send me your over-the-board or other postal rating. Enter today! You'll be glad you did!

Since no one sent in a game, I have no postal game of the month (with my brilliant annotations). You postal players had better send in some of your games so I can show the world how brilliant you are, or else I'll simply talk about how brilliant I am.

RESULTS:
TC-F-82: G'Fellers, Edwards, E. Jones, Irwin, Inman I, Lewis
TC-1-81: Smith I, G'Fellers; Weldon I, Irwin; Irwin I, Weldon
TC-4-81: J. Jones I, G'Fellers; Irwin I, J. Jones
TC-5-81: Menzel I, Irwin; Inman I, Green

ENTRIES:
TC-2-84: Bryant Penuel, John Bowman
TC-3-84: Naceli Glover

THEORY IN REVIEW: QUEEN'S INDIAN DEFENSE

By Mark Isher

The Nimzo-Indian Defense has long been considered one of Black's most effective replies to 1.d4. For that reason, the Queen's Indian Defense (1.d4 Nf6; 2.c4 e6; 3.Ne3 b6) is a popular alternative that is critical to White's chances of securing an opening advantage. White's third move postpones the fight for the e4 square, and is usually considered to lead to an evenly-matched struggle after Black's most logical reply, 3...b6, which guarantees him an adequate share of the center after the fianchetto of his queen's bishop.

Most of the theory of the Queen's Indian centers on the neutralizing counter-g9. Recent games in Grandmaster competition have shown that White need not be quite so direct in his fight for the square e4; the dynamic counter 4...f3 (favored by Kasparov) is perhaps the most popular alternative to 4...g3, but White has been reasonably successful with it. This article will analyze a little-known and very sharp idea of GM Tony Leis: the variation 1.d4 Nf6; 2.c4 e6; 3.Nf3 b6; 4.Bf4!f7 (Diagram).

Powered by
GoDaddy Email Marketing®