



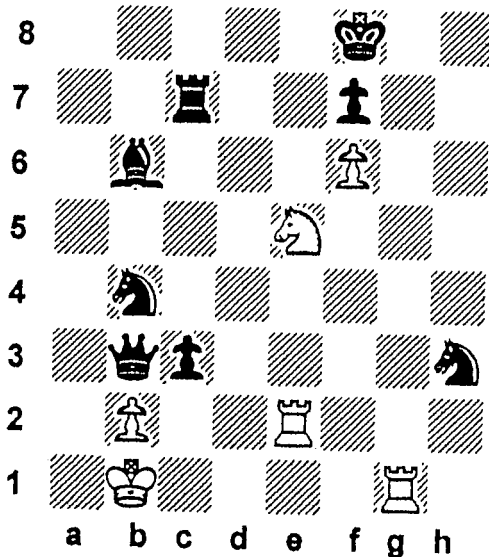
TENNESSEE CHESS NEWS

FALL 2002

VOLUME 45

NO. 1

TOM FINUCANE HALL OF FAME MEMBER.....	5
A RETURN TO GLORY.....	7
2002 TENNESSEE OPEN CROSSTABLES.....	8
2002 TENNESSEE OPEN GAMES.....	11
2002 TENNESSEE OPEN SCHOLASTICS.....	20
GAMES ANNOTATED BY PETER BERELOS.....	26
CUMBERLAND COUNTY FALL OPEN.....	32
ACCEPTING A LOSS.....	34



Problem Corner by Ray Hudgens
 White Mates in 3 Moves - (Sol. Pg. 22)

TENNESSEE CHESS NEWS

The **Tennessee Chess News** is the official publication of the Tennessee Chess Association. TCA annual dues are \$10 for a *regular* membership, \$10 for a *student* membership. Additional members of a family may join for one dollar each, but only one issue of TCN will be mailed per family. All memberships expire August 31.

Tax-deductible Patron Memberships are available beginning at \$100 per year for those who wish to help support the TCA and the FFTC. These memberships expire one year from the date of payment. Patron membership categories and benefits are as follows:

PATRON \$100

- One year TCA Membership and FFTC membership plus a key ring.

PATRON KING \$300

- All Patron benefits plus one year free TCA and FFTC membership for all members of the Patron King's immediate family & free entry into the TN State Scholastic Individual Regional Tournament for the member and all members of the Patron King's immediate family.

PATRON MASTER \$500

- All Patron King benefits plus one free entry to any TCA or FFTC sponsored Open Chess Tournament. The Patron Master or any member of his/her immediate family could use such free entry.

PATRON GRANDMASTER \$1000 (or more)

- All Patron Master benefits plus a chess clock and their name on a permanent plaque to be placed on the wall at the home of the TCA and FFTC.

TOURNAMENT ANNOUNCEMENTS

TCN prints listings of upcoming tournaments requiring TCA membership in each issue for free. Submit complete TLA information to Ellis Jones, Tournament Coordinator.

TN CHESS NEWS STAFF

Editor:

Angela McElrath-Prosser

Contributors:

Games Editor-Peter Lahde
Tech Support-Chris Prosser

Peter Bereolos
Gary Gillespie
Raymond Hudgens
Mark Ishee
Ellis Jones
Peter Lahde
Ed Newkirk
Chris Prosser
Harry Sabine
Allen Snow

TCN publishing schedule:

Winter 2003 - Feb 1 covering
Nov, Dec, Jan events

Deadline: Jan 9, 2003

Spring 2003 - May 1 covering
Feb, Mar, Apr events

Deadline: Apr 9, 2003

Summer 2003 - Aug 1 covering
May, Jun, Jul events

Deadline: July 9, 2003

Fall 2003 - Nov 1 covering
Aug, Sept, Oct events

Deadline: Oct 9, 2003

To submit material by e-mail,
please send text non-zipped
files to: tcanews@aol.com

Tennessee Chess Association and Foundation for Tennessee Chess Patron Members

Patron Grandmaster

Dr. Martin Katahn
George A. Dean
Patricia Knight
Kent Meadows
Clinton H. Pearson Jr.
Harry D. Sabine

Patron Master

None

Patron King

None

Patron Member

Juan T. Aristorenas MD.
Edward Belbusti
J. Scott Eddins
Gary Gillespie
Raymond Hudgens
Mark Ishee
Peter P. Lahde
Mike McGinnis
Harold Miles
Ed Newkirk
Bill Orgain
Albert & Debra Partee
Jeff Pennig
Todd Shimabukuro
Brad Watson

by Allen Snow, TCA President

Chess is alive and well in Tennessee. From Memphis to Clarksville to Nashville to Chattanooga to Knoxville to the Tri Cities and all points in between, from young to older, students to retirees, people are playing chess in Tennessee.

Students in schools all across the state are involved in ever increasing numbers. Many schools have active chess clubs. There have been several scholastic chess tournaments this year around the state. Each time I attend a scholastic tournament, I am amazed at the number of students participating, especially in the primary and elementary divisions. All who are participating need to be encouraged to continue and to progress in chess as well as in school. If there are no tournaments in your area, let me know and we will try to schedule some. If your school club needs help, let me know and we will try to provide some help. If you know of schools where clubs need to be started, let me know and we will try to get one started. We have chess teachers available to teach classes in schools as needed and where schedules can be worked out. We are looking forward to the regional and state tournaments in both individual and team competitions this school year. Once again Tennessee Tech is offering a \$12,000 scholarship to the individual state champion.

There are several chess clubs around Tennessee. For a directory go to the state web site: www.tnchess.org. Local chess clubs have been the foundation for chess for many millennia. Books are good, private classes are great, however, chess is and has always been learned, studied and discussed the most in local chess clubs. It is important to be an active member in the local club in your area. If you need help in promoting your local club, let me know.

The state club: The Tennessee Chess Association is one of the best of all the state associations. We sponsor and co-sponsor several tournaments each year. To find out more and keep up with what is happening in Chess in Tennessee visit our website regularly: www.tnchess.org.

Allen Snow
931-445-7162
asnow@twlakes.net

TOM FINUCANE - A HALL OF FAME MEMBER - DIES

by Peter Lahde

We are indebted to Lloyd Collier of Kingsport to hear about the death of Thomas Finucane, a Charter Member of the Tennessee Chess Hall of Fame. Thanks for sending us the rather detailed obituary. In addition, we received information about Tom's involvement in chess from Jerry Sullivan, another Charter Member of the Tennessee Hall of Fame. In talking to Jerry, he tells me that he [Jerry] was born on December 29, 1930 which makes me only four days older than Jerry. We are now the only surviving charter members of the original seven charter members.

Thomas Finucane passed away on May 26, 2002 in Kingsport at the age of 90. He was born on November 23, 1911. He attended Yale University and the University of Rochester. He married Charlotte Gunton Finucane on April 28, 1941. He had ten sons and two daughters. His wife and eleven of his children survive. He also had 23 grandchildren and six great-grand children.

Tom worked for Tennessee Eastman Company for 30 years as a research chemist. He contributed to the war effort by developing a technique for measuring the effectiveness of the atomic bomb.

He was well-known locally as an avid ornithologist, particularly for his pioneering studies in hawk migration. His work is cited in all of the standard texts.

He was the sparkplug of the Kingsport Chess Club starting in the mid 40's and going into the early sixties. He was for many years the President of the club and Joe Selby served as treasurer. Tom won the club championship on several occasions.

For the state organization, he also served as President starting in the mid 50's. He and Joe Selby both worked in 1956 on an extensive list of potential chess players in the state with nearly 200 names. That was quite an accomplishment when you consider that USCF membership at the time for Tennessee was something like 10 - 20 players. The first mention of a chess activity he was involved in tells of a match in *Chess Life* between Knoxville and the Kingsport area in 1946. That match was won by Knoxville. He took part in several of the early Tennessee Open tournaments scoring 3-2 in 1954. In most of the tournaments, he scored 3 out of 6 points. He was involved in

getting the 1956 Tennessee Open to Kingsport. His best result was in the 1962 Tennessee Open when he scored 4-2 to come in fourth. That was the last Tennessee Open he played in.

Jerry Sullivan recalls that when the Tennessee Open was held in Kingsport in 1956, he was invited to Tom's home and was surprised by the many children they had. The first time I heard of Tom was when Joe Selby challenged the Nashville Chess Club to a match by ham radio. That match was contested in 1959 on four boards with me playing Joe Selby on first board and Albert Bowen playing Tom Finucane on board two which Tom won. (The match ended in a tie with Joe Selby and I drawing.) Later in the early 60's while on vacation, my wife and I visited at the home of Tom. He insisted we stay for the meal. When one of the boys was missing for the meal, he became concerned. My wife recalled one of the children then remembered the missing boy was at a friend's house and all was well.

We conclude with the only two games that were published in *Tennessee Chess News*.

TOM FINUCANE'S GAMES

White: Tom Finucane
Knoxville Championship 1955

Black: Fred Kemp
[TCN, May-June 1960]

1.e4 e5 2.Nf3 Nc6 3.Bc4 Nf6 4.d3 Be7 5.Be3 0-0 6.Nc3 d6
7.a3 Bg4 8.h3 Bh5 9.g4 Bg6 10.h4 h5 11.Nh2 Qd7 12.Qd2 Nxc4
13.0-0-0 Nxe3 14.fxe3 Bxh4 15.Nf3 Be7 16.Rdg1 Kh7 17.Qg2 Bf6
18.Ng5+ Kg8 19.Nd5 Qd8 20.Ne6! fxe6 21.Qxg6 Na5
22.Nxf6+ Qxf6 23.Bxe6+ 1-0

White: Tom Finucane (Kingsport)
Match: Kingsport - Nashville 1959

Black: Albert Bowen (Nashville)
[TCN, Sept.-Oct. 1959]

1.e4 c5 2.Nf3 d6 3.d4 cxd4 4.Nxd4 Nf6 5.Nc3 g6 6.Be3 Nc6 7.f3
Bg7 8.Qd2 a6 9.g4 h6 10.Bd3 Bd7 11.Nce2 Qc7 12.0-0 Nh7
13.Nxc6 bxc6 14.c4 Rb8 15.Rab1 0-0? 16.Bxh6 e5 17.Be3 f6
18.Nc3 Rf7? 19.c5! Be6 20.Bxa6 dxc5 21.Bxc5 Qa5 22.Qd6 Bf8?
23.Qxb8 Qxc5+ 24.Kg2 Kg7 25.Rbd1 f5 26.Qe8 Re7 27.Qd8 Qe3
28.Qd2 Qa7 29.Qe2 Nf6 30.exf5 gxf5 31.g5! Nh5 32.Qxe5+ Kg8
33.Bd3 Bg7 34.Qd6 Bxc3 35.Bxc3 Qxa2+ 36.Rf2 Qa7 37.Re1 Kf8?
38.Rxe6 Qd7 39.Qxe7+ 1-0

A Return to Glory

by Leonard Dickerson

Since the Tennessee Championship competition began in 1947, over half the champions (Bereolos, Burris, Dickerson, Maddigan, Ralston, Sullivan, Tsitseklis, etc.) have been from the Knoxville/Oak Ridge area. However, it has been years since the championship battle was waged on Knoxville turf. On August 28-30, the Tennessee Open Championship finally returned to the Knoxville area, thanks to the organizational efforts of Pat Knight (and UT having an away game!). The event, hosted at the luxurious Marriott (formerly Hyatt Regency), attracted 218 players – the largest turnout for at least the last decade. Also quite noteworthy is that this is the first time ever that the tournament has made a profit over a thousand dollars. In fact, the tournament – whose profit and loss is generally guaranteed by the TCA as part of the membership benefits – generally does well to break even!

FM Peter Bereolos captured the championship convincingly over decent opposition with a perfect 5-0 score. Similarly, the Amateur Section had a champion with a perfect score, Daniel Kut, and three others tying for 2nd (as in the Open). Ex-champion Dickerson managed a modicum of respect by capturing third place and the Expert Trophy. The Novice Section was won by Ron Glass and Ryan Fitch, who both scored 4.5 points.

The tournament had 107 participants in the main section and additional 112 scholastic players. Its prize fund of \$4,000 received an additional boost from Dr. Katahn who donated another \$300 at the door for the Upset prizes. The beneficiaries of his largesse were: Abdoulaye Diallo's (Open) victory over Michael Gee, Malcolm Estrada's (Under 1800) 654-point difference victory over Andrew Crigger, and Coty Phillips (Novice) victory over Don Holden. See the accompanying crosstables and games for more details of the glory!

Also, those worthies who were deemed to exemplified excellence in their play were Klaus Pohl (Open), Chris Prosser (Amateur) and Willard Vanduser (Novice). These individuals won the \$50 Best Game prizes for their sections. See additional examples of their brilliance at where pgn-formatted games from the Tennessee Open are showcased.

Eric Redheffer of Knoxville had an especially spectacular tournament with victories over the South Carolina contingent of masters: Harris and Pohl. His stellar performance saw him garner enough points to surpass the Expert level, but a previous tournament limited his published rating to 1998, 2 points shy of a titled rating. Another individual who bears watching is Abdoulaye Diallo of Memphis. This 1388 player took out Kent Meadows and Mike Gee (both 1800+) on the road to inflating his rating by

well over 125 points. Definitely check out these spectacular games in this issue and in the Game Section on the TCA website!

An especially noteworthy event occurred at the Open: Dr. Katahn was inducted into the Hall of Fame. The participants recognized his significant and continued contributions to the growth and success of chess by giving him a standing ovation. Whether we make the great moves or not, we do appreciate quality.

2002 Tennessee Open Crosstables Open Section

No.	Name	St	Rate	Rd1	Rd2	Rd3	Rd4	Rd5	Score
1.	BEREOLOS, PETER(1)	TN	2313	W23	W5	W14	W2	W4	5.0
2.	ANDREWS, TODD (2)	TN	2304	W15	W3	W7	L1	W8	4.0
3.	LARSON, GERALD (6)	AL	2093	W18	L2	W9	W13	W7	4.0
4.	REDHEFFER, ERIC(9)	TN	1972	W19	W13	W8	W14	L1	4.0
5.	DICKERSON, LEONARD(7)	TN	2068	W25	L1	W11	D7	W10	3.5
6.	SUICH, JOSHUA (18)	TN	1746	D8	W22	L13	-H-	W16	3.0
7.	CAVENEY, ADAM (5)	GA	2153	W17	W12	L2	D5	L3	2.5
8.	ODY, KYLE (12)	SC	1874	D6	W21	L4	W17	L2	2.5
9.	JONES, ELLIS (13)	TN	1844	W20	L14	L3	D11	W21	2.5
10.	SMITH, PAUL (16)	TN	1757	L13	D19	W15	W18	L5	2.5
11.	TAE, PATRICK (17)	TN	1753	L14	W23	L5	D9	W20	2.5
12.	DIALLO, ABDOULAYE(23)	TN	1388	W16	L7	L17	W20	D15	2.5
13.	HARRIS, NEAL (3)	TN	2211	W10	L4	W6	L3	-U-	2.0
14.	POHL, KLAUS (4)	SC	2209	W11	W9	L1	L4	-U-	2.0
15.	MEADOWS, KENT (11)	TN	1891	L2	D20	L10	W19	D12	2.0
16.	GEE, MICHAEL (14)	TN	1807	L12	L18	W19	W21	L6	2.0
17.	NEWKIRK, ED (15)	TN	1793	L7	W25	W12	L8	-U-	2.0
18.	YATES, DAVID (20)	TN	1533	L3	W16	-H-	L10	-U-	1.5
19.	HAMILTON, ALEX (25)	TN	1234	L4	D10	L16	L15	-B-	1.5
20.	MARELLA, DIVAKORAN(19)	TN	1718	L9	D15	D21	L12	L11	1.0
21.	BRADY, STEPHEN (24)	TN	1349	D22	L8	D20	L16	L9	1.0
22.	TSITSEKLIS, EMANUEL(8)	TN	2012	D21	L6	-U-	-U-	-U-	0.5
23.	WATSON, BRADLEY (10)	TN	1934	L1	L11	-U-	-U-	-U-	0.0
24.	REMEC, IGOR (22)	TN	1440	L5	L17	-U-	-U-	-U-	0.0

Amateur Section

No.	Name	St	Rate	Rd1	Rd2	Rd3	Rd4	Rd5	Score
1.	KUT, DANIEL (12)	TN	1582	W32	W22	W11	W2	W7	5.0
2.	REMEC, MIRKO (13)	TN	1578	W18	W28	W10	L1	W11	4.0
3.	STIDHAM, BRIAN (14)	TN	1564	W24	L14	W27	W12	W10	4.0
4.	SABINE, JAY (21)	TN	1500	W36	D6	W33	W14	D5	4.0
5.	PRESSWOOD, ROBERT(3)	TN	1711	W20	L11	W25	W26	D4	3.5
6.	EDDINS, SCOTT J.(5)	TN	1660	W21	D4	W12	L7	W13	3.5
7.	KING, ALEX (6)	TN	1658	D17	W29	W16	W6	L1	3.5
8.	MILLER, LEE (4)	TN	1670	-H-	L16	W28	D9	W26	3.0

Amateur Section (con't)

No.	Name	St	Rate	Rd1	Rd2	Rd3	Rd4	Rd5	Score
9.	HYDZIK, ROBERT J.(9)	TN	1614	W31	L12	D20	D8	W16	3.0
10.	CANTRELL, SCOTT(10)	TN	1606	X39	W27	L2	W21	L3	3.0
11.	BERTRAM, DAVID (15)	TN	1543	W35	W5	L1	W22	L2	3.0
12.	HARBERT, CARLOS(32)	TN	1336	W23	W9	L6	L3	W25	3.0
13.	ESTRADA, MALCOLM(40)	TN	855	W26	D33	-H-	W18	L6	3.0
14.	MIRANI, HARESH (1)	TN	1714	W34	W3	-H-	L4	-U-	2.5
15.	SMITH, TREY (7)	TN	1622	D30	D17	L26	D31	W28	2.5
16.	WRIGHT, JOE (16)	TN	1528	D33	W8	L7	W29	L9	2.5
17.	HUMAN, MATTHEW (17)	TN	1514	D7	D15	L21	W20	D22	2.5
18.	CRIGGER, ANDREW(18)	TN	1509	L2	W30	W32	L13	D21	2.5
19.	AYCOCK, JOHN (20)	TN	1506	L22	L32	D36	W35	W31	2.5
20.	ROSE, PHILIP (26)	TN	1414	L5	W34	D9	L17	W32	2.5
21.	JUSTICE, DAVID (27)	TN	1413	L6	W23	W17	L10	D18	2.5
22.	DIALLO, ADAM (35)	TN	1112	W19	L1	W24	L11	D17	2.5
23.	CHARLTON, CLINT(11)	TN	1588	L12	L21	D35	W36	D27	2.0
24.	SAMS, MICHAEL A.(19)	TN	1508	L3	W31	L22	L25	W34	2.0
25.	TATE, KELLES (22)	TN	1490	L28	W35	L5	W24	L12	2.0
26.	PROSSER, CHRIS (23)	TN	1465	L13	W36	W15	L5	L8	2.0
27.	WADE, JONATHAN(28)	TN	1411	W40	L10	L3	-H-	D23	2.0
28.	TOWNSEND, LATREZE(38)	TN	1007	W25	L2	L8	W30	L15	2.0
29.	HEDGER, WAYNE (8)	TN	1620	-H-	L7	W30	L16	-U-	1.5
30.	FOX, MATTHEW (29)	TN	1409	D15	L18	L29	L28	W36	1.5
31.	MCDANEL, BRAD (30)	NC	1403	L9	L24	W34	D15	L19	1.5
32.	SUICH, VICTOR (33)	TN	1328	L1	W19	L18	-H-	L20	1.5
33.	LAHDE, PETER (2)	TN	1711	D16	D13	L4	-U-	-U-	1.0
34.	PRIER, CEDRIC (37)	TN	1085	L14	L20	L31	-B-	L24	1.0
35.	DAVIS, WILLIAMS (34)	TN	1281	L11	L25	D23	L19	-U-	0.5
36.	HARBERT, CHRIS (36)	TN	1101	L4	L26	D19	L23	L30	0.5
37.	REMEC, IGOR (24)	TN	1440	-U-	-U-	-U-	-U-	-U-	0.0
38.	REMEC, IGOR (25)	TN	1440	-U-	-U-	-U-	-U-	-U-	0.0
39.	RANDELS, DALE (39)	TN	991	L27	-N-	-U-	-U-	-U-	0.0

Novice Section

No.	Name	St	Rate	Rd1	Rd2	Rd3	Rd4	Rd5	Score
1.	GLASS, RON (9)	TN	1266	W46	W29	W27	W6	W11	5.0
2.	FITCH, RYAN (1)	TN	1350	W50	W5	W36	W18	D3	4.5
3.	ROSE, DANIEL (8)	TN	1277	W51	W19	W17	W4	D2	4.5
4.	PHAY, GAINER (11)	TN	1247	W47	W7	W23	L3	W13	4.0
5.	GRIZZARD, BOBBY(19)	TN	1108	W44	L2	W24	W41	W16	4.0
6.	HOWARD, ADAM (24)	TN	1073	W57	W16	W12	L1	W19	4.0
7.	LAFEVER, JUSTIN(28)	TN	1051	-B-	L4	W42	W36	W18	4.0
8.	DUNN, JOSHUA (2)	TN	1339	D22	W35	W30	L11	W23	3.5
9.	NELSON, BRANDON(4)	TN	1304	D33	L22	W49	W46	W34	3.5
10.	THOMTE, JOHN (6)	TN	1298	W34	W28	L18	-H-	W33	3.5
11.	GARNETTE, WILLIAM(7)	TN	1296	D30	W33	W31	W8	L1	3.5
12.	OWENS, TIM (10)	TN	1262	W41	W20	L6	D21	W35	3.5
13.	JONES, ALLEN (15)	TN	1183	W24	D31	W22	W15	L4	3.5

Novice Section (con't)

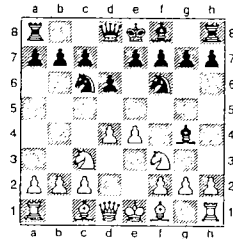
TENNESSEE OPEN (OPEN SECTION)

No.	Name	St	Rate	Rd1	Rd2	Rd3	Rd4	Rd5	Score
14.	BULINGTON, CARTER(48)TN	746	-B-	L18	D29	W31	W27	3.5	
15.	HOLDEN, DON (3)...TN	1308	L40	W47	W51	L13	W38	3.0	
16.	RAY, JAMES (12)...TN	1230	W42	L6	W39	W32	L5	3.0	
17.	ALLISON, JACE (16).TN	1156	W25	W40	L3	L23	W41	3.0	
18.	MCDANEL, BRITT(17).NC	1143	W43	W14	W10	L2	L7	3.0	
19.	CLEMENT, WILLIAM A.(18)TN	1110	W48	L3	W40	W25	L6	3.0	
20.	PAULAUSKAS, TIM(23)TN	1078	W53	L12	L25	W55	W43	3.0	
21.	HORWITZ, MATTHEW(26)TN	1053	W55	L36	W52	D12	-H-	3.0	
22.	KEITA, FALILOU (32) TN	994	D8	W9	L13	D26	W45	3.0	
23.	BAILEY, DEMETTRESS(38)TN	943	W45	W37	L4	W17	L8	3.0	
24.	LETATE, JOE (39)...TN	937	L13	W53	L5	W44	W36	3.0	
25.	SAHOORY, SAMER (42).TN	912	L17	W54	W20	L19	W37	3.0	
26.	VANDUSER, WILLARD(5)TN	1300	W38	L27	D46	D22	D32	2.5	
27.	MARTINDALE, CHRIS(22)TN	1082	W52	W26	L1	D35	L14	2.5	
28.	CORNETT, SHANE (25)TN	1069	W60	L10	L41	D47	W48	2.5	
29.	MARSH, MATTHEW (27)TN	1053	W54	L1	D14	L33	W47	2.5	
30.	STOCKHEM, FRANCOIS(29)TN	1035	D11	W49	L8	L34	W46	2.5	
31.	SNOW, CHRIS (30)...TN	1010	W56	D13	L11	L14	W49	2.5	
32.	FIELD, MIKELLE(36).TN	960	L36	W56	W37	L16	D26	2.5	
33.	RANDELS, SAMUEL(41)TN	914	D9	L11	W50	W29	L10	2.5	
34.	REMEC, MARK (43)...TN	880	L10	W45	-H-	W30	L9	2.5	
35.	MCCANN, DILLON E.(51).TN	710	-B-	L8	W38	D27	L12	2.5	
36.	CAVENEY, JERRY(13).TN	1209	W32	W21	L2	L7	L24	2.0	
37.	MARTINDALE, TIM(14)TN	1185	W39	L23	L32	W40	L25	2.0	
38.	RANDELS, DALE (33).TN	991	L26	W43	L35	W42	L15	2.0	
39.	PRIER, KEVIN (37)...TN	958	L37	W57	L16	L45	W53	2.0	
40.	PHILLIPS, COTY (40)TN	915	W15	L17	L19	L37	W54	2.0	
41.	SIMPSON, JONATHAN(44)TN	846	L12	W55	W28	L5	L17	2.0	
42.	MARSH, DAVID (46)...TN	794	L16	W50	L7	L38	W55	2.0	
43.	ALLISON, GARIN (47)TN	784	L18	L38	W56	W51	L20	2.0	
44.	NELSON, JOHN (50)...TN	711	L5	L46	-B-	L24	W51	2.0	
45.	ENGLAND, JUSTIN(56).TN	nnn	L23	L34	W57	W39	L22	2.0	
46.	ANNE, ABOU (35)...TN	965	L1	W44	D26	L9	L30	1.5	
47.	BURKS, LEE (45)...TN	838	L4	L15	W53	D28	L29	1.5	
48.	DAVE, RUSHIL (49)...TN	723	L19	L51	-H-	W52	L28	1.5	
49.	HAMMONDS, BLAKE(57).GA	nnn	-H-	L30	L9	W50	L31	1.5	
50.	HALL, KENNETH (31).TN	1006	L2	L42	L33	L49	W52	1.0	
51.	BYNUM, KIPP (34)...TN	969	L3	W48	L15	L43	L44	1.0	
52.	CORNETT, PAULA(52).TN	504	L27	-B-	L21	L48	L50	1.0	
53.	BELL, JOSHUA (53)...TN	nnn	L20	L24	L47	W57	L39	1.0	
54.	PAVIA, DEREK (58)...CA	nnn	L29	L25	L55	W56	L40	1.0	
55.	PERRY, BRANDI (59).TN	nnn	L21	L41	W54	L20	L42	1.0	
56.	DAVIS, MICHAEL(54).TN	nnn	L31	L32	L43	L54	D57	0.5	
57.	SIMONTON, ANDREW(60)TN	nnn	L6	L39	L45	L53	D56	0.5	
58.	PAYNE, SAM (20)...TN	1105	-U-	-U-	-U-	-U-	-U-	0.0	
59.	PRIER, CEDRIC (21).TN	1085	-U-	-U-	-U-	-U-	-U-	0.0	
60.	DEASY, CHRIS (55)...TN	nnn	L28	-U-	-U-	-U-	-U-	0.0	

		B41		D00
<input type="checkbox"/>	Diallo, A (1388)		<input type="checkbox"/>	Meadows, K (1891)
<input checked="" type="checkbox"/>	Gee, M (1807)		<input checked="" type="checkbox"/>	Smith, P (1757)
	Tennessee Open (Open)	2002		Tennessee Open (Open)
	[Upset Prize]			
	1.e4 c5 2.Nf3 a6 3.d4 cxd4 4.Nxd4 e6			1.e4 d5 2.d4 dxe4 3.Nc3 Nf6 4.f3 exf3
	5.Be2 Qc7 6.a3 Nf6 7.Nc3 Bd6 8.Bf3			5.Nxf3 Bf5 6.Ne5 Nbd7 7.g4 Be6 8.Qf3
	Nc6 9.Be3 Ne5 10.Be2 0-0 11.f4 Ng6			Nxe5 9.dxe5 Bd5 10.Nxd5 Qxd5 11.Bg2
	12.e5 Bxe5 13.fxe5 Qxe5 14.Bf2 Ng4			14.Qxe3 Nxe3 15.Bxb7 Nxd1 16.Rxd1 e5
	15.Nf3 Qa5 16.0-0 Nxf2 17.Rxf2 d5			17.Bc6+ Ke7 18.Bxa8 g6 19.Bc6 Bh6+
	18.b4 Qc7 19.Qd2 Bd7 20.Raf1 Rac8			20.Kb1 Rd8 21.Rf1 f5 22.c4 Rd2 23.h4
	21.Nb1 Nf4 22.Bd3 e5 23.Nxe5 Nh3+			e4 24.h5 e3
	24.gxh3 Qxe5 25.Bf5 Bxf5 26.Rxf5 Qe4			0-1
	27.Qxd5 Qe3+ 28.Kh1 Qe8 29.c4 b5			
	30.c5 Rc6 31.Nc3 g6 32.R5f4 Re6			
	33.Ne4 f5 34.Ng5 Qc6 35.Qxc6 Rxc6			
	36.Rd1 h6 37.Nf3 g5 38.Rfd4 Re6			
	39.Re1 Re4 40.Rdxe4 fxe4 41.Nd2 Re8			
	42.Nxe4 Kg7 43.Kg2 Kg6 44.c6 Rc8			
	45.Rc1 Rc7 46.Nd6			
	1-0			
<input type="checkbox"/>	Divakorian, M (1718)		<input type="checkbox"/>	Marella, D (1718)
<input checked="" type="checkbox"/>	Diallo, A (1388)		<input checked="" type="checkbox"/>	Tae, P (1753)
	Tennessee Open (Open)	2002		Tennessee Open (Open)
	1.e4 c6 2.d4 d5 3.exd5 cxd5 4.f4 Nf6			1.e4 e5 2.Nf3 f5 3.Bc4 fxe4 4.Nxe5 d5
	5.Nf3 Nc6 6.c3 e6 7.Bd3 Be7 8.0-0			5.Qh5+ g6 6.Nxg6 hxg6 7.Qxh8 Kf7
	Qb6 9.Qe2 0-0 10.Kh1 Bd7 11.b3 Rac8			8.Qd4 Be6 9.Bb3 Nc6 10.Qe3 Bg7 11.c3
	12.Ne5 a6 13.Bb2 Rc7 14.Nd2 Qa7			Nf6 12.Na3 Ne5 13.h3 Nd3+ 14.Kf1 Qh8
	15.h3 b5 16.b4 Nd8 17.g4 Ne8 18.g5			15.Rg1 Bh6 16.Qe2 Nh5 17.Nb5 Ng3+!
	Nd6 19.Ng4 Nf5 20.Bxf5 exf5 21.Nh6+?			18.fxg3 Qf6+
	gxh6 22.Qxe7 Re8 23.Qxe8+ Bxe8			0-1
	24.gxh6 f6 25.Rg1+ Bg6 26.h4 Kf8			
	27.Rg2 Ne6 28.Rf1 Re7 29.Nb3 Qc7			
	30.Rgf2 Bh5 31.Nc5 Nxc5 32.bxc5 Re3			
	33.c6 Rh3+ 34.Kg2 Rxh4 35.Re1 Rxf4			
	36.Ba3+ Kg8 37.Rg1 Rg4+ 38.Kf1 Rxg1+			
	39.Kxg1 Bg4 40.Kf1 Qxc6 41.Bc5 Qe6			
	42.Rb2 Qe3 43.Rb3 Bh3#			
	0-1			
<input type="checkbox"/>	Newkirk, E (1793)		<input type="checkbox"/>	Diallo (1388)
	Tennessee Open (Open)	2002		Tennessee Open (Open)
	1.d4 d5 2.c4 c6 3.Nc3 Nf6 4.Bg5 Nbd7			1.d4 d5 2.c4 c6 3.Nc3 Nf6 4.Bg5 Nbd7
	5.Nf3 Qc7 6.e3 e6 7.Rc1 Be7 8.Bd3 0-0			5.Nf3 Qc7 6.e3 e6 7.Rc1 Be7 8.Bd3 0-0
	9.0-0 dxc4 10.Bxc4 e5 11.Qc2 exd4			9.0-0 dxc4 10.Bxc4 e5 11.Qc2 exd4
	12.exd4 Nb6 13.Bb3 Qd6 14.Rfe1 h6			12.exd4 Nb6 13.Bb3 Qd6 14.Rfe1 h6
	15.Bh4 Nbd5 16.Bg3 Qd8 17.a3 Be6			15.Bh4 Nbd5 16.Bg3 Qd8 17.a3 Be6
	18.Ba2 Qd7 19.Bb1 g6 20.Ne5 Qe8			18.Ba2 Qd7 19.Bb1 g6 20.Ne5 Qe8
	21.Nxg6! fxg6 22.Rxe6 Qf7 23.Rce1 Kg7			21.Nxg6! fxg6 22.Rxe6 Qf7 23.Rce1 Kg7
	24.Nxd5 Nxd5 25.Rxg6+ Kh8 26.Rxh6+			24.Nxd5 Nxd5 25.Rxg6+ Kh8 26.Rxh6+
	Kg8 27.Rh7 Qf6 28.Rhxe7 Nxe7 29.Qh7#			27.Rh7 Qf6 28.Rhxe7 Nxe7 29.Qh7#
	1-0			1-0

Redheffer, E (1978) – Pohl, K (2204) [B00]
Tennessee Open, 2002
[notes by Mark Ishee]

1.e4 Nc6 2.Nf3 d6 3.d4 Nf6 4.Nc3 Bg4



An "unusual" opening variation that nevertheless gets played fairly often even among grandmasters. Notable Black practitioners include Kavalek, Miles, Hodgson, and (especially) Benjamin.

5.d5

This move signals that White wants to refute Black's nonstandard opening. He invites Black to pile up on the pinned knight on f3 with ...Ne5, planning a tactical refutation.

5.Be2 is less "punishing" but may be stronger. For example, 5...e5 6.d5 Ne7 7.h3 Bxf3 8.Bxf3 Ng6 9.h4 h6 10.h5 Ne7 11.Be3 c5 12.a4± and Black is being pushed off the board (Peng Xiaomin-Fadi, Asia 1998);

5.Bb5 also makes sense.

5...Nb8!

Black does not fall into the trap, and instead maneuvers to redeploy his knight via d7.

5...Ne5? is bad for Black after 6.Nxe5!

A) 6...Bxd1 7.Bb5+ c6 (7...Nd7 8.Bxd7+ Qxd7 9.Nxd7 Kxd7 10.Kxd1 leaves White a piece ahead.) 8.dxc6 dxe5 9.c7+ Qd7 10.Bxd7+ Kxd7 11.Kxd1 Kxc7 12.Ke2± White has an edge in this endgame because of his queenside pawn majority.;

B) 6...dxe5 7.Qxg4! Nxf4 8.Bb5+ Qd7 (8...c6 9.dxc6 a6 10.c7+ axb5 11.cxd8Q+ Rxd8 12.Nxb5±) 9.Bxd7+ Kxd7 10.h3 Nf6 11.Be3± White has more space and better coordinated pieces.]

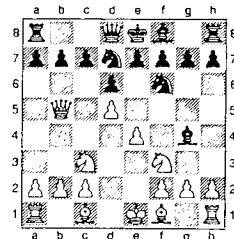
6.Qd3

A novelty. Frequently played in this position instead is either 6.h3 or 6.Be2.

6...Nbd7

A logical reply. Black does not fear Qb5, so he does not spend a tempo on 6...a6 to prevent it.

7.Qb5?!



Evidently this is the point of 6.Qd3: White still has in mind to refute Black's unusual opening. However, he only ends up wasting time.

7...a6 8.Qb4

A very awkward square for the queen.

[8.Qxb7 -- Like it or not, White has to try this now. 8...Nc5 9.Qb4 (9.Qc6+? Bd7 traps the queen) 9...e5 certainly gives Black a nice looking position, but does he have enough compensation for a pawn?]

8...e5 9.dxe6 Bxe6 10.Ng5?!

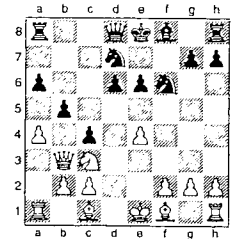
10.Qxb7? is bad now after 10...Nc5 11.Qb4 d5! (threatening ...Nd3+);

10.Qd4 would bring the queen back into the game, keeping the position more or less balanced.

10...b5 11.Nxe6 fxe6 12.a4?

White has been trying to demonstrate an advantage on the light squares, but finally he loses material because of his misplaced queen. Still possible instead is 12.Qd4.

12...c5 13.Qb3 c4



14.Bxc4

Relatively best under the circumstances.

14.Qb4? d5 traps the queen.;

14.Qa3 d5 15.Qa2 b4 16.Nd1 Nxe4 gives Black an extra pawn and a very strong position.

14...bxc4 15.Qxc4

So Black has won a piece for two pawns, but he faces technical difficulties because he is underdeveloped and his king is in the center.

15...Qe7 16.Qc6 Rb8 17.0-0

[17.Qxa6 picks up a third pawn for the piece. White should do it even though Black stands better after 17...Nc5 18.Qe2 (18.Qc6+ Qd7 19.Qxd7+ Nfxd7 is OK for Black) 18...Qb7 19.f3 Be7± followed by ...0-0.]

17...Rb6 18.Qc4 Ne5 19.Qe2 Rc6 20.a5 g6 21.f4 Ned7 22.e5 dxe5 23.fxe5 Qc5+ 24.Kh1 Nd5 25.Bg5 Be7!

[25...Nxc3 is dangerous for Black after 26.Qf3! Be7 27.Bxe7 Kxe7 28.Qf7+ Kd8 29.bxc3 followed by Rad1]

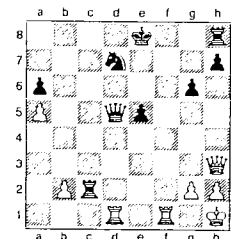
26.Nxd5 Bxg5 27.Qg4

[27.Nf6+ Nxf6 28.exf6 0-0!+]

27...Qxd5 28.Qxg5 Qxe5 29.Qh6 Rxc2 30.Rae1 Qd5

[30...Rf2! is also possible here (followed by ...Rh8).]

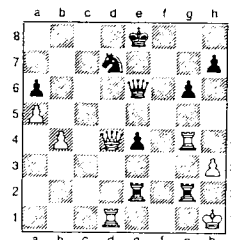
31.Qh3 e5 32.Rd1



32...Rf8!

Black seizes the initiative by taking advantage of White's back-row weakness to bring his last piece into the battle.

33.Rg1 Qf7 34.Qd3 Rc6 35.h3 Qe6 36.Rge1 Rf2 37.Re4 Rcc2 38.Rg4 Rce2 39.b4 e4 40.Qd4 Rxc2



41.Rf1? Allowing mate in three.

[41.Qh8+ is White's last (slim) chance to save the game. After 41...Nf8 42.Rd8+! Kxd8 43.Qxf8+ gives him a lot of checks. However, Black escapes with 43...Kc7 44.Qg7+ Kb8 45.Qh8+ Qc8!

A) 46.Qe5+ Qc7 47.Qe8+ (47.Qh8+ Kb7 48.Rxg2 Re1+ 49.Rg1 Rxg1+ 50.Kxg1 Qg3+ etc.) 47...Ka7 48.Rxg2 Re1+ 49.Rg1 Rxg1+ 50.Kxg1 Qg3+ 51.Kf1 Qxh3+ and Black wins;

B) 46.Qxc8+ 46...Kxc8 47.Rxg2 Rxg2 48.Kxg2 and the pawn ending is an easy win for Black; for example, 48...Kc7 49.Kf2 Kc6 50.Ke3 Kb5 51.Kxe4 Kxb4 52.Kf4 Kxa5 53.Kg5 Kb4 54.Kh6 a5 55.Kxh7 a4 56.Kxg6 a3 57.h4 a2 58.h5 a1Q 59.h6 Qh8 etc.]

41...Rh2+ 42.Kg1 Qxc4+ 43.hxc4 Reg2#

Charlton - Harbert [D20]

2002 Tennessee Open

(Amateur)

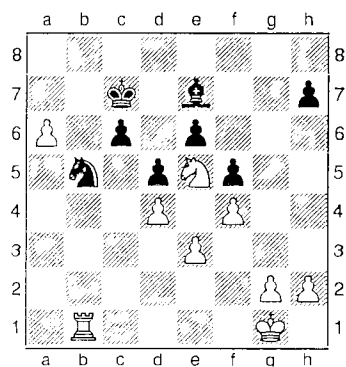
1.d4 d5 2.c4 dxc4 3.Nc3 Nf6
4.e4 Nc6 5.Nf3 Bg4 6.Be3 e6
7.a3 Be7 8.Bxc4 Qd7 9.Bb5 a6
10.Ba4 b5 11.Bb3 Rd8 12.0-0
Bxf3 13.Qxf3 Nxd4 14.Bxd4
Qxd4 15.Rad1 Qe5 16.Rxd8+
Bxd8 17.Rd1 0-0 18.h3 c5
19.Qd3 Bc7 20.Qf3 c4 21.Bc2
Nh5 22.Qg4 Qh2+ 23.Kf1 Nf4
24.f3 Bb6 25.Ke1 Qg1+ 0-1

Bertram - Davis [D30]

2002 Tennessee Open

(Amateur)

1.d4 d5 2.c4 e6 3.Nf3 Nc6 4.e3
Nf6 5.Bd2 Be7 6.c5 Ne4 7.Bd3
f5 8.b4 a6 9.0-0 Bd7 10.b5
axb5 11.Bxb5 Na7 12.Bxd7+
Qxd7 13.Ne5 Qd8 14.Qh5+ g6
15.Nxg6 Kd7 16.Nxh8 Qxh8
17.f3 Nxd2 18.Nxd2 c6 19.f4
Rg8 20.Nf3 Kc7 21.Qf7 Qg7
22.Qxg7 Rxc7 23.a4 b6
24.cxb6+ Kxb6 25.a5+ Kc7
26.a6 Rg8 27.Ne5 Ra8 28.Rfc1
Rb8 29.Rab1 Rxb1 30.Rxb1
Nb5



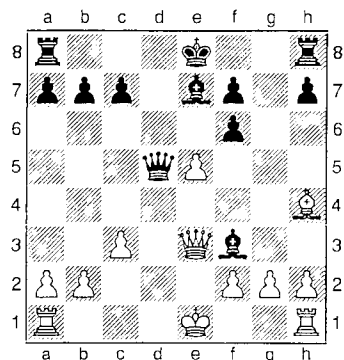
31.Nxc6! Kxc6 32.Rxb5 Kxb5
33.a7 Kc4 34.a8Q Kd3 35.Kf2
Bh4+ 36.g3 Bxg3+ 1-0

Harbert - Hydzyk [C11]

2002 Tennessee Open

(Amateur)

1.d4 e6 2.e4 d5 3.Nc3 dxe4
4.Nxe4 Nf6 5.Bg5 Be7 6.Bd3
Nc6 7.Nf3 Nb4 8.c3 Nxd3+
9.Qxd3 Qd5 10.Nxf6+ gxf6
11.Bh4 e5 12.Qe3 Bg4 13.dxe5
Bxf3?



14.exf6! Qe4 15.Qxe4 Bxe4
16.fxe7 Rg8 17.0-0-0 Rg6
18.Rd8+ 1-0

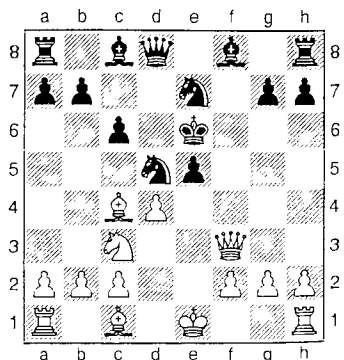
Cantrell, S - Wade, J [C57]

2002 Tennessee Open

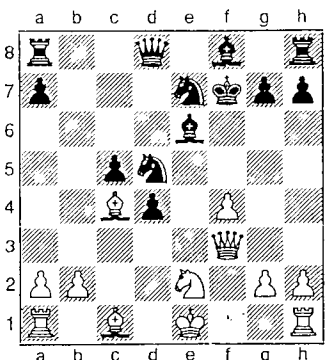
(Amateur)

[notes by Mark Ishee]

1.e4 e5 2.Nf3 Nc6 3.Bc4 Nf6
4.Ng5 d5 5.exd5 Nxd5 6.Nxf7
Kxf7 7.Qf3+ Ke6 8.Nc3 Nce7
9.d4 c6



10.Qe4!?N [10.Bg5] 10...Kf7
11.f4? [11.dxe5 is best,
although after 11...Be6+ Black
has a good position.] 11...exd4
12.Ne2 Bf5 13.Qf3 b5 14.Bb3
c5 15.c4 bxc4 [15...dxc3
16.Nxc3 c4+] 16.Bxc4 Be6



17.f5! Nxf5? 18.g4 Nc7?
[18...Kg8 19.gxf5 Bf7 is better.
Black would have a chance to
emerge with extra material
eventually.] 19.Bxe6+ Nxe6
20.Qxf5+ Qf6 21.Qe4!? A risky
move. [21.Rf1 Qxf5 22.Rxf5+
Kg6+] 21...Qd8? [21...Qh4+!]
22.0-0+ Now White's attack
prevails after all. 22...Ke7
23.Bg5+ Kd6 24.Bxd8 Rxd8
25.Rf5 Ke7 26.Nf4 Rd6 27.Re1
1-0

Mirani, H - Sabine, J [B15]

2002 Tennessee Open

(Amateur)

1.e4 c6 2.d4 d5 3.Nc3 g6 4.Bf4
Bg7 5.exd5 cxd5 6.Nf3 Bg4
7.Be2 Nc6 8.Ne5 Bxe2 9.Nxe2
Nh6 10.c3 f6 11.Bxh6 Bxh6
12.Ng4 Bg7 13.Nf4 Qd6 14.Qf3
Rd8 15.0-0-0 f5 16.Ne3 Bh6
17.Nd3 e5 18.Nc5 Qe7 19.Kb1
e4 20.Qh3 Bxe3 21.Qxe3 0-0
22.h4 b6 23.Nb3 f4 24.Qh3

Qd7 25.g4 Rf7 26.h5 gxh5
27.Qxh5 Rg7 28.g5 Qf7
29.Qh4 Rd6 30.Rdg1 Qg6
31.a4 Qf5 32.Qg4 Qxg4
33.Rxg4 f3 34.Kc2 Rdg6
35.Kd2 Rxg5 36.Rxg5 Rxg5
37.c4 Nb4 38.c5 bxc5 39.dxc5
Kf7 40.Nd4 a6 41.Ke3 Nd3
42.b3 Nxc5 0-1

**Best Game Prize
(Amateur Section)**

Prosser, C - Smith, T [A07]

2002 Tennessee Open

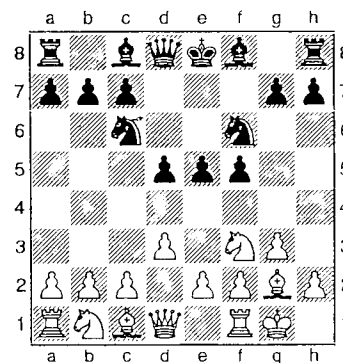
(Amateur)

[notes by Mark Ishee]

1.Nf3 d5 2.g3 Nc6!? 3.Bg2

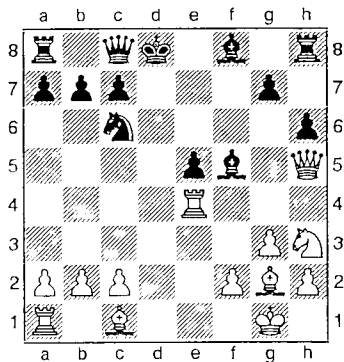
[3.d4!]

3...e5 4.0-0 f5 5.d3 Nf6



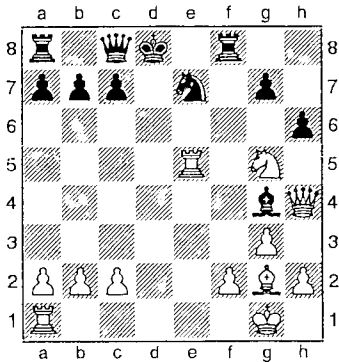
This is the Austrian Attack vs.
the Pirc Defense with colors
reversed, a very risky (probably
overly aggressive) plan for
Black. 6.Nbd2?! [6.c4! would
be the most logical continuation.
6...dxc4 (6...d4 Trying for a
Benoni formation; however,

thanks to his extra move (0-0) White can immediately expand on the queenside with 7.b4! because 7...Bxb4 would be answered effectively with 8.Nxe5) 7.Qa4 Bd6 8.Qxc4 is a nice sicilian-type position.] 6...Be6 7.Ng5 Bd7? Black never recovers from this mistake. [7...Bg8 is essential to keep Black's position coordinated. For example, after 8.e4 h6! 9.exd5 (9.Nh3 Be6 and Black is OK) 9...Bxd5 10.Ng3 Bd6 is fine for Black.] 8.e4 dxe4 9.dxe4 h6 10.Nh3 fxe4 11.Re1? [11.Nxe4 right away is better because after 11...Nxe4? 12.Qh5+ Ke7 13.Bxe4± White has a big advantage.] 11...Qc8 [11...Bg4! 12.f3 Bc5+ 13.Kh1 exf3 14.Nxf3 Qxd1 15.Rxd1 0-0 Black has a big advantage.] 12.Nxe4 Nxe4? [12...Bg4! is a nice in-between move that bumps White's queen off the d1-h5 diagonal.] 13.Qh5+ Kd8 14.Rxe4 Bf5



15.Re1 [15.Bg5+ Be7 16.Rd1+ Bd7 ties Black up in knots. White has several good ways to continue, including 17.Bxe7+ Kxe7 18.Rxe5+ Nxe5 19.Qxe5+ Kf8 (19...Kd8 20.Qxg7 threatens

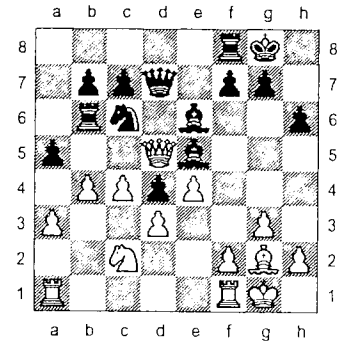
both Qxh8 and Bxb7) 20.Bxb7! Qxb7 21.Rxd7 with a mating attack.] 15...Bg4 16.Qh4+ [16.Bg5+ is also good, e.g. 16...Be7 17.Rad1+! Bxd1 18.Rxd1+ Nd4 19.Bxe7+ Kxe7 20.Qxe5+ Ne6 21.Nf4 and White wins.] 16...Be7 17.Bg5 Bxg5 18.Nxg5 White has a winning position. 18...Ne7 19.Rxe5 [19.Nf7+ is also good of course, but White is planning a sacrifice on e7 instead.] 19...Rf8



20.Rxe7! Kxe7 21.Re1+ Kf6 [21...Kd6 allows a nice finish with 22.Ne4+ Kc6 23.Nd6+! Kxd6 24.Qe7#] 22.Nh7+ Kf7 23.Bd5+ Kg6 24.Nxf8+ Qxf8 25.Qxg4+ Kh7 26.Be4+ Kh8 27.Qg6 Qg8 28.Bf5 Rd8 29.Bd3 Rf8 30.Re7 Rf6 31.Re8 Rxg6 32.Rxg8+ Kxg8 33.Bxg6 1-0

A07
 □ Randels (991)
 ■ Vanduser (1300)
 Tennessee Open (Novice) 2002
 [Notes by Peter Lahde]

1.Nf3 d5 2.g3 Nc6 3.Bg2 e5 4.d3 Nf6 In the game that Prosser took the best game prize the game continued with f5. The text is sounder. 5.0-0 Be7 6.Bg5 0-0 7.Nbd2 h6 8.Bxf6 White has no choice as otherwise the Bishop would be trapped. Bxf6 9.c3 Be6 10.e4 d4 11.a3 Qd7 12.c4 a5 13.Ne1 Bg5 14.Ndf3 Bg4 15.Qb3 Be7 16.Qb5 But not 16.Qxb7 as Rfb8 would trap the Queen. Bd6 17.Nc2 Ra6 18.b4 Again 18.Qxb7 would not work because of Rb8. Rb6 19.Qd5? This traps the Queen. Instead 19.Qa4 is indicated. Be6 20.Nxe5 What else is there? Bxe5



This wins a piece, but the alternative Nxe5 wins the Queen. Then White could continue 21.Qxa5 Ra6 22.Qb5 but now c6! traps the Queen. 21.Qxd7 Bxd7 22.b5 Ne7 23.f4 Bd6 24.e5 Bc5 25.h3 c6 26.a4 Nf5 27.Rf3 f6 28.Re1 cxb5 29.axb5 Re6 30.g4? Nh4 31.Rg3 Nxg2 32.Rxg2 fxe5 33.f5 Re7 34.Re4 b6 35.Ne1 Bc8! An excellent move that was preceded by b6 to reposition the Bishop to the a8-h1 diagonal which is the winning idea. 36.Ree2 Rfe8 37.f6? gxf6 38.Ref2 Rf8 39.h4? Rg7 40.Rg3 Rxg4 41.Rfg2 Rxg3 42.Rxg3+ Kf7 43.Kh2 Bb7 44.h5 e4 45.Rg6 Bd6+ 46.Kh1 Rg8 0-1

B08
 □ Field, M (962)
 ■ Martindale, T (1185)
 Tennessee Open (Novice) 2002
 [Notes by Peter Lahde]

1.e4 d6 2.d4 Nf6 3.Nc3 g6 4.Nf3 Bg7 5.Bg5 0-0 6.e5?! This advance seems premature. ECO gives only 6.Qd2. dxe5 7.dxe5 Ng4 8.Qxd8 Rxd8 9.Bxe7 Re8 10.Nd5!? This may be the only way to justify it as Nxc7 is threatened. Nxe5 An interesting conclusion would be 10...c6! 11.Nc7 Rxe7 12.h3? Nxe5 13.Nxa8 Nxf3++ 14.Kd1 Re1 mate! But that would not be forced. 11.Nxe5 Bxe5 12.0-0 Nc6 13.Bf6 Bf5 14.Bd3 Nd4 15.Bxf5 Nxf5 16.Rhe1 c6 17.Bxe5 cxd5 18.Bc3 d4 19.Rxe8+ Rxe8 20.Bxd4 Nxd4 21.Rxd4 b5 22.Rb4 a6 23.c4 Re4 24.Kd2 Kg7 25.f3 Re5 26.a4 bxc4 27.Rxc4 Rd5+ 28.Kc3 a5 29.b4 axb4+ 30.Rxb4 Rd1 31.a5 Kf6 32.Rb6+ Ke5 33.Rb7 f5 34.a6 Rc1+ 35.Kb2 Rc8 36.a7 Ra8 37.Rxh7 Kf4 38.Kb3 Ke5 39.Kb4 g5 40.Kb5 Kf6 41.Kb6 Kg6 42.Rd7 1-0

C41
 □ Dave, R (723)
 ■ Cornett, P (504)
 Tennessee Open (Novice) 2002

1.e4 e5 2.Nf3 d6 3.Bc4 Nf6 4.d3 g6 5.Ng5 d5 6.exd5 Nxd5 7.0-0 Qd7 8.Qf3 Qf5 9.Qxd5 Be6 10.Qxb7 Bxc4 11.Qxa8 Qc8 12.dxc4 Bh6 13.Re1 0-0 14.Rxe5 Qg4 15.Nc3 f6 16.h3 Qd7 17.Rb5 fxg5 18.Rxb8 Qe7 19.Be3 Rxb8 20.Qxb8+ Kf7 21.Qxa7 Bg7 22.Nd5 Qd6 23.Bxg5 Bxb2 24.Re1 Be5 25.a4 Ke6 26.Bf4 Kf5 27.Rxe5+ Qxe5 28.Bxe5 Kxe5 29.Qxc7+ Kd4 30.Nf4 Kc3 31.Qe5+ Kxc2 32.Qd4 g5 33.Qd3+ Kb2 34.Ne2 h5 35.Qc3+ 1-0

B07
 Sahoury (912)
 Allison (1156)
 Tennessee Open (Novice) 2002
[Notes by Peter Lahde]

1.e4 d6 2.Bc4 Nf6 3.d3 g6 4.Nf3 Bg7
 5.0-0 0-0 6.Bg5 Nxe4! 7.c3 Nf6
 8.Nbd2 c5 9.Ne4 Nxe4 10.dxe4 Nc6
 11.Rb1 Bg4 12.h3 Bxf3 13.Qxf3 Ne5
 14.Qe2 a6 15.Bd5 Qc7 16.f4 Nc6 17.f5
 Kh8 18.g4 Ne5 19.f6 exf6 20.Bxf6
 Rab8 21.g5 Qd7 22.Kh2 b5 23.Rf4 c4
 24.a3 Nd3 25.Bxg7+ Kxg7 26.Rf6 Rbe8
 27.Rbf1 Re7 28.b3 Qc7 29.h4 Nc5
 30.bxc4 bxc4 31.Qxc4 Rxe4! 32.Bxe4
 d5+ 33.Kh3 dxc4 34.Bd5 Qd7+ 35.Be6
 Nxe6 36.Kh2 Qd2+ 37.R1f2 Qxc3
 38.R6f3 Qe5+ 39.Kg1 Nxc5 40.hxc5
 Qxg5+ 41.Kf1 f5 42.Rc2 Rc8 43.Rfc3
 Qf4+ 44.Kg2 h5 45.a4 g5 46.a5 Rc5
 47.Rf2 Qd4 48.Rcf3 Rxa5 49.Rxf5 Rxf5
 50.Kh1 Rxf2 White was hoping for Qxf2
 which would be stalemate! 51.Kg1 Qe3
 52.Kh1 Qe1#
 0-1

B50
 Vanduser (1300)
 Martindale (1082)
 Tennessee Open (Novice) 2002
[Notes by Peter Lahde]

1.e4 c5 2.Nf3 d6 3.Bc4 Nc6 4.Nc3 Nf6
 5.0-0 g6 6.h3 Bg7 7.d3 Qb6 8.Nd5
 Nxd5 9.Bxd5 Bd7 10.c3 Ne5 11.b3 0-0
 12.Nxe5 Bxe5 13.Bb2 a5 14.d4 Bg7
 15.f4 e6 16.Bc4 a4 17.Qd3 a3 18.Bc1
 cxd4 19.Kh1 dxc3 20.Be3 Qa5 21.Rac1
 d5 22.exd5 exd5 23.Bxd5 Bb5 24.Bc4
 Bxc4 25.Qxc4 Rac8 26.Qe2 Qf5 27.Rc2
 Rfe8 28.Rfc1 Qe4 29.Re1 Rcd8 30.Qf2
 Bd4 31.Rce2 Qd3 32.Bxd4 Rxe2
 33.Rxe2 Qxd4 34.Qh4 If 34 Re8+ then
 not 34...Rxe8, 35 Qxd4, but Kg7. Qd1+
 35.Re1 c2 36.Rxd1 cxd1Q+ 37.Kh2 Rd2
 38.f5 Qe2 39.Qg3 Rd3 40.Qf4 Qe3
 41.Qc7 Rd2 42.f6 Qe8 43.Qf4 Rxa2
 44.Qh6 Qf8 45.Qe3 Rb2 46.Qe5 Rxb3

47.Qd5 Rb6 48.Qa2 Ra6 49.Qa1 a2
 50.Qb2 a1Q 51.Qxb7 Qe5+
 0-1

D02
 Cornett (504)
 Hall (1005)
 Tennessee Open (Novice) 2002

1.d4 d5 2.Nf3 Nf6 3.g3 Nc6 4.Bg2 Bf5
 5.0-0 e6 6.Bf4 Bd6 7.Nc3 0-0 8.Re1
 Bxf4 9.gxf4 Ne4 10.Ne5 Qh4 11.Nf3?
 Qxf2+ 12.Kh1 Bg4 13.Rf1 Qe3 14.h3
 Bxf3 15.Bxf3 Nf2+ 16.Rxf2 Qxf2 17.e3
 Ne7 18.e4 dxe4 19.Bxe4 f5 20.Bxb7
 Ng6 21.Bxa8 Rxa8 22.d5 Nxf4 23.Qf1
 Qxf1+ 24.Rxf1 Nxd5 25.Nxd5 exd5
 26.Rxf5 Rf8 27.Rxd5 Rf2 28.c4
 The move is 28 Rc5. Kf8 29.Rd7 Rf7
 30.Rd8+ Ke7 31.Ra8 Rf2 32.Rxa7 Kd7
 33.b4 Rc2 34.a4 Rxc4 35.b5 Kd6
 36.Ra6+ Kc5 37.Rc6+ Kb4 38.Rxc4+
 Kxc4 39.a5 Kxb5 40.Kg2 Kxa5 41.Kg3
 Kb4 42.Kg4 Kc3 43.h4 c5 44.Kf3 Kd3
 45.h5 c4 46.Kf4 c3 47.Kf5 c2 48.Ke6
 c1Q 49.Kf7 g6 50.h6 Qxh6 51.Kf6 Qf4+
 52.Kg7 g5 53.Kxh7 Qf6
 0-1

E10
 Martindale (1185)
 Bailey
 Tennessee Open (Novice) 2002

1.d4 e6 2.c4 Nf6 3.Nf3 c5 4.Nc3 Nc6
 5.e4 cxd4 6.Nxd4 e5 7.Nf3 Qb6 8.Nb5
 Bb4+ 9.Bd2 Nxe4 10.Qe2 Nxd2
 11.Nxd2 0-0 12.a3 Be7 13.Qe4 a6
 14.Nc3 Qxb2 15.Bd3 Qxa1+ 16.Ncb1
 16 Ke2 Qxh1 17 Qxh7mate! is the two Rook
 sac but instead of Qxh1 Black must play f5.
 g6 17.0-0 Qd4 18.Qe2 d6 19.h3 Be6
 20.Nf3 Qc5 21.Rc1 Nd4 22.Qe4 Bf5
 23.Qxb7 Nxf3+ 24.Qxf3 Bxd3 25.Qxd3
 Rfd8 26.Nd2 d5 27.Qg3 Qxa3 28.Rc3
 Qa1+ 29.Kh2 e4 30.f4 dxc4 31.Nxe4
 Rd3 32.Rxd3 cxd3 33.Qxd3 Rd8
 34.Qb3 Qd4 35.Qb7 Bc5 36.Qxa6 Qxe4
 0-1

BIDS FOR 2003 TN OPEN NOW BEING ACCEPTED BY THE TCA

HEAR YE! HEAR YE! HEAR YE!

Any one interested in hosting the 2003 Tennessee Open needs to submit their bids by December 31, 2002. All sealed bids for the 2003 Tennessee Open should be sent to:

ALLEN SNOW
 PO BOX 355
 MONTEREY TN 38574

The bid should include information regarding:




Playing space at the site, lodging accommodations (discounts?)



Budget (entry fee, prize fund, bookstore fee, trophies, rent, table & chair rental if separate, reduced fee for children playing in both Open & Scholastics?, tournament director fees, misc. etc.)



Guarantee against loss (if any)  Scholastics



Seminars or lectures  Food Accommodations

The more details you can provide, the better chance your bid has of being accepted.

BIDS WILL BE AWARDED JAN 2003

2002 TN OPEN SCHOLASTIC RESULTS

PRIMARY		
PLACE	NAME	SCORE
1	RANDELS SAMUEL	4.0
2	CROSS WILL	3.0
3	FIKE COLLYN	3.0
4	FRIELING MATTHEW D.	3.0
5	MARSH CORRY	3.0
6	HORWITZ JOSHUA	3.0
7	ARAYA DANIEL	3.0
8	BALL SPENCER	3.0
9	HERMAN JARED	3.0
10	SMITH NATHAN J.	2.5
11	MAJERLE ADRIAN	2.0
12	CRAVENS BAY	2.0
13	NANDA SID	2.0
14	PEARSON BRANDON	2.0
15	ZHONG SEAN	2.0
16	LORINC ERICK	2.0
17	BAERMAN ELLIOT	2.0
18	SCOTT DYLAN E.	1.5
19	WRIGHT LOGAN	1.5
20	JOHNSON STEPHEN A.	1.5
21	SMITH ZACHARY	1.5
22	GLASS EVAN	1.5
23	GREENLEE ELLIOT	1.0
24	PURUCKER WILL	1.0
25	BLANCHARD DERRICK	1.0
26	TREVINO ISSAC	0.5
27	GLASS COBY	0.5
28	HAMM MEREDITH	0.0

HIGH SCHOOL

PLACE	NAME	SCORE
1	NELSON BRANDON	3.5
2	PARTON DONNIE	3.0
3	GREENE WESTIN	3.0
4	WRIGHT JOE	2.5
5	BURKS LEE	2.5
6	COMPTON CHARLIE	2.0
7	POOLE THOMAS	1.5
8	LAWSON ERIC	1.0
9	BURNETTE TREY	1.0

2002 TN OPEN SCHOLASTIC RESULTS

ELEMENTARY

PLACE	NAME	SCORE
1	HAMILTON ALEX	4.0
2	PHAY GAINER	4.0
3	SUICH PETER	4.0
4	MARSH MATTHEW	3.0
5	BALL COLLIN	3.0
6	MELLGARD JOHN W.	3.0
7	SOLA KALYAAN	3.0
8	DAVE RUSHIL	3.0
9	WORLEY SAM	3.0
10	XU TONY	3.0
11	SUICH JOANNA	3.0
12	ARAYA NICOLAS	3.0
13	BARBER CHRISTOPHER	2.5
14	HURDLE TOM	2.5
15	REMEC MARK	2.0
16	AYCOCK DANIEL	2.0
17	SMITH TRE	2.0
18	SPURLOCK BECK	2.0
&19	PURUCKER MATT	2.0
20	LEE RICHARD	2.0
21	MCFERRIN CLAYTON	2.0
22	MC GEE JOEL	2.0
23	SCOTT JESSE	2.0
24	CARSON DOUG	2.0
25	JOHNSON W. JOHNSON	2.0
26	BELL TIMOTHY S.	2.0
27	OLIVER HILDE	2.0
28	PRAHARAI DAVE	1.0
29	FRIELING SCOTT R.	1.0
30	OLIVER RACHEL	1.0
31	QUINN TYLER	1.0
32	POWERS CLAYTON	1.0
33	BAILEY K KEN	1.0
34	PECK HARRISON	1.0
35	CARLSON JACOB	1.0
36	SCHLENKER DANIEL	1.0
37	TUGGLE TEVIN	1.0
38	ROWLAND JESSE	1.0
39	LOVELL TYLER	0.0
40	TOWERS RONNIE	0.0
41	CARSON DOUG	0.0
&42	BRITT ROBBIE	0.0
&43	BURGESS DEREK	0.0

PUZZLE SOLUTION:

WHITE MATES IN 3 MOVES

1. Nd7+ RxN 2. Re8+ KxR 3. Rg8 Mate

2002 TN OPEN SCHOLASTIC RESULTS

JUNIOR HIGH

PLACE	NAME	SCORE	
1	KING	ALEX	3.5
2	REMEC	MIRKO	3.5
3	MCGEE	JAMIE	3.5
4	BRAIMAN	CHANAN	3.0
5	BULLINGTON	CRAIG	3.0
6	PHILLIPS	COTY	3.0
7	MACKEBEE	GREER	3.0
8	MACDONALD	MYLES R.	3.0
9	LONG	DANIEL	3.0
10	SNOW	CHRIS	3.0
11	HOWARD	ADAM	2.5
12	MCCANN	DILLON	2.5
13	JONES	JESSE	2.0
14	MOORE	ZACHARY	2.0
15	STINNETT	WHITTENY	2.0
&16	NELSON	JOHN	2.0
17	JOHNSON	ZACH	2.0
18	BONAR	TRAVIS	2.0
19	SKOVAN	STEVEN	2.0
20	RAWL	RYAN	2.0
21	HECHT	DAVID E.	2.0
22	MCGEE	JONATHAN	1.5
23	SOLA	KARTHIK	1.5
24	BONAR	TAYLOR	1.0
25	FICKEY	ALEX	1.0
26	ENGLAND	JUSTIN	1.0
&27	PRITCHETT	MATT	1.0
28	HERRMANN	NOEL	1.0
29	COMPTON	CHRISTIAN	1.0
30	DAVIS	MICHAEL	1.0
31	SIMONTON	ANDREW	0.5
32	WAGNER	JUSTIN	0.0
33	POPE	BEN	0.0

2002 TN OPEN SCHOLASTIC HIGH SCHOOL

	State	1	2	3	4	TOTAL	
1	Brandon Nelson	TN	W8	W2	W6	D4	3.5
2	Donnie Parton	TN	W7	L1	W8	W6	3.0
3	Westin Greene	TN	W4	L6	W7	W9	3.0
4	Joe Wright	TN	L3	B	W5	D1	2.5
5	Lee Burks	TN	B	D7	L4	W8	2.5
6	Charles Compton	VA	W9	W3	L1	L2	2.0
7	Thomas Poole	TN	L2	D5	L3	B	1.5
8	Eric Lawson	TN	L1	W9	L2	L5	1.0
9	Trey Burnette	TN	L6	L8	B	L3	1.0

2002 TN OPEN SCHOLASTIC JUNIOR HIGH

	State	1	2	3	4	TOTAL	
1	Alexander King	TN	W19	W8	W5	D2	3.5
2	Mirko Remec	TN	W18	W15	W13	D1	3.5
3	Jamie D McGee	TN	W21	W16	D6	W11	3.5
4	Chris Snow	TN	L24	W32	W19	W20	3.0
5	Craig Bullington	TN	W27	W17	L1	W15	3.0
6	Chanan Braiman	TN	W7	W14	D3	D9	3.0
7	Myles MacDonald	TN	L6	W27	W18	W13	3.0
8	Greer Mackabee	TN	W29	L1	W21	W14	3.0
9	Coty Phillips	TN	W28	D11	W22	D6	3.0
10	Daniel S Long	TN	L11	W28	W31	W22	3.0
11	Adam Howard	TN	W10	D9	W12	L3	2.5
12	Dillon E McCann	TN	D22	W31	L11	W23	2.5
13	Travis Bonar	TN	W32	W24	L2	L7	2.0
14	Zachary A Moore	TN	X	L6	W17	L8	2.0
15	Jesse Gray Jones	TN	W20	L2	W24	L5	2.0
16	Ryan P Rawl	TN	W26	L3	L20	W30	2.0
17	David E Hecht	TN	W30	L5	L14	W26	2.0
18	John P Nelson	TN	L2	W30	L7	W24	2.0
19	Whitten Stinnett	TN	L1	W29	L4	W28	2.0
20	Steven A Skoyran	TN	L15	W25	W16	L4	2.0
21	Zachary Johnson	TN	L3	W26	L8	W25	2.0
22	Jonathan McGee	TN	D12	W23	L9	L10	1.5
23	Sola Karthik	AL	D31	L22	W25	L12	1.5
24	Taylor R Bonar	TN	W4	L13	L15	L18	1.0
25	Christia Compton	VA	B	L2	L23	L21	1.0
26	Justin England	TN	L16	L21	W29	L17	1.0
27	Noel A Herrmann	TN	L5	L7	L30	W31	1.0
28	Alex C Fickey	TN	L9	L10	W32	L19	1.0
29	Michael Davis	TN	L8	L19	L26	W32	1.0
30	Matthew Pritchett	TN	L17	L18	W27	L16	1.0
31	Andrew Simonton	TN	D23	L12	L10	L27	0.5
32	Justin Wagner	TN	L13	L4	L28	L29	0.0

2002 TN OPEN SCHOLASTIC ELEMENTARY

	State	1	2	3	4	TOTAL
1 Alex J Hamilton	TN	W31	W28	W18	W4	4.0
2 Gainer G Phay	TN	X	W21	W15	W5	4.0
3 Peter D Suich	TN	W29	W23	W26	W15	4.0
4 Collin Ball	TN	X	W22	W6	L1	3.0
5 Matthew L Marsh	TN	W24	W7	W13	L2	3.0
6 Rushil A Dave	TN	W33	W16	L4	W19	3.0
7 John B Mellgard	TN	W10	L5	W36	W26	3.0
8 Nicolas Araya	NC	L26	W32	W34	W17	3.0
9 Joanna R Suich	TN	W39	L15	W16	W20	3.0
10 Tony Xu	TN	L7	W31	W28	W18	3.0
11 Samuel C Worley	TN	W12	L17	W31	W28	3.0
12 Kalyaan Sola	AL	L11	W33	W22	W21	3.0
13 Christoher Barber	TN	W19	W20	L5	D14	2.5
14 Thomas A Hurdle	TN	W30	L26	W27	D13	2.5
15 Mark Remec	TN	W25	W9	L2	L3	2.0
16 Joel C McGee	TN	W40	L6	L9	W34	2.0
17 Tre Smith	TN	L35	W11	W23	L8	2.0
18 Richard Lee	TN	W34	W35	L1	L10	2.0
19 Beck Spurlock	TN	L13	W30	W24	L6	2.0
20 Jesse R Scott	TN	W38	L13	W29	L9	2.0
21 Clayton McFerrin	TN	W32	L2	W35	L12	2.0
22 Matthew Purucker	TN	W27	L4	L12	W35	2.0
23 Doug Carson	TN	W37	L3	L17	W30	2.0
24 Matthew Johnson	TN	L5	W39	L19	W36	2.0
25 Hilde Oliver	TN	L15	L34	W37	W38	2.0
26 Daniel J Aycock	TN	W8	W14	L3	L7	2.0
27 Timothy S Bell	TN	L22	W40	L14	W33	2.0
28 Dave Praharaj	AL	W36	L1	L10	L11	1.0
29 Kenneth R Bailey	GA	L3	W37	L20	L31	1.0
30 Jacob Carlson	TN	L14	L19	W39	L23	1.0
31 Scott Frieling	TN	L1	L10	L11	W29	1.0
32 Daniel Schlenker	TN	L21	L8	L33	W39	1.0
33 Tyler Quinn	TN	L6	L12	W32	L27	1.0
34 Rachel Oliver	TN	L18	W25	L8	L16	1.0
35 Clayton Powers	TN	W17	L18	L21	L22	1.0
36 Harrison Peck	TN	L28	W38	L7	L24	1.0
37 Jesse Rowland	TN	L23	L29	L25	W40	1.0
38 Tevin Tuggle	TN	L20	L36	W40	L25	1.0
39 Tyler Lovell	TN	L9	L24	L30	L32	0.0
40 Ronnie Towers	TN	L16	L27	L38	L37	0.0

2002 TN OPEN SCHOLASTIC PRIMARY

	State	1	2	3	4	TOTAL
1 Samuel H Randels	TN	W25	W9	W9	W2	4.0
2 Collyn T Fike	TN	W28	W19	W5	L1	3.0
3 Spencer B Ball	TN	W27	L14	W16	W4	3.0
4 Daniel Araya	NC	W22	W15	W12	L3	3.0
5 Will Cross	TN	W6	W7	L2	W14	3.0
6 Jared Herman	TN	L5	W20	W25	W15	3.0
7 Joshua A Horwitz	NC	W17	L5	W14	W13	3.0
8 Matthew Frieling	TN	W13	W16	L1	W12	3.0
9 Corry L Marsh	TN	W11	L1	W18	W19	3.0
10 Nathan J Smith	TN	L16	W17	D19	W21	2.5
11 Elliot A Baerman	TN	L9	W23	L15	W25	2.0
12 Sean Zhong	TN	W24	W26	L4	L8	2.0
13 Brandon Pearson	TN	L8	W22	W24	L7	2.0
14 Adrian Majerie	AL	W23	W3	L7	L5	2.0
15 Sidharth Nanda	AL	W21	L4	W11	L6	2.0
16 Bay Cravens	TN	W10	L8	L3	W23	2.0
17 Erick Loring	TN	L7	L10	W26	W24	2.0
18 Stephen Johnson	TN	L19	D21	L9	W26	1.5
19 Dylan Scott	TN	W18	L2	D10	L9	1.5
20 Zachary Smith	TN	D26	L6	L21	W27	1.5
21 Logan Wright	TN	L15	D18	W20	L10	1.5
22 Evan Glass	TN	L4	L13	D27	W28	1.5
23 Derric Blanchard	TN	L14	L11	W28	L16	1.0
24 William Purucker	TN	L12	W28	L13	L17	1.0
25 Elliot Greenlee	TN	L1	W27	L6	L11	1.0
26 Isaac Trevino	TN	D20	L12	L17	L18	0.5
27 Coby Glass	TN	L3	L25	D22	L20	0.5
28 Meredith Hamm	GA	L2	L24	L23	L22	0.0

Donations

The Foundation for Tennessee Chess and The Tennessee Chess Association encourage all chess players and their family members to consider donating chess items to us when a member either loses interest or passes on. We have a growing donated reference library which is being used extensively by our membership. Contributions are tax-deductible.

A sample form for a bequest would be:

I, _____, hereby give, devise, and bequeath to the Foundation for Tennessee Chess, (or Tennessee Chess Association) _____ (All of my chess books and equipment), (the following chess books and/or items of equipment), (the sum of _____) to be used at the discretion of the Directors of the Foundation for Tennessee Chess (or Tennessee Chess Association).

Round 4, Board 1

White: Peter Bereolos

Black: Todd Andrews

1. d4 Nf6 2. c4 e6! A big surprise! I've never known Todd to play anything except 2...c5 aiming for the Benko Gambit.

3. Nc3 d5 4. cxd5 exd5 5. Bg5 c6 6. Qc2 Be7 7. e3 O-O 8. Bd3 Nbd7 9. Nge2 Re8 10. O-O Nf8 11. Rae1 Nh5 12. Bxe7 Rxe7 Theory regards 12...Qxe7 as equal. White had a very small plus in 17 games I had in my database. I even found a game Kramnik lost from the White side of this position. I only found one game with Todd's move (Petrosian-Letelier Argentina 1964). The point seems to be to keep the queen from facing the White rook on the e-file, but by not controlling b4, White is allowed to switch from the central strategy back to the queenside strategy. 13. b4 b6 signaling his intention of playing the hanging pawn structure after 14. b5 c5 15. dxc5 bxc5, but perhaps his pieces are not in a good configuration to play this structure. 13...a6 was Letelier's choice although Petrosian did win that game.

14. Nc1 On the immediate 14. b5 c5 15. dxc5 bxc5 16. e4 White has to reckon with 16... c4 which looks about equal after 17. Nxd5 cxd3 18. Nxe7+ Qxe7 19. Qxd3 So instead, the knight frees a square for the bishop to retreat and looks to add more pressure to the c5 square from b3.

14...Qd6 15. b5 15. a3 a5 gives Black counterplay. 15...c5

16. dxc5 bxc5 17. e4 d4 17...c4 18. Be2 d4 19. Bxh5 dxc3 20. Qxc3 is good for White 18. Nd5 Re6 19. Nb3 Nd7 20. f4 I think he realized here that his position was not too rosy since he used up almost all of his remaining time trying to find a defense. 20... Rb8 20... Bb7 21. e5 Qxd5 (21... Qf8 22. Nc7) 22. Bxh7+ Kf8 (22... Kh8 23. Be4 d3 24. Qd1) 23. Be4 d3 24. Bxd5 dxc2 25. Bxb7 21. Bc4 Bb7 22. e5 Nxe5 desperation, but 22... Qf8 23. Nc7 Rg6 (23... Re7 24. e6 (24. g4 Nb6 25. Na6 Qc8 26. f5) 24... Nb6 (24... Ndf6 25. exf7+ Kh8 26. Ne6 Qxf7 27. Nbx5 Bd5 28. Ng5+-) 25. exf7+ Kh8 26. Ne6 Qxf7 27. Ng5+-) 24. e6 Rxc2+ 25. Qxc2 Bxc2 26. e7 Qc8 27. e8=Q+ Qxe8 28. Rxe8+ Rxe8 29. Kxg2 is also much better for White. Black also has to be careful in many variations that g4 doesn't just win the offside knight on h5. 23. fxe5 Rxe5 24. Rxe5 Qxe5 25. Qf5 Qxf5 26. Rxf5 g6 27. Nf6+ Kh8 28. Rf1 Ng7 29. Nd7 Rd8 30. Rxf7 Be4 31. Ndx5 [1:0]

Round 5, Board 1

White: Eric Redheffer

Black: Peter Bereolos

1. e3 g6 2. f4 d6 3. Nf3 Bg7

4. Be2 e5 5. d4 I didn't really like this move. The Stonewall is much less effective when Black has control of the e5 square. 5...exf4

6. exf4 Ne7 7. O-O O-O 8. c4 Nd7 9. Nc3 Nf6 10. h3 Nf5 11. g4 Ng3 12. Re1 Nxe2+ 13. Rxe2 h5 14. g5 Nh7 15. Kh2 c6 16. Rg2 Bf5 17. Nh4 Qd7 18. Rg3 Rfe8 19. Be3 Re7 20. Bf2 d5 I started to lose the thread around here. Black's position is very nice. He has two bishops, White's overextended kingside leaves a big weakness on f5, Black has the only open file, and White's remaining bishop is pretty wretched. I played to emphasize that final point, but give him a nice square on e5 for his knight. If Black wants to play ...d5 he needs to preface it with ...Be4 in order to answer Nf3 with Bxf3. The natural move is 20... Rae8 but I started getting unjustly worried about by a-pawn being loose, but variations like 21. d5 c5 22. Nxf5 Qxf5 23. Nb5 are just good for Black after 23...Qxf4 21. cxd5 cxd5 22. Nf3 Nf8 23. Ne5 Bxe5?! I had intended to move the queen, the very superficially told myself that I had to get rid of Ne5 sooner or later. 24. dxe5 Be6? Now Black starts to get in some serious trouble. Necessary was 24... Rd8 25. Bxa7 (25. Bc5 Re6 26. Bd6 Rxd6 27. exd6 Qxd6 gives Black compensation) 25... d4 26. Ne2 h4 27. Rb3 d3 and the passed d-pawn gives Black some counterplay. 25. f5! Going for the throat, but I was more worried about simply 25. Bc5 Ree8 26. Bd6. Also, 25. Rd3 targetting the d-pawn looks good for White

25...gxf5 26. Qxh5 26. Bc5 should again be considered 26...b6 putting Bc5 to rest once and for all 27. Qh6 Rc8 28. Rd1 f4 28... Rc6!? 29. Rgd3 Not 29. Ne4? dxe4 30. Rxd7 fxg3+ 31. Bxg3 Rxd7 and Black wins 29...Qc6 30. Bd4?! better was 30. Rxd5! with advantage to White 30... Bf5? Roughly equal was 30... Ng6 31. h4 Bf5, but I thought I was setting a deep trap 31. Qxc6 The Black king escapes after 31. e6 fxe6 32. Qh8+ Kf7. Another choice was 31. Qf6 Bxd3 32. Qxe7 Qc4 and Black should be at least equal. 31... Rxc6 32. Nxd5 Rd7 33. Nxf4? A blunder after long thought. Also, bad was 33. Nf6+? Rxf6 34. gxf6 Bxd3 35. Rxd3 Ne6 winning a piece. The same is true after 33. Nb4? Bxd3 34. Nxc6 Be4 35. Nb4 (35. Nb8 Rd8) 35... Ne6. However, White would have winning chances after 33. Rc3! Rxc3 34. Bxc3 since the threat of Nf6+ doesn't give Black time to exploit the pin. A possible continuation is 34...Nh7 35. Rd4 Be6 36. Nxf4 Rxd4 37. Bxd4 Bxa2 when Black has to hope the opposite colored bishops can give him some drawing chances. 33...Bxd3 34. Rxd3 Rc4 35. Ne2? A final mistake, but 35. Be3 Rc2+ 36. Kg3 Rxb2 was also clearly better for Black. 35...Rc2 [0:1]

TN CHESS HALL OF FAME NOMINATIONS

The deadline for nominating an outstanding Tennessee chess player for the Hall of Fame is December 31, 2002. Two copies of each nomination should be submitted for consideration by the TN Chess Hall of Fame Selection Committee. Please forward one copy to Chairman Peter Lahde and one copy to Vice Chairman Bill Orgain.

Inductees into the Tennessee Chess Hall of Fame are current or former Tennessee residents who have either distinguished themselves for outstanding achievements in the competitive chess arena or who have made significant contributions to the game of chess in Tennessee.

The following guidelines may help in selecting a nominee:

1. The nominees should be Tennessee residents for a significant portion of their careers, or have had significant and substantial periods of residency in Tennessee.
2. Inductees may be selected from qualified candidates either living or deceased.
3. Significant achievements in any one or more of the following chess-related areas: competition (over-the-board or correspondence play), composition, promotion, journalism, organization, or leadership. This list is not all-inclusive and should be used for guidance only.

Please think about who you would like to see join the TCA Hall of Fame's special group of dedicated chess players and why.

Tennessee Chess Association Hall of Fame Committee

Peter Lahde, Chairman
2609 Sailboat Ct.
Nashville TN 37217

Bill Orgain, Vice Chairman
PO Box 366
Dickson TN 37056

Juan Aristorenas MD
PO Box 311
135 W. Main St.
Adamsville TN 38310

Gary Pylant
3077 Parham St.
Memphis TN 38127

Lee Edwards Atty.
21 Vaughns Gap Rd. D-50
Nashville TN 37205

Alvin Harris Atty.
3923 Skyline Dr.
Nashville TN 37215

Cumberland County Chess Club Update

The Cumberland County Chess Club meets every Thursday evening at 7 PM CDT at the Dairy Queen on Main Street in Crossville. All persons are welcome. Casual games and free instruction are always available.

The first round results and standings for the rated October Swiss tournament are:

Cumberland County October Swiss Open Round 1 Pairing Sheet

Board	White	Black
101	1.0 Gillespie, Gary(0.0)	0.0 Houston, Charlie(0.0)
102	0.0 Houston, C.J.(0.0)	1.0 Lee, Justin A. (0.0)
103	1.0 Snow, Chris(0.0)	0.0 Burgess, Derek (0.0)
104	0.0 Hassler, Ethan(0.0)	1.0 Giddings, Joshua(0.0)
105	0.5 Hayton, Nicholas(0.0)	0.5 Kanagasegar, Keerthighaan(0.0)

Cumberland County October Swiss -- Open Standings

Place	Name/Team	Rate	Score	MMed	Solk	Cum	Med
1	Gillespie, Gary (1)	1269	1.0	0	0.0	1.0	0
&2	Lee, Justin A. (2)	1139	1.0	0	0.0	1.0	0
&3	Snow, Chris (3)	1087	1.0	0	0.0	1.0	0
&4	Giddings, Joshua (4)	836	1.0	0	0.0	1.0	0
5	Hayton, Nicholas (5)	634	0.5	0	0.5	0.5	0
&6	Kanagasegar, Keerthighaan(10)	nn	0.5	0	0.5	0.5	0
7	Houston, C.J. (6)	607	0.0	0	1.0	0.0	0
&8	Burgess, Derek (7)	558	0.0	0	1.0	0.0	0
&9	Houston, Charlie (8)	418	0.0	0	1.0	0.0	0
&10	Hassler, Ethan (9)	100	0.0	0	1.0	0.0	0

Gary F. Gillespie, Region 2 Scholastic Coordinator
31 Brambleton Court, Crossville, TN 38558-7151
(931) 456-6146 Fax (931) 707-1059

Tennessee Chess Association Affiliate Membership

TCA Affiliate Memberships now available for your club or organization! Receive great benefits, and help support the Tennessee Chess Association in their effort to promote Chess in Tennessee. You must require TCA membership for Tournament Announcements listed on the official TCA Web Site. Affiliate Memberships run for a 12 month period and can be updated if more tournament announcements are needed.

IN STATE AFFILIATES:

\$25.00 - One Tournament Announcement on the TCA's official Web Site Tournament Calendar page and affiliation membership with the TCA. Membership includes one tournament listing in the official publication of the Tennessee Chess Association, as space and schedule permits, and 12 months of the *Tennessee Chess News* published quarterly.

\$50.00 - Up to three Tournament Announcements on the TCA's official Web Site Tournament Calendar page, up to three tournament flyers, results for these tournaments posted on the TCA's Web Site, and affiliation membership with the TCA. Membership includes up to three tournament listings in the official publication of the Tennessee Chess Association, as space and schedule permits, and 12 months of the *Tennessee Chess News* published quarterly.

\$100.00 - Up to six Tournament Announcements on the TCA's official Web Site Tournament Calendar page, up to six tournament flyers, results for these tournaments posted on the TCA's Web Site, and affiliation membership with the TCA. Membership includes up to six tournament listings in the official publication of the Tennessee Chess Association, as space and schedule permit, and 12 months of the *Tennessee Chess News* published quarterly.

\$200.00 - Up to 13 Tournament Announcements on the TCA's official Web Site Tournament Calendar page, up to thirteen tournament flyers, results for these tournaments posted on the TCA's Web Site, and affiliation membership with the TCA. Membership includes up to thirteen tournament listings in the official publication of the Tennessee Chess Association, as space and schedule permits, and 12 months of the *Tennessee Chess News* published quarterly.

\$350.00 - Unlimited Tournament Announcements on the TCA's official Web Site Tournament Calendar page, unlimited tournament flyers, results for these tournaments posted on the TCA's Web Site, and affiliation membership with the TCA. Membership includes unlimited tournament listings in the official publication of the Tennessee Chess Association, as space and schedule permits, and 12 months of the *Tennessee Chess News* published quarterly.

OUT OF STATE AFFILIATES:

\$35.00 - One Tournament Announcement on the TCA's official Web Site Tournament Calendar page and affiliation membership with the TCA. Membership includes one tournament listing in the official publication of the Tennessee Chess Association, as space and schedule permits, and 12 months of the *Tennessee Chess News* published quarterly.

\$75.00 - Up to three Tournament Announcements on the TCA's official Web Site Tournament Calendar page, up to three tournament flyers, results for these tournaments posted on the TCA's Web Site, and affiliation membership with the TCA. Membership includes up to three tournament listings in the official publication of the Tennessee Chess Association, as space and schedule permits, and 12 months of the *Tennessee Chess News* published quarterly.

\$150.00 - Up to six Tournament Announcements on the TCA's official Web Site Tournament Calendar page, up to six tournament flyers, results for these tournaments posted on the TCA's Web Site, and affiliation membership with the TCA. Membership includes up to six tournament listings in the official publication of the Tennessee Chess Association, as space and schedule permits, and 12 months of the *Tennessee Chess News* published quarterly.

\$300.00 - Up to 13 Tournament Announcements on the TCA's official Web Site Tournament Calendar page, up to thirteen tournament flyers, results for these tournaments posted on the TCA's Web Site, and affiliation membership with the TCA. Membership includes up to thirteen tournament listings in the official publication of the Tennessee Chess Association, as space and schedule permits, and 12 months of the *Tennessee Chess News* published quarterly.

\$500.00 - Unlimited Tournament Announcements on the TCA's official Web Site Tournament Calendar page, unlimited tournament flyers, results for these tournaments posted on the TCA's Web Site, and affiliation membership with the TCA. Membership includes unlimited tournament listings in the official publication of the Tennessee Chess Association, as space and schedule permits, and 12 months of the *Tennessee Chess News* published quarterly.

Requirements for flyers:

1. Must send a flyer via e-mail to Pat Knight, Internet Coordinator, TCA webmaster@tnchess.org. Please submit as a Word, Works, or text file. We will not make the flyers for you, but will post your flyer. Please indicate where you want your links, and URL's for the links. Results can be either a link to the results posted on your site, or submitted via e-mail to: Pat Knight, Internet Coordinator: webmaster@tnchess.org, and posted on the TCA Web Site. Please see link below for instructions, abbreviations, and terms.

Please make checks payable to:
Tennessee Chess Association

Information to:
webmaster@tnchess.org

Please send fees, address and contact information to:
Patricia Knight, Internet Chess Coordinator, 103 Albion Rd, Oak Ridge TN 37830

2002 Cumberland Co Fall Open Chess Tournament

47 Players October 12, 2002 Two States Represented
Crossville TN

Open: (18) Prize Winners

Champion	Leonard Dickerson	Knoxville TN	3.5	\$50.00
Class A - 1st	Fheopatrck Patterson	Knoxville TN	3.0	\$25.00
Class B - 1st	Joshua Suich	Morristown TN	3.0	\$25.00
Class C - 1st	Clint D. Charlton	Knoxville TN	2.5	\$12.50
Class C - 1st	Mirko Remec	Oak Ridge TN	2.5	\$12.50

Amateur: (29) Prize Winners

Champion	Peter Suich	Morristown TN	4.0	\$50.00
Class E - 1st	Matthew L. Marsh	Louisville TN	3.5	\$25.00
Class F - 1st	Ryan Rawl	Oak Ridge TN	3.5	\$25.00
Class G - 1st	Kyle Cahal	Kingsport TN	3.0	\$25.00
Unrated - 1st	Tevin Tuggle	Knoxville TN	1.0	\$25.00

2002 CUMBERLAND CO FALL CROSSTABLE AMATEUR

	RATING	1	2	3	4	TOTAL
1 Peter D. Suich (4)	1097	W9	W12	W11	W4	4.0
2 Matthew L. Marsh (3)	1173	W6	D3	W18	W8	3.5
3 Ryan Rawl (10)	970	W23	D2	W7	W11	3.5
4 Justin S. LaFever (6)	1089	W16	W14	W5	L1	3.0
5 Melissa A. McKay (9)	1006	W20	W10	L4	W17	3.0
6 Kyle Cahal (17)	763	L2	W22	W12	W16	3.0
7 Harold Winfield (5)	1095	W21	D13	L3	W19	2.5
8 Samuel A. Wicker (8)	1034	W22	D18	W13	L2	2.5
9 Sarah E. Stanhope (18)	743	L1	W24	D10	W18	2.5
10 Donnie Parton (2)	1189	W19	L5	D9	D13	2.0
11 Stephen G. Webb (7)	1037	W17	W15	L1	L3	2.0
12 Steven F. Brindisi (11)	879	W24	L1	L6	W21	2.0
13 Paul Justice (12)	853	W25	D7	L8	D10	2.0
14 Laura M. Brindisi (13)	836	W27	L4	L17	W22	2.0
15 Frank Brindisi (14)	824	X29	L11	L16	W23	2.0
16 Joanna R. Suich (20)	672	L4	W28	W15	L6	2.0
17 Corry L. Marsh (21)	657	L11	W25	W14	L5	2.0
18 Jonathon T. Simpson (15)	822	W28	D8	L2	L9	1.5
19 Jennifer Brindisi (16)	773	L10	D20	W23	L7	1.5
20 Charlie R. Houston (23)	418	L5	D19	L21	W24	1.5
21 Willie Surtles (19)	703	L7	L23	W20	L12	1.0
22 C.J. Houston (22)	607	L8	L6	W28	L14	1.0
23 Noel A. Herrmann (24)	406	L3	W21	L19	L15	1.0
24 William Pyle (25)	201	L12	L9	W25	L20	1.0
25 Tevin Tuggle (29)	nnnn	L13	L17	L24	W28	1.0
26 Gary Gillespie (1)	1269	U	U	U	U	0.0
27 James Brooks (26)	nnnn	L14	U	U	U	0.0
28 Joshua Herron (27)	nnnn	L18	L16	L22	L25	0.0
29 Harrison Peck (28)	nnnn	F15	U	U	U	0.0

2002 CUMBERLAND CO FALL CROSSTABLE OPEN

	RATING	1	2	3	4	TOTAL
1 Leonard Dickerson (1)	2083	W9	W8	W4	D2	3.5
2 Fheopatrck Patterson (2)	1872	W10	D5	W7	D1	3.0
3 Joshua Suich (4)	1783	W11	L7	W5	W8	3.0
4 Ellis Jones (3)	1855	W12	W6	L1	D7	2.5
5 Jason Knight (6)	1605	W18	D2	L3	W9	2.5
6 Clint D. Charlton (7)	1588	W15	L4	D12	W13	2.5
7 Mirko Remec (8)	1578	W14	W3	L2	D4	2.5
8 Richard R. Westbrook (5)	1701	W16	L1	W10	L3	2.0
9 Michael A. Sams (9)	1508	L1	W13	W11	L5	2.0
10 Octavio Pinell (11)	1424	L2	W18	L8	W12	2.0
11 Timothy Martindale (14)	1185	L3	W14	L9	W15	2.0
12 Victor W. Suich (13)	1251	L4	W15	D6	L10	1.5
13 Chris Snow (16)	1087	H	L9	W18	L6	1.5
14 Pat Cahal (18)	nnnn	L7	L11	D15	W18	1.5
15 Malcolm R. Estrada (17)	1067	L6	L12	D14	L11	0.5
16 Igor Remec (10)	1440	L8	U	U	U	0.0
17 Gary Gillespie (12)	1269	U	U	U	U	0.0
18 Chris Martindale (15)	1101	L5	L10	L13	L14	0.0

Tournament Entry Form

For your convenience we have included this copy and mail Tournament Entry Form. Please fill out completely, and mail with payment to the Tournament organizer.

Name of Tournament : _____

USCF#: _____ Rating: _____ Exp. Date: _____

Last Name: _____ First Name: _____

Address: _____

City: _____ ST: _____ ZIP: _____

E-Mail Address: _____

DOB: _____ Phone Number: _____

Section: _____ Byes: _____

Entry Fee: _____ USCF Dues: _____ TCA Dues: _____

Notes: _____ Total Amount Paid: \$ _____

USCF Dues required for all USCF Rated Tournaments.
TCA Dues required for all TN residents playing in adult tournaments.
If you have any questions, contact the tournament organizer.

ACCEPTING A LOSS

by Ed Newkirk

Usually after losing a tournament game, the average player is either disgusted, angry, or upset, especially if the opponent was rated lower. But on this day, and after this game, all I could think about was when I was in my high school days, and just how much fun winning was against a higher rated player. I was disappointed of course, but in my opponent I could see myself, 30 years ago.

This last May I was at the Rutherford Co. Open in Murfreesboro. We were in round 5, and my opponent was Trey Smith, an up and coming Junior at Franklin High School who is serious about his chess, and about pursuing the HS state championship. However, I was still confident about winning this round because of my advantage of age, experience, and a 300 point higher rating. What I did not know was the strength and sharpness of Trey's game, especially in a tight ending.

Rutherford Co. Open 5-25-02,
Round 5 Trey Smith Ed Newkirk
1. e4 c5 2. Nf3 Nc6 3. d4 cxd
4. Nxd4 Nf6 5. Nc3 g6
I opted for the Accelerated
Dragon defense. 6. Be3 Bg7
7. Be2 Qa5 Forcing white to
castle to the king side, or else
lose material. 8. O-O O-O
9. Nxc6 dxc6 10. f4 Rd8

11. Qe1 Qb4 Both sides are
playing aggressively! 12. e5 Ng4
13. Bxg4 Bxg4 14. h3 Bf5
15. Rf2 Trey is preparing for his
king side attack, and protecting
c2. 15....h5 This seems to
prevent g4, but Trey has plans on
the king side anyway. 16. g4 hxg4
17. hxg4 Bxg4 18. Rh2 Bh5
19. Rb1 Bh6 20. Qg3 Kh7
21. Rh4 Qc4 The black Q must
get back to help on defense.
22. Kh2 Qe6 23. Ne4 Qf5
24. Ng5+ Bxg5 25. Qxg5 Qxc2+
26. Kg3 Qxb1 27. f5 Qe1
28. Bf2 Rd3+ 29. Kg2 Qe2
Qxe5 would simplify and probably
win. 30. fxf3 fxg3 31. Qxe7 Kh6
32. Qf6 Rf3? Appears to be a
winning move, but it blocks the
defense of h5. Qf3 was much
better. Trey only had about 20
seconds left on his clock.
33. Rxh5! Kxh5 34. Qh4 mate
A nice combination by a nice
young man.

TN CHESS HALL OF FAME

PETER LAHDE	1990
ROBERT COVEYOU	1990
JERRY SULLIVAN	1990
MARTIN SOUTHERN	1990
TOM FINUCANE	1990
ROBERT SCRIVENER	1990
L. HUNTER WEAKS	1990
JOHN HURT	1992
JAMES A. SWEETS	1993
REA HAYES	1997
JAMES A. WRIGHT	1998
DR. MARTIN KATAHN	2002

TCA Tournament Guarantee

In recent years, it has become clear that organizers have become wary of sponsoring tournaments in the State of Tennessee. Many organizers feel they simply can not afford to take the risk of losing money on a tournament. In response to this need, the Tennessee Chess Association will guarantee against loss, any tournament held in the State of Tennessee provided the organizer agrees to the TCA's terms and conditions. The TCA Guarantee Committee will review all proposed tournaments.

TCA Terms and Conditions

The Tennessee Chess Assoc will guarantee against any loss tournaments held in the State of Tennessee upon the following terms and conditions: The tournament organizer must agree:

- (1) To pay the TCA one third (1/3) of any profit made by the tournament.
- (2) To require and collect TCA membership of all Tennessee residents playing in the tournament.
- (3) To guarantee all prizes offered by the tournament (no based-on prizes).
- (4) To have the format and budget for the tournament approved by the TCA Guarantee committee.

In return, the TCA agrees to indemnify the organizer against any loss sustained by the tournament. The TCA will not advance funds for the tournament but will only reimburse the organizer for any loss after the tournament is over and a complete financial statement has been submitted by the tournament organizer to the TCA Guarantee committee.

The TCA explicitly reserves the right to limit our exposure on a tournament by tournament basis as part of the approval process.

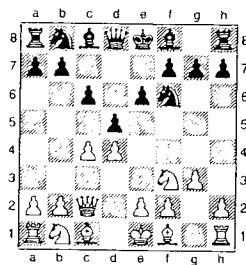
Any organizer that would like to take advantage of this opportunity should submit five (5) copies of the proposed tournament plans, format, and budget to the TCA Guarantee Committee. Please mail proposals to:

Ellis Jones, TCA Tournament Coordinator,
1375 Powder Mill Branch Rd, Summertown TN 38483

The proposal should include information regarding history of past tournaments held in the proposed location and any other information that might prove useful to the committee in evaluating the proposal. Allow sufficient time (at least 30 days) for the committee to evaluate your proposal.

Alburt, L – Spinrad, J [D30]
 Simultaneous exhibition, 1986
[notes by Mark Ishee]

1.d4 d5 2.c4 c6 3.Nf3 Nf6 4.Qc2 e6 5.g3



5...c5

Sooner or later Black is going to have to play this move, but it is very unusual to do so immediately. Out of almost 900 examples in the database, there is only one other game besides this one with 5...c5.

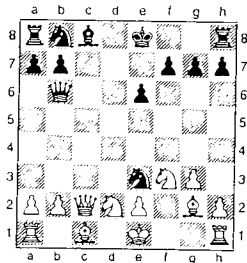
6.cxd5 Nxd5 7.dxc5 Qa5+ 8.Nbd2

[8.Bd2! is better. White has a small advantage after 8...Qxc5 9.Nc3 Nc6 10.Rc1 Be7 11.Bg2 Nxc3 12.Bxc3 0-0 13.0-0± (Navrotescu-Bets, 1993 1-0, 44). This is the only other example of 5...c5!? that I could find.]

8...Bxc5 9.Bg2

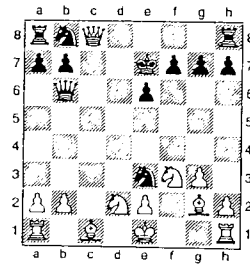
Now comes an unexpected blow.

9...Bxf2+?! 10.Kxf2 Qb6+ 11.Ke1 Ne3



Here is Black's idea: he offers a double-rook sacrifice for perpetual check!

12.Qxc8+ Ke7



13.Qxh8?

[13.Nc4! is a hard move to find, but it gives White a winning position. For example, 13...Nxg2+ 14.Kf1 Rxc8 15.Nxb6 and White will emerge with extra material. 15...Rxc1+ 16.Rxc1 Ne3+ 17.Ke1 axb6 18.Kd2 (18.a3±) 18...Nd5 19.Rc8 with a material and positional advantage for White.]

13...Nc2+ 14.Kf1 Ne3+

White cannot escape the perpetual check.

15.Kf2??

Allowing mate in three.

15...Ng4+ 16.Ke1 Qf2+ 17.Kd1 Ne3# 0-1

=====

Supplemental Game

Navrotescu, C – Bets, A [D30]
 Odorheiu Secuiesc, 1993

1.d4 d5 2.c4 c6 3.Nf3 Nf6 4.Qc2 e6 5.g3 c5
 6.cxd5 Nxd5 7.dxc5 Qa5+ 8.Bd2 Qxc5
 9.Nc3 Nc6 10.Rc1 Be7 11.Bg2 Nxc3
 12.Bxc3 0-0 13.0-0 Rd8 14.a3 Qb5 15.b4
 Bd7 16.a4 Qh5 17.Qb2 Bf8 18.b5 Ne7
 19.Ne5 Nd5 20.Bd4 f6 21.Nd3 Be8 22.a5
 Qf7 23.Rfd1 Nc7 24.a6 Nd5 25.e4 Nc7
 26.axb7 Rab8 27.e5 Nxb5 28.Bc5 Bxc5
 29.Nxc5 Rxd1+ 30.Rxd1 Qe7 31.Nxe6 Bf7
 32.Qxb5 Bxe6 33.exf6 gxf6 34.Qa6 Bb3
 35.Rc1 Be6 36.Re1 Kf7 37.Bh3 Rxb7
 38.Bxe6+ Kg7 39.Qc4 Rb6 40.Qg4+ Kh6
 41.Re4 Rb1+ 42.Kg2 Qb7 43.Kh3 Qb5
 44.Bf5 1-0

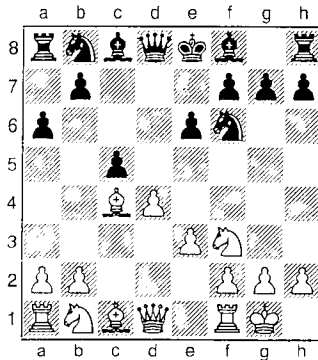
White: Kramnik, V (2807)

Black: DEEP FRITZ

Bahrain (game 2)

[notes by Mark Ishee]

1.d4 d5 2.c4 dxc4 3.Nf3 Nf6
 4.e3 e6 5.Bxc4 c5 6.0-0 a6



7.dxc5

A well-known position in the Queen's Gambit Accepted. White's usual choices are 7.a4, 7.Bd3 and 7.Nc3. Kramnik's strategy is now apparent: he will trade queens in order to minimize his opponent's ability to create tactical threats, while simultaneously playing to accumulate long-term positional advantages. Interestingly, this is the same strategy he adopted with the black pieces against Kasparov.

7...Qxd1 8.Rxd1 Bxc5 9.Kf1!?

A "psychological" move, if it's possible to have such a thing when playing a computer. Although 9.Kf1 is not likely to be the "best" move in this position, it is a useful move given that the endgame is not really far away. It also has the virtue of avoiding any possible prepared variations or database support.

9...b5 10.Be2 Bb7 11.Nbd2 Nbd7 12.Nb3 Bf8?

An inexplicable move that even the weakest human player would not play. Of course 12...Be7 would be better. According to the programmers, Fritz expected white to play 13.Nbd2, when black could repeat the position with 13...Bc5.

13.a4

White plays for better pawn structure. The c4-square will become available as a new outpost for the knight on f3.

13...b4

Virtually forced because 13...bxa4 14.Rxa4 leaves Black with a weak pawn on a6.

14.Nfd2

Heading for the new outpost on c4.

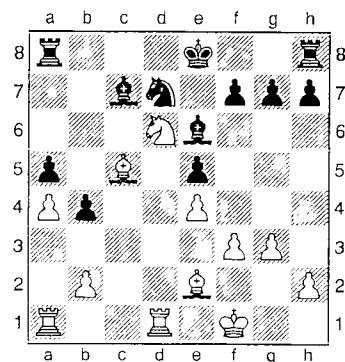
14...Bd5 15.f3!

An excellent positional move, limiting the mobility of Black's light-squared bishop.

15...Bd6 16.g3 e5 17.e4 Be6 18.Nc4 Bc7 19.Be3

This is the kind of position White has been trying to reach. He has more active pieces and better pawn structure. Black has no counterplay.

19...a5 20.Nc5 Nxc5 21.Bxc5 Nd7 22.Nd6+



22...Kf8
Definitely a "computer move." How many human players would walk into a discovered check without being forced to do so? However, 22...Bxd6? 23.Bxd6 f6 24.Bb5 is very strong for White. Black has great difficulty activating his rooks. For example, 24...Rc8 25.Rac1 Rxc1 26.Rxc1 Kf7 27.Rc7 Rd8 28.Ra7 and White wins material.

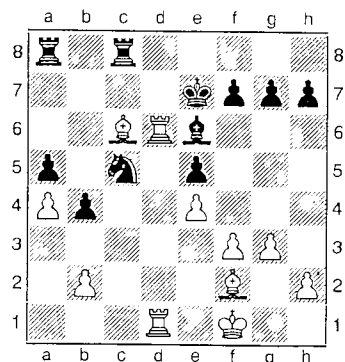
23.Bf2
Simple and strong. White preserves his bishop pair. 23.Nb5+ Nxc5 24.Nxc7 also appears to give White an advantage; for example, 24...Bh3+ 25.Kf2 Rc8 26.Rd5 Nb3 27.Rad1 g6 28.Nb5 f6 29.g4 traps the bishop.

23...Bxd6 24.Rxd6 Ke7 25.Rad1 Rhc8
By surrendering the bishop pair Black has managed to bring the Rh8 into play, but he still faces difficulties.

26.Bb5 Nc5?!
This looks like a blunder -- until you see Black's next move! Of

course 26...Nf6 is a safer-looking alternative, after which White would have a strong position but no forced win.

27.Bc6

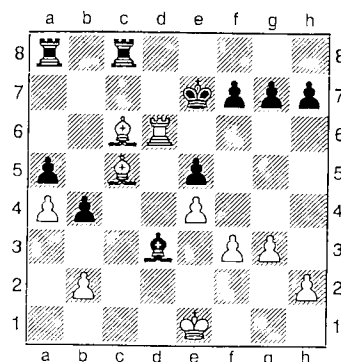


Now White wins material, or at least that's what Kramnik thought during the game.

27...Bc4+!
"Only a computer would find and play something like that," said Kramnik after the game. "I was completely shocked."

28.Ke1
Kramnik took a long time on this move and made the right choice, centralizing the King for the rook endgame that now arises by force. If instead 28.Kg2 Nd3 (the point of Black's maneuver) 29.R1xd3 (29.Bxa8? Kxd6 30.Bd5 Nxb2 is good for Black; 29.R6xd3 Rxc6 30.Rd7+ offers no advantage for White. In fact, after 30...Ke8 31.Rb7 Be6 32.Rd2 b3 (followed by ...Rc2) Black has the advantage.) 29...Bxd3 30.Bc5 is similar to the game except that White's king is on g2 instead of e1.

28...Nd3+ 29.R1xd3 Bxd3 30.Bc5!



Now White will regain the exchange, after which his active king and rook will dominate the board.

30...Bc4
Not 30...Rxc6? 31.Rxc6+ Ke8 32.Rc7 when White has excellent winning chances. For example, 32...Bc4 33.Re7+ Kd8 34.Rxe5± Kc7 35.Bxb4 axb4 36.Rc5+ Kb6 37.Rxc4 Rxa4 38.b3 Ra1+ 39.Ke2 Ra2+ 40.Ke3 Rxh2 41.Rxb4+ with a winning rook endgame.

31.Rd4+ Kf6 32.Rxc4 Rxc6 33.Be7+
This is the position Kramnik had to see before playing 28.Ke1.

33...Kxe7 34.Rxc6
Black stands worse. He has a weak pawn on a5 and cannot activate his king effectively.

34...Kd7 35.Rc5 f6 36.Kd2 Kd6 37.Rd5+ Kc6 38.Kd3 g6 39.Kc4
Now Black does not want to allow either of White's pieces to

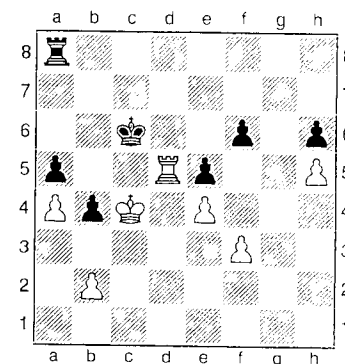
invade, so he is reduced to pawn moves. White therefore plays for zugzwang.

39...g5 40.h3
One step, not two! White is preserving his pawn moves.

40...h6 41.h4 gxh4 42.gxh4 Ra7

42...h5? loses a pawn immediately after 43.f4 exf4 44.Rxh5 followed by Rf5.

43.h5 Ra8



44.Rc5+
Note that 44.b3? is bad because it weakens the c3-square. Now 44...Ra7 45.Rd8 is not clearly good for White after 45...Rc7 46.Rf8 Kb6+ 47.Kd5 Rc3! 48.Rxf6+ Kb7 49.Kxe5 Rxb3 because the b-pawn offers Black significant counterplay.

44...Kb6 45.Rb5+ Kc6 46.Rd5
By "triangulating" with his rook, White has reached the same position as on move 44 except with Black to move -- and Black has no good move.

46...Kc7

Here 46...Ra7 47.Rd8 Rc7
48.Rh8 picks off Black's pawns
without any counterplay.

47.Kb5 b3

Or 47...Ra7 48.Rc5+ Kd6
(48...Kd7 49.Kb6 Ra8 50.Rxa5)
49.Rc6+ Ke7 50.Ra6 and White
is winning.

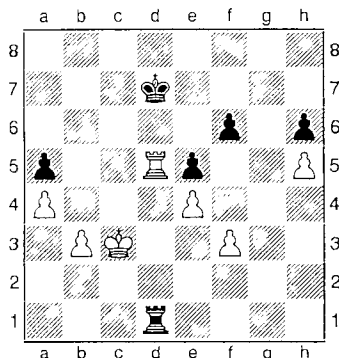
48.Rd3 Ra7 49.Rxb3 Rb7+
50.Kc4 Ra7 51.Rb5 Ra8

[51...Kd6 52.Rb6+ Ke7 53.Kb5]

52.Kd5 Ra6 53.Rc5+ Kd7

[53...Kb7 54.b3 Ra8 55.Ke6]

54.b3 Rd6+ 55.Kc4 Rd4+
56.Kc3 Rd1 57.Rd5+



Black resigns. The conclusion
would be 57...Rxd5 58.exd5
Kd6 59.b4 axb4+ 60.Kxb4 Kxd5
61.Kb5 f5 62.a5 Kd6 63.a6 Kc7
64.Kc5 and white wins. 1-0

Tennessee Tournament Calendar provided by Ellis Jones

Dec 7, 2002 - Meigs Scholastics
5ss, G/30. Meigs Magnet School,
Nashville TN. 4 sections (High,
Junior High, Elementary, & Primary).
Trophies to Top 10 individuals Top 5
Teams and Top 3 Unrated in each
section. Top two local players in
each section qualify for the Nashville
Scholastic Finals in 2003. Contact:
Mark Ishee @ 615.292.7341 or e-
mail: nashvillechess@comcast.net.

Dec 13-15, 2002 - National
Scholastic K-12 Championship
Atlanta GA

Dec 14, 2002 - Nashville Chess
Center Winter Quick Nashville TN

Jan 18-19, 2002 - North Tennessee
Winter Open, Clarksville TN
See Tournament Insert in this issue
for Details.... Great Prize Fund,
Great Fun, Great Location

1/25/03 Individual Regional
Scholastic Tournaments - Contact
your Regional Scholastic
Coordinator or Harry Sabine

2/15/03 Individual Finals Scholastic
Tournament, Cookeville - Contact
Harry Sabine

3/8/03 Team Regional Scholastic
Tournaments - Contact your
Regional Scholastic Coordinator or
Harry Sabine

3/19/03 Team Final Scholastic
Tournaments - Contact Harry
Sabine

2003 TENNESSEE STATE SCHOLASTIC INDIVIDUAL CHESS TOURNAMENT

(Open to Tennessee Students Only)

REGIONAL QUALIFYING TOURNAMENTS JANUARY 25, 2003

REGION 1

Alcoa Elementary
1200 Springbrook Rd.
Alcoa, TN

REGION 2

Rhea Central Elem School
281 Arno Road
Delaware Ave.
Dayton, TN

REGION 3

Page High School
281 Arno Road
Franklin, TN

REGION 4

Grahamwood Elem.
3950 Summer Avenue
Memphis, TN
Information:
www.scsca.net

directions: [www.teacherweb.com/
TN/AntiochMiddle/ChrisProsser](http://www.teacherweb.com/TN/AntiochMiddle/ChrisProsser)

Sponsored by the Tennessee Chess Association

SECTIONS:

High School (open to grades 12 and Below)
Junior High (open to grades 9 and below)
Elementary (open to grades 6 and below)
Primary (open to grades 3 and below)

FORMAT: 5 Round Swiss

*(A 6th round may be added to a section if there are
more than 64 players in a section)*

*(If a section has 6 players or less, it will be played
as a round robin at G/45)*

TIME CONTROL:

Rounds 1 & 2 - 30min/Sudden Death

Rounds 3 - 5 - 60 min/Sudden Death

SITE REGISTRATION: 7:30 am to 8:00 am

CHECK-IN: 8:00 am to 8:30 am

All pre-registered players must check in by 8:30 am or
they will not be paired for the first round.

DUES: No dues are required for the regionals.

USCF Dues are required of all players in the
finals.

ROUNDS: Round 1 - 9:00 am

Rounds 2 thru 5 - As Announced

AWARDS CEREMONY: Immediately
following last round.

TROPHIES: Top Ten Players. Top below
1000, and Top Unrated in each section. Plus -
Ribbons to all players not winning trophies.

TIE BREAKERS: G/10 playoff for First
Place. Otherwise, the system will be:

- 1) Modified Median
- 2) Solkoff
- 3) Cumulative
- 4) Median
- 5) Kashdan
- 6) Sonnenborn-Berger
- 7) Coin Toss

BYES: One one-half point bye is available for
any round if requested before the end of
registration.

All Ties will be broken.

(Only One Champion)

Entry Fee \$10.00 if mailed by January 18th, \$20.00 at site.

All Participants should bring chess sets, boards and clocks if they have them.

SEE TCA Web Site - www.tnchess.org

Region 1

S. Thomas Purucker
112 Orchard Circle
Oak Ridge, TN 37830
HOME(865)482-7397

OFFICE(865)482-6679

Email:

purucker@utk.edu

Region 2

Gary Gillespie
31 Brambleton Court
Crossville, TN 38558-7151
HOME(931)456-6146

FAX(931)456-7624

Email:

gfgillespi@aol.com

Region 3

Chris Prosser
733 Long Hunter Court
Nashville, TN 37217
HOME(615)399-8432

Email:

regionIII@aol.com

Region 4

Bill Cummings
3532 Davieshire Dr.
Memphis, TN 38133
HOME(901)372-6584

Email:

wacummin@bellsouth.net

The Tennessee Chess Association & The Foundation For Tennessee Chess

Invite you to play Chess

January 18 & 19, 2003

The 4th Annual

North Tennessee Winter Open

Chess Tournament

At the beautiful Riverview Inn, Clarksville, TN

\$4,000 Prize Fund

Unconditionally Guaranteed

Section 1 "Kings" Open to all

1st Place Trophy + \$500
2nd Place 300
3rd Place 200

1st Below 2200 150
2nd Below 2200 100

Section 4 "Bishops" U1500

1st Place Trophy + \$225
2nd Place 125
3rd Place 100

Top 1300-1399 100
Top 1299 & Below 50

*Unrated:

1st Place Trophy + \$125
2nd Place 50

Section 2 "Queens" U2000

1st Place Trophy + \$300
2nd Place 200
3rd Place 100

Top 1800-1899 100
Top 1799 & Below 50

Section 5 "Knights" U1250

1st Place Trophy + \$225
2nd Place 125
3rd Place 100

Top 1050-1149 100
Top 1049 & Below 50

*Unrateds must play in Section 4 "Bishops". Unrateds eligible for unrated prizes only.

Section 3 "Rooks" U1750

1st Place Trophy + \$250
2nd Place 125
3rd Place 100

Top 1550-1649 100
Top 1549 & Below 50

Section 6 "Pawns" U1000

1st Place Trophy
2nd Place Trophy
3rd Place Trophy
4th Place Trophy
5th Place Trophy

Top 800-899 Trophy
Top 799 & below Trophy

5 round Swiss.

Supplement will be used.

REGISTRATION: Sat. 18th, 8:30-10:00 am CST.

ENTRY FEE: Sections 1 - 5 \$55.00 advance or \$65.00 at Site Unrateds \$30.00 in advance or \$40.00 at Site
Section 6 \$22.00 advance or \$30.00 at Site **Section 6 is trophy only, No Cash Prizes.**

Advance entries must be postmarked on or before January 13, 2003.

½ point bye available for any one round if requested at or before registration.

USCF membership required for all, and TCA membership required for all TN residents. Available at site. OSA

No Smoking, No Alcohol, No Drugs, No Computers, Wheelchair accessible.

Saturday, January 18th

Round 1 - 11:00 a.m.
Round 2 - 3:30 p.m.
Round 3 - 8:00 p.m.



Sunday, January 19th

Round 4 - 9:00 a.m.
Round 5 - 1:30 p.m.
* Have a safe trip home*

Hotel Rates: \$ 67.00 /night + tax for 1-4 people includes free breakfast. Reservations must be booked individually, and you must reserve you room prior to January 1, 2002 to insure availability. You must say you are with the Chess Tournament to get the discounted rate. Riverview Inn, 50 College St., Clarksville, TN 37040. Phone: (931) 552 -3331

Contact: Kent Meadows, 615-313-5503 / nashvillechess@comcast.net or E-mail Roy Manners, roybintn@msn.com

Athens Chess Club
Mike McGinnis
423-507-8454

Chattanooga CC
Malcolm Robert Estrada
H (423) 697-4938
O (423) 751-8984

Chattanooga UTC CC
Joe Dumas
H (423) 886-7628
O (423) 755-4084

Columbia CC
Joe Crump
(931) 381-2758

Cumberland Co CC
Harry Sabine
(931) 484-9593

Dayton CC
Bruce Barnett
(423) 775-7000

ETSU Chess Assoc
Chun Ng
(423) 917-2219

Goodlettsville, Knights CC
Wieb van der Meer

Greater Knoxville CC
John Anthony, pres.
Leonard Dickerson
(865) 966-1095

MORE DETAILS ABOUT EACH
CLUB ARE AVAILABLE ON
THE TCA WEBSITE:

<http://www.tnchess.org>

Kingsport, Indian Springs CC
Steve Poff
(423) 279-0697

Memphis Chess Club
Michael Sansom, pres.
Gary Pylant (tourney info)
(901) 358-1731

Nashville Chess Center
Bill Orgain, pres.
Mark Ishee, exec dir
e-mail:
mark.ishee@nashville.com
(615) 292-7341

Oak Ridge CC
Charles Maddigan
(865) 482-5962

Rutherford Co CC
Robert Guthrie
(615) 895-7989

Tipton County CC
Thomas Stark
(901) 837-5874



**TN CHESS ASSOCIATION
AFFILIATE MEMBERS**

Cumberland Co Chess Club
Nashville Chess Center

PRESIDENT:
ALLEN SNOW
PO BOX 355
MONTEREY TN 38574
O: 931-445-7162 F: 931-445-7161
E-MAIL: asnow@twiakes.net

VICE-PRESIDENT:
ED NEWKIRK
1202 TWIN SPRINGS DR
BRENTWOOD TN 37027
H: 615-370-3653 W: 615-459-8483
E-MAIL: newkirk@squared.com

TREASURER:
LEONARD S. DICKERSON
420 ORAN ROAD
KNOXVILLE TN 37922
H: 865-966-1095 O: 865-946-1268
F: 865-574-3431
E-MAIL: lxchess@msn.com

SECRETARY:
BRADLEY WATSON
123 COOPER CIRCLE
OAK RIDGE TN 37830
H: 865-482-2983
E-MAIL: bjwatson@esper.com

TN CHESS NEWS EDITOR:
ANGELA McELRATH-PROSSER
733 LONG HUNTER COURT
NASHVILLE TN 37217
H: 615-399-8432
E-MAIL: tcanews@aol.com

INTERNET CHESS COORDINATOR:
PATRICIA KNIGHT
103 ALBION RD
OAK RIDGE TN 37830
H: 865-481-3516
E-MAIL: mspatknight@mindspring.com

STATE SCHOLASTIC COORDINATOR:
HARRY D. SABINE
P.O. BOX 381
CROSSVILLE TN 38557
H: 931-484-4878 O: 931-484-9593
F: 931-456-7624
E-MAIL: hdsabine@citlink.net

EAST TENNESSEE DIRECTOR:
MALCOLM ROBERT ESTRADA
3623 FOUNTAIN AVE #71
CHATTANOOGA TN 37412
H: 414-697-4938 O: 423-751-8984
E-MAIL: mrestrada@tva.gov

TOURNAMENT COORDINATOR:
ELLIS JONES
1375 POWDER MILL BRANCH RD
SUMMERTOWN TN 38483
H: 931-383-0949 O: 931-424-7788
E-MAIL: mudbugger5@earthlink.net

WEST TENNESSEE DIRECTOR:
ROBERT SCHOUMACHER
4266 LONG LEAF DR
MEMPHIS TN 38117
H: 901-767-3060 O: 901-572-5222
E-MAIL: rschoumacher@utmemb.edu

MIDDLE TENNESSEE DIRECTOR:
ROY MANNERS
1215 CUMBERLAND HEIGHTS RD
CLARKSVILLE TN 37040
H: 931-552-1839
E-MAIL: roybintrn@msn.com

**REGIONAL SCHOLASTIC
COORDINATORS**

REGION 1

S. THOMAS PURUCKER
112 ORCHARD CIRCLE
OAK RIDGE TN 37830
H: 865-482-7397 O: 865-482-6679
E-MAIL: purucker@utk.edu

REGION 2

GARY F. GILLESPIE
31 BRAMBLETON COURT
CROSSVILLE TN 38558-7151
H: 931-456-8146
E-MAIL: gfgillespi@aol.com

REGION 3

CHRIS PROSSER
733 LONG HUNTER COURT
NASHVILLE TN 37217
H: 615-399-8432
E-MAIL: regionIII@aol.com

REGION 4

BILL CUMMINGS
3532 DAVIESHIRE DR
MEMPHIS TN 38133
H: 901-372-6584 O: 901-348-1610
E-MAIL: wacummin@bellsouth.net