



# *Tennessee Chess News*

**WINTER ISSUE**

**DECEMBER 1995 - JANUARY 1996**

Patron Membership List .....	3
Editor's Etcetera .....	4
24th Cumberland County Championship .....	5
1995 Cumberland County Fall Open .....	5
East Tennessee Fall Scholastics .....	6
TCA Scholar-Chessplayer Awards .....	8
Annotated Game .....	10
19th Fairfield Glade Open Crosstable .....	12
19th Fairfield Glade Amateur Crosstable .....	13
19th Fairfield Glade Novice Crosstable .....	14
Tennessee Scholastic Team Attendance .....	16
The Problem Corner .....	18
The Correspondence Game .....	19
Tournaments! Tournaments! Tournaments! .....	21
TCA Regional Scholastic Coordinators .....	22
TCA Board of Directors .....	23

## TENNESSEE CHESS NEWS

The Tennessee Chess News is the official publication of the Tennessee Chess Association. TCA annual dues are \$10 for a *regular* membership, \$4 for a *student* membership. Additional members of a family may join for one dollar each, but only one issue of TCN will be mailed per family. All memberships expire August 31.

**Tax-deductible Patron Memberships** are available beginning at \$25 per year for those who wish to help support the TCA. These memberships expire one year from date of payment. Patron memberships categories and benefits are as follows:

### **PATRON - \$25**

- receive TCN by First Class Mail with your name listed in each issue of TCN;

### **PATRON KNIGHT - \$50**

- all Patron benefits plus a commemorative plaque;

### **PATRON BISHOP - \$100**

- all Patron Knight benefits plus free entry to the Tennessee Open;

### **PATRON KING - \$500**

- all Patron Bishop benefits plus free lodging at the Tennessee Open;

### **PATRON FOUNDER - \$1000**

- all Patron King benefits plus free entry into all Turkey Tour events.

TCA memberships are required for participation in all rated chess events in Tennessee except scholastic-only events, and may be purchased at any chess tournament.

## TENNESSEE CHESS NEWS EDITORIAL STAFF

### **Editor:**

Richard Westbrook

### **Contributing Editors:**

John Anthony;

Leonard Dickerson;

Lee Edwards;

Alvin Harris;

Raymond Hudgens;

Rick Igou;

Jason Knight;

Harry Sabine.

## ADVERTISING RATES

Full Page	\$40.00
Half Page	\$20.00
One-third Page	\$14.00
One-Quarter Page	\$10.00
One-Eighth Page	\$ 7.00

**Pre-printed flyers** for insert must be 8½ x 11" in size, 60 pound Offset, and delivered flat. *Only one insert is available per issue.* \$15.00

## TOURNAMENT ANNOUNCEMENTS

TCN prints listings of upcoming tournaments in each issue for free, including those from other states. Submit all announcements to **Rick Igou**, Tournament Coordinator.

# Current T.C.A. Patron Members

## PATRON KING

Dr. Martin "Dick" Katahn

## PATRON BISHOPS

Clinton H. Pearson, Jr.  
Harry Sabine

## PATRON KNIGHTS

Thomas Cooper  
Frank W. Larimer  
Bill Orgain  
Ed Porter  
Jim Rylander, Jr.  
Joseph Sullivan, Jr.

## PATRONS

Roy W. Clark  
Frank B. Couch, III  
Walter R. Green  
Raymond Hudgens  
Rick Igou  
Mark Ishee  
Peter P. Lahde  
Brian D. Lentz

Ed Newkirk  
Jeffrey Pennig  
Thomas R. Pierce  
Edward C. Porter  
Todd Shimabukuro  
Jack C. Sprague  
Edwin Cato White  
James A. Wright

## Editor's Etcetera

By Richard Westbrook

If it is true that time flies when you're having fun, then I must be having a great deal of fun! I think, however, it is more accurate to say that time flies whether you're having fun or not.

In any case, I haven't been able to make the time to play in any tournaments, except the Knoxville Championship during November (which I would rather not mention at all), so I missed seeing my chess friends from across the state and region except for the few hours I spent in Crossville prior to the Fairfield Glade tournament. It was difficult not to defend the title I shared last year, but....

In this issue there is some excellent material. Jason Knight presents a brief account of the 24th Annual Cumberland County Chess Championship. Can anyone verify that this the middle-schooler the youngest person to pen an article for the TCN?

Leonard Dickerson gives a detailed account of the East Tennessee Fall Scholastic tournament held at Mary Blount Elementary School. Over 100 participants made it quite an event!

John Anthony authored a lively and well-researched account of the match between Tom Rowan and Charles Maddigan. This second-round game put Tom in the driver's seat for the Championship which he eventually won.

Alvin Harris provided the information regarding the TCA's Scholar-Chessplayer Award. This is a good opportunity to help good, young players, so please nominate someone you think is deserving!

There are other, usual features as well. Space does not permit the inclusion of games from the State Open way back in September, and from Fairfield, but they will appear in the next issue. 'Til then, may all your pawns promote!

~Richard Westbrook

## 24th Annual Cumberland County Chess Championship

(By Jason Knight)

Twenty residents of Cumberland County participated in the 24th Annual Cumberland County Chess Championship Tournament, Saturday, September 16, 1995. Participants ranged from the young to the experienced. With an impressive score of a perfect 5-0, and more than one hard fought battle, Harry D. Sabine is once again Champion of Cumberland County. The results were: **Champion Harry D. Sabine; 2nd Ron Harvill; 3rd M.C. Deck; 4th Terry Burdett; 5th Bill Harvill; 1st D Class Nancy Weaver; 1st E Class Richard Gilmer; Top Below 1000 Lee Gilmer; 1st Unrated David Kelsey; 2nd Unrated Benjamin Burdett.**

Others participating were: Bill Hall, Clinton H. Pearson, Jr., Scott Winningham, Brian Wyatt, Sean Berry, Danny Powers, Jason Hale, Chris Butler, Emilie Udell, and Willie Clark, all from Cumberland County. Congratulations to all players. TD's were: Jason Knight of Oak Ridge, TN and Ellis Jones of Auburn, Alabama.

## 1995 CUMBERLAND COUNTY FALL OPEN CHESS TOURNAMENT PRIZE WINNERS

(Submitted by Harry Sabine)

October 14, 1995

Fairfield Glade, Tennessee.

Total Players: 43.

States Represented: Tennessee, Kentucky, Georgia

### Open Section: (15 Players)

Champion	- Peter Bereolos	- Knoxville, TN	- 4.0	- \$50.00
Expert-1st	- Bradley S. Watson	- Oak Ridge, TN	- 2.0	- \$25.00
Class A-1st	- Paul B. Semmes	- Cookeville, TN	- 2.5	- \$25.00
Class B-1st	- James N. Hughes	- Charleston, TN	- 3.0	- \$25.00

### Amateur Section: (28 Players)

Co-Champion	- Jimmy D. Worley	- Cookeville, TN	- 4.0	- \$37.50
Co-Champion	- David B. Bertram	- Allardt, TN	- 4.0	- \$37.50
Class D-1st	- Charles L. Miller	- Manchester, TN	- 2.5	- \$25.00
Class E-1st	- Theodore G. Capaul	- Fayetteville, TN	- 3.0	- \$12.50
Class E-1st	- Richard T. Gilmer	- Crab Orchard, TN	- 3.0	- \$12.50
1st - B1000	- Nicholas Upchurch	- Albany, KY	- 2.0	- \$12.50
1st - B1000	- Benjamin T. Clayton	- Fairfield Glade	- 2.0	- \$12.50
Unrated-1st	- Peter S. Field	- Cookeville, TN	- 3.0	- \$25.00

## East Tennessee Fall Scholastics

(By Leonard Dickerson)

The East Tennessee Fall Scholastics was a festive occasion of triumph and good cheer. Held November 11, 1995 at Mary Blount Elementary School of Maryville, Tennessee, the five-round swiss tournament boasted 106 participants from the primary level through high school. And trophies were had by all. Well, 32 trophies were passed out (8 each section) and all received certificates of appreciation. For sure though, fun and scalps were had by all!

The Chief TD for the event was Leonard Dickerson who had assistants of the repute as Harry Sabine and Ron Harvill. Other than severe weather which disabled the lights during a round and felled a large tree which blocked an access road, no problems were had.

With the experienced assistants present it is little wonder that the event ran quite smooth, especially because the considerable organizational duties and preregistration chores were tackled by Tom and Carol Ware and Region I Scholastic Coordinator Pat Knight. Other assistants who made Dickerson look competent were floor tournament directors Jason Knight, Mack Knight, Jay Sabine, Richard Westbrook, and Billy Ware. Harry Sabine contributed additionally by efficiently running PairPlus, ensuring that the rounds were timely started.

The High School Division winner was no surprise: Larry Williams, Jr. Larry dominated his section and displayed as what was described by some as "a disdain for his opposition." He had to wait until Round 5 before he was introduced to respect. In that round, unrated Nicholas Barber of Webb Upper School -- who had been playing chess for only 6 months -- truly gave him a scare. Larry was forced to fight back from a rook and knight down to win the game.

Second place in High School was strongly contended by Richard Gilmer, Nicholas Barber and Joshua B. Dunn, who had 4 points each. Louis Keen and John Bragg, both finished

with 3.5 points. Though finishing in second place, Richard Gilmer's first two tiebreaks were even more impressive than Larry Williams'. In fact, his Solkoff tiebreak was a full 5 points better! He definitely earned his place as top of the 4-point reapers.

The Junior High Division also showed fire. In fact the highest rated player finished without earning one of the 10 place trophies! David Berry of Robertsville Middle School finished with a perfect 5 points to win first outright. A group of talented players tied for 2nd -- 6 with 4 points each: Zach Tipton, David Ehrsam, Lee Gilmer, David Redwine, and John Andrews. Mary Blount Elementary School was represented by over half of the 42 players participating in the Jr. High -- a good reason to play host!

In the Elementary Division, there was no perfect score to be had. In fact, two co-winners emerged: Jay Quigley and Lu Sun scored 4.5 points, with Jay securing first by tie-breaks. Clarence Williams placed a strong second with 4 points and 4th--7th place was shared by a group of combatants who racked up 3.5 points each: Jeff Pool, Jessi Wiest, Chris Miller, and David Norton.

Domination again appeared in the Primary Division. Ryan Olson, rated 1089, over 200 points than his nearest USCF-rated opponent, took first place with 5 points by edging out Woodland's Ryan Pearce by a point. Third through 4th place were taken by Andy Moeller and Andrew Miller who both had 3 points.

Next, a group of up and coming talented youngsters shared 5th--7th place with 2.5 points: Ashley Knight, Andrew Stubblefield, and Joshua Dunn. Ashley easily took 5th place with overwhelming tie breaks (3+ points on Median, and 4+ on Solkoff)! Her tie-break margins show that she was challenged heavily by the plus scorers of the tournament and indicate that she should do well in the future. Don't get confused by the trophy-taker Joshua and the Joshua B. Dunn of the High School Division. They share only good chess talent!

(Continued on page 19)

## TENNESSEE CHESS ASSOCIATION SCHOLAR-CHESSPLAYER AWARDS, 1996

Applications are now being received for the first annual Tennessee Scholar-Chessplayer outstanding Achievement Awards, sponsored by the Tennessee Chess Association. These scholarships are intended to recognize and encourage students in grades 9-12 who promote a positive image of chess in Tennessee. A \$500 scholarship\* will be awarded at the 1996 Team Finals in Murfreesboro on March 23, 1996, to the First Place winner of each Region. All other applicants will be recognized with a certificate. Students do not have to be present to win.

Tennessee students who are current members of the USCF and show out-standing merit in academics, chess play, and sports-manship, are eligible to apply. Applications are available from Regional Scholastic Coordinators, and must be **completed and returned to Harry D. Sabine by midnight on March 1, 1996. This means in his possession, not postmarked.** (Overnight mail or UPS, Fedex, or hand delivery are suggested.)

Applicants are required to return 4 copies each of:

- (1) completed application - detailing academic achievements chess achievements, and extra curricular activities.
- (2) An essay (500 words or less) describing the positive influence chess has had on your life.
- (3) Letters of recommendation from 3 adults.
- (4) One copy of a current picture.

\*Scholarship will be held in trust until winner enrolls in college.

### GUIDELINES FOR TCA SCHOLAR-CHESSPLAYER AWARDS

- (1) Tennessee students in grades 9-12 are eligible.
- (2) A student may only win the award one time.

(3) The prize is a \$500 scholarship for first place. All other applicants will be recognized with a certificate. The award will be held until the student enrolls in college. If the winner does not attend college, the award is forfeited.

(4) Judging will be done by the 3 Regional Scholastic Coordinators outside the applicant's home region. All ties will be broken by the State Scholastic Coordinator.

(5) Each judge will receive a COPY of: application, essay, and letters of recommendation. From these items they are to determine 1st, 2nd, 3rd, 4th, 5th, etc.

### RULES FOR JUDGING:

(1) All materials must be received by the deadline. This does not mean postmarked. Materials must be in the State Scholastic Coordinator's possession by midnight of the deadline date.

(2) Applicant should be a chess player and current USCF member. A strong Class B or better player is preferred. More consideration should be given the higher the rating. Less consideration the lower the rating. This is worth 30%.

(3) Applicant should show high academic achievements, not only in grades but in overall academic endeavors. Are there special state or national academic awards, honors, or programs they have earned? Unusual or exceptional talents? This is worth 30%.

(4) Applicant will submit an essay of 500 words or less detailing "the positive influence chess has had in their life". Judgment should be on articulation, sincerity, and quality of writing as well as what it says about the applicant and chess. This is worth 30%.

(5) Applicant will submit letters of recommendation as well as detail extra curricular activities, including but not limited to, school, church, community, club, leadership and chess related activities. This is worth 10%.

(6) Regional Scholastic Coordinators will review each applicant and determine the winner and others in declining order. The winner will be 1, with the other choices following 2, 3, 4, 3, etc. They will submit their results to the State Scholastic Coordinator, who will tally results from all regions to determine each regional winner. The winner will be announced at the 1996 Team Finals in Murfreesboro on March 23rd.

**(For a copy of the Application Form, see page 15.)**

## Annotated Game

(By John Anthony)

The following game was played during the second round of the 1995 Knoxville Championship between two of the area's top players.

**Rowan (2160)**

**Maddigan (2347)**

English 1...e5 (EO 21.5.4)

1.c4 e5 2.♖c3 ♘c6 3.♕f3 f5

3...♕f6 is the Four Knights Variation, the most important system in the 1.c4 e5 English.

4.d4 e4 5.♕g5

This move, and 5.♕g5 ♕e7, are the most popular.

5...h6

This originated with I.M. John Watson. The main alternatives are 5...♕f6 6.e3 ♕b4, or just the immediate 5...♕b4.

6.♕h3 g5

This seems to be incongruous with Maddigans' defensive, positional style. But he often tries for a lot in the opening when de-

fending against the English Opening.

7.♕g1

G.M. Vladimir Bagirov's improvement on the standard 7.f3, which never worked out very well for White. The idea behind this cabalistic retreat is to play h2-h4, inducing Black to advance ...g5-g4. Then White can maneuver ♕g1-e2-f4, nesting the piece on a lovely outpost.

7...♕g7?

Maybe Black can try 7...♕b4 8.e3 ♕e3+ 9.bxc3 ♕f6 and Black can complete his development using the scheme: ...♖e7, ...b6, and ...♕a6.

8.e3 ♕f6

Black makes ...♕h5, covering the f4 square, the main theme in his development. In Bagirov - A. Ivanov, 1982, Black aimed for the logical ...c6 to limit White's queen knight: 8...d6 (the check on h5 doesn't matter here) 9.h4 g4 10.♕ge2 h5 11.♕f4

(mission accomplished) ...♕ce7 12.b3 c6 13.♕b2 ♕f6 14.♕e2 ♕f7 15.♖d2 and White is a lot better.

9.h4 g4

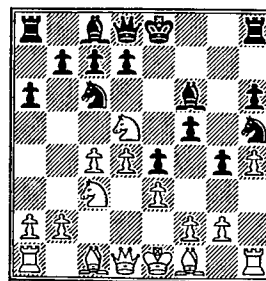
It's very hard to maintain the ♖ on g5. E.g., 9...d6 10.hxg5 hxg5 11.♖xb+ ♕xb8 12.♕h3 ♕g4 transposes into Farago - Ermenkov, 1983, which was terrible for Black. Neither 9...♖g8 nor 9...♕b7 seem any better.

10.♕ge2 ♕h5!? 11.♕d5

Since the square is now unguarded.

11...♕f6?! 12.♕ec3!? a6??

12...♕e7 was the way to go. [diagram]



Rowan - Maddigan, after 12...a6

13.♕e4! O-O

If 13...fxe4?, then 14.♖xg4

♕g7 15.♖g6+ wins another pawn..

14.♕ef6

Obtaining the two bishops.

14...♕f6 15.g3 ♖g7 16.♕g2 b5 17.b3

It would be a mistake to let Black have the open a-file.

17...bc4 18.bc4 ♖b8 19.♕a3 ♖e8 20.O-O a5 21.♖b1

To eliminate Black's well placed rook.

♕a6 22.♖c2 ♕e4 23.♖b8 23...♕b8 24.♖b1 d6

Stopping 25.♕e7 ♖c8 26.♕e4 winning. But, 24...♕c6, getting the piece back out, was better.

25.♕c3 ♕c3 26.♖c3

As Black's pieces disappear, his pawns become exposed to attack.

26...♖g6 27.♖a5 ♕c4 28.♖c1 d5

28...♕a2 allows White's pieces to become very active and loses in the long run.

(Continued on page 18)

## 19th Fairfield Glade Open Open Section

P#	NAME	ST	Pre	Pst	1	2	3	4	5	TOTAL
01	PALATNIK, SAM	TN	2571*S8	2577*SB	W17	W15	W5	D2	W8	4.5
02	DONALDSON, J	WA	2531*t2	2530*t2	W32	W9	W6	D1	D4	4.0
03	MELVIN, BILL	AL	2242*m6	2252*m6	W35	D38	W20	D16	W14	4.0
04	PUCKETT, M	AL	2205*m5	2238*m7	W36	W11	W29	D7	D2	4.0
05	BERELOS, P	TN	2377*M2	2373*M2	W19	W30	L1	D18	W16	3.5
06	WHEELER, J	TN	2222*M4	2230*M4	W44	W23	L2	W33	D7	3.5
07	ROWAN, T	TN	2208*m4	2206*m4	D22	W41	W10	D4	D6	3.5
08	CALE, ROBT	VA	2195*m2	2200*m2	D12	W34	W38	W24	L1	3.5
09	KAGANOVSKA, P	TN	2066*x5	2085*x5	W27	L2	D11	W36	W24	3.5
10	DE KOEKKOEK, T	GA	1959*X5	2020*X5	W33	D14	L7	W8	W20	3.5
11	BENTRUP, BEN	TN	1906*A5	1953*A7	W52	L4	D9	W31	W21	3.5
12	LINNEMANN, R	TN	1842*a6	1919*A5	D8	D21	W34	D29	W33	3.5
13	JONES, JOE C	TN	2200*m4	2200*m4	D34	D24	W39	D27	D17	3.0
14	FURMAN, E	SC	2173*X2	2163*X2	W25	D10	D18	W35	L3	3.0
15	ISHEE, MARK	TN	2140*X5	2140*X5	W42	L1	D25	W22	D18	3.0
16	BROOKSHEAR, T	GA	2108*XB	2122*X8	W37	D29	W28	D3	L5	3.0
17	JORDAN, WALTER	TN	2040*x5	2049*x5	L1	W47	D19	W28	D13	3.0
18	CALE, RICHARD T	TN	2018*A6	2038*A8	D28	W46	D14	D5	D15	3.0
19	WATSON, BRAD	TN	1931*A6	1954*A6	L5	W45	D17	D23	W37	3.0
20	SMITH, BRIAN D	TN	2121*m4	2100*m4	D41	W26	L3	W25	L10	2.5
21	MONGIN, A	TN	2009*x5	1979*x5	D47	D12	H----	W26	L11	2.5
22	BOND, TIM	AL	1977*X2	1993*X2	D7	L31	W43	L15	W40	2.5
23	THOMAS, DANIEL	AL	1967*AS	1961*A8	W45	L6	L27	D19	W35	2.5
24	ANDREWS, TODD	TN	1966*A6	1994*A6	W49	D13	W31	L8	L9	2.5
25	REEDER, THOMAS	AL	1966*A9	1976*A9	L14	W48	D15	L20	W41	2.5
26	MEADOWS, R K	TN	1911*A0	1938*A0	D31	L20	W40	L21	W9	2.5
27	HARDEMAN, B A	GA	1837*a0	1887*a5	L9	W32	W23	D13	U----	2.5
28	VAUGHAN, J E	TN	1802*a7	1839*a9	D18	W40	L16	L17	W44	2.5
29	SPRENKLE, D	TN	2360*m2	2328*m2	W39	D16	L4	D12	U----	2.0
30	WOODWARD, B	KY	2110*X4	2095*X4	W48	L5	L35	W44	U----	2.0
31	WALKER, JAMES H	WV	2110*M5	2100*M5	D26	W22	L24	L11	D34	2.0
32	HAYES, REA B	TN	2013*X5	2000*X5	L2	L27	D48	W47	D36	2.0
33	FELDSTEIN ES, R	NY	2001*X4	2000*X4	L10	W37	W42	L6	L12	2.0
34	PALATNIK, OLGA	TN	1980*A6	1975*A6	D13	L8	L12	W48	D31	2.0
35	DREADING, J D	AL	1945*A2	1943*A2	L3	W51	W30	L14	L23	2.0
36	HYATT, DOUG	TN	1917*A4	1905*A4	L4	D43	W47	L9	D32	2.0
37	SCHAEZTLE, W	AL	1800*A2	1800*A2	L16	L33	W45	X----	L19	2.0
38	BUGBEE, BRIAN	NJ	2016*x5	2006*x5	W43	D3	L8	L10	U----	1.5
39	ROLAND, JERE E	AL	2000*x0	2000*x0	L29	W44	L13	D41	L26	1.5
40	JOHNSON, LARRY	GA	2000*x2	2000*x2	D46	L28	L26	W43	L22	1.5
41	NEWKIRK, ED	TN	1831*a8	1835*a8	D20	L7	H----	D39	L25	1.5
42	LAWSON, JAMES C	KY	1900*A4	1900*A4	L15	W50	L33	U----	U----	1.0
43	SMEDLEY, ALLEN	GA	1836*A2	1800*A2	L38	D36	L22	L40	D47	1.0
44	SLOAN, KENNETH	AL	1798*A2	1771*A2	L6	L39	W51	L30	L28	1.0
45	DUMAS, JOSEPH	TN	1786*B2	1752*B2	L23	L19	L37	X----	U----	1.0
46	DILLON, JACK A	TN	1735*b0	1739*b0	D40	L18	H----	F----	U----	1.0
47	WILLIAMS, LARRY	TN	1504*b2	1523*b2	D21	L17	L36	L32	D43	1.0
48	VELAZQUEZ, JOSE	TN	1827*a2	1810*a2	L30	L25	D32	L34	U----	0.5
49	THOMAS, DANIEL	AL	1961*A8	1945*A8	L24	U----	U----	U----	U----	0.0
50	SABINE, JAY D	TN	1603*b0	1600*b0	U----	L42	U----	U----	U----	0.0
51	GARLINGHOUSE, F	TN	1495*c0	1488*c0	U----	L35	L44	F----	U----	0.0
52	WEAVER, NANCY	TN	1204*E0	1203*E0	L11	U----	U----	U----	U----	0.0

## 19th Fairfield Glade Open Amateur Section

P#	NAME	ST	Pre	Pst	1	2	3	4	5	TOTAL
01	LOWE, JOHN T	KY	1724*B5	1757*B7	W34	W32	W7	W15	D4	4.5
02	WIDENER, K	TN	1676*b9	1718*B4	D52	W42	W37	W21	W17	4.5
03	ALFORD, PAT	AL	1732*A4	1746*A4	W28	W17	D26	W10	D6	4.0
04	STANTON, ROY F	AL	1700*B2	1733*B2	W54	W22	D10	W26	D1	4.0
05	MAGINNIS, PAT	KY	1596*B5	1644*B5	D20	D25	W19	W30	W15	4.0
06	SHEPPARD, R	WV	1593*C2	1645*C7	W44	D21	W20	W9	D3	4.0
07	SLATTON, RALPH	TN	1517*C0	1593*C5	W45	W30	L1	W22	W18	4.0
08	SWANN, RODGER	TN	1646*b0	1651*b0	D27	L11	W42	W28	W29	3.5
09	MORRIS, GARY L	WV	1626*b2	1642*b2	W39	D29	W11	L6	W26	3.5
10	GREEN, GARY	TN	1608*C9	1642*b2	W16	W19	D4	L3	W20	3.5
11	CARMICHAEL, S	WV	1522*c0	1582*C5	D13	W8	L9	W23	W21	3.5
12	REIN, SHELDON M	KY	1791*B4	1764*B4	W40	L26	W29	L17	W30	3.0
13	EDDINS, J SCOTT	TN	1692*b4	1672*b4	D11	D27	L32	W50	W36	3.0
14	GOODWIN, B	NC	1633*B6	1650*B6	W35	W50	L15	W32	U----	3.0
15	YOUNG, PHILLIP	IN	1549*C8	1585*b0	W31	W46	W14	L1	L5	3.0
16	GAY, LEONARD	KY	1523*C4	1548*C4	L10	L28	W49	W40	W1	3.0
17	WORLEY, JIMMY	TN	1507*C5	1565*C7	W24	L3	W45	W12	L2	3.0
18	BERTRAM, D B	TN	1432*D7	1480*c4	L22	W49	W40	W37	L7	3.0
19	BOTTA, SISIR	TN	1398*c2	1452*c4	W55	L10	L5	W34	W38	3.0
20	INMAN, LEWIS	TN	1719*B4	1688*B4	D5	W33	L6	W41	L10	2.5
21	HUGHES, JAMES	TN	1675*B9	1657*B9	W48	D6	W38	L2	L11	2.5
22	PROCTOR, JOHN	TN	1648*B0	1626*B0	W18	L4	W50	L7	D24	2.5
23	LIPKIN, ALAN H	TN	1646*b7	1607*b7	L51	D48	W44	L11	W42	2.5
24	ABRON, MICHAEL	TN	1629*B7	1602*B7	L17	L36	W43	W35	D22	2.5
25	MARTIN, MICHAEL	KY	1616*B0	1618*B0	D42	D5	W36	D27	U	2.5
26	HARVILL, BILL	TN	1594*C0	1597*C0	X----	W12	D3	L4	L9	2.5
27	BROUGHTON, J	KY	1555*B4	1587*B4	D8	D13	W46	D25	U----	2.5
28	EDWARDS, H	LA	1539*b9	1545*b9	L3	W16	D31	L8	W44	2.5
29	SCHAEFER, ED	VA	1459/08	1498/12	X----	D9	L12	W38	L8	2.5
30	JAMISON, GARY	TN	1693*B4	1655*B4	W49	L7	W34	L5	L12	2.0
31	SCHAEZTLE, M	AL	1640*B5	1602*B5	L15	W39	D78	D3	L16	2.0
32	ELLER, CHAD	NC	1599*C5	1618.C5	W53	L1	W17	L14	U----	2.0
33	WICKER, JEFFREY	KY	1532*C7	1548*C7	D17	L20	W52	D31	U----	2.0
34	COOK, MICHAEL	GA	1515*C9	1513*C9	L1	W55	L30	L19	W48	2.0
35	HARVILL, RONALD	TN	1513*c6	1508*c6	L14	L40	W55	L74	W52	2.0
36	NG, CHUN	TN	1499*D4	1518*D6	L46	W24	L25	W45	L13	2.0
37	SEANEY, RON K	TN	1762*B7	1712*B7	D33	W41	L2	L18	U----	1.5
38	NOWLIN, STEVE	AL	1635*C8	1570*C8	D43	W52	L21	L29	L19	1.5
39	HEDGER, WAYNE	TN	1559*C4	1523*C4	L9	L31	L47	W57	D40	1.5
40	SCHWARTZ, LEON	TN	1551*B0	1521*B0	L12	W35	L18	L16	D39	1.5
41	KADE, JIM G	TN	1510*b6	1512*b6	H----	L37	W48	L20	U----	1.5
42	MORCOS, JOHN N	AL	1489*c9	1476*c9	D25	L2	L8	W43	L23	1.5
43	THOMAS EMILY	AL	1326*c5	1321*c5	D38	L45	L24	L42	B----	1.5
44	HUNT, PHILLIP D	TN	1284*d4	1279*d4	L6	B----	L23	D48	L28	1.5
45	KRISTOFF, JUSTIN	KY	1789*a5	1711*a5	L7	W43	L17	L6	U----	1.0
46	MACLIN, PHILIP S	TN	1642*b4	1612*b4	W36	L15	L27	U----	U----	1.0
47	SABINE, JAY D	TN	1600*b0	1614*b0	U----	U----	W39	U----	U----	1.0
48	MILLER, STEPHEN	KY	1519*b7	1474*b7	L21	D232	L41	D44	L4	1.0
49	RAIDER, CHARLES	KY	1515*C2	1500*C2	L0	L18	L16	W52	U----	1.0
50	LANIER, JOHN	GA	1400*c2	1403*c2	W56	L14	L22	L13	U----	1.0
51	FORD, JULIAN B	GA	1400*b5	1425*b5	W23	U----	U----	U----	U----	1.0
52	WINFIELD, H	TN	1416*c0	1400*c0	D2	L38	L33	L49	L35	0.5
53	KRISTOFF, JUSTIN	KY	1814*a5	1789*a5	L32	U----	U----	U----	U----	0.0
54	ELLER, CHAD	NC	1618*C5	1606*C5	L4	U----	U----	U----	U----	0.0
55	DOWELL, FRED S	KY	1588*A5	1526*A5	L19	L34	L35	U----	U----	0.0
56	DOWELL, FRED S	KY	1526*A5	1505*A5	L--50	U----	U----	U----	U----	0.0
57	WEAVER, NANCY	TN	1203*E0	1199*E0	U----	U----	U----	L39	U----	0.0

## 19th Fairfield Glade Open Novice Section

P#	NAME	ST	Pre	Pst	1	2	3	4	5	TOTAL
01	KRISTOFF, RYAN	KY	1373*c4	1428*C2	W25	W24	W13	W11	W3	5.0
02	PROSSER, CHRIS	TN	1388*D9	1403*D9	L5	W33	W9	W25	W7	4.0
03	KUCAN, JOSEPH J	TN	1349*d4	1372*d6	W27	W17	W5	W10	L1	4.0
04	ROBERTS, ALAN	TN	1233*d4	1247*d4	W34	L20	W27	W14	W13	4.0
05	SAVAGE, TROY J	TN	1117/13	1215/17	W2	W22	L3	X----	W15	4.0
06	HALL, PAUL E	VA	0	1537/05	W8	W21	W15	L7	W11	4.0
07	URBAN, RAY	TN	1723/04	1603/09	D29	W36	W16	W6	L2	3.5
08	BARINGER, JIM	TN	1153*e5	1187*E4	L6	W30	D28	W21	W20	3.5
09	HAWKINS, W	TN	0869/11	1037/16	W37	D16	L2	W19	W18	3.5
10	GRAHAM, J A	TN	1340*d2	1345*d2	W40	W19	W14	L3	U----	3.0
11	HALL, KEVIN L	KY	1328*C5	1325*C5	W39	W18	W20	L1	L6	3.0
12	VAN DUSER, W	TN	1321*c4	1300*c4	L20	W34	L18	W27	W26	3.0
13	WELLS, RODNEY	KY	1250*D4	1241*D4	W35	W28	L1	W26	L4	3.0
14	BOTTA, V	TN	1148*E4	1191*E6	W36	W23	L10	L4	W24	3.0
15	PRUITT, NORM	NC	1292*D5	1280*D5	D21	W29	L6	W28	L5	2.5
16	SLOAN, D B	NC	1202*d8	1207*d8	W38	D9	L7	W31	U	2.5
17	SLOAN, DAVID	AL	1179*d9	1166*d9	X----	L3	L23	D30	W28	2.5
18	CLARK, WILLIE	TN	1170/13	1164/18	W1	L11	W12	D20	L9	2.5
19	GUSTAFSON, C	KY	1169*d0	1154*d0	W26	L10	D31	L9	W30	2.5
20	SMITH, BRIAN C	NC	0975*0	1023*e2	W12	W4	L11	D18	L8	2.5
21	MANIVONG, S	TN	0	1216/05	D15	L6	W29	L8	W33	2.5
22	KNIGHT, JASON	TN	1314*c5	1281*c5	W33	L5	L25	W34	U----	2.0
23	CLARK, PATRICK	TN	1260/15	1260/18	W30	L14	W17	F----	U----	2.0
24	YETZINA, TIM	GA	1179*e5	1138*e5	X----	L1	L26	W33	L14	2.0
25	GUGLIELMI, J	NC	1170*e2	1179*e2	L1	W35	W22	L2	U----	2.0
26	ROBERTS, CHRIS	TN	0980*e2	1013*e2	L19	W37	W24	L13	L12	2.0
27	MAGINNIS, KEVIN	KY	0958*e2	0975*e2	L3	W38	L4	L12	W34	2.0
28	MIRONESCU, C	TN	1122*d5	1090*d5	X----	L13	D8	L15	L17	1.5
29	STALEY, TIM	GA	1094*c5	1114*c5	D7	L15	L21	W37	U----	1.5
30	DAMMANN, DAN	TN	0	1055/05	L23	L8	W37	D17	L19	1.5
31	GONZALEZ, J	TN	0	1081/04	L18	W32	D19	L16	U----	1.5
32	WEAVER, N	TN	1199*E0	1181*E0	U----	L31	U----	U----	W35	1.0
33	GUSTAFSON, J	KY	1004*0	0986*0	L22	L2	W35	L24	L21	1.0
34	PEARSON, CLINT	TN	0988*e0	0968*e0	L4	L12	W38	L22	L27	1.0
35	MAGINNIS, M	KY	0	0756/04	L13	L25	L33	X----	L32	1.0
36	MC GINNIS, CH	TN	1388*d5	1355*d5	L14	L7	U----	U----	U----	0.0
37	RICHARDS, J	TN	1315*D0	1210*D0	L9	L26	L30	L29	U----	0.0
38	HAYNES, RON	TN	1255/02	0892/05	L16	L27	L34	F----	U----	0.0
39	KNIGHT, MACK	TN	1050*0	1044*0	L11	U----	U----	U----	U----	0.0
40	KNIGHT, MACK	TN	1044*0	1039*0	L10	U----	U----	U----	U----	0.0

## APPLICATION TCA SCHOLAR-CHESSPLAYER AWARD

NAME: \_\_\_\_\_

ADDRESS: \_\_\_\_\_

DATE OF BIRTH: \_\_\_\_\_ PHONE NO. \_\_\_\_\_

USCF ID#: \_\_\_\_\_ RATING. \_\_\_\_\_

SCHOOL: \_\_\_\_\_

GRADE: \_\_\_\_\_ GRADUATION DATE (Approx.): \_\_\_\_\_

1. Specific Academic Achievements (attach additional sheets as necessary).
2. Specific chess Achievements (attach additional sheets as necessary).
3. Extra Curricular Activities: School, Church, Community, clubs, etc. (attach additional sheets as necessary).
4. Attach 500 word essay on "the positive influence chess has had on your life".
5. Attach 3 letters of recommendation.
6. Attach one current picture of yourself.

Signature: \_\_\_\_\_ Date: \_\_\_\_\_

Applicants: Submit 4 copies of each of the following: this completed form, a 500 word essay, letters of recommendation from 3 adults. Also submit 1 current picture of yourself.  
**Completed application materials must be submitted to Harry D. Sabine by midnight March 1, 1996. This means in his hands, not postmarked by March 1st.** We suggest overnight mail, UPS, Fedex, or hand delivery.

For mailing: Harry D. Sabine, P. O. Box 381, Crossville, TN 38557.

For delivery: Harry D. Sabine, 205 S. Thurman Avenue, Crossville, TN 38555.

Questions: Contact Harry D. Sabine  
Phone: 615-484-9593 or 615-484-4878.



TENNESSEE CHESS ASSOCIATION  
TENNESSEE TEAM SCHOLASTICS  
ATTENDANCE BY REGION  
1981-1995

	Location	Reg. 1	Reg. 2	Reg. 3	Reg. 4	TOT
1981	Murfreesboro	19	132	58	33	242
1982	- Murfreesboro	38	106	62	62	268
1983	- Murfreesboro	29	117	85	70	301
1984	- Crossville	22	130	45	69	266
1985	- Memphis	3	33	19	146	201
1986	- Cookeville	7	61	39	86	193
1987	- Crossville	7	47	10	67	131
1988	- Memphis	1	32	19	90	142
1989	- Alcoa	64				
	Crossville		87			
	Dickson			72		
	Memphis				240	463
1990	- Kingsport	102				
	McMinnville		91			
	Nashville			125		
	Memphis				189	507

TENNESSEE CHESS ASSOCIATION  
TENNESSEE TEAM SCHOLASTICS  
ATTENDANCE BY REGION  
1981-1995

	Location	Reg. 1	Reg. 2	Reg. 3	Reg. 4	TOT
1991	- Oak Ridge	94				
	Chattanooga		99			
	Brentwood			94		
	Ripley				145	432
1992	- Clinton	110				
	Harriman		121			
	Nashville			108		
	Memphis				114	453
1993	- Alcoa	88				
	Crossville		102			
	Franklin			214		
	Cordova				104	508
1994	- Oak Ridge	119				
	Athens		127			
	Franklin			210		
	Memphis				116	572
1995	- Blountville	148				
	McMinnville		110			
	Nashville			233		
	Memphis				152	643

29. ♖f1 ♖f1 30. ♔f1 ♜e6!?

31. ♚c7 ♚e8

31...♙c7 is worthless. E.g.,  
32.♖c7 ♖a6 33.♖c3 ♗d7  
34.♗b4 ♖a2 ♖c6+ ♗b5  
36.♖d6.

32.♔b1

32. ♖c8 wins: E.g.,  
32... ♗b5+ 33. ♕g1 and  
(A) 33... ♜b6?? 34. ♖g8+!  
♜b5 [... ♜f6 35. b5 1-0]  
35. ♖f7+ ♜g6 36. ♖f5+ 1-0;  
(B) 33... ♜d8 34. ♖c5 ♖a4  
[34... ♖d7 35. ♖d6+]  
35. ♖d6+ ♜b5 36. ♖d5. 1-0.

32...♘a6 33.♔a5 ♕c6  
34.♖c5

34. ♖d8! is the winner,  
threatening 35. ♖g8+ ♔f6

36. ♖f8+ ♜g6 37. h5+ ♜h7  
38. ♖f5+ ♜h8 39. ♖f8+ ♜h7  
40. ♖f7+ ♜h8 41. ♜b7.

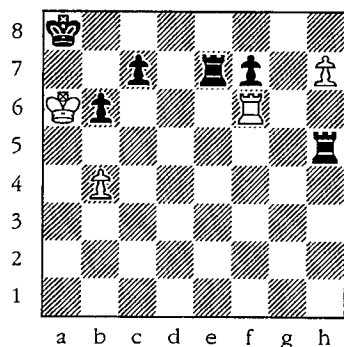
**♘c5 35.♔c5 ♔a6**

*The rook and pawn ending is hopeless: 35...♣c5 36.dxc5 [threatening 37.♠b6 1-0] 36...♠e8 [...♠e4? 37.♠d1] 37.♠b6+ ♣g7 38.c6 ♠c8 39.♠b7+ ♣f6 40.c7 ♣e7 41.a4 ♣d7 42.a5 ♣c6 43.a6 b5 44.♣e2 and Black is in zugzwang. 44...♠c7 45.♠c7+ ♣c7 46.♣d3 and White wins the Black pawns.*

**36.♖b5 ♖a2 37.♖d5 ♖f6**  
**1-0.** *If 37.♖d5 38.♖d5 White has a winning material advantage. Black didn't wait for 38.♖a2.*

## The Problem Corner

*By Ray Hudgens*



The conclusion of Marshall - Mac Klüre, New York, 1923, is this issue's Problem Corner.

Down a rook, Marshall looks to hold the half-point. How did he do it?

Answer page 20.

## The Correspondence Game

(By Lee Edwards)

There hasn't been much interest in Tennessee Postal Chess lately, so we are trying to modernize by sponsoring the first Tennessee e-mail championship. All it takes is a computer, a modem, a T.C.A. membership, and an internet address.

It only costs \$6.00 to enter (plus T.C.A. dues if you are not a member) . You get six games against three opponents -- one White and one Black against each opponent -- and all entry fees are returned as prize money. Send those entry fees to:

*Lee Edwards  
T.C.A. Postal Chess Coordinator  
3214 McGavock Pike  
Nashville, TN 37214-1844*

Checks and money orders should be made payable to the Tennessee Chess Association.

(Continued from page 7)

Half of the players entered in Primary were from Woodland Elementary. You can count on this team finishing well in the upcoming Team Championship, which will be held on March 9, 1996. Also, 7 of the 25 players in the High School Division were from Webb Upper School. It seems that Webb, too, is positioning itself to make an impact during the team championship. Mark your calendar for the Regional Team Championships to be held during March at Mary Blount Elementary. With the same location and same organizers, it is sure to be a stellar event.

Special thanks go to Mary Blount Elementary for sponsoring this event and their willingness to host both the upcoming Individual and Team Championships. Come watch the children shine.

**2nd Annual  
MIDDLE TENNESSEE OPEN**

**February 16-18 or 17-18**

**Nashville, Tenn.**

**\$20,000 prize fund\***

*(50 Grand Prix Points)*

**5-rd Swiss, 35/90, SD/1. Clubhouse Inn & Conference Center, 920 Broadway, Nashville, TN (Across from Union Station.) Open, U2000, U1800, U1600, U1400.**  
Contact: **Ed Newkirk**, 1202 Twin Spings Drive, Brentwood, TN 37027. Phone: 615-370-3653 (\* \$20,000 in prizes based on 275 paid entries Juniors and unratreds count as 1/2 entry), else proportional, 65% gtd.)

**Turkey Tour Prize Fund Doubled!!**

For the tournament year 1995-96, the Turkey Tour Prize Fund will be matched by monies from the TCA. The same criteria apply for earning points on the Turkey Tour: participating in a USCF/TCA Grand Prix event is worth 20 points; playing in the Tennessee Open is worth 30 points; and all other Turkey Tour Tournaments are worth 10 points. Additional points are awarded based on your performance. The top three finishers in each of the following categories will receive cash awards: Master/Expert; Class A; Class B; Class C; Class D; and Class E. Your published rating as of 8/1995 will determine your class for the year. The TCN will periodically update the standings.

**Solution to the Problem Corner**

1.Rh6! Rxh6 2.h8=Q Rxh8 3.b5!!  
I'll bet that MacKlure was not too  
happy with this turn of events.

**Tournaments! Tournaments! Tournaments!**

*By Rick Igou*

**TURKEY TOUR EVENT**

**01/5-7/96 1996 Fairfield Glade Open, Fairfield Glade, TN**

*01/27/96 TN Individual Regionals (SCHOLASTICS)*

*02/10/96 TN Individual Finals (SCHOLASTICS)*

**TURKEY TOUR EVENT**

**02/16-18/96 Middle Tennessee Open, Nashville, TN**

*03/09/96 TN Team Regionals (SCHOLASTICS)*

*03/23/96 TN Team Finals (SCHOLASTICS)*

**TURKEY TOUR EVENT**

**04/13/96 Music City Open, Nashville, TN**

**TURKEY TOUR EVENT**

**05/25/96 Rutherford County Open, Murfreesboro, TN**

**TURKEY TOUR EVENT**

**06/08/96 Columbia Open I, Columbia, TN**

**TURKEY TOUR EVENT**

**07/13/96 Cumberland County Summer Open, Fairfield Glade**

**TURKEY TOUR EVENT**

**07/20/96 Music City Grand Prix, Nashville, TN**

**TURKEY TOUR EVENT**

**08/31/96 Tennessee Open, Nashville, TN**

## **TCA Regional Scholastic Coordinators (1995-1996)**

### STATE SCHOLASTIC COORDINATOR

**Harry D. Sabine**  
205 South Thurman Avenue  
P.O. Box 381  
Crossville, TN 38557  
H: (423) 484 - 4878  
O: (423) 484 - 9593  
Fax: (423) 456 - 7624 (& modem)

### REGION 1 SCHOLASTIC COORDINATOR

**Ms. Pat Knight**  
234 East Drive  
Oak Ridge, TN 37830  
(423) 481 - 3516

### REGION 2 SCHOLASTIC COORDINATOR

**Ms. Nancy Hughes**  
348 Glensara Dr. NW  
Charleston, TN 37310  
H: (423) 476 - 8059

### REGION 3 SCHOLASTIC COORDINATOR

**Alvin L. Harris**  
(Office)  
Greene & Greene  
323 Union Street  
P.O. Box 198768  
Nashville, TN 37219  
H: (615) 297 - 8185  
O: (615) 256 - 5607  
Fax: (615) 256 - 3229

### REGION 4 SCHOLASTIC COORDINATOR

**Bill Cummings**  
3532 Davieshire Drive  
Memphis, TN 38133  
H: (901) 372 - 6584  
O: (901) 348 - 1600  
Fax: (901) 348 - 1610

## **TCA Board Of Directors (1995-96)**

### PRESIDENT

**Bill Orgain**  
PO Box 366  
Dickson, TN 37056  
Home: (615) 446 - 0521  
Work: (615) 446 - 2814  
FAX: (615) 446 - 9913

### SECRETARY

**Ms. Betty Williams**  
4705 Sully Circle  
Knoxville, TN 37921  
Home: (423) 525 - 6623

### TREASURER

**Leonard S. Dickerson**  
420 Oran Road  
Knoxville, TN 37922  
Home: (423) 966 - 1095  
Work: (423) 574 - 4676

### POSTAL CHESS COORDINATOR

**Lee Edwards**  
406 Stahlman Building  
211 Union Street  
Nashville, TN 37201  
Home: (615) 883 - 7522  
Work: (615) 726 - 3395

### TOURNAMENT DIRECTOR

**Rick Igou**  
400 Rhodora Court, Apt. F  
Knoxville, TN 37923  
Home: (423) 690 - 6810  
Work: (423) 574 - 1839

### SCHOLASTIC COORDINATOR

**Harry D. Sabine**  
P.O. Box 381  
Crossville, TN 38557  
Home: (615) 484 - 4878  
Work: (615) 484 - 9593  
FAX: (615) 456 - 7624

### TCN EDITOR

**Richard R. Westbrook**  
1227 Venido Drive  
Knoxville, TN 37932-2599  
Home: (423) 671 - 4124  
Work: (423) 974 - 1250  
FAX: (423) 671 - 4124

### DIRECTOR, EAST TENNESSEE

**Ms. Pat Knight**  
234 East Drive  
Oak Ridge, TN 37830  
(423) 481 - 3516

### DIRECTOR, MIDDLE TENNESSEE

**Ed Newkirk**  
1202 Twin Springs Drive  
Brentwood, TN 37027  
Home: (615) 370 - 3653  
Work (615) 459 - 8483

### DIRECTOR, WEST TENNESSEE

**Brenda Boudreaux**  
107 S. Front St. #36  
Memphis, TN 38103  
(901) 523 - 7555