



TENNESSEE CHESS NEWS

SPRING 2007

VOLUME 50

NO. 2

TN Scholastic Championships	4
TN Girls Championship	5
Memphis Championship	19
Scholastic Crosstables	22

Tennessee Chess Association Tournament Calender from the TCA Website

May 11-13, 2007	National Elementary (K-6) Championship Gaylord Opryland Resort/Convention Ctr. Nashville, TN 37214 Telephone: 615-883-2211
May 19, 2007	Pawn Power Open 4 Hampton Inn, Memphis, TN Gary Pylant; e-mail: gpylant@gmail.com
June 9, 2007	2007 Rea Hayes Open Bethel Bible Village, Hixson, TN E-mail: entries@chattanooga chess.org
June 23, 2007	John Hurt Memorial 4 Hampton Inn, Memphis, TN Gary Pylant; e-mail: gpylant@gmail.com
July 21, 2007	Mid-Summer Open 4 Hampton Inn, Memphis, TN Gary Pylant; e-mail: gpylant@gmail.com
August 11, 2007	James Wright Memorial 4 Hampton Inn, Memphis, TN Gary Pylant; e-mail: gpylant@gmail.com

TENNESSEE CHESS NEWS is the official publication of the
Tennessee Chess Association.

MEMBERSHIPS

TCA annual dues are \$10 for a *regular* membership or *student* membership. Additional members of a family may join for one dollar each, but only one issue of **TCN** will be mailed per family. For those wishing to join after April 1 of any year, a \$15.00 membership is available for the remainder of that year and includes the following year. All non-patron memberships expire August 31.

Tax-deductible Patron Memberships are available beginning at \$100 per year for those who wish to help support the TCA and the FFTC. These memberships expire one year from the date of payment. Patron membership categories and benefits are as follows:

PATRON \$100

- One year TCA Membership and FFTC membership plus a key ring.

PATRON KING \$300

- All Patron benefits plus one year free TCA and FFTC membership for all members of the Patron King's immediate family & free entry into the TN State Scholastic Individual Regional Tournament for the member and all members of the Patron King's immediate family.

PATRON MASTER \$500

- All Patron King benefits plus one free entry to any TCA or FFTC sponsored Open Chess Tournament. The Patron Master or any member of his/her immediate family can use such free entry.

PATRON GRANDMASTER \$1000 **(or more)**

- All Patron Master benefits plus a chess clock and their name on a permanent plaque to be placed on the wall at the home of the TCA and FFTC.

TOURNAMENT ANNOUNCEMENTS

TCN prints listings of upcoming tournaments that require TCA membership in each issue for free. Submit complete TLA information to Paul Semmes, Tournament Coordinator.

E-MAIL: paulsemmes@charter.net

TN CHESS NEWS STAFF

Editor:

Leonard Dickerson

Contributors:

Todd Andrews

Paul Semmes

TCN publishing schedule and deadline for submissions:

Spring 2007 - May 1 covering
Feb, Mar, and Apr events

Deadline: Apr 9, 2007

Summer 2007 - Aug 1 covering
May, Jun, and Jul events

Deadline: July 9, 2007

Fall 2007 - Nov 1 covering
Aug, Sept, and Oct events

Deadline: Oct 9, 2007

Winter 2008 - Feb 1 covering
Nov, Dec, and Jan events

Deadline: Jan 9, 2008

Please submit material by e-mail
to: lsdick@tds.net



TENNESSEE CHESS ASSOCIATION
&
FOUNDATION FOR TENNESSEE CHESS



PATRON MEMBERS

♔ Patron Grandmaster ♔

Dr. Martin Katahn

♘ Patron Member ♘

Dr. Juan T. Aristorenas

R. K. Shimabukuro

Brian Vogt



The Tennessee Chess Hall of Fame was established to honor those members who have distinguished themselves through their outstanding achievements in chess, either in competition or in chess organization or promotion. Peter Lahde is chairman of the electing committee, and guidelines for nominations are posted onsite.

TCA HALL OF FAME

Peter Lahde	1990
Robert Coveyou	1990
Jerry Sullivan	1990
Martin Southern	1990
Tom Finucane	1990
Robert Scrivener	1990
L. Hunter Weeks	1990
John Hurt	1992
James A. Sweets	1993
Rea Hayes	1997
James A. Wright	1998
Dr. Martin Katahn	2002
David Burris	2003
Albert Hodges	2005

A NOTE FROM THE EDITOR

Patrica Knight, Asst. Exec. Dir. and Events Coordinator

Patricia Knight has served as the TCA's Internet Chess Coordinator for over ten years. During that time we have witnessed the site grow from a piddling pasting of sporadic information into the quality site that features speedy posting of post-tournament results as well as the best source of information on upcoming tournaments. And this for free--well, other than the many hours per week that she donated to the TCA! But with her recent promotion from the USCF Executive Assistant to Assistant Executive Director and Events Coordinator she simply has run out of time to do volunteer stuff because she is sometimes on the road for weeks coordinating and conducting national chess events. Hence it is with regret that she is forced to resign as our Internet Chess Coordinator because of her job responsibilities.

We congratulate her on her promotion and thank her for her year's of unselfish and praise-worthy work as the TCA Internet Coordinator! Luckily, we have found a brave volunteer that has been willing to replace her: Alan Kantor, an expert chess player who works at the USCF and lives in Crossville, has stepped up to the challenge of continuing to provide Tennessee and outlying areas with excellent website service. We look forward to seeing his personal touch maintaining and improving our service to you.

Tenn. Scholastics: Individual and Team Finals

The months of February and March are Tennessee's "chess fever" months, and things really heated up in our scholastics. The regional qualifying tournaments and the final events of both the Individual and Team Scholastic Championships have concluded. Games from the events and crosstables are included in this issue. Special thanks goes to Todd Andrews, the NCC, and Paul Semmes for transcribing the scoresheets that were submitted. Even more impressively, some of the Game/10 playoff matches have been captured and included here! Principally because the players are higher-rated and focused more on their own results, the games of the Individual Finals are of appreciably higher quality than the submitted games of the team championships. Nonetheless, every submitted game that was readable is included in this issue. However, space limitations on the **TCN** necessitated that the crosstables of the Team Finals be truncated. There simply was not room enough to list the individual team members of each of the divisional 16 teams that competed in the Team Finals. Only the first- and second-place finishing team have their players detailed. (The complete listing will be put on the website.)

Champions ... no resting on your laurels. Gear up for the National Elementary (K-6) Championships starting May 11th in Nashville, TN!

enn. Team Scholastic Championship

The State Team Finals were held March 24 at the University Center of Tennessee Technological University (TTU) in Cookeville, Tenn. The event featured the top four teams of Primary through High School grades who represented the four regions of Tennessee after having triumphed in the Regional Qualifying Tournaments of March 3.

TTU again awarded four-year University Academic Service Scholarships to the first and second place teams of the high School Section as follows: \$4,000 per year (\$16,000 total) each to the four members of the first-place team, and \$2,000 per year each to the four members of the second-place team.

Waddale High School (Reg. 3) captured first-place honors over Farragut High School after an intense G/10 playoff to break the tie between these teams that had endured since their second round encounter that they drew. So the scholarships consequently went to these key team members. **Meigs Magnet** school won the **Jr. High Section** with 3.5 points. **Grahamwood Elem.** dominated the **Elementary Section**, emerging undefeated

with 4.0., and **Presbyterian Day School** also went undefeated to win the **Primary Team Championship**.

Games from this event are included in this issue as well as the crosstables which begin on page 22. However, only the first- and second-place teams' members have been shown due to space limitations.

Tennessee Individual Scholastic Championship

The State Individual Finals were held February 28 at TTU. The top eight winners of the Primary through High School sections represented the four regions of Tenn. where they had emerged victorious in their Regional Qualifiers of February 14.

TTU awarded Univ. Academic Service Scholarships to the first and second-place winners of the high school section: \$4,000 per year scholarship (totaling \$16,000) to the winner of the high school section and a \$2,000 per year scholarship to the second-place finisher. **Gainer Phay** (Reg. 3) took first place over **Philip Henschman** (Reg. 2) after a G/10 playoff to grab the top scholarship. Games and crosstables are included in this issue.

Su'ad Yoon Wins Tennessee Girls Chess Championship

Nineteen of Tennessee's best girl chess players competed in this year's Tennessee Girls Chess Championship at the Nashville Chess Center on April 14. The tournament was open to any girl in grades K - 12 who resides in Tennessee. When the dust cleared, Martin Luther King High School student **Su'ad Yoon** was awarded the title of 2007 Tennessee Girls Champion, receiving a large trophy and the right to represent Tennessee in the 2007 Susan Polgar National Invitational for Girls. Additionally, the top ten finishers received trophies while all other players took home a new chess set.

To gain the tournament title, Yoon (USCF 1558) had to win the Game/10 playoff match between the second-highest rated Graham Gibson of Cordova (USCF 1541), who also shared a perfect 4.0 score. Chief TD Alvin Harris remarked that the turnout was pleasing and that "One of our goals in hosting the tournament was to encourage more girls to play chess and to continue playing once they've started." Harris also noted that while the girls were all competitive, they displayed a high level of sportsmanship that is sometimes lacking among

their male counterparts.

For more information on the tournament and a track to its crosstable, go to: <http://www.nashvillechess.org/>.

=▲====▲====▲====▲====▲====▲==

Below is a game of Teja Dasari, whose sister Vijaya played in the Girls Championship. This game represents the talent coming out of Memphis. Though she makes some mistakes in the game, she fights back against a tough 1800 to secure the draw. See page 19 for further mention of Teja.

2007 Memphis Championship

Sam O'Bar (1795)

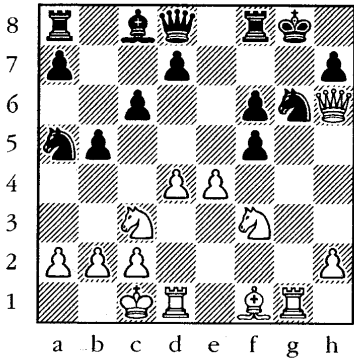
Teja Dasari (1335)

1. e4 c6 2. d4 d5 3. exd5 cxd5 4. Bd3 Nc6 5. c3 Nf6 6. Bf4 e6 7. Nf3 Bd6 8. Bxd6 Qxd6 9. O-O O-O 10. Re1 Re8?! In this variation, the bishop is generally not freed by e5. 11. Ne5 Nd7? 12. Bxh7+ Kf8 13. Nxd7+ Bxd7 14. Bc2 e5 15. Qh5 Qf6 16. Bb3 Bf5? 17. Na3 Better was winning a pawn with f4, since Black can't allow the e-file to be opened. 17... Rad8 18. Nb5 Rd7 19. dxe5 Rxe5 20. Rxe5 Qxe5 21. Nd4 g6 22. Qh6+ Kg8 23. Nxf5 Qxf5 24. Ba4 Re7 25. Qd2 Re4 26. Bc2 Qf4 27. Qxd5? Re2 1/2-1/2

TCN/Spring 2007_05

Team Finals, Jr. High (1)
Schafer, Jacob 1384
McTaggart, Matthew

1. e4 e6 2. d4 Ne7 3. Nc3 g6
 4. f4 Bg7 5. Nf3 O-O 6. Be3
 Nbc6 7. Qd2 Na5?! 8. O-O-O
 c6 9. g4 This is a good
 move that avoids weakening
 White's castled position and
 launches White's attack on
 Black's king. But it is hard
 not to recommend the win of
 the errant knight with the
 simple b4. (9. b4 d5 10.
 bxa5) 9... b5 10. f5 exf5
 11. gxf5 gxf5? With d5
 Black would have a viable
 game. This greed gives White
 an easy kingside attack
 because of the open attack
 lanes. 12. Bh6 Bxh6??
 Welcoming the queen to the
 feast. But Black's position
 was terminal, anyway. (12...
 b4 13. Bxg7 Kxg7 14. Rg1+
 Ng6 15. exf5 d5 16. fxc6
 fxc6 17. Ne5 bxc3 18. Qxc3
 Bf5 19. h4+-) 13. Qxh6 f6
 14. Rg1+ Ng6



White to move.

15. exf5 This wins, of
 course, but flashier is the
 rook sacrifice: 15. Rxc6+
 hxc6 16. Qxc6+ Kh8 17. Bc4!
 15... Kf7 16. Qxh7+ Ke8 17.
 Qxc6+ Rf7 18. Qg8+ Ke7 19.
 Re1+ Kd6 20. Qxf7 (20. Qg3#)
 20... Kc7 21. Re8 Qxe8 22.
 Qxe8 Ba6 23. Qxa8 Bb7 24.
 Qxa7 Kd6 25. Nxb5+ cxb5 26.
 Qc5# 1-0

Team Finals, Jr. High (1)
Nair, Manu (1536)
Suits, Mack (1024)

1. e4 e5 2. Nf3 Nc6 3. Bc4
 Nf6 4. Ng5 Bc5? Playing
 this move is almost
 inexcusable for a player
 rated over 800. If you want
 to avoid this attempt at the
 Fried Liver Attack, then on
 your 3rd move develop your
 bishop to c5 rather than
 move your knight out. Now
 that the pinch is on, play
 d5 here. If you are going
 to play an opening, then
 learn its pitfalls and
 remedies. 5. Bxf7+ Kf8 6.
 Bb3 d6? 7. O-O Winning is
 Nf7. Perhaps White is
 worried about Bg4 or Nxe? Or
 perhaps he is just playing
 soundly because he feels
 that he already has enough
 advantage to win if he
 simply avoids complications.
 Bg4 8. Qe1 This is better
 than the pseudo-queen
 sacrifice, which seems to
 give Black new life: 8.
 Qxg4 Nxg4 9. Ne6+ Ke8

10. Nxd8 Rxd8+/- 11. Nc3 Rf8
 12. Nd1 Nd4 13. Bc4 Nxc2)
 8... Nb4 9. h3 Bd7 10. a3
 Nc6 11. Nf7 White has shown
 great restrain in not
 immediately going for more
 material. After his last
 two careful moves, he now
 capitalizes on his good
 position to easily win. Qe7
 12. Nxb8 Be6 13. Bxe6 Qxe6
 14. Nc3 Nd7 15. Nd5 Nd4? 16.
 Nxc7 Qc4 17. Qd1 (17. Nxa8!
 Nxc2 18. d3 Qb3 19. Qa5)
 17... Rc8 18. Nd5 Nf6 19.
 Nxf6 gxf6 20. d3 Qg8 21. c3
 Ne6 22. Qg4 Qxg4 23. hxg4
 Kg7 24. Be3 Bxe3 25. fxe3
 Rxh8 26. Rf2 Kf7 27. Raf1
 Ke7 28. Rxf6 Rg8 29. Rf7+
 Ke8 30. Rxb7 Rxc4 31. Rxa7
 Rg3 32. Rf3 Rxf3 33. gxf3
 Ng5 34. Kg2 Kf8 35. a4 Kg8
 36. a5 Ne6 37. a6 Nc5 38.
 Ra8+ Kg7 39. a7 Na6 40. Rg8+
 Kxg8 41. a8=Q+ Kg7 42. Qxa6
 h5 43. Qc8 Kg6 44. Qf5+ Kh6
 45. Qf6+ Kh7 46. Kh3 Kg8 47.
 Qe7 Kh8 48. Kh4 Kg8 49. Kg5
 Kh8 50. Kh6 Kg8 51. Qe8# 1-0

Team Finals, Jr. High (3)
Berryhill, Jordan (1418)
Murphy, Ben (998)

1. e4 e5 2. Nf3 Nc6 3. g3
 Nf6 4. d3 Bc5 5. Bg2 O-O 6.
 O-O d5 This is a move
 that should be avoided. Why
 awake the White bishop at
 g2? Still, Black is okay.
 7. exd5 Nxd5 8. c4? Bg4??
 Winning was Ndb4: 8... Ndb4
 9. Ne1 Bf5. 9. cxd5 Bxf3
 10. Bxf3 Nd4 11. Bg2 Re8
 12. Nc3 Bb4 13. Be3 Qf6

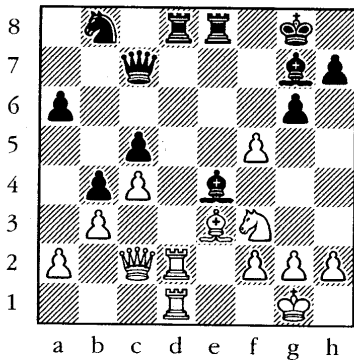
14. a3 Bxc3 15. bxc3 Nf5 16.
 Qb3 b6 17. Rael Nxe3 18.
 fxe3 Qg6 19. d6 Rac8? 20. d7
 Rcd8 21. dxe8=Q+ Rxe8 22.
 Bd5 h6?? 23. Bxf7+ Qxf7 24.
 Qxf7+ Kh7 25. Qxe8 g5 26.
 Qf7+ Kh8 27. Rf6 e4 28.
 Rxh6# 1-0

Team Finals, Jr. High (4)
Schafer, Jacob (1384)
Berryhill, Jordan (1418)

1. e4 c6 2. d4 d5 3. Nc3 e6
 4. e5 Be7 Now how does
 Black plan to develop his
 knight on g8? 5. Bd3 Nd7 6.
 Be3 f6? This is very bad
 but Nxe5 does not work
 either. Black can hope to
 get some freedom with moves
 like c5 or h5, but
 (obviously) he has went
 wrong in the opening. (6...
 Nxe5 7. dxe5 d4 8. Qg4) 7.
 f4 (7. Qh5+ Kf8 8. Nf3 Qe8
 9. Qh3 Bb4 10. O-O+-) 7...
 fxe5 8. fxe5 Bg5?? Nb6 with
 plans of running the king to
 d7 would prolong the
 struggle. 9. Qh5+ g6 10.
 Qxg5 Qxg5 11. Bxg5 Ne7 12.
 Nf3 c5 13. Nb5 Kd8 14. Nd6
 Kc7 15. Bxe7 cxd4 16. Nxd4
 Nxe5 17. N6b5+ Kd7 18. Bf6
 Nxd3+ 19. cxd3 Rf8 20. O-O
 a6 21. Nc3 b6 22. Be5 Bb7
 23. Rxf8 Rxf8 24. Rf1 Rxf1+
 25. Kxf1 Ke7 26. a4 g5 27.
 g4 Kf7 28. b4 h6 29. Ke2 Ba8
 30. Kd2 a5 31. Ncb5 axb4 32.
 Kc2 Ke7 33. Kb3 1-0

Team Finals, Jr. High (3)
Nair, Manu (1536)
Wu, James (1938)

1. e4 c5 2. Nf3 e6 3. b3 Qc7
 4. Bb2 d6 5. Be2 Nd7 6. O-O
 Ngf6 7. d3 a6 8. Nbd2
 Be7 9. c3 b5 10. d4 Bb7 11.
 Bd3 O-O 12. Re1 White has
 managed to rearrange his
 pieces and now has a
 comfortable position. e5
 13. Rc1 This is good in
 principle (lining up with
 the queen), but a4 or Nh5
 was better. Rfe8 14. dxe5
 Nxe5 15. Nxe5 dxe5 16. c4 b4
 17. Nf3 Bf8 18. Qc2 Rad8 19.
 Rcd1 g6 20. Bc1 Nd7 21. Be3
 Bg7 22. Rd2 Nb8 23. Red1 f5
 This is a bold but bad move
 that ends well. 24. exf5+-
 e4!? 25. Bxe4 Bxe4



Black to move.

26. Rxd8? (26. Qxe4 Rxe4 27.
 Rxd8+ Kf7 28. Ng5+ Ke7 29.
 Nxe4+-) 26... Rxd8 27. Rxd8+
 Qxd8 28. Qe2 Yikes! White
 can't take the bishop
 because of the back-rank
 mate threat. Bxf5 29. Bxc5
 a5 30. h3 Nc6 31. Nh4 Bd7

(31... Bxh3 32. gxh3 Qg5+
 33. Kf1 Qxc5 34. Qe6+ Kf8)
 32. Qe3 Qe8 (32... Qxh4!)
 33. Nf3 Be6 34. Qe4 Qd7 35.
 g4 Bf6 36. Nd2 Kg7 37. Nf1
 h5 38. Ne3 hxg4 39. hxg4 Bg5
 40. f4 Bf6 41. f5 Bf7 42.
 fxg6 Bxg6 43. Bf8+ Kf7 44.
 Qf4 Nd4 45. Kf2 Ne6 46. Qf3
 Ng5 0-1

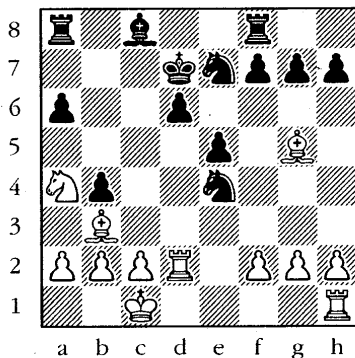
Team Finals, Jr. High (1)
Carver, Michael (995)
Kumar, Vikas (1653)

White assumes a passive
 stance and proceeds with a
 fearful strategy against his
 higher-rated opponent. Play
 your usual game no matter
 what your opponent's rating.
 Only in this manner can you
 consistently improve.

1. Nf3 c5 2. e3 d5 3. Nc3
 Nf6 4. d3 Nc6 5. Be2 e5 6.
 Ng5 h6 7. Nf3 Bd6 8. b3 O-O
 9. Ba3? Qa5 10. Bb2 d4 11.
 exd4 exd4 12. Qd2 dxc3 13.
 Bxc3 Qd8 14. O-O Be6 15.
 Rab1 Nd5 16. d4 Bf4 17. Qd3
 Nxc3 18. Qxc3 cxd4 19. Qd3
 Qd7 20. Qe4 Bc7 21. Rbd1
 Rad8 22. Bd3 f5 23. Qe2 Rfe8
 24. Nh4 Qd6 25. g3 g5 26.
 Ng6? Bf7 27. Qh5 Qxg6 28.
 Qxg6+ Bxg6 29. g4 Ne5 30.
 Bb5 Rf8 31. f3 fxg4 32. fxg4
 Nf3+ 33. Kg2 Be4 34. Bc4+
 Kg7 35. Bd3 Bc6 36. Be2
 Nxf1 37. Kg1 Nxf1 38. Bxf1
 Bb6 39. Rd3 Bb5 40. c4 dxc3+
 41. Re3 Bxe3+ 42. Kg2 Bxf1+
 43. Kg3 Bf2+ 44. Kh2 Rf3 0-1

Team Finals, Jr. High (4)
 Baty, Forrest (1308)
 Murphy, Matthew (1120)

1. e4 c5 2. Nf3 Nc6 3. d4
 cxd4 4. Nxd4 Nf6 5. Nc3 e5
 6. Ndb5 a6 7. Nd6+ Bxd6 8.
 Qxd6 Qe7 9. Qxe7+ Nxe7 10.
 Bg5 d6? The pawn is almost
 indefensible. Now it is
 actually preferable to
 simply let White have it
 rather than trying to defend
 it. 11. O-O-O Kd7 12. Bc4
 Rf8 13. Rd2 b5 14. Bb3 b4
 15. Na4 Nxe4



White to move.

16. Re2?? White misses a
 simple winning check and now
 has to struggle: 16. Nb6+
 Kc6 17. Bxe7 Kxb6 18. Bxf8
 Nxd2 19. Kxd2 Bb7 20. Bxg7.
 16... Nxc5 17. Nb6+ Kc7 18.
 Nxa8+ Kb7 19. Rd1 Rd8? 20.
 h4 (20. Rxe5!) 20... Bg4?
 21. f3 Nxf3 22. Re4? (22.
 gxf3 Bxf3 23. Rxe5 Nc6 24.
 Bd5 dxe5 25. Bxc6+ Bxc6 26.
 Rxd8) 22... f5 23. Rxb4+
 Kxa8 24. gxf3 Bxf3 25. Rd3

e4 26. Bd5+ Nxd5 27. Rxd5 e3
 28. Ra5? (28. Rd3 =) 28...
 Ka7 29. Rba4 Be2? Queening
 the pawn with Re8 was the
 simple win. Now White
 mounts an offensive! 30. c4
 Kb7 31. Rxf5 Bg4? 32. Rf7+
 Kb8 33. Re7 e2 34. Kd2 d5
 35. Rb4+ Kc8 36. Rbb7? (36.
 c5!) 36... dxc4+ 37. Ke1
 Rd1+ 38. Kf2 Rf1+ 39. Kg2
 e1=Q 40. Rxe1 Rxe1 41. Rxc7
 Bf5 42. Kf2 Rb1 43. Ke3 Rxb2
 44. Rf7 Bb1 45. Kd4 Bxa2 46.
 Kc5 c3 47. Rxh7 c2 48. Rh8+
 Kd7 49. Rh7+ Ke8 50. Rh8+
 Kf7 0-1

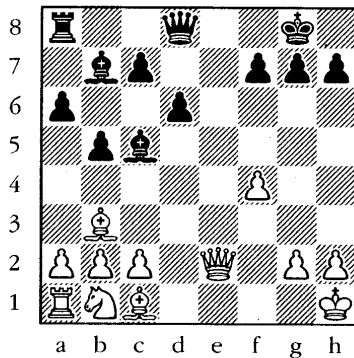
Team Finals, Jr. High (3)
 Franklin, Shane (1207)
 Kumar, Vikas (1653)

1. d4 Nf6 2. c4 e6 3. Nc3
 Bb4 4. Qc2 c5 5. e3 O-O 6.
 Bd2 Na6 7. Bd3 d5 8. b3?
 dxc4 9. bxc4 cxd4 10. exd4
 Qxd4 11. Nf3 Qd8 12. O-O Nc5
 13. Be2 Re8 14. Rfd1 Qe7 15.
 Be3 Bxc3 16. Qxc3 Nfe4 17.
 Qc2 b6 18. Bd3 Nxd3 19. Qxd3
 Bb7 20. Qd7 Qxd7 21. Rxd7
 Bc6 22. Rc7 Rec8 23. Re7??
 Kf8 24. Rxf7+ Kxf7 25. Ne5+
 Kg8 26. f3 Nf6 27. g4 Nd7
 28. Nxc6 Rxc6 29. Rd1 Ne5
 30. f4 Nxc4 31. Rc1 Rac8 32.
 Bd4 Nd2 33. Rd1 Nf3+ 34. Kg2
 Nxd4 35. Rxd4 Rc2+ 36. Kh3
 R8c3+ 37. Kh4 h6 38. h3 Rh2
 39. Kh5 Kh7 40. g5 Rhxh3+
 41. Kg4 Rcg3# 0-1

Team Finals, HS (4)
Ashmun, Frank (1898)
Hurd, Olajuwon (1017)

1. e4 e5 2. Nf3 Nc6 3. Bb5 a6 4. Ba4 Nf6 5. O-O Nxe4

Learn the first 10 moves of any opening that you play. Even a casual acquaintance with the Ruy Lopez shows Black avoiding this capture--for good reason. 6. d4 Bd6 7. dxe5 Nxe5? This move, however, is a blunder that cannot be considered part of the opening. Black should have retreated the bishop to e7, and, moreover, should be able to see the upcoming 2-move combination. 8. Nxe5 Bxe5 9. Re1 Decisive was Qd5, but even this works. O-O 10. Rxe4 Re8 Hoping that White blunders and allows Bxh2+ followed by Rxe. 11. Qe1 b5 12. Bb3 d6 13. f4 Bb7 (13... Bd4+ 14. Kh1 Bb7 15. Rxe8+ Qxe8 16. Qf1) 14. Re2 (14. fxe5 Bxe4 15. Qxe4 Rxe5 16. Qf4+-) 14... Bd4+ 15. Kh1 Rxe2 16. Qxe2



Black to move.

Amazingly, it is actually Black who is winning here because of his powerful bishops sweeping the kingside and White's vulnerable back rank.

Qe8? With Qd7 Black would threaten both Qh3 and Re8, which wins a piece by force: Qd7! 17. Qf1 Re8 18. Nd2 Qh3 19. Nf3 Bxf7 17. Qf1 Qe7 18. Nc3 b4 19. Ne2 Ba7 20. Bd2 Re8 21. Ng3 Qf6 22. Re1 Rxe1 23. Qxe1 h6 24. Qe8+ Kh7 25. Qxf7 Qxf7 26. Bxf7 a5 27. f5 Bf2 28. c3 Bxg3 29. hxg3 bxc3 30. Bxc3 Be4 31. Bg6+ Kg8 32. Bxa5 d5 33. Bxc7 d4 34. Bf4 d3 1-0

Team Finals, Jr. High (3)
Schafer, Jacob (1384)
Velkovsky, Ivan (702)

1. e4 c5 2. Nf3 Nf6 3. Nc3 e6 4. b3 d5 5. Bb5+ Nc6 6. Qe2 Bd6?? 7. e5 Bxe5 8. Nxe5 O-O 9. Nxc6 bxc6 10. Bxc6 Rb8 11. Bb5 a6 12. Qe5? Bb7? (12... Rxb5 13. Nxb5 axb5) 13. Be2 Nd7 14. Qf4 e5 15. Qg3 d4 16. Na4 Bc6 17. Nb2 Rb4 18. c3 dxc3 19. dxc3 Re4 20. Be3 Rh4? 21. Bg5 Qxg5 22. Qxg5 Re4 23. Qh5 g6 24. Qf3 f5 25. O-O-O h5 26. Bd3 Rf4 27. Qxc6 Nf6 28. Bc4+ Kg7 29. Qc7+ Kh6 30. Rd8 Rxd8 31. Qxd8 Kg5 32. Nd3 Rxc4 33. bxc4 e4 34. f4+ Kg4 35. Qxf6 g5 36. Qxg5# 1-0

Individual Finals (2)

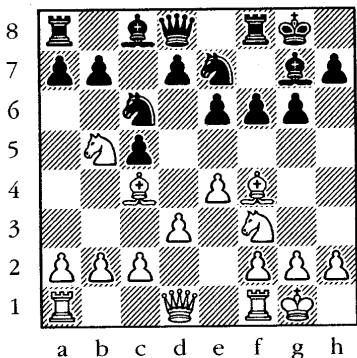
**Phillips, Coty
Harbert, Carlos**

1. d4 g6 2. Nf3 Bg7 3. Bf4 d6 4. e3 Bg4 5. Nbd2 Nd7 6. Be2 Ngf6 7. c3 c5 8. h3 Bxf3 9. Bxf3 Qb6 (Qc7 or 0-0 is better.) 10. Nc4 Qc7 11. Qb3 Rb8 12. O-O b5 13. Nd2 c4 14. Qc2 Nb6 15. e4 Nfd7 16. Bg4 O-O 17. Bxd7 Qxd7 18. e5 d5? and the score concludes here, presumably because White played the winning e6 which attacks queen and rook. 0-1

Individual Finals (4)

**Harbert, Carlos
Agostino, M.**

1. e4 c5 2. Bc4 Nc6 3. Nf3 g6 4. d3 Bg7 5. Nc3 e6 6. O-O Nge7 7. Bg5 f6 8. Bf4 O-O?! (8... d5 9. exd5 exd5 10. Bb3) 9. Nb5



White to move.

a6?? (9... d5 10. exd5 exd5 11. Bb3 Ne5! =) 10. Bc7 Qxc7

(Better was the immediate capture of the piece with 10... axb5 11. Bxd8 Rxd8; and if instead 10... Qe8 11. Nd6) 11. Nxc7 Ra7 12. c3 b5 13. Nxb5 axb5 14. Bxb5 Rb7 15. Bxc6 Nxc6 16. Qc2 d5 17. a4 Na5 18. b4 cxb4 19. cxb4 dxe4 20. dxe4 Rxb4 21. Qc5 Rxe4 22. Qxa5 f5 23. Rac1 Bd7 24. Qa7 Bxa4 25. Ng5 1-0

Individual Finals (2)

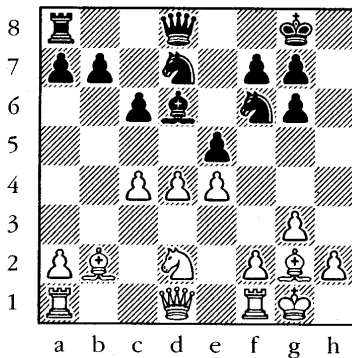
**Berryhill, J.
Marsh, Matthew**

1. e4 c5 2. Nf3 d6 3. g3 Nc6 4. Bg2 g6 5. O-O Bg7 6. d3 e6 7. Nbd2 Nge7 8. Nc4 (Ne1 was better, to prepare f4.) b5 9. Ncd2 O-O 10. Re1 a5?! 11. a4 b4 12. Nb3 (12. e5 dxe5 13. Nxe5 Bxe5 14. Rxe5 Nxe5 15. Bxa8 Bd7 16. Be4 =) 12... Rb8 13. d4 c4 14. d5 cxb3 15. dxc6 bxc2 (Also good is Nxc6.) 16. Qxc2 Qc7 17. e5 d5 18. Nd4 Bxe5 19. Rxe5 Qxe5 20. Bf4 Qxd4 21. Bxb8 Ba6 (21... b3 22. Qc1 Nf5 23. Bc7 Qa7 24. Bf4) 22. Bd6 Re8 23. Bxe7 Rxe7 24. c7 \$2 Qc4 25. Qxc4 dxc4 26. Bf1 Rxc7 27. Rc1 Rc6 28. Kg2 c3 29. b3 Bxf1+ 30. Kxf1 Rd6 31. Ke1 Rd2 32. Rd1 Rxd1+ 33. Kxd1 Kg7 34. Kc2 Kf6 35. f3 Ke5 36. Kd3 Kd5 37. Ke3 e5 38. Kd3 f5 39. Ke2 Kd4 40. h3 e4 41. fxe4 fxe4 42. g4 e3 43. h4 c2 0-1

Individual Finals

**Peter Suich
Nishit Rohith**

1. Nf3 d5 2. b3 Bf5 3. c4 c6
4. Bb2 e6 5. g3 Nf6 6. Bg2
Bd6 7. O-O O-O 8. d4 dxc4 9.
bxc4 Nbd7 10. Nbd2 Re8 11.
Nh4 Bg6 (Bg4 or Bb4 was
necessary. If White captures
the bishop after Black plays
Bb4, then Black would
control e4 and his rook
would be usefully placed.)
12. Nxc6 hxc6 13. e4 e5



White to move.

14. d5? (Playing f4 would at
least win a pawn: 14. f4!
exd4 15. e5 Nxe5 16. fxe5
Bxe5) 14... cxd5 15. cxd5
Nc5 16. Qe2 b6? (Maintaining
the advantage is b5.) 17.
Nc4 Rc8 18. Nxd6 Qxd6 19.
Bh3 Rc7 20. Bg2 Na4 21. Rac1
Rxc1 22. Rxc1 Nxb2 23. Qxb2
Rb8 24. Rc6 Qe7 25. d6?! Qd7
26. Qc3 Rd8 (Better was
Ne8!) 27. f4! exf4 28. gxf4
Nh5 29. Bh3 Nxf4 (Qe8 still
looks drawish.) 30. Bxd7
1-0

Individual Finals (3)

**Marsh, Matthew
Remec, Mark**

1. d4 Nf6 2. c4 g6 3. Nc3
Bg7 4. e4 d6 5. f3 O-O 6.
Be3 Re8? This rook move
misplaces the rook and loses
a valuable tempo. Moving
either knight to d7 was
preferable. 7. Qd2 e5 8. d5
c5 9. O-O-O a6 10. Kb1 Bd7
Playing b5 in the spirit of
the Benko Gambit was better.
11. g4 Qa5?! (11... b5 12.
Nce2 bxc4 13. Nc3. White is
+1.1, according to Fritz9.)
12. Nge2 b5 13. Ng3 White
keeps the a-file closed,
ensuring that he gets at
least four tempi with which
to pursue his attack on the
kingside. bxc4 (Black should
play Bd7 or Re7 to provide a
retreat for his knight.) 14.
Bxc4 (White shouldn't be in
a hurry to recover the pawn.
He should play h4 or g5 and
accelerate his kingside
attack: 14. g5 Nh5 15. Nxb5
gxh5) 14... Bb5 15. Nxb5
Now Bb3 is best, keeping the
a-file closed. axb5 16. Qxa5
Rxa5 17. Bd2 b4 18. a3 Na6
19. Bxa6 Rxa6 20. axb4 cxb4
21. Bxb4 Rb6 22. Bc3 Rc8 23.
Kc2 Nd7 24. Ra1 Nc5 25. Ne2
Nb3 26. Raf1 Nd4+ 27. Kd3
Nb5 28. Rb1 Nd4 29. Rhf1 Rb3
30. h4 f5 31. Ra1 Nb5 \$2 32.
Nc1 Rbxc3+ 33. bxc3 Rxc3+
34. Kd2 fxe4 35. fxe4 Rh3
36. Ra8+ Bf8 37. Raxf8+ Kg7
38. g5 Rh2+ 39. Ne2 1-0

Indiv. Finals--Elem. (2)

Vogt, N.
Lorinc, E.

1. e4 Nc6 2. d4 d6 3. Nf3 Bg4 4. Bb5 Nf6 5. Nc3 e6 6. O-O Be7 7. d5 a6 8. Ba4 Qd7?? (8... b5 9. Nxb5 O-O 10. Nxc7 Qxc7 11. Bxc6 Rab8) 9. dxc6 bxc6 10. h3 Bh5 11. Qd3 O-O? 12. Nd4 d5 13. Bxc6 dxe4 14. Nxe4 Qd8 15. Bxa8 Qxa8 16. Nxf6+ Bxf6 17. c3 Rd8 18. Qg3 g6 19. Bg5 Bxg5 20. Qxg5 Qd5 21. Qxd5 Rxd5 22. g4 e5 23. Nb3 e4 24. gxh5 Rxh5 25. Kh2 f5 26. Rad1 f4 27. Rd7 g5 28. Rd2 g4 1-0

Individual Finals (2)

Fine, I.
Zuo, D.

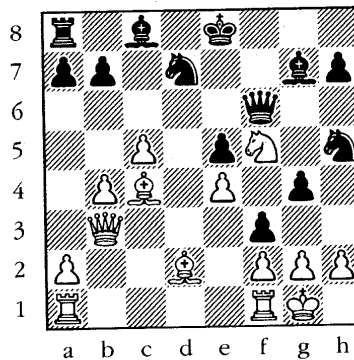
1. d4 d5 2. c4 e6 3. Nc3 Nf6 4. Bf4 Bd6 5. Bg5 Nbd7 6. e3 Be7 7. Bd3 O-O 8. Nf3 b6 9. O-O Bb7 10. Re1 c5 11. e4 Re8 This move accomplishes nothing. Perhaps black thought that his bishop needed additional support? Capturing any of the pawns would have maintained equality: 11... cxd4 12. Nxd4 dxe4 13. Nxe4 Rc8 = 12. Ne5? (12. cxd5 Nxd5 13. exd5 Bxg5 14. dxe6 Rxe6 15. Rxe6 fxe6 16. Qe2 +/-) 12... cxd4 13. Nxd7 Qxd7 14. Nb5 dxe4 15. Bxf6 Bxf6 16. Bxe4 Bxe4 17. Rxe4 d3 18. Qd2 Red8 19. Qd1 d2 20. Rb1 Rac8 21. a4? Qd3 22. Ra1 Qxe4 23. f3 Qe3+ 24. Kf1 Bxb2 25. Rb1 Bc1 26. Nxa7 Rxc4 27. Nb5

Qd3+ 28. Kg1 Qxb1 29. Kf1 Qc2 30. Qxc2 Rxc2 31. Kf2 d1=Q+ 32. Kg3 Qe1+ 33. Kg4 Rc4+ 34. Kh5 Rh4# 0-1

Individual Finals (2)

Yoon, S.
Bovoroupolos, D.
Annotated by NCC

1. d4 f5 2. Nf3 Nf6 3. c4 g6 4. Nc3 Bg7 5. e3 O-O 6. Bd3 d6 7. O-O Nbd7 8. Qc2 e5 9. dxe5 dxe5 10. e4 f4 (10... Nc5 11. Rd1 (11. Nxe5 ? Nh5 12. Be3 Na6 13. f4 Bxe5 14. fxe5 f4 15. Bf2 Nb4) 11... Nxd3 12. Rxd3 Qe8 13. Re3 =/+) 11. Bd2 Re8 12. b4 Nh5 13. c5 g5 14. Bc4+ Kf8? Wrong direction! 15. Qb3 Qf6? 16. Nd5 Qg6 17. Nxc7 g4 18. Nh4 Qf6 19. Nf5 f3 20. Nxe8 Kxe8



White to move.

21. Bf7+! Kf8 (21...Qxf7? 22. Nd6+) 22. Bxh5 fxg2 23. Kxg2 Nxc5 24. bxc5 Bxf5 25. exf5 Qxf5 26. Qxb7 Rc8 27. Bg5 Kg8 28. Ra1 1-0

Individual Finals

Suich, Peter
Gibson, Graham

1. Nf3 d5 2. b3 Nc6 3. c4 dxc4 4. bxc4 Nf6 5. Bb2 Bg4 6. d4 Bxf3 7. exf3? Now the e-pawn is not available for support of d4. e6 8. a3 Qd7+ 9. c5 O-O-O 10. Bb5 Bxc5 11. O-O Bxd4 12. Bxd4 Qxd4 13. Qb3 Rd6 14. Nc3 Rhd8 15. Rab1 Ne5 16. Rfd1 Qc5 Better is Qf4 or Qb6. 17. Rdcl Qd4 18. Na4 Nd3?? (With b6 Black can retain his advantage: 18... b6 19. Ba6+ Kb8 20. Nc5 Rd5 21. Bf1 c6 22. a4 Nfd7 23. Na6+ Kb7) 19. Bxd3 Qxd3 20. Qxb7+ Kd7 21. Nc5+ Ke8 22. Nxd3 Rxd3 23. g3 Rxa3 24. Rxc7 Rad3 25. Re7+ Kf8 26. Rxf7+ Kg8 27. Rxc7+ Kf8 28. Qf7# 1-0

Individual Finals (4)

Yoon, Su'ad
Suich, Peter

1. d4 Nf6 2. c4 e5 3. e3 exd4 4. exd4 d5 5. Nf3 Bg4 6. Nc3 Nc6 7. Be3 Be7 8. Be2 O-O 9. O-O dxc4 10. Ne5 Bxe2 11. Qxe2 Nd5 12. Nxd5 Qxd5 13. f4?! Nxe5 (13... Nxd4!) 14. dxe5 Bc5 15. Bxc5 Qxc5+ 16. Qf2 Qxf2+ 17. Kxf2 Rad8 18. Rad1 c6 19. Rd6 Rxd6 20. exd6 Rd8 21. Rd1 f6 22. Ke3 f5 23. Rd4 b5 24. d7 Kf7 25. Rd6 Ke7 26. Rxc6 Rxd7 27. Rc5 a6 28. Rxf5 Rd1 29. Re5+ Kf7 30. Kf2 Rd2+ 31. Re2 Rxe2+ 32. Kxe2 h5 33. Ke3 Ke6 34. Kd4 Kf5 35. a4 Kxf4 36. axb5 axb5 37. Kc5 Ke4 38. Kxb5 Kd5 39. Kb4 Kd4 40.

Kb5 g5 41. Kb4 h4 42. h3 Kd5 43. Kc3? (43. Kb5) 43... Kc5 44. Kd2 Kd4 45. Kc2 Ke3 46. Kc3 Kf2 47. Kxc4 Kxg2 48. b4 Kxh3 49. b5 g4 50. b6 g3 51. b7 g2 52. b8=Q g1=Q and Black went on to win after a long time scramble and many more moves. 0-1

Individual Finals, JH (4)

Franklin, Shane
Berryhill, Jordan

1. d4 d5 2. c4 Nf6 3. Nc3 e6 4. Bg5 Nbd7 5. Nf3 h6 6. Bh4 Be7 7. e3 O-O 8. Rc1 c6 9. Bd3 Qc7 10. c5 e5? 11. Be2 (11. Bg3!) 11... e4 12. Nd2 b6 13. b4 a5 14. a3 Ba6 15. Bxa6 Rxa6 16. O-O axb4 17. axb4 bxc5 18. bxc5 Ra3 19. Qc2 Ng4 20. Bg3 Qd8 (20... Qa5 21. Ncxe4! (21. Ndb1 Ra1 22. Nxe4 Ra2 23. Qd3) 21... Ra2 22. Qb1 Qa7 23. Rfd1 dxe4 24. Qxe4 Ngf6 25. Qxe7 Re8) 21. Ra1 Rxa1 22. Rxa1 Bh4 23. Bxh4 Qxh4 24. Nf1 f5 25. h3 Ngf6 26. Qd2 Nh5 27. Kh2 f4 28. g3 fxg3+ 29. Nxc3 Nxc3 30. fxg3 Qf6 31. Ra2 Qf3 32. Qe2 g5 33. Qe1 h5 34. Nd1 Qf1 35. Qxf1 Rxf1 36. Rd2 Re1 37. Kg2 h4 38. g4 Nb8 39. Kf2 Rh1 40. Kg2 Re1 41. Kf2 Rh1 42. Kg2 Re1 43. Kf2 1/2-1/2

BERT LERNER ELEM (K-6)
CHAMPIONSHIPS
May 11-13
Opryland, Nashville, TN

Individual Finals, HS (5)

Hinchman, Philip

Remec, Mirko

Annotated by NCC

This is one of High School section game played to decide who would advance to the play-off round.

1. d4 d5 2. c4 e6 3. Nc3 Nf6 4. cxd5 exd5 5. Bg5 Bb4 6. Qc2 h6 7. Bf4 (7. Bxf6 Qxf6 8. a3 Bxc3+ 9. Qxc3 is a well known Nimzo-Indian Variation. 7. Bh4 was investigated seriously in the 1st PCA World Championship match between Nigel Short and Kasparov from the early 90's.) **7... c6** (7... c5 and 7... Ne4 are far more active choices. The opening position that now occurs becomes very similar to any exchange Queen's gambit position. In this sort of position, I believe the move ...h7-h6 actually plays a significant role in weakening Black's opportunities. We will soon see why....) **8. e3 O-O 9. Bd3 Re8 10. a3 Bd6 11. Bxd6 Qxd6 12. Nf3 Nbd7 13. O-O Nf8** In this structure, the g6 square is a very useful post for black in developing his kingside play. However, it is no longer available to him so, consequently, he must seek second-rate plans. **14. b4 Be6** (14... a6 is better when faced with an old-school minority attack. You might even find Black stunting the attack with ...b7-b5 himself in a truly

Botvinnik sort of fashion. And instead of Be6, Black could try the plan Bg4-Bh5-Bg6. **15. Ne5 Ng4 16. Nxc4 Bxc4 17. Qb3** (17. Rfc1 followed by Rab1 and a4 is more useful.) **17... f5?** Just hanging a pawn and making the rest of the battle difficult for black. **18. h3 Bh5 19. Bxf5 Qf6 20. Qc2 g6 21. Bd3 g5 22. b5 Ng6 23. Be2 Bxe2 24. Qxe2 Rac8 25. bxc6 Rxc6 26. Qd3 Qe6 27. Rfc1 g4 28. hxg4 Qxg4** (28. Nxd Nh4 29. Nf4 Rf6 30. Rc7 wins easily.) **29. Qe2 Qg5 30. Qf3 Rec8 31. Ne2 Rxc1+ 32. Rxc1 Rxc1+ 33. Nxc1 Qd8 34. Qh5 Kh7 35. Qf5 Kg7 36. Nd3 b6 37. Nb4 Ne7 38. Qe6 a5 39. Nd3 Ng6 40. Qc6 Qe7 41. a4 Qa3 42. Ne5 Nxe5 43. dxe5 Qa1+ 44. Kh2 Qxe5+ 45. g3 d4?** (45... Qf6! would have saved the game. White may still be slightly better [after avoiding the Queen trade] thanks to his safer king, but it is an advantage that will be very difficult to realize. In Mr. Remecs defense, it seemed he had a very difficult day thus far with many difficult positions to overcome.) **46. Qd7+ Qf7 47. Qg4+ Qg6 48. Qc8** (with plenty of play left.) **46. Qd7+ Kg6 47. exd4 Qh5+ 48. Kg2 Qe2 49. Qd5 Qc2 50. Qe6+ Kg7 51. d5 Qxa4 52. d6 Qc6+ 53. Kh2 Qf3 54. Kg1 Qd1+ 55. Kg2 a4 56. d7 a3 57. Qe7+ Kg6 58. d8=Q 1-0**

**Indiv. Finals Elem. Playoff
Sal Neglia
Nathan Vogt
Annotated by NCC**

This was the G-10 play-off game from the Elementary State Championship between Sal of Region III and Vogt of Region IV.

1. e4 c5 2. Nf3 Nc6 3. c3 Nf6 4. Bd3 d6 5. Bc2 g6 6. d4 cxd4 7. cxd4 Bg7 8. Nc3 O-O 9. O-O (9. h3) 9... Bg4 10. Be3 Nd7 11. h3 Bxf3 12. Qxf3? (12. gxf3 was necessary.) 12... Nxd4 13. Bxd4 Bxd4 14. Qd3 Bg7 15. Rac1 Nc5 16. Qe3 Rc8 17. Rfd1 Bxc3 18. bxc3 Ne6 19. Bb3 Qc7 20. Rd3 (20. Qxa7?! Nc5 21. f3?? Ra8) 20... Nc5 21. Rd2 Nxb3 22. axb3 b6 23. Ra2 a5 24. Qd4 Qc5 25. Qd3 Rc7 26. Rac2 Rfc8 27. b4 axb4 28. cxb4 Qxc2 29. Rxc2 Rxc2 White has succeeded in complicating the issue and can win the b6 pawn to create winning chances for himself. However, with accurate play, the two rooks should be able to overcome the queen. Effective coordination between the Rooks is vital. 30. Qb5 R2c6? This move is too passive: 30... R8c4 31. Qxb6 (31. Qe8+ Kg7 32. Qxe7 Rxb4 33. Qxd6 Rxe4 34. Qxb6 Ree2 and black is still winning.) 31... Rxe4 32. b5 Rb2 followed by bringing the other rook to the b-pawn. 31. g3 Kg7 32. Kg2 e6 33. Qd3 h5 34. Qd4+ Kg8 35. Qd3 f6 All of these pawn moves

around the black king are unnecessary and create too many problems for Black to overcome in a quick chess game. 36. Qb3 Kf7 37. Qa4 f5 38. exf5 exf5 39. b5 Rc5 40. Qa7+ Ke6 41. Qxb6 g5 42. Qb7 R8c7 43. Qa6 g4 44. b6 gxh3+ 45. Kxh3 Rc8?? (45... R7c6 was the last chance for black to hold: 46. Qa2+ d5 47. b7 Rb6 48. Qa8 Rcb5 49. Qe8+ with perpetual check to follow.) 46. b7 Rd8 47. Qa8 Rxa8 48. bxa8=Q Ke5 49. Qh8+ Kd5 50. Qxh5 Ke6 51. Qe8+ Kd5 52. Qf7+ Ke5 53. f4+ Ke4 54. Qe6+ Kf3 55. Qxd6 Rc3 56. Qd5+ Ke2 57. Qe5+ Re3 58. Qxf5 Kf2 59. Qc2+ Kf3 60. Qg2# 1-0

**Individual Finals (5)
Yoon, Su'ad
Noon, Evan**

1. d4 d5 2. c4 dxc4 3. Nf3 Nf6 4. Nc3 Bf5 5. Qa4+ Qd7 6. Qxc4 e6 (6... Qc6 7. Qb3 Qb6) 7. Ne5 Qe7 (Qc8 is better.) 8. Bg5 Na6 Either h6 or c6 was necessary. 9. Qa4+ c6 10. e3?! (10. e4! Bxe4 11. Nxe4 Qb4+ 12. Qxb4 Nxb4 13. Nxf6+ gxf6 14. Bxf6 Rg8 15. Kd1) 10... h6?? (Qb4 was necessary and even Nc7 would help minimize White's advantage. Now it is over.) 11. Bxf6 Qxf6 12. Bxa6 Bd6 13. Bxb7 O-O 14. Nd7 Qe7 15. Bxc6 Rad8 16. Nxf8 and White went on to win. 1-0

Individual Finals, HS (5)
Phay, Gainer
Harbert, Carlos
Annotated by NCC

This was one of the key battles in determining the high school champ, setting up the play-off round.

1. Nf3 g6 2. c4 Bg7 3. d4 d6
4. Nc3 Bg4 5. e3 Nd7 6. Be2
Ngf6 7. O-O O-O 8. a3 a5 9.
Qc2 Ne8 10. Bd2 c6 11. b4
axb4 12. axb4 Rxa1 13. Rxa1
e5 14. dxe5 (14. Nxe5!?! is
an interesting move that
would achieve the same
result as in the game: Nxe5
(14... dxe5? 15. Bxg4) 15.
dxe5) 14... Nxe5 15. Nxe5
Bxe2 16. Nxe2 Bxe5 17. Ra7
Qb8 18. Qa2 Nc7 19. Ra3 d5
20. f4 Bf6 21. cxd5 Nxd5 22.
e4 Nc7 23. Be3 Nb5 24. Rd3
Rd8 25. Rxd8+ Qxd8 26. e5
Be7 27. Qc4 Qd1+ 28. Kf2 Na3
29. Qc3 Nc2 30. Bc5 Bxc5+
31. bxc5 Na1? Moving the
knight away from the arena
of battle. Placing your
knight in a corner is a rare
instance that must have a
clear cut and forced plan
behind it. 31... h5 is
better. 32. Nd4 and the
remaining moves were played
under extreme time trouble.
Qb1 33. g4 Qa2+ 34. Ke3
Qxh2? Black had no reason to
hit the panic button. Better
was to return the Queen to
b1 and make White prove his
advantage. 35. Qxa1 Qg3+
36. Ke4 Qxg4 37. Qf1 h5 38.
Qf3 Qg1 39. e6 Qb1+ 40. Ke5
Qe1+ 41. Kd6 fxe6 42. Ke7

Qh4+ 43. Kxe6 Qd8 44. Ke5
Qe7+ 45. Ne6 Kf7 46. f5!
(46. Qb3 Qf6+ 47. Kd6 Qe7+
48. Ke5 Qf6+= 46... Qf6+
47. Ke4 gxf5+ 48. Qxf5 h4
(48... Qxf5+ 49. Kxf5 Ke7 is
still losing, but puts up a
tougher resistance, which is
key in a time pressure
scenario.) 49. Nd8+ Ke7 50.
Qxf6+ Kxf6 51. Nxb7 h3 52.
Kf3 Ke5 53. Kg3 Kd4 54. Kxh3
Kc4 55. Kg4 Kb5 56. Kf5 Ka6
57. Nd6 Ka7 and White went
on to win. 1-0

Individual Finals (2)
Berryhill, Jordan
Marsh, Matthew

1. e4 c5 2. Nf3 d6 3. g3 Nc6
4. Bg2 g6 5. O-O Bg7 6. d3
e6 7. Nbd2 Nge7 8. Nc4 (Ne1
was better, to prepare f4.)
b5 9. Ncd2 O-O 10. Re1 a5?!
11. a4 b4 12. Nb3 (12. e5
dxe5 13. Nxe5 Bxe5 14. Rxe5
Nxe5 15. Bxa8 Bd7 16. Be4 =)
12... Rb8 13. d4 c4 14. d5
cxb3 15. dxc6 bxc2 (Also
good is Nxc6.) 16. Qxc2 Qc7
17. e5 d5 18. Nd4 Bxe5 19.
Rxe5 Qxe5 20. Bf4 Qxd4 21.
Bxb8 Ba6 (21... b3 22. Qc1
Nf5 23. Bc7 Qa7 24. Bf4) 22.
Bd6 Re8 23. Bxe7 Rxe7 24. c7
\$2 Qc4 25. Qxc4 dxc4 26. Bf1
Rxc7 27. Rc1 Rc6 28. Kg2 c3
29. b3 Bxf1+ 30. Kxf1 Rd6
31. Ke1 Rd2 32. Rd1 Rxd1+
33. Kxd1 Kg7 34. Kc2 Kf6 35.
f3 Ke5 36. Kd3 Kd5 37. Ke3
e5 38. Kd3 f5 39. Ke2 Kd4
40. h3 e4 41. fxe4 fxe4 42.
g4 e3 43. h4 c2 0-1

Volunteers Needed for the 2007 National Elementary Championship

Tom Nelson, Volunteer Coordinator for the USCF, requests volunteers to help with the hosting of this year's 2007 National Burt Lerner Elementary (K-6) Championship in Nashville. He stresses that chess knowledge is not needed for many of the positions—only a desire to serve. Below is a modified version of his request letters and areas where help is needed:

On THURSDAY, MAY 10:

Board Set-up - help is needed in setting up boards in the tournament area.

Trophy Set-up - get an early glimpse of this year's awards!

On FRIDAY MORNING, MAY 11:

Greeters: friendly folk to help greet arriving participants and parents

National Anthem: fulfill your dream of you or your group playing or singing the National anthem at the opening ceremony!

On SATURDAY MORNING, MAY 12:

Trophy Helper – Someone to help us hand out trophies to the Bughouse and Blitz winners.

DURING THE TOURNAMENT we need help in each round with the following:

K-1 Tournament Monitors – to assist the little ones get settled before the round, escort them to restrooms, and make sure they get picked up by an adult after their game is over.

Main Tournament Room Monitors – Assist with recording game results

Posting Results and Pairings – About 45 minutes before each round begins, we need three people who would like to aid us in posting pairings and results on big foam core boards and deliver them to their staging areas

Awards Ceremony Assistants - Help the players who have won trophies find the right seat and coordinate the movement of the kids during the awards presentation on Sunday. Everyone involved with this responsibility will be getting together Saturday evening for a short preparation meeting.

And finally during the last round:

We need help packing the boards and sets in boxes and handing out medallions to all our participants.

Please contact me, Tom Nelson, if you're interested in helping out for one or more time periods at: csca-scholastic-chess@comcast.net! Let me know what you would like to do and when you can assist. Also, please forward this message to any of your friends that may be interested. To show our appreciation for your time and effort, for every round you help out you will receive a meal coupon to be used at the food concession area.

2007 Memphis Championship

The Memphis Championship has been ongoing for almost two months: January 12-March 2. This round robin event featured 7 rounds at a pace of Game/150 min. **Carlos Harbert**, the 2005 Championship, endured the schedule and tough opposition to win again this year after drawing last year's champion in the 4th round. Deserving special mention in the performance of Teja Dasari. She played some monumental games against the heavy-weights. (See page 5.) We'll certainly be hearing more from her in the future. Her games and other facts about the tournament can be found on the Memphis Chess Clubs website: <http://www.homestead.com/MEMPHISCHESSCLUB/INDEX.html>. Below is a game and crosstable of the event.

2007 Memphis Championship

	Player Name	Rate	Pts.	1	2	3	4	5	6	7
1	Harbert, Carlos	1899	6.0	W8	W6	W4	D2	W7	D3	W5
2	Sims, Carlos S	1900	5.5	D5	W8	D6	D1	W4	W7	W3
3	Hall, Kenneth	1530	3.5	W6	W3	L1	W5	L2	D8	L7
4	Bogle, Bradley	1756	3.5	L7	L4	W5	W8	W6	D1	L2
5	Pylant, Gary	1833	3.0	D2	W7	L3	L4	W8	D6	L1
6	Maclin, Philip	1473	3.0	L4	L1	D2	x0	L3	D5	W8
7	O'Bar, Sam R	1815	2.5	W3	L5	D8	F0	L1	L2	W4
8	Dasari, Teja	1441	1.0	L1	L2	D7	L3	L5	D4	L6

Memphis Championship 2007

Carlos Harbert (1926)

Gary Pylant (1856)

1. d4 d5 2. Nf3 Nf6 3. Bg5 Ne4 4. Bf4 c5 5. c3 cxd4 6. Nxd4 f6 7. Bxb8 Usual is f3. 7... Rxb8=/+ 8. Qa4+ Bd7 9. Qb3 It is dangerous to snatch the a-pawn. At the least Black will get excellent development, but it is likely that he will get more as he can make it tough for White to extract the queen. For instance: Qxa7 b6 10. e3 Nc5 11. Bb5 Rb7.

12. Qa3 e5 13. Bxd7+ Rxd7 14. O-O exd4 15. cxd4. 9... e6
 10. e3 a6 11. Be2 Qa5 12. Qc2 Be7 13. Nd2 Nxd2 14. Qxd2 b5
 15. O-O Qb6 16. Qd3 Qc7 17. e4 dxe4 18. Qxe4 Qb7 19. Qg4
 Kf7 20. Bf3 Qc7 21. Rfe1 Rb6 22. Nf5 g6 Better is Bf8.
 23. Nxe7 Kxe7 24. Rad1 e5 25. Qb4+ Ke8 Better is Kf7,
 since it allows the rook to enter the game. 26. Rd2 Be6
 27. Red1 Kf7 28. Bd5 Rc8? (28... Bxd5 29. Rxd5 Rb7 30. Qg4
 f5 31. Qh4 Kg7) 29. Bxe6+ Kxe6 30. Rd7 Fritz9 gives White
 a mighty 3 point plus if he continues with Qh4 but offers
 no quick proof of the assessment. Readily seen, though, is
 that the game continuation should not give White anything
 tangible. 30... Qxd7 31. Rxd7 Kxd7 Now Black is slightly
 favored. 32. g3 Rbc6 33. Qe4 R8c7 34. a4 Ke6 35. axb5 axb5
 36. Qd3 Rc4 37. Qd8 R4c5 38. b4 Rxc3 39. Qe8+ Kf5 40. Qxb5
 h5 41. Qe2 R7c4 42. b5 Rb4 With two rooks patrolling, the
 pawn really can't go anywhere, so h4 is better. 43. Qd2
 Rcb3 44. Qc2+ e4 45. Qc5+ = Ke6 46. Qc6+ Kf5?? So much for
 the easy draw. Black is now forced into a mating net. 47.
 Qd5+ Kg4 48. Kg2 f5 49. h3+ (49. Qd2 e3 50. h3+ Kg5 51.
 Qd8+ Kh6 52. Qh8+ Kg5 53. f4+ Rxf4 54. gxf4+ Kxf4 55. Qd4+
 Kg5 56. h4+ Kh6 57. Qh8#) 49... Kg5 50. Qd8+ Kh6 51. Qh8+
 Kg5 52. h4+ Kg4 53. Qd8 (53. Qf6!) 53... Rxc3+ 54. fxc3
 Rb2+ 55. Kf1 Kf3 56. Ke1 Rb1+ 57. Kd2 e3+ 58. Kc2 e2 59.
 Qd3+ Kf2 60. Qxe2+ 1-0

Individual Finals (5)

Matthew Marsh (1882)

Nishit Reddy (1448)

This game determined the Jr. High Champion of the Individual Finals, giving the winner a perfect 5.0.

1. d4 Nf6 2. c4 g6 3. Nc3 Bg7 4. e4 d6 5. f3 O-O 6. Be3
 Nbd7 7. Qd2 c5 8. d5 Ne5 9. O-O-O a6 10. h3 Rb8 11. f4 Ned7
 12. Nf3 Qa5 13. Bd3 b5 14. a3 bxc4 15. Bxc4 Nb6 (15...
 Nxe4! 16. Nxe4 Bxb2+ 17. Kc2 Qa4+ 18. Kd3 Nb6) 16. Ba2 Na4
 17. Nxa4 Qxa4 18. e5 Ne4 19. Qc2 Qxc2+ 20. Kxc2 Ng3 21.
 Rhe1 Bf5+ 22. Kc1 Rb7 23. Bc4 Rfb8 24. b3 a5 Black could
 get an advantage with Rxb3, since he would maintain the two
 bishops and have a passed pawn: 24... Rxb3 25. Bxb3 Rxb3
 26. Nd2 Rxa3 27. Kb2 Ra4 28. Ra1 Rxa1 29. Kxa1 Bd3 -+ 25.
 a4 Rb4 26. Nd2 Rc8? Keeping the advantage was g5. 27. Bf2
 Nh5 28. g4 Bxg4 29. hxg4 Nxf4 30. exd6 exd6 31. Kc2 Kf8 32.
 Ne4 1-0

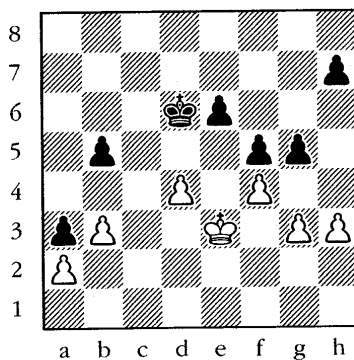
Jack Smith Memorial

The 5 Round, 60 min/Sudden Death Jack Smith Memorial 3 was held on March 31, 2007 in Memphis. (Jack [who died in 2004] was an expert, TD, organizer, and Pres. of Memphis Chess Club.) **Jeffrey Kovalic**, a 1700 player, won the event with 4.5 points. Kenneth Turner finished second over the other 14 players with 4 points. Below is one of the more pivotal games from the event.

Jack Smith Memorial (4)
Kenneth G. Turner(1843)
Erik Walker(1960)

1. e4 c5 2. Nf3 d6 3. Bb5+ Nd7 4. d4 cxd4 5. Nxd4 a6 6. Ba4 b5 7. Bb3 Bb7 8. f3 Ngf6 9. Be3 Nc5 10. Nc3 Nxb3 11. Nxb3 e6 12. O-O Be7 13. Qe2 O-O = 14. Rad1 Qc7 15. Qf2 d5 16. Bb6 Qb8 17. exd5 Bxd5 18. Nxd5 Nxd5 19. Bd4 Bd6 Qf4 with the idea of following up with Bd6 may be slightly better. This would also serve to connect the rooks. 20. g3 Rc8 21. c3 a5 22. Nc5 a4 Fritz9 recommends taking the knight and continuing the queenside offensive: 22... Bxc5 23. Bxc5 Qc7 24. Bd4 e5 25. Be3 Qc4 =/+ 23. Nd7?! Qb7 24. Nb6 Nxb6 25. Bxb6 Rc6 26. Be3 a3 27. b3 Rac8?! Black misses a simple shot. Qc7 would give additional

protection to the bishop and make Rxc feasible. 28. Rd3 Be5 29. Bd4 Rd6 30. Rfd1 Rcd8 31. Qe3 Bxd4 32. Rxd4 Qb6 33. R1d3 Rxd4 Black has to admit that he has allowed his advantage to fade. 34. Rxd4 Rxd4 35. Qxd4 Qxd4+ Settling for isolating the pawn, but White is okay. 36. cxd4 Kf8 37. Kf2 Ke7 38. Ke3 Kd6 39. Ke4 f6 40. h3 g5 41. f4 f5+ 42. Ke3



Black to move.

h6?? Taking the pawn would maintain the draw. This allows White to obtain an outside passed pawn with which he should be able to easily win. 43. fxg5 hxg5 44. h4 f4+ 45. Kf3! fxg3 46. h5 Simpler is to just take the pawn. g2 47. Kxg2 Ke7 48. Kg3 Kf6 49. Kg4 Kg7 (49... b4 50. h6 Kg6 51. h7 Kxh7 52. Kxg5 Kg7 53. Kf4 Kf7 54. Ke5 +/-) 50. Kxg5 Kf7 51. h6 Kg8 52. Kf6 Kh7 53. Kxe6 1-0

2007 TENNESSEE TEAM FINALS -- HIGH SCHOOL

Wall Chart

Name/State ID	Group/Team	Rate	Rnd 1	Rnd 2	Rnd 3	Rnd 4
1. WOODDALE HIGH SCHOOL R4	TN	1491	B6,3.0 1.0	B2,2.0 1.5	B7,2.5 2.5	B3,3.0 3.5
2. FARRAGUT HIGH SCHOOL TN	R1	1289	B12,2.5 1.0	B1,2.0 1.5	B8,3.5 2.5	B4,3.0 3.5
3. HUME FOGG MAGNET TN	R3	1682	B5,4.0 1.0	B7,3.0 2.0	B4,2.0 2.5	B1,1.0 2.5
4. CLARKRANGE HS SCH TN	R2	1487	B10,4.0 1.0	B8,3.5 2.0	B3,2.0 2.5	B2,1.0 2.5
5. COLLIERVILLE HIGH TN	R4	1259	B3,0.0 0.0	B11,4.0 1.0	B9,2.5 2.0	B6,2.0 2.5
6. PAGE HIGH SCHOOL TN	R3	1090	B1,1.0 0.0	B12,2.5 1.0	B13,3.0 2.0	B5,2.0 2.5
7. WHITE STATION HIGH R4	TN	1371	B9,3.0 1.0	B3,1.0 1.0	B1,1.5 1.0	B11,4.0 2.0
8. WHITE STA MIDDLE SCH R4	TN	1284	B13,4.0 1.0	B4,0.5 1.0	B2,0.5 1.0	B12,3.0 2.0
9. STONE MEM HIGH SCH TN	R2	959	B7,1.0 0.0	B10,3.0 1.0	B5,1.5 1.0	B13,3.0 2.0
10. CUMB CO HOME SCHOOL TN	R2	1008	B4,0.0 0.0	B9,1.0 0.0	B11,2.0 0.5	BYE 1.5
11. ROANE COUNTY HS TN	R2	600	BYE 1.0	B5,0.0 1.0	B10,2.0 1.5	B7,0.0 1.5
12. OAK RIDGE HIGH TN	R1	886	B2,1.5 0.0	B6,1.5 0.0	BYE 1.0	B8,1.0 1.0
13. MEIGS MAGNET TN	R3	765	B8,0.0 0.0	BYE 1.0	B6,1.0 1.0	B9,1.0 1.0
14. LAKEWAY HOME ED TN	R1	1200	--- 0.0	--- 0.0	--- 0.0	--- 0.0
15. POPE JOHN PAUL II TN	R3	475	--- 0.0	--- 0.0	--- 0.0	--- 0.0

Wooddale High captured the 4 X \$16,000 scholarships;
 Farragut High received the 4 X \$8,000 scholarships.

2007 TENNESSEE TEAM FINALS -- HIGH SCHOOL
 Team Members Wall Chart

Name/State ID	Rating/Board	Rnd 1	Rnd 2	Rnd 3	Rnd 4
WOODDALE HIGH SCHOOL					
1. HURD, OLAJUWON TN 12810920	1017 Board 1	P 23 1.0	P 5 1.0	P 27 1.0	P 9 1.0
2. HARBERT, CARLOS TN 12833879	1899 Board 2	P 24 0.0	P 6 1.0	P 28 2.0	P 10 3.0
3. HALL, KENNETH TN 12850713	1530 Board 3	P 25 1.0	P 7 1.0	P 29 2.0	P 11 3.0
4. PRIER, CEDRIC TN 12833883	1518 Board 4	P 26 1.0	P 8 2.0	P 30 2.5	P 12 3.5

FARRAGUT HIGH SCHOOL

5. JONES, JESSE GRAY TN 12824925	1726 Board 1	P 55 1.0	P 1 2.0	P 33 3.0	P 14 4.0
6. MUNGAN, ANDREW J TN 12900054	976 Board 2	P 56 0.5	P 2 0.5	P 35 1.5	P 15 1.5
7. PAUL, CORY M TN 12863912	1235 Board 3	P 57 1.0	P 3 2.0	P 36 2.5	P 16 3.5
8. MENESTRINA, JUSTIN TN 12899865	1217 Board 4	P 58 0.0	P 4 0.0	P 37 1.0	P 17 2.0

Individual Finals

Nair, M.

Marsh, Matthew

1. e4 c5 2. Nf3 d6 3. d4 cxd4 4. Nxd4 Nf6 5. Nc3 a6 6. Be2
 e6 7. Be3 b5 8. a3 Bb7 9. Bf3 Nbd7 10. O-O Ne5 Black is
 doing well. 11. Nb3 Be7 12. Re1 O-O 13. Qe2 Qc7 14. Nd2
 Rfd8 15. Bf4 Nfd7 16. Rad1 Bf6 17. Qe3 Nb6 18. Be2 Rd7 19.
 Bg5 Bxg5 20. Qxg5= Rad8 21. f4 Nec4 22. Nxc4 Nxc4 23. Bxc4
 Qxc4 24. Qg3 a5 25. Qd3 Qc5+ 26. Qd4 Bc6 27. b4 Qxd4+ 28.
 Rxd4 a4 29. Rd3 Kf8 30. Red1 Ke7 31. Kf2 g6 32. Ke3 f5 33.
 g3 fxe4 34. Nxe4 Bxe4 35. Kxe4 Rc7 36. c3 Rc6 37. g4
 Unnecessarily weakening the f-pawn. Rdc8 38. Rc1 Rc4+ 39.
 Ke3 d5 40. h4 Re4+ 41. Kf3 Rcc4 42. f5 gxf5 43. gxf5 Rf4+
 44. Kg3 Rxf5 45. Re1 Kd6 46. Rde3 e5 47. Rd3 e4 0-1

2007 TENNESSEE TEAM FINALS -- JUNIOR HIGH

Wall Chart

Name/State	ID	Group/Team	Rate	Rnd 1	Rnd 2	Rnd 3	Rnd 4
1. MEIGS MAGNET TN		R3	1449	B9,4.0 1.0	B4,2.0 1.5	B6,3.0 2.5	B2,2.5 3.5
2. WHT STA MIDDLE SCH TN		R4	1431	B12,3.5 1.0	B7,2.5 2.0	B5,3.5 3.0	B1,1.5 3.0
3. ALCOA MIDDLE TN		R1	1209	B8,2.5 1.0	B5,1.5 1.0	B4,2.0 1.5	B7,3.0 2.5
4. MEMPHIS UNIV. SCHOOL TN		R4	1120	B11,3.0 1.0	B1,2.0 1.5	B3,2.0 2.0	B5,2.0 2.5
5. OLPH TN		R4	1026	B13,4.0 1.0	B3,2.5 2.0	B2,0.5 2.0	B4,2.0 2.5
6. JT MOORE TN		R3	1115	B10,2.0 0.5	B8,2.5 1.5	B1,1.0 1.5	B11,2.0 2.0
7. WHT STA HIGH SCHOOL TN		R4	1059	B15,3.0 1.0	B2,1.5 1.0	B9,3.0 2.0	B3,1.0 2.0
8. FARRAGUT JR HIGH TN		R1	966	B3,1.5 0.0	B6,1.5 0.0	B15,3.0 1.0	B12,3.0 2.0
9. WALKER VALLEY HS TN		R2	839	B1,0.0 0.0	B10,3.0 1.0	B7,1.0 1.0	B13,4.0 2.0
10. SOUTH CUMB ELEM TN		R2	604	B6,2.0 0.5	B9,1.0 0.5	B13,2.0 1.0	B15,2.5 2.0
11. CLEVELAND MIDDLE TN		R2	600	B4,1.0 0.0	B15,3.5 1.0	B12,2.0 1.5	B6,2.0 2.0
12. MCCALLIE SCHOOL TN		R2	731	B2,0.5 0.0	B13,2.0 0.5	B11,2.0 1.0	B8,1.0 1.0
13. CHRIST PRESB ACADEMY TN		R3	600	B5,0.0 0.0	B12,2.0 0.5	B10,2.0 1.0	B9,0.0 1.0
14. JEFFERSON MIDDLE TN		R1	941	--- 0.0	--- 0.0	--- 0.0	--- 0.0
15. LINDEN CORNER TN		R3	600	B7,1.0 0.0	B11,0.5 0.0	B8,1.0 0.0	B10,1.5 0.0

Alan Kantor: new TCA Internet Chess Coordinator

Visit our website at: <http://www.homestead.com/tchessorg/>

2007 TENNESSEE TEAM FINALS -- JUNIOR HIGH
Team Members Wall Chart

Name/State ID	Rating/Board	Rnd 1	Rnd 2	Rnd 3	Rnd 4
MEIGS MAGNET					
1. NAIR, MANU TN 12843521	1536 Board 1	P 37 1.0	P 16 2.0	P 25 2.0	P 6 2.5
2. KUMAR, VIKAS S TN 12920966	1653 Board 2	P 38 1.0	P 17 2.0	P 26 3.0	P 7 3.5
3. SCHAFER, JACOB Ant TN 12913914	1384 Board 3	P 39 1.0	P 18 1.0	P 27 2.0	P 8 3.0
4. FAN, DAVID TN 12931783	1221 Board 4	P 40 1.0	P 19 1.0	P 29 2.0	P 9 2.5
5. WELCH, JOANN P TN 12919632	847 Alternative 1	--- 0.0	--- 0.0	--- 0.0	--- 0.0

WHITE STATION MIDDLE SCHOOL

6. VANCIL, AARON W TN 12780062	1341 Board 1	P 51 0.5	P 30 1.0	P 21 1.5	P 1 2.0
7. REDDY, NISHIT TN 12805997	1525 Board 2	P 52 1.0	P 31 1.0	P 22 2.0	P 2 2.5
8. BERRYHILL, JORDAN TN 12824261	1418 Board 3	P 53 1.0	P 32 2.0	P 23 3.0	P 3 3.0
9. ADUSUMILLI, NAGASAI TN 12843628	1321 Board 4	--- 0.0	--- 0.0	P 24 1.0	P 4 1.5
10. DASARI, TEJA TN 12878872	1441 Alternative 1	P 54 1.0	P 33 2.0	--- 2.0	--- 2.0

Individual Finals

Suich, Peter

Schafer, Jacob

1. Nf3 Nf6 2. c4 e6 3. b3 b6 4. g3 Bb7 5. Bg2 d5 6. Bb2 Bd6
7. O-O O-O 8. d4 Nbd7 9. Nc3 Qe7 (9... dxc4 10. bxc4 c5 11.
d5 exd5 =) 10. Nh4 c6 11. e4 dxe4 12. Nxe4 Nxe4 13. Bxe4
Nf6 14. Bg2 c5 This natural-looking move is the cause of
Black's following problems. 15. d5 Rfe8 (15... exd5 16. Re1
Qd8 17. Nf5 Re8 18. Qd2 Rxe1+ 19. Rxe1 g6 20. Nh6+ Kf8 21.
cxd5 +-) 16. Re1 Rad8? Better was Qf8 or even e5. 17. Nf5
Qc7 18. Bxf6 (Nxc7 also wins.) gxf6 19. Qg4+ 1-0

2007 TENNESSEE TEAM FINALS -- ELEMENTARY

Wall Chart

Name/State	ID	Group/Team	Rate	Rnd 1	Rnd 2	Rnd 3	Rnd 4
1. GRAHAMWOOD ELEMENTARY	1244	TN R4		B14,4.0 1.0	B4,3.0 2.0	B6,3.0 3.0	B2,3.0 4.0
2. FARRAGUT INTERMEDIATE	928	TN R1		B13,4.0 1.0	B8,3.0 2.0	B5,2.5 3.0	B1,1.0 3.0
3. MEIGS MAGNET	870	TN R3		B15,4.0 1.0	B6,1.0 1.0	B14,3.0 2.0	B7,3.0 3.0
4. CUMB CO HOME SCHOOL	867	TN R2		B11,4.0 1.0	B1,1.0 1.0	B12,3.5 2.0	B6,2.5 3.0
5. ST GEORGE IND SCHOOL	862	TN R4		B16,4.0 1.0	B7,2.0 1.5	B2,1.5 1.5	B11,4.0 2.5
6. SEQUOYAH ELEMENTARY	928	TN R1		B9,2.5 1.0	B3,3.0 2.0	B1,1.0 2.0	B4,1.5 2.0
7. HARDING ELEMENTARY	914	TN R3		B10,2.0 0.5	B5,2.0 1.0	B9,4.0 2.0	B3,1.0 2.0
8. LAUSANNE ELEMENTARY	866	TN R4		B12,3.0 1.0	B2,1.0 1.0	B11,2.0 1.5	B10,2.0 2.0
9. BONVISSUTO HOME SCH	676	TN R3		B6,1.5 0.0	B13,4.0 1.0	B7,0.0 1.0	B14,3.5 2.0
10. PLEASANT HILL ELEM	600	TN R2		B7,2.0 0.5	B14,0.0 0.5	B16,3.0 1.5	B8,2.0 2.0
11. JEFFERSON MIDDLE	600	TN R1		B4,0.0 0.0	B15,4.0 1.0	B8,2.0 1.5	B5,0.0 1.5
12. WOODLAND ELEMENTARY	600	TN R1		B8,1.0 0.0	B16,3.0 1.0	B4,0.5 1.0	B13,2.0 1.5
13. DONELSON CHR. ACAD.	382	TN R3		B2,0.0 0.0	B9,0.0 0.0	B15,2.5 1.0	B12,2.0 1.5
14. RICHLAND ELEMENTARY	836	TN R4		B1,0.0 0.0	B10,4.0 1.0	B3,1.0 1.0	B9,0.5 1.0
15. OCOEE MIDDLE SCHOOL	600	TN R2		B3,0.0 0.0	B11,0.0 0.0	B13,1.5 0.0	B16,3.0 1.0
16. THRASHER ELEMENTARY	600	TN R2		B5,0.0 0.0	B12,1.0 0.0	B10,1.0 0.0	B15,1.0 0.0

2007 TENNESSEE TEAM FINALS -- ELEMENTARY
 Team Members Wall Chart

Name/State ID Group/Team Rate Rnd 1 Rnd 2 Rnd 3 Rnd 4

GRAHAMWOOD ELEMENTARY

1. VARRIANO, LOUIS J TN 12916460	1234 Board 1	P 65 1.0	P 17 1.0	P 26 2.0	P 7 2.5
2. BERRYHILL, JANSEN TN 12841080	1351 Board 2	P 66 1.0	P 18 2.0	P 27 3.0	P 8 3.5
3. VADODARIA, VIPUL K TN 12881400	1230 Board 3	--- 0.0	P 19 1.0	P 29 1.0	P 9 2.0
4. CHEN, ERIC TN 12917175	1159 Board 4	P 67 1.0	P 20 2.0	P 30 3.0	P 10 4.0
5. BERRYHILL, JENNER TN 12879059	1160 Alternative 1	--- 0.0	--- 0.0	--- 0.0	--- 0.0
6. SATHYAN, DEEPAK TN 12883890	1133 Alternative 2	P 68 1.0	--- 1.0	--- 1.0	--- 1.0

FARRAGUT INTERMEDIATE

7. FU, JASON TN 13103964	1025 Board 1	P 60 1.0	P 37 2.0	P 22 2.5	P 1 3.0
8. BLUE, CHARLES, JR TN 12934167	1155 Board 2	P 61 1.0	P 38 2.0	P 23 3.0	P 2 3.5
9. SMITH, KAI A TN 13352357	866 Board 3	--- 0.0	P 40 1.0	--- 1.0	P 3 1.0
10. JACOBS, RYAN J TN 12896591	614 Board 4	P 62 1.0	P 41 1.0	P 24 2.0	P 4 2.0
11. DING, CHUNYANG TN 13398966	667 Alternative 1	P 63 1.0	--- 1.0	P 25 1.0	--- 1.0

Individual Finals (3)

Night, R.

Yoon, S.

1. d4 Nf6 2. c4 g6 3. Nc3 Bg7 4. e4 d6 5. f3 O-O 6. Bd3 c5
 7. d5 Nbd7 8. Be3 a6 9. Nge2 Ne5 10. O-O Rb8 11. Rb1 b5 12.
 cxb5 c4 13. Bc2 axb5 14. a3 Nfd7 Better was b4, retaining
 a slight advantage because of queenside space and attacking
 chances. 15. Nd4 Ba6? (15... Nc5) 16. f4 Nd3 17. Bxd3
 (17. Nc6!) 17... cxd3 18. Qxd3 Nc5 1/2-1/2

TCN/Spring 2007_27

2007 TENNESSEE TEAM FINALS -- PRIMARY

Wall Chart

Name/State ID	Group/Team	Rate	Rnd 1	Rnd 2	Rnd 3	Rnd 4
1. PRESBYTERIAN DAY SCH TN	R4	590	B10,3.0 1.0	B8,3.5 2.0	B5,2.5 3.0	B4,2.5 4.0
2. LINDEN PRIMARY		600	B13,3.5 1.0	B5,1.0 1.0	B9,3.0 2.0	B7,3.0 3.0
3. HARDING ACADEMY TN	R3	447	B6,4.0 1.0	B4,2.0 1.5	B8,3.0 2.5	B5,2.0 3.0
4. WEBB LOWER	R1	561	W11,4.0 1.0	B2,3.0 2.0	B1,1.5 2.0	B3,2.0 2.5
5. GRAHAMWOOD ELEM TN	R4	823	W7,3.0 1.0	B3,2.0 1.5	B11,3.5 2.5	B1,1.5 2.5
6. BIG RIDGE ELEMENTARY TN	R2	600	W3,0.0 0.0	B7,1.0 0.0	BYE 1.0	B13,2.5 2.0
7. FARRAGUT INTERMEDIATE TN	R1	494	B4,1.0 0.0	B6,3.0 1.0	B10,4.0 2.0	B2,1.0 2.0
8. BROWN ELEMENTARY TN	R2	486	BYE 1.0	B1,0.5 1.0	B3,1.0 1.0	B11,2.5 2.0
9. JULIA GREEN TN	R3	390	B12,2.0 0.5	B13,2.0 1.0	B2,1.0 1.0	BYE 2.0
10. CHRIST THE KING TN	R3	231	W1,1.0 0.0	BYE 1.0	B7,0.0 1.0	B12,3.0 2.0
11. WOODLAND PRIMARY		600	B5,0.0 0.0	B12,4.0 1.0	B4,0.5 1.0	B8,1.5 1.0
12. CUMB CO HOME SCHOOL TN	2	600	W9,2.0 0.5	B11,0.0 0.5	B13,2.0 1.0	B10,1.0 1.0
13. ST GEORGE IND SCHOOL TN	R4	555	W2,0.5 0.0	B9,2.0 0.5	B12,2.0 1.0	B6,1.5 1.0
14. J P FREEMAN TN	R4	414	--- 0.0	--- 0.0	--- 0.0	--- 0.0
15. PERCY PRIEST TN	R3	174	--- 0.0	--- 0.0	--- 0.0	--- 0.0
16. SO. CUMBERLAND ELEM TN	R2	173	--- 0.0	--- 0.0	--- 0.0	--- 0.0

2007 TENNESSEE TEAM FINALS -- PRIMARY
Team Members Wall Chart

Name/State ID	Group/Team	Rate	Rnd 1	Rnd 2	Rnd 3	Rnd 4
---------------	------------	------	-------	-------	-------	-------

PRESBYTERIAN DAY SCHOOL

1. ALEXANDER, MACKEY TN 13036045	Board 1	386	0.0	0.0	0.0	0.0
2. SERNEL, RAGAN TN 13004603	Board 2	Bate 744	P 46 1.0	P 38 2.0	P 22 2.5	P 16 3.0
3. HAVILL, MICHAEL TN 13555923	Board 3	Sc 287	0.0	0.0	P 23 0.0	P 17 1.0
4. WEBB, BAYS TN 13301104	Board 4	460	P 47 0.0	P 39 0.5	0.5	0.5
5. DICKINSON, JACKSON TN 13056603	Alternative 1	488	P 48 1.0	P 40 2.0	P 24 3.0	P 19 3.0
6. MORRISON, MURRAY TN 12930468	Alternative 2	669	P 49 1.0	--- X2.0	P 26 3.0	P 20 4.0

LINDEN PRIMARY

7. LU, JIECHENG 13674268	Board 1	nnnn	P 60 0.5	P 22 0.5	P 41 0.5	P 32 1.5
8. MA, MICHAEL 13474465	Board 2	nnnn	P 61 1.0	P 23 1.0	P 42 2.0	P 33 2.0
9. SINGH, STEPHEN 13624342	Board 3	nnnn	P 62 1.0	P 25 1.0	P 43 2.0	P 36 3.0
10. FULLER, MATTHEW 13664312	Board 4	nnnn	P 63 1.0	P 27 2.0	P 44 3.0	P 37 4.0

Individual Finals-Elem (2)

Marsh, Cory

Simonson, Andrew

1. d4 d5 2. Nf3 e6 3. Bg5 Nf6 4. e3 Be7 5. c3 h6 6. Bh4 c5
7. Bd3 O-O 8. Nbd2 Nc6 9. Qe2 Bd7 10. O-O-O Qc7 Either c4
or cxd was better. 11. Bg3 Bd6? (11... Qa5!) 12. dxc5 Bxg3
13. hxg3 e5 Black needs to try opening lines on the
queenside. Hence, b6 is better. 14. e4 Bg4? 15. exd5 Nxd5
16. Bh7+ Kh8 17. Ne4!? Tricky!! Kxh7 (17... Nce7 18. Neg5
f6 19. Be4 Nxc3 20. bxc3 fxc3=) 18. Rxd5 Rfe8?? Necessary
was Kg8. 19. Nfg5+ Kh8 20. Qxg4 f6 21. Nxf6 gxf6 22. Rxh6+
Kg8 23. Ne6+ Kf7 24. Rh7# 1-0

TCN/Spring 2007_29

Name/USCF ID	Region	Rate	Rnd 1	Rnd 2	Rnd 3	Rnd 4	Rnd 5
1. STAFFORD, JOSEPH C 12945706	REG 4	993	B 22 1.0	B 20 2.0	B 3 3.0	B 7 3.5	B 2 4.5
2. CHERUKURI, KASYAP 12963620	REG 4	941	B 6 1.0	B 10 2.0	B 4 3.0	B 9 4.0	B 1 4.0
3. SERNEL, RAGAN BATE 13004603	REG 4	752	B 31 1.0	B 13 2.0	B 1 2.0	B 15 3.0	B 7 4.0
4. OOI, HARRISON 13529047	REG 3	681	B 15 1.0	B 29 2.0	B 2 2.0	B 12 3.0	B 9 4.0
5. MIRNICS, MARCO 13491385	Ist REG 3	670	--- 0.0	B 17 1.0	B 31 2.0	B 18 3.0	B 8 4.0
6. SCHULT, CHRISTOPHER 13401468	REG 1	229	B 2 0.0	BYE 1.0	B 10 2.0	B 14 3.0	B 16 4.0
7. SIMONSEN, DAVID 12921006	REG 1	676	B 27 1.0	B 11 2.0	B 8 3.0	B 1 3.5	B 3 3.5
8. GAZULAPALLI, ANOOP 13440153	REG 4	839	B 26 1.0	B 14 2.0	B 7 2.0	B 20 3.0	B 5 3.0
9. THAMES, BENJI 13570763	REG 4	647	B 24 1.0	B 16 2.0	B 21 3.0	B 2 3.0	B 4 3.0
10. BONVISSUTO, ANTHONY 13247344	REG 3	600	B 17 1.0	B 2 1.0	B 6 1.0	B 31 2.0	B 22 3.0
11. WALKER, LAWTON 13378084	REG 2	458	B 23 1.0	B 7 1.0	B 15 1.0	B 29 2.0	B 20 3.0
12. LU, JIECHENG JACKY 13624268	REG 1	nnnn	B 14 0.0	B 25 1.0	B 13 2.0	B 4 2.0	B 18 3.0
13. MANDAVA, SRISAI T 13330713	REG 4	520	B 25 1.0	B 3 1.0	B 12 1.0	B 26 2.0	B 17 2.5
14. PORTER, WILLIAM K 13546124	REG 3	471	B 12 1.0	B 8 1.0	B 16 1.5	B 6 1.5	B 28 2.5
15. STRANG, SAMUEL B 13567968	REG 3	226	B 4 0.0	B 24 1.0	B 11 2.0	B 3 2.0	B 21 2.5
16. BLUE, ANNA 13448928	REG 1	nnnn	B 19 1.0	B 9 1.0	B 14 1.5	B 21 2.5	B 6 2.5

TENNESSEE STATE INDIVIDUAL FINALS -- PRIMARY
Continued

Name/USCF ID	Region	Rate	Rnd 1	Rnd 2	Rnd 3	Rnd 4	Rnd 5
17. BEAHM, RYAN 13622681	REG 3	nnnn	B 10 0.0	B 5 0.0	B 25 1.0	B 19 2.0	B 13 2.5
18. JAMBULAPATI, ARUN 12919608	REG 4	969	B 29 0.0	B 28 1.0	B 22 2.0	B 5 2.0	B 12 2.0
19. YU, JASON 13014856	REG 4	661	B 16 0.0	B 21 0.0	BYE 1.0	B 17 1.0	B 26 2.0
20. JOHN, STEFAN J 12931515	REG 1	634	B 30 1.0	B 1 1.0	B 29 2.0	B 8 2.0	B 11 2.0
21. XUE, ALBERT S 13500641	REG 1	434	B 28 0.5	B 19 1.5	B 9 1.5	B 16 1.5	B 15 2.0
22. JONES, MATTHEW 13378063	REG 2	431	B 1 0.0	B 23 1.0	B 18 1.0	B 30 2.0	B 10 2.0
23. ST PIERRE, GAVIN 13626128	REG 1	nnnn	B 11 0.0	B 22 0.0	B 27 1.0	B 28 1.0	B 30 2.0
24. BRANT, GEORGE 13635185	REG 2	nnnn	B 9 0.0	B 15 0.0	B 30 0.0	BYE 1.0	B 29 2.0
25. SINGH, STEPHEN 13624342	REG 1	nnnn	B 13 0.0	B 12 0.0	B 17 0.0	B 27 1.0	B 31 2.0
26. BACK, ALECIA N 13492174	REG 2	145	B 8 0.0	B 27 0.5	B 28 1.5	B 13 1.5	B 19 1.5
27. CLEMONS, ISAIAH 13558201	REG 2	nnnn	B 7 0.0	B 26 0.5	B 23 0.5	B 25 0.5	BYE 1.5
28. MANLEY, ANDREW 13628565	REG 2	nnnn	B 21 0.5	B 18 0.5	B 26 0.5	B 23 1.5	B 14 1.5
29. MALONE, CHAPMAN 13298507	REG 3	333	B 18 1.0	B 4 1.0	B 20 1.0	B 11 1.0	B 24 1.0
30. WEBBER, ZACH 13639084	REG 2	nnnn	B 20 0.0	B 31 0.0	B 24 1.0	B 22 1.0	B 23 1.0
31. HERRING, BROCK 13631657	REG 2	nnnn	B 3 0.0	B 30 1.0	B 5 1.0	B 10 1.0	B 25 1.0
32. QIN, ALEXANDER C 13298561	REG 3	853	--- 0.0	--- 0.0	--- 0.0	--- 0.0	--- 0.0

TENNESSEE STATE INDIVIDUAL FINALS -- ELEMENTARY Wall Chart,
Page 1

Name/USCF ID	Region	Rate	Rnd 1	Rnd 2	Rnd 3	Rnd 4	Rnd 5
1. VOGT, NATHAN 12847448	REG 4	1768	B 15 1.0	B 6 2.0	B 8 3.0	B 2 3.5	B 7 4.5
2. NEGLIA, SALVATORE 12939260	EG 3	1621	B 16 1.0	B 20 2.0	B 5 3.0	B 1 3.5	W 8 4.5
3. VARRIANO, LOUIS J 12916460	REG 4	1165	B 28 1.0	B 13 1.0	B 22 2.0	B 19 3.0	B 10 4.0
4. SIMONSEN, ANDREW 12921005	REG 1	1028	B 23 1.0	B 7 1.0	B 25 2.0	B 22 3.0	B 9 4.0
5. DAHOTRE, SANKET 12929519	REG 1	1157	B 26 1.0	B 25 2.0	B 2 2.0	B 17 2.5	B 16 3.5
6. LORINC, ERICK L 12865002	REG 2	1141	B 21 1.0	B 1 1.0	B 16 1.5	B 24 2.5	B 17 3.5
7. MARSH, CORRY L 12843522	REG 1	1323	B 17 1.0	B 4 2.0	B 13 3.0	B 8 3.0	B 1 3.0
8. ZUO, DANIEL TEITZ 12920312	REG 4	1289	B 12 1.0	B 11 2.0	B 1 2.0	B 7 3.0	B 2 3.0
9. ZHOU, ALBERT X 12916061	REG 4	1203	B 25 0.0	B 14 1.0	B 11 2.0	B 20 3.0	B 4 3.0
10. BONVISSUTO, GREGORY 12875110	REG 3	1146	B 29 1.0	B 22 1.0	B 15 2.0	B 13 3.0	W 3 3.0
11. FINE, ISAAC 13037713	REG 1	1015	B 32 1.0	B 8 1.0	B 9 1.0	B 28 2.0	B 22 3.0
12. GUPTA, JASON 13510605	REG 4	938	B 8 0.0	B 32 1.0	B 19 1.0	B 29 2.0	B 20 3.0
13. CHEN, ERIC 12917175	REG 4	733	B 18 1.0	B 3 2.0	B 7 2.0	B 10 2.0	B 19 3.0
14. BAERMAN, ELLIOT A 12873865	REG 1	1218	B 24 0.5	B 9 0.5	B 28 0.5	B 27 1.5	B 25 2.5
15. MYHRE, JACOB 12922023	REG 3	1009	B 1 0.0	B 29 1.0	B 10 1.0	B 25 1.5	B 24 2.5
16. MC CLUNG, NOAH 12931299	REG 2	976	B 2 0.0	B 27 1.0	B 6 1.5	B 18 2.5	B 5 2.5

TENNESSEE STATE INDIVIDUAL FINALS -- ELEMENTARY
Continued

Name/USCF ID	Region	Rate	Rnd 1	Rnd 2	Rnd 3	Rnd 4	Rnd 5
17. MURN, ZACH 13525567	REG 1	959	B 7 0.0	B 21 1.0	B 18 2.0	B 5 2.5	B 6 2.5
18. WARREN, JONATHAN 12911327	REG 2	1116	B 13 0.0	B 24 1.0	B 17 1.0	B 16 1.0	B 26 2.0
19. HOUSTON, CHARLIE R 12841434	REG 2	1077	B 22 0.0	B 26 1.0	B 12 2.0	B 3 2.0	B 13 2.0
20. BERRYHILL, JENNER 12879059	REG 4	1054	B 27 1.0	B 2 1.0	B 23 2.0	B 9 2.0	B 12 2.0
21. BOGICH, ZACHARY J 13221320	REG 4	740	B 6 0.0	B 17 0.0	B 24 0.0	BYE 1.0	B 28 2.0
22. BEJNOOD, ARAM 13167705	REG 1	681	B 19 1.0	B 10 2.0	B 3 2.0	B 4 2.0	B 11 2.0
23. HWANG, JOSEPH C 13367393	REG 3	639	B 4 0.0	B 28 1.0	B 20 1.0	B 26 1.0	B 29 2.0
24. WILLIAMS, FRANKLIN 12978356	REG 3	915	B 14 0.5	B 18 0.5	B 21 1.5	B 6 1.5	B 15 1.5
25. WELCH, CHRISTOPHER 12919633	REG 3	914	B 9 1.0	B 5 1.0	B 4 1.0	B 15 1.5	B 14 1.5
26. WADHAWAN, SANCHIT 13399514	REG 1	883	B 5 0.0	B 19 0.0	B 27 0.5	B 23 1.5	B 18 1.5
27. JONES, ETHAN 13103970	REG 2	653	B 20 0.0	B 16 0.0	B 26 0.5	B 14 0.5	BYE 1.5
28. HINCHMAN, RUTH 12958463	REG 2	896	B 3 0.0	B 23 0.0	B 14 1.0	B 11 1.0	B 21 1.0
29. MC CLUNG, JAVAN 12931298	REG 2	832	B 10 0.0	B 15 0.0	B 32 1.0	B 12 1.0	B 23 1.0
30. YANG, ERIC L 12849496	REG 3	1046	--- 0.0	--- 0.0	--- 0.0	--- 0.0	--- 0.0
31. SANTORO, JOEY 13409560	REG 3	920	--- 0.0	--- 0.0	--- 0.0	--- 0.0	--- 0.0
32. CARTER, CARY 13120863	REG 2	575	B 11 0.0	B 12 0.0	B 29 0.0	--- 0.0	--- 0.0

TENNESSEE STATE INDIVIDUAL FINALS -- JUNIOR HIGH Wall Chart
 Page 1

Name/USCF ID	Region	Rate	Rnd 1	Rnd 2	Rnd 3	Rnd 4	Rnd 5
1. MARSH, MATTHEW L 12843523	REG 1	1882	B 18 1.0	B 6 2.0	B 10 3.0	B 4 4.0	B 5 5.0
2. SUICH, PETER D 12779311	REG 1	1789	B 20 1.0	B 11 1.0	B 8 2.0	B 3 3.0	B 13 4.0
3. YOON, SU'AD 12910458	REG 3	1585	B 21 1.0	B 12 2.0	B 5 2.5	B 2 2.5	B 14 3.5
4. NAIR, MANU 12843521	REG 3	1563	B 19 1.0	B 13 2.0	B 11 3.0	B 1 3.0	B 7 3.5
5. REDDY, NISHIT 12805997	REG 4	1448	B 22 1.0	B 26 2.0	B 3 2.5	B 10 3.5	B 1 3.5
6. BERRYHILL, JORDAN 12824261	REG 4	1394	B 23 1.0	B 1 1.0	B 21 2.0	B 18 2.5	B 17 3.5
7. ADUSUMILLI, NAGASAI 12843628	REG 4	1353	B 27 0.5	B 28 1.0	B 15 2.0	B 20 3.0	B 4 3.5
8. GIBSON, GRAHAM 12777372	REG 4	1520	B 15 1.0	B 17 1.5	B 2 1.5	B 16 2.5	B 11 3.0
9. HOROBETZ, GRAHAM J 12800231	REG 4	1424	B 28 0.5	B 27 1.0	B 20 1.0	B 30 2.0	B 18 3.0
10. REMEC, MARK 21020021	REG 1	1390	B 29 1.0	B 16 2.0	B 1 2.0	B 5 2.0	B 21 3.0
11. PARVATHAREDDY, ROHI 12843629	REG 4	1364	B 24 1.0	B 2 2.0	B 4 2.0	B 17 2.5	B 8 3.0
12. BOVOPOULOS, DEMETRI 12901610	REG 1	1341	B 30 1.0	B 3 1.0	B 19 2.0	B 14 2.0	B 23 3.0
13. SCHAFER, JACOB A 12913914	REG 3	1324	B 25 1.0	B 4 1.0	B 28 2.0	B 26 3.0	B 2 3.0
14. NOON, EVAN PATRICK 21020411	REG 1	1138	B 16 0.0	B 29 1.0	B 30 2.0	B 12 3.0	B 3 3.0
15. KONJETI, RAVIKANTH 12780119	REG 3	1000	B 8 0.0	B 31 1.0	B 7 1.0	B 25 2.0	B 20 3.0
16. SMITH, TRE 12790065	REG 3	1593	B 14 1.0	B 10 1.0	B 17 1.5	B 8 1.5	B 27 2.5

TENNESSEE STATE INDIVIDUAL FINALS -- JUNIOR HIGH
Continued

Name/USCF ID	Region	Rate	Rnd 1	Rnd 2	Rnd 3	Rnd 4	Rnd 5
17. KELLER, JOHN M 12790525	REG 4	1254	B 31 1.0	B 8 1.5	B 16 2.0	B 11 2.5	B 6 2.5
18. FRANKLIN, SHANE M 12849501	REG 3	1208	B 1 0.0	B 22 1.0	B 27 2.0	B 6 2.5	B 9 2.5
19. MYHRE, NICK J 12919627	REG 3	1018	B 4 0.0	B 25 1.0	B 12 1.0	B 27 1.5	B 26 2.5
20. DAHOTRE, SHREYAS 12929518	REG 1	1161	B 2 0.0	B 23 1.0	B 9 2.0	B 7 2.0	B 15 2.0
21. JOHNSON, TYLER S 12843630	REG 4	1026	B 3 0.0	B 24 1.0	B 6 1.0	B 31 2.0	B 10 2.0
22. LYNN, JOSHUA ADAM 12937075	REG 1	988	B 5 0.0	B 18 0.0	B 26 0.0	B 29 1.0	B 30 2.0
23. MILLER, CALEB JOHN 12937152	REG 3	962	B 6 0.0	B 20 0.0	B 24 1.0	B 28 2.0	B 12 2.0
24. WALLACE, AARON 12982112	REG 2	849	B 11 0.0	B 21 0.0	B 23 0.0	BYE 1.0	B 31 2.0
25. THORN, TYLER S 13409465	REG 2	737	B 13 0.0	B 19 0.0	BYE 1.0	B 15 1.0	B 28 2.0
26. KOENIG, JARED 13126486	REG 2	736	BYE 1.0	B 5 1.0	B 22 2.0	B 13 2.0	B 19 2.0
27. RICE, KALEB J 13402697	REG 2	837	B 7 0.5	B 9 1.0	B 18 1.0	B 19 1.5	B 16 1.5
28. SHIELDS, TANNER R 12919132	REG 1	978	B 9 0.5	B 7 1.0	B 13 1.0	B 23 1.0	B 25 1.0
29. HAMMETT, JON H 12931306	REG 2	960	B 10 0.0	B 14 0.0	B 31 0.0	B 22 0.0	BYE 1.0
30. HOUSTON, C J 12836144	REG 2	816	B 12 0.0	BYE 1.0	B 14 1.0	B 9 1.0	B 22 1.0
31. THOMAS, ELIJAH 13622868	REG 2	nnnn	B 17 0.0	B 15 0.0	B 29 1.0	B 21 1.0	B 24 1.0
32. SUITS, MACK 13129925	REG 2	1024	--- 0.0	--- 0.0	--- 0.0	--- 0.0	--- 0.0

TENNESSEE STATE INDIVIDUAL FINALS -- HIGH SCHOOL Wall Chart

Page 1

Name/USCF ID	Region	Rate	Rnd 1	Rnd 2	Rnd 3	Rnd 4	Rnd 5
1. PHAY, GAINER 12828988	REG 3	1995	B 22 1.0	B 9 2.0	B 6 3.0	B 2 3.5	B 4 4.5
2. HINCHMAN, PHILIP 12905116	REG 2	1921	B 26 1.0	B 11 2.0	B 8 3.0	B 1 3.5	B 6 4.5
3. JONES, JESSE GRAY 12824925	REG 1	1722	B 27 1.0	B 15 1.0	B 23 2.0	B 12 3.0	B 13 4.0
4. HARBERT, CARLOS 12833879	REG 4	1925	B 29 1.0	B 10 2.0	B 7 2.5	B 15 3.5	B 1 3.5
5. ASHMUN, FRANK 12845540	REG 3	1880	--- 0.0	B 20 1.0	B 15 1.5	B 21 2.5	B 10 3.5
6. REMEC, MIRKO 12662179	REG 1	1831	B 23 1.0	B 12 2.0	B 1 2.0	B 7 3.0	B 2 3.0
7. BULLINGTON, CRAIG 12849512	REG 3	1751	B 30 1.0	B 13 2.0	B 4 2.5	B 6 2.5	B 9 3.0
8. MACDONALD, MYLES R 12785727	REG 3	1712	B 24 1.0	B 14 2.0	B 2 2.0	B 13 2.0	B 15 3.0
9. NAIR, MADHU 12814193	REG 3	1690	B 17 1.0	B 1 1.0	B 27 1.5	B 26 2.5	B 7 3.0
10. PHILLIPS, COTY 21016778	REG 2	1638	B 16 1.0	B 4 1.0	B 30 2.0	B 11 3.0	B 5 3.0
11. TOWNSEND, LATREZE 12850711	REG 4	1603	B 31 1.0	B 2 1.0	B 24 2.0	B 10 2.0	B 23 3.0
12. SALTER, JOSHUA 12890290	REG 3	1594	B 18 1.0	B 6 1.0	B 14 2.0	B 3 2.0	B 21 3.0
13. HUNLEY, RYAN 21013192	REG 2	1549	B 25 1.0	B 7 1.0	B 16 2.0	B 8 3.0	B 3 3.0
14. MUNGAN, ANDREW J 12900054	REG 1	976	B 21 1.0	B 8 1.0	B 12 1.0	B 30 2.0	B 20 3.0
15. AGOSTINO, MICHAEL 12884766	REG 3	1418	B 19 1.0	B 3 2.0	B 5 2.5	B 4 2.5	B 8 2.5
16. PAUL, CORY M 12863912	REG 1	1235	B 10 0.0	B 29 1.0	B 13 1.0	B 18 1.5	B 26 2.5

Gainer Phay is the \$16,000 scholarship winner!

TENNESSEE STATE INDIVIDUAL FINALS -- HIGH SCHOOL
Continued

Name/USCF ID	Region	Rate	Rnd 1	Rnd 2	Rnd 3	Rnd 4	Rnd 5
17. RICHARD, CHRIS L 12972671	REG 4	1235	B 9 0.0	B 26 0.5	B 20 1.0	B 22 1.5	B 29 2.5
18. RILING, KYLE 12915882	REG 3	1149	B 12 0.0	B 23 0.0	B 29 1.0	B 16 1.5	B 27 2.5
19. CARD, JACOB 13410607	REG 1	856	B 15 0.0	BYE 1.0	B 21 1.0	B 24 2.0	B 22 2.5
20. SNOW, CHRIS 21013103	REG 2	1571	B 28 0.5	B 5 0.5	B 17 1.0	B 27 2.0	B 14 2.0
21. HALL, KENNETH 12850713	REG 4	1428	B 14 0.0	B 28 1.0	B 19 2.0	B 5 2.0	B 12 2.0
22. BLANKENSHIP, LOGAN 12914168	REG 2	1415	B 1 0.0	B 24 0.0	B 31 1.0	B 17 1.5	B 19 2.0
23. VANCIL, AARON W 12780062	REG 4	1357	B 6 0.0	B 18 1.0	B 3 1.0	B 25 2.0	B 11 2.0
24. YU, PATRICK 12979956	REG 4	1306	B 8 0.0	B 22 1.0	B 11 1.0	B 19 1.0	B 31 2.0
25. HERRMANN, NOEL A 12863887	REG 1	983	B 13 0.0	B 27 0.0	BYE 1.0	B 23 1.0	B 30 2.0
26. BROWN, ADELINE 12751668	REG 4	1361	B 2 0.0	B 17 0.5	B 28 1.5	B 9 1.5	B 16 1.5
27. MC CANN, DILLON 12844681	REG 2	1336	B 3 0.0	B 25 1.0	B 9 1.5	B 20 1.5	B 18 1.5
28. SUICH, JOANNA R 12779310	REG 1	1050	B 20 0.5	B 21 0.5	B 26 0.5	B 29 0.5	BYE 1.5
29. HOWARD, MICHAEL 12826439	REG 2	1389	B 4 0.0	B 16 0.0	B 18 0.0	B 28 1.0	B 17 1.0
30. HOUSTON, GARRETT 12777522	REG 4	1350	B 7 0.0	B 31 1.0	B 10 1.0	B 14 1.0	B 25 1.0
31. DAVIS, MICHAEL 12877174	REG 2	1169	B 11 0.0	B 30 0.0	B 22 0.0	BYE 1.0	B 24 1.0
32. BARBER, CHRISTOPHER 12844873	REG 1	1372	--- 0.0	--- 0.0	--- 0.0	--- 0.0	--- 0.0

Tenn. Chess Association 2005-2007 Board of Directors

PRESIDENT:

J. Michael Cross
2961 Martha Washington Rd.
Clarkrange, TN 38553
H: (931)863-3188
e-mail: jmcross@twlakes.net

VICE-PRESIDENT:

Allen Snow
P. O. Box 2127
Clarkrange, TN 38553
W: (931)863-4082
Fax: (931) 863-4081
e-mail: asnow@twlakes.net

SECRETARY:

Chris Prosser
733 Long Hunter Court
Nashville, TN 37217
H: (615) 399-8432
e-mail: regioniii@aol.com

TREASURER:

Angela McElrath-Prosser
733 Long Hunter Court
Nashville, TN 37217
H: (615) 399-8432
e-mail: teanews@aol.com

INTERNET CHESS COORDINATOR:

Alan Kantor
577 Livingston Road, Apt. 23
Crossville, TN 38555
H: (931) 200-9038
W: (931) 787-1234 ext. 128
e-mail: kantor@charter.net

SCHOLASTIC COORDINATOR:

Harry D. Sabine
P. O. Box 381
Crossville, TN 38557
H: (931) 484-4878
W: (931) 484-9593
e-mail: hdsabine@citlink.net

TOURNAMENT COORDINATOR:

Paul Semmes
1010 N. Maple Ave.
Cookeville, TN 38501
H: (931) 526-2883
e-mail: PaulSemmes@charter.net

TN CHESS NEWS EDITOR:

Leonard Dickerson
420 Oran Road
Knoxville, TN 37932
H: (865) 966-1095
e-mail: lsdict@tds.net

EAST TENNESSEE DIRECTOR:

Malcolm Robert Estrada
7123 Annview Lane
Harrison, TN 37341
W: (423) 751-8984
e-mail: mrestrada@tva.gov

MIDDLE TENNESSEE DIRECTOR:

Scott Cantrell
2325 Willowbrook Dr., Apt. C6
Murfreesboro, TN 37130
H: (615) 217-9084
e-mail: greatscottmagic@yahoo.com

WEST TENNESSEE DIRECTOR:

Robert Schoumacher
4266 Long Leaf Drive
Memphis, TN 38117
H: (901) 767-3060
W: (901) 572-5222
e-mail: rschoumacher@utmemo.edu

Regional Scholastic Coordinators**Region 1:**

Judd Jones
10904 Lookout Point
Knoxville, TN 37922

Region 2:

Michael Ake
16 Pinecrest Dr.
Wildwood, GA 30757
H: (706) 820-0693
O: (423) 493-5406

Region 3:

Chris Prosser
733 Long Hunter Court
Nashville, TN 37217
H: (615) 399-8432

Region 4:

Brian Vogt
2669 Sweet Maple Cove
Germantown, TN 38139
H: (901) 624-0020

**Leonard Dickerson
420 Oran Road
Knoxville, TN 37934**

VISIT OUR WEBSITE: WWW.TNCHESS.ORG