

PETER P. LAHDE  
2609 SAILBOAT COURT  
NASHVILLE, TENN. 37217

# TENNESSEE CHESS NEWS



VOLUME 24, NO. 5

OCT-NOV 1982

TCA MEMBERSHIP DUES

The annual dues for each member are \$4.00. All memberships expire in August 31 of each year. However any person who joins the TCA between Apr. 1 and Aug.31 shall pay \$2, which expires Aug.31 or pay \$5 which expires Aug.31 of the following year. Each additional person in the same family may become a member by paying \$.50 but will not receive the newsletter. Any USCF affiliate that needs a supply of membership cards for issue should contact Harry D. Sabine, the Secretary-Treasurer.

TCA DEADLINES

ISSUE	DEADLINE
DEC-JAN	NOV 15
FEB-MAR	JAN 15
APR-MAY	MAR 15
JUN-JUL	MAY 15
AUG-SEP	JUL 15
OCT-NOV	SEP 15

ADDRESS CHANGES ?????

PLEASE SEND ALL ADDRESS CHANGES AND DUES TO:

HARRY D. SABINE  
p.o. box 381  
Crossville, TN 38555

The Tennessee Chess Association is a non-profit corporation recognized by the Internal Revenue Service as being 501-(c)-(3) tax exempt; we welcome your deductible contributions.

THE TENN. CHESS NEWS IS THE OFFICIAL PUBLICATION OF THE TCA. THE PUBLICATION IS BI-MONTHLY. INDIVIDUAL COPY PRICE IS \$1.00.

ADVERTISING RATES: FULL PAGE \$40, 1/2 page \$20, 1/3 page \$14, 1/6 page \$7, (camera ready only)

EDITOR: Gary Pylant.

FRONT COVER

"The Queen" by Randy Cope. —

Editor's New address:  
Gary Pylant  
3397 Buchanan Ave.  
Memphis, TN 38122

# Report on Tennessee Chess

MINUTES OF THE ANNUAL MEETING  
OF THE BOARD OF DIRECTORS  
OF THE TENNESSEE CHESS ASSOCIATION

The annual meeting of the Board of Directors of the Tennessee Chess Association was held on Monday, September 6, 1982, at 6:30 A.M., at the Country Fiddler Restaurant in Nashville, Tennessee.

Directors present were Peter Lahde, Harry Sabine, Johnson Moore, Gary Pylant, John White, and Dale Flickinger. Absent were Richard Igou, Jack Smith, and Kent Meadows.

The minutes of the special meeting of the board of directors of February 28, 1982, were read and approved.

The subject of patron memberships for the TCA was discussed. Harry Sabine was directed to prepare a proposed bylaw change to implement patron memberships and to review the effect of such memberships on the IRS status of TCA and to report at the next board of director's meeting.

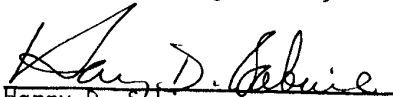
The budget of the Tennessee Chess Association for 1982-1983 was presented and upon motion duly made, seconded and carried, was approved, and a copy of same ordered attached to the minutes of this meeting.

The format and budget for the 1983 Tennessee Scholastics was discussed, and upon motion duly made, seconded and carried, was approved, and a copy of same ordered attached to the minutes of this meeting.

The subject of creating a scholastic coordinator for the Tennessee Chess Association to be a member of the board of directors was discussed. Harry Sabine was ordered to draft the necessary bylaw change to create the office of scholastic coordinator and present same at the next board of directors' meeting.

A tentative format for the 1983 Tennessee Open was presented. It was agreed that a copy of same be distributed to all directors with final approval to be voted on at the February board of directors' meeting.

There being no further business, the meeting was adjourned.

  
Harry D. Sabine  
Secretary-Treasurer

Approved:

TENNESSEE'S TOP TEN PRIMARY PLAYERS (Grades 3 & Below)

1.	Charles Smith	(3)	Franklin Rd Bapt	1382/18
2.	Roger Breeding	(3)	Homestead	1244
3.	Randall Breeding	(3)	Homestead	1209
4.	Mark Burdick	(3)	Parkview	1075
5.	Mark Smith	(3)	No. Cumberland	1053/8
6.	Will Litchford	(2)	Crossville	1046
7.	Jason White	(2)	Homestead	997
8.	Jimmy Day	(2)	Homestead	984
9.	Jason Elmore	(3)	No. Cumberland	944/12
10.	Rodger Hargis	(3)	Crossville	868/14

## Tennessee's "Top Ten" Categories

1.	Curt Jones	Nashville	2311
2.	Henry J. Robinson	Clarksville	2279
3.	Michael Carey	Nashville	2198
4.	Albert Wright	Memphis	2168
5.	Brian McCarthy	Hermitage	2158
6.	Kenny Thomas	Memphis	2140
7.	Mahlon Smith	Memphis	2128
8.	Emanuel Tsitsekliis	Knoxville	2123
9.	Sid Pickard	Memphis	2113
10.	Paul Linxwiler	Memphis	2106

### TENNESSEE'S TOP TEN WOMEN PLAYERS

1.	Söfi Zhislin	Nashville	1755
2.	Pamela Campbell	Crossville	1689
3.	Joy Wellman	Memphis	1539
4.	Susie Smathers	Crossville	1353
5.	Nancy Weaver	Crossville	1350
6.	Camilla West	Nashville	1325/6
7.	Carol McDaniel	Memphis	1323
8.	Janet Schwartz	Memphis	1323
9.	April Bean	Knoxville	1299/11
10.	Amy Knightly	Knoxville	1222/17

### TENNESSEE'S TOP TEN HIGH SCHOOL PLAYERS (Grades 10-12)

1.	Ronald Burnett	(10) Eagleville	1983
2.	Barry D. Goode	(12) ECS	1908
3.	Terry Burdett	(12) Cumberland County	1854
4.	Bradley Watson	(11) Webb	1781
5.	Chris Chambers	(11) Webb	1764
6.	Cary Long	(11) Farragut	1763
7.	Robert G. Etter	(11) Baylor	1754
8.	Matt Dolloff	(11) MBA	1666
9.	Jimmy Alisago	(12) Baylor	1654
10.	Bruce Lemieux	(12) Cumberland County	1602

### TENNESSEE'S TOP TEN JUNIOR HIGH PLAYERS (Grades 7-9)

1.	Chuck Lovingood	(9) Martin	1865
2.	Chris Loyless	(8) Martin	1657
3.	George Wallace	(9) Martin	1619
4.	Todd Etter	(9) Baylor	1600/12
5.	Jeremy Hassler	(7) Martin	1599
6.	Mike Mitchell	(9) Martin	1585
7.	Johnny Camilleri	(9) Martin	1562
8.	Andy Chambers	(7) Farragut	1508/15
9.	Jack Grossl	(7) So. Cumberland	1486
10.	Mike Whisnant	(9) Martin	1475

### TENNESSEE'S TOP TEN ELEMENTARY PLAYERS (Grades 4-6)

1.	Ted Mason	(5) Auburndale	1463
2.	Gus Lipman	(6) Lusanne	1450
3.	Robert Virden	(6) Auburndale	1424/9
4.	Ronnie Baylosis	(6) Martin	1416
5.	Shane Day	(5) Homestead	1386
6.	Jim Grossl	(6) So. Cumberland	1382
7.	Brian White	(6) FACS	1360
8.	Chris Lax	(4) Homestead	1343
9.	Neal Loskovitz	(6) Auburndale	1327/14
10.	Guy Looney	(6) So. Cumberland	1324

## TCA Board Members

### PRESIDENT

Peter P. Lahde  
2609 Sailboat Court  
Nashville, TN 37217  
H: 351-4588  
O: 256-8899

### VICE-PRESIDENT

Jack E. Smith  
3436 Carnes, #6  
Memphis, TN 38111  
H: (901) 452-8779

### SECRETARY-TREASURER

Harry D. Sabine  
P.O. Box 381  
Crossville, TN 38555  
H: 484-4878  
O: 484-9593

### NEWSLETTER EDITOR

Gary Pylant  
3397 Buchanan Ave.  
Memphis, TN 38122  
H: (901) 452-7028  
O: (901) 454-2277

### POSTAL EDITOR

Kent Meadows  
206 30th Ave. N.  
Nashville, TN 37203  
H: 373-8925

### TOURNAMENT COORDINATOR

John L. White  
P.O. Box 2587  
Crossville, TN 38555  
H: (615) 484-8377

### DIRECTOR, EAST TENNESSEE

Richard Igou  
400 Rhodora, Apt. F  
Knoxville, TN 37923  
H: 690-6810

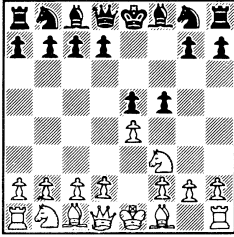
### DIRECTOR, MIDDLE TENNESSEE

Johnson Moore  
3424 - 33rd Avenue South  
Nashville, TN 37212  
H: (615) 383-8823

### DIRECTOR, WEST TENNESSEE

Dale Flickinger  
5247 Shelbourne Circle, #14  
Memphis, TN 38134  
H: (901) 382-3829

## The Latvian Lives! by Sid Pickard



In chess, as in life, some opportunities come only once and then we are seldom prepared for them. Sure enough, in the following curiosity the full point hung in the balance when I had to play for a rarely occurring endgame that I had little idea how to win. But hard work, patience, and a smile from Cassia finally tipped the scales in my favor.

White: Mike Barton Black: Sid Pickard

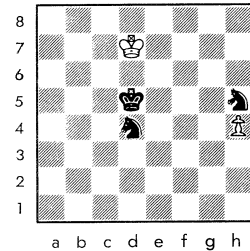
### THE LATVIAN GAMBIT

1. e4 e5 2. Nf3 f5 3. ef e4 4. Ne5 Nf6 5. Be2 d6 6. Bh5+ Ke7 7. Nf7 Qe8 8. Nh8 (8.Nc3) Qh5 9. Qh5 Nh5 This variation always leads to a fascinating endgame struggle which can be characterized as follows: Black is the exchange down but there is a White knight trapped on h8. Before it can be captured, however, White will usually have won a pawn or two so that the material balance (imbalance?) becomes rook + pawns vs. two minor pieces. Keres gives here 10. g4 Nf6 11. Rg1 to be followed eventually by Rg3-h3 and Bg5 to extract the knight. White continued instead 10. d3 Bf5 (10...ed) 11. de Be4 12. 0-0 Bd5 13. Nc3 Bc4 14. Re1+ Kd7 15. b3 Be6 16. Nb5 Na6 17. Bb2 Be7 18. Nd4 Bf6 19. Ne6 Bb2 20. Rab1 Bc3 21. Re3 Rh8 22. Nc7 Nc7 23. Rc3 And after a few complications the game arrives at the configuration described above. Black should feel comfortable with his knights, and in the light of later play these two must be thoroughbreds!

Re8 24. Rd3 Re2 25. Rbd1 d5 26. R3d2 Rd2 27. Rd2 Nf6 28. c4 Kc6 29. cd Ncd5 30. f3 b5 31. a3 a5 32. Rc2+ Kd6 33. Rc8 a4 34. ba ba 35. Ra8 Nb6 36. Ra7 Nfd7 37. Kf2 Kc5 38. Ke3 (38.Rc7+) Kc4 39. Ke4 Kb3 40. Kf5 Ka3 41. Ke6 Kb3 42. Kf7 g5 43. Kg7 Nc5 44. Kh7 a3 If White is careless here Black will next drop a knight onto a4 and queen his pawn. Therefore 45. Ra3+ Ka3 46. Kg6 Ne6 47. Kf5 Nf4 (Now 48. g3 Nh3 49. Kg4 Ng1 is an intriguing possibility) 48. Kg5 Ng2 49. h3 This is a definite mistake, however. White should easily draw this game by simply charging his pawns up the board and forcing Black to capture them with his knights. Accordingly, 49. h4 is indicated when it would be very risky not to take the pawn at once with 49...Nh4. White seemed completely unaware of the danger facing him, so I very quietly played 49...Kb4 50. f4 Kc5 51. f5 Kd6 52. f6 Ke6 53. Kg6 Nf4+ 54. Kg7 Nd7 55. f7 Nh5+ 56. Kg6 Nf4+ 57. Kg7 Ke7 58. h4 Ne6+ 59. Kg6 Ndf8+ 60. Kf5 Ng7+ This is the cusp. White's last chance to save the game consists in playing 61. Kg4 ( 61. Kg5 is also possible, but after 61...Nfe6+ he must be careful, e.g., 62. Kh6? Kf7 63. Kh7 Nf5 64. Kh8 Nf8 65. h5 Ne7 66. h6 Neg6 mate) and pushing his h-pawn as far as possible down the board: 61. Kg4 Kf7 62. h5 Nh7 63. h6 Ne6 64. Kf5 and White steps into the corner of a "drawing zone", which is pictured in reverse on page 119 of Averbakh's Knight Endings! But play actually continued 61. Ke4 Nh5 62. Kd5 Kf7 63. Kd6 Kf6 64. Kc6 Ke5 65. Kc5 Nd6+ 66. Kc6 Nd4+ 67. Kb6 Kd5 (67...Kd6) 68. Kb7 Nb5 69. Kb6 Nd4 70. Kc7 Ke5 71. Kd7 Kd5

With White's pawn blockaded on h4 he is lost, even with Black's inaccuracy on move 67. But since there are too many variations to analyse everything I would here like to show only that the weaker king can be forced to the board's edge, from where I

refer the reader to Knight Endings for the requisite technique. For example, if from the diagram White heads toward the offending knight on h5 he is quickly netted:



72. Ke7 Ne6 73. Kf7 Nef4 74. Ke7 Kc6 75. Ke8 Kd6 76. Kf7 Kd7 77. Kf8 Ng6+ 78. Kf7 Ne5+ 79. Kf8 Kd8 80. Kg8 Ke7 81. Kh7 Kf6 82. Kh6 Ng7 83. Kh7 Kf7 84. Kh6 Nf3 etc. If instead White adopts a "wait and see" policy there can follow from the diagram 72. Ke7 Ne6 73. Kd7 Nc5+ 74. Kc7 Na4 75. Kd7 Nb6+ 76. Kc7 Kc5 77. Kb7 Nd5 78. Ka6 Kb4 79. Kb7 Kb5 and White must give ground. The same end results from an attempt to swing around the queenside, as in 72. Kc7 Nb5+ 73. Kb6 Nd6 74. Ka5 (74. Kc7 Nc4 75. Kd7 Nb6+) Kc5 75. Ka4 Ne4 76. Kb3 Kb5 77. Kc2 Kc4 78. Kb2 Nc5 79. Kc2 Nb3 80. Kb2 Nd4 81. Ka3 Kb5 82. Kb2 Kb4. White, however, hastened his end by continuing from the diagram 72. Kc8 Kd6 73. Kd8 Ne6+ 74. Kc8 Kc6 75. Kb8 Nc5 76. Kc8 ( If instead 76. Ka8 Kc7 77. Ka7 Nf6 78. h5 Nfd7 79. h6 Nb8 80. h7 Nc6+ 81. Ka8 Nd7 82. h8Q Nb6 mate) Nb7 77. Kb8 Nd6 78. Ka7 Kb5 79. Kb8 Kb6 80. Ka8 Nc8 81. Kb8 Na7 82. Ka8 Nf6 83. h5 Nc6 This is why White must have a pawn! 84. h6 Kc7 85. h7

Nd7 86. h8 = Q Nb6 mate.

The point of the foregoing melodrama lies not in the game itself, but in this: though we can't be prepared for every contingency, in chess or in life, yet our best efforts when that once in a lifetime opportunity does present itself are often rewarded by a wink from the Fates!

# Tennessee postal chess

by Kent Meadows

The preliminaries of the 1982 Tenn. Postal Championship are now closed. With only 3 sections, the prize fund is still larger than the '79, '80, and '81 championship prize funds, even though these 3 tourneys all had 4 sections. You can now enter the 1983 Preliminaries. Send \$6 (and \$4 more if not a TCA member) to:

Kent Meadows  
206 30th Ave. N.  
Nashville, TN 37203

You play 6 games with 3 opponents - 2 games vs. each (one white, one as black). All entry fees are returned as prizes to the top 3 places in the finals. You qualify for the finals by scoring 4 or better out of your 6 games. You may enter more than one section.

Entries:

TC-3-82: Inman, Penuel, Irwin, Grayson Green

Results:

TC-F-80: Meadows 1 Ousley; Meadows 1½ Smith ½; Meadows ½ Penuel  
TC-F-81: Ishee 1 Irwin; Ishee, Inman, Irwin, G'Fellers 1F Byerly; Inman 1 G'Fellers  
TC-1-82: G'Fellers, Lewis 1 Irwin; G'Fellers 1 Lewis  
TC-2-82: G'Fellers, Edwards 1 Irwin; Edwards 1 Jones, G'Fellers

Ratings:

Byerly 451	G'Fellers 606
Edwards 608	Green 400
Inman 764	Meadows 690
Irwin 553	Ousley 627
Ishee 647	Penuel 501
Jones, E. 705	Smith 791
Lewis 639	Stearns 823

## POSTAL GAMES OF THE MONTH

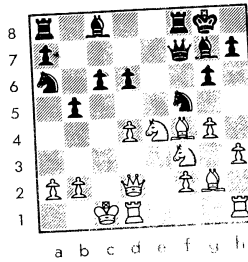
Irwin - Lewis  
1. P-K4 P-KN3  
2. P-Q4 B-Kn2  
3. N-KB3 P-Q3  
4. P-KR3 P-QB3  
5. P-QB4 N-KR3

I didn't want to block my f-pawn, Queen, or black-square bishop, but I did want to castle before I tried to break up his center with f5 and e5.

6. N-QB3 P-KB4  
7. B-KB4 PXP  
8. NXP O-O  
9. Q-Q2 N-KB4  
10. P-KN4 Q-Q2!

The only good move. White can not take the Knight because too many pieces hang.

11. O-O-0 P-QN4  
12. P-B5 N-QR3  
13. PXP PXP  
14. B-N2 Q-KB2



2 pawns and mate threats for the knight if he takes it.

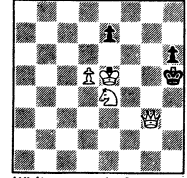
15. PxN QxBP  
16. BxP QxN/4  
17. BxR B-KB4  
18. Q-Q3 RxB

If 19. QxQ, then BxQ, 20. N-K1 B-R3ch, 21. R-Q2 BxB, 22. NxB RxBP.

19. N-K1 B-R3 ch  
20. resigns

If 20. K-B2 QxQP (Lewis).

## EVANS ON CHESS



White mates in 2 moves  
WHIZ KID

In 1980 I wrote: "Gary Kasparov, 17, has captured the fancy of the chess world. Many consider the young Soviet grandmaster the next contender in 1984, the heir to Karpov. His results have been phenomenal ever since his international debut in 1979 at Banja Luka, Yugoslavia, where he led a strong field of 16, including ex-world champ Tigran Petrosian, by two full points. His apparent ease and confidence are reminiscent of Bobby Fischer in his heyday."

This was penned when Kasparov had just won the world junior title. Now he has added fresh laurels by breezing through a 14-grandmaster tourney in Bugojno, Yugoslavia, by a wide margin.

Kasparov, the world's youngest grandmaster at 19, posted 9½ points comprising 6 wins and 7 draws. Far behind were Lubomir Luboyevic (Yugoslavia) and Lev Polugaievsky (USSR) at 8, then Boris Spassky (USSR) and Robert Huebner (West Germany) at 7½. Out of 91 games, 55 were drawn in this closely-matched field.

Kasparov's result was even more impressive considering that he drew his last four games while far in the lead. With a greater incentive to win, his score might have been higher. Yet this performance will probably boost him to number two in the world rankings, replacing Holland's Jan Timman who could only muster 5½.

His rivals were served notice in the very first round when Kasparov strangled Yugoslav veteran Svetozar Gligoric, who landed near the cellar in this powerful group. Kasparov recommends 13... Nf6 14 Nc3 Nc6 and points out that Gligoric could equalize by 16... Bxc3! 17 bxc3 f6. He also mentions that the last drawing chance is 27... f6!

White: KASPAROV Black: GLIGORIC  
Queen's Indian Defense 1982

1 d4	Nf6	22 Nc7	Rb8
2 c4	e6	23 Na6!	Ra8
3 Nf3	b6	24 Bf4	N8e7
4 a3	c5	25 Bd6	Nc8
5 d5	Ba6	26 Bg3	N8e7
6 Qc2	exd5	27 Bh4	Bf8?
7 cxd5	g6	28 Bf6	Rd8
8 Bf4	d6	29 Rc7	Re8
9 Nc3	Bg7	30 g4	Bg7
10 Qa4+	Qd7	31 g5	Bf8
11 Bxd6	Oxa4	32 Kc2	Rc8
12 Nxa4	Nxd5	33 Rb7	Nd4+
13 O-O	Ne7	34 Nxd4	cxd4+
14 e4	Bxf1	35 Kd3	Nc6
15 Rhxf1	Nbc6	36 f4	Bd6
16 Nc3	Rd8	37 e5	Bf8
17 Nb3	Rd7	38 b4	Nf8
18 Bf4	Rxd1+	39 Bxd8	Rxd8
19 Rxd1	O-O	40 Rxa7	R6
20 Rd7	Ra8	41 h4	R5
21 Bd6	Nc8	42 Nc7	Resigns

Mate, H. Froberg, Sweden.  
SOLUTION: 1 Nf2! e6 2 Qg4

## LETTERS TO EDITOR

IT's been longer than a while since the TCN carried any credits to the Latvian -- maybe because you've received none! Most members of our Greater Knoxville C.C. roll around on the floor laughing whenever it is mentioned. I played it August 21 in the first Anderson County Open. White's attack was stalled after move 14.

Carpenter (2048) - Groeniger (1575)

1. e4	e5
2. Nf3	f5
3. Bc4	fe4
4. Ne5	Nf6
5. Nf7	Qe7
6. Nh8	d5
7. Be2	Bf5

Weak, but it invites error.

8. g4	Be6
9. g5	...

Invitation accepted; 9. h4 was better.

9. ...	Ng8
--------	-----

Scandalous but essential.

10. d4	g6
11. Bf4	Bg7
12. Be5	Nc6
13. Bg7	Qg7
14. Bb5	Nge7
15. Ng6	hg6
16. Qe2	...

Apparently to keep Black's bishop of g4; Rg1 was better.

16. ...	Qd4
17. Nc3	0-0-0
18. Bc6	Nc6

Black still down the exchange but has his head together.

19. Rd1	Qe5
20. Qd2?	d4
21. Ne2	e3
22. fe3	de3
23. Qc3	Rd1+
24. Kd1	Qd5+
25. resigns	

\*\*\*

Here are terrific examples of fighting chess where the 1980 Tennessee Co-Champion meets the 1981 Co-Champions! Losing in the openings, Leonard fights back in the middlegame. Indeed, it must be a thrill to beat two talented Masters in one tournament!

Dickerson (2072) - Carey, Mike (2212)

1. c4	f5
2. Nc3	Nf6
3. g3	g6
4. Bg2	Bg7
5. Nf3	d6
6. d4	0-0
7. 0-0	c6
8. d5	Bd7
9. Be3?!	Na6
10. Bd4	c5
11. Be3	Ng4
12. Bf4?!	h6
13. h3	Ne5
14. Ne5	de5
15. Bd2	Rb8
16. Qc1	Kh7
17. e4	e6
18. Rb1	Nc7
19. Be3	b6
20. Kh2	Qe7

Threatening 21. ...ed5 and 22. ...f4!, if White should play in this situation gxf; there follows 23...exf. Now 24. Bxf4 loses to 24...Rxf4!

21. f4	ed5
22. Nd5	Nd5
23. ed5	e4

Black's pawns have finally been contained but White's position is hurting because of Black's King Bishop.

24. Bd2	Bd4!
---------	------

Threatening 25. ...Qf6.

25. Be3	Rbd8
26. Qd2	Bf6

If 26. ...Qf6? then 27. Rfd1.

27. Qe2	Qd6
28. a3	a5
29. b3	Rg8
30. Qd2	Rg7
31. b4	ab4
32. ab4	Ra8
33. bc5	bc5
34. Rb7	...

Finally, white is in the game. 34. Qf2 looks better.

34. ...	Ra3
35. Rfb1	Bc3?!
36. Qf2	Bb4
37. Bc1!	Ra4
38. bb2	Re7
39. Be5	Qa6
40. Rlb4!!	cb4
41. Qc5	Rf7
42. Rd7?!	...

42. Rb8 gave excellent chances. White is too eager with his passed pawns.

42. ...	Rd7
43. Qf8	Qa8
44. Qf6	Ra6

Moves like 44. ...Qe8 with Rf7 look better.

45. d6	Ra2
46. c5	Rg2

Black should now try 46...e3!

47. Kg2	e3
48. Kg1	Ra7
49. c6!	e2
50. Kf2	Qg8
51. d7	resigns



23rd Annual

# MID-SOUTH OPEN

November 27-28, 1982

5-round Swiss in Two Sections

**\$2700 Guaranteed**  
20 GRAND PRIX POINTS

### Prizes

**Open Section** (open to all) \$500-250-150, CM \$150-75, Cat. I \$150-75.

**Amateur Section** (Cat. II & below) \$300-150-125, Cat. III \$150-75, Cat. IV \$150-75, Cat. V \$150-75, UR \$75-25. (Cat. IV, V & UR must have 8 or more players. If not, a % will be allotted and balance will be divided into all other sections.)

### Site

Quality Inn-Airport, 1400 Springbrook Rd., Memphis, TN 38116.

### Entry Fees

\$30 if received by November 7; \$5 more thereafter. Masters free entry fee, taken from winnings.

### Entries/Info

James J. Gallagher, 4611 Boeingshire, Memphis, TN 38116 (phone 901-398-6370).

NOV 27-28 23rd Annual MID-SOUTH OPEN: 5ss, TL 40/100, Quality Inn-Airport, 1400 Springbrook Rd., Memphis 38116. \$\$2700 Guaranteed. In 2 sections: Open: \$\$500-250-150, CM, Cat. I each 150-75. Amateur: open to Cat. II/below. \$\$300-150-125, Cat. III, IV, V each 150-75, UNR. 75-25; Cat. IV, V, and UNR. must have 8 or more players, if not a % will be allotted and balance will be divided into all other sections. BOTH: EF \$30 if rec'd by 11/7; \$5 more at site. Masters free entry, taken from winnings. Un-rated eligible only for unrated prizes or Open prizes in Open section. Hotel rates \$25 single, \$30 double, ask for chess rates. RG: 7-9:30 AM. RD: 10-3-8, (come early) 9:30, 2:30. ENT: James Gallagher, 4611 Boeingshire, Memphis, TN 38116.

DEC 4-5 CROSSVILLE SCHOLASTICS: 6ss, TL 40/60, Martin Jr. High School, Stanley St., Crossville. In 4 sections: High School; EF: \$6 if rec'd by 11/29. Trophies to top ten players, top Cat. II thru VI, top Unr., and top 5 teams. \$75-50-25 to top 3 TN teams as expenses to TN scholastics. Junior High: EF: \$5 if rec'd by 11/29. Trophies to top ten, Cat. III thru Unr., and top 5 teams. \$75-50-25 to top 3 TN teams for TN Scholastics. Elementary: EF: \$4 if by 11/29. Trophies to top 10, Cat. IV thru Unr., and top 5 teams. \$75-50-25 to top 3 teams for Tn. Schol. Primary: EF: \$3 if by 11/29. Trophies to top 10, Cat. VI thru Unr., and top 5 teams. \$50 to top team for TN Schol. ALL: EF \$5 more at site. ENT: Harry Sabine, P.O. Box 381, Crossville TN 38555.

JAN 22 ANDERSON COUNTY OPEN: Clinton-Oak Ridge

JAN 29-30 NASHVILLE AMAT. & CHAMPIONSHIP

FEB 5 MBA SCHOLASTICS: date tentative (Nashville)

FEB 12 CUMBERLAND COUNTY WINTER OPEN: 4ss, TL 40/1, Martin Junior High School, Stanley St., Crossville, TN 38555. EF: \$6. TCA \$4. \$250 based on 45 players. 1st 75 - guaranteed. Category I thru V - \$30 each. Unrated \$10. Category VI \$15. Optional trophies available. RG: 7:30-8:30. RDS: 9-11:30 2:30-5:30 CST.

FEB 26-27 TENN. STATE SCHOL. In 5 sections: High School open to grades 12 and below. EF \$8 if rec'd by 2-21. 5ss TL 40/90. RDS: 10-2-7; 8-1. 1st-trophy and \$100 expenses to regional HS. Trophies to 2nd thru 10th; top Cat. I, II, III, IV&below, and Unr. 1st team-trophy and \$100 expenses to regional HS. Trophies to 2nd thru 5th teams. High School Novice open to grades 12 and below rated under 1400. EF \$7 if rec'd by 2-21; 5ss, TL 40/90. RDS: same as above. Trophies to top ten, top 5 teams, top Cat. V, VI, and Unr. Junior High: open to grades 9 and below. EF \$6 if rec'd by 2-21. 6ss, TL 40/1, RDS 10-1-4-7; 8-1. Trophies to top ten, Cat. III, IV, V& below, and Unr. 1st team - trophy and \$100 expenses to regional JH.

Trophies to 2nd thru 5th teams. Elementary: open to grades 6 and below. EF \$5 if rec'd by 2-21. TL 40/1. Trophies to top ten, Cat. III thru VI, and Unr. 1st team - trophy & \$100 expenses to regional Elem. Trophies to 2nd thru 5th teams. Primary: open to grades 3 and below; EF \$4 if rec'd by 2-21. 5ss, rounds Saturday only. RDS: 10-12-2-4-7. TL: 30/30. Trophies to top 10, top 5 teams, top Cat. VI and top UNR. ALL: EF \$5 more at site. RG: 7-8:30 AM- 2-26. Teams must have at least 4 from the same school. The top 4 scores will be added for the team score. Members of the same team will not be paired against each other. No school may win more than one team trophy per section. INFO and ENTRIES: to Harry Sabine, P.O. Box 381, Crossville, TN 38555. (615)- 484-9593 or 484-4878.

MAR 5-6 BLUFF CITY OPEN: Memphis.

MAR 19-20 MUSIC CITY WINTER: Nashville.

APR 9 CUMBERLAND COUNTY SPR.

APR 16 CHOO CHOO TOWN TOR-NADO: (date tentative) Chattanooga.

APR 31-MAY 1 National Elem.: Memphis.

MAY 7-8 TENN. VALLEY OPEN: Murfreesboro (date tentative)

MAY 14 COOKEVILLE SPRING OPEN

MAY 28-29 MEMPHIS IN MAY OPEN

MAY 28-29 MUSIC CITY SPRING: Nashville (date subject to change).

## Cumberland County Fall Open

The Cumberland Co. Fall Open attracted 76 players to Crossville on September 25th. Because of the large turnout the prize fund was increased to \$380.00.

Sharing first place and \$57.50 each were Curt Jones, Mike Carey, Richard Carpenter and Ronnie Lester all of whom had perfect 4-0 scores. Ten players tied for first in Category II with 3-1 results. Lou Groeniger, David Larson and Stacy Pugh tied for Category III and received \$10.00 each. Cliff Robertson also scored 3 points to win Category IV outright. Category V was share by Larry Parker and Kate Carey. Bob Usher of Fairfield Glade playing in his first tournament scored an impressive 3½-½ to take home unrated honors.

# COMING ATTRACTIONS

## TN OPEN CHAMPIONS

1947	Robert Conveyou	
1948	Jerry Sullivan	Oak Ridge
1949	L. C. Noderer	Knoxville
1950	J. B. Mullinix	Oak Ridge
1951	Jerry Sullivan	Chattanooga
1952	L. C. Noderer	Knoxville
1953	Sullivan/ Southern	Oak Ridge
1954	Robert Conveyou	Knoxville
1955	Robert Conveyou	Oak Ridge
1956	Jerry Sullivan	Oak Ridge
1957	Jerry Sullivan	Knoxville
1958	Robert Conveyou	Knoxville
1959	Robert Conveyou	Oak Ridge
1960	Jerry Sullivan	Oak Ridge
1961	Robert Conveyou	Knoxville
1962	Emanuel Tsitseklis	Oak Ridge
1963	Robert Conveyou	Knoxville
1964	James Wright	Oak Ridge
1965	David Burris	Memphis
1966	David Burris	Knoxville
1967	David Burris	Knoxville
1968	Robert Conveyou	Knoxville
1969	James Sweets	Oak Ridge
1970	James Wright	Chattanooga
1971	Douglas Ralston	Memphis
1972	Juan Aristorenas	Nashville
1973	John Hurt	Chattanooga
1974	Kenny Thomas	Memphis
1975	Kenny Thomas	Memphis
1976	Emanuel Tsitseklis	Memphis
1977	Luis Torres	Knoxville
1978	Marty Appleberry	Knoxville
1979	Marty Appleberry	Memphis
1980	Leonard Dickerson/ Kenny Thomas	Memphis
1981	Curt Jones/ Mike Carey	Knoxville
		Memphis
		Nashville
		Nashville

## TN JUNIORS

1959	Troy Armstrong	Memphis
1960	David Slack	Kingsport
1961	Ben Batson	Knoxville
1962	Mark Gilley	Memphis
1963	David Burris	Knoxville
1964	David Burris	Knoxville
1965	Mark Gilley	Memphis
1966	Ted Mercer	Dayton
1967	Robert Churchill	Memphis
1968	Larry Ousley	Maryville
1969	Mack Garner	Maryville
1970	Mack Garner	Maryville
1971	Robert Felt	Memphis
1972	Vernon Vix	Nashville
1973	Kenny Thomas	Memphis
1974	Steve Gibson	Nashville
1975	Phillip Boyer	Chattanooga
1976	Dewey Maynard	Nashville
1977	Curt Jones	Nashville
1978	Gregory Hood	Memphis
1979	Curt Jones	Nashville
1980	Gary McMurray	Hendersonville
1981	Clark Brown	Signal Mt.

Nonprofit Organ.
U.S. Postage
PAID
Memphis, TN
Permit No. 1677

TENNESSEE CHESS ASSOCIATION  
Gary Pylant, Editor TCN  
3397 Buchanan Ave.  
Memphis, TN 38122

*Peter Laude*  
*2609 Sailboat Court*  
*Nashville, TN*  
*37217*