



TENNESSEE CHESS NEWS



Vol. 22-No. 4

Aug. 80 - Sept. 80

KING COTTON

William McClain, on tie break, captured top honors in a six way tie for first place in the recent King Cotton Open. Marty Appleberry, David Timberlake, James Rackley Ron Harvey, and Sid Pickard were the others tied for first place with four points in the five round tournament.

Gary Weeks was awarded the top prize for class B after he won three games and drew one. Four players tied for the class C prize: Jack Sprague, Howard Smith, Benjy Williams, and Jay Gilbert. Ronald Cross took home the class D money. And the E/UN money was divided among four players: Clyde Miller, Tom Wooten, Randy Butler, and Joy Wellman.

The tournament was a strong with more than a third of the 38 players rated over 1700. The event got off to an unusual start when two of the stronger players were upset in the first round. Kenny Thomas (1947), reigning city champ, was beaten by David Neill (1491), and Dale Flickinger (1904) lost to an unrated player Clyde Miller. (from the Chess Advocate)

TCA Business Meeting

NOTICE: The Annual Membership Meeting of TENNESSEE CHESS ASSOCIATION will be held at the RAMADA INN in Nashville in conjunction with the Tennessee Open. The meeting will be at 2:00 P.M. on Sunday, August 31, 1980. The following offices will be up for election at the Meeting:

- (1) Vice President
 - (2) Postal Chess Coordinator
 - (3) Tournament Coordinator
 - (4) Director- West Tennessee
 - (5) Director- Middle Tennessee
 - (6) Director- East Tennessee
 - (7) USCF Delegates, alternates and voting members for 1981.
- Respectfully--Harry Sabine, Sec-Tre.

TENNESSEE U.S.C.F. Membership Nearing 1,000

According to the latest figures released from the USCF there are 867 players from Tennessee in the national chess organization. (This number represents our membership as of April 1 this year.) The last time a membership count was made two years ago we had 739 members. This is an increase of almost 15%. If we can continue this pace by 1982 we should be able to reach 1,000 members and exceed it. Many other states cannot boast of such increases in membership. In fact, USCF membership in 1978 was 48,283 and as of 4/30/80 stands at 48,275, practically unchanged. In my opinion the main reason USCF membership has been on the increase in our state is that many cities in Tennessee have a scholastic chess program.

Among the cities in Tennessee--Memphis leads the way with 185. (Statistics by cities on page . Unfortunately we did not get a breakdown as to the kind of USCF membership it is; such as adult, junior, or part. Junior. This kind of information had been available in the past.)

In addition there are 44 Certified TD's in our state, which is about 5% of the total state-USCF membership. This is a good number of players that thereby have expressed interest in promoting the game in our state. But we want to encourage others to become TD's as there are some TD's that have never directed and others whose certification is about to expire. Any chess club that would like to receive this list of TD's may do so by writing Harry Sabine. There is no fee.

by Peter Ladhe

RENEW YOUR MEMBERSHIP

Enclosed is an envelope to mail back your \$4 membership fee for the coming year. All memberships expire the 31st of August. If you have the orange membership card for 1980/81 you do not need to renew.

35th TENNESSEE OPEN

AUG. 30-SEPT. 1, 1980

6-ROUND SWISS

THREE SECTIONS

—AT THE RAMADA INN, 840 JAMES ROBERTSON PWY. NASHVILLE, TN. 37200—

GUARANTEED CASH PRIZES
\$1,500
GUARANTEED CASH PRIZES

OPEN SECTION

(OPEN TO ALL) : EF \$25 *(IF RECEIVED BY 8/25)

1st Class - \$300

2nd - \$200

3rd - \$100

Cat. II - \$100

Brilliances - \$25-15

Upset - \$20

Trophies to 1st, Cat. II, State Champion, Junior Champion; Plaque to Top Team

AMATEUR SECTION

(Open to below 1600) : EF \$20 *(IF RECEIVED BY 8/25)

1st - \$200

2nd - \$100

3rd - \$50

Cat. IV - \$70

Brilliance - \$15

Upset - \$15

Trophies to 1st, Cat. IV, and Top Team

NOVICE SECTION

(Open to below 1200) : EF \$15 *(IF RECEIVED BY 8/25)

1st - \$100

2nd - \$50

3rd - \$30

Cat. VI - \$50

Unrated - \$40

Brilliance - \$10

Upset - \$10

Trophies to 1st, Top Cat. VI, Top Unrated, and Top Team

*All EF \$5 more at site

**Players who have never been USCF Members may enter free of charge, provided that they will not be eligible for cash prizes.

- REGISTRATION: Saturday, 9 a.m. to 12 p.m. (CDT)
- ROUNDS: Saturday 1 pm & 6 pm; Sunday 9 am & 3 pm; Monday 8 am & 1 pm
- TIME CONTROL: 50 moves in 2 hours.
- LIMITATIONS: No smoking
- DUES: USCF for all; TCA (\$4) for all TN residents, other states OK
- ACCOMODATIONS:
Ramada Inn (840 James Robertson Parkway, Nashville, TN 37200, Tel. 615-233-6130); Single \$28, Double \$34, each additional \$5. No charge for under 18 in same room with an adult. Deadline for reservations: August 11.
- DIRECTOR: Harry . Sabine, P.O. Box 381, Crossville, TN 38555, Tel. 615-484-9593 or 615-484-4878

A Grand Prix Tournament

Points Available: 10

TENNESSEE CHESS ASSOCIATIONBOARD OF DIRECTORSPRESIDENT:

PETER P. LAHDE
2609 Sailboat Court
Nashville, TN 37217
Phone: Home(615) 361-4588
Office(615) 256-8899

VICE PRESIDENT:

JACK E. SMITH
3436 Carnes #6
Memphis, TN 38111
Phone: Home(901) 452-8779

SECRETARY TREASURER:

HARRY D. SABINE
P.O. BOX 381
Crossville, TN 38555
Phone: Home(615) 484-4878
Office(615) 484-9593

NEWSLETTER EDITOR:

JOHN L. WHITE
P.O. BOX 2587
Crossville, TN 38555
Phone: Home(615) 484-8377

POSTAL CHESS COORDINATOR:

STAN BIMSON
Rt. 2, Box 293
Hendersonville, TN 37075
Phone: (615) 824-4938

TOURNAMENT COORDINATOR:

JOHN F. HURT
1063 S. Perkins Road
Memphis, TN 38117
Phone: (901) 682-5342

EAST TENNESSEE DIRECTOR:

LEONARD S. DICKERSON
2514 Croyden drive
Knoxville, TN. 37921
Phone: (615) 525-0868

MIDDLE TENNESSEE DIRECTOR:

TOM FARR
229 Jacksonian Drive
Hermitage, TN 37076
Phone: (615) 889-4165

WEST TENNESSEE DIRECTOR:

MAHLON A. SMITH
3116 Waynoka #2
Memphis, TN 38111
Phone: (901) 454-1228

ADVERTISING RATES:

Full Page \$40
1/2 Page \$20
1/4 Page \$10
One Inch \$7
(full width, or
2" in column)

TCA MEMBERSHIP DUES

The annual dues for each member are \$4.00. All memberships expire on August 31 of each year. However, any person who joins the association between April 1 and August 31 of each year shall have the option of paying \$2.00 which shall entitle him to a membership which expires on August 31 of the same year in which he pays the dues, or may pay \$5.00 which shall entitle him to a membership which expires on August 31 of the following year. Each additional person in the same family may become a member by paying \$.50 but will not receive the TCN. Any affiliate that needs a supply of membership cards for issue should contact the Secretary.

TCN DEADLINES

The following are the deadline dates for material to be submitted for each issue. The dates refer to the date of receipt by the Editor.

ISSUE	DEADLINE
FEB-MAR	Jan. 15
APR-MAY	Mar. 15
JUN-JUL	May 15
AUG-SEP	Jul. 15
OCT-NOV	Sep. 15
DEC-JAN	Nov. 15

TOURNAMENT ANNOUNCEMENTS will be published four months in advance if the information is received by the appropriate deadline. This will permit publication in two successive TCN issues.

Please do not wait until the last minute. It is never too soon to send stories, announcements, games, crosstables, ect., for publication.

We attempt to mail TCN around the first of the month. You should receive your copy by the 15th of the issue month. If your magazine is constantly late, we suggest that you fill out a Consumer Service card at your local post office.

THE TENNESSEE CHESS NEWS IS THE OFFICIAL PUBLICATION OF THE TENNESSEE CHESS ASSOCIATION. THE PUBLICATION IS BI-MONTHLY. TCA MEMBERSHIP INCLUDING SUBSCRIPTION IS \$4.00 PER YEAR. INDIVIDUAL COPY PRICE IS \$1.00. TCN IS PRINTED BY CUMBERLAND PRINTER, 106 RECTOR, CROSSVILLE, TN. 38555

ADDRESS CHANGES?????

PLEASE SEND ALL ADDRESS CHANGES AND DUES TO:
TN CHESS ASSOCIATION
HARRY D. SABINE
P.O. Box 381
Crossville, TN 38555

TENNESSEE'S TOP TEN PLAYERS

No.	Name	City	Rating
1.	Charles Maddigan	Oak Ridge	2339
2.	Curt Jones	Nashville	2251
3.	Marty Appleberry	Memphis	2211
4.	Henry J. Robinson	Clarksville	2183
5.	Luis Torres	Knoxville	2090
6.	Wolfgang Schroeter	"	2058/14
7.	Robert B. Ilderton	Germantown	2046
8.	Jerry Wheeler	Nashville	2043
9.	William J. Layton	Knoxville	2031
10.	M.C. Wright	Hermitage	2022

TENNESSEE'S TOP TEN WOMEN

No.	Name	City	Rating
1.	Sophi Zhislin	Nashville	1668
2.	Katie E. Ray	"	1611/4
3.	Pamela Campbell	Crossville	1490
4.	Cindy L. Sullivan	Crossville	1330
5.	Joy Wellman	Memphis	1295
6.	Ximena Medina	Crossville	1257
7.	Susie Smathers	Crossville	1246
8.	Nancy Weaver	Crossville	1218
9.	Joan E. Adler	Memphis	1203/8
10.	Anne West	Signal Mt.	1154

TENNESSEE'S TOP TEN HIGH SCHOOL PLAYERS
(Grades 10-12)

No.	NAME	School	Rating
1.	Paul Linxwiler	ChristBros.	1802
2.	Danny Silverstein	Baylor	1631
3.	Clark Brown	Baylor	1548
4.	Mark King	Oakland	1547
5.	Terry Burdett	CumbCo HS	1547
6.	William Gwin	CumbCo HS	1507
7.	Keith Lowe	CumbCo HS	1504
8.	Mike Jones	CumbCo HS	1494
9.	Mike Kerley	CumbCo HS	1494
10.	Pamela Campbell	CumbCo HS	1490

TENNESSEE'S TOP TEN JUNIOR HIGH PLAYERS
(Grades 7-9)

No.	Name	School	Rating
1.	Chuck Lovingood	S.Cumb	1585
2.	Chris Chambers	Farragut	1553/6
3.	Johnny Camilleri	S.Cumb.	1533
4.	Scott Turner	Martin	1490
5.	Gary Fok	Farragut	1463/6
6.	Robert Etter	Baylor	1458/11
7.	Bradley Watson	Farragut	1452
8.	Kennedy Frierson	Baylor	1450/17
9.	Ronald Burnett	Eagleville	1356
10.	George Wallace	S.Cumb.	1350

TENNESSEE'S TOP TEN ELEMENTARY PLAYERS
(6th Grade & below)

No.	Name	School	Rating
1.	Keith Threet	Homestead	1355
2.	Jeff Smathers	S.Cumb.	1303
3.	Travis Parham	Homestead	1274
4.	John Barker	Thrasher	1246
5.	Jay Sabine	Cross.	1231
6.	Jack Grossl	Homestead	1218
7.	Todd Dixon	Homestead	1211
8.	George Arfken	Thrasher	1186
9.	Ronnie Baylouis	Cross.	1164
10.	Jay Meadows	Cross.	1161

(The top ten lists were created from the June Rating Supplement. If perhaps we have omitted someone from your area of TN please drop us a note.)

PAUL KURODA CREATIVE MASTER PART-I

by Marty Appleberry

Chessmaster Paul Kuroda believes in original, flesible and complete development, followed by a weighty middle game struggle. Hotheads planning violent counters to his relaxed and simplified style are forewarned! Smoothly Absorbing such lunges, he counterattacks gaps created by windmill flailing fists, of fastens onto overextended attacking arms! Behold and enjoy the universal style of chessmaster Paul Kuroda.

Kuroda - Espinoza (2160) 1. b3 e5 2. Bb2 Nc6 3. c4 Nf6
4. Nc3 d5 5. cxd5 Nxd5 6. Nf3 Be6?
7. Nxd5! Qxd5 8. e3 f6 9. Bc4 Qd7 10. Bxe6 Qxe6 11. 0-0 e4
12. Nd4 Nxd4 13. Bxd4 Bd6? 14. Qh5+ Qf7 15. Qf5 Qe7 16.
f3 exf3 17. Rxf3 c5 18. Bc3 0-0 19. Rafl Rad8 20. Rh3
g6 21. Qd5+ Kg7? 22. Qg5 Rd7 23. Rxf6 Kg8 24. Rxxg6+ (1-0)

Kuroda - Winslow (2300) 1. b3 e5 2. Bd2 Nc6 3. c4 f5
4. Nf3 d6 5. d4 e4 6. d5! exf3
7. dxc6 fxe2 8. Qxe2+ Qe7 9. Qxe7+ Kxe7! 10. cxb7 Bxb7
11. Nc3 +- ($\frac{1}{2}$ - $\frac{1}{2}$ soon).

Kuroda - Timberlake (2100) 1. b3 e5 2. Bb2 Nc6 3. c4 Nf6
4. Nc3 Bc5 5. e3 0-0 6. a3 a5
7. Nf3 Re8 8. Qc2 d6 9. d3 Bg4 10. Be2 Qd7 11. 0-0 Rad8
12. Racl Ne7 13. Ne4 Ng6 14. Nxf6+ gxf6 15. d4 e4 16.
dxc5? exf3 17. gxf3 Bh5! 18. Bxf6 Qh3 19. Bxd8 Ne5 20.
Bh1 Bxf3+ 21. Bxf3 Qxf3+ 22. Kgl ($\frac{1}{2}$ - $\frac{1}{2}$)

Kuroda - Orton (2034) 1. b3 e5 2. Bb2 Nc6 3. c4 d6
4. g3 g6 5. Bg2 Bg7 6. Nc3 Be6
7. d3 Qd7 8. Nd5 Nd8 9. e4 c6 10. Ne3 Ne7? 11. d4 exd4
12. Bxd4 0-0 13. Bxxg7 Kxxg7 14. Qd4+ f6 15. Ne2 Nf7 16.
Nf4 +- (1-0 in 35)

Kuroda - Malpert (2224) 1. b3 e5 2. Bb2 Nc6 3. c4 d6
4. g3 g6 5. Bg2 Bg7 6. Nc3 Nge7
7. d3?! 0-0 8. e3 f5 9. Nge2 g5 10. f4 gxf4 11. exf4 Ng6
12. Nd5 Nd4!? 13. Nxd4 exd4 14. Nb4! Re8+ 15. Kf2 Bf6
16. Nc2 c5 17. Qd2 Qe7 18. Rhel Bd7 19. Rxe8+ Rxe8 20.
Rel Rxe1 21. Nxe1 a5 22. Qe2 (1-0 in 65)

Kuroda - Henley (2300) 1. b3 e5 2. Bb2 Nc6 3. c4 d6
4. g3 f5 5. Bg2 Nf6 6. Nc3 g6
7. d3?! Bg7 8. e3 0-0 9. Nge2 a6!? 10. 0-0 h5!? 11. f4
h4 12. gxh4 Ng4 13. Nd5 Nb8!? 14. h3 Nh6 15. fxe5 dxe5
16. c5 Nd7 17. c6 bxc6 18. Nb4 Qh4 19. Nxc6 Kh7 20. Qe1
Qg5 21. Qg3 Qxxg3 22. Nxxg3 Bb7 23. Racl Nf7 24. Ne7
Bxxg2 25. Kxxg2 c5 26. Ba3 Bh6 27. Rfel +- (0-1 in 56)

Kuroda - Thibault (2310) 1. b3 Nf6 2. Bb2 g6 3. g3 Bg7
4. Bg2 0-0 5. Nf3 d6 6. d4 Nbd7
7. 0-0 Re8 8. Nbd2 e5 9. dxe5 dxe5 10. e4 b6 11. Qe2 a5
12. a4 Ba6 13. Nc4 Qe7 And now correct is 14. Nfd2!
unclear - (0-1 eventually in actual game)

Kuroda - Thompson (2135) 1. b3 Nf6 2. Bb2 g6 3. g3 Bg7
4. Bg2 0-0 5. Nf3 d6 6. d4 c6
7. 0-0 Nbd7 8. Nbd2 Re8 9. e4 e5?! 10. dxe5 Nxe5 11.
Nxe5 dxe5 12. Nc4 +- (1-0 in 65)

Kuroda - R.Biyasis (2000) 1. b3 g6 2. Bb2 Nf6 3. g3 Bg7
4. Bg2 0-0 5. Nf3 d6 6. d4 Nbd7
7. 0-0 e5 8. dxe5 Ng4 9. c4 Ngxe5 10. Nc3 Nxf3+ 11.
Bxf3 Nc5 12. Qd2 h5 13. Nd5 Ne6 14. Bxxg7 Kxxg7 15. Qb2+
f6 16. h4 a5 17. a3 Bd7 18. Rfd1 Bc6 19. b4 +- (1-0 in 55)

Kuroda - Frenkel (2200) 1. b3 d5 2. Bb2 Bf5 3. Nf3 e6
4. g3 Nf6 5. Bg2 Bd6?! 6. 0-0
0-0 7. d3 Nbd7 8. Nbd2 e5 9. e4! dxe4 10. dxe4 Be6
(10... Nxe4 11. Nh4) 11. Qe2 +- ($\frac{1}{2}$ - $\frac{1}{2}$ in 76)

Kuroda - P.Biyasis (2300) 1. b3 d5 2. Bb2 c5 3. e3 Nc6
4. Nf3 Nf6 5. Bb5 Qb6 6. a4 a6
7. Bxc6+ Qxc6 8. Ne5 Qc7 9. a5 Nd7 10. f4 Nxe5 11. Bxe5
Qc6 12. 0-0 f6 13. Bb2 g6 14. Qf3 Be6 15. Na4 0-0? 16.
Ba3! Bf5 17. Nxc5 Be4 And now correct is 18. Qe2! +-
($\frac{1}{2}$ - $\frac{1}{2}$ in 53)

Kuroda - Peterson (2200) 1. b3 Nf6 2. Bb2 e6 3. e3 Be7
4. f4 d5 5. Nf3 c5 6. Be2 Nc6
7. 0-0 0-0 8. Ne5 d4! 9. Nxc6 bxc6 10. Na3 Qc7 11. Nc4
Nd5 12. exd4 Nxf4 13. Bf3 Nd5 14. Rel cxd4 15. Bxd4 f6
16. Bb2 e5 17. Kh1 Bf5 18. Ne3 Nxe3 19. Rxe3 Qd7? 20.
Qe2! Rac8 21. d4 Bd6 22. dxe5 Bxe5 23. Bxe5 fxe5 24.
Rd1 Qe7 25. Rxe5 Qf6 26. c4 Bg6 27. Re6 Qf4 28. Bxc6?
Rxc6!! 29. Rxc6 Bh5!! 30. Qe6+ Kh8 31. Rgl Bf3!! ($\frac{1}{2}$ - $\frac{1}{2}$)

Kuroda - Michealides (2106) 1. b3 c5 2. Bb2 Nc6 3. c4 Nf6
4. g3 e6 5. Nf3 d5 6. Bg2 Be7
7. cxd exd 8. d4 0-0 9. 0-0 Bf5 10. Nc3 Qd7? 11. Ne5 Qe6
12. Nxc6 bxc6 13. dxc5 Bxc5 14. Na4 Bd6 15. Rcl Rfc8
16. Bd4 Ba3 17. Bb2 Bd6 18. Nc5 Qe7 19. Bd4 Ne4 20. Ne4
dxe4 21. e3 a5 22. Qc2 c5 23. Bb2 a4 24. Bxa4 c4 25.
Bc3 Bb4 26. Bxb4 Qxb4 27. Bxe4 Bxe4 28. axe4 Rxa4 29. Rc2
(1-0 in 45)

Kuroda - Appleberry (2230) 1. b3 b6 2. Bb2 Bb7 3. e3 e6
4. Nf3 Nf6 5. Be2 Be7 6. 0-0
0-0 7. c4 d5 8. d4 c5 9. Nbd2 Nc6 10. dxc5 Bxc5 11. cxd5
Qxd5 12. a3 Rfd8 13. Qb1 Be7 14. Rd1 Rac8 15. b4 Qf5 16.
Qa2 Nb8 17. Racl Ne4 18. Nxe4 Qxe4 19. h3 Rxd1+ 20. Rxd1
Rd8 21. Rxd8+ Bxd8 22. Qal! +- (Game was not finished).

Part-II will show Kuroda's 1. .. g6! against everything!

(Anyone desiring complete game scores and other Kuroda games with 1. b3!, send \$2 to: Marty Appleberry, 1066 Poplar Ave #6 Memphis, TN 38105)

THE TIE BREAKS

PART I - PRIZES

by J. Longworth

Usually the first tie break used in most tournaments is the Cumulative System. Next used are the Median and the Solkoff Systems. Although these systems are the most common used, other tie break systems may be used if written notice is given. At each tournament the tie break system to be used for awarding trophies, ribbons or other non-cash prizes should be posted and announced orally in advance of the first round. The director is the final authority on breaking ties in unresolved cases.

Cash prizes should be divided equally among tied players with the following stipulations from the Official Rules of Chess, Second Edition: "(1) No winner should receive more than one cash award for which he is eligible. The award may be one full cash prize (if he is a clear winner) or parts of two or more cash prizes (if he wins tied with others). Such special prizes as 'upset' or 'best game' may be accepted

from this rule. (2) A clear winner or more than one cash prize should be awarded the greatest prize. (3) Tied winners of place prizes, or tied winners (in the same class) of class prizes, should be awarded all the cash prizes involved summed and divided equally, but no more than one cash prize (in order of amount) should go into the division for each winner. (4) If winners of class prizes tie with winners of place prizes, all the cash prizes involved should be summed and divided equally among the tied winners, no more than one cash prize, in order of amount, to go into the division for each winner, unless the class-prize winners would receive more cash by dividing only the class prizes. (5) An announced class prize must be awarded even if only one player in that class completes his schedule of play".

Non-cash (Indivisible) Prizes should be divided with the following stipulations: "(1) Irrespective of any cash award won, no winner should receive more than one non-cash prize, the most valuable to which he is entitled. (2) Although tie breaking should be avoided if possible, ties may be broken

An Interesting Endgame

by Curt Jones

Recently I had the opportunity to play in a fairly strong tournament in Austin, Texas. The winner of the tournament was a middleaged lady named Maria Ivanka who is presently rated 2330. Her score was perfect, and she is certainly the strongest woman player that I have had the opportunity to meet. Although I did not play Ivanka, I did have some interesting games; one of which is an endgame that I would like to share with you.

White: R. Heitmann (1900)

Black: C. Jones (2250)

The following position arose after white's 29th move: White: Kg1; Rd6; pawns: h3, g2, f4, c4, b3, a2. Black: Kg8; Ra8; pawns: h6, g7, f7, e6, b6, a6.

White clearly has the edge with a more actively placed rook and a queenside majority. Black's counterchances will be the use of his K-side majority and possible rook penetration. The game continued:

29. . . b5 Probably most active. After 29. . . Rb8 30. Rd7. Black's King will be tied to the back rank or the K-side.
30. c5 b4 Preventing white from playing 31. b4 with a protected passed pawn. Now the c-pawn is isolated and potentially weak, so white must manoeuver carefully to use the pawn as a strength by tying the black pieces down by its advance.
31. Rc6 . . Also an important move. The well known rule concerning rooks belonging behind passed pawns is of course valid. Here, however, I saw that my pawn will need King protection and also from c6 the rook prevents frontal attack on the c pawn. The final reason for playing 31. Rc6 was because after a possible Rc7, the black king will be tied to the back rank or the K-side.
31. . . Kf8 32. Kf2 Ra7 (Preventing Rc7 by White)

33. Ke3 a5 34. Kd4 Ke7 35. Kc4 g5 Black looks to the King side with his majority there for counterplay. The ending becomes tricky.

36. g3 Kd7 37. Rd6+ Kc7 38. Kb5 Ra8
39. Rc6+ Kd7 40. Rb6 Kc7 41. c6 . . .
White now threatens 42. Rb7+ when 42. . . Kd6 runs into 43. Rd7++

41. . . Ra7 42. Rb7+ Theoretically this move does lead to a win, although it is complex, especially in time shortage. A more practical course is surely 42. Kc5 when white's king is better placed for the King and pawn endgame.

42. . . Rb7 43. cb7 f5 Now if 44. Ka5 e5! is difficult for white. However, the idea 44. Ka6 forcing 44. . . Kb8 and then 45. Kb6 wins as black will be mated; i.e., 45 . . . g4 46. h4 e5 47. fe f4 48. e6 ect.

44. Kc5!? g4 45. h4 e5 Now with the time pressure over White could think more seriously about what to do. His 46th move is forced, of course.

46. fe Kb7 The best try. (46. . . f4? 47. e6 fg 48. e7 g2 49. b8(Q)+ Kb8 50. e8(Q)+ wins.) White's win from here is almost like an endgame study as he wins by one tempo.

47. Kd4 f4 Forced as 47. . . Kc6? 48. Ke3 Kd5 49. Kf4 Ke6 50. h5 wins through zugzwang.

48. gf h5 49. f5 . . . Apparently the only way to win. White must push his pawns as far as possible, thus leaving black's king with the least manoeuvring space.

49. . . Kc7 50. f6 Kd7 51. f7 Ke7 52. e6 Kf8
Now how can white win? His king is apparently tied to the advanced and protected passed g-pawn and his own pawns are blocked by the opposing king. However, (con't on page 57)

GAMES

Kings Indian Defense- White: R. Minor () Black: Paul Kuroda (Master)
 Little Rock Open, March 16, 1980. 1. e4 g6 2. d4 Bg7
 3. Be3 d6 4. c3 Nf6 5. f3 Nbd7 6. Nh3 b6 7. Bc4 0-0 8. Ng5 Bb7! (not 8... h6 or 8...
 e6?) 9. Qb3 Qe8 10. Nd2 c6 11. a4 d5 12. Bd3 e5 13. 0-0 h6 14. Nh3 exd4 15. cxd
 dxe4 16. fxe Ng4 17. Bc4 NxBe3 18. QxN c5 19. dxc Nxc 20. Rael Qe5 21. b3 Qd4 22.
 Kh1 QxQe3 23. RxQ Rad8 24. Re2 Bc3 25. Nbl Be5 26. Nd2 Kg7 27. Nf3 f6 28. NxBe5 fxN
 29. RxRf8 RxR 30. Bd5 Ba6 31. Rf2 RxR 32. NxR Be2! 33. g3 Kf6 34. Kg2 a5 35. h3 Ke7
 36. g4 g5 37. Kg3 Kd6 38. h4 Bd3 (threatens Bc2) 39. hxg5 hxg4 40. NxB NxN 41. Kf3
 Kc5 42. Ke3 Nf4 43. Bf7 Kb4 44. Kd2 Nh3 45. Ke3 Kc3 46. Be6 Nf4 47. Bc4 Kc2 48. Bb5
 ... (No better is Kf2 which is answered by Kd2) 48... Ne6 49. Be8 Nd4 50. Bd7 Nxb3
 51. Resigns (0-1)

Sicilian- White: R. Minor () Black: Michael Valvo (Grand
 Master). 1972 Golden Knights. 1. e4 c5 2. Nf3 d6
 3. d4 cxd 4. Nxd Nf6 5. Nc3 Nc6 6. Bc4 Qb6 7. Nb3 e6 8. Qe2 a6 9. Be3 Qc7 10. Qd1
 b5 11. Bd3 Be7 12. f4 Bb7 13. 0-0 Rc8 14. Qe1 0-0 15. Kh1 Nb4 16. Racl Qb8! 17.
 Nd4 RxNc3 18. bxR Nxa2 19. Ral Nxb3 20. Qel Ncxd4 21. c4 b5 22. Nb3 Nc5 23. BxNc5
 dxB 24. Ra2 Qc7 25. Be2 Ne4 26. Bf3!? Qxf4! 27. Re2 Bd6! 28. g3 QxB+!! 29. RxQ Ng5
 30. Ree3 NxRf3 31. Qc1 Nd4+ 32. Kgl NxNb3 33. RxN Be5 34. g4 a5 35. Qc2 a4 36. Rh3
 ... (apparently winning a pawn) 36... Bd4+! 37. Kf1 f5! 38. Resigns (White can not win
 the a-pawn) (0-1)

Nimzowitch-Larson- White: Keith Lowe (1429) Black: Danny Thomas (1699).
 1980 U.S. High School Championship, May 1980. 1. b3 Nc6
 2. Bb2 e5 3. e3 Nf6 4. Nf3 d6 5. d4 exd 6. Nxd4 Nxd4 7. Bxd4 Be7 8. Be2 0-0 9. 0-0
 d5 10. c4 Be6 11. Qc2 c5 12. Bb2 Qc7 13. Nd2 Rfd8 14. Rfd1 Ng4 15. Nf3 Bf6 16. Bxf6
 NxBf6 17. Ng5 Qe5 18. Nxe6 fxe6 19. Racl b6 20. Qc3 d4 21. Qb2 Qg5 22. exd cxd 23.
 Bf3 Rac8 24. Rc2 e5 25. Re2 Re8 26. Rdel Rc5 27. Qd2 Qh4 28. g3 Qh3 29. Bg2 Qh5 30.
 Qd3 Ng4 31. h3 Nf6 32. b4 Rc7 33. b5 Rc5 34. a4 Qf7 35. Bc6 ($\frac{1}{2}$ - $\frac{1}{2}$)

Owens- White: Langford (1558) Black: Crabb (1793),
 Crossville-Knoxville Match, June 15, 1980. 1. e4 e6
 2. d4 b6 3. Nc3 Bb7 4. a3 c5 5. Be3?! cxd 6. Bxd Nc6 7. Be3 Nf6 8. f3 Be7 9. Bc4
 Na5 10. Ba2 Ba6 11. Nge2 Nc4 12. BxN BxB 13. Nd4 d5 14. Nc6 Qc7 15. NxBe7 QxN 16.
 exd exd 17. Qd4 0-0 18. 0-0-0 Rfd8? 19. Kel Qb7 20. Bg5 Rd6 21. BxN gxB? 22. b3 Qa6
 23. a4 Rc6 24. Qg4+ Kf1 25. Qd7 b5? 26. Re7 Resign. (1-0)

Center Counter- White: Dave Baker Black: Michael Stewart
 Magnolia Marathon, Starkville, MS, March 30, 1980.
 1. e4 d5 2. exd Qxd 3. Nc3 Qa5 4. d4 Nf6 5. Nf3 Bg4 6. Be2 e6 7. 0-0 Be7 8. Bd2 c6
 9. h3 BxN 10. BxB Qd8 11. Bf4 0-0 12. Rel Nd5 13. NxN cxN 14. c4 Nc6 15. cxd exd 16.
 Qa4 Bf6 17. Be5 Re8 18. BxB QxB 19. Bxd5 Red8 20. BxNc6 Rxd4 21. Qxa7! Rdd8 22. Qxb7
 Rab8 23. Qa6 Rxb2 24. Rfl Rxf2 25. RxR QxRal+ 26. Kh2 g6 27. Qc2 Qd4 28. Bb5 Qd6+
 29. g3 h5 30. h4 Qd4 31. Bc4 Rd7 32. Rxf7 QxBc4 33. Qe8 mate (1-0).

Bishop's Opening- White: Dave Baker Black: Mike Barton
 Offhand game, June '80. 1. e4 e5 2. Bc4 Nf6 3. d4 d5
 4. dxe5 Ng4 5. Bxd5 Nxe5 6. Nf3 Bg4 7. Nc3 c6 8. NxNe5 BxQd1 9. Bxf7+ Ke2 10. Bg5
 Kd6 11. RxBd1+ KxN 12. f4++ (1-0)

English- White: M. Smith (1952) Black: R. Herbers (1847),
 Memphis City Championship '80, Feb. 1, 1980. 1. Nf3 f5
 2. c4 Nf6 3. Nc3 e6 4. e3 b6 5. Be2 Bb7 6. b3 Nc6 7. Bb2 Be7 8. 0-0 0-0 9. a3 Qe8
 10. Qc2 a6 11. Rfd1 Bd6 12. d4 Qg6 13. Nel Qh6 14. f4 g5 15. g3 gxf 16. exf Kf7 17.
 Ng2 Rfg8 18. Qd2 Ne7 19. Rdf1 Ng4 20. BxNg4 RxBg4 21. Rf2 Rag8 22. Raf1 Qh3 23. Ne2
 R8g6 24. Qe3 Rh6 25. Nel Ng6 26. Nd3 Be4 27. Ne5+ BxNe5 28. fxBe5 Nxf4 29. NxNf4
 RxNf4 30. Resigns (0-1)

English-

White: K. Thomas (1959) Black: M. Smith (1952)

Memphis City Championship '80, March 14, 1980, 1. c4
 Nf6 2. Nc3 g6 3. Nf3 Bg7 4. g3 c6 5. d4 d5 6. b3 Nxe4 7. Bb2 Qa5 8. Bg2 0-0 9. cxd
 cxd 10. Rcl Nc6 11. 0-0 Rfd8 12. a3 Bf5 13. Na4 e5 14. b4 Nxb4 15. axNb4 Qxb4 16.
 Ba2 b5 17. Nc5 NxNc5 18. RxNc5 e4 19. Nel Rac8 20. Nc2 Qa5 21. RxRc8 RxRc8 22. Ne3
 Bc6 23. Qb3 b4 24. Rbl Bf8 25. Nc2 Qb6 26. Bb2 a5 27. Bf1 Qa7 28. Ral Ra8 29. Bcl
 a4 30. Qb2 Qb6 31. Bd2 b3 32. Na3 Rc8 33. Bcl Bb4 34. Bd2 BxNa3 35. QxBa3 Rc2 36.
 Bb4 Qd4 37. Qxa4 b2 38. Rbl Rcl 39. Qe8+ Kg7 40. Qf8+ Kf6 41. Qh8+ Kf5 42. QxQd4
 Rbl 43. Kg2 RxBf1 44. Qxb2 Resign (1-0).

Queen's Gambit-

White: D. Hutto (1466) Black: M. Barton (1633)

Dyersburg Quick Swiss #3, 6/21/80. 1. d4 d5 2. c4 c6
 3. Nf3 Nf6 4. Bg5 e6 5. a3 Bd6 6. Nbd2 Nbd7 7. e3 0-0 8. Bd3 dxc4 9. Bxc4 e5 10.
 BxNf6 QxBf6 11. Ne6 Qe7 12. NxBd6 QxNd6 13. dxe5 QxQd1 14. RxQ Re8 15. 0-0 b5 16.
 Ba2 Nc5 17. Ng5 Ne6 18. NxNe6 BxNe6 19. BxB Rxe6 20. Rd6 Rae8 21. RxRe6 RxRe6 22. f4
 f6 23. exf6 gxf6 24. Kf2 Rd6 25. Rbl Kf7 26. Ke2 Ke6 27. Rd1 RxRd1 28. KxRd1 Kd5 29.
 Kd2 Ke4 30. b4 a6 31. h3 h6 32. Ke2 Kd5 33. Kd3 c5 34. bxc5 Kxc5 35. Kc3 a5 36. g4
 b4+ 37. axb4 axb4+ 38. Kb3 Kd5 39. h4 Ke4 40. g5 fxg5 41. fxg5 hxg5 42. hxg5 Kf5 43.
 Kxb4 Kxg5 44. Kc4 Kf6 45. Kd5 Ke7 46. Ke5 Ke8 47. Ke6 Kd8 48. e4 Ke8 49. e5 Kf8 50.
 Kd7 resigns (1-0).

French Defense-

White: David Hawkes (1637) Black: M. Barton (1633)

Region VIII, Memphis, 7/5/80. 1. e4 e6 2. d4 d5 3.
 Nc3 Nf6 4. e5 Nfd7 5. Qg4 c5 6. Nf3 Nc6 7. Bg5 Qb6 8. 0-0-0 cxd4 9. Nxd4 Ncxe5 10.
 Qe2 a6 11. f4 Nc6 12. Nxd5 Qa5 13. Nxe6 Qxa2 14. Nc7++ (1-0).

Veresov

White: R. Searles (1823) Black: M. Gee (1732)

Cougar II, Cleveland, 5/10/80. 1. Nc3 d5 2. d4 e6 3.
 Nf3 Nf6 4. Bg5 c5 5. e3 c4 6. e4 Be7 7. e5 Nfd7 8. Qd2 a6 9. a4 Nc6 10. Be3 b6 11.
 Be3 b6 12. b3 cxb 13. cxb Rc8 14. Na2 a5 15. 0-0 0-0 16. Rfcl f6 17. exf Nxf6 18.
 Ng5 Qd7 19. Bb5 h6 20. Nh3 Ne4 21. Qe2 Bd6 22. Nc3 NxNc3 23. Rc8 e5 24. Qd2? Bb4!
 25. Racl BxRc3 26. RxBc3 e4 27. Bh6! Rf7 28. Rg3 Kf8 29. Bf4 Qf5 30. Rg5 e3! 31. Qe3
 Qbl+ 32. Bbl Ba6 33. Qcl QxQ! 34. BxQ Nxd4! 35. Be3 BxBf1 36. KxB Nxb3 37. Rxd5 Re7
 38. g3 Nc5 39. Rd4 Rc6 40. Nb4 Re4 41. RxRe4 NxRe4 42. Nd5 Nd6 43. Nxb6 Nc4 44. Nd5
 NxBe3+ 45. NxNe3 Rcl+ 46. Ke2 Ral 47. Kd3 Rxa4 48. Nc4 Ra2 49. Nd2 a4 50. f4 a3 51.
 Nbl Rb2 52. Resign (0-1).

Sicilian Defense-

White: J. Jeffery (1206) Black: L. Thomas (1356)

Crossville Grand Prix, 1980. 1. e4 c5 2. Nf3 e6 3.
 d4 cxd4 4. Nxd4 a6 5. Nc3 Qc7 6. Bd3 Nf6 7. 0-0 Bd6 8. f4 Bc5 9. Be3 e5 10. fxe5
 Qxe5 11. Nf5 BxBc3+ 12. NxBc3 d6 13. Ncd5 NxNd5 14. NxNd5 0-0 15. c3 b5 16. a4! Bb7
 17. axb5 axb5 18. RxRa8 BxRa8 19. Rf5 Qe6 20. Nc7 Qa2 21. NxBa8 QxNa8 22. Rxb5 Nc6
 23. Rb3 Na5 24. Ra3 Qa7+ 25. Kh1 Qb6 26. b4 Nc6 27. Qg1 QxQ+ 28. KxQg1 Ne5 29. Be2
 f5 30. exf5 Rxf5 31. b5 Rf8 32. Ra7 Rb8 33. Kf2 g6 34. Ke3 h5 35. Kd4 Kf8 36. Kd5
 Nf7 37. c4 Rb6 38. Ke6 Nd8+ 39. Kd7 Rb7+ 40. RxRb7 NxRb7 41. Bf3 Na5 42. b6 Kf7 43.
 b7 Nxb7 44. BxNb7 Resigns (1-0)

Reti-

White: M. Potts (1396) Black: R Adkinson (1364)

Hardee s Summer Open, 7/12/80 1. Nf3 d5 2. c4 dxc
 3. Na3 Nf6 4. Nc4 e6 5. g3 c5 6. Bg2 Nc6 7. 0-0 Be7 8. b3 0-0 9. Bb2 Rb8 10. e3
 b5 11. Nce5 Bd7 12. Nc6 Bc6 13. d4 Nd7 14. Qc2 Qb6 15. Qc3 Qb7 16. d5 Bf6 17. dc6
 Bc3 18. cb7 Bb2 19. Rab1 Bf6 20. Nel Nb6 21. Rcl Be7 22. Nd3 c4 23. bc4 Nc4 24. a4
 Nd6 25. Nc5 Rbd8 26. Na6 Nb7 27. Bb7 Rd6 28. ab5 Rb6 29. Bc6 Rc8 30. Ral Bf6 31. Ra2
 Kf8 32. Rd1 h5 33. Rd7 Be5 34. Ra7 Bd6 35. Rb7 Rb7 36. Bb7 Rcl+ 37. Kg2 f5 38. Bc6
 g5 39. Rb2 f4 40. ef4 Bf4 41. gf4 g4 42. Kg3 Kf2 43. Kh4 Kg6 44. Be4+ Kh6 45. b6
 Rc3 46. Bg2 Rcl 47. b7 Rg1 48. b8(Q) Rg2 49. Qh8+(1-0)

(Please send in games of all levels to be published. I would like to thank all those who
 send games in the past two months. Please keep sending! And be patient and not disappoint-
 ed if your game was not published. Maybe in the future issues.)

Larsen's Opening-

White: D Thistlewaite (1776 Black: R Carpenter (Knoxville-Nashville Match in Crossville, 4/22 79 1. b3 e5 2. Bb2 Nc6 3. e3 d5 4. Bb5 Bd6 5. c4 a6 6. Ba4 Nf6 7. cxd5 Nxd5 8. BxNc6+ bxB 9. Nf3 Nb4 10. d3 Bg4 11. Na3 BxNf3 12. gxB Be7 13. Ke2 f6 14. Nc4 O-O 15. a3 Nd5 16. Qc2 Qd7 17. d4 exd4 18. Bxd4 Rae8 19. Na5 Nf4+ 20. Ke1 Ng2+ 21. Kf1 Qh3 22. Ke2 c5 23. Qc4+ Kh8 24. Bc3 h5 25. Qxa6 Nf4+ 26. exN Bd6+ 27. Kd2 Bxf4+ 28. Kc2 Qxf3 29. Nc4 Re2+ 30. Bd2 BxB (instead 30... Qe5+ 31. Kc3 Qd5+ 32. Kc2 BxB wins easier.) 31. NxB RxN+ 32. KxR Rd8+ 33. Kc2 Qe4+ 34. Kc3 Qd4+ 35. Kc2 Qxf2+ 36. Kb1 Rd2 37. Qa8+ Kh7 38. Qe4+ f5 (Kh6 is better) 39. Qe5 Qf3 40. Kc1 Rd2 41. QxR QxQ 42. Rhd1 Qxh2 43. Rd2 Qf5 44. Kc2 Qe4+ 45. Resigns (0-1)

English-

White: L. Dickerson Black: G. Matthews, Cougar II
Cleveland, 5/10/80 1. c4+ Nf6 2. Nc3 d5 3. cxd Nxd 4. g3 g6 5. Bg2 Nxc3 6. bNc3 Bg7 7. Rb1 Nc6 8. Qa4 O-O 9. Nf3 (Bxc gives Black a terrible white square Bishop) 9... a6+ 10. O-O Qd5 11. Nd4 Qa5 12. Bxc6 Qxa4 13. Bxa4 Bh3 14. Re1 e5 15. Nf3 b5 16. Bc2 Be6 17. a4 c6 18. Ng5 Ba2 19. Ral Bd5 20. Be4 h6 21. Bxd5 cxd 22. Nf3 b4! 23. e4 dxe 24. Rxe b3 25. R(a)b R(a)b 26. Rb4 RxRb4 27. cxb4 e4 28. Ne1 Rc8 29. Bb2 Bf8 30. Bc3 Rb8 31. Rxb3 a5 32. b5 Resigns (1-0)

King Indian's Defense-

White: M. Gee Black: L. Dickerson, Cougar II,
Cleveland, 5/10/80. 1. e4 g6 2. d4 Bg7 3. Nc3 d6 4. Be3 c6 5. f3 Qb6 6. Na4? Qa5+ 7. c3 b5 8. Nc5 dxNc5 9. dxc Nf6 10. b4 Qd8 11. Qc2 a5 12. Rd1 Qc7 13. Bd3 axb 14. cxb Be6 15. Qd2 Rxa2 16. Bc2 O-O (if 16 Bd3, then 17 Bf4 causes unnecessary complications) 17. Bf4 Qa7 18. Ne2 Bb3 19. Bb3 RxQd2 20. RxRd2 Nh5 21. Be3 Qa6 22. Resigns (0-1)

Sicilian-

White: OWEN S() Black: MINOR(1948), Pillsbury
Incentive III. 1. e4 c5 2. Nf3 Nc6 3. d4 cxd4 4. Nxd4 g6 5. f4?! Bg7 6. e5 d6 7. Bb5 Bd7 8. Bc6 bc6 9. ed6 ed6 10. O-O Ne7 11. c3?! O-O 12. Be3 c5 13. Ne2 Nf5 14. Bf2 Qb6 15. b3 Rfe8 16. g4 Ne3 17. Be3 Re3 18. f5 c4 19. Rf2 Rd3 20. Qc1 Re8 21. Kf1 Bc6 22. f6 Bh6 23. Nf4 Qf2!! 24. Kf2 Rf3 25. Kg1 Bf4 26. Qf4 Re1 27. Kg2 Rf4 28. Kg3 g5 (0-1)

Caro Kann-

White: D. Hawkes (1637 Black: M. Stewart (1617)
Region VIII, Memphis 1. e4 c6 2. d4 d5 3. Nc3 dxe4 4. Nxe4 Bf5 5. Ng3 Bg6 6. Nf3 Nd7 7. Bc4 e6 8. O-O Be7 9. c3 n6 10. Rfel Ngf6 11. Bf4 Nd5 12. Bxd5 cxd5 13. Ne5 Nxe5 14. Bxe5 O-O 15. Nh5 Bxh5 16. Qxh5 Rac8 17. Qg4 Bf6 18. Bf4 Kh7 19. Re3 Rg8 20. Rf3 Qe7 21. Rael Rce8 22. Rfe3 Qd7 23. Qd1 Qb5 24. Qc2+ g6 25. Rh3 Bg7 26. Qd2 h5 27. Qc2 f5 28. g4 Bh6 29. g5 Bg7 30. Rhe3 Qh6 31. Qe2 Rec8 32. Rxe6 Qa5 33. Re7 Qd8 34. Qb5 b6 35. Rd7 a6 36. Qxd5 Qf8 37. Bd6 Rc5 38. dxc5 Qc8 39. Qb7 Qxb7 40. Rxb7 bxc5 41. Rle7 Resigns (1-0)

Ruy Lopez-

White: D. Baker (1923 Black: J. Moore (1495)
Dyersburg Quick Swiss #3, 1. e4 e5 2. Nf3 Nc6 3. Bb5 a6 4. Ba4 b5 5. Bb3 d6 6. d4 Bg4 7. c3 Nf6 8. O-O Be7 9. Re1 Bxf3 10. gxf3 O-O 11. Qd3 Qd7 12. Nd2 Nh5 13. Nf1 Bh4 14. Ng3 BxNg3 15. fxBg3 Qh3 16. Bd5 Ne7 17. BxRa8 RxB 18. Qf1 QxQf1+ 19. KxQ f6 20. a4 bxa4 21. Rxa4 a5 22. Be3 d5 23. dxe5 fxe5 24. Bc5 Nc6 25. exd5 Nd8 26. Rxe5 Nf6 27. Rf5 Nd7 28. Be7 g6 29. R5f4 Nf7 30. b4 Re8 31. Bf5 Nb6 32. BxNb6 cxBb6 33. bxa5 Re5 34. axb6 Rxd5 35. b7 Rb5 36. Reb4 RxRb4 37. RxR Kg7 38. b8(Q) h5 39. Rb7 Kf6 40. Qf4+ Resigns (1-0)

Pirc Defense-

White: Francis (1525) Black: Igou (1825 , Music)
City Spring, 1980, 1. e4 d6 2. d4 Nf6 3. Nc3 g6 4. f4 Bg7 5. Nf3 O-O 6. Be2 c6 7. O-O b5 8. e5 Ne8 9. Be3 Bb7 10. Qd2 e6 11. Bd3 Nd7 12. Ne4 Qc7 13. Qf2 a6 14. Neg5 h6 15. Qh4 Qd8 16. Qh3 c5 17. Bg6! Bf3 18. Bf7+ Rf7 19. Nf7 Kf7 20. Rf3 cd4 21. Bd4 Qe7 22. f5 ef5 23. Rf5+ Kg8 24. Qf3 Bc8 25. Qd5+ Kh8 26. Rf7 Qd8 27. ed6 Ndf6 28. Bf6 Nf6 29. Qb7 Bf8 30. Raf1 Bd6 31. R7f6 Rc2 32. Rh6+ Resigns

POSTAL CHESS

by Stan Bimson

LAST CHANCE 1980 TN POSTAL CHAMPIONSHIP:

(Closing date of 30 Sept. 80) A cash prize fund (based on the number of entries) will be awarded to the top 3 finishers with 50% for the prize fund for 1st, 30% for 2nd and 20% for 3rd. Initial assignments are four players to a section. You play two games simultaneously with each opponent, six games in all. A score of 4 points or more will qualify a player for the finals. All games are postal rated. The entry fee is only \$3.00 per section. You may enter more than one section. Tennessee residency is not required but, as in all TCA sanctioned events, TCA membership is required. If you are not already a TCA member for 80/81, you may send \$4.00 TCA dues with your entry fee and you will receive your TCA membership card and this bi-monthly publication.

New entrants to TN Postal Chess are requested to furnish their latest USCF rating, either OTB or postal or any established postal rating. Send all entries to Stan Bimson, Rt. 2 Box 293, Hendersonville TN. 37075, please make checks payable to: TN Chess Association.

GAME RESULTS: (7/15) C4/2/78 Jones 1 Searles. MLE/F Jones 1F Irwin; Searles 1 Groeniger, 1F Irwin. TC-1-79 Jones 2F Irwin, 2F Parsons. TC-2-79 White 2F Irwin. TC-3-79 G'Fellers 1 Ousley. TC-2-80 Meadows 2 G'Fellers.

RATINGS: (* denotes change in rating.)

Barton	400	Nuckols	603
Bennett	575	Ousley	* 572
Bimson	496	Parsons	* 959
Bohannon	400	Penuel	463
Carpenter	783	Sabine	595
G'Feller	* 404	Sawyer	760
Greer	533	Searles	* 801
Groeniger	* 508	Shirley	400
Irwin	* 647	Sims	410
Jones	*1039	Stamper	435
Meadows	* 529	Towery	359
Noonan	681	White	* 456

Game: (MLE/F Jones - Nuckols) 1. e4 c5 2. Nf3 Nc6 3. d4 cd4 4. Nd4 e5 5. Nb5 d6 6. c4 a6 7. N(5)c3 h6 8. Be3 Be7 9. Nd5 Kf8 10. N(1)c3 Bg5 11. Bb6 Qd7 12. Be2 g6 13. 0-0 Nf6 14. f4 ef4 15. Bd4 Nd4 16. Qd4 Qd8 17. h4 Bh4 18. Rf4 ... (1-0)

CHALLENGE MATCHES: Challenge matches are rated postal games between a pre-arranged or challenged opponent. Any number of games may be agreed on, usually in groups of two, where you play one game as White and the other as Black. The opening and even the variation may be designated.

The fee for this type of match will be 25¢ per game per player. Play will comply with normal postal chess rules, except that more replying time may be added when more than two games are being played. All you need to do is (1) to set up your match and notify the postal director of the arrangements, enclosing the required fee, or (2) if it's an open challenge, just send your match format with its requirements and I will offer it in this section. Send all entries and/or challenges to: Stan Bimson, Rt. 2 Box 293, Hendersonville, TN 37075.

Canadian Chess Chat

(incorporating Chess Canada)

• • SPECIAL ISSUES • •

MONTREAL 1979 \$4.00

A round by round report with all the games, photos, interviews.

Buenos Aires Olympiad ... \$2.00

A round by round report, with 135 selected games and positions.

Karpov - Korchnoi \$3.00

All the games of the match, and an interview with Karpov.

All with algebraic annotations.

**ORDER ALL THREE
FOR ONLY \$5.00!**

CANADIAN CHESS CHAT
P.O.Box 304, Station "B"
Hamilton, Ontario, Canada L8L 7V7

Revenge Match

Webb School brought five players to Oak Ridge on March 30th in a successful effort to avenge their previous defeat. This time they produced a decisive $7\frac{1}{2}$ - $2\frac{1}{2}$ victory.

Oak Ridge		Webb	
1. Dagenhart	1	1. Bass	1
2. Shipp	$\frac{1}{2}$	2. Henderson	$1\frac{1}{2}$
3. Sprvill	0	3. Krane	2
4. Madden	$\frac{1}{2}$	4. Bowleby	$1\frac{1}{2}$
5. Brewer	$\frac{1}{2}$	5. Potts	$1\frac{1}{2}$

(reported by Rick Igou)

MBA OPEN

The MBA Open concluded on May 17th with a two-way tie for first between Matt Dolloff and Bobby Khan, both with 4.5. In the playoff, Matt and Bobby drew, thus making them co-champions. Each won a trophy and a \$15 gift certificate from Port-O-Call Records and Tapes. Andy Nelson finished third with a 4-1 record. Top unrated was won by Kelly Shackelford (4-1), while Harris Hatcher took second place-unrated ($3\frac{1}{2}$). John Dale won top junior high honors with a score of $3\frac{1}{2}$.

This event attracted a total of 61 players (including one chess challenger). An interesting feature of this tournament is that whereas the Challenger (at level 3) has done well in many other tournaments, the Challenger finished dead last with a score of zero. (by Bobby Khan)

COUGAR 2

Leonard Dickerson posted a perfect score of three to place first in Cleveland's Cougar II, May 10th. Mike Gee, Charles Laws, R. Carpenter and Richard Searles tied for the second spot. (See crosstable)

Knoxville Quick Swiss

Played on 5/17/80, resulted in a tie for 1st between top rated's Wolfgang Schroeter and Leonard Dickerson. Sharing 3rd were Richard Carpenter, Larry Crawford, Emanuel Tsitsekliis, Al Ruehmann and Rick Igou. Carpenter and Crawford also tied for top Cat. II. Top Cat. III was Ed Barr. Lou Groeniger and Robert Presswood tied for Cat IV. Top Unrated was Bob Parker.

TD'S: If you are interested in assisting at the 35th TENNESSEE OPEN, please contact Harry Sabine, P.O. Box 381 Crossville., TN ; Phone (615) 484-9593 or 484-4878.

TN OPEN CHAMPIONS

	Name		#players
1947	Robert Coveyou	Oak Ridge	
1948	Jerry Sullivan	Knoxville	
1949	L.C. Noderer	Oak Ridge	16
1950	J.B. Mullinix	Chattanooga	
1951	Jerry Sullivan	Knoxville	14
1952	L.C. Noderer	Oak Ridge	8
1953	Sullivan		
	Southern	Knoxville	
1954	Robert Coveyou	Oak Ridge	24
1955	Robert Coveyou	Oak Ridge	10
1956	Jerry Sullivan	Knoxville	
1957	Jerry Sullivan	Knoxville	
1958	Robert Coveyou	Oak Ridge	29
1959	Robert Coveyou	Oak Ridge	21
1960	Jerry Sullivan	Oak Ridge	31
1961	Robert Coveyou	Oak Ridge	34
1962	Emanuel Tsitsekliis	Knoxville	30
1963	Robert Coveyou	Oak Ridge	35
1964	James Wright	Memphis	34
1965	David Burris	Knoxville	39
1966	David Burris	Knoxville	44
1967	David Burris	Knoxville	56
1968	Robert Coveyou	Oak Ridge	50
1969	James Sweets	Chattanooga	74
1970	James Wright	Memphis	84
1971	Douglas Ralston	Nashville	105
1972	Juan Aristorenas	Chattanooga	130
1973	John Hurt	Memphis	130
1974	Kenny Thomas	Memphis	113
1975	Kenny Thomas	Memphis	112
1976	Emanuel Tsitsekliis	Knoxville	108
1977	Luis Torres	Knoxville	105
1978	Marty Appleberry	Memphis	101
1979	Marty Appleberry	Memphis	112

JR CHAMPIONS

1959	Troy Armstrong	Memphis
1960	David Slack	Kingsport
1961	Ben Batson	Knoxville
1962	Mark Gilley	Memphis
1963	David Burris	Knoxville
1964	David Burris	Knoxville
1965	Mark Gilley	Memphis
1966	Ted Mercer	Dayton
1967	Robert Churchill	Memphis
1968	Larry Ousley	Maryville
1969	Mack Garner	Maryville
1970	Mack Garner	Maryville
1971	Robert Felt	Memphis
1972	Vernon Vix	Nashville
1973	Kenny Thomas	Memphis
1974	Steve Gibson	Nashville
1975	Phillip Boyer	Chattanooga
1976	Dewey Maynard	Nashville
1977	Curt Jones	Nashville
1978	Gregory Hood	Memphis
1979	Curt Jones	Nashville

From The Editor

As the wee hours of the morning are approaching, I am trying to gather my thoughts--and piece together what I need to (the electricity just turned off for five minutes) pass on. First of all, my own typewriter brokedown again in the middle of the TCN, so I borrowed this one from the repair shop; hence some rough type.

I hope that every one will return their membership fees quickly so that you do not miss the October issue. Don't wait until you goto a tournament to renew. If you are already a member for next year pass the enclosed envelope to a friend.

The costs to print two or three hundred magazines is about the same as it is to print seven or eight hundred. And unless we keep TCA membership up all year round our TCN will have to be shortened. Just since I became editor last fall the printers have gone thru three price increases for paper. So please send your memberships in the mail. NOW!

I had the opportunity this month (July) to be a chaperone at the Michigan State University Chess Camp for ten days. It was an outstanding experience. I met many talented young players from all parts of the country. The instuctors, Grandmaster Lombardy and Int. Master Matera presented an exciting, invigorating program (lecture, small group instruction, small group simuls, and various exhibitions). The chess program was varied with swimming, softball, tours and snacks after the evening instuction period. I guess one of the biggest highlights (or the biggest!!!) was when Chuck Lovingood was selected to be part of the young American Chess team traveling to Iceland in August. Chuck,, you'll have to write a story for us next issue.

(Chuck is twelve years old and will be in the seventh grade next year.) GOOD LUCK!

I really did appreciate the response I received concerning games. I still have a few that I have not looked at. Do keep sending games in. I will eventually get around to printing some sometime.

Remember the TENNESSEE OPEN. I hope to see all of you there. Even if you just stop by on your way thru. MAKE YOUR RESERVATIONS NOW!! TODAY!! Note the deadline. We will try to publish more infomation earlier next June.

Oh! Note my new mailing address!!! You may wish to change your records-- POBOX 2587 Crossville. TN 38555.

for now-- John

CUMBERLAND CO. SUMMER OPEN

Once again a three way tie developed in a one day tournament: Leonard Dickerson, Ronnie Lester and William Davis shared top honors with perfect 4-0 scores. All total a whopping 50 player field showed up early on the pleasant June day (7th).

Other winners were: Tied 2nd Cat III John Burnett, Bryant Penuel & Johnny Owens; Tied 1st Cat IV Lou Groeniger, Robert Buchanan, & Ron Seaney; Tied 1st Cat V George Wallace & Bruce Lemieux. Top Cat VI was Greg Robbins. A four way tie for top Unrated -- Mike Sama, Bob Baylosis, William Evans, & Leslie Bucklew.

This tournament was the second straight one day event to draw 50 or more wood pushers. And again, all the entry fees, minus rating fees, were returned to the winners.

PILLSBURY CHESS CLUB: The Pillsbury

Chess Club has begun a 12-Man Round Robin Championship. Kenny Thomas is attempting to steal Jack Smith's crown.

POSTAL CLUB CHALLENGE: NASHVILLE VS PILLSBURY--- The PCC has challenged Music City CC to six games (maybe more) thru the mails. PCC team members are Jack Smith, Scott Smith, Kenny Thomas, Gary Pylant, Joy Wellman and Eddie Middleton. Representing MCCC are Pete Lahde, Kent Meadows, Joe Jones, Pete Ciarcilegio, Bruce Stearns, Mark Ishee, Morris Lewis and Gary McMurray. Details and games (or up date coming next issue). PCC is White in three and Nashville is white in three.

(Con't from p 48)

to award trophies or merchandise, to determine which player wins any title at stake or qualifies for another contest, or to serve any other purpose than the award of cash prizes".

(Within the pages of the next three issues, space allowing, we will give samples of the Cumulative, Median and Solkoff Systems of tie break.) (I also recommend that each individual purchase a copy of the Official Rules of Chess from the USCF. J.White)

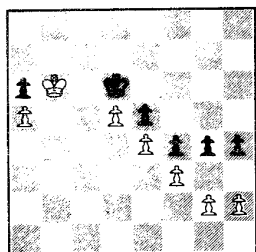
Last Round Lessons: AVOIDING THE CHEAPO

by Jerry Lawson

The rule that King and Pawn endgames are the easiest to win is generally a valid one. However, even in the simplest of positions, a certain level of alertness is necessary to avoid unpleasant surprises. This lesson was brought home to me in a dramatic fashion in two of my last round games from 1980 tournaments. The first position is from a tournament at Concord College, Athens, West Virginia: the Tony Slamecka Memorial Open. The late Mr. Slamecka was a very strong European emigre chess player whose culture and wit brightened southern West Virginia chess circles for a number of years. Although he participated in very few tournaments in this country, primarily because the customary three or four rounds per day, combined with his age, meant he could not play the quality of competitive chess to which he was accustomed, he was a very positive influence on the local chess scene. He gave many simultaneous exhibitions, was active in chess organization, and was always ready to instruct and encourage talented young players.

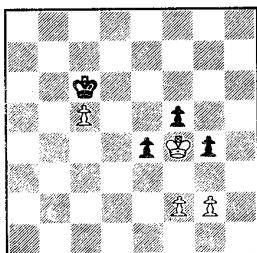
If I won my last round game, I would tie for the Class B prize. Unfortunately, I happened to be paired with Tony Slamecka's son, Tom, who wanted to win even more than I did. Diagram 1 was the position:

White: J. Lawson (1613)
Black: T. Slamecka (1599)



White to Play: Can you find his forced win, as well as his plausible--looking move that loses?

White: J. Lawson (16??)
Black: B. McCarthy (1824)



White to Play: Once again White is confronted by the choice between a move that wins easily-- and a cheapo that loses by force. Can you tell the difference?

Many moves previously I had foreseen this position, and played for it, believing it was an easy win. Indeed it is an easy win--if played correctly. Unfortunately I was more concerned with mentally congratulating myself for playing such a fine game than I was with finding the right move. For several moves I had been wondering to myself why Tom didn't resign instead of continuing.

I played 36. KxRP, without thinking about it, only to be stunned by the reply 36. ... P-R6! White is helpless.

The correct move, of course, was 36. P-R3, which would have won with ease.

Too late, the light dawned. I finally figured out why Tom had played on in such a bad position--he knew there is always one more cheapo down the road.

Two weeks later I was playing in the 1980 Crossville Grand Prix tournament in Cumberland County Tennessee. Despite losing a disastrous second round game to Al Ruehmann (1916), in the final round I was in a very good position. With a win, I would be guaranteed of a tie for 3rd prize and Top Class B. Once again, I had bad luck in the pairings. I was paired up against an opponent rated more than 200 points higher, while every Class B player who could potentially tie with me was paired down, with a player rated beneath him!

Greatly assisted by my opponent's nonchalant overconfidence, I once again reached a King and Pawn ending which looked like an easy win. I looked at the board briefly and then wrote down on my scoresheet my intended move, 48. KxP. However, before making that move, I was struck by the unpleasant memory of my last round game two weeks earlier. I decided to consider my move a little more carefully. And then I saw it clearly: 48. KxP?? P-N6! and wins.

The look of mingled dismay and disgust on my opponent's face as I erased the losing move from my score sheet to replace it with the winning one (the simple prophylactic 48. P-N3) was indescribable. My pleasure in winning this game was heightened by the ironic fact that the respective losing and winning moves were identical to the ones in

Where To Play

CHATTANOOGA: Chattanooga Chess Club meets Monday Nights, 5:30-10:00 at the Siskins Foundation, Vine Street. Contact John Stremel or Bill Severson.

CLEVELAND: Contact Charles Laws, 1004 Georgetown Road, NW

COOKEVILLE: Tennessee Tech Chess Club, room 371, University Center, TTU campus Monday nights 7:00 PM. Correspondence to Rick Cumby, TTU Box 6398, Cookeville, TN 38501.

CROSSVILLE: Cumberland County Community Complex, Wed. 7 PM; Contact Harry Sabine 484-9594 or 484-4878.

Dyersburg: The Dyer Co. Chess Club meets each Monday night at 7:30 at the Neighborhood Activity Center in Dyersburg. Contact David Hawkes (901) 285-8830.

HENDERSONVILLE: Hendersonville Chess Club, St. Joseph's Episcopal Church, Contact Stan Bimson 874-4938.

JACKSON: Call Dave Baker 424-4382, or Ernie Pinson 668-0248.

JOHNSON CITY: ???

KINGSPORT: Contact Jim Sims 245-4796 or Barry Pope, Blountville.

KNOXVILLE: (1) Greater Knoxville Chess Club, Arnstein Jewish Community Center, 6800 Deane Hill Dr., Wed. 6:30 PM. Contact Rick Igou 690-6810. (2) UT Chess Club, Student Center, Room 202, Fri. 6:30 PM.

MEMPHIS: (1) Memphis Chess Club, 7:00 PM, Friday nights at the University Christian Church on the southwest corner of Highland and Spottswood. Contact Les Branch, 761-0483.

(2) Pillsbury Chess Club, McFarland Community Center, 4983 Cottonwood Road, Tuesday, 7:30 PM; PCC gives lessons at 6:30 Tues. & meets some Sats. Contact Rick Herbers 274-9320.

(3) Memphis State Chess Club, activities suspended for summer, contact Randy Cope 452-6373.

(4) Christian Brothers Chess Club, Contact Greg Krog 683-1527.

MURFREESBORO: Contact Leon Stancliff 893-1495.

NASHVILLE: Nashville Chess Club, Arlington United Methodist Church, 1360 Murfreesboro Road. Thursdays 7:30 PM, Contact Peter Lahde, 361-4588.

OAK RIDGE: The Oak Ridge Chess Club meets every Sunday from 2 - 6 PM, Chapel on the Hill, Contact Ed Gottlieb, 457-5045.

SPARTA: Tuesdays, 6:30 PM, Contact James Burden, 738-8672.

SIGNAL MT: Contact Debra Arfken 886-5233.

(Please send any additions or corrections.)

my earlier game with Tom Slamecka. In both games KxP fell into a cheapo, while P-3 was the road to victory.

My tie for third place in the Open section was my best tournament result ever in such a strong event.

Having read this tale of two endgames, if you are ever paired up against a fellow named Lawson, and he seems to be rather slow endgame player, maybe how you'll realize I'm only trying to do the best I can to ... AVOID THE CHEAPO!

THE JOURNALISTIC FATE OF 9 STATES

By Stephen Dann
(reprinted from THE CHESS JOURNALIST)

According to August, 1980 Chess Life, The Chessman magazine serves nine states: AR, FL, GA, KY, NC, NY, PA, SC, and WV. While this publication may not be the official voice of all these state chess associations, most have suspended the issuance of their own publications during the past five years.

Chessman publisher J. Earle Morrison, whose address is listed in August Chess Life as Box 11288, Capitol Station, Columbia, SC 29211, is an AUSCJ member, but his last official address given to us is in Marietta, GA.

While there have been no official complaints made to AUSCJ officials regarding THE CHESSMAN, a prominent southern organizer has informed us that attempts to reach Mr. Morrison during the past several months have not met with success. It was not said whether correspondence was sent to Morrison's new address in South Carolina.

The last copy of THE CHESSMAN sent to this writer was in early 1980. This story is being printed in order to seek information, as this publication has a profound effect on chess promotion and publicity in nine states.

A recent communique from USCF President Gary Sperling indicates that the official NY state publication is still CHESS IN NY STATE, which has also lapsed into dormancy.

Sperling, replying to a letter by Joseph Lux to Chess Life editor Fairfield Hoban, stated "I hope that New York will not slip behind states such as Illinois, Massachusetts and Michigan, which have produced such outstanding publications."

Chess With Curt (Con't)
black's king is greatly restricted and white's f-pawn is only one square from queening. So, white hits upon the right idea.

53. Ke4 Kg7 If 53. .. Ke7 54. Kf4 Kf8 55. Kf5 Kg7 (55. .. g3?? 56. Kf6 wins outright; also 55. .. Ke7 56. Kg6 g3 57. Kg7 g2 58. f8(Q)+ wins.) 56. Ke5 transposes to the game.

54. Ke5 g3 55. Kd6 g2 56. Ke7 g1(Q) 57. f8(Q)+ Kh7 58. Qf5+ Kh6 (if 58. .. Kg7 I intended 59. Qe5+.) 59. Qg5+ (1-0)

A complicated ending.

Membership con't

City	# USCF	City	# USCF
1. Memphis	185	14. Hender'lie	10
2. Crossville	118	15. Hixson	10
3. Nashville	111	16. Smyrna	10
4. Knoxville	61	19. Jackson	9
5. Chattanooga	46	18. Cleveland	8
6. Signal Mt.	22	19. Germantown	7
7. Clarksville	19	20. Hermitage	7
8. Murfreesboro	19	21. Johnson C.	7
9. Oak Ridge	18	22. Maryville	7
10. Athens	17	23. Concord	6
11. Cookeville	16	24. Columbia	6
12. Kingsport	14	25. Millington	5
13. Sparta	12	26. Bristol	4
		27. Franklin	4

TCA MEMBERSHIP - 7/1/80		USCF
East Tennessee	222	413
Middle Tennessee	164	226
West Tennessee	68	228
Out of State	35	—
Total Membership	489	867

Canadian Chess Chat

(incorporating Chess Canada)

is the favourite magazine
of 5000 chessplayers
(including over 50 GM's and IM's)

Why? — See for yourself!

Send \$1.00 bill postage for
SIX FREE SAMPLE COPIES

• • • • •

CANADIAN CHESS CHAT
P.O.Box 304, Station "B"
Hamilton, Ontario, Canada L8L 7V7

Chess With Curt (Con't)

black's king is greatly restricted and white's f-pawn is only one square from queening. So, white hits upon the right idea!

53. Ke4 Kg7 54. Ke5 g3

Nashville Championship

1. Stearns, Bruce	W-5 D-5 D-2 W-6 D-4	3.5
2. Farr, Roy T.	W-6 D-4 D-1 D-3 W-5	3.5
3. MC Carthy, Brian	D-4 D-1 W-5 D-2 W-6	3.5
4. Moore, Johnson	D-3 D-2 W-6 L-5 D-1	2.5
5. Ciarleglio, Peter	L-1 W-6 L-3 W-4 L-2	2.0
6. Byerly, Bill	L-2 L-5 L-4 L-1 L-3	.0

CROSSVILLE-KNOXVILLE MATCH

PLAYER	ST	PRE RTNG	POST RTNG	1	2	TOT
1 DICKERSON, LEONARD	TN	2034	2041	W18	W18	2.0
2 HEADRICK, MIKE	TN	1321	1397	W20	W20	2.0
3 LANGFORD, DONALD S	TN	1613	1685	W17	W17	2.0
4 IGOU, RICHARD	TN	1821	1837	W19	W19	2.0
5 FOK, GARRY C	TN	1447/16	1480	D16	W16	1.5
6 GROENIGER, LOUIS M	TN	1482	1487	W13	L13	1.0
7 BURDETT, TERRY	TN	1631	1647	W-9	L-9	1.0
8 STORY, LLOYD	TN	1534	1535	D12	D12	1.0
9 CARPENTER, RICHARD	TN	1819	1805	L-7	W-7	1.0
10 CAMPBELL, PAMELA C	TN	1556	1541	L15	W15	1.0
11 MURRAY, JIM M	TN	1485	1503	W14	L14	1.0
12 CHAMBERS, CHRIS L	TN	1542/15	1541	D-8	D-8	1.0
13 LOWE, KEITH	TN	1541	1536	L-6	W-6	1.0
14 MATTHEWS, GARY	TN	1576/7	1556	L11	W11	1.0
15 LONG, CARY D	TN	1385	1400	W10	L10	1.0
16 GWIN, WILLIAM H	TN	1550	1525	D-5	L-5	.5
17 CRABB, CHARLES C	TN	1869	1859	L-3	L-3	.0
18 SABINE, HARRY D	TN	1667	1660	L-1	L-1	.0
19 LOVINGOOD, CHUCK H	TN	1631	1615	L-4	L-4	.0
20 JONES, JAMES MICHA	TN	1628	1618	L-2	L-2	.0

RULES FOR TEAM COMPETITION IN

THE AMATEUR AND NOVICE SECTIONS

1. A Team shall consist of 4 persons, no more or no less, and shall represent only one city, club or county in the State of Tennessee.
2. A list of team members must be submitted to the tournament director by the end of registration for the tournament.
3. Each team shall designate a team captain who shall have the authority to act on behalf of the team.
4. Any city, club or county may enter more than one team.
5. Team members must be a member of the club they represent or must reside in the city or county being represented by them.
6. All team members must play in the same section.
7. Team members will not be paired against each other during the tournament unless the tournament director deems it necessary in order to reasonably comply with the swiss system rules.
8. Team scores at the end of the tournament shall be determined by adding the individual scores of the four team members. Any team member who withdraws from the tournament shall be counted as a "0" score. If two teams tie for first, the cumulative tie break system on the team score will be used to determine the winner of the trophy.
9. The tournament director shall have the absolute authority to resolve any disputes over eligibility of team members, pairings, scores, or any other matters involving the team competition.
10. Any player competing on a team in the novice or amateur sections will also be eligible to compete on a team for the Scrivener team plaque.

1980 CUMBERLAND COUNTY SUMMER OPEN

PLAYER	ST	PRE RTNG	POST RTNG	1	2	3	4	TOT
1 DICKERSON, LEONARD	TN	2018	2034	W25	W10	W14	W-4	4.0
2 LESTER, RONNIE	KY	1620/A	1713	W50	W18	W-9	W-5	4.0
3 DAVIS, WILLIAM G	TN	1516	1581	W41	W16	W17	W-6	4.0
4 OWENS, JOHNNY	KY	1586	1620	W42	W19	W-7	L-1	3.0
5 BURDETT, TERRY	TN	1592	1631	W13	W32	W-8	L-2	3.0
6 GROENIGER, LOUIS M	TN	1433	1482	W43	W33	W34	L-3	3.0
7 CARPENTER, RICHARD	TN	1824	1819	W47	W31	L-4	W15	3.0
8 HURNETT, JOHN T	TN	1685	1684	W29	W21	L-5	W23	3.0
9 KING, MARK T	TN	1547	1558	W37	W22	L-2	W24	3.0
10 BUCHANAN, ROBERT A	TN	1543	1567	W27	L-1	W41	W25	3.0
11 SEANEY, RON K	TN	1595	1601	W30	L14	W42	W17	3.0
12 PENUEL, BRYANT D	TN	1549	1541	L22	W37	W32	W19	3.0
13 ROBBINS, GREGORY K	TN	1315	1363	L-5	W49	W36	W18	3.0
14 LOVINGOOD, CHUCK H	TN	1618	1631	W35	W11	L-1	D16	2.5
15 BINDER, DANIEL	CA	1606	1602	D36	W26	W20	L-7	2.5
16 WATSON, BRADLEY S	TN	1490	1517	W28	L-3	W33	D14	2.5
17 EVANS, WILLIAM A	TN	1402	1421	W23	W40	L-3	L11	2.0
18 PRESSWOOD, ROBERT	TN	1513	1511	W18	L-2	W35	L13	2.0
19 PEARSON, JR CLINTO	TN	1276	1294	W45	L-4	W27	L12	2.0
20 MURRAY, JIM M	TN	1508	1485	D46	W36	L15	D21	2.0
21 STANCLIFF, LEON D	TN	1386	1392	W39	L-8	D22	D20	2.0
22 LEMIEUX, BRUCE L	TN	1351	1361	W12	L-9	D21	D26	2.0
23 POTTS, MICHAEL	TN	1498	1505	L17	W43	W28	L-8	2.0
24 LEMMON, EDWARD D	TN	1209/10	1229	L33	W44	W40	L-9	2.0
25 BURNETT, RONALD WA	TN	1458	1470	L-1	W48	W31	L10	2.0
26 BURGESS, DONALD R	TN	1165	1194	D34	L15	W46	D22	2.0
27 SAMS, MICHAEL A	TN	0	1355	L10	W50	L19	W40	2.0
28 BUCKLEW, LESLIE WA	KY	1613/14	1571	L16	W29	L23	W41	2.0
29 WALLACE, GEORGE O	TN	1435	1444	L-8	L28	W39	W43	2.0
30 BAYLOSIS, ROBERTO	TN	1414/5	1384	L11	L35	W44	W42	2.0
31 TURNER, SCOTT	TN	1537	1500	W44	L-7	L25	D37	1.5
32 HAYNES, DANNY	TN	1388	1375	W49	L-5	L12	D38	1.5
33 TAPP, THOMAS C	TN	1231/6	1254	W24	L-6	L16	D35	1.5
34 COLLARD, THOMAS P	TN	1596	1568	D26	W46	L-6	U--	1.5
35 LONG, CARY D	TN	1387	1385	L14	W30	L18	D33	1.5
36 PANICALT, MICHAEL	TN	1305	1307	D15	L20	L13	W46	1.5
37 ROBBINS, MICHAEL W	TN	1011/12	1073	L-9	L12	W45	D31	1.5
38 SAYLORS, EUGENE H	TN	0	1241	L18	L41	W48	D32	1.5
39 HUBBS, DAVID H	TN	1171	1181	L21	D47	L29	W46	1.5
40 BAYLOSIS, DENIS C	TN	1246	1246	W44	L17	L28	L27	1.0
41 LYNN, BOBBY J	TN	1280	1287	L-3	W38	L10	L28	1.0
42 DIXON, TODD A	TN	1306	1302	L-4	W45	L11	L30	1.0
43 PARKER, JR ROBERT	TN	1463/6	1348	L-6	L23	W49	L29	1.0
44 HOYD, SCOTT R	TN	0	1097	L31	L24	L30	W49	1.0
45 LEMMON, MARK E	TN	0	798	L19	L42	L37	W--	1.0
46 BOWMAN, RAYMOND D	TN	1039/13	1052	D20	L34	L26	L36	.5
47 MC DANIEL, JORY J	TN	1319	1311	L-7	D39	U--	U--	.5
48 TURNER, GREG C	TN	1181	1144	L40	L25	L38	L39	.0
49 DAVIS, TRENT G	TN	1027/6	991	L32	L13	L43	L44	.0
50 DEVENPECK, EDWARD	TN	1353	1349	L-2	L27	U--	U--	.0

CLEVELAND COUGAR II

PLAYER	ST	PRE RTNG	POST RTNG	1	2	3	TOT
1 DICKERSON, LEONARD	TN	1985	2000	W-8	W-4	W-2	3.0
2 GEE, MIKE	TN	1732	1751	W-7	W-5	L-1	2.0
3 LAKS, CHARLES G	TN	1707	1706	W-6	W-8	L-4	2.0
4 CARPENTER, RICHARD	TN	1772	1782	W-9	L-1	W-3	2.0
5 SEARLES, RICHARD A	TN	1823	1809	W10	L-2	W-7	2.0
6 FRAZIER, RICKY	TN	1376/14	1403	L-3	D-9	W10	1.5
7 PRESSWOOD, ROBERT	TN	1460	1466	L-2	W10	L-5	1.0
8 MATTHEWS, GARY	TN	1496/4	1531	L-1	L-3	W-9	1.0
9 CUMMINGS, CHARLE	TN	1441	1432	L-4	D-6	L-4	.5
10 GROENIGER, LOUIS M	TN	1431	1395	L-5	L-7	L-6	.0

FARRAGOT-CROSSVILLE MATCH

PLAYER	ST	PRE RTNG	POST RTNG	1	TOT
1 WALLACE, GEORGE O	TN	1416	1419	W-7	1.0
2 SABINE, JAY D	TN	1310	1315	W10	1.0
3 MITCHELL, MICHAEL	TN	1417	1420	W-9	1.0
4 WHISNANT, MICHAEL	TN	1384	1387	W-8	1.0
5 LOVINGOOD, CHUCK H	TN	1600	1593	D-6	.5
6 FOK, GARRY C	TN	1437/15	1447	D-5	.5
7 MONDAY, J. DEAN	TN	0	1016	L-1	.0
8 DIXON, ANDREW	TN	0	984	L-4	.0
9 FLOYD, THOMAS B	TN	0	1017	L-3	.0
10 FRICKS, BART C	TN	0	910	L-2	.0

TOURNAMENTS CON'T

- OCT 24 4th IVORY PAWN DEDICATION TOURNAMENT: Friday nights, 5 rounds,
Contact Memphis Chess Club for details.
- JCT 25-26 1st GREATER TUPELO OPEN: 50/2. 2nd floor, U S Federal Building,
500 W Main, Tupelo, MS 38801 EF: \$20 (\$16 if rec'd by 10/20, under
1200 \$15 (12 if rec'd by 10/20, UNR 7.50 (6.00 if rec'd by 10/20, EF Free if joining USCF
for the first time. USCF & MCA req, other states OK \$\$: All Entry Fees Returned minus
expenses!! REG: 8-9 RD: 9-1-5, 9-1 Ent: Robert Shirley, 207 N Foster, Tupelo, MS
38801 (601 842 8319) LS (rated 30 30 Quads between rounds, EF: \$5, \$winner take all)
- OCT 25 MUSIC CITY FALL:??? Details next issue.
- NOV 8 9 4th FAIRFIELD GLADE OPEN, 5-SS, TL 50/2, Fairfield Glade Resort,
Peavine Rd, Crossville TN 38555 \$\$\$ \$1,700 In 3 Sections:
Open, EF: \$20, if rec'd by 11/1 \$\$\$300 125 75, I, II each 100 50; trophies to 1st, top I,
II, III Amateur, open to below 1600, EF: \$17.50, if rec'd by 11/1. \$\$\$150 75 50, IV
100 50; trophies to 1st, top IV, V Novice, open to below 1200, EF: \$15, if rec'd by 11/1
\$\$\$ 150 75 50, VI 100 50, UR 50; trophies to 1st VI, UR All EF: \$5 more at site ST \$4
Optional trophies available RG: 7-9 PM 11-7 or 7-9 AM 11/8. RD: 9:30-2-7, 8-1 CST HR:
Fairfield Glade, 30 35, condo's 38; Capri Motel, Crossville, 14 20 23 26 ENT: Harry
Sabine, P O Box 381, Crossville, TN 38555 (615 484 9593 or 484 4878) LS.
- NOV 28-30 21ST ANNUAL MID-SOUTH OPEN & AMATEUR: MEMPHIS
- DEC 5 MEMPHIS '80 QUADS III: Friday nights, 3 round, (Memphis Chess
Club).
- DEC 6 7 1980 CROSSVILLE SCHOLASTICS, 5-SS, TL 40/90, Martin JHS, Stanley
St, Crossville, TN 38555 Open to all school students in 4 sections
HS, open to grades 12 below, EF: \$6, if rec'd by 12/1 Trophies to top 10, top IV, V, VI,
UNR, top 5 teams. \$100 to top TN team for expenses to TN Scholastics JHS, open to grades
9 below, EF: \$5, if rec'd by 12/1. Trophies to top 10, top V, VI, UNR, top 5 teams, \$100
to top TN team for expenses to TN Scholastics. Elementary, open to grades 6 below, EF: \$4,
if rec'd by 12/1 Trophies to top 10, top VI, UNR, top 5 teams, \$100 to top TN team for
expenses to TN Scholastics. Primary, open to grades 3 below, EF: \$3, if rec'd by 12/1
Trophies to to 5, top team, \$50 to top TN team for ex enses to TN Scholastics. All EF:
\$3 more at site. ST, \$4 req of TN students. Teams must have at least 4 from same school
no school may win more than one team trophy per section, top 4 scores added for team score
Team members will not be paired against each other. RG: 9-10:30 AM, CST, RD: 11-3-7, 8-12
ENT: Harry Sabine, P O BOX 381, Crossville, TN 38555 (484 9593 or 484 4878) Free
Sleeping bag accommodations if requested in advance HR: Capri Motel, 16-22-27-30- NS
- DEC 26-30 1980 U.S. INTERCOLLEGIATE TEAM, Atlanta, GA

Grandmaster Visits Memphis

On April 7th and 8th International Grandmaster Larry Christiansen gave two simultaneous exhibitions at Christian Brothers College. On Monday the 7th, twenty-nine local players were stunned with the speed and accuracy of Christiansen's play. Nevertheless, the I.G.M. had some close calls, and actually lost one game to the team of Paul Linxwiler and Greg Hood, both students at C.B.H.S..

The next night, Grandmaster Christiansen played ten games at once without sight of the board. Memphis players walked away with five wins. Unlike the first "regular" simultaneous, which was open to participants on a first serve basis, the blindfold exhibition was invitational. Ten players participated: Kenny Thomas, Mahlon Smith, Rick Herbers, John Hurt, James Wright, Paul Linxwiler, Steve Spencer, Ron Moore, Loel Hickman and Kent Sanborn. Hickman, Linxwiler, Hurt, Wright and Thomas all won their games.
(from the Chess Advocate)

Tournament Calender

- AUG 3 QUICK SWISS #4: 3-SS, 40/90. REG: 8:30-9:15, RD: 9:30-1:30-5:30. EF: \$6.50 All money (less 50¢ per player returned as cash prizes). \$\$: (b/12 40-20-12) Site is First Citizen's Bank, Monroe St, Newbern, TN (7 miles north of Dyersburg on hwy 51). Contact David Hawkes (901) 285-8830.
- AUG 8 MEMPHIS QUADS II. 3-RR, TL: 50/2. University Christian Church. USCF & MCC required. RG: 7:30-8 PM, August 8. RDS: 8:15 Friday Nights. ENT: Wm. C. Neitzel, 5690 Walnut Grove, Memphis, TN 38117.
- AUG 9 10 U.S. OPEN JUNIOR HIGH ELEMENTARY CHAMPIONSHIPS, 5-SS, TL 40 1, THE Dunfey Hotel, I 75 and Howell Mill Road, Atlanta 30318 In 2 sections Junior High, open to grades 9 below, EF: \$5.50 if rec'd by 8/2. Elementary, open to grades 6 below, EF: \$4.50 if rec d by 8/2. Both, EF \$2 more at site. Prizes (based on 40 players, 5 teams) Trophies to top 5, medals to 6th 10th, rosettes & certificates to 11th-15th, Trophies to top 3 4 man teams. REG: 9-9:30 AM RD: 10-12:30-3, 10-12:30 Ent: L Thad Rogers, 3055 General Lee Road, Macon, GA 31204, NS
- AUG 16 2ND TENNESSEE TECH WARM UP FOR THE TENNESSEE OPEN, 4-SS, TL: 40/1 TENNESSEE TECH University Center, Multipurpose Room, Cookeville, TN 38501 EF: \$7, ST\$ for TN res \$\$(235/b30, 1st PRIZE GUARANTEED!) \$65 45, Cat II, III, IV each 20 10, Cat V 20, Cat VI Unr 15 REG: 7:30 8:45 AM CDT RDS: 9-11:30-2:30-5:30 CDT. ENT: Darryl E Marsee, 1516 Flintwood Ave, Cookeville, TN 38501 (432 4260) NS
- AUG 30- SEP 1 35TH TENNESSEE OPEN: (see add for details)
- SEP 12 MEMPHIS FALL CLASSICS : Friday nights, 5 rounds, Contact Memphis Chess Club for details.
- SEP 22-26 1980 ARMED FORCES CHAMPIONSHIP, Washington, D.C.
29-30
- SEP 27 1980 CUMBERLAND COUNTY FALL OPEN, 4-SS, TL: 40/1, Martin JHS, Stanley St, Crossville, TN 38555 EF: \$6, ST\$4 for TN res, \$\$(165 b/30): 50, C,D,1000 1199, below 1000 each 25, UNR 15, optional trophies, RG: 7:30-8:45 AM CDT, RD: 9-11:30-2:30-5:30 CDT, ENT: Harry D Sabine, P O Box 381, Crossville, TN (484 9593 or 484 4878), LS
- SEP 20 QUICK SWISS #5: 3-SS, 40-90 REG: 8:30 9:15, RD: 9:30-1:30-5:30 EF: \$6.50 All money (less 50¢ per player returned as cash prizes), \$\$ (b/12 40-20-12) Site is First Citizen's Bank, Monroe St, Newbern, TN (7 miles north of Dyersburg on hwy 51 Contact David Hawkes (901) 285-8830

TENNESSEE CHESS ASSOCIATION

John L.White, Editor
Tennessee Chess News
P.O.Box 2587
Crossville, Tn. 38555

NONPROFIT ORGANIZATION U. S. POSTAGE PAID CROSSVILLE, TENNESSEE PERMIT NO. 52

Peter P. Lahde
2609 Sailboat Court
Nashville, TN 37217