

Like

Tweet



Tennessee Chess  
Association

## TENNESSEE CHESS NEWSLETTER

*April 2019, Volume 64, Issue 2*

---

### TN Chess Girls Battle for UT Knoxville College Scholarships

By: Gilbert Chan



The 2019 Tennessee All-Girls Scholastic Championship was a combination of STEM and chess beginning with a Friday evening seminar featuring WIM Dr. Carolina Blanco, who was also on hand during the tournament analyzing players' games. Saturday included visits from different student groups as well as a laboratory tour. Players were given a 3-D printed chess queen courtesy of the Undergraduate Laboratories in the Department of Materials Science and Engineering (in UT orange), and got to make chess necklaces and bracelets and friends between rounds, as well as being treated to free pizza.

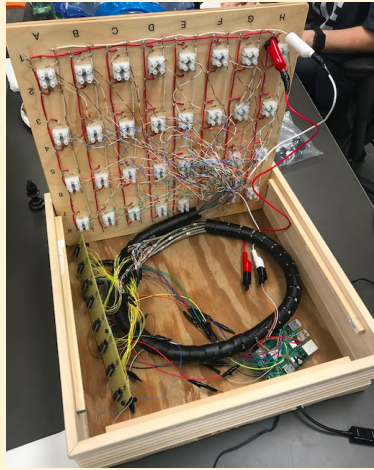












None of that diverted the attention from the main purpose of dominating on the 64 squares and there was plenty of fighting chess with only four draws in 78 games. In the K-3 section, defending champion and top seed Selena Ma, a second grader from Rocky Hill Elementary in Knoxville, swept her section with a perfect 4-0 score, followed by third grader Abbie Liu of Farragut Intermediate School with 3 and second grader Olivia Law of Christian Academy of Knoxville, with 2.5, taking third on tiebreak ahead of third grader Hannah Harris and kindergartener Thea Pattison.



The K-6 section was won by fifth grader Maggie Zhong of A.L. Lotts Elementary of Knoxville, who earned a perfect 4-0 score despite being the only player in the tournament who had to face three opponents with three wins. Following with three wins in tiebreak order were fourth grader Elly Wu of Nolan Elementary in Signal Mountain; a third place tie between fifth grader Sylvia Lin of Farragut Intermediate School and sixth grader Nikita Yang (playing in her first rated tournament) of Hardin Valley Middle School in Knoxville; and sixth grader Shirley Kong of Houston Middle School in Germantown.





2017 Girls' Champion and State Co-Champion Sydney Kong was the #1 seed and also won her section with a 4-0 score, earning a \$4500 scholarship offer from the University of Tennessee Tickle College of Engineering. But the Houston Middle School eighth grader had to survive a powerful kingside attack in the third round from second place finisher Violet De Credico, an eighth-grade



homeschooler from Chattanooga. Following Violet on tiebreaks were homeschool senior Tera Vilaire from Friendsville and seventh grader Grace Feng of West Valley Middle School in Knoxville, all with three points. A blitz playoff was held to determine the other two scholarship offers, and Violet won the \$3000 and Grace the \$1500.

2019 All-Girls State Champion, Sydney will also be the Tennessee representative at the 2019 National Girls' Tournament of Champions to be held in Orlando, FL from August 3-6. She joins Rachel Weishaar (2012, 2014) and Zsofia De Credico (2015, 2018) as two-time All-Girls champions and has four years to match or pass Graham Gibson (2008-2011) for most championships.





To view the full Wall Charts from the event, visit:

<https://www.reg4chess.com/results/2019%20TN%20All%20Girls%20Results.pdf>

## TN All-Girls Game Analysis

By: NM Forest Chen, 2017 TN State Co-Champion and reigning 3-time TN High School Champion (2017-2019)

Event- 2019 TN All-Girls State Championship

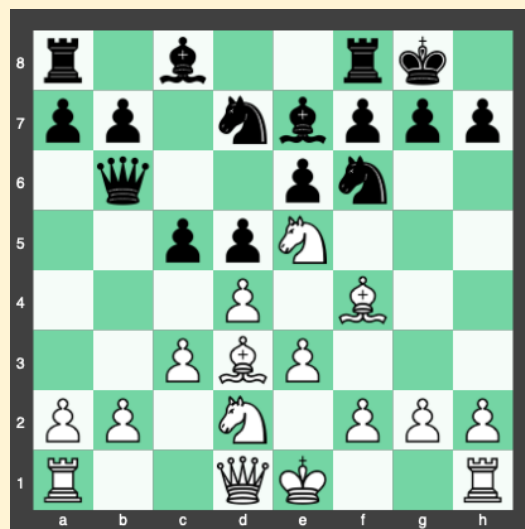
Date- 2019.03.30

Round- 3

White- De Credico, Violet

Black- Kong, Sydney

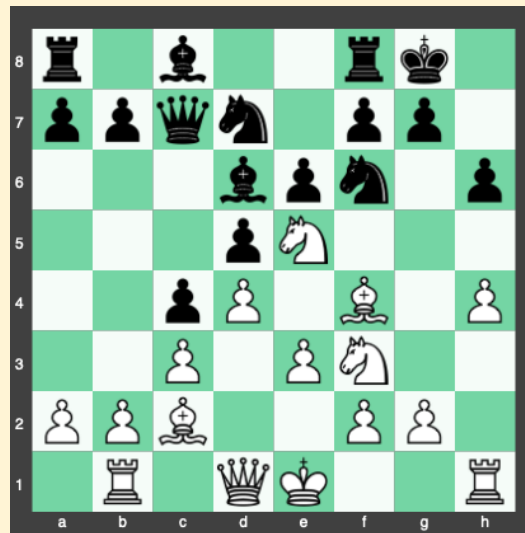
Hi, I am Forest Chen, and I will be commentating round 3 of the 2019 All-Girls State Championship. This game was the critical matchup between the top two seeds, Sydney Kong (1787 USCF), 2017 TN State Co-Champion and 2017 winner of the TN All-Girls State Championship and Violet De Credico (1423 USCF), but Violet did not panic against her strong opponent and played an excellent game that stopped just short of being a brilliancy. Let's see! **1. d4 d5 2. Bf4** The beginning of the famous London System used by players like Carlsen, Nakamura, Kamsky, and most of the other top players in the world. After the game, Mr. Richard De Credico, Violet's father, revealed that she had prepared this opening a mere couple of days before the tournament, watching videos on Youtube and playing some online. **Nf3 3. e3 e6** (3... Bf5 Another popular alternative to develop the light squared bishop) (3... c5 {The mainline}) **4. Bd3 Nbd7 5. c3 c5 6. Nd2 Be7 7. Ngf3** White's goal is simply to achieve control over the e5 square and positionally strangle her opponent in the center and with a kingside attack. **O-O** (7... Nh5 ?!) **8. Ne5 Qb6?**



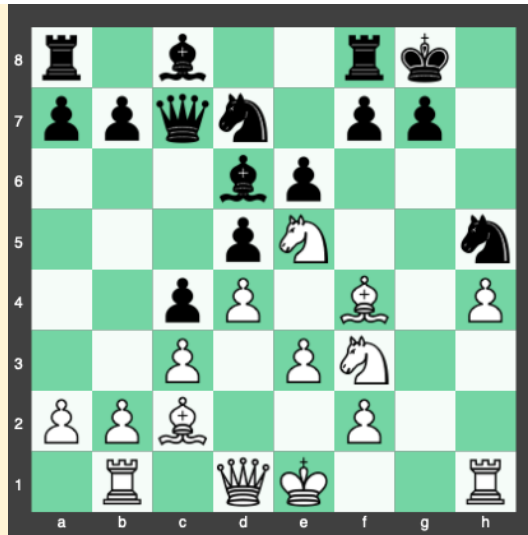
The first mistake. The queen makes a simple attack of the b2 pawn which is easily defended by white's next move. Moreover, the queen is misplaced on b6, hindering ideas of b5 or b6 to develop the light squared bishop (8... Nxe5 9. Bxe5 (9. dxe5 is another possibility although it blocks the bishop on f4 Nd7 10. O-O Qc7 11. Nf3= a5 with ideas to advance on the queenside and if possible trade light squared bishops with Ba6.) (9... c4 10. Bc2 b5= was much more natural, launching a queenside offensive with moves like b4, a5-a4-a3 to follow.) **9. Rb1 Bd6?** Blunders into a well-known trap **10. Ndf3** (10. Nec4! One of the reasons



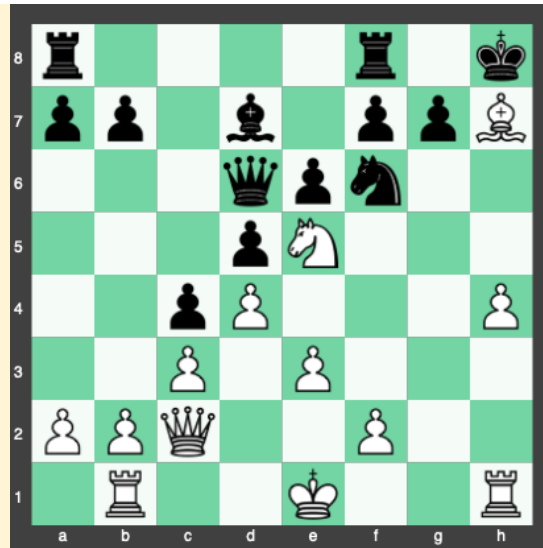
why the queen is misplaced ...dxc4 11. Nxc4 Qc6 12. Nxd6 Qxg2 13. Rf1+/- while black has avoided material loss at the moment, the g-file has been opened allowing an easier attack on the black king. Black's center has been shattered and white has a commanding knight on d6.) **10... Qc7+/-** The queen and bishop have moved a total of 4 times already while the c8 bishop and the two rooks remain undeveloped. With white's clear lead in development, white has a clear edge already. **11. h4 ?!** An objectively speculative idea, but incredibly interesting and a practical choice in such a critical matchup. White has the simple idea of just advancing the h pawn down the board and checkmating black. **11... c4 12. Bc2 h6??**



There is a rule in chess that one should avoid moving pawns in front of one's king. This creates a hook in the position and a target. For example, imagine if white could place a pawn on g5. This would force a capture and the opening of lines against the black king. (12... Ne4! An idea I preferred while watching the live broadcast, although hard to make. The idea is that the c2 bishop is a monster, one of the key attacking pieces. However, this invites the fracturing of black's center as compensation. 13. Bxe4 dxe4 White must take on d7 14. Nxd7 (14. Nd2? Nxe5 15. Bxe5 Bxe5 16. dxe5 Qxe5 17. Nxc4 Qc7=/+ where now it is black who has the edge as white's king is trapped in the center as h4 is a big weakness on the kingside.) 14... Bxd7 15. Bxd6 Qxd6 16. Ne5 (16. Nd2 Qd5) 16... Rac8+/- White is still better due the structure and the strong knight on e5, but at least black has averted the checkmating plans and ideas.) **13. g4!+-** Violet shows an excellent grasp of attacking and understanding. Previously we mentioned how a g5 pawn would rip open the kingside. She played this intuitively no doubt with the same goal in mind. **13... h5?** Way too provocative, this guarantees the opening of the g-file and the king. **14. gxh5 Nxh5**



Here we need to pause and take stock of the position. White has a strong knight on e5, a monster bishop on c2, and an open g-file against the king. Notice how black's center or queenside counter-play is nowhere near complete. I would be thinking here on how to neutralize the black counter attack as once that is neutralized, black is helpless. **15. Nxd7!** Fantastic! She understands that Sydney's only counterplay lies with somehow taking the knight in the center. With this move, she effectively kills this plan and gains a very important square. **15... Bxd7** **16. Bh7+?** The beginning of some troubles for white. The bishop move looks flashy but doesn't accomplish that much. Also, the engine suggests that the bishop can be taken. I suspect that Violet played intuitively, thinking that taking the bishop would result in an immediate loss and while this idea was wrong, it is a sign of a great attacker. (16. Bxd6! Of course, trading the last defender of e5 gives white free rein on the kingside as black's pieces are effectively cut off. Qxd6 17. Ne5 Nf6 18. Qf3 White is completely winning which may be somewhat hard to understand when counting material; however, four-time US champion Yasser Seirawan once said that it is about what is on the chess board not what is off. White's pieces are in the best positions, all that remains is to either double on the g-file with the rooks or play h5 and h6 eventually.) **16... Kh8** (16... Kxh7 17. Ng5+ Forced! Kg6 18. Rg1 Bxf4 19. Nxe6+ Kh6 20. Nxc7 Bxc7+/- After this series of forcing moves, which is by no means easy to see over the board, white is still better due to the attack, but black does have 3 pieces for the queen, giving some chances.) **17. Bxd6 !** Finally, the right idea. White seizes control over e5 and transposes to the earlier version 16.Bxd6, albeit a tempo down. **17... Qxd6** **18. Ne5 Nf6** **19. Qc2??**



A pity. Ignoring Bh7, Violet has demonstrated great attacking intuition and skill up to this point. After the game, I learned that she had forgot that she played Ne5 and thought the knight was on

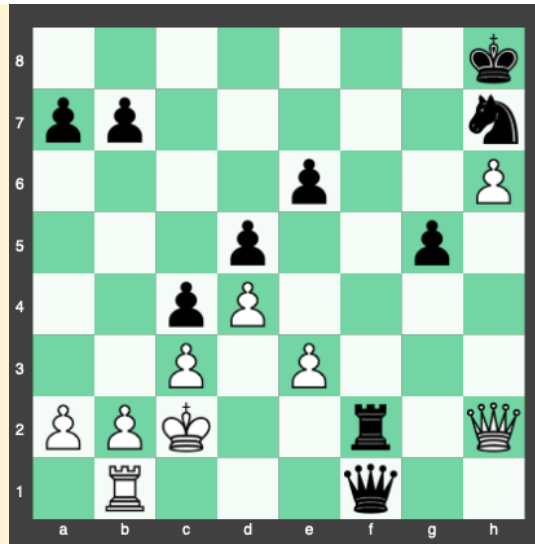
g5 which she had considered in other lines. (19. Bc2 This was the move. Again, material is equal. No tactics are necessary. A simple plan wins. I have provided some nice lines. You will notice that at the end white didn't checkmate black. This is due to the tenacious nature of computers, but I assure you that over the board, this is over for black. Be8 20. Rg1 Qe7 21.Qf3 Ng8 22. Kd2! Bring all the pieces to the attack. f6 23. Rg6! The end approaches Nh6 (23... Bxg6 24. Nxg6+) 24.

Qh5 Kg8 (24... fxe5 25. Rxh6+ gxh6 26. Qxh6+ Kg8 27. Rg1+ The reason behind Kd2 Bg6 28. Qxg6+ Kh8 29. Qh6+ Qh7 30. Qxh7#) 25. Rbg1 Bxg6 (25... fxe5 26. Rxg7+ Qxg7 27. Rxg7+ Kxg7 28. Qg5+ Kf7 29. Bg6+ Kg7 30. Bf5+ Kf7 31. Qg6+ Ke7 32. Qxe6+ Kd8 33. Qd6+ Bd7 34. Qxd7#) 26. Qxg6 Nf5 27. Ng4 Qe8 28. Bxf5 Qxg6 (28... exf5 29. Nh6+ Kh8 30. Qxg7#) 29. Bxg6+- Note that these were the best moves as recommended by a computer; however, I believe it is impossible for black to defend like this. More likely, one of the earlier lines will occur and white will easily win.)

**19... Nxb7+** From here, all black needs to do is trade and weather the storm. **20. h5 Kg8?** While still technically winning, the move seems unnatural as it puts the king into the fire of the rook on the g-file. The king was safe on h8 as h6 would always be met by g6. This is the last notable moment in the game as black smoothly converted her advantage. (20... Nf6

Black just needs to get the pieces back in place to win. 21. h6 g6 22. Nxg6+ Doesn't work on account of fxg6 23. Qxg6 Qe7 Calm Qe7 defends everything) **21. Rg1 Be8 22. h6 g5 23. f4 Qe7 24. Rg4 f6 25. Ng6 Bxg6 26. Qxg6+ Kh8 27. ffg5 Rg8 28. Qh5 Rfg5 29. Rfg5 ffg5 30. Kd2 Rf8 31. Qh2 Qf6 32. Kc1 Qf1+ 33. Kc2 Rf2+**





An extremely painful defeat for Violet, who but for one move played a great game and almost took down the top seed. Things like this do happen, and it is important to understand this. Through this game, we saw Violet's superb intuition and attacking skills as well as patience by Sydney who never gave up and was eventually rewarded for her effort. A brilliant game by both sides. Sydney went on to win her last game, earning her second All-Girls State Champion title. Violet also won her last game, coming in second place. **0-1**

---

## 2019 State Scholastic Individual & Team Championships

By: Tiffany Elliott



The 2019 Tennessee Scholastic Individual Championship took place at Tennessee Tech University on February 16. The event was smoothly run by TCA Scholastic Coordinator, Paul Semmes, and the facilities and new renovations at TN Tech were very nice and accommodating. There were 123 players competing individually across four sections based on grade level: K-12, K-9, K-6, and K-3. Throughout the day, spectators enjoyed watching the live games of Forest Chen on the big screen in the skittles room and perhaps all across the state, maybe even beyond through [the Live Chess Cloud link online](#). These games are still visible at that link for your enjoyment.







Forest Chen of Knoxville played to a perfect score and won the High School Championship. This is his third year winning in a row! Devon Puckett and Suhas Gummadi both scored 4 points out of 5 tying for second place.

2019 State Finals **HIGH SCHOOL**

No.	Name	Rate	Team	Pts	Rnd1	Rnd2	Rnd3	Rnd4	Rnd5	
1	Chen, Forest	2309		1	5	W12	W6	W7	W2	W8
2	Puckett, Devon	2023		4	4	W14	W17	W8	L1	W6
3	Gummadi, Suhas	1850		2	4	W21	W18	D9	D4	W11
4	Davidson, Ryan	1324		3	3.5	W29	D9	W10	D3	D7
5	Tang, Colin	1629		3	3.5	W16	L7	W21	D9	W17
6	Byrd, Johnny Mac	1687		3	3	W25	L1	W13	W12	L2
7	Pao, Lucas	1928		3	3	W19	W5	L1	D17	D4
8	Campbell, Joshua A	1932		3	3	W20	W11	L2	W18	L1
9	Zhao, Eric	1757		1	3	W22	D4	D3	D5	D10
10	Wang, Vic			4	3	D13	W15	L4	W19	D9
11	Burgett, Matthew	1569		3	3	W23	L8	W19	W14	L3
12	Sullins, Jonathan	1304		2	3	L1	W25	W23	L6	W21
13	Pafunda, Mason D	1461		1	3	D10	W27	L6	D15	W22
14	Wilder, Marcel E	1242		1	3	L2	W26	W27	L11	W18
15	Stueckle, Joshua S	1474		3	3	D26	L10	W24	D13	W20
16	Sculley, Reed	853		3	3	L5	L19	-B-	W28	W25
17	Cagle, Joseph S	1713		2	2.5	W24	L2	W20	D7	L5
18	Blanchard, Justin	1463		1	2	W28	L3	W22	L8	L14
19	Burns, Jeremy E	1033		1	2	L7	W16	L11	L10	W27
20	Vowell, Jose Luis	1131		1	2	L8	W28	L17	W23	L15
21	Nimon, Thomas W	995		2	2	L3	W29	L5	W27	L12
22	Moran V, Edward	990		1	2	L9	W24	L18	W26	L13
23	Bailey, Jonathan M	645		2	2	L11	-B-	L12	L20	W28
24	Douden, Joshua D	974		2	2	L17	L22	L15	-B-	W26
25	Padezhki, Alexandar	956		4	1.5	L6	L12	D26	W29	L16
26	Wilson, Cameron	416		4	1	D15	L14	D25	L22	L24
27	Christian, Lucas	394		2	1	-B-	L13	L14	L21	L19
28	Davis, Thomas Skyler			4	1	L18	L20	W29	L16	L23
29	Threadgill, Samuel			4	1	L4	L21	L28	L25	-B-
30	Bansal, Saumil	1627		4	0	-U-	-U-	-U-	-U-	-U-
31	Viswanathan, Anand	1363		4	0	-U-	-U-	-U-	-U-	-U-
32	Sprouse, Taylor			2	0	-U-	-U-	-U-	-U-	-U-



The Junior High was dominated by Dhruv Chandra of Nashville. He finished 5-0 winning the section. Following him was a five-way tie for second place shared by Logan Wu, Nicholas Ostoski, Hemi Rambha, Violet De Credico, and Henry Veys all scoring 4 points.



2019 State Finals **JR HIGH**

No.	Name	Rate	Team	Pts	Rnd1	Rnd2	Rnd3	Rnd4	Rnd5
1	Chandra, Dhruv	1885	3	5	W24	W12	W3	W2	W4
2	Wu, Logan	2236	4	4	W13	W5	W8	L1	W10
3	Ostroski, Nicholas	1548	3	4	W17	W15	L1	W14	W9
4	Rambha, Hemachandra	2034	3	4	W26	W11	W7	W10	L1
5	De Credico, Violet	1378	2	4	W30	L2	W26	W13	W7
6	Veys, Henry	1220	2	4	W28	L7	W21	W11	W8
7	Campbell, Harrison	1688	3	3	W22	W6	L4	W12	L5
8	Li, Justin	1629	1	3	W21	W14	L2	W16	L6
9	Jalem Jr, Arya	1702	3	3	W18	W16	L10	W15	L3
10	Irving, Owen	1581	3	3	W20	W19	W9	L4	L2
11	Cagle, Jonathan E	1546	2	3	W25	L4	W24	L6	W22
12	Cao, Kerry K	1357	4	3	W29	L1	W18	L7	W20
13	Goldfeder, Jonathan	843	4	3	L2	W17	W31	L5	W19
14	Priyadarshi, Shreya	1238	3	3	W23	L8	W20	L3	W17
15	Bayazitova, Renata	1068	4	3	W31	L3	W19	L9	W23
16	Mehrotra, Jonathan	1373	4	3	W27	L9	W22	L8	W18
17	Nimon, Oliver	543	2	2	L3	L13	W27	W24	L14
18	Maradana, Tejkaushik	700	4	2	L9	W27	L12	W25	L16
19	Parks, Connor	107	2	2	-B-	L10	L15	W21	L13
20	Scott, Henri J	546	1	2	L10	W28	L14	W31	L12
21	Bingham, Abram	668	4	2	L8	W23	L6	L19	W29
22	Kanamarlapudi, Nitesh	672	2	2	L7	W29	L16	W28	L11
23	Goldfeder, Benjamin	308	4	2	L14	L21	W30	W26	L15
24	Burns, Jonathan A	747	1	2	L1	W30	L11	L17	W27
25	Brooks, Hrishi	497	1	2	L11	L26	W29	L18	W28
26	Perry, Noah	797	2	1	L4	W25	L5	L23	-U-
27	Cross, Joshua	468	1	1	L16	L18	L17	W30	L24
28	Kyle, Elijah Peyton	297	2	1	L6	L20	-B-	L22	L25
29	Gouge, Aaron	403	1	1	L12	L22	L25	-B-	L21
30	Schmitt, Anthony J	490	1	1	L5	L24	L23	L27	-B-
31	Jones, Holly	118	1	1	L15	-B-	L13	L20	-U-
32	Wu, Emma	737	2	0	-U-	-U-	-U-	-U-	-U-



In the Elementary Championship, Ronit Chandra of Nashville took first with 4.5 points. What a proud achievement in the Chandra household to have two brothers winning their respective sections in the same year! Coming up next with just a half-point difference were Lillian Wu and Raymond Cui tying for second place.

### 2019 State Finals **ELEMENTARY**

No.	Name	Rate	Team	Pts	Rnd1	Rnd2	Rnd3	Rnd4	Rnd5
1	Chandra, Ronit	1770	3	4.5	W15	W9	W2	D5	W6
2	Wu, Lillian	1412	4	4	W12	W3	L1	W8	W5
3	Cui, Raymond	1128	4	4	W32	L2	W29	W9	W7
4	Nguyen, James L	917	1	4	L7	W26	W20	W19	W10
5	Tompkins, Claiborn	1747	3	3.5	W25	W20	W13	D1	L2
6	Sandhu, Ehman S	1252	4	3.5	W30	W8	D7	W11	L1
7	Hall, Stewart Will	1372	3	3	W4	D10	D6	W14	L3
8	Meiners Iii, Gordon	1455	1	3	W14	L6	W22	L2	W23
9	Hosad, Shubh	1288	4	3	W21	L1	W24	L3	W25
10	Porter, Noah James	1089	3	3	W31	D7	D19	W13	L4
11	Jain, Arihant	1082	4	3	D27	W18	W23	L6	D12
12	Giddaluri, Nikhil	966	2	3	L2	W30	W28	D16	D11
13	Sahibnazarova, Azi	1350	3	3	W24	W28	L5	L10	W22
14	Campbell, Maxwell	984	3	3	L8	W31	W21	L7	W20
15	Giddaluri, Akhil S	1041	2	3	L1	L21	W31	W29	W19
16	Idell Ii, Wesley D	1268	1	3	L28	D17	W27	D12	W24
17	De Credico, Audrey	890	2	2.5	L19	D16	L18	W21	W27
18	Xiao, Stephen Yang	656	1	2.5	D23	L11	W17	L20	W29
19	Zhong, Maggie	1300	1	2	W17	D22	D10	L4	L15
20	Guo, Justin	1284	3	2	W29	L5	L4	W18	L14
21	Kundavajjala, Sudeep	862	4	2	L9	W15	L14	L17	W30
22	Tsao, Emmanuel	1051	4	2	W26	D19	L8	D23	L13
23	Bradley, Buren	1181	3	2	D18	W27	L11	D22	L8
24	Gummadi, Nivas	891	2	2	L13	W32	L9	W30	L16
25	Wu, Elly	986	2	2	L5	L29	W32	W28	L9
26	Parker, Grayson	493	1	2	L22	L4	L30	W32	W28
27	Cruise, Tucker M	497	2	1.5	D11	L23	L16	W31	L17
28	Quigley, Jack T	844	1	1	W16	L13	L12	L25	L26
29	Kalaga, Aneesh	880	4	1	L20	W25	L3	L15	L18
30	Palanati, Gokul	705	2	1	L6	L12	W26	L24	L21
31	Authier, Lyric C	553	2	1	L10	L14	L15	L27	W32
32	Egner, Jack	638	1	0	L3	L24	L25	L26	L31





Ashish Kalaga won the Primary Championship with 5 wins. Tying next all with 4 points were Marc Wayne Denny, Selena Ma, Ryan Erdman, and Miguel Panelo. Congratulations to all the players who qualified to make it to State Finals and to the winners of course! Special thanks to TN Tech and TCA volunteers for making this a wonderful event!

### 2019 State Individual PRIMARY

Place	Name	Rtg	Rg	Pts	Rnd1	Rnd2	Rnd3	Rnd4	Rnd5
1	Kalaga, Ashish	862	4	5	W30	W17	W8	W7	W6
2	Denny, Marc Wayne	512	4	4	W25	L4	W10	W13	W8
3	Ma, Selena	753	1	4	W11	W19	W9	D6	D7
4	Erdman, Ryan A	833	4	4	W21	W2	L7	W17	W15
5	Panelo, Miguel	621	3	4	W31	L6	W12	W19	W9
6	Sandhu, Gurnoor S	1003	4	3.5	W18	W5	W13	D3	L1
7	Rambha, Gnanadatta	1084	3	3.5	W14	W27	W4	L1	D3
8	Nachnani, Krish	679	3	3	W23	W10	L1	W18	L2
9	Scott, Matthew	940	3	3	W12	W22	L3	W16	L5
10	Gallege, Rehan		1	3	W16	L8	L2	W22	W18
11	Manuel, M Christian		4	3	L3	W14	W27	L15	W17
12	Kolhatkar, Sharvil	428	3	3	L9	W23	L5	W26	W24
13	Udayakumar, Mahatru	685	3	3	W29	W20	L6	L2	W19
14	Wells, Noah D	461	1	3	L7	L11	-B-	W25	W20
15	Gipson, Charles Jo	600	4	3	L20	W28	W30	W11	L4
16	Darapaneni, Sreshath	513	4	3	L10	W31	W21	L9	W23
17	Nguyen, John	471	1	2	W28	L1	W25	L4	L11
18	Singh, Armaan	452	4	2	L6	W24	W20	L8	L10
19	Bathi, Praketh R	110	2	2	-B-	L3	W22	L5	L13
20	Rudek, Derek		2	2	W15	L13	L18	W30	L14
21	Harris, Hannah	256	2	2	L4	W26	L16	L24	W29
22	Jiang, Bochen John	517	1	2	W26	L9	L19	L10	W28
23	Warren, Jackson D		2	2	L8	L12	W29	W27	L16
24	Zhang, Jason		1	2	L27	L18	W28	W21	L12
25	Sikma, Jude		2	2	L2	W29	L17	L14	W31
26	Liu, Abbie		1	2	L22	L21	W31	L12	W27
27	Johnson, Philip Elijah	617	3	1	W24	L7	L11	L23	L26
28	Stewart, Xander		2	1	L17	L15	L24	W31	L22
29	Goodner, Talan		2	1	L13	L25	L23	-B-	L21
30	Wells, Jonah M	281	1	1	L1	-B-	L15	L20	-U-
31	Sikma, Asher		2	0	L5	L16	L26	L28	L25
32	Petapalle, Abhinav	813	3	0	-U-	-U-	-U-	-U-	-U-

### Team Championships:





Region 1 Photos by KB Hanley Photography







*Region 3 Team Photos by Kristi Irving*

The 2019 TN Scholastic Team events took place all over the state in March. Regions 1, 2, and 4 held their Team Regional events on March 2 at Lenoir City Intermediate Middle School, Livingston Academy and Idlewild Elementary in Memphis. Nashville's event was at St. Paul Academy a week later on March 9. The Regional Team events had high player participation this year, 176 for Region 1, 125 for Region 2, about 300 for Region 3 and 100 for Region 4 all together equaling 700 Tennessee chess kids battling for a chance at State Team Finals! Only the top four teams in each section qualify. The [full player lists](#) can be viewed over on our website. Team results by region below:

## 2019 REGION 1 TEAM RESULTS

<b>PRIMARY</b>	Pts	Rnd1	Rnd2	Rnd3	Rnd4	Rnd5
1 King Pawns	5	W5,4.0	W3,3.5	-B-,4.0	W2,2.5	W4,4.0
2 Farragut Primary	3.5	W4,2.5	W5,3.5	D3,2.0	L1,1.5	-B-,4.0
3 Linden Lion Knight's Watch	3	-B-,4.0	L1,0.5	D2,2.0	D4,2.0	W5,3.5
4 Alcoa K-3	2.5	L2,1.5	-B-,4.0	W5,3.5	D3,2.0	L1,0.0
5 Panther Cubs	1	L1,0.0	L2,0.5	L4,0.5	-B-,4.0	L3,0.5

<b>ELEMENTARY</b>	Pts	Rnd1	Rnd2	Rnd3	Rnd4
1 Admirals	4	W6,4.0	W8,4.0	W2,2.5	W4,4.0
2 AL LOTTS	3	W5,3.0	W4,3.0	L1,1.5	W7,3.0
3 Saints	2.5	L4,0.5	D7,2.0	W8,4.0	W9,4.0
4 Spartan Knights	2	W3,3.5	L2,1.0	W6,3.0	L1,0.0
5 Alcoa Intermed 4th-6th	2	L2,1.0	-B-,4.0	D7,2.0	D8,2.0
6 Robertsville Rams	2	L1,0.0	W9,4.0	L4,1.0	-B-,4.0
7 Rocky Hill	1.5	D9,2.0	D3,2.0	D5,2.0	L2,1.0
8 Willow Brook	1.5	-B-,4.0	L1,0.0	L3,0.0	D5,2.0
9 Little Panthers	1.5	D7,2.0	L6,0.0	-B-,4.0	L3,0.0

<b>JR HIGH</b>	Pts	Rnd1	Rnd2	Rnd3	Rnd4
1 JMS	4	W2,3.0	W7,3.5	W3,3.0	W4,2.5
2 Panthers	2.5	L1,1.0	D4,2.0	-B-,4.0	W5,3.0
3 Marooned Mates	2.5	W6,3.0	D5,2.0	L1,1.0	-B-,4.0
4 Big Panthers	2	D5,2.0	D2,2.0	W7,3.0	L1,1.5
5 CAK Warriors	2	D4,2.0	D3,2.0	W6,3.0	L2,1.0
6 Connected Pawns	2	L3,1.0	-B-,4.0	L5,1.0	W7,3.0
7 Alcoa Middle	1	-B-,4.0	L1,0.5	L4,1.0	L6,1.0

<b>HIGH SCHOOL</b>	Pts	Rnd1	Rnd2	Rnd3	Rnd4
1 Hawks - Won Playoff	3	W8,4.0	D3,2.0	W5,4.0	D2,2.0
2 Elder Panthers	3	W7,3.0	W5,2.5	D3,2.0	D1,2.0
3 WEBBU	2.5	W6,3.0	D1,2.0	D2,2.0	D4,2.0
4 Rebel Rooks	2.5	L5,0.5	W7,3.0	W6,3.0	D3,2.0
5 Wild Knights	2	W4,3.5	L2,1.5	L1,0.0	W8,4.0
6 South Rebels	1.5	L3,1.0	W8,4.0	L4,1.0	D7,2.0
7 Pawn Proficient Patriots	1	L2,1.0	L4,1.0	D8,2.0	D6,2.0
8 CBSA	0.5	L1,0.0	L6,0.0	D7,2.0	L5,0.0

<b>B TEAM</b>	Pts	Rnd1	Rnd2	Rnd3	Rnd4
1 LCHS Ferocious Felines	3	W5,3.0	D2,2.0	W4,2.5	W3,2.0
2 Webb B1 Warriors	2.5	-X-,4.0	D1,2.0	D3,1.5	W5,4.0
3 LCHS Cool Cats	2	W4,3.0	W5,2.5	D2,1.5	L1,1.0
4 Linden B2 The Free Folk	1	L3,1.0	-B-,4.0	L1,1.5	-N-,0.0
5 Linden B1 Knights Watch	1	L1,1.0	L3,1.5	-B-,4.0	L2,0.0
6 Happy Valley K-9	0	-F-,0.0	-U-	-U-	-U-

## Region 2 Team

### PRIMARY/B TEAM

No.	Name	Pts	Rnd1	Rnd2	Rnd3	Rnd4
1	Chatt Prep 1	4	W6,2.5	W9,2.0	W3,4.0	W2,3.0
2	Lake Forest Middle School	3	W5,3.0	W6,3.0	W9,4.0	L1,1.0
3	Hilham Elementary	2.5	W4,4.0	W8,3.0	L1,0.0	D5,2.0
4	Big Ridge Elementary	2.5	L3,0.0	W7,3.0	D5,2.0	W8,4.0
5	Chatt Prep 2	2	L2,1.0	-B-,4.0	D4,2.0	D3,2.0
6	Cleveland Middle School	2	L1,1.5	L2,1.0	-B-,4.0	W9,4.0
7	Big Ridge PriB	1.5	L9,1.0	L4,1.0	D8,1.5	-B-,4.0
8	Big Ridge - Elem B	1.5	-B-,4.0	L3,1.0	D7,1.5	L4,0.0
9	Livingston Middle School	1	W7,2.0	L1,1.0	L2,0.0	L6,0.0

### ELEMENTARY

No.	Name	Pts	Rnd1	Rnd2	Rnd3	Rnd4
1	Chattanooga Preparatory School	4	W2,3.0	W3,3.5	W4,4.0	W5,4.0
2	Big Ridge Elementary	3	L1,1.0	W5,4.0	-B-,4.0	W4,3.0
3	Mountain Top Christian Co-op	3	W4,3.0	L1,0.5	W5,4.0	-B-,4.0
4	Cleveland Middle School	1	L3,1.0	-B-,4.0	L1,0.0	L2,1.0
5	Westview Elementary	1	-B-,4.0	L2,0.0	L3,0.0	L1,0.0

### JR HIGH

No.	Name	Pts	Rnd1	Rnd2	Rnd3	Rnd4
1	McCallie School	4	W5,3.0	W2,3.0	W3,3.0	W4,3.0
2	Cleveland Middle School	3	-B-,4.0	L1,1.0	W7,4.0	W5,3.5
3	Lake Forest Middle School	2.5	W7,4.0	D4,2.0	L1,1.0	W6,3.0
4	Rickman Elementary	2	W6,3.0	D3,2.0	D5,2.0	L1,1.0
5	Hilham Elementary	1.5	L1,1.0	-B-,4.0	D4,2.0	L2,0.5
6	Livingston Middle School	1.5	L4,1.0	D7,2.0	-B-,4.0	L3,1.0
7	Wilson Elementary	1.5	L3,0.0	D6,2.0	L2,0.0	-B-,4.0

### HIGH SCHOOL

No.	Name	Pts	Rnd1	Rnd2	Rnd3
1	East Hamilton Middle High Sch	3	W3,4.0	W2,2.5	-B-,4.0
2	McCallie School	1.5	-B-,4.0	L1,1.5	D3,2.0
3	Walker Valley High School	1.5	L1,0.0	-B-,4.0	D2,2.0

## Region 3 Team

### PRIMARY

No.	Name	Pts	Rnd1	Rnd2	Rnd3	Rnd4
1	CLOVERCROFT	4	W16,4.0	W12,4.0	W9,3.0	W3,2.5
2	UNIVERSITY SCHOOL	3.5	W8,3.0	D4,2.0	W11,2.5	W7,3.0
3	ST BERNARD'S ACADEMY	3	W13,4.0	W10,4.0	W6,4.0	L1,1.5
4	HARDING ACADEMY	3	W14,4.0	D2,2.0	W10,2.5	D6,2.0
5	LOCKELAND DESIGN CENTER	3	L12,1.5	W8,2.5	W15,3.0	W9,3.0
6	GRANBERY	2.5	W7,3.0	W15,3.0	L3,0.0	D4,2.0
7	JULIA GREEN	2	L6,1.0	-B-,4.0	W12,4.0	L2,1.0
8	TRINITY ELEMENTARY	2	L2,1.0	L5,1.5	W17,3.5	W13,4.0
9	OVERBROOK	2	-B-,4.0	W11,3.0	L1,1.0	L5,1.0
10	HARPETH VALLEY ELEMENTARY	2	W15,3.0	L3,0.0	L4,1.5	W14,3.0
11	ST PAUL CHRISTIAN ACADEMY	2	W17,4.0	L9,1.0	L2,1.5	W16,4.0
12	ENSWORTH	2	W5,2.5	L1,0.0	L7,0.0	W17,4.0
13	STANFORD MONTESSORI	1.5	L3,0.0	W16,4.0	D14,2.0	L8,0.0
14	HULL JACKSON MONTESSORI	1.5	L4,0.0	W17,3.5	D13,2.0	L10,1.0
15	KENROSE	1	L10,1.0	L6,1.0	L5,1.0	-B-,4.0
16	BELLSHIRE ELEMENTARY	1	L1,0.0	L13,0.0	-B-,4.0	L11,0.0
17	LIPSCOMB ACADEMY	0	L11,0.0	L14,0.5	L8,0.5	L12,0.0

### ELEMENTARY

No.	Name	Pts	Rnd1	Rnd2	Rnd3	Rnd4
1	USN	3.5	W11,4.0	W9,4.0	D7,2.0	W2,3.0
2	CLOVERCROFT	3	W10,4.0	W4,4.0	W3,3.0	L1,1.0
3	ST PAUL	3	W6,4.0	W5,4.0	L2,1.0	W7,2.5
4	HARDING ACADEMY	2.5	W14,3.0	L2,0.0	D8,2.0	W12,3.0
5	J.T. MOORE	2.5	W16,4.0	L3,0.0	W10,3.0	D6,2.0
6	ENSWORTH	2.5	L3,0.0	W16,4.0	W9,2.5	D5,2.0
7	BRENTWOOD MIDDLE	2	D12,2.0	W8,2.5	D1,2.0	L3,1.5
8	MEIGS	2	W15,3.5	L7,1.5	D4,2.0	D11,2.0
9	OVERBROOK	2	W13,3.0	L1,0.0	L6,1.5	W14,3.0
10	JORDAN ELEMENTARY	2	L2,0.0	W12,3.0	L5,1.0	W15,4.0
11	KENROSE ELEMENTARY	2	L1,0.0	D13,2.0	W14,3.0	D8,2.0
12	ST BERNARD	1.5	D7,2.0	L10,1.0	W13,4.0	L4,1.0
13	SYLVAN PARK	1.5	L9,1.0	D11,2.0	L12,0.0	W16,2.5
14	HARPETH VALLEY	1	L4,1.0	W15,2.5	L11,1.0	L9,1.0
15	LOCKELAND DESIGN CENTER	1	L8,0.5	L14,1.5	W16,3.0	L10,0.0
16	STRIVE COLLEGIATE ACADEMY	0	L5,0.0	L6,0.0	L15,1.0	L13,1.5



### JR HIGH

No.	Name	Pts	Rnd1	Rnd2	Rnd3	Rnd4
1	MBA	3.5	W7,4.0	W5,3.0	W2,3.0	D3,2.0
2	ST BERNARD	3	W6,3.0	W3,2.5	L1,1.0	W5,3.5
3	HARDING ACADEMY	2.5	W8,3.0	L2,1.5	W6,2.5	D1,2.0
4	OVERBROOK	2.5	L5,1.5	-B-,4.0	D7,2.0	W9,2.5
5	VALOR COLLEGIATE ACADEMY	2	W4,2.5	L1,1.0	W9,4.0	L2,0.5
6	PAGE MIDDLE SCHOOL	2	L2,1.0	W8,3.0	L3,1.5	-B-,4.0
7	USN	2	L1,0.0	W9,4.0	D4,2.0	D8,2.0
8	MEIGS	1.5	L3,1.0	L6,1.0	-B-,4.0	D7,2.0
9	OLIVER MIDDLE	1	-B-,4.0	L7,0.0	L5,0.0	L4,1.5

### HIGH SCHOOL

No.	Name	Pts	Rnd1	Rnd2	Rnd3	Rnd4
1	CAMPBELL HOME SCHOOL	3.5	W4,4.0	D2,2.0	W5,4.0	W6,4.0
2	MBA	3	W6,4.0	D1,2.0	D3,2.0	W4,3.0
3	USN	2.5	W5,3.5	L4,1.0	D2,2.0	W5,4.0
4	HUME FOGG	2	L1,0.0	W3,3.0	W6,4.0	L2,1.0
5	DAVIDSON ACADEMY	1	L3,0.5	W6,4.0	L1,0.0	L3,0.0
6	SPRING HILL HOMESCHOOL	0	L2,0.0	L5,0.0	L4,0.0	L1,0.0

### K-3 B TEAM

No.	Name	Pts	Rnd1	Rnd2	Rnd3	Rnd4
1	ST BERNARD	3.5	W8,4.0	W7,4.0	D2,2.0	W3,4.0
2	USN MAROON *Won Playoff	3.5	W4,3.0	W6,3.5	D1,2.0	W7,3.0
3	CLOVERCROFT	2.5	D5,2.0	W9,3.0	W6,4.0	L1,0.0
4	OVERBROOK BLUE AND GOLD	2	L2,1.0	-B-,4.0	W5,3.5	L6,1.5
5	TRINITY ELEMENTARY	2	D3,2.0	D8,2.0	L4,0.5	W9,3.0
6	ENSWORTH TIGERS	2	W9,3.0	L2,0.5	L3,0.0	W4,2.5
7	OVERBROOK GIRL EAGLES	2	-B-,4.0	L1,0.0	W8,2.5	L2,1.0
8	JULIA GREEN	1.5	L1,0.0	D5,2.0	L7,0.5	-B-,4.0
9	ENSWORTH KINDERGARTEN	1	L6,1.0	L3,1.0	-B-,4.0	L5,1.0

### K-12 B TEAM

No.	Name	Pts	Rnd1	Rnd2	Rnd3	Rnd4
1	MBA 7th Grade	4	W9,4.0	W3,3.0	W8,4.0	W2,3.5
2	ST PAUL SAINTS	3	W4,4.0	W7,4.0	W5,4.0	L1,0.5
3	MBA 8th Grade	3	W11,4.0	L1,1.0	W9,4.0	W5,4.0
4	GRANBERY	2.5	L2,0.0	W11,3.5	W10,4.0	D6,2.0
5	USN	2	W6,3.0	W8,2.5	L2,0.0	L3,0.0
6	ST BERNARD RED AND WHITE	2	L5,0.0	D10,1.5	W7,2.0	D4,2.0
7	ENSWORTH ORANGE AND BLACK	2	-B-,4.0	L2,0.0	L6,1.0	W11,2.5
8	CLOVERCROFT	1.5	W10,4.0	L5,1.5	L1,0.0	D9,2.0
9	OVERBROOK	1.5	L1,0.0	-B-,4.0	L3,0.0	D8,2.0
10	ST PAUL BLUE AND WHITE	1.5	L8,0.0	D6,1.5	L4,0.0	-B-,4.0
11	J.T.MOORE	1	L3,0.0	L4,0.5	-B-,4.0	L7,1.5

## Region 4 Team

### PRIMARY

No.	Name	Pts	Rnd1	Rnd2	Rnd3
1	Grahamwood	3	W2,3.0	W3,4.0	-B-,4.0
2	Idlewild	2	L1,1.0	-B-,4.0	W3,4.0
3	Douglass K-8	1	-B-,4.0	L1,0.0	L2,0.0

### ELEMENTARY

No.	Name	Pts	Rnd1	Rnd2	Rnd3	Rnd4
1	Grahamwood	4	W6,3.5	W3,4.0	W2,4.0	W5,4.0
2	White Station MS	3	W4,4.0	W7,4.0	L1,0.0	W3,3.0
3	Idlewild	2	W5,4.0	L1,0.0	W7,3.5	L2,1.0
4	Douglass K-8	2	L2,0.0	D6,2.0	-B-,4.0	D7,2.0
5	Highland Oaks MS	2	L3,0.0	-B-,4.0	W6,2.5	L1,0.0
6	Maxine Smith Steam Academy	1.5	L1,0.5	D4,2.0	L5,1.5	-B-,4.0
7	West Collierville MS	1.5	-B-,4.0	L2,0.0	L3,0.5	D4,2.0

### JR HIGH

No.	Name	Pts	Rnd1	Rnd2	Rnd3	Rnd4
1	White Station MS	4	W3,3.5	W2,3.5	W4,3.5	W6,3.0
2	White Station HS	3	W5,4.0	L1,0.5	W6,4.0	W3,3.5
3	Highland Oaks MS	2	L1,0.5	W4,3.0	W5,3.0	L2,0.5
4	West Collierville MS	2	W6,3.0	L3,1.0	L1,0.5	W5,4.0
5	Grahamwood	1	L2,0.0	W6,3.0	L3,1.0	L4,0.0
6	Douglass K-8	0	L4,1.0	L5,1.0	L2,0.0	L1,1.0

### HIGH SCHOOL

No.	Name	Pts	Rnd1	Rnd2	Rnd3	Rnd4
1	White Station HS	4	W2,3.5	W4,3.5	W3,2.5	W5,4.0
2	Douglass K-8	3	L1,0.5	-B-,4.0	W5,3.0	W4,4.0
3	White Station MS	2.5	D4,2.0	W5,3.0	L1,1.5	-B-,4.0
4	Highland Oaks MS	1.5	D3,2.0	L1,0.5	-B-,4.0	L2,0.0
5	Idlewild	1	-B-,4.0	L3,1.0	L2,1.0	L1,0.0

---



All four regions came back together on March 23 at Tennessee Tech University for the 2019 State Team Finals. The NCC's DGT board was put to good use again showing and streaming the games from high school board 1. The games can still be viewed on [Live Chess Cloud here](#).





Congratulations to Montgomery Bell Academy of Nashville on their sweep in High School. Tennessee Tech University awarded each of the team's players a college scholarship with their victory. Their perfect score put them a full point ahead of White Station High School and Hardin Valley tying for second place. A playoff tie break game determined that the second place scholarship prizes be awarded to White Station High School. For the [player lists](#) click here. Full team results below:

<u>No.</u>	<u>HIGH SCHOOL TEAM</u>	<u>Rate</u>	<u>Pts</u>	<u>Rnd1</u>	<u>Rnd2</u>	<u>Rnd3</u>	<u>Rnd4</u>
1	MONTGOMERY BELL ACADEMY	1730	4	W9,4.0	W3,3.0	W5,3.0	W2,2.5
2	WHITE STATION HIGH SCHOOL	1519	3	W11,3.5	W8,3.5	W7,3.5	L1,1.5
3	HARDIN VALLEY	1304	3	W10,4.0	L1,1.0	W11,3.0	W5,3.0
4	UNIVERSITY SCHOOL NASHVILLE	1309	2.5	W14,4.0	L5,0.0	D6,2.0	W8,3.0
5	CAMPBELL HOME SCHOOL	1767	2	W6,4.0	W4,4.0	L1,1.0	L3,1.0
6	LENOIR CITY	1102	2	L5,0.0	W12,4.0	D4,2.0	D7,2.0
7	WEBB	1285	2	D12,2.0	W9,2.0	L2,0.5	D6,2.0
8	HUME FOGG	1130	2	W13,3.0	L2,0.5	W14,4.0	L4,1.0
9	EAST HAMILTON MIDDLE	1001	2	L1,0.0	L7,1.0	W12,3.0	W11,3.0
10	WHITE STATION MIDDLE	697	1.5	L3,0.0	L11,0.0	D13,2.0	W14,2.0
11	WALKER VALLEY HIGH SCHOOL	891	1	L2,0.5	W10,4.0	L3,1.0	L9,1.0
12	DOUGLASS	552	1	D7,2.0	L6,0.0	L9,1.0	D13,2.0
13	HIGHLAND OAKS MIDDLE	418	1	L8,1.0	L14,1.0	D10,2.0	D12,2.0
14	McCALLIE SCHOOL	802	1	L4,0.0	W13,3.0	L8,0.0	L10,1.0
15	OAK RIDGE	945	0	-U-	-U-	-U-	-U-





*Montgomery Bell Academy, 2019 TN High School Team Champions*



In Junior High there was a tie for first between Montgomery Bell Academy and White Station Middle. A tie break match was played with MBA winning. Junior High team captain, Dhruv Chandra played on the high school team simultaneously and performed like a pro for both. MBA has had an incredible year in chess under the direction of High School team captain, Lucas Pao. He will be graduating next month and heading off to Oxford University. Congratulations and job well done!

<u>No.</u>	<u>JR HIGH TEAM</u>	<u>Rate</u>	<u>Pts</u>	<u>Rnd1</u>	<u>Rnd2</u>	<u>Rnd3</u>	<u>Rnd4</u>
1	MONTGOMERY BELL ACADEMY	1380	3.5	W12,4.0	W7,4.0	D2,2.0	W3,2.5
2	WHITE STATION MIDDLE	1254	3.5	W11,4.0	W5,4.0	D1,2.0	W7,2.5
3	HARDING ACADEMY	1284	3	W13,3.5	W4,4.0	W8,4.0	L1,1.5
4	McCALLIE SCHOOL	655	3	W15,4.0	L3,0.0	W11,4.0	W8,4.0
5	HIGHLAND OAKS MIDDLE	644	3	W9,4.0	L2,0.0	W15,4.0	W10,2.5
6	LENOIR CITY	335	2.5	D10,2.0	W13,2.5	L7,1.0	W15,3.0
7	JEFFERSON	812	2	W14,3.0	L1,0.0	W6,3.0	L2,1.5
8	RICKMAN ELEMENTARY	300	2	-B-,4.0	W10,3.5	L3,0.0	L4,0.0
9	LAKE FORREST MIDDLE	337	2	L5,0.0	L11,0.0	-B-,4.0	W13,3.0
10	ST BERNARD	593	1.5	D6,2.0	L8,0.5	W12,3.0	L5,1.5
11	GRAHAMWOOD	426	1.5	L2,0.0	W9,4.0	L4,0.0	D14,2.0
12	OVERBROOK	490	1.5	L1,0.0	D14,2.0	L10,1.0	-B-,4.0
13	HAPPY VALLEY	427	1	L3,0.5	L6,1.5	W14,3.0	L9,1.0
14	CLEVELAND MIDDLE	424	1	L7,1.0	D12,2.0	L13,1.0	D11,2.0
15	LENOIR CITY INTERMEDIATE	351	1	L4,0.0	-B-,4.0	L5,0.0	L6,1.0
16	WEST COLLIERVILLE MIDDLE	741	0	-U-	-U-	-U-	-U-



Montgomery Bell Academy, 2019 TN Junior High Team Champions





Grahamwood Elementary School of Memphis won in the Elementary section with a perfect score. They are pictured below with Coach Jonathan Beatty. Farragut of Knoxville had a clear second place with three points out of four.

<b>No.</b>	<b>ELEMENTARY TEAM</b>	<b>Rate</b>	<b>Pts</b>	<b>Rnd1</b>	<b>Rnd2</b>	<b>Rnd3</b>	<b>Rnd4</b>
1	GRAHAMWOOD	1186	4	W6,4.0	W9,3.5	W3,2.5	W4,4.0
2	FARRAGUT	755	3	W16,4.0	L4,1.5	W11,3.5	W7,3.0
3	ST PAUL CHRISTAIN ACAD	1126	2.5	W10,3.5	W7,4.0	L1,1.5	D5,2.0
4	WHITE STATION MIDDLE	947	2.5	W11,3.0	W2,2.5	D5,2.0	L1,0.0
5	CLOVERCROFT	989	2.5	W12,3.0	D8,2.0	D4,2.0	D3,2.0
6	CHATTANGOOGA PREPARATORY	495	2.5	L1,0.0	W15,4.0	W14,4.0	D9,2.0
7	UNIVERSIY SCHOOL NASHVILLE	914	2	W13,4.0	L3,0.0	W8,3.0	L2,1.0
8	WEBB	638	2	W15,4.0	D5,2.0	L7,1.0	D10,2.0
9	HARDING ACADEMY	875	2	W14,3.0	L1,0.5	D10,2.0	D6,2.0
10	IDLEWILD	495	2	L3,0.5	W13,3.0	D9,2.0	D8,2.0
11	EPISCOPAL SCHOOL KNOXVILLE	399	2	L4,1.0	W16,3.0	L2,0.5	W14,4.0
12	AL LOTTS ELEMENTARY	418	1.5	L5,1.0	L14,1.0	D15,2.0	W16,2.5
13	BIG RIDGE ELEMENTARY	310	1.5	L7,0.0	L10,1.0	W16,4.0	D15,2.0
14	DOUGLASS	300	1	L9,1.0	W12,3.0	L6,0.0	L11,0.0
15	CLEVELAND MIDDLE	300	1	L8,0.0	L6,0.0	D12,2.0	D13,2.0
16	WESTVIEW ELEMENTARY	300	0	L2,0.0	L11,1.0	L13,0.0	L12,1.5



Grahamwood Elementary, 2019 TN Elementary Team Champions





Over in the K-3 Primary section, even the youngest warriors battled for a chance at becoming champion. It came down to a playoff for first between University School of Nashville and Idlewild of Memphis with USN winning. Both teams are pictured below with coaches Todd Andrews and Mark Beatty.





<b>No.</b>	<b>PRIMARY TEAM</b>	<b>Rate</b>	<b>Pts</b>	<b>Rnd1</b>	<b>Rnd2</b>	<b>Rnd3</b>	<b>Rnd4</b>
1	UNIVERSITY SCHOOL PRIMARY	725	3.5	-X-,4.0	D2,2.0	W6,4.0	W3,3.0
2	IDLEWILD	379	3.5	W11,4.0	D1,2.0	W7,3.5	W5,3.0
3	GRAHAMWOOD	828	3	W7,4.0	W6,4.0	W5,3.0	L1,1.0
4	WEBB PRIMARY	320	2.5	L5,0.0	D9,2.0	W11,4.0	W10,3.5
5	ST BERNARD'S ACADEMY	660	2	W4,4.0	W8,4.0	L3,1.0	L2,1.0
6	CLOVERCROFT	583	2	W10,3.0	L3,0.0	L1,0.0	W9,4.0
7	HARDING ACADEMY	348	2	L3,0.0	W10,3.0	L2,0.5	-B-,4.0
8	BIG RIDGE PRIMARY	300	2	-B-,4.0	L5,0.0	L9,0.0	W11,4.0
9	FARRAGUT	339	1.5	-F-,0.0	D4,2.0	W8,4.0	L6,0.0
10	LINDEN	300	1	L6,1.0	L7,1.0	-B-,4.0	L4,0.5
11	DOUGLASS	300	1	L2,0.0	-B-,4.0	L4,0.0	L8,0.0
12	LENOIR CITY ELEMENTARY	300	0	-U-	-U-	-U-	-U-





Primary Playoff with TDs Harry Sabine, Chris Prosser and Jerry Nash



University School of Nashville, 2019 TN Primary Team Champion





Extra thanks to TDs Jay Sabine and Jerry Nash who made sure everybody played a rated game every round back in the Alternates section. These are mostly the younger players and so it was highly entertaining watching them trying to figure out how to read the old-timey analog clocks the TCA provided for them. One more thank you to Tennessee Tech and Paul Semmes for putting on a wonderful tournament.

---

## Murfreesboro Upcoming Events

By: Norbert Thiemann

### Rated Blitz Chess in Murfreesboro

The MCC has a fast-paced blitz tournament held on the last Thursday of every month, which only effects the players' blitz ratings. We use a self-pairing method where every player receives their own pairing card. It informs them to what board, opponent and color they are due for every upcoming round. They simply mark the result after each game. Our next event is on **April 25, 2019**, and you can learn more about our methodologies on the **[MCC Blitz Page](#)**.

### Slowest Quick Time Control for MCC's Spring Tournament

G/25;d5 is a dual time control, which effects both regular and quick ratings. For that reason we are opting for the G/25;d3 time control, which is solely for a player's quick chess rating. This event is being held on **Saturday April 27, 2019**.

### 2019 Murfreesboro Open

May 25, 2019 Site: First Cumberland Presbyterian Church, 907 Main St. (parking in back accessed on N. Bilbro Ave.), Murfreesboro, TN 37130. 5SS; Rd. 1, G/25 d5; Rd. 2, G/45 d5; Rds. 3, 4, 5, G/60 d5. Open Section: \$575 in Prizes based on 30 entries, \$150 1st, \$75 2nd, Class Prizes X, A, B, C, D, E/below, Unr., each \$50, Above 30 players, additional prizes will be added and/or increased. Rounds: 9, 10, 12:30, 3:00, 5:30. Registration: 7:30am – 8:45am. EF: \$25 by check if received by 05/20, \$30 cash at site. Bye: One half point bye is available for any Rd. per player if requested before Rd. 1. Early Entries: mail to Chris Prosser (TD), 733 Long Hunter Ct., Nashville, TN 37217. More Info: [murfreesborochess@gmail.com](mailto:murfreesborochess@gmail.com), [murfreesborochess.weebly.com/](http://murfreesborochess.weebly.com/)

---

## Shelby County Chess Happenings

By: Korey Kormick





Spring 2019 has been an eventful one for Shelby County Chess. Our monthly scholastic series picked up in March with our “Pot of Gold” tournament, hosted at and in association with Rhodes College. Students got to practice their skills in halls reminiscent of Hogwarts, vying for green beaded necklaces and their own green hats full of golden (chocolate) coins. Several members of the college chess club, many of whom also coach in the Memphis area, assisted as tournament volunteers to help the players feel welcome. April brought another “Egg-cellent” tournament, as fifty players searched high and low for their opponents’ pieces to take. Some players use these regular events as benchmarks to evaluate how far they’ve progressed throughout the season, while others focus on the longer time controls to practice and prepare for other events, especially state and national competitions.

While the regular scholastic circuit takes its summer hiatus, West Tennessee is still going to be happening with two major events: one a week-long chess experience, and the other a national event in our own backyard. The 2019 Mid-South Chess Camp will be the eighteenth annual edition, hosted once again on the campus of Memphis University School, June 9-15th. Returning headline instructors Grandmasters Alex Stripunsky and Joel Benjamin and local International Master Jake Kleiman lead a talented team of coaches and trainers in a full week of level-based chess classes for students of all ages and experience. Local students may participate in day and evening activities, while out-of-town participants have a fully immersive residential experience also! The 2019 US Amateur South Championship is in its ninth edition here in Memphis, July 27-28th. This tournament is solely focused on players below the Master class (under 2200 rating), where players compete for the title, souvenirs, and pride instead of

for prize money. The competition is no less fierce, however, as the best class players in the region seek out their opportunity for national glory, with winners over the years being the best of Tennessee, as well as coming in from Missouri, Kansas, Florida, and Louisiana. Will another “outstater” win this year, or will a Tennessean defend and claim the title again?! Full details on both events are available at [www.chesscamp.us](http://www.chesscamp.us) and [www.shelbycountyChess.com](http://www.shelbycountyChess.com).



## Top Ten Tennessee Chess Players

1. IM Jake Kleiman 2480
2. IM Ron Burnett 2406
3. FM Todd Andrews 2394
4. NM Alex King 2349
5. NM Forest Chen 2313
6. NM Dean Lee 2303
7. NM Graham Horobetz 2298
8. FM Peter Bereolos 2290
9. Jimmy Garcia 2284
10. Logan Wu 2224

For more US Chess Top 100 Rating Lists, visit [www.uschess.org](http://www.uschess.org)

---

## Tennessee Chess Patrons

The TCA wishes to send special thanks to the current 2019 Patron and Life Members. Without their contributions, much of what the TCA accomplishes would not be possible.

2019 Patron Members:

DAVID SNODGRASS

PAUL SEMMES

MICHAEL NATH

Life Members:

DR. MARTIN KATAHN

PAT KNIGHT SMITH

PETER LAHDE

R. K. SHIMABUKURO

We need new Patrons for the 2019 year! The Tennessee Chess Association appreciates those who help sponsor the game and offers tax-deductible memberships to Patrons beginning at \$100 per year. Membership for all levels will be for 12 calendar months (including the month membership is paid). To check your membership expiration, please visit our [current members page](#). If you'd like to renew your membership or become a TCA member, visit our [membership page](#). Thank you for supporting TCA!



**Tennessee Chess Calendar**

April 25, 2019 **MCC Rated Blitz** @ First Cumberland Presbyterian Church, Murfreesboro, TN

April 27, 2019 **MCC Spring Quick**@ Technology Engagement Center, Murfreesboro, TN

May 4, 2019 **Nashville Monthly Swiss** @ Nashville Chess Center

May 4, 2019 **Happy Valley High School Scholastic Chess Tournament** @ Happy Valley Middle School Cafeteria, Elizabethton, TN

May 10-12, 2019 **2019 National Elementary K-6 Championship** @ Opryland Hotel, Nashville, TN

May 17-19, 2019 **2019 Tennessee Senior Open** @ Fair Park Senior Center, Crossville **Online Registration**

May 18, 2019 **Pawn Power 15 US Chess Junior Grand Prix!** @ IBEW, Memphis

May 25, 2019 **2019 Murfreesboro Open** @ First Cumberland Presbyterian Church, Murfreesboro, TN

Summer 2019 **Summer Chess Camps** @ Nashville Chess Center

June 8, 2019 **2019 Tennessee Home School State Championship and Open Scholastic** @ Northfield Conference Center, Spring Hill, TN

June 8, 2019 **Rea Hayes Open Chess Tournament** @ Chattanooga Christian School, Chattanooga, TN

June 9-15, 2019 **Mid-South Chess Camp** @ Memphis University School, Memphis

June 10-14, 2019 **Fundamentals Chess Camp** @ Webb School of Knoxville

June 15, 2019 **John Hurt Memorial Chess Tournament** @ IBEW, Memphis

July 8-12, 2019 **Intermediate/Advanced Chess Camp** @ Webb School of Knoxville

July 20, 2019 **Clinton H. Pearson Jr. Memorial Summer Open Chess Tournament** @ Cumberland County Community Complex, Crossville, TN

July 20, 2019 **Hot Summer Swiss US Chess Grand Prix** @ IBEW, Memphis



July 22-26, 2019 **Novice/Advanced Chess Camps @ UT Knoxville**

July 27-28, 2019 **US Amateur South Championship @ Lausanne Collegiate Academy, Memphis**

September 13-15, 2019 **2019 Tennessee Open State Chess Championship @ Montgomery Bell State Park, Burns, TN**

September 21, 2019 **Overbrook Scholastic City Qualifier @ Overbrook School, Nashville**

October 12, 2019 **Cumberland County Fall Open National Chess Day Chess Tournament @ Cumberland County Community Complex, Crossville, TN**

May 8-10, 2020 **2020 National Elementary Championship @ Opryland Hotel, Nashville, TN**

May 7-9, 2021 **2021 SuperNationals VII @ Opryland Hotel, Nashville, TN**

---

## Forms & Flyers

**A Monthly Event (Last Thursday of each Month)**

### **Murfreesboro Thursday Night Round Robin Blitz Tournament**

FIRST CUMBERLAND PRESBYTERIAN CHURCH  
907 EAST MAIN STREET (PARKING AND BASEMENT ACCESS ON N. BILBRO AVE.)  
MURFREESBORO, TN 37130

**65 % OF ENTRIES RETURNED**

---

**Sectioned Round Robin(s) Based on Participation. 12 Rounds Absolute Max. Section Divisions @ Organizer and/or TD Discretion.**

---

**PRIZES:**

65% Returned.

**FORMAT:**

Round Robin, G/3;d2 Round Times: 1st Round 7:30pm (rounds every 15 minutes to completion).

**ENTRY FEES:**

\$6.00

**ENTRIES TO:**

Cash @ Site On-site Reg: 6:30pm to 7:15pm

No Smoking. No Computers. Wheelchair Accessible with Text Communication. Email for any details.  
[murfreesborochess@gmail.com](mailto:murfreesborochess@gmail.com)

\* Please bring your digital chess clock set to G/3;d2.

Learn more about the unique format <https://murfreesborochess.weebly.com/blitz.html>

---

MCC 2019 SPRING QUICK CHESS TOURNAMENT

Apr 27, 2019

## Murfreesboro Spring Quick Chess Tournament

TECHNOLOGY ENGAGEMENT CENTER  
306 MINERVA DR.  
MURFREESBORO, TN 37130

---

### Swiss Open

---

**PRIZES:**

Based on 12 players. 1st \$70 2nd \$45 U1600 \$30 Additional prizes will be added, or prizes will be increased with more players, and reduced with less than 12 @ TD's discretion.

**FORMAT:**

4 Round Swiss, G/25;d3 Affects Quick rating only.

Rounds: 10:25, 11:35, 1:45, 2:55

Byes: A one half-point bye allowed for rounds 1 - 3 if requested before round 1 begins.

**ENTRY FEES:**

\$15 cash only, collected on-site.

**ENTRIES TO:**

On-site Reg: 10:00 – 10:15

\* All players are required to bring their own digital clocks preset for time control, as well as their tournament board and chess set. Scoresheets will be provided. RSVPs are appreciated. Email with any inquiries.

No Smoking. No Computers. Wheelchair Accessible.

[murfreesborochess@gmail.com](mailto:murfreesborochess@gmail.com)

<https://murfreesborochess.weebly.com/>

---

# Happy Valley High School

## SCHOLASTIC CHESS TOURNAMENT

**Date:** Saturday, May 4<sup>th</sup>, 2019  
**Entry Fee:** \$20 if registered by April 26<sup>th</sup>  
 \$25 if registered after April 26<sup>th</sup> or on-site

May the Fourth  
be with you!



The first 20  
Registrants will  
receive a light saber.

Register online at [www.Reg4Chess.com](http://www.Reg4Chess.com) and pay on-site **OR**

Mail form and check (payable to "HVHS") to the payment address:

Tournament Location:	Payment Address:
Happy Valley Middle School Cafeteria 163 Warpath Lane Elizabethton, TN 37643	ATTN: Susan Burns Happy Valley High School 121 Warpath Lane Elizabethton, TN 37643

\* The tournament will be held in Happy Valley Middle School's cafeteria. Skittles will be in the gym. \*

Sections	Novice/Unrated: K-3, 4-6, 7-9, 10-12	4 Rounds
	Championship/Rated: K-3, 4-6, 7-9, 10-12	G/45 d5

\*G/45 d5: Each player has 45 minutes on their clock with a 5 second delay to make a move.

- Chess sets will be provided. Please bring chess clocks if you would like to use one.
- Check-in and on-site registration: 7:30 am – 8:30 am.
- Round 1 begins at 9:00 am. Rounds begin ASAP after previous round is completed. No lunch break will be provided. Concessions will be available from 11 am – 3 pm.
- Email [susanburns@carterk12.net](mailto:susanburns@carterk12.net) for more information.
- 1<sup>st</sup>, 2<sup>nd</sup>, and 3<sup>rd</sup> place trophies awarded for each section.
- 4<sup>th</sup>, 5<sup>th</sup>, and 6<sup>th</sup> place medals awarded for each section.

*Trophy Awarded for Best Costume for  
Star Wars Theme.*

Please tear here and return this form with check if paying by mail.

\*\*\*\*\*

Name: \_\_\_\_\_ School: \_\_\_\_\_ Grade: \_\_\_\_\_

Parent/Guardian Name: \_\_\_\_\_ Contact Phone(s): \_\_\_\_\_

Address: \_\_\_\_\_ City: \_\_\_\_\_ State: \_\_\_\_\_ Zip: \_\_\_\_\_

Email: \_\_\_\_\_ Player's Date of Birth: \_\_\_\_\_

Section Entered (Circle one): **Championship** **Novice** Amount Enclosed: \_\_\_\_\_

For Championship Entrants: USCF ID: \_\_\_\_\_ Expiration Date: \_\_\_\_\_





## 2019 TENNESSEE SENIOR OPEN CHESS TOURNAMENT

Open to age 50 and older (born before May 17, 1969)

\$400 \*Guaranteed\* \$400

**MAY 17 - 19, 2019**

Sponsored by Tennessee Chess Association, Cumberland County Chess Club, City of  
Crossville and Fair Park Senior Center

at the Fair Park Senior Center: 1433 Livingston Road, Crossville, Tennessee

<p><b><u>Rounds:</u></b> 5 Round Swiss</p> <p><b><u>Schedules:</u></b> <b>Traditional Schedule</b> (Game/120;d5) 1<sup>st</sup> Round - Friday at 4:00 pm 2<sup>nd</sup> Round - Saturday at 10:00 am 3<sup>rd</sup> Round - Saturday at 4:00 pm 4<sup>th</sup> Round - Sunday at 9:00 am 5<sup>th</sup> Round - Sunday 2:00 pm</p> <p><b>2 – Day Schedule:</b> 1<sup>st</sup> Round - Saturday at 10:00 am 2<sup>nd</sup> Round - Saturday at 1:00 pm Rounds 1 and 2 Game/60;d5 (merges with Traditional Schedule for Rounds 3, 4 and 5) <b>USCF membership required</b> <b>TCA dues required for</b> <b>Tennessee residents</b> <b>TCA dues \$10.00</b></p>	<p><b><u>INFORMATION</u></b></p> <p><b>Entry Fee:</b> \$25.00 if mailed before May 12, 2019 \$35.00 later and at site \$10.00 entry fee for unrateds</p> <p><b>Registration:</b> Friday 2:00 PM to 3:30 pm Saturday 8:00 AM to 9:30 am All times are Central Daylight Time</p> <p><b>Entries:</b> Enter on line at <a href="http://www.cumberlandcountychess.org">www.cumberlandcountychess.org</a> or mail to: Harry D. Sabine P.O. Box 381 Crossville, TN 38557 Phone: (931) 484-9593 Fax: (931) 456-7624 Cell: (931) 261-8440 Email: <b>*For Questions Only*</b> <a href="mailto:hdsabine@citlink.net">hdsabine@citlink.net</a></p> <p>The top finishing Tennessee resident will be invited to the National Senior Tournament of Champions to be held at the 2019 U.S. Open in Orlando, FL.</p>	<p><b><u>PRIZES</u></b></p> <table style="width: 100%; border: none;"> <tr><td>1st Place</td><td style="text-align: right;">\$150.00</td></tr> <tr><td>2<sup>nd</sup> Place</td><td style="text-align: right;">\$100.00</td></tr> <tr><td>Class A/B</td><td style="text-align: right;">\$ 50.00</td></tr> <tr><td>Class C/D</td><td style="text-align: right;">\$ 50.00</td></tr> <tr><td>Class E &amp; Below</td><td style="text-align: right;">\$ 50.00</td></tr> </table> <p><b><u>PLAQUES</u></b> Top 2 Top Age 60 – 69 Top Age 70 - 79 Top Age 80 &amp; Older (Plaques are for Tennessee Residents Only) Medals to all participants.</p> <p><b>Byes:</b> ½ point bye available for any one (and only one) round if requested at or before registration.</p>	1st Place	\$150.00	2 <sup>nd</sup> Place	\$100.00	Class A/B	\$ 50.00	Class C/D	\$ 50.00	Class E & Below	\$ 50.00
1st Place	\$150.00											
2 <sup>nd</sup> Place	\$100.00											
Class A/B	\$ 50.00											
Class C/D	\$ 50.00											
Class E & Below	\$ 50.00											

**HOTEL INFORMATION:**

Crossville Quality Inn  
4035 Highway 127 N (I-40 at Exit 317)  
Crossville, TN 38571  
(931) 484-1551  
Rate - \$69.00 + tax for 1 - 4 persons  
(must reserve by May 10, 2019)

**ENTRY FORM**

USCF ID: \_\_\_\_\_ Exp Date: \_\_\_\_\_ Rating: \_\_\_\_\_

Last Name: \_\_\_\_\_ First Name: \_\_\_\_\_ DOB: \_\_\_\_\_

Address: \_\_\_\_\_ City: \_\_\_\_\_ State: \_\_\_\_\_ Zip: \_\_\_\_\_

Phone: \_\_\_\_\_ E-mail: \_\_\_\_\_ Bye: \_\_\_\_\_

Entry Fee: \$ \_\_\_\_\_ TCA Dues: \$ \_\_\_\_\_ USCF Dues: \$ \_\_\_\_\_ Fri. Round 1 \_\_\_\_\_ Sat. Round 1 \_\_\_\_\_

**2019 Murfreesboro Open  
MAY 25, 2019**

**Site:** First Cumberland Presbyterian Church, 907 Main St., Murfreesboro, TN 37130.

**SSS;** Rd. 1, G/25 d5; Rd. 2, G/45 d5; Rds. 3, 4, 5, G/60 d5.

**Open section:** \$575 in Prizes based on 30 entries, \$150 1st, \$75 2nd, Class Prizes X, A, B, C, D, E/below, Unr., each \$50, Above 30 players, additional prizes added and/or increased.

**Rounds:** 9, 10, 12:30, 3:00, 5:30. cst

**Registration:** 7:30am - 8:45am.

**EF:** \$25 by check if received by 5/20, \$30 cash at site.

**Early entries sent to:** Chris Prosser

733 Long Hunter Ct.,  
Nashville, TN 37217

(Name, Address, Phone, USCF#, Entry Fee and Bye Request)

(One half point bye available if requested before Rd. 1)

**Info:** [murfreesborochess@gmail.com](mailto:murfreesborochess@gmail.com)

[murfreesborochess.weebly.com/](http://murfreesborochess.weebly.com/)





NASHVILLE  
**CHESS  
CENTER**

## REGISTER FOR SUMMER CAMP

SIGN UP ONLINE AT [WWW.NASHVILLECHESS.ORG](http://WWW.NASHVILLECHESS.ORG)

**Summer camps run Monday - Friday from 9am - 4pm**

Students will have lessons in the morning from the best chess teachers in the Southeast, then compete in a variety of rated and unrated events plus partake in other mind building exercises to enhance their chess abilities. Camps at the NCC are fun-filled and highly educational experiences where the kids can learn their first moves or become even more accomplished tournament players.



NASHVILLE  
**CHESS  
CENTER**

## 2019 SUMMER CAMP DATES

**CAMP 1: JUNE 3 - 9**

**CAMP 2: JUNE 24 - 28**

**CAMP 3: JULY 15 - 19**

**CAMP 4: JULY 29 - AUGUST 2**

### SIGN UP SOON!

Each camp is limited to 40 students.  
Instructors have a combined 50+ years experience.

[www.nashvillechess.org](http://www.nashvillechess.org)

*Nashville Chess Camp is held at Nashville Chess Center on Belmont Blvd. For more than a decade, the camps have been successful and required a waiting list. Register early. Questions? [nashvillechess@gmail.com](mailto:nashvillechess@gmail.com) | (615)292-7341 | [www.nashvillechess.org](http://www.nashvillechess.org)*





**2019 TENNESSEE HOME SCHOOL  
CHESS CHAMPIONSHIP  
AND OPEN SCHOLASTIC**



**Saturday, June 8 2019 at the Northfield Conference Center  
5000 Northfield LN ,Bldg 500, Spring Hill, TN 37174**

5 Round G/30 Swiss Tournament      \$20 Entry Fee (by June 1, \$30 on site)

**4 Homeschool Sections:**

K-3 (9 yrs old/under), K-6 (12 yrs old/under), K-9 (15 yrs old/under), K-12 (18 yrs old/under)

**3 Public/Private School Sections:**

Primary (K-3rd), Elementary (K-6th), Jr High/High (K-12th)

**TOP 5 INDIVIDUAL TROPHIES IN EACH SECTION**

(More Trophies and Medals may be added based on entries)

*ON SITE REGISTRATION 7:45-8:30 a.m. Round 1 at 9 a.m. cst*

**Send Entries To:**

Chris Prosser  
733 Long Hunter Ct  
Nashville, TN 37217

Questions - Regioniii@aol.com or 615-426-7105

**2019 TENNESSEE HOME SCHOOL CHAMPIONSHIP AND OPEN SCHOLASTIC ENTRY FORM**

Name \_\_\_\_\_

Address \_\_\_\_\_

City \_\_\_\_\_, TN ZIP \_\_\_\_\_ Phone # \_\_\_\_\_ BD \_\_\_\_\_

E-Mail Address \_\_\_\_\_ School/Home School Group \_\_\_\_\_

SECTION: (Circle One)

**HOME SCHOOL**

K-3 (9yrs old/under)

K-6 (12yrs old/under)

K-9 (15yrs old/under)

K-12 (18yrs old/under)

**PUBLIC/PRIVATE SCHOOL**

Primary (K-3rd Grade)

Elementary (K-6th Grade)

Jr High/High (K-12th)

**FEE PAID** \_\_\_\_\_



## 2019 Clinton H. Pearson, Jr. Memorial Summer Open Chess Tournament

\$420 \*Guaranteed\* \$420

July 20, 2019

At Cumberland County Community Complex, 1398 Livingston Rd, Crossville, TN

<b>Open Section</b> (Open to All)	<b>Amateur Section</b> (Open to Under 1200)
1 <sup>st</sup> Place.....\$75.00	1 <sup>st</sup> Place.....\$75.00
Top Expert.....\$30.00	Top Class F.....\$30.00
Top Class A.....\$30.00	Top Class G.....\$30.00
Top Class B.....\$30.00	Top Class H & Below.....\$30.00
Top Class C.....\$30.00	Top Unrated.....\$30.00
Top Class D & Below...\$30.00	(Unrated eligible for Unrated Prize Only)

### All Sections

<p><b>Registration:</b> Saturday 7:30 – 8:30 A.M. CDT</p> <p><b>Entry Fee:</b> \$15.00 if mailed by July 15, 2019 \$20.00 later or at site</p> <p><b>Format:</b> 4 Rounds – Swiss System</p> <p><b>Time Control:</b> Game/60;d5</p> <p><b>Rounds:</b> 9:00 A.M. 11:00 A.M. 2:00 P.M. 4:30 P.M. CDT For more information see <a href="http://www.cumberlandcountychess.org">www.cumberlandcountychess.org</a></p>	<p><b>Dues Required:</b> USCF membership dues REQUIRED TCA membership dues required for TN Residents</p> <p><b>Send Entries To:</b> Harry D. Sabine P.O. Box 381 Crossville, TN 38557</p> <p><b>Contact:</b> Harry D. Sabine (931)484-9593 or (931)261-8440 hdsabine@citlink.net</p>
--	--

2019 Clinton H. Pearson Jr. Memorial Entry Form

Name: \_\_\_\_\_ USCF ID: \_\_\_\_\_ Section: \_\_\_\_\_

Address: \_\_\_\_\_ City: \_\_\_\_\_ State: \_\_\_\_\_ Zip: \_\_\_\_\_

Phone: \_\_\_\_\_ Email: \_\_\_\_\_



**2019 Tennessee Open State Chess Championship**  
**\$4,000 (based on 80 entries - 75%\*Guaranteed\*) GRAND PRIX**  
 September 13 - September 15, 2019

Montgomery Bell State Park Conference Center – 1020 Jackson Hill Rd. Burns, TN 37029

<u>Open Section</u>	<u>Entries</u>	<u>Amateur U1600</u>
1st Place.....*Plaque + \$600 2nd Place..... 350 3rd Place.....275 <b>Expert</b> 1st Place.....*Plaque + \$250 2nd Place.....200 <b>Class A</b> 1st Place..... *Plaque + \$225 2nd Place.....175 <b>Class B &amp; Below</b> 1st Place..... *Plaque + \$200 2nd Place.....100  **Unrated is only eligible for the top 3 prizes in the Open Section and Unrated Prize in Amateur Section.	Enter online at <a href="http://www.tnchess.us">www.tnchess.us</a> or Mail to: Chris Prosser 733 Long Hunter Ct Nashville, TN 37217 615-426-7105 Regioniii@aol.com  *Make Checks to: TN Chess Association *Plaques to top Tennessee residents.  <b>TCA Membership Meeting:</b> 1:00 PM CST Sunday, September 15  IM's & GM's free entry (\$70.00 entry fee deducted from winnings)  USCF MEMBERSHIP REQUIRED TCA MEM REQ FOR TN RESIDENTS	1st Place.....*Plaque + \$300 2nd Place.....225 3rd Place.....175 <b>Class D</b> 1 <sup>st</sup> Place.....*Plaque + \$150 2 <sup>nd</sup> Place.....100 <b>Class E</b> 1st Place..... *Plaque + \$125 2nd Place.....100 <b>Class F &amp; Below</b> 1 <sup>st</sup> Place..... *Plaque + \$125 2 <sup>nd</sup> Place.....100 <b>Unrated</b> 1st Place.....*Plaque + \$125 2 <sup>nd</sup> Place.....100

**Entry Fee:** \$70.00 both sections if mailed by 9/06 (Online until 09/10) \$80.00 later and on-site  
**Registration:** Fri. 5:00 – 6:00 PM Sat. 8:30-9:30 AM CDT  
 Re-entry available for \$45 (Counts as half entry towards prize fund)  
**Byes:** 1/2 point bye available for any one round if requested at or before registration.

**Rounds:** 5 Round Swiss  
**Schedule:**  
 Rnd 1 Friday 7:00 PM or Sat 10:00 AM  
 Rnd 2 and 3 Saturday 2:00 PM, 7:00 PM  
 Rnd 4 and 5 Sunday 10:00 AM, 2:00 PM  
**Time Control:** G/90; d5

**Other Information:**  
 Wheelchair accessible  
 Hotel: Limited Rooms – Reserve soon!  
 Montgomery Bell State Park Conference Center Room Rate: \$115 per night. Camp sites and Cabins available too  
 Contact: (615) 797 - 3101  
 Mention "Tennessee Chess"  
 Find alternative hotels in Dickson, TN (10 minute drive)

USCF ID: _____	Rating: _____	Exp Date: _____
Last Name: _____	First Name: _____	DOB: _____
Section: <u>Circle one-</u> OPEN <u>AMATEUR U 1600</u> Round 1: <u>Circle one-</u> FRIDAY 7:00pm SATURDAY 10:00am		
Address: _____		
City: _____	State: _____	Zip: _____
Phone: _____	Email: _____	
1/2 Point Bye Round # _____	Entry Fee: \$ _____	TCA Dues: \$ _____ USCF Dues: \$ _____ TOTAL: \$ _____



## 2019 Cumberland County Fall Open National Chess Day Chess Tournament

\$420 \*Guaranteed\* \$420

October 12, 2019

At Cumberland County Community Complex, 1398 Livingston Rd, Crossville, TN

<b>Open Section</b> (Open to All)	<b>Amateur Section</b> (Open to Under 1200)
1 <sup>st</sup> Place.....\$75.00	1 <sup>st</sup> Place.....\$75.00
Top Expert.....\$30.00	Top Class F.....\$30.00
Top Class A.....\$30.00	Top Class G.....\$30.00
Top Class B.....\$30.00	Top Class H & Below.....\$30.00
Top Class C.....\$30.00	Top Unrated.....\$30.00
Top Class D & Below...\$30.00	(Unrated eligible for Unrated Prize Only)

### All Sections

<p><b>Registration:</b> Saturday 7:30 – 8:30 A.M. CDT</p> <p><b>Entry Fee:</b> \$15.00 if mailed by October 7, 2019 \$20.00 later or at site</p> <p><b>Format:</b> 4 Rounds – Swiss System</p> <p><b>Time Control:</b> Game/60;d5</p> <p><b>Rounds:</b> 9:00 A.M. 11:00 A.M. 2:00 P.M. 4:30 P.M. CDT For more information see <a href="http://www.cumberlandcountychess.org">www.cumberlandcountychess.org</a></p>	<p><b>Dues Required:</b> USCF membership dues REQUIRED TCA membership dues required for Tennessee Residents</p> <p><b>Send Entries To:</b> Harry D. Sabine P.O. Box 381 Crossville, TN 38557</p> <p><b>Contact:</b> Harry D. Sabine (931)484-9593 or (931) 261-8440 hdsabine@citlink.net</p>
--	--

### 2019 Cumberland County Fall Open Entry Form

Name: \_\_\_\_\_ USCF ID: \_\_\_\_\_ Section: \_\_\_\_\_

Address: \_\_\_\_\_ City: \_\_\_\_\_ State: \_\_\_\_\_ Zip: \_\_\_\_\_

Phone: \_\_\_\_\_ Email: \_\_\_\_\_

## TCA Board of Directors

President: Alan Kleiman, [akleiman12@gmail.com](mailto:akleiman12@gmail.com)

Vice President: FM Todd Andrews, [nashvillechess@gmail.com](mailto:nashvillechess@gmail.com)

Treasurer: Angela McElrath-Prosser, [TCAnews@aol.com](mailto:TCAnews@aol.com)

Scholastic Coordinator: Paul Semmes, [PaulSemmes@charter.net](mailto:PaulSemmes@charter.net)

Secretary/Membership: Chris Prosser, [Regioniii@aol.com](mailto:Regioniii@aol.com)

News Coordinator: Tiffany Andrews Elliott, [tiffany.elliott@comcast.net](mailto:tiffany.elliott@comcast.net)



Internet Coordinator: Interim Coordinators [Chris Prosser](#) and [Tiffany Elliott](#)

Tournament Coordinator: Christy Kirchner, [c.kirchner@hotmail.com](mailto:c.kirchner@hotmail.com)

East Tennessee Director, Alan Kantor, [carokantor05@yahoo.com](mailto:carokantor05@yahoo.com)

Middle Tennessee Director: IM Ron Burnett, [rburn2500@aol.com](mailto:rburn2500@aol.com)

West Tennessee Director: Michael Robertson, [MRobertson@Aeneas.com](mailto:MRobertson@Aeneas.com)

If you're interested in serving on the TCA Board of Directors, please email the current board members. Elections and appointments for the open or vacant positions will be held at the 2019 TCA Membership Meeting on the Sunday of the 2019 Tennessee Open State Championship. The TCA Board of Directors are all volunteer positions.

---

## Bids and Announcements

Are you interested in bidding on one of these upcoming tournaments? We need tournament organizers! Please send your bid including all proposed event details and sample budget to the Board of Directors to be considered.

Deadline September 1, 2019 for the 2020 TN All-Girls State Championship

Deadline September 1, 2019 for the 2020 TN Senior Open

Deadline September 1, 2019 for the 2020 TN Winter Open

Deadline January 20, 2020 for the 2020 TN Open State Championship

---

The Tennessee Chess Hall of Fame Committee is now accepting nominations for 2020 inductions to take place at the 2020 TN Open State Chess Championship. If you know of someone who has made a lasting impact in Tennessee chess and you would like to nominate them to the [Tennessee Chess Hall of Fame](#), please send your nomination and supporting information to a member of the Hall of Fame Committee:

Ron Burnett [rburn2500@aol.com](mailto:rburn2500@aol.com)

Leonard Dickerson [lsdick@tds.net](mailto:lsdick@tds.net)

Tiffany Elliott [tiffany.elliott@comcast.net](mailto:tiffany.elliott@comcast.net)

Alan Kantor [carokantor05@yahoo.com](mailto:carokantor05@yahoo.com)

Chris Prosser [Regioniii@aol.com](mailto:Regioniii@aol.com)

Dwight Weaver [southaven@gmail.com](mailto:southaven@gmail.com)

The 2019 Tennessee Chess Hall of Fame Induction Ceremony will take place on September 15, 2019 at the TCA Membership Meeting at 1:00 central time at the

TN Open State Chess Championship being held at Montgomery Bell State Park in Burns, TN. We hope you will join us there!

---

**HAVE YOU SEEN THESE MISSING TN CHESS NEWSLETTERS? We've filled in a couple more gaps with the help of Harry Sabine, Dwight Weaver, and Kent Meadows but the hunt continues to locate the rest of these Tennessee treasures. Thank you for helping us digitize our TN Chess history!**

2004  
Winter  
Spring

2003  
All

2001  
Spring

2000  
Winter

1998  
Fall

1996  
Fall

1995  
Spring  
Summer

1993  
Spring  
Summer

1992  
Summer  
Winter

1984  
August, Volume 26, Issue 4  
October, Volume 26, Issue 5

1980  
October, Volume 22, Issue 5

1979  
February, Volume 21, Issue 1  
April, Volume 21, Issue 2  
October, Volume 21, Issue 5

1978  
June, Volume 20, Issue 3  
August, Volume 20, Issue 4  
October, Volume 20, Issue 5  
December, Volume 20, Issue 6

1971  
March, Volume 13, Issue 2

1969  
November, Volume 11, Issue 6

1962  
November, Volume 4, Issue 6

1961  
January, Volume 3, Issue 1  
May, Volume 3, Issue 3

**The full list of what we have already scanned and uploaded is on the [tnchess.us](http://tnchess.us) webpage under the Newsletter Archive tab. Please help us in locating these missing pieces to complete our online collection.**

**-Tiffany Elliott, TCA News**

---

**Membership**



Support Tennessee Chess! Become a TCA Member today! Renew or join for as little as \$10 per year. Or please consider a Patron Membership to really make an impact in Tennessee Chess. [Click here](#) for more membership information.

[Become a Member](#)

Please share, distribute, and post this TCA publication as desired. To share your own TN chess news, photos, events, and games, please email Newsletter Coordinator, [Tiffany Elliott](#). Thank you for supporting the Tennessee Chess Association!

---

©2019 Tennessee Chess Association | 2911 Belmont Blvd.

[Web Version](#)

[Preferences](#)

[Forward](#)

[Unsubscribe](#)

Powered by  
[GoDaddy Email Marketing](#)®