



TENNESSEE CHESS NEWS



Vol. 21, No. 3

June 1979

Tennessee Chess News is the official publication of Tennessee Chess Association, Inc. The publication is bi-monthly. TCA membership, including subscription, is \$3 a year through 31 December 1978, \$4 a year thereafter. Individual copy price \$1.00.

TCN EDITOR: John D. Nichols, 825 W. Maple St., Johnson City, TN 37601

TCN POSTAL EDITOR: Stan Bimson, Rt. 2, Box 293, Hendersonville, TN 37075

TCA PRESIDENT: Peter P. Lahde, 2609 Sailboat Court, Nashville, TN 37217

TCA VICE PRESIDENT: Jack E. Smith, 815 Creekside No. 1, Memphis, TN 38117

TCA SECRETARY-TREASURER: Harry Sabine, PO Box 381, Crossville, TN 38555

TCA TMT CO-ORDINATOR: Arthur Hager, 1320 Elkwood St., Memphis, TN 38111

TCN is printed by Collier's Printing Co., 718 Riverside Ave., Kingsport, TN 37660

CUMBERLAND COUNTY - BLUEPRINT FOR SUCCESS

by Talbot W. Rogers

Cumberland County, with a population of only 26,000, has more TCA members than any area in the state, including Nashville and Memphis. The secret of this growth appears to be the strong school program at all age levels. In 1972 several local Jaycees discussed the possibility of forming a chess club in the bar of the Crossville Holiday Inn, and the Cumberland County Chess Club was born. The first Cumberland County Chess Championship tournament soon followed (won by Harry Sabine), and by 1973 the club was able to promote two unrated tournaments.

A year later the club held its first rated tournament with thirteen players, and players attended two other tournaments out of state. USCF affiliation came in 1975.

Harry Sabine and his law office became the hub of recordkeeping and distribution of chess news, and as the years passed the number of tournaments and players steadily increased. Harry's copying machine certainly deserves a share of the credit for the growth in Cumberland County.

Local tournaments began to be published in Chess Life & Review, and in 1977 the 1st Annual Fairfield Glade Tournament was held with 82 players, which swelled to 129 players last year!

The high school team was already an entity, though, as is true in most Tennessee counties, it was slow in growing and lacked the dynamic foundation that well-organized elementary and junior high schools could provide.

The flash-point was probably reached when Steve Sabine, Harry's son, managed to convince Talbot Rogers, his sixth grade teacher, that a chess club at Cumberland Elementary was at least worth a try. Like many elementary teachers, Mr. Rogers doubted the ability of elementary students to play chess, but after Cumberland Elementary Chess Club was formed, found that his students could often outplay experienced adults.

The Martin Junior High School Chess Club was formed shortly thereafter, coached by Lidell Agee. With the constant aid of Harry Sabine and other members of the Cumberland County CC, the two new clubs thrived. Entry in the TN

Scholastics Championship in Nashville was rewarded by Cumberland Elementary's winning the first place team trophy (by default: they were the only team present) as well as the first and second place individual trophies. Martin finished fourth of seven teams.

Later, when Cumberland Elementary's team picture appeared on the front page of both local newspapers, Harry Sabine termed it "...the one thing that did more to spur interest in scholastic chess than anything else." With this publicity, he was able to solicit funds from local merchants and organizations to send both the Martin and Cumberland Elementary teams to the nationals, held a few months later in Minneapolis and Atlanta. The value of newspaper pictures and stories has ever since been a priority of the Cumberland County Chess Club.

Other schools in the county were scouted for chess interest, their principals talked to about supporting a club, and supplied with chess sets whenever needed. Homestead Elementary School, coached by teacher John White, soon organized a strong chess team. Mr. White, meeting with different groups of students three afternoons a week, quickly won a place of respect for Homestead in the county's chess community.

In 1978 Cumberland County stormed the Tennessee Scholastics Championship in Nashville, with 40 entries out of a field of 124. The high school won the novice championship, with Pamela Campbell taking the first place novice individual trophy. In the junior high division, Martin took second place as a team, while Cumberland Elementary edged out Homestead (the only other elementary team) to win the first place trophy, as well as second and third place individual trophies.

Meanwhile, back at the ranch, Harry and the county chess club had arranged for more tournaments. Local merchants, impressed with the performance of the county's teams, were providing more and more money for trophies, transportation, lettered shirts, and the like. Local papers became more generous with chess coverage, and Pam Campbell's victory in the novice section was published in Sports Illustrated [March 5, 1979]. She was given a trophy and other honors in a special high school assembly.

The Crossville Scholastics, held December 2-3, 1978, drew several teams from other states. The 1st Southern Elementary/Junior High Championships (March 31-April 1) drew participants from as far away as New York.

With the Nationals at hand again in 1979, clubs on all levels are presently raising funds from a variety of sources -- basketball games, a "slave sale," a "chess carnival," school movies, and donations by local merchants and other interested parties. Three county teams have made firm plans to attend the Nationals in Minneapolis and Philadelphia. [See below--Ed.] The Cumberland County School Board has been very cooperative in granting paid leave to involved coaches and chaperones.

To further spur interest and performance, the Cumberland County CC has held two chess classes at night during the past six months. Both were filled to capacity, with a majority of the participants from the elementary school.

Another strategy has been to encourage beginners to become rated as soon as possible. Ratings of "0" or "1" are not uncommon, but frequent publication of rating sheets quickly rewards those who make upward progress.

Some unofficial goals for the future are: (1) to have a strong chess program in every school in the county; (2) to win the state open high school championship; and (3) to win a national championship at some level.

Cumberland County

The 7th Annual Cumberland County Scholastics, sponsored by the Cumberland Thrift Corporation on April 21 at Martin Junior High School, had a record turnout of 49 students. Altogether, twenty-five trophies (top 5 HS, top 10 JHS, and top 10 Elementary) were awarded in the event, which was directed by John L. White and Harry D. Sabine.

In the 6-man round-robin high school section, Pamela Campbell scored 4.5 points to become the 1979 Cumberland County HS Champion. Donald Langford (3), James Jones (2.5), James Hancock (2), Keith Lowe (2) and Larry Bradley (1) finished in the order named.

The only perfect score of the tournament was earned by Terry Burdett, who captured the junior high championship with a 5-0 score. Johnny Camillieri edged Chuck Lovingood on tie-break to take first place trophy in the elementary division. Jay Sabine took home the third-grade-and-below trophy on tie-break with Jeff Smathers.

Cumberland Elementary scored 15 points to Homestead's 14.5 to win the elementary school team trophy. [Harry Sabine]

In the 4th National Elementary School Championship, held in Minneapolis, MN, on April 28-29, Cumberland Elementary finished 9th in a field of 25. Lincoln of MN took first place for the third year in a row, followed by Cove Creek of AZ, and Frederick Douglas of PA. The only other southern school in the tournament, Hebrew Academy (GA) finished in 16th place. Unofficial team and individual scores [reported by Harry Sabine] are as follows:

Team Standings

1 Lincoln (MN)	26.0	14 Johamu (MN)	18.0
2 Cove Creek (AZ)	24.5	15 Noble (MN)	18.0
3 Frederick Douglas (PA)	22.5	16 <u>Hebrew Academy (GA)</u>	17.0
4 Meadow Lake (ML)	21.0	17 Hawthorne (MN)	17.0
5 Komarek (IL)	21.0	18 Cedar Manor (MN)	16.5
6 Poinsetta (CA)	20.5	19 Highland (MN)	16.0
7 Roberts (WI)	20.5	20 Olson (MN)	16.0
8 Pilgrim Lane (20.5)	20.5	21 Shonto Baerling (AZ)	15.0
9 <u>Cumberland (TN)</u>	19.5	22 Crestview (MN)	15.0
10 Meadowbrook (MN)	19.0	23 Lakeview (MN)	15.0
11 Forest (MN)	18.5	24 North Branch (MN)	13.5
12 Pratt (MN)	18.5	25 Silver Lake (MN)	13.0
13 Fair Meadows (IA)	18.5		

Individual Standings (TN)

1 Chuck Lovingood	5.0	7 Michael Whisnant	4.0
2 Johnny Camillieri	5.0	8 Perry Sarantopoulos	4.0
3 Trey Meadows	5.0	9 George Wallace	4.0
4 Richard Jones	4.5	10 Michael Mitchell	3.0
5 Timothy Sexton	4.0	11 Jay Sabine	3.0
6 John Roberson	4.0	12 Daniel Tuttle	2.5

If you have been thinking of purchasing a micro-chess computer, you have probably been wondering which of the rapidly growing number of machines on the market represents a Good Buy, if not the Best Buy. This article represents a preliminary essay based upon actual play-testing and observation. It is consumer-oriented, written to help you to decide which machine, if any, to purchase. We shall, therefore, name names, specify models. Articles about unnamed models (see, for example, Roland Benoit, "Marathon with a Miniature," CL&R, May 1979, pp. 268-269) may amuse, but they are useless when you are on the point of writing a check for \$200 to \$300 for a toy.

How does one go about testing the relative strengths and/or weaknesses of micro-chess computers? One approach, of course, is to pit machine against machine. Let's see what happened when the editor matched his Chess Challenger X (about \$200) against a friend's Chess Champion Mark I (about \$100):

[1] Challenger-Champion: 1 d4 d5 2 c4 dc4 3 Qa4+ c6 4 Qc4 Nf6 5 Nd2 e6 6 Qd3 Bb4 7 a3 Qa5 8 Qg3 Bd2+ 9 Bd2 Qb6 10 Qg7 Qb2 11 Qh8+ Ng8 12 Qg8+ Kd7 13 Qf7+ Kd8 14 Bg5 mate.

[2] Challenger-Champion: 1 e4 e5 2 Nf3 Qf6 (Champion has an incurable addiction to this patzer move) 3 d4 Bb4+ (as a rule, neither machine can resist a check) 4 c3 Ba5 5 Bg5 Bc3+ (can a machine experience panic?) 6 Nc3 Qg6 7 de5 Qh5 (Her Majesty deserts the battlefield and will not be heard from again) 8 Nb5 b6 (what can one say?) 9 Nc7+ Kf8 10 Qd6+ (bravo! Challenger finds the mate in two in about five seconds...or does he?) Ne7 11 Bd7+ (he blows it!) Kg8 12 Qd5 (not bad at all: we assumed Challenger would not be able to resist 12 Na8) Bb7 13 Qb7 Nc6 14 Qa8+ Nd8 (at this point a human would resign -- or upset the board in a tantrum) 15 Qd8+ mate. (The final position boggles the imagination: Challenger has lost a solitary pawn, while Champion -- who presumed to challenge Karpov to a match -- has dropped five pieces and two pawns!)

In the illustrative games published above, both machines were set at the next-to-the-lowest level of play (Level 2). It is no coincidence that Challenger played White in both games. Challenger is easily programmed to play either color, but Champion's instruction manual is quite confusing. In subsequent games the machines were set to play at Levels 3 and 4. The games were quite amusing -- and unprintable, being utterly without any socially redeeming value. The games saw-sawed back and forth interminably, with Challenger always obtaining a clearly superior, if not winning position after 45 or 50 moves. By this time the human observers have long since ceased to find even the most absurd moves amusing, and are drooping from fatigue and boredom. There is nothing to do but "to pull the plug," as neither machine will resign until the dirt is being shovelled on its coffin.

Chess Challenger X appears to be a better buy than Chess Champion Mark I. But is it worth its \$200 price tag? Judge for yourself. The following observations are based on more than 100 games played since December 1978:

1. Challenger X never castles. Often, where castling is obviously called for, the computer will make a silly move, such as h4, Kf1, or Rf1. Chess Champion, for its faults, does often castle.

2. In the two cases where the position has arisen, Challenger has refused as a legal move a Queen-side castle by White when the b1 square was under attack by the computer's bishop. It would appear that whoever programmed the computer was himself ignorant of the laws of chess regarding castling.

3. Whereas Challenger will frequently use the en passant rule to capture an opponent's pawn, it stubbornly refuses to accept the legality of en passant captures of its own pawns.

4. Challenger, like Champion, is apparently programmed to regard knights and bishops as fully equivalent pieces and shows no hesitation in giving up the "minor exchange." Its sense of pawn structure is poorly developed, so that it does not hesitate to double or even triple its pawns, even when these awkward formations could easily be avoided.

5. Don't pay any attention to the advertiser's claim that the micro-computer will play such classic defenses as the Ruy Lopez, French, Sicilian, etc. Its knowledge of the "book" stops at the third or fourth move.

6. The claim that the computer plays at 10 levels of sophistication must be taken with a grain of salt. For "sophistication" substitute "average response time." Its performance at Level 1 (beginner: 5 seconds) is spectacularly bad, and there is a noticeable qualitative leap at Level 2 (intermediate: 15 seconds), and an even greater improvement at Level 8 (expert: 11 minutes). Level 8 is actually its highest level, a rather confusing design feature.

In order to compare Challenger's responses at different levels of play, I set up the following position, chosen at random from the Encyclopedia of Chess Openings (E59:11):

[1] Nichols-Challenger (Level 5: superior: 2:20 minutes): 1 d4 Nf6 2 c4 e6 3 Nc3 Bb4 4 e3 O-O 5 Nf3 d5 6 Bd3 c5 7 O-O Nc6 8 a3 Bc3 9 bc3 dc4 10 Bc4 Qc7 11 Bd3... The machine is now on its own: 11 ...c4? 12 Bc2 b6? 13 e4 Bb7 14 e5 Nd5 15 Bh7+! Kh7 16 Ng5+ Kg6 17 Qg4 Qe7 18 Ne6+ Qg5 19 Qg5+ resigns (1-0)

[2] Nichols-Challenger (Level 9: excellent: 6 minutes) 11 ...c4 12 Bc2 b6 13 e4 Ng4 14 h3 Nf6 15 e5 Nd5 16 Bh7+ Kh7 17 Ng5+ Kg8 18 Qh5 Rd8 19 Qh7+ resigns (1-0)

[3] Nichols-Challenger (Level 8: expert: 11 minutes): 11 ...c4 12 Bc2 b6 13 e4 Ng4 14 h3 Nf6 15 e5 Nd5 16 Bh7+ Kh7 17 Ng5 Kg6 18 Qg4 Bb7 19 Ne6+ (1-0)

Some players naively ask if the machine is capable of learning from its mistakes. The answer is obvious. Equally obvious is the fact that even a five-fold increase in response time showed no improvement whatever in the machine's quality of play.

Champion Mark I is not a challenge, and Challenger X is not a champion. I must agree with Roland Benoit's conclusion: "Either they must vastly increase in playing strength or their cost must come down to about \$50....\$200 or so is way out of line for what you get."

Leon Stancliff of Murfreesboro recently sent us a report on Boris (around \$300):

I purchased a new Boris chess playing computer in December 1978 and decided to attack it systematically. The instruction manual suggested time limits for the machine of (1) immediate response -- this means about 3 seconds,

(2) 20 seconds, (3) 2 minutes, and (4) 10 minutes. My own rating is at present somewhere between 1250 and 1300 USCF points. Below you will find the results of a series of four-game matches, with my score listed first. The time setting for Boris is on the left and the average time per game at that setting is given on the right.

Time setting	Score	Average time
0:00	4-0	1 hr 39 min
0:20	4-0	1 hr 40 min
2:00	4-0	2 hr 32 min
3:00	4-0	3 hr 10 min
4:00	4-0	3 hr 48 min
5:00	3-1	3 hr 50 min
6:00	3-1	4 hr 15 min
7:00	2-2	4 hr 52 min
8:00	3-1	6 hr 08 min
9:00	4-0	6 hr 58 min
10:00	1-3	7 hr 05 min

The average length of game was 38 moves. At the ten-minute level I did not win any games. The point I scored was on two draws.

I conclude that Boris is playing at around 1200 USCF at the five minute time setting, and somewhere in the vicinity of 1300 at the ten minute setting. There may be an incremental jump from the nine to the ten minute level. The series of games at the nine-minute level were played after

having become accustomed to the style of the computer. It will fall into traps where material may be offered in place of very serious positional deficiencies.

Games from the 1979 Marshall International (March 10-19)

Popovich-Rohde: 1 e4 e5 2 f4 exf4 3 Nf3 d6 4 d4 g5 5 h4 g4 6 Ng1 Bh6 7 Nc3 Nc6 8 Qd3 Bd7 9 Nd5 Nf6 10 Ne2 Nxd5 11 exd5 Ne7 12 Bxf4 Bg7 13 c4 0-0 14 h5 b5 15 b3 bxc4 16 bxc4 c6 17 Bxd6 cxd5 18 c5 Re8 19 h6 Bh6 20 Rh5 Nc6 21 0-0-0 Qa5 22 a3 Rxe2 23 Bxe2 Nxd4 24 Bf1 Qa4 25 Be5 Nb3+ 26 Kb2 Nxc5 27 Qd2 Rb8+ (0-1)

Shamkovich-Morris: 1 c4 Nf6 2 Nc3 g6 3 e4 d6 4 d4 Bg7 5 f3 0-0 6 Be3 Nc6 7 Nge2 Rb8 8 Rb1 Nd7 9 Qd2 a6 10 h4 b5 11 cxb5 axb5 12 h5 b4 13 Nd1 e5 14 d5 Na5 15 Bh6 Bxh6 16 Qxh6 g5 17 Ng3 Nc5 18 Ne3 f6 19 Ngf5 Rf6 20 g3 c6 21 Rd1 b3 22 a3 cxd5 23 Rxd5 Nab7 24 Bc4 Be6 25 Kf2 Rc8 26 Rhd1 Qc7 27 Kg2 Rd8 28 Rxc5 Nxc5 29 Nd5 Bxd5 30 Bxd5 Kh8 31 Bxf7 Qxf7 32 Nxd6 (1-0)

J. Meyer-Vantilbury: 1 d4 Nf6 2 Nf3 g6 3 c4 Bg7 4 Nc3 0-0 5 e4 c5 6 dxc5 Qa5 7 Bd3 Nc6 8 0-0 Qxc5 9 Be3 Qh5 10 h3 d6 11 a3 Nd7 12 Be2 Nde5 13 Ng5 Qh4 14 g3 Qh6 15 h4 Bf6 16 Ne6 g5 17 hxg5 Bxg5 18 Nxg5 f6 19 Nf3 Qh3 20 Nxe5 Nxe5 21 Nd5 Kf7 22 Nf4 Qh6 23 Kg2 (1-0)

Kaufman-Biyasas: 1 d4 Nf6 2 c4 g6 3 Nc3 Bg7 4 e4 d6 5 f3 0-0 6 Be3 e5 7 Nge2 c6 8 Qd2 Nbd7 9 d5 cxd5 10 cxd5 a6 11 g4 Ne8 12 Ng3 Bf6 13 h4 Bxh4 14 Qh2 Bxg3+ 15 Qxg3 f6 16 0-0-0 Rf7 17 Rd2 b5 18 Rdh2 Qa5 19 Kb1 b4 20 Nd1 Nc5 21 Bd2 Qb6 22 Ne3 a5 23 g5 Ba6 24 gxf6 Nxf6 25 Nf5 Kf8 26 Rxh7 Nxh7 27 Qxg6 Bxf1 28 Bh6+ Ke8 29 Nxd6+ Qxd6 30 Qxd6 Bd3+ 31 Ka1 Nd7 32 Qe6+ Re7 33 Qg6+ Rf7 34 Bg7 Ndf6 (1-0)

[USCF Press Release #5 of 1979]

11th NATIONAL HIGH SCHOOL AND JUNIOR HI CHAMPIONSHIPS by Sabine

A number of Tennessee schools participated in these tournaments, held in Philadelphia, PA, on May 4-6, 1979.

The Cumberland County HS team scored 16 points to finish approximately 26th out of 50+ teams (25 trophies were awarded). A total of 320 players were in the Novice section. Pam Campbell, Mike Jones, James Hancock, Keith Lowe and Scott Langford each scored 4 points for CCHS. The team winner was Cony (ME), winning on tie-break over Bermadian Springs (PA), also with 23 points. Plant (FL) finished third with 22.5 points.

Christian Brothers (Memphis) and Baylor (Nashville) both participated in the HS Championship Section, scoring 16 and 15.5 points respectively. (I don't know in what place they finished or if they won a trophy, as I left before that section was finished.) Scoring for CBHS were Paul Linxwiler (4.5), Kenneth Robinson (4.5), Gregory Hood (4) and Mitchell Cheeseman (3). Scoring for Baylor were David Thistlethwaite (5.5), Danny Silverstein (4.5), Jimmy Gorton (4), Scott Godfrey (4) and Clark Brown (4). There were 41 teams and 270 players in the HS Championship Section.

In the JHS section Martin (Crossville) scored 16.5 points, which was good for 16th or 17th place (again only 15 trophies were available). Scoring for Martin were Mike Kerley (4.5), Terry Burdett (4), Gary Stockslager (4), Tom LeMasters (4), Wade Kendrick (4), William Gwin (4) and Bruce England (4).

Baylor finished 12th in the JHS with 18 points: Terry Paige (5), David Pratt (5), Pete Austin (4) and Jimmy Aisago (4).

Individuals in the JHS were David Lynn of Apollo (5), Bruce Lemieux of Pleasant Hill (4) and Bobby Mayfield of Homestead (2.5).

The high point for Cumberland County was Terry Burdett's upsetting the 5th-rated player in the JHS section in the first round:

Terry Burdett (766)-Grant Gillen (1779): National JHS: Rd 1

1 e4 e6 2 Nf3 d5 3 e5 c5 4 b3 Nc6 5 Bb5 Bd7 6 Bb2 Nxe5 7 Bxd7 Nxd7
8 d4 Nf6 9 c4 cxd4 10 cxd5 Bb4+ 11 N1d2 Bc3 12 dxe6 fxe6 13 Bxc3 dxc3
14 Nc4 0-0 15 0-0 b5 16 Ng5 bxc4 17 Nxe6 Qc8 18 Nxf8 Nxf8 19 Rc1 Ne4
20 Qd5+ Kh8 21 Qxe4 cxb3 22 axb3 Ne6 23 Rxc3 Qxc3 24 Qxa8+ (1-0)

MEMPHIS CHAMPIONSHIPS [see "Crosstables"]

The 1979 Pillsbury Chess Club Championship was won by Jack Smith, Jr. Randy Cope was awarded the "Most Improved" prize.

The 1979 Memphis Chess Club Championship was won by Mahlon Smith III; John F. Hurt captured second place a half-point behind.

A Smith vs. Smith match has been agreed upon, but, like true champions, there is the inevitable hard bargaining over the number of wins and draw clauses.

BLUFF CITY OPEN [see "Crosstables"]

The 7th Annual Bluff City Open, sponsored by the Memphis Chess Club, was won by James Rackley in a tie-break over Marty Appleberry. The last round found Rackley playing Gary Pylant on board two, Appleberry versus Rick Herbers on board one, and Randy Cope versus Jack Smith on board three; all six had earned three points each. Jack had beaten Marty, and Randy had beaten John Hurt in earlier rounds, but the two upset-prone players could only manage draws in the last round to finish in third and fourth place respectively. [Jack Smith]

KARPOV & TAL TIE

World Champion Anatoly Karpov and former World Champion Mikhail Tal tied for first place in the spectacular Chess Challenge Cup in Montreal (April 10-May 8). The two Russian grandmasters each scored 12 points of a possible 18 to lead the strongest field in recent times, possibly ever.

Only a handful of other tournaments in chess history bear comparison. The great AVRO 1938 tournament in Holland, or the Nottingham, England, event of the same year are in the same class. However, only the 1948 World Championship, held in the Hague and Moscow really vies with the Chess Challenge Cup for the honor of being the strongest tournament ever. That event was won by Mikhail Botvinnik, one of Karpov's teachers.

In recent years, FIDE has ranked tournaments by categories based on the average rating of the event. The previous record was Category 14 --both the Bugojno, Yugoslavia and the Tilburg, Holland tournaments reached that level last year. The average rating of the Chess Challenge Cup was 2622; the Category was 15. Ten of the world's twenty top players competed.

The prize fund was \$110,000, making this the richest chess tournament in history. Karpov and Tal each won \$21,500 for their performances. Additionally, there was a brilliancy prize of \$1000. Svetozar Gligoric, the tournament director, was unable to decide between the second encounters of Tal-Spassky and Larsen-Karpov and so split the prize between Tal and Larsen.

Here is the brevity from round 10 that earned Tal his half of the brilliancy prize:

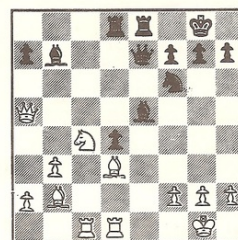
Spassky-Tal

1 d4 Nf6
2 c4 e6
3 Nf3 b6
4 e3 Bb7
5 Bd3 d5
6 b3 Bd6
7 O-O O-O
8 Bb2 Nbd7
9 Nbd2 Qe7
10 Rac1 Rad8
11 Qc2 c5

Spassky-Tal

12 cxd5 exd5
13 dxc5 bxc5
14 Qc3 Rfe8
15 Rfd1 d4
16 exd4 cxd4
17 Qa5 Ne5
18 Nxe5 Bxe5
19 Nc4 Rd5
20 Qd2 Bxh2+
21 Kxh2 Rh5+
22 Kg1 Ng4

Position after 19 Nc4:



Spassky resigned because he could not stop the black Queen from invading on the h-file. 23 g3 loses instantly to 23...Rh8 mate.

Story and game courtesy of US Chess Federation (Press releases ##9 and 11 of 1979)

Tal's lucky number this year appears to be 22, as witness Tal-Larsen:

1 e4 e5 2 Nf3 Nc6 3 d4 cxd4 4 Nxd4 Nf6 5 Nc3 d6 6 Bg5 e6 7 Qd2 Be7
8 O-O-O a6 9 f4 Qc7 10 Be2 Nxd4 11 Qxd4 b5 12 e5 dxe5 13 fxe5 Nd5
14 Bxe7 Nxc3 15 Bf3 Nxd1 16 Bd6 Qc4 17 Qb6 Nf2 18 Bx6+ Bd7 19 Bxd7+
Kxd7 20 Qb7+ Kd8 21 Qxa8+ Qc8 22 Qa7 (1-0)

6th KING COTTON OPEN [see "Crosstables" section]

Marty Appleberry captured 1st in a tie-break over Ron Minor. Sid Pickard finished in 3rd place, edging out four other players on tie-breaks. [John Hurt]

MUSIC CITY SPRING OPEN [see "Crosstables" section]

Ronald Roe chalked up 4.5 points to win the 35-player event. Nashville's perennial bridesmaid, David Thistlethwaite, fought Ronald to a draw in the last round and finished in second place when his 4-1 deadlock with George Jamison and Michael Mitelman was resolved by tie-break. [Peter Lahde]

CHALLENGE CUP

Crossville and Sparta have established a Cumberland County-White County challenge cup as a traveling trophy between the two counties. Two matches have been held so far, and Sparta presently holds the trophy. Other cities might consider having a similar trophy to play for each time they hold a match. [Sabine]

KNOXVILLE-CROSSVILLE MATCH by Frank Larimer

An underdog Crossville team out to avenge their previous defeat gave Knoxville a severe scare before bowing 11-9 to their hosts in a ten-board match held in Knoxville, March 25. Strong play on the lower boards allowed Crossville to claim a 5 1/2 - 4 1/2 first round lead. Knoxville rallied in the second round, leaving the match to be decided on board one. Dickerson, needing only a draw to clinch the match, brought home the full point against Sabine, widening a slim margin of victory. In an unrated juniors match, played concurrently, Knoxville scraped by with a 6 1/2 - 5 1/2 win. The Greater Knoxville Chess Club gratefully acknowledges the generosity of the Arnstein Jewish Community Center for providing the playing site.

<u>Knoxville</u>			<u>Crossville</u>		
Leonard Dickerson	1741	1-1	Harry Sabine	1479	0-0
Richard Carpenter	1665	1-1/2	Gary Kendrick	1389	0-1/2
Richard Igou	1536	1-1	Larry Thomas	1379	0-0
Ron Easter	1456	1-0	Thomas Collard	1327	0-1
Frank Larimer	1394	0-1	John White	1022	1-0
Mike Headrick	1305	1/2-0	Pamela Campbell	975	1/2-1
Louis Groeniger	1139	0-0	James Hancock	738	1-1
Thomas Cole	UNR	0-1	Toby Rodgers	651	1-0
Harold Weaver	UNR	0-1	Chuck Lovingood	338	1-0
Russell Baker	UNR	0-1	Bobby Wilson	UNR	1-0
<hr/> 11			<hr/> 9		

KNOXVILLE QUICK SWISS [see "Crosstables" section]

Twelve players turned out for this 3-SS, six per section event, played on April 21 at the UT Student Center. Frank Larimer directed.

KNOXVILLE-NASHVILLE MATCH [see "Crosstables" section]

A ten-board, two-round match was contested in Crossville on April 22, with Nashville pulling away to a 14-6 win. The out-rated Knoxville team managed to tie 5-5 after the first round, but succumbed quietly as Nashville won 8 and drew 2 games in the final round. [Frank Larimer]

1979 CROSSVILLE OPEN [see "Crosstables" section]

Ben Sides, an Expert from Alabama, dominated the tournament from the first round to the last (5-0). Leonard Dickerson and Richard Bennett shared second place honors with 4-1 scores. L. Thad Rogers directed.

Incidentally, Thad, whose directorial energies seem boundless, recently became the only National Tournament Director in the South. Congratulations!

MEMPHIS CITY AMATEUR CHAMPIONSHIP [see "Crosstables" section]

Paul Linxwiler went undefeated to capture the amateur championship on February 10-11. Briane Hufford, an unrated player, topped the field of five players who tied for second place. [Jack Smith]

COUGAR I

Jerry Wheeler and George Jamison scored 2.5 points each in this three-round event to share top honors. Six players (Brian McCarthy, Kenneth Chaney, Charles Laws, Tom Thorpe, Mike Gee and Danny Poole finished 2-1. Although the turnout in Cleveland State University's first [?] rated tournament was small (13 players), six of the entrants, including Gee and Poole, were new, unrated players. James W. Sims directed.

SPACE CITY OPEN

Four Tennesseans braved freezing temperatures and snow flurries to play in Huntsville, AL, on March 23-24. Henry Robinson of Nashville won the 16-player event with 4 1/2 points. Robert N. Edwards, Jr. of Fayetteville, who is currently a student in Huntsville and secretary-treasurer of the Huntsville Chess Club, won the top Class B prize. [Wally Helgeson]

"HELP-LOSSES" by Doug LaVerne

For your amusement, here are two innocuous-looking positions, each of which has a "help-loss in one." Both positions are from real games—one between me and my friend Gordon Manning, the other between Gordon and a postal opponent in Pennsylvania.

In both games White is to play the best one-move loss (which is what actually happened). This, of course, excludes such obvious choices as putting the Queen en prise, etc. In both games White has at least a draw (in #1, for example, 1 N-N5 probably wins).

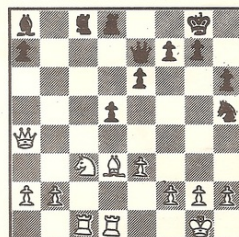
[1] 1 R-Q2? (...P-Q5! 2 PxP Q-N4 3 P-B4 Nxp; or 2 N-K2 Q-N4 3 P-N3 RxR 4 NxR PxP 5 R moves Q-Q4).

[2] 1 K-B5?? R-K4 mate!

The reader can find an analogous situation in the Jones-Searles postal game published in this issue --Editor.

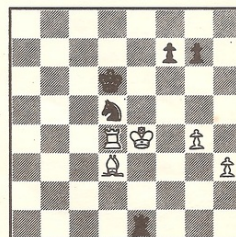
TCN 42

LaVerne



Manning

Manning



Curt Rhudy

CODE OF CONDUCT FOR TOURNAMENT PLAYERS--AN ORGANIZER'S DREAM

There are penalties for violations of tournament rules, but what does a director do when players do not use common sense? If all players followed the common sense guidelines given here, tournaments would run smoother, and everyone would have a more enjoyable time. We have an idea that this is not the last time that we will see these maxims published, so players should study them and directors give credit when republishing them! Your ideas for additions and revisions are appreciated--S. Damm.

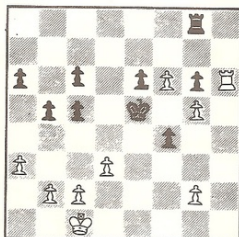
1. Enter tournaments in advance if possible. If not, come early so the event may start on time. Get directions to the tournament site in advance.
2. Know your last published rating, always carry your membership cards, and, if entering late, have exact amount of entry fee in cash or check.
3. Always know what section you are playing in and know when the next round will start without asking the director.
4. Be sure you can be on time to each round or tell the tournament director well in advance. This includes being able to come early on Sunday morning if you have an adjourned game from the day before.
5. Bring equipment, or be prepared to borrow it, or, wait until it becomes available. A board, set, clock and pen or pencil are essential equipment.
6. Agree to a draw if your opponent proposes one in a hopelessly drawn position. Don't keep on playing to spite your opponent, the director, or the players waiting for the next round to begin.
7. Purchase a copy of the Official Chess Rulebook and read it carefully.
8. Make sure all your equipment has your identification on it and don't leave it unattended. Directors are not equipment attendants!
9. Leave the tournament room after you complete your game and record your result. Players with games in progress have a right to silence.
10. If you have a protest, quietly contact the director right away. Claims and protests should be made in accordance with USCF tournament rules.

[Reprinted from Chess Horizons, Feb-Mar 1979]

White to play and win:

In the position on the right, Paul Whitehead played 29 Rxd6 and Grandmaster Janosevic of Yugoslavia resigned, since 29...Rxd6 loses to 30 f7.

(Lone Pine 1979--courtesy USCF PR #9 of 1979)



Tournament Announcements

TCN now publishes details of tournament announcements up to four months ahead. The August issue will cover events scheduled between August 15 and December 31. (Deadline for copy: July 15.)

Unpaid tournament announcements of events in neighboring states will be published on a first-come-first-served basis.

Wally Helgeson, current Alabama and 350-369 zip code clearing-house director, writes that all tournament organizers in Central Tennessee can and should send detailed flyers to him. He will distribute copies throughout the northern Alabama chess centers (such as Huntsville, Decatur, Anniston, and Birmingham. Other areas in TN are welcome to send flyers, but travel time would prohibit a response. Mail flyers to:
Wally F. Helgeson
2008 Roundleaf Green
Huntsville, AL 35803

370-385 Tmt Clearinghouse

As TN's tournament coordinator, Arthur Hager, is currently out-of-state, Jack E. Smith, Jr., 3436 Carnes #6, Memphis, TN 38111 has volunteered to act as pro tem coordinator through August 31.

TCA/TCN memberships

Subscribers are reminded that all 1978-79 memberships will expire as of August 31, 1979.

In the next issue:

Proposed new Charter and By-laws of the Tennessee Chess Association.

Games from Recent Events

Jack Smith (1678)-James Jones (1789): 1 c4 g6 2 Nc3 Bg7 3 Nf3 Nf6 4 e4 d6 5 d4 0-0 6 Be2 Nbd7 7 h3 a5 8 Be3 e5 9 Qc2 c6 10 dxe5 dxe5 11 Rad1 Qe7 12 Na4 b5 13 cxb5 cxb5 14 Bxb5 Qb4+ 15 Nc3 Rb8 16 a3 Qe7 17 0-0 Nc5 18 Nd5 Nxd5 19 Rxd5 Rxb5 20 Rxc5 Rxc5 21 Qxc5 Qxc5 22 Bxc5 Re8 23 b4 axb4 24 axb4 Bb7 25 Re1 Bf8 26 Nd2 Bxc5 27 bxc5 Rc8 28 Rc1 Kf8 29 f3 Ke7 30 Nb3 Kd7 31 Kf2 Ra8 32 Ra1 Rxa8 33 Nxa1 Kc6 34 Nb3 Ba6 35 a3 f5 (1/2-1/2)

Rick Herbers (1635)-Jack Smith (1678): 1 d4 Nf6 2 g3 g6 3 Bg2 Bg7 4 c4 0-0 5 Nc3 d6 6 Nf3 Nbd7 7 0-0 c6 8 e4 e5 9 Qc2 Qe7 10 Be3 Ng4 11 Bg5 f6 12 Bd2 a5 13 Rae1 f5 14 exf5 gxf5 15 Bg5 Qf7 16 dxe5 dxe5 17 h3 e4 18 hxg4 exf3 19 Bxf3 Ne5! 20 Bg2 fxg4 21 Bf4 Nf3+ 22 Bxf3 gxf3 23 Re3 Bg4 24 Ne4 Qh5 25 Ng5 Bf6 26 Qh7+ Qxh7 27 Nxh7 Kxh7 28 Rb3 Rf7 29 Rd1 Rae8 30 Rd6 Re1+ 31 Kh2 Kg6 (0-1)

Joe Roberdeau (1774)-Tom Harley (1625): 1 P-KB4 P-QB4 2 N-KB3 N-QB3 3 P-QN3 N-B3 4 B-N2 P-K3 5 P-K3 P-Q3 6 B-K2 B-K2 7 0-0 0-0 8 P-Q4 PxP 9 PxP P-QN3 10 B-Q3 B-N2 11 QN-Q2 N-Q4 12 Q-K1 NxP 13 B-N5 P-QR3 14 BxN BxB 15 N-K4 R-B1 16 N/3-Q2 N-N3 17 Q-K2 B-N2 18 P-B4 P-Q4 19 N-N3 B-N4 20 N-B3 N-B5 21 Q-QB2 B-K2 22 Q-Q2 N-N3 23 QR-QB1 B-Q3 24 N-R5 PxP 25 PxP Q-B2 26 P-Q5 P-K4 27 N-N5 Q-K2 28 N-K4 B-N1 29 P-Q6 Q-R5 30 P-Q7 R-B2 31 N/4-B6+ PxN 32 P-Q8(=Q) RxQ 33 QxR+ N-B1 34 NxP+ K-N2 35 N-K8+ K-N1 36 QxQ (1-0)

Alexander Zhislin (0)-Kent Meadows (1732): 1 P-QB4 P-K4 2 N-QB3 N-QB3 3 N-KB3 P-KN3 4 P-Q4 PxP 5 NxP B-N2 6 NxN NPxN 7 P-K4 N-K2 8 B-KN5 P-KR3 9 B-KR4 0-0 10 Q-KB3 R-QN1 11 P-QN3 P-KN4 12 B-KN3 P-Q4 13 KPxP PxP 14 R-Q1 R-K1 15 B-K2 P-Q5 16 0-0 N-KB4? [a] 17 N-Q5 R-QN2 18 B-Q3 NxP 19 BPxN P-QB4 20 B-K4 R-K4 21 B-KB5 P-QR3 22 QR-K1 BxB 23 QxB RxQRP 24 P-KR4 PxP 25 R-K4 R-QR3 26 R/1-K1 [b] R-K3 27 RxR PxR 28 QxP+ K-R1 29 N-K7 P-Q6 30 N-N6+ K-R2 31 Q-B5 K-N1 32 Q-K6+ K-R2 33 Q-B5 K-N1 34 Q-K6+ K-R2 (1/2-1/2)

[a] I think Black has a win here with 16...P-N5! 17 Q-Q3 B-B4! 18 Q-Q2 PxN etc. [b] Now it's White's turn for a pretty combination: 26 R-K7! RxR 27 NxR+ QxN 28 Q-B8+ followed by 29 QxR, winning the exchange. Unfortunately, the passed Q pawn probably gives Black adequate compensation. [Lahde]

Steve Choatie (1565)-Morris Lewis (1325): 1 d4 b6 2 c4 Nf6 3 Nc3 Bb7 4 e3 e6 5 Nf3 Be7 6 Bd3 d5 7 0-0 Nbd7 8 Qc2 c5 9 cxd5 exd5 10 dxc5 Nxc5 11 Bb5+ Ncd7 12 Ne5 0-0 13 Nf3 Qc7 14 Qf5 Rad8 15 Bd2 a6 16 Ba4 Nc5 17 Rac1 Rd6 18 Ne2 Qb8 19 Bc2 Nfe4 20 Bb4 Rh6 21 Bxc5 Nd2! 22 h3! [if 22 Nd2? Qh2 mate; if B retreats or captures, 22...Nf3+ 23 gf Qh2 mate --Lahde] Nxf3+ 23 Qxf3 Bxc5 24 Bb3 d4 25 e4 Qe5 26 Ng3 Rg6 27 Qd3 Re8 28 f4 Bxe4 29 fxe5 Bxd3 30 Bxf7+ Kh8 31 Bxg6 Bxg6 32 Kh2 Rxe5? 33 Rxc5! Rxc5?? 34 Rf8 mate (1-0)

David Thistlethwaite (1776)-Michael Mitelman (2003): 1 b3 d5 2 Bb2 Bf5 3 e3 Nc6 4 Nf3 Nf6 5 Be2 e6 6 0-0 Bd6 7 Nh5 Bg6 8 f4 Qe7 9 f5 Ne4 10 Qe1 ef 11 Nf5 Bf5 12 Rf5 0-0-0 13 Bg4 Kb8 14 d3 Nf6 15 Bf6 gf 16 Nc3 Be5 17 Qd2 Bc3 18 Qc3 Qe3+ 19 Kh1 d4 20 Qe1 Rd6 21 Qf2 Ke8 22 Rf1 Nb4 23 Rf6 Rf6 24 Qf6 Nc2 25 Qf7 a6 (1/2-1/2)

TENNESSEE POSTAL CHESS by Stan Bimson

Postal Chess - Why? A good question: most postal players have reasons why they play, but what are yours? To the best set of reasons go 10 postal cards with postage (as sold by US Post Office). Send yours today and next issue we will see what we have.

1979 Tennessee Postal Championship. Prize fund based on entries. All entry money returned in a cash prize fund to the top 3 finishers. Assignments are in 4-man sections with mixed classes, play six games--half as white, half as black. Entry fee is \$3 per section and you may enter more than one section. TCA membership is required. For more details see the April issue of TCN and/or to enter, write: Stan Bimson, Rt 2 Box 293, Hendersonville, TN 37075.

Vacations! What to do when! Are you going on vacation for a week, two weeks or more this summer? What about a three or four day weekend? Whatever, whenever you plan to go off this summer, inform your postal opponents of your schedule in advance. This will insure smooth continuation of all your postal games.

Game Results (received on/before 15 May 1979): MLE/PF Searles 1/2 Noonan, Irwin 1 Noonan, Jones 1 Groeniger; C4/2/78 (challenge) Jones 1 Searles.

Ratings (only changes are shown; see April TCN for complete list of players):

Groeniger	522.05	Jones	989.08	Searles	819.21
Irwin	719.06	Noonan	683.15		

Challenge Matches! Play the opponent or opening of your choice for only 25¢ per player per game. All postal rated. See April issue for details of challenge matches.

Postal game (C4/2/78) Curt Jones - Richard Searles

1 e4 g6 2 d4 Bg7 3 Nf3 d6 4 Nc3 Nf6 5 Be2 0-0 6 0-0 c6 7 a4 Qc7
8 h3 e5 9 Be3 ed4 10 Bd4 Re8 11 Bc4 Ne4 12 Re1 Nf6 13 Bf6 Re1+
14 Qe1 Nf6 15 Qe8+ Kg7 16 Ne4 Be6 17 Nf6 Bc4 18 Re1 Be6 19 Qe6! fe6
20 Ne8+ (1-0)

** **

Games from King Cotton Open

APPLEBERRY-SULGER 1 Nf3 Nf6 2 g3 g6 3 b3 d5 4 Bb2 c5 5 c4 Bg7 6 Bg2
d4 7 b4 Nbd7 8 0-0 e5 9 bc5 Qc7 10 e3 d3 11 Nc3 0-0 12 Nb5 Qb8 13 Rb1
e4 14 Ng5 Nc5 15 Bf6 Bf6 16 Ne4 Ne4 17 Be4 a6 18 Nd4 Qd6 19 Bd5 Rb8
20 Qf3 Bh3 21 Rfe1 b6 22 g4 Bg4 23 Qg4 h5 24 Qg6+ (1-0)

J.WRIGHT-APPLEBERRY 1 d4 Nf6 2 Nf3 g6 3 e3 Bg7 4 b3 0-0 5 Bd3 d6
6 0-0 e5 7 de5 Ng4 8 Bb2 Ne5 9 Ne5 Be5 10 Be5 de5 11 Nd2 Qe7 12 f4 ef4
13 ef4 Bf5 14 Bf5 Qc5+ 15 Kh1 Qf5 16 Nc4 Nc6 17 Ne3 Qc5 18 Qf3 Rae8
19 Nd5 f5 20 c4 Nb8 21 Rae1 Nd7 22 Qc3 c6 23 Nc7 Re1 24 Re1 Qf2
25 Qe3? Qe3 26 Re3 Nf6 27 Kg1 Rd8 28 Re2 Ne4 29 g3 Kf7 30 b4 Rc8 (0-1)37

THORNBERRY-APPLEBERRY 1 d4 Nf6 2 c4 c5 3 d5 g6 4 Nf3 d6 5 Nc3 Bg7
6 e4 0-0 7 Bd3 e6 8 0-0 ed5 9 cd5 a6 10 a4 Bg4 11 h3 Bf3 12 Qf3 Nbd7
13 Bg5 h6 14 Bh4 Qc7 15 Bc2 b5 16 ab5 ab5 17 Nb5 Qb6 18 Qe2 Rfb8
19 Nd6 Qd6 20 Bg3 Ne5 21 f4 Nh5 22 fe5 Ng3 23 Qf3 Qe5 24 Qf7+ Kh7
25 Ra8 Ra8 26 Re1 Rf8 27 Qb7 Nf1 28 Rf1 Qd4+ (0-1)

7th ANNUAL BLUFF CITY OPEN

1 James R Rackley	1741	W21	W18	D5	D3	W6	4.0
2 Marty Appleberry	2227	W15	L3	W9	W10	W5	4.0
3 Jack E Smith, Jr	1039	W22	W2	D6	D1	D4	3.5
4 Randy W Cope	1391	W10	L5	W11	D3	D5	3.5
5 Charles Herbers	1652	W19	W13	D1	D6	L2	3.0
6 Gary M Pylant	1693	W14	W11	D3	D5	L1	3.0
7 David R Hawkes	1363	D9	W12	L10	D14	W13	3.0
8 Daniel L Boyd	0	---	---	W16	W9	W12	3.0
9 Ed Issa	1694	D7	W4	L2	L8	W19	2.5
10 John F Hunt	1831	L4	W22	W7	L2	D11	2.5
11 U.J. Gilbert	1545	W16	L6	L4	W22	D10	2.5
12 James H Mitchell	1339	Bye	L7	W21	W17	L8	2.5
13 Paul Linxwiler	1491	W23	L5	W18	L4	L7	2.0
14 Larry S Wheat	0	L6	Bye	W19	D7	L17	2.0[?]
15 Rolf Uwe Pludra	1452	L2	W23	L17	D18	D16	2.0
16 Khrosrow Naraghian	0	L11	D19	L8	W20	D15	2.0
17 Lerow Brown	1579	---	---	W15	L12	W14	2.0
18 Gordon E Scott	1627	W20	L1	L13	D15	---	1.5
19 Benjamin F Williams	1184	L5	D16	L14	W21	L9	1.5
20 William N Gross	0	L18	L21	Bye	L16	W23	1.5
21 Charles M Dangeau	1383	L1	W20	L12	L19	---	1.0
22 Morris L Busby	1033	L3	L10	W23	L11	---	1.0
23 Billy Morris	1000	L13	L15	L22	Bye	L20	0.5

MEMPHIS CITY AMATEUR CHAMPIONSHIP

1 Paul Linxwiler	1491	W11	W8	W15	W7	W2	5.0
2 Briane Hufford	0	W26	W28	WF	W15	L1	4.0
3 Benjamin F Williams	1184	W20	W26	W4	L9	WF	4.0
4 Joseph H Owens	1479	W27	W13	L3	W16	W8	4.0
5 Khrosrow Naraghian	0	W28	W24	L7	W9	W13	4.0
6 Michael R Stewart	0	L24	WF	W17	W14	W7	4.0
7 Rolf Uwe Pludra	1452	W21	W9	W5	L1	L6	3.0
8 James H Mitchell	1339	W22	L1	W18	W3	L4	3.0
9 Paul A Bruhwiler	1314	W10	L7	W26	L5	W16	3.0
10 Philip S MacIn, Sr	1558	L9	W28	W16	W11	LF	3.0
11 Robert F Stewart	11-7*	L1	W22	W19	L10	W17	3.0
12 Jeff Ice	0	WF	W19	W21	W15	---	2.0
13 Kenneth A Robinson	1317	W23	L4	D14	W18	L5	2.5
14 James W Clark	143-*	L15	W21	D13	L6	W26	2.5
15 Ronald Hill	1316	W14	W18	L1	L2	L12	2.0
16 Jay Purdie	0	W17	W19	L10	L4	L9	2.0
17 Louis T Weis	1353	L16	W12	L6	W19	L11	2.0
18 Donald Antrim	148-*	W25	L15	L8	L13	W21	2.0
19 Charles M Dangeau	1383	W12	L16	L11	L17	W22	2.0
20 James Fisher	1590	L3	L25	L21	W22	W23	2.0
21 Walter Bayer	0	L7	L14	W20	L12	L18	1.0
22 Mark R Wilkinson	0	L8	L11	W23	L20	L19	1.0
23 Howard Haglin	1000	L13	L10	L22	W27	L20	1.0
24 John W Ruvia III	149	---	---	L5	LF	---	1.0

25 B.G. Rice (1), 26 Eddie Tidwell (0.5), 27 Leslie Branch (0), 28 Fred Lowe (0).

MUSIC CITY SPRING OPEN, NASHVILLE, APRIL 28-29

1 Ronald Roe	1685	W35	W28	W11	W3	D2	4.5	1st
2 David Thistlethwaite	1776	W17	W29	D4	W5	D1	4.0	2nd
3 George Jamison	1681	W24	W27	W10	L1	W9	4.0	2nd
4 Michael Mittelman	2003	W26	W6	D2	D9	W10	4.0	2nd
5 Kent Meadows	1732	W22	W15	D9	L2	D8	3.5	
6 Steven Choate	1665	W20	L4	W13	W16	D8	3.5	1st C
7 Alan D Gambrell	1275	W33	D11	L8	W28	W17	3.5	1st D
8 Jerry T Wheeler	1938	L28	W12	W7	W20	D6	3.5	
9 Alexander Zhalin	0	W26	W30	D5	D4	L3	3.0	
10 Roy T Farr	1808	W21	W13	L3	W12	L4	3.0	
11 Scott Zhalin	0	W34	D7	L1	W27	D14	3.0	
12 Don Sibrel	1415	W14	L8	W30	L10	W22	3.0	2nd D
13 Morris Lewis	1325	W19	L10	L6	W25	W20	3.0	2nd D
14 Kenneth McElhanev	0	L12	W22	D25	WF	D11	3.0	1st E
15 Mark D Richardson	1223	W23	L5	D29	L17	W27	2.5	
16 Bill Conte	1210	L27	W32	W23	L6	D19	2.5	
17 Paul Zepelinsky	1038	L2	D18	W32	W15	L7	2.5	2nd E
18 Ed Murphy	0	---	D17	W35	W29	L5	2.5	2nd E
19 William Smirley	0	L13	L21	W26	W31	D18	2.5	2nd E
20 John W Childress	0	L6	W31	W24	L8	L13	2.0	
21 John L White	1047	L10	W19	---	W24	---	2.0	
22 Eric Martin	1005	L5	L14	W33	W23	L12	2.0	
23 Diane Burgess	870	L15	Bye	L16	L22	W32	2.0	
24 J Scott Bennett	0	L3	W26	L20	L21	W36	2.0	
25 John W Storrs	1163	L4	D35	D14	L13	W31	2.0	
26 Kirk Barton	1142	L9	L24	L19	W35	W29	2.0	
27 Peter Gregory	748	W18	L5	D28	L11	L15	1.5	
28 David Lynn	1061	W8	L1	D27	L7	---	1.5	
29 Jim Seymour	1266	W31	L2	D15	L18	L26	1.5	
30 Harry Hopewell	1500	W32	L9	L12	---	---	1.0	
31 Edward Deverpeck	881	L29	L20	Bye	L19	L26	1.0	
32 Graydon Green	0	L16	L17	---	L23	L10	1.0	
33 D Ray Stanfill	0	L7	L34	L22	L32	Bye	1.0	
34 Mike Barton	1044	L11	W33	---	---	---	1.0	
35 Ross Adkinson	0	L1	D25	L18	L26	L24	0.5	

Tournament Directors: Peter Lahde and Diane Burgess

NASHVILLE-KNOXVILLE MATCH, CROSSVILLE, APRIL 22

Nashville	Knoxville
Carl Jones	2147 1-1
Mike Mittelman	2003 1-1
Jerry Wheeler	1938 1-1
Roy T. Farr	1808 0-1
David Thistlethwaite	1776 0-1
Kent Meadows	1732 1-1/2
Brian McCarthy	1661 0-1/2
Peter Labbe	1275 1/2-1
Robert Yokley	1589 1/2-1
Jody Landrum	1537 0-1
Leonard Dickerson	1820 0-0
Richard Menet	1807 0-0
Richard Bennett	1774 0-0
Richard Igou	1696 1-0
Richard Carpenter	1683 1-0
Larry Crawford	1665 0-1/2
Alex Barrero	1356 1-1/2
Ron Baxter	1185 1/2-0
Frank Larimer	1390 1/2-0
Mike Hendrick	1286 1-0

MUSIC CITY WINTER OPEN, NASHVILLE, MARCH 17-18

1 Randy Kolvic	2024	W30	W15	W25	W3	D2	4.5	1st
2 Dave Thistlethwaite	1740	W35	W16	W11	D4	D1	4.0	2nd-t
3 Dennis Gogel	2208	W29	W9	W14	L1	W13	4.0	2nd-t
4 Henry Robinson	1911	W26	D6	W12	D9	---	4.0	2nd-t, B
5 Ronald Roe	1625	W24	D20	D6	W33	W10	4.0	2nd-t, B
6 Kent Meadows	1652	W34	D4	D5	W26	D7	3.5	
7 Doug Ralston	1847	W23	L25	W24	W20	D6	3.5	
8 Gary McMurray	1374	L9	D18	W30	W39	W12	3.5	D 1st
9 George Jamison	1682	W8	L3	W27	W11	L4	3.0	
10 Joe Rickman	1840	L11	W17	W16	W14	L5	3.0	
11 John Freeman	1509	W10	W13	L5	L9	W29	3.0	C 1st
12 Wes Kerlin	1071	W41	W31	L4	W15	L8	3.0	E 1st
13 Joe Roberdeau	1737	W19	L11	W39	W25	L3	3.0	
14 Rick Igou	1597	W36	W33	L3	L10	W28	3.0	C 1st
15 Richard Carpenter	1665	W22	L1	W42	L12	W26	3.0	
16 Rick Cunby	1045	W32	L2	L10	W27	W23	3.0	E 1st
17 Steven Choate	1602	D21	L10	W36	W23	D19	3.0	
18 David Lynn	0	L27	D8	W44	W22	D17	3.0	E 1st
19 David Neill	1381	L13	W41	L26	W37	W31	3.0	D 2nd
20 David Baker	1914	W31	D6	W21	L7	---	2.5	
21 Todd Kinane	1274	D17	W39	L20	L29	W37	2.5	
22 Russ Eagle	1353	L15	W43	D37	L18	W36	2.5	
23 Grayson Green	0	L7	W27	W34	L17	L16	2.0	
24 Bobby Chapuis	1285	L5	W26	L7	L28	W42	2.0	
25 Eby Barnes	1510	W40	W7	L1	L13	---	2.0	
26 Larry Hinson	0	W44	L24	W19	L6	L15	2.0	
27 Michael White	883	W18	L23	L9	L16	W43	2.0	
28 Edward Murphy	0	W42	L34	L35	W24	L14	2.0	
29 John Childress	0	L3	L40	W41	W21	L11	2.0	
30 Kenneth McElhanev	0	L1	D36	L8	D41	W39	2.0	
31 T.B. Shelton	0	L20	L12	W43	W40	L19	2.0	
32 T.R. Shelton	0	L16	L35	W38	L34	W40	2.0	
33 Tom Farr	1840	W37	L14	W40	L5	---	2.0	
34 Barry Wheeler	1297	L6	W38	L23	W32	---	2.0	
35 Don Sibrel	1437	L2	W32	W28	---	---	2.0	
36 Bill Conte	1230	L14	D30	L17	W42	L22	1.5	
37 Jennifer Ball	0	L33	W44	D22	L19	D21	1.5	
38 Jesse Armantrout	0	L4	L42	L32	Bye	D41	1.5	
39 Darryll Marsee	972	W43	L21	L13	L8	L30	1.0	
40 Louis Groeniger	1148	L25	W29	L33	L31	L32	1.0	
41 Ross Adkinson	0	L12	L19	L29	D30	D38	1.0	
42 Diane Burgess	876	L26	W38	L15	L36	L24	1.0	
43 Ray Stanfill	0	L39	L22	L31	W44	L27	1.0	
44 Edward Deverpeck	881	L26	L37	L18	L43	Bye	1.0	

Tournament Director: Morris Lewis, assisted by David Thistlethwaite

TCN 48

1979 CROSSVILLE OPEN, MARCH 31-APRIL 1

1 Ben Sides	2013	W11	W8	W5	W3	W4	5.0	1st 84.00
2 Leonard Dickerson	1741	W16	W9	W7	L4	W6	4.0	2nd 36.00
3 Richard Bennett	1759	W25	W22	W6	L1	W7	4.0	2nd 36.00
4 David Freitag	1815	D21	W16	W9	W2	L1	3.5	
5 George Jamison	1700	W24	W14	L1	D13	W8	3.5	B 31.00
6 Richard Carpenter	1665	W17	W13	L3	W14	L2	3.0	
7 Alejandro Barrero	1547	W23	W18	L2	W17	L3	3.0	C 10.50
8 William Presley	1540	W15	L1	W29	W10	L5	3.0	C 10.50
9 John T Burnett	1525	W19	L2	L4	W21	W13	3.0	C 10.50
10 Edward Murphy	0	L22	W24	W11	L8	W17	3.0	U 15.50
11 Gary McMurray	1374	L1	W21	L10	W18	W19	3.0	D 31.00
12 Charles Vaughan	0	L13	L17	W24	LF	W21	3.0	U 15.50
13 Thomas P White	1433	W12	L6	W16	D6	L9	2.5	
14 Gary W Kendrick	1389	W26	L5	W18	L6	D15	2.5	
15 Pamela C Campbell	975	L8	Bye	L13	W20	D14	2.5	
16 Thomas P Colliard	1327	L2	L4	Bye	W26	W24	2.5	
17 Jeffrey Wickler	1091	L6	W12	W22	L7	L10	2.0	
18 Mike R Wilson	926	W20	L7	L14	L11	W23	2.0	
19 Bob D Bow	0	L9	L20	W26	W23	L11	2.0	
20 Roy D Rich	0	L18	W19	L21	L15	W26	2.0	
21 W.L. Severson	1348	D4	L11	W20	L9	L12	1.5	
22 William Valentino	1471	W10	L3	L17	LF	---	1.0	
23 Clinton Pearson, Jr	1012	L7	W26	L8	L19	L18	1.0	
24 Randy Rexroat	1311	L5	L10	L12	Bye	L16	1.0	
25 Robert L Young	1345	L3	Bye	---	---	---	0.5	
26 Bobby L Wilson	0	L14	L23	L19	L16	L20	0.0	

Tournament Director: L. Thad Rogers

1979 PILLSBURY CHAMPIONSHIP, MARCH 10-25

1 Jack E Smith Jr	1678	X	1	1/2	0	1	1	1	1	7.5
2 Scott Fletcher	1873	0	X	1/2	1/2	1	1	1	1	6.5
3 James A Wright	1853	0	1/2	X	0	1	1/2	1	1	6.0
4 James E Jones	1789	1/2	1/2	1	X	0	1/2	1/2	1	6.0
5 Randolph	1406	0	0	0	0	1/2	1/2	1	1	5.5
6 Jack C Sprague	1524	0	0	1/2	1/2	X	1/2	1	1	5.0
7 Charles R Herbers	1635	0	0	0	1/2	1	1/2	X	1	4.0
8 Ronald L Meek	1371	0	0	0	0	1/2	0	1	X	2.0
9 Jeff Ice	0	0	0	0	0	0	0	0	X	1.0
10 Ed Stoy	0	0	0	0	0	0	0	0	X	1.0

1st SOUTHERN JUNIOR HIGH CHAMPIONSHIP, CROSSVILLE, MAR 31-APR 1

1 David Lynn	0	W17	W24	W11	W15	W2	D5	5.5
2 Tom Kayne	1425	W31	W27	W16	W7	L1	W8	5.0
3 Terry Paige	0	W18	L15	W14	W25	W19	W9	5.0
4 Brooks Reed	1050	W6	L7	W31	W12	D8	W13	4.5
5 Darry Silverstein	1937	L7	W28	W25	W11	W15	D1	4.5
6 Pote Austin	0	L4	W23	W19	W17	D7	W15	4.5
Terry Burdett	507	W6	W4	W10	L2	D6	D14	4.0
Mark Brown	1266	D25	W21	W9	W24	D4	L2	4.0
Id Milon	0	W23	W14	L8	W26	W10	L3	4.0
Id C Pratt	999	W32	W30	L7	W16	L9	W17	4.0
William Gwin	663	W36	W28	L1	L5	W22	W18	4.0
Gary Stockslager	630	L20	W37	W28	L4	W21	W24	4.0
Kelly Sims	0	W21	W19	L15	W18	D24	L4	3.5
Jon Flesnor	921	W35	L9	L3	W27	W25	D7	3.5
Wade Kendrick	675	W37	W3	W13	L1	L5	L6	3.0
Bruce Lemieux	534	W33	W29	L2	L10	L17	W28	3.0
Steve Robinson	851	L1	W30	W35	L6	W16	L10	3.0
Kurt W Harlow	714	L3	W33	W29	L13	W26	L11	3.0
Kenneth Flesnor	1003	W38	L13	L6	W30	L3	W25	3.0
Charles Smith	0	W12	L10	L26	W34	L25	W37	3.0
Brendley Alley	871	L13	L8	W37	W36	L12	W39	3.0
David Irwin	898	L27	L25	W38	W35	L11	W30	3.0
Steve Sabine	753	L9	L6	L30	Bye	W36	W32	3.0
Monty Monteith	1012	W30	L1	W27	L8	D13	L12	2.5
Ross Addison	0	D8	W22	L5	L3	W20	L19	2.5
Bobby Mayfield	658	L29	W32	W20	L9	L14	D27	2.5
Joey Hinton	0	W22	L2	L24	L14	W34	D25	2.5
Scott Shoulders	0	W34	L11	L12	W31	L18	L16	2.0
Paul Pickett	0	W25	L16	L8	---	W35	L21	2.0
Larry Brill	0	L24	L17	W22	L19	W33	L22	2.0
Michael Reagan	531	L2	W36	L4	L28	L37	W35	2.0
Miller Bushong	0	L10	L26	L36	W37	W38	L23	2.0
Tommy Vaughn	0	L16	L18	---	W38	L30	W36	2.0
Thomas LeMaster	650	L28	L38	Bye	L20	L27	W38	2.0
Frank Egolf	0	L14	W34	L7	L22	L29	L31	1.0
Benjie Reed	0	L11	L31	W32	L21	L23	L33	1.0
Terry Ray	0	L15	L12	L21	L32	W31	L20	1.0
Gary Bush	0	L19	L5	L22	L33	L32	L34	0.0

Team Standings

1 Baylor (3,5,9,10,6,13)	1.5	4.5	8.5	12.5	16.5	18.0
2 Martin "A" (7,11,12,15)	3.0	7.0	10.0	10.0	12.5	15.0
3 Pulaski "A" (14,19,21)	2.0	3.0	5.0	8.0	10.0	12.5
4 Greenwood "A" (4,27,28,30)	3.0	3.0	5.0	7.0	9.5	11.0
5 Pulaski "B" (20,22,24,32)	2.0	2.0	4.0	7.0	8.5	10.5
6 Martin "B" (17,23,29,31,33)	1.0	3.0	4.0	5.0	8.0	10.0
7 Greenwood "B" (35-38)	0.0	1.0	2.0	2.0	3.0	3.0

Tournament Director: L. Thad Rogers

KNOXVILLE QUICK SWISS

Twelve players turned out for this 3-SS, six per section event, played April 21 at the UT Student Center. Frank Larimer directed.

Section One	RTG	RD 1	RD 2	RD 3	Total
1. Emanuel Tetteakis	1910	W5	W4	D3	2 1/2
2. Richard Carpenter	1683	W6	L3	W5	2
3. Richard Igou	1696	L4	W2	D1	1 1/2
4. Terry Luptak	1494	W1	L1	Bye	1
5. Larry Crawford	1665	L1	W6	L2	1
6. Mark Derrick	1494	L2	L5	---	0

Section Two

1. Louis Greeniger	1211	W6	W5	W3	3
2. Charles Vaughan	UNR	W5	D3	W4	2 1/2
3. Ron Al-Chobachy	1292	W6	D2	L1	1 1/2
4. Cary Long	UNR	L3	W6	L2	1
5. Chester Crowley	UNR	L2	L1	W6	1
6. Russell Moneymaker	UNR	L1	L4	L5	0

KING COTTON OPEN - MEMPHIS - April 21-22, 1979

No.	Player	Rtg.	Round	Opp	Score	TOTAL		
1	Appleberry, M.	2234	W13	W6	D2	W3	4 1/2	
2	Hino, R. L.	1866	W17	W21	W10	D1	W5	4 1/2
3	Picard, Sid	1817	W27	W9	W5	D4	L1	3 1/2
4	Bryant, G.	1795	W26	D14	W19	D3	D6	3 1/2
5	Hunt, John P.	1948	W22	W20	L7	D15	W16	3 1/2
6	Sulcer, Wm.	1704	W30	L1	W14	W9	D4	3 1/2
7	Boyd, Leroy	UNR.	W11	L8	D16	W14	W15	3 1/2
8	Wright, J. A.	1853	W29	W7	L1	W20	L2	3
9	Stoy, Ed.	UNR.	W15	L3	W21	L6	W20	3
10	Barton, R. D.	1044	W12	W23	L2	L16	W22	3
11	Brown, Leroy	1573	L7	W25	W13	D19	D12	3
12	Mitchell, James	1365	L10	D26	W18	W25	D11	3
13	Thornberry, O. T.	1111	L1	W30	L11	W27	W19	3
14	Haragchian, R.	1108	W24	D5	L6	L7	W25	2 1/2
15	Gilbert, V. J.	1549	L9	W29	W17	D5	L7	2 1/2
16	Hawkes, D. R.	1397	D25	D19	D7	W10	L5	2 1/2
17	Harrison, Craig	UNR.	L2	W28	L15	W24	D18	2 1/2
18	Williams, B. F.	1192	L20	W22	L12	W21	D17	2 1/2
19	Gallagher, J. J.	1198	W23	D16	L4	D11	L13	2
20	Coe, R. V.	1406	W18	L5	W27	L4	L9	2
21	Danguen, C. M.	1329	W28	L2	L9	L18	W27	2
22	Matthews, S. A.	1201	L5	L18	W28	W23	L10	2
23	Scott, G. E.	1472	L19	L10	W29	L22	W25	2
24	Heltzel, Wm. C.	1397	L14	L27	W30	L17	W28	2
25	Busby, R. L.	1137	D16	L11	W26	L12	L23	1 1/2
26	Bayer, Walter	UNR.	L4	D12	L25	W29	L14	1 1/2
27	Lee, Jeff	UNR.	L3	W24	L20	L13	L21	1
28	Murrie, Billy	1000	L21	L17	W22	W19	L24	1
29	Garret, Broderick	new	L8	L15	L23	L26	W30	1
30	Selley, Jerry L.	new	L6	L13	L24	L28	L29	0

1st SOUTHERN ELEMENTARY CHAMPIONSHIP, CROSSVILLE, MAR 31-APR 1

1778 1 Jay Schneider	1413	W40	W11	W7	W8	W2	W6	6.0
2 Albert White	1066	W13	W9	W16	W3	L1	W7	5.0
3 Johnny Camilleri	549	W21	W20	W17	L2	W8	W9	5.0
4 Mike Payne	495	W38	W23	L8	W21	W17	D5	4.5
5 Todd Walton	0	W39	L10	W28	W13	W31	D4	4.5
6 Charles Daugherty	854	W26	W19	W10	W7	W16	L1	4.0
7 Chuck Lovingsod	388	W12	W18	L1	W6	W11	L2	4.0
8 Ron Burnett	0	W33	W27	W4	L1	L3	W18	4.0
9 Lee Bushong	0	W30	L2	W23	W12	W10	L3	4.0
10 Karl Absher	0	W25	W5	L6	W20	L9	W22	4.0
11 Cindy Sullivan	0	W28	L1	W35	W19	L7	W16	4.0
12 Susie Smathers	0	L7	W39	W22	L9	W20	W19	4.0
13 Jonathan Feinerman	0	L2	W30	W24	L5	W29	W17	4.0
14 Mike White	0	W37	L16	L18	W34	D26	W31	3.5
15 Chris Byrd	0	L27	L33	D34	W39	W24	W26	3.5
16 Philippe Blumenthal	0	W29	W14	L2	W18	L6	L11	3.0
17 Tony Bow	0	W32	W24	L3	W25	L4	L18	3.0
18 Jeff Smathers	0	W31	L7	W14	L16	W28	L2	3.0
19 Ian Elad	0	W36	L6	W29	L11	W25	L12	3.0
20 Bill Kayma	0	W34	L3	W36	L10	L12	W29	3.0
21 Stacy Pugh	0	L3	W28	W33	L4	L22	W30	3.0
22 John Robinson	1	L24	W38	L12	W36	W21	L10	3.0
23 Keith Threat	0	W35	L4	L9	L38	W37	W32	3.0
24 Jay Sabine	0	W22	L17	L13	W32	L15	D25	2.5
25 Perry Sarantopoulos	0	L10	W31	W27	L17	L19	D24	2.5
26 Richard Jones	0	W34	L5	W30	D14	L15	2.5	
27 Travis Wyatt	0	W15	L8	L25	---	W38	D28	2.5
28 Trey Meadows	262	L11	L21	W38	W23	L18	D27	2.5
29 Dan Tuttle	0	L16	W37	L19	W35	L13	L20	2.0
30 Mike Whisnant	0	L3	W37	L26	W35	L21	2.0	
31 Mike Mitchell	517	L18	L25	W40	W7	L5	L14	2.0
32 Tim Sexton	0	L17	L35	W39	L34	W36	L23	2.0
33 George Wallace	0	L8	W15	L21	LF	---	W40	2.0
34 Steve Allmann	651	L20	L26	D15	L14	W39	D36	2.0
35 Jim Bertram	0	L39	L2	---	---	---	D34	2.0
36 Avery York	0	L19	W40	L20	L22	L32	D37	1.5
37 Wade Bolin	0	L14	L29	L30	Bye	L23	D36	1.5
38 Shane Lowe	0	L4	L22	L28	W40	L27	L39	1.0
39 Rick Bertram	0	L5	L12	L32	L15	L34	W38	1.0
40 Troy Givens	0	L1	L36	L31	L38	Bye	L33	1.0

Team Standings

1 Hebrew Academy (1,13,16,19)	3.0	6.0	9.0	11.0	14.0	16.0
2 Pulaski Middle (4,6,9,15)	3.0	5.0	7.5	10.5	14.5	16.0
3 Homestead "A" (10-12,17)	4.0	6.0	8.0	11.0	12.0	15.0
4 Cumberland "A" (3,7,22,25)	2.0	5.0	8.0	10.0	13.5	14.5
5 Homestead "B" (18,21,23,27)	3.0	4.0	6.0	9.0	11.5	14.5
6 Cumberland "B" (26, 28-30)	0.0	2.0	4.0	7.0	9.5	9.0
7 Cumberland "C" (31-33,35)	0.0	2.0	4.0	5.0	6.0	7.5
8 Cumberland "D" (37-40)	0.0	0.0	0.0	2.0	3.0	4.5

1979 CUMBERLAND SCHOLASTICS: JUNIOR HIGH

1 Terry Burdett	768	W12	W5	W7	W2	W3	5.0
2 Steve Robinson	859	W10	W11	W6	L1	D4	3.5
3 Thomas M. LeMasters	691	D7	W10	W5	W6	L1	3.5
4 Michael Kerley	569	L6	W14	W11	W9	D2	3.5
5 William H. Gwin	837	W8	L1	L3	W7	W10	3.0
6 Bruce England	837	W44	W13	L2	L5	D8	2.5
7 Scott Turner	899	D3	W8	L1	L5	W9	2.5
8 Bobby Mayfield	655	L5	L7	W14	W11	D6	2.5
9 Gregory K. Robbins	524	L11	W12	W13	L4	L7	2.0
10 Bruce L. Lemieux	657	L2	L5	W12	W14	L5	2.0
11 Steven D. Sabine	700	W9	L2	L4	L8	D12	1.5
12 Michael W. Reagan	524	L1	L9	L10	Bye	D11	1.5
13 Gary Stockslager	692	W14	L6	L9	---	---	1.0
14 Perry D. Traw	503	L19	L4	L8	L10	Bye	1.0

1979 CUMBERLAND SCHOLASTICS: ELEMENTARY

1 Johnny S Camilleri	548	W11	W26	W4	D2	W6	4.5
2 Chuck H Lovingsod	579	W14	W20	W6	D1	W8	4.5
3 Keith O Threat	23	W8	W18	W16	L6	W7	4.0
4 D. Travis Wyatt	0	W19	W9	L1	W18	W11	4.0
5 Tony E Bow	185	L7	W27	D17	W21	W10	3.5
6 Karl E Absher	238	W27	W17	L2	W3	L1	3.0
7 George O Wallace	0	W5	W26	L8	W9	L3	3.0
8 Trey Meadows	263	L3	W13	W7	W12	L2	3.0
9 Timothy W Sexton	238	W22	L4	W14	L7	W23	3.0
10 Stacy W Pugh	0	L26	W15	W20	W19	L5	3.0
11 Perry Sarantopoulos	57	L1	Bye	W21	W16	L4	3.0
12 John A Robinson	93	L16	W29	W25	L8	W20	3.0
13 David C Lawrence	0	W15	L8	L34	W29	W25	3.0
14 Cindy L Sullivan	99	L2	W25	L9	W24	W19	3.0
15 Daniel L Tuttle	108	L13	L10	Bye	W22	W18	3.0
16 Mike Mitchell	551	W12	W21	L3	L11	D17	2.5
17 Michael D Whisnant	113	W23	L6	D5	D25	L16	2.5
18 Wade B Bolin	185	W24	L3	W22	L4	L15	2.5
19 Richard Jones	237	L4	W24	W26	L10	L14	2.0
20 Susan E Turner	118	W29	L2	L12	L12	L12	2.0
21 Jay D Sabine	152	W29	L16	L11	L5	W26	2.0
22 Shane Lowe	0	L9	W23	L18	L15	W28	2.0
23 Rick Bernham	0	L17	L22	W29	W26	L9	2.0
24 Eric D Turner	118	W29	L2	L12	L12	W27	2.0
25 Jeff Smathers	162	W10	L7	L12	D17	L13	1.5
26 Freddie M Weaver	1	Bye	L1	L19	L23	L21	1.0
27 Michelle R Collard	0	L6	L5	W28	L20	L24	1.0
28 Eric D Turner	118	L20	L14	L20	L20	L24	1.0
29 George M Graham	0	L21	L12	L23	L13	Bye	1.0

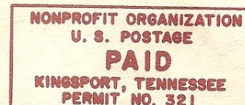
JUNE 15 - OCTOBER 15, 1979

- JUN 23-24 VANDERBILT SUMMER OPEN (A Grand Prix Tournament) 5-SS, 50/2, Branscomb Rec. Room, Branscomb Quadrangle, Vanderbilt Univ., Nashville, TN 37205. EF: \$15, TCA mem. (\$4) req. of all TN residents. \$\$430 guaranteed: 125-75-50, B,C,D, E/UNR each 45. Reg: 8-9:15 AM 6/23. Rds: 9:30-2-7, 9-2. For more info contact: Dave Thistlethwaite, 4641 Tara Dr., Nashville, TN 37215.
- JUL 21 ETSU SUMMER AMATEUR (Class B and below), 3-SS, 45/90, D.P. Culp University Center, ETSU, Johnson City, TN 37601. EF: \$8, TCA mem. (\$4) req. of all TN residents. \$\$ (based on 20): 70-30-15, 1000-1199: 15, below 1000: 10. Reg: 9:30-10 AM 7/21. Rds: 10-1:30-4:30. For more info contact: John Nichols, 825 W. Maple St., Johnson City, TN 37601 (926-1705).
- JUL 21-22 MUSIC CITY SUMMER (Details are presumed to be the same as those of the Music City Spring -- Ed.) 5-SS, 50/2, Admiral Benbow Inn, 823 Murfreesboro Rd., Nashville, TN 37217. EF: \$15, TCA mem. (\$4) req. of all TN residents. \$\$ (based on 30): 100-50-25, B,C,D,E/UNR each 15-25 (2nd if 5/class), trophy to 1st. Reg: 8-9 AM 7/21. Rds: 9:30-2-7, 9-2. For further info contact: Music City Chess Assoc., 303 Belinda Dr., Hermitage, TN 37076.
- SEP 1-3 34th TENNESSEE OPEN (A Grand Prix Tournament), 6-SS, 50/2, Ramada Inn, 840 James Robertson Pkwy, Nashville, TN 37200. In three sections: Open, Amateur (below 1600), and Novice (below 1200), EF: \$25-20-15 respectively, TCA mem. (\$4) req. of all TN residents. \$\$1500 guaranteed. Full details in August issue of TCN. For further info contact: Harry Sabine, PO Box 381, Crossville, TN 38555 (615-484-9593 or 615-484-4878).
- SEP 22 CUMBERLAND COUNTY FALL OPEN, 4-SS, 40/1, Martin Junior High School, Stanley St., Crossville, TN 38555. EF: \$6, TCA mem. (\$4) req. of all TN residents. \$\$ (based on 30): 50, C 25, D 25, UNR 15, Top 1000-1199 25, Top below 1000 25; optional trophies available. Reg: 7:30-8:45 AM 9/22. Rds: 9-11:30-2:30-5:30. For further info contact: Harry Sabine, PO Box 381, Crossville, TN, 38555.

TENNESSEE CHESS ASSOCIATION, INC.

John D. Nichols, Editor
Tennessee Chess News
825 W. Maple St.
Johnson City, TN 37601

Ronald Burnett
1106 Omahundro
Nashville TN 37210



©2018 Tennessee Chess Association | 2911 Belmont Blvd.

Web Version

Forward

Unsubscribe

Powered by

