



**TENNESSEE CHESS NEWS**  
**SUMMER 2009**

**VOLUME 52**

**NO. 3**

Tenn. Senior Open	.....	5
Cumberland Co. Spring Open	.....	8
John Hurt Memorial	.....	10
Lakeway Spring Open	.....	11
Atlanta Open: Todd Andrews	.....	13

---

- |                   |   |  |
|-------------------|---|--|
| Aug. 22, 2009     | <b>17<sup>th</sup> Battle of Murfreesboro</b><br>Grace Lutheran Church, Murfreesboro<br>Entries: Rutherford Co. Chess Club  |  |
| Sept. 5–6, 2009   | <b>Tennessee Open Championship</b><br>Cumberland Co. Community Complex<br>1398 Livingston Road<br>Crossville, TN<br>Three Sections: Open, Amateur U1600, and Novice U1200<br>Hotel: Best Western Leisure Inn<br>Harry Sabine (931) 484-9593; <a href="mailto:hdsabine@citlink.net">hdsabine@citlink.net</a> |  |
| October 10, 2009  | <b>Cumberland Co. Fall Open</b><br>Cumberland Co. Community Complex, Crossville<br>Harry Sabine (931) 484-9593; <a href="mailto:hdsabine@citlink.net">hdsabine@citlink.net</a>  |  |
| November 28, 2009 | <b>49<sup>th</sup> Mid-South Open</b><br>Hampton Inn<br>962 South Shady Grove Road, Memphis<br>2 Sections: Open & Under 1200<br>Entries: Memphis Chess Club   |  |

This magazine is being provided to current Tennessee Chess Association members as one of their benefits for supporting chess activity in Tennessee. It is to be considered legal property of the Tennessee Chess Association. We are trusting you to not abuse the privilege of access to this information. Abuse would be considered sharing your access key with others or copying over two pages for publication without crediting the source (Tennessee Chess News—**TCN**). However, you are permitted to download a copy of this publication to your personal computer. If you desire to use this content for other purposes than your own copy, contact the editor, Leonard Dickerson, for approval. Thank you for your support of chess in Tennessee and observation of these few requests!

**TENNESSEE CHESS NEWS** is the official publication of the  
Tennessee Chess Association.

### MEMBERSHIPS

**TCA** annual dues are \$10 for a *regular* membership or *student* membership. Additional members of a family may join for one dollar each, but only one issue of **TCN** will be available per family. Both regular and patron memberships are for a 12-month period, starting in the month of purchase and expiring after a 12-month period.

**Tax-deductible Patron Memberships** are available beginning at \$100 per year for those who wish to help support the **TCA** and the FFTC. These memberships expire one year from the date of payment. Patron membership categories and benefits are as follows:

#### **PATRON \$100**

- One year **TCA** Membership and FFTC membership plus a key ring.

#### **PATRON KING \$300**

- All Patron benefits plus one year free **TCA** and FFTC membership for all members of the Patron King's immediate family & free entry into the TN State Scholastic Individual Regional Tournament for the member and all members of the Patron King's immediate family.

#### **PATRON MASTER \$500**

- All Patron King benefits plus one free entry to any **TCA** or FFTC sponsored Open Chess Tournament. The Patron Master or any member of his/her immediate family can use such free entry.

#### **PATRON GRANDMASTER \$1000 (or more)**

- All Patron Master benefits plus a chess clock and their name on a permanent plaque to be placed on the wall at the home of the **TCA** and FFTC.

### TOURNAMENT ANNOUNCEMENTS

**TCN** prints listings of upcoming tournaments that require **TCA** membership in each issue for free. Submit complete TLA information to Larry Grohn, Tournament Coordinator.

E-MAIL: [LarryGrohn@comcast.net](mailto:LarryGrohn@comcast.net)

### TN CHESS NEWS STAFF

#### **Editor:**

Leonard Dickerson

#### **Contributors:**

Peter Lahde

**TCN** publishing schedule and deadline for submissions:

Spring 2008 - May 1 covering Feb, Mar, and Apr events

**Deadline: Apr 18, 2008**

Summer 2008 - Aug 1 covering May, Jun, and Jul events

**Deadline: July 18, 2008**

Fall 2008 - Nov 1 covering Aug, Sept, and Oct events

**Deadline: Oct 18, 2008**

Winter 2009 - Feb 1 covering Nov, Dec, and Jan events

**Deadline: Jan 18, 2009**

Please submit material by e-mail to: [lsdick@tds.net](mailto:lsdick@tds.net)



## TENNESSEE CHESS ASSOCIATION & FOUNDATION FOR TENNESSEE CHESS



### PATRON MEMBERS

**Patron Grandmaster**

**Dr. Martin Katahn**

**Patron Member**

**Dr. Juan T. Aristorenas**

**Mark Ishee**

**Peter Lahde**

**Ron Seaney**

**Paul Semmes**

**R. K. Shimabukuro**

**Brian Vogt**



The Tennessee Chess Hall of Fame was established to honor those members who have distinguished themselves through their outstanding achievements in chess, either in competition or in chess organization or promotion. Peter Lahde is chairman of the electing committee, and guidelines for nominations are posted onsite.

#### TCA HALL OF FAME

Peter Lahde	1990
Robert Coveyou	1990
Jerry Sullivan	1990
Martin Southern	1990
Tom Finucane	1990
Robert Scrivener	1990
L. Hunter Weak	1990
John Hurt	1992
James A. Sweets	1993
Rea Hayes	1997
James A. Wright	1998
Dr. Martin Katahn	2002
David Burris	2003
Albert Hodges	2005

## A NOTE FROM THE PRESIDENT: Malcolm Estrada

I have not communicated with the members for some time but it has not been from a lack of desire to do so. In truth, the TCA board has been very busy wrestling with issues of great importance to our organization, the members and chess in Tennessee. So here are some highlights ...

- ▲ The TCA has engaged the services of a web designer to create and install a new website. Your answers to our survey handed out at the Class Championship pointed us in this direction in no uncertain terms. The working benefits to be gained from the new website are many: players may enter our tournaments on line, memberships can be tracked and preserved in a special database (If you join TCA on a certain date, renewal comes up on that date one year later. No more September madness.), game viewers, and a sponsor section to name a few. We expect to have the site up and running soon. Bear with us as we iron out the wrinkles.
- ▲ This newsletter will also be published on the website with a year book issued in hard copy.
- ▲ Membership dues have rolled back to \$10 per year where they once were long ago in the past. There is not enough to be gained and much to lose by increasing the dues at this time.
- ▲ The Tennessee Winter Open is back in its original format and scheduled to be held at Henry Horton State Park just off of I-65 south of Nashville. We believe that this is a good venue for this tournament from the point of view of accommodations and accessibility.
- ▲ The 2009 Senior Open was a success and I think that it will continue to grow over time if we take steps to cultivate the market. We have always been strong supporters of scholastic chess and shall continue to be, but the Baby Boom Generation (of which I am one) is legion.

From this short list I think that you can see that the board is reacting to your needs as chess players and members of the TCA. If we get something wrong, we will fix it. Expect to be asked to fill out more surveys in the future as we will continue to need your help to seek and find constant improvement.

*Malcolm Estrada*

## FROM THE EDITOR

As President Estrada has stated, the Tenn. Senior Open was a success. It far exceeded the attendance that the tournament has seen in the past and even exceeded expectations. Too, the rating strength of the tournament was impressive, boosting four masters. All games submitted by the participants are included in this issue.

Many of the veterans hadn't played for years, and the Senior Open has reignited their desire to compete. For instance, Joe Jones had been inactive since 1996. After the Senior Open, he went on to play in the World Open. Expert Mack Garner played in a warmup tournament for the Senior Open. But prior to that, he had been inactive so long that the USCF doesn't even have a tournament trail of him! Since the Senior Open, he has played in two other tournaments. The Senior Open is bringing "retired" chess players back into action, and the USCF needs to take note of this because this may be the key to increasing its lagging membership.

Because the costs of producing and mailing the **TCN** were exceeding the dues charged, it was decided that the **TCN** will become an online publication. Currently four issues are printed yearly. In the future, only the Summer issue will be a printed on paper (as well as published online).

Hence, starting with the November 1<sup>st</sup> issue, the TCN will be published as an online magazine, probably in pdf format. **This current issue will be the last paper copy of the TCN to be printed until next Summer, August 2010.** That issue and subsequent Summer issues will be a sort of yearbook, summarizing some of the key articles or games from the previous three online issues and updating you on chess events since February.

Because of this significant change, it will now be possible to reduce the membership costs. The revised TCA website should be functional and accessible by October.

**ERRATTA:** In the last issue's *NOTES FROM EDITOR*, I mistakenly credited Jerry Sullivan with Jeremy Spinrad's research into historical Tenn. chess happenings. Sorry. Jeremy Spinrad is the historian and researcher.

## 2009 Tenn. Senior Open

The 2009 Tenn. Senior Open Tournament was held May 15-17 at Fair Park Senior Center located in Crossville. The tournament had 35 participants from 5 states: TN, GA, KY, NC, and SC. With three playing schedules to choose from and a time limit of 2-hours per game, there were no complaints about the time-or anything else. In fact, there was excess praise for the whole affair! Be sure to read Michael Bacon's vivid tribute to the event, which is summarized below and published in full at the USCF Forum. Below is also a listing of the prize winners. Many games of the winners are annotated throughout this issue.

### 2009 TENNESSEE SENIOR OPEN CHESS TOURNAMENT

#### PRIZE WINNERS

<u>PLACE</u>	<u>NAME</u>	<u>CITY, ST</u>	<u>POINTS</u>	<u>AWARD</u>
Champion	Henry Robinson	Charlotte, TN	4.0	\$150.00
2nd Place	Jerry Spinrad	Nashville, TN	3.5	\$100.00
3rd Place	Alan Kantor	Crossville, TN	3.0	Plaque
B/C-1st	Michael Bacon	Scottsdale, GA	3.0	\$25.00
B/C-1st	Robert Hydzik	Knoxville, TN	3.0	\$25.00
D/E-1st	Lawrence Pond	Pleasant Hill, TN	2.0	\$25.00
D/E-1st	John Ryland	Rome, GA	2.0	\$25.00
D/E-1st	Timothy Staley	Decatur, GA	2.0	\$25.00
Below 1400	Lawrence Pond	Pleasant Hill, TN	2.0	Plaque
Below 1000	Larry Grohn	Chattanooga, TN	2.0	\$50.00
UNR-1st	William Murray	Crossville, TN	2.0	\$50.00
Age 60-69	Joe Jones, Jr.	Nashville, TN	3.0	\$50.00
Age 70>	William Bragg	Hopkinsville, KY	3.0	\$50.00
Age 70>	Jon L. Murray	Loudon, TN	2.5	Plaque
Upset Prize	Larry Grohn	Chattanooga, TN	2.0	Set

#### **Michael Bacon's Senior Open Experience**

The Tennessee Senior Open was a wonderful event! At the opening ceremonies at the Fair Park Senior Center that evening, Mayor, J.H. Graham, III, welcomed us with open arms. I told him about this incident that occurred earlier: I left my hotel room after changing pants, as it was warm enough for shorts. After ordering a couple of burritos at Taco Bell, I realized I had left my money in my jeans. I felt foolish, but the employee, Nan Turner, handed me the

grub, saying it would be on her! I simply could not believe it! I mean, that does not happen in a large city like Atlanta. This is a perfect illustration of the difference between a big city and a small town. I learned that during my stay in Hendersonville, NC. My theory is that people are much more friendly in a small town because they realize the person they encounter one day at a restaurant may be the same person they encounter at the library the next day. In a big city, one thinks they will never see that person again. It is the people who constitute a community, whether Crossville or our small chess community. This has to be one of the major reasons Crossville was chosen to be the new USCF HQ. A better place could not have been found!

Following the Mayor's welcome, there was a drawing for prizes donated by the Crossville community. Moreover, there were many drawings and I was fortunate enough to win one! Too, there was free coffee, drinks and snacks for all the players, which was a real nice touch! Harry was the head TD, capably assisted by Susan Houston, an employee of the USCF, and her son, Charley (who kept us updated on the ongoing U.S. Championship). Harry is training Charley: passing the torch, so to speak.

Susan remarked that the tournament had a different feel to it than any other she has attended, with the players acting more like a family reunion or homecoming. Susan handled the computer, acted as 'Chess Mom', and also coordinated trips for the players to the USCF HQ. I went by earlier in the week, seeing old friends like Chuck Lovingood, Jay Sabine, Walter Brown, Alan Kantor, etc., and meeting new friends.

The Fair Park Senior Center was a fine place for the tournament. The lighting was superior, far better than the recent GA State Championship, for example. (Lighting is especially important for Senior players.) Many folks from the Senior Center welcomed us, making us feel right at home. As I sat there listening to these wonderful people, I thought that this is the kind of greeting I've read about on the Web that happens in European countries. It made me real proud to be a chess player! These wonderful people made us feel special.

There were 35 players, far exceeding the small turnouts for previous TN Senior tournaments, which were only one-day events with a G/60 time control. Players came from half a

dozen different states. NM Henry Robinson took first, 4-0. The fine *Chess Café* historical writer, Jerry Spinrad, was clear second with 3.5. Seven players tied for third with a score of 3-1. I am proud to say I was in that group, losing only to Henry. An ornate chess set was donated by the Fair Park Senior Center, and it was decided it would go to the biggest upset. (I asked Harry if that meant the largest rating differential, or the player who got the most upset with a loss!) My first round opponent, Larry Grohn, rated 880, bested my third round opponent, Wieb Van Der Meer, 1420, in the last round to take the prize.

Mucho kudos to Harry Sabine for holding this event! You must come to Crossville in order to understand what having the USCF HQ means to this community! These people are PROUD, and Harry Sabine, as the Mayor said, deserves much credit. The modest Harry pointed out the work of others. I can think of no one better than Harry to coordinate a Senior tournament in all 50 states! Senior chess is bringing chess retirees back to the game after years of absence. I would like to thank Harry, Susan, Charley, and everyone else for a wonderful time here in the mountains.

**TN Senior Open (4)**  
**Russell Thurmond - 1610**  
**Alan Kantor - 2020**

1. **d4 Nf6** 2. **Nf3 e6** 3. **c4 d5**  
 4. **e3 c6** 5. **Nc3 Bd6** 6. **Be2 Nbd7** 7. **h3** I'm not sure that this move is at all useful, unless a bayonet attack is planned. White should be making some provisions to play e4 or to get his dark-squared bishop into the game. **O-O** 8. **O-O Bc7** More consistent is Ne4, planning f5. But perhaps Black is thinking about playing Qd6 to target the weakened b8-h2 diagonal. 9. **c5** Fearing such, White clamps down on the idea. As a rule, this advance is generally weak if it can be met by an immediate break in the center. However, if you are willing to give up space in the center, then it can be a space-gaining maneuver on the queenside. **e5=** 10. **b4 a6** This is probably not necessary, since a further advance of the b-pawn will remove the protection from the c-pawn. Ne4 is more common. 11. **a4 Re8** A little better is exd4 followed by the undermining a5. 12. **dxex Nxe5** 13. **Nd4 Bd7** Still good is a5. 14. **Bd2 Ng6** 15. **b5?** -/+ White seriously weakens his queenside pawns. **axb5** 16. **axb5 Qe7** 17. **bxcb bxc6** 18. **Rxa8 Rxa8** 19. **Qb3 Rb8** (19... Qxc5 20. Qb7 Ra7) 20. **Qa3 Be8** 21. **Qa7?? Bh2+ 0-1**

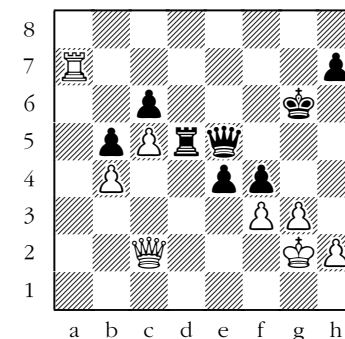
**A Family Affair: The Cumberland Co. Spring**

**Peter Suich** went undefeated to win the **Open Section** of the Cumberland Co. Spring Open, held on April 18 in Crossville. With 29 players competing, Alan Kantor was able to amass 3.5 points and capture clear second by avoiding him. (Alan Kantor, incidentally, won the following July 18<sup>th</sup> Summer Open-named the Pearson Memorial-tying at 3.5 points with Cory Marsh!) Peter's exciting victory over Joe Wright is given below. While Peter was dominating the Open Section, **Victoria Suich** tied with undefeated **Joseph Lynn** to win the **Amateur Section** over 31 combatants. Her fourth round victory over Jacob Hoyos is presented below. Not to be outdone, father Victor also took a couple of scalps, one of which is included on the next page.

The real star of the family appears to be Joanna, though. She boosted her rating by a massive 191 points (!), defeating two much higher-rated opponents. Her victories over tough Matthew Human and other worthies are showcased here, also. (Lest you think she was luck, check out her game over Hydzik in the Lakeway Open, page 12.)

**Cumberland Co. Spring (3)**  
**Peter Suich**  
**Joe Wright**

1. **Nf3 Nf6** 2. **c4 g6** 3. **b3 Bg7** 4. **Bb2 b6** 5. **g3 Bb7** 6. **Bg2 d6** 7. **d4 Nbd7** 8. **O-O O-O** 9. **Re1 Ne4** Better was Qc8 or c5. 10. **Ng5 Ndf6** 11. **Nd2 d5** (11... Nxc5 12. Bxb7 Rb8 13. Bg2 Qd7) 12. **Ngxe4 Nxe4** 13. **Nxe4 dxe4** 14. **Qc2 f5** 15. **e3 e6 =** 16. **Red1 Qe7** 17. **Rac1 Rac8** 18. **c5 Ba6** 19. **Ba3 Bd3** 20. **Qb2** Fritz recommends Rxd3 when White will likely pick up the c-pawn later, but Peter's move is best for practical play. **b5** 21. **Bb4 c6** 22. **Bc3 Rfd8** 23. **b4 g5** 24. **Bf1 Bxf1** 25. **Rxf1 Rd5** 26. **Rfd1 Rcd8** 27. **Qb3 Kf8** 28. **a4 a6** 29. **axb5 axb5** 30. **Ra1 e5** A little better is Qe8, preparing to contest the rook invasion. 31. **dxex Bxe5** 32. **Rxd5 Rxd5** 33. **Ra8+ Kg7** 34. **Kg2 Bxc3** 35. **Qxc3+ Qe5** 36. **Ra7+ Kg6** 37. **Qc2 f4** Black has hopes of f3+, but Qe6 is safe and keeps a defensible position. 38. **exf4 gxf4** 39. **f3?** gxf5 holds the balance.

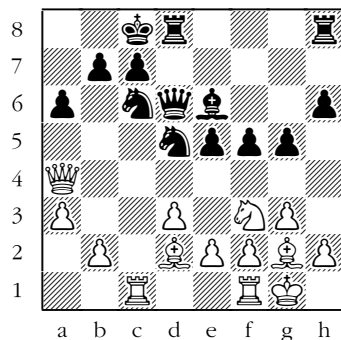


39... Rd3! 40. Ra6 exf3+  
 Winning is Qd5. 41. Kf1 Qe4  
 42. Rxc6+ Kf5 43. Rd6 Re3  
 44. Qxe4+ Rxe4 Also drawing  
 is Kxe4: 44... Kxe4 45. Re6+  
 Kd5 46. Rd6+ Ke4 = 45. Rd5+  
 Kg4 46. c6 White's clever  
 maneuver enables him to  
 shield his pawn from an  
 attack of the rook on the  
 c-file, but the game should  
 still be drawn. fxc3 47.  
 hxg3 h5?? (47... Rxb4 48.  
 Rc5 Kxg3 49. Rg5+ Kf4 50.  
 Rc5 Kg3 =) 48. c7 Re8 49.  
 Rxb5 1-0

Cumberland Co. Spring  
 Victor Suich - 1540  
 Dan Smith - 1363

1. Nf3 d5 2. g3 Nc6 3. Bg2  
 e5 4. d3 Bd6 5. O-O Nge7 6.  
 Nbd2 h6 7. c4 Be6 8. cxd5  
 Nxd5 9. Nc4 f6 Just castling  
 was proper, since the pawn  
 is sufficiently protected.  
 Now there are serious  
 white-square weaknesses on  
 the kingside. 10. Nxd6+ Qxd6  
 11. a3 O-O-O = With a holey  
 kingside, Black was almost  
 compelled to castle  
 queenside. The open c-file  
 and the white bishop trained  
 down the diagonal would  
 ordinarily discourage Black  
 from castling here, though.  
 12. Bd2 Better was b4,  
 preparing to push the knight  
 to an inferior position and  
 gaining queenside space. g5  
 13. Rc1 f5 Better was the  
 cautionary Kb8 or h5. 14.  
 Qa4 a6? This move is bad on  
 two accounts. First, you

shouldn't push your  
 sheltering pawns on the side  
 where you have castled  
 (unless there is no better  
 move available); and,  
 secondly, the king would be  
 much better placed on b8  
 away from the enemy rook and  
 defending the a-pawn.



15. Rxc6 Qxc6 16. Qxc6 bxc6  
 17. Nxe5 Bd7? This is almost  
 inexplicable. Black could  
 have tried either Rd6 or  
 Kb7. 18. Nf7 Rde8 19. Nxb8  
 Rxe2?? 20. Bc3 A little  
 better is Rd1, holding onto  
 the queenside pawns. Nxc3  
 21. bxc3 Ra2 Black should  
 at least try Be8 to have a  
 chance of regaining the  
 piece, but White should be  
 able to hold onto the knight  
 with accurate play. 22. Nf7  
 Rxa3 23. Rc1 a5 24. Ne5 Be8  
 25. Bxc6 Bxc6 26. Nxc6 a4  
 27. Ne7+ Kd7 28. Nxf5 Rb3  
 29. Nd4 Rb8 30. Ra1 Ra8 31.  
 Kg2 c5 32. Nb3 Kc6 33. Nc1  
 Kb5 34. Rb1+ Ka5 35. c4 Ra6  
 Black helps set up the self  
 mate. 36. Rb5# 1-0

TCN/Sum 2009\_09

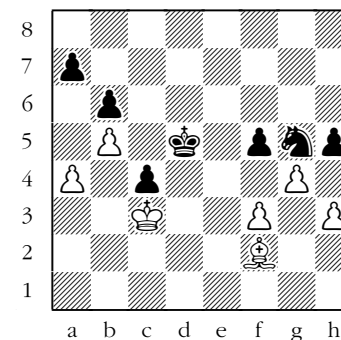
## John Hurt Memorial 6

The John Hurt Memorial 6 was  
 held on June 27, 2009. It  
 was a 4 round event with a  
 G/60 time. Twenty four (24)  
 players participated in the  
 tournament. The highest  
 rated expert, **David Justice**,  
 went undefeated with 4.0  
 points; and Sam O'Bar took  
 clear second with 3.5  
 points. A game from each of  
 the tournament leaders is  
 presented below. More  
 information and games can be  
 obtained from the Memphis  
 Chess Club's website:  
<http://www.memphischess.com>.

John Hurt Memorial (4)  
 David Justice - 2087  
 Kenneth Turner - 1940

1. Nf3 d5 2. g3 e6 3. Bg2  
 Nf6 4. d4 Be7 5. O-O O-O 6.  
 c4 b6 7. Nc3 Bb7 8. cxd5  
 exd5 9. Bf4 c6 10. Rc1 Bd6  
 11. Ne5 Re8 12. e4 Bxe5? 13.  
 dxe5 Nfd7 Better was Nxe4.  
 14. exd5 Nxe5 15. d6 Much  
 better is Re1: 15. Re1 f6  
 16. Bxe5 fxe5 17. d6 +  
 15... Ng6 16. Be3 Nd7 17. b4  
 The immediate Nb5 was  
 better. Nde5 18. Nb5 cxb5?!  
 Better was Re6. 19. Bxb7 Rb8  
 20. Qd5 Better was Ba6,  
 attacking the weak pawn that  
 is difficult to defend. Re6  
 21. Rfd1 Nf8 22. Rc7 Nc4 23.  
 Bf4 g5?! Trying to divert a  
 protector of d6. However,  
 the plan is actually flawed  
 as the pawn can be taken  
 without consequences: 24.  
 Bxg5! Qxd6 25. Bf4!! Qxd5

26. Bxd5 +- 24. Rxc4 bxc4  
 25. Bxg5 Rxd6 26. Qxd6 Qxd6  
 27. Rxd6 Rxb7 28. Rc6 Ne6 =  
 White's big advantage has  
 disappeared. 29. Bf6 Rc7 30.  
 b5 Kf8 31. Kf1 Ke8 32. Ke2  
 Kd7 33. Rxc7+ Nxc7 34. a4  
 Nd5 Ne6 was better,  
 preventing the White king  
 from getting close to the  
 c-pawn. 35. Be5 f6 36. Bd4  
 Ke6 37. Kd2 f5 38. f3 Nc7  
 39. Kc3 Kd5 40. Be3 Ne6 41.  
 h3 h5 42. Bf2 Ng5 43. g4

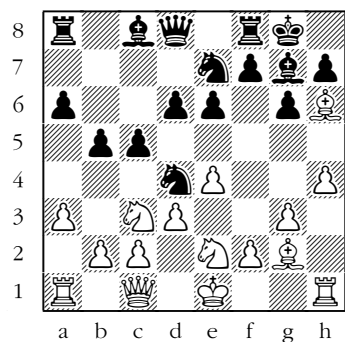


Nxb3?? With the cautious  
 hxg4, Black would be  
 winning. Now he is losing.  
 44. gxh5! Ke6 45. h6 Kf6 46.  
 Be3 f4 47. Bd4+ Better is  
 Bxb6, giving Black advanced  
 passed pawns on both sides  
 of the board. Kg6 48. Kxc4  
 Kxh6 49. a5 bxa5 50. Bxa7  
 1-0

John Hurt Memorial (3)  
 David Sichel - 1989  
 Sam O'Bar - 1778

1. e4 c5 2. Nc3 Nc6 3. g3 g6  
 4. Bg2 d6 5. d3 Bg7 6. Nge2  
 e6 7. Bd2 Nge7 8. Qc1 a6 9.  
 a3 O-O 10. Bh6 b5 11. h4 Nd4

TCN/Sum 2009\_10



12. **Bxg7** In this position, h5 was already possible because **Nxc2** is not a real threat: 12. **h5 Nxc2+** 13. **Qxc2 Bxh6** 14. **hxg6 +/-** 12... **Kxg7** 13. **h5 Ng8** 14. **Nxd4 cxd4** 15. **Ne2 e5** 16. **hxg6 fxc6** 17. **O-O Bg4** 18. **f3 Be6** 19. **c3 dxc3** 20. **bxg3 Qa5** 21. **Qb2 Nf6 =/+** 22. **Kh2 Nd7** 23. **Rfd1 Bh3** or **f4** was better. Black gets a small plus now. **Qc7** 24. **d4 Bc4** 25. **Ng1 Rad8** 26. **Nh3 h6** 27. **Qd2 Nb6** 28. **Nf2 Be6** 29. **Rh1 Rc8** 30. **Kg1 Rh8** 31. **Rc1 Nc4** 32. **Qa2 Qa5** 33. **Nd1 Ra8** Stronger was **exd4** followed by the capture of the a-pawn. 34. **Ra1 Qc7** 35. **a4 bxa4** 36. **Qxa4 Bc8** 37. **dxe5 =/+ 0-1**

## 2009 Lakeway Spring Open

The Lakeway Spring Open, a 4-round G/60 event, was held in Morristown on May 2. Charlie Houston assisted Victor Suich in directing the increasingly-popular event. **Peter Suich** earned 4 points in the 14-player **Open**

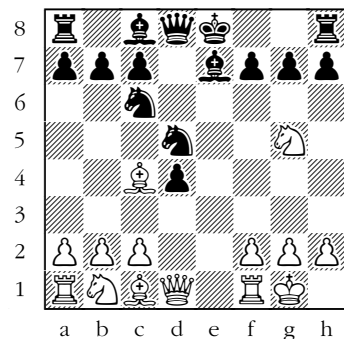
Section to capture first place. Jan Blasenak took clear second with 3.0. In the **Amateur Section** (Under 1200), twenty players fought it out; and **Herbert Glatt** (yes, Brian's father!) emerged undefeated with 4.0. Peter Nagy took clear second with 3.5 points. Below is one of the more spectacular games from the event. Other games follow.

### Lakeway Spring Open (3)

**Charles Blue - 1349**

**Ben Blair - 1500**

1. **e4 e5** 2. **Nf3 Nc6** 3. **d4 exd4** 4. **Bc4 Nf6** 5. **Ng5 d5** 6. **exd5 Nxd5** 7. **O-O** Calmly castling rather than prematurely playing **Qf3** or **Qh5**. **Be7** Better was **Be6** to protect the knight, though



this allows **Nxe**. 8. **Nxf7 Kxf7** 9. **Qf3+ Bf6** 10. **Bxd5+ Be6** 11. **Bxe6+ Kxe6** 12. **Bf4 Rf8?** Mandatory was **Kf7**. 13. **Re1+ Kd7** Wrong direction! 14. **Qh3# 1-0**

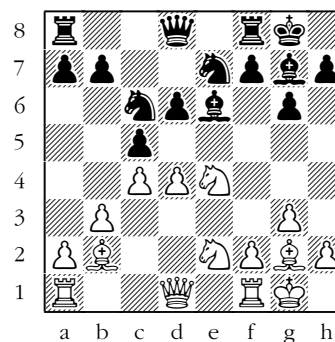
TCN/Sum 2009\_11

### Lakeway Spring Open (1)

**Joanna Suich - 1320**

**Robert Hydzik - 1577**

1. **c4 c5** 2. **g3 g6** 3. **Bg2 Bg7** 4. **Nc3 Nc6** 5. **e3 e5** 6. **Nge2 Nge7** 7. **O-O O-O** 8. **b3 d6** 9. **Bb2 Be6** 10. **Ne4!?** **h6** 11. **d4** Recommended is **d3**. The game continuation should actually give Black a slight advantage. **exd4** 12. **exd4**



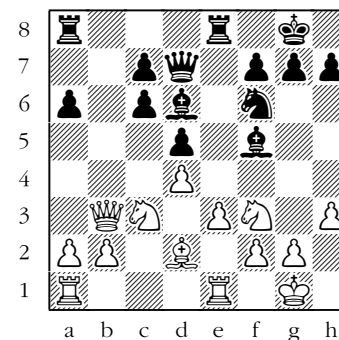
**cxd4?** Hydzik overlooks his pin along the a1-h8 diagonal: 12... **Nf5!** 13. **Qd2** (13. **d5 Bxb2** 14. **Rb1 Bd4** (to shield the d-pawn) 15. **dxc6 bxc6** 16. **g4 d5** 17. **gxf5 Bxf5 +/-**) 13... **Nfxd4 =/+** 13. **Nxd4 Nxd4** 14. **Bxd4 Bf5?** Black has to try **Be5** or **Nf5**. 15. **Bxg7 Bxe4??** 16. **Bxf8 Bxg2** 17. **Bxe7 Qxe7** 18. **Kxg2 Qe4+** 19. **Qf3 Qe7** 20. **Rfe1 Qd7** 21. **Re2 Re8** 22. **Rxe8+ Qxe8** 23. **Qxb7 Qe5** 24. **Rd1 h5** 25. **Qb8+ Kg7** 26. **Qxd6 Qe4+** 27. **Kg1 Qe2** 28. **Qd2 Qf3** 29. **Qd4+ Kg8** 30. **c5 g5** 31. **Qd8+ Kg7** 32. **Qxg5+ Kh7** 33. **Qd5** **Black resigns 1-0**

### Lakeway Spring Open

**Andrew Simonsen - 1401**

**Charles Blue - 1349**

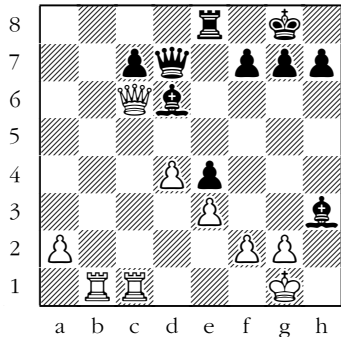
1. **d4 d5** 2. **Nf3 Nf6** 3. **e3 Bf5** 4. **c4 e6** 5. **Nc3 Nc6** 6. **Be2 Be7** 7. **O-O O-O** 8. **Re1 Re8** 9. **cxd5 exd5** 10. **Bb5 Bd6** 11. **Qb3 a6** 12. **Bxc6 bxc6** Black's two bishops give him a clear advantage despite his weakened queenside. 13. **Qb7 Qd7** Gaining a tempo with threat of winning the queen. 14. **Qb3 Ng4** 15. **h3 Nf6** 16. **Bd2**



**Rab8** (16... **Bxh3!** 17. **gxh3 Qxh3** 18. **Qd1 Ng4** and with the rook soon to enter the fray, White is mated within 8 moves.) 17. **Qa4 Rxb2 Bxh3** still wins, of course. 18. **Qxa6 Ne4** 19. **Red1** White needed to play a rook to **b1**. **Rxd2** 20. **Nxd2 Nxc3** 21. **Rdc1 Ne4** 22. **Nxe4 dxe4** **Bxe4** was better, but Charles has spotted the potential sacrifice on the kingside and wants to keep his bishop aimed at the vulnerable h-pawn and use the pawn to restrain White. (22... **Bxe4**

TCN/Sum 2009\_12

23. Qxc6 Qe6 -+) 23. Rab1  
 (If 23. Qxc6, Black still  
 gets his attack going: 23...  
 Qd8 24. Rab1 Bd7 25. Qc2  
 Qg5-+) 23... Bxh3 24. Qxc6



Qg4!! (Fritz was slow to  
 process this rook sacrifice,  
 and most non-experts would  
 not consider it long because  
 of the rook being given up  
 with check.) 25. Qxe8+ Bf8  
 26. Kf1 Qxg2+ 27. Ke1 Bg4!?  
 Calmly repositioning his  
 bishop. However, the direct  
 kill with Qg1+ was better  
 since it rips all the pawns  
 off with check: 27... Qg1+  
 28. Kd2 Qxf2+ 29. Kc3 Qxe3+  
 30. Kb2 Qxd4+ -+ 28. Kd2?  
 White could have played the  
 strong 28. Qb5!, which would  
 have maintained his kingside  
 pawns. Qxf2+ 29. Kc3 Qxe3+  
 30. Kb2 Qxd4+ 31. Kc2 Qd3+  
 32. Kb2 Charles converted  
 his big advantage (2.8  
 points, according to Fritz)  
 into two queens but had to  
 settle for a draw because of  
 time pressure. 1/2-1/2

## Todd Andrews Wins Atlanta Open Again!

Submitted by Peter Lahde

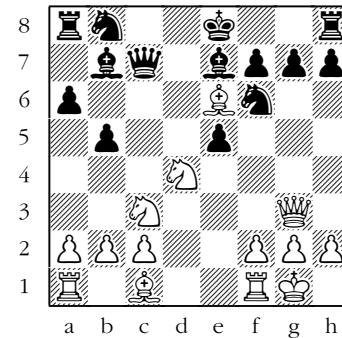
For the last eight times  
 Todd has competed in the  
 Atlanta Open. At the  
 December 2008 Atlanta Open,  
 he again came out the winner  
 with a score of 4.5 out of  
 five. This makes the third  
 time he has won the  
 tournament, and three times  
 he has taken either second  
 or third. Only twice has he  
 failed to achieve this level  
 of success. Two of his  
 wins—which were taken from  
 the March/April 2009 edition  
 of the *Georgia Chess*  
 magazine—are included.

I might add that I looked  
 at Fritz's evaluation and  
 found an improvement on the  
 12<sup>th</sup> move for Black in the  
 first game where he faced  
 Kuderinov as Black.

**Atlanta Open (4)**  
**Kuderinov Kirill - 2484**  
**Todd Andrews - 2379**

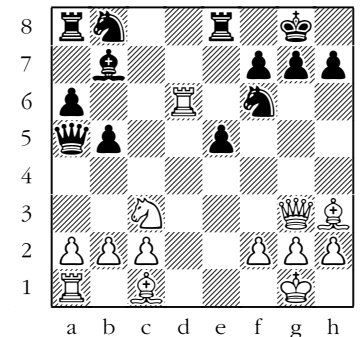
(Submitted by Peter Lahde  
 and annotated by Daniel  
 Quigley)

1. e4 c5 2. Nf3 d6 3. d4  
 cxd4 4. Nxd4 Nf6 5. Nc3 a6  
 6. Bc4 e6 7. O-O b5 8. Bb3  
 Be7 9. Qf3 Qc7 10. e5 Bb7 11.  
 Qg3? dxe5 12. Bxe6!?



Bc5? White had no doubt  
 hoped for 12... fxe6 13.  
 Nxe6 Qd7 and after 14. Qxe5  
 or 14. Nxc7 he would have  
 three pawns for the  
 piece--Daniel Quigley (PDQ).  
 However, Fritz gives the  
 superior 12... Nh5! which  
 eliminates the pin and  
 allows Bxd4, while  
 simultaneously protecting  
 the g-pawn. Then after 13.  
 Qh3, Bxd4 follows. The text  
 allows White to get back  
 into the game with at least  
 equal chances. 13. Nb3?  
 White should have taken the  
 opportunity to punish Black  
 for his overly-clever 12...  
 Bc5 and restored material  
 parity with 13. Bh3!, giving  
 up the knight on d4  
 entirely. PDQ Fritz agrees.  
 Bd6? Both players are going  
 astray amidst these immense  
 complications. After the  
 correct 13... fxe6 14. Nxc5  
 Qxc5, White can't play the  
 intended 15. Qxg7 because of  
 15... Nbd7! 16. Qxh8 Kf7  
 and White's queen is lost.  
 PDQ Fritz says that taking  
 on g7 is his best try, as

White gets some compensation  
 for the queen. 14. Bh3  
 White has restored material  
 equality and has a fully  
 playable position with  
 approximately equal chances.  
 PDQ O-O 15. Rd1 If 15. Bh6,  
 Black simply retreats 15...  
 Ne8 and follows with 16...  
 Kh8, thereby forcing White  
 to retreat his bishop from  
 h6. PDQ Re8 16. Na5 Qxa5  
 17. Rxd6  
 Ne4! The move White



overlooked when playing 16.  
 Na5. White now has a lost  
 game. Instead of Na5, White  
 should have played either  
 16. Bh6 or 16. Bf5.

Moreover, Black may have  
 played 17... Ne4! believing  
 that he was just winning the  
 exchange, but further  
 examination reveals that he  
 is even more ahead than  
 that. For if 18. Qd3 Nxd6  
 19. Qxd6 Rd8 20. Qxe5  
 Qxc3! and Black threatens a  
 back-rank mate. So White  
 chooses to go down a piece



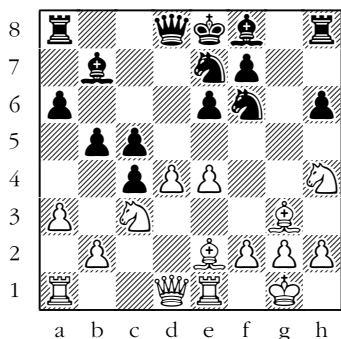
instead. There was nothing better. DQ 18. b4 Qxb4 19. Ba3 Qxc3 20. Qxc3 Nxc3 21. Re1 Ne4 22. Rb6 Bd5 23. c4 bxc4 24. Bf5 Nf6 25. g4 Nbd7 0-1

### Atlanta Open (3)

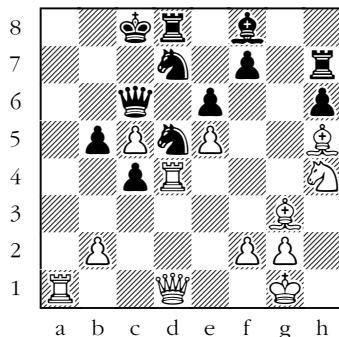
Todd Andrews - 2379

Alan Piper - 2075

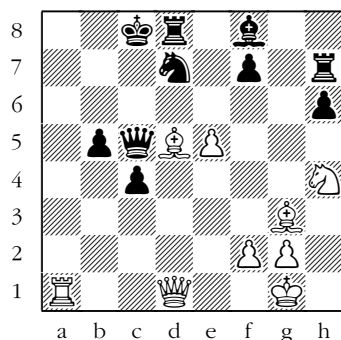
1. d4 d5 2. c4 c6 3. Nf3 e6 4. Nc3 dxc4 5. e4 b5 The Noteboom variation of the Slav. 6. Be2 Bb7 7. O-O a6 8. a3 Nd7 9. Re1 Ndf6? 10. Bg5 h6 11. Bh4 g5 12. Bg3 Ne7 13. h4 gxh4 Better than helping White's pieces reach threatening squares was Ng6. 14. Nxh4 c5



15. e5 Fritz reveals that d5 is better, daring Black to open the position and allow the White knight access to f5 while his king is parked in the center. Nd7 16. Bh5 Qb6 17. Ne4 Bxe4 18. Rxe4 Rh7 19. a4 O-O-O?! 20. axb5 axb5 21. dxc5 Qc6 The immediate capture of the pawn would allow the decisive Ra8+. 22. Rd4 Nd5



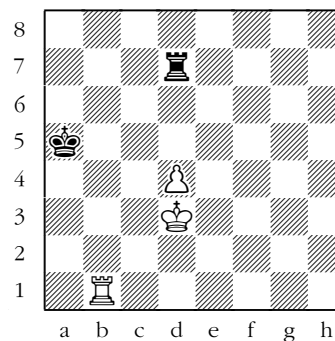
23. b4 Though Todd makes it look routine, this nice move is actually not so easy to spot in the midst of an attack. Nxb4? Black could not afford to lose another tempo. Necessary was cxb3. 24. Bf3 Nd5 25. Rxd5! exd5 26. Bxd5 Qxc5



27. Be4 Immediately decisive is 27. Ra8+: 27. Ra8+! Nb8 28. e6 Bd6 29. e7!. 27... Rg7 28. Ra8+ Kc7 29. e6+ Rxb3 30. Rxd8 Ne5 31. Rd5 Qb6 32. Rxe5 fxe6 33. Qh5 1-0

## Checking Distance

Let's clarify a concept that is critical to know when trying to promote a pawn in a rook endgame. In the below diagram, Black can



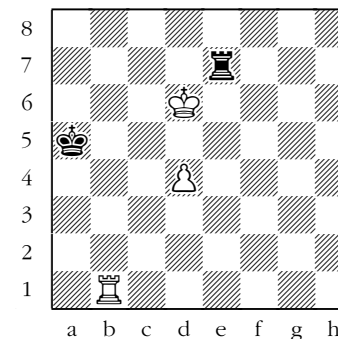
Diag. 1 Whether Black can draw depends upon whose move it is.

either draw or lose, depending upon whose move it is and whether he knows about checking distance.

Checking distance refers to the distance from which the rook checks the king. You want to have as much space as possible so that the king cannot attack the rook's checking square. In this particular case, the rule is that if there are two or less squares between rook and pawn, then Black loses if it is White to move.

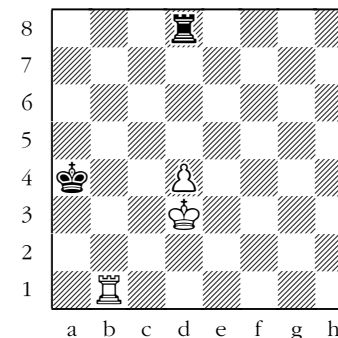
With White on the move he plays 1. Ke4, preparing to advance the board and promote the pawn. Since Black's king is helplessly

cut off, this is a duel between the king and rook. Black responds 1... Re7+; 2. Kf5 Rd7 3. Ke5 Re7+; 4. Kd6 and suddenly Black has no safe square upon which to check (Diagram 2, below).



From Diagram 1 with Black to move, he draws easily with 1... Rd8, increasing the checking distance to three squares. There is no sure win for White.

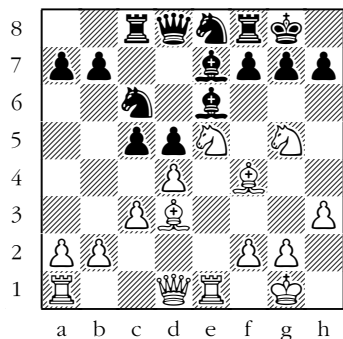
The below diagram presents a trick that allows White to



decrease the checking distance and win. White plays 1. d5!, for if 1... Rxd5+, 2. Kc4 sets mate.

## Scholastic Corner: Continuing with Check

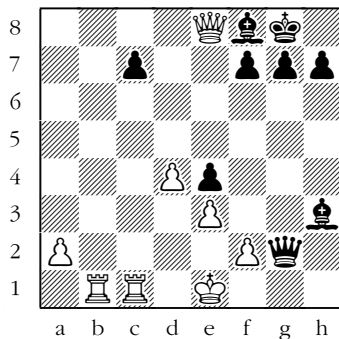
When working combinations or attempting to advance your goals, use the more forcing move—most especially if it involves a check. Checks, captures, and direct attacks force your opponent to react more predictably, reducing the number of possible counter moves and variations needing to be evaluated.



The below diagram from a July 7<sup>th</sup> game shows White

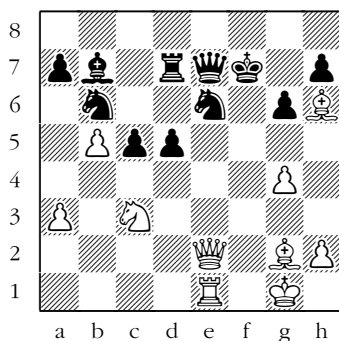
winning material with the effective 15. Nxh7 but overlooking the more forceful 15. Bxh7+ Kh8 16. Nxe6 fxe6 17. Qh5, threatening Ng6++. Forcing continuations should receive more attention and priority.

In this next diagram from the Lakeway Spring Open, Blue continued with 27... Bg4, costing himself some valuable clock time. But more energetic and involving less calculation was the



simpler 27... Qg1+.

During the Senior Open, Patty could have proved that the most forcing move need



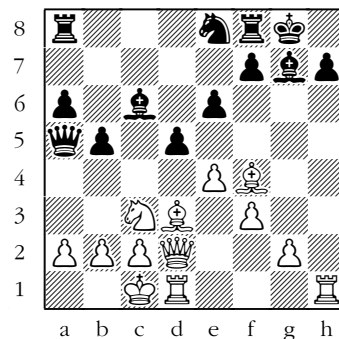
not be a check by continuing 33. Qe5 against Semmes.

The following game from the Rea Hayes shows a scholastic overlooking checks and captures, but still demonstrating nice tactics.

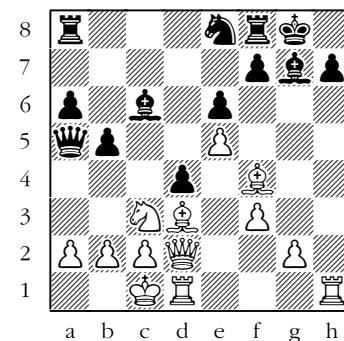
**Xu, Albert - 1022**  
**Phillip Pennington - 1559**

1. e4 c5 2. Nc3 Nc6 3. Nf3 d6 4. d4 cxd4 5. Nxd4 Bd7 6.  
TCN/Sum 2009\_17

6. Be3 Nf6 7. f3 a6 8. Bd3?! e6 Black could create some problems with the simple Qb6 and possibly win the b-pawn: 8... Qb6 9. Nf5 (9. Na4 Qa5+ 10. Nc3 Nxd4 11. Bxd4 Qb4 12. Bxf6 gxf6 13. Rb1 Rg8 =/+ ) 9... Qxb2 10. Na4 Qa3 11. Nb6 Rb8. 9. Nxc6 Bxc6 10. Bg5 Unnecessary. Be7 = 11. Qd2 O-O 12. O-O-O Qc7 13. h4 b5 14. h5 d5? Black should have continued with b4 and Qa5. Now White is able to chase one of Black's best defenders away with e5 since capturing the pawn with Qxe5 would result in loss of the queen. 15. Bh6? This is actually a blunder because the piece can be safely captured, but you've got to admire Albert's daring! Ne8? (15... gxh6 16. exd5 (16. Qxh6 dxe4 17. fxe4 Ng4 18. Qd2 b4 -+) 16... Nxd5 17. Qxh6 Qf4+) 16. Bf4 Qa5 17. h6 Single-mindedly going for mate. However, the simple exd is also strong: 17. exd5 Bxd5 18. Qe3 Bc6 19. h6 +/- 17... Bf6? Necessary was g6 or dxe4. 18. hxg7 Bxg7



19. e5 This gives Black a reprieve. More direct is to continue the attack with tempo with exd5. After 19. e5, though, White can try to block the kingside with f5; but Black still maintains an initiative. (19. exd5 Bxd5 20. Bxh7+ Kh8 21. Be5 Bxe5 22. Be4+ Kg8 23. Qg5+ Bg7 24. Rh8+ Kxh8 25. Qh5+ Kg8 26. Qh7#) 19... d4??



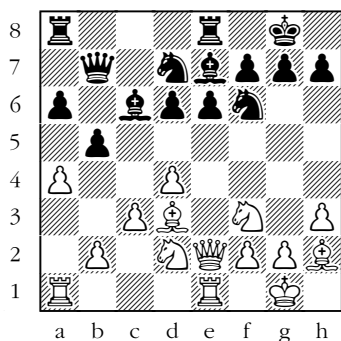
20. Bh6! This wins, too, but allows f5. It was better to use forcing checks: 20. Bxh7+ Kh8 21. Bh6 f6 22. Bg6 fxe5 23. Bxg7+ Kxg7 24. Rh7+ Kf6 25. Qh6 -+ 20... dxc3 21. Bxh7+ Kh8 22. Bxg7+ Nxg7 23. Qh6 cxb2+ 24. Kb1 f5 25. Bg6+ Kg8 26. Qh8# 1-0

Continuing with checks and captures would have made White's victory surer and more precise. But we still need to applaud White's vision for seeing the final kill. As stated in the last issue: check the checks!

Leonard Dickerson - 2200  
Joe Jones - 2214

1. d4 Nf6 2. Nf3 e6 3. e3 b6  
4. Bd3 Bb7 5. O-O c5 6. Nbd2  
cxd4 7. exd4 Be7 8. c3 I  
didn't wish to play a  
hanging pawn position so  
just decided to reduce any  
Black pressure down the  
c-file. O-O 9. Re1 d6 10.  
Nc4 Nbd7 This Hedgehog  
position sees White  
maintaining only a minimum  
advantage, discouraging the  
freeing e5. 11. Bf4+/- Qc7  
12. h3 Rfe8 13. a4 a6 Most  
often played is h6, but Nd5  
is also seen. 14. Ncd2 This  
move is not so great, but I  
was worried that he might  
soon drop a piece on e4 to  
reduce my pressure. (14. Bg3  
Ne4 15. Bxe4 Bxe4 16. Bxd6  
Bxf3 17. Bxc7 Bxd1 18. Raxd1  
Rac8=) Perhaps some subtlety  
was overlooked here, but  
such was the fear that  
prompted me to return my  
knight rather than retreat  
my bishop. 14... Bc6 15.  
Bh2 Bg3 is probably a  
little better since I could  
then play to h4 if desired  
and my king would still have  
an escape square. But I  
didn't want to yield a tempo  
to Nh5 later because Black  
might use the move to  
reorganize his defensively  
placed pieces. Qb7 16. Qe2  
Qb3 restricts b5 and Nc4  
would probably see Black  
return his queen to c7. But  
I still would have made no  
inroads into the Black  
position. So I decided to

play to connect rooks and  
company my king. 16... b5

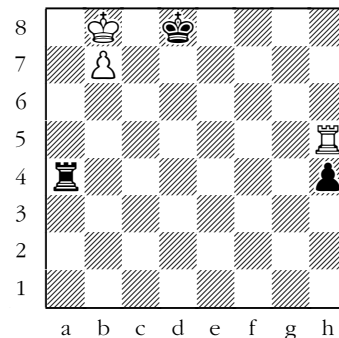


17. axb5 Fritz initially  
suggested Ng5, which I  
certainly did not consider  
during the game. And even  
now with analysis it still  
is not overly impressive:  
17. Ng5!? h6 (17... Bxg2?!  
18. axb5 axb5 19. Rxa8 Qxa8  
20. f3 h6 21. Nxe6 Bxf3 22.  
Qxf3+/-); (17... bxa4 18.  
Nc4 d5 19. Na5 Qb6 20. Nxc6  
Qxc6=) 18. Nxf7 Kxf7 19.  
axb5 axb5 20. Rxa8 Qxa8 21.  
Qxe6+ Kf8 22. Bxd6 Bxd6 23.  
Qxd6+ Kf7 24. Rxe8 Kxe8 25.  
f3+/- 17... axb5 18. Qf1 b4  
19. Rxa8 Seeing the  
potential attack coming down  
the a-file, I decide to  
eliminate a rook so that  
playing b3 would be a  
mistake. Rxa8 20. Ra1?! Now  
I should have continued with  
my idea of c4 followed by  
b3, but I credited my  
opponent with seeing that b3  
would eventually result in  
the loss of a pawn. (20. c4  
b3? 21. d5) 20... bxc3 21.  
Rxa8+ Qxa8 22. bxc3 Qa3 23.  
c4 Qc3 24. Qb1 g6 25. Qc2  
1/2-1/2 TCN/Sum 2009\_19

TN Senior Open (3)  
Robert Hydzik - 1614  
Richard Higgins - 1427

1. c4 Nf6 2. g3 Nc6 3. Bg2  
g6 4. Nc3 Bg7 5. Nf3 O-O 6.  
O-O e5 7. d4 exd4 8. Nxd4  
Re8 9. e3 Ne7!? 10. Bd2 c6  
11. e4 d5 Black has shown  
creativity in freeing his  
position and now has an  
equal game. 12. cxd5 cxd5  
13. exd5 Much better was e5.  
Nfxd5 14. Nxd5 Nxd5 15. Qb3  
Bxd4 16. Bxd5 Be6 17. Bxe6  
fxe6? 18. Rad1 Qf6 Better  
was Qb6 or Qd5. 19. Bg5!  
Also good is Bf4. Bxf2+ 20.  
Rxf2 Qxg5 21. Qxb7 Rad8 22.  
Rxd8 Rxd8 23. Qf7+ Kh8 24.  
Qxe6 Rd1+ Better was Kg7 or  
a5. 25. Kg2 Qd5+ Unless  
your king is over-exposed  
and your opponent has mate  
threats, swapping queens is  
the last thing that you  
should consider for the  
queen is your best source of  
counter play. Now nearly  
perfect technique will be  
required of Black to draw  
the game. 26. Qxd5 Rxd5 27.  
Rc2 a5 28. Kf3 h5 29. a3 Kg7  
30. Ke4 Rf5 31. h3 The  
immediate b4 is better. Kf6  
32. Rc6+ Kf7 33. Rc3 Rb5 34.  
b3 Ke6 35. Re3 Kd6 36. Rd3+  
Ke6 37. Kd4 Rf5 38. Kc4 Re5  
39. b4 axb4 40. axb4 Re2 41.  
Kc5 Rh2 In rook endgames it  
is the quality of the pawns,  
not the quantity. Hence  
Black goes seriously wrong  
here as he gives White 3  
tempi to advance the passer.  
42. b5 Rxh3 43. b6 Rh2 44.  
Rc3? Passed pawns must be

pushed, so b7 is best. The  
game continuation is weak  
because it allows the Black  
king to get closer to the  
pawn. But White still  
remains fully in control.  
Kd7 45. Kb5 Rb2+ 46. Ka6  
Ra2+ 47. Kb7 g5 48. Kb8 h4  
49. gxh4 gxh4 50. b7 Ra4 51.  
Rc7+ Kd8 52. Rc8+ Kd7 53.  
Rh8 Rb4 54. Rh7+ Kd8 55. Rh5  
(Also winning is Ka7: 55.  
Ka7 Ra4+ 56. Kb6 Rb4+ 57.  
Kc6 Ke8 58. Rh5 Kd8 59. Rd5+  
Ke8 60. Rb5) 55... Ra4



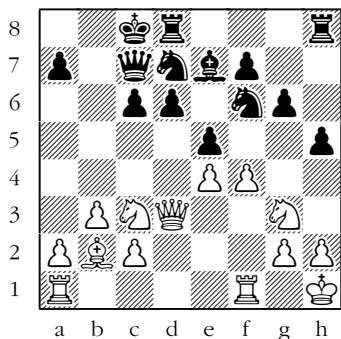
56. Rd5+ Finally setting up  
the Lucena position  
(building a protective  
bridge from which to shelter  
from checks). Ke7 57. Kc7  
Rc4+ 58. Kb6 Ke6 59. Rb5 Kd7  
60. b8=Q Rc6+ 61. Ka5 1-0

63<sup>rd</sup> Annual Tenn. Open  
September 5—6, 2009  
Crossville, TN

Official Hotel:  
Best Western Leisure Inn

**Jerry Spinrad - 1978**  
**Leonard Dickerson - 2200**

1. e4 d6 2. Nc3 Nf6 3. b3  
 Played to avoid a Pirc. e5  
 Showing a willingness to  
 accept a Philidor-type  
 position and blunting  
 White's dark-squared  
 bishop's diagonal. 4. Bb2  
 Be7 5. f4 Bg4 6. Be2 Bxe2 7.  
 Ngxe2 c6 8. O-O Nbd7 9. Ng3  
 g6 10. d4 Qc7 11. Kh1 I was  
 happy to see this move. I  
 immediately started  
 visualizing h7-h5-h4  
 followed by dropping a  
 knight on g3. I felt that  
 any queenside action that  
 White could generate would  
 be offset by this plan and  
 having his bishop at b2  
 slows any queenside pawn  
 assault. Besides, it would  
 be suicide to castle on the  
 kingside! O-O-O= 12. d5 The  
 game has transposed into a  
 Nimzo-Larsen Opening where  
 Black has castled queenside  
 to avoid the bishop's power.  
 h5! 13. dxc6 bxc6 14. Qd3



exf4=/+ Also leading to an  
 advantage is Nc5: 14... Nc5  
 15. Qe3 (15. Qc4 h4 While

analyzing my potential  
 moves, I only considered  
 immediately pushing d5 and  
 overlooked the effectiveness  
 of continuing h4: (15... d5  
 16. exd5 cxd5?! (16... h4!-  
 /+) 17. Nxd5 Nxd5 18. Bxe5  
 Qb7 and though Black might  
 have a tiny advantage, my  
 king is exposed for sure and  
 White certainly has  
 counterplay (after he  
 guards e3 from a knight  
 intrusion).) 16. Nge2 h3 17.  
 gxh3 (17. g3? d5 18. Qb4  
 Nd3) 17... Rxh3 -+) 15...  
 Ng4 16. Qf3 exf4 17. Qxf4  
 Rh7) 15. Rxf4 Ne5 16. Qf1  
 h4 17. Qa6+ (17. Nge2 Nh5  
 18. Rf2 (18. Rxf7 Ng3+ 19.  
 Nxc3 hxg3 20. h3 Nxf7 21.  
 Qxf7 Qd7) 18... Ng3+ 19.  
 hxg3 hxg3+ 20. Kg1 gxf2+ 21.  
 Qxf2) 17... Qb7 1/2-1/2

**Tim Staley - 1120**  
**Neal Williams**

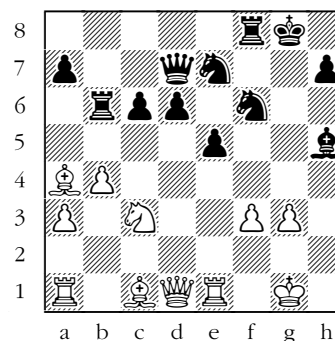
1. c4 c5 2. Nc3 Nf6 3. g3 d6  
 4. Bg2 Nc6 5. e3 e6 6. Nge2  
 Be7 7. O-O O-O 8. d4 cxd4 9.  
 Nxd4 Nxd4 10. Qxd4 Qc7 11.  
 b3 e5 Better has to be Bd7,  
 as this move leaves the d-  
 pawn backward and allows the  
 White knight the d5-square.  
 12. Qd3 a6 13. Rb1 Bd7 14.  
 Nd5 Nxd5 15. Bxd5 Rab8 16.  
 Be4 g6 17. Bb2 Bc6 18. f4  
 Bxe4 19. Qxe4 b5?! 20. cxb5  
 axb5? 21. Rbc1 Qa5 22. Ra1?  
 (22. fxe5 Qxa2 23. exd6)  
 Rfd8? Better was Bf6. 23.  
 Qd5 Much better was fxe5  
 with thoughts of lining up a

TCN/Sum 2009\_21

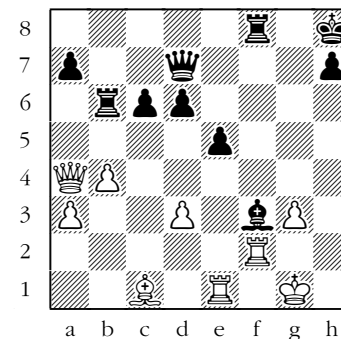
queen-bishop battery on the  
 a1-h8 diagonal. Rf8? Qa8 was  
 necessary. 24. fxe5 dxe5  
 25. Qxe5 f6 26. Qxe7 Rf7 27.  
 Qe6 Rb6 28. Qe8+ Kg7 29. Bd4  
 Ra6 30. a4 bxa4 31. Rxa4 Ra8  
 32. Qxa8 Qxa8 33. Rxa8 1-0

**TN Senior Open (2)**  
**Johnny Owens - 1787**  
**John Patty - 2200**

1. c4 e5 2. g3 Nc6 3. Bg2 f5  
 4. Nc3 Nf6 5. e3 Be7 6. Nge2  
 O-O 7. O-O d6 8. a3 g5 9.  
 Nd5 Be6 10. Nec3 Qd7 11.  
 Nxe7+ Nxe7 12. Bxb7 Rab8 13.  
 Ba6 Rb6 14. Bb5 c6 15. Ba4  
 Bxc4 16. Re1 f4 17. exf4  
 gxf4 18. d3 Bf7 (18... Qh3  
 19. dxc4 Ng4 20. Qf3 Qxh2+  
 21. Kf1 fxg3 22. Qxg4+ Kh8  
 23. Ke2 Rxf2+ 24. Kd3) 19.  
 b4 Bh5 20. f3 fxg3 21. hxg3



Kh8 (21... Qh3 22. Ra2 Bxf3  
 23. Qxf3 Nfd5 24. Qg2 Qxg2+  
 25. Rxc3 Nxc3 26. Bb3+ Ncd5  
 27. d4 Ng6= 28. Bb2) 22. Ra2  
 Nfd5 23. Nxd5 Nxd5 24. Rf2  
 Nc3 25. Qc2 Nxa4 26. Qxa4  
 Bxf3-/+



27. b5! White's timely pawn  
 sacrifice allows him to  
 swing over to the kingside  
 for defense. Here, Rxb5 is  
 better, keeping the option  
 of deploying the rook down  
 the b-file and leaving the  
 pawns massed in the center.  
 Note that if Black had a  
 c-pawn, he could protect his  
 center from a later d4 when  
 White's bishop might enter  
 the fray with effect. cxb5  
 28. Qh4 Rbb8 29. Ref1 Qb7  
 30. Bh6 Rf7 Fritz claims  
 that Black is winning,  
 regardless of the his  
 black-squared weaknesses.  
 31. Bg5 Rbf8 32. Bh6 Rg8 33.  
 Bg5 A draw was agreed here,  
 but Rg6 followed by Kg8 does  
 give Black a decided  
 edge-especially since he can  
 create a passed pawn on the  
 queenside. 1/2-1/2

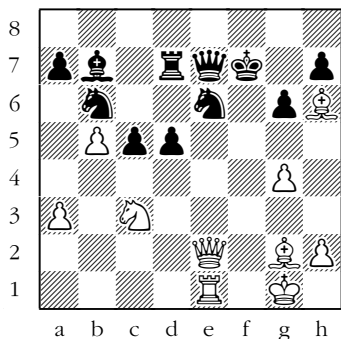


**U.S. Chess League Resumes:**  
**Tennessee Tempo's** season  
 opens on Aug. 31, 2009 at  
 7:00 PM.

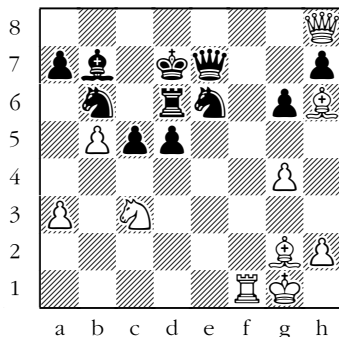
TCN/Sum 2009\_22

John Patty - 2200  
Paul Semmes - 1946

1. c4 Nf6 2. g3 c5 3. Bg2 Nc6 4. Nc3 g6 5. d3 Bg7 6. a3 O-O 7. Rb1 e6 8. e4 d6 9. Nge2 Rb8 10. b4 b6 11. O-O Bb7 12. b5 Ne7 13. f4 d5 14. cxd5 exd5 15. e5 Ne8 16. d4 Nc7 17. g4 f6 18. Be3 Capturing the f-pawn was better. Now Black gets a minor threat of releasing his d-pawn for a fork on d4. **fxe5** 19. **fxe5 Rxf1+ -/+** 20. **Qxf1 Ne6** (20... cxd4 21. Bxd4 Ne6 22. Re1 Qc7 -+) 21. **Rd1** (21. dxc5 Nxc5 22. Rd1 Bxe5 23. Bf4 Qd6 24. Bxe5 Qxe5 25. Qf4=) 21... **Qd7** 22. **dxn5 bxc5** More precise was first Rf8. 23. **Ne4 Bxe5** 24. **Nf6+ Bxf6** 25. **Qxf6 Rf8** 26. **Qe5 Rd8** Fritz recommends g5 with the idea of planting a knight on f4, giving Black a nice plus. 27. **Bh6 Nc8** 28. **Nc3 Qd6** 29. **Qf6 Qe7** 30. **Qf2 Nb6** (30... d4 31. Bxb7 Qxb7 32. Qa2 Qd7 33. Ne4 Kh8-/+)  
31. **Qe2 Rd7?** Black should not allow the pin to be intensified; so Qf7 was necessary. 32. **Re1 Kf7** 33.



33. **Rf1+?! (33. Qe5!**  
Threatening 34. **Rf1+ Kg8** 35.  
**Qxe6+! Qxd6** 36. **Rf8++ Rd8**  
34. **Bg5)** 33... **Ke8**



34. **Qe5 +/- Rd6** 35. **Qh8+ Kd7**  
36. **Qg8?** (36. **Qb8!** +- Nd8  
37. **Bf4 Re6** 38. a4) 36...  
**Nd8** 37. **Bf4 Rf6** 38. **Nxd5!?**  
Fritz recommends Qh8, but  
Black has already recovered  
the initiative. **Nxd5** 39.  
**Bxd5 Rf8** 40. **Bc6+ Nxc6?**  
(40... **Bxc6** 41. **bxn6+ Kc8**  
42. **Qc4 Nxc6 +/-**) 41. **Qd5+**  
**Kc8** 42. **bxn6 Ba6** 43. **Rf3**  
(43. **Qb3!** **Rxf4** 44. **Rxf4 +-**)  
43... **Qe1+** 44. **Kg2 Qe2+** 45.  
**Kg3 Qe1+** 46. **Kg2 Qe2+** 47.  
**Kg3 Qe1+** 48. **Kg2 1/2-1/2**

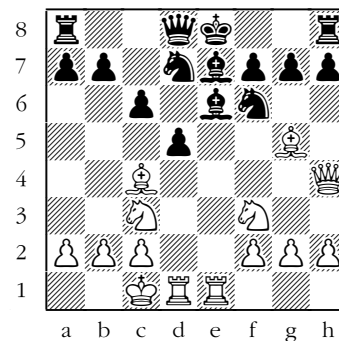
4th Tenn. Senior Open  
Bernie LeFrancois  
Leonard Dickerson

1. e4 c5 2. Bc4 Nc6 3. Nf3  
Nf6 4. d3 e6 5. O-O Be7 6.  
e5 Nd5?! (6... Ng4 7. Bf4 f6  
8. exf6 Bxf6 9. Nc3 d5) 7.  
c3 Nb6 8. a4 Nxc4 9. dxc4  
O-O= 10. Na3 a6 11. Be3 d6  
12. exd6 Bxd6=/+ 13. Qc2 Qc7  
(go to page 25)

TCN/Sum 2009\_23

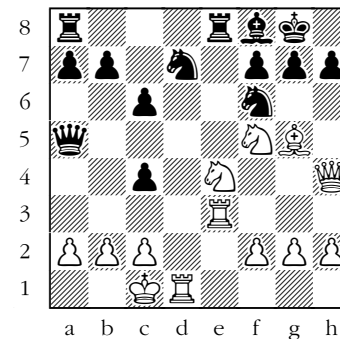
TN Senior Open  
Henry Robinson - 2224  
William Bragg - 1930

1. e4 e5 2. d4 exd4 3. Bc4  
Nf6 4. Nf3 Nxe4 5. Qxd4 Nf6  
6. Nc3 c6 Trying to blunt  
the diagonal of the  
dangerous White bishop is  
the start of Black's  
problems. Recommended was  
Nc6 to gain a tempo against  
the White queen. Still,  
Fritz feels that the  
position is drawish. 7. **Bg5**  
**Be7** 8. O-O-O d5 9. **Rhe1 Be6**  
10. **Qh4** Robinson's play is  
reminiscent of Morphy's  
style. White's active  
development and excellent  
piece placement easily  
compensates for the pawn  
deficit. **Nbd7** Black is  
reluctant to castle because  
the White bishop would slide  
ominously to d3.



11. **Nd4!** Displaying the  
daring of a champion! **dxn4**  
12. **Rxe6 O-O?** Capturing the  
rook was forced, especially  
in view of the knight ready  
to hop to f5 and the  
uncaptured rook's potential

of playing **Re6-e3-h3** (or  
g3). Fritz even gives Black  
a plus of a full point after  
lengthy analysis: 12... **fxe6**  
13. **Nxe6 Qa5** 14. **Qxc4 Qb4**  
15. **Nc7+ Kf8** 16. **Qxb4 Bxb4**  
17. **Nxa8 Ke7=/+** If such came  
to past, Black would be  
slightly favored. However,  
this is hasty post analysis  
and, to me, indicates that  
White's over-the-board  
chances are definitely to be  
preferred. 13. **Re3 Re8** 14.  
**Nf5** White has a 2-point  
advantage. **Bf8** 15. **Ne4** Fritz  
recommends sacrificing the  
rook. **Qa5**



16. **Nh6+ Kh8** (16... **gxh6** 17.  
**Bxf6 Nxf6** (17... **Ne5** 18.  
**Bxe5 Qxe5** 19. **Nf6+**) 18.  
**Nxf6+ Kh8** 19. **Nxe8**) 17. **Bxf6**  
**Nxf6** (17... **Rxe4** 18. **Bxg7+**  
**Bxg7** 19. **Nxf7+ Kg8** 20. **Qxe4**)  
18. **Nxf6 gxf6** (Henry  
demonstrated the nice knight  
mate lurking in the  
position: 18... **Rxe3** 19.  
**Nxf7#**; and if 18... **gxh6** 19.  
**Nxe8 Qg5** 20. **Qxc4**) 19. **Qxf6+**  
**Bg7** 20. **Nxf7+ Kg8** 21. **Rg3**  
1-0

TCN/Sum 2009\_24

**LeFrancois-Dickerson, p. 23**

14. Ng5 g6 (14... f5! 15. f4 h6 16. Nh3 b6 17. Rad1 Bb7-/+)  
 15. g3 f6?! 16. Ne4 Nd8?  
 17. Rad1? Be7 18. Bh6 Re8  
 19. Be3 e5? 20. f3 (20. Bxc5 Bxc5 21. Nxf6+ Kf7 22. Nxe8 Kxe8 23. b4 Be7 +/=) 20...  
 Be6 21. Rd2 Nf7 22. b3 Qc6  
 23. Rb1 f5 24. Rf2?? (24. Nf2 Qxf3 25. Rd3 e4 26. Qd1 Ne5) 24... fxe4 25. Qxe4  
 Qxe4 26. fxe4 Ng5 27. Bxg5 Bxg5  
 28. b4 Be3 29. Rbf1 cxb4  
 30. cxb4 Rf8 31. Kh1?? Rxf2  
 32. Rxf2 Bxf2 33. Kg2 Be1  
 34. Nc2 Bd2 35. c5 Bb3  
 36. Na1 Bxa4 0-1

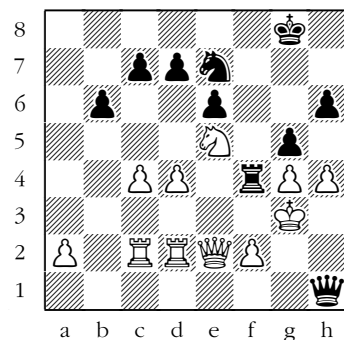
**TN Senior Open**

**Alan Kantor - 2020**

**Henry Robinson - 2224**

1. e4 Nf6 2. e5 Nd5 3. c4 Nb6  
 4. c5 Nd5 Black's four consecutive moves of the knight sees him securing a central post for his knight, while White's four consecutive pawn moves yields him a space advantage but perhaps over-extended pawns. 5. Bc4 e6 6. d4 Nc6  
 7. Nf3 b6 8. cxb6 Robinson was pleased to obtain the open file for his rook. Better was Bxd5 followed by Nc3, leaving the a-file closed: 8. Bxd5 exd5 9. Nc3 bxc5 10. dxc5 Bxc5 11. Nxd5. 8... axb6= 9. O-O Be7 10. Nc3  
 Perhaps Bxd5 was best, but giving up control of the White squares also has problems: 10. Bxd5 exd5 11.

Nc3 Ba6 12. Re1 Nb4. 10... Nxc3 11. bxc3 Ba6 12. Bxa6 Rxa6 13. Qe2 Qa8 14. Bg5 Ra3 15. Rfc1 Qa5 16. Bxe7 Nxe7 17. c4 O-O=/+ 18. Rc2 Nf5 19. Rd1 Ra8 20. Rdd2 Active play with d5 was better. h6 21. g4?! White radically removes the possibility of back-rank mate. However, this does weaken his kingside pawn structure and gives Black new targets. Ne7 22. Kg2 g5 Fritz recommends planting the knight on d5 with a temporary pawn sacrifice but the game continuation is also strong: 22... b5 23. cxb5 Nd5 24. Qe4 Rb8-/+ 23. Qe4 Rf8 Positionally sound is Ng6-f4, but Robinson is tactical minded. 24. h4 f5 Making use of his rook's position on the a-file. 25. exf6 Rxf6 26. Ne5 Rf4 27. Qe2 Qa8+ 28. Kh2 (28. d5 exd5 29. Nxd7 d4+ 30. Kg1 Qc6 31. Ne5 Qe6 -+) 28... Rh3+! 29. Kxh3 Qh1+ 30. Kg3



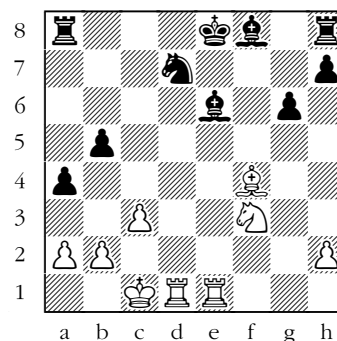
Nf5+! 31. gxf5 Qg1+ 32. Kh3 Rxb4# 0-1

**TN Senior Open**

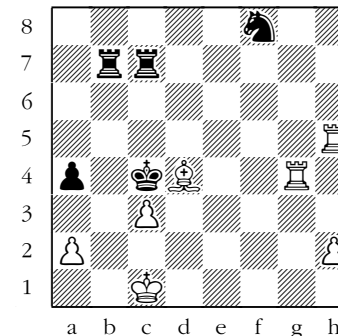
**Ellis Jones - 1811**

**James Hughes - 1604**

1. d4 Nf6 2. Bf4 c5 3. e3 d5 4. c3 cxd4 5. exd4 a6 6. Nf3 Bg4 7. Nbd2 Ne4 Since Black has removed both the bishop and knight's protection of his pawns, this can be exploited by Qb3: 8. Qb3! b5 (8... Nxd2 9. Qxb7 Nxf3+ 10. gxf3 Bxf3 11. Qxa8 Bxh1 12. Qxb8 Qxb8 13. Bxb8 a5 14. Bc7+/-) 9. Nxe4 dxe4 10. Ng5 e6 11. Nxe4. 8. Qa4+ Qd7 9. Qxd7+ Nxd7 10. Nxe4 dxe4 11. Ng5 Bf5 12. Bc4 e6 13. g4? I'm not sure what this is about. Perhaps White noticed at the last second that the followup of 14. Nxe4 would lose to Bf3? Bxg4 14. Rg1 Bf5 15. f3 exf3 16. Nxf3 g6 Though Black still maintains a plus, this is a little too mechanical, with moves like Rc8 and h6 available. 17. O-O-O b5 18. Bb3 a5 19. d5 a4 20. dxe6 fxe6 (20... axb3 21. exd7+ Bxd7 22. Rge1+ Be6 23. axb3=) 21. Bxe6? Bxe6 22. Rge1



Kf7?? Both Nc5 and Ra6 easily hang onto the extra material. 23. Ng5+ Kg8 24. Nxe6 Ra7 25. Nxf8 Kxf8 26. Bh6+ Kf7 27. Rf1+ Ke6 28. Be3 Rb7 29. Bd4 Rc8 Rf8 with a later Kf7 would be a better plan, relying on defense rather than offense. 30. Rde1+ Kd5 Overprotecting the knight with Kd6 was better. 31. Re7 b4 32. Rff7 Kd6 33. Rxh7 bxc3 34. bxc3 Rcc7 35. Reg7 Kd5 36. Rxg6 Nf8 37. Rh5+ Kc4 38. Rg4



Rf7? Overlooking that White can play the simple Kc2, which would force Black to give up a rook to prevent mate. 39. Bf6+ Cutting the rook off from any possible defense, but, also, overlooking the simple kill mentioned in the previous note. Kd3 40. Rh3+ Ke2 41. Re4+ Kf2 42. Bd4+ Kg2 43. Rg3+ Kxh2 44. Rd3 Ng6 (The mate can be stalled with: 44... Rf1+ 45. Kc2 Rh7) 45. Re2+ 1-0

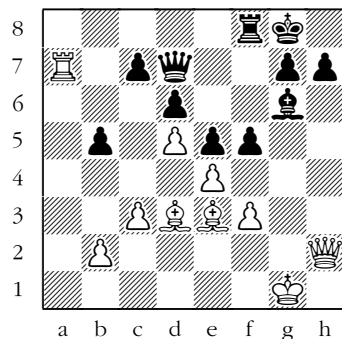
**Cumberland Co. Spring (4)**  
**Jacob Hoyos**  
**Victoria Suich**

1. e4 e5 2. Nf3 Nc6 3. Bc4 Bc5 4. O-O Nf6 5. d3 h6 This is unnecessary. 6. h4? White should continue with development, hurrying with Nc3 just in case Black wants to complicate things with d5. What makes this move extra bad is that White has castled. d6 7. Be3 Bb6 8. Nbd2 Bg4 9. c3 O-O 10. Qc2 Bxf3 There was no reason for Black to voluntarily part with his good bishop, especially since the other white knight can effectively replace the captured one. Better was d5. 11. gxf3? I'm unsure what could have prompted this blunder, especially since the knight isn't doing anything useful sitting on d2. Nh5 12. Kg2 Qxh4 13. Rh1 Nf4+ 14. Kg1?? Of course Bxf4 was required. Qg5+ 15. Kf1 Qg2+ 16. Ke1 Resigns

**Matthew Human - 1686**  
**Joanna Suich - 1129**

1. e4 e5 2. Nf3 Nc6 3. d4 d6? 4. Bb5 Black has made the rather common mistake of 3... d6, showing her unfamiliarity with the Scotch Opening. White should have punished this with the simple dxe, forcing Black to forfeit castling. Bg4 5. d5 a6 6. Ba4 b5 7. Bb3 Of course, dxc6 was better. Now it is Black who has a slight initiative and White's white-squared bishop

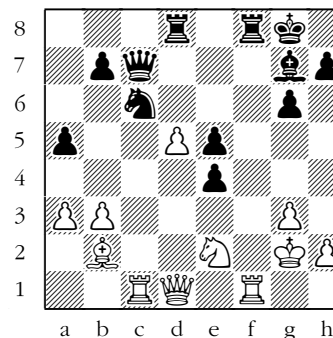
is out of action. Nd4 8. Nbd2 Nf6 9. c3 Nxf3+ 10. gxf3 Bh5 11. Qe2 Be7 12. Nf1 O-O 13. Ng3 Bg6 14. Be3 Qd7 15. O-O Queenside castling was a little better so that White could have a free hand on the kingside for attack. Nh5 16. Qd2 Qh3 17. Bc2 Bh4 18. a4 Nxc3 19. fxc3 Bxc3?! This is overly-bold. White has too much help on the kingside for this to properly work. 20. hxg3 Qxc3+ 21. Qg2 Qh4 22. axb5 axb5 23. Bd3 Rxa1 The correct idea, even though it gives up the a-file and surely a queenside pawn. 24. Rxa1 f5 Doing everything possible to avoid an endgame and maintain a semblance of counter play. 25. Qh2 Qe7 Correctly retaining the queen. 26. Ra7 Qd7!?



27. Rb7? Necessary was Qg2 or Qh3. fxe4 28. fxe4? Rf3 29. Qd2?? (29. Rb8+ Kf7 (29... Be8 30. Qh4 Rxe3 31. Bxb5) 30. Qh4 +-) 29... Qh3 Immediate decisive was Qg4+. 30. Bf2 Qg4+ 31. Kf1 Qh3+ 32. Ke2 Bh5 0-1

**TN Senior Open (1)**  
**Tim Staley - 1120**  
**Bill Murray - UNR**

1. c4 Nc6 2. Nc3 Nf6 3. g3 g6 4. Bg2 Bg7 5. e3 O-O 6. Nge2 e5 7. O-O d6 8. b3 Bd7 9. a3 a5 10. Bb2 Qc8 11. f4 Bh3 12. fxe5 dxe5 13. Nd5 Bxc2 14. Kxg2 Nxd5 15. cxd5 Ne7 16. e4 f5 17. Rc1!? Safer is d3. fxe4 18. d6 Nc6 19. dxc7 Qxc7 Better was Rxf1 first, possibly removing protection from the d-pawn. 20. d4? Equal would have been Nc3, regaining the pawn. Rad8 Capturing the rook on f1 would have been best, giving Black a big advantage. 21. d5



Qe7 (21... Rxf1 22. Qxf1 (22. Kxf1 Qf7+ 23. Kg1 Rxd5) 22... Rxd5 -) 22. Rxf8+ Kxf8?? 23. Qf1+ Kg8 24. dxc6 Rf8 25. Qe1 Even better was c7. bxc6 26. Rxc6 e3 27. Kg1 h5 28. Rxc6 Qf7 29. Ra6 (29. Rg5! Qf2+ 30. Qxf2 Rxf2 31. Bxe5) 29... Qf2+ 30. Qxf2 Rxf2 31. Rxa5 Rxe2 32. Bc3 Just Bxe5, the pawn can't be queened with the king so

close. Rc2 33. Be1 e2? Better was e4, threatening Re2 and bringing the bishop into the game. 34. Kf2 e4 35. Ra4 e3+ 36. Kxe3 Bh6+ 37. Kf2 Kf7 38. Rc4 Rb2 39. Re4 Rxb3 40. Rxe2 Best is a4. Rxa3 41. Bb4 Ra7 42. Bc5 Rd7 43. Be3 Re7?? 44. Bxh6 Rxe2+ 45. Kxe2 Kg6 46. Bf4 Kf5 47. Kf3 Kg6 48. h3 Kf6 49. Ke4 Kg6 50. Ke5 h4 51. g4 Kh7 52. Bg5 1-0

**TN Senior Open (3)**  
**Joe Jones - 2214**  
**Mack Garner - 2017**

1. e4 c5 2. Nc3 g6 3. g3 Bg7 4. Bg2 Nc6 5. d3 d6 6. Be3 Nf6 7. h3 O-O 8. Qd2 Ne8 9. Bh6 Nd4 10. Bxc7 Kxc7 11. Nd5 e5 12. c3 Nc6 13. Ne2 f5 14. O-O Nf6 If Ne7, then d4 may be even more effective later. 15. f4 Be6 16. Kh2 Qd7 17. Rael Rae8 18. b3 Qf7 19. Nxf6 If c4, then Black has a later Nd4. Qxf6= 20. Rd1 Bc8 21. fxe5 dxe5 22. Qe3 Qe7 23. d4 cxd4 24. cxd4 exd4 25. Nxd4 Nxd4 26. Qxd4+ Qe5 27. exf5 Qxd4 28. Rxd4 Bxf5 29. g4 (29. Bxb7 Re2+ 30. Bg2 Rxa2=) 29... Bc8 Draw. White does seem to have enough to continue a few more moves, though: 30. Rxf8 Rxf8 31. Rc4 Rd8 32. Kg3 (32. Bxb7 Bxb7 33. Rc7+ Kg8 34. Rxb7 Rd2+=) 32... h5 33. Rc5 hxg4 34. hxg4 b6 35. Rc7+ Kf6 36. Rxa7 Rd3+ 37. Bf3 Kg5= 1/2-1/2

TN Senior Open

John Ryland - 1216

Robert Hydzyk - 1614

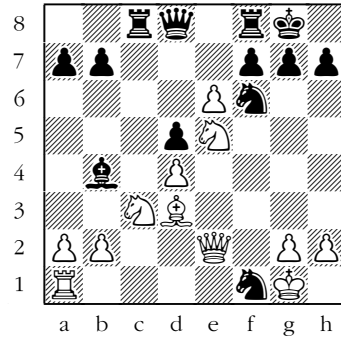
1. e4 e6 2. d4 d5 3. e5 c5  
4. c3 Nc6 5. Nf3 Qb6 6. Be2  
Nge7 7. Qb3? Qxb3 8. axb3  
Nf5?! Better still is the  
immediate capture of the  
d-pawn to really fracture  
White's queenside pawns. 9.  
Be3? (9. g4 Nh6 10. h3+/=)  
9... cxd4 10. cxd4 Nb4 11.  
Bb5+ White should simply  
play Na3, not relieving  
Black of his only problem  
piece. Bd7 12. Bxd7+ Kxd7  
13. Na3 a6 14. O-O Rc8 15.  
Rac1 White should not be  
rushing to enter an endgame  
with little counter chances.  
Be7 16. Rxc8 Rxc8 17. Rc1  
Nxe3 18. Rxc8 Kxc8 19. fxe3  
Nd3 20. Kf1 h6 Carefully  
played, but the immediate  
Nxb2 is good since the White  
knight on a3 would then be  
under attack by the bishop.  
21. Ke2 Nc1+ 22. Kd2 Nxb3+  
23. Kc2 Na5 24. Kd3 b5 25.  
e4 Bxa3 26. bxa3 Nc4 27.  
exd5 exd5 28. Nh4 g6 29. g4?  
Some counter play could have  
been generated by e6: 29. e6  
fxe6 30. Nxc6 Kd7 31. g4  
Nxa3 32. h4 but Black should  
still win. 29... Nxa3 30.  
Kc3 a5 31. Kb3 b4 32. Ng2  
Kd7 33. Nf4 Nb5 34. Ne2 Na3  
35. Nf4 Nb5 36. Ne2 g5 37.  
Ka4 Kc6 38. Kxa5 b3 39. Kb4  
b2 40. Nc3 Nxc3 41. Kxc3  
b1=Q White resigns.

TN Senior Open

William Bragg - 1930

Johnny Owens - 1787

1. e4 e6 2. d4 d5 3. exd5  
exd5 4. c4 c6 5. Nc3 Bb4 6.  
Nf3 Nf6 7. Bd2 Nbd7 (7...  
O-O 8. cxd5 Re8+ 9. Be2  
cxd5=) 8. cxd5 cxd5 9. Bd3  
Nb6?! Stronger was Qe7+.  
10. O-O O-O 11. Ne5 Be6  
Better was Nc4. 12. f4 Rc8  
13. Qe2 Nc4 14. f5 Nxd2 15.  
fxe6 fxe6



Possible continuation after 15.  
fxe6. If Black had captured the  
rook...

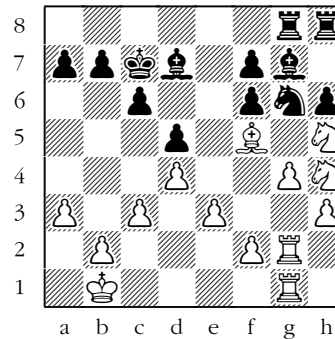
Taking the exchange was  
better—as long as it was  
immediately returned, else  
White would obtain a  
dangerous-looking kingside  
attack (see above diagram):  
15... Nxf1 16. exf7+ Rxf7  
(16... Kh8? 17. Bxh7! Kxh7  
(17... Nxh7 18. Ng6#) 18.  
Qd3+ +- 17. Nxf7 Kxf7= 16.  
Qxd2 Ne4 17. Bxe4 dxe4 18.  
Rxf8+ Qxf8 19. Rf1 Qe8 20.  
Qe3 Bd6 21. Qxe4 Qh5 22.  
Qxb7 Rb8 23. Qd7 Black  
resigns. 1-0

TN Senior Open (2)

Leonard Dickerson - 2200

Russell Thurman - 1610

1. d4 d6 2. Nf3 Nf6 3. Bg5  
c6 4. Bxf6?! gxf6 5. Nbd2  
Bg4 6. g3 Qb6 7. Qc1 (7. Bg2  
Qxb2 8. Rb1 Qxa2 9. Rxb7 Nd7  
10. O-O Bh6 11. Qa1 Qxa1 12.  
Rxa1=) 7... Bh6 8. e3 Qa5 9.  
Bg2 Qh5 10. h3 Bd7 11. c3  
Na6 12. Qc2 Nc7 13. Qb3  
O-O-O 14. g4 Qb5 15. Qxb5  
Nxb5 16. Bf1 Nc7 17. Bd3 Nd5  
18. O-O-O e6 19. Ne4 Kc7 20.  
Kb1 (20. c4 Nb4 21. Nxf6  
Nxa2+ 22. Kb1 (22. Kc2 Nb4+  
23. Kb3 Nxd3 24. Rxd3 Bg7  
25. Nh5 Rhg8+/= 26. c5))  
20... Bg7 21. Ng3 Rdg8 22.  
Nh5 h6 23. Nh4 Ne7 24. Rhg1  
Nd5 25. a3 Ne7 26. Rg2 e5  
27. Rdg1 d5 28. Bf5 Ng6? Be6  
or Be8 was better.



29. Bxg6 (29. Nxc6! fxc6 30.  
Bxg6 Bf8? 31. Bf7 That Bf7  
is the move that I couldn't  
quite bring into focus!)  
29... fxc6 30. Nxc6 Rh7 31.  
Ne7 Re8 32. Nf5 Bh8 33. Nhg3  
e4 34. Rc1 Be6 35. Rgg1 Bf7  
36. c4? (Better, of course,

is Nh5. But I still didn't  
see an entry point. 36. Nh5  
b5 37. Kc2 a5 38. b3) 36...  
dxc4 37. Nh5 b5 38. Kc2 Bd5  
39. Nf4 Rg8 40. Nh5 Kd7 41.  
a4 a6 42. axb5 cxb5 43. Ra1  
Bb7 44. Nf4 Ra8 45. Ra5 Bg7  
46. Nxc6 Rxc6 47. Nh5 Rf7  
48. Ng3 Ke6 49. Kc3 Rc7 50.  
Rga1 Rg7 51. Kb4 Kd5 52. Nh5  
Rf7 53. Ng3 Rh7 54. R5a3 Kd6  
55. Rc1 Bd5 56. Ra5 Ke6 57.  
Rca1 Bb7 58. Kc5 Rc8+ 59.  
Kb4 Ra8 60. Rc1 Bd5 61. Ra3  
Rc7 (I became needlessly  
fearful of Black sacrificing  
some pawns to get his rook  
behind me. But this would  
backfire on him: 61... a5+  
62. Rxa5 Rxa5 63. Kxa5 Ra7+  
64. Kxb5 Rb7+ 65. Kc5 Rxb2  
66. Nf5 Rxf2 67. Ra1  
threatening Ra7 or Ng7+.)  
62. Ra5 Bb7 63. Raa1 Bc6 64.  
Rc3 Bd5 65. Nh5 Bb7 66. Rca3  
Kd6 Revealing that I really  
can't take the pawn without  
consequences. 67. Ra5 Rd7  
68. Rf1 Rg7 69. Nxf6 Rf7 70.  
Nh5 Rf3 71. Nf4 Rf8 72. Raa1  
This seems adequate, but Ra3  
has to be better. I, too,  
was suffering from time  
pressure. R8xf4 73. exf4  
Rhx3 74. Rh1 Rb3+ 75. Ka5  
Rxb2 and I managed to win  
the bishop for my advanced  
f-pawn and the game. A  
spectator said that my  
opponent captured his own  
pawn during the time  
scramble! 1-0



2009 TENNESSEE SENIOR OPEN

Wall Chart, Page 1

Name/State ID	Rating	Rnd 1	Rnd 2	Rnd 3	Rnd 4
1. ROBINSON, HENRY TN 10241138	2224	B 12   W 8	B 5   W 6	1.0   2.0   3.0   4.0	
2. SPINRAD, JERRY TN 12409131	1978	W 28   B 19	W 4   B 10	1.0   2.0   2.5   3.5	
3. JONES, JR., JOE C. TN 10242096	2214	W 26   B 7	W 10   B 4	1.0   2.0   2.5   3.0	
4. DICKERSON, LEONARD TN 11324355	2200	B 34   W 14	B 2   W 3	1.0   2.0   2.5   3.0	
5. KANTOR, ALAN TN 10118506	2020	W 16   B 9	W 1   B 14	1.0   2.0   2.0   3.0	
6. BRAGG, WILLIAM N KY 10433011	1930	W 25   B 30	W 24   B 1	1.0   2.0   3.0   3.0	
7. JONES, ELLIS EUGENE NC 10238927	1811	B 27   W 3	B 18   W 15	1.0   1.0   2.0   3.0	
8. BACON, W MICHAEL GA 10218705	1782	W 22   B 1	W 28   B 16	1.0   1.0   2.0   3.0	
9. HYDZIK, ROBERT J TN 12468777	1614	B 29   W 5	B 20   W 17	1.0   1.0   2.0   3.0	
10. GARNER, MACK TN 10244242	2017	B 17   W 15	B 3   W 2	1.0   2.0   2.5   2.5	
11. SEMMES, PAUL B TN 10221188	1946	B 18   W 21	B 13   ---	1.0   2.0   2.5   2.5	
12. MURRAY, JON L TN 10177219	1560	W 1   B 23	W 27   B 24	0.0   0.5   1.5   2.5	
13. PATTY, JOHN M. TN 12397977	2200	W 35   B 24	W 11   ---	1.0   1.5   2.0   2.0	
14. THURMOND, RUSSELL SC 10500401	1610	W 33   B 4	W 19   W 5	1.0   1.0   2.0   2.0	
15. HUGHES, JAMES D TN 12222390	1604	W 32   B 10	W 21   B 7	1.0   1.0   2.0   2.0	

Name/State ID	Rating	Rnd 1	Rnd 2	Rnd 3	Rnd 4
16. SUICH, VICTOR W TN 12732019	1531	B 5   W 29	B 22   W 8	0.0   1.0   2.0   2.0	
17. HIGGINS, RICHARD A KY 12921471	1427	W 10   B 35	W 30   B 9	0.0   1.0   2.0   2.0	
18. STANDBROOK, FRED C. TN 12075300	1400	W 11   B 32	W 7   B 25	0.0   1.0   1.0   2.0	
19. POND, LAWRENCE F TN 12580170	1259	B 31   W 2	B 14   W 29	1.0   1.0   1.0   2.0	
20. RYLAND, JOHN ALLEN GA 13287184	1216	W 24   B 33	W 9   B 32	0.0   1.0   1.0   2.0	
21. STALEY, TIMOTHY P. GA 12625534	1120	W 23   B 11	B 15   W 33	1.0   1.0   1.0   2.0	
22. GROHN, LARRY O TN 12554623	880	B 8   BYE	W 16   B 28	0.0   1.0   1.0   2.0	
23. MURRAY, WILLIAM S TN 13046104	nnnn	B 21   W 12	W 26   HALF	0.0   0.5   1.5   2.0	
24. OWENS, JOHNNY KY 10248795	1787	B 20   W 13	B 6   W 12	1.0   1.5   1.5   1.5	
25. DAVIS, WILLIAM S TN 12484473	1257	B 6   W 27	B 34   W 18	0.0   0.5   1.5   1.5	
26. LONDROY, ROGER GA 12397848	1020	B 3   W 34	B 23   W 30	0.0   0.5   0.5   1.5	
27. MCDONALD, RICK TN 14213948	nnnn	W 7   B 25	B 12   W 34	0.0   0.5   0.5   1.5	
28. VAN DER MEER, B WIEB TN 12552192	1420	B 2   W 31	B 8   W 22	0.0   1.0   1.0   1.0	
29. BRINDISI, FRANK TN 12736464	697	W 9   B 16	BYE   B 19	0.0   0.0   1.0   1.0	
30. HOBBS, ALBERT E TN 13951393	276	BYE   W 6	B 17   B 26	1.0   1.0   1.0   1.0	
31. DIGIORGI, BRUNO TN 13487881	nnnn	W 19   B 28	W 32   W 35	0.0   0.0   0.0   1.0	

**TN SENIOR OPEN CHAMPIONSHIP, cont.**

Name/State ID	Rating	Rnd 1	Rnd 2	Rnd 3	Rnd 4
32. HUTCHISON, EARL R. TN 14190620	nnnn	B 15   0.0	W 18   0.0	B 31   1.0	W 20   1.0
33. NEAL, WILLIAM E TN 13221115	nnnn	B 14   0.0	W 20   0.0	B 35   1.0	B 21   1.0
34. LEFRANCOIS, BERNARD TN 14029777	nnnn	W 4   0.0	B 26   0.5	W 25   0.5	B 27   0.5
35. BANIK, JR., THOMAS TN 14029364	nnnn	B 13   0.0	W 17   0.0	W 33   0.0	B 31   0.0

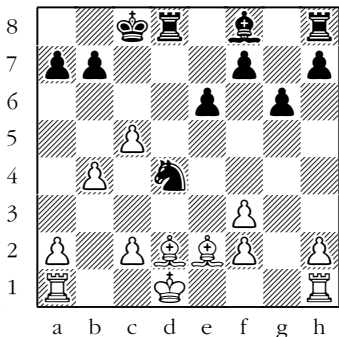
**TN Senior Open (4)**

**Mack Garner - 1978**

**Jerry Spinrad - 2017**

1. e4 c5 2. Nf3 Nf6 3. Nc3 Nc6 4. d4 d5 5. exd5 Nxd5 6. Nxd5 If dxc5, White's extra pawn could get tripled: 6. dxc5 Nxc3 7. Qxd8+ Kxd8 8. bxc3=/+ 6... Qxd5 7. dxc5 Qxd1+ 8. Kxd1 Bg4= 9. Bb5 Better is c3 to protect against the knight entering on b4 or d4; too, in some variations the king

might shelter at c2. Bxf3+ 10. gxf3 O-O-O+ 11. Bd2= Nd4 12. Be2 e6 13. b4 Playing c3 was safer, addressing the king's safety. g6 14. c3 (14. Bg5! Rd7 (14... Rd5 15. Bf6 Nxf3+ 16. Kc1 Rg8 17. Bxf3 Rf5 18. Bxb7+ Kxb7 19. Bd4 Bg7 20. Bxg7 Rxd7=) 15. Bf6 Rg8 16. Bd3) 14... Nxf3! 15. Bxf3 Bh6 16. Kc2 Rxd2+ 17. Kb3 Rxf2 18. Raf1 Rd2 19. c6 Fritz recommends the sacrifice of the bishop to gobble pawns and create queening threats: 19. Bxb7+ Kxb7 20. Rxf7+ Kb8 21. Rel. 19... bxc6 20. Bxc6 Rd6 21.



After move 13.

b5 f5 22. Rd1 Rhd8 23. Rxd6 Rxd6 24. Re1 Bf4 25. Re2 e5 26. c4 Kc7 27. c5 Bd5 was better, but White has a very difficult defensive task, anyway. Rd3+ 28. Kc4 Rd4+ 29. Kb3 e4 30. a4 Bd2 31. Be8 e3 32. a5 f4 33. Bc6 Rb4+ The undermining a6 is also very effective. 34. Kc2 Rc4+ 35. Kd3 Rxc5 36. a6 Rxc6 37. bxc6 f3 38. Rxe3 Bxe3 39. Kxe3 Kxc6 40. Kxf3 Kb6 0-1

**PRESIDENT:**

Malcolm Estrada  
123 Annaview LN  
Harrison, TN 37341  
H: (423) - 326-1446  
e-mail: straightleg111@aol.com

**TN CHESS NEWS EDITOR:**

Leonard Dickerson  
420 Oran Road  
Knoxville, TN 37932  
H: (865) 966-1095  
e-mail: lsdict@tds.net

**VICE-PRESIDENT:**

Paul Semmes  
1010 N. Maple Ave.  
Cookeville, TN 38501  
H: (931) 863- 4082  
e-mail: PaulSemmes@charter.net

**EAST TENNESSEE DIRECTOR:**

Victor Suich  
707 Pritchard  
Morristown, TN 37813  
(423) 586-4351  
e-mail: vesuich@bellsouth.net

**SECRETARY:**

Chris Prosser  
733 Long Hunter Court  
Nashville, TN 37217  
H: (615) 399 - 8432  
e-mail: regioniii@aol.com

**MIDDLE TENNESSEE DIRECTOR:**

Roy Manners  
1215 Cumberland Heights Road  
Clarksville, TN 37040  
H:(931) 552-1839  
e-mail: clarkvillechessclub@charter.net

**TREASURER:**

Angela McElrath-Prosser  
733 Long Hunter Court  
Nashville, TN 37217  
H: (615) 399 - 8432  
e-mail: tcaneews@aol.com

**WEST TENNESSEE DIRECTOR:**

Korey Kormick  
3550 S. Galloway Rd.  
Memphis, TN 38111  
H: (502) - 396 - 8858  
e-mail: kjkormick@hotmail.com

**Regional Scholastic Coordinators**

**Region 1:**

David Marsh  
4411 Stillwood Road  
Louisville, TN 37777  
H: (865) 982-7216; NESGIV4DAVE@aol.com

**Region 2:**

Michael Ake  
16 Pinecrest Dr.  
Wildwood, GA 30757  
Cell phone: (423) 505-8214  
O: (423) 493-5406; revmake@bellsouth.net

**Region 3:**

Chris Prosser  
733 Long Hunter Court  
Nashville, TN 37217  
H: (615) 399-8432; e-mail: regioniii@aol.com

**Region 4:**

Brian Vogt  
2669 Sweet Maple Cove  
Germantown, TN 38139  
H: (901) 624-0020; b-vogt@comcast.net

**INTERNET CHESS COORDINATOR:**

Alan Kantor  
577 Livingston Road, Apt. 23  
Crossville, TN 38555  
H: (931) 200-9038  
W: (931) 787-1234 ext. 128  
e-mail: kantor@charter.net

**SCHOLASTIC COORDINATOR:**

Harry D. Sabine  
P. O. Box 381  
Crossville, TN 38557  
H: (931) 484-4878  
W: (931) 484-9593  
e-mail: hdsabine@citlink.net

**TOURNAMENT COORDINATOR:**

Larry Grohn  
7032 Igoo Gap Road  
Chattanooga, TN 37421  
H: (423)-243-8235  
e-mail: LarryGrohn@comcast.net