

TENNESSEE CHESS NEWS



VOLUME XXV, NO. IV

AUG - SEP 1983

37th TENNESSEE OPEN Chess Tournament

September 3-5, 1983

\$2,000 Guaranteed

At Quality Inn Parkway - 10 Interstate Drive - Nashville, TN

OPEN SECTION (Open to all)

1st - \$300.00 & Trophy
2nd - \$200.00
3rd - \$100.00

Candidate

Master 1st - \$150.00 & Trophy
2nd - \$ 90.00
3rd - \$ 50.00

Category I

& Below - 1st - \$150.00 & Trophy
2nd - \$ 90.00
3rd - \$ 50.00

Tennessee State Champion - Trophy
Tennessee Junior (18 & Under)
Champion - Trophy
Team Champion - Plaque

Entry Fee -

\$25.00 if received by August 30th
\$30.00 at Site

AMATEUR SECTION (Open to Below 1800)

1st - \$150.00 & Trophy
2nd - \$ 90.00
3rd - \$ 50.00

Category III

& Below - 1st - \$100.00 & Trophy
2nd - \$ 50.00
3rd - \$ 30.00

Amateur Team Champion - Trophy

Entry Fee

\$20.00 if received by August 30th
\$25.00 at Site

NOVICE SECTION (Open to Below 1400)

1st - \$100.00 & Trophy
2nd - \$ 60.00
3rd - \$ 40.00

Category V - 1st - \$50.00 & Trophy

Category VI - 1st - \$50.00 & Trophy

Unrated - 1st - \$50.00 & Trophy
(Unrated eligible for unrated prize only)

Novice Team Champion - Trophy

Entry Fee

\$15.00 if received by August 30th
\$20.00 at Site

ALL SECTIONS

Registration

Saturday - 9am-12 noon

Rounds

Six Round Swiss

Saturday - 1:00 pm & 6:00 pm

Sunday - 9:00 am & 3:00 pm

Monday - 8:00 am & 1:00 pm

(All times Central Daylight Time)

Time Limit

50 moves in 2 hours
then 15 moves in 30 minutes

Dues

USCF Dues required for all
TCA Dues required for TN Residents
(Dues may be paid at Tournament)

TCA Membership Meeting

Sunday - 2:00 pm

Limitations

No Smoking

Location

Quality Inn Parkway
10 Interstate Drive
Nashville, TN 37213

Accommodations

Quality Inn Parkway

Single - \$30.00

Double - \$37.00

(All room reservations should be made
with Quality Inn by August 15th)

To Enter and Information

Send all Entry Fees to:

Peter P. Lahde
2609 Sailboat Court
Nashville, TN 37217
615-361-4588
or 361-1900

A GRAND PRIX TOURNAMENT

How 'Bout a Hand?

BY PAT BURDICK

With some, its fishing, with others, golf, tennis, or stamp collecting and on and on. With us, its chess.

Unusual? I am sure most of you have had many occasions (as have I) to receive that sudden quick glance of curiosity when you tell someone your hobby. Golfers don't get that!

Perhaps it is because so many think chess as rather foreign and beyond them that I have had some difficulty in interesting teachers and school administrators in starting up their own chess club.

Many will say that they don't have time. Many claim they know too little or nothing about chess, and therefore can't teach. The truth is: they've not been bit by the chess bug and just don't share our interest. We have to accept that.

The day will come, I think, when this will change, when there will be interest, even among non-players, and chess will be an "in" thing. Certainly, I intend to do what I can to make my hobby a popular pass time. But there is much to do between now and then, so how 'bout a hand?

How 'bout starting a chess club in a school near you? Now is the time to get organized. Contact the principal -he loves volunteers-and be prepared for a warm welcome. Then call or write me; there is a great deal of help I can arrange.

Would you like to receive a guide to organizing the club? Some pamphlets? A teaching outline? Some advice? (Its Free!) Maybe even some chess sets!!

All you add is your commitment, a dab of courage and about two hours per week.

Think about this: Tennessee is acknowledged as having one of the nation's fine scholastic chess programs. We have teams from forty schools and over three hundred youngsters playing in our scholastic tournaments. Yet there are well over 1000 schools in the state. The potential is practically unlimited!

Please, pick a school and play e4. And let me hear from you. My address and phone are included among the list of TCA Directors.

TREASURER'S REPORT

TENNESSEE CHESS ASSOCIATION

QUARTERLY TREASURER'S REPORT

September 1, 1982 to May 31, 1983

Balance on Hand - 9/1/82 \$2,895.10

INCOME:

1. TCA Membership Dues:			
526 persons at \$4.00	\$2,104.00		
57 persons at .50	28.50		
8 persons at 5.00	40.00		
8 persons at 2.00	16.00		
599		2,188.50	
2. Subscriptions to TCN		44.00	
3. Interest on savings		210.18	
4. Postal Chess Entry Fees		90.00	
5. <u>1982 Tennessee Open:</u>			
Entry Fees	\$2,635.00		
Cash Prizes	\$2,099.99		
TD Fees	200.00		
Playing Room	300.00		
Rating Fee	43.75		
Trophies	168.00		
Supplies	25.00	2,836.74	(201.74)

BOARD OF DIRECTORS

PRESIDENT

Peter Lahde
2609 Sailboat Court
Nashville TN 37217
H: 361-4588
O: 361-1900

VICE-PRESIDENT

Jack Smith
815 Creekside #1
Memphis TN 38117
H: 685-8029

SECRETARY-TREASURER

Harry Sabine
P.O. Box 381
Crossville TN 38555
H: 484-4878
O: 4849593

NEWSLETTER EDITOR

Gary Pylant
3397 Buchanan Ave.
Memphis TN 38122
H: 452-7028
O: 454-2277

POSTAL EDITOR

Kent Meadows
206 - 30th Avenue, N.
Nashville TN 37203
H: 320-0394

TOURNAMENT COORDINATOR

John White
P.O. Box 2587
Crossville TN 38555
(615)- 484 - 7146

SCHOLASTIC COORDINATOR

Pat Burdick
905 Milfred Avenue
Cookeville TN 38501
H: 526-4975

DIRECTOR, WEST TENNESSEE

Dale Flickinger
5247 Shelbourne Circle, #14
Memphis TN 38134
H: (901) 382-3829

DIRECTOR, MIDDLE TENNESSEE

Johnson Moore
5627 Kendall Drive
Nashville TN 37209
H: 352-6898

DIRECTOR, EAST TENNESSEE

Richard Igou
400 Rhodora, Apt. F
Knoxville TN 37923
H: 690-6810

TENNESSEE CHESS NEWS

Gary Pylant, Editor

THE TENN. CHESS NEWS IS THE OFFICIAL PUBLICATION OF THE TCA. THE PUBLICATION IS BI-MONTHLY. INDIVIDUAL COPY PRICE IS \$1.00.

TENNESSEE CHESS ASSOC

The annual dues for each member are \$4.00. All memberships expire in August 31 of each year. However any person who joins the TCA between Apr. 1 and Aug. 31 shall pay \$2, which expires Aug. 31 or pay \$5 which expires Aug. 31 of the following year. Each additional person in the same family may become a member by paying \$.50 but will not receive the newsletter. Any USCF affiliate that needs a supply of membership cards for issue should contact Harry D. Sabine, the Secretary-Treasurer.

TCA DEADLINES

ISSUE	DEADLINE
DEC-JAN	NOV 15
FEB-MAR	JAN 15
APR-MAY	MAR 15
JUN-JUL	MAY 15
AUG-SEP	JUL 15
OCT-NOV	SEP 15

ADDRESS CHANGES ????

PLEASE SEND ALL ADDRESS CHANGES AND DUES TO:

HARRY D. SABINE
p.o. box 381
Crossville, TN 38555

ADVERTISING RATES: FULL PAGE
\$40, 1/2 page \$20, 1/3 page
\$14, 1/6 page \$7, (camera ready
only)

FRONT COVER: FISHBAIT, by
Randy Cope.

6. 1983 Tennessee Scholastics:

Entry Fees	\$2,020.00	
Grant - ACF	500.00	
USCF Dues	173.00	
	<u>\$2,693.00</u>	
Trophies	\$1,027.00	
Cash Prizes	450.00	
Rating Fee	209.50	
Flyers & Mailing	202.92	
Supplies	46.56	
TD Fees	275.00	
Playing Site	30.15	
Refund - EF	76.00	
USCF Dues	<u>171.00</u>	
		<u>2,488.13</u>
		204.87

7. Miscellaneous Income:

Advertising - TCN	\$ 68.00	
Copies - TCN	12.00	
Miscellaneous	<u>.50</u>	
		<u>80.50</u>

TOTAL INCOME

\$5,511.41

EXPENSES:

1. Tennessee Chess News

\$1,128.43

2. TCA Operating Expenses:

Postage & Supplies	\$ 161.72	
Bulk Mail Permit	40.00	
USCF Affiliation Fee	25.00	
TCA Membership Cards	71.00	
TCA Envelopes	26.00	
Filing Fee - TN	<u>5.00</u>	
		<u>328.72</u>

3. USCF Delegate Expenses

100.00

4. Postal Chess Prizes

48.00

5. 1983 Tennessee Open:

Flyers	\$ 46.00	
Chess Life Ad	<u>33.00</u>	
		<u>79.00</u>

TOTAL EXPENSES

1,684.15

Balance on Hand - 5/31/83

\$3,827.26

Less: Postal Chess Prize Fund

192.00

NET OPERATING BALANCE

\$3,635.26

Cumberland County Bank:

Checking Account #563-208-0 (Super Now)

\$3,827.26

Respectfully submitted,

Harry D. Sabine
Harry D. Sabine
Secretary-Treasurer

TENNESSEE CHESS ASSOCIATION

QUARTERLY BUDGET COMPARISON

May 31, 1983

	Budget 1982-83	Actual 1982-83	Difference
INCOME:			
1. Dues	\$1,725.00	\$2,188.50	\$ 463.50
2. Interest	150.00	210.18	60.18

3. Miscellaneous	None	124.50	124.50
4. TN Open	Break even	(201.74)	(201.74)
5. TN Scholastics	Break even	204.87	204.87
TOTAL INCOME		<u>\$1,875.00</u>	<u>\$2,526.31</u>
			<u>\$ 651.31</u>

EXPENSES:

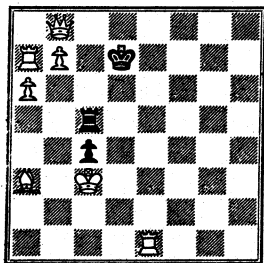
1. TCN	\$1,425.00	\$1,128.43	\$ 296.57
2. TCA Operating Expenses	337.50	328.72	8.78
3. USCF Delegate Expense	100.00	100.00	-----
4. Miscellaneous Expense	37.50	None	37.50
TOTAL EXPENSES	<u>\$1,900.00</u>	<u>\$1,557.15</u>	<u>\$ 342.85</u>

PATRON MEMBERSHIP... the best move you can make for Tennessee!

ARTICLE I - MEMBERSHIP

Section 5 - Patron Membership. Any person may become a patron member of the Association by paying annual dues of twenty-five dollars (\$25.00). Patron dues shall be payable annually and shall be good for one year from the first day of the month payment is received. All patron members shall enjoy full privileges in the Association, including the right to vote and hold office. Patron members shall receive the newsletter published by the Association by first class mail, shall receive a special membership card, and shall have their names published in each issue of the newsletter of the Association.

EVANS ON CHESS



White mates in 2 moves OFFBEAT OPENINGS

In the frantic search for newness, moves once considered awful are now hailed as theoretical novelties. We tend to forget that some openings regarded as indispensable were once scorned.

The Nimzo-Indian Defense (1 d4 Nf6 2 c4 e6 3 Nc3 Bb4!) used to be condemned as ugly. Nimzovich replied to his critic that "the beauty of a chess move lies not in its appearance, but in the thought behind it."

Nowadays monographs and cassettes deal with offbeat lines

without names that were lumped together as irregular. MYERS OPENINGS BULLETIN is an obscure, struggling American magazine devoted to weird and wonderful openings both old and new. (\$18 yearly. 1506 1/2 Harrison, Davenport, Iowa 52803.)

Pergamon Press in England has just issued PLAY THE ST. DRAGON by Michael Basman for anyone willing to shell out \$10 for the 122-page paperback. What is the St. George and how did it get its name?

Basman writes: "It is a universal defense, playable against both 1 e4 and 1 d4. Its characteristic moves are 1...e6, a6, and b5. The most famous victory using this opening was Karpov's defeat by Miles in 1980, the first time a British player had defeated a reigning world champion for 20 years. St. George shows on the one hand that this defense was developed by English players--and on the other that it was used in heroic rearguard circumstances. St. George, to my knowledge, only killed one dragon and Miles has only beaten Karpov once."

It was introduced by British amateur John Baker at a London chess club during a rare blindfold display by Blackbourne and Steinitz in 1868. Baker beat them both with this crazy defense!

Wilhelm Steinitz, who went on to become world champ in 1872, held the title for 22 years. Playing without sight of the board, he overlooked that 27 f3 holds everything.

White: STEINITZ Black: BAKER
St. George Defense 1868

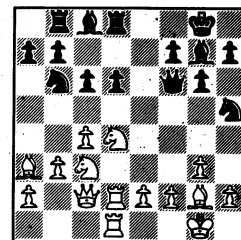
1 e4	a6	18 Be3	Ng6
2 d4	b5	19 Nxa5	Oxa5
3 Nf3	Bb7	20 Nd2	Nf4
4 Bd3	e6	21 Bx14	gx14
5 Ne3	c5	22 Nc4	Oc5
6 dxc5	Bxc5	23 Nxd6+	Oxd6
7 a4	b4	24 Rd1	Oe7
8 Ne2	Nc6	25 h3	Og7
9 O-O	Nge7	26 Bc4	Rc8
10 Ng3	Oc7	27 Rd2	f3!
11 Oe2	h5	28 Qxf3	Rxc4
12 Be3	Bd6	29 Qf5	Rg8
13 Rfe1	f6	30 f3	Rd4
14 Nd2	h4	31 Rde2	Ke7
15 Ngf1	Na5	32 Rf2	Og3
16 Nb3	g5	33 Oh7+	Rg7
17 Bd4	e5	White Resigns	

*ADHANS
SOLUTION: 1. e4 threatening b5 2. Nf3

Games from the MUSIC CITY WINTER

Joe Sentef (2177) - John Burnett (1795)

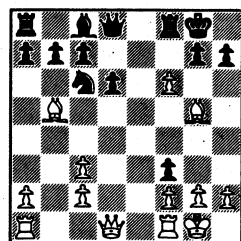
1. c4 e5 2. Nc3 g6 3. g3 Bg7
4. Bg2 Nf6 5. Nf3 d6 6. 0-0
0-0 7. d4 ed4 8. Nxd4 Nbd7
9. Qc2 Rb8 10. Rd1 Nb6 11. b3
c6 12. Bf4 Nh5 13. Bcl Qe7
14. Ba3 Rd8 15. Rd2 Qf6 16.
Rad1



16. ...Bf8 17. f4 c5 18. N4-b5 a6 19. Ne4 Qe6 20. N5xe6 Bxd6 21. Rxd6 Rxd6 22. Rxd6
Black resigns.

Curt Jones (2292) - Bill Keogh (1834)

1. e4 e5 2. Nf3 Nc6 3. Bb5
f5 4. d3 Nf6 5. Nc3 Bb4 6.
0-0 Bxc3 7. bxc d6 8. d4 0-0
9. dxe5 fe4 10. ef6 ef3 11.
Bg5



11. ...Ne5? 12. f7ch Rxf7
13. Bxd8 fg2 14. Rel Bg4
and Black resigns. The
conclusion might run: 15.
Rxe5 Bxd1 16. Re8ch Rf8 17.
Bc4ch d5 18. Bxd5ch Kh8
19. Rxf8 mate.

The Sicilian Wing Gambit

A Book Review by Kenny Thomas

I must confess I have always considered the Wing Gambit unsound. Reading John Hurt's new book, Sicilian Wing Gambit (Thinkers' Press, \$7) did not change my mind.

The really attractive feature of the Wing Gambit is not so much that you get Black out of his book, but that the positions which arise are so un-Sicilian-like. What Black player can conceive of getting in ...e5 and d5, then having a White N settle in at d6? Or to see a maneuver like Ral-a4-h4? Or to see his Q constantly harassed without getting behind in development? All this and more is possible. Unfortunately, Hurt's book has no text, only columns of analysis; so there is no exposition of the underlying ideas, which is an absolute necessity where the ideas are so unusual.

Another problem is that Hurt rarely gives best play for Black in his analysis. In a way this is an advantage, since you are unlikely to face best play, even against strong opposition. I once saw Senior Master Ken Smith flounder into a lost position against Hurt in less than 20 moves, though he later wriggled away and won. If you study Hurt's book properly and figure out all the ideas, you can look forward to many pleasant games where Black won't know what hit him. Unfortunately, if you're Black, the lack of "best play" analysis makes it impossible to tell where to improve. Lucky for you, I'll tell you.

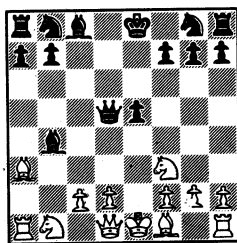
(1) In the minor lines of pp. 2-5, just follow Geller in ECO. Hurt's evaluations are overly optimistic, with "=" or "+=" where Geller has a slight plus for Black. I checked the positions and I think Geller is right.

(2) In the Santasiere Variation, pp 7-10, you're on your own. This is uncharted territory, except for an original analysis in Chess Digest, which I have not seen. My provisional suggestion for Black would be

something like 1. e4 c5 2. b4 cb4 3. c4 e6 4. d4 d5 5. Nd2 Nc6 6. Ngf3 Nf6 7. Bd3 de4 8. Ne4 and now instead of Hurt's pawn-grubbing Nxd4?, try 8...Nxe4 9. Bxe4 Bd6 exchanging a piece and preparing to castle.

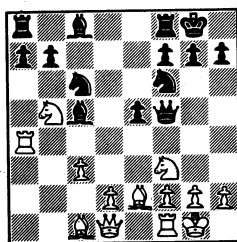
(3) In the main line, pp 11-30, adopt the continuation of p. 29, since White has virtually no good alternative to it. After all, main lines are main lines for a good reason. The only one you might want to note is column 58, p.21:

1. e4 c5 2. b4 cb 3. a3 d5 4. ed Qxd5 5. Nf3 e5 6. ab Bxb4 7. Ba3



Here the correct continuation is that of note 1: 7...Bxa3 8. Rxa3 (according to Hurt 8. Nxa3 is better for Black) 8...Nc6 9. Nc3 Qd6 10. Nb5 Qe7 11. Qal Nf6 12. Bc4 0-0 13. 0-0 Bg4. Hurt calls this equal, attributing it to the game Barden - Fuellen. But Geller in ECO, Evans in MCO-10, and Pachman himself in Semi-Open Games say this is Podgorry - Pachman Czech Champ. 1953, and in the words of Pachman, "Black is clearly winning."

Now, I've got you to page 29, and you're undoubtedly saying, "But White stands better in every line!" Not to worry, some of the analysis is wrong. Column 78 goes 1. e4 c5 2. b4 cb4 3. a3 d5 4. ed5 Qd5 5. Nf3 e5 6. ab4 Bb4 7. c3 Bc5 8. Na3 Nf6 9. Bc4 Qe4+ 10. Be2 0-0 11. Nb5 Nc6 12. Ra4 Qf5 13. 0-0



13. ...e4. I've never played this logical move before. Hurt's analysis may encourage me to do so in the future. It goes 14. Nfd4 Nxd4 15. cd4 Bb6 16. Ba3 Rd8 17. Nd6 Qf4 18. g3 Qg5 19. Bc4 Be6 20. Bxe6 fe6 21. Nb7 winning. However, after simply 21. ...Rxd4 it seems like Black should win without too much trouble. A matter of technique, as they say.

Column 79 13. ...Nd5 is the real main line, though you wouldn't know it from the fact that Hurt only gives it one column, while giving four columns to the inferior 13. ...Rd8. The virtue of 13. ...Nd5 is that it covers c7 and attacks the soon-to-be-weakened c3 (White will play d4 and the N on b5 will be driven away by a6 eventually). First let's dispatch 14. Rh4! given without analysis. Simply 14. ...Be7 is strong, since 15. Rh3 fails to 15. ...Qb1 16. Rg3 e4 followed by an eventual ...Bh4 trapping the Rook. In any event with the B on e7, Black can meet d4 with e4 and will have no worries about Bd3 eyeing h7 as in the main line. So White correctly continues 14. d4 ed 15. Bd3 Qh5 16. cd Be7 17. Rel. Now, Hurt gives a totally faulty continuation for Black (Bg4?), which is surprising since 3 years ago I played the correct continuation against him 17...Be6! The point is that White intends Bd3-e4 x d5 and Black needs to capture with the B rather than the Q, so Nc7 won't win an exchange. Hurt-Thomas 1980 continued 18. Be4 a6 19. Bxd5 Bd5 20. Nc7 Rad8 21. Nd5 Qd5 22. Be3 a5 and Black went on to win.

Since Black gets a superior game by excepting the gambit, there is no reason to think about declining. And once you understand the gambit accepted, you can probably work out the tricks in the delayed Wing Gambit.

But as White, if you don't mind taking some risks for active play, and don't

like memorizing a million lines of Najdorfs, Dragons, Taimanovs, Schevenings, etc., the Wing Gambit may be just for you. It is no less sound than the Smith-Morra Gambit, but it will come as a much bigger surprise to your opponent. For the enterprising gambit player, this may be the new anti-Sicilian line you've been waiting for. Just do not play it against me, though unless you can find some improvements.

Wing Gambits in Action

J. Hurt - G. Scott
Mid-South Open, 1978
1. e4 c5 2. b4 Qb6?! 3. bc5 Qc5 4. d4 Qc7 5. Nf3 Nf6 6. Bd3 d6 7. 0-0 Bg4 8. Be3 g6 9. Nbd2 Bg7 10. c4 0-0 11. Rb1 Nc6 12. h3 Bd7 13. Nb3 Nb4 14. e5 de5 15. de5 Nd3 16. ef6 ef6 17. Qd3 Bf5 18. Qe2 Bb1 19. Rb1 Rfe8 20. c5 Qc6 21. Na5 Re3? 22. Qe3 Qa4 23. Nb7 Qa2 24. Qb3 Qe2 25. Re1 Qa6 26. Re7 Rf8 27. Nd6 h5 28. Nf7 Kh7 29. Qb7 Qa1+ 30. Kh2 Rg8 31. Qa7 Qc1 32. Qc7 (1-0)

J. Hurt - Challenger "10"
1. e4 c5 2. b4 cb4 3. a3 Nc6 4. ab4 Nb4 5. Nf3 d5 6. ed5 Nd5 7. Bb5+ Bd7 8. Bd7+ Qd7 9. c4 Qe6+ 10. Kf1 Nf4 11. Na3 Qg6 12. g3 Qd3+ 13. Kgl Ne2+ 14. Kg2 Nf6 15. Qa4+ Nd7 16. Nb5 Nb6 17. Nd6+ Kd8 18. Qe8+ Kc7 19. Nb5# (1-0)

J. Hurt - Challenger "10"
1. e4 c5 2. b4 cb4 3. a3 Nc6 4. ab4 Nb4 5. Nf3 d5 6. ed5 Nd5 7. Bb5+ Bd7 8. Bd7+ Qd7 9. c4 Nf4 10. d4 Ng2+ 11. Kf1 Qg4 12. h3 Qg6 13. Ne5 Qe4 14. f3 Qh4 15. Qa4+ (1-0)

SCHOLASTIC CHESS

WITH PATRICK BURDICK

Contained in the July rating supplement, the U.S.C.F. has published the "Top 50" lists under a new format. Where there were three lists for scholastic players, there are now six.

I am very proud to report that Tennessee is well represented with

twenty-two nationally ranked scholastic players. In fact, only New York with 62 and California with 34 have more top players than Tennessee!

Listed below are our state's contribution to the nation's best young players. Congratulations to all!

Top 50 Age 15-16

16th	Ronald Burnett	Nashville	2089
41st	Chuck Lovingood	Crossville	1946

Top 50 Age 13-14

18th	Chris Loyless	Crossville	1833
------	---------------	------------	------

Top 50 Age 11-12

24th	Gus Lipman	Memphis	1557
33rd	Chris Lax	Crossville	1500
36th	Jeremy Hassler	Crossville	1496
39th	Ted Mason	Memphis	1489
42nd	Shane Day	Crossville	1471

Top 50 Age 9-10

4th	Ian Wright	Cookeville	1447
21st	Chuck Hamlett	Memphis	1315
22nd	Stewart Wood	Crossville	1313
25th	Roger Breeding	Crossville	1305
28th	Jason Wilkerson	Murfreesboro	1294
32nd	Michael Lynch	Cookeville	1263
38th	Randall Breeding	Crossville	1243
41st	Jason Balogh	Memphis	1234

Top 50 Age 8 and Below

3rd	Mark Burdick	Cookeville	1355
4th	Charles Smith	Nashville	1354
9th	Jason White	Crossville	1246
17th	Nick Dieringer	Cookeville	1116
19th	Jimmy Day	Crossville	1083
23rd	Roger Hargis	Crossville	966

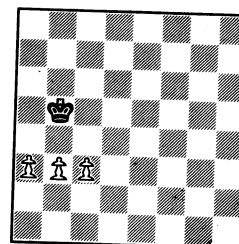
Renew your TCA membership now!

Members, who have not paid for the 1983-84 TCA dues, will not receive the next TCN, which will be mailed OCT 1. The 1982-83 membership are brown. Peace will be reassured if you use the enclosed envelope with your check for \$4 or \$25 if you want a patron membership. THANKS!!!!

For this issues' idea, I thought we should cover some basics of pawn play. Much has been written on this subject, and much of that is rather complex. So lets see if we can demonstrate five valuable rules that can be the starting point for understanding pawn play throughout the game.

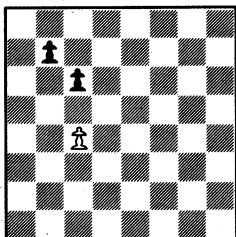
Rule 1: Pawns are generally strongest when side-by-side.

Notice that the Black King must take four moves to get to d3 where he can threaten a pawn (assuming they don't move). But if White were to play b4, then Black could immediately play Ka4 or Kc4 and attack the a or



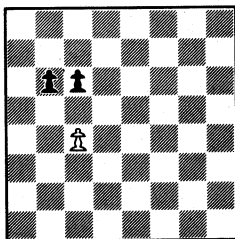
c pawn. The difference of three moves could well be decisive in a real ending.

Rule 2: Push the pawn that holds up two pawns.



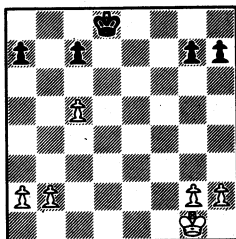
With White to move, he plays c5 and Black can no longer push the b-pawn without the threat of White taking it with the c-pawn, and then moving towards a queen. Notice that if Black's pawns were side-by-side, White would be unable to hold them up, a good example of rule 1! This leads us to.....

Rule 3: When you are ready to advance your pawns, advance first the pawn that does not have an enemy pawn in front of it.



With Black to move, he simply pushes b5 and white cannot prevent a passed pawn. Notice how weak white's pawn is here, compared to how strong in the previous example.

Rule 4: Pawns are most easily defended when close to their original square.



With Black to move, he easily holds a draw by moving his king towards the c-pawn and taking White's one pawn advantage. White however, can lose the game trying to hold this pawn by advancing the b pawn. Then both will fall because his King is too far away to help. (Advancing the a-pawn doesn't help, either). This leads to the last rule.

Rule 5: Advance your King in front of your pawns.

Wouldn't the above game be dramatically different if the White

King were on c6! White would win easily.

I'm sure you have already thought of examples that break these rules. I'm glad, because these ideas are not useful at all times during a

game. It is knowing which rule to use when that takes study. So please don't discard these rules just because you can find exceptions. Use them, and discover how to let them work for you.

tennessee postal chess

— with Kent Meadows —

TC-4-83 has now been completed with Bryant Penuel, Ronald Burnett, and Gary G'Fellers joining Joe Jones. The prize fund for the '83 Championship is now \$96. If we get another section completed, the prize fund will be \$120. Remember, all entry fees are returned as prize money.

If you want to play some rough, tough he-man chess send \$6 (and \$4 more if not a TCA member) to

Kent Meadows
206 30th Ave. N.
Nashville, TN 37203

You play 6 duels with 3 other gladiators - 2 games vs. each (one as White, one as Black). All entry fees are returned to the top 3 players in the Finals. You qualify for the Finals by scoring 4 points or better out of your 6 games. You may enter more than one section.

Enter today! You'll be glad ya did!

ENTRIES: TC-4-83
Penuel, Burnett, G'Fellers

RESULTS: TC-3-82: Penuel, Inman, Irwin 1 Green; Inman 2 Penuel.
TC-1-83 : Smith 1 Irwin

RATINGS:

Bowman	400
Burnett	1084
Edwards	586
G'Fellers	581
Green	386
Inman	750
Irwin	602
Ishee	662
Jones, E.	731
Jones, J.	937
Lewis	660
McElhanev	400

Meadows	716
Ousley	576
Penuel	497
Smith	811
Stearns	804
Teague	400
Weldon	400

POSTAL GAME OF THE MONTH

Lewis Inman - Gary G'Fellers

Caro-Kann Defense

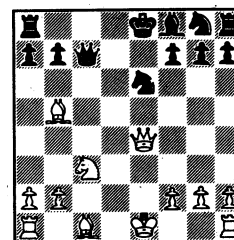
1. P-K4	P-QB3
2. N-KB3	P-Q4
3. PXP	PxP
4. P-Q4	N-QB3
5. P-B4	B-N5
6. PXP	BxN

6....QxP and Black is better because if
A. 7. N-B3 BxN wins the Queen Pawn.
B. 7. B-K3 BxN 8. QxB QxQ
9. PxQ 0-0-0 and White's position is in a mess.

7. QxB	NxP
8. Q-K4	Q-B2

The Knight is trapped so the Black Queen is forced to counterattack White's Bishop.

9. N-QB3	P-K4
10. PXP ep	NxP
11. B-QN5ch	...



11. ...	K-Q1
12. B-N5ch	K-B1

Better is 12. ...B-K2, but after 13. B-KB4 White threatens 14. R-Q1ch.

13. R-QB1	B-B4	19. QxQ	R-N1	29. P-B4	P-KN3
14. N-R4	Q-R4ch	20. 0-0	N-B3	30. P-KB5	R-Q1
15. P-QN4	QxB	21. Q-QR5ch	K-K2	31. Q-KB3	PxP
16. NxB	NxB	22. QxRP	N-Q4	32. QxNPch	R-Q2
17. Q-B5ch	K-Q1	23. KR-K1	K-B3	33. Q-KB3	R-Q4
		24. Q-R3	KR-Q1	34. P-QR4	N-K5
If 17. ...K-N1?	18. N-R6!	25. Q-KB3ch	K-K2	35. P-N5	N/3-B4
PxN 19. Q-B8 mate.		26. QR-Q1	N-B3	36. R-Q1	RxRch
		27. RxR	KxR	37. QxR	N-B6
18. N-K6ch	NxN	28. Q-Q3ch	K-K2	38. Q-K1ch	resigns

COOKVILLE SPRING OPEN

COOKEVILLE

TN 38501

DATE STARTED: 05/14/83

DATE ENDED: 05/14/83

AFFILIATE: A6005890
COOKEVILLE CHESS CLUB
C/O MIKE WILLIAMS
601 S JEFFERSON
COOKEVILLE

DIRECTOR: 10798671
PATRICK T BURDICK
905 MILFRED AVE

TN 38501

COOKEVILLE

PLAYER	ST	PRE RTNG	POST RTNG	1	2	3	4	TOT
1 CAREY, MICHAEL P	TN	2227	2235	W35	W11	W17	W-5	4.0
2 GOODFREY, SCOTT	TN	2033	2050	W37	W28	W18	W-6	4.0
3 JONES, JR JOE C	TN	2000	2019	W38	W20	W26	W-8	4.0
4 CARPENTER, RICHARD	TN	2102	2084	W36	W12	L-8	W25	3.0
5 EASTER, RON	TN	1974	1977	W30	W13	W40	L-1	3.0
6 KING, MARK T	TN	1830	1845	W48	W21	W15	L-2	3.0
7 REED, BROOKS	TN	1796	1799	W55	019	029	W16	3.0
8 PATTERSON, RODNEY	TN	1752	1783	W23	W45	W-4	L-3	3.0
9 WHITE, JOHN L	TN	1697	1709	W46	L15	W19	W34	3.0
10 EGULF, FRANK T	TN	1667	1667	W57	L40	W49	W29	3.0
11 BEASLEY, RONALD E	KY	1661	1679	W42	L-1	W38	W32	3.0
12 MC HENRY, TIM	TN	1624	1641	W53	L-4	W35	W33	3.0
13 THOMAS, LARRY G	TN	1624	1648	W59	L-5	W54	W26	3.0
14 THOMAS, DAVID M	TN	1579/4	1631	L44	W50	W45	W28	3.0
15 SAMS, MICHAEL A	TN	1412	1498	W41	W-9	L-6	W27	3.0
16 SABINE, HARRY D	TN	1817	1809	W50	W44	025	L-7	2.5
17 SCHNETTMAN, PATRIC	TN	1778	1774	W54	W34	L-1	020	2.5
18 GLOVER, HASKELL L	TN	1742	1738	W52	W49	L-2	021	2.5
19 COLLINGSWORTH, NOR	TN	1656	1661	W60	0-7	L-9	W43	2.5
20 JACKSON, JAMES L	TN	1620	1627	W65	L-3	W55	017	2.5
21 PARHAM, W TRAVIS	TN	1603	1607	W63	L-6	W52	018	2.5
22 CARTER, ALTON O	TN	1470	1493	L43	W24	023	W40	2.5
23 KOON, JAMES K	TN	1332/12	1364	L-8	W62	022	W48	2.5
24 SKEEN, LARRY	TN	0	1496	029	L22	W63	W44	2.5
25 MOORE, PATRICK	TN	0	1838	W33	W27	016	L-4	2.5
26 MC GILL, TONY RHEA	TN	1820	1790	W56	W61	L-3	L13	2.0
27 BUSBY, JOHN	TN	1679/4	1634	W64	L25	W36	L15	2.0
28 BURGESS, DONALD R	TN	1645	1638	W58	L-2	W30	L14	2.0

29 LAWSON, DAVID L	TN	1587	1592	024	W43	0-7	L10	2.0
30 HALL, BILL	TN	1514	1507	L-5	W59	L28	W56	2.0
31 ALLEN, CHARLIE	TN	1472	1457	L40	L42	W64	W54	2.0
32 DAY, SHANE M	TN	1453	1448	L61	W53	W42	L11	2.0
33 CROUCH, SAM J	TN	1448	1445	L25	W56	W58	L12	2.0
34 GOINS, MIKE	TN	1434	1444	W39	L17	W61	L-9	2.0
35 HESS, WILLIAM W	TN	1409	1413	L-1	W64	L12	W58	2.0
36 PEARSON, JR CLINTO	TN	1405	1410	L-4	W57	L27	W52	2.0
37 ORGAIN, WILLIAM H	TN	1349/10	1356	L-2	L58	W57	W61	2.0
38 MC GILL, RONNIE R	TN	1315	1320	L-3	W65	L11	W59	2.0
39 BARNES, TWIN W	TN	1273/4	1270	L34	L54	W53	W55	2.0
40 AUSTIN, ANDY	TN	1267/4	1456	W31	W10	L-5	L22	2.0
41 BARNES, LEVERNE	TN	1228/4	1318	L15	W46	L48	W51	2.0
42 WILSON, CHRIS	TN	1154/15	1229	L11	W31	L32	W49	2.0
43 WICKLE, CHRIS L	TN	1627/5	1553	W22	L29	044	L19	1.5
44 LEFTWICH, LANNY	TN	1450/12	1469	W14	L16	043	L24	1.5
45 GREEN, GRAYSON	TN	1414	1403	W66	L-3	L14	046	1.5
46 WOODS, GENE E	TN	1334	1325	L-9	L41	W60	045	1.5
47 BURDICK, KITTY E	TN	1248	1245	0-0	U-0	062	W63	1.5
48 MC HENRY, LYNN	TN	1186	1193	L-6	063	W41	L23	1.5
49 WRIGHT, IAN	TN	1447	1423	W62	L18	L10	L42	1.0
50 DEKMAR, ERIC	TN	1346	1316	L16	L14	L59	W62	1.0
51 BURDICK, MARK	TN	1309	1298	0-0	U-0	W65	L41	1.0
52 ALDRICH, KEVIN	TN	1242	1234	L18	W66	L21	L36	1.0
53 WHITE, JASON C	TN	1239	1221	L12	L32	L39	W65	1.0
54 MORGAN, GORDON R	TN	1201	1211	L17	W39	L13	L31	1.0
55 ALLISON, JEFF	TN	1190	1189	L-7	W60	L20	L39	1.0
56 CAREY, KATE B	TN	1171/15	1187	L26	L33	W66	L30	1.0
57 HESS, RICHARD W	TN	1122	1119	L10	L36	L37	W66	1.0
58 SHAW, MARK	TN	1019	1041	L28	W37	L33	L35	1.0
59 WRIGHT, NATHAN	TN	732/4	991	L13	L30	W50	L38	1.0
60 WATTS, DARRELL	TN	0	1155	L19	L55	L46	W64	1.0
61 WOOLLEY, JIMMY D	TN	0	1316	W32	L26	L34	L37	1.0
62 KOON, BILL	TN	991/8	1018	L49	L23	047	L50	.5
63 COUGHLAN, PAT	TN	0	1079	L21	048	L24	L47	.5
64 ALLEN, WYATT	TN	1240	1201	L27	L35	L31	L60	.0
65 REINARD, SCOTT	TN	1027	1008	L20	L38	L51	L53	.0
66 BURDICK, MATTHEW	TN	648/4	745	L45	L52	L56	L57	.0

TIED PLAYERS ARE LISTED IN ORDER OF PRE-TOURNAMENT RATINGS
W=WIN, L=LOSS, 0=DRAW, X=FORFEIT WIN, F=FORFEIT LOSS
Z=FORFEIT DRAW, H=1/2 PT BYE, B=BYE, U=UNPLAYED

TENNESSEE'S TOP TEN PLAYERS

1. Curt Jones	Nashville	2295
2. Paul Harless	Nashville	2228
3. Micheal Carey	Nashville	2227
4. Brian McCarthy	Hermitage	2190
5. Emanuel Tsitseklis	Knoxville	2178
6. Albert Wright	Memphis	2152
7. Mahlon Smith	Memphis	2134
8. Leonard Dickerson	Knoxville	2131
9. Kenny Thomas	Memphis	2121
10. Robert Ilderton	Memphis	2098

TENNESSEE'S TOP TEN WOMEN PLAYERS

1. Sofi Zhislin	Nashville	1725
2. Joy Wellman	Memphis	1448
3. Debbie Pollen	Memphis	1439/5
4. Nancy Weaver	Crossville	1344
5. Susan Smathers	Crossville	1332
6. Janet Schwartz	Memphis	1323
7. April Bean	Knoxville	1299/11
8. Camilla West	Nashville	1283/17
9. Amy Knightly	Knoxville	1222/17
10. Penny McGill	Maryville	1204

TENNESSEE'S TOP TEN HIGH SCHOOL PLAYERS (GRADES 10-12)

1. Ronald Burnett	(11)	Overton	2089
2. Chuck Lovingood	(10)	Cumberland	1946
3. Cris Chambers	(12)	Webb	1857
4. Robert G. Etter	(12)	Baylor	1843
5. Tony McGill	(10)	Maryville	1811
6. Bradley Watson	(12)	Webb	1801
7. Cary Long	(12)	Farragut	1769
8. Richard Weems	(11)	Baylor	1733
9. Charles Leete	(12)	Webb	1719
10. George Yu	(12)	CBHS	1706

TENNESSEE'S TOP TEN JUNIOR HIGH SCHOOL PLAYERS (GRADES 7-9)

1. Chris Loyless	(9)	Martin	1833
2. Travis Parham	(9)	Homestead	1585
3. Gus Lipman	(7)	Lusanne	1557
4. Bill Hall	(9)	Cumberland	1554
5. Jay Sabine	(8)	Martin	1521
6. Jeremy Hassler	(8)	Martin	1496
7. John Barker	(9)	Baylor	1484
8. Jack Grossl	(8)	So. Cumberland	1455
9. Andy Chambers	(8)	Farragut	1454
10. Robert Viriden	(7)	Auburndale	1424/9

TENNESSEE'S TOP TEN ELEMENTARY PLAYERS (GRADES 4-6)

1. Chris Lax	(5)	Homestead	1500
2. Ted Mason	(6)	Auburndale	1489
3. Shane Day	(6)	Homestead	1471
4. Lee Hendricks	(4)	Reeves-Rogers	1464/16
5. Ian Wright	(5)	Capshaw	1447
6. Chris Arfken	(6)	Thrasher	1357
7. Mark Burdick	(4)	Parkview	1355
8. Charles Smith	(4)	Franklin Christian	1354
9. John Sinkawkas	(6)	Rocky Hill	1325
10. Sisompathana Phrommala	(4)	Bradley Model	1318/17

TENNESSEE'S TOP TEN PRIMARY PLAYERS (GRADES 3 & Below)

1. Todd Shimabukuro	(3)	Willowbrook	1402/15
2. Oliver Tai	(3)	Auburndale	1312/14
3. Sengamp Phrommala	(3)	Bradley Model	1262/17
4. Jason White	(3)	Homestead	1246
5. Thilavanh Phrommala	(3)	Bradley Model	1212/17
6. Will Litchford	(3)	Crossville	1128
7. Jonathan Smith	(2)	Franklin Christian	1119
8. Jimmy Day	(3)	Homestead	1083
9. Allon Carr	(3)	Capshaw	1001/13
10. Mike Dieringer	(2)	Parkview	889/13

The 1983 Memphis Open

The 2nd Annual Memphis Open (formerly the Memphis in May Open) was held Memorial Day weekend (May 28-29) at the Quality Inn-Airport, 1400 Springbrook in south Memphis. The tournament received no advertising in Chess Life yet managed to attract 44 entries (10 less than last year's Memphis in May Open which boasted \$1300 in guaranteed prizes).

Carl daCunha (Memphis) and Ron Burnett (Nashville) co-championed the two-day event and shared top money, although daCunha won the first place trophy on tie-breaks. Burnett's last round victory CM Johnson Moore (Nashville) allowed him to catch up with daCunha who was held to a draw by chess master Brian McCarthy (Nashville) after having won his first four games.

Both Carl and Ron have been leaving their marks on Tennessee chess events in recent months. DaCunha, a medical doctor and a native of Brazil, just moved to Memphis a couple of years ago. While in Brazil Carl "sparred" with Grandmaster Mecking on occasion, and from the looks of things he must have learned a trick or two. This year alone Carl has qualified for the Memphis City Championship, won first place on tie-breaks in the Bluff City Open, and has now won a share of the Memphis Open title.

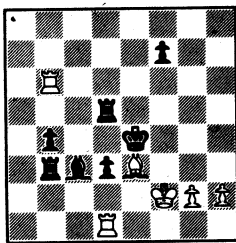
Burnett, on the other hand, is no stranger to Tennessee chess. Ron who just finished the tenth grade at Nashville Overton is Tennessee's highest rated high school chess-player with his CM rating. Besides tying for first in the Memphis Open, Ron recent-

ly won clear first in the 1983 Tennessee Scholastics. Also among his recent credits he has qualified for the Nashville City Championship, tied for first in the Music City Winter Open, and taken a share of first in the Cumberland County Spring Open. Apparently Carl and Ron have discovered the secret for manhandling Tennessee chess events!

Other winners in the 1983 Memphis Open were:
Albert Wright - CM
Bill Keogh, Thomas Harley, and Nils Gentner - Cat I.
Bill Melvin, Norman Cantor, and Guy Thompson - Cat II.
Gus Lipman - Cat III.
Skip Hamlett - Cat IV/below.
Sidney Woods - top Unrated.

The tournament was directed by Jim Gallagher Sr. The Memphis Chess Club sponsored the event.

Johnson Moore - Ron Burnett
1. d4 g6 2. c4 Bg7 3. Nc3 d6
4. Bg5 Nf6 5. e4 Nbd7 6. Be2
h6 7. Bf4 e5 8. de de 9. Be3
c6 10. Nf3 Qe7 11. Nd2 Nc5
12. 0-0 0-0 13. b4 Ne6 14. c5
Rd8 15. f3 Nd4 16. Qa4 Be6
17. Bd1 a5 18. Rf2 b5 19.
Qa3 Nd7 20. Nb3 ab 21. Qb4
Bb3 22. Bb3 Qc5 23. Qc5 Nc5
24. Bd1 b4 25. Ne2 Ra3 26.
Nd4 ed 27. Bcl Ra6 28. Rbl
Rb6 29. Bf4 Rd7 30. Rd2 Ne6
31. Bg3 c5 32. Bb3 Ra6 33.
Rcl d3 34. e5 Nd4 35. Rc5
Nb3 36. ab Ra3 37. Rc8 Kh7
38. Rb8 Rb3 39. Kf2 Rd5 40.
f4 g5 41. Rb7 gf 42. Bf4
Kg6 43. Rb6 Kf5 44. Bh6 Be5
45. Be3 Bc3 46. Rd1 Ke4

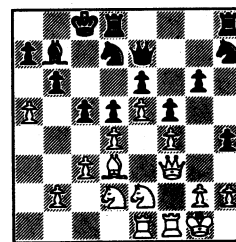


White resigns. Black threatens to win the Bishop by ...Rb2 or Rf5, and if White's Bishop relinquishes control of the g1 - a7 diagonal ... Bd4 picks up the White Rook on b6.

Thomas Harley - Randy Cope
1. e4 c5 2. Nf3 d6 3. d4 cd4
4. Nd4 Nf6 5. f3?! g6? 6. Be3
7. c4 Nc6 8. Qd2 0-0 9. Nc3
Nd4 10. Bd4 Be6 11. Be2 Qa5
12. 0-0 Rfc8 13. b3 a6 14.
Rfd1 Qh5 15. Rac1 Bh6 16.
f4 Bg4 17. Bf6 ef6 18. Nd5
Kg7 19. Nf6!? Qc5+ 20. Kh1
Be2 Nd7 Qc6 22. Qb2+ Kg8
23. Nf6+ Kf8 24. Nh7+ Ke7
25. Qf6+ Ke8 26. Rd6 Qe4
27. Qh8+ Ke7 28. Qf6+
drawn.

Carl da Cunha - Kenny Thomas
1. c4 e5 2. Nc3 Nc6 3. g3 g6
4. Bg2 Bg7 5. Nf3 d6 6. d3
f5 7. e3 Nge7 8. 0-0 0-0 9.
Nel Be6 10. f4 Qd7 11. Nc2
d5 12. fe Ne5 13. c5 N5c6 14.
d4 Kh8 15. b4 Nd8 16. a4 c6
17. Bd2 Ng8
18. Rb1 Nf6 19. Na3 Qe7 20.
Nc2 Ne4 21. Ne4 fe 22. Rf8
Bf8 23. Qe2 Qd7 24. b5 Bg4
25. Qf1 Bg7 26. h3 Be6 27.
Kh2 cb 28. Qb5 Qb5 29. ab
Bd7 30. Bf1 Kg8 31. Be2 Kf7
32. Nb4 Be6 33. c6 bc 34.
bc Rc8 35. Ba6 Rc7 36. Rcl
Bf8 37. Bb5 Bb4 38. Bb4 Bc8
39. Bd6 Ne6 40. Bc7 Nc7 41.
Ba4 Ke7 42. Rbl Kd6 43. Rb8
Be6 44. g4 Black resigns.

Pickard - DaCunha
1. d4 Nf6 2. Bg5 e6 3. e3
Be7 4. Nd2 d5 5. Bd3 Nbd7 6.
f4 c5 7. c3 b6 8. Qf3 Bb7 9.
Ne2 h5 10. 0-0 g6 11. Rael
Nh7 12. Be7 Qe7 13. e4 0-0-0
14. e5 h4 15. a4 f5 16. a5



c4 17. Bc2 g5 18. ab6 Nb6
19. Ral Kb8 20. Rfbl gf4 21.
Nf4 Rdg8 22. Qf2 Ng5 23. b3
Ne4 24. Be4 fe4 25. bc4 dc4
26. Qe3 Rg4 27. Ne4 Qg7 28.
Ne6 Rg2 29. Kh1 Qg4 30. d5
Re2 31. Rgl Qe4 32. Qe4 Re4
33. Nc5 Bd5 34. Na6 Kc8 35.
Nb4 Bb7 36. Ra7 Rel 37. Rb7
Rgl White resigns.

scholastic chess club

A new chess club has emerged in Memphis. Monday nights, 7:30 to 10 p.m. The name of the club is the Scholastics

ASSORTED GAMES!

CUMBERLAND COUNTY

SPRING OPEN 1983

MCGILL (1811) PARHAM (1472)

SICILIAN

1. e4 d6 2. d4 g6 3. Nc3 Bg7 4. f4 Nd7 5. Nf3 c5 6. Bc4 Nb6 7. Be2 Bg5 8. Be3 Nf6 9. dxc5 dxc5 10. Qxd8 Rxd8 11. Bxc5 Nh5 12. e5 Nxf4 13. Bb5+ Nd7 14. O-O b6 15. Ba3 Ne6 16. Nd5 Bxf3 17. Rxf3 Nd4 18. Nc7+ Kf8 19. Rf2 Bxe5 20. Bc4 Nf6 21. Raf1 Nf5 22. Re2 Bd6 23. b4 Bxc7 24. Bc1 Kg7 25. Rxf5 gxf5 26. Rxe7 Rd1+ 27. Kf2 Rxc1 28. Rxf7+ Kg6 29. Rxc7 Rxc2+ 30. Ke3 Re8+ (Nd5+ is better) 31. Kd3 Rxc4 32. Kxc4 and Black went on to win.

BIRMINGHAM OPEN

1983

PARAHAM (1472) PERRY (1732)

CENTER COUNTER

1. e4 d5 2. exd5 Nf6 3. Nc3 Nxd5 4. Nxd5 Qxd5 5. Nf3 Nc6 6. Be2 Bf5 7. c3 O-O 8. O-O e5 9. Qa4 h5 10. Ng5 a6 11. Bc4! Qd7 12. Nxf7 Bd6 13. Nxb8 Rxb8 14. d4 exd4 15. cxd4 Bh3 16. Bd5 Qg4 17. Bxc6 bxc6 18. Qxc6 Rf8 19. Be3 Rf6 20. g3 Bxf1 21. Rxf1 h5 22. Qxa6+ Kd7 23. Qb5+ Kc8 24. Qd5 hxc3 25. fxg3 Rxf1 26. Kxf1 Qd1+ 27. Kg2 Qe2+ 28. Bf2 Qxb2 29. Qg8+ Kb7 30. Qb3+! Resigns

U.T. 30/30 Tournament

Jack Jeffery (1851) -

Greg Robbins (1859)

1. e4 c6 2. d4 d5 3. Nc3 de 4. Ne4 Nf6 5. Nf6 gf 6. Nf3 Bg4 7. c3 Nbd7 8. h3 Bh5 9. Be2 Qc7 10. Be3 e6 11. Nd2 Bg6 12. Nb3 O-O 13. Bd3 e5 14. Bg6 hg 15. Qc2 f5 16. O-O 17. de Qe5 18. Ba7

Qf4 19. Kbl Nd5 20. Rd4 Qg5 21. Rhd1 Bg7 22. f4 Qh4 23. Ra4 Bc3 24. bc Nc3 25. Qc3 Rd1 26. Kc2 Rhd8 27. Bb6 R8d5 28. Ra8 Kd7 29. Nc5 Ke7 30. Qe3 Kf6 31. Bd8 Kg7 32. Bh4 b6 33. Nb3 Rf1 34. Qc3 Kh6 35. Rh8 mate.

1982 U.S. Junior Open

Herbert Vaughn (1695) -

Jack Jeffery (1839)

1. e4 c5 2. Nc3 Nc6 3. g3 g6 4. Bg2 Bg7 5. Nge2 Rb8 6. b3 e6 7. Bb2 Nge7 8. Nf4 O-O 9. O-O b5 10. Qe2 Nd4 11. Qd3 c4 12. Qe3 Nec6 13. Racl Qa5 14. e5 Be5 15. Nd1 Nf5 16. Qc5 Bd6 17. Bc3 Qa6 White resigns.

Yu (1496) - Janet Schwartz (1147)

1. e4	d5
2. ed5	Qd5
3. Nc3	Qg5
4. Nf3	Nf6
5. d4	Bg4
6. Bd2	Qb6!?
7. Bf4?	e6
8. Nb5	Bd6
9. Nd6	cd6
10. c3	Qc6
11. a4	Bf3
12. Qf3	Qc7
13. Rg1	e5
14. de5	de5
15. Qe2	Nbd7
16. Bg5	O-O
17. Bh6??	Nh5??
18. f4?	Nf4
19. Bg7??	Ne2

0:1

COMING ATTRACTIONS

AUG 13 COOKEVILLE SUMMER OPEN

4ss, 40/60, Ovo room, University Center, Tenn. Tech., University, Cookeville, TN 38501. EF: \$5 if rec'd by 8/9. At site \$6. ST: \$4. \$250 based on 50 players. 1st 60, 2nd 40, 3rd 30, Cat. IV thru VI each \$15, Unrated \$15. REG: 7-8:30 am. RDS: 8:45-11:30-4:30. Advance entry - Pat Burdick, 905 Milfred Ave, Cookeville, TN 38501. NS & NC.

SEP 3-5 37th TENNESSEE OPEN

6ss, 50/2, In 3 sections.

OPEN-AMATEUR-NOVICE.

SITE: Quality Inn Parkway, 10 Interstate Drive, Nashville TN 37213. Advanced EF: \$15/20/25 if rec'd by 8/30. At site EF: \$20/25/30. TCA dues \$4. \$2000 unconditional-ly guaranteed.

OPEN: 1st 300 & trophy, 2nd 200, 3rd 100; CM 1st 150 & trophy, 2nd 90, 3rd 50; Cat I & below 1st 150 & trophy, 2nd 90, 3rd 50. Tenn. State Champion - trophy, TN Junior - trophy (18 or under on 9/5), and team trophy.

AMATEUR: (below 1800)

1st \$150 & trophy, 2nd 90, 3rd \$50, Cat III & below 1st \$100 & trophy, 2nd 50, 3rd 30; Team champion - trophy.

NOVICE: (below 1400)

1st \$100 & trophy, 2nd 60, 3rd 40; Cat. V, VI, and Unrated each \$50 & trophy (unrated eligible for UNR prize only); team champion trophy. RG: 9-12. RDS:

1-6, 9-3, 8-1. HR: single 30, double 37. ENT:

Peter Lahde, 2609 Sailboat Ct., Nashville, TN 37217. 361-4588. NS.

SEP 24 CUMBERLAND COUNTY

FALL OPEN: 4ss, 40/1, Martin JHS, Stanley St., Crossville, TN 38555. EF: \$6. TCA \$4. \$250 based on 45 players: 1st \$75, Cat. I thru V each \$30. Cat. VI \$15, UNR \$10; 1st guaranteed. Optional trophies available. REG: 7:30-8:30. RDS: 9-11:30-2:30-5:30. ENT: Harry Sakine, P.O. Box 381, Crossville, TN 38555 484-9593 or 484-4878.

to the editor

I have been a fan of TCN for 4½ years now & lately I've been very disappointed with the exclusion of tournament crosstables in the past several issues. Contrary to some people's opinions, simply reporting the winners' names is sufficient. Many chess-players (including myself) enjoy seeing one's standing among the other players & crossreferencing other players'

results. In fact, crosstables encourage participation in tournaments. I know, because I have discussed this with many Tenn. players. A crosstable gives much more info than a mere paragraph listing winners. No written word can capture the drama & excitement that is a chess event, but crosstables certainly help.

Thank you,
Jack Jeffery

OCT 1-2 THE MEMPHIS INVITATIONAL & CLASS CHAMPIONSHIPS:
 4ss, 40/2, Roadway Inn - Medical Center, 889 Union, Memphis, TN 38103. EF: \$20 (\$22 at site) TCA dues \$4. No checks at site! Masters' entry deducted from winnings. Unrateds \$5 entry (eligible for UNR trophy only).
 5 sections: INVITATIONAL:
 Open to 2000 or above.
 \$\$(\$225 b/16 at \$20) \$150-75 trophy to 1st. Categories
I, II, III, IV/below/UNR
 each: \$\$(\$100 b/10) \$75-25 trophy to 1st per class (5 per class min.). RG: 8-9:30. RDS: 10-3, 10-3. HR: \$20-25. ENT: Randy Cope, 206 Wills #4, Memphis, TN 38111. (901) - 324-4454. LS&NC.

OCT 15 COOKEVILLE FALL OPEN.

NOV 26-27 24th ANNUAL MID-SOUTH OPEN: 5ss, 40/100, Roadway Inn-Medical Center, 889 Union, Memphis, TN 38104. 2 Sections: \$G: 800-400-300; CM, Cat I each 200-100. The above prizes are for the Open section.
RESERVE: (open to under 1800 or unrated) \$G 600-300-200 Cat III, IV/below each 200-100, UNR 125-75 (unrateds eligible only for UNR prizes or top prizes in Open section).
 . ALL: EF: \$30 (\$35 at site). TCA dues: \$4. No checks accepted at site! Masters' entry deducted from winnings. RG: 7:30-9:30 a.m. RDS: 10-3-8, 10-3. HR: \$20-25 special chess rates (901)-526-8481. ENT: Jim Gallagher, 4611 Boeingshire, Memphis,

TN 38116. (901)-398-6370. LS & NC. \$4,000 total fund! Make plans early!

DEC 3-4 CROSSVILLE SCHOLASTICS: 6ss, 40/60, Martin JHS, Stanley St., Crossville, TN 38555. Open to all school students. In 4 sections: HS open to grades 12/below. EF: \$6, if mailed by 11/28. Trophies to top 10, top II, III, IV, V, VI, UNR, top 5 teams. \$75-50-25 to top 3 TN teams for expenses to TN Scholastics. JHS, open to grades 9/below. EF: \$5 if mailed by 11/28. Trophies to top 10, top III, IV, V, VI, UNR, top 5 teams. \$75-50-25 to top 3 teams for expenses to TN Scholastics. Elementary, open to grades 6/below. EF: \$4 if mailed by 11/28. Trophies to top 10, top IV, V, VI, UNR, top 5 teams. \$75-50-25 to top 3 teams for TN Scholastics. RG: Friday Only! 5-10 PM; (players meeting Sat. 8 AM) RD: 8:30-12-3:30-7; 8-12. Primary, 5ss, 30/30, Saturday only, open to grades 3/below. EF: \$3 if mailed by 11/28. Trophies to top 10, top VI, Unr, top 5 teams. \$50 to top TN team for TN Scholastics. RD: first round- 8:30am. All: EF \$5 more at site. ST: \$4 reg. of TN students. Teams must have at least 4 from same school. No school may win more than one team trophy per section, top 4 scores added for team score. Team members will not be paired against each other. ENT: Harry Sabine, P.O. Box

381, Crossville, TN 38555. (615)-484-9593 or 484-4878. Free sleeping bag accommodations if requested in advance. HR: Heritage Inn \$27.50 per room for any number - 484-9505, P.O. Box 581, Crossville TN 38555. NS & NC.

DEC 31 - JAN 1 7th ANNUAL FAIRFIELD GLADE OPEN: 5ss, 50/2, Fairfield Glade Resort, Peavine Rd., Crossville, TN 38555. \$G 2,500. In 3 sections: Open, EF \$25 if rec'd by 12/26. \$G 500-200-100, CM, I & below, 200-100-50; trophies to 1st, top CM, I & below. Amateur: open to below 1800. EF: \$20 if rec'd by 12/26. \$G 200-75-50, III & below 150-75-50, trophies to 1st, top III & below. Novice: open to below 1400. EF: \$15 if rec'd by 12/26. \$G 100-75-50, V \$75, VI \$50, UR \$50; trophies to 1st, V, VI, UR (UR eligible for UR prize only). ALL: special \$5 EF for all Juniors (current youth or participating youth member of USCF), may win trophies only. EF \$5 more at site. ST: \$4. Optional trophies available. RG: 7-9 PM 12/30 or 7-8 am. 12/31. RDS 9-2-7, 9-2. HR: Fairfield Glade Lodge \$28-28-28-28. Villa Parlor (kitchen/2 double beds) - \$40, VP + one bedroom - \$60, VP + 2 bedrooms - \$80. ENT: Harry Sabine, P.O. Box 381, Crossville, TN 38555. (615) 484-9593 or 484-4878. LS.

TENNESSEE CHESS ASSOCIATION
 Gary Pylant, Editor TCN
 206 Wills, Apt. 3
 Memphis, TN 38111

Nonprofit Organ.
U.S. Postage
PAID
Memphis, TN
Permit No. 1677